

TM-ZF500 31093010010A FRAME/STD,MANUAL

PB2000004-01 POWER TAKE OFF & PUMP

PK2000772-00 FRAME UNIT

PO1000122-01 INDICATION PLATES

PY1000987-00 OPTIONS (STD)

ASSEMBLY

CLICK HERE TO **DOWNLOAD** THE COMPLETE MANUAL

- Thank you very much for reading the preview of the manual.
- You can download the complete manual from: www.heydownloads.com by clicking the link below



- Please note: If there is no response to CLICKING the link, please download this PDF first and then click on it.

CLICK HERE TO **DOWNLOAD** THE COMPLETE MANUAL

TM-ZF500 31093010010A FRAME/STD,MANUAL

PB1380261-01 POWER SUPPLY (REAR JACK)
PB1400210-01 PIPING,HYDRAULIC UPPER
PB1410624-02 PIPING,HYDRAULIC LOWER
PB1410774-00 PIPING,LOWER (REMOTE/RADIO,OPT)
PB1410777-00 PIPING,HYDRAULIC LOWER
PB1410798-00 PIPING,LOWER (RADIO CONTROL)
PB1410811-02 PIPING,LOWER (TANK)
PB1411319-00 PIPING,LOWER (REMOTE CONT.VALVE/NACHI)
PB1411762-00 PIPING,LOWER (VALVE/NABCO)
PB1411898-00 PIPING,LOWER (REMOTE CONT.VALVE/SANWA)
PC1010424-03 OUTRIGGER (STD,L=570)
PC1010425-03 OUTRIGGER (STD,L=700)
PC1010442-02 OUTRIGGER (STD L=930)
PC1010815-00 OUTRIGGER (REAR FRAME/NOT ROTARY)
PC1011263-00 OUTRIGGER (L=570)
PC1011264-00 OUTRIGGER (L=700)
PC1011265-00 OUTRIGGER (L=930)
PC1020004-01 OUTRIGGER,REAR (ROTARY/LOW TRUCK BED)
PC1020005-01 OUTRIGGER,REAR (ROTARY/HIGH TRUK BED)
PC1020053-00 OUTRIGGER,REAR (CAB BACK)
PC1020054-00 OUTRIGGER,REAR (ROTARY/LOW TRUK BED)
PC1020055-00 OUTRIGGER,REAR (ROTARY/HIGH TRUK BED)
PC1030013-04 CYLINDER,JACK (REAR/STROKE 430MM)
PC1030126-01 CYLINDER,JACK (REAR/STROKE 330MM)
PC1030205-03 CYLINDER,JACK
PC1100159-07 OPE.ASSY,OUTRIGGER
PC1190020-00 INDICATOR,OUTRIGGER
PC1190021-01 INDICATOR,OUTRIGGER
PC1190022-00 INDICATOR,OUTRIGGER
PC1230023-03 PIPING,REAR JACK (ROTARY TYPE)
PC1230024-01 PIPING,REAR JACK (1,NOT ROTARY)
PC1230025-00 PIPING,REAR JACK (2,NOT ROTARY)
PD1010062-01 REDUCER,SWING SPEED
PD1010101-03 REDUCER,SWING SPEED (MOUNT)
PD1010133-00 REDUCER,SWING SPEED
PD1010172-00 REDUCER,SWING SPEED
PD1200086-01 PIPING,SWING
PE1010235-01 CYLINDER,ELEVATING
PE5020094-00 ELEC.ASSY
PE5020095-00 ELEC.ASSY (CRANE/SWITCH)
PE5020096-00 ELEC.ASSY (CRANE/HARNESS)
PE5020097-00 ELEC.ASSY (CRANE/HARNESS)
PE5020098-00 ELEC.ASSY (CARRIER)
PE5020099-00 ELEC.ASSY (FRAME)
PE5020100-00 ELEC.ASSY (FRAME)
PE5020101-00 ELEC.ASSY (AWL LAMP/STOP TO CONFIGURATION)
PE5020102-01 ELEC.ASSY
PE5020103-00 ELEC.ASSY
PE5021180-00 ELEC.ASSY (MOUNTING VEHICLE)
PF1010128-03 WINCH (OOKUBO)
PF1010131-01 WINCH (DRUM FREE,OPTION)
PF1010133-01 WINCH (DRUM FREE)
PF1010135-02 WINCH (HARTYS)
PF1010167-02 WINCH (HARTYS)
PF1010229-01 WINCH (Y.G.TEC)
PF1010237-01 WINCH (OOKUBO)
PF1010354-00 WINCH (DRUM FREE)
PF1020007-00 DRUM,WINCH (HARTYS)
PF1020025-00 DRUM,WINCH (Y.G.TEC)
PF1050063-01 HOOK (DRUM FREE,OPTION)
PF1050161-03 HOOK (1-PART LINE ,OPTION)
PF1050447-00 HOOK
PF1080002-00 SUPPORT
PF1180055-00 DETECTOR,DISORDERLY WINDING

TM-ZF500 31093010010A FRAME/STD,MANUAL

Pos No.	Parts No	Parts Name	Qty	Unit	Technical Data	Serial No (Start)	Serial No (End)	Remarks	Page
1	36400025010	CASE	1						
2	36400015020	GEAR	1						
3	36400015030	SHAFT	1						
4	36400015040	ADAPTER	1						
5	36400015050	SHAFT (FORK)	1						
6	36400015060	FORK	1						
7	52430604200	BALL,STEEL	1		10				
8	52430604190	SPRING	1						
9	52430304150	BOLT (ADJUSTING)	1						
10	52430604180	PACKING	1						
11	52430604210	NUT	1		M12				
12	80500006306	BEARING,BALL	1						
13	80500006007	BEARING,BALL	1						
14	91206035002	SEAL,OIL	1						
15	91216020001	SEAL,OIL	1						
16	36400015070	O-RING	1						
17	36400015080	PLUG	1						
18	36400015090	PACKING	1						
19	52630203020	PACKING	1						
20	36400015100	BOLT	2		M12X50X1.15				
21	90264201200	NUT	2		M12				
22	90302041201	WASHER,SPRING	2		12				
23	90191210045	BOLT	2		M10X45				
24	36400025020	BOLT	6		M10X45X1.5				
25	90264201000	NUT	6		M10				
26	90302041001	WASHER,SPRING	8		10				
50	36400020000	POWER TAKE OFF	1						

TM-ZF500 31093010010A FRAME/STD,MANUAL

Pos No.	Parts No	Parts Name	Qty	Unit	Technical Data	Serial No (Start)	Serial No (End)	Remarks	Page
1	51630405010	CASE	1						
2	51630405020	GEAR,OUTPUT	1						
3	36400175010	SHAFT (OUTPUT)	1						
4	51630403060	SHAFT (SHIFTER)	1						
5	51630403070	FORK	1						
6	36400175020	COVER (BEARING)	1						
7	80500006206	BEARING,BALL	1						
8	80500006305	BEARING,BALL	1						
9	91206030009	SEAL,OIL	1						
10	91206020007	SEAL,OIL	1						
11	52430604200	BALL,STEEL	1		10				
12	52430604190	SPRING	1						
13	51630405040	PACKING	1						
14	52130307290	PACKING	1						
15	52430304150	BOLT (ADJUSTING)	1						
16	52430604210	NUT	1		M12				
17	52430604180	PACKING	1						
18	90193512115	BOLT	4						
19	90193512035	BOLT	2		M12X35				
20	90191208022	BOLT	4		M8X22				
21	90302041201	WASHER,SPRING	6		12				
22	90302040801	WASHER,SPRING	4		8				
23	36400175030	FLANGE	1						
24	36400175040	KEY	1						
25	36400155010	WASHER,PLAIN	1						
26	36400175050	STOPPER	1						
27	36400155020	NUT	1		M16				
50	36400170000	POWER TAKE OFF	1						

TM-ZF500 31093010010A FRAME/STD,MANUAL

Pos No.	Parts No	Parts Name	Qty	Unit	Technical Data	Serial No (Start)	Serial No (End)	Remarks	Pages
1	52130105020	CASE	1						
2	52130102050	GEAR	1						
3	52130105030	SHAFT,DRIVING	1						
4	52130102070	FORK (SHIFTER)	1						
5	52130102060	SHAFT (SHIFTER)	1						
6	52130105100	COVER	1						
7	52130404040	COVER	1						
8	52130102100	PACKING	2						
9	91206025010	SEAL,OIL	1						
10	91206020007	SEAL,OIL	1						
11	80500006205	BEARING,BALL	2						
12	80560010000	BALL,STEEL	1		10				
13	52130102120	SPRING	1						
14	90104512013	BOLT	1						
15	52430604180	PACKING	1						
16	52130102030	COUPLING	1						
17	52130105070	WASHER,PLAIN	1						
18	52230102330	STOPPER	1						
19	52130105090	NUT,LOCK	1						
20	52130404310	KEY	1						
21	90101508020	BOLT	8		M8X20				
22	90302040801	WASHER,SPRING	8		8				
23	52130102150	PACKING	1						
24	90302041001	WASHER,SPRING	6		10				
25	90101510030	BOLT	6		M10X30				
30	52130105000	POWER TAKE OFF	1						

TM-ZF500 31093010010A FRAME/STD,MANUAL

Pos No.	Parts No	Parts Name	Qty	Unit	Technical Data	Serial No (Start)	Serial No (End)	Remark
2	51630103010	CASE (P.T.O)	1					
3	51630103020	SHAFT (POWER TAKE OFF)	1					
4	51630103030	BEARING,NEEDLE	1					
5	51630104010	GEAR	1					
7	51630103050	WASHER	1					
8	51630103060	PIN,SPRING	2					
9	36400315010	SHAFT (OUTPUT)	1					
10	51630103080	BEARING,NEEDLE	2					
11	51630104020	GEAR	1					
13	51630103100	WASHER	1					
15	51630103110	SLEEVE	1					
16	80500006206	BEARING,BALL	3					
17	52630106230	COVER (FRONT)	1					
18	36400315020	ADAPTER	1					
19	51630103140	GASKET	2					
20	51630103150	BOLT	4					
21	36400315030	BOLT	4					
22	52630106350	SEAL,OIL	1					
25	51630103170	SHAFT	1					
26	51630103180	FORK	1					
27	51630103190	BOLT	1					
28	52630106200	BALL,STEEL	1					
29	52630106190	SPRING	1					
30	51630103200	PLUG	1					
31	51630103210	PLUG	1					
32	51630103220	SEAL,OIL	1					
33	51630103230	BOLT	1					
35	51630103240	NUT	1					
36	51630103250	GASKET	1					
37	51630103260	GASKET	1					
38	36400315040	BOLT	6					
40	36400315050	PLATE,NAME	1					
50	36400310000	POWER TAKE OFF	1					

TM-ZF500 31093010010A FRAME/STD,MANUAL

Pos No.	Parts No	Parts Name	Qty	Unit	Technical Data	Serial No (Start)	Serial No (End)	Remarks	Page
1	36400535010	CASE	1						
2	36400535020	GEAR	1						
3	36400535030	SHAFT	1						
4	36400535040	GEAR	1						
5	36400095040	SHAFT	1						
6	36400095050	COLLAR	1						
7	36400285040	SHIFTER SET	1						
8	36400095110	PACKING	1						
9	36400095070	COVER (BEARING)	1						
10	36400095080	PACKING (COVER)	1						
11	36400095090	SHIM	N						
12	80500006206	BEARING,BALL	2						
13	36400095120	BEARING	2						
14	91206030005	SEAL,OIL	1						
15	36400095130	WASHER	1						
16	90101206012	BOLT	1		M6X12				
17	80602110520	RING,RITAINING	2		R52				
18	90191208014	BOLT	3		M8X14				
19	90191208030	BOLT	4		M8X30				
20	90302040801	WASHER,SPRING	7		8				
21	36400285080	SPACER	1						
22	36400535050	PLATE,NAME	1						
25	36400095140	PACKING (CASE)	1						
26	90191210030	BOLT	4		M10X30				
27	36400095150	BOLT,STUD	4		M10X1.25/1.5X43				
28	90267201000	NUT	4		M10				
29	90302041001	WASHER,SPRING	8		10				
30	31790680100	SUPPORT	1						
31	90191208035	BOLT	2		M8X35				
50	36400530000	POWER TAKE OFF	1						
100	31791810000	POWER TAKE OFF	1						

TM-ZF500 31093010010A FRAME/STD,MANUAL

Pos No.	Parts No	Parts Name	Qty	Unit	Technical Data	Serial No (Start)	Serial No (End)	Remarks	Page
1	36400865010	CASE	1						
2	36400865020	GEAR	1						
3	36400865030	SHAFT	1						
4	36400095040	SHAFT	1						
5	36400095050	COLLAR	1						
6	36400865040	GEAR	1						
7	36400095070	COVER (BEARING)	1						
8	36400095080	PACKING (COVER)	1						
9	36400095090	SHIM	1						
10	36400095100	SHIFTER ASSY	1						
11	36400095110	PACKING	1						
12	80500006206	BEARING,BALL	2						
13	36400095120	BEARING	2						
14	80602110520	RING,RITAINING	2		R52				
15	91206030005	SEAL,OIL	1						
16	90101206012	BOLT	1		M6X12				
17	36400095130	WASHER	1						
18	90191208020	BOLT	4		M8X20				
19	90191208014	BOLT	3		M8X14				
20	90302040801	WASHER,SPRING	7		8				
21	36400335030	SHIM	1						
22	90191210030	BOLT	4		M10X30				
23	36400095150	BOLT,STUD	4		M10X1.25/1.5X43				
24	90267201000	NUT	4		M10				
25	90302041001	WASHER,SPRING	8		10				
28	31790670100	SUPPORT	1						
29	90191208025	BOLT	2		M8X25				
50	36400860000	POWER TAKE OFF	1						
100	31791360000	POWER TAKE OFF	1						

TM-ZF500 31093010010A FRAME/STD,MANUAL

Pos No.	Parts No	Parts Name	Qty	Unit	Technical Data	Serial No (Start)	Serial No (End)	Remarks	Pa
1	36401025010	CASE	1						
2	36401025020	GEAR	1						
3	36400845030	SHAFT	1						
4	36401025030	GEAR	1						
5	36400395050	SHAFT	1						
6	36400095100	SHIFTER ASSY	1						
7	36400095110	PACKING	1						
8	36400095070	COVER (BEARING)	1						
9	36400095080	PACKING (COVER)	1						
10	36400095090	SHIM	1						
11	36400675030	COLLAR	1						
12	80500006206	BEARING,BALL	2						
13	36401025050	BEARING	2						
14	91206030005	SEAL,OIL	1						
15	80602110470	RING,RITAINING	2		R47				
16	36400095130	WASHER	1						
17	90101206015	BOLT	1		M6X15				
18	90191208020	BOLT	4		M8X20				
19	90191208014	BOLT	3		M8X14				
20	90302040801	WASHER,SPRING	7		8				
21	36401025060	PLUG	1						
22	36401025070	WASHER,PLAIN	1						
24	36401025090	PLATE,NAME	1						
25	36401025100	PACKING	1						
26	36400095150	BOLT,STUD	6		M10X1.25/1.5X43				
27	90267201000	NUT	6		M10				
28	90302041001	WASHER,SPRING	6		10				
29	31790770100	SUPPORT	1						
30	90191208025	BOLT	2		M8X25				
31	36401025120	NUT (REINFORCER)	1						
50	36401020000	POWER TAKE OFF	1						
100	31790810000	POWER TAKE OFF	1						

TM-ZF500 31093010010A FRAME/STD,MANUAL

Pos No.	Parts No	Parts Name	Qty	Unit	Technical Data	Serial No (Start)	Serial No (End)	Remarks	Page
1	36400895010	CASE	1						
2	36400895020	GEAR	1						
3	36400895030	SHAFT	1						
4	36400895040	GEAR	1						
5	36400415050	SHAFT	1						
6	36400215070	COLLAR	2						
7	36400225110	SHIFTER SET	1						
8	36400095110	PACKING	1						
9	36400095070	COVER (BEARING)	1						
10	36400095080	PACKING (COVER)	1						
11	36400095090	SHIM	1						
12	80500006206	BEARING,BALL	2						
13	91206030005	SEAL,OIL	1						
14	91001102100	O-RING	1		1A P21				
15	90710006120	SCREW,SET	1		M6X12				
16	90191208020	BOLT	4		M8X20				
17	90191208014	BOLT	3		M8X14				
18	90302040801	WASHER,SPRING	7		8				
19	36400675050	BEARING	2						
20	80602110520	RING,RITAINING	2		R52				
22	36400415100	PACKING (CASE)	1						
23	36400095150	BOLT,STUD	2		M10X1.25/1.5X43				
24	90191210030	BOLT	6		M10X30				
25	90267201000	NUT	2		M10				
26	90302041001	WASHER,SPRING	8		10				
27	31790910100	SUPPORT	1						
28	90191208025	BOLT	2		M8X25				
39	36400225160	SEAL,OIL	1						
50	36401180000	POWER TAKE OFF	1						
100	31790910000	POWER TAKE OFF	1						

TM-ZF500 31093010010A FRAME/STD,MANUAL

Pos No.	Parts No	Parts Name	Qty	Unit	Technical Data	Serial No (Start)	Serial No (End)	Remarks	Pa
1	36401695010	CASE	1						
2	36401025020	GEAR	1						
3	36400845030	SHAFT	1						
4	36401695020	GEAR	1						
5	36400395050	SHAFT	1						
6	36400095100	SHIFTER ASSY	1						
7	36400095110	PACKING	1						
8	36400095070	COVER (BEARING)	1						
9	36400095080	PACKING (COVER)	1						
10	36400095090	SHIM	N						
11	36401105050	COLLAR	1						
12	80500006206	BEARING,BALL	2						
13	36401025050	BEARING	2						
14	91206030005	SEAL,OIL	1						
15	80602110470	RING,RITAINING	2		R47				
16	36400095130	WASHER	1						
17	90101206015	BOLT	1		M6X15				
18	90191208020	BOLT	4		M8X20				
19	90191208014	BOLT	3		M8X14				
20	90302040801	WASHER,SPRING	7		8				
21	36401025060	PLUG	1						
22	36401025070	WASHER,PLAIN	1						
25	36401025100	PACKING	1						
26	36401695040	BOLT,STUD	6		M10X1.25/1.5X47				
27	90267201000	NUT	6		M10				
28	90302041001	WASHER,SPRING	6		10				
29	31790770100	SUPPORT	1						
30	90191208025	BOLT	2		M8X25				
31	36401025120	NUT (REINFORCER)	1						
50	36401690000	POWER TAKE OFF	1						
100	31791070000	POWER TAKE OFF	1						

TM-ZF500 31093010010A FRAME/STD,MANUAL

Pos No.	Parts No	Parts Name	Qty	Unit	Technical Data	Serial No (Start)	Serial No (End)
50	53063551150	BACKUP STRIP	2				
51	36650715040	GASKET	2				
52	36650715050	GASKET	2				
65	53063551010	SEAL,OIL	1				
100	36652290000	PUMP,HYDRAULIC (SGP2-44D2H9-L)	1				

TM-ZF500 31093010010A FRAME/STD,MANUAL

Pos No.	Parts No	Parts Name	Qty	Unit	Technical Data	Serial No (Start)	Serial No (End)	Remarks	Pages
1	36102290000	TANK,OIL	1						000056
2	31660450100	BAND	1				EH8286		
3	90201201000	NUT	2		M10				
4	31660530200	CUSHION	1			EH8287			
12	31660520100	BAND	1			EH8287			

TM-ZF500 31093010010A FRAME/STD,MANUAL

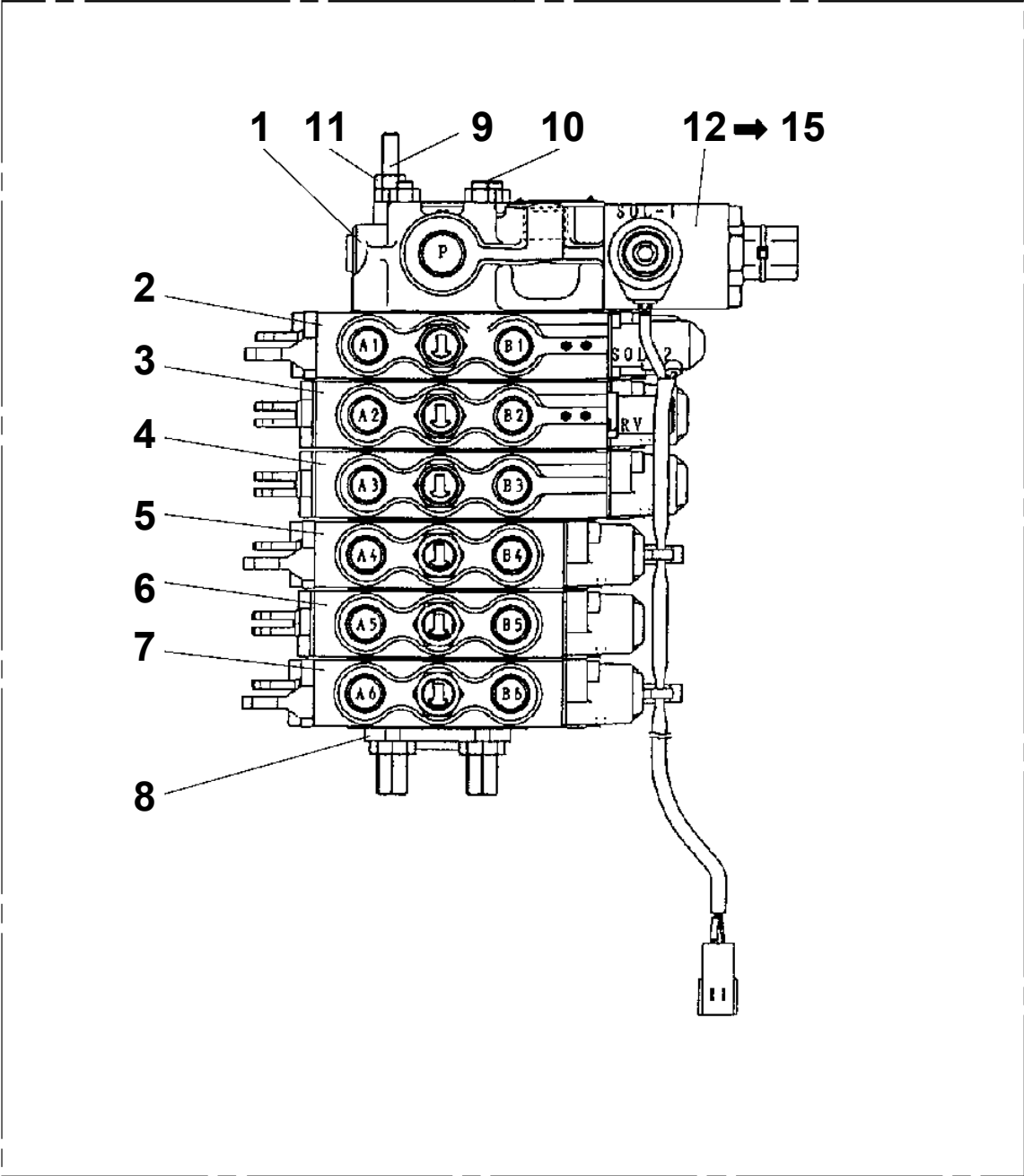
Pos No.	Parts No	Parts Name	Qty	Unit	Technical Data	Serial No (Start)	Serial No (End)	Remarks	Page
1	31631061000	RING,SLIP	1						
2	90180208016	BOLT,BUTTON	2		M8X16				
3	90302040801	WASHER,SPRING	6		8				
4	90102208035	BOLT	4		M8X35				
5	90303070801	WASHER,PLAIN	6		8				
6	82114203020	CONNECTOR (CAP)	1						
7	82121502020	PLATE	1						
8	82114203030	CONNECTOR (CAP)	1						
9	82121502030	PLATE	1						
10	82100002855	CAP	2						
31	31631803000	RING ASSY,SLIP	1			EH8711			0002

TM-ZF500 31093010010A FRAME/STD,MANUAL

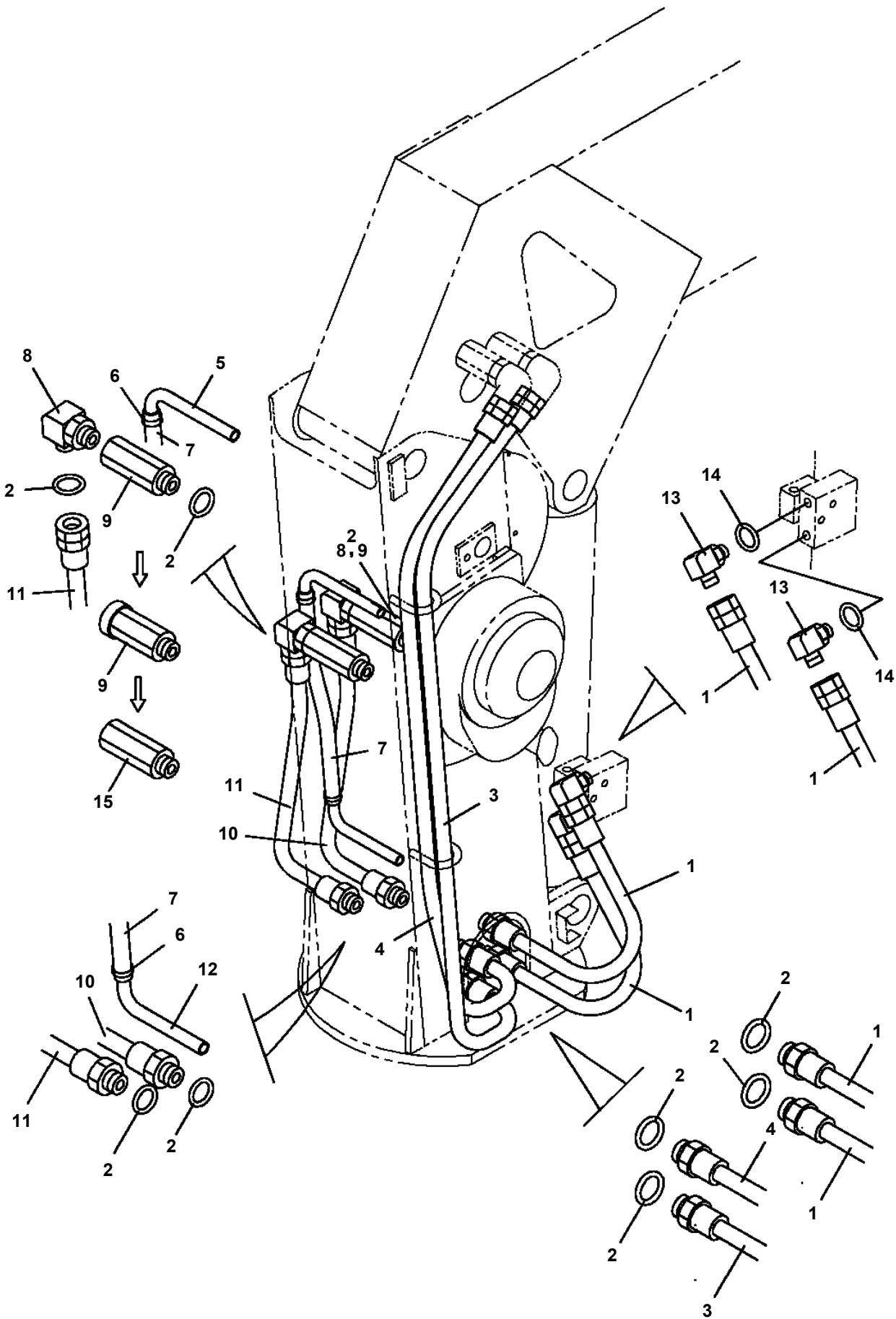
Pos No.	Parts No	Parts Name	Qty	Unit	Technical Data	Serial No (Start)	Serial No (End)
1	36635785010	COVER (FRONT)	1				
2	36635655010	VALVE,RELIEF	1				
3	36635785030	VALVE,CONTROL (TELESCOPE)	1				EH5276
4	36635785040	VALVE,CONTROL (WINCH)	1				
5	36635785050	VALVE,CONTROL (ELEVATING)	1				
6	36635655020	VALVE,CONTROL (SWING)	1				
7	36635785070	VALVE,CONTROL (JACK 2)	1				
8	36635785080	VALVE,CONTROL (JACK 1)	1				
9	91001205500	O-RING	7		1A G55		
10	36641555090	COVER (BOTTOM)	1				
11	36636235040	BOLT,TIE	1				
12	36645495290	BOLT,TIE (A)	3				
13	90201200800	NUT	4		M8		
14	90203200800	NUT	4		M8		
17	80316030040	PLUG	1		PT1/4		
18	36640755070	CAP	5				
19	36645615090	PROTECTOR	2				
20	36635785090	SEAL,DUST	12		3/8		EH5276
33	12635101110	SPRING (RETURN)	1				
36	12635101140	SPRING	1				
38	11629431040	PACKING	2				
41	16623320390	TUBE (SEAL)	1				
42	91002802100	O-RING	1		1B P21		
43	91001102600	O-RING	1		1A P26		
53	36633365040	CAP (RETURN SPRING)	6				
54	36633365050	SPRING (RETURN)	6				
55	36640625380	SEAT,SPRING	10				
	36640625380	SEAT,SPRING	10				
	36640625380	SEAT,SPRING	2				EH5276
	36640625380	SEAT,SPRING	2				EH5276
56	36633365060	PLATE (B)	9				
57	36633365070	ADAPTER	6				
58	36633365080	LINK	3				
59	36633365090	CAP (CHECK VALVE)	6				
60	36633365100	SEAL,OIL	12				
61	91001101400	O-RING	6		1A P14		
62	36645615260	C-BOLT	18		M5X8		
63	36645615230	C-BOLT	6		5X12		
80	12635101190	SPRING	4				
100	36635650000	VALVE,MANUAL CONTROL (SANWA)	1				

TM-ZF500 31093010010A FRAME/STD, MANUAL
PB1320511-01 VALVE, MANUAL CONTROL (NABCO)

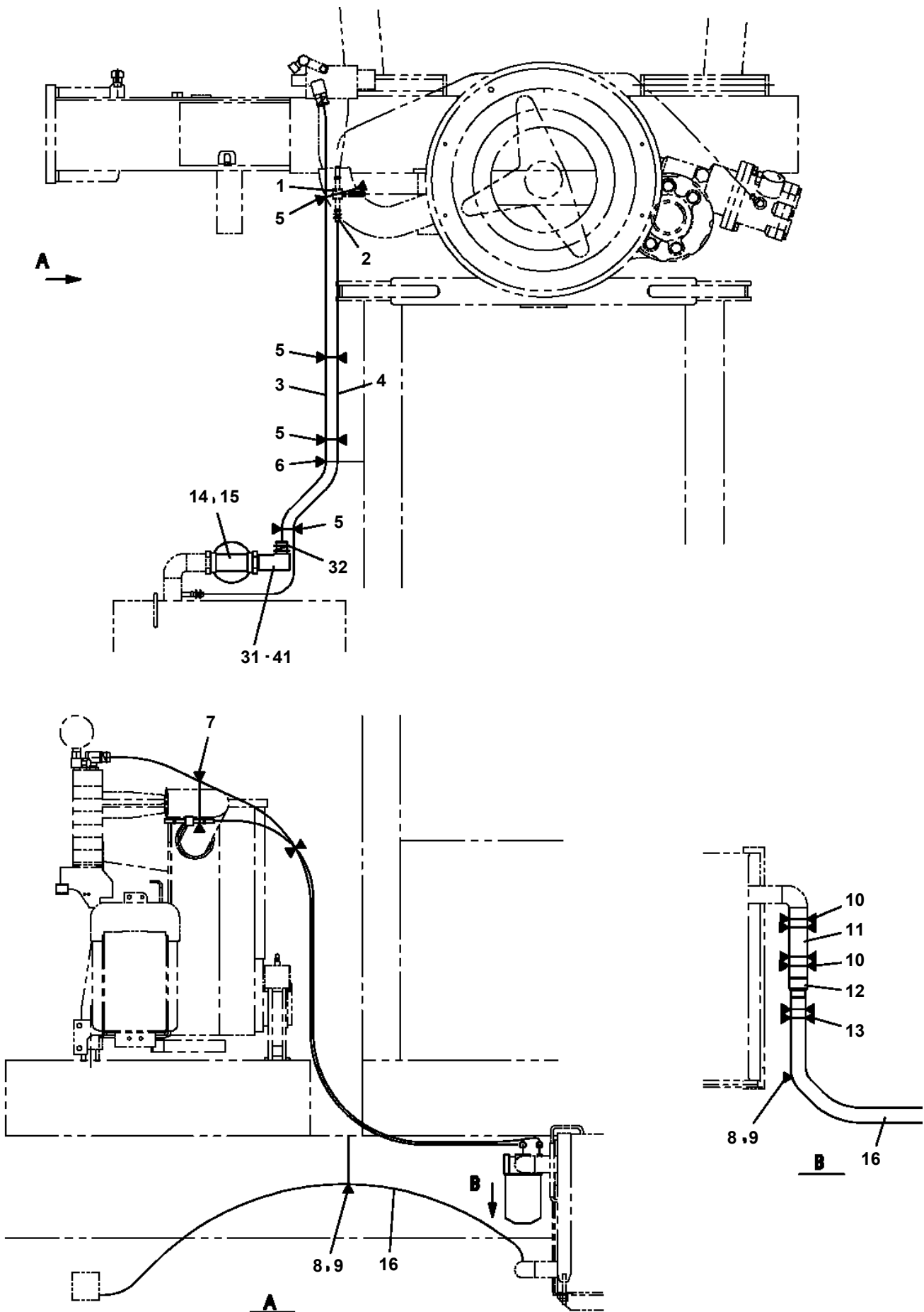
300



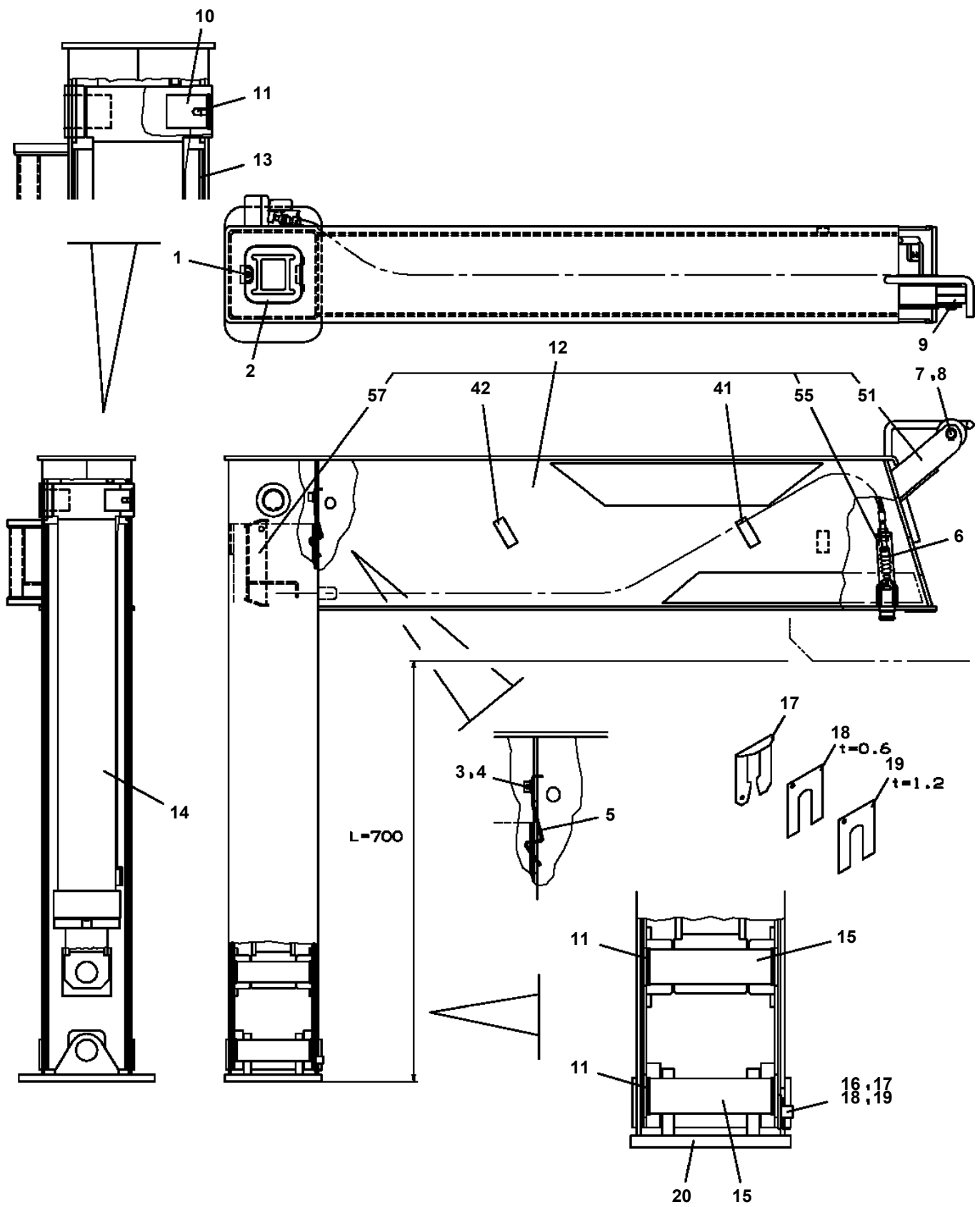
TM-ZF500 31093010010A FRAME/STD,MANUAL
PB1400210-01 PIPING,HYDRAULIC UPPER



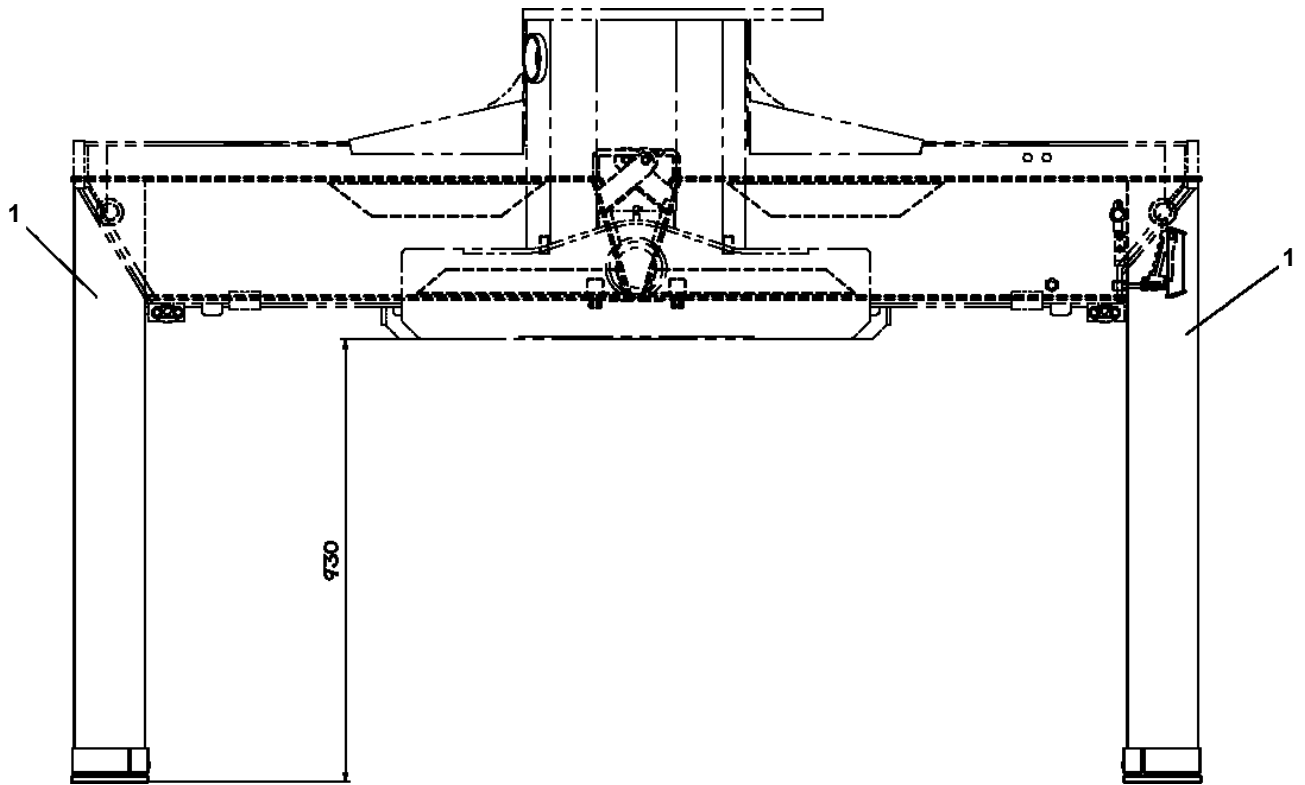
TM-ZF500 31093010010A FRAME/STD,MANUAL
PB1410811-02 PIPING,LOWER (TANK)



**TM-ZF500 31093010010A FRAME/STD,MANUAL
PC1010425-03 OUTRIGGER (STD,L=700)**



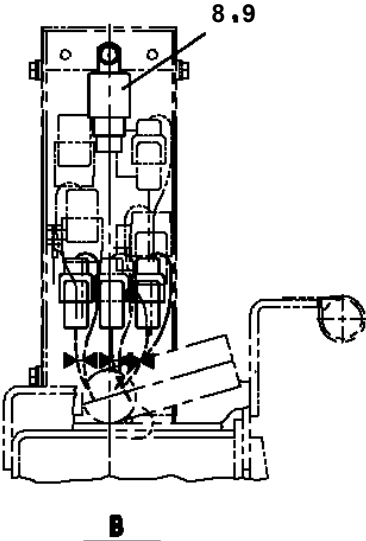
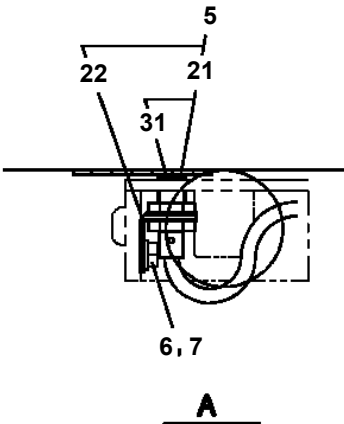
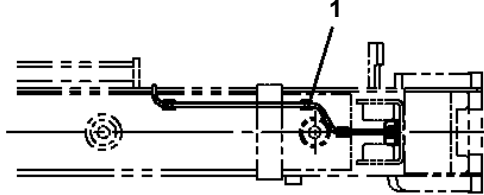
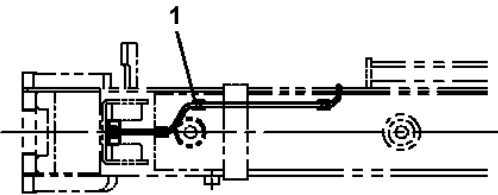
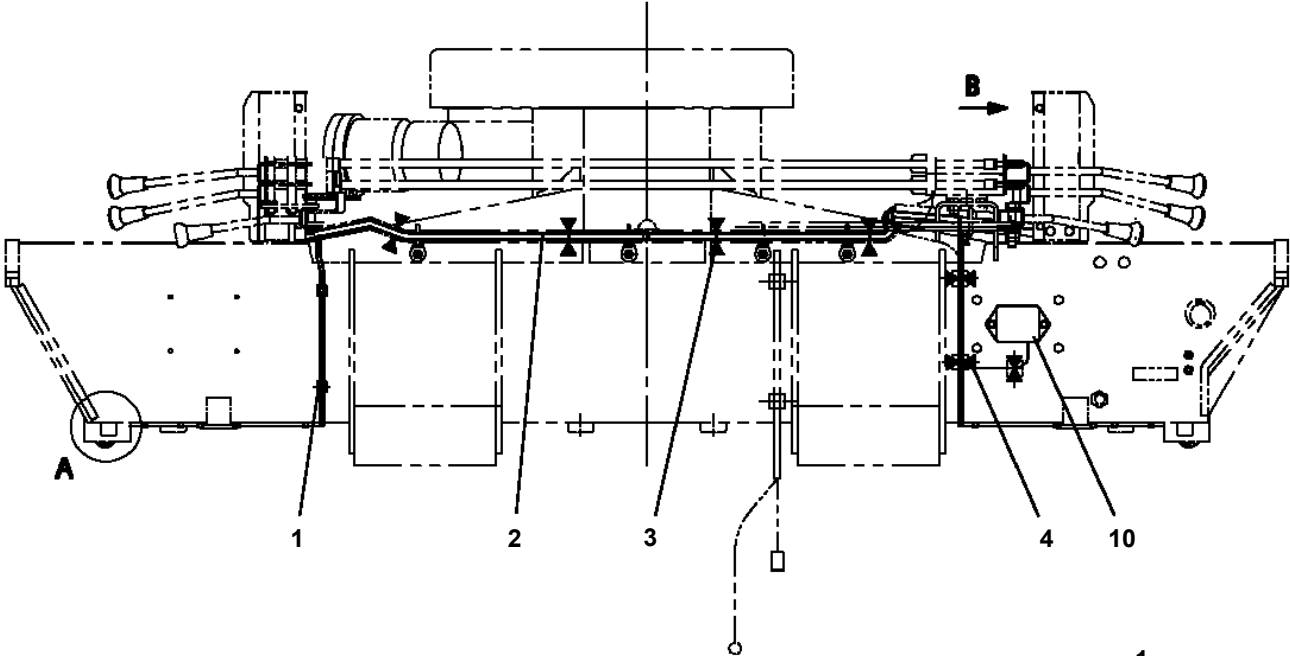
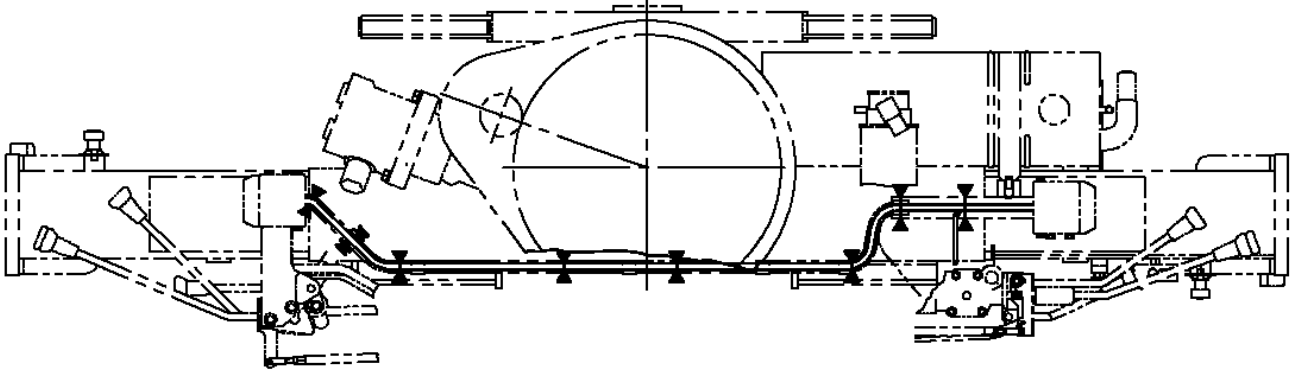
TM-ZF500 31093010010A FRAME/STD,MANUAL
PC1011265-00 OUTRIGGER (L=930)



TM-ZF500 31093010010A FRAME/STD,MANUAL
PC1020055-00 OUTRIGGER,REAR (ROTARY/HIGH TRUK BED)

1	アウトリガ ,リヤ OUTRIGGER,REAR
2	ハイセンASSY ELEC.ASSY
3	パイピング ,リヤ ジャッキ PIPING,REAR JACK
4	プレートASSY,ネーム PLATE ASSY,NAME

TM-ZF500 31093010010A FRAME/STD, MANUAL
PC1190020-00 INDICATOR, OUTRIGGER



TM-ZF500 31093010010A FRAME/STD,MANUAL

Pos No.	Parts No	Parts Name	Qty	Unit	Technical Data	Serial No (Start)	Serial No (End)
1	80400160203	JOINT (WITH O-RING)	1				
2	80400160182	JOINT (WITH O-RING)	2				
3	91803600400	CLIP	2		D=27-40		
4	37002512560	HOSE	1		L=1640		
5	37002450920	HOSE	1		L=1700		
6	91810130270	FASTENER	4				
7	36635620000	VALVE,MANUAL CONTROL (REAR OUTRIGGER)	1				
8	80430620800	JOINT	1				
9	90101208025	BOLT	3		M8X25		
10	90302040801	WASHER,SPRING	3		8		
11	80491303030	JOINT (WITH O-RING)	2		L,PF3/8-PF3/8		
12	80481103030	JOINT	2		L,G3/8-G3/8		
13	91002801400	O-RING	2		1B P14		
14	37000924110	JOINT	2		S,G1/2-G1/2		
15	80481004042	JOINT	1				
16	91002801800	O-RING	3		1B P18		
17	37002447870	HOSE	4		L=980		
18	80320512020	FITTING	4				
19	81408000160	PIPE,STEEL	4	M	12X1.4T		
20	80301140100	FITTING	4				
21	80321010080	JOINT	4				
22	37002441220	HOSE	4		L=940		
23	31642951100	COVER	1				
24	31622044100	CLAMP ASSY	1				
25	31644140200	SUPPORT	1				
26	37000703670	CLAMP ASSY	7				
27	31641772800	CLAMP ASSY	1				
41	91002802900	O-RING	1		1B P29		
51	91002801800	O-RING	3		1B P18		
61	91002801400	O-RING	2		1B P14		

TM-ZF500 31093010010A FRAME/STD,MANUAL

Pos No.	Parts No	Parts Name	Qty	Unit	Technical Data	Serial No (Start)	Ser
1	36081325090	RING,SNAP	1				
2	36081325010	SPACER	1				
3	36081325080	SHIM SET	1				
4	36081325110	BEARING,TAPER ROLLER	1				
5	36081325020	WORM	1				
6	36081325120	BEARING,TAPER ROLLER	1				
7	36080755040	GAUGE,OIL	1				
8	36080235080	WASHER,SEAL	1		M16		
9	80316090060	PLUG	1		KKT PT3/8		
12	91280431931	SEAL,OIL	1				
13	36081325050	CASE,GEAR	1				
14	36081325130	BEARING,BALL(METAL SHIELD TYPE 6210ZZC3)	1				
15	36081325140	BEARING,BALL (RUBBER SEAL TYPE 6210LLU)	1				
16	36080495050	BOLT,SEMS (M10X25,WITH WASHER)	9				
17	36080505080	KEY	1				
18	36081325060	WHEEL,WORM	1				
19	36081325070	CASE,GEAR	1				
20	80500006209	BEARING,BALL	1				
21	80601110450	RING,RITAINING	1		S45		
22	36080015000	PIN	2				
23	82400000478	BREATHER	1				
31	36081615500	GEAR,SPUR	1				
50	36081610000	REDUCER,SWING SPEED	1				

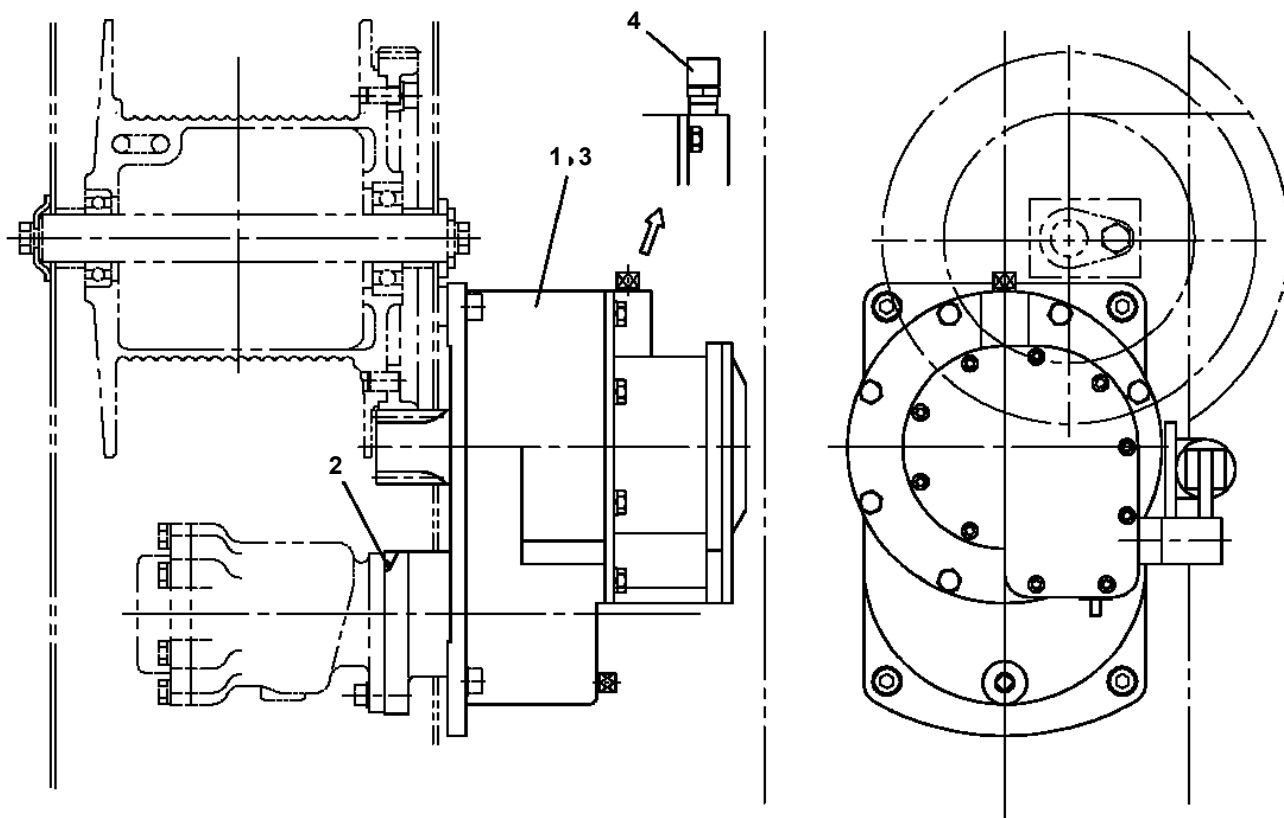
TM-ZF500 31093010010A FRAME/STD,MANUAL

Pos No.	Parts No	Parts Name	Qty	Unit	Technical Data	Serial No (Start)	Serial No (End)	Remarks	Pages
1	91850310405	CLAMP (BLACK)	4						
2	91810130240	FASTENER	10						
3	31476361100	HARNESS (RED)	2		L=2000				
4	82100000192	TERMINAL	2						
5	82100000182	INSULATOR	2						

TM-ZF500 31093010010A FRAME/STD,MANUAL

Pos No.	Parts No	Parts Name	Qty	Unit	Technical Data	Serial No (Start)	Serial No (End)	Remarks	Pages
1	(*****)	ELEC.ASSY	1						000116
2	(*****)	NAME PLATE ASSY	1						000224
6	(*****)	NAME PLATE ASSY	1			EW5625			000225

**TM-ZF500 31093010010A FRAME/STD, MANUAL
PF1010131-01 WINCH (DRUM FREE, OPTION)**



TM-ZF500 31093010010A FRAME/STD,MANUAL

Pos No.	Parts No	Parts Name	Qty	Unit	Technical Data	Serial No (Start)	Serial No (End)	Remarks
2	36073085020	COVER	1					
3	36073085030	GEAR	1					
6	36073085060	BRAKE,DISK	1				EH9932	
	36073085061	BRAKE,DISK	1			EH9933		
7	36073085070	WHEEL,RATCHET	1				EH9932	
	36073085071	WHEEL,RATCHET	1			EH9933	EH9998	
	36073085072	WHEEL,RATCHET	1			EH9999		
8	36073085080	RING (C)	1					
10	36073085090	RATCHET	1					
11	36073085100	SHAFT	1					
12	36073085110	SPRING	1					
13	36073085120	CAP	1					
14	36073085130	PIN	1					
15	36073085140	NUT	1					
16	80500006202	BEARING,BALL	1					
17	80500006212	BEARING,BALL	1					
18	80500006305	BEARING,BALL	1					
19	80500006007	BEARING,BALL	1					
20	36073085150	SEAL,OIL	1					
21	80602110620	RING,RITAINING	1		R62			
22	36071195200	O-RING	1					
23	91001101500	O-RING	1		1A P15			
24	80136340040	PIN,SPLIT	1		4X40			
25	36073085160	KEY	2					
26	36073085180	BOLT (WITH SW)	6					
27	36073085200	PLUG	1					
28	36073085170	GAUGE,OIL	1					
29	80172304015	SCREW,MACHINE	1		M4X15			
30	90302040401	WASHER,SPRING	1		4			
41	36073085600	GEAR ASSY	1				EH9932	
	36073085601	GEAR ASSY	1			EH9933	EH9998	
	36073085602	GEAR ASSY	1			EH9999		
100	36073080000	WINCH (Y.G.TEC)	1					
101	36070441000	FACING KIT(JAPANESE)	1					
102	36070442000	FACING KIT (ENGLISH)	1					

TM-ZF500 31093010010A FRAME/STD,MANUAL

Pos No.	Parts No	Parts Name	Qty	Unit	Technical Data	Serial No (Start)	Serial No (End)	Remarks
1	36091929520	BODY ASSY	1					
2	80720104028	PIN,SPRING	1		4X28			
4	90303071801	WASHER,PLAIN	1		18			
5	12231505000	BEARING,PLAIN	1					
11	36091929510	HOOK ASSY	1					
12	90710008160	SCREW,SET	1		M8X16			
30	36094049510	STOPPER ASSY	1					
50	36091920000	HOOK (DRUM FREE,OPTION)	1					

TM-ZF500 31093010010A FRAME/STD,MANUAL

Pos No.	Parts No	Parts Name	Qty	Unit	Technical Data	Serial No (Start)	Serial No (End)	Remarks
1	36642760000	VALVE,SOLENOID	1					
2	31473743100	JOINT	1					
3	31473743200	JOINT	1					
4	37000924420	JOINT	1					
5	31473743300	COVER	1					
6	91803600200	CLIP	2		D=13-20			
7	81408000081	PIPE,STEEL	1	M	8X1.2T			
8	81408000081	PIPE,STEEL	1	M	8X1.2T			
9	81408000081	PIPE,STEEL	1	M	8X1.2T			
10	80303210040	FITTING,ELBOW	4					
11	80302120040	FITTING	2		POA08PF1/4			
12	91002801100	O-RING	6		1B P11			
13	90302040801	WASHER,SPRING	4		8			
14	90172105045	BOLT,HEXAGON SOCKET	4		M5X45			
15	90101208016	BOLT	2		M8X16			
16	90101208012	BOLT	2		M8X12			
17	37002511730	HOSE	1		L=225			
34	91002801400	O-RING	1		1B P14			

TM-ZF500 31093010010A FRAME/STD,MANUAL

Pos No.	Parts No	Parts Name	Qty	Unit	Technical Data	Serial No (Start)	Serial No (End)	Remark
1	36131315010	PLATE (BASE)	1					
2	36131745020	CASE	1					
3	36131745030	DRUM ASSY	1					
4	32360005050	RING,SLIP	1					
5	32360005060	CONTACTOR ASSY	1					
6	36131745040	CASE	1					
7	36131745050	PACKING	1					
8	91001209000	O-RING	1		1A G90			
9	36131745060	BRACKET	1					
10	36131745010	POTENTIOMETER	1					
11	36130915030	SEAL	1					
12	36131745070	GEAR	1					
13	82100000192	TERMINAL	1					
14	36161185010	CAP	1					
15	82100000191	TERMINAL	1					
16	36131625050	CAP	1					
17	31370005080	GUIDE (CORD)	1					
18	36131745080	CORD ASSY	1					
19	82100001406	CONNECTOR (SEAL)	1					
20	36130795030	STOPPER	2					
31	36131745090	CORD	13	M				
100	36131740000	DETECTOR,BOOM LENGTH	1					

TM-ZF500 31093010010A FRAME/STD,MANUAL

Pos No.	Parts No	Parts Name	Qty	Unit	Technical Data	Serial No (Start)	Serial No (End)	Remarks	Pages
1	91002801400	O-RING	1		1B P14				
10	36150050000	DETECTOR,LOAD	1						

TM-ZF500 31093010010A FRAME/STD,MANUAL

Pos No.	Parts No	Parts Name	Qty	Unit	Technical Data	Serial No (Start)	Serial No (End)	Remarks
2	36116551300	CUSHION	1					
4	36190831930	BOARD,CIRCUIT	1					
5	36190831940	HARNESS	1					
11	36190831800	COVER	1					
21	36194675010	CPU UNIT (WITH DATA)	1					
100	36194670000	MOMENT LIMITER (BML)	1					

TM-ZF500 31093010010A FRAME/STD,MANUAL

Pos No.	Parts No	Parts Name	Qty	Unit	Technical Data	Serial No (Start)	Serial No (End)	Remarks	Pages
1	31361312100	HARNESS	1						

TM-ZF500 31093010010A FRAME/STD,MANUAL

Pos No.	Parts No	Parts Name	Qty	Unit	Technical Data	Serial No (Start)	Serial No (End)	Rema
13	36662185010	KEY (FEATHER)	1					
40	36662415020	SEAL KIT	1					
50	36662180000	MOTOR,HYDRAULIC (WINCH)	1					

TM-ZF500 31093010010A FRAME/STD,MANUAL

Pos No.	Parts No	Parts Name	Qty	Unit	Technical Data	Serial No (Start)	Serial No (End)	Remarks	Pa
2	91002801400	O-RING	2		1B P14				
6	91002800700	O-RING	1		1B P7				
50	36623930000	VALVE,PILOT CHECK	1						

TM-ZF500 31093010010A FRAME/STD,MANUAL

Pos No.	Parts No	Parts Name	Qty	Unit	Technical Data	Serial No (Start)	Serial No (End)
1	36682500000	METER,LOAD (3.0TON KUSABA/ENGLISH)	1				

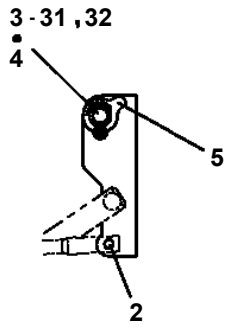
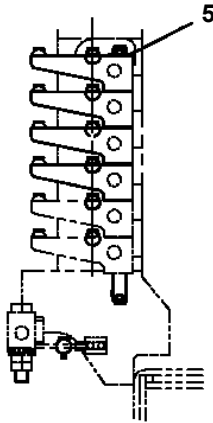
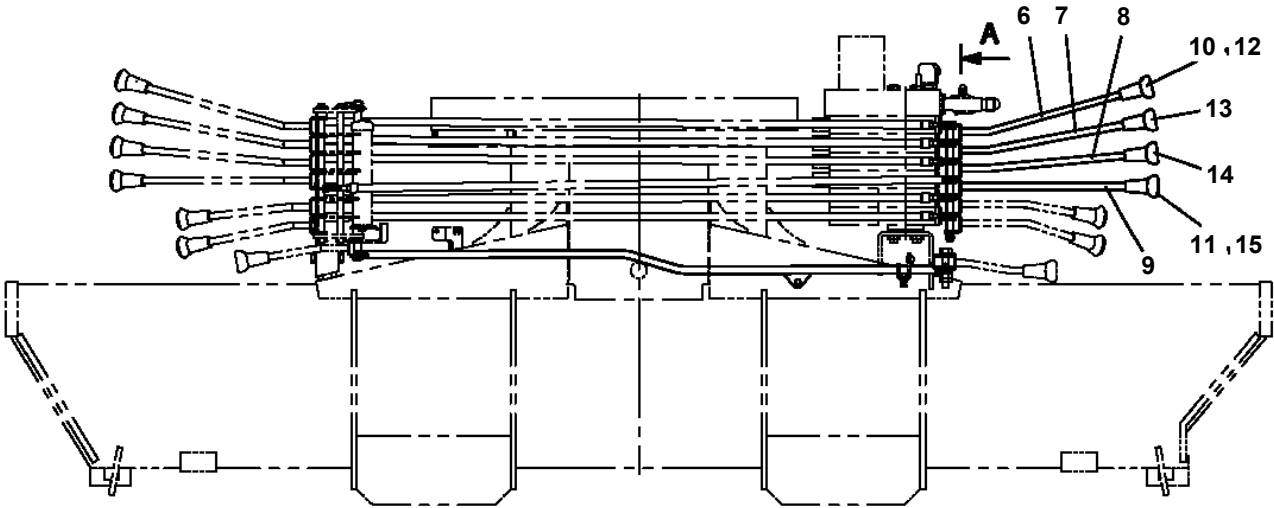
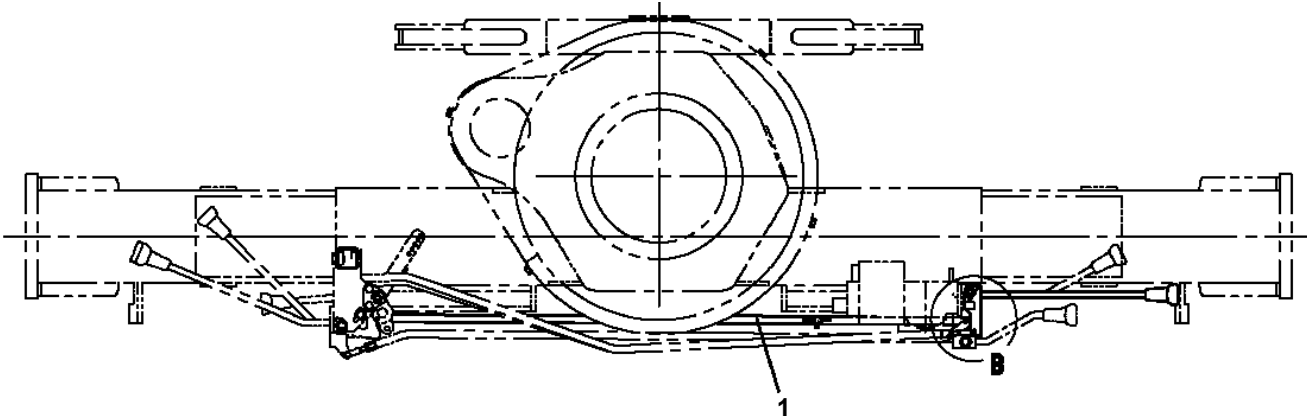
TM-ZF500 31093010010A FRAME/STD,MANUAL

Pos No.	Parts No	Parts Name	Qty	Unit	Technical Data	Serial No (Start)	Serial No (End)
1	36682520000	METER,LOAD (4.0TON ENGLISH/KUSABA)	1				

TM-ZF500 31093010010A FRAME/STD,MANUAL

Pos No.	Parts No	Parts Name	Qty	Unit	Technical Data	Serial No (Start)	Serial No (End)	Remarks
1	31622250100	FRAME ASSY	1					
2	82459103000	NIPPLE,GREASE	1		C-PT1/8			
3	82400000459	CAP	1					
4	31621022000	FRAME	1					
5	37000562190	PLATE	1					
6	80601111100	RING,RITAINING	1		S110			
7	90203201600	NUT	2		M16			
8	90101216045	BOLT	2		M16X45			
9	31621962301	PIN	2					
10	31621962800	KNOB	2					
11	37001201380	SPRING	2					
12	90172108014	BOLT,HEXAGON SOCKET	4		M8X14		EH2989	
	90172110016	BOLT,HEXAGON SOCKET	4		M10X16	EH2990		
13	90302040801	WASHER,SPRING	12		8		EH2989	
	90302040801	WASHER,SPRING	8		8	EH2990		
14	31622092100	PLATE	2				EH2989	
	31622253600	PLATE	2			EH2990		
15	90101208012	BOLT	8		M8X12		EH2490	
	90101208014	BOLT	8		M8X14	EH2491		
16	90303070801	WASHER,PLAIN	8		8			
17	82466003005	INSULATOR	4					
18	31621962100	SUPPORT	4					
19	31621962200	PLATE	12		T=0.5			
20	37000161010	PIN	2					
21	80530000225	BEARING,BALL (KOYO)	4				EW9477	
22	37000309980	SPACER	2		L=60			
23	82400000470	LEVEL	1					
24	80183306016	SCREW,MACHINE	1		M6X16			
25	90302040601	WASHER,SPRING	1		6			
26	90303070601	WASHER,PLAIN	1		6			
28	90302041001	WASHER,SPRING	4		10	EH2990		
43	31621963300	SUPPORT	2					
49	31621961230	SUPPORT	2				EH4613	
	31621961290	SUPPORT	2			EH4614		
61	31622258010	FRAME ASSY	1					

TM-ZF500 31093010010A FRAME/STD,MANUAL
PL1010688-01 OPE.ASSY,CONT.VALVE (RADIO)



A

B

TM-ZF500 31093010010A FRAME/STD,MANUAL

Pos No.	Parts No	Parts Name	Qty	Unit	Technical Data	Serial No (Start)	Serial No (End)	Remarks	Pages
1	31651762300	HARNESS	1						
2	80192483010	SCREW,MACHINE	4		M3X10				
3	82100002490	CAP	1						
4	82401600510	CLAMP	1		10				
5	91810132530	FASTENER	6						
6	31651760800	PLATE,CAUTION	1						
13	82100002478	CAP	1						

CLICK HERE TO **DOWNLOAD** THE COMPLETE MANUAL

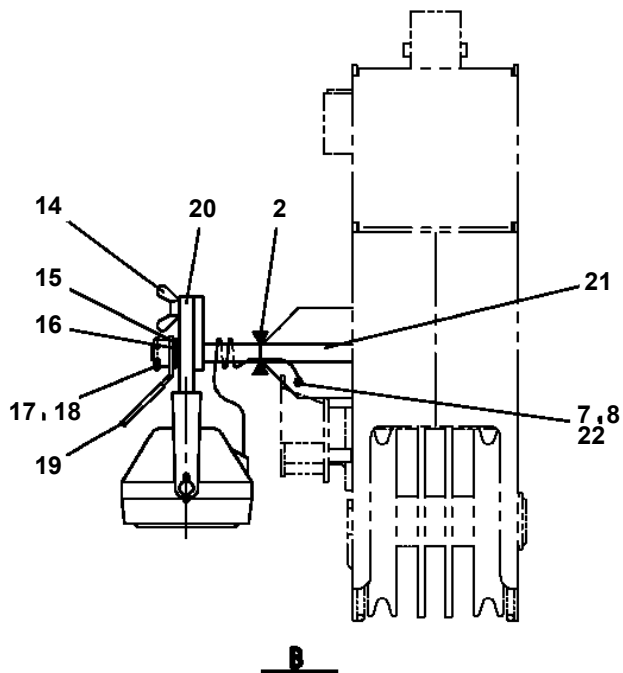
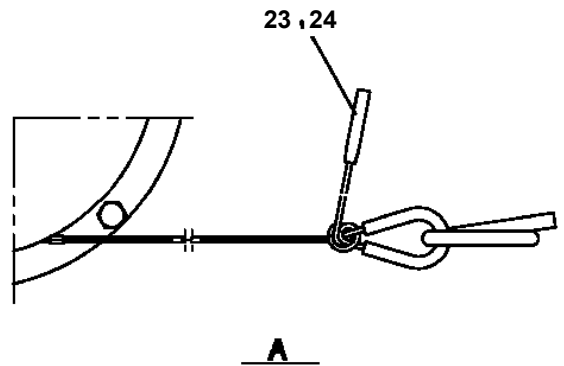
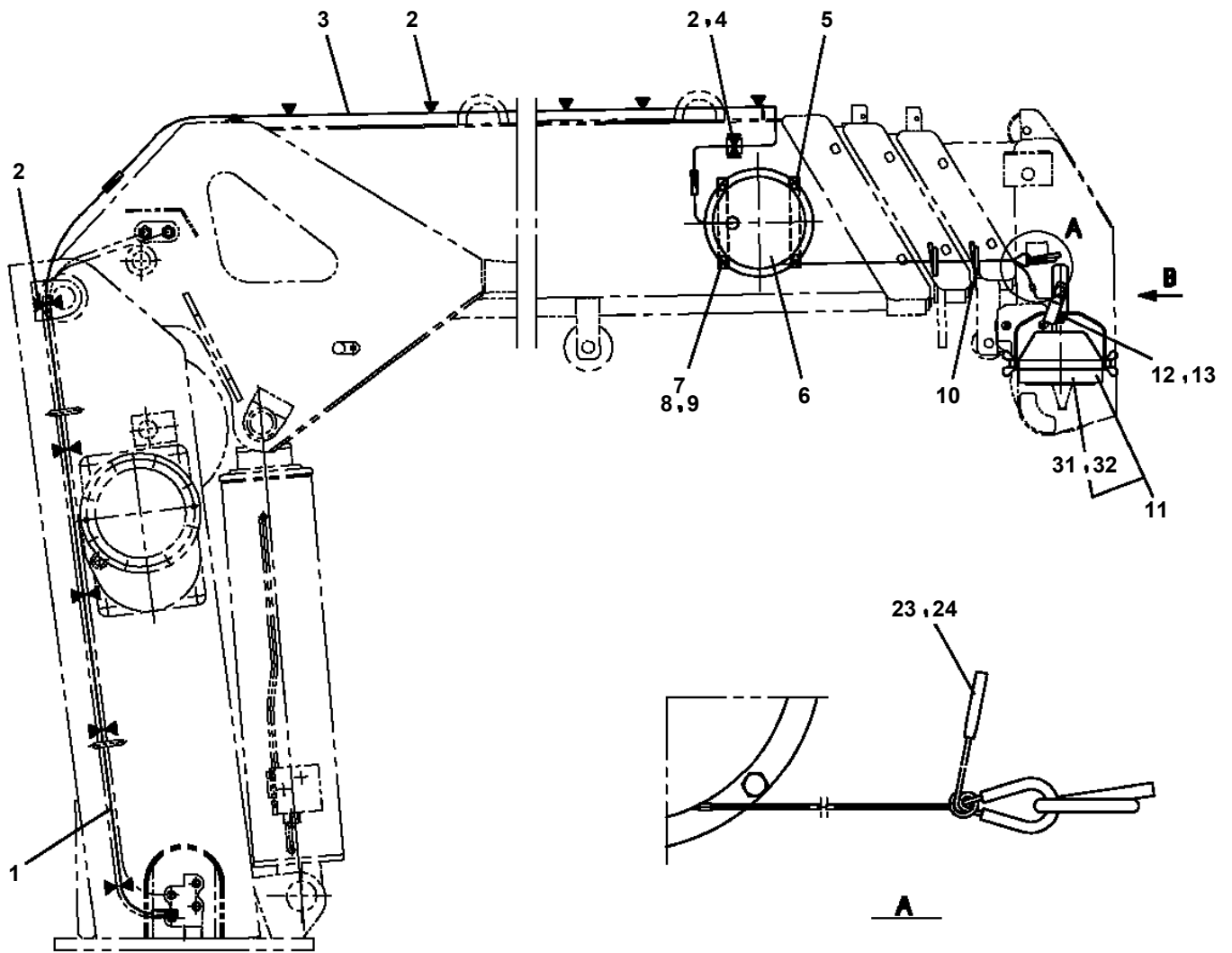
- Thank you very much for reading the preview of the manual.
- You can download the complete manual from: www.heydownloads.com by clicking the link below



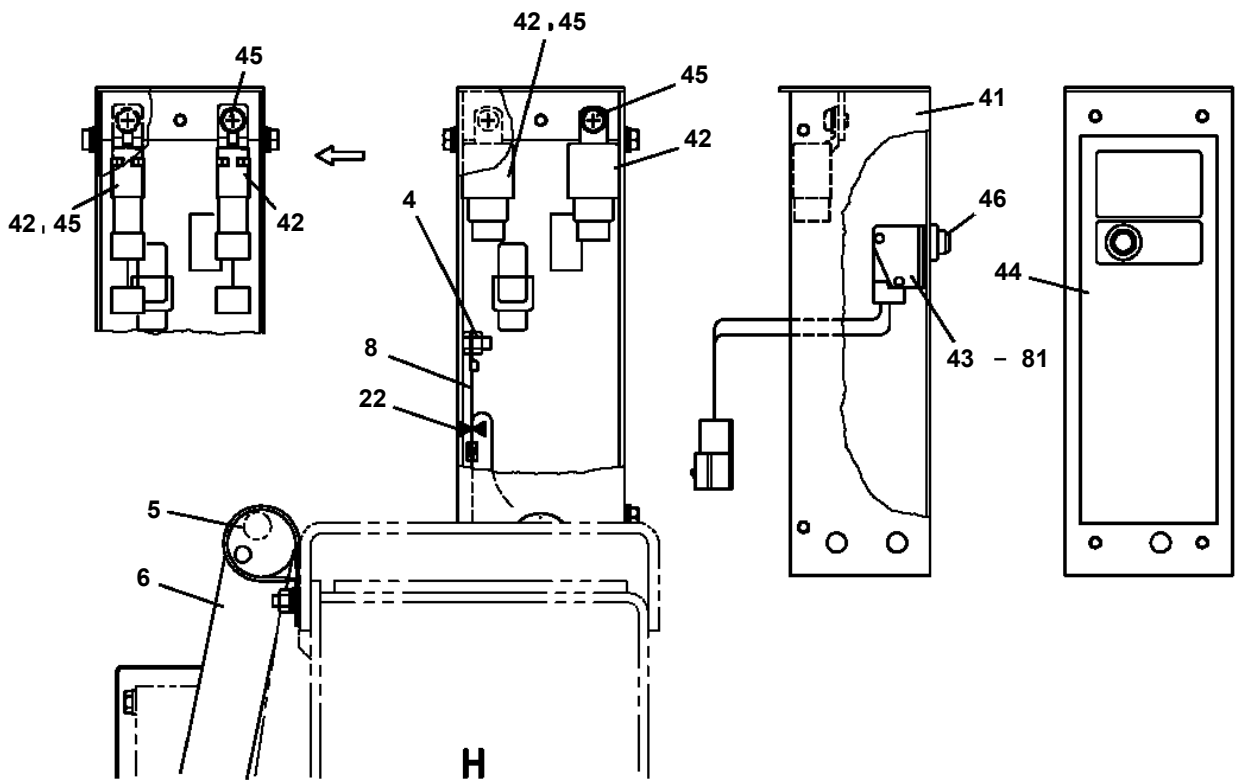
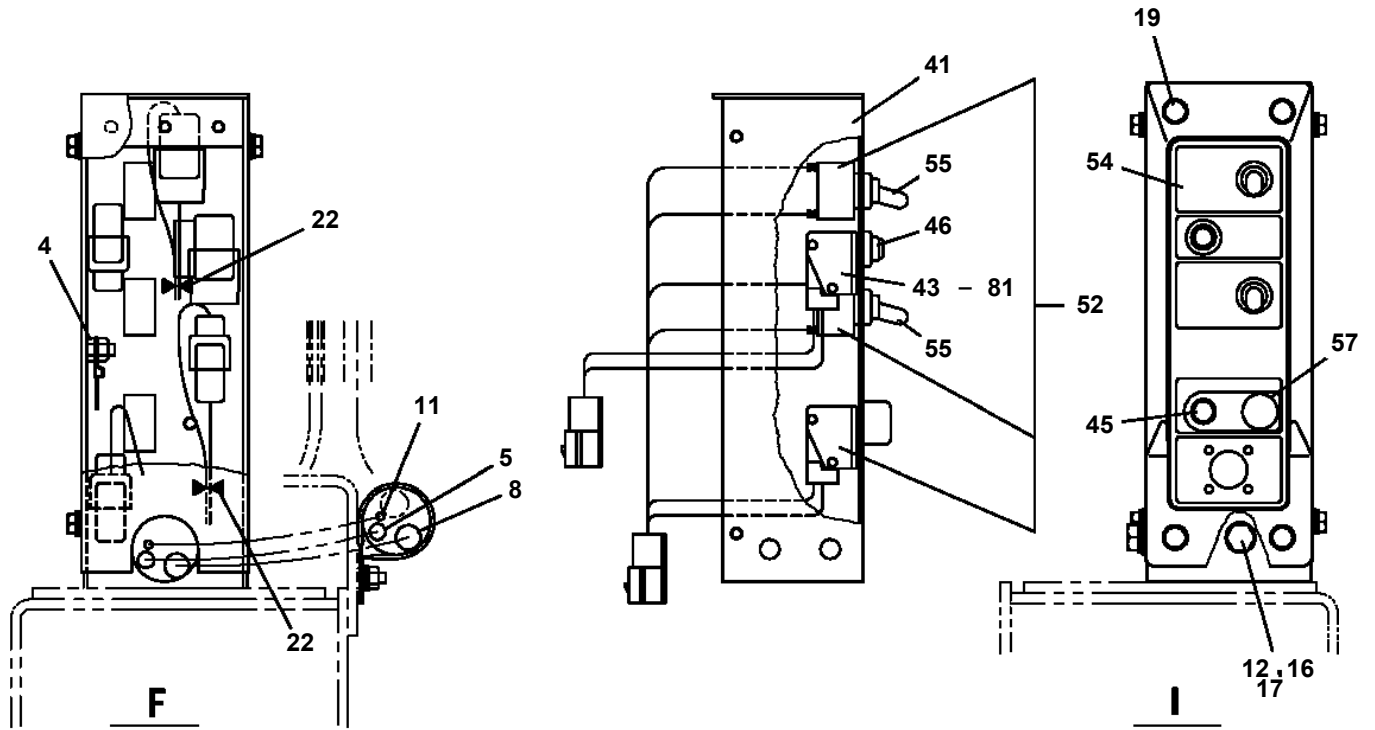
- Please note: If there is no response to CLICKING the link, please download this PDF first and then click on it.

CLICK HERE TO **DOWNLOAD** THE COMPLETE MANUAL

TM-ZF500 31093010010A FRAME/STD, MANUAL
PN1011426-02 ELEC.ASSY (UPPER,LAMP/BOOM)



TM-ZF500 31093010010A FRAME/STD, MANUAL
PN1011758-03 ELEC.ASSY (RADICON. C-TYPE)



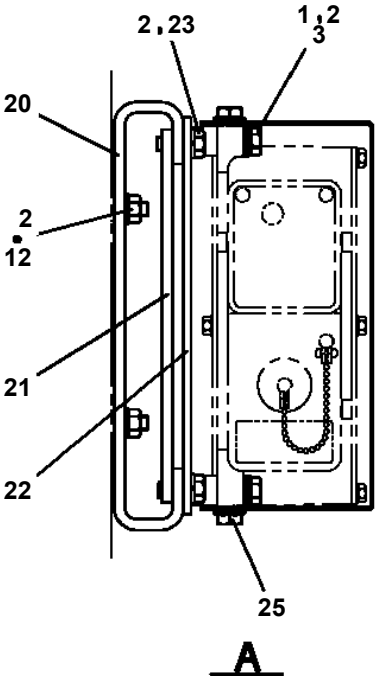
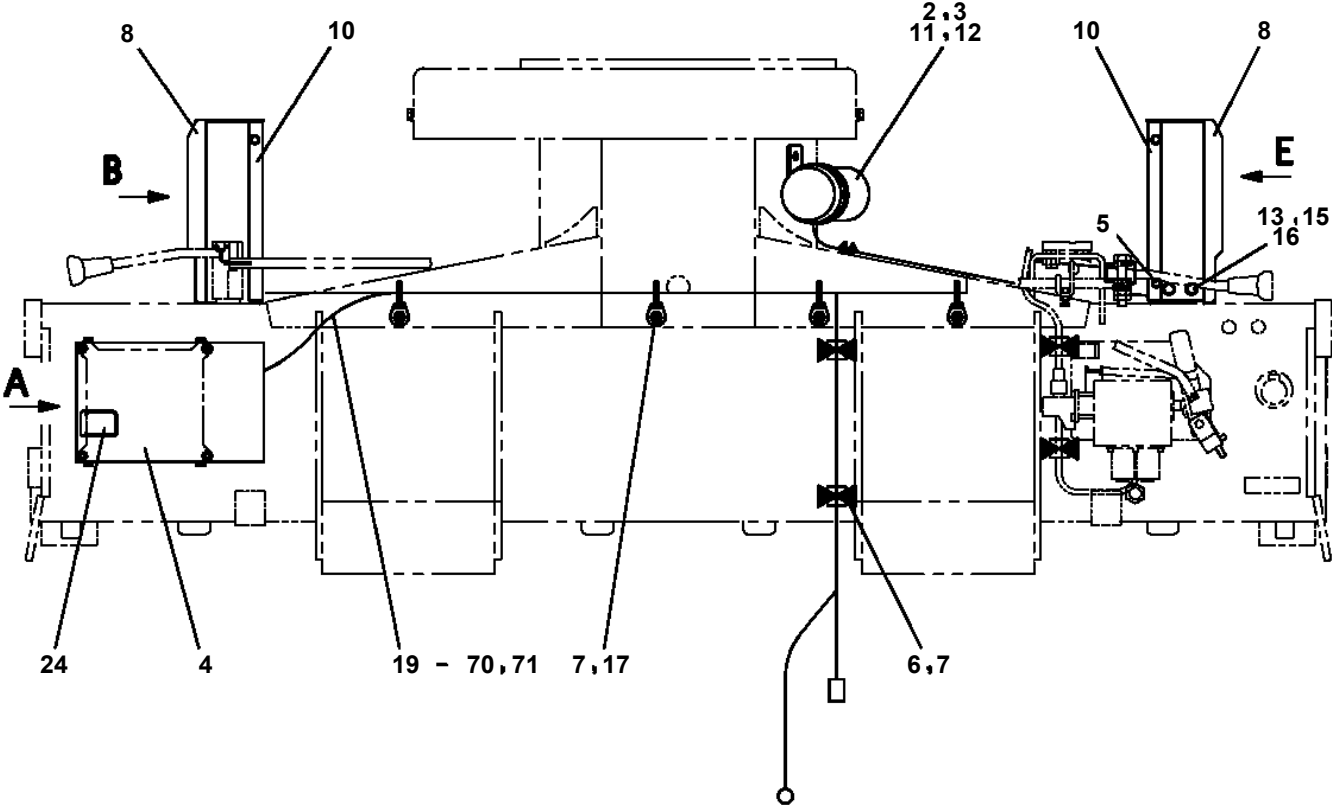
TM-ZF500 31093010010A FRAME/STD,MANUAL

Pos No.	Parts No	Parts Name	Qty	Unit	Technical Data	Serial No (Start)	Serial No (End)	Remarks	Pages
1	82109902050	SWITCH,THERMO	1						
3	90101208012	BOLT	2		M8X12				
4	90302040801	WASHER,SPRING	2		8				
5	91810130240	FASTENER	10						
21	90101206014	BOLT	1		M6X14				
22	90302040601	WASHER,SPRING	2		6				
23	90201200600	NUT	1		M6				
24	90303070601	WASHER,PLAIN	2		6				
25	82100002596	RELAY	1						
26	31730363200	HARNESS	1						
27	31730363300	HARNESS	1						
28	31652830110	COVER	1						
29	31473460101	SWITCH ASSY	1						
30	90101206010	BOLT	1		M6X1.0				
31	82100000665	CAP (BLACK)	1						
32	31652172100	PANEL	1						
33	31730363500	PLATE,NAME	1						
41	82105410110	SWITCH,TOGGLE	1						
47	82100000745	FUSE	1		10A,6.5X30				
48	82100000688	HOLDER,FUSE	1						

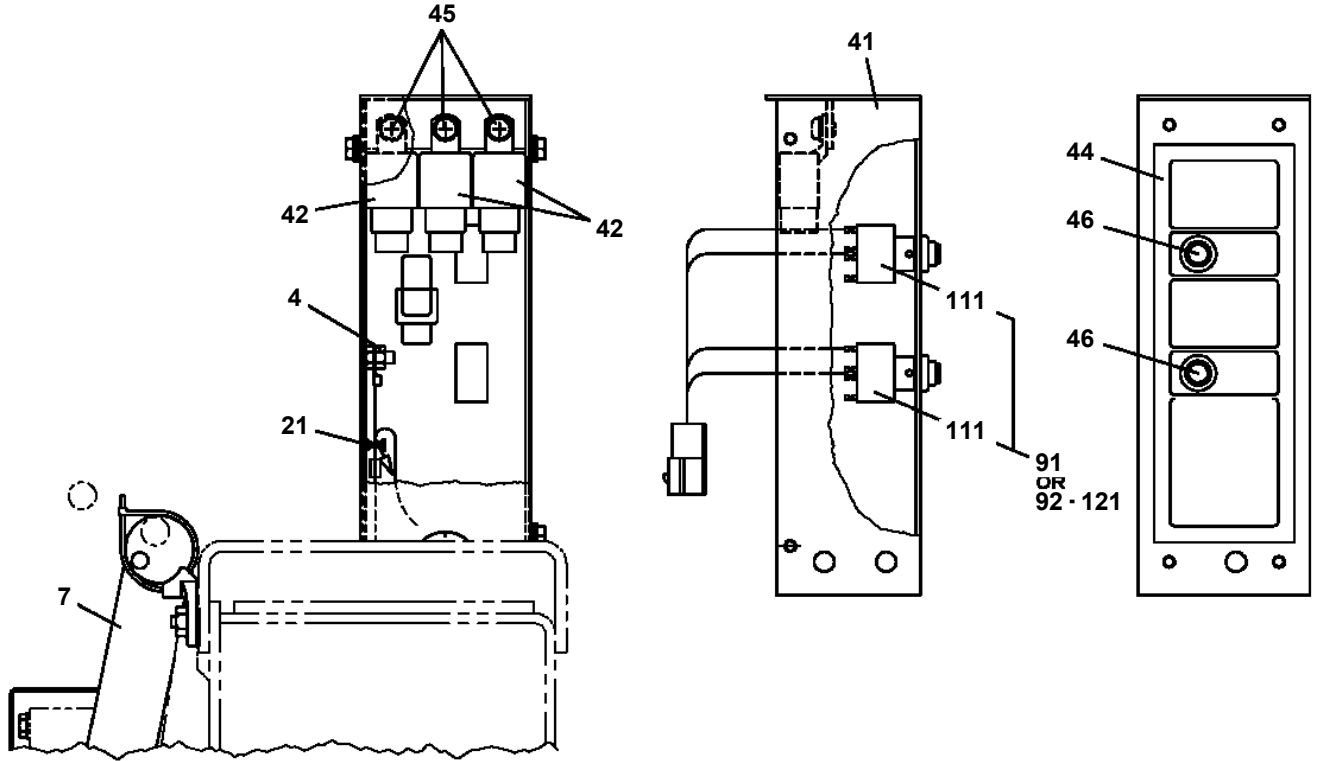
TM-ZF500 31093010010A FRAME/STD,MANUAL

Pos No.	Parts No	Parts Name	Qty	Unit	Technical Data	Serial No (Start)	Serial No (End)	Remark
1	31380292101	ALARM ASSY	1					
2	31475352100	PLATE,NAME	1					
3	31380292500	HARNESS	1					
4	31380174000	LAMP ASSY (ASSY ONLY)	1					
5	82100000191	TERMINAL	2					
6	82100000183	INSULATOR	2					
7	91810130240	FASTENER	6					
8	82100002673	CONNECTOR (0.5-0.85,RED)	7					
9	82100001400	TERMINAL	4					
10	31475982100	PLATE,CAUTION	1					
11	31380292600	SUPPORT	1					
12	80172305020	SCREW,MACHINE	2		M5X20			
13	90302040501	WASHER,SPRING	2		5			
14	90303070501	WASHER,PLAIN	2		5			
15	31380292800	HARNESS	1					
16	31475982200	RELAY ASSY	1					
17	31475982300	RELAY ASSY	1					
18	31475982400	DIODE ASSY	1					
19	82100000192	TERMINAL	1					
20	82100000182	INSULATOR	1					
41	82100002597	RELAY	1					
51	82100002596	RELAY	1					

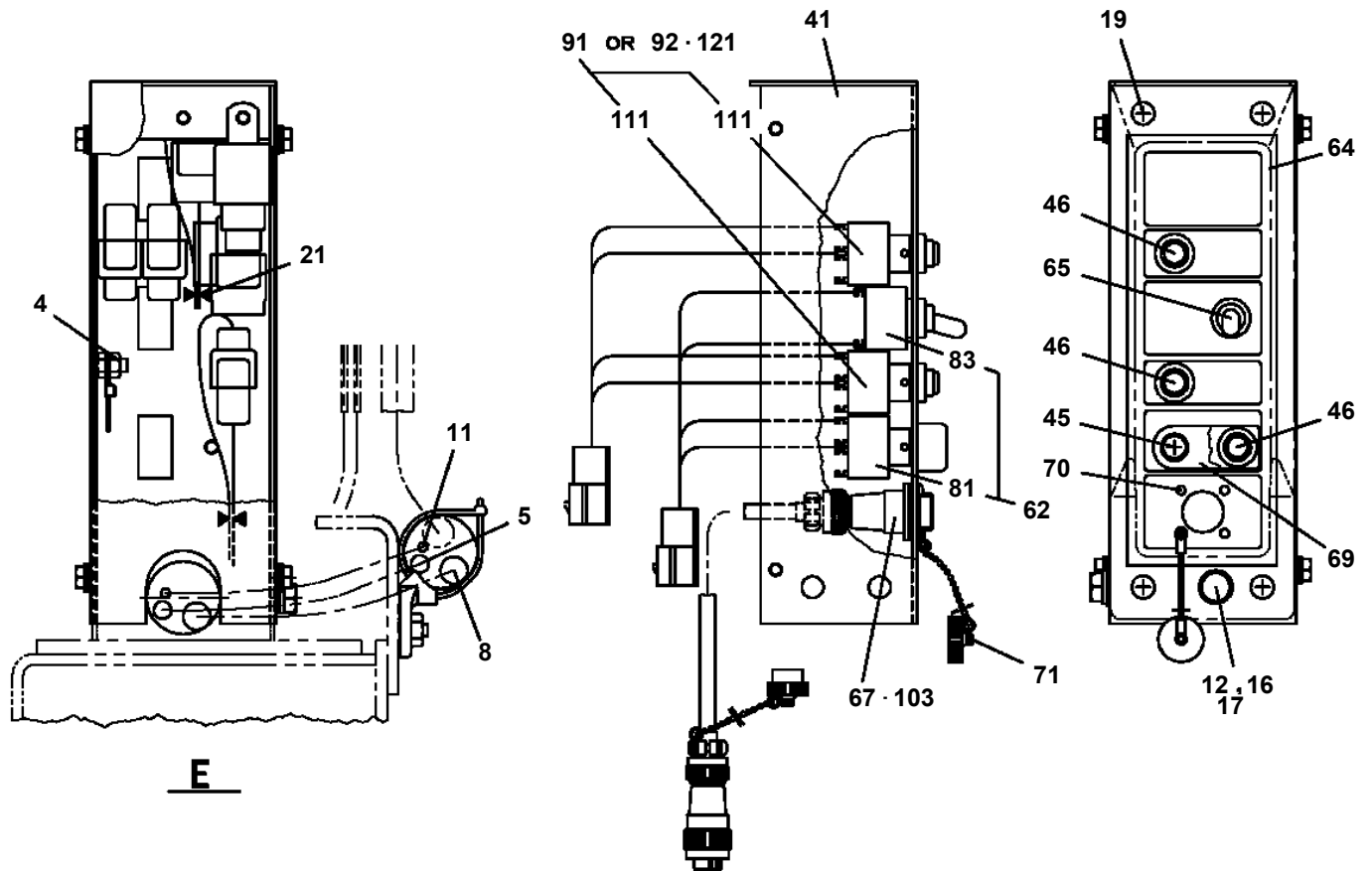
TM-ZF500 31093010010A FRAME/STD, MANUAL
PN1013076-02 ELEC.ASSY (FRAME)



**TM-ZF500 31093010010A FRAME/STD,MANUAL
PN1013447-00 ELEC.ASSY**



D

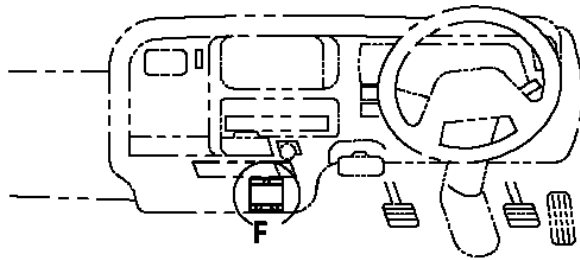


E

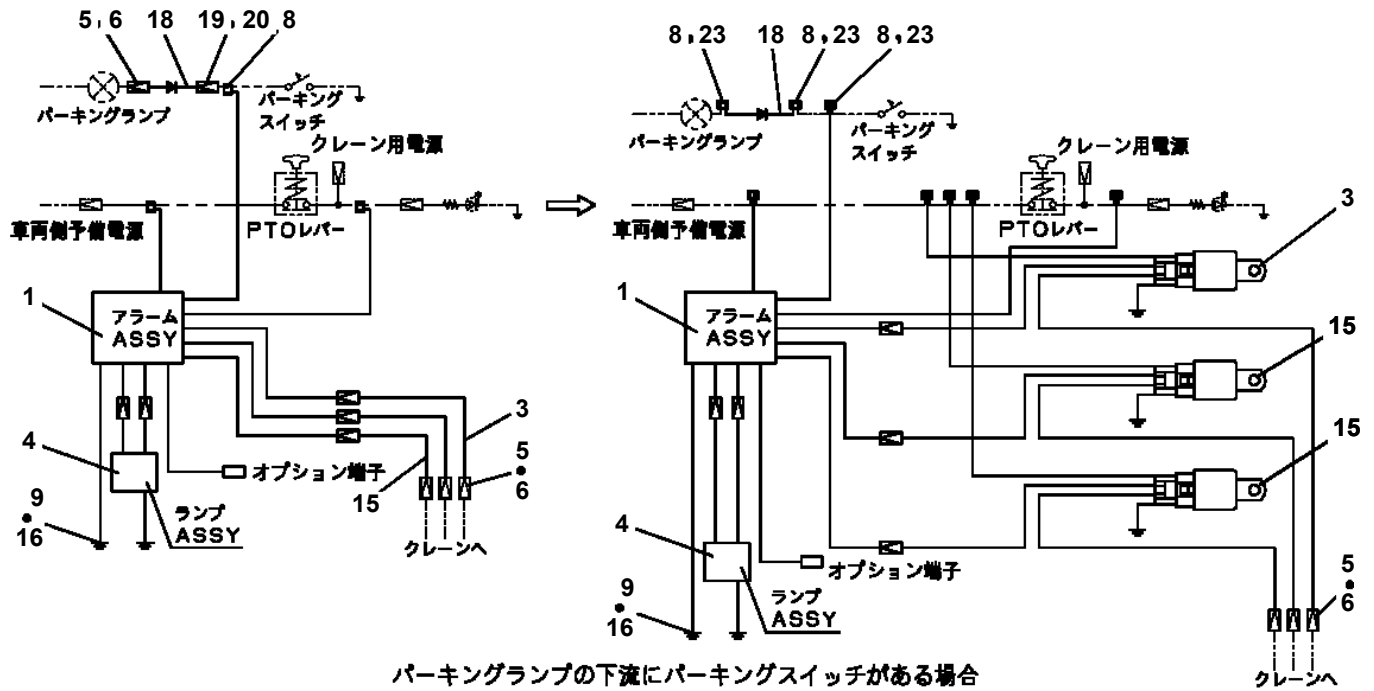
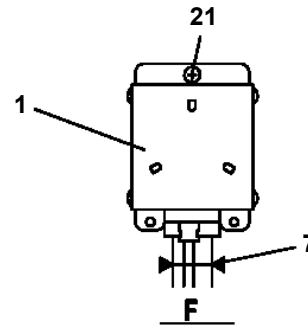
TM-ZF500 31093010010A FRAME/STD,MANUAL

Pos No.	Parts No	Parts Name	Qty	Unit	Technical Data	Serial No (Start)	Serial No (End)	Remarks	Pages
1	36801920300	HARNESS	1						
2	91810130250	FASTENER	8						
3	36801920400	PLATE,NAME	1						
4	82197600101	CAP (BLACK)	1						
5	31473744150	SWITCH ASSY	1						
6	82100000192	TERMINAL	1						
7	82100000182	INSULATOR	1						
8	82100000191	TERMINAL	2						
9	82100000183	INSULATOR	2						
10	31652060300	HARNESS	1						

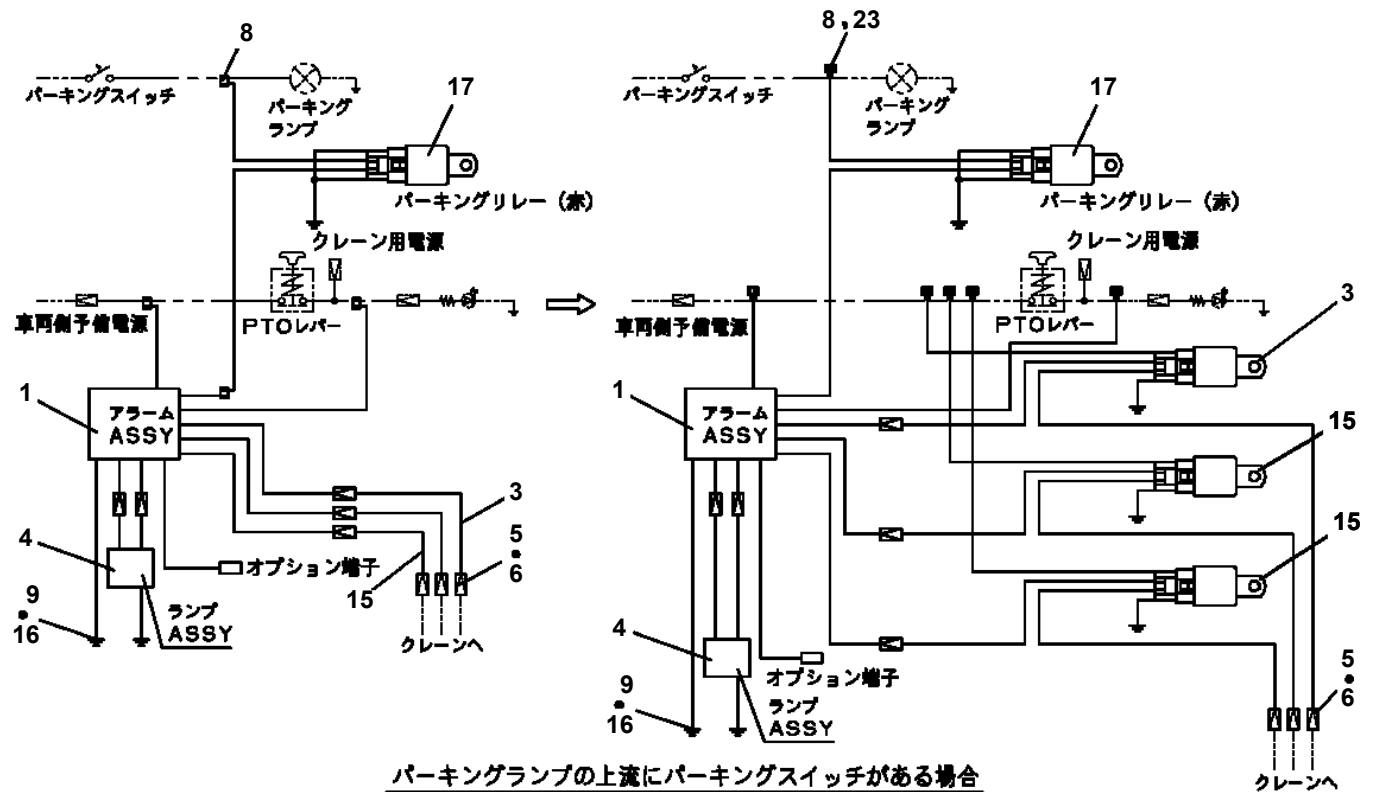
TM-ZF500 31093010010A FRAME/STD, MANUAL
 PN1014341-01 ELEC.ASSY (CARRIER)



アラームASSY取付



駐車ランプの下流に駐車スイッチがある場合

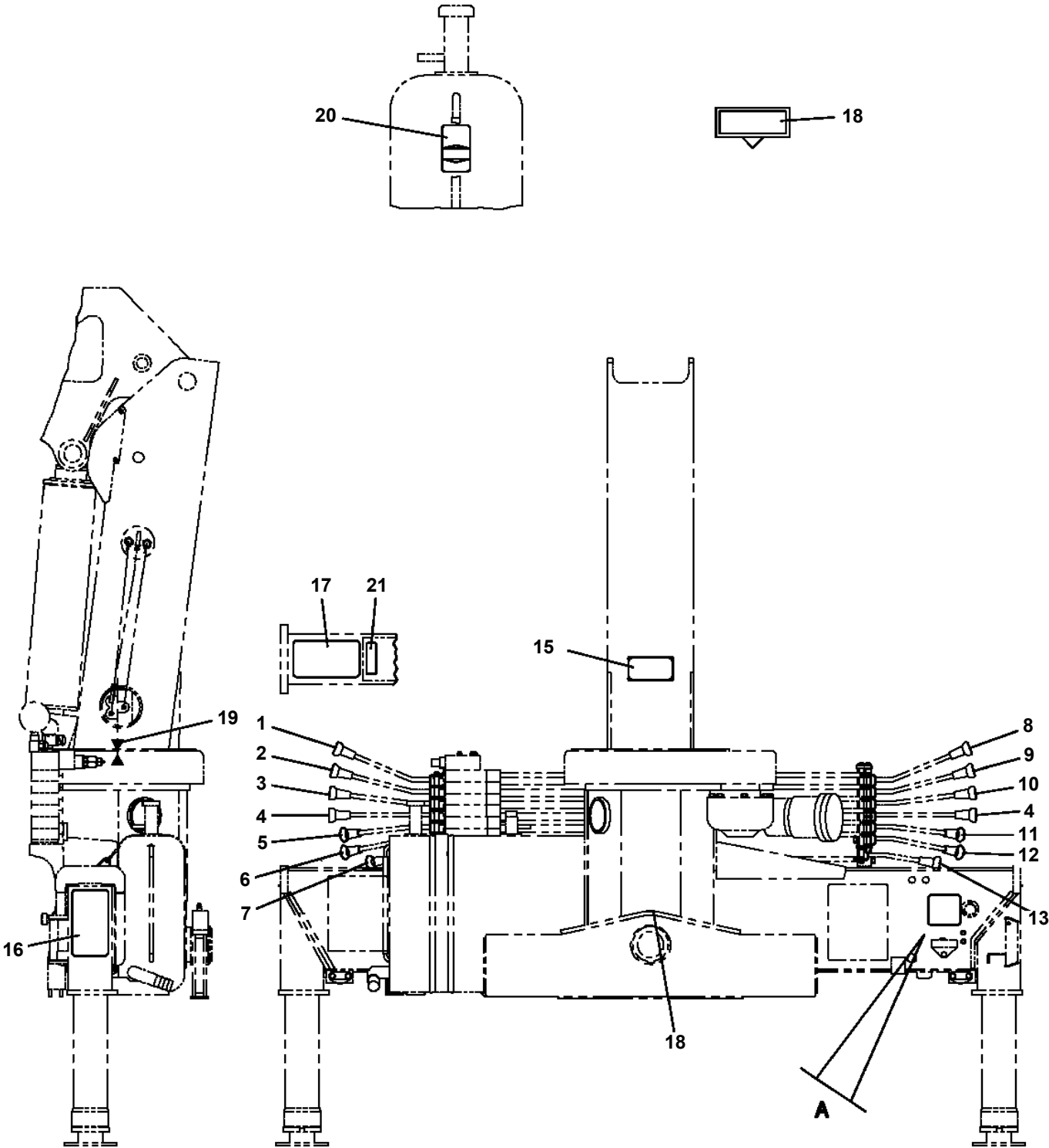


駐車ランプの上流に駐車スイッチがある場合

TM-ZF500 31093010010A FRAME/STD,MANUAL

Pos No.	Parts No	Parts Name	Qty	Unit	Technical Data	Serial No (Start)	Serial No (End)
1	82105501003	SWITCH,TOGGLE	2				
10	31653322200	SWITCH ASSY (WITH HARNESS,2-SW)	1				

TM-ZF500 31093010010A FRAME/STD,MANUAL
PO1011774-02 PLATE ASSY,NAME (ENG.TAIWAN/RADICON)



TM-ZF500 31093010010A FRAME/STD,MANUAL

Pos No.	Parts No	Parts Name	Qty	Unit	Technical Data	Serial No (Start)	Serial No
1	31394580620	PLATE,CAUTION (DO NOT FAIL TO CAP)	2				
2	31394580630	PLATE,NAME (OPERAT OF UNLOAD)	1				
3	31394580640	PLATE,CAUTION (ACCELERATOR ADJUST)	1				
4	31394580660	PLATE,NAME	1				

TM-ZF500 31093010010A FRAME/STD,MANUAL

Pos No.	Parts No	Parts Name	Qty	Unit	Technical Data	Serial No (Start)	Serial No (End)	Remarks
1	31473745100	PLATE,NAME	1					
2	31473745200	PLATE,NAME	1					
3	31473745500	PLATE,CAUTION	2					
4	31473745400	SUPPORT	2					
5	37000604590	CLAMP	2					
6	80182306008	SCREW,MACHINE	4		M6X8			
7	90302040601	WASHER,SPRING	4		6			
8	90303070601	WASHER,PLAIN	4		6			
9	31473745600	PLATE,CAUTION	2					
10	31473745700	PLATE,CAUTION (0.49TON)	1					

TM-ZF500 31093010010A FRAME/STD,MANUAL

Pos No.	Parts No	Parts Name	Qty	Unit	Technical Data	Serial No (Start)	Serial No (End)	Re
1	37002213050	PLATE,NAME (TELESCOPING)	1					
2	37002213060	PLATE,NAME (WINCH)	1					
3	37002213070	PLATE,NAME (ELEVATING)	1					
4	37002213080	PLATE,NAME (SWING)	2					
5	37002213090	PLATE,NAME (JACK)	1					
6	37002213100	PLATE,NAME (JACK)	1					
7	37002213110	PLATE,NAME	1					
8	37002213120	PLATE,NAME (TELESCOPING)	1					
9	37002213130	PLATE,NAME (WINCH)	1					
10	37002213140	PLATE,NAME (ELEVATING)	1					
11	37002213150	PLATE,NAME (JACK)	1					
12	37002213160	PLATE,NAME (JACK)	1					
13	37002213170	PLATE,NAME	1					
15	90451700100	SCREW,TAPPING	4		M4X6.4			
16	31395095210	PLATE,CAUTION	2					
17	31395220230	PLATE,CAUTION	2					
18	37002206490	PLATE,NAME (GREASE)	5					
19	37002200320	PLATE,NAME	2					
20	31395220260	PLATE,CAUTION	2					
21	31395220250	PLATE,CAUTION	2					
31	37002213190	PLATE,NAME (LEVEL,ISO VG46)	1					
32	37002213740	PLATE,NAME (LEVEL,ISO VG32)	1					

TM-ZF500 31093010010A FRAME/STD,MANUAL

Pos No.	Parts No	Parts Name	Qty	Unit	Technical Data	Serial No (Start)	Serial No (End)	Remarks	Pages
1	31477441100	PLATE,NAME	2						

TM-ZF500 31093010010A FRAME/STD,MANUAL

Pos No.	Parts No	Parts Name	Qty	Unit	Technical Data	Serial No (Start)	Serial No (End)	Remarks	Pa
1	31395342100	PLATE,NAME	1						
2	31395342200	PLATE,NAME	1						
3	31395342301	PLATE,NAME	2						
4	31395342401	PLATE,NAME	1						
5	37002215690	PLATE,NAME (ZF503)	1						
6	31392140130	INDICATOR	2						
7	90190000060	BOLT	2		M10X16				

TM-ZF500 31093010010A FRAME/STD,MANUAL

Pos No.	Parts No	Parts Name	Qty	Unit	Technical Data	Serial No (Start)	Serial No (E
1	31395347100	PLATE,NAME(INDICATEUR DE CHARGE)	1				
2	31395347200	PLATE,NAME(INDICATEUR DE CHARGE)	1				
3	31395347300	PLATE,NAME (TM-ZF503)	2				
4	31392140130	INDICATOR	2				
5	90190000060	BOLT	2		M10X16		

TM-ZF500 31093010010A FRAME/STD,MANUAL

Pos No.	Parts No	Parts Name	Qty	Unit	Technical Data	Serial No (Start)	Serial No (End)	Remarks	Pages
1	31395353100	PLATE,NAME	1						
2	31395353200	PLATE,NAME	1						
3	31395353301	PLATE,NAME	2						
4	31395353401	PLATE,NAME	1						
5	37002215700	PLATE,NAME	1						
6	31392140130	INDICATOR	2						
7	90190000060	BOLT	2		M10X16				

TM-ZF500 31093010010A FRAME/STD,MANUAL

Pos No.	Parts No	Parts Name	Qty	Unit	Technical Data	Serial No (Start)	Serial No (End)	Remarks	Pa
1	31395361100	PLATE,NAME	1						
2	31395361200	PLATE,NAME	1						
3	31395361301	PLATE,NAME	2						
4	31395361401	PLATE,NAME	1						
5	37002215710	PLATE,NAME (ZF505)	1						
6	31392140130	INDICATOR	2						
7	90190000060	BOLT	2		M10X16				

TM-ZF500 31093010010A FRAME/STD,MANUAL

Pos No.	Parts No	Parts Name	Qty	Unit	Technical Data	Serial No (Start)	Serial No (E
1	31395366100	PLATE,NAME(INDICATEUR DE CHARGE)	1				
2	31395366200	PLATE,NAME(INDICATEUR DE CHARGE)	1				
3	31395366300	PLATE,NAME (TM-ZF505)	2				
4	31392140130	INDICATOR	2				
5	90190000060	BOLT	2		M10X16		

TM-ZF500 31093010010A FRAME/STD,MANUAL

Pos No.	Parts No	Parts Name	Qty	Unit	Technical Data	Serial No (Start)	Serial No (End)
1	31395374100	PLATE,NAME (LOAD INDICATOR 10TON)	1				
2	31395374200	PLATE,NAME (LOAD INDICATOR 10TON)	1				
3	31395374300	PLATE,NAME (TM-ZF506 TOTAL RATED LOADS)	2				
4	31392140130	INDICATOR	2				
5	90190000060	BOLT	2		M10X16		

TM-ZF500 31093010010A FRAME/STD,MANUAL

Pos No.	Parts No	Parts Name	Qty	Unit	Technical Data	Serial No (Start)	Serial No (End)
1	31395642100	PLATE,NAME (LOAD INDICATOR 6TON)	1				
2	31395642200	PLATE,NAME (LOAD INDICATOR 6TON)	1				
3	31395642300	PLATE,NAME(TM-ZF503G TOTAL RATED LOADS)	2				
4	31392140130	INDICATOR	2				
5	90190000060	BOLT	2		M10X16		

TM-ZF500 31093010010A FRAME/STD,MANUAL

Pos No.	Parts No	Parts Name	Qty	Unit	Technical Data	Serial No (Start)	Serial No
2	(*****)	ELEC.ASSY (FRAME)	1				
3	(*****)	ELEC.ASSY (ANTENNA)	1				
11	36804911000	CONTROL UNIT	1				
12	36804912000	ANTENNA (FOR RADIO CONTROL)	1				
13	36804913000	SWITCH BOX (RADIO CONTROL,LED TYPE)	1				
14	36804914000	BOX,STOWING	1				

TM-ZF500 31093010010A FRAME/STD,MANUAL

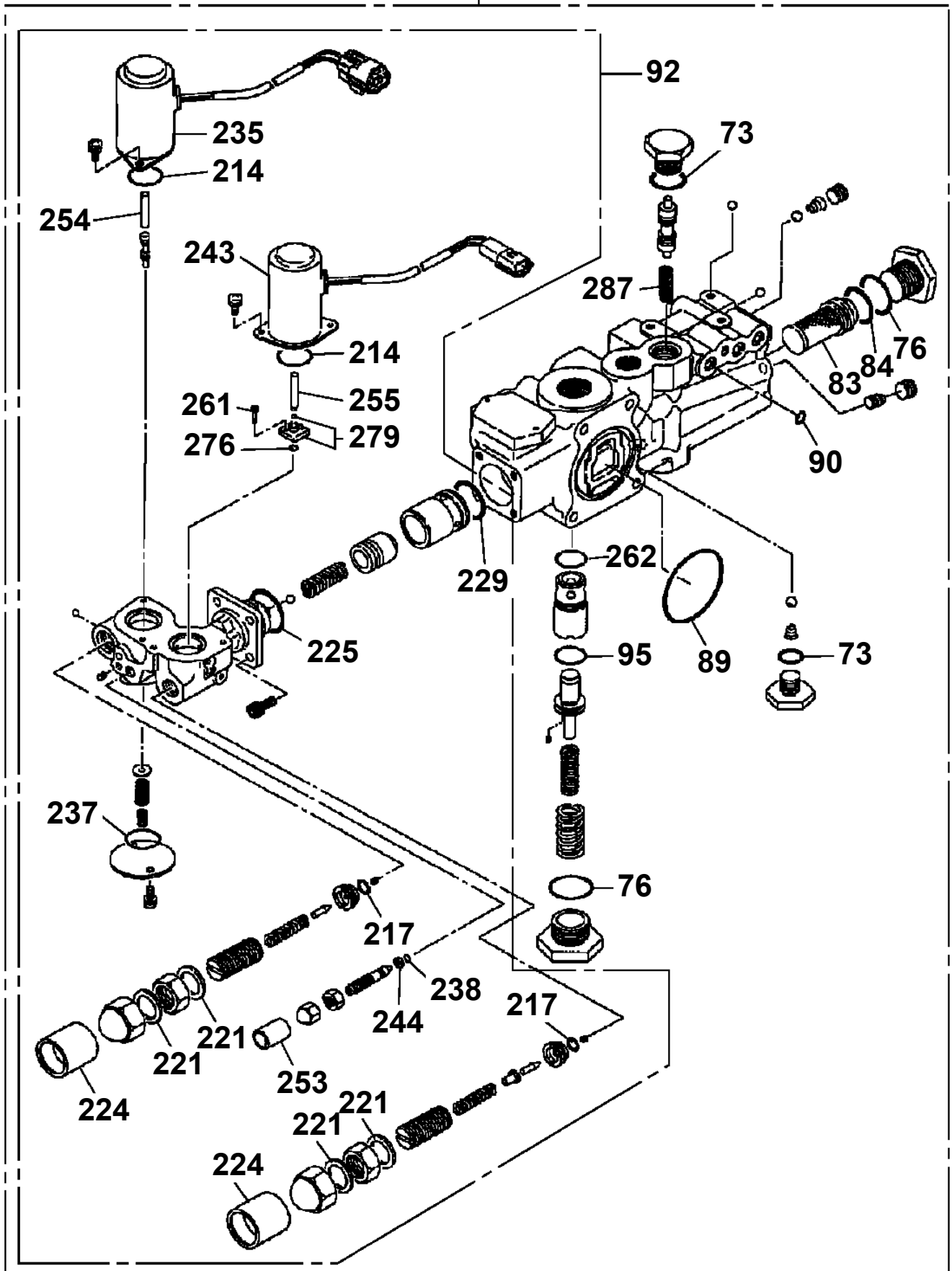
Pos No.	Parts No	Parts Name	Qty	Unit	Technical Data	Serial No (Start)	Serial No (End)	Remarks
5	82182819823	DIODE	1		1.5A			
9	34354781710	RELAY (WITH BRACKET)	1					
100	34354781720	RELAY (WITH HARNESS)	1					

TM-ZF500 31093010010A FRAME/STD,MANUAL

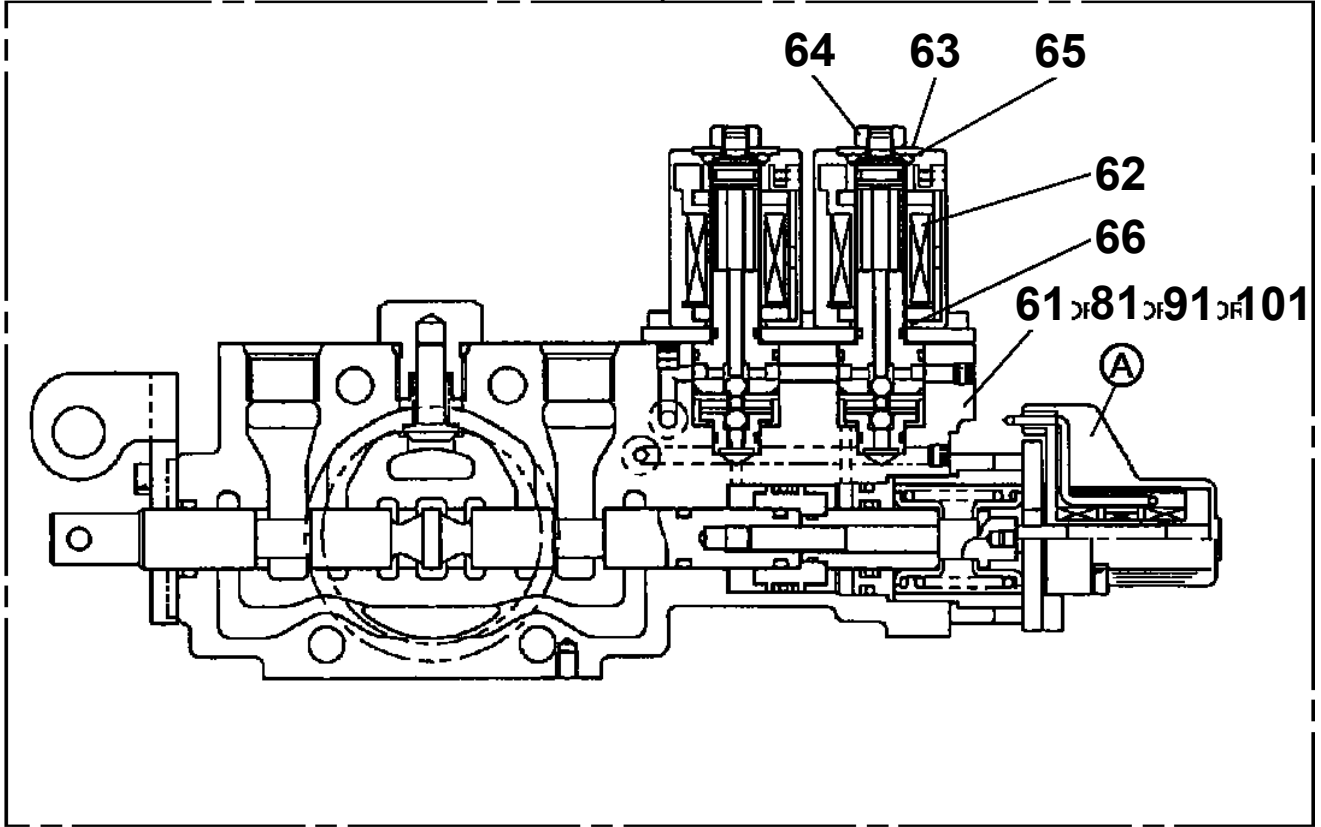
Pos No.	Parts No	Parts Name	Qty	Unit	Technical Data	Serial No (Start)	Serial No (End)
2	(*****)	STOWING BOX (REMOTE CONTROL)	1				
3	(*****)	OPE.ASSY,CONT.VALVE (RADIO)	1				
4	(*****)	OPE.ASSY,ACCELERATOR (REMO,RADI)	1				
5	(*****)	PIPING,LOWER (RADIO CONTROL)	1				
6	(*****)	ELEC.ASSY	1				
7	(*****)	PLATE ASSY,NAME (REMOTE CONTROL)	1				
21	36800581000	CONTROL BOX (REMOTE CONTROL.M2)	1				
	36803781000	CONTROL BOX	1			EH8905	EH8904
22	36800582001	SWITCH BOX	1				

TM-ZF500 31093010010A FRAME/STD, MANUAL
PV1020106-04 VALVE, REMOTE CONTROL (SANWA)

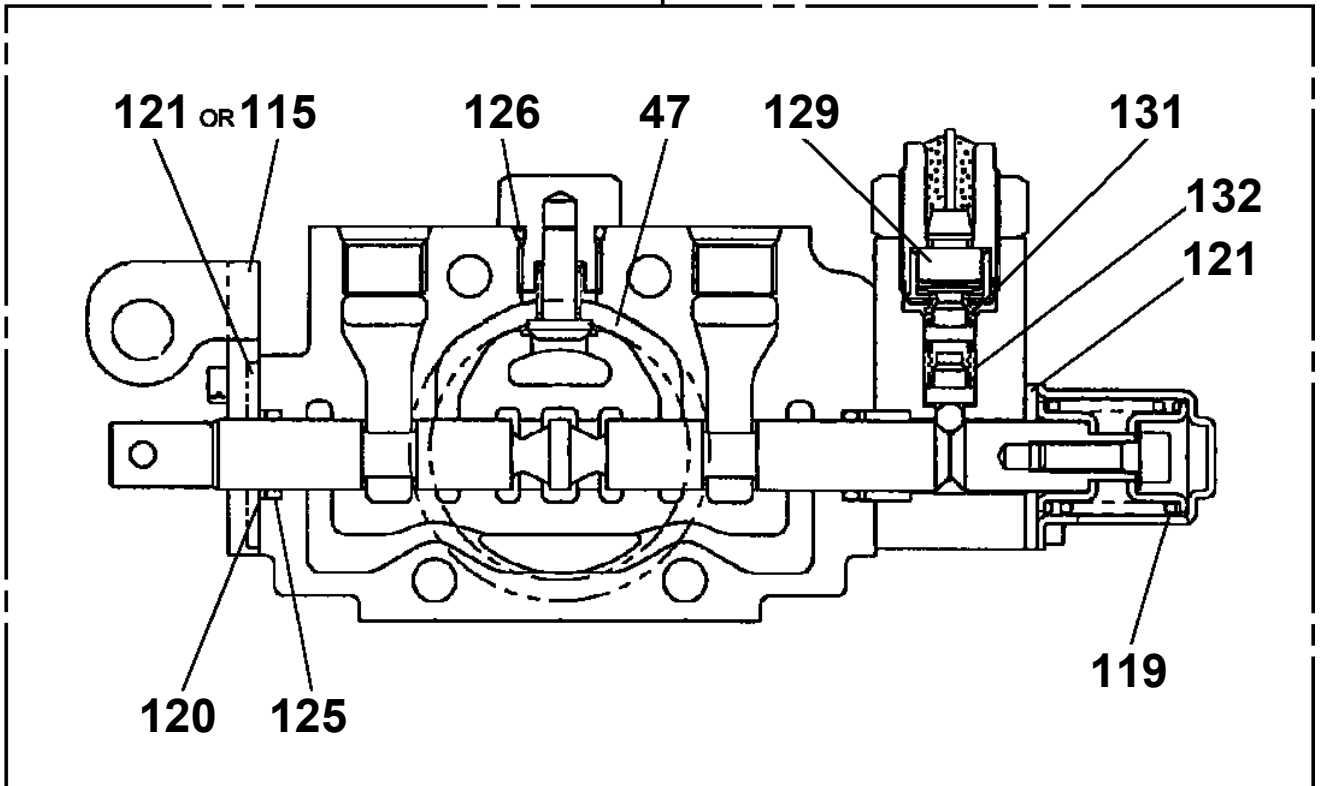
1



2345

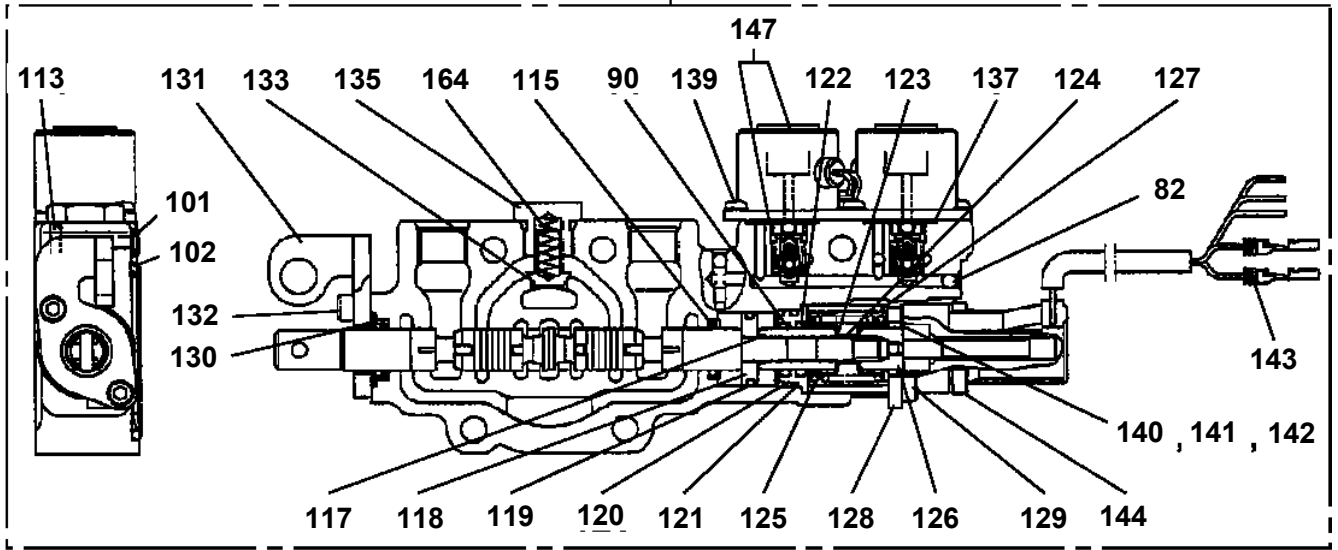


67

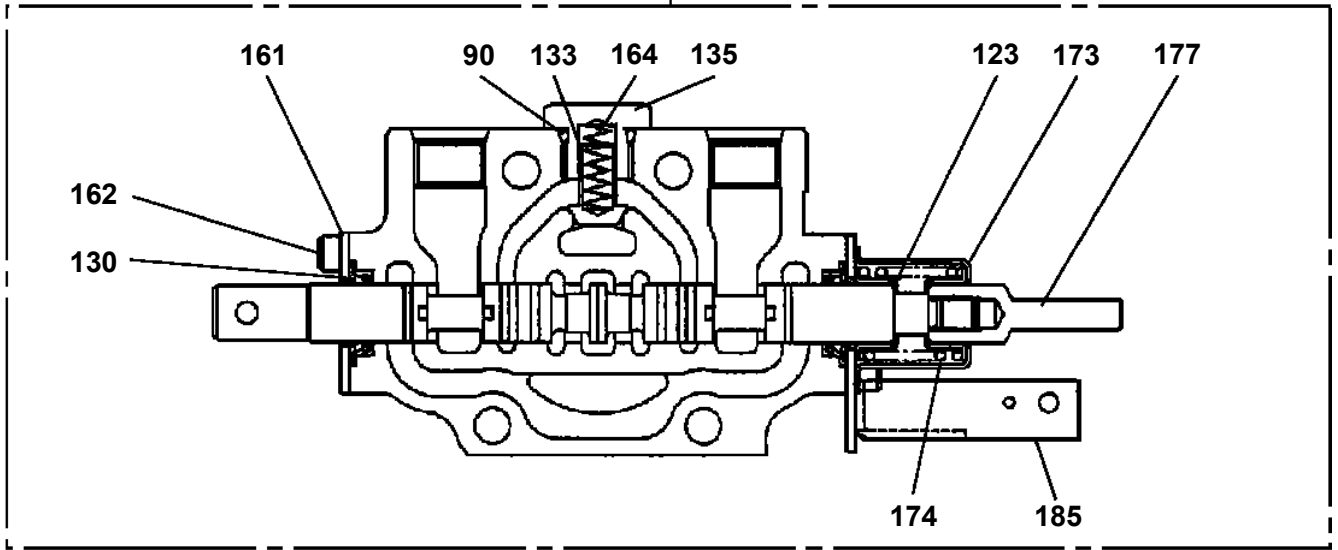


**TM-ZF500 31093010010A FRAME/STD, MANUAL
PV1020351-00 VALVE,REMOTE CONTROL**

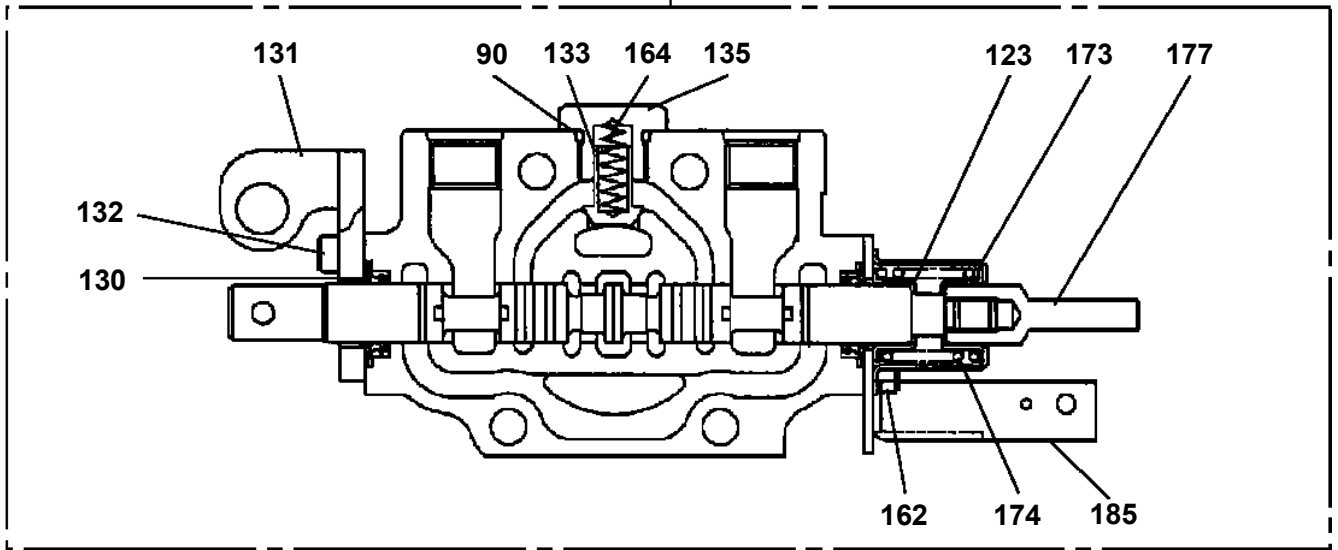
9



10



11

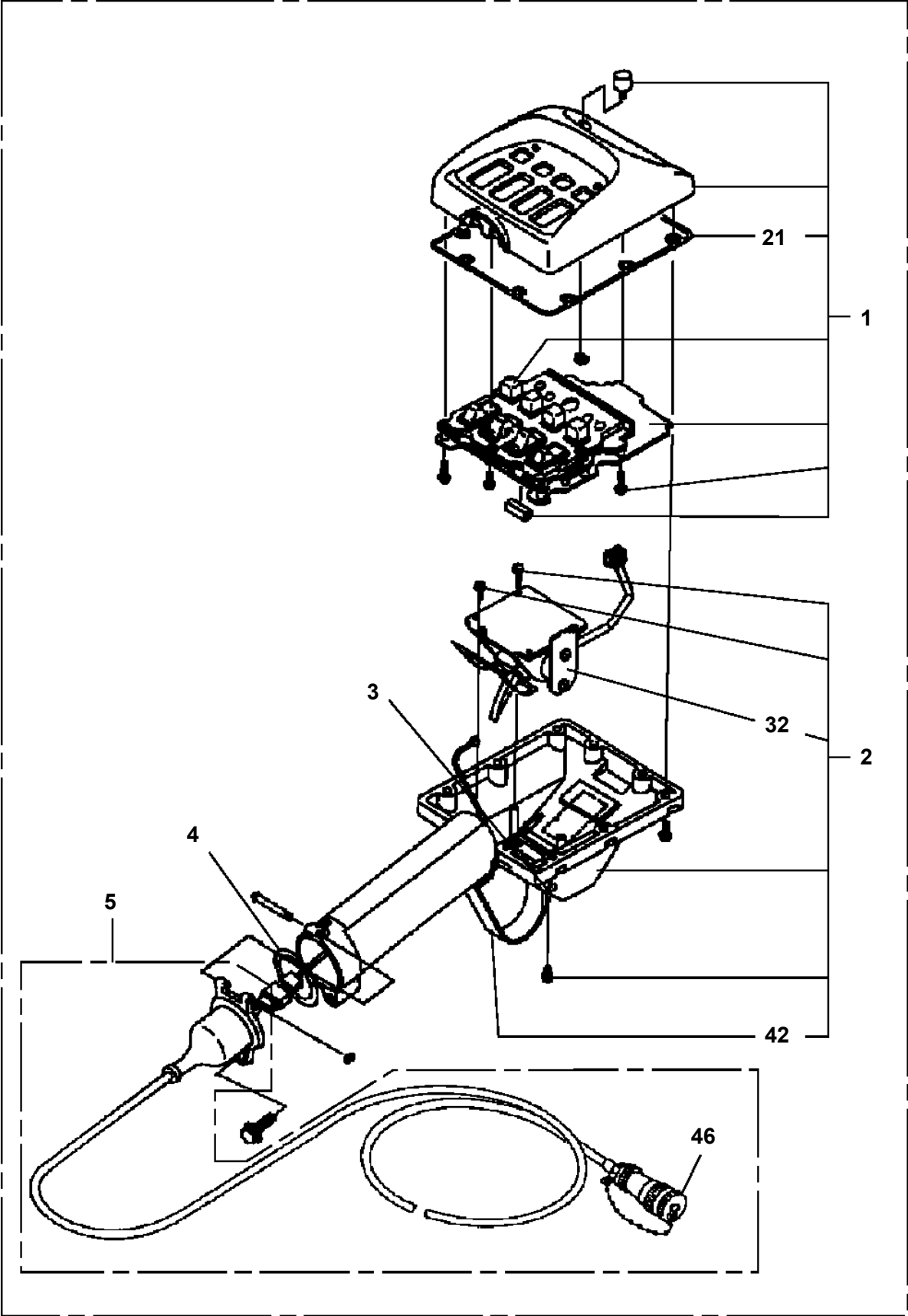


TM-ZF500 31093010010A FRAME/STD,MANUAL

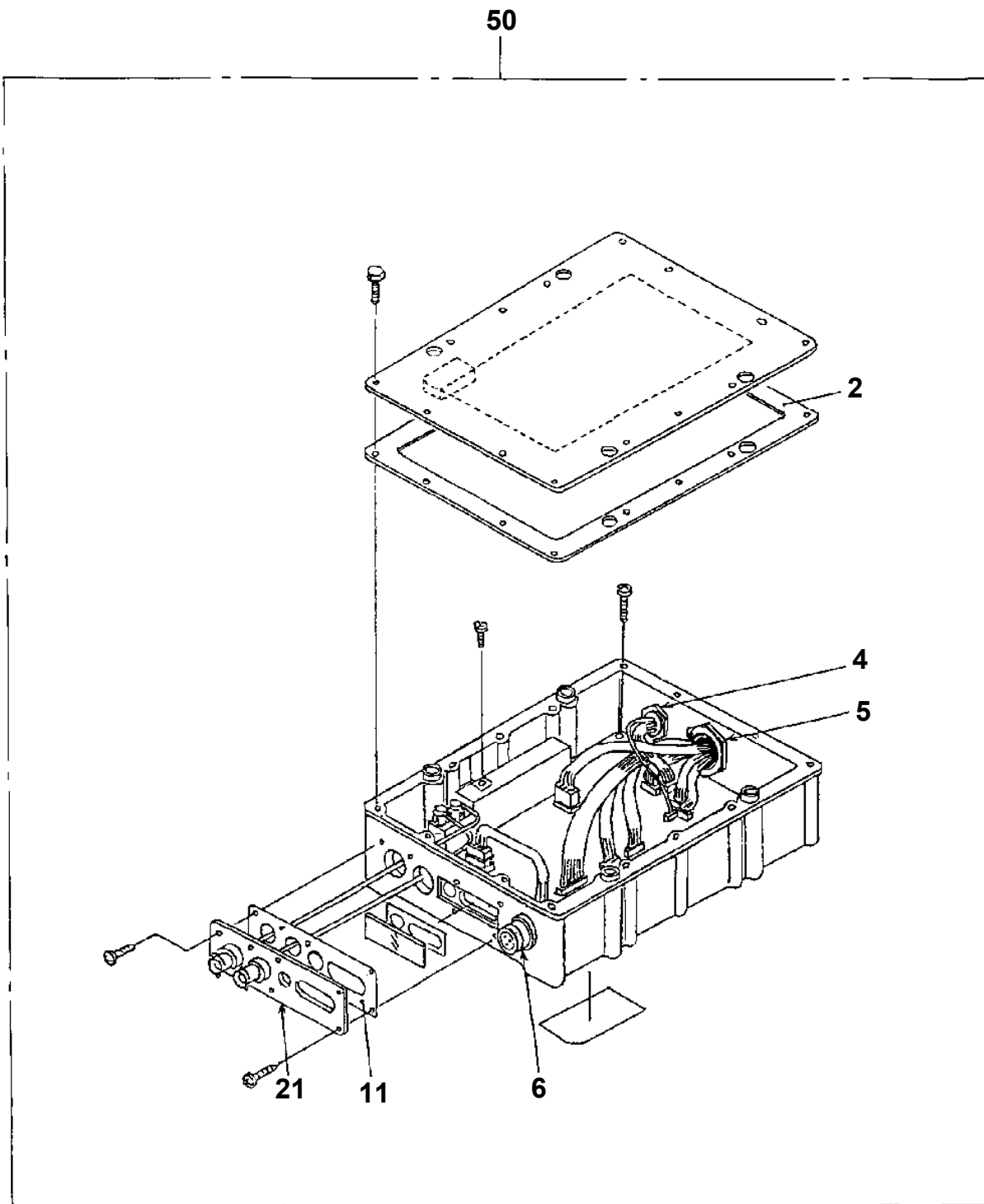
Pos No.	Parts No	Parts Name	Qty	Unit	Technical Data	Serial No (Start)	Serial N
1	36800555050	CASE KIT (UPPER)	1				
2	36800565070	CASE KIT (LOWER)	1				
3	36800555080	LABEL (SEAL)	1				
4	36800095041	BELT ASSY	1				
5	36800565100	COVER (BATTERY)	1				
6	36800095030	CASE (BATTERY)	1				
21	36800095060	CASE (RING)	1				
22	36800565060	ANTENNA (FLEXIBLE)	1				
23	36800565150	PLATE,NAME	1				
24	36801995060	RUBBER ASSY	1				
32	36800565080	CASE ASSY	1				
42	36800295110	GUARD	1				
43	36801995080	GRIP	1				
50	36800552000	SWITCH BOX (RADIO CONTROL.M2.TYPE-A)	1				

TM-ZF500 31093010010A FRAME/STD,MANUAL
PV1030090-00 SWITCH BOX

100

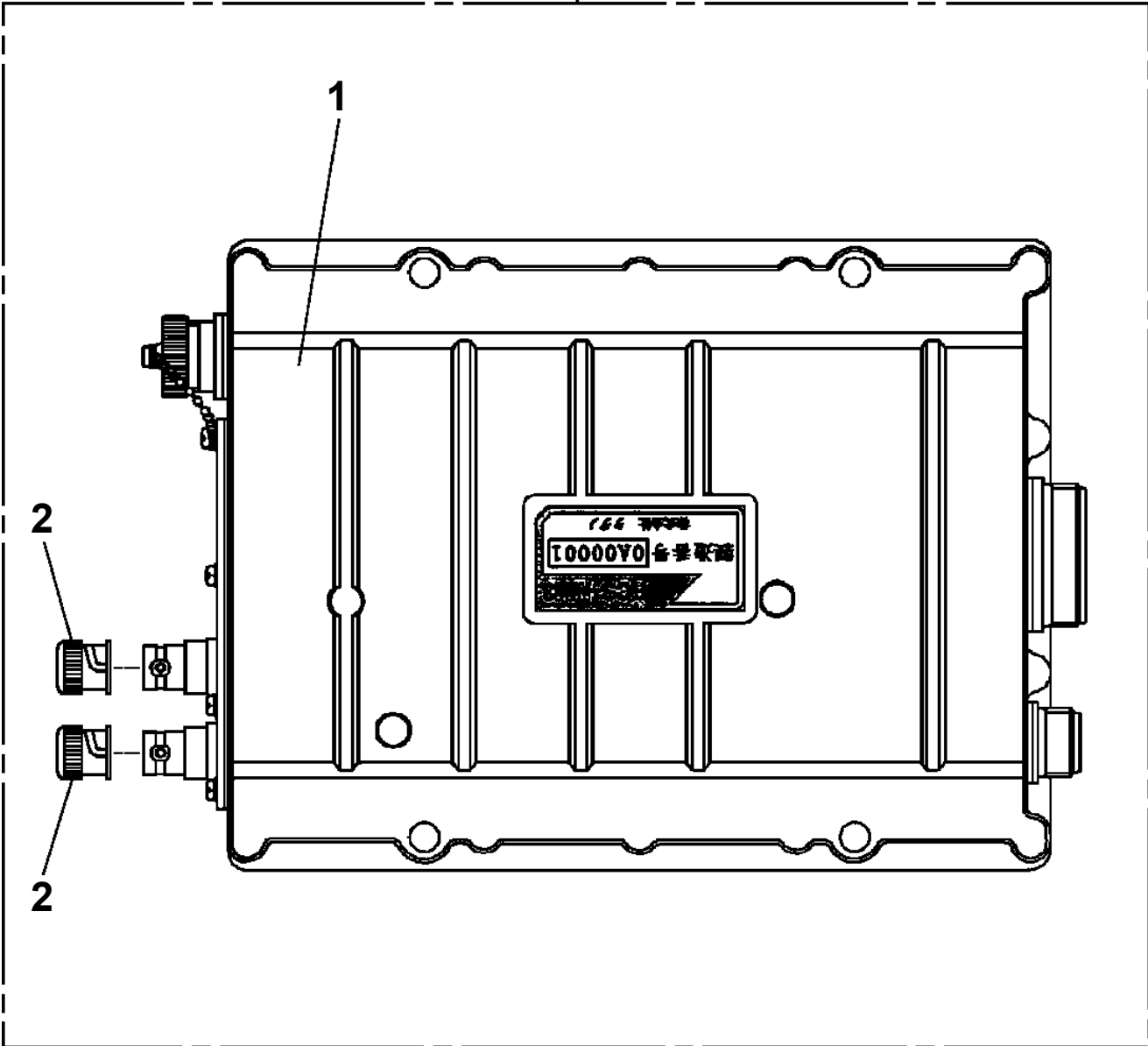


TM-ZF500 31093010010A FRAME/STD,MANUAL
PV1040035-00 CONTROL BOX (RADIO CONTROL C-TYPE)



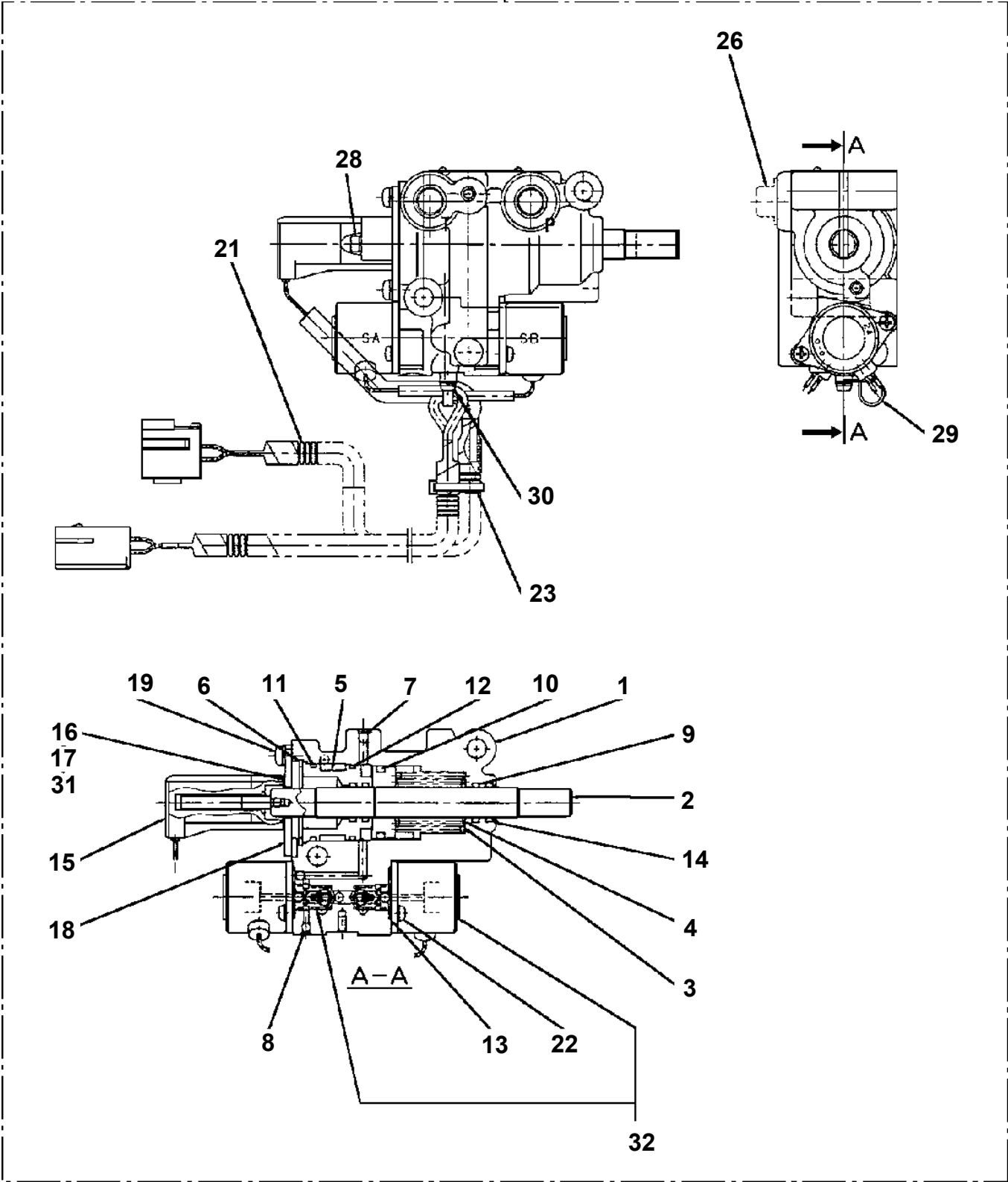
TM-ZF500 31093010010A FRAME/STD,MANUAL
PV1040094-00 CONTROL BOX

10



TM-ZF500 31093010010A FRAME/STD,MANUAL
PV1050011-00 CYLINDER,ACCELERATOR

50



TM-ZF500 31093010010A FRAME/STD,MANUAL
PV1070366-00 RADIO CONTROL

指示番号 KEY NO.	ラジオコントロール (テイシカ ^タ BMLタイオウ/キユウジ ^{ヨウ} コウサクシヤ) RADIO CONTROL
1	P-ロム P-ROM
2	ハイセンASSY ELEC.ASSY

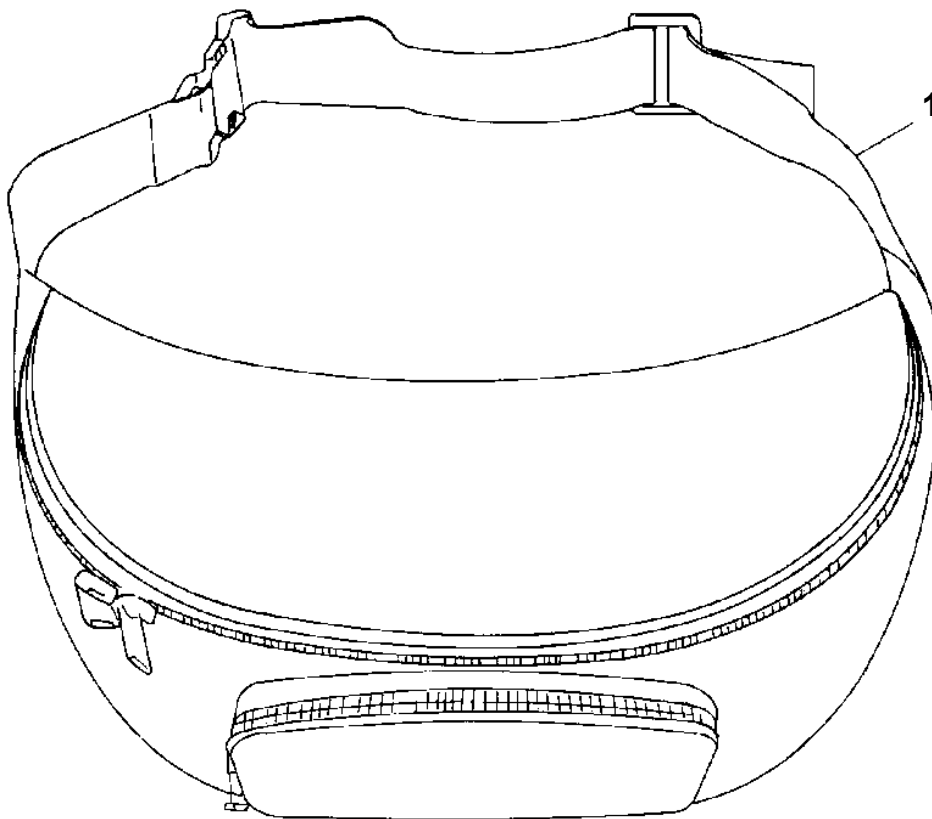
**TM-ZF500 31093010010A FRAME/STD,MANUAL
PV1080017-00 PARTS,BML (5,6 SECT.MANUAL)**

1	ハイセンASSY ELEC.ASSY
3	デテクタ,オーバ フロント エリア DETECTOR,OVER FRONT AREA
4	インジケータ,アウトリガ INDICATOR,OUTRIGGER
5	デテクタ,ロード DETECTOR,LOAD
6	スイッチ インスタレーション SWITCH INSTALLATION
7	プレートASSY,ネーム PLATE ASSY,NAME
9	デテクタ,ブーム レンクス DETECTOR,BOOM LENGTH
10	モーメント リミッタ MOMENT LIMITER
11	プレートASSY,ネーム PLATE ASSY,NAME

TM-ZF500 31093010010A FRAME/STD,MANUAL
 PV1090028-00 PARTS,AWL (3.4 SECT./RADICON OR MH)

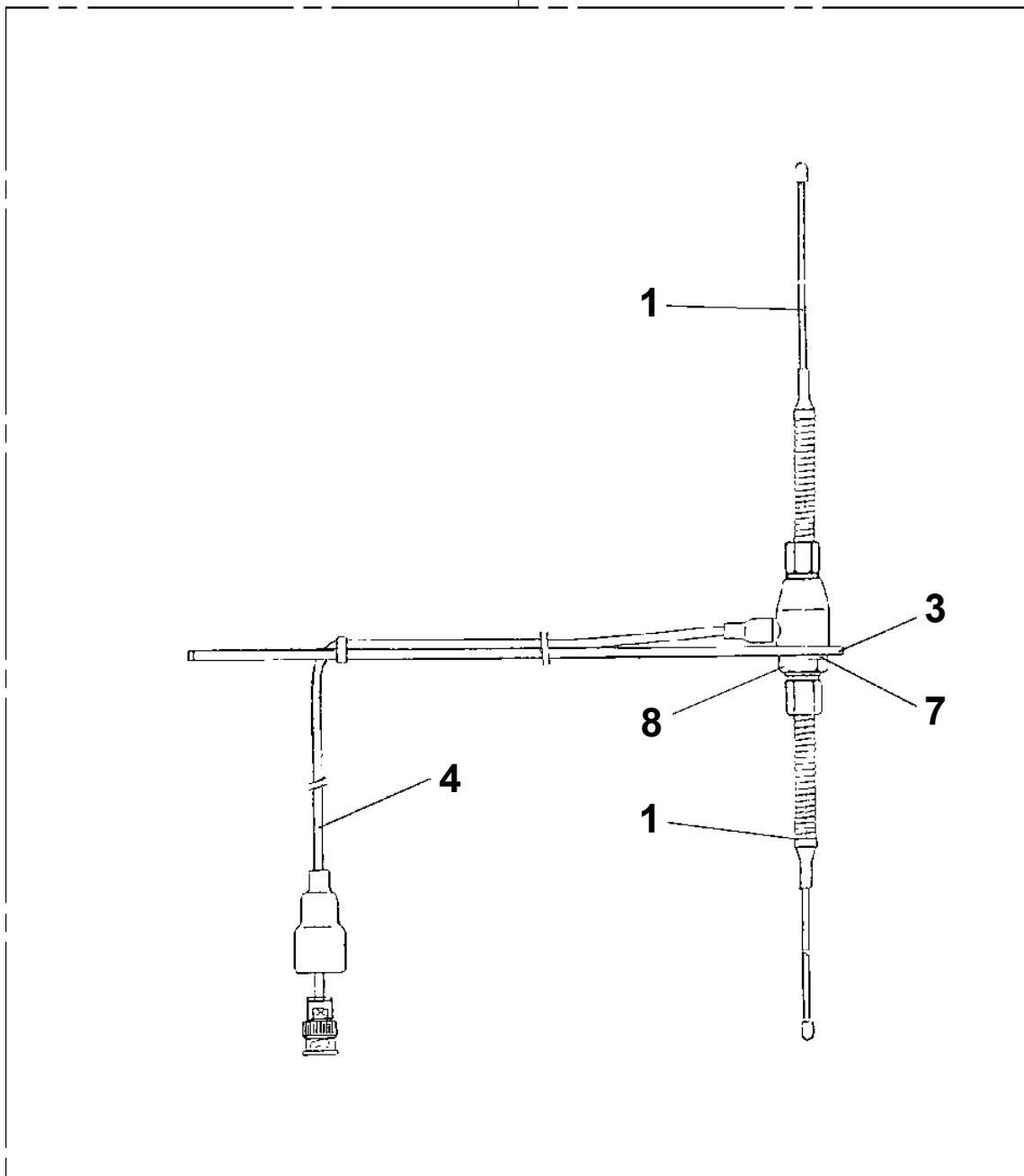
指示番号 KEY NO.	パーツ,AWL (3.4セクション,ニンイ/ラジコンORマニュアル フックイン) PARTS,AWL (3.4 SECT./RADICON OR MANUAL HOOK-IN)
1	ハイセンASSY ELEC.ASSY
2	ハイセンASSY (スペアハーネス) ELEC.ASSY (SPARE HARNESS)
3	プレートASSY,ネーム PLATE ASSY,NAME
4	ディテクタ,ブームレングス DETECTOR,BOOM LENGTH
6	モーメントリミッタ MOMENT LIMITER
12	マウント MOUNT

**TM-ZF500 31093010010A FRAME/STD,MANUAL
PV1250006-00 STOWING BOX (BAG,RADIO CONTROL)**

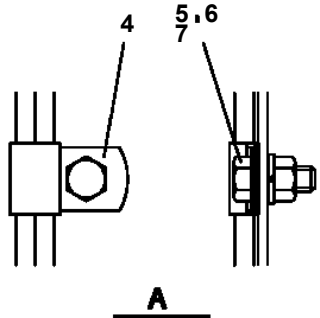
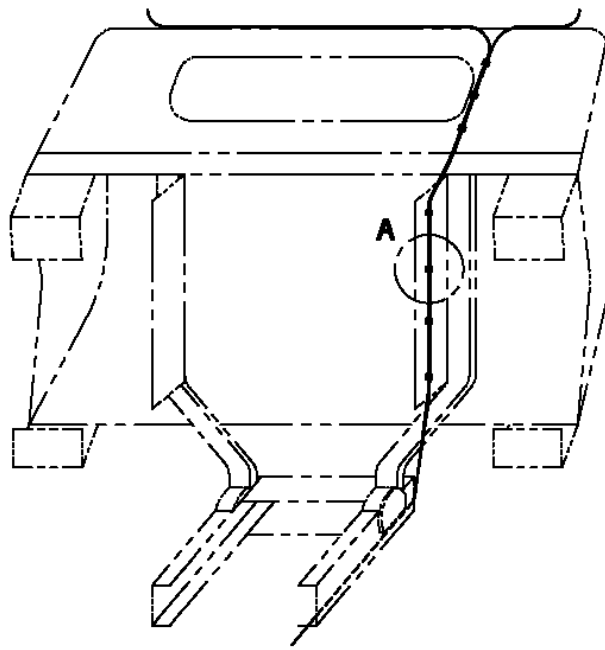
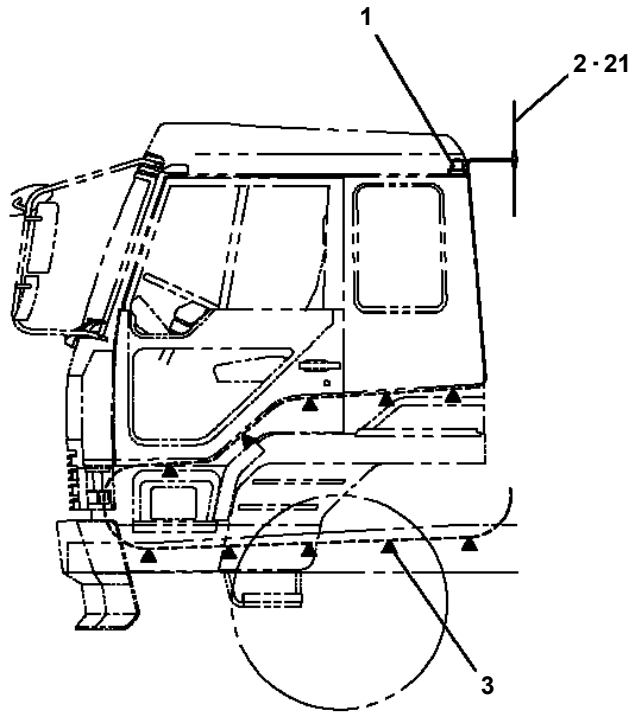
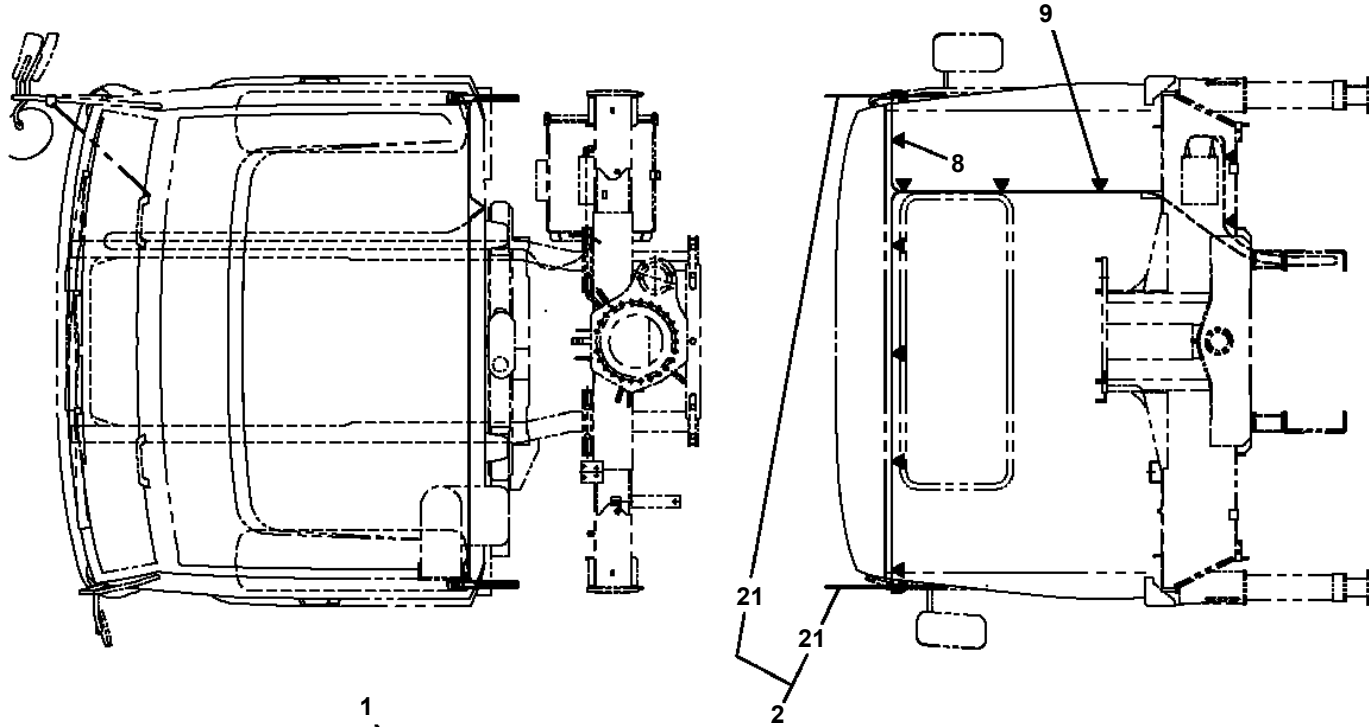


TM-ZF500 31093010010A FRAME/STD, MANUAL
PV1400014-02 ANTENNA (FOR RADIO CONTROL)

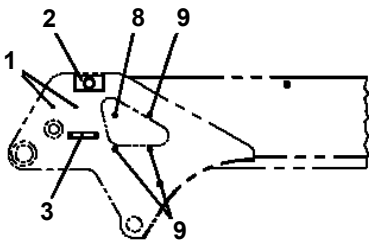
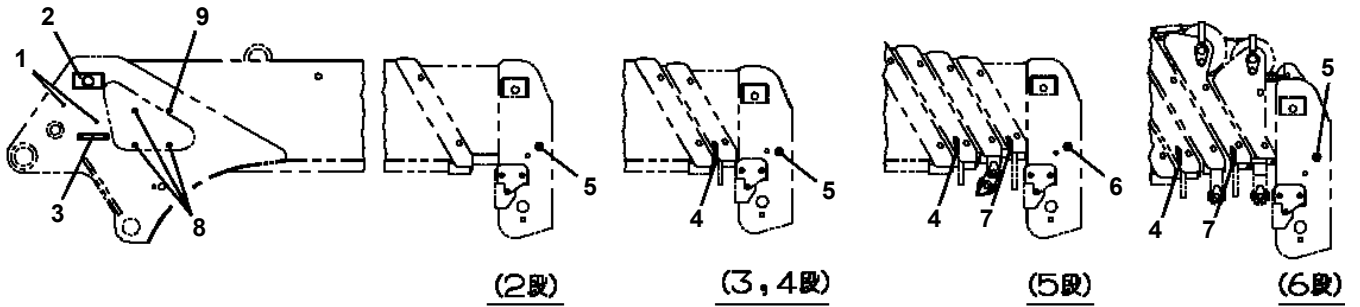
10



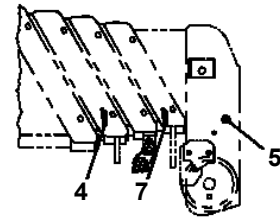
TM-ZF500 31093010010A FRAME/STD,MANUAL
PV1410005-01 MOUNT,ANTENNA (RADIO CONTROL,TYPE-A)



TM-ZF500 31093010010A FRAME/STD, MANUAL
PX1940184-01 MOUNT (BOOM)

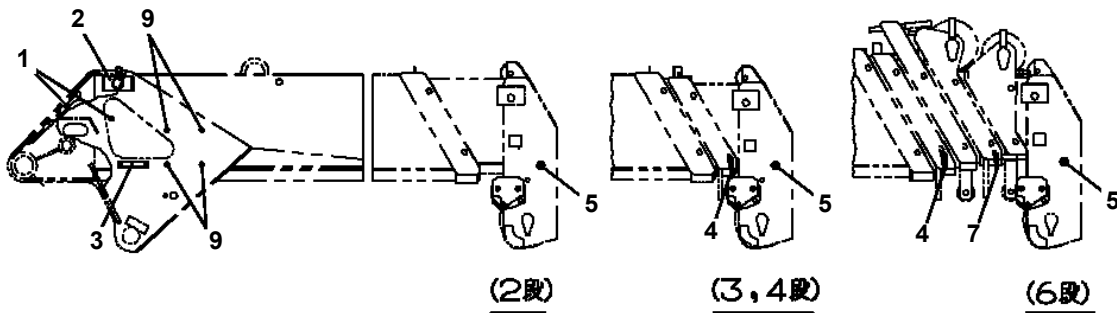


ZR230, 230W, 263Jの場合

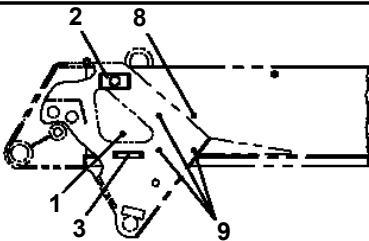


ZR505, 555の場合

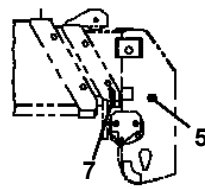
ZRの場合



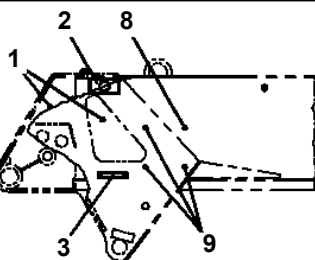
ZF300, 360, 500 (2~6段) の場合



ZF230, 260, 290,
300J (2~4段), 263Jの場合



ZF263, 293, 303Jの場合



ZF260, 290, 300J (5, 6段) の場合

ZFの場合

TM-ZF500 31093010010A FRAME/STD,MANUAL
PY1300037-00 COOLER,OIL

指示番号 KEY NO.	クーラ,オイル COOLER,OIL
1	オイル クーラ インスタレーション OIL COOLER INSTALLATION
2	パイピング,クーラ PIPING,COOLER
3	ハイセンASSY ELEC.ASSY

TM-ZF500 31093010010A FRAME/STD,MANUAL
PY1560027-01 ALARM SYSTEM

指示番号 KEY NO.	アラーム システム (キフクカクノウスレ: SWツキPTOケーブル ルタイオウ) ALARM SYSTEM
1	ハイセンASSY (クレーンホンタイプ) ELEC. ASSY (CRANE)
2	ハイセンASSY (カソウシャリヨウブ) ELEC. ASSY (CARRIER)
4	プレート ASSY, ネーム PLATE ASSY, NAME

CLICK HERE TO **DOWNLOAD** THE COMPLETE MANUAL

- Thank you very much for reading the preview of the manual.
- You can download the complete manual from: www.heydownloads.com by clicking the link below



- Please note: If there is no response to CLICKING the link, please download this PDF first and then click on it.

CLICK HERE TO **DOWNLOAD** THE COMPLETE MANUAL