

TM-ZF260 41108110010A FRAME/STD,MANUAL

PB2000010-01 POWER TAKE OFF & PUMP

PK2000414-00 FRAME UNIT

PO1000122-01 INDICATION PLATES

PY1000373-00 OPTIONS

ASSEMBLY

CLICK HERE TO **DOWNLOAD** THE COMPLETE MANUAL

- Thank you very much for reading the preview of the manual.
- You can download the complete manual from: www.heydownloads.com by clicking the link below



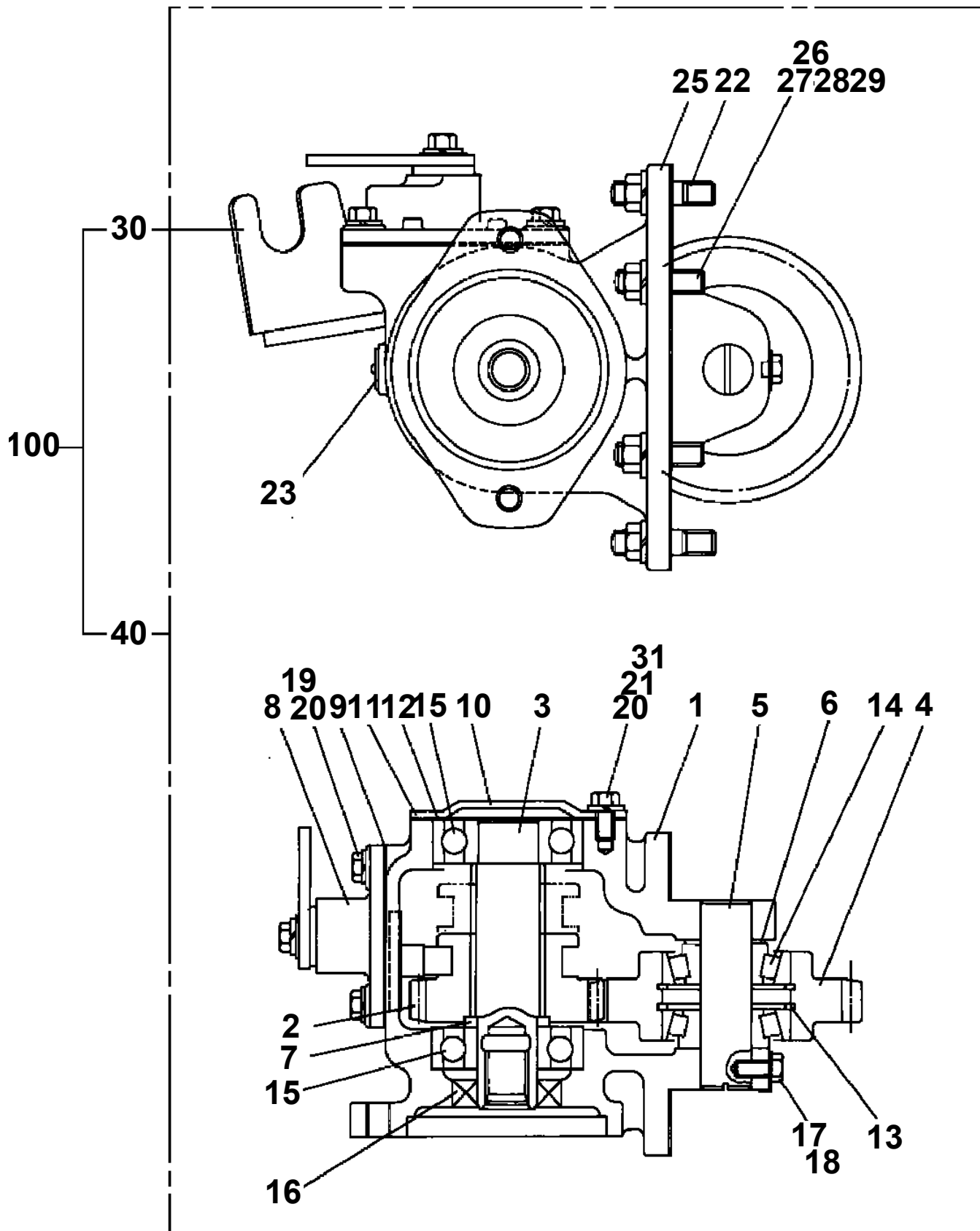
- Please note: If there is no response to CLICKING the link, please download this PDF first and then click on it.

CLICK HERE TO **DOWNLOAD** THE COMPLETE MANUAL

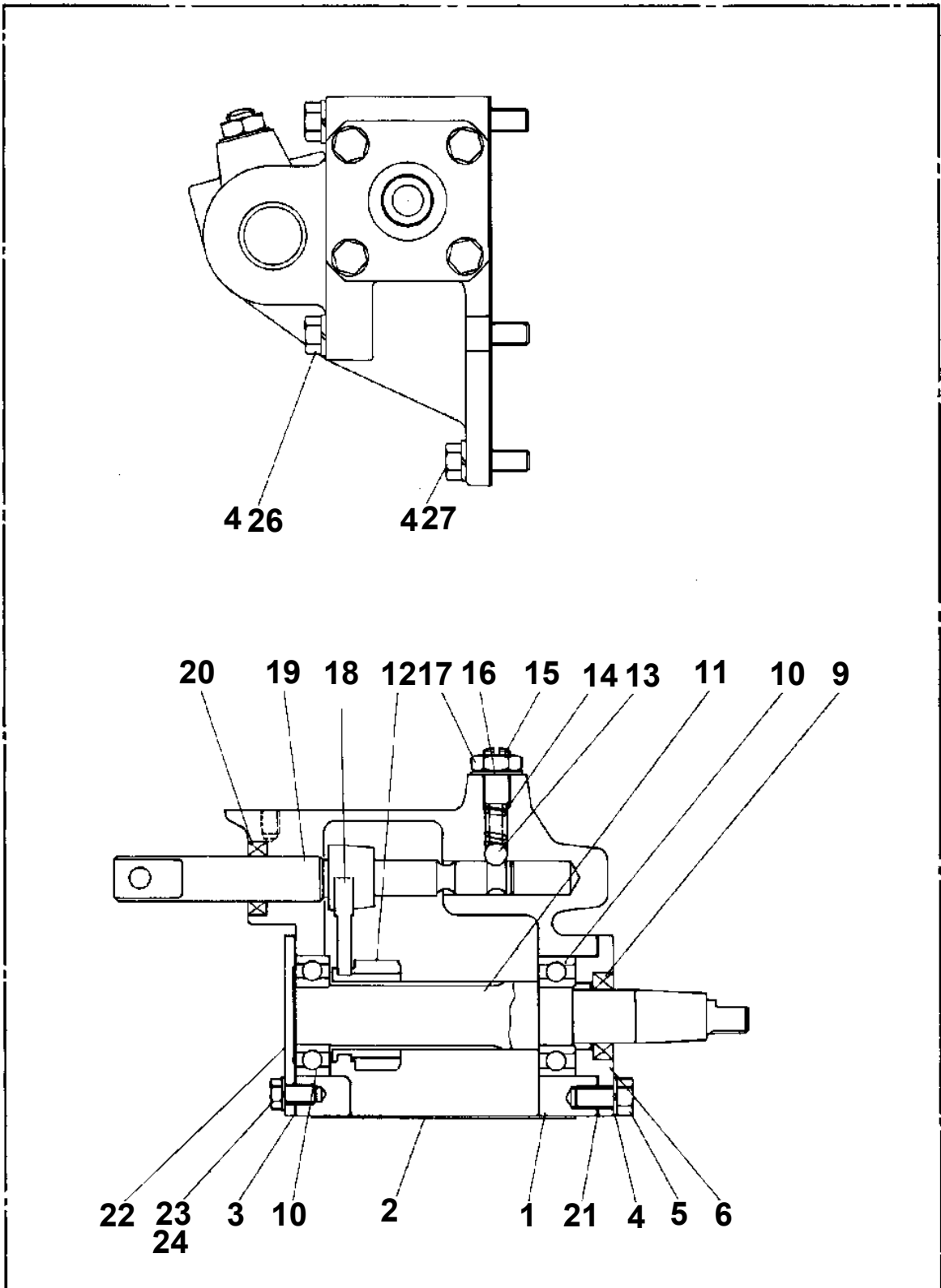
TM-ZF260 41108110010A FRAME/STD,MANUAL

PC1010400-03 OUTRIGGER,REAR
PC1020032-00 OUTRIGGER,REAR (ROTARY)
PC1020034-00 OUTRIGGER,REAR (ROTARY/SERVICE PORT)
PC1020104-01 OUTRIGGER,REAR
PC1030185-04 CYLINDER,JACK (REAR)
PC1030195-03 CYLINDER,JACK (MIN600.WITH FLOAT)
PC1030196-03 CYLINDER,JACK (MIN670.WITH FLOAT)
PC1030197-04 CYLINDER,JACK (MIN661.WITHOUT FLOAT)
PC1030418-00 CYLINDER,JACK (COLD-FORGED)
PC1030421-00 CYLINDER,JACK (COLD-FORGED)
PC1030423-00 CYLINDER,JACK (COLD-FORGED)
PC1100154-04 OPE.ASSY,OUTRIGGER
PC1100163-01 OPE.ASSY,OUTRIGGER (ROTARY REAR JACK)
PC1100198-01 OPE.ASSY,O/R (ROTARY R/J+SEAVICE PORT)
PC1190020-00 INDICATOR,OUTRIGGER
PC1190021-01 INDICATOR,OUTRIGGER
PC1190022-00 INDICATOR,OUTRIGGER
PC1230018-01 PIPING,REAR JACK (1,ROTARY)
PC1230019-01 PIPING,REAR JACK (2,ROTARY)
PD1010035-01 REDUCER,SWING SPEED
PD1010090-02 REDUCER,SWING SPEED
PD1010185-00 REDUCER,SWING SPEED
PD1200078-00 PIPING,SWING
PE1010225-01 CYLINDER,ELEVATING
PE5020094-00 ELEC.ASSY
PE5020095-00 ELEC.ASSY (CRANE/SWITCH)
PE5020096-00 ELEC.ASSY (CRANE/HARNESS)
PE5020097-00 ELEC.ASSY (CRANE/HARNESS)
PE5020098-00 ELEC.ASSY (CARRIER)
PE5020101-00 ELEC.ASSY (AWL LAMP/STOP TO CONFIGURATION)
PE5020102-01 ELEC.ASSY
PE5020103-00 ELEC.ASSY
PE5020106-00 ELEC.ASSY (FRAME)
PE5021179-00 ELEC.ASSY (MOUNTING VEHICLE)
PE5021180-00 ELEC.ASSY (MOUNTING VEHICLE)
PF1010102-01 WINCH
PF1010128-03 WINCH (OOKUBO)
PF1010131-01 WINCH (DRUM FREE,OPTION)
PF1010133-01 WINCH (DRUM FREE)
PF1010135-02 WINCH (HARTYS)
PF1010167-02 WINCH (HARTYS)
PF1010229-01 WINCH (Y.G.TEC)
PF1010237-01 WINCH (OOKUBO)
PF1010304-00 WINCH (DRUM FREE)
PF1020005-00 DRUM,WINCH (HARTYS)
PF1020024-00 DRUM,WINCH (Y.G.TEC)
PF1050063-01 HOOK (DRUM FREE,OPTION)
PF1050161-03 HOOK (1-PART LINE ,OPTION)
PF1050447-00 HOOK
PF1080003-00 SUPPORT (DRUM FREE,OPTION)
PF1180054-00 DETECTOR,DISORDERLY WINDING
PF1200195-01 PIPING,WINCH (DRUM FREE,OPTION)
PF1400211-02 MOUNT,WINCH
PG1130016-02 DETECTOR,BOOM LENGTH
PG1130086-01 DETECTOR,BOOM LENGTH (BML,OPTION)
PG1130086-01 DETECTOR,BOOM LENGTH (BML,OPTION)
PG1130134-00 DETECTOR,BOOM LENGTH
PG1130135-00 DETECTOR,BOOM LENGTH
PG1130144-01 DETECTOR,BOOM LENGTH (MOUNT)
PG1130145-01 DETECTOR,BOOM LENGTH (MOUNT)
PH1010007-01 DETECTOR,LOAD (BML,OPTION)
PH1010008-00 DETECTOR,LOAD
PH1060266-01 DETECTOR,OVER WINDING (OPTION)
PH1100052-01 DETECTOR,OVER FRONT AREA (BML,OPTION)

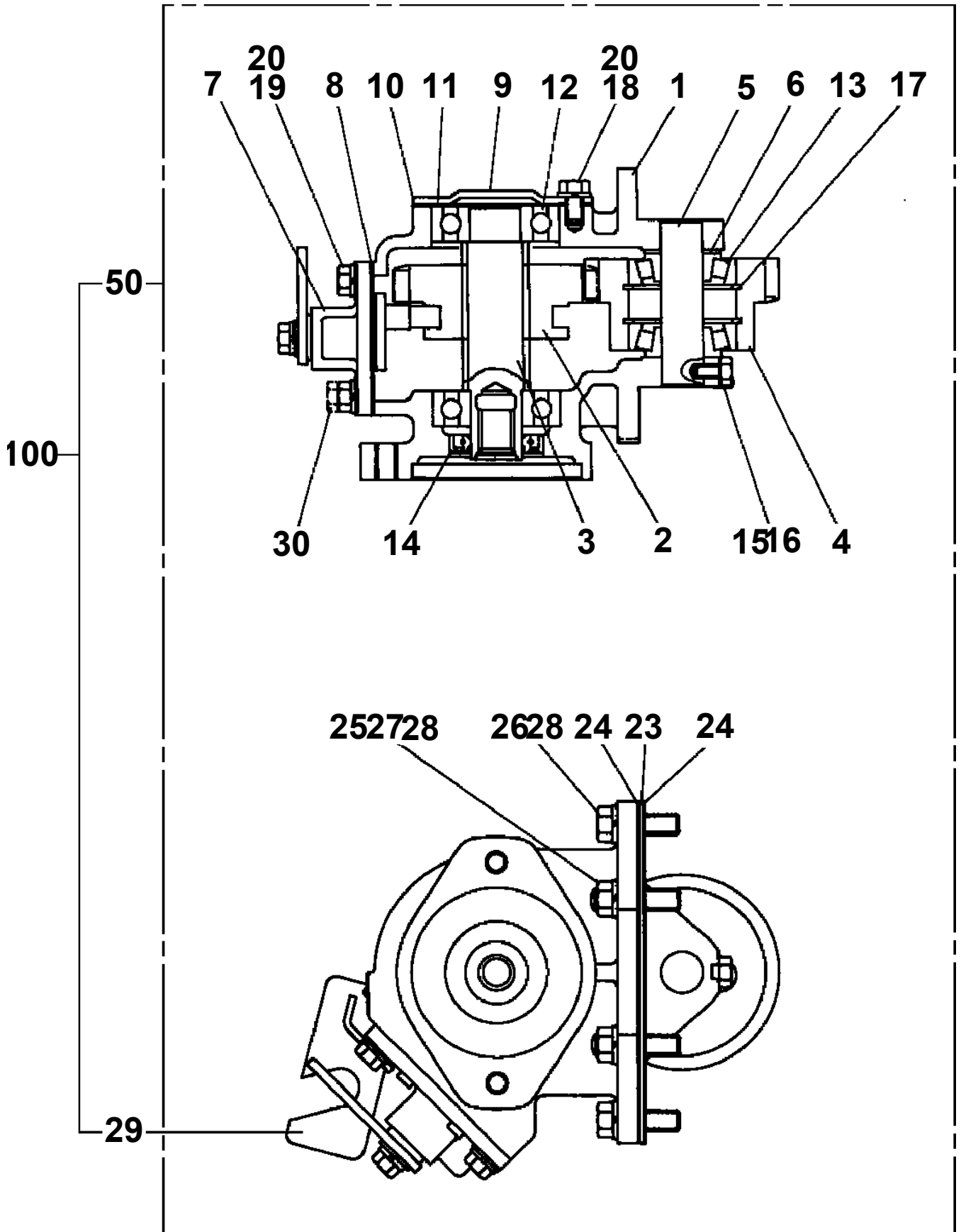
TM-ZF260 41108110010A FRAME/STD,MANUAL
PB1030022-01 POWER TAKE OFF



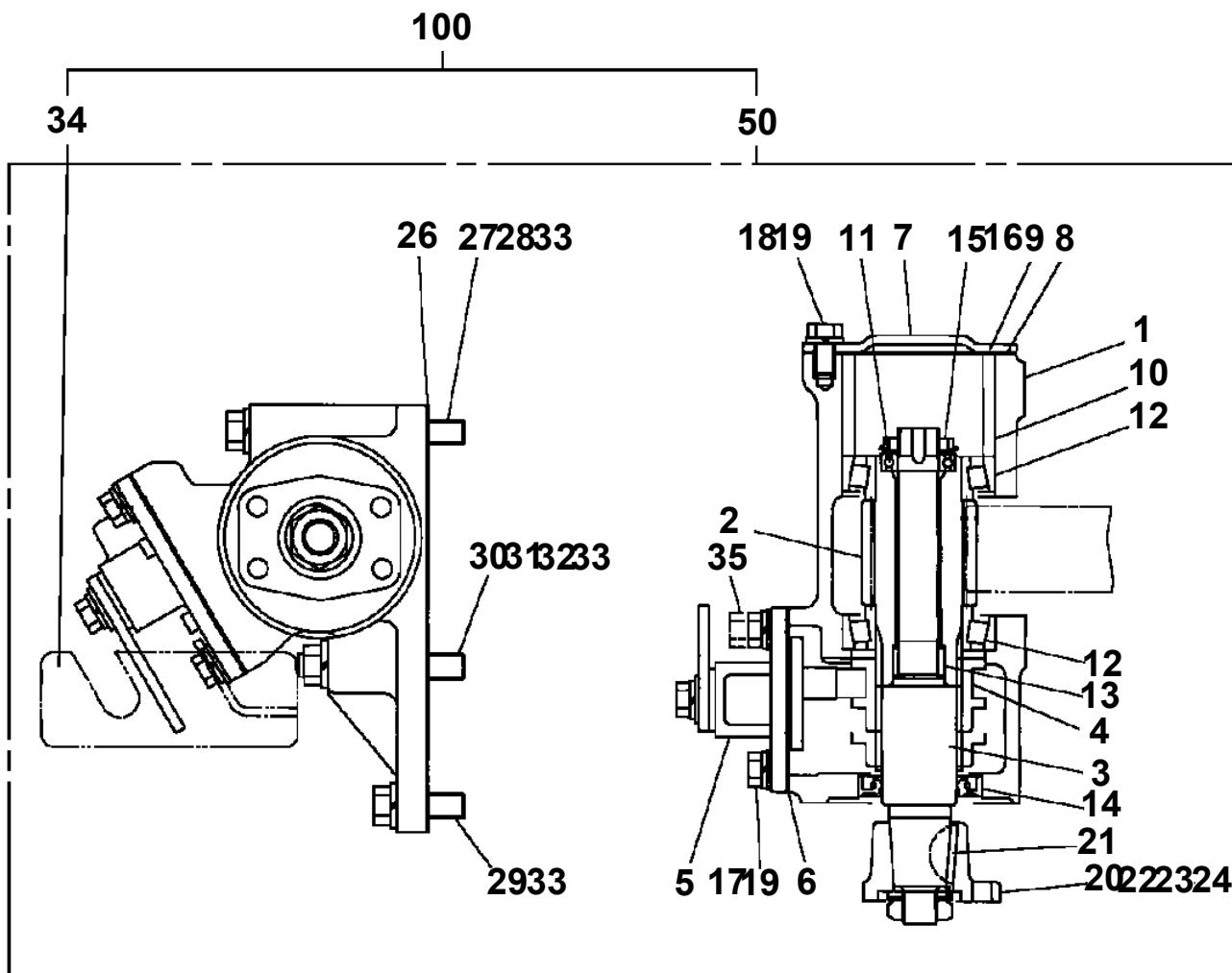
TM-ZF260 41108110010A FRAME/STD,MANUAL
PB1030064-00 POWER TAKE OFF



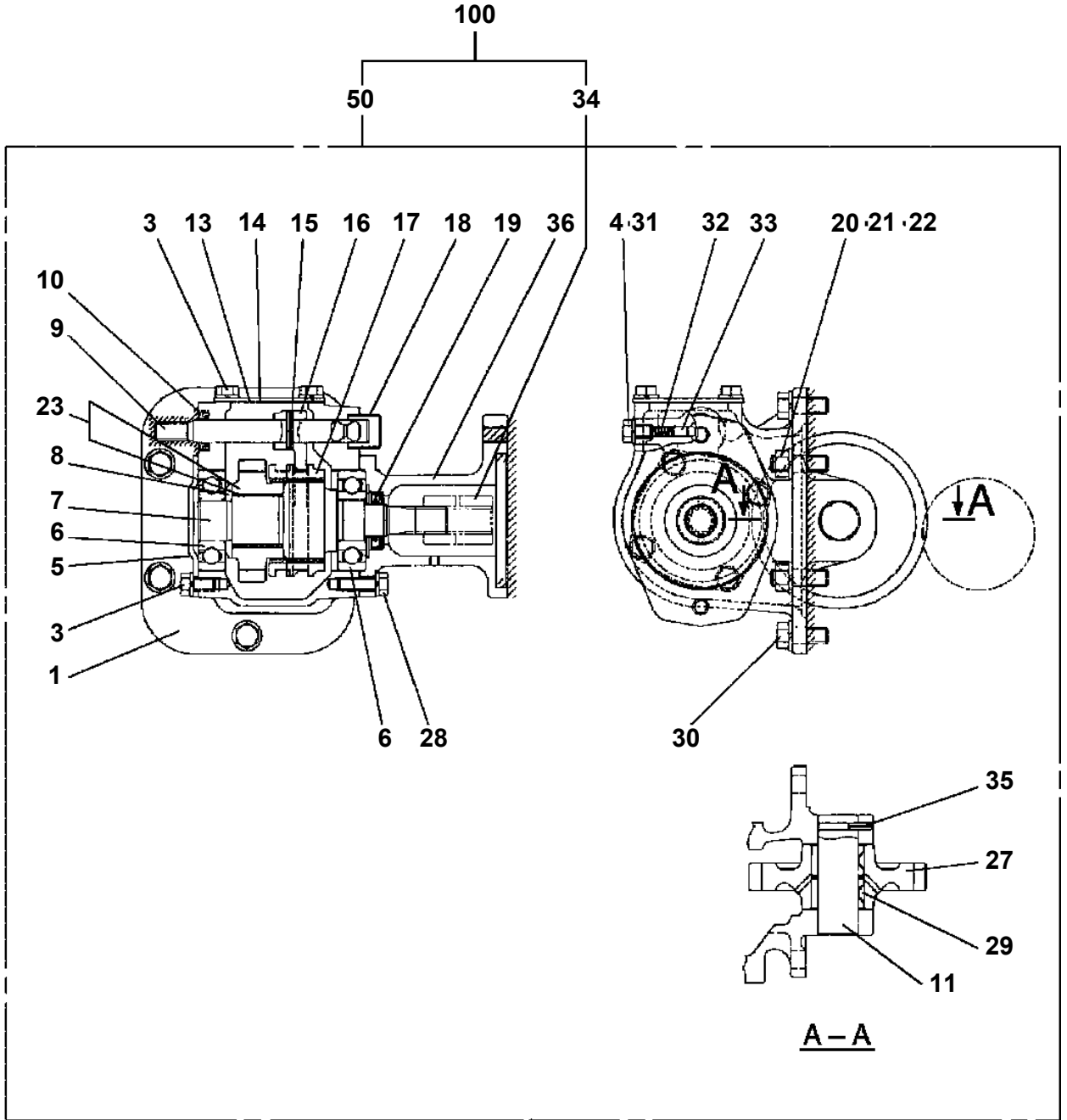
TM-ZF260 41108110010A FRAME/STD,MANUAL
PB1030100-01 POWER TAKE OFF



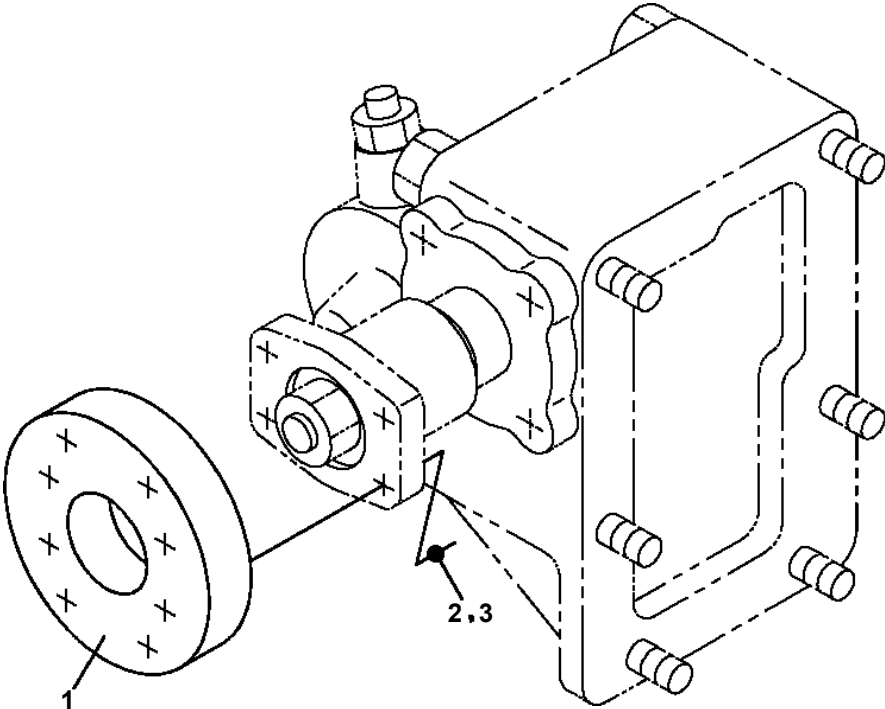
TM-ZF260 41108110010A FRAME/STD,MANUAL
PB1030131-01 POWER TAKE OFF



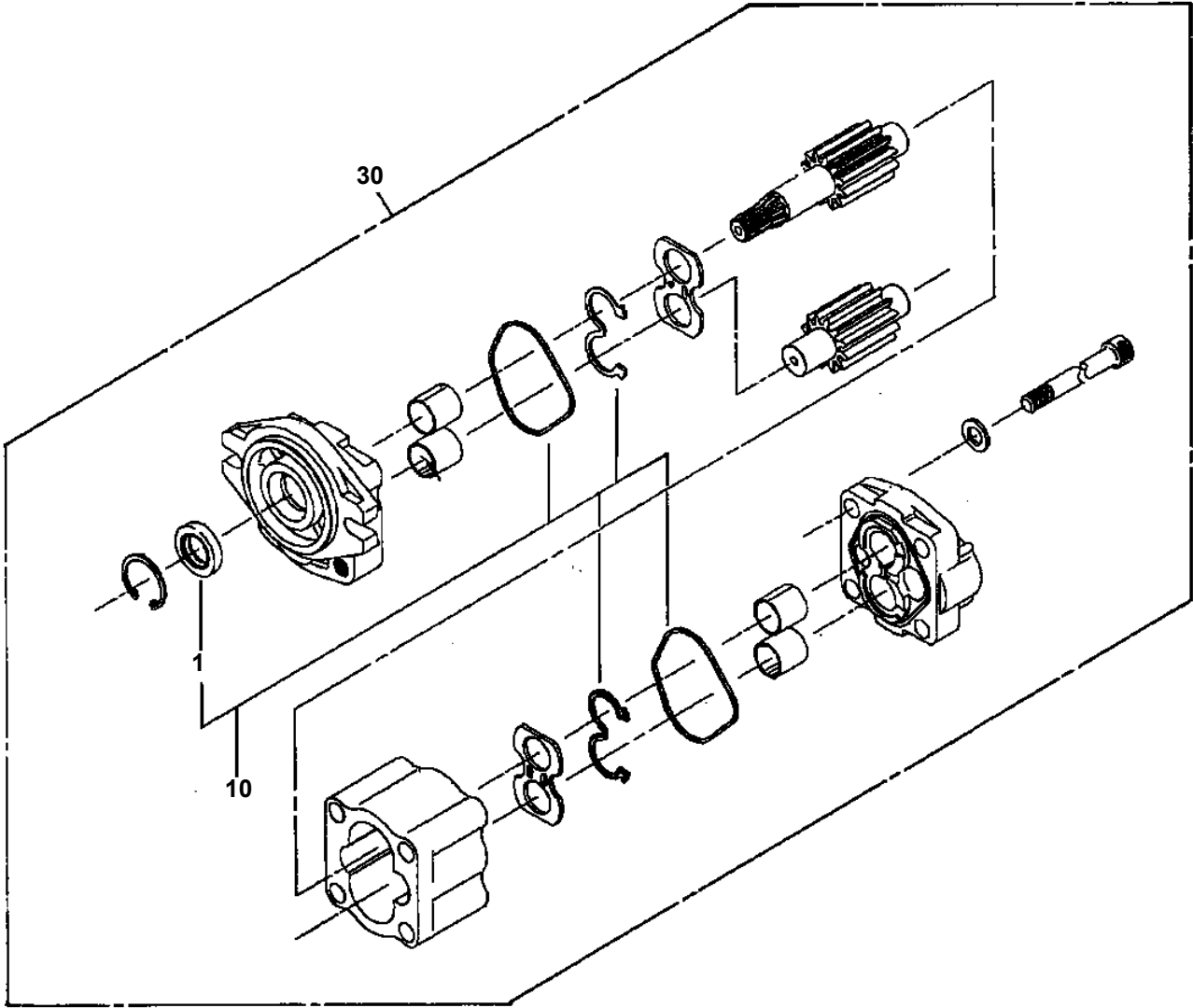
TM-ZF260 41108110010A FRAME/STD, MANUAL
PB1030163-02 POWER TAKE OFF



**TM-ZF260 41108110010A FRAME/STD,MANUAL
PB1030217-00 POWER TAKE OFF (SPACER)**

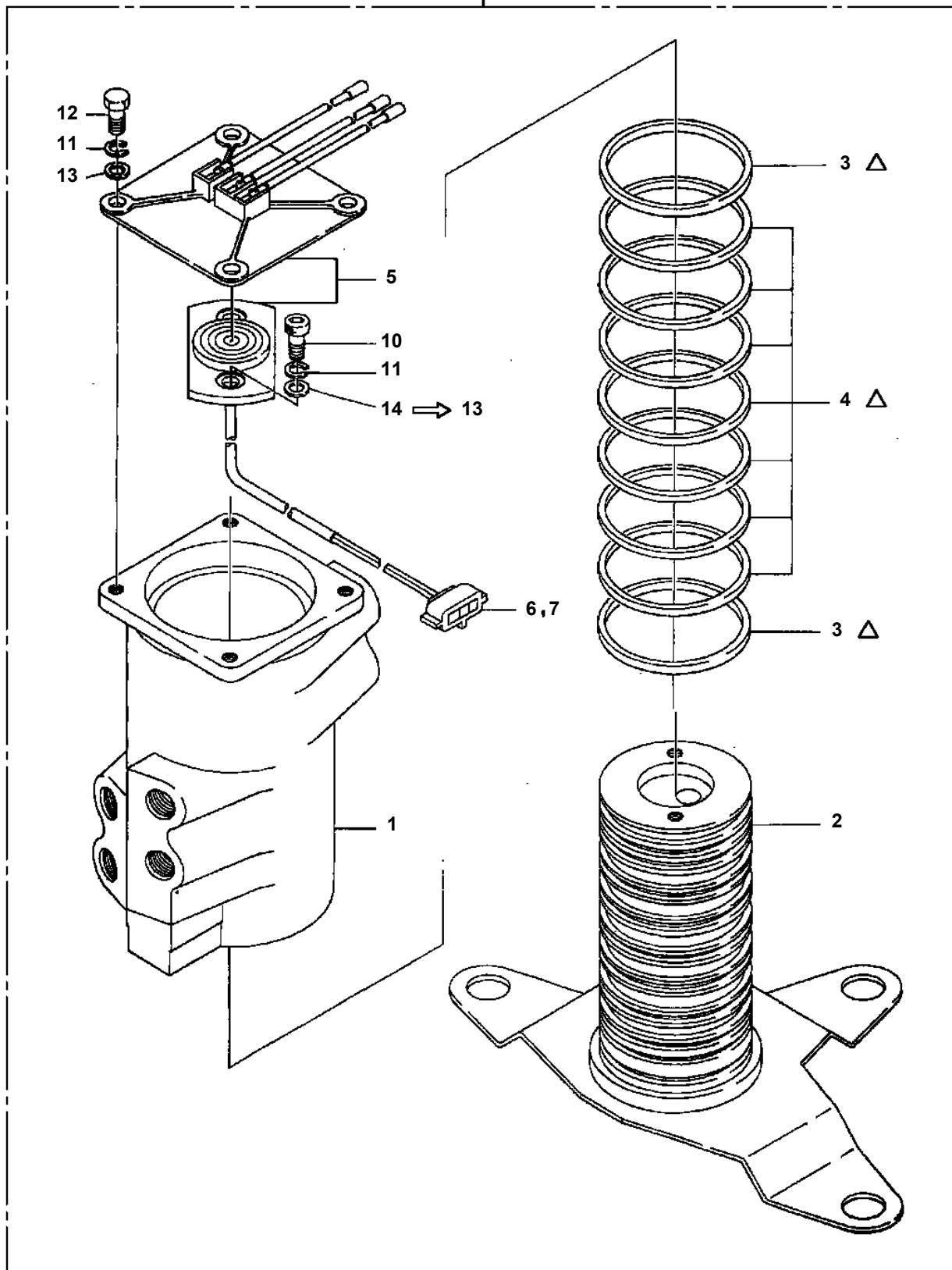


TM-ZF260 41108110010A FRAME/STD,MANUAL
PB1100119-00 PUMP, HYDRAULIC



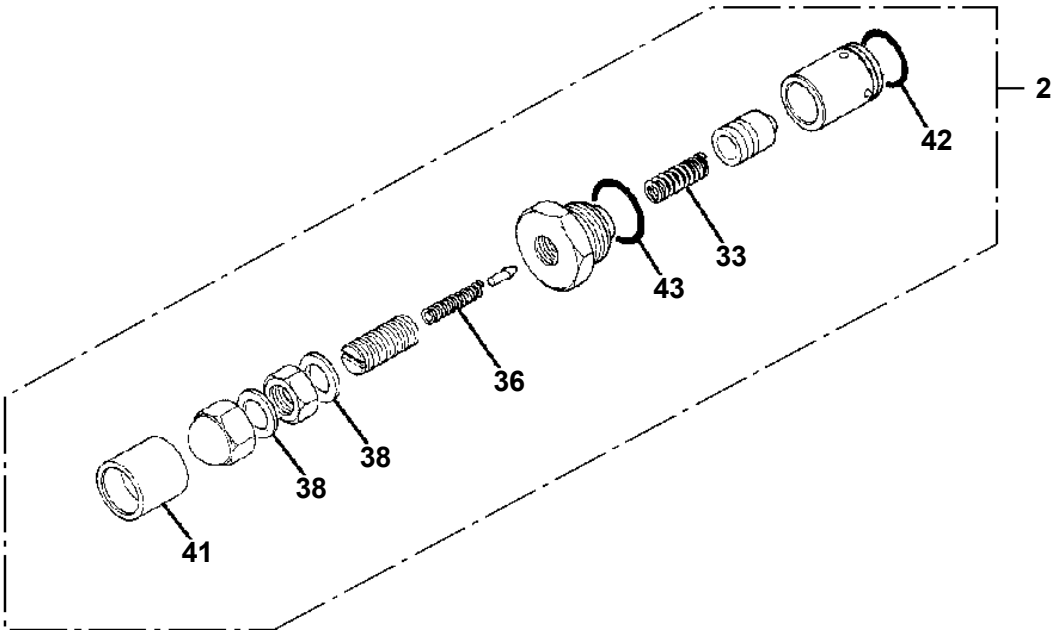
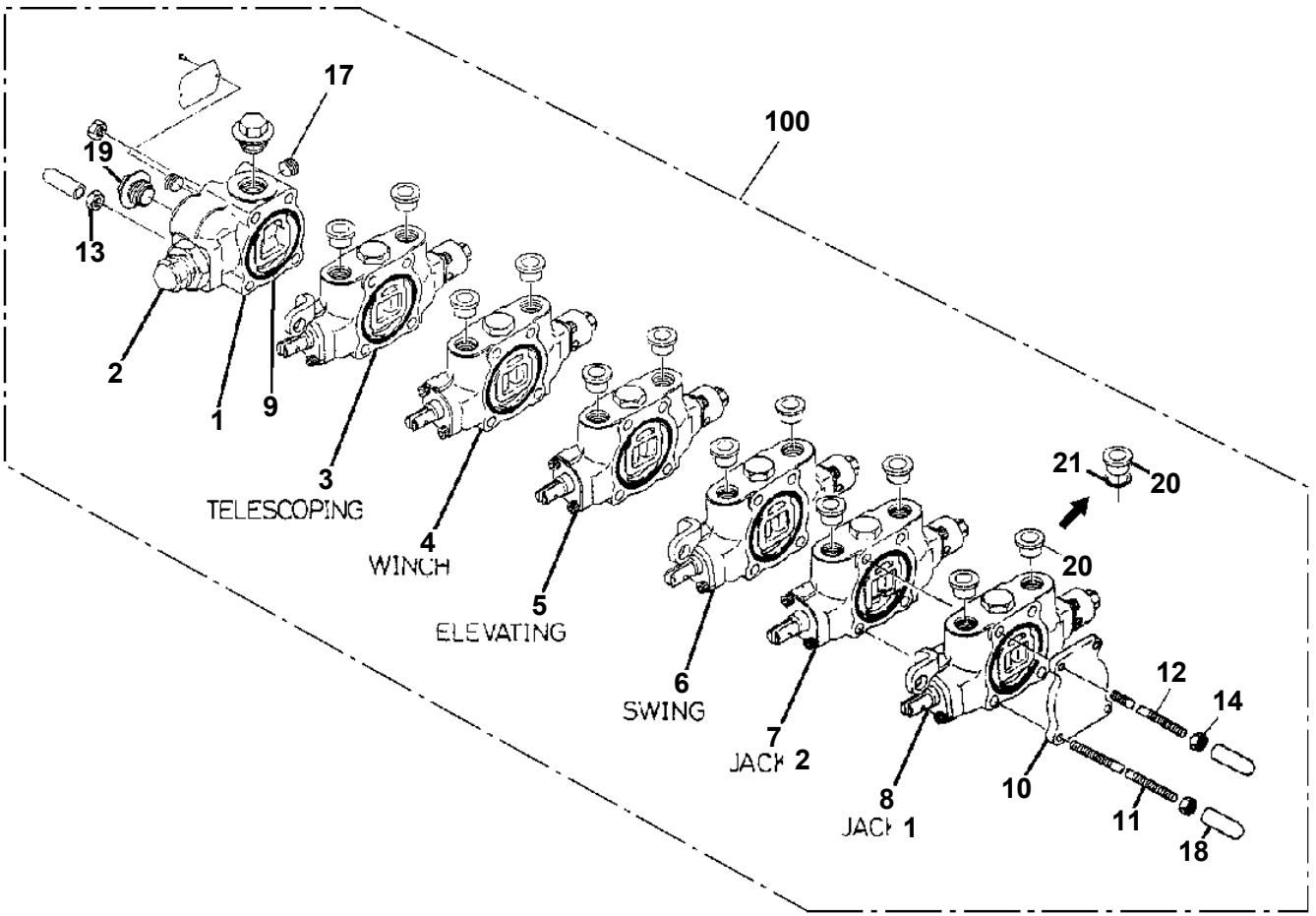
TM-ZF260 41108110010A FRAME/STD,MANUAL
PB1300203-02 JOINT,ROTARY (MURAKAMI)

30



Δ:PACKING SET KEY NO. 20 (KEY NO.3,4.)

TM-ZF260 41108110010A FRAME/STD,MANUAL
PB1320265-03 VALVE,MANUAL CONTROL (SANWA)



TM-ZF260 41108110010A FRAME/STD,MANUAL

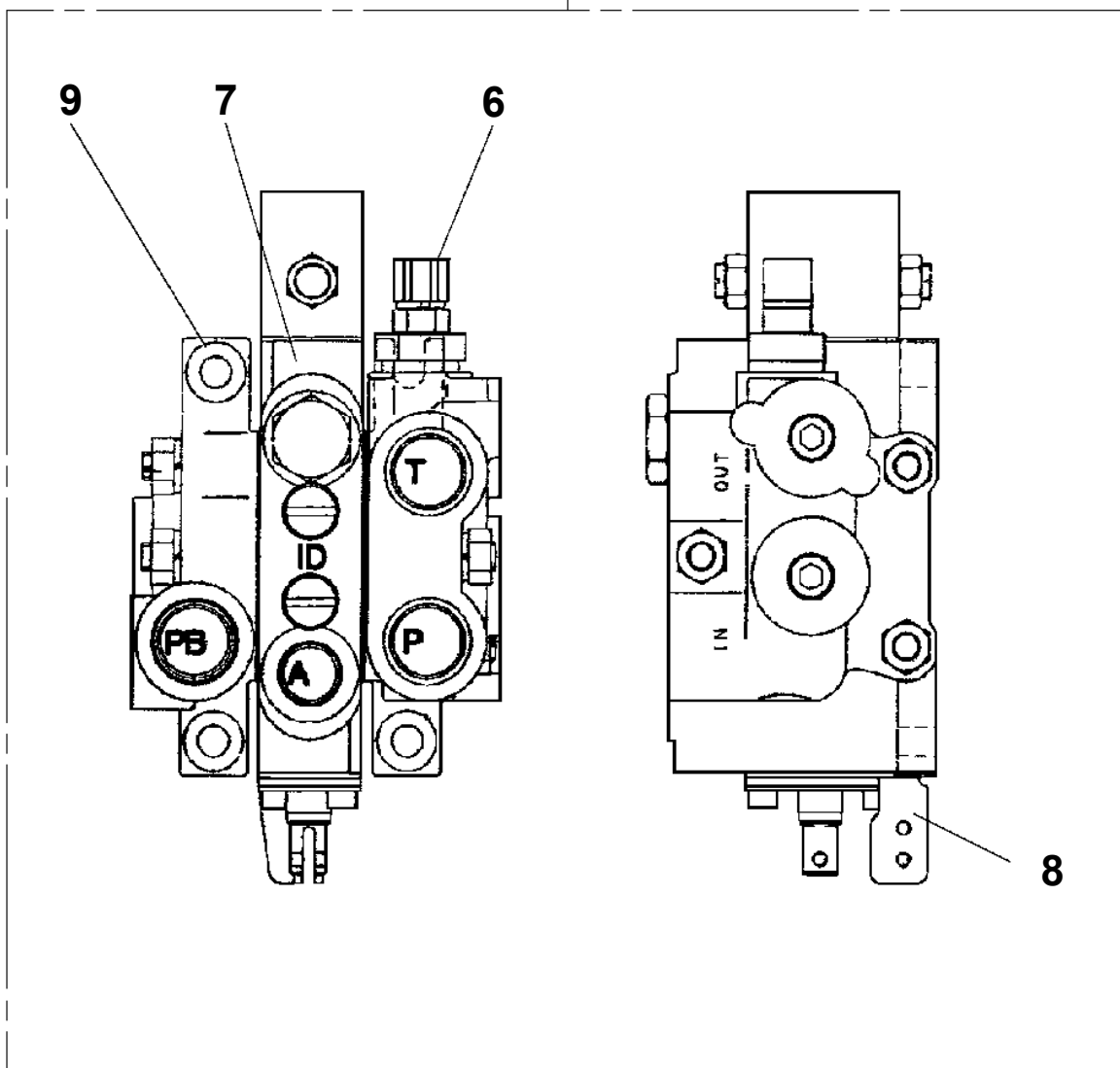
Pos No.	Parts No	Parts Name	Qty	Unit	Technical Data	Serial No (Start)	Serial No (End)	Remarks
1	36635725010	COVER	1					
2	36635725020	VALVE,CONTROL	1					
4	36635725030	VALVE,RELIEF	1					
5	36635725040	VALVE,RELIEF	1					
6	36635725050	RING (A)	1					
7	36635725060	RING (X)	1					
8	36635725070	RING (C)	1					
24	91002903000	O-RING	2		1B G30			
25	91002904000	O-RING	2		1B G40			
30	91002903500	O-RING	2		1B G35			
46	13115103260	PLUG	1					
47	09115101100	VALVE,CHECK	1					
48	09115101080	SPRING	1					
49	19215101010	O-RING	1					
50	13115103030	SEAL,OIL	2					
51	13115103160	RETAINER (BALL)	1					
52	56451331080	COVER	1					
53	13115103170	SPRING	1					
54	80560007000	BALL,STEEL	2		7			
55	13115103140	NOTCH	1					
56	13115103150	CASE (BALL)	1					
57	36635725090	COVER (SPRING)	1					
60	36635725050	RING (A)	1					
61	36635725060	RING (X)	1					
62	36635725070	RING (C)	1					
63	13115103180	RETAINER (SEAL)	1					
64	36630295070	PLUG	1					
65	91002801800	O-RING	2		1B P18			
66	91002800600	O-RING	1		1B P6			
73	36630365030	SPRING	1					
75	91002802600	O-RING	1		1B P26			
76	91002801100	O-RING	1		1B P11			
80	16025153020	SPRING	2					
84	91001001600	O-RING	4		1A S16			
86	91002802100	O-RING	1		1B P21			
87	36630045230	TUBE	2					
102	91000501500	O-RING	1		AS568-015			
104	16025153030	SPRING	1					
106	91002801001	O-RING	1		1B P10A			
107	36630755040	O-RING	1		1A WP6			
108	36631215050	RING,BACKUP	1					
112	16095101070	O-RING	1					
200	36635720000	VALVE,MANUAL CONTROL	1					

TM-ZF260 41108110010A FRAME/STD,MANUAL

Pos No.	Parts No	Parts Name	Qty	Unit	Technical Data	Serial No (Start)	Serial No (End)
1	36635785010	COVER (FRONT)	1				
2	36635785020	VALVE,RELIEF	1				
3	36635785031	VALVE,CONTROL (TELESCOPE)	1				
4	36635785040	VALVE,CONTROL (WINCH)	1				
5	36635785050	VALVE,CONTROL (ELEVATING)	1				
6	36635785100	VALVE,CONTROL (SWING)	1				
7	36635785070	VALVE,CONTROL (JACK 2)	1				
8	36635785080	VALVE,CONTROL (JACK 1)	1				
9	91001205500	O-RING	7		1A G55		
10	36641555090	COVER (BOTTOM)	1				
11	36636235040	BOLT,TIE	1				
12	36645495290	BOLT,TIE (A)	3				
13	90201200800	NUT	4		M8		
14	90203200800	NUT	4		M8		
17	80316030040	PLUG	1		PT1/4		
18	36640755070	CAP	5				
19	36645615090	PROTECTOR	2				
20	36645615190	PLUG (DUST)	12				
21	36645615200	PACKING	12				
33	12635101110	SPRING (RETURN)	1				
36	12635101140	SPRING	1				
38	11629431040	PACKING	2				
41	16623320390	TUBE (SEAL)	1				
42	91002802100	O-RING	1		1B P21		
43	91001102600	O-RING	1		1A P26		
53	36633365040	CAP (RETURN SPRING)	6				
54	36633365050	SPRING (RETURN)	6				
55	36645495210	SEAT,SPRING (RETURN)	4				
56	36633365060	PLATE (B)	9				
57	36633365070	ADAPTER	6				
58	36633365080	LINK	3				
59	36633365090	CAP (CHECK VALVE)	6				
60	36633365100	SEAL,OIL	12				
61	91001101400	O-RING	6		1A P14		
62	36645615260	C-BOLT	20		M5X8		
63	36645615230	C-BOLT	6		5X12		
75	36640625380	SEAT,SPRING	8				
80	12635101190	SPRING	4				
109	12635101360	SPOOL	1				
200	36635780001	VALVE,MANUAL CONTROL (SANWA)	1				

TM-ZF260 41108110010A FRAME/STD,MANUAL
PB1320517-00 VALVE,MANUAL CONTROL (DUMP)

100



TM-ZF260 41108110010A FRAME/STD,MANUAL

Pos No.	Parts No	Parts Name	Qty	Unit	Technical Data	Serial No (Start)	Serial No
1	36637335010	VALVE (BODY ASSY)	1				
2	36637335020	VALVE,CONTROL (TELESCOPING)	1				
3	36637335030	VALVE,CONTROL (WINCH)	1				
4	36637335040	VALVE,CONTROL (ELEVATING)	1				
5	36637545020	VALVE,CONTROL (SWING)	1				
6	36637335060	VALVE,CONTROL (JACK 2)	1				
7	36637335070	VALVE,CONTROL (JACK 1)	1				
8	36637335080	COVER (SIDE)	1				
9	36633165030	BOLT	1		M8X323		
10	36637335090	BOLT	3		M8X303		
11	90201200800	NUT	9		M8		
12	36637455010	VALVE,UNLOAD	1			ET5132	ET5131
	36637455030	VALVE,UNLOAD	1				
31	36637335110	BODY	1				
32	91002905500	O-RING	7		1B G55		
33	91002801800	O-RING	3		1B P18		
34	91002803500	O-RING	1		1B P35		
35	91002800600	O-RING	1		1B P6		
36	36637335120	PLUG	1		PF1/4		
37	91002801100	O-RING	1		1B P11		
38	36647205050	PLUG	4		NPT1-16		ET5131
	36647205050	PLUG	1		NPT1-16		
	36647205050	PLUG	2		NPT1-16	ET5132	
45	36637335130	O-RING	12		1A P14.5		
46	36637335140	SEAL,DUST	12				
47	36637335150	RETAINER (SEAL)	9				
48	36637335160	RETAINER (SPRING)	12				
49	36637335170	SPRING	6				
50	36637335180	END,SPOOL	6				
51	36637335190	COVER (SPRING)	4				
52	36637335200	BOLT,HEXAGON SOCKET	12		M6X20		
53	36637335210	COVER	3				
54	36637335220	BOLT,HEXAGON SOCKET	6		M6X15		
55	36636435060	VALVE,CHECK	6				
56	36635535140	SPRING	2				
57	36634085090	RETAINER (VALVE)	2				
58	91002801400	O-RING	7		1B P14		
59	36637335230	SOCKET	1				
60	36637335240	O-RING	1		1AS10		
61	36637335250	O-RING	1		1A S11.2		
62	36637335260	O-RING	1		1AS14		
63	36637335270	SPRING	1				
64	36637335280	SPOOL	1				
65	36637335290	SOLENOID ASSY	1				
66	36637335300	BOLT,HEXAGON SOCKET	2		M4X8		
67	36647205070	PLUG	4		GPM1/32		
73	36637335310	BOLT,HEXAGON SOCKET	6		M6X10		
78	36637335320	SEAT,VALVE	1				
79	14225101010	VALVE,REGULATOR	2				
80	36635175110	SPRING	1				
81	36637335330	CAP	1				
82	36637335340	O-RING	1		1B P15		
94	36635555080	SPRING	4				
95	36635045040	RETAINER (VALVE)	4				
100	36637335350	COVER	2				
111	36637335360	BODY	1				ET5131
113	36637335370	SPOOL	1				
114	36637545050	SPRING	1				
115	91002800800	O-RING	1		1B P8		
116	36634915280	PLUG	1				
117	36636005150	SOLENOID ASSY	1				ET5131
118	91002800900	O-RING	1		1B P9		
119	36637455020	SEAT,VALVE	1				

TM-ZF260 41108110010A FRAME/STD,MANUAL

Pos No.	Parts No	Parts Name	Qty	Unit	Technical Data	Serial No (Start)	Serial No (End)	Remarks	Pages
1	37002448730	HOSE	2		L=330				
2	91002801400	O-RING	10		1B P14				
3	37002454080	HOSE	1		L=1200		644909		
	37002459300	HOSE	1		L=1200	644910			
4	37002432940	HOSE	1		L=1300		644909		
	37002459320	HOSE	1		L=1300	644910			
5	37000804110	JOINT	1						
6	91803880070	CLIP	2		D=13.1-16.2				
7	37002500640	HOSE	1		L=400				
8	80481103030	JOINT	2		L,G3/8-G3/8				
9	37000920980	JOINT	2		PF3/8-PF3/8				
10	37002454090	HOSE	1		L=520				
11	37002454100	HOSE	1		L=480 TO 490				
12	31340310100	JOINT	1						
13	80481102030	JOINT	2		L G1/4-G3/8				
14	91002801100	O-RING	2		1B P11				

TM-ZF260 41108110010A FRAME/STD,MANUAL

Pos No.	Parts No	Parts Name	Qty	Unit	Technical Data	Serial No (Start)	Serial No
1	81408000081	PIPE,STEEL	1	M	8X1.2T		
2	81408000081	PIPE,STEEL	1	M	8X1.2T		
3	36062440000	CYLINDER,ACCELERATOR	1				642473
	36062740000	CYLINDER,ACCELERATOR	1			642474	
4	90101208070	BOLT	2		M8X70		
5	90302040801	WASHER,SPRING	7		8		642473
	90302040801	WASHER,SPRING	6		8	642474	
6	90201780800	NUT	5		M8		642473
	90201780800	NUT	4		M8	642474	
7	36648360000	VALVE,REMOTE CONTROL (MAIN/SANWA)	1				642473
	36648360001	VALVE,REMOTE CONTROL	1			642474	
8	80302090081	FITTING	1		KCO80-020N		
9	91002801100	O-RING	1		1B P11		
10	80303130081	FITTING,ELBOW	3		KLO08-020E		
11	36672590000	FILTER,OIL (CARTRIDGE)	1				
12	81408000160	PIPE,STEEL	1	M	12X1.4T		
13	90303070801	WASHER,PLAIN	1		8		
14	80316070040	PLUG	1		PF1/4		
15	31474004100	PLATE,NAME	1				
16	90280200800	NUT,FLANGE	1		M8	642474	
31	91002801100	O-RING	3		1B P11		

TM-ZF260 41108110010A FRAME/STD,MANUAL

Pos No.	Parts No	Parts Name	Qty	Unit	Technical Data	Serial No (Start)	Serial No (End)	Re
1	31622141002	CASE,OUTER	1					
2	31622142001	CASE,INNER (LEFT)	1					
3	31622143001	CASE,INNER (RIGHT)	1					
4	31622149510	SUPPORT ASSY	1					
5	31622149520	SUPPORT ASSY	1					
6	31622140100	COVER	2					
7	90101206010	BOLT	6		M6X1.0			
8	90302040601	WASHER,SPRING	6		6			
9	90172110025	BOLT,HEXAGON SOCKET	8		M10X25			
10	90302041001	WASHER,SPRING	8		10			
11	(*****)	CYLINDER,JACK (REAR)	2					
12	90201201600	NUT	2		M16			
13	90720716400	SCREW,SET	2		M16X40			
14	31622140200	COVER	4					
15	31622140300	PLATE	4					
16	90191208014	BOLT	8		M8X14			
17	90302040801	WASHER,SPRING	8		8			
18	82455106000	NIPPLE,GREASE	4		A-M6F FE			
19	31622140400	PIN	2					
20	37001200720	SPRING	2					
21	37003100020	GRIP	2					
22	80136332025	PIN,SPLIT	8		3.2X25			
23	80530000225	BEARING,BALL (KOYO)	4				LA3939	
	31620582020	BEARING,BALL (KOYO)	4			LA3940		
24	37000157880	PIN	4					
25	82400000459	CAP	4					
26	90171210030	BOLT	2		M10X30			
27	90203201000	NUT	2		M10			
28	31622140640	PLATE	2					
29	(*****)	PIPING,REAR JACK (2,ROTARY)	1					
30	31622140501	SUPPORT	2					
31	31622140601	SUPPORT	2					
32	31622140700	SUPPORT	2					
52	31622141200	PIN ASSY	2					
54	82400000204	GROMMET	4		L=320			

TM-ZF260 41108110010A FRAME/STD,MANUAL

Pos No.	Parts No	Parts Name	Qty	Unit	Technical Data	Serial No (Start)	Serial No (End)
1	36031780100	CYLINDER	1				
2	90211203000	NUT	1		M30X3/2		
3	36032110300	PISTON	1				
4	91350207500	BEARING,PLAIN (WITH PACKINGX2)	1				
5	91002903000	O-RING	1		1B G30		
6	36010130080	COVER,ROD	1				
7	91002907000	O-RING	1		1B G70		
8	91694006000	PACKING	1				
9	91660006001	SEAL,DUST	1				
10	36033731000	ROD	1				
20	36033739900	PACKING SET	1		60X75		
50	36033730000	CYLINDER,JACK (COLD-FORGED)	1				

TM-ZF260 41108110010A FRAME/STD,MANUAL

Pos No.	Parts No	Parts Name	Qty	Unit	Technical Data	Serial No (Start)	Serial No (End)	Remarks
1	37000147840	PIN	11					
2	80620210050	PIN,SNAP	11					
3	31701550200	ROD ASSY	2					
4	31701550100	SUPPORT	1					
5	37000165020	PIN	2					
6	80136340020	PIN,SPLIT	3		4X20			
7	37000165040	PIN	1					
8	31701581100	END	2					
9	90203200800	NUT	2		M8			
10	31701581500	LINK	2					
11	31701580700	LEVER	1					
12	31701580800	LEVER	1					
13	31322050500	KNOB (BLACK)	5					
14	31701581200	SUPPORT	1					
15	90131510020	BOLT,HEXAGON SOCKET	2		M10X20			
16	90302041001	WASHER,SPRING	6		10			
17	90201201000	NUT	4		M10			
18	31701580200	LEVER	1					
19	31701580100	LEVER	1					
20	31701581700	SUPPORT	1					
21	31701581300	SUPPORT	1					
22	31701581400	SUPPORT	1					
23	31701581600	LINK	2					
24	90101210018	BOLT	3		M10X18			
25	90303071201	WASHER,PLAIN	2		12			
26	90101208016	BOLT	2		M8X16			
27	90302040801	WASHER,SPRING	4		8			
28	90201200800	NUT	2		M8			
29	31701580900	LEVER	1					
41	31701550250	ROD	2					
42	90203200800	NUT	2		M8			
43	31320810210	END	2					

TM-ZF260 41108110010A FRAME/STD,MANUAL

Pos No.	Parts No	Parts Name	Qty	Unit	Technical Data	Serial No (Start)	Serial No (End)	Remarks	Pa
1	90101208014	BOLT	3		M8X14				
2	90302040801	WASHER,SPRING	3		8				
3	90303070801	WASHER,PLAIN	3		8				
4	31643010100	COVER	1						
5	37002452510	HOSE	4		L=1380				
6	37000711080	CLAMP ASSY	2		12-2				
7	80491002020	JOINT (WITH O-RING)	4						
8	82100001411	TUBE,SPIRAL	N		SE-08BK				
21	91002801100	O-RING	4		1B P11				

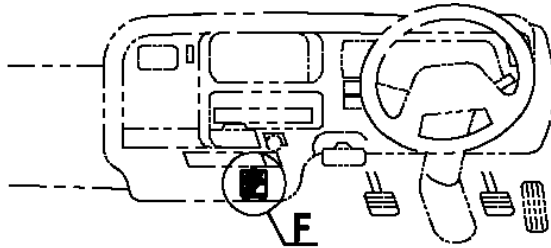
TM-ZF260 41108110010A FRAME/STD,MANUAL

Pos No.	Parts No	Parts Name	Qty	Unit	Technical Data	Serial No (Start)	Serial No (End)
1	90171110045	BOLT	2		M10X45		EL1223
	90171110040	BOLT	2		M10X40	EL1224	
2	90302041001	WASHER,SPRING	2		10		
3	36604060000	VALVE,COUNTERBALANCE (ELEVATING)	1				
4	36024670000	CYLINDER,ELEVATING	1				
5	82400000459	CAP	2				
21	37000403070	BEARING,PLAIN	4				
22	36024671000	PISTON	1				
23	91350211500	BEARING,PLAIN (WITH PACKINGX2)	1				
24	91002907500	O-RING	1		1B G75		
27	91002911000	O-RING	1		1B G110		
28	36024671500	COVER,ROD	1				
29	91694008001	PACKING	1				
30	91410208001	RING,BACKUP	1				
31	91660008000	SEAL,DUST	1				
32	80622000800	RING,RITAINING	1		SP80		
33	82456101000	NIPPLE,GREASE	2		A-PT1/8		
40	36024679900	PACKING SET	1		80X115		
51	36024679510	CYLINDER ASSY	1				
52	36024679520	ROD ASSY	1				

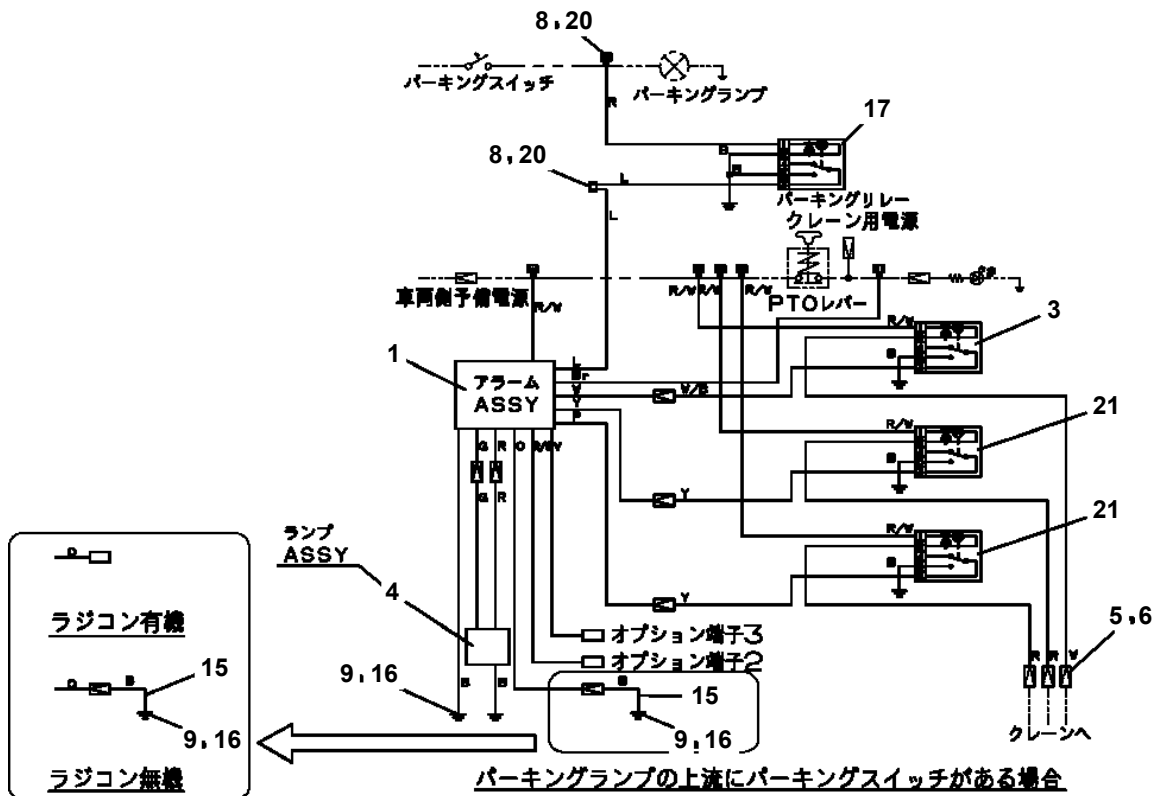
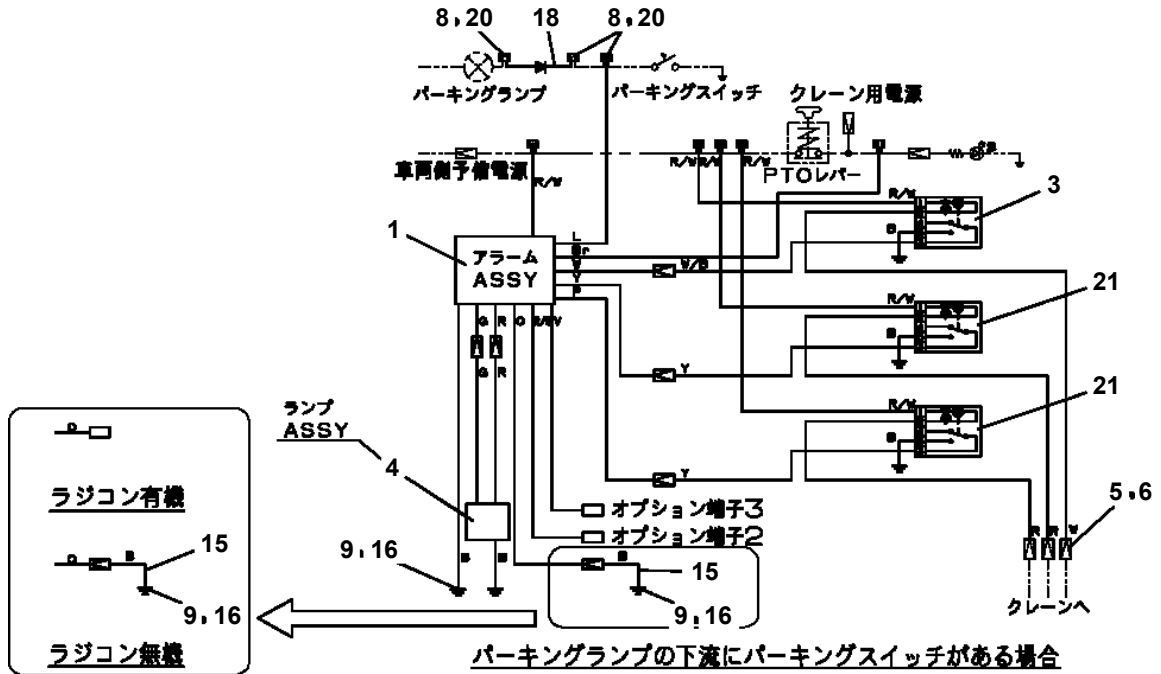
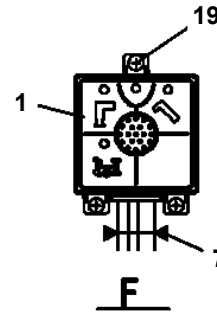
TM-ZF260 41108110010A FRAME/STD,MANUAL

Pos No.	Parts No	Parts Name	Qty	Unit	Technical Data	Serial No (Start)	Serial No (End)	Remark
2	31475352100	PLATE,NAME	1					
5	82100000191	TERMINAL	1					
6	82100000183	INSULATOR	1					
7	91810130240	FASTENER	4					
8	82100002673	CONNECTOR (0.5-0.85,RED)	1					
9	31380292800	HARNESS	1					

TM-ZF260 41108110010A FRAME/STD, MANUAL
 PE5021179-00 ELEC.ASSY (MOUNTING VEHICLE)



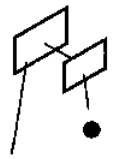
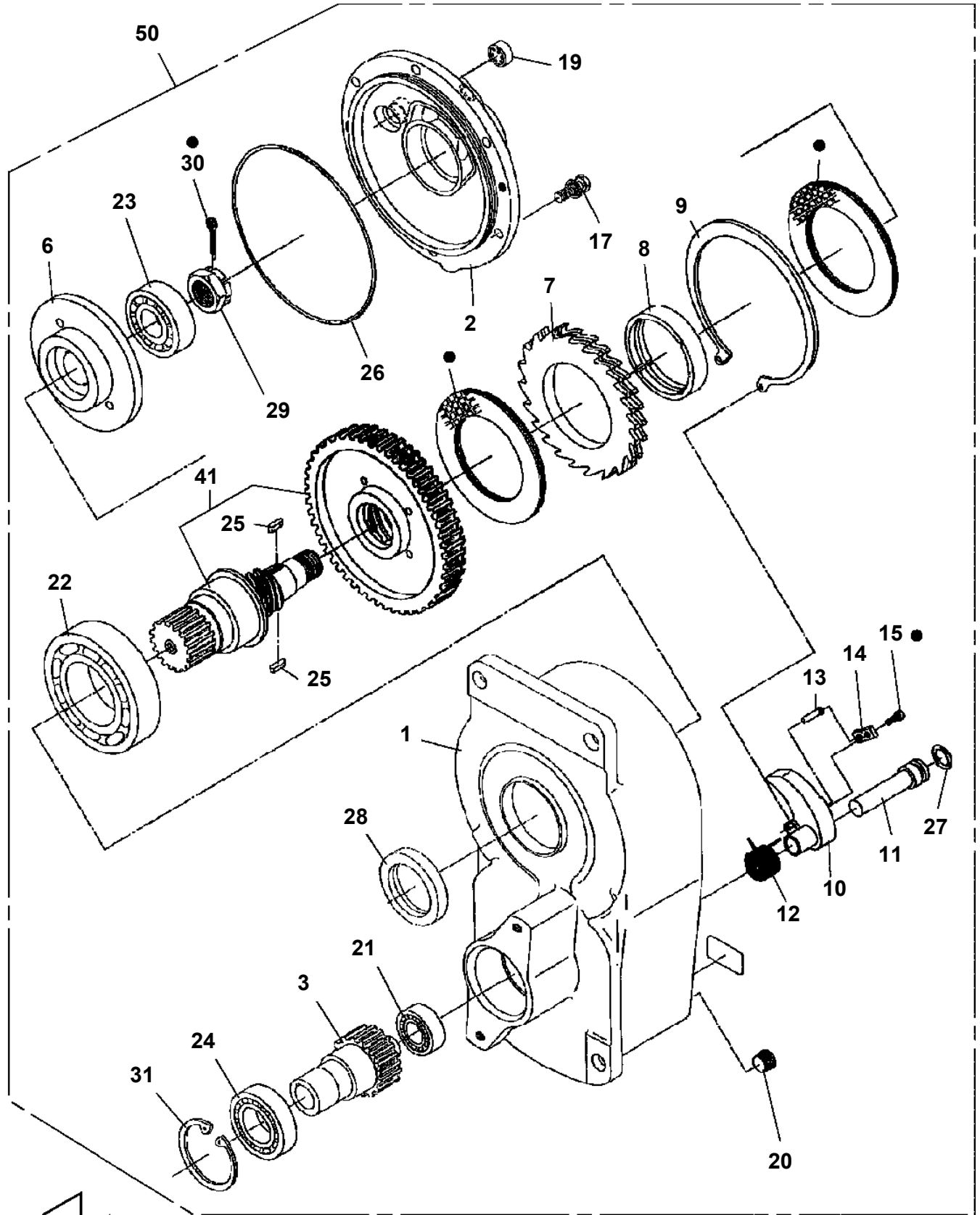
アラームASSY取付



TM-ZF260 41108110010A FRAME/STD,MANUAL

Pos No.	Parts No	Parts Name	Qty	Unit	Technical Data	Serial No (Start)	Serial No (End)	Remarks	Pa
1	36072280000	WINCH (DRUM FREE)	1						000
2	91001206000	O-RING	1		1A G60				

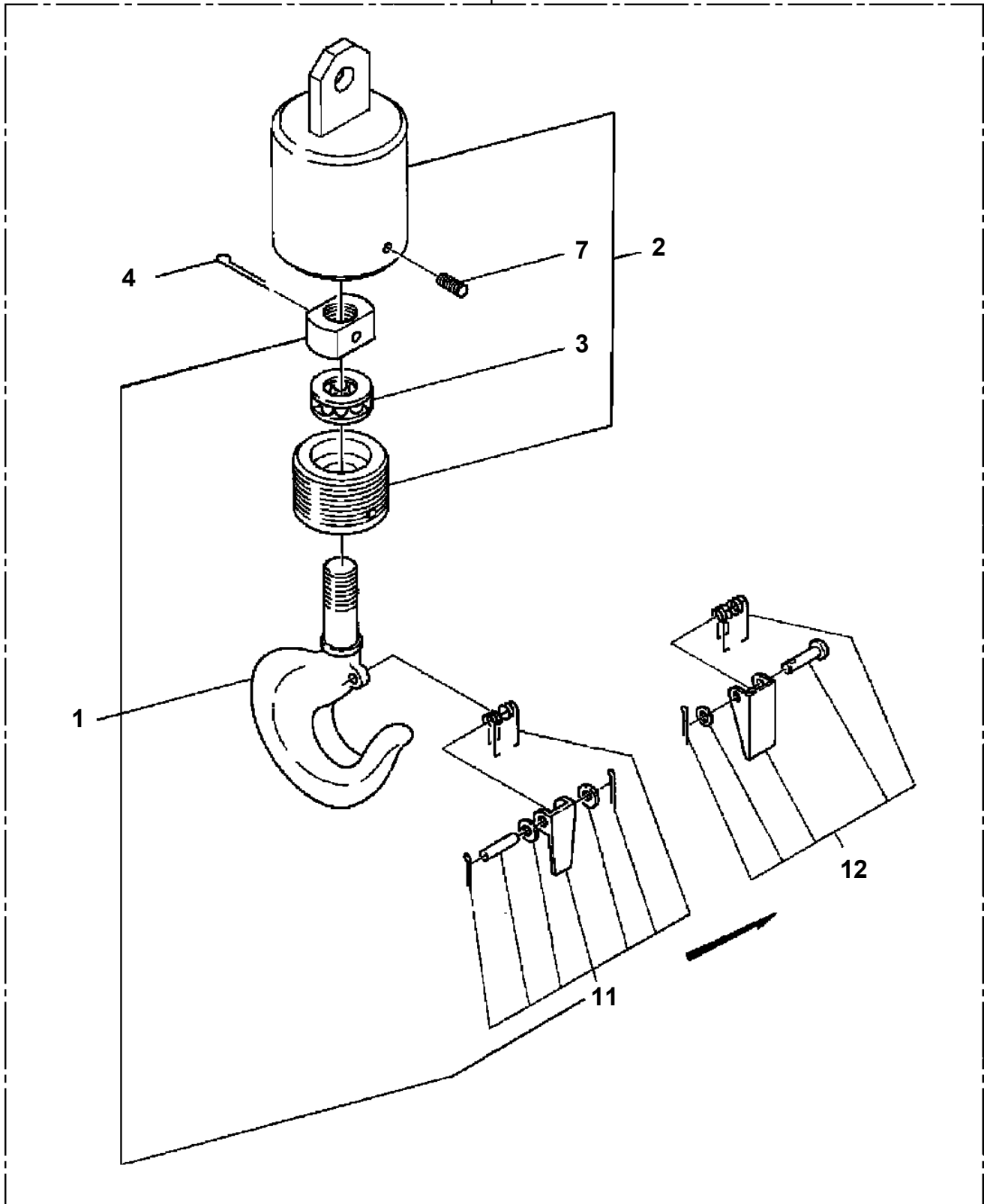
**TM-ZF260 41108110010A FRAME/STD,MANUAL
PF1010237-01 WINCH (OOKUBO)**



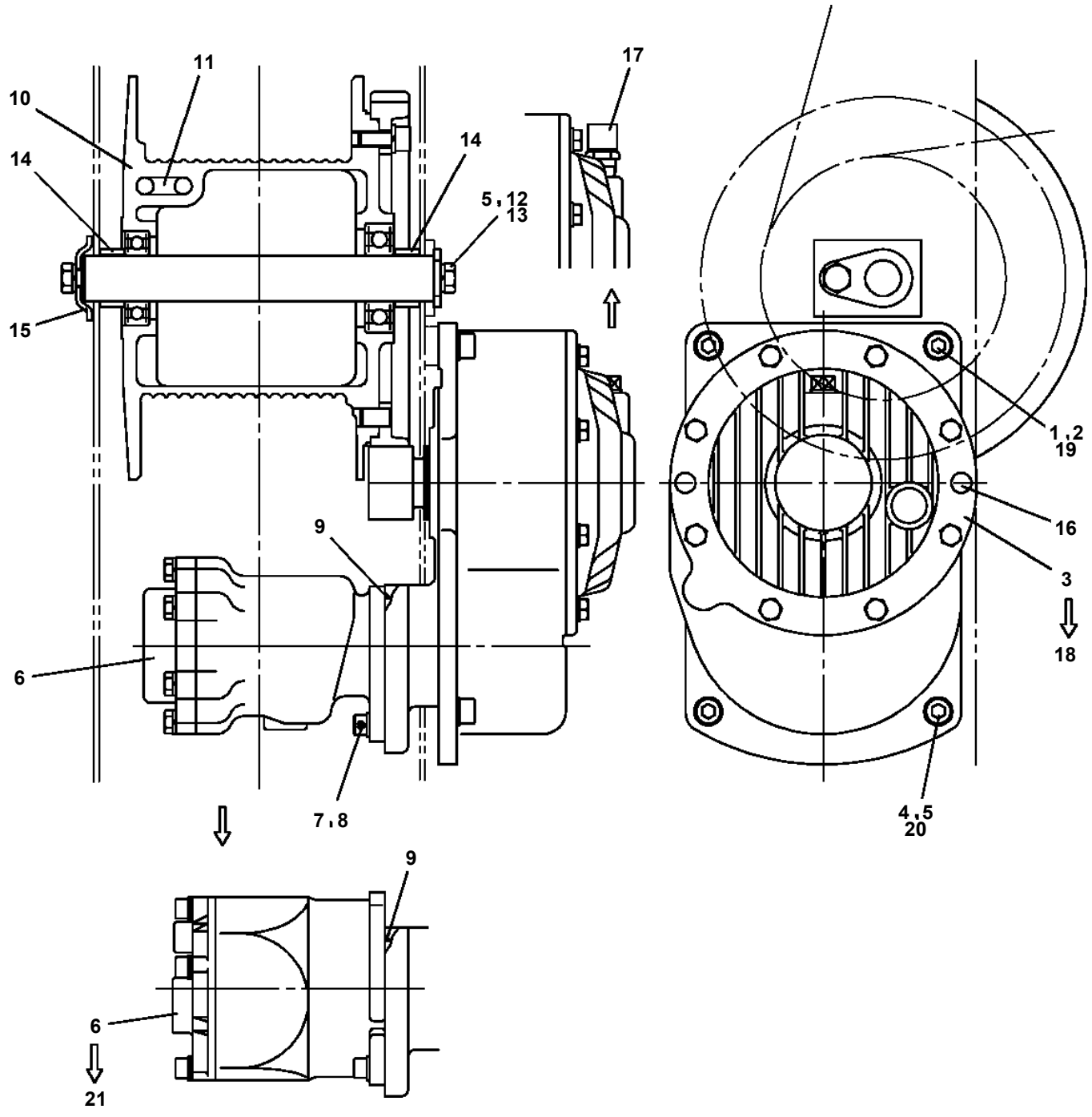
- Protective seal
- Replacement interval name plate
- : FACING KIT KEY NO.101 (JAPANESE)
- : FACING KIT KEY NO.102 (ENGLISH)

TM-ZF260 41108110010A FRAME/STD,MANUAL
PF1050161-03 HOOK (1-PART LINE ,OPTION)

20

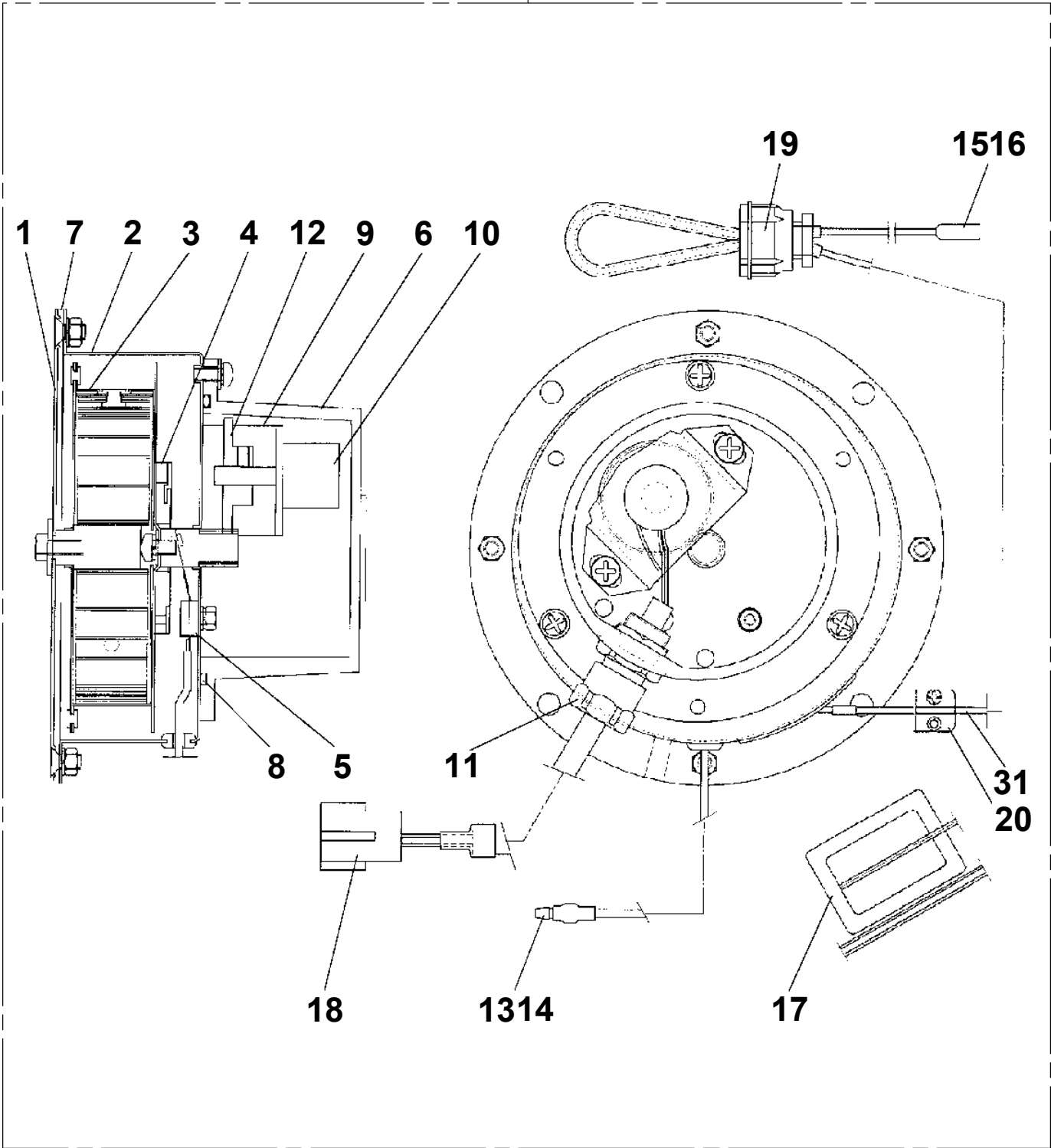


TM-ZF260 41108110010A FRAME/STD,MANUAL
PF1400211-02 MOUNT,WINCH

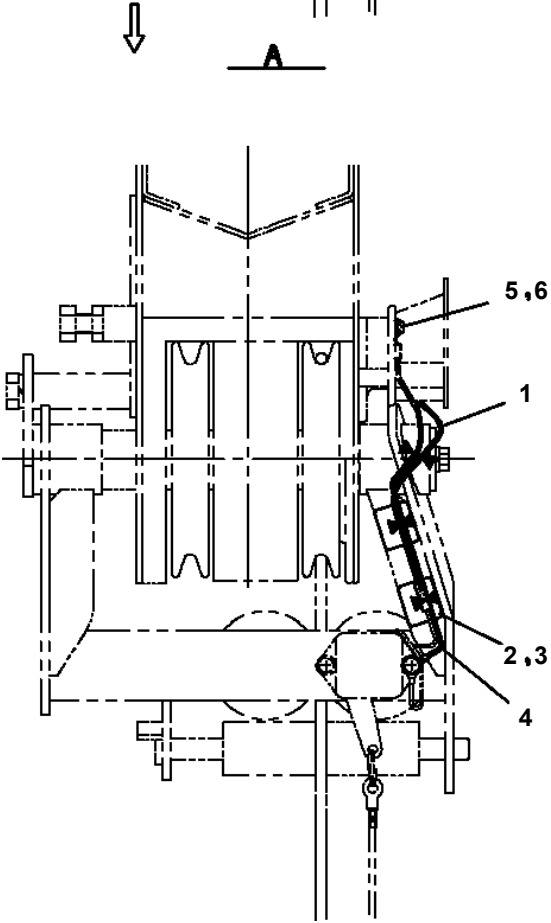
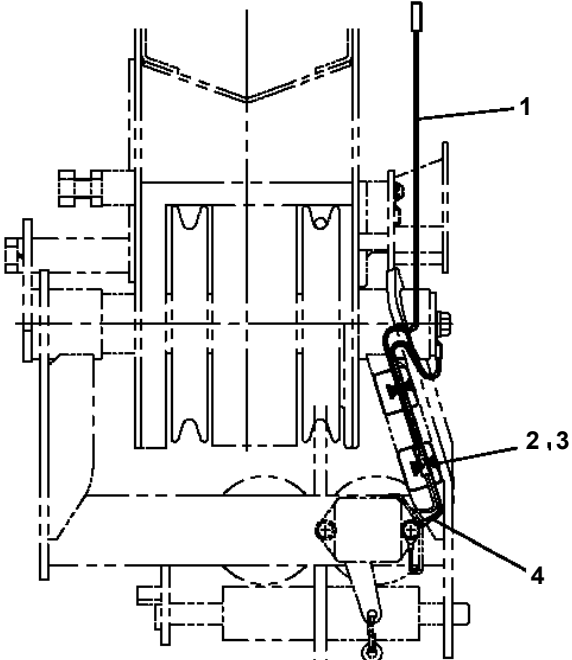
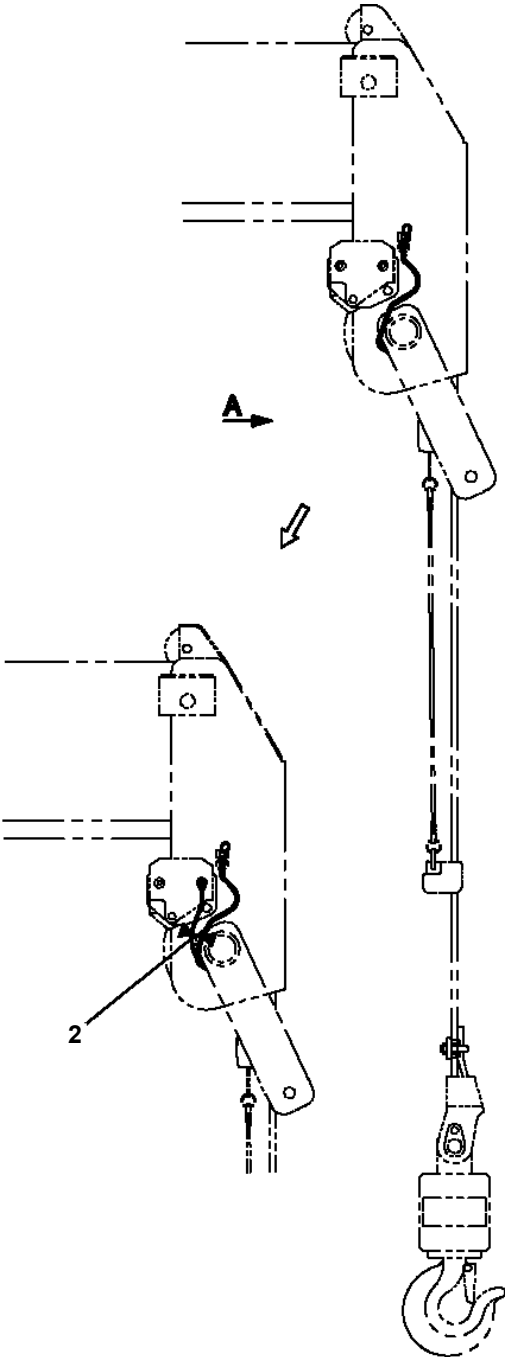


TM-ZF260 41108110010A FRAME/STD,MANUAL
PG1130135-00 DETECTOR,BOOM LENGTH

100

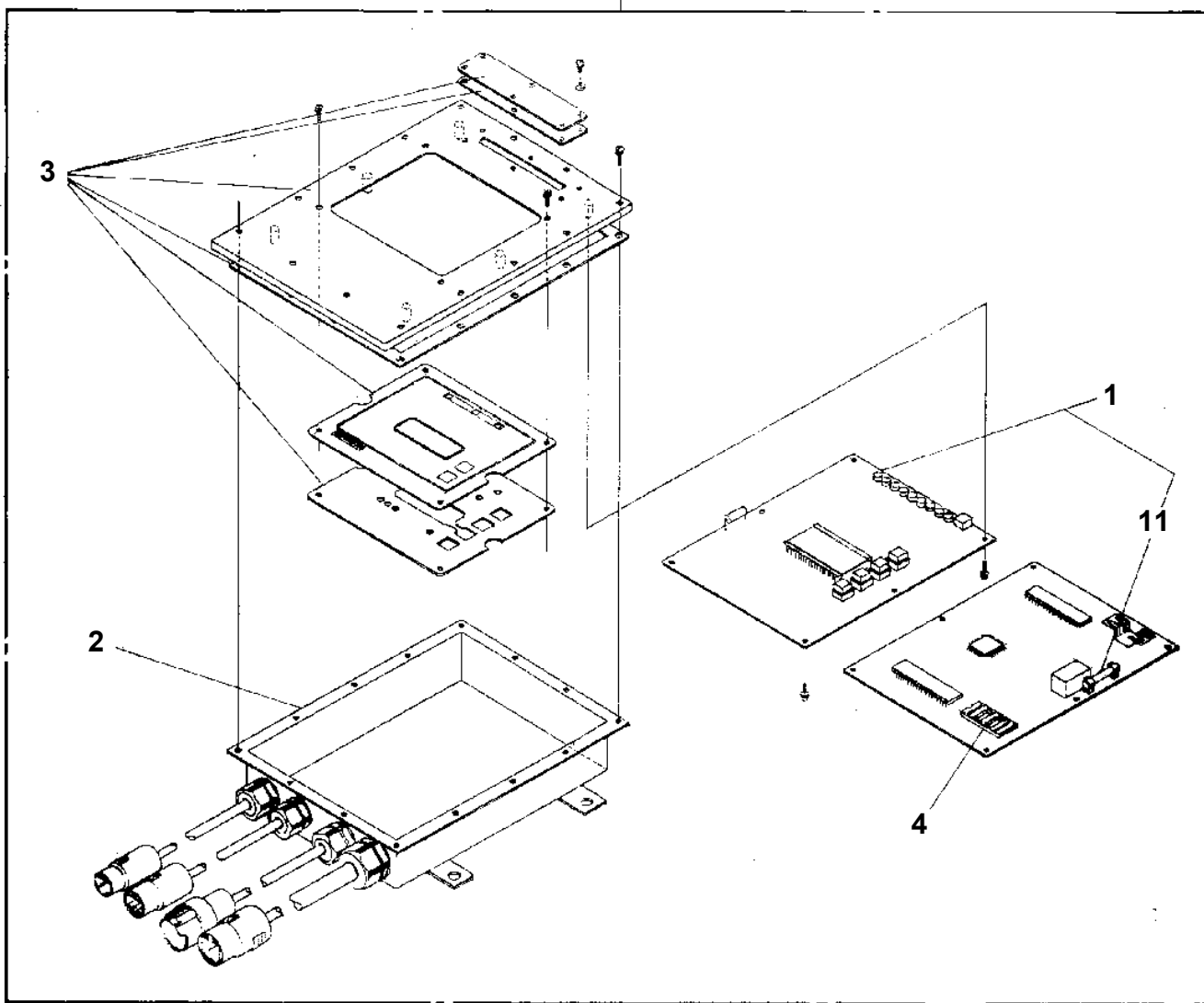


TM-ZF260 41108110010A FRAME/STD, MANUAL
PH1060266-01 DETECTOR, OVER WINDING (OPTION)



TM-ZF260 41108110010A FRAME/STD, MANUAL
PH1350007-00 WORKING AREA LIMITER (AWL-N)

30



CLICK HERE TO **DOWNLOAD** THE COMPLETE MANUAL

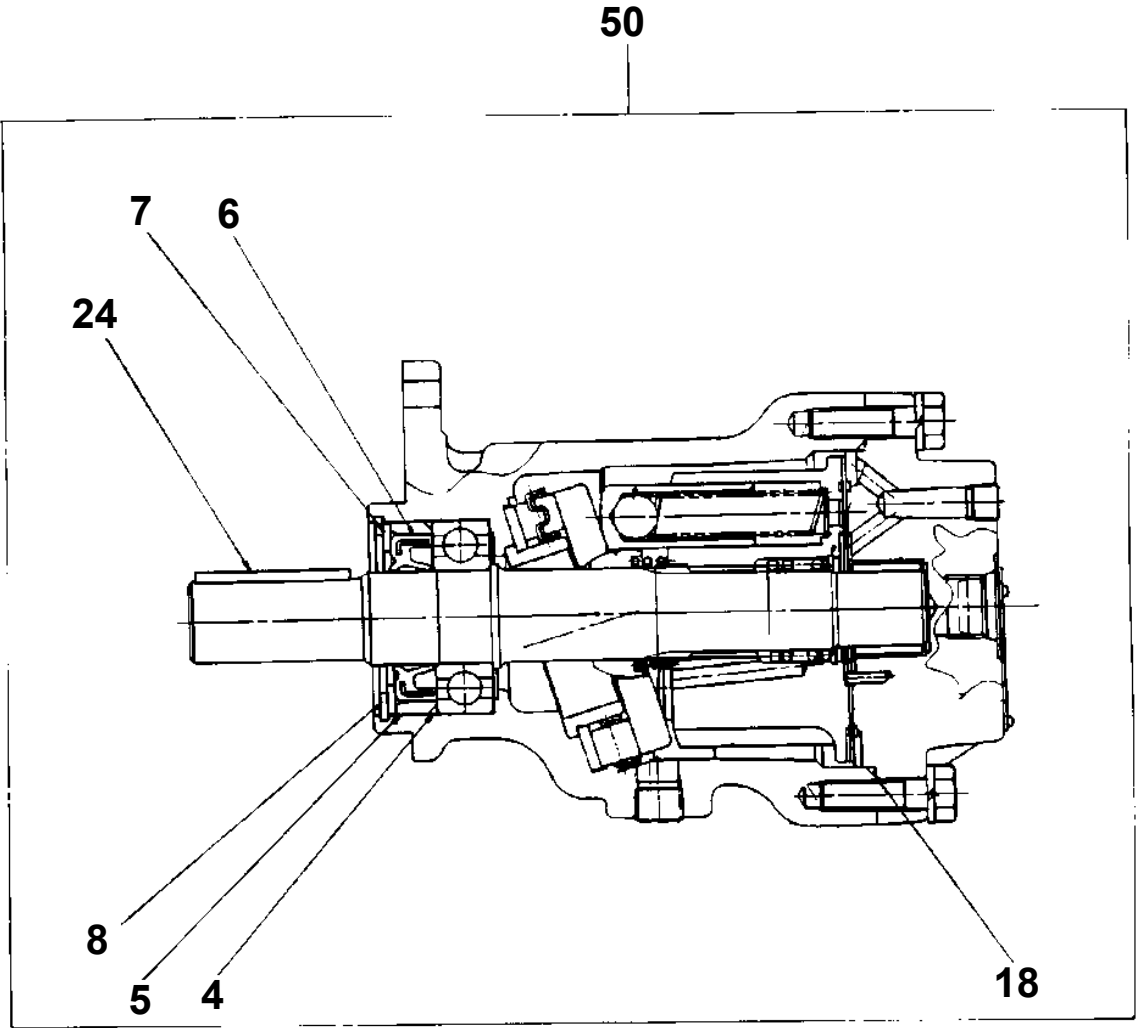
- Thank you very much for reading the preview of the manual.
- You can download the complete manual from: www.heydownloads.com by clicking the link below



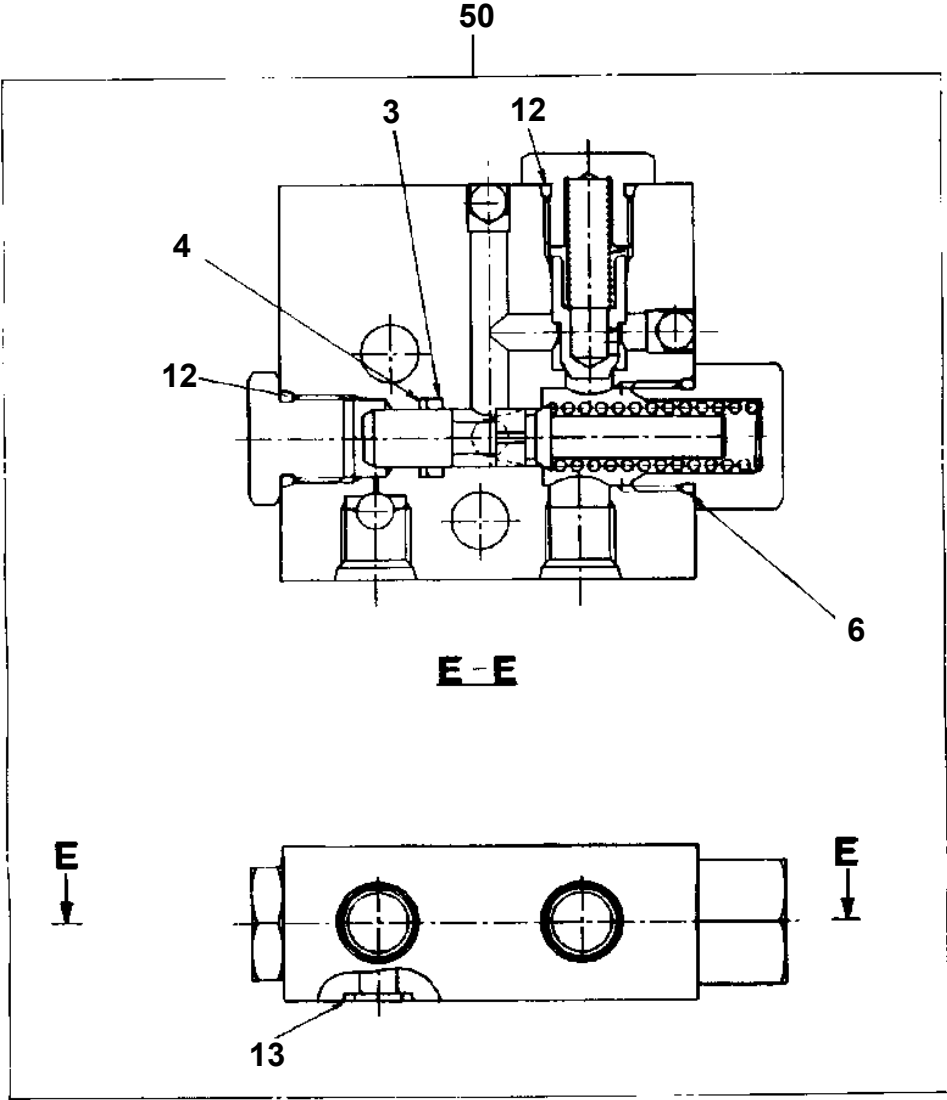
- Please note: If there is no response to CLICKING the link, please download this PDF first and then click on it.

CLICK HERE TO **DOWNLOAD** THE COMPLETE MANUAL

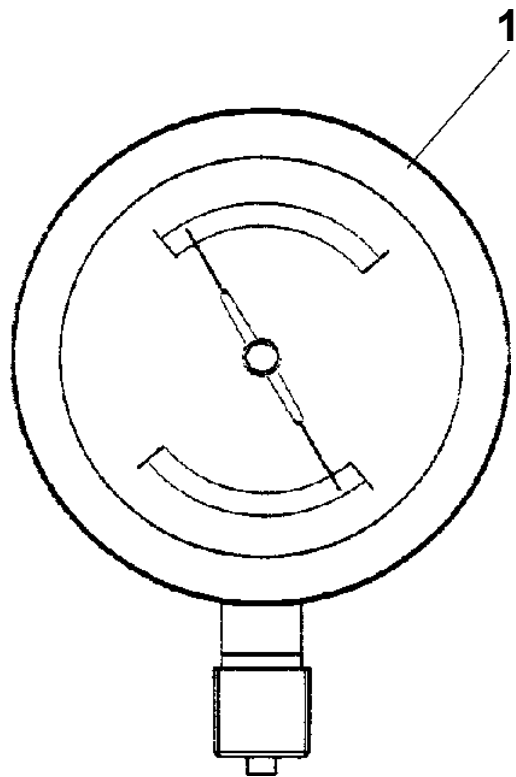
TM-ZF260 41108110010A FRAME/STD, MANUAL
PI1010058-00 MOTOR, HYDRAULIC (WINCH)



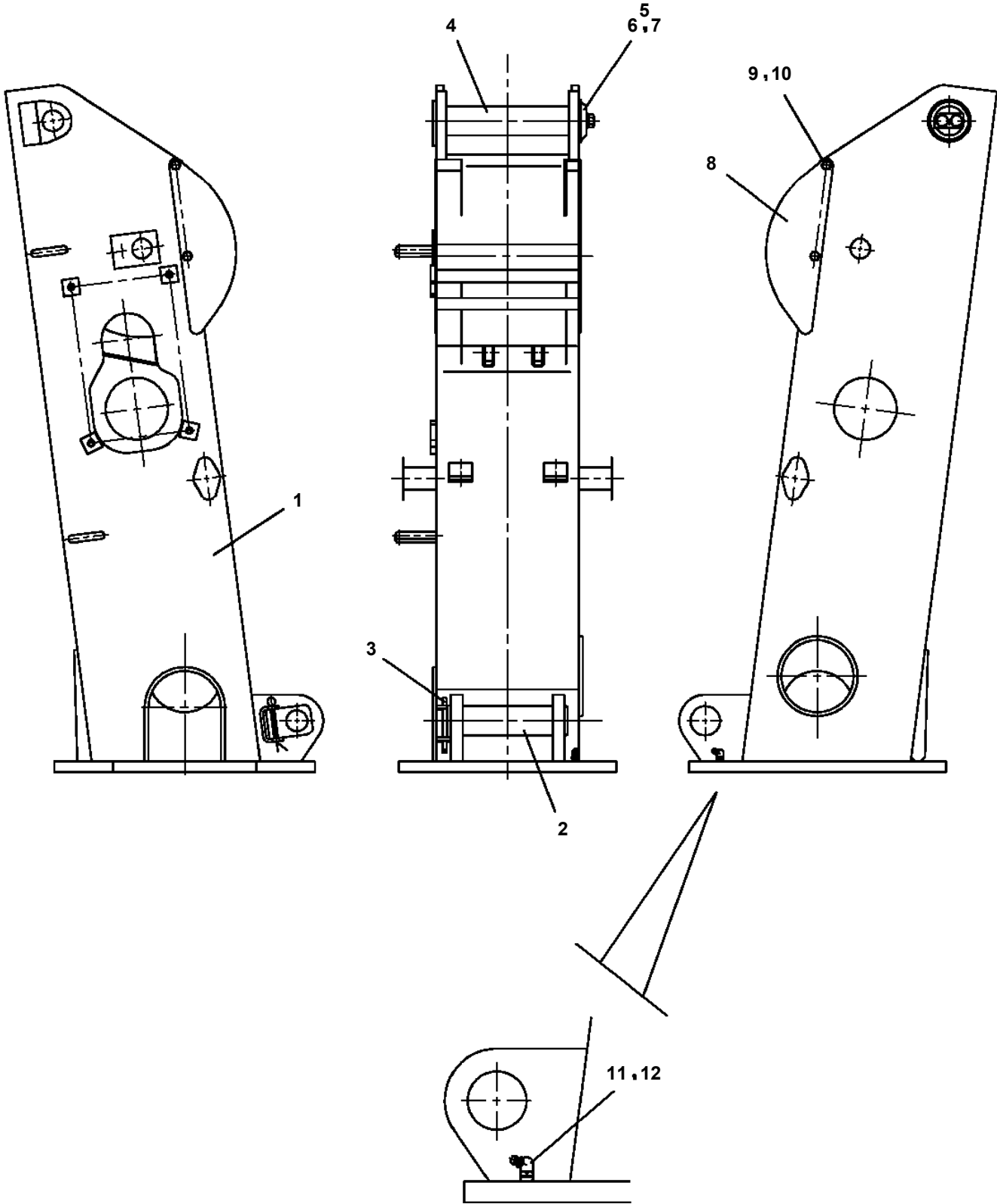
TM-ZF260 41108110010A FRAME/STD, MANUAL
PI1250073-01 VALVE, COUNTERBALANCE (ELEVATING)



**TM-ZF260 41108110010A FRAME/STD,MANUAL
PI1440027-00 METER,LOAD (2.6TON ENG& APANESE/KUSABA)**



TM-ZF260 41108110010A FRAME/STD,MANUAL
PK1100202-00 SWING FRAME



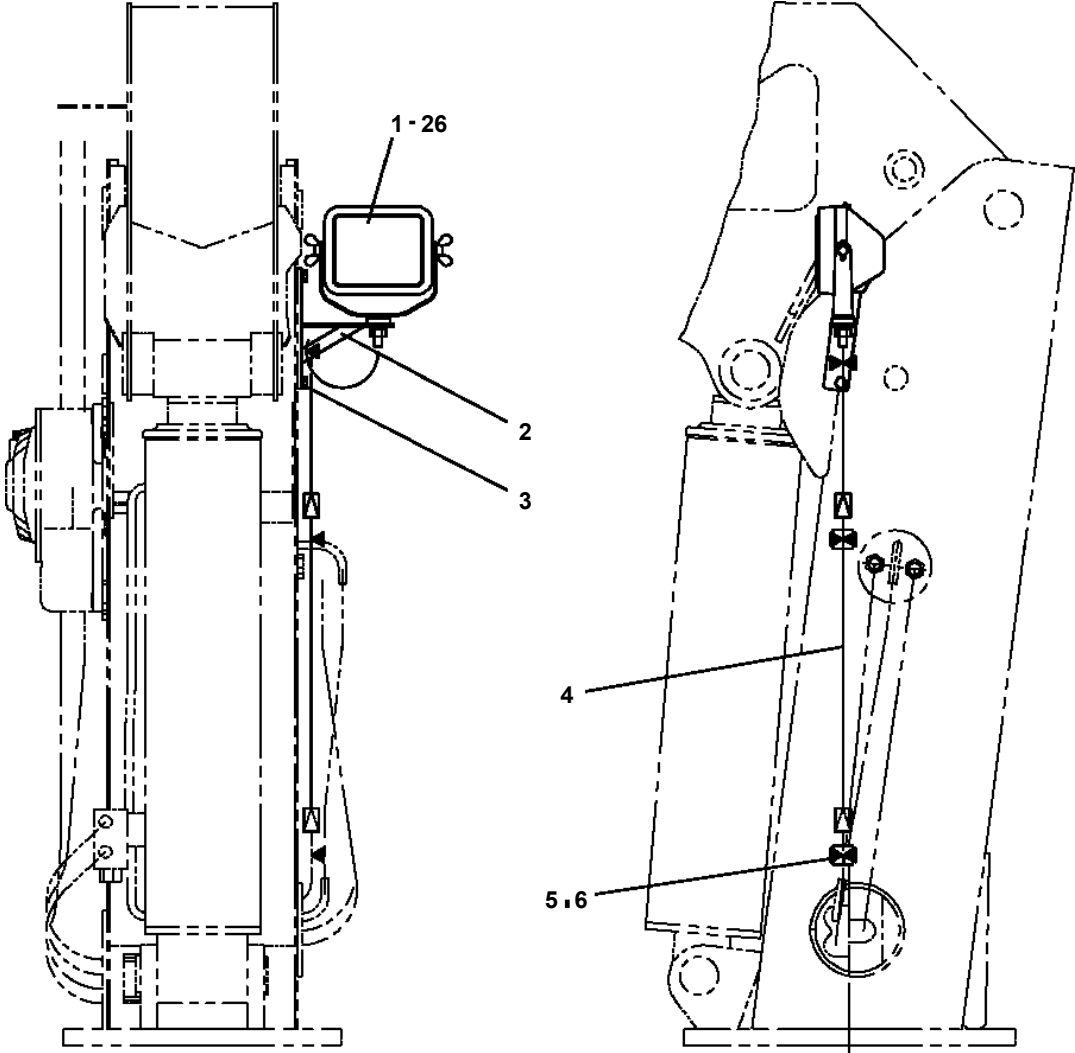
TM-ZF260 41108110010A FRAME/STD,MANUAL

Pos No.	Parts No	Parts Name	Qty	Unit	Technical Data	Serial No (Start)	Serial No (End)	Remark
52	80136340020	PIN,SPLIT	1		4X20	643569		
53	31322224200	PLATE	10		L=1		EL0437	
	31322224200	PLATE	8		L=1	EL0438	EL1439	
	31322224200	PLATE	7		L=1	EL1440		
54	31322103350	LEVER	1				643683	
	31322103351	LEVER	1			643569	EL2786	
	31322103352	LEVER	1			EL2787		
55	31322103300	LEVER	1				643683	
	31322103301	LEVER	1			643569	EL2786	
	31322103302	LEVER	1			EL2787		
56	31322032550	LEVER	1				643683	
	31322101051	LEVER	1			643569		
57	37000306130	SPACER	1		L=8		EL1439	
	37000311480	SPACER	1		L=10	EL1440		
58	31322031250	LINK	1				643568	
	31322101100	LINK	1			643569		
59	37000302990	SPACER	1		L=14		EL0437	
	37000311190	SPACER	1		L=16	EL0438		
60	80824001206	BEARING,PLAIN	2					
61	90303071201	WASHER,PLAIN	4		12		642529	
	90303071201	WASHER,PLAIN	2		12	642530		
71	31322222050	ROD	5					
72	90203200800	NUT	7		M8			
73	31320810210	END	7					
83	31322222150	ROD	1					
91	82466003005	INSULATOR	1					
92	31322050700	SUPPORT	1					
93	90202200600	NUT	1		M6			
94	90101206020	BOLT	1		M6X20			
117	31322031501	ROLLER	1					
123	31322222250	ROD	1					
161	80172305008	SCREW,MACHINE	1		M5X8	643569		
162	31322031600	COVER	1			643569		
163	31322101150	LINK	1			643569		
164	37000161490	PIN	1			643569		
166	90302040501	WASHER,SPRING	1		5	643569		

TM-ZF260 41108110010A FRAME/STD,MANUAL

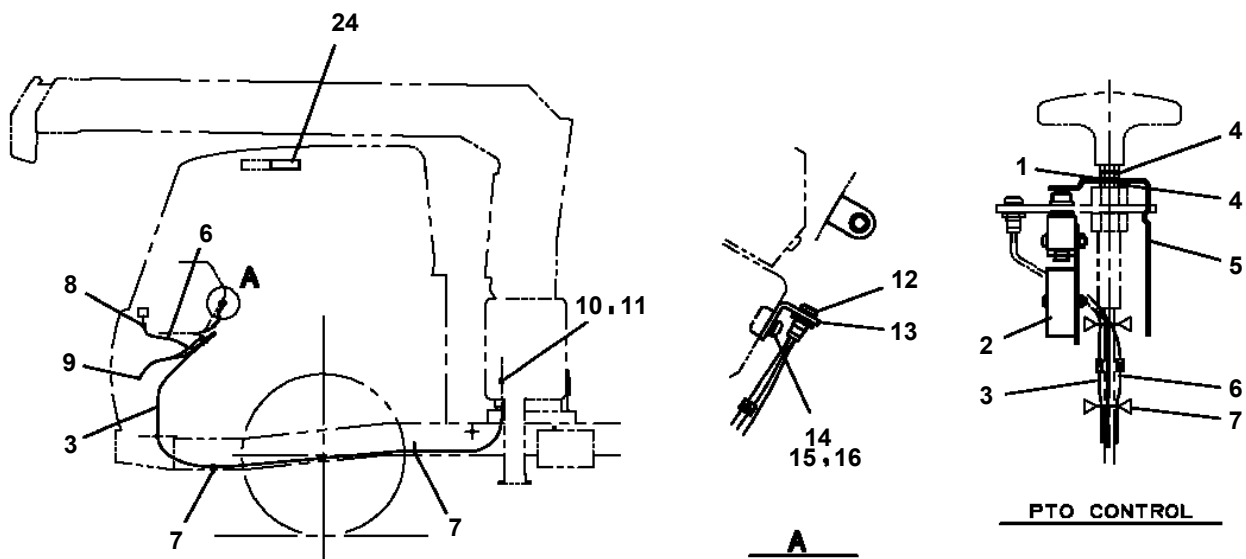
Pos No.	Parts No	Parts Name	Qty	Unit	Technical Data	Serial No (Start)	Serial No (End)	Remarks	Pages
1	80136340020	PIN,SPLIT	1		4X20				
2	90303071001	WASHER,PLAIN	1		10				
4	90101208016	BOLT	4		M8X16				
5	90302040801	WASHER,SPRING	4		8				
6	31330931000	OPERATION UNIT	1						
7	80620210050	PIN,SNAP	1						
8	90303070501	WASHER,PLAIN	1		5				
9	31330912000	PLATE,CAUTION	1						
11	31330931500	PLATE	1			644956			
21	90101210020	BOLT	1		M10X20				
22	90302041001	WASHER,SPRING	1		10				
23	31330861400	SUPPORT	1						
24	31330931100	SUPPORT	1						
25	37001300150	SPRING	1						
26	31330931300	LINK	1						
27	37000401920	BEARING,PLAIN	2						
28	90303071001	WASHER,PLAIN	1		10				
29	80136340020	PIN,SPLIT	1		4X20				
30	31330911600	PLATE	1						
31	31330931200	LINK	1						
32	31330911701	SUPPORT	1				EL2043		
	31330911702	SUPPORT	1			EL2044			
33	90710708300	SCREW,SET	1		M8				
34	90201200800	NUT	1		M8				
35	31330931601	SPRING	1			EL2044			
36	37000311680	SPACER	1			EL2044			
41	31330910600	END	1						
42	90203200800	NUT	1		M8				
43	31330950150	ROD	1						

TM-ZF260 41108110010A FRAME/STD,MANUAL
PN1011423-03 ELEC.ASSY (UPPER,LAMP/POST)

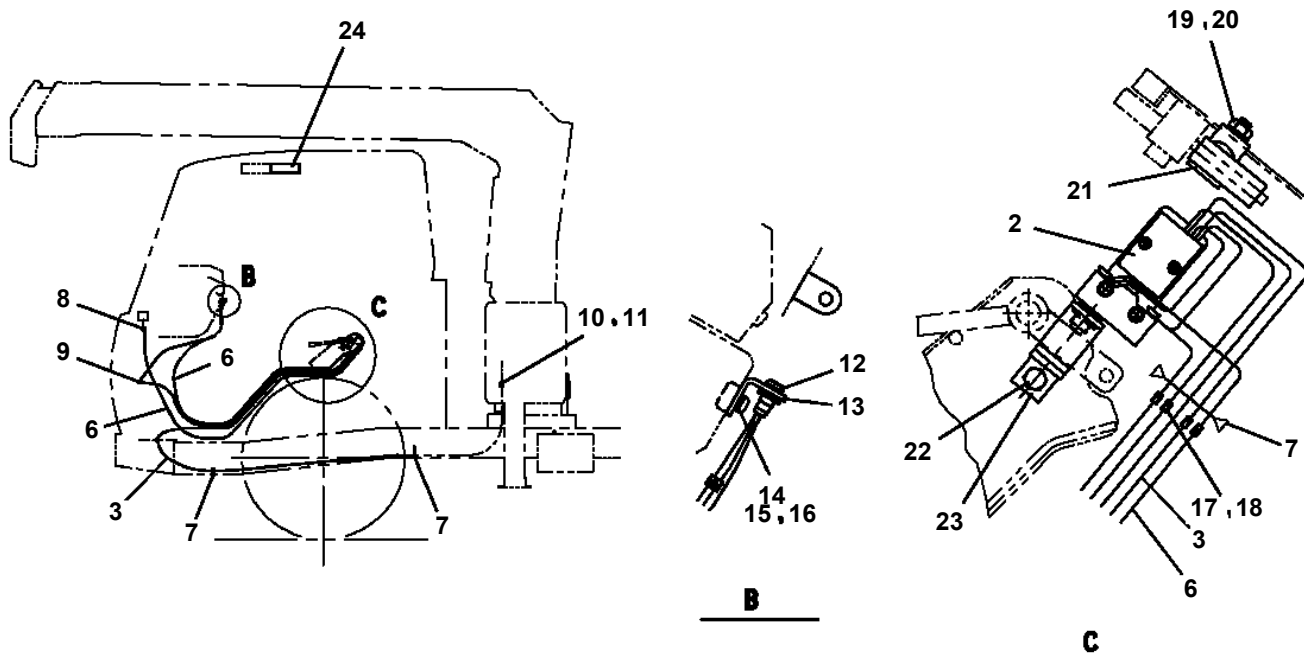


TM-ZF260 41108110010A FRAME/STD, MANUAL
PN1011777-00 ELEC.ASSY (ALARM,LOWER)

TYPE A



TYPE B



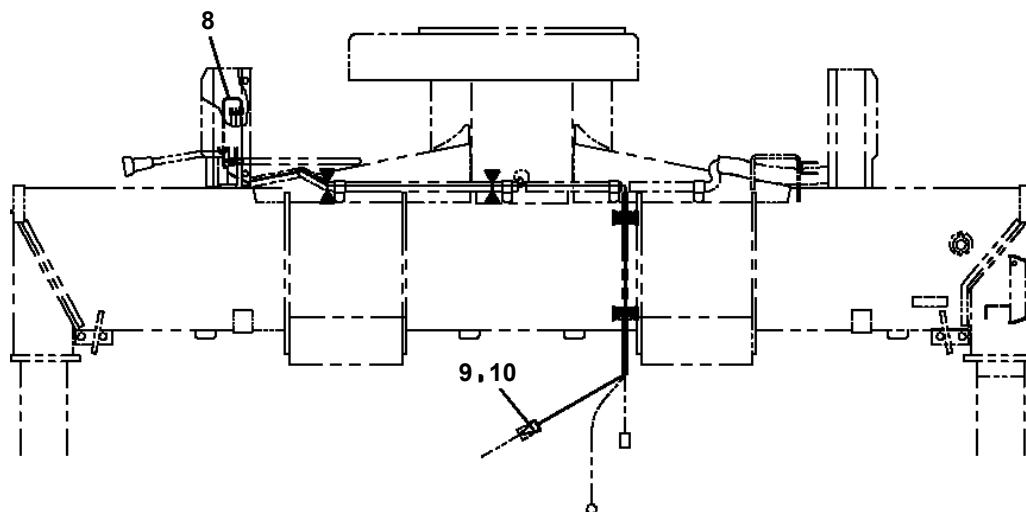
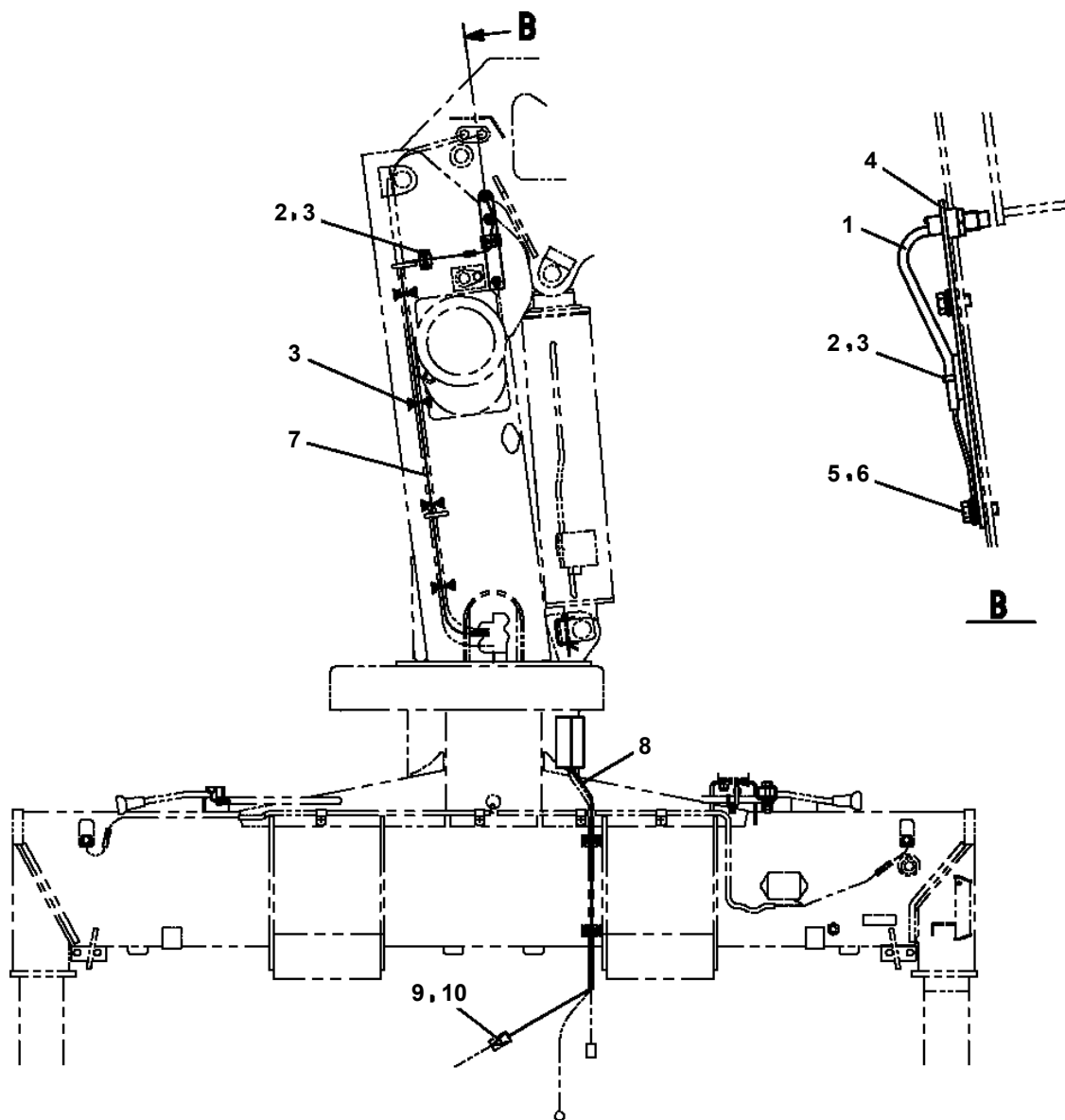
TM-ZF260 41108110010A FRAME/STD,MANUAL

Pos No.	Parts No	Parts Name	Qty	Unit	Technical Data	Serial No (Start)	Serial No (End)	Remarks	Pages
1	82108901180	SWITCH	1		APS8-12GM-Z				
2	82401601002	CLAMP	2						
3	91810130240	FASTENER	8						
4	31380181100	SUPPORT	1						
5	90101208016	BOLT	2		M8X16				
6	90303070801	WASHER,PLAIN	2		8				
7	31652160100	HARNESS	2		L=1400				

TM-ZF260 41108110010A FRAME/STD,MANUAL

Pos No.	Parts No	Parts Name	Qty	Unit	Technical Data	Serial No (Start)	Serial No
1	82100002014	CLAMP	1		WR20		
2	90201200600	NUT	6		M6		
3	90302040601	WASHER,SPRING	32		6		
4	91810130240	FASTENER	20				
5	31360201101	HARNESS	1				
6	82401601002	CLAMP	5				
7	90101206012	BOLT	26		M6X12		
8	31360201200	SUPPORT	1				
9	90201200800	NUT	4		M8		
10	90302040801	WASHER,SPRING	8		8		
11	31360191200	SUPPORT	1				
12	90203401200	NUT	1		M16		
13	36140380000	DETECTOR,BOOM ANGLE	1				
14	90101208012	BOLT	4		M8X12		
15	90101205010	BOLT	4		M5X10		
16	90302040501	WASHER,SPRING	4		5		
17	31360191300	COVER ASSY	1				
18	31360191010	COVER (CORRUGATE TUBE)	1		L=1500		
19	31360201300	LAMP ASSY	2				
20	31360191600	BUZZER ASSY	1				
21	90303070601	WASHER,PLAIN	11		6		
24	31360191500	SUPPORT	2				
25	31360191030	SUPPORT ASSY	1				
26	31476021400	HARNESS	1				
31	31360431100	SUPPORT	1				
32	36131310000	DETECTOR,BOOM LENGTH (BML,OPTION)	1				
33	31476021100	HARNESS	1				
34	31476021200	SWITCH ASSY	1				
35	31476021300	SUPPORT	1				
36	82100002596	RELAY	2				
37	82100002597	RELAY	1				
50	31360199510	PLATE	1				
51	31360191310	COVER	1				
52	31360191320	PLATE	1				
53	31360191330	SEAL	1				
54	82400000309	GROMMET	1	M	L=1000		
61	82199444321	LAMP	2				
62	31360201310	SUPPORT	2				
71	31476021210	SUPPORT	1				
72	31473744150	SWITCH ASSY	2				
73	82197600101	CAP (BLACK)	2				
75	31476021260	PLATE,NAME	1				
76	31476021270	PLATE,NAME	1				
107	82163361222	LAMP,PILOT	2				

TM-ZF260 41108110010A FRAME/STD, MANUAL
PN1013708-01 ELEC.ASSY



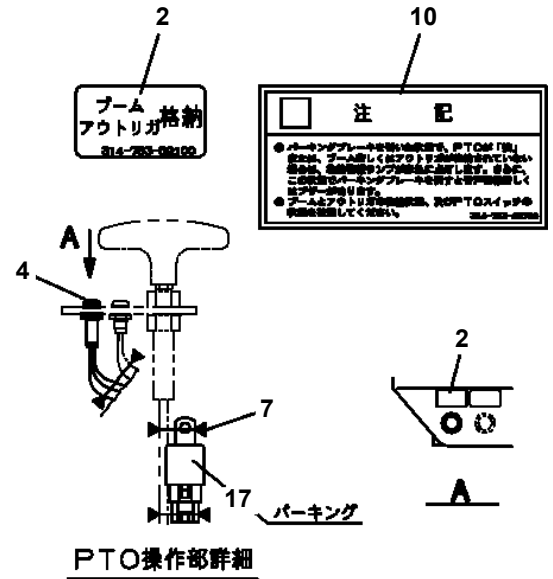
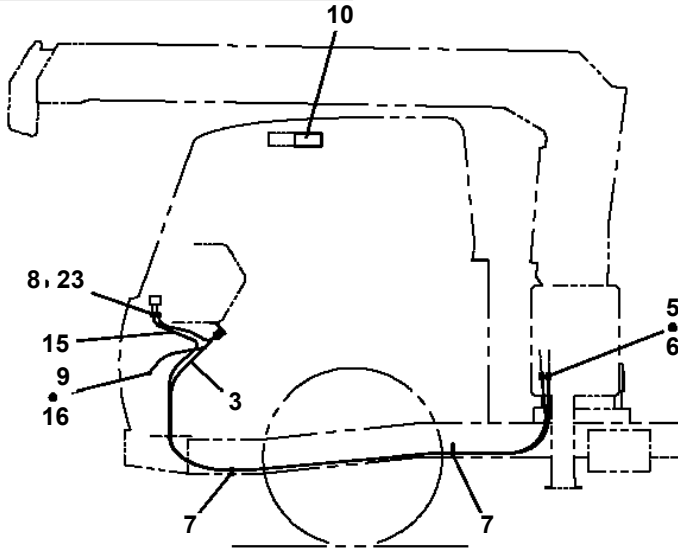
操作パ[°]ネルがある場合
(フックイン, 及びラシ[°]コン仕様)

TM-ZF260 41108110010A FRAME/STD,MANUAL

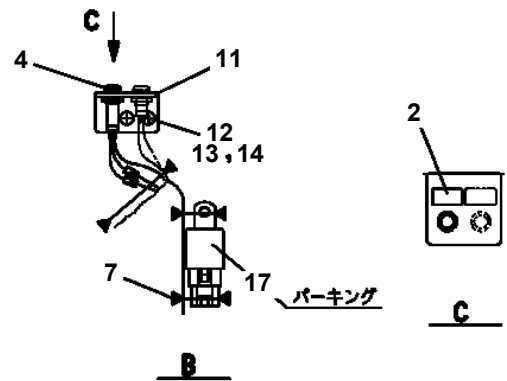
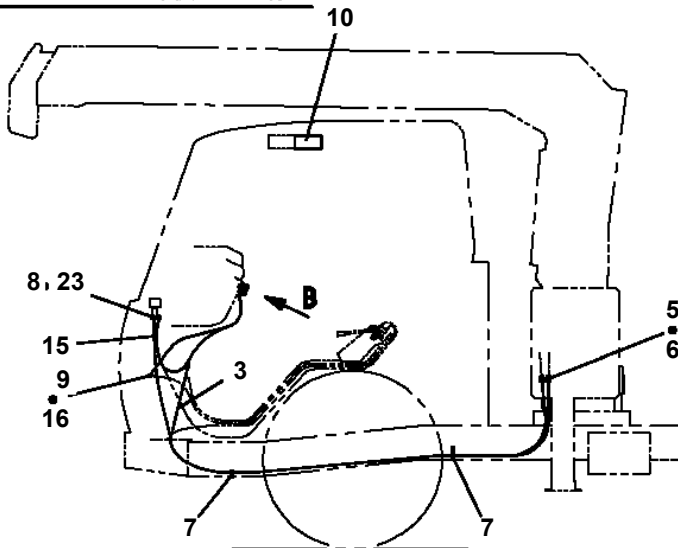
Pos No.	Parts No	Parts Name	Qty	Unit	Technical Data	Serial No (Start)	Serial No (End)	Remarks	Pages
1	31653110100	SUPPORT	1						
2	90101210014	BOLT	2		M10X14				
3	90302041001	WASHER,SPRING	2		10				
4	90280200600	NUT,FLANGE	4		M6				
5	90101206045	BOLT	4		M6X45				
6	90303070601	WASHER,PLAIN	4		6				
7	31653110200	CABLE ASSY	1		L=2000				
8	91850310305	CLAMP	4						
9	91810130240	FASTENER	8						
10	82401600510	CLAMP	1		10				
21	82100002385	CONNECTOR	2						

TM-ZF260 41108110010A FRAME/STD, MANUAL PN1014342-01 ELEC.ASSY (CARRIER)

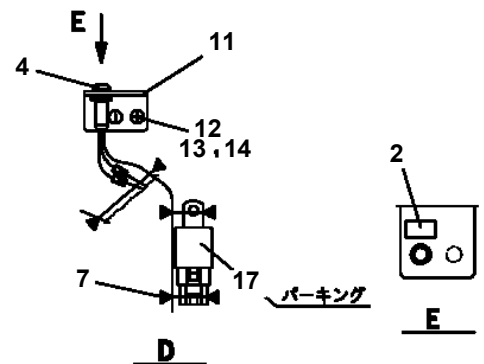
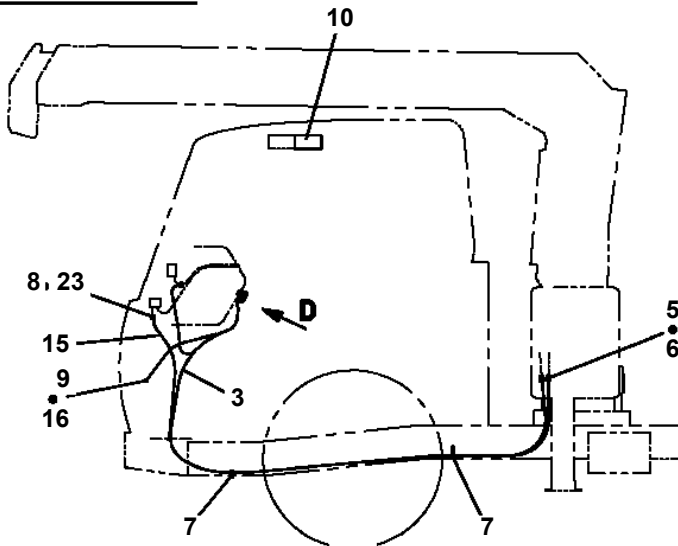
PTOレバーがハンドル横にある場合



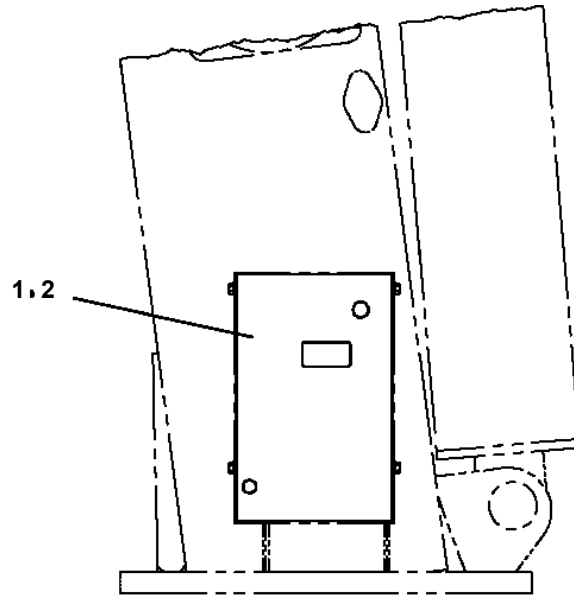
PTOレバーが座席横にある場合



純正PTO付きの場合



TM-ZF260 41108110010A FRAME/STD, MANUAL
 PN5010195-00 NAME PLATE ASSY



1

高さ制限

AUTOMATIC WORKING AREA LIMITER

高さ制限値 m

△ 警告

- 作業開始前によく目視、目視では見逃す恐れがあるため「A」にしてください。
- クレーン停止時にのみ、作業用フリーモードで「A」にしてください。
- 作業開始前によく目視、目視では見逃す恐れがあるため「A」にしてください。
- フリーモードで作業を行う場合は、必ず作業範囲を設定してください。
- フリーモードで作業を行う場合は、必ず作業範囲を設定してください。
- エンジン停止時に作業を行う場合は、必ず作業範囲を設定してください。

AWL 作業開始前点検

1. フォトリフレクトリレーが正常に動作していることを確認する。
 フリーモードで作業を行う場合は、必ず作業範囲を設定してください。
 OK (100)
2. 作業範囲でクレーンが正常に動作していることを確認する。
 フリーモードで作業を行う場合は、必ず作業範囲を設定してください。
 OK (100)
3. フリーモードで作業を行う場合は、必ず作業範囲を設定してください。
 OK (100)
4. 作業範囲でフリーモードが正常に動作していることを確認する。
 OK (100)
5. 終了。

高さ制限値 (100)

AWL

2

高さ制限

AUTOMATIC WORKING AREA LIMITER

高さ制限値 m

△ 警告

- 作業開始前によく目視、目視では見逃す恐れがあるため「A」にしてください。
- クレーン停止時にのみ、作業用フリーモードで「A」にしてください。
- 作業開始前によく目視、目視では見逃す恐れがあるため「A」にしてください。
- フリーモードで作業を行う場合は、必ず作業範囲を設定してください。
- フリーモードで作業を行う場合は、必ず作業範囲を設定してください。
- エンジン停止時に作業を行う場合は、必ず作業範囲を設定してください。

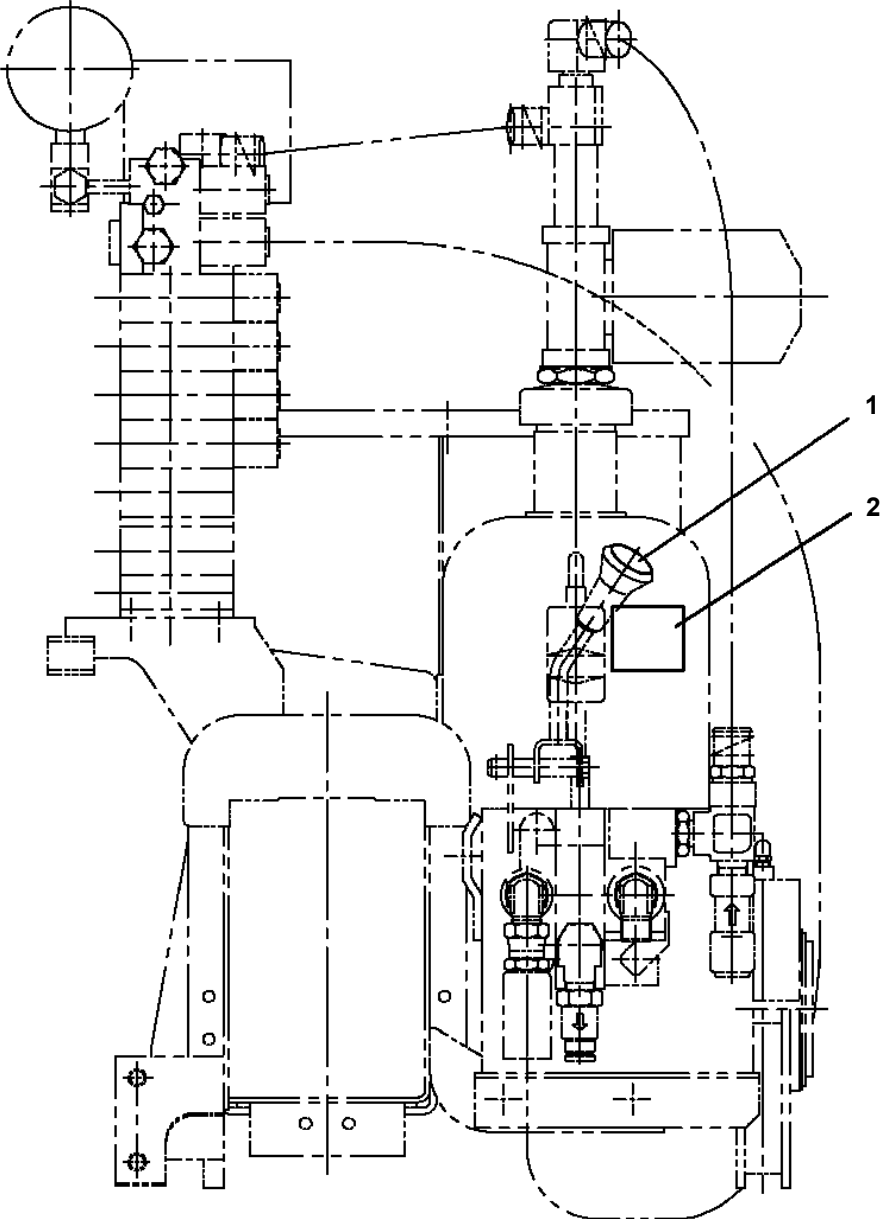
AWL 作業開始前点検

1. PTOB (B) にし、フリーモードにする。
 OK (100)
2. フォトリフレクトリレーが正常に動作していることを確認する。
 フリーモードで作業を行う場合は、必ず作業範囲を設定してください。
 OK (100)
3. 作業範囲でフリーモードが正常に動作していることを確認する。
 OK (100)
4. 終了。

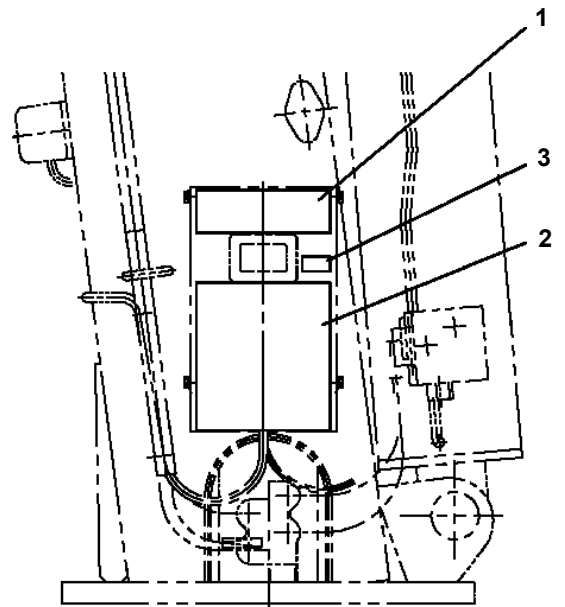
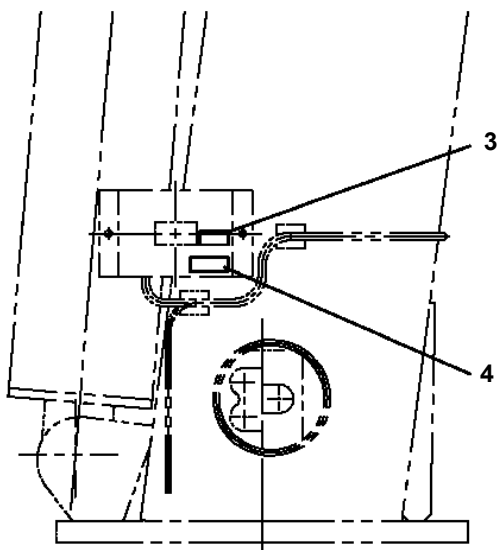
高さ制限値 (100)

AWL

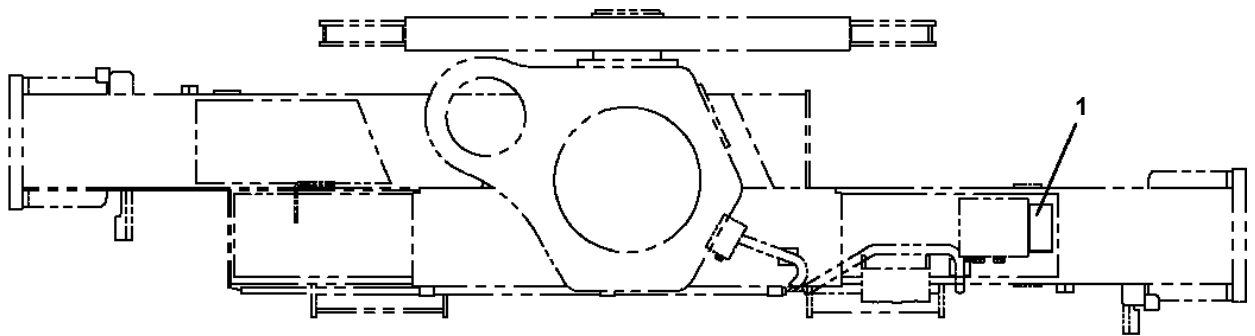
TM-ZF260 41108110010A FRAME/STD,MANUAL
PO1012212-00 PLATE ASSY,NAME (POWER SUPPLY)



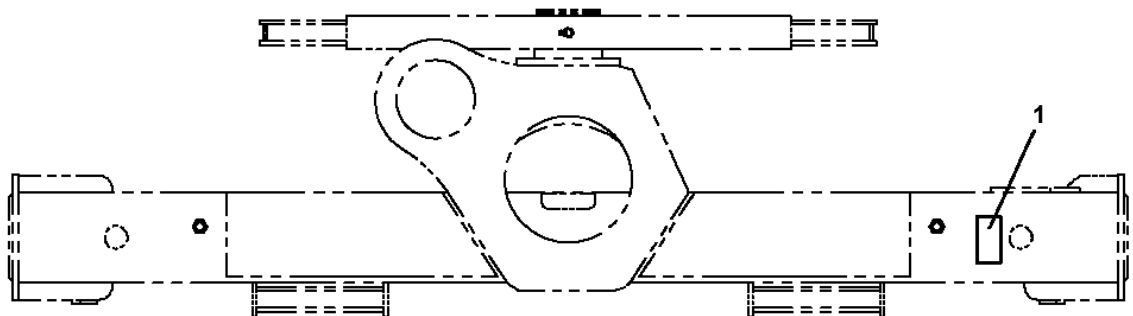
TM-ZF260 41108110010A FRAME/STD,MANUAL
PO1012546-01 PLATE ASSY,NAME (BML,OPTION)



TM-ZF260 41108110010A FRAME/STD,MANUAL
PO1014489-01 PLATE ASSY,NAME

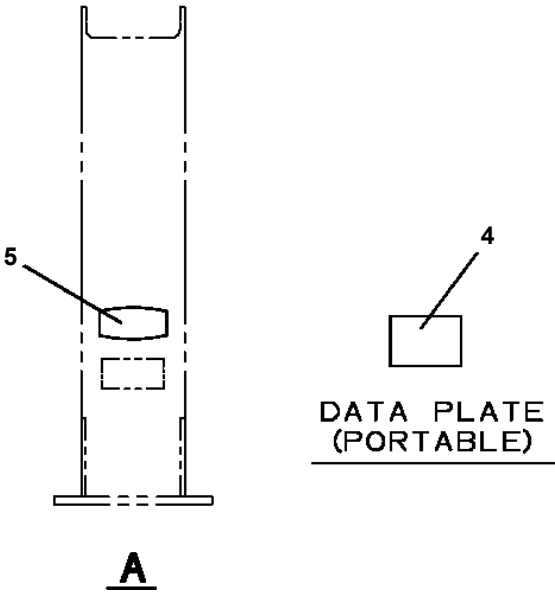
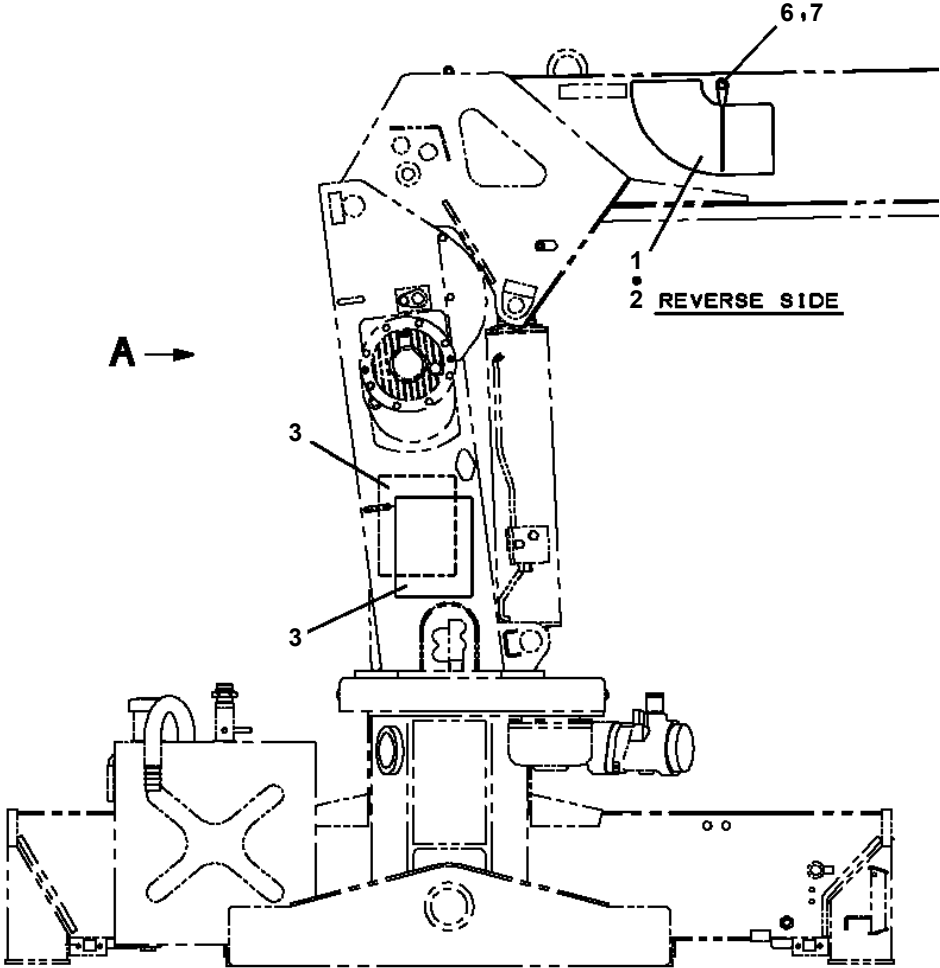


ZF260,290,300J,300,300SLの場合

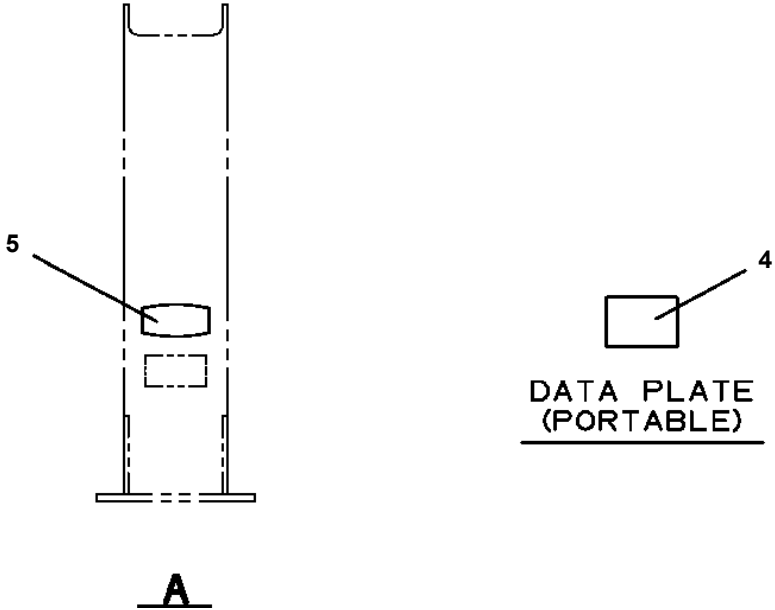
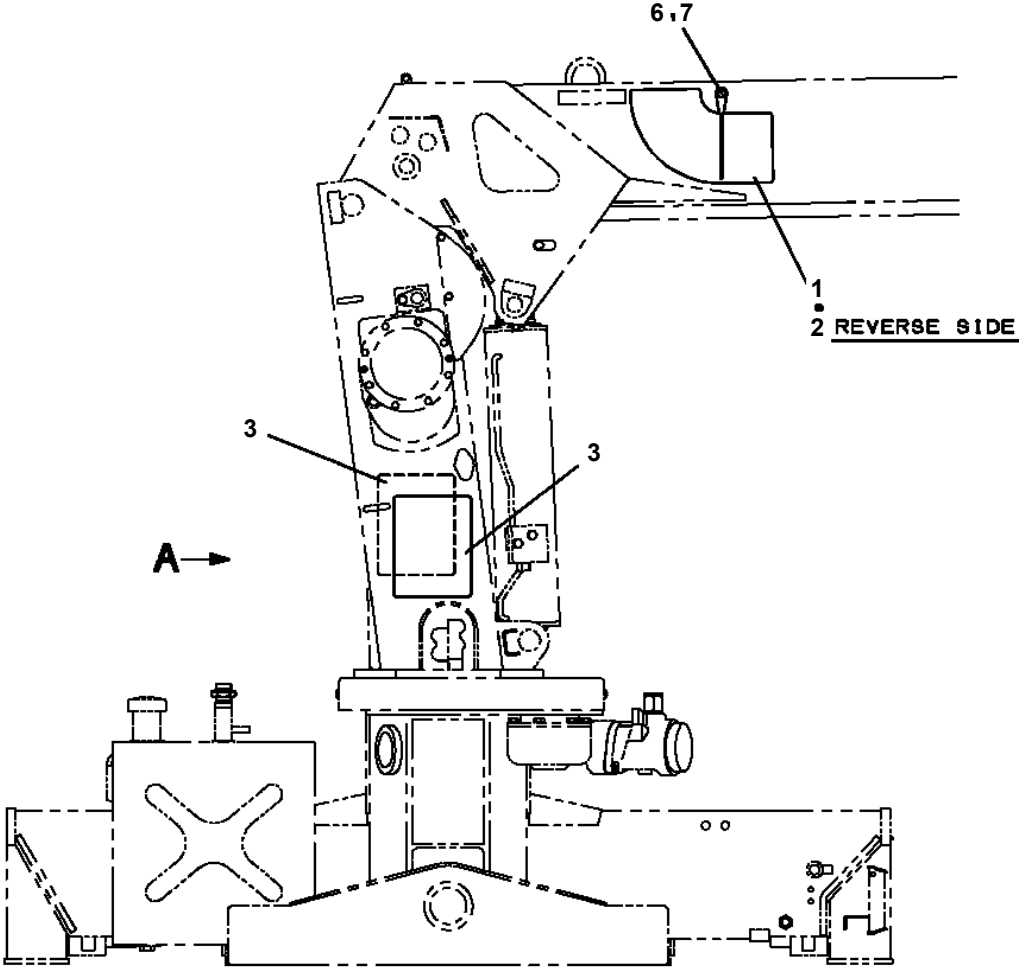


ZF230,230Wの場合

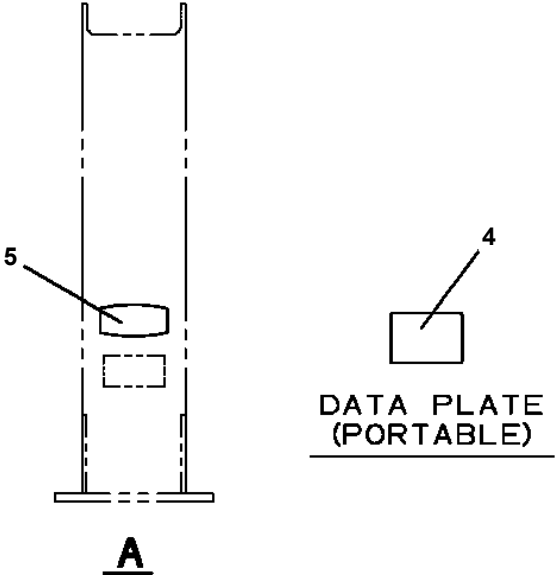
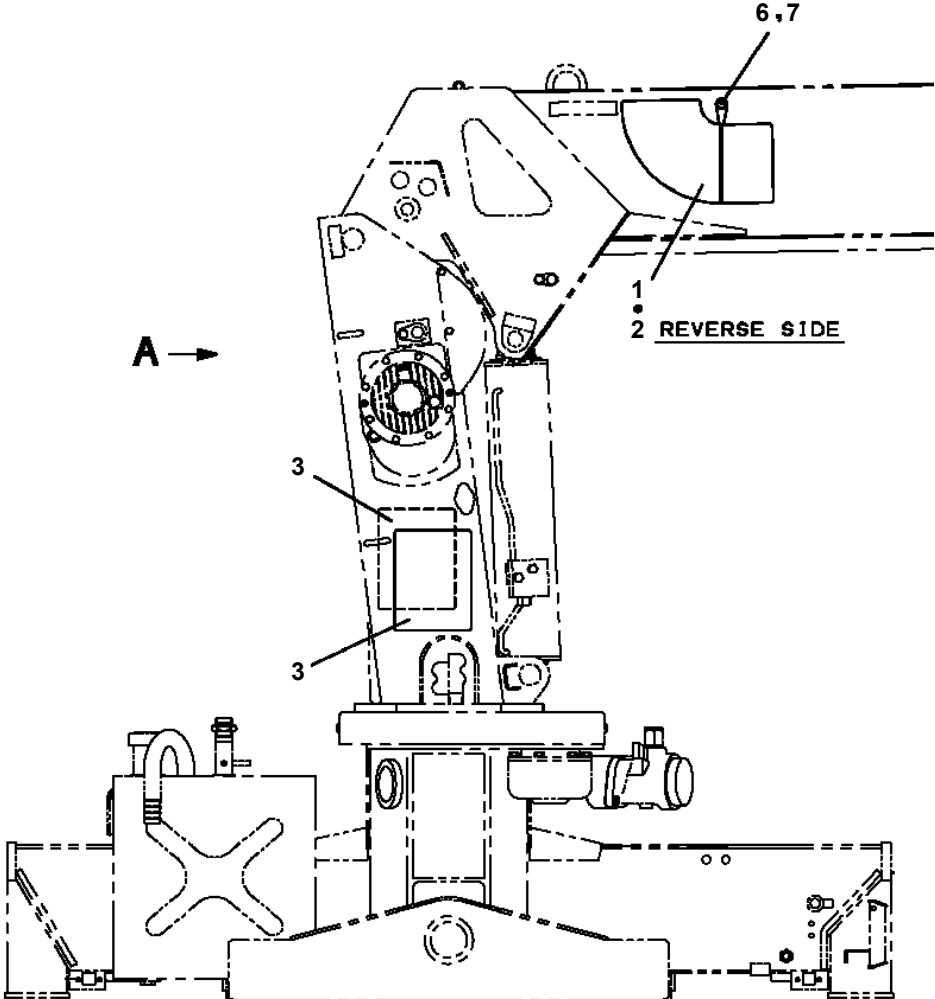
**TM-ZF260 41108110010A FRAME/STD, MANUAL
PO1070474-00 PERFORMANCE DATA (ZF262, STD CAB/JPN)**



**TM-ZF260 41108110010A FRAME/STD, MANUAL
PO1070479-00 PERFORMANCE DATA (ZF263, MOUNT ON REAR)**



TM-ZF260 41108110010A FRAME/STD, MANUAL
PO1070484-00 PERFORMANCE DATA(ZF265WIDE CAB LONG/JPN)



TM-ZF260 41108110010A FRAME/STD,MANUAL
PR5040006-00 RADIO CONTROLLER ASSY (F-TYPE:LED/WITHOUT HOOK-IN)

ラジコンASSY (Fタイプ:LED/フックインナシ)
RADIO CONTROLLER ASSY (F-TYPE:LED/WITHOUT HOOK-IN)

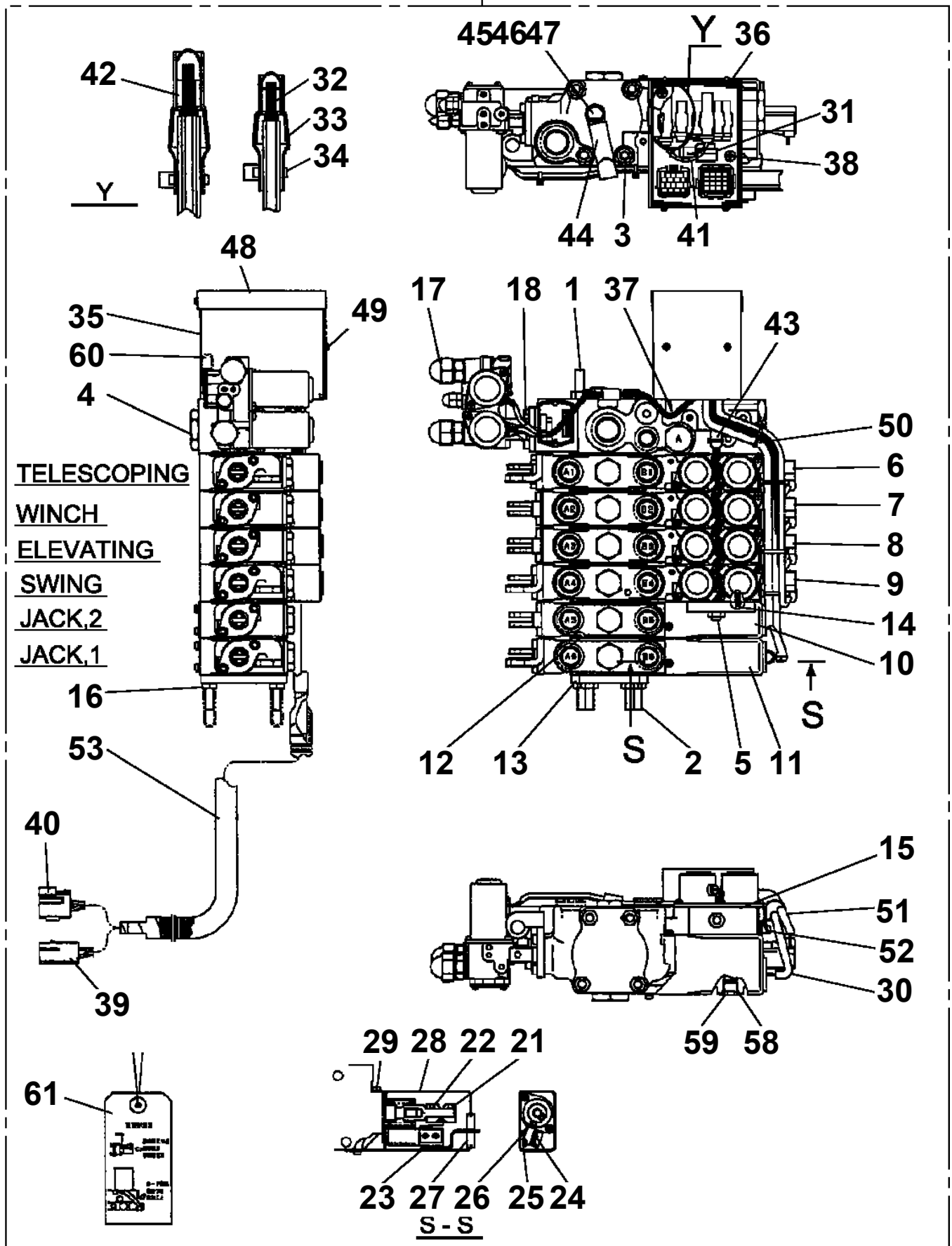
【組立名称一覧】より選択してください。
SEE THE CORRESPONDING "ASSEMBLY NAME" LIST.

**TM-ZF260 41108110010A FRAME/STD,MANUAL
PV1010025-00 REMOTE CONTROL (KIT)**

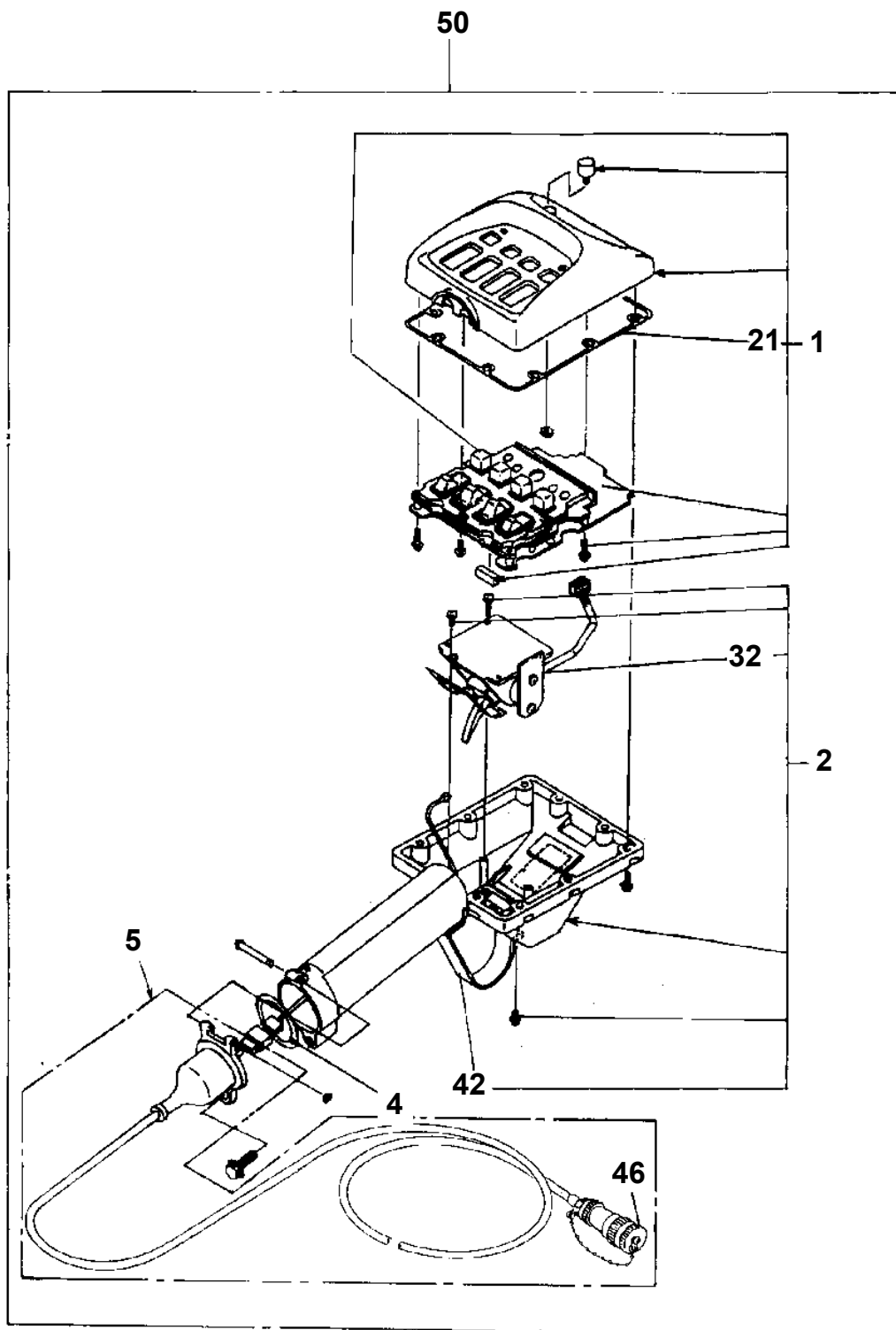
1	スイッチ ホックス SWITCH BOX
2	ストーイング ホックス STOWING BOX
3	ハイセンASSY ELEC.ASSY

TM-ZF260 41108110010A FRAME/STD, MANUAL
 PV1020331-00 VALVE,REMOTE CONTROL

300



TM-ZF260 41108110010A FRAME/STD,MANUAL
PV1030015-02 SWITCH BOX (REMOTE CONTROL.M2)



TM-ZF260 41108110010A FRAME/STD,MANUAL

Pos No.	Parts No	Parts Name	Qty	Unit	Technical Data	Serial No (Start)	Serial No (End)	Remarks	Pages
7	36804917060	STEM	1						
8	36804917070	PANEL	1						
900	36804911000	CONTROL UNIT	1						

TM-ZF260 41108110010A FRAME/STD,MANUAL

Pos No.	Parts No	Parts Name	Qty	Unit	Technical Data	Serial No (Start)	Serial No (End)
1	(*****)	ELEC.ASSY (BML,OPTION)	1				
3	(*****)	DETECTOR,OVER FRONT AREA (BML,OPTION)	1				
4	(*****)	INDICATOR,OUTRIGGER	1				
5	(*****)	DETECTOR,LOAD (BML,OPTION)	1				
6	(*****)	SWITCH INSTALLATION (BML)	1				
7	(*****)	PLATE ASSY,NAME (BML,OPTION)	1				
9	(*****)	OPE.ASSY,CONT.VALVE (BML,OP.)	1				
10	36117310000	MOMENT LIMITER (BML-PB)	1				
11	(*****)	PLATE ASSY,NAME (BML,OPTION)	1				

TM-ZF260 41108110010A FRAME/STD,MANUAL

Pos No.	Parts No	Parts Name	Qty	Unit	Technical Data	Serial No (Start)	Serial No (End)
1	(*****)	ELEC.ASSY (BML,OPTION)	1				
3	(*****)	DETECTOR,OVER FRONT AREA (BML,OPTION)	1				
4	(*****)	INDICATOR,OUTRIGGER	1				
5	(*****)	DETECTOR,LOAD (BML,OPTION)	1				
6	(*****)	SWITCH INSTALLATION (BML)	1				
7	(*****)	PLATE ASSY,NAME (BML,OPTION)	1				
9	(*****)	OPE.ASSY,CONT.VALVE (BML)	1				
10	36117310000	MOMENT LIMITER (BML-PB)	1				
11	(*****)	PLATE ASSY,NAME (BML,OPTION)	1				

TM-ZF260 41108110010A FRAME/STD,MANUAL

Pos No.	Parts No	Parts Name	Qty	Unit	Technical Data	Serial No (Start)	Serial No (End)
1	(*****)	ELEC.ASSY	1				
3	(*****)	PLATE ASSY,NAME (UPPER)	1				
4	(*****)	DETECTOR,BOOM LENGTH (MOUNT)	1				
6	36194650000	MOMENT LIMITER (BML)	1				
8	(*****)	ELEC.ASSY (SPARE HARNESS)	1				
12	(*****)	MOUNT (BOOM)	1				

TM-ZF260 41108110010A FRAME/STD,MANUAL

Pos No.	Parts No	Parts Name	Qty	Unit	Technical Data	Serial No (Start)	Serial No (End)	Remarks	Pages
10	36804914000	BOX,STOWING	1						

TM-ZF260 41108110010A FRAME/STD,MANUAL

Pos No.	Parts No	Parts Name	Qty	Unit	Technical Data	Serial No (Start)	Serial No (End)	F
10	36804912000	ANTENNA (FOR RADIO CONTROL)	1					

TM-ZF260 41108110010A FRAME/STD,MANUAL

Pos No.	Parts No	Parts Name	Qty	Unit	Technical Data	Serial No (Start)	Serial No (End)	Remarks	Pages
1	90190000008	BOLT,STUD	2		M6X20				
2	31360202500	SUPPORT	2						
3	31360742500	SUPPORT	1						
4	31360192900	SUPPORT	1		L=55				
5	37001601290	NUT	1		M12				
6	31360742700	NUT	1		M12				
7	31360003020	SUPPORT	1		L=63				
8	37001601010	NUT	3						
9	90288106030	NUT	3		M6X30				

TM-ZF260 41108110010A FRAME/STD,MANUAL

Pos No.	Parts No	Parts Name	Qty	Unit	Technical Data	Serial No (Start)	Serial No (End)	Remarks
1	(*****)	ELEC.ASSY (ALARM,UPPER)	1					
2	(*****)	ELEC.ASSY (ALARM,LOWER)	1					
4	(*****)	PLATE ASSY,NAME	1					

CLICK HERE TO **DOWNLOAD** THE COMPLETE MANUAL

- Thank you very much for reading the preview of the manual.
- You can download the complete manual from: www.heydownloads.com by clicking the link below



- Please note: If there is no response to CLICKING the link, please download this PDF first and then click on it.

CLICK HERE TO **DOWNLOAD** THE COMPLETE MANUAL