

TM-Z600 31102000023A FRAME/SL,MANUAL,4 SECT. BOOM

PB1000215-03 HYDRAULIC PRESSURE GENERATING SYSTEM

PC1000163-00 OUTRIGGER SYSTEM

PD1000201-01 SWING SYSTEM

PE1000198-00 ELEVATING SYSTEM

PF1000188-00 WINCH SYSTEM

PG1000197-00 TELESCOPING SYSTEM

PH1000185-00 SAFETY DEVICES

PI1000218-00 HYDRAULIC DEVICES

PK1000208-00 FRAME

PL1000205-01 CONTROL DEVICES

PN1000219-01 ELECTRIC EQUIPMENT

PO1000122-01 INDICATION PLATES

PW1000040-01 ACCESSORIES & TOOLS

PY1000373-00 OPTIONS

ASSEMBLY

CLICK HERE TO **DOWNLOAD** THE COMPLETE MANUAL

- Thank you very much for reading the preview of the manual.
- You can download the complete manual from: www.heydownloads.com by clicking the link below



- Please note: If there is no response to CLICKING the link, please download this PDF first and then click on it.

CLICK HERE TO **DOWNLOAD** THE COMPLETE MANUAL

TM-Z600 31102000023A FRAME/SL,MANUAL,4 SECT. BOOM

Pos No.	Parts No	Parts Name	Qty	Unit	Technical Data	Serial No (Start)	Serial No (End)
1	(*****) 36072460000	WINCH WINCH (HARTYS)	1 1			655379	
2	(*****)	WINCH (SELF)	1				
3	36090820000	HOOK (SHEAVE 2 PC'S)	1				
4	(*****)	HOOK (SELF WINCH 10TON OPTION)	1				
5	50890084001	HOOK (SHEAVE 1 PC'S)	1				
6	50826000011	ROPE,WIRE	1				
7	37001801090	ROPE,WIRE	1				
8	(*****)	SOCKET,ROPE	1				
9	(*****)	MOTOR,HYDRAULIC (WINCH)	1				655139
	(*****)	MOTOR,HYDRAULIC (WINCH)	1			655140	
10	36661600000	MOTOR,HYDRAULIC	1				

TM-Z600 31102000023A FRAME/SL,MANUAL,4 SECT. BOOM

Pos No.	Parts No	Parts Name	Qty	Unit	Technical Data	Serial No (Start)	Serial No (End)
1	(*****)	OPERATION SYSTEM, CONTROL VALVE	1				655296
	(*****)	OPERATION SYSTEM, CONTROL VALVE	1			655297	
2	(*****)	OPERATION SYSTEM, CONTROL VALVE	1				

TM-Z600 31102000023A FRAME/SL,MANUAL,4 SECT. BOOM

PH1250017-01 MOMENT LIMITER (AML-PA)
PI1010015-05 MOTOR,HYDRAULIC (WINCH)
PI1010029-01 MOTOR,HYDRAULIC
PI1010228-02 MOTOR,HYDRAULIC (WINCH)
PI1190010-01 VALVE,PRESSURE REGULATOR (SELF WINCH)
PI1250014-00 VALVE,COUNTERBALANCE
PI1250063-00 VALVE,COUNTERBALANCE
PI1280056-00 VALVE,PILOT CHECK
PI1280162-00 VALVE,PILOT CHECK
PI1280180-01 VALVE,PILOT CHECK
PI1330001-00 VALVE,DIVIDING & COMBINING
PI1330002-00 VALVE,DIVIDING & COMBINING (NABCO)
PI1330005-00 VALVE,DIVIDING & COMBINING (MORIKAWA)
PI1330006-00 VALVE,DIVIDING & COMBINING (MURAKAMI)
PK1010205-01 FRAME
PK1010451-00 FRAME
PK1010492-00 FRAME
PK1100137-01 SWING FRAME
PK1200153-00 COVER,SWING FRAME
PL1010354-01 OPERATION SYSTEM, CONTROL VALVE
PL1010358-01 OPERATION SYSTEM, CONTROL VALVE
PL1010707-00 OPERATION SYSTEM, CONTROL VALVE
PM5230010-00 MOTOR,OIL
PN1011982-02 ELEC.ASSY (REMOTE CONTROL)
PO1010916-00 PLATE,INDICATION
PO1010937-01 PLATE,INDICATION
PO1010939-00 PLATE,INDICATION
PO1010943-00 PLATE ASSY,NAME (SL)
PO1010944-00 PLATE ASSY,NAME (SL)
PO1011251-00 PLATE ASSY,NAME (REAR OUTRIGGER)
PO1012332-00 PLATE,INDICATION
PO1020001-00 PLATE,NAME (AML)
PV1010124-00 REMOTE CONTROL
PV1020196-00 VALVE,RELIEF
PW1010020-00 ACCESSORIES (PUMP,GREASE)
PW1050010-00 STOPPER,TIRE

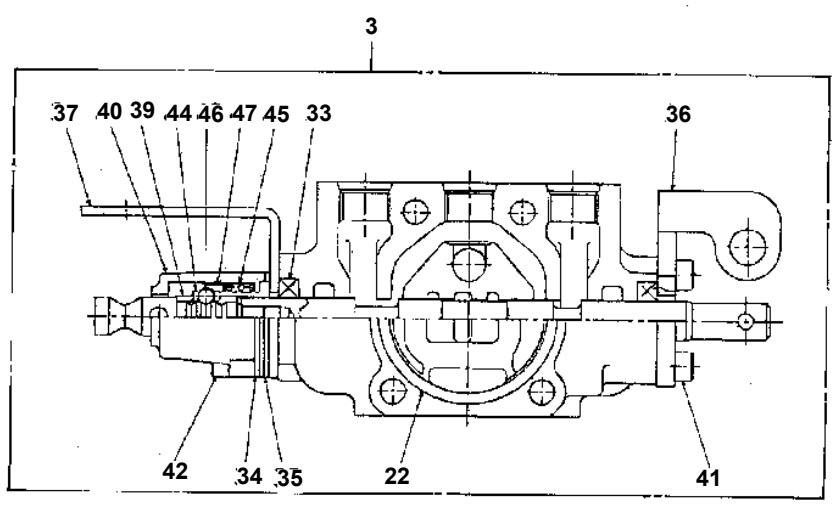
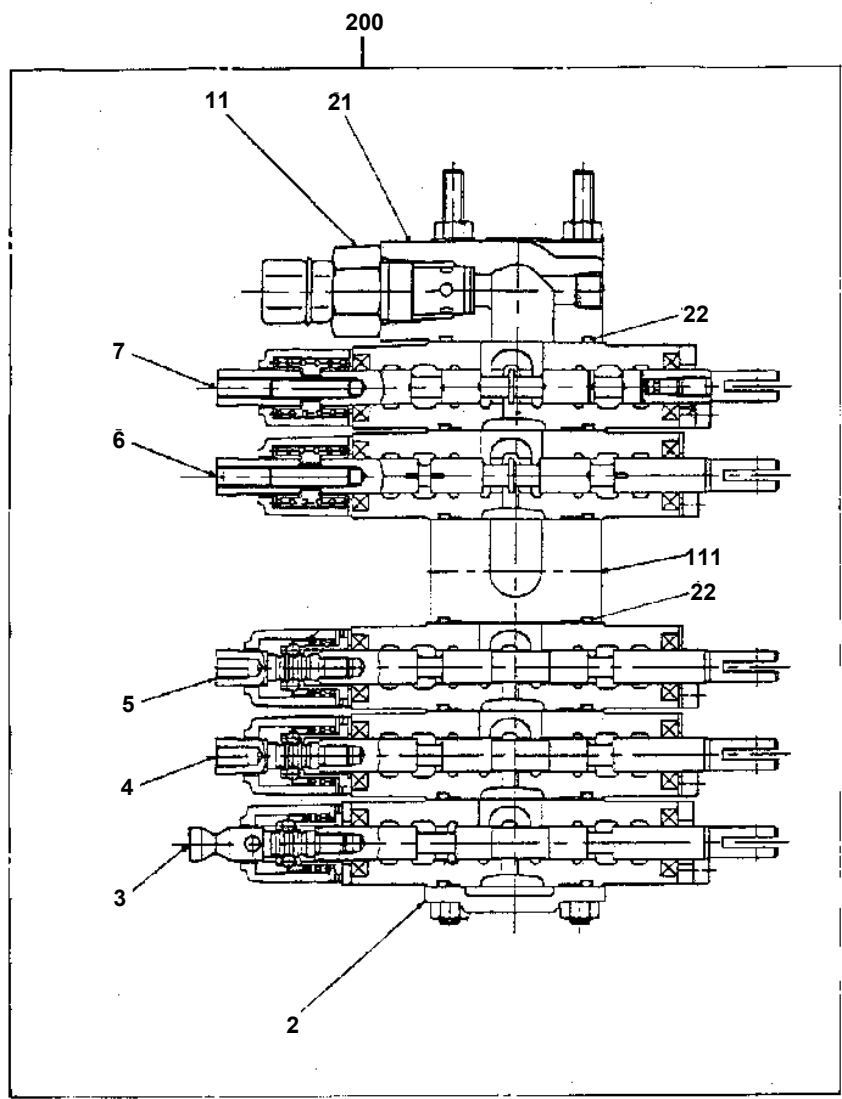
TM-Z600 31102000023A FRAME/SL,MANUAL,4 SECT. BOOM

Pos No.	Parts No	Parts Name	Qty	Unit	Technical Data	Serial No (Start)	Serial No (End)	Remarks	Page
1	52130202121	CASE	1						
2	52130202320	COVER (BEARING)	1						
3	52130202330	COVER	1						
4	52130202021	GEAR	1						
5	52130202010	SHAFT (OUTPUT)	1						
6	52130202040	FORK (SHIFTER)	1						
7	52130202050	SHAFT (SHIFTER)	1						
8	52130202030	YOKE	1						
9	52430304110	KEY	1						
10	80500006206	BEARING,BALL	2						
11	52430101090	WASHER,PLAIN	1						
12	52130302070	WASHER (LOCK)	1						
13	91209201200	NUT	1						
14	91206030009	SEAL,OIL	1						
15	91206020007	SEAL,OIL	1						
16	90191208020	BOLT	8		M8X20				
17	90302040801	WASHER,SPRING	8		8				
18	80560010000	BALL,STEEL	1		10				
19	52430604190	SPRING	1						
20	52430604180	PACKING	1						
21	52430304150	BOLT (ADJUSTING)	1						
22	90209201200	NUT	1		M12				
23	52130307290	PACKING	2						
24	52130202240	PACKING	2						
25	90191210030	BOLT	6		M10X30				
26	90302041001	WASHER,SPRING	6		10				
50	52130202001	POWER TAKE OFF	1						

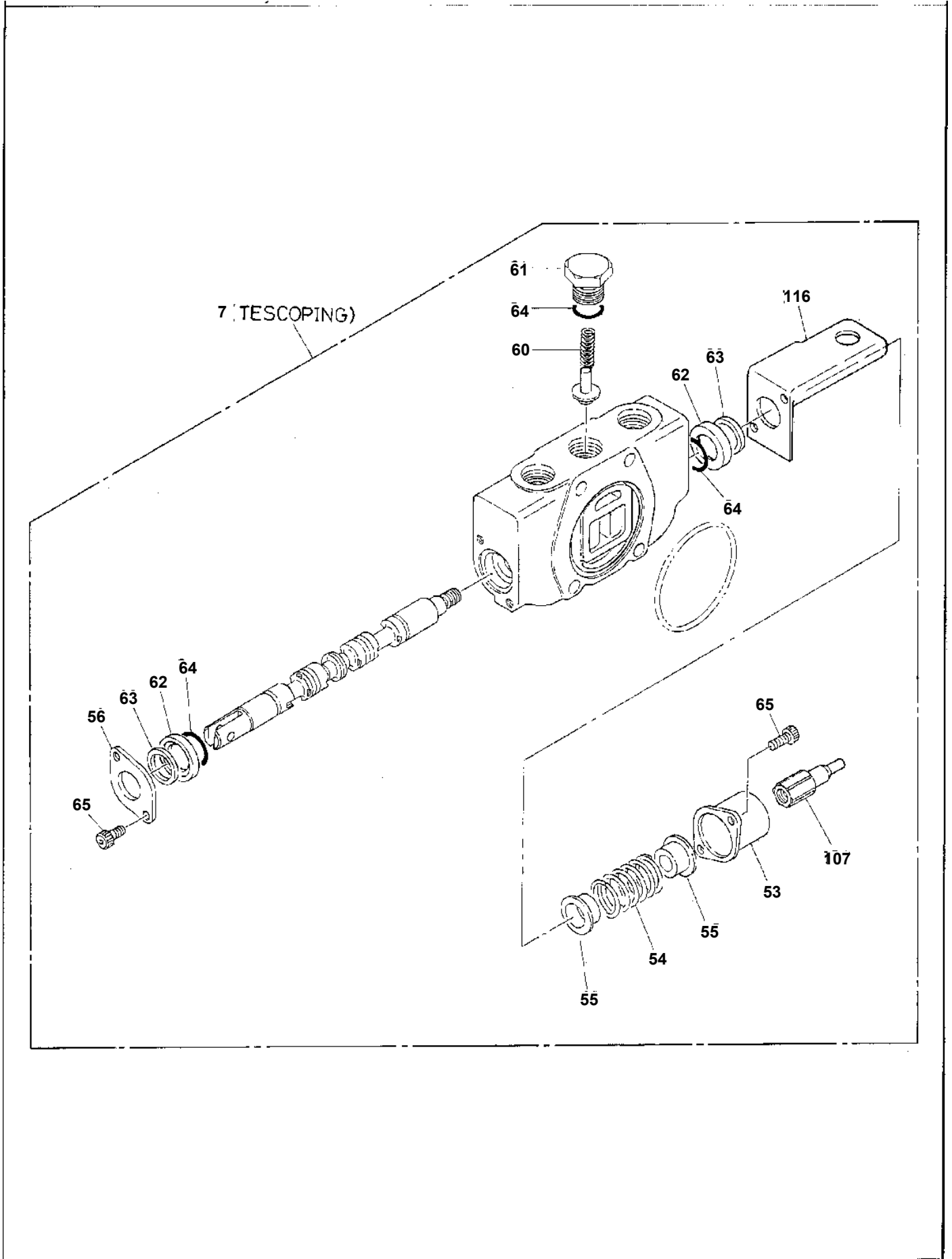
TM-Z600 31102000023A FRAME/SL,MANUAL,4 SECT. BOOM

Pos No.	Parts No	Parts Name	Qty	Unit	Technical Data	Serial No (Start)	Serial No (End)	Rema
1	90101510016	BOLT	4		M10X16			
2	90302041001	WASHER,SPRING	4		10			
3	36102585010	COVER	1					
4	91001211500	O-RING	1		1A G115			
5	37001200600	SPRING	1					
6	36621450000	VALVE,SAFETY	1					
7	36670860000	ELEMENT	1					
8	80316030060	PLUG	1		PT3/8			
9	53156005000	BREATHER ASSY (OB-10T)	1					
10	36100365030	HOSE	1					
11	36100365040	BAND	2					
21	53156005010	ELEMENT (OB-10T & OB-10B)	1					
22	53156005020	PACKING SET	1					
100	36100360000	TANK,OIL	1					

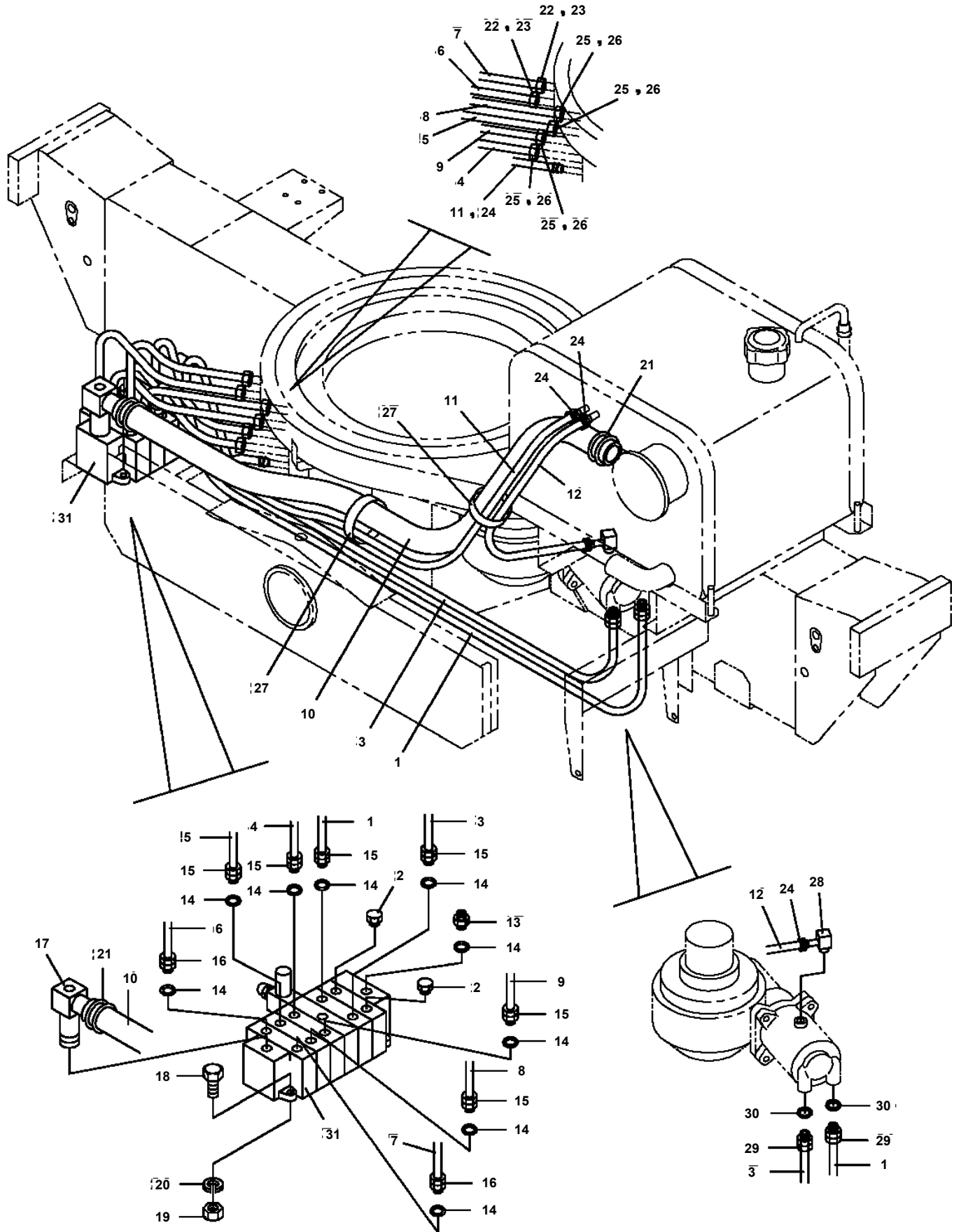
TM-Z600 31102000023A FRAME/SL, MANUAL, 4 SECT. BOOM
PB1320185-00 VALVE, MANUAL CONTROL



TM-Z600 31102000023A FRAME/SL, MANUAL, 4 SECT. BOOM
PB1320273-00 VALVE, MANUAL CONTROL



**TM-Z600 31102000023A FRAME/SL,MANUAL,4 SECT. BOOM
PB1410306-00 PIPING,HYDRAULIC LOWER**



TM-Z600 31102000023A FRAME/SL,MANUAL,4 SECT. BOOM

Pos No.	Parts No	Parts Name	Qty	Unit	Technical Data	Serial No (Start)	Serial No (End)	Rem
4	31610960100	PLATE	8				655347	
11	31610961000	CASE,OUTER (H=2053)	1					
12	31610783000	CASE,INNER	2					
13	(*****)	CYLINDER,JACK	2					
14	90101210014	BOLT	6		M10X14			
15	90302041001	WASHER,SPRING	18		10			
16	37000141460	PIN	2					
17	31610740100	COVER	2					
18	50822012000	SHIM	4					
19	90191210025	BOLT	4		M10X25			
20	50822014000	PLATE	2					
21	37001400200	SPRING	2					
22	37002000540	PLATE,SLIDE	4					
23	80185206020	SCREW,MACHINE	12		M6X20			
24	90302040601	WASHER,SPRING	12		6			
25	90201200600	NUT	4		M6			
26	37000104130	PIN	2					
27	31200030530	PLATE	2					
28	90191210020	BOLT	4		M10X20			
29	37000108350	PIN	2					
30	80602110350	RING,RITAINING	4		R35			
31	31610105000	FLOAT ASSY	2					
32	90240200600	NUT,CAP	8		M6			
33	37002001250	PLATE,SLIDE	8					
34	80430410450	JOINT	2				655325	
	80430410450	JOINT	2					
	80491002020	JOINT (WITH O-RING)	2			655326		
35	37002442860	HOSE	4		L=2370			
36	91810130240	FASTENER	8					
37	82100001412	TUBE,SPIRAL	2	M	SE-12BK			
38	37000149500	PIN	2					
39	80602110200	RING,RITAINING	4		R20			
40	36041670000	CYLINDER,EXTENSION (LEFT)	1					
41	82100002039	CLAMP	2					
42	90240200800	NUT,CAP	6		M8			
43	90302040801	WASHER,SPRING	6		8			
44	37000600920	CLAMP	2		L=90			
45	80430450450	JOINT	4		YL502			
51	31610962000	CASE,OUTER (H=2053)	1					
80	36041680000	CYLINDER,EXTENSION (RIGHT)	1					
91	37000153080	PIN	2					
92	90101210025	BOLT	4		M10X25			
101	31610055010	TRUNNION	2					
117	37002000670	PLATE,SLIDE	12					
121	91002801100	O-RING	2		1B P11	655326		
141	31611300600	PLATE,NAME (YELLOW)	4			655344		
142	31611300500	PLATE,NAME (WHITE)	4			655344		

TM-Z600 31102000023A FRAME/SL, MANUAL, 4 SECT. BOOM

Pos No.	Parts No	Parts Name	Qty	Unit	Technical Data	Serial No (Start)	Serial No (End)	Remarks	Page
1	(*****)	OUTRIGGER (LEFT)	1						000
2	(*****)	OUTRIGGER (RIGHT)	1						000
11	37000153080	PIN	2						
12	90101210025	BOLT	4		M10X25				
13	90302041001	WASHER, SPRING	4		10				
14	90303071001	WASHER, PLAIN	2		10	655532			

TM-Z600 31102000023A FRAME/SL,MANUAL,4 SECT. BOOM

Pos No.	Parts No	Parts Name	Qty	Unit	Technical Data	Serial No (Start)	Serial No (End)
1	36620990000	VALVE,PILOT CHECK	1				
2	90131510035	BOLT,HEXAGON SOCKET	2		M10X35		655259
	90172110035	BOLT,HEXAGON SOCKET	2		M10X35	655260	
3	90131510025	BOLT,HEXAGON SOCKET	4		M10X25		655259
	90172110025	BOLT,HEXAGON SOCKET	4		M10X25	655260	
4	90302041001	WASHER,SPRING	4		10		
5	36032650001	CYLINDER,JACK	1				
11	36032651000	CYLINDER	1				
12	80136363071	PIN,SPLIT	1		6.3X71		
13	37001600000	NUT,CASTLE	1		M36		
14	36032654000	ROD	1				
15	91350207500	BEARING,PLAIN (WITH PACKINGX2)	1				
16	91002803400	O-RING	1		1B P34		
17	36032652000	PISTON	1				
18	36030643000	COVER,ROD	1				
19	91002907000	O-RING	1		1B G70		
20	91694006000	PACKING	1				
21	91410206002	RING,BACKUP	1				
22	36010130030	WASHER	1				
23	91660006000	SEAL,DUST	2				
24	80622000600	RING,RITAINING	1		SP60		
30	36032659900	PACKING SET	1		60X75		

CLICK HERE TO **DOWNLOAD** THE COMPLETE MANUAL

- Thank you very much for reading the preview of the manual.
- You can download the complete manual from: www.heydownloads.com by clicking the link below



- Please note: If there is no response to CLICKING the link, please download this PDF first and then click on it.

CLICK HERE TO **DOWNLOAD** THE COMPLETE MANUAL

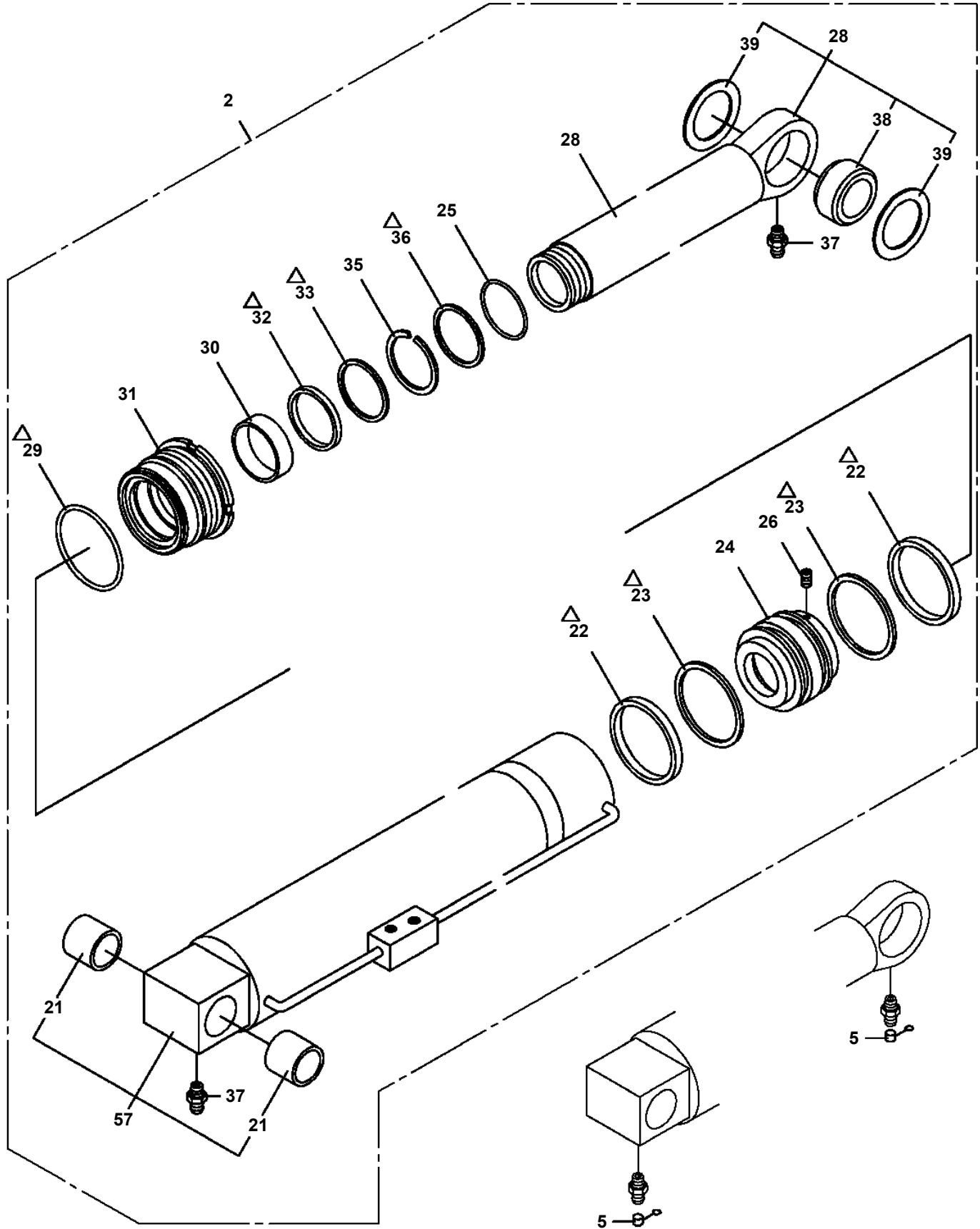
TM-Z600 31102000023A FRAME/SL,MANUAL,4 SECT. BOOM

Pos No.	Parts No	Parts Name	Qty	Unit	Technical Data	Serial No (Start)	Serial No (End)	Remarks	Pages
1	31700670100	LEVER	1						
2	31700621200	LEVER	1						
3	31700621300	LEVER	1						
4	31700620100	ROD	3						
5	37000105610	PIN	15		L=18				
6	80620210050	PIN,SNAP	15						
7	31320020071	ADJUSTER	2						
8	90201200800	NUT	2		M8				
9	37000537270	PLATE	8						
10	37000119130	PIN ASSY	1						
11	37001601520	NUT	12		M12				
12	31320830010	KNOB (BLACK)	12						
13	31700670200	LEVER	1						
14	31700620400	LEVER	1						
15	31700620500	LEVER	1						
16	31700620600	LEVER	1						
17	31700670300	LEVER	1						
18	37000116420	PIN ASSY	1						
19	31700620800	ROD	2						
20	80136340020	PIN,SPLIT	2		4X20				
21	31700621400	LEVER	1						
22	37001705510	CABLE,CONTROL	1				655169		
	37001705511	CABLE,CONTROL	1			655170			
23	31700622500	LINK	1						
24	37000401920	BEARING,PLAIN	2						
25	31700670400	LEVER	1						
26	31320841300	LEVER	2						
27	80720104025	PIN,SPRING	2						
28	37000306130	SPACER	1		L=8				
29	37000304160	SPACER	1		L=30				
30	37000153270	PIN	1						
31	82401600510	CLAMP	2		10		655179		
32	82100001411	TUBE,SPIRAL	1	M	SE-08BK		655169		
33	90101206008	BOLT	2		M6X8	655180			
34	90302040601	WASHER,SPRING	2		6	655180			
35	82100002006	CLAMP	2		WR10	655180			
41	80720104020	PIN,SPRING	1		4X20				

TM-Z600 31102000023A FRAME/SL,MANUAL,4 SECT. BOOM

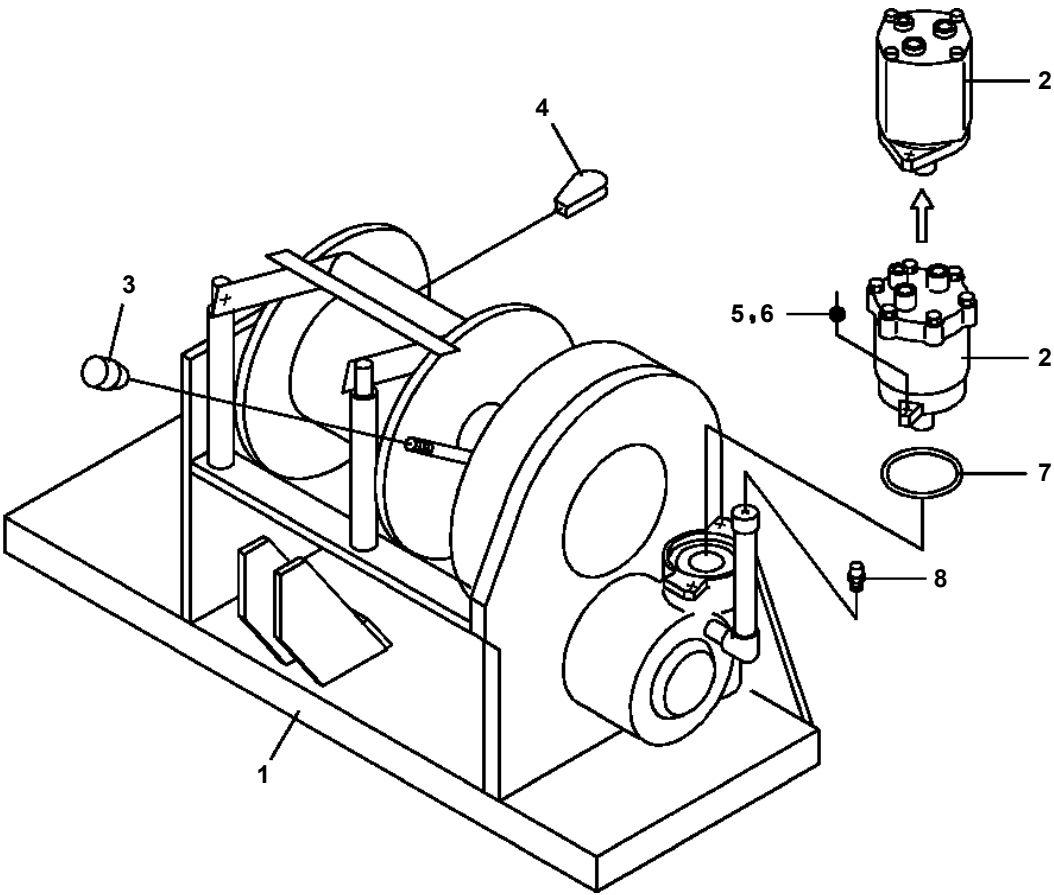
Pos No.	Parts No	Parts Name	Qty	Unit	Technical Data	Serial No (Start)	Serial No (End)	Remarks	Pages
1	80314110060	NUT	4		PT10				
2	80314120060	SLEEVE	4		PT10				
3	80314130080	FITTING	4		PA10PT1/4				
4	81408000130	PIPE,STEEL	1	M	10X1.8T				
5	81408000130	PIPE,STEEL	1	M	10X1.8T				

**TM-Z600 31102000023A FRAME/SL, MANUAL, 4 SECT. BOOM
PE1010170-02 CYLINDER, ELEVATING**

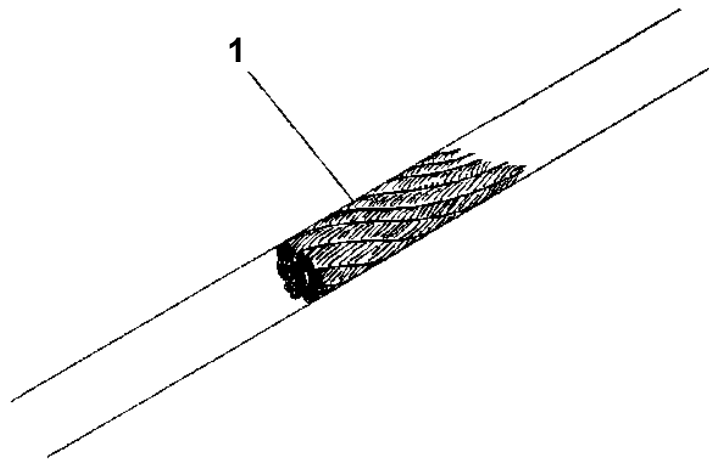


Δ : PACKING SET KEY NO. 80 (KEY NO. 22, 23, 25, 29, 32, 33, 36)

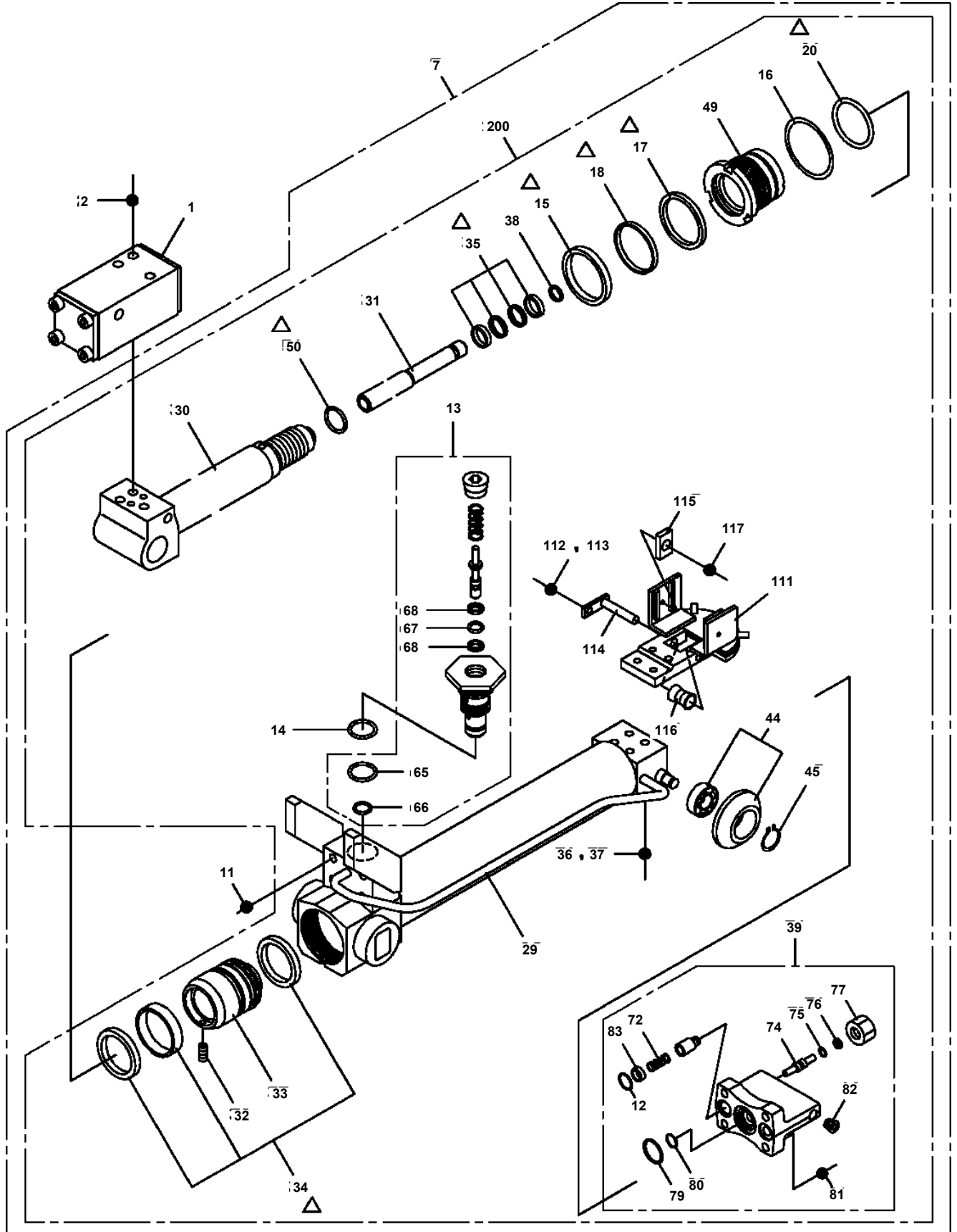
TM-Z600 31102000023A FRAME/SL,MANUAL,4 SECT. BOOM
PF1010210-00 WINCH (SELF)



TM-Z600 31102000023A FRAME/SL,MANUAL,4 SECT. BOOM
PF1070005-00 ROPE,WIRE



**TM-Z600 31102000023A FRAME/SL,MANUAL,4 SECT. BOOM
PG1050180-03 CYLINDER,TELESCOPING**

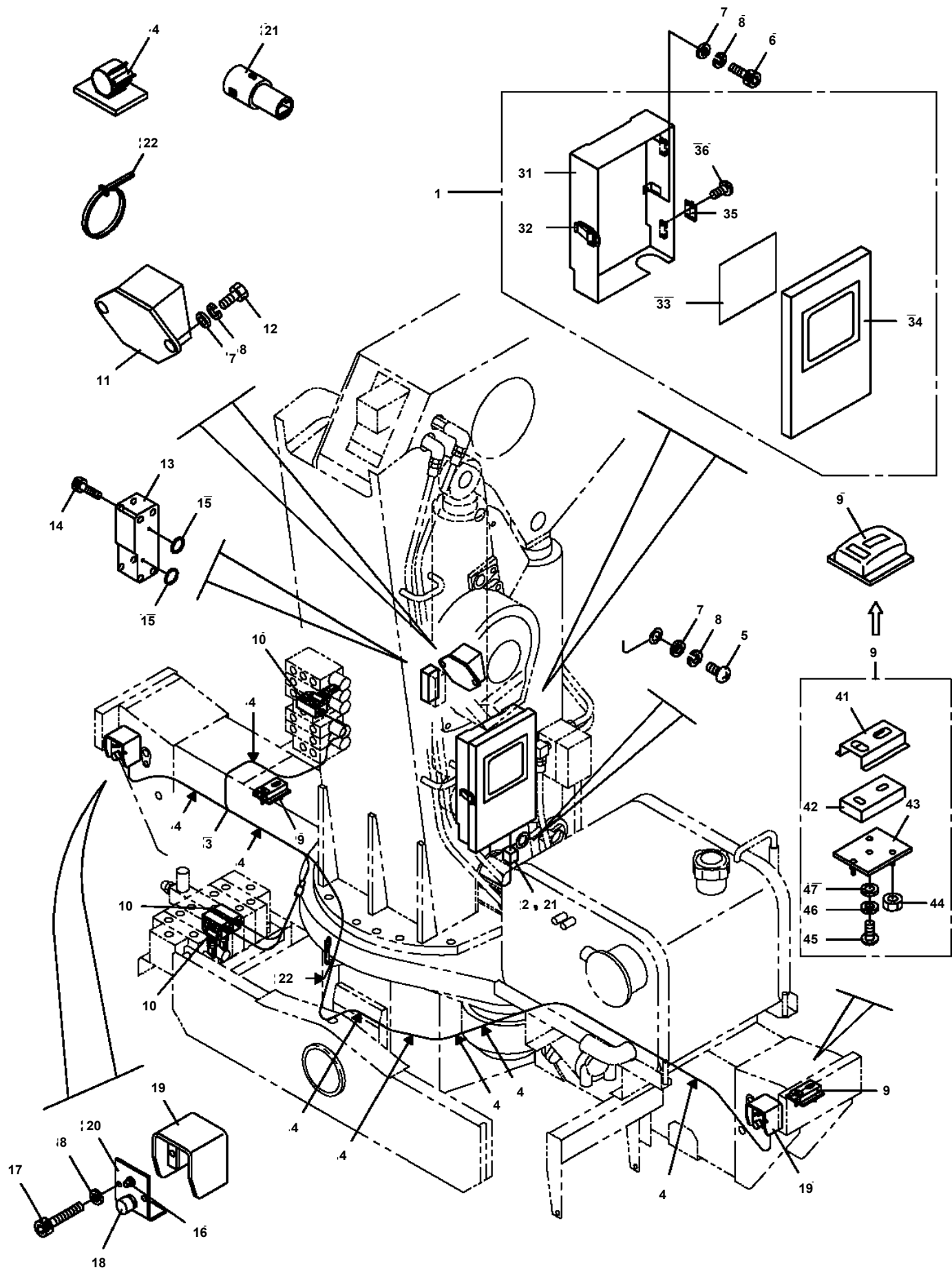


△:PACKING SET KEY NO. '90' (KEY NO.15,17,18,20,34,35,50)



△:PACKING SET KEY NO. '91' (KEY NO.15,17,18,20,34,35,50)

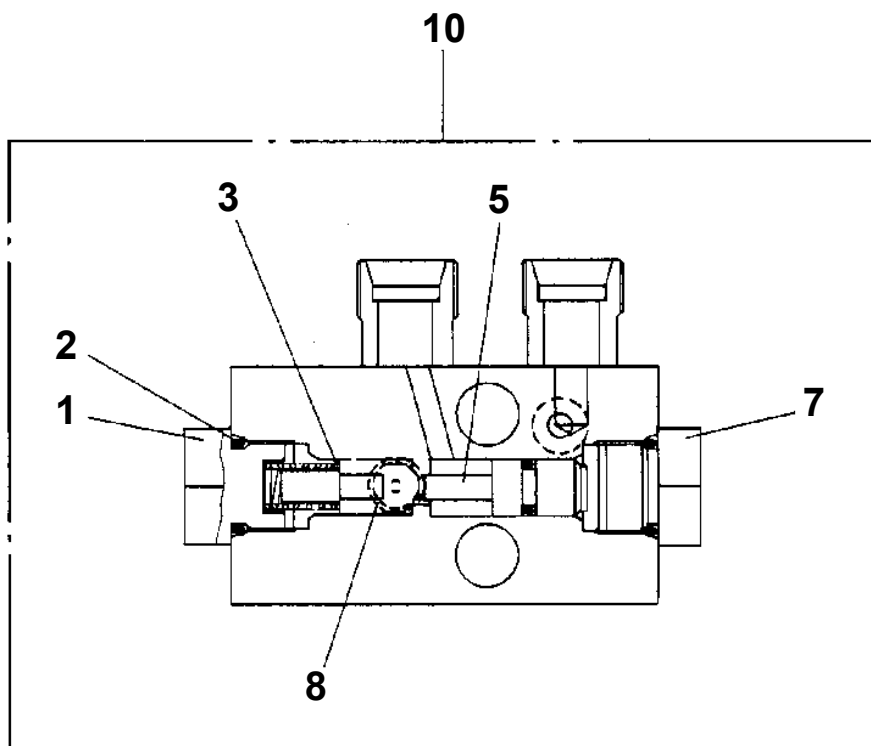
**TM-Z600 31102000023A FRAME/SL, MANUAL, 4 SECT. BOOM
PH1180106-01 CONNECTION, MOMENT LIMITER SYSTEM**



TM-Z600 31102000023A FRAME/SL,MANUAL,4 SECT. BOOM

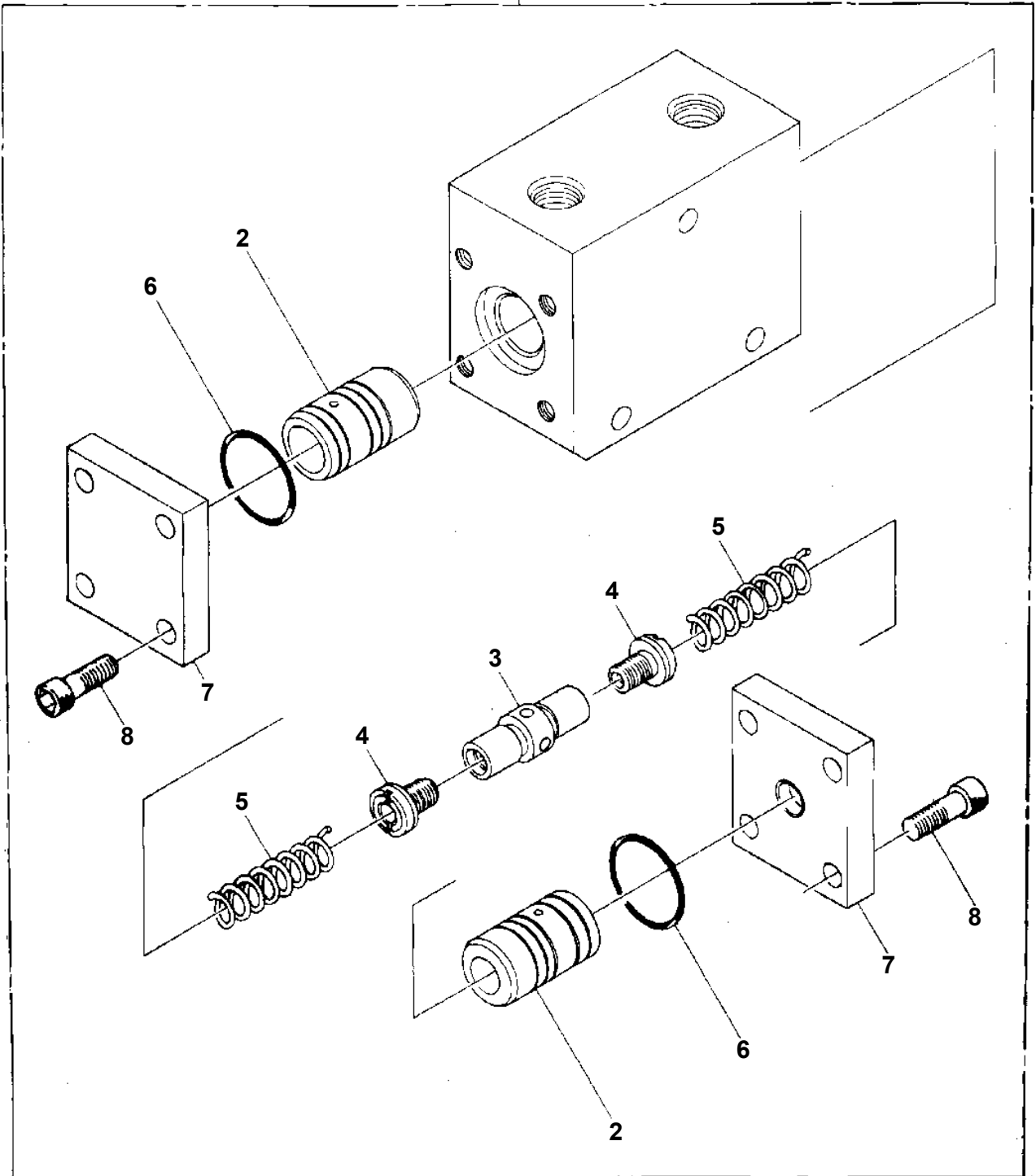
Pos No.	Parts No	Parts Name	Qty	Unit	Technical Data	Serial No (Start)	Serial No (End)	Remarks
2	80500006306	BEARING,BALL	1					
3	80601110300	RING,RITAINING	1		S30			
11	80720110020	PIN,SPRING	1		10X20			
12	36660495040	BARREL,CYLINDER	1					
13	36660495060	PIN	3					
14	36660495070	HOLDER,PLUNGER	1					
15	80730060014	PIN	2		6X14			
16	36660495080	PLATE (CYLINDER BARREL)	1					
17	36660495090	PLATE (VALVE)	1					
18	13615101290	RING,RETAINING	1					
19	80720106014	PIN,SPRING	2		6X14			
20	13615101280	BEARING,PLAIN	1					
21	80316030040	PLUG	3		PT1/4			
22	36660495100	SCREW (AIR BREATHER)	1					
23	91002800300	O-RING	1		1B P3			
24	91002800800	O-RING	3		1B P8			
26	36660495110	PLUG	6					
27	36660495120	THROTTLE	1		M4			
29	36660495130	PISTON	1					
30	91001102400	O-RING	1		1A P24			
31	36660495140	WASHER	1		M8			
32	90201200800	NUT	1		M8			
33	36660495150	SEAT,SPRING	1					
34	36660495160	PISTON	1					
35	36660495170	SPRING (C)	1					
36	36660495180	SPRING (D)	1					
37	36660495190	CAP (COUNTER)	1					
38	91002803000	O-RING	2		1B P30			
39	36660495200	CAP (PILOT)	1					
40	80316030020	PLUG	1		PT1/8			
42	36660495210	SPRING (CHECK)	1					
43	36660495220	PLUG	1		PF3/4			
44	91002802201	O-RING	1		1B P22A			
45	36660495230	VALVE,RELIEF	1					
47	36660495280	SEAT,SPRING	2					
48	36660495290	SPRING	2					
49	36660495300	PLUG	2					
50	91002801400	O-RING	2		1B P14			
51	36660495310	CAP (CHECK VALVE)	1					
52	91001101800	O-RING	1		1A P18			
53	91001212000	O-RING	1		1A G120			
54	90131510085	BOLT,HEXAGON SOCKET	1		M10X85			
56	90302041001	WASHER,SPRING	6		10			
74	36340055410	KEY	1					
81	36660495450	BOLT,HEXAGON SOCKET	8		M12X110			
82	90302041201	WASHER,SPRING	8		12			
87	36660495460	THROTTLE	1		M6			
92	36660495050	SEAT,SPRING	1					
93	13115101070	SPRING (CENTER)	1					
94	80602110450	RING,RITAINING	1		R45			
103	36660495240	SEAT,SPRING	1					
104	36660495250	SPRING	1					
105	91002801400	O-RING	1		1B P14			
106	36660495260	SCREW (ADJUSTING)	1					
107	36660495270	NUT	1		M16			
108	91002801600	O-RING	1		1B P16			
109	91002802201	O-RING	1		1B P22A			
121	36660495500	SHAFT	1					
125	36660985040	PLATE (CAM)	1					
139	90131510040	BOLT,HEXAGON SOCKET	5		M10X40			
142	80602110720	RING,RITAINING	1		R72			
145	36660495490	FLANGE	1					
146	91252104500	SEAL,OIL	1					

TM-Z600 31102000023A FRAME/SL, MANUAL, 4 SECT. BOOM
PI1280162-00 VALVE, PILOT CHECK

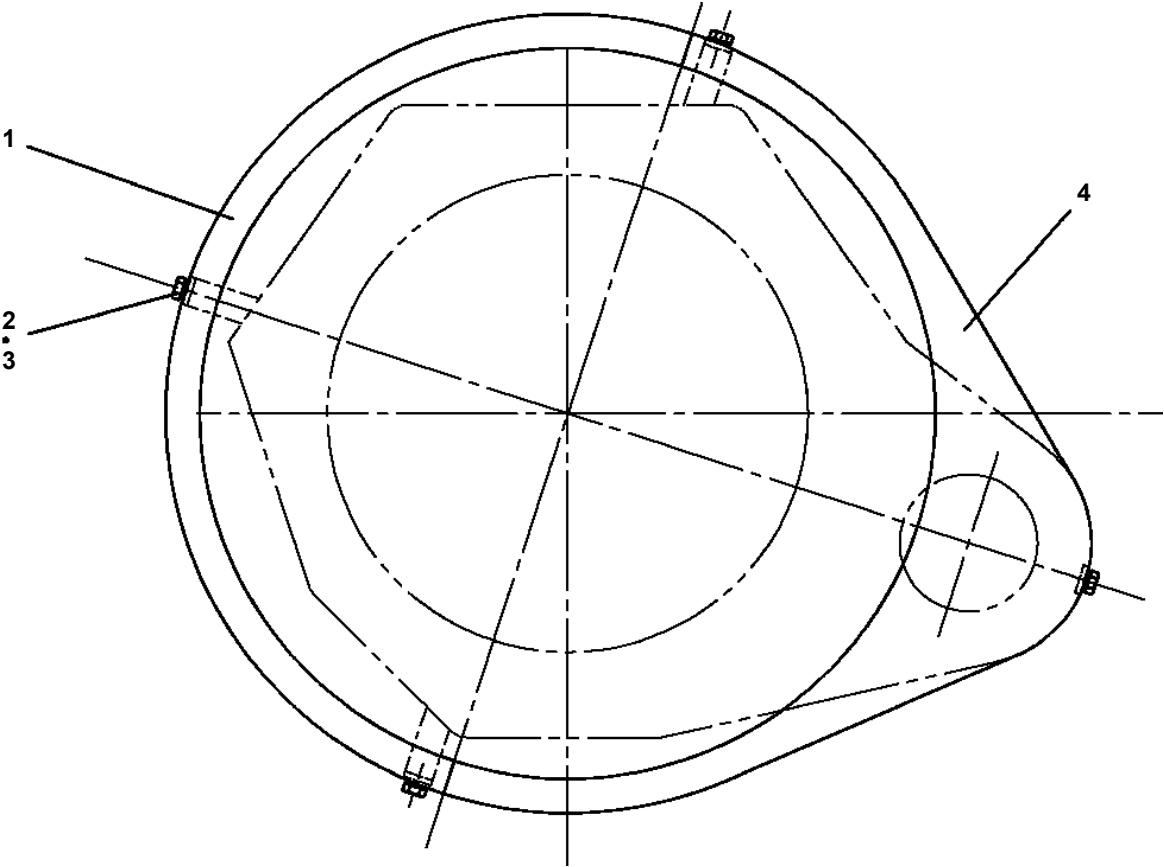


TM-Z600 31102000023A FRAME/SL, MANUAL, 4 SECT. BOOM
PI1330006-00 VALVE, DIVIDING & COMBINING (MURAKAMI)

20



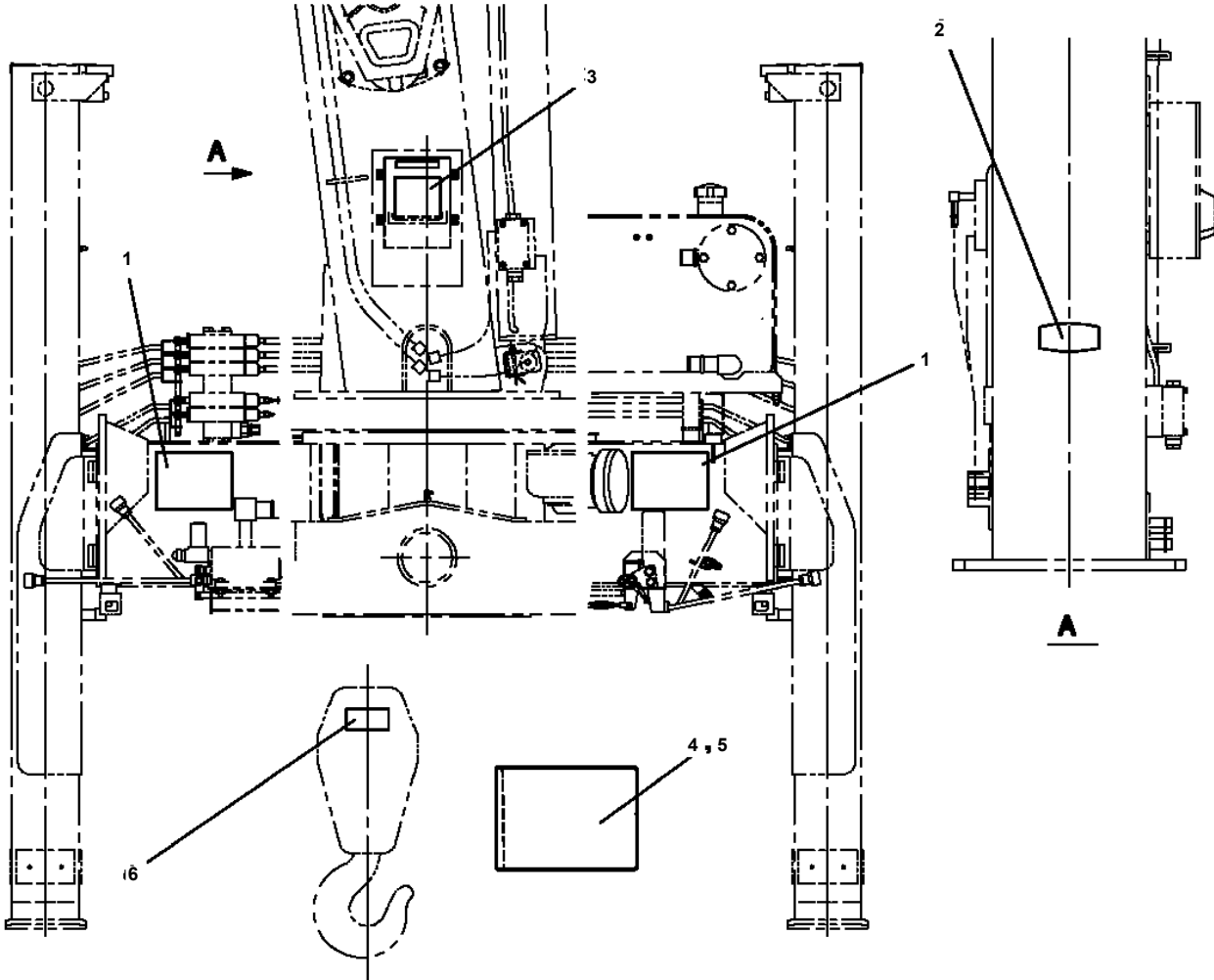
TM-Z600 31102000023A FRAME/SL,MANUAL,4 SECT. BOOM
PK1200153-00 COVER,SWING FRAME



TM-Z600 31102000023A FRAME/SL,MANUAL,4 SECT. BOOM

Pos No.	Parts No	Parts Name	Qty	Unit	Technical Data	Serial No (Start)	Serial No (End)	Remarks	Page
1	36660025000	SHAFT	1						
3	80500006206	BEARING,BALL	1						
4	36660025021	COVER (OIL SEAL)	1						
5	36660025140	SEAL,OIL	1						
6	36663485110	RING,RETAINING	1		R72				
7	80720110020	PIN,SPRING	1		10X20				
8	36660025030	PLATE (CAM)	1						
9	80500006203	BEARING,BALL	1						
10	36660025040	O-RING	1		S112				
11	36660025051	COVER (BOTTOM)	1						
12	18335116540	WASHER,SPRING	6		M10				
13	90171110035	BOLT	6		M10X35				
16	14125151020	KEY	1						
17	91001206500	O-RING	1		1A G65				
18	80316030040	PLUG	1		PT1/4				
19	36660125050	PLUG	1		PT1/4				
20	36660025060	BARREL,CYLINDER	1						
21	36660125060	PLUG	2		PF3/8				
43	36660025090	SEAT,SPRING	5						
44	36660025100	SPRING (PLUNGER)	5						
46	12645103171	SPRING (CENTER)	1						
47	14125151300	RING,RETAINING	1						
100	36660020000	MOTOR,OIL	1						

TM-Z600 31102000023A FRAME/SL, MANUAL, 4 SECT. BOOM
PO1010943-00 PLATE ASSY, NAME (SL)



CLICK HERE TO **DOWNLOAD** THE COMPLETE MANUAL

- Thank you very much for reading the preview of the manual.
- You can download the complete manual from: www.heydownloads.com by clicking the link below



- Please note: If there is no response to CLICKING the link, please download this PDF first and then click on it.

CLICK HERE TO **DOWNLOAD** THE COMPLETE MANUAL