

TM-Z600 31102000002A FRAME/STD,MANUAL,3 SECT. BOOM

PB1000215-03 HYDRAULIC PRESSURE GENERATING SYSTEM

PC1000163-00 OUTRIGGER SYSTEM

PD1000201-01 SWING SYSTEM

PE1000198-00 ELEVATING SYSTEM

PF1000188-00 WINCH SYSTEM

PG1000197-00 TELESCOPING SYSTEM

PH1000185-00 SAFETY DEVICES

PI1000218-00 HYDRAULIC DEVICES

PK1000208-00 FRAME

PL1000205-01 CONTROL DEVICES

PO1000122-01 INDICATION PLATES

**PW1000040-01 ACCESSORIES & TOOLS
ASSEMBLY**

CLICK HERE TO **DOWNLOAD** THE COMPLETE MANUAL

- Thank you very much for reading the preview of the manual.
- You can download the complete manual from: www.heydownloads.com by clicking the link below



- Please note: If there is no response to CLICKING the link, please download this PDF first and then click on it.

CLICK HERE TO **DOWNLOAD** THE COMPLETE MANUAL

TM-Z600 31102000002A FRAME/STD,MANUAL,3 SECT. BOOM

Pos No.	Parts No	Parts Name	Qty	Unit	Technical Data	Serial No (Start)	Serial No (End)	Rema
1	(***** 36072460000	WINCH WINCH (HARTYS)	1 1			655379		
3	36090820000	HOOK (SHEAVE 2 PC'S)	1					
7	37001801080	ROPE,WIRE	1					
8	(***** 37001801080	SOCKET,ROPE	1					
9	(***** 37001801080	MOTOR,HYDRAULIC (WINCH)	1				655139	
	(***** 37001801080	MOTOR,HYDRAULIC (WINCH)	1			655140		

TM-Z600 3110200002A FRAME/STD,MANUAL,3 SECT. BOOM

Pos No.	Parts No	Parts Name	Qty	Unit	Technical Data	Serial No (Start)	Serial No (End)
1	(***** *****)	OPERATION SYSTEM, CONTROL VALVE	1				655290
	(***** *****)	OPERATION SYSTEM, CONTROL VALVE	1			655291	

TM-Z600 3110200002A FRAME/STD,MANUAL,3 SECT. BOOM

Pos No.	Parts No	Parts Name	Qty	Unit	Technical Data	Serial No (Start)	Serial No (End)	Remarks	Page
1	36400025010	CASE	1						
2	36400015020	GEAR	1						
3	36400015030	SHAFT	1						
4	36400015040	ADAPTER	1						
5	36400015050	SHAFT (FORK)	1						
6	36400015060	FORK	1						
7	52430604200	BALL,STEEL	1		10				
8	52430604190	SPRING	1						
9	52430304150	BOLT (ADJUSTING)	1						
10	52430604180	PACKING	1						
11	52430604210	NUT	1		M12				
12	80500006306	BEARING,BALL	1						
13	80500006007	BEARING,BALL	1						
14	91206035002	SEAL,OIL	1						
15	91206020007	SEAL,OIL	1						
16	36400015070	O-RING	1						
17	36400015080	PLUG	1						
18	36400015090	PACKING	1						
19	52630203020	PACKING	1						
20	36400015100	BOLT	2		M12X50X1.15				
21	90264201200	NUT	2		M12				
22	90302041201	WASHER,SPRING	2		12				
23	90191210045	BOLT	2		M10X45				
24	36400025020	BOLT	6		M10X45X1.5				
25	90264201000	NUT	6		M10				
26	90302041001	WASHER,SPRING	8		10				
50	36400020000	POWER TAKE OFF	1						

TM-Z600 31102000002A FRAME/STD,MANUAL,3 SECT. BOOM

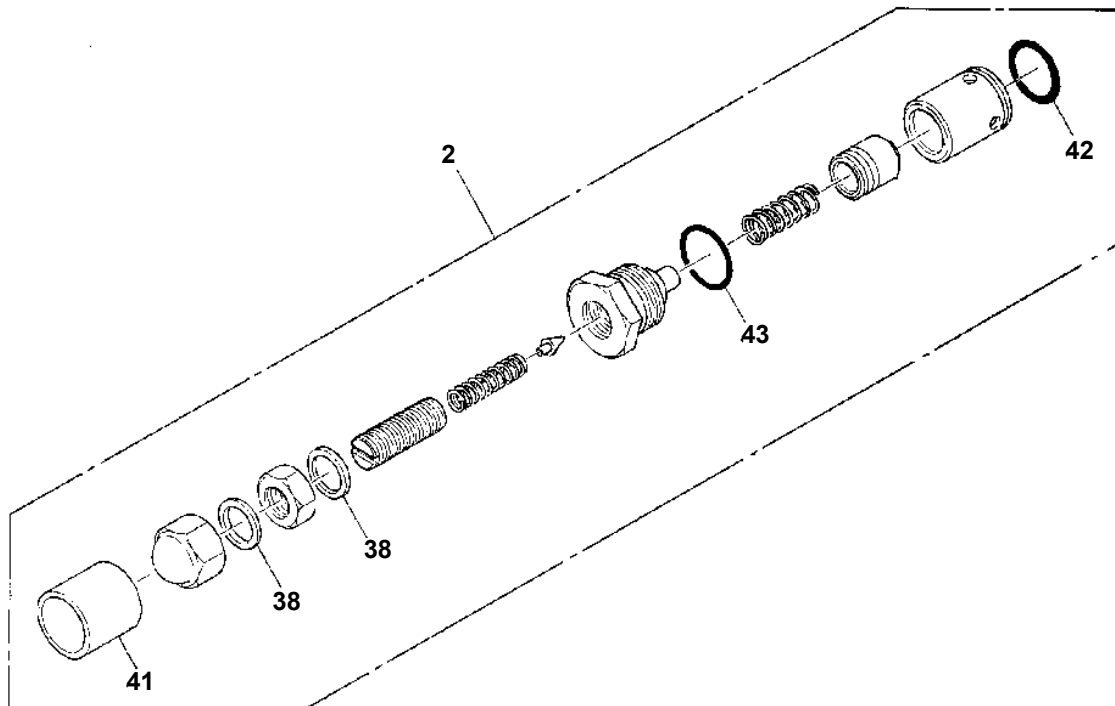
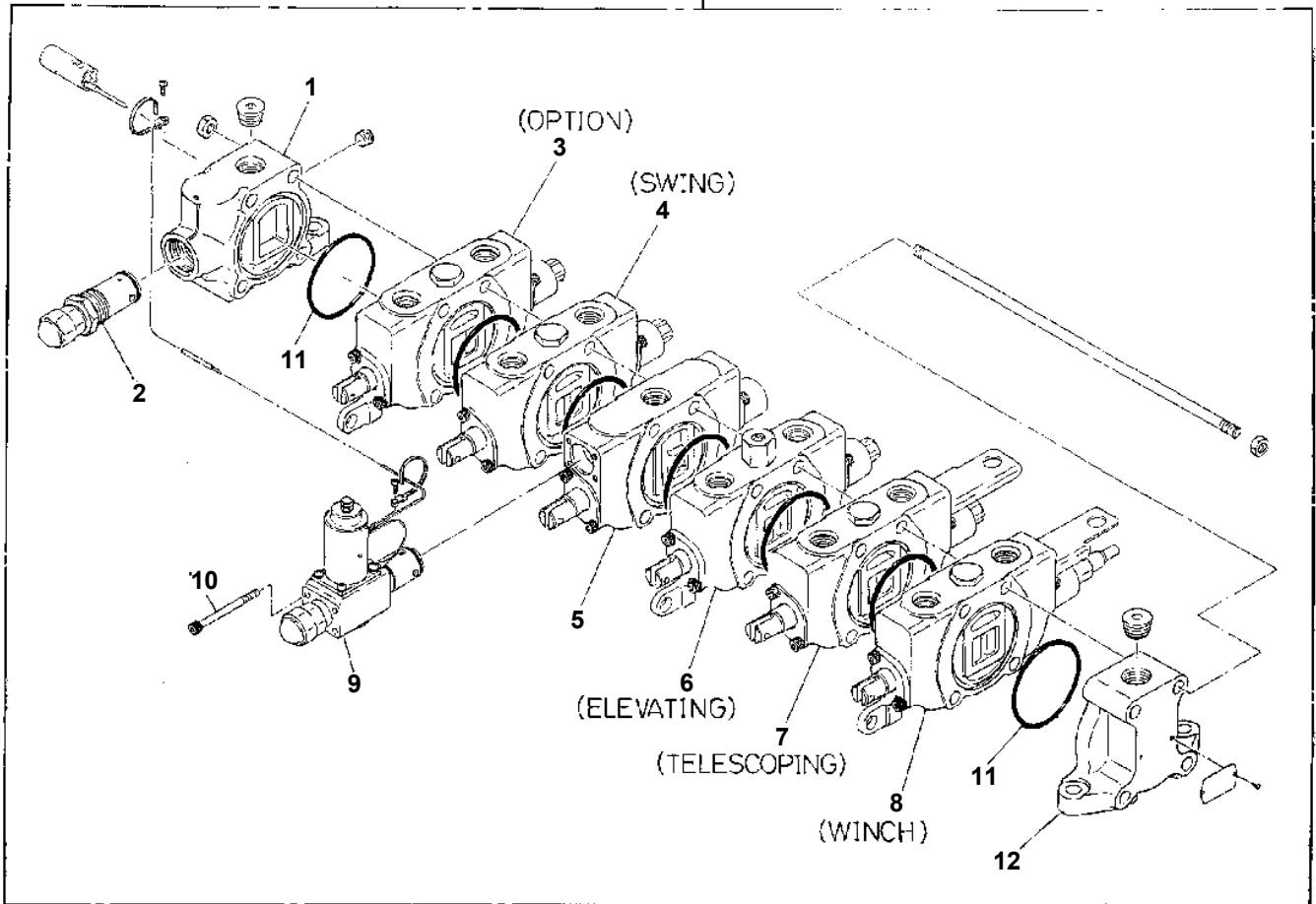
Pos No.	Parts No	Parts Name	Qty	Unit	Technical Data	Serial No (Start)	Serial No (End)	Remarks	Pages
1	36650715010	COVER (FRONT)	1						
5	36650715020	PLATE (SIDE)	2						
6	36650715030	COVER (REAR)	1						
9	36650715040	GASKET	2						
10	36650715050	GASKET	2						
11	36650715060	BACKUP STRIP	2						
12	53063551010	SEAL,OIL	1						
13	80602110360	RING,RITAINING	1		R36				
14	90302041201	WASHER,SPRING	4		12				
20	36650770000	PUMP,HYDRAULIC	1						

TM-Z600 3110200002A FRAME/STD,MANUAL,3 SECT. BOOM

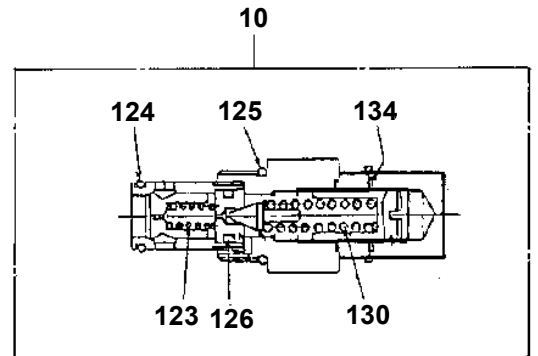
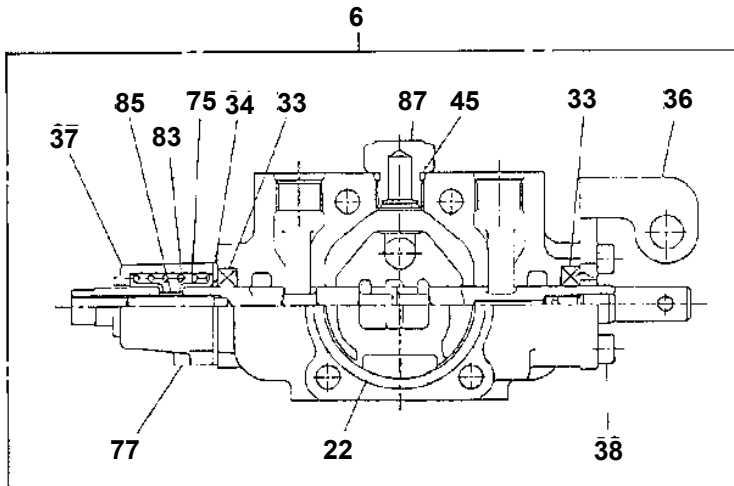
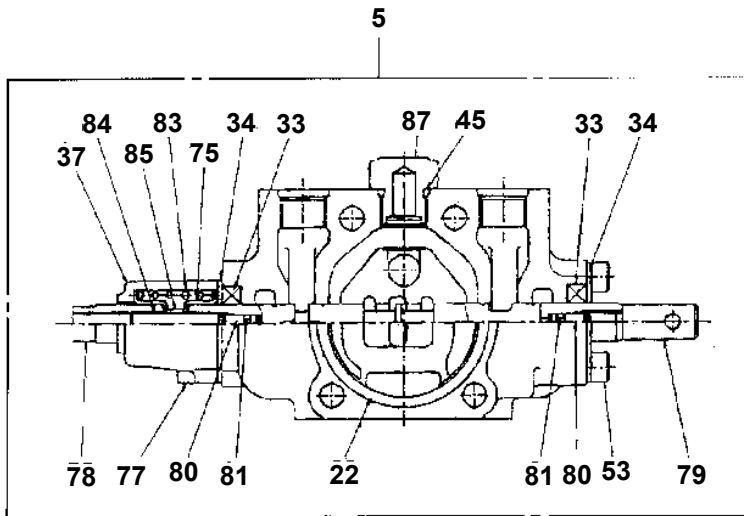
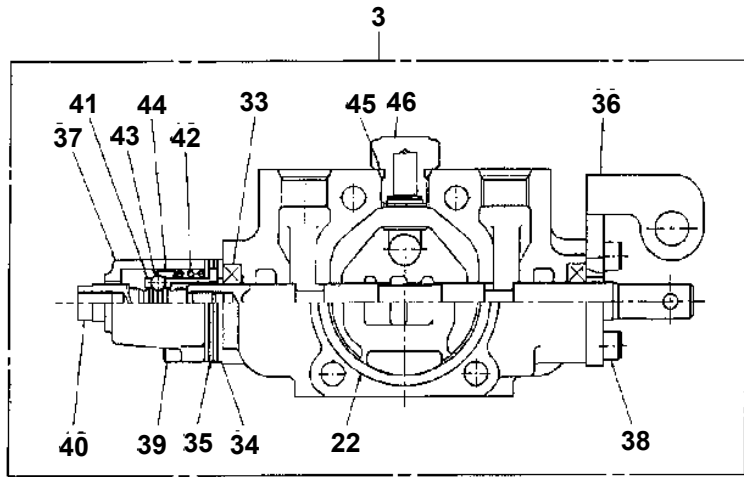
Pos No.	Parts No	Parts Name	Qty	Unit	Technical Data	Serial No (Start)	Serial No (End)	Remarks	Page
1	31630100010	SUPPORT	1				NA0394		
	31630100011	SUPPORT	1			NA0395			
2	31630100020	COVER	1						
3	31630100030	BRUSH	2						
4	80171203010	SCREW,MACHINE	4		M3X10				
5	90303290301	WASHER,PLAIN	6		3				
6	90201800300	NUT	4		M3				
7	90102208014	BOLT	4		M8X14				
8	90302040801	WASHER,SPRING	6		8				
9	90303070801	WASHER,PLAIN	4		8				
10	31630100060	RING,SLIP	1						
11	90180208016	BOLT,BUTTON	2		M8X16				
12	31630100040	HARNESS	1						
13	31630720100	CORE	1						
14	91531209000	PACKING	2						
15	91100309000	SEAL,RING	9						
16	31630100150	BODY	1				NA0394		
	31630100151	BODY	1			NA0395			
17	90102210025	BOLT	4		M10X25				
18	90302041001	WASHER,SPRING	4		10				
19	90201201000	NUT	4		M10				
20	90171114025	BOLT	2		M14X25				
21	31630100270	PLATE	1						
22	31630100280	PLATE	1						
23	80316030060	PLUG	2		PT3/8				
24	91002801800	O-RING	2		1B P18				
25	91002801400	O-RING	4		1B P14				
26	31630720200	JOINT	1						
27	91803600250	CLIP	1		D=18-25				
28	37002449720	HOSE	1		L=980				
29	37002449730	HOSE	1		L=1030				
30	37002440270	HOSE	2		L=1000	655270			
31	37002448690	HOSE	2		L=1030	655270			
32	37002511010	HOSE	1						
41	90171114030	BOLT	2		M14X30				
42	31630120010	PLATE	1						
43	90101510020	BOLT	4		M10X20				
50	31630720000	JOINT ASSY,SWIVEL	1						
60	31630099900	PACKING SET	1						

TM-Z600 31102000002A FRAME/STD,MANUAL,3 SECT. BOOM
PB1320273-00 VALVE,MANUAL CONTROL

200



TM-Z600 3110200002A FRAME/STD,MANUAL,3 SECT. BOOM
 PB1320377-00 VALVE,MANUAL CONTROL (OUTRIGGER)



TM-Z600 3110200002A FRAME/STD,MANUAL,3 SECT. BOOM

Pos No.	Parts No	Parts Name	Qty	Unit	Technical Data	Serial No (Start)	Serial No (End)	Rem
11	31620064000	COVER	2				655228	
	31620064001	COVER	2			655229		
12	80185306016	SCREW,MACHINE	2		M6X16			
13	37000153180	PIN	2					
14	80602110200	RING,RITAINING	4		R20			
15	36041690000	CYLINDER,EXTENSION (LEFT)	1					
16	31610900100	CASE,INNER	2					
17	31610210000	CYLINDER,JACK(FRONT)	2					
18	90101210030	BOLT	8		M10X30			
19	90302041001	WASHER,SPRING	12		10			
20	31620386500	GUIDE	8					
21	37002414100	HOSE	4		L=1320			
22	82100001412	TUBE,SPIRAL	2	M	SE-12BK			
23	91810130240	FASTENER	8					
24	31610900510	PLATE	2					
25	80430450450	JOINT	4		YL502			
35	36041700000	CYLINDER,EXTENSION (RIGHT)	1					
41	37000153080	PIN	2					
42	90101210025	BOLT	4		M10X25			
44	90303071001	WASHER,PLAIN	2		10	655532		
61	31611300600	PLATE,NAME (YELLOW)	4			655344		
62	31611300500	PLATE,NAME (WHITE)	4			655344		

CLICK HERE TO **DOWNLOAD** THE COMPLETE MANUAL

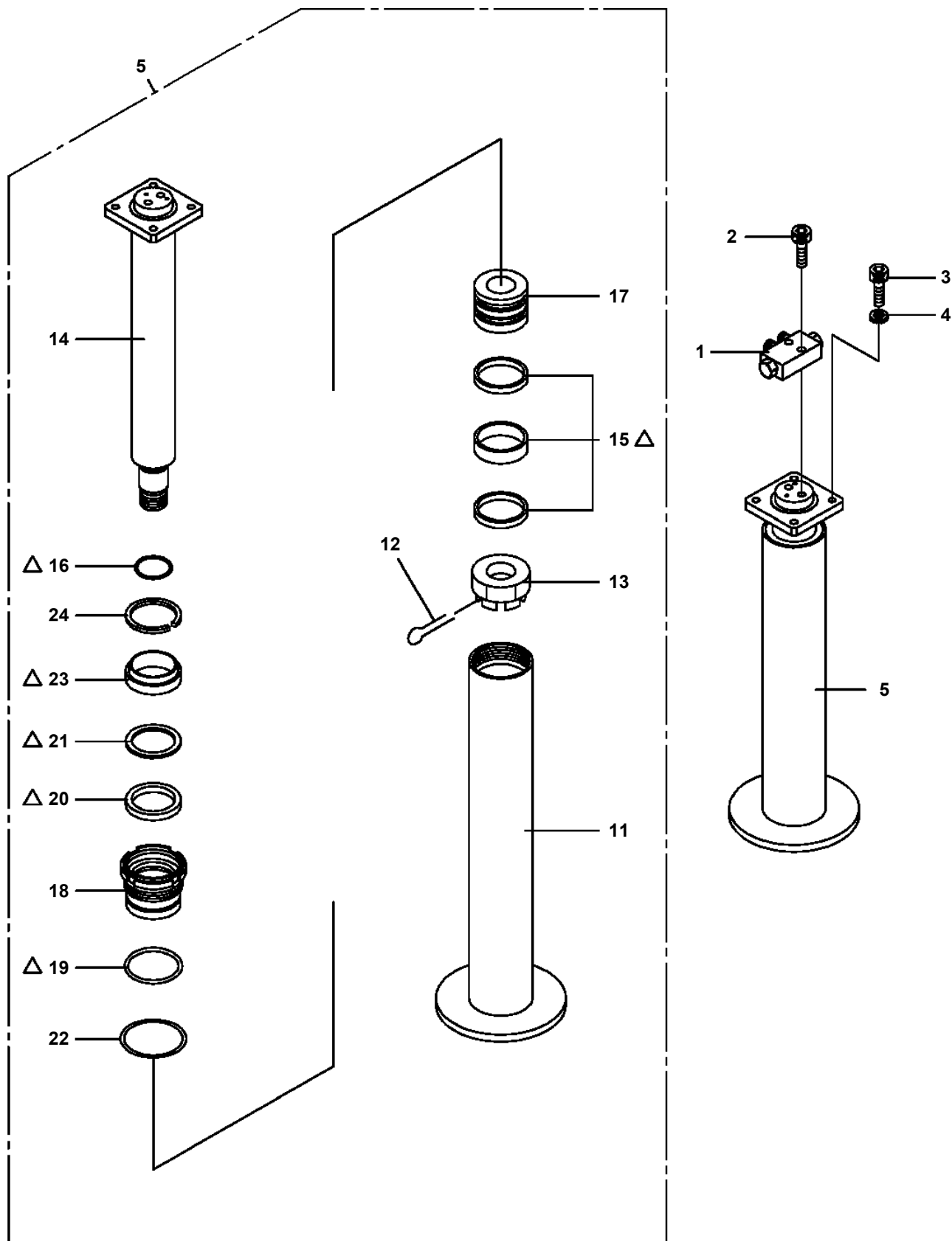
- Thank you very much for reading the preview of the manual.
- You can download the complete manual from: www.heydownloads.com by clicking the link below



- Please note: If there is no response to CLICKING the link, please download this PDF first and then click on it.

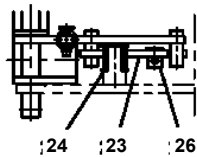
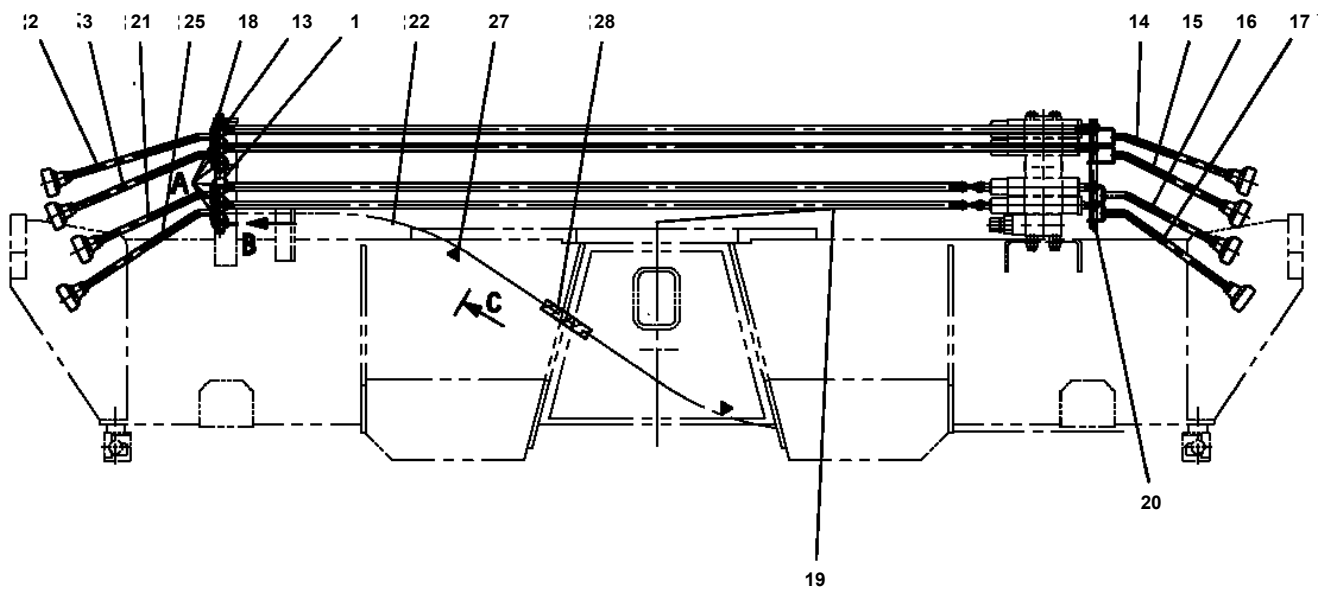
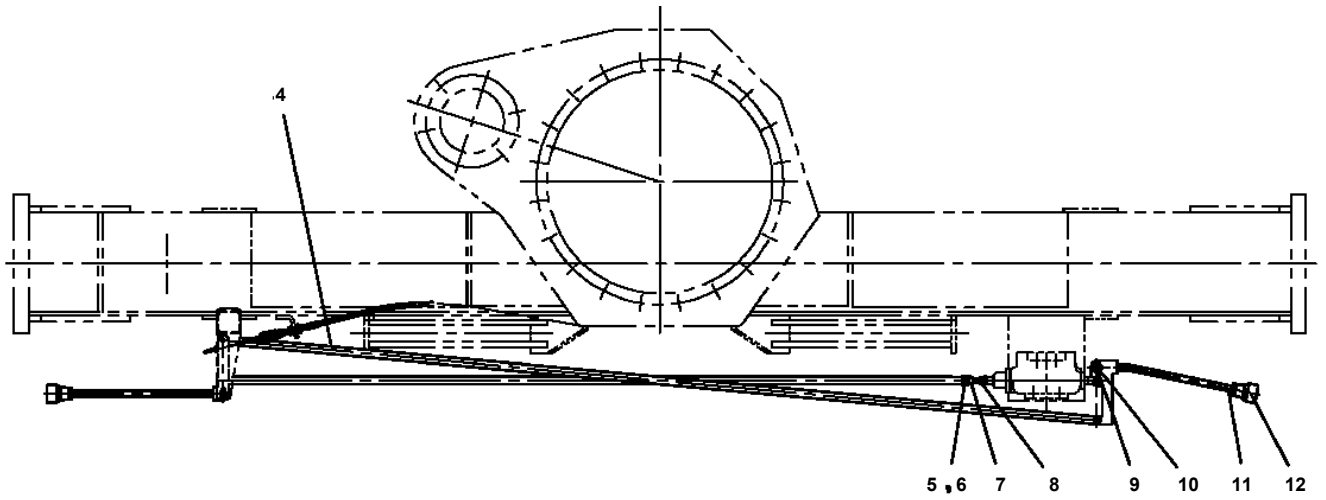
CLICK HERE TO **DOWNLOAD** THE COMPLETE MANUAL

TM-Z600 3110200002A FRAME/STD,MANUAL,3 SECT. BOOM
 PC1030126-01 CYLINDER,JACK (REAR/STROKE 330MM)

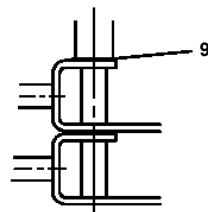


△:PACKING SET KEY NO.30 (KEY NO.15,16,19,20,21,23)

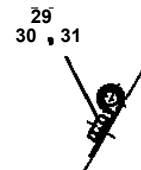
**TM-Z600 31102000002A FRAME/STD,MANUAL,3 SECT. BOOM
PC1100100-01 OPERATION SYSTEM, OUTRIGGER**



B

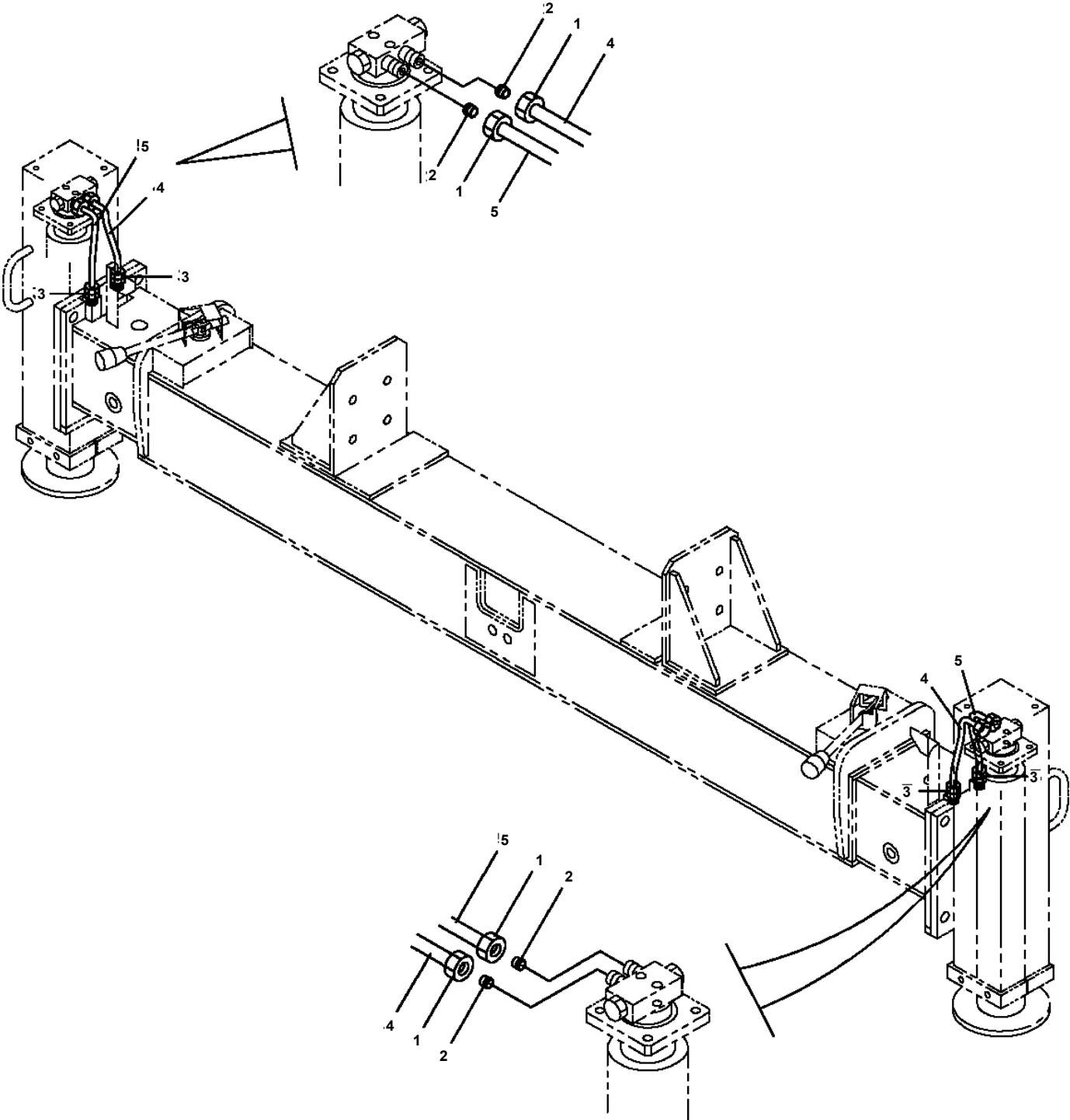


A



C

TM-Z600 3110200002A FRAME/STD,MANUAL,3 SECT. BOOM
PC1200161-00 PIPING,OUTRIGGER (REAR.NO.2)



TM-Z600 3110200002A FRAME/STD,MANUAL,3 SECT. BOOM

Pos No.	Parts No	Parts Name	Qty	Unit	Technical Data	Serial No (Start)	Serial No (End)	Remark
1	36020740001	CYLINDER,ELEVATING	1					
2	36023670000	CYLINDER,ELEVATING	1					
3	36603110000	VALVE,COUNTERBALANCE	1					
4	90131508060	BOLT,HEXAGON SOCKET	4		M8X60		655263	
	90172108060	BOLT,HEXAGON SOCKET	4		M8X60	655264		
5	82400000459	CAP	4			655193		
21	37000400000	BEARING,PLAIN	4					
22	91684112000	PACKING	4					
23	91411210501	RING,BACKUP	4					
24	36020740100	PISTON	2					
25	91002908500	O-RING	2		1B G85			
26	90750008101	SCREW,SET	2		M8X10			
27	36020749531	CYLINDER ASSY	1					
28	36020749510	ROD ASSY	2					
29	91002811000	O-RING	2		1B P110			
30	91302108500	BEARING,PLAIN	2					
31	36020740400	COVER,ROD	2					
32	91694008500	PACKING	2					
33	91410208500	RING,BACKUP	2					
35	80622000850	RING,RITAINING	2		SP85			
36	91660008500	SEAL,DUST	2					
37	82456101000	NIPPLE,GREASE	4		A-PT1/8			
38	80530000112	BEARING,SPHERICAL	2					
39	36020542020	RETAINER	4					
57	36023679510	CYLINDER ASSY	1					
80	36020749900	PACKING SET	2					

TM-Z600 31102000002A FRAME/STD,MANUAL,3 SECT. BOOM

Pos No.	Parts No	Parts Name	Qty	Unit	Technical Data	Serial No (Start)	Serial No (End)	Remarks	Pages
1	37001801080	ROPE,WIRE	1						

TM-Z600 3110200002A FRAME/STD,MANUAL,3 SECT. BOOM

Pos No.	Parts No	Parts Name	Qty	Unit	Technical Data	Serial No (Start)	Serial No (End)	F
1	36130235010	PLATE (BASE)	1					
2	36130925010	CASE	1					
3	36130595010	DRUM ASSY	1					
4	36130805020	COVER	1					
5	31370105030	PACKING	1					
6	31370005030	PACKING	1					
7	32360005220	PACKING	1					
8	36131265010	BRACKET	1					
9	33371277520	CONTACTOR ASSY	1					
10	36130235060	POTENTIOMETER	1					
11	32360005170	CLAMP (CORD)	1					
12	36130045090	CLIP (NYLON)	1					
13	32360005150	CLIP (NYLON)	1					
14	36130235070	GEAR (A)	1					
15	36130875010	GEAR (B)	1					
16	36130675020	TERMINAL	3					
17	36130675030	TERMINAL	3					
18	36130805010	CABLE ASSY (WITH CONNECOTR)	1		L=2950			
19	31370005080	GUIDE (CORD)	1					
20	82100000969	PLUG	1					
21	82100002282	CONNECTOR	1					
22	32360005050	RING,SLIP	1					
23	82100002290	CONNECTOR	1					
24	82100001406	CONNECTOR (SEAL)	1					
25	82100002332	PLUG	1					
26	82100002328	PLUG	1					
27	82100002258	TERMINAL	6					
35	82100000080	CORD (1-LINE)	14	M				
60	36130800000	DETECTOR,BOOM LENGTH	1					

TM-Z600 3110200002A FRAME/STD,MANUAL,3 SECT. BOOM

Pos No.	Parts No	Parts Name	Qty	Unit	Technical Data	Serial No (Start)	Serial No (End)	Remarks
1	36660495010	SHAFT	1					
2	80500006306	BEARING,BALL	1					
3	80601110300	RING,RITAINING	1		S30			
4	36660495020	COVER (OIL SEAL)	1					
5	13615101010	SEAL,OIL	1					
6	12413305460	O-RING	1					
7	90131504010	BOLT,HEXAGON SOCKET	3		M4X10			
8	90302040401	WASHER,SPRING	3		4			
10	36660495030	PLATE (CAM)	1					
11	80720110020	PIN,SPRING	1		10X20			
12	36660495040	BARREL,CYLINDER	1					
13	36660495060	PIN	3					
14	36660495070	HOLDER,PLUNGER	1					
15	80730060014	PIN	2		6X14			
16	36660495080	PLATE (CYLINDER BARREL)	1					
17	36660495090	PLATE (VALVE)	1					
18	13615101290	RING,RETAINING	1					
19	80720106014	PIN,SPRING	1		6X14			
20	13615101280	BEARING,PLAIN	1					
21	80316030040	PLUG	3		PT1/4			
22	36660495100	SCREW (AIR BREATHER)	1					
23	91002800300	O-RING	1		1B P3			
24	91002800800	O-RING	3		1B P8			
26	36660495110	PLUG	6					
27	36660495120	THROTTLE	1		M4			
29	36660495130	PISTON	1					
30	91001102400	O-RING	1		1A P24			
31	36660495140	WASHER	1		M8			
32	90201200800	NUT	1		M8			
33	36660495150	SEAT,SPRING	1					
34	36660495160	PISTON	1					
35	36660495170	SPRING (C)	1					
36	36660495180	SPRING (D)	1					
37	36660495190	CAP (COUNTER)	1					
38	91002803000	O-RING	2		1B P30			
39	36660495200	CAP (PILOT)	1					
40	80316030020	PLUG	1		PT1/8			
42	36660495210	SPRING (CHECK)	1					
43	36660495220	PLUG	1		PF3/4			
44	91002802201	O-RING	1		1B P22A			
45	36660495230	VALVE,RELIEF	1					
47	36660495280	SEAT,SPRING	2					
48	36660495290	SPRING	2					
49	36660495300	PLUG	2					
50	91002801400	O-RING	2		1B P14			
51	36660495310	CAP (CHECK VALVE)	1					
52	91001101800	O-RING	1		1A P18			
53	91001212000	O-RING	1		1A G120			
54	90131510085	BOLT,HEXAGON SOCKET	1		M10X85			
55	90131510045	BOLT,HEXAGON SOCKET	5		M10X45			
56	90302041001	WASHER,SPRING	6		10			
60	36660495320	FLANGE	1					
61	36660495330	SEAL,OIL	1					
62	36660495340	SLEEVE	1					
63	80602110280	RING,RITAINING	1		R28			
64	36660495350	FACING	2					
65	36660495360	BRAKE,DISK	2					
66	36660495370	RING,RETAINING	1					
67	91001111500	O-RING	1		1A P115			
68	36660495380	RING,BACKUP	1		P115			
69	91001211500	O-RING	1		1A G115			
70	36660495390	PISTON	1					
71	91001112000	O-RING	1		1A P120			

TM-Z600 31102000002A FRAME/STD,MANUAL,3 SECT. BOOM

Pos No.	Parts No	Parts Name	Qty	Unit	Technical Data	Serial No (Start)	Serial No (End)	Remarks	Pa
1	36620030010	PLUG	1		PF3/8				
2	91002801400	O-RING	2		1B P14				
3	52255101000	SPRING	1						
5	91002801000	O-RING	2		1B P10				
7	91002800700	O-RING	1		1B P7				
9	36620030050	PLUG	1						
20	36620220000	VALVE,PILOT CHECK	1						

TM-Z600 31102000002A FRAME/STD,MANUAL,3 SECT. BOOM

Pos No.	Parts No	Parts Name	Qty	Unit	Technical Data	Serial No (Start)	Serial No (End)	Remarks	Pages
1	31621330012	FRAME ASSY	1						
2	31620382000	FRAME	1						
3	80601111200	RING,RETAINING	1		S-120				
4	82459103000	NIPPLE,GREASE	1		C-PT1/8				
5	80601110200	RING,RITAINING	4		S20				
6	31620385000	ROLLER ASSY	4						
7	31620385500	PIN	4						
8	90101210016	BOLT	4		M10X16				
9	90302041001	WASHER,SPRING	4		10				
10	82400000459	CAP	1						
22	80516006004	BEARING,BALL	4						

TM-Z600 3110200002A FRAME/STD,MANUAL,3 SECT. BOOM

Pos No.	Parts No	Parts Name	Qty	Unit	Technical Data	Serial No (Start)	Serial No (End)	Remarks	Page
1	36660025000	SHAFT	1						
3	80500006206	BEARING,BALL	1						
4	36660025021	COVER (OIL SEAL)	1						
5	36660025140	SEAL,OIL	1						
6	36663485110	RING,RETAINING	1		R72				
7	80720110020	PIN,SPRING	1		10X20				
8	36660025030	PLATE (CAM)	1						
9	80500006203	BEARING,BALL	1						
10	36660025040	O-RING	1		S112				
11	36660025051	COVER (BOTTOM)	1						
12	18335116540	WASHER,SPRING	6		M10				
13	90171110035	BOLT	6		M10X35				
16	14125151020	KEY	1						
17	91001206500	O-RING	1		1A G65				
18	80316030040	PLUG	1		PT1/4				
19	36660125050	PLUG	1		PT1/4				
20	36660025060	BARREL,CYLINDER	1						
21	36660125060	PLUG	2		PF3/8				
43	36660025090	SEAT,SPRING	5						
44	36660025100	SPRING (PLUNGER)	5						
46	12645103171	SPRING (CENTER)	1						
47	14125151300	RING,RETAINING	1						
100	36660020000	MOTOR,OIL	1						

CLICK HERE TO **DOWNLOAD** THE COMPLETE MANUAL

- Thank you very much for reading the preview of the manual.
- You can download the complete manual from: www.heydownloads.com by clicking the link below



- Please note: If there is no response to CLICKING the link, please download this PDF first and then click on it.

CLICK HERE TO **DOWNLOAD** THE COMPLETE MANUAL