

TM-Z220 31052010080A FRAME/STD,MANUAL

PB1000151-02 HYDRAULIC PRESSURE GENERATING SYSTEM

PD1000146-00 SWING SYSTEM

PE1000142-00 ELEVATING SYSTEM

PF1000131-01 WINCH SYSTEM

PI1000150-02 HYDRAULIC DEVICES

PK1000150-00 FRAME

PL1000147-01 CONTROL DEVICES

PN1000042-00 ELECTRIC EQUIPMENT

PO1000122-01 INDICATION PLATES

PW1000040-01 ACCESSORIES & TOOLS

**PY1000879-00 OPTIONS (REAR OUTRIGGER S-TEC)
ASSEMBLY**

CLICK HERE TO **DOWNLOAD** THE COMPLETE MANUAL

- Thank you very much for reading the preview of the manual.
- You can download the complete manual from: www.heydownloads.com by clicking the link below



- Please note: If there is no response to CLICKING the link, please download this PDF first and then click on it.

CLICK HERE TO **DOWNLOAD** THE COMPLETE MANUAL

TM-Z220 31052010080A FRAME/STD,MANUAL

Pos No.	Parts No	Parts Name	Qty	Unit	Technical Data	Serial No (Start)	Serial No (End)	Rema
1	36661340000	MOTOR,HYDRAULIC (SWING)	1				739995	
	36662200000	MOTOR,HYDRAULIC (SWING)	1			739996		
2	36661380000	MOTOR,HYDRAULIC	1				739704	
	36662150000	MOTOR,HYDRAULIC (WINCH)	1			739705		
3	36602100000	VALVE,COUNTERBALANCE	1					

TM-Z220 31052010080A FRAME/STD,MANUAL

Pos No.	Parts No	Parts Name	Qty	Unit	Technical Data	Serial No (Start)	Serial No (End)	Rema
1	(*****)	ACCESSORIES (PUMP,GREASE)	1					

TM-Z220 31052010080A FRAME/STD,MANUAL

Pos No.	Parts No	Parts Name	Qty	Unit	Technical Data	Serial No (Start)	Serial No (End)	R
1	52230107011	CASE	1					
2	52230104020	PACKING	1					
3	52430604050	PACKING	1					
4	90302041001	WASHER,SPRING	10		10			
5	90191210025	BOLT	4		M10X25			
6	52230309040	ADAPTER	1					
7	52230107020	COUPLING	1					
8	80720103027	PIN	1		3X27			
9	91203024002	SEAL,OIL	1					
10	80500006205	BEARING,BALL	2					
11	52230107030	SHAFT (OUTPUT)	1					
12	36400205010	GEAR	1					
13	52430604200	BALL,STEEL	1		10			
14	52430604190	SPRING	1					
15	52430304150	BOLT (ADJUSTING)	1					
16	52430604180	PACKING	1					
17	52430604210	NUT	1		M12			
18	52430103060	FORK	1					
19	36400205020	FORK (SHIFTER)	1					
20	91206020001	SEAL,OIL	1					
21	52230603020	PACKING	1					
22	52230107041	COVER (BEARING)	1					
23	90191208014	BOLT	4		M8X14			
24	90302040801	WASHER,SPRING	4		8			
26	90191210030	BOLT	4		M10X30			
27	90191210090	BOLT	2		M10X90			
40	36400200000	POWER TAKE OFF (WITH TURBO)	1					

TM-Z220 31052010080A FRAME/STD,MANUAL

Pos No.	Parts No	Parts Name	Qty	Unit	Technical Data	Serial No (Start)	Serial No (End)	Remarks	Page
1	51630402010	CASE	1						
2	51630401020	GEAR	1						
3	51630401030	SHAFT	1						
4	51630401040	SHAFT (FORK)	1						
5	51630401050	FORK	1						
6	90192210016	BOLT	8		M10X16				
7	90302041001	WASHER,SPRING	8		10				
8	80500006305	BEARING,BALL	1						
9	51630401140	BEARING,ROLLER	1						
10	91204020001	SEAL,OIL	1						
11	91204025003	SEAL,OIL	1						
12	51630401060	SHIM	1						
13	51630401070	COVER (FRONT)	1						
14	51630401080	COVER (REAR)	1						
15	51630401090	PACKING	2						
16	51630401100	BOLT (ADJUSTING)	1						
17	51630401110	SPRING	1						
18	90211201600	NUT	1		M16				
19	80560061000	BALL,STEEL	1		3/8				
20	52130404310	KEY	1						
21	52130102030	COUPLING	1						
22	90269201400	NUT	1		M14				
23	52230102330	STOPPER	1						
24	52130105070	WASHER,PLAIN	1						
25	51630401130	PACKING (CASE)	1						
26	90193712105	BOLT (N4C)	4		M12X105				
27	90302041201	WASHER,SPRING	4		12				
30	51630402000	POWER TAKE OFF	1						

TM-Z220 31052010080A FRAME/STD,MANUAL

Pos No.	Parts No	Parts Name	Qty	Unit	Technical Data	Serial No (Start)	Serial No (End)	Remarks	Pages
1	36400455010	CASE	1						
2	36400625010	SHAFT	1						
3	36400455030	SHAFT	1						
4	36400625020	GEAR	1						
5	36400095040	SHAFT	1						
6	36400095050	COLLAR	1						
7	36400095100	SHIFTER ASSY	1						
8	36400095110	PACKING	1						
9	36400095070	COVER (BEARING)	1						
10	36400095080	PACKING (COVER)	1						
11	36400095090	SHIM	N						
12	80500006305	BEARING,BALL	2						
13	36400095120	BEARING	2						
14	91206025005	SEAL,OIL	1						
15	36400095130	WASHER	1						
16	90101206012	BOLT	1		M6X12				
17	80602110520	RING,RITAINING	2		R52				
18	90191208014	BOLT	3		M8X14				
19	90191208020	BOLT	4		M8X20				
20	90302040801	WASHER,SPRING	7		8				
21	36400625030	PLATE,NAME	1						
23	36400055070	PACKING	1						
24	36400195030	BOLT,STUD	3						
25	90193210025	BOLT	3		M10X25				
26	90267201000	NUT	3		M10				
27	90302041001	WASHER,SPRING	6		10				
28	31790670100	SUPPORT	1						
29	90191208025	BOLT	2		M8X25				
50	36400620000	POWER TAKE OFF	1						
100	31791520000	POWER TAKE OFF	1						

TM-Z220 31052010080A FRAME/STD,MANUAL

Pos No.	Parts No	Parts Name	Qty	Unit	Technical Data	Serial No (Start)	Serial No (End)	Remarks	Pages
1	36400455010	CASE	1						
2	36400635010	GEAR	1						
3	36400455030	SHAFT	1						
4	36400095040	SHAFT	1						
5	36400635020	COLLAR	1						
6	36400635030	GEAR	1						
7	36400095070	COVER (BEARING)	1						
8	36400095080	PACKING (COVER)	1						
9	36400095090	SHIM	N						
10	36400095100	SHIFTER ASSY	1						
11	36400095110	PACKING	1						
12	80500006305	BEARING,BALL	2						
13	91206025005	SEAL,OIL	1						
14	90191208014	BOLT	3		M8X14				
15	90191208020	BOLT	4		M8X20				
16	90101206012	BOLT	1		M6X12				
17	90302040801	WASHER,SPRING	7		8				
18	36400095130	WASHER	1						
19	36400095120	BEARING	2						
20	80602110520	RING,RITAINING	2		R52				
21	36400635040	SPACER	1						
22	36400635050	BOLT	6						
23	36400055070	PACKING	2						
24	90267201000	NUT	6		M10				
25	90302041001	WASHER,SPRING	6		10				
26	36400635060	PLATE,NAME	1						
28	31790670100	SUPPORT	1						
29	90191208025	BOLT	2		M8X25				
50	36400630000	POWER TAKE OFF	1						
100	31791870000	POWER TAKE OFF	1						

TM-Z220 31052010080A FRAME/STD,MANUAL

Pos No.	Parts No	Parts Name	Qty	Unit	Technical Data	Serial No (Start)	Serial No (End)	Remarks	Page
1	52230509010	CASE	1						
2	91206020007	SEAL,OIL	1						
3	52230509020	SHAFT (SHIFTER)	1						
4	52430604140	FORK	1						
5	52430604200	BALL,STEEL	1		10				
6	52430604190	SPRING	1						
7	52430304150	BOLT (ADJUSTING)	1						
8	52430604180	PACKING	1						
9	52430604210	NUT	1		M12				
10	91206025010	SEAL,OIL	1						
11	52230508010	COVER (BEARING)	1						
12	90302041001	WASHER,SPRING	10		10				
13	90191210020	BOLT	4		M10X20				
14	90302040801	WASHER,SPRING	4		8				
15	90191208020	BOLT	4		M8X20				
16	52130105100	COVER	1						
17	80500006205	BEARING,BALL	2						
18	52430604050	PACKING	1						
19	52230603020	PACKING	1						
20	80602110520	RING,RITAINING	2		R52				
21	80500006304	BEARING,BALL	2						
23	51630201050	SHAFT (INPUT)	1						
24	51630201060	STOPPER	1						
25	90102206012	BOLT	1		M6X12				
26	52230510040	GEAR,OUTPUT	1						
27	52230508020	SHAFT (OUTPUT)	1						
28	52130102030	COUPLING	1						
29	52230506130	PACKING	2						
30	52230506140	SPACER	1						
31	90193210035	BOLT	2		M10X35				
32	90267251000	NUT	4		M10				
33	52230506160	BOLT,STUD	4		M10X49				
34	52230509030	GEAR,INPUT	1						
35	52130404310	KEY	1						
36	52130105070	WASHER,PLAIN	1						
37	52230102330	STOPPER	1						
38	52130105090	NUT,LOCK	1						
50	52230508000	POWER TAKE OFF	1						

TM-Z220 31052010080A FRAME/STD,MANUAL

Pos No.	Parts No	Parts Name	Qty	Unit	Technical Data	Serial No (Start)	Serial No (End)	Remarks	Page
1	36401165010	CASE	1						
2	36401135060	GEAR (TO)	1						
3	36401165020	SHAFT	1						
4	36401125040	SLEEVE	1						
5	36401125050	SHIFTER SET	1						
6	36400095110	PACKING	1						
7	36400095070	COVER (BEARING)	1						
8	36400095080	PACKING (COVER)	1						
9	36400095090	SHIM	1						
10	36401135070	COLLAR	1						
11	80500006903	BEARING,BALL	1						
12	36401125080	BEARING,ROLLER	2						
13	36401125090	BEARING,NEEDLE	1						
14	91206030005	SEAL,OIL	1						
15	36401165030	NUT	1						
16	36401165040	WASHER	1						
17	90191208020	BOLT	4		M8X20				
18	90191208014	BOLT	3		M8X14				
19	90302040801	WASHER,SPRING	7		8				
20	36400135120	COUPLING	1						
21	36400135100	KEY	1						
22	36401165050	NUT	1		M14X1.5				
23	36400135080	WASHER,PLAIN	1						
24	36400135090	WASHER	1						
26	36401125120	PACKING (CASE)	1						
27	90191210100	BOLT	1		M10X100				
28	90191210090	BOLT	1		M10X90				
29	90191210030	BOLT	2		M10X30				
30	36400095150	BOLT,STUD	1		M10X1.25/1.5X43				
31	36401125140	BOLT	1						
32	90267201000	NUT	2		M10				
33	90302041001	WASHER,SPRING	6		10				
34	31790880100	SUPPORT	1						
35	90191208025	BOLT	2		M8X25				
50	36401160000	POWER TAKE OFF	1						
100	31790900000	POWER TAKE OFF	1						

CLICK HERE TO **DOWNLOAD** THE COMPLETE MANUAL

- Thank you very much for reading the preview of the manual.
- You can download the complete manual from: www.heydownloads.com by clicking the link below



- Please note: If there is no response to CLICKING the link, please download this PDF first and then click on it.

CLICK HERE TO **DOWNLOAD** THE COMPLETE MANUAL

TM-Z220 31052010080A FRAME/STD,MANUAL

Pos No.	Parts No	Parts Name	Qty	Unit	Technical Data	Serial No (Start)	Serial No (End)	Remarks	Page
1	52230604010	GEAR,INPUT	1						
2	80602110520	RING,RITAINING	1		R52				
3	80500006304	BEARING,BALL	2						
4	51630201060	STOPPER	1						
5	90102206012	BOLT	1		M6X12				
6	51630201050	SHAFT (INPUT)	1						
7	52230604020	SPACER	1						
8	52230604030	SPACER	1						
9	52230604040	CASE	1						
10	52430604070	PACKING	1						
11	52430604050	PACKING	1						
12	52130105100	COVER	1						
13	90302040801	WASHER,SPRING	4		8				
14	90191208020	BOLT	4		M8X20				
16	80500006205	BEARING,BALL	2						
17	52230604050	SHAFT (OUTPUT)	1						
18	52230604060	SPACER	1						
19	52230604070	GEAR,OUTPUT	1						
20	80602110470	RING,RITAINING	1		R47				
21	80500006005	BEARING,BALL	2						
22	52230604080	SPACER	1						
23	52430604130	GEAR	1						
24	51630201130	COUPLING	1						
25	52230603020	PACKING	1						
26	52230603040	ADAPTER	1						
27	91206022001	SEAL,OIL	1						
28	90302041001	WASHER,SPRING	10		10				
29	90191210025	BOLT	4		M10X25				
30	52430601240	SHAFT (SHIFTER)	1						
31	52430604140	FORK	1						
32	91206020007	SEAL,OIL	1						
33	52430604200	BALL,STEEL	1		10				
34	52430604190	SPRING	1						
35	52230604090	BOLT (ADJUSTING)	1						
36	52430604180	PACKING	1						
37	52430604210	NUT	1		M12				
38	52430604170	BOLT,STUD	4		M10X40				
39	90201261000	NUT	4		M10				
40	90193210025	BOLT	2		M10X25				
50	52230604000	POWER TAKE OFF	1						

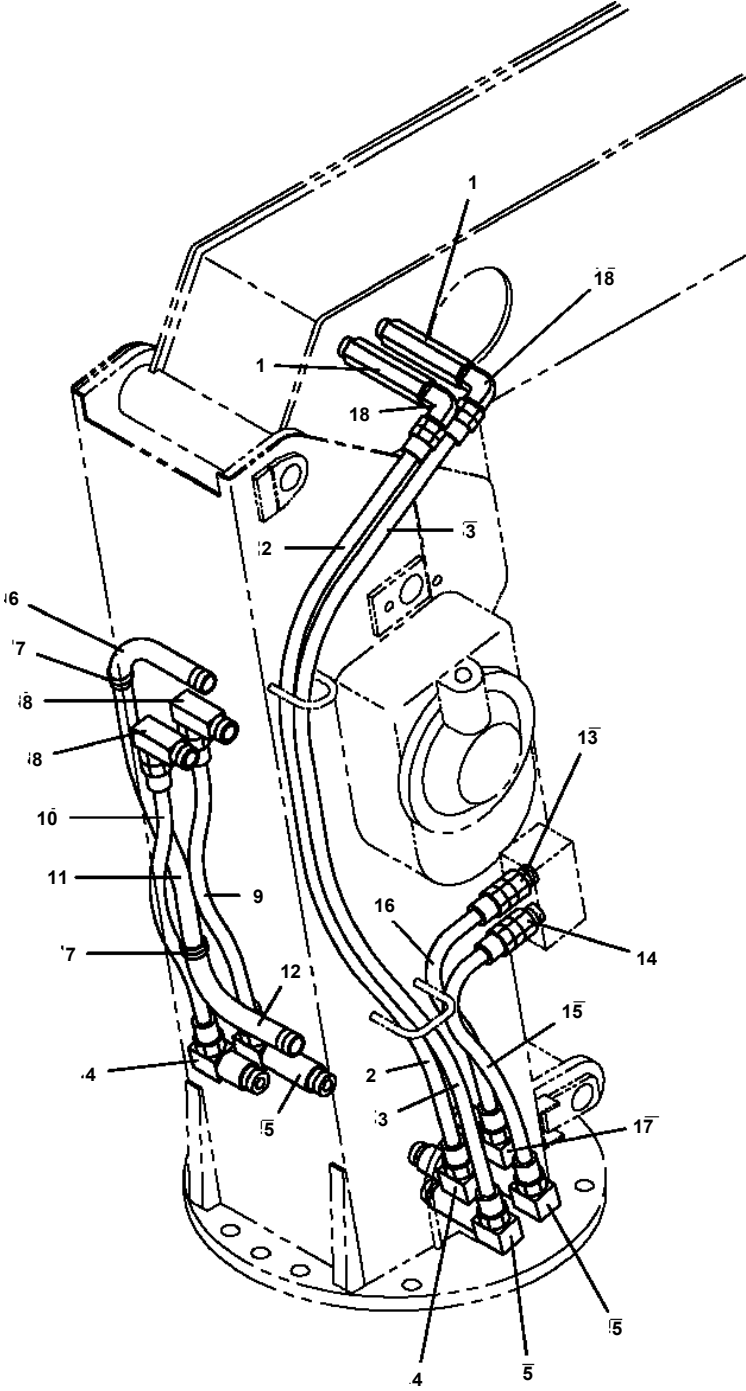
TM-Z220 31052010080A FRAME/STD,MANUAL

Pos No.	Parts No	Parts Name	Qty	Unit	Technical Data	Serial No (Start)	Serial No (End)	Remarks	Pages
1	36402055010	CASE	1						
2	36402055020	GEAR	1						
3	36400835030	SHAFT	1						
4	36402055030	GEAR	1						
5	36400095040	SHAFT	1						
6	36400095100	SHIFTER ASSY	1						
7	36400095110	PACKING	1						
8	36400095070	COVER (BEARING)	1						
9	36400095080	PACKING (COVER)	1						
10	36400095090	SHIM	N						
11	36400095050	COLLAR	1						
12	80500006305	BEARING,BALL	2						
13	36400095120	BEARING	2						
14	80602110520	RING,RITAINING	2		R52				
15	91206025005	SEAL,OIL	1						
16	90101206012	BOLT	1		M6X12				
17	36400095130	WASHER	1						
18	90191208014	BOLT	3		M8X14				
19	90191208020	BOLT	4		M8X20				
20	90302040801	WASHER,SPRING	7		8				
23	36402055040	PACKING	2						
24	36400195030	BOLT,STUD	2						
25	90191210025	BOLT	4		M10X25				
26	90267201000	NUT	2		M10				
27	90302041001	WASHER,SPRING	6		10				
28	36402055050	SPACER	1						
30	90191208025	BOLT	2		M8X25				
100	36402050000	POWER TAKE OFF	1						

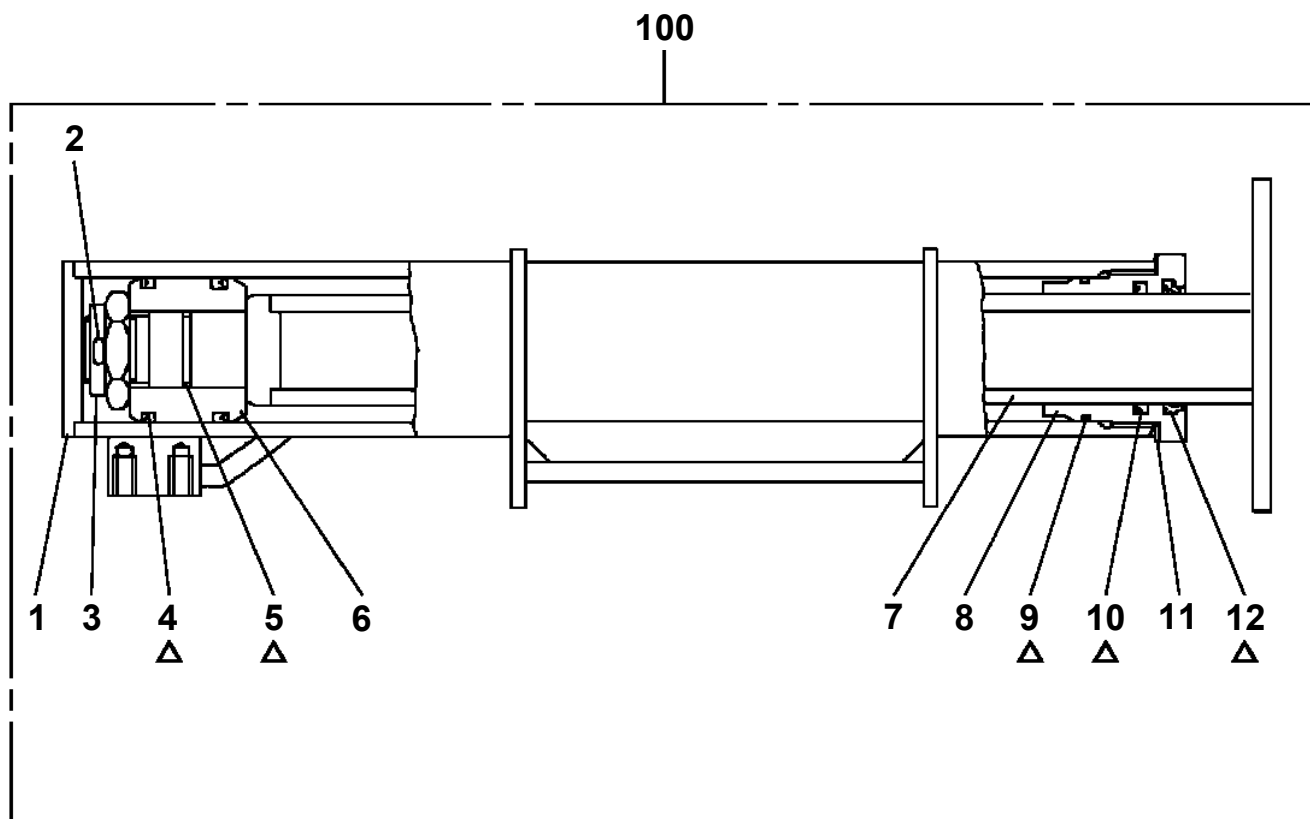
TM-Z220 31052010080A FRAME/STD,MANUAL

Pos No.	Parts No	Parts Name	Qty	Unit	Technical Data	Serial No (Start)	Serial No (End)	Remarks	Page
1	52230605010	GEAR,INPUT	1						
2	80602110520	RING,RITAINING	1		R52				
3	80500006304	BEARING,BALL	2						
4	51630201060	STOPPER	1						
5	90102206012	BOLT	1		M6X12				
6	51630201050	SHAFT (INPUT)	1						
7	52230604020	SPACER	1						
8	52230604030	SPACER	1						
9	52230605020	CASE	1						
10	52430604070	PACKING	1						
11	52430604050	PACKING	1						
12	52130105100	COVER	1						
13	90302040801	WASHER,SPRING	4		8				
14	90191208020	BOLT	4		M8X20				
16	80500006205	BEARING,BALL	2						
17	52230604050	SHAFT (OUTPUT)	1						
18	52230604060	SPACER	1						
19	52230605030	GEAR,OUTPUT	1						
20	80602110470	RING,RITAINING	1		R47				
21	80500006005	BEARING,BALL	2						
22	52230604080	SPACER	1						
23	52430604130	GEAR	1						
24	51630201130	COUPLING	1						
25	52230603020	PACKING	1						
26	52230603040	ADAPTER	1						
27	91206022001	SEAL,OIL	1						
28	90302041001	WASHER,SPRING	10		10				
29	90191210025	BOLT	4		M10X25				
30	52430601240	SHAFT (SHIFTER)	1						
31	52430604140	FORK	1						
32	91206020007	SEAL,OIL	1						
33	52430604200	BALL,STEEL	1		10				
34	52430604190	SPRING	1						
35	52230604090	BOLT (ADJUSTING)	1						
36	52430604180	PACKING	1						
37	52430604210	NUT	1		M12				
38	52430604170	BOLT,STUD	4		M10X40				
39	90201261000	NUT	4		M10				
40	90193210025	BOLT	2		M10X25				
50	52230605000	POWER TAKE OFF	1						

TM-Z220 31052010080A FRAME/STD,MANUAL
PB1400078-00 PIPING,HYDRAULIC UPPER

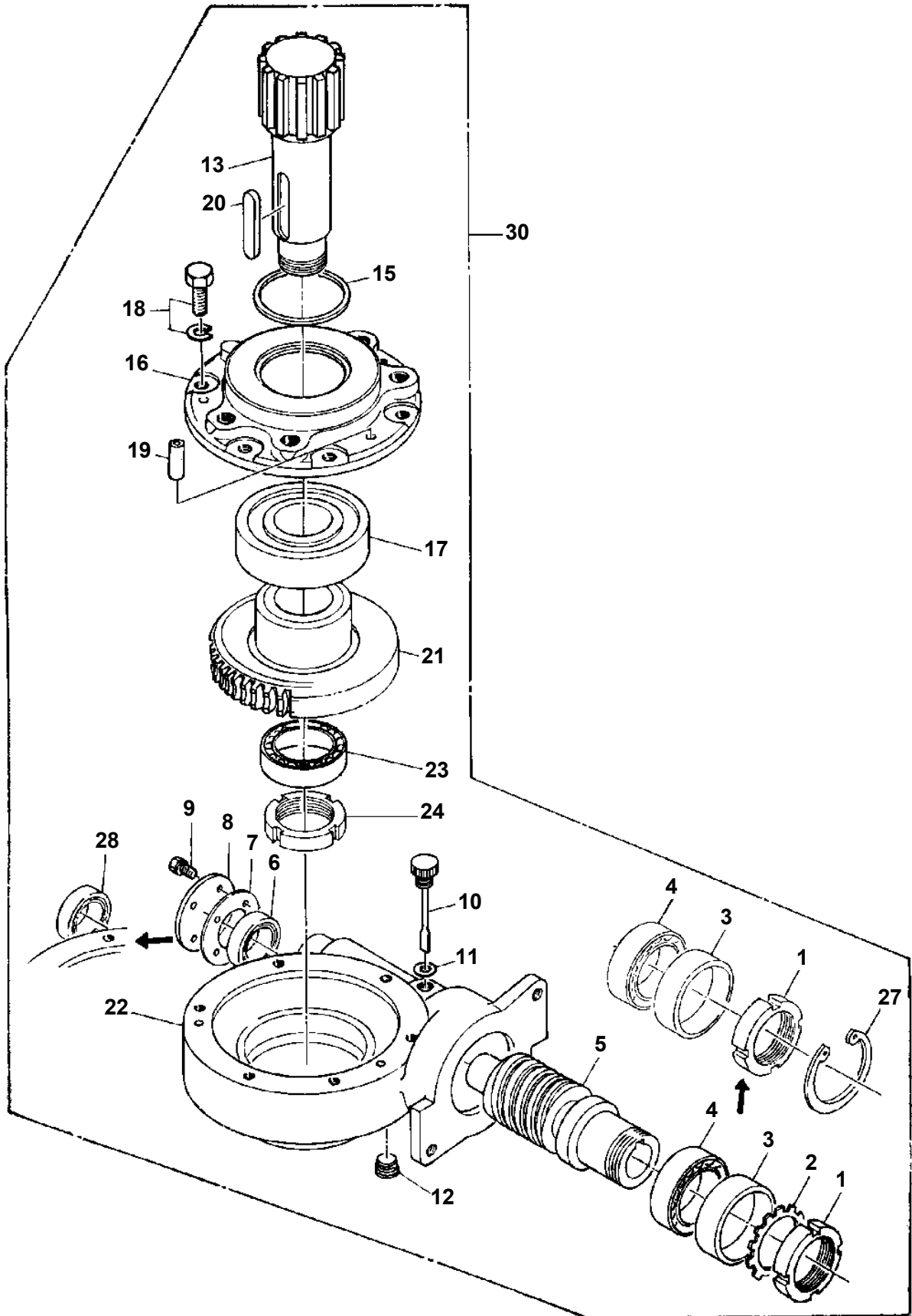


TM-Z220 31052010080A FRAME/STD,MANUAL
PC1030387-00 CYLINDER,JACK (REAR,S-TEC)



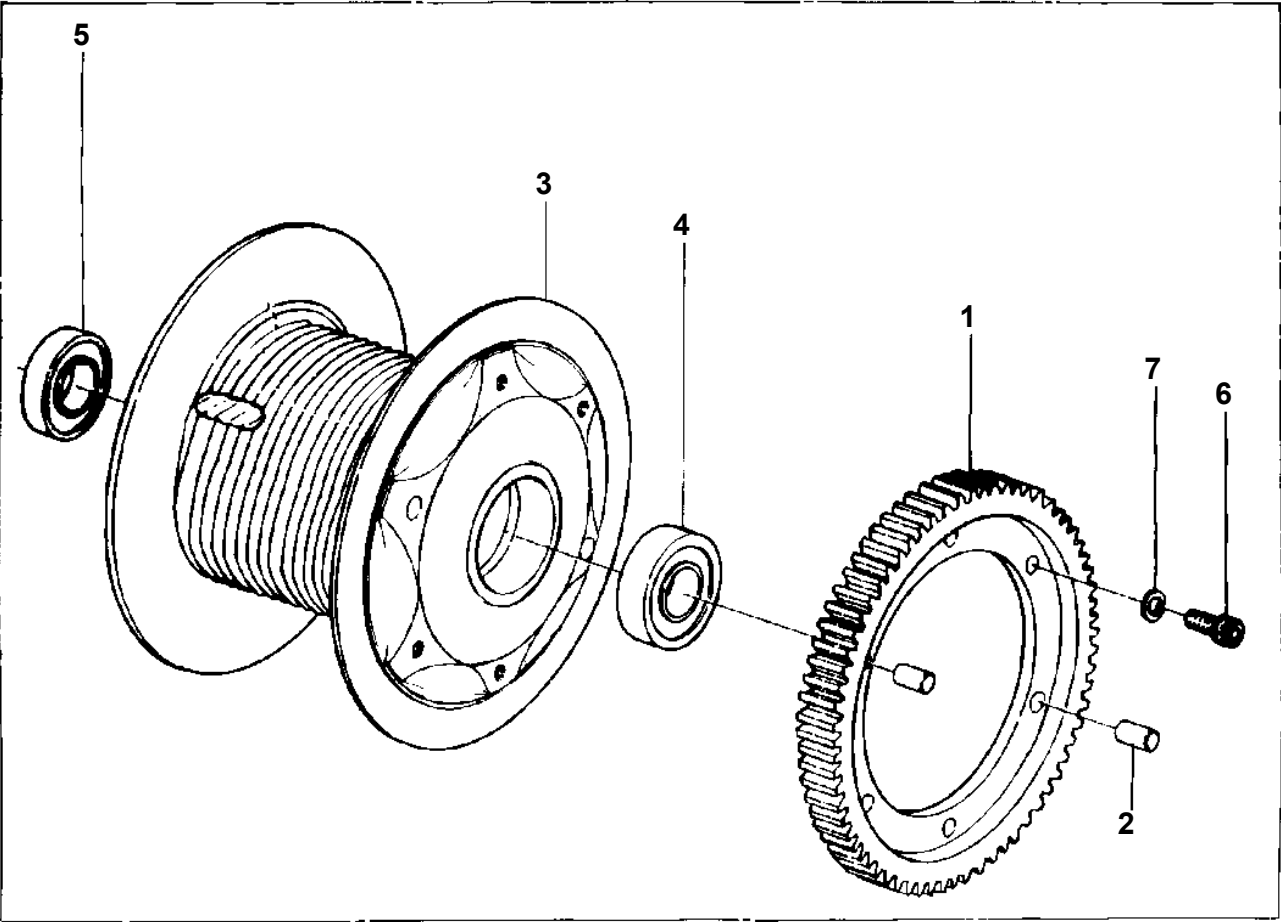
Δ : PACKING SET KEY NO. 20 (KEY NO.4,5,9,10,12)

TM-Z220 31052010080A FRAME/STD,MANUAL
PD1010035-01 REDUCER,SWING SPEED

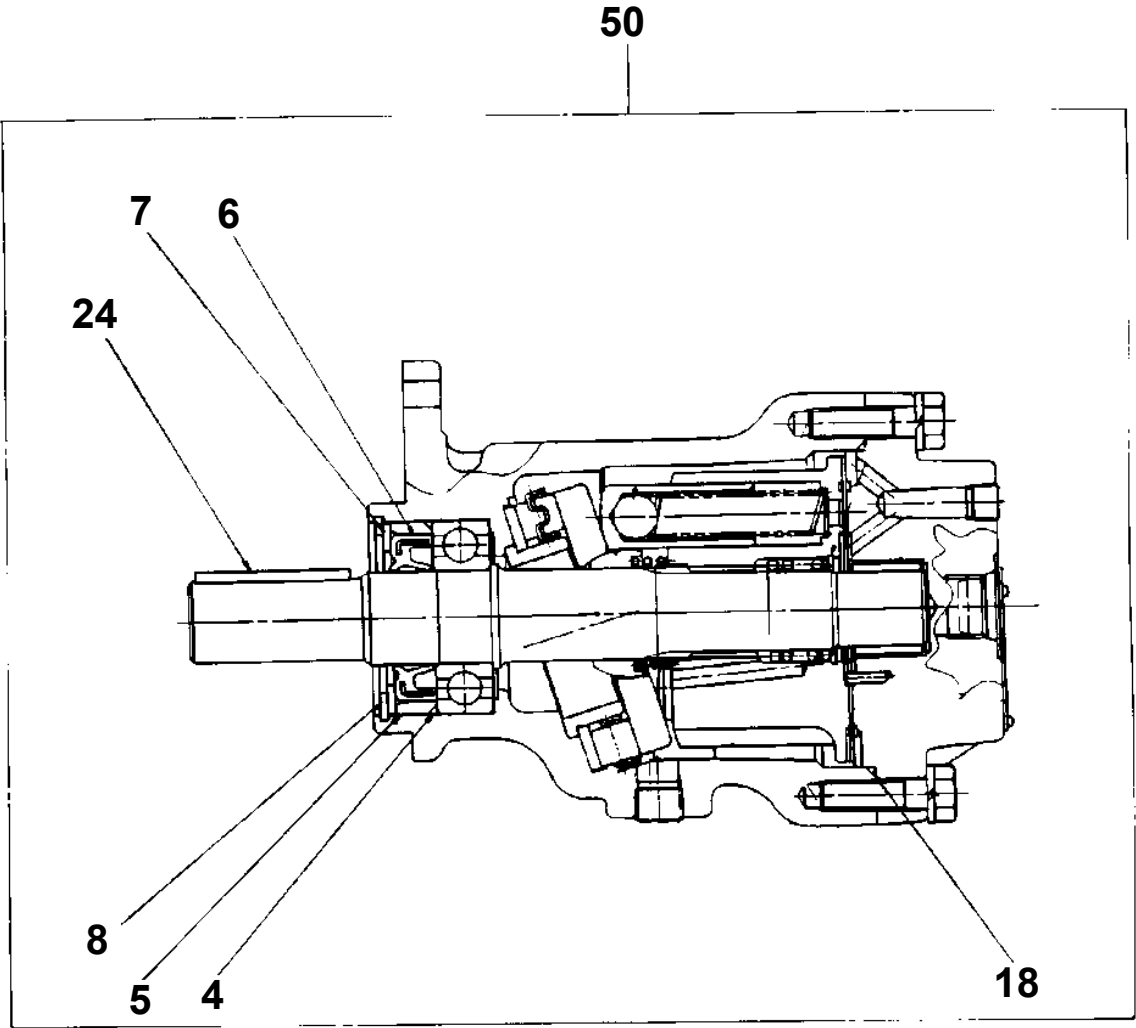


TM-Z220 31052010080A FRAME/STD,MANUAL
PF1020005-00 DRUM,WINCH (HARTYS)

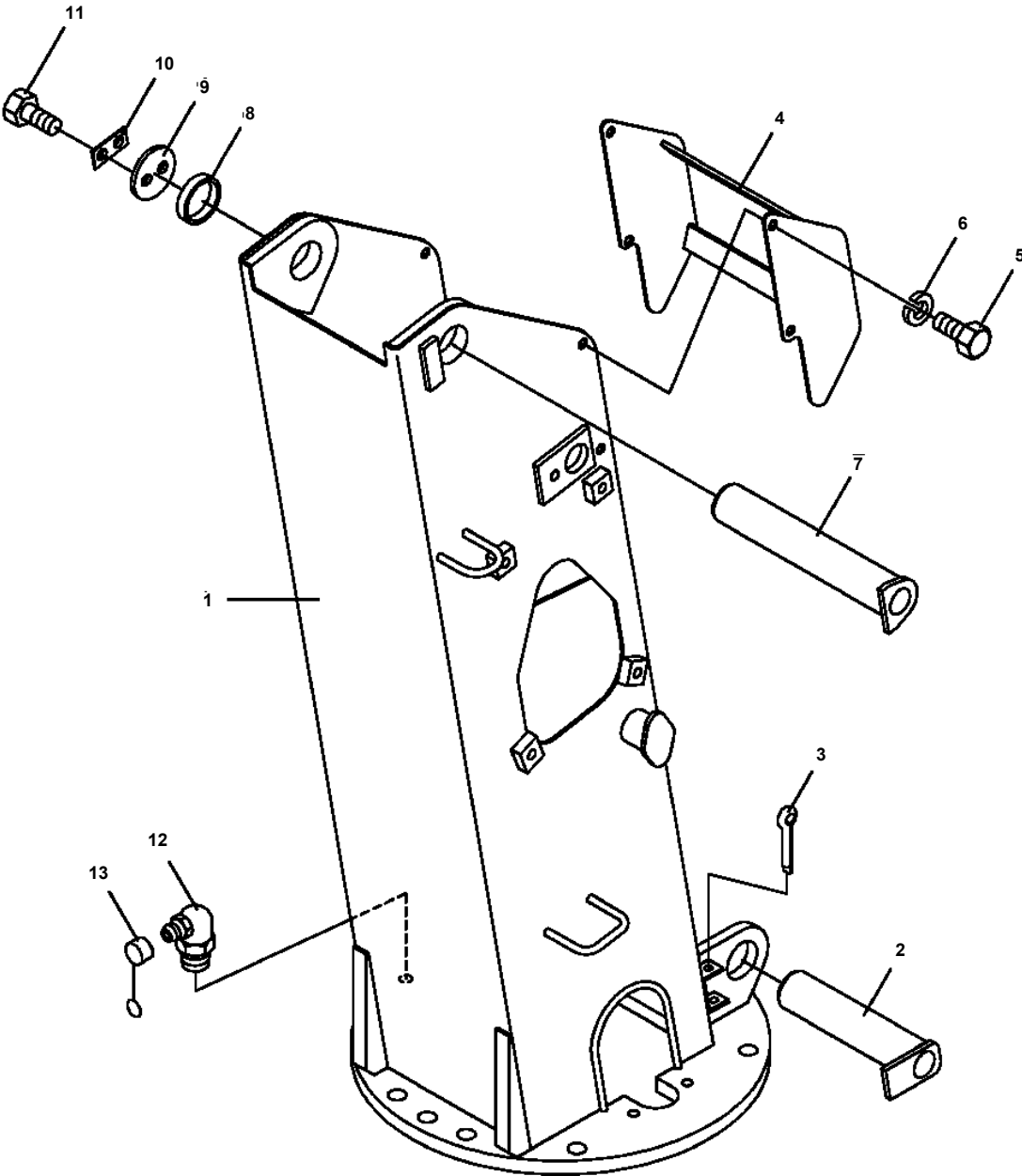
20



TM-Z220 31052010080A FRAME/STD,MANUAL
PI1010058-00 MOTOR,HYDRAULIC (WINCH)



TM-Z220 31052010080A FRAME/STD,MANUAL
PK1100159-00 SWING FRAME



TM-Z220 31052010080A FRAME/STD,MANUAL

Pos No.	Parts No	Parts Name	Qty	Unit	Technical Data	Serial No (Start)	Serial No (End)	Remarks	Pages
1	31650530100	SWITCH	2						
2	90927030061	SCREW,TAPPING	2						
3	90925030121	SCREW,TAPPING	2						
4	31650680100	HARNESS	1						
5	82100002451	SUPPORT	9						
6	91800000002	FASTENER	11						
7	90101206012	BOLT	2		M6X12				
8	90302040601	WASHER,SPRING	2		6				
9	90303070601	WASHER,PLAIN	2		6				
10	31650530300	BUZZER ASSY	1						
21	82100002450	SWITCH,PUSH	2						

CLICK HERE TO **DOWNLOAD** THE COMPLETE MANUAL

- Thank you very much for reading the preview of the manual.
- You can download the complete manual from: www.heydownloads.com by clicking the link below



- Please note: If there is no response to CLICKING the link, please download this PDF first and then click on it.

CLICK HERE TO **DOWNLOAD** THE COMPLETE MANUAL