

TM-Z100 31032000012A FRAME/STD,REMOTE-RADIO CONT.,3 BOOM
PZ1000505-00 SYSTEM
ASSEMBLY

CLICK HERE TO **DOWNLOAD** THE COMPLETE MANUAL

- Thank you very much for reading the preview of the manual.
- You can download the complete manual from: www.heydownloads.com by clicking the link below



- Please note: If there is no response to CLICKING the link, please download this PDF first and then click on it.

CLICK HERE TO **DOWNLOAD** THE COMPLETE MANUAL

TM-Z100 31032000012A FRAME/STD,REMOTE-RADIO CONT.,3 BOOM

Pos No.	Parts No	Parts Name	Qty	Unit	Technical Data	Serial No (Start)	Serial No (End)	Remarks	Page
1	36400245010	CASE	1						
2	51630201050	SHAFT (INPUT)	1						
3	52230601050	SPACER	2						
4	80500006304	BEARING,BALL	2						
5	80602110520	RING,RITAINING	1		R52				
6	52230603050	GEAR,INPUT	1						
7	51630201060	STOPPER	1						
8	90102206012	BOLT	1		M6X12				
9	90191208020	BOLT	4		M8X20				
10	90302040801	WASHER,SPRING	4		8				
11	52430604050	PACKING	1						
12	52130105100	COVER	1						
13	80500006205	BEARING,BALL	1						
14	36400245020	COLLAR	1						
15	36400245030	GEAR	1						
16	80500006006	BEARING,BALL	3						
17	80602110550	RING,RITAINING	1		R55				
18	52230601180	GEAR	1						
19	91206030009	SEAL,OIL	1						
20	36400245040	SHAFT (OUTPUT)	1						
21	91206020007	SEAL,OIL	1						
22	52430601240	SHAFT (SHIFTER)	1						
23	52430604140	FORK	1						
24	52430604200	BALL,STEEL	1		10				
25	52430604190	SPRING	1						
26	52430304150	BOLT (ADJUSTING)	1						
27	52430604180	PACKING	1						
28	52430604210	NUT	1		M12				
29	36400245050	BOLT,STUD	4						
30	90302041001	WASHER,SPRING	4		10				
31	90267251000	NUT	4		M10				
40	36400240000	POWER TAKE OFF	1						

TM-Z100 31032000012A FRAME/STD,REMOTE-RADIO CONT.,3 BOOM

Pos No.	Parts No	Parts Name	Qty	Unit	Technical Data	Serial No (Start)	Serial No (End)	Remarks	Pages
1	36400455010	CASE	1						
2	36400455020	GEAR	1						
3	36400455030	SHAFT	1						
4	36400455040	GEAR	1						
5	36400095040	SHAFT	1						
6	36400095100	SHIFTER ASSY	1						
7	36400095110	PACKING	1						
8	36400095070	COVER (BEARING)	1						
9	36400095080	PACKING (COVER)	1						
10	36400095090	SHIM	1						
11	36400095050	COLLAR	1						
12	80500006305	BEARING,BALL	2						
13	36400095120	BEARING	2						
14	91206025005	SEAL,OIL	1						
15	80602110520	RING,RITAINING	2		R52				
16	90101206012	BOLT	1		M6X12				
17	36400095130	WASHER	1						
18	90191208014	BOLT	3		M8X14				
19	90191208020	BOLT	4		M8X20				
20	90302040801	WASHER,SPRING	7		8				
23	36400055070	PACKING	1						
24	36400195030	BOLT,STUD	3						
25	90267201000	NUT	3		M10				
26	90193210025	BOLT	3		M10X25				
27	90302041001	WASHER,SPRING	6		10				
29	90191208025	BOLT	2		M8X25				
50	36400450000	POWER TAKE OFF	1						

TM-Z100 31032000012A FRAME/STD,REMOTE-RADIO CONT.,3 BOOM

Pos No.	Parts No	Parts Name	Qty	Unit	Technical Data	Serial No (Start)	Serial No (End)	Remarks	Pages
1	36400575010	CASE	1						
2	36400575020	GEAR	1						
3	36400575030	SHAFT	1						
4	36400575040	GEAR	1						
5	36400575060	SHAFT	1						
6	36400095050	COLLAR	1						
7	36400215060	SHIFTER SET	1						
8	36400095110	PACKING	1						
9	36400095070	COVER (BEARING)	1						
10	36400095080	PACKING (COVER)	1						
11	36400095090	SHIM	N						
12	80500006305	BEARING,BALL	2						
13	36400095120	BEARING	2						
14	91206025005	SEAL,OIL	1						
15	36400575070	COLLAR	1						
16	90710006120	SCREW,SET	1		M6X12				
17	80602110520	RING,RITAINING	2		R52				
18	90191208014	BOLT	3		M8X14				
19	90191208020	BOLT	4		M8X20				
20	90302040801	WASHER,SPRING	7		8				
21	36400575080	PLATE,NAME	1						
23	36400575090	PACKING (CASE)	1						
24	36400195030	BOLT,STUD	2						
25	36400575110	BOLT,STUD	2						
26	90267201000	NUT	4		M10				
27	90302041001	WASHER,SPRING	4		10				
28	31790870100	SUPPORT	1						
29	90191208025	BOLT	2		M8X25				
30	91001101600	O-RING	2		1A P16				
50	36400570000	POWER TAKE OFF	1						
100	31791510000	POWER TAKE OFF	1						

TM-Z100 31032000012A FRAME/STD,REMOTE-RADIO CONT.,3 BOOM

Pos No.	Parts No	Parts Name	Qty	Unit	Technical Data	Serial No (Start)	Serial No (End)	Remarks	Page
1	52230509010	CASE	1						
2	91206020007	SEAL,OIL	1						
3	52230509020	SHAFT (SHIFTER)	1						
4	52430604140	FORK	1						
5	52430604200	BALL,STEEL	1		10				
6	52430604190	SPRING	1						
7	52430304150	BOLT (ADJUSTING)	1						
8	52430604180	PACKING	1						
9	52430604210	NUT	1		M12				
10	91206022001	SEAL,OIL	1						
11	52230603040	ADAPTER	1						
12	90302041001	WASHER,SPRING	10		10				
13	90191210025	BOLT	4		M10X25				
14	90302040801	WASHER,SPRING	4		8				
15	90191208020	BOLT	4		M8X20				
16	52130105100	COVER	1						
17	80500006205	BEARING,BALL	2						
18	52430604050	PACKING	1						
19	52230603020	PACKING	1						
20	80602110520	RING,RITAINING	2		R52				
21	80500006304	BEARING,BALL	2						
23	51630201050	SHAFT (INPUT)	1						
24	51630201060	STOPPER	1						
25	90102206012	BOLT	1		M6X12				
26	52230510040	GEAR,OUTPUT	1						
27	52230510050	SHAFT (OUTPUT)	1						
28	51630201130	COUPLING	1						
29	52230506130	PACKING	2						
30	52230506140	SPACER	1						
31	90193210035	BOLT	2		M10X35				
32	90267251000	NUT	4		M10				
33	52230506160	BOLT,STUD	4		M10X49				
34	52230509030	GEAR,INPUT	1						
40	52230509000	POWER TAKE OFF	1						

TM-Z100 31032000012A FRAME/STD,REMOTE-RADIO CONT.,3 BOOM

Pos No.	Parts No	Parts Name	Qty	Unit	Technical Data	Serial No (Start)	Serial No (End)	Remarks	Pages
1	52230701010	CASE	1						
2	52230701020	GEAR	1						
3	52230701030	SHAFT	1						
4	52230701040	SHAFT	1						
5	52230701050	SPACER	1						
6	52230701060	GEAR	1						
7	52230701070	COVER (FRONT)	1						
8	52230701080	COVER (REAR)	1						
9	52230701090	PACKING	2						
10	52230701100	SHIM	N						
11	52230701110	SHIFTER ASSY	1						
12	52230701120	PACKING	1						
13	52230701130	FLANGE	1						
14	52230701140	WASHER,PLAIN	1						
15	52230701150	WASHER	1						
16	90269251400	NUT	1		M14				
17	90192210016	BOLT	8		M10X16				
18	90192208020	BOLT	4		M8X20				
19	90102206012	BOLT	1		M6X12				
20	90302041001	WASHER,SPRING	8		10				
21	90302040801	WASHER,SPRING	4		8				
22	90307190601	WASHER	1		6				
23	80500006305	BEARING,BALL	2						
24	52230103110	BEARING,ROLLER	2						
25	80602110520	RING,RITAINING	2		R52				
26	91203025003	SEAL,OIL	1						
27	52230701160	KEY	1						
28	52230701170	SPACER	1						
29	52230701180	BOLT,STUD	6						
30	52230701190	PACKING	2						
31	90267251000	NUT	6		M10				
32	90302041001	WASHER,SPRING	6		10				
40	52230701000	POWER TAKE OFF	1						

TM-Z100 31032000012A FRAME/STD,REMOTE-RADIO CONT.,3 BOOM

Pos No.	Parts No	Parts Name	Qty	Unit	Technical Data	Serial No (Start)	Serial No (End)	Remarks	Page
1	52230107011	CASE	1						
2	52230104020	PACKING	1						
3	52430604050	PACKING	1						
4	90302041001	WASHER,SPRING	11		10				
5	90191210025	BOLT	4		M10X25				
6	52230309040	ADAPTER	1						
7	52230107020	COUPLING	1						
8	80720103027	PIN	1		3X27				
9	91203024002	SEAL,OIL	1						
10	80500006205	BEARING,BALL	2						
11	52230107030	SHAFT (OUTPUT)	1						
12	52230104040	GEAR,OUTPUT	1						
13	52430604200	BALL,STEEL	1		10				
14	52430604190	SPRING	1						
15	52430304150	BOLT (ADJUSTING)	1						
16	52430604180	PACKING	1						
17	52430604210	NUT	1		M12				
18	52430103060	FORK	1						
19	52230104050	SHAFT (SHIFTER)	1						
20	91206020007	SEAL,OIL	1						
21	52230603020	PACKING	1						
22	52230107041	COVER (BEARING)	1						
23	90191208016	BOLT	4		M8X16				
24	90302040801	WASHER,SPRING	4		8				
26	90191210030	BOLT	4		M10X30				
27	90191210090	BOLT	2		M10X90				
40	52230107000	POWER TAKE OFF	1						

TM-Z100 31032000012A FRAME/STD,REMOTE-RADIO CONT.,3 BOOM

Pos No.	Parts No	Parts Name	Qty	Unit	Technical Data	Serial No (Start)	Serial No (End)	Remarks	Pages
50	36652035020	GASKET	2						
51	36652035010	GASKET	2						
65	53063551010	SEAL,OIL	1						
80	36652010000	PUMP,HYDRAULIC	1						

CLICK HERE TO **DOWNLOAD** THE COMPLETE MANUAL

- Thank you very much for reading the preview of the manual.
- You can download the complete manual from: www.heydownloads.com by clicking the link below



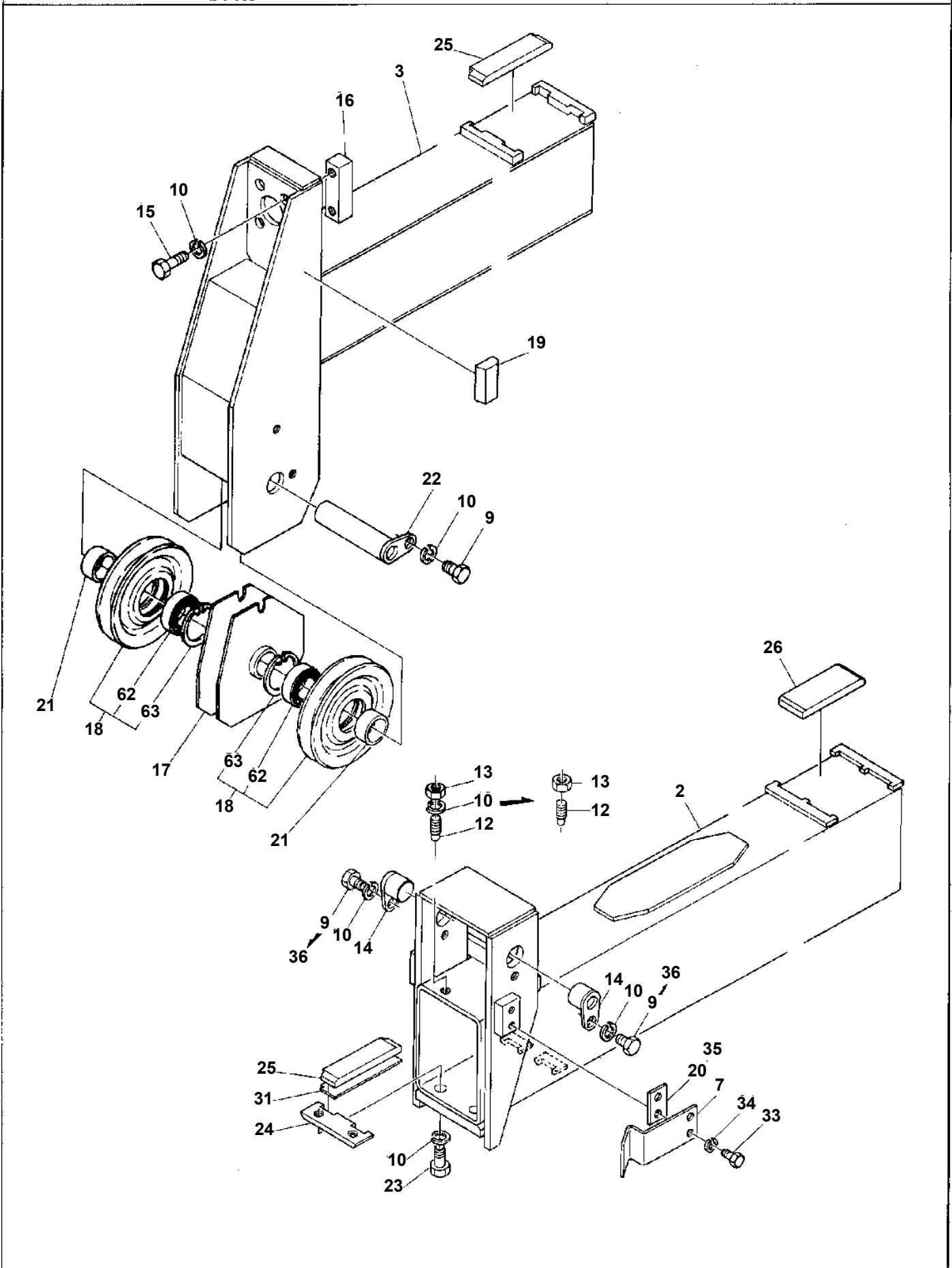
- Please note: If there is no response to CLICKING the link, please download this PDF first and then click on it.

CLICK HERE TO **DOWNLOAD** THE COMPLETE MANUAL

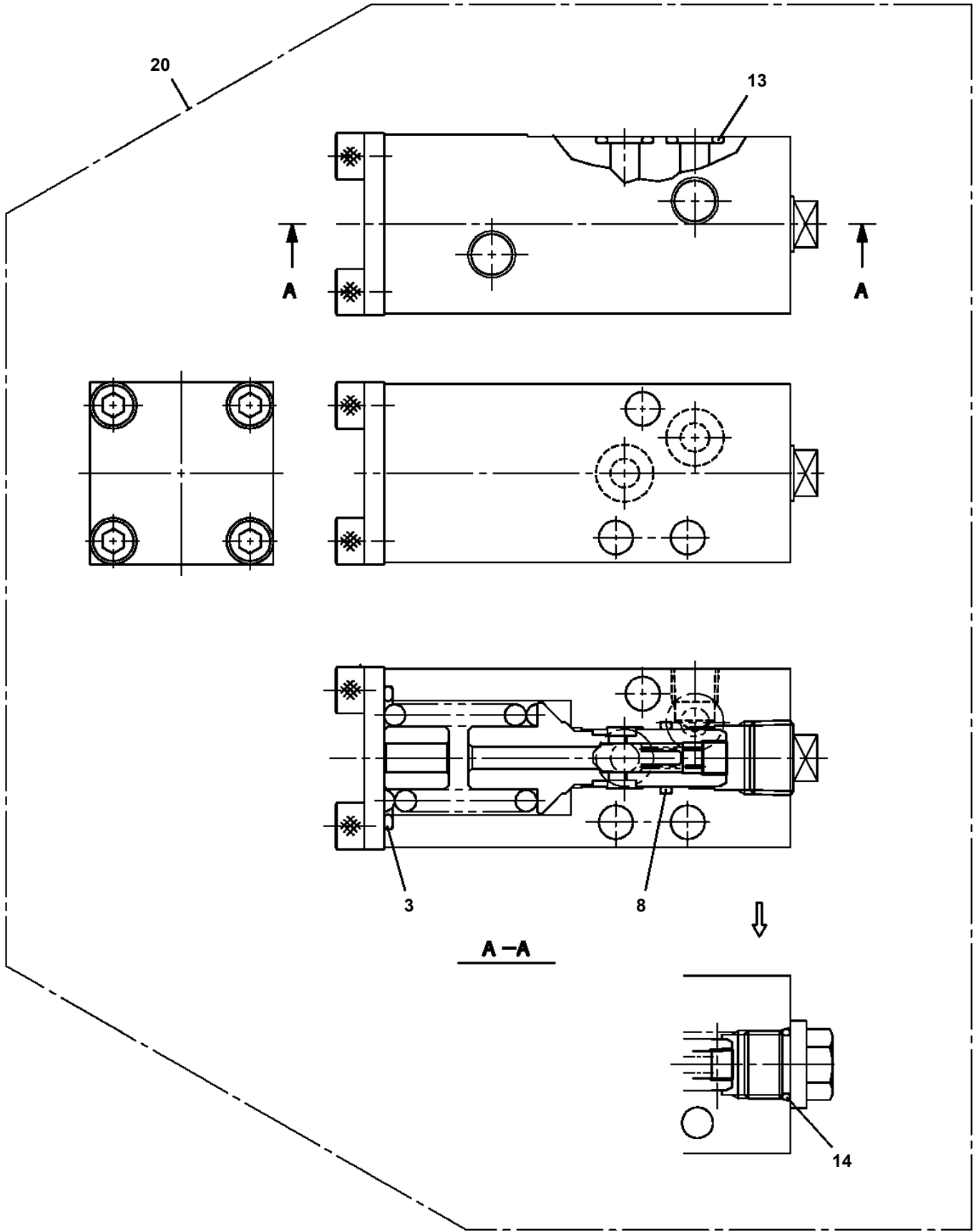
TM-Z100 31032000012A FRAME/STD,REMOTE-RADIO CONT.,3 BOOM

Pos No.	Parts No	Parts Name	Qty	Unit	Technical Data	Serial No (Start)	Serial No (End)	Remark
1	36602100000	VALVE,COUNTERBALANCE	1					
2	90131908060	BOLT,HEXAGON SOCKET	3		M8X60		119961	
	90172108060	BOLT,HEXAGON SOCKET	3		M8X60	119962		
3	36020120000	CYLINDER ASSY	1					
21	91002902500	O-RING	1		1B G25			
22	36020120010	PISTON	1					
23	91500307005	PACKING	2					
24	36020129510	CYLINDER ASSY	1					
25	36020129520	ROD ASSY	1					
26	36020120090	COVER,ROD	1					
27	91002906500	O-RING	1		1B G65			
28	91694005000	PACKING	1					
29	36020120100	PLATE	1					
30	91660005000	SEAL,DUST	1					
31	80622000500	RING,RITAINING	1		SP50			
32	80801003040	BEARING,PLAIN	3					
33	90750008101	SCREW,SET	1		M8X10			
40	36020129901	PACKING SET	1		50X70			
100	31240440000	CYLINDER,ELEVATING	1					

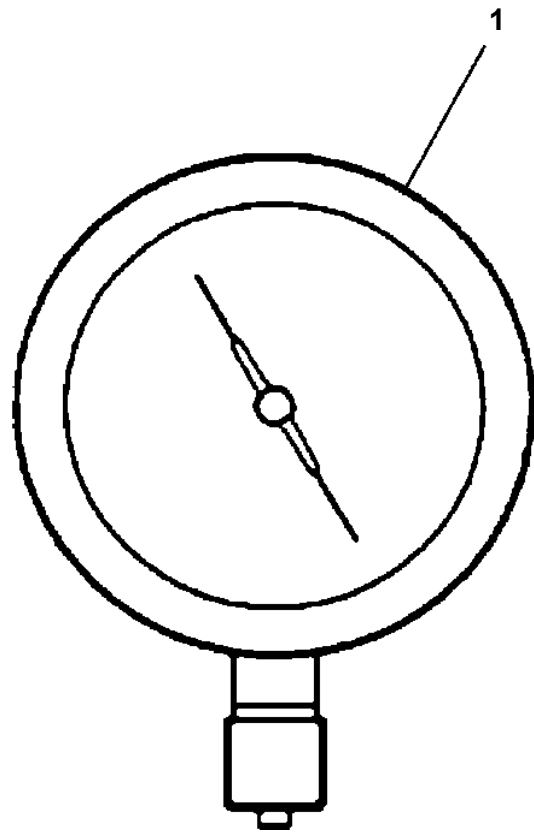
TM-Z100 31032000012A FRAME/STD,REMOTE-RADIO CONT.,3 BOOM
PG1010100-02 BOOM



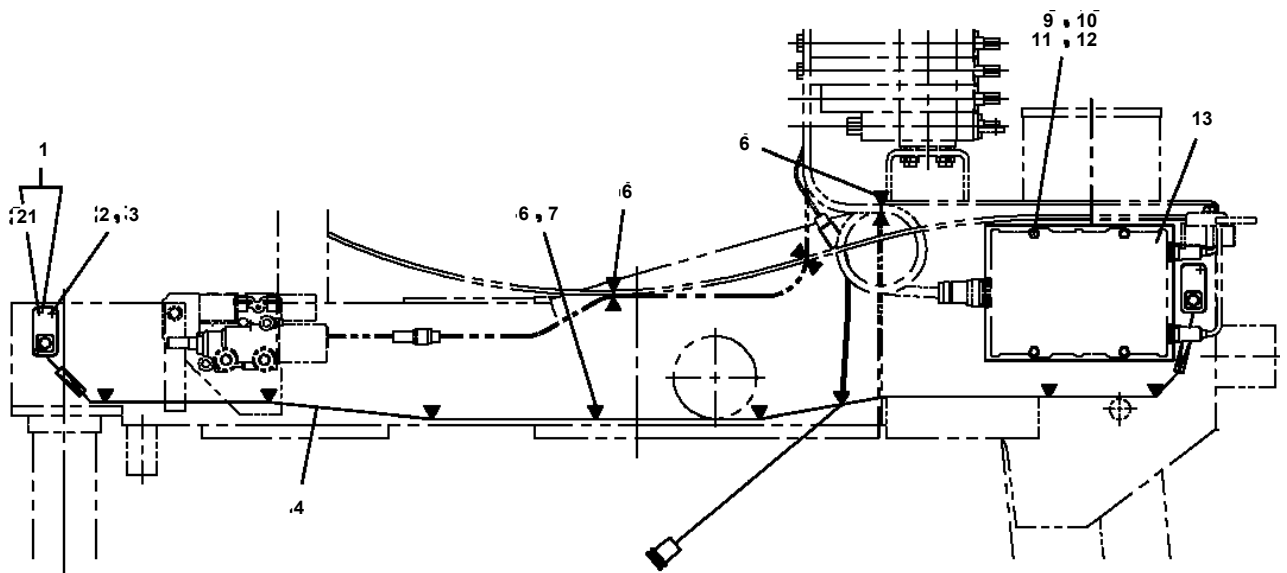
TM-Z100 31032000012A FRAME/STD,REMOTE-RADIO CONT.,3 BOOM
PI1250040-02 VALVE,COUNTERBALANCE



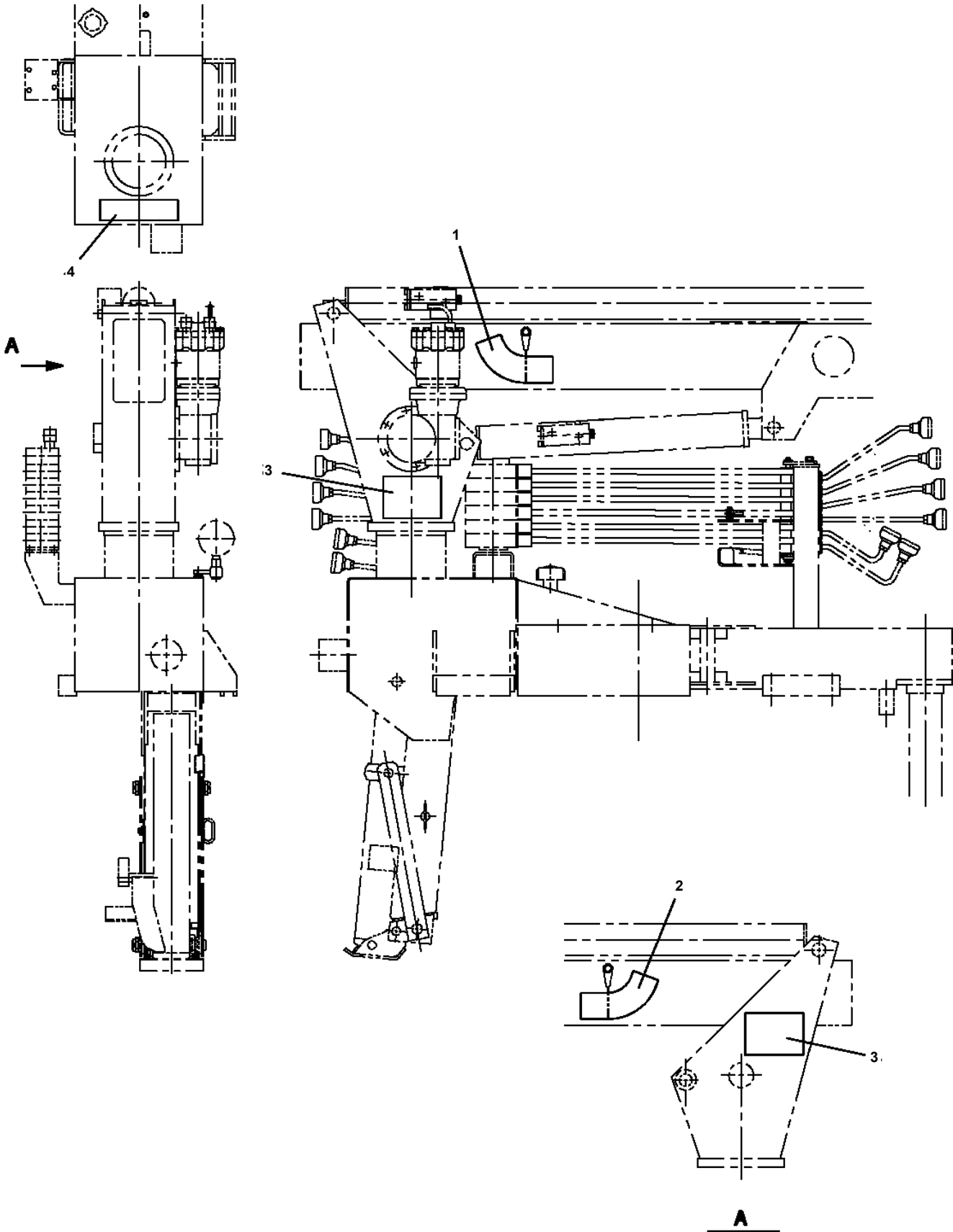
TM-Z100 31032000012A FRAME/STD,REMOTE-RADIO CONT.,3 BOOM
PI1440049-00 METER,LOAD (KUSABA/ENGLISH)



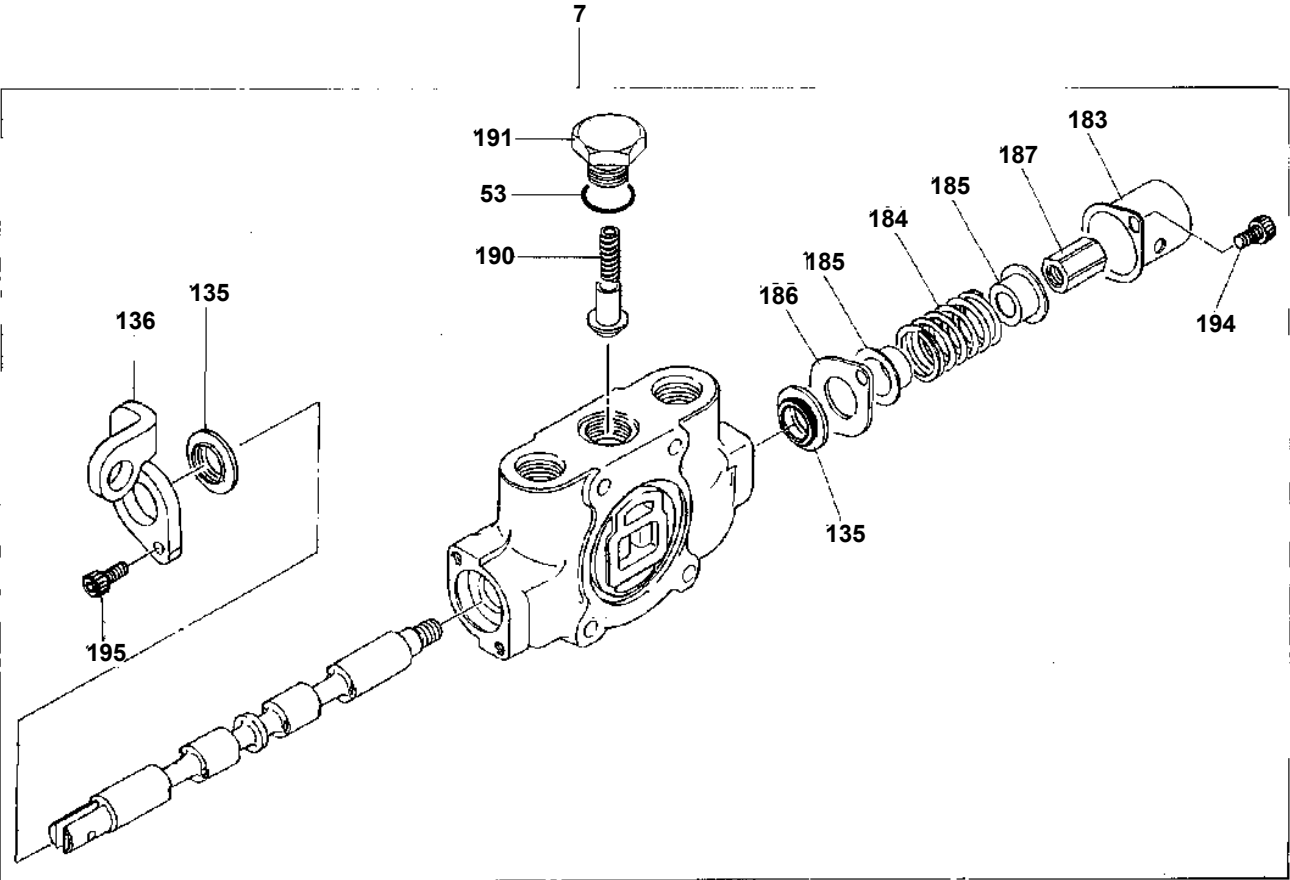
TM-Z100 31032000012A FRAME/STD,REMOTE-RADIO CONT.,3 BOOM
PN1011017-01 ELEC.ASSY (REMOTE CONTROL)



TM-Z100 31032000012A FRAME/STD,REMOTE-RADIO CONT.,3 BOOM
PO1011196-00 PLATE ASSY,NAME (ENGLISH.STD CAB)

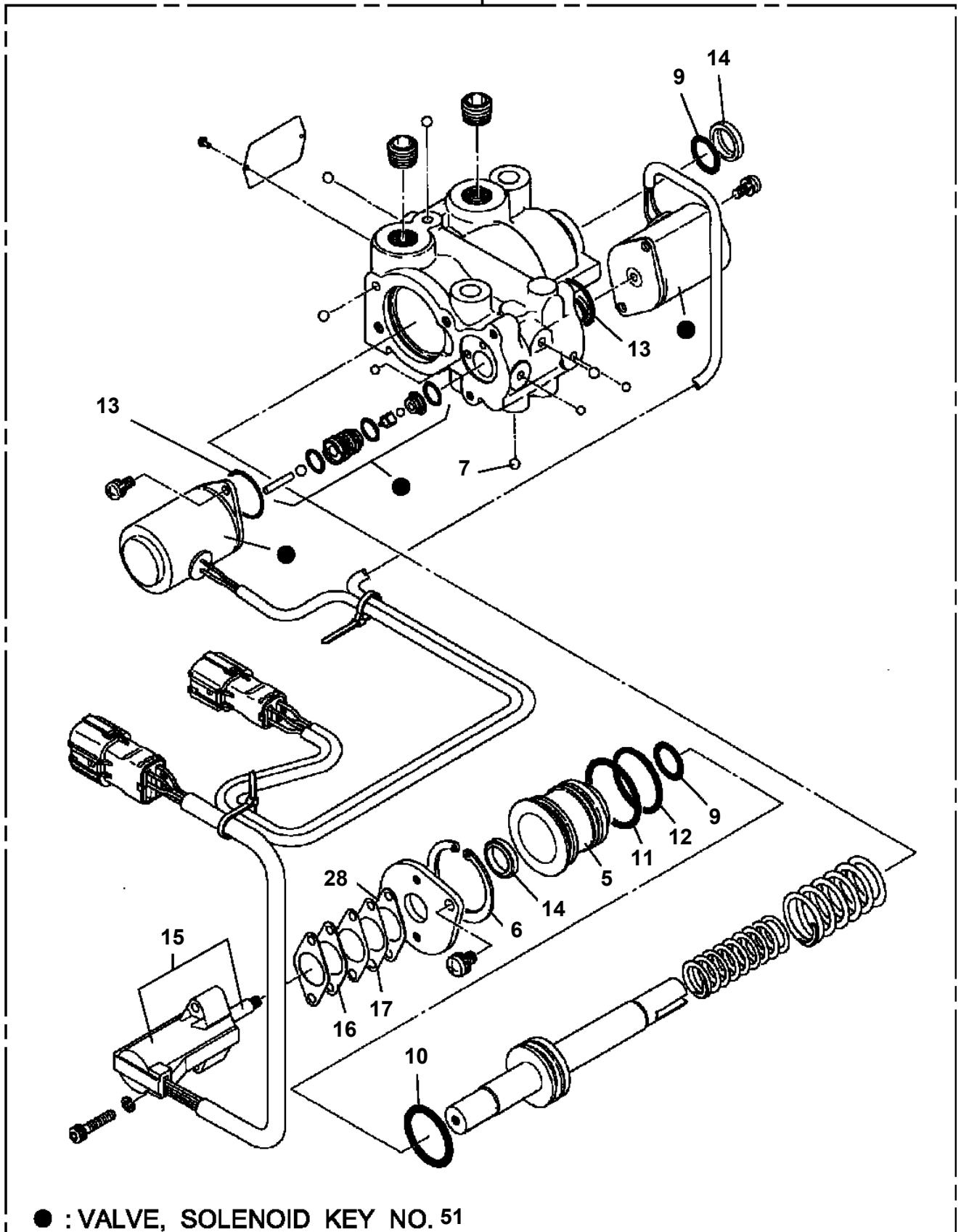


TM-Z100 31032000012A FRAME/STD,REMOTE-RADIO CONT.,3 BOOM
PV1020022-01 VALVE,REMOTE CONTROL(T.SANWA)



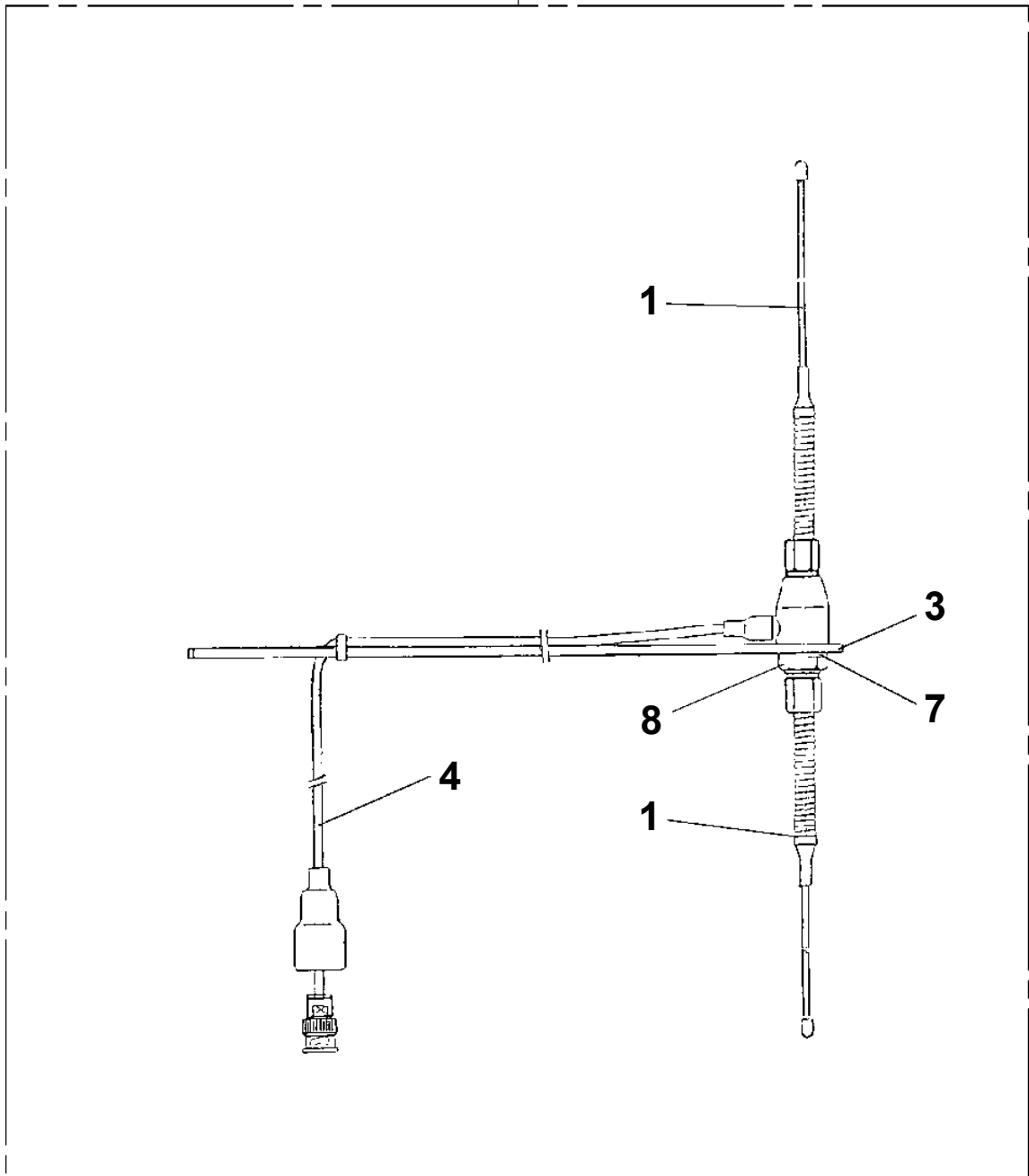
TM-Z100 31032000012A FRAME/STD,REMOTE-RADIO CONT.,3 BOOM
PV1050002-03 CYLINDER,ACCELERATOR(T.SANWA)

100



TM-Z100 31032000012A FRAME/STD,REMOTE-RADIO CONT.,3 BOOM
PV1400014-02 ANTENNA (FOR RADIO CONTROL)

10



CLICK HERE TO **DOWNLOAD** THE COMPLETE MANUAL

- Thank you very much for reading the preview of the manual.
- You can download the complete manual from: www.heydownloads.com by clicking the link below



- Please note: If there is no response to CLICKING the link, please download this PDF first and then click on it.

CLICK HERE TO **DOWNLOAD** THE COMPLETE MANUAL