

TM-20110 41043100104A FRAME/MANUAL,5 BOOM
PB0000009-02 SYSTEM (TM-2000-1,NORTH AMERICA)
ASSEMBLY

CLICK HERE TO **DOWNLOAD** THE COMPLETE MANUAL

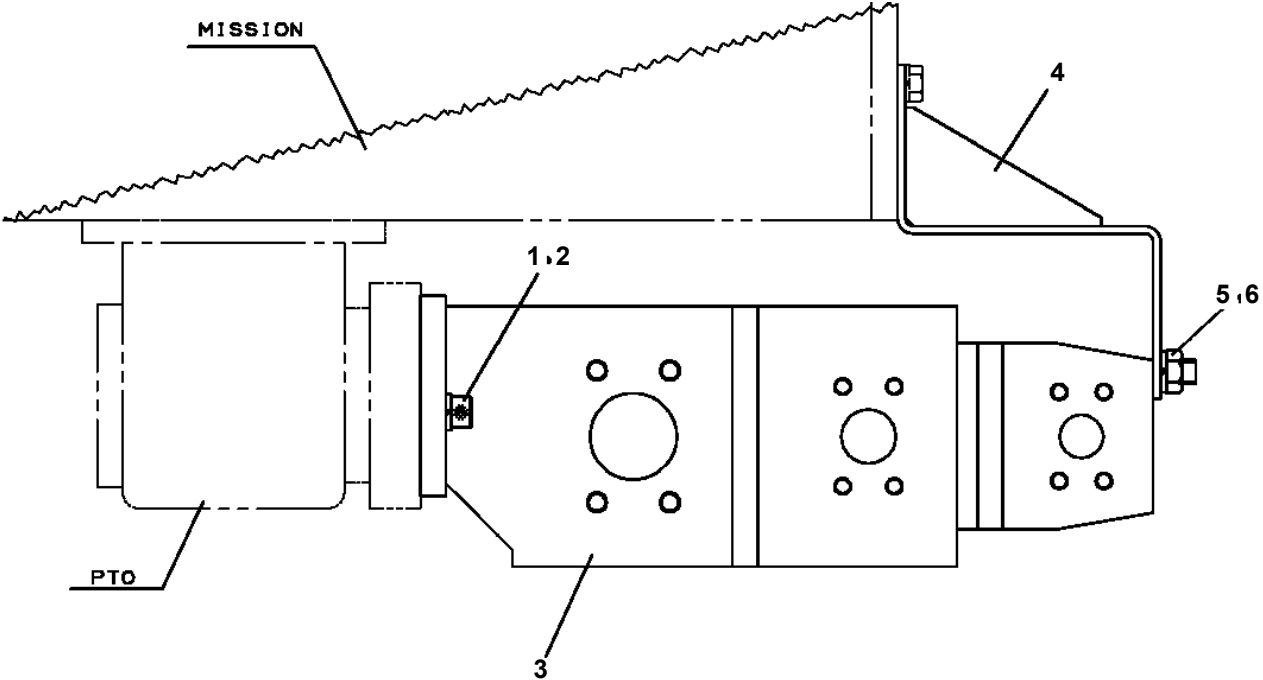
- Thank you very much for reading the preview of the manual.
- You can download the complete manual from: www.heydownloads.com by clicking the link below



- Please note: If there is no response to CLICKING the link, please download this PDF first and then click on it.

CLICK HERE TO **DOWNLOAD** THE COMPLETE MANUAL

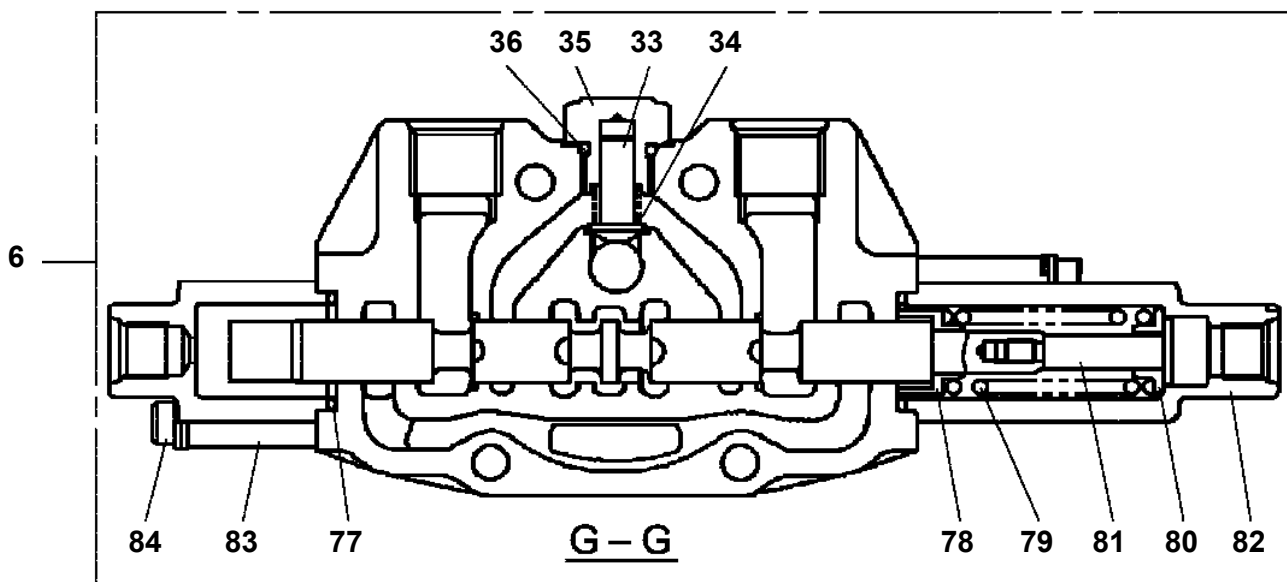
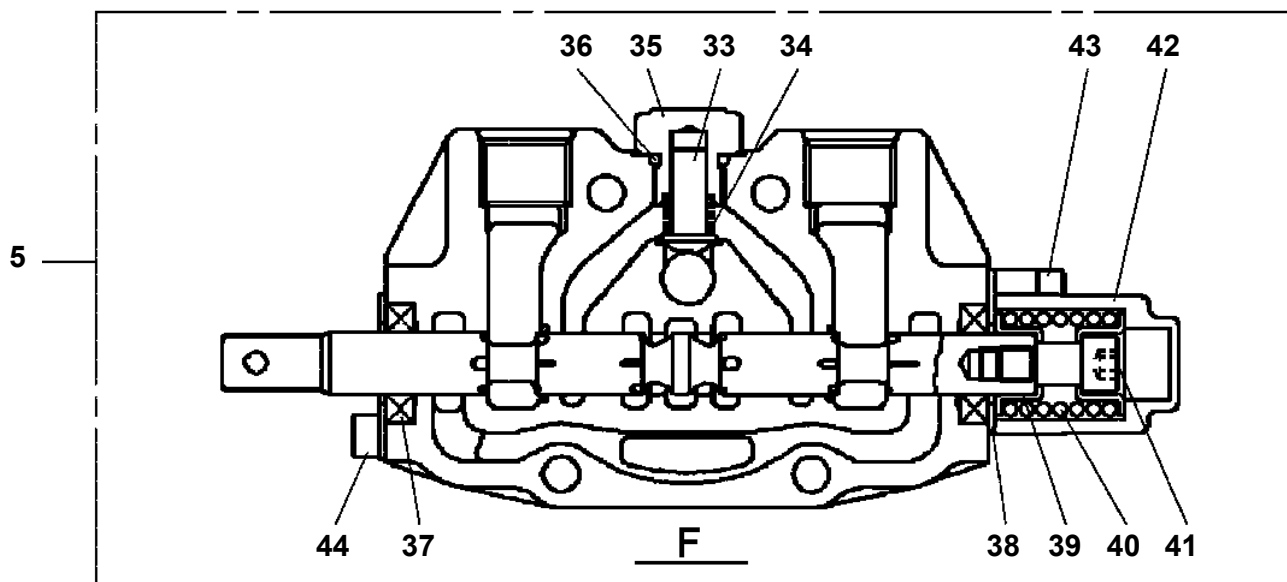
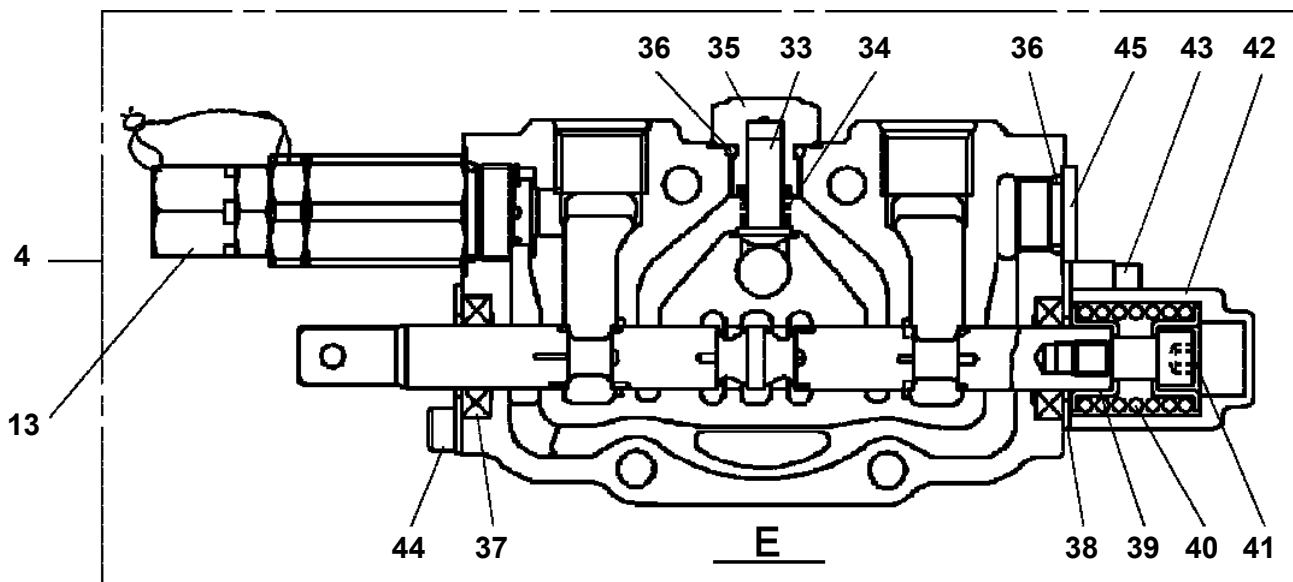
TM-20110 41043100104A FRAME/MANUAL,5 BOOM
PB1100323-01 MOUNT ASSY,PUMP (PTO:CHELEA 489)



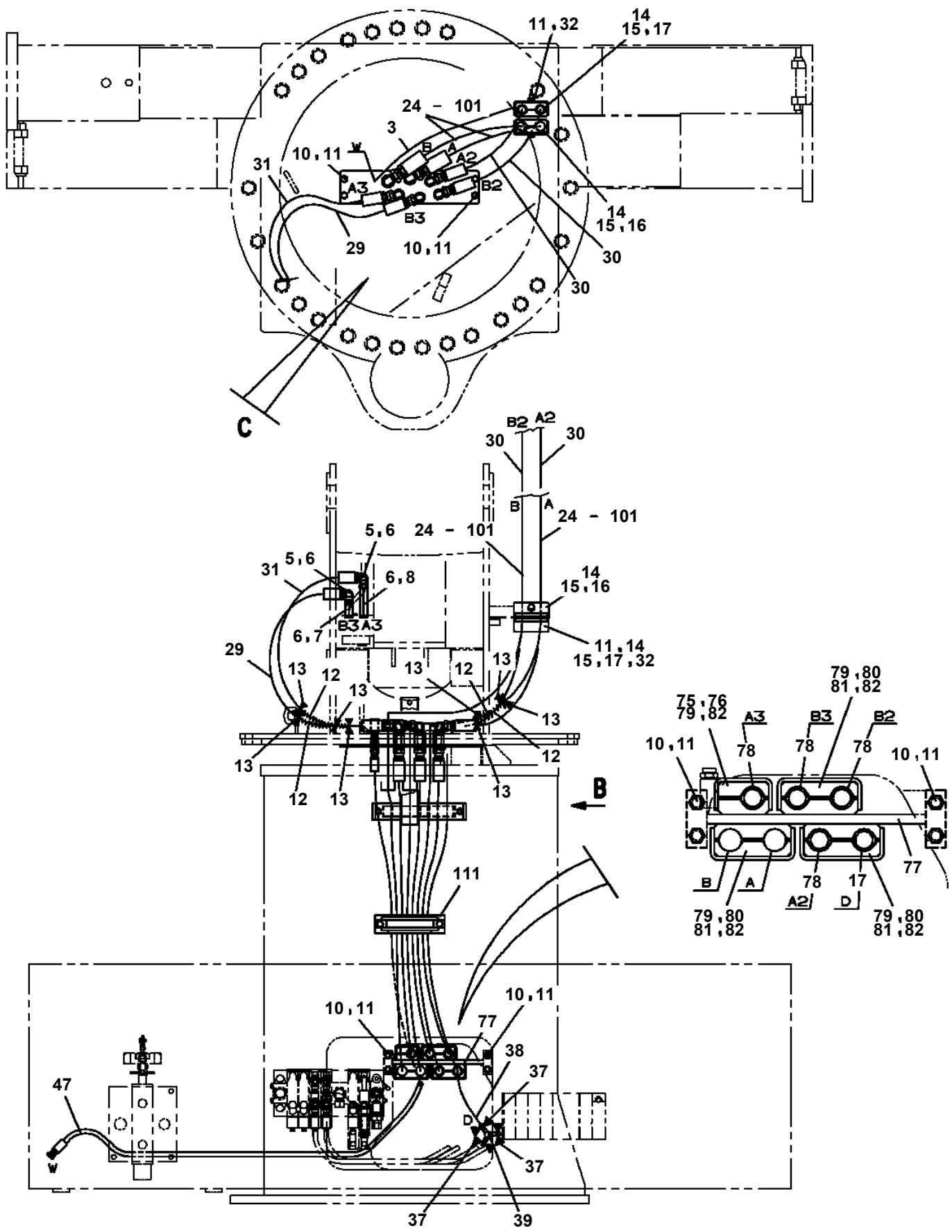
TM-20110 41043100104A FRAME/MANUAL,5 BOOM

Pos No.	Parts No	Parts Name	Qty	Unit	Technical Data	Serial No (Start)	Serial No (End)	Remarks	Pa
1	31631741000	JOINT,SWIVEL	1				EX0309		
3	90171114035	BOLT	4		M14X35				
4	90302041401	WASHER,SPRING	4		14				
5	31631740100	SUPPORT	1				EX0326		
6	90171112020	BOLT	4		M12X20				
7	90302041201	WASHER,SPRING	4		12				
21	31631741100	BODY	1				EX0309		
22	31631741200	CORE	1				EX0361		
23	31631061000	RING,SLIP	1				EX0382		
24	31631741500	BEARING,PLAIN	1						
25	37000404380	BEARING,PLAIN	1						
26	31631741300	PLATE	1						
27	31631741400	PLATE	1						
28	91531214000	PACKING	2						
29	91100514000	SEAL,RING	11						
30	90151200100	BOLT,EYE	2		M10				
31	90102208030	BOLT	4		M8X30				
32	90302040801	WASHER,SPRING	10		8				
33	90303070801	WASHER,PLAIN	10		8				
34	90180208016	BOLT,BUTTON	2		M8X16				
35	90180208010	BOLT,BUTTON	4		M8X10				
36	90180104010	BOLT,BUTTON	4		M4X10				
37	90102208016	BOLT	4		M8X16				
38	82456101000	NIPPLE,GREASE	1		A-PT1/8				
39	82458202000	NIPPLE,GREASE	1		B-TYPE PT1/8				
40	16715401000	NIPPLE	1						
41	16715403000	SLEEVE	2						
42	16715404000	NIPPLE	2						
43	31631741650	PIPE	1				EX0309		
44	16715402000	FITTING,ELBOW	1						
45	82114203020	CONNECTOR (CAP)	1						
46	82121502020	PLATE	1						
47	82114203030	CONNECTOR (CAP)	1						
48	82121502030	PLATE	1						
49	82100002855	CAP	2						
50	80316090060	PLUG	3		KKT PT3/8				
51	80316090080	PLUG SOCKET	2		R1/2				
52	80316090040	PLUG SOCKET	2		R1/4				
53	90302040401	WASHER,SPRING	4		4				
54	90303070401	WASHER,PLAIN	4		4				
55	82400000459	CAP	2						
56	31631741700	COVER	1						
61	80400160134	JOINT	4						
62	91002802900	O-RING	4		1B P29				
63	80316070100	PLUG	4		G3/4				
64	91002802400	O-RING	8		1B P24				
65	37000913850	JOINT (WITH O-RING)	4		L,G3/4-G1/2				
66	80430620800	JOINT	4						
67	80430620400	JOINT	2						
68	80316070040	PLUG	2		PF1/4				
69	91002801100	O-RING	2		1B P11		EX0309		
	91002801100	O-RING	4		1B P11				
70	80400160190	JOINT (WITH O-RING)	2						
71	37000919710	JOINT,BUSHING	2						
72	91002801400	O-RING	2		1B P14				
81	91002801800	O-RING	4		1B P18				

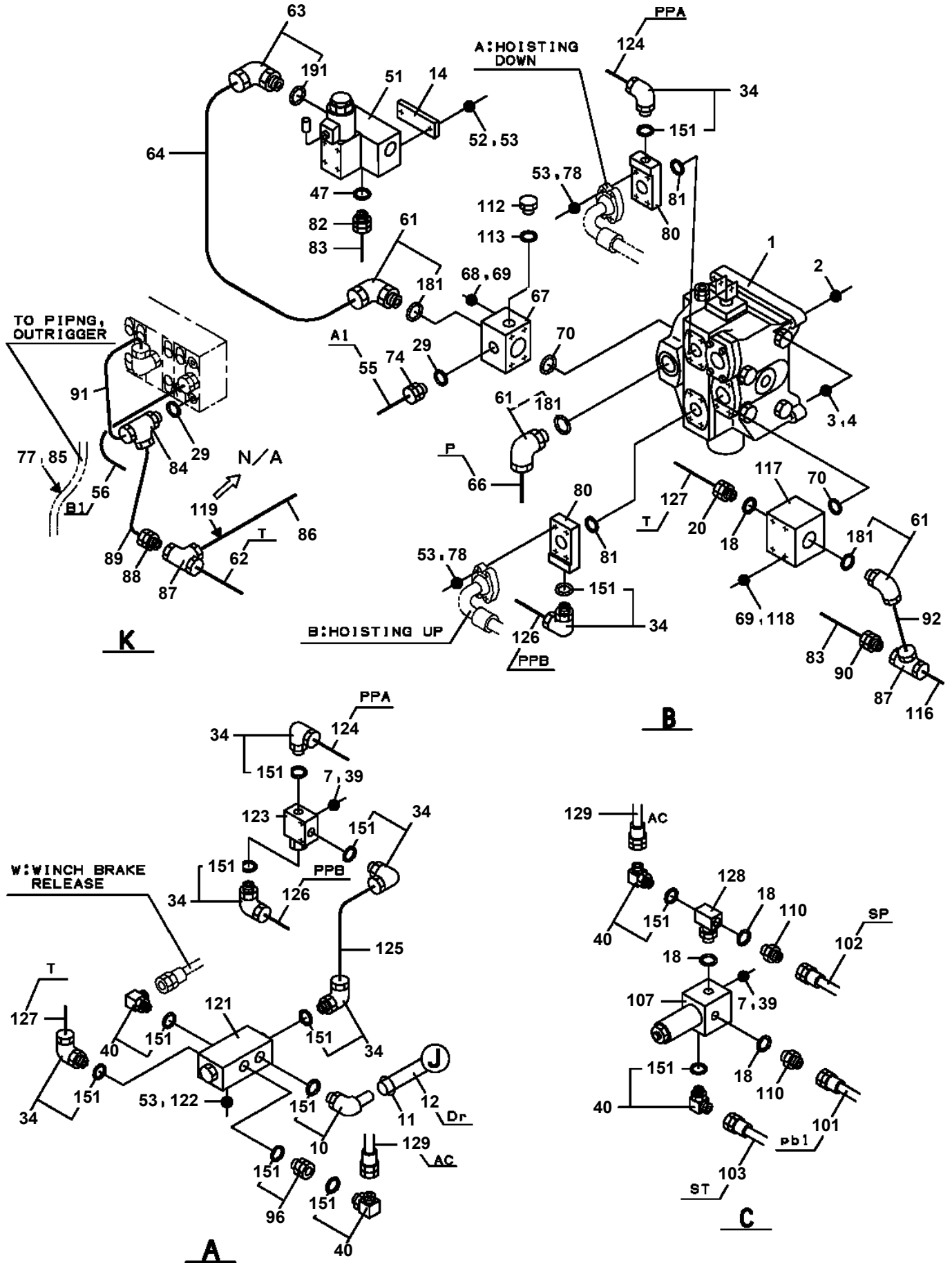
TM-20110 41043100104A FRAME/MANUAL,5 BOOM
 PB1320604-01 VALVE,MANUAL CONTROL



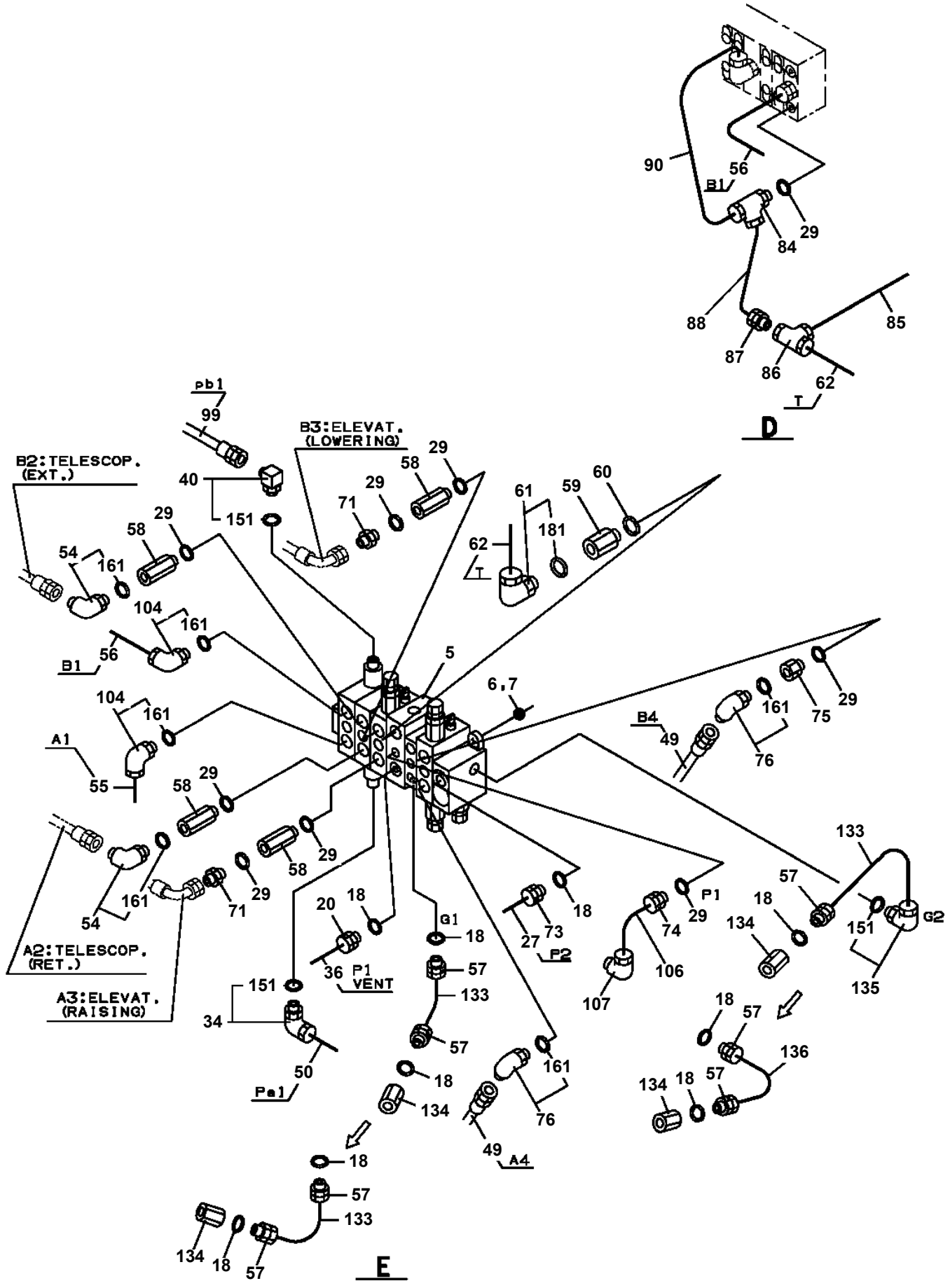
TM-20110 41043100104A FRAME/MANUAL,5 BOOM
 PB1400425-02 PIPING,UPPER



**TM-20110 41043100104A FRAME/MANUAL,5 BOOM
PB1411718-02 PIPING,LOWER**



TM-20110 41043100104A FRAME/MANUAL,5 BOOM
PB1411865-03 PIPING,LOWER



TM-20110 41043100104A FRAME/MANUAL,5 BOOM
PB2000028-02 POWER TAKE OFF & PUMP

- POWER TAKE OFF
- パワー テイク オフの選定

[NOTE]

- (1) POWER TAKE OFF FOR EXPORT IS SUPPLIED FROM THE CARRIER MANUFACTURE.

[注 意]

- (1) 海外向けのパワーテイクオフは、車両メーカー品です。

- PUMP
- ポンプの選定

key No 指示番号	PUMP MODEL ポンプ型式番号	RUNNING DIRECTION 回転方向
1	GXP05-B1B52WBTB400LPL1OABL	COUNTERCLOCKWISE 左

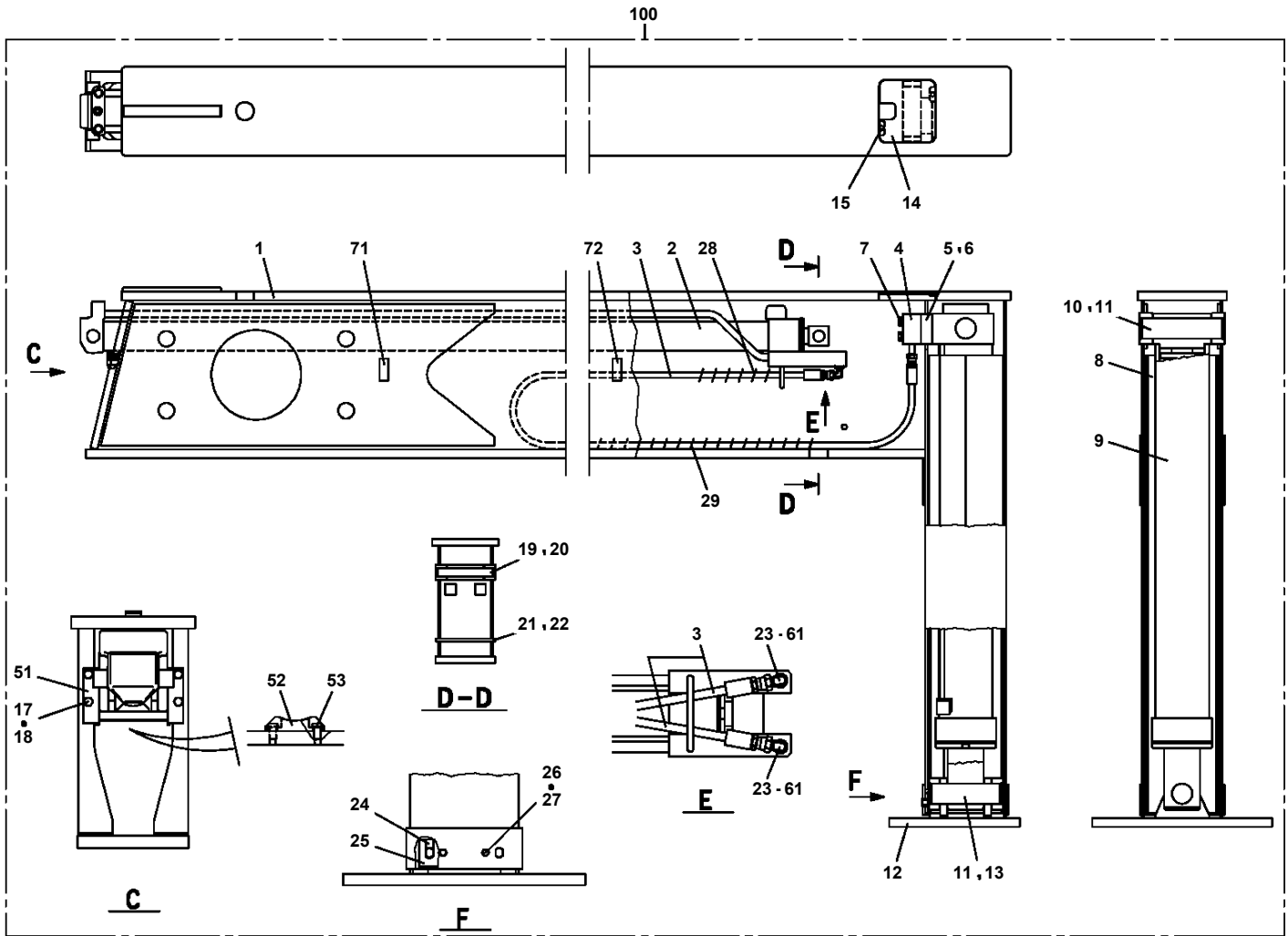
[NOTE]

- (1) PUMP MODEL NOS. ARE PUNCHED ON PUMP NAMEPLATE.

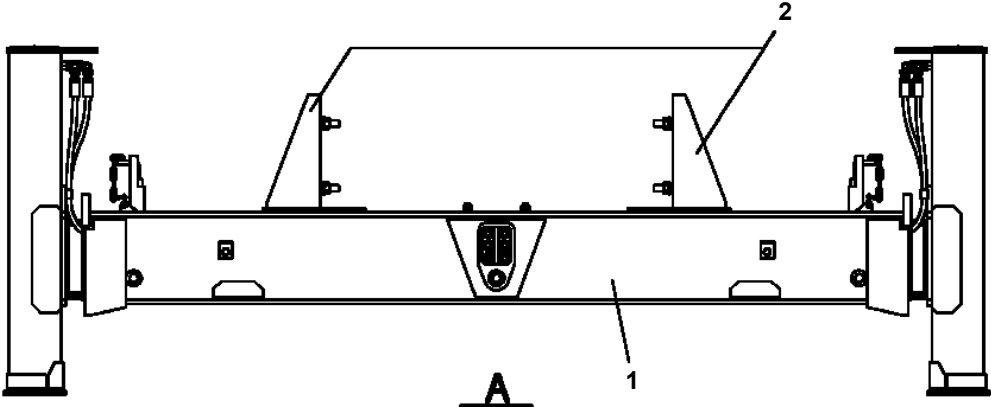
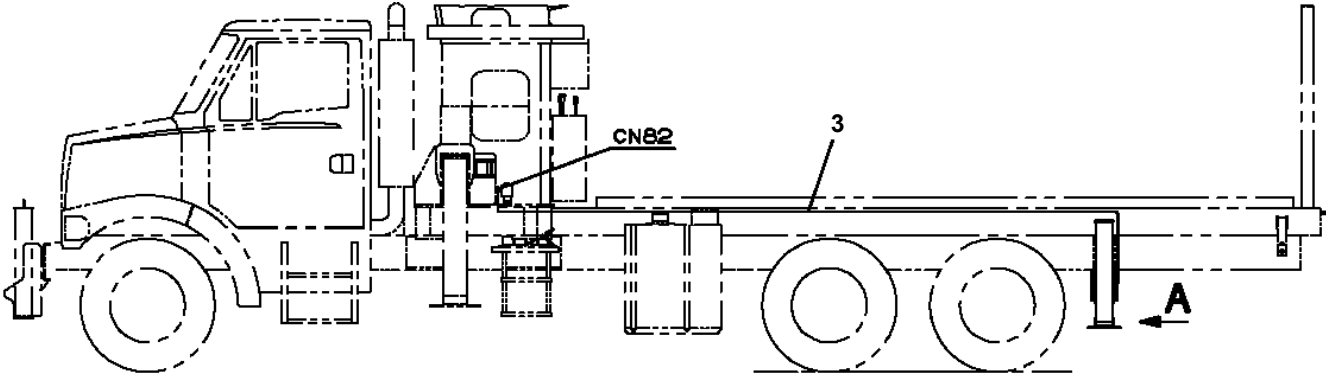
[注 意]

- (1) ポンプ型式番号はポンプ本体の銘板に打刻しています。

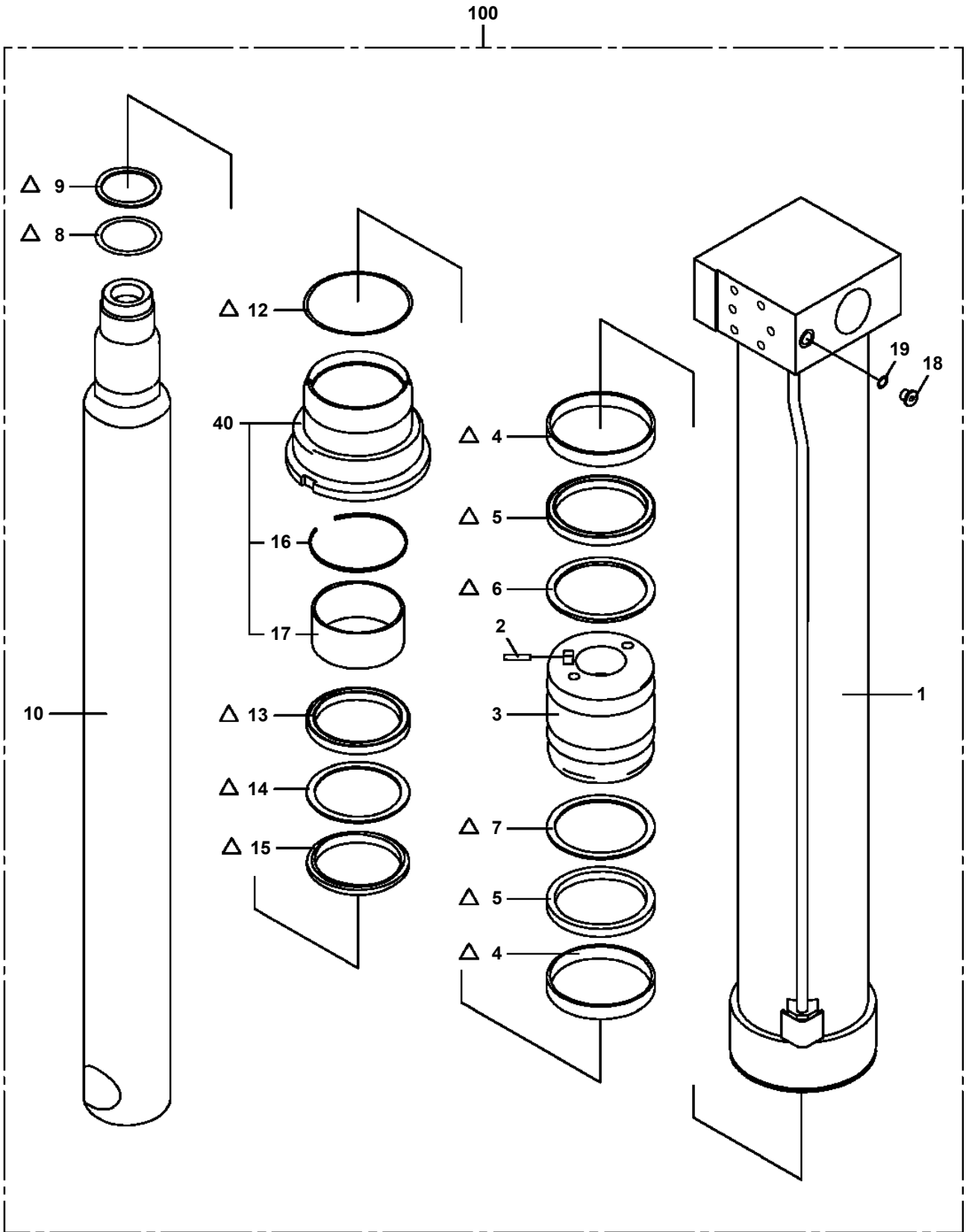
**TM-20110 41043100104A FRAME/MANUAL,5 BOOM
PC1011285-00 OUTRIGGER**



TM-20110 41043100104A FRAME/MANUAL,5 BOOM
PC1020111-00 OUTRIGGER,REAR (TM-20110)



TM-20110 41043100104A FRAME/MANUAL,5 BOOM
 PC1030458-00 CYLINDER ASSY,JACK

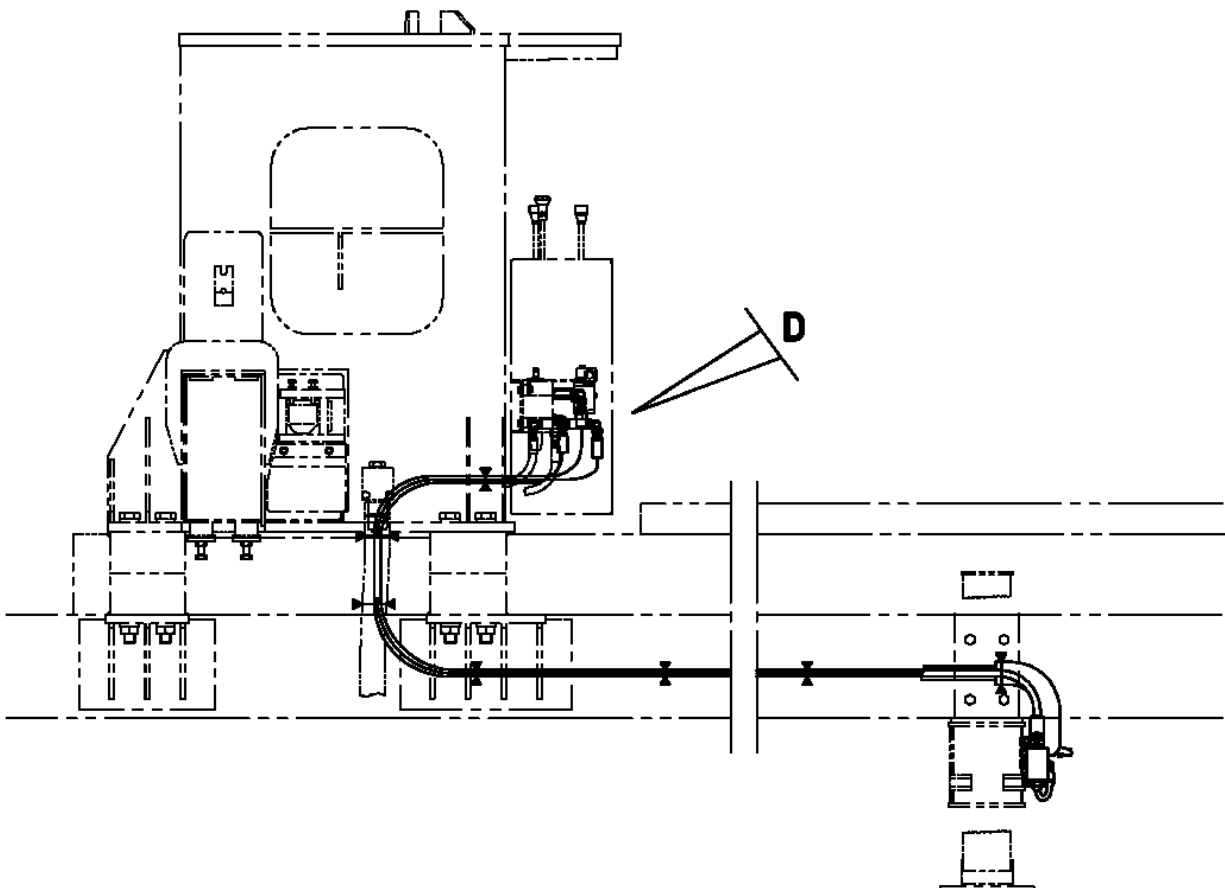
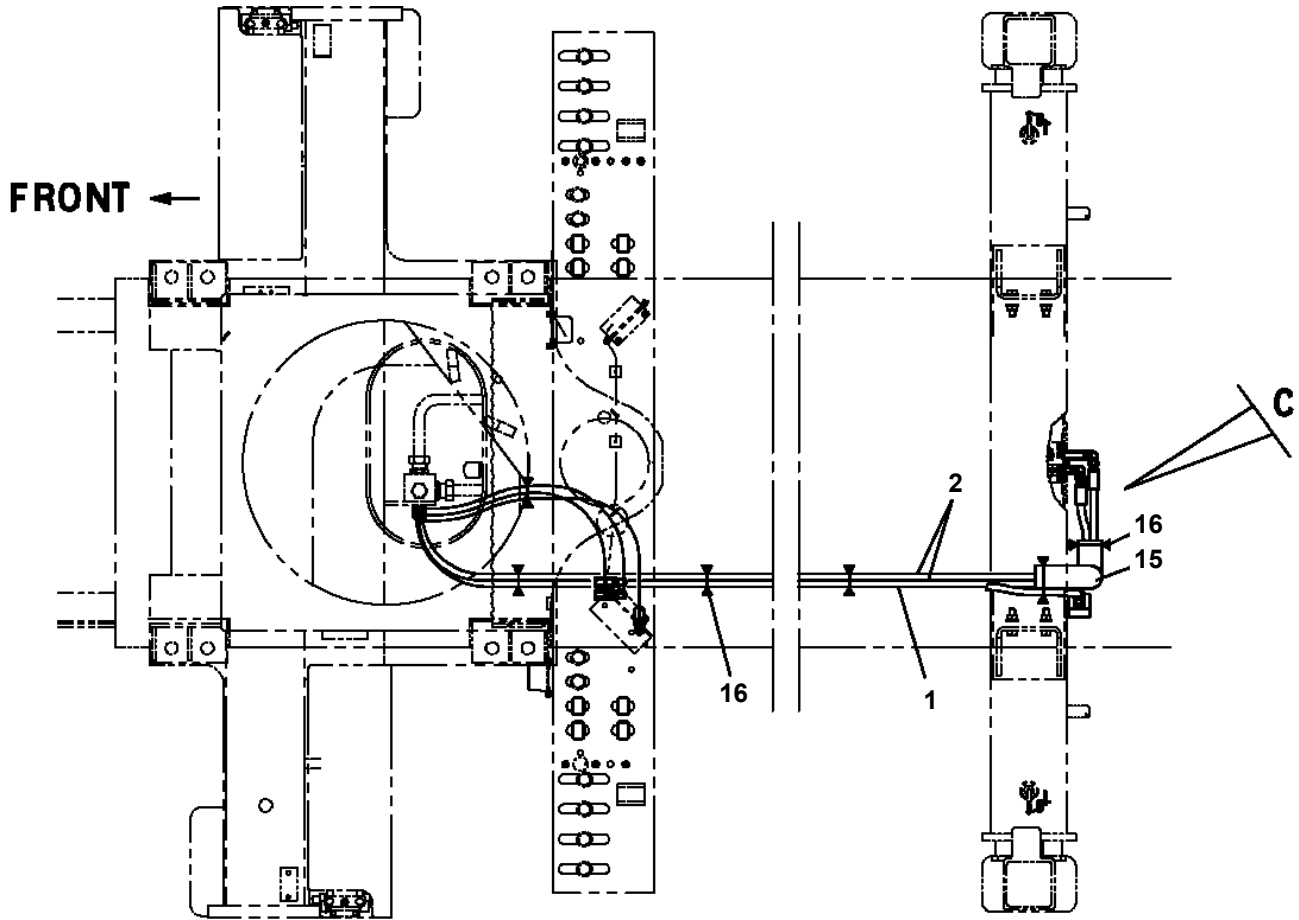


△:PACKING SET KEY NO.50 (KEY NO.4,5,6,7,8,9,12,13,14,15)

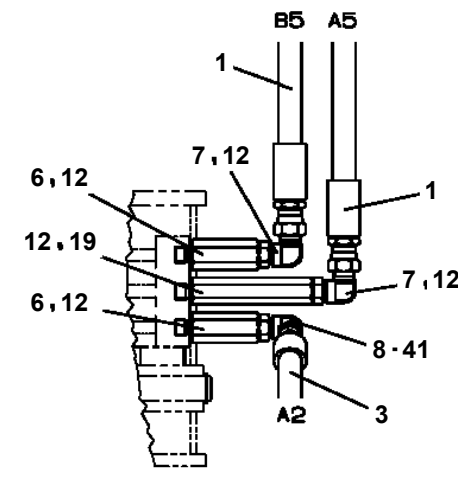
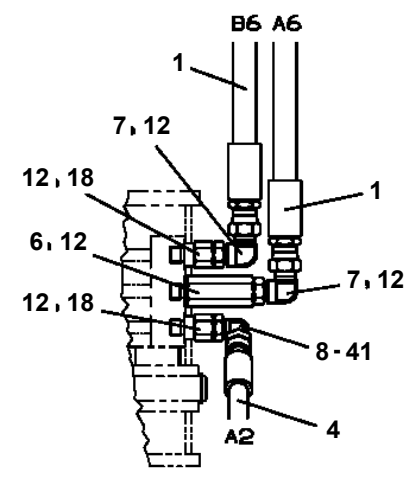
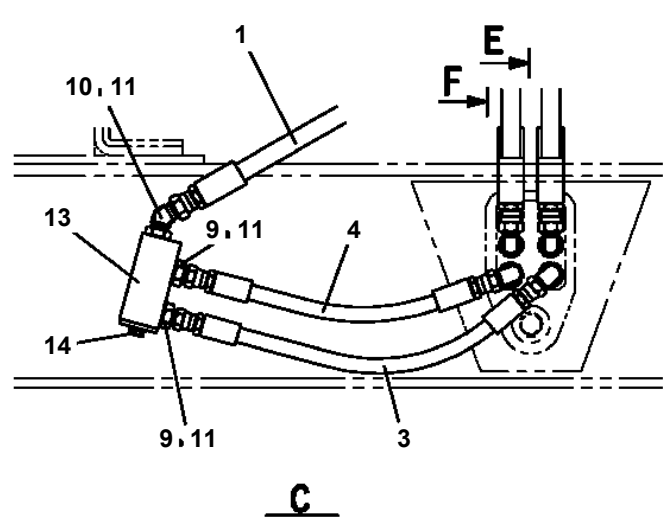
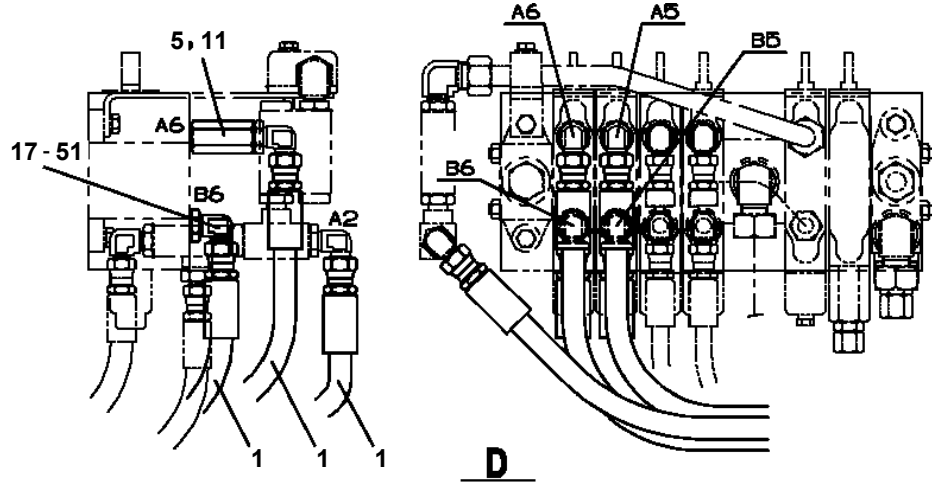
TM-20110 41043100104A FRAME/MANUAL,5 BOOM

Pos No.	Parts No	Parts Name	Qty	Unit	Technical Data	Serial No (Start)	Serial No (End)	Re
1	37002452930	HOSE	6		L=2500			
2	90171108035	BOLT	3		M8X35			
3	90302040801	WASHER,SPRING	11		8			
4	36638280000	VALVE,MANUAL CONTROL	1					
5	91002801400	O-RING	25		1B P14			
6	80316070060	PLUG	2		PF3/8			
7	37000926820	JOINT	1					
8	80481103030	JOINT	3		L,G3/8-G3/8			
9	80302090161	FITTING	2		KCO12-030N			
10	81408000160	PIPE,STEEL	1	M	12X1.4T			
11	37000926260	JOINT	2					
12	80481103020	JOINT	5		PF3/8-PF1/4			
13	42344290500	JOINT	1					
14	42343190700	JOINT	1					
15	31648351100	VALVE ASSY	1					
16	80400160128	JOINT	7		S,G3/8-G1/4			
17	90101208030	BOLT	8		M8X30			
18	37000601510	CUSHION	8					
19	37000601210	CLAMP	4					
20	80303130241	FITTING,ELBOW	2		KLO18-040E			
21	80302090241	FITTING	1		KCO18-040N			
22	91002801800	O-RING	1		1B P18			
23	80302090181	FITTING	1		KCO15-030N			
24	31648121101	CLAMP ASSY	1					
25	37000300750	SLEEVE	1		18-15			
26	90280200800	NUT,FLANGE	1		M8			
27	37000600120	CLAMP	1		WR45			
28	81408000210	PIPE,STEEL	1	M	15X2.0T			
41	91002801800	O-RING	2		1B P18			
51	80303130181	FITTING,ELBOW	1		KLO15-030E			
52	36604860000	VALVE,PRESSURE REGULATOR	1					
61	91002801400	O-RING	1		1B P14			

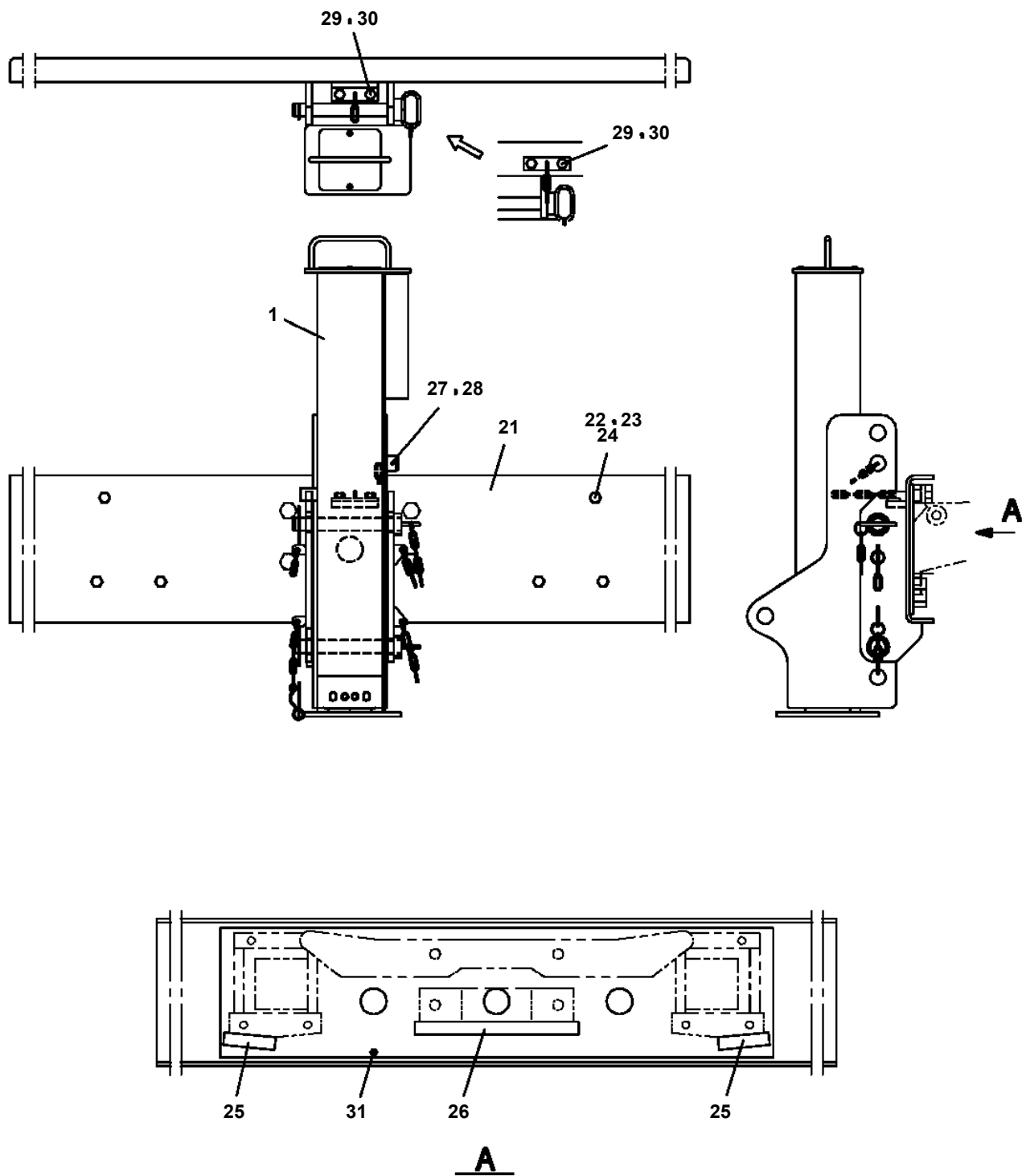
TM-20110 41043100104A FRAME/MANUAL,5 BOOM
PC1230041-00 PIPING,REAR JACK



**TM-20110 41043100104A FRAME/MANUAL,5 BOOM
PC1230046-00 PIPING,REAR JACK**



TM-20110 41043100104A FRAME/MANUAL,5 BOOM
 PC1250112-01 FRONT JACK



展開図有
 ILLUSTRATED BREAKDOWN NO. 21

TM-20110 41043100104A FRAME/MANUAL,5 BOOM

Pos No.	Parts No	Parts Name	Qty	Unit	Technical Data	Serial No (Start)	Serial No (End)	Remarks	Pa
1	(*****)	FRONT JACK	1			EX0327			000
2	(*****)	PIPING,FRONT JACK	1			EX0327			000
100	31613433002	JACK ASSY,FRONT	1						

TM-20110 41043100104A FRAME/MANUAL,5 BOOM

Pos No.	Parts No	Parts Name	Qty	Unit	Technical Data	Serial No (Start)	Serial No (End)	Remarks
2	90101508030	BOLT	16		M8X30			
3	90302040801	WASHER,SPRING	16		8			
4	36081695020	RETAINER	1					
5	36081695030	CASING	1					
6	80513006313	BEARING,BALL	1					
7	36080625120	RETAINER (B)	1					
8	80601110650	RING,RITAINING	1		S65			
9	80316090080	PLUG SOCKET	1		R1/2			
11	80601110600	RING,RITAINING	1		S60			
12	36081695050	GEAR,SUN	1					
14	36070845250	RING,THRUST	3					
15	36081695060	GEAR,PLANETARY	3					
16	36080625190	BEARING,NEEDLE	3					
17	36081695210	RING	3					
18	36080625070	PLUG	1					
19	36080625180	WASHER,SEAL	1		W20			
20	36081695070	GEAR,SUN	1					
21	36080515010	RING,THRUST	2		AS1102			
23	80601110520	RING,RITAINING	2		S52			
24	36081695220	RING	4					
25	36073325310	RING,THRUST	4					
26	36081695090	GEAR,PLANETARY	4					
27	36071915210	BEARING,NEEDLE	4					
28	36070845230	RING,THRUST	4					
30	36081135040	BEARING,ROLLER	1					
31	91280439941	SEAL,OIL	1					
51	36081695510	CARRIER ASSY	1					
52	36081695520	CARRIER ASSY	1					
53	36081695530	GEAR,SPUR	1					
100	36081691000	REDUCER,SWING SPEED	1					

TM-20110 41043100104A FRAME/MANUAL,5 BOOM

Pos No.	Parts No	Parts Name	Qty	Unit	Technical Data	Serial No (Start)	Serial No (End)	Remarks	Page
1	36073600000	WINCH	1						000
2	36073671000	SUPPORT	1						
3	36663010000	MOTOR,HYDRAULIC	1						000
4	90101516050	BOLT	4		M16X50				
5	90302041601	WASHER,SPRING	4		16				
6	91001216500	O-RING	1		1A G165				
7	59457138000	PLUG ASSY	1						
50	36073670000	WINCH	1						

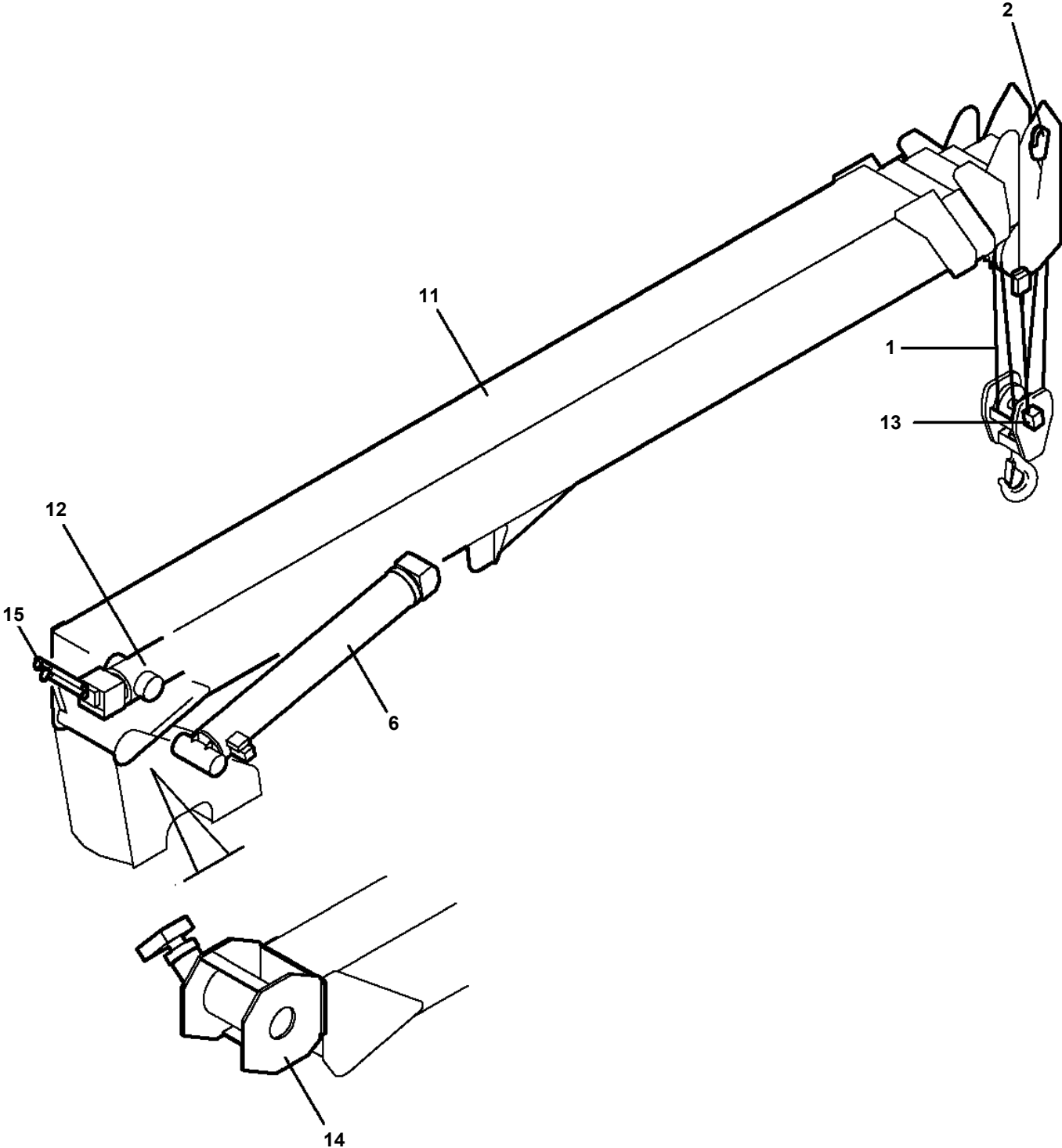
TM-20110 41043100104A FRAME/MANUAL,5 BOOM

Pos No.	Parts No	Parts Name	Qty	Unit	Technical Data	Serial No (Start)	Serial No (End)	Remarks
1	36073670000	WINCH	1					
2	90171114040	BOLT	8		M14X40			
3	90302041401	WASHER,SPRING	8		14			
4	37002600541	WEDGE	1		14-2			
5	36073672000	COVER	1					
6	90101212018	BOLT	4		M12X18			
7	90303071201	WASHER,PLAIN	6		12			
8	90302041201	WASHER,SPRING	6		12			
9	31311490100	SUPPORT	1					
10	90101212030	BOLT	2		M12X30			
11	90172114020	BOLT,HEXAGON SOCKET	2		M14X25			
12	90172112020	BOLT,HEXAGON SOCKET	2		M12X20		EX0405	
13	90302401401	WASHER,SPRING (14)	2					
14	90302401201	WASHER,SPRING (12)	2				EX0405	
15	31311490200	PLATE	1					
22	82401800120	PLUG (FOR M12)	2			EX0406		

TM-20110 41043100104A FRAME/MANUAL,5 BOOM

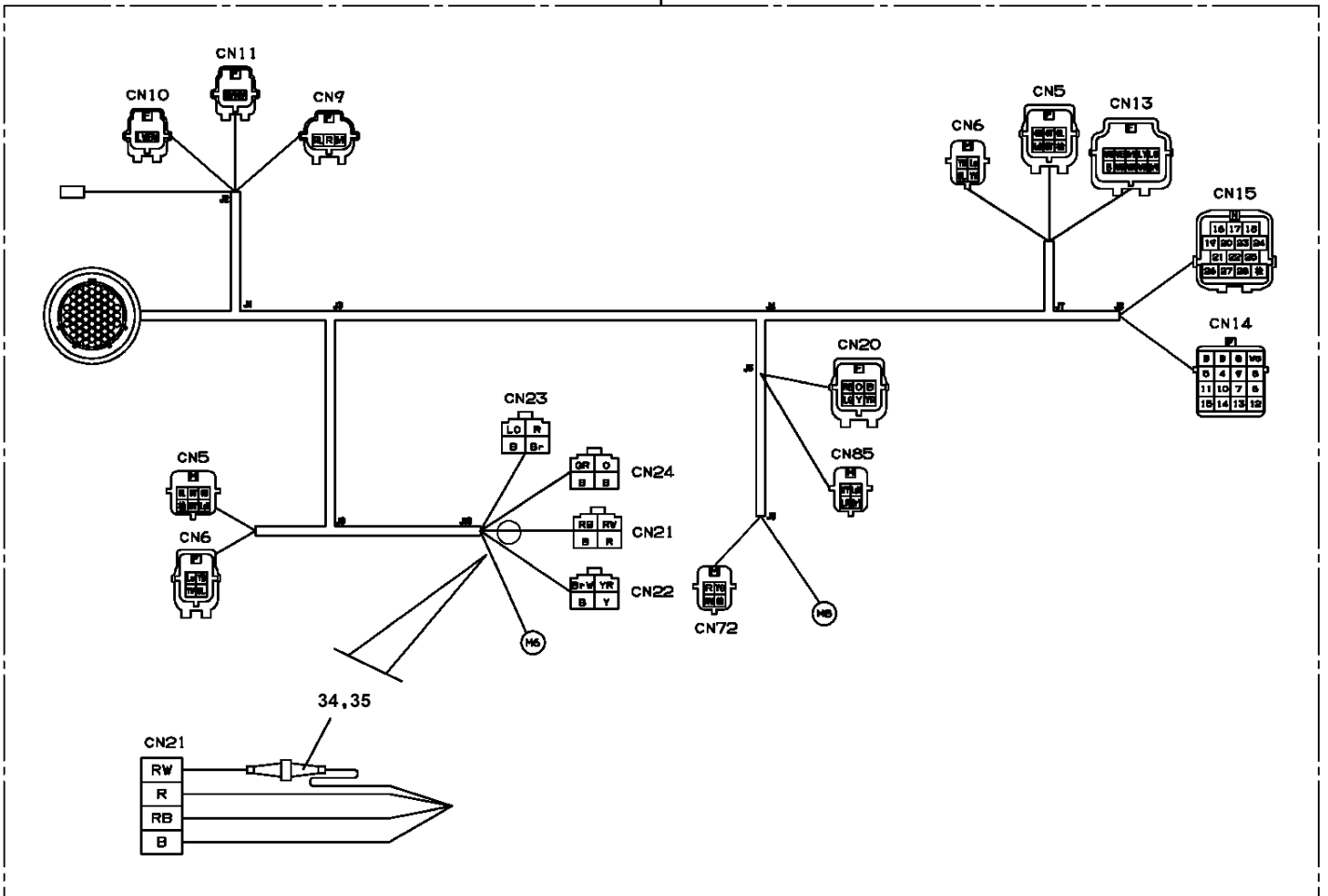
Pos No.	Parts No	Parts Name	Qty	Unit	Technical Data	Serial No (Start)	Serial No (End)	Rem
311	31204381800	PLATE	1					
312	31204381850	PLATE	1					
313	31204991750	GUIDE	3					
314	31204381901	SUPPORT	2					
316	31360202500	SUPPORT	2					
317	31204381950	PLATE	1			EX0176		
318	31204991800	SUPPORT	1			EX0176		
361	82400000459	CAP	1					
371	31592443100	PLATE,NAME (WHITE)	4			EX0420		
372	31592443200	PLATE,NAME (WHITE)	4			EX0420		

TM-20110 41043100104A FRAME/MANUAL,5 BOOM
PG2000193-01 BOOM UNIT (411-431-20040)



TM-20110 41043100104A FRAME/MANUAL,5 BOOM
 PH5030835-00 HARNESS

100



CLICK HERE TO **DOWNLOAD** THE COMPLETE MANUAL

- Thank you very much for reading the preview of the manual.
- You can download the complete manual from: www.heydownloads.com by clicking the link below

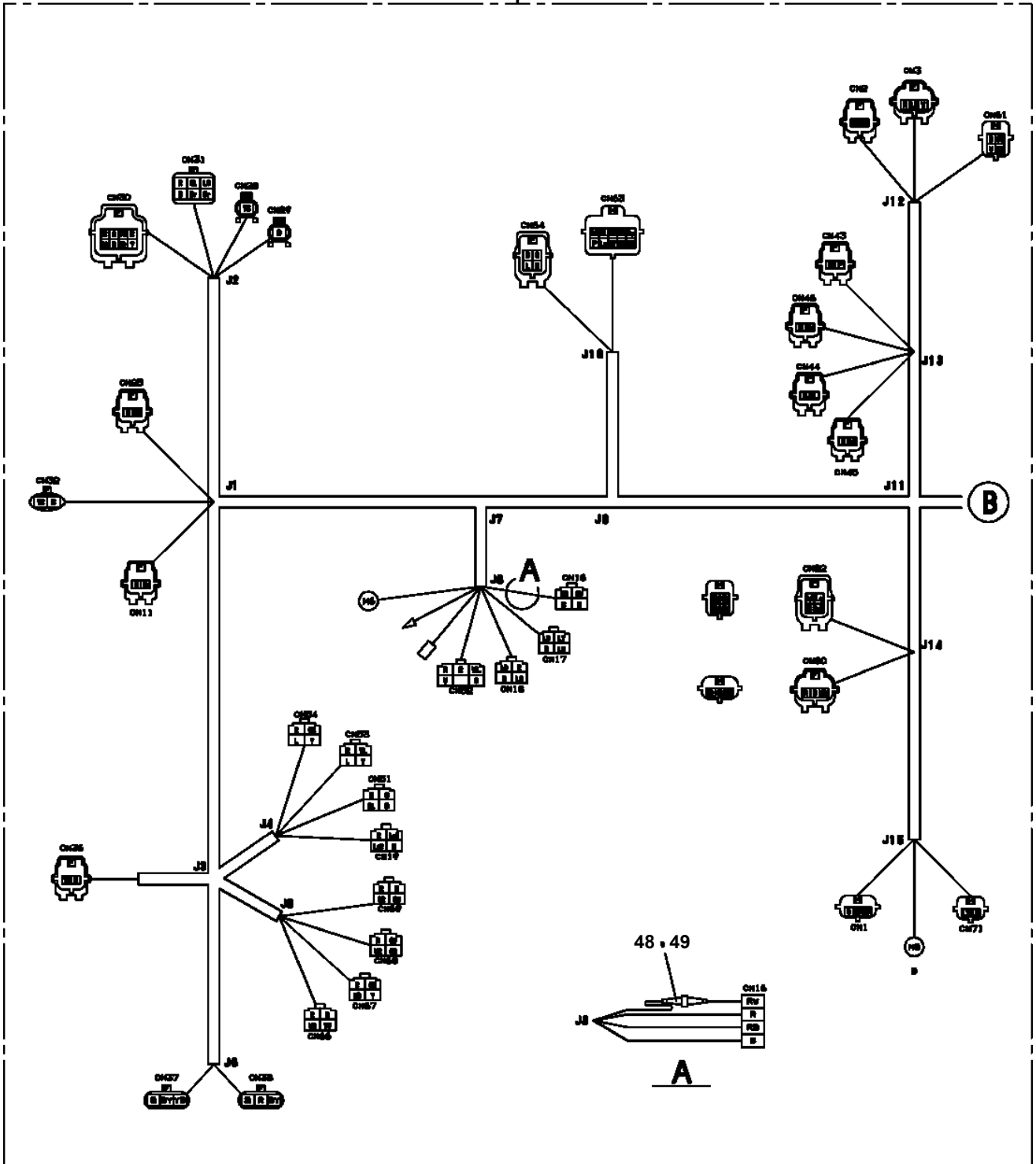


- Please note: If there is no response to CLICKING the link, please download this PDF first and then click on it.

CLICK HERE TO **DOWNLOAD** THE COMPLETE MANUAL

TM-20110 41043100104A FRAME/MANUAL,5 BOOM
 PH5030840-00 HARNESS

100



TM-20110 41043100104A FRAME/MANUAL,5 BOOM

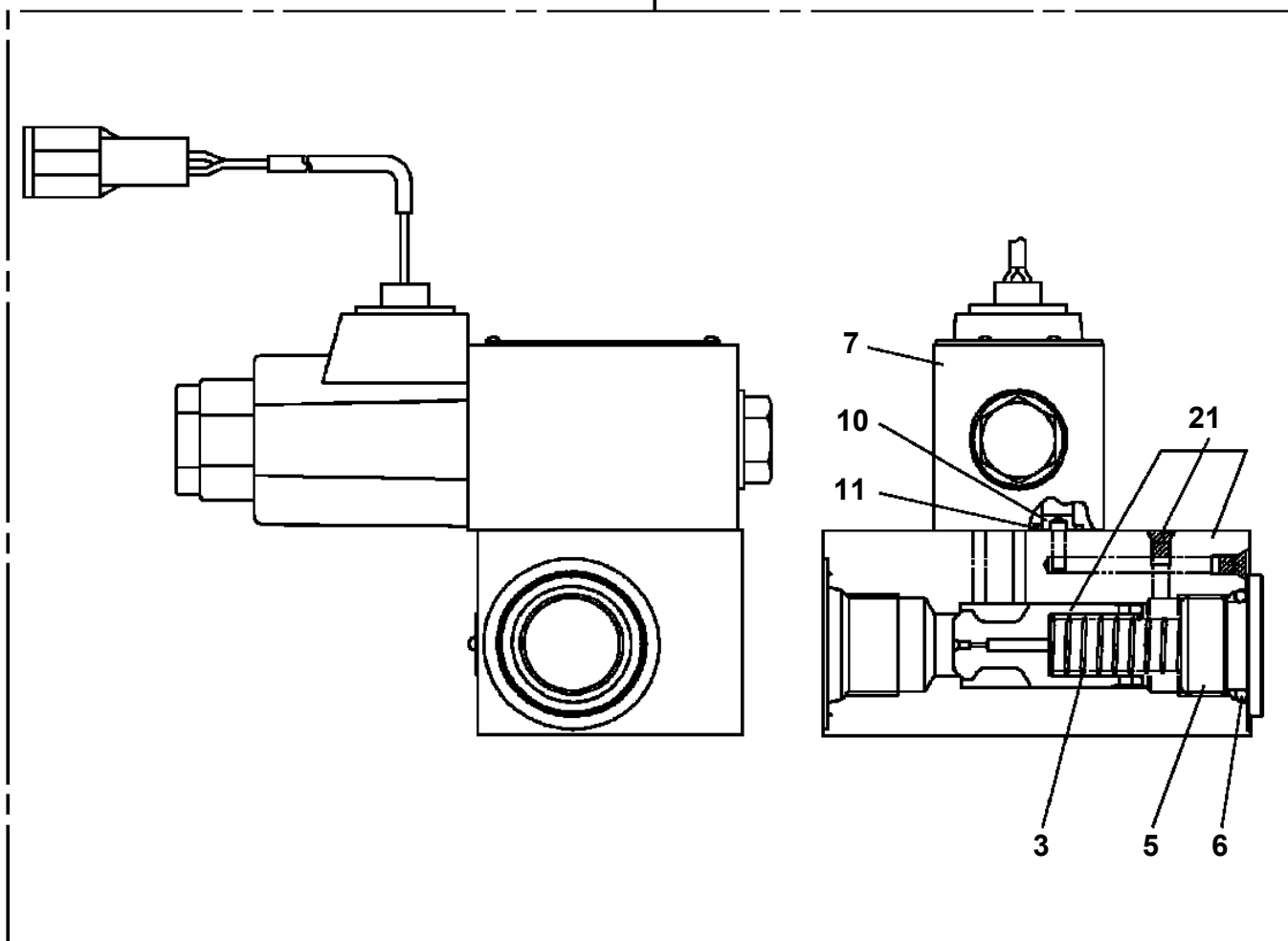
Pos No.	Parts No	Parts Name	Qty	Unit	Technical Data	Serial No (Start)	Serial No (End)	Remarks	Pages
10	31480382200	HARNESS	1						

TM-20110 41043100104A FRAME/MANUAL,5 BOOM

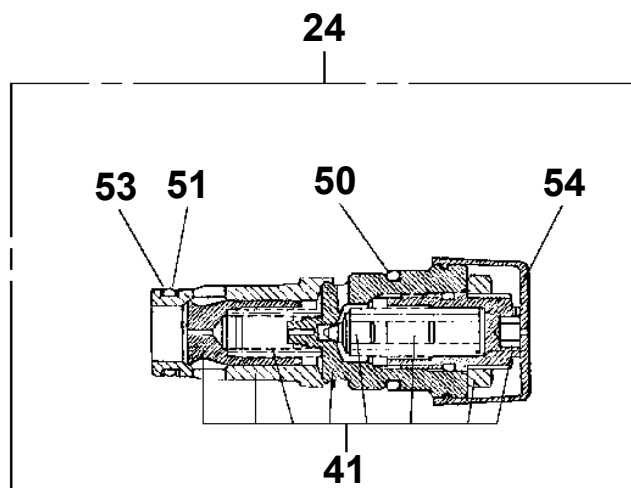
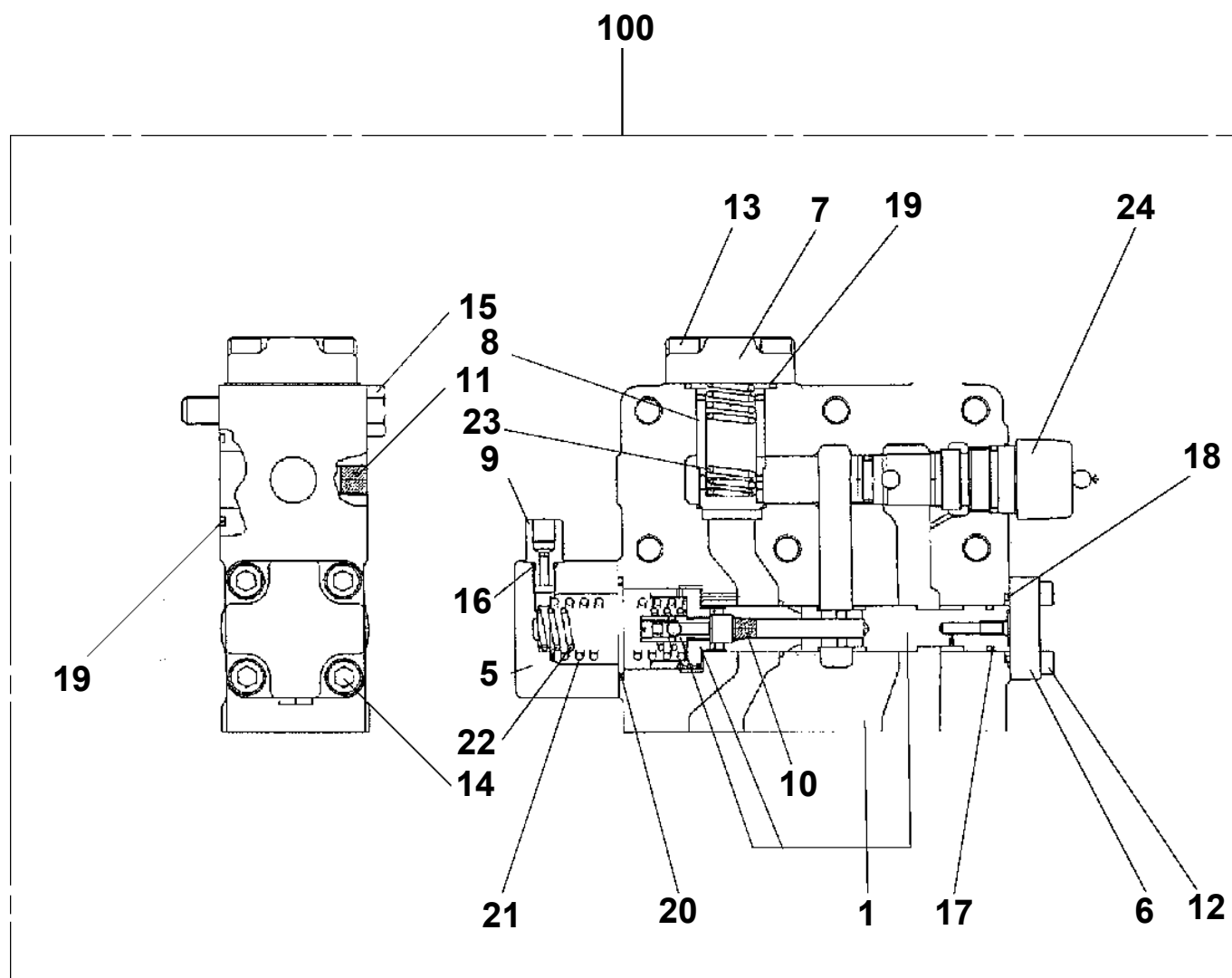
Pos No.	Parts No	Parts Name	Qty	Unit	Technical Data	Serial No (Start)	Serial No (End)	Remark
1	36663015020	ROTARY ASSY	1					
3	36663015030	HOUSING	1					
4	36663015040	COVER	1					
5	36663015050	PIN (PARALLEL)	1		6X12			
6	36663015060	O-RING	1					
7	90131512030	BOLT,HEXAGON SOCKET	6		M12X30			
15	36632465230	PLUG	1		PF1/4			
51	36663015010	MOTOR,PISTON	1					
52	36605370000	VALVE,COUNTERBALANCE	1					
100	36663010000	MOTOR,HYDRAULIC	1					

TM-20110 41043100104A FRAME/MANUAL,5 BOOM
PI1120313-00 VALVE,SOLENOID

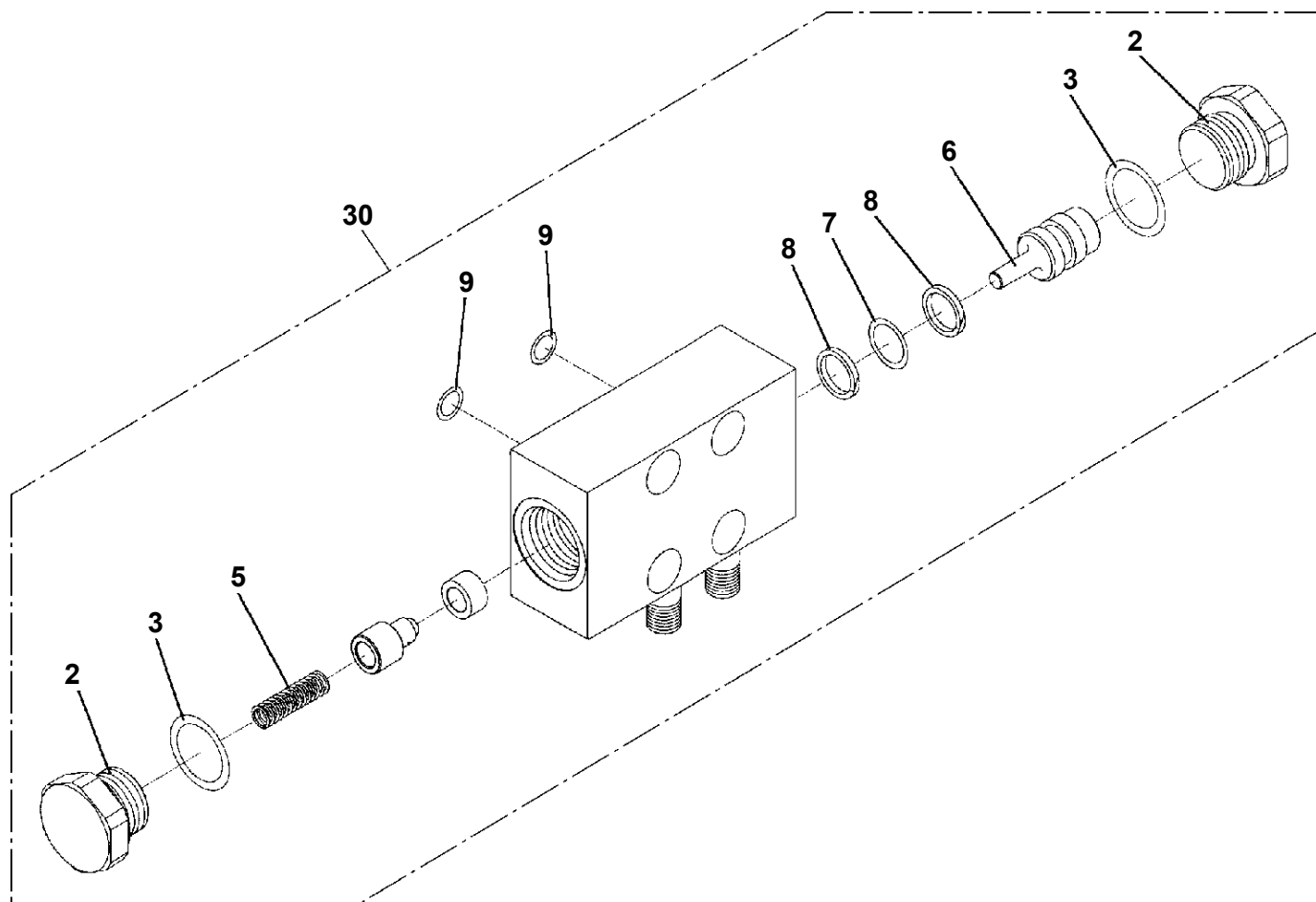
100



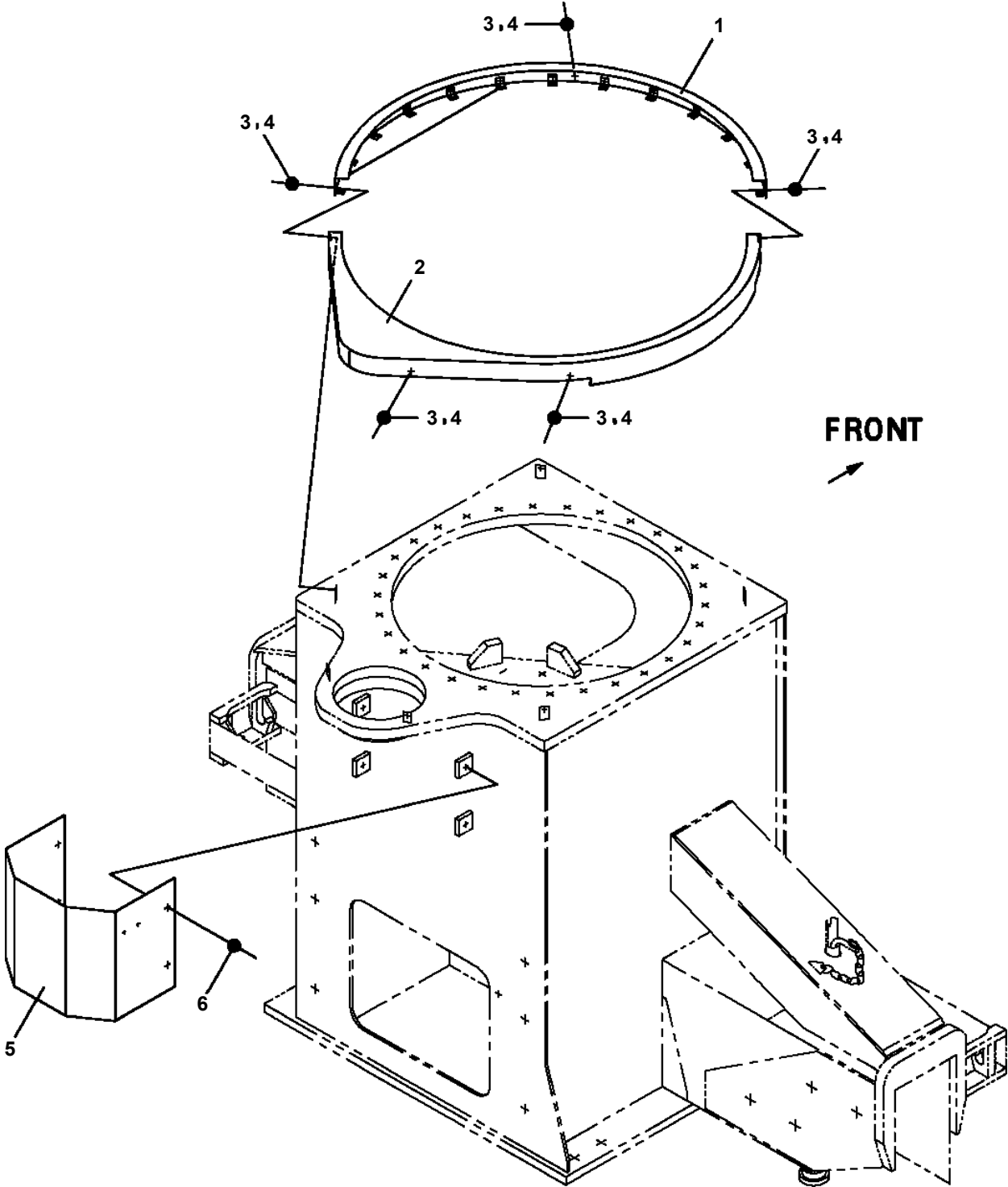
TM-20110 41043100104A FRAME/MANUAL,5 BOOM
PI1250122-00 VALVE,COUNTERBALANCE



TM-20110 41043100104A FRAME/MANUAL,5 BOOM
PI1280071-01 VALVE,PILOT CHECK



TM-20110 41043100104A FRAME/MANUAL,5 BOOM
PK1130019-00 COVER,BEARING



TM-20110 41043100104A FRAME/MANUAL,5 BOOM

Pos No.	Parts No	Parts Name	Qty	Unit	Technical Data	Serial No (Start)	Serial No (End)	Remarks
1	31324781000	BOX	1				EX0242	
	31324781003	BOX	1			EX0243	EX0321	
	31324781004	BOX	1			EX0322		
2	90172114045	BOLT,HEXAGON SOCKET	6		M14X45		EX0242	
	90172114045	BOLT,HEXAGON SOCKET	5		M14X45	EX0243		
3	90302041401	WASHER,SPRING	6		14			
4	31324541500	SUPPORT	1					
5	31324761600	COVER	2					
6	90101208014	BOLT	4		M8X14			
7	90302040801	WASHER,SPRING	46		8			
8	31324782100	LEVER	1				EX0242	
	31324782101	LEVER	1			EX0243		
9	31324782200	LEVER	1				EX0242	
	31324782201	LEVER	1			EX0243		
10	31324782300	LEVER	1				EX0242	
	31324782301	LEVER	1			EX0243		
11	31324782400	LEVER	1				EX0242	
	31324782401	LEVER	1			EX0243		
12	31324542501	LEVER	1				EX0242	
	31324542502	LEVER	1			EX0243		
13	31324542551	LEVER	1				EX0242	
	31324542552	LEVER	1			EX0243		
14	31324542601	LEVER	1				EX0242	
	31324542602	LEVER	1			EX0243		
15	31324542651	LEVER	1				EX0242	
	31324542652	LEVER	1			EX0243		
16	31324542701	LEVER	1				EX0242	
	31324542702	LEVER	1			EX0243		
17	31324542751	LEVER	1				EX0242	
	31324542752	LEVER	1			EX0243		
18	31324782800	SUPPORT	8					
19	31324782810	SUPPORT	2					
20	31324542820	SUPPORT	2					
21	31324542830	SUPPORT	4					
22	80720104036	PIN,SPRING	20		4X36		EX0242	
	80720104036	PIN,SPRING	2		4X36	EX0243		
23	90101208060	BOLT	18		M8X60		EX0391	
	90101208060	BOLT	20		M8X60	EX0392		
24	90303070801	WASHER,PLAIN	42		8		EX0391	
	90303070801	WASHER,PLAIN	46		8	EX0392		
25	90288008030	NUT	8		M8			
26	90202200800	NUT	8		M8			
27	90203201200	NUT	8		M12			
28	31320830010	KNOB (BLACK)	8					
29	31320020010	KNOB (BLACK)	4					
30	31323330100	KNOB (BLACK)	6					
31	31323330200	KNOB (RED)	2					
32	31324763100	ROD ASSY	2					
33	31324543100	ROD ASSY	2					
34	31324543300	ROD ASSY	2					
35	31324543700	ROD ASSY	1					
36	31324543401	ROD ASSY	1					
37	31324543501	ROD ASSY	1					
38	31324543601	ROD ASSY	1					
39	37000147840	PIN	19					
40	80620210050	PIN,SNAP	31					
41	37000107210	PIN	1					
42	80620210080	PIN,SNAP	1					
43	31230980400	PLATE	1					
44	82401800120	PLUG (FOR M12)	2					
45	34700161000	LEVEL	2					
46	82400000203	GROMMET	1	M	L=250			
47	90186210020	BOLT,FLANGE	4		M10X20			

TM-20110 41043100104A FRAME/MANUAL,5 BOOM

Pos No.	Parts No	Parts Name	Qty	Unit	Technical Data	Serial No (Start)	Serial No (End)	Remarks	Pages
2	31494980410	SUPPORT	1						
3	90101208025	BOLT	4		M8X25				
4	90302040801	WASHER,SPRING	4		8				
5	90303100801	WASHER,PLAIN	4		8				
6	90280200800	NUT,FLANGE	2		M8				
21	(*****)	STOWING BOX	1						000165
22	31653312100	SUPPORT	1						
25	31652170320	PLATE,NAME	1						
26	80182306016	SCREW,MACHINE	3		M6X16				
27	90303100601	WASHER,PLAIN	4		6				
28	90280200600	NUT,FLANGE	4		M6				
29	80182306020	SCREW,MACHINE	1		M6X20				

TM-20110 41043100104A FRAME/MANUAL,5 BOOM

Pos No.	Parts No	Parts Name	Qty	Unit	Technical Data	Serial No (Start)	Serial No (End)
2	31480111200	COVER	2				
3	31480111400	HARNESS	2				
4	80172303020	SCREW,MACHINE	4		M3X20		
5	90201200300	NUT	4		M3		
6	90302040301	WASHER,SPRING	4		3		
7	90303070301	WASHER,PLAIN	4		3		
8	91810130240	FASTENER	10				
21	31480111300	SWITCH ASSY (PLANTING:NACC)	2				
	31480111370	SWITCH ASSY (PANASONIC-DENKO)	2				
23	90202200600	NUT	2		M6		
25	82197518114	CAP (MATSUSHITA/BLACK)	2				
	82197518119	CAP (PLUS ONE MFG./BLACK)	2				
42	31480111101	SUPPORT	2				
44	90102206030	BOLT	2		M6X30		

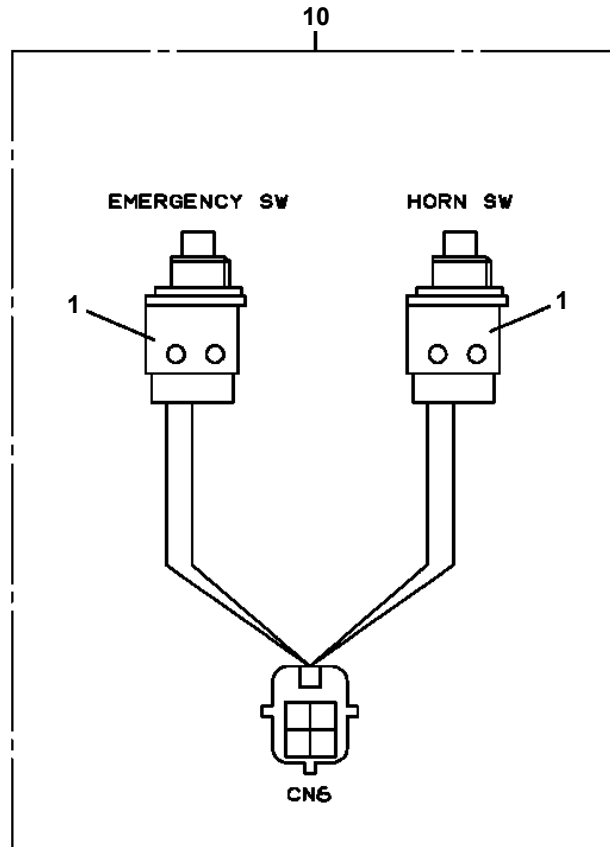
TM-20110 41043100104A FRAME/MANUAL,5 BOOM

Pos No.	Parts No	Parts Name	Qty	Unit	Technical Data	Serial No (Start)	Serial No (End)	Remarks	Pages
1	31480336100	HARNESS	1						000096
2	91810130240	FASTENER	18						
3	91850100802	CLAMP	4						
4	82108501080	SWITCH	2						

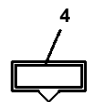
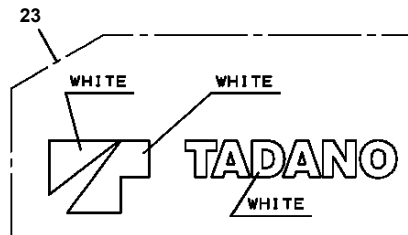
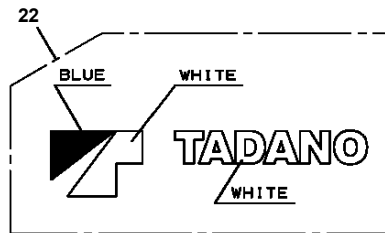
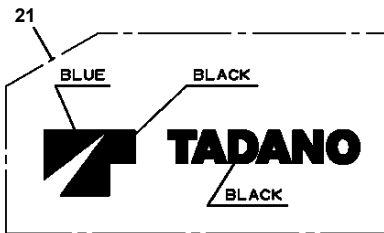
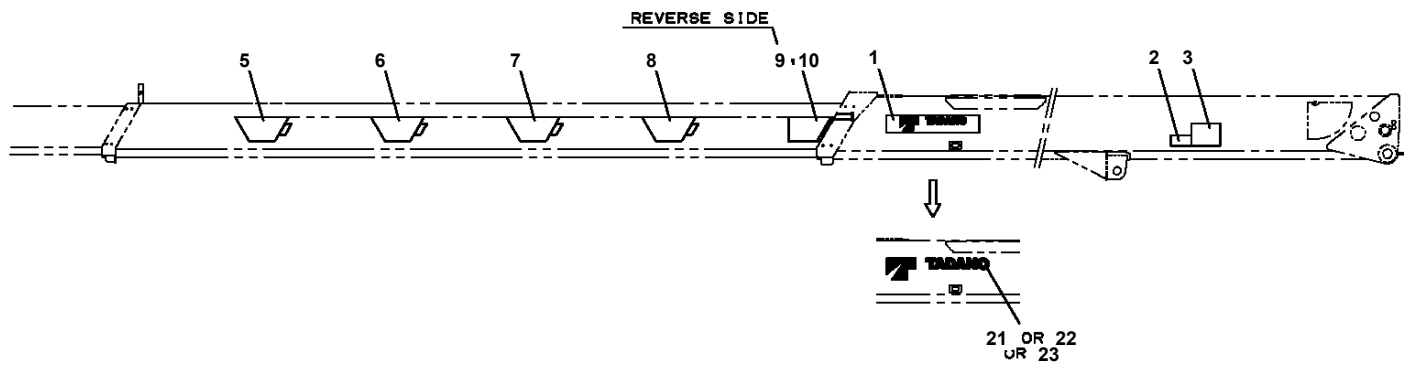
TM-20110 41043100104A FRAME/MANUAL,5 BOOM

Pos No.	Parts No	Parts Name	Qty	Unit	Technical Data	Serial No (Start)	Serial No (End)	Remarks
1	31361374200	HARNESS	1		L=1200			
2	31655804300	HARNESS	1		L=1450			
3	31655804400	HARNESS	1					
4	91810130240	FASTENER	15					
6	31655804500	HARNESS	1					
7	31654702100	COVER	1					
8	31360741700	SUPPORT	1					
9	90101205010	BOLT	4		M5X10			
10	90302040501	WASHER,SPRING	4		5			
11	90186206010	BOLT,FLANGE	8		M6X10			
12	90303070601	WASHER,PLAIN	4		6			
13	90280200600	NUT,FLANGE	2		M6			
14	82161201030	RELAY	1					
15	82100001802	TUBE,CORRUGATE	3	M	10			
16	31361372100	PLUG	2					
18	31361292100	PLUG	1				EX0419	
	31476751010	CONNECTOR	1			EX0420		
31	36193010000	MOMENT LIMITER (BML)	1				EX0140	
	36193470000	MOMENT LIMITER (BML)	1			EX0141		

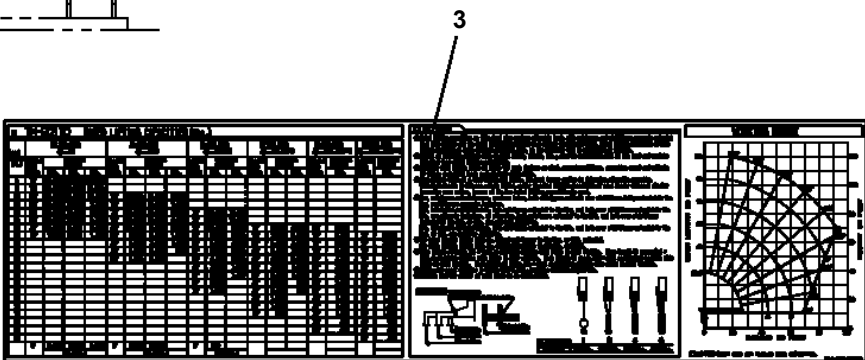
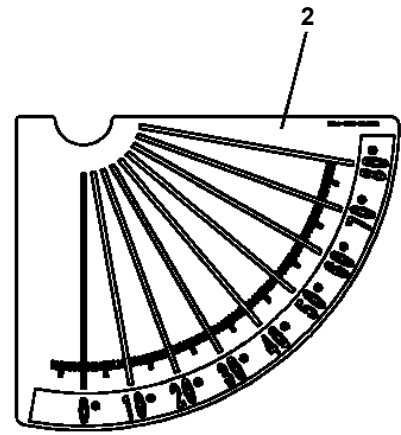
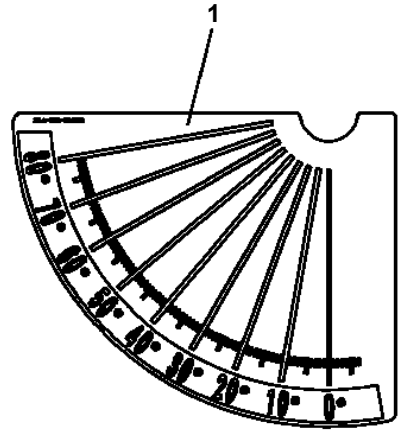
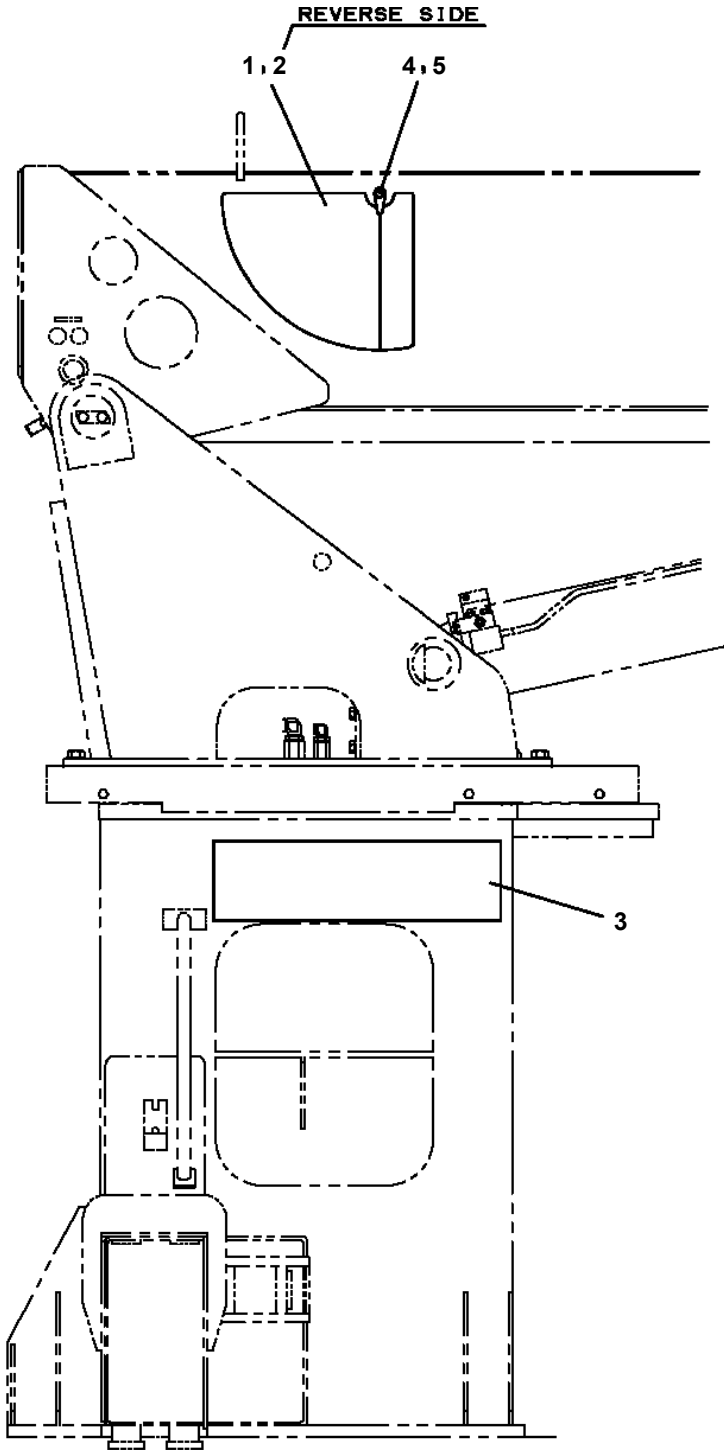
**TM-20110 41043100104A FRAME/MANUAL,5 BOOM
PN1140223-01 SWITCH ASSY (GREEN:PANASONIC)**



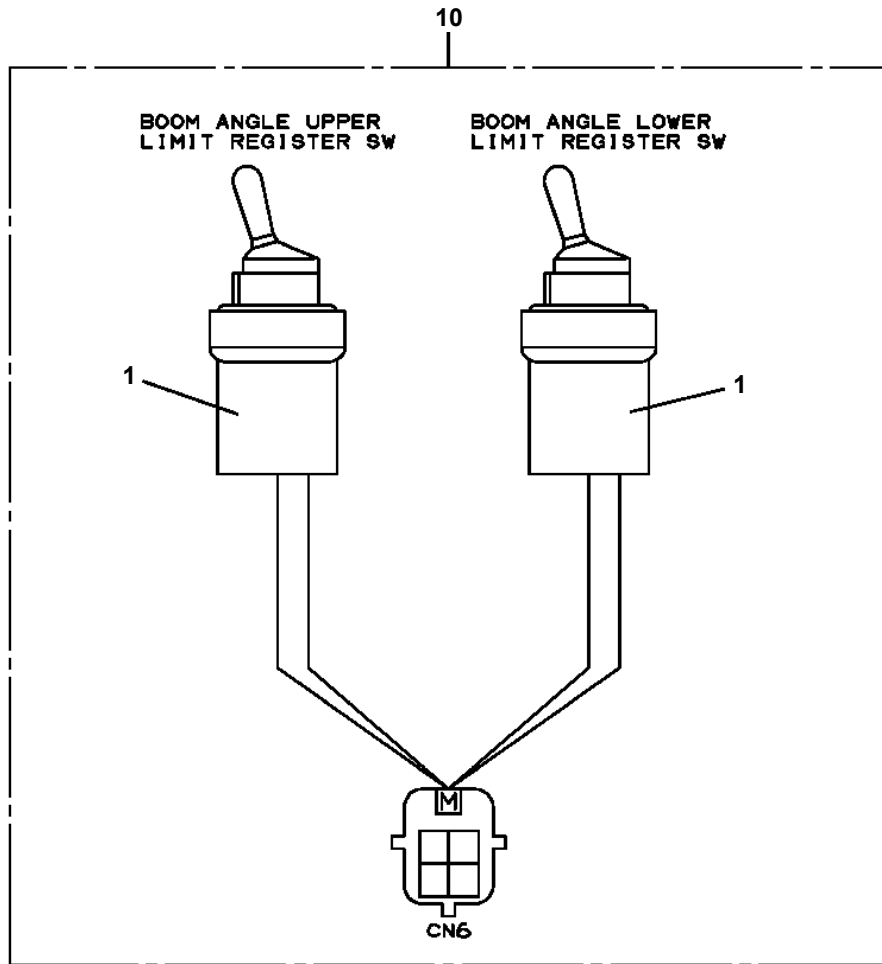
TM-20110 41043100104A FRAME/MANUAL,5 BOOM
PO1014624-01 PLATE ASSY,NAME (BOOM)



TM-20110 41043100104A FRAME/MANUAL,5 BOOM
PO1070572-01 PERFORMANCE DATA

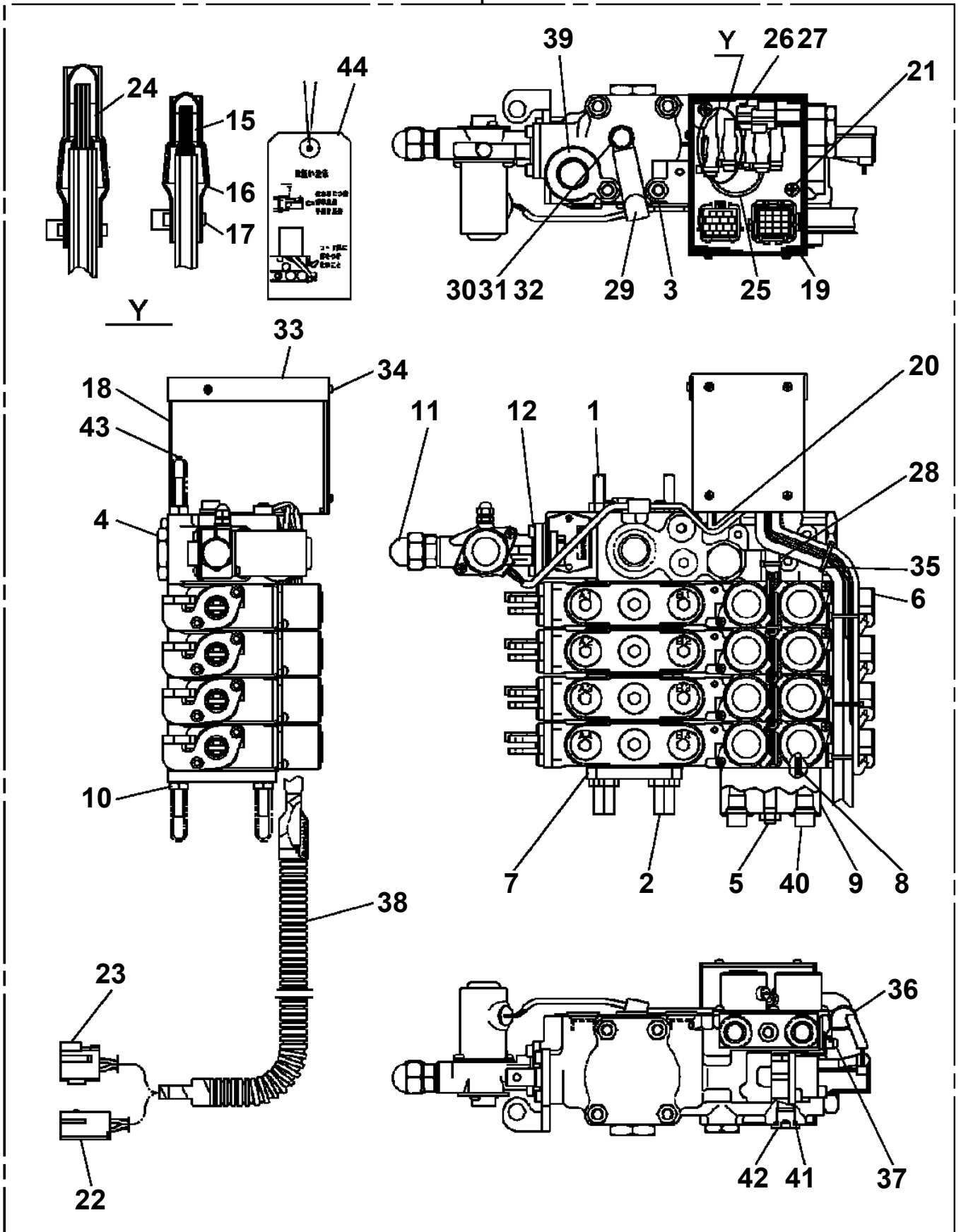


**TM-20110 41043100104A FRAME/MANUAL,5 BOOM
PS5530041-00 SWITCH ASSY (NACC)**



TM-20110 41043100104A FRAME/MANUAL,5 BOOM
PV1020339-00 VALVE,REMOTE CONTROL

500



TM-20110 41043100104A FRAME/MANUAL,5 BOOM

Pos No.	Parts No	Parts Name	Qty	Unit	Technical Data	Serial No (Start)	Serial No
1	(*****)	RADIO CONTROL (KIT:LED)	1				
2	(*****)	PIPING,LOWER (RADIO CONTROL)	1				
3	(*****)	ELEC.ASSY (RADIO CONTROL)	1				
4	(*****)	OPE.ASSY,CONT.VALVE (RADIO CONTROL)	1				
5	(*****)	OPE.ASSY,ACCELERATOR (RADIO CONTROL)	1				

TM-20110 41043100104A FRAME/MANUAL,5 BOOM

Pos No.	Parts No	Parts Name	Qty	Unit	Technical Data	Serial No (Start)	Serial No (End)
1	(***** *****)	MOUNT ASSY,PUMP (PTO:CHELEA 880)	1				
	(***** *****)	MOUNT ASSY,PUMP (PTO:CHELEA 489)	1				
2	(***** *****)	MOUNT ASSY (TRUCK MOUNTING)	1				

TM-20110 41043100104A FRAME/MANUAL,5 BOOM

Pos No.	Parts No	Parts Name	Qty	Unit	Technical Data	Serial No (Start)	Serial No (End)	Remarks	Pages
1	31846131001	FRAME	1						
2	31846130100	SUPPORT	2						
3	31846130200	SUPPORT	1						
4	31846130300	SUPPORT	1						
5	90171130330	BOLT	8		M30X330				
6	90201783000	NUT	8		M30				
7	90303503001	WASHER,PLAIN	16		30XT8				
8	31846200100	PLATE	8						
9	31846200200	PLATE	2						
10	90201781600	NUT	12		M6				
11	90171116060	BOLT	12		M16X60		EX0131		
	90171116070	BOLT	12		M16X70				
12	90303501601	WASHER,PLAIN	24		16	EX0132			
13	31846200300	PLATE	2						

TM-20110 41043100104A FRAME/MANUAL,5 BOOM

Pos No.	Parts No	Parts Name	Qty	Unit	Technical Data	Serial No (Start)	Serial No (End)	Remarks	Pages
1	31846491001	FRAME	1						
2	31846130100	SUPPORT	2				EX0293		
	31846130101	SUPPORT	2			EX0294			
3	31846130200	SUPPORT	1				EX0293		
	31846130201	SUPPORT	1			EX0294			
4	31846130300	SUPPORT	1				EX0293		
	31846130301	SUPPORT	1			EX0294			
5	90171130330	BOLT	8		M30X330				
6	90201783000	NUT	8		M30				
7	90303503001	WASHER,PLAIN	16		30XT8				
8	31846200100	PLATE	8						
9	31846200200	PLATE	2						
10	90201781600	NUT	12		M6				
11	90171116070	BOLT	12		M16X70				
12	90303501601	WASHER,PLAIN	24		16				
13	31846200300	PLATE	2						
14	31846680500	SUPPORT	4						
15	90101210025	BOLT	8		M10X25				
16	90302041001	WASHER,SPRING	8		10				

TM-20110 41043100104A FRAME/MANUAL,5 BOOM

Pos No.	Parts No	Parts Name	Qty	Unit	Technical Data	Serial No (Start)	Serial No (End)
1	(*****)	ATTACHMENT PARTS,CRANE FRAME	1				EX0240
	(*****)	ATTACHMENT PARTS,CRANE FRAME	1			EX0241	
2	(*****)	BOOM REST	1				
3	(*****)	ELEC.ASSY (REMOT CONT.)	1				
4	(*****)	PIPING (PUMP)	1				
5	(*****)	PIPING,REAR JACK (20FEET)	1				EX0240
	(*****)	PIPING,REAR JACK	1			EX0241	
6	(*****)	PIPING,FRONT JACK	1				
11	36102880000	TANK,OIL	1				EX0240
	36102880001	TANK,OIL	1			EX0241	
12	(*****)	TANK SUPPORT	1				
13	(*****)	PIPING (TANK)	1				
14	(*****)	PLATE ASSY,NAME (TANK)	1				

CLICK HERE TO **DOWNLOAD** THE COMPLETE MANUAL

- Thank you very much for reading the preview of the manual.
- You can download the complete manual from: www.heydownloads.com by clicking the link below



- Please note: If there is no response to CLICKING the link, please download this PDF first and then click on it.

CLICK HERE TO **DOWNLOAD** THE COMPLETE MANUAL