

TL-300E-2-10401 4 BOOM + JIB, 2M2D, KG45SXN

PB1000076-00 HYDRAULIC PRESSURE GENERATING SYSTEM

PC1000064-00 OUTRIGGER SYSTEM

PD1000075-00 SWING SYSTEM

PE1000071-00 ELEVATING SYSTEM

PF1000067-01 WINCH SYSTEM

PG1000072-01 TELESCOPING SYSTEM

PH1000072-00 SAFETY DEVICES

PI1000075-01 HYDRAULIC DEVICES

PK1000075-00 FRAME

PL1000075-00 CONTROL DEVICES

PN1000072-01 ELECTRIC EQUIPMENT

PO1000097-00 INDICATION PLATES

PW1000064-00 ACCESSORIES & TOOLS

PX1000075-01 MOUNTING PARTS

PY1000063-00 OPTIONS

ASSEMBLY

CLICK HERE TO **DOWNLOAD** THE COMPLETE MANUAL

- Thank you very much for reading the preview of the manual.
- You can download the complete manual from: www.heydownloads.com by clicking the link below



- Please note: If there is no response to CLICKING the link, please download this PDF first and then click on it.

CLICK HERE TO **DOWNLOAD** THE COMPLETE MANUAL

TL-300E-2-10401 4 BOOM + JIB, 2M2D, KG45SXN

Pos No.	Parts No	Parts Name	Qty	Unit	Technical Data	Serial No (Start)	Serial No (End)
1	(*****)	WINCH	2				355257
	(*****)	WINCH	2			355258	
2	19413067000	CLUTCH,WINCH	2				
3	36090960000	HOOK (MAIN)	1				
4	36090240001	HOOK (AUXILIARY)	1				
5	37001800980	ROPE,WIRE	1				
	37001800940	ROPE,WIRE	1				355294
	37001802100	ROPE,WIRE (TSK)	1			355295	
6	(*****)	SOCKET,ROPE	2				
7	(*****)	OPERATION SYSTEM, WINCH BRAKE	1				
8	33310312000	BAND,WINCH BRAKE	2				
9	(*****)	OPERATION SYSTEM, DRUM LOCK	1				
10	(*****)	OPERATION SYSTEM, CLUTCH	1				
11	(*****)	PIPING,WINTCH	1				
12	(*****)	PIPING,WINTCH BRAKE	1				
13	36631570000	VALVE,CLUTCH	1				
14	36670110000	JOINT,WINCH ROTARY	2				355238
	(*****)	JOINT,WINCH ROTARY	2			355239	355257
	36672739510	JOINT,WINCH ROTARY	2			355258	
15	(*****)	MOUNT,WINCH (2M2D)	1				
16	36660160000	MOTOR,HYDRAULIC	2				
17	36060180002	CYLINDER,MASTER	2				
18	36640560000	VALVE,SOLENOID	2				
19	36621230000	VALVE,CHECK	1				
20	36621320000	VALVE,SHUTTLE	1				
21	36600730000	VALVE,COUNTERBALANCE	2				
22	36670740000	FILTER,OIL	1				
23	36670000006	ACCUMULATOR	1				
24	36680390000	GAUGE,PRESSURE	1				

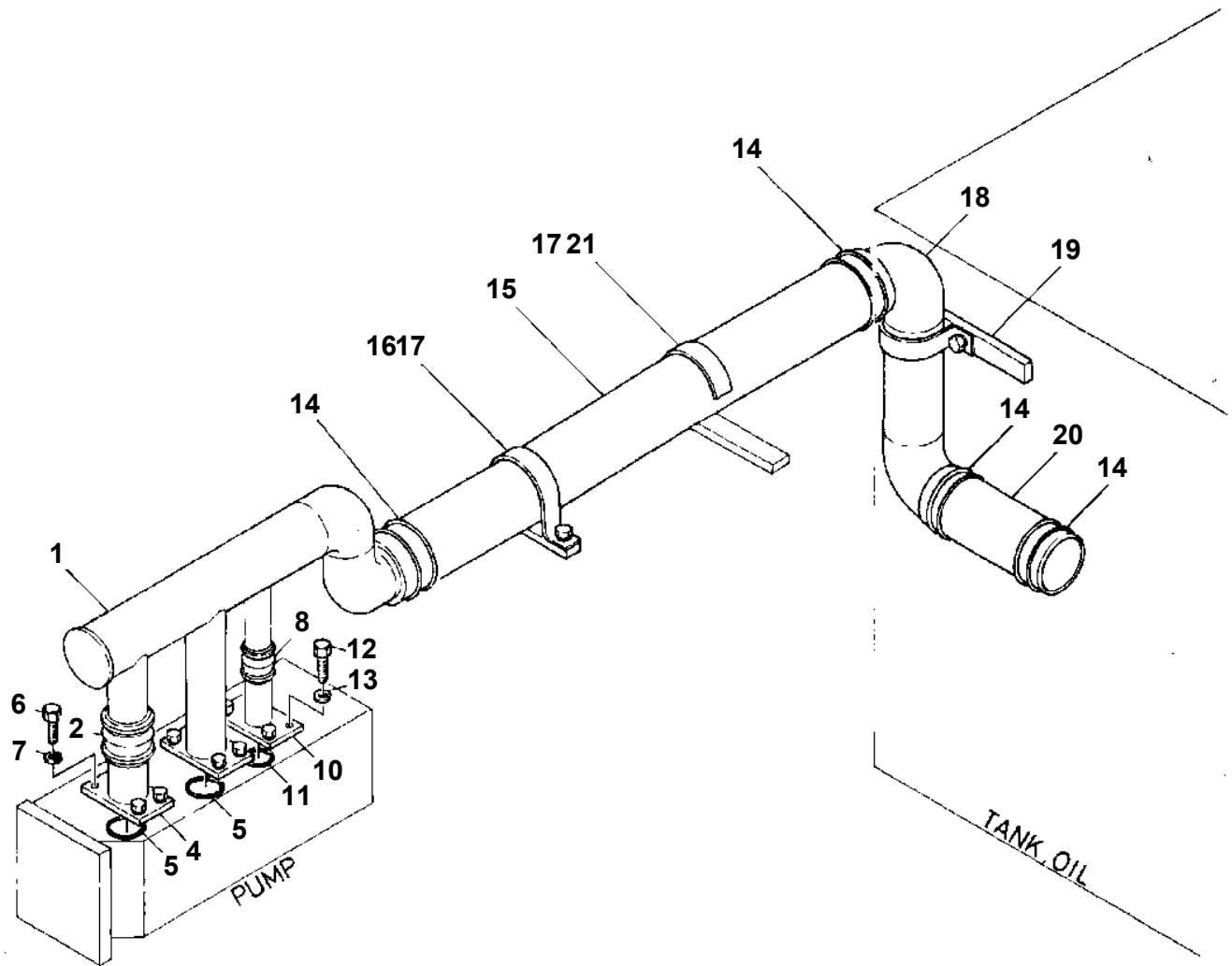
TL-300E-2-10401 4 BOOM + JIB, 2M2D, KG45SXN

Pos No.	Parts No	Parts Name	Qty	Unit	Technical Data	Serial No (Start)	Serial No (E
1	(*****)	OPERATION SYSTEM, CONTROL VALVE	1				
2	(*****)	OPERATION SYSTEM, ACCELERATOR	1				
3	3606000001	CYLINDER,MASTER	1				

TL-300E-2-10401 4 BOOM + JIB, 2M2D, KG45SXN

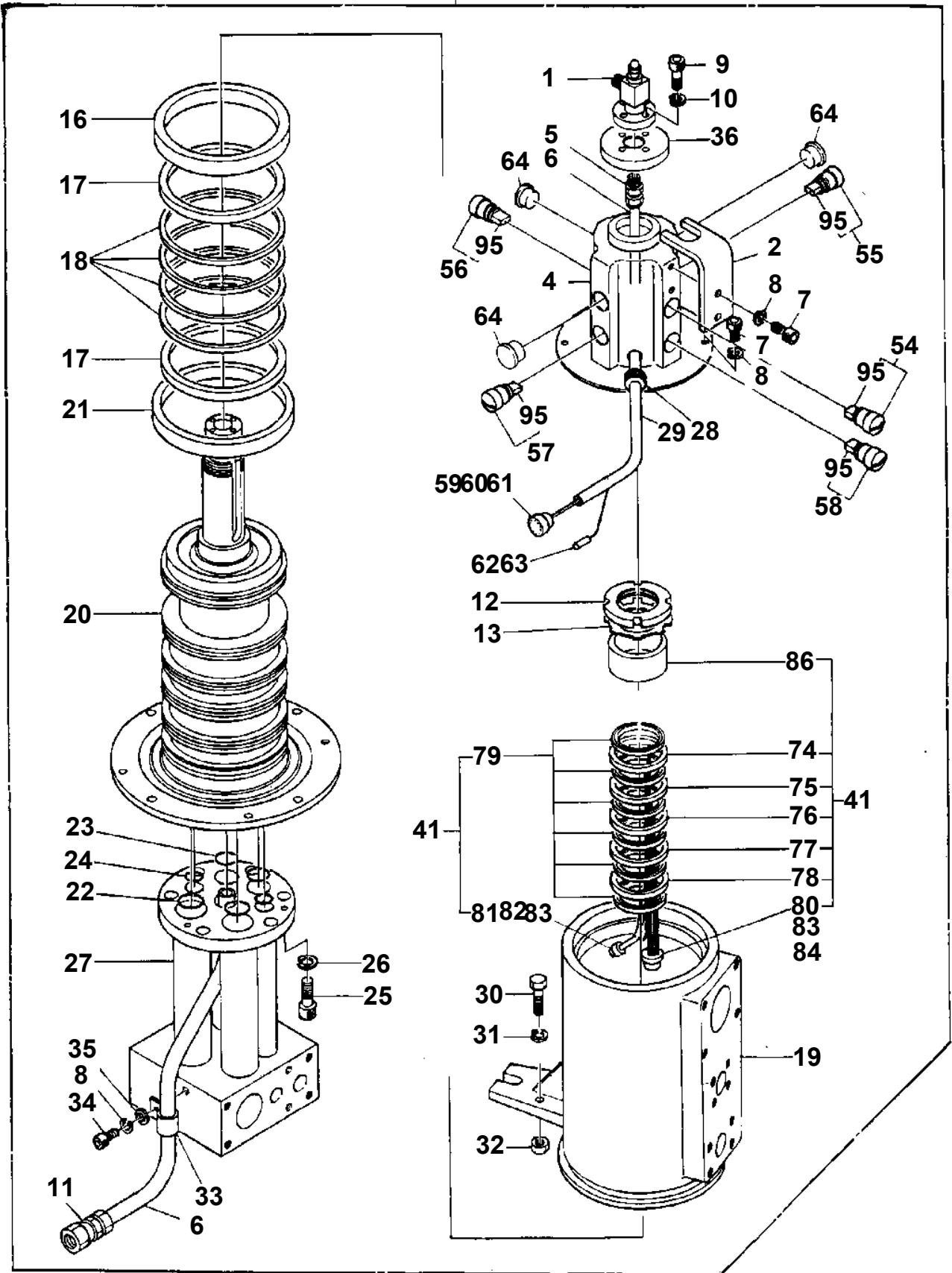
Pos No.	Parts No	Parts Name	Qty	Unit	Technical Data	Serial No (Start)	Serial No (End)	Remarks	Page
1	(*****)	SINGLE TOP	1						0001
2	(*****)	HEATER SYSTEM	1						0001
3	36290090002	HEATER (22HK)	1				355280		0001
	36290090003	HEATER (M22H)	1			355281			0001
4	(*****)	FAN INSTALLATION	1						0001

TL-300E-2-10401 4 BOOM + JIB, 2M2D, KG45SXN
PB1200028-00 PIPING,SUCTION



TL-300E-2-10401 4 BOOM + JIB, 2M2D, KG45SXN
 PB1300027-00 JOINT,ROTARY

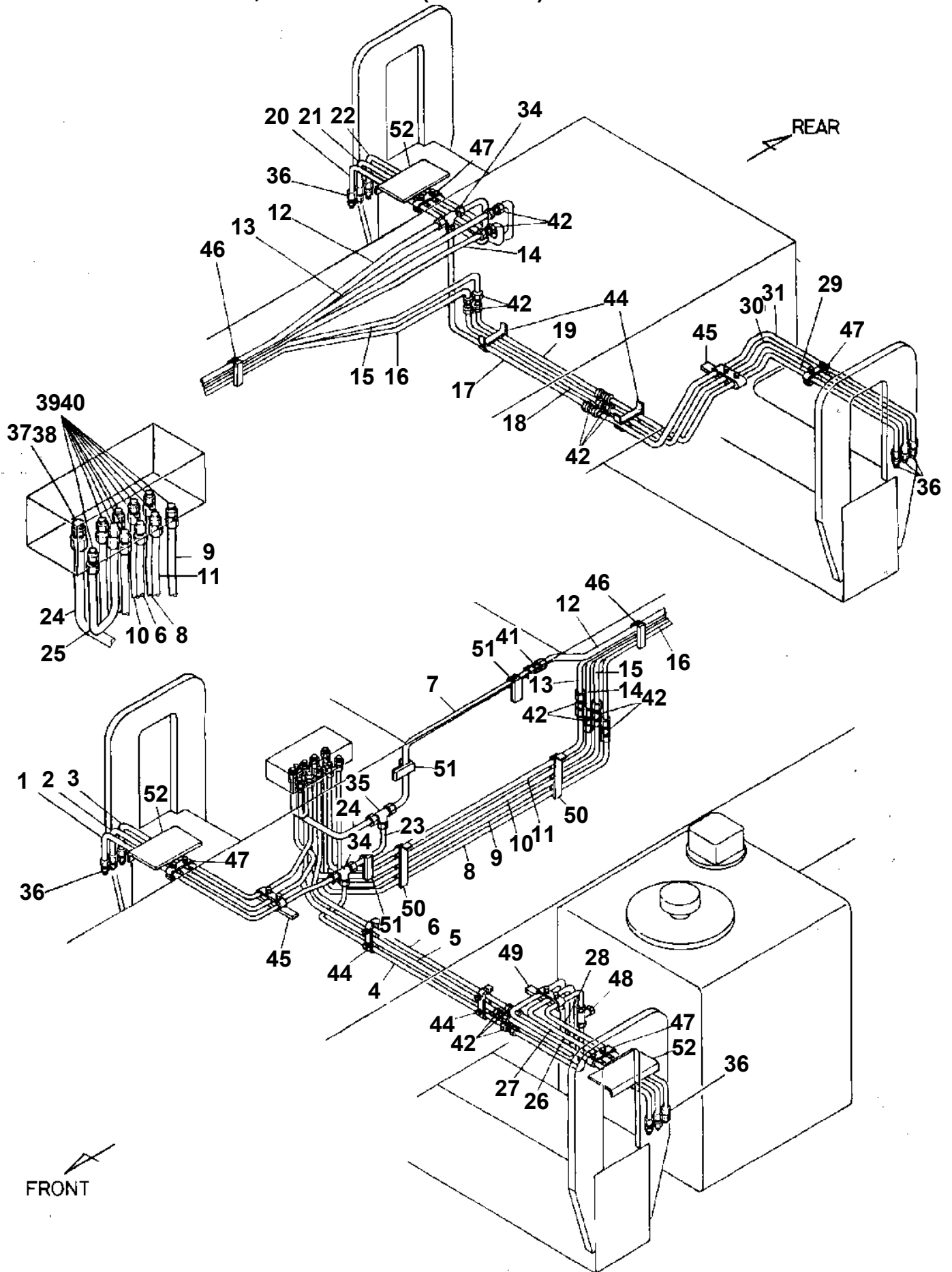
100



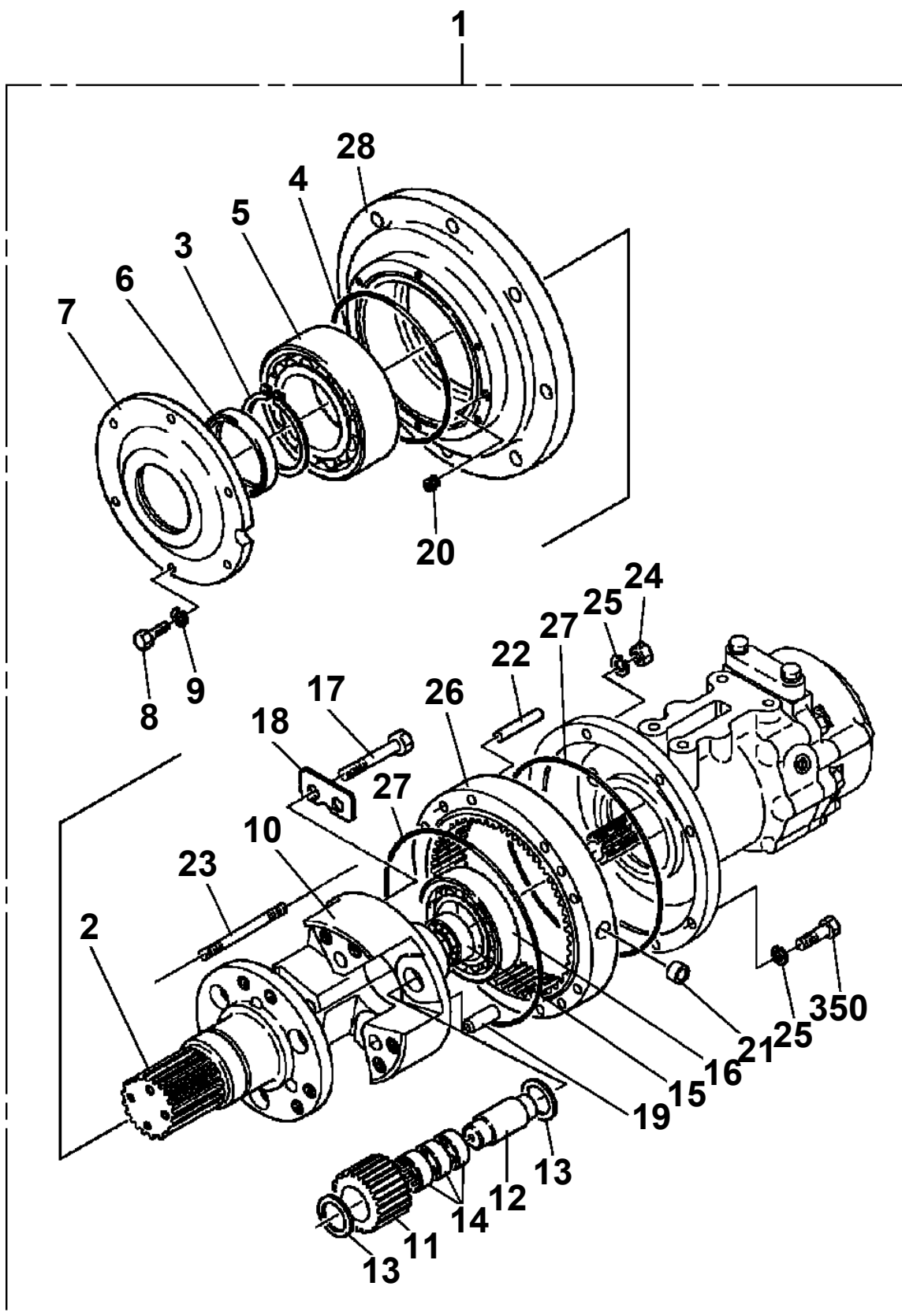
TL-300E-2-10401 4 BOOM + JIB, 2M2D, KG45SXN

Pos No.	Parts No	Parts Name	Qty	Unit	Technical Data	Serial No (Start)	Serial No (End)	F
1	36631315010	VALVE,PILOT CONTROL	1					
2	36632315010	VALVE,CONTROL (MAIN WINCH)	1					
3	36631055020	VALVE,FLOW CONTROL	1					
4	36631055030	VALVE,UNLOAD	1					
5	36632315020	VALVE,CONTROL (AUX.WINCH)	1					
6	36631055050	VALVE,CHECK	1					
7	36630175020	VALVE,CONTROL (TELESCOPING)	1					
8	36631365010	VALVE,CONTROL (ELEVATING)	1					
9	36631095020	BODY	1					
10	36630475020	VALVE,RELIEF	1					
11	90131510045	BOLT,HEXAGON SOCKET	4		M10X45			
12	36631315060	BOLT	4					
13	90202201600	NUT	8		M16			
14	90203201600	NUT	8		M16			
15	91002903000	O-RING	5		1B G30			
16	91002904000	O-RING	5		1B G40			
17	16095101080	O-RING	2		WG6			
18	91002905000	O-RING	7		1B G50			
19	16095101480	RING (A/FOR O-RING,G30)	5					
20	16095101490	RING (B/FOR O-RING,G40)	5					
21	16095101090	RING (C/FOR O-RING,WG6)	2					
22	16095101500	RING (D/FOR O-RING,G50)	7					
23	80316030040	PLUG	2		PT1/4			
24	36630265050	VALVE,RELIEF	1					
26	36631195010	VALVE,RELIEF	1					
27	36631195020	VALVE,RELIEF	1					
28	19415142030	VALVE,RELIEF	2					
29	91002801000	O-RING	5		1B P10			
30	91002801600	O-RING	4		1B P16			
31	91002902500	O-RING	2		1B G25			
32	90131508070	BOLT,HEXAGON SOCKET	4		M8X70			
33	36630475010	VALVE,RELIEF	1					
42	36631315070	VALVE,UNLOAD	1					
43	90131508040	BOLT,HEXAGON SOCKET	10		M8X40			
45	36631095090	COVER	1					
48	36631095100	SPRING	1					
50	91002801600	O-RING	1		1B P16			
51	91002803000	O-RING	1		1B P30			
52	91002902500	O-RING	1		1B G25			
53	80316030040	PLUG	3		PT1/4			
64	91000501500	O-RING	6		AS568-015			
67	16025153020	SPRING	8					
68	36630045200	SCREW (ADJUSTING)	8		M10X25			
69	36630045220	NUT	8		M10			
70	36630295130	NUT,CAP	6					
71	91001001600	O-RING	16		1A S16			
72	91002802200	O-RING	1		1B P22			
75	36630365030	SPRING	1					
77	91002801400	O-RING	1		1B P14			
78	91002800700	O-RING	1		1B P7			
79	80316030020	PLUG	1		PT1/8			
82	91002801800	O-RING	1		1B P18			
85	36631095110	FILTER	1					
93	36630175110	SUPPORT	2					
94	13635101040	PIN	4					
95	90303100801	WASHER,PLAIN	4		8			
96	14045122020	PIN,SNAP	4					
97	16035181010	SEAL,OIL	4					
98	16035181050	RETAINER (SEAL)	4					
103	16095101280	SPRING	2					
106	16095101120	RETAINER (SPRING)	4					
111	90131508030	BOLT,HEXAGON SOCKET	8		M8X30			
112	36631055170	PLUG	2					

TL-300E-2-10401 4 BOOM + JIB, 2M2D, KG45SXN
 PC1200225-00 PIPING,OUTRIGGER (WITH F/J)

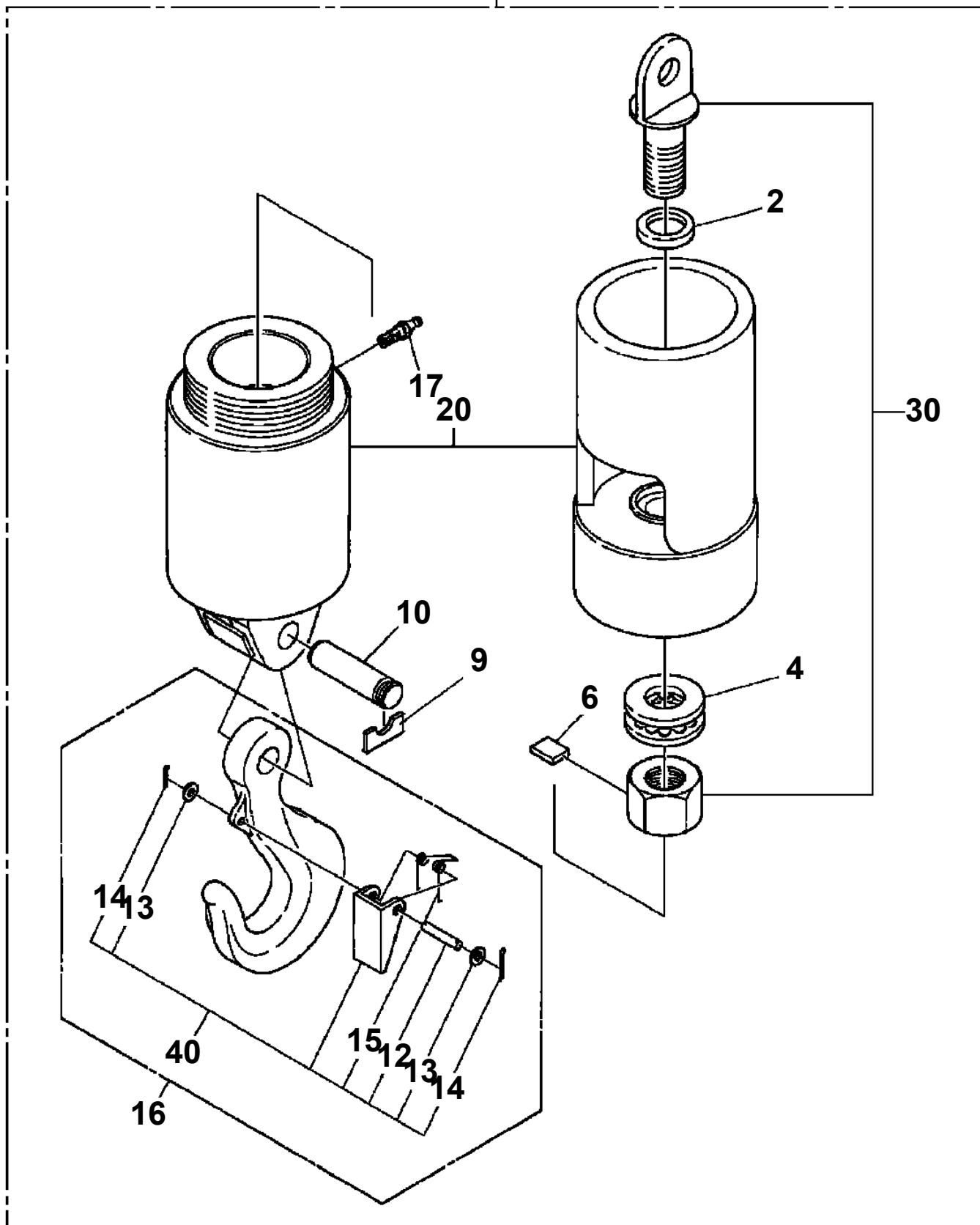


TL-300E-2-10401 4 BOOM + JIB, 2M2D, KG45SXN
PD1070090-02 DRIVING UNIT, SWING

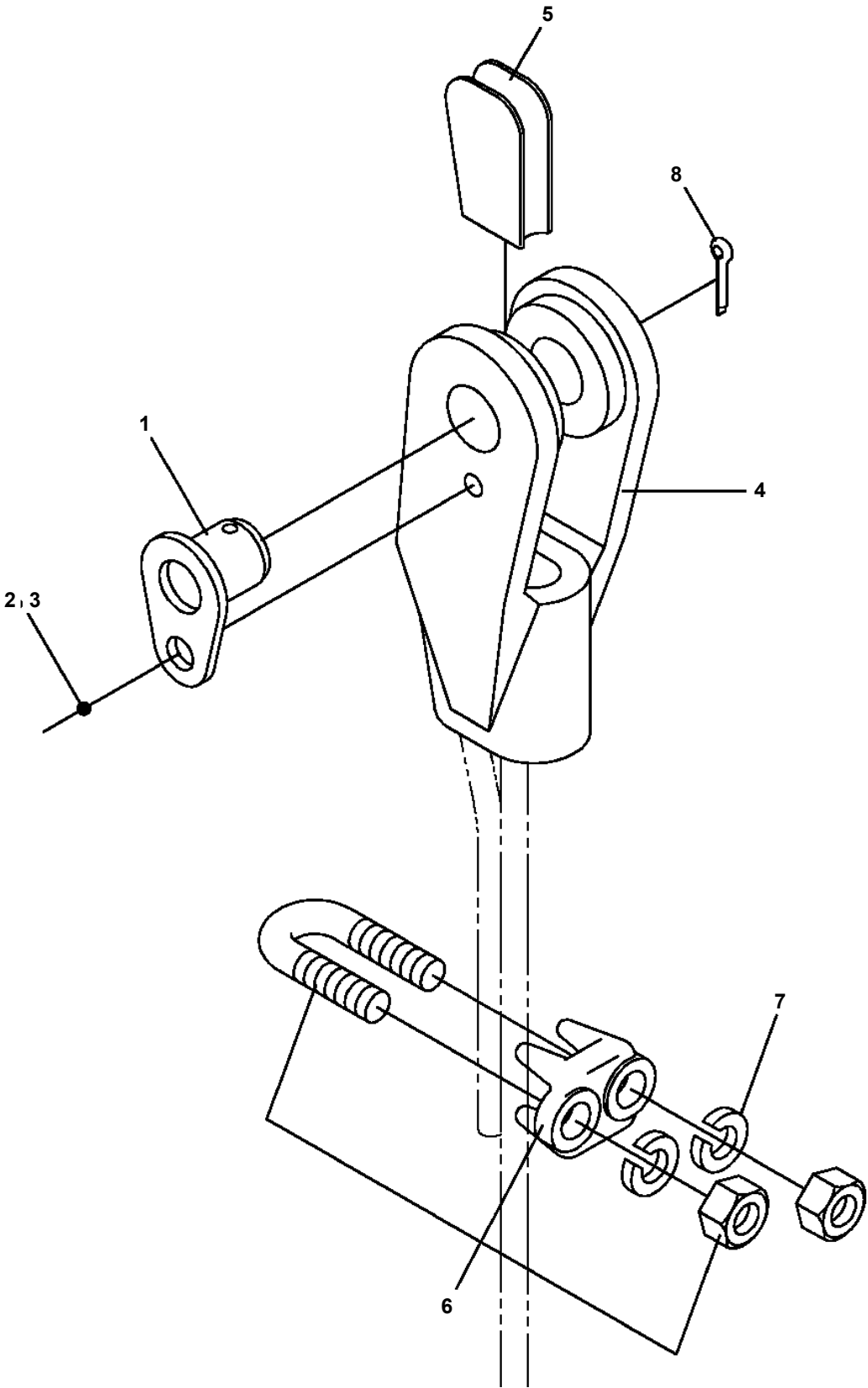


TL-300E-2-10401 4 BOOM + JIB, 2M2D, KG45SXN
PF1050180-01 HOOK (AUXILIARY)

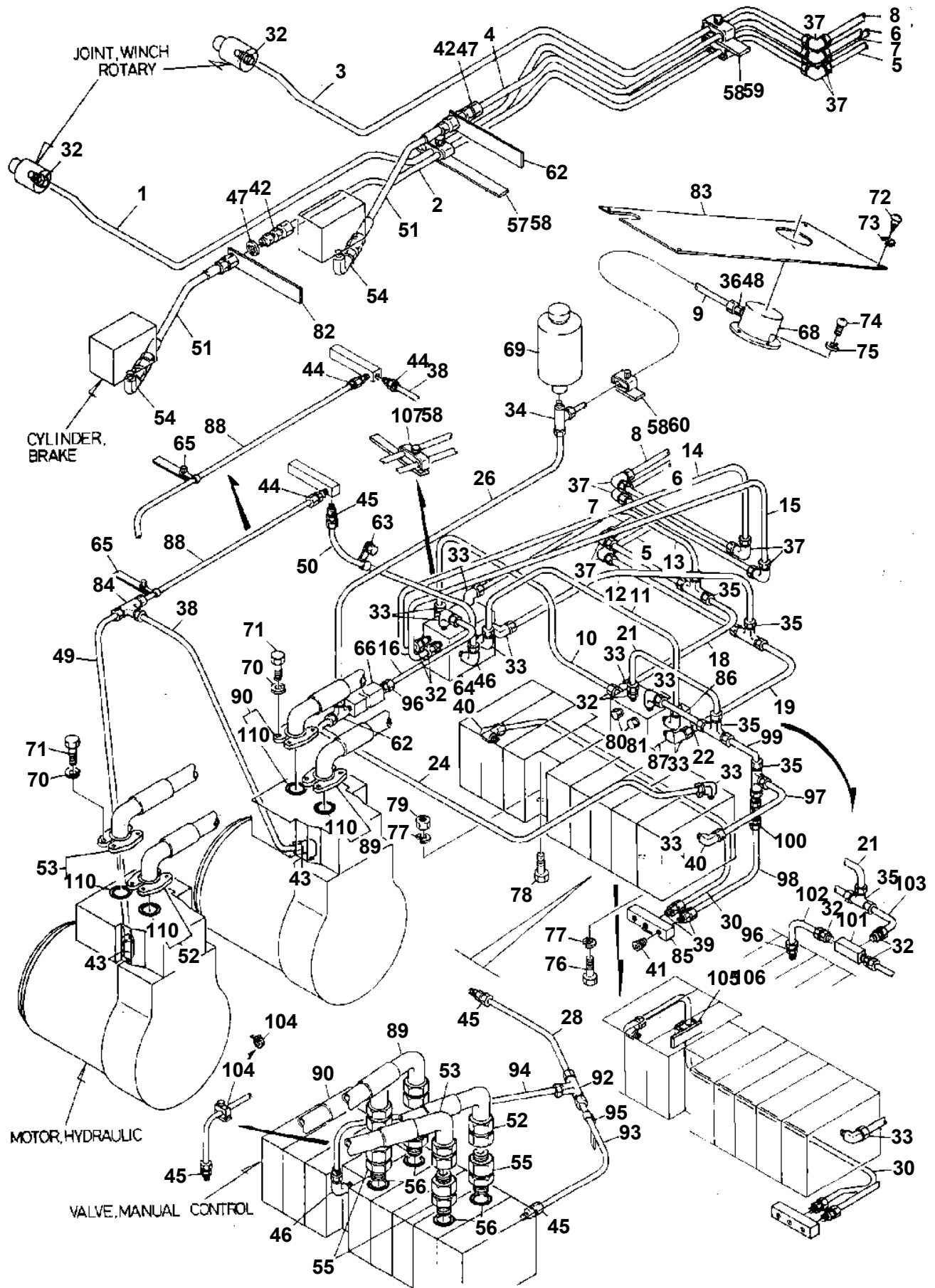
50



**TL-300E-2-10401 4 BOOM + JIB, 2M2D, KG45SXN
PF1090016-03 SOCKET,ROPE**



**TL-300E-2-10401 4 BOOM + JIB, 2M2D, KG45SXN
PF1200432-01 PIPING,WINTCH**



TL-300E-2-10401 4 BOOM + JIB, 2M2D, KG45SXN

Pos No.	Parts No	Parts Name	Qty	Unit	Technical Data	Serial No (Start)	Serial No (End)	Remarks	P
1	36672739510	JOINT,WINCH ROTARY	1						

CLICK HERE TO **DOWNLOAD** THE COMPLETE MANUAL

- Thank you very much for reading the preview of the manual.
- You can download the complete manual from: www.heydownloads.com by clicking the link below



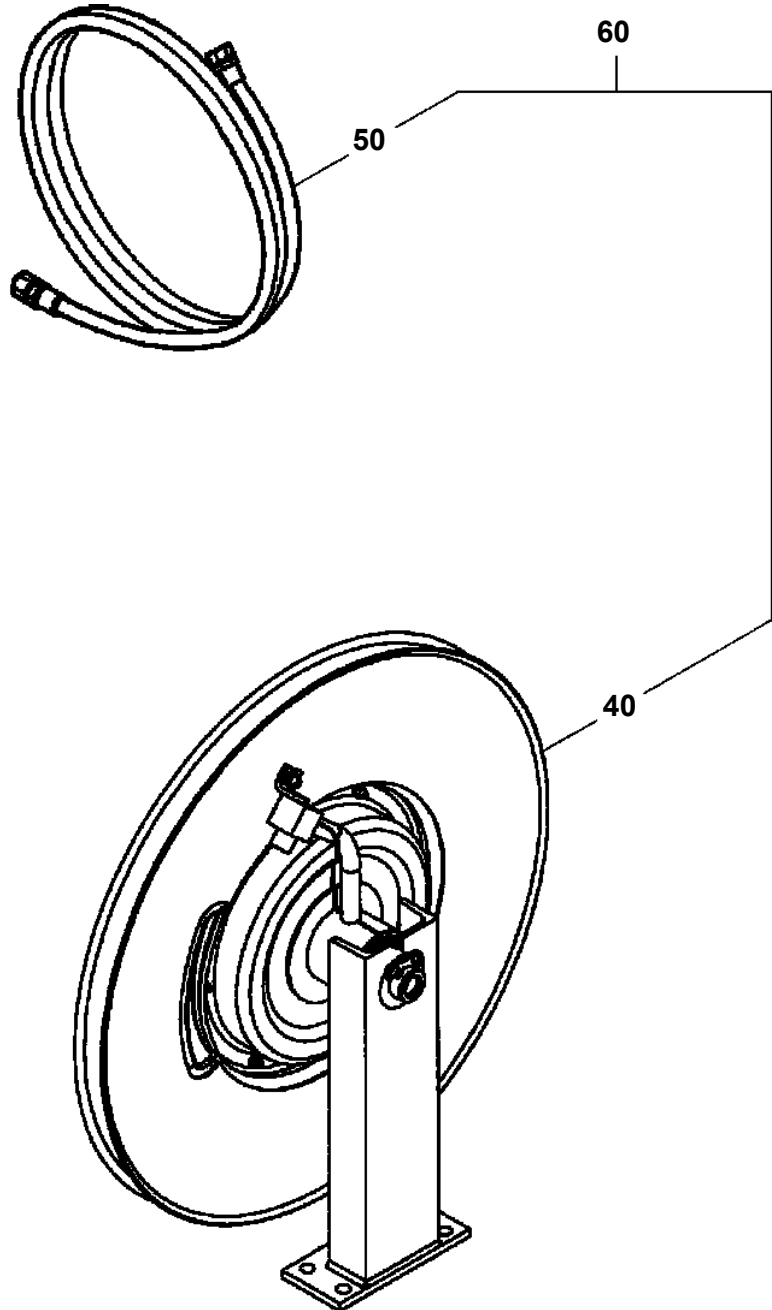
- Please note: If there is no response to CLICKING the link, please download this PDF first and then click on it.

CLICK HERE TO **DOWNLOAD** THE COMPLETE MANUAL

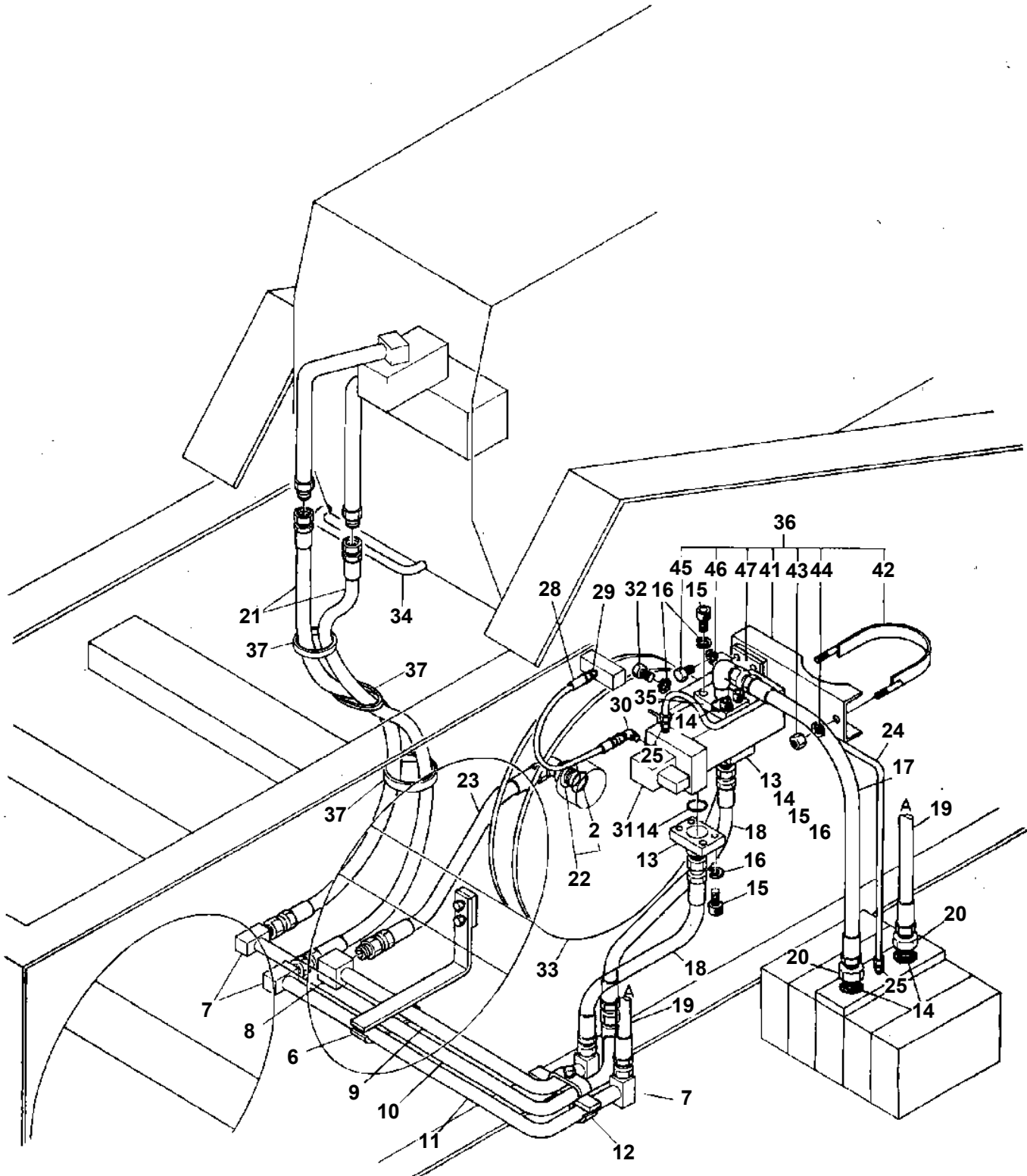
TL-300E-2-10401 4 BOOM + JIB, 2M2D, KG45SXN

Pos No.	Parts No	Parts Name	Qty	Unit	Technical Data	Serial No (Start)	Serial No (End)	Remarks
73	37002000960	PLATE,SLIDE	1					
74	90131506020	BOLT,HEXAGON SOCKET	6		M6X20			
75	33200314400	SUPPORT ASSY	1					
76	90131512020	BOLT,HEXAGON SOCKET	4		M12X20			
77	37000112660	PIN	2					
78	80602110600	RING,RITAINING	4		R60			
79	37002000240	PLATE,SLIDE	2					
80	37002000030	PLATE,SLIDE	4		15X50X150			
81	33200000380	SHIM	12		T=1.0			
82	33200000390	SHIM	4		T=0.6			
83	37000112630	PIN	2					
84	37000112640	PIN	1					
85	80601110600	RING,RITAINING	4		S60			
86	37000112650	PIN	1					
87	37000400220	BEARING,PLAIN	2					
88	33200314500	GUIDE	1					
89	90131506008	BOLT,HEXAGON SOCKET	6		M6X8			
90	90730010160	SCREW,SET	4		M10X16			
93	37002000950	PLATE,SLIDE	1					
94	37002000970	PLATE,SLIDE	1					
98	33200294700	SHIM (T=1.0)	2					
99	33200294710	SHIM (T=0.6)	2					
100	33200294720	SHIM (T=1.0)	2					
101	33200294730	SHIM (T=0.6)	2					
102	33440151010	BAR	2					
106	19411133000	SHIM (T=1.0)	10					
107	19411134000	SPACER	2		T=28			
109	33200246500	SHIM	14		T=3			
110	90101512028	BOLT	4		M12X28			
122	80515006214	BEARING,BALL	14					
123	80612111250	RING,RITAINING	7		AR125			
132	80520045013	BEARING,ROLLER	2					
141	33200240070	PLATE	2					
142	33200240150	SHIM	6		T=1.0			
143	33200240160	SHIM	2		T=0.6			
144	37002002180	PLATE,SLIDE	2			355686	355685	
	37002006380	PLATE,SLIDE	2					
147	90101212020	BOLT	16		M12X20			
151	90203401600	NUT	1		M16			
152	90201401600	NUT	1		M16			
153	33200314610	SUPPORT	1					
154	37001002310	SHEAVE	1					
155	37000100800	PIN	1					
156	80601110250	RING,RITAINING	1		S25			
157	90101512018	BOLT	4		M12X18			
158	90302041201	WASHER,SPRING	5		12			
159	33200314650	SUPPORT	1					
160	90101512020	BOLT	1		M12X20			
161	90303071201	WASHER,PLAIN	1		12			
162	80602110900	RING,RITAINING	2		R90			
163	80516006308	BEARING,BALL	2					
171	80136060040	PIN,SPLIT	2		6X40			
172	33200034240	SUPPORT	2					
173	33200039510	ROLLER ASSY	1					
174	80516006206	BEARING,BALL	4					
175	37000301410	SPACER	3		L=3			
176	33200039520	ROLLER ASSY	1					
177	37000109040	PIN	1					
183	33200030510	PLATE	14					
185	33200000210	SHIM	42		T=1.0			
186	33200000220	SHIM	14		T=0.6			
187	37002000150	PLATE,SLIDE	6					
191	33200314410	SUPPORT	1					

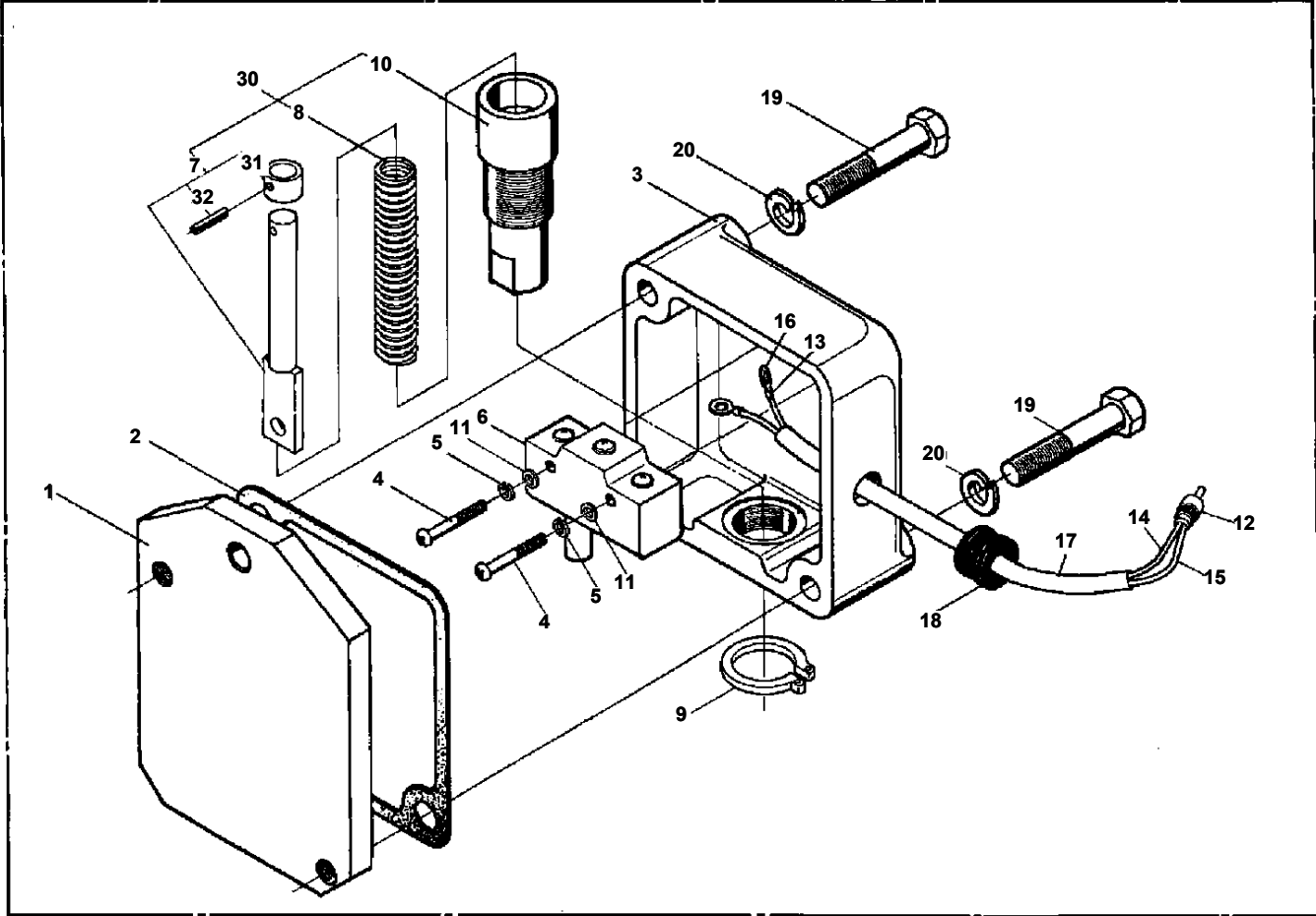
**TL-300E-2-10401 4 BOOM + JIB, 2M2D, KG45SXN
PG1070028-01 REEL,HOSE**



TL-300E-2-10401 4 BOOM + JIB, 2M2D, KG45SXN
PG1200272-01 PIPING,TELESCOPING



TL-300E-2-10401 4 BOOM + JIB, 2M2D, KG45SXN
PH1070040-01 SWITCH,OVER WIND DETECTOR (JIB&S/T)



TL-300E-2-10401 4 BOOM + JIB, 2M2D, KG45SXN

Pos No.	Parts No	Parts Name	Qty	Unit	Technical Data	Serial No (Start)	Serial No (E
1	36110195010	SASH	1				
2	36110195020	PANEL ASSY	1				
3	36112335200	BOARD (PANEL & MASTER/WITH P-ROM)	1				355293
6	36110195060	BOARD,ANALOG	1				
7	36110195070	SHIELD	1				
8	36110195080	BOARD,POWER	1				
9	36110195090	AMPLIFIER ASSY	1				
10	36110195100	BOX ASSY	1				
11	36110195110	COVER ASSY	1				
12	36110195120	COVER	1				
13	36110195130	SEAL	1				
14	36110195140	SCREW,SET	17				
15	82100000689	FUSE	2		3A,6.5X30		
16	36110195150	COVER (FUSE BOX)	1				
17	80155103008	SCREW,MACHINE	4				
18	36110195160	BULB,LAMP (ASSY)	2				
33	36110195031	BOARD,DISPLAY (K4)	1			355294	
34	36112332001	P-ROM (K4)	1			355294	
35	36110195051	BOARD (MASTER)	1			355294	
40	36110196001	MOMENT LIMITER (K4.WITHOUT P-ROM)	1			355294	
50	36112330000	MOMENT LIMITER (AML K-K4)	1				

TL-300E-2-10401 4 BOOM + JIB, 2M2D, KG45SXN

Pos No.	Parts No	Parts Name	Qty	Unit	Technical Data	Serial No (Start)	Serial No (End)	Remarks	Page
5	36050185010	SEAL KIT	1						
6	19413127040	CONNECTOR	1						
7	19413127050	BOLT (CONNECTOR)	1						
8	19413127060	PACKING	1						
9	19413127070	PACKING	1						
10	36050185020	SCREW (BLEEDER)	1						
11	19413127090	CAP (BLEEDER)	1						
30	36050180000	CYLINDER,BRAKE	1						

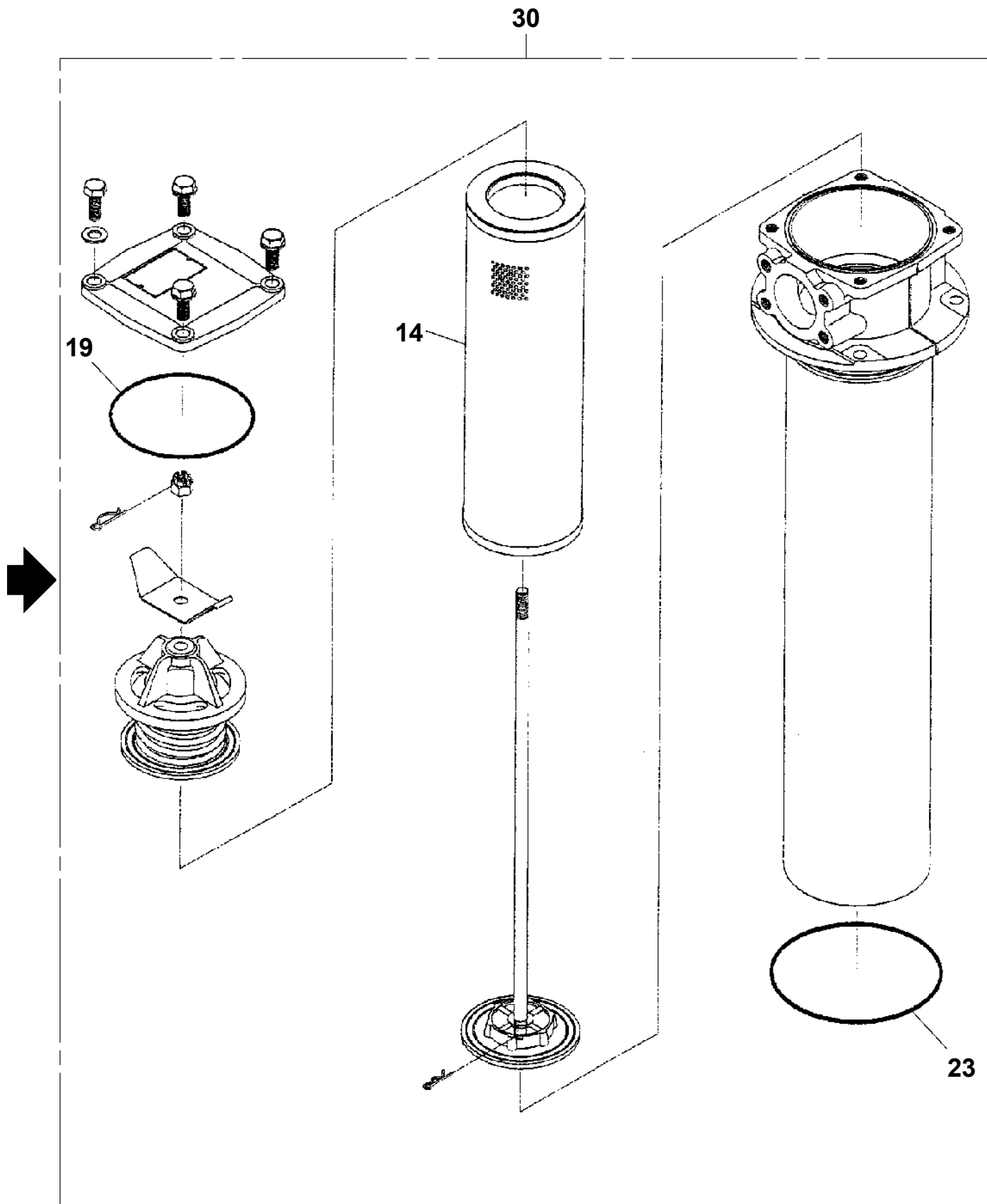
TL-300E-2-10401 4 BOOM + JIB, 2M2D, KG45SXN

Pos No.	Parts No	Parts Name	Qty	Unit	Technical Data	Serial No (Start)	Serial No (End)	Remarks	Pages
2	36620025020	PLUG	2						
3	36620025030	PLUG	2						
4	36620025040	FILTER	2						
5	36620025050	SPRING	2						
6	91002801400	O-RING	2		1B P14				
7	91002800800	O-RING	2		1B P8				
8	19491046020	PLUG	4		NPTF1/16				
9	80560058000	BALL,STEEL	2		9/32				
30	36620020000	VALVE,CHECK	1						

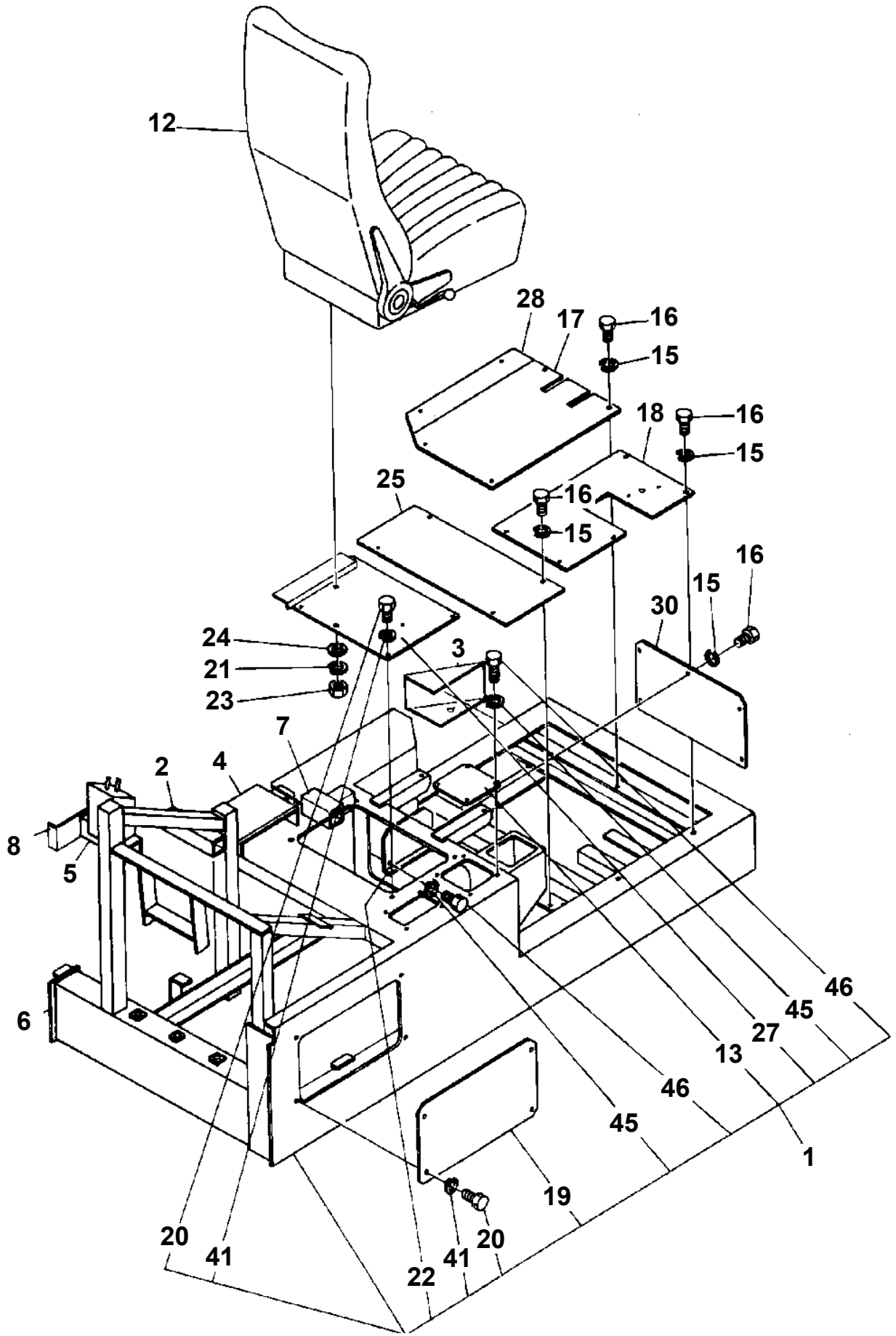
TL-300E-2-10401 4 BOOM + JIB, 2M2D, KG45SXN

Pos No.	Parts No	Parts Name	Qty	Unit	Technical Data	Serial No (Start)	Serial No (End)	R
2	91002804400	O-RING	3		1B P44			
3	91411004400	RING,BACKUP	3		P44			
6	16265153060	SPRING	1					
9	91002801600	O-RING	1		1B P16			
11	91001002200	O-RING	1		S22		355362	
13	16265153130	SPRING-A	1				355362	
	16265153131	SPRING	1			355363		
14	16265153140	SPRING-B	1				355362	
	16265153141	SPRING	1			355363		
16	36601665060	O-RING	1		P30			
17	91410003000	RING,BACKUP <P30.	1			355300		
18	91002804000	O-RING	1		1B P40			
20	91002801250	O-RING	1		1B P12.5			
21	91410001250	RING,BACKUP	1		P12.5	355300		
22	91001003150	O-RING	1		1A S31.5		355299	
	91002802800	O-RING	1		1B P28	355300	355362	
	91002802600	O-RING	1		1B P26	355363		
30	16265153000	CARTRIDGE, COUNTERBALANCE	1					

TL-300E-2-10401 4 BOOM + JIB, 2M2D, KG45SXN
PI1300120-02 FILTER,OIL



TL-300E-2-10401 4 BOOM + JIB, 2M2D, KG45SXN
PK1120035-00 SWING TABLE



TL-300E-2-10401 4 BOOM + JIB, 2M2D, KG45SXN

Pos No.	Parts No	Parts Name	Qty	Unit	Technical Data	Serial No (Start)	Serial No (End)	Remarks	Pages
1	33281021000	COUNTERWEIGHT	1						
2	90101524070	BOLT	4		M24X70				
3	90302042401	WASHER,SPRING	4		24				
4	90303072401	WASHER,PLAIN	4		24				
5	33280910100	STOPPER	4						
6	33280992000	SUPPORT	2						

TL-300E-2-10401 4 BOOM + JIB, 2M2D, KG45SXN

Pos No.	Parts No	Parts Name	Qty	Unit	Technical Data	Serial No (Start)	Serial No (End)
1	80192484016	SCREW,MACHINE	4		M4X16		
3	33430561200	BUZZER ASSY	1				
5	33431372000	SWITCH ASSY	1				
6	80192485014	SCREW,MACHINE (WITH WASHER)	10		M5X14		
7	33431182000	SWITCH ASSY	1				
8	33430001560	RELAY ASSY	1				
9	59481504000	RELAY	2				
10	82100000001	HORN	1				
11	90301010801	WASHER	1		8		
12	80176304014	SCREW,MACHINE	2		M4X14		
14	33431373000	RELAY ASSY	1				
15	33430001510	BOX,FUSE	1				
16	37002203510	PLATE,NAME (FUSE)	1				
17	80161304030	SCREW,MACHINE	6		M4X30		
18	90302040401	WASHER,SPRING	6		4		
19	90303100401	WASHER,PLAIN	6		4		
20	80161305020	SCREW,MACHINE	8		M5X20		
21	90302040501	WASHER,SPRING	8		5		
22	90303100501	WASHER,PLAIN	8		5		
23	33430601400	COVER	1				
24	33430601560	COVER	1				
25	80161306020	SCREW,MACHINE	4		M6X20		
26	90302040601	WASHER,SPRING	5		6		
27	90201200600	NUT	1		M6		
28	90190000008	BOLT,STUD	1		M6X20		
29	33431374000	PLATE	1				
30	33431371000	LAMP,PILOT	1				
41	33431181100	PANEL	1				
42	33431181200	HARNESS	1				
43	33431372100	PLATE,NAME	1				
44	82100001392	SWITCH,ROTARY	1				
45	82100001199	KNOB	1				
46	82100001359	SWITCH,TOGGLE	2				
47	82100001381	SWITCH,PUSH (RED)	2				
48	82100001361	SWITCH,TOGGLE	1				
49	82100000082	SWITCH,STARTER (WITH KEY)	1				
50	34350002100	CAP	3				
61	33430701061	PANEL	1				
62	90303070501	WASHER,PLAIN	2		5		
64	33431182200	PLATE,NAME	1				
65	82100001682	SWITCH,TOGGLE	1				
66	82100001696	SWITCH,TOGGLE	2				
67	82400000180	TRAY,ASH	1				
68	82100000690	LIGHTER,CIGARETTE	1				
69	33431182100	HARNESS	1				
70	34250000030	COVER	1				
71	80192485014	SCREW,MACHINE (WITH WASHER)	2		M5X14		
72	34250000430	PLATE	1				
73	33431222300	COVER	1				
74	80176304012	SCREW,MACHINE	4		M4X12		
75	90302040401	WASHER,SPRING	4		4		
91	82100000745	FUSE	5		10A,6.5X30		
92	82100001162	FUSE (15A,6.35X30>	3				
94	33430601440	GROMMET	1				
101	34350352150	COVER	1				
102	33431377510	PLATE,NAME (Q)	1				
103	90925030101	SCREW,TAPPING	10		M3X10		
104	82100002470	BULB,LAMP	16				
105	34350352180	COVER	1				
106	33431387510	LAMP ASSY (C)	1				
111	82100000564	BUZZER	1				
121	82100000734	RELAY	1				
131	82100000687	KEY (STARTER)	1				

TL-300E-2-10401 4 BOOM + JIB, 2M2D, KG45SXN

Pos No.	Parts No	Parts Name	Qty	Unit	Technical Data	Serial No (Start)	Serial No (End)	Remarks	Pa
65	8210000826	CONNECTOR ASSY	N						
66	8210000834	CONNECTOR ASSY	N						
67	8210000959	CONNECTOR	N						
68	8210000960	CONNECTOR	N						
69	8210000961	CONNECTOR	N						
70	8210000962	CONNECTOR	N						
71	8210000963	CONNECTOR	N						
72	8210000964	CONNECTOR	N						
73	8210000965	CONNECTOR	N						
74	8210000966	CONNECTOR	N						
75	8210000967	TERMINAL	N						
76	8210000969	PLUG	N						
77	8210000968	TERMINAL	N						
78	82100001015	CONNECTOR	N						
79	82100001016	CONNECTOR	N						
80	82100001022	CONNECTOR	N						
81	82100001023	CONNECTOR	N						
82	82100001024	CONNECTOR	N						
83	82100001025	CONNECTOR	N						
84	82100001072	CONNECTOR	N						
85	82100001073	CONNECTOR	N						
86	82100001010	PLUG,CONNECTOR	N						
87	82100001011	RECEPTACLE	N						
88	82100001012	TERMINAL (SOCKET)	N						
89	82100001013	TERMINAL (PIN)	N						

TL-300E-2-10401 4 BOOM + JIB, 2M2D, KG45SXN

Pos No.	Parts No	Parts Name	Qty	Unit	Technical Data	Serial No (Start)	Serial No (End)	Remarks
1	36670455010	PLATE (A)	1					
2	36670455020	PLATE (B)	1					
3	36670455030	PACKING (SEAT)	1					
4	36671410010	CASE (SPRING)	1				356106	
	36670455040	BOX (SPRING)	1			356107		
5	36670455050	SPRING	1					
6	36670455060	SPRING	1					
7	36670455070	BOLT	2		M8X12			
8	90302040801	WASHER,SPRING	3		8			
9	90201200800	NUT	2		M8			
10	80515006003	BEARING,BALL	1					
11	36670455080	BUSH	1					
12	80515006007	BEARING,BALL	1				356106	
	80513006007	BEARING,BALL	1			356107		
13	16246595020	RING ASSY (RL)	2					
15	36671410030	PIN	1				356106	
	36671650200	PIN	1			356107		
16	36671410040	SUPPORT	1				356106	
	36671650300	SUPPORT	1			356107		
17	90730005120	SCREW,SET	3		M5X12		356106	
18	90201200600	NUT	6		M6			
19	90302040601	WASHER,SPRING	6		6			
20	36670455110	PLATE	1					
21	90102208014	BOLT	1		M8X14			
23	80602110700	RING,RETAINING	1		R70		356106	
24	36670545060	SEAL,OIL	1				356106	
25	36671410020	SPACER	1				356106	
26	91001203000	O-RING	1		1A G30		356106	
27	90101510018	BOLT	4		M10X18		356106	
28	90302041001	WASHER,SPRING	4		10		356106	
29	36671410050	RING,RETAINING	1				356106	
30	36670675030	GROMMET	1			356059		
31	91282412251	SEAL,OIL	1			356107		
32	36671650400	PLATE	1			356107		
33	90172206014	BOLT,HEXAGON SOCKET	2		M6X14	356107		
100	36671410000	REEL ASSY,HOSE	1					

TL-300E-2-10401 4 BOOM + JIB, 2M2D, KG45SXN

Pos No.	Parts No	Parts Name	Qty	Unit	Technical Data	Serial No (Start)	Serial No (End)	Remarks	Pages
1	33860231000	SUPPORT	4						

TL-300E-2-10401 4 BOOM + JIB, 2M2D, KG45SXN

Pos No.	Parts No	Parts Name	Qty	Unit	Technical Data	Serial No (Start)	Serial No (End)	Remarks	Pages
1	33762768010	COVER ASSY	1						
2	33762768020	COVER ASSY	1						
3	90101210014	BOLT	20		M10X14				
4	90302041001	WASHER,SPRING	20		10				
5	12515253000	PLATE	4						
6	33762750400	COVER	3						
7	33762752000	COVER ASSY	4						
8	33762750500	COVER	1						
9	33762750600	BAR	1						
21	33762752100	COVER	4						
22	56760106000	PLATE	8						
25	33762752200	SUPPORT	4						

CLICK HERE TO **DOWNLOAD** THE COMPLETE MANUAL

- Thank you very much for reading the preview of the manual.
- You can download the complete manual from: www.heydownloads.com by clicking the link below



- Please note: If there is no response to CLICKING the link, please download this PDF first and then click on it.

CLICK HERE TO **DOWNLOAD** THE COMPLETE MANUAL