

TL-300E-3-10101 4 BOOM + JIB, 2M2D, KG45SXN

PB1000231-02 HYDRAULIC PRESSURE GENERATING SYSTEM

PC1000174-02 OUTRIGGER SYSTEM

PD1000215-01 SWING SYSTEM

PE1000214-02 ELEVATING SYSTEM

PF1000202-03 WINCH SYSTEM

PG1000211-02 TELESCOPING SYSTEM

PH1000197-03 SAFETY DEVICES

PK1000224-02 FRAME

PL1000219-02 CONTROL DEVICES

PN1000184-02 ELECTRIC EQUIPMENT

PO1000144-01 INDICATION PLATES

PW1000028-00 ACCESSORIES & TOOLS

PX1000227-03 MOUNTING PARTS

PY1000195-03 OPTIONS

ASSEMBLY

CLICK HERE TO **DOWNLOAD** THE COMPLETE MANUAL

- Thank you very much for reading the preview of the manual.
- You can download the complete manual from: www.heydownloads.com by clicking the link below



- Please note: If there is no response to CLICKING the link, please download this PDF first and then click on it.

CLICK HERE TO **DOWNLOAD** THE COMPLETE MANUAL

TL-300E-3-10101 4 BOOM + JIB, 2M2D, KG45SXN

Pos No.	Parts No	Parts Name	Qty	Unit	Technical Data	Serial No (Start)	Serial No (End)
1	36092270000	HOOK (SHEAVE 5 PC'S)	1				
2	(*****)	HOOK (AUXILIARY)	1				
3	37001803550	ROPE,WIRE (TESAC)	1				
	37001803540	ROPE,WIRE (TSK)	1				
4	37001803510	ROPE,WIRE (TSK)	1				
	37001803520	ROPE,WIRE (TESAC)	1				
5	(*****)	SOCKET,ROPE	2				
7	(*****)	OPE.ASSY, WINCH BRAKE (MAIN)	1				
8	(*****)	OPE.ASSY, WINCH BRAKE (AUX.)	1				
9	(*****)	OPE.ASSY,DRUM LOCK (MAIN)	1				
10	(*****)	OPE.ASSY,DRUM LODK (AUX.)	1				
11	(*****)	OPE.ASSY,CLUTCH (MAIN)	1				
12	(*****)	OPE.ASSY,CLUTCH (AUX.)	1				
13	(*****)	DETECTOR,DISORDERLY WIND (MAIN,OPTION)	1				
14	(*****)	DETECTOR,DISORDERLY WIND (AUX.,OPTION)	1				
15	(*****)	PIPING,WINCH (MAIN,FOR SANWA MOTOR)	1				
16	(*****)	PIPING,WINCH (AUX.,FOR SANWA MOTOR)	1				
17	(*****)	PIPING,WINCH BRAKE (MAIN)	1				
18	(*****)	PIPING,WINCH BRAKE (AUX.)	1				
19	(*****)	DETECTOR,DRUM ROTATION (AML-M,OPTION)	1				
20	(*****)	MOUNT,WINCH (MAIN)	1				
21	(*****)	MOUNT,WINCH (AUX.,SANWA)	1				

TL-300E-3-10101 4 BOOM + JIB, 2M2D, KG45SXN

Pos No.	Parts No	Parts Name	Qty	Unit	Technical Data	Serial No (Start)	Serial No (End)	Remarks
1	(*****)	SWITCH,DETECTOR (F/J)	1					
4	(*****)	ELECTRICAL PARTS,CAB	1					
5	(*****)	SWITCH PANEL (OPERATION)	1					
6	(*****)	LAMP (WORKING)	1					
8	(*****)	WIRING,MATERIALS	1					

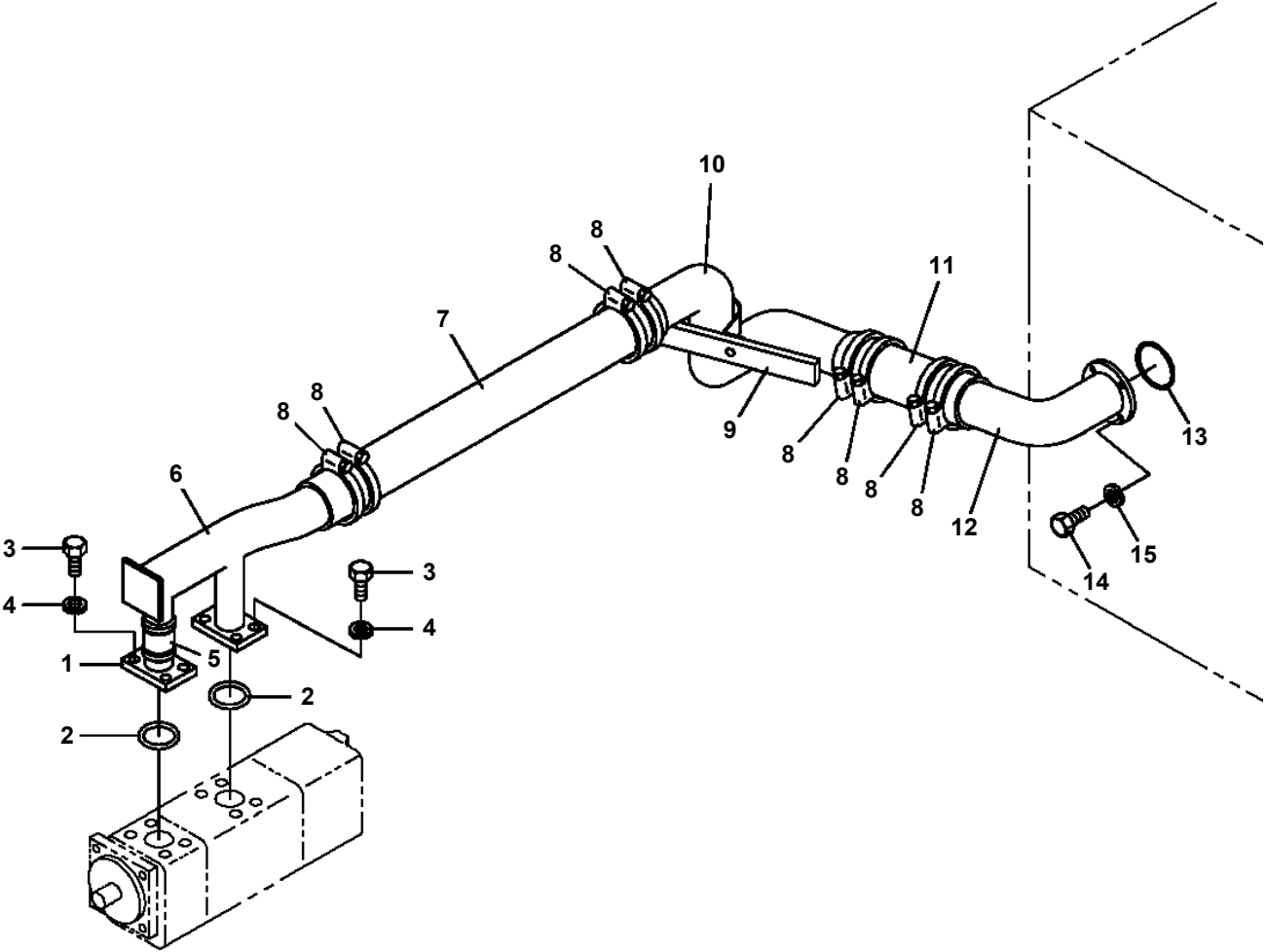
TL-300E-3-10101 4 BOOM + JIB, 2M2D, KG45SXN

PF1180014-02 DETECTOR,DISORDERLY WIND (MAIN,OPTION)
PF1180015-01 DETECTOR,DISORDERLY WIND (AUX.,OPTION)
PF1200136-05 PIPING,WINCH (MAIN,FOR SANWA MOTOR)
PF1200137-03 PIPING,WINCH (AUX.,FOR SANWA MOTOR)
PF1220030-02 PIPING,WINCH BRAKE (MAIN)
PF1220092-01 PIPING,WINCH BRAKE (AUX.)
PF1250016-02 DETECTOR,DRUM ROTATION (AML-M,OPTION)
PF1300006-00 VALVE,CLUTCH
PF1320005-00 JOINT,WINCH ROTARY
PF1400061-04 MOUNT,WINCH (AUX.,SANWA)
PF1400304-00 MOUNT,WINCH (MAIN)
PG1010145-06 BOOM
PG1040063-01 JIB
PG1050082-03 CYLINDER,TELESCOPING
PG1070028-01 REEL,HOSE
PG1070034-02 REEL,HOSE (MOUNT)
PG1120028-02 DETECTOR SYSTEM, BOOM LENGTH
PG1120085-02 DETECTOR SYSTEM, BOOM LENGTH
PG1130050-02 DETECTOR,BOOM LENGTH (NICHIDEN)
PG1130054-00 DETECTOR,BOOM LENGTH (WITH ANGLE DETECT)
PG1130079-00 DETECTOR,BOOM LENGTH
PG1130107-00 DETECTOR,BOOM LENGTH (WITH ANGLE DETECT)
PG1160000-03 DETECTOR,BOOM RETRACTION (TOP)
PG1200039-05 PIPING,TELESCOPING
PG1360112-01 WIRE GUIDE (BOOM)
PH1060073-02 DETECTOR,OVER WINDING (BOOM)
PH1060077-00 DETECTOR,OVER WINDING (JIB&S/T)
PH1070001-02 SWITCH,OVER WIND DETECTOR (BOOM)
PH1170011-00 DETECTOR,CONTROL VALVE ACTUATION
PH1180083-01 CONNECTION,MOMENT LIMITER SYSTEM
PH1180135-01 CONNECTION,MOMENT LIMITER SYSTEM
PH1200018-02 PIPING,VENT
PH1200035-00 PIPING,VENT (MODIFICATION)
PH1250008-01 MOMENT LIMITER (AML-M1)
PI1010034-03 MOTOR,HYDRAULIC (SANWA)
PI1010111-00 MOTOR,HYDRAULIC (SANWA)
PI1010121-01 MOTOR,HYDRAULIC (SWING)
PI1010124-00 MOTOR,HYDRAULIC (COOLER,OIL)
PI1030007-01 CYLINDER,MASTER (MIYAKO)
PI1030008-01 CYLINDER,MASTER
PI1030008-01 CYLINDER,MASTER
PI1030011-00 CYLINDER,MASTER
PI1030012-00 CYLINDER,MASTER (NABCO)
PI1030040-00 CYLINDER,MASTER
PI1040011-00 CYLINDER,AIR
PI1050002-00 RESERVOIR,OIL
PI1120085-02 VALVE,SOLENOID
PI1120086-02 VALVE,SOLENOID
PI1120353-00 VALVE,SOLENOID
PI1130005-01 VALVE,HYDRAULIC
PI1130029-00 VALVE,HYDRAULIC
PI1140007-01 VALVE,CHECK
PI1140042-00 VALVE,CHECK
PI1140047-00 VALVE,CHECK
PI1140229-00 VALVE,CHECK
PI1160007-00 VALVE,FLOW CONTROL
PI1170000-00 VALVE,PRESSURE DETECTOR
PI1250066-00 VALVE,COUNTERBALANCE (SANWA)
PI1260011-02 CARTRIDGE, COUNTERBALANCE
PI1280002-00 VALVE,PILOT CHECK
PI1300012-03 FILTER,OIL (TANK,OIL)
PI1300080-00 FILTER,OIL
PI1300120-02 FILTER,OIL
PI1340011-01 ACCUMULATOR

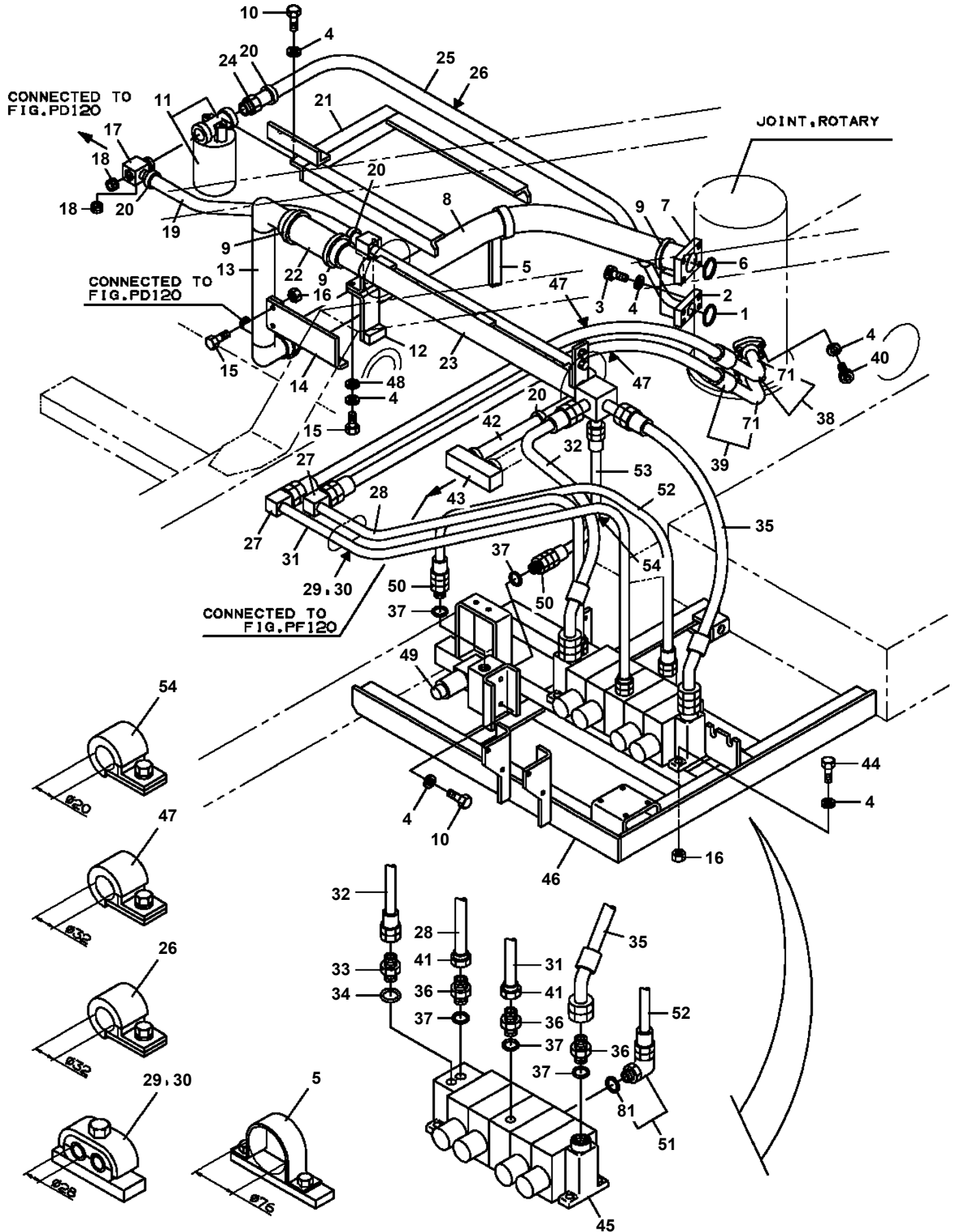
TL-300E-3-10101 4 BOOM + JIB, 2M2D, KG45SXN

Pos No.	Parts No	Parts Name	Qty	Unit	Technical Data	Serial No (Start)	Serial No (End)	Remarks	Pages
2	36651205010	SEAL,OIL	1						
3	36651205020	SEAL,OIL	1						
5	36650615030	BEARING,NEEDLE	8						
7	36651205030	PLATE,WEAR (F)	2						
8	36650615040	PLATE,WEAR (F)	2						
9	36650095350	O-RING	6						
10	36651205040	RING,BACKUP	6						
12	36650615050	COUPLING	1						
13	36650625080	O-RING	7						
14	36650625090	COLLAR	2						
15	36650615070	COUPLING	1						
16	36650095540	PLATE,WEAR (F)	2						
18	36650675010	BEARING,NEEDLE	4						
19	36650625110	CAP	1						
20	36650625120	O-RING	1						
21	36651205050	BOLT	4						
22	36650096010	WASHER (LOCK)	12						
25	91001701800	O-RING	1		WG18				
28	36651205060	PLUG	3						
31	36651205070	O-RING	2						
33	36650625030	BOLT	8						
34	36650615130	O-RING	2						
35	36650615150	BOLT	6						
36	36650625020	WASHER	6						
40	36651205080	PUMP ASSY (NO.1)	1						
50	36651205090	PUMP ASSY (NO.2)	1						
60	36651205100	PUMP ASSY (NO.3)	1						
100	36651200001	PUMP,HYDRAULIC	1						

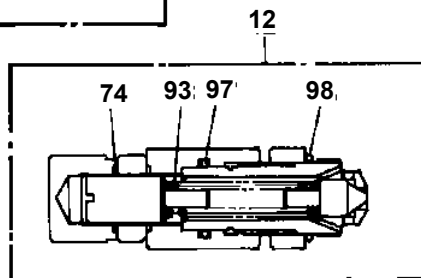
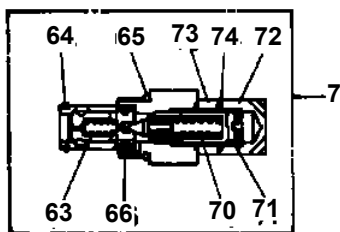
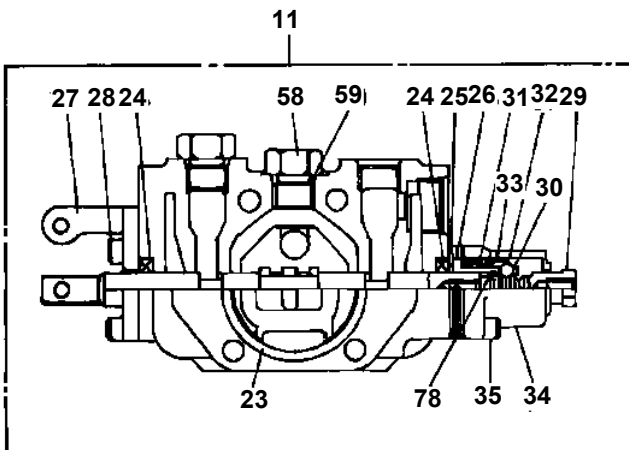
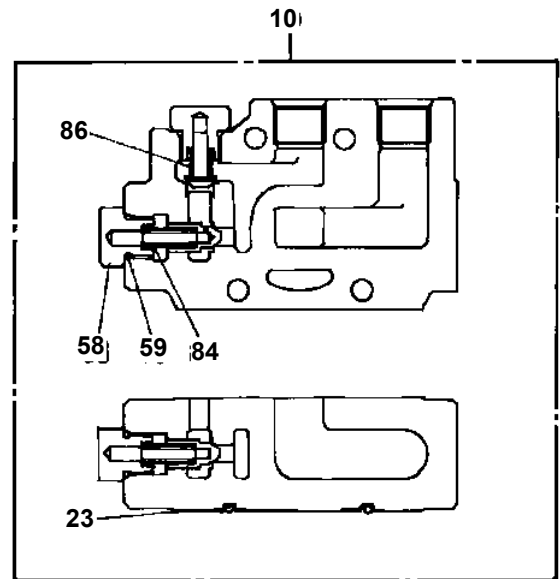
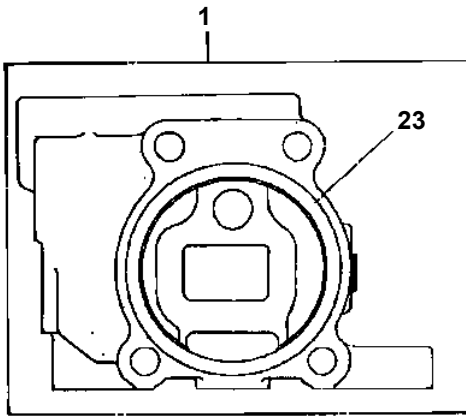
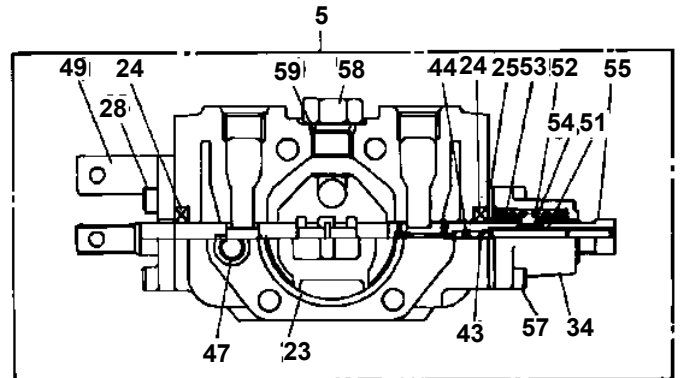
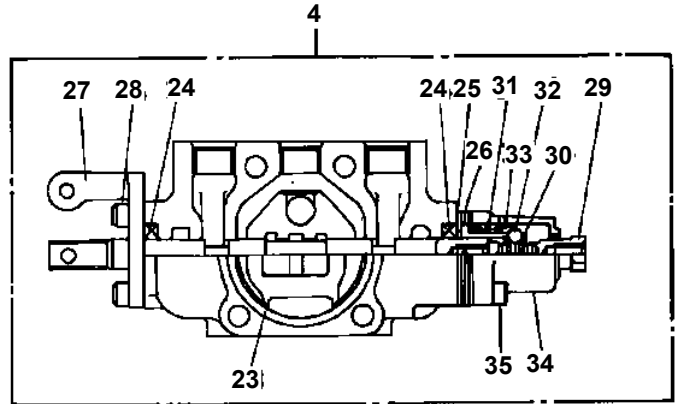
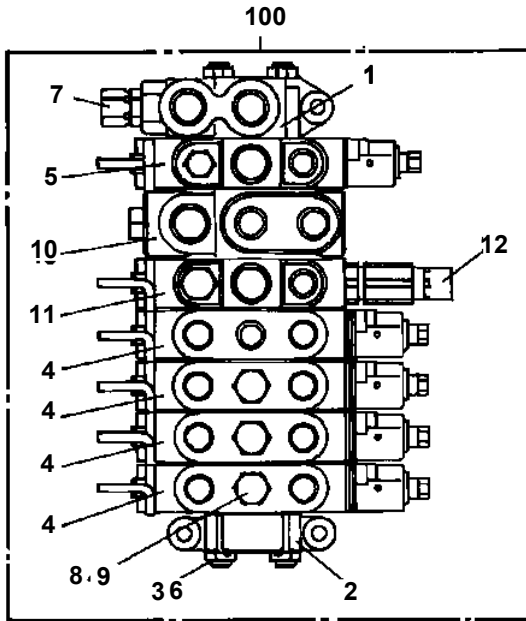
**TL-300E-3-10101 4 BOOM + JIB, 2M2D, KG45SXN
PB1200045-00 PIPING,SUCTION**



**TL-300E-3-10101 4 BOOM + JIB, 2M2D, KG45SXN
PB1260037-03 PIPING, UPPER RETURN**



TL-300E-3-10101 4 BOOM + JIB, 2M2D, KG45SXN
PB1320154-02 VALVE, MANUAL CONTROL (OUTRIGGER, F/J)



TL-300E-3-10101 4 BOOM + JIB, 2M2D, KG45SXN

Pos No.	Parts No	Parts Name	Qty	Unit	Technical Data	Serial No (Start)	Serial No (End)	Remarks	Pages
1	36031370101	CYLINDER	1						
2	80720105025	PIN,SPRING	1		5X25				
3	36030100201	PISTON	1						
4	91684112000	PACKING	2						
5	91431210501	RING,BACKUP	1						
6	91002807000	O-RING	1		1B P70				
7	91411007000	RING,BACKUP	1		P70				
8	91332212000	BEARING,PLAIN	2						
9	36031370200	ROD	1						
10	36030100401	COVER,ROD	1						
11	91002911500	O-RING	1		1B G115				
12	91251101000	RING,DAMPER	1						
13	91694010000	PACKING	1						
14	91410210000	RING,BACKUP	1						
15	91660010000	SEAL,DUST	1						
16	36030775000	STOPPER	1						
17	90101510040	BOLT	2		M10X40				
18	90302041001	WASHER,SPRING	6		10				
19	90101210022	BOLT	4		M10X22				
20	91411210501	RING,BACKUP	1						
31	80612111080	RING,RITAINING	1		AR108				
40	36031370001	CYLINDER,JACK	1						
51	36031749900	PACKING SET	1		100X120				

TL-300E-3-10101 4 BOOM + JIB, 2M2D, KG45SXN

Pos No.	Parts No	Parts Name	Qty	Unit	Technical Data	Serial No (Start)	Serial No (End)	Remarks	Pages
1	33700590500	LEVER	1						
2	33700590600	LEVER	1						
5	31320020010	KNOB (BLACK)	2						
6	37000105610	PIN	4		L=18				
7	80136320010	PIN,SPLIT	4		2X10				
8	12644502000	ROD	1						
9	90203200800	NUT	1		M8				

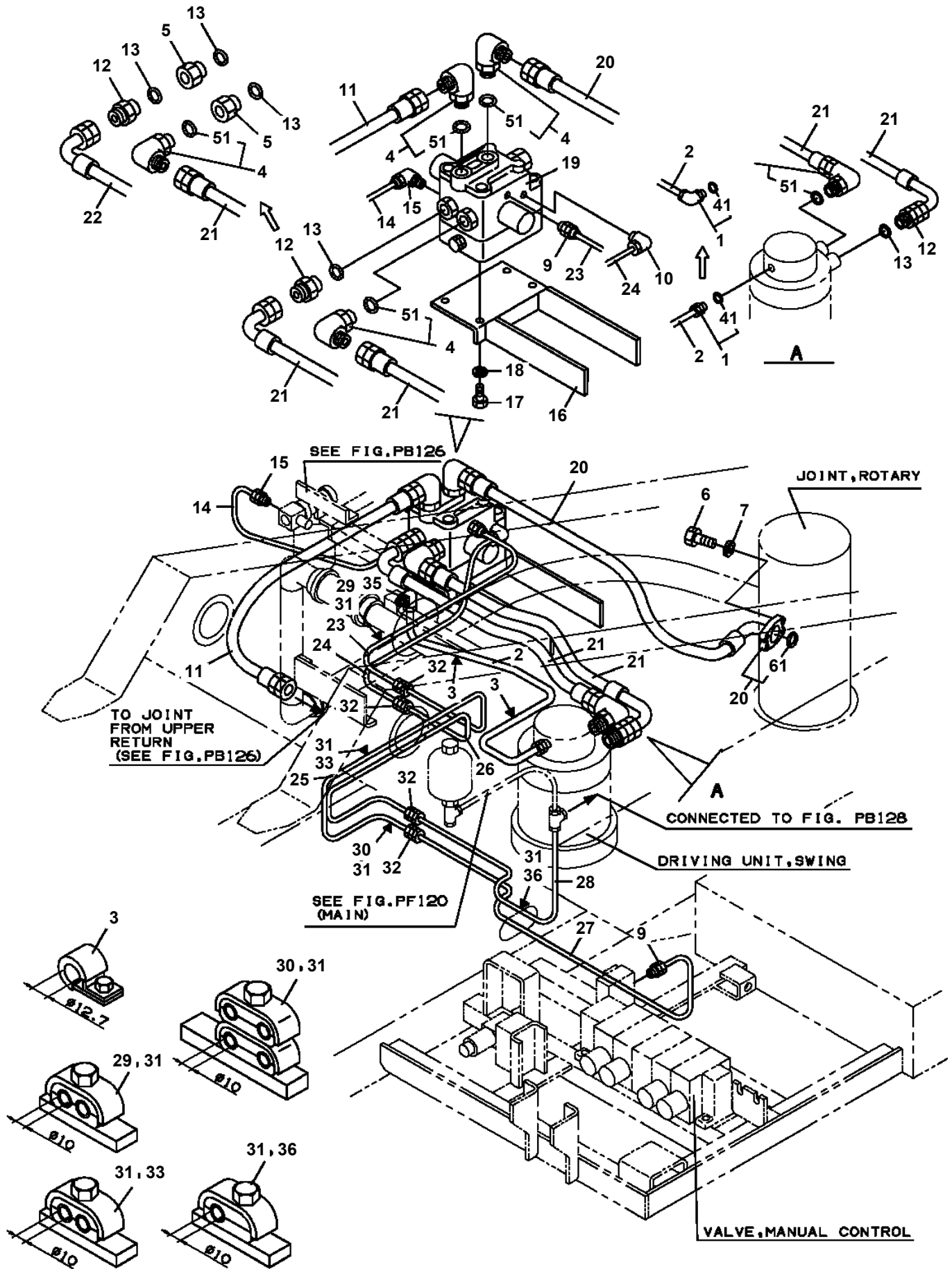
TL-300E-3-10101 4 BOOM + JIB, 2M2D, KG45SXN

Pos No.	Parts No	Parts Name	Qty	Unit	Technical Data	Serial No (Start)	Serial No (End)	Rem
1	90101510040	BOLT	3		M10X40			
2	90302041001	WASHER,SPRING	3		10			
3	36620510000	VALVE,PILOT CHECK	1					
4	36030340001	FRONT JACK,HYDRAULIC	1					
5	33730271200	SUPPORT	1					
6	90171116040	BOLT	4		M16X40			
7	90302041601	WASHER,SPRING	4		16		355904	
	90303501601	WASHER,PLAIN	4		16	355905		
8	90101512055	BOLT	4		M12X55			
9	90302041201	WASHER,SPRING	4		12			
10	33730261200	FLOAT ASSY	1					
13	90302040801	WASHER,SPRING	4		8			
14	90101508075	BOLT	4		M8X75			
15	36030760000	VALVE,PRESSURE DETECTOR	1					
20	33730268020	HARNES	1					
31	90191210035	BOLT	6		M10X35			
32	90302041001	WASHER,SPRING	6		10			
33	33730261210	COVER	2					
35	82456101000	NIPPLE,GREASE	1		A-PT1/8			
44	33730268010	FLOAT ASSY	1					

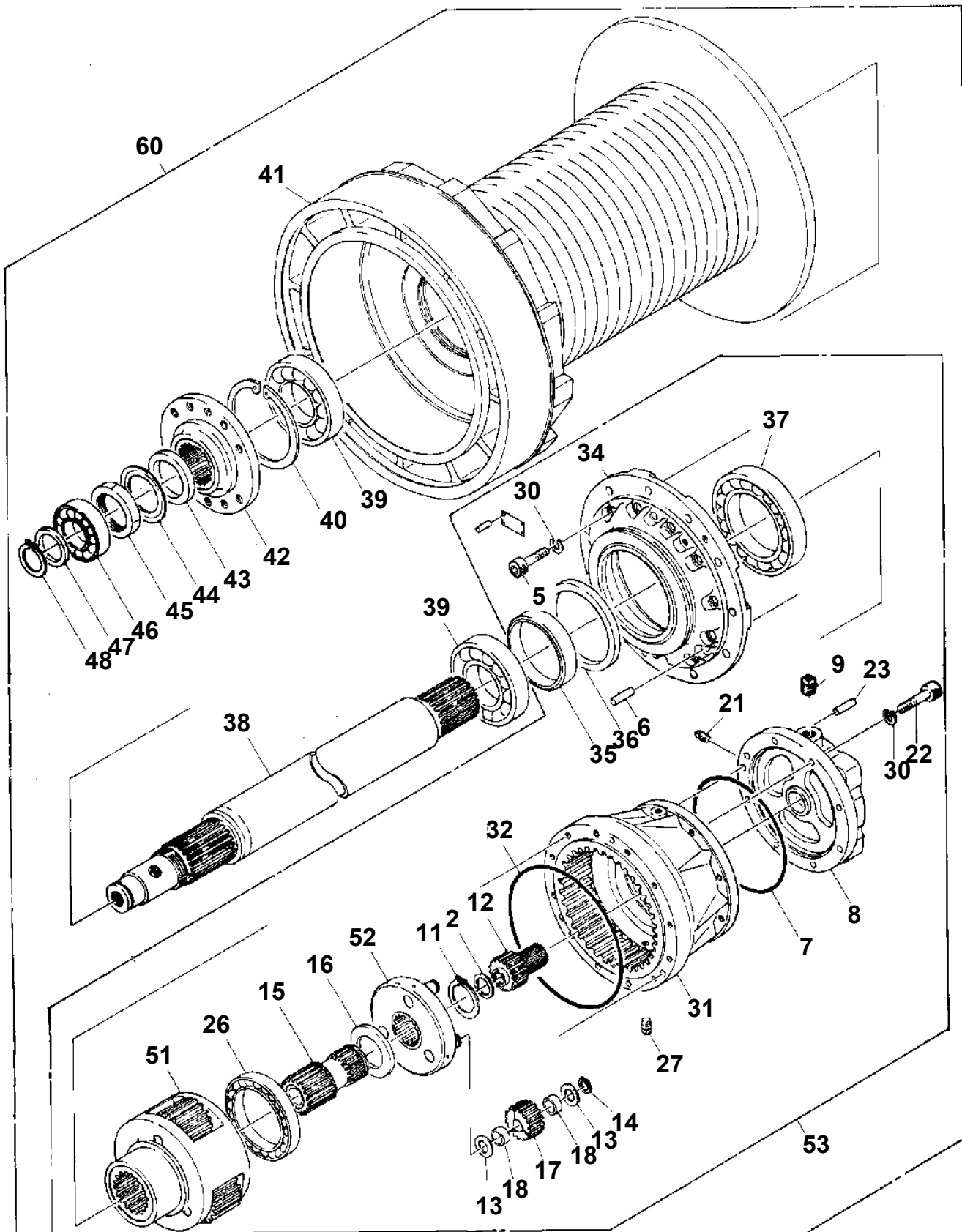
TL-300E-3-10101 4 BOOM + JIB, 2M2D, KG45SXN

Pos No.	Parts No	Parts Name	Qty	Unit	Technical Data	Serial No (Start)	Serial No (End)	Remarks
1	36340150000	REDUCER ASSY	1					
2	36660980000	MOTOR ASSY	1					
3	36080415010	NIPPLE	1					
4	36080415020	JOINT,ELBOW	1					
5	80316080080	PLUG	1		PT1/2			
11	36340155010	HOUSING (GEAR)	1					
12	36340155020	SHAFT (R)	1					
13	80500022217	BEARING,BALL	1					
14	16623320050	SEAL,OIL	1					
15	36080155280	WASHER	3					
16	80165106010	SCREW,MACHINE	3		M6X10			
17	36340155030	SPIDER	1					
18	36340155040	GEAR (P2)	3					
19	36340155050	PIN,KING (P2)	3					
20	16623320100	BEARING,THRUST	6					
21	36340155060	BEARING,NEEDLE	6					
22	80720106025	PIN,SPRING	3		6X25			
23	36340155070	RING,THRUST	2					
24	36340155080	PIN	3		18X40			
25	36340155090	BEARING	1					
26	90131516060	BOLT,HEXAGON SOCKET	6		M16X60			
27	36340155100	GEAR (R2)	1					
28	80730130025	PIN	1		13X25			
29	18335116040	O-RING	2					
30	36340155110	PIN	2		20X65			
31	36340155120	COVER,END	1					
32	90131512080	BOLT,HEXAGON SOCKET	2		M12X80			
33	36340155130	GEAR (S2)	1					
34	36340155140	GEAR (P1)	3					
35	36340155150	BEARING,NEEDLE	3					
36	36340155160	PIN,KING (P1)	3					
37	36080155220	WASHER	3					
38	80601110200	RING,RITAINING	3		S20			
39	80720106018	PIN,SPRING	3		6X18			
40	36340155170	CARRIER	1					
41	80601110500	RING,RITAINING	1		S50			
42	36340155180	O-RING	2					
43	80316030020	PLUG	1		PT1/8			
44	90101510050	BOLT	13		M10X50			
45	90101510075	BOLT	2		M10X75			
46	90302041001	WASHER,SPRING	15		10			
47	80316030060	PLUG	6		PT3/8			
48	36340155190	GEAR (R1)	1					
51	36660985010	SHAFT	1					
52	80500006305	BEARING,BALL	1					
53	36660025140	SEAL,OIL	1					
54	36660985070	ROLLER,NEEDLE	3					
55	36660985040	PLATE (CAM)	1					
56	80720110020	PIN,SPRING	1		10X20			
57	36660985050	BARREL,CYLINDER	1					
58	36660495070	HOLDER,PLUNGER	1					
59	36660985030	HOUSING ASSY	1					
60	36660985090	FACING	1					
61	80500006006	BEARING,BALL	1					
62	14315102190	O-RING	1					
63	36660985110	COVER (BOTTOM)	1					
64	18335116940	BREATHER,AIR	1					
67	80602110520	RING,RITAINING	1		R52			
68	36660985100	SPRING (BRAKE)	20					
70	36660125050	PLUG	1		PT1/4			
72	59451302360	CAP (AIR BLEEDER SCREW)	1					
82	36660985060	SPRING (CENTER)	1					
83	80602110450	RING,RITAINING	1		R45			

**TL-300E-3-10101 4 BOOM + JIB, 2M2D, KG45SXN
PD1200089-03 PIPING, SWING**

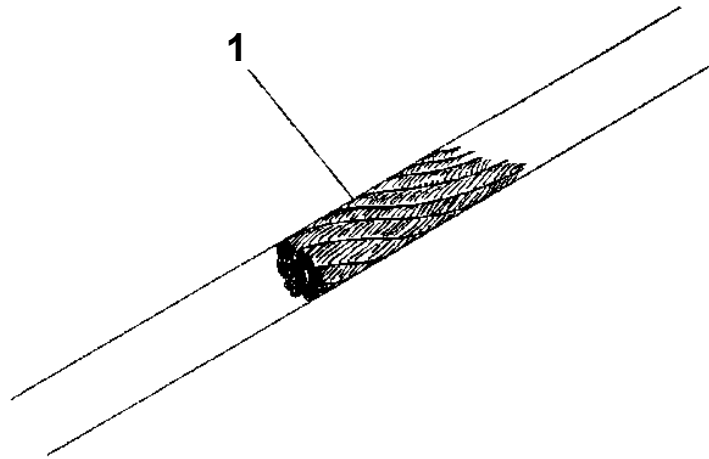


TL-300E-3-10101 4 BOOM + JIB, 2M2D, KG45SXN
 PF1010021-01 WINCH

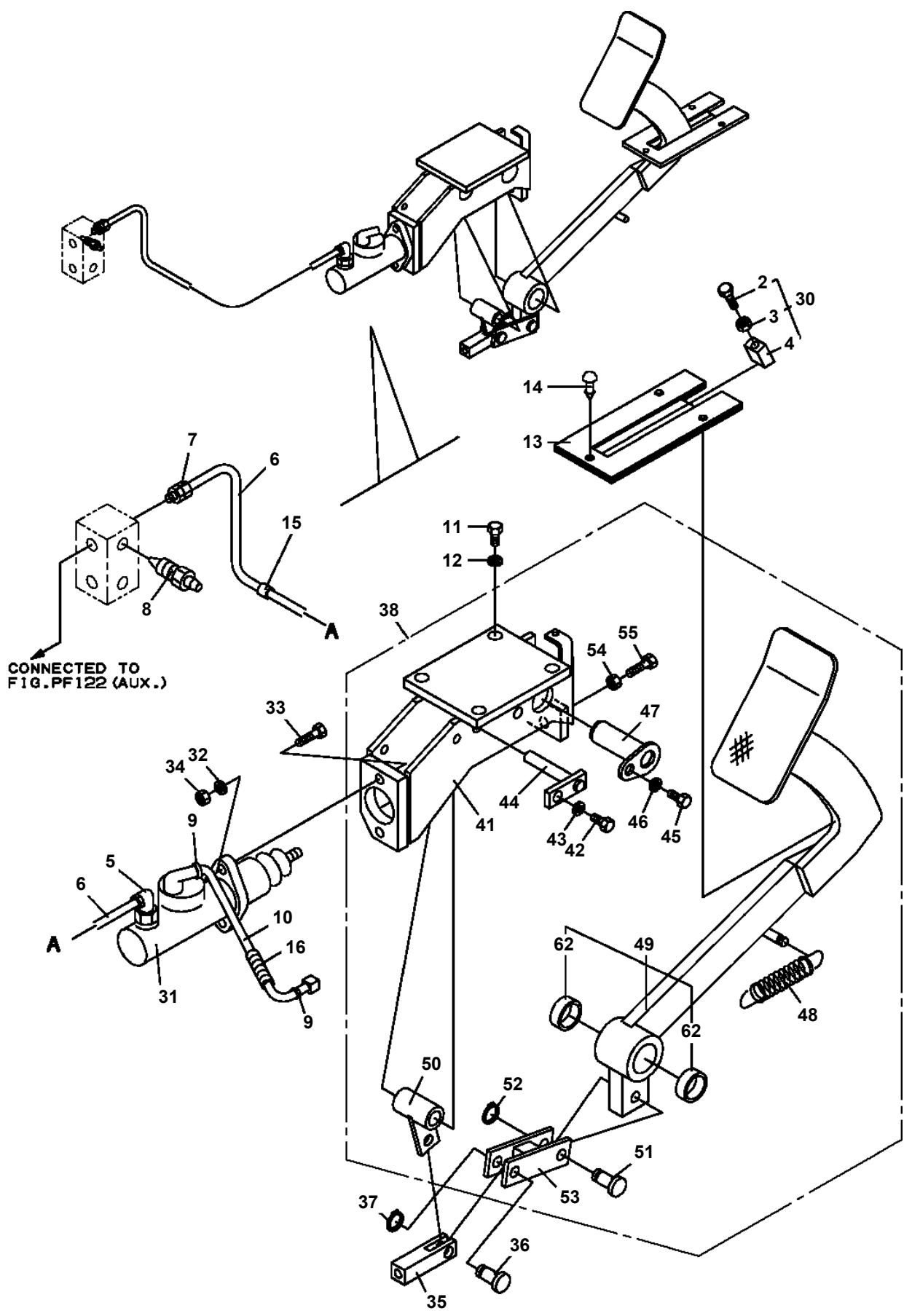


本イラスト中の○印部品は、仕様によっては使用されていない場合があります。
 The parts marked by ○ may not be used,
 depending on machine specifications.

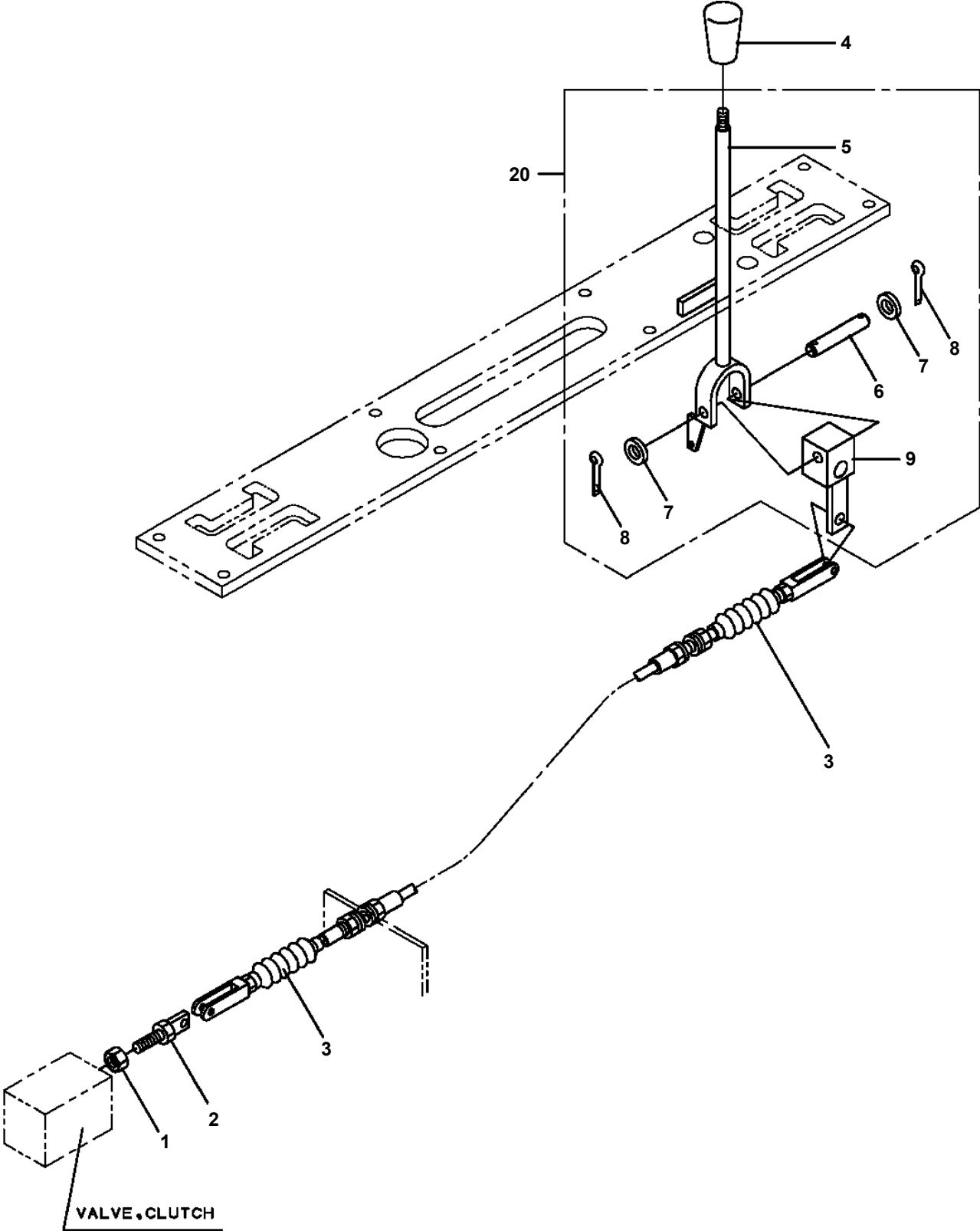
TL-300E-3-10101 4 BOOM + JIB, 2M2D, KG45SXN
PF1070031-00 ROPE,WIRE (TESAC)



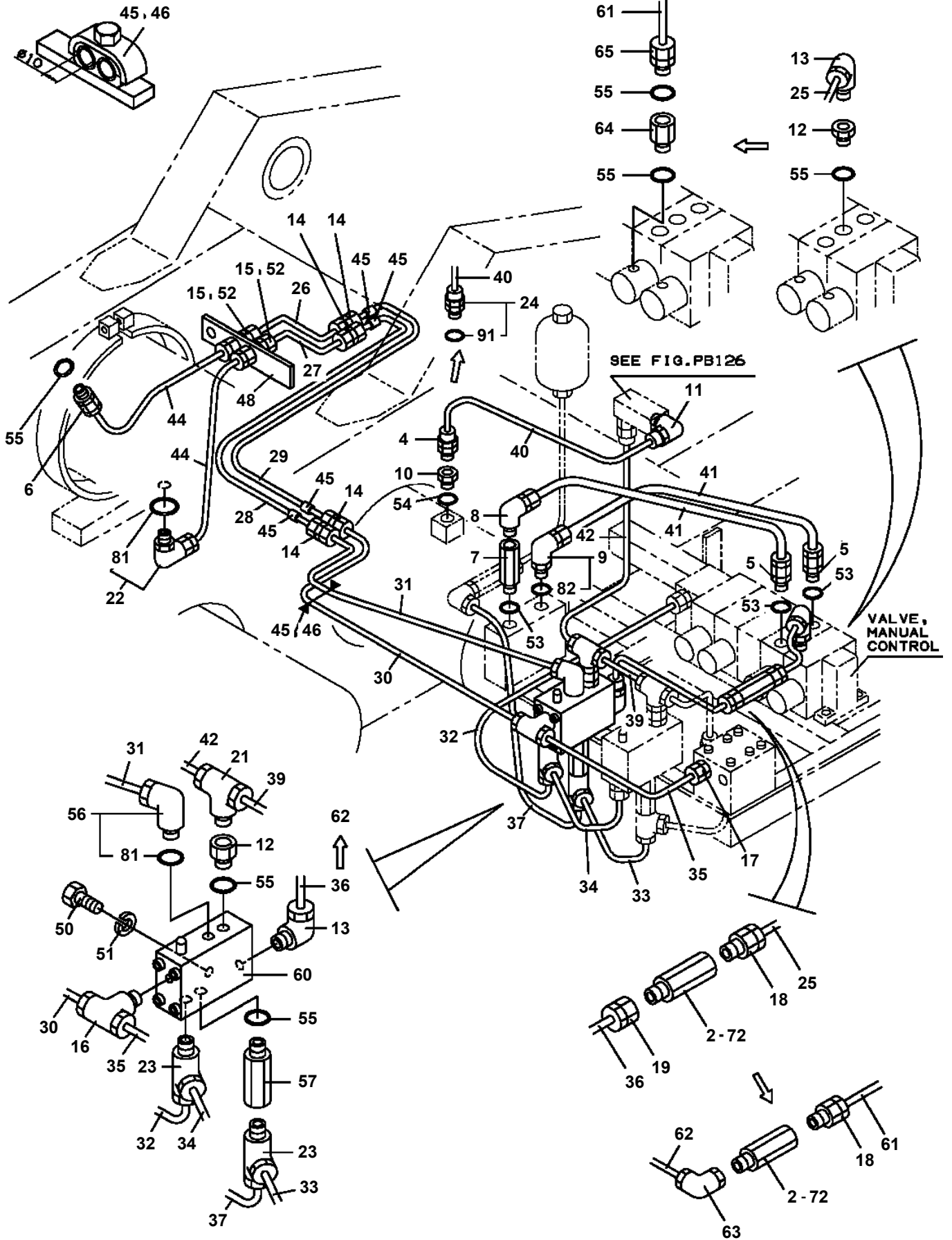
**TL-300E-3-10101 4 BOOM + JIB, 2M2D, KG45SXN
PF1110026-03 OPE.ASSY, WINCH BRAKE (AUX.)**



TL-300E-3-10101 4 BOOM + JIB, 2M2D, KG45SXN
PF1160023-03 OPE.ASSY,CLUTCH (AUX.)



**TL-300E-3-10101 4 BOOM + JIB, 2M2D, KG45SXN
PF1200137-03 PIPING,WINCH (AUX.,FOR SANWA MOTOR)**



TL-300E-3-10101 4 BOOM + JIB, 2M2D, KG45SXN

Pos No.	Parts No	Parts Name	Qty	Unit	Technical Data	Serial No (Start)	Serial No (End)	Remarks
2	36632345020	COVER	1					
4	36632345040	ROD,PUSH	2					
5	80316030020	PLUG	10		PT1/8			
6	36632340100	PIN	2					
7	80560056000	BALL,STEEL	4		7/32			
8	36630625030	ROD,PUSH	2					
9	91040100300	O-RING	2		P3			
10	91411000300	RING,BACKUP	2					
11	91040101200	O-RING	4		P12			
12	13115141040	SEAL,OIL	4					
13	91002802200	O-RING	6		1B P22			
14	91002801400	O-RING	6		1B P14			
16	36630005070	SPRING	6					
18	90131710045	BOLT,HEXAGON SOCKET	6		M10X45			
19	90302041001	WASHER,SPRING	6		10			
20	91002800900	O-RING	2		1B P9			
30	36632340000	VALVE,CLUTCH	1					

TL-300E-3-10101 4 BOOM + JIB, 2M2D, KG45SXN

Pos No.	Parts No	Parts Name	Qty	Unit	Technical Data	Serial No (Start)	Serial No (End)	Remarks
1	33200671000	BOOM, TOP	1					
2	33200679520	BOOM, 3RD	1					
3	33200679530	BOOM, 2ND	1					
4	33200679540	BOOM, BASE	1					
10	33200246500	SHIM	2		T=3			
11	16311007000	SPACER	6		L=3.5			
12	37000102500	PIN	1					
13	16511007000	PLATE	2					
14	90101510020	BOLT	14		M10X20			
15	90302041001	WASHER, SPRING	20		10			
16	37000102530	PIN	1					
17	37001002850	SHEAVE ASSY	6					
18	16411006000	SPACER	1					
19	80561100140	NUT	1		AN14			
20	80562100140	WASHER, TOOTH	1		AW14			
21	37000116040	PIN	2					
22	18111009010	PIN, SNAP	2					
23	37000129020	PIN	1					
24	33200675100	SPACER	1					
25	37001000270	SHEAVE ASSY	2					
26	34200160360	SHIM (T=3)	2					
27	33200294080	GUIDE	2					
28	37001903020	ROPE, WIRE	1					
30	37001600110	NUT	2		M33			
31	90203203300	NUT	2		M33			
32	37001917190	ROPE, WIRE (KOKOKU)	1					
33	33200675200	GUIDE	1					
34	90101208012	BOLT	4		M8X12			
35	90302040801	WASHER, SPRING	8		8			
36	33200675250	SUPPORT	1					
37	90131508020	BOLT, HEXAGON SOCKET	1		M8X20			
38	37002000250	PLATE, SLIDE	1					
39	33200645350	GUIDE	2					
40	90101210014	BOLT	4		M10X14			
41	90101512025	BOLT	20		M12X25		355637	
	90101512025	BOLT	18		M12X25	355638		
42	90302041201	WASHER, SPRING	20		12		355637	
	90302041201	WASHER, SPRING	18		12	355638		
45	37002001780	PLATE, SLIDE	4					
47	33200074400	PLATE	1					
48	90101510030	BOLT	2		M10X30			
49	34200025400	PLATE	1					
50	37000129030	PIN	1					
51	90131506020	BOLT, HEXAGON SOCKET	8		M6X20			
52	37002000220	PLATE, SLIDE	2					
53	33200000320	SHIM	6		T=1.0			
54	33200000330	SHIM	2		T=0.6			
55	37000100820	PIN	2		20			
56	90101208014	BOLT	4		M8X14			
57	19411012000	PLATE, SLIDE	8		T=15			
58	19411013000	SHIM	16		T=1.0			
59	33200000350	SHIM	8		T=0.6			
60	90131506015	BOLT, HEXAGON SOCKET	8		M6X15			
61	19411124001	GUIDE	2					
62	37002002420	PLATE, SLIDE	2					
63	80561100060	NUT	2		AN06			
64	80562100060	WASHER, TOOTH	2		AW06			
65	37001000140	SHEAVE ASSY	2					
66	80602110600	RING, RETAINING	8		R60			
67	37000112660	PIN	2					
68	90101506010	BOLT	6		M6X1.0			
69	37002000570	PLATE, SLIDE	4					
70	37000112630	PIN	2					

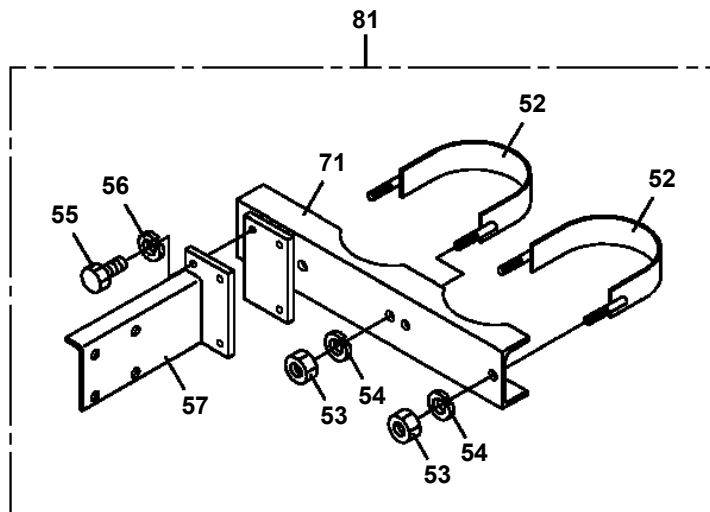
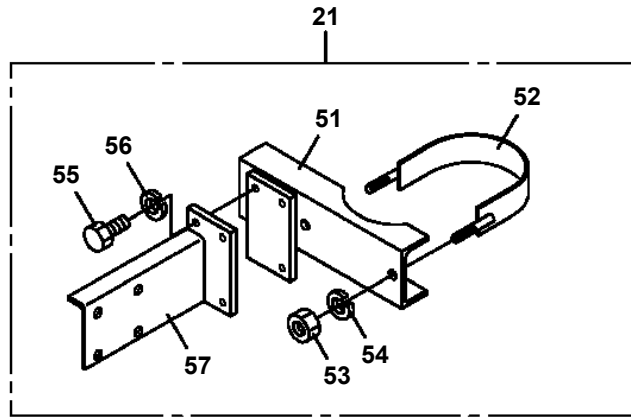
TL-300E-3-10101 4 BOOM + JIB, 2M2D, KG45SXN

Pos No.	Parts No	Parts Name	Qty	Unit	Technical Data	Serial No (Start)	Serial No (End)	R
1	36011960000	CYLINDER,TELESCOPING (NO.1)	1					
2	36011970000	CYLINDER,TELESCOPING (NO.2)	1				355458	
	36011970001	CYLINDER,TELESCOPING (NO.2)	1			355459		
3	37002404910	HOSE	1		L=600			
4	33210030030	JOINT,SELF SEALING	1					
5	33210470620	SUPPORT	2			355459		
21	37001101850	ROLLER ASSY	1					
22	16316005000	COLLAR	2		L=4			
23	90303102001	WASHER,PLAIN	2		20			
24	80720104032	PIN,SPRING	4		4X32			
25	16516106000	PIN	1					
26	59457138000	PLUG ASSY	2					
28	80720105025	PIN,SPRING	2		5X25			
29	91302214000	BEARING,PLAIN	4					
30	91684014003	PACKING	4					
31	91431212501	RING,BACKUP	2					
32	36010584001	PISTON	2					
33	91002910000	O-RING	2		1B G100			
34	36011962000	ROD	1					
35	91002914500	O-RING	2		1B G145			
36	36010586001	COVER,ROD	2					
37	91251101200	RING,DAMPER	2					
38	91694012000	PACKING	2					
39	91410212000	RING,BACKUP	2					
40	91301112000	BEARING,PLAIN	2					
41	91660012001	SEAL,DUST	2					
42	36010090600	PLATE	4					
44	16616016000	PLATE	2					
48	16265153000	CARTRIDGE, COUNTERBALANCE	2					
49	19116004000	COVER	2					
50	90131510025	BOLT,HEXAGON SOCKET	8		M10X25			
51	90302041001	WASHER,SPRING	8		10			
52	37001600790	NUT	2					
53	36010586200	SUPPORT	1					
54	91411212501	RING,BACKUP	2					
71	18616057000	COLLAR	2		L=5			
72	37001100040	ROLLER ASSY	2					
86	36011972000	ROD	1					
89	36010595000	SUPPORT	1					
97	33210000400	SUPPORT	1					
98	90720005120	SCREW,SET	2		M5X12			
112	80516006204	BEARING,BALL	4					
133	80602110470	RING,RITAINING	2		R47			
141	36011968810	CYLINDER,TELESCOPING (NO.1)	1					
142	36011978810	CYLINDER,TELESCOPING (NO.2)	1					
150	36011969900	PACKING SET	2		120X140			

TL-300E-3-10101 4 BOOM + JIB, 2M2D, KG45SXN

Pos No.	Parts No	Parts Name	Qty	Unit	Technical Data	Serial No (Start)	Serial No (End)
1	36130046010	CASE	1				
2	36130016021	PLATE	1				
3	36130016030	COVER	1				
4	36130016040	PLATE	1				
5	36130046052	DRUM ASSY (TYPE,TOOTH NO.)	1				
6	36130046062	SHAFT	1				
7	36130016070	RING,SLIP	1				
8	36130016080	BRUSH	2				
9	36130046090	RUBBER (GUIDE)	1				
10	36130016101	SHAFT (GEAR)	1				
11	80516000628	BEARING,BALL	1				
12	36130016110	PLATE (REDUCER)	1				
13	36130016120	REDUCER (1/50)	1				
14	36130016130	GEAR	2				
15	36130016140	POTENTIOMETER	1				
16	36130016150	SPRING	1				
17	33370025220	LOCK (CORD)	1				
18	36130016160	GLAND	1				
20	82100001155	CONNECTOR	1				
21	36130016170	PACKING	1				
22	36130016180	PACKING	1				
25	82100002329	PLUG	1				
	82100002356	TERMINAL (GOLD)	1				
	82100002284	CONNECTOR	1				
26	82100002329	PLUG	1				
	82100002283	CONNECTOR	1				
	82100002355	TERMINAL (GOLD)	1				
27	36130045200	CABLE ASSY (WITH CONNECTOR)	1		L=1200		
28	36131935100	CORD (2-LINE)	33	M			
31	80601110170	RING,RITAINING	1		S17		
32	80601110120	RING,RITAINING	1		S12		
50	36130541000	DETECTOR,BOOM LENGTH (NICHIDEN)	1				

TL-300E-3-10101 4 BOOM + JIB, 2M2D, KG45SXN
PG1200039-05 PIPING,TELESCOPING



CLICK HERE TO **DOWNLOAD** THE COMPLETE MANUAL

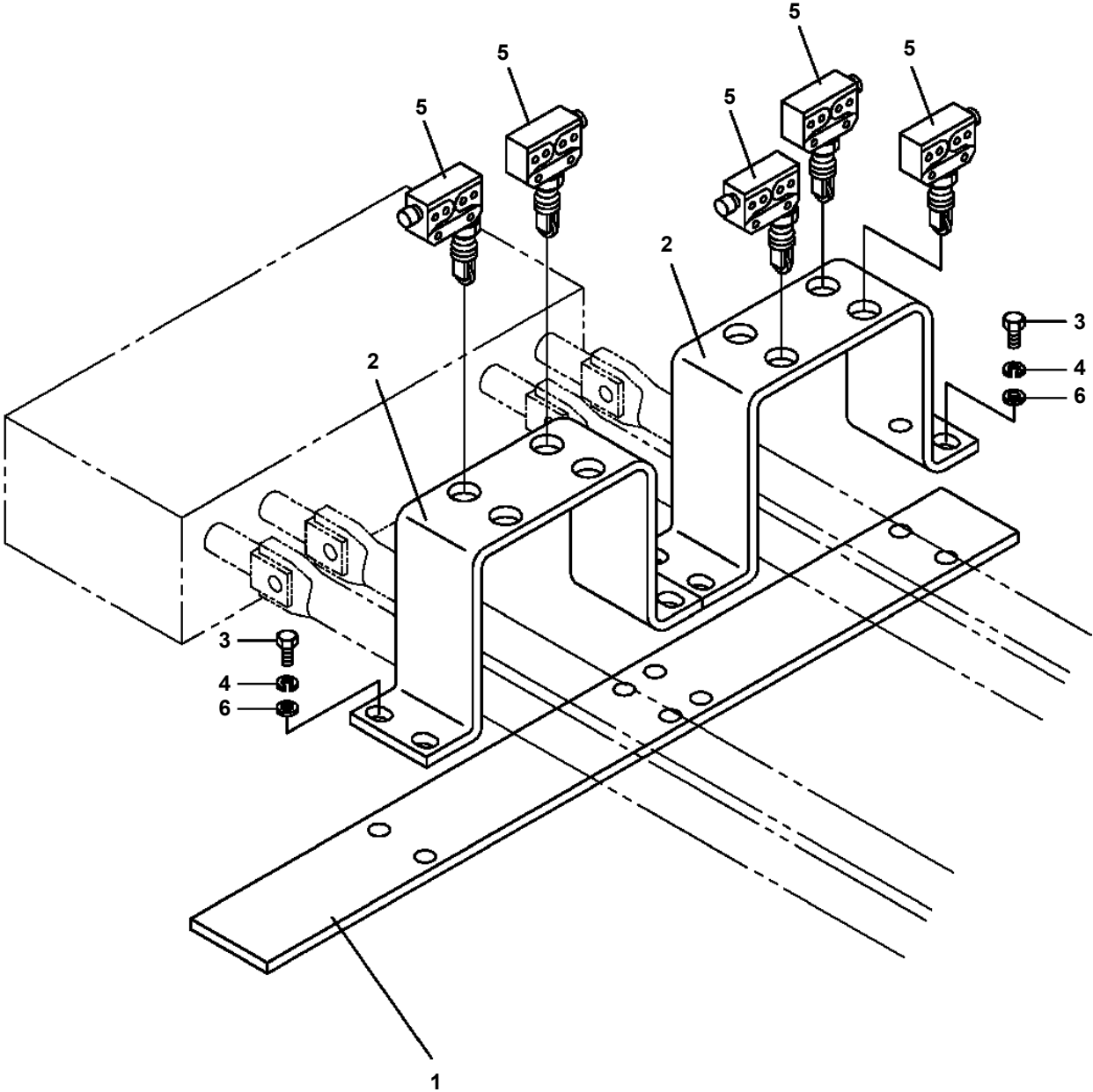
- Thank you very much for reading the preview of the manual.
- You can download the complete manual from: www.heydownloads.com by clicking the link below



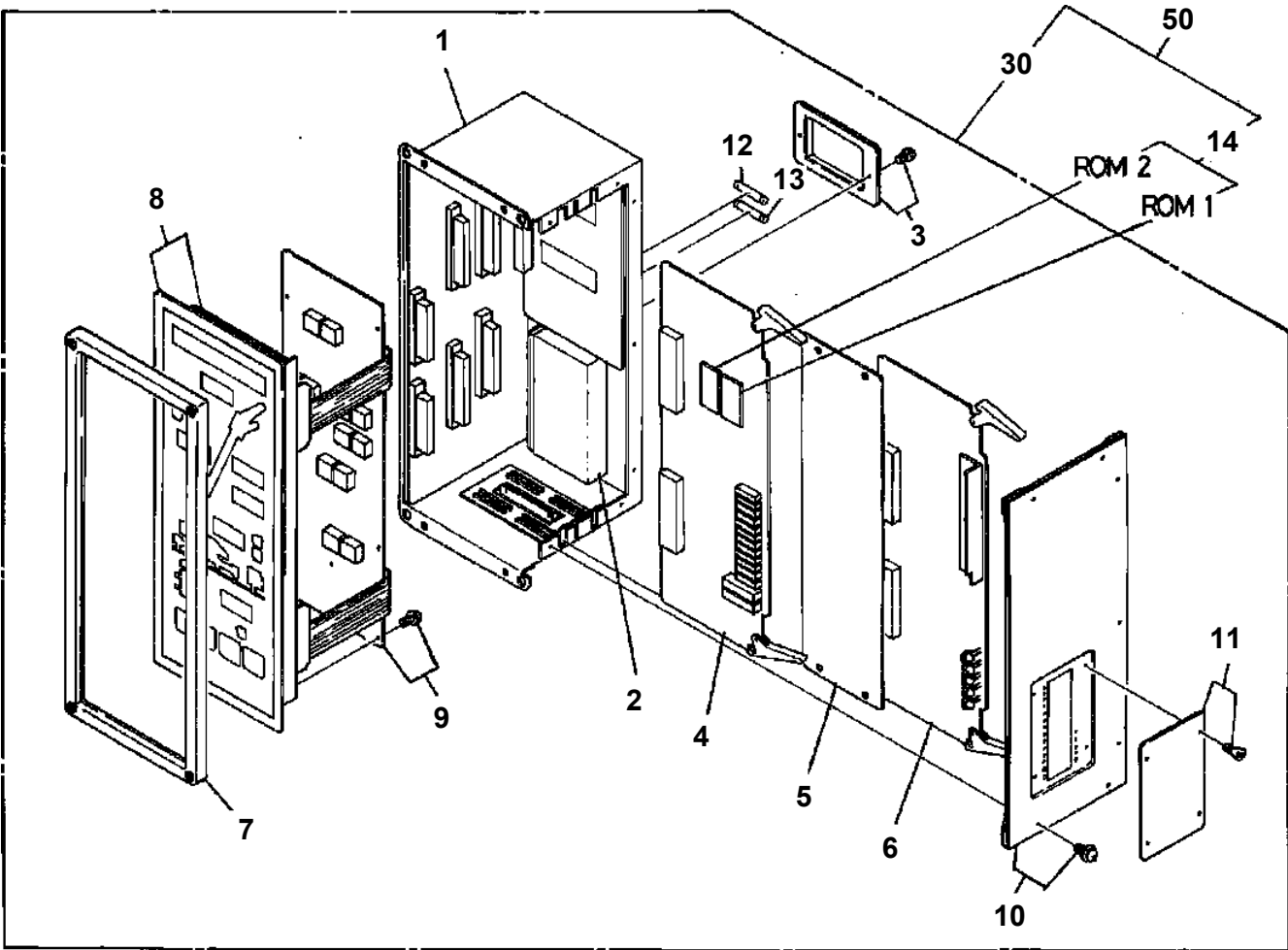
- Please note: If there is no response to CLICKING the link, please download this PDF first and then click on it.

CLICK HERE TO **DOWNLOAD** THE COMPLETE MANUAL

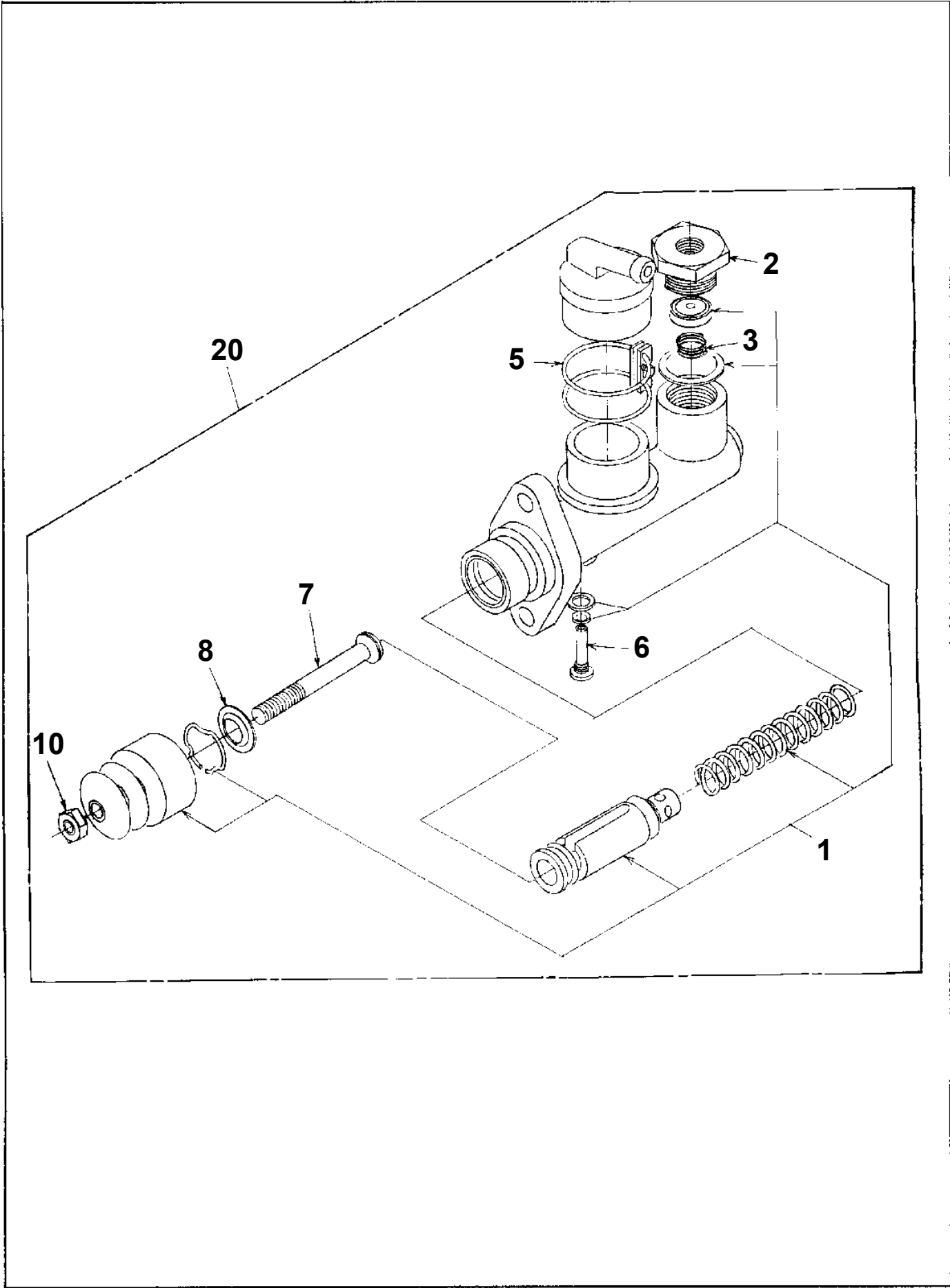
**TL-300E-3-10101 4 BOOM + JIB, 2M2D, KG45SXN
PH1170011-00 DETECTOR,CONTROL VALVE ACTUATION**



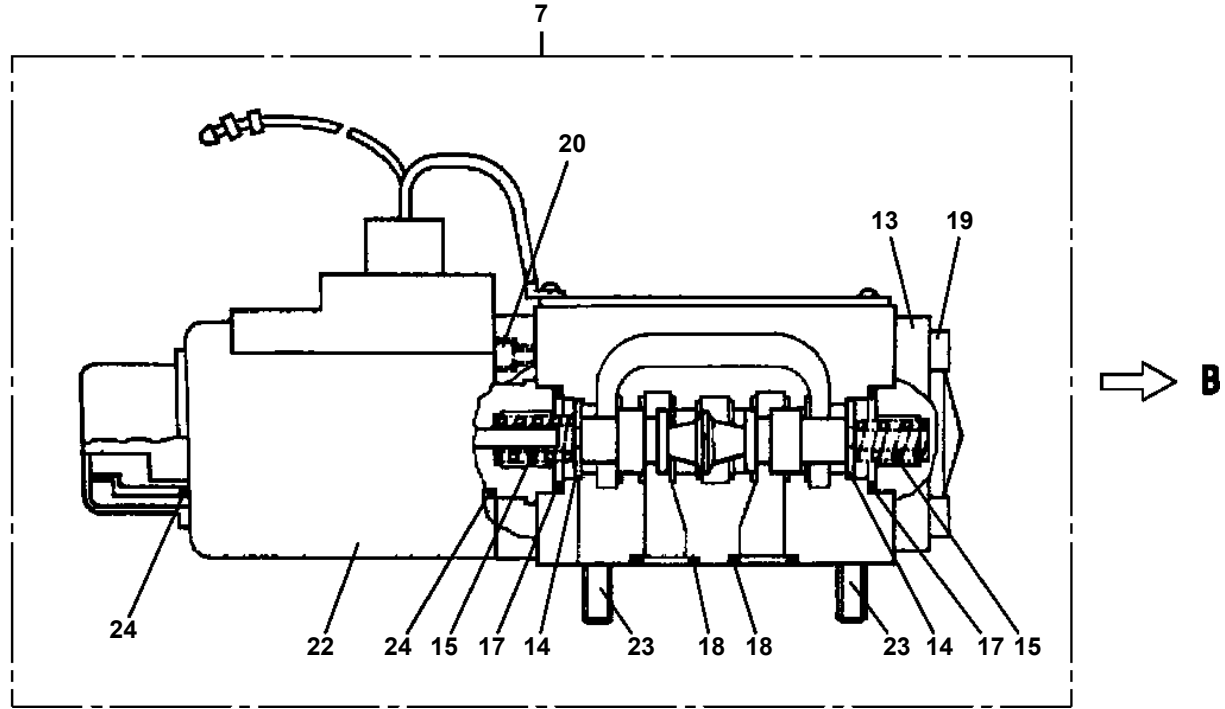
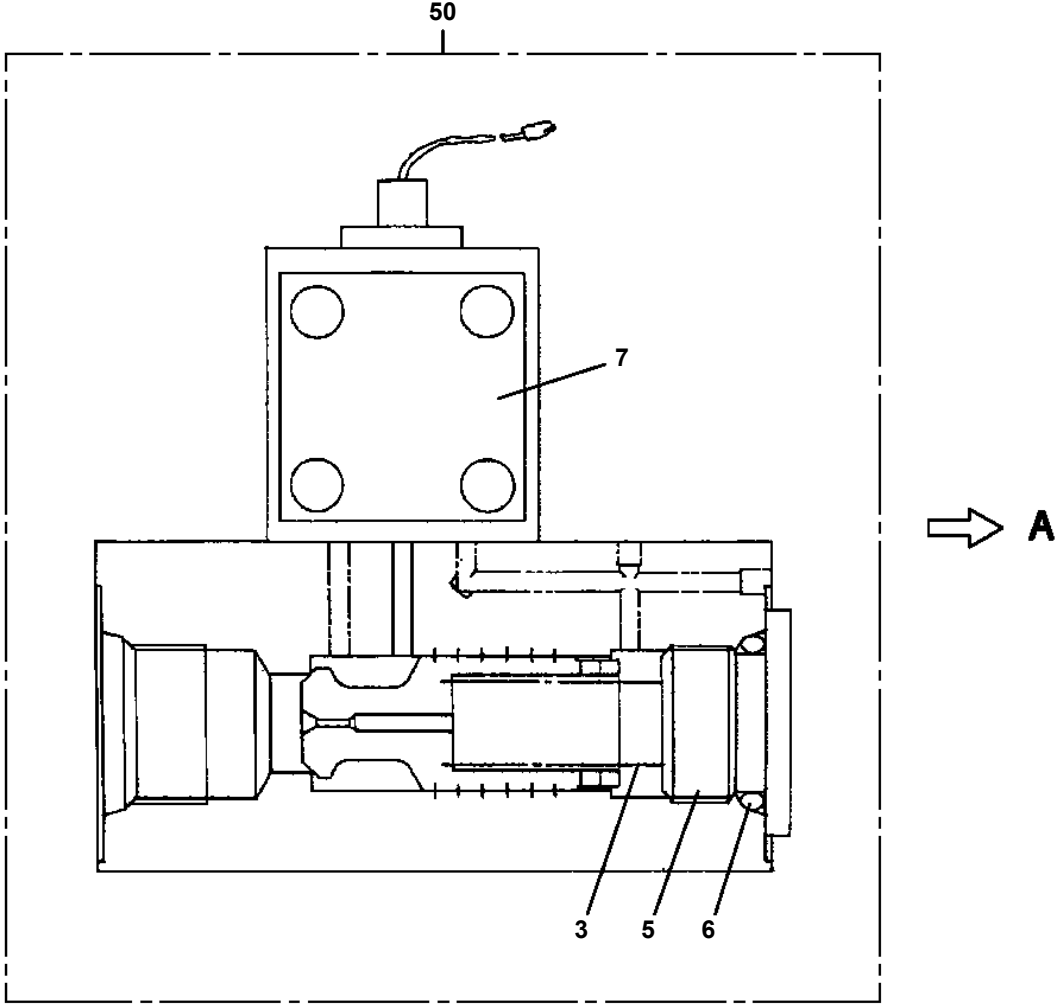
TL-300E-3-10101 4 BOOM + JIB, 2M2D, KG45SXN
PH1250008-01 MOMENT LIMITER (AML-M1)



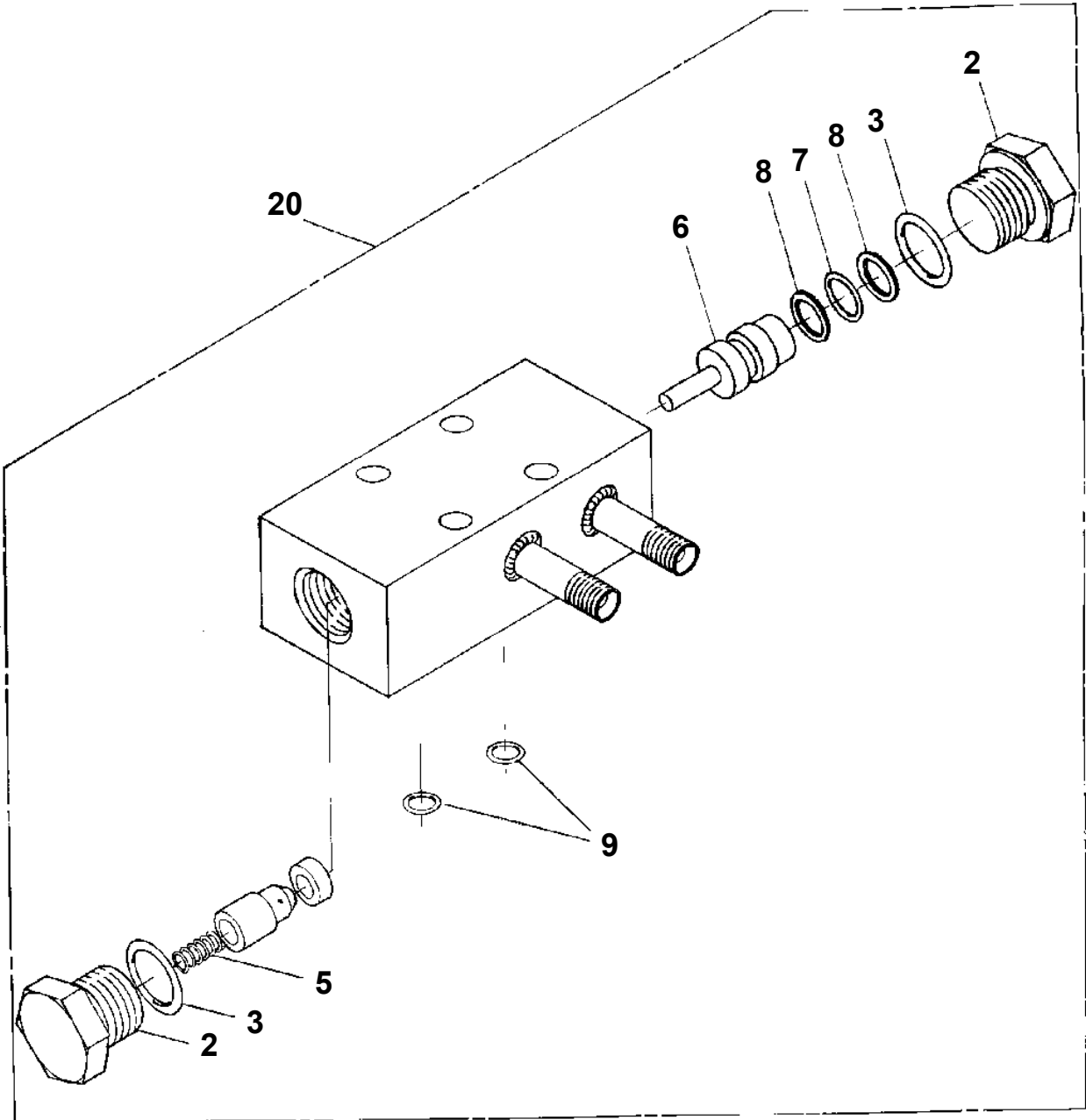
TL-300E-3-10101 4 BOOM + JIB, 2M2D, KG45SXN
PI1030007-01 CYLINDER,MASTER (MIYAKO)



TL-300E-3-10101 4 BOOM + JIB, 2M2D, KG45SXN
 PI1120353-00 VALVE,SOLENOID



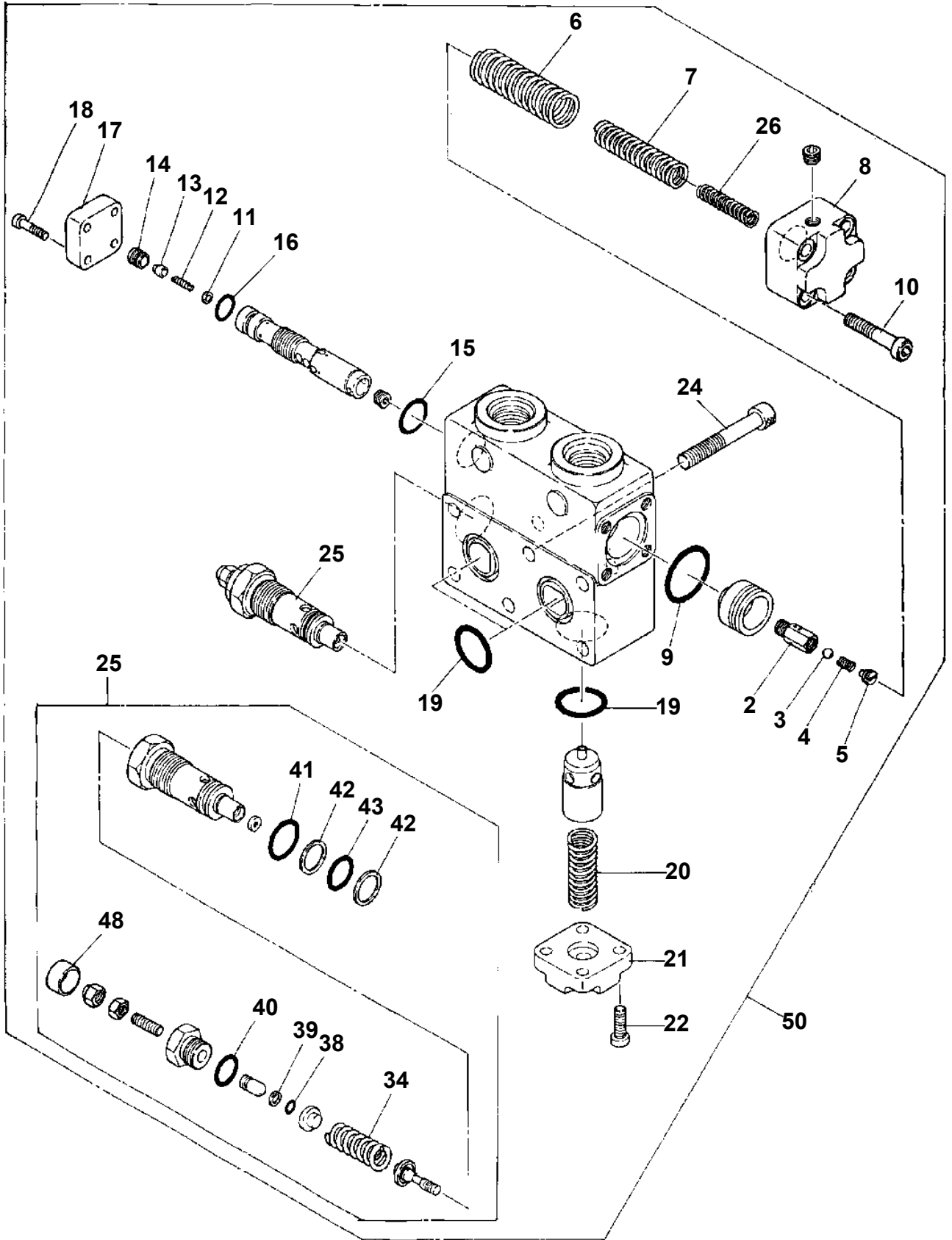
TL-300E-3-10101 4 BOOM + JIB, 2M2D, KG45SXN
PI1140042-00 VALVE,CHECK



**TL-300E-3-10101 4 BOOM + JIB, 2M2D, KG45SXN
PI1250066-00 VALVE,COUNTERBALANCE (SANWA)**

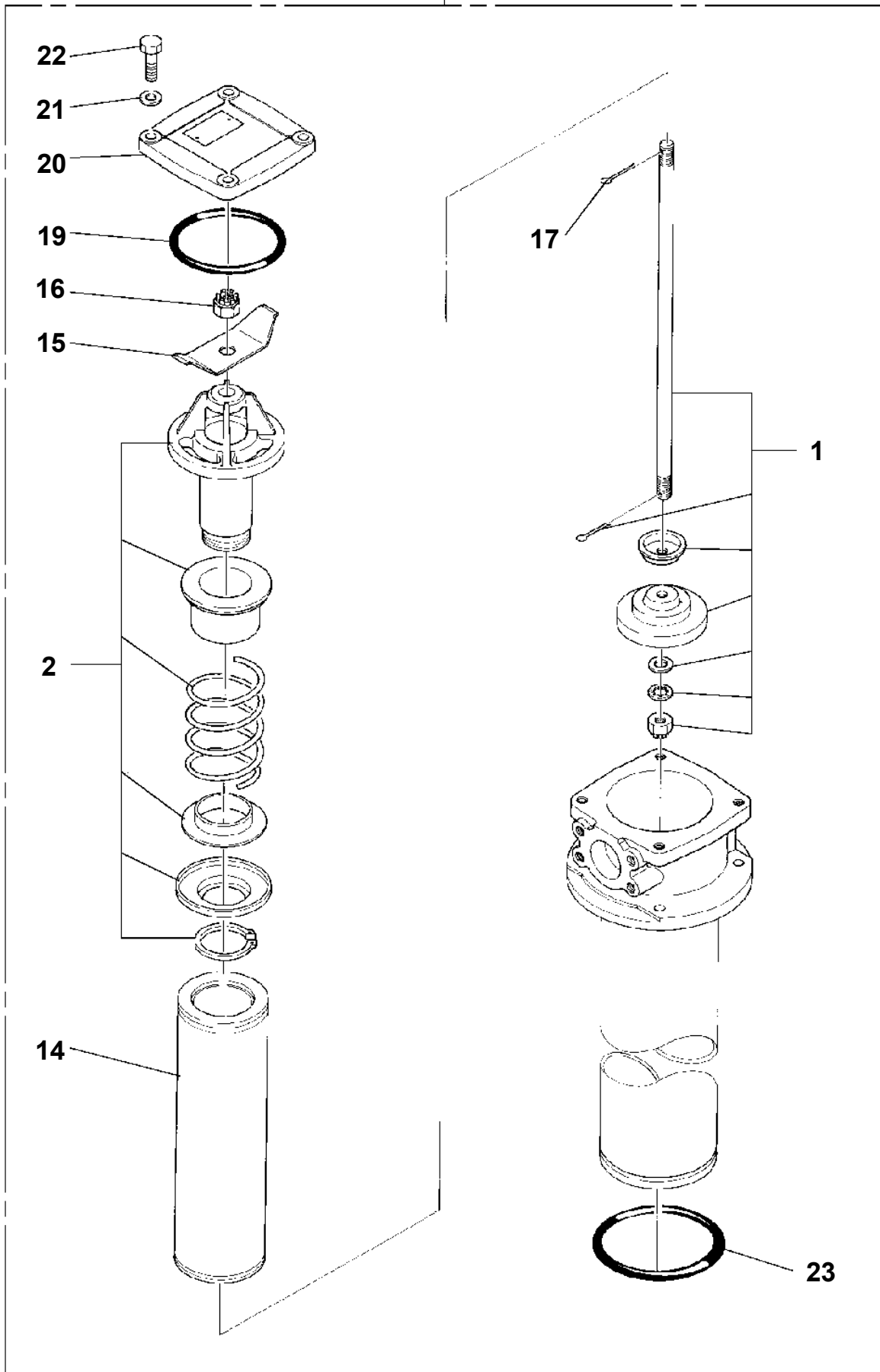
Assembly Name VALVE, COUNTERBALANCE (SANWA)

PI125 0000 00



TL-300E-3-10101 4 BOOM + JIB, 2M2D, KG45SXN
PI1300120-02 FILTER,OIL

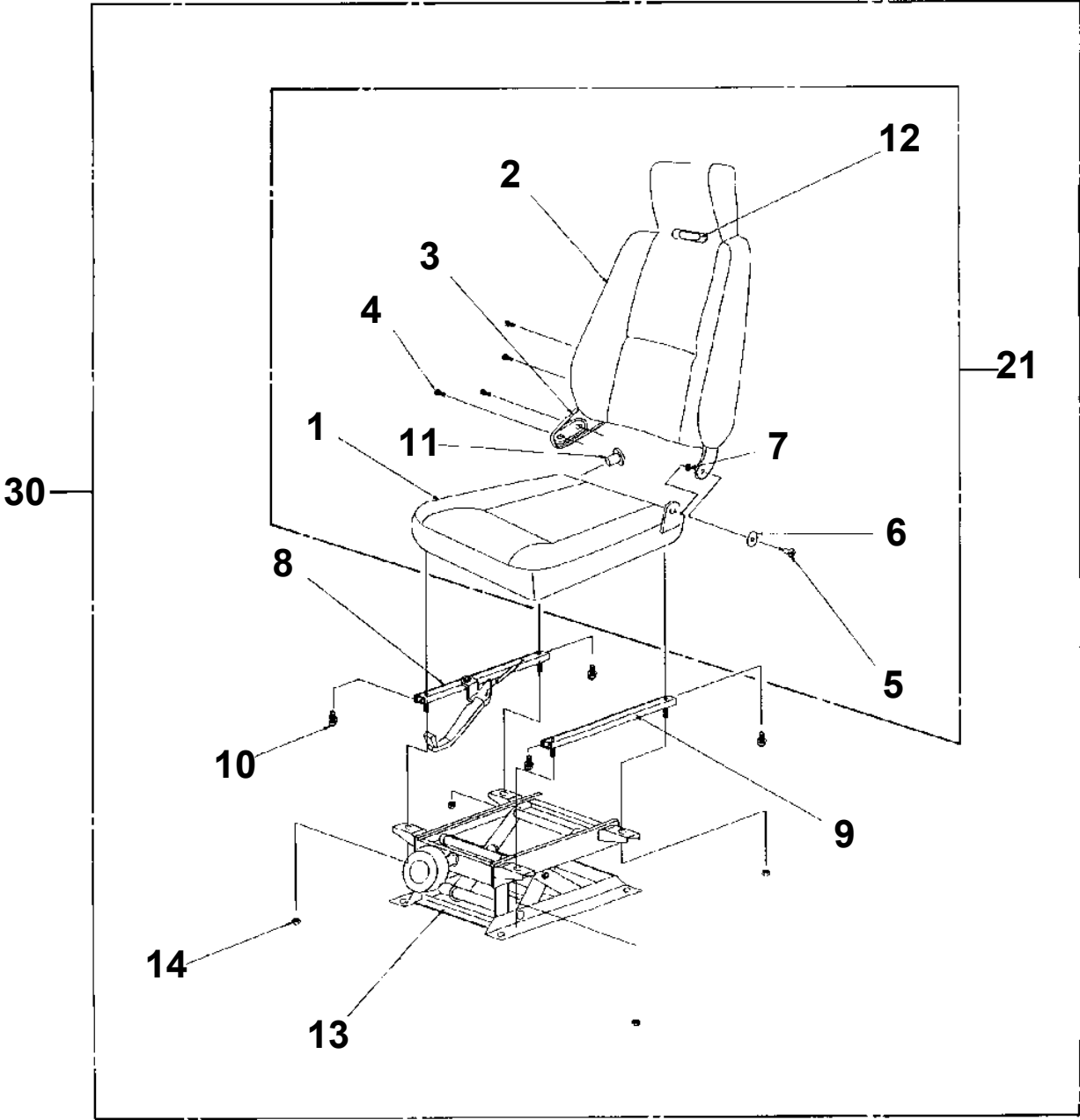
30



TL-300E-3-10101 4 BOOM + JIB, 2M2D, KG45SXN

Pos No.	Parts No	Parts Name	Qty	Unit	Technical Data	Serial No (Start)	Serial No (End)	Remarks	Pages
1	37000130130	PIN	1						
2	33230025000	STOPPER	1						
3	90101512030	BOLT	2		M12X30				
4	90302041201	WASHER,SPRING	2		12				
5	90102208012	BOLT	2		M8X12				
6	90302040801	WASHER,SPRING	2		8				
7	33230310010	COVER	1						
8	37001504070	BOLT	46		M22X130		355776		
	37001508730	BOLT	46		M22X135	355777			
9	90201702200	NUT	26		M22				
10	90303502201	WASHER,PLAIN	47		22				
11	37000130140	PIN	1						
12	33230045000	PLATE	2						
13	33230440010	TABLE,SLEWING	1						
14	16242002001	PLATE	2						
15	90101510030	BOLT	4		M10X30				
16	90302041001	WASHER,SPRING	4		10				
17	37001504080	BOLT	1		M22X115		355776		
	37001503550	BOLT	1		M22X120	355777			
31	33441151100	SUPPORT	1						
36	33230350020	BOSS	1						
37	33230350030	BOSS	1						
44	33764821100	SUPPORT	2			355558			

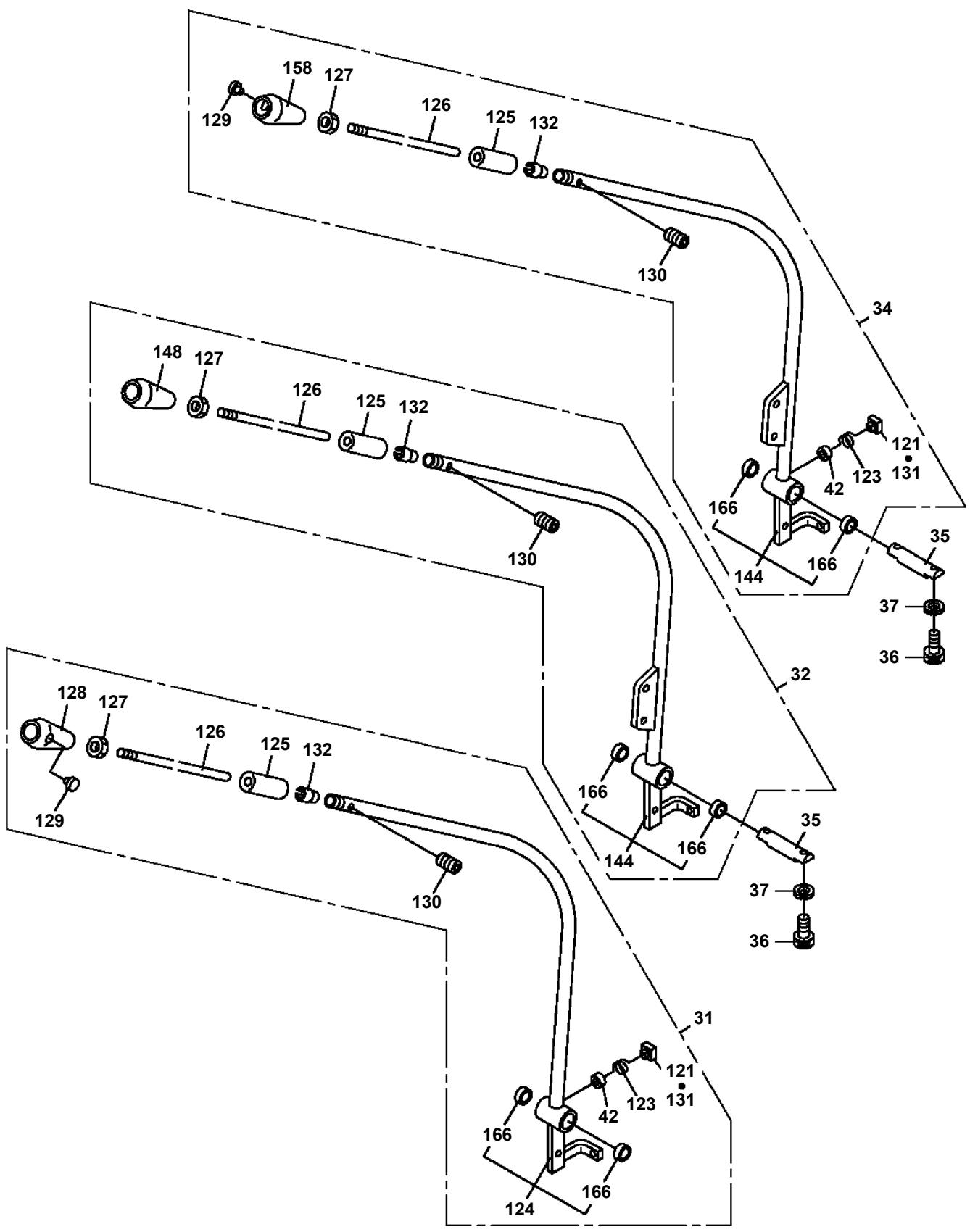
**TL-300E-3-10101 4 BOOM + JIB, 2M2D, KG45SXN
PK1150021-00 SEAT, OPERATOR**



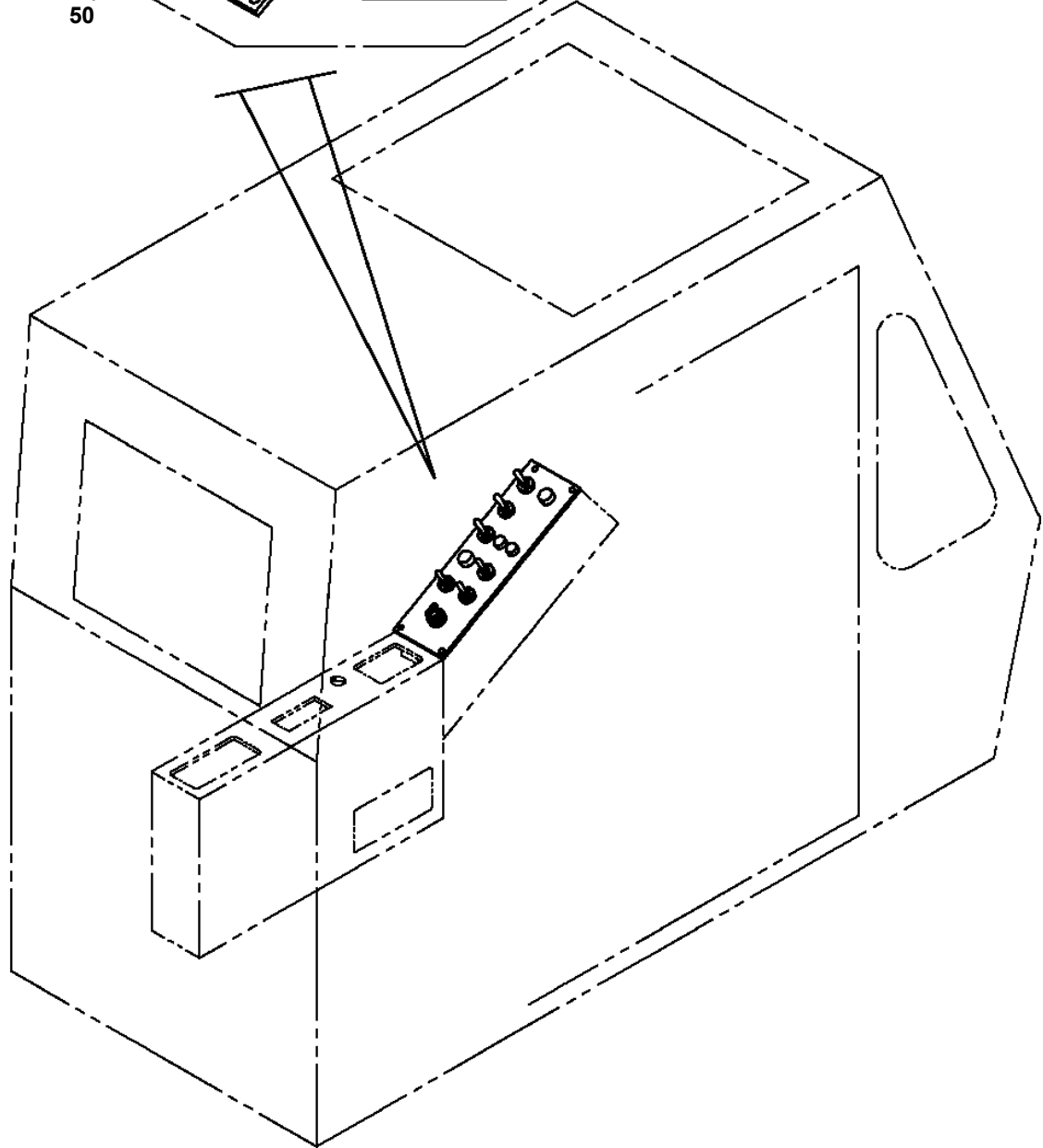
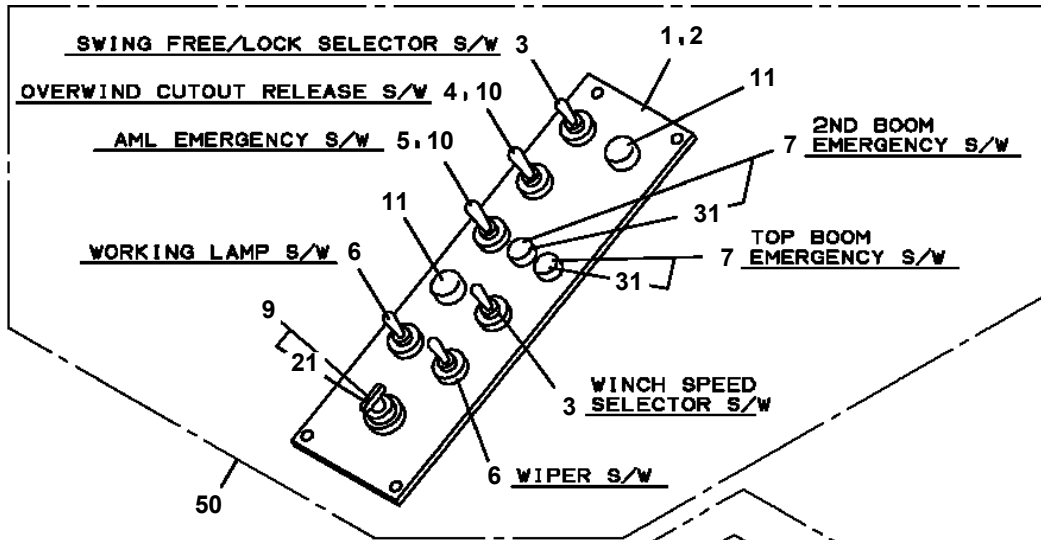
TL-300E-3-10101 4 BOOM + JIB, 2M2D, KG45SXN

Pos No.	Parts No	Parts Name	Qty	Unit	Technical Data	Serial No (Start)	Serial No (End)	Remarks	Pages
1	33281472000	SUPPORT	2						
2	90101524050	BOLT	3		M24X50				
3	33281440010	PLATE	3						
4	33282141000	COUNTERWEIGHT	1						
5	33282142000	WEIGHT	1						
6	90151200200	BOLT,EYE	2						
7	33282132500	PLATE	2						
8	90101724065	BOLT	2		M24X65				
9	90302042401	WASHER,SPRING	2		24				

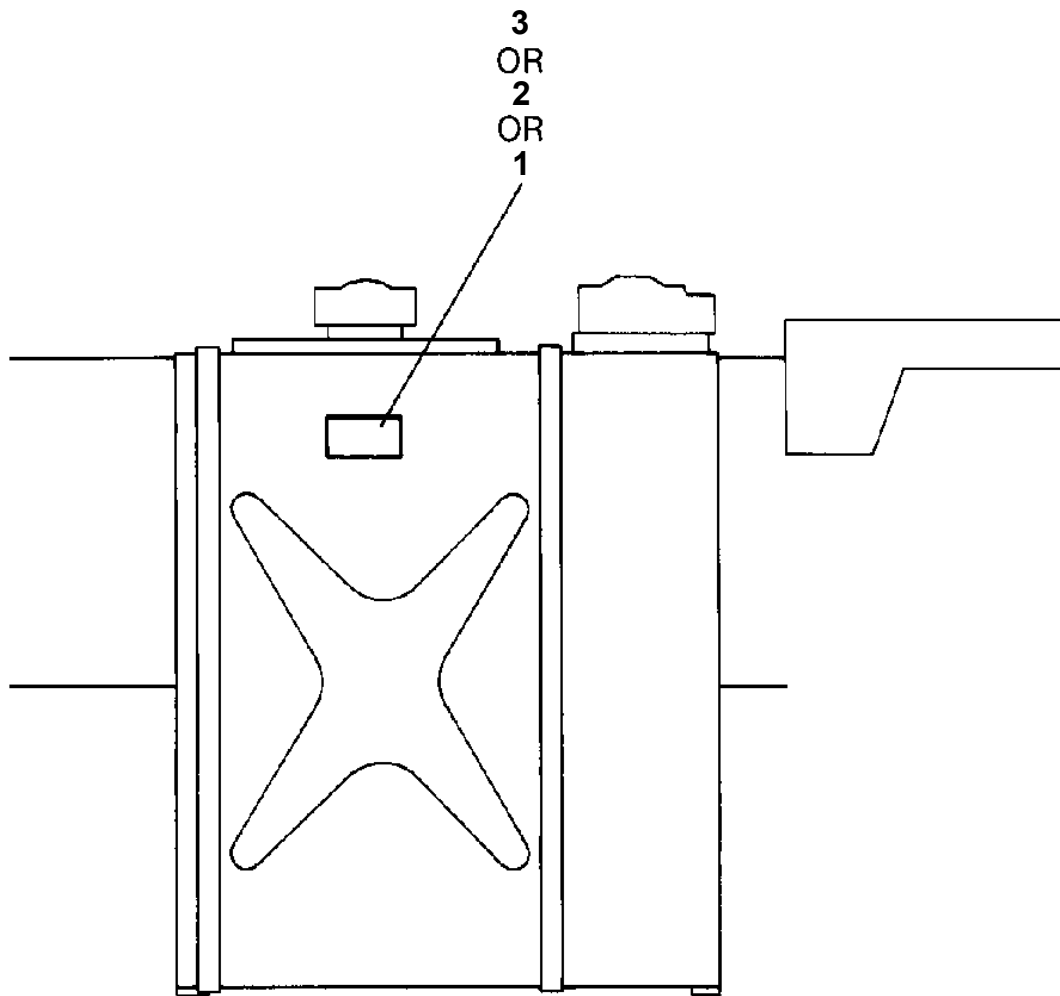
TL-300E-3-10101 4 BOOM + JIB, 2M2D, KG45SXN
PL1010712-04 OPE.ASSY,CONT.VALVE (ISO)



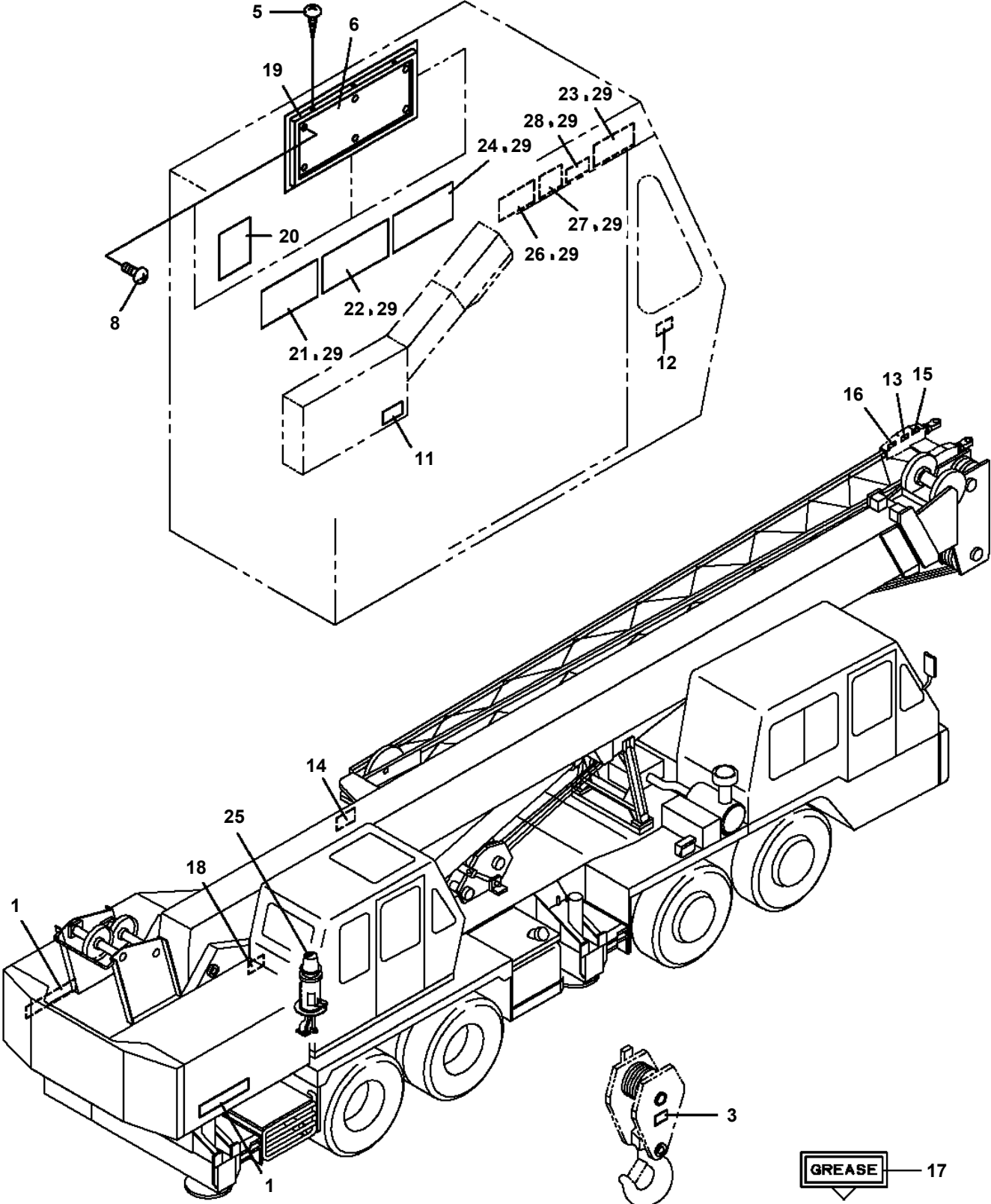
**TL-300E-3-10101 4 BOOM + JIB, 2M2D, KG45SXN
PN1060013-04 SWITCH PANEL (OPERATION)**



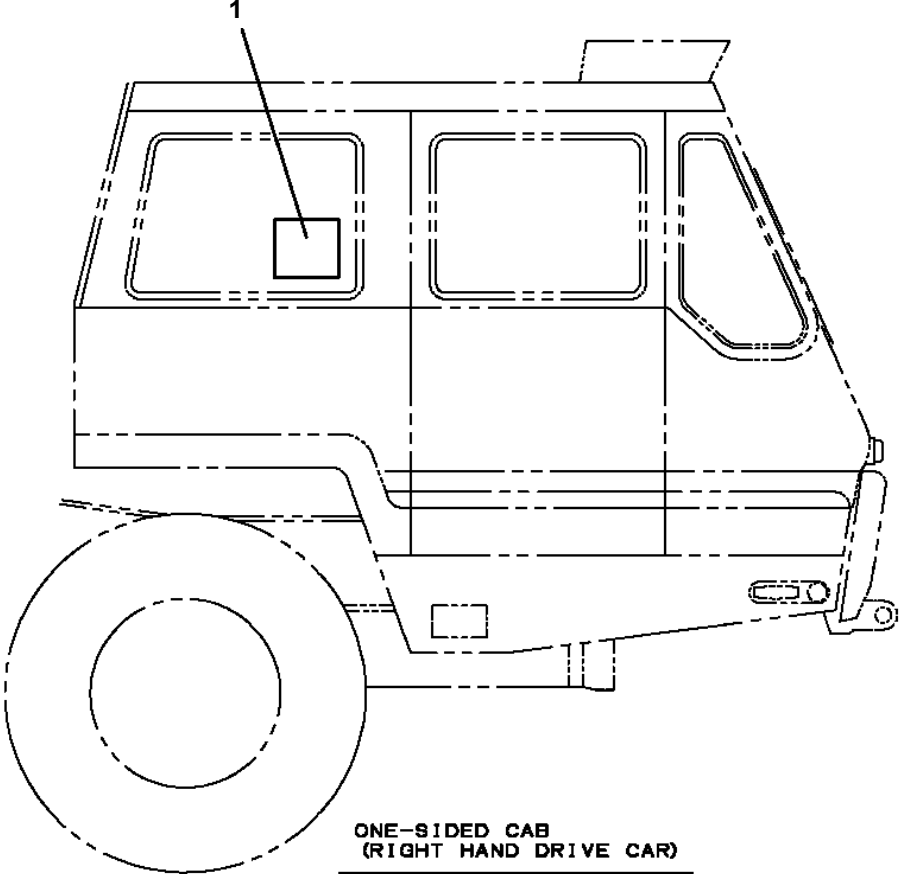
TL-300E-3-10101 4 BOOM + JIB, 2M2D, KG45SXN
PO1010159-03 PLATE ASSY,NAME (OIL)



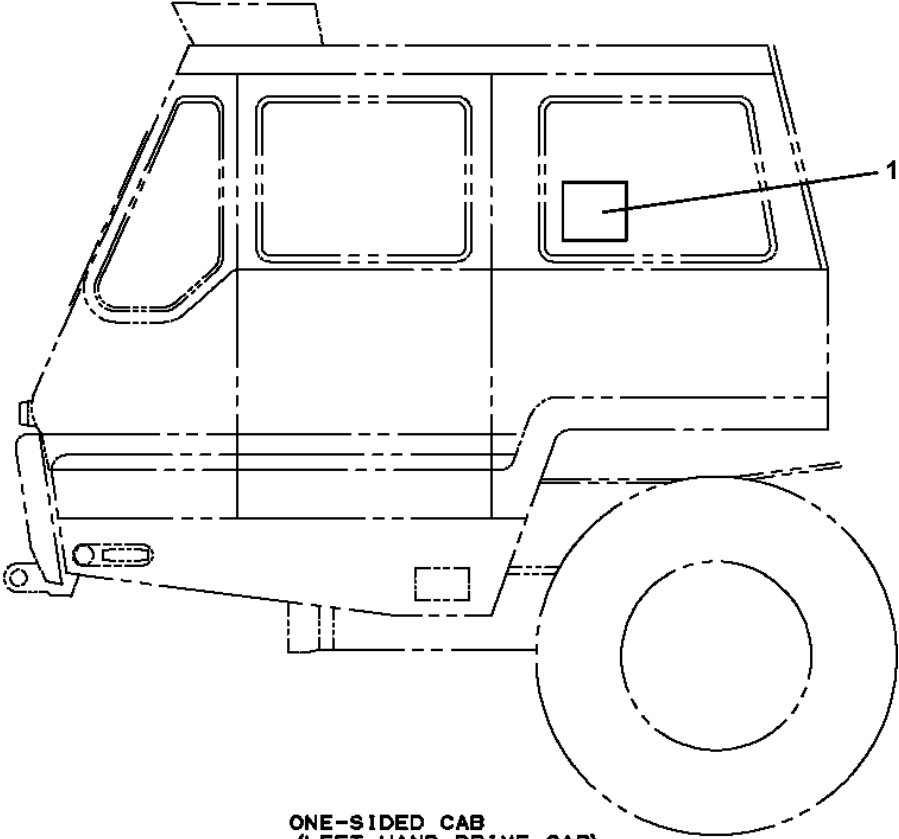
TL-300E-3-10101 4 BOOM + JIB, 2M2D, KG45SXN
PO1011026-00 PLATE ASSY,NAME (UPPER 2)



**TL-300E-3-10101 4 BOOM + JIB, 2M2D, KG45SXN
PO1012999-00 PLATE ASSY,NAME (SHIPMENT)**



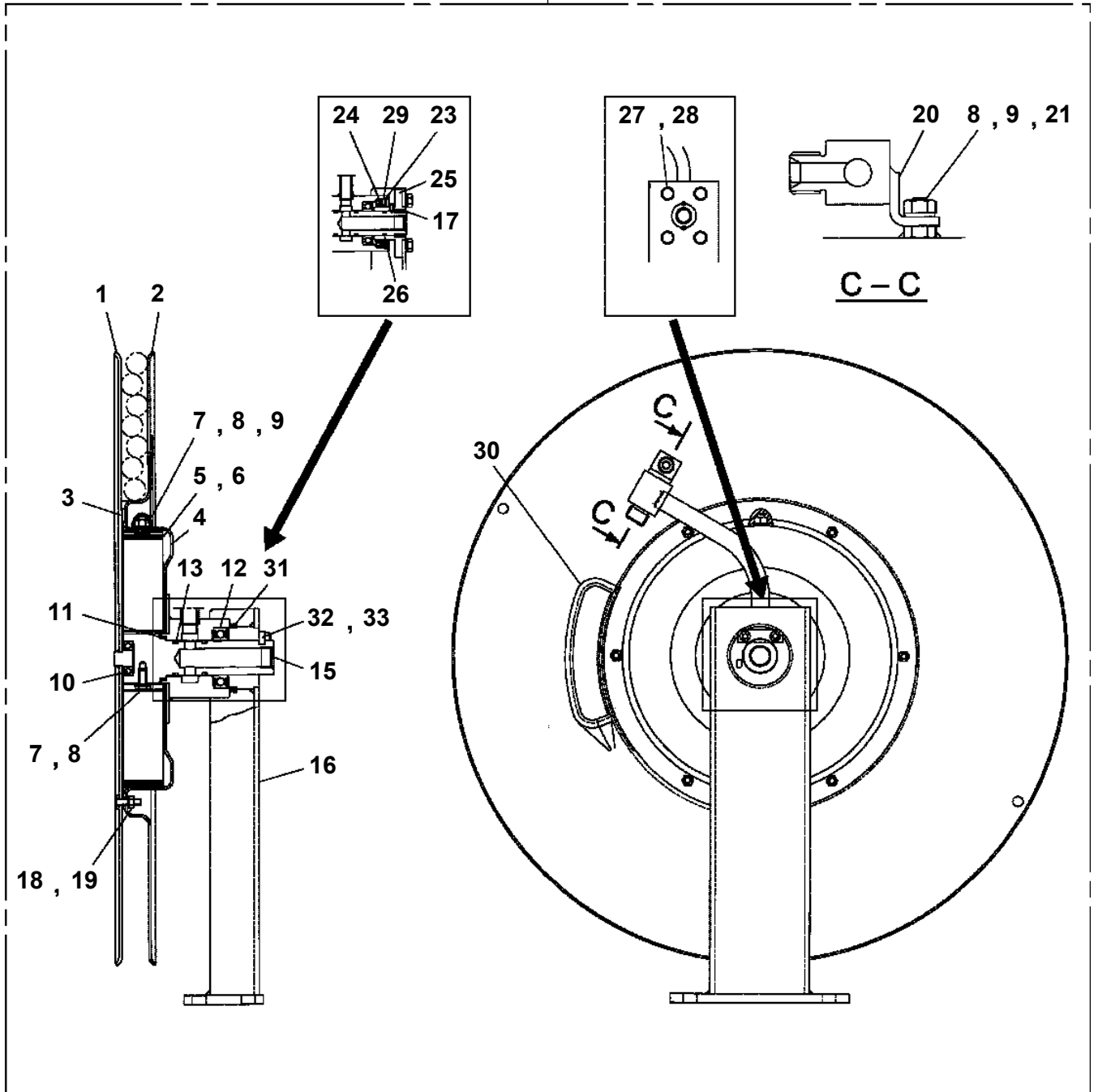
**ONE-SIDED CAB
(RIGHT HAND DRIVE CAR)**



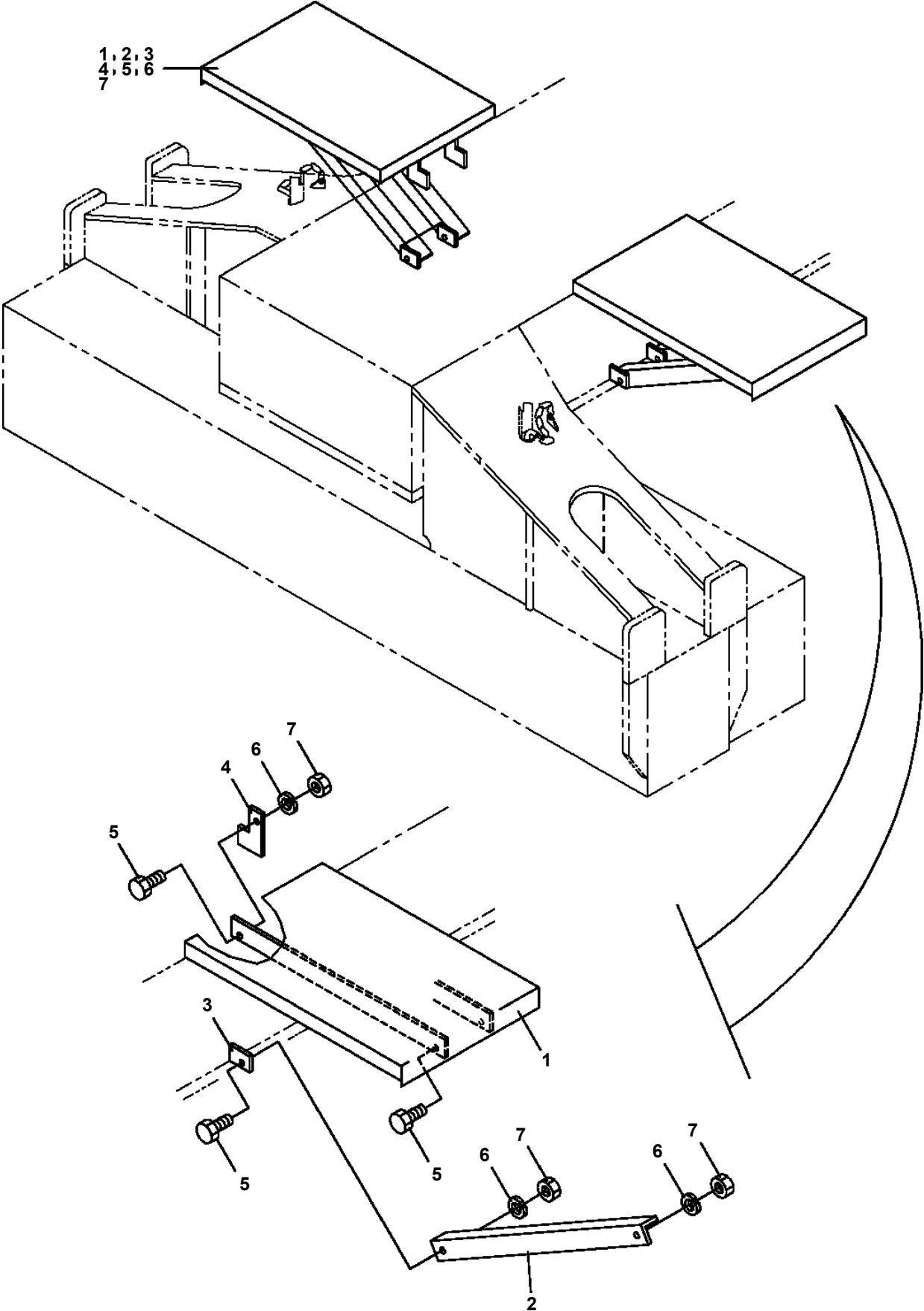
**ONE-SIDED CAB
(LEFT HAND DRIVE CAR)**

TL-300E-3-10101 4 BOOM + JIB, 2M2D, KG45SXN
PR5060014-00 REEL ASSY,HOSE

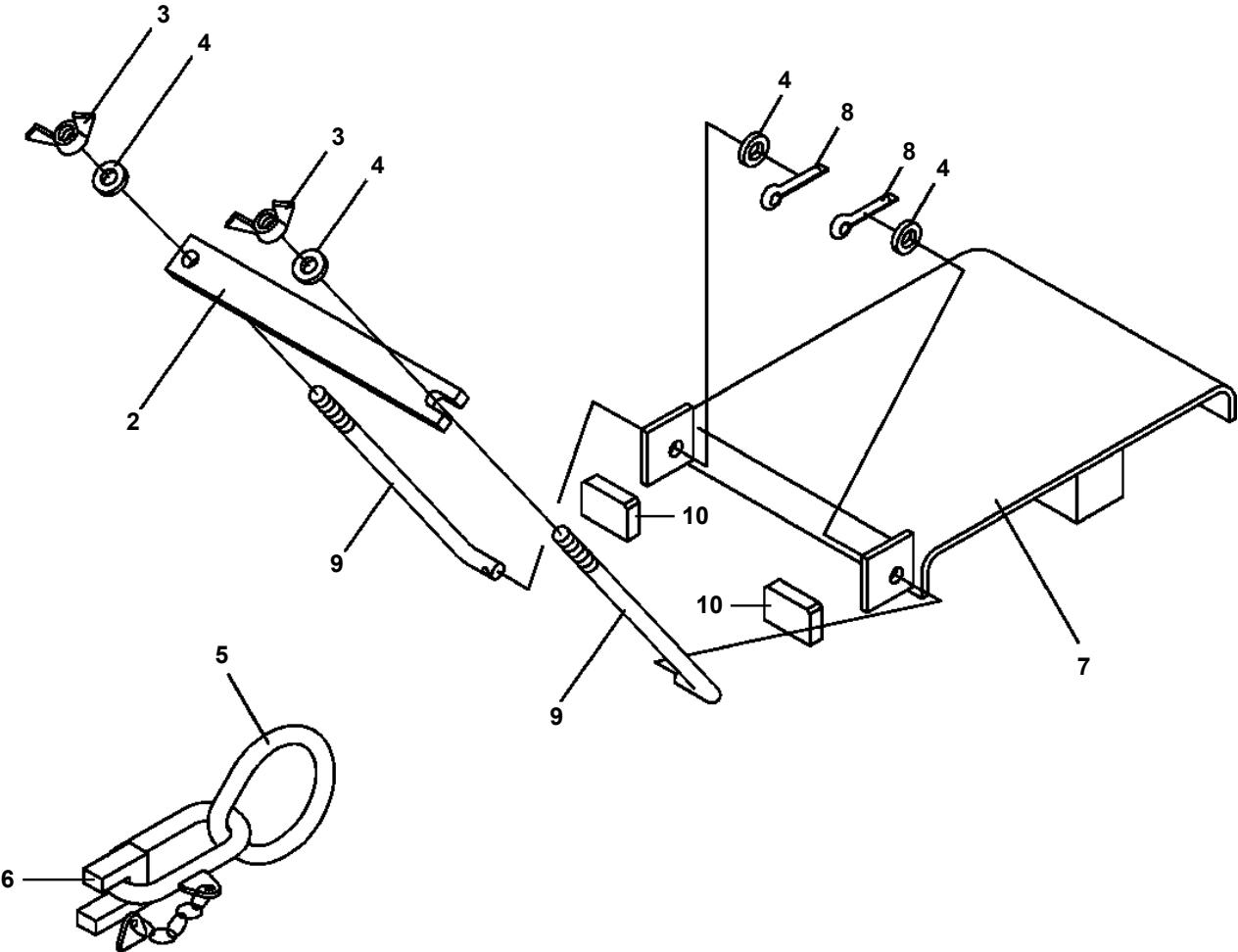
100



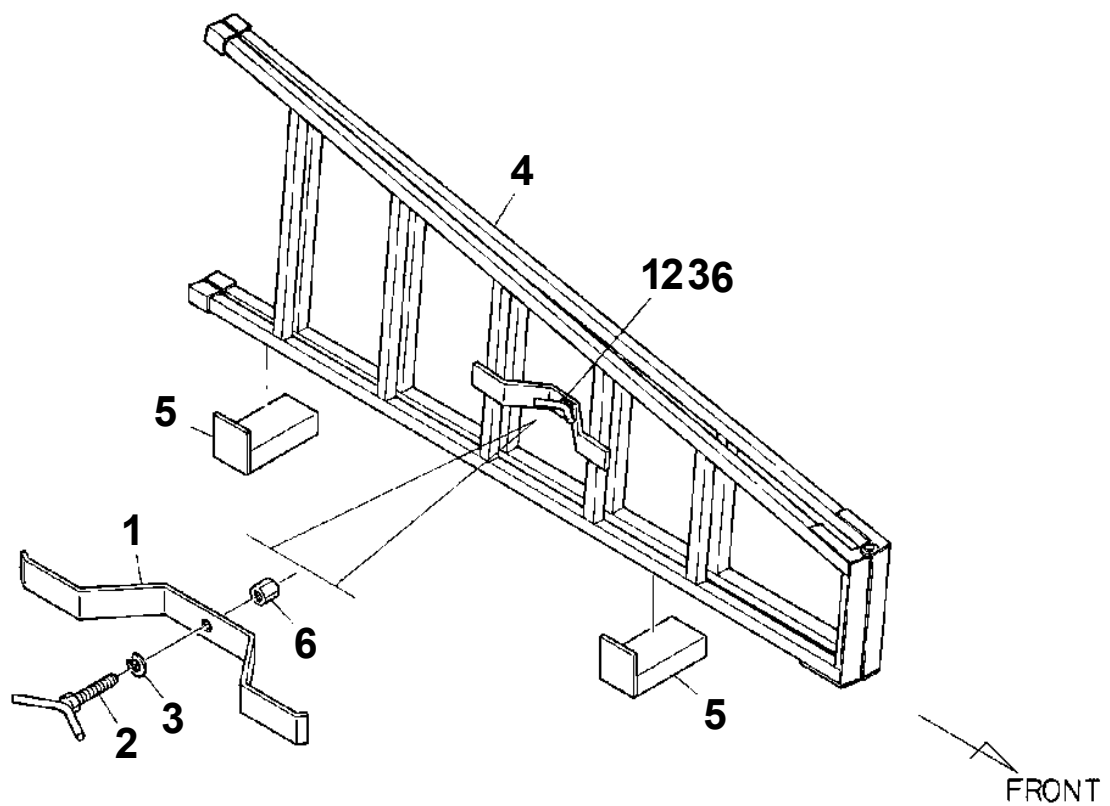
TL-300E-3-10101 4 BOOM + JIB, 2M2D, KG45SXN
PX1030214-00 FENDER



TL-300E-3-10101 4 BOOM + JIB, 2M2D, KG45SXN
PX1180065-00 MOUNT,HOOK (MAIN)



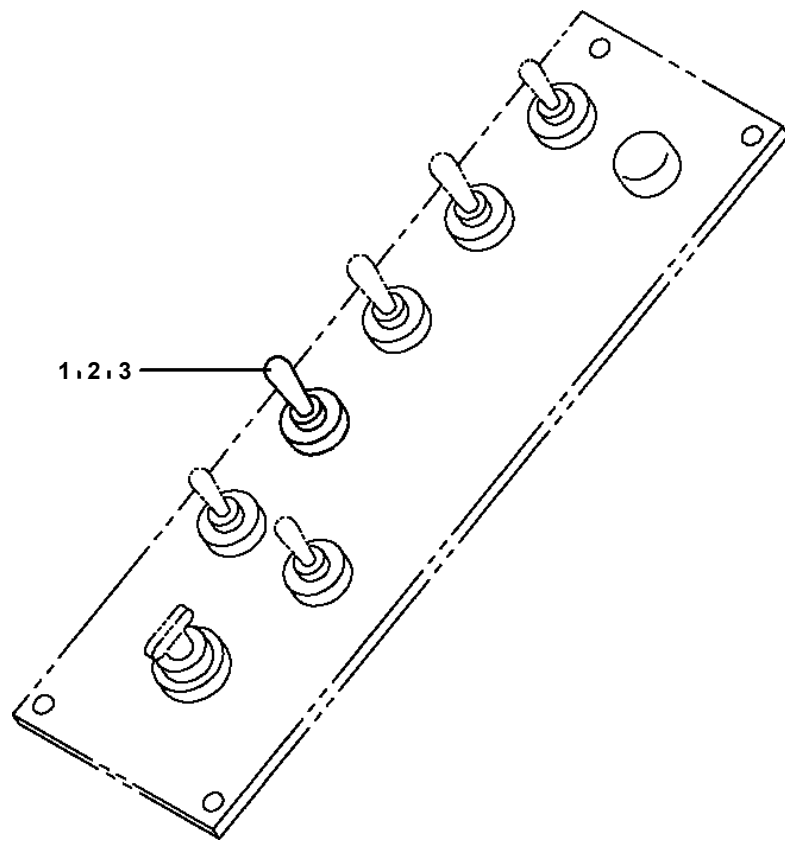
**TL-300E-3-10101 4 BOOM + JIB, 2M2D, KG45SXN
PX1260024-00 STEP INSTALLATION**



TL-300E-3-10101 4 BOOM + JIB, 2M2D, KG45SXN

Pos No.	Parts No	Parts Name	Qty	Unit	Technical Data	Serial No (Start)	Serial No (End)	Rema
1	36290665320	BLOWER ASSY	1					
2	36290665330	COMBUSTION (AIR BLOWER)	1					
3	36290665340	CHAMBER	1					
4	36290665350	PLATE (SWIRLER)	1					
5	36290665360	HOLDER (GLOW PLUG)	1					
6	36290665420	HOUSING	1					
7	36290665430	CONDENSER	1					
8	36290665440	PACKING	1					
9	36290665450	GASKET	1					
10	36290665460	WASHER	1					
11	36290665490	SHIM (T=0.3)	N					
	36290665480	SHIM (T=0.2)	N					
	36290665470	SHIM (T=0.1)	N					
12	36290665500	SCREW,SET	1					
13	36290665510	NUT	1					
14	36290665520	PLUG	1					
15	36290665530	RING	1					
16	36290665540	PLATE	1					
17	36290665550	COLLAR	1					
18	36290665560	FLANGE	1					
19	36290665570	BASE ASSY	1					
20	36290665600	CASE (UPPER)	1					
21	36290665610	CASE (LOWER)	1					
22	36290665620	HOUSING (VENT ASSY)	1					
23	36290665630	COVER	1					
24	36290665640	COVER (A)	1					
25	36290665650	CAP	1					
26	36290665660	CLIP	9					
28	36290665670	COVER	1					
29	36290665680	PACKING	1					
30	36290665690	PACKING	4					
31	36290665700	PACKING	1					
32	36290665710	SHIM (T=0.1)	N					
	36290665720	SHIM (T=0.2)	N					
	36290665730	SHIM (T=0.3)	N					
33	36290665740	RING (E)	1					
34	36290665750	CLAMP	1					
35	36290655090	PLUG,GLOW	1					
36	36290665760	MOTOR ASSY	1					
37	36290665770	RESISTOR ASSY	1					
38	36290665780	THERMOSTAT ASSY	1					
39	36290665790	HOLDER (THERMOSTAT)	1					
40	36290665800	CLAMP	1					
41	36290665810	THERMOSTAT ASSY	1					
42	36290665820	CABLE ASSY	1					
43	36290665840	CABLE ASSY	1					
44	36290665850	CABLE ASSY	1					
45	36290665860	GROMMET	1					
46	36290665870	CAP	1					
47	36290665880	INLET ASSY	1					
49	36290665890	BOLT	3					
50	36290665900	BOLT	4					
51	80171304012	SCREW,MACHINE	5		M4X12			
52	36290665910	SCREW	4					
53	36290665920	PIPE,EXHAUST	1					
54	36290665930	BRANCH ASSY	1					
55	36290665940	THERMOSTAT ASSY	1					
61	36290665370	PACKING	1					
62	36290665380	GROMMET	1					
63	36290665390	RUBBER	1					
64	36290665400	ORIFICE	1					
65	36290665410	O-RING	1					
71	36290665580	PACKING	2					

**TL-300E-3-10101 4 BOOM + JIB, 2M2D, KG45SXN
PY1250001-00 SWITCH INSTALLATION (FAN)**



CLICK HERE TO **DOWNLOAD** THE COMPLETE MANUAL

- Thank you very much for reading the preview of the manual.
- You can download the complete manual from: www.heydownloads.com by clicking the link below



- Please note: If there is no response to CLICKING the link, please download this PDF first and then click on it.

CLICK HERE TO **DOWNLOAD** THE COMPLETE MANUAL