

TL-300E-2-10301 4 BOOM + JIB, 2M2D, KG45SXN

PB1000076-00 HYDRAULIC PRESSURE GENERATING SYSTEM

PC1000064-00 OUTRIGGER SYSTEM

PD1000075-00 SWING SYSTEM

PE1000071-00 ELEVATING SYSTEM

PF1000067-01 WINCH SYSTEM

PG1000072-01 TELESCOPING SYSTEM

PH1000072-00 SAFETY DEVICES

PI1000075-01 HYDRAULIC DEVICES

PK1000075-00 FRAME

PL1000075-00 CONTROL DEVICES

PN1000072-01 ELECTRIC EQUIPMENT

PO1000097-00 INDICATION PLATES

PW1000064-00 ACCESSORIES & TOOLS

PX1000075-01 MOUNTING PARTS

PY1000063-00 OPTIONS

ASSEMBLY

CLICK HERE TO **DOWNLOAD** THE COMPLETE MANUAL

- Thank you very much for reading the preview of the manual.
- You can download the complete manual from: www.heydownloads.com by clicking the link below



- Please note: If there is no response to CLICKING the link, please download this PDF first and then click on it.

CLICK HERE TO **DOWNLOAD** THE COMPLETE MANUAL

TL-300E-2-10301 4 BOOM + JIB, 2M2D, KG45SXN

| Pos No. | Parts No | Parts Name | Qty | Unit | Technical Data | Serial No (Start) | Serial No (End) |
|---------|-------------|-------------------------------|-----|------|----------------|-------------------|-----------------|
| 1 | (*****) | WINCH | 2 | | | | 355257 |
| | (*****) | WINCH | 2 | | | 355258 | |
| 2 | 19413067000 | CLUTCH,WINCH | 2 | | | | |
| 3 | 36090960000 | HOOK (MAIN) | 1 | | | | |
| 4 | 36090240001 | HOOK (AUXILIARY) | 1 | | | | |
| 5 | 37001800980 | ROPE,WIRE | 1 | | | | |
| | 37001800940 | ROPE,WIRE | 1 | | | | 355294 |
| | 37001802100 | ROPE,WIRE (TSK) | 1 | | | 355295 | |
| 6 | (*****) | SOCKET,ROPE | 2 | | | | |
| 7 | (*****) | OPERATION SYSTEM, WINCH BRAKE | 1 | | | | |
| 8 | 33310312000 | BAND,WINCH BRAKE | 2 | | | | |
| 9 | (*****) | OPERATION SYSTEM, DRUM LOCK | 1 | | | | |
| 10 | (*****) | OPERATION SYSTEM, CLUTCH | 1 | | | | |
| 11 | (*****) | PIPING,WINTCH | 1 | | | | |
| 12 | (*****) | PIPING,WINTCH BRAKE | 1 | | | | |
| 13 | 36631570000 | VALVE,CLUTCH | 1 | | | | |
| 14 | 36670110000 | JOINT,WINCH ROTARY | 2 | | | | 355238 |
| | (*****) | JOINT,WINCH ROTARY | 2 | | | 355239 | 355257 |
| | 36672739510 | JOINT,WINCH ROTARY | 2 | | | 355258 | |
| 15 | (*****) | MOUNT,WINCH (2M2D) | 1 | | | | |
| 16 | 36660160000 | MOTOR,HYDRAULIC | 2 | | | | |
| 17 | 36060180002 | CYLINDER,MASTER | 2 | | | | |
| 18 | 36640560000 | VALVE,SOLENOID | 2 | | | | |
| 19 | 36621230000 | VALVE,CHECK | 1 | | | | |
| 20 | 36621320000 | VALVE,SHUTTLE | 1 | | | | |
| 21 | 36600730000 | VALVE,COUNTERBALANCE | 2 | | | | |
| 22 | 36670740000 | FILTER,OIL | 1 | | | | |
| 23 | 36670000006 | ACCUMULATOR | 1 | | | | |
| 24 | 36680390000 | GAUGE,PRESSURE | 1 | | | | |

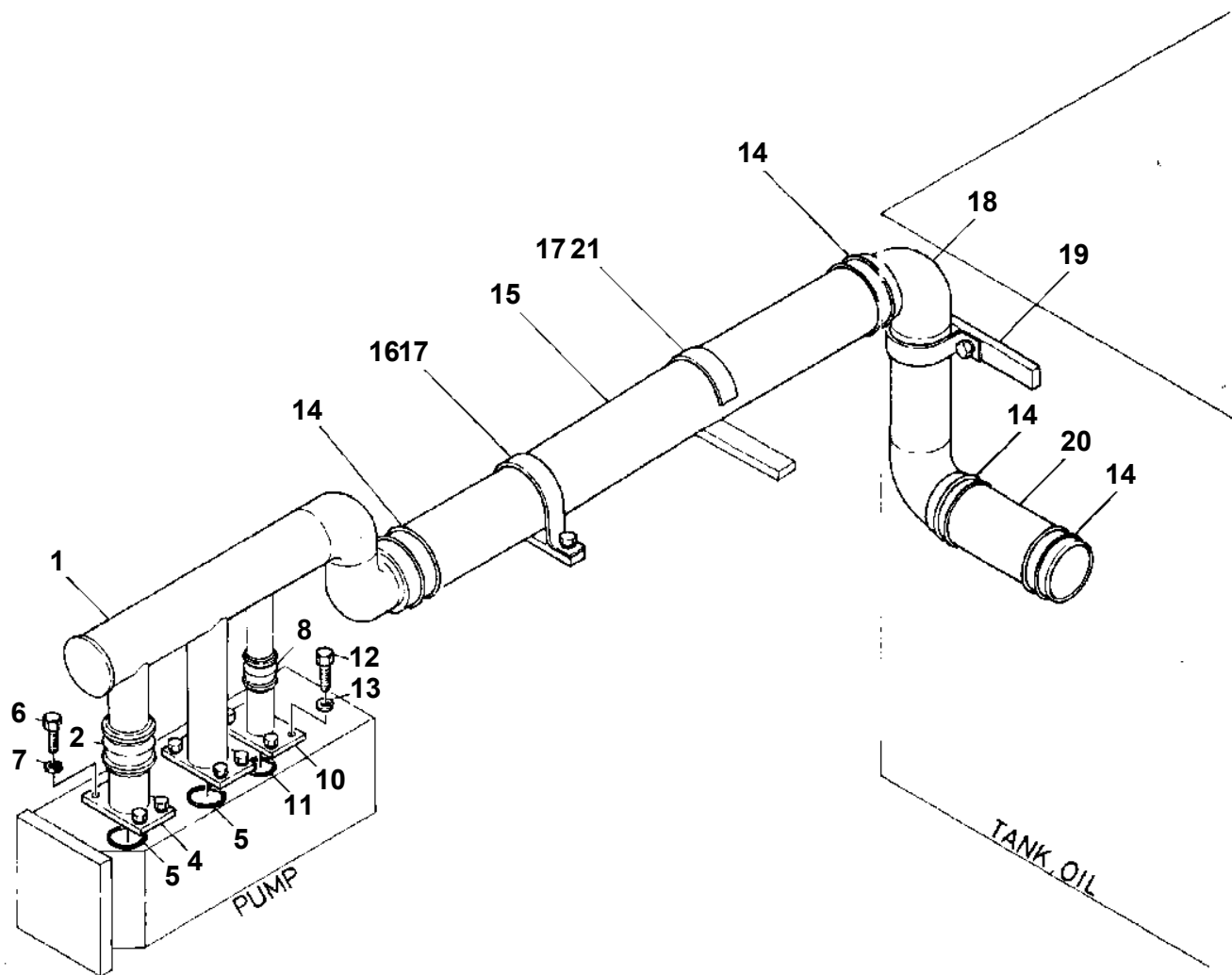
TL-300E-2-10301 4 BOOM + JIB, 2M2D, KG45SXN

| Pos No. | Parts No | Parts Name | Qty | Unit | Technical Data | Serial No (Start) | Serial No (E |
|---------|------------|---------------------------------|-----|------|----------------|-------------------|--------------|
| 1 | (*****) | OPERATION SYSTEM, CONTROL VALVE | 1 | | | | |
| 2 | (*****) | OPERATION SYSTEM, ACCELERATOR | 1 | | | | |
| 3 | 3606000001 | CYLINDER,MASTER | 1 | | | | |

TL-300E-2-10301 4 BOOM + JIB, 2M2D, KG45SXN

| Pos No. | Parts No | Parts Name | Qty | Unit | Technical Data | Serial No (Start) | Serial No (End) | Remarks | Page |
|---------|-------------|------------------|-----|------|----------------|-------------------|-----------------|---------|------|
| 1 | (*****) | SINGLE TOP | 1 | | | | | | 0001 |
| 2 | (*****) | HEATER SYSTEM | 1 | | | | | | 0001 |
| 3 | 36290090002 | HEATER (22HK) | 1 | | | | 355280 | | 0001 |
| | 36290090003 | HEATER (M22H) | 1 | | | 355281 | | | 0001 |
| 4 | (*****) | FAN INSTALLATION | 1 | | | | | | 0001 |

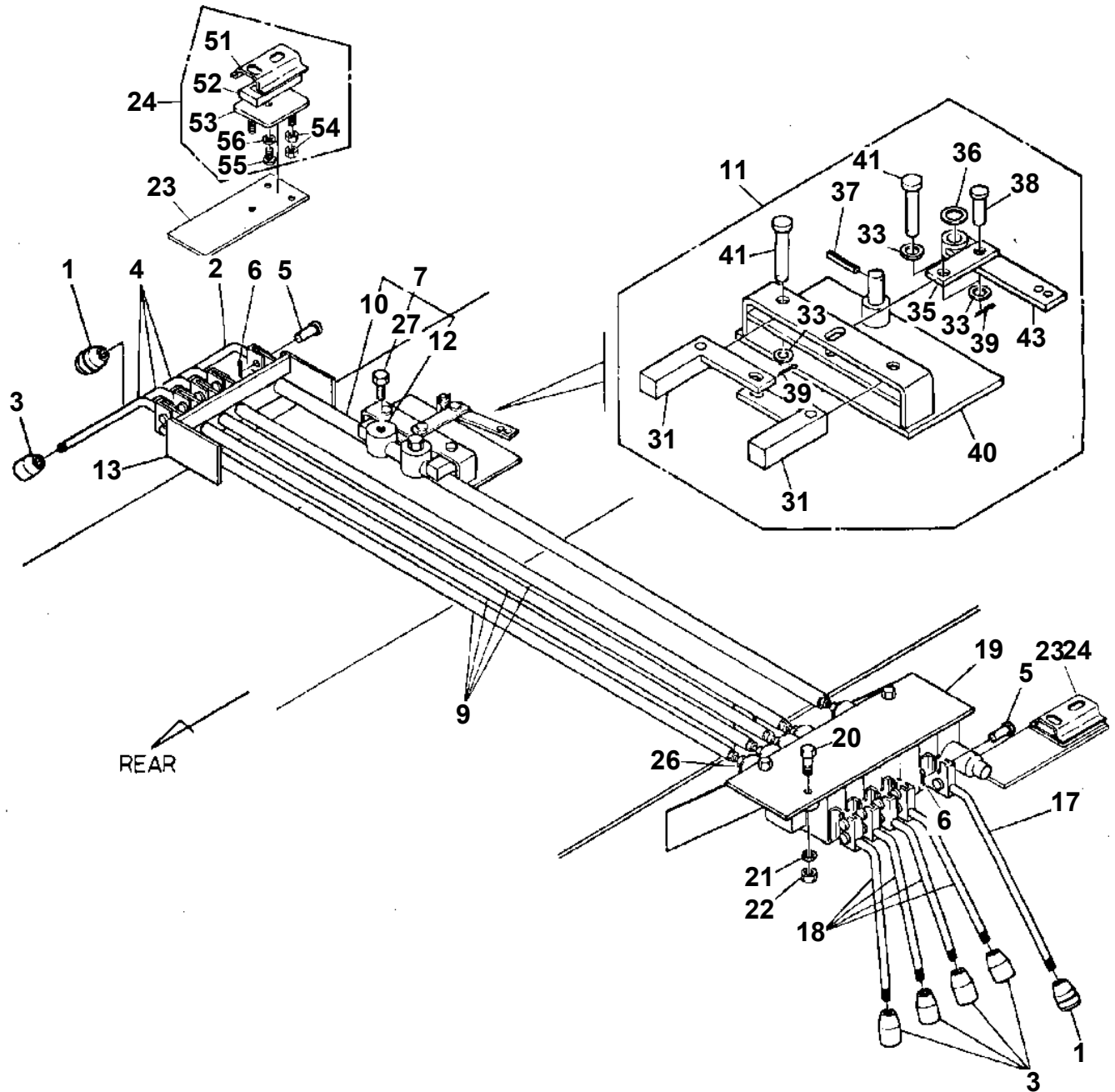
TL-300E-2-10301 4 BOOM + JIB, 2M2D, KG45SXN
PB1200028-00 PIPING,SUCTION



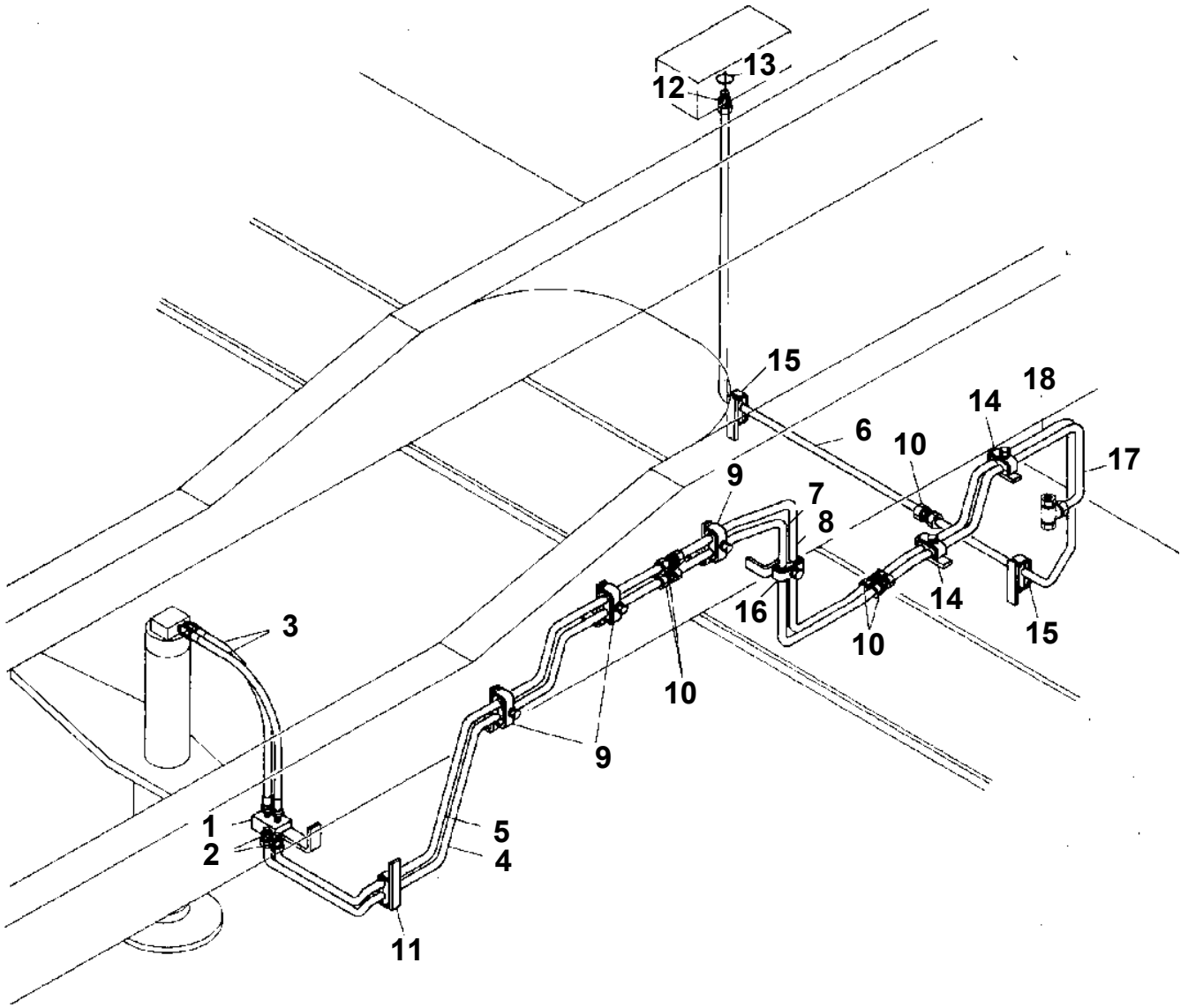
TL-300E-2-10301 4 BOOM + JIB, 2M2D, KG45SXN

| Pos No. | Parts No | Parts Name | Qty | Unit | Technical Data | Serial No (Start) | Serial No (End) | F |
|---------|-------------|-----------------------------|-----|------|----------------|-------------------|-----------------|---|
| 1 | 36631315010 | VALVE,PILOT CONTROL | 1 | | | | | |
| 2 | 36632315010 | VALVE,CONTROL (MAIN WINCH) | 1 | | | | | |
| 3 | 36631055020 | VALVE,FLOW CONTROL | 1 | | | | | |
| 4 | 36631055030 | VALVE,UNLOAD | 1 | | | | | |
| 5 | 36632315020 | VALVE,CONTROL (AUX.WINCH) | 1 | | | | | |
| 6 | 36631055050 | VALVE,CHECK | 1 | | | | | |
| 7 | 36630175020 | VALVE,CONTROL (TELESCOPING) | 1 | | | | | |
| 8 | 36631365010 | VALVE,CONTROL (ELEVATING) | 1 | | | | | |
| 9 | 36631095020 | BODY | 1 | | | | | |
| 10 | 36630475020 | VALVE,RELIEF | 1 | | | | | |
| 11 | 90131510045 | BOLT,HEXAGON SOCKET | 4 | | M10X45 | | | |
| 12 | 36631315060 | BOLT | 4 | | | | | |
| 13 | 90202201600 | NUT | 8 | | M16 | | | |
| 14 | 90203201600 | NUT | 8 | | M16 | | | |
| 15 | 91002903000 | O-RING | 5 | | 1B G30 | | | |
| 16 | 91002904000 | O-RING | 5 | | 1B G40 | | | |
| 17 | 16095101080 | O-RING | 2 | | WG6 | | | |
| 18 | 91002905000 | O-RING | 7 | | 1B G50 | | | |
| 19 | 16095101480 | RING (A/FOR O-RING,G30) | 5 | | | | | |
| 20 | 16095101490 | RING (B/FOR O-RING,G40) | 5 | | | | | |
| 21 | 16095101090 | RING (C/FOR O-RING,WG6) | 2 | | | | | |
| 22 | 16095101500 | RING (D/FOR O-RING,G50) | 7 | | | | | |
| 23 | 80316030040 | PLUG | 2 | | PT1/4 | | | |
| 24 | 36630265050 | VALVE,RELIEF | 1 | | | | | |
| 26 | 36631195010 | VALVE,RELIEF | 1 | | | | | |
| 27 | 36631195020 | VALVE,RELIEF | 1 | | | | | |
| 28 | 19415142030 | VALVE,RELIEF | 2 | | | | | |
| 29 | 91002801000 | O-RING | 5 | | 1B P10 | | | |
| 30 | 91002801600 | O-RING | 4 | | 1B P16 | | | |
| 31 | 91002902500 | O-RING | 2 | | 1B G25 | | | |
| 32 | 90131508070 | BOLT,HEXAGON SOCKET | 4 | | M8X70 | | | |
| 33 | 36630475010 | VALVE,RELIEF | 1 | | | | | |
| 42 | 36631315070 | VALVE,UNLOAD | 1 | | | | | |
| 43 | 90131508040 | BOLT,HEXAGON SOCKET | 10 | | M8X40 | | | |
| 45 | 36631095090 | COVER | 1 | | | | | |
| 48 | 36631095100 | SPRING | 1 | | | | | |
| 50 | 91002801600 | O-RING | 1 | | 1B P16 | | | |
| 51 | 91002803000 | O-RING | 1 | | 1B P30 | | | |
| 52 | 91002902500 | O-RING | 1 | | 1B G25 | | | |
| 53 | 80316030040 | PLUG | 3 | | PT1/4 | | | |
| 64 | 91000501500 | O-RING | 6 | | AS568-015 | | | |
| 67 | 16025153020 | SPRING | 8 | | | | | |
| 68 | 36630045200 | SCREW (ADJUSTING) | 8 | | M10X25 | | | |
| 69 | 36630045220 | NUT | 8 | | M10 | | | |
| 70 | 36630295130 | NUT,CAP | 6 | | | | | |
| 71 | 91001001600 | O-RING | 16 | | 1A S16 | | | |
| 72 | 91002802200 | O-RING | 1 | | 1B P22 | | | |
| 75 | 36630365030 | SPRING | 1 | | | | | |
| 77 | 91002801400 | O-RING | 1 | | 1B P14 | | | |
| 78 | 91002800700 | O-RING | 1 | | 1B P7 | | | |
| 79 | 80316030020 | PLUG | 1 | | PT1/8 | | | |
| 82 | 91002801800 | O-RING | 1 | | 1B P18 | | | |
| 85 | 36631095110 | FILTER | 1 | | | | | |
| 93 | 36630175110 | SUPPORT | 2 | | | | | |
| 94 | 13635101040 | PIN | 4 | | | | | |
| 95 | 90303100801 | WASHER,PLAIN | 4 | | 8 | | | |
| 96 | 14045122020 | PIN,SNAP | 4 | | | | | |
| 97 | 16035181010 | SEAL,OIL | 4 | | | | | |
| 98 | 16035181050 | RETAINER (SEAL) | 4 | | | | | |
| 103 | 16095101280 | SPRING | 2 | | | | | |
| 106 | 16095101120 | RETAINER (SPRING) | 4 | | | | | |
| 111 | 90131508030 | BOLT,HEXAGON SOCKET | 8 | | M8X30 | | | |
| 112 | 36631055170 | PLUG | 2 | | | | | |

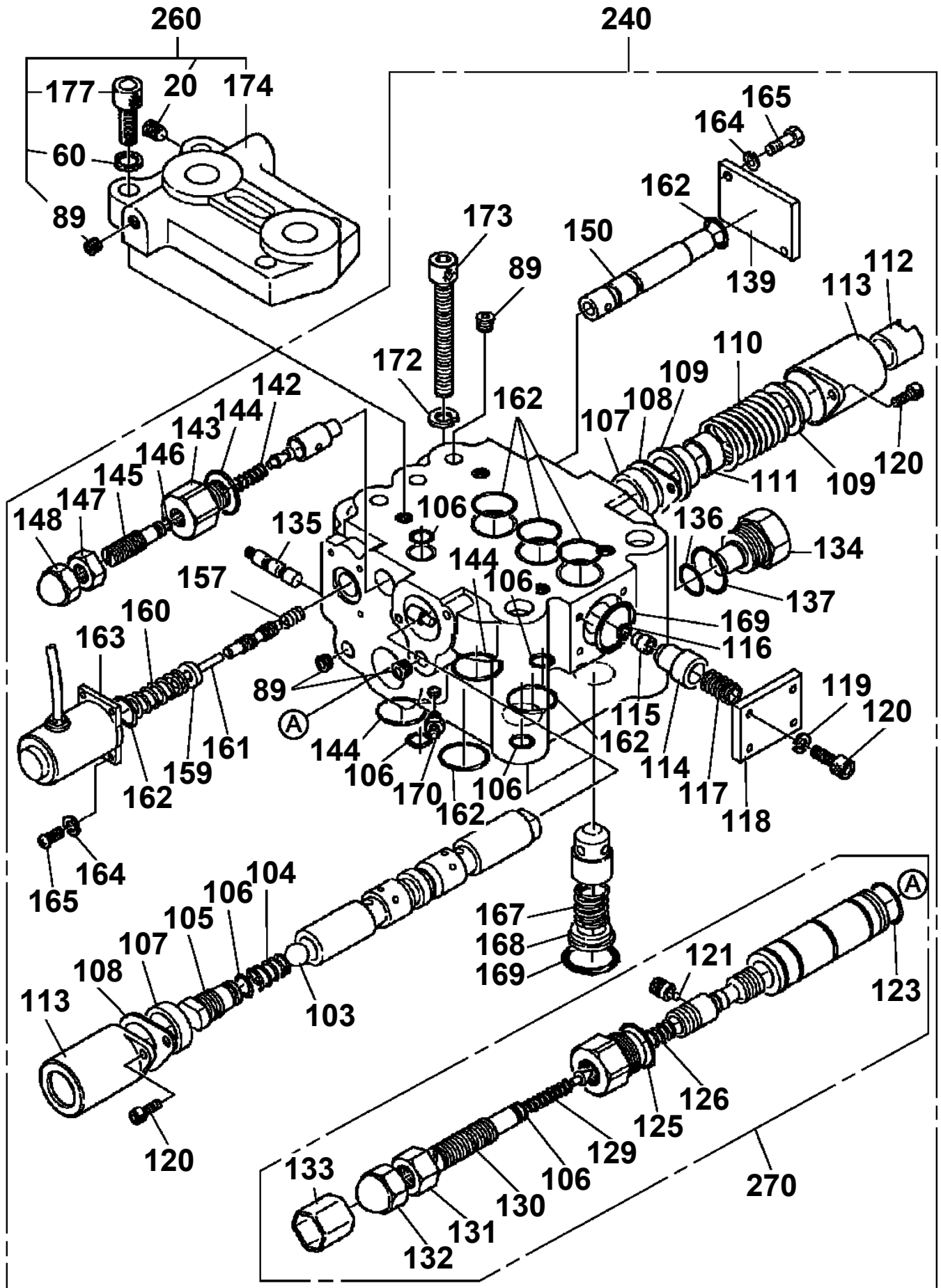
TL-300E-2-10301 4 BOOM + JIB, 2M2D, KG45SXN
PC1100027-00 OPE.ASSY,OUTRIGGER (WITHOUT F/J)



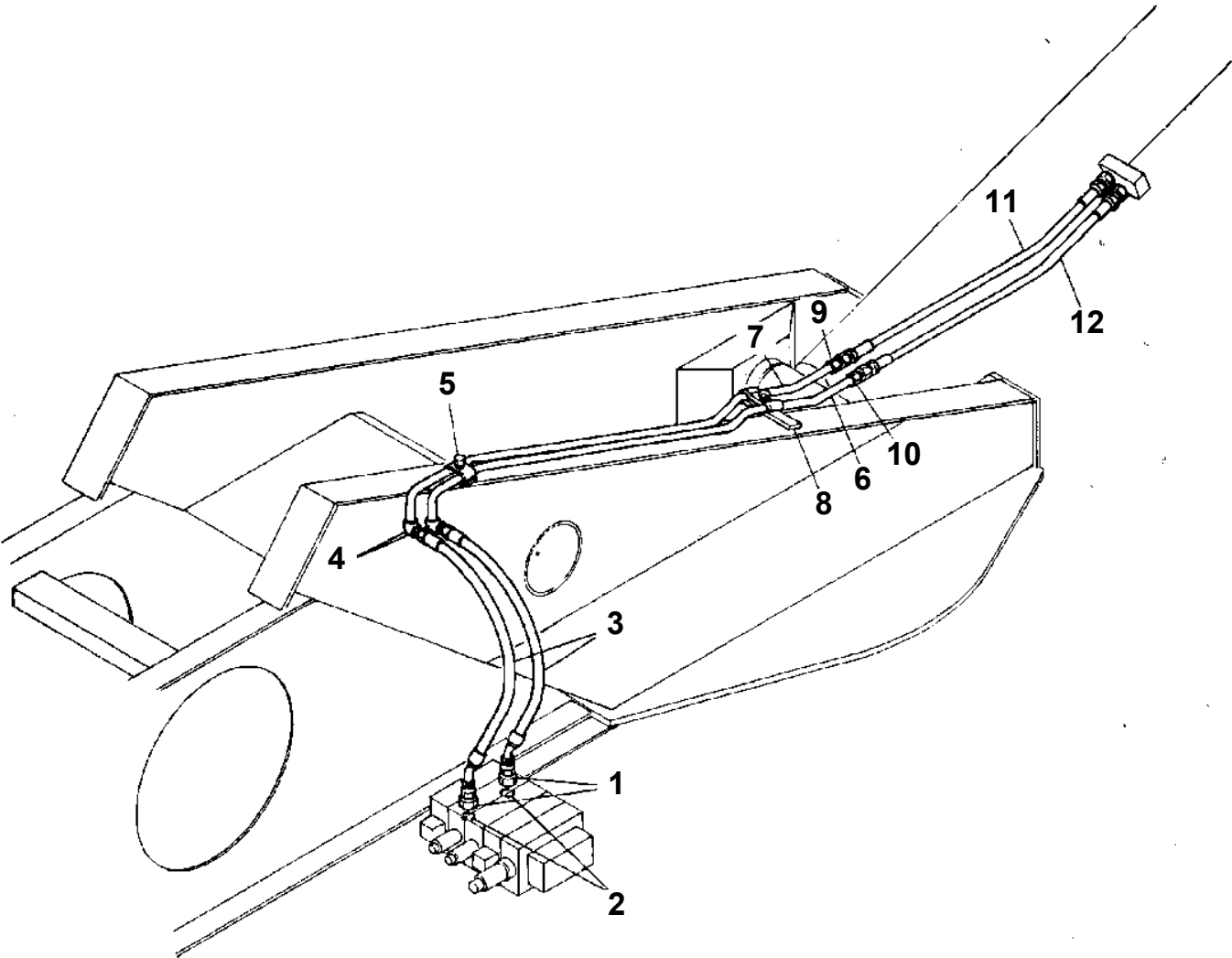
TL-300E-2-10301 4 BOOM + JIB, 2M2D, KG45SXN
PC1220101-00 PIPING,FRONT JACK



TL-300E-2-10301 4 BOOM + JIB, 2M2D, KG45SXN
 PD1070090-02 DRIVING UNIT, SWING



TL-300E-2-10301 4 BOOM + JIB, 2M2D, KG45SXXN
PE1200070-00 PIPING,ELEVATING



TL-300E-2-10301 4 BOOM + JIB, 2M2D, KG45SXN

| Pos No. | Parts No | Parts Name | Qty | Unit | Technical Data | Serial No (Start) | Serial No (End) | Remarks | Page |
|---------|-------------|----------------|-----|------|----------------|-------------------|-----------------|---------|------|
| 73 | 90305200501 | WASHER | 6 | | 5 | | | | |
| 74 | 80171104010 | SCREW,MACHINE | 4 | | M4X10 | | | | |
| 75 | 90302040401 | WASHER,SPRING | 4 | | 4 | | | | |
| 76 | 90101212020 | BOLT | 3 | | M12X20 | | | | |
| 77 | 90302041201 | WASHER,SPRING | 4 | | 12 | | | | |
| 78 | 90101212050 | BOLT | 1 | | M12X50 | | | | |
| 79 | 90201201200 | NUT | 1 | | M12 | | | | |
| 80 | 90101208016 | BOLT | 8 | | M8X16 | | | | |
| 81 | 90302040801 | WASHER,SPRING | 8 | | 8 | | | | |
| 82 | 37000514370 | PLATE | 2 | | | | | | |
| 83 | 33341661000 | COVER | 1 | | | | | | |
| 85 | 37000902520 | JOINT | 1 | | | | | | |
| 86 | 36640560000 | VALVE,SOLENOID | 2 | | | | | | 0000 |
| 87 | 36621230000 | VALVE,CHECK | 1 | | | | | | 0000 |
| 88 | 33340081000 | HOSE | 1 | M | 880-NKF | | | | |
| 89 | 37002401060 | HOSE | 1 | | L=685 | | | | |
| 90 | 37002411110 | HOSE | 1 | | L=560 | | | | |
| 92 | 80400160125 | FITTING,TEE | 1 | | 20364-U3/8 | | | | |
| 93 | 33340081040 | HOSE | 1 | M | 660-NFK | | | | |
| 94 | 33340081040 | HOSE | 1 | M | 660-NFK | | | | |
| 95 | 37000702750 | CLAMP ASSY | 1 | | | | | | |
| 96 | 80302010120 | FITTING | 2 | | KCT10-030N | | | | |
| 97 | 81408000130 | PIPE,STEEL | 1 | M | 10X1.8T | | | | |
| 98 | 81408000081 | PIPE,STEEL | 1 | M | 8X1.2T | | | | |
| 99 | 81408000130 | PIPE,STEEL | 1 | M | 10X1.8T | | | | |
| 100 | 80311010100 | FITTING | 1 | | KRE10-080N | | | | |
| 101 | 36621320000 | VALVE,SHUTTLE | 1 | | | | | | 0000 |
| 102 | 81408000130 | PIPE,STEEL | 1 | M | 10X1.8T | | | | |
| 103 | 81408000130 | PIPE,STEEL | 1 | M | 10X1.8T | | | | |
| 104 | 91800000004 | FASTENER | 1 | | | | | | |
| 105 | 37000704580 | CLAMP ASSY | 1 | | | 355273 | | | |
| 106 | 37000300710 | SLEEVE | 1 | | 12-8 | 355273 | | | |
| 107 | 37000703690 | CLAMP ASSY | 1 | | | 355273 | | | |
| 110 | 91000521900 | O-RING | 4 | | AS568-219-1B | | | | |

TL-300E-2-10301 4 BOOM + JIB, 2M2D, KG45SXN

| Pos No. | Parts No | Parts Name | Qty | Unit | Technical Data | Serial No (Start) | Serial No (End) | Remarks | P |
|---------|-------------|--------------------|-----|------|----------------|-------------------|-----------------|---------|---|
| 1 | 82458102000 | NIPPLE,GREASE | 1 | | B-PT1/8 | | | | |
| 2 | 36670110000 | JOINT,WINCH ROTARY | 1 | | | | | | |
| 3 | 14125501000 | SPRING | 1 | | | | | | |
| 4 | 14125502000 | WASHER | 1 | | | | | | |
| 5 | 14125504000 | ADAPTER | 1 | | | | | | |
| 6 | 14125505000 | PACKING | 5 | | | | | | |
| 7 | 14125507000 | ADAPTER | 1 | | | | | | |
| 8 | 16115551000 | PLATE | 1 | | | | | | |
| 9 | 80601110170 | RING,RITAINING | 1 | | S17 | | | | |
| 10 | 16115552000 | WASHER | 1 | | | | | | |
| 11 | 80515006303 | BEARING,BALL | 1 | | | | | | |
| 12 | 80602110470 | RING,RITAINING | 1 | | R47 | | | | |
| 13 | 16115554000 | SLEEVE | 1 | | | | | | |

CLICK HERE TO **DOWNLOAD** THE COMPLETE MANUAL

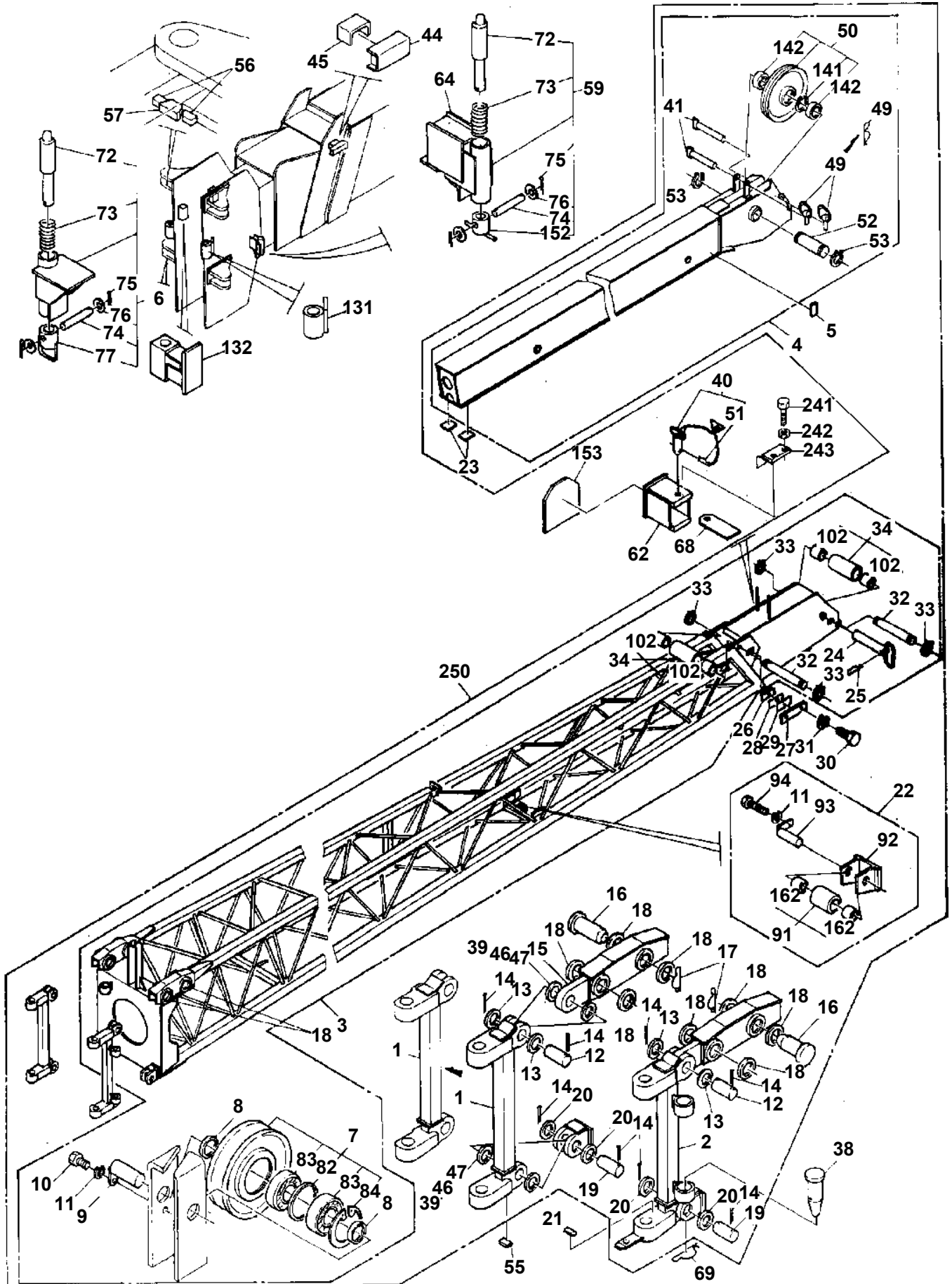
- Thank you very much for reading the preview of the manual.
- You can download the complete manual from: www.heydownloads.com by clicking the link below



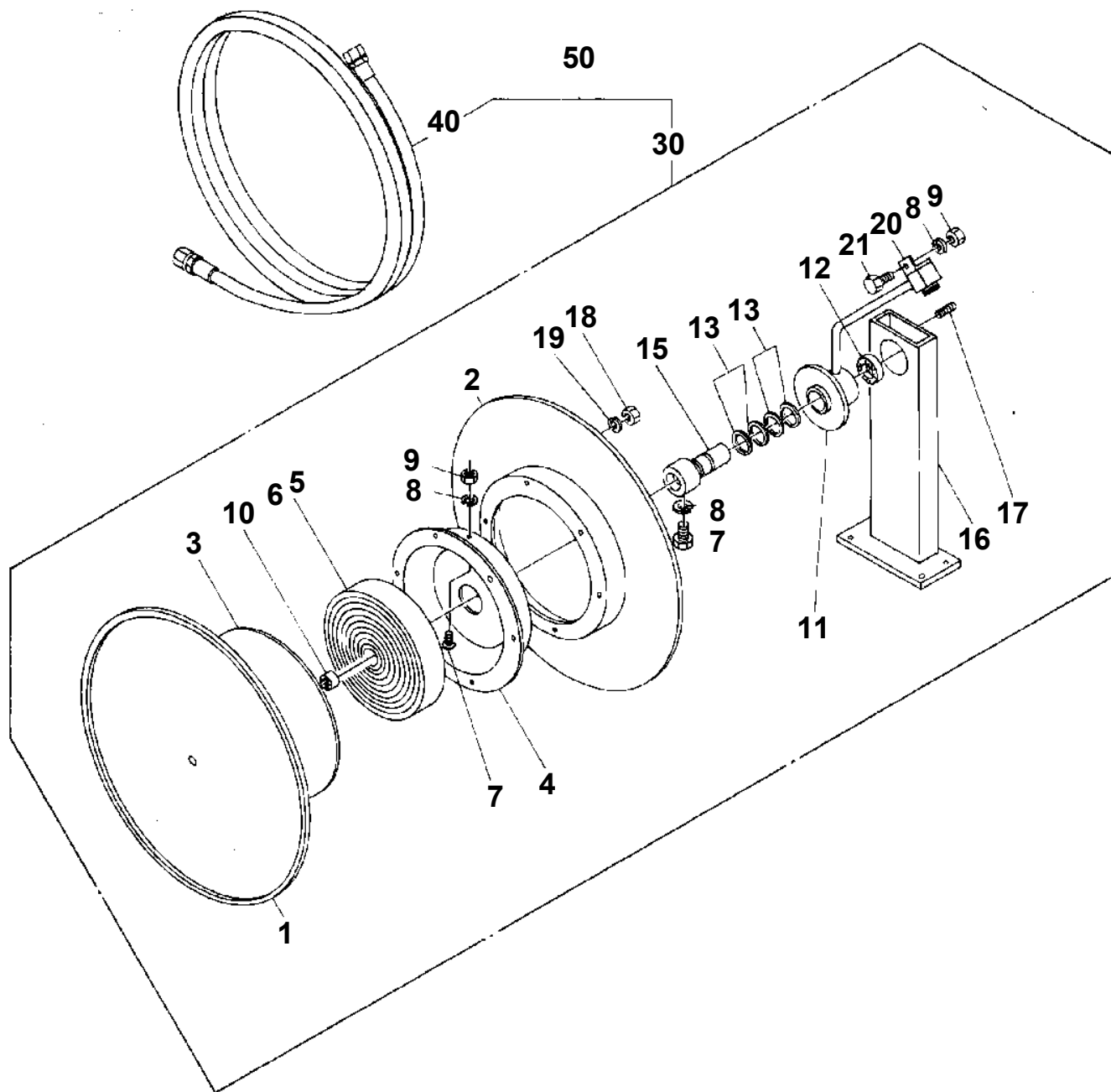
- Please note: If there is no response to CLICKING the link, please download this PDF first and then click on it.

CLICK HERE TO **DOWNLOAD** THE COMPLETE MANUAL

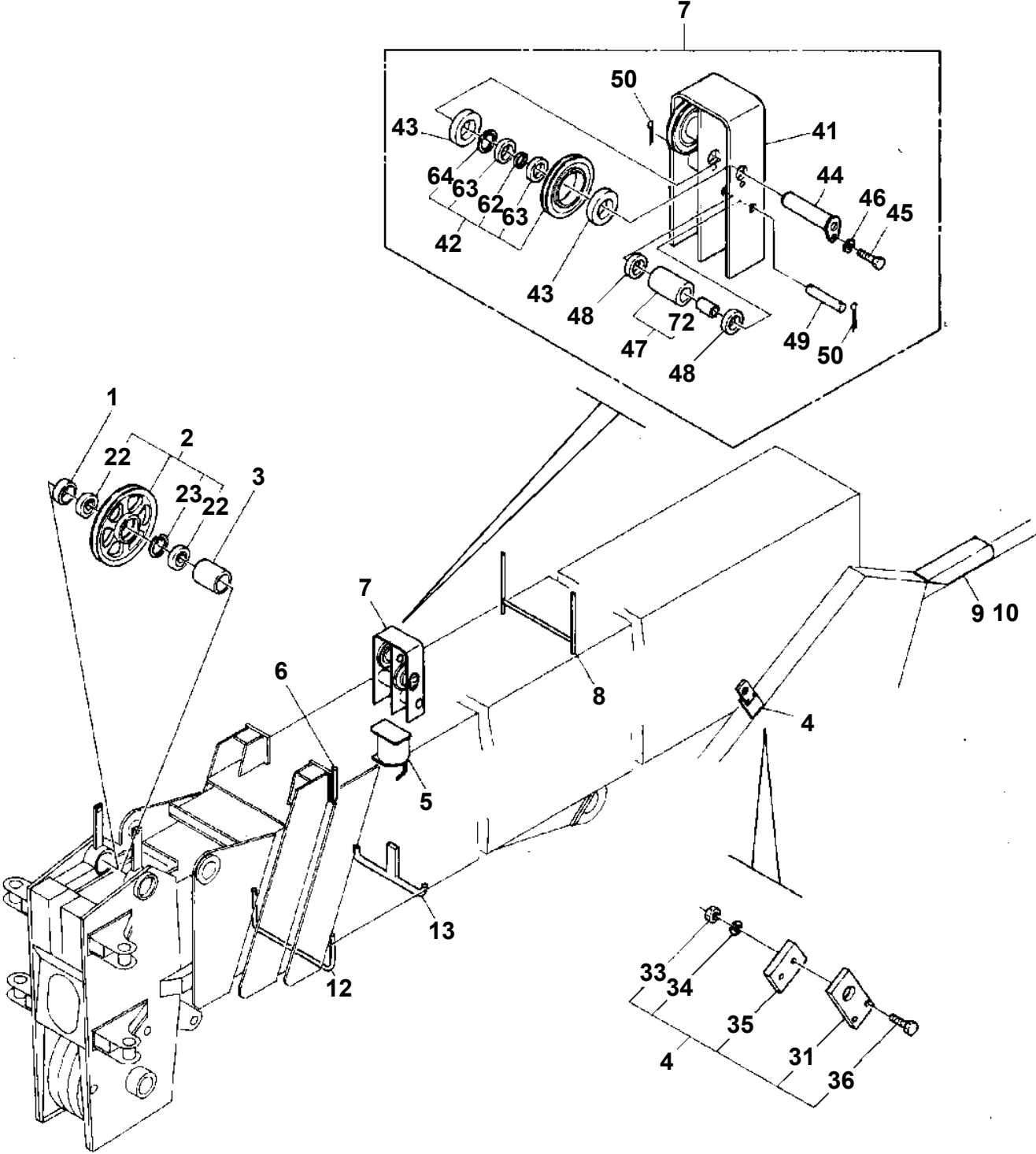
TL-300E-2-10301 4 BOOM + JIB, 2M2D, KG45SXN
PG1040352-04 JIB



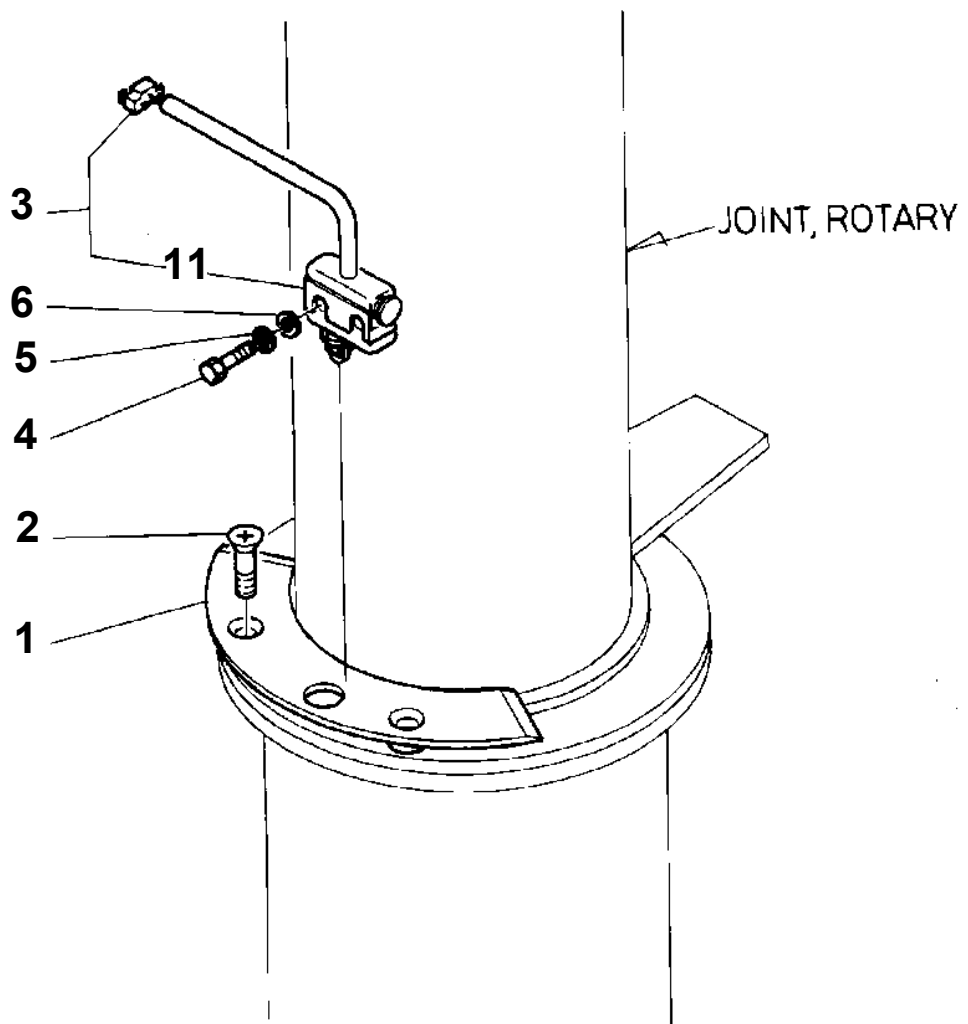
**TL-300E-2-10301 4 BOOM + JIB, 2M2D, KG45SXN
PG1070270-01 REEL,HOSE**



TL-300E-2-10301 4 BOOM + JIB, 2M2D, KG45SXN
PG1360135-00 GUIDE,WIRE



TL-300E-2-10301 4 BOOM + JIB, 2M2D, KG45SXN
PH1100025-02 DETECTOR, OVER FRONT AREA



TL-300E-2-10301 4 BOOM + JIB, 2M2D, KG45SXN

| Pos No. | Parts No | Parts Name | Qty | Unit | Technical Data | Serial No (Start) | Serial No (End) | Remarks |
|---------|-------------|-------------------------|-----|------|----------------|-------------------|-----------------|---------|
| 1 | 36660165010 | SHAFT | 1 | | | | | |
| 2 | 36660005010 | BEARING | 1 | | | | | |
| 3 | 36660005110 | COVER (OIL SEAL) | 1 | | | | | |
| 4 | 36660005020 | SEAL,OIL | 1 | | | | | |
| 5 | 91001212500 | O-RING | 2 | | 1A G125 | | | |
| 6 | 36660005120 | RING,RETAINING | 1 | | | | | |
| 7 | 36660165020 | PLATE (CAM) | 1 | | | | | |
| 8 | 80730160045 | PIN | 1 | | M16X45 | | | |
| 9 | 90302040801 | WASHER,SPRING | 2 | | 8 | | | |
| 10 | 90101208028 | BOLT | 2 | | M8X28 | | | |
| 11 | 36660005140 | SPRING | 18 | | | | | |
| 12 | 80500006308 | BEARING,BALL | 1 | | | | | |
| 13 | 36660165030 | PLATE (VALVE) | 1 | | | | | |
| 14 | 36660165040 | COVER (BOTTOM) | 1 | | | | | |
| 15 | 80720113025 | PIN,SPRING | 1 | | 13X25 | | | |
| 16 | 36660045050 | O-RING | 1 | | | | | |
| 17 | 90302041401 | WASHER,SPRING | 14 | | 14 | | | |
| 18 | 90131514045 | BOLT,HEXAGON SOCKET | 3 | | M14X45 | | | |
| 19 | 36660165050 | PLATE (CYLINDER BARREL) | 1 | | | | | |
| 20 | 80730100020 | PIN | 3 | | 10X20 | | | |
| 21 | 80316030080 | PLUG | 1 | | PT1/2 | | | |
| 22 | 12423016140 | PLUG | 1 | | PT1/2 | | | |
| 26 | 36660005100 | MANIFOLD | 1 | | | | | |
| 27 | 91002903500 | O-RING | 2 | | 1B G35 | | | |
| 28 | 90302041001 | WASHER,SPRING | 8 | | 10 | | | |
| 29 | 90131510060 | BOLT,HEXAGON SOCKET | 8 | | M10X60 | | | |
| 30 | 91001101000 | O-RING | 2 | | 1A P10 | | | |
| 31 | 36660005040 | SEAL,OIL | 1 | | | | | |
| 35 | 14145101021 | O-RING | 1 | | | | | |
| 40 | 36660005060 | SPRING (CENTER) | 1 | | | | | |
| 41 | 36660005050 | SEAT,SPRING (CENTER) | 1 | | | | | |
| 42 | 80602110880 | RING,RITAINING | 1 | | R88 | | | |
| 45 | 36660165060 | BARREL,CYLINDER | 1 | | | | | |
| 56 | 36660245020 | HOLDER,PLUNGER | 1 | | | | | |
| 57 | 36660165100 | BOLT | 11 | | M14X45 | | | |
| 60 | 36660160000 | MOTOR,HYDRAULIC | 1 | | | | | |

TL-300E-2-10301 4 BOOM + JIB, 2M2D, KG45SXN

| Pos No. | Parts No | Parts Name | Qty | Unit | Technical Data | Serial No (Start) | Serial No (End) | Remarks | Pa |
|---------|-------------|------------------|-----|------|----------------|-------------------|-----------------|---------|----|
| 1 | 36060010000 | CYLINDER,CONTROL | 1 | | | | | | |
| 2 | 36060015010 | INNER KIT | 1 | | | | | | |
| 6 | 36060015070 | SCREW (BLADER) | 1 | | | | | | |
| 7 | 36060015080 | SCREW (CAP) | 1 | | | | | | |

TL-300E-2-10301 4 BOOM + JIB, 2M2D, KG45SXN

| Pos No. | Parts No | Parts Name | Qty | Unit | Technical Data | Serial No (Start) | Serial No (End) | Remarks |
|---------|-------------|------------------------|-----|------|----------------|-------------------|-----------------|---------|
| 3 | 36621235030 | SPRING | 2 | | | | | |
| 4 | 80316030060 | PLUG | 9 | | PT3/8 | | | |
| 5 | 80316030020 | PLUG | 2 | | PT1/8 | | | |
| 6 | 36640465040 | FILTER (WITH THROTTLE) | 2 | | | | | |
| 7 | 36621235040 | COLLAR | 2 | | | | | |
| 20 | 36621230000 | VALVE,CHECK | 1 | | | | | |

TL-300E-2-10301 4 BOOM + JIB, 2M2D, KG45SXN

| Pos No. | Parts No | Parts Name | Qty | Unit | Technical Data | Serial No (Start) | Serial No (End) | Remarks | Pa |
|---------|-------------|-------------------|-----|------|----------------|-------------------|-----------------|---------|----|
| 1 | 36620510060 | PLUG | 1 | | | | | | |
| 2 | 91002801400 | O-RING | 2 | | 1B P14 | | | | |
| 3 | 37001200350 | SPRING | 1 | | | | | | |
| 4 | 36620510012 | POPPET | 1 | | | | | | |
| 5 | 91002801000 | O-RING | 2 | | 1B P10 | | | | |
| 6 | 36620510020 | PISTON | 1 | | | | | | |
| 7 | 91002800700 | O-RING | 1 | | 1B P7 | | | | |
| 8 | 36620510030 | BODY | 1 | | | | | | |
| 9 | 36620030050 | PLUG | 1 | | | | | | |
| 20 | 36620510000 | VALVE,PILOT CHECK | 1 | | | | | | |

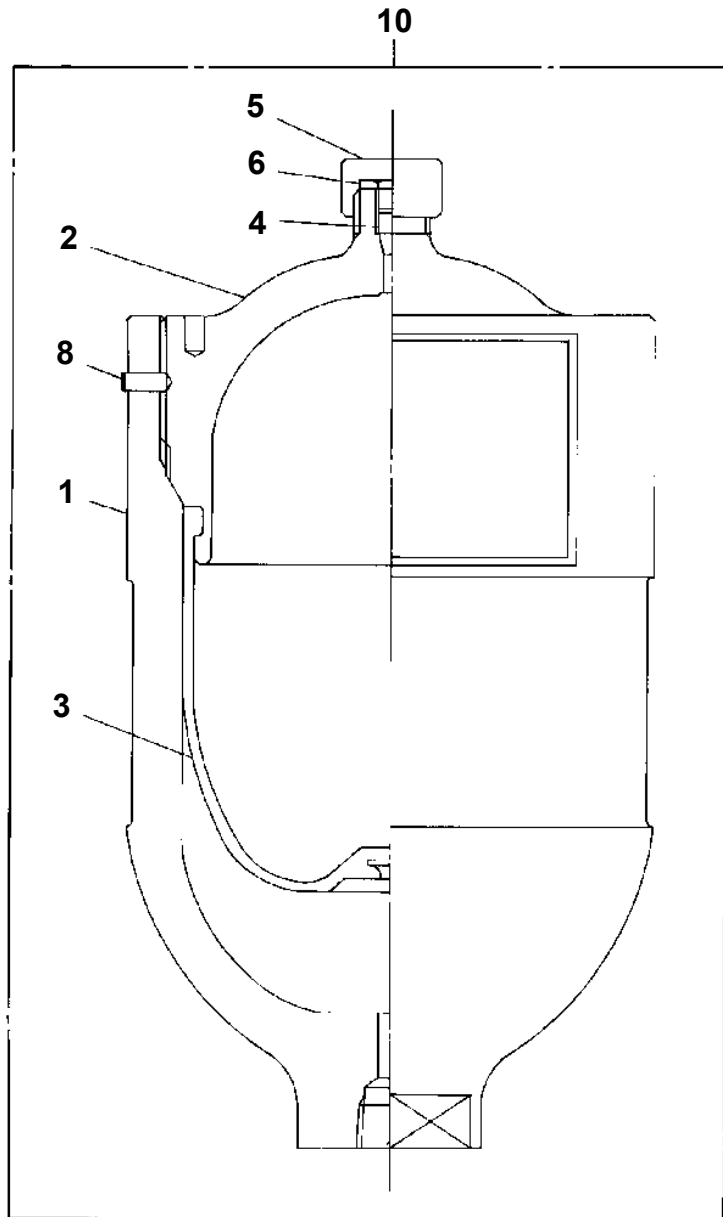
TL-300E-2-10301 4 BOOM + JIB, 2M2D, KG45SXN

PI1340060-01 ACCUMULATOR

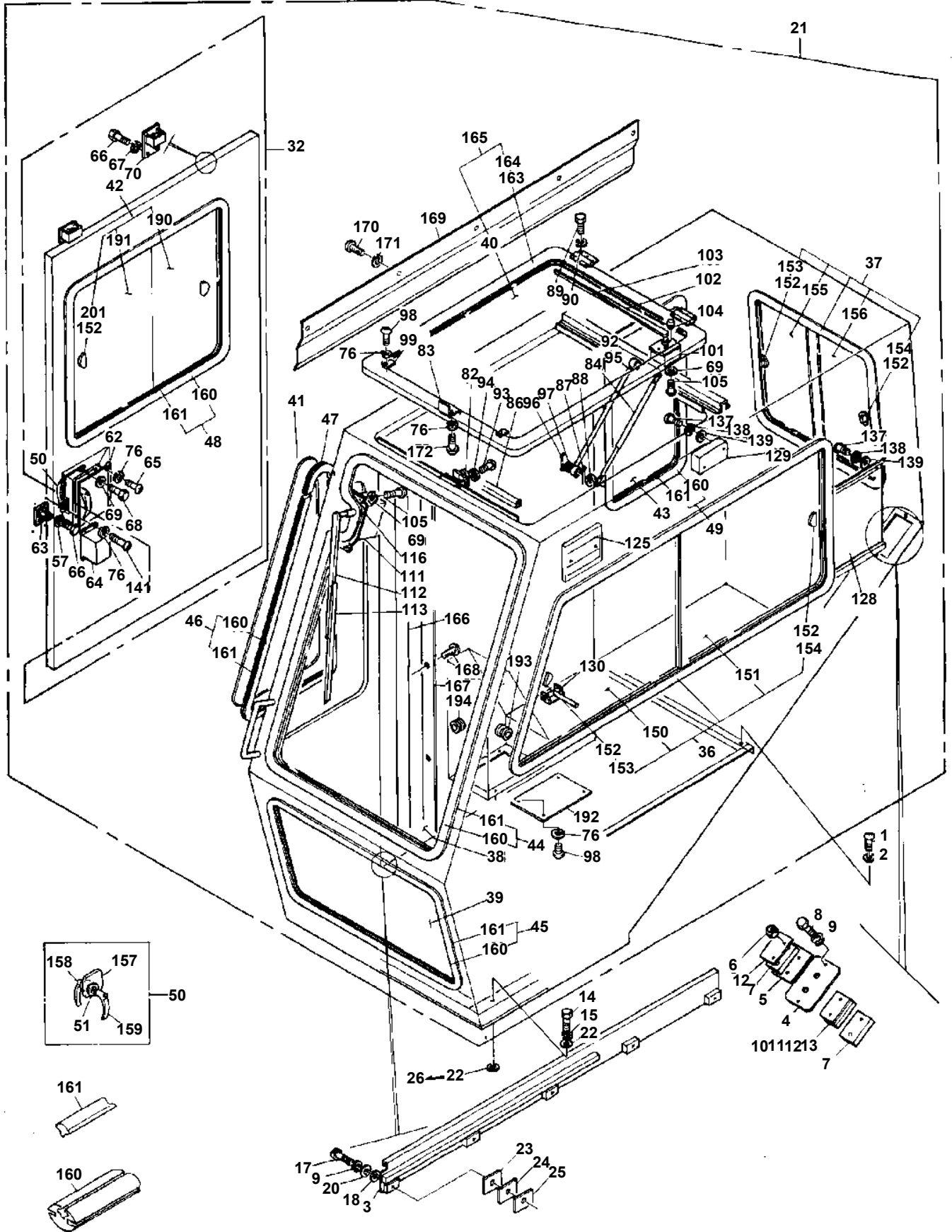
Assembly

Name

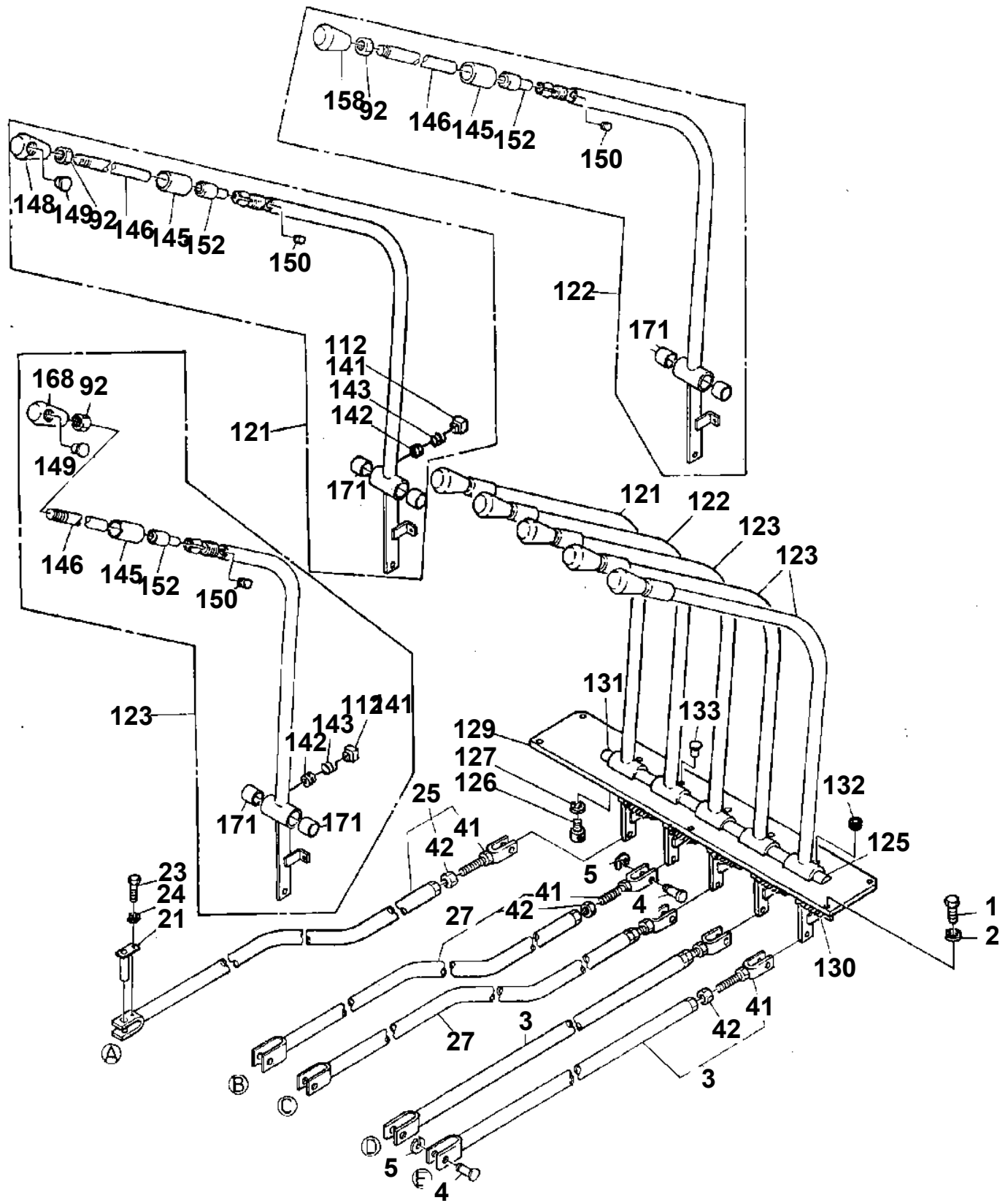
ACCUMULATOR



TL-300E-2-10301 4 BOOM + JIB, 2M2D, KG45SXN
 PK1140090-03 CAB, OPERATOR'S



TL-300E-2-10301 4 BOOM + JIB, 2M2D, KG45SXN
PL1010393-00 OPERATION SYSTEM, CONTROL VALVE



TL-300E-2-10301 4 BOOM + JIB, 2M2D, KG45SXN

| Pos No. | Parts No | Parts Name | Qty | Unit | Technical Data | Serial No (Start) | Serial No (End) |
|---------|-------------|-----------------------------|-----|------|----------------|-------------------|-----------------|
| 1 | 80192484016 | SCREW,MACHINE | 4 | | M4X16 | | |
| 3 | 33430561200 | BUZZER ASSY | 1 | | | | |
| 5 | 33431588010 | SWITCH ASSY | 1 | | | | |
| 6 | 80192485014 | SCREW,MACHINE (WITH WASHER) | 10 | | M5X14 | | |
| 7 | 33431488020 | SWITCH ASSY | 1 | | | | |
| 8 | 33430001560 | RELAY ASSY | 1 | | | | |
| 9 | 59481504000 | RELAY | 2 | | | | |
| 10 | 82100000001 | HORN | 1 | | | | |
| 11 | 90301010801 | WASHER | 1 | | 8 | | |
| 12 | 80176304014 | SCREW,MACHINE | 2 | | M4X14 | | |
| 14 | 33431373000 | RELAY ASSY | 1 | | | | |
| 15 | 33430001510 | BOX,FUSE | 1 | | | | |
| 16 | 37002201380 | PLATE,NAME | 1 | | | | |
| 17 | 80161304030 | SCREW,MACHINE | 6 | | M4X30 | | |
| 18 | 90302040401 | WASHER,SPRING | 6 | | 4 | | |
| 19 | 90303100401 | WASHER,PLAIN | 6 | | 4 | | |
| 20 | 80161305020 | SCREW,MACHINE | 8 | | M5X20 | | |
| 21 | 90302040501 | WASHER,SPRING | 8 | | 5 | | |
| 22 | 90303100501 | WASHER,PLAIN | 8 | | 5 | | |
| 23 | 33430601400 | COVER | 1 | | | | |
| 24 | 33430601560 | COVER | 1 | | | | |
| 25 | 80161306020 | SCREW,MACHINE | 4 | | M6X20 | | |
| 26 | 90302040601 | WASHER,SPRING | 5 | | 6 | | |
| 27 | 90201200600 | NUT | 1 | | M6 | | |
| 28 | 90190000008 | BOLT,STUD | 1 | | M6X20 | | |
| 29 | 33431374000 | PLATE | 1 | | | | |
| 30 | 33431371000 | LAMP,PILOT | 1 | | | | |
| 41 | 33431181100 | PANEL | 1 | | | | |
| 42 | 33431181200 | HARNESS | 1 | | | | |
| 43 | 33431581010 | PLATE,NAME | 1 | | | | |
| 44 | 82100001392 | SWITCH,ROTARY | 1 | | | | |
| 45 | 82100001199 | KNOB | 1 | | | | |
| 46 | 82100001359 | SWITCH,TOGGLE | 2 | | | | |
| 47 | 82100001381 | SWITCH,PUSH (RED) | 2 | | | | |
| 48 | 82100001361 | SWITCH,TOGGLE | 1 | | | | |
| 49 | 82100000082 | SWITCH,STARTER (WITH KEY) | 1 | | | | |
| 50 | 34350002100 | CAP | 3 | | | | |
| 61 | 33430701061 | PANEL | 1 | | | | |
| 62 | 90303070501 | WASHER,PLAIN | 2 | | 5 | | |
| 64 | 33430701140 | PLATE,NAME | 1 | | | | |
| 65 | 82100001682 | SWITCH,TOGGLE | 1 | | | | |
| 66 | 82100001696 | SWITCH,TOGGLE | 2 | | | | |
| 67 | 82400000180 | TRAY,ASH | 1 | | | | |
| 68 | 82100000690 | LIGHTER,CIGARETTE | 1 | | | | |
| 69 | 33431182100 | HARNESS | 1 | | | | |
| 70 | 34250000030 | COVER | 1 | | | | |
| 71 | 80192485014 | SCREW,MACHINE (WITH WASHER) | 2 | | M5X14 | | |
| 72 | 34250000430 | PLATE | 1 | | | | |
| 73 | 33431222300 | COVER | 1 | | | | |
| 74 | 80176304012 | SCREW,MACHINE | 4 | | M4X12 | | |
| 75 | 90302040401 | WASHER,SPRING | 4 | | 4 | | |
| 91 | 82100000745 | FUSE | 5 | | 10A,6.5X30 | | |
| 92 | 82100001162 | FUSE (15A,6.35X30> | 3 | | | | |
| 94 | 33430601440 | GROMMET | 1 | | | | |
| 101 | 34350352150 | COVER | 1 | | | | |
| 102 | 33431377510 | PLATE,NAME (Q) | 1 | | | | |
| 103 | 90925030101 | SCREW,TAPPING | 10 | | M3X10 | | |
| 104 | 82100002470 | BULB,LAMP | 16 | | | | |
| 105 | 34350352180 | COVER | 1 | | | | |
| 106 | 33431387510 | LAMP ASSY (C) | 1 | | | | |
| 111 | 82100000564 | BUZZER | 1 | | | | |
| 121 | 82100000734 | RELAY | 1 | | | | |
| 131 | 82100000687 | KEY (STARTER) | 1 | | | | |

TL-300E-2-10301 4 BOOM + JIB, 2M2D, KG45SXN

| Pos No. | Parts No | Parts Name | Qty | Unit | Technical Data | Serial No (Start) | Serial No (End) |
|---------|-------------|--------------------------------|-----|------|----------------|-------------------|-----------------|
| 1 | 37002200450 | PLATE,NAME (WITHOUT F/J) | 1 | | | | |
| 2 | 37002200460 | PLATE,NAME (WITHOUT F/J) | 1 | | | | |
| 3 | 14137207000 | PLATE,NAME (GREASE) | 7 | | | | |
| 4 | 33940070010 | PLATE,NAME (WHEN FILLING TANK) | 1 | | | | |

TL-300E-2-10301 4 BOOM + JIB, 2M2D, KG45SXN

| Pos No. | Parts No | Parts Name | Qty | Unit | Technical Data | Serial No (Start) | Serial No (End) | Remarks |
|---------|-------------|---------------------|-----|------|----------------|-------------------|-----------------|---------|
| 1 | 36670455010 | PLATE (A) | 1 | | | | | |
| 2 | 36670455020 | PLATE (B) | 1 | | | | | |
| 3 | 36670455030 | PACKING (SEAT) | 1 | | | | | |
| 4 | 36671410010 | CASE (SPRING) | 1 | | | | 356106 | |
| | 36670455040 | BOX (SPRING) | 1 | | | 356107 | | |
| 5 | 36670455050 | SPRING | 1 | | | | | |
| 6 | 36670455060 | SPRING | 1 | | | | | |
| 7 | 36670455070 | BOLT | 2 | | M8X12 | | | |
| 8 | 90302040801 | WASHER,SPRING | 3 | | 8 | | | |
| 9 | 90201200800 | NUT | 2 | | M8 | | | |
| 10 | 80515006003 | BEARING,BALL | 1 | | | | | |
| 11 | 36670455080 | BUSH | 1 | | | | | |
| 12 | 80515006007 | BEARING,BALL | 1 | | | | 356106 | |
| | 80513006007 | BEARING,BALL | 1 | | | 356107 | | |
| 13 | 16246595020 | RING ASSY (RL) | 2 | | | | | |
| 15 | 36671410030 | PIN | 1 | | | | 356106 | |
| | 36671650200 | PIN | 1 | | | 356107 | | |
| 16 | 36671410040 | SUPPORT | 1 | | | | 356106 | |
| | 36671650300 | SUPPORT | 1 | | | 356107 | | |
| 17 | 90730005120 | SCREW,SET | 3 | | M5X12 | | 356106 | |
| 18 | 90201200600 | NUT | 6 | | M6 | | | |
| 19 | 90302040601 | WASHER,SPRING | 6 | | 6 | | | |
| 20 | 36670455110 | PLATE | 1 | | | | | |
| 21 | 90102208014 | BOLT | 1 | | M8X14 | | | |
| 23 | 80602110700 | RING,RETAINING | 1 | | R70 | | 356106 | |
| 24 | 36670545060 | SEAL,OIL | 1 | | | | 356106 | |
| 25 | 36671410020 | SPACER | 1 | | | | 356106 | |
| 26 | 91001203000 | O-RING | 1 | | 1A G30 | | 356106 | |
| 27 | 90101510018 | BOLT | 4 | | M10X18 | | 356106 | |
| 28 | 90302041001 | WASHER,SPRING | 4 | | 10 | | 356106 | |
| 29 | 36671410050 | RING,RETAINING | 1 | | | | 356106 | |
| 30 | 36670675030 | GROMMET | 1 | | | 356059 | | |
| 31 | 91282412251 | SEAL,OIL | 1 | | | 356107 | | |
| 32 | 36671650400 | PLATE | 1 | | | 356107 | | |
| 33 | 90172206014 | BOLT,HEXAGON SOCKET | 2 | | M6X14 | 356107 | | |
| 100 | 36671410000 | REEL ASSY,HOSE | 1 | | | | | |

TL-300E-2-10301 4 BOOM + JIB, 2M2D, KG45SXN

| Pos No. | Parts No | Parts Name | Qty | Unit | Technical Data | Serial No (Start) | Serial No (End) | Remarks | Pages |
|---------|-------------|------------|-----|------|----------------|-------------------|-----------------|---------|-------|
| 1 | 33860231000 | SUPPORT | 4 | | | | | | |

TL-300E-2-10301 4 BOOM + JIB, 2M2D, KG45SXN

| Pos No. | Parts No | Parts Name | Qty | Unit | Technical Data | Serial No (Start) | Serial No (End) | Remarks | Pages |
|---------|-------------|---------------|-----|------|----------------|-------------------|-----------------|---------|-------|
| 1 | 33762768010 | COVER ASSY | 1 | | | | | | |
| 2 | 33762768020 | COVER ASSY | 1 | | | | | | |
| 3 | 90101210014 | BOLT | 20 | | M10X14 | | | | |
| 4 | 90302041001 | WASHER,SPRING | 20 | | 10 | | | | |
| 5 | 12515253000 | PLATE | 4 | | | | | | |
| 6 | 33762750400 | COVER | 3 | | | | | | |
| 7 | 33762752000 | COVER ASSY | 4 | | | | | | |
| 8 | 33762750500 | COVER | 1 | | | | | | |
| 9 | 33762750600 | BAR | 1 | | | | | | |
| 21 | 33762752100 | COVER | 4 | | | | | | |
| 22 | 56760106000 | PLATE | 8 | | | | | | |
| 25 | 33762752200 | SUPPORT | 4 | | | | | | |

CLICK HERE TO **DOWNLOAD** THE COMPLETE MANUAL

- Thank you very much for reading the preview of the manual.
- You can download the complete manual from: www.heydownloads.com by clicking the link below



- Please note: If there is no response to CLICKING the link, please download this PDF first and then click on it.

CLICK HERE TO **DOWNLOAD** THE COMPLETE MANUAL