

TL-250M-5-20101 4 BOOM + JIB,KS305R

PB1000339-01 HYDRAULIC PRESSURE GENERATING SYSTEM
PC1000268-01 OUTRIGGER SYSTEM
PD1000320-01 SWING SYSTEM
PE1000319-01 ELEVATING SYSTEM
PF1000296-02 WINCH SYSTEM
PG1000294-01 TELESCOPING SYSTEM
PH1000278-01 SAFETY DEVICES
PK1000330-01 FRAME
PL1000330-01 CONTROL DEVICES
PN1000245-01 ELECTRIC EQUIPMENT
PO1000144-01 INDICATION PLATES
PW1000028-00 ACCESSORIES & TOOLS
PX1000347-00 MOUNTING PARTS
PY1000295-01 OPTIONS
ASSEMBLY

CLICK HERE TO **DOWNLOAD** THE COMPLETE MANUAL

- Thank you very much for reading the preview of the manual.
- You can download the complete manual from: www.heydownloads.com by clicking the link below



- Please note: If there is no response to CLICKING the link, please download this PDF first and then click on it.

CLICK HERE TO **DOWNLOAD** THE COMPLETE MANUAL

TL-250M-5-20101 4 BOOM + JIB,KS305R

Pos No.	Parts No	Parts Name	Qty	Unit	Technical Data	Serial No (Start)	Serial
1	36091120000	HOOK (OPTION, 6TON OR 7TON)	1				
2	(*****)	HOOK (AUX.)	1				
3	36092010000	HOOK (SHEAVE 4 PC'S)	1				
4	19491011000	HOOK (12TON)	1				
5	37001802120	ROPE,WIRE (TSK)	1				
6	37001802100	ROPE,WIRE (TSK)	1				
7	(*****)	SOCKET,ROPE (SEIZING)	2				
8	(*****)	OPE.ASSY, WINCH BRAKE (MAIN)	1				
9	(*****)	OPE.ASSY, WINCH BRAKE (AUX.)	1				
10	(*****)	OPE.ASSY,DRUM LOCK (MAIN)	1				
11	(*****)	OPE.ASSY,DRUM LODK (AUX.)	1				
12	(*****)	OPE.ASSY,CLUTCH (MAIN)	1				
13	(*****)	OPE.ASSY,CLUTCH (AUX.)	1				
14	(*****)	DETECTOR,DISORDERLY WIND (MAIN,OPTION)	1				
15	(*****)	DETECTOR,DISORDERLY WIND (AUX.,OPTION)	1				
16	(*****)	PIPING,WINCH (MAIN)	1				3407
	(*****)	PIPING,WINCH (MAIN)	1			340791	
17	(*****)	PIPING,WINCH (AUX.)	1				3407
	(*****)	PIPING,WINCH (AUX.)	1			340791	
18	(*****)	PIPING,WINCH BRAKE (MAIN)	1				
19	(*****)	PIPING,WINCH BRAKE (AUX.)	1				
20	(*****)	MOUNT,WINCH (MAIN)	1			340791	
	(*****)	MOUNT,WINCH (MAIN)	1				3407
21	(*****)	MOUNT,WINCH (AUX.,TOSHIBA)	1				3407
	(*****)	MOUNT,WINCH (AUX.,SANWA)	1			340791	

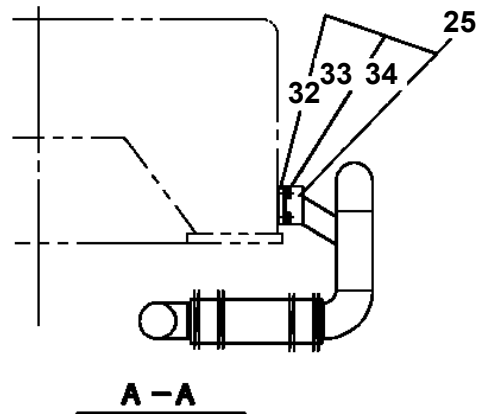
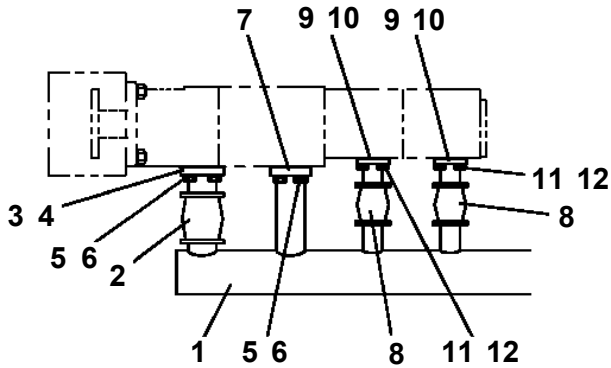
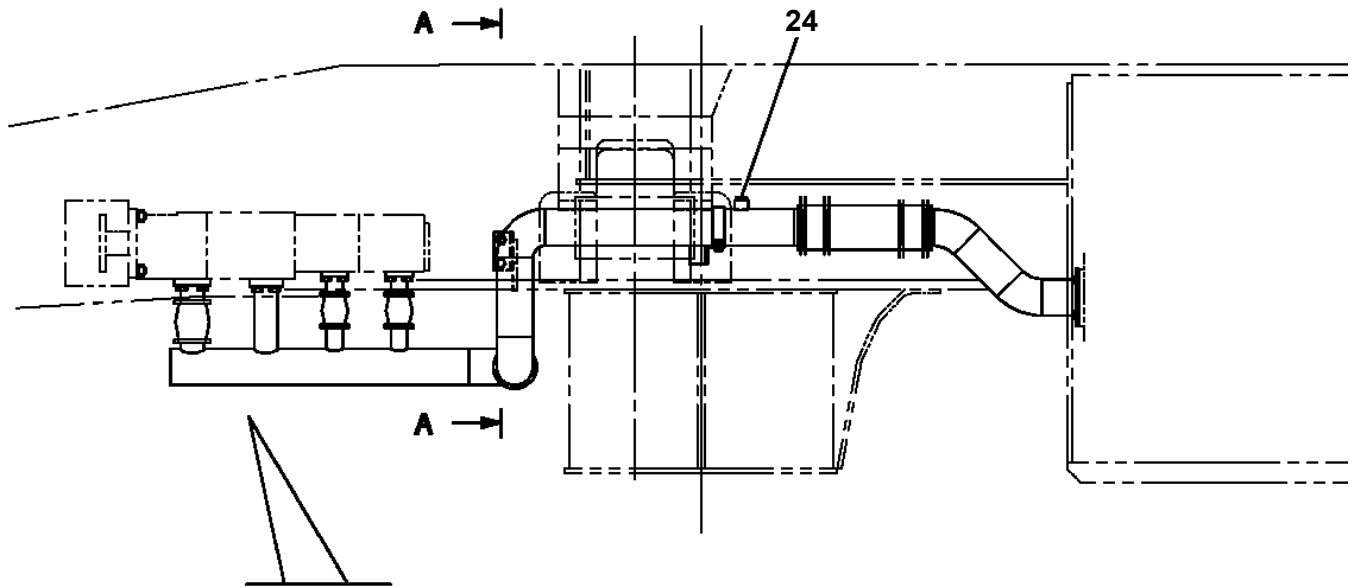
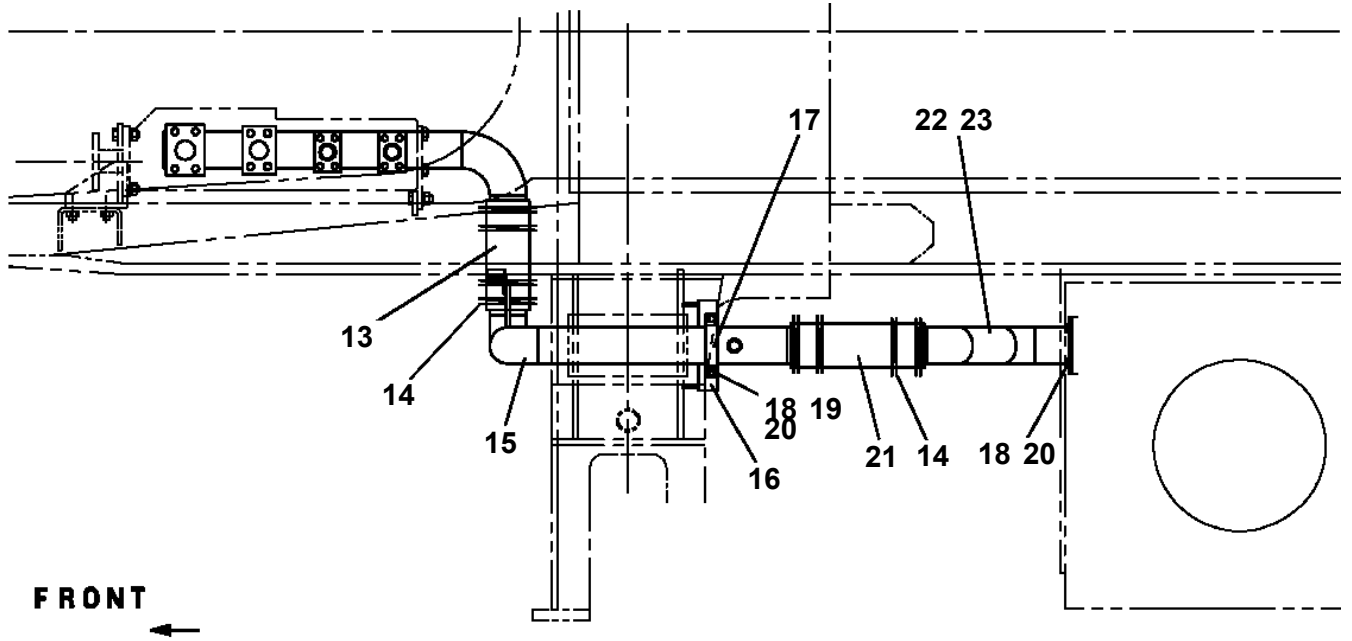
TL-250M-5-20101 4 BOOM + JIB,KS305R

Pos No.	Parts No	Parts Name	Qty	Unit	Technical Data	Serial No (Start)	Serial No (End)
1	(*****)	ELEC.ASSY (BOOM)	1				
2	(*****)	ELEC.ASSY (SWING FRAME)	1				
3	(*****)	ELECTRICAL PARTS,CAB	1				340772
	(*****)	ELECTRICAL PARTS,CAB	1			340773	
4	(*****)	LAMP (WORKING)	1				
5	(*****)	SWITCH,DETECTOR (JIB AUTOMATIC PIN)	1			340780	
6	(*****)	SWITCH,DETECTOR(WINCH FREE)	1			340796	

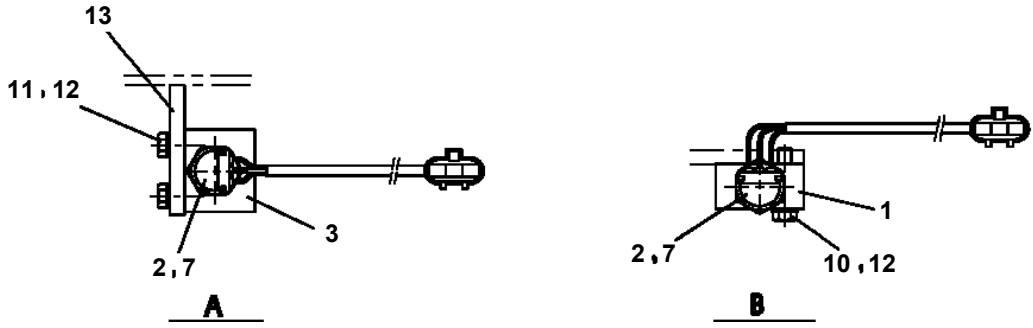
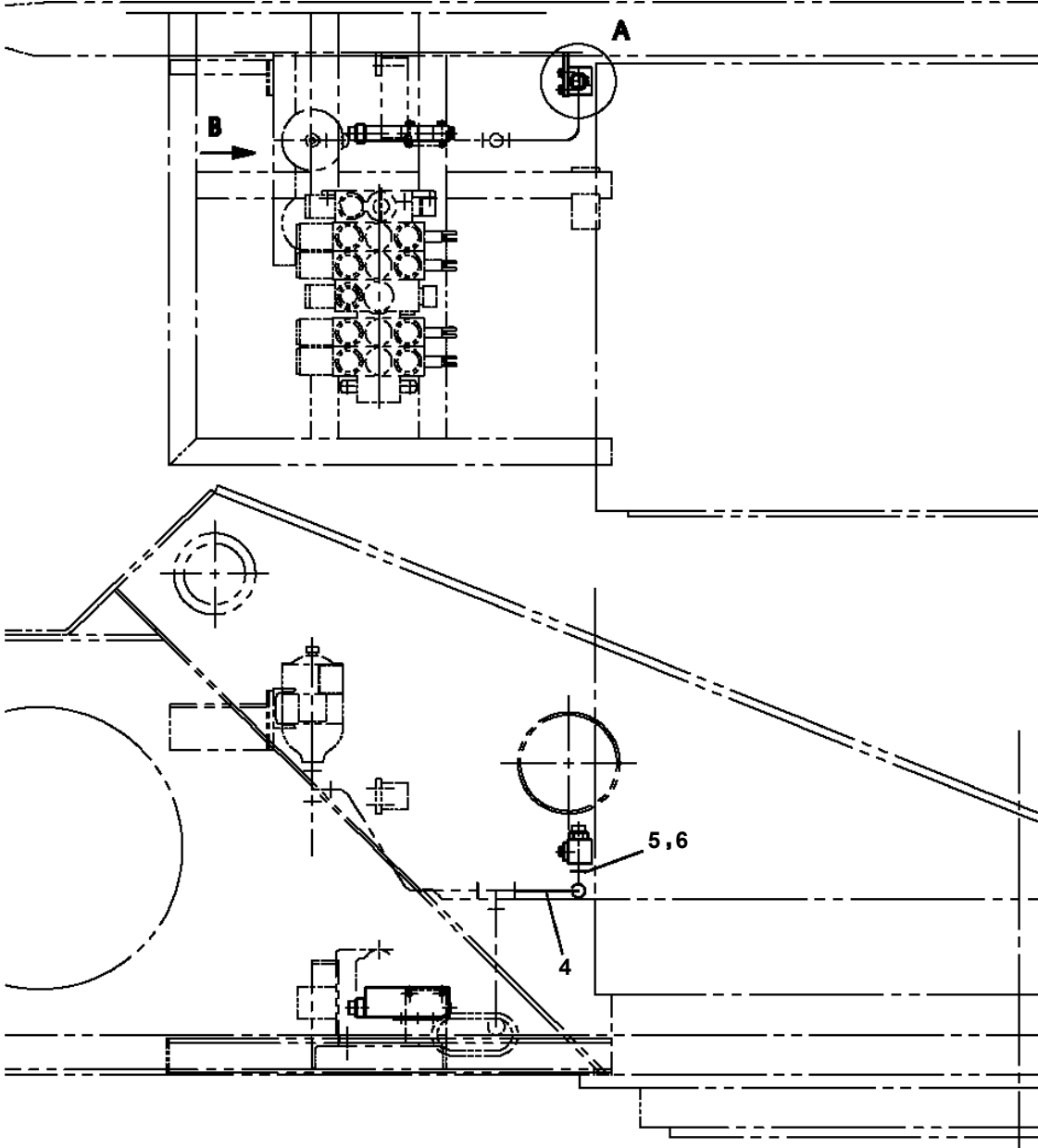
TL-250M-5-20101 4 BOOM + JIB,KS305R

PG1010146-06 BOOM
PG1040141-04 JIB
PG1040191-03 JIB
PG1050082-03 CYLINDER,TELESCOPING
PG1070028-01 REEL,HOSE
PG1070034-02 REEL,HOSE (MOUNT)
PG1120112-01 DETECTOR SYSTEM, BOOM LENGTH
PG1130032-01 DETECTOR,BOOM LENGTH
PG1130112-00 DETECTOR,BOOM LENGTH (WITH ANGLE DETECT)
PG1160000-03 DETECTOR,BOOM RETRACTION (TOP)
PG1200115-00 PIPING,TELESCOPING
PG1250004-00 ATTACHMENT,JIB (SUPPORT)
PG1360018-02 GUIDE,WIRE
PH1060199-01 DETECTOR,OVER WINDING (JIB&S/T)
PH1060262-01 DETECTOR,OVER WIND (WEIGHT,JIB & S/T)
PH1060277-02 DETECTOR,OVER WINDING (BOOM)
PH1070013-02 SWITCH,OVER WIND DETECTOR (BOOM)
PH1070025-01 SWITCH,OVER WIND DETECTOR (JIB & SINGLETOP)
PH1180169-00 CONNECTION,MOMENT LIMITER SYSTEM
PH1200015-02 PIPING,VENT
PH1250025-01 MOMENT LIMITER (AML-LA)
PH1250025-01 MOMENT LIMITER (AML-LA)
PI1010026-01 MOTOR,HYDRAULIC (TOSHIBA)
PI1010034-03 MOTOR,HYDRAULIC (SANWA)
PI1010072-01 MOTOR,HYDRAULIC (AIR CONDITIONER)
PI1010111-00 MOTOR,HYDRAULIC (SANWA)
PI1010121-01 MOTOR,HYDRAULIC (SWING)
PI1010124-00 MOTOR,HYDRAULIC (COOLER,OIL)
PI1010186-00 MOTOR,HYDRAULIC
PI1030007-01 CYLINDER,MASTER (MIYAKO)
PI1030008-01 CYLINDER,MASTER
PI1030011-00 CYLINDER,MASTER
PI1030012-00 CYLINDER,MASTER (NABCO)
PI1030040-00 CYLINDER,MASTER
PI1040011-00 CYLINDER,AIR
PI1050002-00 RESERVOIR,OIL
PI1100044-01 VALVE,RELIEF
PI1120086-02 VALVE,SOLENOID
PI1120138-04 VALVE,SOLENOID
PI1120146-02 VALVE,SOLENOID
PI1120344-00 VALVE,SOLENOID
PI1120345-00 VALVE,SOLENOID
PI1120353-00 VALVE,SOLENOID
PI1130005-01 VALVE,HYDRAULIC
PI1130022-01 VALVE,HYDRAULIC
PI1130049-00 VALVE,HYDRAULIC
PI1140017-00 VALVE,CHECK
PI1140042-00 VALVE,CHECK
PI1140082-00 VALVE,CHECK
PI1140100-00 VALVE,CHECK
PI1140170-03 VALVE,CHECK
PI1160007-00 VALVE,FLOW CONTROL
PI1170000-00 VALVE,PRESSURE DETECTOR
PI1250043-00 VALVE,COUNTERBALANCE (TOSHIBA)
PI1250066-00 VALVE,COUNTERBALANCE (SANWA)
PI1260011-02 CARTRIDGE, COUNTERBALANCE
PI1280047-00 VALVE,PILOT CHECK
PI1300012-03 FILTER,OIL (TANK,OIL)
PI1300120-02 FILTER,OIL
PK1100239-01 SWING FRAME
PK1120072-02 SWING TABLE
PK1120096-01 SWING TABLE
PK1140124-02 CAB,OPERATOR
PK1150000-00 SEAT,OPERATOR

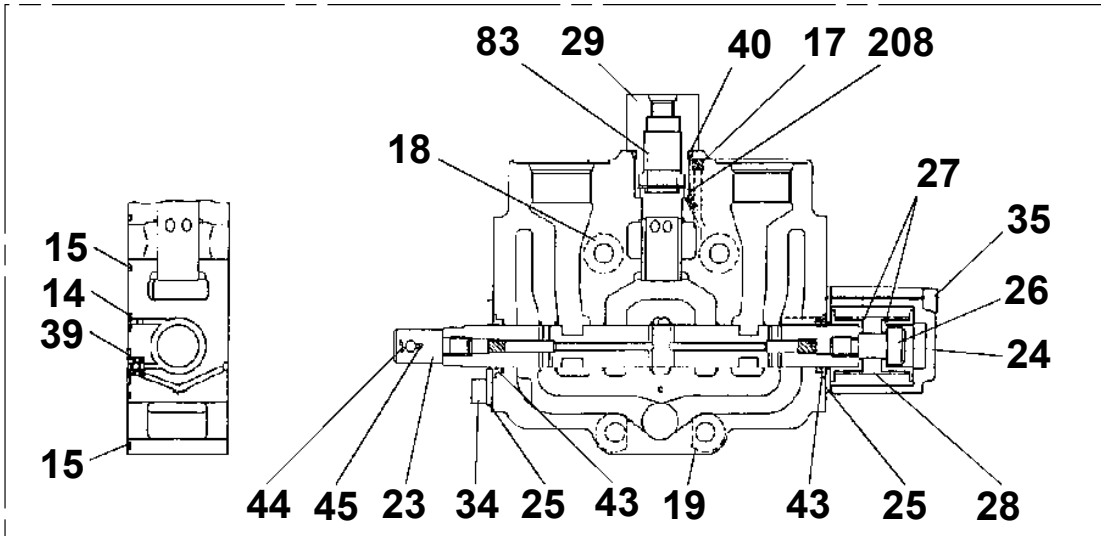
**TL-250M-5-20101 4 BOOM + JIB,KS305R
PB1200126-00 PIPING,SUCTION**



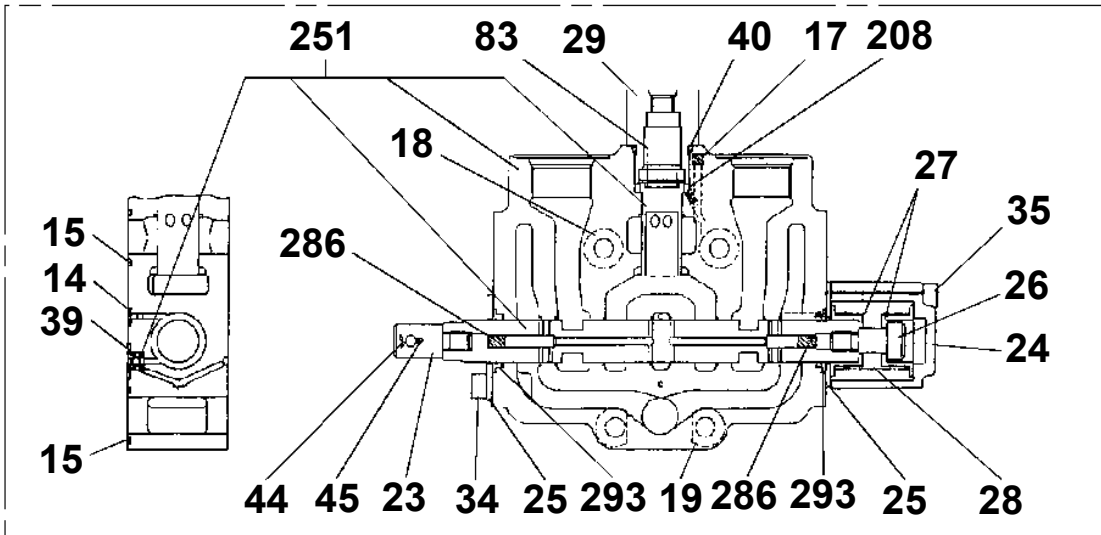
TL-250M-5-20101 4 BOOM + JIB,KS305R
PB1280083-00 PIPING,GAUGE



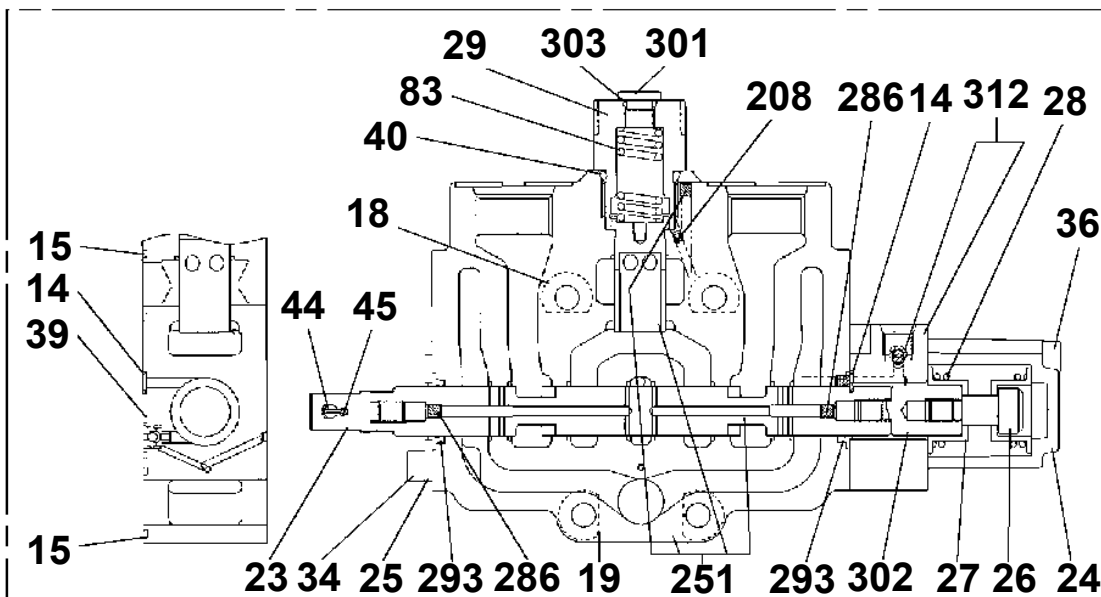
TL-250M-5-20101 4 BOOM + JIB,KS305R
 PB1320103-06 VALVE,MANUAL CONTROL



6
 MAIN WINCH
 (~1989.9)

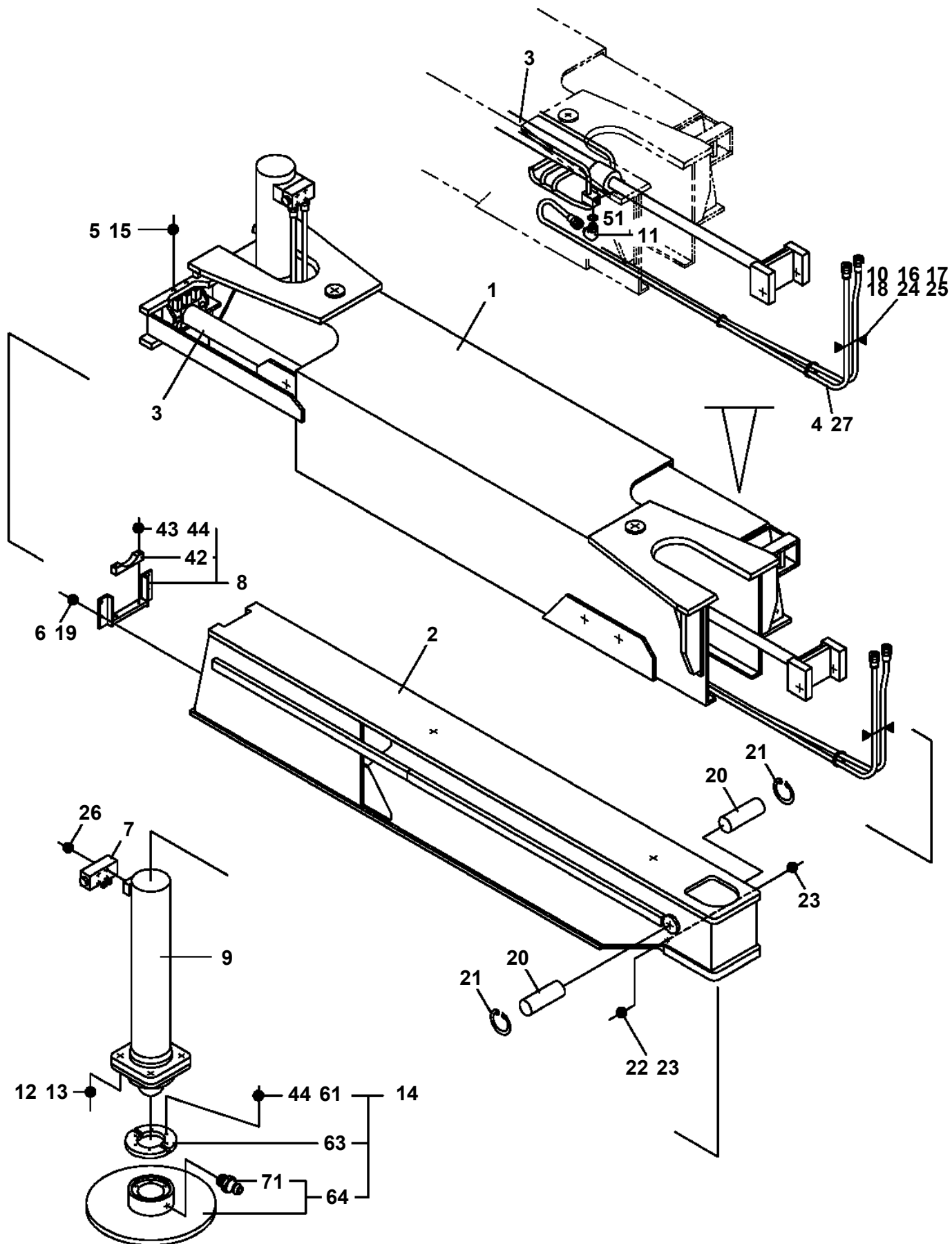


6
 MAIN WINCH
 (1989.10~)

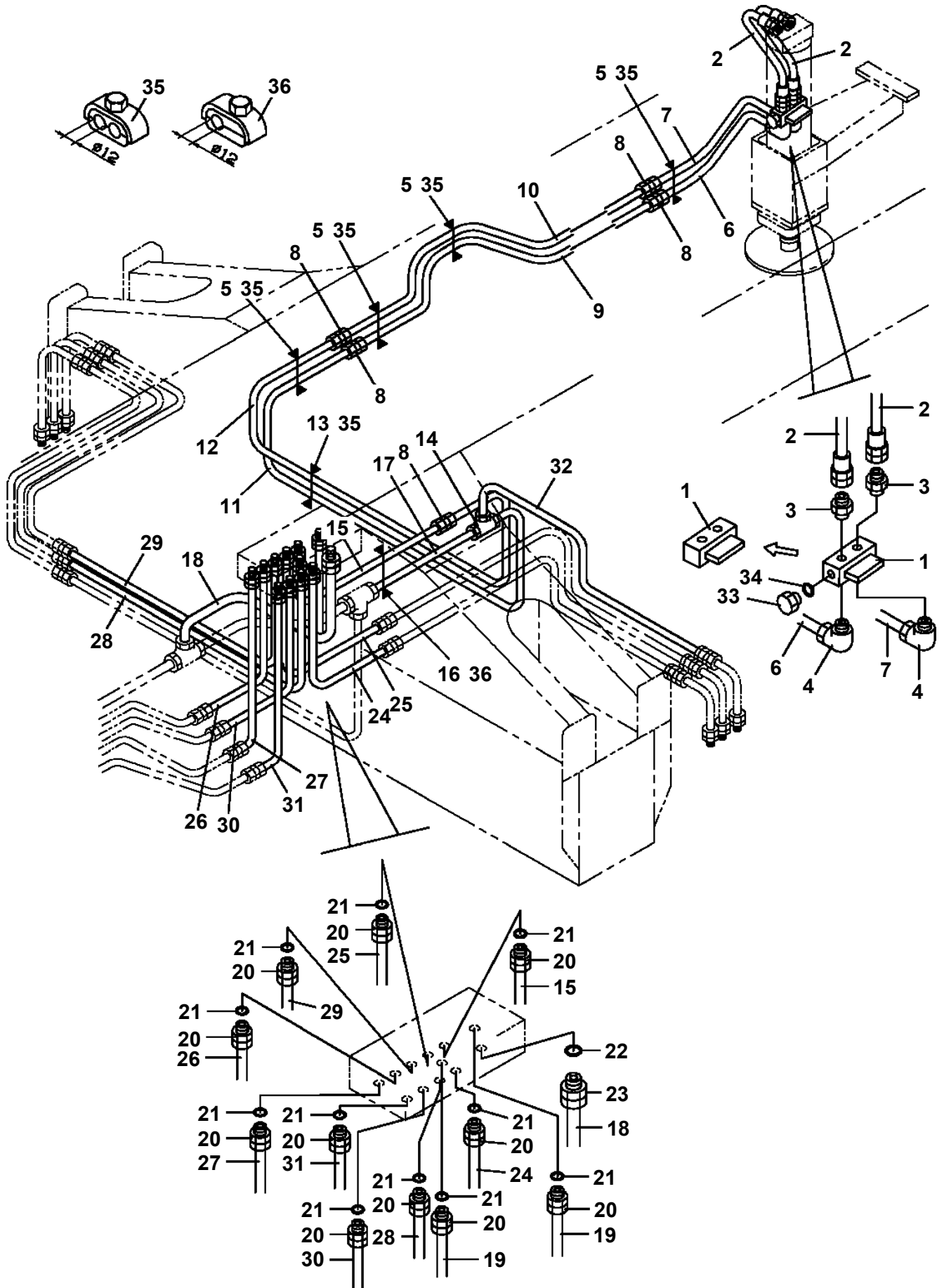


6
 MAIN WINCH

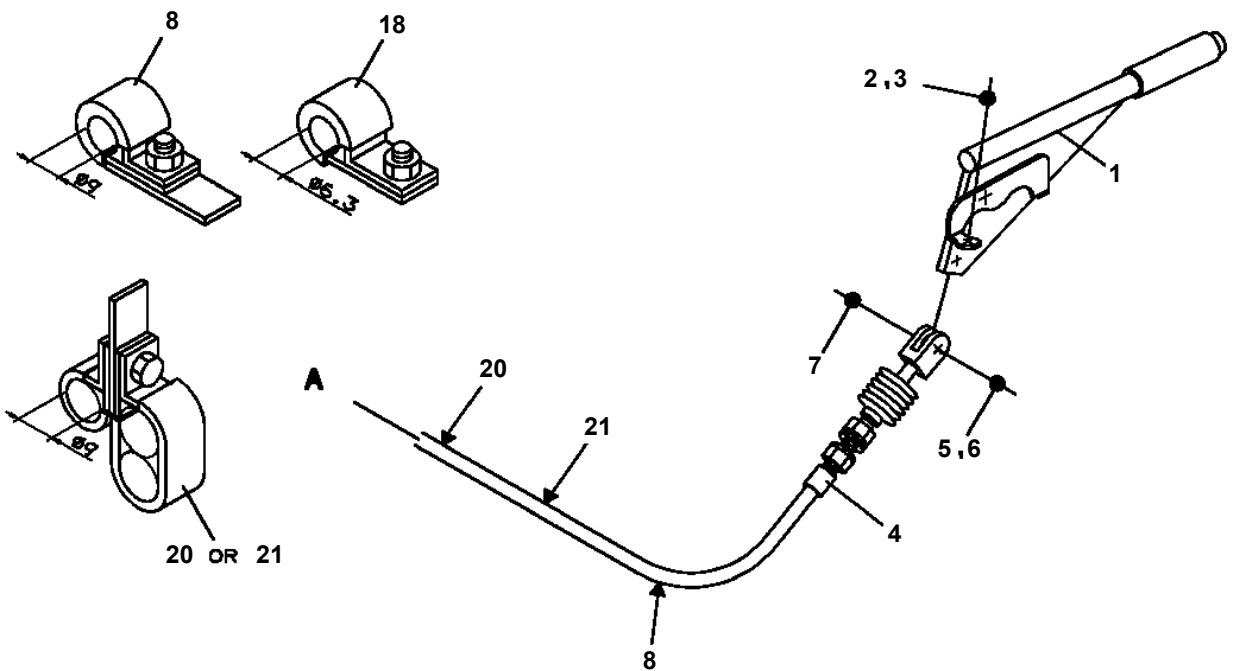
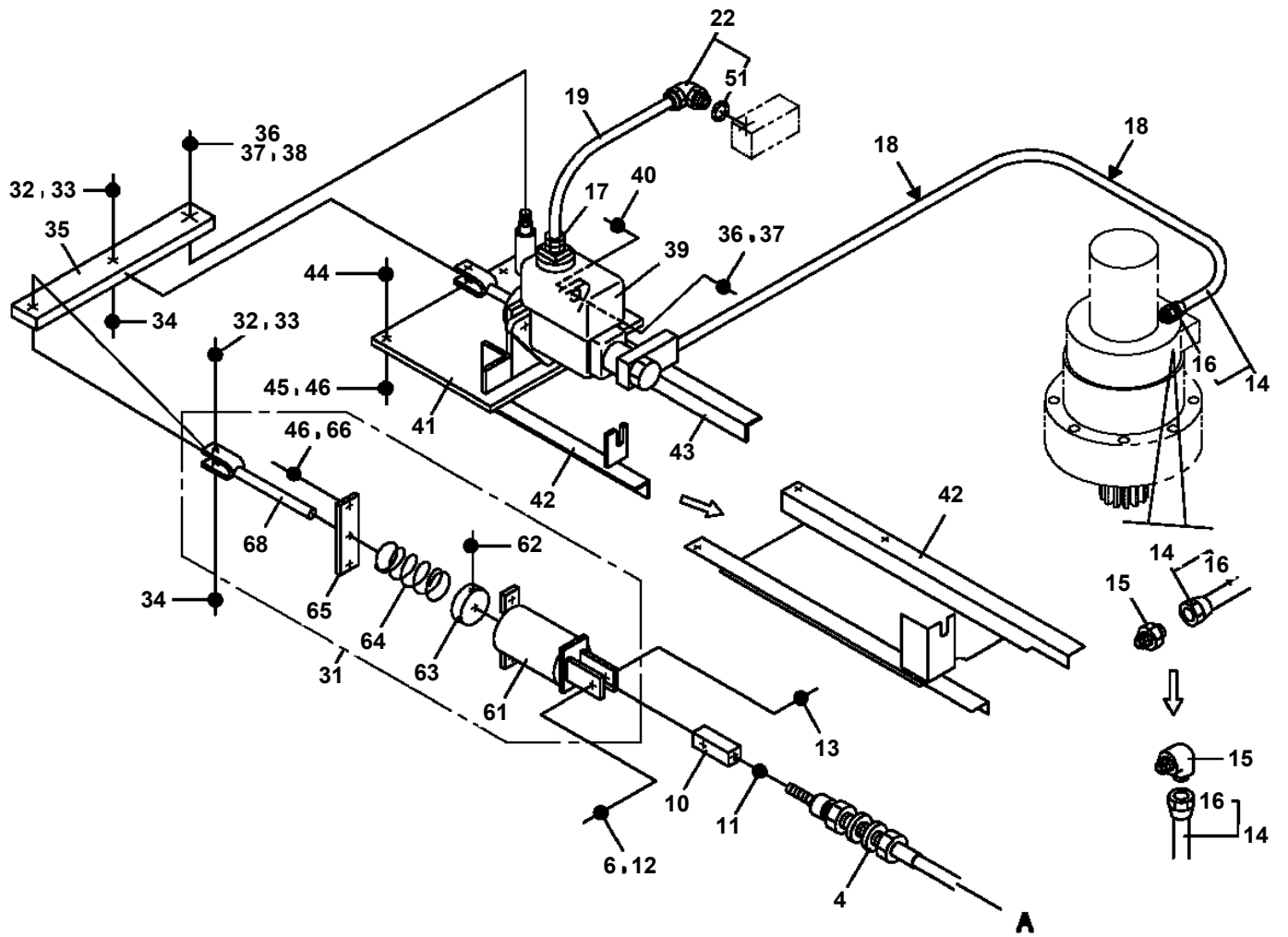
TL-250M-5-20101 4 BOOM + JIB,KS305R
PC1010542-00 OUTRIGGER (FRONT)



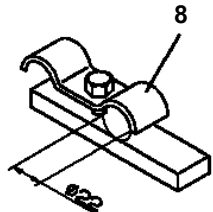
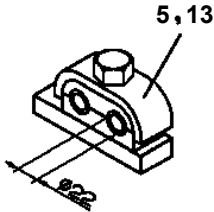
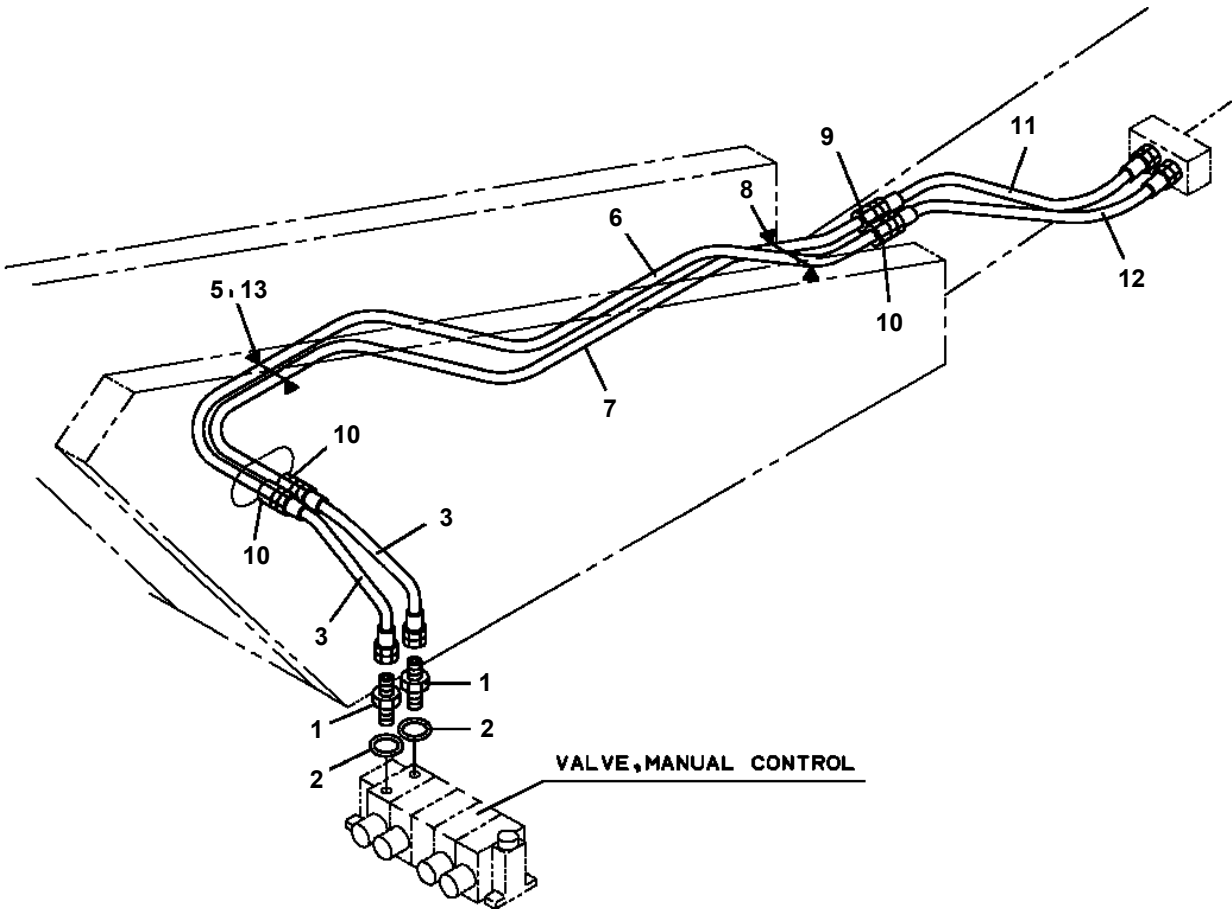
TL-250M-5-20101 4 BOOM + JIB,KS305R
PC1220065-00 PIPING,FRONT JACK



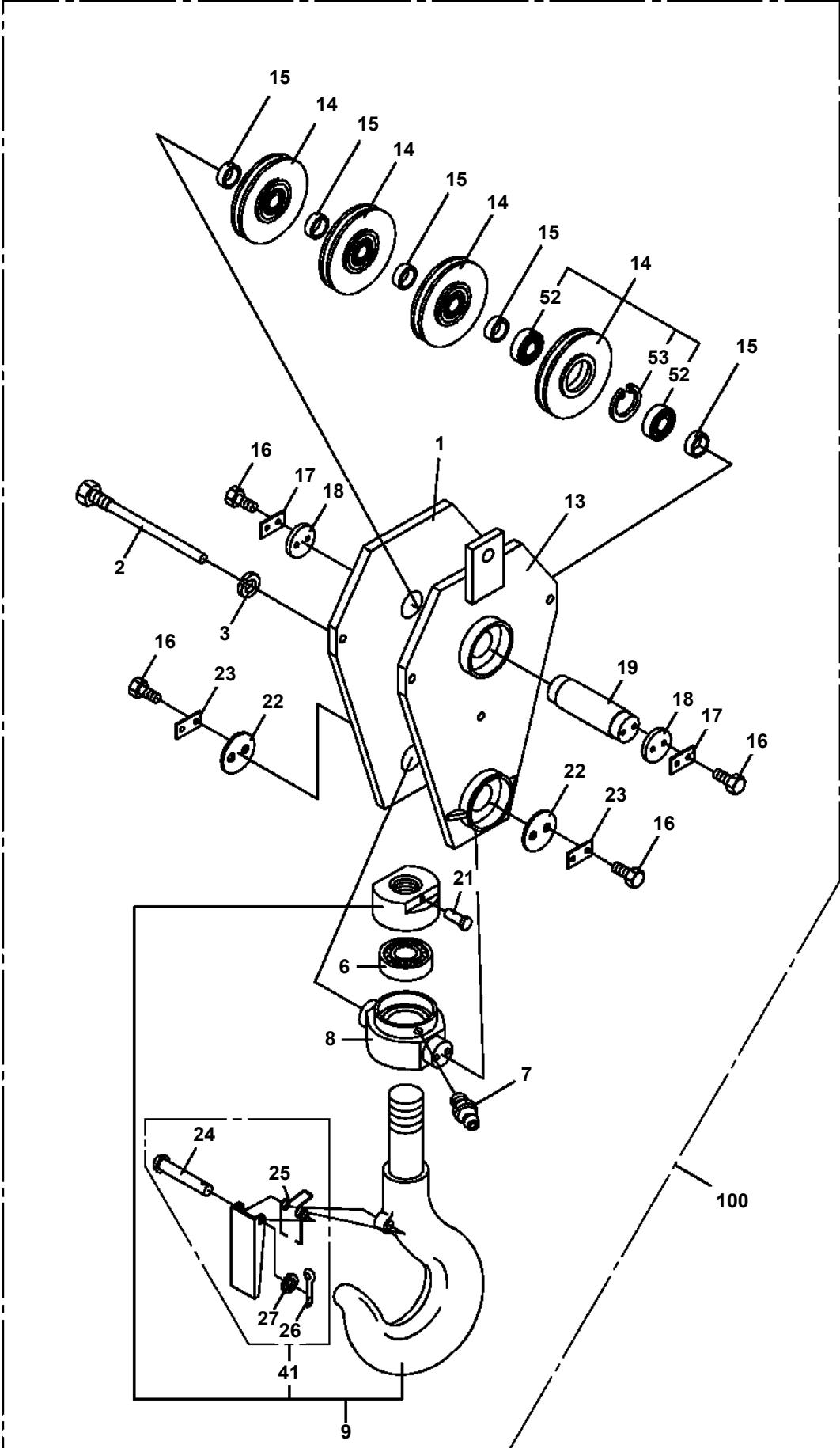
**TL-250M-5-20101 4 BOOM + JIB,KS305R
PD1100044-00 OPERATION SYSTEM, SWING BRAKE**



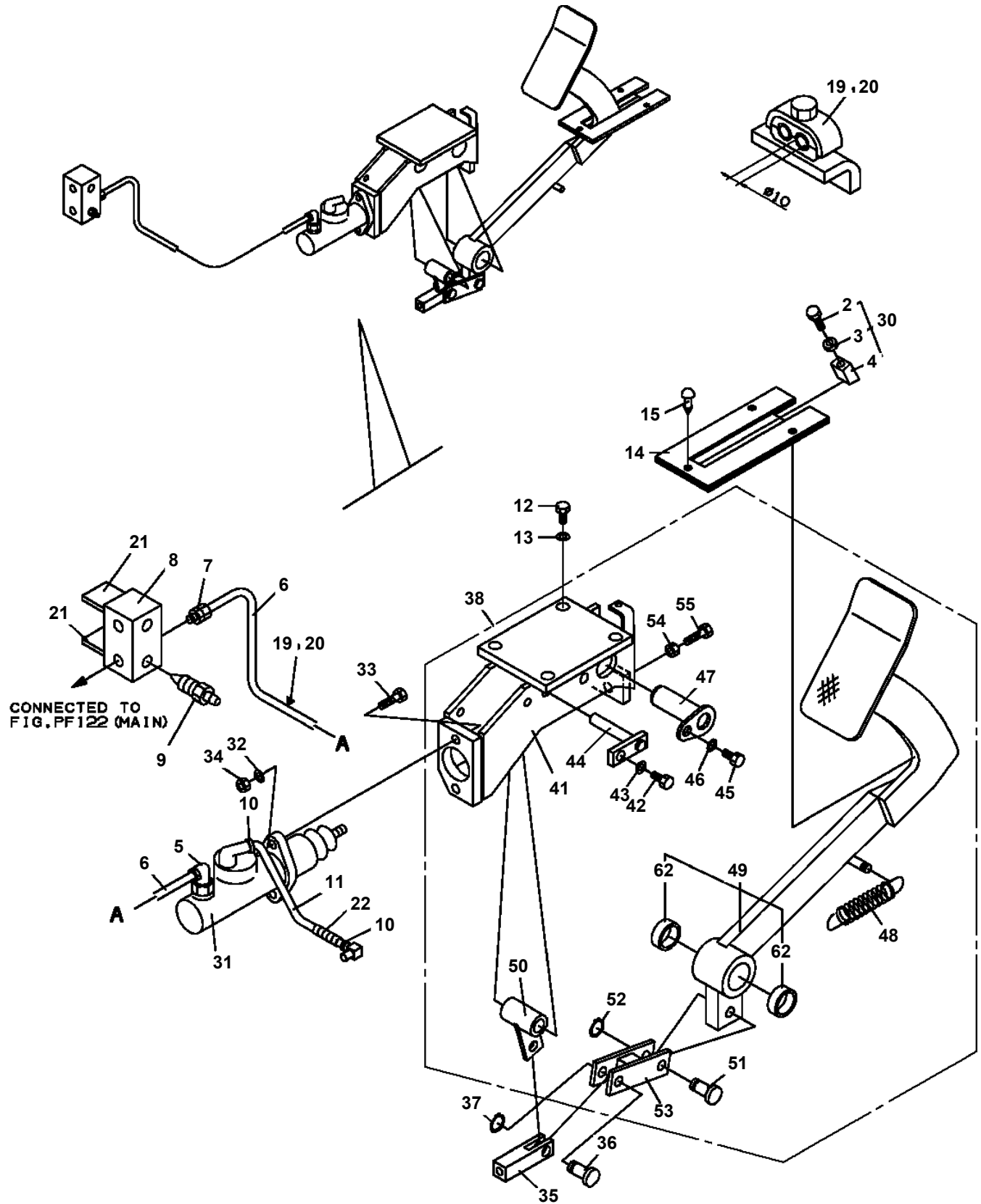
**TL-250M-5-20101 4 BOOM + JIB,KS305R
PE1200032-01 PIPING,ELEVATING**



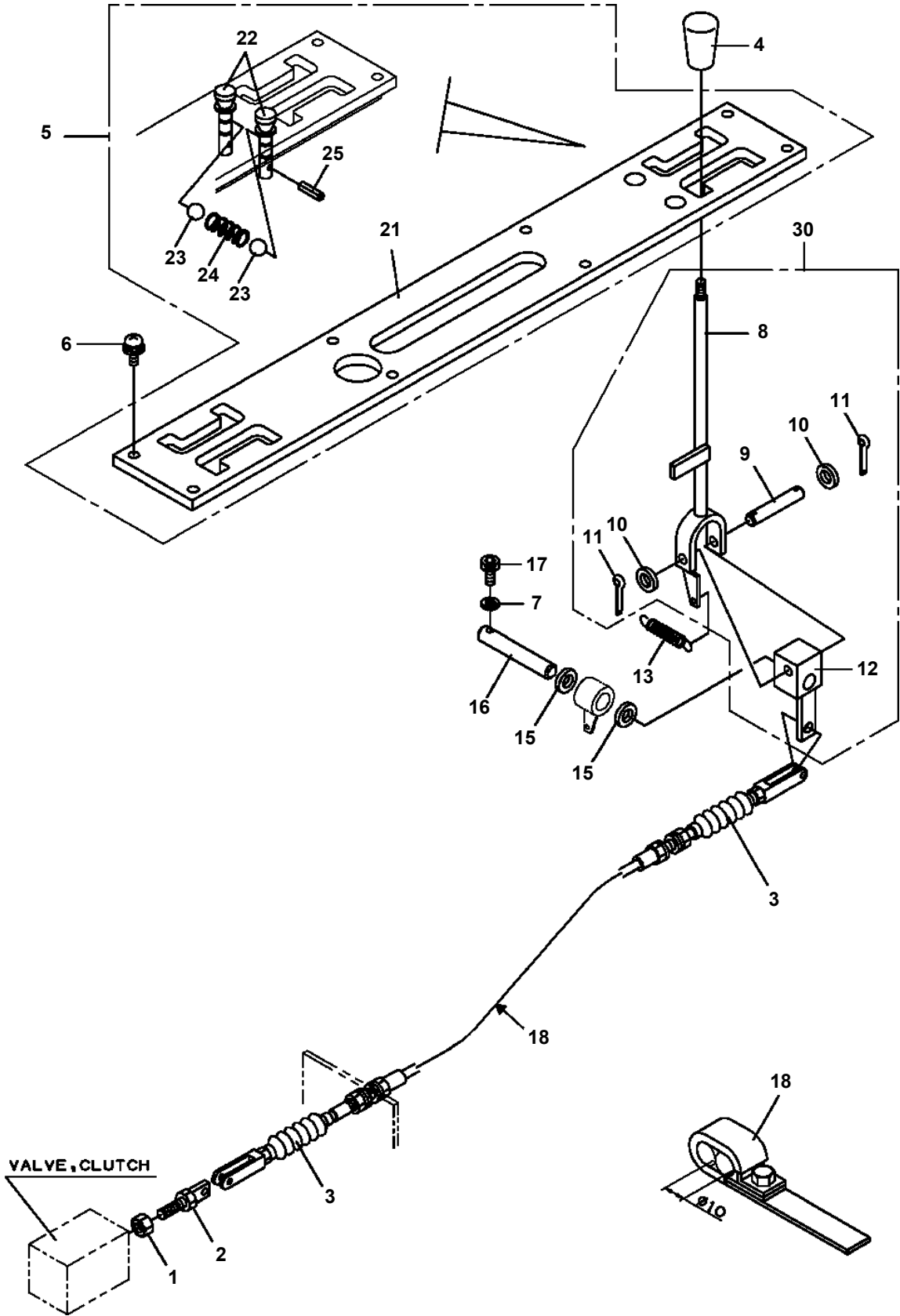
TL-250M-5-20101 4 BOOM + JIB,KS305R
PF1050086-00 HOOK (SHEAVE 4 PC'S)



**TL-250M-5-20101 4 BOOM + JIB,KS305R
PF1110025-04 OPE.ASSY, WINCH BRAKE (MAIN)**



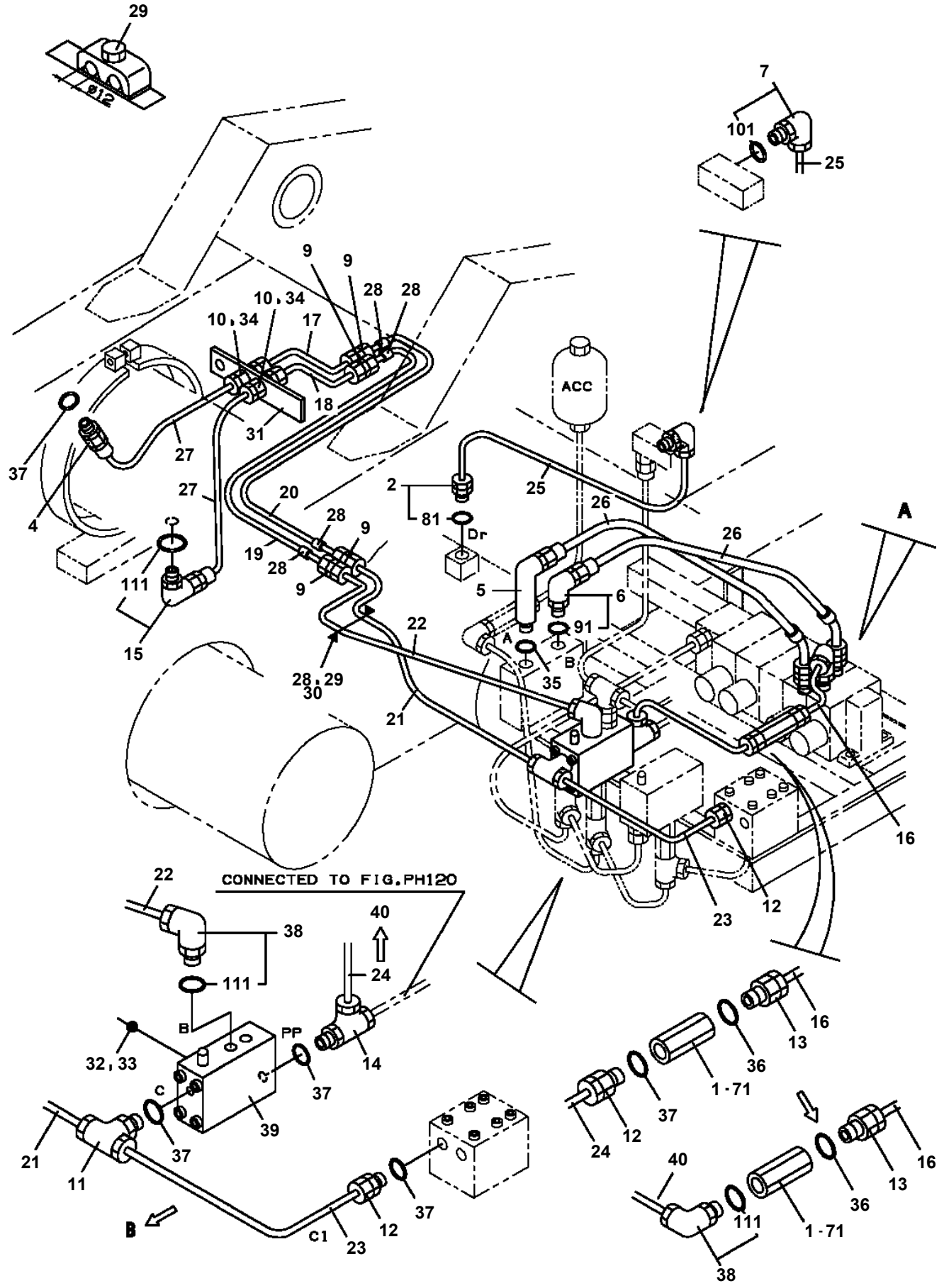
**TL-250M-5-20101 4 BOOM + JIB,KS305R
PF1160021-04 OPE.ASSY,CLUTCH (MAIN)**



TL-250M-5-20101 4 BOOM + JIB,KS305R

Pos No.	Parts No	Parts Name	Qty	Unit	Technical Data	Serial No (Start)	Serial No (End)	Re
1	36634680000	VALVE,CLUTCH	1					
2	36643940000	VALVE,HYDRAULIC	1					
3	36672140000	FILTER ASSY	2					
4	36672480000	ACCUMULATOR	1					
5	80302090101	FITTING	5		KCO10-020N			
6	80400160135	JOINT	2					
7	80305010080	FITTING,TEE	1		KTA10-000N			
8	80441010604	FITTING	1					
10	37000919710	JOINT,BUSHING	1					
11	80430621600	JOINT	1					
12	80481308080	JOINT	1		L,G1-G1			
13	80441030908	FITTING,ELBOW (WITH O-RING)	1		L,G1/2-12.7			
14	80303130101	FITTING,ELBOW	5		KLO10-020E			
15	80305151002	FITTING,TEE	5					
16	80301010080	FITTING	4		KUA10-000E			
17	80320020050	FITTING	2		KUF10-020N			
18	80305131002	FITTING,TEE	1		KTNO010-020N			
19	80441030604	FITTING,ELBOW	1					
20	80302090121	FITTING	2		KCO10-030N			
21	80441050604	FITTING,TEE	2					
22	80430620400	JOINT	1					
23	91002802900	O-RING	3		1B P29			
24	91002801400	O-RING	3		1B P14	340763		
	91002801400	O-RING	4		1B P14		340762	
25	91002801100	O-RING	14		1B P11			
26	80400160127	JOINT	1					
27	81408000130	PIPE,STEEL	1	M	10X1.8T			
28	81408000130	PIPE,STEEL	1	M	10X1.8T			
29	81408000130	PIPE,STEEL	1	M	10X1.8T			
30	81408000130	PIPE,STEEL	1	M	10X1.8T			
31	81408000130	PIPE,STEEL	1	M	10X1.8T			
32	81408000130	PIPE,STEEL	1	M	10X1.8T			
33	81408000130	PIPE,STEEL	1	M	10X1.8T			
34	81408000130	PIPE,STEEL	1	M	10X1.8T			
35	81408000130	PIPE,STEEL	1	M	10X1.8T			
36	81408000130	PIPE,STEEL	1	M	10X1.8T			
37	81408000130	PIPE,STEEL	1	M	10X1.8T			
38	81408000130	PIPE,STEEL	1	M	10X1.8T			
39	81408000130	PIPE,STEEL	1	M	10X1.8T			
40	81408000130	PIPE,STEEL	1	M	10X1.8T			
41	81408000130	PIPE,STEEL	1	M	10X1.8T			
42	81408000130	PIPE,STEEL	1	M	10X1.8T			
43	81408000130	PIPE,STEEL	1	M	10X1.8T			
44	37002420920	HOSE	2		L=1400			
45	89640101000	HOSE	1		880-NFK,1M			
46	89640201000	HOSE	1		660-NFK,1M			
47	89640201000	HOSE	1		660-NFK,1M			
48	89640201000	HOSE	1		660-NFK,1M			
49	37002415780	HOSE	2		L=530			
50	37000711000	CLAMP ASSY	1		12-1			
51	37000711080	CLAMP ASSY	1		12-2			
52	33344200400	SUPPORT	1					
53	37000711470	CLAMP ASSY	1					
54	37000711560	CLAMP ASSY	1					
55	90101210020	BOLT	2		M10X20			
56	90101208016	BOLT	4		M8X16			
57	90304111601	WASHER,TOOTH	2		16			
58	90302041001	WASHER,SPRING	2		10			
59	90302040801	WASHER,SPRING	4		8			
60	37000300720	SLEEVE	7		12-10			
61	37000502450	PLATE	1					
62	37000514160	PLATE	1					
63	37000502970	PLATE	1					

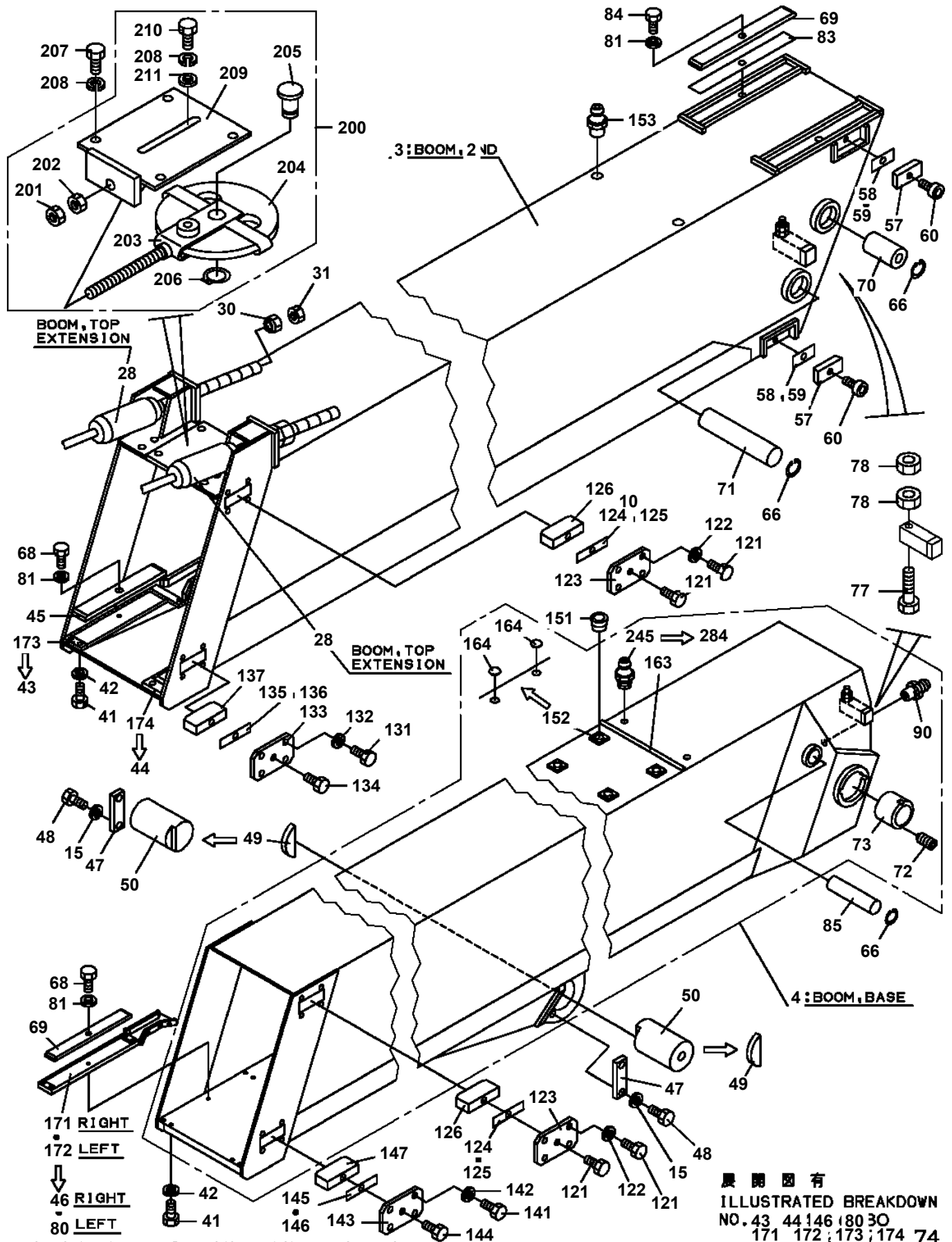
**TL-250M-5-20101 4 BOOM + JIB,KS305R
PF1200265-02 PIPING,WINCH (AUX.)**



TL-250M-5-20101 4 BOOM + JIB,KS305R

Pos No.	Parts No	Parts Name	Qty	Unit	Technical Data	Serial No (Start)	Serial No (End)	Remarks	P
1	36672739510	JOINT,WINCH ROTARY	1						

**TL-250M-5-20101 4 BOOM + JIB,KS305R
PG1010146-06 BOOM**

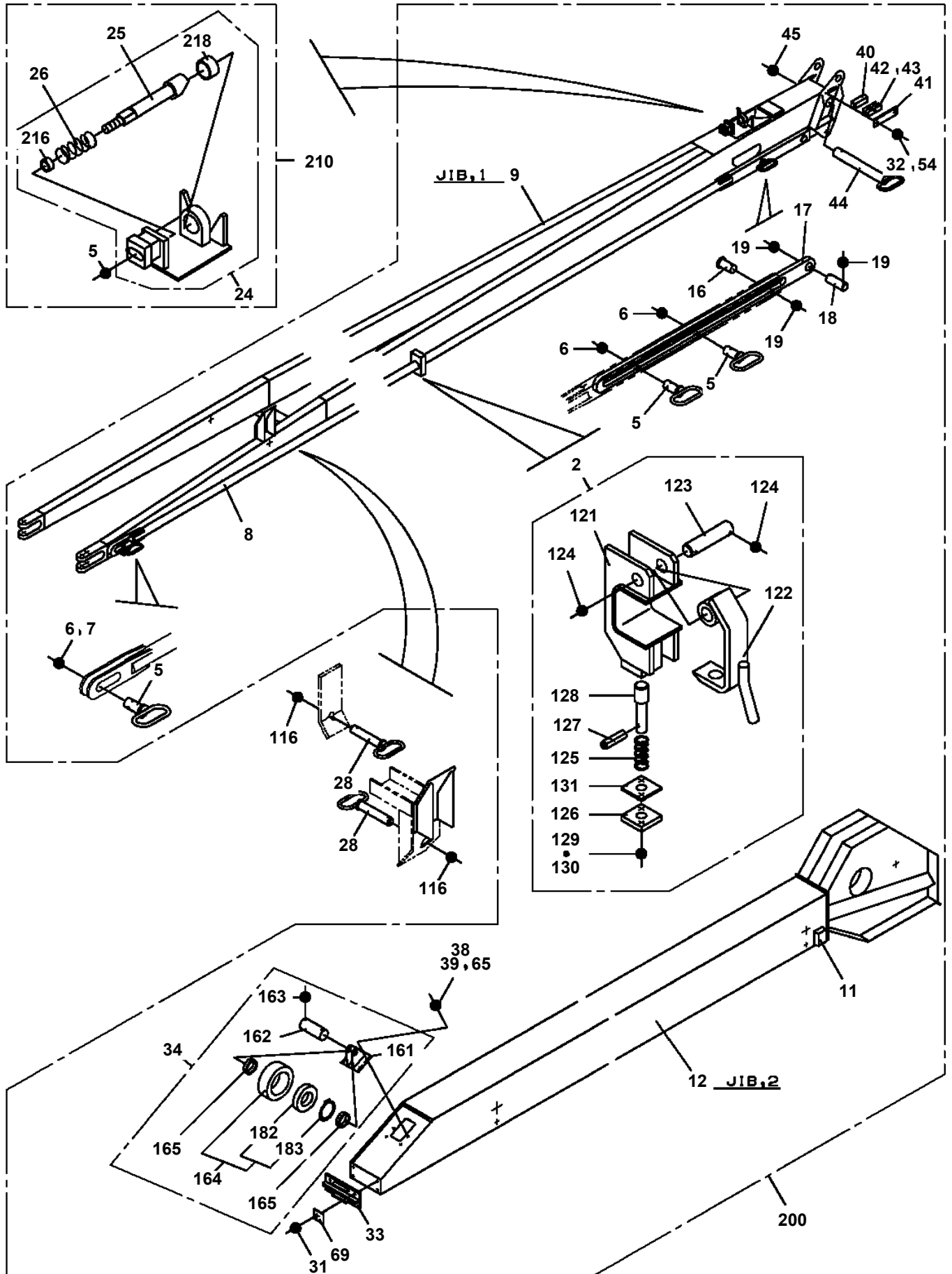


図中の左右の表示は、ブーム後端から先端を見たものです。

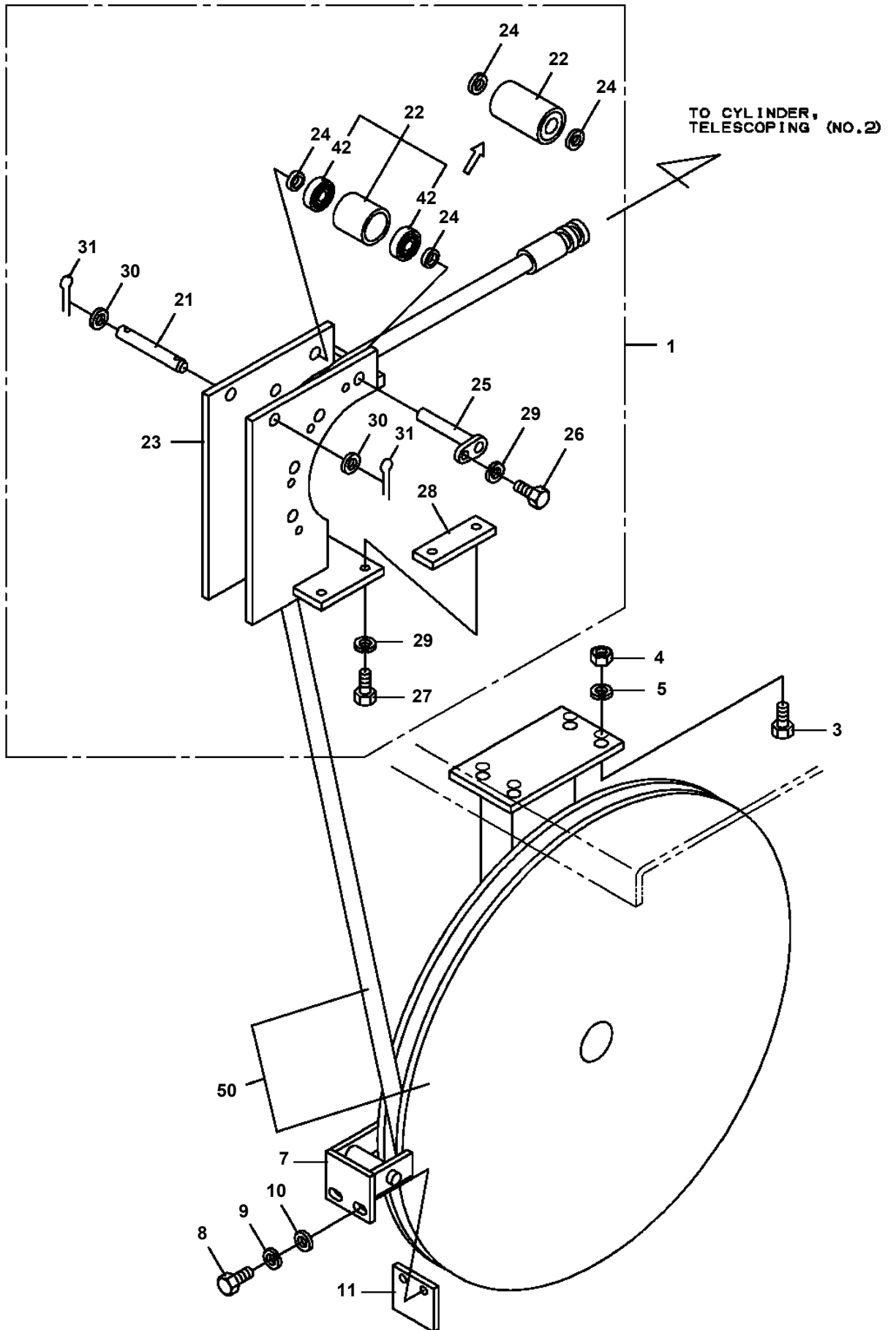
THE RIGHT AND LEFT IN FIGURE ARE THE EXPRESSION THAT SEES FROM BOOM END TO TOP.

展開図有
ILLUSTRATED BREAKDOWN
NO. 43 44 146 180 30
171 172 ; 173 ; 174 74

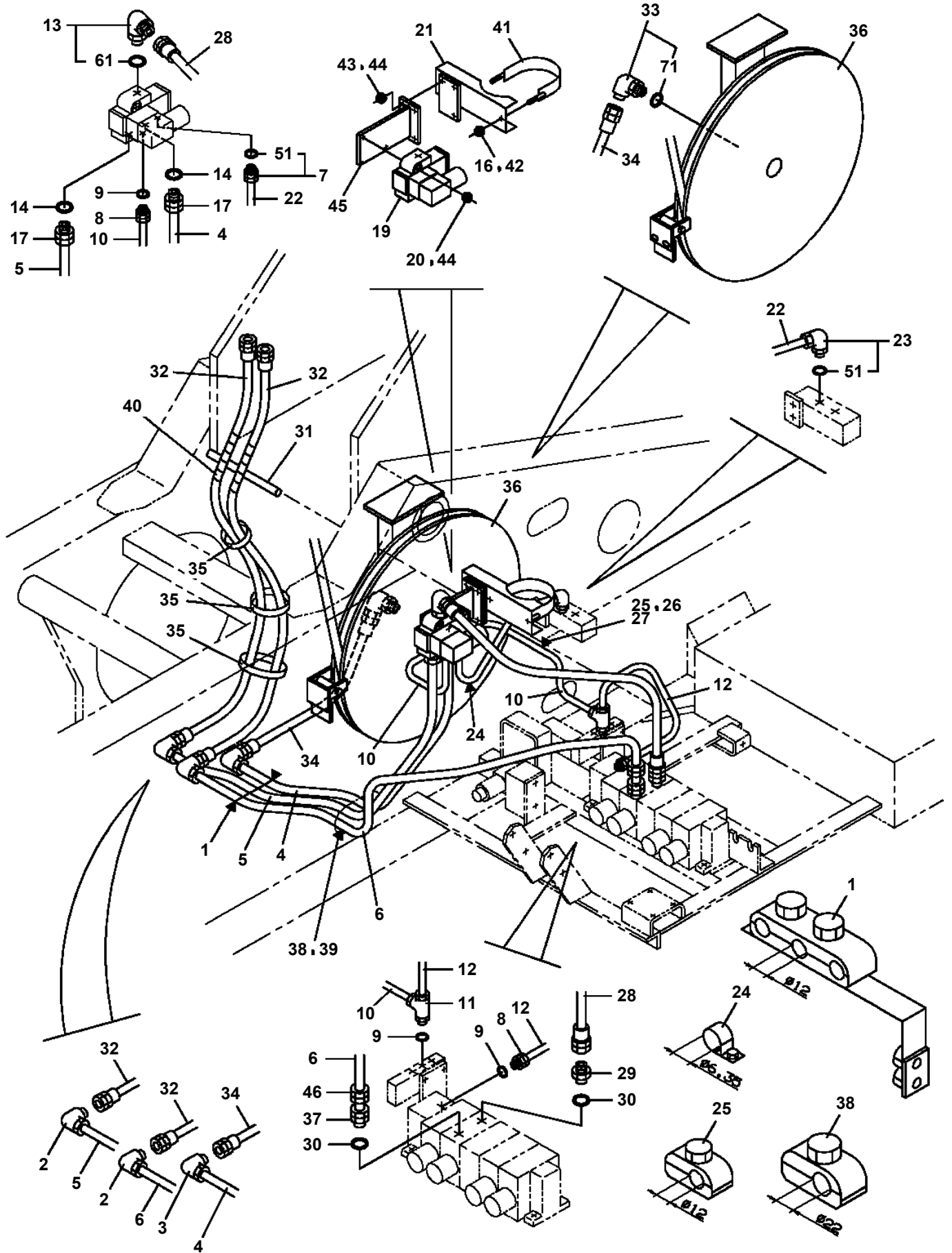
TL-250M-5-20101 4 BOOM + JIB,KS305R
 PG1040191-03 JIB



**TL-250M-5-20101 4 BOOM + JIB,KS305R
PG1070034-02 REEL,HOSE (MOUNT)**



**TL-250M-5-20101 4 BOOM + JIB,KS305R
PG1200115-00 PIPING,TELESCOPING**



TL-250M-5-20101 4 BOOM + JIB,KS305R

Pos No.	Parts No	Parts Name	Qty	Unit	Technical Data	Serial No (Start)	Serial No
1	82100002005	CLAMP	1		WRC8		
2	34371314100	SWITCH (OVER WIND/JIB & SINGLE TOP)	1				
3	14128208000	RING	4				
4	34371212101	WEIGHT ASSY	1				
5	37001909070	ROPE,WIRE	1				
6	82401500700	HOOK	2				
7	34371314300	SUPPORT	1				
8	37001900310	WIRE	1				
22	90101212040	BOLT	2		M12X40		
23	90302041201	WASHER,SPRING	2		12		
24	90303071201	WASHER,PLAIN	2		12		
50	34371314000	DETECTOR,OVER WIND (WEIGHT,JIB & S/T)	1				

TL-250M-5-20101 4 BOOM + JIB,KS305R

Pos No.	Parts No	Parts Name	Qty	Unit	Technical Data	Serial No (Start)	Serial No (End)	Remarks	Pages
1	80302090101	FITTING	9		KCO10-020N				
2	91002801100	O-RING	9		1B P11				
3	81408000130	PIPE,STEEL	1	M	10X1.8T				
4	81408000130	PIPE,STEEL	1	M	10X1.8T				
5	81408000130	PIPE,STEEL	1	M	10X1.8T				
6	80305010080	FITTING,TEE	1		KTA10-000N				
7	81408000130	PIPE,STEEL	1	M	10X1.8T				
8	81408000130	PIPE,STEEL	1	M	10X1.8T				
9	36623860000	VALVE,CHECK	1						00012
10	81408000130	PIPE,STEEL	1	M	10X1.8T				
11	81408000130	PIPE,STEEL	1	M	10X1.8T				
12	36646080000	VALVE,SOLENOID	1						00011
13	90101208016	BOLT	2		M8X16				
14	90302040801	WASHER,SPRING	2		8				

CLICK HERE TO **DOWNLOAD** THE COMPLETE MANUAL

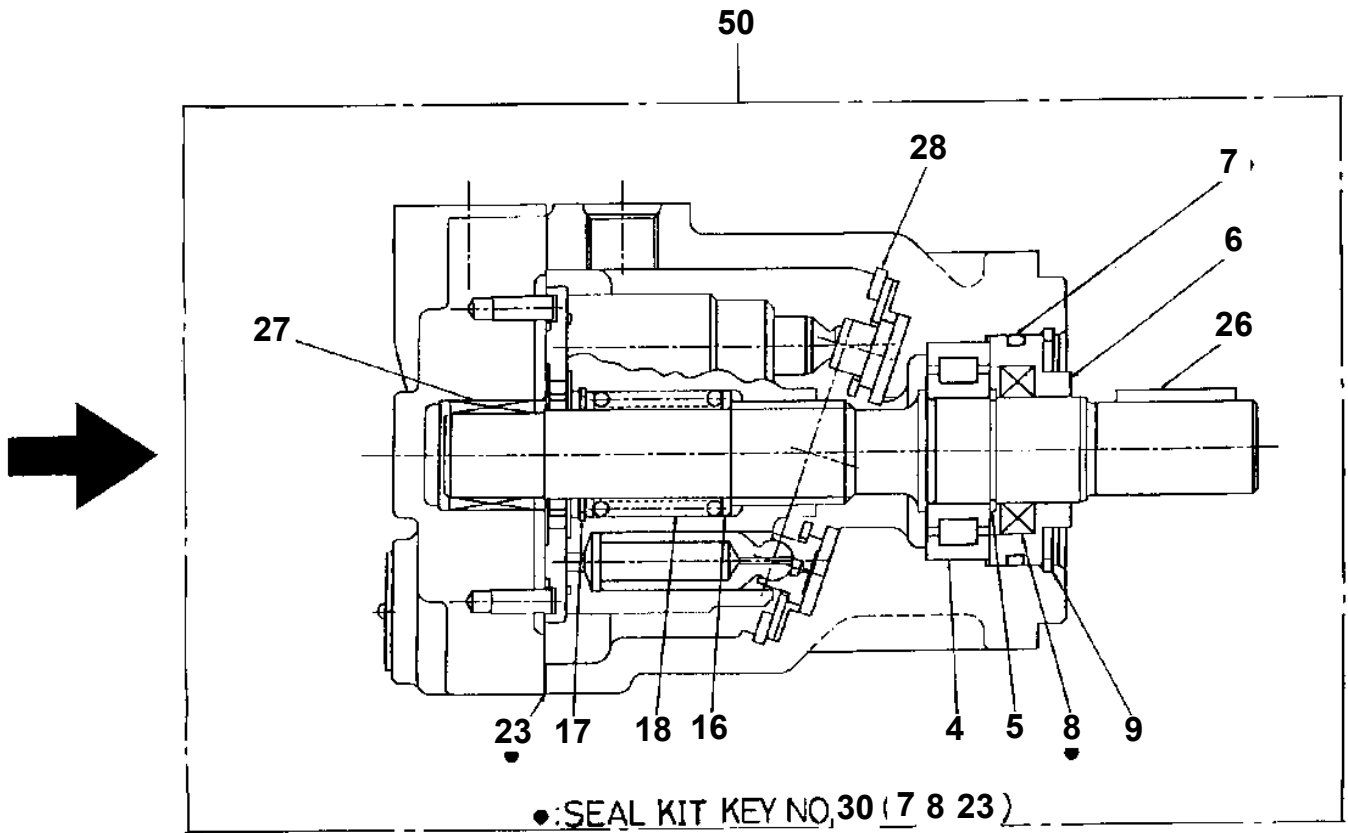
- Thank you very much for reading the preview of the manual.
- You can download the complete manual from: www.heydownloads.com by clicking the link below



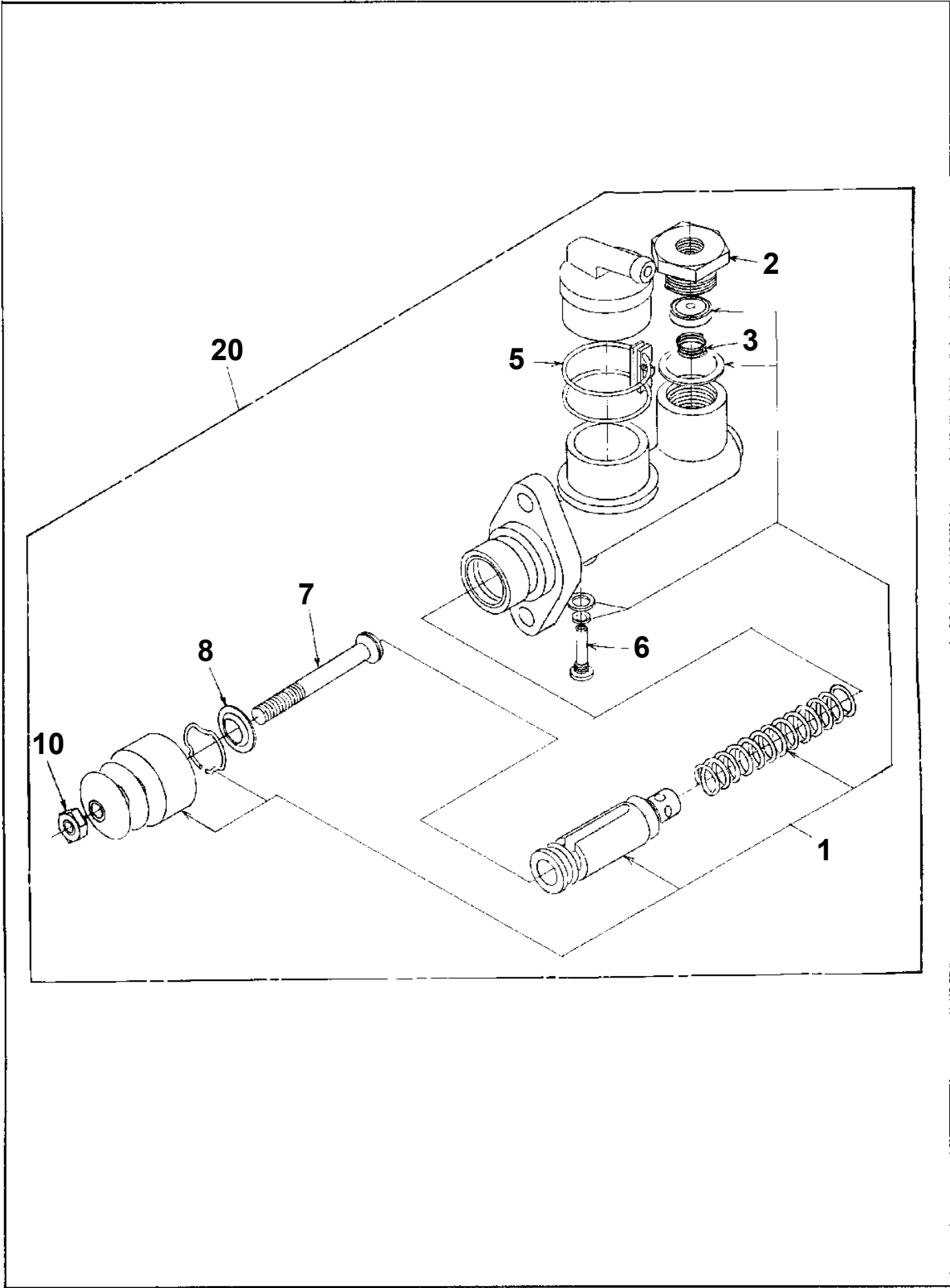
- Please note: If there is no response to CLICKING the link, please download this PDF first and then click on it.

CLICK HERE TO **DOWNLOAD** THE COMPLETE MANUAL

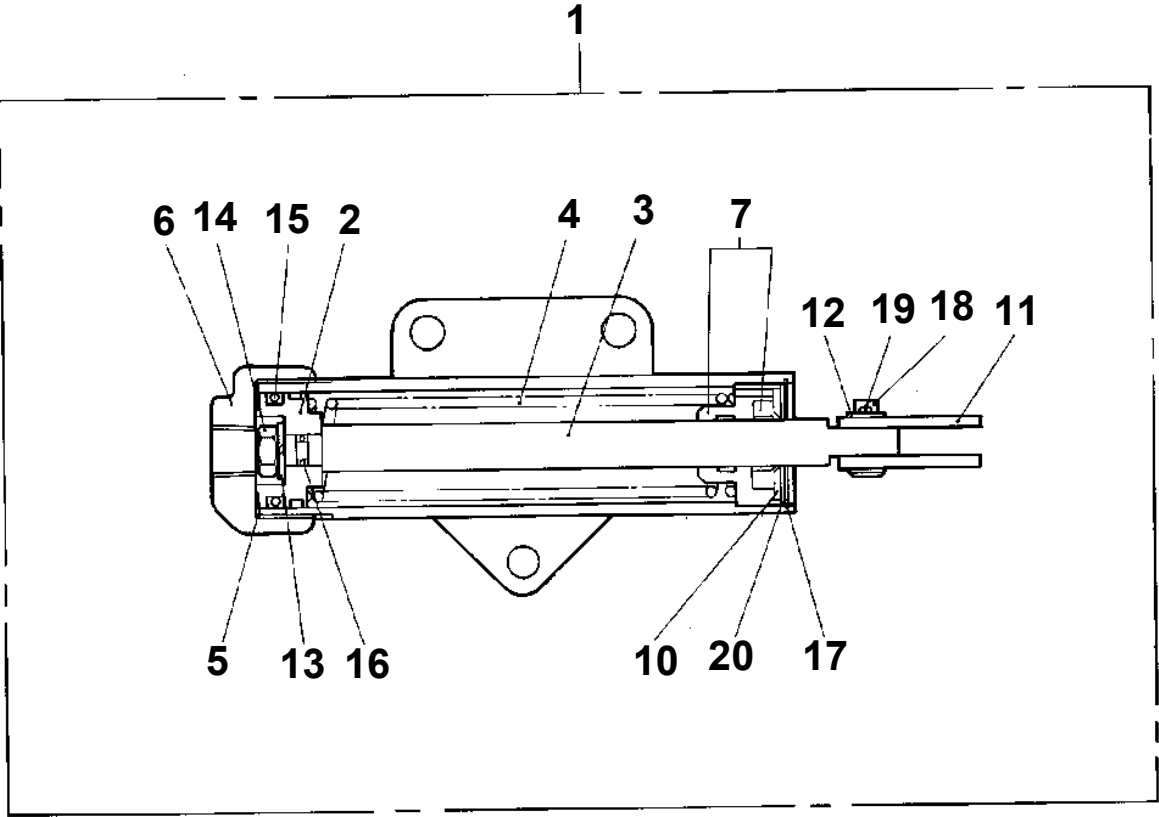
TL-250M-5-20101 4 BOOM + JIB,KS305R
PI1010072-01 MOTOR,HYDRAULIC (AIR CONDITIONER)



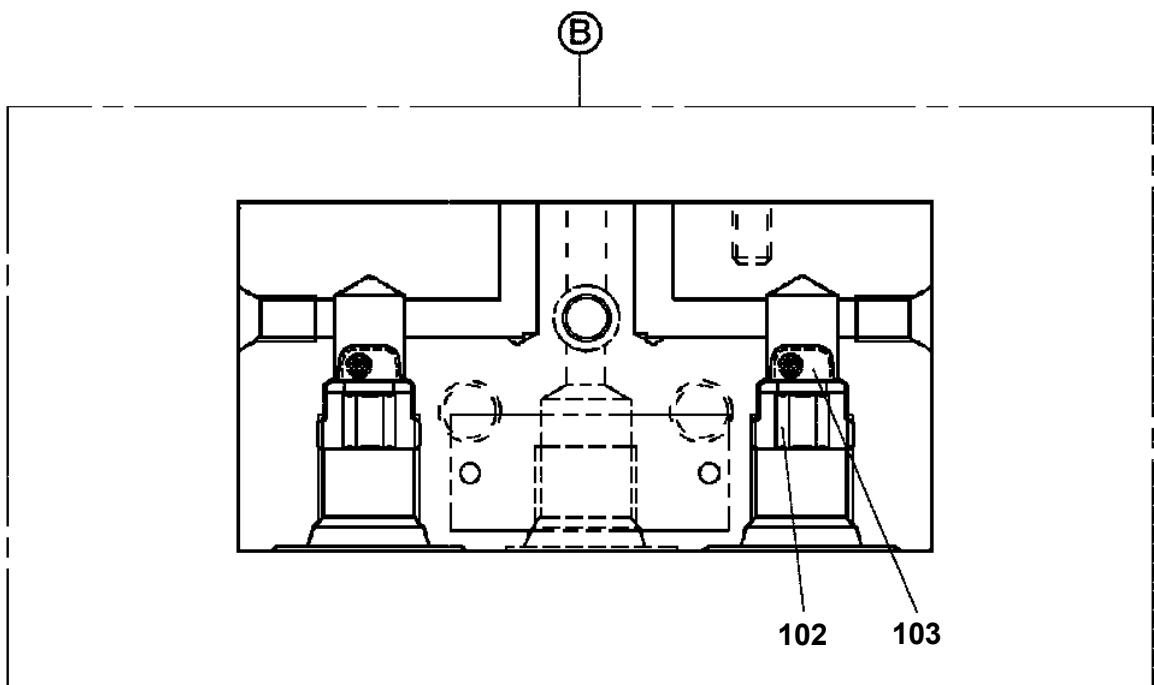
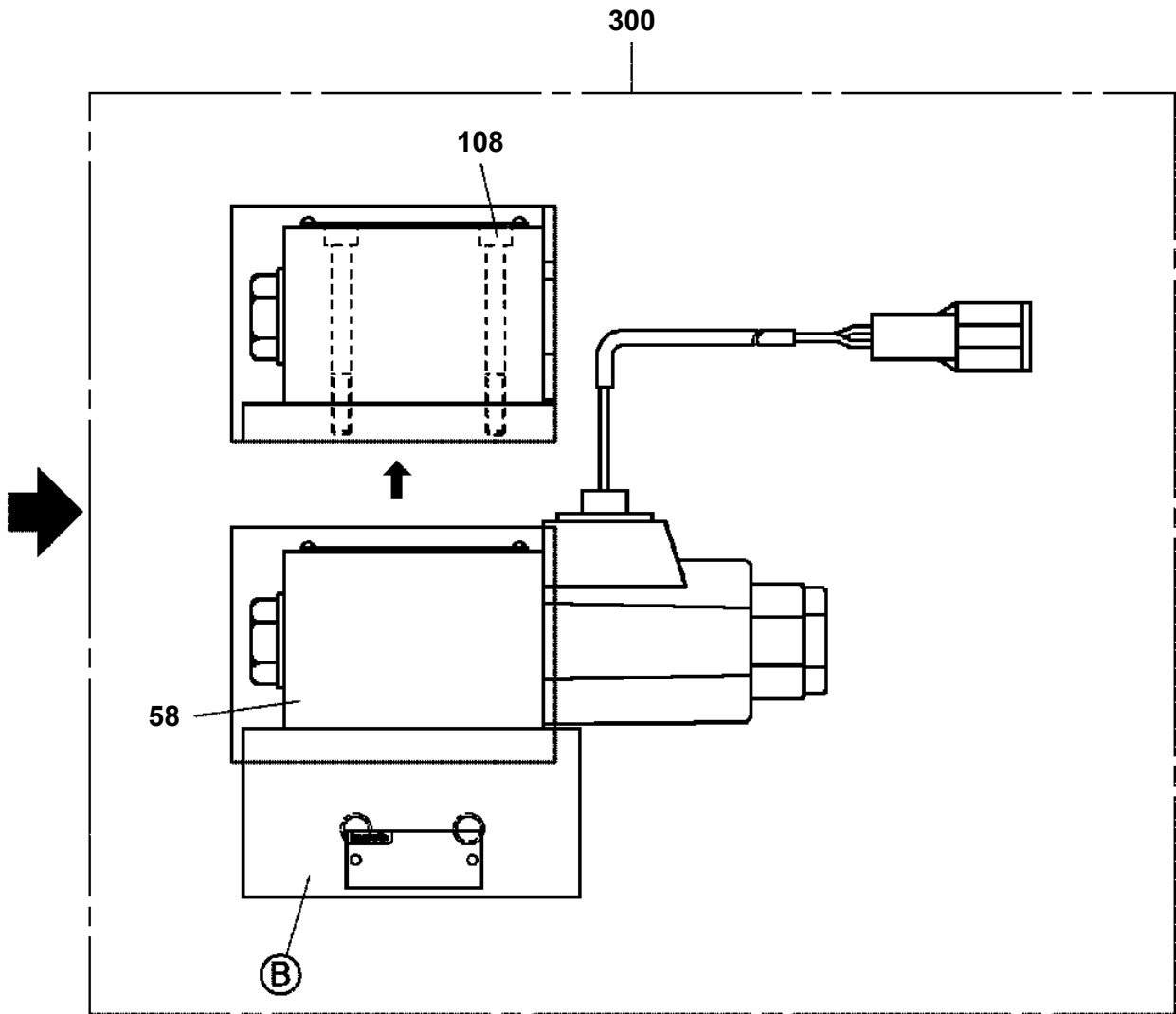
TL-250M-5-20101 4 BOOM + JIB,KS305R
PI1030007-01 CYLINDER,MASTER (MIYAKO)



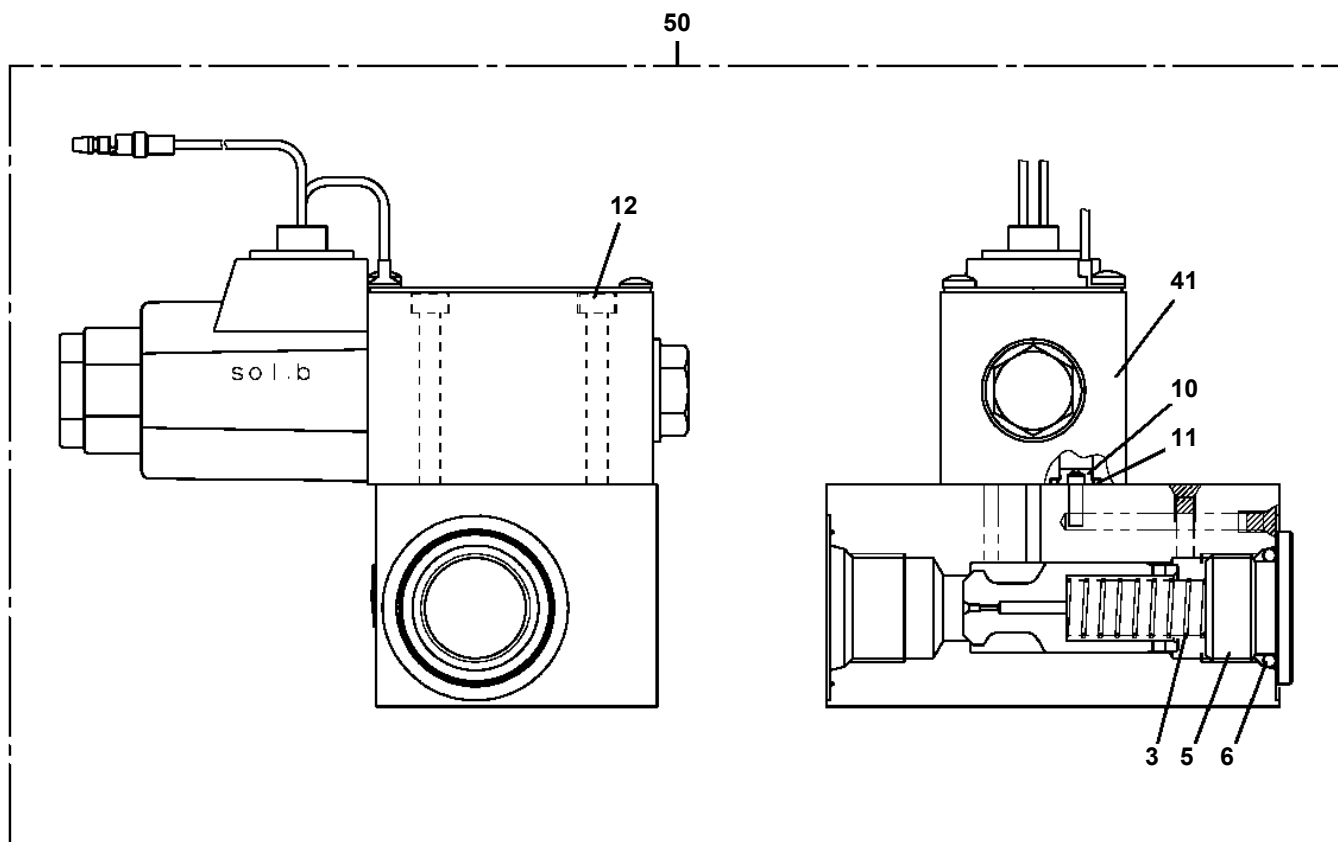
TL-250M-5-20101 4 BOOM + JIB,KS305R
PI1040011-00 CYLINDER,AIR



TL-250M-5-20101 4 BOOM + JIB,KS305R
PI1120138-04 VALVE,SOLENOID

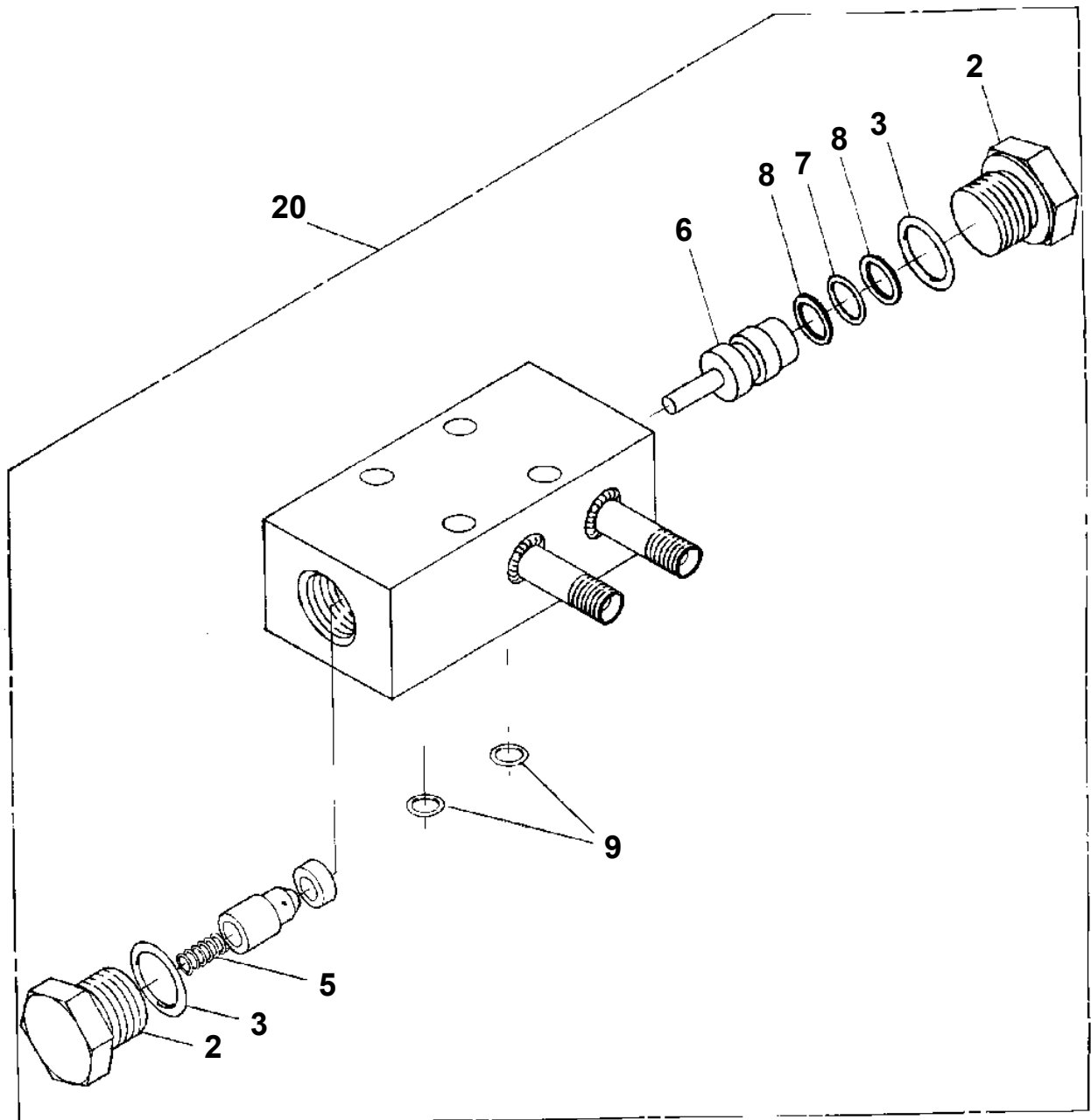


TL-250M-5-20101 4 BOOM + JIB,KS305R
PI1120353-00 VALVE,SOLENOID



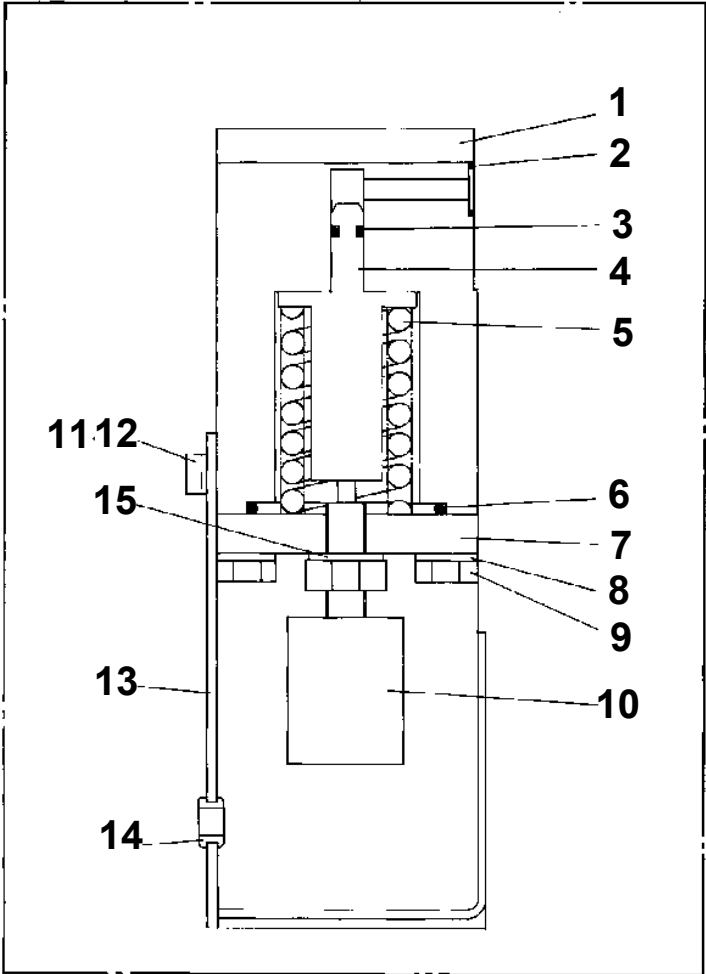
C

TL-250M-5-20101 4 BOOM + JIB,KS305R
PI1140042-00 VALVE,CHECK



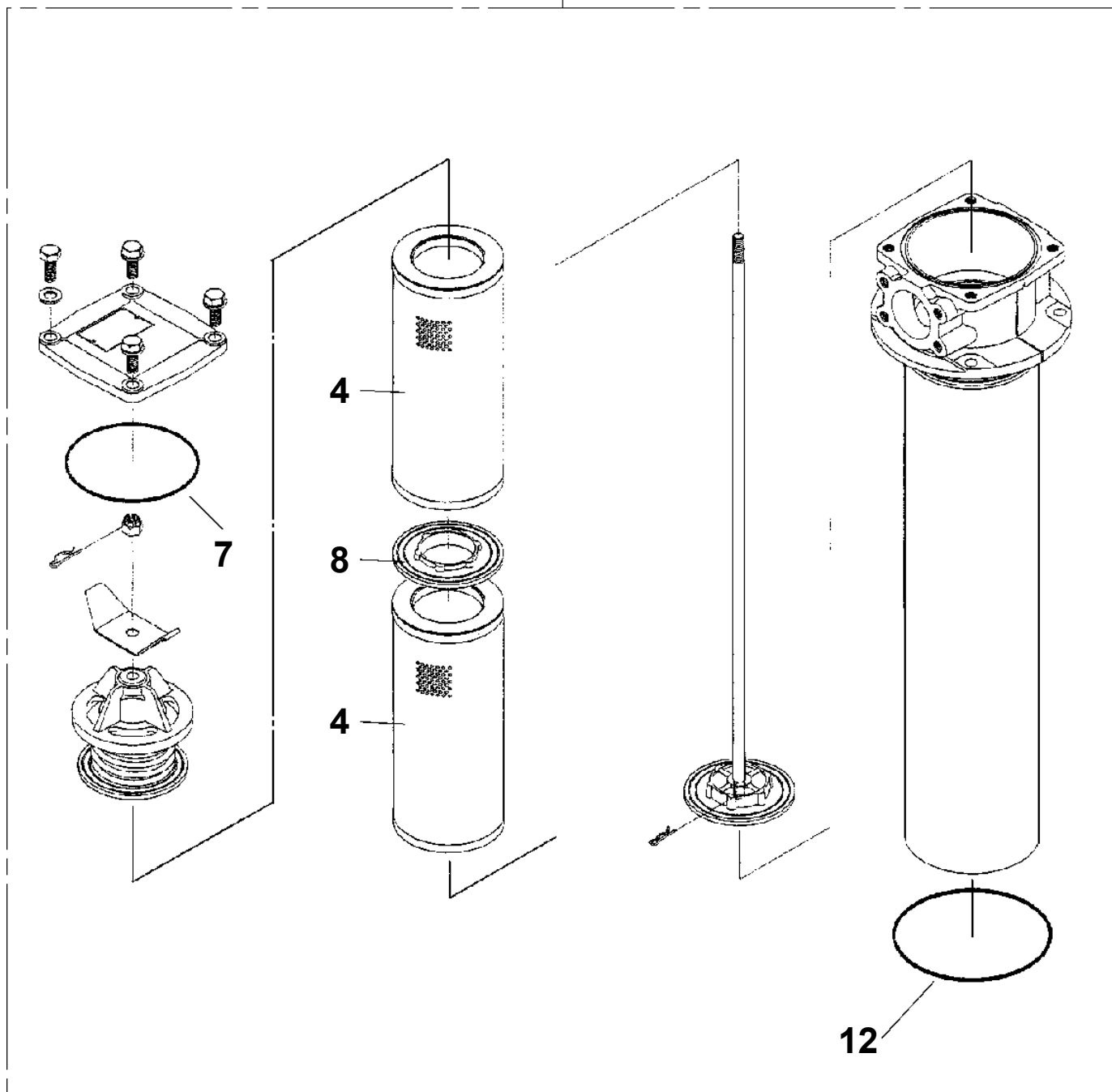
**TL-250M-5-20101 4 BOOM + JIB,KS305R
PI1170000-00 VALVE,PRESSURE DETECTOR**

20



TL-250M-5-20101 4 BOOM + JIB,KS305R
PI1300012-03 FILTER,OIL (TANK,OIL)

30



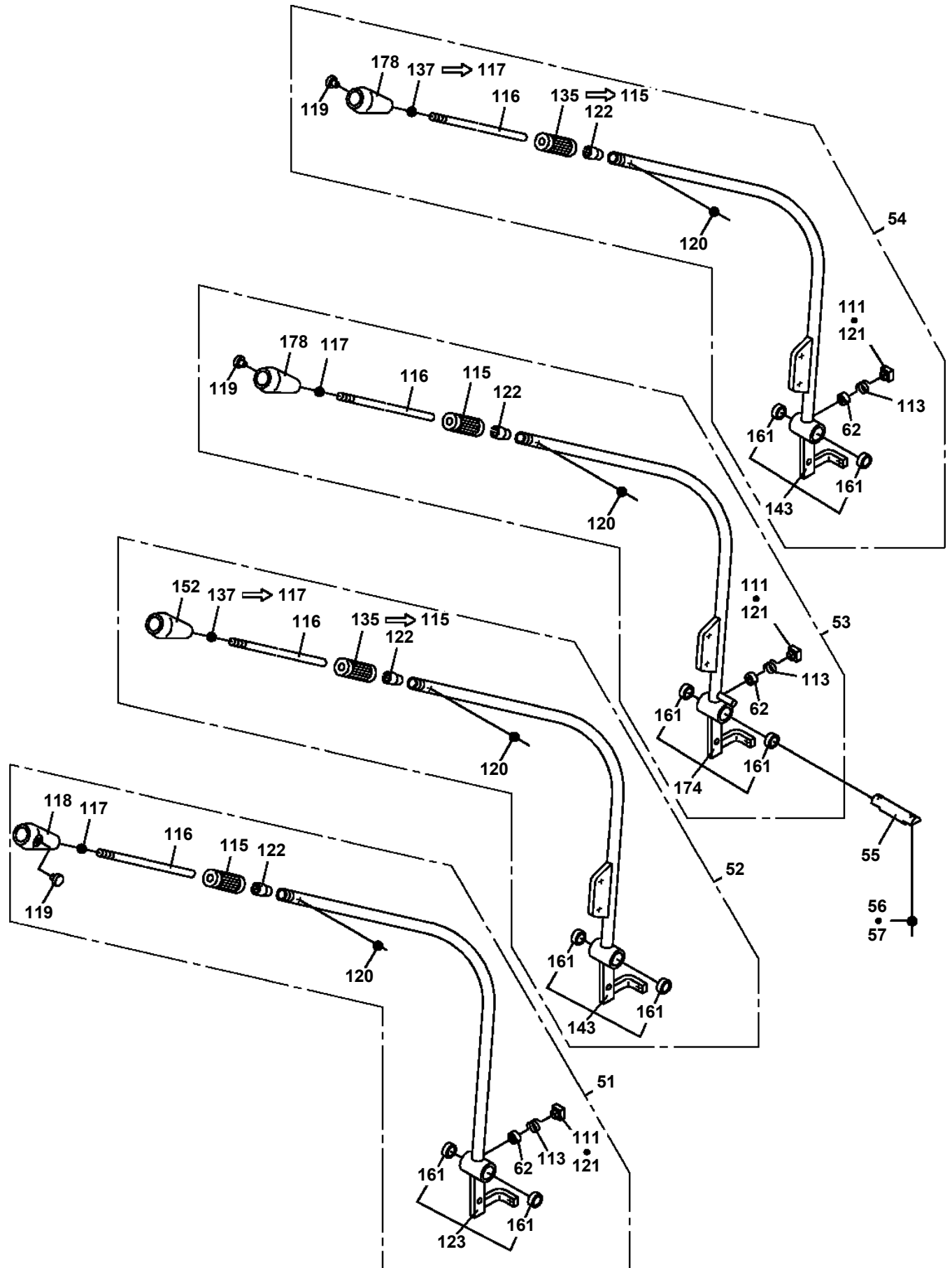
TL-250M-5-20101 4 BOOM + JIB,KS305R

Pos No.	Parts No	Parts Name	Qty	Unit	Technical Data	Serial No (Start)	Serial No (End)
1	33250590010	SUPPORT	1				
4	90101210020	BOLT	4		M10X20		
5	90302041001	WASHER,SPRING	4		10		
6	90201201000	NUT	4		M10		
7	33250590030	PLATE	1				
8	33250590040	PLATE	1				
9	33250711000	SEAT,OPERATOR	1				
20	33250598010	FRAME ASSY	1				
21	33250590100	COVER	1				
25	33250590140	BOX	1				
26	33250590270	SUPPORT	1				
28	33250590170	COVER	1				
30	33250590190	COVER	1				
31	90101208020	BOLT	10		M8X20		
32	90302040801	WASHER,SPRING	10		8		
33	90101206012	BOLT	18		M6X12		
34	90302040601	WASHER,SPRING	18		6		
36	80192485014	SCREW,MACHINE (WITH WASHER)	6		M5X14		
37	33250590210	COVER	1				
38	90101205010	BOLT	2		M5X10		
39	90302040501	WASHER,SPRING	2		5		
43	33250590260	SUPPORT	1				

TL-250M-5-20101 4 BOOM + JIB,KS305R

Pos No.	Parts No	Parts Name	Qty	Unit	Technical Data	Serial No (Start)	Serial No (End)	Remarks	Pages
1	90101210045	BOLT	1		M10X45				
2	90302041001	WASHER,SPRING	41		10				
3	90303071001	WASHER,PLAIN	38		10				
4	37000512630	PLATE	1						
5	90101210020	BOLT	30		M10X20				
6	33270640100	SUPPORT	1						
7	90101212020	BOLT	12		M12X20				
8	90302041201	WASHER,SPRING	14		12				
9	37000504020	PLATE	2						
10	33270020530	PLATE	3						
11	90201201000	NUT	7		M10				
12	90101210030	BOLT	10		M10X30				
13	33270640200	SUPPORT	1						
14	37000501090	PLATE	2						
15	90101212018	BOLT	2		M12X18				
16	33270640300	SUPPORT	1						
17	33270640400	COVER	1						
18	33270640500	COVER	1						
19	33270640600	COVER	1						
20	33270640700	COVER	1						
21	33270640800	COVER	1						
22	33270640900	COVER	1						
23	33270641000	COVER	1						
24	33270641100	COVER	1				340772		
	33270641101	COVER	1			340773			
25	33270491400	COVER	1						
26	33270641300	COVER	1						
27	33270780100	COVER	1						
28	33270641500	SUPPORT	1						
29	33270641600	SUPPORT	1						
30	33270641700	SUPPORT	1						
31	33270641800	SUPPORT	1						
32	33270641900	SUPPORT	2						
33	33270642000	SUPPORT	2						
34	33270642100	SUPPORT	2						
35	33270040060	SHIM	7						
36	37000505920	PLATE	7						
37	33270642200	SUPPORT	1						
38	33270630010	SHIM	6						
39	33270780200	COVER	1			340773			
51	33270648010	FENDER ASSY	1						
52	33270648020	FENDER ASSY	2						
53	33270648030	FENDER ASSY	1						
54	33270648040	FENDER ASSY	1						
55	33270648050	FENDER ASSY	1						
56	33270648060	SUPPORT ASSY	1						
57	33270788010	COVER ASSY	1			340773			
83	90302041001	WASHER,SPRING	4		10	340773			
84	90303071001	WASHER,PLAIN	4		10	340773			
85	90101210020	BOLT	4		M10X20	340773			

TL-250M-5-20101 4 BOOM + JIB,KS305R
PL1010705-00 OPE.ASSY,CONT.VALVE (TDN)



TL-250M-5-20101 4 BOOM + JIB,KS305R

Pos No.	Parts No	Parts Name	Qty	Unit	Technical Data	Serial No (Start)	Serial No (End)	Remarks	Pages
1	33430041300	GUARD	1						
4	33430001010	GUARD	1						
5	33431756010	GUARD	1						
6	37000526350	PLATE	9						
7	82100000192	TERMINAL	1						
8	82100000182	INSULATOR	1						
9	82100000191	TERMINAL	2						
10	82100000183	INSULATOR	2						
21	82100001364	LAMP	2						
22	90303290600	WASHER,PLAIN	2		6				
23	90302040601	WASHER,SPRING	2		6				
24	90201200600	NUT	2		M6				
25	33430262110	SUPPORT	1						
35	33430151210	SUPPORT	1						
100	82100000501	BULB,LAMP	2		24V 3W				

TL-250M-5-20101 4 BOOM + JIB,KS305R

Pos No.	Parts No	Parts Name	Qty	Unit	Technical Data	Serial No (Start)	Serial No
123	82100001683	SWITCH,TOGGLE	3				
124	34350002100	CAP	2				
125	82100001770	SWITCH,TOGGLE	3				
128	82100000947	CAP (RED)	1				
129	82100002263	CONNECTOR	1				
130	82100000082	SWITCH,STARTER (WITH KEY)	1				
141	82100002442	BUZZER	1				
151	34350003400	RELAY	1				
161	82100000687	KEY (STARTER)	1				
171	82479000900	KEY (NO.S900/S-1)	1				
181	82199504073	BUTTON (RED)	2				

TL-250M-5-20101 4 BOOM + JIB,KS305R

Pos No.	Parts No	Parts Name	Qty	Unit	Technical Data	Serial No (Start)	Serial No (End)	R
2	13627152000	PLATE,NAME (6TON)	2					
3	12117140000	PLATE,NAME (GREASE)	1					
4	36091521020	PLATE,CAUTION (2- PART LINES)	1					

TL-250M-5-20101 4 BOOM + JIB,KS305R

Pos No.	Parts No	Parts Name	Qty	Unit	Technical Data	Serial No (Start)	Serial No (End)
2	37002218430	PLATE,CAUTION	2				
4	33390000220	PLATE,NAME (INDICATION ANGLE)	1				340793
5	37002209470	PLATE,NAME (TADANO)	2				
6	16268231000	LABEL (SWITCH,OVER WINDING)	2				
7	80147310420	RIVET	4		3.2X6		
9	90201201000	NUT	1		M10		340793
10	12647107001	INDICATOR	1				340793
11	90101210016	BOLT	1		M10X16		340793
12	34390223800	PLATE,NAME (WINCH BRAKE)	2				
13	37002200010	PLATE,NAME (HORN)	1				
14	37002207020	PLATE,NAME (WINCH)	1				
15	37002200050	PLATE,NAME (SWING)	1				
16	37002200070	PLATE,NAME (BOOM,TELESCOPING)	1				
17	37002207030	PLATE,NAME (AUX.WINCH)	1				
18	37002207040	PLATE,NAME (MAIN WINCH)	1				
19	37002200060	PLATE,NAME (BOOM,ELEVATING)	1				
20	37002207270	PLATE,NAME (BOOM EXT.)	1				
21	37002207310	PLATE,NAME (MAIN WINCH)	1				
22	37002207320	PLATE,NAME (AUX.WINCH)	1				
31	37002214470	PLATE,NAME (BLUE & BLACK)	1			340795	
	37002214500	PLATE,NAME (TADANO BLUE+BLACK)	1				340794
32	37002214510	PLATE,NAME (TADANO BLUE+WHITE)	1				340794
	37002214480	PLATE,NAME (BLUE & WHITE)	1			340795	
33	37002214490	PLATE,NAME (WHITE & WHITE)	1			340795	
	37002214520	PLATE,NAME (TADANO WHITE+WHITE)	1				340794
41	37002220410	PLATE,CAUTION	1			340794	
42	37002220440	PLATE,CAUTION	1			340794	
43	37002221060	PLATE,CAUTION	1			340794	
44	(*****)	PLATE,NAME	1			340794	

TL-250M-5-20101 4 BOOM + JIB,KS305R

Pos No.	Parts No	Parts Name	Qty	Unit	Technical Data	Serial No (Start)	Serial No (End)	Rem
1	34393573100	PLATE,NAME (BLUE & WHITE)	1					

TL-250M-5-20101 4 BOOM + JIB,KS305R

Pos No.	Parts No	Parts Name	Qty	Unit	Technical Data	Serial No (Start)	Serial No (E
1	34371314200	SUPPORT	1				
2	32370002110	GASKET	1				
3	32370002121	COVER	1				
4	80172303025	SCREW,MACHINE	2		M3X25		
5	90302040301	WASHER,SPRING	2		3		
6	82100001355	SWITCH,LIMIT	1				
7	32370002131	ROD	1				
8	14148373001	SPRING	1				
9	80601110180	RING,RITAINING	1		S18		
10	32370002161	SUPPORT	1			340792	340791
	34371314400	SUPPORT	1				
11	90303070301	WASHER,PLAIN	2		3		
12	82100002505	CONNECTOR (CN-6)	1				
13	82100002506	CONNECTOR	1				
14	32370154070	CORD	1				
15	32370154080	CORD	1				
16	82100000592	TERMINAL (M40.3 TO 1.25)	2				
17	89630201000	HOSE,VINYL	1		6X8,1M		
18	14148375000	GROMMET	1				
19	90101208045	BOLT	2		M8X45		
20	90302040801	WASHER,SPRING	2		8		
21	82100001220	INSULATOR	2				
30	32370009511	ROD ASSY	1				340791
	32370009512	ROD ASSY	1			340792	
31	32370002150	SPACER	1		L=12 TO 11		
32	80720103014	PIN,SPRING	1		3X14		
50	34371314100	SWITCH (OVER WIND/JIB & SINGLE TOP)	1				

TL-250M-5-20101 4 BOOM + JIB,KS305R

Pos No.	Parts No	Parts Name	Qty	Unit	Technical Data	Serial No (Start)	Serial No (End)	Remarks	Pages
1	33880161000	SUPPORT	1						
2	90201201000	NUT	4		M10				
3	33761428010	BAND ASSY	2						
4	33760030050	CUSHION	2						
5	56560009000	PIN	2						
6	80136330025	PIN,SPLIT	2						
7	90303071201	WASHER,PLAIN	2		12				
8	33880140010	PLATE	2						
9	33760030180	CUSHION	2						
21	33761421100	CUSHION	2						
22	33761421200	CUSHION	2						
23	33761001100	CUSHION	3						

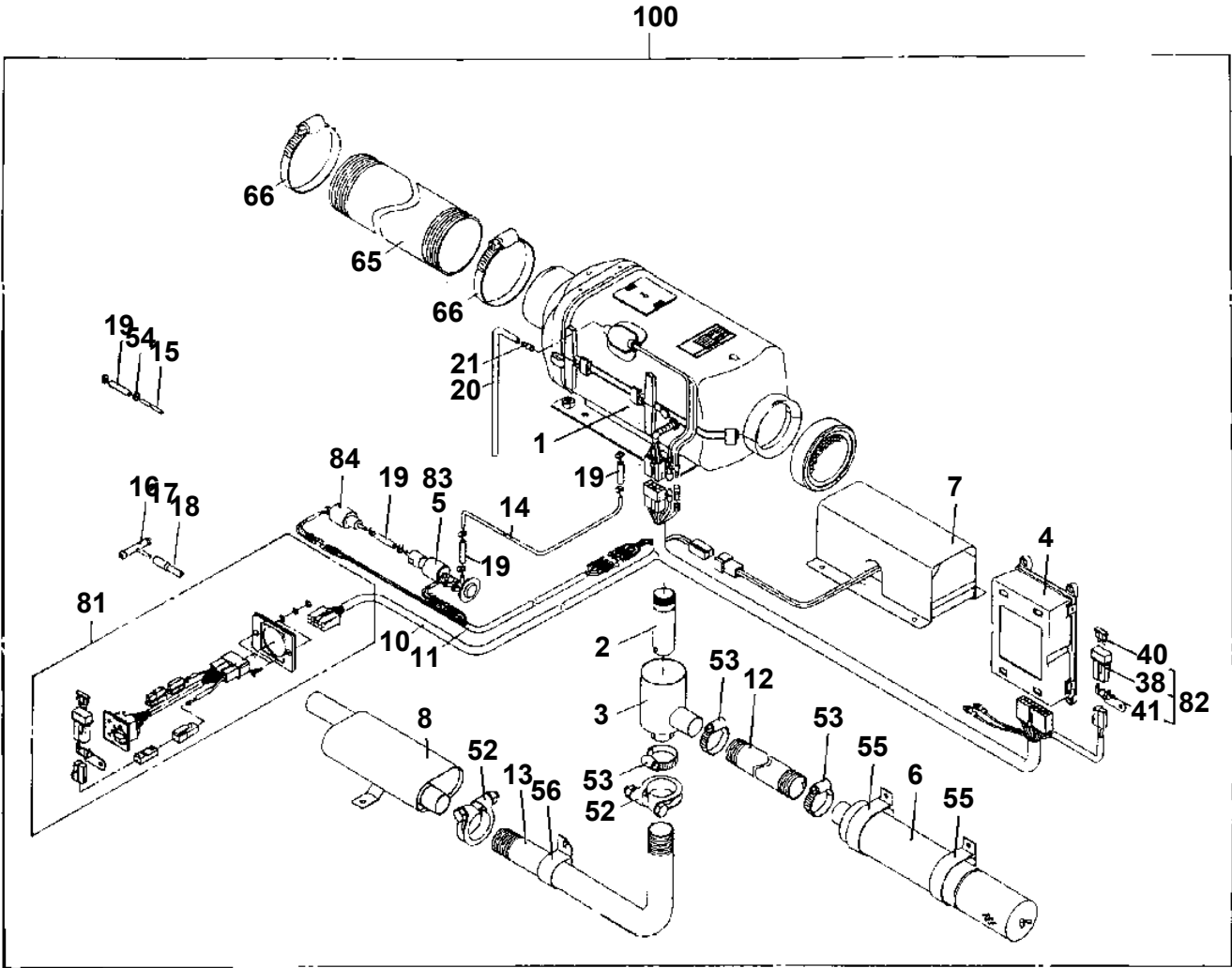
TL-250M-5-20101 4 BOOM + JIB,KS305R

Pos No.	Parts No	Parts Name	Qty	Unit	Technical Data	Serial No (Start)	Serial No (End)	Remarks	Pages
2	56460017010	PLATE	1						
3	90258901600	NUT,WING	2		M16				
4	90303101601	WASHER,PLAIN	4		16				
5	33763040100	RING	1						
6	56360704000	HOOK	1						
7	33762530101	SUPPORT	1						
8	80136340035	PIN,SPLIT	2		4X35				
9	33762680200	BOLT	2						
10	33762680300	PLATE	2						
20	33763048010	SUPPORT ASSY	1						

TL-250M-5-20101 4 BOOM + JIB,KS305R

Pos No.	Parts No	Parts Name	Qty	Unit	Technical Data	Serial No (Start)	Serial No (End)	Remarks	Pages
1	33731351000	BLOCK	4		500X500,H=90				
2	33731352000	BOLT	1						
3	33440250900	BAR	2						
4	33760605010	STOPPER	4						
5	33731353000	BOLT	2						
6	37001601630	NUT	2						

TL-250M-5-20101 4 BOOM + JIB,KS305R
PY1120017-01 HEATER ASSY (DIESEL FUEL,MY30)



TL-250M-5-20101 4 BOOM + JIB,KS305R

Pos No.	Parts No	Parts Name	Qty	Unit	Technical Data	Serial No (Start)	Serial No (End)
9	36290665010	VALVE,SOLENOID	1				
13	36290665240	HOLDER (PUMP)	1				
14	36290665250	RUBBER	1				
15	36290665260	CLAMP	1				
17	36290665280	BOLT	1				
19	36290665290	NUT	1				
21	36290665300	WASHER,SPRING	2				
50	36290662100	HEATER (VALVE KIT ASSY,SOLENOID)	1				

TL-250M-5-20101 4 BOOM + JIB,KS305R

Pos No.	Parts No	Parts Name	Qty	Unit	Technical Data	Serial No (Start)	Serial No (End)	Remarks
1	80441010404	FITTING	1		92171-PF1/4			
2	37000924970	JOINT	1					
3	80302090201	FITTING	1		KCO15-040N			
4	81408000241	PIPE,STEEL	1	M	18X1.9T		340795	
5	80321115050	VALVE,CHECK	1				340795	
6	37000711090	CLAMP ASSY	2		18X2			
7	37000511350	PLATE	2					
8	81408000210	PIPE,STEEL	1	M	15X2.0T			
9	81408000241	PIPE,STEEL	1	M	18X1.9T			
10	80302090241	FITTING	3		KCO18-040N			
11	91002801800	O-RING	6		1B P18			
12	80302090181	FITTING	1		KCO15-030N			
13	91002801400	O-RING	1		1B P14			
14	81408000210	PIPE,STEEL	1	M	15X2.0T		340795	
15	81408000241	PIPE,STEEL	1	M	18X1.9T			
16	80400160102	FITTING	1		20368-U1/4X1/4			
17	37000510150	PLATE	2					
18	82100002006	CLAMP	2		WR10			
19	90302040601	WASHER,SPRING	2		6			
20	90101206012	BOLT	2		M6X12			
21	89640401000	HOSE	1					
22	80441010604	FITTING	1					
23	80305151804	FITTING,TEE	1		KTK018-040N			
24	80430622000	JOINT	2					
25	37002407030	HOSE	1		L=1060			
26	81408000241	PIPE,STEEL	1	M	18X1.9T			
27	36622030000	VALVE,CHECK	1					
28	80311010240	FITTING	1		KRE18-150E			
29	81408000210	PIPE,STEEL	1	M	15X2.0T			
30	80305010120	FITTING,TEE	1		ZKTA15-000N			
31	36610000000	VALVE,FLOW CONTROL	1					
32	90101208050	BOLT	3		M8X50			
33	90302040801	WASHER,SPRING	4		8			
34	37000711010	CLAMP ASSY	2		18X1			
35	37000502460	PLATE	1					
36	81408000241	PIPE,STEEL	1	M	18X1.9T	340796		
37	33473890910	SUPPORT	1			340792		
	33473890900	SUPPORT	1				340791	
38	37002411240	HOSE	1		L=800			
39	(*****)	COOLER,OIL (MOUNT)	1					
40	33476270100	SUPPORT	1					
41	90101210025	BOLT	5		M10X25			
42	90302041001	WASHER,SPRING	8		10			
43	33476270200	SUPPORT	1					
44	81408000210	PIPE,STEEL	1	M	15X2.0T			
45	81408000210	PIPE,STEEL	1	M	15X2.0T			
46	80320010090	FITTING	2		KUD15-030N			
47	37002425270	HOSE	2		L=400			
48	80430450650	JOINT	2					
49	89640201000	HOSE	1		660-NFK,1M			
52	80400160103	FITTING	1		20368-U3/8X1/4			
53	37000300750	SLEEVE	5		18-15			
54	90101210030	BOLT	1		M10X30			
55	80321118450	VALVE,CHECK	1			340796		
56	90101210040	BOLT	2		M10X40			
57	90303071001	WASHER,PLAIN	2		10			
58	90201201000	NUT	2		M10			
59	90301011001	WASHER	4		10			
60	33476270300	STAY	1					
61	33476270400	PLATE	2					
62	80316070080	PLUG	1		PF1/2			
64	37000600120	CLAMP	1		WR45			
65	37000514590	PLATE	1					

TL-250M-5-20101 4 BOOM + JIB,KS305R

Pos No.	Parts No	Parts Name	Qty	Unit	Technical Data	Serial No (Start)	Serial No (End)	Remarks	Pages
1	33472993000	ANTENNA	1						
2	80175304016	SCREW,MACHINE	1		M4X16				
3	90302040401	WASHER,SPRING	2		4				
4	90201200400	NUT	2		M4				
5	80172304030	SCREW,MACHINE	1		M4X30				
6	33472992000	SPEAKER	1						
7	19291000010	CABLE	1						
8	82400000024	CLAMP	6						
9	80172305012	SCREW,MACHINE	4		M5X12		340753		
	90101205012	BOLT	4		M5X12	340754			
10	33476131000	RADIO	1						
11	33476130100	HARNESS	1						
12	90302040501	WASHER,SPRING	4		5				
13	90303070501	WASHER,PLAIN	4		5				

CLICK HERE TO **DOWNLOAD** THE COMPLETE MANUAL

- Thank you very much for reading the preview of the manual.
- You can download the complete manual from: www.heydownloads.com by clicking the link below



- Please note: If there is no response to CLICKING the link, please download this PDF first and then click on it.

CLICK HERE TO **DOWNLOAD** THE COMPLETE MANUAL