

# **TL-250E-2-10401 4 BOOM + JIB, 2M2D, KW30MXH**

**PB1000074-00 HYDRAULIC PRESSURE GENERATING SYSTEM**

**PC1000062-00 OUTRIGGER SYSTEM**

**PD1000073-00 SWING SYSTEM**

**PE1000068-00 ELEVATING SYSTEM**

**PF1000065-02 WINCH SYSTEM**

**PG1000069-01 TELESCOPING SYSTEM**

**PH1000069-00 SAFETY DEVICES**

**PI1000073-02 HYDRAULIC DEVICES**

**PK1000073-00 FRAME**

**PL1000073-00 CONTROL DEVICES**

**PN1000069-01 ELECTRIC EQUIPMENT**

**PO1000071-00 INDICATION PLATES**

**PW1000062-00 ACCESSORIES & TOOLS**

**PX1000073-00 MOUNTING PARTS**

**PY1000061-01 OPTIONS**

**ASSEMBLY**

CLICK HERE TO **DOWNLOAD** THE COMPLETE MANUAL

- Thank you very much for reading the preview of the manual.
- You can download the complete manual from: [www.heydownloads.com](http://www.heydownloads.com) by clicking the link below



- Please note: If there is no response to CLICKING the link, please download this PDF first and then click on it.

CLICK HERE TO **DOWNLOAD** THE COMPLETE MANUAL

# TL-250E-2-10401 4 BOOM + JIB, 2M2D, KW30MXH

Pos No.	Parts No	Parts Name	Qty	Unit	Technical Data	Serial No (Start)	Serial No (End)
1	(*****)	WINCH	2				
	(*****)	WINCH	2			335383	335382
2	19413067000	CLUTCH,WINCH	2				
3	36090920000	HOOK (MAIN)	1				
4	36090240001	HOOK (AUXILIARY)	1				
5	37001800410	ROPE,WIRE	1				
6	37001801380	ROPE,WIRE (TSK)	1				
7	(*****)	SOCKET,ROPE	2				
8	(*****)	OPERATION SYSTEM, WINCH BRAKE	1				
9	33310312000	BAND,WINCH BRAKE	2				
10	(*****)	OPERATION SYSTEM, DRUM,LOCK	1				
11	(*****)	OPERATION SYSTEM, CLUTCH	1				
13	(*****)	PIPING,WINCH	1				
14	(*****)	PIPING,WINCH BRAKE	1				
16	36631570000	VALVE,CLUTCH	1				
17	(*****)	JOINT,WINCH ROTARY	2				335382
	36672739510	JOINT,WINCH ROTARY	2			335383	
18	(*****)	MOUNT,WINCH (2M2D)	1				
19	36660160000	MOTOR,HYDRAULIC	2				
20	36060180002	CYLINDER,MASTER	2				
21	36640560000	VALVE,SOLENOID	2				
22	36621230000	VALVE,CHECK	1				
23	36621320000	VALVE,SHUTTLE	1				
24	36600730000	VALVE,COUNTERBALANCE	2				
25	36670740000	FILTER,OIL	1				
26	36670000006	ACCUMULATOR	1				
27	36680390000	GAUGE,PRESSURE	1				

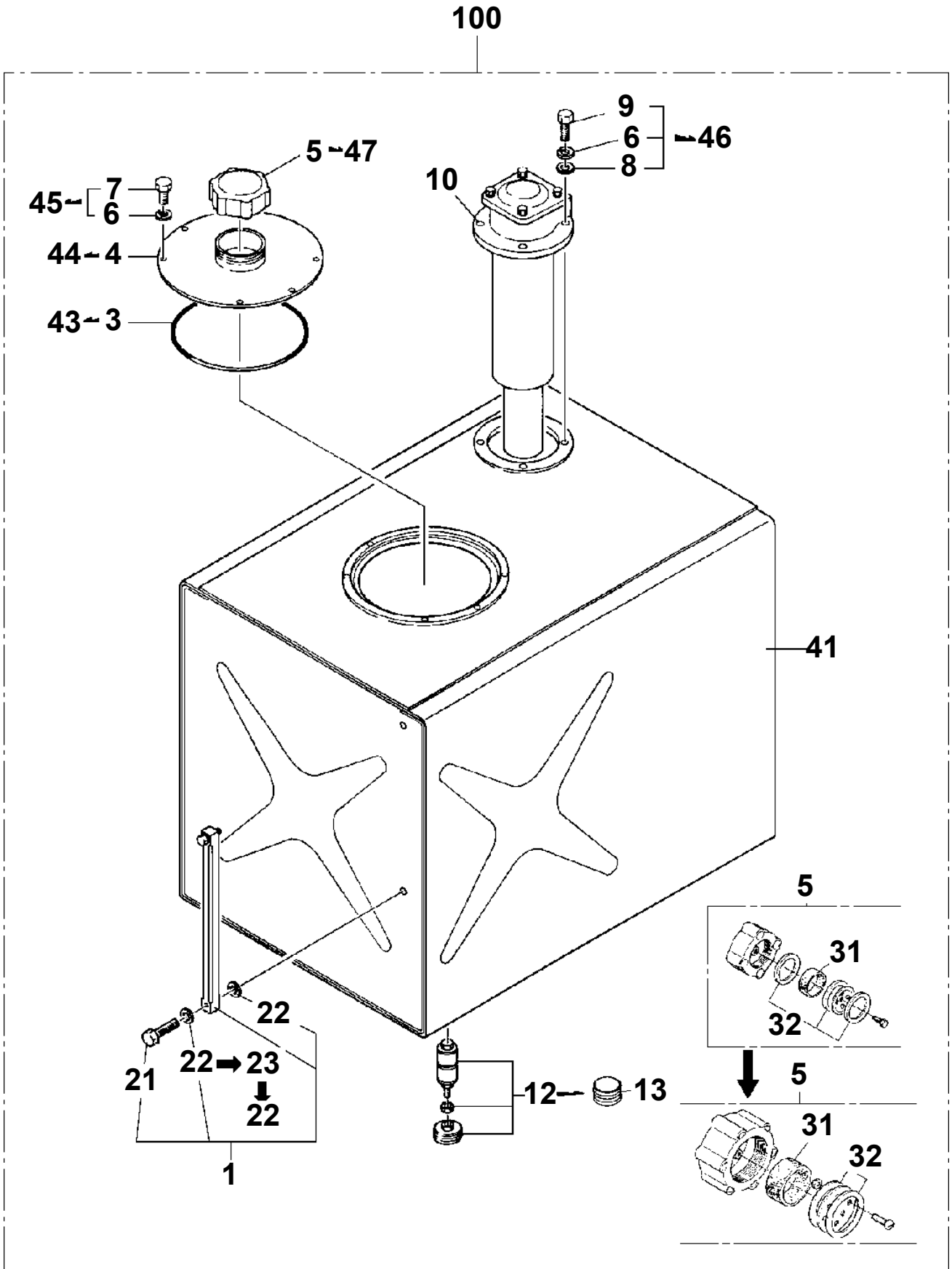
# TL-250E-2-10401 4 BOOM + JIB, 2M2D, KW30MXH

Pos No.	Parts No	Parts Name	Qty	Unit	Technical Data	Serial No (Start)	Serial No (E
1	(*****)	OPERATION SYSTEM, CONTROL VALVE	1				
2	(*****)	OPERATION SYSTEM, ACCELERATOR	1				
3	3606000001	CYLINDER,MASTER	1				

## TL-250E-2-10401 4 BOOM + JIB, 2M2D, KW30MXH

Pos No.	Parts No	Parts Name	Qty	Unit	Technical Data	Serial No (Start)	Serial No (End)	Remarks
1	(*****)	SINGLE TOP	1					
2	(*****)	HEATER SYSTEM	1					
3	36290090002	HEATER (22HK)	1				335388	
	36290090003	HEATER (M22H)	1			335389		
4	(*****)	PIPING,COOLER	1					
5	(*****)	PIPING,CLAMSHELL	1			335658		
6	36690000000	COOLER,OIL	1					
7	(*****)	FAN INSTALLATION	1					
8	36640450000	VALVE,SOLENOID	1			335658		
9	36641130000	VALVE,SOLENOID	1			335658		
10	16515122000	VALVE,CHECK	1					
11	36620050000	VALVE,CHECK	1					
12	36610130000	VALVE,FLOW CONTROL	1					
13	36670610000	FILTER,OIL	1			335658		

TL-250E-2-10401 4 BOOM + JIB, 2M2D, KW30MXH  
PB1130187-01 TANK,OIL



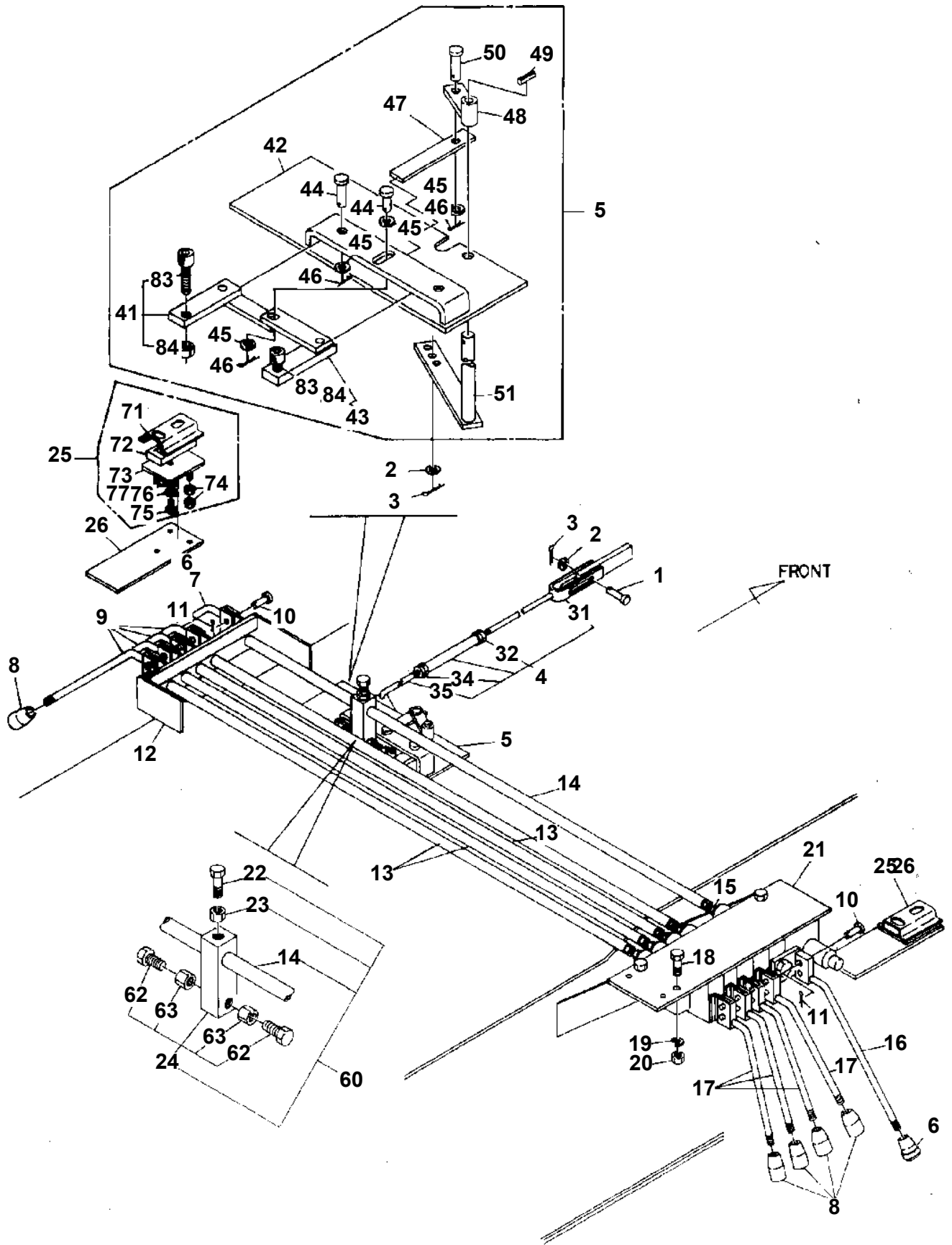
## TL-250E-2-10401 4 BOOM + JIB, 2M2D, KW30MXH

Pos No.	Parts No	Parts Name	Qty	Unit	Technical Data	Serial No (Start)	Serial No (End)	Remarks
1	90101210020	BOLT	2		M10X20			
4	37000700670	CLAMP ASSY	2					
5	91001202500	O-RING	1		1A G25			
6	33340440200	FITTING,FLANGE	1					
7	90131510035	BOLT,HEXAGON SOCKET	16		M10X35			
8	90302041001	WASHER,SPRING	18		10			
10	37000700880	CLAMP ASSY	3					
11	37000700890	CLAMP ASSY	1					
12	37000700900	CLAMP ASSY	1					
13	80400160134	JOINT	2					
18	80316030040	PLUG	1		PT1/4			
19	90131508025	BOLT,HEXAGON SOCKET	4		M8X25			
20	90302040801	WASHER,SPRING	4		8			
24	33340440010	HOSE	1		19X30.6			
25	33340440020	HOSE	1		19X30.6			
26	33340440030	HOSE	1		19X30.6			
27	33340440040	HOSE	1		50.8X69			
28	91803600350	CLIP	12		D=25-35			
29	91803600800	CLIP	4		D=60-80			
30	37000901170	JOINT	1					
31	91001205500	O-RING	1		1A G55			
32	33340440300	FITTING,FLANGE	1					
35	91002904000	O-RING	1		1B G40			
37	37002409690	HOSE	1		L=1700			
38	37002400920	HOSE	1		L=1800			
39	91002802900	O-RING	2		1B P29			
40	91001203000	O-RING	2		1A G30			
41	33340440800	FITTING,FLANGE	1					
45	33340441100	JOINT	1					
46	36670040000	FILTER,OIL	1					
47	37000901190	JOINT	1					
48	33340441200	SUPPORT	1					
51	37000500940	SUPPORT	1					
52	33342320400	SUPPORT	1					
56	33340441400	FITTING,FLANGE	1					
57	91810132530	FASTENER	1					
58	37000702020	CLAMP ASSY	1					
59	33341720200	FITTING,FLANGE	1					
60	37002412200	HOSE	1		L=2300			
61	33341720300	JOINT	1					
62	33342320200	JOINT	1					
63	37000700140	CLAMP ASSY	2					
64	91810130270	FASTENER	4					

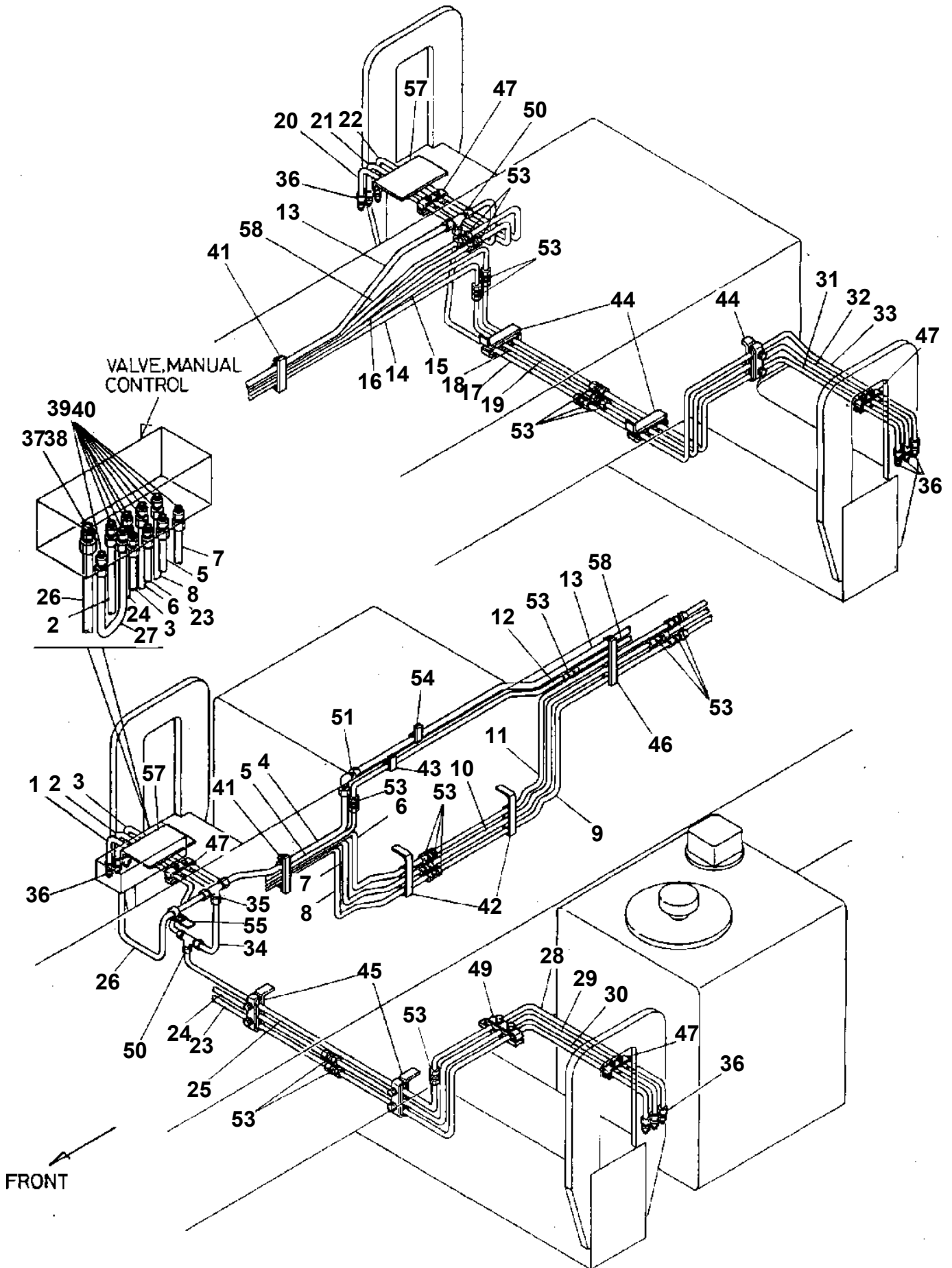
# TL-250E-2-10401 4 BOOM + JIB, 2M2D, KW30MXH

Pos No.	Parts No	Parts Name	Qty	Unit	Technical Data	Serial No (Start)	Serial No (End)	F
1	36631315010	VALVE,PILOT CONTROL	1					
2	36631315020	VALVE,CONTROL (MAIN WINCH)	1					
3	36631055020	VALVE,FLOW CONTROL	1					
4	36631055030	VALVE,UNLOAD	1					
5	36631315040	VALVE,CONTROL (AUX.WINCH)	1					
6	36631055050	VALVE,CHECK	1					
7	36630145020	VALVE,CONTROL (TELESCOPING)	1					
8	36631365010	VALVE,CONTROL (ELEVATING)	1					
9	36631095020	BODY	1					
10	36630265030	VALVE,RELIEF	2					
11	90131510045	BOLT,HEXAGON SOCKET	4		M10X45			
12	36631315060	BOLT	4					
13	90202201600	NUT	8		M16			
14	90203201600	NUT	8		M16			
15	91002903000	O-RING	5		1B G30			
16	91002904000	O-RING	5		1B G40			
17	16095101080	O-RING	2		WG6			
18	91002905000	O-RING	7		1B G50			
19	16095101480	RING (A/FOR O-RING,G30)	5					
20	16095101490	RING (B/FOR O-RING,G40)	5					
21	16095101090	RING (C/FOR O-RING,WG6)	2					
22	16095101500	RING (D/FOR O-RING,G50)	7					
23	80316030040	PLUG	2		PT1/4			
24	36630265050	VALVE,RELIEF	1					
26	36630435010	VALVE,RELIEF	1					
28	36631095070	VALVE,RELIEF	2					
29	91002801000	O-RING	5		1B P10			
30	91002801600	O-RING	4		1B P16			
31	91002902500	O-RING	2		1B G25			
32	90131508070	BOLT,HEXAGON SOCKET	4		M8X70			
42	36631315070	VALVE,UNLOAD	1					
43	90131508040	BOLT,HEXAGON SOCKET	10		M8X40			
45	36631095090	COVER	1					
48	36631095100	SPRING	1					
50	91002801600	O-RING	1		1B P16			
51	91002803000	O-RING	1		1B P30			
52	91002902500	O-RING	1		1B G25			
53	80316030040	PLUG	3		PT1/4			
64	91000501500	O-RING	5		AS568-015			
67	16025153020	SPRING	7					
68	36630045200	SCREW (ADJUSTING)	7		M10X25			
69	36630045220	NUT	7		M10			
70	36630295130	NUT,CAP	5					
71	91001001600	O-RING	14		1A S16			
72	91002802200	O-RING	1		1B P22			
75	36630365030	SPRING	1					
77	91002801400	O-RING	1		1B P14			
78	91002800700	O-RING	1		1B P7			
79	80316030020	PLUG	1		PT1/8			
82	91002801800	O-RING	1		1B P18			
85	36631095110	FILTER	1					
93	36630175110	SUPPORT	2					
94	13635101040	PIN	4					
95	90303100801	WASHER,PLAIN	4		8			
96	14045122020	PIN,SNAP	4					
97	16035181010	SEAL,OIL	4					
98	16035181050	RETAINER (SEAL)	4					
99	36631315080	NOTCH (F)	2					
100	36631055140	CASE (BALL)	2					
101	16095101200	RETAINER (BALL)	2					
102	80560005000	BALL,STEEL	8		5			
103	16095101280	SPRING	2					
104	16095101270	WASHER	2					

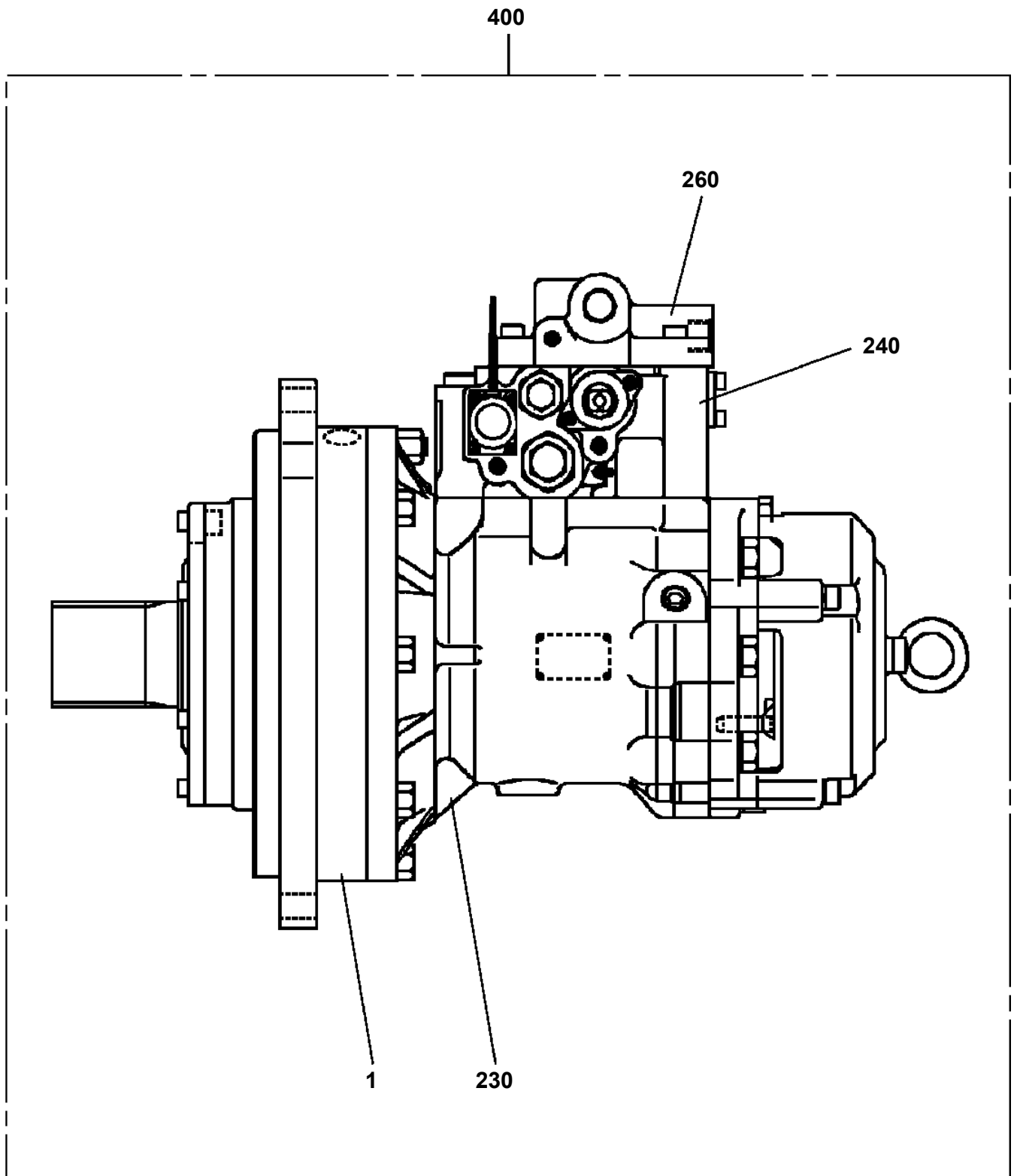
TL-250E-2-10401 4 BOOM + JIB, 2M2D, KW30MXH  
PC1100017-01 OPE.ASSY,OUTRIGGER (WITHOUT F/J)



**TL-250E-2-10401 4 BOOM + JIB, 2M2D, KW30MXH  
PC1200046-00 PIPING,OUTRIGGER (WITHOUT F/J)**



TL-250E-2-10401 4 BOOM + JIB, 2M2D, KW30MXH  
PD1070080-03 DRIVING UNIT, SWING



## TL-250E-2-10401 4 BOOM + JIB, 2M2D, KW30MXH

Pos No.	Parts No	Parts Name	Qty	Unit	Technical Data	Serial No (Start)	Serial No (End)	Remarks	Pages
1	80400160106	FITTING	2		20368-U1/2X1/2				
2	82100001173	CLAMP ASSY	2		L=65				
3	89640101000	HOSE	1		880-NFK,1M				
4	80400160131	JOINT	1						
5	91002801800	O-RING	2		1B P18				
6	37002400760	HOSE	1		L=380				
7	37002400770	HOSE	1		L=510				
8	90191508030	BOLT	4		M8X30				
9	90302040801	WASHER,SPRING	4		8				
10	80302010060	FITTING	1		KCT08-010N				
11	37000702220	CLAMP ASSY	2						
12	81408000081	PIPE,STEEL	2	M	8X1.2T				
13	81408000081	PIPE,STEEL	1	M	8X1.2T				
14	80302010080	FITTING	1		KCT08-020N				
15	80301010060	FITTING	2		KUA08-000N				
16	80316030040	PLUG	1		PT1/4				
18	37000300710	SLEEVE	2		12-8				
19	81408000081	PIPE,STEEL	1	M	8X1.2T				
30	91000521000	O-RING	1						

# TL-250E-2-10401 4 BOOM + JIB, 2M2D, KW30MXH

Pos No.	Parts No	Parts Name	Qty	Unit	Technical Data	Serial No (Start)	Serial No (End)	Re
1	19413067000	CLUTCH,WINCH	1					
3	19413067010	CYLINDER,CLUTCH	1					
5	19413067020	CYLINDER,CLUTCH	1					
6	19413067030	SHOE ASSY (CLUTCH)	2					
7	19413067040	SPRING	4					
8	19413067050	SPRING	2					
10	19413067060	HOLDER ASSY (SHOE)	2					
13	19413067070	BOLT (WITH WASHER)	4					
14	90101516040	BOLT	2		M16X40			
15	90302041601	WASHER,SPRING	2		16			
16	19413067080	TUBE ASSY	1					
17	19413067090	PLATE (BACK)	1					
20	19413067170	LINING	2					
21	19413067180	RIVET	36					
31	19413067110	PISTON	2					
32	19413067120	PACKING SET	2					
33	19413067130	SCREW (ADJUSTING)	2					
34	80152105012	SCREW	2		M5X12			
35	90302040501	WASHER,SPRING	2		5			
36	19413067140	SPRING (ADJUSTING)	2					
37	19413127090	CAP (BLEEDER)	2					
38	19413067160	BLEEDER	2					
39	19413067220	CONNECTOR	1					
40	19413067100	TUBE ASSY (WITH CONNECTOR)	1					

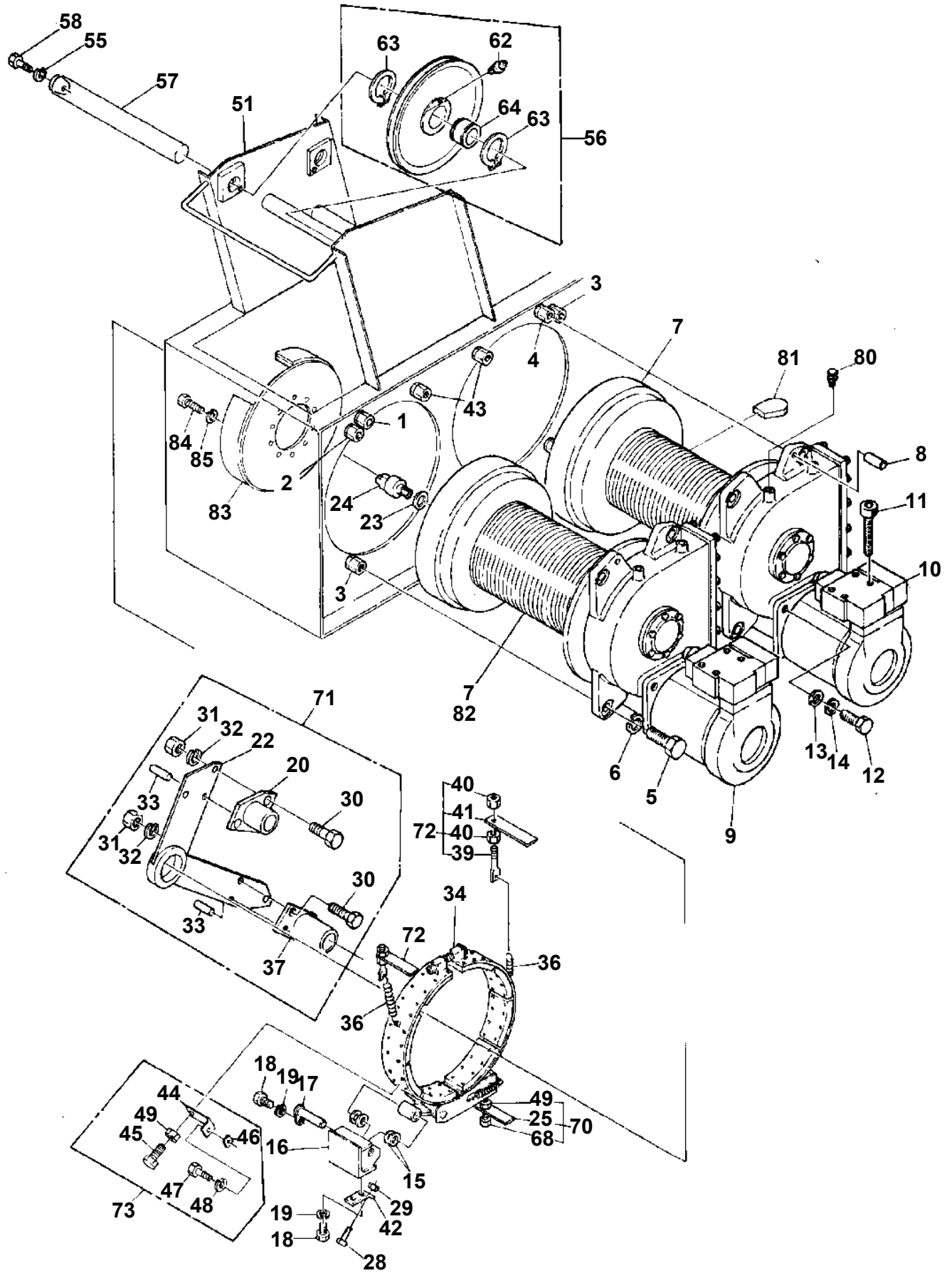
# TL-250E-2-10401 4 BOOM + JIB, 2M2D, KW30MXH

Pos No.	Parts No	Parts Name	Qty	Unit	Technical Data	Serial No (Start)	Serial No (End)	Remarks	Pages
1	37000120950	PIN	1						
2	90302041001	WASHER,SPRING	1		10				
3	90171110016	BOLT	1		M10X16				
4	16317502002	SOCKET,ROPE	1		16				
5	16113009002	WEDGE	1						
6	83151411602	CLIP	1						
7	90302041801	WASHER,SPRING	2		18				
8	80136363045	PIN,SPLIT	1		6.3X45				

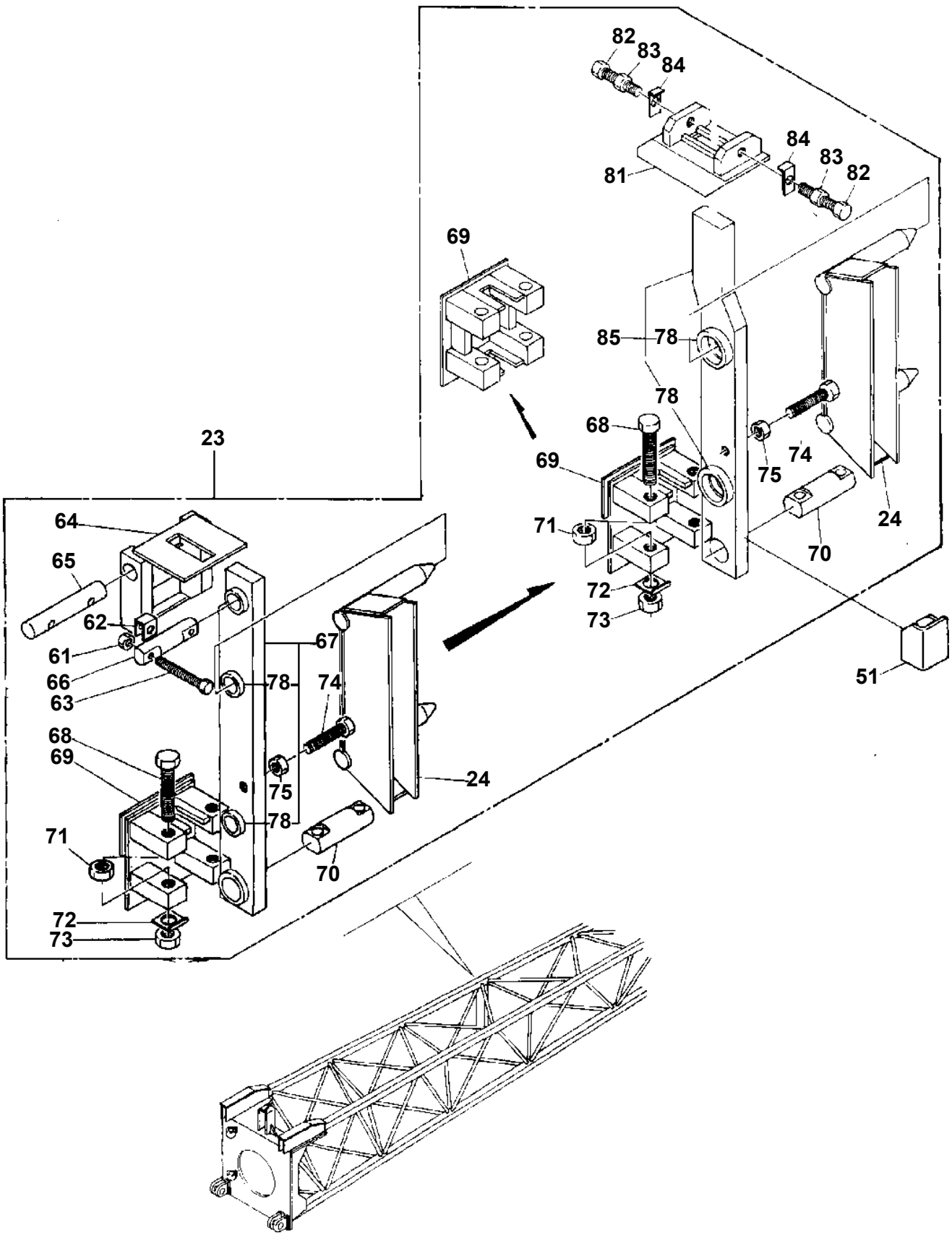
**TL-250E-2-10401 4 BOOM + JIB, 2M2D, KW30MXH**

Pos No.	Parts No	Parts Name	Qty	Unit	Technical Data	Serial No (Start)	Serial No (End)	Remarks	Page
1	81408000130	PIPE,STEEL	2	M	10X1.8T				
2	81408000130	PIPE,STEEL	1	M	10X1.8T				
3	81408000130	PIPE,STEEL	1	M	10X1.8T				
4	81408000130	PIPE,STEEL	1	M	10X1.8T				
5	81408000130	PIPE,STEEL	1	M	10X1.8T				
6	81408000130	PIPE,STEEL	1	M	10X1.8T				
7	81408000130	PIPE,STEEL	1	M	10X1.8T				
8	81408000130	PIPE,STEEL	1	M	10X1.8T				
9	81408000130	PIPE,STEEL	1	M	10X1.8T				
10	81408000130	PIPE,STEEL	1	M	10X1.8T				
11	81408000130	PIPE,STEEL	1	M	10X1.8T				
12	81408000130	PIPE,STEEL	1	M	10X1.8T				
13	81408000130	PIPE,STEEL	1	M	10X1.8T				
14	81408000130	PIPE,STEEL	2	M	10X1.8T				
15	81408000130	PIPE,STEEL	2	M	10X1.8T				
16	81408000130	PIPE,STEEL	1	M	10X1.8T				
18	81408000130	PIPE,STEEL	1	M	10X1.8T				
19	81408000130	PIPE,STEEL	1	M	10X1.8T				
21	81408000130	PIPE,STEEL	1	M	10X1.8T				
22	81408000130	PIPE,STEEL	1	M	10X1.8T				
24	81408000130	PIPE,STEEL	2	M	10X1.8T				
26	81408000130	PIPE,STEEL	2	M	10X1.8T				
28	89640201000	HOSE	1		660-NFK,1M				
30	81408000081	PIPE,STEEL	2	M	8X1.2T				
31	80301010080	FITTING	4		KUA10-000E				
32	80302010100	FITTING	9		KCT10-020N				
33	80303030100	FITTING,ELBOW	11		KLN10-020N				
34	80305050080	FITTING,TEE	1		KTA10-020N				
35	80305010080	FITTING,TEE	4		KTA10-000N				
36	80307030180	FITTING	1		KGA10-030N				
37	80303010080	FITTING,ELBOW	2		KLA10-000N				
38	89640101000	HOSE	1		880-NFK,1M				
39	80302010080	FITTING	2		KCT08-020N				
40	80303030080	FITTING,ELBOW	1		KLN08-020N				
41	80316030040	PLUG	2		PT1/4				
42	80320020050	FITTING	2		KUF10-020N				
43	80400160112	FITTING,ELBOW	2		20369U1/2X1/2				
44	80400160106	FITTING	2		20368-U1/2X1/2				
45	80400160103	FITTING	4		20368-U3/8X1/4				
46	80400160109	FITTING,ELBOW	1		20369-U3/8X1/4				
47	90304111601	WASHER,TOOTH	2		16				
48	14115209000	PACKING	1						
50	89640201000	HOSE	1		660-NFK,1M				
51	37002405400	HOSE	2		L=265				
52	37002401040	HOSE	1		L=1320				
53	37002411120	HOSE	1		L=1180				
54	80430450450	JOINT	2		YL502				
55	80400160135	JOINT	4						
56	91002802900	O-RING	4		1B P29				
57	37000703580	CLAMP ASSY	1						
58	37000300720	SLEEVE	12		12-10		335385		
	37000300720	SLEEVE	14		12-10	335386			
59	37000703590	CLAMP ASSY	2						
60	37000702220	CLAMP ASSY	1						
62	80305050085	FITTING,TEE	1		KTK10-030N				
63	37000700960	CLAMP ASSY	1						
64	36631570000	VALVE,CLUTCH	1						0000
65	37000701030	CLAMP ASSY	1						
66	36670740000	FILTER,OIL	1						0001
68	36680390000	GAUGE,PRESSURE	1						0001
69	36670000006	ACCUMULATOR	1						0001
70	90302041001	WASHER,SPRING	19		10				
71	90191510035	BOLT	16		M10X35				

TL-250E-2-10401 4 BOOM + JIB, 2M2D, KW30MXH  
PF1400342-01 MOUNT,WINCH (2M2D)



TL-250E-2-10401 4 BOOM + JIB, 2M2D, KW30MXH  
PG1040021-01 JIB



# TL-250E-2-10401 4 BOOM + JIB, 2M2D, KW30MXH

Pos No.	Parts No	Parts Name	Qty	Unit	Technical Data	Serial No (Start)	Serial No (End)	Remarks	Pages
1	37002400610	HOSE	1		L=9250		335427		
2	33420031000	ROLLER ASSY	1						
3	(***** 33420032000	REEL,HOSE	1				335427		000069
4	33420032000	PLATE	1						
5	90101210020	BOLT	2		M10X20				
6	90302041001	WASHER,SPRING	2		10				
7	90303071001	WASHER,PLAIN	2		10				
8	37000501800	PLATE	1						
9	33420033000	GUIDE	1						
11	33420031400	SUPPORT	1						
12	37000108740	PIN	1						
13	37001100480	ROLLER ASSY	3						
14	18066519000	SPACER	6						
15	37000108730	PIN	3						
16	90101208012	BOLT	3		M8X12				
18	33420031300	PLATE	2						
19	90101208016	BOLT	4		M8X16				
20	90302040801	WASHER,SPRING	7		8				
21	80516006202	BEARING,BALL	6						
22	90303071601	WASHER,PLAIN	2		16				
23	80136032030	PIN,SPLIT	2		3.2X30				
30	36670128010	REEL,HOSE	1				335427		
	33420038020	REEL,HOSE	1			335428			000071
40	36670126002	SUPPORT	1			335428			
41	90101212025	BOLT	2		M12X25	335428			
42	90302041201	WASHER,SPRING	2		12	335428			

CLICK HERE TO **DOWNLOAD** THE COMPLETE MANUAL

- Thank you very much for reading the preview of the manual.
- You can download the complete manual from: [www.heydownloads.com](http://www.heydownloads.com) by clicking the link below



- Please note: If there is no response to CLICKING the link, please download this PDF first and then click on it.

CLICK HERE TO **DOWNLOAD** THE COMPLETE MANUAL

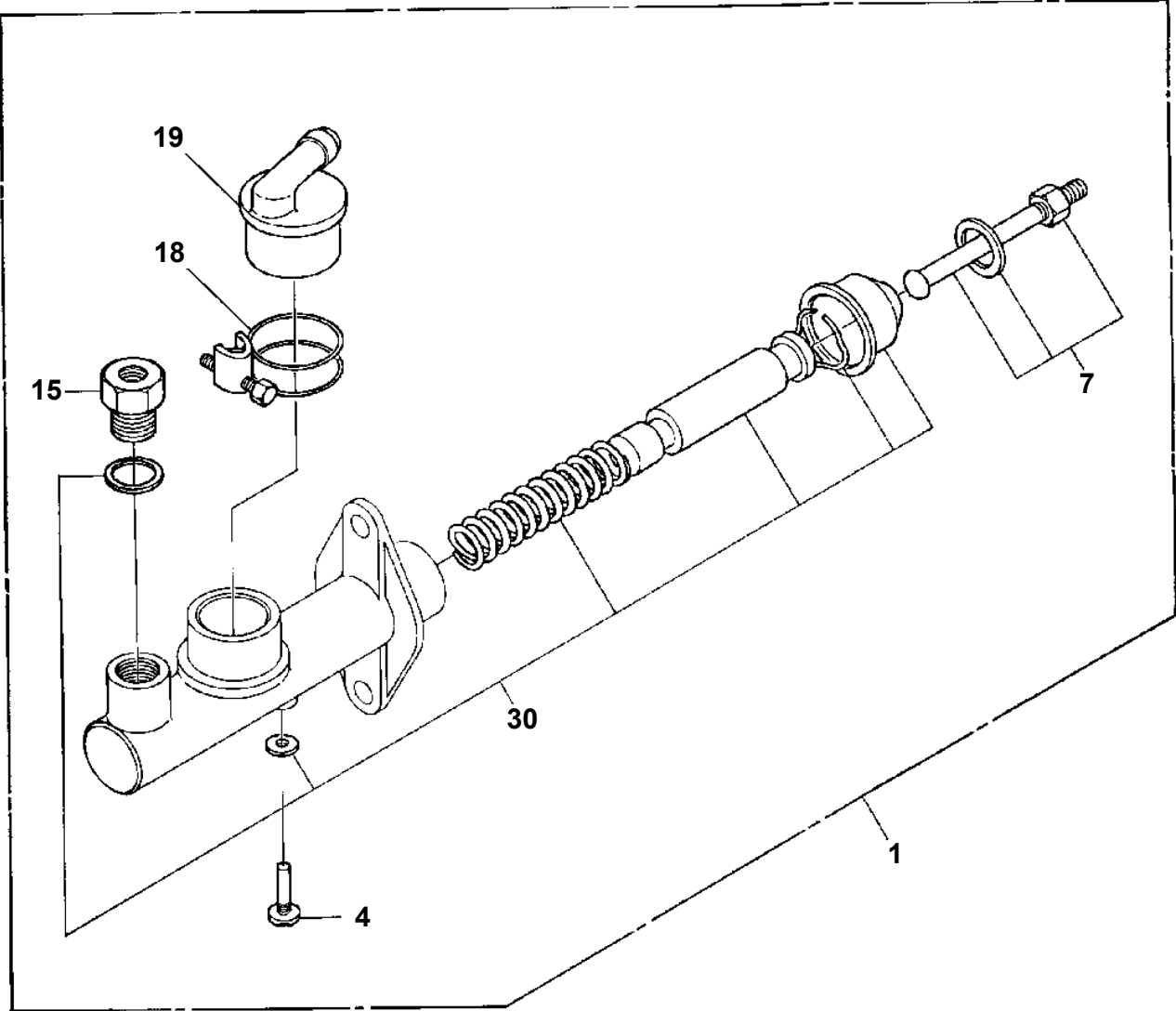
# TL-250E-2-10401 4 BOOM + JIB, 2M2D, KW30MXH

Pos No.	Parts No	Parts Name	Qty	Unit	Technical Data	Serial No (Start)	Serial No (End)	Remarks	Pages
1	16311007000	SPACER	1		L=3.5				
2	37001002850	SHEAVE ASSY	1						
3	16411006000	SPACER	1						
4	33220033200	SUPPORT ASSY	1						
5	33220033800	SUPPORT	1						
6	33220033730	GUARD	1						
7	33440090011	ROLLER ASSY	1						
8	33440321000	GUIDE (WIRE)	1						
9	33440090110	GUARD	1						
10	33760360100	GUIDE	1						
22	80515006214	BEARING,BALL	2						
23	80612111250	RING,RITAINING	1		AR125				
31	33220033230	SUPPORT	1						
33	90201200800	NUT	2		M8				
34	90302040801	WASHER,SPRING	2		8				
35	33220033250	SUPPORT	1						
36	90101208030	BOLT	2		M8X30				
41	33440090021	SUPPORT	1						
42	37001000380	SHEAVE ASSY	2						
43	37000300350	SPACER	4		L=18.5				
44	37000102280	PIN	2						
45	90101210014	BOLT	2		M10X14				
46	90302041001	WASHER,SPRING	2		10				
47	37001101350	ROLLER ASSY	2						
48	37000301420	SPACER	4		L=30				
49	37000109120	PIN	2						
50	80136340028	PIN,SPLIT	4		4X28				
62	12111503000	SPACER	2						
63	80515006206	BEARING,BALL	4				335424		
	80514006206	BEARING,BALL	4			335425			
64	80602110620	RING,RITAINING	2		R62				
72	80516006202	BEARING,BALL	2						

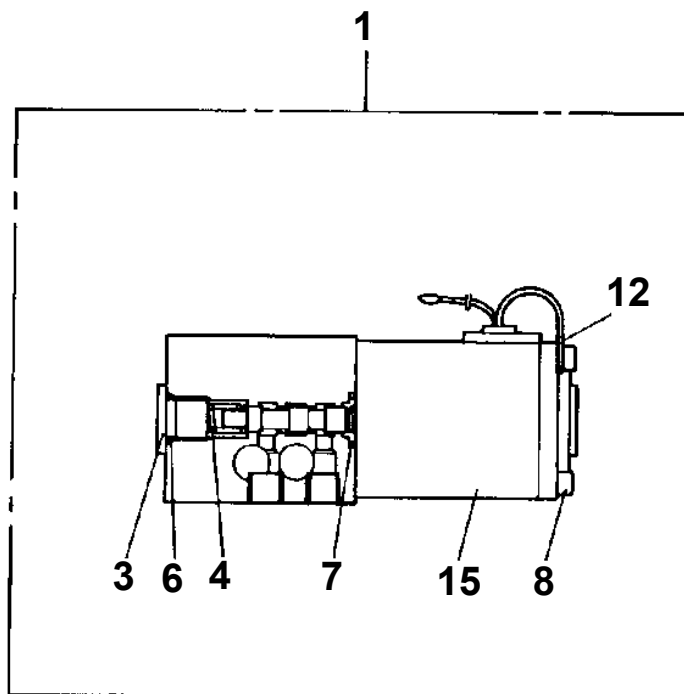
# TL-250E-2-10401 4 BOOM + JIB, 2M2D, KW30MXH

Pos No.	Parts No	Parts Name	Qty	Unit	Technical Data	Serial No (Start)	Serial No (End)	Remarks
1	33950310100	CAM	1					
2	90190000020	BOLT	2		M10X22			
3	33950040200	SWITCH ASSY	1					
4	90131304035	BOLT,HEXAGON SOCKET	2		M4X35			
5	90302040401	WASHER,SPRING	4		4			
6	90303070401	WASHER,PLAIN	4		4			
11	33950000050	SWITCH,LIMIT	1					

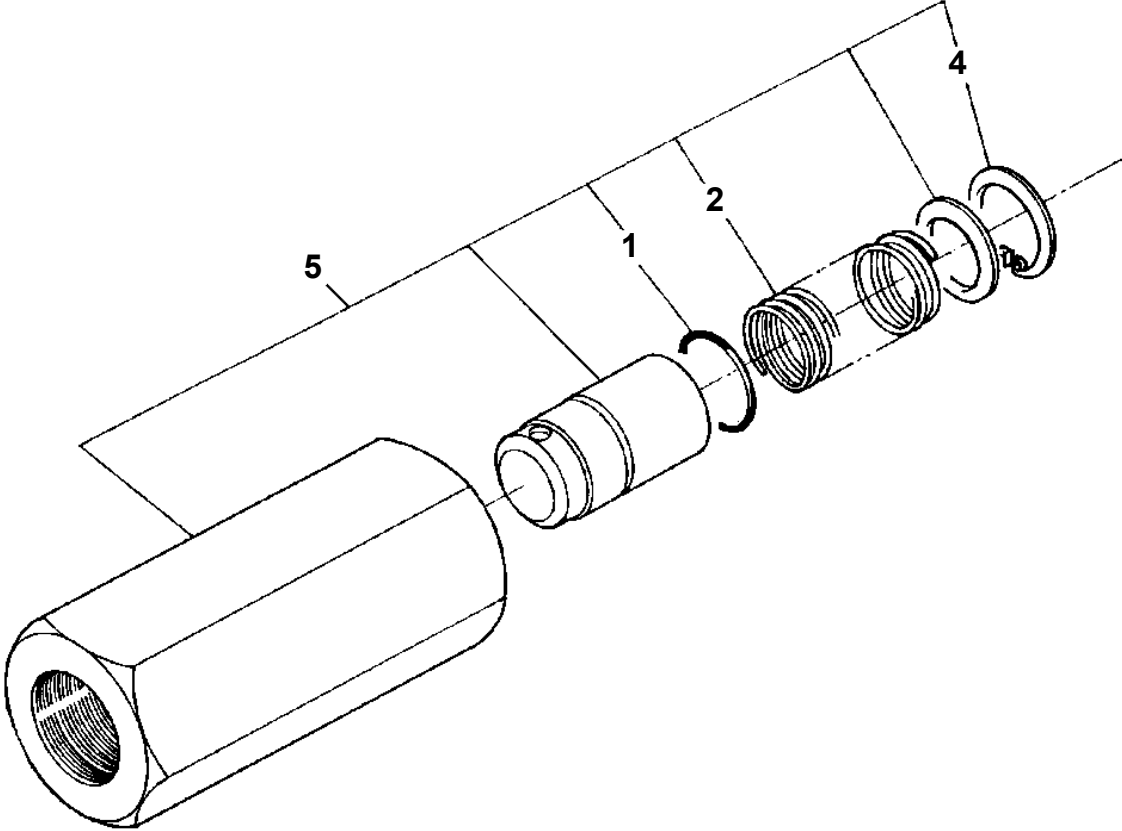
**TL-250E-2-10401 4 BOOM + JIB, 2M2D, KW30MXH  
PI1030001-00 CYLINDER,MASTER**



**TL-250E-2-10401 4 BOOM + JIB, 2M2D, KW30MXH  
PI1120006-00 VALVE,SOLENOID**

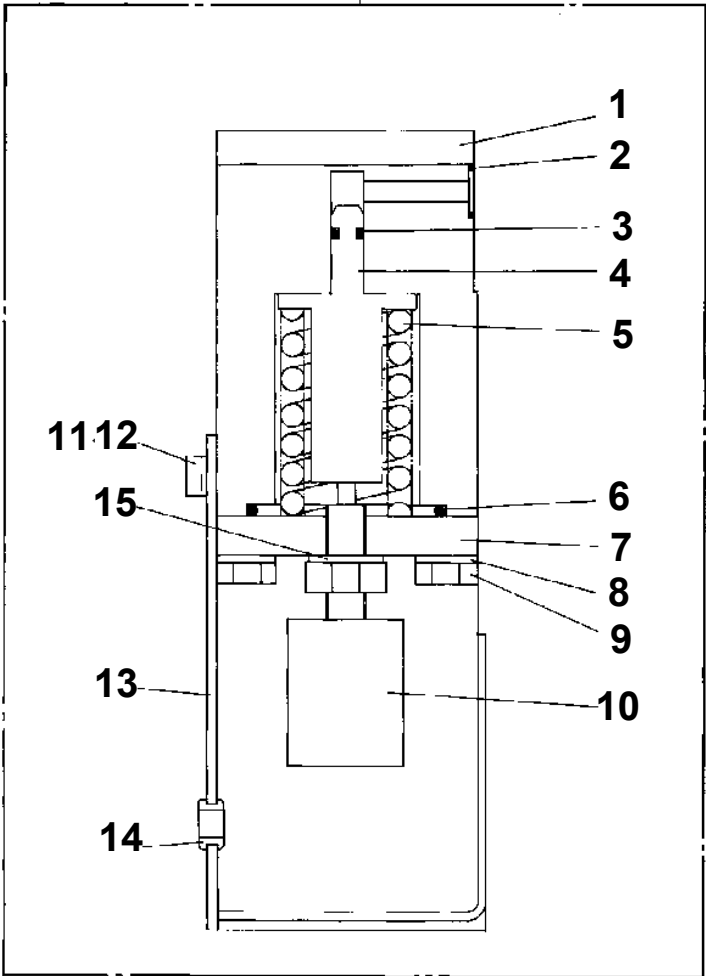


TL-250E-2-10401 4 BOOM + JIB, 2M2D, KW30MXH  
PI1140020-00 VALVE,CHECK

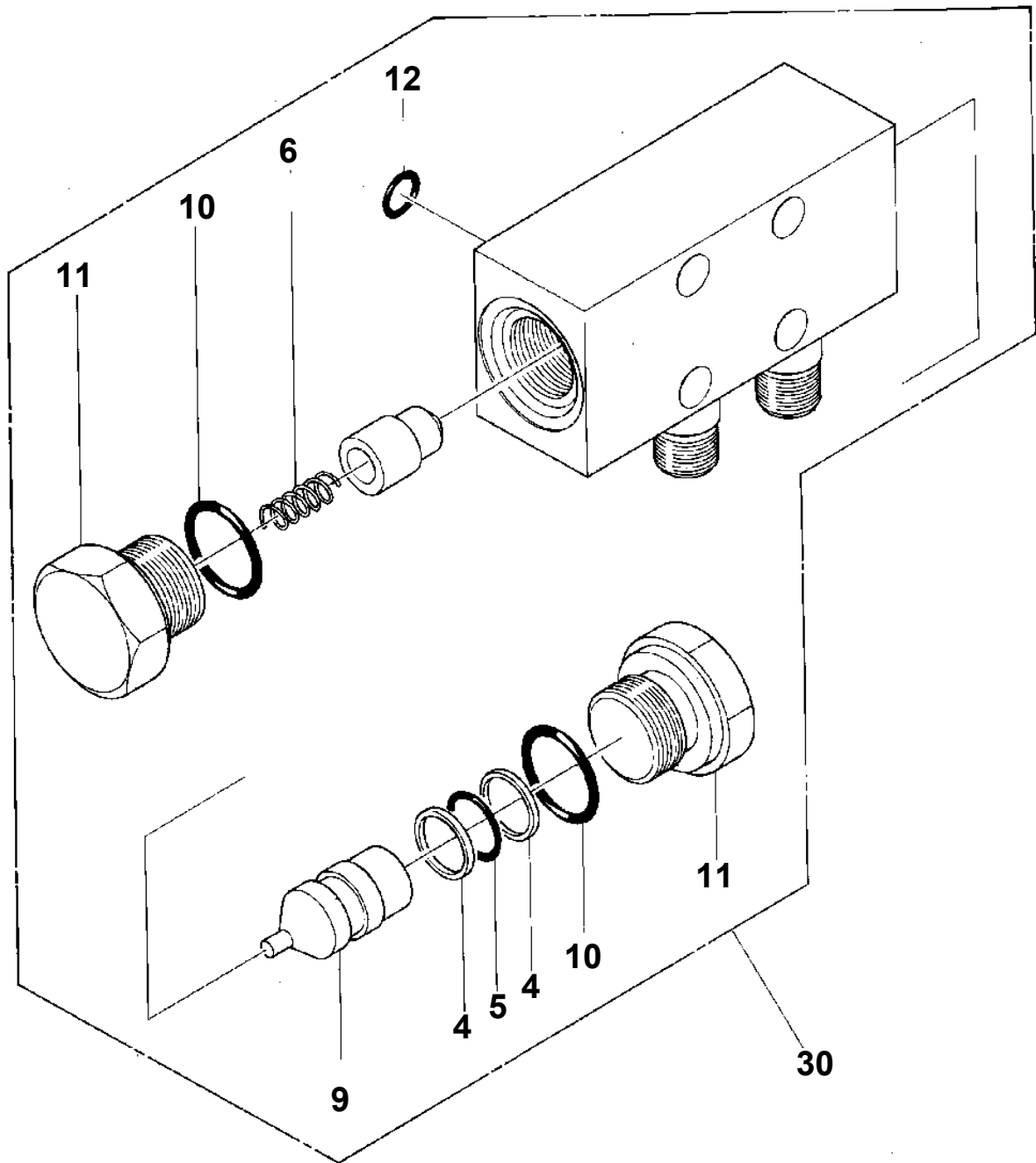


**TL-250E-2-10401 4 BOOM + JIB, 2M2D, KW30MXH  
PI1170000-00 VALVE,PRESSURE DETECTOR**

**20**

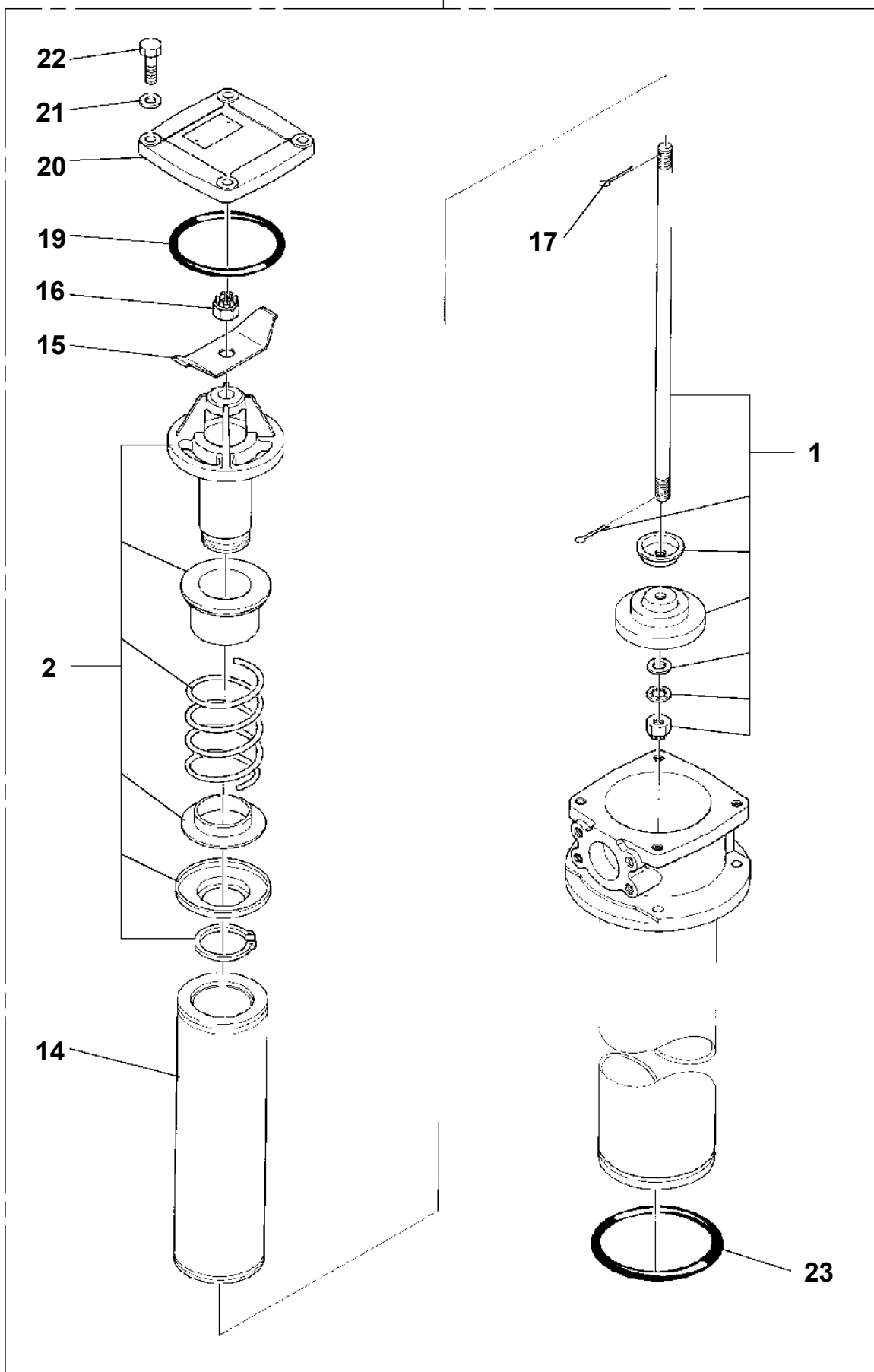


TL-250E-2-10401 4 BOOM + JIB, 2M2D, KW30MXH  
PI1280100-00 VALVE,PILOT CHECK



TL-250E-2-10401 4 BOOM + JIB, 2M2D, KW30MXH  
PI1300120-02 FILTER,OIL

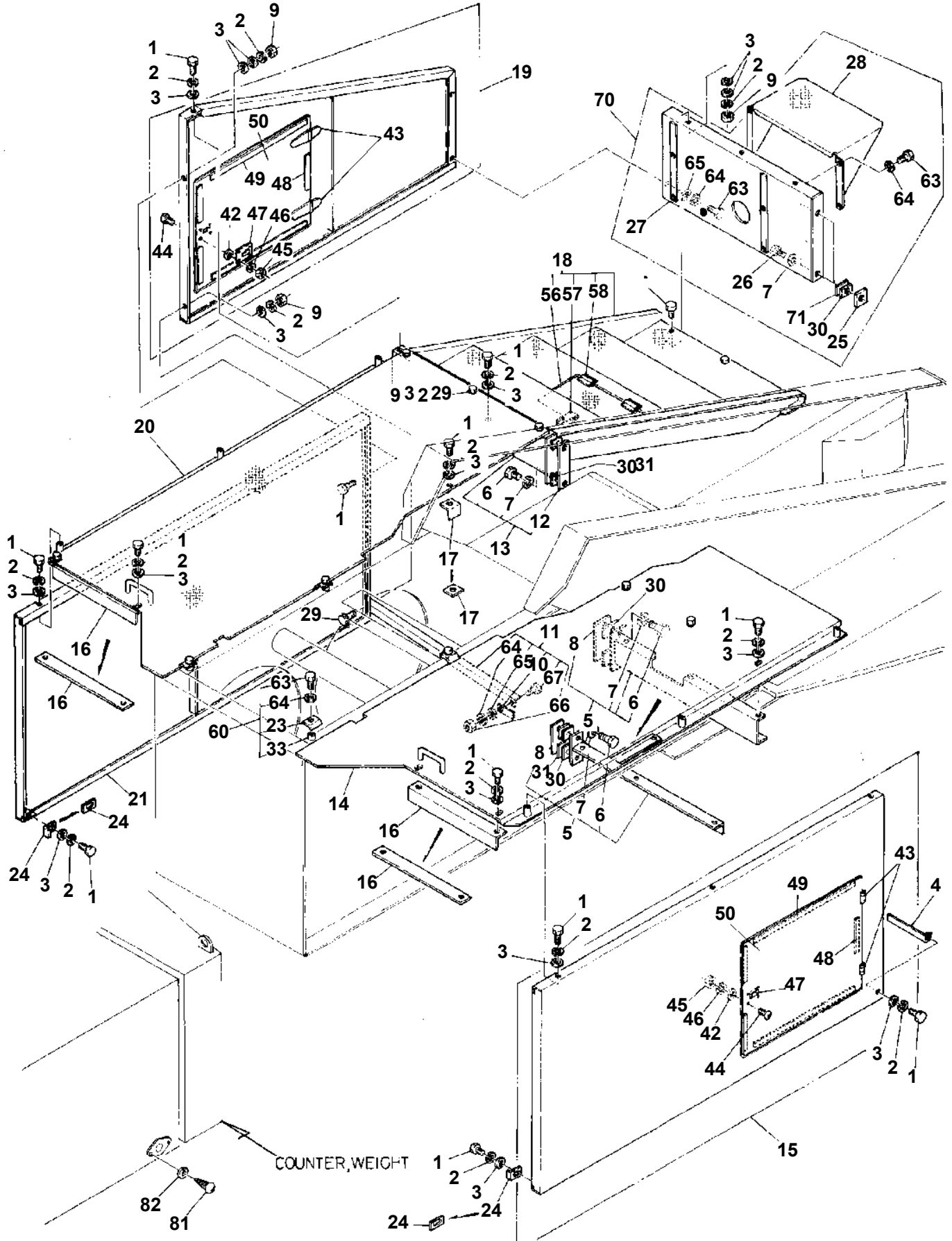
30



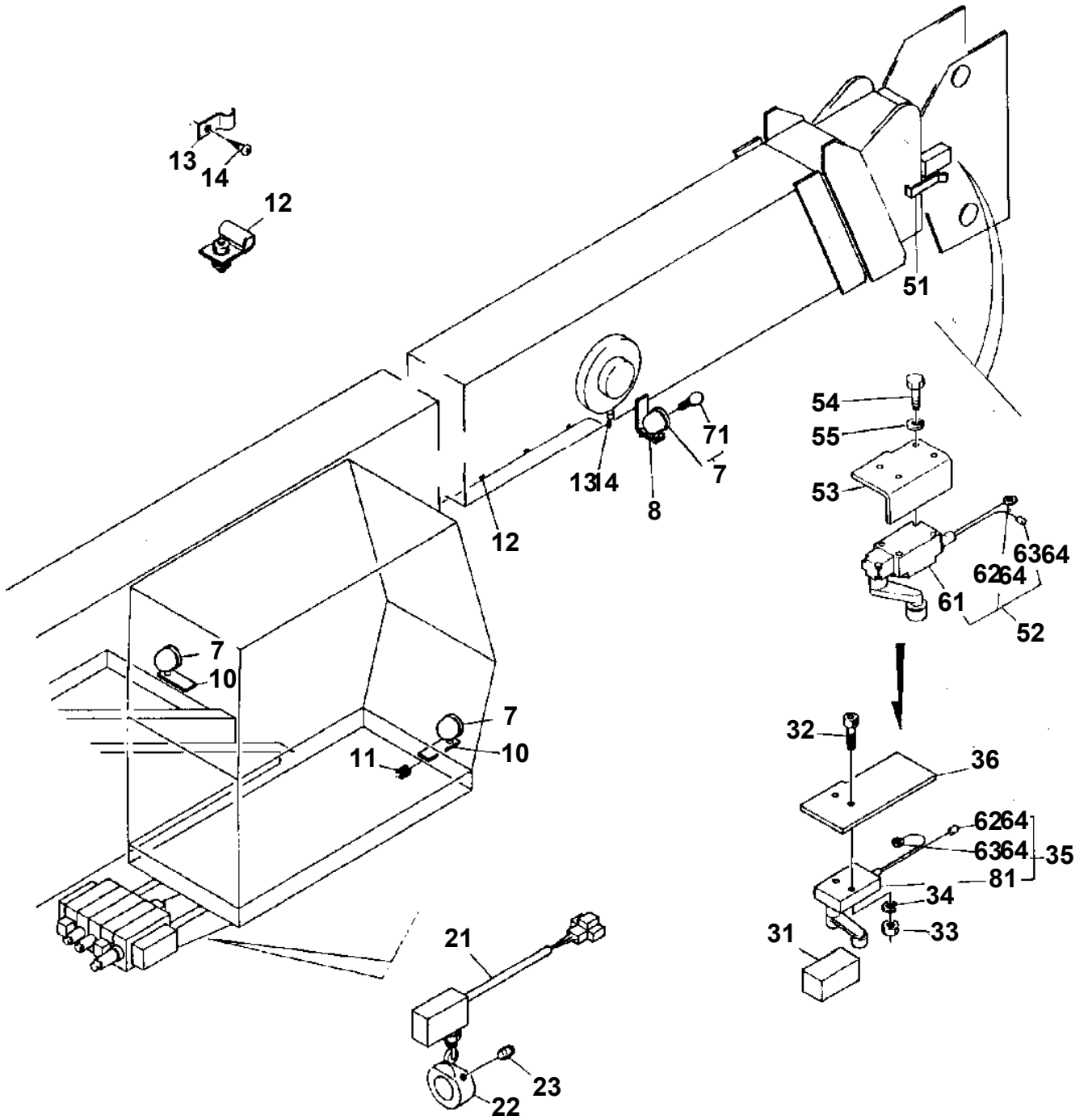
## TL-250E-2-10401 4 BOOM + JIB, 2M2D, KW30MXH

Pos No.	Parts No	Parts Name	Qty	Unit	Technical Data	Serial No (Start)	Serial No (End)	Remarks	Pages
1	33230220010	TABLE,SLEWING	1						
2	16242002001	PLATE	2						
3	90101510030	BOLT	4		M10X30				
4	90302041001	WASHER,SPRING	4		10				
5	37000117690	PIN	1						
6	37001500020	BOLT	28		M24X140				
7	90201702400	NUT	23		M24				
8	90302042401	WASHER,SPRING	28		24				
9	16072005001	STOPPER	2						
10	37000117700	PIN	1						
12	33230026000	PLATE	2						
13	90102208012	BOLT	2		M8X12				
14	90302040801	WASHER,SPRING	2		8				
15	16612008000	COVER	1						
16	90101512030	BOLT	2		M12X30				
17	90302041201	WASHER,SPRING	2		12				
20	33230220020	FRAME	1						
21	33230025100	FORK	1						
22	37000100390	PIN	1						
23	90303102001	WASHER,PLAIN	1		20				
24	80136340040	PIN,SPLIT	1		4X40				
30	33220033200	SUPPORT ASSY	1						
31	33220033230	SUPPORT	1						
33	90201200800	NUT	2		M8				
34	90302040801	WASHER,SPRING	2		8				
35	33220033250	SUPPORT	1						
36	90101208030	BOLT	2		M8X30				
40	33230027001	COVER ASSY	1						

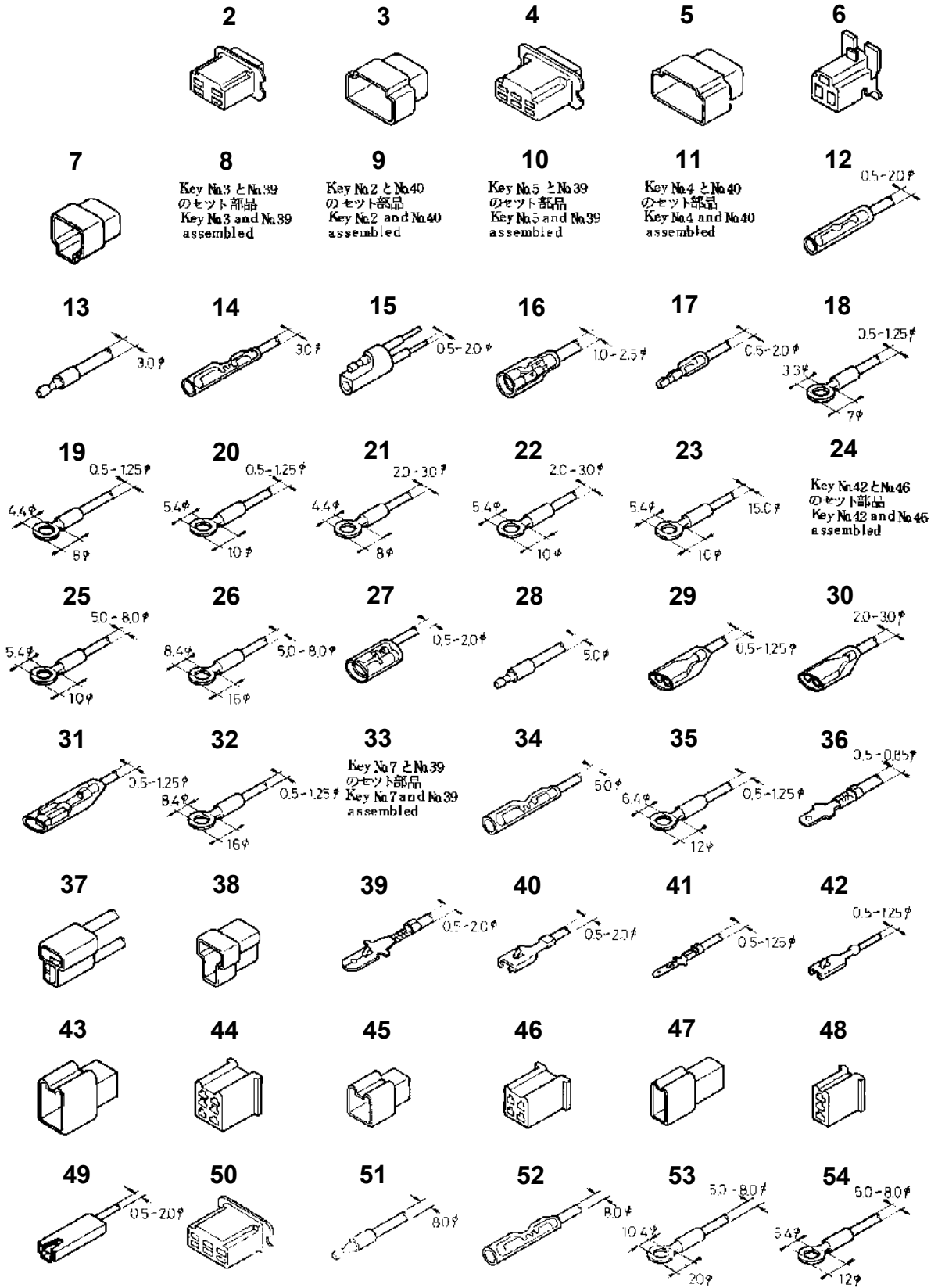
TL-250E-2-10401 4 BOOM + JIB, 2M2D, KW30MXH  
PK1200033-02 COVER, SWING FRAME



**TL-250E-2-10401 4 BOOM + JIB, 2M2D, KW30MXH  
PN1010089-01 ELECTRICAL ACCESSORIES**

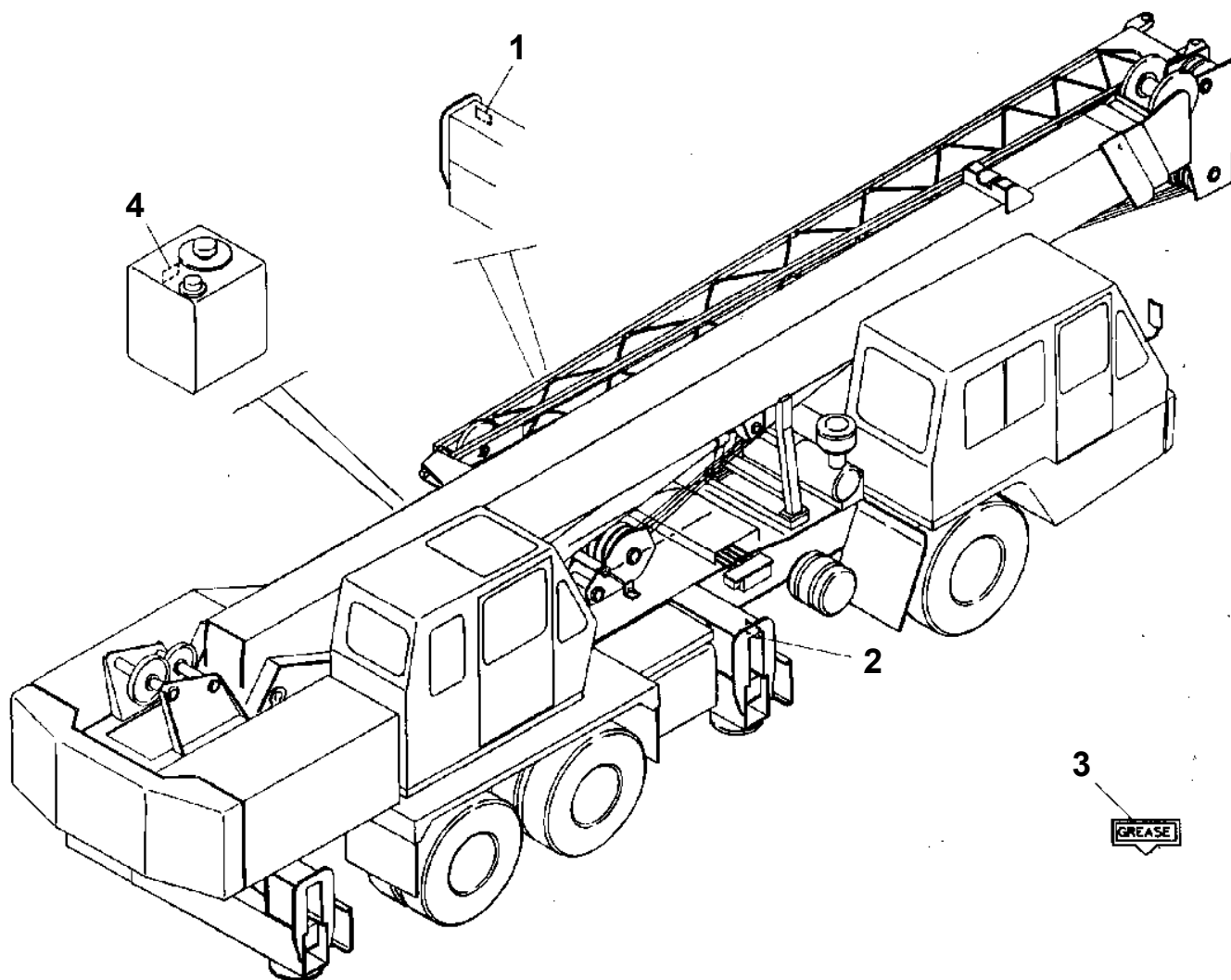


**TL-250E-2-10401 4 BOOM + JIB, 2M2D, KW30MXH  
PN1400011-00 WIRING MATERIALS**

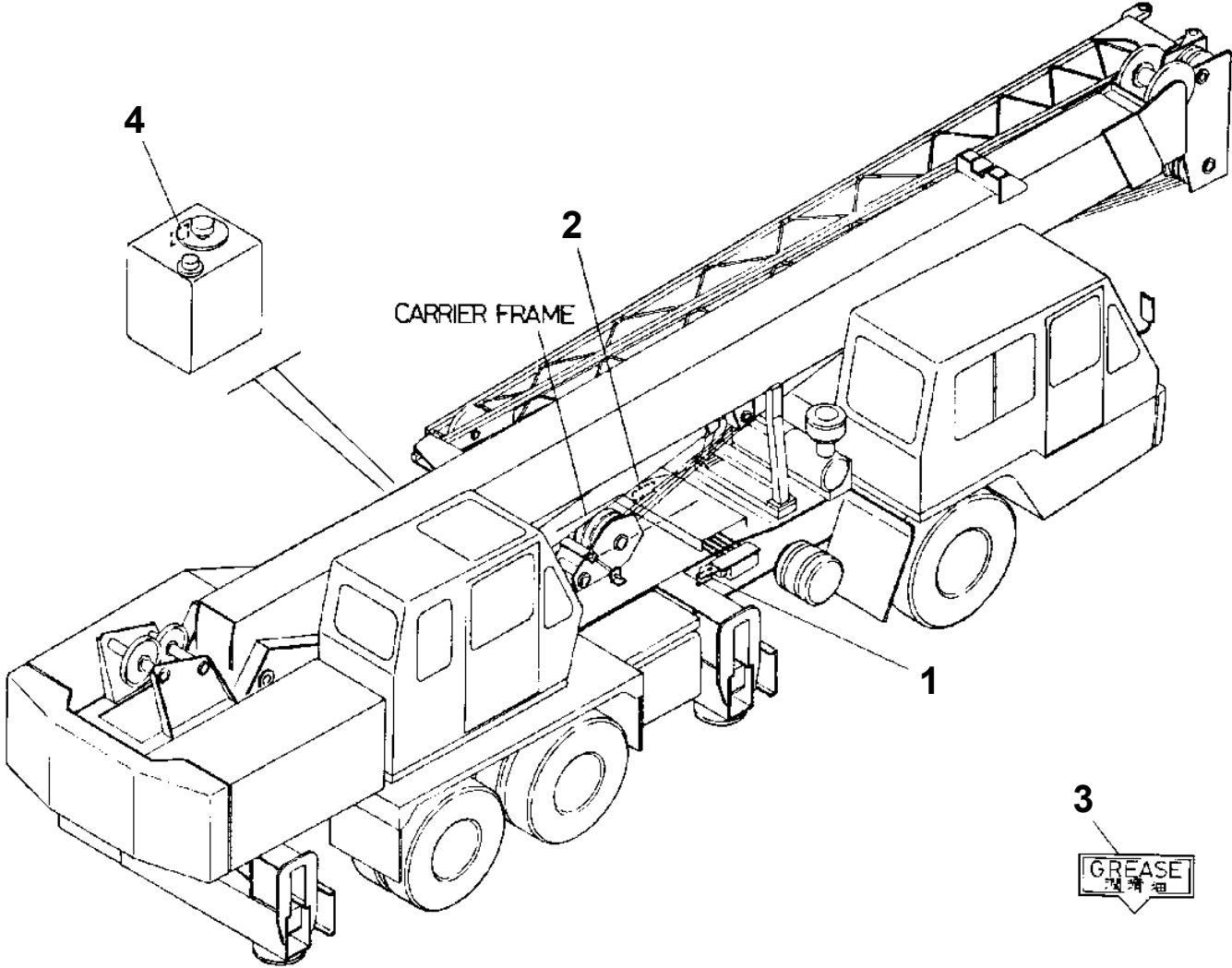


**TL-250E-2-10401 4 BOOM + JIB, 2M2D, KW30MXH  
PO1010091-00 PLATE ASSY,NAME (WITH F/J. ENGLISH)**

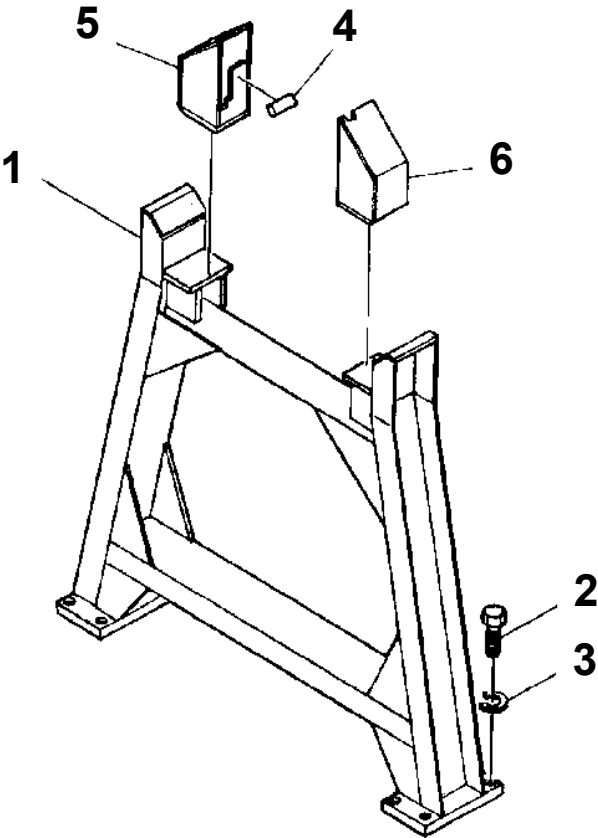
- 本図は共通イラストの為、シャシ形状が実機と異っている場合があります。
- The sketch of the carrier may differ from the actual carrier.



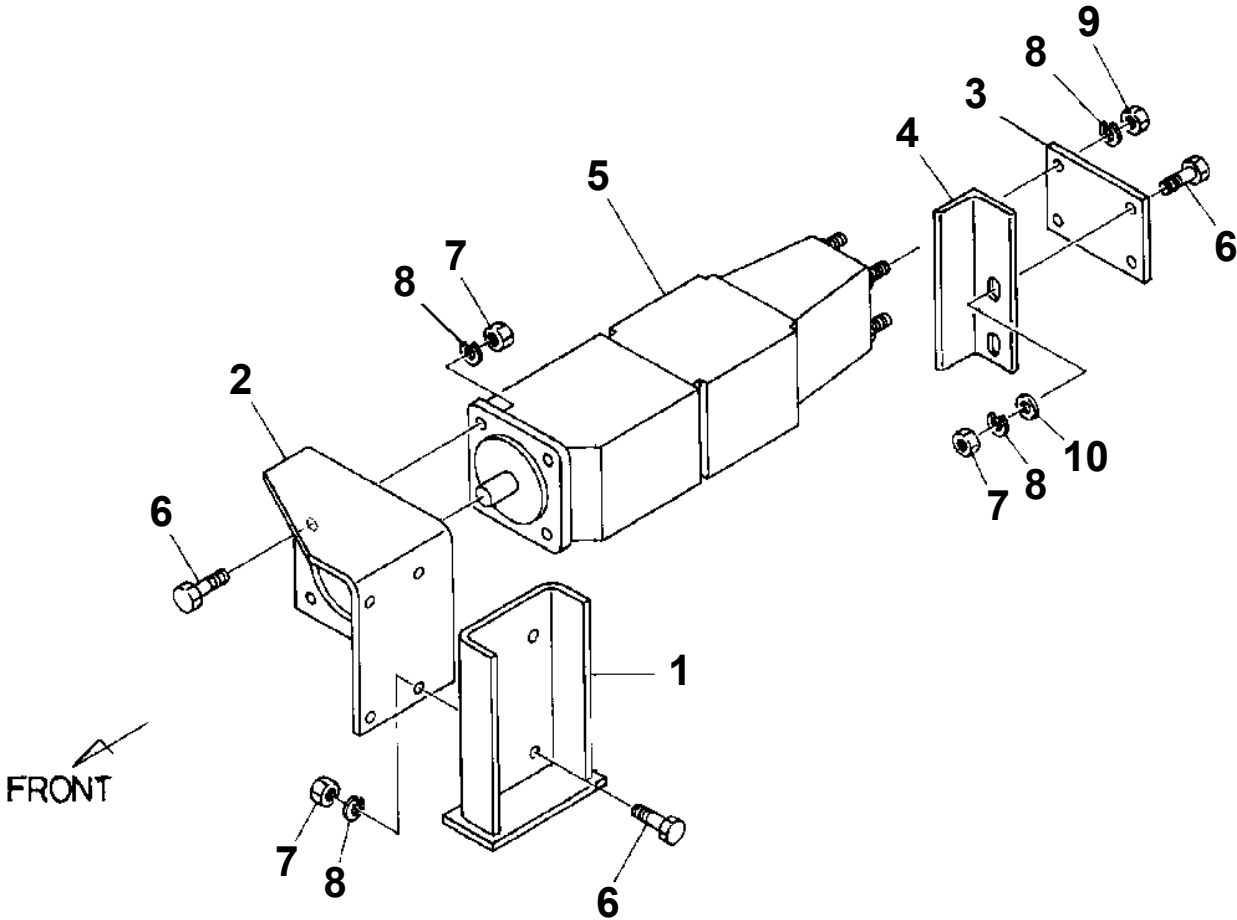
TL-250E-2-10401 4 BOOM + JIB, 2M2D, KW30MXH  
PO1011100-01 PLATE ASSY,NAME (WITHOUT F/J.ENG&CHI)



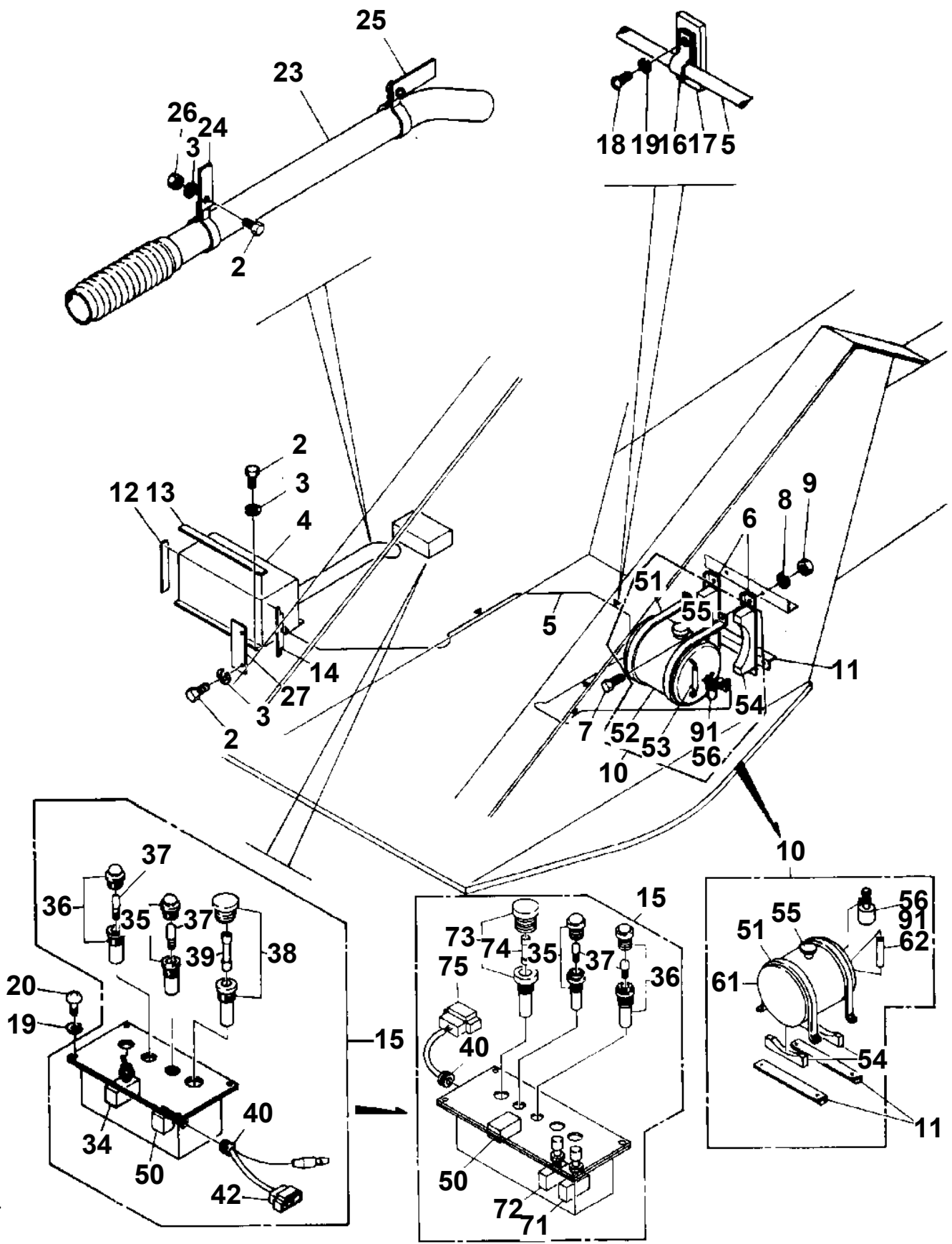
**TL-250E-2-10401 4 BOOM + JIB, 2M2D, KW30MXH  
PX1120158-00 BOOM REST INSTALLATION**



**TL-250E-2-10401 4 BOOM + JIB, 2M2D, KW30MXH  
PX1220146-00 PUMP INSTALLATION**



TL-250E-2-10401 4 BOOM + JIB, 2M2D, KW30MXH  
PY1100004-02 HEATER SYSTEM



CLICK HERE TO **DOWNLOAD** THE COMPLETE MANUAL

- Thank you very much for reading the preview of the manual.
- You can download the complete manual from: [www.heydownloads.com](http://www.heydownloads.com) by clicking the link below



- Please note: If there is no response to CLICKING the link, please download this PDF first and then click on it.

CLICK HERE TO **DOWNLOAD** THE COMPLETE MANUAL