

TG-1200M-2-20101 6 BOOM + JIB,K1500

**PB1000150-01 HYDRAULIC PRESSURE GENERATING SYSTEM
PC1000107-01 OUTRIGGER SYSTEM
PD1000145-00 SWING SYSTEM
PE1000141-00 ELEVATING SYSTEM
PF1000129-02 WINCH SYSTEM
PG1000141-01 TELESCOPING SYSTEM
PH1000134-01 SAFETY DEVICES
PI1000149-01 HYDRAULIC DEVICES
PK1000149-01 FRAME
PL1000146-00 CONTROL DEVICES
PN1000134-01 ELECTRIC EQUIPMENT
PO1000144-01 INDICATION PLATES
PP1000002-01 DISASSEMBLY DEVICES
PQ1000045-01 DRIVING POWER GENERATING SYSTEM
PW1000028-00 ACCESSORIES & TOOLS
PX1000147-00 MOUNTING PARTS
PY1000127-00 OPTIONS
ASSEMBLY**

CLICK HERE TO **DOWNLOAD** THE COMPLETE MANUAL

- Thank you very much for reading the preview of the manual.
- You can download the complete manual from: www.heydownloads.com by clicking the link below



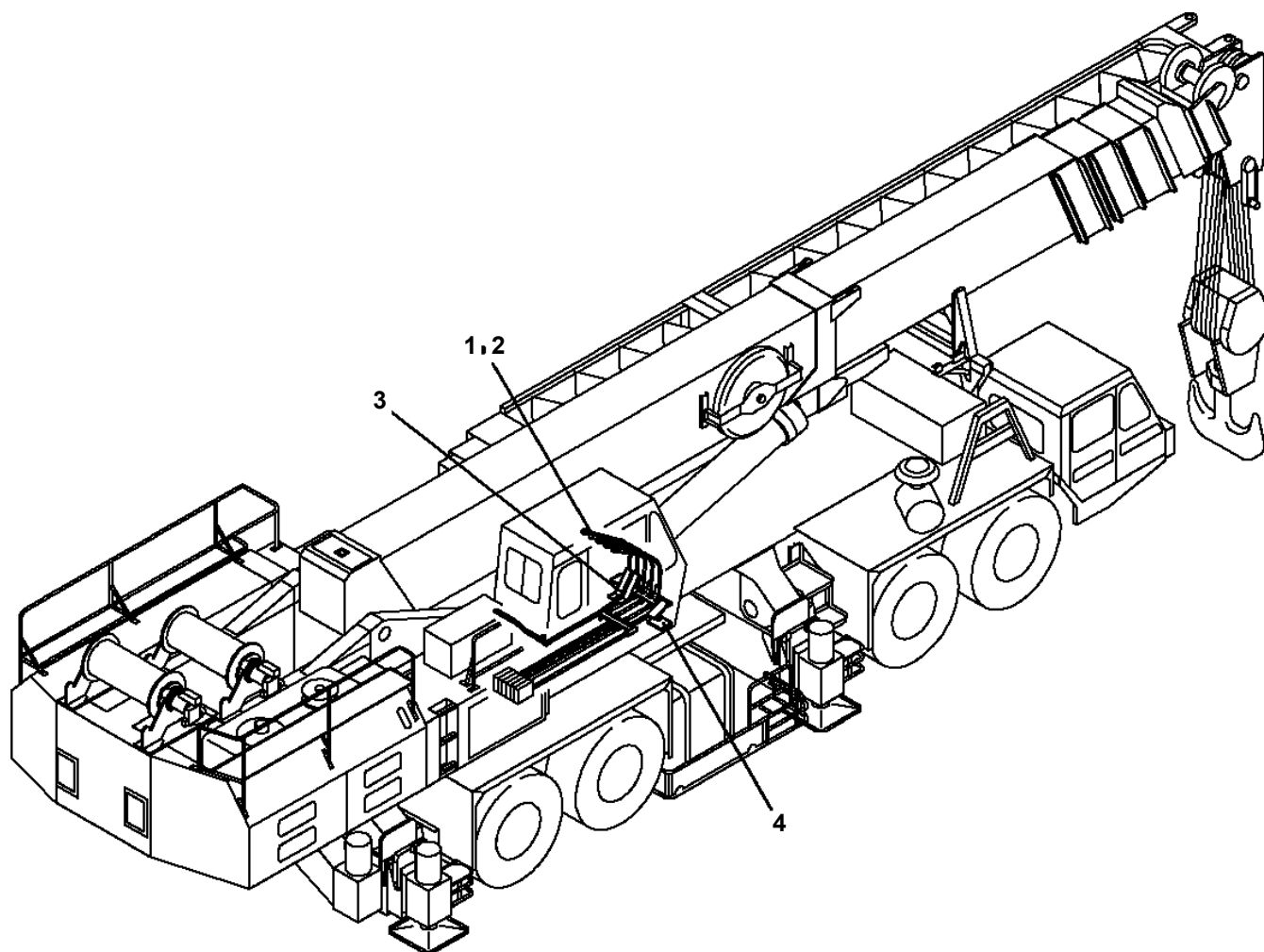
- Please note: If there is no response to CLICKING the link, please download this PDF first and then click on it.

CLICK HERE TO **DOWNLOAD** THE COMPLETE MANUAL

TG-1200M-2-20101 6 BOOM + JIB,K1500

Pos No.	Parts No	Parts Name	Qty	Unit	Technical Data	Serial No (Start)	Serial No (End)
1	(*****)	WINCH (MAIN)	1				
2	(*****)	WINCH (AUX.)	1				
3	36071170000	WINCH	1				
4	36071350000	WINCH (AUXILIARY)	1				
5	36090630000	HOOK (MAIN.120TON)	1				
6	36090160000	HOOK (45TON)	1				
7	36091720000	HOOK (AUXILIARY)	1				
9	37001800730	ROPE,WIRE	1				
10	37001800740	ROPE,WIRE	1				
11	(*****)	SOCKET,ROPE	2				
12	(*****)	OPE.ASSY,DRUM LOCK (MAIN)	1				
13	(*****)	OPE.ASSY,DRUM LODK (AUX.)	1				
14	(*****)	PIPING,WINCH (MAIN)	1				
15	(*****)	PIPING,WINCH (AUX.)	1				
16	(*****)	PIPING,WINCH BRAKE	1				
17	(*****)	DETECTOR,DRUM ROTATION (OPTION)	1				
18	(*****)	MOUNT,WINCH (MAIN)	1				
19	(*****)	MOUNT,WINCH (AUX)	1				
20	36661210000	MOTOR,HYDRAULIC (WINCH)	2				
21	36602090000	VALVE,REDUCING	1				
22	36601680001	VALVE,RELIEF	2				
23	36601690000	VALVE,RELIEF	2				
24	36641330000	VALVE,SOLENOID	4				
25	36642000000	VALVE,HYDRAULIC	2				
26	59451304000	VALVE,CHECK	1				
27	36622230000	VALVE,CHECK	1				
28	36621320000	VALVE,SHUTTLE	2				
29	36601630000	VALVE,COUNTERBALANCE (WINCH)	1				
30	36601810000	VALVE,COUNTERBALANCE (WINCH)	1				
31	36600180000	VALVE,SEQUENCE	1				
32	36671390006	ACCUMULATOR	1				

TG-1200M-2-20101 6 BOOM + JIB, K1500
PL1000146-00 CONTROL DEVICES

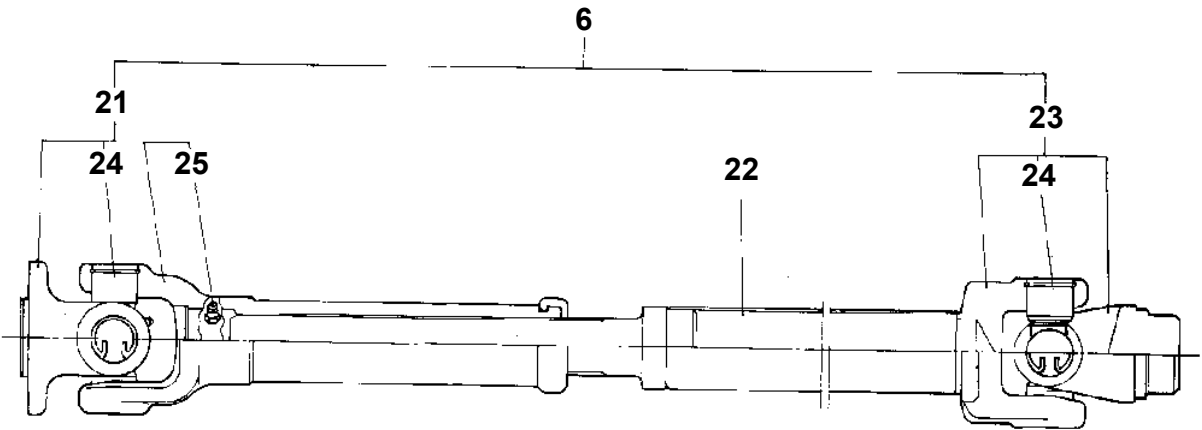
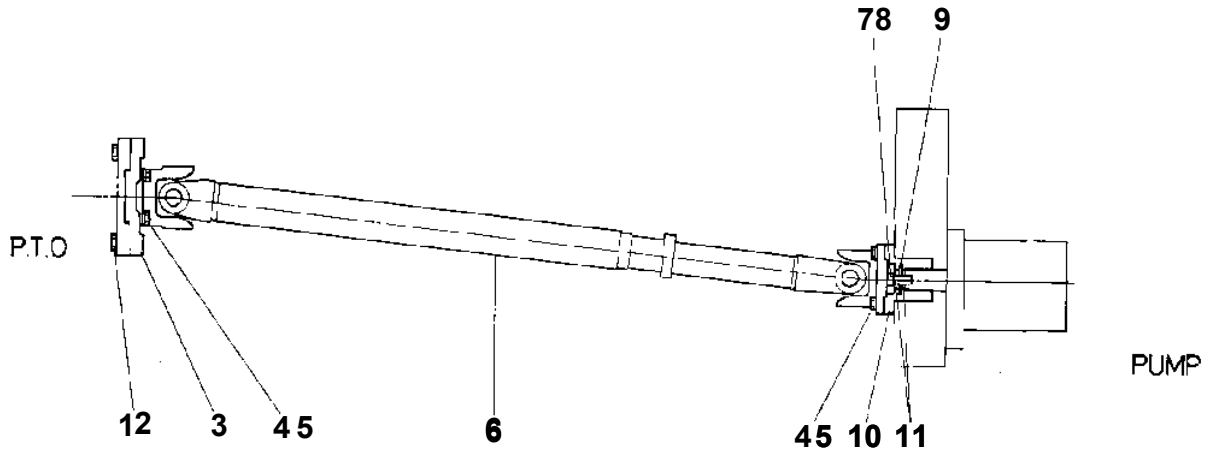


**TG-1200M-2-20101 6 BOOM + JIB,K1500
PW1000028-00 ACCESSORIES & TOOLS**

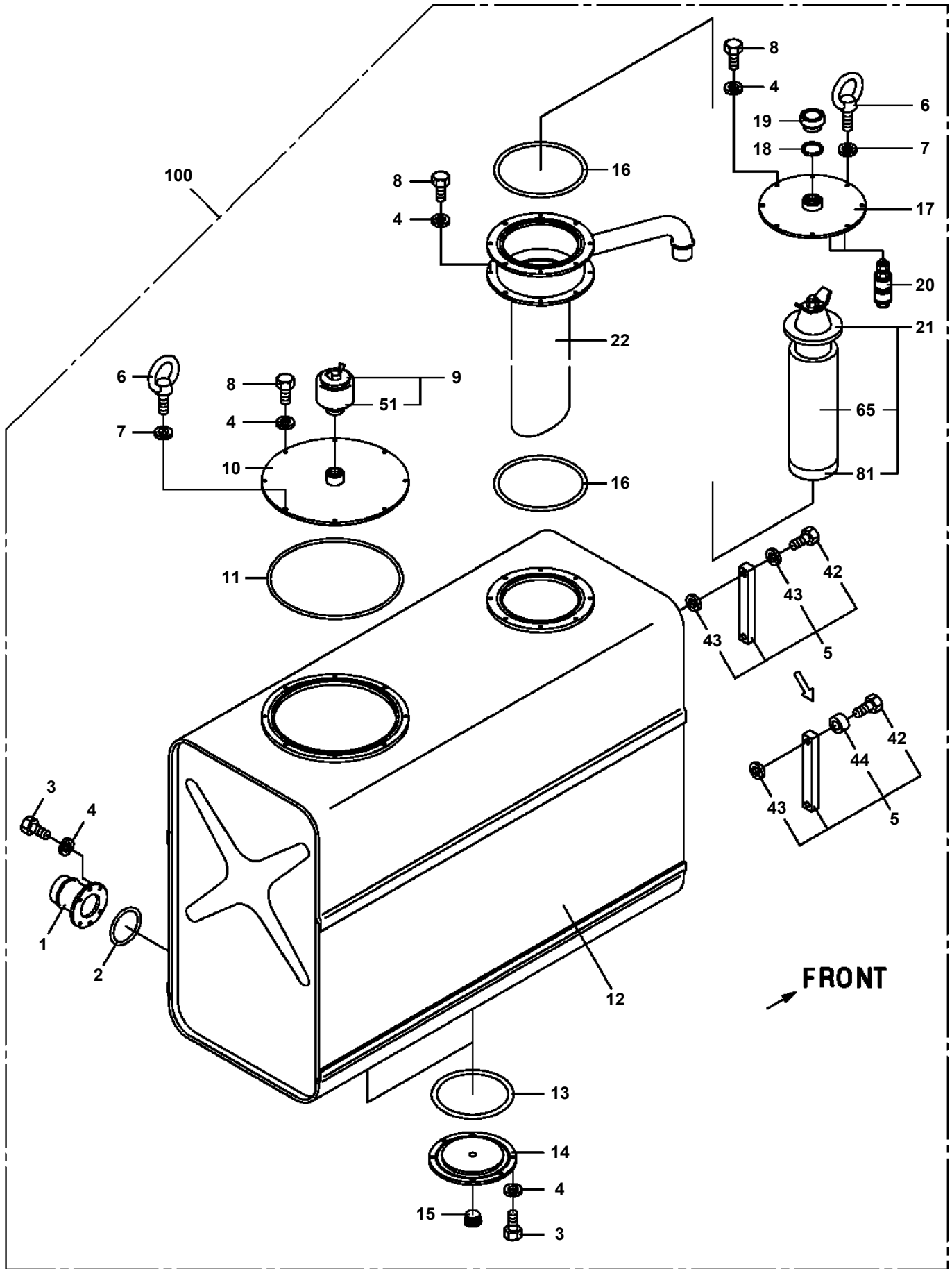
フック アヒン
ACCESSORIES & TOOLS

【組立名称一覧】より選択してください。
SEE THE CORRESPONDING "ASSEMBLY NAME" LIST.

TG-1200M-2-20101 6 BOOM + JIB,K1500
PB1070090-00 PROPELLER SHAFT,PUMP



TG-1200M-2-20101 6 BOOM + JIB,K1500
PB1130050-02 TANK,OIL (UPPER)



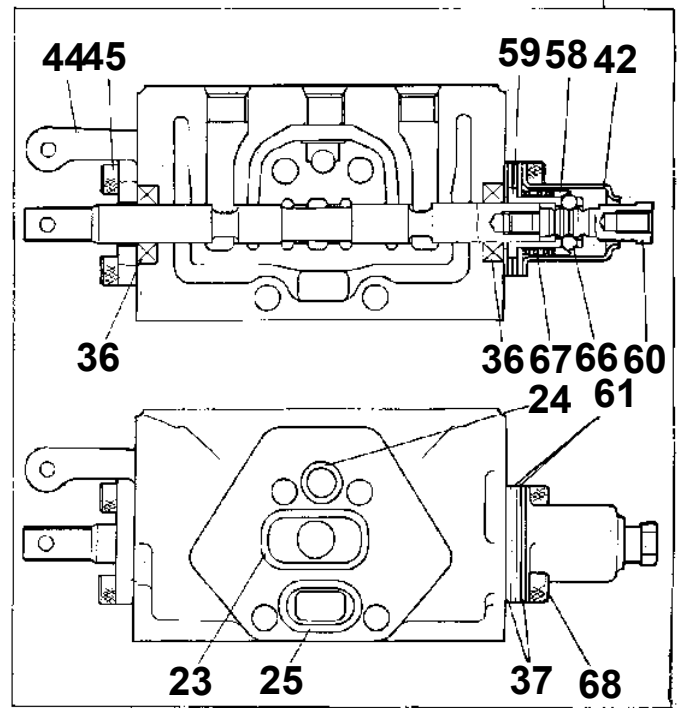
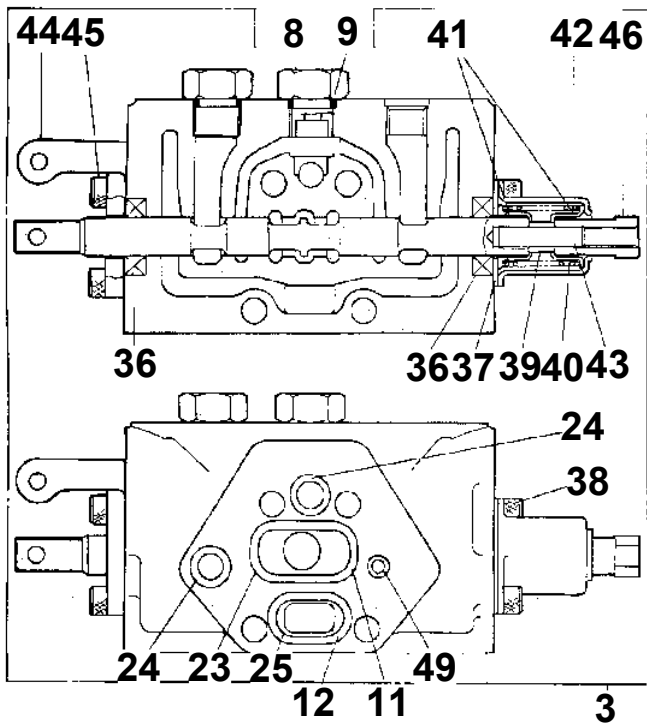
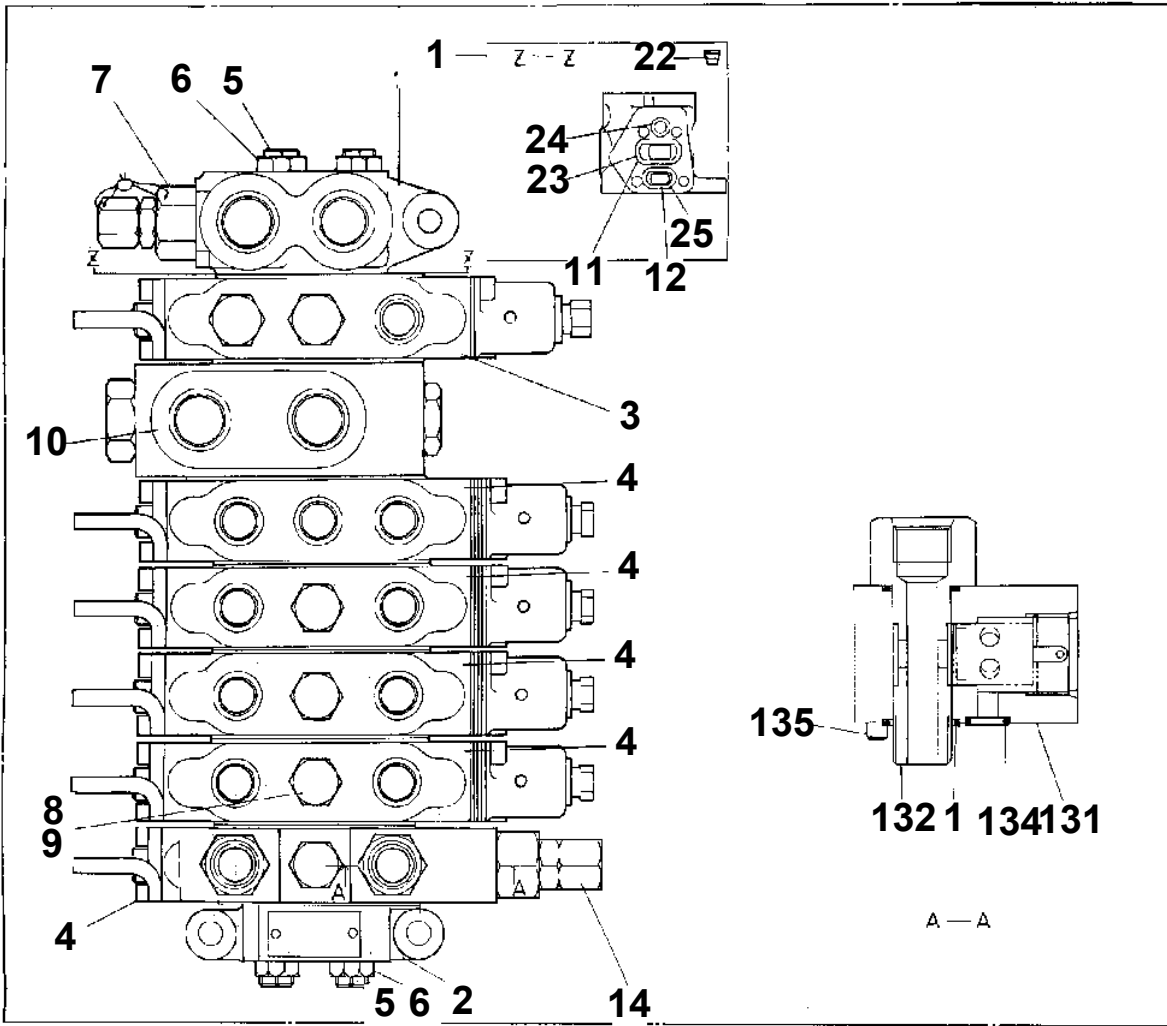
TG-1200M-2-20101 6 BOOM + JIB,K1500

Pos No.	Parts No	Parts Name	Qty	Unit	Technical Data	Serial No (Start)	Serial No (End)	Remarks	Pages
1	37000912820	JOINT	2						
2	37000802920	JOINT	3						
3	80400160103	FITTING	9		20368-U3/8X1/4				
4	80400160104	FITTING	14		20368-U3/8X3/8				
5	80400160105	FITTING	12		20368-U1/2X3/8				
6	80316030060	PLUG	3		PT3/8				
7	80400160109	FITTING,ELBOW	9		20369-U3/8X1/4				
8	80400160125	FITTING,TEE	4		20364-U3/8				
9	80305050120	FITTING,TEE	1						
10	80301010120	FITTING	1		KUA15-000N				
11	37000702230	CLAMP ASSY	3						
12	37000300750	SLEEVE	3		18-15				
13	80302010180	FITTING	1		KCT15-030N				
14	80315040040	JOINT	1						
15	91002801100	O-RING	1		1B P11				
16	80400160111	FITTING,ELBOW	1						
17	37000701280	CLAMP ASSY	14						
18	37000700200	CLAMP ASSY	7						
20	82100001411	TUBE,SPIRAL	5	M	SE-08BK				
21	89640202000	HOSE	1						
22	89640201000	HOSE	1		660-NFK,1M				
23	89640201000	HOSE	1		660-NFK,1M				
24	89640201000	HOSE	1		660-NFK,1M				
25	89640202000	HOSE	1						
26	89640201000	HOSE	1		660-NFK,1M				
27	89640102000	HOSE	1		880-NFK,2M				
28	81408000210	PIPE,STEEL	2	M	15X2.0T				
29	89640201000	HOSE	1		660-NFK,1M				
30	89640201000	HOSE	1		660-NFK,1M				
31	89640201000	HOSE	1		660-NFK,1M				
32	89640102000	HOSE	1		880-NFK,2M				
33	89640202000	HOSE	1						
34	89640101000	HOSE	1		880-NFK,1M				
35	89640202000	HOSE	1						
36	89640203000	HOSE	1						
37	89640101000	HOSE	1		880-NFK,1M				
38	89640102000	HOSE	1		880-NFK,2M				
39	89640202000	HOSE	1						
40	89640101000	HOSE	1		880-NFK,1M				
41	89640201000	HOSE	1		660-NFK,1M				
42	89640201000	HOSE	1		660-NFK,1M				
43	89640201000	HOSE	1		660-NFK,1M				
44	89640201000	HOSE	1		660-NFK,1M				
45	89640201000	HOSE	1		660-NFK,1M				
46	89640201000	HOSE	1		660-NFK,1M				
47	89640201000	HOSE	1		660-NFK,1M				
48	89640201000	HOSE	1		660-NFK,1M				
53	89640201000	HOSE	1		660-NFK,1M				
54	81408000210	PIPE,STEEL	2	M	15X2.0T				

TG-1200M-2-20101 6 BOOM + JIB, K1500
 PB1320054-00 VALVE, MANUAL CONTROL

ASSEMBLY DRAWING VALVE, MANUAL CONTROL (OVERLOOK)

13102 0054 00



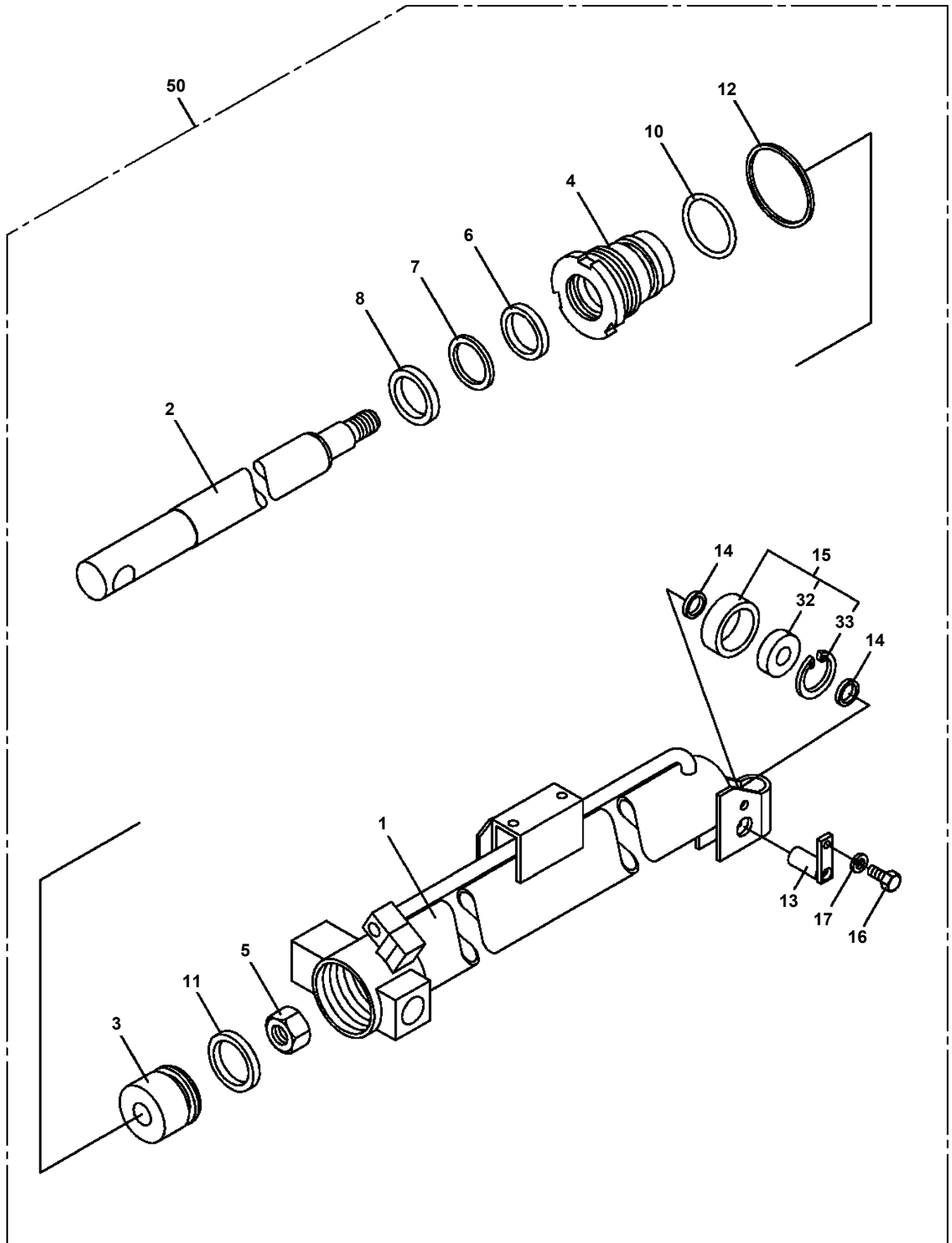
TG-1200M-2-20101 6 BOOM + JIB,K1500

Pos No.	Parts No	Parts Name	Qty	Unit	Technical Data	Serial No (Start)	Serial No (End)
95	90203201600	NUT	2		M16		
97	80316030060	PLUG	1		PT3/8		
101	36632605030	MANIFOLD	1				
102	36632605040	BOLT,HEXAGON SOCKET	2		M14X130		
104	90131510035	BOLT,HEXAGON SOCKET	2		M10X35		
105	90302041001	WASHER,SPRING	2		10		
150	36634070000	VALVE,MANUAL CONTROL (SWING)	1				

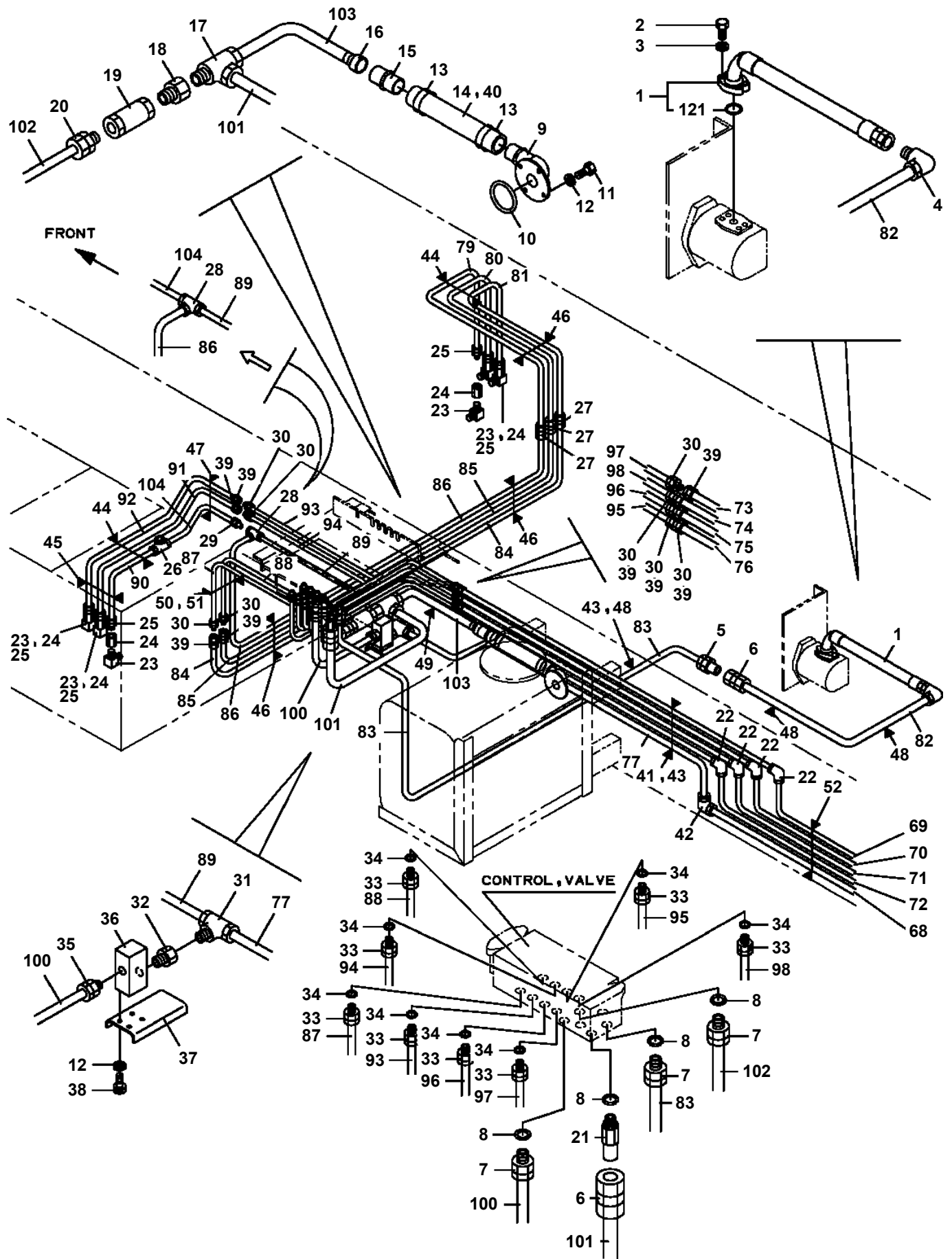
TG-1200M-2-20101 6 BOOM + JIB,K1500

Pos No.	Parts No	Parts Name	Qty	Unit	Technical Data	Serial No (Start)	Serial No (End)	Remarks
1	33610851010	CASE,INNER	1					
2	33610851200	CASE,INNER	2					
3	33610851500	CASE,INNER	2					
4	36031640001	CYLINDER,JACK	2					
5	36040960000	CYLINDER,EXTENSION	2					
6	36040970000	CYLINDER,EXTENSION	2					
7	58320305000	FLOAT	2					
8	90101530100	BOLT	8		M30X100			
9	90302043001	WASHER,SPRING	8		30			
10	36622490000	VALVE,CHECK	2					
11	90131510032	BOLT,HEXAGON SOCKET	8		M10X32			
12	90302041001	WASHER,SPRING	20		10			
13	80430450650	JOINT	2			460061		
	80430450650	JOINT	4				460060	
14	37002435220	HOSE,TWIN	2		L=3150	460063		
	37002416020	HOSE,TWIN	2		L=3150		460062	
15	33610852700	SUPPORT	2					
16	90101208020	BOLT	4		M8X20			
17	90302040801	WASHER,SPRING	6		8			
18	37002410260	HOSE	4		L=515			
19	80430410650	JOINT	4					
20	80430410450	JOINT	6					
21	37002425680	HOSE,TRIPLE	2		L=2600			
22	33610852150	SUPPORT	2					
23	33610852410	SUPPORT	2					
24	90101212025	BOLT	6		M12X25			
25	90302041201	WASHER,SPRING	6		12			
26	37000200720	PIN	4					
27	33610212520	SUPPORT	4					
28	82100002041	CLAMP	2					
29	90201200800	NUT	2		M8			
30	37000100330	PIN	4					
31	80136340050	PIN,SPLIT	4		4X50			
32	33610852160	SUPPORT	2					
33	37000527700	PLATE	2					
34	37000108250	PIN	8					
35	80602110300	RING,RITAINING	8		R30			
36	33610852140	SUPPORT	2					
37	33610852760	COVER	2					
38	90101210022	BOLT	8		M10X22			
39	90201201000	NUT	8		M10			
40	90101210025	BOLT	4		M10X25			
41	56760106000	PLATE	6					
42	90101210014	BOLT	8		M10X14			
43	82100001413	TUBE,SPIRAL	1	M	SE-15BK			
44	37000543880	PLATE	4			460054		
45	91800000003	FASTENER	2			460056		
46	80303080040	JOINT	2			460061	460062	
47	37000911550	JOINT	2			460061		
61	58320395520	SUPPORT ASSY	2					
62	58320395510	PIN ASSY	2					

TG-1200M-2-20101 6 BOOM + JIB,K1500
PC1050045-00 CYLINDER,EXTENSION



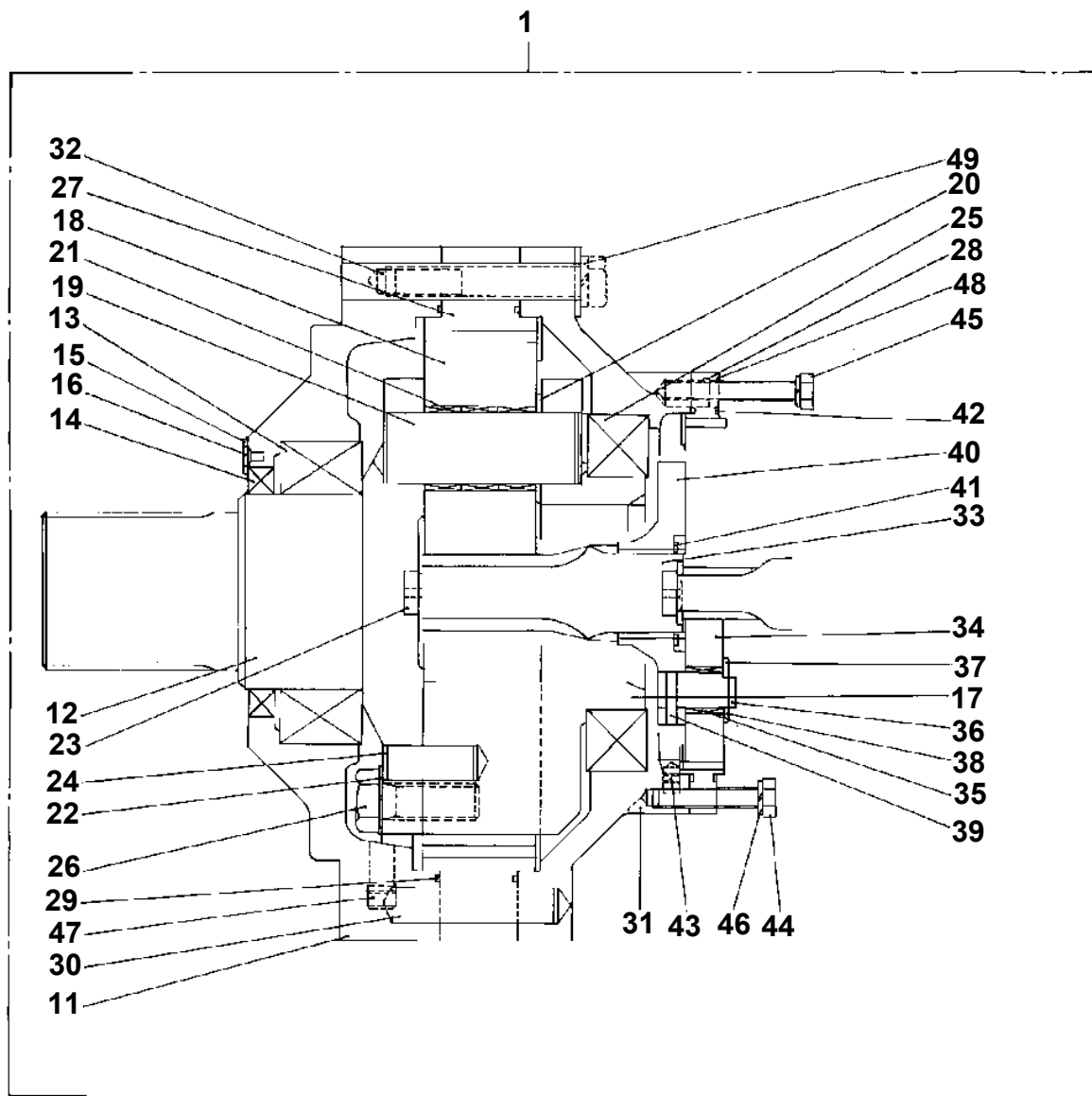
**TG-1200M-2-20101 6 BOOM + JIB,K1500
PC1200097-02 PIPING,OUTRIGGER**



TG-1200M-2-20101 6 BOOM + JIB,K1500

Pos No.	Parts No	Parts Name	Qty	Unit	Technical Data	Serial No (Start)	Serial No (End)	Remarks
67	37000545470	PLATE	3					
68	37000502400	PLATE	4					
69	37000711080	CLAMP ASSY	3		12-2			
70	37000300720	SLEEVE	6		12-10			
71	37000502360	PLATE	2					
72	37000502320	PLATE	1					
73	37000711010	CLAMP ASSY	1		18X1			
74	37000502370	PLATE	1					

TG-1200M-2-20101 6 BOOM + JIB,K1500
PD1070008-00 DRIVING UNIT, SWING



TG-1200M-2-20101 6 BOOM + JIB,K1500

Pos No.	Parts No	Parts Name	Qty	Unit	Technical Data	Serial No (Start)	Serial No (End)	Rema
1	36022630010	CYLINDER	1					
2	36022630030	ROD ASSY	1			460051		
	36022500010	ROD ASSY	1				460050	
3	36020390030	PISTON	1					
4	36020390040	COVER,ROD	1					
6	36022490040	COVER,HEAD	1					
7	36020390100	SHIM	1					
8	36020390110	SHIM	1					
9	91302228000	BEARING,PLAIN	2					
10	91684028000	PACKING	2					
11	91431225501	RING,BACKUP	1					
12	91411225501	RING,BACKUP	1					
13	91694023000	PACKING	1					
14	91410223001	RING,BACKUP	1					
15	91660023000	SEAL,DUST	1					
16	91251102300	RING,DAMPER	1					
20	91002919500	O-RING	1		1B G195			
21	91002826500	O-RING	1		1B P265			
23	91001227000	O-RING	1		1A G270			
24	36020070700	PLATE	1					
25	36020390150	RETAINER	2					
26	90101205012	BOLT	6		M5X12			
27	90302040501	WASHER,SPRING	6		5			
28	80720105040	PIN,SPRING	1		5X40			
41	37000400760	BEARING,PLAIN	2					
42	90730010160	SCREW,SET	4		M10X16			
52	18026209000	RETAINER	2					
53	18026213000	BEARING,SPHERICAL	1					
61	80612112500	RING,RETAINING	1					
100	36022639510	CYLINDER,ELEVATING (NO.1)	1					

TG-1200M-2-20101 6 BOOM + JIB,K1500

Pos No.	Parts No	Parts Name	Qty	Unit	Technical Data	Serial No (Start)	Serial No (End)
1	36070625010	REDUCER ASSY	1				
2	36661210000	MOTOR,HYDRAULIC (WINCH)	1				
3	36601810000	VALVE,COUNTERBALANCE (WINCH)	1				
11	36070625020	PLATE,THRUST	1				
12	36070625030	GEAR,SUN	1				
13	36070625040	SHIM	1				
14	36070625050	PLATE,THRUST	1				
17	36070625060	O-RING	2				
20	36070625070	PLATE,THRUST	1				
21	36070625080	RING,SNAP	1				
22	36070625090	RING,RETAINING	1				
23	36070625100	BEARING,BALL	1				
24	36070625110	SEAL,OIL	1				
27	36070625430	BRAKE ASSY (WITH CILLAR)	1				
28	36070625130	SPRING	1				
29	36070625140	COLLAR	1				
30	90131512025	BOLT,HEXAGON SOCKET	8		M12X25		
31	90302401201	WASHER,SPRING (12)	8				
33	36070625150	SHAFT (2)	4				
34	36070625160	BEARING,NEEDLE	12				
35	36070625170	GEAR,SPUR	4				
36	36070625180	PLATE,THRUST	8				
37	80720106035	PIN,SPRING	4		6X35		
38	80720106025	PIN,SPRING	2		6X25		
39	36070625190	GEAR,SPUR	3				
40	36070625200	BEARING,NEEDLE	6				
41	90302041001	WASHER,SPRING	8		10		
42	90101210025	BOLT	8		M10X25		
43	36070625210	PLATE,THRUST	6				
44	36070625220	SHAFT (1)	3				
45	36070625230	RING,SNAP	1				
46	36070625240	GEAR,SPUR	1				
51	36070625250	COUPLING	1				
52	36070625260	BEARING,NEEDLE	1				
53	36070625270	SEAL,OIL	1				
54	34310117510	SPRING	12				
55	91002914000	O-RING	2		1B G140		
56	36070625280	RING,BACKUP	1				
57	36070625290	O-RING	1				
58	36070625300	RING,BACKUP	1				
59	91001223000	O-RING	1		1A G230		
62	36070625310	CAP	2				
63	91002801100	O-RING	2		1B P11		
64	90131516045	BOLT,HEXAGON SOCKET	4		M16X45		
65	90302041601	WASHER,SPRING	4		16		
66	80720103008	PIN,SPRING	2		3X8		
67	36070625320	SHIM	1				
68	80720104010	PIN,SPRING	9		4X10		
69	36070625330	PLATE (SHIFT)	1				
70	91001703800	O-RING	1		WG38		
71	36070625340	BEARING,NEEDLE	1				
72	36070625350	SPACER	1				
73	36070625360	PLATE (FIXED)	9				
74	36070625370	PLATE (FRICTION)	8				
75	36070625380	RING,SNAP	1				
76	36070625390	RING,SNAP	1				
77	36070625400	LEVER	9				
78	36070625410	RING,SNAP	1				
81	90302401001	WASHER,SPRING	8		10		
82	90131510030	BOLT,HEXAGON SOCKET	8		M10X30		
100	36071170000	WINCH	1				

TG-1200M-2-20101 6 BOOM + JIB,K1500

Pos No.	Parts No	Parts Name	Qty	Unit	Technical Data	Serial No (Start)	Serial No (End)	Remarks	Pages
1	37001800730	ROPE,WIRE	1						

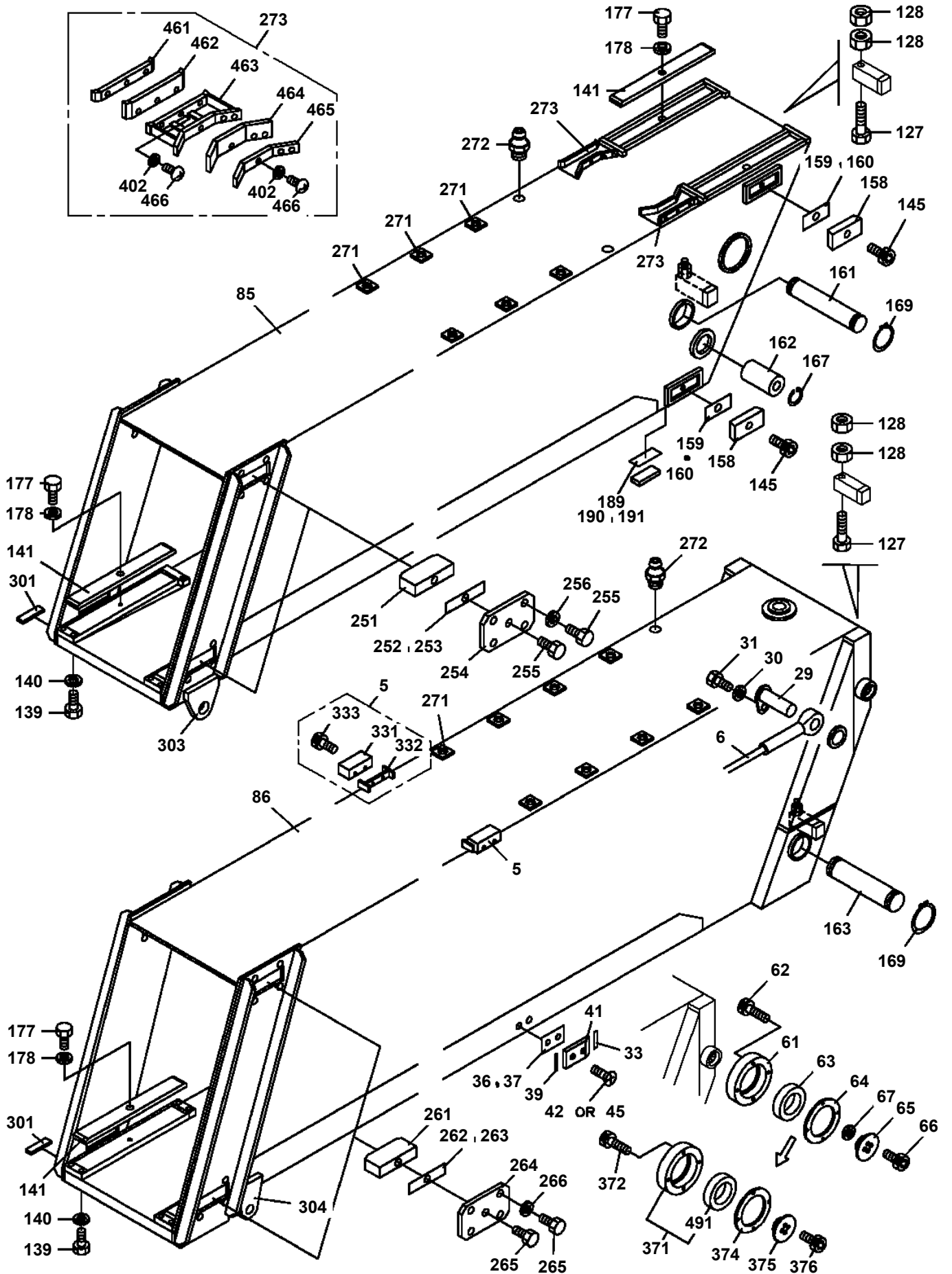
TG-1200M-2-20101 6 BOOM + JIB,K1500

Pos No.	Parts No	Parts Name	Qty	Unit	Technical Data	Serial No (Start)	Serial No (End)	Remarks
1	33380160010	LEVER ASSY	1					
2	34920000150	VALVE,SOLENOID	1					
3	37000900990	JOINT	1					
5	37000505090	SUPPORT	1					
6	37000903370	JOINT	1		L,G1/4-R1/8			
7	37000901290	FITTING,ELBOW	2		L,R1/4-6.35			
8	56476172000	FITTING	2		S,R1/4-M12			
12	37002411350	HOSE	1		L=400			
14	33380308050	PIPE ASSY	1					
16	33380308060	PIPE ASSY	1					
18	37000904810	NUT,FLARE	4		M12			
20	90131508016	BOLT,HEXAGON SOCKET	2		M8X16			
21	90302040801	WASHER,SPRING	2		8			
23	90303070801	WASHER,PLAIN	2		8			
41	37000110920	PIN	1		40			
42	90101210020	BOLT	1		M10X20			
43	90302041001	WASHER,SPRING	1		10			
44	33380160020	SUPPORT	1					
45	90101208014	BOLT	2		M8X14			
46	90302040801	WASHER,SPRING	2		8			
47	33380160030	LEVER	1					
48	33380160070	SUPPORT	1					
49	59440015000	NUT	2		M26			
50	59440017000	CYLINDER,AIR	1					
51	37000303210	SPACER	4		L=2			
52	37000120070	PIN	1					
53	90303070601	WASHER,PLAIN	1		6			
54	80136320016	PIN,SPLIT	1		2X16			
74	80804040030	BEARING,PLAIN	1					

TG-1200M-2-20101 6 BOOM + JIB,K1500

Pos No.	Parts No	Parts Name	Qty	Unit	Technical Data	Serial No (Start)	Serial No (End)	Remarks	Page
68	33343418080	PIPE ASSY	1						
69	33343418090	PIPE ASSY	1						
70	33343418100	PIPE ASSY	1						
71	37000904230	FITTING,ELBOW	1		L,R1/4-M16				
72	80316030020	PLUG	1		PT1/8				

TG-1200M-2-20101 6 BOOM + JIB,K1500
PG1010181-04 BOOM



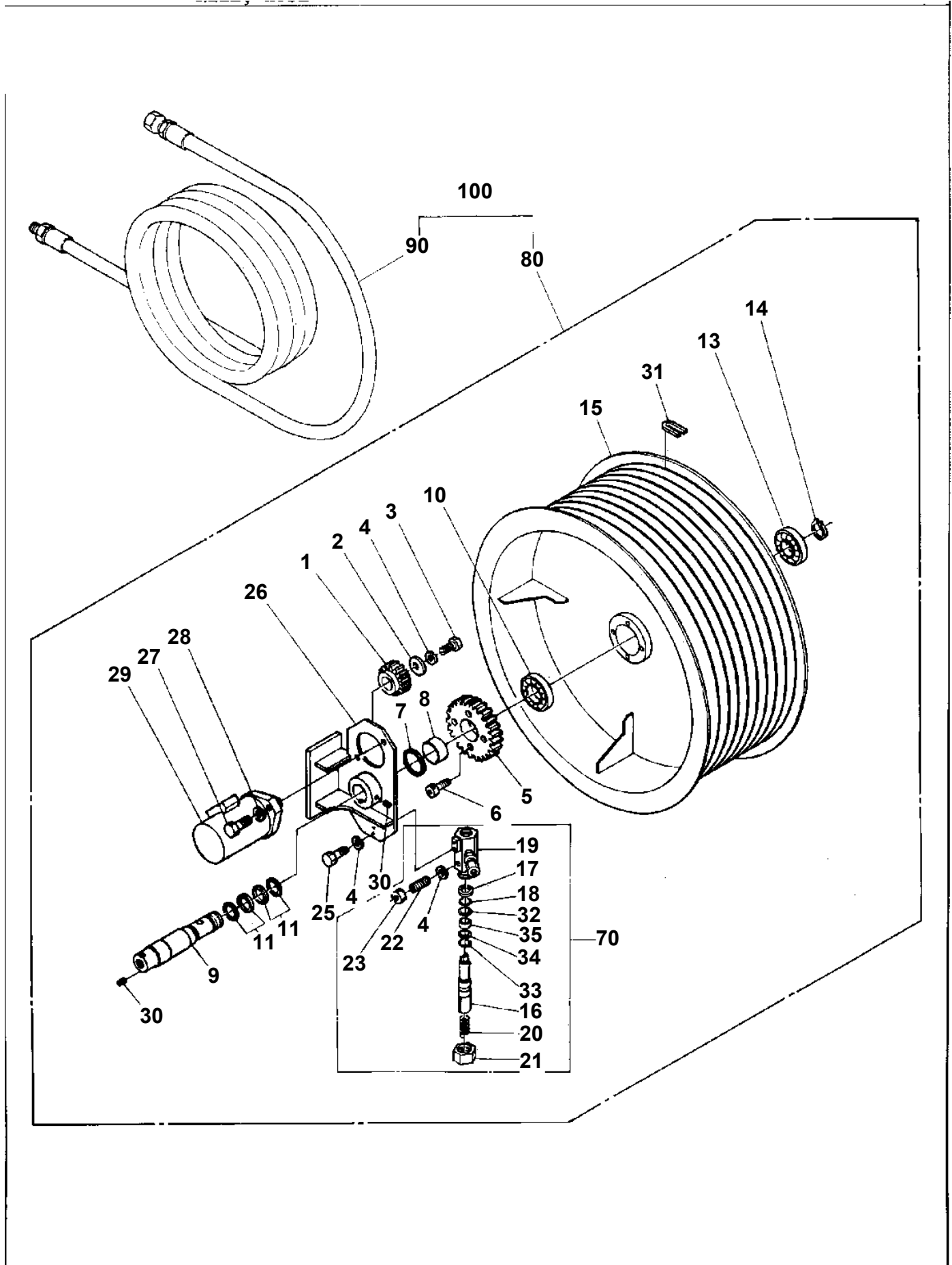
TG-1200M-2-20101 6 BOOM + JIB,K1500

Pos No.	Parts No	Parts Name	Qty	Unit	Technical Data	Serial No (Start)	Serial No (End)	Remarks
1	33221179510	JIB (1)	1					
2	33221179520	JIB (2)	1					
3	33221179530	JIB (3)	1					
4	33221179540	JIB (BASE)	1					
5	33221179550	JIB (SUPPORT ASSY)	1					
6	36012750000	CYLINDER,JIB	1					
16	37000137150	PIN	2					
17	37000200010	PIN,SNAP	4					
20	37000137170	PIN	2					
21	33221170300	SUPPORT ASSY	1					
22	33220914700	SUPPORT	2					
23	33221170360	SUPPORT	1					
24	33221170350	SUPPORT	1					
25	33220912700	PIN	1					
26	37000523600	PLATE	1					
27	90101210020	BOLT	1		M10X20			
28	90302041001	WASHER,SPRING	2		10			
29	37000137190	PIN	1					
30	90101510016	BOLT	1		M10X16			
40	37000129850	PIN	2					
41	14231508000	PLATE	2					
42	37000306040	SPACER	1					
43	90131514030	BOLT,HEXAGON SOCKET	8		M14X30			
44	14231507000	PLATE	1					
45	37000137210	PIN	1					
46	80561100120	NUT	1		AN12			
47	37000139730	PIN	2			460046	460094	
	37000139730	PIN	2			460046		
	37000139690	PIN	2				460045	
48	37000201810	PIN,SNAP	2					
49	37000129860	PIN	2					
50	37000303870	SPACER	2		T=3			
51	37000522980	PLATE	2					
53	37000108290	PIN	4					
54	37000200750	PIN,SNAP	4					
55	33221170690	STOPPER	1					
56	33220344700	STOPPER	1					
57	33220913800	ROLLER ASSY	2					
58	33221170100	SUPPORT ASSY	1					
59	33221170200	SUPPORT	1					
60	33221170140	SUPPORT	1					
61	33220235700	GUIDE	1					
62	33221170180	SUPPORT ASSY	1					
63	33221051000	SUPPORT ASSY	1					
64	33220620580	PLATE	1					
65	33220620600	SUPPORT	1					
66	37000508480	PLATE	1					
67	33221170550	SUPPORT	1				460045	
	33221170800	SUPPORT	1			460046		
68	37000111390	PIN	1					
69	90261002000	NUT	2		M20			
70	90302042001	WASHER,SPRING	2		20			
71	90102520090	BOLT	2		M20X90			
72	90203402000	NUT	4		M20			
73	33220913720	STOPPER	1					
74	33220913730	STOPPER	1					
75	33221170760	PIN ASSY	1					
76	33221170750	SUPPORT	1					
77	33220000260	STOPPER	1					
78	33220000270	STOPPER	2					
79	33220033710	STOPPER	1					
81	33220000100	ROLLER ASSY	2					
82	37001903740	ROPE,WIRE	1					

TG-1200M-2-20101 6 BOOM + JIB,K1500

Pos No.	Parts No	Parts Name	Qty	Unit	Technical Data	Serial No (Start)	Serial No (End)	Remarks	Pages
4	33221179540	JIB (BASE)	1						
7	33221170450	GUIDE	1						
8	37001002600	SHEAVE ASSY	2						
9	90101520040	BOLT	4		M20X40				
10	33200343100	PLATE	2						
11	37000534390	PLATE	2						
93	33221170600	SUPPORT ASSY	1						
97	90730010160	SCREW,SET	4		M10X16				
98	37000402400	BEARING,PLAIN	2						
121	33221176050	SUPPORT	1						
123	33220910040	ROLLER ASSY	1						
124	33441300100	PLATE	1						
125	37001903840	ROPE,WIRE	2						
126	37000129880	PIN	1						
127	37000127300	PIN	4						
128	37000201120	PIN,SNAP	4						
129	37000506880	SUPPORT	3						
130	37001902550	ROPE,WIRE	1		20X13M				
131	83152312003	SHACKLE	2				460045		00024
	83152512003	SHACKLE	2			460046			
132	37000201730	PIN,SNAP	1						
133	33441300200	SUPPORT	2						
134	33441300300	SUPPORT	3						
135	33441300400	SUPPORT	1						
136	33200140540	PLATE	2						
137	90101212022	BOLT	4		M12X22				
138	90302041201	WASHER,SPRING	4		12				
139	33221176170	SUPPORT	1						
140	34220470050	PIN	4						
141	34220470090	PIN,SNAP	4						
144	33221176090	SUPPORT	2						
145	33221176120	SUPPORT	4						
152	33441300130	GUIDE	2						
153	33441300140	GUIDE	4						
154	80620210140	PIN,SNAP	2						
155	33220491010	SUPPORT	2				460045		
	33221176400	SUPPORT	2			460046			
156	53270118000	BAR	1						
161	33221176300	SUPPORT	1						
162	33221176350	SUPPORT	1						
332	80520045022	BEARING,ROLLER	2						
351	33220919550	ROLLER ASSY	2						
352	80515006208	BEARING,BALL	4						
353	80601110400	RING,RITAINING	3		S40				
354	37000129840	PIN	1						
355	33200110230	SUPPORT	2						
356	33200110240	SUPPORT	2						
357	90101512022	BOLT	4		M12X22				
358	90302041201	WASHER,SPRING	4		12				
481	90201404200	NUT	1		M42				
482	37001600150	NUT	1						
484	33220914510	ROD	1						
485	33221170500	SUPPORT	1						

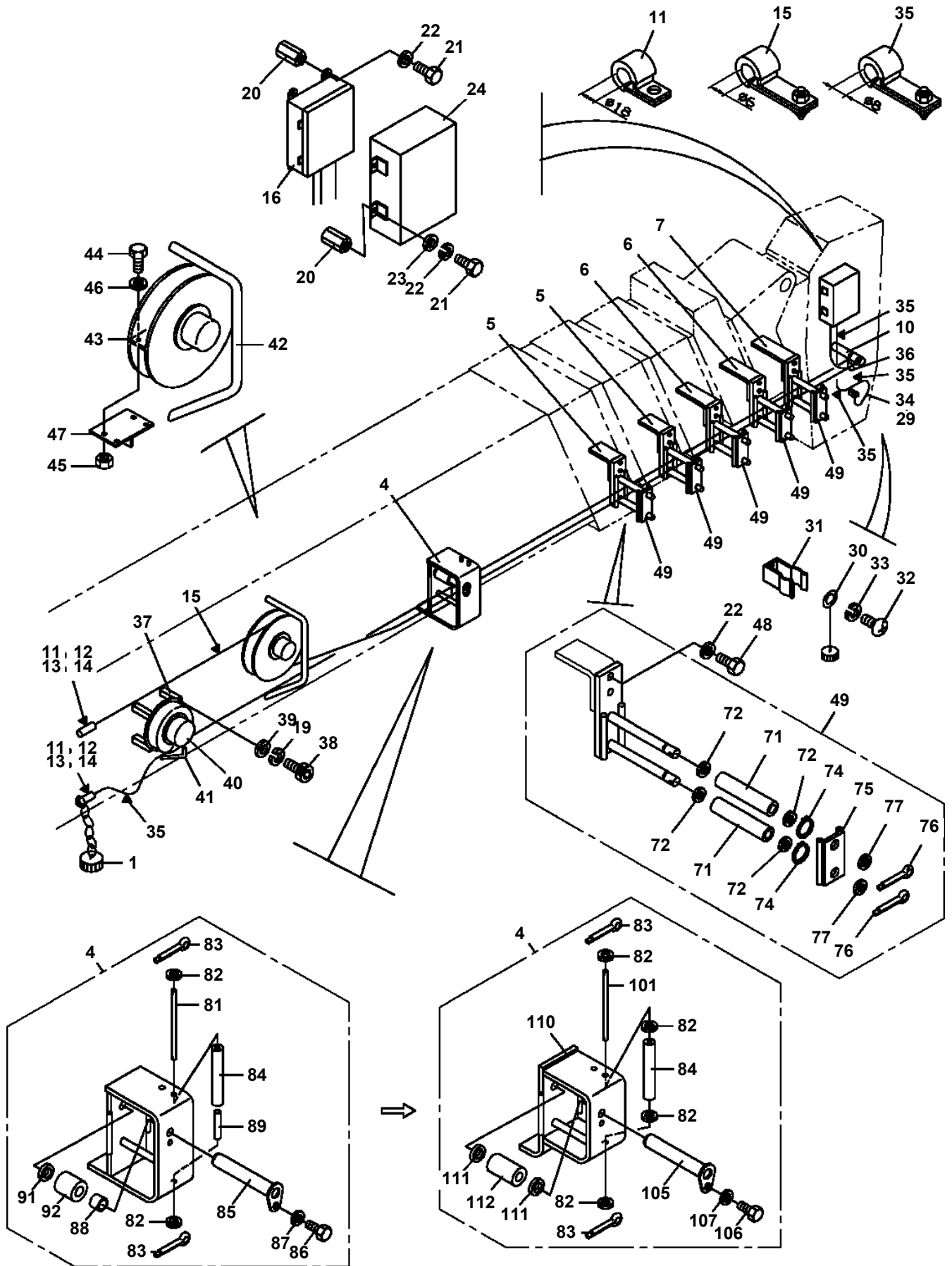
TG-1200M-2-20101 6 BOOM + JIB,K1500
PG1070013-03 REEL,HOSE



TG-1200M-2-20101 6 BOOM + JIB,K1500

Pos No.	Parts No	Parts Name	Qty	Unit	Technical Data	Serial No (Start)	Serial No (End)
1	36670978020	REEL,HOSE	1				
2	36710108010	REEL,HOSE	1				
3	33341578010	REEL,HOSE	1				
6	33343180010	ROLLER ASSY	2				
7	33340641050	PLATE	2				
8	33343302030	ROLLER ASSY	1				
9	37000538010	PLATE	2				
10	90101210025	BOLT	4		M10X25		
11	90302041001	WASHER,SPRING	8		10		
12	90101210020	BOLT	4		M10X20		
13	33343302010	ROLLER ASSY	1				
14	37000504020	PLATE	2				
15	90101212025	BOLT	16		M12X25		
16	90302041201	WASHER,SPRING	16		12		
17	33343180220	SUPPORT	1				
18	33343353200	ROLLER	1				
19	33343180190	PLATE	1				
20	90101208020	BOLT	2		M8X20		
21	90303070801	WASHER,PLAIN	2		8		
22	90302040801	WASHER,SPRING	2		8		
23	80456120810	JOINT,SELF SEALING	2				
24	80456110810	JOINT,SELF SEALING	2				
25	80400160131	JOINT	2				
26	91002801800	O-RING	4		1B P18		
27	80456121211	JOINT,SELF SEALING	3				
28	80456111211	JOINT,SELF SEALING	3				
29	80400160133	JOINT	3				
30	91002802400	O-RING	6		1B P24		
34	80456920810	JOINT,SELF SEALING (WITH DUST CAP)	2				
35	80456921210	JOINT,SELF SEALING (WITH DUST CAP)	1				
38	33343353100	SUPPORT	1				
39	91800000003	FASTENER	3				
40	33343353010	GUIDE	1				
51	33343180250	SUPPORT	2				
52	37000536070	PLATE	2				
53	90101212030	BOLT	8		M12X30	460065	
	90101212025	BOLT	8		M12X25		460064
54	90302041201	WASHER,SPRING	8		12		
61	33343180200	COVER	1				
62	37000506640	PLATE	2				
63	90102210020	BOLT	2		M10X20		
64	90302041001	WASHER,SPRING	2		10		
65	90303071001	WASHER,PLAIN	2		10		
71	33343180310	COVER	1				
72	37000506640	PLATE	2				
73	90102210020	BOLT	2		M10X20		
74	90302041001	WASHER,SPRING	2		10		
75	90303071001	WASHER,PLAIN	2		10		
91	33343180060	SUPPORT	2				
92	33343180020	ROLLER ASSY	2				
93	37000105160	PIN	2				
94	80601110200	RING,RITAINING	4		S20		
95	33341577740	PIPE	2				
96	80136350032	PIN,SPLIT	4		5X32		
101	37000302190	SPACER	2			460051	
	37000302190	SPACER	1				460050
102	37000304190	SPACER	1				460050
	37000300000	SPACER	1		L=20	460051	
103	33342450600	ROLLER ASSY	3				
104	37000301890	SPACER	1		L=11		
105	37000303910	SPACER	3		L=36		
106	37000303060	SPACER	1		L=27		
107	33343302020	PIN	1				

**TG-1200M-2-20101 6 BOOM + JIB,K1500
PG1120038-00 DETECTOR SYSTEM, BOOM LENGTH**



TG-1200M-2-20101 6 BOOM + JIB,K1500

Pos No.	Parts No	Parts Name	Qty	Unit	Technical Data	Serial No (Start)	Serial No (End)	F
66	81408000210	PIPE,STEEL	2	M	15X2.0T			
67	81408000210	PIPE,STEEL	1	M	15X2.0T			
68	81408000341	PIPE,STEEL	2	M	28X3.1T			
69	81408000341	PIPE,STEEL	1	M	28X3.1T			
70	81408000341	PIPE,STEEL	2	M	28X3.1T			
71	81408000341	PIPE,STEEL	3	M	28X3.1T			
72	81408000341	PIPE,STEEL	2	M	28X3.1T			
73	81408000341	PIPE,STEEL	2	M	28X3.1T			
74	81408000341	PIPE,STEEL	1	M	28X3.1T			
75	81408000401	PIPE,STEEL	1	M	35X4.0T			
76	81408000401	PIPE,STEEL	1	M	35X4.0T			
77	37000300720	SLEEVE	8		12-10			
78	37000702270	CLAMP ASSY	2					
79	37000701900	CLAMP ASSY	1					
80	81408000210	PIPE,STEEL	2	M	15X2.0T			
81	81408000210	PIPE,STEEL	2	M	15X2.0T			
82	81408000210	PIPE,STEEL	1	M	15X2.0T			
83	81408000210	PIPE,STEEL	1	M	15X2.0T			
84	36642130000	VALVE,HYDRAULIC	1					
85	33343352100	SUPPORT	1					
86	80430621600	JOINT	1					
87	81408000341	PIPE,STEEL	2	M	28X3.1T			
88	90102210020	BOLT	2		M10X20			
91	33343352620	SUPPORT	1					
92	82100001413	TUBE, SPIRAL	3	M	SE-15BK			
93	81408000210	PIPE,STEEL	1	M	15X2.0T			
94	80303010120	FITTING,ELBOW	1		KLA15-000N			
95	81408000341	PIPE,STEEL	3	M	28X3.1T			
111	33340020080	SUPPORT	2					
112	33340020090	PLATE	2					
113	90102216025	BOLT	4		M16X25			
114	90302041601	WASHER,SPRING	4		16			
125	80601110250	RING,RITAINING	2		S25			
126	91001102201	O-RING	4		1A P22A			
127	36670555010	RING,BACKUP	4					
128	91001002500	O-RING	4		S25			
131	91000521900	O-RING	7		AS568-219-1B			
141	91000522200	O-RING	4		AS568-222-1B			
161	91002802900	O-RING	1		1B P29			

TG-1200M-2-20101 6 BOOM + JIB,K1500

Pos No.	Parts No	Parts Name	Qty	Unit	Technical Data	Serial No (Start)	Serial No (End)	Remarks	Pages
1	33474710100	SUPPORT	1						
2	33474710200	PLATE	1						
3	33474710300	SUPPORT	1						
4	33474711400	SUPPORT	1						
5	33474710400	LINK	1						
6	37000138950	PIN	2						
7	80136350063	PIN,SPLIT	2						
8	37000139010	PIN	1						
9	37000200040	PIN,SNAP	1						
10	33474710500	LINK	1						
11	37001904320	ROPE,WIRE	1						
12	33474710600	SUPPORT	1						
13	33474710700	SUPPORT	1						
14	37000138970	PIN	1						
15	90101212020	BOLT	1		M12X20				
16	90302041201	WASHER,SPRING	1		12				
17	33474710800	SUPPORT ASSY	1						
18	33474711200	PLATE	1						
20	37002900000	SHACKLE ASSY	1						
31	33474712010	PLATE,CAUTION	1						
32	33474712020	PLATE,CAUTION	1						
45	80801004030	BEARING,PLAIN	2						
48	80801004550	BEARING,PLAIN	1						
52	33474710900	LINK	1						
53	33474710950	SUPPORT	1						
54	33474711000	LINK	1						
56	37000139030	PIN	3						
57	80136363071	PIN,SPLIT	3		6.3X71				
58	37000139010	PIN	1						
59	37000200040	PIN,SNAP	1						
60	33474711100	PLATE	1						

TG-1200M-2-20101 6 BOOM + JIB,K1500

Pos No.	Parts No	Parts Name	Qty	Unit	Technical Data	Serial No (Start)	Serial No (End)	Re
1	32370002170	PLATE	1					
2	32370002110	GASKET	1					
3	32370002121	COVER	1					
4	80162303025	SCREW,MACHINE	2		M3X25			
5	90302040301	WASHER,SPRING	2		3			
6	82100001355	SWITCH,LIMIT	1					
7	32370002131	ROD	1					
8	14148373001	SPRING	1					
9	80601110180	RING,RITAINING	1		S18			
10	32370002161	SUPPORT	1					
11	90303070301	WASHER,PLAIN	2		3			
12	82100002283	CONNECTOR	1					
13	82100002355	TERMINAL (GOLD)	2					
14	32370005200	CORD	1					
15	32370005210	CORD	1					
16	82100000592	TERMINAL (M40.3 TO 1.25)	2					
17	89630201000	HOSE,VINYL	1		6X8,1M			
18	14148375000	GROMMET	1					
19	90101208045	BOLT	2		M8X45			
20	90302040801	WASHER,SPRING	2		8			
21	16268231000	LABEL (SWITCH,OVER WINDING)	1					
22	82100001220	INSULATOR	2					
23	82100002329	PLUG	1					
30	32370009511	ROD ASSY	1					
31	32370002150	SPACER	1		L=12 TO 11			
32	80720103014	PIN,SPRING	1		3X14			
50	33370888030	SWITCH ASSY (BOOM)	1					

CLICK HERE TO **DOWNLOAD** THE COMPLETE MANUAL

- Thank you very much for reading the preview of the manual.
- You can download the complete manual from: www.heydownloads.com by clicking the link below



- Please note: If there is no response to CLICKING the link, please download this PDF first and then click on it.

CLICK HERE TO **DOWNLOAD** THE COMPLETE MANUAL

TG-1200M-2-20101 6 BOOM + JIB,K1500

Pos No.	Parts No	Parts Name	Qty	Unit	Technical Data	Serial No (Start)	Serial No (End)	Remarks	Pages
1	82100002349	SWITCH,LIMIT	4						
2	33431093300	SUPPORT	2						
3	82100002348	SWITCH,LIMIT	4						
5	33431934200	SUPPORT	2						

TG-1200M-2-20101 6 BOOM + JIB,K1500

Pos No.	Parts No	Parts Name	Qty	Unit	Technical Data	Serial No (Start)	Serial N
1	36113385010	BOARD,DISPLAY	1				
2	36113385020	BOARD (LCD ILLUMINATIO)	1				
3	36113385030	BOARD,ANALOG	1				
4	36113385040	BOARD,CPU	1				
5	36113385050	BOARD (WITHOUT PROGRAM & DATA ROM)	1				
6	36113385060	BOARD,POWER	1				
7	36113385070	BOARD,CONNECTOR	1				
8	36113385080	BOARD	1				
9	36113385090	ESCUTCHEON	1				
10	36113385100	PANEL,FRONT	1				
11	36113385110	CASE	1				
12	36113385120	PLATE (SIDE)	1				
13	36113385130	COVER (SIDE)	1				
17	82171200300	FUSE	1		3A,5.2X20		
18	82171200500	FUSE	1		5A,5.2X20		
19	(*****)	P-ROM (PROGRAM)	1				
20	36113382000	P-ROM (DATA/4PC.)	1				
30	36113381000	MOMENT LIMITER (Z/WITHOUT ROM)	1				
50	36113380000	MOMENT LIMITER (AML-Z)	1				

TG-1200M-2-20101 6 BOOM + JIB,K1500

Pos No.	Parts No	Parts Name	Qty	Unit	Technical Data	Serial No (Start)	Serial No (End)	Remarks	Pages
2	36601695010	SPRING	1						
4	91002801800	O-RING	1		1B P18				
5	91411001800	RING,BACKUP	1		P18				
6	36601695020	RING,SNAP	1						
9	36600925090	O-RING	1						
11	36660095330	O-RING	1						
20	36601690000	VALVE,RELIEF	1						

TG-1200M-2-20101 6 BOOM + JIB,K1500

Pos No.	Parts No	Parts Name	Qty	Unit	Technical Data	Serial No (Start)	Serial No (End)	Remarks
1	36641455010	VALVE,SOLENOID	1					
2	36640315020	PLATE	1					
3	90131506035	BOLT,HEXAGON SOCKET	4		M6X35			
12	36640165010	COVER (A)	1					
13	19045104110	COVER (B)	1					
15	36640775050	RETAINER	2					
16	19045110030	PIN	1					
17	36640775070	SPRING	2					
20	19045104100	SPACER	1					
22	36640375010	NUT	1					
23	19045104130	RING	1					
25	36640485030	CONNECTOR	1					
26	36640165040	PACKING	1					
27	90131506015	BOLT,HEXAGON SOCKET	8		M6X15			
28	80316030020	PLUG	1		PT1/8			
29	91001100300	O-RING	1		1A P3			
30	91002801200	O-RING	5		1B P12			
31	91002802800	O-RING	3		1B P28			
32	91001203000	O-RING	2		1A G30			
41	70320027720	GUIDE KIT	1					
42	36640315040	COIL KIT	1					
50	36641450000	VALVE,SOLENOID	1					

TG-1200M-2-20101 6 BOOM + JIB,K1500

Pos No.	Parts No	Parts Name	Qty	Unit	Technical Data	Serial No (Start)	Serial No (End)	Remarks
3	91001203000	O-RING	2		1A G30			
4	36641735010	COVER (SIDE,A)	1					
5	90131508020	BOLT,HEXAGON SOCKET	4		M8X20			
6	36641735020	SPRING	1					
7	36642135010	COVER (SIDE,B)	1					
8	90131508055	BOLT,HEXAGON SOCKET	4		M8X55			
9	80316030020	PLUG	1		PT1/8			
10	36642130000	VALVE,HYDRAULIC	1					

TG-1200M-2-20101 6 BOOM + JIB,K1500

Pos No.	Parts No	Parts Name	Qty	Unit	Technical Data	Serial No (Start)	Serial No (End)	Remarks
2	36620565020	COVER	1					
4	12515186000	SPRING	1					
5	36620565030	STOPPER (A)	1					
6	12429108000	RING,STOP	1					
8	36620175060	SPRING	1					
9	36621895010	STOPPER (B)	1					
10	91002903000	O-RING	1		1B G30			
11	90132708030	BOLT,HEXAGON SOCKET	4		M8X30			
12	90302040801	WASHER,SPRING	4		8			
20	36621890000	VALVE,CHECK	1					

TG-1200M-2-20101 6 BOOM + JIB,K1500

Pos No.	Parts No	Parts Name	Qty	Unit	Technical Data	Serial No (Start)	Serial No (End)	Remarks	Pages
2	36620000030	PLUG	2						
3	91002802400	O-RING	2		1B P24				
5	12215120000	SPRING	1						
6	36622045010	PISTON	1						
7	91001101600	O-RING	1		1A P16				
8	91411001600	RING,BACKUP	2		P16				
9	91002801000	O-RING	2		1B P10				
20	36622040000	VALVE,CHECK	1						

TG-1200M-2-20101 6 BOOM + JIB,K1500

Pos No.	Parts No	Parts Name	Qty	Unit	Technical Data	Serial No (Start)	Serial No (End)	Remarks	Pages
1	16265102000	VALVE,CHECK	1						
3	16265102010	SPACER	1						
4	80602110220	RING,RITAINING	1		R22				

TG-1200M-2-20101 6 BOOM + JIB,K1500

Pos No.	Parts No	Parts Name	Qty	Unit	Technical Data	Serial No (Start)	Serial No (End)	Remark
5	36601795010	SPRING	1					
12	36601795020	SPRING	1					
18	91002802200	O-RING	2		1B P22			
19	91002800600	O-RING	4		1B P6			
20	91002801100	O-RING	1		1B P11			
21	91002801100	O-RING	1		1B P11			
50	36601790000	VALVE,COUNTERBALANCE	1					

TG-1200M-2-20101 6 BOOM + JIB,K1500

Pos No.	Parts No	Parts Name	Qty	Unit	Technical Data	Serial No (Start)	Serial No (End)	Remarks	Pages
2	36600185010	FILTER	1						
4	36600185020	O-RING	1						
5	36600185030	VALVE	1						
6	36600185040	SPRING (VALVE)	1						
7	36600185050	O-RING	2						
17	36600185060	COVER	1						
20	36600180000	VALVE,SEQUENCE	1						

TG-1200M-2-20101 6 BOOM + JIB,K1500

Pos No.	Parts No	Parts Name	Qty	Unit	Technical Data	Serial No (Start)	Serial No (End)	Remarks	Pages
1	36670005015	SHELL	1						
2	36670005025	COVER	1						
3	36670005035	BLADDER ASSY	1						
4	36670005045	CORE	1						
5	36670005055	CAP	1						
6	36670005065	PACKING	1						
8	36670005075	PIN,SPRING	1						
10	36671390006	ACCUMULATOR	1						

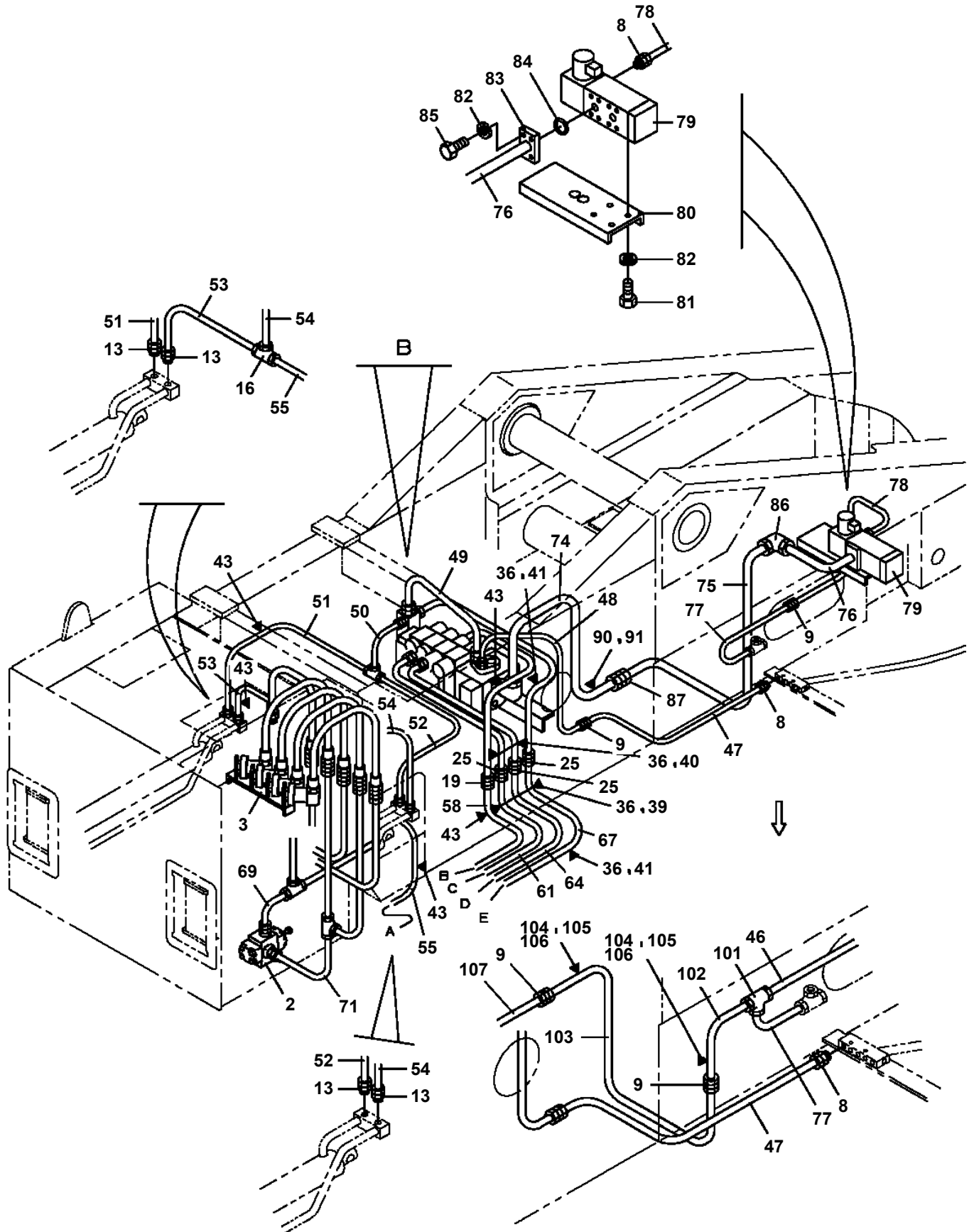
TG-1200M-2-20101 6 BOOM + JIB,K1500

Pos No.	Parts No	Parts Name	Qty	Unit	Technical Data	Serial No (Start)	Serial No (End)	Remarks	Pages
1	33260353000	CAB,OPERATOR	1			460045			000169
	33260351100	CAB,OPERATOR	1				460044		000168
2	33260351500	GUIDE	1						
3	90101512070	BOLT	3		M12X70				
4	90101512035	BOLT	11		M12X35				
5	90302041201	WASHER,SPRING	14		12				
6	90303071201	WASHER,PLAIN	14		12				
7	90101208030	BOLT	5		M8X30				
8	90302040801	WASHER,SPRING	5		8				
9	90303070801	WASHER,PLAIN	5		8				
10	90303071001	WASHER,PLAIN	5		10				
11	37000506530	PLATE	5		T=4.5				
12	37000506540	PLATE	5		T=3.2				
13	37000506550	PLATE	5		T=1.6				
14	33260351300	CUSHION	1						
21	37001501780	BOLT	1		M14X95				
22	34260070800	CUSHION	2						
23	90101210035	BOLT	2		M10X35				
24	90302041001	WASHER,SPRING	2		10				
25	34260070700	SUPPORT	1						
26	37000519660	PLATE	1						
27	90236201400	NUT,CASTLE	1		M14				
28	80136332028	PIN,SPLIT	1		3.2X28				
29	34260070900	SUPPORT	1						
30	33260382011	SUPPORT	1						

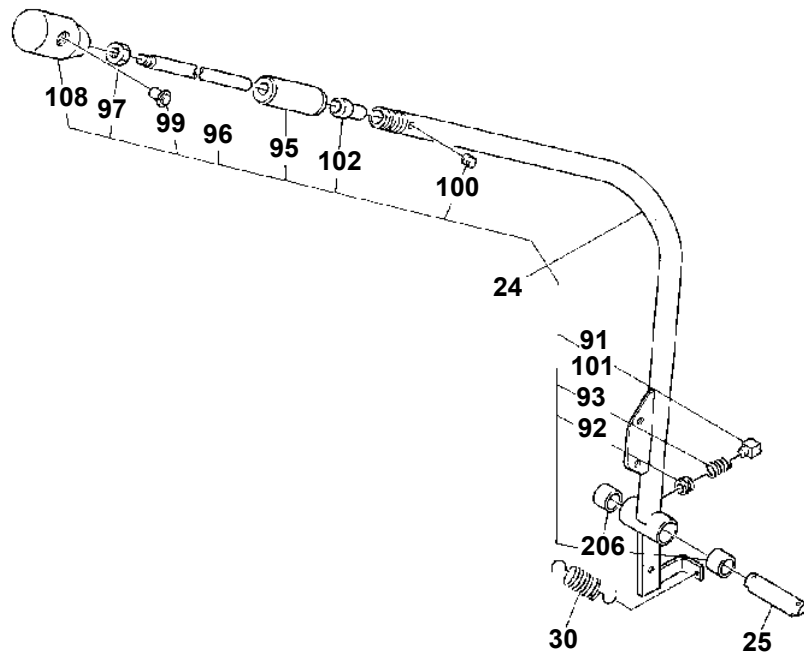
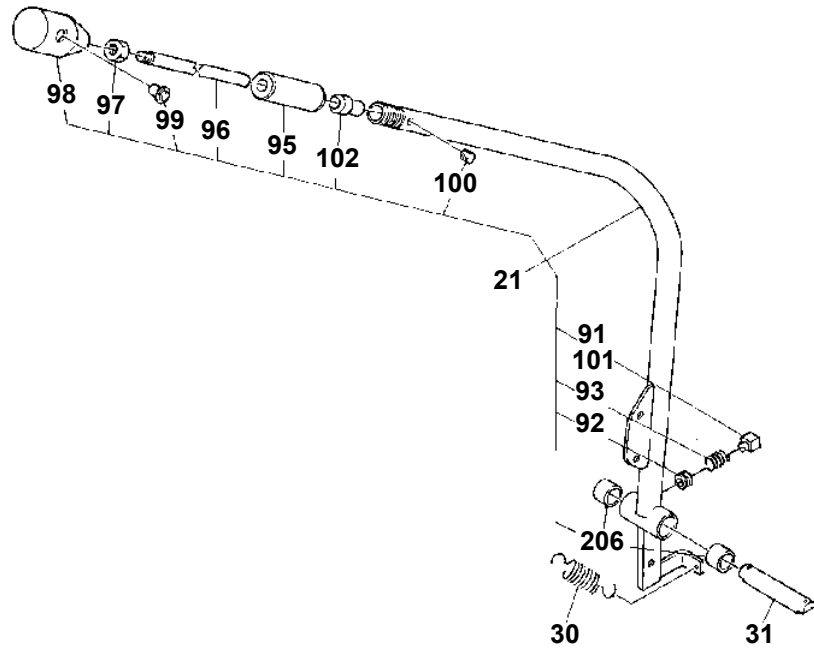
TG-1200M-2-20101 6 BOOM + JIB,K1500

Pos No.	Parts No	Parts Name	Qty	Unit	Technical Data	Serial No (Start)	Serial No (End)	Remarks
1	33250597600	SEAT ASSY	1					
2	33250597590	RISER ASSY	1					
3	90302040801	WASHER,SPRING	4		8			
4	90201200800	NUT	4		M8			
11	33250597510	CUSHION ASSY	1					
12	33250597520	BACK ASSY	1					
13	34250887630	ADJUSTER (RECLINING)	1					
14	33250597540	ADJUSTER (SLIDE)	1					
15	33250597550	ADJUSTER (SLIDE)	1					
16	33250597560	BOLT (WITH WASHER)	4					
17	33250597570	BOLT	1					
18	90303070801	WASHER,PLAIN	1		8			
19	90302040801	WASHER,SPRING	1		8			
20	33250597580	SCREW (WITH WASHER)	4					
30	33250591000	SEAT,OPERATOR	1					

TG-1200M-2-20101 6 BOOM + JIB, K1500
PK1250008-01 PIPING, WEIGHT REMOVER (REMOTE CONTROL)



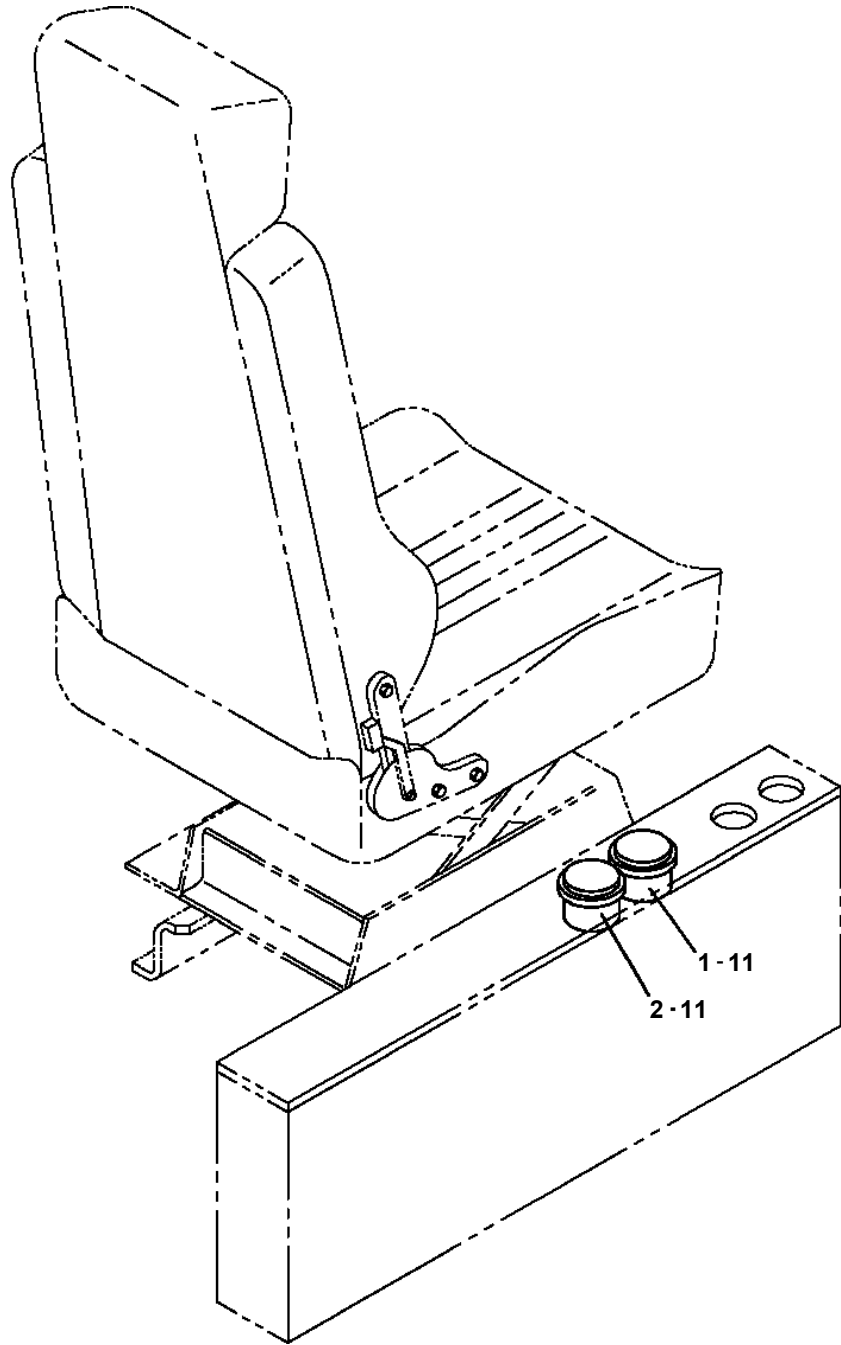
TG-1200M-2-20101 6 BOOM + JIB,K1500
PL1010126-00 OPE.ASSY,CONT.VALVE (M/ISO)



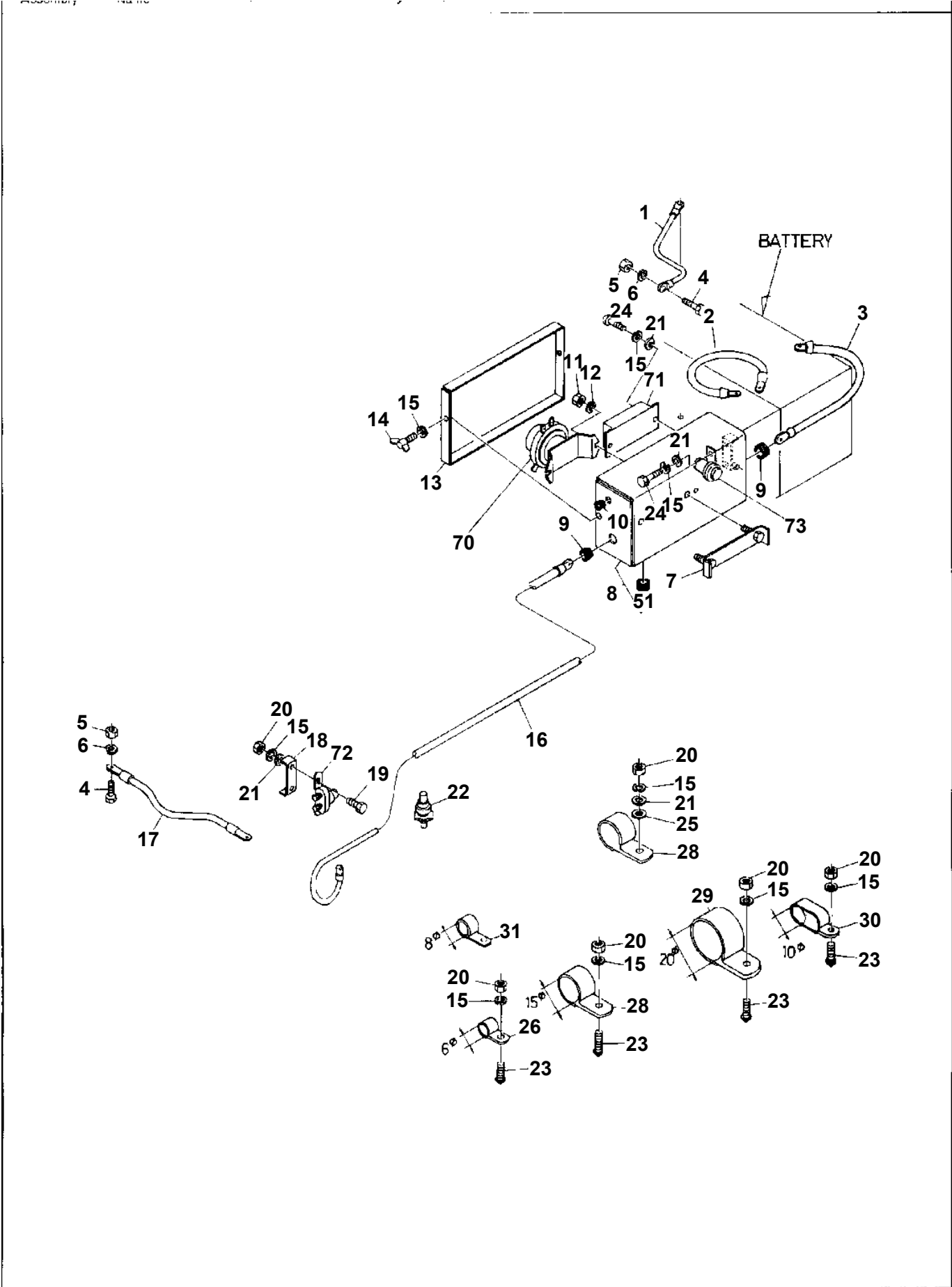
TG-1200M-2-20101 6 BOOM + JIB,K1500

Pos No.	Parts No	Parts Name	Qty	Unit	Technical Data	Serial No (Start)	Serial No (End)
3	37000101050	PIN	12				
4	80613110080	RING,RITAINING	12		8		
5	90101208020	BOLT	6		M8X20		
6	90302040801	WASHER,SPRING	6		8		
7	33320900120	ROD ASSY	2				
8	33320900140	ROD ASSY	3				
9	33321070500	ROD ASSY	1				
13	33320900080	ROD ASSY	1				
14	33321070100	LINK ASSY	1				
15	33321070300	ROD ASSY	1				
19	33320900200	LEVER ASSY	1				
31	33320871100	LEVER ASSY	1				
34	33320871400	LEVER ASSY	3				
35	37000101070	PIN	1				
36	90131510016	BOLT,HEXAGON SOCKET <M10X16.	4				
37	90302041001	WASHER,SPRING	4		10		
39	33320900250	SUPPORT	1				
40	53620233000	SPRING	4				
41	37000108440	PIN	1				
42	82100001035	GROMMET	3				
44	34350002100	CAP	1				
52	90201201200	NUT	8		M12		
53	33320000100	END	7				
72	90291201200	NUT	1		M12		
81	80601110200	RING,RITAINING	1		S20		
82	33321070200	LINK	1				
83	37000131980	PIN	1				
91	33320091100	END	1				
94	90303070801	WASHER,PLAIN	1		8		
95	80136320016	PIN,SPLIT	1		2X16		
96	37000105730	PIN	1				
97	34320000400	END,FORK	1				
98	90201200800	NUT	1		M8		
101	37000132600	PIN	1				
102	90101210016	BOLT	1		M10X16		
103	90302041001	WASHER,SPRING	1		10		
104	33320900150	SUPPORT	1				
105	37000300620	SPACER	1		L=11.8		
106	33320900190	LEVER	1				
107	33320900180	LEVER	1				
108	33320900170	LEVER	1				
109	33320900160	LEVER	1				
110	90303072001	WASHER,PLAIN	2		20		
121	82100000582	CONNECTOR	4				
122	82100001035	GROMMET	4				
123	33320871500	CABLE	4				
124	80804022010	BEARING,PLAIN	8				
125	33320001440	NUT	4				460077
	32320110250	NUT (BLACK)	4			460078	
126	33320001081	LEVER	4				
127	90203201200	NUT	4		M12		460077
	37001601520	NUT	4		M12	460078	
128	33320001090	KNOB (RED)	1				
129	82100001033	SWITCH,PUSH	4				
130	90710006060	SCREW,SET	4		M6X6		
131	82100000578	TERMINAL	8				
132	33320001450	SLEEVE	4				
148	33320001120	KNOB (BLACK)	3				
161	80804020010	BEARING,PLAIN	8				
174	80804020020	BEARING,PLAIN	2				
181	33321071010	SUPPORT	1				
182	33321071020	SUPPORT	1				
183	33321071030	SUPPORT	1				

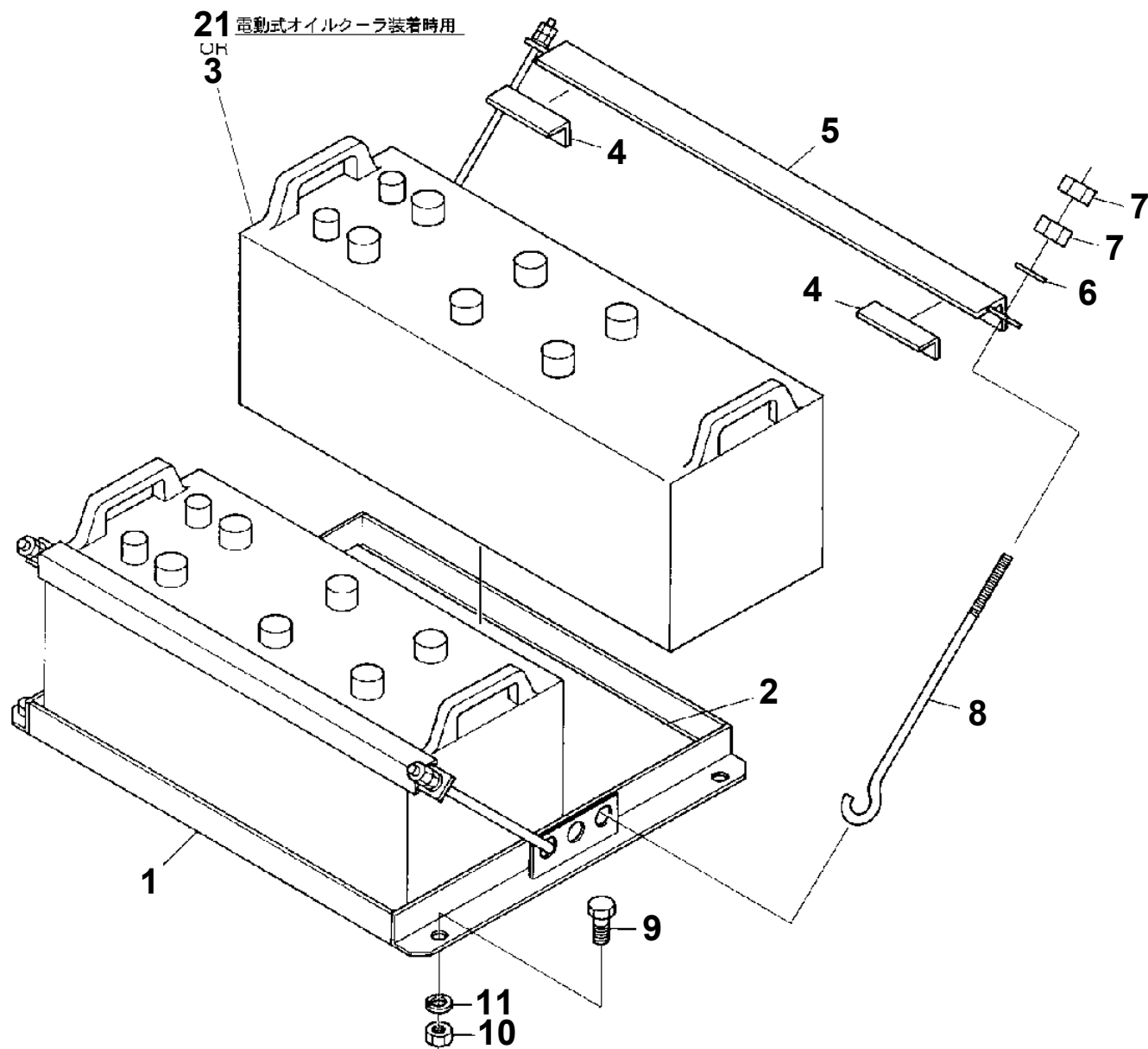
TG-1200M-2-20101 6 BOOM + JIB,K1500
PN1050058-01 ELECTRICAL PARTS,CAB(GAUGE)



TG-1200M-2-20101 6 BOOM + JIB,K1500
PN1090005-00 ELECTRICAL PARTS, ENGINE



TG-1200M-2-20101 6 BOOM + JIB,K1500
PN1370010-03 BATTERY INSTALLATION



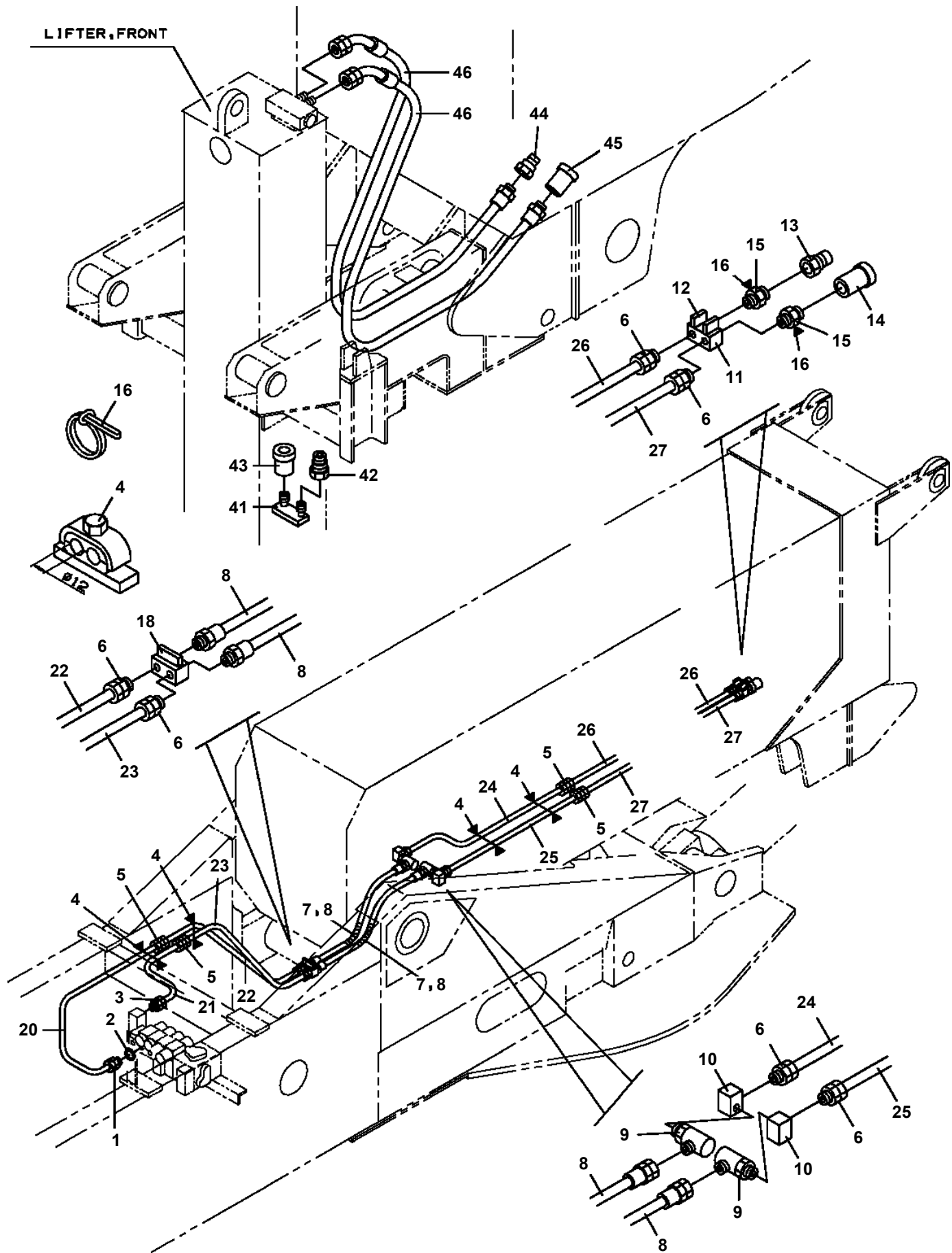
TG-1200M-2-20101 6 BOOM + JIB,K1500

Pos No.	Parts No	Parts Name	Qty	Unit	Technical Data	Serial No (Start)	Serial No (End)	Rem
1	33390463010	PLATE,CAUTION	1					
2	16627013000	PLATE,NAME (ACCUMULATOR)	1					
3	33390463020	PLATE,CAUTION	4					
4	33391881640	PLATE,NAME	1					
5	33391881650	PLATE,NAME	1					
6	12117140000	PLATE,NAME (GREASE)	2					
7	33394292010	PLATE,CAUTION	1					
8	33394292030	PLATE,CAUTION	1					
9	33394292050	PLATE,CAUTION	1					
10	33394292070	PLATE	1					
11	33390463040	PLATE,NAME	1					
12	33394292090	PLATE,CAUTION	1					

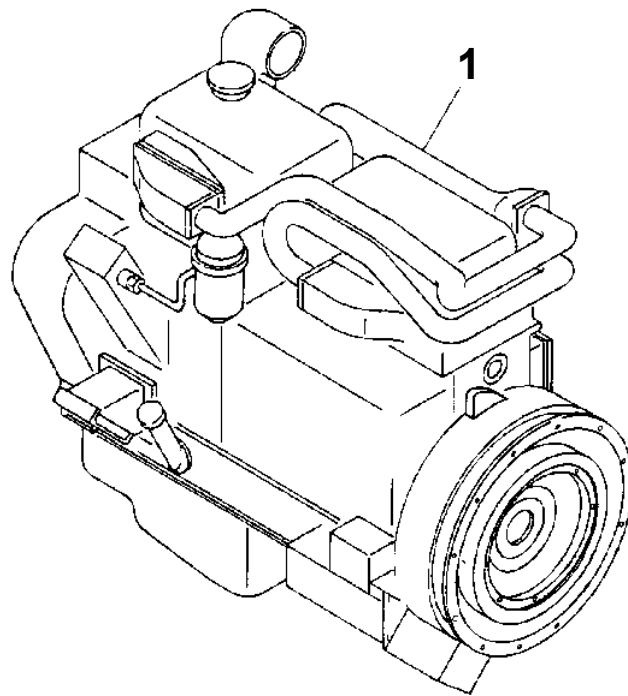
TG-1200M-2-20101 6 BOOM + JIB,K1500

Pos No.	Parts No	Parts Name	Qty	Unit	Technical Data	Serial No (Start)	Serial No (End)	Re
1	36040080000	EXTENSION CYLINDER,LIFTER	1					
2	33590102010	CASE,INNER	2					
3	33590102021	CASE,OUTER	1					
4	12511009000	PIN	2					
5	80601110250	RING,RITAINING	4		S25			
6	37001504850	BOLT,WING	4					
7	33610120050	FLOAT	2					
8	82456101000	NIPPLE,GREASE	2		A-PT1/8			
9	33610120250	COVER	4					
10	90101510045	BOLT	12		M10X45			
11	90302041001	WASHER,SPRING	20		10			
12	36030700000	JACK CYLINDER,LIFTER (REAR)	2					
13	36622490000	VALVE,CHECK	2					
14	90131510032	BOLT,HEXAGON SOCKET	8		M10X32			
15	90101520060	BOLT	12		M20X60			
16	90302042001	WASHER,SPRING	12		20			
17	33590102030	PLATE	4					
18	37000529850	PLATE	12					
19	80185306020	SCREW,MACHINE	16					
20	90102210020	BOLT	8		M10X20			
21	37000200510	PIN	2					
22	56094033000	SPRING	2					
23	33610120300	COVER	2					
24	16021605001	PIN	2					
25	90101208014	BOLT	2		M8X14			
26	90302040801	WASHER,SPRING	2		8			
27	37000504891	PLATE	4		T=3.2			
28	37000504881	PLATE	4		T=4.5			
29	37000504911	PLATE	2		T=3.2			
30	37000504901	PLATE	2		T=4.5			
31	37000137440	PIN	4					
32	90833112020	BOLT,WING	4		M12X20			
33	37000553540	PLATE	4		T=2.3	460091		
34	37000553600	PLATE	2		T=2.3	460091		

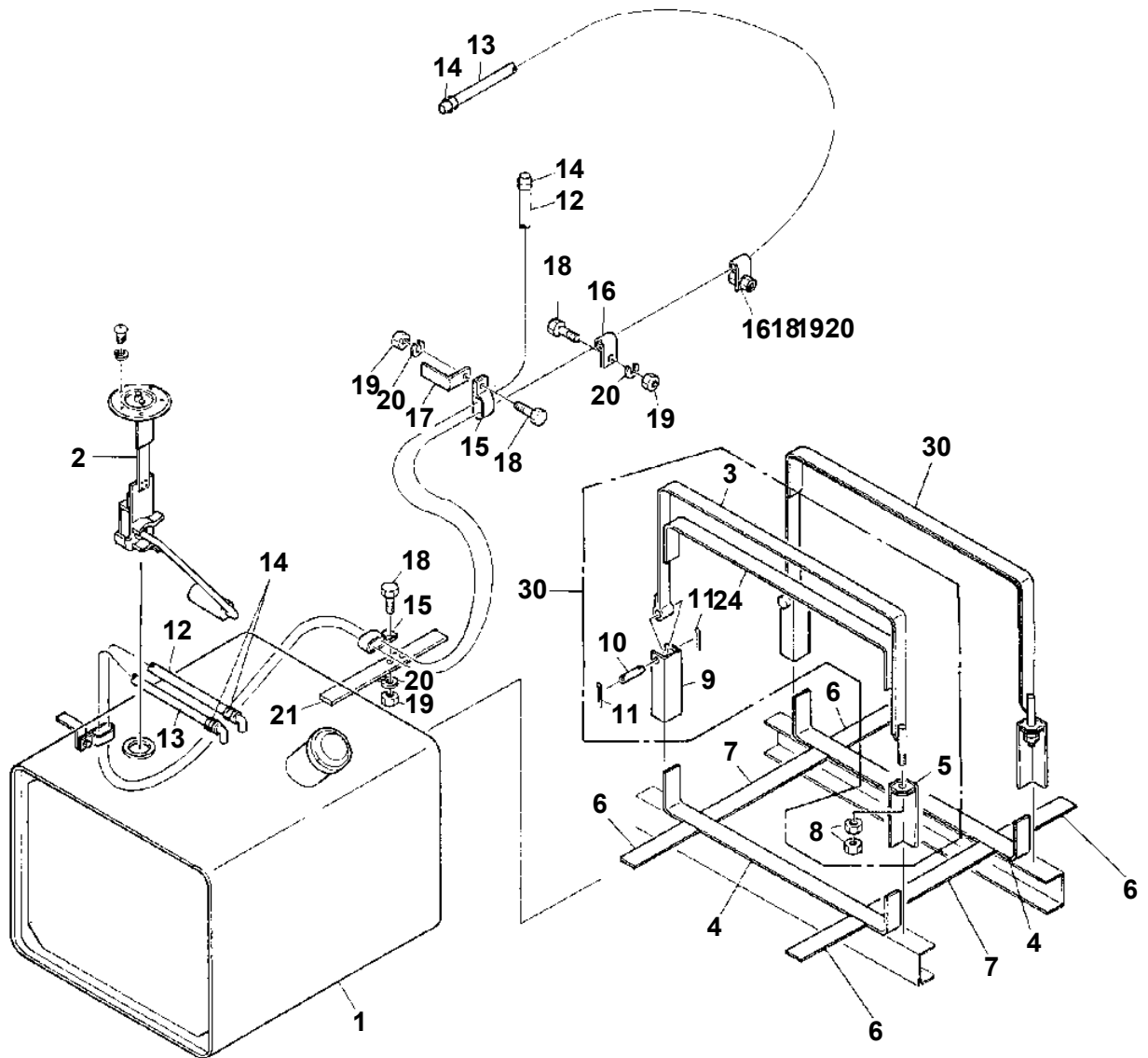
**TG-1200M-2-20101 6 BOOM + JIB,K1500
PP1100002-00 PIPING,LIFTER(FRONT)**



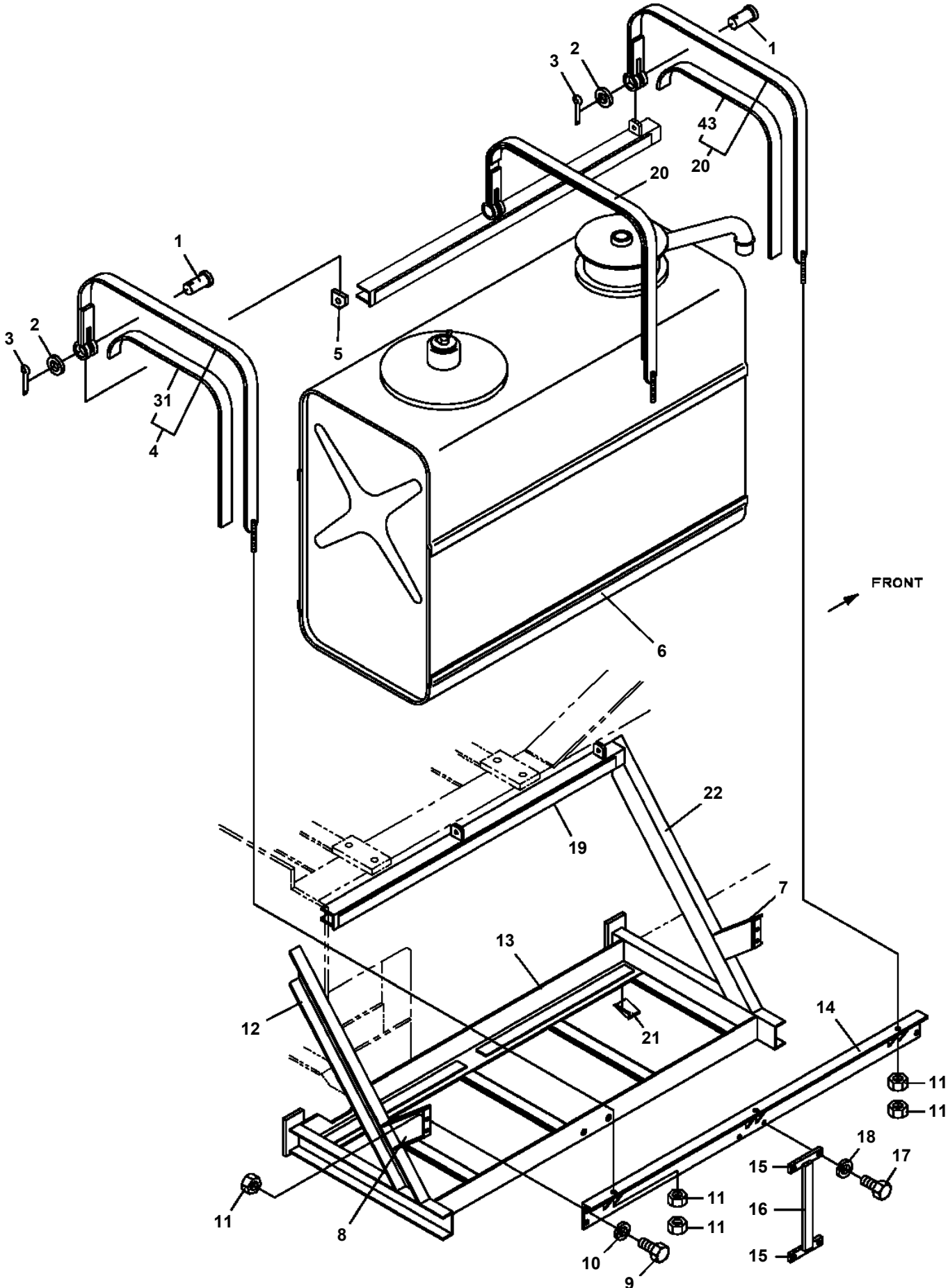
TG-1200M-2-20101 6 BOOM + JIB,K1500
PQ1010004-00 ENGINE



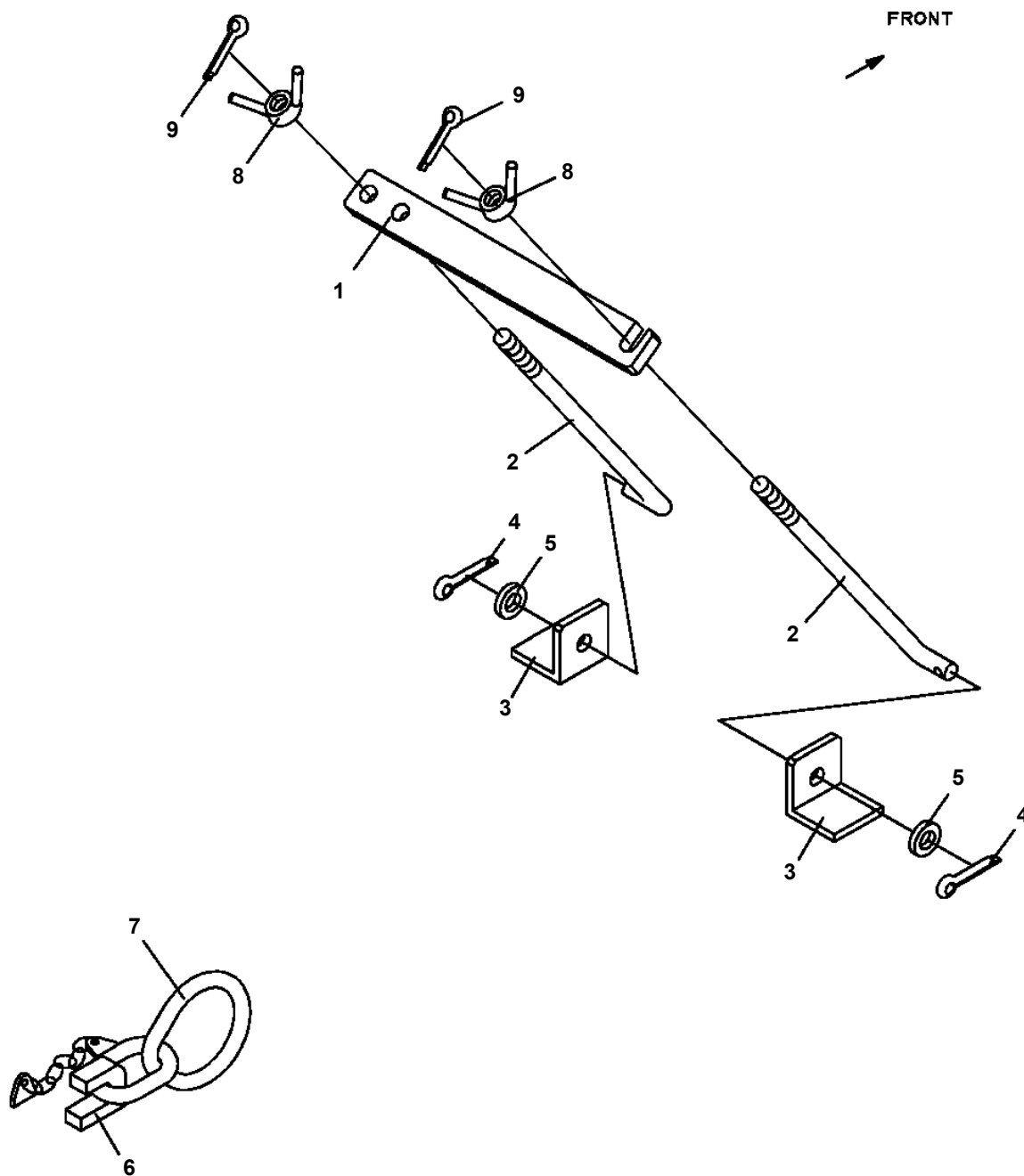
TG-1200M-2-20101 6 BOOM + JIB,K1500
PQ1090029-00 TANK,FUEL INSTALLATION



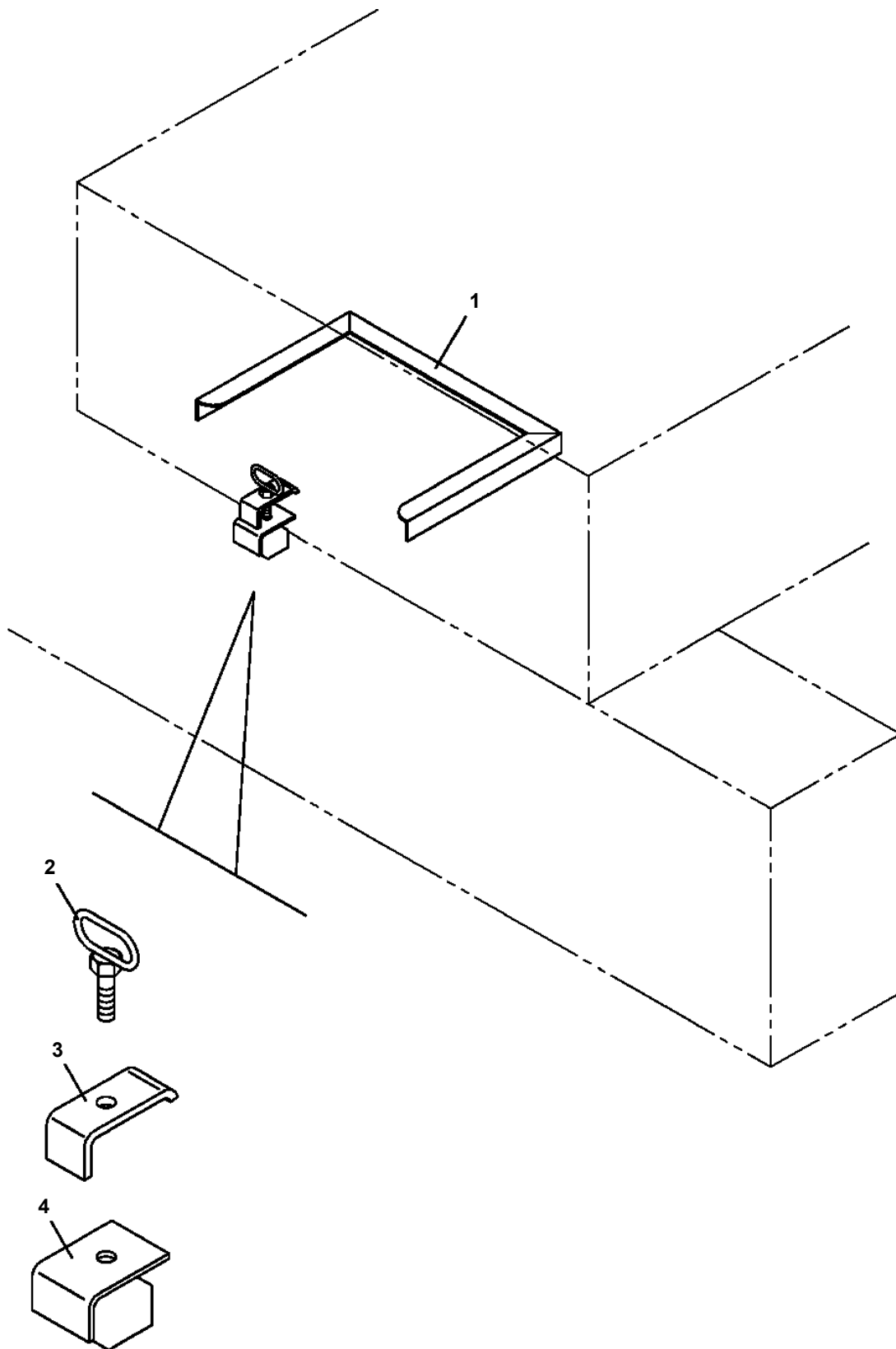
TG-1200M-2-20101 6 BOOM + JIB, K1500
PX1100064-00 TANK SUPPORT (UPPER)



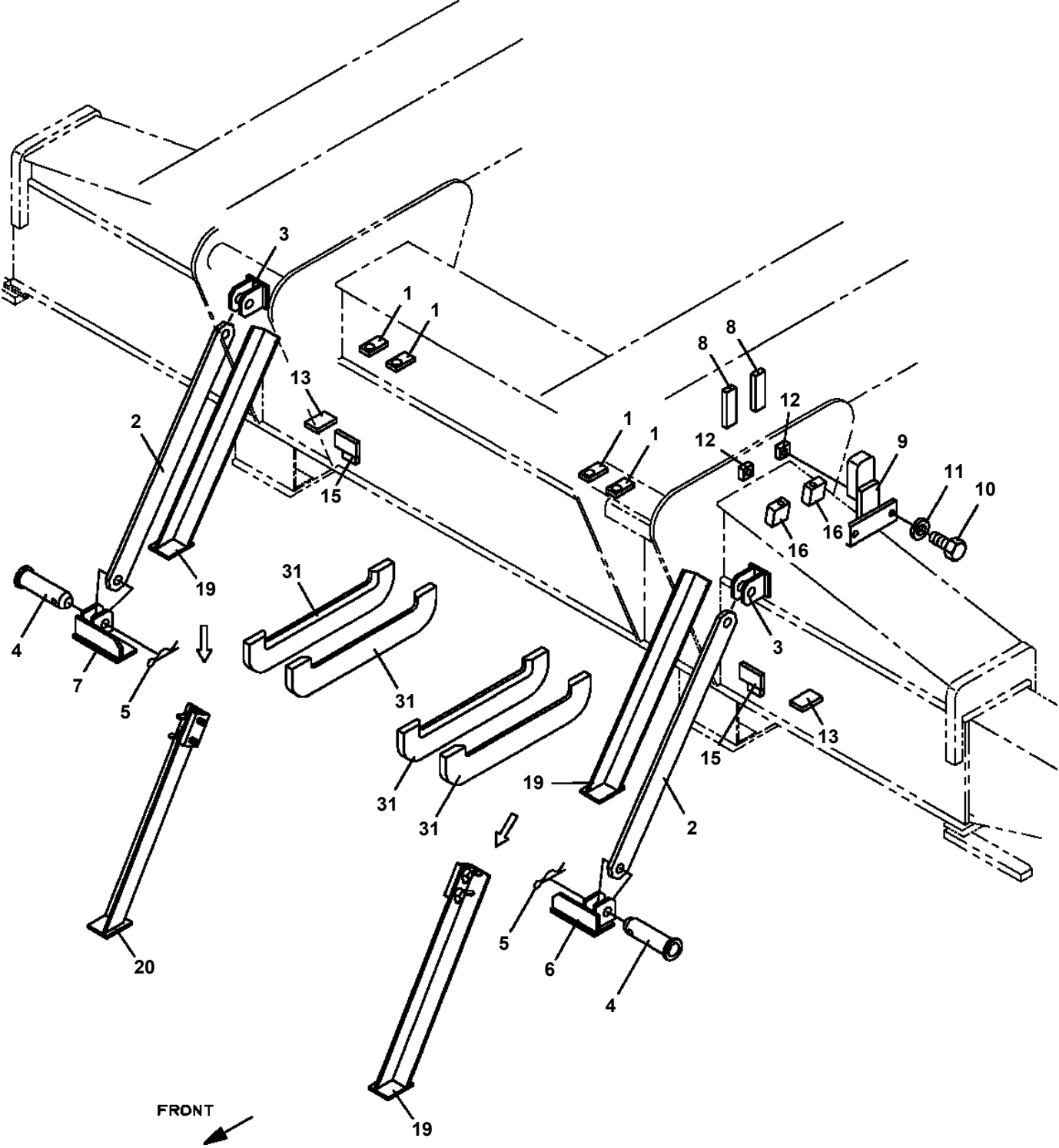
TG-1200M-2-20101 6 BOOM + JIB,K1500
PX1180081-00 MOUNT,HOOK



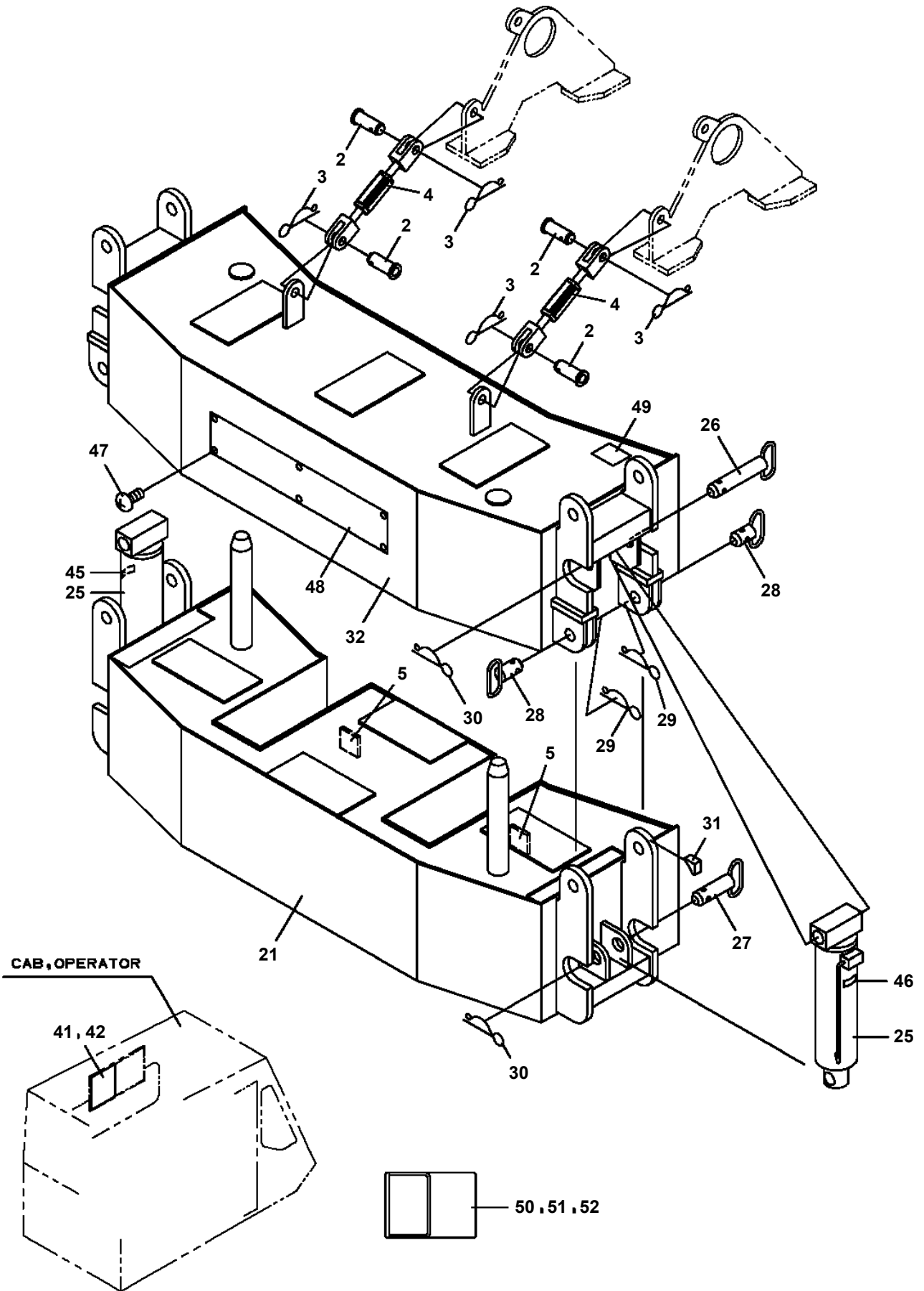
TG-1200M-2-20101 6 BOOM + JIB, K1500
PX1280004-00 FLOAT HOLDER, OUTRIGGER



TG-1200M-2-20101 6 BOOM + JIB,K1500
PX1520000-01 MOUNT,LIFTER



TG-1200M-2-20101 6 BOOM + JIB,K1500
PY1320001-00 WEIGHT,EXTRA



CLICK HERE TO **DOWNLOAD** THE COMPLETE MANUAL

- Thank you very much for reading the preview of the manual.
- You can download the complete manual from: www.heydownloads.com by clicking the link below



- Please note: If there is no response to CLICKING the link, please download this PDF first and then click on it.

CLICK HERE TO **DOWNLOAD** THE COMPLETE MANUAL