

OC-160M-1-20800 LOWER,MITSUBISHI U-FV419P

PB1000615-00 HYDRAULIC PRESSURE GENERATING SYSTEM

PC1000515-00 OUTRIGGER SYSTEM

PF1000482-00 WINCH SYSTEM

PH1000521-00 SAFETY DEVICES

PK1000559-00 FRAME

PL1000563-00 CONTROL DEVICES

PN1000457-00 ELECTRIC EQUIPMENT

PO1000144-01 INDICATION PLATES

PQ1000180-00 DRIVING POWER GENERATING SYSTEM

PV1000054-01 REMOTE CONTROL SYSTEM

PW1000028-00 ACCESSORIES & TOOLS

PX1000729-00 MOUNTING PARTS

PY1000734-00 OPTIONS

ASSEMBLY

CLICK HERE TO **DOWNLOAD** THE COMPLETE MANUAL

- Thank you very much for reading the preview of the manual.
- You can download the complete manual from: www.heydownloads.com by clicking the link below



- Please note: If there is no response to CLICKING the link, please download this PDF first and then click on it.

CLICK HERE TO **DOWNLOAD** THE COMPLETE MANUAL

OC-160M-1-20800 LOWER,MITSUBISHI U-FV419P

Pos No.	Parts No	Parts Name	Qty	Unit	Technical Data	Serial No (Start)	Serial No (End)	Remarks	Pages
1	(*****)	FRAME	1						000051

OC-160M-1-20800 LOWER,MITSUBISHI U-FV419P

Pos No.	Parts No	Parts Name	Qty	Unit	Technical Data	Serial No (Start)	Serial No (End)	Re
1	32471050000	SWITCH BOX (WITH CABLE 10M)	1					
2	(*****)	STOWING BOX (OPTION)	1					

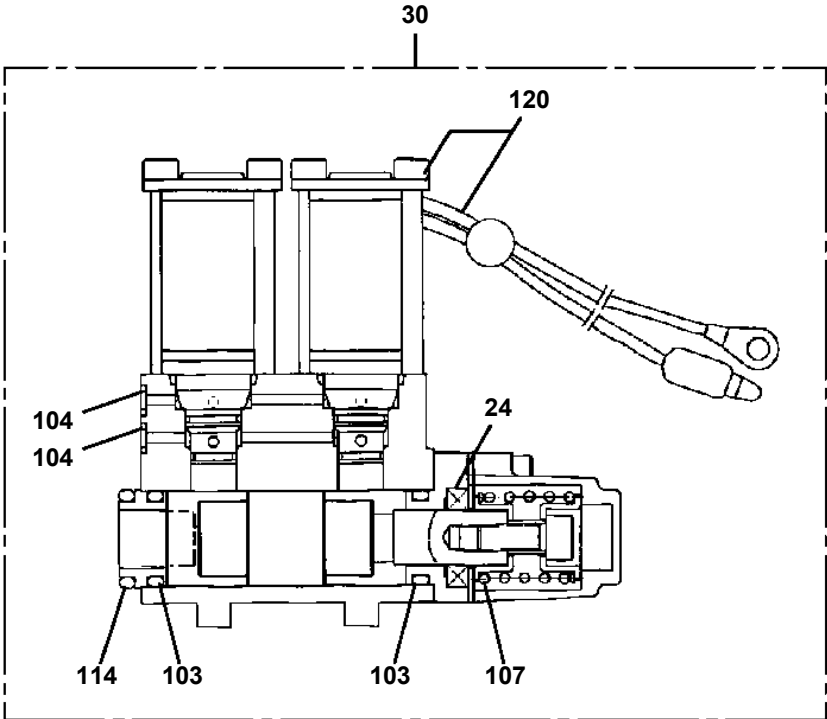
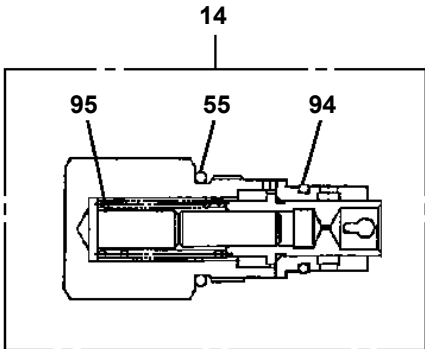
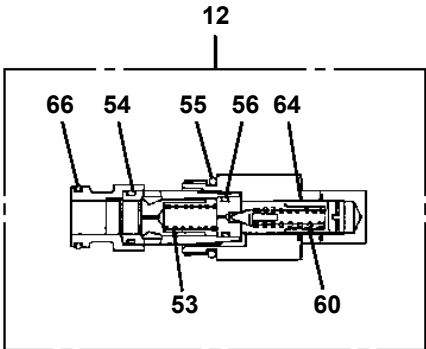
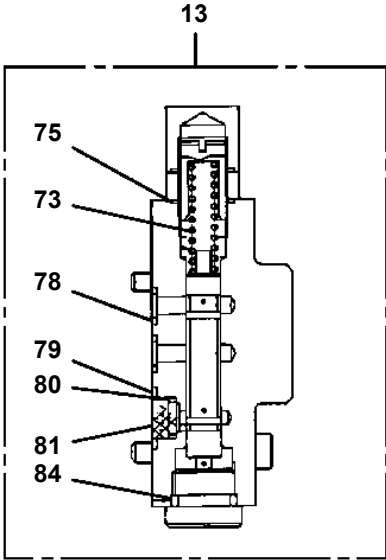
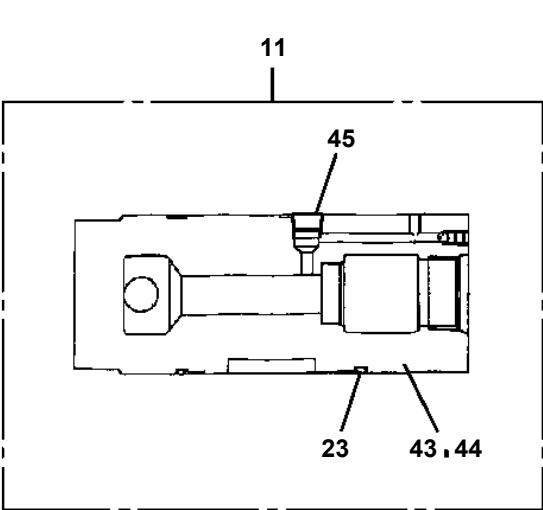
OC-160M-1-20800 LOWER,MITSUBISHI U-FV419P

PX1290212-00 WEIGHT (OPTION)
PX1360001-00 REFLECTOR INSTALLATION
PX1380011-00 LAMP SUPPORT (SIDE WINKER)
PX1390268-00 PARTS,CHASSIS MODIFICATION
PX1390269-00 PARTS,CHASSIS MODIFICATION
PX1410030-01 MOUNT,TIRE
PY1440001-00 PINTLE HOOK INSTALLATION
PY1830004-00 PIN INSTALLATION
PY1830005-00 PIN INSTALLATION
PY2060003-00 ROPE,GUIDE (GUIDE SHEAVE/REAR WINCH)
PY3420000-00 SHACKLE
PZ0000000-00 VALVE ASSY

OC-160M-1-20800 LOWER,MITSUBISHI U-FV419P

Pos No.	Parts No	Parts Name	Qty	Unit	Technical Data	Serial No (Start)	Serial No (End)	Rema
1	80316080060	PLUG	2					
2	53256551000	COVER	1					
3	91001221000	O-RING	2		1A G210			
4	90101508016	BOLT	14		M8X16			
5	90302040801	WASHER,SPRING	22		8			
7	91001211000	O-RING	2		1A G110			
8	53156005000	BREATHER ASSY (OB-10T)	1					
9	53256552000	COVER	1					
10	37002510350	HOSE (L=140/PVC)	1					
11	91801300150	CLIP	2		D=13-15			
12	90101508020	BOLT	8		M8X20			
13	36100935010	CASE	1					
14	36100930100	COVER	1					
41	53156005010	ELEMENT (OB-10T & OB-10B)	1					
42	53156005020	PACKING SET	1				325542	
53	53156005030	PLATE (WITH PACKING)	1			325543		
54	53156005040	PACKING	1			325543		
100	36100930002	TANK,OIL	1					

**OC-160M-1-20800 LOWER, MITSUBISHI U-FV419P
PB1340037-01 VALVE, SOLENOID CONTROL**



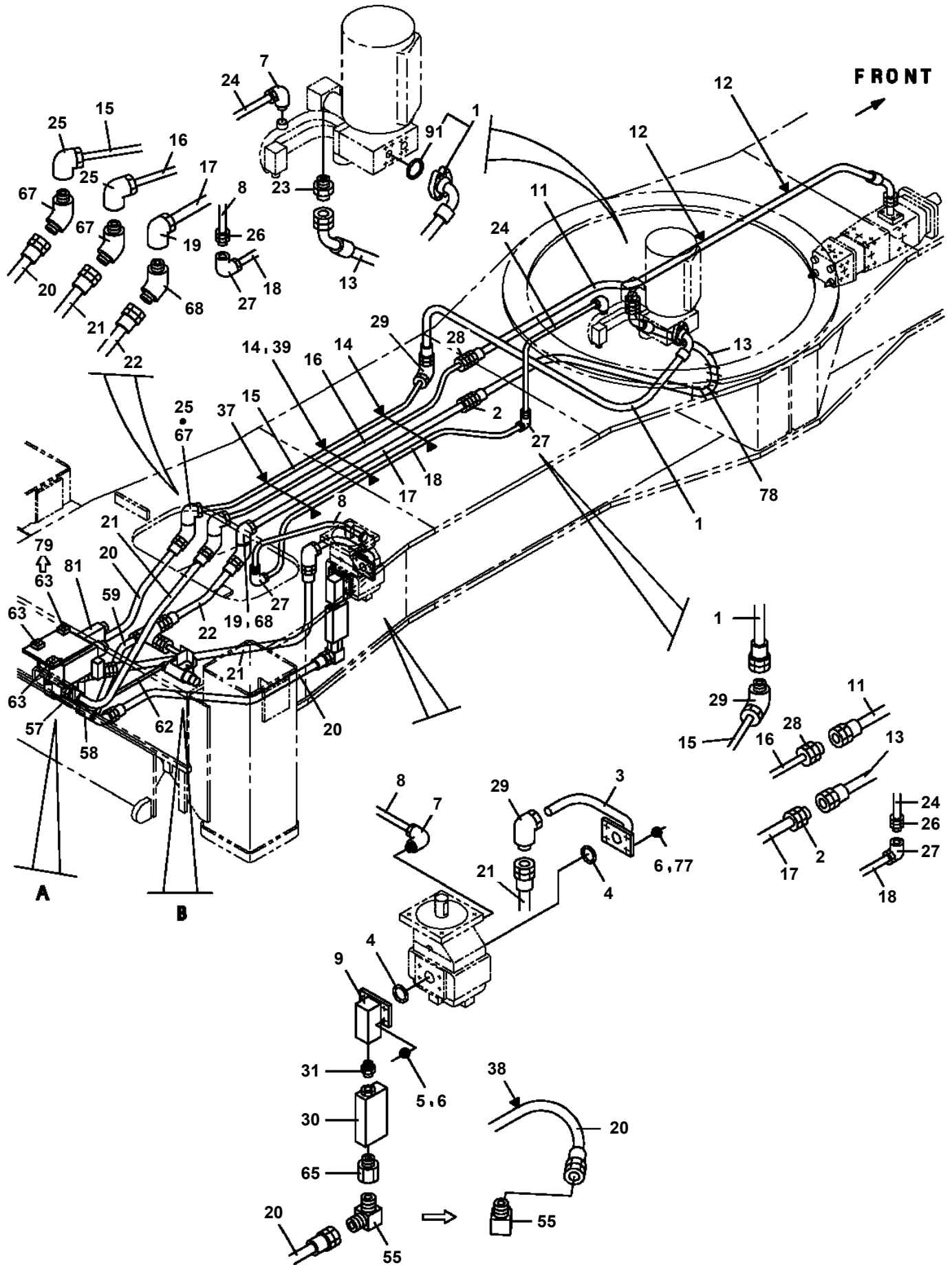
OC-160M-1-20800 LOWER,MITSUBISHI U-FV419P

Pos No.	Parts No	Parts Name	Qty	Unit	Technical Data	Serial No (Start)	Serial No (End)	Remarks	Pages
1	33610023300	FLOAT ASSY	2						
2	37000102100	PIN	2						
3	80136340050	PIN,SPLIT	4		4X50				
4	32610401100	PLATE	8				325386		
	32610401101	PLATE	8			325387			
5	32610401200	PLATE	2				325274		
	32610401201	PLATE	4			325275			
6	32610401300	PLATE	2				325274		
7	32610401400	PLATE	2						
8	32610401500	PLATE	2						
9	32610401600	PLATE	4				325274		
	32610401601	PLATE	4			325275			
10	32610401700	PLATE	2						
11	32610401800	PLATE	2						
12	32610401900	PLATE	2						
21	90191410045	BOLT	12		M10X45				
22	90302041001	WASHER,SPRING	12		10				
23	33610023310	COVER	4						
24	33610028010	FLOAT ASSY	2						
31	82456101000	NIPPLE,GREASE	2		A-PT1/8				

OC-160M-1-20800 LOWER,MITSUBISHI U-FV419P

Pos No.	Parts No	Parts Name	Qty	Unit	Technical Data	Serial No (Start)	Serial No (End)	Remarks	P
1	36041001000	CYLINDER	1						
2	90272102000	NUT	1		M20		325466		
	90201202000	NUT	1		M20	325467			
3	91100105500	RING,SEAL	1						
4	36040020301	PISTON	1						
5	36041002000	ROD	1						
6	36040020502	COVER,ROD	1						
7	91002804801	O-RING	1		1B P48A				
8	91694003500	PACKING	1						
9	91410203501	RING,BACKUP	1						
10	36040020600	WASHER	1						
11	91660003501	SEAL,DUST	1						
30	36041000000	CYLINDER,EXTENSION	1						
41	36040079901	PACKING SET	1		35X55				

**OC-160M-1-20800 LOWER, MITSUBISHI U-FV419P
PF1200094-02 PIPING, WINCH (OPTION)**



CLICK HERE TO **DOWNLOAD** THE COMPLETE MANUAL

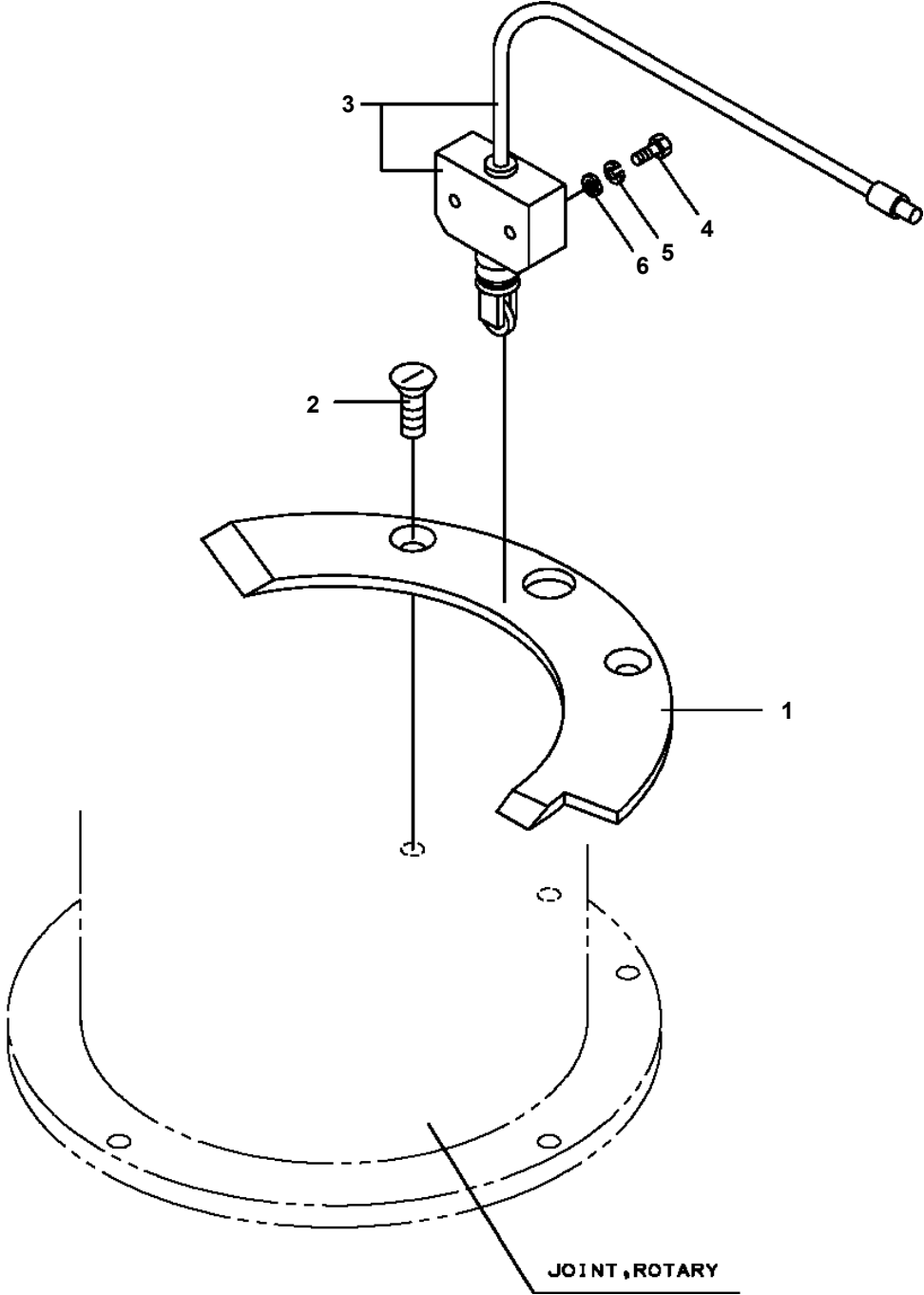
- Thank you very much for reading the preview of the manual.
- You can download the complete manual from: www.heydownloads.com by clicking the link below



- Please note: If there is no response to CLICKING the link, please download this PDF first and then click on it.

CLICK HERE TO **DOWNLOAD** THE COMPLETE MANUAL

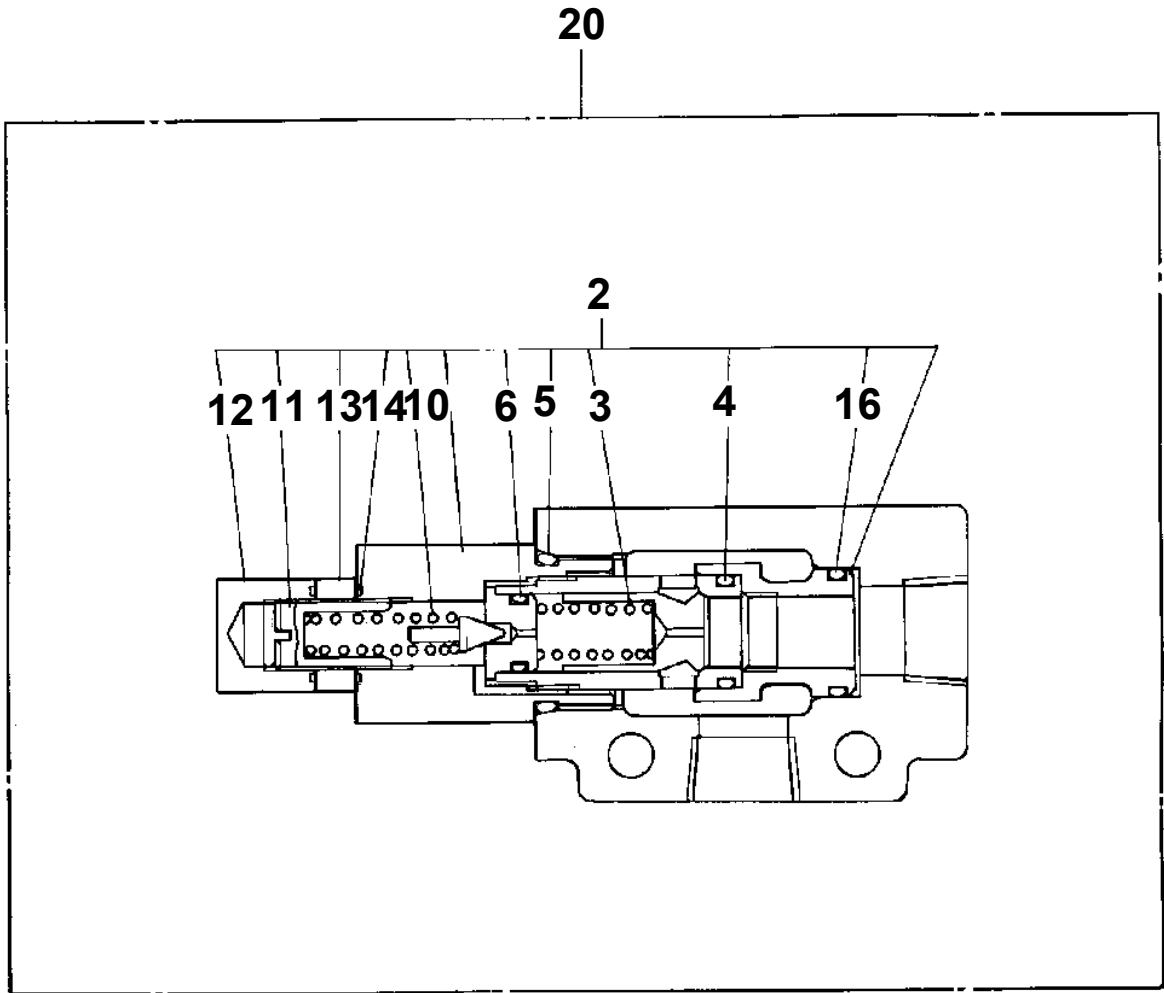
**OC-160M-1-20800 LOWER, MITSUBISHI U-FV419P
PH1100017-02 DETECTOR, OVER FRONT AREA**



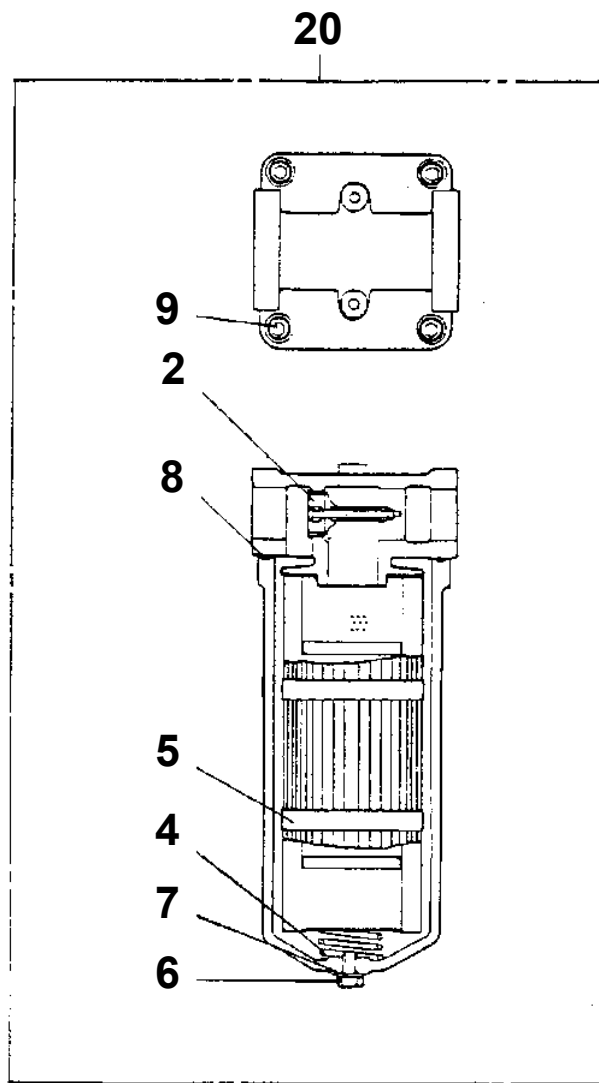
OC-160M-1-20800 LOWER, MITSUBISHI U-FV419P
PI1100060-01 VALVE, RELIEF

ASSEMBLY DRAWING VALVE, RELIEF

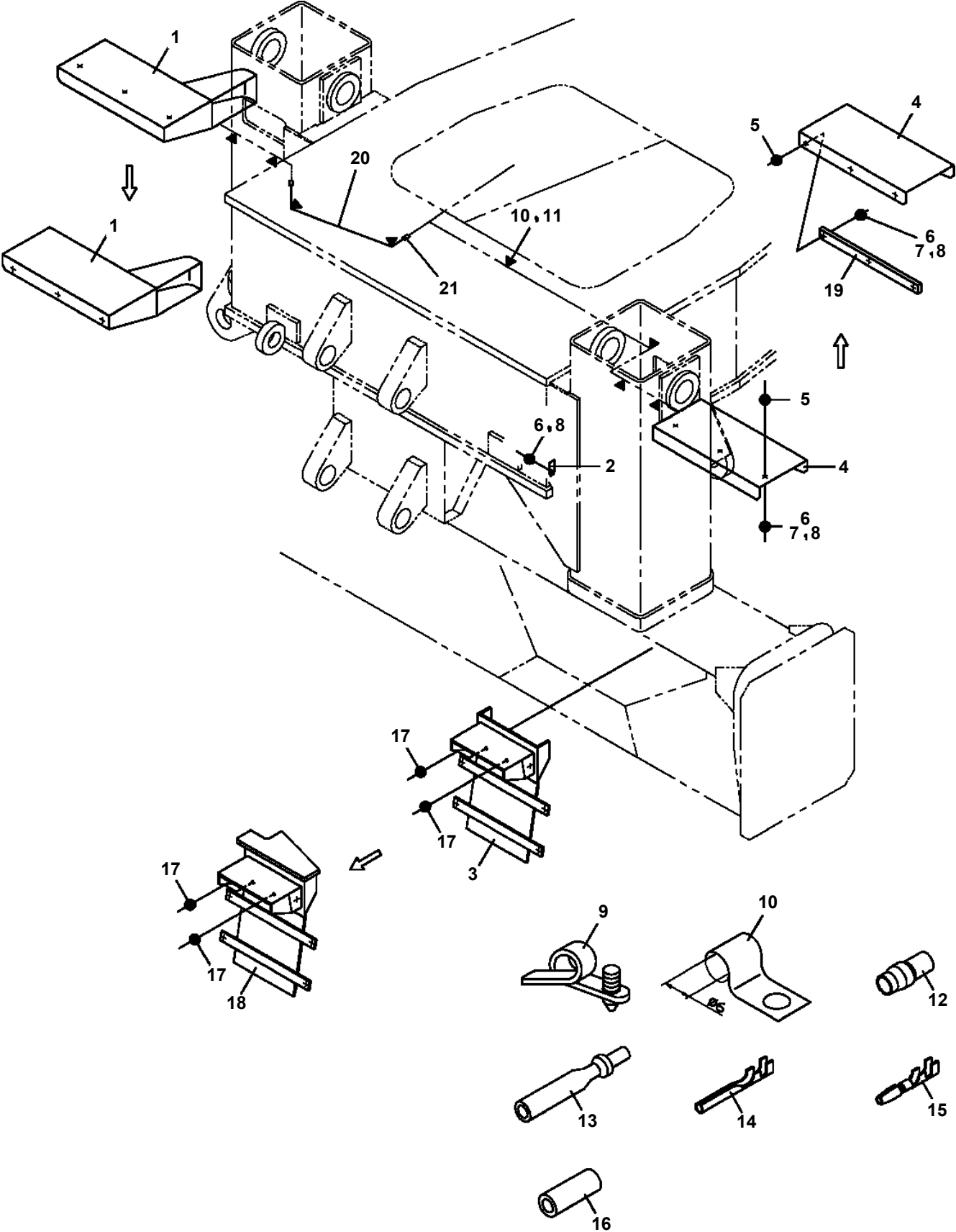
11110 0000 01



OC-160M-1-20800 LOWER, MITSUBISHI U-FV419P
PI1300014-00 FILTER, OIL

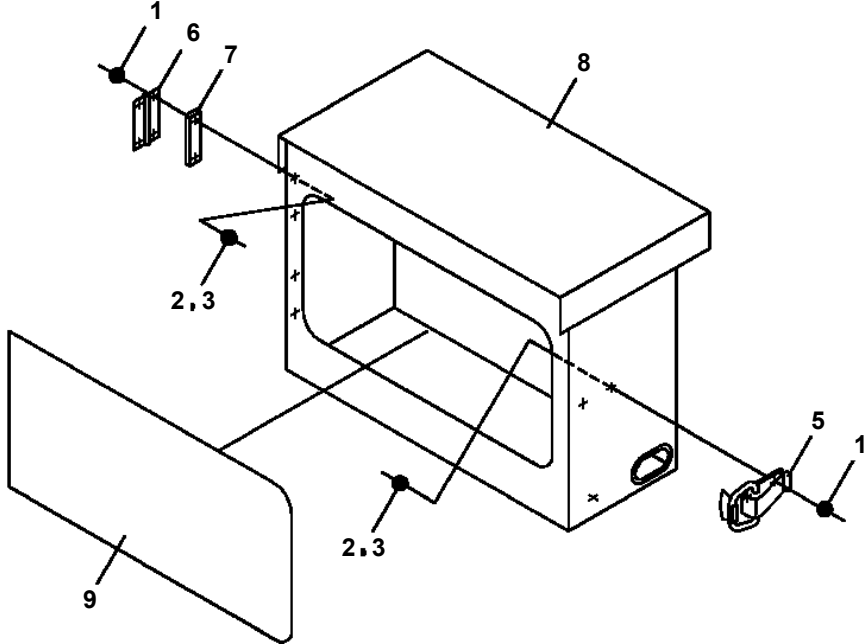
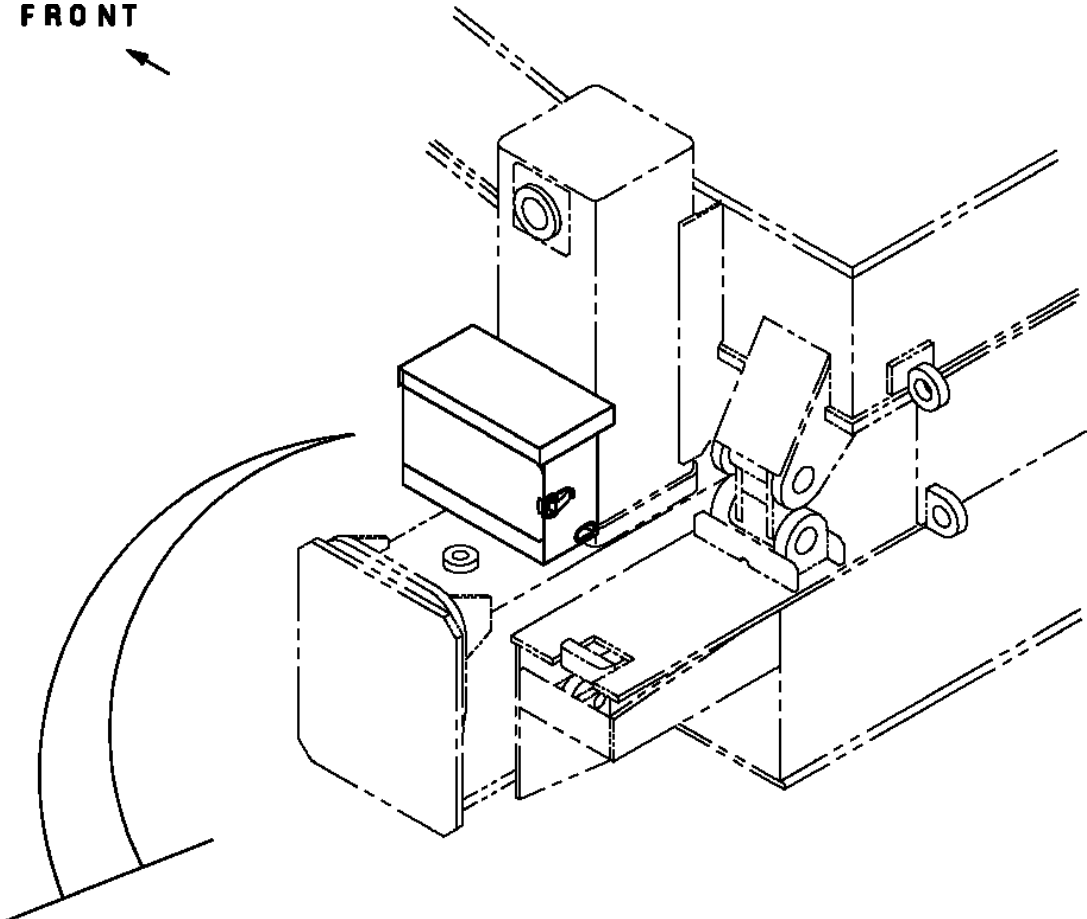


OC-160M-1-20800 LOWER, MITSUBISHI U-FV419P
PN1010363-01 ELECTRICAL ACCESSORIES

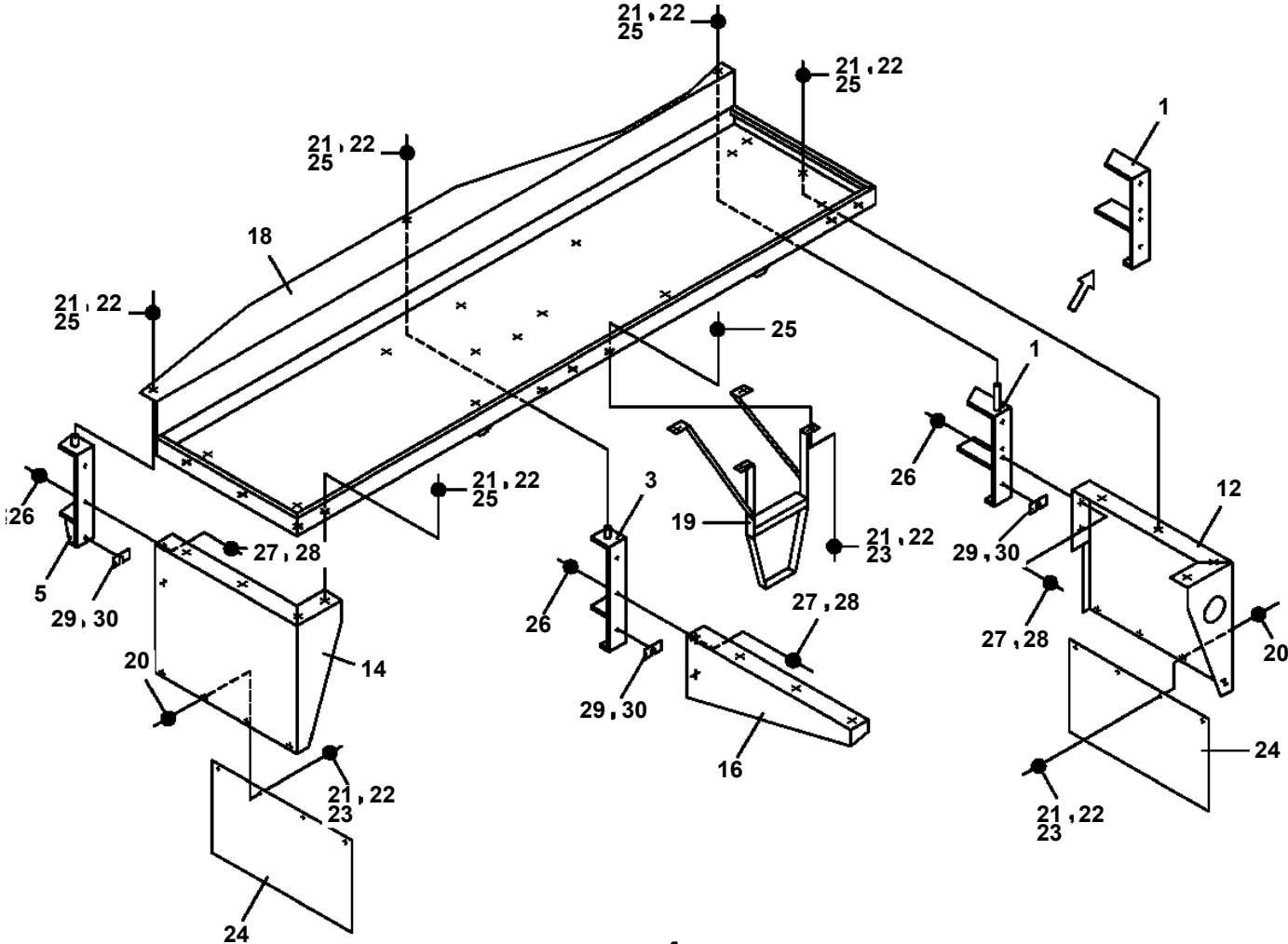


OC-160M-1-20800 LOWER, MITSUBISHI U-FV419P
PV1250001-01 STOWING BOX (OPTION)

FRONT



OC-160M-1-20800 LOWER, MITSUBISHI U-FV419P
PX1030284-00 FENDER



OC-160M-1-20800 LOWER,MITSUBISHI U-FV419P

Pos No.	Parts No	Parts Name	Qty	Unit	Technical Data	Serial No (Start)	Serial No (End)	Remarks	Pages
1	32840011100	SUPPORT	1				325229		
	32840051100	SUPPORT	1			325230			
2	32840011200	SUPPORT	1						
3	90201402200	NUT	8		M22				
4	53262513000	SUPPORT	4						
5	53262005000	SUPPORT	2						
6	53262006000	SUPPORT	2						
7	32840011300	U-BOLT	2						
8	53261123000	SUPPORT	2						

OC-160M-1-20800 LOWER,MITSUBISHI U-FV419P

Pos No.	Parts No	Parts Name	Qty	Unit	Technical Data	Serial No (Start)	Serial No (End)	Remarks	Pages
1	59224356000	STEP	1						
2	32761630100	PLATE	1						
3	90101210025	BOLT	5		M10X25				
4	90302041001	WASHER,SPRING	5		10				
5	32761630800	SUPPORT ASSY	1						
6	32761630200	SUPPORT	2						
7	32761630300	PLATE	1						
8	32761630400	STEP	1				325546		
9	32761630500	COVER	1						
10	32761630601	COVER	1						
11	90101208040	BOLT	5		M8X40				
12	37000521600	PLATE	10						
13	90201200800	NUT	5		M8				
14	90302040801	WASHER,SPRING	13		8				
15	32761631000	COVER ASSY	1						
16	12434402040	SPRING	2						
17	80172305012	SCREW,MACHINE	4		M5X12				
18	90101208020	BOLT	6		M8X20				
19	34690000200	SUPPORT	2						
20	32761630040	SUPPORT	2						
21	32761630050	PLATE	1						
22	90101208012	BOLT	2		M8X12				
23	37001601640	NUT	2						
24	90303070801	WASHER,PLAIN	6		8				
31	92001220400	HINGE	2						

OC-160M-1-20800 LOWER,MITSUBISHI U-FV419P

Pos No.	Parts No	Parts Name	Qty	Unit	Technical Data	Serial No (Start)	Serial No (End)	Remarks	Pages
1	32890040100	SUPPORT	1						
2	32890040200	SUPPORT	4						
3	32890040300	SUPPORT	3						

OC-160M-1-20800 LOWER,MITSUBISHI U-FV419P

Pos No.	Parts No	Parts Name	Qty	Unit	Technical Data	Serial No (Start)	Serial No (End)	Remarks	Pages
1	32890700100	PLATE	2						
2	32890700200	PLATE	2						
3	32890180200	PLATE	2						
4	32890700300	PLATE	2						
5	32890700400	PLATE	2						
6	32890700500	PLATE	2						
7	32890180300	PLATE	2						

CLICK HERE TO **DOWNLOAD** THE COMPLETE MANUAL

- Thank you very much for reading the preview of the manual.
- You can download the complete manual from: www.heydownloads.com by clicking the link below



- Please note: If there is no response to CLICKING the link, please download this PDF first and then click on it.

CLICK HERE TO **DOWNLOAD** THE COMPLETE MANUAL