

TM-ZX290 41047701334A FRAME

PB0000365-00 SYSTEM (ZX290SL,DOMESTIC)

ASSEMBLY

CLICK HERE TO **DOWNLOAD** THE COMPLETE MANUAL

- Thank you very much for reading the preview of the manual.
- You can download the complete manual from: www.heydownloads.com by clicking the link below



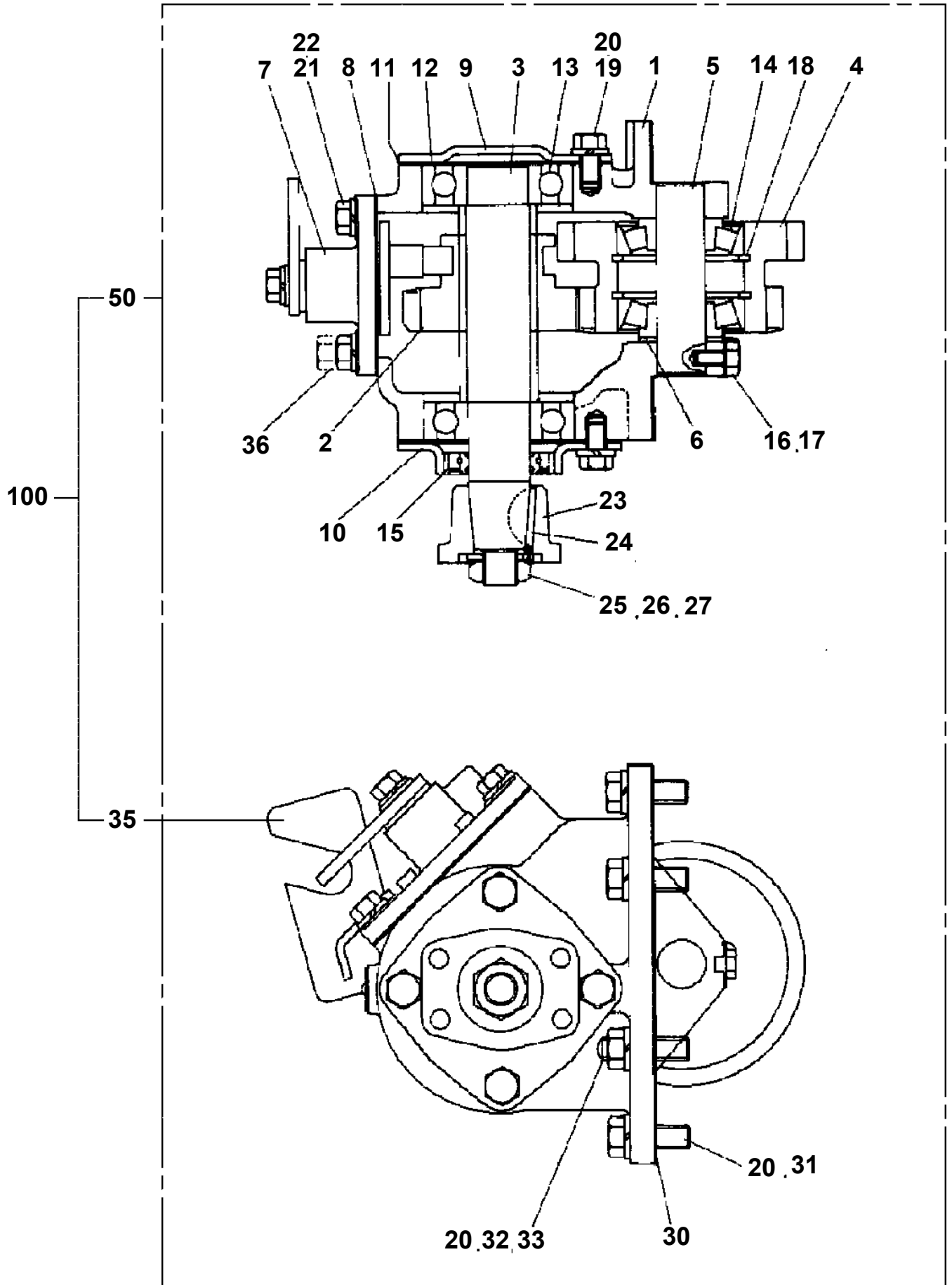
- Please note: If there is no response to CLICKING the link, please download this PDF first and then click on it.

CLICK HERE TO **DOWNLOAD** THE COMPLETE MANUAL

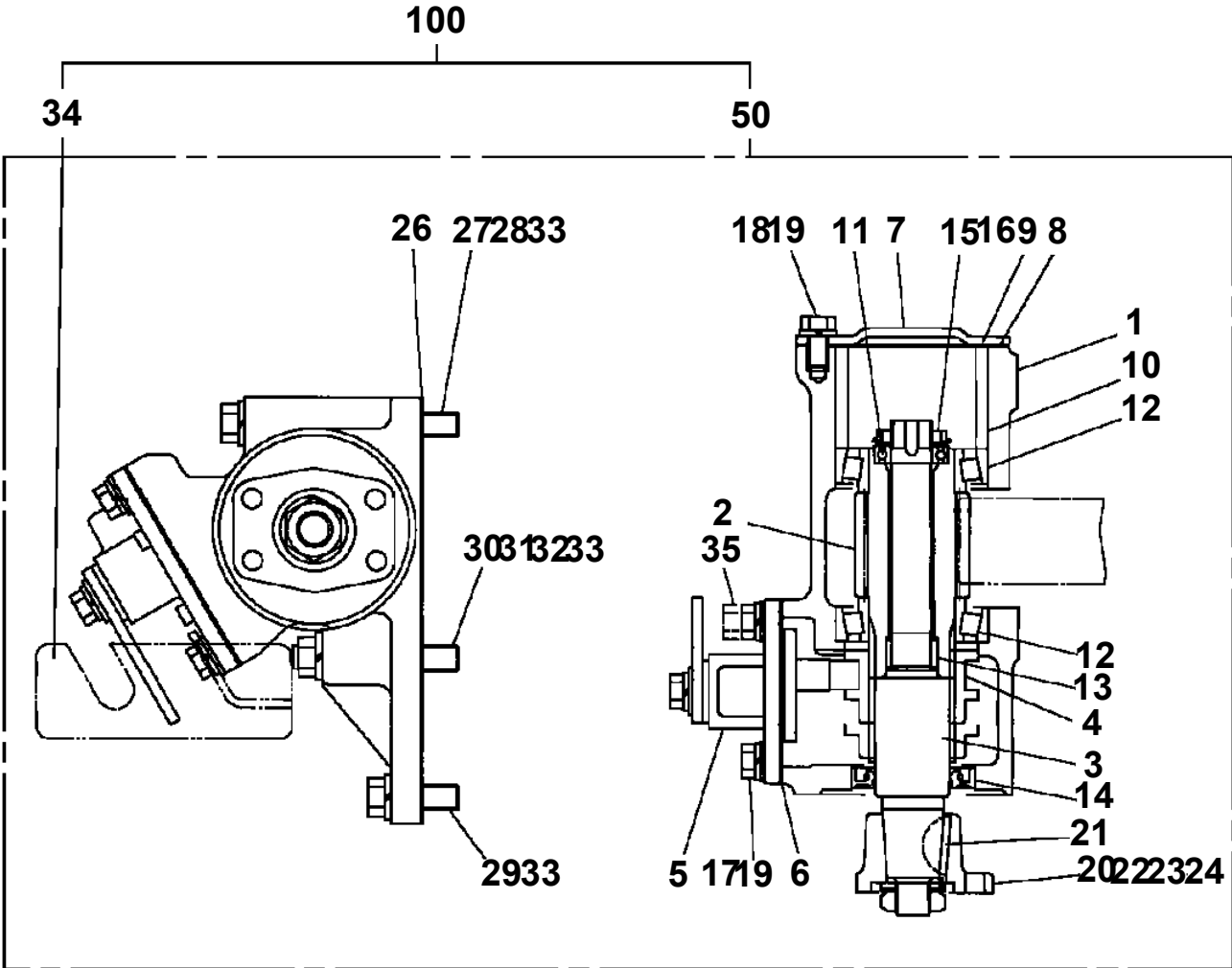
TM-ZX290 41047701334A FRAME

Pos No.	Parts No	Parts Name	Qty	Unit	Technical Data	Serial No (Start)	Serial No (End)	R	
1	31792370000	POWER TAKE OFF	1						
	31792100000	POWER TAKE OFF	1						
	31792090000	POWER TAKE OFF	1						
	31792080000	POWER TAKE OFF	1						
	31790990000	POWER TAKE OFF	1						
	31790900000	POWER TAKE OFF	1						
	31792270000	POWER TAKE OFF	1						
	31790890000	POWER TAKE OFF	1						
	31792260000	POWER TAKE OFF	1						
	31792150000	POWER TAKE OFF	1						
	31792380000	POWER TAKE OFF	1						
	31790880000	POWER TAKE OFF	1						
	2	31791190000	POWER TAKE OFF	1					
		31791240000	POWER TAKE OFF	1					
		31791180000	POWER TAKE OFF	1					
		31791220000	POWER TAKE OFF	1					
		31791120000	POWER TAKE OFF	1					
31791090000		POWER TAKE OFF	1						
31791080000		POWER TAKE OFF	1						
31792480000		POWER TAKE OFF	1						
31790710000		POWER TAKE OFF	1						
31791170000		POWER TAKE OFF	1						
31791130000		POWER TAKE OFF	1						
31791100000		POWER TAKE OFF	1						
31790730000		POWER TAKE OFF	1						
31791110000		POWER TAKE OFF	1						
31791570000		POWER TAKE OFF	1						
31791610000		POWER TAKE OFF	1						
31791620000		POWER TAKE OFF	1						
31792120000		POWER TAKE OFF	1						
31790970000		POWER TAKE OFF	1						
31792490000		POWER TAKE OFF	1						
31792220000		POWER TAKE OFF	1						
31792230000		POWER TAKE OFF	1						
31792240000		POWER TAKE OFF	1						
31792250000		POWER TAKE OFF	1						
3		31792230000	POWER TAKE OFF	1					
		31791130000	POWER TAKE OFF	1					
		31791180000	POWER TAKE OFF	1					
	31792120000	POWER TAKE OFF	1						
	31791190000	POWER TAKE OFF	1						
	31791090000	POWER TAKE OFF	1						
	31791080000	POWER TAKE OFF	1						
	31791050000	POWER TAKE OFF	1						
	31790970000	POWER TAKE OFF	1						
	31791620000	POWER TAKE OFF	1						
	31791170000	POWER TAKE OFF	1						
	31791120000	POWER TAKE OFF	1						
	31791570000	POWER TAKE OFF	1						
	31791240000	POWER TAKE OFF	1						
	31792220000	POWER TAKE OFF	1						
	31792240000	POWER TAKE OFF	1						
	31792250000	POWER TAKE OFF	1						
	31791110000	POWER TAKE OFF	1						
	31790710000	POWER TAKE OFF	1						
	31790730000	POWER TAKE OFF	1						
	31791220000	POWER TAKE OFF	1						
31791100000	POWER TAKE OFF	1							
31791610000	POWER TAKE OFF	1							
4	31790730000	POWER TAKE OFF	1						
	31790710000	POWER TAKE OFF	1						
5	52230312000	POWER TAKE OFF (WITH TURBO)	1						
	36401650000	POWER TAKE OFF	1						

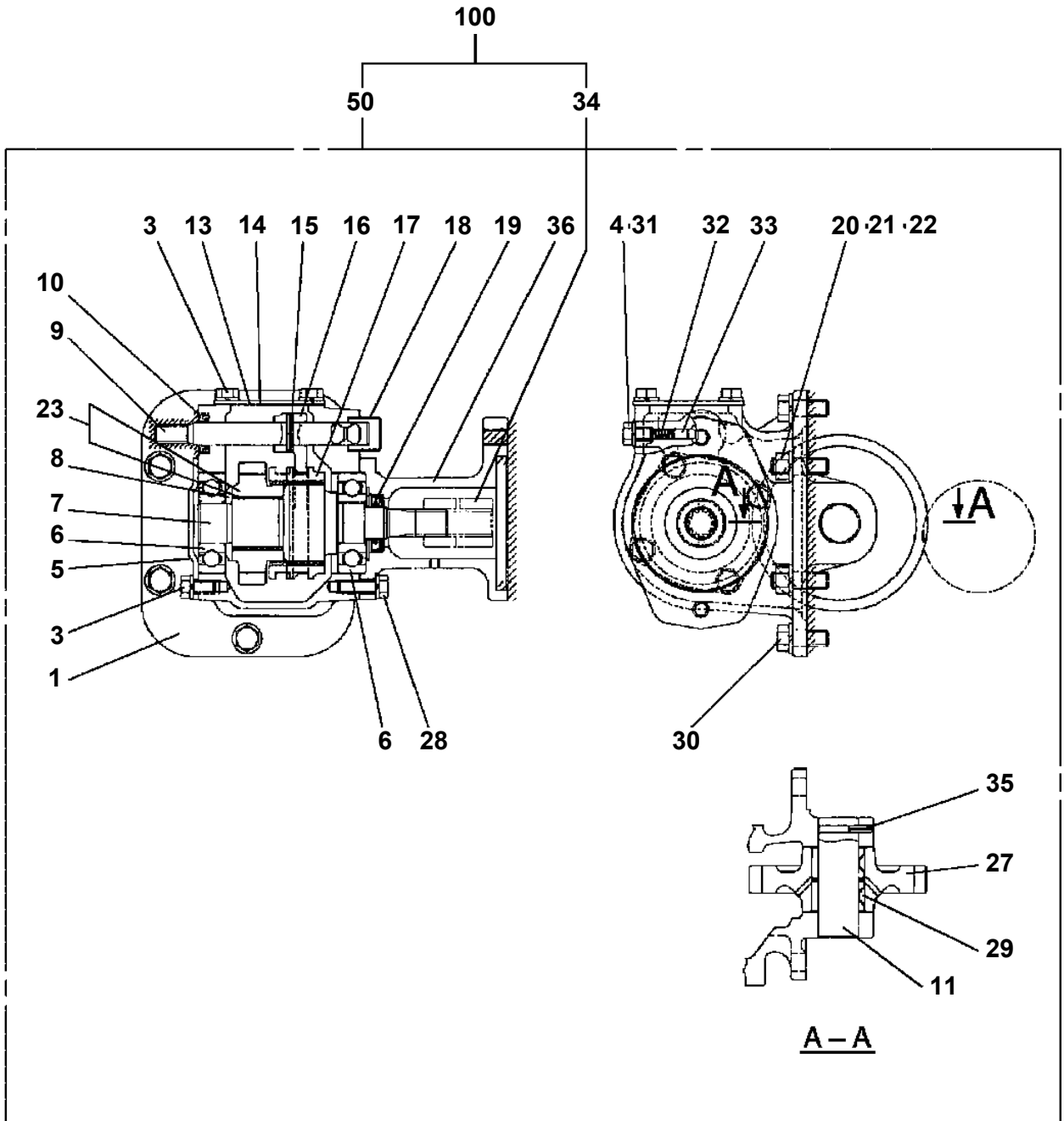
TM-ZX290 41047701334A FRAME
PB1030063-02 POWER TAKE OFF



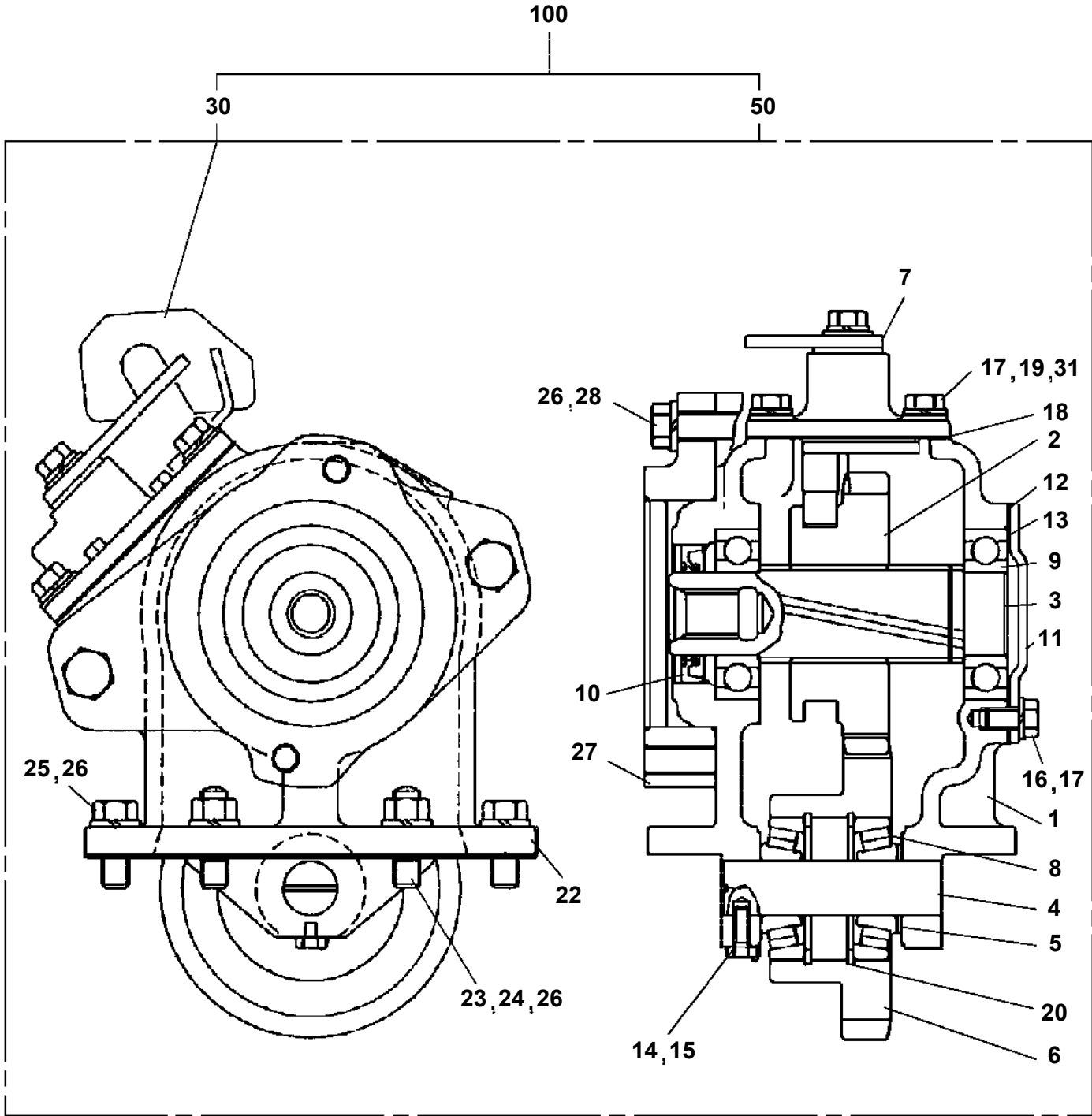
**TM-ZX290 41047701334A FRAME
PB1030131-01 POWER TAKE OFF**



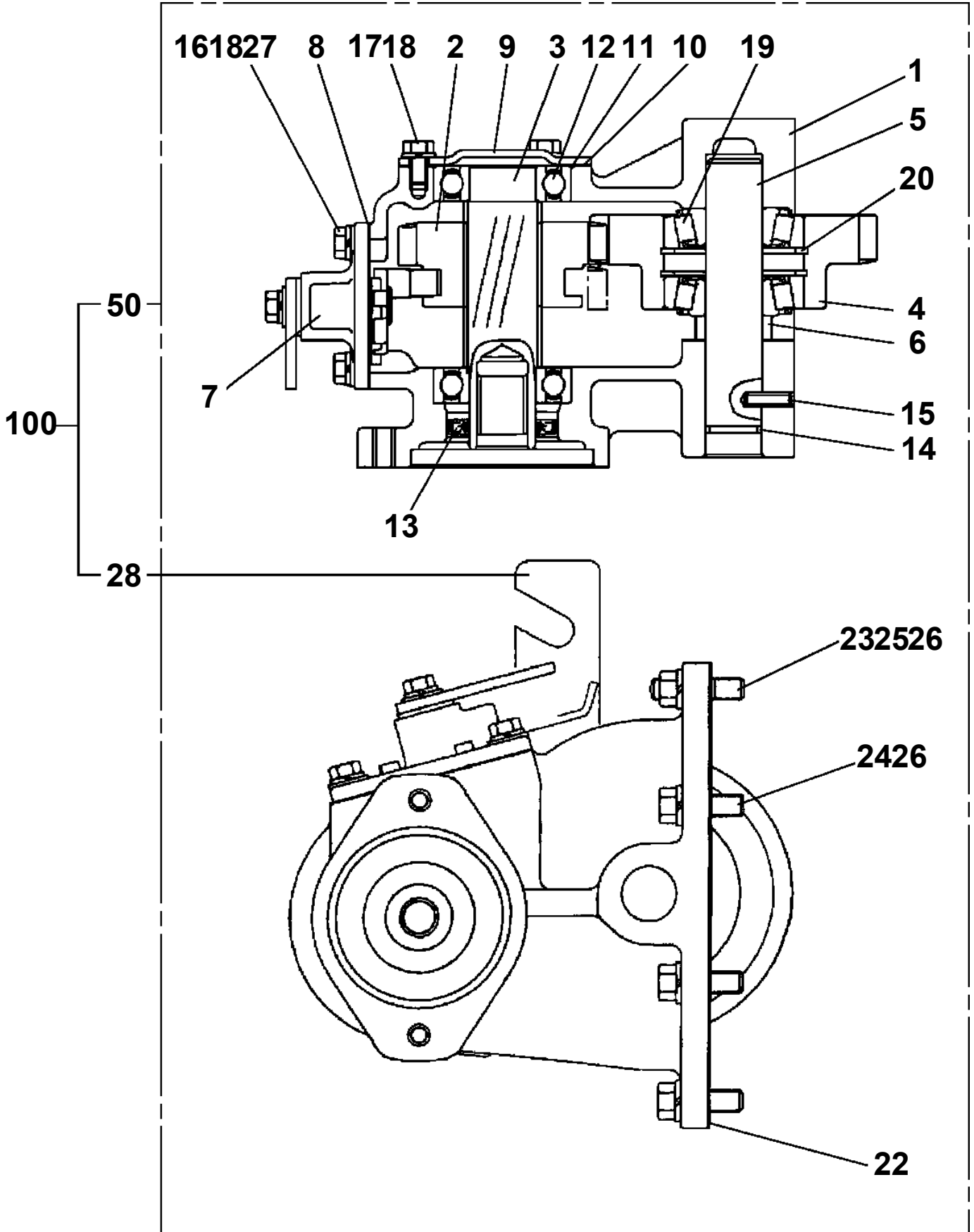
TM-ZX290 41047701334A FRAME
PB1030163-02 POWER TAKE OFF



TM-ZX290 41047701334A FRAME
PB1030171-02 POWER TAKE OFF

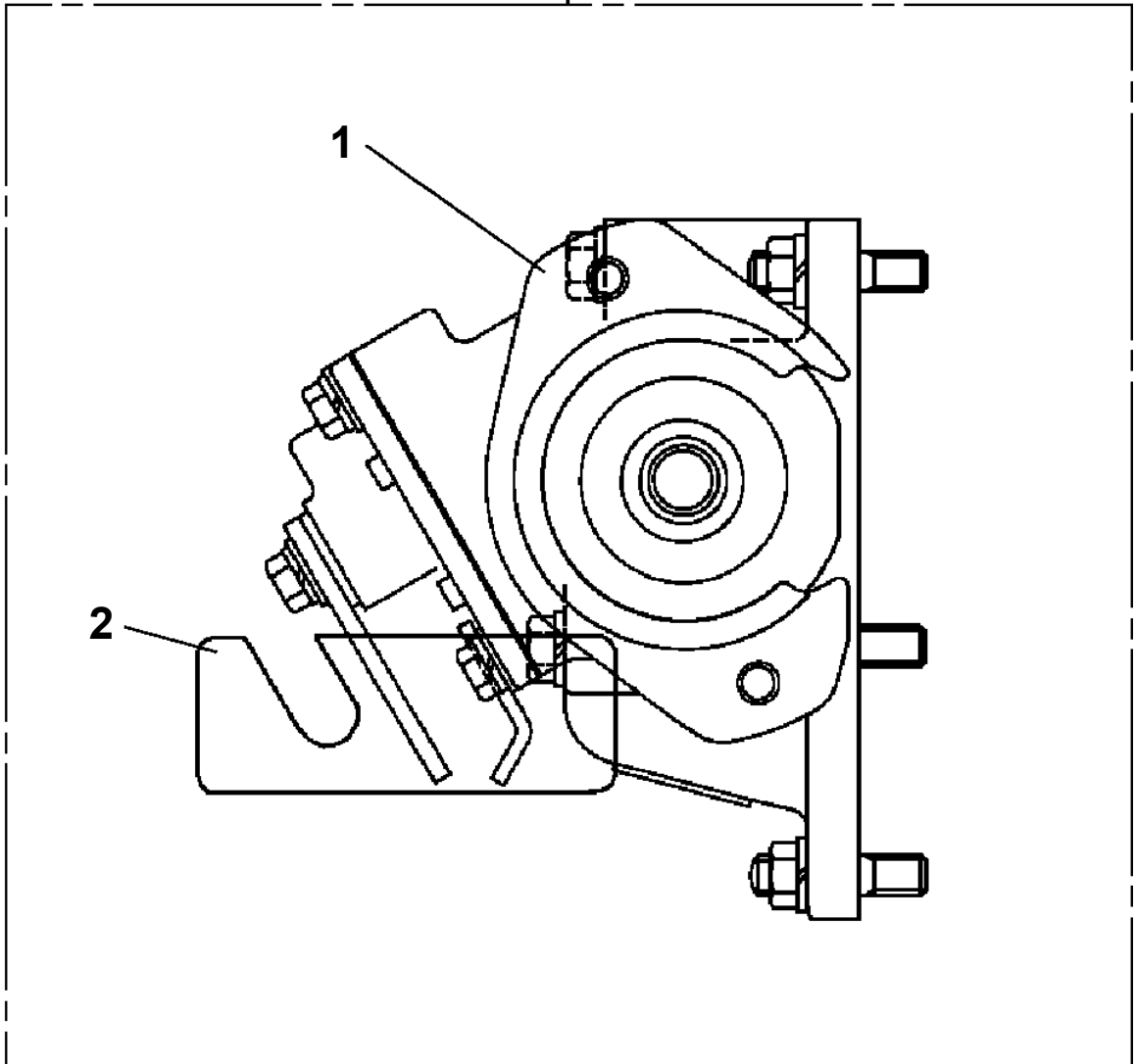


TM-ZX290 41047701334A FRAME
PB1030192-01 POWER TAKE OFF



TM-ZX290 41047701334A FRAME
PB1030204-00 POWER TAKE OFF

50



TM-ZX290 41047701334A FRAME

Pos No.	Parts No	Parts Name	Qty	Unit	Technical Data	Serial No (Start)	Serial No (End)	Remarks
1	36401895070	CASE	1					
2	36401885020	GEAR	1					
3	36400915030	SHAFT	1					
4	36401885030	GEAR	1					
5	36400415050	SHAFT	1					
6	36400675030	COLLAR	1					
7	36400095100	SHIFTER ASSY	1					
8	36400095110	PACKING	1					
9	36400095070	COVER (BEARING)	1					
10	36400095080	PACKING (COVER)	1					
11	36400095090	SHIM	N					
12	80500006206	BEARING,BALL	2					
13	91206030005	SEAL,OIL	1					
14	91001102100	O-RING	1		1A P21			
15	90710006200	SCREW,SET	1		M6X20			
16	90191208020	BOLT	4		M8X20			
17	90191208014	BOLT	3		M8X14			
18	90302040801	WASHER,SPRING	7		8			
19	36400135070	BEARING	2					
20	80602110620	RING,RITAINING	2		R62			
22	36401885050	PACKING	1					
24	90191210030	BOLT	6		M10X30			
25	90267201000	NUT	2		M10			
26	90302041001	WASHER,SPRING	8		10			
28	31790670100	SUPPORT	1					
29	90191208025	BOLT	2		M8X25			
60	36402100000	POWER TAKE OFF ASSY	1					
61	36401695040	BOLT,STUD	2		M10X1.25/1.5X47			
100	31791240000	POWER TAKE OFF	1					

TM-ZX290 41047701334A FRAME

Pos No.	Parts No	Parts Name	Qty	Unit	Technical Data	Serial No (Start)	Serial No (End)	Remarks	Pages
1	36401135050	CASE	1						
2	36401135060	GEAR (TO)	1						
3	36401125030	SHAFT (TO)	1						
4	36401125040	SLEEVE	1						
5	36401125050	SHIFTER SET	1						
6	36400095110	PACKING	1						
7	36400095070	COVER (BEARING)	1						
8	36400095080	PACKING (COVER)	1						
9	36400095090	SHIM	N						
10	36401135070	COLLAR	1						
11	80500006903	BEARING,BALL	1						
12	36401125080	BEARING,ROLLER	2						
13	36401125090	BEARING,NEEDLE	1						
14	91206030005	SEAL,OIL	1						
15	36401125100	RING,RETAINING	1						
16	90191208020	BOLT	4		M8X20				
17	90191208014	BOLT	3		M8X14				
18	90302040801	WASHER,SPRING	7		8				
20	36402015020	PACKING	2						
21	36402025030	BOLT	1		M10X1.5X115				
22	36402015040	BOLT	1		M10X1.5X105				
23	90191210045	BOLT	2		M10X45				
24	36402015010	BOLT,STUD	1						
25	36402025010	BOLT,STUD	1						
26	90267201000	NUT	2		M10				
27	90302041001	WASHER,SPRING	6		10				
28	36402025020	SPACER	1						
30	90191208025	BOLT	2		M8X25				
51	36402020000	POWER TAKE OFF	1						
52	31790880100	SUPPORT	1						
100	31792090000	POWER TAKE OFF	1						

TM-ZX290 41047701334A FRAME

Pos No.	Parts No	Parts Name	Qty	Unit	Technical Data	Serial No (Start)	Serial No (End)	Remarks
1	36401995010	CASE	1					
2	36401995020	GEAR	1					
3	36402125010	SHAFT	1					
4	36400095040	SHAFT	1					
5	36400095050	COLLAR	1					
6	36401995040	GEAR	1					
7	36400095070	COVER (BEARING)	1					
8	36400095080	PACKING (COVER)	1					
9	36400095090	SHIM	N					
10	36401995050	SHIFTER ASSY	1					
11	36400095110	PACKING	1					
12	80500006206	BEARING,BALL	2					
13	91206030005	SEAL,OIL	1					
14	90191208014	BOLT	3		M8X14			
15	90191208020	BOLT	4		M8X20			
16	90101206012	BOLT	1		M6X12			
17	90302040801	WASHER,SPRING	7		8			
18	36400095130	WASHER	1					
19	36401745060	BEARING	2					
20	80602110470	RING,RITAINING	2		R47			
22	36400055070	PACKING	1					
23	36401995060	BOLT	4					
24	90267401000	NUT	4		M10			
25	90302041001	WASHER,SPRING	6		10			
26	90193510035	BOLT	2		M10X35			
28	90191208025	BOLT	2		M8X25			
50	36402120000	POWER TAKE OFF ASSY	1					
60	31791160100	SUPPORT	1					
100	31792240000	POWER TAKE OFF	1					

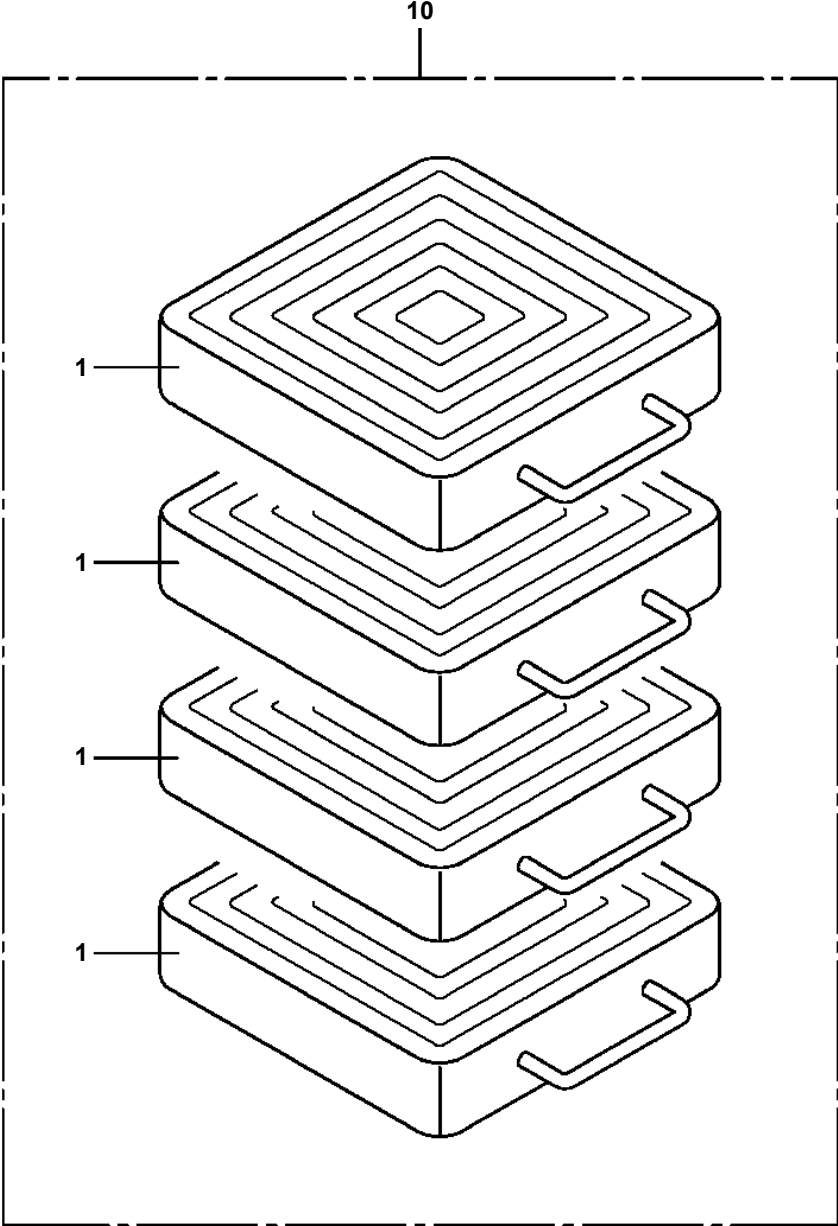
TM-ZX290 41047701334A FRAME

Pos No.	Parts No	Parts Name	Qty	Unit	Technical Data	Serial No (Start)	Serial No (End)	Remarks
1	36402470510	CASE	1					
2	36402470520	GEAR	1					
3	36402470530	SHAFT	1					
4	36401125040	SLEEVE	1					
5	36401125050	SHIFTER SET	1					
6	36400095110	PACKING	1					
7	36400095070	COVER (BEARING)	1					
8	36400095080	PACKING (COVER)	1					
9	36400095090	SHIM	N					
10	36402470540	COLLAR	1					
11	80500006903	BEARING,BALL	1					
12	36401125080	BEARING,ROLLER	2					
13	36401125090	BEARING,NEEDLE	1					
14	91206030005	SEAL,OIL	1					
15	36401125100	RING,RETAINING	1					
16	90191208020	BOLT	4		M8X20			
17	90191208014	BOLT	3		M8X14			
18	90302040801	WASHER,SPRING	7		8			
20	36402015020	PACKING	2					
21	36402035040	BOLT	1		M10X1.5X120			
22	36402035050	BOLT	1		M10X1.5X110			
23	90191210050	BOLT	2		M10X50			
24	36402035010	BOLT,STUD	1					
25	36402035020	BOLT,STUD	1					
26	90267201000	NUT	2		M10			
27	90302041001	WASHER,SPRING	6		10			
28	36402470550	SPACER	1					
30	90191208025	BOLT	2		M8X25			
50	36402470000	POWER TAKE OFF ASSY	1					
60	31790990100	SUPPORT	1					
100	31792370000	POWER TAKE OFF	1					

TM-ZX290 41047701334A FRAME

Pos No.	Parts No	Parts Name	Qty	Unit	Technical Data	Serial No (Start)	Serial No (End)	Remarks	P
1	31611617510	ADAPTER ASSY	1						
7	31611617590	MOTOR ASSY	1						
12	31611617530	TANK	1						
14	31611617540	CAP (OIL FILLER)	1						
18	44550417860	GASKET (WITH O-RING)	1						
30	31611617550	VALVE ASSY	1						
41	31611617560	VALVE,SOLENOID	2						
44	31611617570	MANIFOLD	1						
47	31611617580	O-RING	2						
100	31611613101	POWER SUPPLY	1						

TM-ZX290 41047701334A FRAME
PB5110002-01 BLOCK (4 PIECE SET:PLATE,355X355,H=80)



TM-ZX290 41047701334A FRAME

Pos No.	Parts No	Parts Name	Qty	Unit	Technical Data	Serial No (Start)	Serial No (End)	Re
1	31625101001	CASE,OUTER	1					
2	31625102000	CASE,INNER	1					
3	31625103000	CASE,INNER	1					
4	31622149510	SUPPORT ASSY	1					
5	31622149520	SUPPORT ASSY	1					
6	31622140100	COVER	2					
7	90101206010	BOLT	6		M6X1.0			
8	90302040601	WASHER,SPRING	6		6			
9	90172110025	BOLT,HEXAGON SOCKET	8		M10X25			
10	90302041001	WASHER,SPRING	8		10			
11	(*****)	CYLINDER,JACK (REAR)	2					
12	90201201600	NUT	2		M16			
13	90720716400	SCREW,SET	2		M16X40			
14	31622140200	COVER	4					
15	31622140300	PLATE	4					
16	90191208014	BOLT	8		M8X14			
17	90302040801	WASHER,SPRING	8		8			
18	82455106000	NIPPLE,GREASE	4		A-M6F FE			
19	31622140400	PIN	2					
20	37001200720	SPRING	2					
21	37003100020	GRIP	2					
22	80136332025	PIN,SPLIT	4		3.2X25			
23	31620582020	BEARING,BALL (KOYO)	6					
24	37000157880	PIN	2					
25	82400000459	CAP	4					
26	90171210030	BOLT	2		M10X30			
27	90203201000	NUT	2		M10			
28	31622140640	PLATE	2					
29	(*****)	PIPING,REAR JACK (2,ROTARY)	1					
30	31622140501	SUPPORT	2					
31	31622140601	SUPPORT	2					
32	31622140700	SUPPORT	2					
33	31621962100	SUPPORT	4					
34	31621962200	PLATE	12		T=0.5			
35	37000161010	PIN	2					
36	37000309980	SPACER	2		L=60			
37	90186208010	BOLT,FLANGE	8		M8X10			
42	31622141200	PIN ASSY	2					
44	82400000204	GROMMET	4		L=320			

TM-ZX290 41047701334A FRAME

Pos No.	Parts No	Parts Name	Qty	Unit	Technical Data	Serial No (Start)	Serial No (End)	Remarks
1	31649130010	PIPE	1					
2	31649130020	PIPE	1					
3	31649130030	PIPE	1					
4	31649130040	PIPE	1					
5	80303130101	FITTING,ELBOW	6		KLO10-020E			
6	80302090101	FITTING	2		KCO10-020N			
7	31611613101	POWER SUPPLY	1					
8	90172108018	BOLT,HEXAGON SOCKET	4		M8X18			
9	90302040801	WASHER,SPRING	6		8			
10	91002801100	O-RING	2		1B P11			
11	31645360100	SUPPORT	1					
12	90186210014	BOLT,FLANGE	4		M10X14			
13	37005700130	CLAMP	2		10X2			
14	90101208035	BOLT	2		M8X35			
15	90303070801	WASHER,PLAIN	2		8			
31	91002801100	O-RING	6		1B P11			

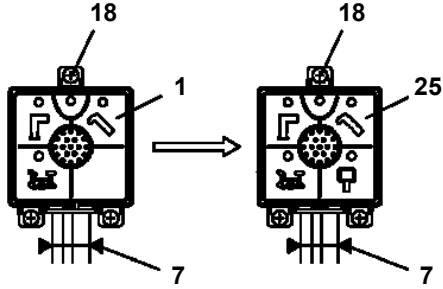
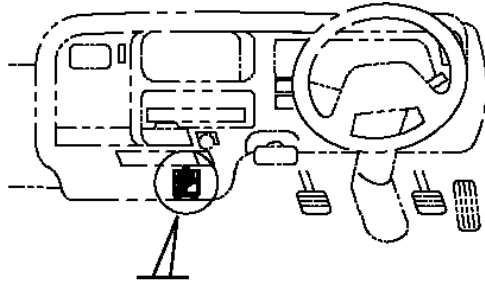
TM-ZX290 41047701334A FRAME

Pos No.	Parts No	Parts Name	Qty	Unit	Technical Data	Serial No (Start)	Serial No (End)
1	37000403070	BEARING,PLAIN	4				
2	36024671000	PISTON	1				
3	91350211500	BEARING,PLAIN (WITH PACKINGX2)	1				
4	91002907500	O-RING	1		1B G75		
5	36029199511	CYLINDER ASSY	1				
6	36025969520	ROD ASSY	1				
7	91002911000	O-RING	1		1B G110		
8	36024671500	COVER,ROD	1				
9	91694008001	PACKING	1				
10	91410208001	RING,BACKUP	1				
11	91660008000	SEAL,DUST	1				
12	80622000800	RING,RITAINING	1		SP80		
13	82456101000	NIPPLE,GREASE	2		A-PT1/8		
14	80316100010	PLUG	1		GPF1/8		
15	91002800800	O-RING	1		1B P8		
16	37000926070	ORIFICE	1		M8,0.6		
80	36024679900	PACKING SET	1		80X115		
100	36029190001	CYLINDER ASSY,DERRICK	1				

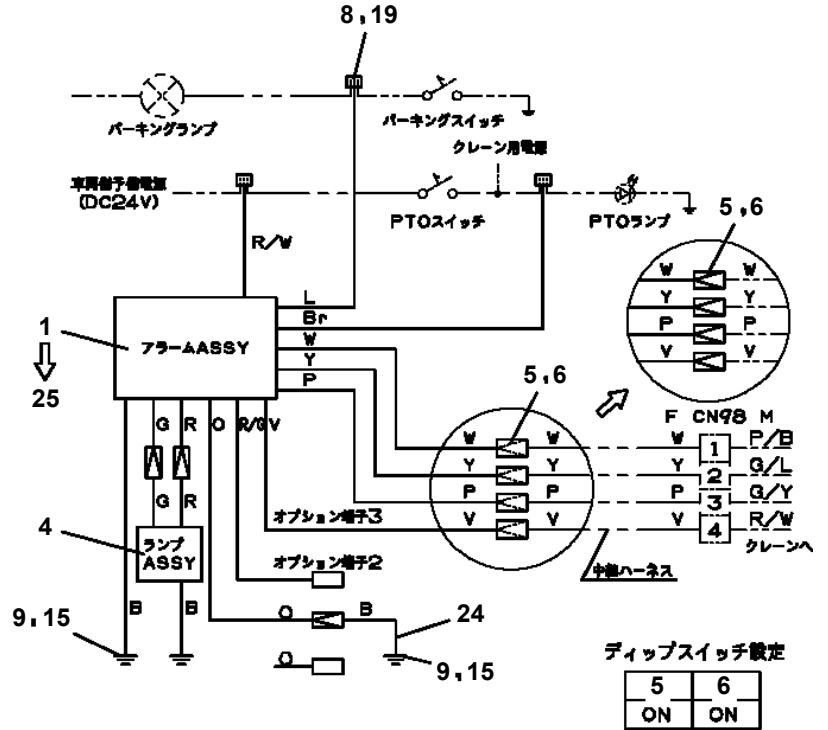
TM-ZX290 41047701334A FRAME

Pos No.	Parts No	Parts Name	Qty	Unit	Technical Data	Serial No (Start)	Serial No (End)	Remarks
13	91002801100	O-RING	1		1B P11			
100	36150100000	DETECTOR ASSY,MOMENT	1					

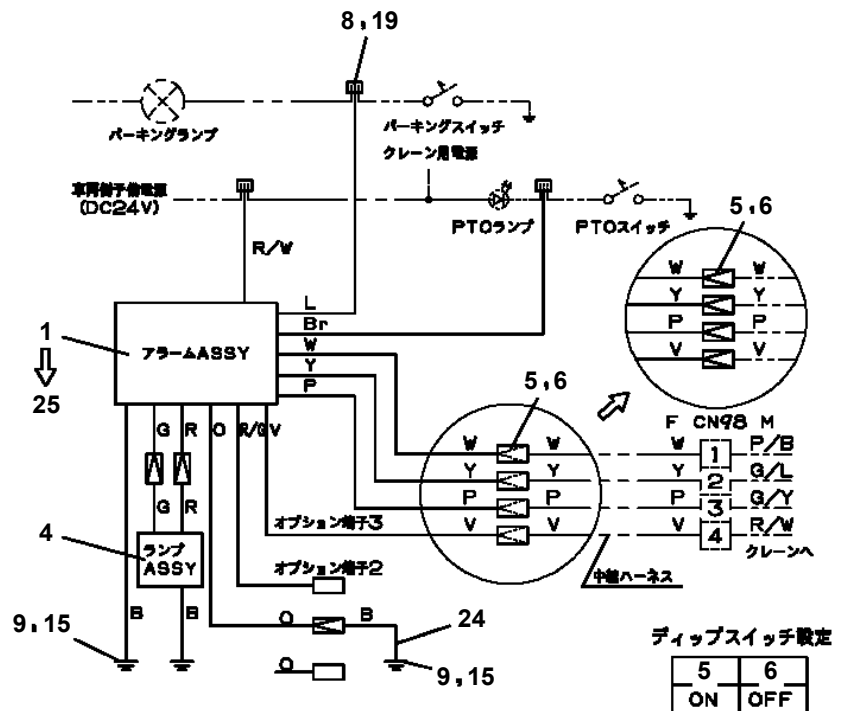
TM-ZX290 41047701334A FRAME
PE5021239-02 ELEC.ASSY (MOUNTING VEHICLE)



アラームASSY取付



パーキングランプの下流にパーキングスイッチがあり、
PTOランプの上流にPTOスイッチがある場合



パーキングランプの下流にパーキングスイッチがあり、
PTOランプの下流にPTOスイッチがある場合

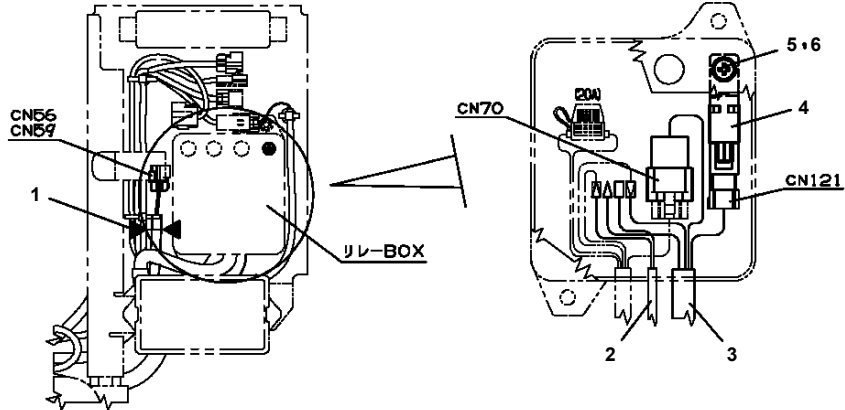
TM-ZX290 41047701334A FRAME

Pos No.	Parts No	Parts Name	Qty	Unit	Technical Data	Serial No (Start)	Serial No (End)	Remarks	Pages
1	31361042300	PLUG	1						
2	91810130250	FASTENER	2						

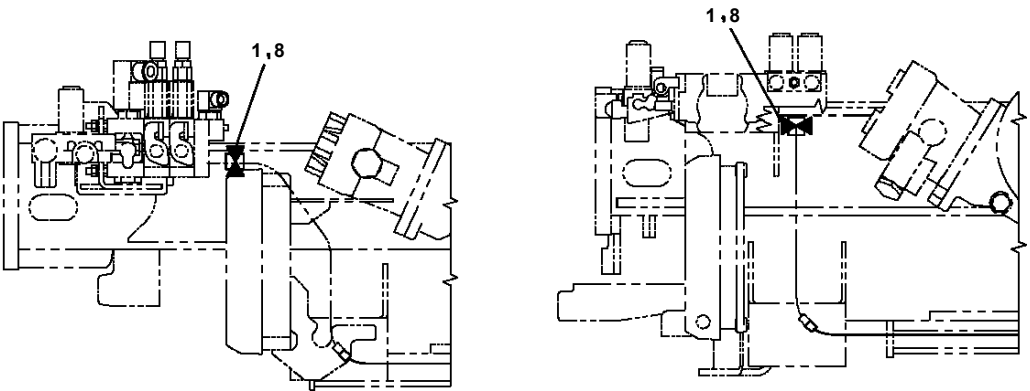
TM-ZX290 41047701334A FRAME

Pos No.	Parts No	Parts Name	Qty	Unit	Technical Data	Serial No (Start)	Serial No (End)	Remarks
1	31506121100	HARNESS	1					
2	34354781710	RELAY (WITH BRACKET)	1					
3	90280200600	NUT,FLANGE	1		M6			
4	80197586012	SCREW,MACHINE	1		M6X12			
5	91810130250	FASTENER	6					

TM-ZX290 41047701334A FRAME
PE5021342-00 ELEC.ASSY



B



(ZX290)

(ZX300,360)

F

TM-ZX290 41047701334A FRAME
PE5021363-00 ELEC.ASSY (OVER-UNWINDING CUTOUT DEVICewith HARNESS)

ハイセンASSY (ステマキテイシソウチ,ハーネスツキ)
ELEC.ASSY (OVER-UNWINDING CUTOUT DEVICE,WITH HARNESS)

符号	日本語名称	英語名称	備考
1	ハイセンASSY	ELEC.ASSY	上部ハーネス
2	ローラASSY	ROLLER ASSY	捨巻検出用
3	インジケータASSY	INDICATOR ASSY	捨巻検出器

適用製造番号によっては取り付けがないものもあります。

MACHINES OF SOME SERIAL NO. ARE NOT EQUIPPED WITH THESE PARTS.

TM-ZX290 41047701334A FRAME

Pos No.	Parts No	Parts Name	Qty	Unit	Technical Data	Serial No (Start)	Serial No (End)	Remarks
1	31734212100	HARNESS	1					
2	91810130240	FASTENER	17					
3	91850310405	CLAMP (BLACK)	13					
4	31656101200	PLUG (2-POLES,FEMALE)	1					

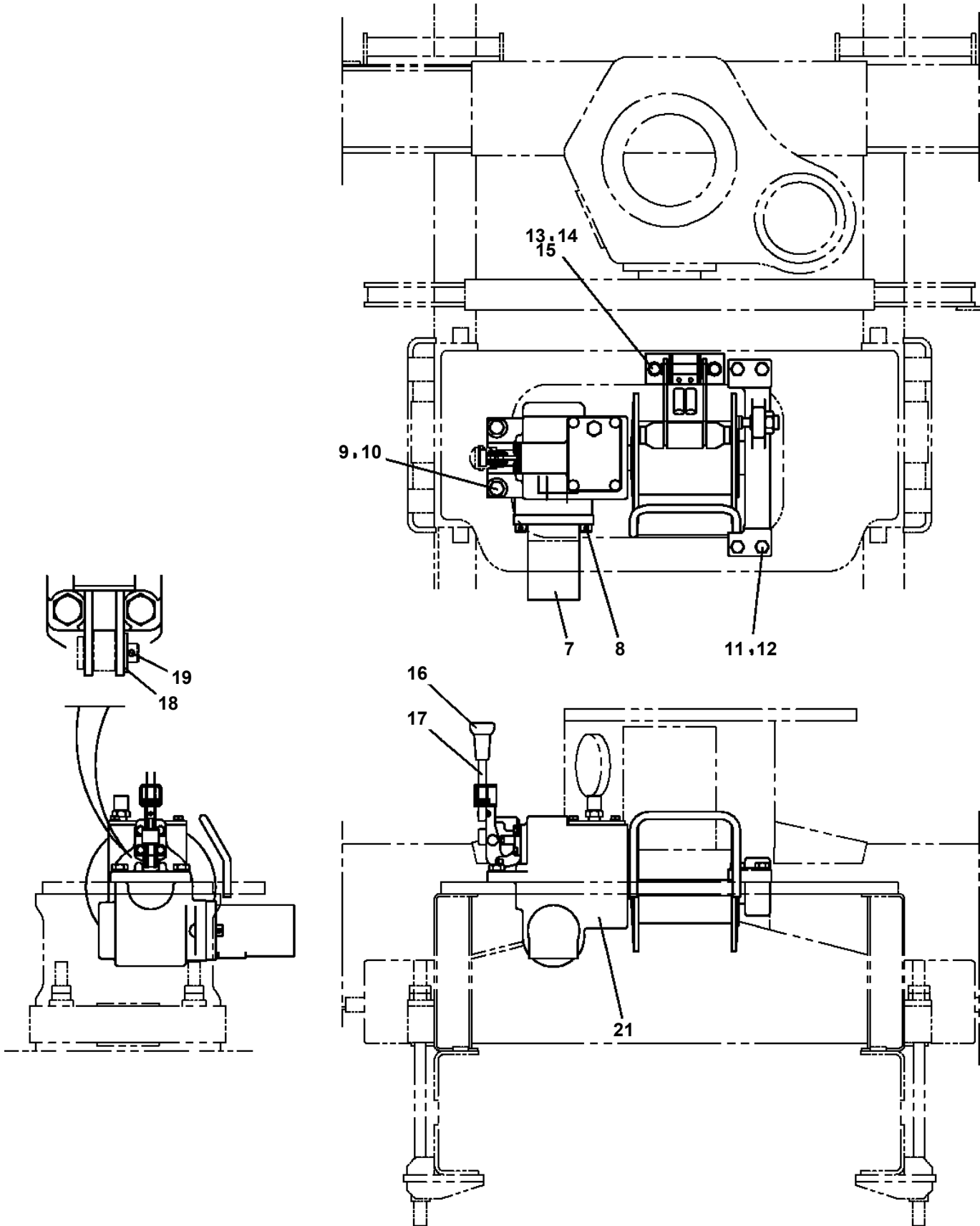
TM-ZX290 41047701334A FRAME

Pos No.	Parts No	Parts Name	Qty	Unit	Technical Data	Serial No (Start)	Serial No (End)	P
1	36072625080	CASE,GEAR	1					
2	36072625020	CASE,GEAR	1					
3	36072625030	GEAR,SPUR	1					
4	36072625100	GEAR,SPUR	1					
5	36072625050	GEAR,SPUR	1					
6	36072625110	BRAKE,DISK	1					
7	36072625120	WHEEL,RATCHET (BUSH L=17MM)	1					
8	36071195080	LINK (RATCHET CONTROL)	1					
10	36071195100	RATCHET	1					
11	36072625090	SHAFT	1					
12	36071195120	SPRING	1					
13	36071195130	CAP	1					
14	36071195140	PIN	1					
15	36071195150	NUT	1					
16	80500006202	BEARING,BALL	1					
17	80500006212	BEARING,BALL	1					
18	80500006305	BEARING,BALL	1					
19	80500006007	BEARING,BALL	1					
20	91206048001	SEAL,OIL	1					
21	80602110620	RING,RITAINING	1		R62			
23	36071195200	O-RING	1					
24	36071195170	O-RING	1		P15			
25	80136340040	PIN,SPLIT	1		4X40			
26	36072625070	KEY	2					
27	90101208018	BOLT	6		M8X18			
28	90302040801	WASHER,SPRING	6		8			
29	80316030060	PLUG	1		PT3/8			
33	36071195190	GAUGE,OIL	1					
34	80172304015	SCREW,MACHINE	1		M4X15			
35	90302040401	WASHER,SPRING	1		4			
100	36072620000	WINCH (HARTYS)	1					
101	36070441000	FACING KIT(JAPANESE)	1					
102	36070442000	FACING KIT (ENGLISH)	1					

TM-ZX290 41047701334A FRAME

Pos No.	Parts No	Parts Name	Qty	Unit	Technical Data	Serial No (Start)	Serial No (End)	Remarks
1	90191510020	BOLT,HEXAGON SOCKET	8		M10X20			
2	90302041001	WASHER,SPRING	8		10			
3	90303071001	WASHER,PLAIN	4		10			
4	36093860021	BODY	1					
5	36093860042	SUPPORT	1					
6	37001008670	SHEAVE ASSY	2					
7	80720105056	PIN,SPRING	1		5X56			
9	36093860031	BODY	1					
10	36093860080	COVER	2					
12	80500051207	BEARING,BALL	1					
13	36093860071	TRUNNION	1					
21	36095155020	HOOK ASSY	1					
32	36093861100	BEARING,BALL	2					
40	36095150050	TRIGGER SET	1					
100	36095150000	HOOK (LOCKING)	1					

TM-ZX290 41047701334A FRAME
PF1400422-01 MOUNT,WINCH



TM-ZX290 41047701334A FRAME

Pos No.	Parts No	Parts Name	Qty	Unit	Technical Data	Serial No (Start)	Serial No (End)	Remarks	F
62	31622072000	SUPPORT	3				LB7054		
	31622072000	SUPPORT	2				LB8938		
	31622072000	SUPPORT	2			LB7055			
	31622072000	SUPPORT	2			LB7055			
63	90288110020	NUT	1		M10		LB7054		
	90288110020	NUT	1		M10		LB8938		
	90288110020	NUT	1		M10		LB8938		
	90288110020	NUT	1		M10	LB7055			
	90288110020	NUT	1		M10	LB7055			
64	90101206014	BOLT	3		M6X14		LB7054		
	90101206014	BOLT	3		M6X14		LB8938		
	90101206014	BOLT	3		M6X14		LB8938		
	90101206014	BOLT	3		M6X14	LB7055			
	90101206014	BOLT	3		M6X14	LB7055			
65	90288110040	NUT	2				LB8938		
	90288110040	NUT	2				LB8938		
	90288110040	NUT	2				LB7054		
	90288110040	NUT	2			LB7055			
	90288110040	NUT	2			LB7055			
66	31626292700	SUPPORT	1				LB8938		
	31626292700	SUPPORT	1				LB8938		
	31626292700	SUPPORT	1				LB7054		
	31626292700	SUPPORT	1			LB7055			
	31626292700	SUPPORT	1			LB7055			
67	31626292600	SUPPORT	2				LB8938		
	31626292600	SUPPORT	2				LB7054		
	31626292600	SUPPORT	2				LB8938		
	31626292600	SUPPORT	2			LB7055			
68	31626292600	SUPPORT	2			LB7055			
	31626312600	PLATE	1				LB8938		
	31626312600	PLATE	1				LB8938		
	31626312600	PLATE	1				LB7054		
	31626312600	PLATE	1			LB7055			
109	31626312600	PLATE	1			LB7055			
	31626302100	SUPPORT	1				LB8938		
	31626302100	SUPPORT	1				LB8938		
	31626302100	SUPPORT	1			LB7055			
	31626302100	SUPPORT	1			LB7055			

TM-ZX290 41047701334A FRAME

Pos No.	Parts No	Parts Name	Qty	Unit	Technical Data	Serial No (Start)	Serial No (End)	Remarks	Pages
1	31656330200	HARNESS	1						

TM-ZX290 41047701334A FRAME

Pos No.	Parts No	Parts Name	Qty	Unit	Technical Data	Serial No (Start)	Serial No (End)	Remarks	Pages
1	31503072100	HARNESS	1						

TM-ZX290 41047701334A FRAME

Pos No.	Parts No	Parts Name	Qty	Unit	Technical Data	Serial No (Start)	Serial No (End)	Remarks	Pages
1	82182809623	DIODE	2						
100	31658780900	HARNESS	1						

TM-ZX290 41047701334A FRAME

Pos No.	Parts No	Parts Name	Qty	Unit	Technical Data	Serial No (Start)	Serial No (End)	Remarks	Pages
10	31506521200	HARNESS	1						

TM-ZX290 41047701334A FRAME

Pos No.	Parts No	Parts Name	Qty	Unit	Technical Data	Serial No (Start)	Serial No (End)	Remarks	Pages
1	82182809623	DIODE	2						
100	31734203200	HARNESS	1						

TM-ZX290 41047701334A FRAME

Pos No.	Parts No	Parts Name	Qty	Unit	Technical Data	Serial No (Start)	Serial No (End)	Remarks	Pages
10	31350010240	HARNESS	1						

CLICK HERE TO **DOWNLOAD** THE COMPLETE MANUAL

- Thank you very much for reading the preview of the manual.
- You can download the complete manual from: www.heydownloads.com by clicking the link below



- Please note: If there is no response to CLICKING the link, please download this PDF first and then click on it.

CLICK HERE TO **DOWNLOAD** THE COMPLETE MANUAL

TM-ZX290 41047701334A FRAME

Pos No.	Parts No	Parts Name	Qty	Unit	Technical Data	Serial No (Start)	Serial No (End)	Remark
6	36072725250	CAP (END)	1					
7	36072725260	PLATE (SPACER)	1					
8	36072725270	FLANGE	1					
9	36660375050	RACE (BEARING)	1					
11	36072725280	HOUSING	1					
12	36660375170	PLUG (HOUSING)	1					
13	36660375060	BEARING,THRUST NEEDLE	1					
14	36661585030	SCREW	4					
23	36660375160	PLUG (CAP)	1					
31	36661835010	SEAL KIT	1					
41	91000515200	O-RING	1		AS568-152			
100	36662810000	MOTOR,HYDRAULIC	1					

TM-ZX290 41047701334A FRAME

Pos No.	Parts No	Parts Name	Qty	Unit	Technical Data	Serial No (Start)	Serial No (End)	Remarks	Pa
5	50815054503	PACKING	2						
6	50815054603	SPRING	2						
7	91002801800	O-RING	2		1B P18				
8	50815054703	PIN (STOP)	2						
9	36623835900	PLUG	2						
10	91002801200	O-RING	2		1B P12				
11	36623825200	CAP (SEAL)	1						
100	36624690000	VALVE,PILOT CHECK	1						

TM-ZX290 41047701334A FRAME

Pos No.	Parts No	Parts Name	Qty	Unit	Technical Data	Serial No (Start)	Serial No (End)	Remarks
1	31950472000	LOCK ASSY	1					
2	90203201000	NUT	2		M10			
3	90172110055	BOLT,HEXAGON SOCKET	2		M10X55			
4	90172110020	BOLT,HEXAGON SOCKET	4		M10X20			
5	31950492000	LOCK ASSY	1					
6	90303071001	WASHER,PLAIN	4		10			
21	31950300460	SUPPORT (STEEL CAST)	1					
	31950300402	SUPPORT	1					
22	37000537270	PLATE	4					
23	31950491100	LEVER	2					
24	37001400341	SPRING	1					
25	31950300602	HOOK	2					
26	37001510080	BOLT,HEXAGON SOCKET	2					
27	90303071201	WASHER,PLAIN	2		12			
28	82400000527	CAP	2					
29	90203201200	NUT	2		M12			
30	37000400510	BEARING,PLAIN	4					
31	80824001206	BEARING,PLAIN	2					
41	31950330720	SUPPORT (STEEL CAST)	1					
	31950330702	SUPPORT	1					
44	37001400351	SPRING	1					

TM-ZX290 41047701334A FRAME

Pos No.	Parts No	Parts Name	Qty	Unit	Technical Data	Serial No (Start)	Serial No (End)	Remarks	Pages
1	31361946100	COVER	2						

TM-ZX290 41047701334A FRAME

Pos No.	Parts No	Parts Name	Qty	Unit	Technical Data	Serial No (Start)	Serial No (End)	Remarks	Pages
1	37000105610	PIN	2		L=18				
2	80620210050	PIN,SNAP	2						
3	37000165020	PIN	1						
4	80136840020	PIN,SPLIT	1		4X20				
5	37000311190	SPACER	1		L=16				
6	31322160150	FORK	2						

TM-ZX290 41047701334A FRAME

Pos No.	Parts No	Parts Name	Qty	Unit	Technical Data	Serial No (Start)	Serial No (End)	Remarks
2	(*****)	ELEC.ASSY (POST)	1					
3	(*****)	ELEC.ASSY (BOOM/LED LAMP)	1					

TM-ZX290 41047701334A FRAME

Pos No.	Parts No	Parts Name	Qty	Unit	Technical Data	Serial No (Start)	Serial No (End)	Remarks	Pages
2	31326322401	LEVER	1						
3	31326322501	LEVER	1						
5	31323330100	KNOB (BLACK)	4						
6	31323330200	KNOB (RED)	1						
7	37010103590	PIN	1						
8	80136840020	PIN,SPLIT	1		4X20				
9	37000105040	PIN	5						
10	80650100030	RING,RETAINING	11						
11	37000105050	PIN	6						
12	31322224200	PLATE	1		L=1				

TM-ZX290 41047701334A FRAME

Pos No.	Parts No	Parts Name	Qty	Unit	Technical Data	Serial No (
1	31783950100	SUPPORT	2			
2	31783950200	SUPPORT	2			
3	31783950300	SUPPORT	2			
4	31783950400	SUPPORT	2			
5	37001603150	NUT,FLANGE	8		M10	
6	37001510640	BOLT,FLANGE	8		M10X35	
7	90171310030	BOLT	8		M10X30	
8	90303071001	WASHER,PLAIN	8		10	
9	90302041001	WASHER,SPRING	8		10	
10	90209781000	NUT	8		M10	
11	31783930300	SUPPORT	2			
12	32460251300	CHAIN	2		L=386	
13	82400000543	HOOK	2			
14	31200791030	PLATE	2			
15	31783090500	PLATE,CAUTION	2			
16	90303501005	WASHER,PLAIN	4		10	
100	31783950000	MODIFICATION ASSY (PLANKING CASE:REAR OVERHANG)	1			

TM-ZX290 41047701334A FRAME

Pos No.	Parts No	Parts Name	Qty	Unit	Technical Data	Serial No (Start)	Serial No (End)	Remarks	Pages
1	31360741200	HARNESS	1						000131
2	31360202500	SUPPORT	2						
3	31501491100	LAMP ASSY	2						
4	90186206010	BOLT,FLANGE	8		M6X10				
5	31501491200	COVER	1		L=500				
6	82100002007	CLAMP	2		WRC10				
7	91850310305	CLAMP	2						
8	91810130240	FASTENER	3						
9	31350700300	HARNESS (L=50)	2						000132
21	82199444329	LAMP (YELLOW)	2		24V 12W				
22	31501491110	SUPPORT	2						
36	82166600010	BULB,LAMP	2		24V/12W				

TM-ZX290 41047701334A FRAME

Pos No.	Parts No	Parts Name	Qty	Unit	Technical Data	Serial No (Start)	Serial No (End)
100	31595751000	NAME PLATE ASSY (KNOB:TDN-LAYOUT)	1				

TM-ZX290 41047701334A FRAME

Pos No.	Parts No	Parts Name	Qty	Unit	Technical Data	Serial No (Start)	Serial No (End)	Remarks	Pages
1	37002241850	PLATE,NAME	2						
2	37002241600	PLATE,NAME	2						

TM-ZX290 41047701334A FRAME

Pos No.	Parts No	Parts Name	Qty	Unit	Technical Data	Serial No (Start)	Serial No (End)	Remarks	Pages
1	37002241820	PLATE,NAME	2						

TM-ZX290 41047701334A FRAME

Pos No.	Parts No	Parts Name	Qty	Unit	Technical Data	Serial No (Start)	Serial No (End)	Remarks	Pages
1	37002241760	PLATE,NAME	2						

TM-ZX290 41047701334A FRAME

Pos No.	Parts No	Parts Name	Qty	Unit	Technical Data	Serial No (Start)	Serial No (End)	Remarks
1	31506446100	PLATE,NAME	2					
2	31506446200	PLATE,NAME	1					
3	31506446400	PLATE,NAME	1					
4	31393180100	REFLECTOR (RED)	2				LB7973	
	31393180100	REFLECTOR (RED)	4			LB7974		
5	31615754100	PLATE,NAME (BLUE)	4					
6	37002213970	PLATE,NAME (MARKING)	2					
7	37002240210	PLATE,CAUTION	2					
8	37002240110	PLATE,CAUTION	2					

TM-ZX290 41047701334A FRAME

Pos No.	Parts No	Parts Name	Qty	Unit	Technical Data	Serial No (Start)	Serial No (End)	Remarks	Pages
1	37002241850	PLATE,NAME	1						

TM-ZX290 41047701334A FRAME

Pos No.	Parts No	Parts Name	Qty	Unit	Technical Data	Serial No (Start)	Serial No (End)	Remarks	Pag
1	37002227810	PLATE,NAME (2.93T)	2						

TM-ZX290 41047701334A FRAME

Pos No.	Parts No	Parts Name	Qty	Unit	Technical Data	Serial No
1	(*****)	OPE.ASSY,CONT.VALVE (ELEVATING,WINCH, TELESCOPING/U)	1			
2	(*****)	PLATE ASSY,NAME (SWITCH,BOX/U)	1			

TM-ZX290 41047701334A FRAME

Pos No.	Parts No	Parts Name	Qty	Unit	Technical Data	Serial No (Start)	Serial
1	37000163600	PIN	1				
2	80601110300	RING,RITAINING	2		S30		
3	31616034000	CASE,OUTER	1		L=1537		
4	31611592000	CASE,INNER	1				
5	(*****)	OUTRIGGER ASSY (MIN.1149)	1				
6	37000112060	PIN	1				
7	80602110300	RING,RITAINING	2		R30		
8	37000112070	PIN	1				
9	31611594000	FLOAT ASSY	1				
10	31201770100	PLATE,SLIDE	4		T=3.0		
11	31200030530	PLATE	1				
12	90191210020	BOLT	2		M10X20		
13	90302041001	WASHER,SPRING	4		10		
14	90186208014	BOLT,FLANGE	2		M8X14		
15	31614060110	COVER	1				
16	31611300600	PLATE,NAME (YELLOW)	2				
17	31615754100	PLATE,NAME (BLUE)	2				
18	(*****)	OPE.ASSY,OUTRIGGER	1				
19	50822014000	PLATE	1				
20	37001400200	SPRING	1				
21	37002240310	PLATE,CAUTION	1				
22	37000150360	PIN	1				
23	80601110150	RING,RITAINING	2		15		
24	37000310360	SPACER	1		L=15		
26	90171110020	BOLT	2		M10X20		
27	31615754200	PLATE,NAME (RED)	2				
42	31621963200	SUPPORT	1				
55	31615912500	SUPPORT	1				
60	31616049510	SUPPORT	1				
71	31620582020	BEARING,BALL (KOYO)	1				
82	31610175010	TRUNNION	1				
100	31616030200	OUTRIGGER ASSY (LEFT,CYLINDER:MIN.1149)	1				

TM-ZX290 41047701334A FRAME

Pos No.	Parts No	Parts Name	Qty	Unit	Technical Data	Serial No (Start)	Serial No (End)
1	31624970000	FRAME ASSY (R/O:WITH LOCK ASSY)	1				LB8613
	31624970001	FRAME ASSY(R/O:WITH LOCK ASSY)	1			LB8614	
3	(*****)	ELEC.ASSY	1				
4	(*****)	OPE.ASSY,CONT.VALVE (REMOCON)	1				
5	(*****)	NAME PLATE ASSY	1				
8	(*****)	ELEC.ASSY (R/J)	1				
31	(*****)	PIPING ASSY (REAR,JACK)	1				
32	36743500000	VALVE ASSY,REMOTE CONTROL	1				
33	(*****)	PIPING ASSY	1				LB7104
	(*****)	PIPING ASSY	1			LB7105	
34	(*****)	SUPPORT ASSY	1			LB7105	

TM-ZX290 41047701334A FRAME

Pos No.	Parts No	Parts Name	Qty	Unit	Technical Data	Serial No (Start)	Serial No (End)
1	31506041000	BOX,OPERATION	1				
2	(*****)	ELEC.ASSY	1				
3	(*****)	NAME PLATE ASSY	1				
5	(*****)	PLATE ASSY,NAME (SWITCH,BOX/U)	1				

TM-ZX290 41047701334A FRAME

Pos No.	Parts No	Parts Name	Qty	Unit	Technical Data	Serial No (Start)	Serial No (End)	Remarks	Pages
50	36652335010	GASKET	2						
51	36652335020	GASKET	2						
54	53063551010	SEAL,OIL	1						
55	80602110360	RING,RITAINING	1		R36				
100	36652840000	PUMP,OIL (32CC:L)	1						

TM-ZX290 41047701334A FRAME

Pos No.	Parts No	Parts Name	Qty	Unit	Technical Data	Serial No (Start)	Serial No (End)	Remarks
1	91002801400	O-RING	2		1B P14			
2	37000912810	JOINT	1					
3	31641050100	JOINT	1					
4	36671630000	JOINT ASSY,SELF SEAL	1					
5	37000932150	JOINT	1		S,G3/8-G3/8			
6	37000924860	JOINT	1					
7	37012409650	HOSE	1		L=2250			
8	37002512880	HOSE	1		L=2500			
9	90191208030	BOLT	3		M8X30			
10	90201200800	NUT	3		M8			
11	90302040801	WASHER,SPRING	3		8			
12	80400160205	JOINT (WITH O-RING)	1					
13	80400160182	JOINT (WITH O-RING)	2					
14	91803930440	CLIP	2		32-45			
15	91002801800	O-RING	7		1B P18			
17	80400160131	JOINT	1					
18	91810150020	FASTENER	4		L=488			
21	31734222100	PLATE	1					
22	90101210020	BOLT	2		M10X20			
23	90302041001	WASHER,SPRING	2		10			
26	82100001413	TUBE,SPIRAL	1	M	SE-15BK			
27	42882090100	JOINT	1		L,G1/2-G1/2			
28	80481104046	JOINT	1					
29	37012409600	HOSE	1		L=2100			
30	37002457350	HOSE	1		L=2360			
31	90186208025	BOLT,FLANGE	6		M8X25			
32	90280200800	NUT,FLANGE	6		M8			
33	91860100022	CLAMP	4		KCR-W22			
34	91860100040	CLAMP	4		KCR-W40			
35	82100002535	TUBE,SPIRAL	1	M	SE-29BK			
37	91810160010	HOLDER	1					
38	91810130270	FASTENER	4					
51	36671635010	JOINT,SELF SEALING	1					
52	36671635020	JOINT,SELF SEALING	1					
202	36638550000	VALVE,MANUAL CONTROL	1					

TM-ZX290 41047701334A FRAME

Pos No.	Parts No	Parts Name	Qty	Unit	Technical Data	Serial No (Start)	Serial No (End)	Remarks	Pages
1	80430450250	JOINT	1		L R1/8-G1/8				
2	80430410250	JOINT	1		S R1/8-G1/8				
3	82100002006	CLAMP	2		WR10				
4	90280200600	NUT,FLANGE	2		M6				
5	37002474140	HOSE	1		L=950				
6	91810130250	FASTENER	1						

TM-ZX290 41047701334A FRAME

Pos No.	Parts No	Parts Name	Qty	Unit	Technical Data	Serial No (Start)	Serial No (End)	Remarks	Pages
1	31733762200	SUPPORT	1						
2	90186208016	BOLT,FLANGE	2		M8X16				

TM-ZX290 41047701334A FRAME

Pos No.	Parts No	Parts Name	Qty	Unit	Technical Data	Serial No (Start)	Serial No (End)	Remarks	P
1	31658777510	CASE SET (JAPANESE)	1						
100	31658770300	SWITCH ASSY	1						

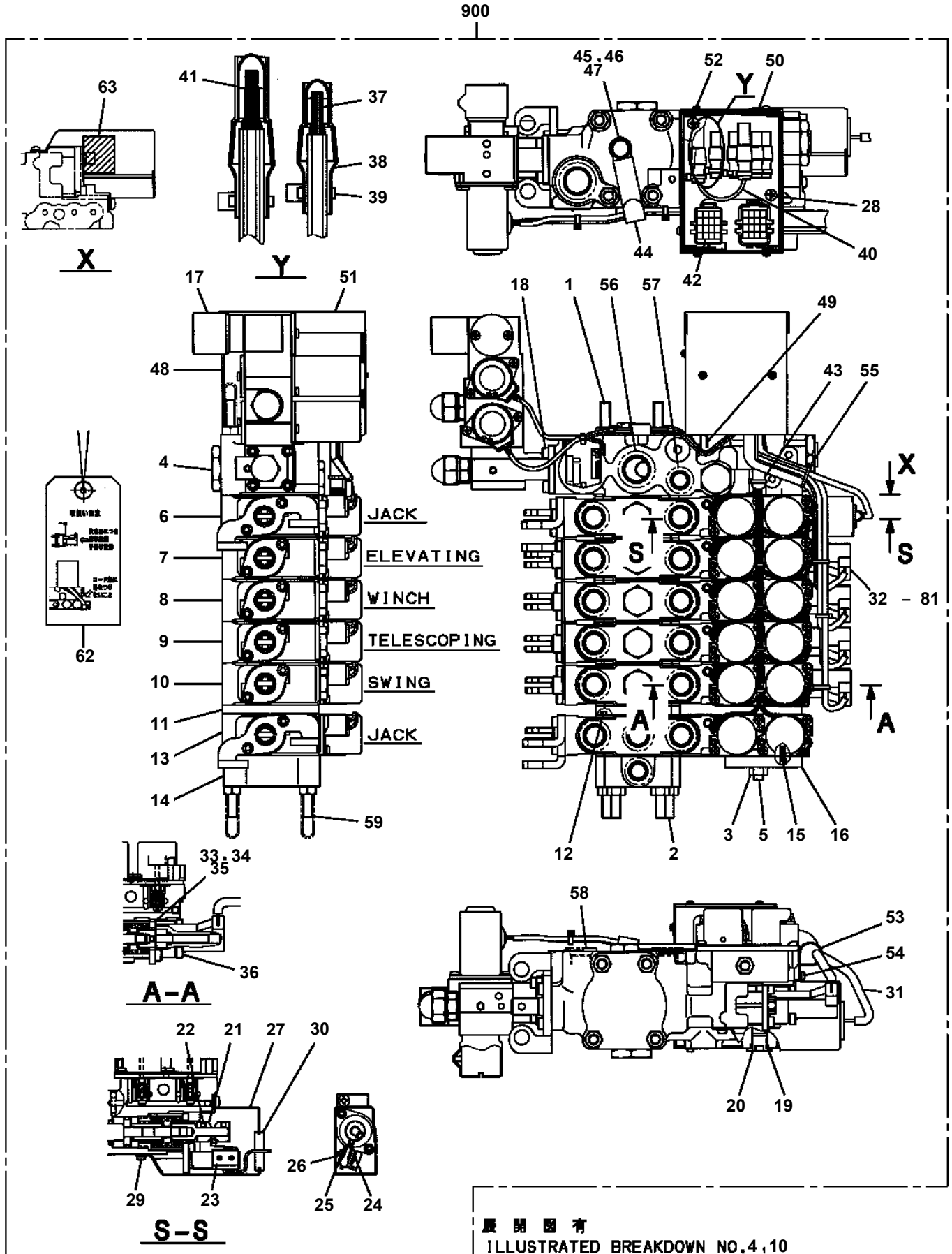
TM-ZX290 41047701334A FRAME

Pos No.	Parts No	Parts Name	Qty	Unit	Technical Data	Serial No (Start)	Serial No (End)	Re
1	(*****)	PARTS ASSY,RADIO CONTROLLER	1					

TM-ZX290 41047701334A FRAME

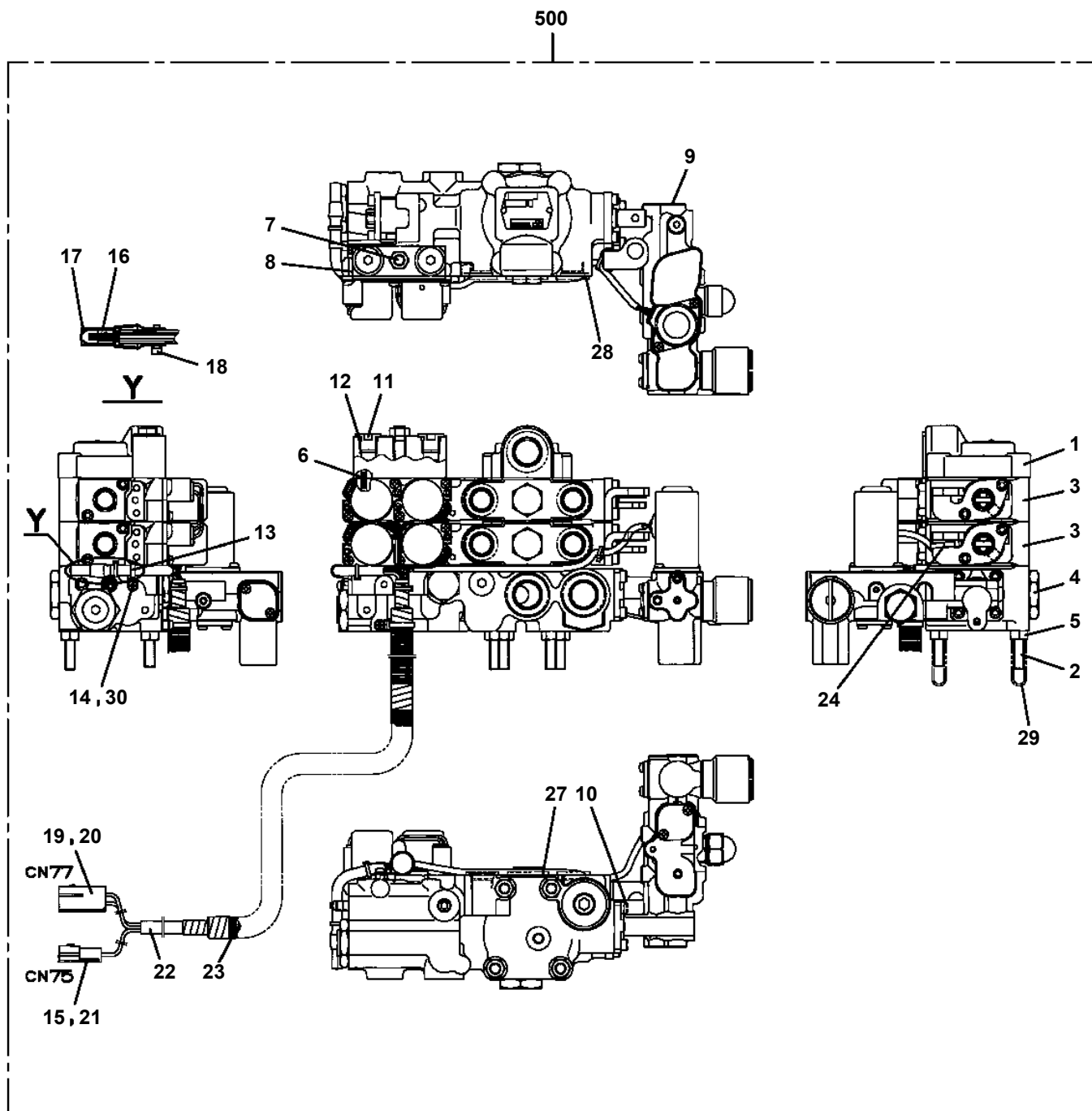
Pos No.	Parts No	Parts Name	Qty	Unit	Technical Data	Serial No (Start)	Serial No (E
7	91001000800	O-RING	1		S8		
8	36646865190	PISTON	1				
9	91001102000	O-RING	1		1A P20		
10	36648365110	FLANGE	1				
11	91001002240	O-RING	1		S22.4		
12	91650001400	SCRAPER	1				
13	36645495210	SEAT,SPRING (RETURN)	2				
14	36648365120	SPOOL (SUB)	1				
15	36645845060	SPRING (RETURN)	1				
16	36644015260	ADAPTER	1				
17	36648365130	SPACER	1				
18	36645405090	PLATE (D)	1				
19	36645615250	C-BOLT	2		M5X25		
20	36633365100	SEAL,OIL	1				
21	36633365060	PLATE (B)	1				
22	36645615260	C-BOLT	2		M5X8		
23	12635101360	SPOOL	1				
24	36635735150	SPRING (CHECK VALVE)	1				
25	36633365090	CAP (CHECK VALVE)	1				
27	91001002200	O-RING	2		S22		
29	36740745140	SCREW,MACHINE	4		M4X12		
30	91001100600	O-RING	5		1A P6		
31	91002905500	O-RING	1		1B G55		
51	36740745150	VALVE,SOLENOID (KIT)	2				
100	36743010041	VALVE ASSY,CONTROL (TELESCOPING)	1				

**TM-ZX290 41047701334A FRAME
PV5150052-02 VALVE ASSY,REMOTE CONTROL**



展開圖有
ILLUSTRATED BREAKDOWN NO.4,10

TM-ZX290 41047701334A FRAME
 PV5150059-00 VALVE ASSY,REMOTE CONTROL



展開圖有
 ILLUSTRATED BREAKDOWN NO.3,4

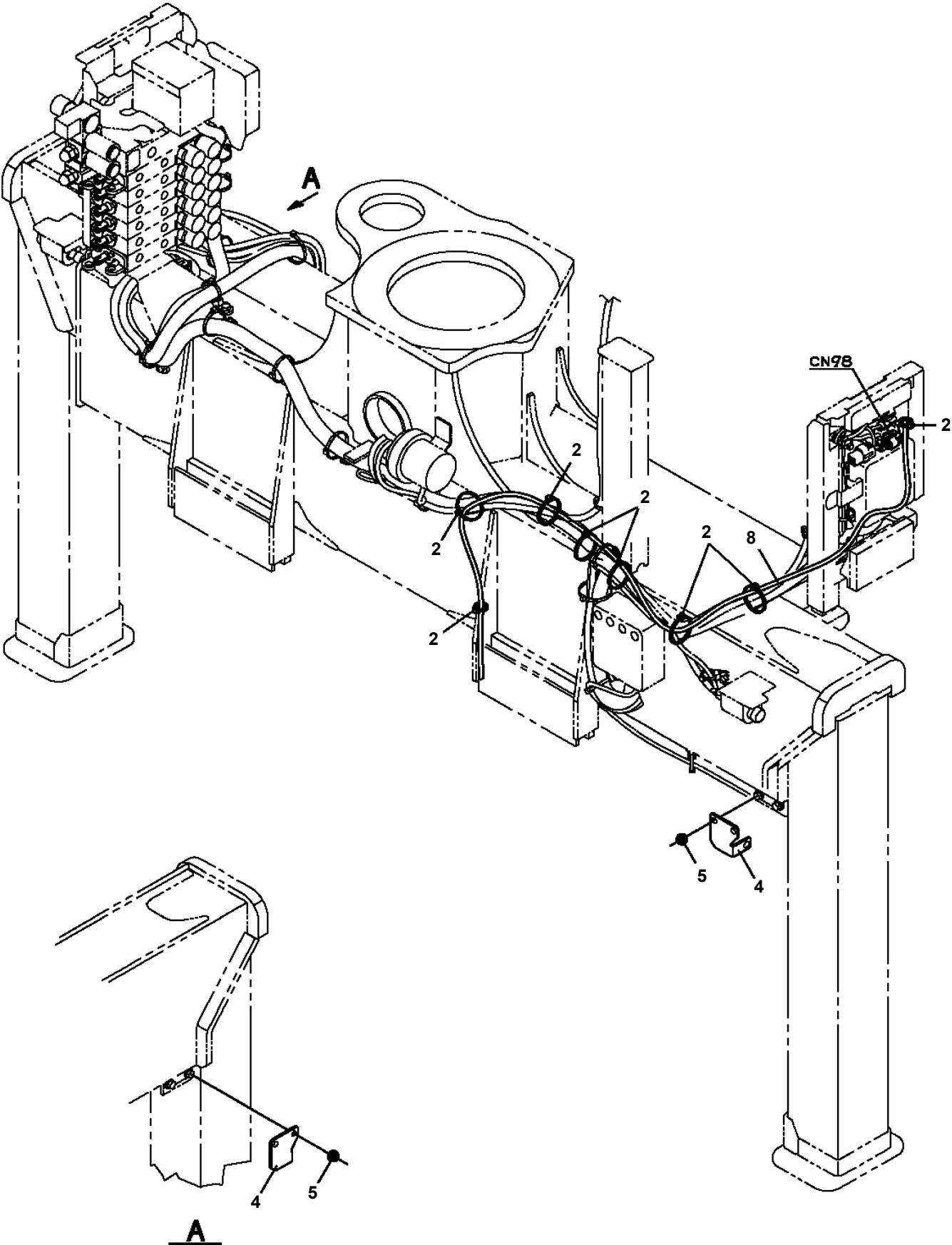
TM-ZX290 41047701334A FRAME

Pos No.	Parts No	Parts Name	Qty	Unit	Technical Data	Serial No (Start)	Serial No (End)	Remarks
7	91001000800	O-RING	1		S8			
8	36646865190	PISTON	1					
9	91001102000	O-RING	1		1A P20			
10	36648365110	FLANGE	1					
11	91001002240	O-RING	1		S22.4			
12	91650001400	SCRAPER	1					
13	36645495210	SEAT,SPRING (RETURN)	2					
14	36648365120	SPOOL (SUB)	1					
15	36645845060	SPRING (RETURN)	1					
16	36644015260	ADAPTER	1					
17	36648365130	SPACER	1					
18	36645405090	PLATE (D)	1					
19	36645615250	C-BOLT	2		M5X25			
20	36633365100	SEAL,OIL	1					
21	36633365060	PLATE (B)	1					
22	36645615260	C-BOLT	2		M5X8			
23	12635101360	SPOOL	1					
24	12635101190	SPRING	1					
25	36633365090	CAP (CHECK VALVE)	1					
27	91001002200	O-RING	2		S22			
29	36740745140	SCREW,MACHINE	4		M4X12			
30	91001100600	O-RING	5		1A P6			
31	91002905500	O-RING	1		1B G55			
51	36740745150	VALVE,SOLENOID (KIT)	2					
100	36743030061	VALVE,CONTROL	1					

TM-ZX290 41047701334A FRAME

Pos No.	Parts No	Parts Name	Qty	Unit	Technical Data	Serial No (Start)	Serial No (End)	Remarks
1	(*****)	OPE.ASSY,ACCELERATOR	1					
2	(*****)	ELEC.ASSY	1					
3	(*****)	PIPING ASSY	1					

TM-ZX290 41047701334A FRAME
PY5170081-00 ALARM ASSY (CRANE)



販売部品 検討中につき、イラストはありません。

Parts for sale : Under consideration now.
Therefore not illustrated.

TM-ZX290 41047701334A FRAME

PZ0000000-00 OUTRIGGER ASSY (RIGHT,CYLINDER:MIN.1149)

販売部品 検討中につき、イラストはありません。

Parts for sale : Under consideration now.
Therefore not illustrated.

TM-ZX290 41047701334A FRAME
PZ0000000-00 FRAME ASSY

販売部品 検討中につき、イラストはありません。

**Parts for sale : Under consideration now.
Therefore not illustrated.**

CLICK HERE TO **DOWNLOAD** THE COMPLETE MANUAL

- Thank you very much for reading the preview of the manual.
- You can download the complete manual from: www.heydownloads.com by clicking the link below



- Please note: If there is no response to CLICKING the link, please download this PDF first and then click on it.

CLICK HERE TO **DOWNLOAD** THE COMPLETE MANUAL