

TM-ZF600 31103000022A 3 SEC. BOOM,SL TYPE

PB000013-01 SYSTEM

ASSEMBLY

CLICK HERE TO **DOWNLOAD** THE COMPLETE MANUAL

- Thank you very much for reading the preview of the manual.
- You can download the complete manual from: www.heydownloads.com by clicking the link below



- Please note: If there is no response to CLICKING the link, please download this PDF first and then click on it.

CLICK HERE TO **DOWNLOAD** THE COMPLETE MANUAL

TM-ZF600 3110300022A 3 SEC. BOOM,SL TYPE

Pos No.	Parts No	Parts Name	Qty	Unit	Technical Data	Serial No (Start)	Serial No (End)	Remarks	Page
1	36400035010	CASE	1						
2	52130307020	GEAR,INPUT	1						
3	36400035020	GEAR,OUTPUT	1						
4	52130307040	SHAFT (INPUT)	1						
5	36400035030	SHAFT (OUTPUT)	1						
6	52130307060	SHAFT (SHIFTER)	1						
7	52130307070	SHAFT	1						
8	52130307080	FORK (SHIFTER)	1						
9	36400035040	ADAPTER	1						
10	36400035050	COVER	1						
11	52130307330	PACKING	1						
12	36400035060	COLLAR	1						
13	36400035070	COLLAR	1						
14	80500006207	BEARING,BALL	2						
15	36400035080	BEARING,ROLLER	2						
16	91206035001	SEAL,OIL	1						
17	91206020007	SEAL,OIL	1						
18	80956207320	KEY	1						
19	90191210030	BOLT	8		M10X30				
20	90302041001	WASHER,SPRING	8		10				
21	36400015080	PLUG	1						
22	52430604180	PACKING	1						
23	36400015090	PACKING	1						
24	52430604210	NUT	1		M12				
25	52430304150	BOLT (ADJUSTING)	1						
26	52130003200	SCREW,SET	1						
27	52430604200	BALL,STEEL	1		10				
28	52430604190	SPRING	1						
29	36400035090	PACKING	2						
30	90191208020	BOLT	8		M8X20				
31	90302040801	WASHER,SPRING	8		8				
50	36400030000	POWER TAKE OFF	1						

TM-ZF600 31103000022A 3 SEC. BOOM,SL TYPE

Pos No.	Parts No	Parts Name	Qty	Unit	Technical Data	Serial No (Start)	Serial No (End)	Remarks	Page
1	36401005010	CASE	1						
2	36401005020	GEAR	1						
3	36401005030	SHAFT	1						
4	36401005040	COVER (BEARING)	1						
5	36401005050	COVER (PACKING)	1						
6	36401005060	SHIM	1						
7	36401005070	SHIFTER SET	1						
8	36401005080	PACKING	1						
9	80500006206	BEARING,BALL	3						
10	91206030005	SEAL,OIL	1						
11	90191208020	BOLT	7		M8X20				
12	36401005090	PACKING (CASE)	1						
14	90302040801	WASHER,SPRING	7		8				
15	90191210030	BOLT	2		M10X30				
16	36400095150	BOLT,STUD	6		M10X1.25/1.5X43				
17	90267201000	NUT	6		M10				
18	90302041001	WASHER,SPRING	8		10				
21	31790790100	SUPPORT	1						
30	90191208025	BOLT	2		M8X25				
50	36401000000	POWER TAKE OFF	1						
100	31790800000	POWER TAKE OFF	1						

TM-ZF600 3110300022A 3 SEC. BOOM,SL TYPE

Pos No.	Parts No	Parts Name	Qty	Unit	Technical Data	Serial No (Start)	Serial No (End)	Rem
1	31630855400	SUPPORT	1					
2	31630855700	BRUSH ASSY (WITH SLIP RING)	1				655927	
	31630855800	BRUSH ASSY (WITH SLIP RING)	1			655928		
3	90102208014	BOLT	4		M8X14			
4	90302040801	WASHER,SPRING	6		8			
5	90303070801	WASHER,PLAIN	6		8			
6	90180008024	BOLT,BUTTON	2		M8X24		655927	
	90180208024	BOLT,BUTTON	2		M8X24	655928		
7	31630855100	PLATE	1					
8	31630855200	CORE	1					
9	91531209000	PACKING	2					
10	91100309000	SEAL,RING	7					
11	31630855300	BODY	1					
12	90102210025	BOLT	4		M10X25			
13	90302041001	WASHER,SPRING	4		10			
14	90201201000	NUT	4		M10			
15	90171114025	BOLT	2		M14X25			
16	31630855500	PLATE	1					
17	31630855600	PLATE	1					
18	82114203030	CONNECTOR (CAP)	1					
19	82121502030	PLATE	1					
30	31630850000	JOINT,ROTARY	1					

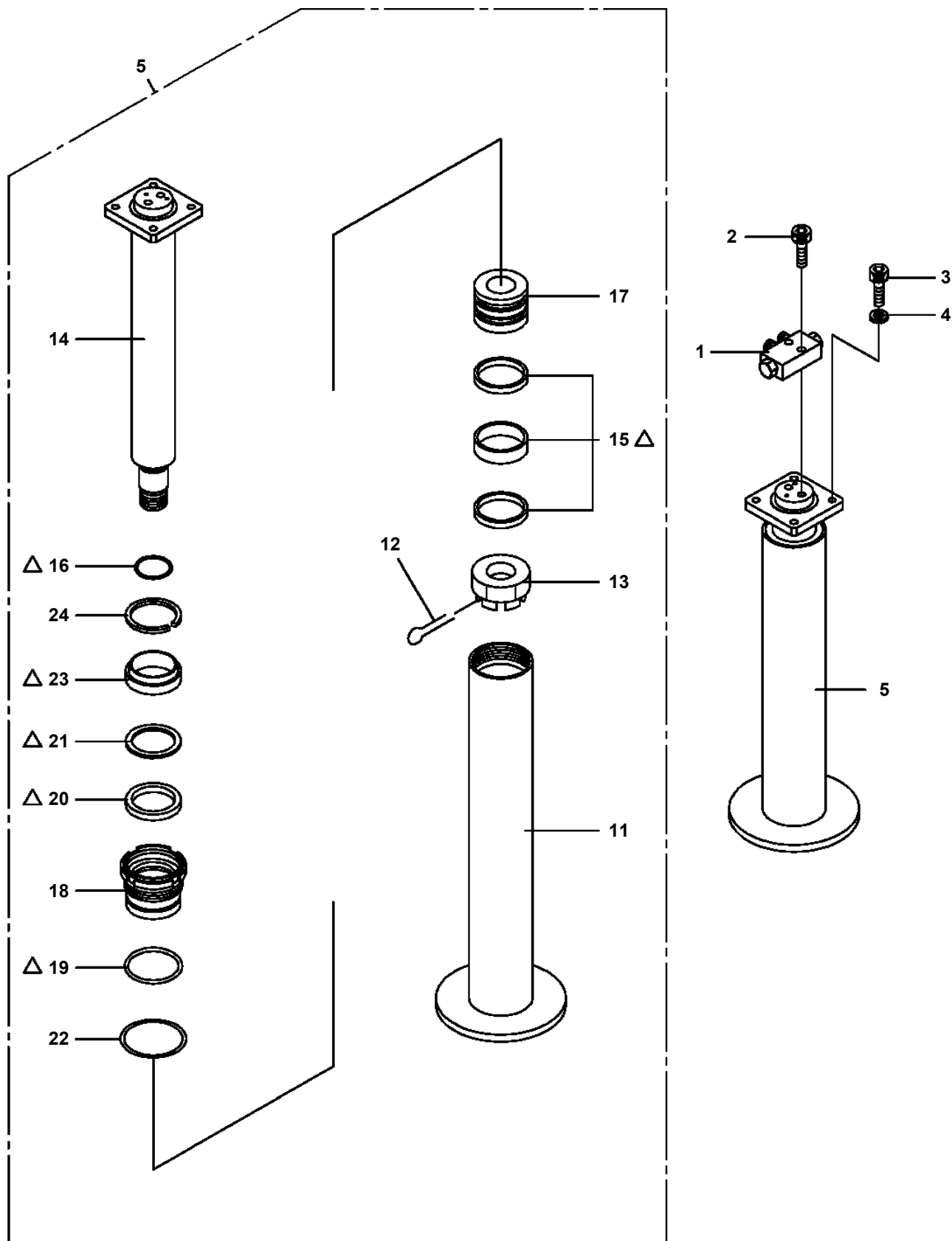
TM-ZF600 3110300022A 3 SEC. BOOM,SL TYPE

Pos No.	Parts No	Parts Name	Qty	Unit	Technical Data	Serial No (Start)	Serial No (End)	R
2	36630045070	PLATE	1					
3	36634395020	VALVE,CONTROL	1					
4	36634395030	VALVE,CONTROL	1					
5	36631805021	VALVE,CONTROL	1					
6	36634395090	366-343-95041	1			655416		
7	36634395050	VALVE,CONTROL	1					
11	36634395070	VALVE,RELIEF	1					
21	36631805060	BODY	1					
22	91002905500	O-RING	7		1B G55			
33	56051331100	SEAL,OIL	10					
34	12435101180	RETAINER (SEAL)	10					
35	13115102010	RETAINER (SEAL)	6					
36	36630045150	COVER	2					
37	36634395080	BRACKET	1					
39	36630755020	STOPPER	1					
40	36630045170	COVER (SPRING)	5					
41	90131506015	BOLT,HEXAGON SOCKET	4		M6X15			
42	90131506025	BOLT,HEXAGON SOCKET	6		M6X25			
44	13115102030	CASE (BALL)	3					
45	13115102040	SPRING	3					
46	80560005000	BALL,STEEL	5		5			
47	56051331130	RETAINER (BALL)	3					
57	90131506010	BOLT,HEXAGON SOCKET	6		M6X10			
64	91002801400	O-RING	3		1B P14			
65	12435101160	RETAINER (VALVE)	3					
82	56051331150	END,SPOOL	1					
95	12435101170	RETAINER (SPRING)	4					
97	90131506020	BOLT,HEXAGON SOCKET	4		M6X20			
100	36630045140	SPRING	2					
102	12415101130	SPACER	2					
118	12415101140	NUT	1			655416		
119	36630045130	END,SPOOL	1			655416		
120	13115102080	PLUG	2			655416		
121	91001100300	O-RING	2		1A P3	655416		
124	36633415080	SCREW,SET (HEXAGON SOCKET)	1			655416		
151	36631805070	BODY	1					
163	36630045190	SPRING	1					
164	91000501500	O-RING	1		AS568-015			
165	91002802200	O-RING	1		1B P22			
166	91002801001	O-RING	1		1B P10A			
170	16025153020	SPRING	1					
174	91001001600	O-RING	2		1A S16			
200	36634390001	VALVE,MANUAL CONTROL	1					

TM-ZF600 31103000022A 3 SEC. BOOM,SL TYPE

Pos No.	Parts No	Parts Name	Qty	Unit	Technical Data	Serial No (Start)	Serial No (End)	Remarks	Pa
1	(*****)	OUTRIGGER (LEFT)	1						000
2	(*****)	OUTRIGGER (RIGHT)	1						000
21	37000153080	PIN	2						
22	90101210025	BOLT	4		M10X25				
23	90302041001	WASHER,SPRING	4		10				
24	90303071001	WASHER,PLAIN	2		10	655532			

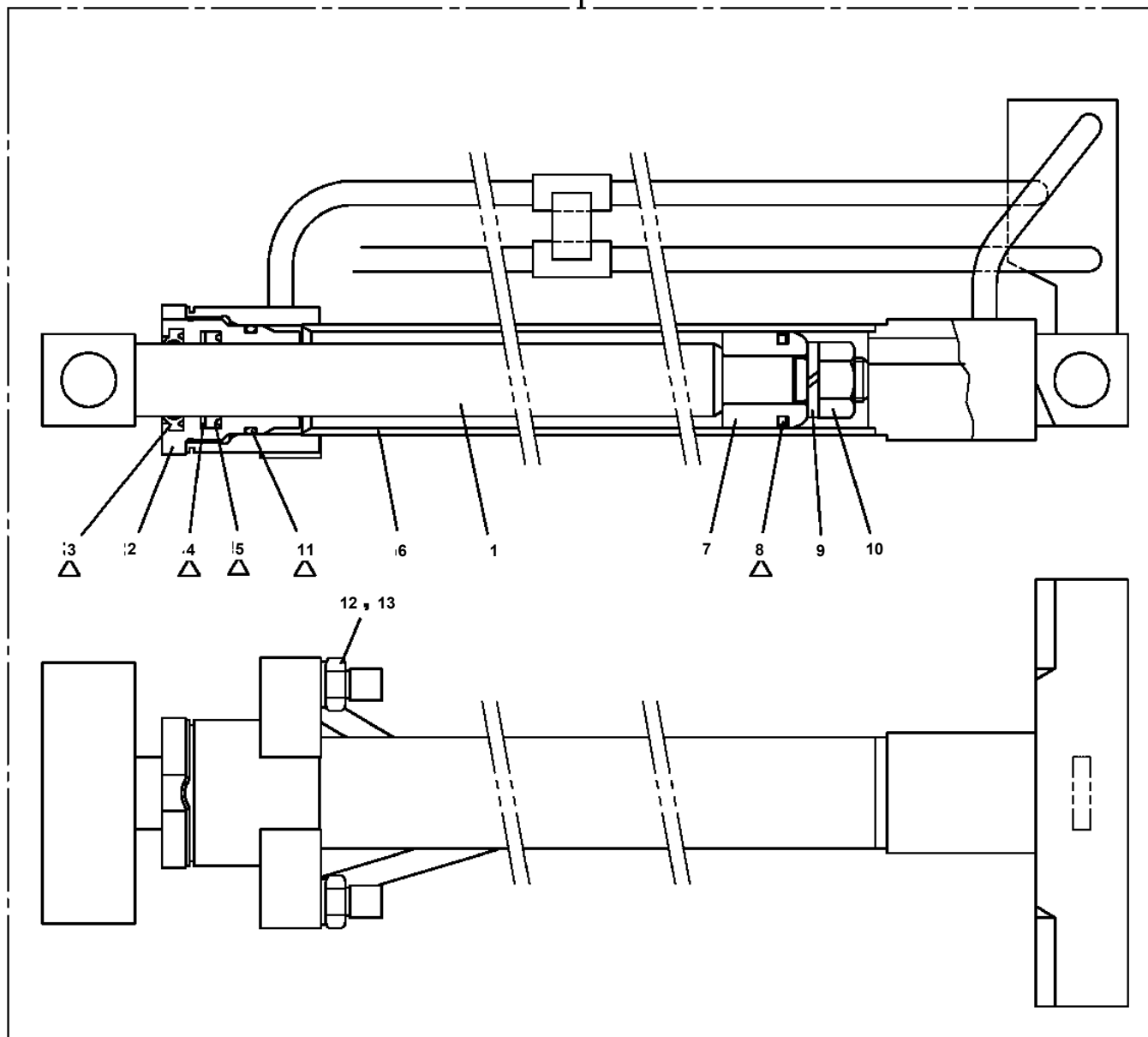
**TM-ZF600 31103000022A 3 SEC. BOOM,SL TYPE
PC1030126-01 CYLINDER,JACK (REAR/STROKE 330MM)**



Δ:PACKING SET KEY NO.30 (KEY NO.15,16,19,20,21,23)

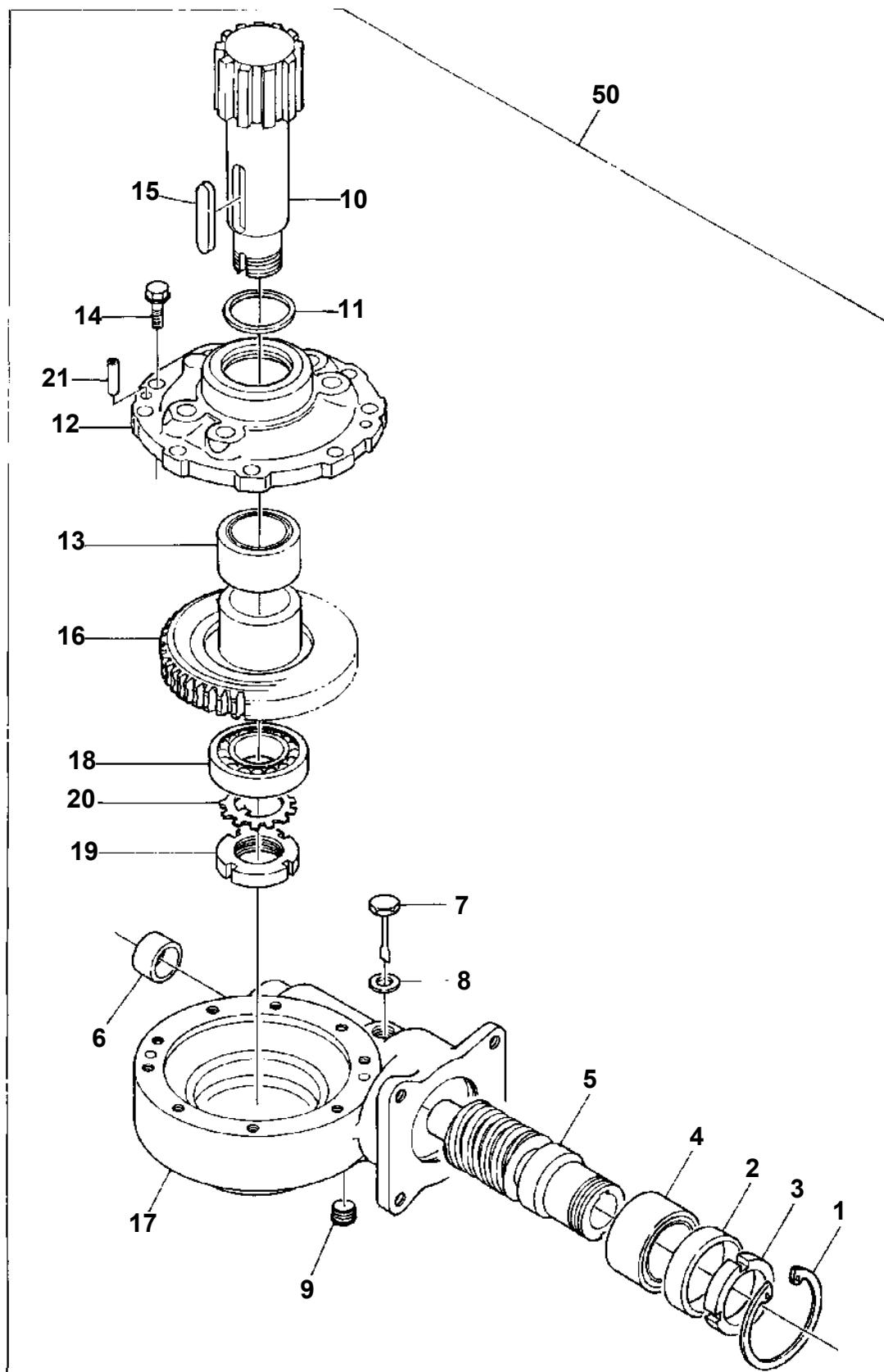
TM-ZF600 31103000022A 3 SEC. BOOM,SL TYPE
PC1050157-01 CYLINDER,EXTENSION

50

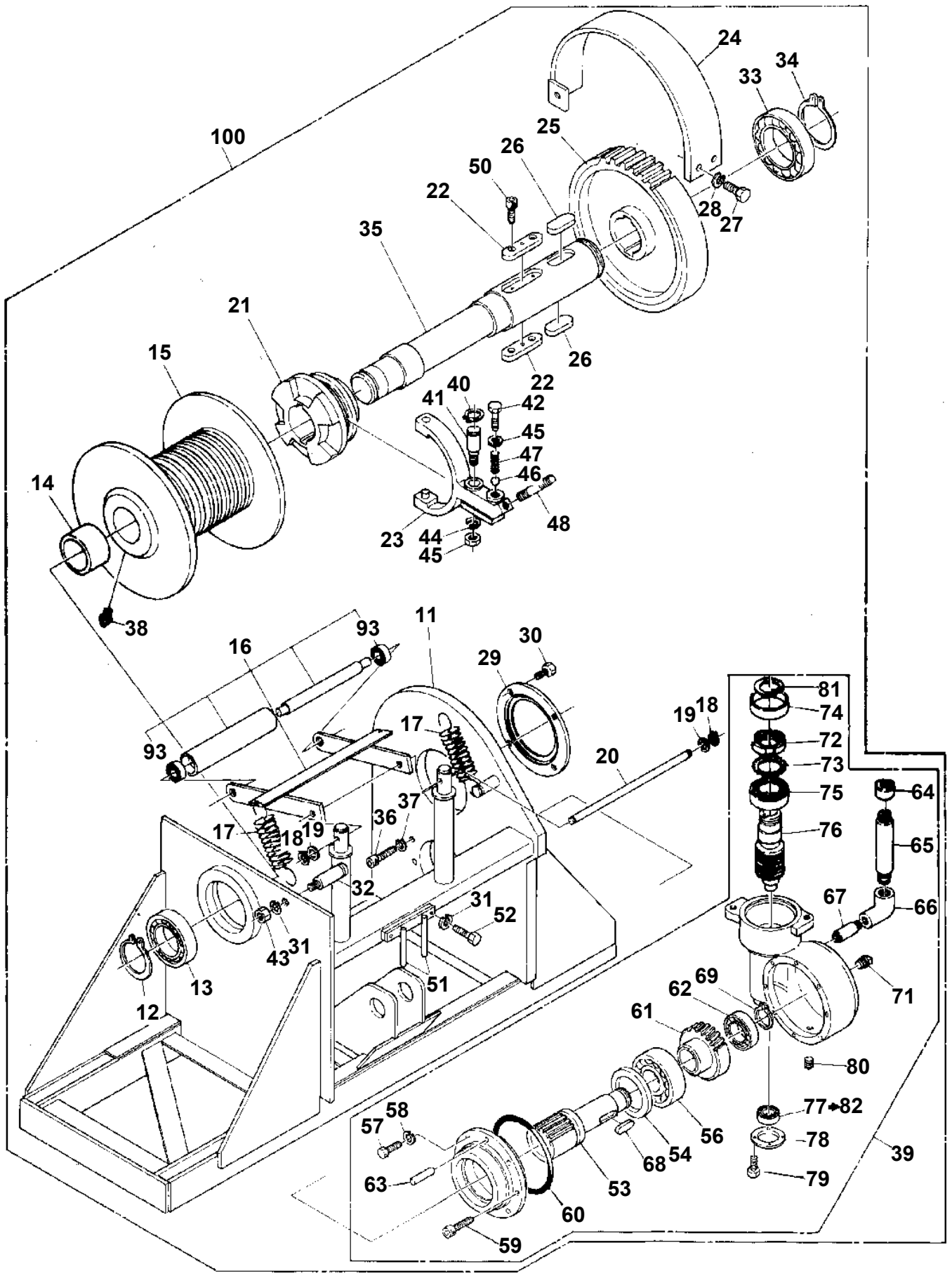


Δ:PACKING SET KEY NO.(20) (KEY NO.3,4,5,8,11)

TM-ZF600 31103000022A 3 SEC. BOOM,SL TYPE
PD1010097-00 REDUCER,SWING SPEED



TM-ZF600 3110300022A 3 SEC. BOOM,SL TYPE
PF1010177-00 WINCH (SL 4TONX1)



TM-ZF600 3110300022A 3 SEC. BOOM,SL TYPE

Pos No.	Parts No	Parts Name	Qty	Unit	Technical Data	Serial No (Start)	Serial No (E
1	(*****)	WINCH (SELF 3TX1,OPTION)	1				
2	(*****)	HOOK (3TON SELF WINCH)	1				
3	(*****)	OPE.ASSY,CONT.VALVE (SL)	1				
4	(*****)	PIPING,WINCH (3TON SELF,OPTION)	1				
6	31470511000	STOPPER,TIRE	4				
7	(*****)	PLATE ASSY,NAME (SELF WINCH,3TON)	1				
8	(*****)	ELEC.ASSY (SELF WINCH,OPT.)	1				
9	(*****)	RADIO CONTROL (KIT:MITSUMI)	1				
12	(*****)	PIPING,LOWER (SELF WINCH,OP.)	1				
13	36647440000	VALVE,REMOTE CONTROL	1				

CLICK HERE TO **DOWNLOAD** THE COMPLETE MANUAL

- Thank you very much for reading the preview of the manual.
- You can download the complete manual from: www.heydownloads.com by clicking the link below



- Please note: If there is no response to CLICKING the link, please download this PDF first and then click on it.

CLICK HERE TO **DOWNLOAD** THE COMPLETE MANUAL

TM-ZF600 3110300022A 3 SEC. BOOM,SL TYPE

Pos No.	Parts No	Parts Name	Qty	Unit	Technical Data	Serial No (Start)	Serial No (End)	Remarks	P
3	50890084001	HOOK (SHEAVE 1 PC'S)	1						
11	50890084011	HOOK ASSY	1						
13	50890084130	FRAME	2						
14	50890084140	PLATE	2						
15	50825004000	SHAFT	1						
16	90221210000	NUT	1						
17	80136050030	PIN,SPLIT	1		5X30				
18	50890084180	SPACER	1						
19	50890084150	BOLT	1						
20	50825006000	BOLT	1						
21	90261001600	NUT	1		M16				
22	90201201200	NUT	1		M12				
23	90302041201	WASHER,SPRING	1		12				
24	50890084110	BEAM	1						
25	50825005000	SHEAVE ASSY	1						
26	50825000020	BUSH	2						
27	50890084160	ROLLER	1						
28	50890084170	STOPPER	1						

TM-ZF600 3110300022A 3 SEC. BOOM,SL TYPE

Pos No.	Parts No	Parts Name	Qty	Unit	Technical Data	Serial No (Start)	Serial No (End)
1	80400160130	JOINT	2		S,G1/2-G3/8		
2	37000805060	JOINT	1				
3	91803880070	CLIP	2		D=13.1-16.2		
4	37002438570	HOSE	4		L=1000		
5	90101210018	BOLT	2		M10X18		
6	90302041001	WASHER,SPRING	2		10		
7	36600480000	VALVE,PRESSURE REGULATOR (SELF WINCH)	1				
8	31643000100	SUPPORT	1				
9	80430450650	JOINT	2				
10	91810130250	FASTENER	4				
11	91803600250	CLIP	2		D=18-25		
12	31641031000	JOINT	1				
13	37002510540	HOSE	1				
14	80400160129	JOINT	2				
15	91002801400	O-RING	2		1B P14		
16	91002801800	O-RING	2		1B P18		

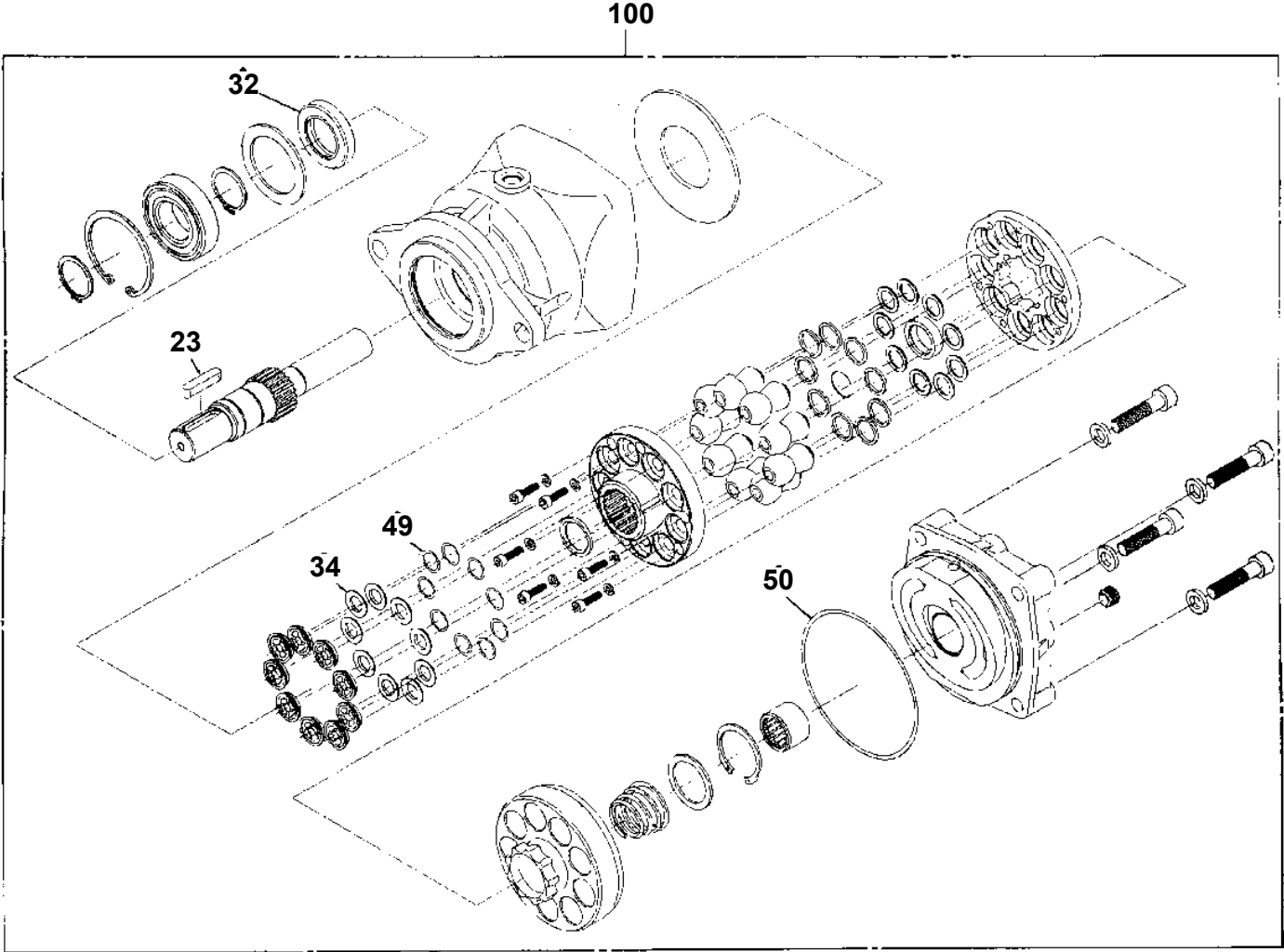
TM-ZF600 31103000022A 3 SEC. BOOM,SL TYPE

Pos No.	Parts No	Parts Name	Qty	Unit	Technical Data	Serial No (Start)	Serial No (End)	Remark
1	36604540001	VALVE,COUNTERBALANCE	1					
3	36015110000	CYLINDER,TELESCOPING	1					
4	90172110065	BOLT,HEXAGON SOCKET	3		M10X65			

TM-ZF600 3110300022A 3 SEC. BOOM,SL TYPE

Pos No.	Parts No	Parts Name	Qty	Unit	Technical Data	Serial No (Start)	Serial No (End)
1	90302040601	WASHER,SPRING	9		6		
2	90201200600	NUT	3		M6		
3	82100002014	CLAMP	2		WR20		
4	91810130240	FASTENER	8				
5	82100002004	CLAMP	1		WR8		
6	36140380000	DETECTOR,BOOM ANGLE	1				
7	90101208012	BOLT	4		M8X12		
8	90302040801	WASHER,SPRING	4		8		
9	36131340000	DETECTOR,BOOM LENGTH	1				
10	82401600504	CLAMP	3		D=4.5		
11	31371332000	WEIGHT ASSY	1				
12	31360051000	SUPPORT	1				
13	31371282000	SWITCH ASSY	1				
14	31371283000	SUPPORT	1				
15	37001908920	DETECTOR,OVER WINDING (ROPE)	1				
16	90101206014	BOLT	4		M6X14		
17	90303070601	WASHER,PLAIN	2		6		
18	80182306014	SCREW,MACHINE	2		M6X14		
19	90203401200	NUT	1		M16		
20	31360250100	HARNESS	1		L=2000		

**TM-ZF600 31103000022A 3 SEC. BOOM,SL TYPE
PI1010078-01 MOTOR,HYDRAULIC (SWING)**



•SEAL KIT KEY NO80(KEY NO.32345049)

TM-ZF600 3110300022A 3 SEC. BOOM,SL TYPE

Pos No.	Parts No	Parts Name	Qty	Unit	Technical Data	Serial No (Start)	Serial No (End)
2	91002801800	O-RING	2		1B P18		
20	36600480000	VALVE,PRESSURE REGULATOR (SELF WINCH)	1				

TM-ZF600 31103000022A 3 SEC. BOOM,SL TYPE

Pos No.	Parts No	Parts Name	Qty	Unit	Technical Data	Serial No (Start)	Serial No (End)	Remarks	Pa
1	36620030010	PLUG	1		PF3/8				
2	91002801400	O-RING	2		1B P14				
3	52255101000	SPRING	1						
5	52255204000	PISTON	1						
7	36620030050	PLUG	1						
8	91002800700	O-RING	3		1B P7				
10	36620990000	VALVE,PILOT CHECK	1						

TM-ZF600 3110300022A 3 SEC. BOOM,SL TYPE

Pos No.	Parts No	Parts Name	Qty	Unit	Technical Data	Serial No (Start)	Serial No (End)	Remarks	Pages
1	31300150010	COVER	1						
2	90101210014	BOLT	4		M10X14				
3	90302041001	WASHER,SPRING	4		10				
4	31300150060	COVER	1						

TM-ZF600 3110300022A 3 SEC. BOOM,SL TYPE

Pos No.	Parts No	Parts Name	Qty	Unit	Technical Data	Serial No (Start)	Serial No (End)	Remarks	Pages
1	31710230300	SUPPORT	1						
2	90303070601	WASHER,PLAIN	1		6				
3	80136332016	PIN,SPLIT	1		3.2X16				
4	80620210050	PIN,SNAP	5						
5	31701060900	END	2						
6	37000147840	PIN	4						
8	31322050510	KNOB (BLACK)	3						
10	37000162910	PIN	1						
11	31322650100	LEVER	1						
12	31322650300	ROD	1						
13	37001706340	CABLE,CONTROL	1		L=4000				
14	31710230100	LINK	1						
15	52442101000	PIN	1						
16	31322224200	PLATE	3		L=1				
17	37000307020	SPACER	1		L=4				
18	31322650010	SUPPORT	1						
19	90101210025	BOLT	2		M10X25				
20	90302041001	WASHER,SPRING	2		10				
21	90201201000	NUT	2		M10				
22	37001702110	CABLE,CONTROL	1						
23	37000511220	PLATE	2						
24	82100002006	CLAMP	2		WR10				
25	82100002002	CLAMP	2		WR6				
26	90101206016	BOLT	2		M6X16				
27	90302040601	WASHER,SPRING	2		6				
28	90201200600	NUT	2		M6				
29	91810130240	FASTENER	4						
41	31321852100	SUPPORT	1						
42	90303071001	WASHER,PLAIN	2		10				
43	31322651100	LINK	1						
44	80136332014	PIN,SPLIT	1		3.2X14				
51	31322431101	LEVER	1						
52	31322431200	SUPPORT	1						
53	80136340020	PIN,SPLIT	1		4X20				
54	37000537270	PLATE	2						
55	31322431301	LEVER	1						
56	90101210040	BOLT	1		M10X40				
57	90203201000	NUT	1		M10				
58	12434402040	SPRING	1						
59	80172105006	SCREW,MACHINE	2		M5X6				
60	90203201200	NUT	2		M12				
61	90303071201	WASHER,PLAIN	2		12				
62	90309331201	WASHER	2		L12				

TM-ZF600 3110300022A 3 SEC. BOOM,SL TYPE

Pos No.	Parts No	Parts Name	Qty	Unit	Technical Data	Serial No (Start)	Serial No (End)
1	(*****)	PLATE,NAME (AML)	1				
3	37002200320	PLATE,NAME	2				
4	37002216410	PLATE,NAME (TELESCOPING)	1				
5	37002216420	PLATE,NAME (TELESCOPING)	1				
6	37002216430	PLATE,NAME (TELESCOPING)	1				
7	37002216660	PLATE,NAME (TELESCOPING)	2				
8	31395850210	PLATE,CAUTION	2				
9	31393310200	PLATE,CAUTION	2				
10	31391040120	PLATE,NAME	2				
11	37002214800	PLATE,NAME (580)	2				
12	37002216450	PLATE,NAME (WINCH)	2				
13	37002216460	PLATE,NAME (SWING)	2				
14	37002215900	PLATE,NAME (ELEVATING)	2				
15	37002216470	PLATE,NAME (TELESCOPING)	2				
16	37002215890	PLATE,NAME (WINCH)	2				
18	90451700100	SCREW,TAPPING	4		M4X6.4		
19	37002216480	PLATE,NAME (TELESCOPING)	1				
20	37002216490	PLATE,NAME (TELESCOPING)	1				
21	37002216500	PLATE,NAME (TELESCOPING)	1				
22	37002201980	PLATE,NAME	1				
23	37002206490	PLATE,NAME (GREASE)	7				
24	31395850231	PLATE,CAUTION	1				
25	31395850240	PLATE,CAUTION	2				
26	31393300700	PLATE,NAME	1				
27	31394250100	PLATE,NAME	1				
28	37002216670	PLATE,NAME (OVERHANG,SPONSON)	1				
29	37002216680	PLATE,NAME (OVERHANG,SPONSON)	1				
30	31642171600	PLATE,NAME	1				
31	31395850250	PLATE,CAUTION	1				
41	37002213190	PLATE,NAME (LEVEL,ISO VG46)	1				
42	37002213740	PLATE,NAME (LEVEL,ISO VG32)	1				

TM-ZF600 3110300022A 3 SEC. BOOM,SL TYPE

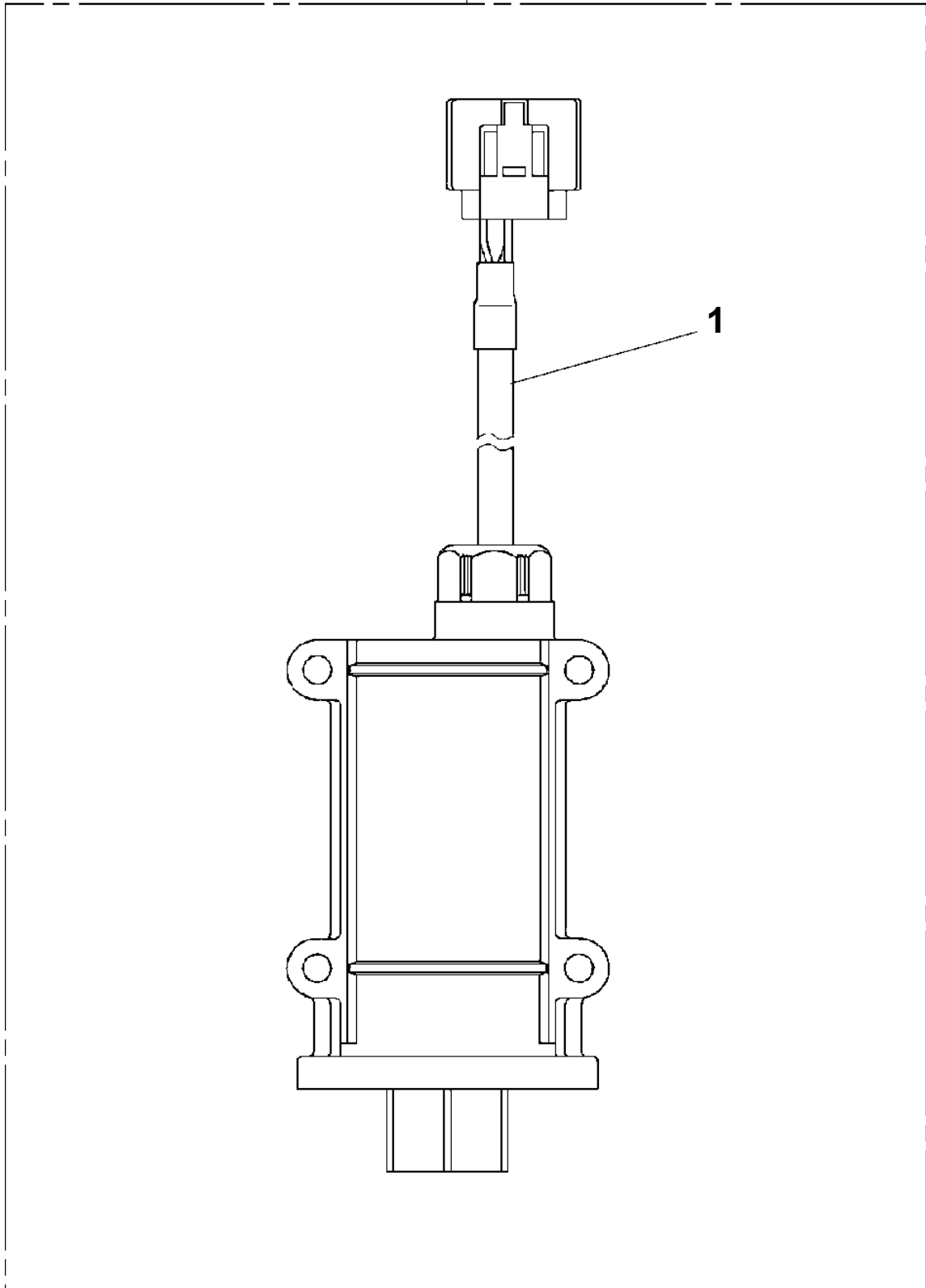
Pos No.	Parts No	Parts Name	Qty	Unit	Technical Data	Serial No (Start)	Serial No (End)	Remarks	Pages
1	31394490500	PLATE,CAUTION	2						
2	31612301210	PLATE,CAUTION	2						

TM-ZF600 31103000022A 3 SEC. BOOM,SL TYPE

Pos No.	Parts No	Parts Name	Qty	Unit	Technical Data	Serial No (Start)	Serial No (End)	Ren
1	31395851022	PLATE,NAME	2					
2	31395861111	PLATE,NAME	2					
3	31395861020	PLATE,NAME	1					
4	31391040230	PLATE,NAME	1					
5	31395861121	PLATE,NAME	1					
6	(*****)	DETECTOR,OVER FRONT AREA	1					
7	31395851130	PLATE,NAME	1					

TM-ZF600 3110300022A 3 SEC. BOOM,SL TYPE
PV1040032-01 CONTROL BOX (SELF WINCH RADIO CONTROL)

50



CLICK HERE TO **DOWNLOAD** THE COMPLETE MANUAL

- Thank you very much for reading the preview of the manual.
- You can download the complete manual from: www.heydownloads.com by clicking the link below



- Please note: If there is no response to CLICKING the link, please download this PDF first and then click on it.

CLICK HERE TO **DOWNLOAD** THE COMPLETE MANUAL