

TM-ZF600 31103000008A 3 SEC. BOOM,STD FRAME,REAR-END MOUNTIN
PB000013-01 SYSTEM
ASSEMBLY

CLICK HERE TO **DOWNLOAD** THE COMPLETE MANUAL

- Thank you very much for reading the preview of the manual.
- You can download the complete manual from: www.heydownloads.com by clicking the link below



- Please note: If there is no response to CLICKING the link, please download this PDF first and then click on it.

CLICK HERE TO **DOWNLOAD** THE COMPLETE MANUAL

TM-ZF600 3110300008A 3 SEC. BOOM,STD FRAME,REAR-END MOUNTIN

Pos No.	Parts No	Parts Name	Qty	Unit	Technical Data	Serial No (Start)	Serial No (End)	Remarks	Page
1	36400035010	CASE	1						
2	52130307020	GEAR,INPUT	1						
3	36400035020	GEAR,OUTPUT	1						
4	52130307040	SHAFT (INPUT)	1						
5	36400035030	SHAFT (OUTPUT)	1						
6	52130307060	SHAFT (SHIFTER)	1						
7	52130307070	SHAFT	1						
8	52130307080	FORK (SHIFTER)	1						
9	36400035040	ADAPTER	1						
10	36400035050	COVER	1						
11	52130307330	PACKING	1						
12	36400035060	COLLAR	1						
13	36400035070	COLLAR	1						
14	80500006207	BEARING,BALL	2						
15	36400035080	BEARING,ROLLER	2						
16	91206035001	SEAL,OIL	1						
17	91206020007	SEAL,OIL	1						
18	80956207320	KEY	1						
19	90191210030	BOLT	8		M10X30				
20	90302041001	WASHER,SPRING	8		10				
21	36400015080	PLUG	1						
22	52430604180	PACKING	1						
23	36400015090	PACKING	1						
24	52430604210	NUT	1		M12				
25	52430304150	BOLT (ADJUSTING)	1						
26	52130003200	SCREW,SET	1						
27	52430604200	BALL,STEEL	1		10				
28	52430604190	SPRING	1						
29	36400035090	PACKING	2						
30	90191208020	BOLT	8		M8X20				
31	90302040801	WASHER,SPRING	8		8				
50	36400030000	POWER TAKE OFF	1						

TM-ZF600 31103000008A 3 SEC. BOOM,STD FRAME,REAR-END MOUNTIN

Pos No.	Parts No	Parts Name	Qty	Unit	Technical Data	Serial No (Start)	Serial No (End)	Remarks	Pag
1	36401005010	CASE	1						
2	36401005020	GEAR	1						
3	36401005030	SHAFT	1						
4	36401005040	COVER (BEARING)	1						
5	36401005050	COVER (PACKING)	1						
6	36401005060	SHIM	1						
7	36401005070	SHIFTER SET	1						
8	36401005080	PACKING	1						
9	80500006206	BEARING,BALL	3						
10	91206030005	SEAL,OIL	1						
11	90191208020	BOLT	7		M8X20				
12	36401005090	PACKING (CASE)	1						
14	90302040801	WASHER,SPRING	7		8				
15	90191210030	BOLT	2		M10X30				
16	36400095150	BOLT,STUD	6		M10X1.25/1.5X43				
17	90267201000	NUT	6		M10				
18	90302041001	WASHER,SPRING	8		10				
21	31790790100	SUPPORT	1						
30	90191208025	BOLT	2		M8X25				
50	36401000000	POWER TAKE OFF	1						
100	31790800000	POWER TAKE OFF	1						

TM-ZF600 3110300008A 3 SEC. BOOM,STD FRAME,REAR-END MOUNTIN

Pos No.	Parts No	Parts Name	Qty	Unit	Technical Data	Serial No (Start)	Serial No (End)	Rem
1	31630855400	SUPPORT	1					
2	31630855700	BRUSH ASSY (WITH SLIP RING)	1				655927	
	31630855800	BRUSH ASSY (WITH SLIP RING)	1			655928		
3	90102208014	BOLT	4		M8X14			
4	90302040801	WASHER,SPRING	6		8			
5	90303070801	WASHER,PLAIN	6		8			
6	90180008024	BOLT,BUTTON	2		M8X24		655927	
	90180208024	BOLT,BUTTON	2		M8X24	655928		
7	31630855100	PLATE	1					
8	31630855200	CORE	1					
9	91531209000	PACKING	2					
10	91100309000	SEAL,RING	7					
11	31630855300	BODY	1					
12	90102210025	BOLT	4		M10X25			
13	90302041001	WASHER,SPRING	4		10			
14	90201201000	NUT	4		M10			
15	90171114025	BOLT	2		M14X25			
16	31630855500	PLATE	1					
17	31630855600	PLATE	1					
18	82114203030	CONNECTOR (CAP)	1					
19	82121502030	PLATE	1					
30	31630850000	JOINT,ROTARY	1					

TM-ZF600 3110300008A 3 SEC. BOOM,STD FRAME,REAR-END MOUNTIN

Pos No.	Parts No	Parts Name	Qty	Unit	Technical Data	Serial No (Start)	Serial No (
2	36630045070	PLATE	1				
3	36634405020	VALVE,CONTROL	1				
4	36631805021	VALVE,CONTROL	1				
5	36634395090	366-343-95041	1				
6	36634395050	VALVE,CONTROL	1				
10	36634395070	VALVE,RELIEF	1				
21	36631805060	BODY	1				
22	91002905500	O-RING	6		1B G55		
33	56051331100	SEAL,OIL	8				
34	12435101180	RETAINER (SEAL)	8				
35	13115102010	RETAINER (SEAL)	4				
36	36630045150	COVER	2				
37	36630045170	COVER (SPRING)	4				
38	90131506015	BOLT,HEXAGON SOCKET	4		M6X15		
39	90131506025	BOLT,HEXAGON SOCKET	4		M6X25		
40	56051331150	END,SPOOL	2				
41	13115102030	CASE (BALL)	2				
42	13115102040	SPRING	2				
43	80560005000	BALL,STEEL	4		5		
44	56051331130	RETAINER (BALL)	2				
45	91002801400	O-RING	3		1B P14		
46	36635045040	RETAINER (VALVE)	1				
53	90131506010	BOLT,HEXAGON SOCKET	4		M6X10		
75	12435101170	RETAINER (SPRING)	4				
77	90131506020	BOLT,HEXAGON SOCKET	4		M6X20		
78	12415101140	NUT	1				
79	36630045130	END,SPOOL	1				
80	13115102080	PLUG	2				
81	91001100300	O-RING	2		1A P3		
83	36630045140	SPRING	2				
84	36633415080	SCREW,SET (HEXAGON SOCKET)	1				
85	12415101130	SPACER	2				
87	12435101160	RETAINER (VALVE)	2				
111	36631805070	BODY	1				
123	36630045190	SPRING	1				
124	91000501500	O-RING	1		AS568-015		
125	91002802200	O-RING	1		1B P22		
126	91002801001	O-RING	1		1B P10A		
130	16025153020	SPRING	1				
134	91001001600	O-RING	2		1A S16		
200	36634400001	VALVE,MANUAL CONTROL (OUTRIGGER)	1				

TM-ZF600 3110300008A 3 SEC. BOOM,STD FRAME,REAR-END MOUNTIN

Pos No.	Parts No	Parts Name	Qty	Unit	Technical Data	Serial No (Start)	Serial No (End)	Remarks
1	31620064001	COVER	1					
2	80165006016	SCREW,MACHINE	1		M6X16			
3	37000153180	PIN	1					
4	80602110200	RING,RITAINING	2		R20			
5	36042340000	CYLINDER,EXTENSION	1					
6	31612121100	CASE,INNER (H=1072)	1					
7	(*****)	CYLINDER,JACK	1					
8	90101210030	BOLT	4		M10X30			
9	90302041001	WASHER,SPRING	4		10			
10	31620386500	GUIDE	4					
11	37002414100	HOSE	2		L=1320			
12	82100001412	TUBE,SPIRAL	2	M	SE-12BK			
13	91810130240	FASTENER	4					
14	31610900510	PLATE	1					
15	80430620400	JOINT	2					
17	80491002020	JOINT (WITH O-RING)	2					
18	80530000225	BEARING,BALL (KOYO)	2				NA0306	
	31620582020	BEARING,BALL (KOYO)	2			NA0307		
19	37000150360	PIN	1					
20	80601110150	RING,RITAINING	2		15			
31	91002801100	O-RING	4		1B P11			
40	31612129510	SUPPORT	1					
51	31611300600	PLATE,NAME (YELLOW)	2					
52	31611300500	PLATE,NAME (WHITE)	2					
100	31612121000	OUTRIGGER (LEFT)	1					

TM-ZF600 31103000008A 3 SEC. BOOM,STD FRAME,REAR-END MOUNTIN

Pos No.	Parts No	Parts Name	Qty	Unit	Technical Data	Serial No (Start)	Serial No (End)	Remarks	P
1	91660003001	SEAL,DUST	1						
2	91411203001	RING,BACKUP	1						
3	91694003000	PACKING	1						
4	91002803900	O-RING	1		1B P39				
5	36041541000	COVER,ROD	1						
6	36042351000	CYLINDER	1						
7	36040432000	ROD	1				655430		
	36040432001	ROD	1			655431			
8	36041070400	PISTON	1						
9	91100104000	SEAL,RING	1						
10	90302041801	WASHER,SPRING	1		18		655430		
11	90201201800	NUT	1		M18				
20	36042359900	PACKING SET	1		30X40				
50	36042350000	CYLINDER,EXTENSION	1						

CLICK HERE TO **DOWNLOAD** THE COMPLETE MANUAL

- Thank you very much for reading the preview of the manual.
- You can download the complete manual from: www.heydownloads.com by clicking the link below



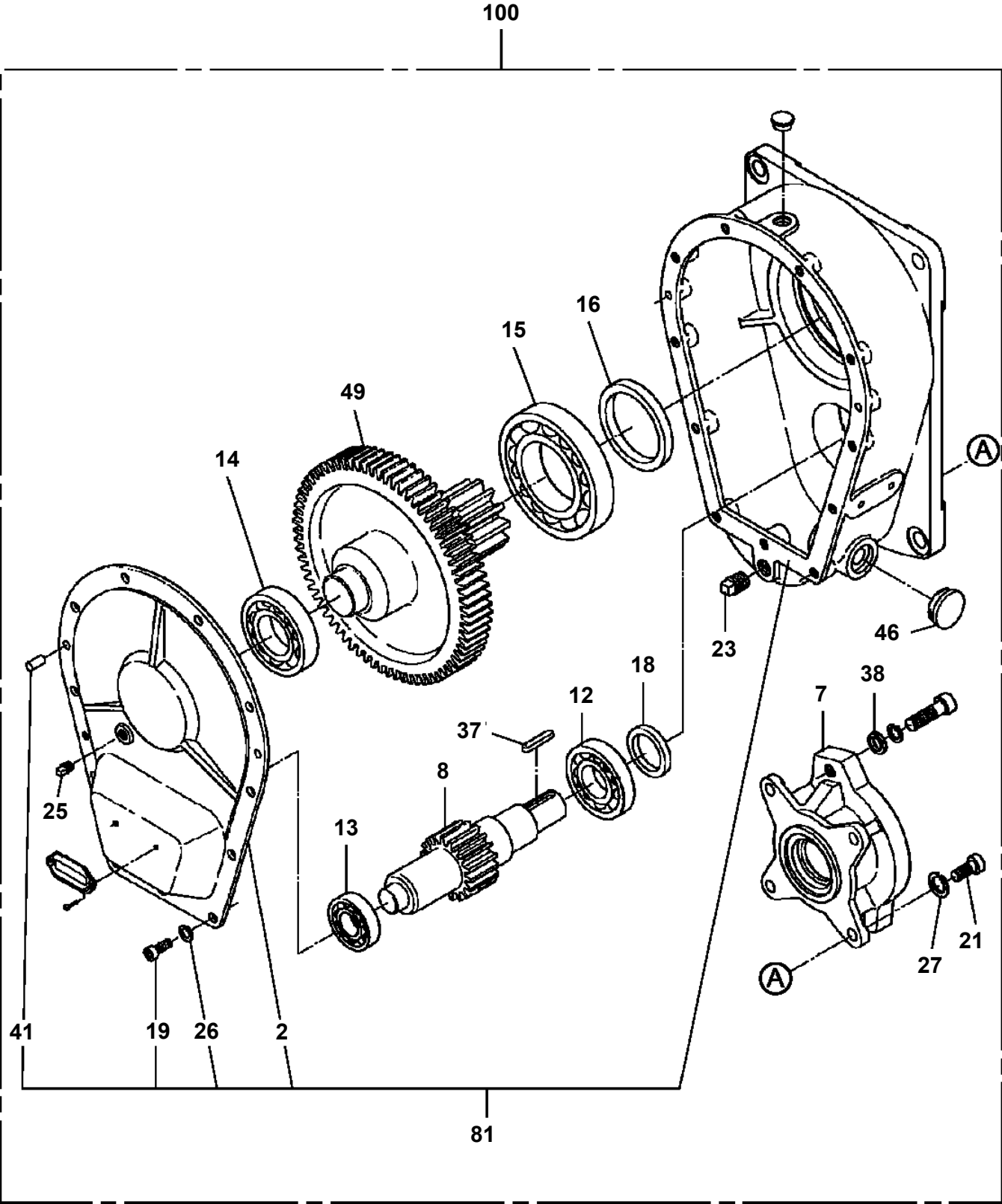
- Please note: If there is no response to CLICKING the link, please download this PDF first and then click on it.

CLICK HERE TO **DOWNLOAD** THE COMPLETE MANUAL

TM-ZF600 3110300008A 3 SEC. BOOM,STD FRAME,REAR-END MOUNTIN

Pos No.	Parts No	Parts Name	Qty	Unit	Technical Data	Serial No (Start)	Serial No (End)	Rema
1	37002301480	BEARING,SWING	1					
2	37001500420	BOLT	11		M20X60			
3	90309342001	WASHER,CONICAL SPRING	11					
4	31300140010	BOLT	20		M22X79			
5	82458102000	NIPPLE,GREASE	2		B-PT1/8			
6	82400000459	CAP	2					
7	36081070000	REDUCER,SWING SPEED	1					
8	91001208500	O-RING	1		1A G85			
9	90172112035	BOLT,HEXAGON SOCKET	2		M12X35			
10	90302041201	WASHER,SPRING	2		12			
11	36662420000	MOTOR,HYDRAULIC (SWING)	1					
12	90172116035	BOLT,HEXAGON SOCKET	2		M16X35			
13	90172116045	BOLT,HEXAGON SOCKET	4		M16X45			
14	82401800120	PLUG (FOR M12)	3					
15	82440901070	PLUG	2					
16	82401800100	PLUG (FOR M10)	2					

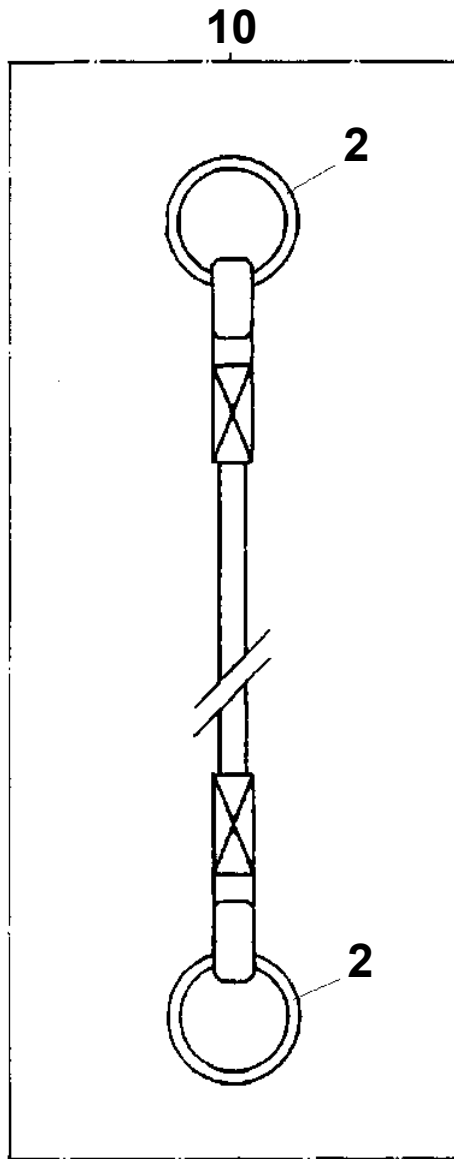
TM-ZF600 3110300008A 3 SEC. BOOM,STD FRAME,REAR-END MOUNTIN
PF1010127-01 WINCH (HARTYS)



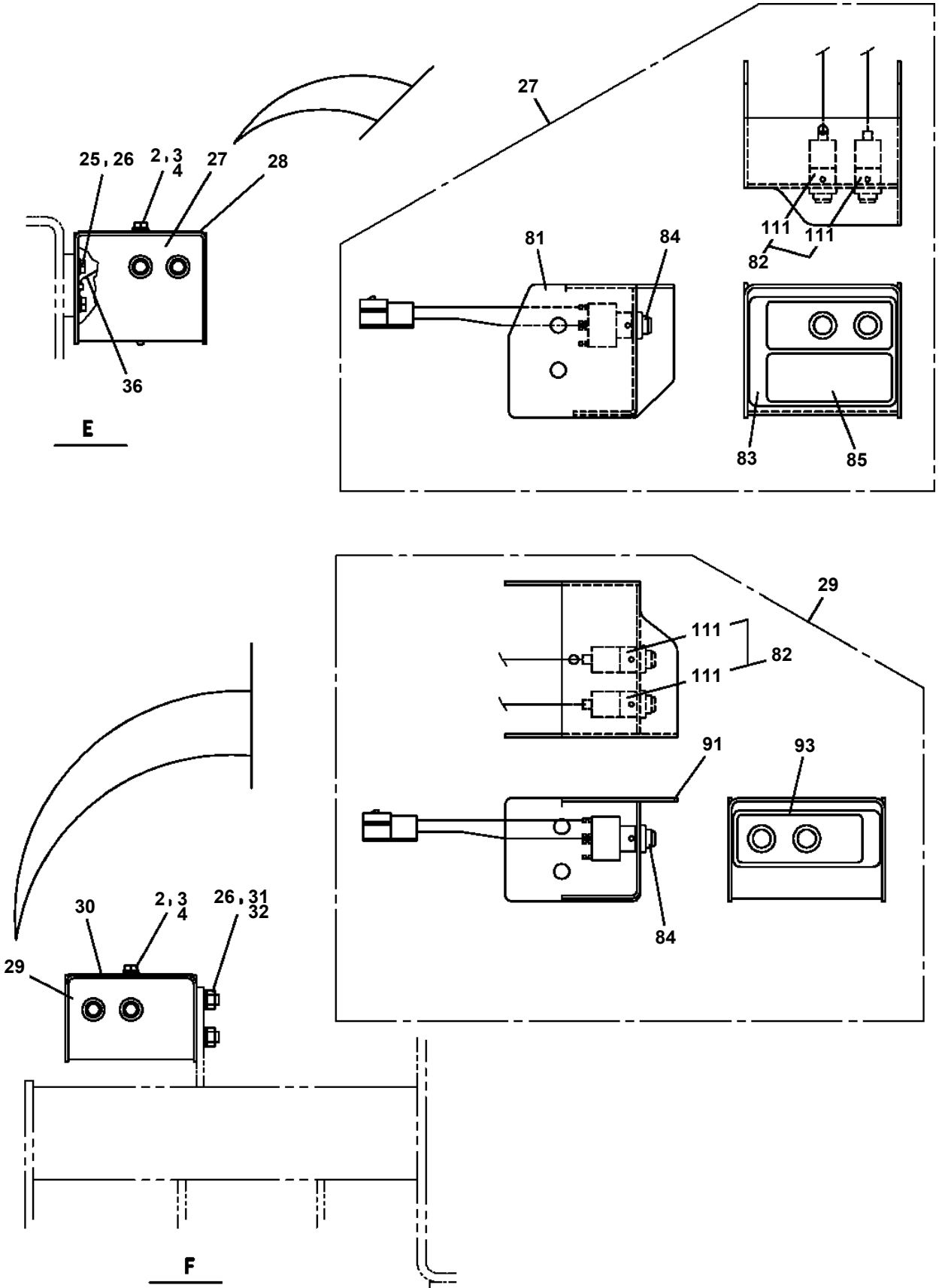
TM-ZF600 3110300008A 3 SEC. BOOM,STD FRAME,REAR-END MOUNTIN

Pos No.	Parts No	Parts Name	Qty	Unit	Technical Data	Serial No (Start)	Serial No (End)	Remarks	Pages
1	31202089510	BOOM,BASE	1						
2	31202082000	BOOM,2ND	1						
3	31202083000	BOOM,TOP	1						
4	37001901560	ROPE,WIRE	1						
5	90202782200	NUT	4		M22				
6	82455106000	NIPPLE,GREASE	4		A-M6F FE				
7	82456101000	NIPPLE,GREASE	1		A-PT1/8				
8	37000401440	BEARING,PLAIN	2						
9	37000302900	SPACER	1						
10	37000115960	PIN	1						
11	80601110400	RING,RITAINING	2		S40				
12	37002002630	PLATE,SLIDE	2						
13	90180206012	BOLT,BUTTON	8		M6X12				
14	37000116100	PIN	2						
15	80602110400	RING,RITAINING	4		R40				
16	37001002490	SHEAVE ASSY	2						
17	37000124700	PIN	2						
18	18111306000	COLLAR	4						
19	90171108014	BOLT	4		M8X14				
20	90302040801	WASHER,SPRING	12		8				
21	31200293020	SUPPORT	2						
22	31201015100	SPACER	2						
23	37002002640	PLATE,SLIDE	2						
24	31200293050	SUPPORT	1						
25	90171110040	BOLT	8		M10X40		655440		
	90171110040	BOLT	4		M10X40	655441			
26	90302041001	WASHER,SPRING	25		10				
27	80136363080	PIN,SPLIT	2		6.3X80				
28	37000149410	PIN	2						
29	37001002510	SHEAVE ASSY	1				655530		
30	37000118260	PIN	1						
31	90171110016	BOLT	7		M10X16				
32	37000565170	PLATE	1		T=9				
33	37002002610	PLATE,SLIDE	4						
34	31200303030	RETAINER	2						
35	37001901550	ROPE,WIRE	1						
36	90202781400	NUT	4		M14				
37	90101210012	BOLT	2		M10X12				
38	31200293320	ROLLER ASSY	1						
39	37000118760	PIN	1						
40	80603110220	RING,RETAINING	2						
41	90101210020	BOLT	2		M10X20				
42	37000565190	PLATE	1		T=12				
43	90303071001	WASHER,PLAIN	8		10		655440		
	90303071001	WASHER,PLAIN	12		10	655441			
44	37002002620	PLATE,SLIDE	4						
45	37000539440	PLATE	1						
46	31201770100	PLATE,SLIDE	4		T=3.0				
47	31201580100	SHIM (FOR FIXED)	4						
48	31200713400	SHIM	2		T=0.6				
49	90171108020	BOLT	8		M8X20				
50	31201015300	PLATE,SLIDE	4						
51	37000552560	PLATE	8		T=2.3				
52	31201010200	SHIM	4		T=1.0				
53	31201010300	SHIM	4		T=0.5				
54	37001002090	SHEAVE ASSY	1						
55	37000153450	PIN	1						
56	37000308620	SPACER	2						
57	37001002530	SHEAVE ASSY	2						
58	37000517270	PLATE	2						
59	37000118890	PIN	2						
60	90191210070	BOLT	4		M10X70				
61	37000516720	PLATE	2						

TM-ZF600 31103000008A 3 SEC. BOOM,STD FRAME,REAR-END MOUNTIN
PH1060213-01 DETECTOR,OVER WINDING (ROPE)



TM-ZF600 31103000008A 3 SEC. BOOM,STD FRAME,REAR-END MOUNTIN
PH1180194-02 CONNECTION,MOMENT LIMITER SYSTEM



TM-ZF600 31103000008A 3 SEC. BOOM,STD FRAME,REAR-END MOUNTIN

Pos No.	Parts No	Parts Name	Qty	Unit	Technical Data	Serial No (Start)	Serial No (End)	Remark
3	91002801400	O-RING	3		1B P14			
7	36601665020	SPRING	1					
10	91001001000	O-RING	1		1A S10			
11	36601665030	SPRING	1					
13	91002803400	O-RING	1		1B P34			
14	36601665050	O-RING	1		P25			
15	91410002500	RING,BACKUP	1		P25			
18	91002802600	O-RING	1		1B P26			
19	91001301600	O-RING	1		WP16			
20	91002801000	O-RING	1		1B P10			
21	91410001000	RING,BACKUP	1		P10			
50	36603110000	VALVE,COUNTERBALANCE	1					

TM-ZF600 31103000008A 3 SEC. BOOM,STD FRAME,REAR-END MOUNTIN

Pos No.	Parts No	Parts Name	Qty	Unit	Technical Data	Serial No (Start)	Serial No (End)	Remarks	Pages
1	31230751000	POST ASSY	1						
2	37000149430	PIN	2						
3	80136363080	PIN,SPLIT	2		6.3X80				
4	31230090300	COVER	1						
5	90101210014	BOLT	4		M10X14				
6	90302041001	WASHER,SPRING	4		10				
7	37000119000	PIN	1						
8	37000565160	PLATE	1						
9	90101212025	BOLT	2		M12X25				
10	90302041201	WASHER,SPRING	2		12				
11	31230350100	PLATE	1						
12	80182306010	SCREW,MACHINE	2		M6X10				
13	90302040601	WASHER,SPRING	2		6				
14	82401800120	PLUG (FOR M12)	2						

**TM-ZF600 31103000008A 3 SEC. BOOM,STD FRAME,REAR-END MOUNTIN
PO1000122-01 INDICATION PLATES**

メイバン
INDICATION PLATES

【組立名称一覧】より選択してください。
SEE THE CORRESPONDING "ASSEMBLY NAME" LIST.

CLICK HERE TO **DOWNLOAD** THE COMPLETE MANUAL

- Thank you very much for reading the preview of the manual.
- You can download the complete manual from: www.heydownloads.com by clicking the link below



- Please note: If there is no response to CLICKING the link, please download this PDF first and then click on it.

CLICK HERE TO **DOWNLOAD** THE COMPLETE MANUAL