

# **TM-ZF260 41108110030A FRAME/STD,MANUAL**

**PB2000010-01 POWER TAKE OFF & PUMP**

**PK2000418-00 FRAME UNIT**

**PO1000122-01 INDICATION PLATES**

**PY1000373-00 OPTIONS**

**ASSEMBLY**

CLICK HERE TO **DOWNLOAD** THE COMPLETE MANUAL

- Thank you very much for reading the preview of the manual.
- You can download the complete manual from: [www.heydownloads.com](http://www.heydownloads.com) by clicking the link below



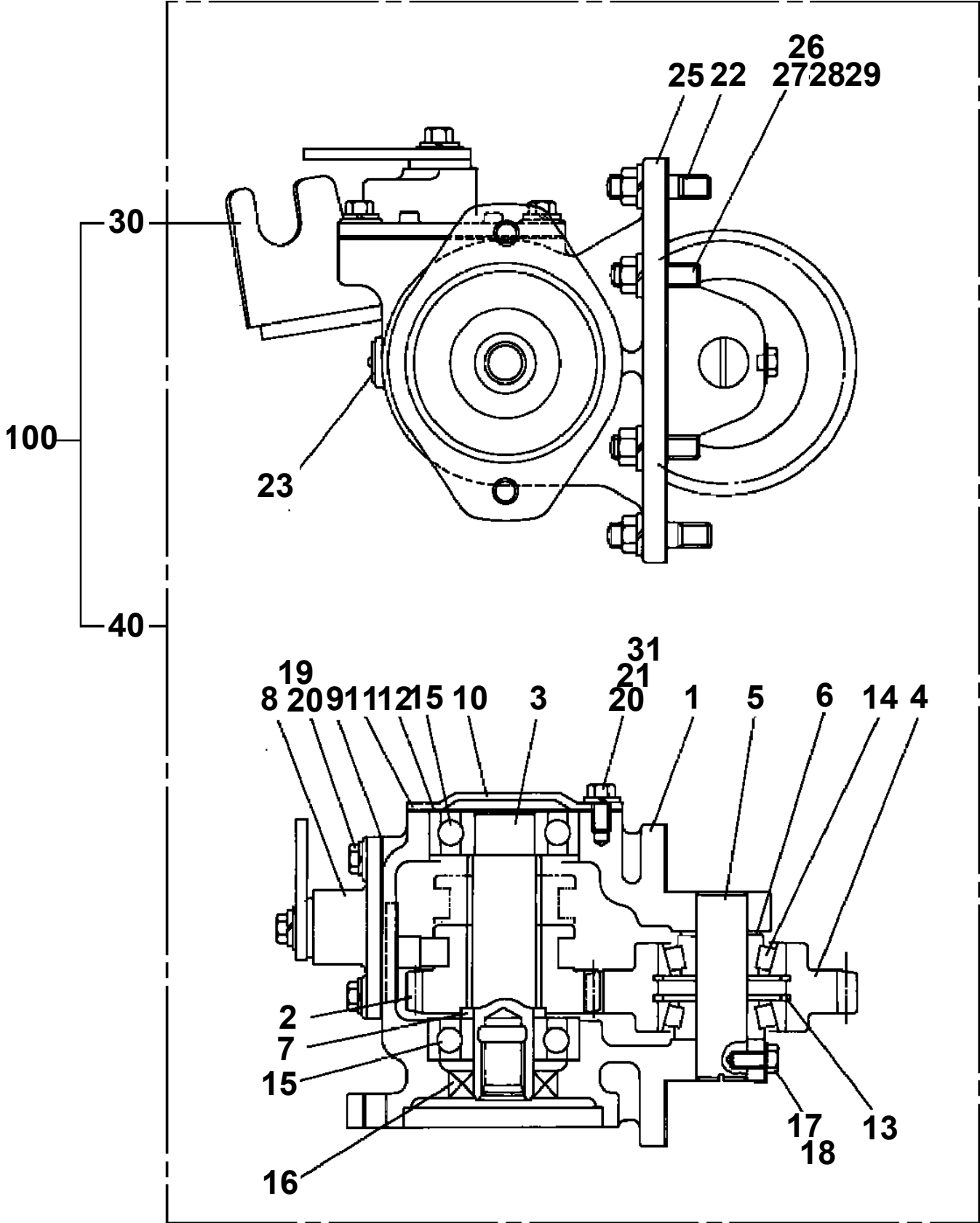
- Please note: If there is no response to CLICKING the link, please download this PDF first and then click on it.

CLICK HERE TO **DOWNLOAD** THE COMPLETE MANUAL

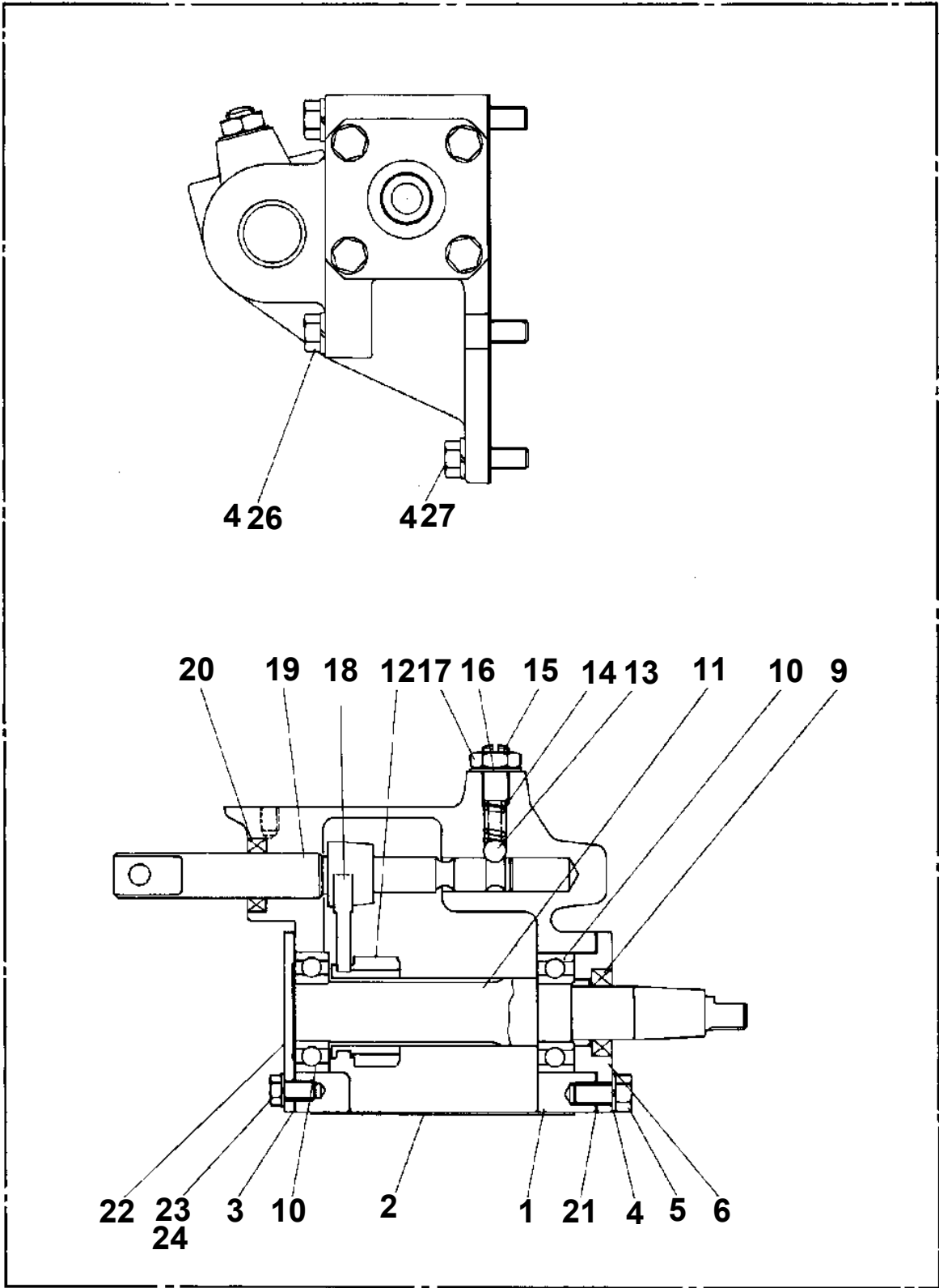
# TM-ZF260 41108110030A FRAME/STD,MANUAL

PC1010400-03 OUTRIGGER,REAR  
PC1020032-00 OUTRIGGER,REAR (ROTARY)  
PC1020033-00 OUTRIGGER,REAR (ROTARY/ENGLISH)  
PC1020034-00 OUTRIGGER,REAR (ROTARY/SERVICE PORT)  
PC1020104-01 OUTRIGGER,REAR  
PC1030185-04 CYLINDER,JACK (REAR)  
PC1030195-03 CYLINDER,JACK (MIN600.WITH FLOAT)  
PC1030196-03 CYLINDER,JACK (MIN670.WITH FLOAT)  
PC1030197-04 CYLINDER,JACK (MIN661.WITHOUT FLOAT)  
PC1030418-00 CYLINDER,JACK (COLD-FORGED)  
PC1030421-00 CYLINDER,JACK (COLD-FORGED)  
PC1030423-00 CYLINDER,JACK (COLD-FORGED)  
PC1100154-04 OPE.ASSY,OUTRIGGER  
PC1100163-01 OPE.ASSY,OUTRIGGER (ROTARY REAR JACK)  
PC1100198-01 OPE.ASSY,O/R (ROTARY R/J+SEAVICE PORT)  
PC1190020-00 INDICATOR,OUTRIGGER  
PC1190021-01 INDICATOR,OUTRIGGER  
PC1190022-00 INDICATOR,OUTRIGGER  
PC1230018-01 PIPING,REAR JACK (1,ROTARY)  
PC1230019-01 PIPING,REAR JACK (2,ROTARY)  
PD1010035-01 REDUCER,SWING SPEED  
PD1010090-02 REDUCER,SWING SPEED  
PD1010185-00 REDUCER,SWING SPEED  
PD1200078-00 PIPING,SWING  
PE1010225-01 CYLINDER,ELEVATING  
PE5020094-00 ELEC.ASSY  
PE5020095-00 ELEC.ASSY (CRANE/SWITCH)  
PE5020096-00 ELEC.ASSY (CRANE/HARNESS)  
PE5020097-00 ELEC.ASSY (CRANE/HARNESS)  
PE5020098-00 ELEC.ASSY (CARRIER)  
PE5020101-00 ELEC.ASSY (AWL LAMP/STOP TO CONFIGURATION)  
PE5020102-01 ELEC.ASSY  
PE5020103-00 ELEC.ASSY  
PE5020106-00 ELEC.ASSY (FRAME)  
PE5021179-00 ELEC.ASSY (MOUNTING VEHICLE)  
PE5021180-00 ELEC.ASSY (MOUNTING VEHICLE)  
PF1010102-01 WINCH  
PF1010128-03 WINCH (OOKUBO)  
PF1010131-01 WINCH (DRUM FREE,OPTION)  
PF1010133-01 WINCH (DRUM FREE)  
PF1010135-02 WINCH (HARTYS)  
PF1010167-02 WINCH (HARTYS)  
PF1010229-01 WINCH (Y.G.TEC)  
PF1010237-01 WINCH (OOKUBO)  
PF1010304-00 WINCH (DRUM FREE)  
PF1020005-00 DRUM,WINCH (HARTYS)  
PF1020024-00 DRUM,WINCH (Y.G.TEC)  
PF1050063-01 HOOK (DRUM FREE,OPTION)  
PF1050161-03 HOOK (1-PART LINE ,OPTION)  
PF1050447-00 HOOK  
PF1080003-00 SUPPORT (DRUM FREE,OPTION)  
PF1180054-00 DETECTOR,DISORDERLY WINDING  
PF1200195-01 PIPING,WINCH (DRUM FREE,OPTION)  
PF1400211-02 MOUNT,WINCH  
PG1130016-02 DETECTOR,BOOM LENGTH  
PG1130086-01 DETECTOR,BOOM LENGTH (BML,OPTION)  
PG1130086-01 DETECTOR,BOOM LENGTH (BML,OPTION)  
PG1130134-00 DETECTOR,BOOM LENGTH  
PG1130135-00 DETECTOR,BOOM LENGTH  
PG1130144-01 DETECTOR,BOOM LENGTH (MOUNT)  
PG1130145-01 DETECTOR,BOOM LENGTH (MOUNT)  
PH1010007-01 DETECTOR,LOAD (BML,OPTION)  
PH1010008-00 DETECTOR,LOAD  
PH1060266-01 DETECTOR,OVER WINDING (OPTION)

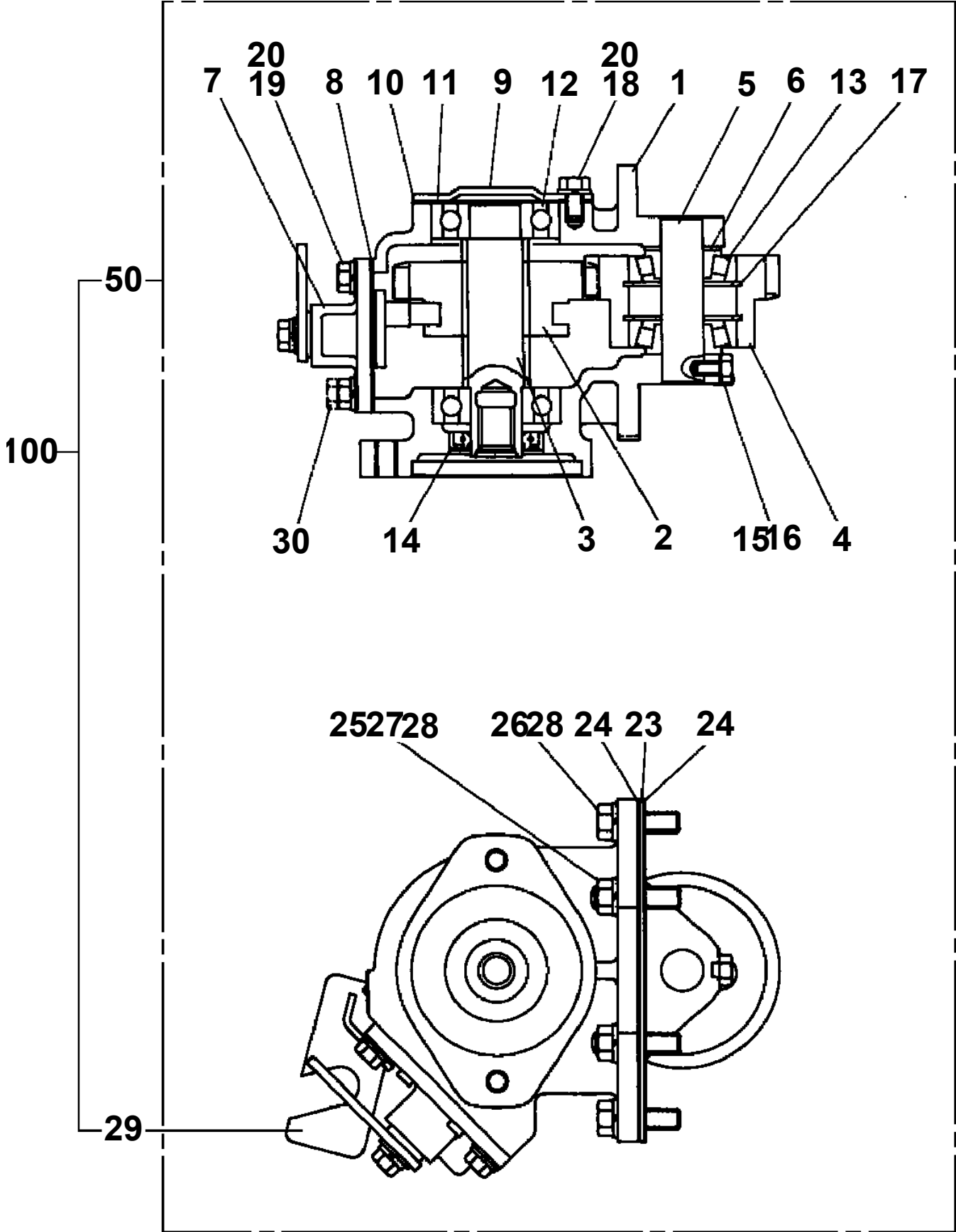
TM-ZF260 41108110030A FRAME/STD,MANUAL  
PB1030022-01 POWER TAKE OFF



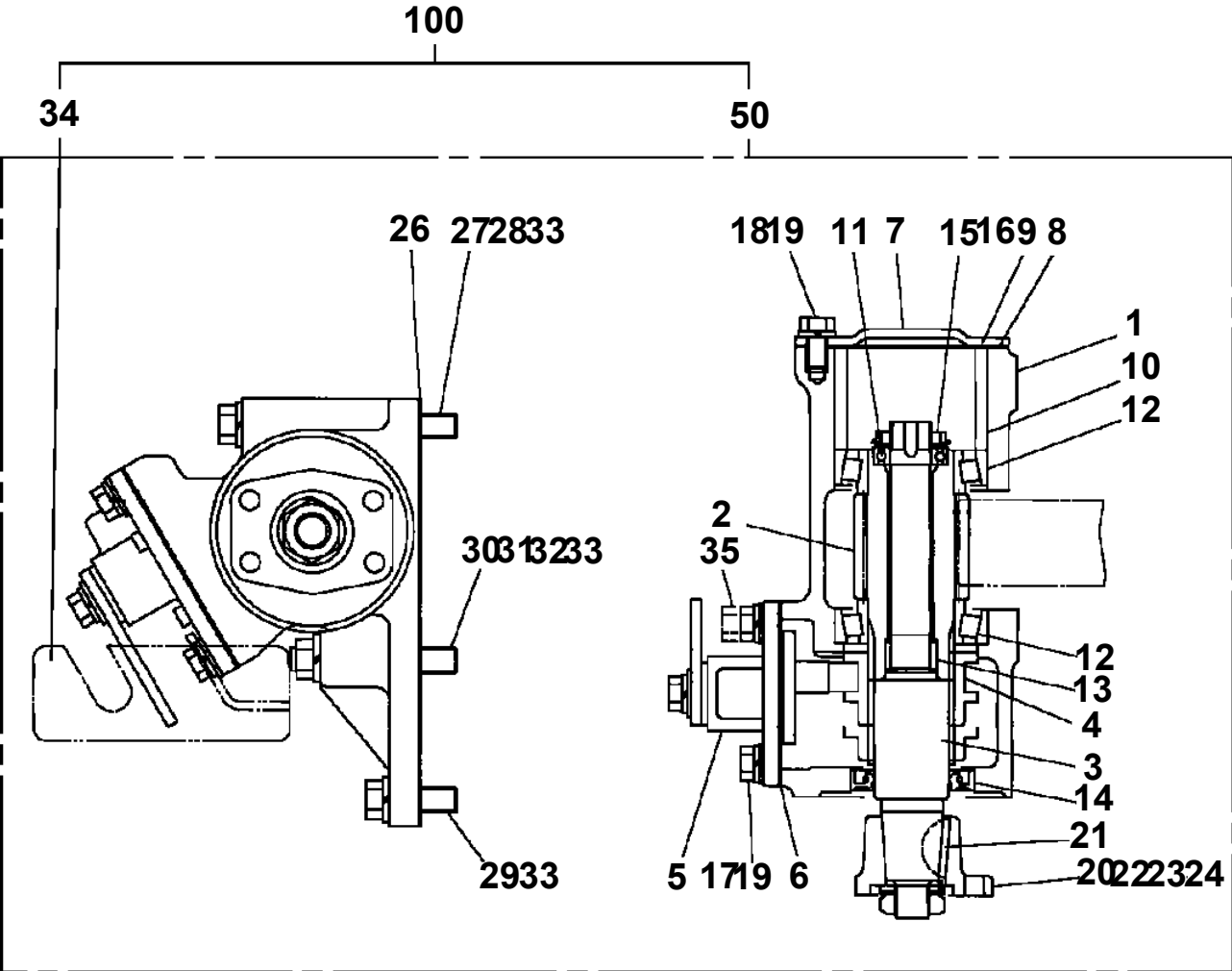
TM-ZF260 41108110030A FRAME/STD,MANUAL  
PB1030064-00 POWER TAKE OFF



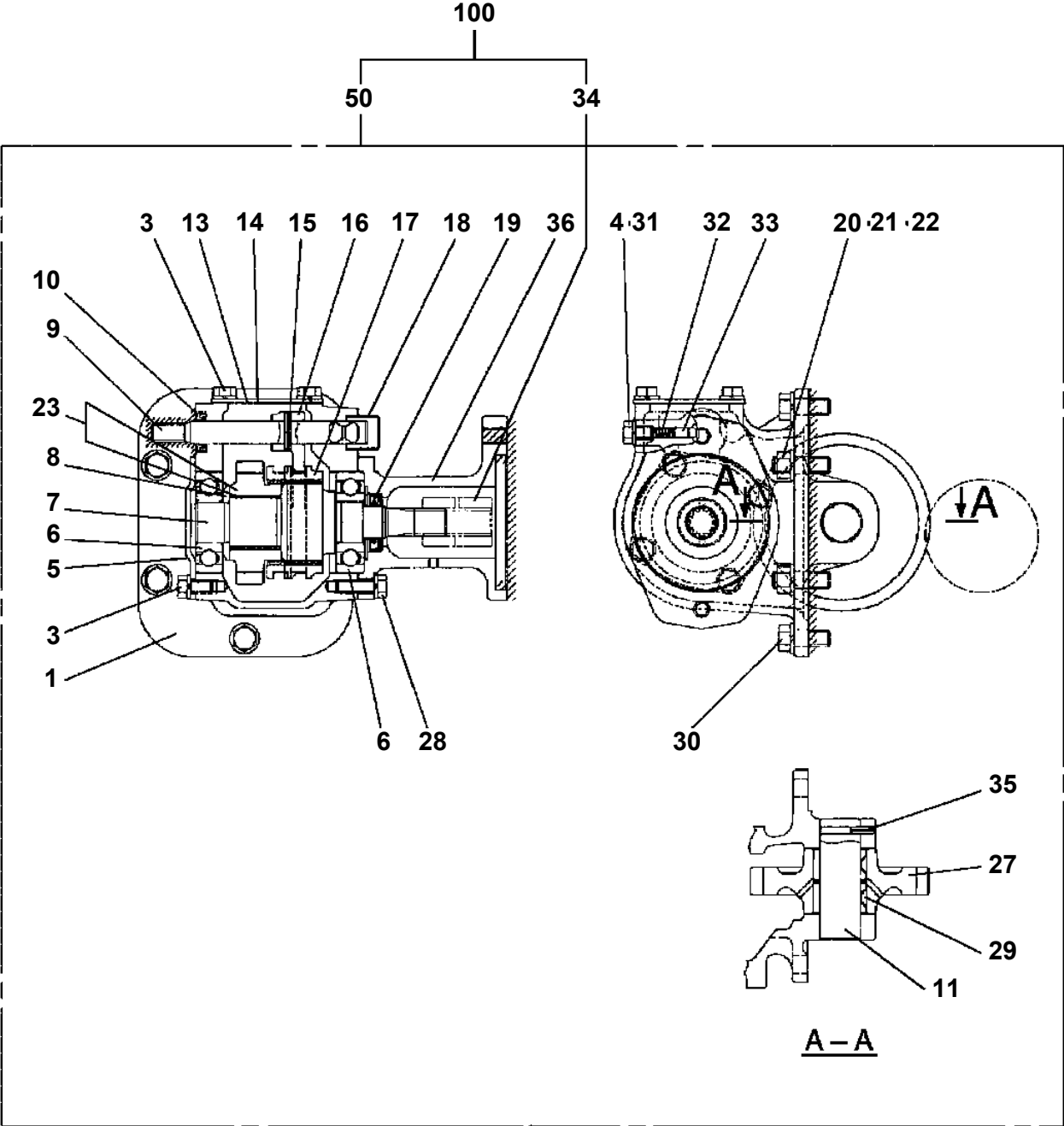
TM-ZF260 41108110030A FRAME/STD,MANUAL  
PB1030100-01 POWER TAKE OFF



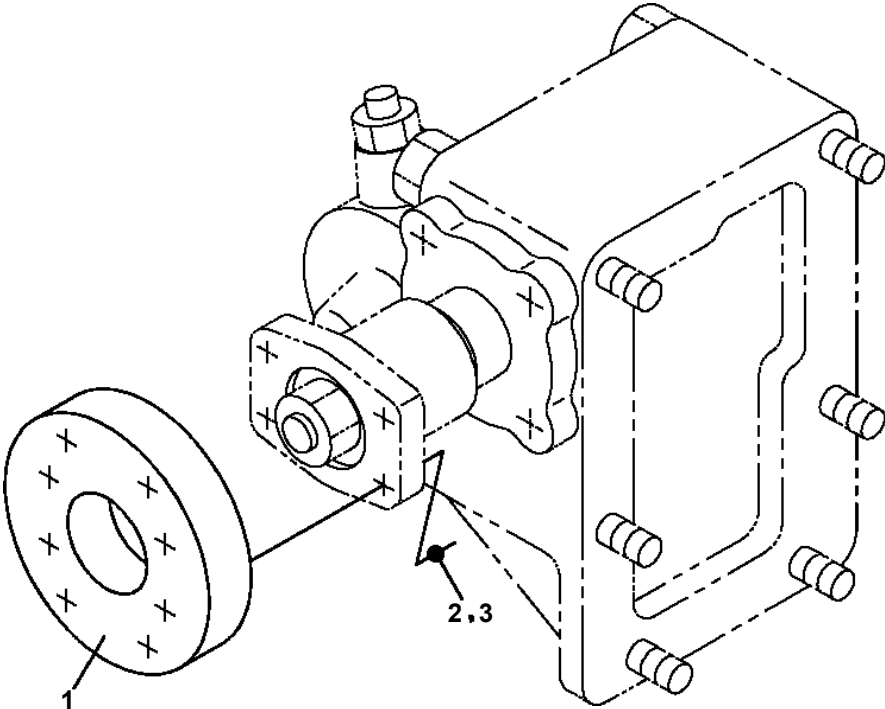
**TM-ZF260 41108110030A FRAME/STD,MANUAL  
PB1030131-01 POWER TAKE OFF**



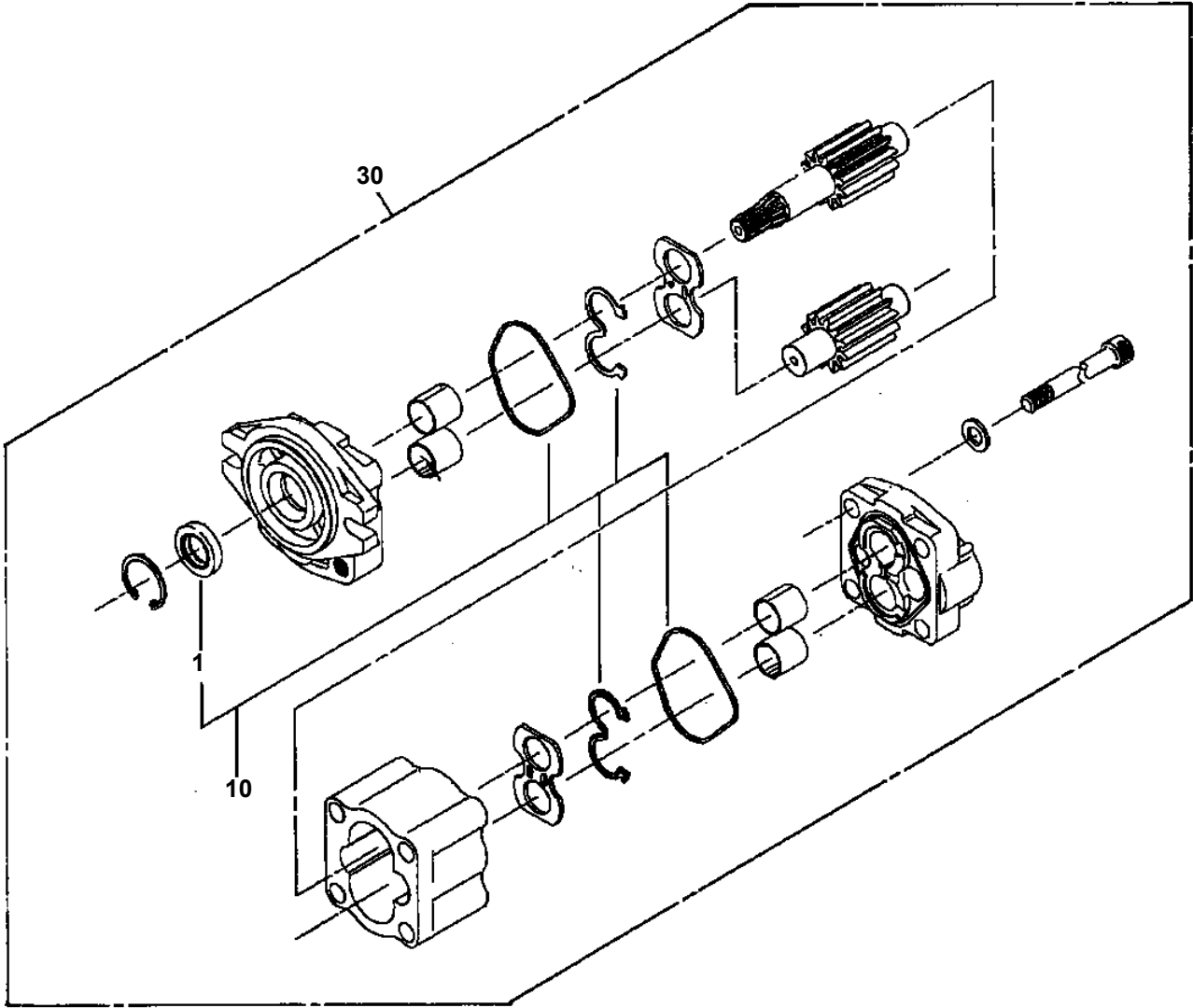
TM-ZF260 41108110030A FRAME/STD,MANUAL  
PB1030163-02 POWER TAKE OFF



**TM-ZF260 41108110030A FRAME/STD,MANUAL  
PB1030217-00 POWER TAKE OFF (SPACER)**

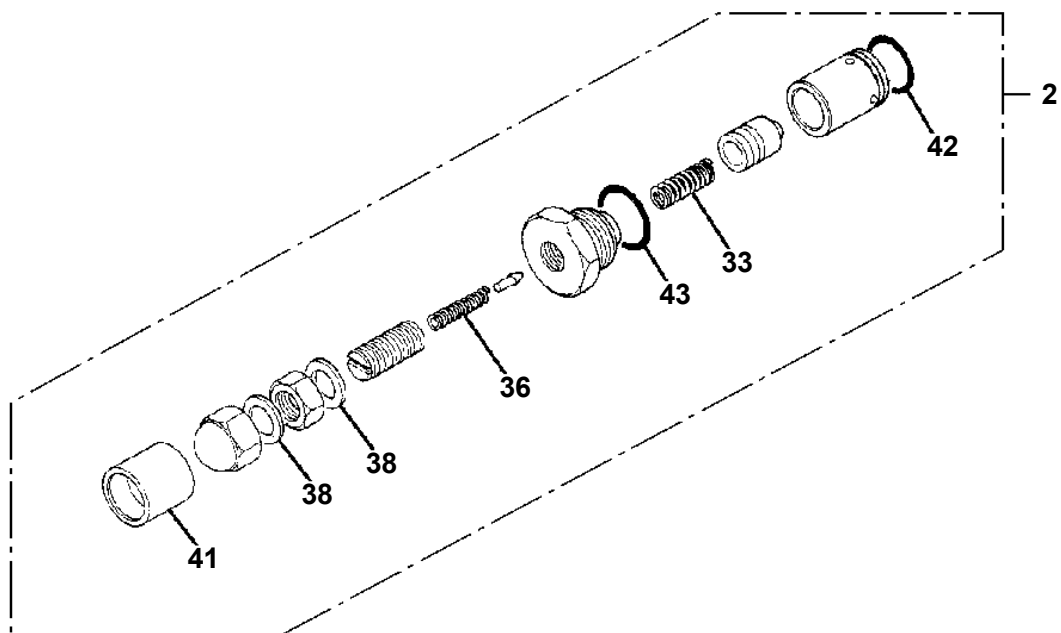
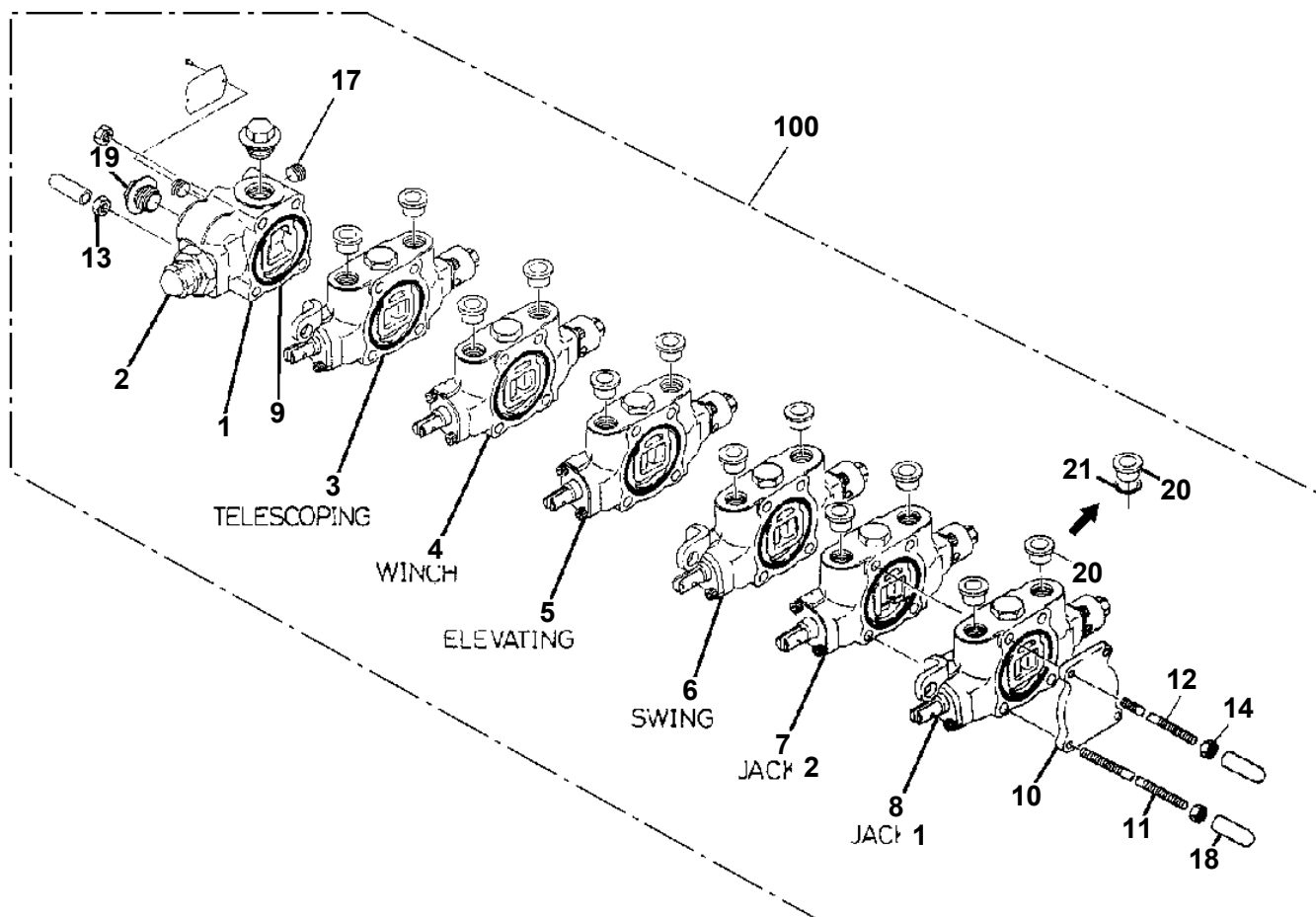


TM-ZF260 41108110030A FRAME/STD,MANUAL  
PB1100119-00 PUMP, HYDRAULIC





TM-ZF260 41108110030A FRAME/STD,MANUAL  
PB1320265-03 VALVE,MANUAL CONTROL (SANWA)



# TM-ZF260 41108110030A FRAME/STD,MANUAL

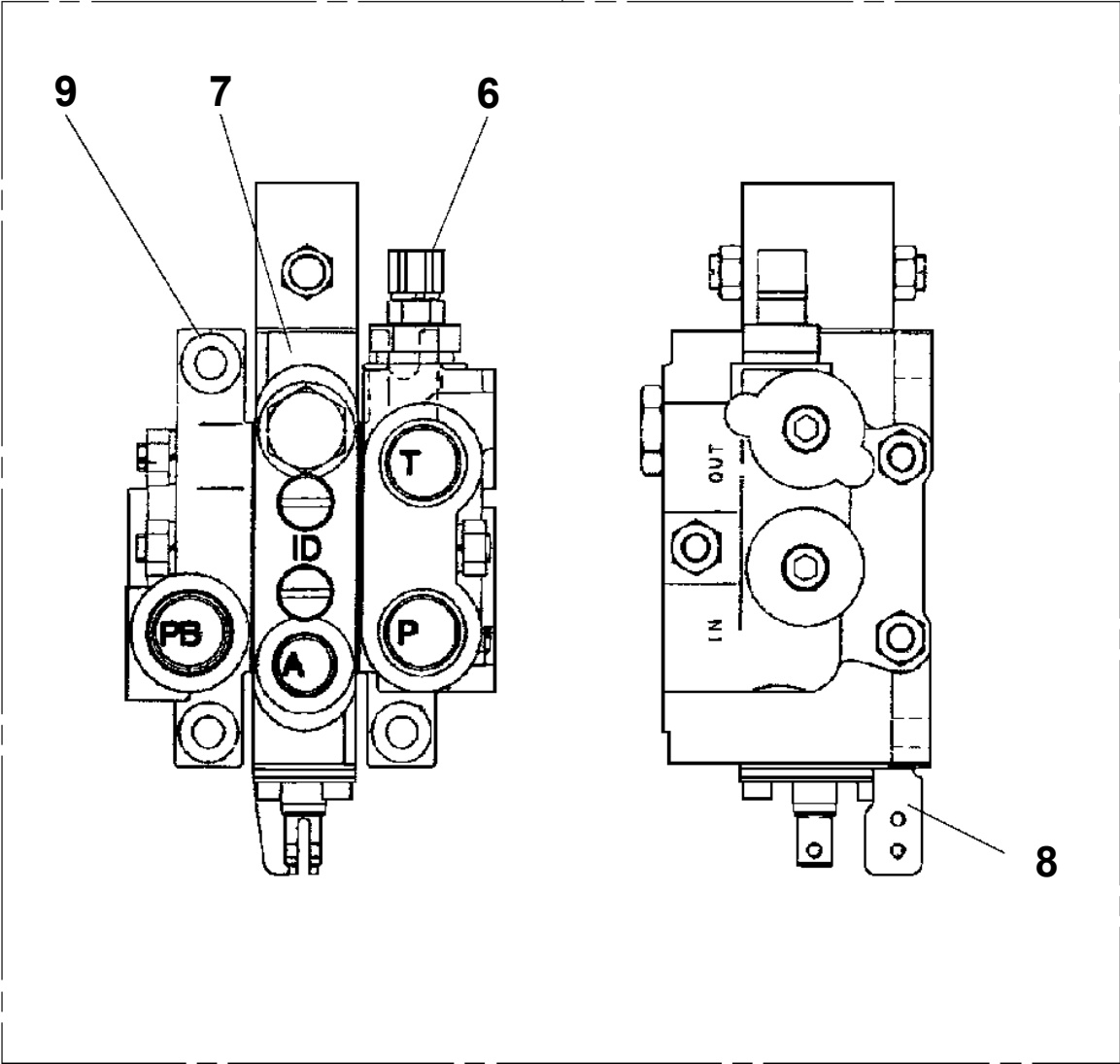
Pos No.	Parts No	Parts Name	Qty	Unit	Technical Data	Serial No (Start)	Serial No (End)	Remarks
1	36635725010	COVER	1					
2	36635725020	VALVE,CONTROL	1					
4	36635725030	VALVE,RELIEF	1					
5	36635725040	VALVE,RELIEF	1					
6	36635725050	RING (A)	1					
7	36635725060	RING (X)	1					
8	36635725070	RING (C)	1					
24	91002903000	O-RING	2		1B G30			
25	91002904000	O-RING	2		1B G40			
30	91002903500	O-RING	2		1B G35			
46	13115103260	PLUG	1					
47	09115101100	VALVE,CHECK	1					
48	09115101080	SPRING	1					
49	19215101010	O-RING	1					
50	13115103030	SEAL,OIL	2					
51	13115103160	RETAINER (BALL)	1					
52	56451331080	COVER	1					
53	13115103170	SPRING	1					
54	80560007000	BALL,STEEL	2		7			
55	13115103140	NOTCH	1					
56	13115103150	CASE (BALL)	1					
57	36635725090	COVER (SPRING)	1					
60	36635725050	RING (A)	1					
61	36635725060	RING (X)	1					
62	36635725070	RING (C)	1					
63	13115103180	RETAINER (SEAL)	1					
64	36630295070	PLUG	1					
65	91002801800	O-RING	2		1B P18			
66	91002800600	O-RING	1		1B P6			
73	36630365030	SPRING	1					
75	91002802600	O-RING	1		1B P26			
76	91002801100	O-RING	1		1B P11			
80	16025153020	SPRING	2					
84	91001001600	O-RING	4		1A S16			
86	91002802100	O-RING	1		1B P21			
87	36630045230	TUBE	2					
102	91000501500	O-RING	1		AS568-015			
104	16025153030	SPRING	1					
106	91002801001	O-RING	1		1B P10A			
107	36630755040	O-RING	1		1A WP6			
108	36631215050	RING,BACKUP	1					
112	16095101070	O-RING	1					
200	36635720000	VALVE,MANUAL CONTROL	1					

# TM-ZF260 41108110030A FRAME/STD,MANUAL

Pos No.	Parts No	Parts Name	Qty	Unit	Technical Data	Serial No (Start)	Serial No (End)
1	36635785010	COVER (FRONT)	1				
2	36635785020	VALVE,RELIEF	1				
3	36635785031	VALVE,CONTROL (TELESCOPE)	1				
4	36635785040	VALVE,CONTROL (WINCH)	1				
5	36635785050	VALVE,CONTROL (ELEVATING)	1				
6	36635785100	VALVE,CONTROL (SWING)	1				
7	36635785070	VALVE,CONTROL (JACK 2)	1				
8	36635785080	VALVE,CONTROL (JACK 1)	1				
9	91001205500	O-RING	7		1A G55		
10	36641555090	COVER (BOTTOM)	1				
11	36636235040	BOLT,TIE	1				
12	36645495290	BOLT,TIE (A)	3				
13	90201200800	NUT	4		M8		
14	90203200800	NUT	4		M8		
17	80316030040	PLUG	1		PT1/4		
18	36640755070	CAP	5				
19	36645615090	PROTECTOR	2				
20	36645615190	PLUG (DUST)	12				
21	36645615200	PACKING	12				
33	12635101110	SPRING (RETURN)	1				
36	12635101140	SPRING	1				
38	11629431040	PACKING	2				
41	16623320390	TUBE (SEAL)	1				
42	91002802100	O-RING	1		1B P21		
43	91001102600	O-RING	1		1A P26		
53	36633365040	CAP (RETURN SPRING)	6				
54	36633365050	SPRING (RETURN)	6				
55	36645495210	SEAT,SPRING (RETURN)	4				
56	36633365060	PLATE (B)	9				
57	36633365070	ADAPTER	6				
58	36633365080	LINK	3				
59	36633365090	CAP (CHECK VALVE)	6				
60	36633365100	SEAL,OIL	12				
61	91001101400	O-RING	6		1A P14		
62	36645615260	C-BOLT	20		M5X8		
63	36645615230	C-BOLT	6		5X12		
75	36640625380	SEAT,SPRING	8				
80	12635101190	SPRING	4				
109	12635101360	SPOOL	1				
200	36635780001	VALVE,MANUAL CONTROL (SANWA)	1				

TM-ZF260 41108110030A FRAME/STD,MANUAL  
PB1320517-00 VALVE,MANUAL CONTROL (DUMP)

100



# TM-ZF260 41108110030A FRAME/STD,MANUAL

Pos No.	Parts No	Parts Name	Qty	Unit	Technical Data	Serial No (Start)	Serial No
1	36637335010	VALVE (BODY ASSY)	1				
2	36637335020	VALVE,CONTROL (TELESCOPING)	1				
3	36637335030	VALVE,CONTROL (WINCH)	1				
4	36637335040	VALVE,CONTROL (ELEVATING)	1				
5	36637545020	VALVE,CONTROL (SWING)	1				
6	36637335060	VALVE,CONTROL (JACK 2)	1				
7	36637335070	VALVE,CONTROL (JACK 1)	1				
8	36637335080	COVER (SIDE)	1				
9	36633165030	BOLT	1		M8X323		
10	36637335090	BOLT	3		M8X303		
11	90201200800	NUT	9		M8		
12	36637455010	VALVE,UNLOAD	1			ET5132	ET5131
	36637455030	VALVE,UNLOAD	1				
31	36637335110	BODY	1				
32	91002905500	O-RING	7		1B G55		
33	91002801800	O-RING	3		1B P18		
34	91002803500	O-RING	1		1B P35		
35	91002800600	O-RING	1		1B P6		
36	36637335120	PLUG	1		PF1/4		
37	91002801100	O-RING	1		1B P11		
38	36647205050	PLUG	1		NPT1-16		
	36647205050	PLUG	4		NPT1-16	ET5132	ET5131
	36647205050	PLUG	2		NPT1-16		
45	36637335130	O-RING	12		1A P14.5		
46	36637335140	SEAL,DUST	12				
47	36637335150	RETAINER (SEAL)	9				
48	36637335160	RETAINER (SPRING)	12				
49	36637335170	SPRING	6				
50	36637335180	END,SPOOL	6				
51	36637335190	COVER (SPRING)	4				
52	36637335200	BOLT,HEXAGON SOCKET	12		M6X20		
53	36637335210	COVER	3				
54	36637335220	BOLT,HEXAGON SOCKET	6		M6X15		
55	36636435060	VALVE,CHECK	6				
56	36635535140	SPRING	2				
57	36634085090	RETAINER (VALVE)	2				
58	91002801400	O-RING	7		1B P14		
59	36637335230	SOCKET	1				
60	36637335240	O-RING	1		1AS10		
61	36637335250	O-RING	1		1A S11.2		
62	36637335260	O-RING	1		1AS14		
63	36637335270	SPRING	1				
64	36637335280	SPOOL	1				
65	36637335290	SOLENOID ASSY	1				
66	36637335300	BOLT,HEXAGON SOCKET	2		M4X8		
67	36647205070	PLUG	4		GPM1/32		
73	36637335310	BOLT,HEXAGON SOCKET	6		M6X10		
78	36637335320	SEAT,VALVE	1				
79	14225101010	VALVE,REGULATOR	2				
80	36635175110	SPRING	1				
81	36637335330	CAP	1				
82	36637335340	O-RING	1		1B P15		
94	36635555080	SPRING	4				
95	36635045040	RETAINER (VALVE)	4				
100	36637335350	COVER	2				
111	36637335360	BODY	1				ET5131
113	36637335370	SPOOL	1				
114	36637545050	SPRING	1				
115	91002800800	O-RING	1		1B P8		
116	36634915280	PLUG	1				
117	36636005150	SOLENOID ASSY	1				ET5131
118	91002800900	O-RING	1		1B P9		
119	36637455020	SEAT,VALVE	1				

# TM-ZF260 41108110030A FRAME/STD,MANUAL

Pos No.	Parts No	Parts Name	Qty	Unit	Technical Data	Serial No (Start)	Serial No (End)	Remarks	Pages
1	37002448730	HOSE	2		L=330				
2	91002801400	O-RING	10		1B P14				
3	37002454080	HOSE	1		L=1200		644909		
	37002459300	HOSE	1		L=1200	644910			
4	37002432940	HOSE	1		L=1300		644909		
	37002459320	HOSE	1		L=1300	644910			
5	37000804110	JOINT	1						
6	91803880070	CLIP	2		D=13.1-16.2				
7	37002500640	HOSE	1		L=400				
8	80481103030	JOINT	2		L,G3/8-G3/8				
9	37000920980	JOINT	2		PF3/8-PF3/8				
10	37002454090	HOSE	1		L=520				
11	37002454100	HOSE	1		L=480 TO 490				
12	31340310100	JOINT	1						
13	80481102030	JOINT	2		L G1/4-G3/8				
14	91002801100	O-RING	2		1B P11				

# TM-ZF260 41108110030A FRAME/STD,MANUAL

Pos No.	Parts No	Parts Name	Qty	Unit	Technical Data	Serial No (Start)	Serial No
1	81408000081	PIPE,STEEL	1	M	8X1.2T		
2	81408000081	PIPE,STEEL	1	M	8X1.2T		
3	36062440000	CYLINDER,ACCELERATOR	1				642473
	36062740000	CYLINDER,ACCELERATOR	1			642474	
4	90101208070	BOLT	2		M8X70		
5	90302040801	WASHER,SPRING	7		8		642473
	90302040801	WASHER,SPRING	6		8	642474	
6	90201780800	NUT	5		M8		642473
	90201780800	NUT	4		M8	642474	
7	36648360000	VALVE,REMOTE CONTROL (MAIN/SANWA)	1				642473
	36648360001	VALVE,REMOTE CONTROL	1			642474	
8	80302090081	FITTING	1		KCO80-020N		
9	91002801100	O-RING	1		1B P11		
10	80303130081	FITTING,ELBOW	3		KLO08-020E		
11	36672590000	FILTER,OIL (CARTRIDGE)	1				
12	81408000160	PIPE,STEEL	1	M	12X1.4T		
13	90303070801	WASHER,PLAIN	1		8		
14	80316070040	PLUG	1		PF1/4		
15	31474004100	PLATE,NAME	1				
16	90280200800	NUT,FLANGE	1		M8	642474	
31	91002801100	O-RING	3		1B P11		

# TM-ZF260 41108110030A FRAME/STD,MANUAL

Pos No.	Parts No	Parts Name	Qty	Unit	Technical Data	Serial No (Start)	Serial N
1	(*****)	OUTRIGGER,REAR	1				
	(*****)	OUTRIGGER,REAR	1				
3	(*****)	OPE.ASSY,O/R (ROTARY R/J+SEAVICE PORT)	1				
4	(*****)	PLATE ASSY,NAME (POWER SUPPLY)	1				
5	(*****)	PLATE ASSY,NAME (R/J OPERATION)	1				
11	(*****)	PIPING,LOWER (MAIN--R/J+SERVICE PORT VA)	1				
12	(*****)	PIPING,REAR JACK (1,ROTARY)	1				

# TM-ZF260 41108110030A FRAME/STD,MANUAL

Pos No.	Parts No	Parts Name	Qty	Unit	Technical Data	Serial No (Start)	Serial No (End)	R
1	91001101000	O-RING	2		1A P10			
2	90172110040	BOLT,HEXAGON SOCKET	2		M10X40			
3	36623930000	VALVE,PILOT CHECK	1					
4	90174110025	BOLT	2		M10X25			
5	31611230010	WASHER,PLAIN	2		10			
6	36033900000	CYLINDER,JACK (COLD-FORGED)	1					
7	80491002020	JOINT (WITH O-RING)	2					
8	31621963000	COVER	1					
9	80172305008	SCREW,MACHINE	1		M5X8			
21	91002801100	O-RING	2		1B P11			

# TM-ZF260 41108110030A FRAME/STD,MANUAL

Pos No.	Parts No	Parts Name	Qty	Unit	Technical Data	Serial No (Start)	Serial No (End)	Remarks
1	37000147840	PIN	10					
2	80620210050	PIN,SNAP	10					
3	31701550200	ROD ASSY	2					
4	31701550100	SUPPORT	1					
5	37000165020	PIN	3					
6	80136340020	PIN,SPLIT	3		4X20			
7	37000302990	SPACER	1		L=14			
8	31701581100	END	2					
9	90203200800	NUT	2		M8			
10	31701581500	LINK	2					
11	31701580700	LEVER	1				643757	
	31701580701	LEVER	1			643758		
12	31701580800	LEVER	1				643757	
	31701580801	LEVER	1			643758		
13	31322050500	KNOB (BLACK)	4				643757	
	31322050510	KNOB (BLACK)	4			643758	EL7963	
	31323330100	KNOB (BLACK)	4			EL7964		
14	31701581200	SUPPORT	1					
15	90131510020	BOLT,HEXAGON SOCKET	2		M10X20			
16	90302041001	WASHER,SPRING	6		10			
17	90201201000	NUT	4		M10			
18	31701580200	LEVER	1				643757	
	31701580201	LEVER	1			643758		
19	31701580100	LEVER	1				643757	
	31701580101	LEVER	1			643758		
20	31701581700	SUPPORT	1					
21	31701581300	SUPPORT	1					
22	31701581400	SUPPORT	1					
23	31701581600	LINK	2					
24	90101210018	BOLT	3		M10X18			
25	90303071201	WASHER,PLAIN	2		12			
26	90101208016	BOLT	2		M8X16			
27	90302040801	WASHER,SPRING	4		8			
28	90201200800	NUT	2		M8			
41	31701550250	ROD	2					
42	90203200800	NUT	2		M8			
43	31320810210	END	2					

# TM-ZF260 41108110030A FRAME/STD,MANUAL

Pos No.	Parts No	Parts Name	Qty	Unit	Technical Data	Serial No (Start)	Serial No (End)	Remarks	Pages
1	91810132530	FASTENER	2						
2	37002447960	HOSE	4		L=1180				
	37002486200	HOSE	4		L=1180				
3	80320030050	FITTING,ELBOW	4		KLE10-020N		EY1258		
4	81408000130	PIPE,STEEL	16	M	10X1.8T				
5	80320010050	FITTING	4		KUD10-020N		EY1258		
	80320010050	FITTING	8		KUD10-020N	EY1259			
6	80430620400	JOINT	4						
7	37000561880	SUPPORT	3						
8	82100002039	CLAMP	2						
9	90101208012	BOLT	2		M8X12				
10	90302040801	WASHER,SPRING	2		8				
11	37002428090	HOSE	2		L=1280				
12	37002413240	HOSE	2		L=500				
13	37000300720	SLEEVE	12		12-10				
14	37000711410	CLAMP ASSY	3		12-4				
21	91002801100	O-RING	4		1B P11				

# TM-ZF260 41108110030A FRAME/STD,MANUAL

Pos No.	Parts No	Parts Name	Qty	Unit	Technical Data	Serial No (Start)	Serial No (End)	Remarks	Pages
1	80400160131	JOINT	1						
2	91002801800	O-RING	1		1B P18				
3	91810130240	FASTENER	3						
4	80303210050	FITTING,ELBOW	2						
5	91002801400	O-RING	4		1B P14				
6	37000800740	JOINT	1						
7	91803880070	CLIP	2		D=13.1-16.2				
8	80302120080	FITTING	2		POA10PF3/8				
9	81408000100	PIPE,STEEL	1	M	10X1.2T				
10	81408000100	PIPE,STEEL	1	M	10X1.2T				
11	37002510120	HOSE	1		L=1200				
12	90101208045	BOLT	1		M8X45				
13	90201200800	NUT	1		M8				
14	90302040801	WASHER,SPRING	1		8				
15	37000602910	CLAMP	2						

# TM-ZF260 41108110030A FRAME/STD,MANUAL

Pos No.	Parts No	Parts Name	Qty	Unit	Technical Data	Serial No (Start)	Serial No (End)	Rem
1	82401601002	CLAMP	4					
2	91810130240	FASTENER	10					
3	31360201600	COVER	1					
4	82100002596	RELAY	2					
5	31475371100	HARNESS	1					
6	80192486010	SCREW,MACHINE	3		M6X10			
7	31473460300	HARNESS (RED)	1		L=1600			
8	31380291200	RELAY ASSY (WITH HARNESS)	1					

# TM-ZF260 41108110030A FRAME/STD,MANUAL

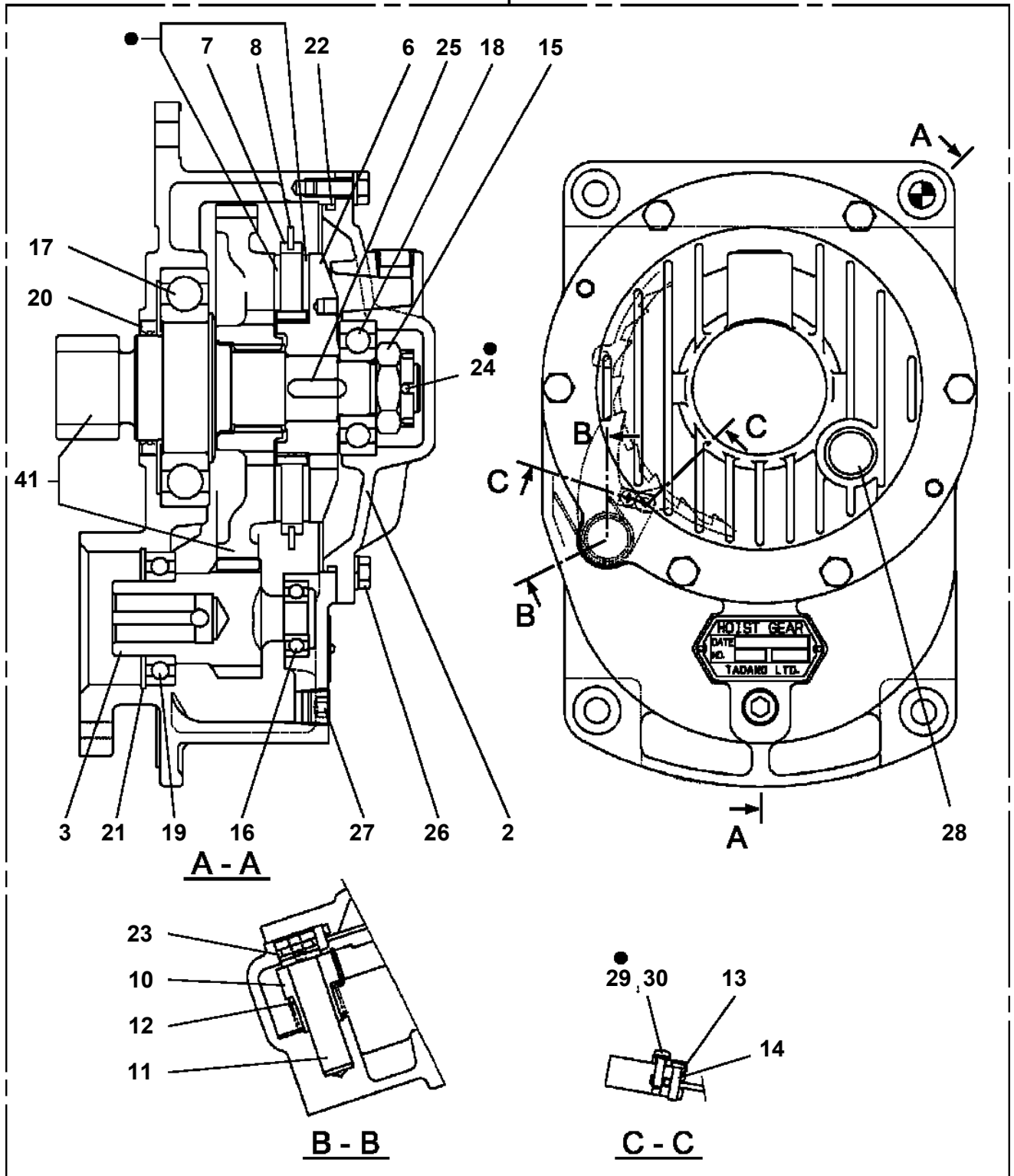
Pos No.	Parts No	Parts Name	Qty	Unit	Technical Data	Serial No (Start)	Serial No (End)	Remarks	Pages
1	90101206035	BOLT	4		M6X35				
2	90302040601	WASHER,SPRING	8		6				
3	90303070601	WASHER,PLAIN	4		6				
4	31653221500	COVER (IP)	1						
	31653221300	COVER	1						
5	91810130240	FASTENER	13						
6	31474066100	HARNESS	1						
7	90101206016	BOLT	4		M6X16				
8	31473795200	SUPPORT	1						
9	31651760800	PLATE,CAUTION	1						
10	90186306010	BOLT,FLANGE	4		M6X10				
20	82100000745	FUSE	1		10A,6.5X30				
21	82100002832	HOLDER,FUSE	1						

# TM-ZF260 41108110030A FRAME/STD,MANUAL

Pos No.	Parts No	Parts Name	Qty	Unit	Technical Data	Serial No (Start)	Serial No (End)	Remarks
1	36072255010	CASING	1					
2	36072255020	COVER	1					
3	36072255030	GEAR (1)	1					
6	36072255060	DISK	1					
7	36072255070	WHEEL,RATCHET	1					
8	36072255080	BUSH	1					
9	36072255090	RING,SLIP	1					
10	36072255100	RATCHET	1					
11	36072255110	PIN	1					
12	36072255120	SPRING	1					
13	36072255130	PIN	1					
14	36072255140	PLATE (LOCK)	1					
15	80172304010	SCREW,MACHINE	1		M4X10			
17	36072255160	BOLT (WITH WASHER)	6		M8X25			
18	36072255170	BREATHER,AIR	1					
19	36072255180	GAUGE,OIL	1					
20	80205000300	PLUG	1		PT3/8		EY1729	
21	80500006004	BEARING,BALL	1					
22	80500006212	BEARING,BALL	1					
23	80500006305	BEARING,BALL	1					
24	80500006007	BEARING,BALL	1					
25	36072255190	KEY	2		7X7X20			
26	36072255200	O-RING	1				EY1729	
27	91001101500	O-RING	1		1A P15			
28	36072255210	SEAL,OIL	1					
29	36072255220	NUT,CASTLE	1		M24			
30	80136350035	PIN,SPLIT	1		5X35			
31	80602110620	RING,RITAINING	1		R62			
41	36072255230	GEAR SET	1					
50	36072250000	WINCH (OOKUBO)	1					
101	36072251000	FACING KIT(JAPANESE)	1					
102	36072252000	FACING KIT (ENGLISH)	1					

TM-ZF260 41108110030A FRAME/STD, MANUAL  
 PF1010229-01 WINCH (Y.G.TEC)

100

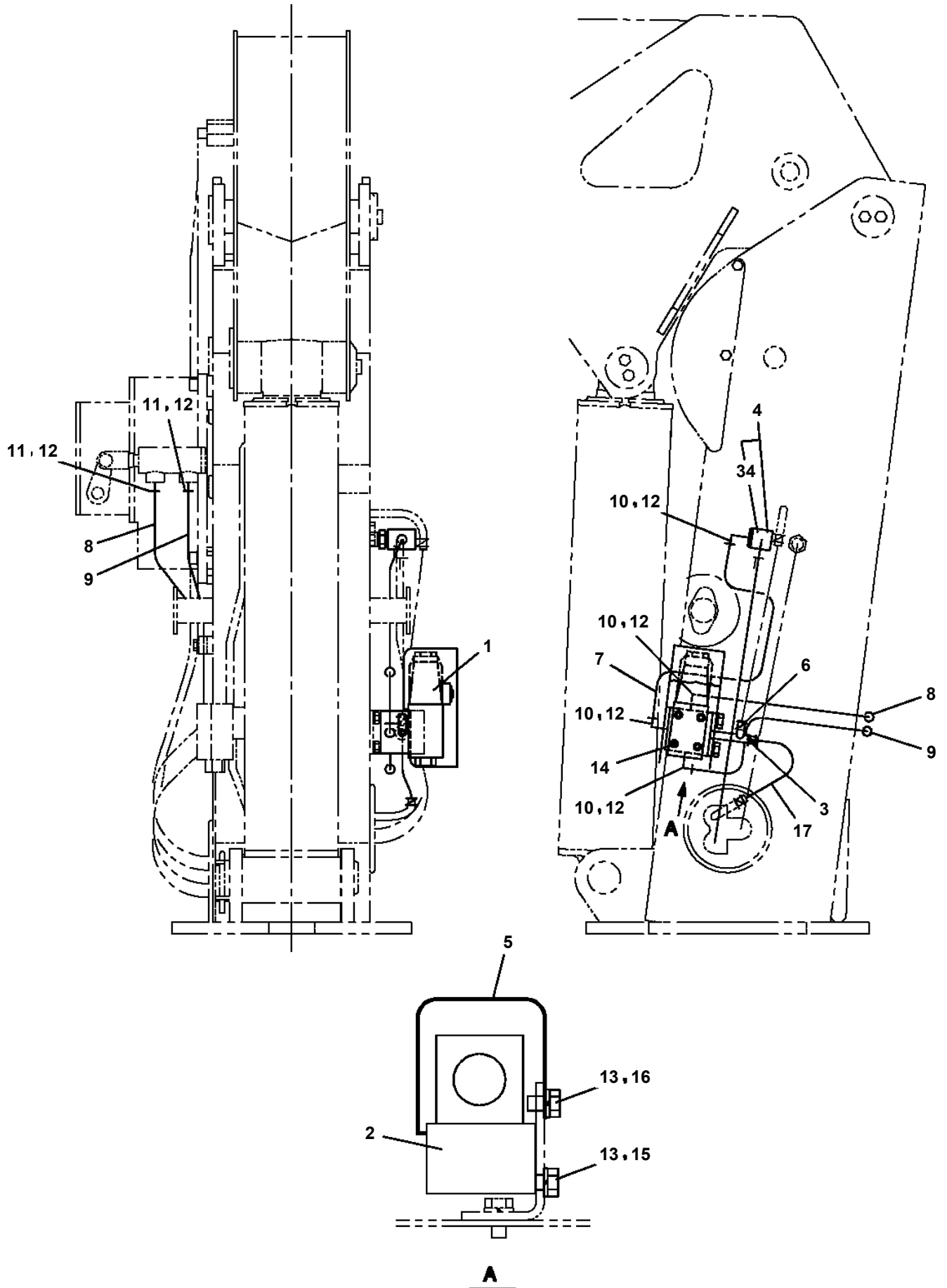


- : FACING KIT KEY NO.101 ( JAPANESE )
- : FACING KIT KEY NO.102 ( ENGLISH )

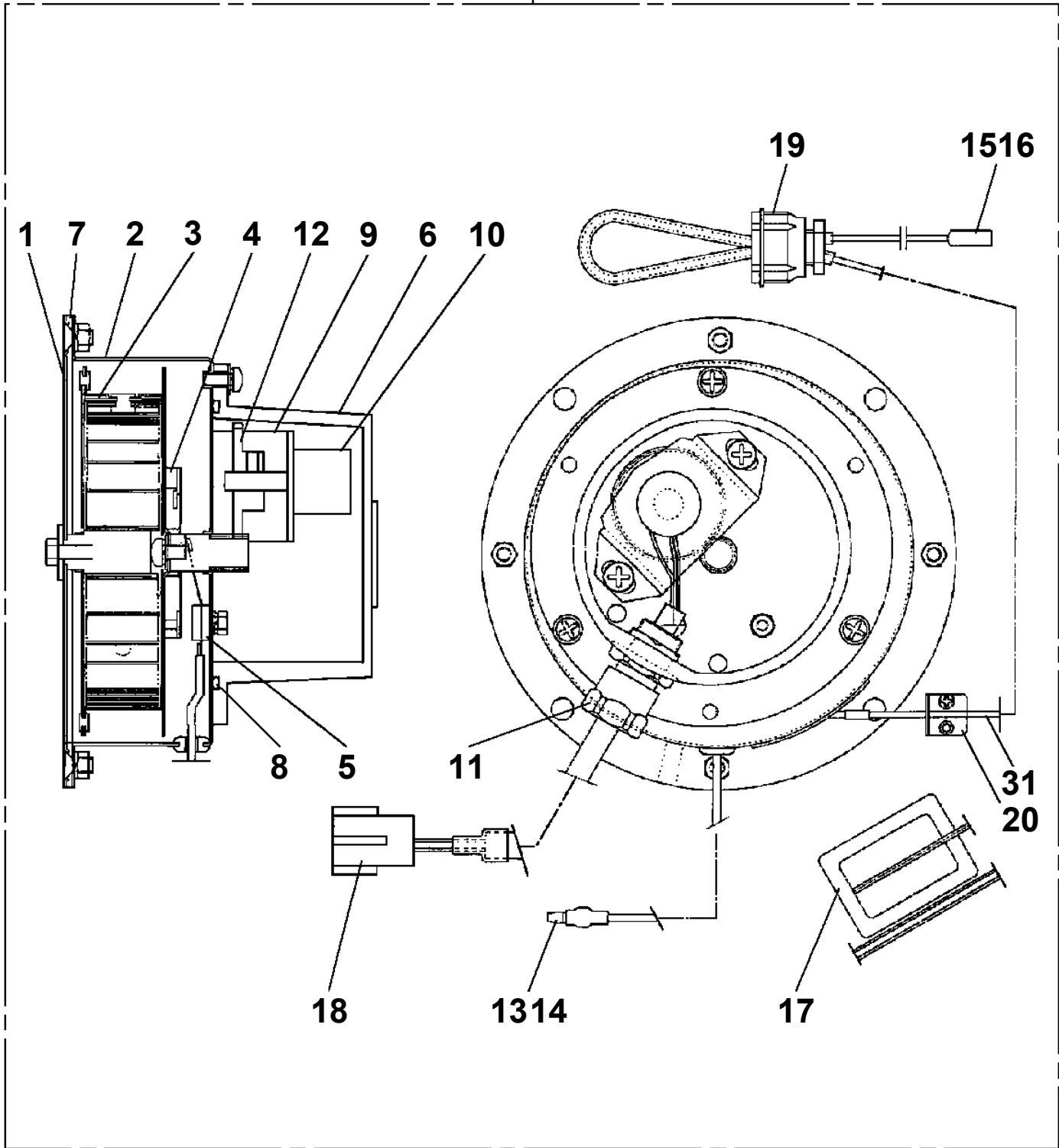
- Protective seal
- Replacement interval name plate



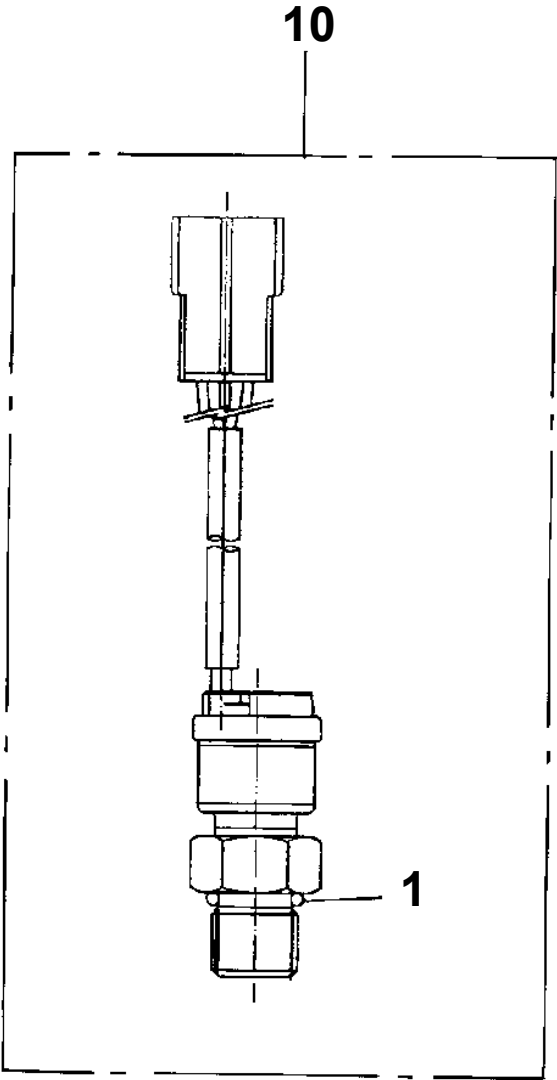
TM-ZF260 41108110030A FRAME/STD, MANUAL  
PF1200195-01 PIPING, WINCH (DRUM FREE, OPTION)



100



**TM-ZF260 41108110030A FRAME/STD,MANUAL  
PH1010008-00 DETECTOR,LOAD**



CLICK HERE TO **DOWNLOAD** THE COMPLETE MANUAL

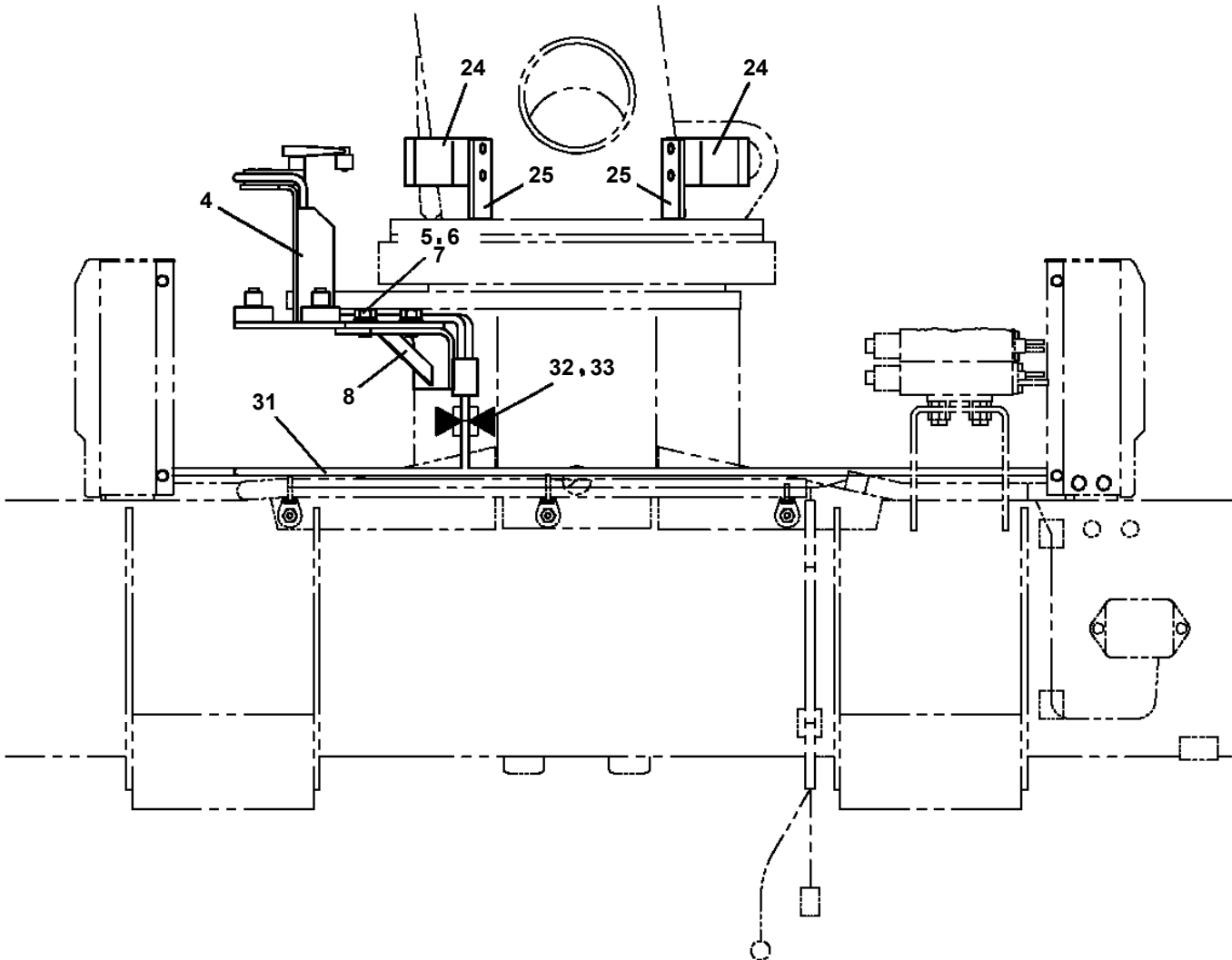
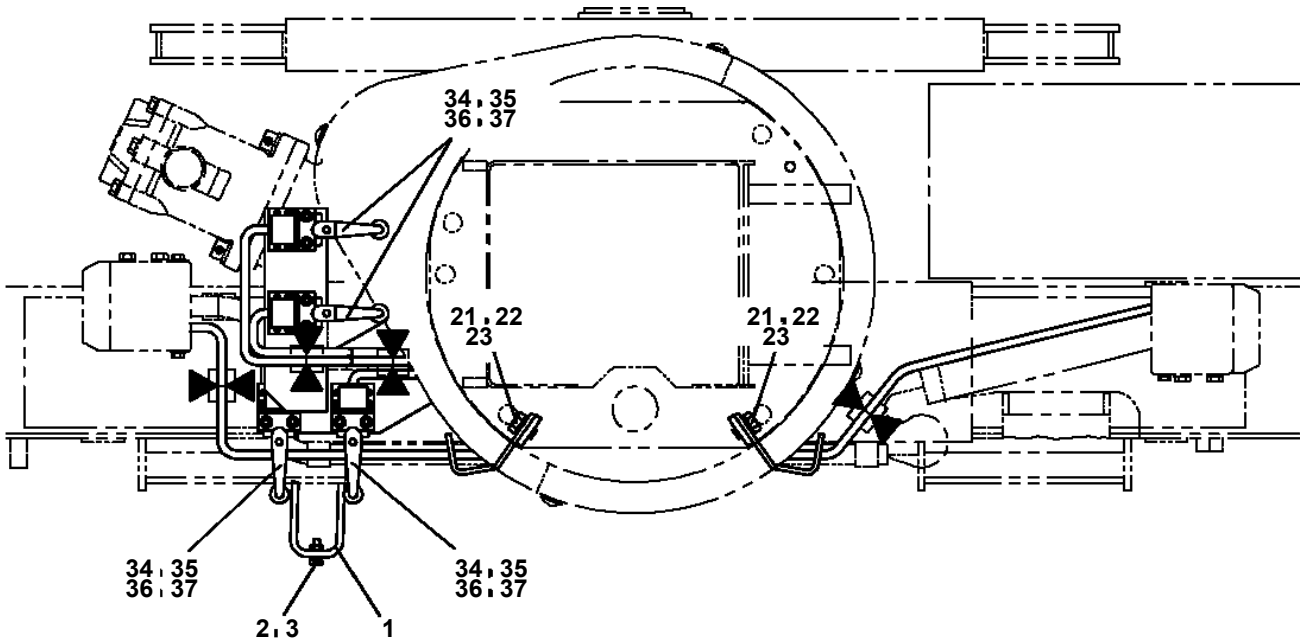
- Thank you very much for reading the preview of the manual.
- You can download the complete manual from: [www.heydownloads.com](http://www.heydownloads.com) by clicking the link below



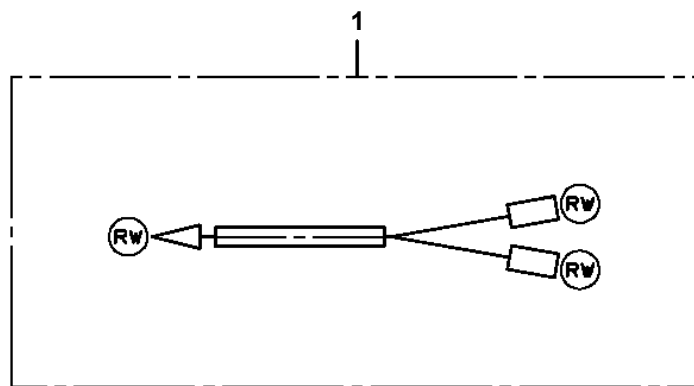
- Please note: If there is no response to CLICKING the link, please download this PDF first and then click on it.

CLICK HERE TO **DOWNLOAD** THE COMPLETE MANUAL

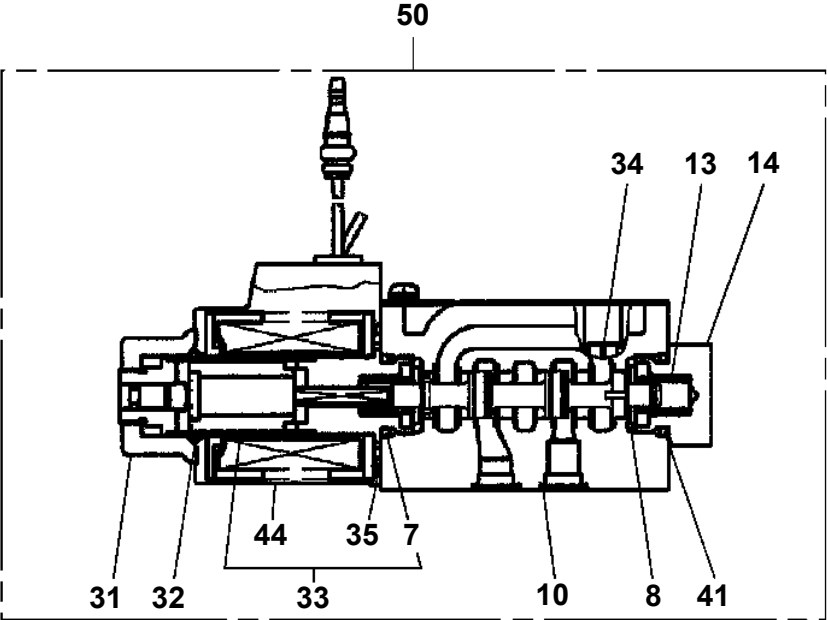
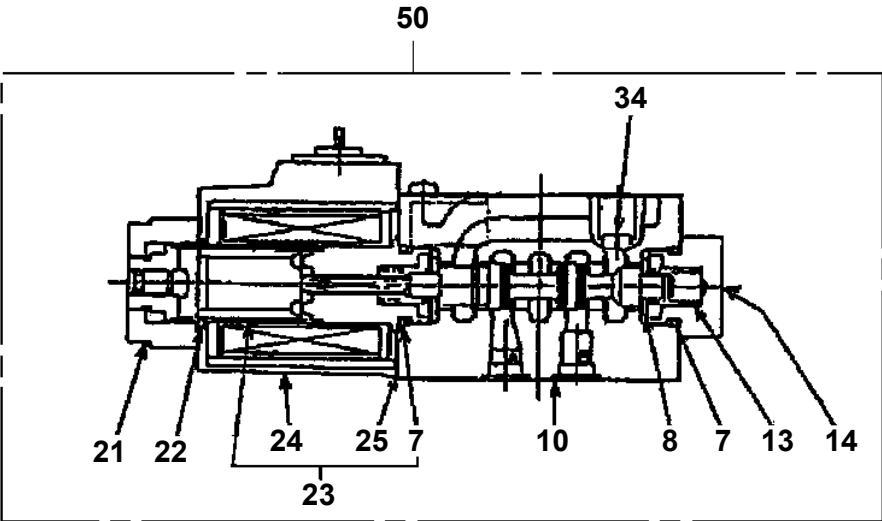
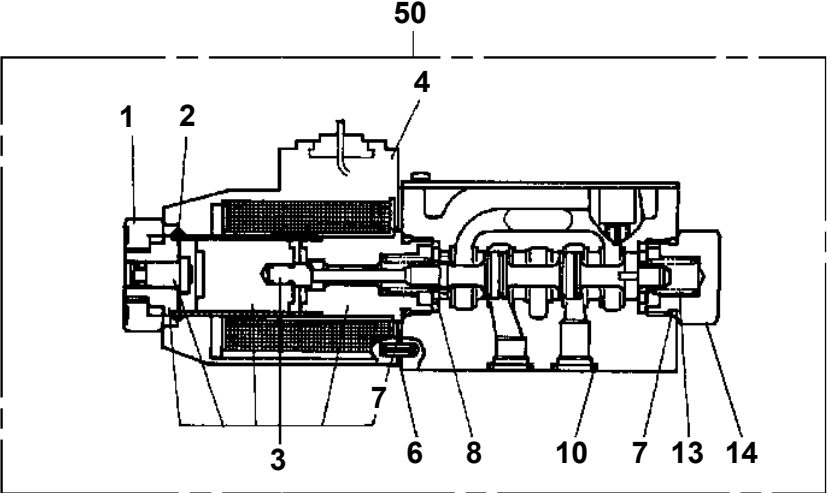
**TM-ZF260 41108110030A FRAME/STD,MANUAL  
PH1260044-00 INDICATOR,ANGLE (LIGHTING LAMP,HOOK-IN)**



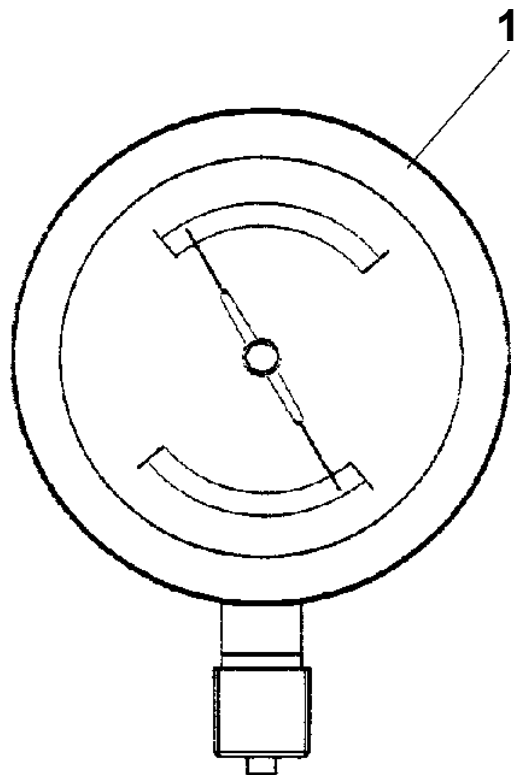
TM-ZF260 41108110030A FRAME/STD,MANUAL  
PH5033590-00 HARNESS



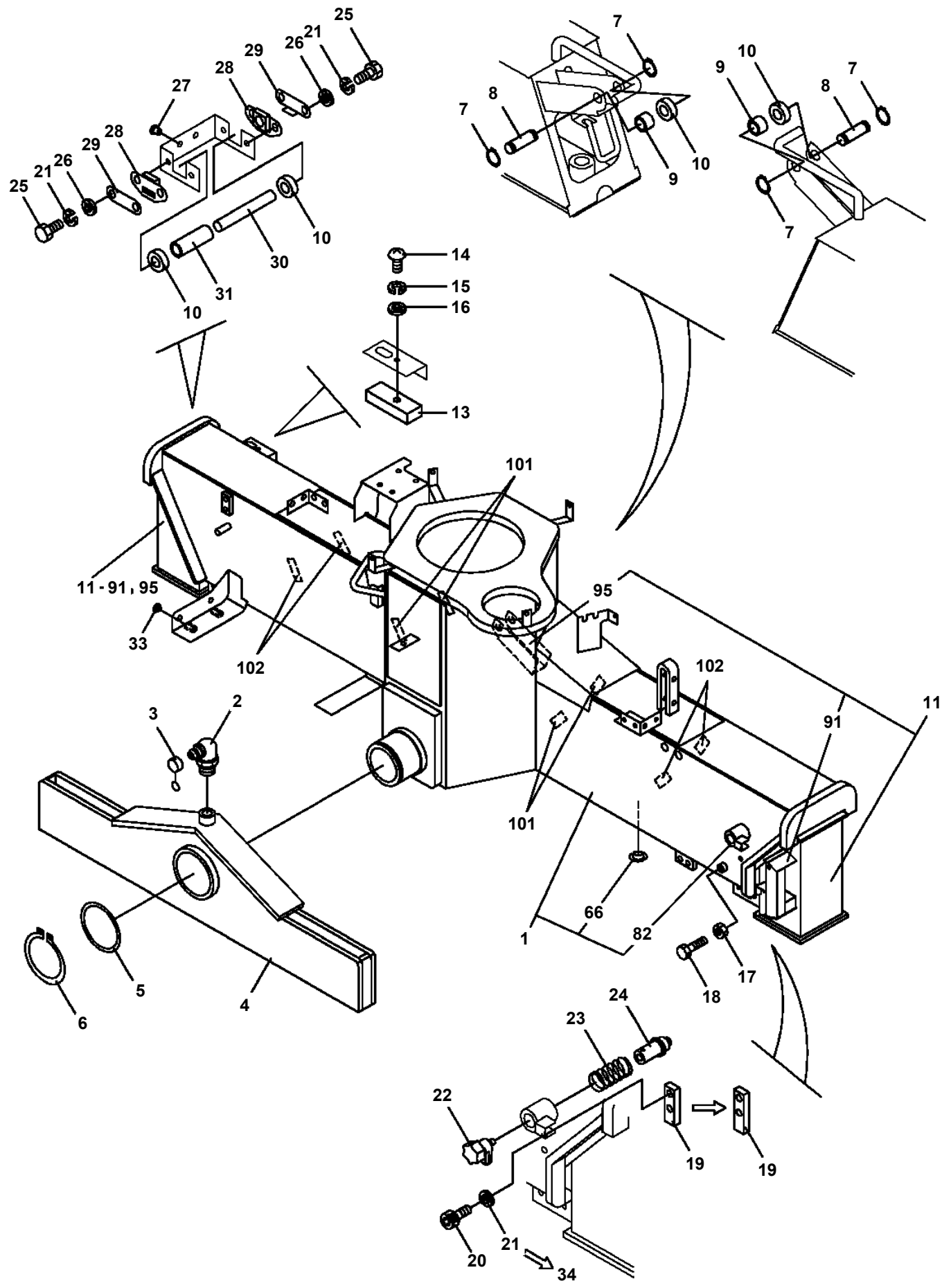
TM-ZF260 41108110030A FRAME/STD, MANUAL  
 PI1120241-01 VALVE, SOLENOID



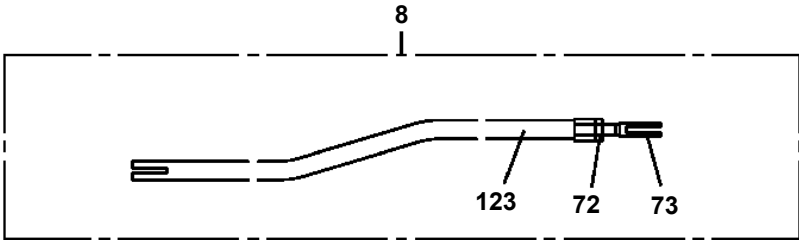
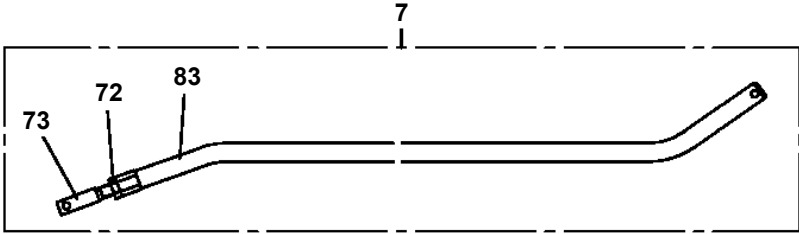
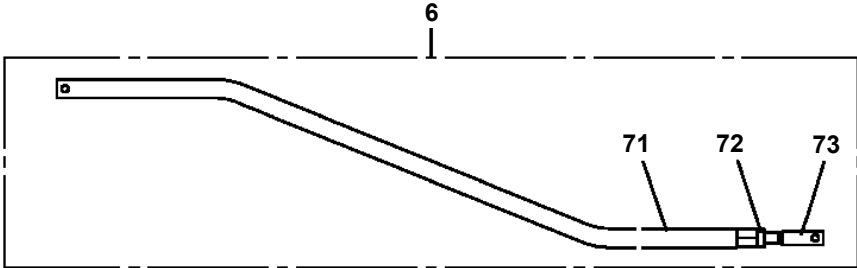
**TM-ZF260 41108110030A FRAME/STD,MANUAL  
PI1440027-00 METER,LOAD (2.6TON ENG& APANESE/KUSABA)**



TM-ZF260 41108110030A FRAME/STD,MANUAL  
PK1010375-03 FRAME



TM-ZF260 41108110030A FRAME/STD, MANUAL  
PL1010554-05 OPERATION SYSTEM, CONTROL VALVE

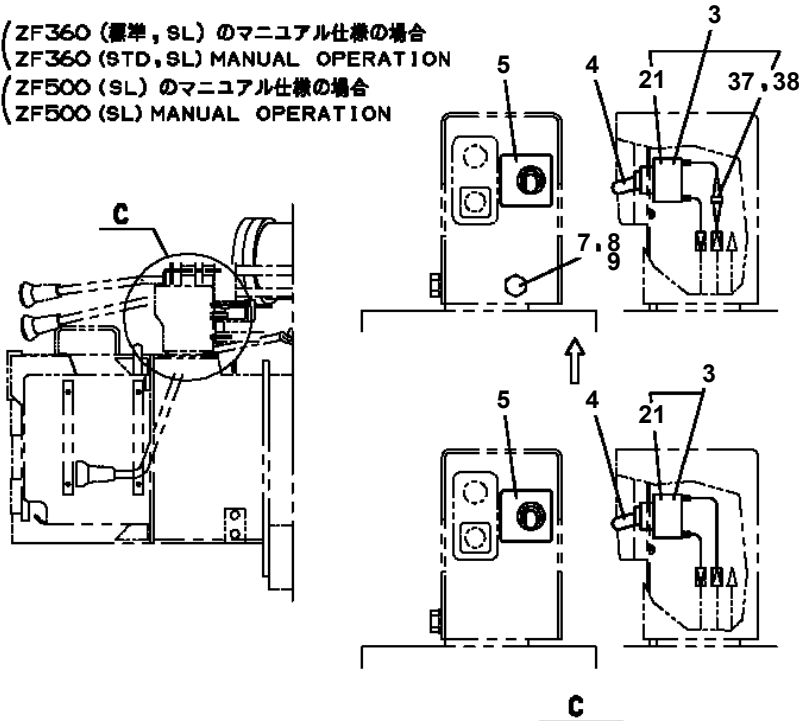


# TM-ZF260 41108110030A FRAME/STD,MANUAL

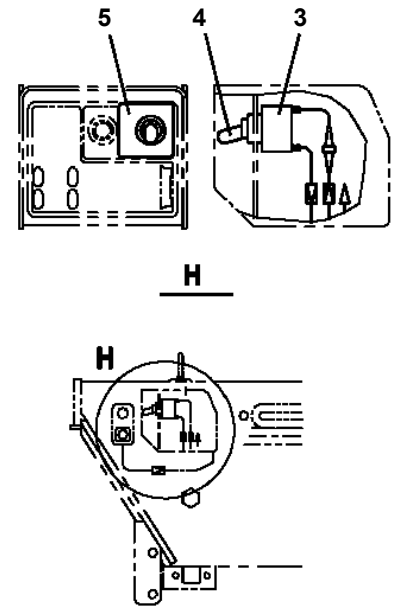
Pos No.	Parts No	Parts Name	Qty	Unit	Technical Data	Serial No (Start)	Serial No (End)	Rema
1	31474051100	ROD	1					
2	31473662200	LEVER	1					
3	31322053150	LEVER	1					
4	31322053200	LEVER	1					
5	31322053250	LEVER	1					
6	37000164930	PIN	1					
7	31322224200	PLATE	6		L=1			
8	80136340020	PIN,SPLIT	1		4X20			
9	37002213080	PLATE,NAME (SWING)	1					
10	80620210050	PIN,SNAP	14					
11	31322050500	KNOB (BLACK)	3					
12	31322050550	KNOB (RED)	1					
13	37002213050	PLATE,NAME (TELESCOPING)	1					
14	37002213060	PLATE,NAME (WINCH)	1					
15	37002213070	PLATE,NAME (ELEVATING)	1					

**TM-ZF260 41108110030A FRAME/STD, MANUAL  
PN1011422-02 ELEC.ASSY (LOWER, LAMP)**

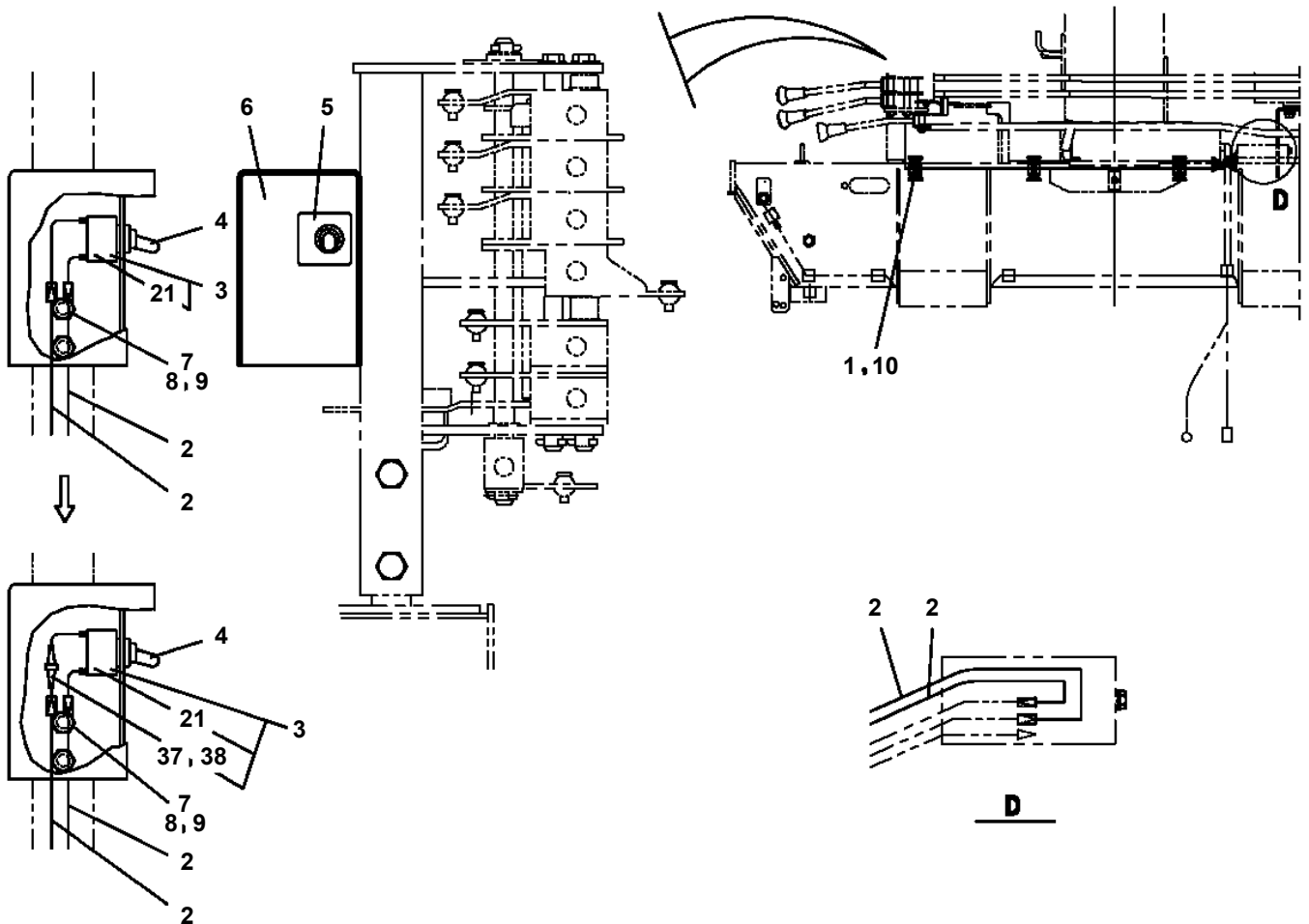
(ZF360 (標準, SL) のマニュアル仕様の場合  
ZF360 (STD, SL) MANUAL OPERATION  
ZF500 (SL) のマニュアル仕様の場合  
ZF500 (SL) MANUAL OPERATION



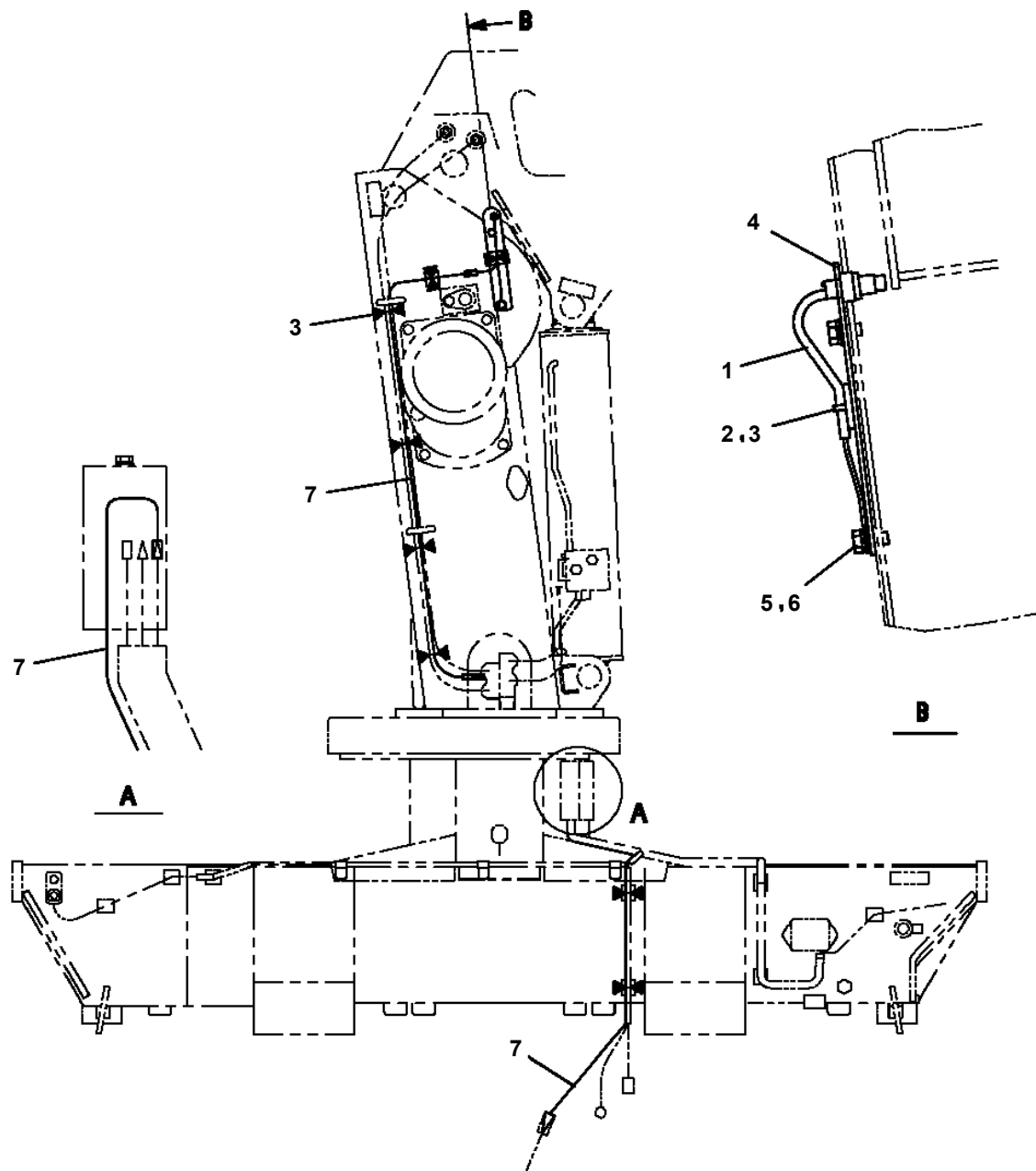
(ZF230 のフックイン、及びラジコン仕様の場合  
ZF230 HOOK-IN, RADIO CONTROL



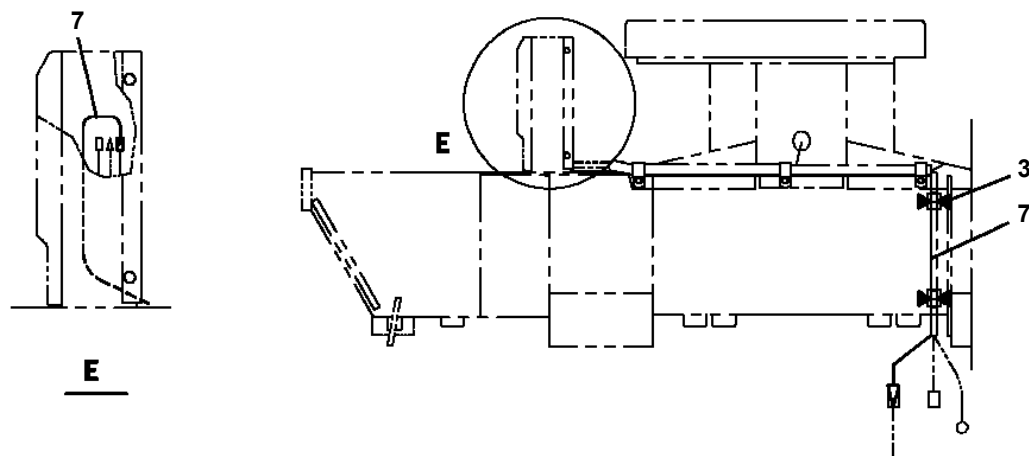
(ZF230 のマニュアル仕様の場合  
ZF230 MANUAL OPERATION



TM-ZF260 41108110030A FRAME/STD, MANUAL  
 PN1011581-00 ELEC.ASSY (ALARM,UPPER)



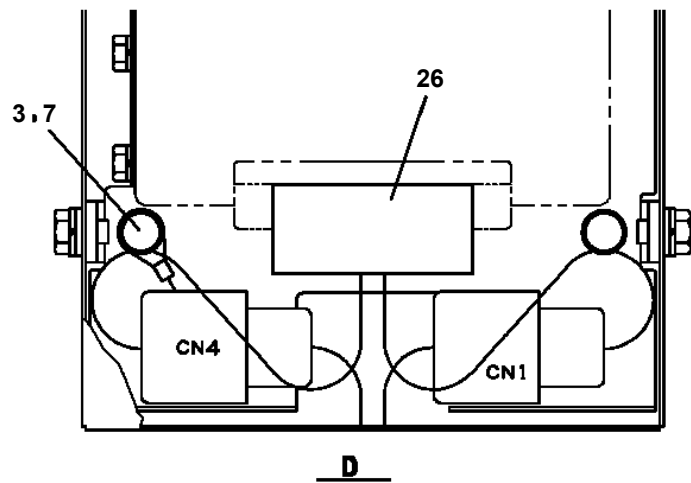
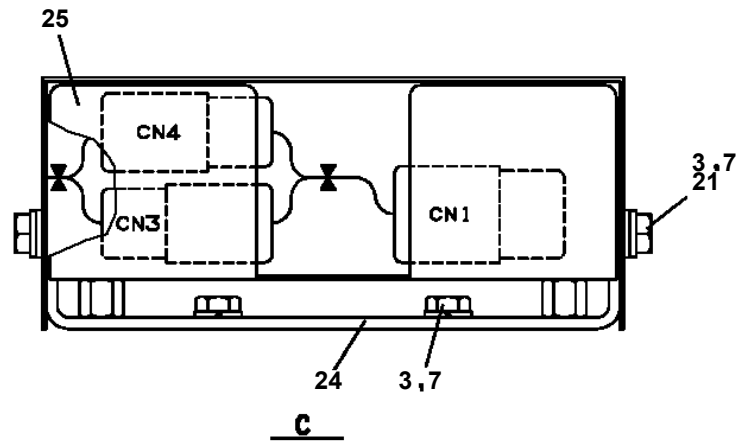
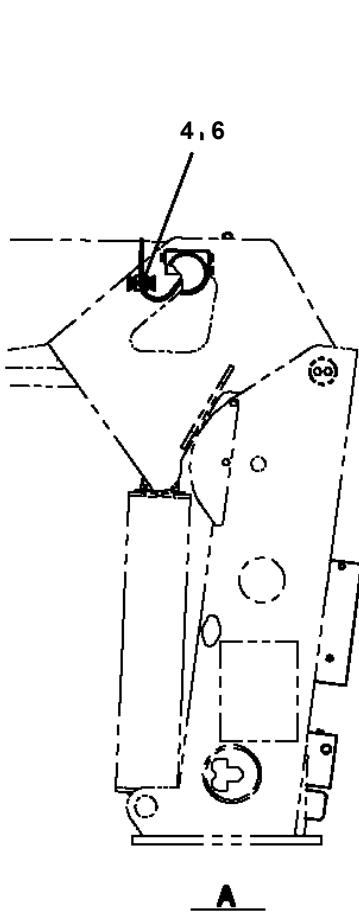
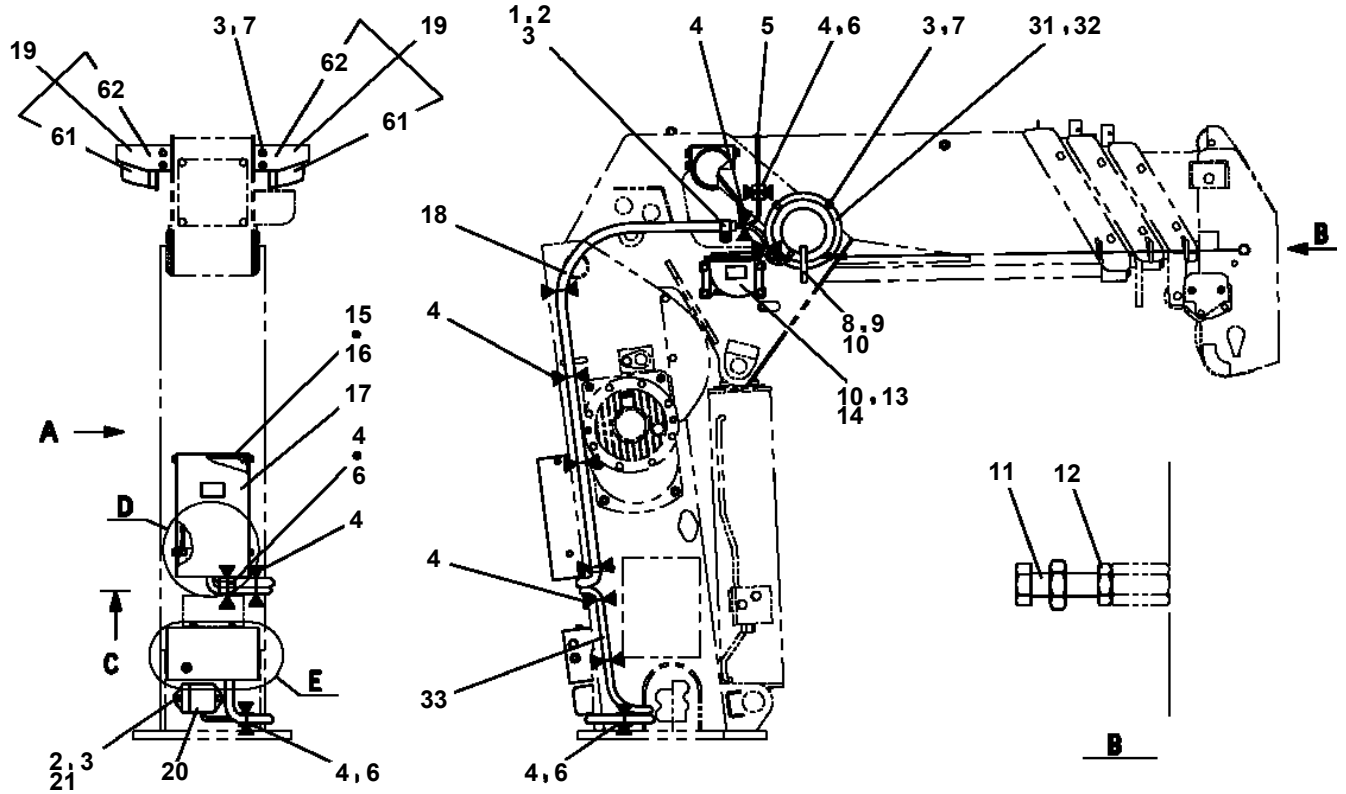
操作パネルがある場合 (フックイン, 及びラジコン仕様)  
 WITH OPERATION PANEL (HOOK-IN, RADIO CONTROL)



# TM-ZF260 41108110030A FRAME/STD,MANUAL

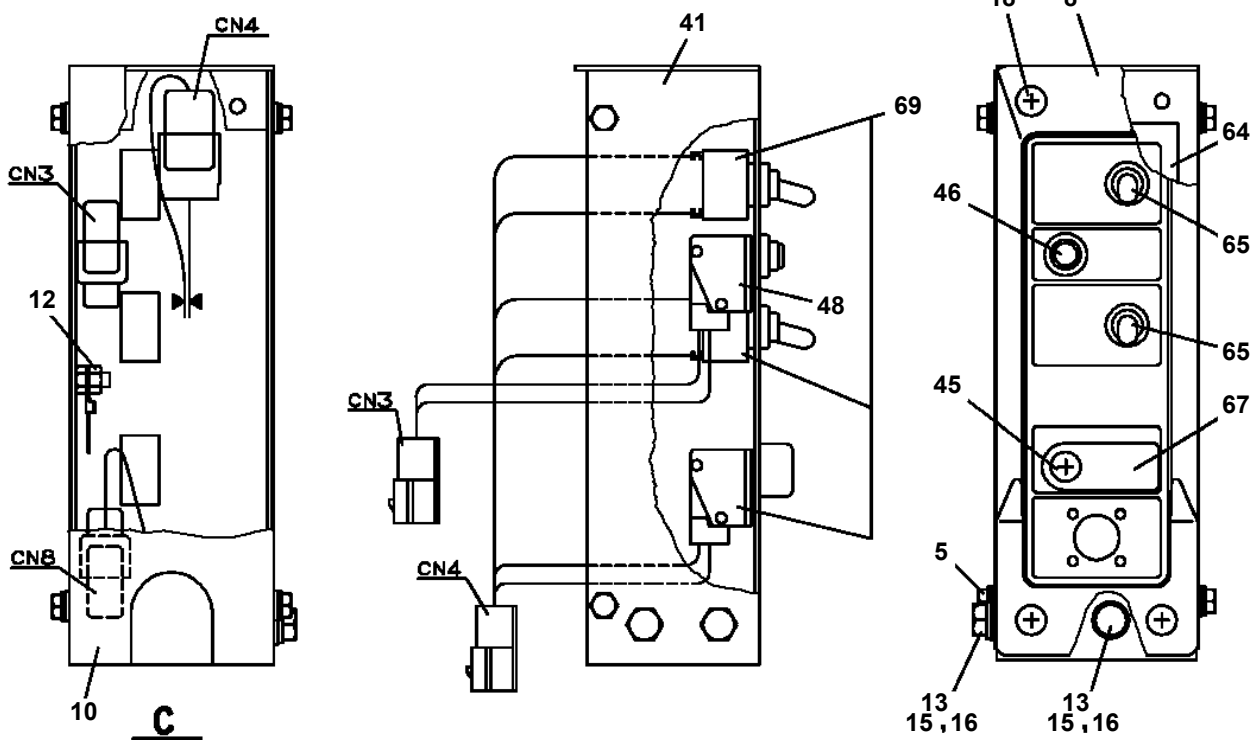
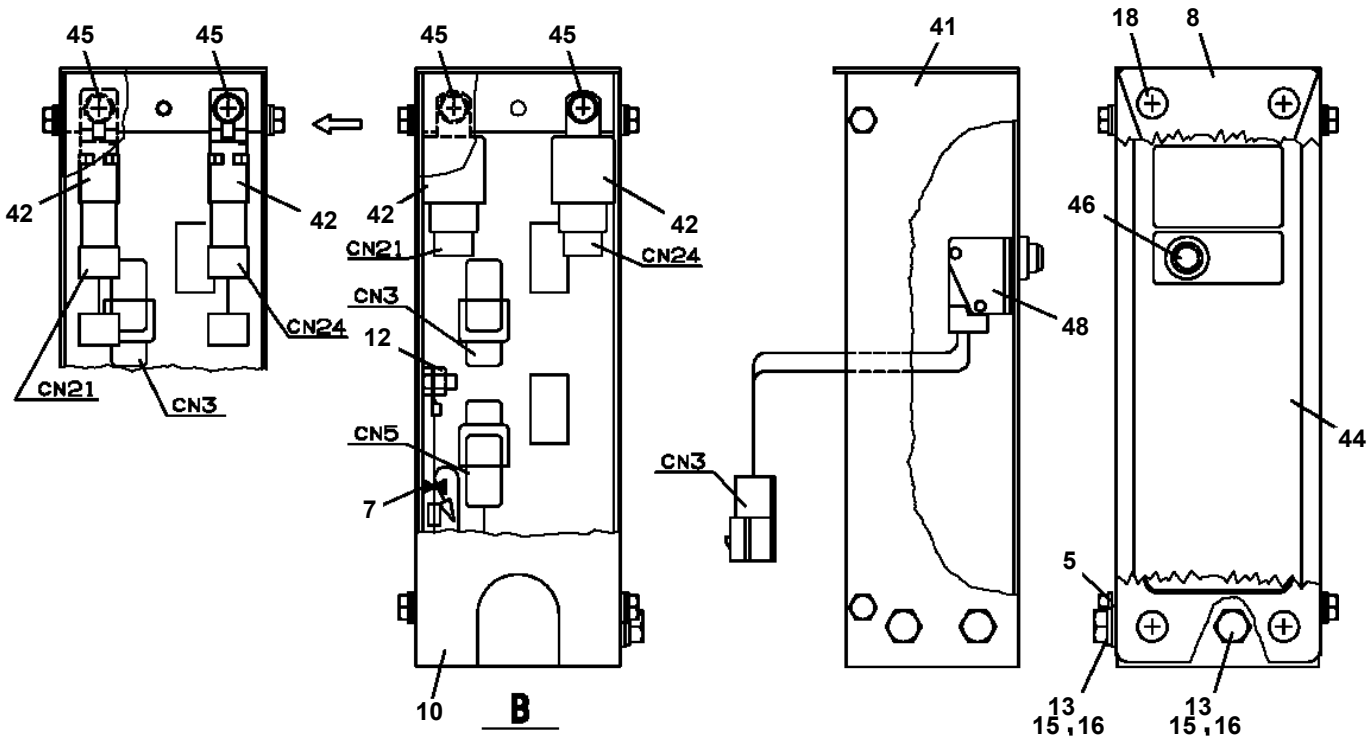
Pos No.	Parts No	Parts Name	Qty	Unit	Technical Data	Serial No (Start)	Serial No (End)	Remarks
1	82100002014	CLAMP	1		WR20			
2	90101206010	BOLT	9		M6X1.0			
3	90302040601	WASHER,SPRING	16		6			
4	36140180000	DETECTOR,BOOM ANGLE	1					
5	90101208012	BOLT	4		M8X12			
6	90302040801	WASHER,SPRING	4		8			
7	31360191010	COVER (CORRUGATE TUBE)	1		L=1500			
8	82401601002	CLAMP	4					
9	91810130240	FASTENER	13					
10	36130800000	DETECTOR,BOOM LENGTH	1					
11	31360101000	SUPPORT	1					
12	90203401200	NUT	1		M16			
13	31360041000	COVER ASSY	1					
14	31474591100	HARNESS	1					
15	31360191600	BUZZER ASSY	1					
16	90303070601	WASHER,PLAIN	11		6			
18	90131506016	BOLT,HEXAGON SOCKET	4		M6X16			
19	90201200600	NUT	3		M6			
20	82100002596	RELAY	3					
41	31360041100	SUPPORT	1					
42	90000000044	CATCH	1					
43	31360041300	PLATE	1					
44	31360041200	COVER	1					
45	82400000348	HINGE	2					
46	80172303008	SCREW,MACHINE	6		M3X8			
51	31474591210	SUPPORT	1					
52	82100002676	LAMP	1					
53	82199424421	LAMP	1					

TM-ZF260 41108110030A FRAME/STD, MANUAL  
 PN1012148-02 ELEC.ASSY (AWL,OPTION)

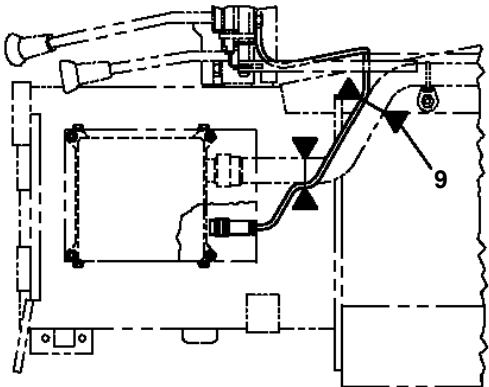
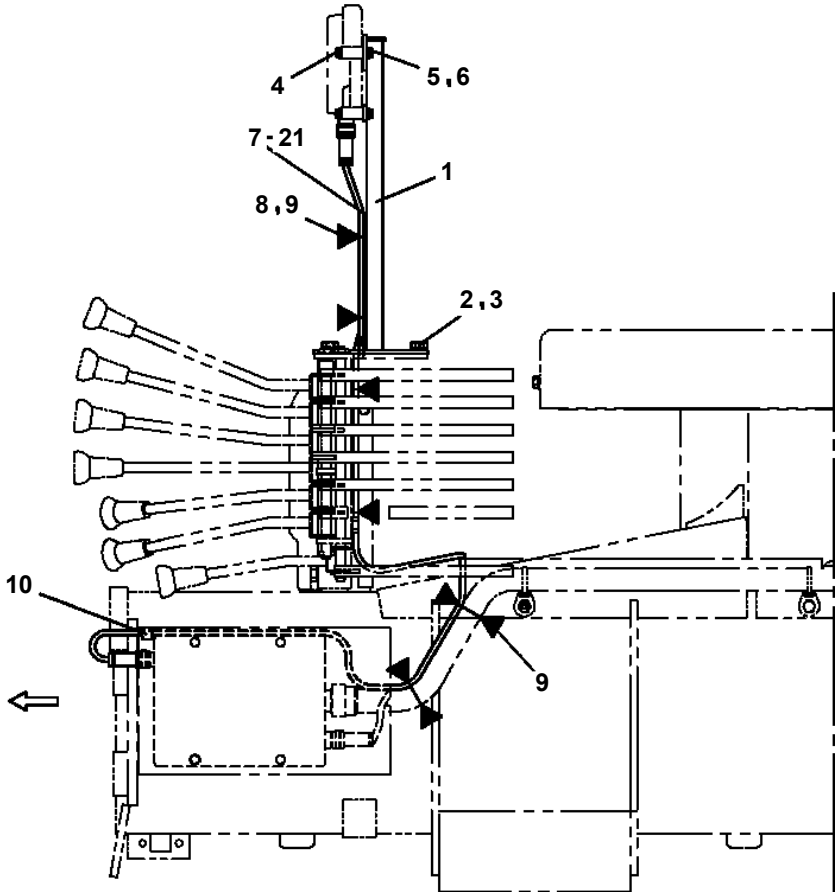
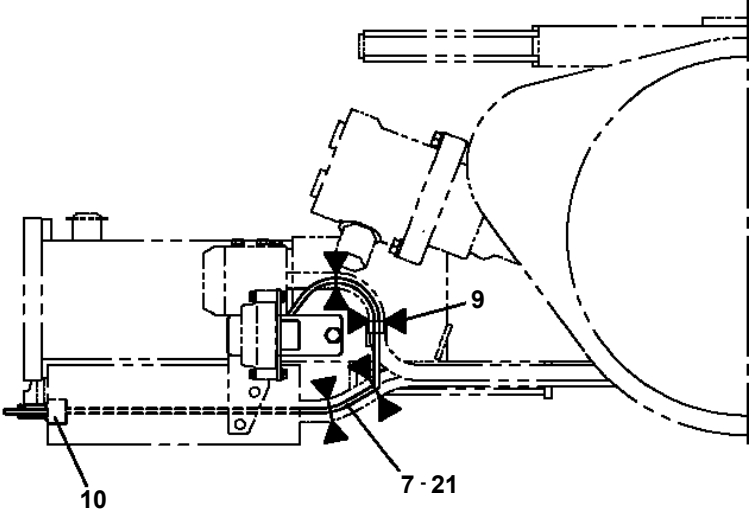


展開図有  
 ILLUSTRATED BREAKDOWN NO. 17

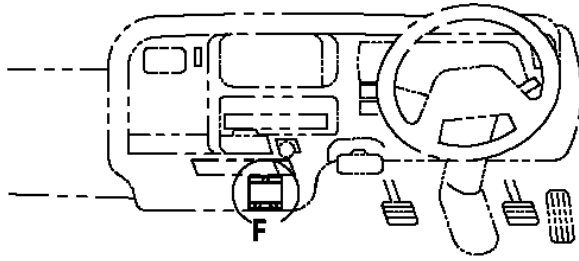
**TM-ZF260 41108110030A FRAME/STD, MANUAL  
PN1013439-02 ELEC.ASSY (FRAME)**



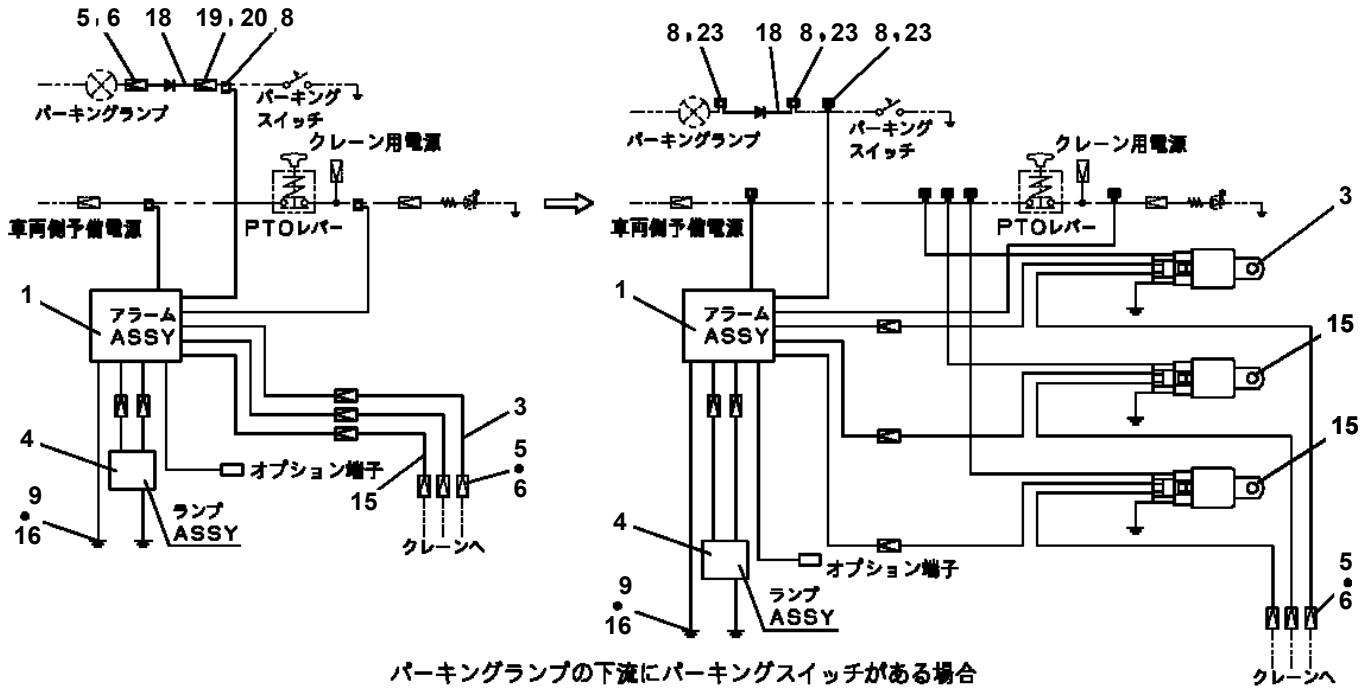
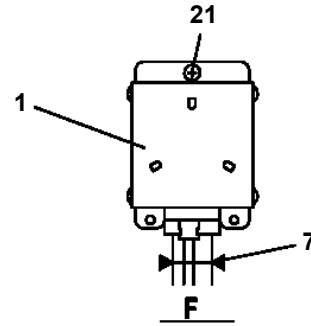
TM-ZF260 41108110030A FRAME/STD, MANUAL  
PN1014043-01 ELEC.ASSY (ANTENNA)



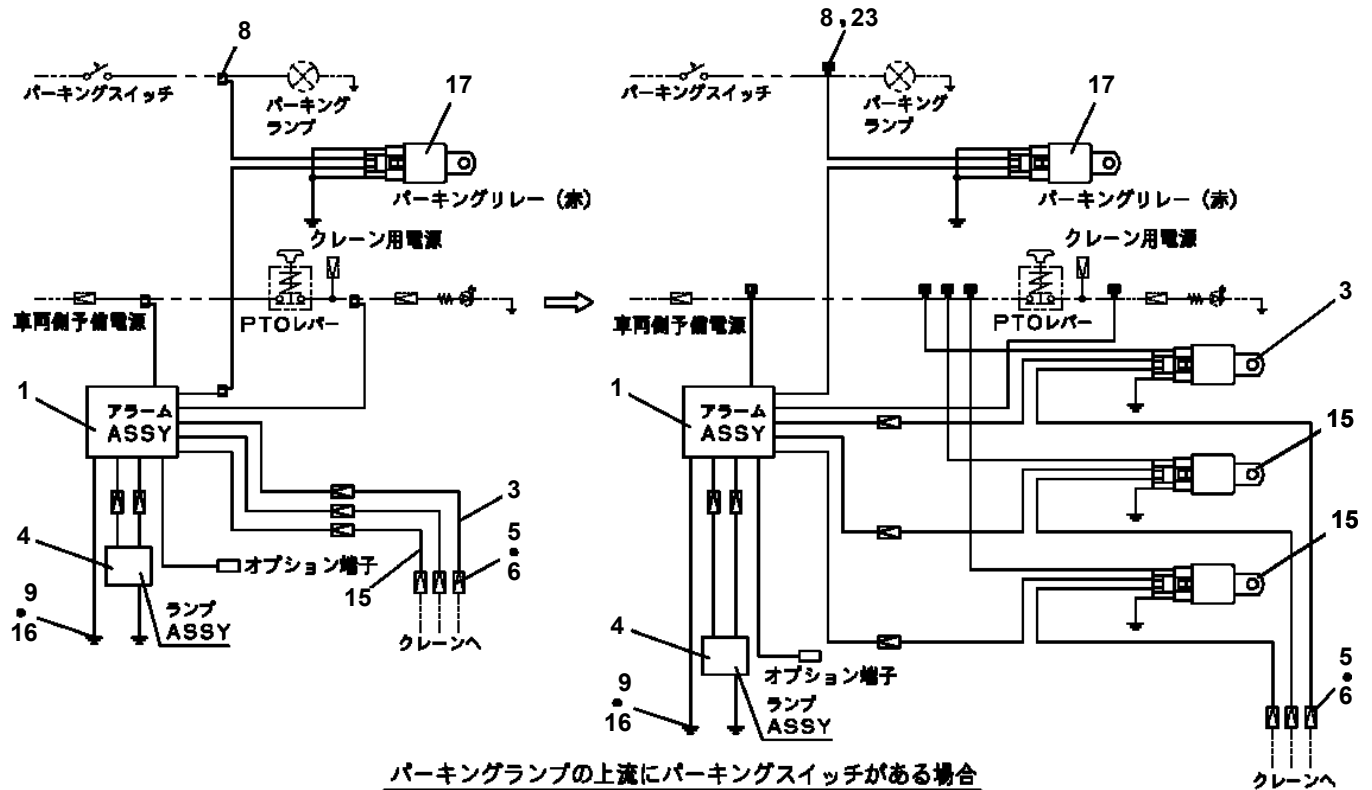
TM-ZF260 41108110030A FRAME/STD, MANUAL  
 PN1014341-01 ELEC.ASSY (CARRIER)



アラームASSY取付

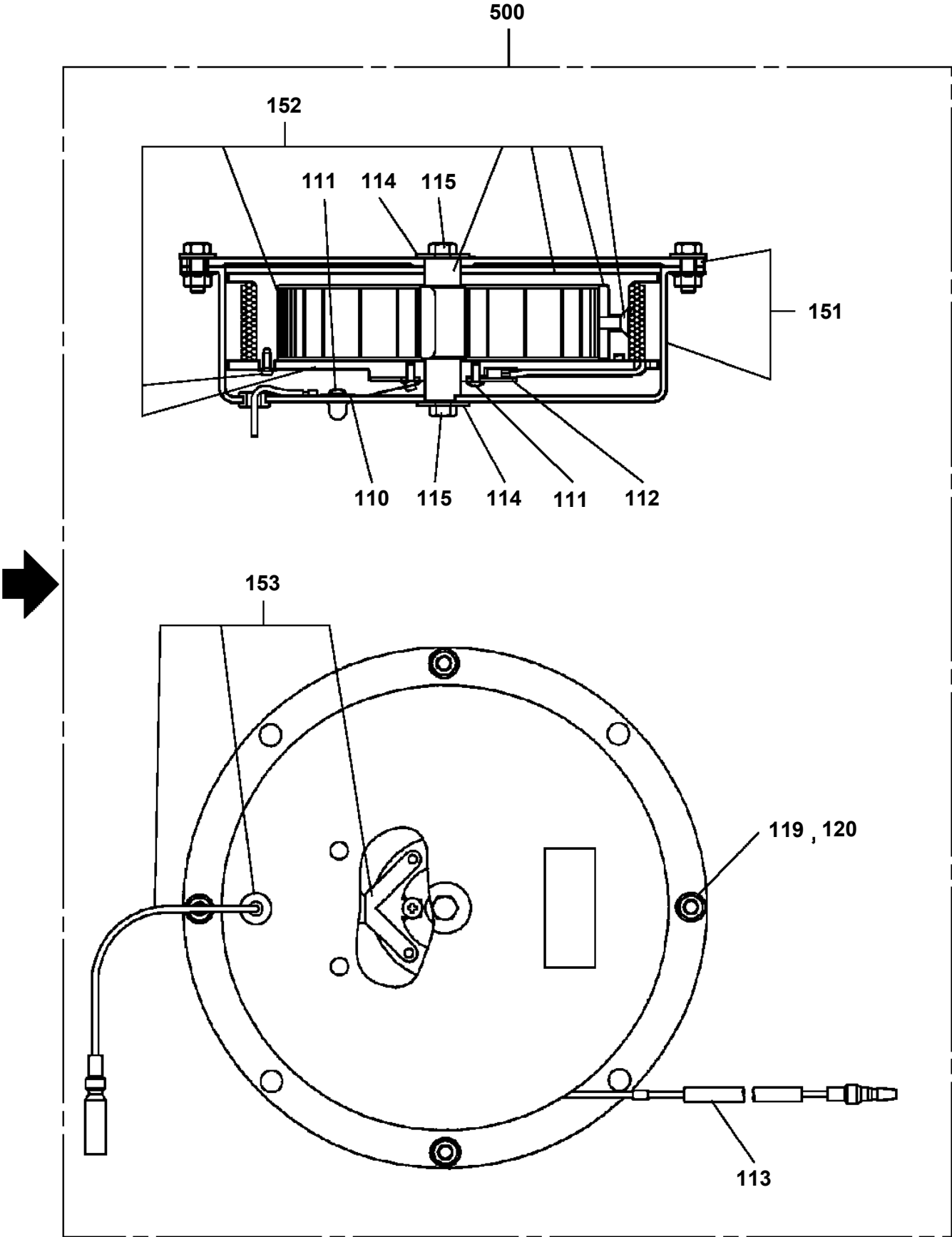


駐車ランプの下流に駐車スイッチがある場合

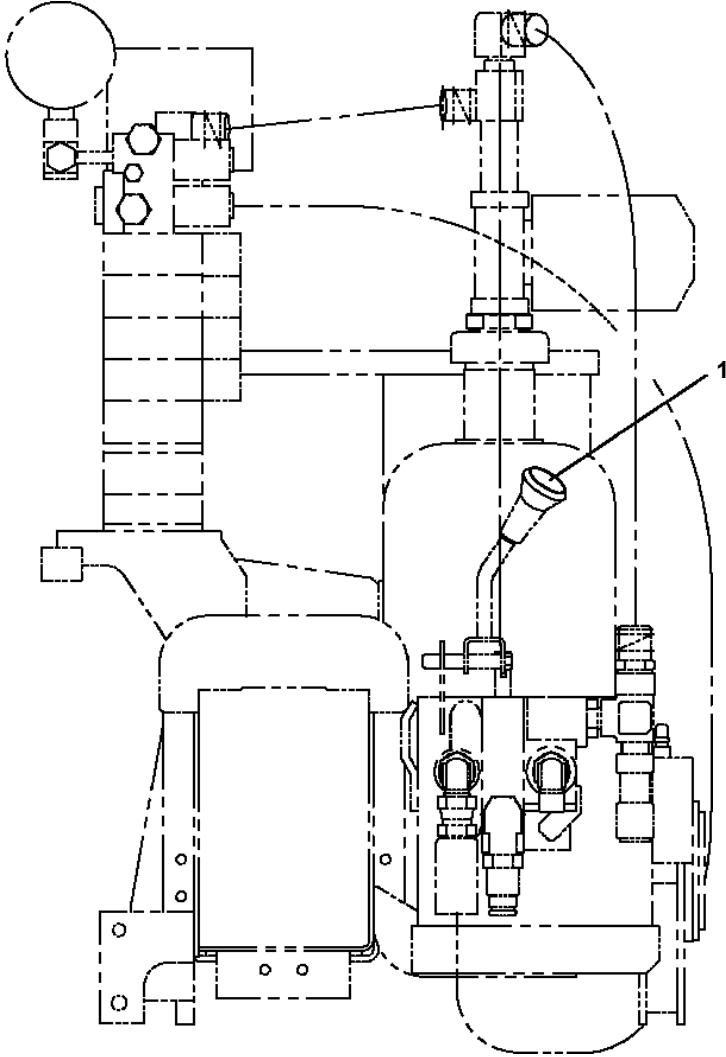


駐車ランプの上流に駐車スイッチがある場合

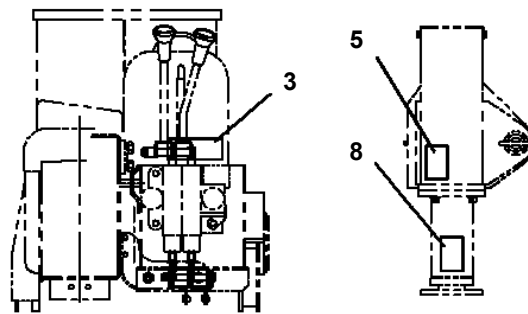
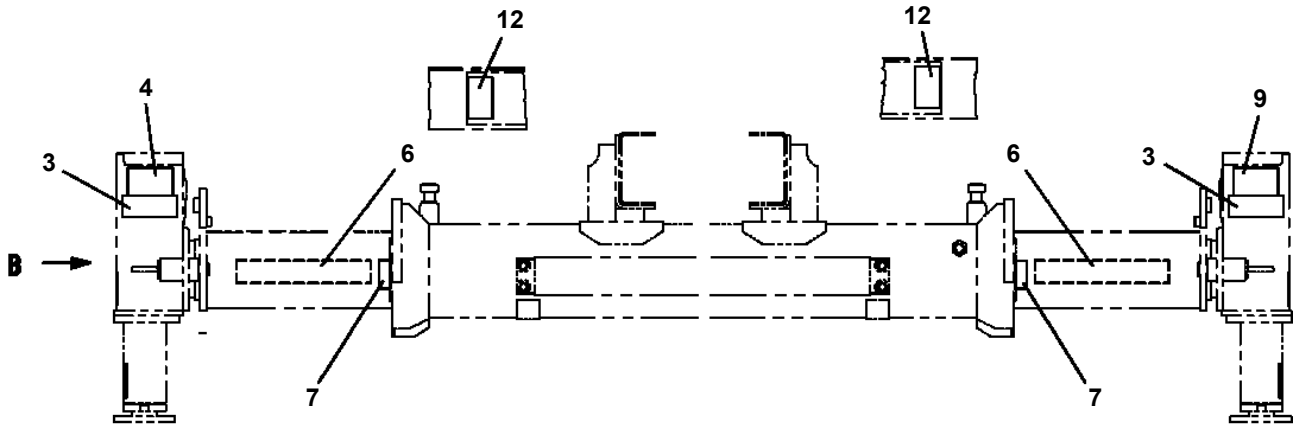
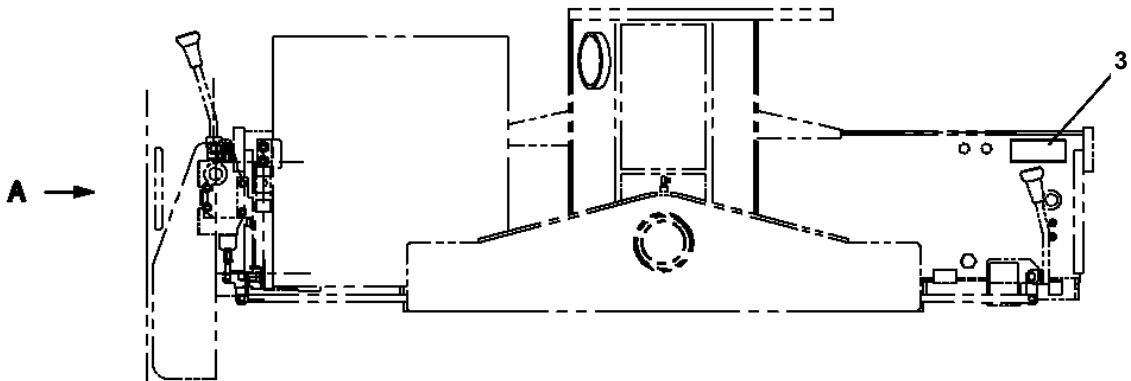
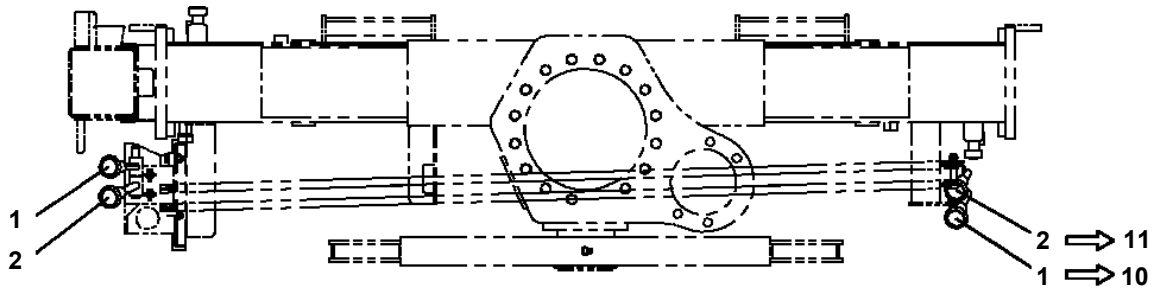
TM-ZF260 41108110030A FRAME/STD, MANUAL  
PN1350004-01 REEL, CORD



**TM-ZF260 41108110030A FRAME/STD,MANUAL  
PO1011890-00 PLATE ASSY,NAME (POWER SUPPLY)**



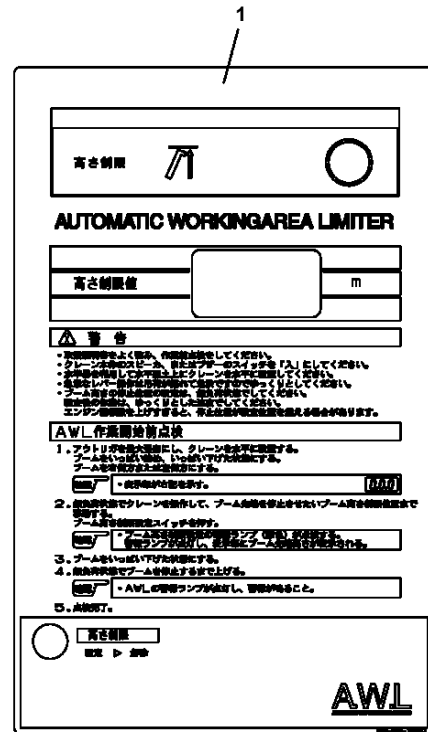
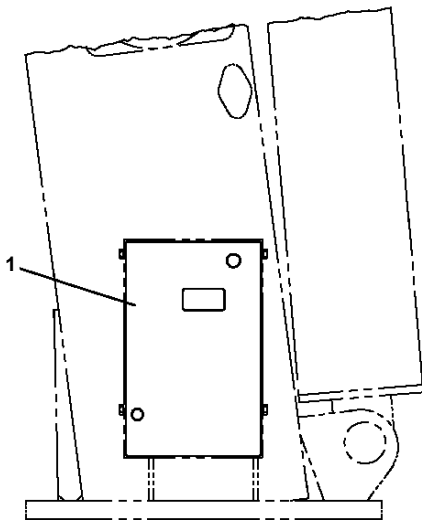
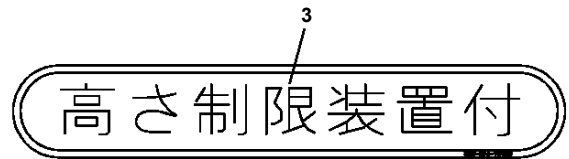
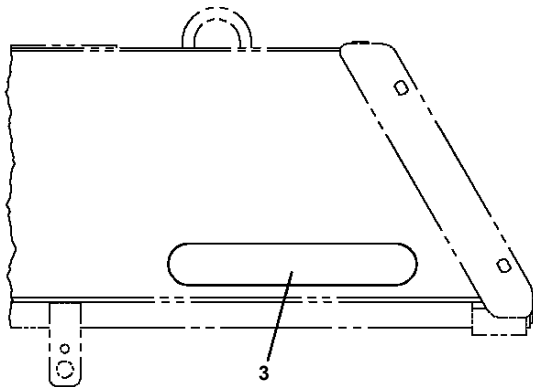
TM-ZF260 41108110030A FRAME/STD, MANUAL  
PO1012452-03 PLATE ASSY, NAME (R/J OPERATION)



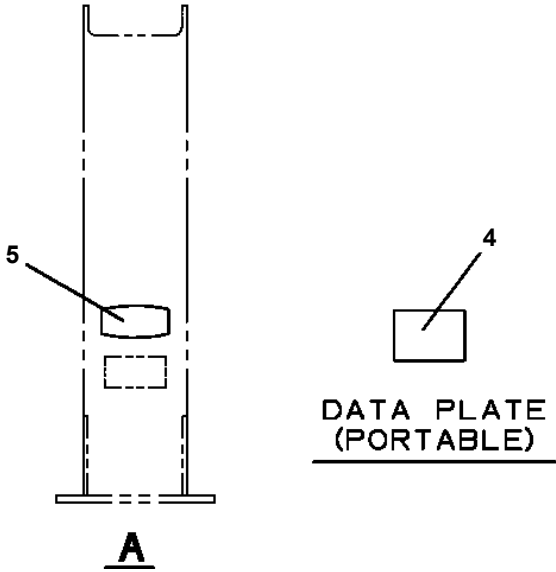
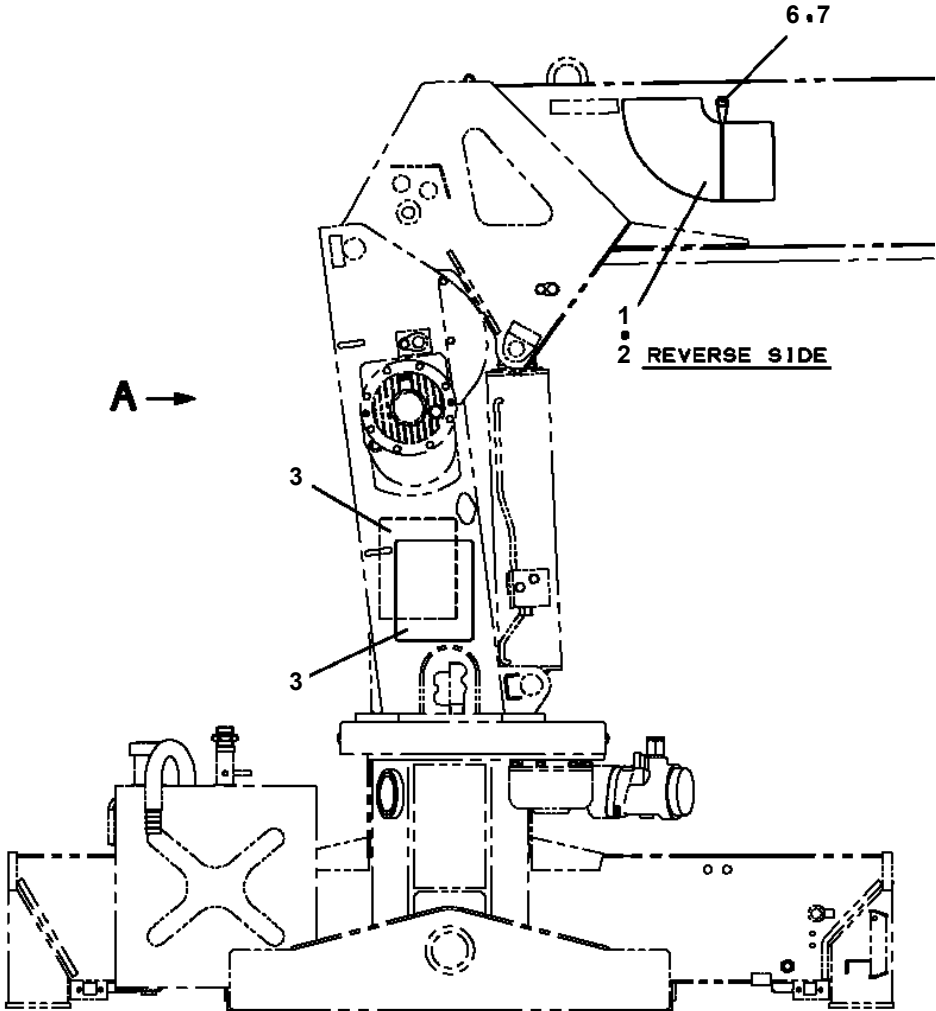
**A**

**B**

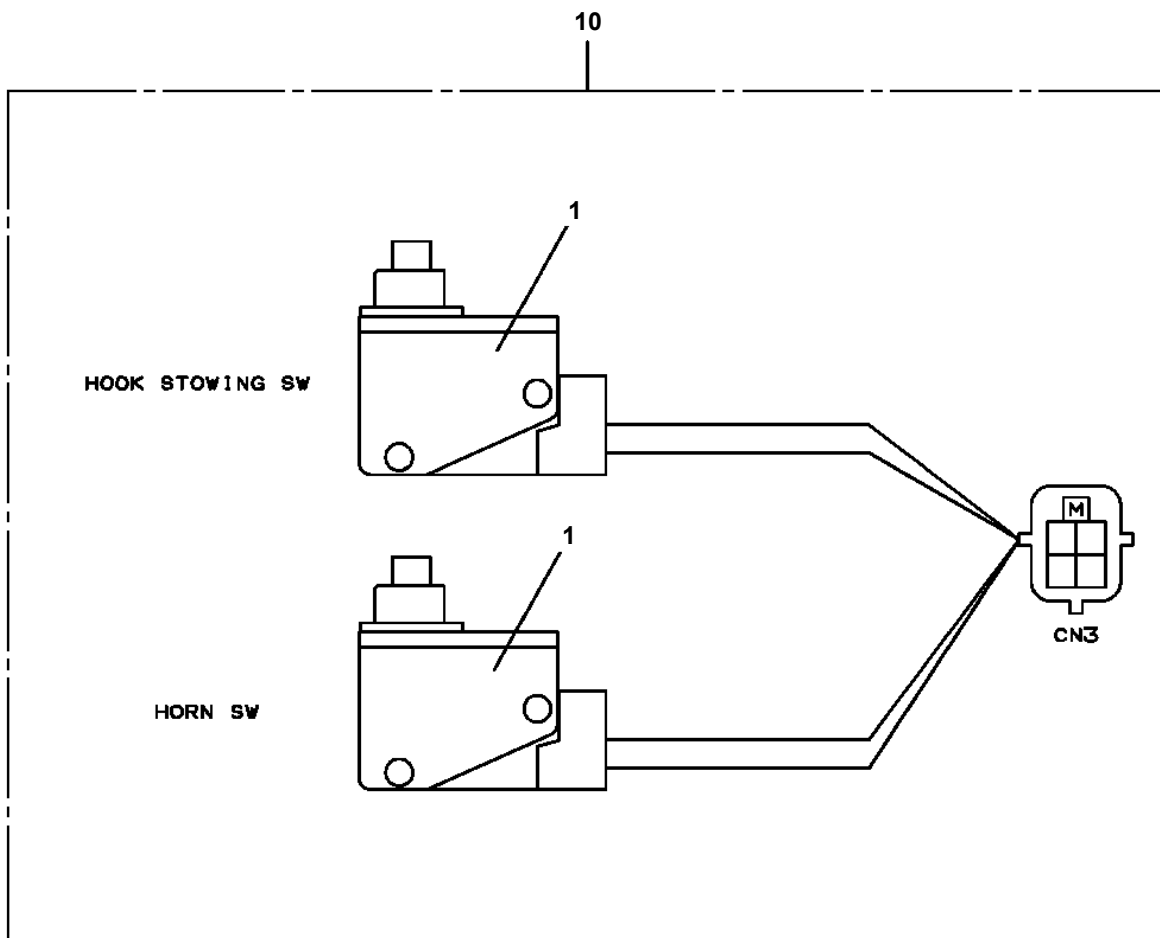
TM-ZF260 41108110030A FRAME/STD, MANUAL  
 PO1014437-01 PLATE ASSY, NAME (UPPER)



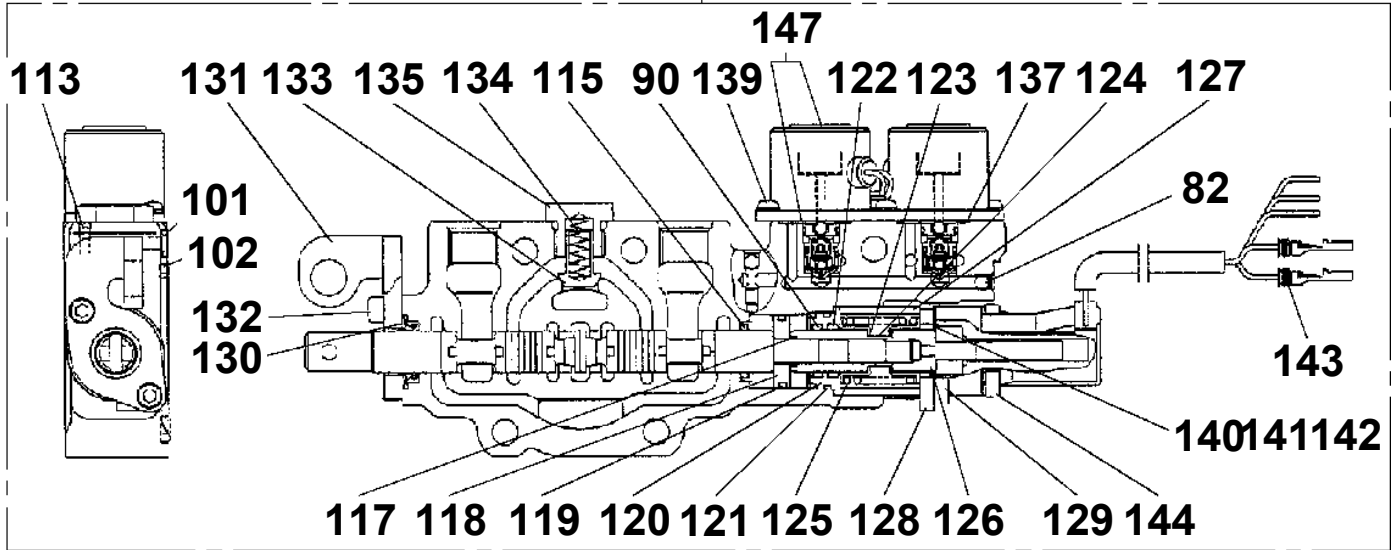
TM-ZF260 41108110030A FRAME/STD, MANUAL  
PO1070486-00 PERFORMANCE DATA(ZF266WIDE CAB LONG/JPN)



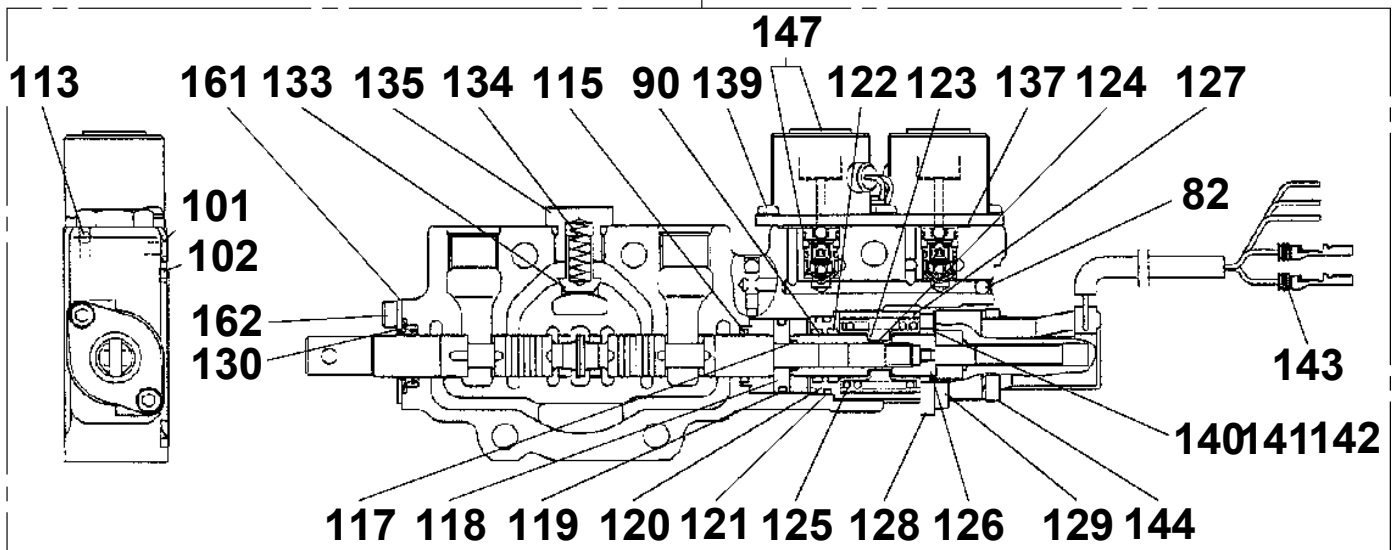
**TM-ZF260 41108110030A FRAME/STD, MANUAL  
PS5530073-00 SWITCH ASSY (GREEN: PANASONIC)**



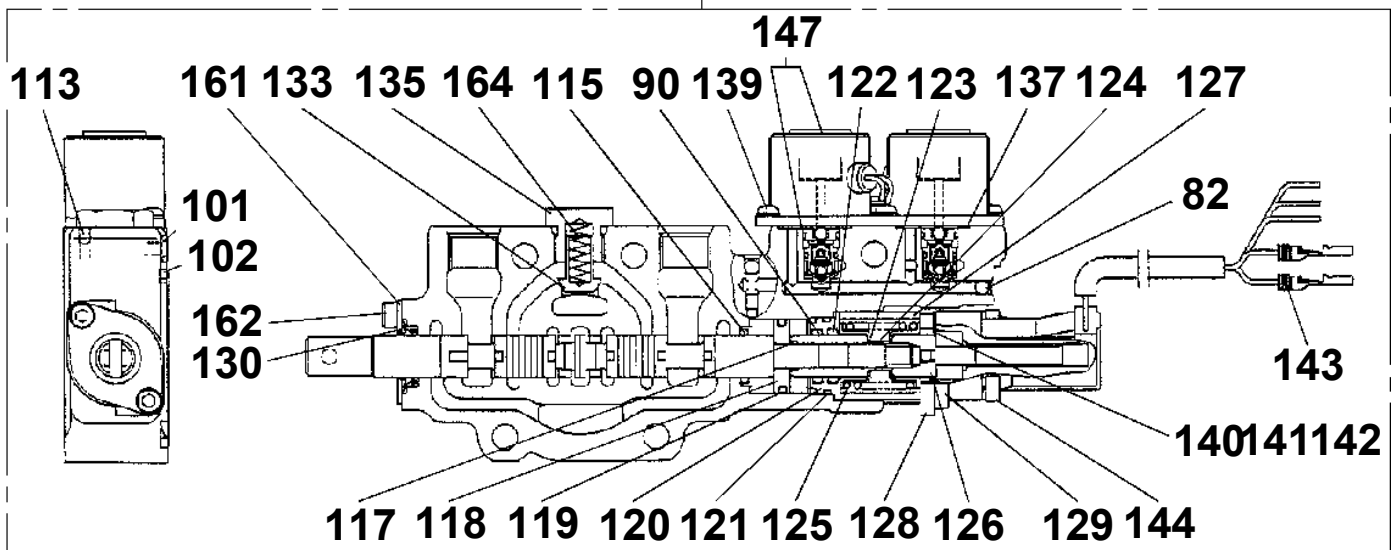
6



7

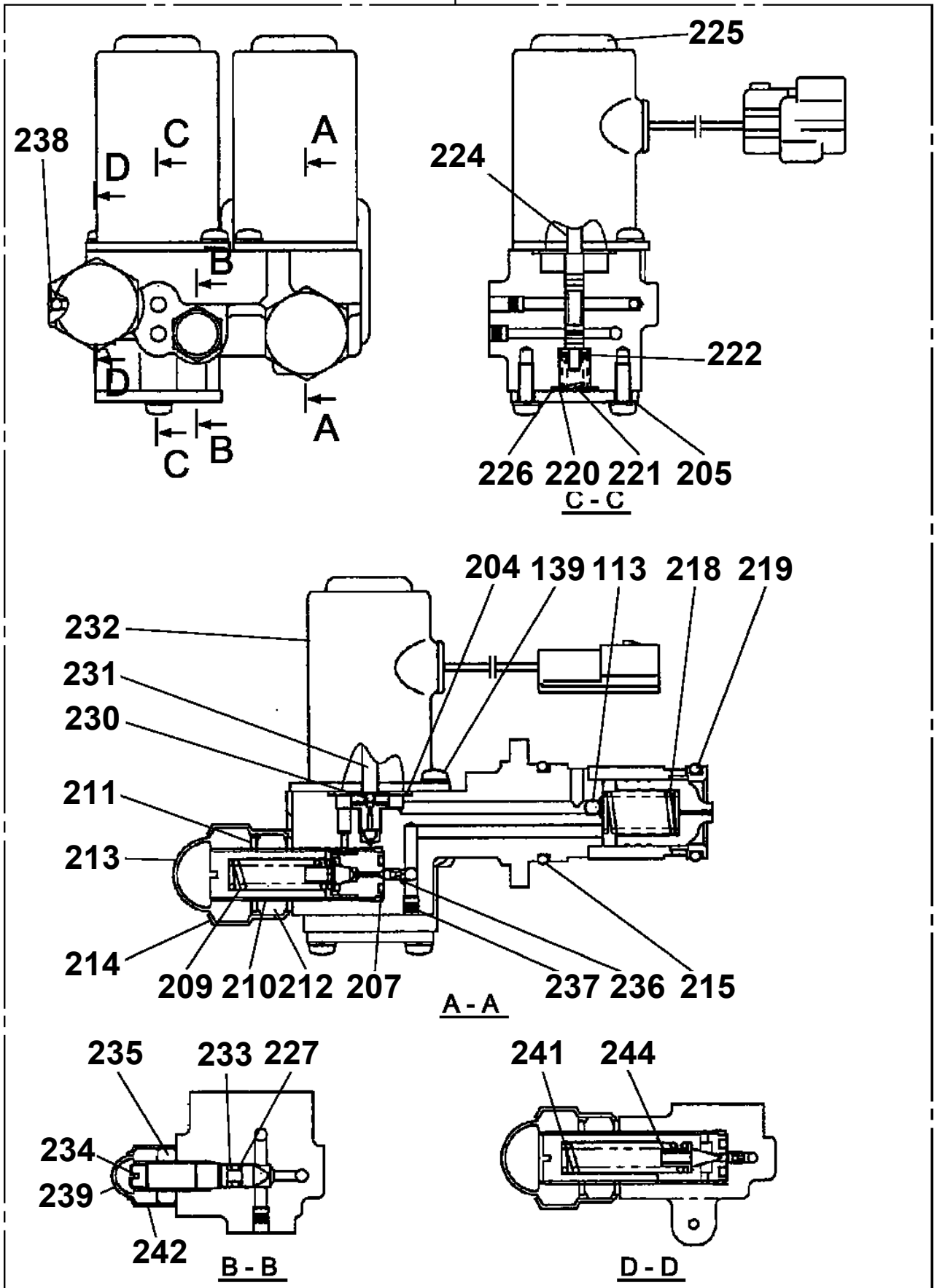


8



TM-ZF260 41108110030A FRAME/STD, MANUAL  
PV1020331-00 VALVE, REMOTE CONTROL

17



# TM-ZF260 41108110030A FRAME/STD,MANUAL

Pos No.	Parts No	Parts Name	Qty	Unit	Technical Data	Serial No (Start)	Serial No
20	36804915010	O-RING (CASE)	1				
29	36804915020	PIN	1				
30	36804915030	RING	1				
49	36805795020	HARNESS	1				
50	36805795030	HARNESS	1				
61	36804915060	RUBBER(FRONT)	1				
65	36804915070	PLATE,NAME (TM,STD.)	1				
66	36804915080	LABEL (SERIAL)	1				
101	36804915090	CASE ASSY(LOWER)	1				EY3397
102	36804915100	GUARD ASSY (HAND)	1				
103	36804915110	COVER ASSY (BATTERY)	1				
104	36804915120	LEVER ASSY (TRIGGER)	1				
105	36804915130	RF ASSY	1				
106	36804915140	PANEL ASSY (INNER)	1				
107	36804915150	SWITCH ASSY	1				
108	36804915160	CASE ASSY (FRONT)	1				
151	36804917570	CASE ASSY(LOWER)	1			EY3398	
153	36804917530	HOLDER (BATTERY)	1			EY3398	
201	36804915170	STRAP	1				
300	36804913000	SWITCH BOX (RADIO CONTROL,LED TYPE)	1				

# TM-ZF260 41108110030A FRAME/STD,MANUAL

Pos No.	Parts No	Parts Name	Qty	Unit	Technical Data	Serial No (Start)	Serial No (End)	Remark
5	36062635020	COVER (SEAL)	1					
6	80602110370	RING,RETAINING	1					
7	36648375020	BALL,STEEL	9		3/16			
9	91001101400	O-RING	2		1A P14			
10	91001102400	O-RING	1		1A P24			
11	91001003000	O-RING	1		S30			
12	91001002800	O-RING	1		S28			
13	91001002200	O-RING	2		S22			
14	91650001400	SCRAPER	2					
15	36062445010	LVDT ASSY (A/WITH CORE,)	1				642473	
16	36644015220	SHIM (T=0.2)	2					
17	36644015230	SHIM (T=0.3)	2					
51	36062445040	VALVE,SOLENOID	1					
100	36062440000	CYLINDER,ACCELERATOR	1					

# TM-ZF260 41108110030A FRAME/STD,MANUAL

Pos No.	Parts No	Parts Name	Qty	Unit	Technical Data	Serial No (Start)	Serial No (End)
1	(*****)	ELEC.ASSY (BML,OPTION)	1				
3	(*****)	DETECTOR,OVER FRONT AREA (BML,OPTION)	1				
4	(*****)	INDICATOR,OUTRIGGER	1				
5	(*****)	DETECTOR,LOAD (BML,OPTION)	1				
6	(*****)	SWITCH INSTALLATION (BML)	1				
7	(*****)	PLATE ASSY,NAME (BML,OPTION)	1				
9	(*****)	OPE.ASSY,CONT.VALVE (BML)	1				
10	36117310000	MOMENT LIMITER (BML-PB)	1				
11	(*****)	PLATE ASSY,NAME (BML,OPTION)	1				

# TM-ZF260 41108110030A FRAME/STD,MANUAL

Pos No.	Parts No	Parts Name	Qty	Unit	Technical Data	Serial No (Start)	Serial No (End)	F
1	(*****)	ELEC.ASSY (AWL)	1					
3	(*****)	PLATE ASSY,NAME (AWL)	1					
4	36118010000	WORKING AREA LIMITER (AWL-N)	1					

# TM-ZF260 41108110030A FRAME/STD,MANUAL

Pos No.	Parts No	Parts Name	Qty	Unit	Technical Data	Serial No (Start)	Serial No (End)
1	(*****)	PARTS,AWL (5.6 SECT./RADICON OR MH)	1				
2	(*****)	MOUNT (LOWER)	1				

# TM-ZF260 41108110030A FRAME/STD,MANUAL

Pos No.	Parts No	Parts Name	Qty	Unit	Technical Data	Serial No (Start)	Serial No
1	36800335010	ELEMENT,ANTENNA (FLEXIBLE,TYPE A,B)	1				
10	36800150000	ANTENNA (15M.TRAVELLING TYPE A,B)	1				

# TM-ZF260 41108110030A FRAME/STD,MANUAL

Pos No.	Parts No	Parts Name	Qty	Unit	Technical Data	Serial No (Start)	Serial No (End)	Remarks
2	36073085020	COVER	1					
3	36073815010	GEAR,SPUR	1					
6	36073085061	BRAKE,DISK	1					
7	36073085072	WHEEL,RATCHET	1					
8	36073085080	RING (C)	1					
10	36073085090	RATCHET	1					
11	36073085100	SHAFT	1					
12	36073085111	SPRING	1					
13	36073085120	CAP	1					
14	36073085130	PIN	1					
15	36073085140	NUT	1					
16	80500006202	BEARING,BALL	1					
17	80500006212	BEARING,BALL	1			EY7711	EY7710	
	80500006211	BEARING,BALL	1					
18	80500006305	BEARING,BALL	1					
19	80500006007	BEARING,BALL	1					
20	36073085150	SEAL,OIL	1					
21	80602110620	RING,RITAINING	1		R62			
22	36071195200	O-RING	1					
23	91001101500	O-RING	1		1A P15			
24	80136340040	PIN,SPLIT	1		4X40			
25	36073085160	KEY	2					
26	36073085180	BOLT (WITH SW)	6					
27	36073085200	PLUG	1					
28	36073085170	GAUGE,OIL	1					
29	80172304015	SCREW,MACHINE	1		M4X15			
30	90302040401	WASHER,SPRING	1		4			
51	36073085602	GEAR ASSY	1					
	36073085603	GEAR ASSY	1			EY7711	EY7710	
100	36073810000	WINCH ASSY (Y.G.TEC)	1					
101	36070441000	FACING KIT(JAPANESE)	1					
102	36070442000	FACING KIT (ENGLISH)	1					

# TM-ZF260 41108110030A FRAME/STD,MANUAL

Pos No.	Parts No	Parts Name	Qty	Unit	Technical Data	Serial No (Start)	Serial No (End)	Remark
1	31360205601	SWITCH ASSY	1					
2	31360205801	SUPPORT	1					
4	90101206010	BOLT	2		M6X1.0			
5	90302040601	WASHER,SPRING	2		6			
6	90303070601	WASHER,PLAIN	2		6			
7	31360205902	HARNESS	1					
21	31360205702	SUPPORT	1					
22	31473744150	SWITCH ASSY	2					
23	82197600101	CAP (BLACK)	2					
24	42433333400	LAMP ASSY (GREEN) <24V)	1					
25	42433333300	LAMP ASSY (RED)<24V)	1					
26	82400000076	GROMMET	1					
27	31360205611	PLATE,NAME	1					
31	82101419002	SWITCH,PUSH	2					
45	82100002463	LAMP,PILOT (GREEN)	1					
55	82100002462	LAMP,PILOT (RED)	1					

CLICK HERE TO **DOWNLOAD** THE COMPLETE MANUAL

- Thank you very much for reading the preview of the manual.
- You can download the complete manual from: [www.heydownloads.com](http://www.heydownloads.com) by clicking the link below



- Please note: If there is no response to CLICKING the link, please download this PDF first and then click on it.

CLICK HERE TO **DOWNLOAD** THE COMPLETE MANUAL