

**TM-ZE300 41044502015A BOOM/5 SECT.,HOOK-IN**

**PB0000062-01 SYSTEM (ZE300,DOMESTIC)**

**PB0000066-01 SYSTEM (ZE360,DOMESTIC)**

**ASSEMBLY**

CLICK HERE TO **DOWNLOAD** THE COMPLETE MANUAL

- Thank you very much for reading the preview of the manual.
- You can download the complete manual from: [www.heydownloads.com](http://www.heydownloads.com) by clicking the link below



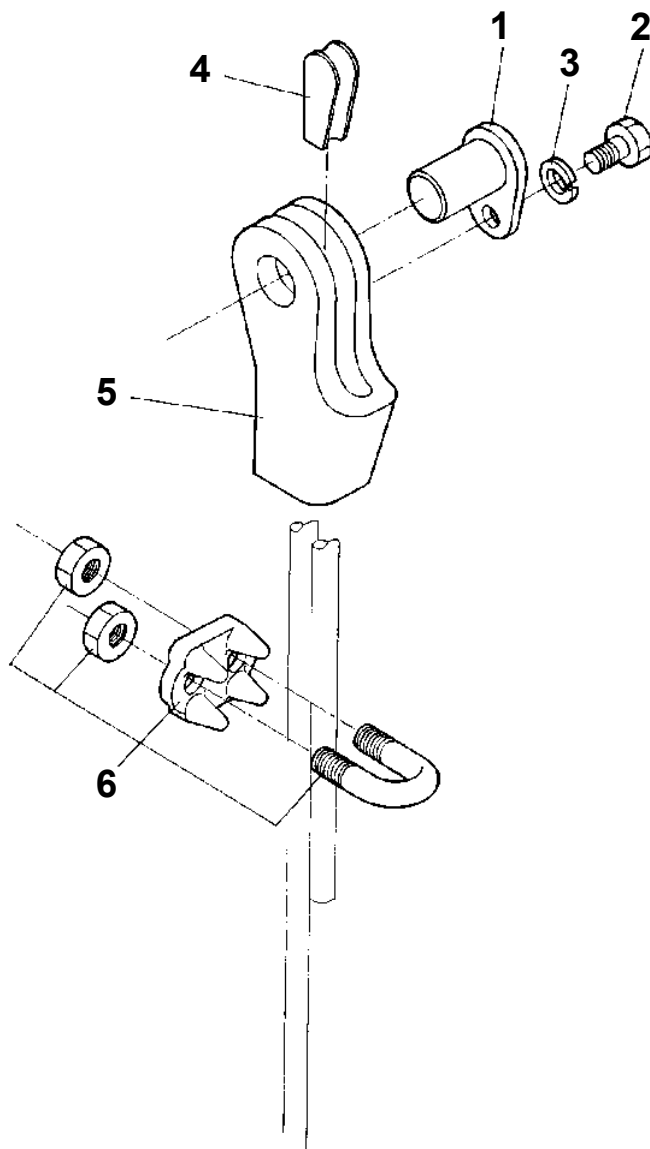
- Please note: If there is no response to CLICKING the link, please download this PDF first and then click on it.

CLICK HERE TO **DOWNLOAD** THE COMPLETE MANUAL

# TM-ZE300 41044502015A BOOM/5 SECT.,HOOK-IN

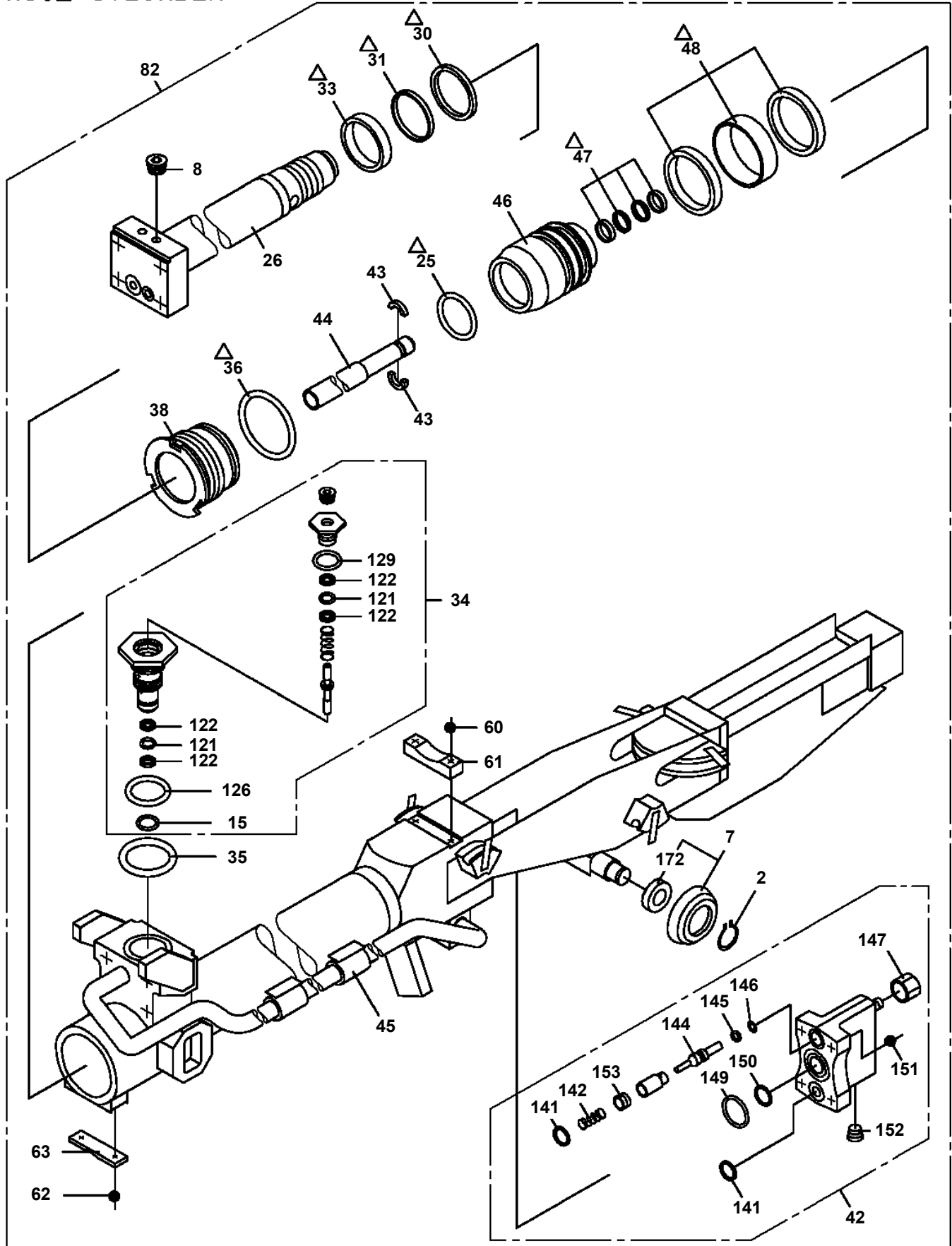
Pos No.	Parts No	Parts Name	Qty	Unit	Technical Data	Serial No (Start)	Serial No (End)
32	31211400100	SUPPORT	1				
33	91660004001	SEAL,DUST	2				
	91660004001	SEAL,DUST	2				
34	36011671000	VALVE,CHECK	1				
	36011671000	VALVE,CHECK	1				
35	91001103500	O-RING	1		1A P35		
	91001103500	O-RING	1		1A P35		
36	91002905000	O-RING	1		1B G50		
	91002905000	O-RING	1		1B G50		
37	36605200001	VALVE,COUNTERBALANCE	1				
	36605200001	VALVE,COUNTERBALANCE	1				
38	36013926000	COVER,ROD	1				
	36013926000	COVER,ROD	1				
39	91001103800	O-RING	1		1A P38		
	91001103800	O-RING	1		1A P38		
40	36011672000	VALVE ASSY,CHECK	1				
	36011672000	VALVE ASSY,CHECK	1				
41	91350206000	BEARING,PLAIN (WITH PACKINGX2)	1				
	91350206000	BEARING,PLAIN (WITH PACKINGX2)	1				
42	36625270000	VALVE,CHECK	2			DE3538	DF6291
	36624620000	VALVE,CHECK	2			DF6292	
43	36010060340	STOPPER	4				
	36010060340	STOPPER	4				
44	36014320100	PIPE	2				
	36014320100	PIPE	2				
45	36016053000	CYLINDER	1				
	36016053000	CYLINDER	1				
46	36013922500	PISTON	1				
	36013922500	PISTON	1				
47	37000402120	BEARING,PLAIN (WITH PACKINGX2)	2				
	37000402120	BEARING,PLAIN (WITH PACKINGX2)	2				
48	91350205500	BEARING,PLAIN (WITH PACKINGX2)	1				
	91350205500	BEARING,PLAIN (WITH PACKINGX2)	1				
49	91002903500	O-RING	1		1B G35		
	91002903500	O-RING	1		1B G35		
50	36013793000	PISTON	1				
	36013793000	PISTON	1				
51	36016064000	CYLINDER	1				
	36016064000	CYLINDER	1				
52	91002905500	O-RING	1		1B G55		
	91002905500	O-RING	1		1B G55		
53	91694004500	PACKING	1				
	91694004500	PACKING	1				
54	91410204502	RING,BACKUP	1				
	91410204502	RING,BACKUP	1				
55	36016030600	COVER,ROD	1				DK4466
	36016030600	COVER,ROD	1				DK4466
56	91660004501	SEAL,DUST	1				
	91660004501	SEAL,DUST	1				
57	36016032000	ROD	1				
	36016032000	ROD	1				
58	90180206010	BOLT,BUTTON	2		M6X10		
	90180206010	BOLT,BUTTON	2		M6X10		
59	37002010600	PLATE,SLIDE	1				
	37002010600	PLATE,SLIDE	1				
60	80171304012	SCREW,MACHINE	2		M4X12		
	80171304012	SCREW,MACHINE	2		M4X12		
61	37002008830	PLATE,SLIDE	1				
	37002008830	PLATE,SLIDE	1				
62	80175304008	SCREW,MACHINE	2		M4X8		
	80175304008	SCREW,MACHINE	2		M4X8		
63	37002006310	PLATE,SLIDE	1				
	37002006310	PLATE,SLIDE	1				

TM-ZE300 41044502015A BOOM/5 SECT.,HOOK-IN  
PF1090022-01 SOCKET,ROPE



**TM-ZE300 41044502015A BOOM/5 SECT.,HOOK-IN  
PG1050681-02 CYLINDER,TELESCOPING**

**NO.2 CYLINDER**

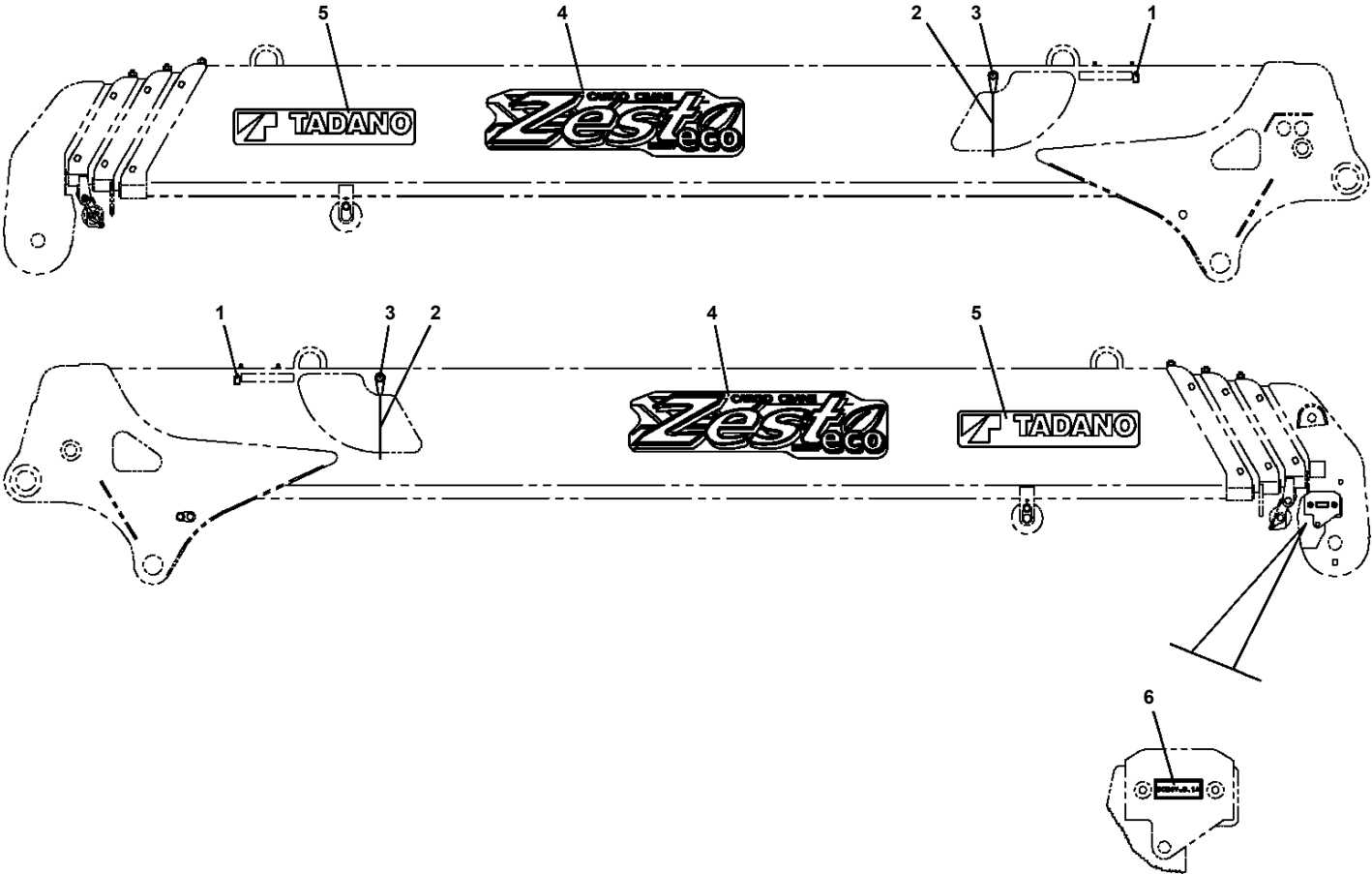


Δ:PACKING SET KEY NO.101 (KEY NO.25,30,31,33,36,47,48)

**TM-ZE300 41044502015A BOOM/5 SECT.,HOOK-IN**

Pos No.	Parts No	Parts Name	Qty	Unit	Technical Data	Serial No (Start)	Serial
1	14148375000	GROMMET	1				
2	90302040601	WASHER,SPRING	2		6		
3	80182306014	SCREW,MACHINE	2		M6X14		
4	90303070601	WASHER,PLAIN	2		6		
5	31371922000	SWITCH ASSY (ASSY ONLY)	1				DE929
	31373350000	SWITCH ASSY (ASSY ONLY)	1			DE9294	
6	82401600504	CLAMP	2		D=4.5		DE079
	82401600504	CLAMP	3		D=4.5	DE0794	DE929
	82401600504	CLAMP	1		D=4.5	DE9294	
7	31371283000	SUPPORT	1				
8	91810130230	FASTENER	6				
9	31371923500	DETECTOR,OVER WIND (CHAIN,FOR WEIGHT)	1				
10	31371923000	WEIGHT	1				
11	90302040801	WASHER,SPRING	2		8		
12	90172108012	BOLT,HEXAGON SOCKET	2		M8X12		
13	31371921000	ROLLER ASSY	1				
14	90186208010	BOLT,FLANGE	8		M8X10		
15	31372970200	COVER	1				
16	31372981000	SUPPORT ASSY	1				DE692
17	91810130240	FASTENER	5				DE929
	91810130240	FASTENER	6			DE9294	
19	91850310305	CLAMP	1			DE9294	
26	31372981001	SUPPORT ASSY	1			DE6921	
31	31371921100	SUPPORT	1				
32	31371921200	ROLLER	1				
33	37000122350	PIN	2				
34	80136320016	PIN,SPLIT	2		2X16		
41	31372981100	SUPPORT	1				DE692
42	37000206691	PIN	1				DE692
43	80601110120	RING,RITAINING	2		S12		DE692
44	90303071201	WASHER,PLAIN	4		12		DE692
45	37000301830	SPACER	1		L=16		DE692
46	37001102460	ROLLER	1				DE692
61	31372981101	SUPPORT	1			DE6921	
62	37000172930	PIN	1			DE6921	
63	80136332020	PIN,SPLIT	1		3.2X20	DE6921	
64	31322224200	PLATE	2		L=1	DE6921	
66	37001107620	ROLLER	1			DE6921	

**TM-ZE300 41044502015A BOOM/5 SECT.,HOOK-IN  
PN5010277-00 PLATE ASSY,NAME (CAUTION.LOGO)**



# TM-ZE300 41044502015A BOOM/5 SECT.,HOOK-IN

Pos No.	Parts No	Parts Name	Qty	Unit	Technical Data	Serial No (Start)	Serial No (End)
1	(*****)	PLATE ASSY,NAME (CAUTION.LOGO)	1			DE7261	
2	(*****)	PLATE ASSY,NAME (STAMP)	1				

CLICK HERE TO **DOWNLOAD** THE COMPLETE MANUAL

- Thank you very much for reading the preview of the manual.
- You can download the complete manual from: [www.heydownloads.com](http://www.heydownloads.com) by clicking the link below



- Please note: If there is no response to CLICKING the link, please download this PDF first and then click on it.

CLICK HERE TO **DOWNLOAD** THE COMPLETE MANUAL