

GR-800-1-00211 5 BOOM + 2 JIB,2M2D

PB1000659-00 HYDRAULIC PRESSURE GENERATING SYSTEM
PC1000553-00 OUTRIGGER SYSTEM
PD1000566-00 SWING SYSTEM
PE1000568-00 ELEVATING SYSTEM
PF1000565-00 WINCH SYSTEM
PG1000523-00 TELESCOPING SYSTEM
PH1000566-00 SAFETY DEVICES
PK1000639-01 FRAME
PL1000599-00 CONTROL DEVICES
PM1000032-01 LUBRICATION DEVICES
PN1000511-02 ELECTRIC EQUIPMENT
PO1000150-00 INDICATION PLATES
PQ1000204-00 DRIVING POWER GENERATING SYSTEM
PR1000126-00 DRIVING POWER TRANSMISSION SYSTEM
PS1000154-00 STEERING SYSTEM
PT1000134-00 BRAKE SYSTEM
PU1000127-00 SUSPENSION
PW1000097-02 ACCESSORIES & TOOLS
PX1000869-02 MOUNTING PARTS
PY1001038-02 OPTIONS
ASSEMBLY

CLICK HERE TO **DOWNLOAD** THE COMPLETE MANUAL

- Thank you very much for reading the preview of the manual.
- You can download the complete manual from: www.heydownloads.com by clicking the link below



- Please note: If there is no response to CLICKING the link, please download this PDF first and then click on it.

CLICK HERE TO **DOWNLOAD** THE COMPLETE MANUAL

GR-800-1-00211 5 BOOM + 2 JIB,2M2D

Pos No.	Parts No	Parts Name	Qty	Unit	Technical Data	Serial No (Start)	Serial No (End)	Remarks	P
1	(*****)	MOUNT,WINCH (MAIN)	1						00
2	(*****)	MOUNT,WINCH (AUX.)	1						00
3	(*****)	PIPING,WINCH (MAIN)	1						00
4	(*****)	PIPING,WINCH (AUX.)	1						00
5	37001806980	ROPE,WIRE (TSK)	1						00
	37001807140	ROPE,WIRE (KISWIRE)	1						00
6	37001807160	ROPE,WIRE (KISWIRE)	1						00
	37001806990	ROPE,WIRE (TSK)	1						00
7	(*****)	SOCKET,ROPE	2						00

GR-800-1-00211 5 BOOM + 2 JIB,2M2D

Pos No.	Parts No	Parts Name	Qty	Unit	Technical Data	Serial No (Start)	Serial No (End)	Remarks	Pages
1	(*****)	PARTS,GREASING	1						000199

GR-800-1-00211 5 BOOM + 2 JIB,2M2D

Pos No.	Parts No	Parts Name	Qty	Unit	Technical Data	Serial No (Start)	Serial No (End)	Remarks
1	(*****)	OPE.ASSY,STEERING (CAB)	1					
2	(*****)	PIPING,STEERING (UPPER)	1					
3	(*****)	PIPING,STEERING (LOWER)	1					
4	(*****)	STEERING ASSY	1					

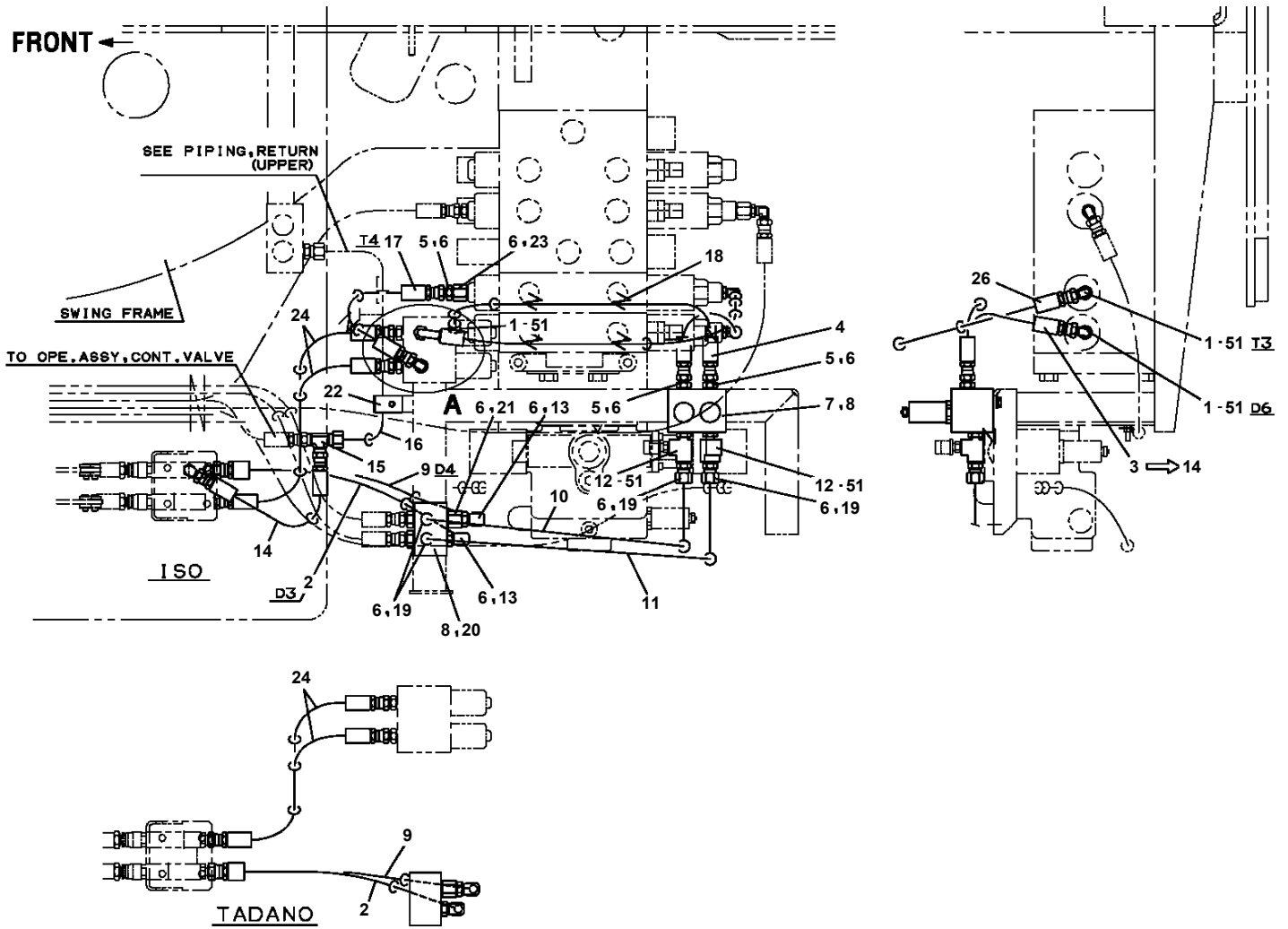
GR-800-1-00211 5 BOOM + 2 JIB,2M2D

Pos No.	Parts No	Parts Name	Qty	Unit	Technical Data	Serial No (Start)	S
1	(*****)	DETECTOR,DISORDERLY WIND (MAIN)	1				
2	(*****)	DETECTOR,DISORDERLY WIND (AUX.)	1				
3	(*****)	SINGLE TOP	1				
4	(*****)	DETECTOR,DRUM ROTATION (MAIN/TACTILE)	1				
5	(*****)	DETECTOR,DRUM ROTATION (AUX.)	1				
7	(*****)	MIRROR (WINCH DRUM MONITOR)	1				
8	(*****)	FAN	1				
9	34730290000	INFLATOR,AIR	1				
16	37001901160	ROPE,WIRE (MAIN HOOK STOWING)	1				
17	(*****)	HOUR METER (MOUNT)	1				
18	(*****)	ACCESSORIES (HUB)	1				
20	(*****)	OPE.ASSY,CONT.VALVE (PEDAL NEUTRAL)	1				
21	(*****)	LAMP (LICENSE)	1				
23	(*****)	MODIFICATION ASSY (OH&S ALBERTA TIE OFF)	1				
41	(*****)	COMPRESSOR & CONDENSER ASSY	1				
42	(*****)	EVAPORATOR INSTALLATION,AIR CONDITIONER	1				
43	(*****)	PIPING,AIR CONDITIONER	1				
44	(*****)	PIPING,RADIATOR	1				
45	(*****)	PIPING,EMERGENCY STEERING (LOW PRESSURE)	1				
	(*****)	PIPING,EMERGENCY STEERING (GRAND DRIVE)	1				
46	(*****)	AIR CONDITIONER ASSY	1				
48	(*****)	PLATE ASSY,NAME (FAN,BELT CAUTION)	1				
49	(*****)	NAME PLATE ASSY (AUX. HOOK)	1				
61	36090870000	HOOK (AUX.,5.6TON)	1				
63	(*****)	MOUNT,HOOK (AUX.)	1				

GR-800-1-00211 5 BOOM + 2 JIB,2M2D

Pos No.	Parts No	Parts Name	Qty	Unit	Technical Data	Serial No (Start)	Serial M
1	36653525010	SEAL KIT	1				
10	36653520000	PUMP,HYDRAULIC (EMERGENCY STEERING)	1				

**GR-800-1-00211 5 BOOM + 2 JIB,2M2D
PB1250045-03 PIPING,PILOT**



GR-800-1-00211 5 BOOM + 2 JIB,2M2D

Pos No.	Parts No	Parts Name	Qty	Unit	Technical Data	Serial No (Start)	Serial No (End)	Rem
101	91002801400	O-RING	2		1B P14			

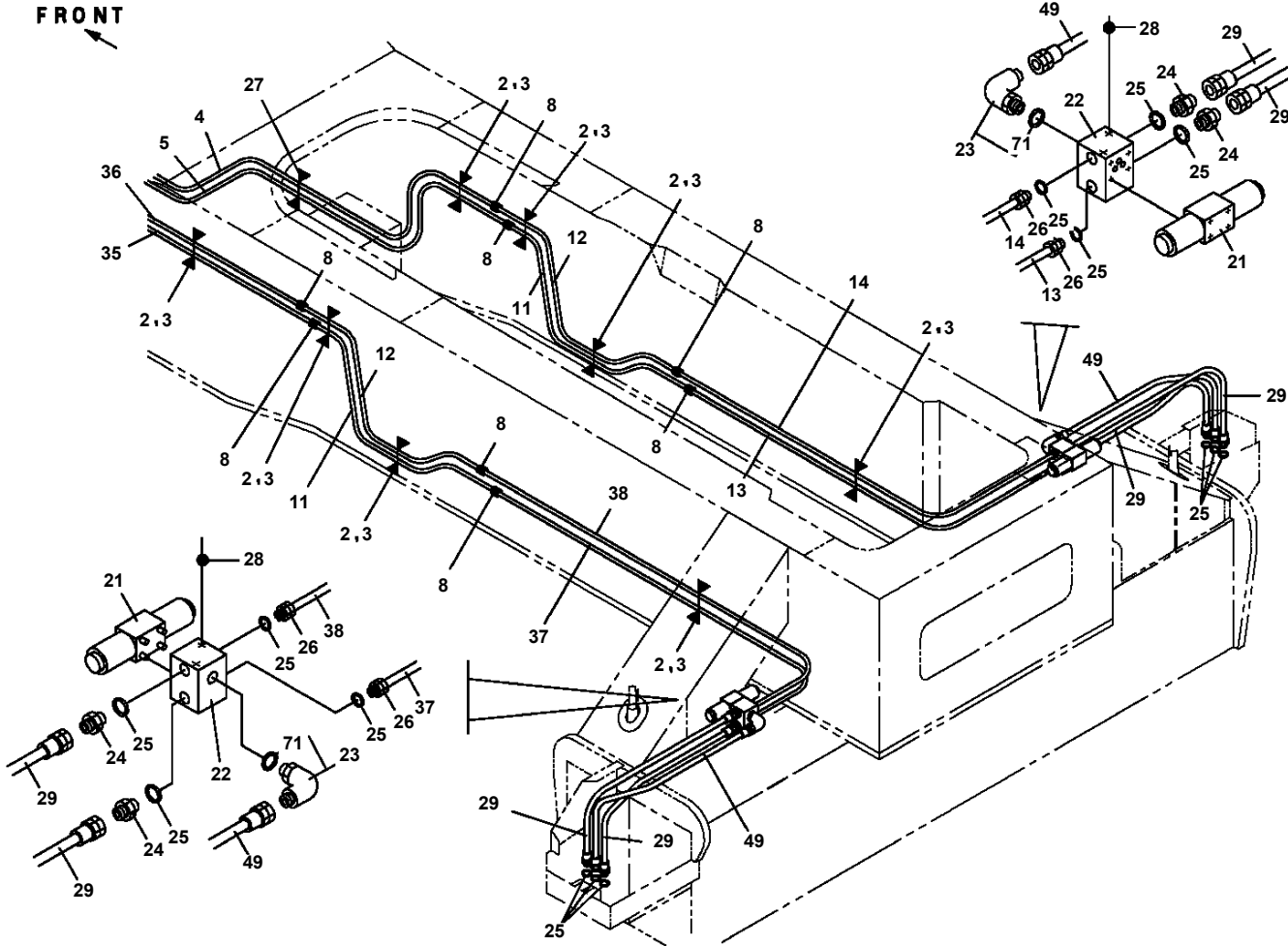
GR-800-1-00211 5 BOOM + 2 JIB,2M2D

Pos No.	Parts No	Parts Name	Qty	Unit	Technical Data	Serial No (Start)	Serial No (End)
10	34630597610	BRUSH	6				
13	34630597620	BRUSH	24				
18	34630597630	GUIDE	1				
19	34630597640	O-RING	1				
22	34630597660	PACKING	1				
26	34630981500	BREATHER	1				
27	34630981600	JOINT	1				
29	34630597670	BOLT,HEXAGON SOCKET	2		M6X6		
50	34630597650	POTENTIOMETER (WITH SUPPORT)	1				
100	34630591001	BRUSH,ROTARY JOINT	1				

GR-800-1-00211 5 BOOM + 2 JIB,2M2D

Pos No.	Parts No	Parts Name	Qty	Unit	Technical Data	Serial No (Start)	Serial No (End)	Remarks
1	36649415010	VALVE,CONTROL	1					
2	36640545010	VALVE,CONTROL	1					
3	36649415030	VALVE,CONTROL	1					
4	36646035050	COVER,END	1					
5	91002909500	O-RING	3		1B G95			
6	91002801000	O-RING	5		1B P10			
7	36649705020	BOLT,HEXAGON SOCKET	4		M12X170			
8	36636615040	VALVE,RELIEF	1					
9	36640545020	VALVE,RELIEF	1					
10	36636615330	VALVE,OVERLOAD RELIEF	2					
11	36649415050	VALVE,OVERLOAD RELIEF	1					
12	36640545030	VALVE,OVERLOAD RELIEF	1					
13	90131910045	BOLT,HEXAGON SOCKET	8		M10X45			
14	36634535210	PLUG	1		PF1/4			
15	91002801100	O-RING	1		1B P11			
16	36647205050	PLUG	1		NPT1-16			
17	36637265060	BOLT,EYE	2		M10			
36	91000512800	O-RING	8					
37	36648985130	RETAINER (SPRING)	2					
38	36646035120	SPRING (W2)	2					
39	36646035130	SPRING (W1)	2					
40	36646675040	RETAINER (SPRING)	4					
41	36648985090	END,SPOOL	2					
42	36646655070	COVER (PILOT)	2					
43	36646655080	COVER (PILOT)	2					
44	36630285200	CHOKE	2					
45	36631055180	SPRING	3					
46	36632585150	PLUG	7					
47	91002903000	O-RING	10		1B G30			
48	36646035150	RETAINER (SPRING)	3					
49	36631055300	VALVE,CHECK	3					
50	36631055310	SPRING	3					
51	36631055320	PLUG (CHECK VALVE)	3					
52	16095101070	O-RING	7					
53	90131908040	BOLT,HEXAGON SOCKET	16		M8X40			
54	90303100801	WASHER,PLAIN	16		8			
55	90302040801	WASHER,SPRING	16		8			
56	36636615210	PLUG	3		NPT3/8			
57	91002801400	O-RING	3		1B P14			
58	36647205050	PLUG	13		NPT1-16			
59	36648985110	BALL,STEEL	6		1/4			
60	90720008120	SCREW,SET	6		M8X12			
77	36646675030	RETAINER (SPRING)	2					
78	36646035160	SPRING (B1)	2					
79	36646035170	SPRING (B2)	2					
81	36646675050	END,SPOOL	2					
82	36646655130	COVER (PILOT)	1					
83	36646655140	COVER (PILOT)	2					
84	36648985120	BALL,STEEL	1		5/16			
85	36636615280	PLUG	1					
86	91002800800	O-RING	1		1B P8			
87	36631985090	CHOKE	1				547030	
	36631985090	CHOKE	1				547025	
	36741645060	CHOKE	1			547026		
	36741645060	CHOKE	1			547031		
88	36646035180	SPRING	2					
89	36636615350	PLUG	3					
90	91002802400	O-RING	3		1B P24			
102	36646655150	COVER (PILOT)	1					
114	91002802800	O-RING	2		1B P28			
115	91411002800	RING,BACKUP	2		P28			
117	13215111010	PACKING	2					
122	91001001600	O-RING	12		1A S16			

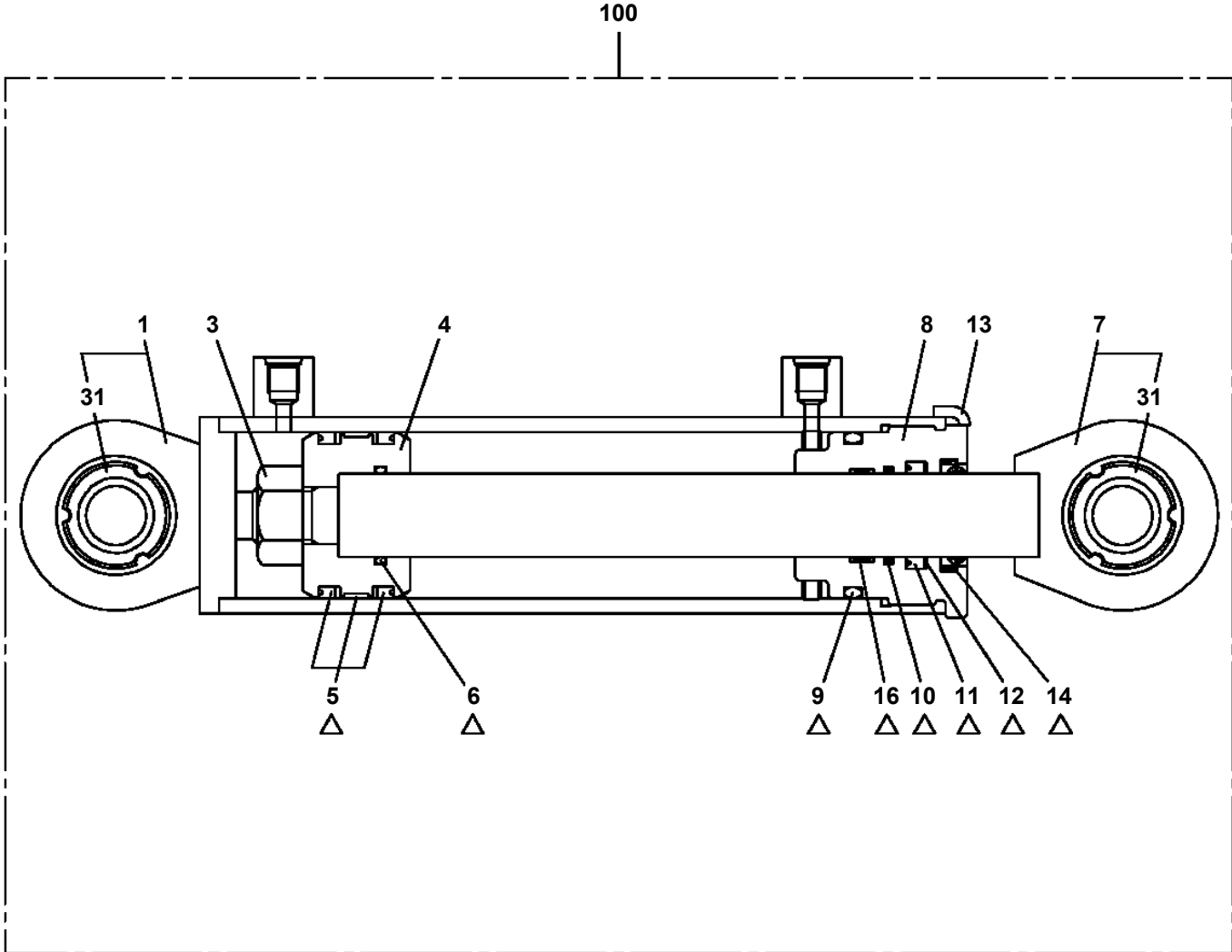
**GR-800-1-00211 5 BOOM + 2 JIB,2M2D
PC1200469-01 PIPING,OUTRIGGER**



GR-800-1-00211 5 BOOM + 2 JIB,2M2D

Pos No.	Parts No	Parts Name	Qty	Unit	Technical Data	Serial No (Start)	Serial No (End)	Remarks	Page
1	36320455490	CONDENSER	1						
2	36320765010	SUPPORT	1						
3	36320565030	SUPPORT	1						
4	36320565040	SUPPORT	1						
5	36320765020	FAN ASSY	1						
6	36320565060	PIPE	1						
7	36320765030	RECEIVER (DRIER)	1						
8	36320765040	BOLT	4						
9	36320765050	BOLT	6						
10	36320765060	NUT	8						
11	36320765070	WASHER	6						
12	36320765080	WASHER,SPRING	8						
13	36320455940	BOLT	1						
14	36320565100	WASHER	2						
100	36320762010	CONDENSER ASSY	1						

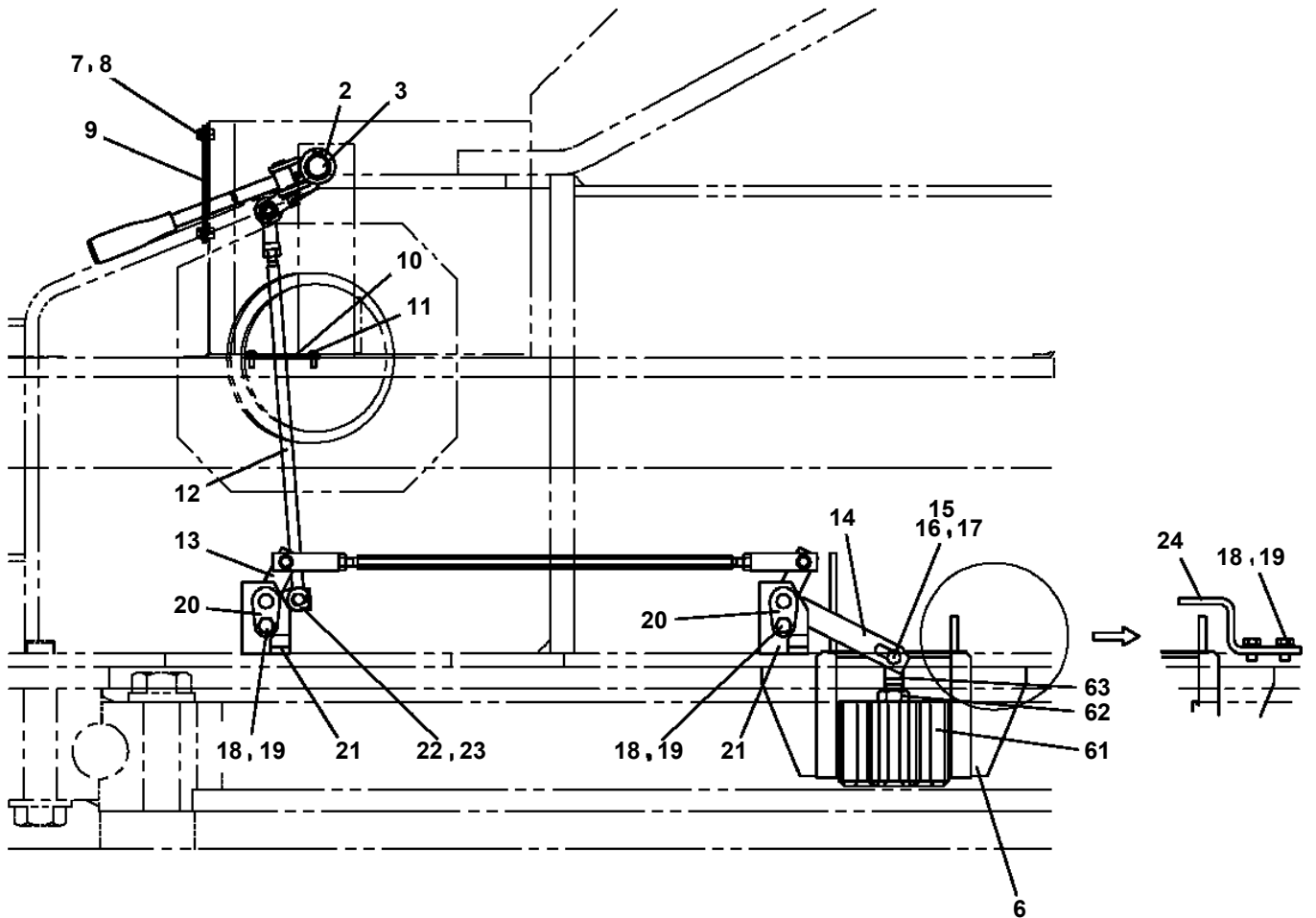
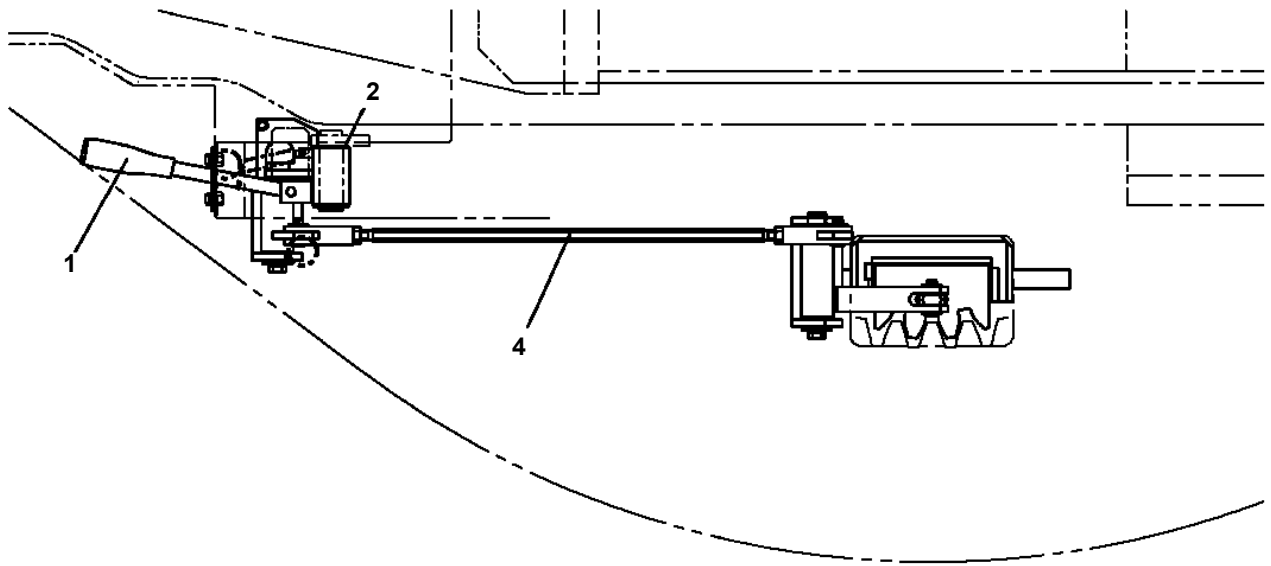
GR-800-1-00211 5 BOOM + 2 JIB,2M2D
PC6200001-02 CYLINDER ASSY (QUICK TURN JIB)



△:PACKING SET KEY NO.50 (KEY NO.5,6,9,10,11,12,14,16)

GR-800-1-00211 5 BOOM + 2 JIB,2M2D
 PD1120041-05 OPE.ASSY,SWING LOCK

FRONT ←



展開図有
 ILLUSTRATED BREAKDOWN NO.1,4,12

GR-800-1-00211 5 BOOM + 2 JIB,2M2D

Pos No.	Parts No	Parts Name	Qty	Unit	Technical Data	Serial No (Start)	Serial No (End)	Remarks	Pages
2	34510702330	PACKING	1				546215		
	34510702350	PACKING	1			546216			
3	34510702420	PACKING	1				546215		
	34510702430	PACKING	1			546216	547819		
5	34510702440	PACKING	1			546216	547819		
6	34510702450	PACKING	1			547820			
7	34510702460	PACKING	1			547820			
100	34510702400	DUCT	1						

GR-800-1-00211 5 BOOM + 2 JIB,2M2D

Pos No.	Parts No	Parts Name	Qty	Unit	Technical Data	Serial No (Start)	Serial No (End)	Rem
1	36026751000	CYLINDER	1					
2	80720105050	PIN,SPRING	1		5X50		546840	
3	91302230000	BEARING,PLAIN	2					
4	91684030000	PACKING	2					
5	91431227501	RING,BACKUP	1					
6	91411227501	RING,BACKUP	1					
7	91002825000	O-RING	1		1B P250			
8	36020940041	PISTON	1				546840	
9	36026752000	ROD ASSY	1				546840	
	36026752001	ROD ASSY	1			546841		
10	36026380100	COVER ASSY,ROD	1				547212	
	36026380101	COVER ASSY,ROD	1			547213	547299	
11	91002828500	O-RING	2		1B P285			
12	91251102500	RING,DAMPER	1					
13	91694125000	PACKING	1					
14	91410225003	RING,BACKUP	1					
15	91660025000	SEAL,DUST	1					
16	36020940080	RETAINER	2				547299	
17	90302040501	WASHER,SPRING	6		5		547299	
18	90101205012	BOLT	6		M5X12		547212	
	90101205014	BOLT	6		M5X14	547213	547299	
19	37000568540	SUPPORT	1					
20	80302090271	FITTING	1		KCO22-040N			
21	91002801800	O-RING	1		1B P18			
22	80302090181	FITTING	3		KCO15-030N			
23	91002801400	O-RING	3		1B P14			
24	81408000290	PIPE,STEEL	2	M	22X2.5T			
25	81408000210	PIPE,STEEL	1	M	15X2.0T			
26	80305010120	FITTING,TEE	1		ZKTA15-000N			
27	81408000210	PIPE,STEEL	2	M	15X2.0T			
28	37000711010	CLAMP ASSY	3		18X1			
29	37000300750	SLEEVE	3		18-15			
30	90101508075	BOLT	4		M8X75			
31	90302040801	WASHER,SPRING	4		8			
32	36605170000	VALVE,COUNTERBALANCE	1					
33	80302090281	FITTING	1		KCO22-060N			
34	91002802400	O-RING	1		1B P24			
35	37000926070	ORIFICE	1		M8,0.6			
36	82456101000	NIPPLE,GREASE	1		A-PT1/8			
37	81408000210	PIPE,STEEL	1	M	15X2.0T			
38	91000527800	O-RING	1		AS568-278			
39	36026380200	COVER,HEAD	1					
40	91410025000	RING,BACKUP	1		P250			
41	90730008200	SCREW,SET	1		M8X20	546841		
42	90303070501	WASHER,PLAIN	1		5	547213	547299	
43	36026380102	COVER ASSY,ROD	1			547300		
44	80622002500	RING,RETAINING	1			547300		
58	36028030010	PISTON	1			546841		
61	36026569900	PACKING SET	1		250X300			
71	37000400030	BEARING,PLAIN	2					
72	90730010160	SCREW,SET	4		M10X16			
82	80612112700	RING,RETAINING	1				547299	
91	18116221000	BEARING,SPHERICAL (NTN)	1					
	80543000120	BEARING,SPHERICAL (ELGES)	1					
102	36026380180	SUPPORT	1			547300		
103	37000404590	BEARING,PLAIN	1			547300		
201	36026750000	CYLINDER,ELEVATING	1					

GR-800-1-00211 5 BOOM + 2 JIB,2M2D

Pos No.	Parts No	Parts Name	Qty	Unit	Technical Data	Serial No (Start)	Serial No (End)	Remarks
1	36320765280	BLOWER ASSY	1					
2	36320765310	AIR INTAKE ASSY	1					
3	36320765340	HEATER (CORE)	1				549439	
	36320765341	HEATER (CORE)	1			549440		
4	36320765350	CASE ASSY	1					
5	36320765450	CASE	1					
6	36320565870	PACKING	1					
7	36320566050	PACKING	1					
8	36320565660	BRACKET	1					
9	36320765090	COVER	1					
10	36320765100	ACTUATOR	2					
11	36320765105	VALVE (EXPANSION)	1				549439	
	36320765110	VALVE (EXPANSION)	1			549440		
12	36320765120	THERMISTOR	1					
13	36320765460	HARNESS	1					
14	36320765130	LEVER	2					
15	36320765140	ROD	1					
16	36320765150	ROD	1					
17	36320765470	LEVER	4					
18	36320565490	RELAY	5					
19	36320765480	EVAPORATOR	1					
20	36320765490	BOLT,HEXAGON SOCKET	2		M5X35			
21	36320565700	SCREW,MACHINE	1					
22	36321165400	SCREW,MACHINE	14					
23	36321165410	SCREW,MACHINE	5					
24	36320565970	CLAMP	1					
25	36321162090	FASTENER	1					
26	36320455380	HOLDER	2					
27	36320565180	HOLDER (SENSOR)	1					
28	36320565190	CLAMP	3					
29	36320565260	PACKING	2					
30	36320565270	PACKING	1					
31	36320565280	PACKING	1					
32	36320565300	CLAMP	1					
33	36321162080	CAP	1					
34	36320565330	LEVER	1					
35	36320565950	LEVER	1					
36	36320565350	LEVER	4					
37	36320565960	CAM	1					
38	36320565380	ROD	1					
39	36320765270	SCREW,MACHINE	2					
40	36320765180	SCREW,MACHINE	6					
41	36320765220	SCREW,MACHINE	6					
42	36320765210	SCREW,MACHINE	2					
61	36320765290	CASE (UPPER)	1					
62	36320765300	CASE (LOWER)	1					
63	36320565700	SCREW,MACHINE	12					
64	36320765200	CONTROLLER (FAN)	1					
65	36320565710	SCREW,MACHINE	3					
66	36320565570	BRACKET	2					
67	36320565580	HOSE	1					
68	36320565590	MOTOR (BLOWER)	1					
69	36320765210	SCREW,MACHINE	2					
70	36320765220	SCREW,MACHINE	4					
71	36320765320	CASE (R)	1					
72	36320765330	CASE (L)	1					
74	36320565650	DAMPER	1					
75	36320765100	ACTUATOR	1					
76	36320765230	LEVER	1					
77	36320765240	LEVER	1					
78	36320765250	SCREW,MACHINE	3				549439	
	36320765180	SCREW,MACHINE	3			549440		
79	36320565620	FILTER	1					

GR-800-1-00211 5 BOOM + 2 JIB,2M2D

Pos No.	Parts No	Parts Name	Qty	Unit	Technical Data	Serial No (Start)	Serial No (End)
1	37001901160	ROPE,WIRE (MAIN HOOK STOWING)	1				

GR-800-1-00211 5 BOOM + 2 JIB,2M2D

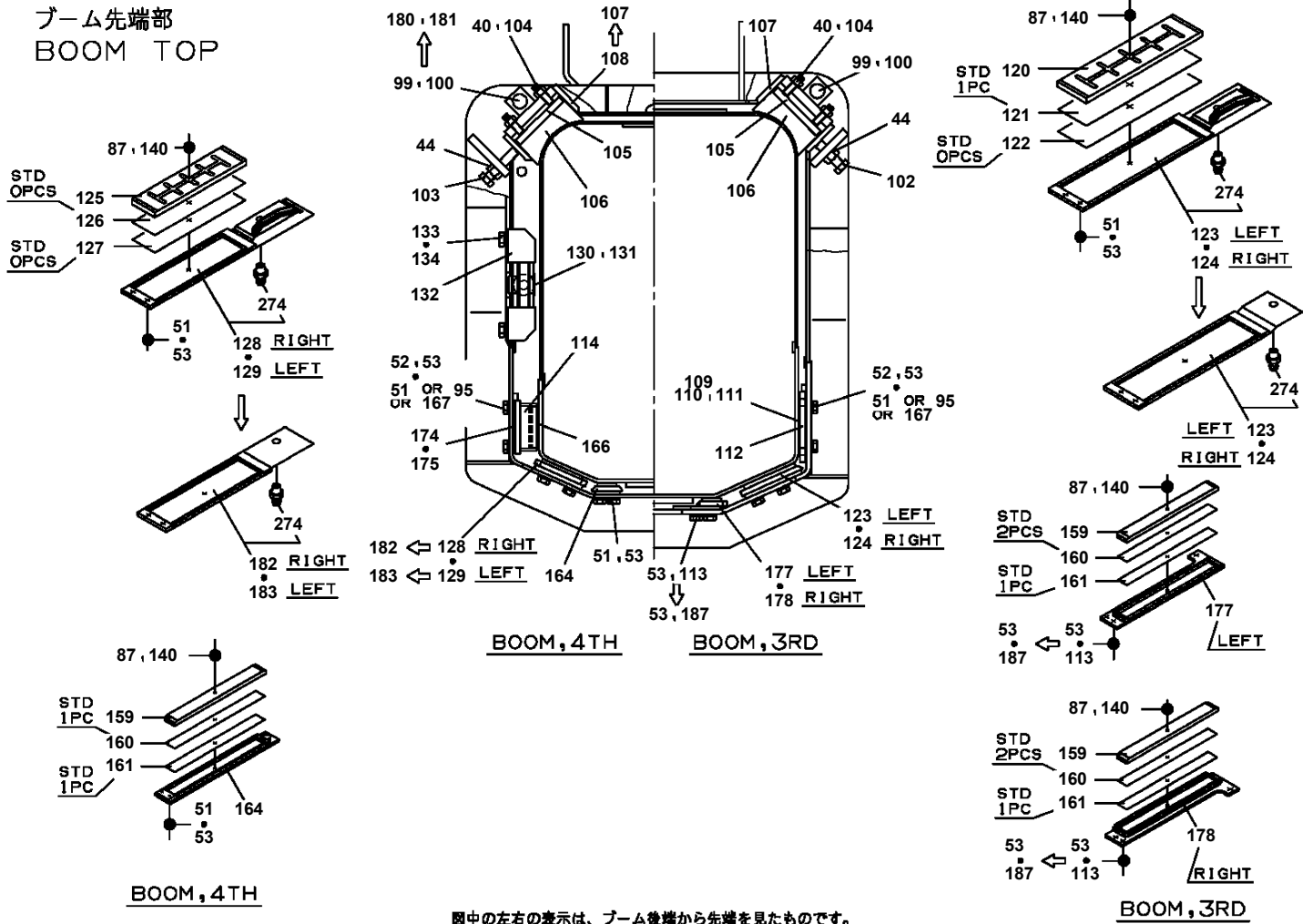
Pos No.	Parts No	Parts Name	Qty	Unit	Technical Data	Serial No (Start)	Serial No (End)	Remarks	Pages
1	34310111000	ROLLER ASSY	1						000293
2	90101210022	BOLT	8		M10X22				
3	90302041001	WASHER,SPRING	8		10				
4	90303071001	WASHER,PLAIN	8		10				

GR-800-1-00211 5 BOOM + 2 JIB,2M2D

Pos No.	Parts No	Parts Name	Qty	Unit	Technical Data	Serial No (Start)	Serial No (End)	Remarks	Page
1	34490461101	PLATE	3		T=3.2				
2	90191208035	BOLT	12		M8X35				
3	90302040801	WASHER,SPRING	12		8				
4	34490461200	SUPPORT	1						
5	82100002001	CLAMP	1		WR5				
6	80182306010	SCREW,MACHINE	1		M6X10		547564		
	90186206010	BOLT,FLANGE	1		M6X10	547565			
7	90302040601	WASHER,SPRING	1		6		547564		
8	90303070601	WASHER,PLAIN	1		6		547564		
9	90101210016	BOLT	2		M10X16		547564		
	90186210014	BOLT,FLANGE	2		M10X14	547565			
10	90302041001	WASHER,SPRING	2		10		547564		
11	90303071001	WASHER,PLAIN	2		10		547564		
12	37000308440	SPACER	12		L=20				
13	82108901190	SWITCH	1				546165		
	82108501100	SWITCH	1		FL7M-5A6N-901	546166			
14	34478931100	INDICATOR,DRUM	1						00008
15	80172304025	SCREW,MACHINE	4		M4X25				
16	90302040401	WASHER,SPRING	4		4				

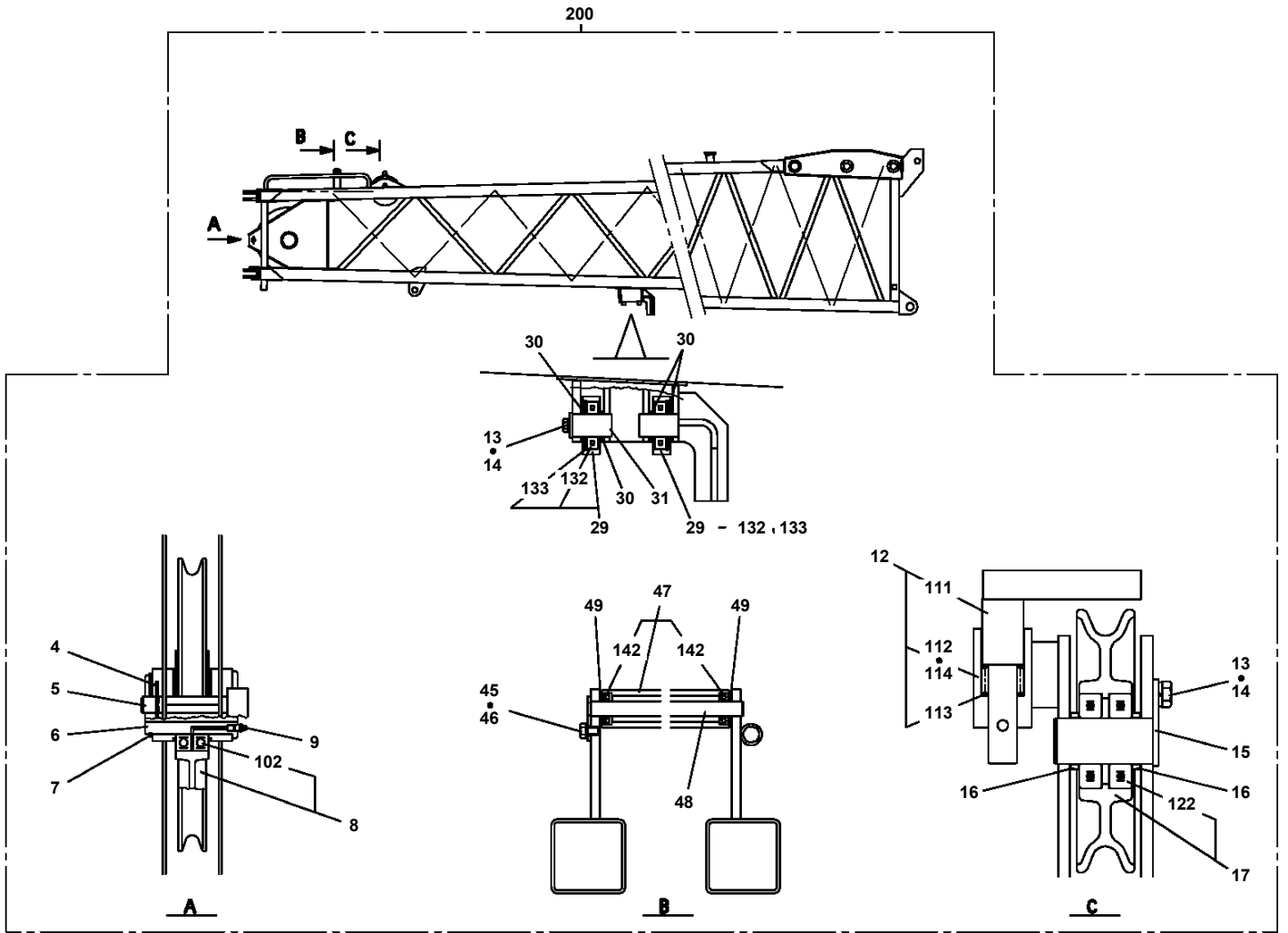
**GR-800-1-00211 5 BOOM + 2 JIB,2M2D
PG1010781-09 BOOM (5 SECT.)**

**ブーム先端部
BOOM TOP**



図中の左右の表示は、ブーム後端から先端を見たものです。
THE RIGHT AND LEFT IN FIGURE ARE THE EXPRESSION THAT SEES FROM BOOM END TO TOP.

GR-800-1-00211 5 BOOM + 2 JIB,2M2D
PG1040276-03 JIB (BASE)



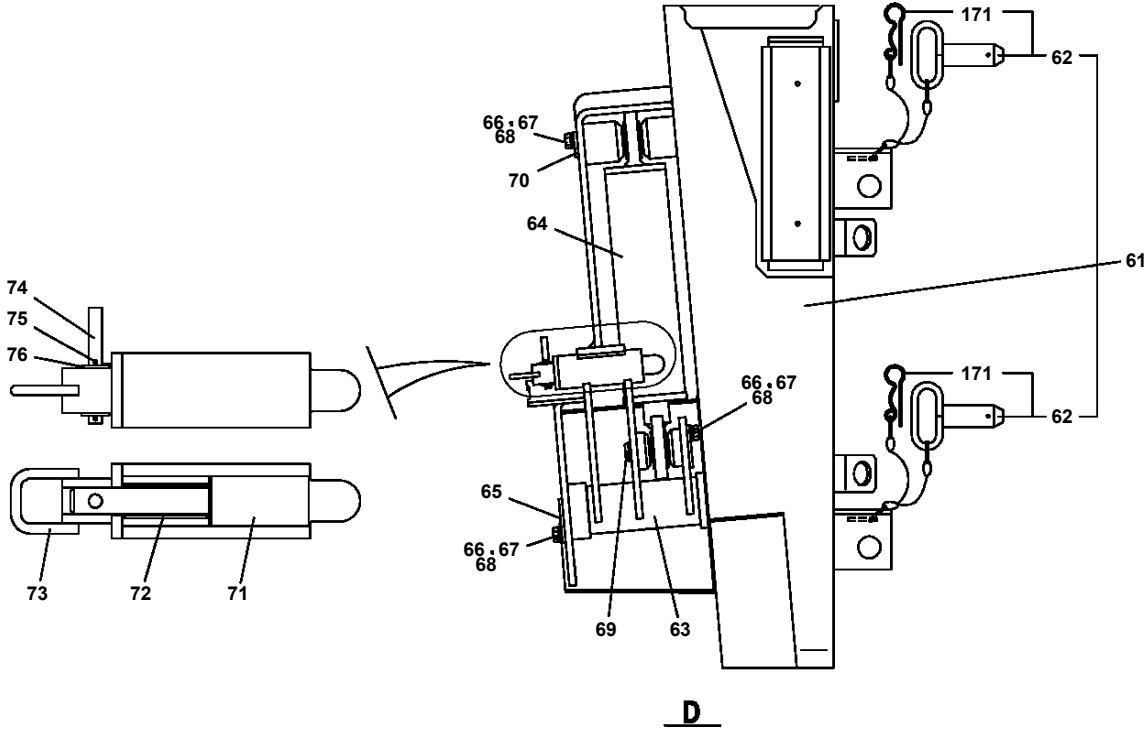
GR-800-1-00211 5 BOOM + 2 JIB,2M2D

Pos No.	Parts No	Parts Name	Qty	Unit	Technical Data	Serial No (Start)	Serial No (End)	R
1	59457138000	PLUG ASSY	1					
2	80720105025	PIN,SPRING	1		5X25		546844	
3	37001600470	NUT	1				546844	
	36017500010	NUT	1			546845		
4	91302319000	BEARING,PLAIN	2					
5	91684019000	PACKING	2					
6	91431217501	RING,BACKUP	2					
7	36010920101	PISTON	1					
8	91002813500	O-RING	1		1B P135			
9	36017122000	ROD	1				546844	
	36017122001	ROD	1			546845		
11	91002919000	O-RING	1				545936	
	91002918500	O-RING	1		1B G185	545937		
12	36016923000	COVER,ROD	1				545936	
13	36017123000	SUPPORT	1				545936	
	36017120100	SUPPORT	1			545937		
14	91251101600	RING,DAMPER	1					
15	91694016000	PACKING	1					
16	91410216001	RING,BACKUP	1					
17	91301116000	BEARING,PLAIN	1					
18	91660016001	SEAL,DUST	1					
19	36605480000	CARTRIDGE, COUNTERBALANCE	1					
20	19116004000	COVER	1					
21	90172110025	BOLT,HEXAGON SOCKET	4		M10X25			
22	90302041001	WASHER,SPRING	4		10			
23	18336032000	PLATE	1					
24	16616016000	PLATE	1					
25	37000300030	SPACER	2		L=80			
26	37001100380	ROLLER ASSY	4					
27	18616057000	COLLAR	4		L=5			
28	90303102001	WASHER,PLAIN	4		20			
29	37000100350	PIN	2					
30	80136340036	PIN,SPLIT	4		4X36			
31	91000526600	O-RING	1		AS568-266		545936	
	91000526500	O-RING	1		AS568-265	545937		
33	90730008120	SCREW,SET	1		M8X12	546845		
42	36016664000	COVER,ROD	1			545937		
51	36017129510	CYLINDER ASSY	1				545936	
	36017129511	CYLINDER ASSY	1			545937		
61	36016929900	PACKING SET	1		160X190		545936	
	36016669902	PACKING SET	1		160X190	545937		
81	80516006204	BEARING,BALL	4					
82	80602110470	RING,RITAINING	4		R47			
92	80612111700	RING,RITAINING	1		AR170	545937		
93	37000404290	BEARING,PLAIN	1			545937		
100	36017120000	CYLINDER,TELESCOPING (NO.2)	1					

GR-800-1-00211 5 BOOM + 2 JIB,2M2D

Pos No.	Parts No	Parts Name	Qty	Unit	Technical Data	Serial No (Start)	Serial No (End)	Remarks	Pages
1	80720105025	PIN,SPRING	1		5X25				
2	36060383000	PLATE	1				546760		
3	91302204500	BEARING,PLAIN	2						
4	91100104500	SEAL,RING	1						
5	91002903000	O-RING	1		1B G30				
6	36052864000	PISTON	1						
7	36053161001	CYLINDER	1				546760		
	36053161002	CYLINDER	1			546761			
8	36053162000	ROD	1						
9	36052863000	COVER,ROD	1						
10	91301103000	BEARING,PLAIN	1						
11	91002904000	O-RING	1		1B G40				
12	91251100300	RING,DAMPER	1						
13	91694003000	PACKING	1						
14	91410203001	RING,BACKUP	1						
15	91660003001	SEAL,DUST	1						
41	36052869900	PACKING SET	1		30X45				
100	36053160001	CYLINDER,JIB	1						

GR-800-1-00211 5 BOOM + 2 JIB,2M2D
PG1250013-05 ATTACHMENT,JIB



GR-800-1-00211 5 BOOM + 2 JIB,2M2D

Pos No.	Parts No	Parts Name	Qty	Unit	Technical Data	Serial No (Start)	Serial No (End)	Remarks	Pages
3	34443550600	GUIDE	6						
4	37001106990	ROLLER ASSY	3						
5	37001107010	ROLLER ASSY	3						
6	37000301410	SPACER	9		L=3				
7	37000145560	PIN	3						
8	90101210016	BOLT	3		M10X16				
9	90302041001	WASHER,SPRING	7		10				
14	33442120200	GUIDE	2						
15	34443760100	SUPPORT	4				547242		
17	37000514230	PLATE	4						
18	90101512020	BOLT	12		M12X20				
19	90302041201	WASHER,SPRING	12		12				
21	34443411600	SUPPORT	1						
22	37000304660	SPACER	6		L=2				
23	34443411700	GUARD	2						
24	34443550100	SUPPORT	1						
25	34440040600	PLATE	1						
26	90101210018	BOLT	4		M10X18				
27	33442125200	SUPPORT	1						
28	31202253550	PLATE	2						
29	34443560300	GUIDE	1						
30	34443560400	PLATE	1						
31	34443560500	PLATE	1						
32	34443560600	GUIDE	1						
33	34443760400	SHEAVE ASSY	1				546214		
	34443760600	SHEAVE ASSY	1			546215			
34	34443760200	SHEAVE ASSY	1				546214		
	34443760800	SHEAVE ASSY	1			546215			
52	90302041001	WASHER,SPRING	2		10				
55	37001000210	SHEAVE ASSY	2						
72	80513006206	BEARING,BALL	12						
80	33442128010	ROLLER ASSY	1						
81	34443550400	SUPPORT	1						
82	37000180460	PIN	1						
83	37000301410	SPACER	2		L=3				
85	80516006206	BEARING,BALL	2						
86	34443550500	SUPPORT	1						
87	37000509960	PLATE	1						
88	90101510020	BOLT	2		M10X20				
92	80602110800	RING,RITAINING	2		R80				
93	80514006208	BEARING,BALL	4				549747		
	80514006208	BEARING,BALL	4			546215	549747		
	80513006208	BEARING,BALL	4			549748			
111	34443760500	SUPPORT	1				546214		
113	80601110400	RING,RITAINING	2		S40				
114	37000188270	PIN	2				546214		
115	37000200690	PIN,SNAP	2				546214		
116	80136340032	PIN,SPLIT	2		4X32		546214		
117	90303071601	WASHER,PLAIN	4		16		546214		
121	34443760300	SUPPORT	1				546214		
131	34443760700	SUPPORT	1			546215			
134	80601110300	RING,RITAINING	2		S30	546215			
135	34440980850	SPACER	4		L=3	546215			
136	37001102980	ROLLER ASSY	2			546215			
141	34443760900	SUPPORT	1			546215			
151	80801003020	BEARING,PLAIN	4			546215			

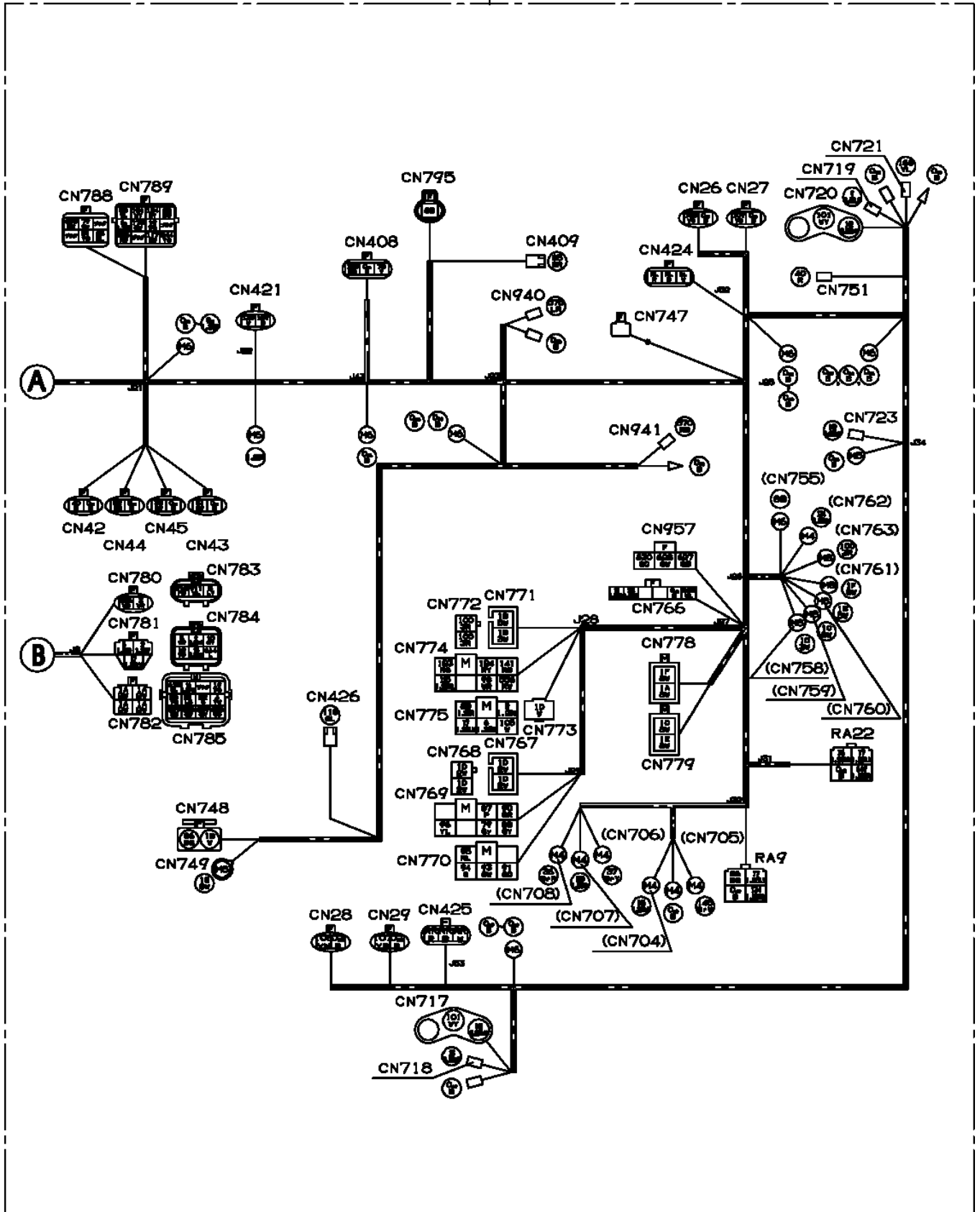
GR-800-1-00211 5 BOOM + 2 JIB,2M2D

Pos No.	Parts No	Parts Name	Qty	Unit	Technical Data	Serial No (Start)	Serial No (End)	Re
1	34372351300	SUPPORT	1					
2	32370002110	GASKET	1					
3	32370002121	COVER	1					
4	80172303025	SCREW,MACHINE	2		M3X25			
5	90302040301	WASHER,SPRING	2		3			
6	82104102010	SWITCH,LIMIT	1					
7	34372351200	ROD	1					
8	14148373001	SPRING	1					
9	80601110180	RING,RITAINING	1		S18			
10	34371314400	SUPPORT	1					
11	90303070301	WASHER,PLAIN	2		3			
12	82114101020	CONNECTOR (2P,MALE)	1					
13	82111101010	TERMINAL	2					
14	32370005200	CORD	1					
15	32370005210	CORD	1					
16	82100000592	TERMINAL (M40.3 TO 1.25)	2					
17	89630201000	HOSE,VINYL	1		6X8,1M			
18	14148375000	GROMMET	1					
19	90101208045	BOLT	2		M8X45			
20	90302040801	WASHER,SPRING	2		8			
21	82121102020	HOLDER	1					
22	82100001220	INSULATOR	2					
23	82121101085	PLUG (AVS0.85)	2					
24	82400000201	GROMMET	1		KG-016			
30	34372359510	ROD ASSY	1					
42	32370002150	SPACER	1		L=12 TO 11			
43	80720103014	PIN,SPRING	1		3X14			
100	34372351101	SWITCH,OVER WIND DETECTOR	1					

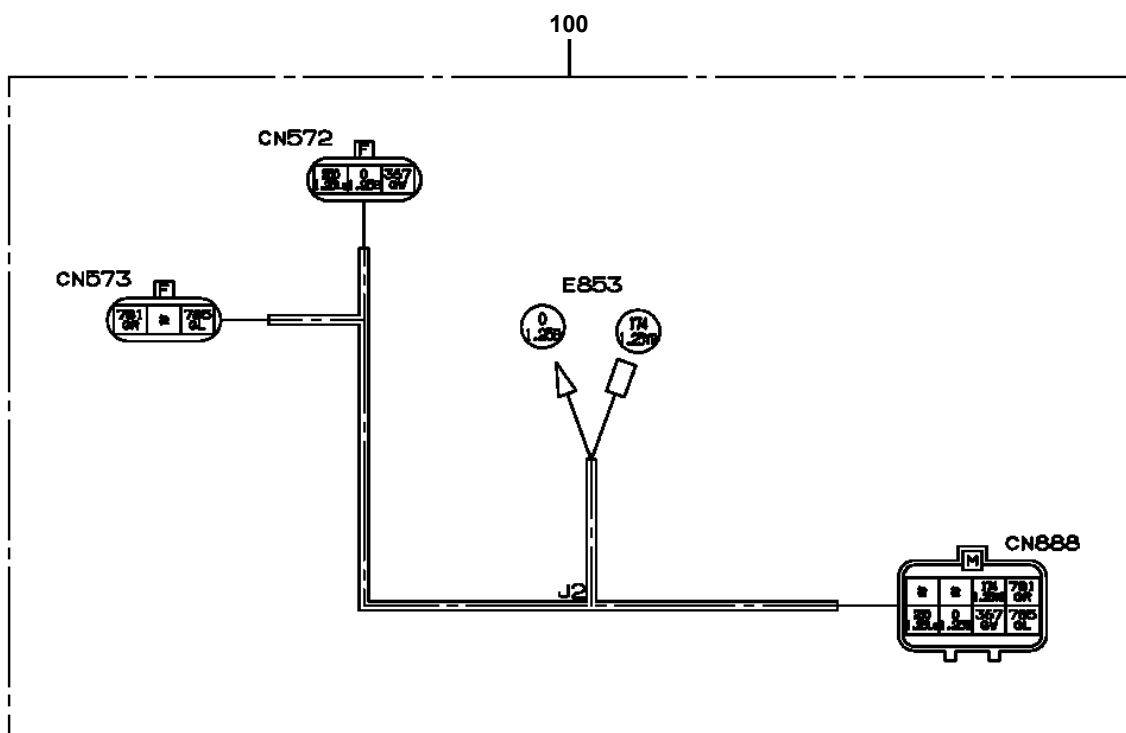
GR-800-1-00211 5 BOOM + 2 JIB,2M2D

Pos No.	Parts No	Parts Name	Qty	Unit	Technical Data	Serial No (Start)	Serial No (End)
1	36119671500	BOARD ASSY (ANALOGUE)	1				
2	36119671200	BOARD ASSY (CONNECTOR)	1				
3	36190061300	BOARD ASSY (DISPLAY)	1				
4	36119671100	BOARD ASSY (POWER)	1				
5	36119671600	BOARD ASSY (OUT PUT)	1				
6	36119671401	BOARD	1				
8	36119675010	COVER (BUTTON)	1				
9	(*****)	P-ROM	1				
10	36119675020	ESCUTCHEON	1				
11	36190475010	PANEL	1				
21	36190061000	MOMENT LIMITER (L2C/WITHOUT P-ROM)	1				
31	36119675040	FUSE	5		250V 2A		
32	36119675050	FUSE	5		250V 3A		
50	36193220000	MOMENT LIMITER (AML-L2C)	1				

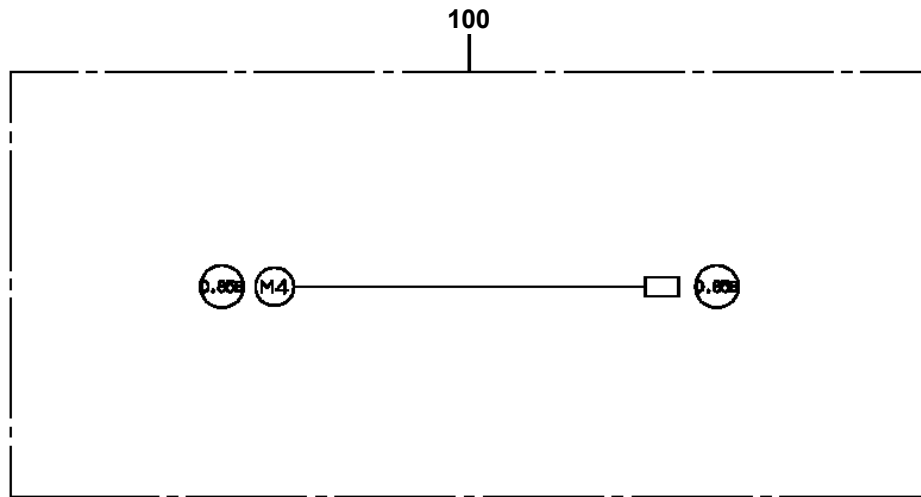
GR-800-1-00211 5 BOOM + 2 JIB,2M2D
PH5032313-00 HARNESS



GR-800-1-00211 5 BOOM + 2 JIB,2M2D
PH5033655-00 HARNESS (BOOM, TOP)

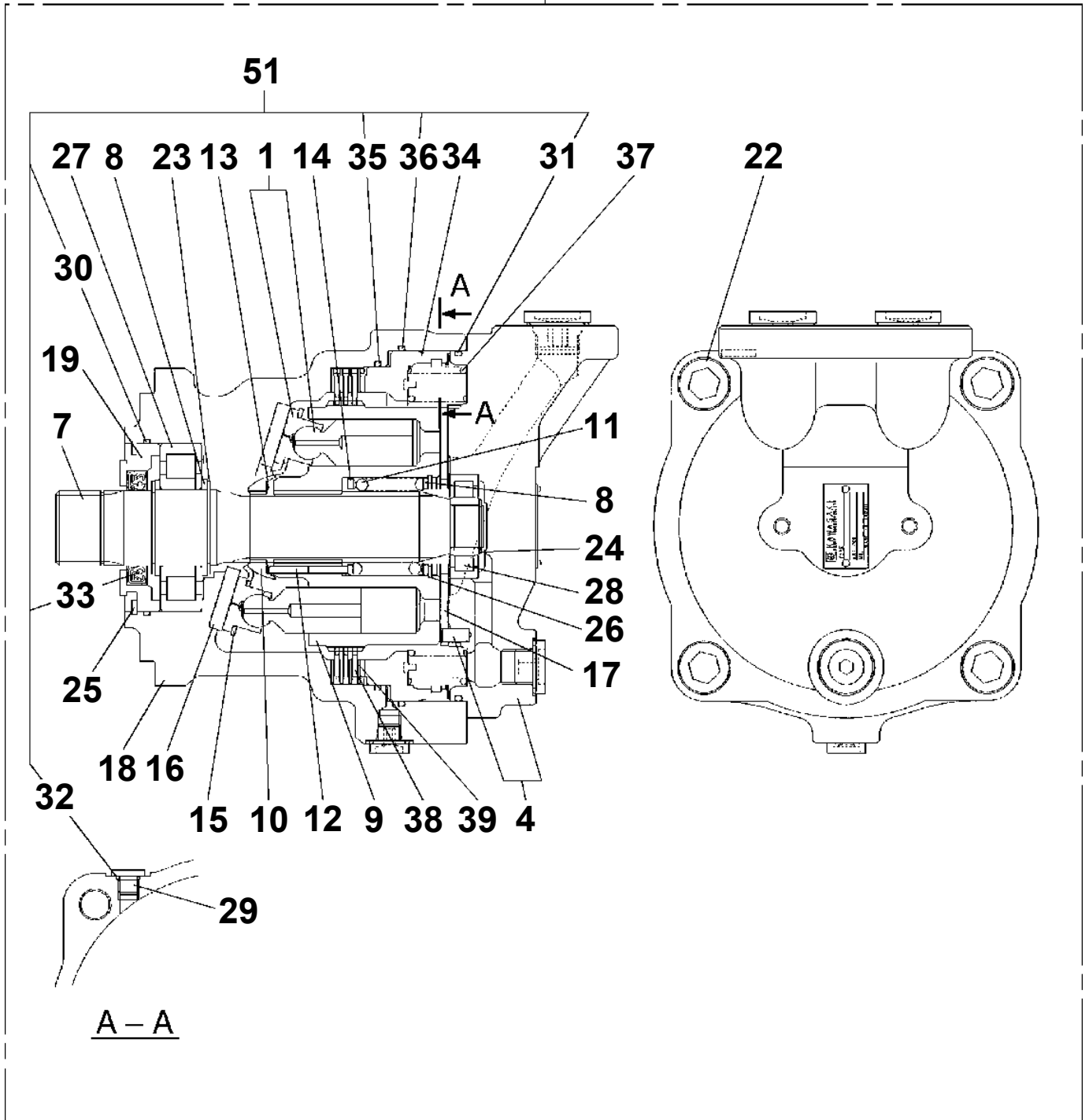


GR-800-1-00211 5 BOOM + 2 JIB,2M2D
PH5034207-00 HARNESS



GR-800-1-00211 5 BOOM + 2 JIB,2M2D
PI1010192-00 MOTOR,HYDRAULIC

100



GR-800-1-00211 5 BOOM + 2 JIB,2M2D

Pos No.	Parts No	Parts Name	Qty	Unit	Technical Data	Serial No (Start)	Serial No (End)	Remarks
5	36640175040	SPACER	4					
6	36641687560	SPRING (C)	2					
19	36646375030	SCREW	2					
21	91000501200	O-RING	4					
25	90131905045	BOLT,HEXAGON SOCKET	4		M5X45			
26	36641687570	ROD	2					
53	36641687520	RETAINER (A)	2					
54	36641687530	RETAINER (B)	2					
55	36646375050	COIL,SOLENOID	2					
57	36642915020	NUT	2					
59	36641687580	GUIDE (SOLENOID)	2					
64	91001102000	O-RING	2		1A P20			
65	91002801800	O-RING	2		1B P18			
66	91001002500	O-RING	2		S25			
100	36645730000	VALVE,SOLENOID (NACHI)	1					

GR-800-1-00211 5 BOOM + 2 JIB,2M2D

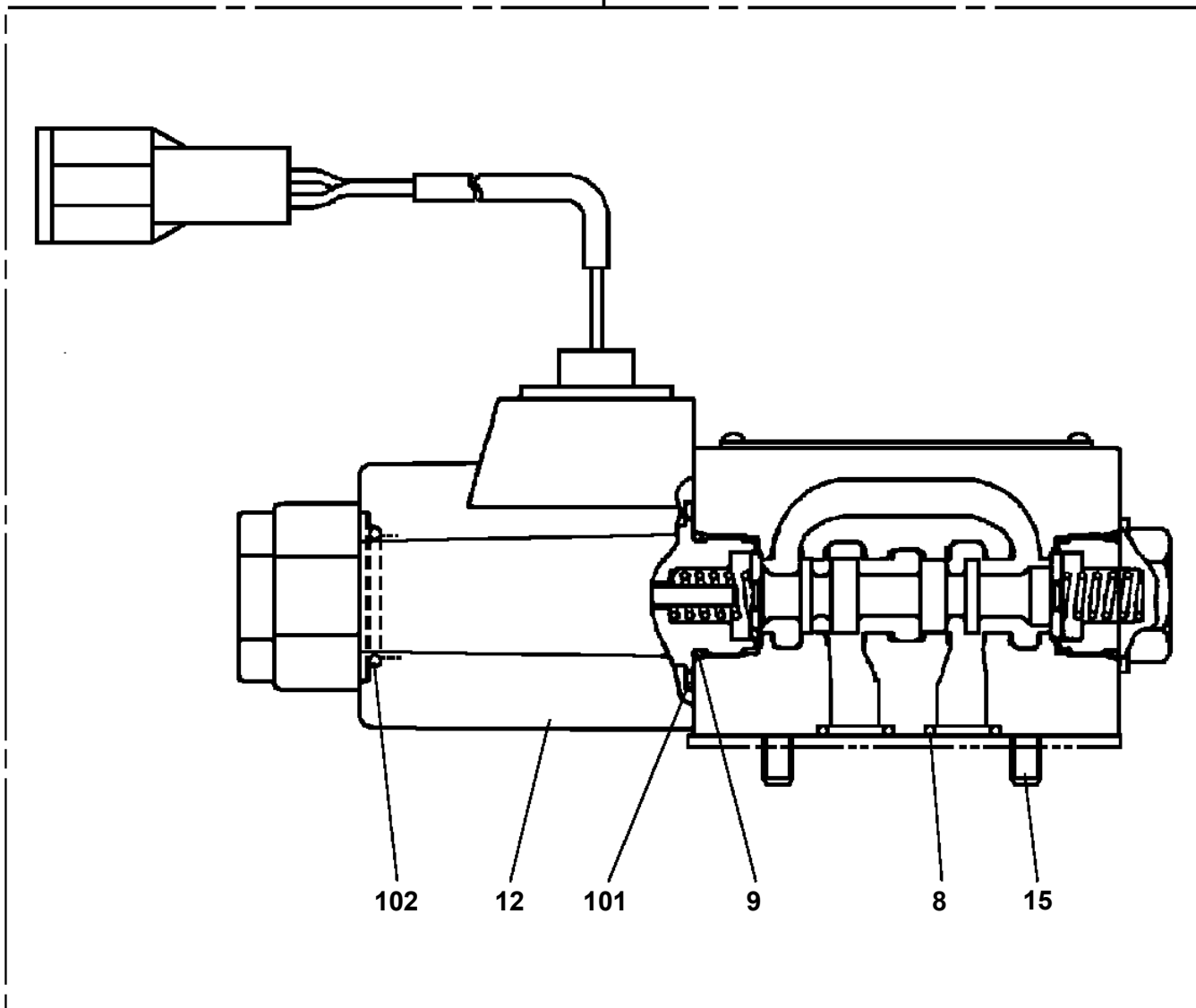
Pos No.	Parts No	Parts Name	Qty	Unit	Technical Data	Serial No (Start)	Serial No (End)	Rema
2	90131905045	BOLT,HEXAGON SOCKET	4		M5X45			
11	36741765010	NUT	2					
12	36741765020	O-RING	2					
13	36646545040	CORE ASSY (SOLENOID)	2				549736	
	36741765030	CORE ASSY (SOLENOID)	2			549737		
18	91000501200	O-RING	4					
20	36642765060	WASHER (CENTER)	2					
21	36646545020	SPRING	2					
22	36643435040	PIN,SPRING	4					
26	36642765050	O-RING	2					
34	36741765040	COIL,SOLENOID	2					
35	36648475110	O-RING	2					
50	36647900000	VALVE,SOLENOID (TOKIMEC)	1					

GR-800-1-00211 5 BOOM + 2 JIB,2M2D

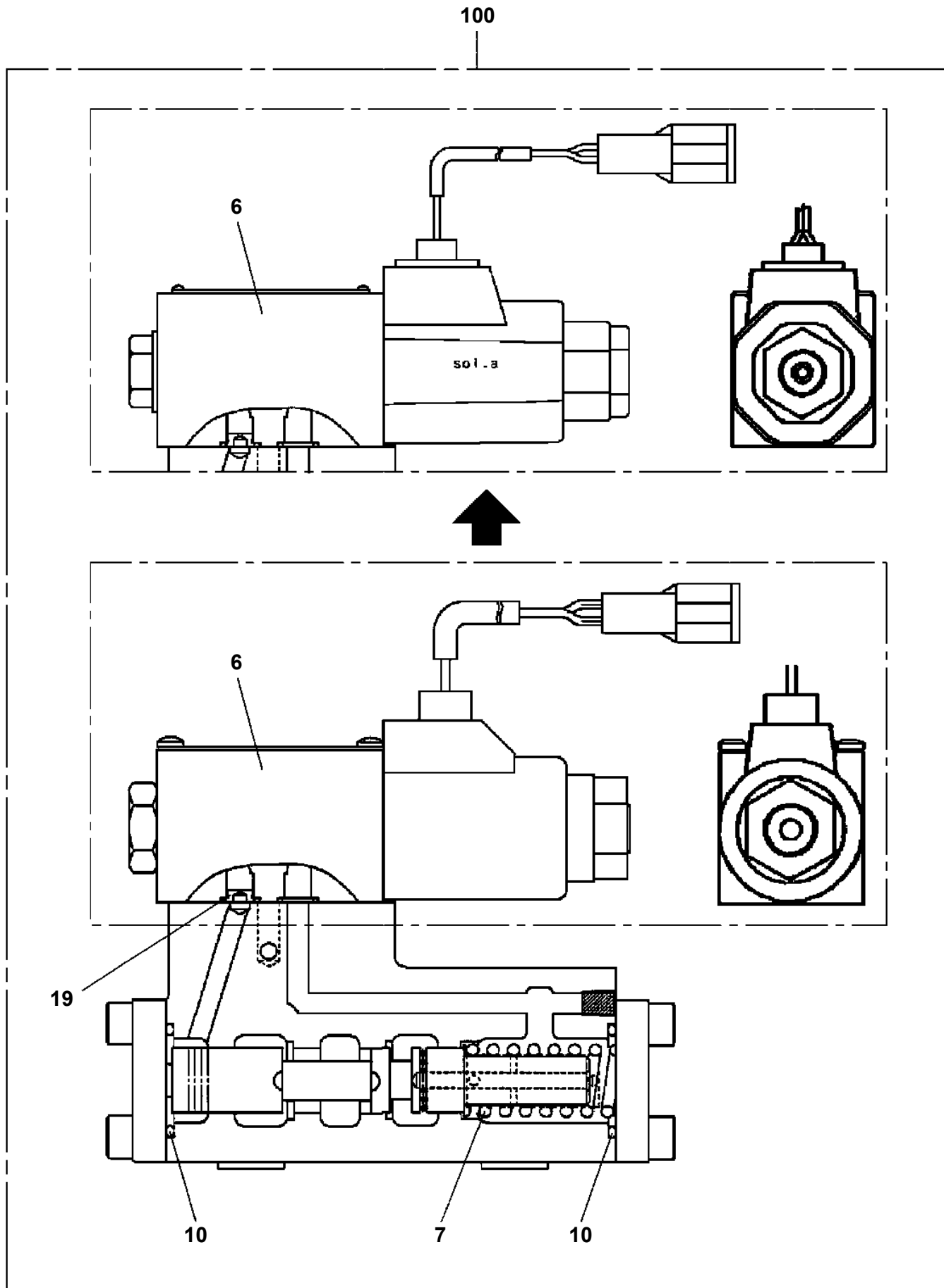
Pos No.	Parts No	Parts Name	Qty	Unit	Technical Data	Serial No (Start)	Serial No (End)	Remarks
1	36740105010	CASING	1					
2	36730165010	BOLT,HEXAGON SOCKET	4					
3	36740095020	SOLENOID ASSY	2					
25	91000501300	O-RING	2		AS568-013			
26	91000501400	O-RING	2		014 1115-70			
27	91000501500	O-RING	2		AS568-015			
29	36730165030	NUT	2					
30	36646605110	O-RING	2					
50	36740100000	VALVE,SOLENOID	1					

GR-800-1-00211 5 BOOM + 2 JIB,2M2D
PI1120345-00 VALVE,SOLENOID

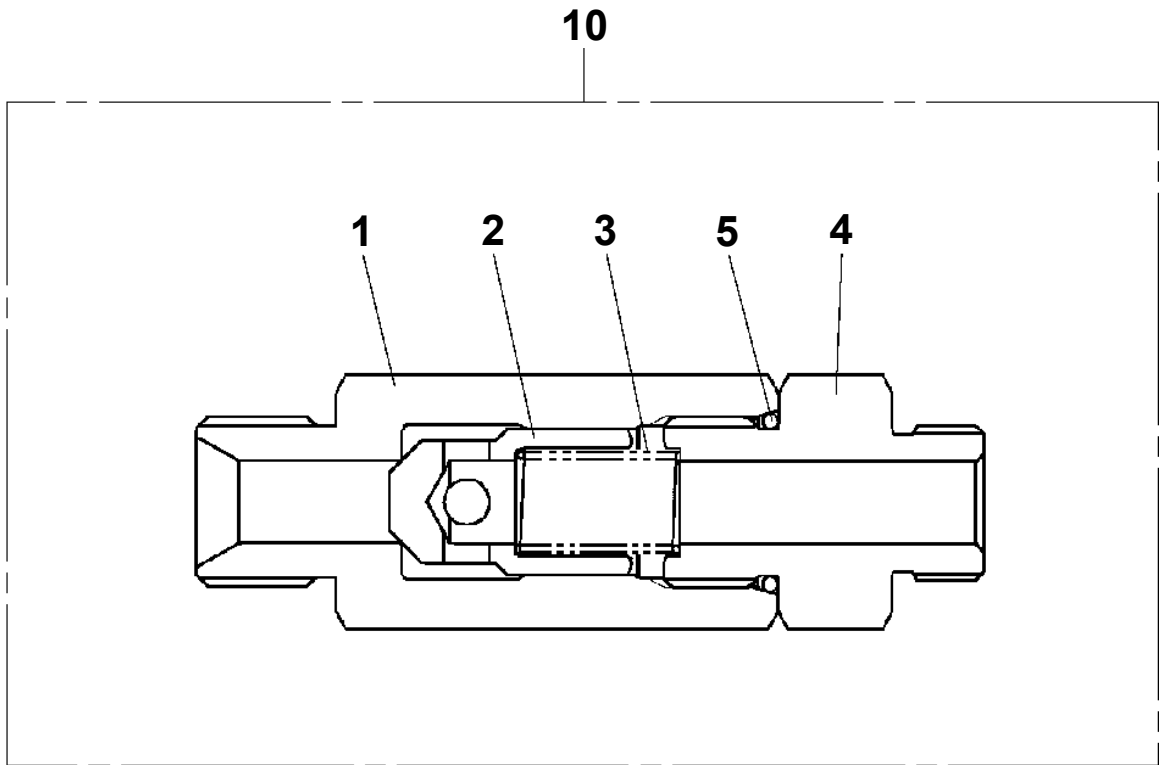
200



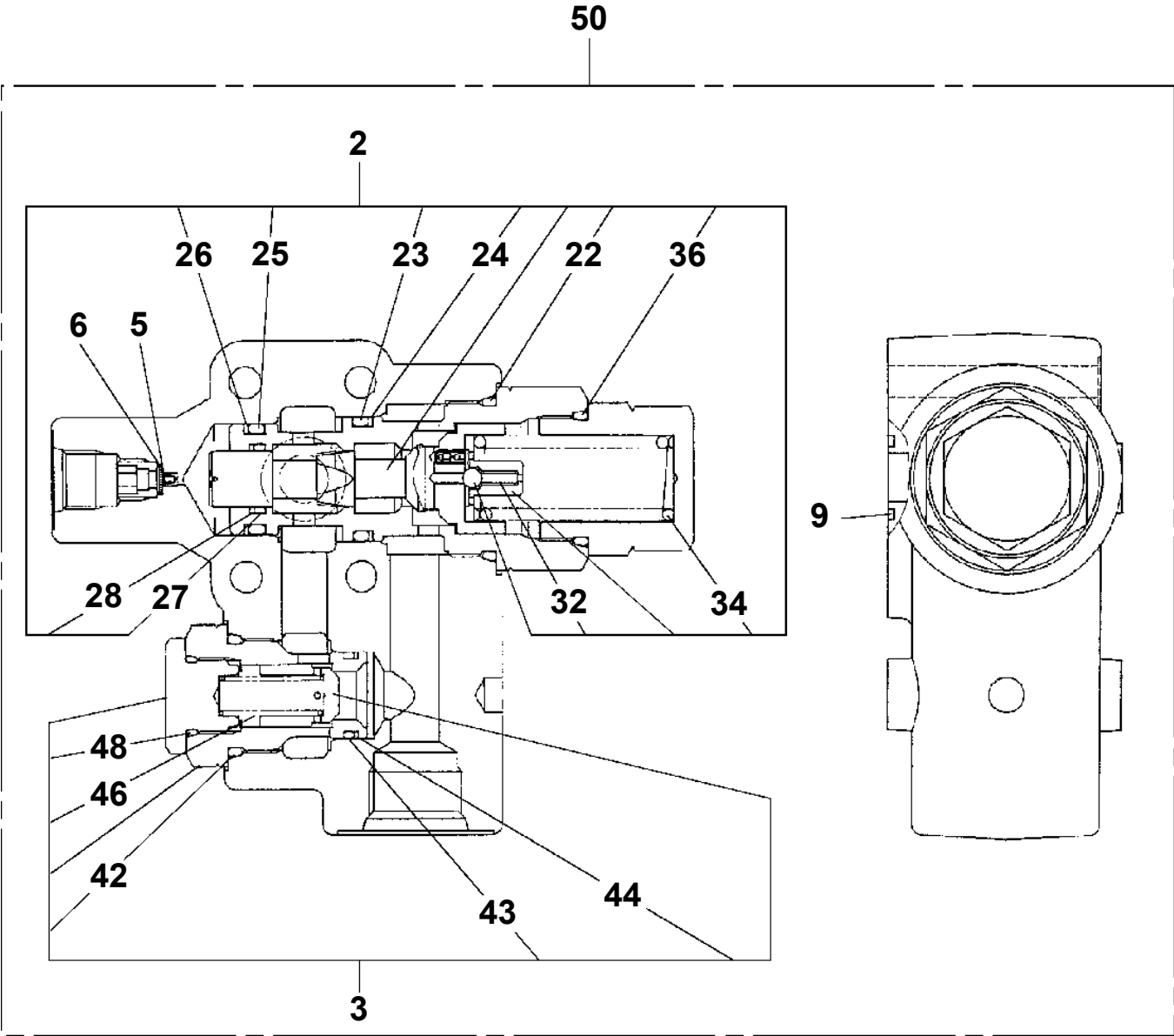
GR-800-1-00211 5 BOOM + 2 JIB,2M2D
PI1130044-02 VALVE,HYDRAULIC



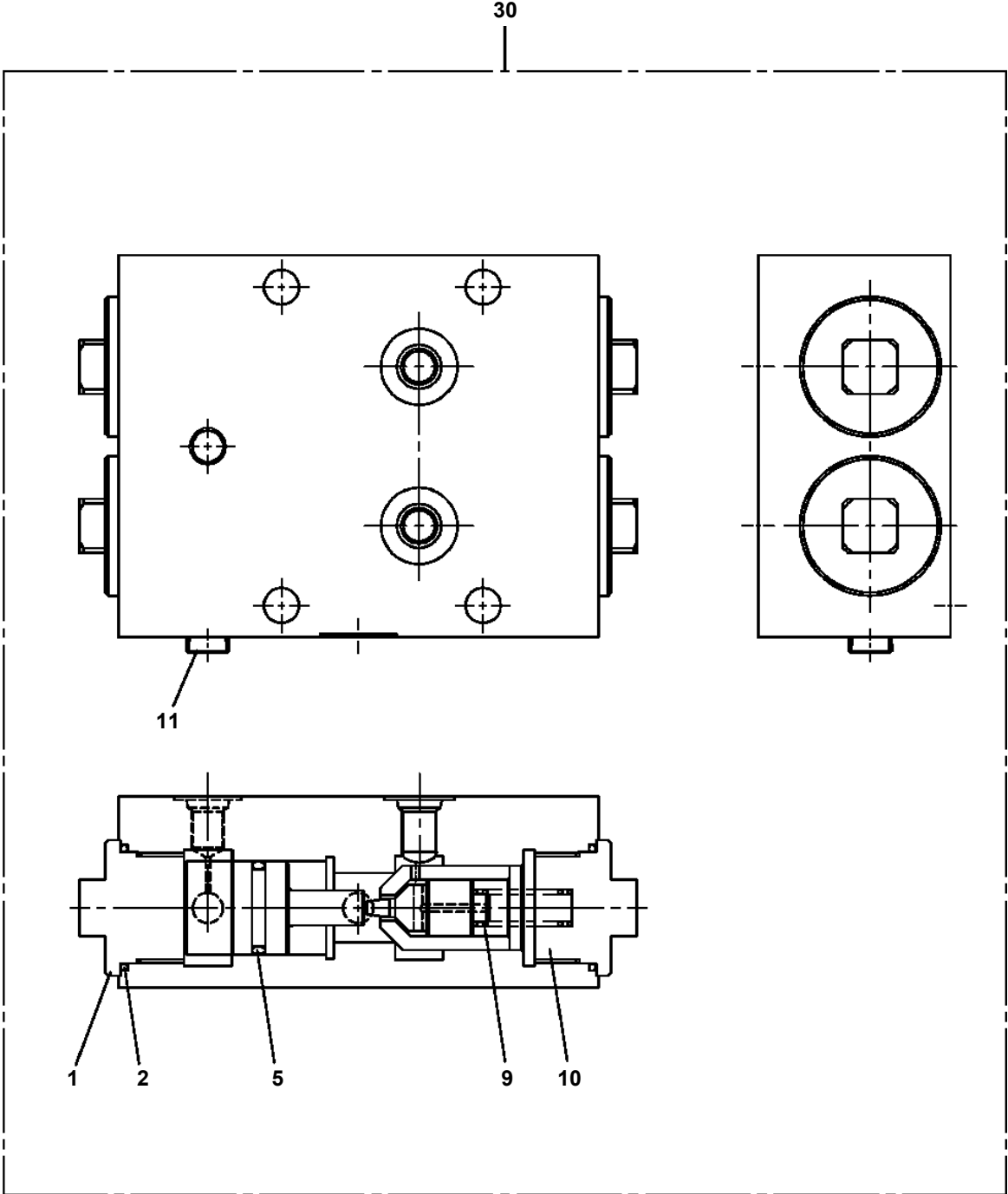
GR-800-1-00211 5 BOOM + 2 JIB,2M2D
PI1140156-00 VALVE,CHECK



GR-800-1-00211 5 BOOM + 2 JIB,2M2D
PI1250115-01 VALVE,COUNTERBALANCE



GR-800-1-00211 5 BOOM + 2 JIB,2M2D
PI1280065-00 VALVE,PILOT CHECK



GR-800-1-00211 5 BOOM + 2 JIB,2M2D

Pos No.	Parts No	Parts Name	Qty	Unit	Technical Data	Serial No (Start)	Serial No (End)
1	90186210020	BOLT,FLANGE	12		M10X20		
2	34250882400	SUPPORT	1				
3	80192486014	SCREW,MACHINE (WITH WASHER)	1		M6X14		
4	34250380200	SUPPORT	1				
5	90201200400	NUT	10		M4		
6	80192484016	SCREW,MACHINE	10		M4X16		
7	34250961100	COVER	2				
8	99172108016	BOLT,TAPPING	15		M8X16		
9	34251281000	COVER	3				
10	82100000956	GROMMET	2		SG-36A		
11	34251281100	COVER	2				
12	34251281200	COVER	1				
13	80176405012	SCREW,MACHINE	16		M5X12		
14	90305260501	WASHER	19		B1-5		
15	34251200500	LEVEL GAUGE	1				
16	80186406016	SCREW,MACHINE	37		M6X16		
17	90305260601	WASHER	37		B1-6		
18	90186208020	BOLT,FLANGE	1		M8X20		
19	82100000951	GROMMET	5				
21	82100000920	GROMMET	3				
22	82121800010	PLUG (OTUKA)	3				
23	34251331100	PANEL	1				
24	(*****)	BELT,SEAT (MOUNT)	1				
25	34251280100	SEAT,OPERATOR	1				
26	34251590200	SUPPORT	1				
27	34251280300	COVER	1				
28	34251280400	COVER	1				
29	34251480300	SUPPORT	1				
30	34251281600	COVER	1				
31	34251280600	COVER	1				
32	34251280700	COVER	1				
34	34251280900	COVER	1				
35	34251281500	PANEL	1				
36	82400000468	TRAY,ASH	1				
37	80176405025	SCREW,MACHINE	3		M5X25		
38	37001200180	SPRING	3				
39	80192484012	SCREW,MACHINE (WITH WASHER)	1		M4X12		
40	80192485014	SCREW,MACHINE (WITH WASHER)	2		M5X14		
41	34251480500	COVER	1				
45	34251330900	COVER	1				
46	34251330800	COVER	1				
47	80176404012	SCREW,MACHINE	2		M4X12		
48	90305270401	WASHER	2				
49	34251480200	COVER	1				
50	90280201000	NUT,FLANGE	4		M10		
51	34251221700	COVER	1				
74	34251331150	PLATE,NAME (REMOVED/EQUIPPED)	1				
75	34251331160	PLATE,NAME (ON/OFF)	1				
111	34251280750	PLATE,NAME	1				
112	34251280760	PLATE,NAME	1				
113	34251480160	PLATE,NAME	1				
114	34251280780	PLATE,NAME	1				
115	34251590310	PLATE,NAME	1				

GR-800-1-00211 5 BOOM + 2 JIB,2M2D

Pos No.	Parts No	Parts Name	Qty	Unit	Technical Data	Serial No (Start)	Serial
60	34260957620	COVER (LOCK)	1				
61	80192484012	SCREW,MACHINE (WITH WASHER)	2		M4X12		
62	34260957630	COVER (JUNCTION)	1				
63	80192486012	SCREW,MACHINE	2		M6X12		
64	34260957640	HOLDER (FRONT-ROOF/GLASS)	2				
65	99164008020	BOLT (M8X20)	8				
66	34260957650	HOOK ASSY	1				
67	34260657580	BOLT,HEXAGON SOCKET(WITH WASHER)	2		M8X16		
68	34260367810	STRIKER	1				
69	34260367820	SHIM	1				
70	34260957785	LINER	1				
71	34260957786	LINER	1				
72	80185308035	SCREW,MACHINE	2		M8X35		
73	90302040801	WASHER,SPRING	2		8		
74	90304110801	WASHER,TOOTH	2		8		
75	90201200800	NUT	2		M8		
76	34260957670	COVER (WEATHER STRIP)	1				
77	80192486016	SCREW,MACHINE	2		M6X16		
78	34260957680	TRIM	1				
79	34260957813	CLIP	6				
80	34260957690	COVER	1				
81	80192484012	SCREW,MACHINE (WITH WASHER)	3		M4X12		
82	34260957700	COVER	2				
83	90915040125	SCREW,TAPPING	8		M4X12		
84	34260957710	COVER (WIPER MOTOR)	1				
85	80192486012	SCREW,MACHINE	7		M6X12		
86	34260957720	SUPPORT ASSY	1				
87	99164008020	BOLT (M8X20)	2				
88	34260957791	DOOR ASSY	1				546356
	34260957792	DOOR ASSY	1			546356	
89	34260952330	GLASS (DOOR)	1				
90	34260581400	WEATHER STRIP (DOOR GLASS LAN L=2800)	1				
91	34260952360	WEATHER STRIP (1SET)	1				
92	34260581200	REGULATOR,WINDOW	1				
93	90180106012	BOLT,BUTTON	6		M6X12		
94	90302040601	WASHER,SPRING	6		6		
95	80192486012	SCREW,MACHINE	2		M6X12		
96	34260952300	JUNCTION	1				546356
	34260952301	JUNCTION (DOOR SIDE)	1			546356	
97	34260957800	COVER	1				
98	80192484012	SCREW,MACHINE (WITH WASHER)	10		M4X12		
99	34260957801	ARM ASSY	1				
100	34260657630	BOLT (WITH WASHER))	2		M10X30		
101	34260957802	ARM ASSY (LOWER)	1				
102	34260657600	BOLT (WITH WASHER)	3		M8X25		
103	34260957803	ARM ASSY	1				
104	34260657580	BOLT,HEXAGON SOCKET(WITH WASHER)	2		M8X16		
105	34260367840	REMOTE CONTROL ASSY	1				
106	80185306016	SCREW,MACHINE	2		M6X16		
107	90304120601	WASHER	2		6		
108	34260239810	HANDLE (INNER)	1				
109	80192435016	SCREW,MACHINE	2		M5X16		
110	34260957804	REMOTE ASSY	1				
111	80185306016	SCREW,MACHINE	3		M6X16		
112	90304120601	WASHER	3		6		
113	34260239710	HANDLE (DOOR/OUTER)	1				
114	80192486016	SCREW,MACHINE	2		M6X16		
115	34260957805	LOCK	1				
116	80192436016	SCREW,MACHINE	3		M6X16		
117	34260322300	SWITCH ASSY (STARTER & DOOR LOCK CYL.)	1				
118	34260957806	LINK (OUTER HANDLE)	1				
119	34260957807	HANDLE (ROD INNER)	1				
120	34260957808	ROD (REMOTE)	1				

GR-800-1-00211 5 BOOM + 2 JIB,2M2D

Pos No.	Parts No	Parts Name	Qty	Unit	Technical Data	Serial No (Start)	Serial No (End)	Remarks	Pages
2	34282551000	COUNTERWEIGHT	1						
3	37000183010	PIN	2						
4	37000200010	PIN,SNAP	2						
5	90171220100	BOLT	2		M20X100	545974			
6	90201202000	NUT	2		M20	545974			
21	34282409510	SUPPORT ASSY	1						
34	34282400500	SUPPORT	1			545969			
35	34282400600	SUPPORT	1			545969			

CLICK HERE TO **DOWNLOAD** THE COMPLETE MANUAL

- Thank you very much for reading the preview of the manual.
- You can download the complete manual from: www.heydownloads.com by clicking the link below



- Please note: If there is no response to CLICKING the link, please download this PDF first and then click on it.

CLICK HERE TO **DOWNLOAD** THE COMPLETE MANUAL

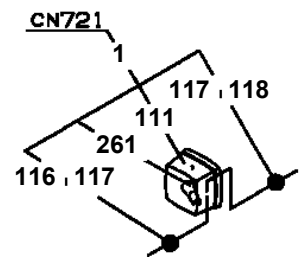
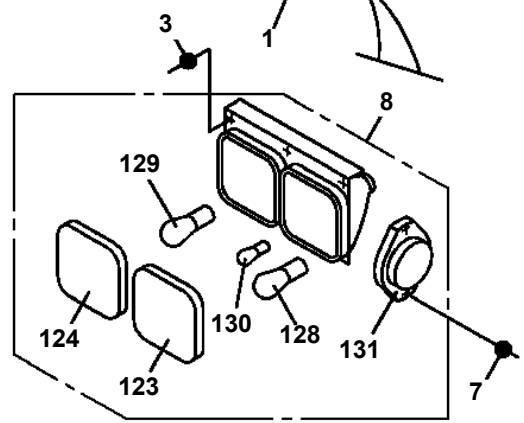
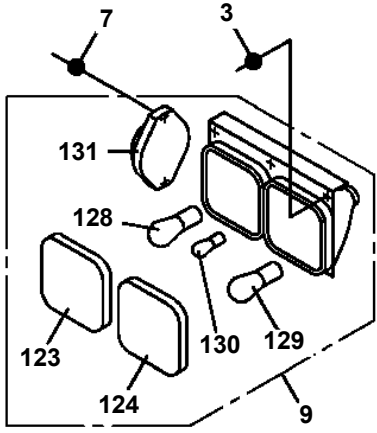
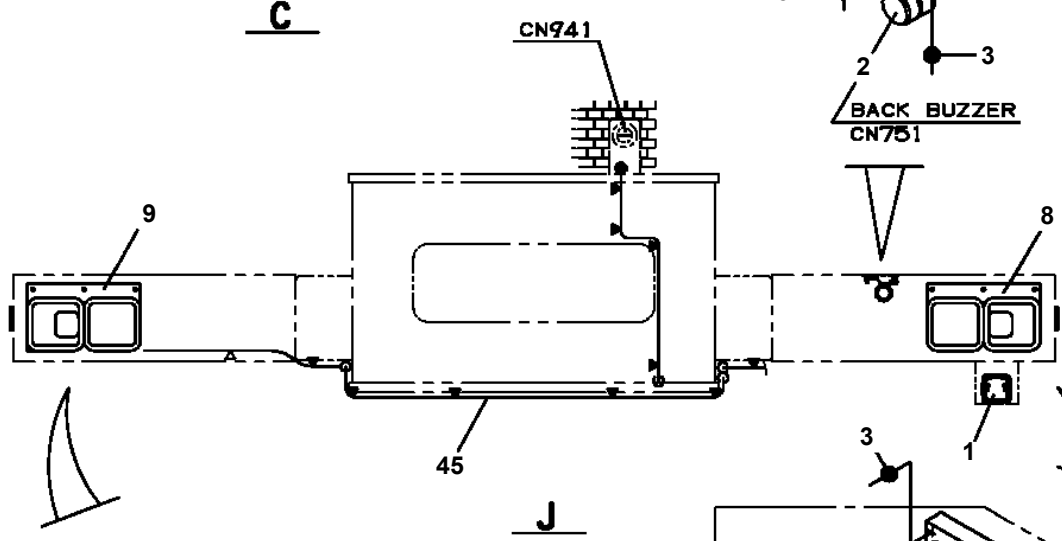
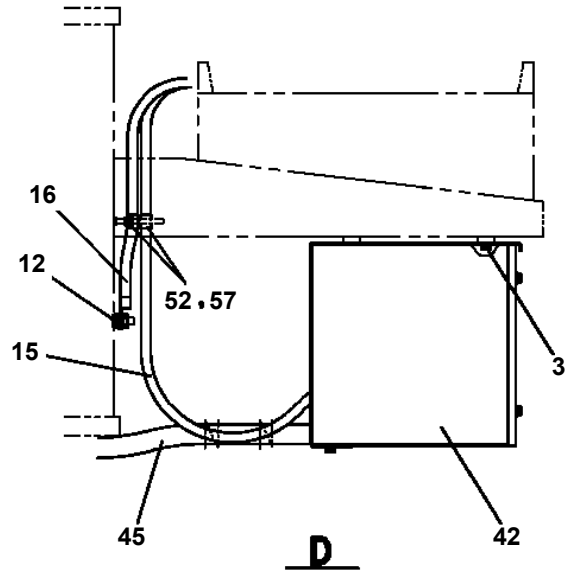
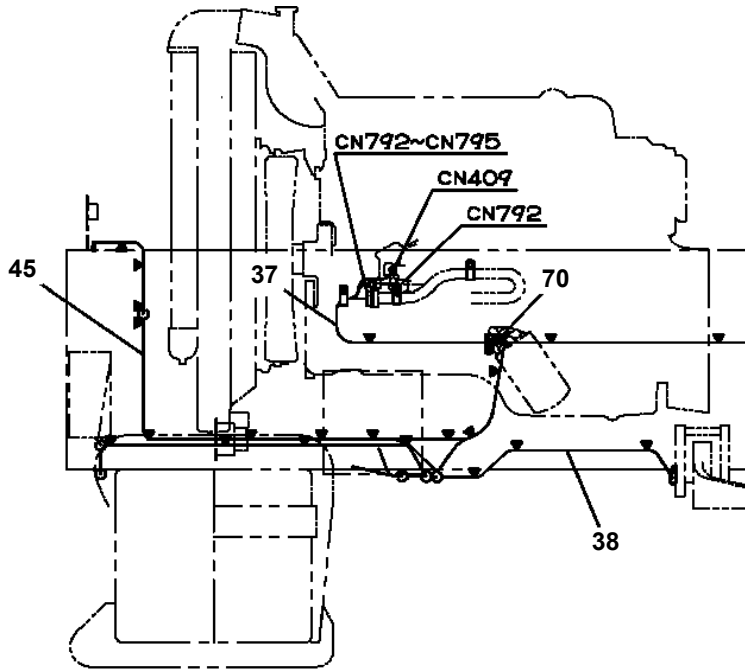
GR-800-1-00211 5 BOOM + 2 JIB,2M2D

Pos No.	Parts No	Parts Name	Qty	Unit	Technical Data	Serial No (Start)	Serial No (End)	Ren
206	37002473200	HOSE	1		L=2240			
209	82100002002	CLAMP	1		WR6			
216	37002460250	HOSE	1		L=2950			
219	34320903900	KNOB	1					
220	34320904000	KNOB	1					
221	34320904300	KNOB	1					
231	34320908120	KNOB ASSY	1					
232	34322238030	KNOB ASSY	1					
246	34322233600	ROD	1					
254	80801002010	BEARING,PLAIN	8					
265	34321966200	PEDAL	2					

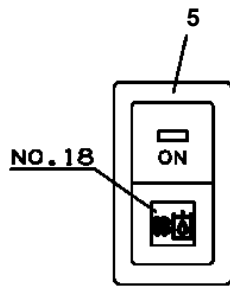
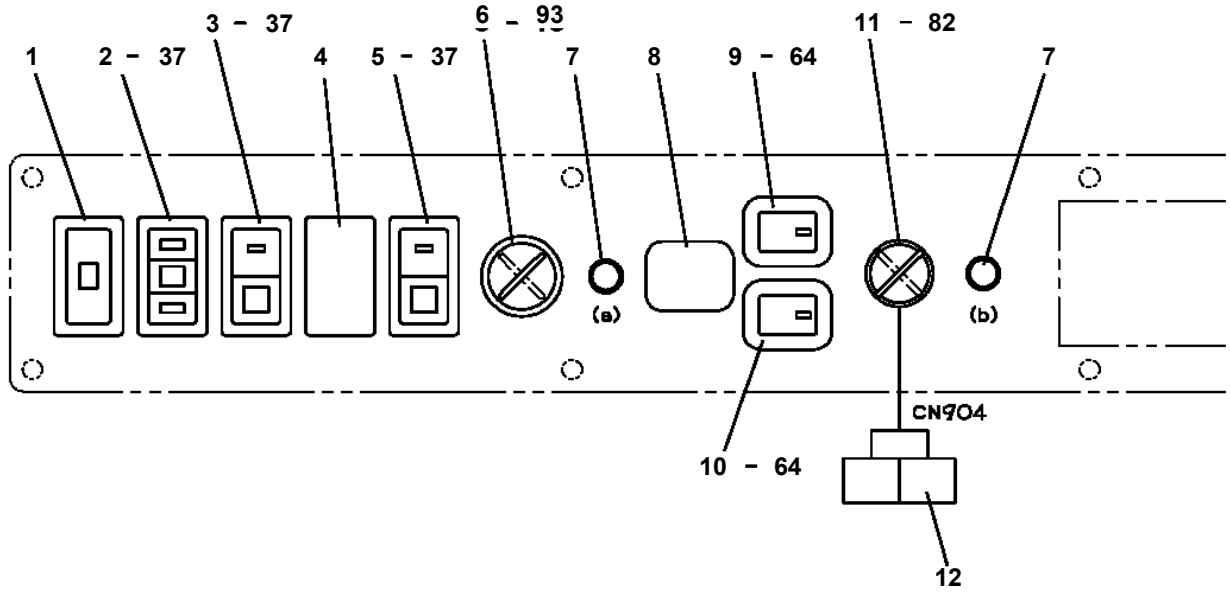
GR-800-1-00211 5 BOOM + 2 JIB,2M2D

Pos No.	Parts No	Parts Name	Qty	Unit	Technical Data	Serial No (Start)	Serial No (End)	Remarks	Pages
31	36635335040	BELLOWS	2						
50	36634920000	VALVE,CONTROL	1						

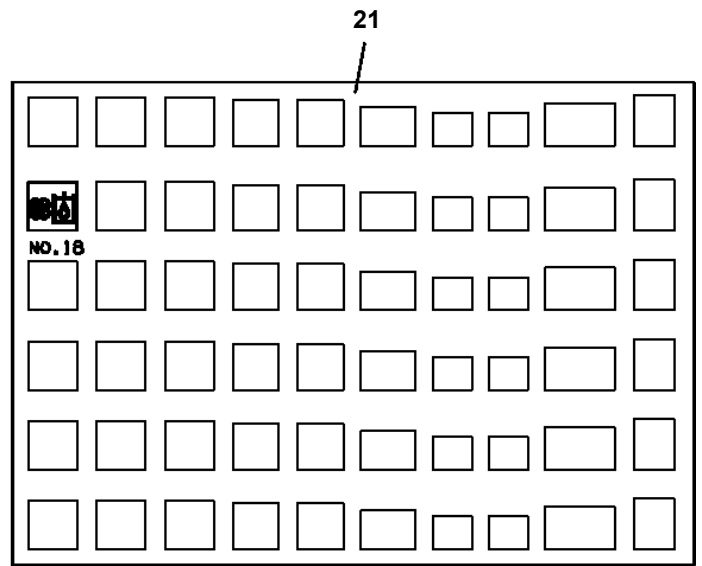
**GR-800-1-00211 5 BOOM + 2 JIB,2M2D
PN1014263-03 ELEC.ASSY (LOWER)**



**GR-800-1-00211 5 BOOM + 2 JIB,2M2D
PN1060126-05 SWITCH PANEL**



銘板貼付作業
HOW TO PUT ON THE
NAME PLATE



1	ROOF WASHER	CN495
2	ROOF WIPER	CN468
3	WORKING LAMP	CN470
4	CAP	—
5	OIL COOLER	CN574
6	O/R OPERATION (EMERGENCY)	CN907
7 (a)	O/R OPERATION LAMP (EMERGENCY)	CN908 CN909
7 (b)	CAPACITY SELECTION-WITH JIB/WITHOUT JIB LAMP	CN939
8	CAP	CN504
9	(2ND BOOM EMERGENCY TELESCOPING)	CN503
10	(3RD & TOP BOOM EMERGENCY TELESCOPING)	CN904
11	CAPACITY SELECTION-WITH JIB/WITHOUT JIB	CN905 CN906

GR-800-1-00211 5 BOOM + 2 JIB,2M2D

Pos No.	Parts No	Parts Name	Qty	Unit	Technical Data	Serial No (Start)	Serial No (End)	Remarks	Pages
1	34731941000	SUPPORT	1						
2	82100002563	LAMP,LICENSE	1						
3	90280200800	NUT,FLANGE	2		M8				
11	82100000783	BULB,LAMP	1		24V 12W				

GR-800-1-00211 5 BOOM + 2 JIB,2M2D

Pos No.	Parts No	Parts Name	Qty	Unit	Technical Data	Serial No (Start)	Serial No (End)	F
1	34930682310	PLATE	1					
2	82100002596	RELAY	5					
3	82100002597	RELAY	5					
4	80192486012	SCREW,MACHINE	12		M6X12			
5	82100001404	TERMINAL	6					
6	82100001219	INSULATOR	6					
7	34351571350	RELAY ASSY (WITH CONNECTOR)	2					
8	80192483010	SCREW,MACHINE	4		M3X10			
9	82181024271	RESISTANCE	1					
11	34930732500	RELAY ASSY	2					
12	44320491010	LAMP ASSY (RED)	1					
13	44320491040	LAMP ASSY	1					
15	82100000640	TERMINAL,BASE	1					
16	80192483016	SCREW,MACHINE	2		M3X16			
17	34350003350	PLATE	1					
18	82114214121	CONNECTOR	1					
19	82111207051	TERMINAL (MAIL)	6					
21	82100001852	RESISTANCE	1					
22	82100002313	RESISTANCE	1					
23	82100002361	RESISTANCE	1					
100	34931002300	RELAY ASSY	1					

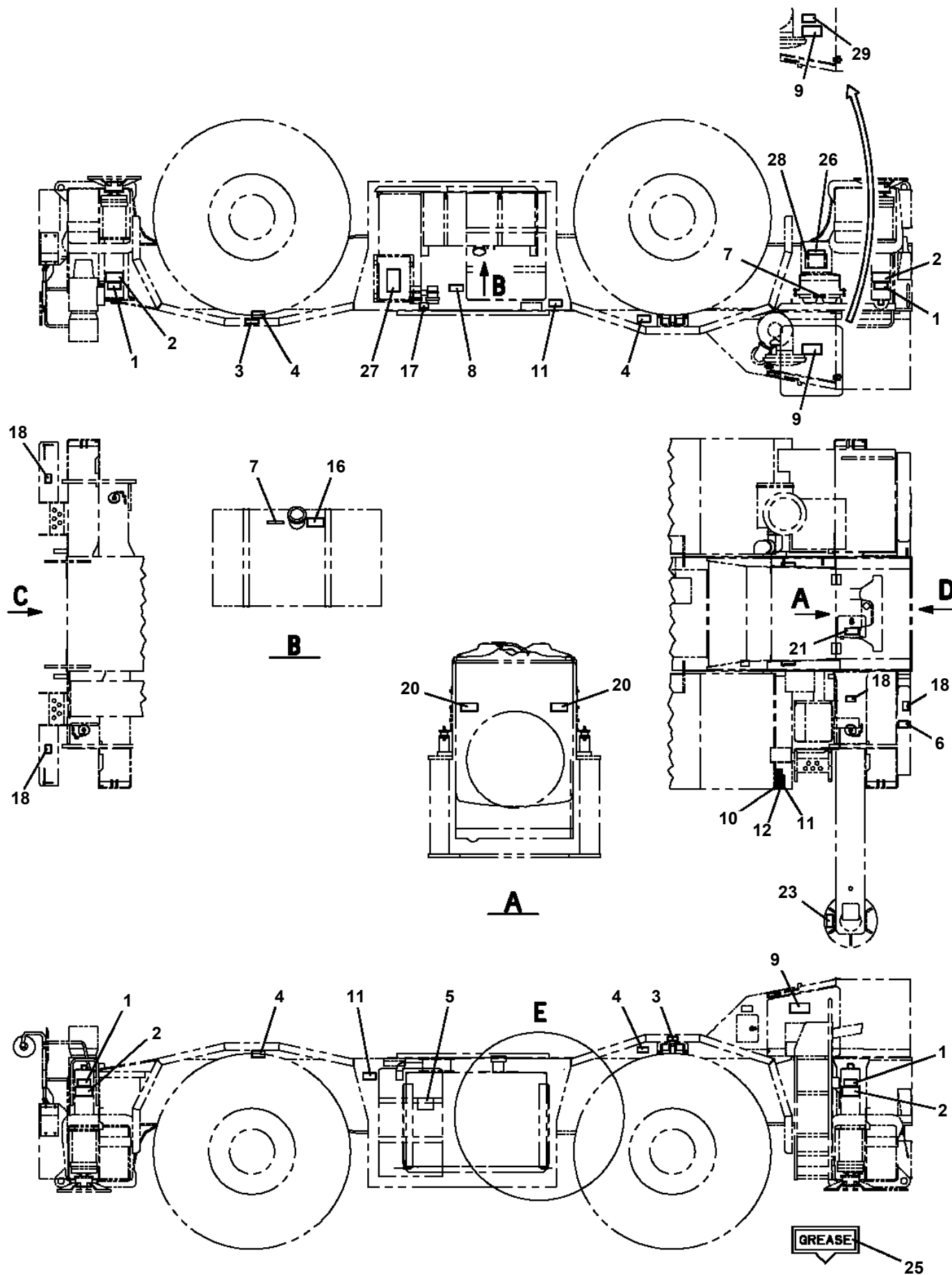
GR-800-1-00211 5 BOOM + 2 JIB,2M2D

Pos No.	Parts No	Parts Name	Qty	Unit	Technical Data	Serial No (Start)	Serial No (End)	Remarks
1	34930096000	BATTERY (YUASA,170F51)	1					

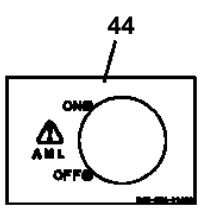
GR-800-1-00211 5 BOOM + 2 JIB,2M2D

Pos No.	Parts No	Parts Name	Qty	Unit	Technical Data	Serial No (Start)	Serial No (End)	Re
100	37010000010	BATTERY (HYUNDAI ENERCELL)	1					

GR-800-1-00211 5 BOOM + 2 JIB,2M2D
PO1014644-02 PLATE ASSY,NAME (LOWER)



GR-800-1-00211 5 BOOM + 2 JIB,2M2D
 PO1014663-03 PLATE ASSY,NAME (UPPER)



WARNING
 THIS KEY SWITCH BYPASSES CONTROL LEVER LOCKOUT FUNCTION OF LOAD MOMENT INDICATOR (AML). THE SWITCH MAY ONLY BE USED BY AUTHORIZED PERSONNEL DURING EMERGENCY SITUATIONS. FAILURE TO FOLLOW THIS INSTRUCTION MAY RESULT IN PROPERTY DAMAGE AND OR PERSONAL INJURY.

WARNING
 ELECTRONIC EQUIPMENT ON THIS MACHINE IS INTENDED AS AN AID TO THE OPERATOR. Under no condition should it be relied upon to replace use of capacity charts and operating instruction. Sole reliance upon these electronic aids in place of good operating practices can cause an accident.

KEEP HANDS AWAY. FAN STARTS AUTOMATICALLY. STOP ENGINE TO SERVICE.

Never remove OPERATION, SAFETY & MAINTENANCE MANUAL from this machine.

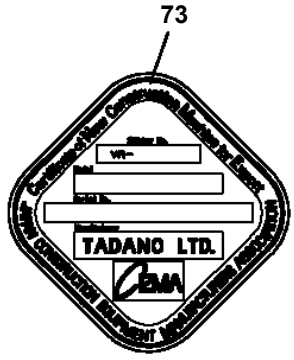
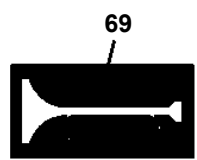
WARNING
 WHEN STARTING THE ENGINE IN AN ENCLOSED SPACE, PROVIDE A MEANS OF POSITIVE VENTILATION. CONNECT A HOSE FROM THE EXHAUST TO VENT THE FUMES OUTDOORS. OPEN DOORS AND WINDOWS TO ALLOW FRESH AIR CIRCULATION. INSTALL VENTILATOR AS REQUIRED. OTHERWISE YOU CAN BE INJURED IN TOXIC POISONING.

CAUTION
 For Jib offset (111) 23°, 43° operation, be sure to store single top. Never fail to install offset (111) lock pin at 3, 5°, 23° or 43° position to prevent the jib from falling and causing injury or equipment damage.

WARNING
 PULL THE CONTROL CONSOLE BACKWARD TO THE STOWING POSITION WHEN TRAVELING OR GETTING OUT OF THE CAB. FOLD UP THE ARMREST BEFORE ADJUSTING THE ANGLE OF CONTROL CONSOLE. TAKE CARE TO CLOSE THE DOOR WHEN THE CONTROL CONSOLE IS UPRIGHT.

PULL STOP EMERGENCY ENGINE STOP EMERGENCY ACCELERATOR EMERGENCY TRANSMISSION MULTIFLEX DRUMMER GEAR

WARNING
 MAKE SURE JIB SET STATUS IS SELECTED ON LOAD MOMENT INDICATOR BEFORE ERECTING AND STOWING JIB OR CHANGING JIB OFFSET ANGLE. DON'T EXTEND THE BOOM, OR BASE JIB COULD BE DAMAGED.



LIFTING OF CRANE FOR SHIPMENT
 吊機時クレーンつり上げ要領

MODEL	TYPE
TR-800-111	111
TR-800-112	112

NOTES
 1. The weight and dimensions are approximate.
 2. Dimensions are given in *100 THROUGHOUT.

VEHICLE MASS OVER 10.0 t

TADANO LTD. 343-169-70100

Select correct Jib status, or Load Moment Indicator does not function precisely and may cause critical condition.
WARNING
 343-167-52600

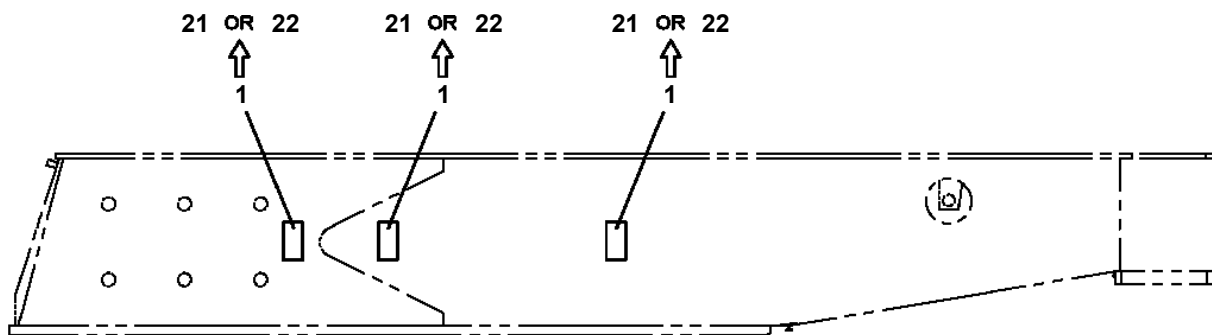
CAUTION
 343-167-52600

WARNING
 MAKE SURE THE SINGLE TOP IS STOWED BEFORE MOUNTING THE JIB, OR THE JIB COULD BE DAMAGED.

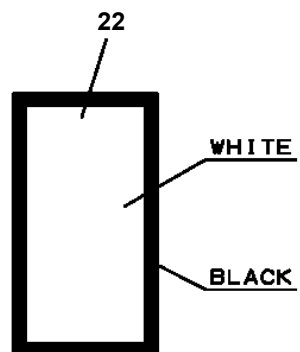
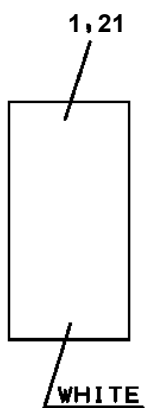
GR-800-1-00211 5 BOOM + 2 JIB,2M2D

Pos No.	Parts No	Parts Name	Qty	Unit	Technical Data	Serial No (Start)	Se
1	37002204680	PLATE,NAME (ANGLE METER)	1				
2	34391202140	PLATE,CAUTION (DO NOT CLIMB BOOM)	2				
3	34391201430	PLATE,CAUTION (DANGER! KEEP CLEAR)	3				
4	34391202171	PLATE,CAUTION (SWING STRUCTURE)	4				
5	34396873010	PLATE,NAME (GR-800XL)	2				
6	34395752500	PLATE,CAUTION (STOWING AUX.WINCH ROPE)	1				
7	37002209450	PLATE,NAME (TADANO)	2				54
8	34395411700	PLATE,CAUTION (WHEN MOUNTING OR)	2				
9	34391201071	PLATE,CAUTION (HAZARDOUS CONDITION)	1				
10	34394191360	PLATE,CAUTION (!WARNING)	1				
11	37002207270	PLATE,NAME (BOOM EXT.)	1				
12	34395412500	PLATE,CAUTION (JIB HANDLING INSTRUCTION)	1				
13	34395412600	PLATE,CAUTION (JIB PIN STATUS)	1				
14	34395751700	PLATE,NAME	2				
15	34392531220	PLATE,NAME	2				
16	34392531230	PLATE,NAME	2				
17	34395411500	PLATE,CAUTION (HAZRDOUS CONDITION)	1				
18	90101210016	BOLT	1		M10X16		
19	12647107001	INDICATOR	1				
20	90201201000	NUT	1		M10		
21	34390731280	PLATE,NAME (WINKER)	1				
22	34391202060	PLATE,CAUTION (NO STEP)	6				
23	19047017000	PLATE,CAUTION (DON'T KEEP GEAR)	1				
24	34395412400	PLATE,NAME (AML)	1				
25	34395411800	PLATE,CAUTION (WHEN THE OVERRIDE KEY SW)	1				
26	37002212090	PLATE,NAME (MAIN WINCH LEVER)	1				
27	37002212110	PLATE,NAME (ELEVATE LEVER)	1				
28	37002224260	PLATE,NAME (TELES&AUX/W LEVER)	1				
29	37002218710	PLATE,NAME (SWING LEVER)	1				
30	34393761210	PLATE,CAUTION (WARNING)	1				
31	34396871030	PLATE,CAUTION (CAUTION IN TRAVEL)	1				
32	34391201230	PLATE,CAUTION (DO NOT LIFT PEOPLE.)	1				
33	34394191350	PLATE,CAUTION (!CAUTION)	1				
34	34392531380	PLATE,CAUTION (DC-DC CONVERTOR)	1				
35	34391201300	PLATE,CAUTION (HAND SIGNALS)	1				
36	34396872000	PLATE,NAME (FUSE)	1				
37	34392531480	PLATE,CAUTION (PROPOSITION65 WARN)	1				
38	34392531361	PLATE,CAUTION (!WARNING:AVOID PER)	1				
39	34391201261	PLATE,CAUTION (READ OPERATION)	1				
40	34396872100	PLATE,CAUTION (EMERGENCY T/M)	1				
41	34396872200	PLATE,CAUTION (ELECTROCUTION HAZARD)	1				
42	80147310420	RIVET	4		3.2X6		
44	34395411400	PLATE,NAME (AML ON/OFF)	1				
45	34394191320	PLATE,CAUTION (THIS KEY S/W BYPASSES)	1				
46	34396873102	LOAD CHART BOOKLET	1				
47	14137207000	PLATE,NAME (GREASE)	23				
48	34391201451	PLATE,CAUTION (FAN)	1				
49	37002209500	PLATE,NAME (TADANO)	1				54
50	34392531270	PLATE,CAUTION (NEVER REMOVE)	1				
51	34392531450	PLATE,CAUTION (AML)	1				
52	37000515850	PLATE	1				
53	90201200600	NUT	1		M6		
54	90305210601	WASHER	1				
55	80186806025	SCREW,MACHINE	1		M6X25		
56	34392251300	PLATE	1				
57	34396362500	PLATE,NAME(EMERGENCY ENGINE STOP)	1				
58	34396870200	PLATE,CAUTION (WHEN STARTING THE E/G)	1				
59	34395751400	PLATE,CAUTION (FOR JIB OFFSET TILT)	2				
60	34395412700	PLATE,CAUTION (PULL THE CONTROL)	1				
61	34395751500	PLATE,CAUTION (MAKE SURE JIB SET)	2				
62	34396873020	PLATE,NAME (LIFTING OF CRANE FOR SHIP)	1				
63	34395751800	PLATE,NAME (BLUE)	1				
64	34395751900	PLATE,NAME (RED)	1				

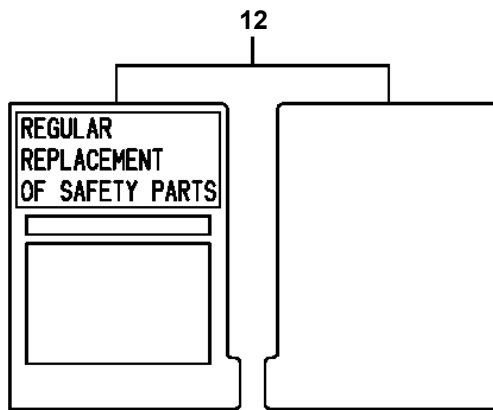
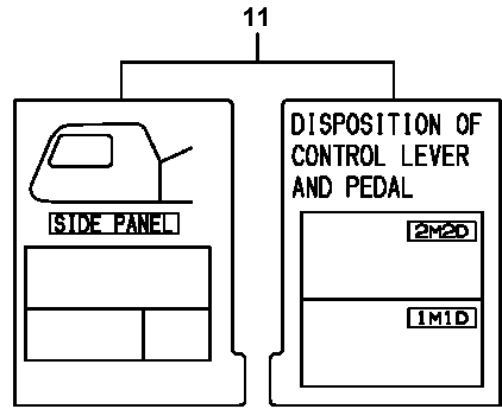
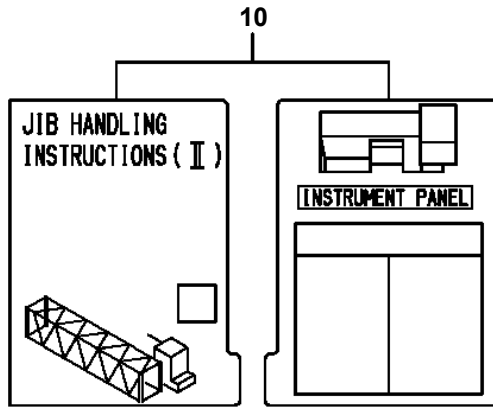
GR-800-1-00211 5 BOOM + 2 JIB,2M2D
PO1050021-01 MARKING (OUTRIGGER)



アウトリガ内箱



**GR-800-1-00211 5 BOOM + 2 JIB,2M2D
PO1060206-01 LOAD CHART BOOKLET**



GR-800-1-00211 5 BOOM + 2 JIB,2M2D

Pos No.	Parts No	Parts Name	Qty	Unit	Technical Data	Serial No (Start)	Serial No (End)
143	34781815100	SUPPORT	2				
144	90155306015	BOLT,WELD	2		M6X15		
145	34780150400	PLATE	2				
146	90155306030	BOLT,WELD	2		M6X30		
152	36102165010	CAP	1				
161	36360957510	CAP	1				

GR-800-1-00211 5 BOOM + 2 JIB,2M2D

Pos No.	Parts No	Parts Name	Qty	Unit	Technical Data	Serial No (Start)	Serial No (End)	Remarks	P
57	36102835010	CAP (FUEL,WITH KEY)	1						
58	36101875030	COVER	1						
59	36101875040	PACKING	1						
61	36101875050	BOLT (WITH WASHER)	5		M5X10				
63	36101875060	STRAINER ASSY	1						
65	90303391601	WASHER	2		M16				
66	36101875070	PLUG	2						
100	36101870000	TANK,FUEL (300L)	1						

GR-800-1-00211 5 BOOM + 2 JIB,2M2D

Pos No.	Parts No	Parts Name	Qty	Unit	Technical Data	Serial No (Start)	Serial No (End)	Remarks	Pages
2	91801630024	CLIP	8		22.6-26.0				
3	37002513790	HOSE	1		L=3850				
4	37002512430	HOSE	1		L=4850				
5	37000925070	JOINT	3		S,PT3/8-16				
6	90280200800	NUT,FLANGE	28		M8				
7	82100002016	CLAMP	24		WR25				

GR-800-1-00211 5 BOOM + 2 JIB,2M2D

Pos No.	Parts No	Parts Name	Qty	Unit	Technical Data	Serial No (Start)	Serial No (End)	Rem
1	36370555070	HOUSING	1					
2	36370415160	COVER	1					
3	36370215520	SEAL,OIL	1					
4	36370505080	COVER	1					
5	36370505090	GASKET	1					
6	36370505100	GEAR (N)	1					
7	80601110950	RING,RITAINING	1		S95			
8	36370555080	SHAFT ASSY	1					
9	36370505120	SUPPORT ASSY	1					
10	36370217020	BEARING,BALL	4					
11	36370217050	RING,SEAL	1					
12	36370207570	RING,SEAL	2					
13	36370217070	RING,SEAL	1					
14	36370555090	SHAFT ASSY	1					
15	36370505140	GEAR (Q)	2					
16	36370555100	SHAFT (S)	1					
17	36370505161	SHAFT (C)	1					
18	36370217100	WASHER	6					
19	36370217130	BEARING,BALL	1					
20	80518006209	BEARING,BALL	1					
21	80601110450	RING,RITAINING	6		S45			
22	80601110400	RING,RITAINING	2		S40			
23	36370207130	WASHER	2					
26	36370207190	WASHER	1					
27	80602110950	RING,RITAINING	1		95			
28	36370505180	BEARING,BALL	1					
29	80518006009	BEARING,BALL	1					
30	36370455150	WASHER	1					
31	80602110820	RING,RITAINING	1		82			
32	36370207290	FLANGE	1					
33	91067103500	O-RING	1		4E P35			
34	36370355130	WASHER	1					
35	90103516040	BOLT	1		M16X40			
36	36350455150	SEAL,OIL	1					
37	36350456050	SEAL,OIL	1					
38	80601110350	RING,RITAINING	1		S35			
39	36370207380	WASHER	2					
40	36370207390	SHIM (T=0.2)	N					
41	36370207400	SHIM (T=0.5)	N					
42	36370216230	O-RING	1					
43	36350365760	PISTON	1					
44	36370555110	SPRING	1					
45	36370555120	SPRING	1					
46	36370555130	SPRING	1					
47	36350525320	STOPPER	1					
48	36370505190	COVER	1					
49	36370505200	GASKET	1					
50	36370207650	PLUG	1					
51	36370207520	O-RING	1					
52	36370215550	COVER	1					
53	36350525370	FILTER	1					
54	36370505210	SPACER	1					
55	36350265160	PIN	3		10X28			
56	36681890000	SENDER,THERMO (OIL)	1					
57	36370207560	PLUG,MAGNET	1					
58	36370505220	BOLT ASSY	2					
59	36350455440	BOLT (WITH FLANGE)	4					
60	36350525360	BOLT	6					
61	90171110030	BOLT	10		M10X30			
62	90101510065	BOLT	4		M10X65			
64	36350456060	PLUG	10					
65	90171108020	BOLT	4		M8X20			
66	36370555140	GEAR (M)	1					

GR-800-1-00211 5 BOOM + 2 JIB,2M2D

Pos No.	Parts No	Parts Name	Qty	Unit	Technical Data	Serial No (Start)	Serial No (End)	Ren
1	36350595010	CLUTCH PACK, TRANSMISSION	1					
2	36350595020	CLUTCH PACK, TRANSMISSION	1					
3	36350555090	VALVE,CONTROL (T/M)	1					
4	36350595030	HOUSING (MISSION)	1					
5	36350555050	GASKET	1					
6	36350595040	HOUSING (COVER)	1					
7	36350555070	GASKET	1					
8	36350595050	HOUSING (FRONT)	1					
9	36350595060	SHAFT ASSY	1					
11	36370207290	FLANGE	1					
12	36350595070	SHAFT ASSY	1					
13	36350595080	GEAR (K)	1					
14	36350555130	GEAR (U)	1					
15	36350535150	SHAFT	1					
16	36350455140	FLANGE	2					
17	36350275130	SLEEVE (B)	1					
18	36350455150	SEAL,OIL	1			546452	546451	
	36370615120	SEAL,OIL	1					
19	36350456050	SEAL,OIL	1					
20	91067103500	O-RING	1		4E P35			
21	36370355130	WASHER	1					
22	90131516040	BOLT,HEXAGON SOCKET	3		M16X40			
23	36350265160	PIN	4		10X28			
24	36350555140	GEAR (W)	1					
25	36350555150	SHAFT	1					
26	36350555160	CASE (SPEEDOMETER)	1					
27	36350555170	GASKET	1					
28	36350555180	COVER	1					
29	36350555190	GASKET	2					
30	36350555200	COVER	1					
31	36350555210	GASKET	1					
32	36350555220	COVER	1					
33	36350535170	SEAL,OIL	2					
34	36350275650	SEAL,OIL	2				546451	
	36350685060	SEAL,OIL	2			546452		
35	36350535180	COVER (C)	1					
36	36350455250	GASKET (C)	1					
37	80500006212	BEARING,BALL	1					
38	36350275220	BEARING,BALL	1					
39	36350525260	SWITCH	1				546451	
	36350685070	SWITCH	2			546452		
40	36350265480	WASHER,SEAL	2					
41	36350445040	SENSOR	1					
42	80601110700	RING,RITAINING	4		S70			
43	80602111100	RING,RETAINING	1		110			
44	36350535190	BEARING,NEEDLE	1					
45	36350595090	SHROUD	1					
46	36350595100	PLATE	1					
47	36350265350	BEARING,BALL	1					
48	36350555230	SPACER	1					
49	36350265960	SPRING	1					
50	36350275600	SPRING	1					
51	36350535230	BAR (SHIFT)	1					
52	36350455370	FORK (SHIFT)	1					
53	80720108040	PIN,SPRING	1		8X40			
54	36350275670	WASHER	2					
55	36350265950	COVER	1					
56	91067206000	O-RING	2		4E G60			
57	36350535240	PISTON	2					
58	91067101600	O-RING	2		P16			
59	36350535250	COLLAR	1					
60	36350265450	PACKING	2					
61	36350535270	BOLT	1				546195	

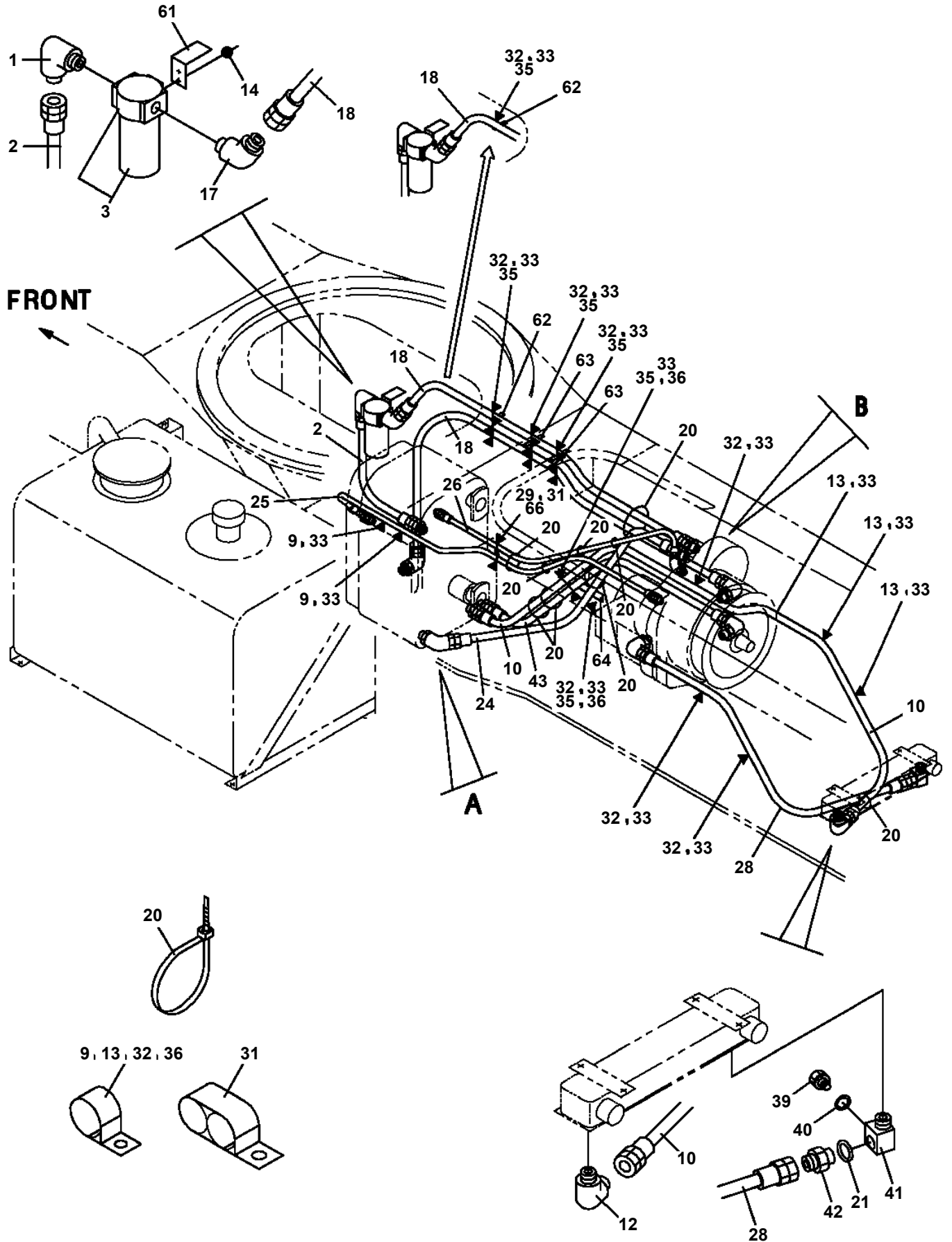
GR-800-1-00211 5 BOOM + 2 JIB,2M2D

Pos No.	Parts No	Parts Name	Qty	Unit	Technical Data	Serial No (Start)	Serial No (End)	Remarks
1	36302315010	TUBE ASSY	1					
2	36302045021	FLANGE ASSY	1					
3	36381155720	NIPPLE,GREASE	1		A-PT1/8			
4	36301275010	JOURNAL ASSY	2					
5	36300365016	NIPPLE,GREASE	2					
6	36300535026	BOLT	16					
7	36381155630	WASHER,SPRING	16		12			
30	36302306000	PROPELLER SHAFT,DRIVING	1					

GR-800-1-00211 5 BOOM + 2 JIB,2M2D

Pos No.	Parts No	Parts Name	Qty	Unit	Technical Data	Serial No (Start)	Serial I
1	36381215020	CARRIER SET	1				
2	59172010030	NUT,RING	2				
3	59172010040	PIN	2				
4	34680005180	PLUG (THRUST)	1				
5	34680005190	BOLT (M24,THRUST)	1				
6	34680005220	NUT	1		M24		
7	36380365290	SHIM SET	1				
8	36381215040	CASE SET (DIFF.)	1				
9	36380075010	DIFFERENTIAL ASSY (NO-SPIN)	1				
14	59172071030	BEARING,TAPER ROLLER(INSIDE=80.962MM)	1				
15	36380065090	BEARING,TAPER ROLLER(INSIDE=85.725MM)	1				
16	36381445030	GEAR SET (HYPOID PINION GEAR)	1				
17	36381225050	BOLT	16		M16X42		
18	36381355020	YOKE ASSY	1				
19	36380065140	BEARING CAGE,PINION	1				
20	36380065150	SPACER (PINION BEARING)	1				
21	36380075020	COVER (BEARING CAGE)	1				
24	36380105190	NUT (HYPOID PINION)	1				
25	59172071070	BEARING,ROLLER	1				
26	36380075030	BEARING,TAPER ROLLER	1				
27	36380065170	BEARING,TAPER ROLLER	1				
28	36380065160	PACKING	1				
29	90191512050	BOLT	9		M12X50		
30	90302041201	WASHER,SPRING	9		12		
31	80601110320	RING,RETAINING	1		S32		
32	36380105210	SEAL,OIL	1				
45	36380365360	GROMMET	2				
51	90171116045	BOLT	10		M16X45		
52	90171116050	BOLT	4		M16X50		
53	90302051601	WASHER,SPRING (16)	14				
61	36381455020	HOUSING ASSY (AXLE)	1				
62	36381595010	BUSH,KING PIN	4				
64	59172030030	BREATHER,AIR	1				
65	36380705280	PLUG	1				
66	59172081020	PLUG,MAGNET	1		PT3/4		
67	36380705080	RETAINER	2				
68	36380995070	BUSHING (AXLE HONSING)	2				
69	36381345080	SEAL,OIL (AXLE HOUSING)	2				
70	36380705090	O-RING	2				
80	36381225020	CASE ASSY (DIFFERNITIAL).	1				
101	36380065351	BOOT,RUBBER (KNUCKLE)	2			545875	545874
	36380065352	BOOT,RUBBER (KNUCKLE)	2				
102	59172030450	BAND	2				
103	36380065360	PLATE (LOCK)	4				
104	36380435010	BOLT (WITH WASHER)	28				
106	36381595020	KNUCKLE (1)	1				
107	36381595030	KNUCKLE (2)	1				
108	36381455030	PLATE	1				
109	36380435010	BOLT (WITH WASHER)	4				
110	59172080010	NIPPLE,GREASE	6		PT1/8		
111	36380995100	SPINDLE,KNUCKLE	2				
112	90103720055	BOLT	36		M20X55		
114	36380365240	SEAL,OIL	2				
115	36380365020	COLLAR (SEAL)	2				
116	36381595040	PIN,KING	2				
117	36381595050	WASHER,THRUST	2				
118	36381595060	PIN,KING	2				
119	36381595070	WASHER,THRUST	2				
120	36380065410	PIN	4				
121	36381595080	SHIM SET	1				
122	36380215350	COVER	8				
123	36381595090	BOLT	16				
124	34680005670	BOLT,STOPPER	2				

**GR-800-1-00211 5 BOOM + 2 JIB,2M2D
PR1700078-03 PIPING,CONVERTER**



GR-800-1-00211 5 BOOM + 2 JIB,2M2D

Pos No.	Parts No	Parts Name	Qty	Unit	Technical Data	Serial No (Start)	Serial No (End)	Remarks	Pages
1	37003900010	WHEEL,TIRE	1						

GR-800-1-00211 5 BOOM + 2 JIB,2M2D

Pos No.	Parts No	Parts Name	Qty	Unit	Technical Data	Serial No (Start)	Serial I
217	36381125120	PAD KIT	2				
218	36380065910	BOLT	16				
219	36380685070	PLATE (COVER)	2				
220	36381445220	PLUG (PISTON)	6				
221	36380685080	SEAL KIT	2				
222	36380675640	PISTON	12				
223	36380675650	CAP (BREATHER)	2				
231	36380675490	O-RING	2				
241	90191520130	BOLT	4		M20X130		
242	90303502001	WASHER,PLAIN	4		20		
251	36380105090	BOLT (SHORT)	8				
252	36380105080	BOLT (LONG)	8				
300	36381465010	CARRIER,DIFFERENTIAL	1				
500	36381590001	AXLE (REAR NO-SPIN)	1				

GR-800-1-00211 5 BOOM + 2 JIB,2M2D

Pos No.	Parts No	Parts Name	Qty	Unit	Technical Data	Serial No (Start)	Serial
1	37003900010	WHEEL,TIRE	1				
2	37003804510	TIRE (HUNG-A)	1				
4	37003804720	VALVE	1			545878	
21	34397020100	PLATE,NAME (INSTALLED TIRES AT TIME OF)	1			545878	

GR-800-1-00211 5 BOOM + 2 JIB,2M2D

Pos No.	Parts No	Parts Name	Qty	Unit	Technical Data	Serial No (Start)	Serial
1	37003901500	WHEEL,TIRE	1				
2	37003804510	TIRE (HUNG-A)	1				
4	37003804720	VALVE	1				
21	34397020100	PLATE,NAME (INSTALLED TIRES AT TIME OF)	1				

GR-800-1-00211 5 BOOM + 2 JIB,2M2D

Pos No.	Parts No	Parts Name	Qty	Unit	Technical Data	Serial No (Start)	Serial No (End)	Remarks
1	36670455010	PLATE (A)	1					
2	36670675010	PLATE (B)	1				547610	
	36670670101	PLATE (B)	1			547611		
3	36670455030	PACKING (SEAT)	1					
4	36670675020	BOX (SPRING)	1				546824	
	36671650100	BOX (SPRING)	1			546825	548011	
	36670670200	BOX (SPRING)	1			548012		
5	36670455050	SPRING	1					
6	36670455060	SPRING	1					
7	36670455070	BOLT	2		M8X12			
8	90302040801	WASHER,SPRING	3		8			
9	90201200800	NUT	2		M8			
10	80515006003	BEARING,BALL	1					
11	36670455080	BUSH	1					
12	80515006007	BEARING,BALL	1				548011	
	80513006007	BEARING,BALL	1			548012		
13	16246595020	RING ASSY (RL)	2					
15	36671410030	PIN	1				548011	
	36671650200	PIN	1			548012		
16	36671410040	SUPPORT	1				548011	
	36671650300	SUPPORT	1			548012		
17	90730005120	SCREW,SET	3		M5X12		548011	
18	90201200600	NUT	6		M6			
19	90302040601	WASHER,SPRING	6		6			
20	36670455110	PLATE	1					
21	90102208014	BOLT	1		M8X14			
23	80602110700	RING,RITAINING	1		R70		548011	
24	36670545060	SEAL,OIL	1				548011	
25	36671410020	SPACER	1				548011	
26	91001203000	O-RING	1		1A G30		548011	
27	90101510018	BOLT	4		M10X18		548011	
28	90302041001	WASHER,SPRING	4		10		548011	
29	36671410050	RING,RETAINING	1				548011	
30	36670675030	GROMMET	1			546825		
31	91282412251	SEAL,OIL	1			548012		
32	36671650400	PLATE	1			548012		
33	90172206014	BOLT,HEXAGON SOCKET	2		M6X14	548012		
100	36671650000	REEL ASSY,HOSE	1					

GR-800-1-00211 5 BOOM + 2 JIB,2M2D

Pos No.	Parts No	Parts Name	Qty	Unit	Technical Data	Serial No (Start)	Serial No (End)	Remarks
1	80460004080	JOINT	5		S,3/4-16UNF-G1/2			
2	91000590800	O-RING	5		AS568-908			
3	82100001819	TUBE, SPIRAL	1	M	SE-18BK			
4	37000601630	CLAMP	3		65			
7	37002460260	HOSE	1		L=2550			
8	80303240280	JOINT (WITH O-RING)	1					
9	37002426680	HOSE	2		L=2450			
11	90101208075	BOLT	2		M8X75			
12	90302040801	WASHER, SPRING	2		8			
13	36610380000	VALVE, PRIORITY	1					
14	80430620400	JOINT	1					
15	91000590400	O-RING	2		AS568-904			
16	37000921090	JOINT	2		S,7/16-20UNF-PF1/4			
17	37002460110	HOSE	1		L=2400			
18	36625060000	VALVE, CHECK	1					
21	37002417150	HOSE	1		L=2650			
22	36672530000	FILTER (WITH O-RING)	1					
23	37000919900	JOINT (ORIFICE)	1		0.7			
24	37002441920	HOSE	1		L=950			
41	91000591200	O-RING	1		AS568-912			
51	91002801100	O-RING	2		1B P11			

GR-800-1-00211 5 BOOM + 2 JIB,2M2D

Pos No.	Parts No	Parts Name	Qty	Unit	Technical Data	Serial No (Start)	Serial No (End)
1	34640791200	JOINT	1				
2	37000925320	JOINT (FILTER,WITH O-RING)	1		T,3-G1/4		
3	80316070040	PLUG	1		PF1/4		
4	91002801100	O-RING	1		1B P11		
5	36653520000	PUMP,HYDRAULIC (EMERGENCY STEERING)	1				
6	34640271700	GASKET	1				
7	80303130141	FITTING,ELBOW	1		KLO12-020E		
8	80303130171	FITTING,ELBOW	1		KLO12-040E		
9	36605490000	VALVE,REDUCING	1				
10	90101210020	BOLT	2		M10X20		
11	37002418130	HOSE	1		L=400		
12	89640101000	HOSE	1		880-NFK,1M		
13	80400160126	FITTING,TEE	2		20364-U1/2		
14	36640660000	VALVE,HYDRAULIC	1				
15	34640272300	JOINT	1		G3/4		
16	91002802400	O-RING	4		1B P24		
17	80441030904	FITTING,ELBOW (WITH O-RING)	2		L,G1/4-12.7		
18	36683150000	SWITCH,PRESSURE	1				
19	81408000160	PIPE,STEEL	1	M	12X1.4T		
20	90191510030	BOLT	2		M10X30		
21	90302041001	WASHER,SPRING	4		10		
22	80430620400	JOINT	1				
23	91803600400	CLIP	8		D=27-40		
24	37002509360	HOSE	1		L=550		
25	37000910010	JOINT	2		G3/4-25		
26	90303071001	WASHER,PLAIN	2		10		
27	37002510560	HOSE	1		L=620		
28	37002446630	HOSE	1		L=750		
29	37000916600	PLUG	1				
30	89640101000	HOSE	1		880-NFK,1M		
31	91810130250	FASTENER	4				
32	34731460100	PLATE	1				
33	90186210020	BOLT,FLANGE	2		M10X20		
34	80400160133	JOINT	1				
35	80471020506	JOINT	1		45,G3/4-G3/4		
36	80303130321	FITTING,ELBOW	1		KLO28-080E		
37	81408000341	PIPE,STEEL	1	M	28X3.1T		
38	80302090322	FITTING	1		KCO28-080N		
39	91002802900	O-RING	1		1B P29		
40	37002471850	HOSE	1		L=1650		
64	91002801100	O-RING	5		1B P11		
71	91002801800	O-RING	1		1B P18		
81	91002801400	O-RING	1		1B P14		
91	91002802900	O-RING	1		1B P29		

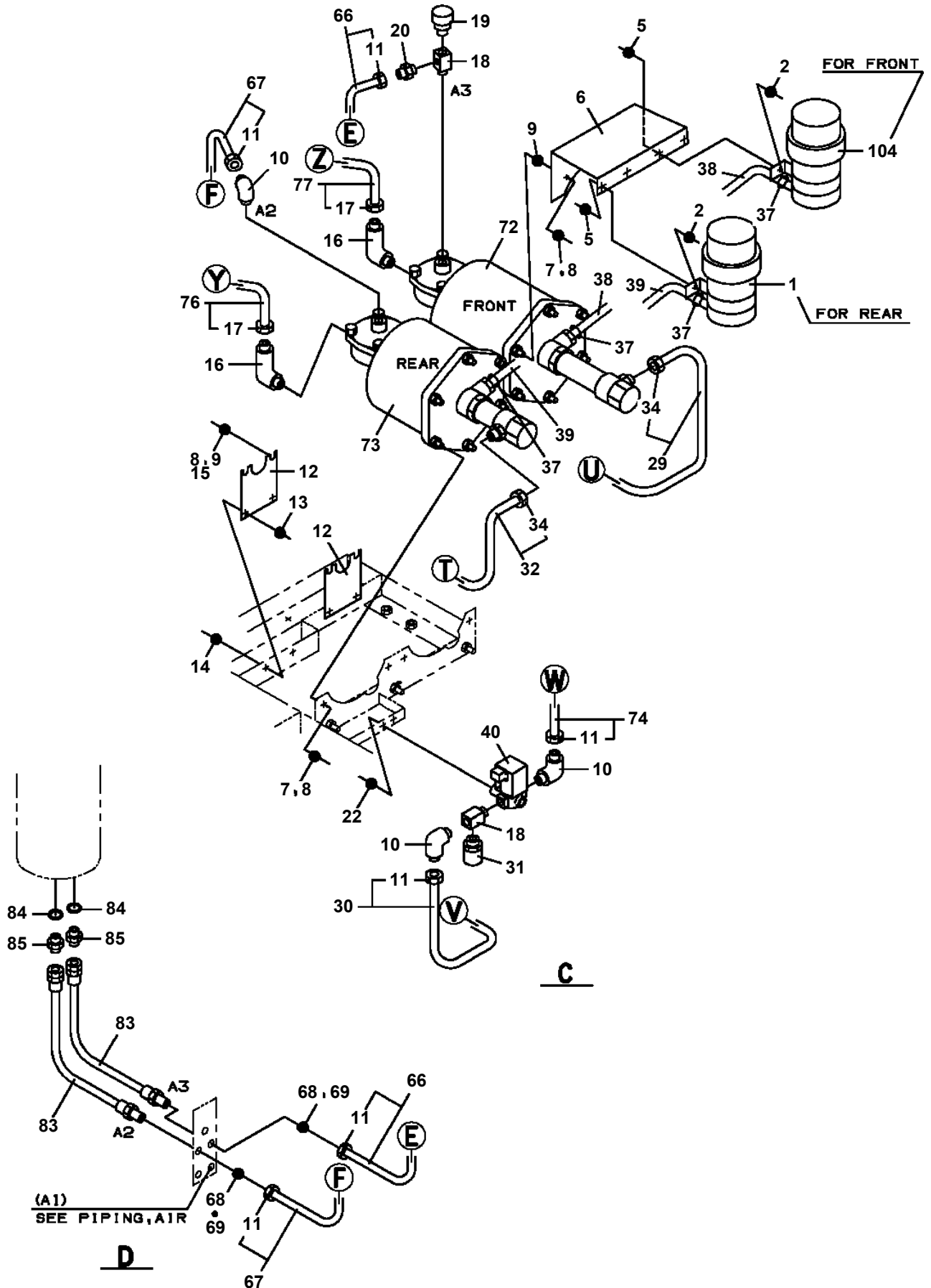
GR-800-1-00211 5 BOOM + 2 JIB,2M2D

Pos No.	Parts No	Parts Name	Qty	Unit	Technical Data	Serial No (Start)	Serial No (End)	Re
1	34721987510	BRACKET (COLUMN)	1					
2	34721987520	COLUMN ASSY	1					
3	34721427570	JOINT ASSY(UNIVERSAL JOINT)	1					
4	34721987530	NUT	1					
5	34721987540	PIN (LOCK)	1					
6	34721987550	LEVER	1					
7	34721987560	SCREW,MACHINE	1		M6X30			
8	34721987570	WASHER,TOOTH	1		M6			
9	34721987580	PIN	1					
10	34721987590	NUT	1		M10			
11	34721987600	U-NUT	1					
12	34721987610	GRIP	1					
13	34721987620	SCREW,MACHINE	2		M5X10			
14	34721987630	SPRING	2					
17	34721987650	SPRING	1					
18	34721987660	SPACER	1					
19	34721987670	WASHER,THRUST	1					
35	34721427550	BOLT	2					
36	34721427560	WASHER,SPRING	2					
51	34721987640	RACK (WITH PLATE)	1					
500	34721422301	SHAFT ASSY (STEERING)	1					

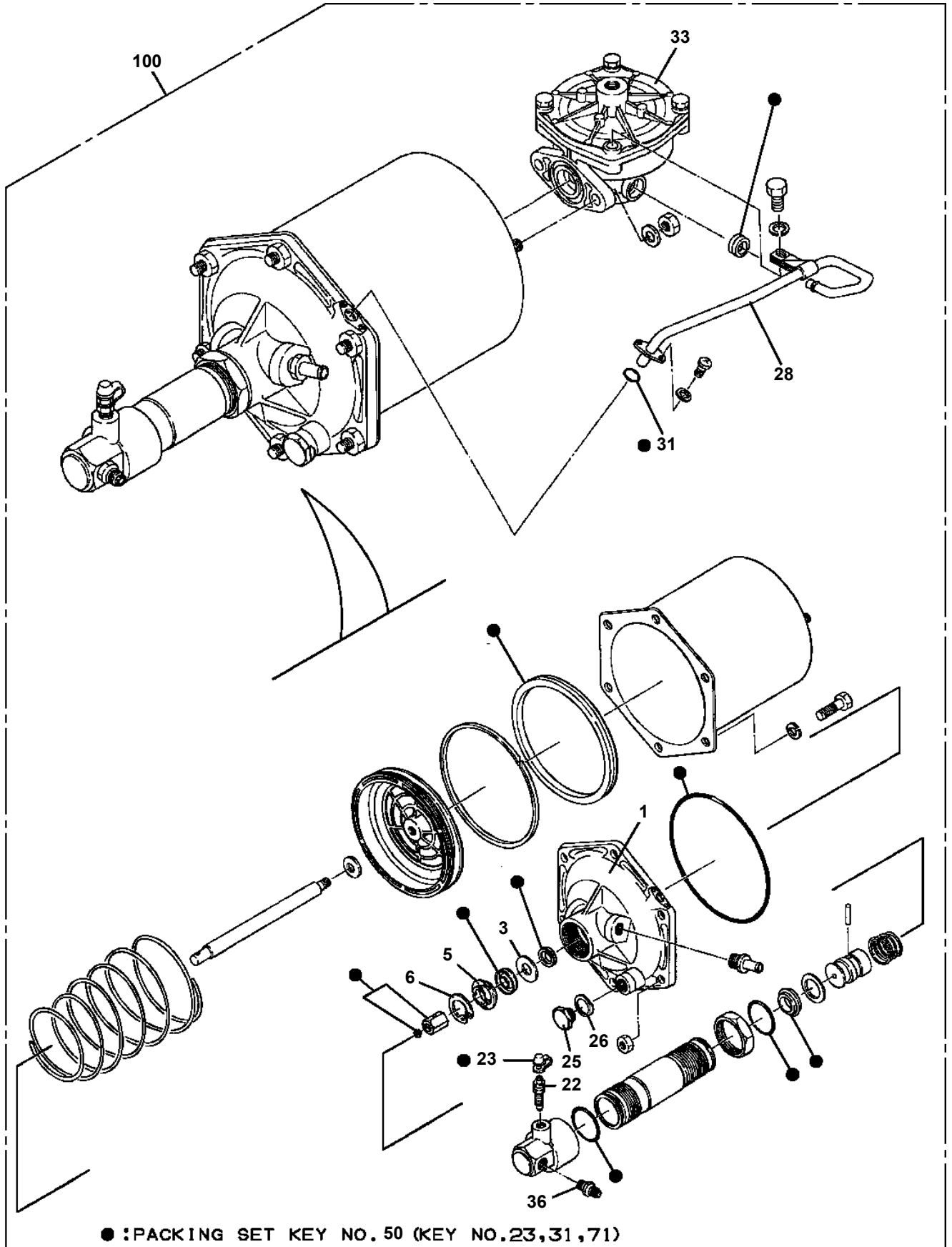
GR-800-1-00211 5 BOOM + 2 JIB,2M2D

Pos No.	Parts No	Parts Name	Qty	Unit	Technical Data	Serial No (Start)	Serial No (End)	Remarks	Pages
1	80430470650	JOINT	2						
3	82100001819	TUBE, SPIRAL	1	M	SE-18BK				
4	37000600120	CLAMP	3		WR45				
5	90186208025	BOLT, FLANGE	1		M8X25				
6	37002486920	HOSE	2		L=2150				
7	90280200800	NUT, FLANGE	2		M8				
8	80430410650	JOINT	2						
9	37002474830	HOSE	2		L=2950				
10	90191208030	BOLT	2		M8X30				
11	90302040801	WASHER, SPRING	3		8				
12	90303070801	WASHER, PLAIN	1		8				
13	90101208040	BOLT	1		M8X40				
14	82100002017	CLAMP	1		WR30				
15	80430450650	JOINT	2						
16	90186208020	BOLT, FLANGE	3		M8X20				
17	82100002044	CLAMP	1		WE25				
41	36604510000	VALVE, BRAKE	1						000317
42	90710008160	SCREW, SET	1		M8X16				
43	34330161100	ROLLER	1						
44	37000117540	PIN	1						
45	90303071001	WASHER, PLAIN	2		10				
46	80136332016	PIN, SPLIT	2		3.2X16				
47	34721208010	PEDAL ASSY	1						
48	82400000035	COVER (PEDAL)	1						
49	90102208060	BOLT	1		M8X60				
50	90201200800	NUT	1		M8				
51	37000117490	PIN	1						
62	80804010010	BEARING, PLAIN	1						

**GR-800-1-00211 5 BOOM + 2 JIB,2M2D
PT1200119-01 PIPING,BRAKE (LOWER)**



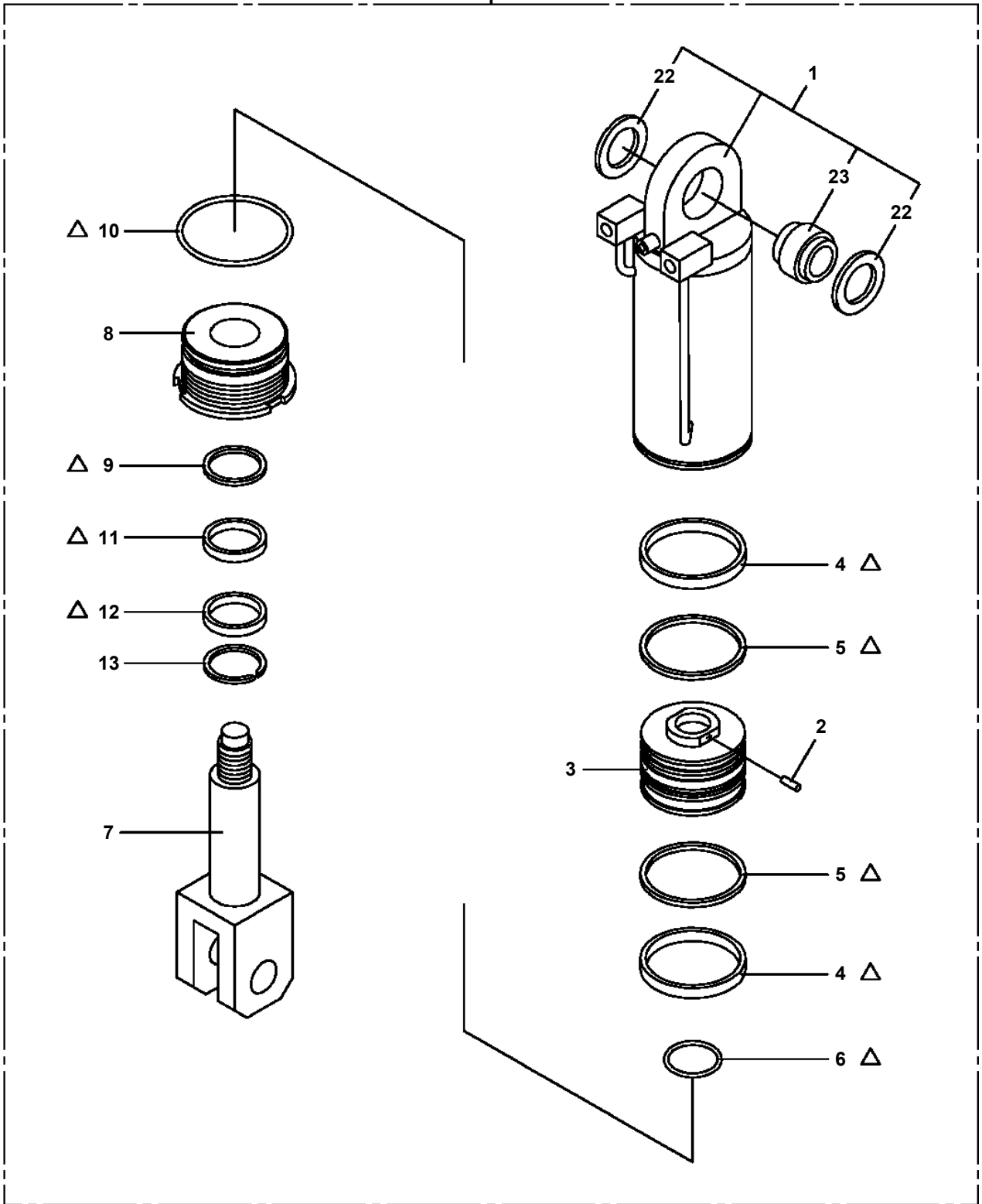
GR-800-1-00211 5 BOOM + 2 JIB,2M2D
PT1420006-08 BOOSTER (BRAKE)



展開図有
ILLUSTRATED BREAKDOWN NO. 33

**GR-800-1-00211 5 BOOM + 2 JIB,2M2D
PU1050026-03 CYLINDER,SPRING LOCK**

100

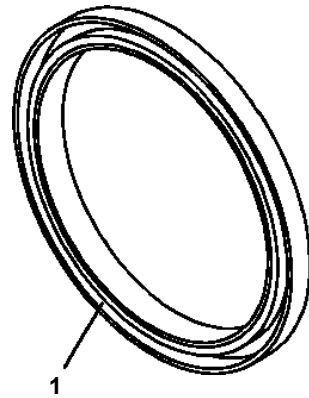


△:PACKING SET KEY NO. 50 (KEY NO.4,5,6,9,10,11,12,12)



△:PACKING SET KEY NO. 60 (KEY NO.4,5,6,9,10,11,12,12)

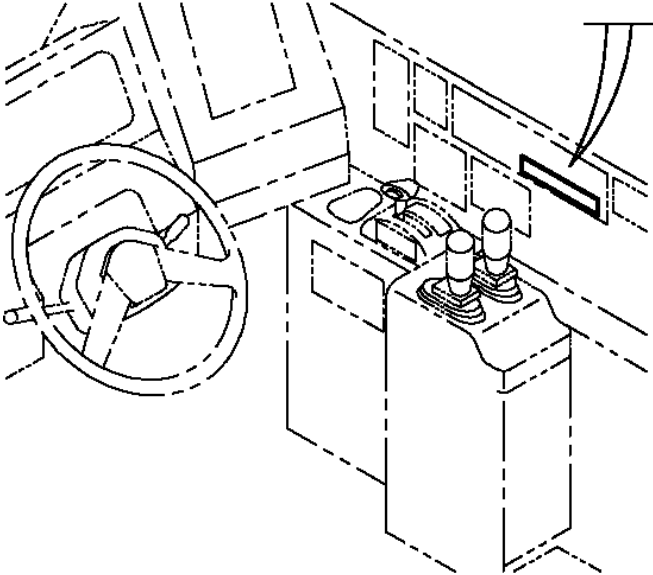
GR-800-1-00211 5 BOOM + 2 JIB,2M2D
PW1010327-00 ACCESSORIES (HUB)



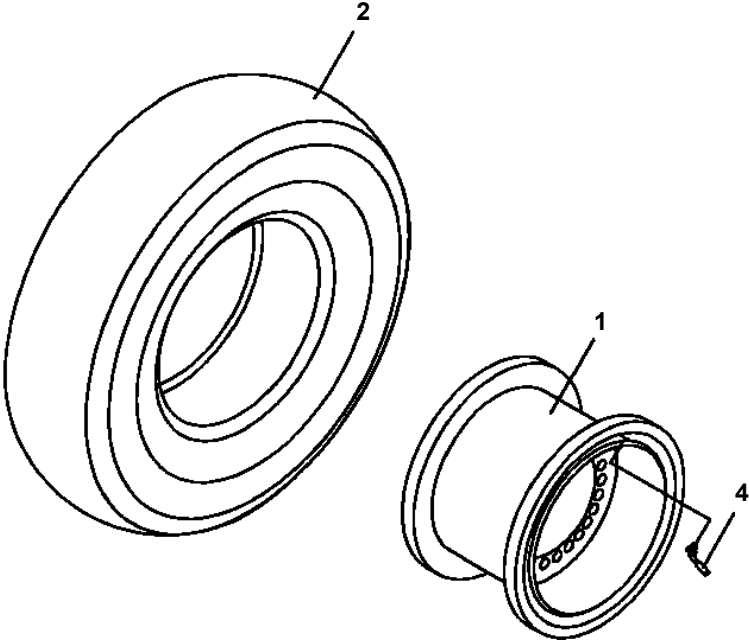
**GR-800-1-00211 5 BOOM + 2 JIB,2M2D
PW5030032-00 WHEEL ASSY (TOPY + HUNG-A:HS658)**

21

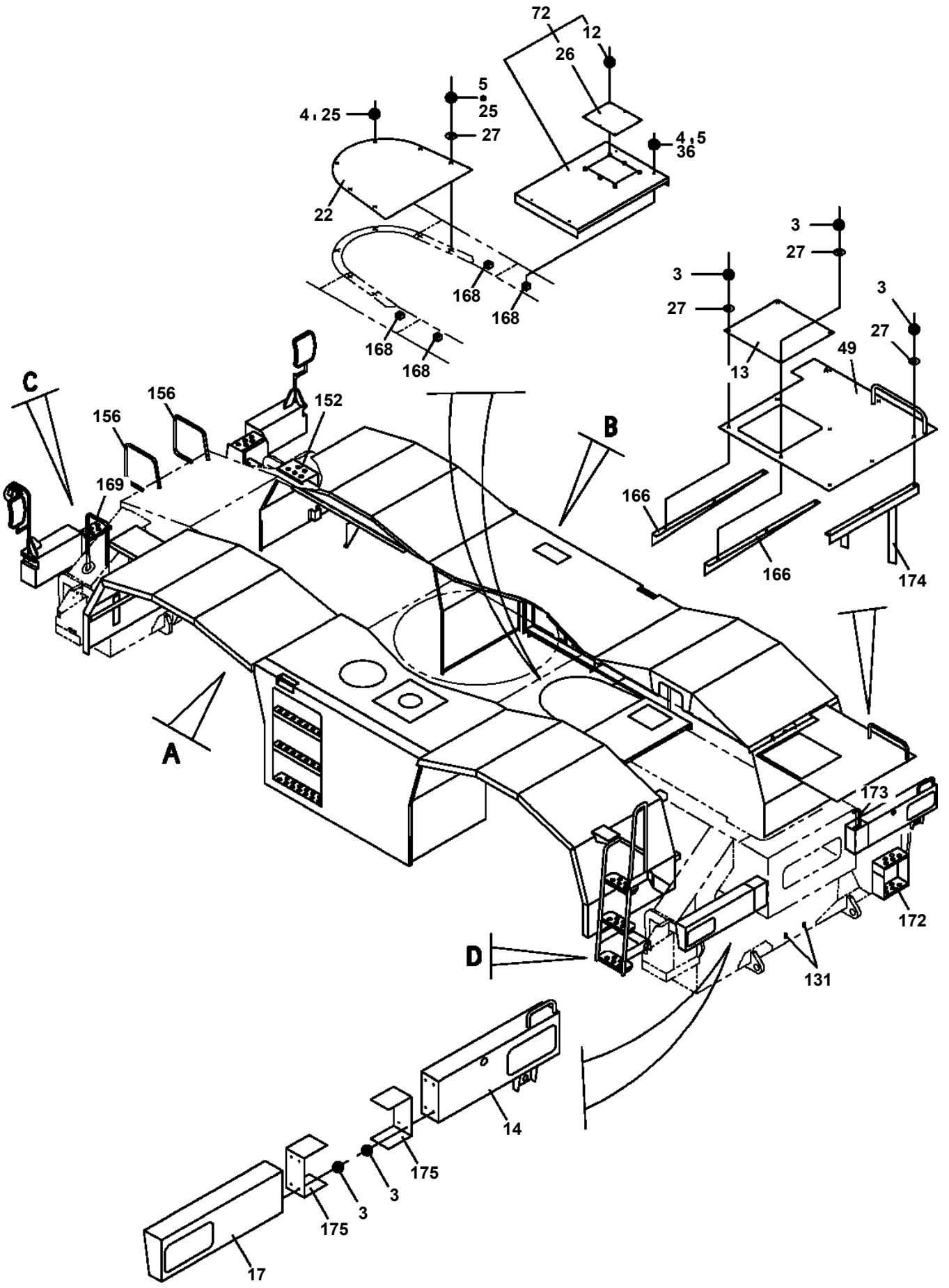
Installed tires at time of shipment from the factory : 29.5-25-28PR
343-770-20100



INNER CAB



GR-800-1-00211 5 BOOM + 2 JIB,2M2D
PX1030666-01 FENDER



GR-800-1-00211 5 BOOM + 2 JIB,2M2D

Pos No.	Parts No	Parts Name	Qty	Unit	Technical Data	Serial No (Start)	Serial No (End)	Remarks	Pages
2	37000104230	PIN	2						
3	80136332025	PIN,SPLIT	2		3.2X25				
4	90303071201	WASHER,PLAIN	2		12				
5	34760850100	BAND	2						
6	34760053200	WASHER	2						
7	90201201000	NUT	4		M10				
8	34761621100	SUPPORT	1						

GR-800-1-00211 5 BOOM + 2 JIB,2M2D

Pos No.	Parts No	Parts Name	Qty	Unit	Technical Data	Serial No (Start)	Serial No (End)	Remarks	Pages
1	36119675090	BATTERY	1						
100	36119671401	BOARD	1						

GR-800-1-00211 5 BOOM + 2 JIB,2M2D

Pos No.	Parts No	Parts Name	Qty	Unit	Technical Data	Serial No (Start)	Serial No (End)	Remarks	Pages
1	37000502410	PLATE	1						

GR-800-1-00211 5 BOOM + 2 JIB,2M2D

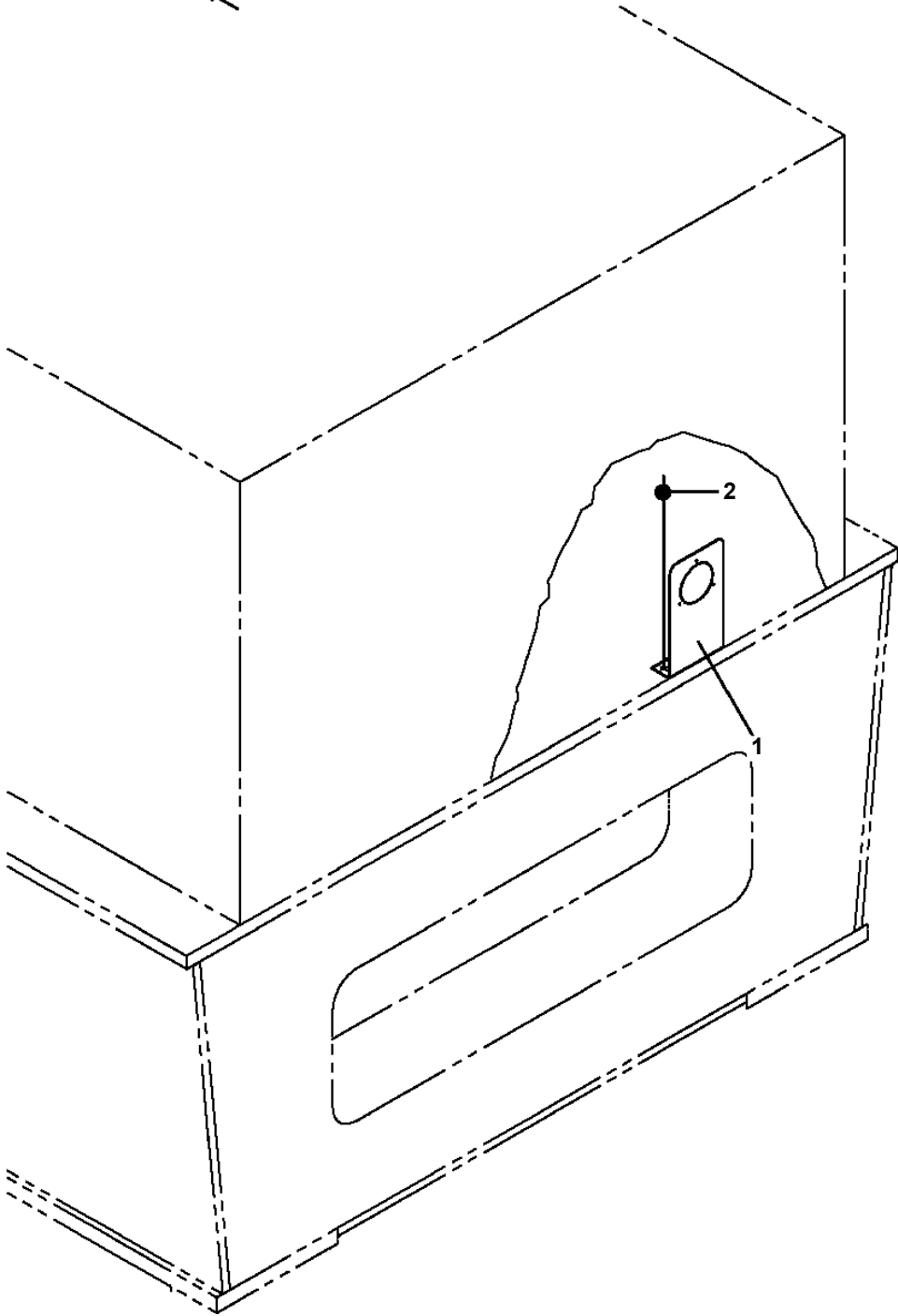
Pos No.	Parts No	Parts Name	Qty	Unit	Technical Data	Serial No (Start)	Serial No (End)	Remarks
1	36690121000	COOLER,OIL	1					
2	36663120000	MOTOR,HYDRAULIC	1					
3	36690291000	SUPPORT	1					
4	90101210020	BOLT	4		M10X20			
5	90201201000	NUT	4		M10			
6	90302041001	WASHER,SPRING	6		10			
7	90172110025	BOLT,HEXAGON SOCKET	2		M10X25			
8	36690040500	FLANGE	1					
9	90101208018	BOLT	5		M8X18			
10	90302040801	WASHER,SPRING	5		8			
11	37000509410	PLATE	1					
12	90303071001	WASHER,PLAIN	2		10			
13	90201401000	NUT	2		M10			

GR-800-1-00211 5 BOOM + 2 JIB,2M2D

Pos No.	Parts No	Parts Name	Qty	Unit	Technical Data	Serial No (Start)	Serial No (End)	Remarks
84	36320565790	CASE (FRONT)	1					
85	36320565800	DAMPER	1					
86	36320565810	DAMPER	1					
87	36320565820	DAMPER	1					
88	36320565830	DAMPER	1					
89	36320565840	DAMPER	1					
90	36320565700	SCREW,MACHINE	6					
541	36320565700	SCREW,MACHINE	7					
542	36320565550	CASE	1					
543	36320565560	CASE (BLOWER)	1					
621	36320565700	SCREW,MACHINE	5					
622	36320566020	CASE	1					
623	36320566030	CASE	1					
624	36320565650	DAMPER	1					

**GR-800-1-00211 5 BOOM + 2 JIB,2M2D
PY1510052-00 HOUR METER (MOUNT)**

FRONT



GR-800-1-00211 5 BOOM + 2 JIB,2M2D

Pos No.	Parts No	Parts Name	Qty	Unit	Technical Data	Serial No (Start)	Serial No (End)	Remarks
1	36320395200	CLIP	1					
2	36320396180	SEAL (MECHANICAL)	1					
3	36320395220	ARMATURE ASSY	1					
4	36320395260	HOLDER ASSY (MOTOR)	1					
5	36320395270	BRACKET	1					
6	36320395280	BODY ASSY	1					
7	36320395350	CASING,PUMP	1					
8	36320395360	IMPELLER	1					
10	36320395370	SCREW (WITH WASHER)	2					
11	36320395380	BOLT (WITH WASHER)	3		M6X30			
12	36320395390	BOLT (WITH WASHER)	1		M6X20			
13	36320395400	WASHER	3					
14	36320395410	WASHER,SPRING	1					
15	36320395420	WASHER (RUBBER)	1					
16	36320395430	NUT,HEXAGON	1		M6			
17	36320395440	O-RING	1					
18	36320395450	O-RING	1					
19	36320395460	BAND	1					
22	36320395230	RING	2					
23	36320395030	BEARING,BALL	1					
24	36320395250	BEARING,BALL	1					
31	36320395290	BRUSH (CARBON)	2					
32	36320395300	HOLDER,BRUSH	1					
33	36320395310	SPRING	2					
34	36320395320	GROMMET	1					
35	36320395330	TUBE	1					
36	36320395340	WIRE ASSY	1					
50	36320392081	PUMP,WATER	1					

CLICK HERE TO **DOWNLOAD** THE COMPLETE MANUAL

- Thank you very much for reading the preview of the manual.
- You can download the complete manual from: www.heydownloads.com by clicking the link below



- Please note: If there is no response to CLICKING the link, please download this PDF first and then click on it.

CLICK HERE TO **DOWNLOAD** THE COMPLETE MANUAL