

## **BT-400-1-00003 UPPER**

PD2000035-00 SWING UNIT  
PG2000044-00 BOOM UNIT,1  
PG2000045-01 BOOM UNIT,2  
PG2000046-00 BOOM UNIT,3  
PH1000463-01 SAFETY DEVICES (MOTION CONTROLLER)  
PJ3000477-00 BASKET SYSTEM  
PK2001148-00 FRAME UNIT  
PO1000131-03 INDICATION PLATES  
PW1000028-00 ACCESSORIES & TOOLS  
PY1001988-00 OPTION UNIT,1 (UPPER)  
ASSEMBLY

CLICK HERE TO **DOWNLOAD** THE COMPLETE MANUAL

- Thank you very much for reading the preview of the manual.
- You can download the complete manual from: [www.heydownloads.com](http://www.heydownloads.com) by clicking the link below



- Please note: If there is no response to CLICKING the link, please download this PDF first and then click on it.

CLICK HERE TO **DOWNLOAD** THE COMPLETE MANUAL

# BT-400-1-00003 UPPER

Pos No.	Parts No	Parts Name	Qty	Unit	Technical Data	Serial No (Start)	Serial No (End)	Remarks
1	36192330000	MOTION CONTROLLER (AMC)	1					

BT-400-1-00003 UPPER  
 PY1001988-00 OPTION UNIT,1 (UPPER)

12	P-ROM (オンセイ/エイコ) P-ROM (VOICE/ENGLISH)
----	-------------------------------------------

15

キウバビ (オプション) のための修正サポート  
 MODIFICATION ASSY  
 OPTION BLOCK/SERIAL NO. STAMPING SUPPORT

キー KEY NO.	部品 PART NAME	注 REMARK
1	キウバビ MODIFICATION ASSY	フレーム、プレート FRAME, PLATE
2	キウバビ MODIFICATION ASSY	プレート PLATE

16

ハネ (オプション)  
 HARNESS FOR GONDOLA

キー KEY NO.	部品 PART NAME	注 REMARK
1	ハネ HARNESS	オプション用 OPTIONAL
2	ハネ HARNESS	オプション用 OPTIONAL

17

マウントアッシー (ラッシングベルト)  
 MOUNT ASSY (RUSHING BELT)

番号 NO.	部品名 PART NAME	部品 PART	注 REMARK
1	マウントアッシー MOUNT ASSY	フレーム、プレート、プレート FRAME, PLATE, PLATE	
2	マウントアッシー MOUNT ASSY	プレート PLATE	
3	電気アッシー ELEC. ASSY	プレート、プレート PLATE, PLATE	
4	プレートアッシー PLATE ASSY	プレート PLATE	

18

キウバビ (AMC ROM書き換え/修正) のための修正サポート  
 MODIFICATION ASSY (AMC ROM REWRITING/NIHON BISHO)  
 キウバビ  
 MODIFICATION ASSY

番号 NO.	部品名 PART NAME	部品 PART	注 REMARK
1	キウバビ MODIFICATION ASSY	プレート PLATE	

適用製造番号によっては取り付けがないものもあります。  
 MACHINES OF SOME SERIAL NO. ARE NOT EQUIPPED WITH THESE PARTS.

# BT-400-1-00003 UPPER

Pos No.	Parts No	Parts Name	Qty	Unit	Technical Data	Serial No (Start)	Serial No (End)	Remarks	P
1	42442281000	JOINT ASSY,SWIVEL	1						
2	90171112025	BOLT	4		M12X25				
3	90302041201	WASHER,SPRING	6		12				
4	42442280100	SUPPORT	1						
5	90171112065	BOLT	2		M12X65				
6	37000100390	PIN	1						
7	80136340040	PIN,SPLIT	1		4X40				
8	90303072001	WASHER,PLAIN	1		20				
21	42630682001	BRUSH,ROTARY JOINT	1						0
22	44630211100	BODY	1						
23	42442281200	CORE	1						
24	37000400070	BEARING,PLAIN	1						
25	91531214000	PACKING	2						
26	91100214000	SEAL,RING	6						
27	37000400090	BEARING,PLAIN	1						
28	90101208022	BOLT	3		M8X22				
29	90302040801	WASHER,SPRING	3		8				
30	33630460400	STOPPER	2						
31	90101210025	BOLT	4		M10X25				
32	90302041001	WASHER,SPRING	4		10				
33	80316070060	PLUG	4		PF3/8		HB6489		
	80316100030	PLUG	4		G3/8	HB6490			
34	91002801400	O-RING	4		1B P14				

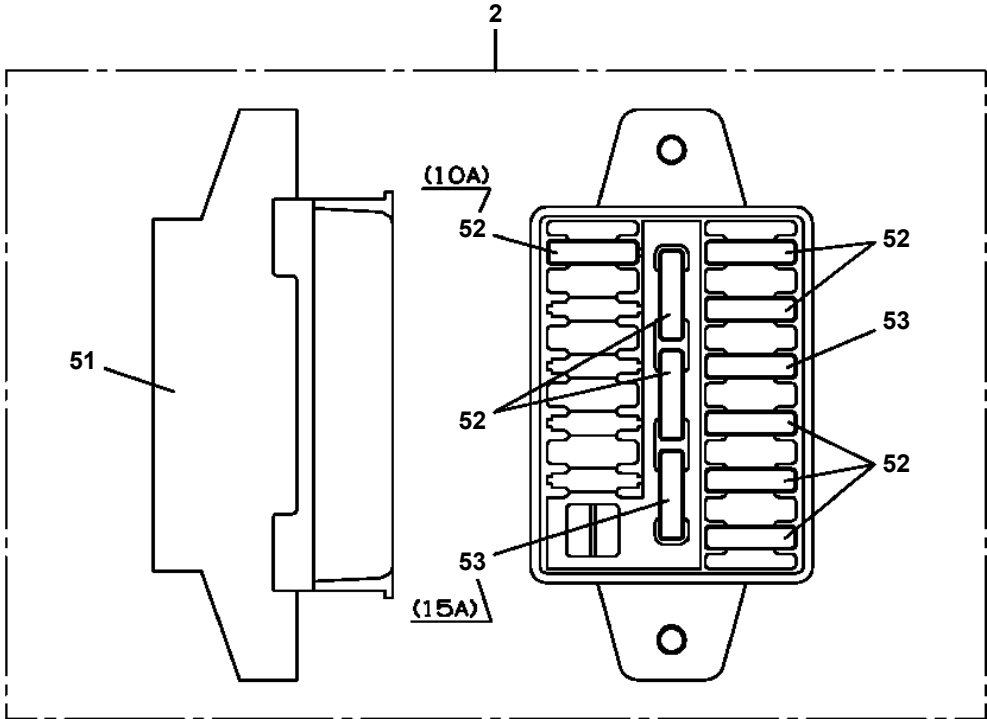
# BT-400-1-00003 UPPER

Pos No.	Parts No	Parts Name	Qty	Unit	Technical Data	Serial No (Start)	Serial No (End)
1	36635755010	VALVE ASSY	1				
2	36631595020	VALVE,CONTROL	1				
3	36633375020	VALVE,PILOT CHECK	1				
4	36631595030	VALVE,CONTROL	1				
5	36631595040	VALVE,CONTROL	3				
6	36634515060	BODY	1				
7	11625101020	BOLT,STUD	4				
8	90201200800	NUT	8		M8		
9	36631595010	VALVE,RELIEF	1				
12	91002905500	O-RING	7		1B G55		
13	36634535210	PLUG	1		PF1/4		
14	91002801100	O-RING	2		1B P11		
25	91002800500	O-RING	1		1B P5		
26	56051331100	SEAL,OIL	10				
27	36635045040	RETAINER (VALVE)	5				
28	91002801400	O-RING	5		1B P14		
29	49263367570	END,SPOOL	1				
30	12435101180	RETAINER (SEAL)	9				
31	12435101170	RETAINER (SPRING)	2				
32	36630045140	SPRING	1				
33	36630215030	COVER (SPRING)	5				
34	56051331120	COVER	5				
35	90131906020	BOLT,HEXAGON SOCKET	2		M6X20		
36	90131906014	BOLT,HEXAGON SOCKET	10		M6X14		
46	13115102010	RETAINER (SEAL)	8				
47	56051331150	END,SPOOL	4				
48	13115102030	CASE (BALL)	4				
49	80560005000	BALL,STEEL	8		5		
50	56051331130	RETAINER (BALL)	4				
51	13115102040	SPRING	4				
54	90131906025	BOLT,HEXAGON SOCKET	8		M6X25		
65	56051331180	SPRING	1				
69	91000501500	O-RING	2		AS568-015		
70	91002802200	O-RING	2		1B P22		
71	19215101010	O-RING	1				
83	36630045190	SPRING	1				
86	91002801001	O-RING	1		1B P10A		
90	16025153020	SPRING	1				
91	36630045200	SCREW (ADJUSTING)	1		M10X25		
92	36630295130	NUT,CAP	1				
93	36630045220	NUT	1		M10		
94	91001001600	O-RING	2		1A S16		
100	36631590001	VALVE,MANUAL CONTROL (OUTRIGGER)	1				

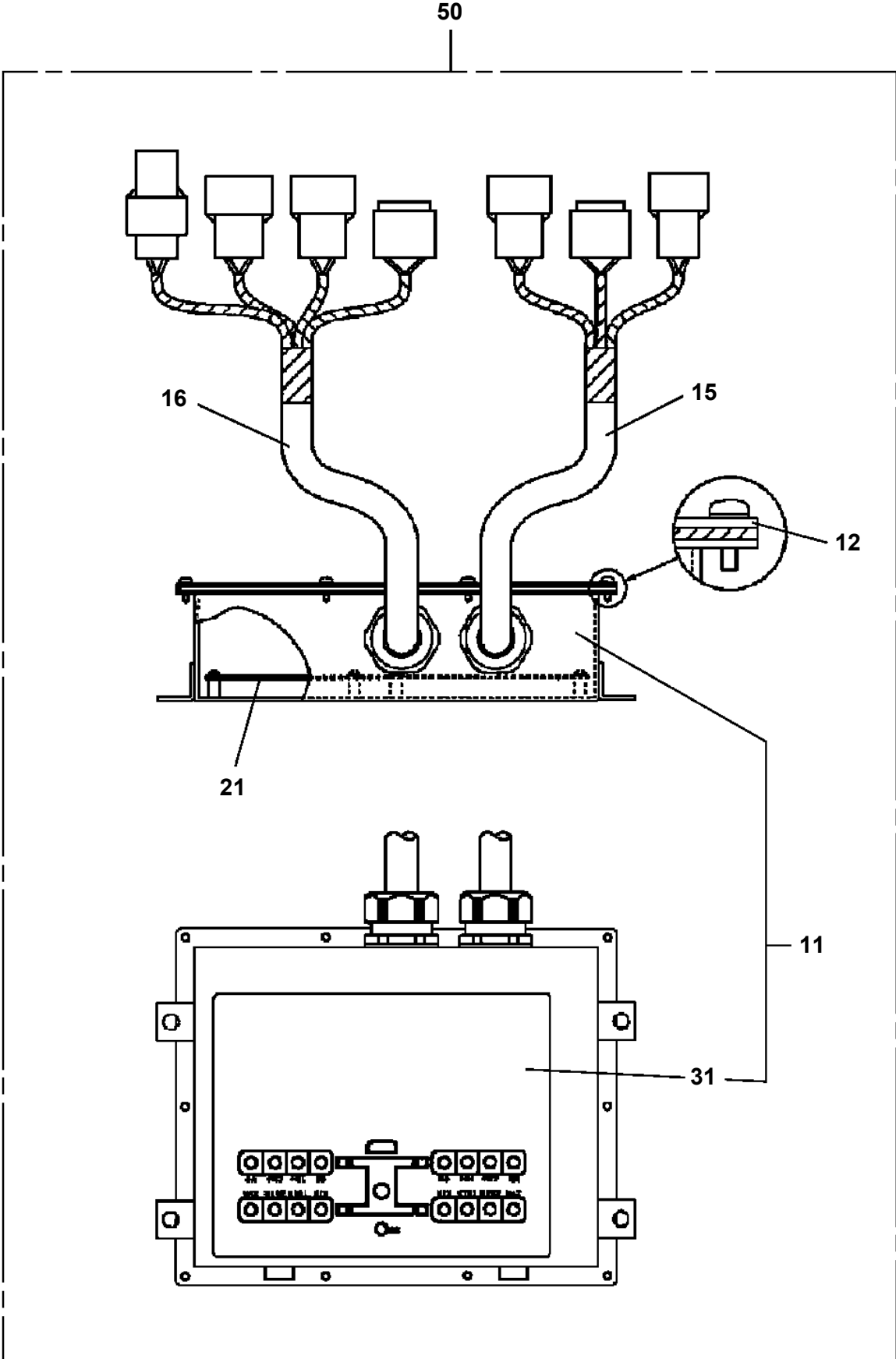
# BT-400-1-00003 UPPER

Pos No.	Parts No	Parts Name	Qty	Unit	Technical Data	Serial No (Start)	Serial No (End)
54	91002802400	O-RING	6		1B P24		HB5436
	91002802400	O-RING	4		1B P24	HB5437	
55	80302090281	FITTING	1		KCO22-060N		
56	42345560250	JOINT ASSY	1				
57	80471020506	JOINT	1		45,G3/4-G3/4		
58	42345560300	FITTING,FLANGE	1				
59	91002902500	O-RING	1		1B G25		
60	90171110045	BOLT	4		M10X45		
61	42345560400	FITTING,FLANGE	2				
62	91002903000	O-RING	2		1B G30		
63	90171110030	BOLT	12		M10X30		HB6404
	90171110030	BOLT	8		M10X30	HB6405	
64	42345560700	FITTING,FLANGE	1				
65	91002905500	O-RING	1		1B G55		
66	90171110065	BOLT	4		M10X65		
68	42345560500	JOINT	1				
69	37000605650	CLAMP	1				
70	42343190700	JOINT	2				
71	80302090161	FITTING	3		KCO12-030N		
72	81408000160	PIPE,STEEL	1	M	12X1.4T		
73	81408000160	PIPE,STEEL	1	M	12X1.4T		
74	82100002042	CLAMP	1		WE20		
75	90201200800	NUT	3		M8		HB5376
	90201200800	NUT	4		M8	HB5377	
76	80321112000	VALVE,CHECK	2				
77	42344641600	JOINT	1				
78	90101208035	BOLT	2		M8X35		
79	81408000160	PIPE,STEEL	1	M	12X1.4T		
80	37002476300	HOSE	1		L=1380		
81	37002476310	HOSE	1		L=1700		
82	42345560600	JOINT	1				
83	90101208045	BOLT	4		M8X45		
84	37002476320	HOSE	1		L=2600		
85	37002476330	HOSE	1		L=2650		
86	37002476340	HOSE	2		L=3100		
87	37002476350	HOSE	1		L=2650		
88	36625420000	VALVE,CHECK	1				HB6537
	36626350000	VALVE,CHECK	1			HB6538	
89	42345560550	JOINT	1				
90	37002407390	HOSE	1		L=800		
91	37000927510	JOINT	2				HB5436
	37000925870	JOINT	2		PF1/2-PF3/8	HB5437	
92	37000925790	JOINT	2				HB6213
	37000925790	JOINT	1			HB6214	
93	37002500150	HOSE	1		L=700		
94	90101208025	BOLT	4		M8X25		
95	81408000160	PIPE,STEEL	1	M	12X1.4T		
96	80305010100	FITTING,TEE	1		KTA12-000N		
97	37000927890	JOINT	1				
98	37002415640	HOSE	1		L=425		
100	90101208040	BOLT	4		M8X40		
101	37002466410	HOSE	1		L=1400		
102	42345560270	PLATE	1				
103	42345560280	PLATE	1				
104	37000578740	PLATE	2		T=1.6		
105	82100001819	TUBE,SPIRAL	2	M	SE-18BK		
107	90101210055	BOLT	2		M10X55		
108	42344623200	JOINT	1				HB5421
	37000932660	JOINT (WITH O-RING)	1		T G1/4-G1/4-G1/4	HB5422	
109	37002433320	HOSE	1		L=430		
110	37002451380	HOSE	1		L=820 TO 690		
111	37002434090	HOSE	1		L=550		
112	42340240500	FILTER,OIL	3				

**BT-400-1-00003 UPPER  
PB5260142-00 BOX ASSY**



BT-400-1-00003 UPPER  
PC1190042-01 INDICATOR,OUTRIGGER

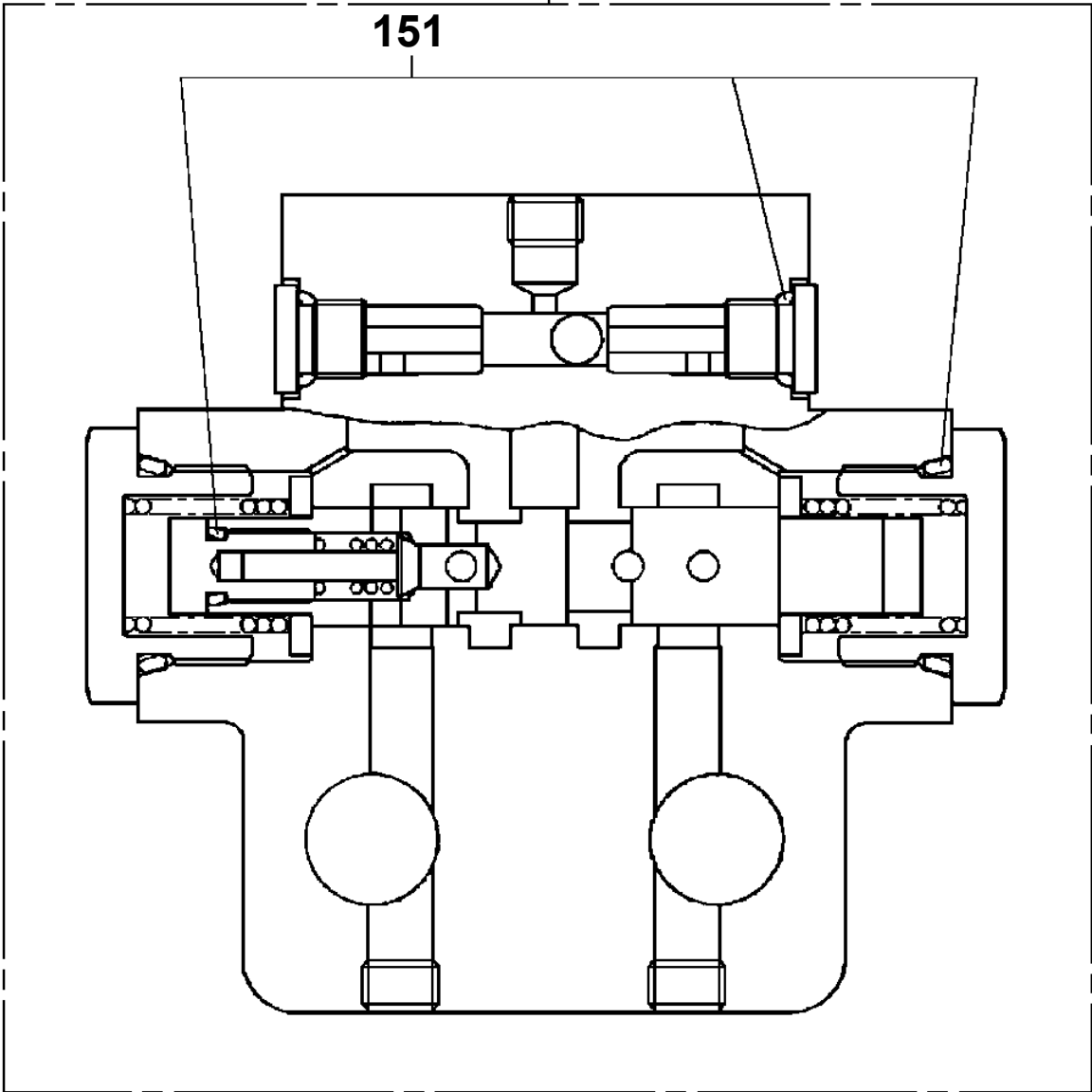


## BT-400-1-00003 UPPER

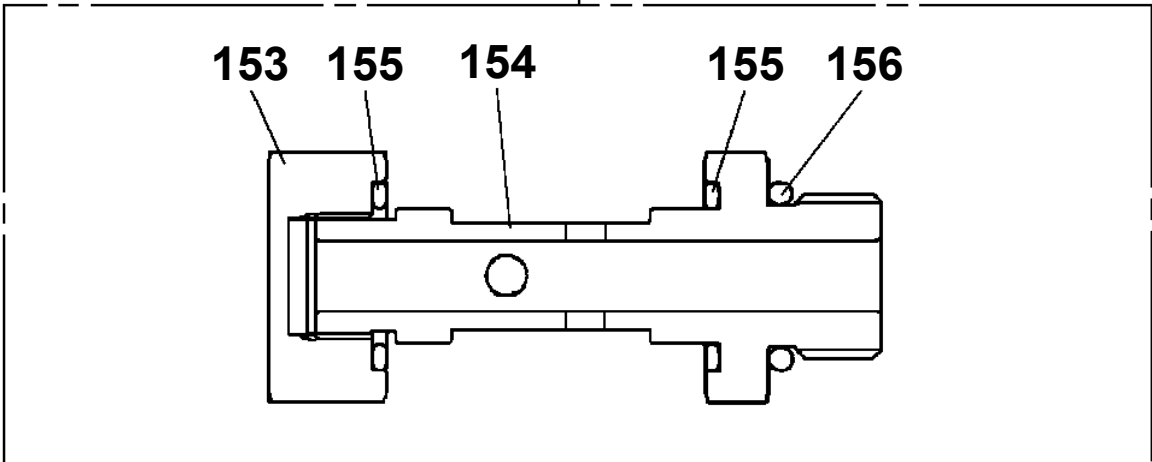
Pos No.	Parts No	Parts Name	Qty	Unit	Technical Data	Serial No (Start)	Serial No (End)	Remarks	Pages
1	42509780100	COVER	1						
2	42509780010	COVER	1				HB6313		
	42509780011	COVER	1			HB6314			
3	37000314890	SPACER	5		L=30		HB6191		
	37000310040	SPACER	5			HB6192			
4	90101206045	BOLT	5		M6X45				
5	90101206016	BOLT	5		M6X16	HB6430			

**BT-400-1-00003 UPPER  
PD1010175-00 REDUCER, SWING SPEED**

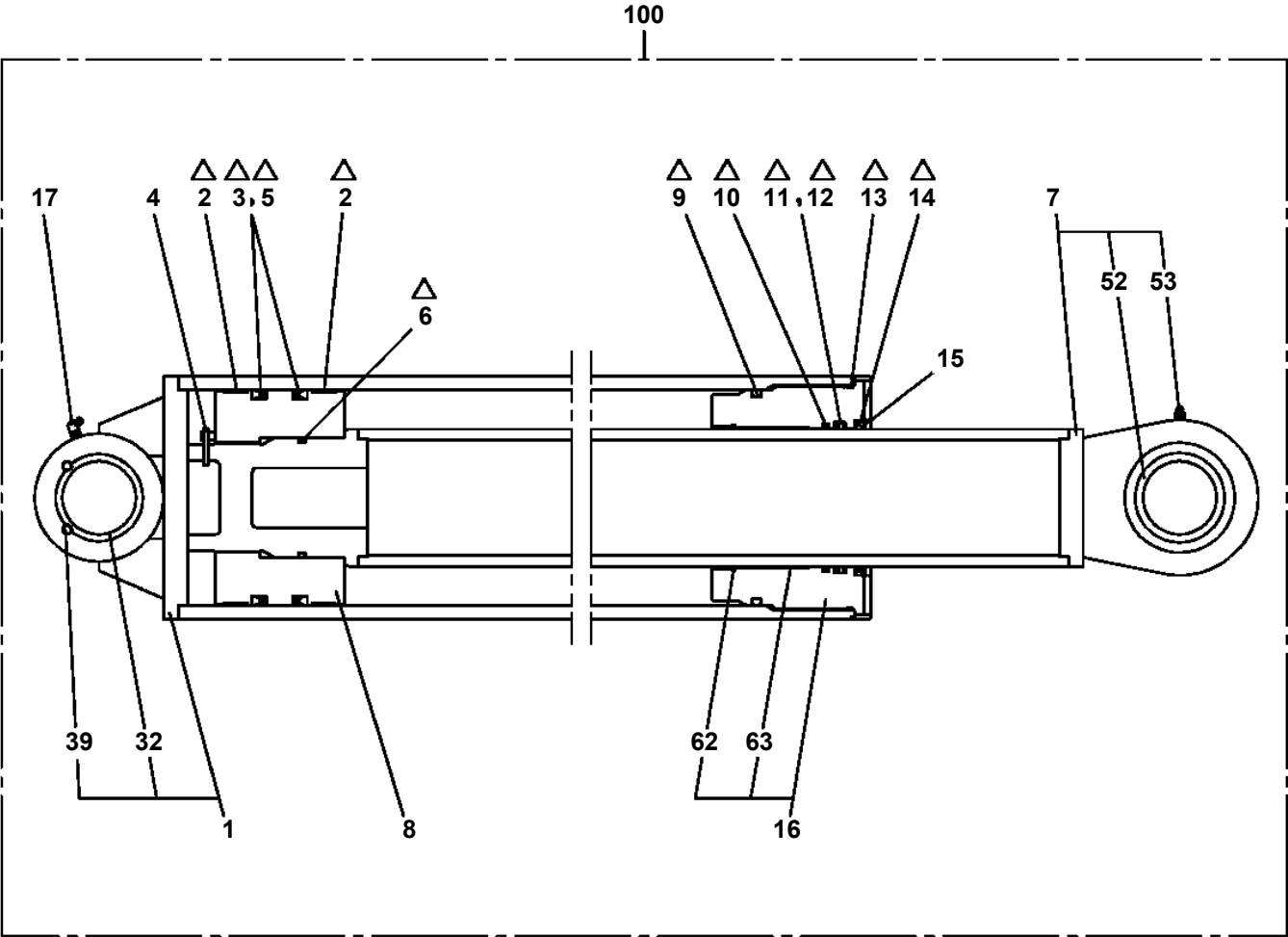
**B**



**152**



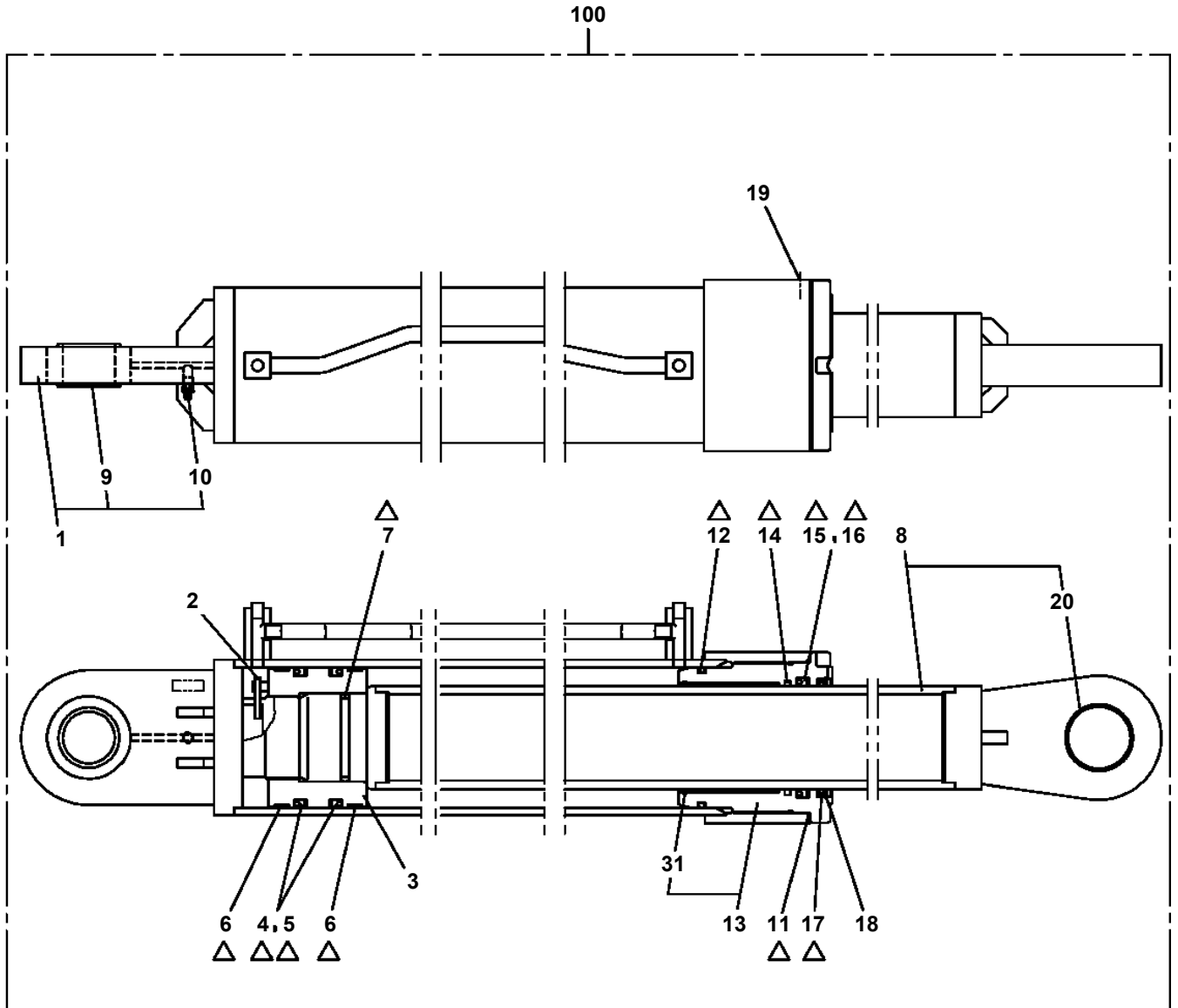
**BT-400-1-00003 UPPER  
PE1010406-00 CYLINDER,ELEVATING**



△:PACKING SET KEY NO.90 (KEY NO.2,3,5,6,9,10,11,12,13,14)



**BT-400-1-00003 UPPER  
PE1070042-01 CYLINDER, ARTICULATING**



Δ: PACKING SET KEY NO. 50 (KEY NO. 4, 5, 6, 7, 11, 12, 14, 15, 16, 17)



Δ: PACKING SET KEY NO. 60 (KEY NO. 4, 5, 6, 7, 11, 12, 14, 15, 16, 17)

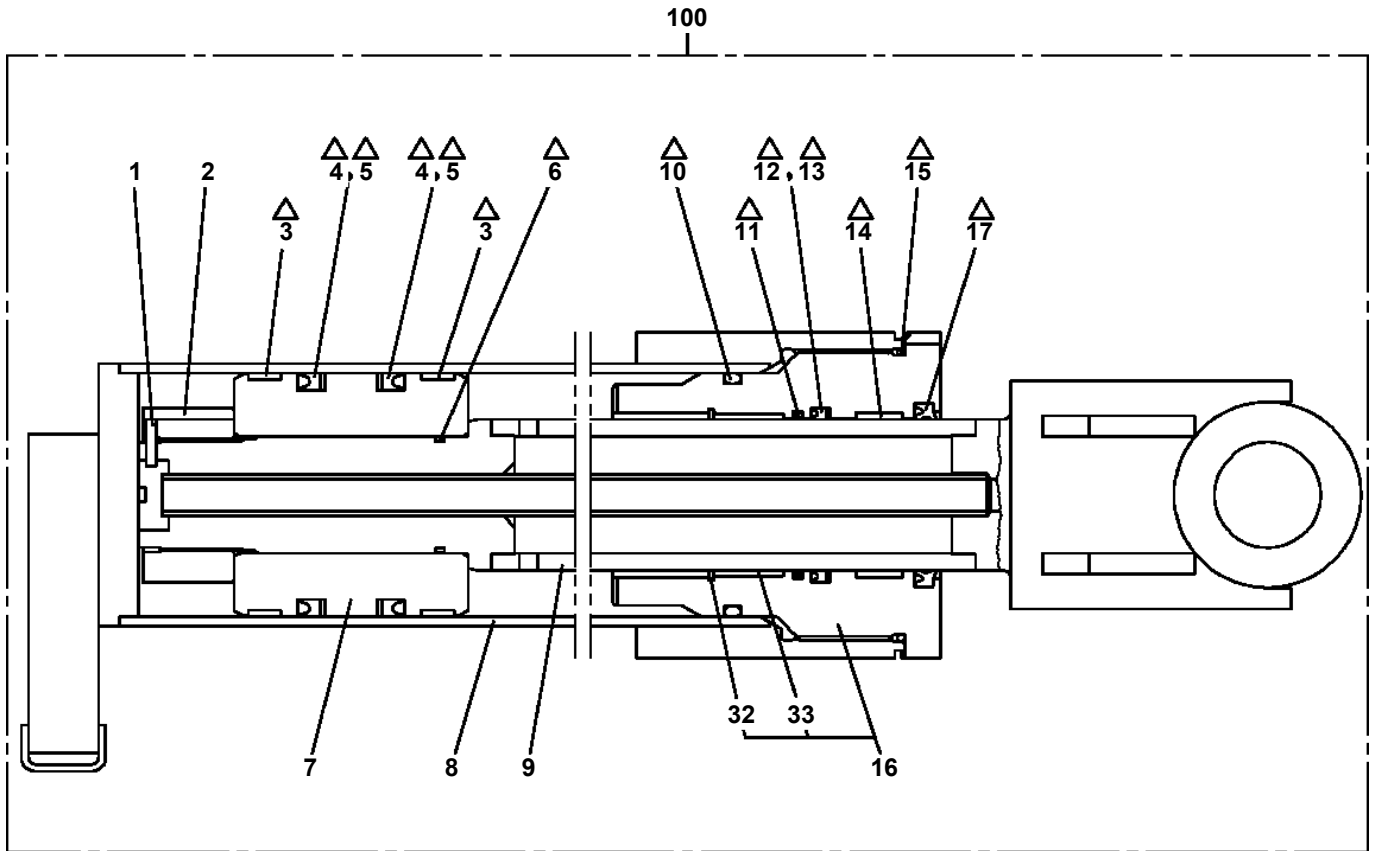
# BT-400-1-00003 UPPER

Pos No.	Parts No	Parts Name	Qty	Unit	Technical Data	Serial No (Start)	S
1	42461162000	FALL ARREST SYSTEM (TB-LSA-550/FUJII-DENKO)	1				

# BT-400-1-00003 UPPER

Pos No.	Parts No	Parts Name	Qty	Unit	Technical Data	Serial No (Start)	Serial No (End)	Remark
1	37000182820	PIN	1					
2	90236204201	NUT,CASTLE	1		M42			
3	90303074201	WASHER,PLAIN	1		42			
4	80136380071	PIN,SPLIT	1		8X71			
5	37000182480	PIN	2					
6	42261964010	SPACER	2					
7	90171116050	BOLT	12		M16X50			
8	90303501601	WASHER,PLAIN	12		16			
9	37000182580	PIN	2					
10	90238403008	NUT,CASTLE	2		M30X2			
11	90303073001	WASHER,PLAIN	2		30			
12	80136363056	PIN,SPLIT	2		6.3X56			
13	42220600010	FRAME	1				HB6265	
	42220600011	FRAME	1			HB6266		
14	42220600020	LINK ASSY	1					
15	42220600030	LINK ASSY	1				HB5392	
16	36026980000	CYLINDER,TILT	1					
17	42490920700	JOINT	1				HB5445	
18	36605210000	VALVE,COUNTERBALANCE	2				HB5445	
	42241320400	VALVE ASSY	1			HB5446		
19	90172108060	BOLT,HEXAGON SOCKET	4		M8X60			
20	90302040801	WASHER,SPRING	4		8			
21	91002800900	O-RING	2		1B P9		HB5445	
22	82455106000	NIPPLE,GREASE	3		A-M6F FE			
23	82400000459	CAP	3					
24	90171210040	BOLT	1		M10X40			
25	90201201000	NUT	1		M10			
26	37000569030	SHIM	N		T=0.6			
27	37000569040	SHIM	N		T=1.0			
65	80802506040	BEARING,PLAIN	2					
82	80801004050	BEARING,PLAIN	8					
83	42220602200	SPACER	2					
84	82459103000	NIPPLE,GREASE	6		C-PT1/8			
85	82400000459	CAP	6					
103	80806004050	BEARING,PLAIN	2					
111	42220604000	LINK ASSY	1			HB5393		

**BT-400-1-00003 UPPER  
PG1050485-01 CYLINDER,TELESCOPING**



Δ:PACKING SET KEY NO.50 (KEY NO.3,4,5,6,10,11,12,13,14,15,17)

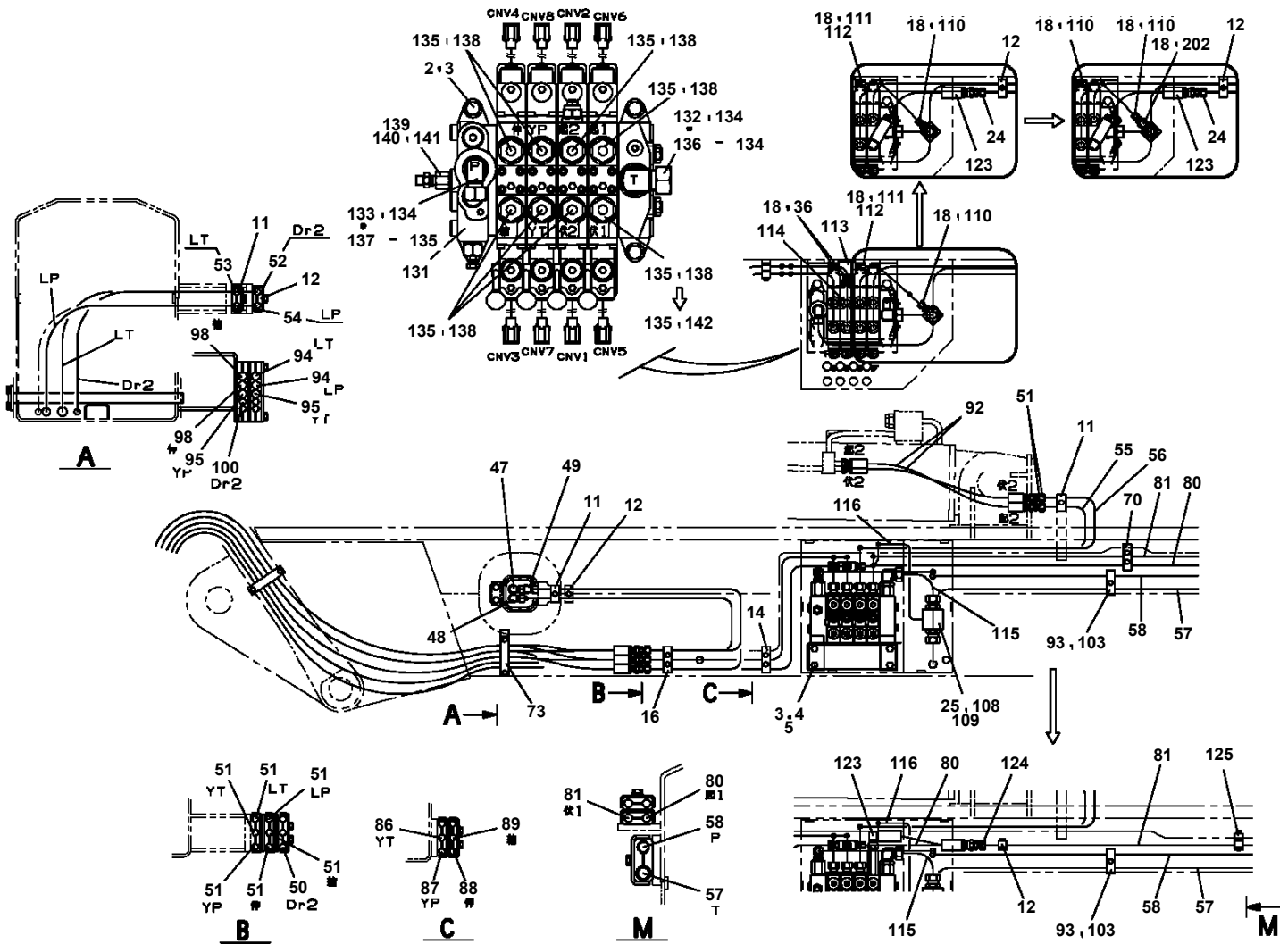


Δ:PACKING SET KEY NO.60 (KEY NO.3,4,5,6,10,11,12,13,14,15,17)

# BT-400-1-00003 UPPER

Pos No.	Parts No	Parts Name	Qty	Unit	Technical Data	Serial No (Start)	Serial No (End)	Remarks
1	42345530100	CABLE CONVEYER	1					
2	42345530200	SUPPORT	1					
3	90101210018	BOLT	20		M10X18			
4	90302041001	WASHER,SPRING	20		10			
5	90172108030	BOLT,HEXAGON SOCKET	8		M8X30			
6	90302040801	WASHER,SPRING	20		8			
7	90201200800	NUT	8		M8			
8	37002013000	PLATE,SLIDE	2					
9	90172106016	BOLT,HEXAGON SOCKET	2		M6X16			
10	90303070601	WASHER,PLAIN	2		6			
11	90303070801	WASHER,PLAIN	16		8			
12	80302090181	FITTING	2		KCO15-030N			
13	42345530800	JOINT	1					
14	42345530900	JOINT	1					
15	80400160131	JOINT	6					
16	91002801800	O-RING	6		1B P18			
17	80400160133	JOINT	2					
18	91002802400	O-RING	2		1B P24			
19	42345530500	CLAMP	4					
20	42345530010	PLATE	4					
21	37000711100	CLAMP ASSY	1		28X2			
22	37000300780	SLEEVE	2		28-22			
23	37000711090	CLAMP ASSY	4		18X2			
24	37000300750	SLEEVE	8		18-15			
25	80320010100	FITTING	16		KUD15-040N			
26	80320010180	FITTING	4		KUD22-060N			
27	42345530300	SUPPORT	1					
28	42345530400	COVER	1					
29	90101208014	BOLT	12		M8X14			
31	42344613300	ROLLER	1					
32	37000182660	PIN	1					
33	80136340025	PIN,SPLIT	4		4X25			
34	37000162820	PIN	1					
35	42345530600	CLAMP	1					
36	42345530020	PLATE	2					
37	42345530700	CLAMP	1					
38	42341310100	CLAMP ASSY	2					
39	90101208070	BOLT	2		M8X70		HB5553	
	90101208065	BOLT	2		M8X65	HB5554		
40	37000711260	CLAMP ASSY	1		25X2			
41	81408000290	PIPE,STEEL	3	M	22X2.5T			
42	81408000290	PIPE,STEEL	3	M	22X2.5T			
43	81408000210	PIPE,STEEL	3	M	15X2.0T			
44	81408000210	PIPE,STEEL	3	M	15X2.0T			
45	81408000210	PIPE,STEEL	3	M	15X2.0T			
46	81408000210	PIPE,STEEL	3	M	15X2.0T			
47	81408000210	PIPE,STEEL	3	M	15X2.0T			
48	81408000210	PIPE,STEEL	3	M	15X2.0T			
49	81408000210	PIPE,STEEL	3	M	15X2.0T			
50	81408000210	PIPE,STEEL	3	M	15X2.0T			
51	80301010200	FITTING	2		KUA22-000N			
52	80301010120	FITTING	8		KUA15-000N			
53	81408000290	PIPE,STEEL	2	M	22X2.5T			
54	81408000290	PIPE,STEEL	2	M	22X2.5T			
55	81408000210	PIPE,STEEL	2	M	15X2.0T			
56	81408000210	PIPE,STEEL	2	M	15X2.0T			
57	81408000210	PIPE,STEEL	2	M	15X2.0T			
58	81408000210	PIPE,STEEL	2	M	15X2.0T			
59	81408000210	PIPE,STEEL	2	M	15X2.0T			
60	81408000210	PIPE,STEEL	2	M	15X2.0T			
61	81408000210	PIPE,STEEL	2	M	15X2.0T			
62	81408000210	PIPE,STEEL	2	M	15X2.0T			
63	37002475810	HOSE	1		L=5400		HB5642	

**BT-400-1-00003 UPPER  
PG1220093-08 PIPING,BOOM (FOR BOOM NO.2)**



**BT-400-1-00003 UPPER**

Pos No.	Parts No	Parts Name	Qty	Unit	Technical Data	Serial No (Start)	Serial No (End)	Rem
1	80172303014	SCREW,MACHINE	6		M3X14			
2	90302040301	WASHER,SPRING	3		3			
4	36140110000	DETECTOR,ANGLE	1					
8	19228500080	SLEEVE	3					
9	82100000548	CONNECTOR	1					
10	37002702110	CABLE ASSY	1					
11	91002906000	O-RING	1		1B G60			
12	90303390301	WASHER	3		M3			
13	37005500120	SEAL,OIL	1					
23	34360705101	PLATE	1					
26	34360705301	HOLDER	1					
30	33360834100	DETECTOR ASSY,ANGLE (JIB)	1					

# BT-400-1-00003 UPPER

Pos No.	Parts No	Parts Name	Qty	Unit	Technical Data	Serial No (Start)	Serial No (End)	Remarks	Pages
100	42354332020	HARNESS	1						

# BT-400-1-00003 UPPER

Pos No.	Parts No	Parts Name	Qty	Unit	Technical Data	Serial No (Start)	Serial No (End)	Remarks	Pages
100	42354331010	HARNESS	1						

# BT-400-1-00003 UPPER

Pos No.	Parts No	Parts Name	Qty	Unit	Technical Data	Serial No (Start)	Serial No (End)	Remarks	Pages
100	42354362500	HARNESS	1						

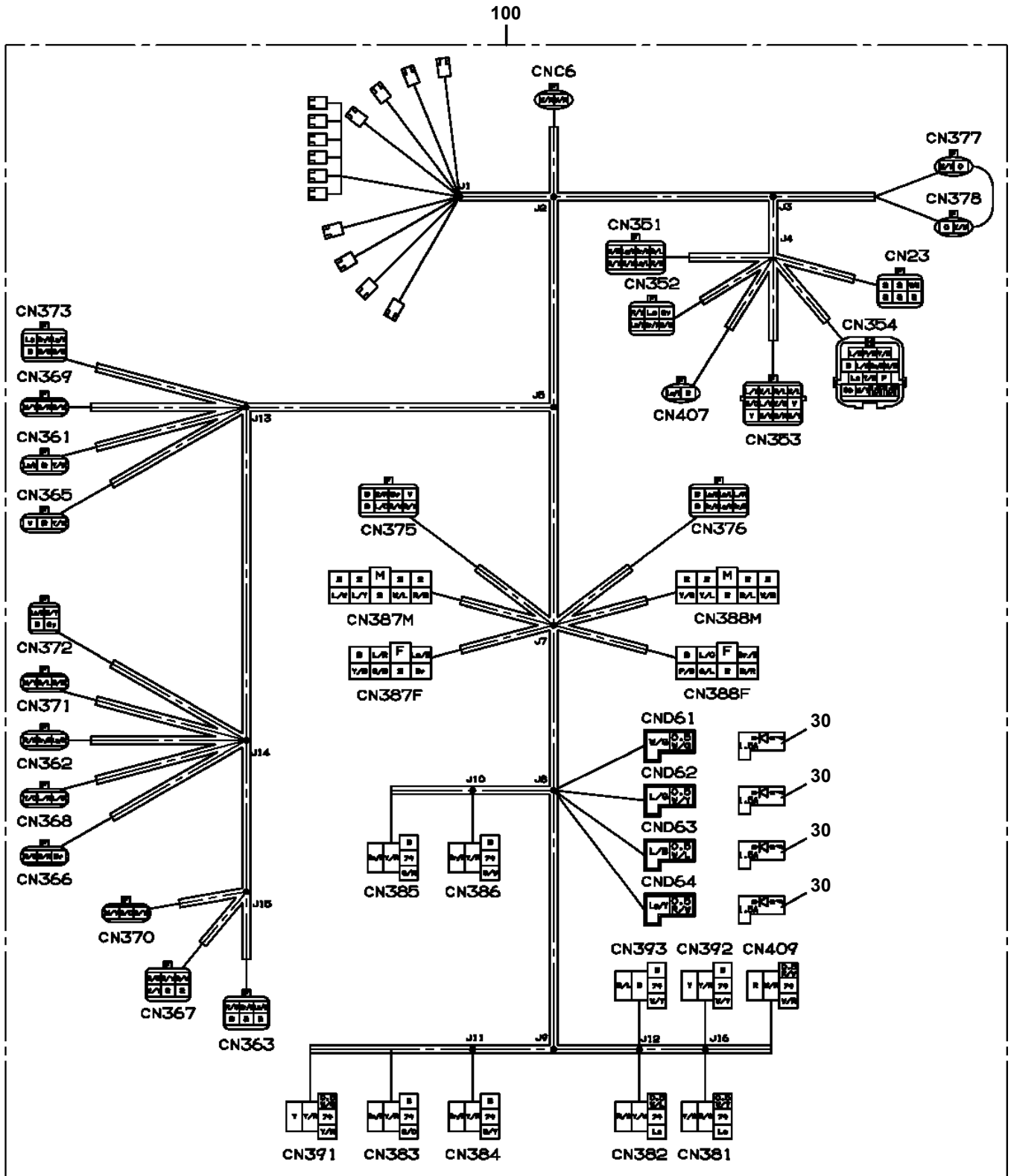
# BT-400-1-00003 UPPER

Pos No.	Parts No	Parts Name	Qty	Unit	Technical Data	Serial No (Start)	Serial No (End)	Remarks	Pages
100	42355650100	HARNESS	1						

# BT-400-1-00003 UPPER

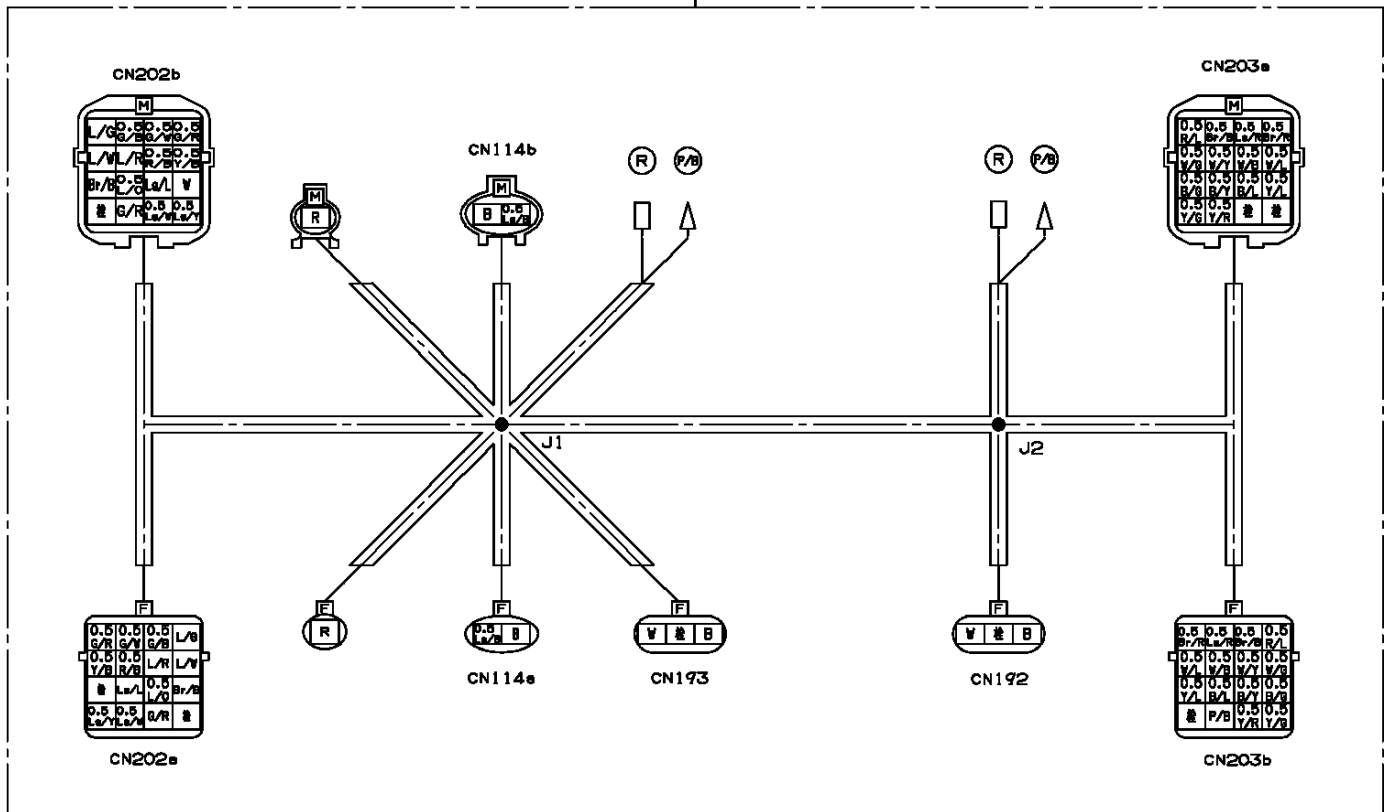
Pos No.	Parts No	Parts Name	Qty	Unit	Technical Data	Serial No (Start)	Serial No (End)	Remarks	Pages
100	42354362200	HARNESS	1						

**BT-400-1-00003 UPPER  
PH5033238-00 HARNESS**

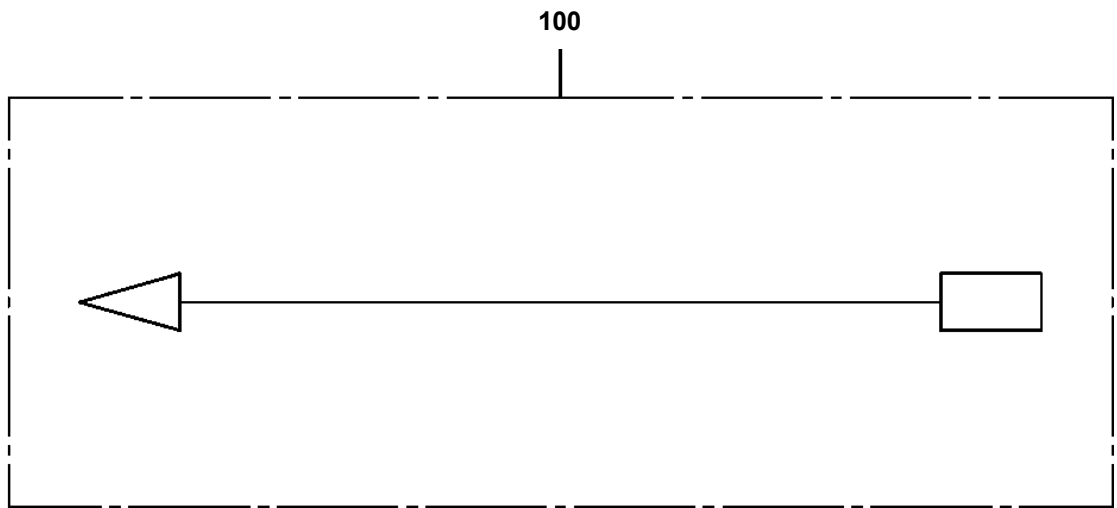


**BT-400-1-00003 UPPER  
PH5033839-00 HARNESS**

100



**BT-400-1-00003 UPPER  
PH5034557-00 HARNESS**



CLICK HERE TO **DOWNLOAD** THE COMPLETE MANUAL

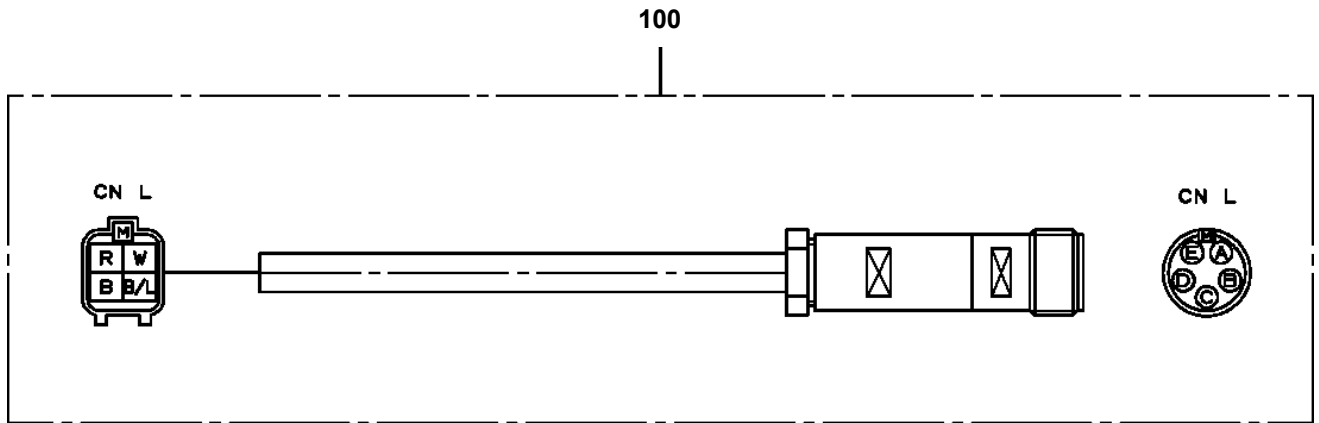
- Thank you very much for reading the preview of the manual.
- You can download the complete manual from: [www.heydownloads.com](http://www.heydownloads.com) by clicking the link below



- Please note: If there is no response to CLICKING the link, please download this PDF first and then click on it.

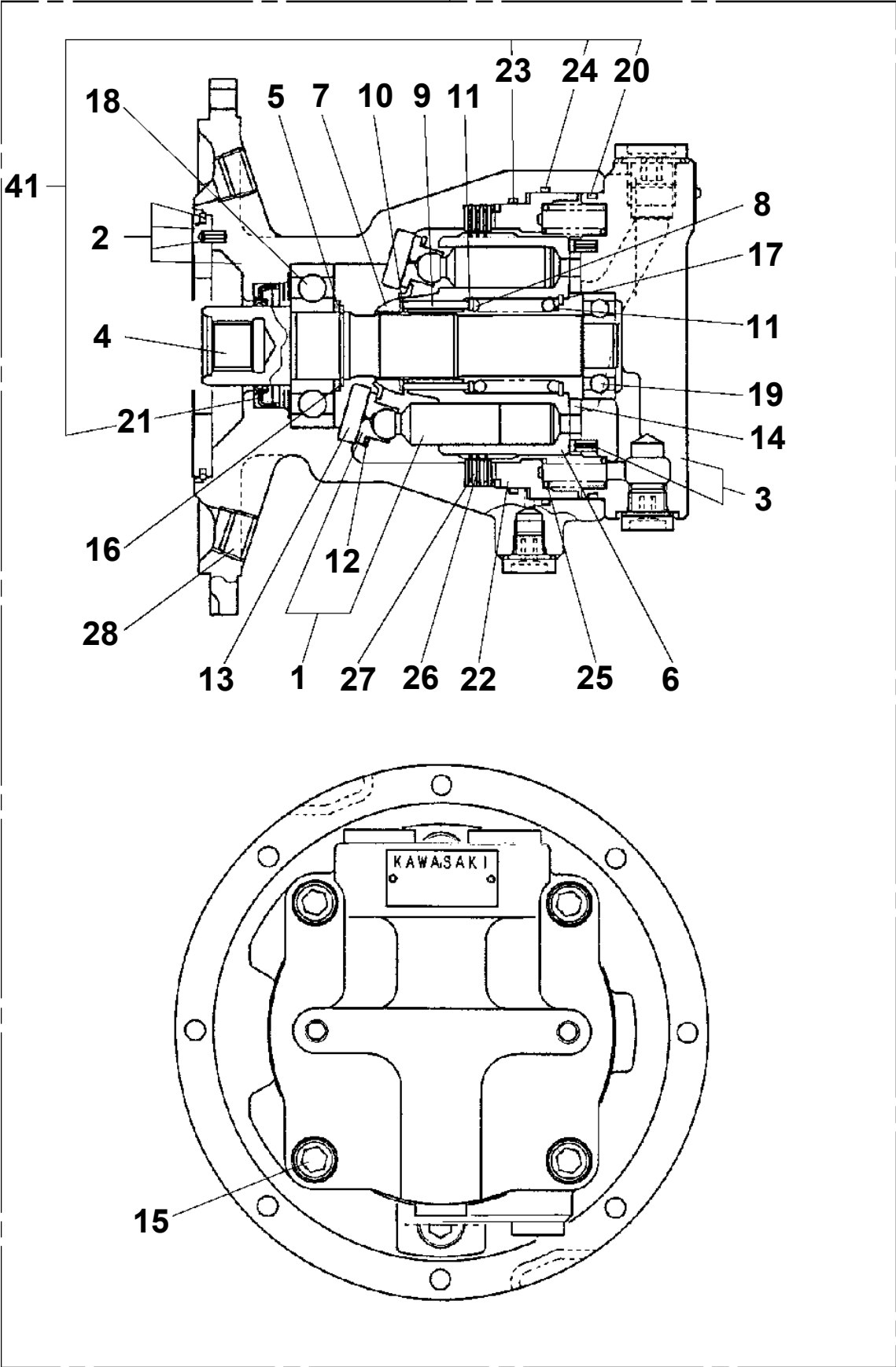
CLICK HERE TO **DOWNLOAD** THE COMPLETE MANUAL

**BT-400-1-00003 UPPER  
PH5034563-00 HARNESS**



BT-400-1-00003 UPPER  
PI1010159-00 MOTOR, HYDRAULIC

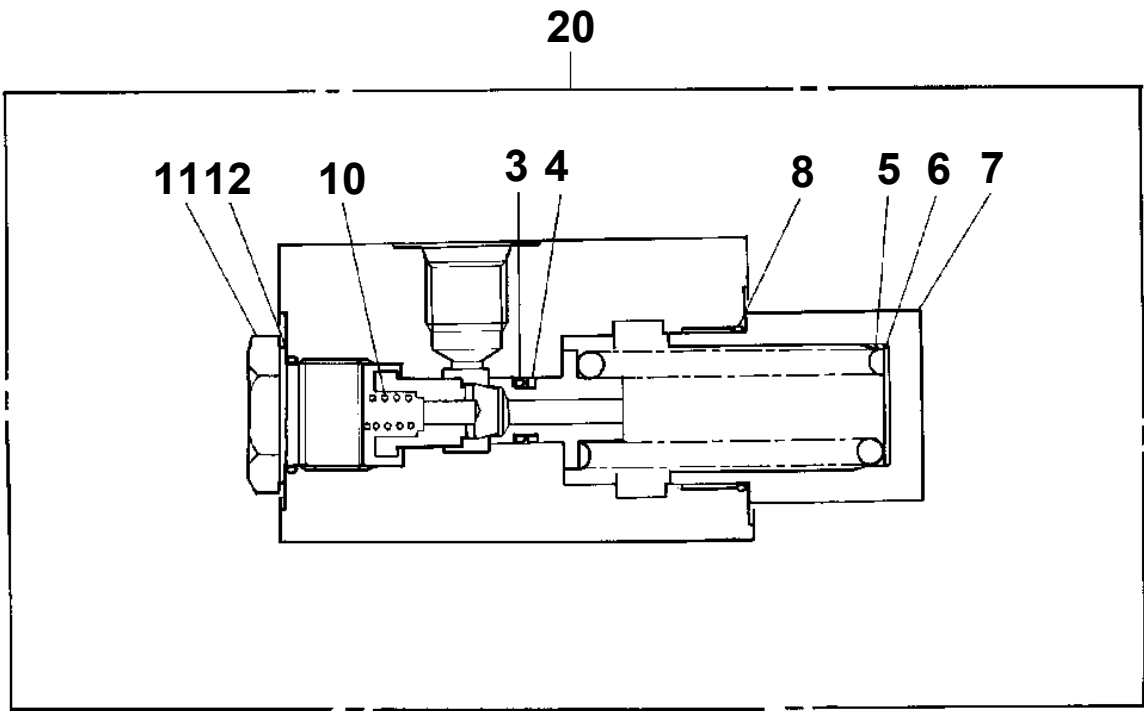
100



**BT-400-1-00003 UPPER**  
**PI1100007-00 VALVE,RELIEF**

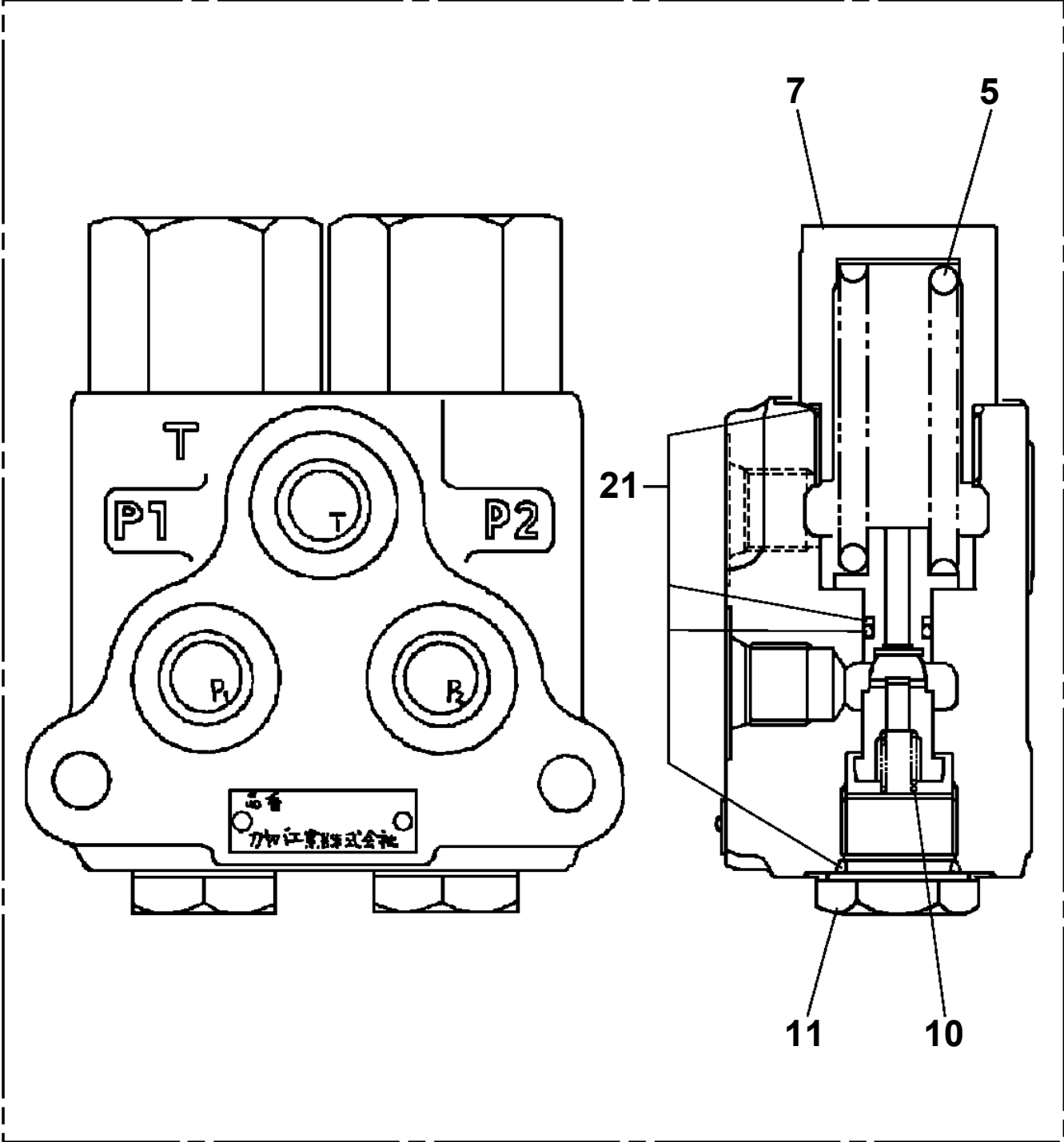
Assembly Name VALVE, RELIEF

PI110-0007-00

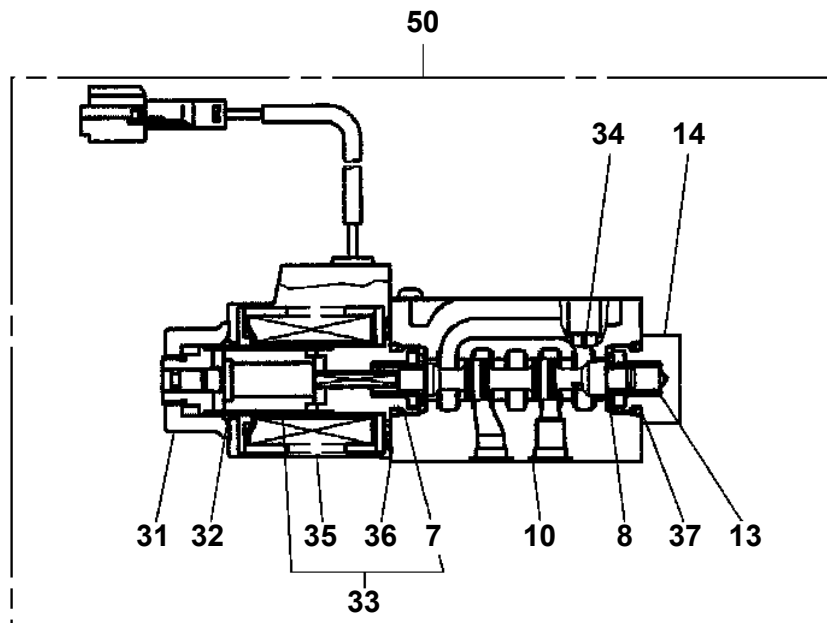
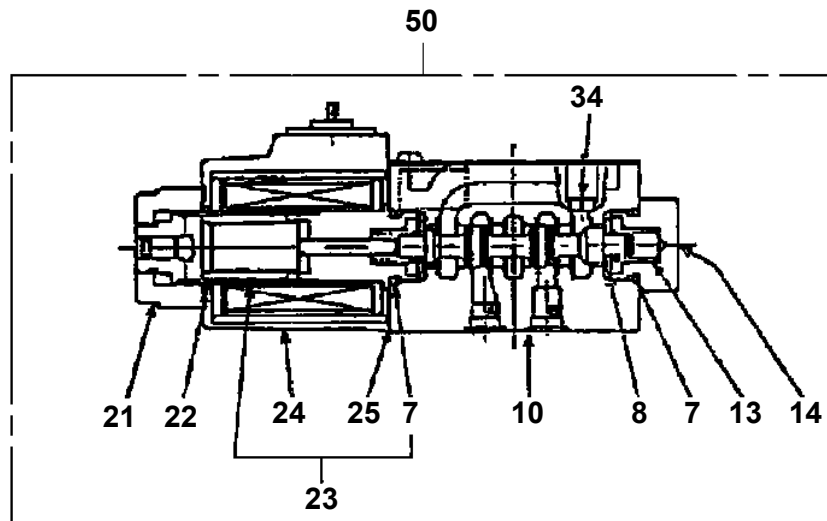
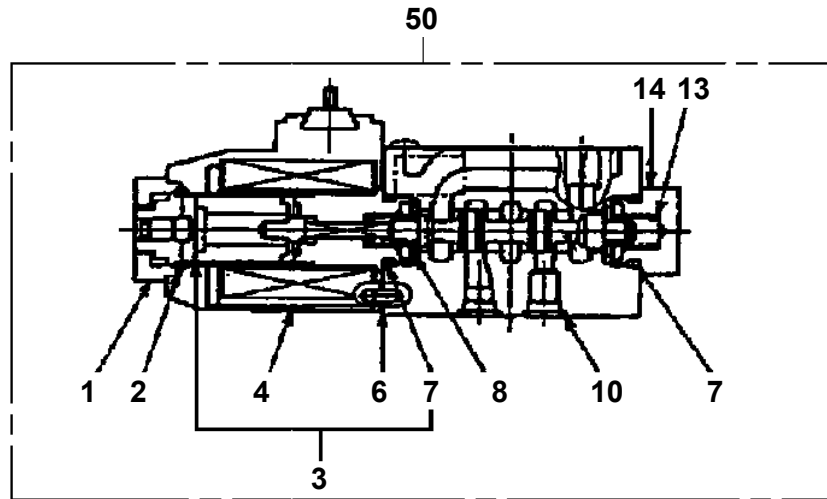


BT-400-1-00003 UPPER  
PI1100123-00 VALVE,RELIEF

100

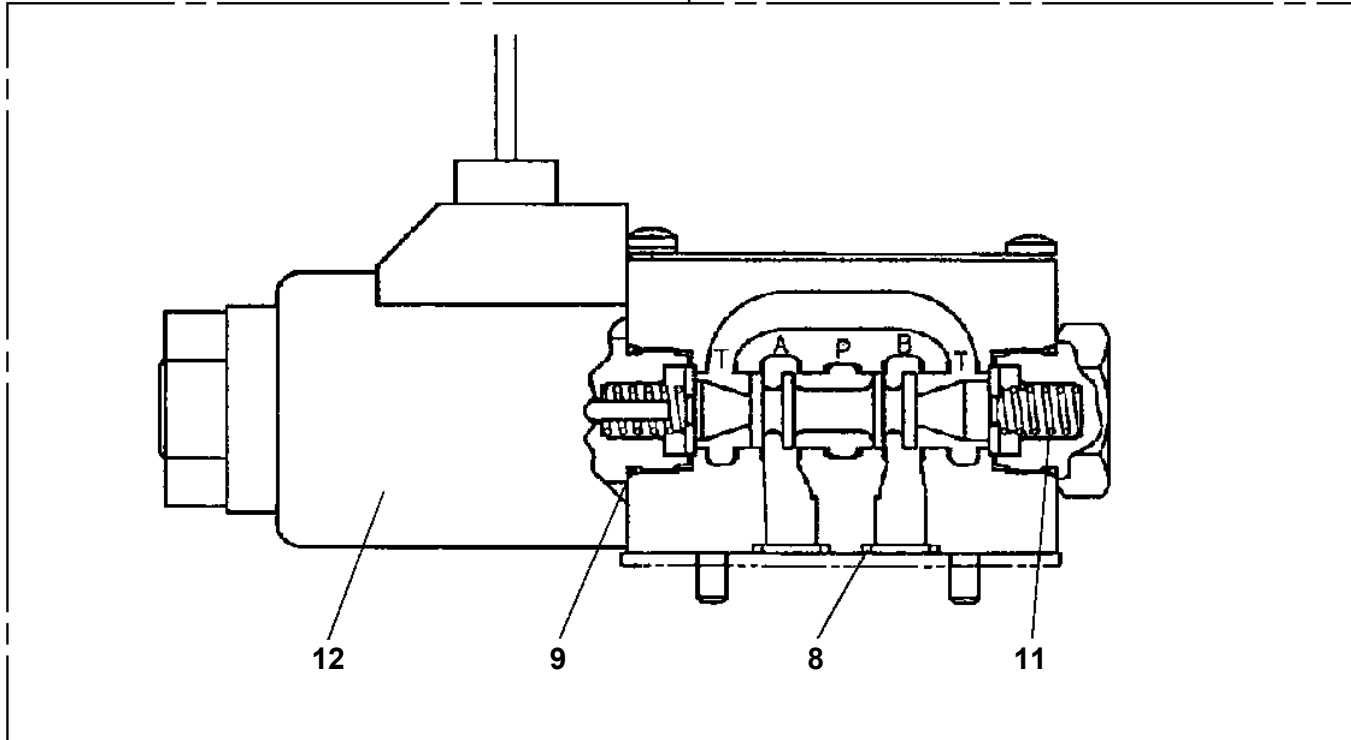


**BT-400-1-00003 UPPER  
PI1120199-02 VALVE,SOLENOID**

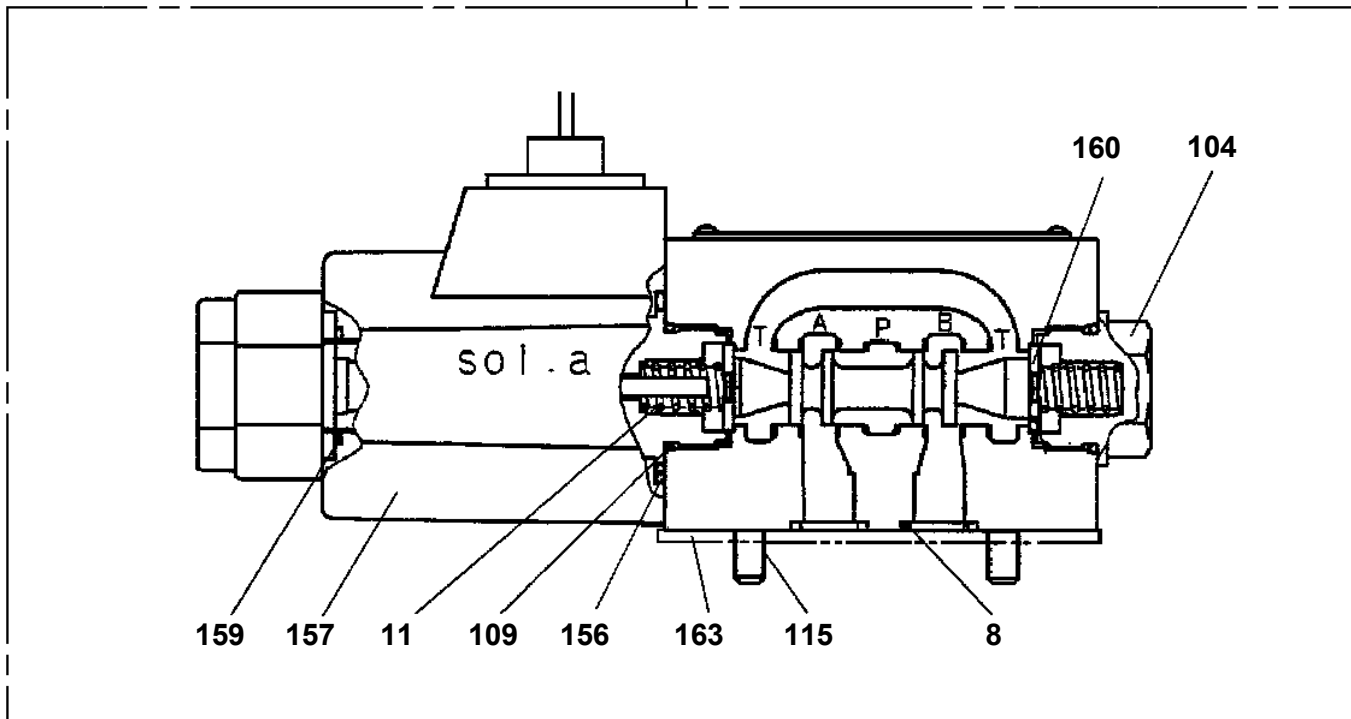


**BT-400-1-00003 UPPER  
PI1120265-01 VALVE,SOLENOID**

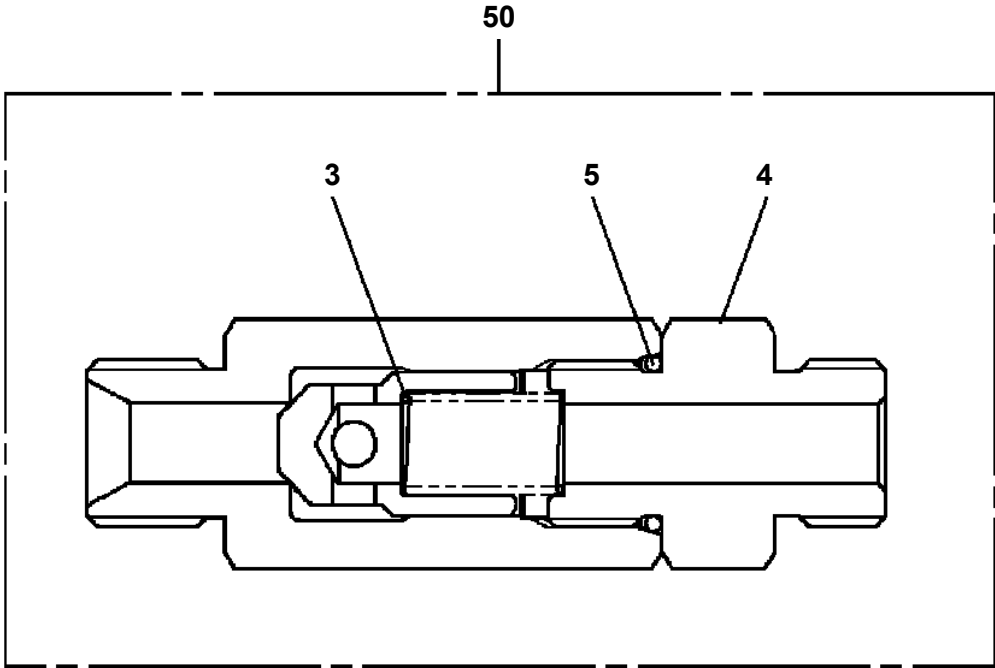
200



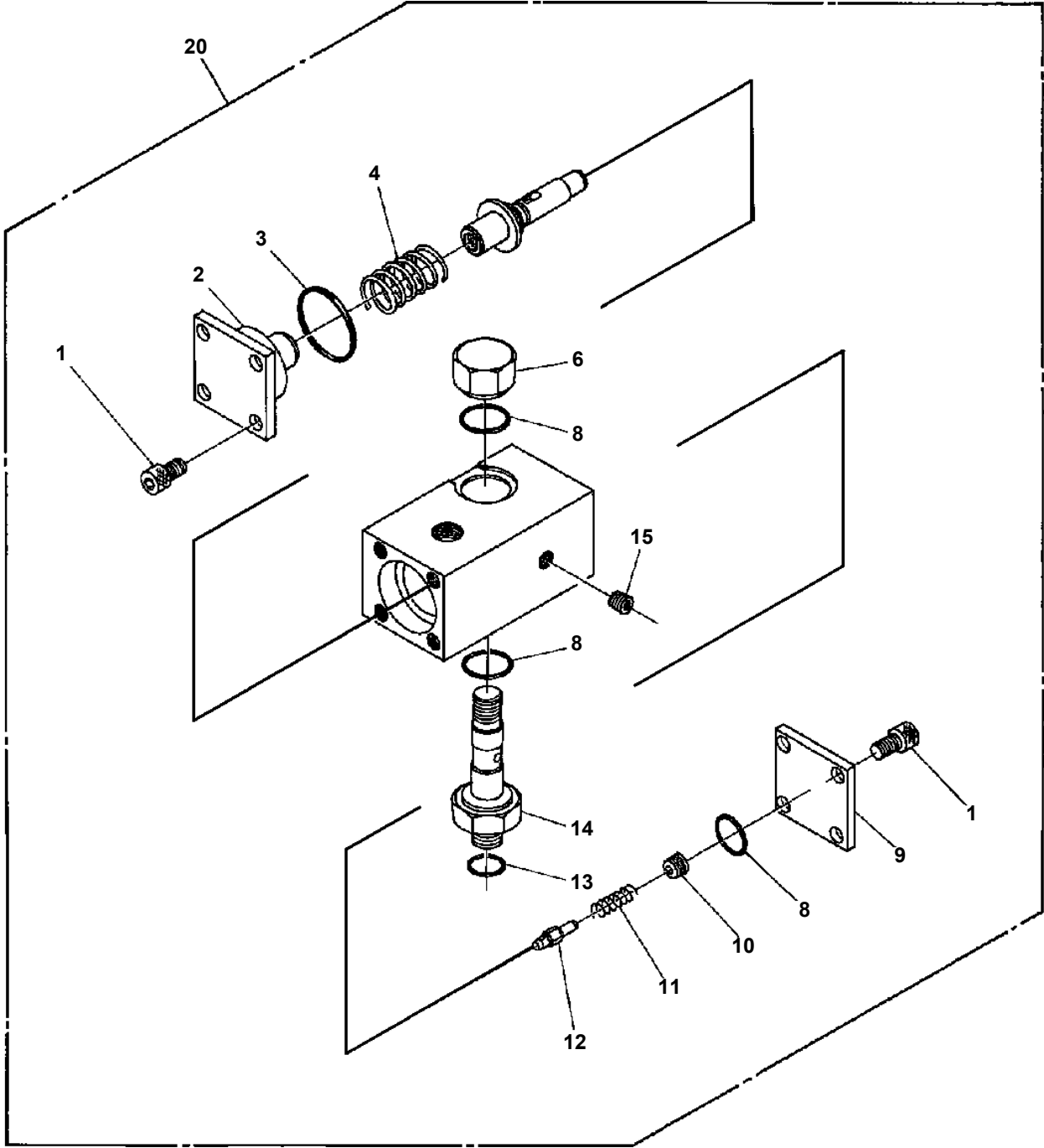
200



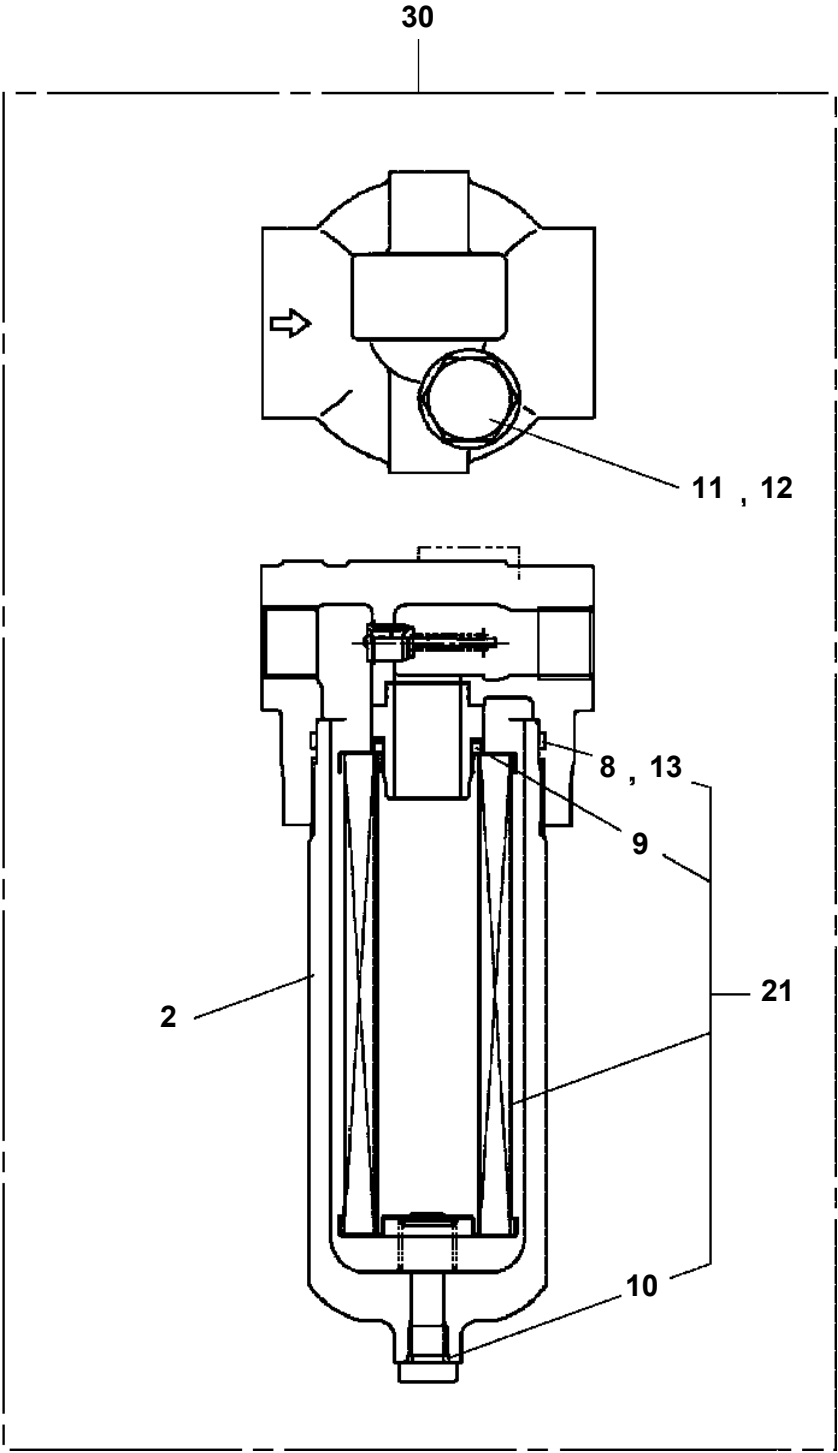
**BT-400-1-00003 UPPER  
PI1140164-01 VALVE,CHECK (MORIKAWA GAUGE)**



**BT-400-1-00003 UPPER  
PI1250016-01 VALVE,COUNTERBALANCE**



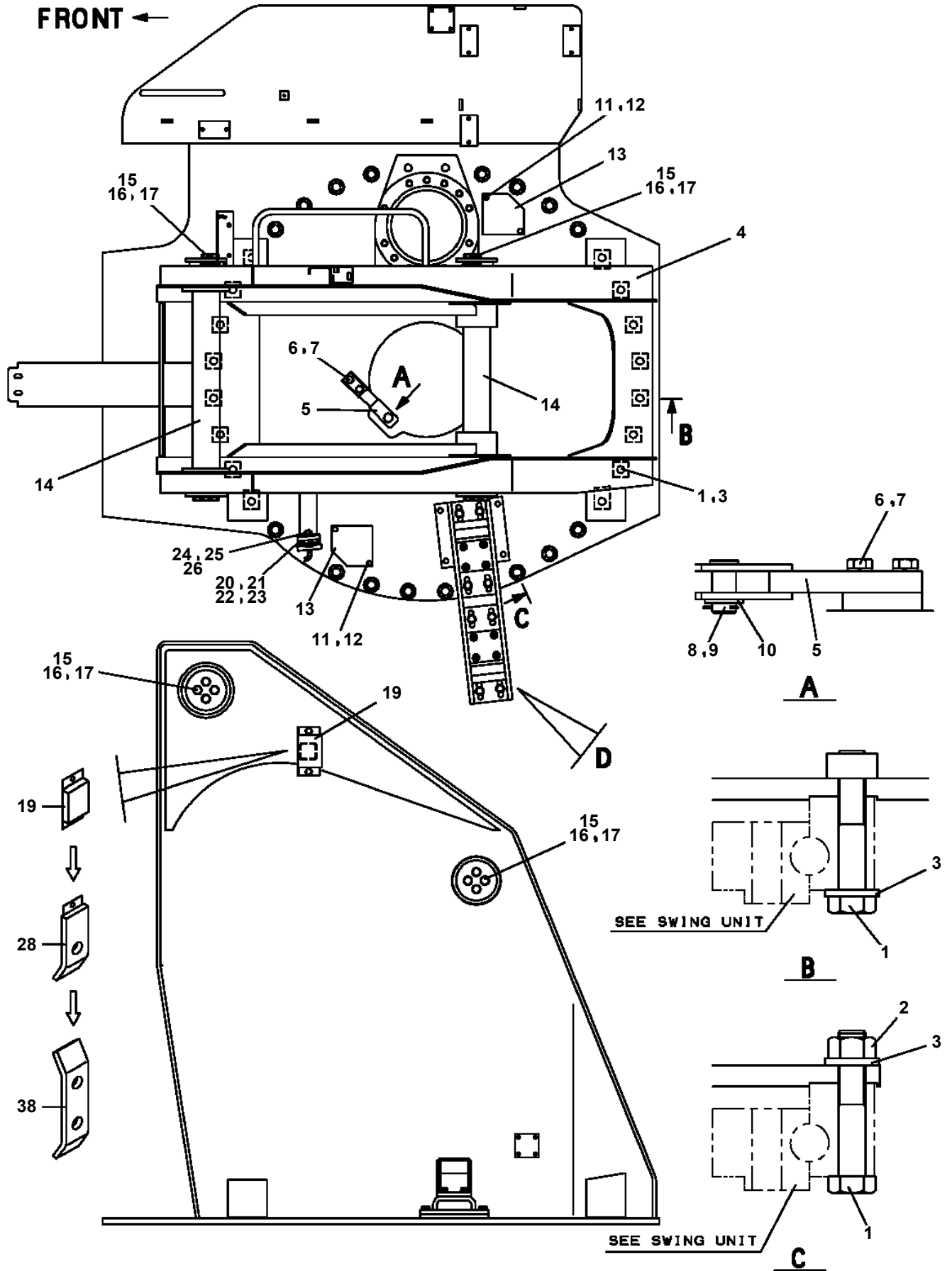
**BT-400-1-00003 UPPER  
PI1300021-01 FILTER,OIL**



# BT-400-1-00003 UPPER

Pos No.	Parts No	Parts Name	Qty	Unit	Technical Data	Serial No (Start)	Serial No (End)
5	91810130240	FASTENER	10				
6	82100001411	TUBE, SPIRAL	5	M	SE-08BK		
7	80430620400	JOINT	1				
8	37002476090	HOSE	1		L=425		
9	37002414400	HOSE	1		L=530		
10	37000714010	CLAMP ASSY	2		12X1		
13	37002428650	HOSE	4		L=950		
14	37002439540	HOSE	2		L=750		
15	37000714080	CLAMP ASSY	2		12X3		
16	90201200800	NUT	4		M8		
17	37002462290	HOSE (Z)	2		L=700		
18	91002801100	O-RING	2		1B P11		
19	81408000160	PIPE, STEEL	2	M	12X1.4T		
20	81408000160	PIPE, STEEL	2	M	12X1.4T		
21	81408000160	PIPE, STEEL	2	M	12X1.4T		
22	37002478330	HOSE	2		L=1030		
23	81408000130	PIPE, STEEL	1	M	10X1.8T		
24	81408000130	PIPE, STEEL	1	M	10X1.8T		
25	81408000130	PIPE, STEEL	1	M	10X1.8T		
27	90302040801	WASHER, SPRING	13		8		
28	90101208070	BOLT	2		M8X70		
30	90101208014	BOLT	5		M8X14		
35	90101208050	BOLT	6		M8X50		
38	37002447870	HOSE	1		L=980		
39	42345570200	SUPPORT	1				
40	42345570300	SUPPORT	1				
41	80400160127	JOINT	2				
42	80302010140	FITTING	1		C717KCT12-020N		
43	80303130161	FITTING, ELBOW	2		KLO12-030E		
44	90180208050	BOLT, BUTTON	2		M8X50		
45	42345570400	SUPPORT	1				
46	37002478690	HOSE	3		L=750		
47	37002478320	HOSE	2		L=2580		
48	37002475930	HOSE	1		L=2615		
49	37000924960	JOINT (WITH O-RING)	1				
50	42344041110	ORIFICE	1				
52	82400000208	GROMMET	1			HB5376	HB5471
	82400000203	GROMMET	1		L=250	HB5472	
71	91002801100	O-RING	34		1B P11		
81	36648200000	VALVE, SOLENOID	1				
82	90172105050	BOLT, HEXAGON SOCKET	16		M5X50		
83	80430620400	JOINT	3				
84	(*****)	VALVE, RELIEF	1				
85	36647720000	VALVE, SOLENOID	3				
86	36648460000	VALVE, SOLENOID	1				
87	36603350000	VALVE, REDUCING	1				
88	42345572100	JOINT	1				
89	80400160127	JOINT	13				
91	90172105090	BOLT, HEXAGON SOCKET	12		M5X90		
92	37000924410	JOINT	1		PF1/4-PF1/4		
93	37000926070	ORIFICE	1		M8, 0.6		
94	80481002030	JOINT	4		S, G1/4-G3/8		
95	80316030020	PLUG	2		PT1/8		
105	42344631100	JOINT	1				
106	36646790000	VALVE, SOLENOID	1				
111	42345573100	JOINT	1				HB6264
	42345573101	JOINT	1			HB6265	
114	36605730000	VALVE, RELIEF	1				
115	36646770000	VALVE, SOLENOID	1				
117	36611350000	VALVE, FLOW CONTROL	1				
119	80303130101	FITTING, ELBOW	2		KLO10-020E		
120	80302090101	FITTING	4		KCO10-020N		
122	80302090141	FITTING	1		KCO12-020N		

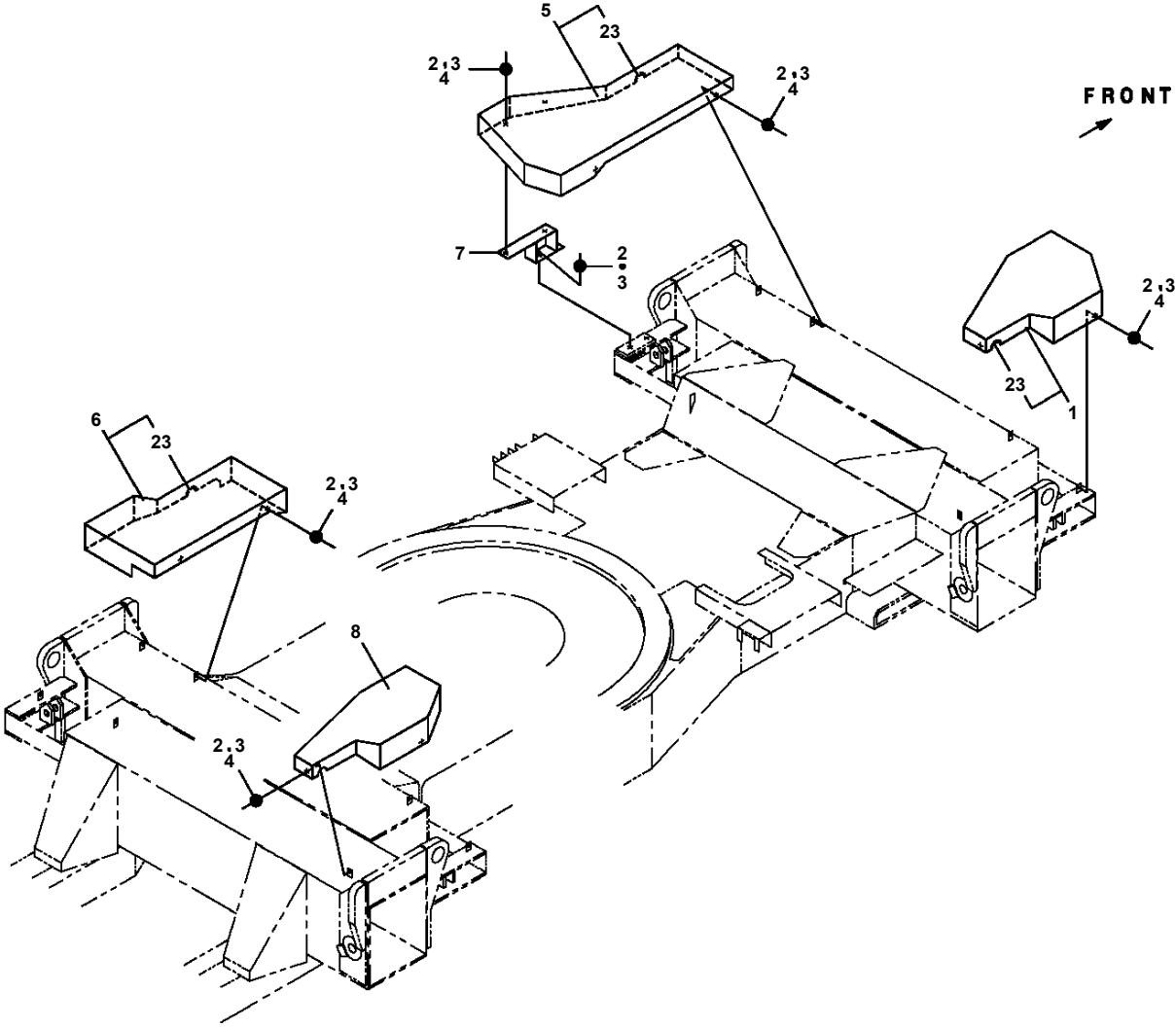
**BT-400-1-00003 UPPER  
PK1100369-05 SWING FRAME**



# BT-400-1-00003 UPPER

Pos No.	Parts No	Parts Name	Qty	Unit	Technical Data	Serial No (Start)	Serial No (End)	Remarks	Pages
1	42344752101	COVER ASSY	1						
2	42345553500	COVER	1				HB5375		
	42345553501	COVER	1			HB5376			
3	42345554000	COVER	1						
4	42345554500	COVER	2						
5	42345554600	COVER	1						
6	42345554700	COVER	1						
7	90101208016	BOLT	17		M8X16				
8	90303070801	WASHER,PLAIN	17		8				
9	90302040801	WASHER,SPRING	17		8				
10	90101210018	BOLT	8		M10X18				
11	90302041001	WASHER,SPRING	8		10				
12	90303071001	WASHER,PLAIN	12		10				
13	42344751300	SUPPORT	1						
14	42344750050	PLATE	1						
15	42344750060	BLADE	1						
32	42344752110	PLATE	1						
33	42344752120	BLADE	1						
34	90101208016	BOLT	5		M8X16				
35	90303070801	WASHER,PLAIN	5		8				
36	90302040801	WASHER,SPRING	5		8				
44	82400000201	GROMMET	1		KG-016				

**BT-400-1-00003 UPPER  
PK1330142-01 COVER (OUTRIGGER)**





**BT-400-1-00003 UPPER****PM5150775-00 MODIFICATION ASSY (NIHON BISOH/SERIAL NO. STAMPING)**

カイツウASSY (ニホンビソームケ/セイバシコクインヨウサホートトリツケ)  
MODIFICATION ASSY  
(NIHON BISOH/SERIAL NO. STAMPING SUPPORT)

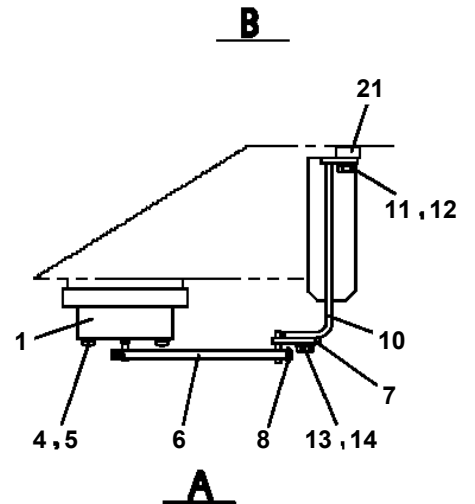
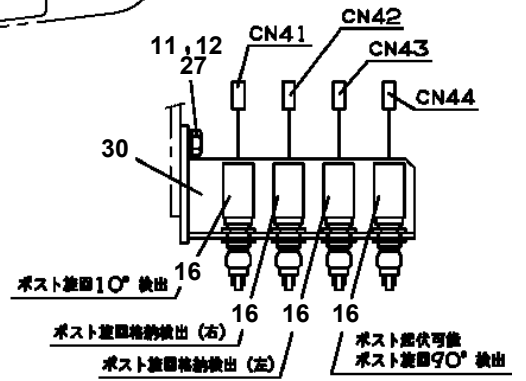
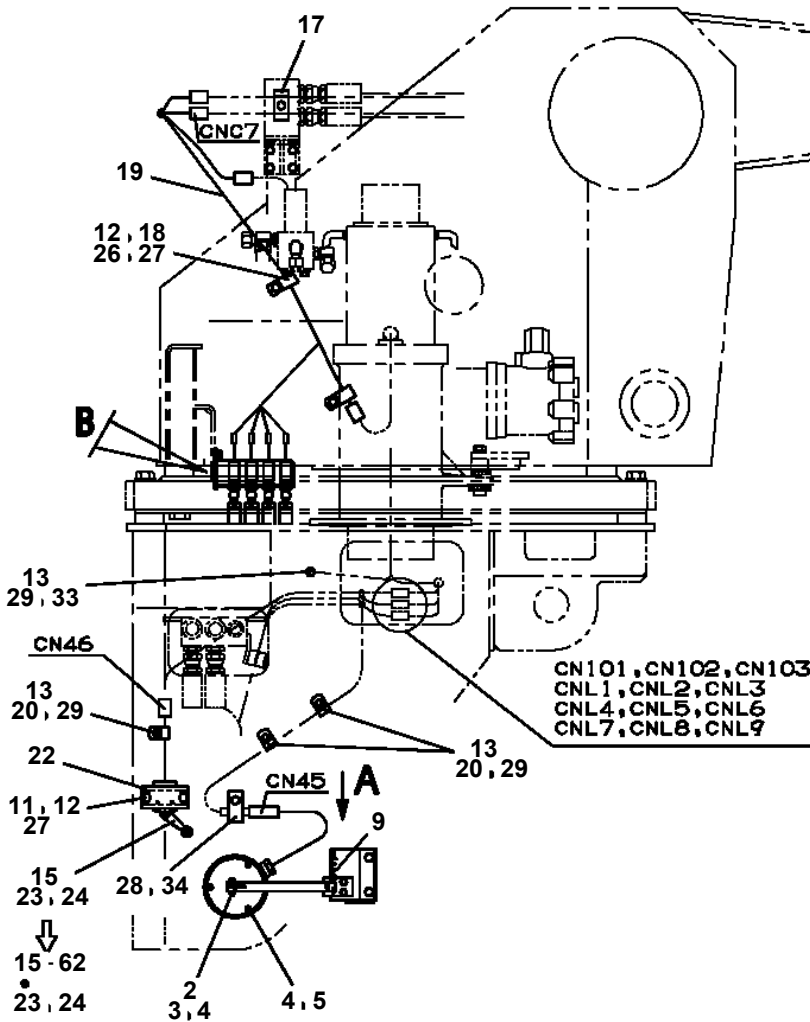
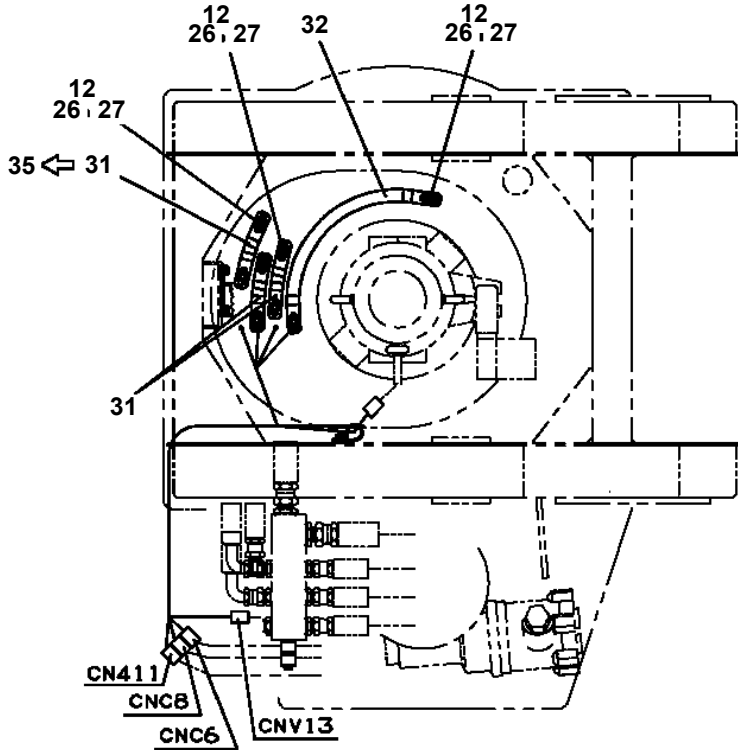
---

指示番号 KEY NO.	部品名称 PART NAME	備考 REMARK
1	カイツウASSY MODIFICATION ASSY	センカイトイ,アウトリカ SWING FRAME,OUTRIGGER
2	カイツウASSY MODIFICATION ASSY	ブーム BOOM

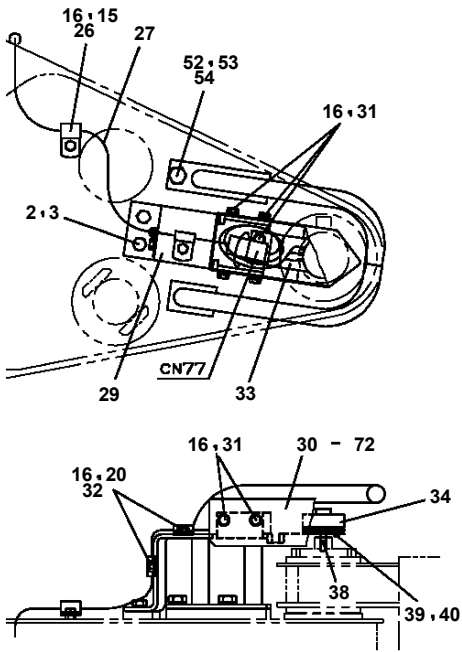
適用製造番号によっては取り付けがないものもあります。

MACHINES OF SOME SERIAL NO. ARE NOT EQUIPPED WITH THESE PARTS.

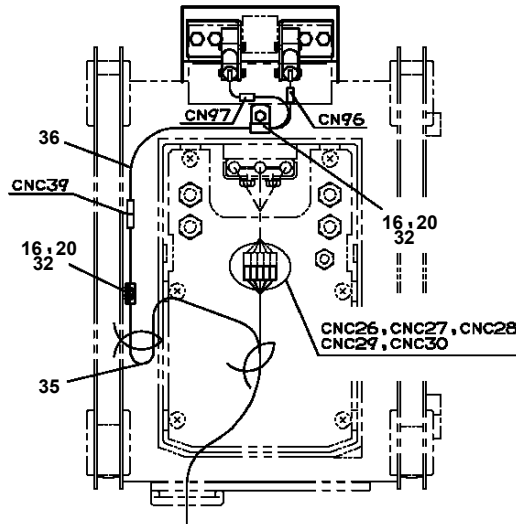
**BT-400-1-00003 UPPER  
PN1013024-04 ELEC.ASSY (FRAME)**



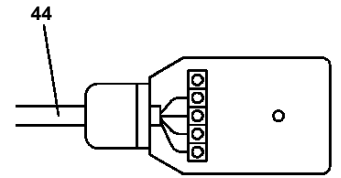
**BT-400-1-00003 UPPER  
PN1013104-04 ELEC.ASSY (NO.4 BOOM)**



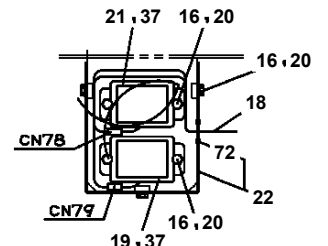
**A**



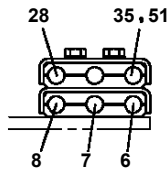
**B**



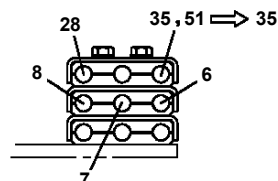
レベリング電磁比例弁結線詳細



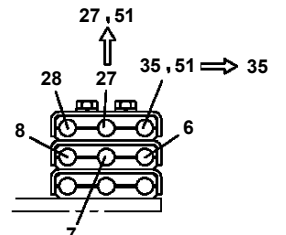
**C**



**D**



**E**



**F**

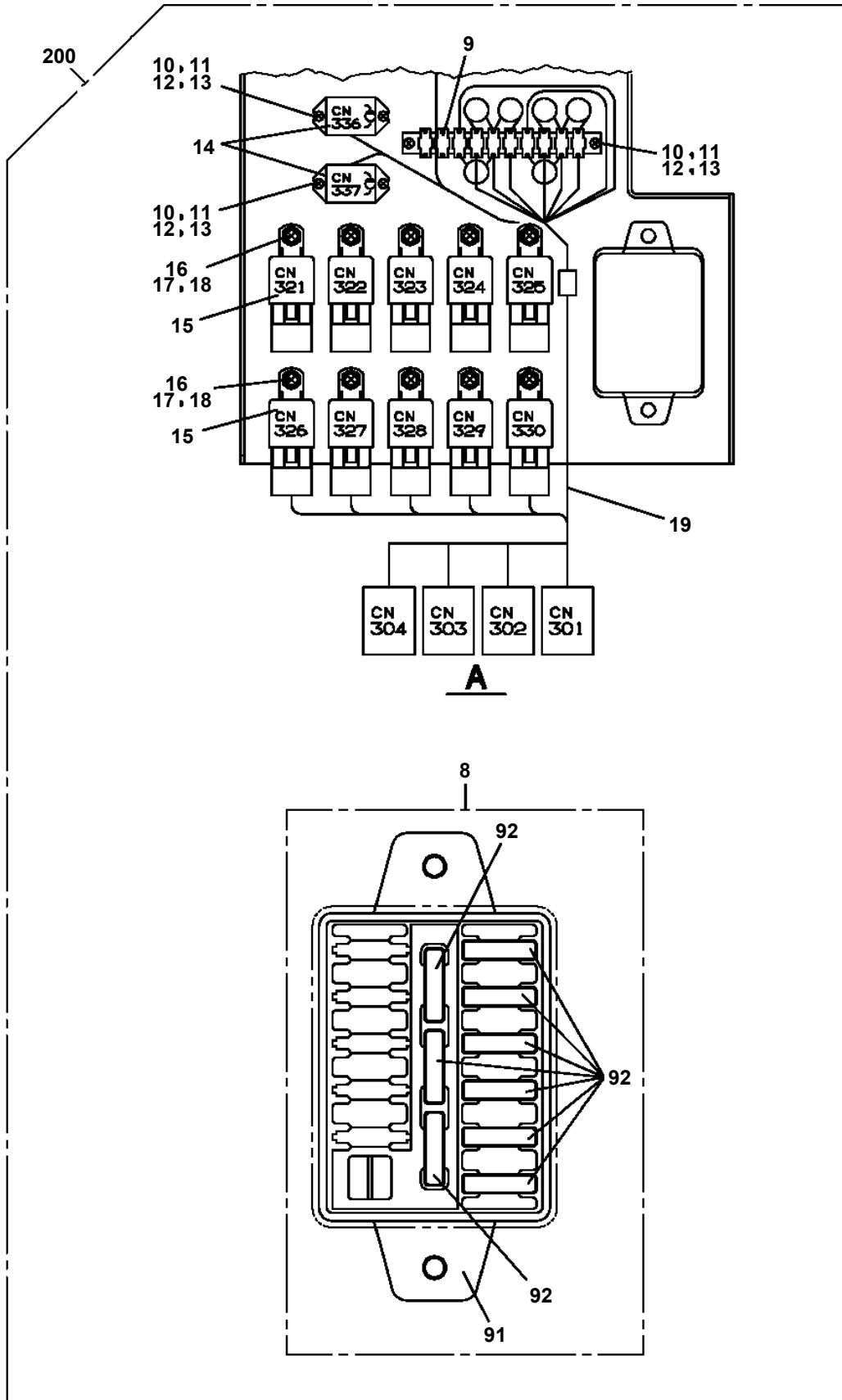
# BT-400-1-00003 UPPER

Pos No.	Parts No	Parts Name	Qty	Unit	Technical Data	Serial No (Start)	Serial No (End)
1	42355650100	HARNESS	1				HB6037
2	42355650200	HARNESS	1				HB6037
3	42352724501	SWITCH ASSY	1				
4	42432561100	CAM	3				
5	42354350300	SUPPORT	1				HB5375
	42354350301	SUPPORT	1			HB5376	
6	42354350400	SUPPORT	1				HB5375
	42354350450	SUPPORT	1			HB5376	HB5377
7	90101210020	BOLT	6		M10X20		
8	90302041001	WASHER,SPRING	6		10		
9	90303071001	WASHER,PLAIN	6		10		
10	90101208020	BOLT	14		M8X20		
11	90302040801	WASHER,SPRING	30		8		
12	90303070801	WASHER,PLAIN	8		8		
13	42354351000	BOX ASSY	1				HB5377
	42354351001	BOX ASSY	1			HB5378	HB6191
	42354351002	BOX ASSY	1			HB6192	
14	80192484016	SCREW,MACHINE	6		M4X16		
15	90101208012	BOLT	10		M8X12		
16	42354352000	RELAY	1				HB6191
	42354352001	RELAY ASSY	1			HB6192	
17	90201200800	NUT	4		M8		
18	42354350700	COVER	1				
19	90201200600	NUT	18		M6		
20	90302040601	WASHER,SPRING	22		6		
21	82100002006	CLAMP	9		WR10		
22	82100002014	CLAMP	9		WR20		
23	82100002017	CLAMP	2		WR30		
24	91810132530	FASTENER	30				
25	91850400601	CLAMP	3				
26	42354350500	COVER	1				
27	90101206010	BOLT	2		M6X1.0		
28	90303070601	WASHER,PLAIN	2		6		
29	82104501120	SWITCH,LIMIT	1				
30	42434160100	CAM	1				
31	37000714430	CLAMP ASSY	1				
32	37000300710	SLEEVE	2		12-8		
33	37000300720	SLEEVE	1		12-10		
34	90171108020	BOLT	2		M8X20		
35	42354350600	HARNESS	1				
36	36140510000	DETECTOR ASSY,ANGLE	1				
37	90101206012	BOLT	2		M6X12		
38	42355650300	HARNESS	1				
39	42651760010	PLUG	1				
40	42354350850	RESISTANCE	1				
41	90201200500	NUT	2		M5		
42	90302040501	WASHER,SPRING	2		5		
43	90303070501	WASHER,PLAIN	2		5		
44	90101205012	BOLT	2		M5X12		
45	90101208016	BOLT	2		M8X16		
47	42355650400	COVER	1				
48	42354350250	HARNESS	1				
49	42354350950	PLATE	5				
50	90101210030	BOLT	2		M10X30		
51	90101206016	BOLT	2		M6X16		
52	42354350451	SUPPORT	1			HB5378	
53	42354350050	HARNESS	2			HB5532	
61	42355650101	HARNESS	1			HB6038	
71	42352724601	SUPPORT	1				
72	82104501120	SWITCH,LIMIT	3				
102	82400000200	GROMMET	1		KG-012,L=250		
111	42355651100	SUPPORT	1				
112	42736070100	SWITCH ASSY (WITH HARNESS)	1				

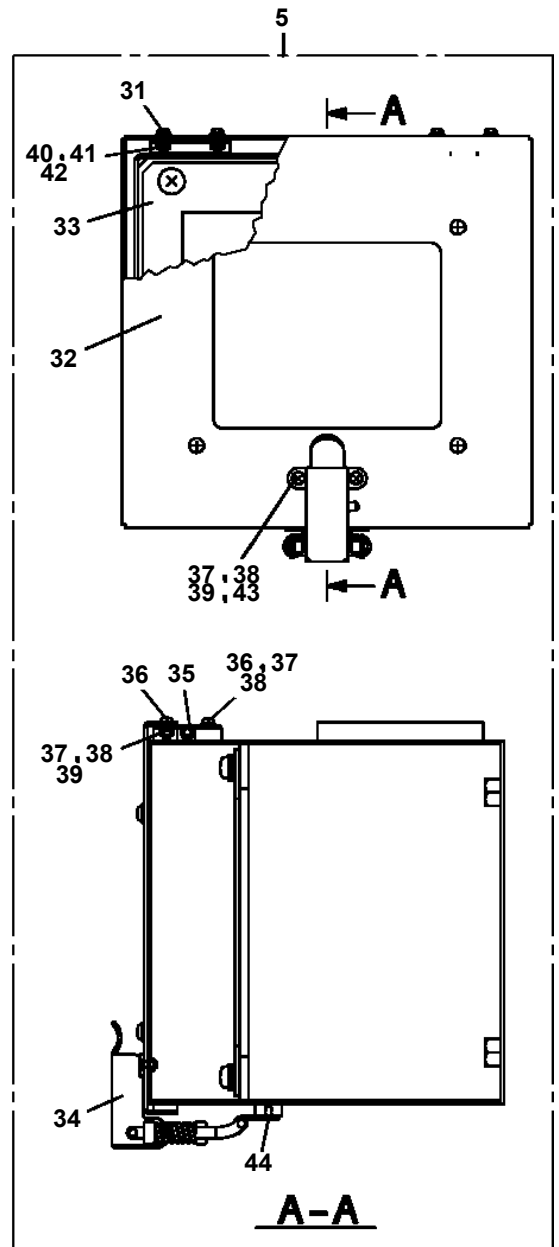
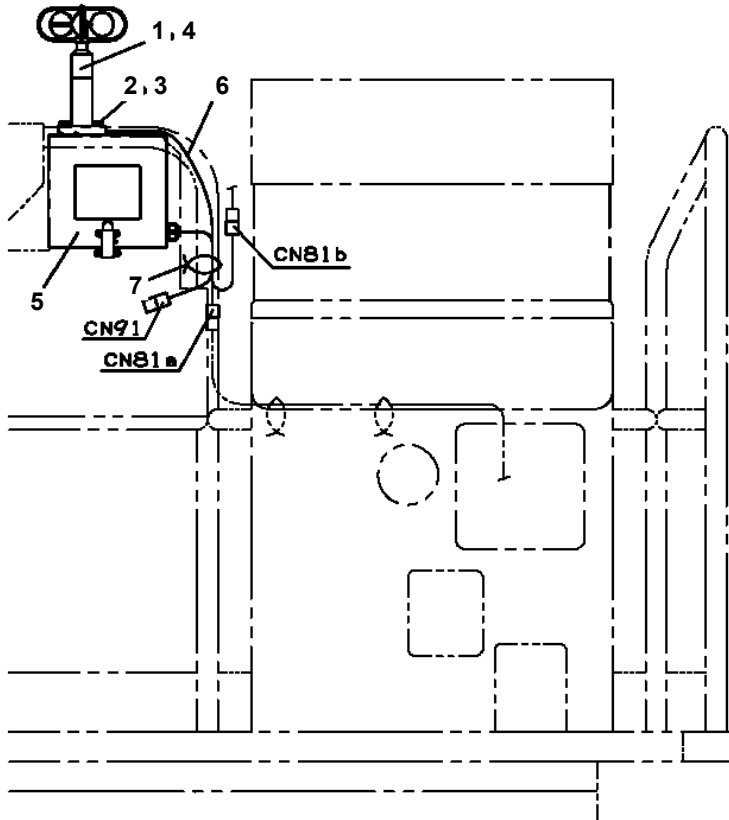
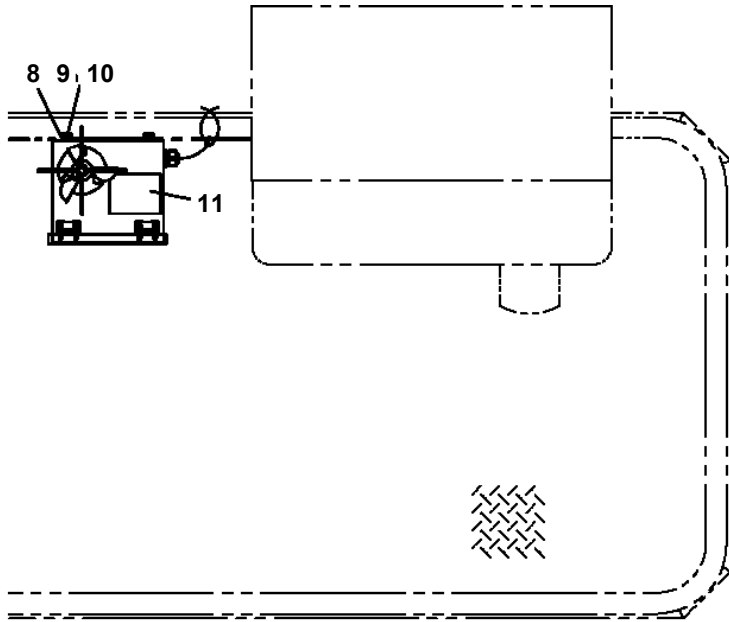
**BT-400-1-00003 UPPER**

Pos No.	Parts No	Parts Name	Qty	Unit	Technical Data	Serial No (Start)	Serial No
76	82100002004	CLAMP	1		WR8		
77	90201200600	NUT	1		M6		
78	90302040601	WASHER,SPRING	1		6		
91	42360030040	SUPPORT	2				
92	37001102350	ROLLER	2				
93	37000302060	SPACER	2		L=11.2		
95	90201201000	NUT	2		M10		
96	90302041001	WASHER,SPRING	2		10		
97	90303071001	WASHER,PLAIN	2		10		

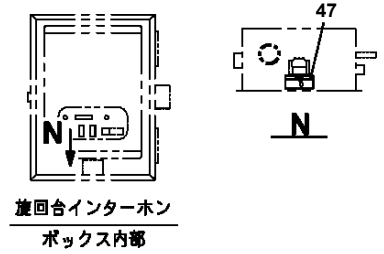
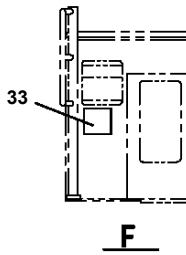
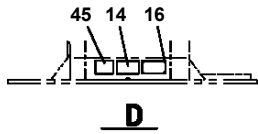
**BT-400-1-00003 UPPER  
PN1110295-05 RELAY**



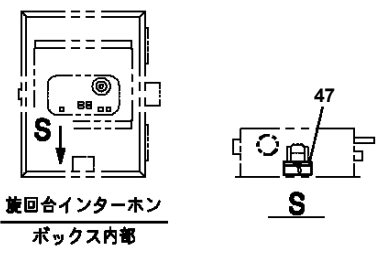
**BT-400-1-00003 UPPER**  
**PN1130025-00 ANEMOMETER (BASKET/FOR KINKI)**



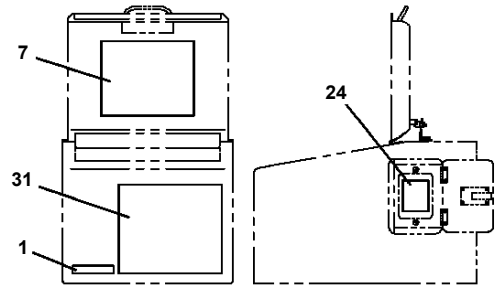
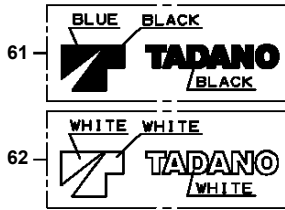
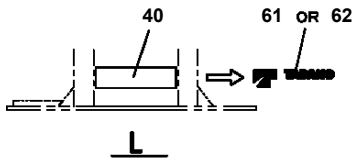
**BT-400-1-00003 UPPER**  
**PO1014155-06 PLATE ASSY,NAME (UPPER)**



旋回台インターホン  
ボックス内部



旋回台インターホン  
ボックス内部

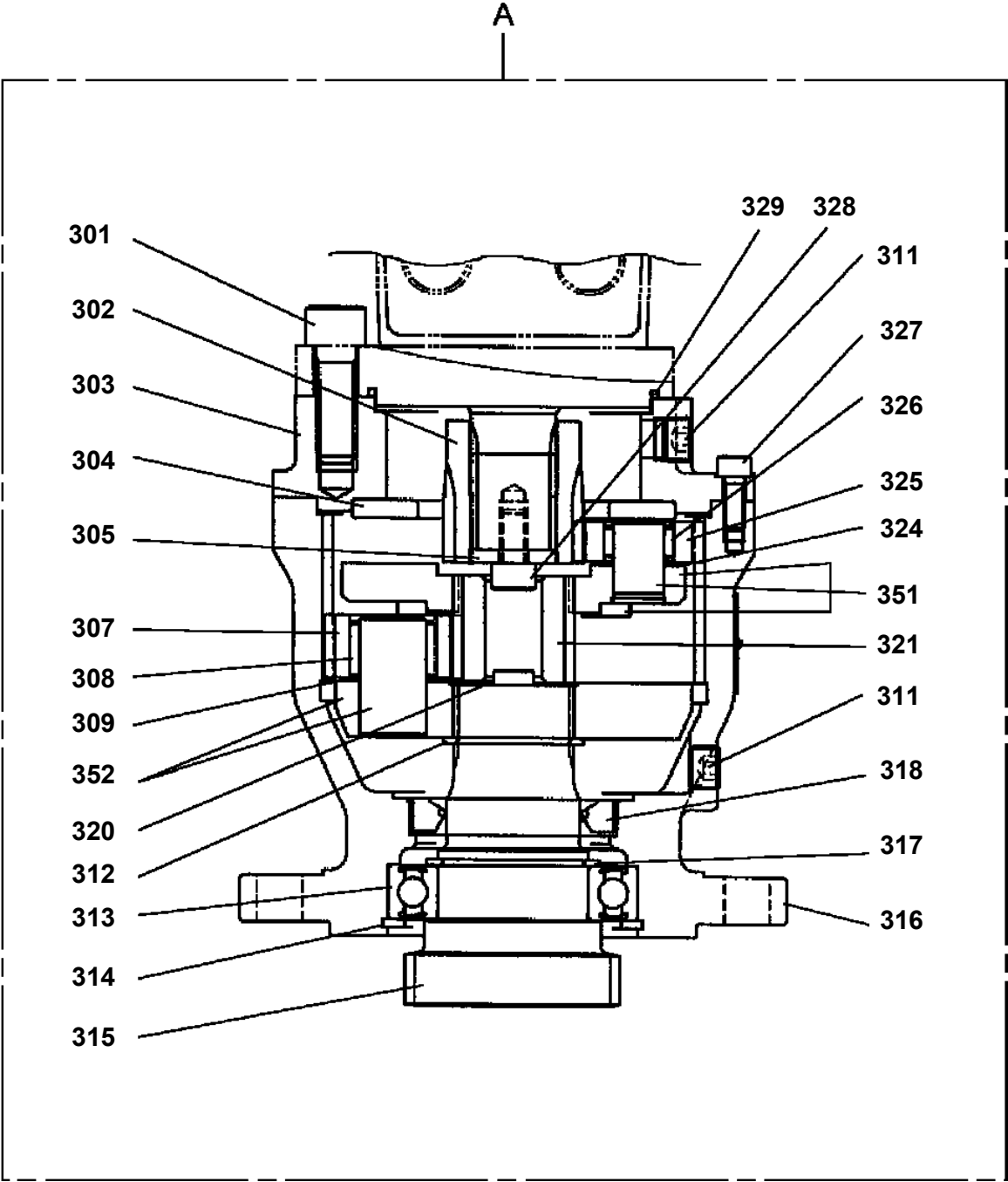


**B**  
 (OPEN THE DOOR)

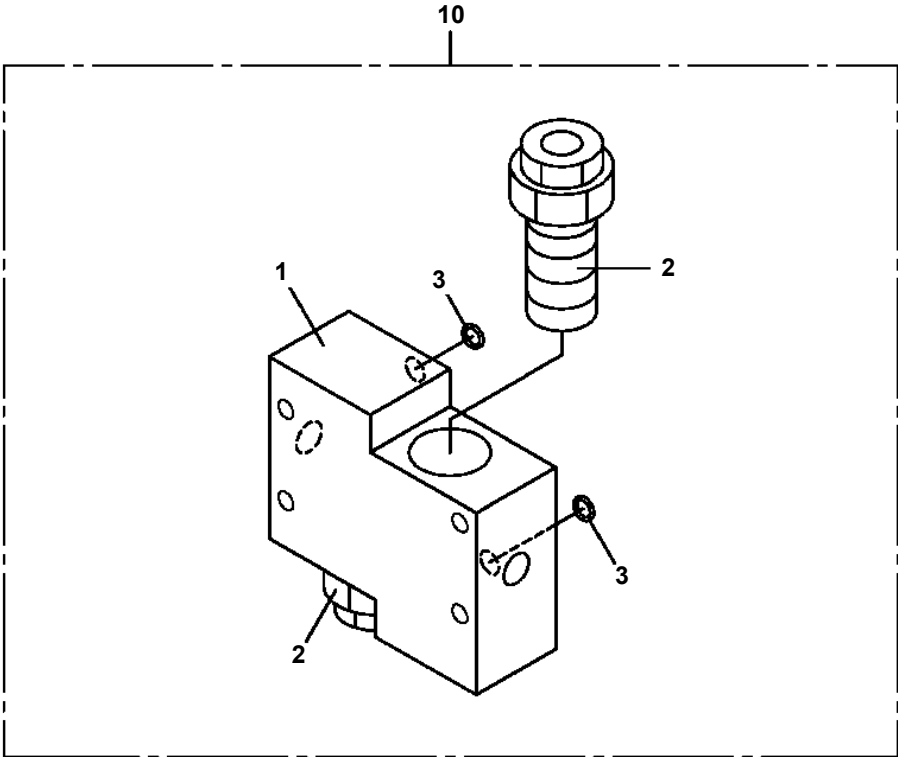
## BT-400-1-00003 UPPER

Pos No.	Parts No	Parts Name	Qty	Unit	Technical Data	Serial No (Start)	Serial No (End)
1	42354352101	PANEL ASSY	1				
2	42354352300	HARNESS	2				
3	80172303016	SCREW,MACHINE	8		M3X16		
4	90302040301	WASHER,SPRING	8		3		
5	90303070301	WASHER,PLAIN	8		3		
6	34351571350	RELAY ASSY (WITH CONNECTOR)	2				
7	34354781710	RELAY (WITH BRACKET)	10				
8	90101206020	BOLT	7		M6X20		
9	90302040601	WASHER,SPRING	7		6		
11	42651593500	SWITCH ASSY (WITH CONNECTOR)	2				
12	42651593400	SWITCH ASSY (WITH HARNESS,1 SW)	1				
13	42433932100	SWITCH ASSY (WITH HARNESS,1 SW)	6				
14	42433932200	SWITCH ASSY (WITH HARNESS,1 SW)	3				
15	90201200300	NUT	8		M3		
16	82197518113	CAP (RED)	2				
17	82197518112	CAP (GREEN)	3				
18	82197518115	CAP (YELLOW)	1				
19	82197518117	CAP (GRAY)	3				
20	82197518114	CAP (MATSUSHITA/BLACK)	3				
	82197518119	CAP (PLUS ONE MFG./BLACK)	3				
22	90201200600	NUT	3		M6		
41	42354352110	PLATE,NAME	1				
100	42354352001	RELAY ASSY	1				

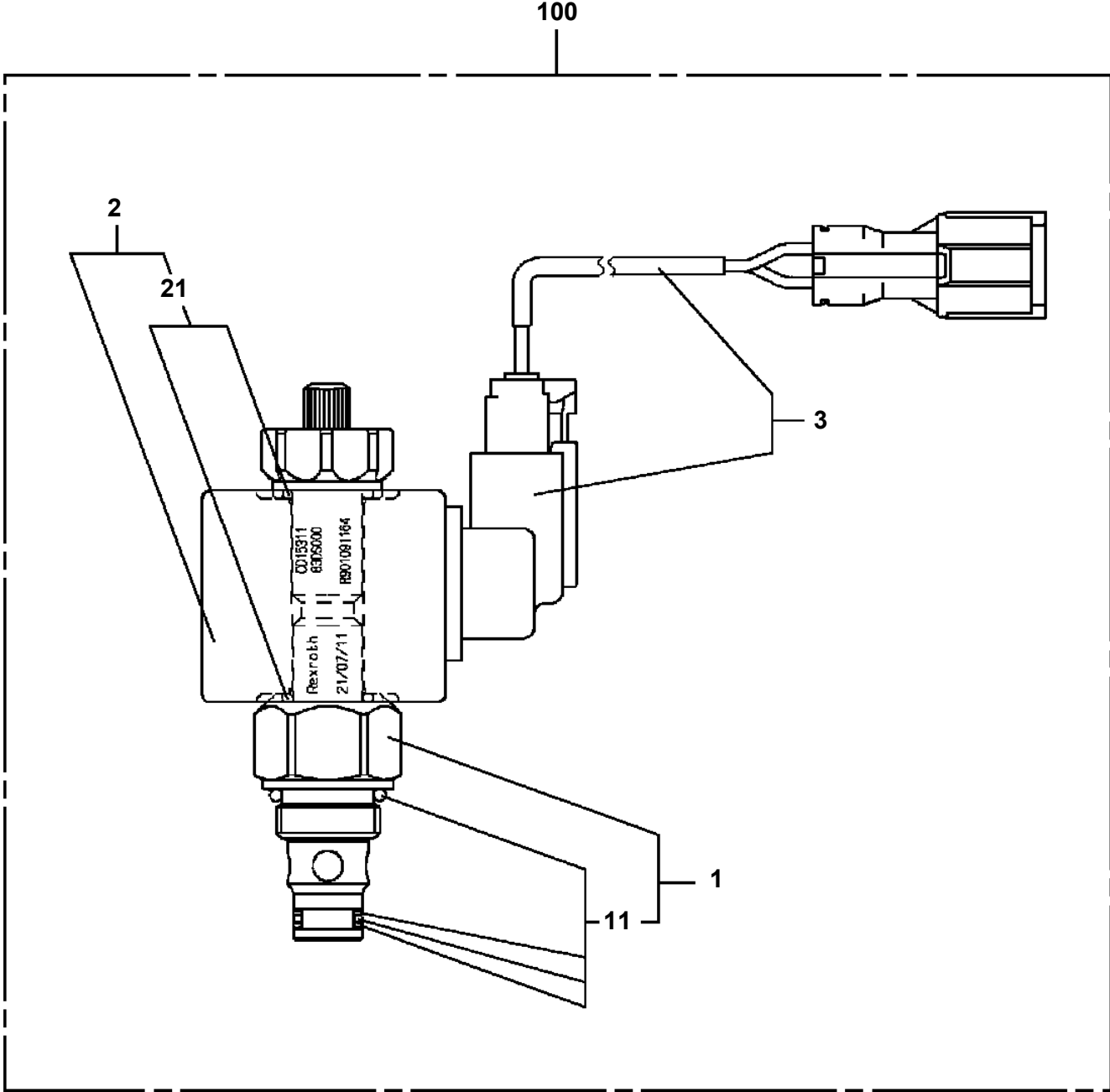
**BT-400-1-00003 UPPER  
PS5290003-00 SPEED REDUCER ASSY**



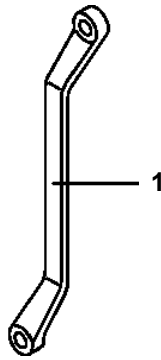
**BT-400-1-00003 UPPER  
PV5010003-00 VALVE ASSY**



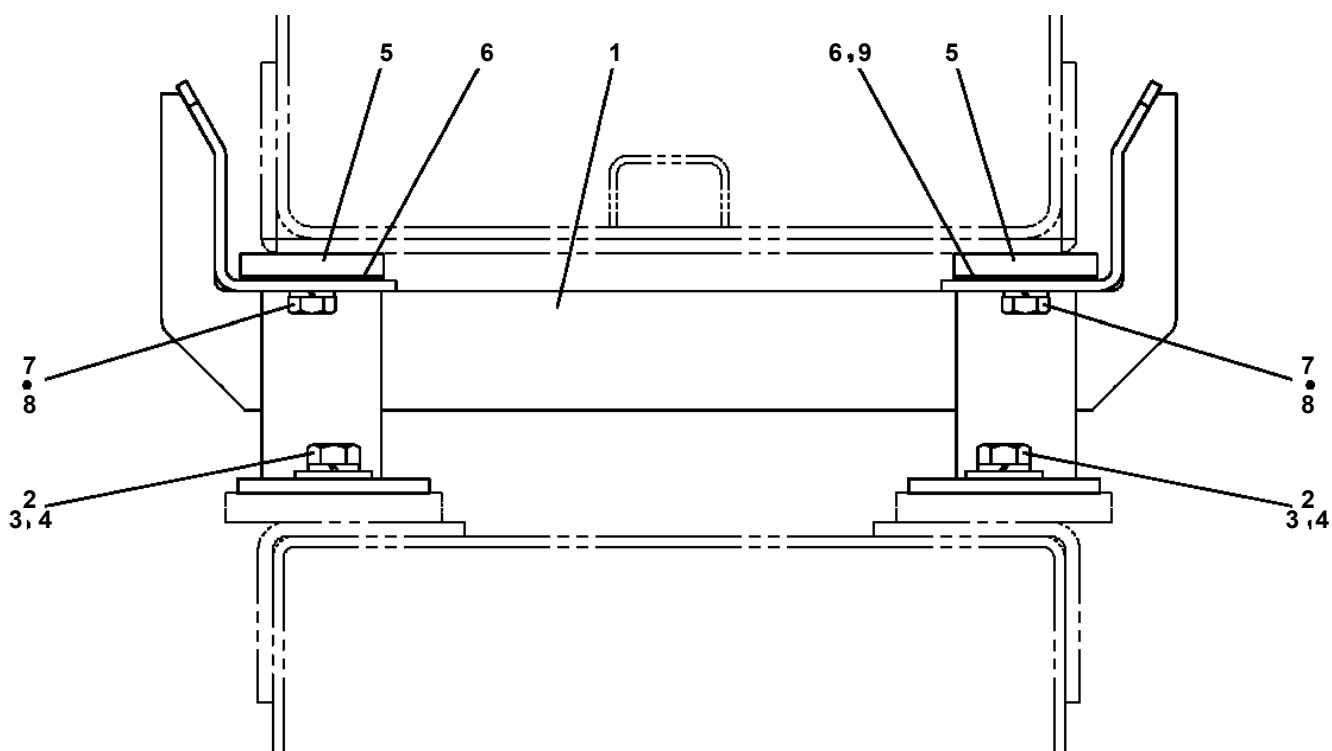
**BT-400-1-00003 UPPER  
PV5240016-00 VALVE ASSY,SOLENOID**



**BT-400-1-00003 UPPER  
PW1010381-00 ACCESSORIES (WRENCH)**



**BT-400-1-00003 UPPER  
PX1120434-01 BOOM REST (NO.3)**



CLICK HERE TO **DOWNLOAD** THE COMPLETE MANUAL

- Thank you very much for reading the preview of the manual.
- You can download the complete manual from: [www.heydownloads.com](http://www.heydownloads.com) by clicking the link below



- Please note: If there is no response to CLICKING the link, please download this PDF first and then click on it.

CLICK HERE TO **DOWNLOAD** THE COMPLETE MANUAL