

BT-200-2-00001 UPPER

PD2000221-01 SWING UNIT
PG2000298-00 BOOM UNIT (UPPER BOOM)
PG2000299-00 BOOM UNIT (POST)
PG2000300-00 BOOM UNIT (DECK BOOM)
PH1000550-00 SAFETY DEVICES (MOTION CONTROLLER)
PJ3000566-00 PLATFORM SYSTEM
PK2001237-00 FRAME UNIT
PN1000588-00 ELECTRIC EQUIPMENT
PO1000156-00 INDICATION PLATES
PW1000028-00 ACCESSORIES & TOOLS
PY1001419-12 OPTION UNIT,1 (UPPER)
PY2000202-03 OPTION UNIT,2 (UPPER)
ASSEMBLY

CLICK HERE TO **DOWNLOAD** THE COMPLETE MANUAL

- Thank you very much for reading the preview of the manual.
- You can download the complete manual from: www.heydownloads.com by clicking the link below



- Please note: If there is no response to CLICKING the link, please download this PDF first and then click on it.

CLICK HERE TO **DOWNLOAD** THE COMPLETE MANUAL

BT-200-2-00001 UPPER

Pos No.	Parts No	Parts Name	Qty	Unit	Technical Data	Serial No (Start)	Serial No (End)
1	36194850000	MOTION CONTROLLER (AMC)	1				HB5974
	36194850001	AUTOMATIC MOTION CONTROLLER	1			HB5975	

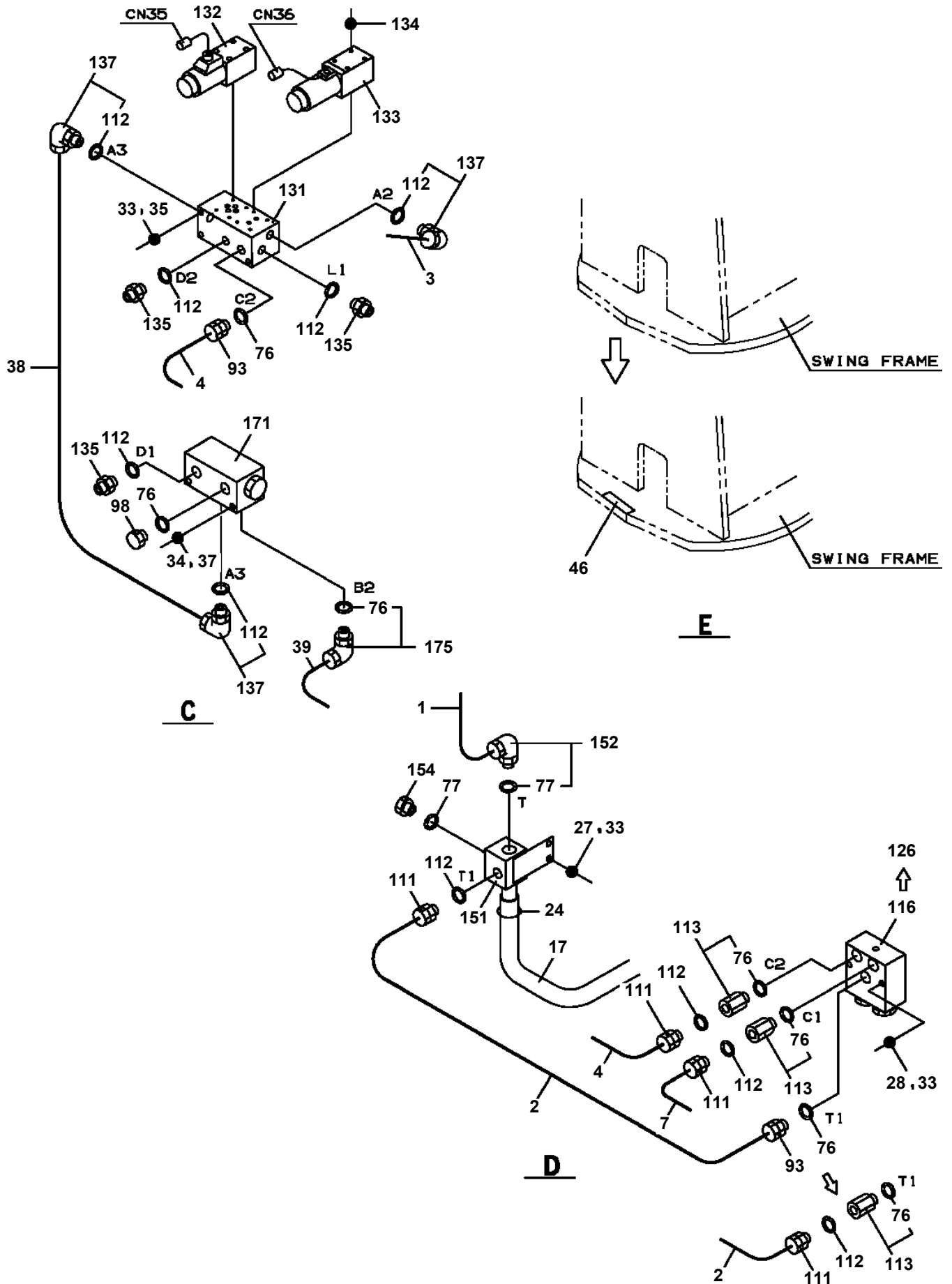
BT-200-2-00001 UPPER

Pos No.	Parts No	Parts Name	Qty	Unit	Technical Data	Serial No (Start)	Serial No (End)	Remarks	Pages
1	(*****)	ACCESSORIES	1						000184

BT-200-2-00001 UPPER

Pos No.	Parts No	Parts Name	Qty	Unit	Technical Data	Serial No (Start)	Serial No (End)	Remarks
2	37002516440	HOSE	1		L=140			
3	91803880040	CLIP	2		D=10-12.2			
4	36100080101	COVER	1					
5	91001211000	O-RING	1		1A G110			
6	36101740010	SUPPORT	1					
7	53156005000	BREATHER ASSY (OB-10T)	1					
8	99163008016	BOLT (M8X16)	4					
9	80205001000	PLUG	1		PT1		HB5511	
	36102790010	PLUG	1			HB5512		
10	90303392001	WASHER	1		M20	HB5512		
31	53156005011	ELEMENT	1					
53	53156005030	PLATE (WITH PACKING)	1					
54	53156005040	PACKING	1					
100	36102440000	TANK,OIL	1					

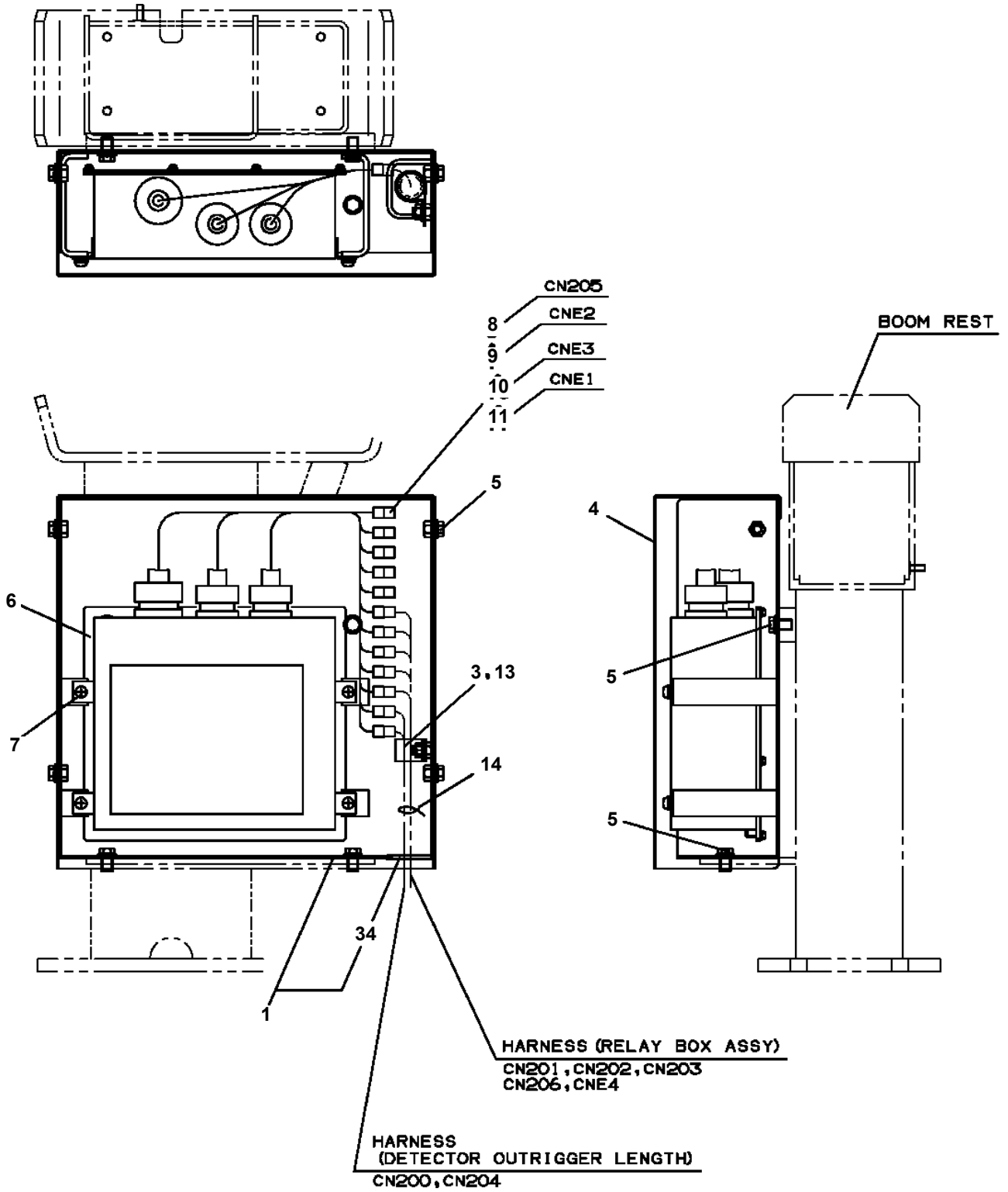
BT-200-2-00001 UPPER
PB1400455-02 PIPING,UPPER (1)



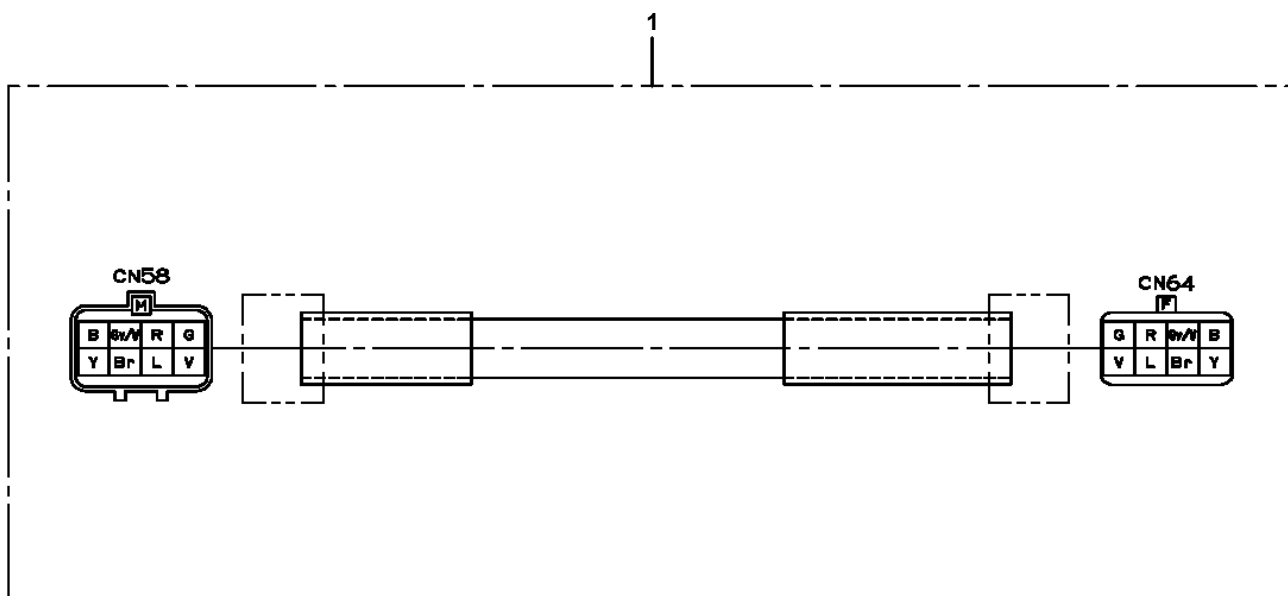
BT-200-2-00001 UPPER

Pos No.	Parts No	Parts Name	Qty	Unit	Technical Data	Serial No (Start)	Serial No (End)	Remarks
61	80316070060	PLUG	2		PF3/8			
62	80481103020	JOINT	4		PF3/8-PF1/4			
63	80320010140	FITTING	1		KUD18-040N			
64	80491304040	JOINT (WITH O-RING)	2					
65	82100002014	CLAMP	1		WR20			
66	80320030075	FITTING,ELBOW	6		KLE12-020N			
67	81408000160	PIPE,STEEL	1	M	12X1.4T			
68	81408000160	PIPE,STEEL	1	M	12X1.4T			
69	37002412790	HOSE	1		L=1120			
70	37002456680	HOSE	1		L=990			
77	81408000210	PIPE,STEEL	1	M	15X2.0T			
78	90101208050	BOLT	5		M8X50			
79	90101208040	BOLT	2		M8X40			
80	90302040801	WASHER,SPRING	11		8			
81	90303070801	WASHER,PLAIN	7		8			
82	90280200800	NUT,FLANGE	3		M8			
83	81408000241	PIPE,STEEL	1	M	18X1.9T			
84	37002470650	HOSE	1		L=780			
85	82100002018	CLAMP	4		WR35			
86	82100002010	CLAMP	1		WR15			
87	82100001412	TUBE,SPIRAL	20	M	SE-12BK			
88	90201200800	NUT	5		M8			
89	90101208010	BOLT	2		M8X10			
90	90101206010	BOLT	2		M6X1.0			
91	90302040601	WASHER,SPRING	2		6			
92	81408000241	PIPE,STEEL	2	M	18X1.9T			
93	90101208025	BOLT	2		M8X25			
94	82100001819	TUBE,SPIRAL	4	M	SE-18BK			
95	37002449600	HOSE	2		L=375			
96	37002425880	HOSE	1		L=950			
97	37002453130	HOSE	1		L=850			
98	37002414100	HOSE	1		L=1320			
99	37002403320	HOSE	1		L=1400			
100	81408000241	PIPE,STEEL	2	M	18X1.9T			
101	81408000241	PIPE,STEEL	2	M	18X1.9T			
102	37000711090	CLAMP ASSY	1		18X2			
103	80303010160	FITTING,ELBOW	2		KLA18-000N			
104	80491303020	JOINT (WITH O-RING)	2		L,G3/8-G1/4			
105	90186208035	BOLT,FLANGE	1		M8X35	HB5910		
106	80302090141	FITTING	1		KCO12-020N			
121	91002801100	O-RING	7		1B P11		HB5402	
	91002801100	O-RING	8		1B P11			
	91002801100	O-RING	10		1B P11	HB5403		
131	91002801800	O-RING	4		1B P18			
141	91002801400	O-RING	4		1B P14			
151	36624250000	VALVE,SHUTTLE	1			HB5403		
152	80303130141	FITTING,ELBOW	7		KLO12-020E	HB5403		
153	37000927050	JOINT	1			HB5403		
161	37000924930	JOINT	2		T G1/4-G1/4-G1/4	HB5403		
163	80400160127	JOINT	2			HB5403		

**BT-200-2-00001 UPPER
PC1190057-02 INDICATOR,OUTRIGGER**

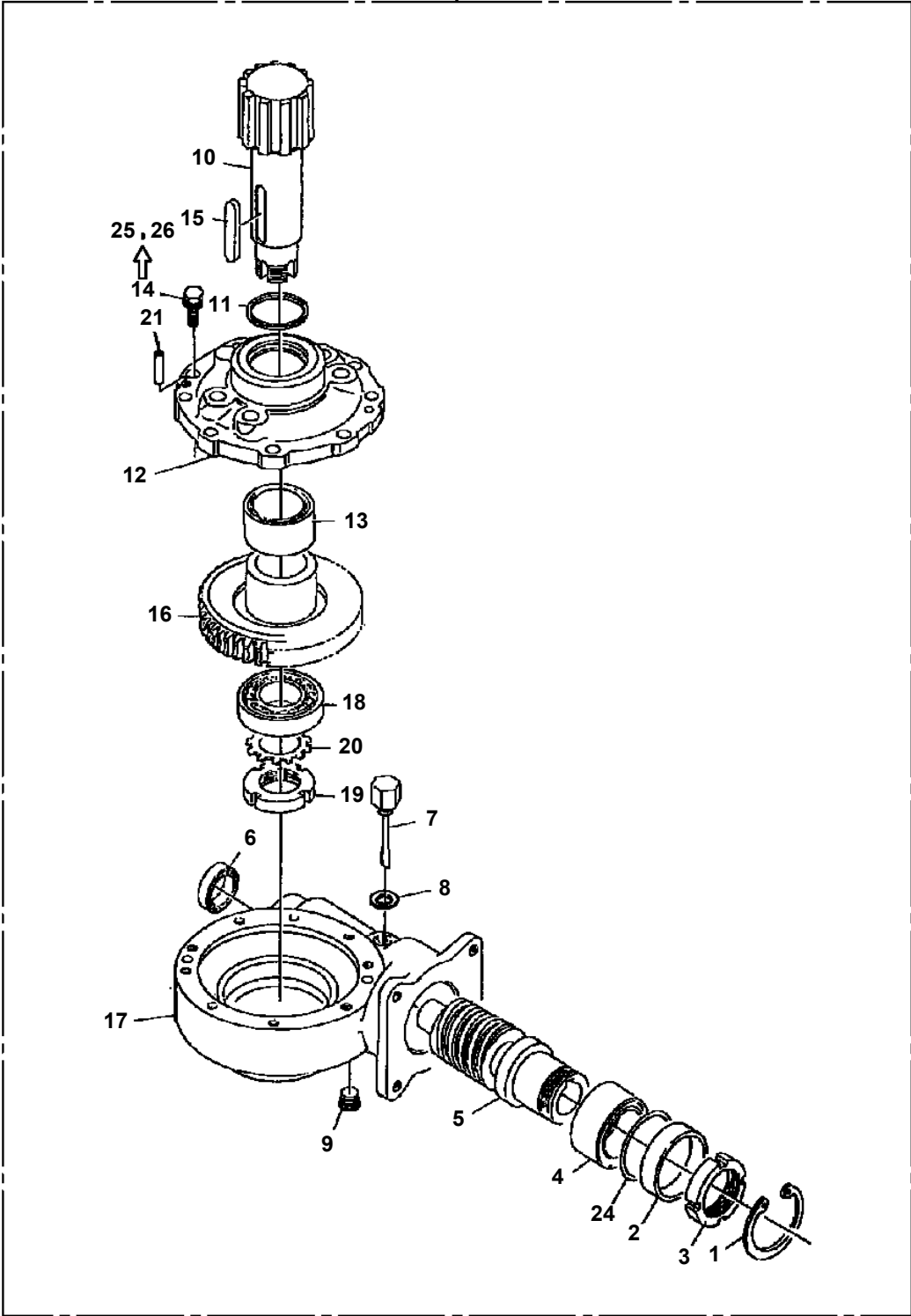


BT-200-2-00001 UPPER
PC5650028-00 CABLE (L=10000)

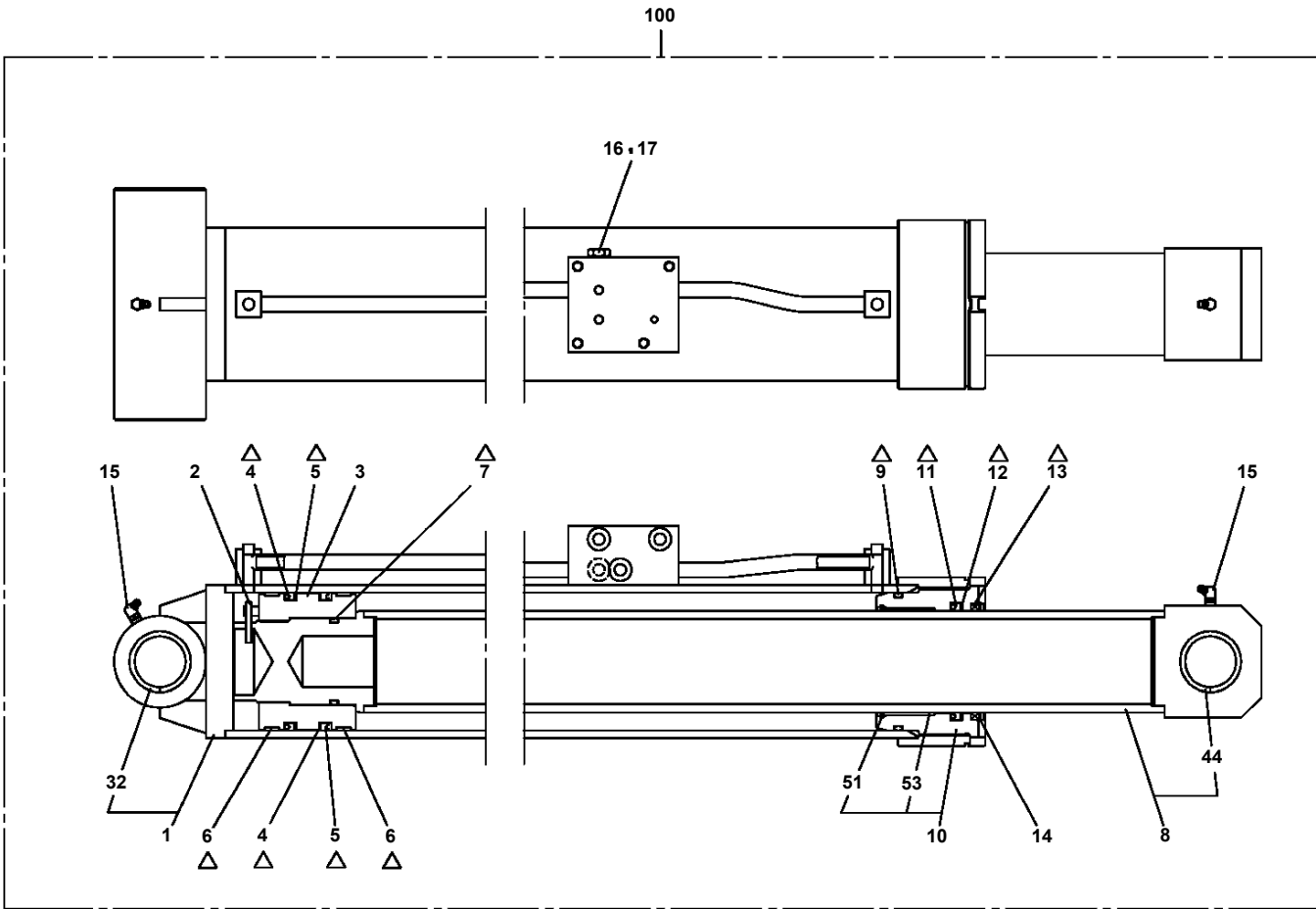


**BT-200-2-00001 UPPER
PD1010104-02 REDUCER, SWING SPEED**

50



**BT-200-2-00001 UPPER
PE1010523-00 CYLINDER,ELEVATING**



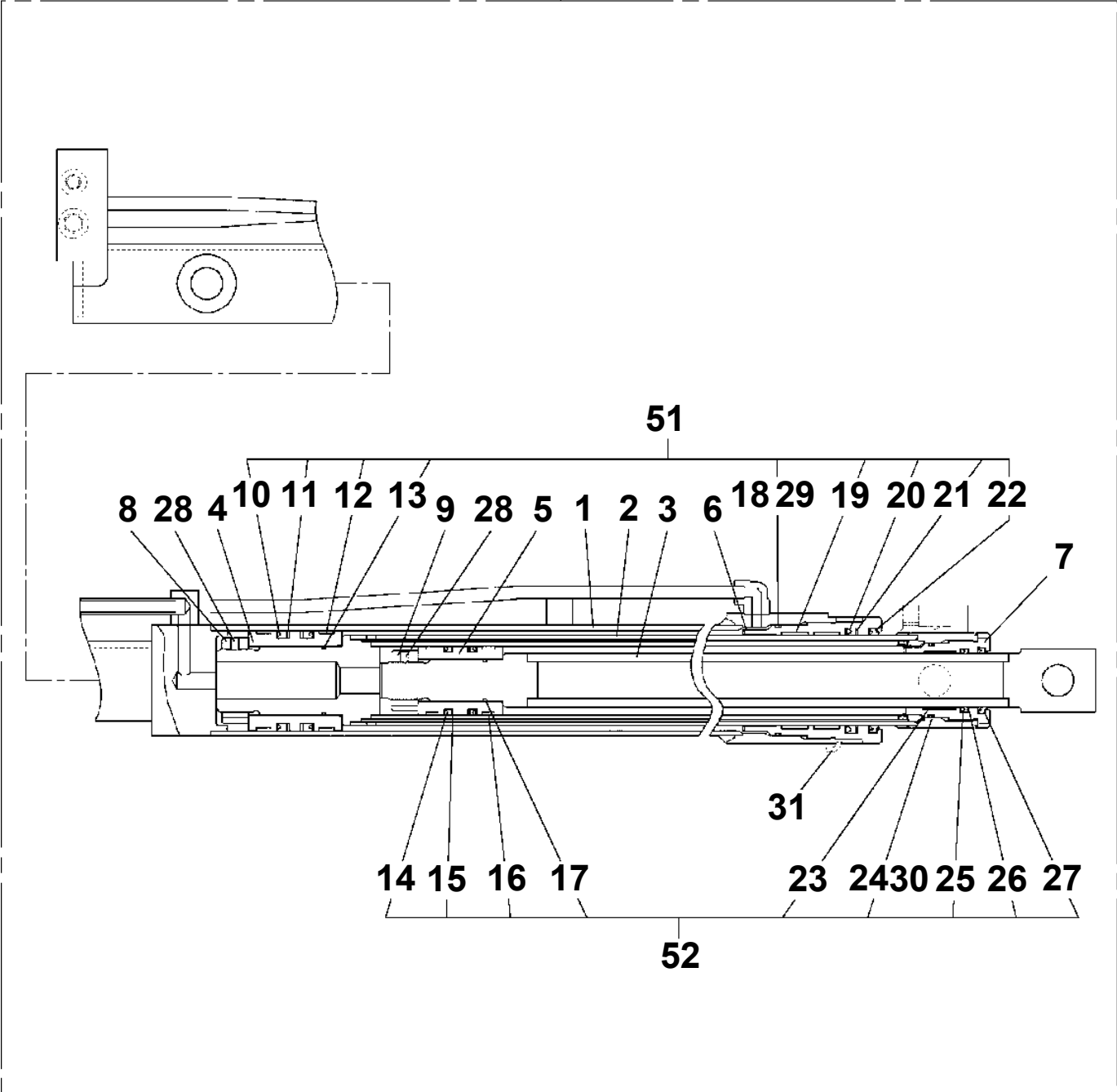
Δ:PACKING SET KEY NO.61 (KEY NO.4,5,6,7,9,11,12,13)

BT-200-2-00001 UPPER

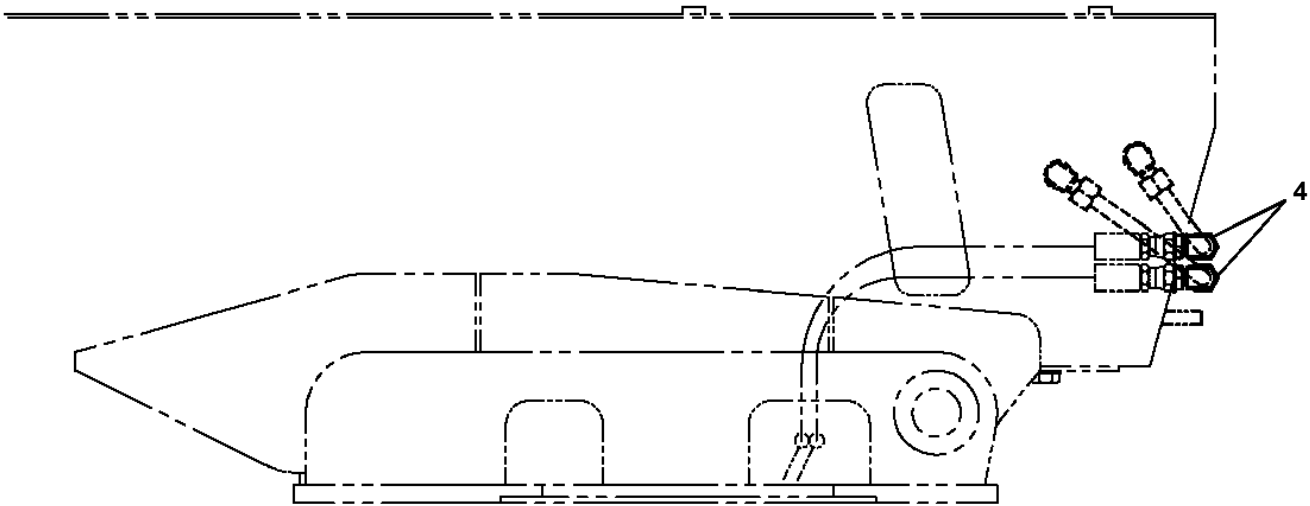
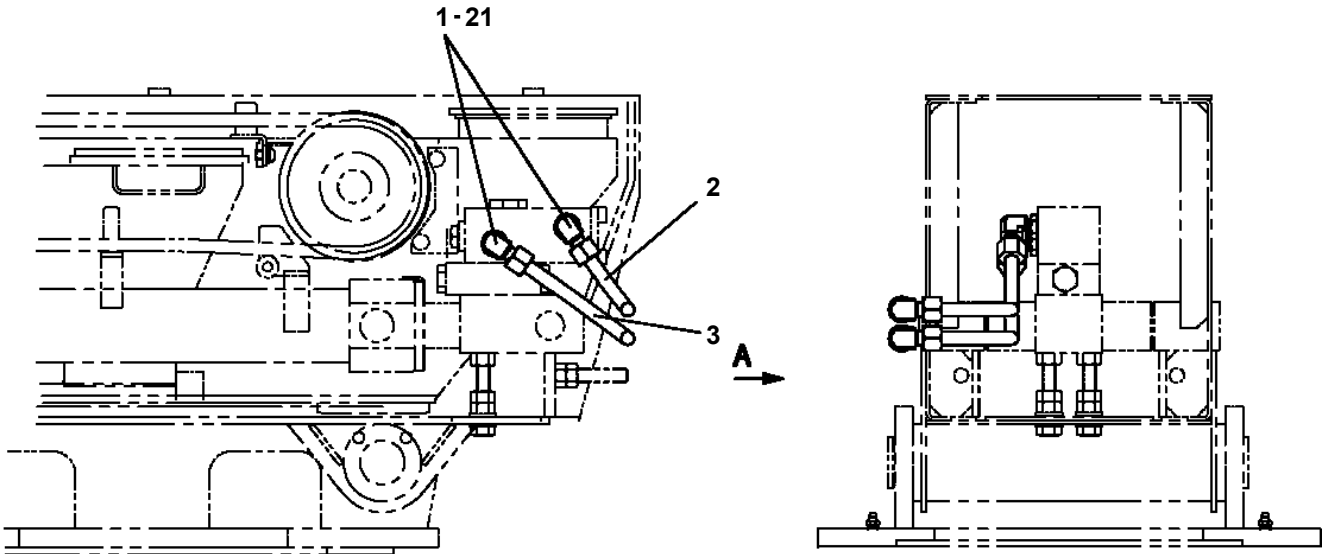
Pos No.	Parts No	Parts Name	Qty	Unit	Technical Data	Serial No (Start)	S
1	42461162000	FALL ARREST SYSTEM (TB-LSA-550/FUJII-DENKO)	1				

**BT-200-2-00001 UPPER
PG1050439-00 CYLINDER,TELESCOPING**

100

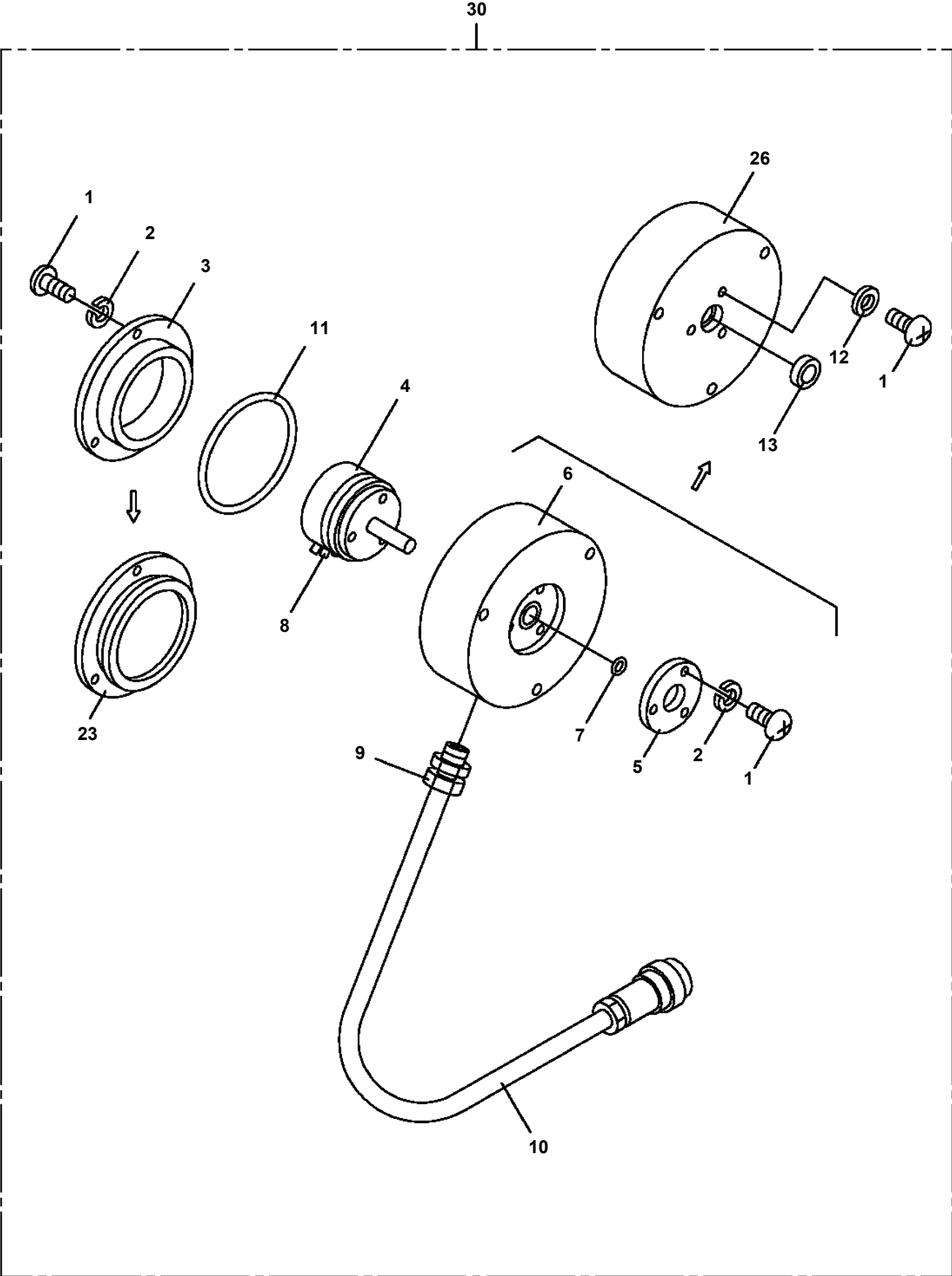


**BT-200-2-00001 UPPER
PG1220067-00 PIPING,BOOM**



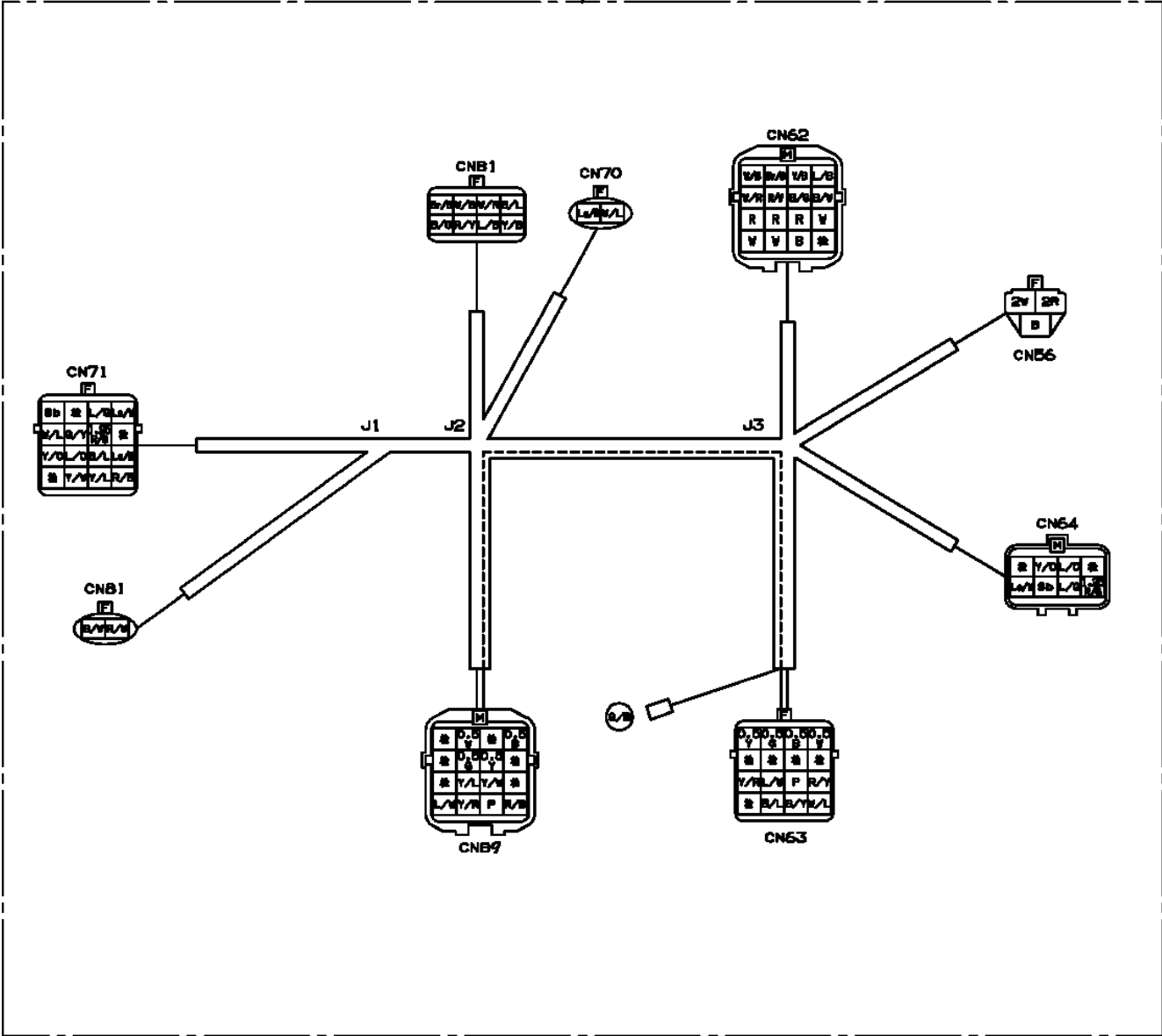
A

**BT-200-2-00001 UPPER
PH1220004-02 DETECTOR ASSY,ANGLE (JIB)**

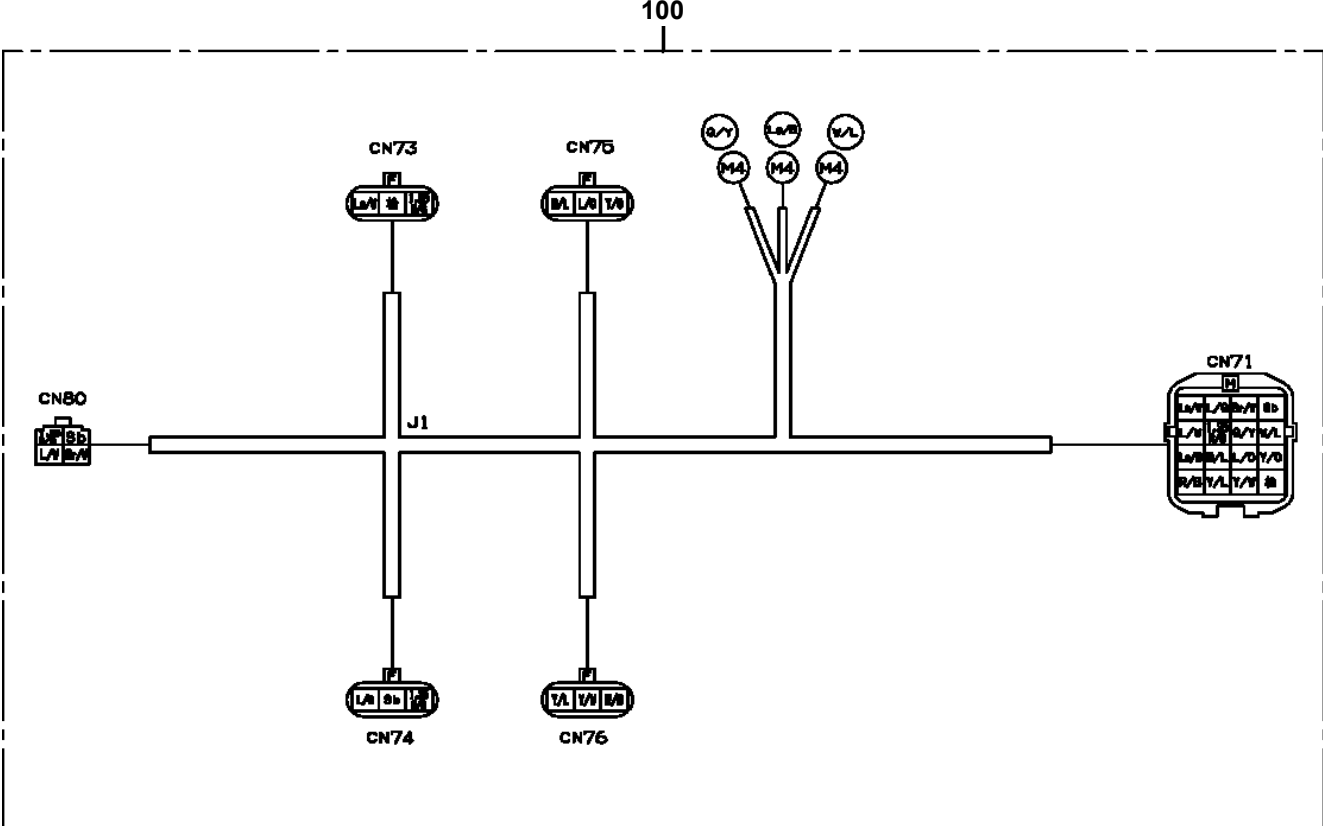


BT-200-2-00001 UPPER
PH5030905-00 HARNESS

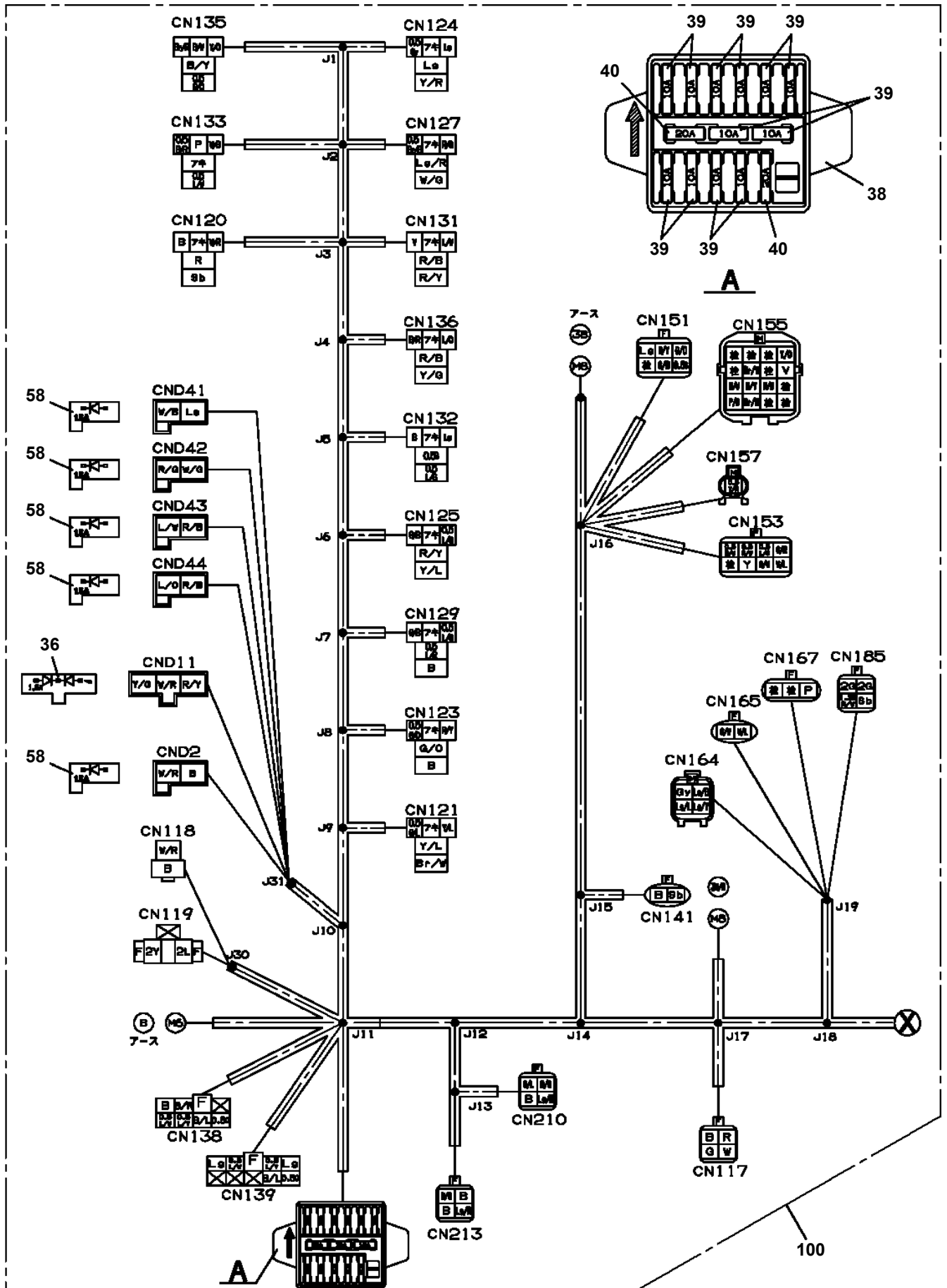
100



BT-200-2-00001 UPPER
PH5030911-00 HARNESS

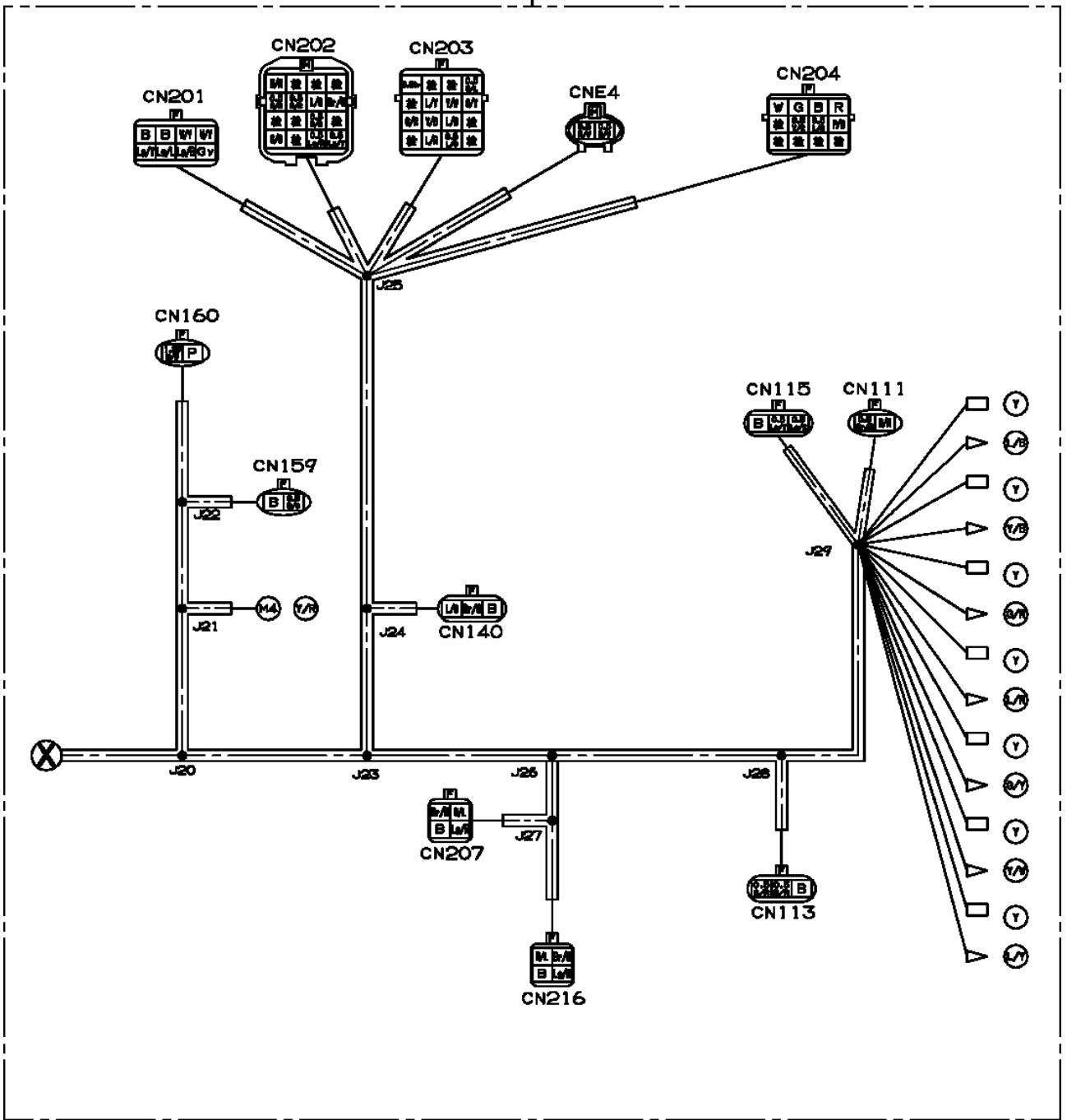


**BT-200-2-00001 UPPER
PH5032224-00 HARNESS**

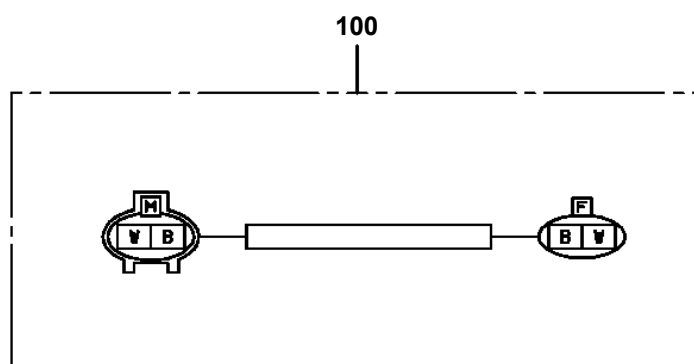


BT-200-2-00001 UPPER
PH5032683-00 HARNESS

100



**BT-200-2-00001 UPPER
PH5034171-00 HARNESS**



BT-200-2-00001 UPPER

Pos No.	Parts No	Parts Name	Qty	Unit	Technical Data	Serial No (Start)	Serial No (End)	Rema
2	36660025130	BEARING,BALL	1					
4	91001206500	O-RING	1		1A G65			
5	36660025021	COVER (OIL SEAL)	1					
6	36660025140	SEAL,OIL	1					
7	80602110720	RING,RITAINING	1		R72			
14	36661925010	O-RING	1					
16	36661925021	CYLINDER ASSY (LOCK)	1					
19	14125151020	KEY	1					
35	91410001800	RING,BACKUP	1		P18			
36	91002801800	O-RING	1		1B P18			
37	91001102201	O-RING	1		1A P22A			
38	91001102200	O-RING	1		1A P22			
39	91001101800	O-RING	1		1A P18			
50	36662600000	MOTOR,HYDRAULIC (SWING)	1					

BT-200-2-00001 UPPER

Pos No.	Parts No	Parts Name	Qty	Unit	Technical Data	Serial No (Start)	Serial No (End)	Ren
1	59251502241	BODY ASSY (MANUAL SELECT)	1					
4	36622285050	O-RING	4					
7	59251502170	O-RING	1					
11	91000501200	O-RING	1					
14	36643545010	COIL,SOLENOID	1					
30	36643570000	VALVE,SOLENOID	1					

BT-200-2-00001 UPPER

Pos No.	Parts No	Parts Name	Qty	Unit	Technical Data	Serial No (Start)	Serial No (End)	Remarks	Pages
4	36640505040	SPRING	1						
5	91002801600	O-RING	1		1B P16				
6	91002801800	O-RING	1		1B P18				
7	36603235060	O-RING	1						
30	36624430000	VALVE,CHECK	1						

CLICK HERE TO **DOWNLOAD** THE COMPLETE MANUAL

- Thank you very much for reading the preview of the manual.
- You can download the complete manual from: www.heydownloads.com by clicking the link below



- Please note: If there is no response to CLICKING the link, please download this PDF first and then click on it.

CLICK HERE TO **DOWNLOAD** THE COMPLETE MANUAL

BT-200-2-00001 UPPER

Pos No.	Parts No	Parts Name	Qty	Unit	Technical Data	Serial No (Start)	Serial No (End)	Remark
3	91001101100	O-RING	2		1A P11			
4	36601125010	RING,BACKUP	2		P11			
5	36601125020	SPRING	2					
7	91001101800	O-RING	2		1A P18			
8	80316030020	PLUG	1		PT1/8			
9	80316030040	PLUG	2		PT1/4			
11	36601125030	SPRING	2					
12	80316030060	PLUG	4		PT3/8			
13	91002801400	O-RING	2		1B P14			
14	36601125040	PLUG	2					
15	36660495120	THROTTLE	2		M4			
16	36601125050	PLUG	1					
20	36601310000	VALVE,COUNTERBALANCE	1					

BT-200-2-00001 UPPER

Pos No.	Parts No	Parts Name	Qty	Unit	Technical Data	Serial No (Start)	Serial No (End)	Remark
1	90172108014	BOLT,HEXAGON SOCKET	4		M8X14			
2	36602110101	COVER	1					
3	91001203500	O-RING	1		1A G35			
5	36600070020	SPRING	1					
8	91002801600	O-RING	1		1B P16			
10	36600070070	SPRING	1					
11	80316090020	PLUG	1		KKT PT1/8			
12	36602100300	PLUG	1					
13	91001101200	O-RING	2		1A P12			
14	91002801800	O-RING	1		1B P18			
50	36604630000	VALVE,COUNTERBALANCE	1					

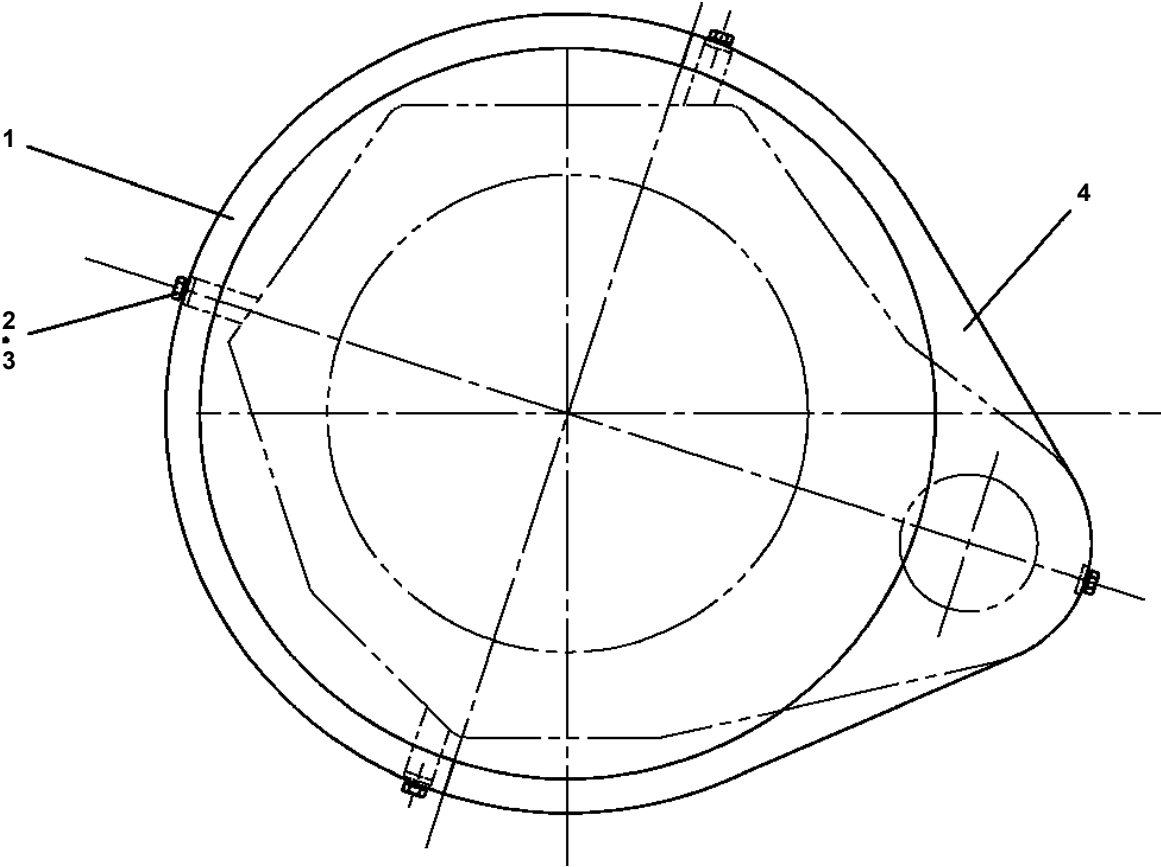
BT-200-2-00001 UPPER

Pos No.	Parts No	Parts Name	Qty	Unit	Technical Data	Serial No (Start)	Serial No (End)	Remarks	Page
1	42343102101	SUPPORT	1						
2	42343102201	SUPPORT	1				HB5391		
	42345611100	SUPPORT	1			HB5392			
3	42343102301	SUPPORT	1						
5	90101208016	BOLT	12		M8X16				
6	80320020140	FITTING	1						
7	80320020080	FITTING	3		KUF12-030N				
8	80320020075	FITTING	2		KUF12-020N				
9	90101208025	BOLT	4		M8X25				
10	90201200800	NUT	4		M8				
11	90302040801	WASHER,SPRING	22		8				
12	90303070801	WASHER,PLAIN	4		8				
13	42343102401	SUPPORT	1						
14	90101208012	BOLT	6		M8X12				
15	37000136800	PIN	1						
16	80136340025	PIN,SPLIT	2		4X25				
17	37002457100	HOSE	1		L=1490				
18	37002457110	HOSE	1		L=1450				
19	37002457120	HOSE	1		L=1540				
20	37002457130	HOSE	1		L=1710 TO 1645				
21	37002457140	HOSE	1		L=1660 TO 1625				
22	90101210025	BOLT	2		M10X25				
23	90302041001	WASHER,SPRING	2		10				
24	42343102500	CLAMP	2						
25	42343102600	CLAMP	1						
26	37002457150	HOSE	1		L=1580				
27	37000302020	SPACER	1		L=18		HB5974		
	37000301830	SPACER	1		L=16	HB5975			
41	37002457170	HOSE	3		L=4240				
42	37002457160	HOSE	2		L=4240				
43	37002457180	HOSE	1		L=4240				
44	42343103200	SUPPORT	4				HB5391		
45	90302040801	WASHER,SPRING	14		8		HB5391		
	90302040801	WASHER,SPRING	6		8	HB5392			
46	90201200800	NUT	4		M8				
47	42343105001	SUPPORT ASSY	1				HB5391		
48	37002009030	PLATE,SLIDE	1						
49	90101208020	BOLT	16		M8X20		HB5391		
	90101208020	BOLT	8		M8X20	HB5392			
50	90303070801	WASHER,PLAIN	8		8				
51	90101206020	BOLT	16		M6X20				
52	90303070601	WASHER,PLAIN	16		6				
53	90302040601	WASHER,SPRING	16		6				
54	42343104001	SUPPORT	1				HB5391		
	42343106000	SUPPORT	1			HB5392	HB5974		
	42343106001	SUPPORT	1			HB5975			
55	42343104301	COVER	1						
56	42343104400	COVER	1				HB5530		
	42343104401	COVER	1			HB5531			
57	42343104501	JOINT	1				HB5391		
	42343104502	JOINT	1			HB5392			
58	90101208080	BOLT	2		M8X80				
59	42343104601	JOINT	1				HB5391		
	42343104602	JOINT	1			HB5392			
60	80400160127	JOINT	2						
61	91002801100	O-RING	2		1B P11				
62	80400160129	JOINT	3						
63	91002801400	O-RING	3		1B P14				
64	80400160131	JOINT	1						
65	91002801800	O-RING	1		1B P18				
71	42343105101	CABLE CONVEYER	1				HB5391		
72	90190105014	BOLT	52		M5X14		HB5391		
73	90302510501	WASHER,SPRING	52		5		HB5391		

BT-200-2-00001 UPPER

Pos No.	Parts No	Parts Name	Qty	Unit	Technical Data	Serial No (Start)	Serial No (End)	Remarks
1	42440832000	BRUSH,ROTARY JOINT	1					
2	90101208025	BOLT	3		M8X25			
3	90302040801	WASHER,SPRING	3		8			
5	42630502200	JOINT	1					
6	90172110055	BOLT,HEXAGON SOCKET	4		M10X55			
7	90302041001	WASHER,SPRING	10		10			
8	80316030060	PLUG	2		PT3/8			
9	80316030080	PLUG	2		PT1/2			
10	42630502100	FITTING,FLANGE	1					
11	91002802200	O-RING	5		1B P22			
12	90101210085	BOLT	4		M10X85			
13	42630502300	FITTING,FLANGE	1					
14	90172110065	BOLT,HEXAGON SOCKET	2		M10X65			
15	80316090120	PLUG	1		KKT PT1			
16	80316030040	PLUG	1		PT1/4			
17	37002459260	HOSE	2		L=950			
18	91002801100	O-RING	2		1B P11			
19	82100001411	TUBE,SPIRAL	2	M	SE-08BK			
20	82100001804	TUBE,CORRUGATE	2	M	15		HB5603	
21	91001203500	O-RING	1		1A G35			
22	91002902500	O-RING	3		1B G25			
41	42630503100	CORE	1					
42	32630010020	BODY	1					
43	42630902100	SUPPORT	1					
44	42630503300	PLATE	1					
45	42630503400	SUPPORT	1				HB5691	
46	91100211000	SEAL,RING	4					
47	91531211000	PACKING	2					
48	80561100080	NUT	1		AN08			
49	80562100080	WASHER,TOOTH	1		AW08			
50	42630902200	SPACER	1					
51	80500051109	BEARING,BALL	1					
52	42630902300	PLATE	1		T=3		HB5691	
53	42630902400	PLATE	1		T=3		HB5691	
54	90101206016	BOLT	6		M6X16		HB5691	
55	90302040601	WASHER,SPRING	6		6		HB5691	
56	90131508120	BOLT,HEXAGON SOCKET	3		M8X120			
57	90101208018	BOLT	3		M8X18			
58	90302040801	WASHER,SPRING	3		8			
59	80720105020	PIN,SPRING	1		5X20			
60	32630010050	PLATE	1					
75	42630902500	SUPPORT	1			HB5692		
100	42630901000	JOINT ASSY,SWIVEL	1					

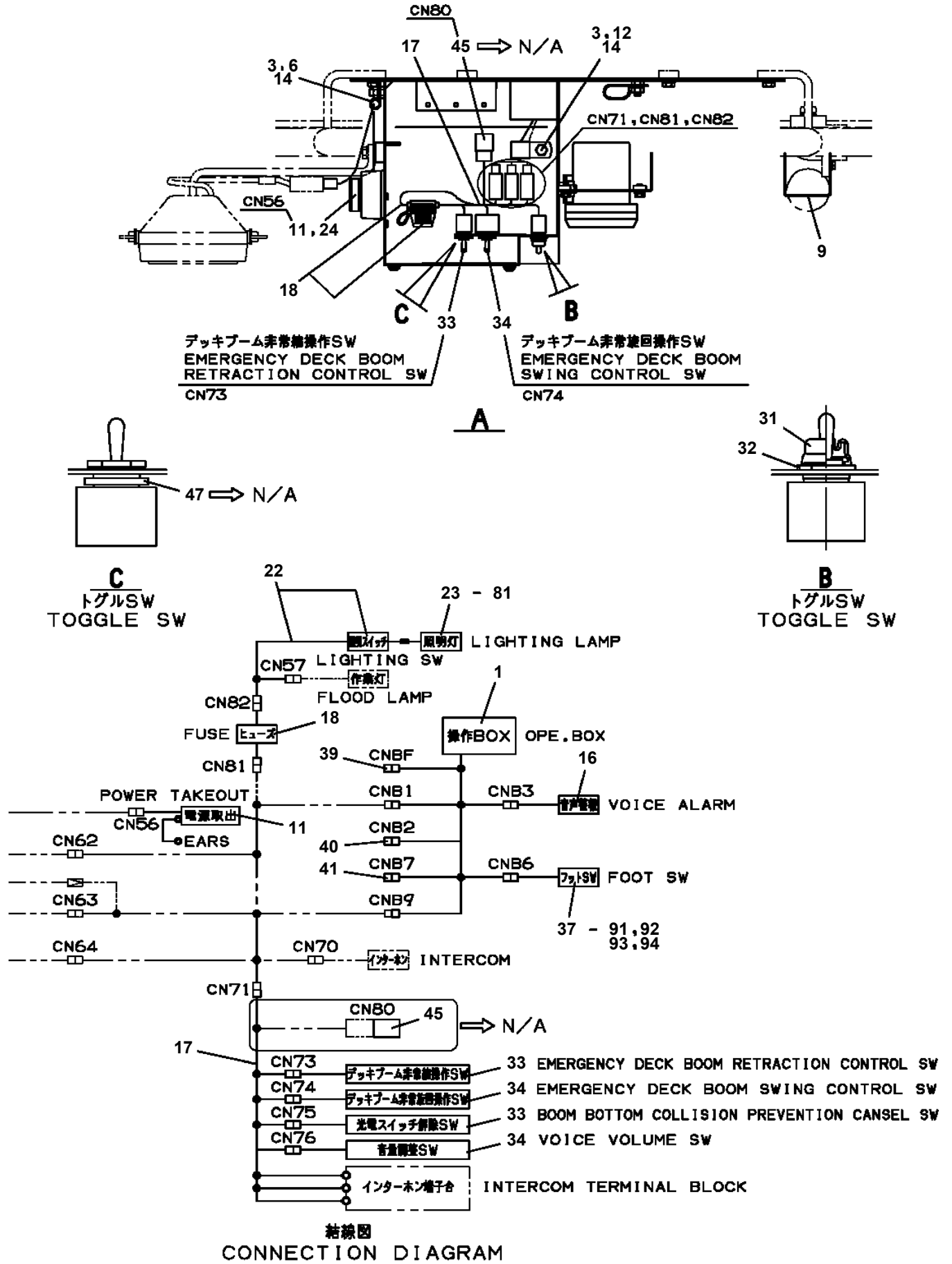
**BT-200-2-00001 UPPER
PK1200153-00 COVER, SWING FRAME**



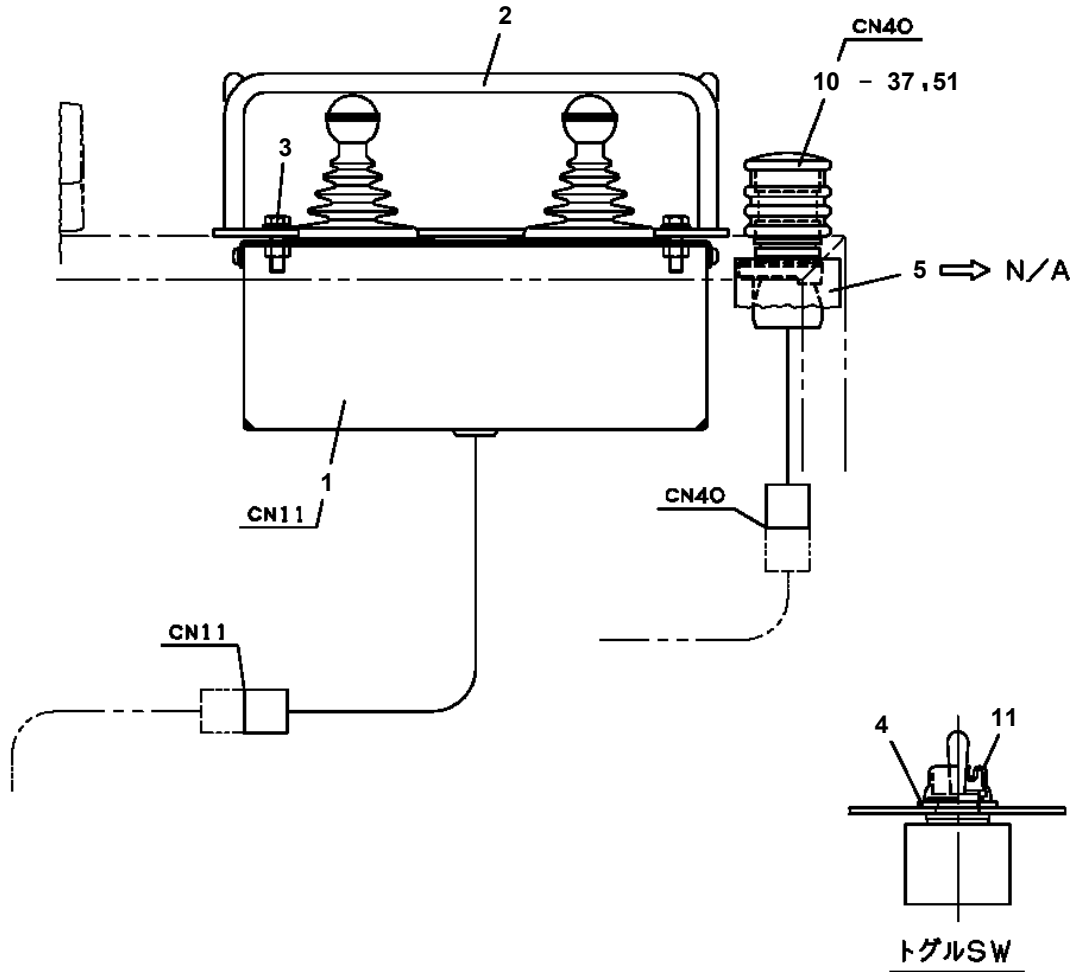
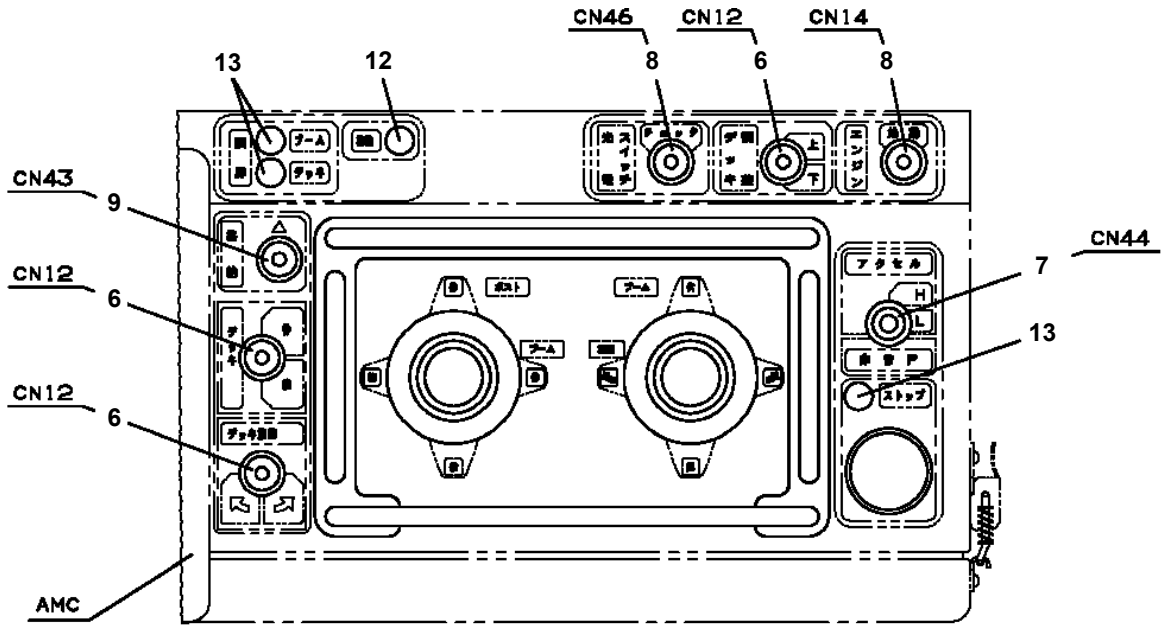
BT-200-2-00001 UPPER

Pos No.	Parts No	Parts Name	Qty	Unit	Technical Data	Serial No (Start)	Serial No (End)	Remarks
1	42505742200	COVER	1					
2	42272411201	COVER	1					
4	42271801600	COVER	1					
5	42220249510	ROPE,WIRE	1	M				
6	82464104602	HINGE	2					
8	80172803010	SCREW,MACHINE	4		M3X10			
9	37000565900	PLATE	2					
10	42272410100	SUPPORT	1					
11	80172804012	SCREW,MACHINE	12		M4X12			
12	90201500400	NUT	12		M4			
13	90302510401	WASHER,SPRING	12		4			
14	42271680020	HOOK	1					
15	82464110305	HINGE	2					
16	80172803008	SCREW,MACHINE	8		M3X8			
17	90201500300	NUT	16		M3			
18	90302510301	WASHER,SPRING (SUS 3)	20					
19	82466100702	CATCH	2					
20	80175803010	SCREW,MACHINE	8		M3X8			
21	82466009002	CATCH	2					
22	37000508510	PLATE	4					
23	80163803010	SCREW,MACHINE	4		M3X10			
25	82112001022	SLEEVE	2					
26	90101208016	BOLT	2		M8X16			
27	90302040801	WASHER,SPRING	2		8			
28	90201200800	NUT	2		M8			
39	82400000309	GROMMET	1		L=1000			
50	42505742100	COVER ASSY	1					

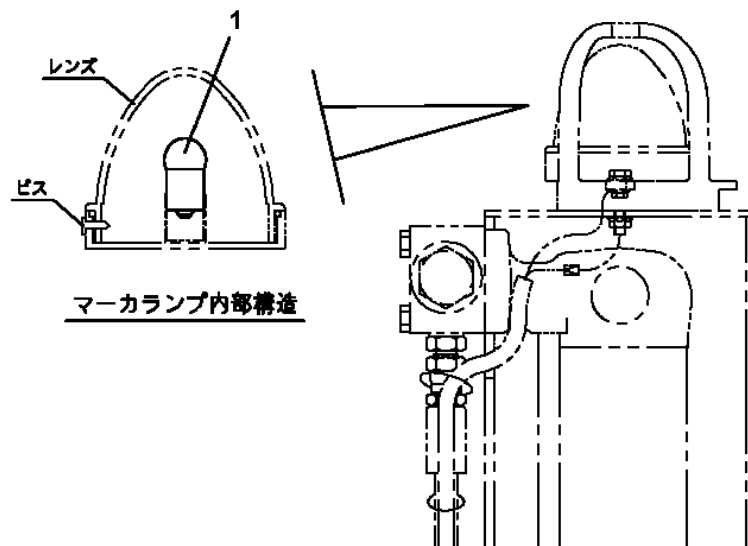
BT-200-2-00001 UPPER
PL1100259-02 BOX,OPERATION (PLATFORM)



BT-200-2-00001 UPPER
 PL1920105-02 OPE.ASSY

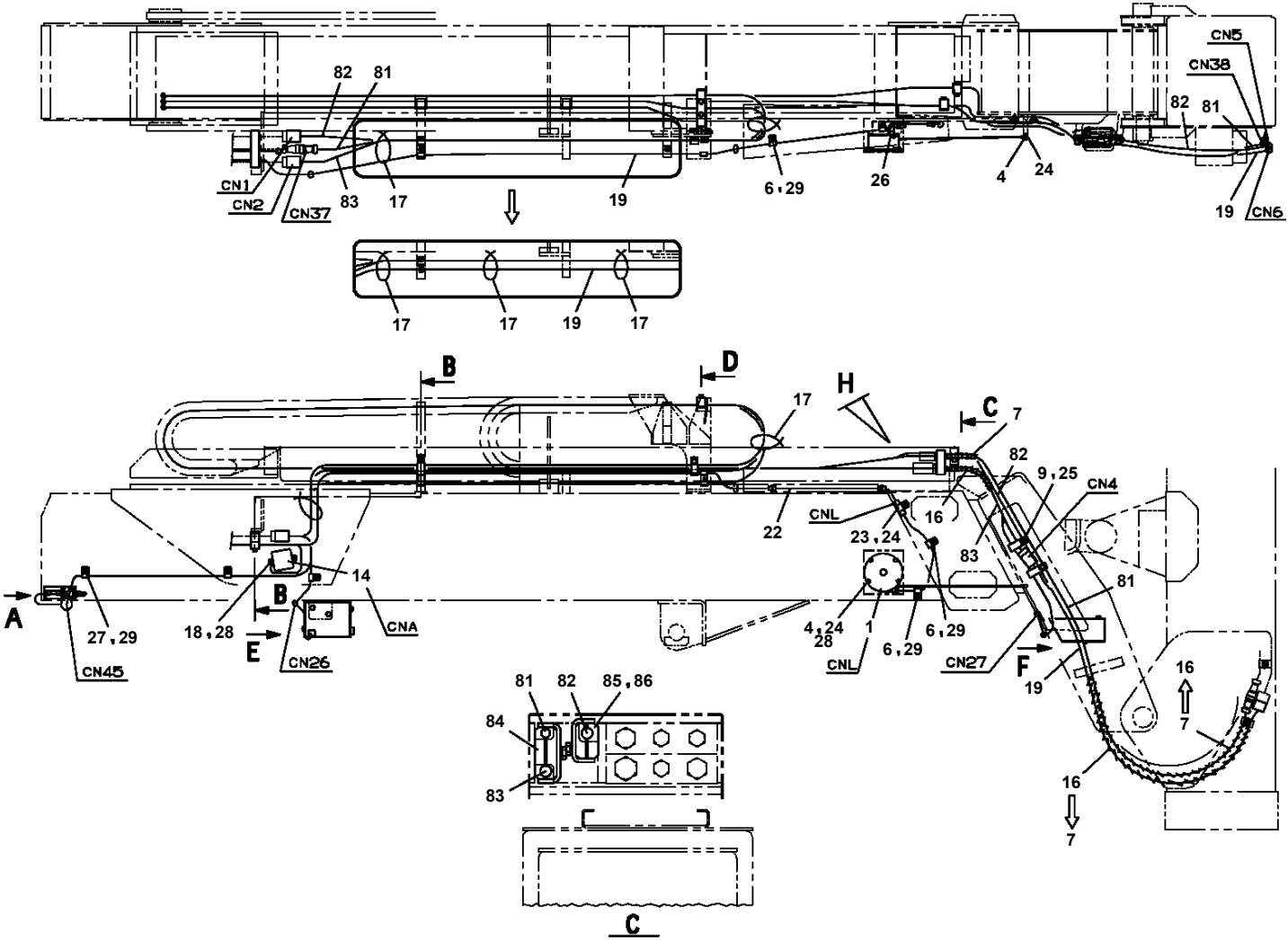


**BT-200-2-00001 UPPER
PM5150489-00 MODIFICATION ASSY (YELLOW MARKER LAMP/LED)**

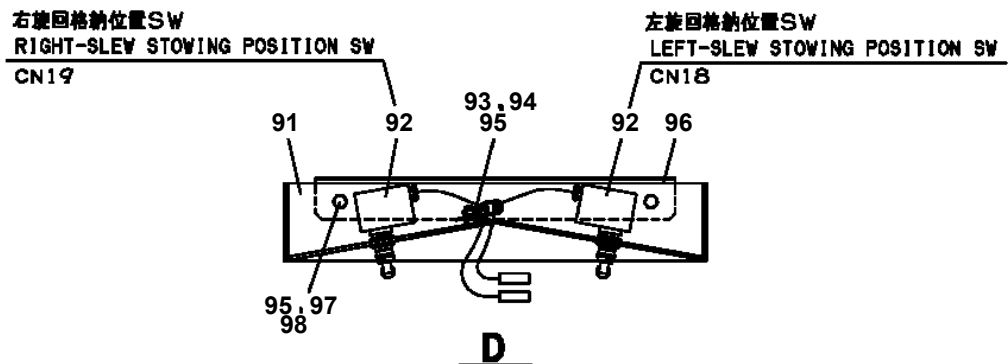
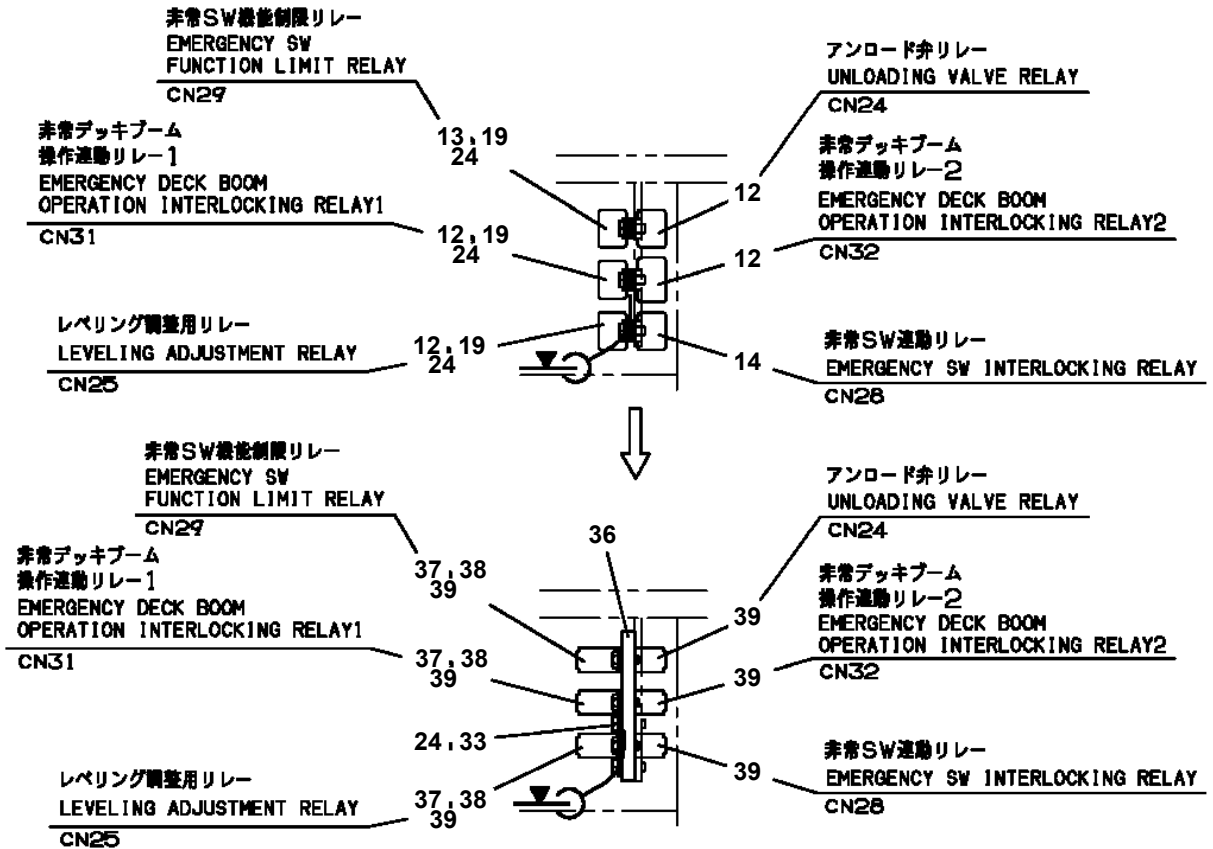
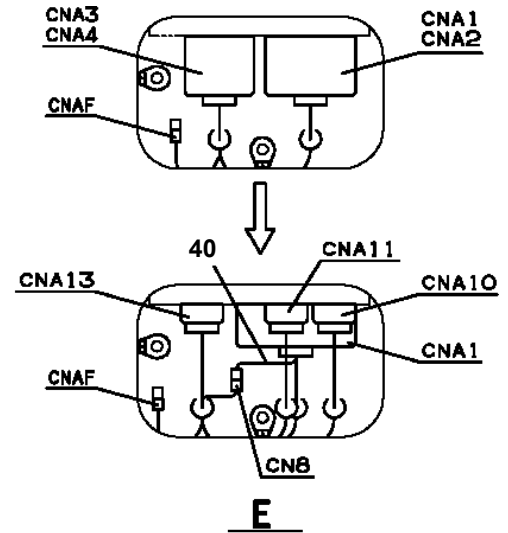
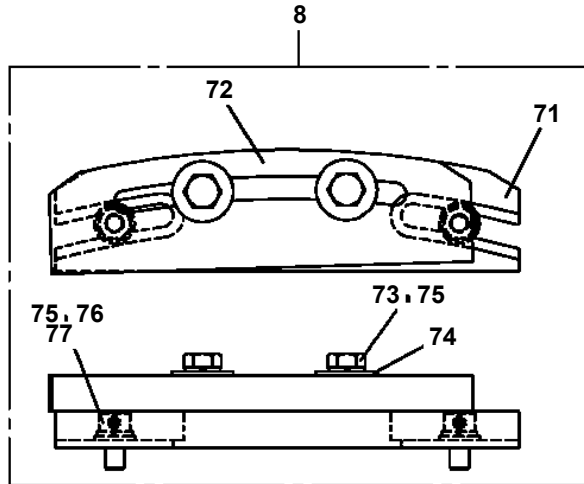


アウトリガジャッキ上部 (4ヶ所)

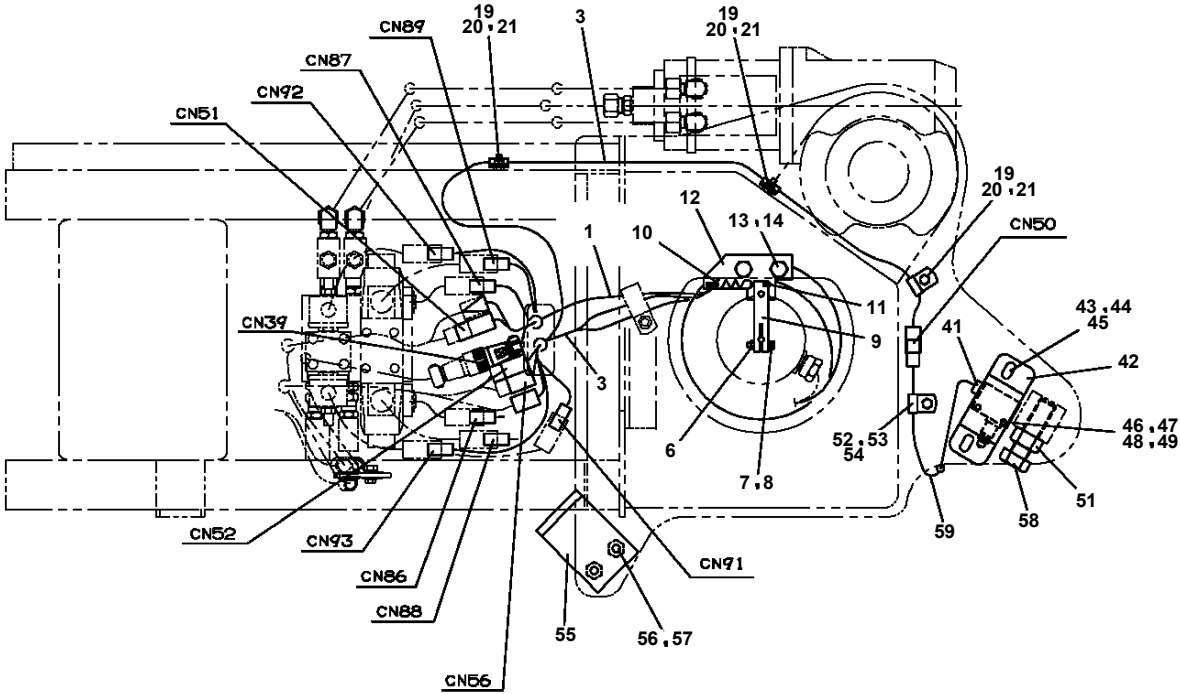
**BT-200-2-00001 UPPER
PN1014976-05 ELEC.ASSY (BOOM)**



**BT-200-2-00001 UPPER
PN1014979-02 ELEC.ASSY (SWING FRAME)**

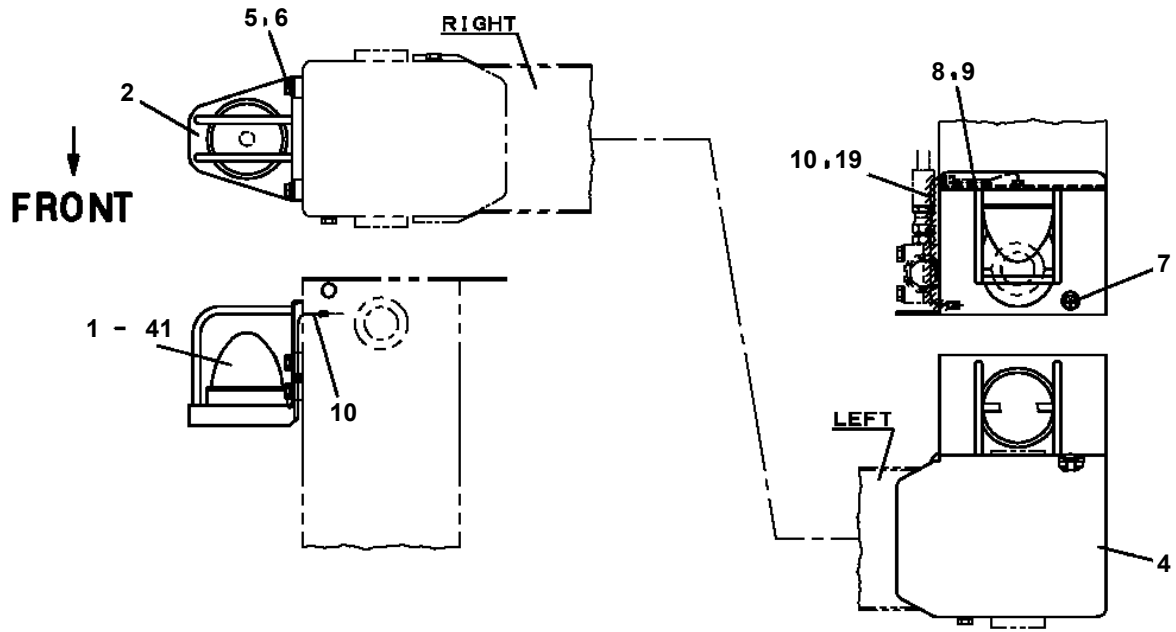


**BT-200-2-00001 UPPER
PN1014998-02 ELEC.ASSY (SWING FRAME)**

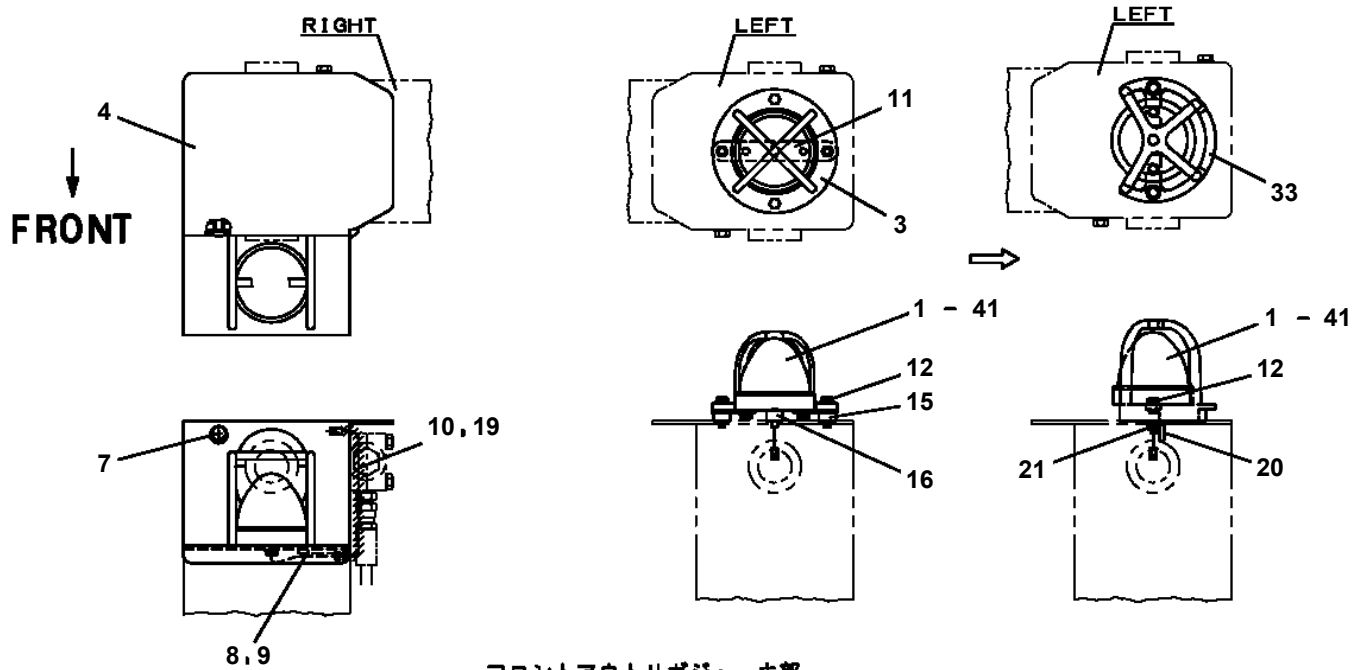


A

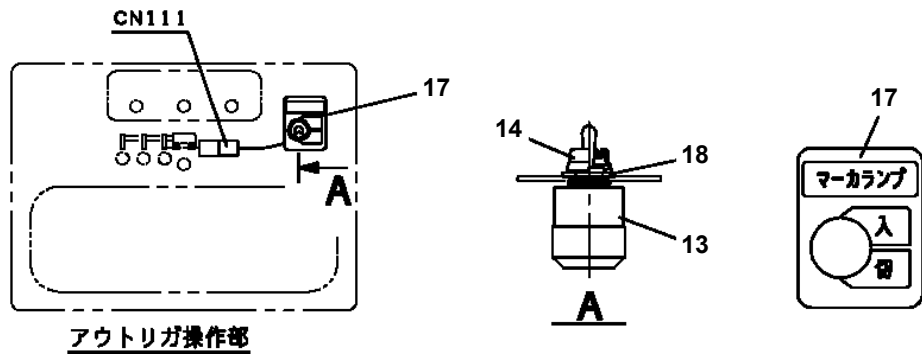
**BT-200-2-00001 UPPER
PN1080440-02 LAMP (FLICKER)**



リヤアウトリガジャッキ部



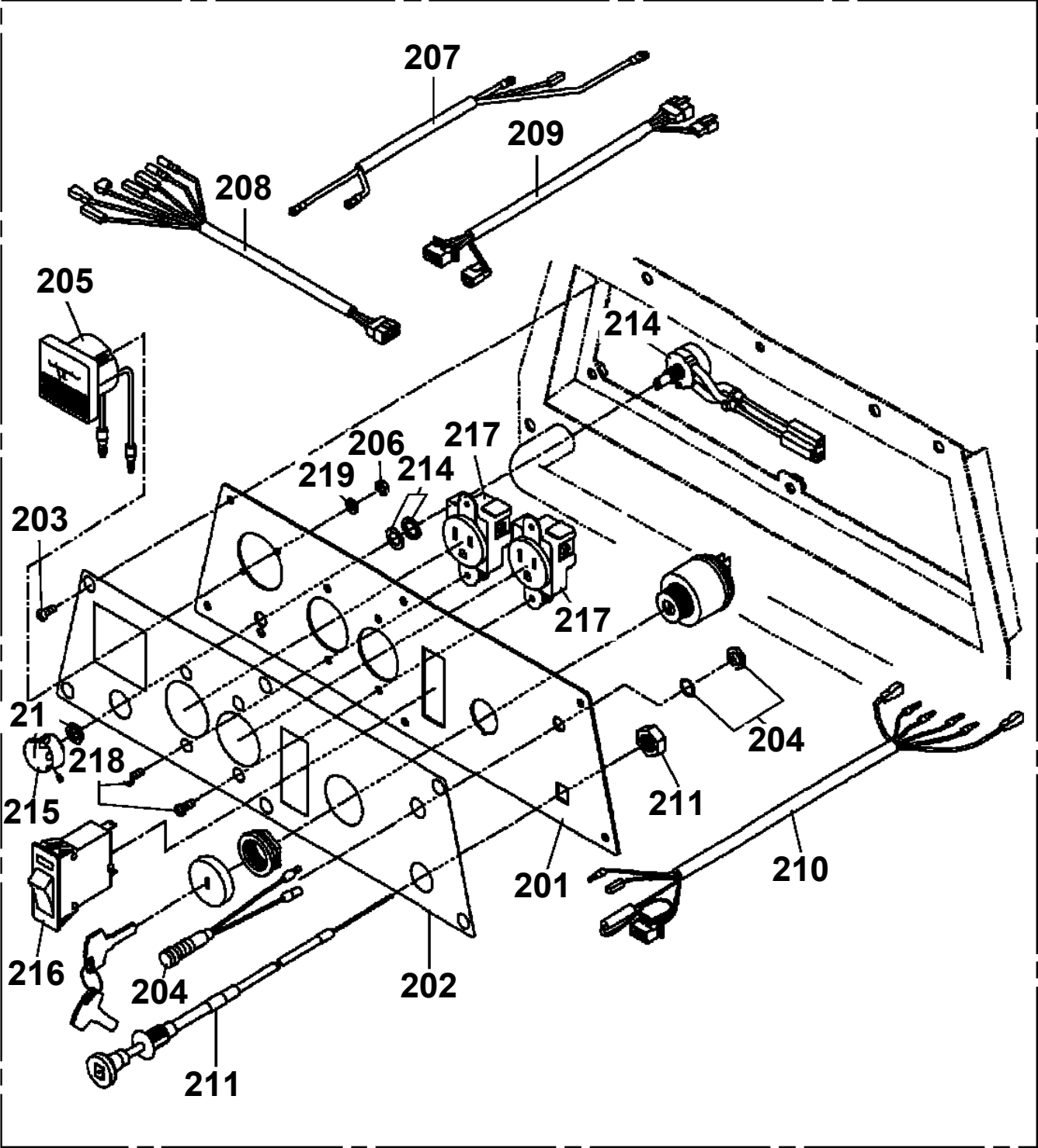
フロントアウトリガジャッキ部



アウトリガ操作部

BT-200-2-00001 UPPER
PN1430043-00 GENERATOR

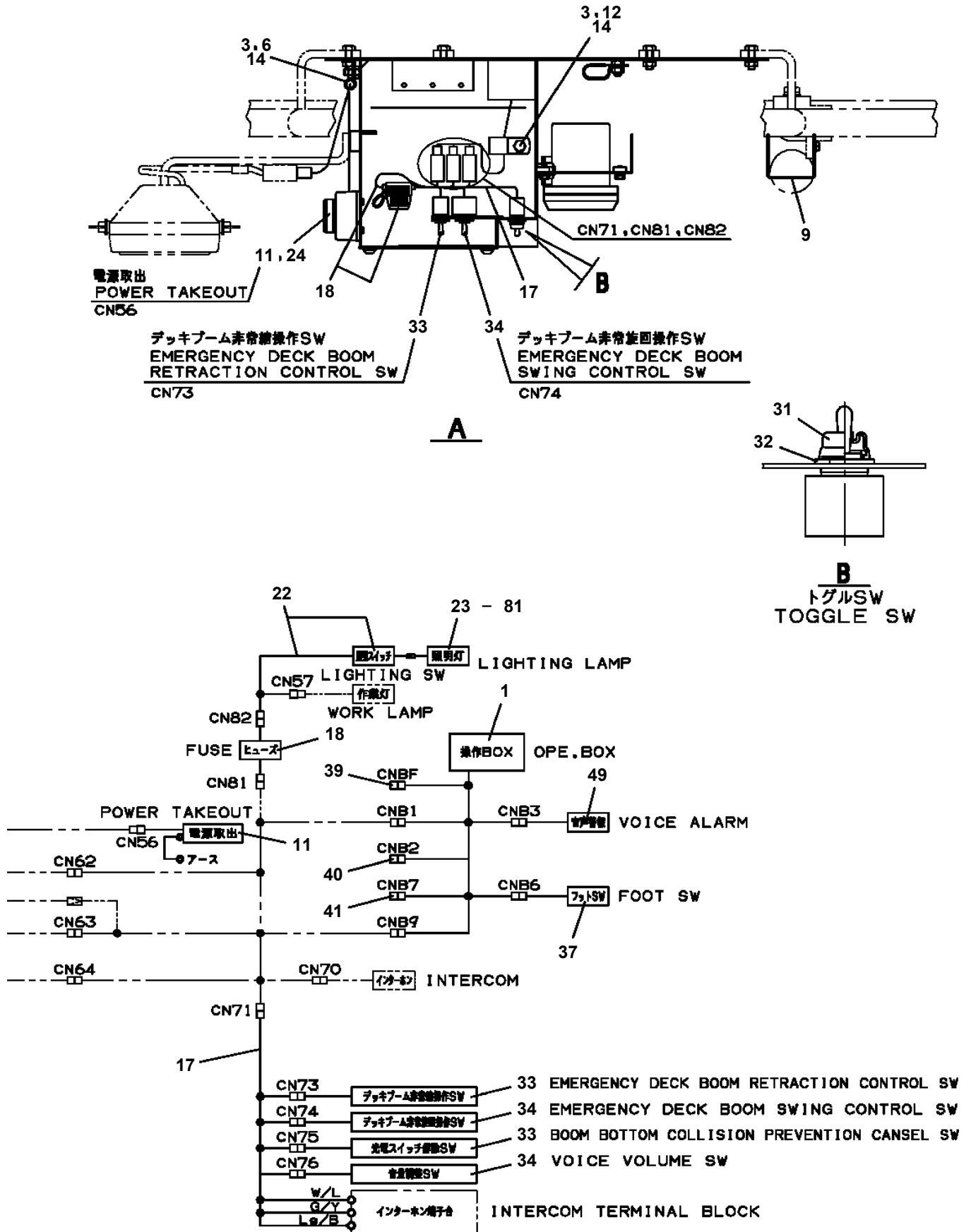
500



BT-200-2-00001 UPPER

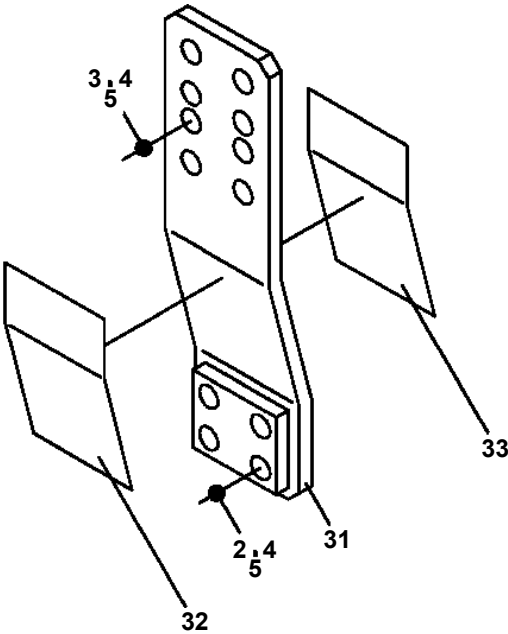
Pos No.	Parts No	Parts Name	Qty	Unit	Technical Data	Serial No (Start)	Serial No (End)
92	42394272021	PLATE,NAME (UPPER,LOWER,ACCELE)	1				
93	44390611011	NAME PLATE ASSY	2				HB5520
	44390611011	NAME PLATE ASSY	1			HB5521	

BT-200-2-00001 UPPER
PO5140003-01 OPE.ASSY,PLATFORM



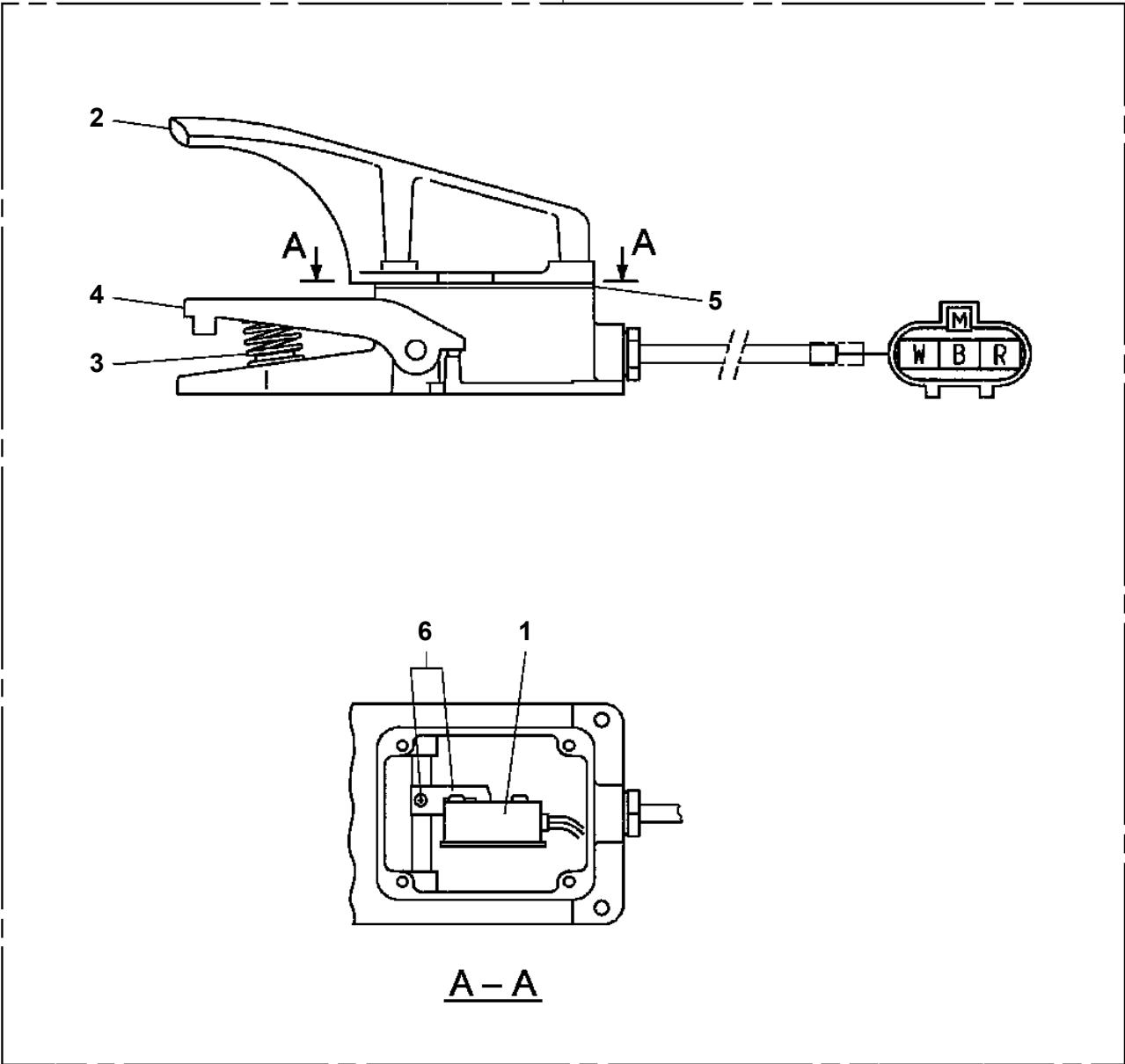
結線図
CONNECTION DIAGRAM

BT-200-2-00001 UPPER
PS5420035-01 SUPPORT ASSY(POST FIXED)

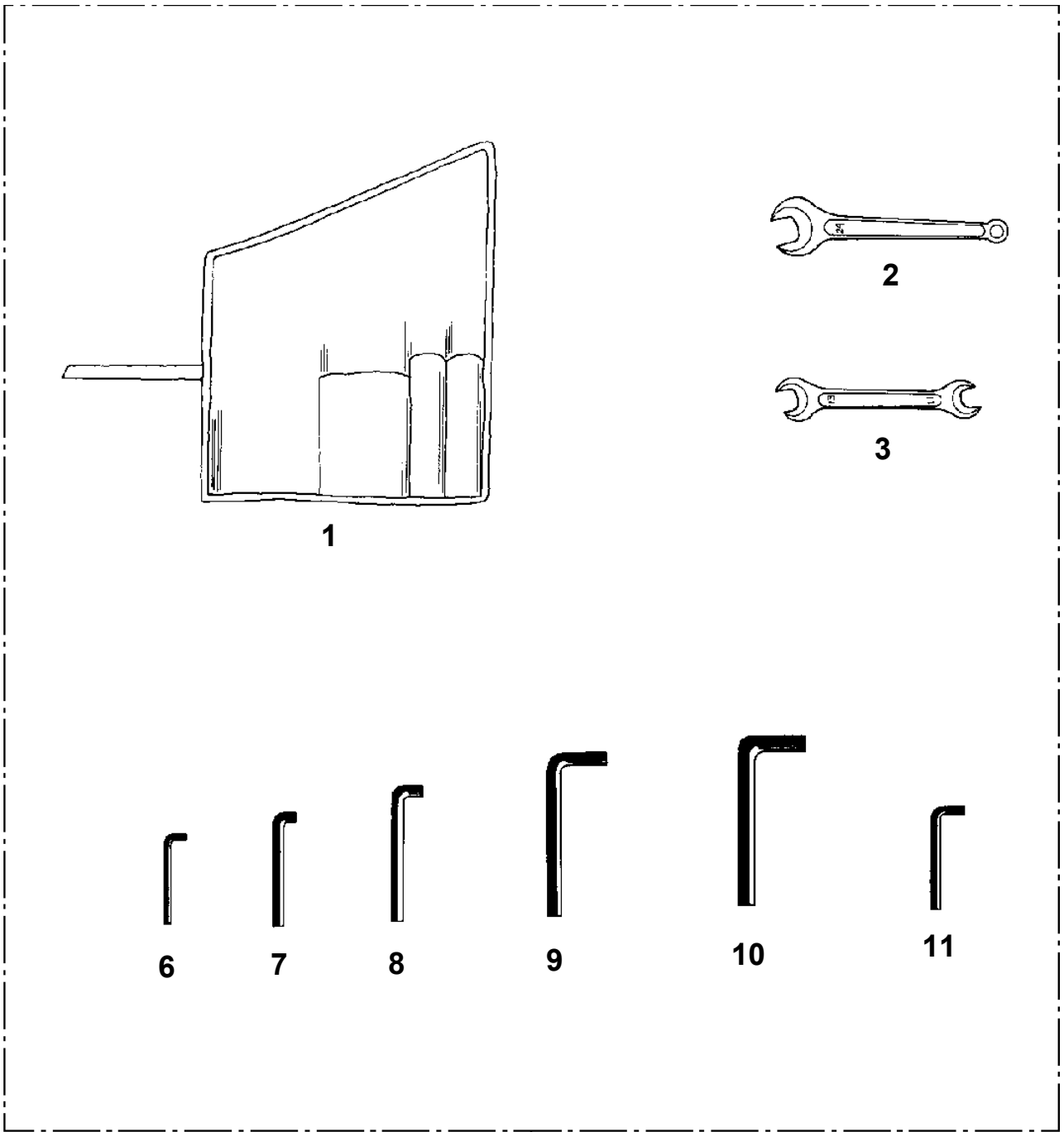


BT-200-2-00001 UPPER
PS5530449-00 SWITCH ASSY

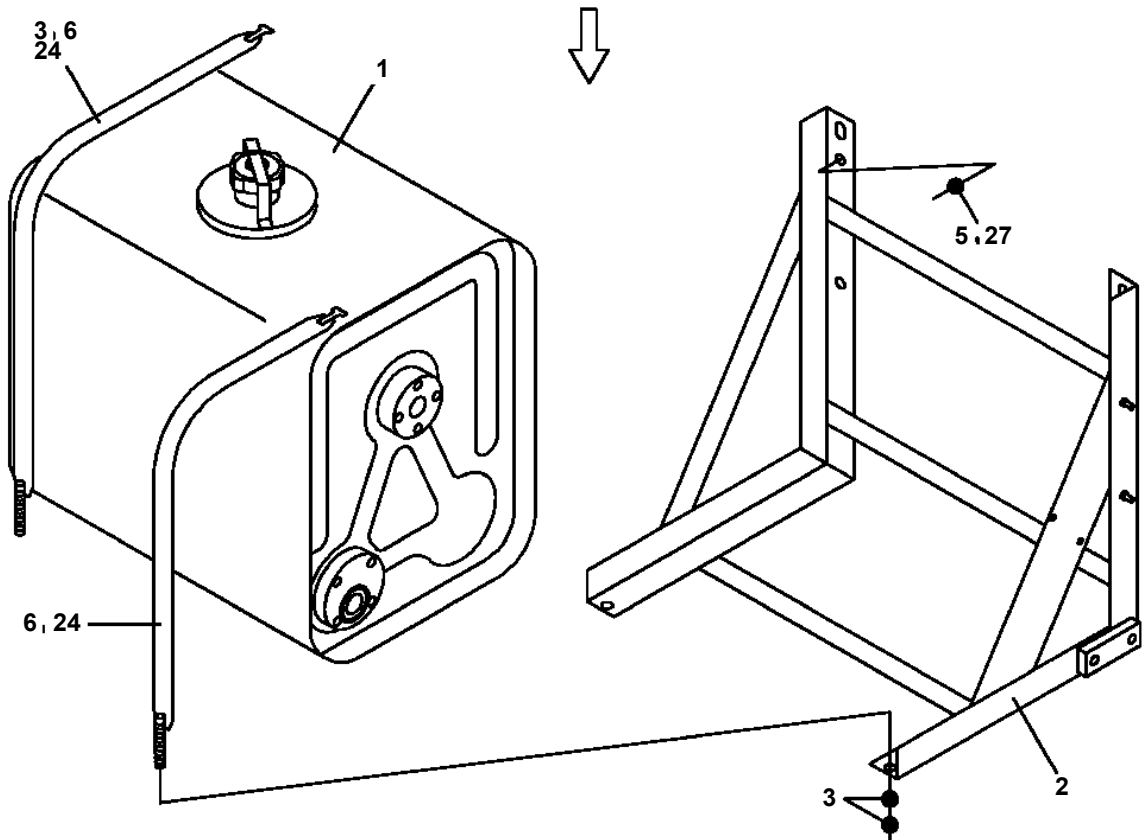
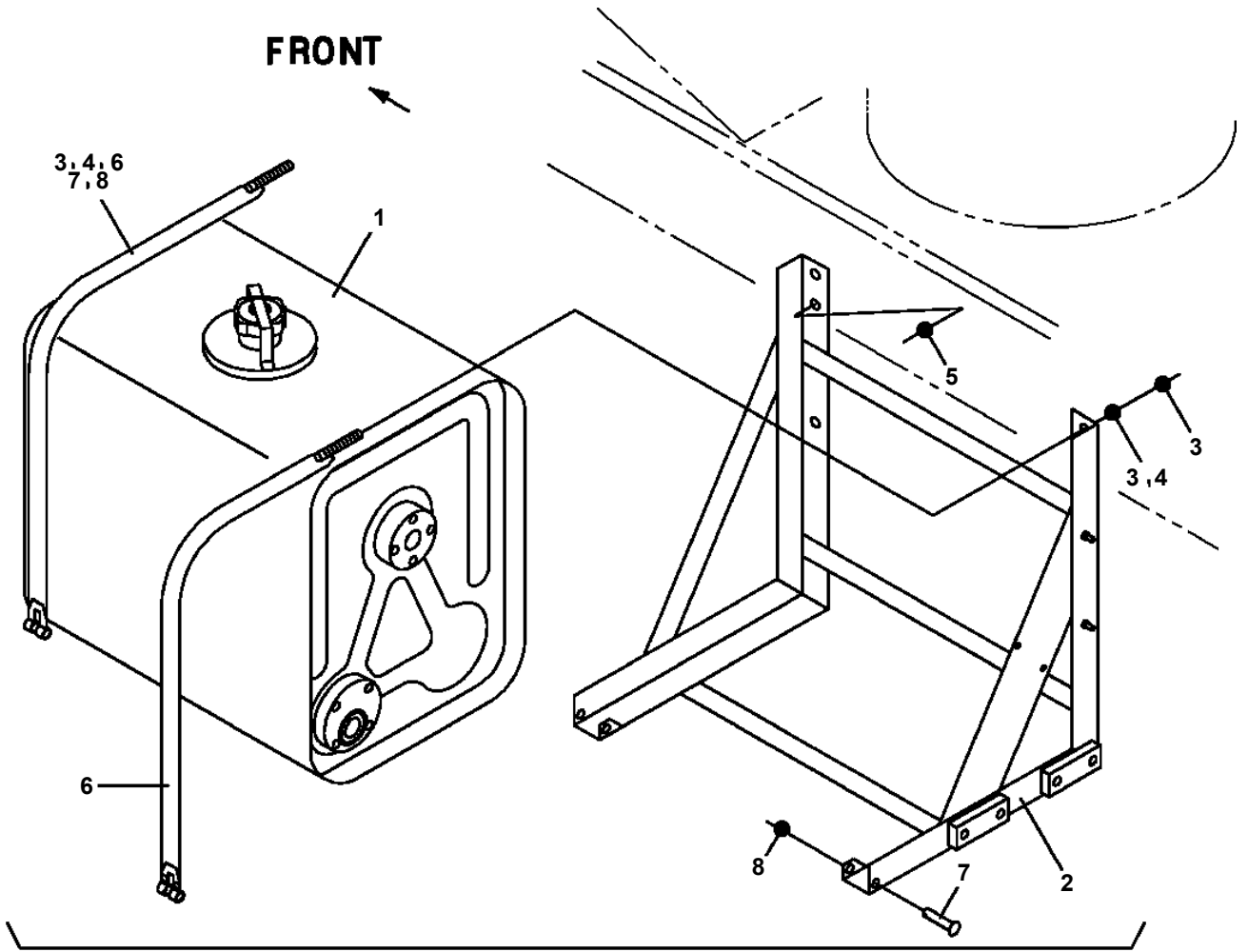
100



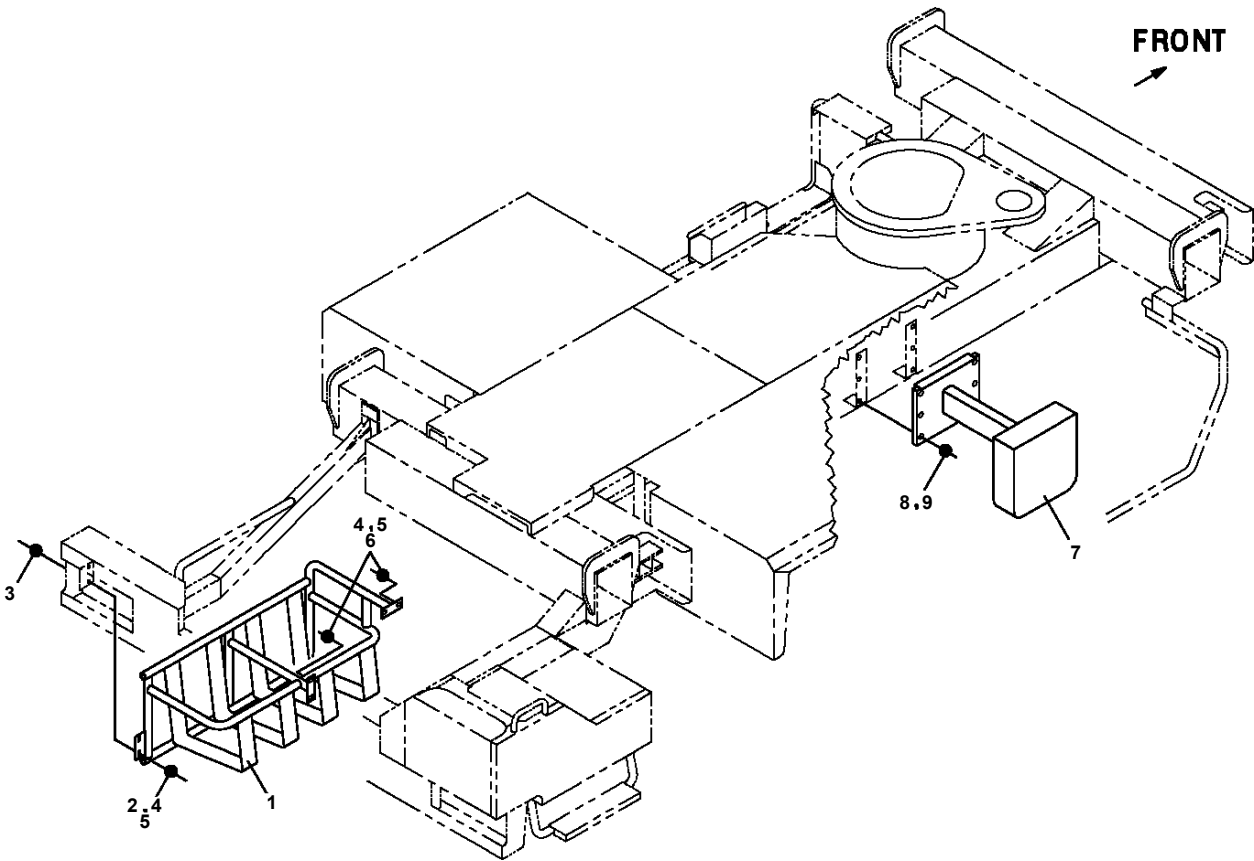
**BT-200-2-00001 UPPER
PW1030015-01 TOOLS**



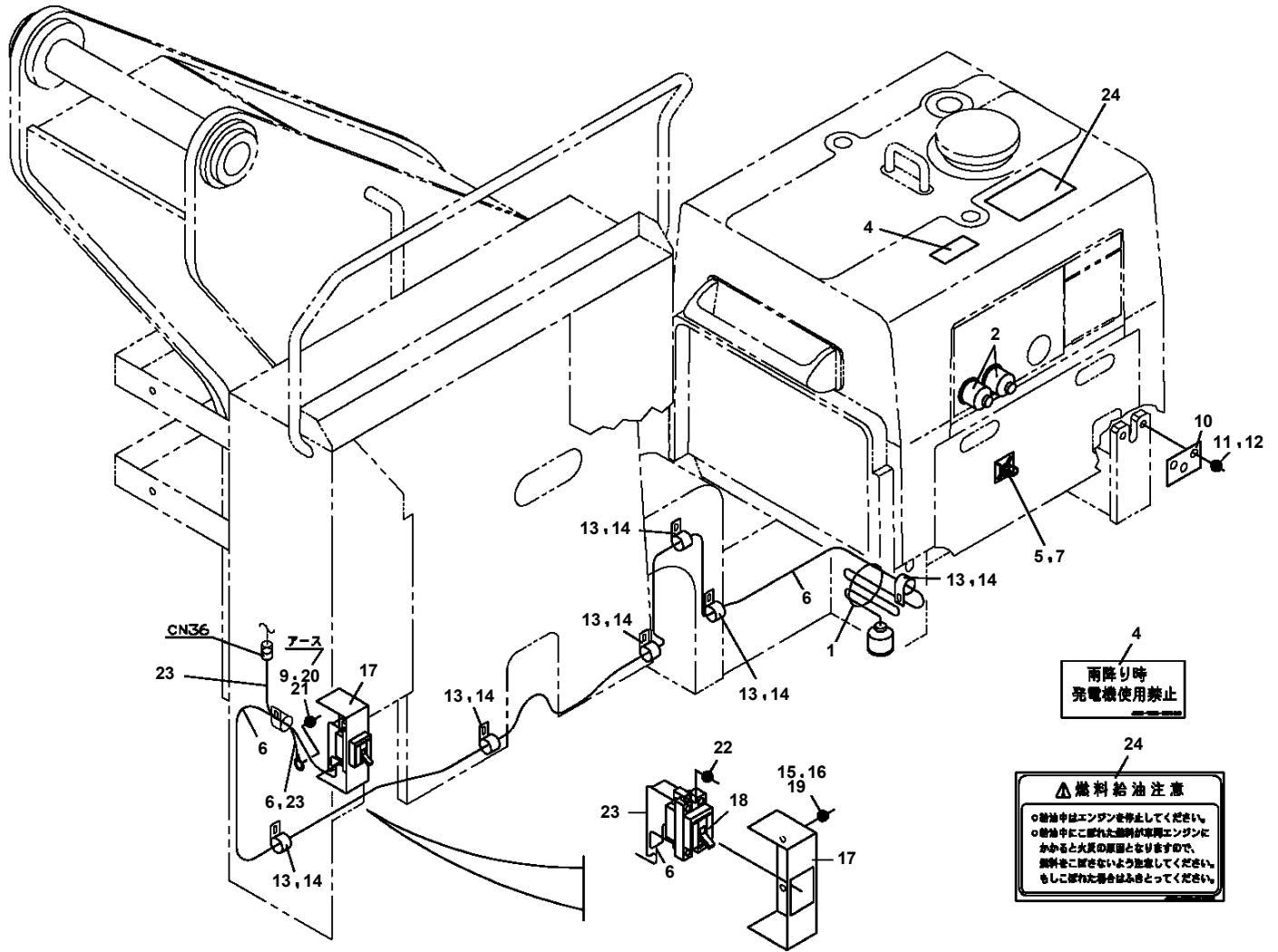
**BT-200-2-00001 UPPER
PX1100302-01 TANK SUPPORT**



**BT-200-2-00001 UPPER
PX1270164-00 WOOD BLOCK**



**BT-200-2-00001 UPPER
PX5420015-00 MOUNT ASSY,GENERATOR**



CLICK HERE TO **DOWNLOAD** THE COMPLETE MANUAL

- Thank you very much for reading the preview of the manual.
- You can download the complete manual from: www.heydownloads.com by clicking the link below



- Please note: If there is no response to CLICKING the link, please download this PDF first and then click on it.

CLICK HERE TO **DOWNLOAD** THE COMPLETE MANUAL