

## **BT-100-1-00002 UPPER**

**PB1000337-03 HYDRAULIC PRESSURE GENERATING SYSTEM**

**PD1000318-02 SWING SYSTEM**

**PE1000317-02 ELEVATING SYSTEM**

**PG1000292-02 TELESCOPING SYSTEM**

**PJ3000066-02 PLATFORM SYSTEM**

**PK1000328-00 FRAME**

**PL1000328-03 CONTROL DEVICES**

**PN1000241-03 ELECTRIC EQUIPMENT**

**PO1000131-03 INDICATION PLATES**

**PW1000028-00 ACCESSORIES & TOOLS**

**PX1000345-02 MOUNTING PARTS**

**PY1001006-00 OPTIONS**

**ASSEMBLY**

CLICK HERE TO **DOWNLOAD** THE COMPLETE MANUAL

- Thank you very much for reading the preview of the manual.
- You can download the complete manual from: [www.heydownloads.com](http://www.heydownloads.com) by clicking the link below



- Please note: If there is no response to CLICKING the link, please download this PDF first and then click on it.

CLICK HERE TO **DOWNLOAD** THE COMPLETE MANUAL

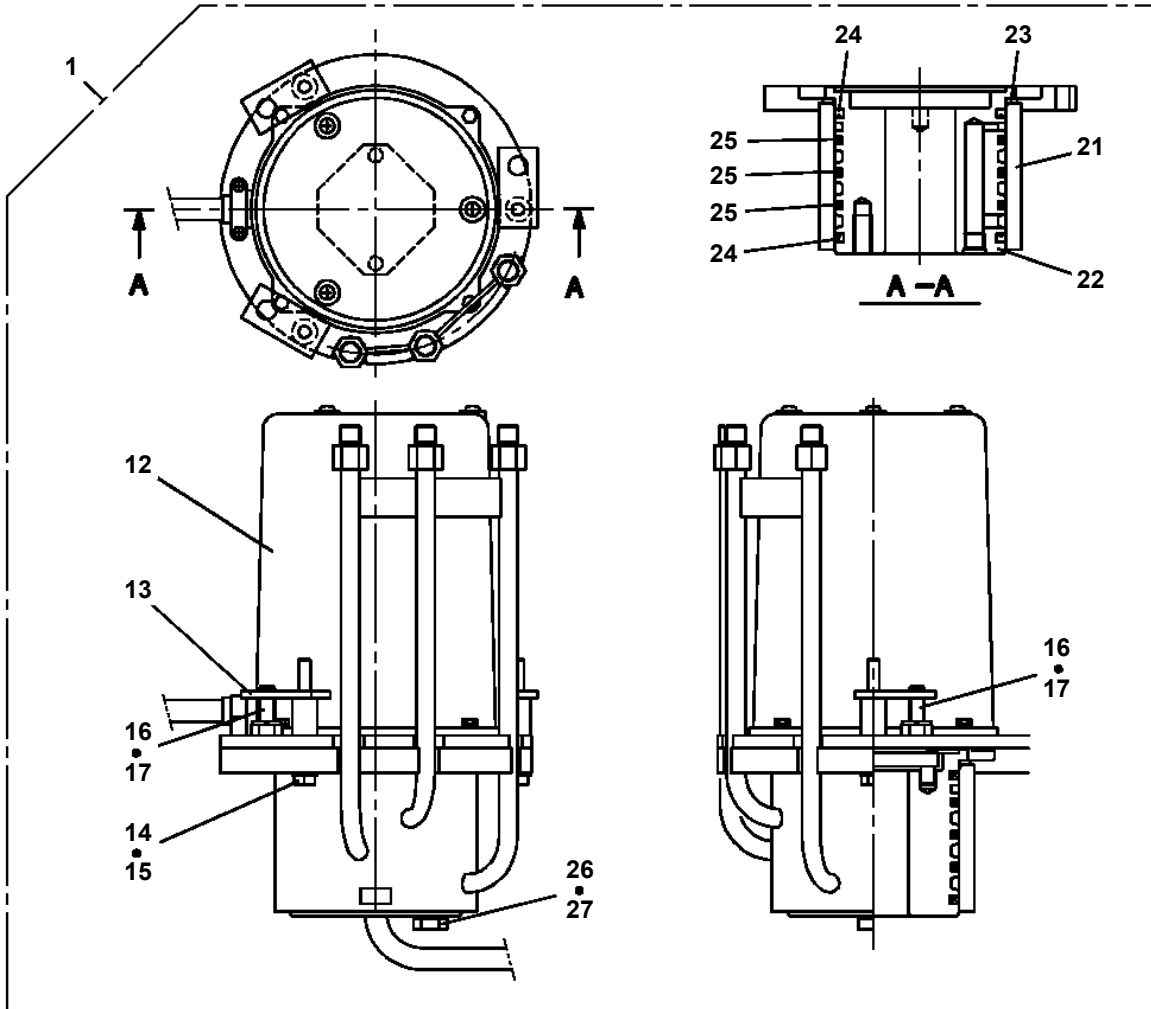
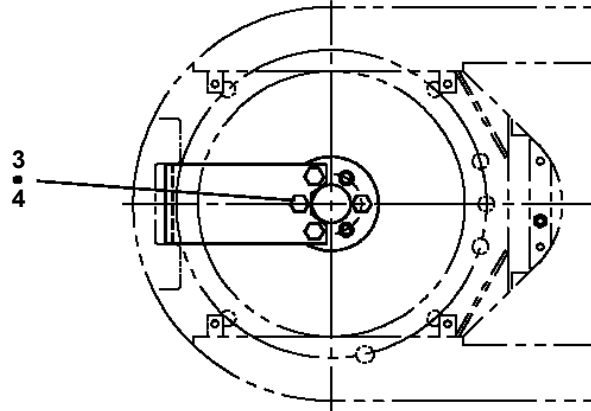
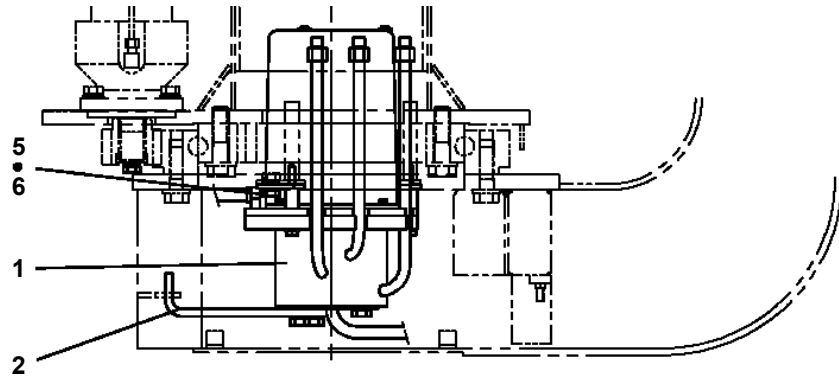
# BT-100-1-00002 UPPER

Pos No.	Parts No	Parts Name	Qty	Unit	Technical Data	Serial No (Start)	Serial No (End)
1	(*****)	PLATFORM	1				
2	(*****)	PIPING,BOOM (1)	1				
3	(*****)	PIPING,BOOM (2)	1				
5	(*****)	PIPING,PLATFORM	1				
6	(*****)	PIPING,PLATFORM	1				
7	(*****)	CYLINDER,SLIDE FLOOR (MOUNT)	1				
8	(*****)	REDUCER,PLATFORM SWING SPEED	1				

# BT-100-1-00002 UPPER

Pos No.	Parts No	Parts Name	Qty	Unit	Technical Data	Serial No (Start)	Serial No (End)	Remarks	Pages
1	(***** )	ACCESSORIES	1						000100
2	42460015001	TOOLS	1						000101

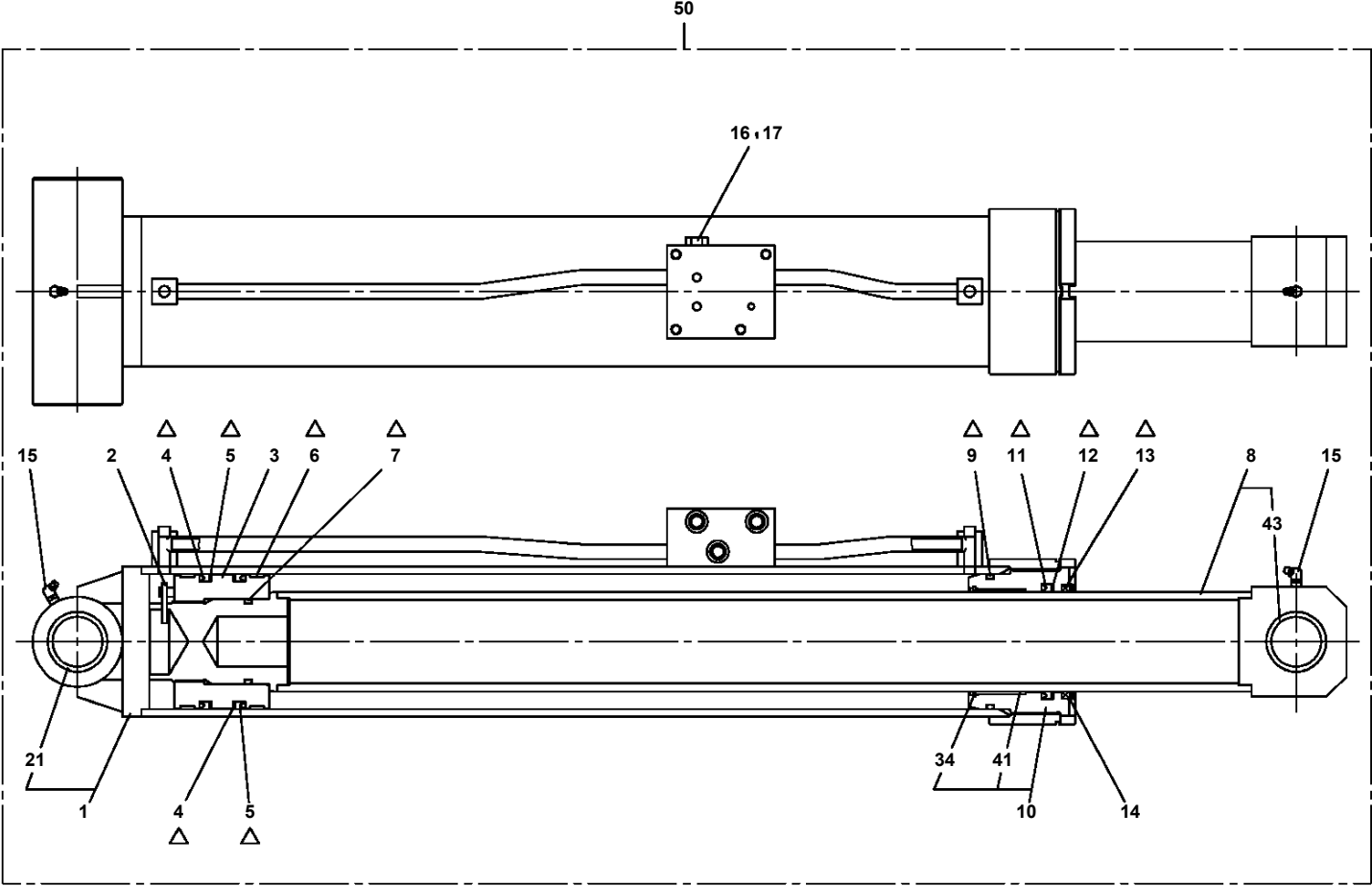
**BT-100-1-00002 UPPER**  
**PB1300284-00 JOINT, ROTARY**



# BT-100-1-00002 UPPER

Pos No.	Parts No	Parts Name	Qty	Unit	Technical Data	Serial No (Start)	Serial No (End)	R
1	42343134100	FRAME	1				HB5375	
	42343134350	FRAME	1			HB5376		
2	90101210020	BOLT	3		M10X20			
3	90302041001	WASHER,SPRING	9		10		HB5259	
	90302041001	WASHER,SPRING	11		10	HB5260		
5	90101210025	BOLT	4		M10X25			
7	90101208060	BOLT	6		M8X60			
8	90302040801	WASHER,SPRING	11		8			
10	90131508040	BOLT,HEXAGON SOCKET	2		M8X40			
12	81408000160	PIPE,STEEL	1	M	12X1.4T			
13	81408000160	PIPE,STEEL	1	M	12X1.4T			
14	81408000210	PIPE,STEEL	1	M	15X2.0T			
15	81408000160	PIPE,STEEL	1	M	12X1.4T			
16	81408000210	PIPE,STEEL	1	M	15X2.0T			
17	81408000241	PIPE,STEEL	1	M	18X1.9T			
18	37002433310	HOSE	1		L=420			
19	82100002018	CLAMP	3		WR35			
20	90201200800	NUT	3		M8			
21	37002509860	HOSE	1		L=460			
22	91803600400	CLIP	4		D=27-40			
23	42343134600	FITTING,FLANGE	1					
24	90131510025	BOLT,HEXAGON SOCKET	2		M10X25			
25	91001203000	O-RING	1		1A G30			
26	37002417360	HOSE	2		L=1800			
27	37002417930	HOSE	1		L=1800		HB5259	
28	80400160129	JOINT	1					
29	91002801400	O-RING	1		1B P14			
30	80400160127	JOINT	2					
31	91002801100	O-RING	2		1B P11			
32	91810130240	FASTENER	5					
33	81408000160	PIPE,STEEL	1	M	12X1.4T			
34	81408000210	PIPE,STEEL	1	M	15X2.0T			
35	81408000210	PIPE,STEEL	1	M	15X2.0T			
37	82100001412	TUBE,SPIRAL	4	M	SE-12BK			
39	90101210050	BOLT	2		M10X50	HB5260		
40	81408000160	PIPE,STEEL	1	M	12X1.4T	HB5260		
41	81408000160	PIPE,STEEL	1	M	12X1.4T	HB5260		
42	37002412880	HOSE	1		L=475	HB5260		
50	37002459470	HOSE	1		L=1730	HB5260		
51	36602610000	VALVE,RELIEF	1				HB5371	
	36606430000	VALVE,RELIEF	1			HB5372	HB5375	
52	42340240500	FILTER,OIL	1					
	42340240500	FILTER,OIL	2				HB5259	
	42340240500	FILTER,OIL	3			HB5260		
53	91002801100	O-RING	11		1B P11			
	91002801100	O-RING	3		1B P11		HB5259	
	91002801100	O-RING	10		1B P11	HB5260		
54	80302090161	FITTING	1		KCO12-030N		HB5259	
	80302090161	FITTING	3		KCO12-030N			
	80302090161	FITTING	2		KCO12-030N	HB5260		
55	91002801400	O-RING	16		1B P14		HB5259	
	91002801400	O-RING	6		1B P14			
	91002801400	O-RING	19		1B P14	HB5260		
56	80316070040	PLUG	1		PF1/4			
	80316070040	PLUG	2		PF1/4		HB5070	
57	80302090181	FITTING	2		KCO15-030N			
58	80305100150	FITTING,TEE	1					
61	42343134320	JOINT	1					
62	36623640000	VALVE,PILOT CHECK	1				HB5239	
	36623640001	VALVE ASSY,CHECK	1			HB5240		
63	90131508050	BOLT,HEXAGON SOCKET	4		M8X50			
64	80400160127	JOINT	1					
	80400160127	JOINT	1			HB5260		

**BT-100-1-00002 UPPER  
PE1010272-02 CYLINDER,ELEVATING**

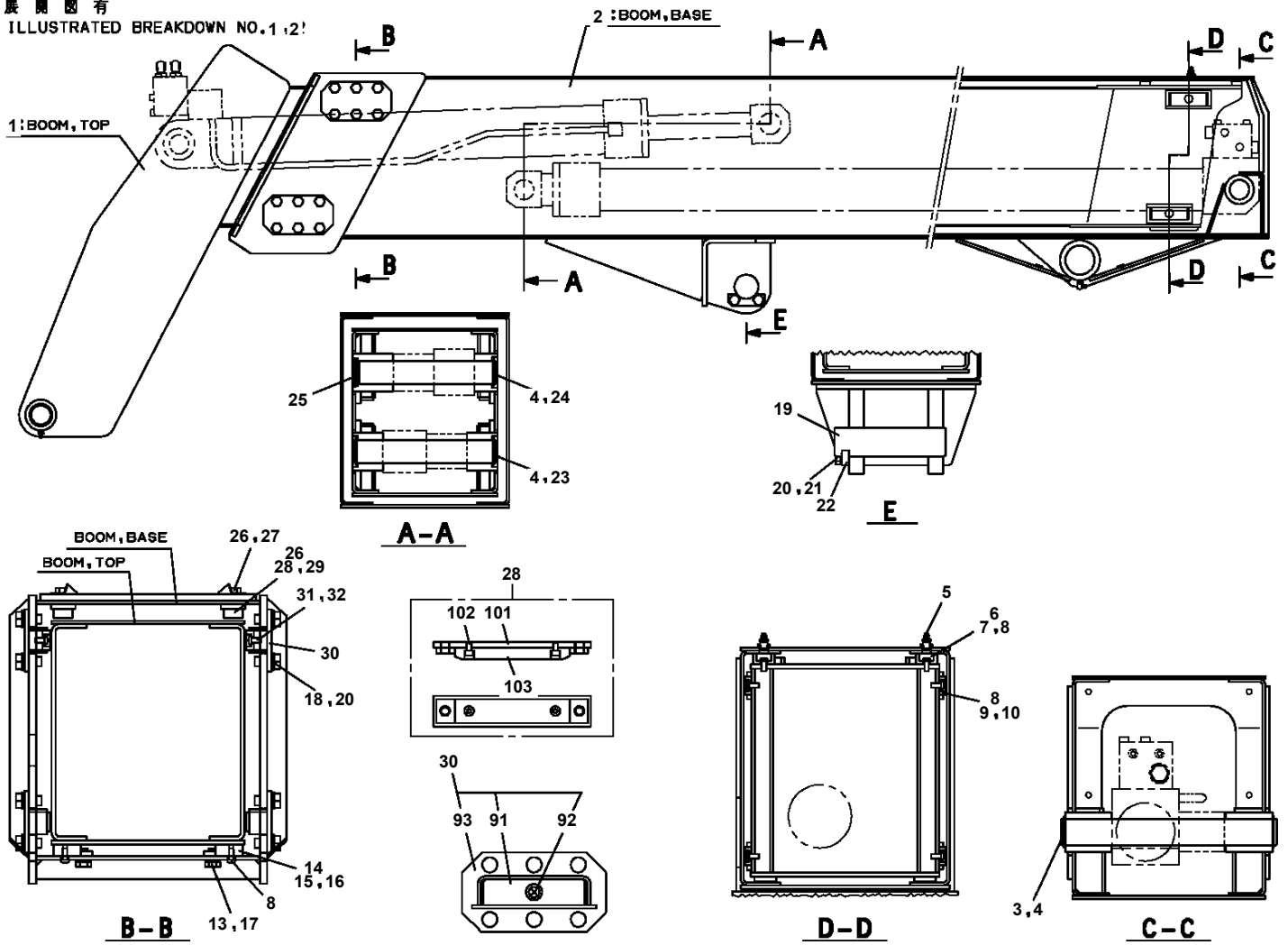


Δ:PACKING SET KEY NO.61 (KEY NO.4,5,6,7,9,11,12,13)

**BT-100-1-00002 UPPER  
PG1010481-04 BOOM**

展開圖有

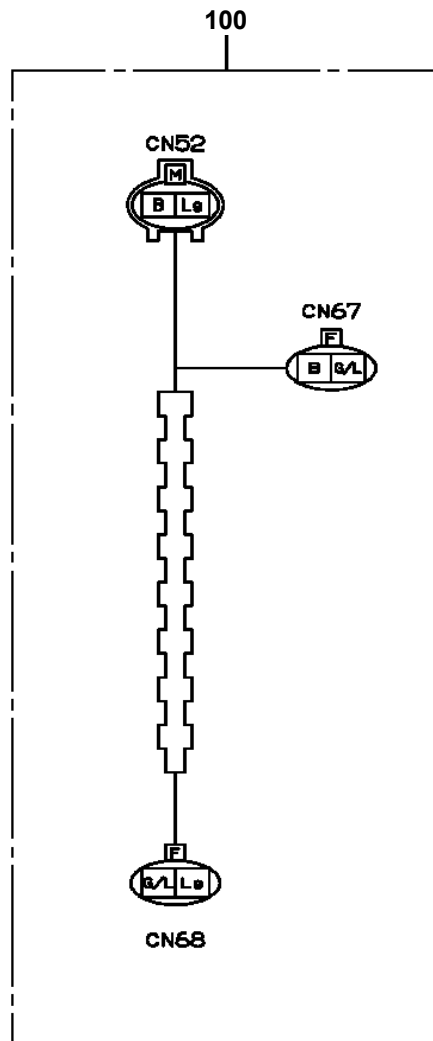
ILLUSTRATED BREAKDOWN NO.1,2'



**BT-100-1-00002 UPPER**

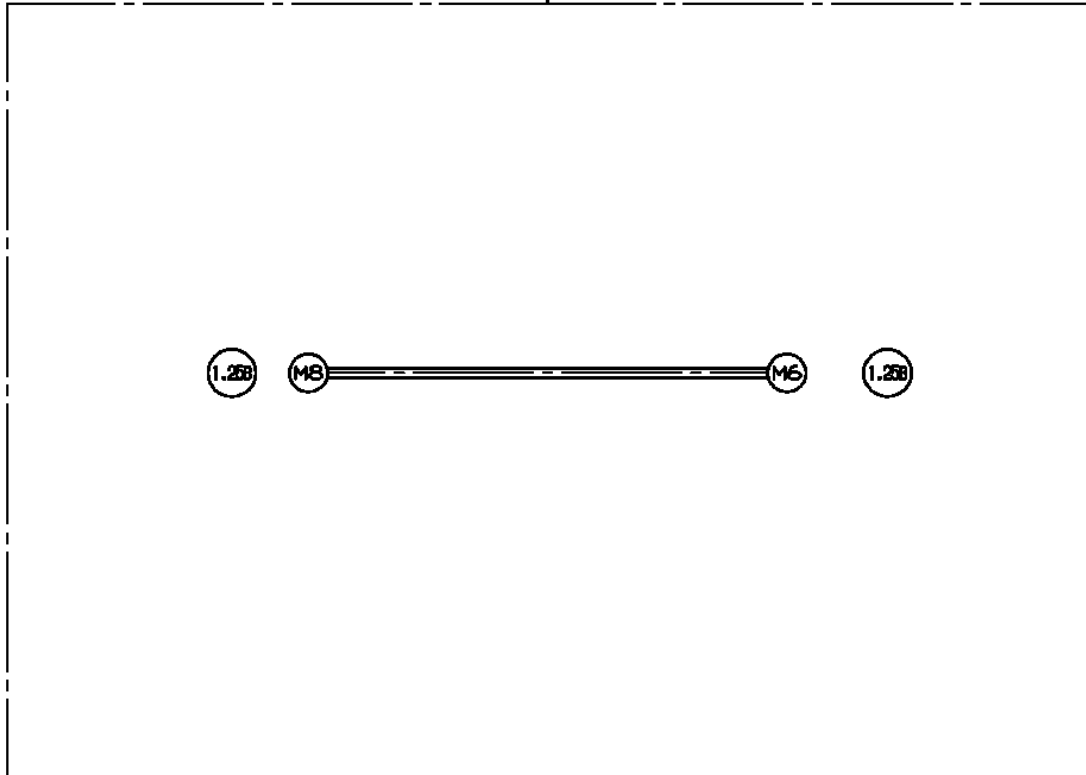
Pos No.	Parts No	Parts Name	Qty	Unit	Technical Data	Serial No (Start)	Serial No (End)	Remark
1	91660006501	SEAL,DUST	1					
2	91430206501	RING,BACKUP	1					
3	91694106500	PACKING	1					
4	36016889530	COVER ASSY,ROD	1					
5	91002908500	O-RING	1		1B G85			
6	36014643001	ROD	1					
7	36016882000	CYLINDER	1					
8	91002803600	O-RING	1		1B P36			
9	91431207002	RING,BACKUP	2					
10	91684008501	PACKING	2					
11	36016883000	PISTON	1					
12	91302208504	BEARING,PLAIN	2					
13	37001602080	NUT	1					
14	80801006530	BEARING,PLAIN	2					
15	80612110700	RING,RITAINING	2		AR70			
16	91410108500	RING,BACKUP	1					
41	36016889900	PACKING SET	1		65X85			
101	36016880000	CYLINDER,TELESCOPING	1					
102	36601310000	VALVE,COUNTERBALANCE	1					
103	90172108080	BOLT,HEXAGON SOCKET	4		M8X80			

BT-100-1-00002 UPPER  
PH5031665-00 HARNESS



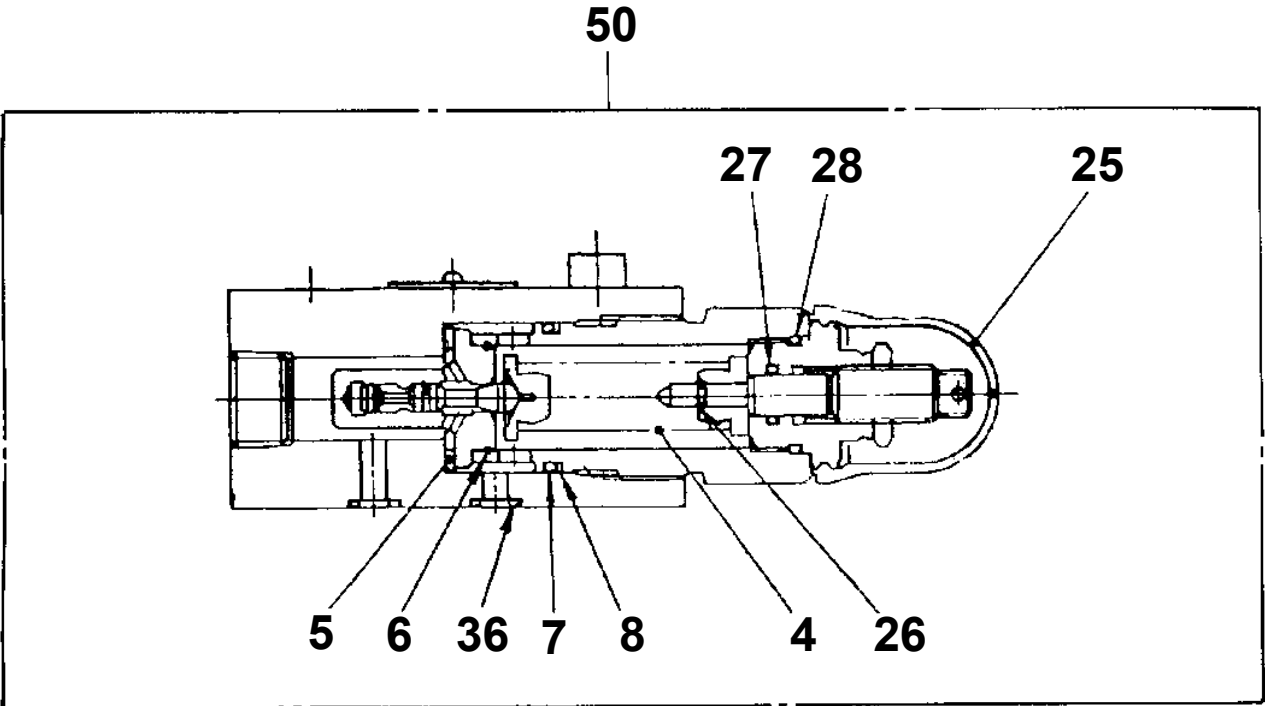
**BT-100-1-00002 UPPER  
PH5034252-00 HARNESS**

100



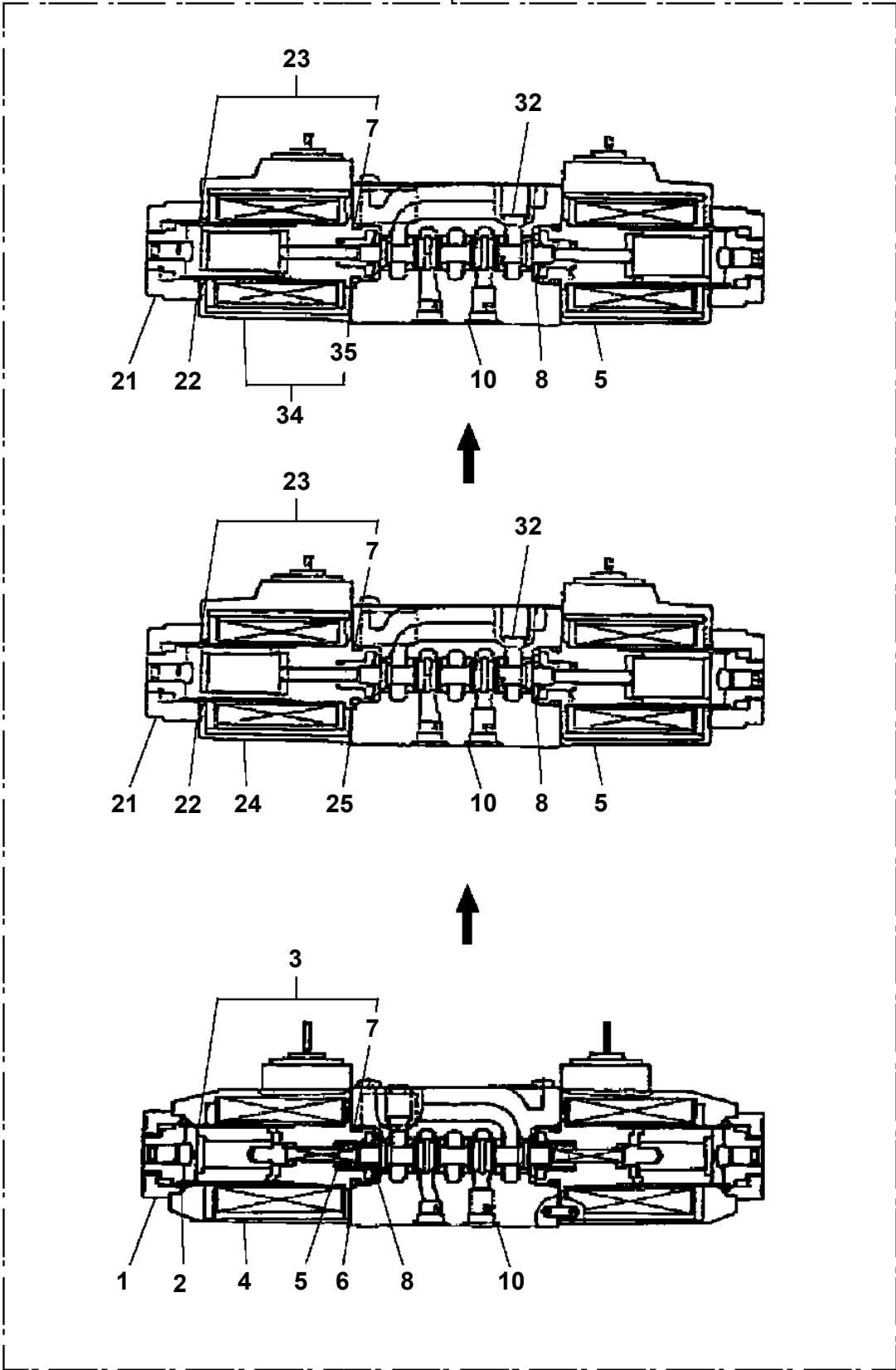
**BT-100-1-00002 UPPER**  
**PI1100058-00 VALVE,RELIEF**

VALVE, RELIEF

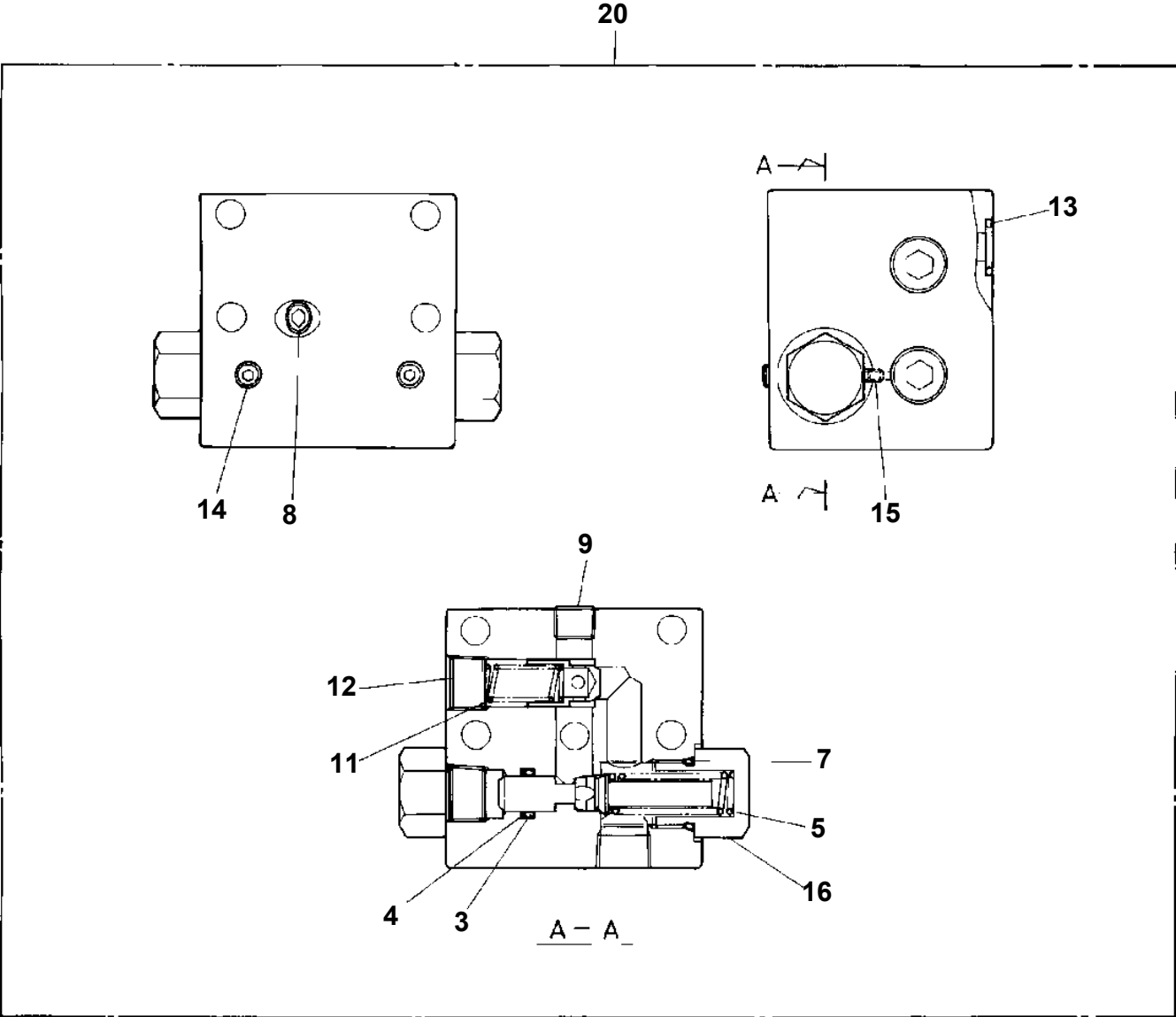


**BT-100-1-00002 UPPER  
PI1120166-02 VALVE,SOLENOID**

50



**BT-100-1-00002 UPPER**  
**PI1250027-00 VALVE, COUNTERBALANCE**



CLICK HERE TO **DOWNLOAD** THE COMPLETE MANUAL

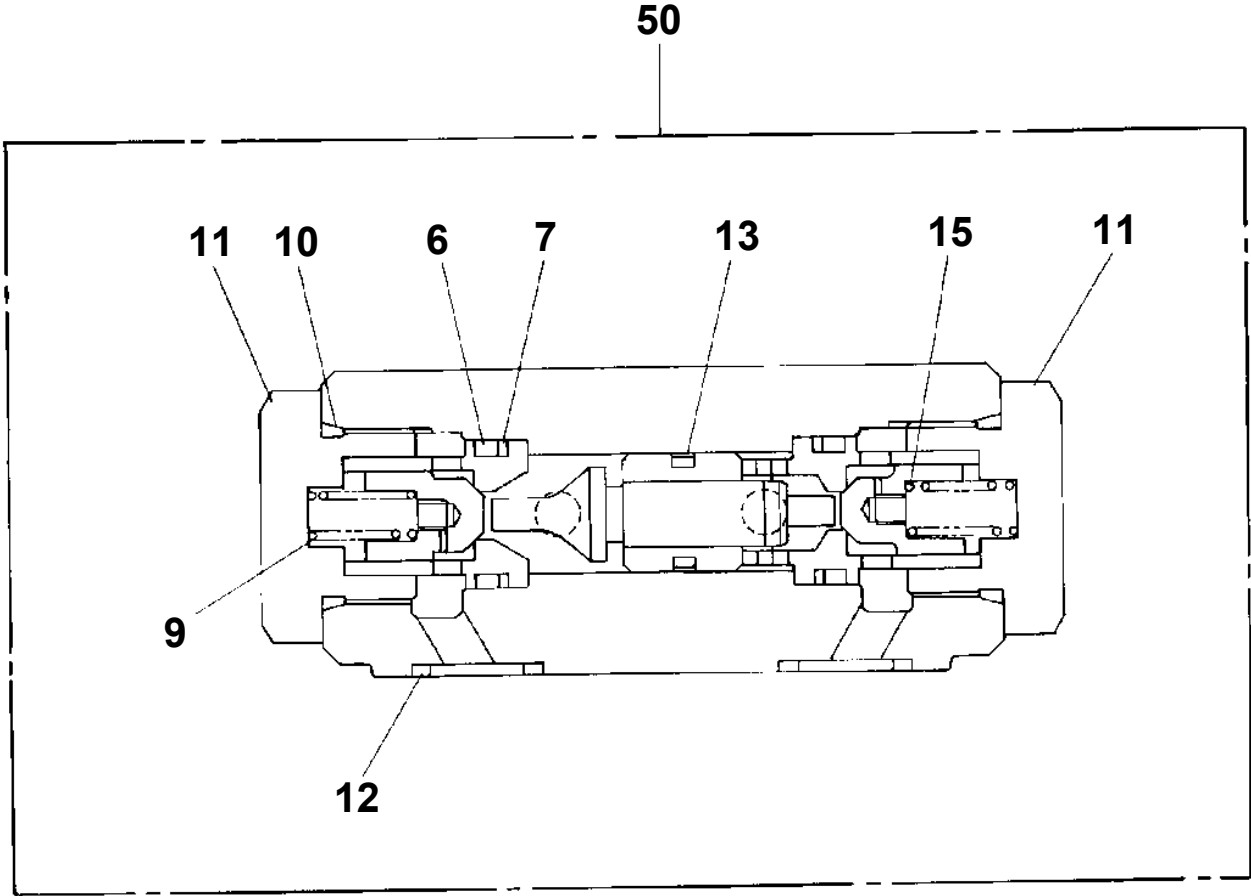
- Thank you very much for reading the preview of the manual.
- You can download the complete manual from: [www.heydownloads.com](http://www.heydownloads.com) by clicking the link below



- Please note: If there is no response to CLICKING the link, please download this PDF first and then click on it.

CLICK HERE TO **DOWNLOAD** THE COMPLETE MANUAL

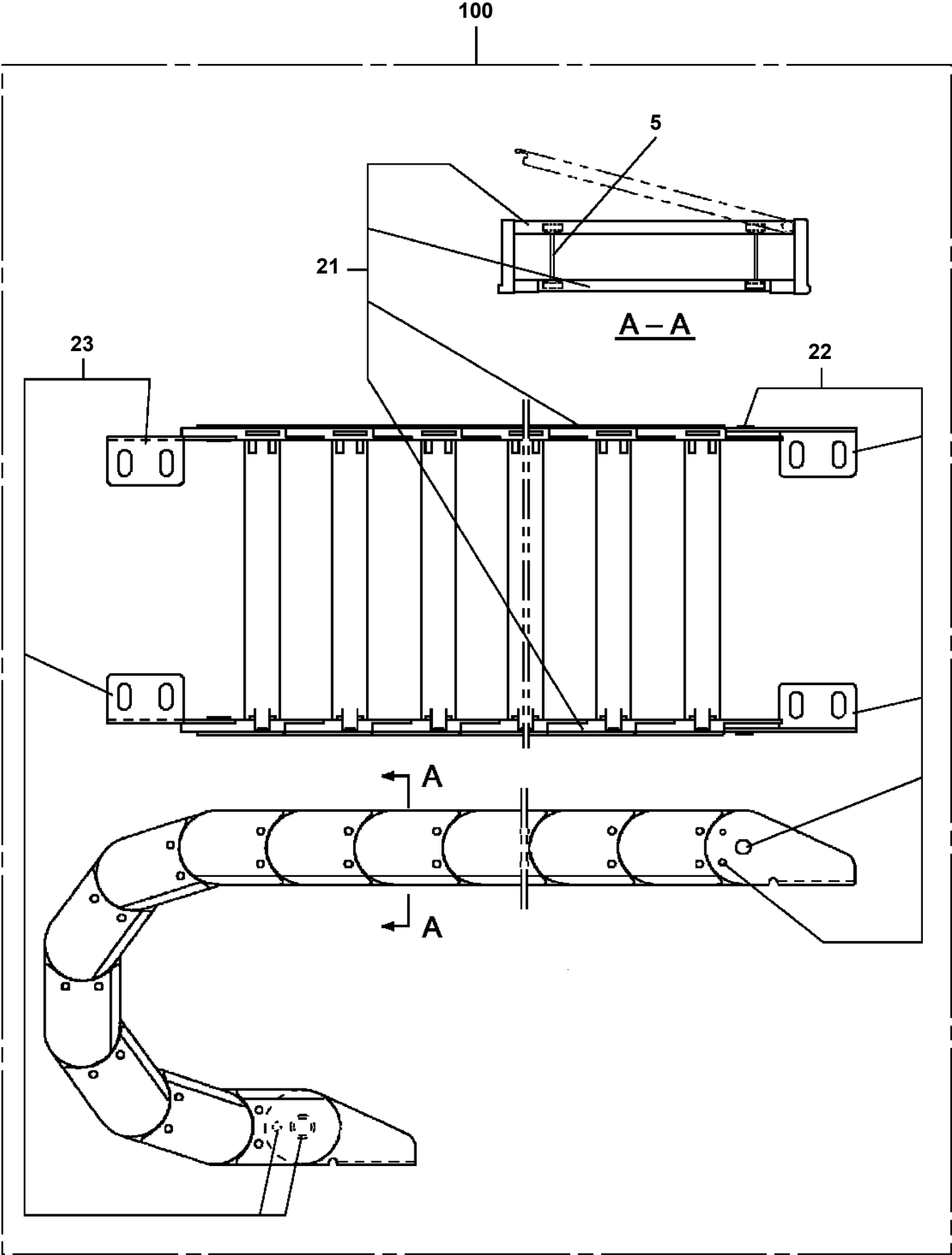
**BT-100-1-00002 UPPER  
PI1280049-00 VALVE,PILOT CHECK**



# BT-100-1-00002 UPPER

Pos No.	Parts No	Parts Name	Qty	Unit	Technical Data	Serial No (Start)	Serial No (End)	Remarks	Page
1	42343102101	SUPPORT	1						
2	42343102201	SUPPORT	1				HB5391		
	42345611100	SUPPORT	1			HB5392			
3	42343102301	SUPPORT	1						
5	90101208016	BOLT	12		M8X16				
6	80320020140	FITTING	1						
7	80320020080	FITTING	3		KUF12-030N				
8	80320020075	FITTING	2		KUF12-020N				
9	90101208025	BOLT	4		M8X25				
10	90201200800	NUT	4		M8				
11	90302040801	WASHER,SPRING	22		8				
12	90303070801	WASHER,PLAIN	4		8				
13	42343102401	SUPPORT	1						
14	90101208012	BOLT	6		M8X12				
15	37000136800	PIN	1						
16	80136340025	PIN,SPLIT	2		4X25				
17	37002457100	HOSE	1		L=1490				
18	37002457110	HOSE	1		L=1450				
19	37002457120	HOSE	1		L=1540				
20	37002457130	HOSE	1		L=1710 TO 1645				
21	37002457140	HOSE	1		L=1660 TO 1625				
22	90101210025	BOLT	2		M10X25				
23	90302041001	WASHER,SPRING	2		10				
24	42343102500	CLAMP	2						
25	42343102600	CLAMP	1						
26	37002457150	HOSE	1		L=1580				
27	37000302020	SPACER	1		L=18		HB5974		
	37000301830	SPACER	1		L=16	HB5975			
41	37002457170	HOSE	3		L=4240				
42	37002457160	HOSE	2		L=4240				
43	37002457180	HOSE	1		L=4240				
44	42343103200	SUPPORT	4				HB5391		
45	90302040801	WASHER,SPRING	14		8		HB5391		
	90302040801	WASHER,SPRING	6		8	HB5392			
46	90201200800	NUT	4		M8				
47	42343105001	SUPPORT ASSY	1				HB5391		
48	37002009030	PLATE,SLIDE	1						
49	90101208020	BOLT	16		M8X20		HB5391		
	90101208020	BOLT	8		M8X20	HB5392			
50	90303070801	WASHER,PLAIN	8		8				
51	90101206020	BOLT	16		M6X20				
52	90303070601	WASHER,PLAIN	16		6				
53	90302040601	WASHER,SPRING	16		6				
54	42343104001	SUPPORT	1				HB5391		
	42343106000	SUPPORT	1			HB5392	HB5974		
	42343106001	SUPPORT	1			HB5975			
55	42343104301	COVER	1						
56	42343104400	COVER	1				HB5530		
	42343104401	COVER	1			HB5531			
57	42343104501	JOINT	1				HB5391		
	42343104502	JOINT	1			HB5392			
58	90101208080	BOLT	2		M8X80				
59	42343104601	JOINT	1				HB5391		
	42343104602	JOINT	1			HB5384			
60	80400160127	JOINT	2						
61	91002801100	O-RING	2		1B P11				
62	80400160129	JOINT	3						
63	91002801400	O-RING	3		1B P14				
64	80400160131	JOINT	1						
65	91002801800	O-RING	1		1B P18				
71	42343105101	CABLE CONVEYER	1				HB5391		
72	90190105014	BOLT	52		M5X14		HB5391		
73	90302510501	WASHER,SPRING	52		5		HB5391		

BT-100-1-00002 UPPER  
PJ3160016-00 BEAR,CABLE



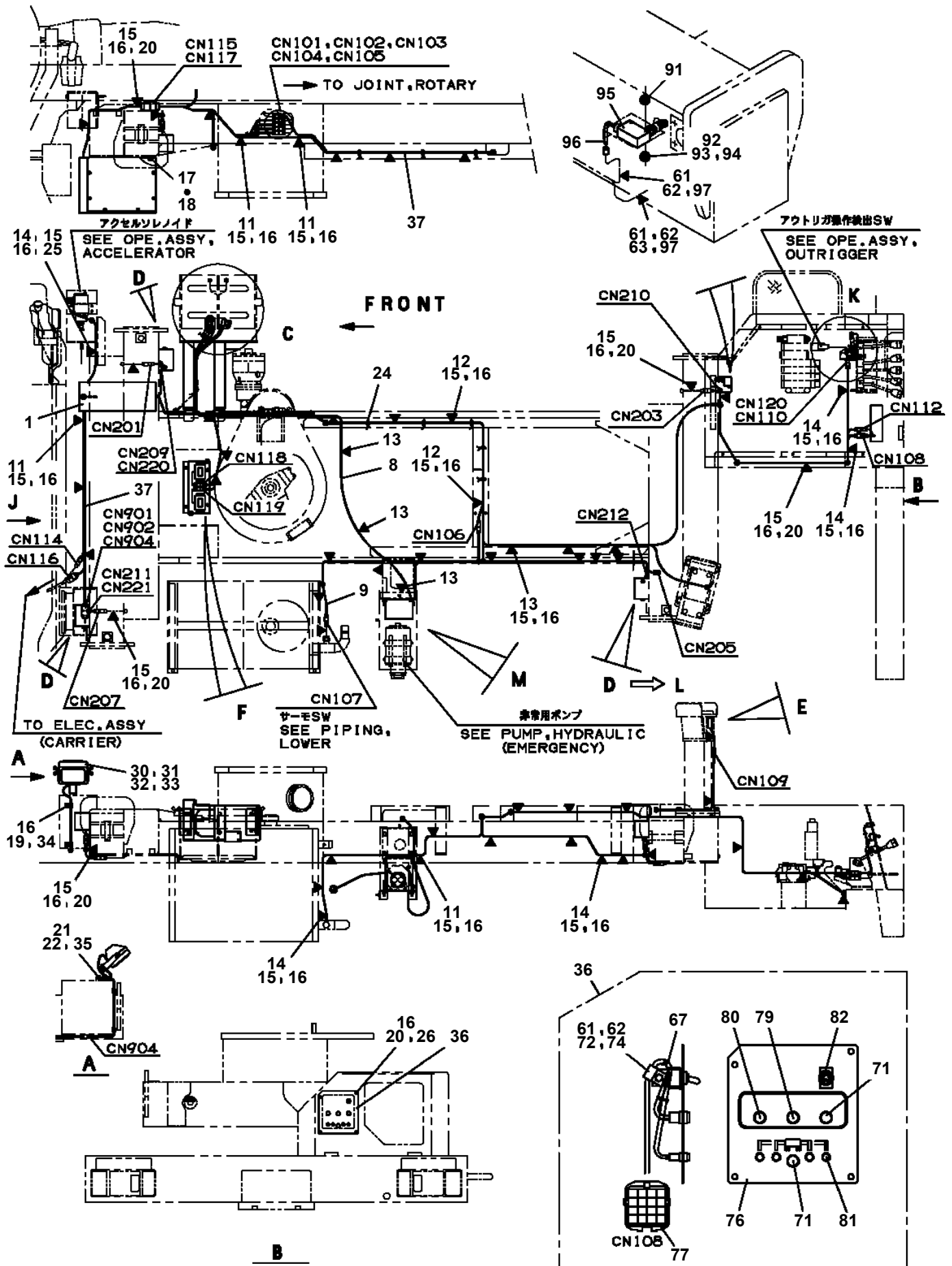
**BT-100-1-00002 UPPER**

Pos No.	Parts No	Parts Name	Qty	Unit	Technical Data	Serial No (Start)	Serial No (End)	Remarks	Pages
1	37000509190	PLATE	2						
2	90101512030	BOLT	4		M12X30		HB5101		
	90191512030	BOLT	4		M12X30	HB5102			
3	90302041201	WASHER,SPRING	4		12				
4	37000138820	PIN	2						
5	37000507730	PLATE	2						
6	90103520045	BOLT	2		M20X45				
7	90302042001	WASHER,SPRING	2		20				
8	37001500420	BOLT	11		M20X60				
9	90303502001	WASHER,PLAIN	11		20				
10	32270070330	PLATE	1						
11	42230720011	TABLE,SLEWING	1						
12	31230350100	PLATE	1						
13	80182306010	SCREW,MACHINE	4		M6X10				
14	90302040601	WASHER,SPRING	4		6				
15	42230720020	PLATE	1						

# BT-100-1-00002 UPPER

Pos No.	Parts No	Parts Name	Qty	Unit	Technical Data	Serial No (Start)	Serial No (End)	Remarks	Pages
1	42271090501	COVER	1						
2	42271090600	STEP	1						
3	42271090701	GUARD	1						
4	42271090800	COVER	1						
5	42271090900	COVER	1						
6	90101208014	BOLT	26		M8X14				
7	90302040801	WASHER,SPRING	26		8				
8	37000553000	PLATE	20						
9	90101206010	BOLT	4		M6X1.0				
10	90302040601	WASHER,SPRING	4		6				
11	42271090950	COVER	1						
12	90101210020	BOLT	4		M10X20		HB5188		
	90101210020	BOLT	2		M10X20	HB5189			
13	90302041001	WASHER,SPRING	4		10				
14	90303071001	WASHER,PLAIN	4		10				
15	42271091000	SUPPORT	1						
16	90101210030	BOLT	2		M10X30	HB5189			
17	90201201000	NUT	2		M10	HB5189			
35	80172804010	SCREW,MACHINE	4		M4X10				
36	90302510401	WASHER,SPRING	4		4				
37	90201500400	NUT	4		M4				
39	82400000200	GROMMET	2		KG-012,L=250				
	82400000200	GROMMET	1		KG-012,L=250	HB5999			

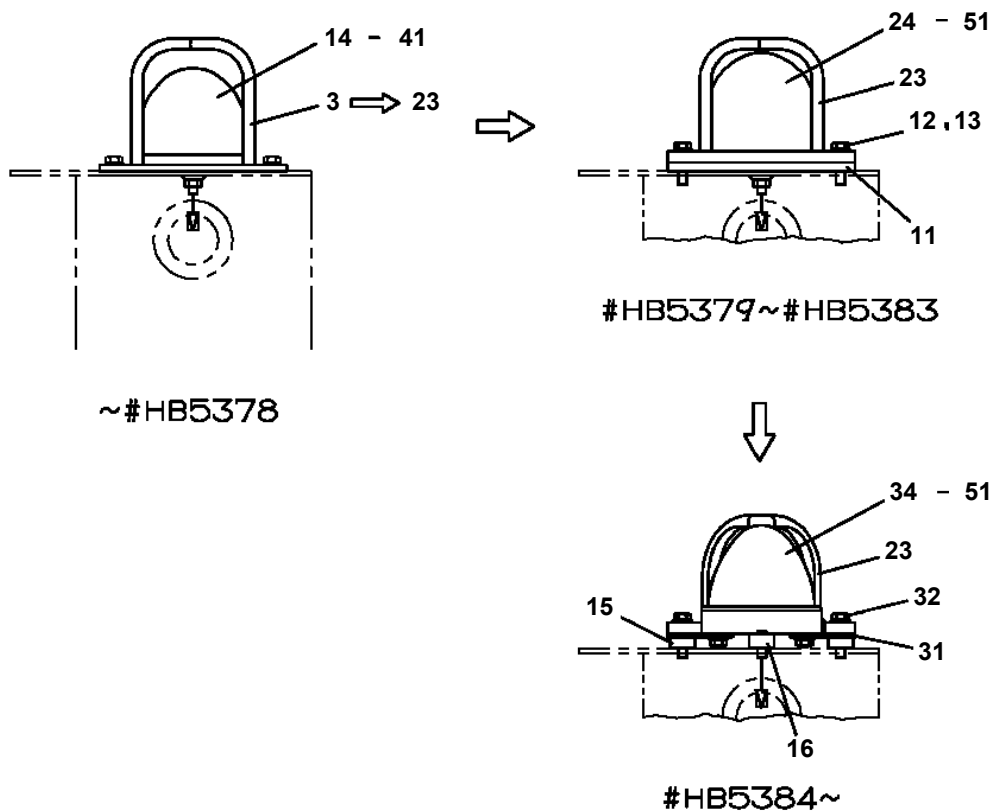
**BT-100-1-00002 UPPER  
PN1011693-06 ELEC.ASSY (FRAME)**



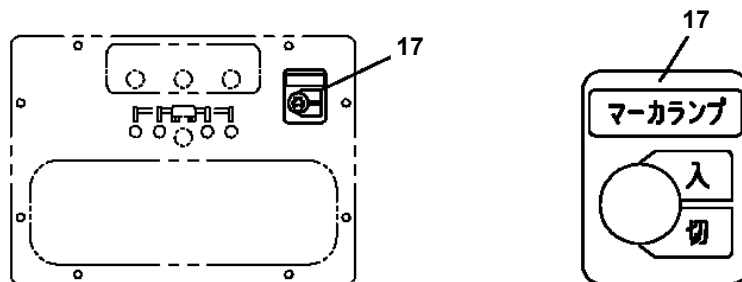
## BT-100-1-00002 UPPER

Pos No.	Parts No	Parts Name	Qty	Unit	Technical Data	Serial No (Start)	Serial No (End)	Remarks
1	42351020101	CABLE	1		L=10620			
2	42351020201	CABLE	1					
3	42351020300	CABLE	1					
4	82100001804	TUBE,CORRUGATE	2	M	15			
5	82100001803	TUBE,CORRUGATE	1	M	13			
6	91810130250	FASTENER	17					
7	82100001412	TUBE,SPIRAL	7	M	SE-12BK			
8	82100002008	CLAMP	2		WR12			
9	90101206020	BOLT	2		M6X20			
10	90201200600	NUT	5		M6			
11	90302040601	WASHER,SPRING	5		6			
12	90303070601	WASHER,PLAIN	2		6			
13	82100002040	CLAMP	3		WE15			
14	37000300710	SLEEVE	1		12-8			
15	42351020400	HARNESS	1		L=2200			
16	82100002004	CLAMP	3		WR8			
17	90302040801	WASHER,SPRING	1		8			
18	90201200800	NUT	1		M8			
19	42351040500	SWITCH ASSY	1					
20	90131505025	BOLT,HEXAGON SOCKET	2		M5X25			
21	90201200500	NUT	2		M5			
22	90302040501	WASHER,SPRING	2		5			
23	90303070501	WASHER,PLAIN	2		5			
24	42351020500	SUPPORT	1					
25	82100002017	CLAMP	1		WR30			
35	82100001996	SWITCH,LIMIT	1					

**BT-100-1-00002 UPPER  
PN1080142-03 LAMP (O/R:MARKER LAMP)**

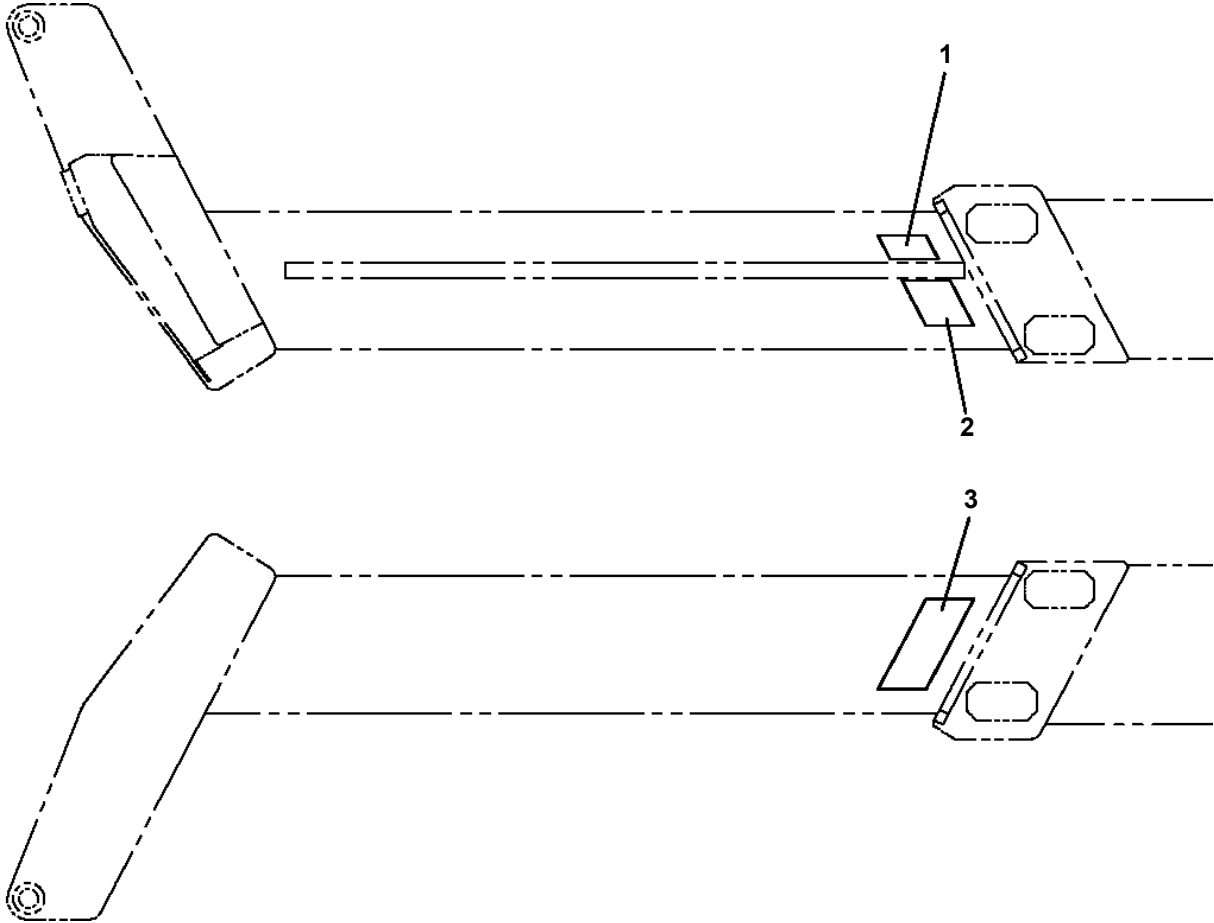


フロントアウトリガ (2ヶ所)



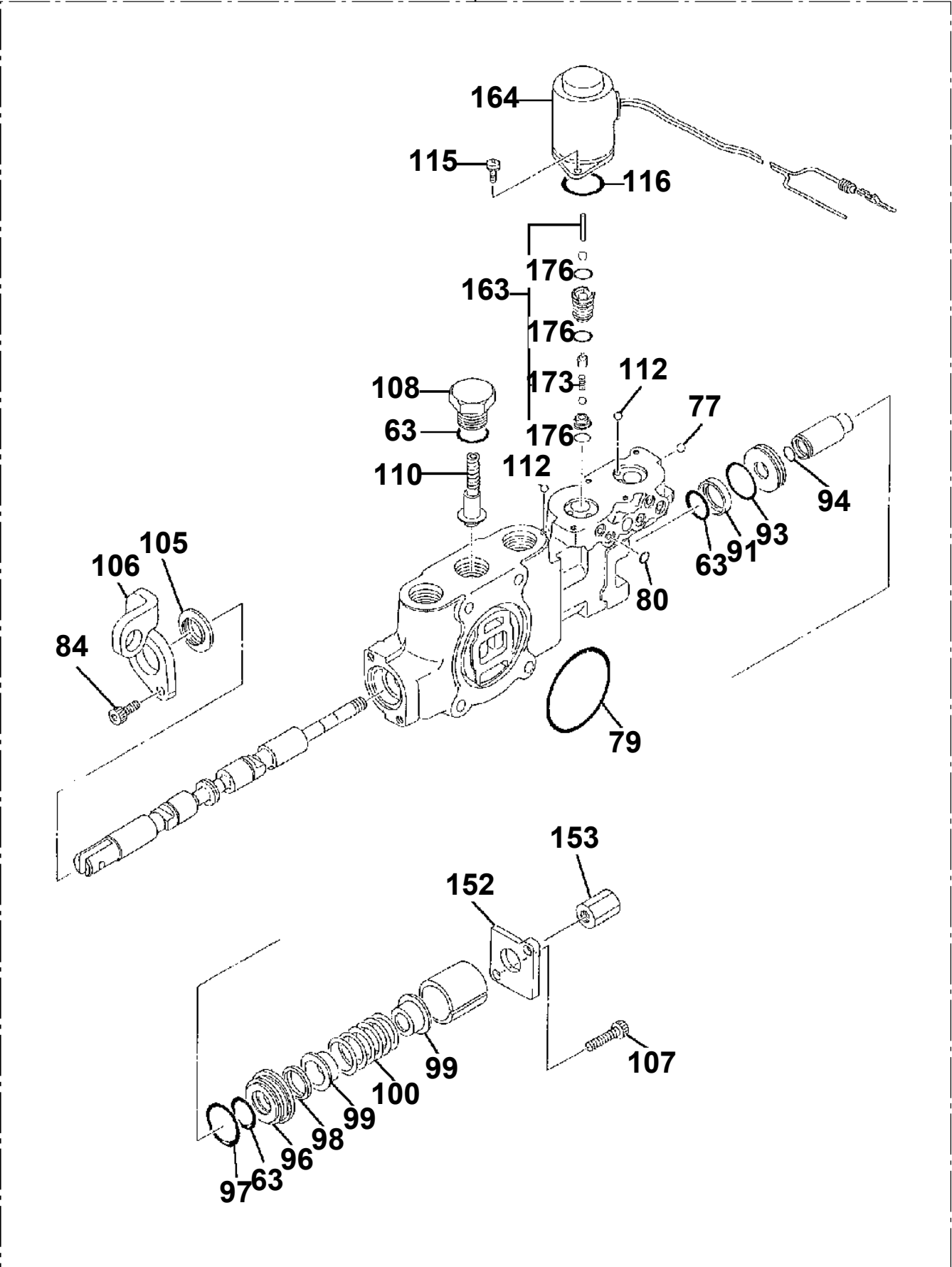
アウトリガ操作部

**BT-100-1-00002 UPPER  
PO1050082-00 MARKING (BOOM)**



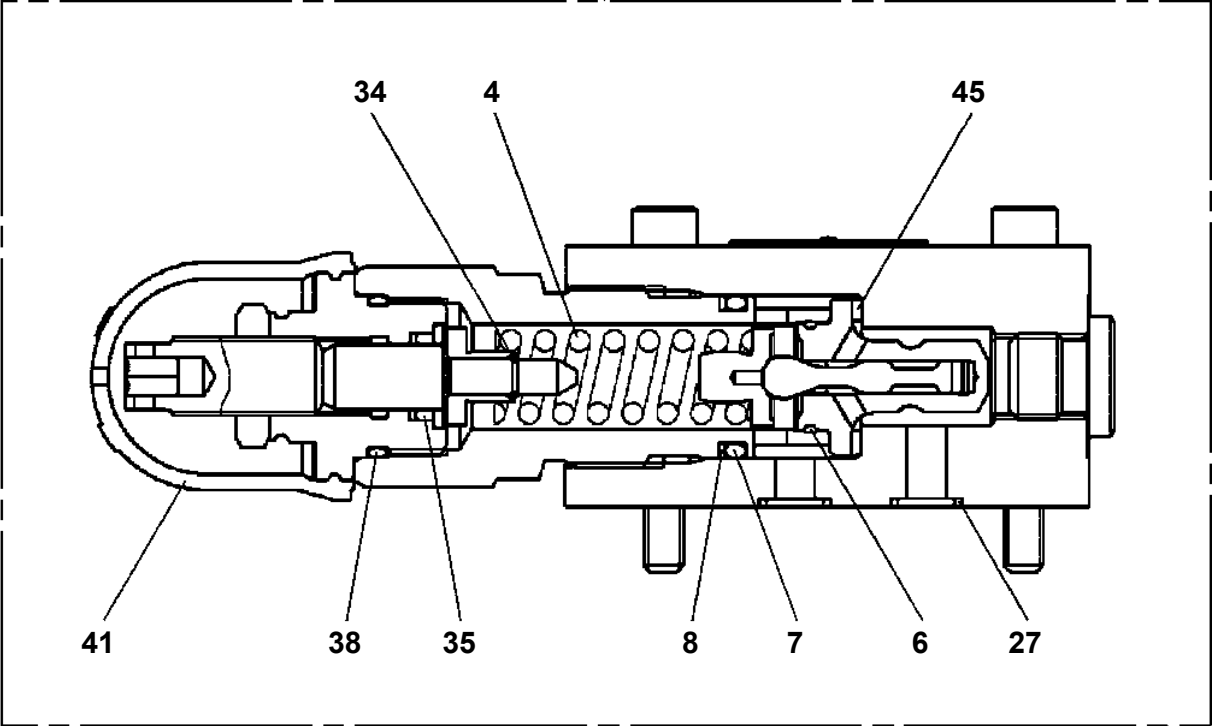
**BT-100-1-00002 UPPER  
PV1020116-03 VALVE,REMOTE CONTROL**

**7 LEVELING**

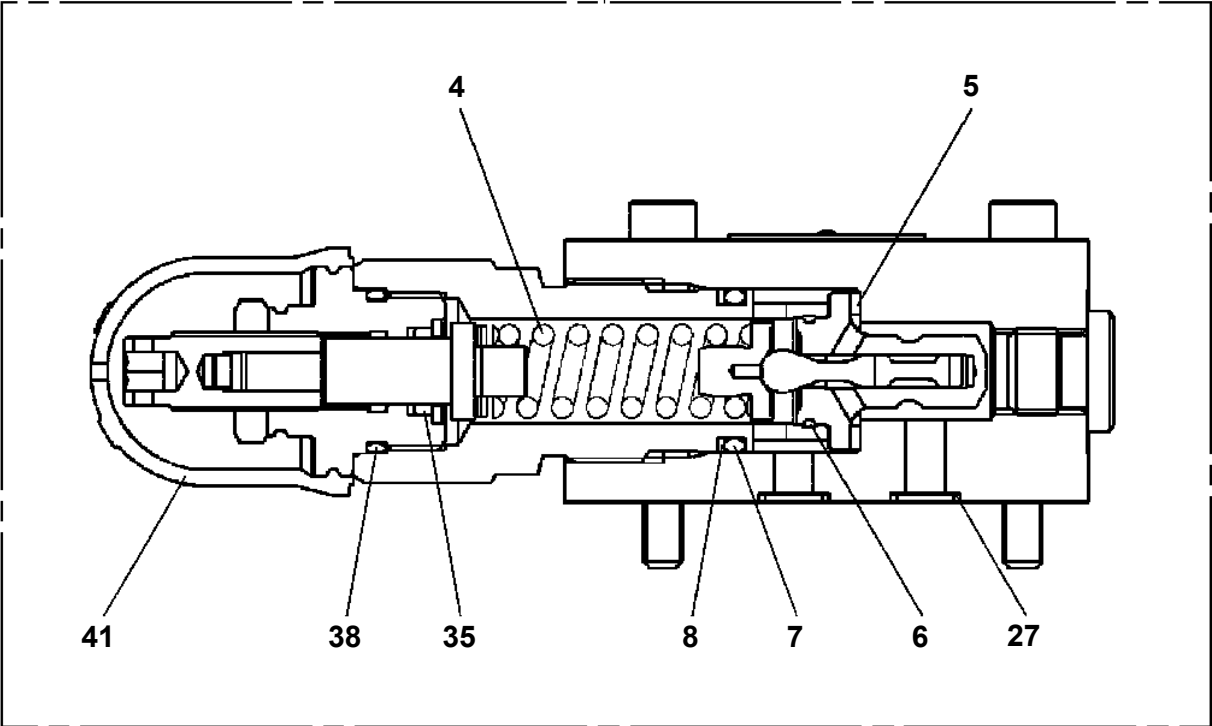


**BT-100-1-00002 UPPER  
PV5140020-00 VALVE ASSY,RELIEF**

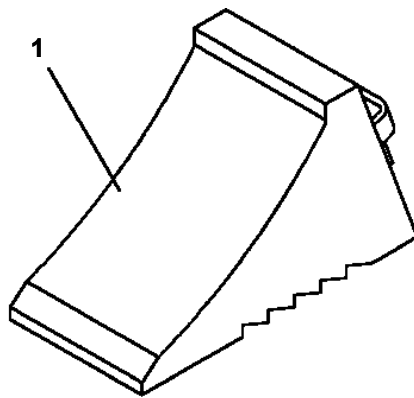
100



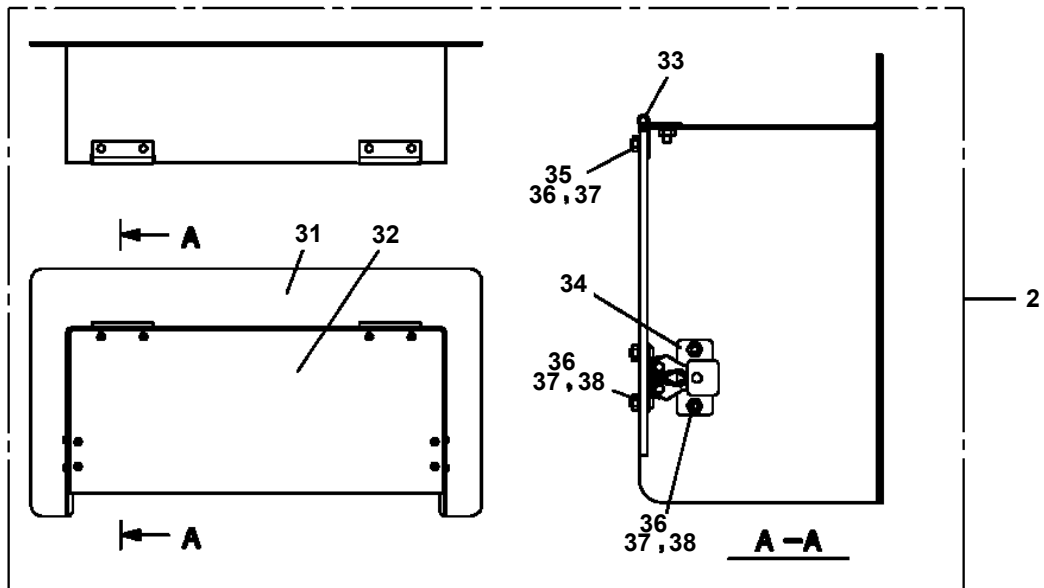
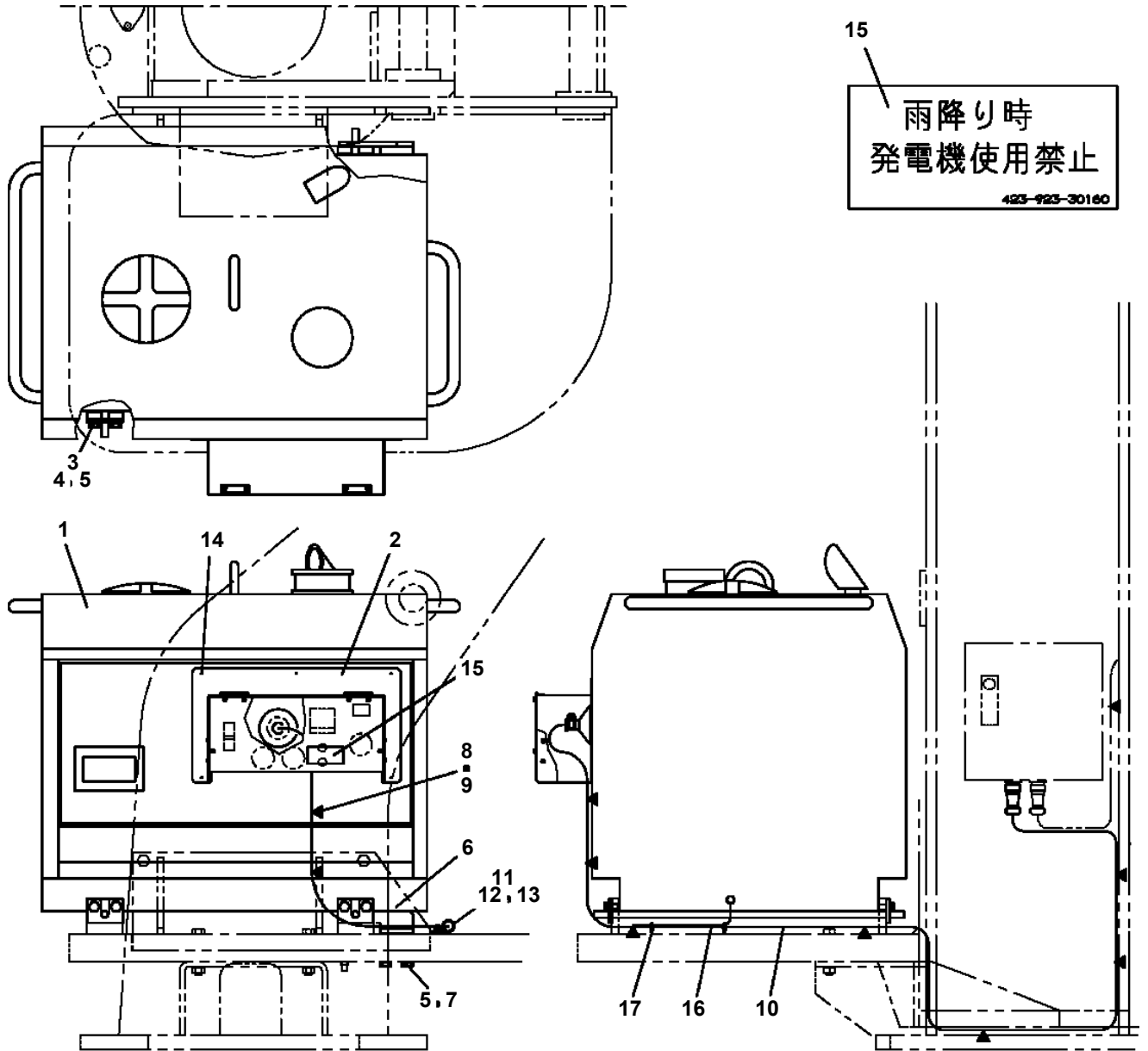
100



**BT-100-1-00002 UPPER**  
**PW5110002-00 WEDGE (STOPPER FOR TIRE/WAZUMI)**



**BT-100-1-00002 UPPER**  
**PX1480009-02 MOUNT, GENERATOR (100V, 60HZ, 2.2KW)**



CLICK HERE TO **DOWNLOAD** THE COMPLETE MANUAL

- Thank you very much for reading the preview of the manual.
- You can download the complete manual from: [www.heydownloads.com](http://www.heydownloads.com) by clicking the link below



- Please note: If there is no response to CLICKING the link, please download this PDF first and then click on it.

CLICK HERE TO **DOWNLOAD** THE COMPLETE MANUAL