

AT-195-1 42093132007 UPPER,LOWER,HINO 2KG-XZU640F-TKFSE6

PB0000276-02 UPPER STRUCTURE SYSTEM

PB0000513-00 LOWER STRUCTURE SYSTEM

ASSEMBLY

CLICK HERE TO **DOWNLOAD** THE COMPLETE MANUAL

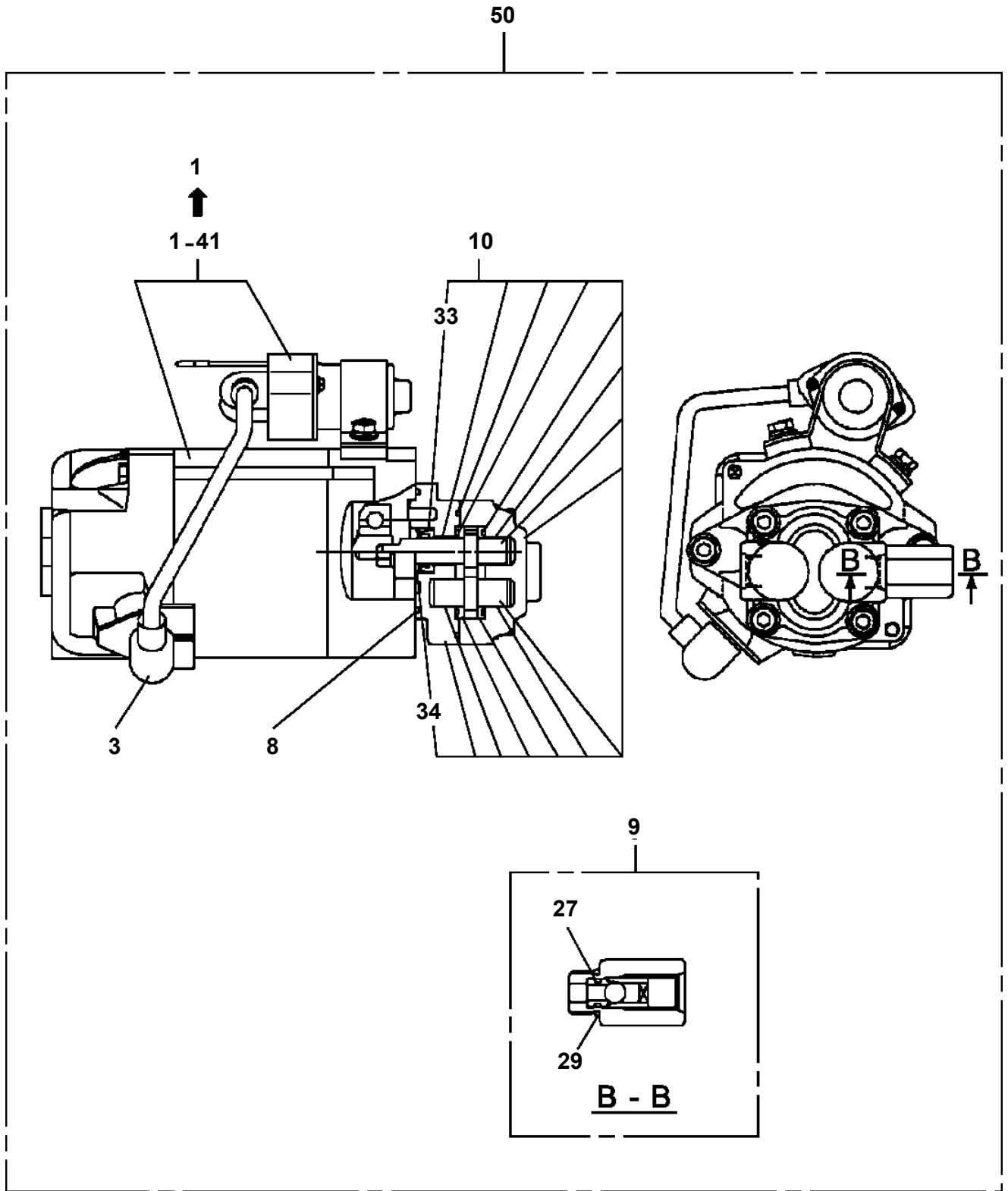
- Thank you very much for reading the preview of the manual.
- You can download the complete manual from: www.heydownloads.com by clicking the link below



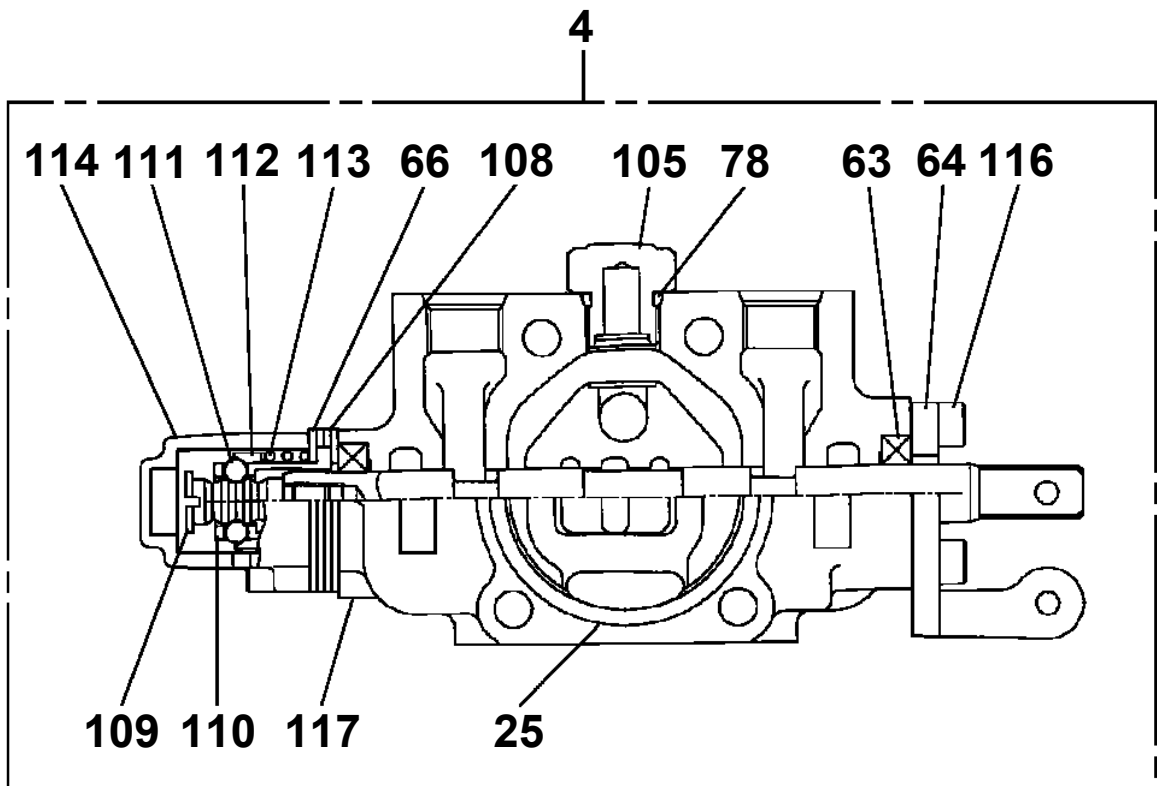
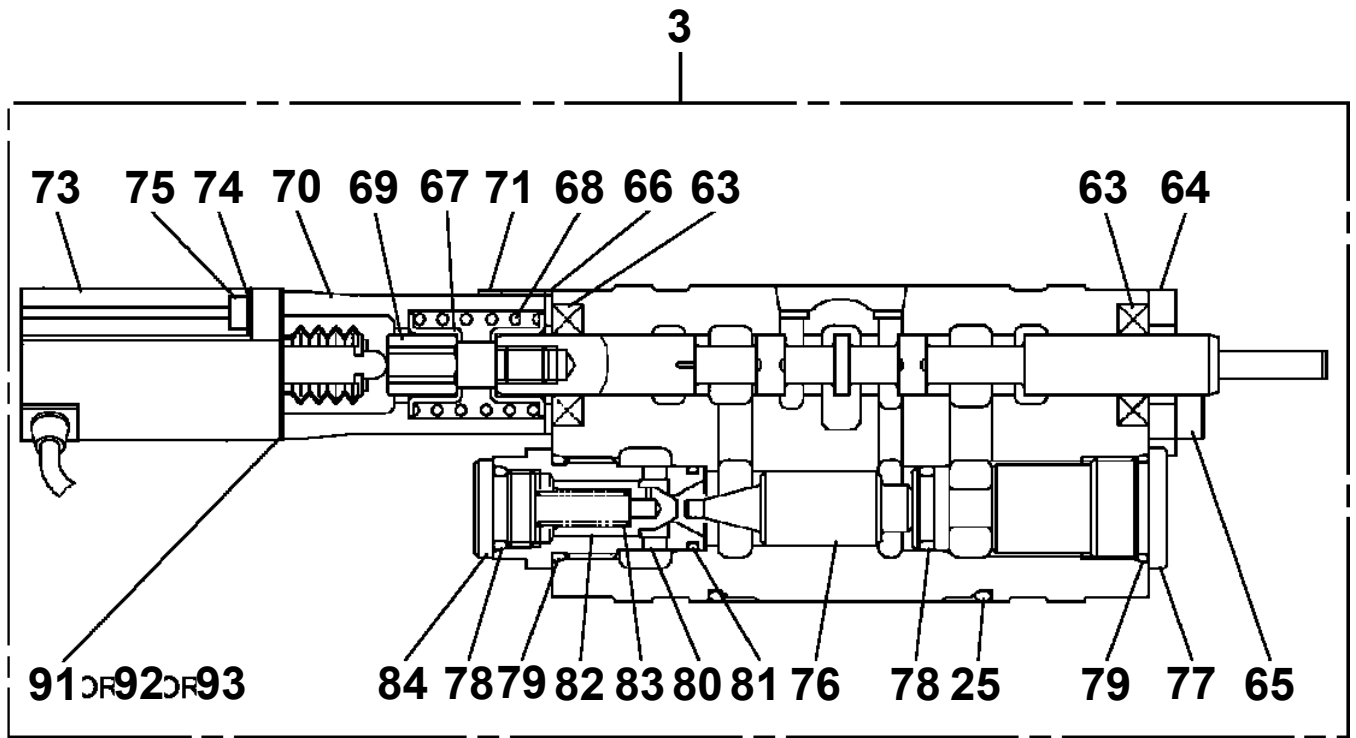
- Please note: If there is no response to CLICKING the link, please download this PDF first and then click on it.

CLICK HERE TO **DOWNLOAD** THE COMPLETE MANUAL

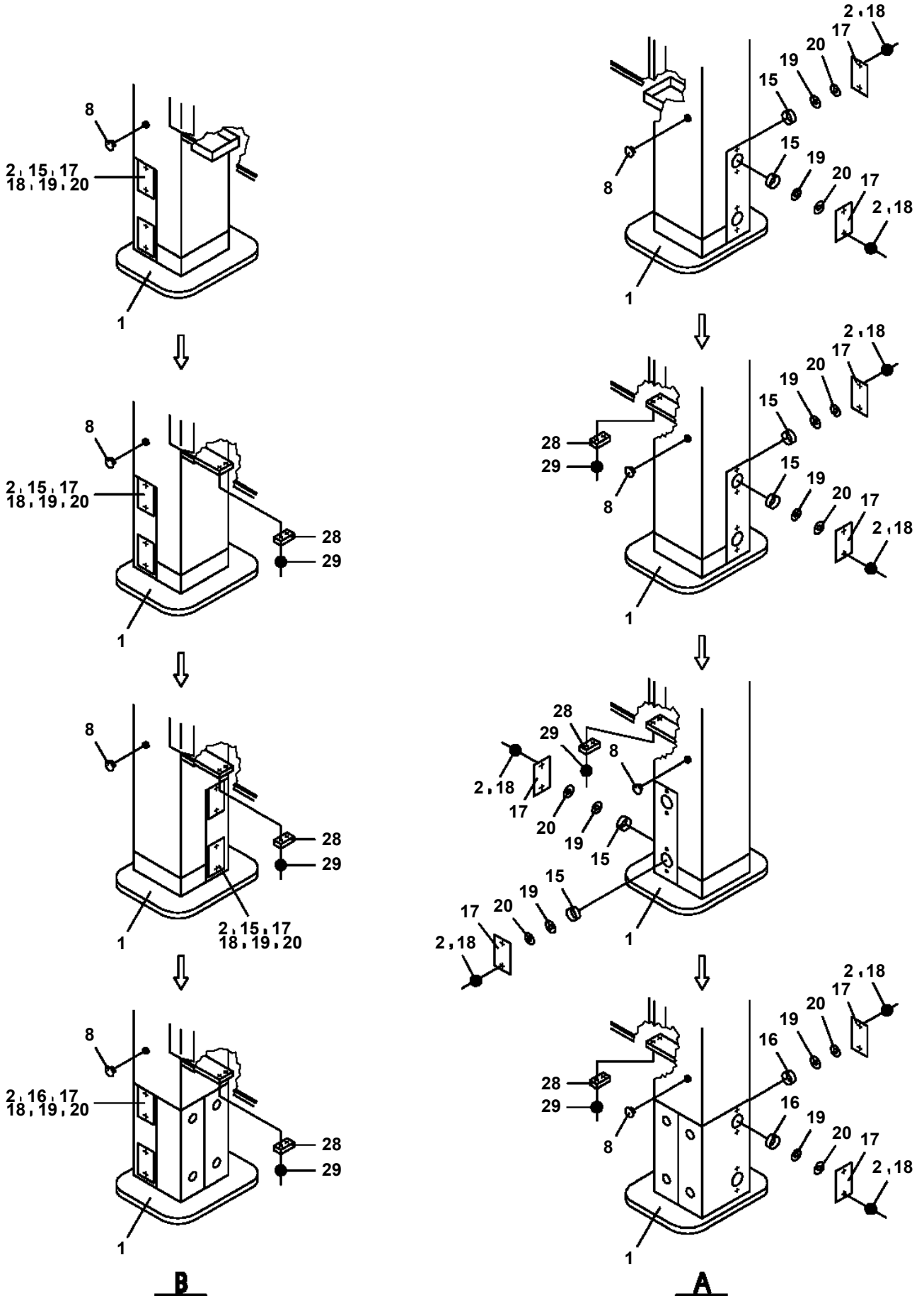
AT-195-1 42093132007 UPPER,LOWER,HINO 2KG-XZU640F-TKFSE6
PB1100101-02 PUMP,HYDRAULIC (EMERGENCY)



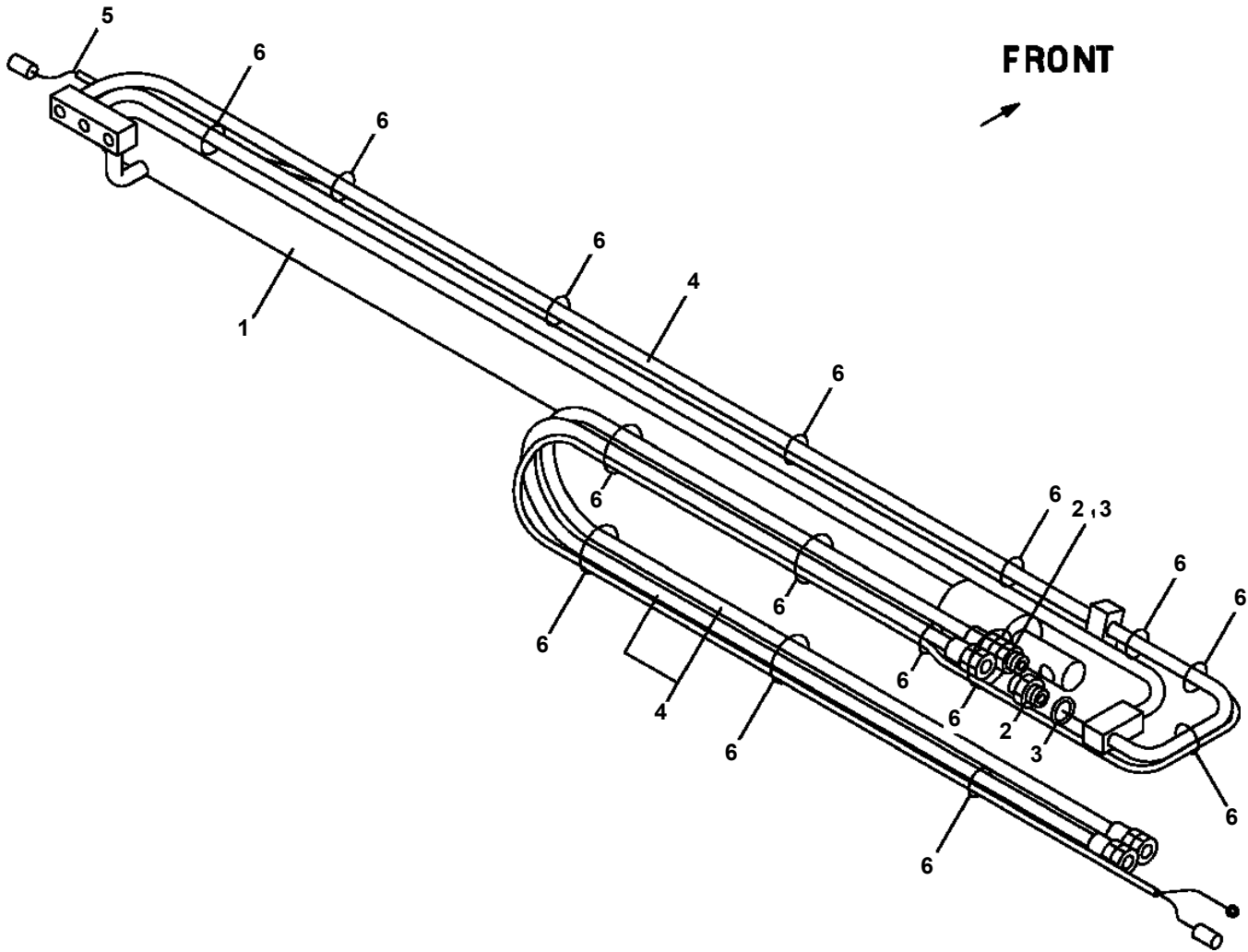
AT-195-1 42093132007 UPPER,LOWER,HINO 2KG-XZU640F-TKFSE6
PB1320537-01 VALVE,MANUAL CONTROL



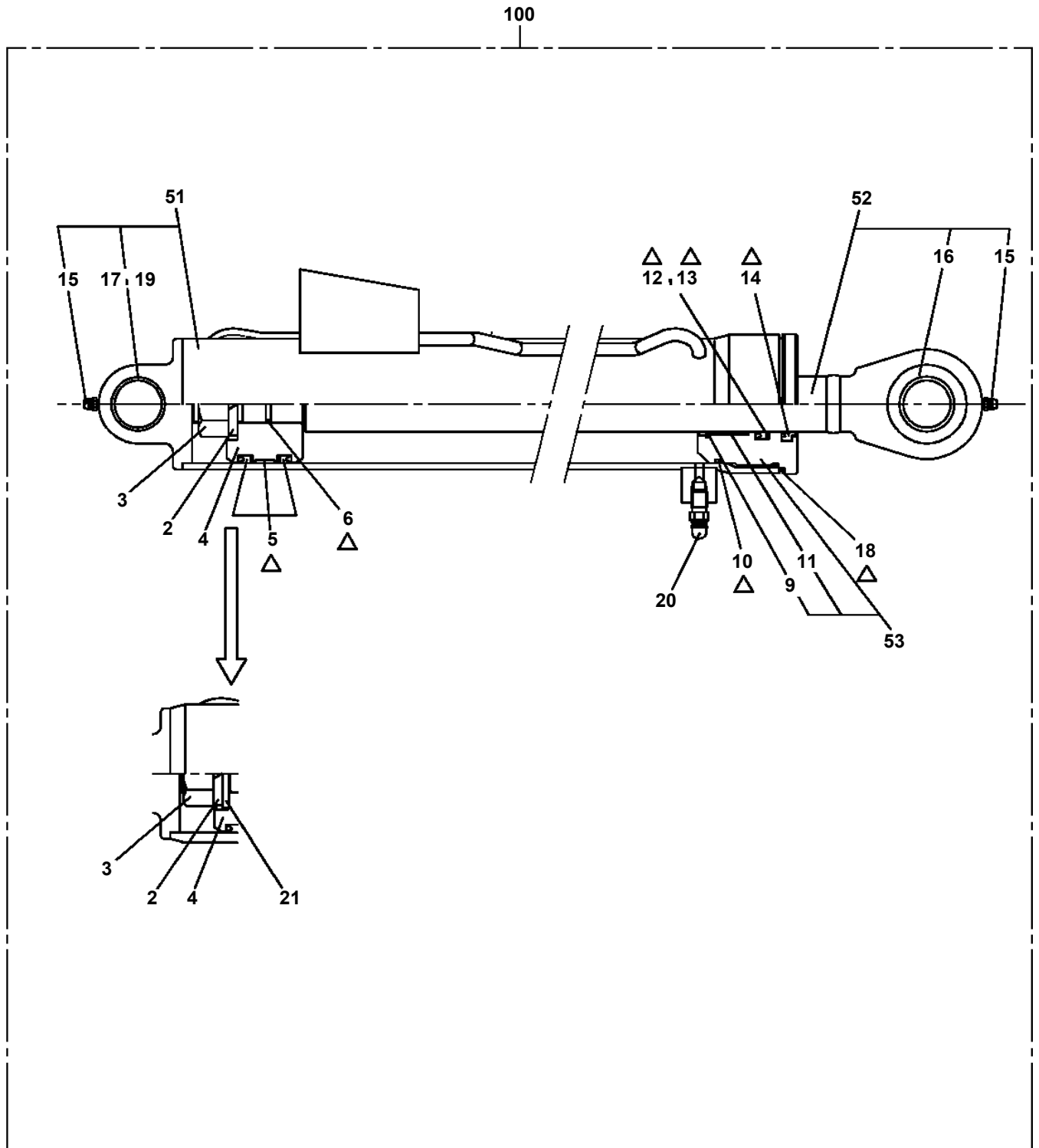
**AT-195-1 42093132007 UPPER,LOWER,HINO 2KG-XZU640F-TKFSE6
PC1011112-03 OUTRIGGER (FRONT)**



AT-195-1 42093132007 UPPER,LOWER,HINO 2KG-XZU640F-TKFSE6
PC1050283-00 CYLINDER,EXTENSION (MOUNT)

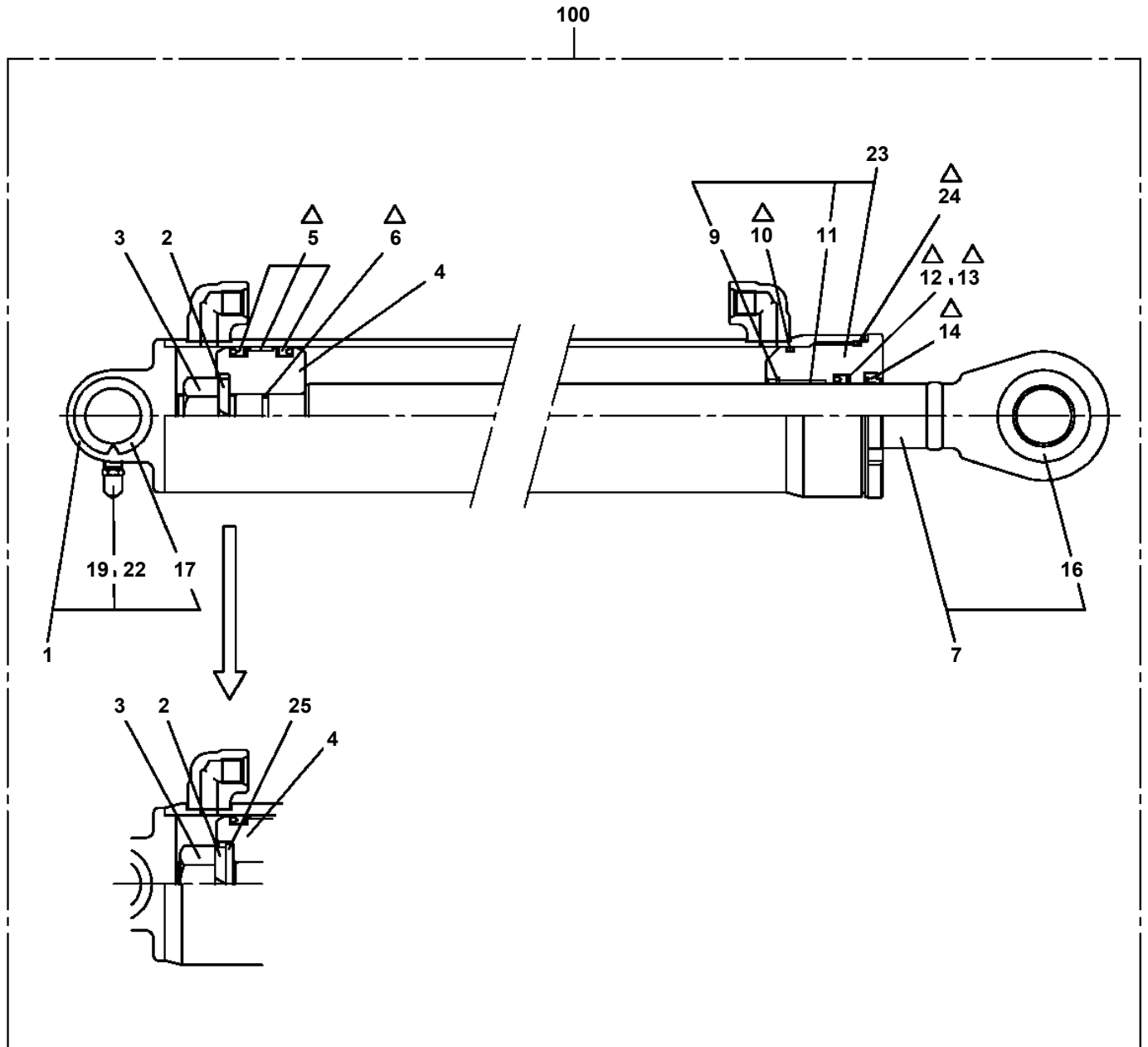


AT-195-1 42093132007 UPPER,LOWER,HINO 2KG-XZU640F-TKFSE6
PC6400005-00 CYLINDER ASSY,LEVELING



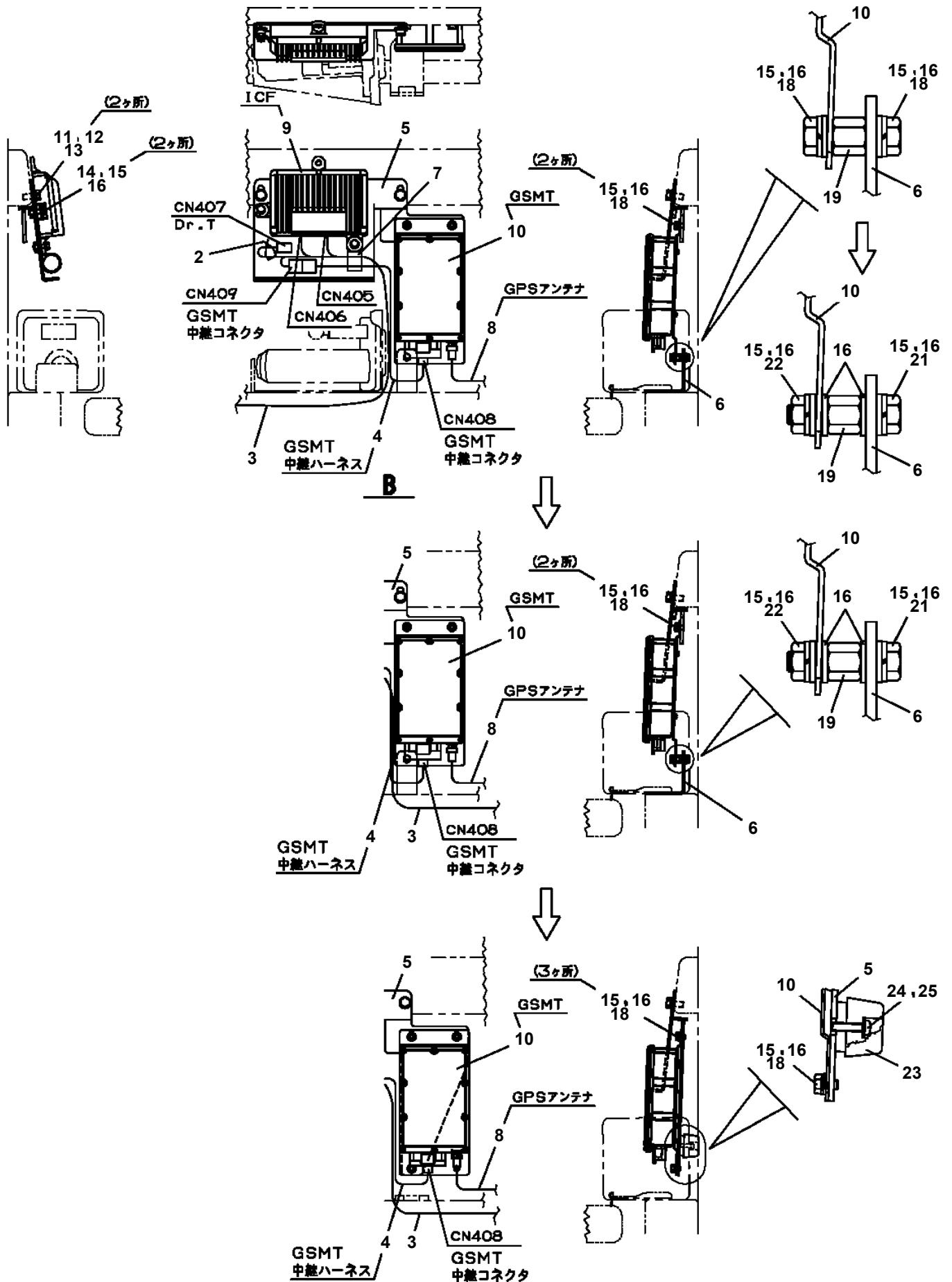
△:PACKING SET KEY NO.54 (KEY NO.5,6,10,12,13,14,18)

AT-195-1 42093132007 UPPER,LOWER,HINO 2KG-XZU640F-TKFSE6
PE1050083-01 CYLINDER,LEVELING (LOWER)

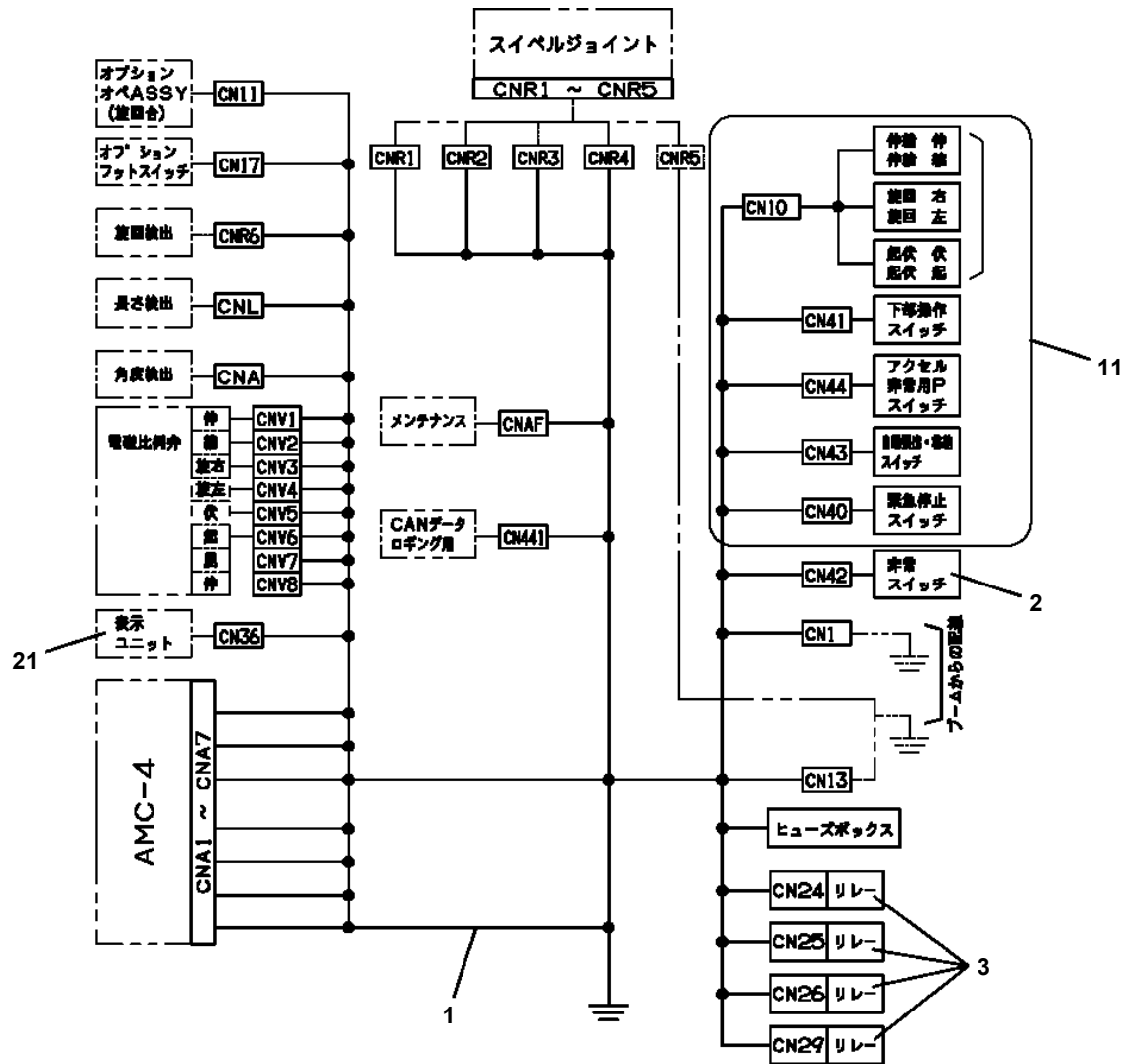


△:PACKING SET KEY NO.41 (KEY NO.5,6,10,12,13,14,24)

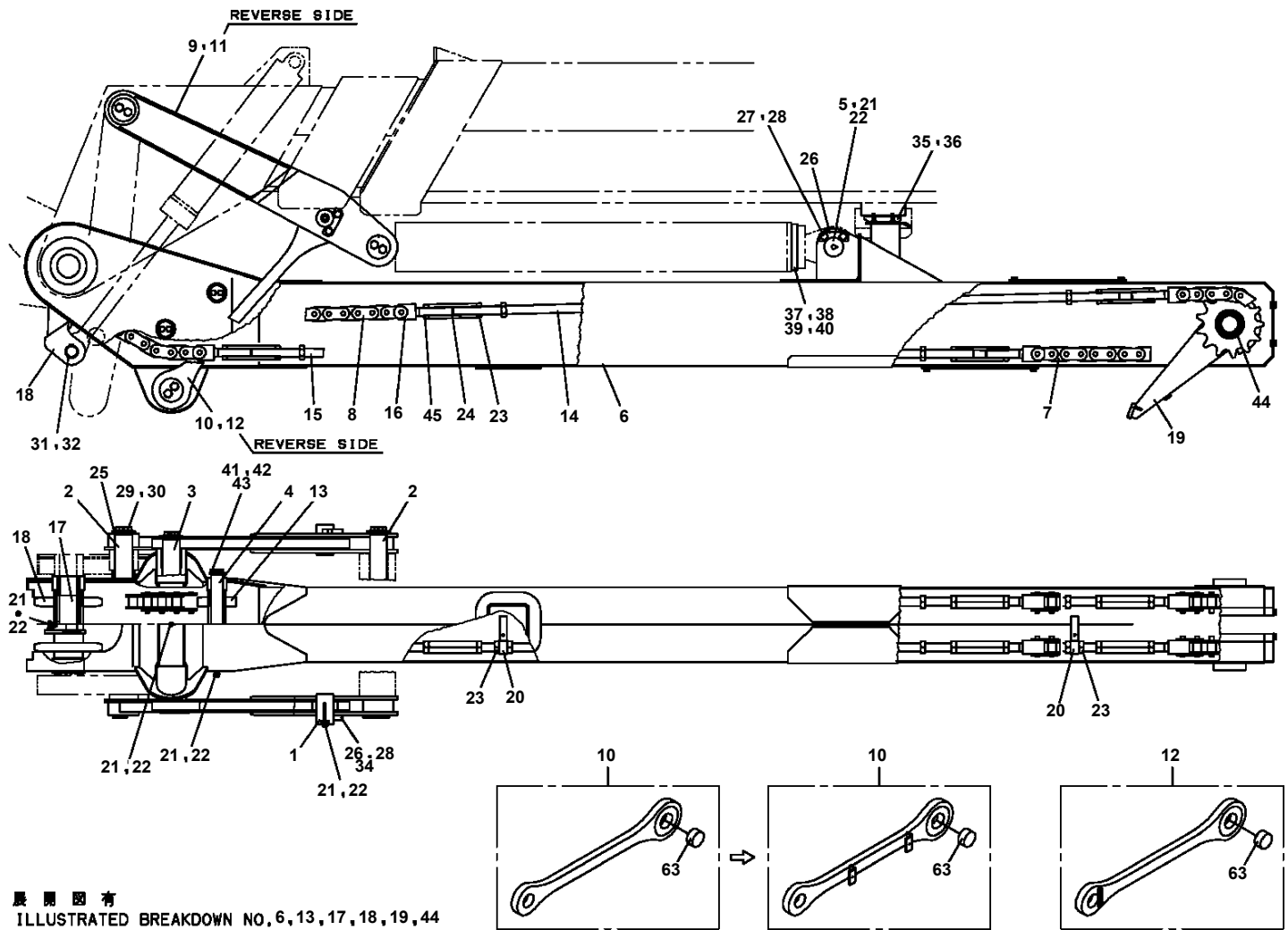
AT-195-1 42093132007 UPPER,LOWER,HINO 2KG-XZU640F-TKFSE6
 PE5020676-03 ELEC.ASSY (TELEMATICS)



AT-195-1 42093132007 UPPER,LOWER,HINO 2KG-XZU640F-TKFSE6
 PE5190040-01 ELEC.ASSY,SWING FRAME

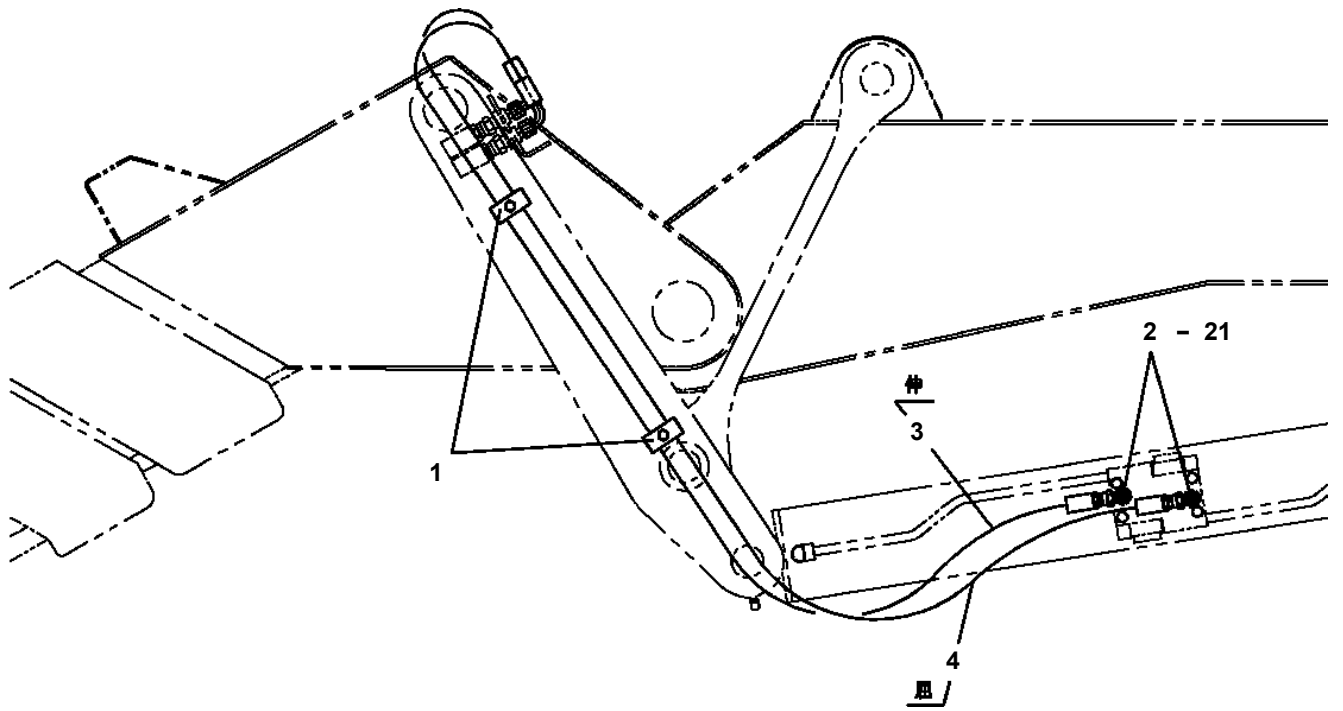


AT-195-1 42093132007 UPPER,LOWER,HINO 2KG-XZU640F-TKFSE6
 PG1040267-05 JIB



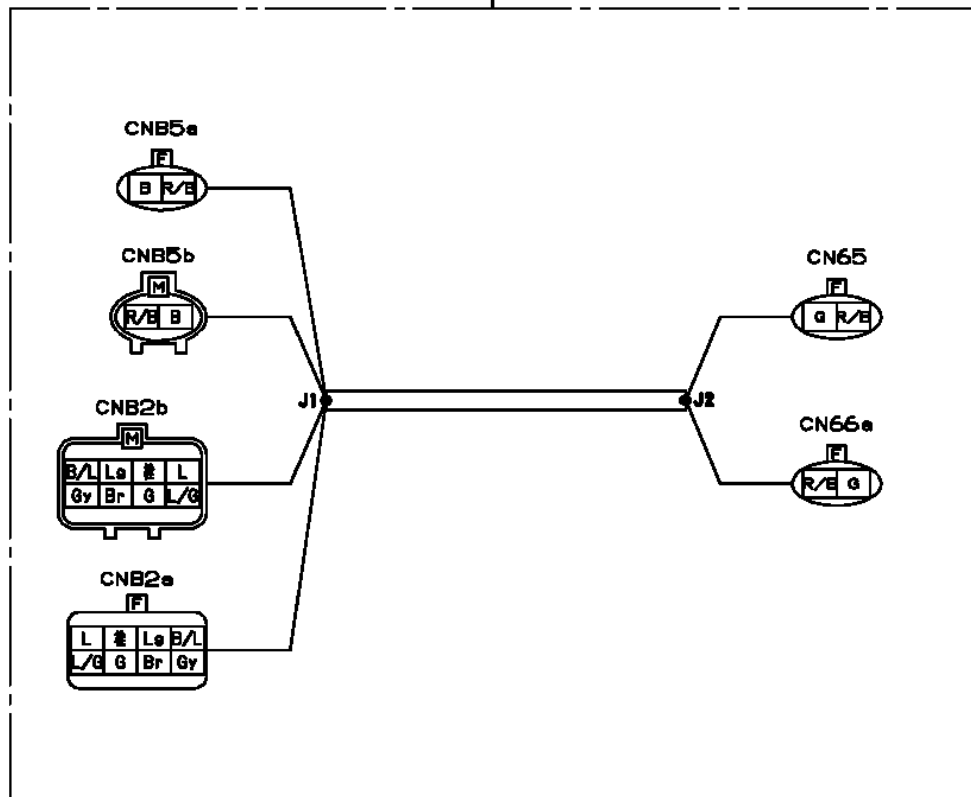
展開図有
 ILLUSTRATED BREAKDOWN NO.6,13,17,18,19,44

AT-195-1 42093132007 UPPER,LOWER,HINO 2KG-XZU640F-TKFSE6
PG1400120-01 PIPING,JIB

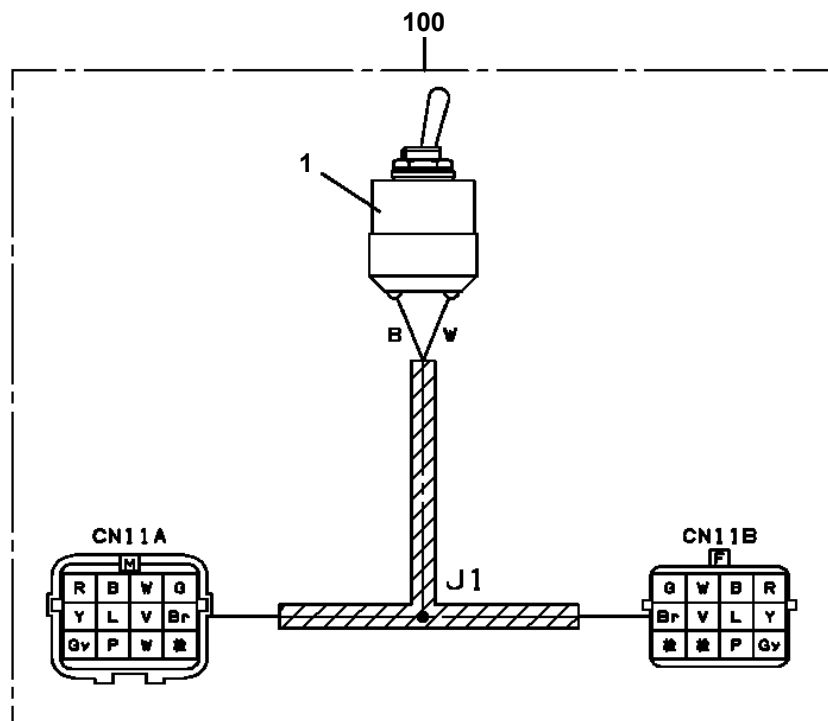


AT-195-1 42093132007 UPPER,LOWER,HINO 2KG-XZU640F-TKFSE6
 PH5030683-00 HARNESS

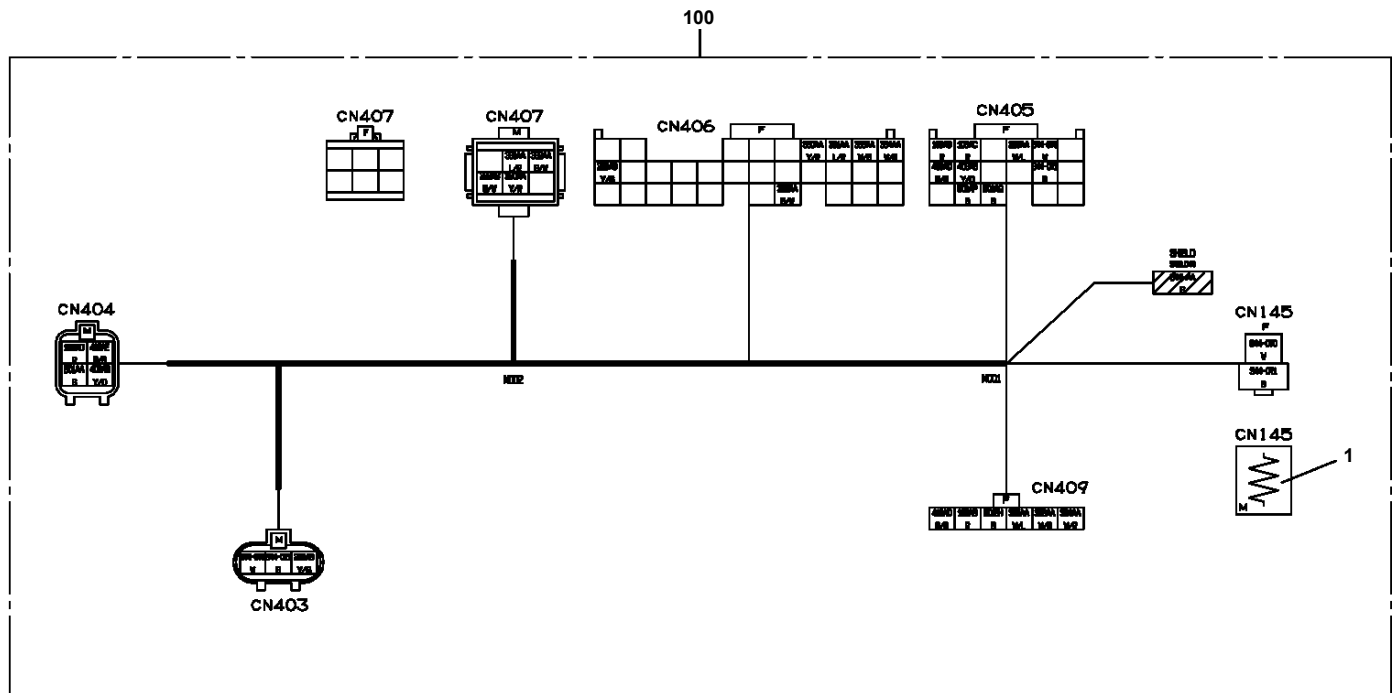
10



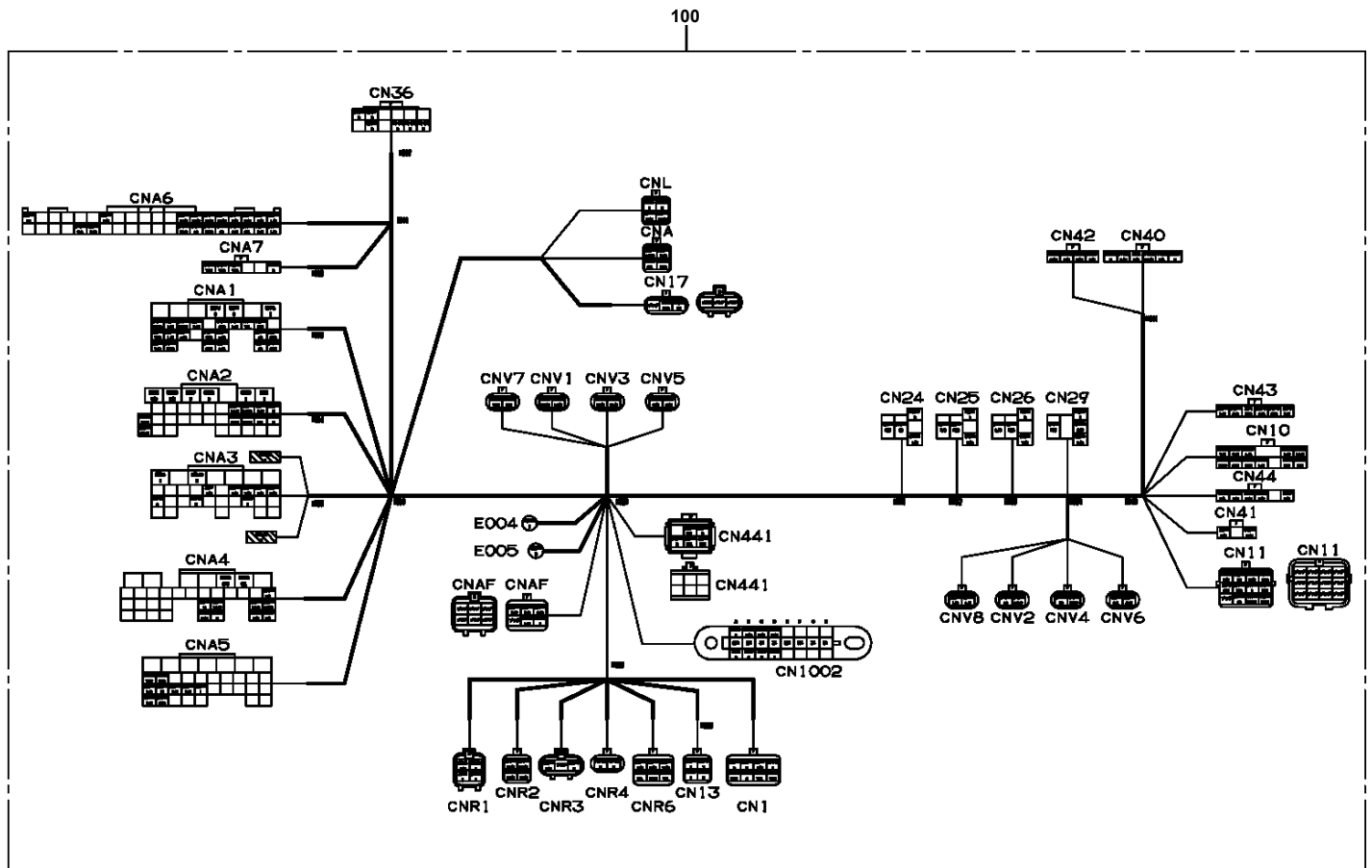
AT-195-1 42093132007 UPPER,LOWER,HINO 2KG-XZU640F-TKFSE6
PH5031298-00 HARNESS (WITH SWITCH)



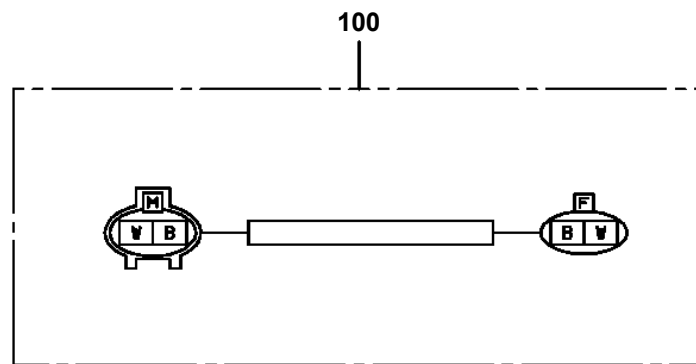
AT-195-1 42093132007 UPPER,LOWER,HINO 2KG-XZU640F-TKFSE6
 PH5031985-02 HARNESS



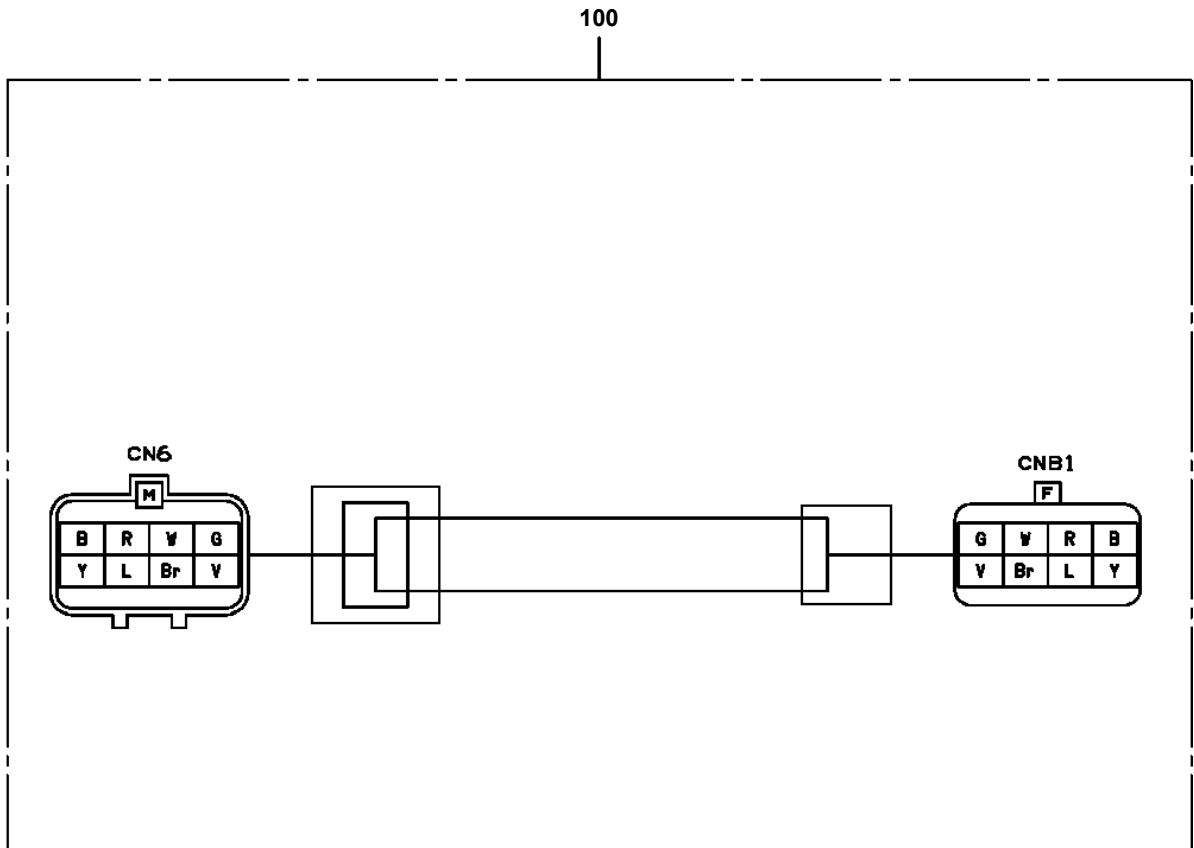
AT-195-1 42093132007 UPPER,LOWER,HINO 2KG-XZU640F-TKFSE6
PH5033939-00 HARNESS (SWING TABLE)



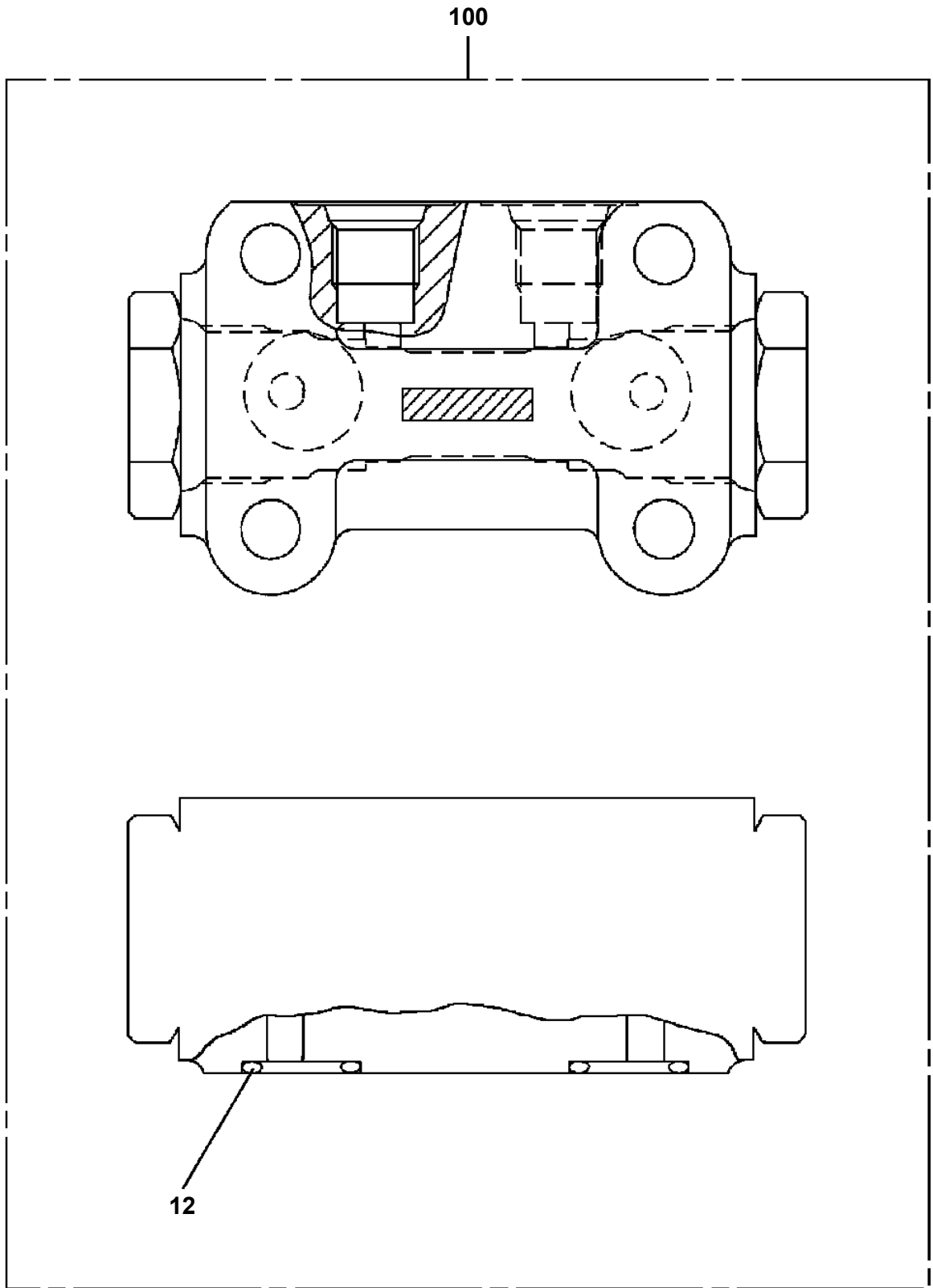
AT-195-1 42093132007 UPPER,LOWER,HINO 2KG-XZU640F-TKFSE6
PH5034171-00 HARNESS



AT-195-1 42093132007 UPPER,LOWER,HINO 2KG-XZU640F-TKFSE6
PH5034441-00 HARNESS



AT-195-1 42093132007 UPPER,LOWER,HINO 2KG-XZU640F-TKFSE6
PI1140227-00 VALVE,CHECK



CLICK HERE TO **DOWNLOAD** THE COMPLETE MANUAL

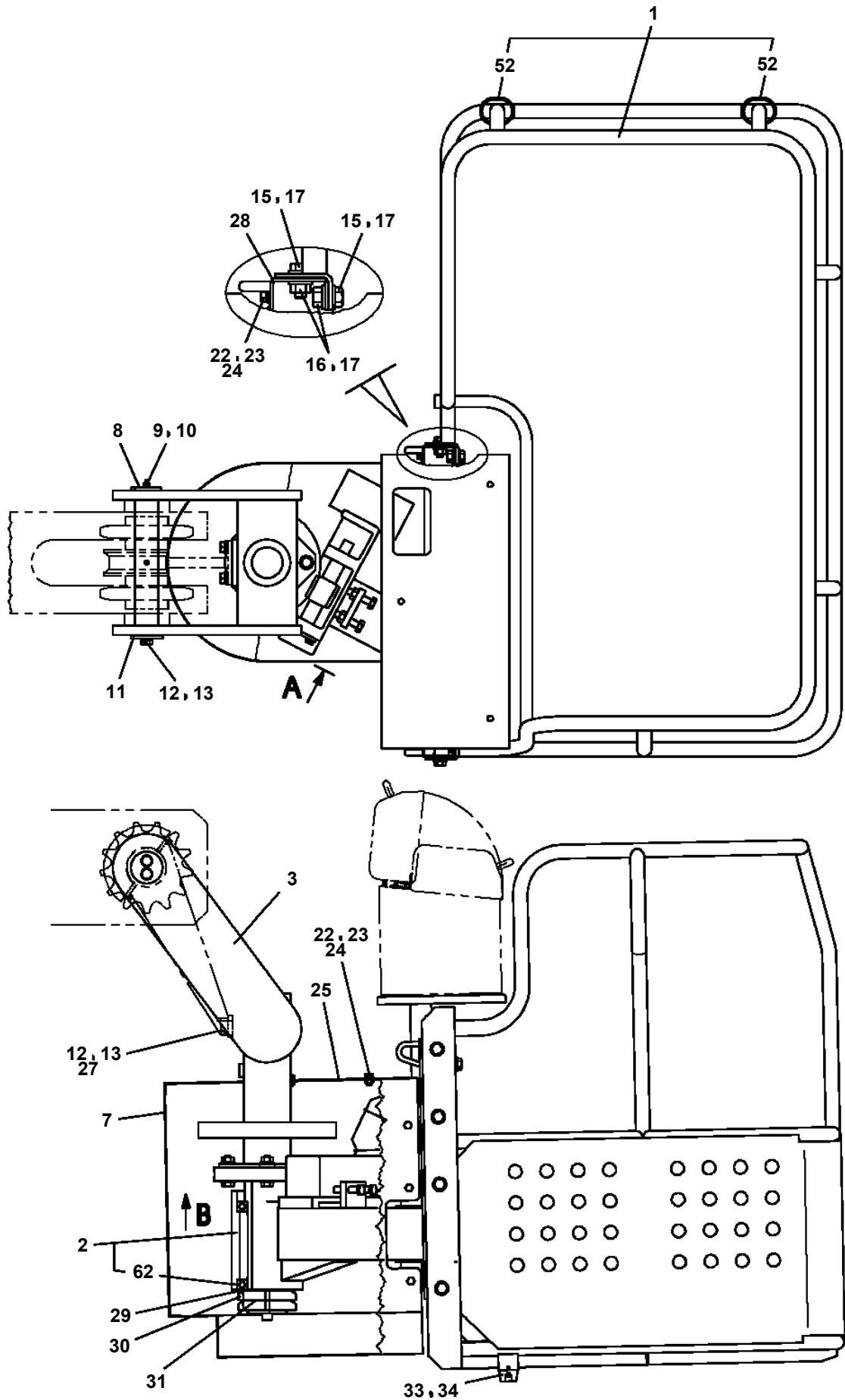
- Thank you very much for reading the preview of the manual.
- You can download the complete manual from: www.heydownloads.com by clicking the link below



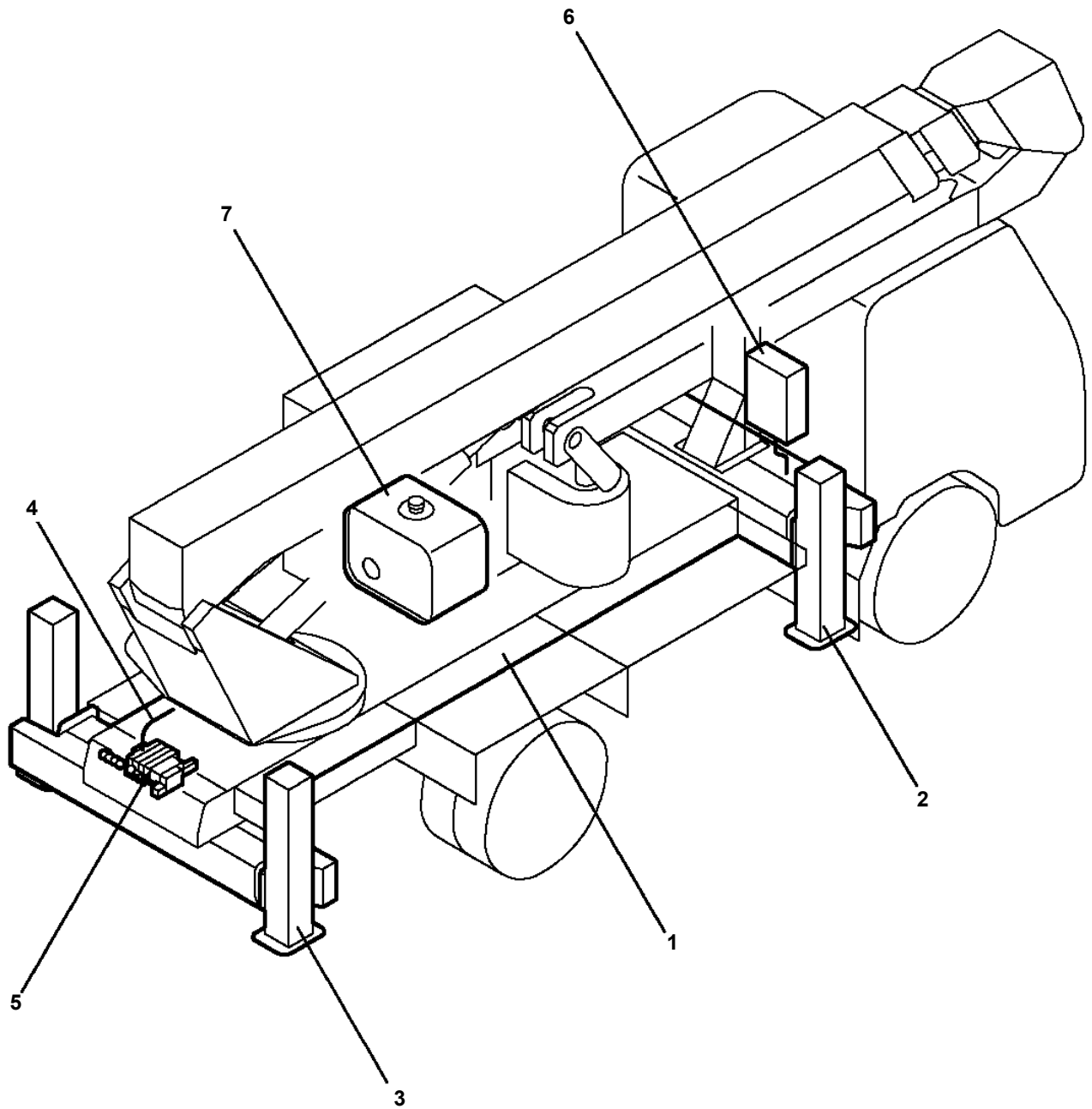
- Please note: If there is no response to CLICKING the link, please download this PDF first and then click on it.

CLICK HERE TO **DOWNLOAD** THE COMPLETE MANUAL

AT-195-1 42093132007 UPPER,LOWER,HINO 2KG-XZU640F-TKFSE6
PJ3010173-05 BASKET



**AT-195-1 42093132007 UPPER,LOWER,HINO 2KG-XZU640F-TKFSE6
PK2002318-00 FRAME UNIT**



適用製造番号によっては取り付けがないものもあります。

MACHINES OF SOME SERIAL NO. ARE NOT EQUIPPED WITH THESE PARTS.

AT-195-1 42093132007 UPPER,LOWER,HINO 2KG-XZU640F-TKFSE6

Pos No.	Parts No	Parts Name	Qty	Unit	Technical Data	Serial No (Start)	Serial No (End)	Rem
1	42332037513	COVER	1					
2	42332037631	BOX	1					
3	42332037641	BASE	1					
4	44330577600	COVER	1					
5	42332037541	PLATE,NAME	1					
6	42332037551	PLATE ASSY (BASE)	1					
7	42333527620	BOARD,CPU (WITH DATA)	1					
8	42332031161	BOARD,CIRCUIT	1					
9	44330577640	GUARD ASSY	1					
11	44330571171	OPE.ASSY (JOY STICK)	2					
12	82105221183	SWITCH,TOGGLE	3					
13	82105221193	SWITCH,TOGGLE	1					
14	82105221286	SWITCH,TOGGLE	1					
15	42332207520	CAP	5					
16	42352737730	LAMP	2					
17	82163351221	LAMP,PILOT	2					
18	42333527610	RELAY SET	2					
19	82101361453	SWITCH,PUSH	1					
20	42332037590	HANDLE SET	1					
21	42332037600	CATCH SET	1					
22	42332037610	CATCH SET	1					
23	42332037620	HINGE SET	1					
24	80175804008	SCREW,MACHINE	14		M4X8			
25	42332207700	NUT	5					
41	82101361003	BUTTON	1					
46	42330037810	KNOB	2					
47	42330037800	BOOT	2					
100	42332031000	BOX,OPERATION (WITH DATA)	1					

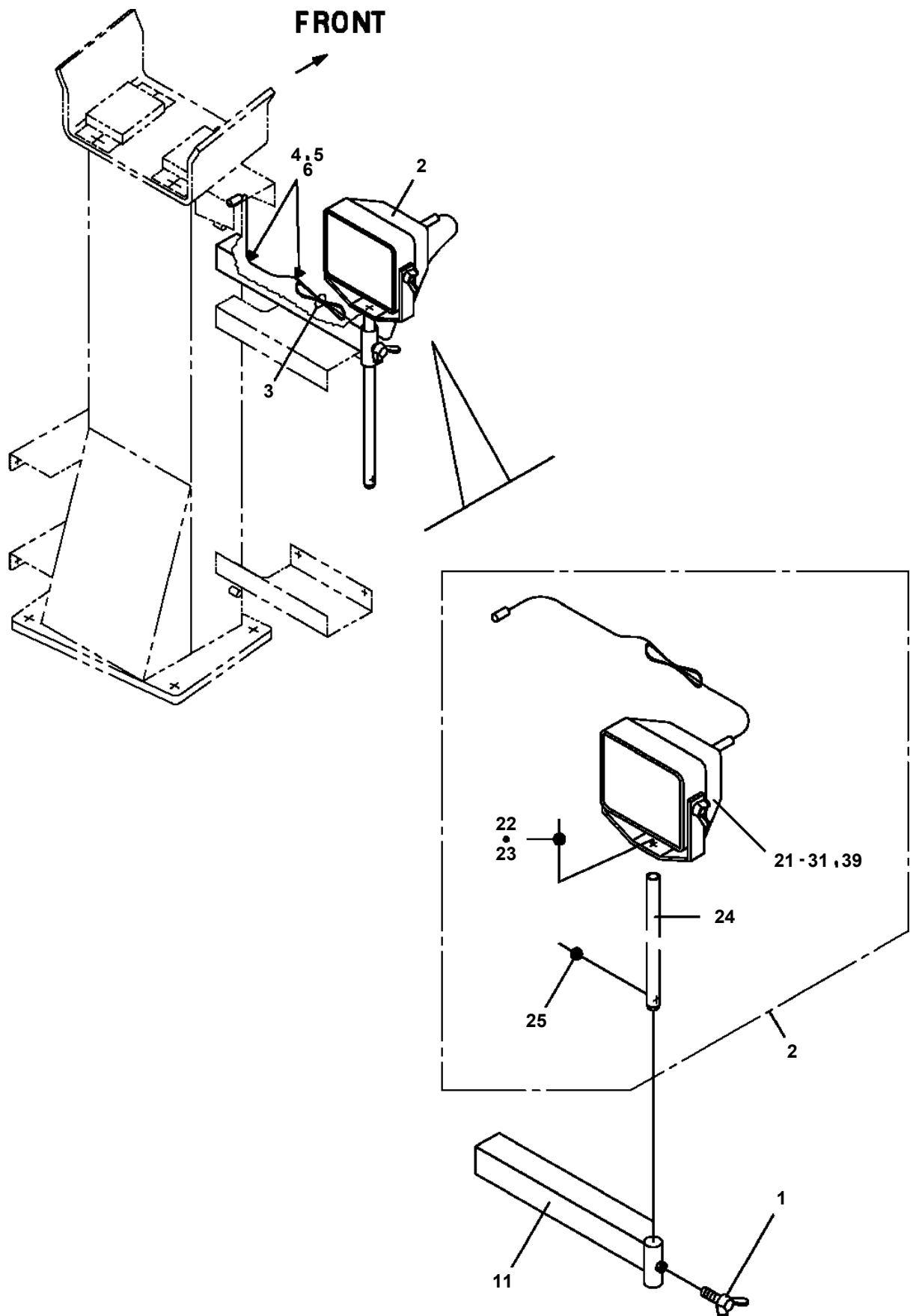
AT-195-1 42093132007 UPPER,LOWER,HINO 2KG-XZU640F-TKFSE6

Pos No.	Parts No	Parts Name	Qty	Unit	Technical Data	Serial No (Start)	Serial No (End)	Remarks
1	82199105017	LAMP (ASSY ONLY)	1					
2	90101212020	BOLT	1		M12X20			
3	90302041201	WASHER,SPRING	1		12			
4	37000179070	PIN	1					
5	80620210160	PIN,SNAP	1					
100	42510232000	LAMP ASSY (SQUARE TYPE)	1					

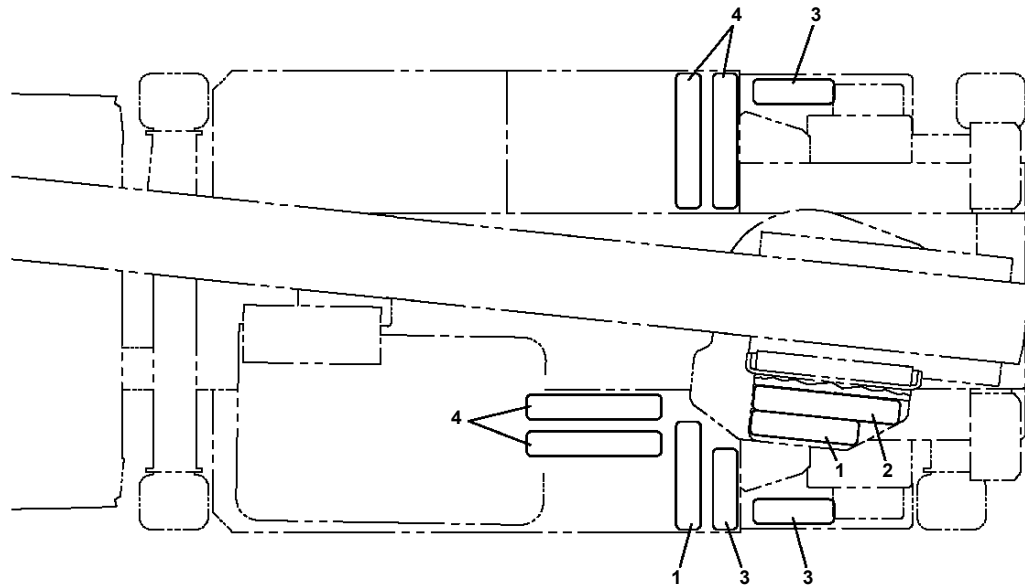
AT-195-1 42093132007 UPPER,LOWER,HINO 2KG-XZU640F-TKFSE6

Pos No.	Parts No	Parts Name	Qty	Unit	Technical Data	Serial No (Start)	Serial No (End)
1	36131820000	DETECTOR,BOOM LENGTH	1				
3	90101206012	BOLT	6		M6X12		
4	90304110601	WASHER,TOOTH	4		6		
5	90302040601	WASHER,SPRING	10		6		
6	42352910100	COVER	1				
7	42350071000	ROLLER ASSY	2				
8	42360030060	WASHER	1				
9	82100001735	SLEEVE	1				
10	82100001737	SLEEVE	2				
11	80175304010	SCREW,MACHINE	1		M4X10		
12	90101206010	BOLT	6		M6X1.0		
13	82100002035	CLAMP	2		WE8		
14	90201200600	NUT	2		M6		
15	82100001802	TUBE,CORRUGATE	4	M	10		
16	91810132530	FASTENER	5				
17	36140760000	DETECTOR ASSY,ANGLE (ASSY ONLY)	1				
31	42360030040	SUPPORT	2				
32	37001102350	ROLLER	2				
33	37000302060	SPACER	2		L=11.2		
35	90201201000	NUT	2		M10		
36	90302041001	WASHER,SPRING	2		10		
37	90303071001	WASHER,PLAIN	2		10		

AT-195-1 42093132007 UPPER,LOWER,HINO 2KG-XZU640F-TKFSE6
PN1080252-00 LAMP (BOOM REST)



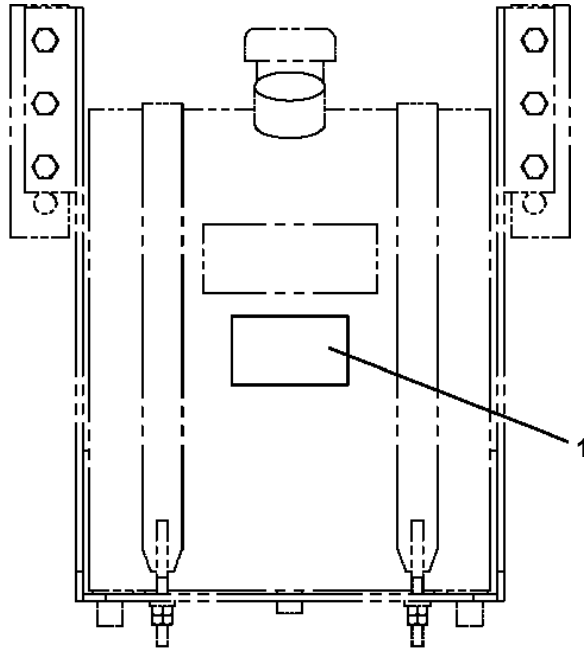
**AT-195-1 42093132007 UPPER,LOWER,HINO 2KG-XZU640F-TKFSE6
PN5011507-00 NAME PLATE ASSY (NON-SLIP/YELLOW)**



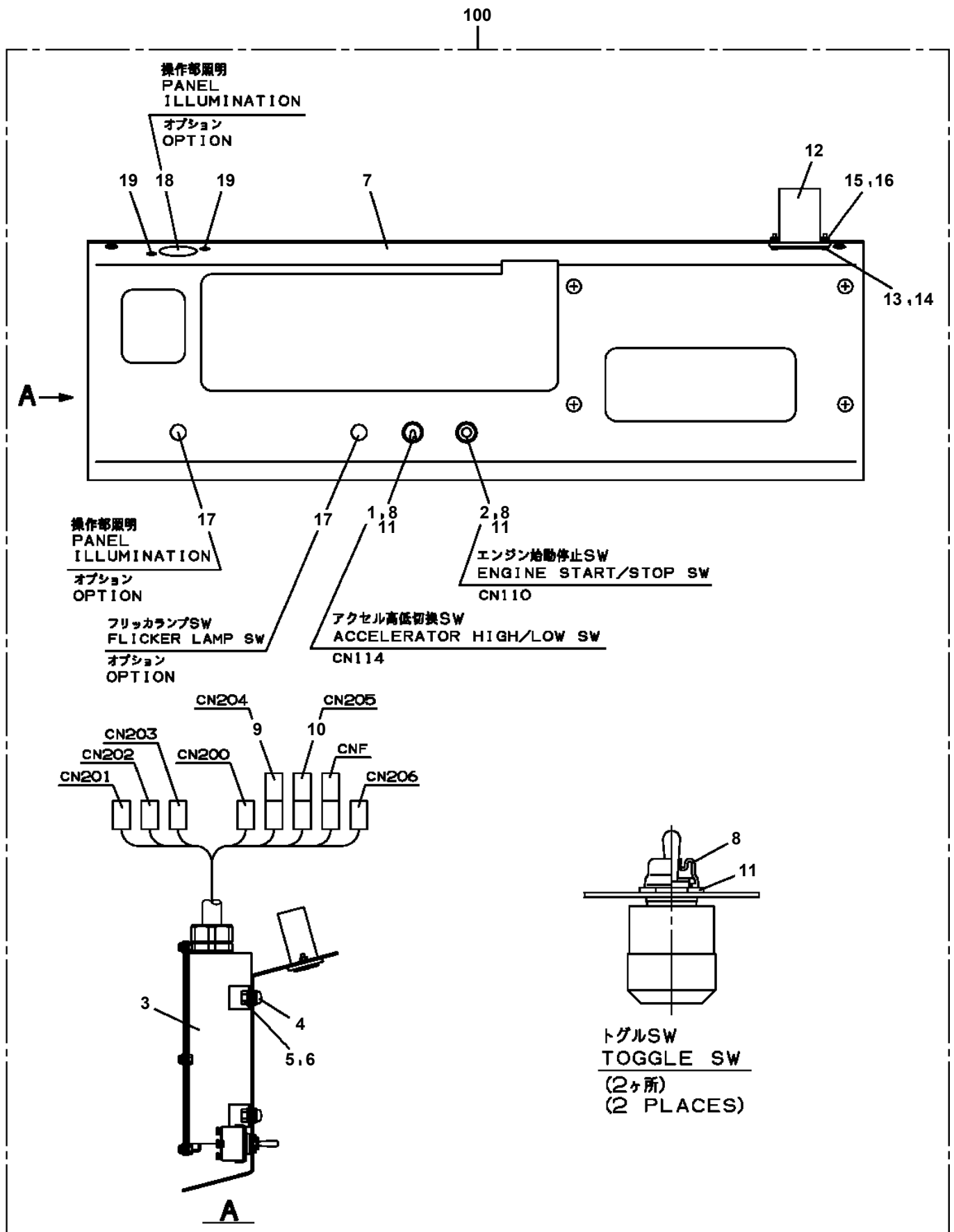
AT-195-1 42093132007 UPPER,LOWER,HINO 2KG-XZU640F-TKFSE6

Pos No.	Parts No	Parts Name	Qty	Unit	Technical Data	Serial No (Start)	Serial No (End)	Remarks	Pages
1	34393926560	PLATE (NON-SLIP)	1						

AT-195-1 42093132007 UPPER,LOWER,HINO 2KG-XZU640F-TKFSE6
PO1012229-02 PLATE ASSY,NAME (HYDRAULIC OIL)

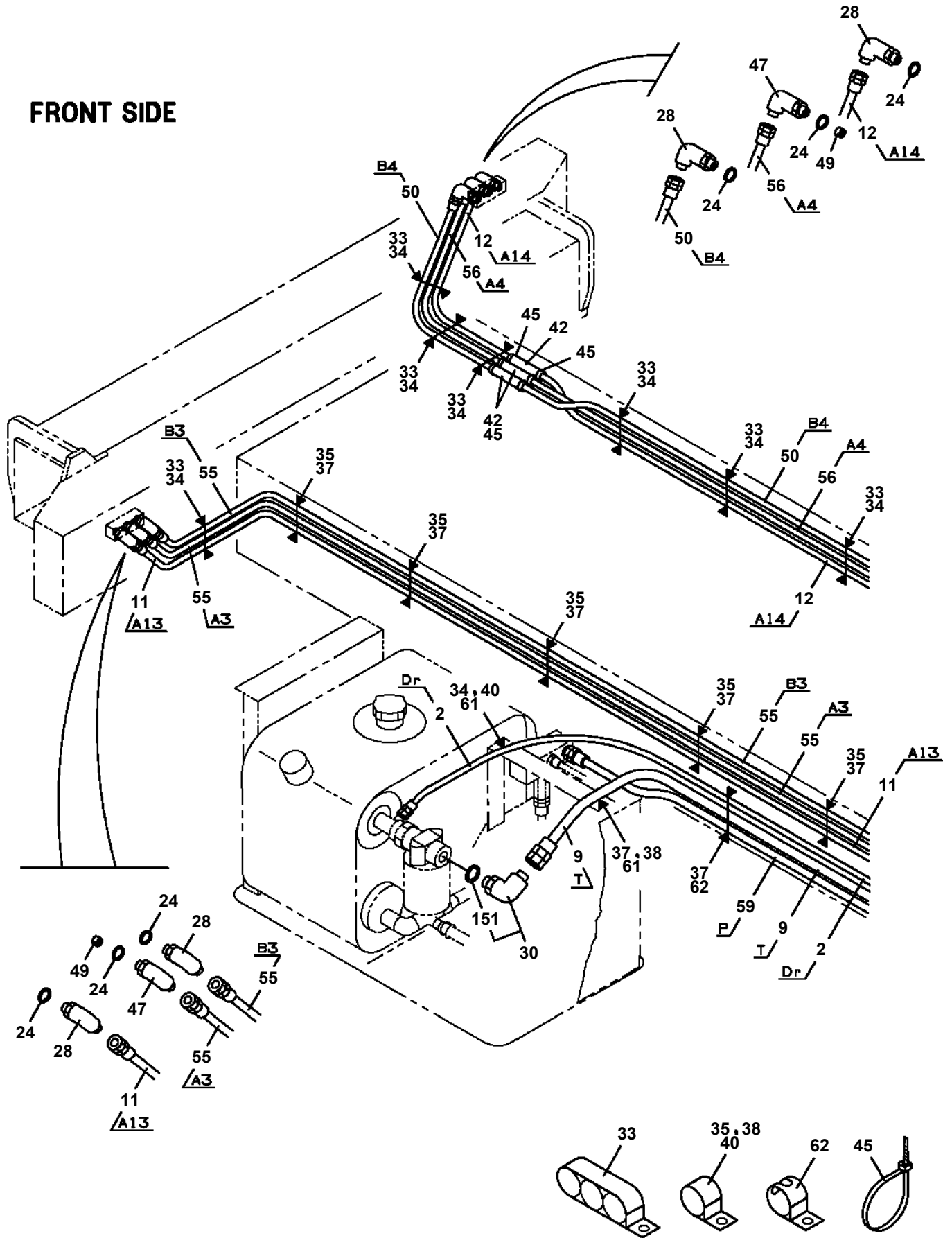


AT-195-1 42093132007 UPPER,LOWER,HINO 2KG-XZU640F-TKFSE6
 PP5020040-01 PANEL ASSY,CONTROL

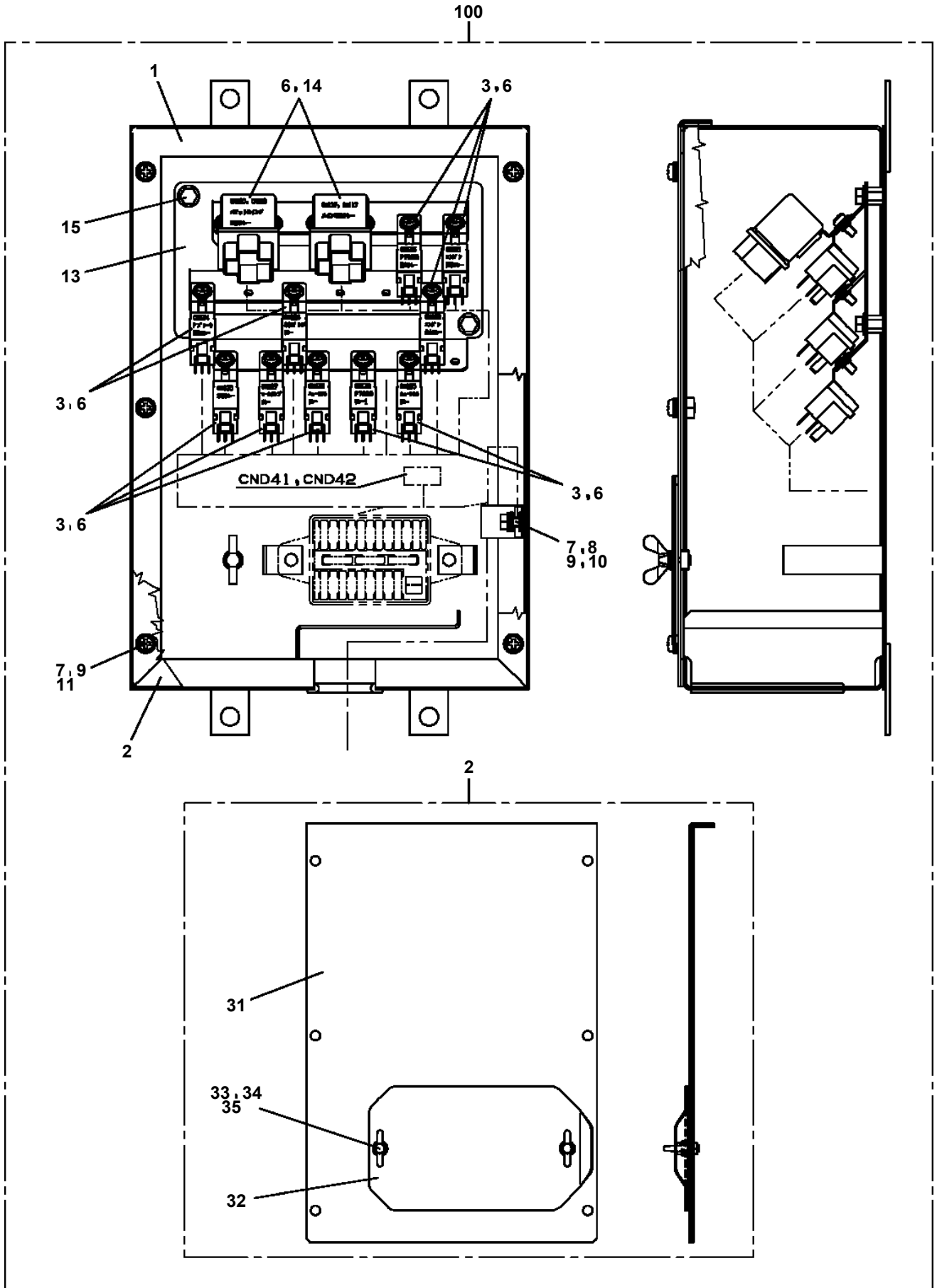


AT-195-1 42093132007 UPPER,LOWER,HINO 2KG-XZU640F-TKFSE6
 PP6130075-02 PIPING ASSY,FRAME

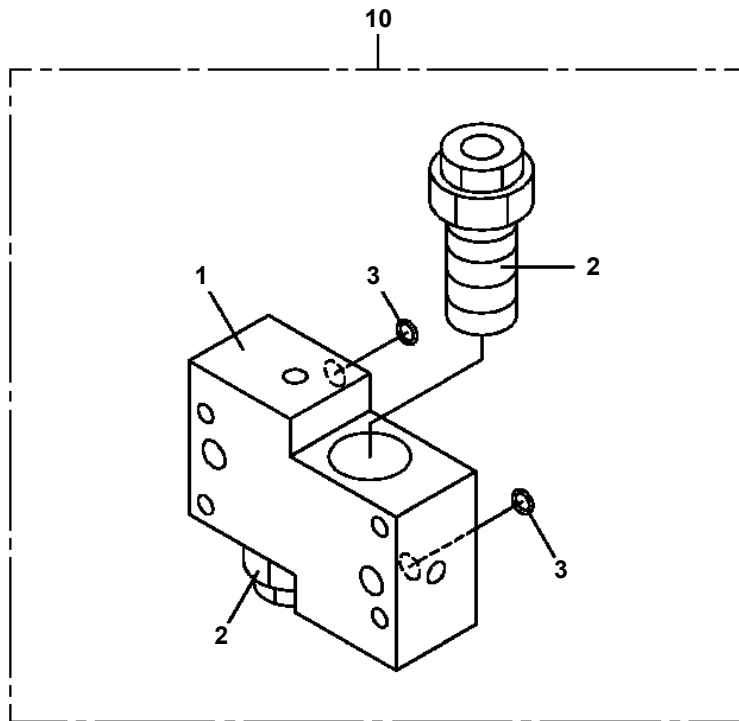
FRONT SIDE



AT-195-1 42093132007 UPPER,LOWER,HINO 2KG-XZU640F-TKFSE6
PR5100142-00 RELAY BOX ASSY



AT-195-1 42093132007 UPPER,LOWER,HINO 2KG-XZU640F-TKFSE6
PV5010001-00 VALVE ASSY

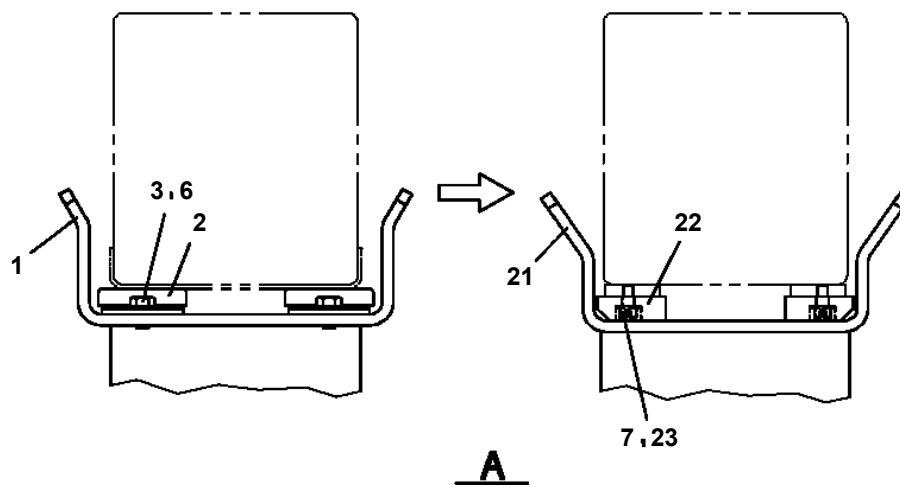
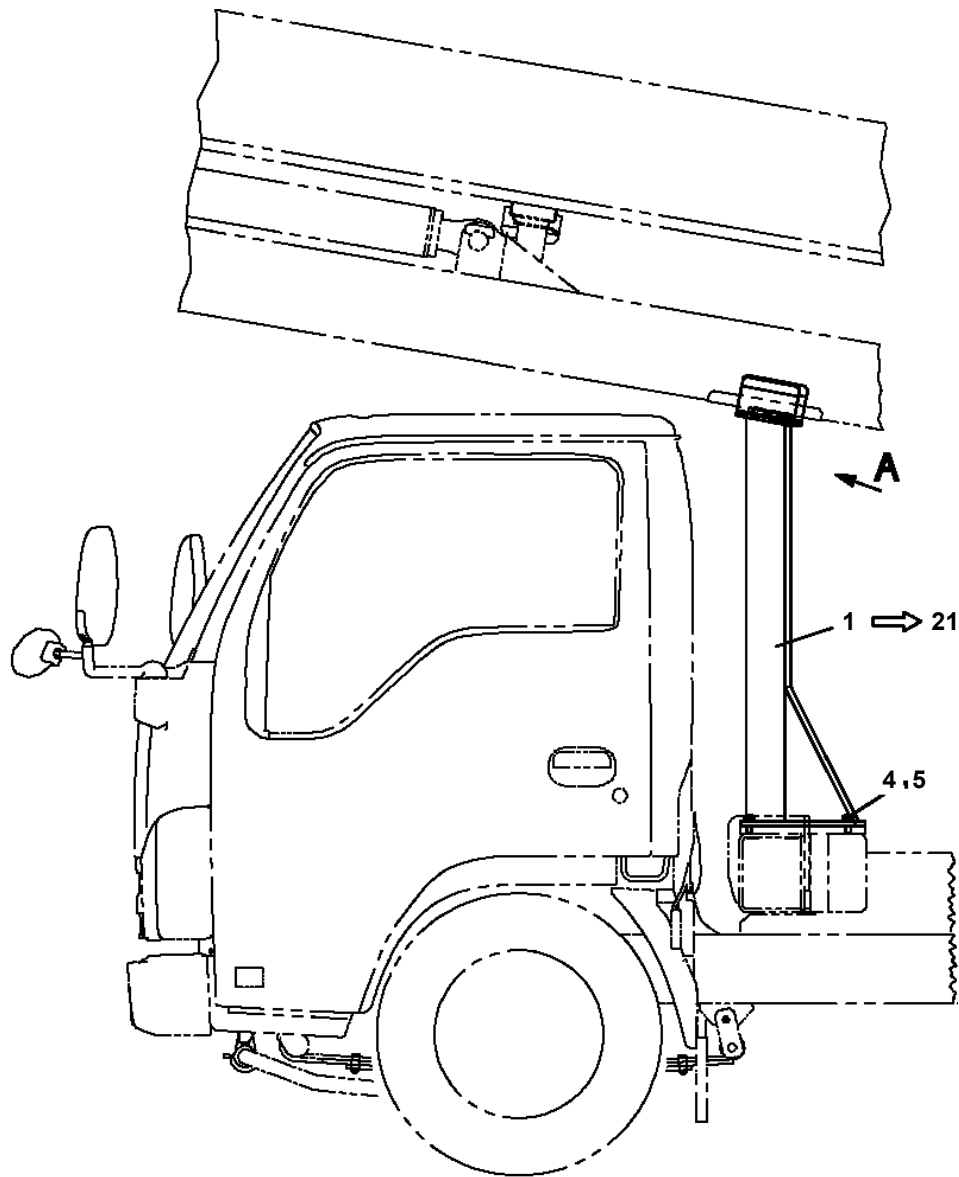


**AT-195-1 42093132007 UPPER,LOWER,HINO 2KG-XZU640F-TKFSE6
PW1000118-00 ACCESSORIES & TOOLS**

フソク ア ヒン
ACCESSORIES & TOOLS

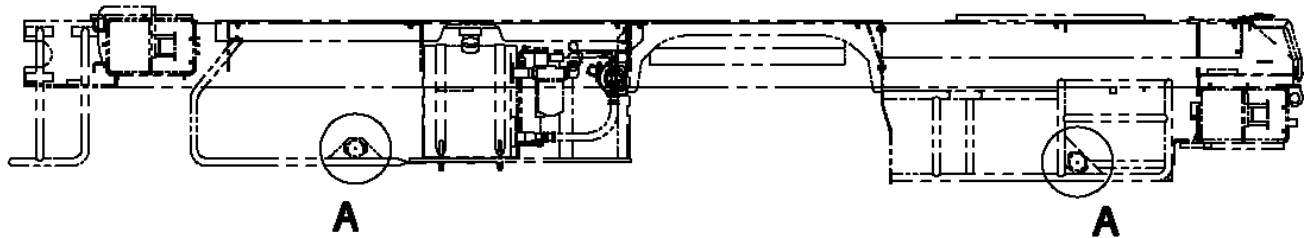
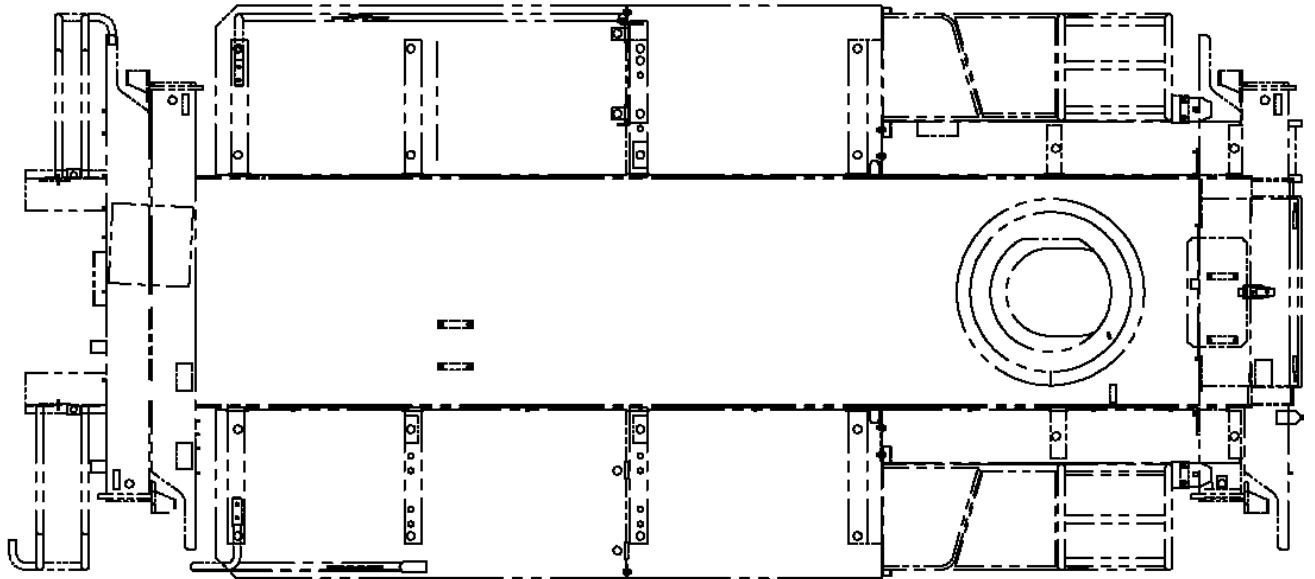
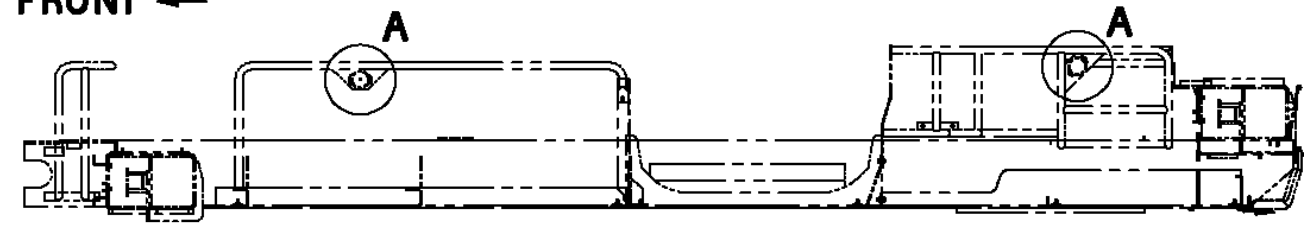
【組立名称一覧】より選択してください。
SEE THE CORRESPONDING "ASSEMBLY NAME" LIST.

AT-195-1 42093132007 UPPER,LOWER,HINO 2KG-XZU640F-TKFSE6
PX1120594-02 BOOM REST

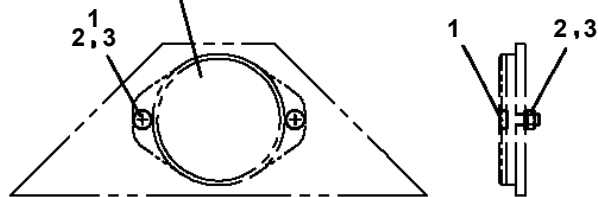


AT-195-1 42093132007 UPPER,LOWER,HINO 2KG-XZU640F-TKFSE6
PX1360085-01 REFLECTOR (FRAME SIDE)

FRONT ←

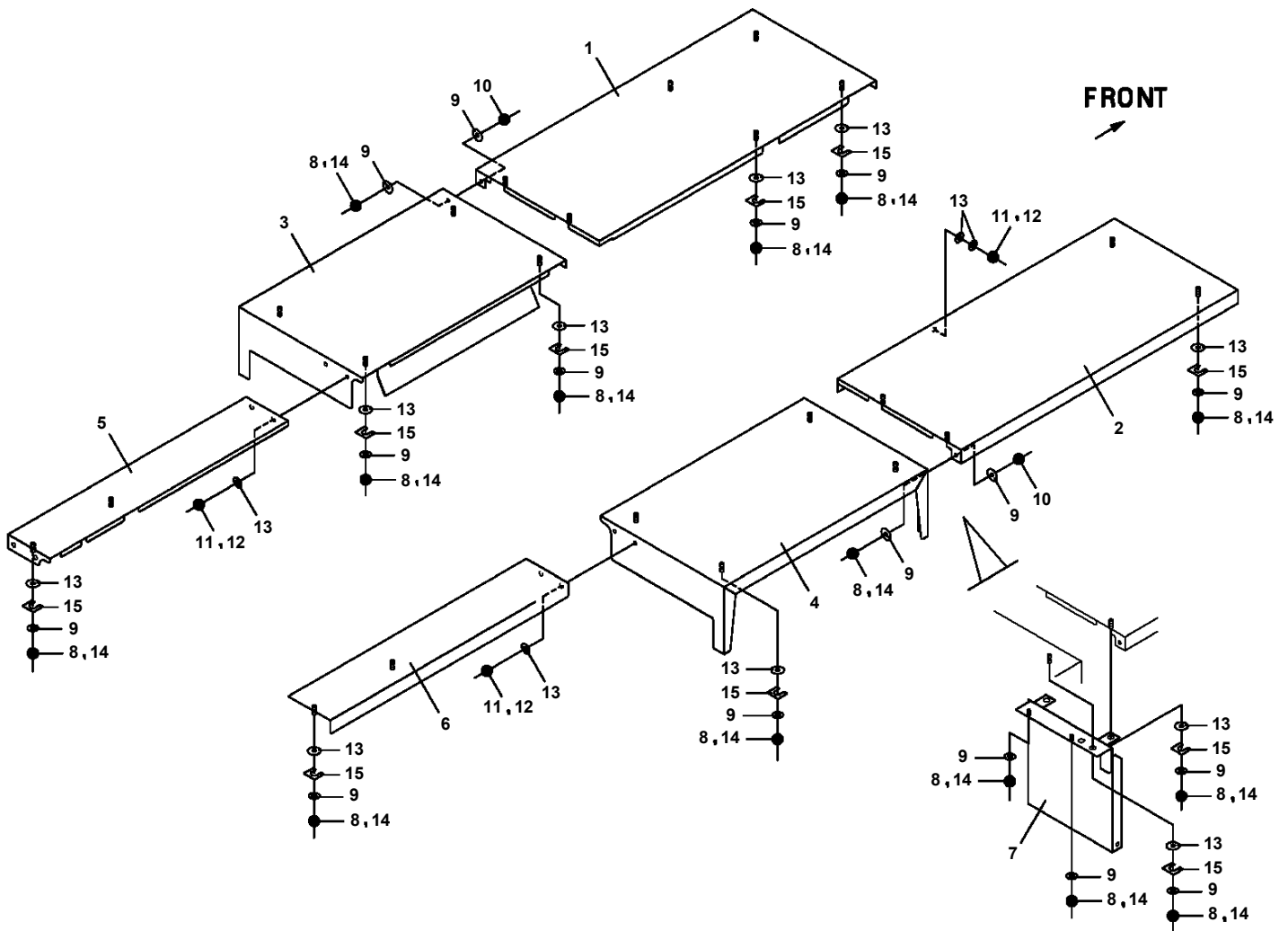


UNSET-UP PARTS
INSIDE CAB

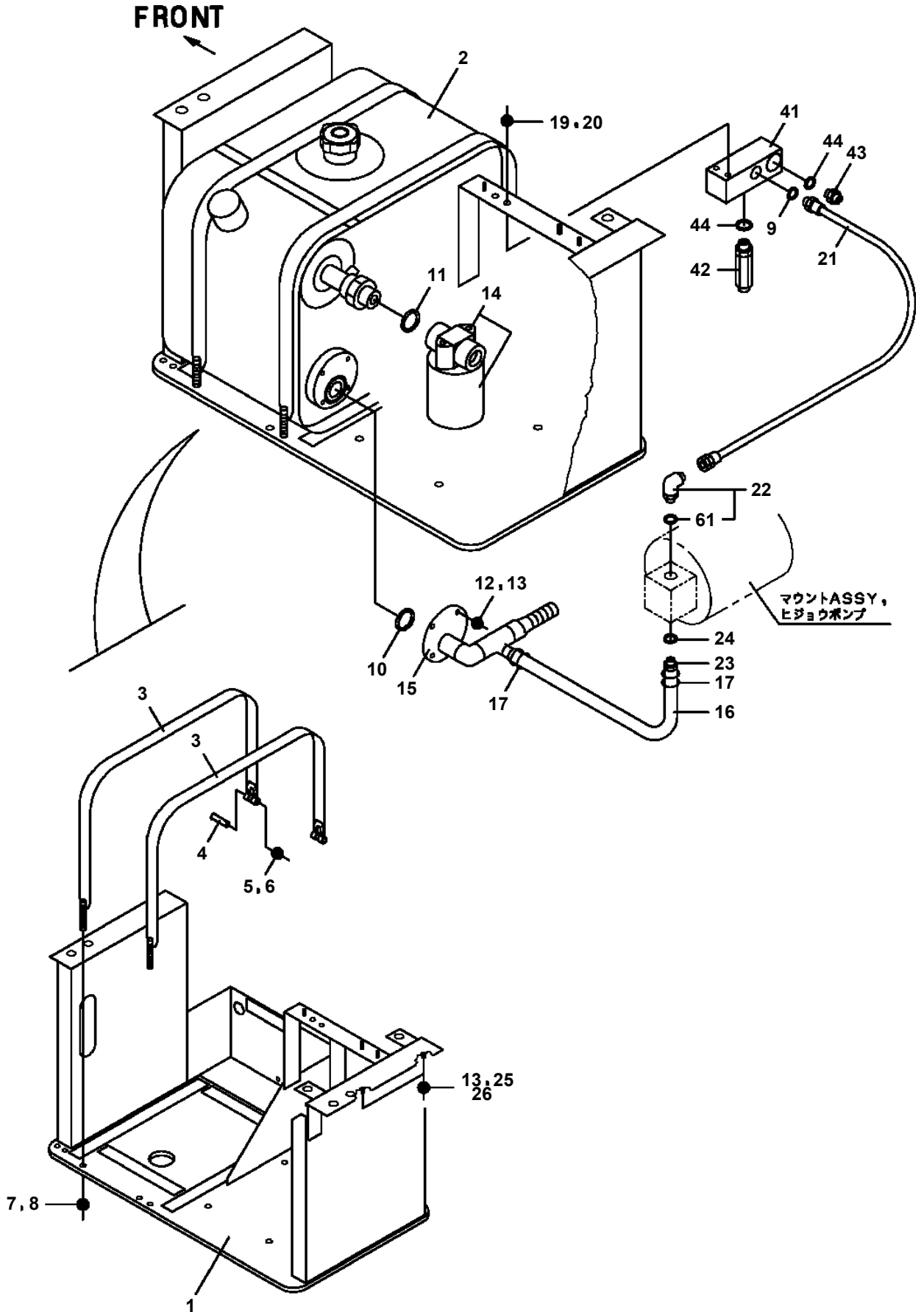


A

AT-195-1 42093132007 UPPER,LOWER,HINO 2KG-XZU640F-TKFSE6
PX5280025-00 MOUNT ASSY,DECK



AT-195-1 42093132007 UPPER,LOWER,HINO 2KG-XZU640F-TKFSE6
PX5750032-00 MOUNT ASSY,TANK



AT-195-1 42093132007 UPPER,LOWER,HINO 2KG-XZU640F-TKFSE6

Pos No.	Parts No	Parts Name	Qty	Unit	Technical Data	Serial No (Start)	Serial No (End)	Remarks	Pages
1	42460021000	BELT,SAFETY	1						

CLICK HERE TO **DOWNLOAD** THE COMPLETE MANUAL

- Thank you very much for reading the preview of the manual.
- You can download the complete manual from: www.heydownloads.com by clicking the link below



- Please note: If there is no response to CLICKING the link, please download this PDF first and then click on it.

CLICK HERE TO **DOWNLOAD** THE COMPLETE MANUAL