

## **AT-185-1 42004100001 UPPER**

**PB1000013-02 HYDRAULIC PRESSURE GENERATING SYSTEM**

**PD1000013-03 SWING SYSTEM**

**PE1000013-02 ELEVATING SYSTEM**

**PG1000013-02 TELESCOPING SYSTEM**

**PH1000013-02 SAFETY DEVICES**

**PJ3000013-02 BUCKET OR BASKET SYSTEM**

**PK1000013-02 FRAME**

**PL1000013-03 CONTROL DEVICES**

**PN1000013-00 ELECTRIC EQUIPMENT**

**PO1000171-00 INDICATION PLATES**

**PW1000097-02 ACCESSORIES & TOOLS**

**PY1000013-04 OPTIONS**

**ASSEMBLY**

CLICK HERE TO **DOWNLOAD** THE COMPLETE MANUAL

- Thank you very much for reading the preview of the manual.
- You can download the complete manual from: [www.heydownloads.com](http://www.heydownloads.com) by clicking the link below



- Please note: If there is no response to CLICKING the link, please download this PDF first and then click on it.

CLICK HERE TO **DOWNLOAD** THE COMPLETE MANUAL

# AT-185-1 42004100001 UPPER

Pos No.	Parts No	Parts Name	Qty	Unit	Technical Data	Serial No (Start)	Serial N
1	(*****)	DETECTOR,SWING ANGLE	1				240316
	(*****)	DETECTOR,SWING ANGLE	1			240068	
	(*****)	DETECTOR,SWING ANGLE	1			240317	
2	(*****)	CONNECTION,WORKING AREA LIMITER	1				240067
	(*****)	CONNECTION,AWL SYSTEM (BASKE)	1				240255
	(*****)	CONNECTION,AWL SYSTEM (FOR CHINES)	1				240255
	(*****)	CONNECTION,AWL SYSTEM (STD)	1			240068	
	(*****)	CONNECTION,AWL SYSTEM (STD,WITH WINCH)	1			240106	240255

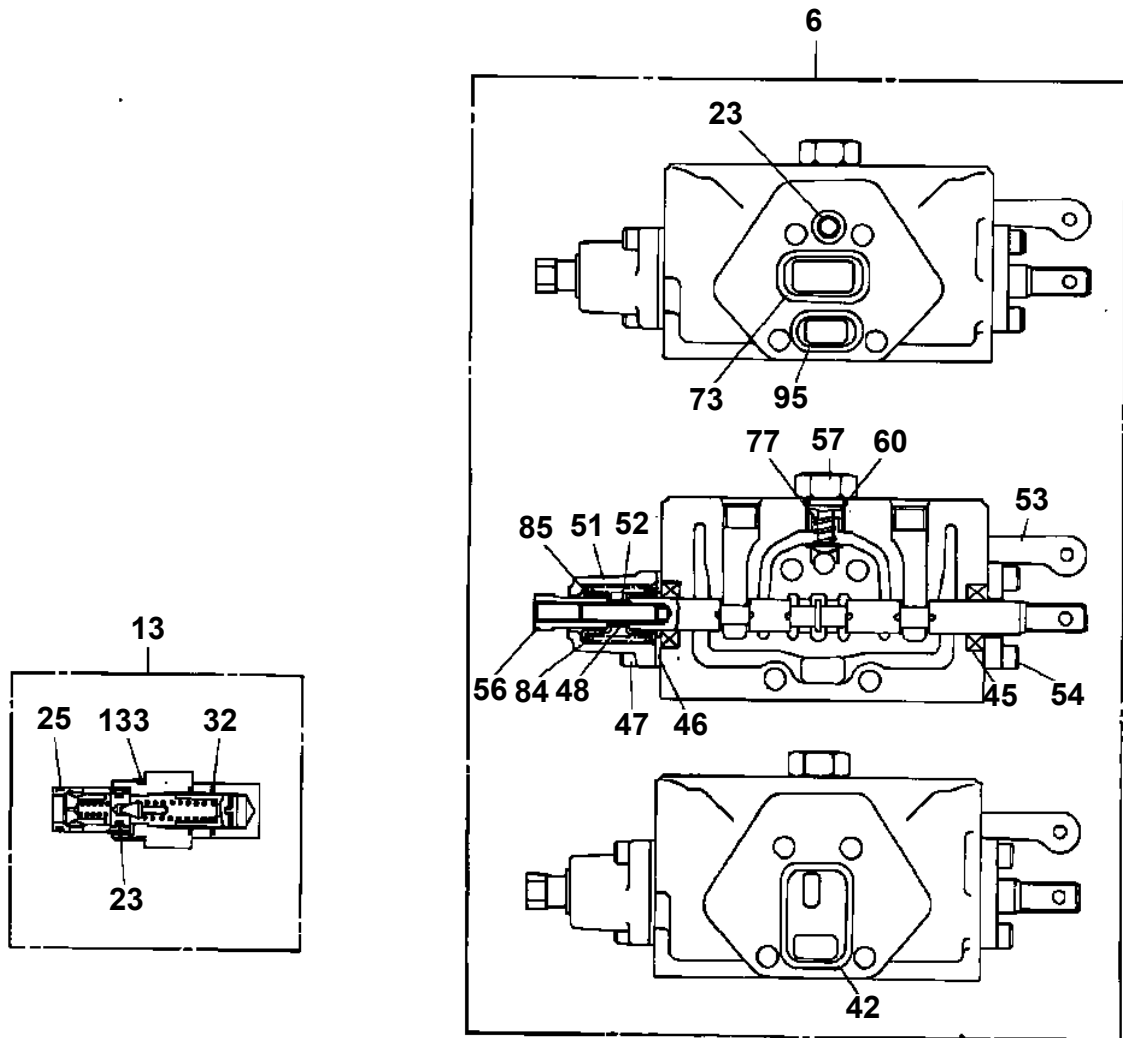
# AT-185-1 42004100001 UPPER

Pos No.	Parts No	Parts Name	Qty	Unit	Technical Data	Serial No (Start)	Serial No (End)
1	(*****)	PLATE ASSY,NAME (UPPER)	1				240255
	(*****)	PLATE ASSY,NAME (ENGLISH)	1			240082	
2	(*****)	PLATE ASSY,NAME (BUCKET)	1				
	(*****)	PLATE ASSY,NAME (BASKET,OPTION)	1				
3	(*****)	PLATE ASSY,NAME (WINCH,OPTION)	1				
	(*****)	PLATE ASSY,NAME (WINCH,OPTION)	1			240020	
4	(*****)	PLATE ASSY,NAME (FOOT SWITCH)	1			240192	

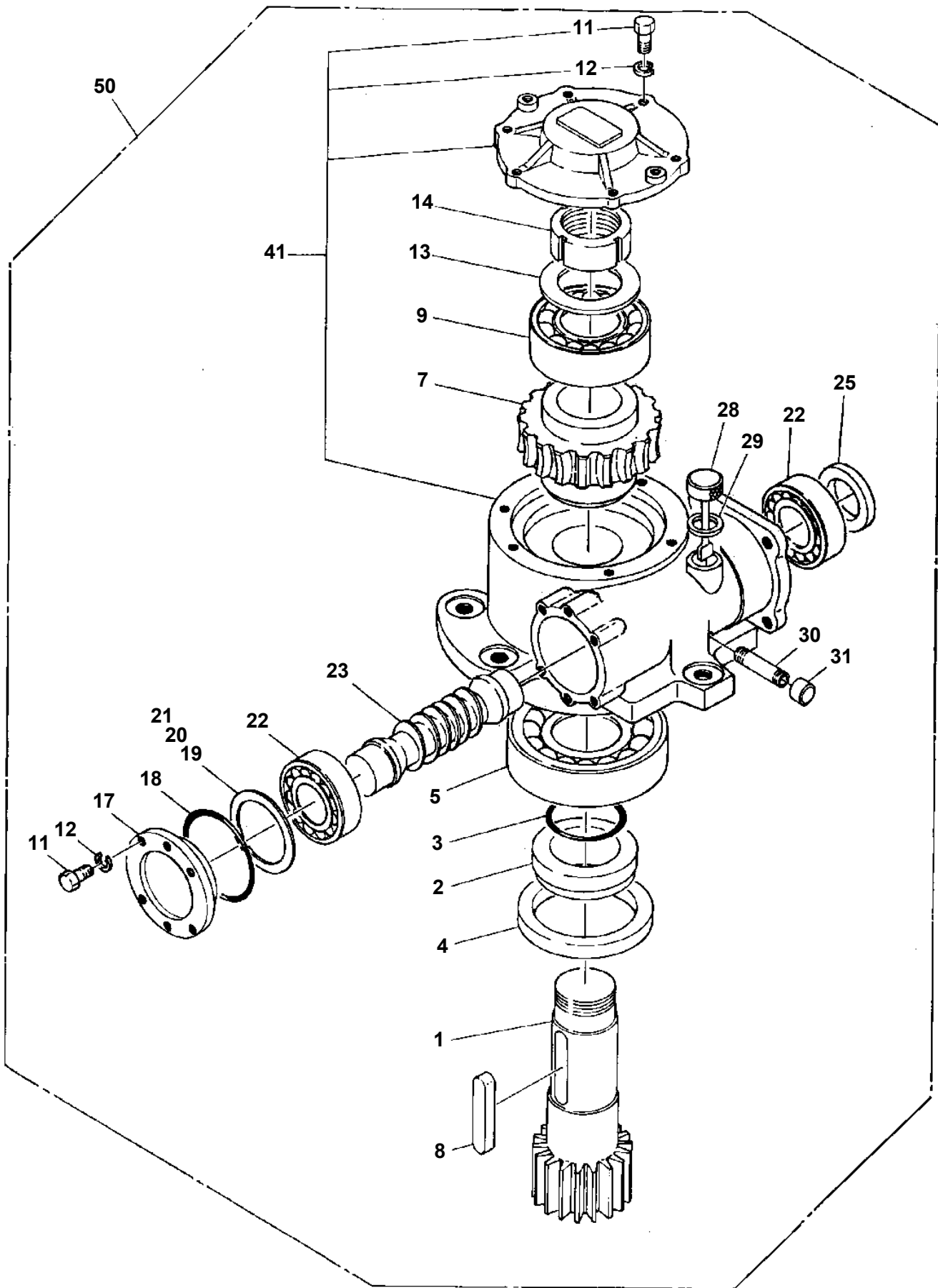
# AT-185-1 4200410001 UPPER

Pos No.	Parts No	Parts Name	Qty	Unit	Technical Data	Serial No (Start)	Serial No (End)	Rem
66	82100000967	TERMINAL	14					
67	82100000969	PLUG	8					
68	82100001015	CONNECTOR	3					
69	82100001016	CONNECTOR	3					
81	37004500300	BRUSH (WITH CABLE L)	1					
82	37004500310	BRUSH (WITH CABLE W)	1					
83	37004500320	BRUSH (WITH CABLE R)	1					
84	37004500330	BRUSH (WITH CABLE G)	1					
85	37004500340	BRUSH (WITH CABLE Y)	1					
86	37004500350	BRUSH (WITH CABLE,B)	1					
87	37004500360	BRUSH (WITH CABLE GY)	1					
88	37004500370	BRUSH (WITH CABLE B/R)	1					
89	37004500380	BRUSH (WITH CABLE W/R)	1					
90	37004500390	BRUSH (WITH CABLE R/G)	1					
91	37004500400	BRUSH (WITH CABLE G/R)	1					
92	37004500410	BRUSH (WITH CABLE Y/R)	1					
93	37004500420	BRUSH (WITH CABLE BR)	1					
94	37004500430	BRUSH (WITH CABLE,O)	1					
95	82100001073	CONNECTOR	2					
96	82100000968	TERMINAL	14					
100	42630028012	JOINT,ROTARY	1					
110	82400000204	GROMMET	1		L=320		240316	
111	82100001990	BRUSH	14					

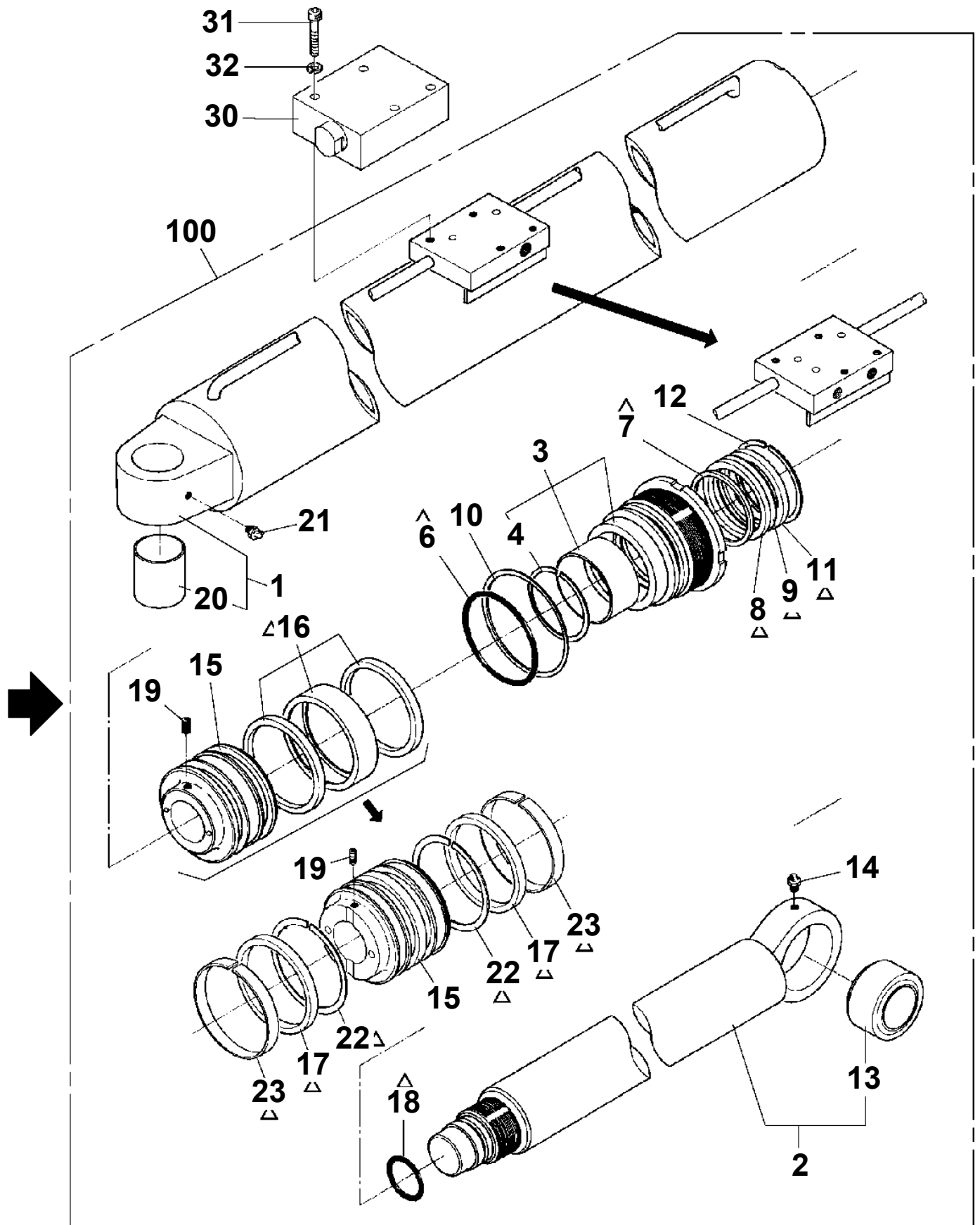
AT-185-1 42004100001 UPPER  
PB1320500-01 VALVE, MANUAL CONTROL



AT-185-1 4200410001 UPPER  
PD1010049-00 REDUCER, SWING SPEED



**AT-185-1 4200410001 UPPER  
PE1010006-05 CYLINDER,ELEVATING**



△ : PACKING SET KEY NO **51** ( KEY NO. 6,7,8,9,11,16,18)

△ : PACKING SET KEY NC **51** ( KEY NO. 6,7,8,9,11,17,18,22,23)

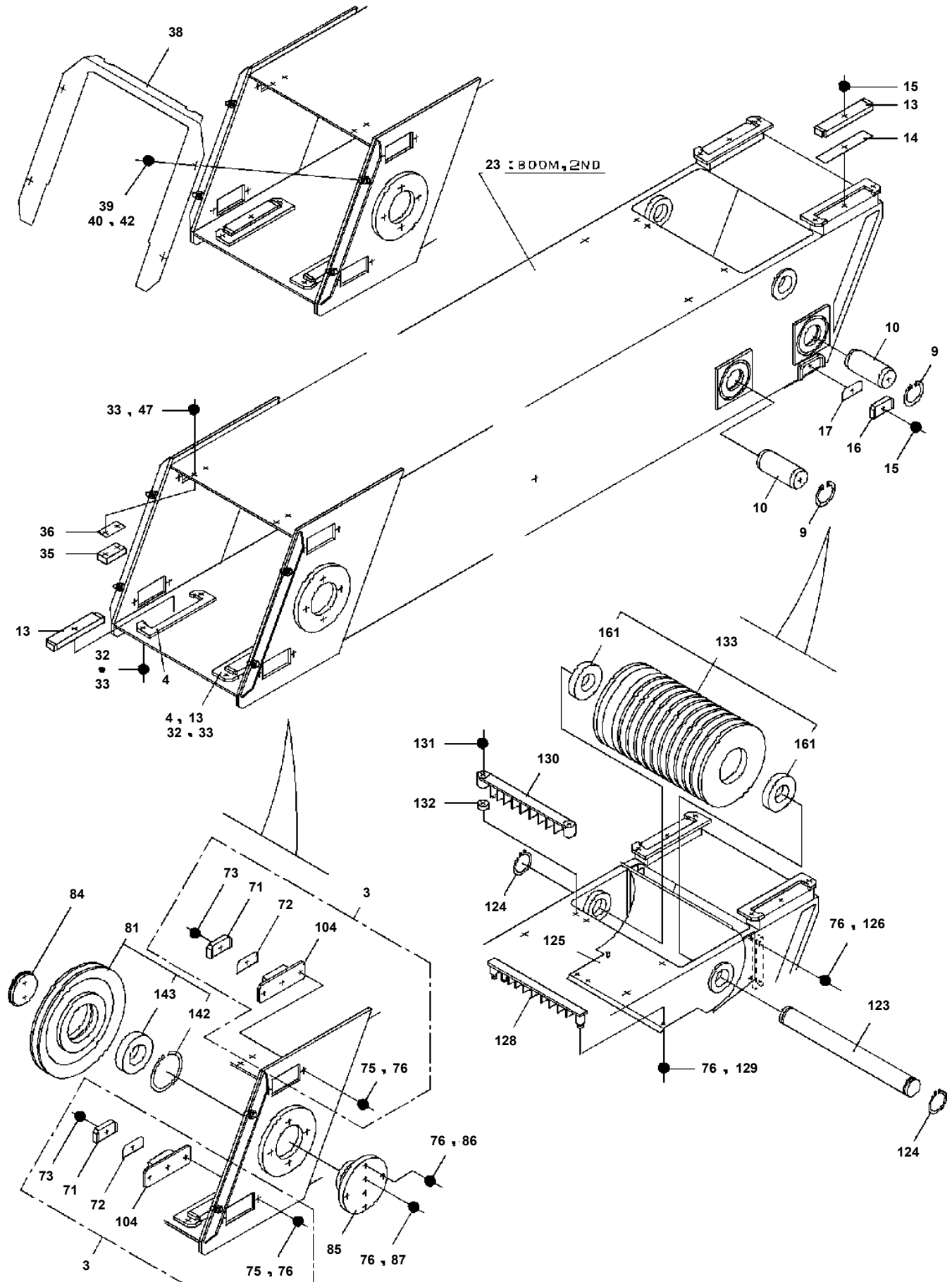
# AT-185-1 4200410001 UPPER

Pos No.	Parts No	Parts Name	Qty	Unit	Technical Data	Serial No (Start)	Serial No (End)	Remark
1	36020825060	CYLINDER ASSY	1				240097	
	36020825061	CYLINDER ASSY	1			240098	240345	
2	36020825070	ROD ASSY	1				240158	
	36020825071	ROD ASSY	1			240159	240345	
3	91001104600	O-RING	1		1A P46		240345	
4	36020825030	PISTON	1					
5	91310211500	BEARING,PLAIN	1					
6	91684011500	PACKING	2					
7	90730006080	SCREW,SET	1		M6X8		240345	
8	80801004550	BEARING,PLAIN	2					
9	80612110620	RING,RITAINING	1		AR62		240345	
10	80801005540	BUSH	1				240345	
11	91002810500	O-RING	1		1B P105			
12	36020825080	COVER,ROD	1				240345	
13	91251100550	RING,DAMPER	1		DR-55		240345	
14	91694005500	PACKING	1				240345	
15	91410205501	RING,BACKUP	1				240345	
16	36020825050	STOPPER	1				240345	
17	91660005500	SEAL,DUST	1				240345	
18	80622000550	RING,RITAINING	1		SP55		240345	
19	82456101000	NIPPLE,GREASE	1		A-PT1/8		240097	
	82456101000	NIPPLE,GREASE	1		A-PT1/8		240158	
	82456101000	NIPPLE,GREASE	1		A-PT1/8	240098	240345	
	82456101000	NIPPLE,GREASE	1		A-PT1/8	240159		
20	36020645060	BEARING,SPHERICAL	1					
21	90102216030	BOLT	2		M16X30	240098	240345	
22	90203201600	NUT	2		M16	240098		
42	36600910000	VALVE,COUNTERBALANCE	1					
43	90131508095	BOLT,HEXAGON SOCKET	4		M8X95		240148	
	90131508090	BOLT,HEXAGON SOCKET	4		M8X90	240149		
51	36020825010	CYLINDER ASSY	1			240346		
52	36020825110	ROD ASSY	1			240346		
53	91002804600	O-RING	1		1B P46	240346		
57	90710006080	SCREW,SET	1		M6X8	240346		
59	80612110720	RING,RITAINING	1		AR72	240346		
60	80801006540	BEARING,PLAIN	1			240346		
62	36021445060	COVER,ROD	1			240346		
63	91251100650	RING,DAMPER	1			240346		
64	91694106500	PACKING	1			240346		
65	91410206503	RING,BACKUP	1			240346		
66	36020606000	PLATE	1			240346		
67	91660006500	SEAL,DUST	1			240346		
68	80622000650	RING,RITAINING	1		SP65	240346		
71	90101216030	BOLT	2		M16X30	240346		
81	36020829900	PACKING SET	1		55X155		240345	
82	36026079900	PACKING SET	1		65X115	240346		
100	36020820000	CYLINDER,ARTICULATE	1				240345	
200	36020820001	CYLINDER,ARTICULATE	1			240346		

# AT-185-1 42004100001 UPPER

Pos No.	Parts No	Parts Name	Qty	Unit	Technical Data	Serial No (Start)	Serial No (End)	Remarks	Pages
1	83151210661	CLIP	1						
2	83151110661	CLIP	1						

# AT-185-1 4200410001 UPPER PG1010493-01 BOOM



# AT-185-1 4200410001 UPPER

Pos No.	Parts No	Parts Name	Qty	Unit	Technical Data	Serial No (Start)	Serial No (End)	Remark
1	32360005010	CASE	1					
2	32360005020	PLATE	1					
3	32360005030	SHAFT	1					
4	32360005040	DRUM ASSY	1					
7	33370025120	BEARING,BALL	1					
8	80602110300	RING,RITAINING	1		R30			
9	80601110100	RING,RITAINING	1		S10			
10	32360005070	CASE (BEARING)	1					
11	36130165015	REDUCER	1					
12	32360005090	GEAR (1)	1					
13	32360005100	GEAR	1					
14	32360005110	BRACKET	1					
15	32360005120	POTENTIOMETER (5K)	1					
16	32360005130	SPRING	1					
17	32360005140	COVER	1					
18	32360005150	CLIP (NYLON)	1					
19	32360005160	CLIP (NYLON)	1					
20	32360005170	CLAMP (CORD)	1					
24	32360005190	GUIDE (CORD)	1					
25	32360005200	PACKING	1					
26	32360005210	PACKING	1					
27	32360005220	PACKING	1					
30	90710004050	SCREW,SET	2		M4X5			
31	90710005060	SCREW,SET	2		M5X6			
32	80165105012	SCREW,MACHINE	8		M5X12			
35	90101205010	BOLT	8		M5X10			
36	90201200500	NUT	4		M5			
37	90302040501	WASHER,SPRING	12		5			
38	90302040401	WASHER,SPRING	13		4			
39	90302040301	WASHER,SPRING	3		3			
40	90303070501	WASHER,PLAIN	6		5			
41	90303070401	WASHER,PLAIN	7		4			
42	80161103005	SCREW,MACHINE	3		M3X5			
43	32360005230	TUBE,VINYL	1					
44	80161104008	SCREW,MACHINE	3		M4X8			
45	80161104040	SCREW,MACHINE	4		M4X4			
46	90201200400	NUT	1		M4			
47	32360005240	LOCK (CORD)	1					
48	82100000080	CORD (1-LINE)	10	M				
49	82100001155	CONNECTOR	1					
52	36130165025	CABLE	1					
60	36130160005	DETECTOR,BOOM LENGTH	1					

# AT-185-1 42004100001 UPPER

Pos No.	Parts No	Parts Name	Qty	Unit	Technical Data	Serial No (Start)	Serial No (End)	Remarks
1	36110695020	PANEL,DISPLAY	1					
2	36110695030	BOARD,ANALOG (NO.1)	1					
3	36110695040	BOARD,DIGITAL	1					
12	36110695010	HOLDER,FUSE	1					
13	82100000689	FUSE	1		3A,6.5X30			
20	36110690000	WORKING AREA LIMITER	1					

# AT-185-1 42004100001 UPPER

Pos No.	Parts No	Parts Name	Qty	Unit	Technical Data	Serial No (Start)	Serial No (End)	Remarks
1	36110695020	PANEL,DISPLAY	1					
2	36111065030	BOARD,ANALOG (NO.2)	1					
3	36114385040	BOARD,DIGITAL	1					
12	36110695010	HOLDER,FUSE	1					
13	82100000689	FUSE	1		3A,6.5X30			
20	36114380000	WORKING AREA LIMITER	1					

# AT-185-1 4200410001 UPPER

Pos No.	Parts No	Parts Name	Qty	Unit	Technical Data	Serial No (Start)	Serial No (End)
1	42360180010	HARNES	1				
2	82100002035	CLAMP	3		WE8		
3	90190000008	BOLT,STUD	7		M6X20		
4	90302040601	WASHER,SPRING	13		6		
5	90201200600	NUT	7		M6		
6	36130230000	DETECTOR,BOOM LENGTH	1				
7	82100002010	CLAMP	2		WR15		
8	36140010000	DETECTOR ASSY,ANGLE (ASSY ONLY)	1				
9	37000519420	PLATE	1				
10	37000516940	PLATE	1				
11	90101208014	BOLT	8		M8X14		
12	90304110601	WASHER,TOOTH	4		6		
13	42360310020	PLATE	1				
14	37000517130	PLATE	2				
15	90101206010	BOLT	10		M6X1.0		
16	90302040801	WASHER,SPRING	8		8		
17	90303070801	WASHER,PLAIN	10		8		
18	82100001411	TUBE,SPIRAL	1	M	SE-08BK		
19	42360031000	BOX ASSY	1				
20	90201201000	NUT	2		M10		
21	80176304010	SCREW,MACHINE	6		M4X10		
22	90305210401	WASHER	6		4		
23	90303071001	WASHER,PLAIN	2		10		
24	42360030020	PLATE	2				
25	90302041001	WASHER,SPRING	2		10		
26	37000302060	SPACER	2		L=11.2		
27	37001102350	ROLLER	2				
28	42360080050	COVER	1				
29	42360030040	SUPPORT	2				
30	82100001735	SLEEVE	1				
31	82100001737	SLEEVE	2				
32	80175304010	SCREW,MACHINE	1		M4X10		
33	42360030060	WASHER	1				
36	36111510000	WORKING AREA LIMITER	1				
39	82100002037	CLAMP	2		WE10		
51	42360011010	COVER	1				
52	37000508810	PLATE	2				
53	37000508820	PLATE	2				
55	42360011020	COVER	1				
56	90101206008	BOLT	6		M6X8		
57	90302040601	WASHER,SPRING	6		6		
58	82400000319	HINGE	2				
59	80172303008	SCREW,MACHINE	12		M3X8		
60	90201200300	NUT	12		M3		
61	90302040301	WASHER,SPRING	12		3		
62	82400000318	CATCH	1				

# AT-185-1 4200410001 UPPER

Pos No.	Parts No	Parts Name	Qty	Unit	Technical Data	Serial No (Start)	Serial No (End)	Remarks	Pages
1	42471540100	SUPPORT	1						
2	42471540300	SWITCH ASSY	1						
3	42471540400	SWITCH ASSY	2						
4	42471540200	SUPPORT	1						
5	37000705910	CLAMP ASSY	2		D=8				
6	37000705940	CLAMP ASSY	1		D=15				
7	42471540600	HARNESS	1						
8	42471540500	SUPPORT	1						
9	91810130240	FASTENER	5						
10	82400000221	GROMMET	1						
11	90101206014	BOLT	12		M6X14				
12	90302040601	WASHER,SPRING	12		6				
13	90201200600	NUT	12		M6				
14	80172304012	SCREW,MACHINE	7		M4X12				
15	90302040401	WASHER,SPRING	7		4				
16	90201200400	NUT	7		M4				

# AT-185-1 42004100001 UPPER

Pos No.	Parts No	Parts Name	Qty	Unit	Technical Data	Serial No (Start)	Serial No (End)	Remarks	Pages
1	36600710000	VALVE,RELIEF	1						
2	36600715010	VALVE,RELIEF	2						
16	91002801400	O-RING	2		1B P14				
17	91002801800	O-RING	4		1B P18				

# AT-185-1 4200410001 UPPER

Pos No.	Parts No	Parts Name	Qty	Unit	Technical Data	Serial No (Start)	Serial No (End)	Remarks	Pages
1	36620650000	VALVE,CHECK	1						
2	36620030050	PLUG	1						
4	91002801000	O-RING	1		1B P10				
5	52255101000	SPRING	1						
7	91002801400	O-RING	2		1B P14				
8	36620030010	PLUG	1		PF3/8				
9	91002801200	O-RING	2		1B P12				

CLICK HERE TO **DOWNLOAD** THE COMPLETE MANUAL

- Thank you very much for reading the preview of the manual.
- You can download the complete manual from: [www.heydownloads.com](http://www.heydownloads.com) by clicking the link below



- Please note: If there is no response to CLICKING the link, please download this PDF first and then click on it.

CLICK HERE TO **DOWNLOAD** THE COMPLETE MANUAL

# AT-185-1 42004100001 UPPER

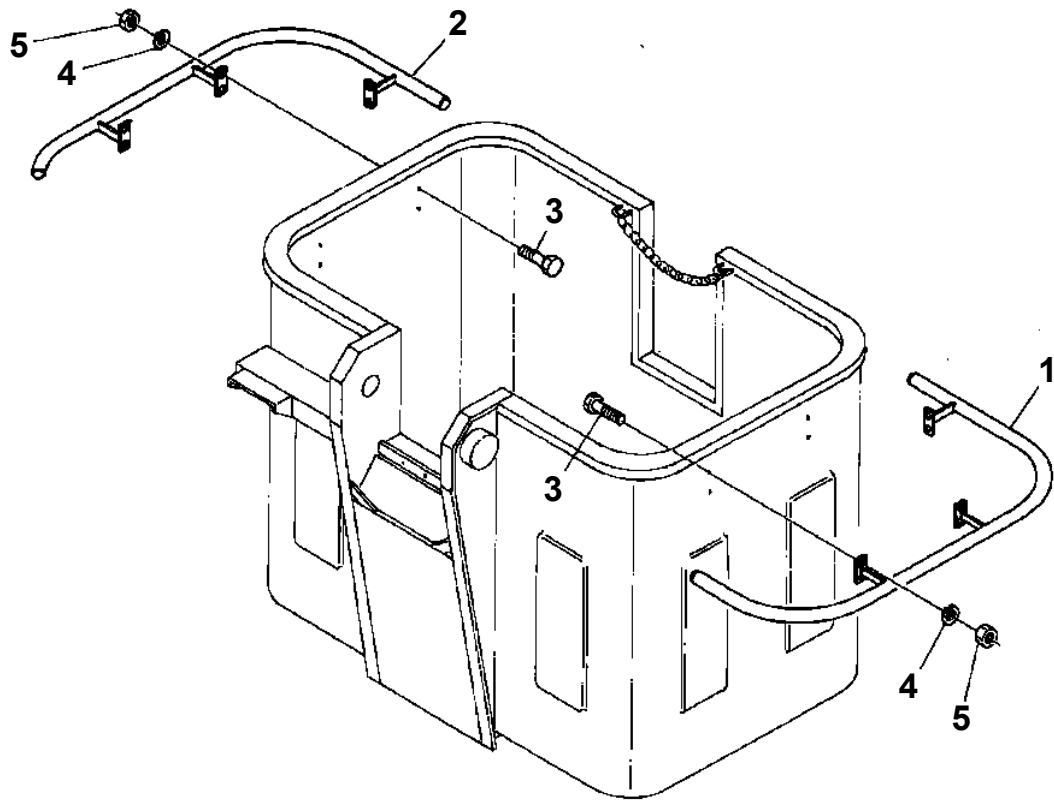
Pos No.	Parts No	Parts Name	Qty	Unit	Technical Data	Serial No (Start)	Serial No (End)	Remark
3	91001203500	O-RING	1		1A G35			
8	91002801600	O-RING	1		1B P16			
13	91001101200	O-RING	2		1A P12			
14	91002801800	O-RING	1		1B P18	240272		
20	36603310000	VALVE,COUNTERBALANCE	1					

# AT-185-1 42004100001 UPPER

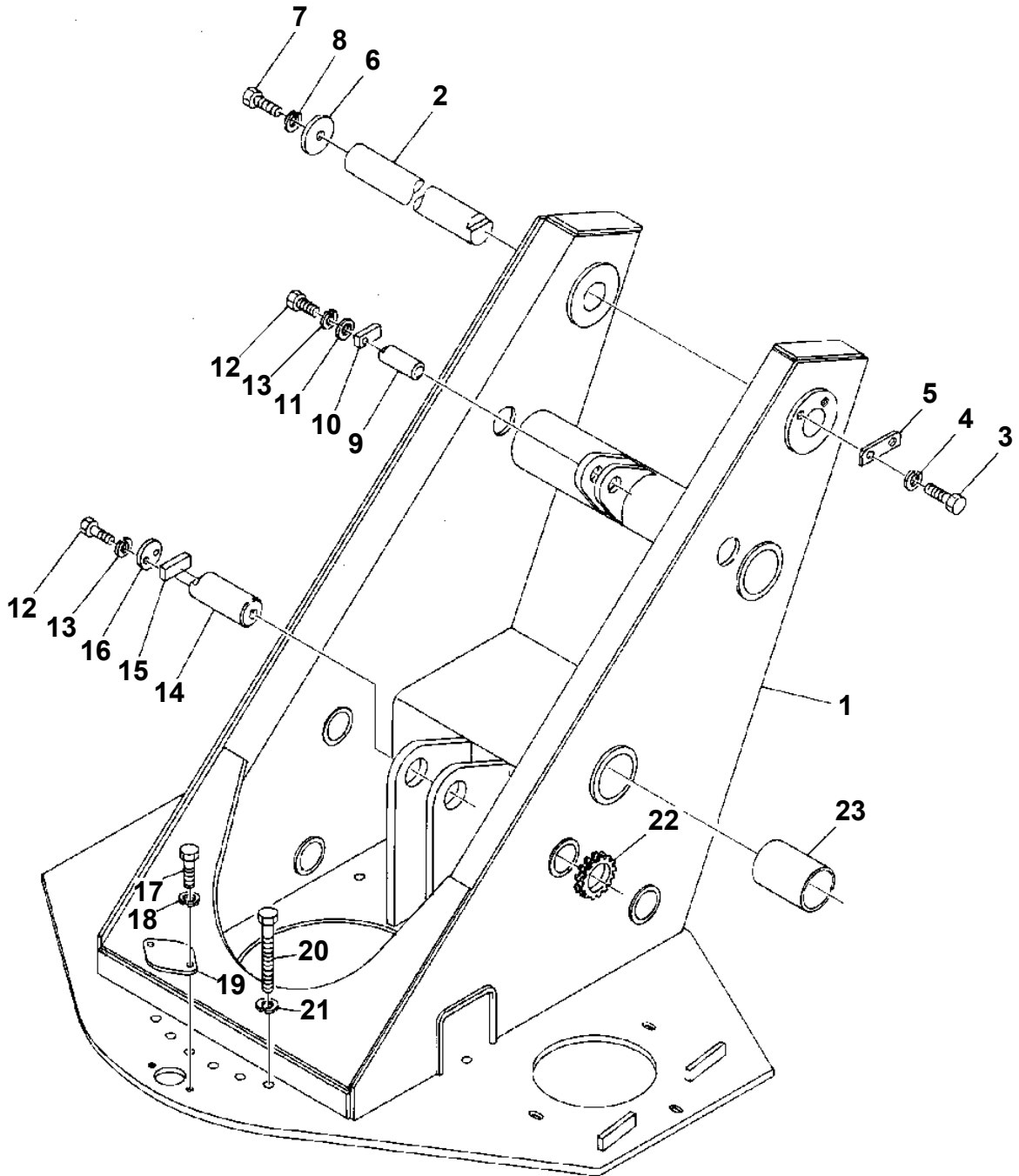
Pos No.	Parts No	Parts Name	Qty	Unit	Technical Data	Serial No (Start)	Serial No (End)	Remark
6	36601665010	SPRING (A)	1					
8	91002802500	O-RING	1		1B P25			
9	91002803400	O-RING	1		1B P34			
11	91002801000	O-RING	1		1B P10			
12	91001301600	O-RING	1		WP16			
13	91002802800	O-RING	1		1B P28			
15	36601035070	SPRING (B)	1					
18	91002801400	O-RING	3		1B P14			
50	36601660000	VALVE,COUNTERBALANCE	1					



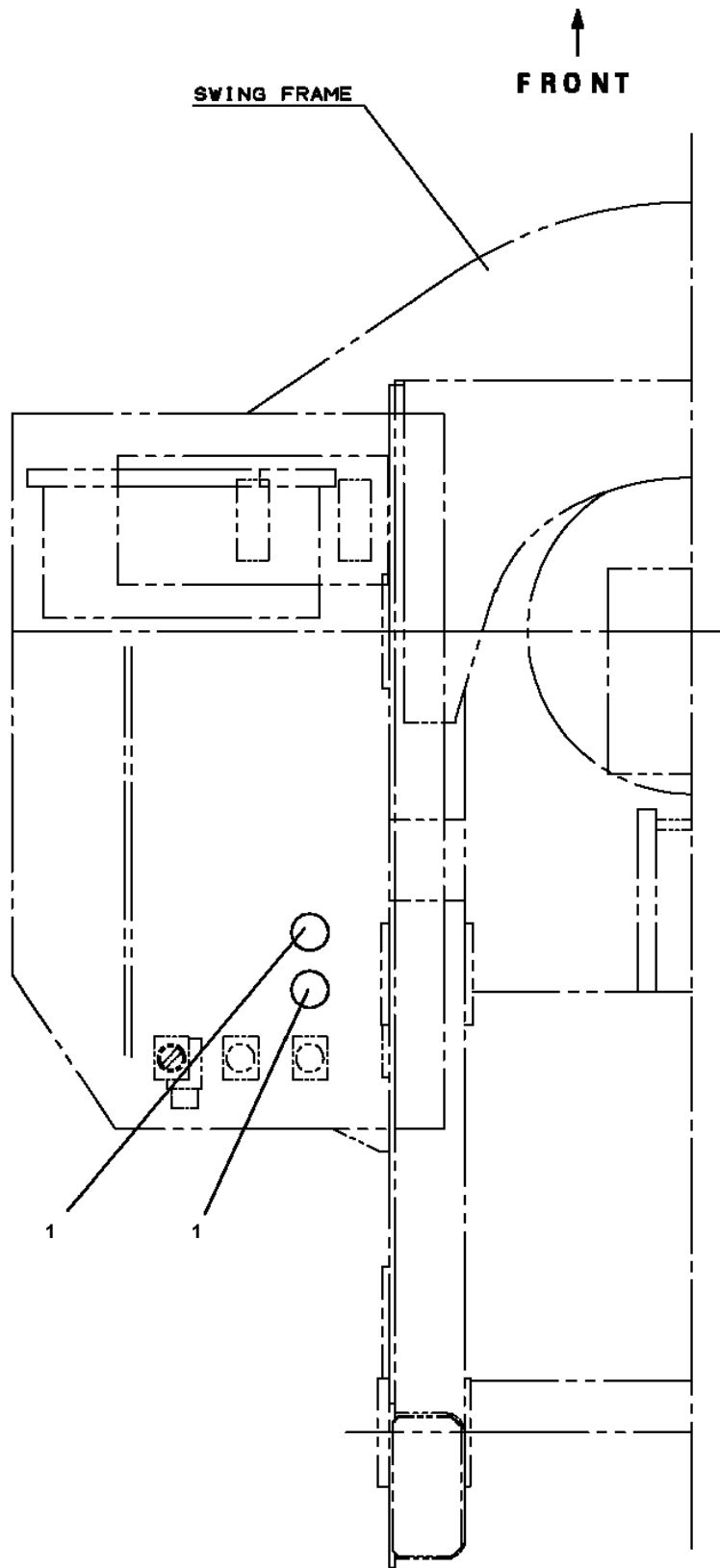
**AT-185-1 42004100001 UPPER  
PJ3090001-00 GUARD (OPTION)**



**AT-185-1 4200410001 UPPER  
PK1100001-02 SWING FRAME**

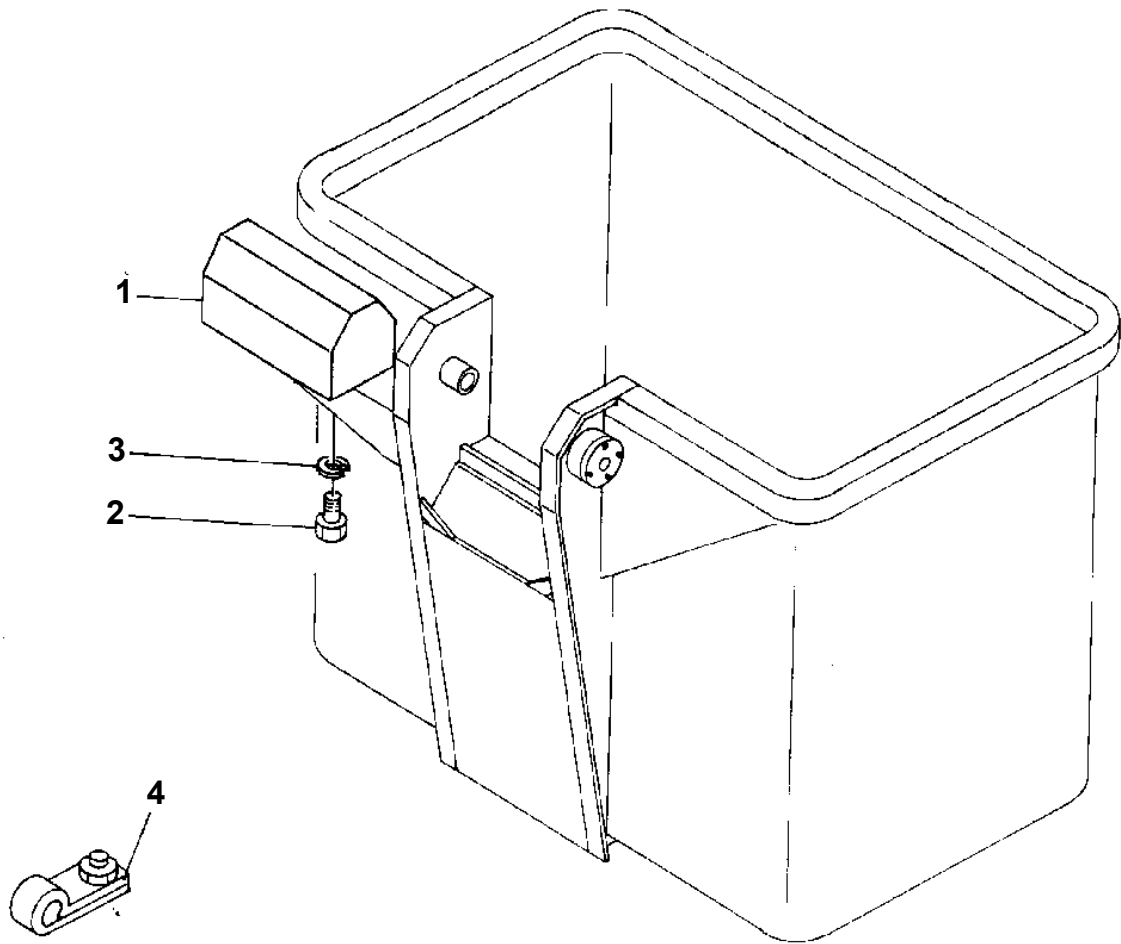


**AT-185-1 42004100001 UPPER  
PK1200330-00 COVER, SWING FRAME (PLUG)**



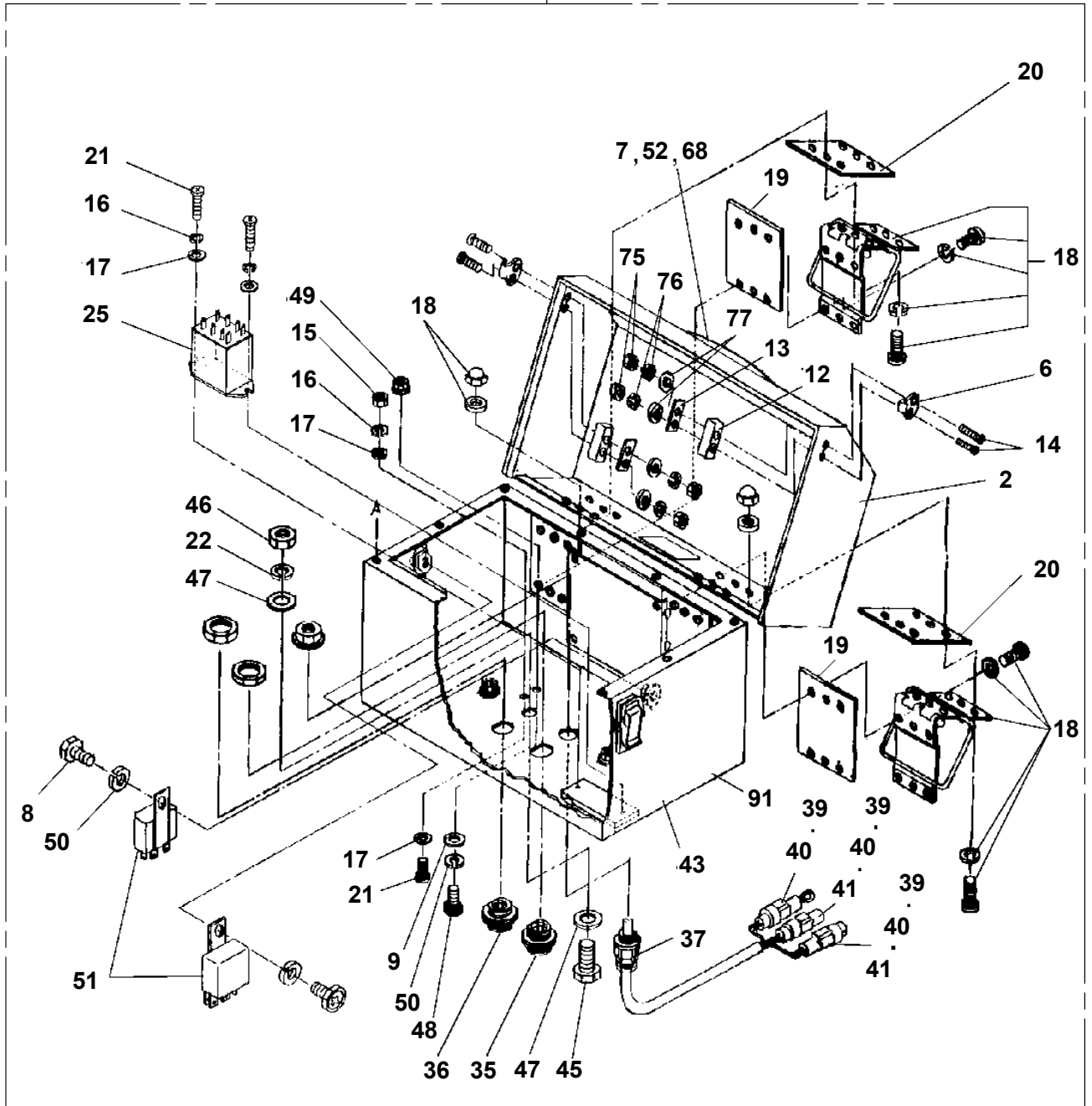
**AT-185-1 42004100001 UPPER  
PL1050033-00 OPERATION SYSTEM, BUCKET**

---



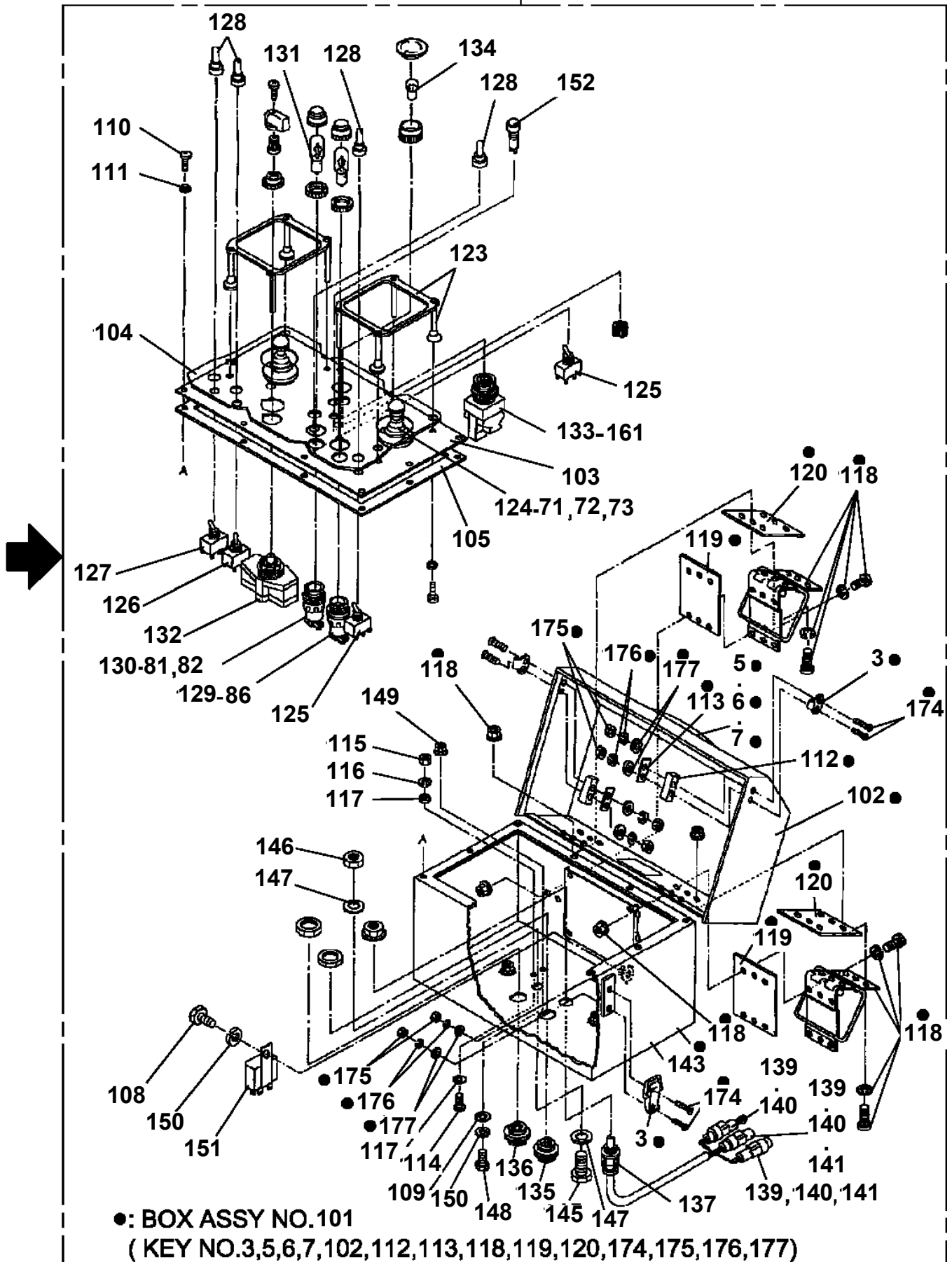
**AT-185-1 4200410001 UPPER  
PL1100047-01 BOX,OPERATION (LED LAMP.WITHOUT WINCH)**

100



AT-185-1 4200410001 UPPER  
 PL1100124-02 BOX,OPERATION (WITH WINCH)

200



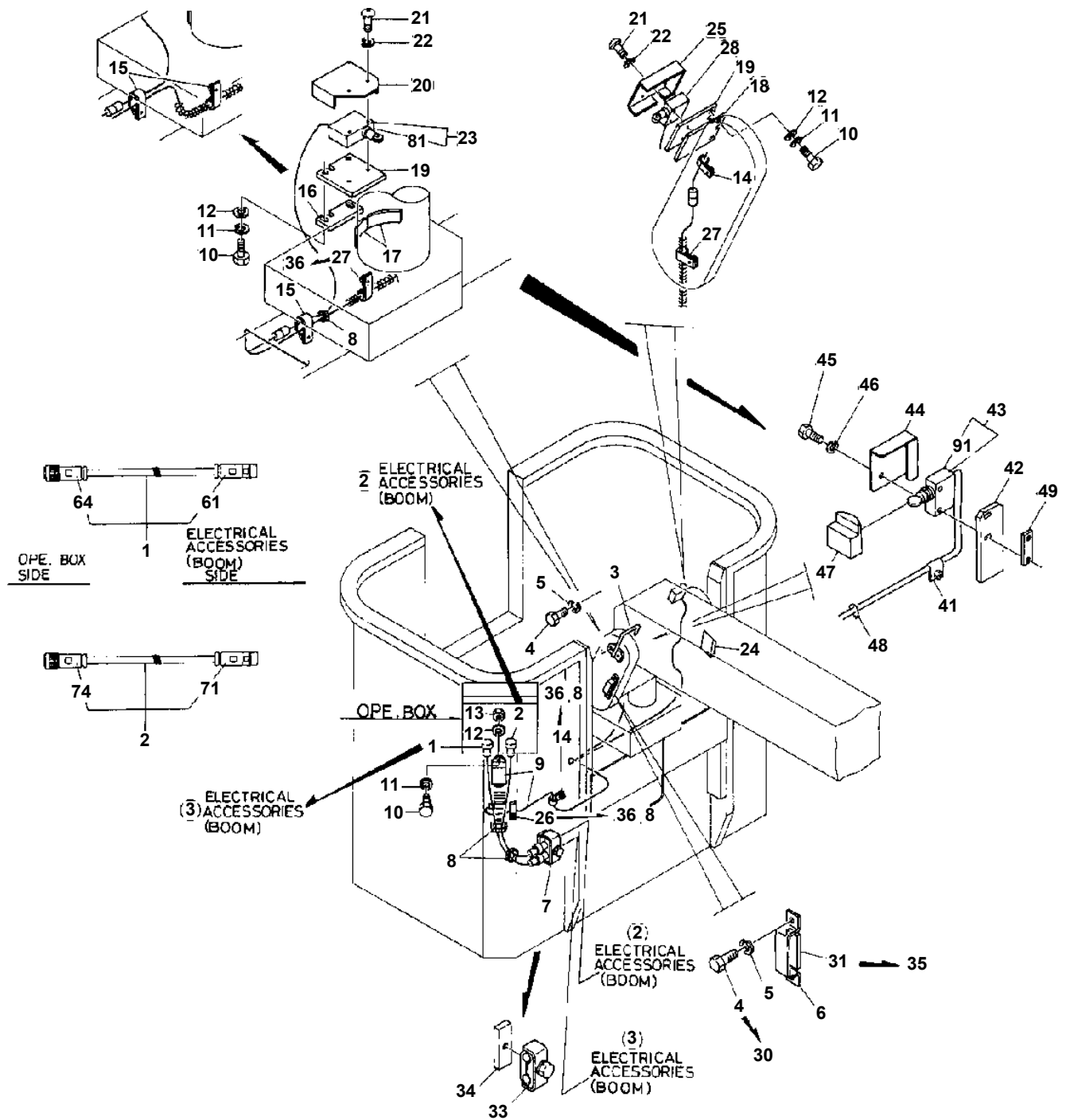
# AT-185-1 4200410001 UPPER

Pos No.	Parts No	Parts Name	Qty	Unit	Technical Data	Serial No (Start)	Serial No (End)
1	42330587510	BOX ASSY	1				
2	42330587520	COVER	1				
3	42330037730	CATCH	2				
4	42330037740	STAY ASSY	1				
5	42330037750	HANDLE	1				
6	42330037760	BOLT	6		M6X1.0		
7	90303070601	WASHER,PLAIN	3		6		
9	42330037532	PLATE (BOTTOM)	1				
11	90302040601	WASHER,SPRING	1		6		
12	90201200600	NUT	2		M6		
13	42330037540	SCREW,MACHINE	10		M4X0.7		
14	90302040401	WASHER,SPRING	10		4		
15	90303070401	WASHER,PLAIN	10		4		
16	42330337610	WASHER	10				
17	42330037511	JOY STICK,CONTROLLER	2				
18	42330037520	GUARD (FINGER CONTROL)	2				
19	42330037550	SWITCH,PUSH	1				
20	42330037560	SWITCH,PUSH	1				
21	42330037570	SWITCH (ENGINE STOP)	1				
22	42330037580	SWITCH (EMERGENCY STOP)	1				
23	42330037590	SWITCH,CAM	1				
24	42330037600	LAMP,INDICATOR	1				
25	82100002881	LAMP,PILOT	1				
26	42330037620	BULB,LAMP	2		30V 5W		
27	82100001940	BULB,LAMP	2		30V-1W		
28	82100001650	COVER	3				
29	42330037650	COVER	1				
30	82100001770	SWITCH,TOGGLE	1				
31	82100000665	CAP (BLACK)	1				
32	42330037670	CONNECTOR	1				
33	82100001905	CONNECTOR	1				
37	42330037710	CUSHION (RUBBER)	2				
39	42330037780	DIODE	1				
42	82100001417	RELAY	2				
43	90101206018	BOLT	1		M6X18		
50	82100001407	CONNECTOR (SEAL)	1				
52	82100002258	TERMINAL	3				
	82100002284	CONNECTOR	3				
53	82100002283	CONNECTOR	3				
	82100002256	TERMINAL	3				
54	82100000969	PLUG	4				
55	44430017760	RING	4				
56	90240200600	NUT,CAP	4		M6		
57	90101206012	BOLT	4		M6X12		
58	90203200600	NUT	4		M6		
59	42330587530	NUT,CAP	4		M6		
60	42330587540	HINGE	2				
71	42330021110	POTENTIOMETER	4				
72	42330037800	BOOT	2				
73	42330037810	KNOB	2				
81	42330038010	LENS (RED)	1				
82	42330037990	CAP	1				
100	42330581000	BOX,OPERATION (WITHOUT WINCH)	1				

# AT-185-1 4200410001 UPPER

Pos No.	Parts No	Parts Name	Qty	Unit	Technical Data	Serial No (Start)	Ser
1	42310037500	BOX ASSY (BOX+COVER+HINGE+CATCH+STAY)	1				
2	42330037720	COVER	1				
3	42330037730	CATCH	2				
4	42330037740	STAY ASSY	1				
5	42330037750	HANDLE	1				
6	42330037760	BOLT	2		M6X1.0		
7	90303070601	WASHER,PLAIN	2		6		
8	42330337620	HINGE	2				
9	42330037531	PLATE (BOTTOM)	1				
10	42330037790	CLIP	1				
11	90302040601	WASHER,SPRING	1		6		
12	90201200600	NUT	2		M6		
13	42330037540	SCREW,MACHINE	10		M4X0.7		
14	90302040401	WASHER,SPRING	10		4		
15	90303070401	WASHER,PLAIN	10		4		
17	42330037511	JOY STICK,CONTROLLER	2				
18	42330037520	GUARD (FINGER CONTROL)	2				
19	42330037550	SWITCH,PUSH	1				
20	42330037560	SWITCH,PUSH	1				
21	42330037570	SWITCH (ENGINE STOP)	1				
22	42330037580	SWITCH (EMERGENCY STOP)	1				
23	42330037590	SWITCH,CAM	1				
24	42330037600	LAMP,INDICATOR	1				
25	82100002881	LAMP,PILOT	1				
26	42330037620	BULB,LAMP	2		30V 5W		
27	82100001940	BULB,LAMP	2		30V-1W		
28	82100001650	COVER	3				
29	42330037650	COVER	1				
30	82100001770	SWITCH,TOGGLE	2				
31	82100000665	CAP (BLACK)	2				
32	42330037670	CONNECTOR	1				
33	82100001905	CONNECTOR	1				
34	42330037690	CONNECTOR	1				
35	82100001209	CAP (RECEPTACLE)	1				
37	42330037710	CUSHION (RUBBER)	2				
39	42330037780	DIODE	1				
41	42310037510	LAMP,INDICATOR (LED)	1				
42	82100001417	RELAY	1			240099	
43	90101206018	BOLT	1		M6X18	240099	
51	42330037771	POTENTIOMETER	4				
52	42330037800	BOOT	2				
53	42330037810	KNOB	2				
61	42330037990	CAP	1				
100	42310032101	BOX,OPERATION (WITH WINCH)	1				

# AT-185-1 4200410001 UPPER PN1010593-04 ELEC.ASSY (BUCKET,OPTION)



# AT-185-1 4200410001 UPPER

Pos No.	Parts No	Parts Name	Qty	Unit	Technical Data	Serial No (Start)	Serial No (End)	Remarks	Pages
1	82100002040	CLAMP	2		WE15				
2	90101208014	BOLT	4		M8X14				
3	90302040801	WASHER,SPRING	6		8				
4	90201200800	NUT	2		M8				
5	82400000201	GROMMET	1	M	KG-016				
6	37000510990	SUPPORT	1						
7	37000704360	CLAMP ASSY	3						
8	42430040070	CLAMP ASSY	6						
9	42430070010	SUPPORT	1						
10	82100001412	TUBE, SPIRAL	10	M	SE-12BK				
11	91810130240	FASTENER	2						
12	42430070050	SUPPORT	1						
13	90101208012	BOLT	2		M8X12				
14	90303070801	WASHER,PLAIN	2		8				
15	37000514710	PLATE	1						

# AT-185-1 42004100001 UPPER

Pos No.	Parts No	Parts Name	Qty	Unit	Technical Data	Serial No (Start)	Serial No (End)	Remarks	Pages
1	42260943100	PLATE,CAUTION	1				240336		
	42260943200	PLATE,CAUTION	1			240337			
2	42390020160	PLATE,CAUTION	1			240256	240336		
	42392350150	PLATE,CAUTION	1			240337			
3	42390220090	PLATE,CAUTION	1			240256	240336		
	42260943210	PLATE,NAME	1			240337			
4	37002202030	PLATE,NAME	2			240256			
5	42390020080	PLATE,NAME	1			240256			
6	42390020220	PLATE,CAUTION	1			240290			
7	42390220110	PLATE,NAME	1			240337			
8	42391720090	PLATE,NAME	2			240337			

# AT-185-1 42004100001 UPPER

Pos No.	Parts No	Parts Name	Qty	Unit	Technical Data	Serial No (Start)	Serial No (End)	Remarks	Pages
1	42310033010	PLATE,NAME	1						
2	42310033020	PLATE,CAUTION	1						

# AT-185-1 42004100001 UPPER

Pos No.	Parts No	Parts Name	Qty	Unit	Technical Data	Serial No (Start)	Serial No (End)	Remark
1	33460002100	BAG,TOOL	1					
2	91991310027	SPANNER,SINGLE END (27)	1					
3	91991310032	SPANNER,SINGLE END (32)	1					
4	91991310036	SPANNER,SINGLE END (36)	1					
5	91991540508	WRENCH SET,HEXAGON	1					

# AT-185-1 42004100001 UPPER

Pos No.	Parts No	Parts Name	Qty	Unit	Technical Data	Serial No (Start)	Serial No (End)
1	42460012530	WEDGE (STOPPER FOR TIRE/WAZUMI)	1				

# AT-185-1 42004100001 UPPER

Pos No.	Parts No	Parts Name	Qty	Unit	Technical Data	Serial No (Start)	Serial No (End)	Remarks
2	90813108016	BOLT,WING	1		M8X16			
3	42430340010	SUPPORT	1					
11	82100001724	LAMP	1					
12	37000113640	PIN	1					
13	90102212020	BOLT	1		M12X20			
14	90302041201	WASHER,SPRING	1		12			
15	82100001718	CONNECTOR	1					
16	19228500080	SLEEVE	2					
20	82100000044	BULB,LAMP (24V 60/60W>	1					

CLICK HERE TO **DOWNLOAD** THE COMPLETE MANUAL

- Thank you very much for reading the preview of the manual.
- You can download the complete manual from: [www.heydownloads.com](http://www.heydownloads.com) by clicking the link below



- Please note: If there is no response to CLICKING the link, please download this PDF first and then click on it.

CLICK HERE TO **DOWNLOAD** THE COMPLETE MANUAL