

## **AT-150S-2 42068200011 UPPER**

**PD2000153-01 SWING UNIT**

**PG2000179-00 BOOM UNIT**

**PH1000550-00 SAFETY DEVICES (MOTION CONTROLLER)**

**PJ3000419-00 PLATFORM SYSTEM**

**PK2000689-01 FRAME UNIT**

**PO1000189-00 INDICATION PLATES**

**PW1000118-00 ACCESSORIES & TOOLS**

**ASSEMBLY**

CLICK HERE TO **DOWNLOAD** THE COMPLETE MANUAL

- Thank you very much for reading the preview of the manual.
- You can download the complete manual from: [www.heydownloads.com](http://www.heydownloads.com) by clicking the link below



- Please note: If there is no response to CLICKING the link, please download this PDF first and then click on it.

CLICK HERE TO **DOWNLOAD** THE COMPLETE MANUAL

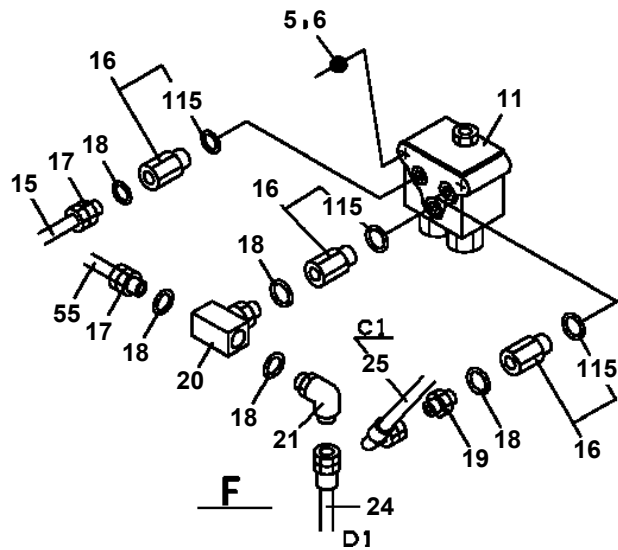
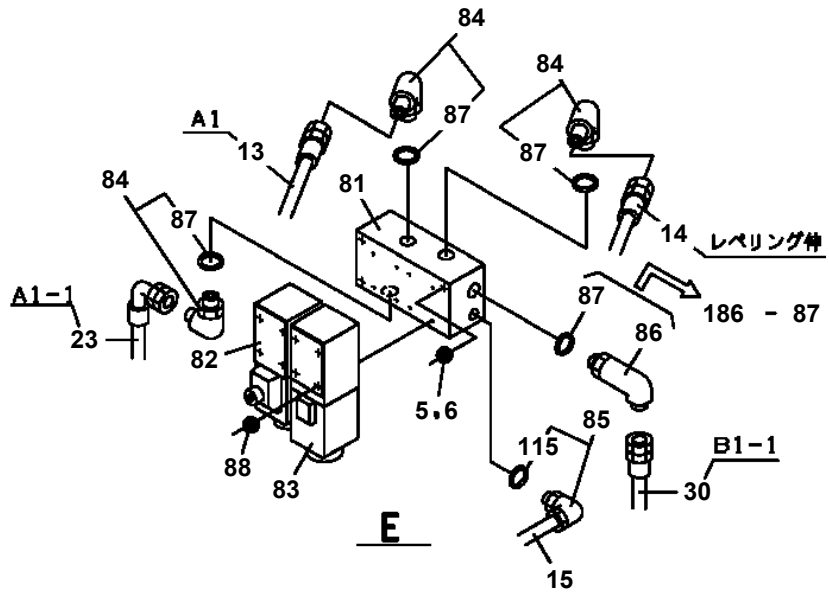
# AT-150S-2 42068200011 UPPER

Pos No.	Parts No	Parts Name	Qty	Unit	Technical Data	Serial No (Start)	Serial No (End)	Remarks	Page
1	(*****)	FRAME	1						0000
2	(*****)	OUTRIGGER (FRONT)	1						0000
3	(*****)	OUTRIGGER (REAR)	1						0000
4	(*****)	PIPING,OUTRIGGER	1						0000
5	(*****)	ELEC.ASSY (FRAME)	1						0000
6	(*****)	LAMP (FLICKER/RED)	1						0000
7	(*****)	PIPING,LOWER (TANK)	1						0000

# AT-150S-2 42068200011 UPPER

Pos No.	Parts No	Parts Name	Qty	Unit	Technical Data	Serial No (Start)	Serial No (End)	Remarks	Pages
1	42630810000	JOINT,ROTARY	1						000011
2	90101210028	BOLT	4		M10X28				
3	90302041001	WASHER,SPRING	4		10				
4	42441780100	SUPPORT	1						
5	90171112055	BOLT	2		M12X55				
6	90302041201	WASHER,SPRING	4		12				
7	42441150020	SUPPORT	1						
8	90171112040	BOLT	2		M12X40				

AT-150S-2 42068200011 UPPER  
PB1400383-05 PIPING,UPPER



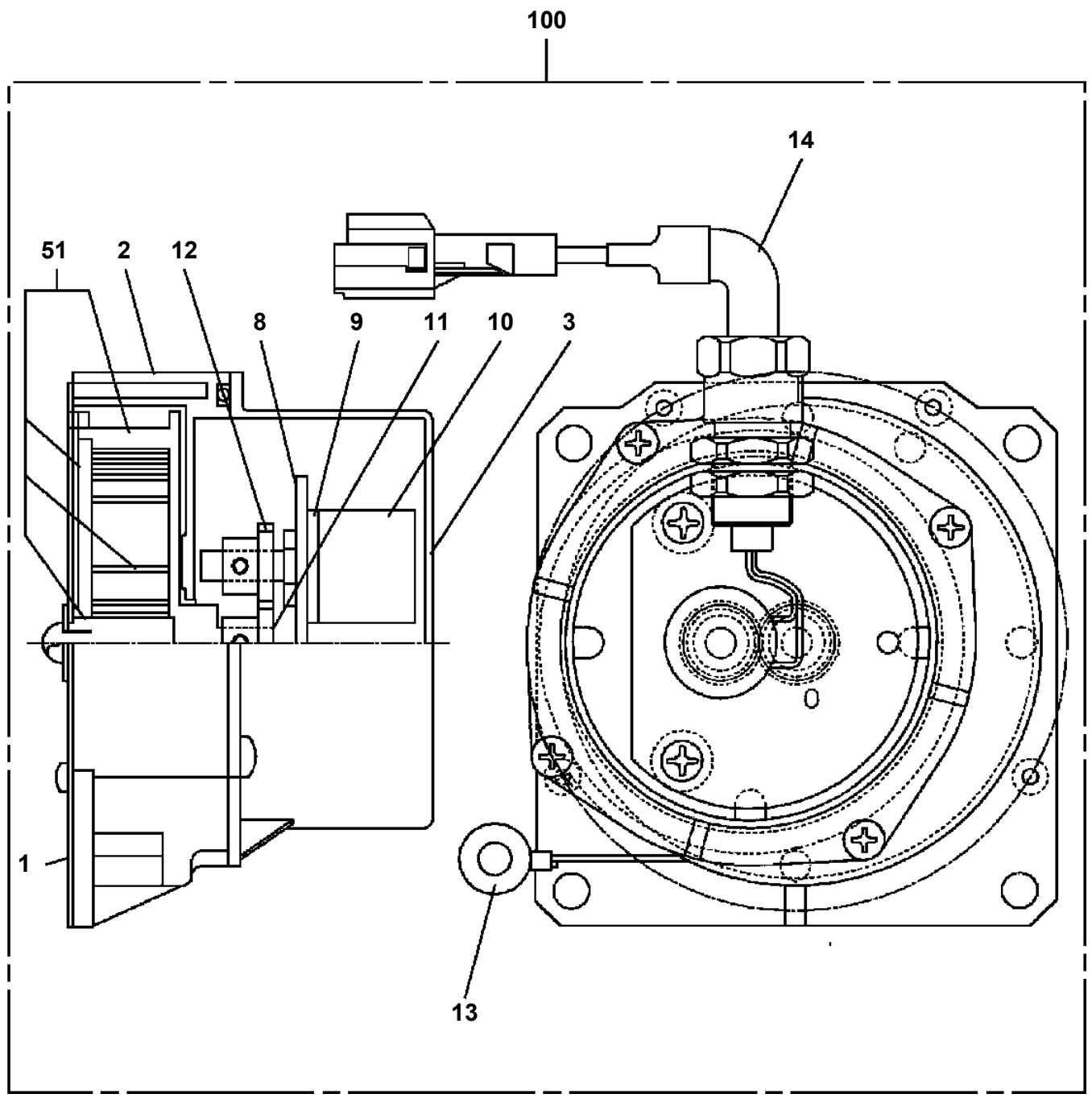
## AT-150S-2 42068200011 UPPER

Pos No.	Parts No	Parts Name	Qty	Unit	Technical Data	Serial No (Start)	Serial No (E
1	42613691000	OUTRIGGER (REAR,RIGHT/INNER CASE)	1				
2	37002013590	PLATE,SLIDE	8		T=11		
3	31611640150	SPRING	2				
4	90171108016	BOLT	4		M8X16		
5	37000504780	PLATE	4		T=0.6		
6	90302041001	WASHER,SPRING	16		10		
7	42613610010	PLATE	4				
8	42613610020	BLADE	2				
9	90303070601	WASHER,PLAIN	2		6		
10	42613692000	OUTRIGGER (REAR,LEFT/INNER CASE)	1				
11	90101206014	BOLT	2		M6X14		
12	90302040601	WASHER,SPRING	2		6		
13	90101208012	BOLT	4		M8X12		
14	90302040801	WASHER,SPRING	4		8		
15	37000575240	PLATE	2		T=3		
16	42612850200	PLATE	8		T=6		
17	90171110018	BOLT	16		M10X18		
18	37000501960	PLATE	16		T=0.5		
19	37000501970	PLATE	8		T=1.5		
20	37000178190	PIN	2				

# AT-150S-2 42068200011 UPPER

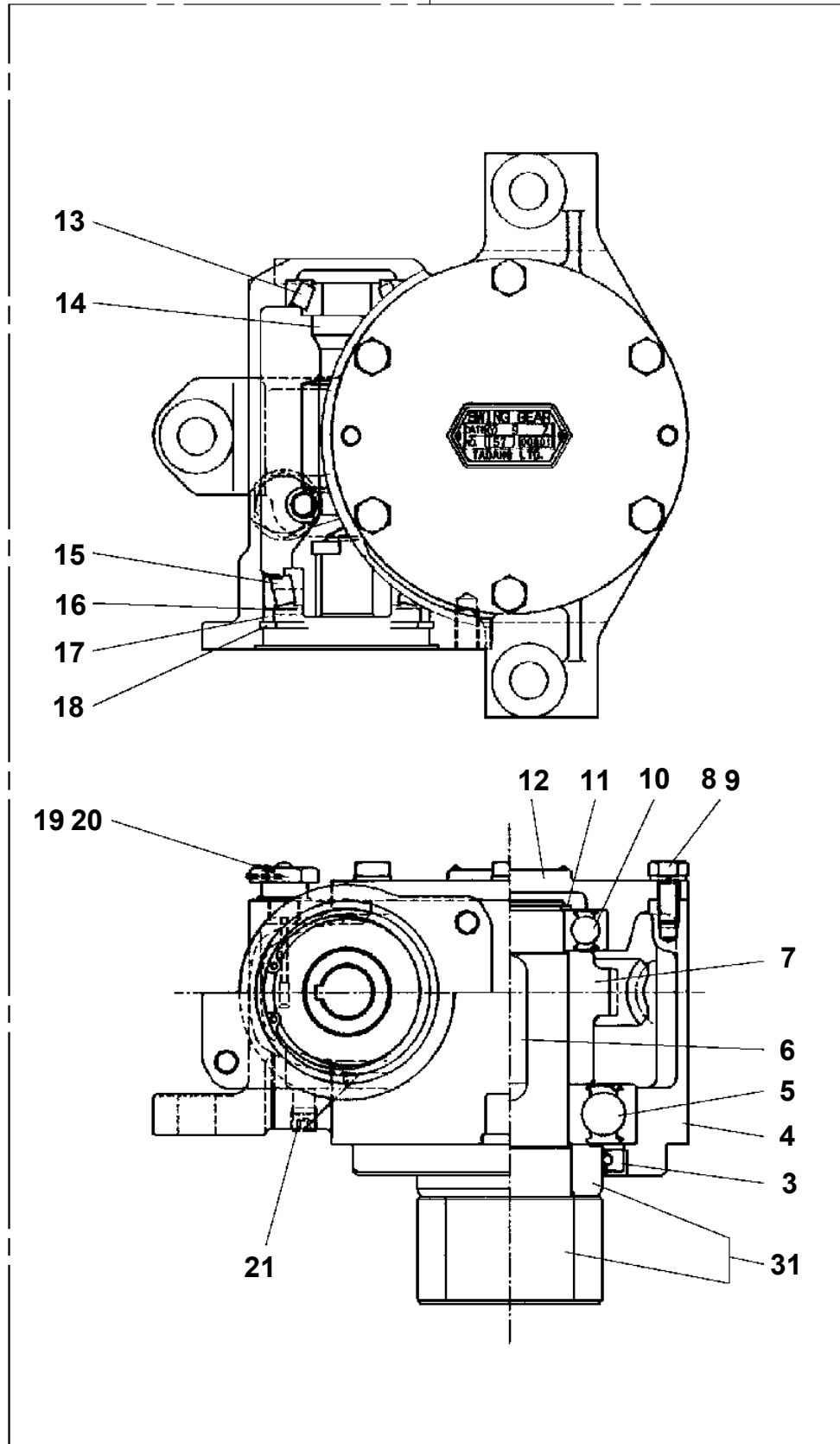
Pos No.	Parts No	Parts Name	Qty	Unit	Technical Data	Serial No (Start)	Serial No (End)	Remarks	P
1	90209201800	NUT	1		M18				
2	91684004500	PACKING	2						
3	91002802000	O-RING	1		1B P20				
4	36042810400	PISTON	1						
5	36042840100	ROD	1						
6	36042841000	CYLINDER	1						
7	36042810300	COVER,ROD	1						
8	91002904000	O-RING	1		1B G40				
9	91694003000	PACKING	1						
10	91660003001	SEAL,DUST	1						
11	90302041801	WASHER,SPRING	1		18				
12	90303071801	WASHER,PLAIN	1		18				
13	91002904500	O-RING	1		1B G45				
14	91411203501	RING,BACKUP	2						
30	36042819900	PACKING SET	1		30X45				
100	36042840000	CYLINDER,EXTENSION	1						

AT-150S-2 42068200011 UPPER  
PC1380015-01 DETECTOR,OUTRIGGER LENGTH



AT-150S-2 42068200011 UPPER  
PD1010160-00 REDUCER, SWING SPEED

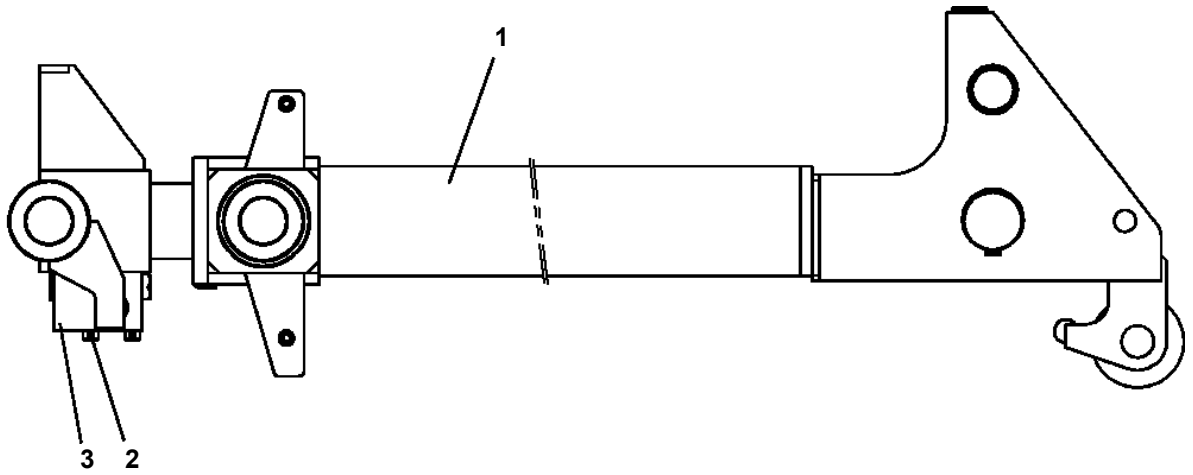
50



# AT-150S-2 42068200011 UPPER

Pos No.	Parts No	Parts Name	Qty	Unit	Technical Data	Serial No (Start)	Serial No (End)	Remarks
1	80720105040	PIN,SPRING	1		5X40			
2	91684112501	PACKING	2					
3	91411211001	RING,BACKUP	1					
4	91002807500	O-RING	1		1B P75			
5	36025193000	BOOT	1					
6	91803601200	CLIP	1		D=90-120			
7	91803601500	CLIP	1		D=130-150			
8	91002811500	O-RING	1		1B P115			
9	90750006061	SCREW,SET	1		M6X6			
10	91660010000	SEAL,DUST	1					
11	80622001000	RING,RITAINING	1		SP100			
12	36025190100	PISTON	1					
13	91302212500	BEARING,PLAIN	2					
14	36025192001	ROD	1					
15	36027131000	CYLINDER ASSY	1				HD5713	
16	36023213000	COVER,ROD	1				HD5713	
17	91251101000	RING,DAMPER	1					
18	91694010000	PACKING	1					
19	91410210000	RING,BACKUP	1					
20	91001206500	O-RING	2		1A G65			
21	36025194000	END,ROD	1					
22	90720008350	SCREW,SET	1		M8X35			
23	91431211001	RING,BACKUP (BLACK)	1					
24	91000525000	O-RING	1		AS568 #250	HD5714		
41	36025199901	PACKING SET	1		100X125		HD5713	
42	36027139900	PACKING SET	1		100X125	HD5714		
51	82458102000	NIPPLE,GREASE	2		B-PT1/8			
52	37000400950	BEARING,PLAIN	2					
53	82400000459	CAP	1				HD5713	
	82400000459	CAP	1			HD5566		
	82400000459	CAP	1			HD5714		
61	80612111080	RING,RITAINING	1		AR108			
72	80530000112	BEARING,SPHERICAL	1					
74	82100001411	TUBE,SPIRAL	1	M	SE-08BK		HD5976	
	82100001411	TUBE,SPIRAL	2	M	SE-08BK	HD5977		
77	82100000548	CONNECTOR	1					
79	80316090020	PLUG	1		KKT PT1/8			
81	36027132000	CYLINDER ASSY	1			HD5714		
82	36027133000	COVER ASSY,ROD	1			HD5714		
91	82100001155	CONNECTOR	1					
100	36027130000	CYLINDER,ELEVATING	1					
113	56452256000	BEARING,PLAIN	1			HD5714		

**AT-150S-2 42068200011 UPPER  
PG1050530-00 CYLINDER,TELESCOPING**



# AT-150S-2 42068200011 UPPER

Pos No.	Parts No	Parts Name	Qty	Unit	Technical Data	Serial No (Start)	Serial No (End)	Rema
2	36190191060	BOARD,CIRCUIT	1					
3	36190191070	BOARD,CIRCUIT	1				HD5528	
	36190191071	BOARD ASSY	1			HD5529		
4	36190185150	SEAT	1					
5	36190185050	BOX	1					
6	36190185060	PANEL ASSY	1					
7	36190185070	FITTING (SET)	1					
8	36190185080	COVER (SET)	1					
9	36190195020	STAY SET	1					
10	36190185100	FRAME ASSY	1					
11	36190185111	HARNESS ASSY	1				HD5499	
	36191045020	HARNESS ASSY	1			HD5500		
12	36190185121	HARNESS ASSY	1					
14	36190185160	HARNESS	1					
31	36192525011	BOARD,CIRCUIT (WITH DATA)	1				HD5494	
	36192525012	BOARD,CPU (WITH DATA)	1			HD5495	HD5530	
	36192525013	BOARD,CPU (WITH DATA)	1			HD5531		
100	36192520000	MOTION CONTROLLER (AMC)	1					

# AT-150S-2 42068200011 UPPER

Pos No.	Parts No	Parts Name	Qty	Unit	Technical Data	Serial No (Start)	Serial No (End)	Remarks	Pages
100	42354590051	HARNESS	1						

# AT-150S-2 42068200011 UPPER

Pos No.	Parts No	Parts Name	Qty	Unit	Technical Data	Serial No (Start)	Serial No (End)	Remarks	Page
10	42354251200	HARNESS (L=15500)	1						

# AT-150S-2 42068200011 UPPER

Pos No.	Parts No	Parts Name	Qty	Unit	Technical Data	Serial No (Start)	Serial No (End)	Remarks	Pages
1	42354770020	HARNESS	1						

CLICK HERE TO **DOWNLOAD** THE COMPLETE MANUAL

- Thank you very much for reading the preview of the manual.
- You can download the complete manual from: [www.heydownloads.com](http://www.heydownloads.com) by clicking the link below



- Please note: If there is no response to CLICKING the link, please download this PDF first and then click on it.

CLICK HERE TO **DOWNLOAD** THE COMPLETE MANUAL

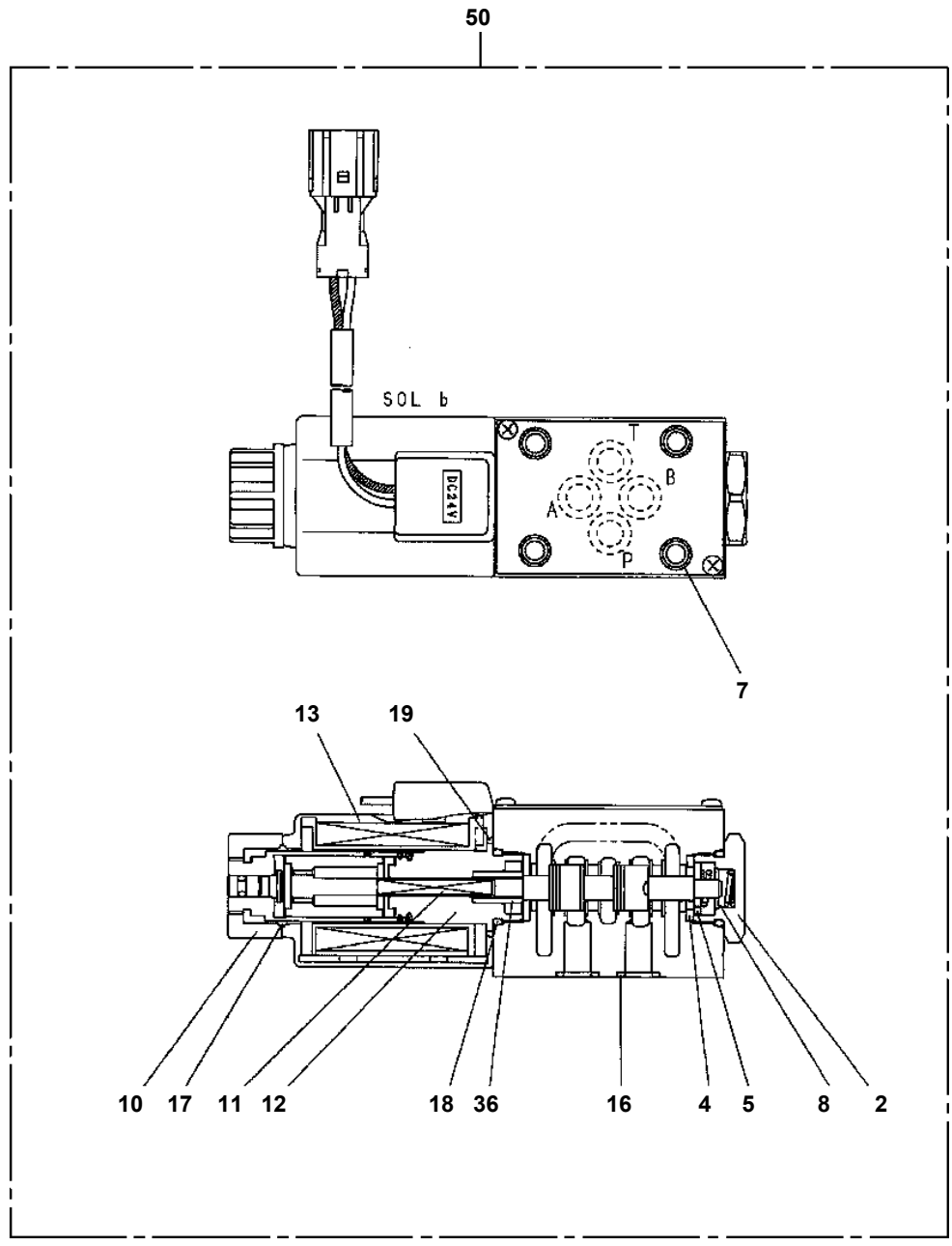
# AT-150S-2 42068200011 UPPER

Pos No.	Parts No	Parts Name	Qty	Unit	Technical Data	Serial No (Start)	Serial No (End)	Remarks	Pages
100	42354590052	HARNESS	1						

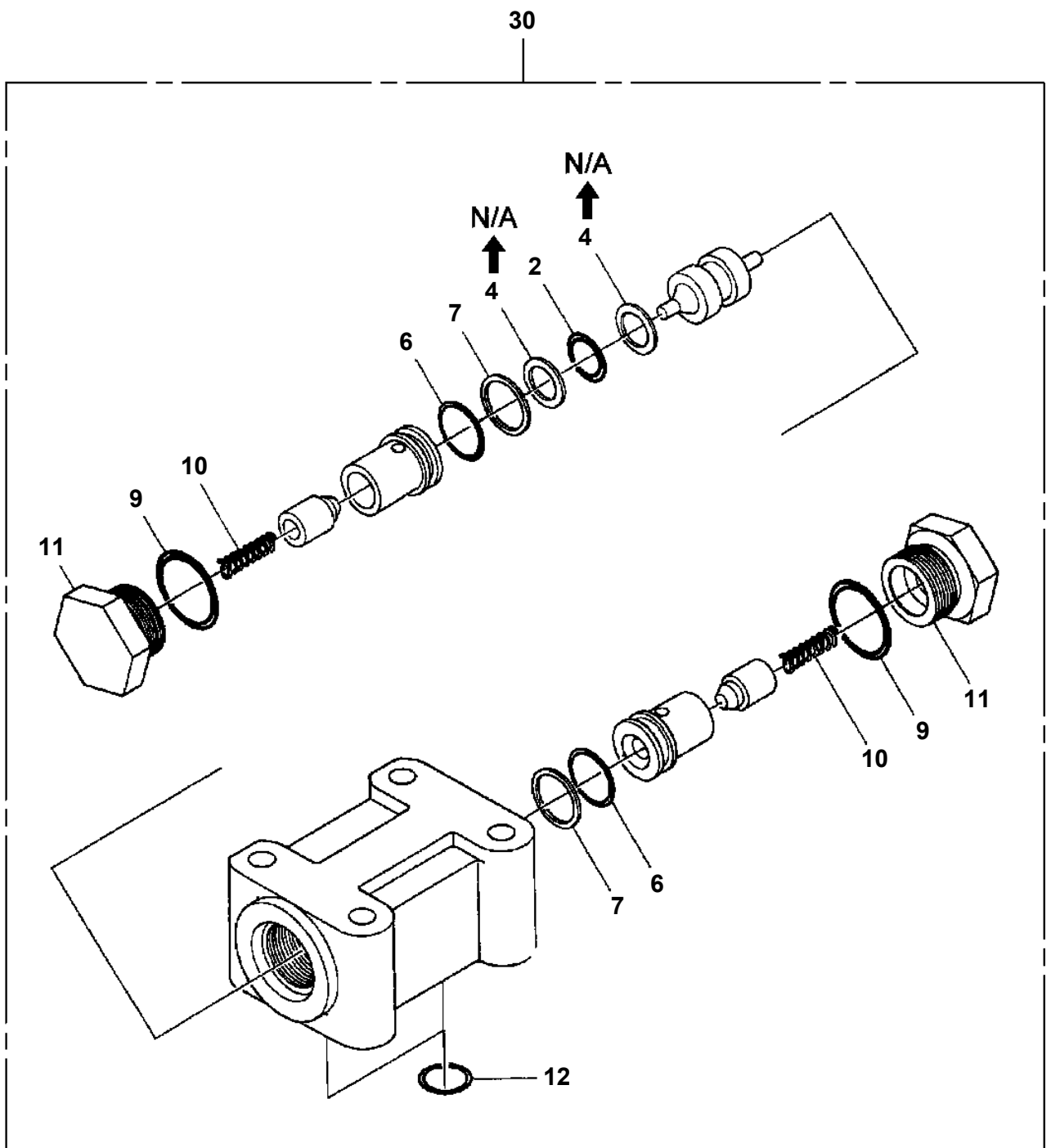
# AT-150S-2 42068200011 UPPER

Pos No.	Parts No	Parts Name	Qty	Unit	Technical Data	Serial No (Start)	Serial No (End)	Remarks	Pages
3	36640765100	O-RING	2						
4	36640765110	RING,BACKUP	2						
5	36601615010	SPRING	2						
6	36601615020	SHIM	2						
7	36601615030	PLUG	2						
8	91000591200	O-RING	2		AS568-912				
10	36601615040	SPRING	2						
11	36601615050	PLUG	2						
12	91000590800	O-RING	2		AS568-908				
20	36602610000	VALVE,RELIEF	1						

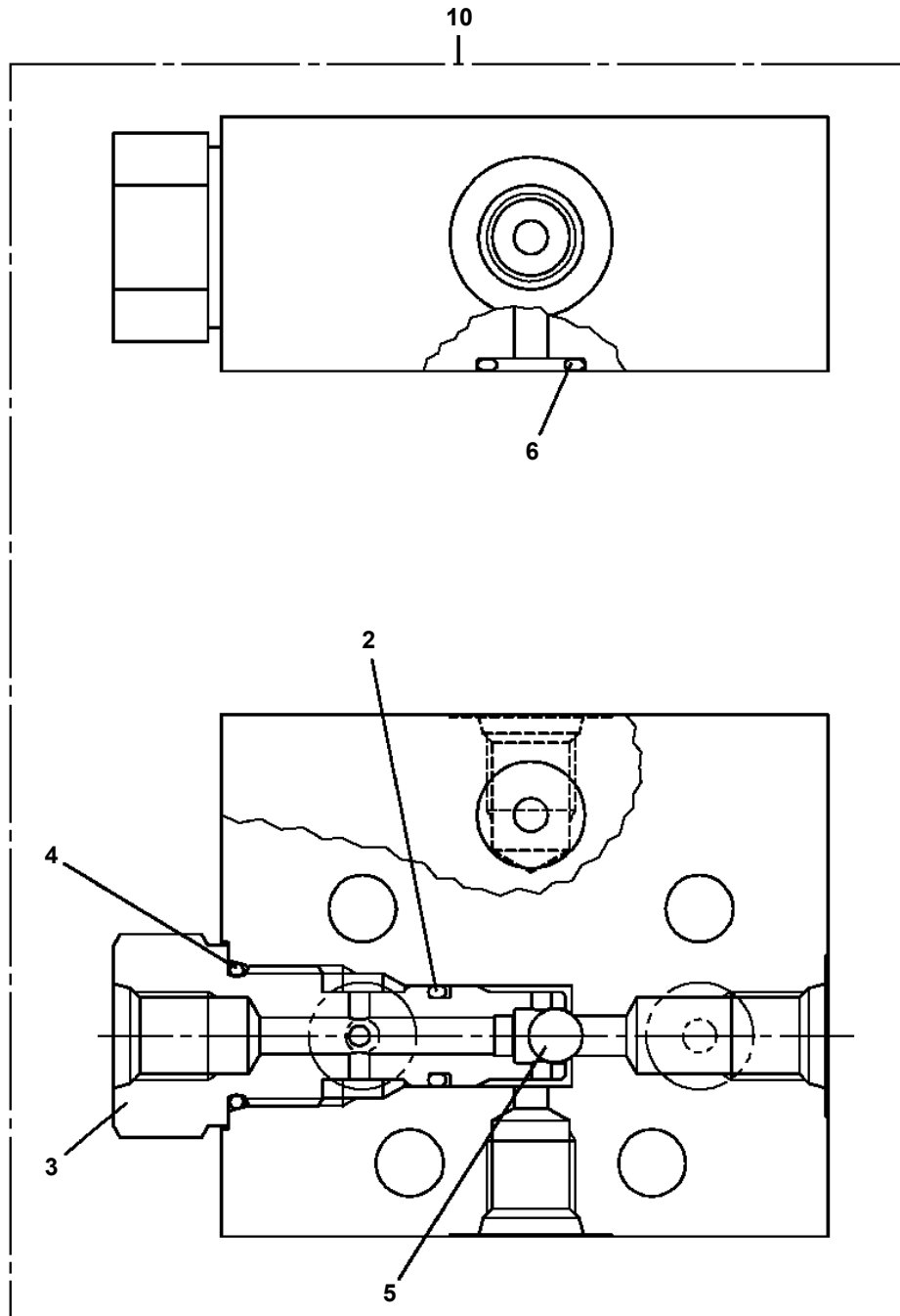
**AT-150S-2 42068200011 UPPER  
PI1120272-01 VALVE,SOLENOID**



AT-150S-2 42068200011 UPPER  
PI1140094-01 VALVE,CHECK



**AT-150S-2 42068200011 UPPER  
PI1230018-00 VALVE,SHUTTLE**



# AT-150S-2 42068200011 UPPER

Pos No.	Parts No	Parts Name	Qty	Unit	Technical Data	Serial No (Start)	Serial No (End)	Rema
1	42266600100	GUARD	2					
2	42265970200	GUARD	2					
3	42265970300	COVER	1					
4	42266601000	PLATFORM ASSY	1					
5	42262470010	FLOOR	1					
6	80182808014	SCREW,MACHINE	4					
7	90302510801	WASHER,SPRING (8)	4					
8	80176804008	SCREW,MACHINE	48		M4X8			
9	82400000389	LOCK	8					
11	82464100251	HINGE	2					
12	80172805016	SCREW,MACHINE	10		M5X16			
13	90201500500	NUT	4		M5			
14	90302510501	WASHER,SPRING	10		5			
15	90303520501	WASHER,PLAIN	10		5			
31	16715401000	NIPPLE	2					
32	16715403000	SLEEVE	2					
33	16715404000	NIPPLE	2					
34	82456201000	NIPPLE,GREASE	1		A-TYPE PT1/8			
35	42262479510	PIPE ASSY	1					
41	42266603100	FLOOR	1					
42	42266603200	FLOOR	1					
43	42266603300	FLOOR	1					
44	42266603400	FLOOR	1					
45	42266603500	FLOOR	1					
46	42266603600	FLOOR	1					
51	90190000008	BOLT,STUD	4		M6X20			
52	42262473510	JOINT	1					
53	82420102413	TRIM	2	M				
54	37000581160	PLATE	3					
55	42265564020	PLATE	1					
56	90288108015	NUT	4		M8,H=15			
100	42266600000	PLATFORM (3.3MX1.7MDECK)	1					

# AT-150S-2 42068200011 UPPER

Pos No.	Parts No	Parts Name	Qty	Unit	Technical Data	Serial No (Start)	Serial No (End)
1	42624041000	FRAME ASSY	1				
2	37001501340	BOLT	30		M16X85		
3	90303501601	WASHER,PLAIN	30		16		
4	42622860100	COVER ASSY	1				
5	90186208010	BOLT,FLANGE	29		M8X10		
6	80175305010	SCREW,MACHINE	6		M5X10		
7	82400000393	INSULATOR	2				
8	80172303014	SCREW,MACHINE	2		M3X14		
9	90303070301	WASHER,PLAIN	2		3		
10	42623380400	COVER	3				
11	42623380100	COVER	3				HD5583
	42623380101	COVER	3			HD5584	
12	42623380200	COVER	1				HD5583
	42623380201	COVER	1			HD5584	
13	42623380300	COVER	1				
14	32700007500	LEVEL	1				
31	42622549510	COVER ASSY	1				
33	82400000357	CATCH	1				
34	82400000314	HINGE	2				
35	80192485014	SCREW,MACHINE (WITH WASHER)	4		M5X14		
36	90201200500	NUT	4		M5		
54	82400000311	GROMMET	1		L=1000		
62	42622860300	COVER	1				
67	42622860200	SUPPORT	1				
68	37000600090	CLAMP	2		R=5		
69	90201200800	NUT	2		M8		
70	90302040801	WASHER,SPRING	2		8		

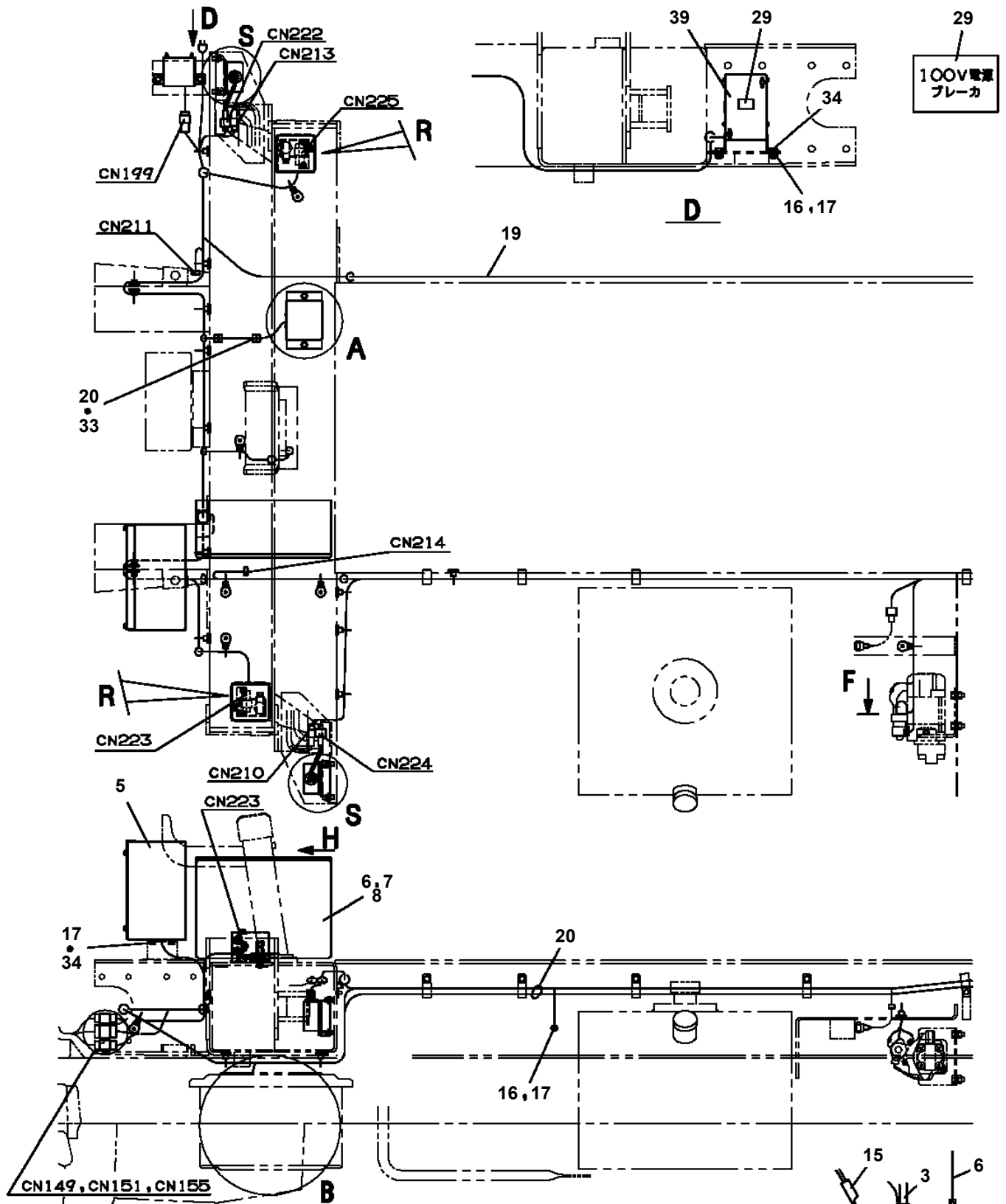
# AT-150S-2 42068200011 UPPER

Pos No.	Parts No	Parts Name	Qty	Unit	Technical Data	Serial No (Start)	Serial No (End)
75	36648785030	VALVE,REDUCING	8				HD5675
	36742265020	VALVE,REDUCING	8			HD5676	
80	36641745040	VALVE,RELIEF	1				HD5675
	36641745041	VALVE,RELIEF	1			HD5676	
81	36641745050	VALVE,RELIEF	1				HD5675
	36641745051	VALVE,RELIEF	1			HD5676	
82	36641745030	VALVE,RELIEF	2				HD5675
	36641745031	VALVE,RELIEF	2			HD5676	
90	36648355460	FILTER ASSY (WITH HOLDER,O-RING)	1				
200	36641740000	VALVE,CONTROL	1				

# AT-150S-2 42068200011 UPPER

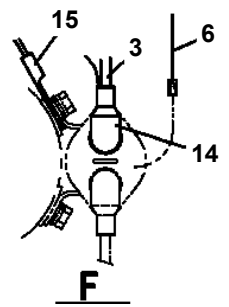
Pos No.	Parts No	Parts Name	Qty	Unit	Technical Data	Serial No (Start)	Serial No (End)
1	36132010000	DETECTOR,BOOM LENGTH	1				
2	90186206014	BOLT,FLANGE	2		M6X14		HD5604
	90101206012	BOLT	2		M6X12	HD5605	
3	90186206020	BOLT,FLANGE	4		M6X20		
4	90280200600	NUT,FLANGE	13		M6		
5	36140520000	DETECTOR,ANGLE	1				HD5604
	36140680000	DETECTOR,ANGLE (ASSY ONLY)	1			HD5605	HD5996
6	90186208010	BOLT,FLANGE	6		M8X10		
7	90302040601	WASHER,SPRING	2		6	HD5605	
8	42354762100	SUPPORT	1				
9	80175304010	SCREW,MACHINE	1		M4X10		
10	42354762200	CABLE	1		L=4500		
11	42360030060	WASHER	1				
13	42433521000	ROLLER ASSY	1				
14	82100002006	CLAMP	7		WR10		HD5604
	82100002006	CLAMP	8		WR10	HD5605	HD5854
	82100002006	CLAMP	1		WR10	HD5855	HD5976
15	82100002012	CLAMP	1		WR18		HD5976
16	42354762300	COVER	1				
17	91810130230	FASTENER	N				
18	90303070801	WASHER,PLAIN	6		8		HD5481
19	82100002010	CLAMP	1		WR15		
20	82100002004	CLAMP	7		WR8	HD5855	HD5976
	82100002004	CLAMP	4		WR8	HD5977	
21	82400000204	GROMMET	1		L=320	HD5855	
22	82100002008	CLAMP	4		WR12	HD5977	
23	82100002014	CLAMP	1		WR20	HD5977	
24	36140760000	DETECTOR ASSY,ANGLE (ASSY ONLY)	1			HD5997	
41	42433521100	SUPPORT	1				
42	37001102350	ROLLER	1				
43	37000302060	SPACER	1		L=11.2		
44	90303071001	WASHER,PLAIN	1		10		
45	90201201000	NUT	1		M10		
46	90302041001	WASHER,SPRING	1		10		

AT-150S-2 42068200011 UPPER  
 PN1014144-02 ELEC.ASSY (FRAME)



FRONT SIDE

展開図有  
 ILLUSTRATED BREAKDOWN NO. 39

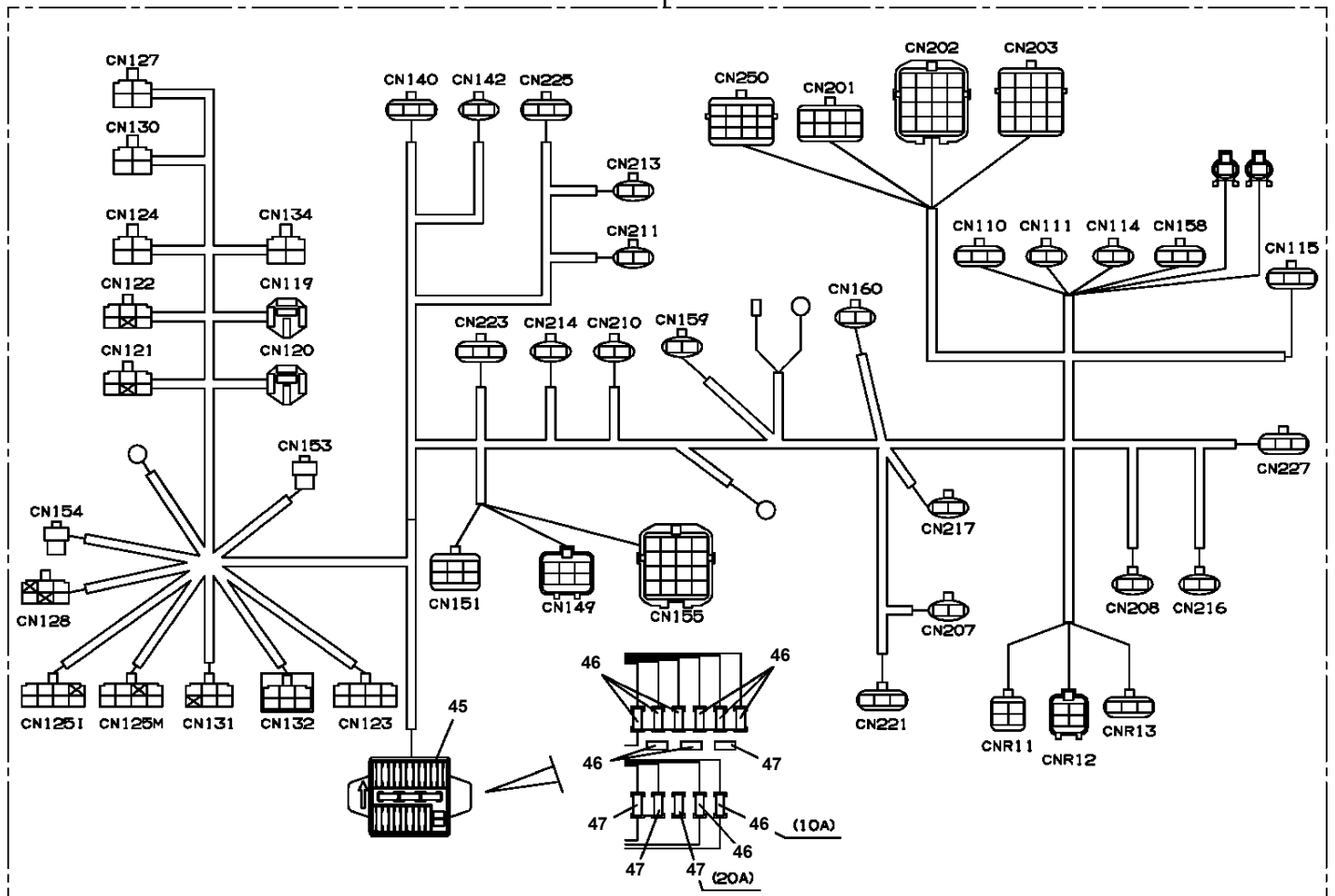


# AT-150S-2 42068200011 UPPER

Pos No.	Parts No	Parts Name	Qty	Unit	Technical Data	Serial No (Start)	Serial No (End)	Remarks	Pages
1	82100002253	LAMP	2						
2	80176304016	SCREW,MACHINE	4		M4X16				
3	42653344100	SWITCH ASSY	1						
4	42652894010	PLATE,NAME	1						
5	82199514013	CAP	1						
6	82100000711	CLAMP	5						
7	90302040401	WASHER,SPRING	4		4				
8	90303070401	WASHER,PLAIN	4		4				
9	90201200400	NUT	4		M4				
10	82199504017	NUT	1		AT-401N				
41	82100000783	BULB,LAMP	2		24V 12W				

# AT-150S-2 42068200011 UPPER PN1450105-00 HARNESS

100





# AT-150S-2 42068200011 UPPER

Pos No.	Parts No	Parts Name	Qty	Unit	Technical Data	Serial No (Start)	Serial No (End)
1	82105221286	SWITCH,TOGGLE	5				
10	42354593100	SWITCH ASSY (WITH HARNESS,5 SW)	1				

CLICK HERE TO **DOWNLOAD** THE COMPLETE MANUAL

- Thank you very much for reading the preview of the manual.
- You can download the complete manual from: [www.heydownloads.com](http://www.heydownloads.com) by clicking the link below



- Please note: If there is no response to CLICKING the link, please download this PDF first and then click on it.

CLICK HERE TO **DOWNLOAD** THE COMPLETE MANUAL