

AT-146-3 43011100096 UPPER

**PD2000237-01 SWING UNIT
PF1000674-00 WINCH SYSTEM
PG2000319-01 BOOM UNIT
PH1000550-00 SAFETY DEVICES (MOTION CONTROLLER)
PJ3000511-00 BUCKET SYSTEM
PJ5000003-00 BOOSTER UNIT
PK2001402-01 FRAME UNIT
PO1000171-00 INDICATION PLATES
PW1000118-00 ACCESSORIES & TOOLS
PX1001237-00 MOUNTING PARTS
PY1001439-00 OPTIONS
ASSEMBLY**

CLICK HERE TO **DOWNLOAD** THE COMPLETE MANUAL

- Thank you very much for reading the preview of the manual.
- You can download the complete manual from: www.heydownloads.com by clicking the link below



- Please note: If there is no response to CLICKING the link, please download this PDF first and then click on it.

CLICK HERE TO **DOWNLOAD** THE COMPLETE MANUAL

AT-146-3 43011100096 UPPER

Pos No.	Parts No	Parts Name	Qty	Unit	Technical Data	Serial No (Start)	Serial No (End)
1	(*****)	FRAME	1				228521
	(*****)	BUCKET FRAME ASSY	1			228522	228535
	(*****)	BUCKET FRAME ASSY	1			228536	228597
	(*****)	BUCKET FRAME ASSY	1			228598	
2	(*****)	PIPING, BUCKET	1				228535
	(*****)	PIPING ASSY, BUCKET	1			228536	228597
	(*****)	PIPING ASSY, BUCKET	1			228598	
3	(*****)	ELEC. ASSY (BUCKET)	1				228521
	(*****)	ELEC. ASSY, BUCKET	1			228522	
4	(*****)	OPE. ASSY	1				
11	42267241000	BUCKET	1				
12	(*****)	BUCKET (INNER CASE)	1				
13	(*****)	COVER (BUCKET, FRP, WHITE)	1				
14	(*****)	COVER, BOOM (TOP/FRP, WHITE)	1				
15	42267244000	COVER (CLOTH, WHITE)	1				
16	(*****)	ACCESSORIES (BUCKET INNER MAT)	1				

AT-146-3 43011100096 UPPER

Pos No.	Parts No	Parts Name	Qty	Unit	Technical Data	Serial No (Start)	Serial No (
1	(*****)	BOX, TOOL (LEFT/F:3-DECKER,R:1-DECKER)	1				
2	(*****)	BOX, TOOL (RIGHT/F:RACK,R:1-DECKER)	1				
3	(*****)	EARTHING DEVICE (8X10M, TOP CLIP)	1				

AT-146-3 43011100096 UPPER

Pos No.	Parts No	Parts Name	Qty	Unit	Technical Data	Serial No (Start)	Serial No (End)	Remarks	Pages
11	36654185010	SEAL KIT	1						
100	36654180000	PUMP,HYDRAULIC	1						

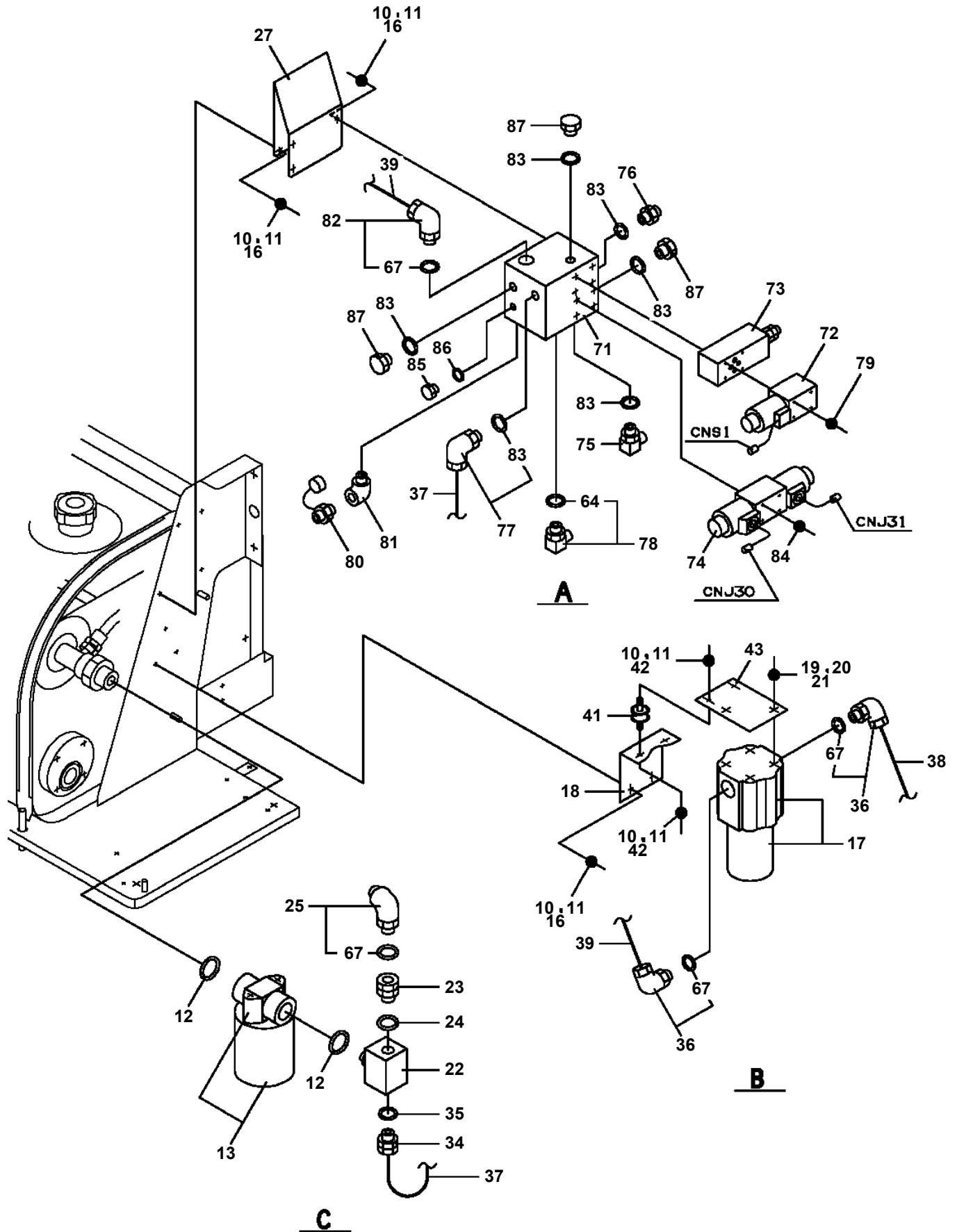
AT-146-3 43011100096 UPPER

Pos No.	Parts No	Parts Name	Qty	Unit	Technical Data	Serial No (Start)	Serial No (End)	Remarks
1	90101208016	BOLT	2		M8X16			
2	90302040801	WASHER,SPRING	2		8			
3	36630910060	NEEDLE	1					
4	36630910030	HOLDER	1					
5	91002801000	O-RING	1		1B P10			
6	91410001000	RING,BACKUP	1		P10			
8	36630910050	POPPET	1					
9	52255101000	SPRING	1					
10	91002801400	O-RING	1		1B P14			
11	36620030050	PLUG	1					
12	82400000350	KNOB	1					
13	37000508510	PLATE	1					
14	80172303006	SCREW,MACHINE	1		M3X6			
100	36636340000	VALVE,MANUAL CONTROL	1					

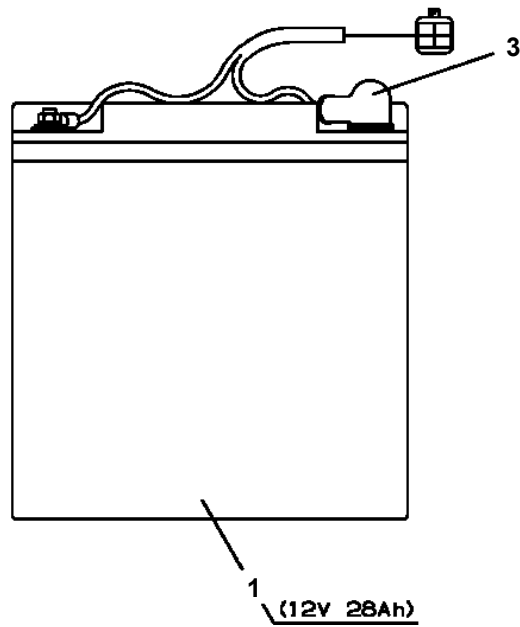
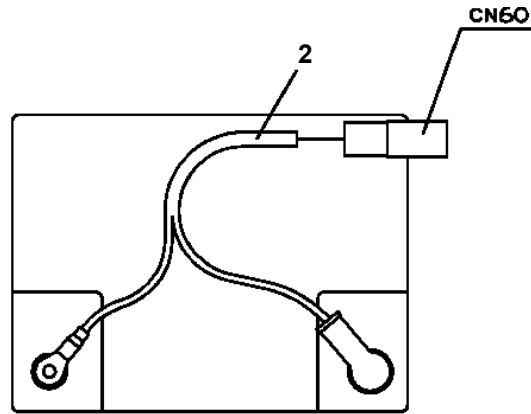
AT-146-3 43011100096 UPPER

Pos No.	Parts No	Parts Name	Qty	Unit	Technical Data	Serial No (Start)	Serial No (End)	Ren
2	90101210040	BOLT	4		M10X40			
3	90302041001	WASHER,SPRING	4		10			
4	42422301010	PLATE	4					
21	(*****)	POWER SUPPLY (MOTOR UNIT)	1					
22	(*****)	COVER	1					
23	(*****)	ELEC.ASSY (MOTOR UNIT)	1					
24	(*****)	PIPING,LOWER (MOTOR UNIT)	1					

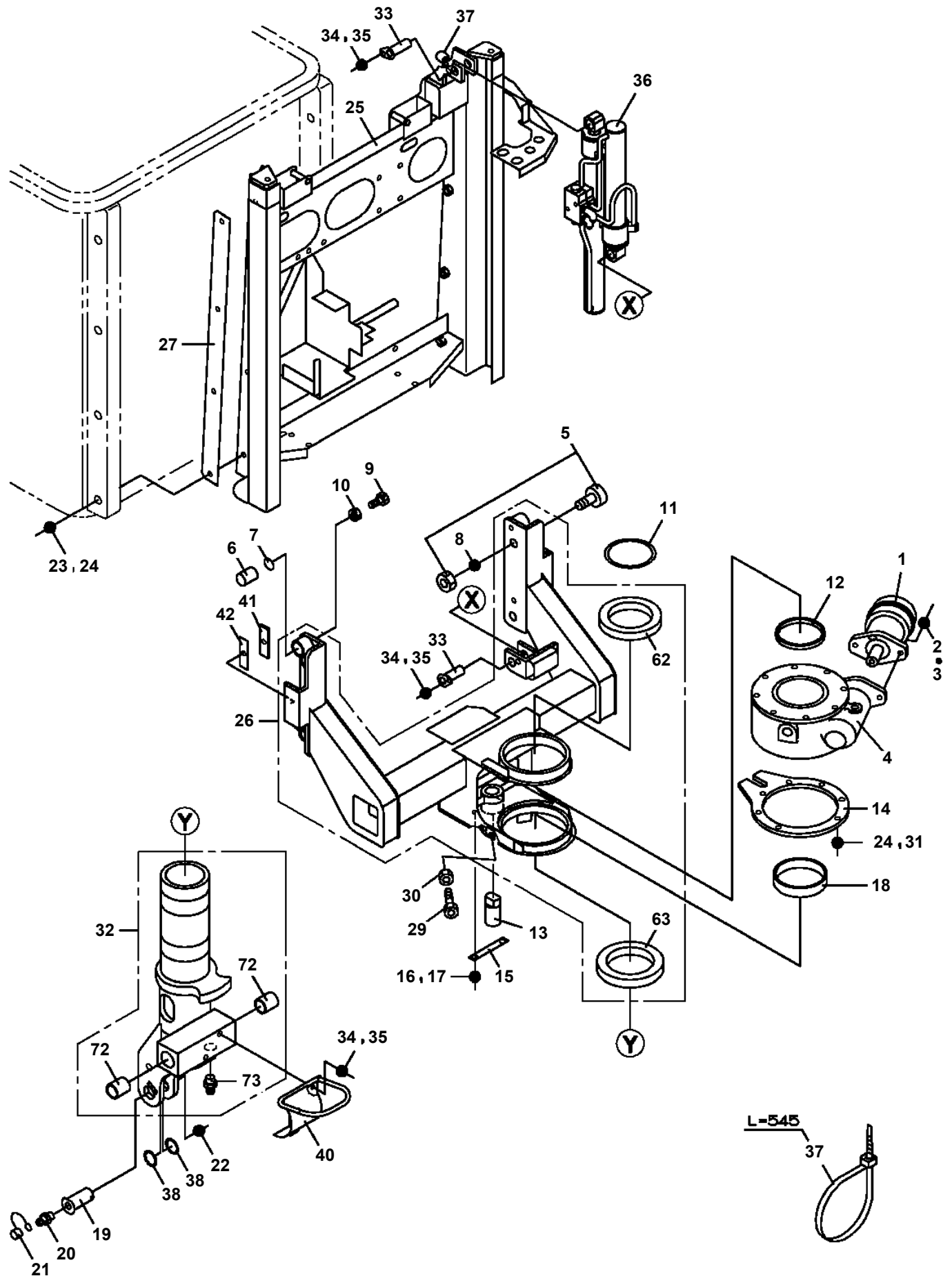
**AT-146-3 43011100096 UPPER
PB1411883-04 PIPING,LOWER (TANK)**



**AT-146-3 43011100096 UPPER
PB5060002-00 BATTERY ASSY (12V28AH/PANASONIC)**



**AT-146-3 43011100096 UPPER
PB5370005-00 BUCKET FRAME ASSY**



AT-146-3 43011100096 UPPER

Pos No.	Parts No	Parts Name	Qty	Unit	Technical Data	Serial No (Start)	Serial No (End)	Remarks	Pages
1	42512340000	BELT	1						

AT-146-3 43011100096 UPPER

Pos No.	Parts No	Parts Name	Qty	Unit	Technical Data	Serial No (Start)	Serial No (End)	R
1	42614471105	CASE,INNER	1					
2	42613351200	CASE,INNER (JACK)	1					
4	36035100000	CYLINDER,JACK	1					
5	42613351400	FLOAT ASSY	1					
6	37000171720	PIN	1					
7	80601110250	RING,RITAINING	2		S25			
8	37000169010	PIN	1		30			
9	80601110300	RING,RITAINING	2		S30			
10	36625740001	VALVE,CHECK	1					
11	901711108055	BOLT	4		M8X55			
12	37000138750	PIN	1		18			
13	80136332036	PIN,SPLIT	2		3.2X36			
14	80400160127	JOINT	1					
15	91002801100	O-RING	1		1B P11			
16	36672460000	FILTER (NIPPLE TYPE)	1					
17	42612851010	COVER	1					
18	90186206014	BOLT,FLANGE	2		M6X14			
19	37000112320	PIN	1					
20	80601110120	RING,RITAINING	2		S12			
21	91810130240	FASTENER	2					
22	31201770100	PLATE,SLIDE	8		T=3.0			
23	90280200600	NUT,FLANGE	1		M6			
24	37000600700	CLAMP	1		12X3			
25	42614471010	PLATE,SLIDE	1		T=2.0			
41	36042820000	CYLINDER,EXTENSION (REAR)	1					
42	80400160127	JOINT	2					
43	91002801100	O-RING	3		1B P11			
44	37002474980	HOSE	1		L=2075			
45	42612861350	HARNESS	1				228539	
46	91810130240	FASTENER	13					
51	42612851420	TRUNNION	1					
100	42614471006	OUTRIGGER (REAR/INNER CASE)	1					

AT-146-3 43011100096 UPPER

Pos No.	Parts No	Parts Name	Qty	Unit	Technical Data	Serial No (Start)	Serial No (End)	Remarks
2	42356377510	COVER	1					
3	42356377520	SCREW	12		M4X8			
4	42356377530	WASHER	12		M4			
5	42900027510	HARNESS	1					
6	42900027520	HARNESS	1					
7	42356377560	COVER	1					
8	42356377570	SCREW	2		M3X4			
9	42900022160	BOARD,POWER	1					
11	42900022180	BOARD,DISPLAY	1				228621	
	42900022181	BOARD,DISPLAY	1			228622		
12	42356371170	BOARD ASSY	1					
13	42356377580	SEAT (SILICONE)	1					
14	42356377590	SEAT (SILICONE)	1					
16	42356377600	SPACER	9					
17	42356377610	SCREW	24		M3X6			
18	42900027530	SPACER	9					
21	42900027540	BOARD,CPU (WITH DATA)	1				228621	
	42900027550	BOARD,CPU (WITH DATA)	1			228622	229360	
	42900027560	BOARD,CPU (WITH DATA)	1			229361		
100	42900022000	INDICATOR,OUTRIGGER	1					

AT-146-3 43011100096 UPPER

Pos No.	Parts No	Parts Name	Qty	Unit	Technical Data	Serial No (Start)	Serial No (End)	F
4	82119101065	CONNECTOR	1					
21	82119101066	CAP (WITH CHAIN)	1					
50	42356752100	CABLE ASSY (WITH CONNECTOR)	1		L=5650			

AT-146-3 43011100096 UPPER

Pos No.	Parts No	Parts Name	Qty	Unit	Technical Data	Serial No (Start)	Serial No (End)	R
1	42614462100	CASE,INNER	1					
2	42613351200	CASE,INNER (JACK)	1					
4	36035100000	CYLINDER,JACK	1					
5	42502970100	FLOAT ASSY	1					
6	37000171720	PIN	1					
7	80601110250	RING,RITAINING	2		S25			
8	37000169010	PIN	1		30			
9	80601110300	RING,RITAINING	2		S30			
10	36625740001	VALVE,CHECK	1					
11	90171108055	BOLT	4		M8X55			
12	37000138750	PIN	1		18			
13	80136332036	PIN,SPLIT	2		3.2X36			
14	80400160127	JOINT	1					
15	91002801100	O-RING	1		1B P11			
16	36672460000	FILTER (NIPPLE TYPE)	1					
17	42612851010	COVER	1					
18	90186206014	BOLT,FLANGE	2		M6X14			
19	37000112320	PIN	1					
20	80601110120	RING,RITAINING	2		S12			
21	91810130240	FASTENER	2					
22	31201770100	PLATE,SLIDE	8		T=3.0			
23	82467300106	PLUG	4					
41	36042810000	CYLINDER,EXTENSION (FRONT)	1					
42	80400160127	JOINT	2					
43	91002801100	O-RING	3		1B P11			
44	37002485290	HOSE	1		L=1605			
45	42614051350	HARNES	1			228523		
46	91810130240	FASTENER	13					
63	42612851420	TRUNNION	1					
100	42614462000	CASE ASSY,INNER (FRONT,LEFT)	1					

AT-146-3 43011100096 UPPER

Pos No.	Parts No	Parts Name	Qty	Unit	Technical Data	Serial No (Start)	Serial No (End)
1	42508320000	COVER ASSY (BACKET CONTROL)	1				

AT-146-3 43011100096 UPPER

Pos No.	Parts No	Parts Name	Qty	Unit	Technical Data	Serial No (Start)
1	36623930000	VALVE,PILOT CHECK	1			
2	91002801000	O-RING	2		1B P10	
3	36054430000	CYLINDER ASSY (LIFT,BUCKET FRAME)	1			
6	90180210035	BOLT,BUTTON	2		M10X35	
100	42268804001	CYLINDER ASSY (LIFT,BUCKET FRAME WITH VALVE)	1			

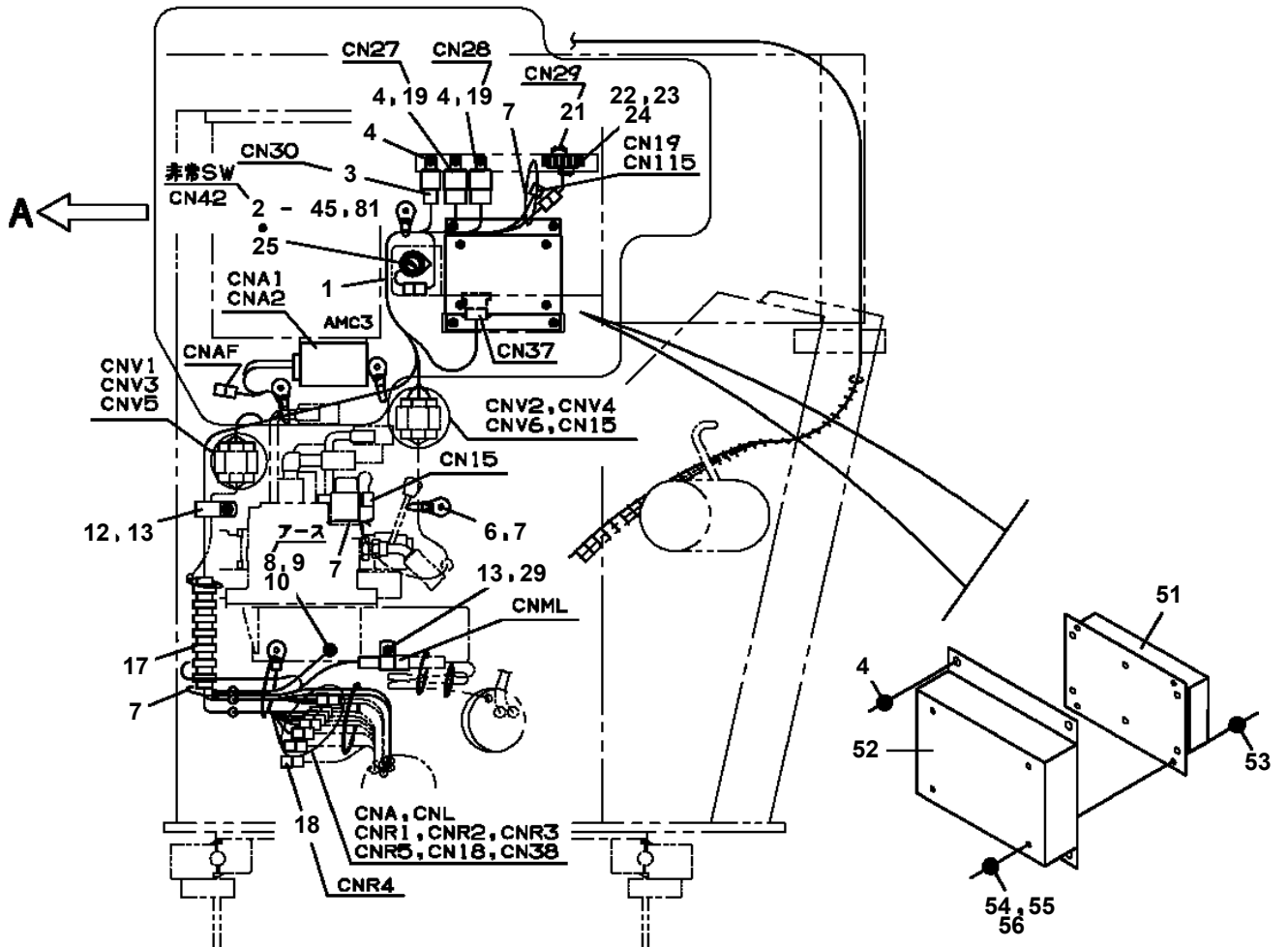
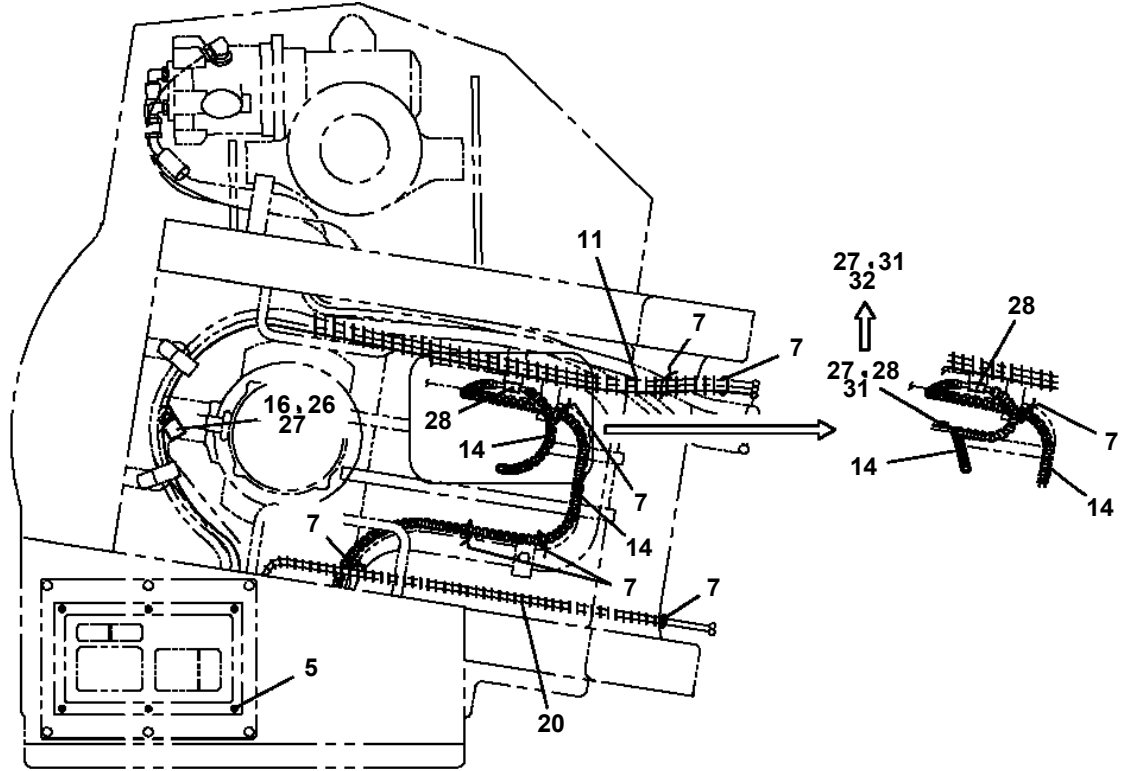
AT-146-3 43011100096 UPPER

Pos No.	Parts No	Parts Name	Qty	Unit	Technical Data	Serial No (Start)	Serial No (End)	Remarks
3	91280439941	SEAL,OIL	1					
4	36081565010	CASE,GEAR	1					
5	80515006312	BEARING,BALL	1					
6	36081395040	KEY	1					
7	36081395050	WHEEL,WORM	1		4X32-34			
8	90102510025	BOLT	6		M10X25			
9	90302041001	WASHER,SPRING	6		10			
10	80516006211	BEARING,BALL	1					
11	80601110550	RING,RITAINING	1		S55			
12	36081395060	CASE,GEAR	1					
13	36072725350	BEARING,TAPER ROLLER	1					
14	36081395070	WORM	1		4X20			
15	36081325110	BEARING,TAPER ROLLER	1					
16	36081325080	SHIM SET	1					
17	36081325010	SPACER	1					
18	36081325090	RING,SNAP	1					
19	36080495090	GAUGE,OIL	1					
20	36080235080	WASHER,SEAL	1		M16			
21	80316090040	PLUG SOCKET	1		R1/4			
31	36081395500	GEAR,SPUR	1					
50	36081560000	REDUCER,SWING SPEED	1					

AT-146-3 43011100096 UPPER

Pos No.	Parts No	Parts Name	Qty	Unit	Technical Data	Serial No (Start)	Serial No (End)	Remarks	Pages
1	(***** 42512320100	REEL ASSY,CORD SUPPORT	1						00022
2	42512320200	SUPPORT	1						
3	90101208020	BOLT	2		M8X20				
4	90302040801	WASHER,SPRING	2		8				
5	42421721500	CABLE ASSY	1		L=700				
6									

**AT-146-3 43011100096 UPPER
PE5190007-06 ELEC.ASSY, SWING FRAME**



AT-146-3 43011100096 UPPER

Pos No.	Parts No	Parts Name	Qty	Unit	Technical Data	Serial No (Start)	Serial No (End)	Remarks
500	36073820000	WINCH	1					

AT-146-3 43011100096 UPPER

Pos No.	Parts No	Parts Name	Qty	Unit	Technical Data	Serial No (Start)	Serial No (End)	Rem
1	42311894030	FITTING,ELBOW	1				228685	
	80303130101	FITTING,ELBOW	1		KLO10-020E	228686		
2	42342460320	ORIFICE	2		1.0		228685	
	42342460320	ORIFICE	1		1.0	228686		
4	91002801100	O-RING	2		1B P11			
5	42311894100	JOINT	1					
6	42311894200	JOINT	1					
7	80303130121	FITTING,ELBOW (WITH O-RING)	2		KLO10-030E			
8	42311894301	JOINT	2				229395	
9	80400160223	JOINT	1					
10	82420912713	TRIM	1	M				
11	91810132530	FASTENER	9					
12	37002403170	HOSE	1		L=2100			
13	82100001411	TUBE, SPIRAL	1	M	SE-08BK			
14	42311894400	JOINT	1			229396		
15	42311894500	JOINT	1			229396		
17	37000927860	JOINT	1					
18	37002489970	HOSE	2		L=2110			
19	37002402790	HOSE	1		L=2740		228430	
	37002413790	HOSE	1		L=2680	228431		
21	82100001819	TUBE, SPIRAL	1	M	SE-18BK			
22	37002488450	HOSE	1		L=2200		228430	
	37002413870	HOSE	1		L=2160	228431		
23	37002453590	HOSE	1		L=1950			
24	37002489990	HOSE	1		L=2680			
25	37002482840	HOSE	1		L=2720		228430	
	37002413940	HOSE	1		L=2660	228431		
41	91002801100	O-RING	1		1B P11			
51	91002801400	O-RING	2		1B P14			

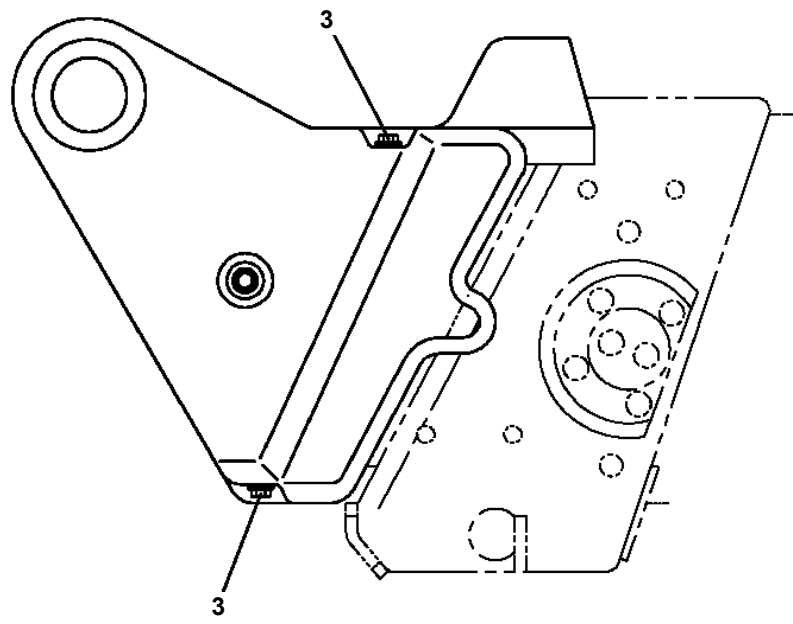
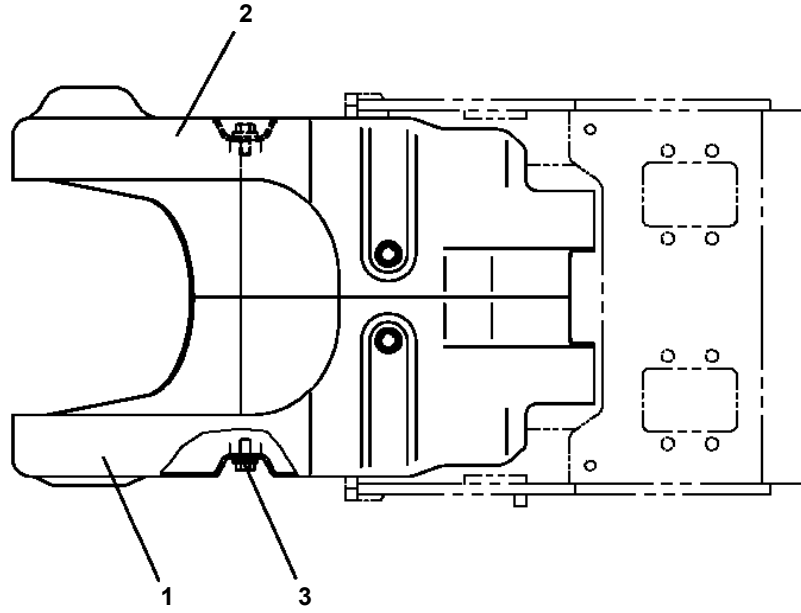
AT-146-3 43011100096 UPPER

Pos No.	Parts No	Parts Name	Qty	Unit	Technical Data	Serial No (Start)	Serial No (End)	Rema
61	42356370030	SUPPORT	1				229424	
	42356370031	SUPPORT	1			229425		
62	42356370040	SUPPORT	1				229424	
	42356370041	SUPPORT	1			229425		
63	90101208016	BOLT	4		M8X16			
64	90303070801	WASHER,PLAIN	4		8			
81	80806007540	BEARING,PLAIN	2					
82	42311301410	SPACER	1					
83	80820003020	BEARING,PLAIN	2					
84	82455106000	NIPPLE,GREASE	1		A-M6F FE			
86	80720103020	PIN,SPRING	1		3X20			
92	80513006015	BEARING,BALL	1					
101	42312145102	SUPPORT	1					
102	42312145201	PIN ASSY	1					
103	90710006120	SCREW,SET	2		M6X12			
111	42312145301	GRIP	1					
112	80720105018	PIN,SPRING	1		5X18			
113	80720105028	PIN,SPRING	1		5X28			
114	42312145400	GUIDE	1					
115	37001201220	SPRING	1					
116	42312145500	PIN	1					

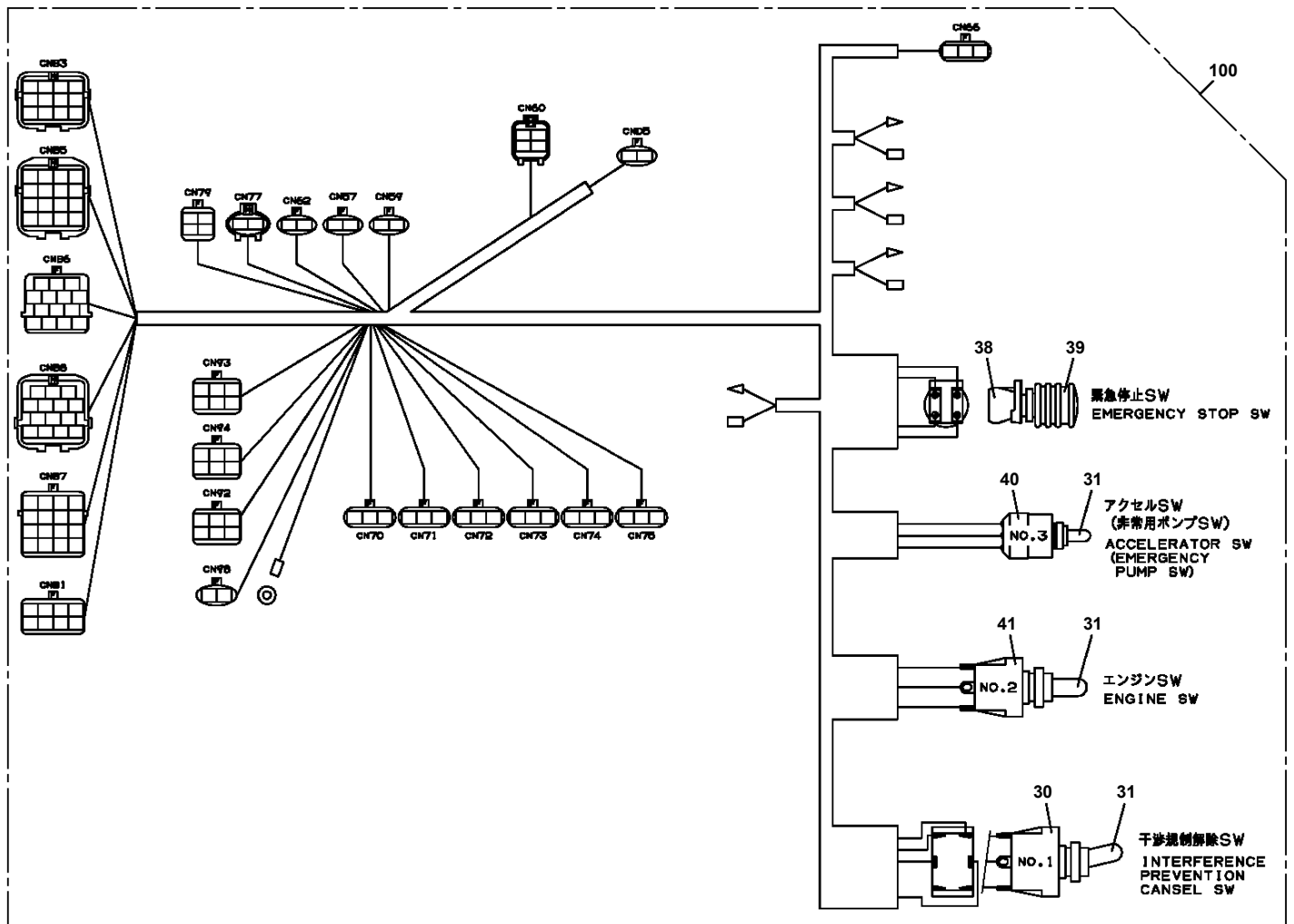
AT-146-3 43011100096 UPPER

Pos No.	Parts No	Parts Name	Qty	Unit	Technical Data	Serial No (Start)	Serial No (End)	Re
1	42202591003	FRAME	1					
2	42202592000	BOOM, TOP	1					
3	42202593002	SADDLE	1					
4	42202594000	BOOM, 2ND	1					
5	42202599510	BOOM, BASE	1					
6	37001922851	ROPE, WIRE (TESAC)	2		8X4.795M			
7	37001922871	ROPE, WIRE (TESAC)	2		10X9.22M			
9	37000115380	PIN	1					
10	90238403008	NUT, CASTLE	1		M30X2			
11	80136360050	PIN, SPLIT	1		6X50			
12	90303073001	WASHER, PLAIN	1		30			
16	37000168750	PIN	1					
17	80601110300	RING, RITAINING	2		S30			
18	42202590051	PLATE	N		T=0.8			
19	42202590061	PLATE	N		T=0.5			
20	42202590330	PLATE	N		T=0.5			
21	37002019390	PLATE, SLIDE	2					
22	37002019400	PLATE, SLIDE	4					
23	37000586481	PLATE	N		T=0.6			
24	42202590011	PLATE	4					
25	42202590090	PLATE	4		T=0.5			
26	42202590200	PLATE	N		T=0.8			
27	90201701600	NUT	10		M16			
28	90303501601	WASHER, PLAIN	10		16			
29	42202590281	SPACER	10					
31	90302041001	WASHER, SPRING	48		10			
32	90180210045	BOLT, BUTTON	4		M10X45			
37	90180210055	BOLT, BUTTON	4					
38	42202590360	PIN	2					
39	42200021510	PLATE	2					
40	37001007740	SHEAVE ASSY	2					
41	42202700120	PLATE	1		T=0.8			
42	42201630570	PLATE	N		T=2.3			
44	42202700130	PLATE	1		T=1.0			
45	37002018110	PLATE, SLIDE	2					
46	90180210025	BOLT, BUTTON	24		M10X25			
47	82455106000	NIPPLE, GREASE	1		A-M6F FE			
48	82400000459	CAP	1					
50	80601110200	RING, RITAINING	4		S20			
51	42202590220	PLATE	N		T=0.8			
52	42202590230	PLATE	N		T=0.5			
53	42202590240	PLATE	N		T=0.5			
54	42202590250	PLATE	N		T=1.0			
55	90172106008	BOLT, HEXAGON SOCKET	16		M6X8			
57	37002018070	PLATE, SLIDE	2					
58	37002018060	PLATE, SLIDE	4					
59	37000586470	PLATE	N		T=1.0			
60	37000586460	PLATE	N		T=1.0			
61	42202700111	PLATE	N		T=0.6			
62	37000155020	PIN	4					
63	42202590210	PLATE	N		T=0.8			
64	37002018120	PLATE, SLIDE	2					
65	37000508520	PLATE	N		T=0.8			
66	80184306012	SCREW, MACHINE	4		M6X12			
67	37002006500	PLATE, SLIDE	2					
68	37002010340	PLATE, SLIDE	2					
69	90180210016	BOLT, BUTTON	8		M10X16			
70	37000176290	PIN	1					
71	37000303050	SPACER	2		L=9			
72	42202590100	SHEAVE ASSY	1					
73	80602110300	RING, RITAINING	2		R30			
74	31630482500	CAP	4					
75	37001007240	SHEAVE ASSY	2					

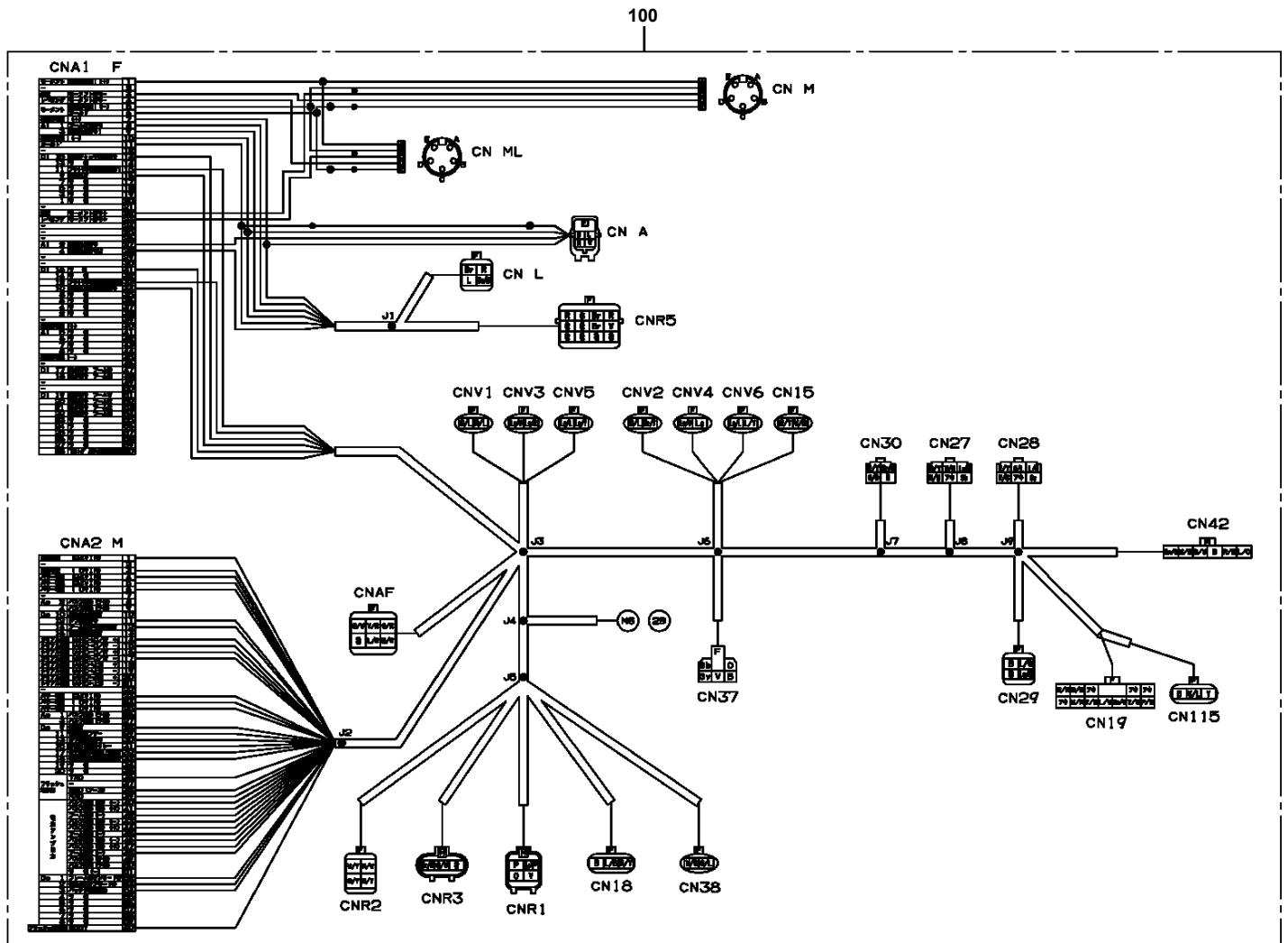
**AT-146-3 43011100096 UPPER
PG1410105-00 COVER,BOOM (TOP/FRP,WHITE)**



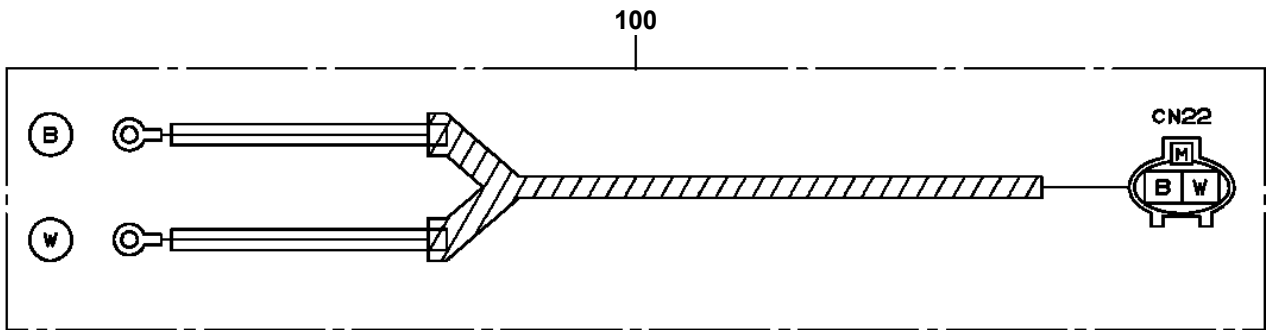
**AT-146-3 43011100096 UPPER
PH5030161-03 HARNESS**



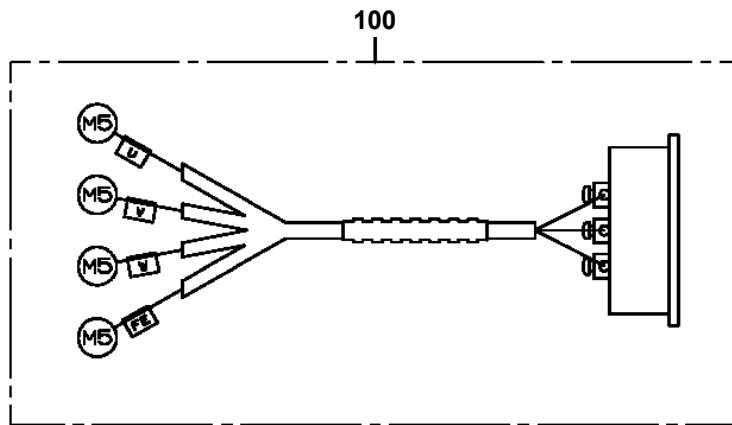
AT-146-3 43011100096 UPPER PH5030993-01 HARNESS



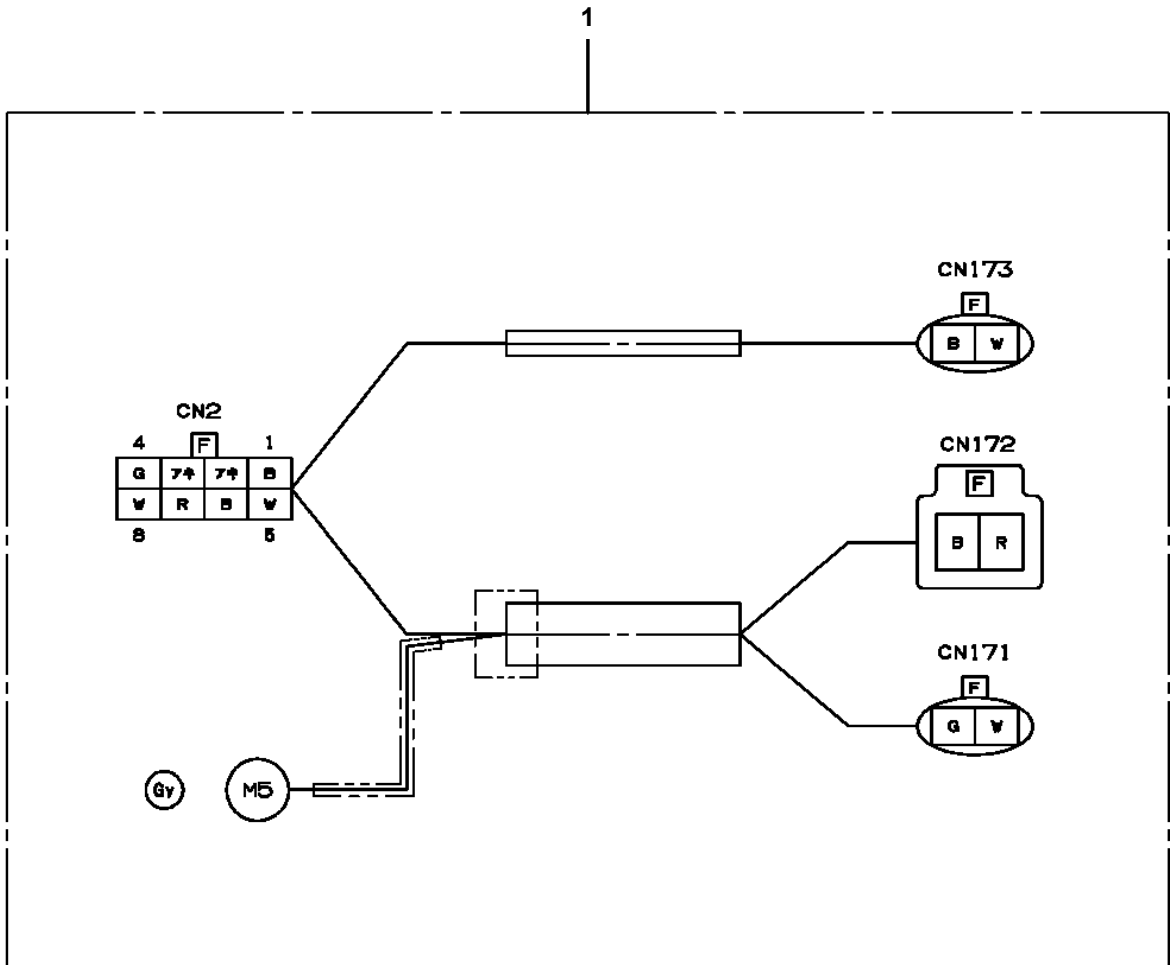
AT-146-3 43011100096 UPPER
PH5031069-00 HARNESS



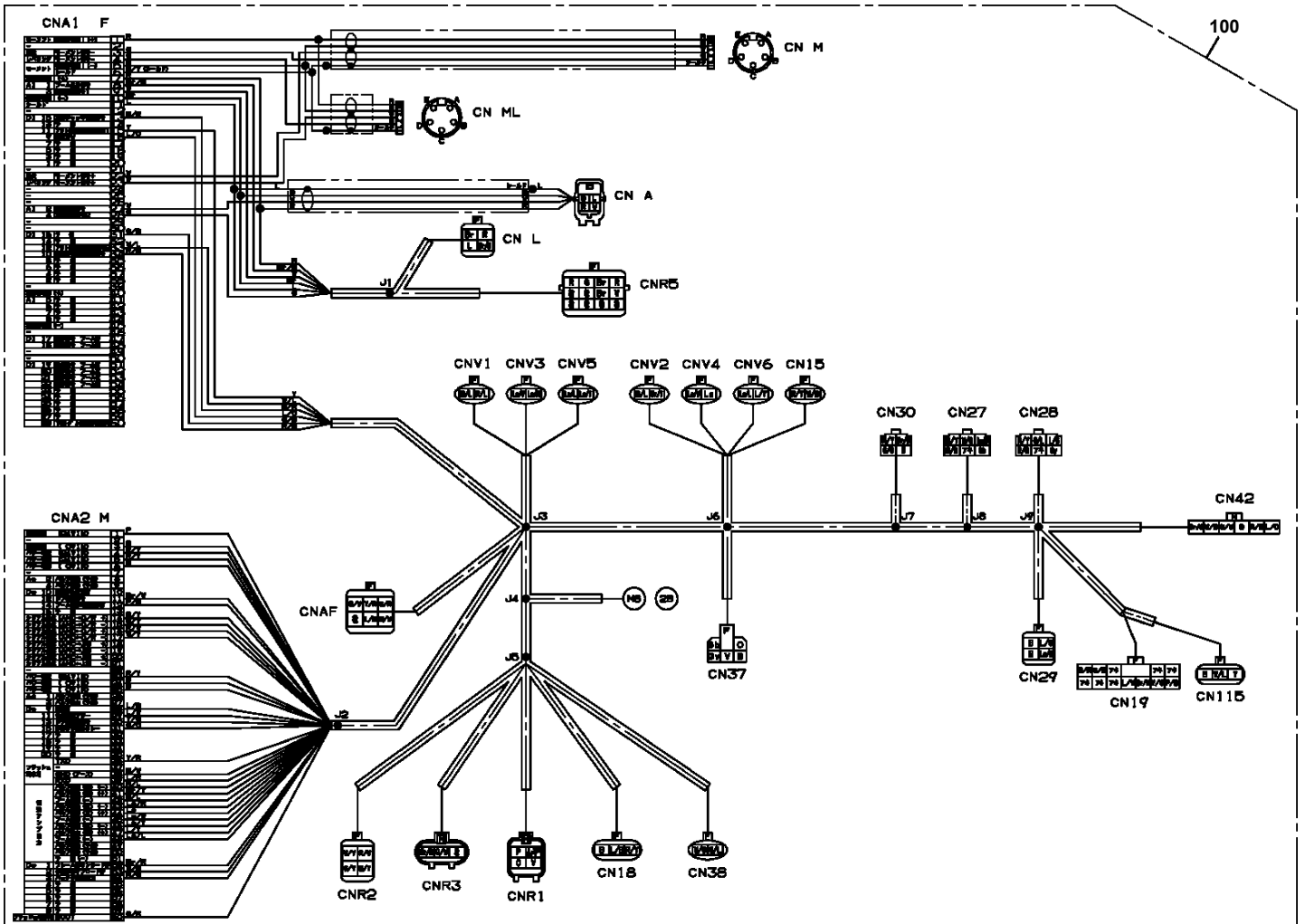
AT-146-3 43011100096 UPPER
PH5031074-00 HARNESS



AT-146-3 43011100096 UPPER
PH5031205-00 HARNESS



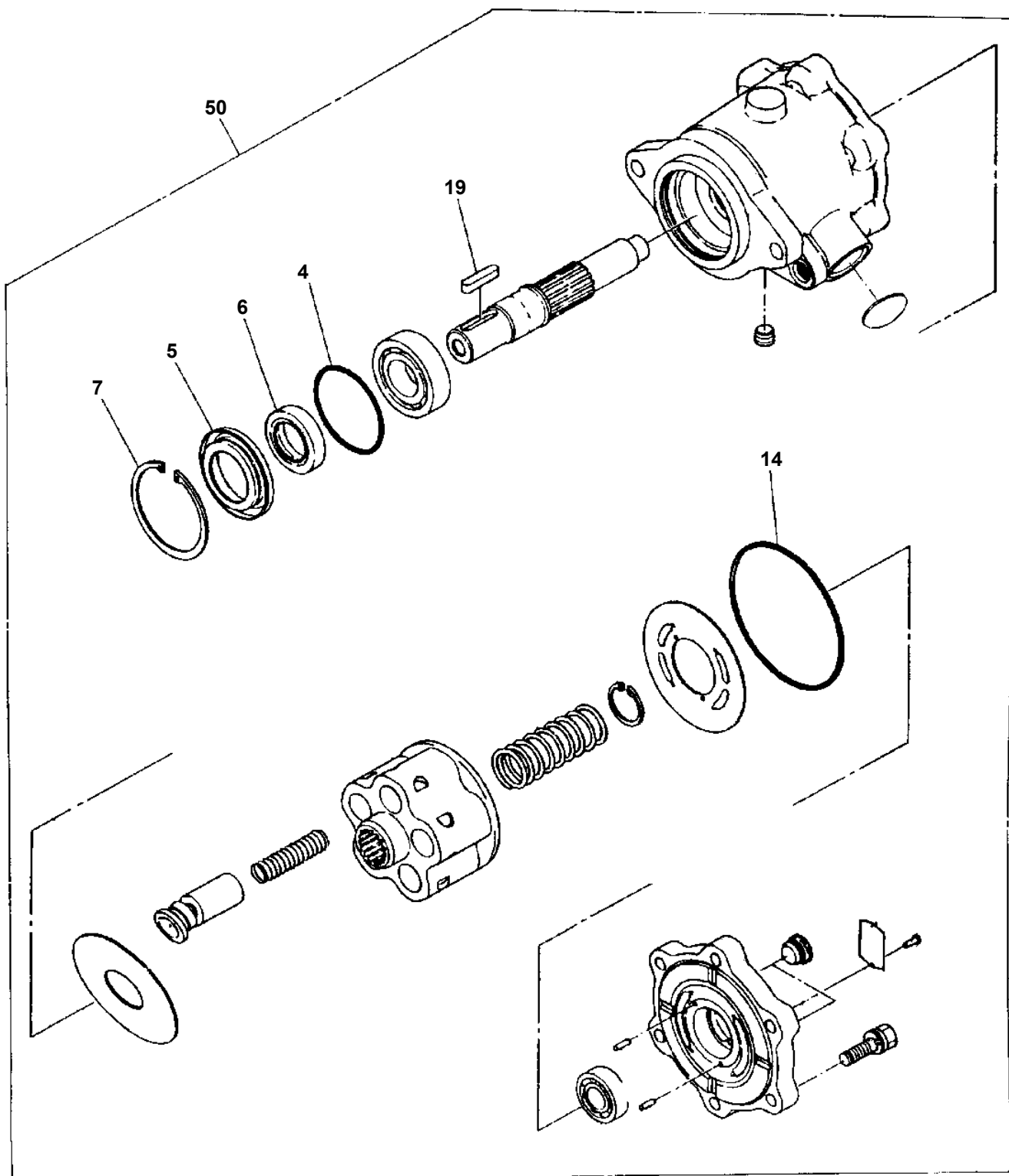
AT-146-3 43011100096 UPPER
PH5032330-00 HARNESS



AT-146-3 43011100096 UPPER

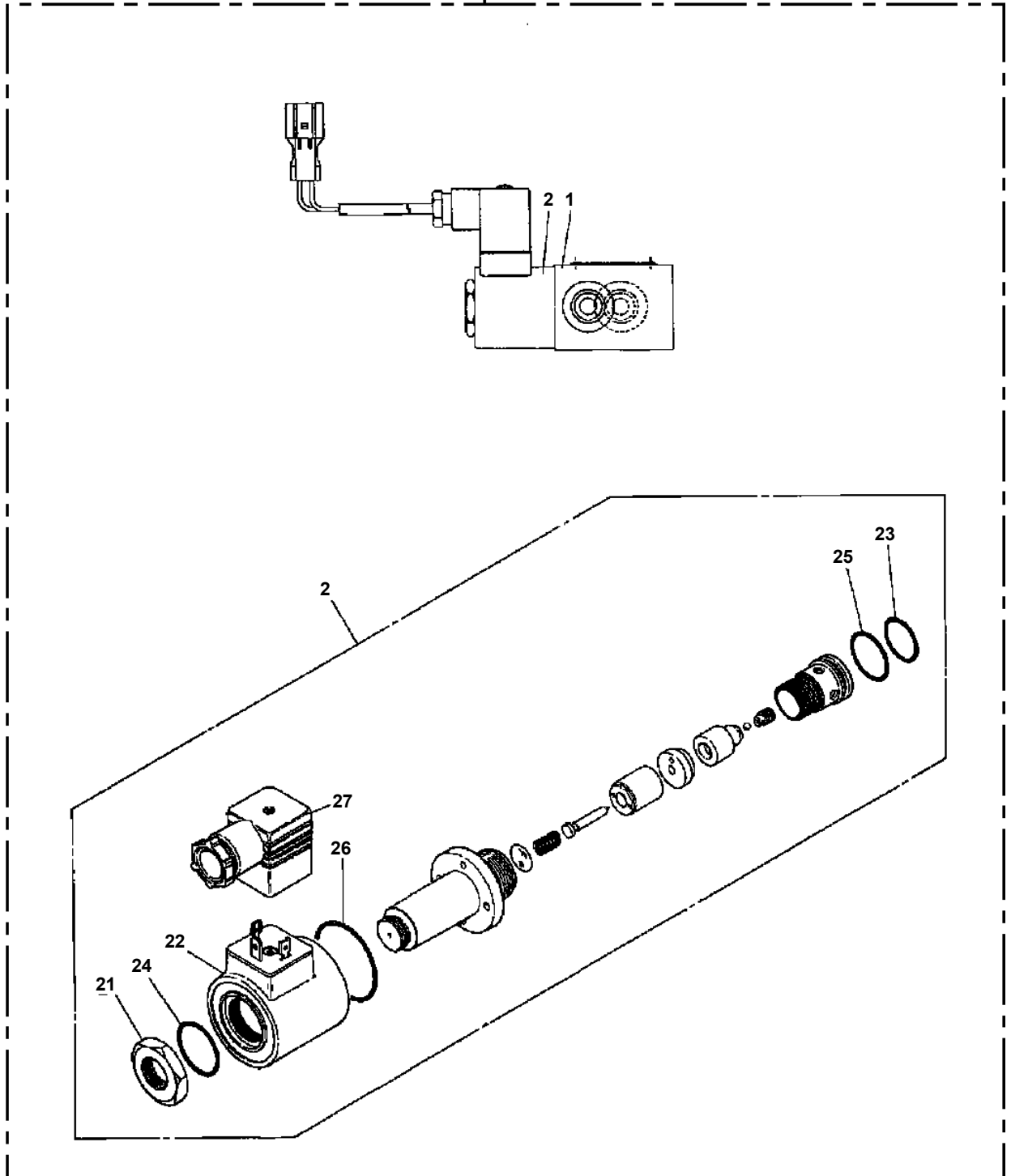
Pos No.	Parts No	Parts Name	Qty	Unit	Technical Data	Serial No (Start)	Serial No (End)	Remarks	Pages
40	82182819823	DIODE	3		1.5A				
100	42900000102	HARNESS	1						

AT-146-3 43011100096 UPPER
PI1010074-00 MOTOR, HYDRAULIC (SWING)

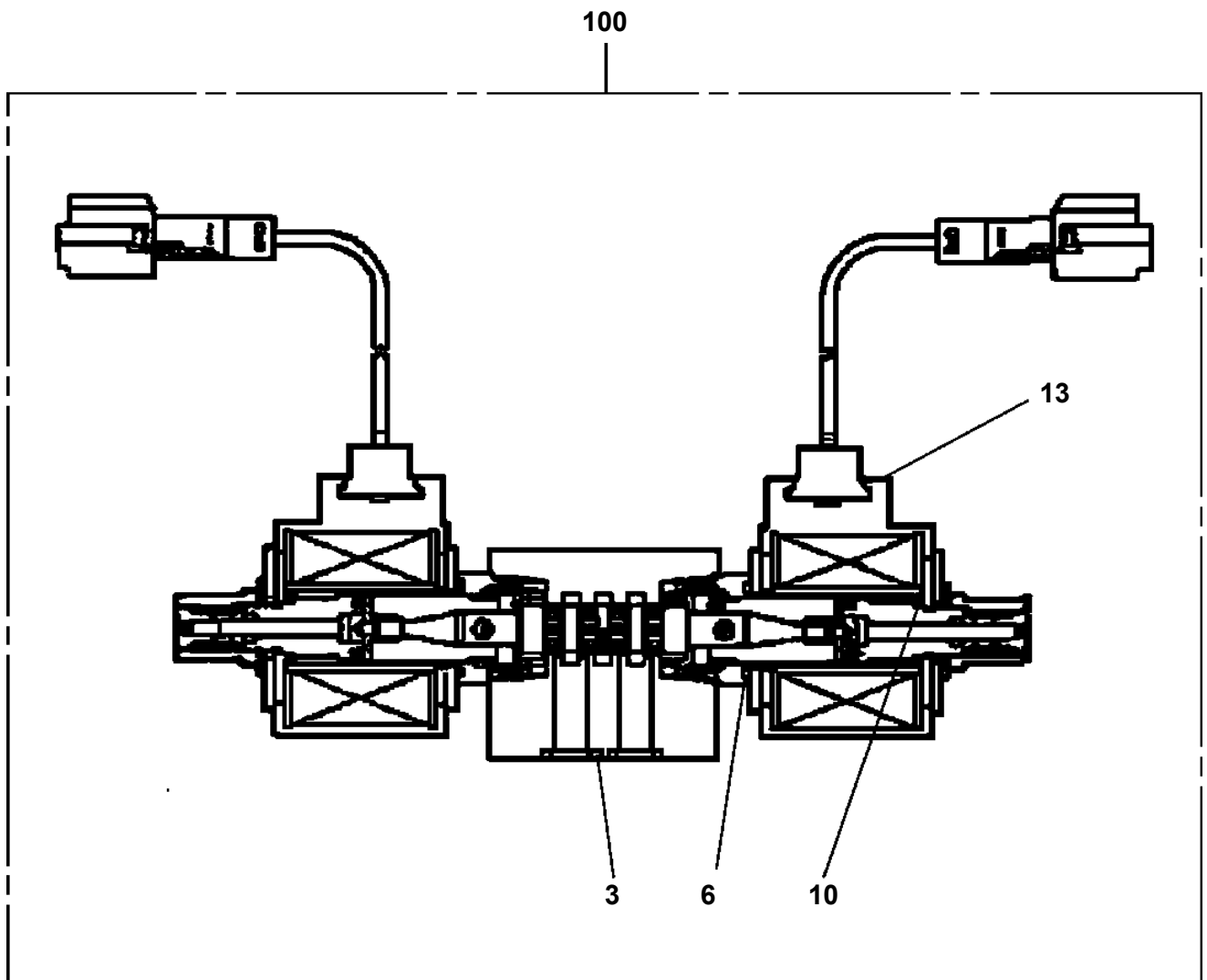


AT-146-3 43011100096 UPPER
PI1120148-01 VALVE,SOLENOID

100

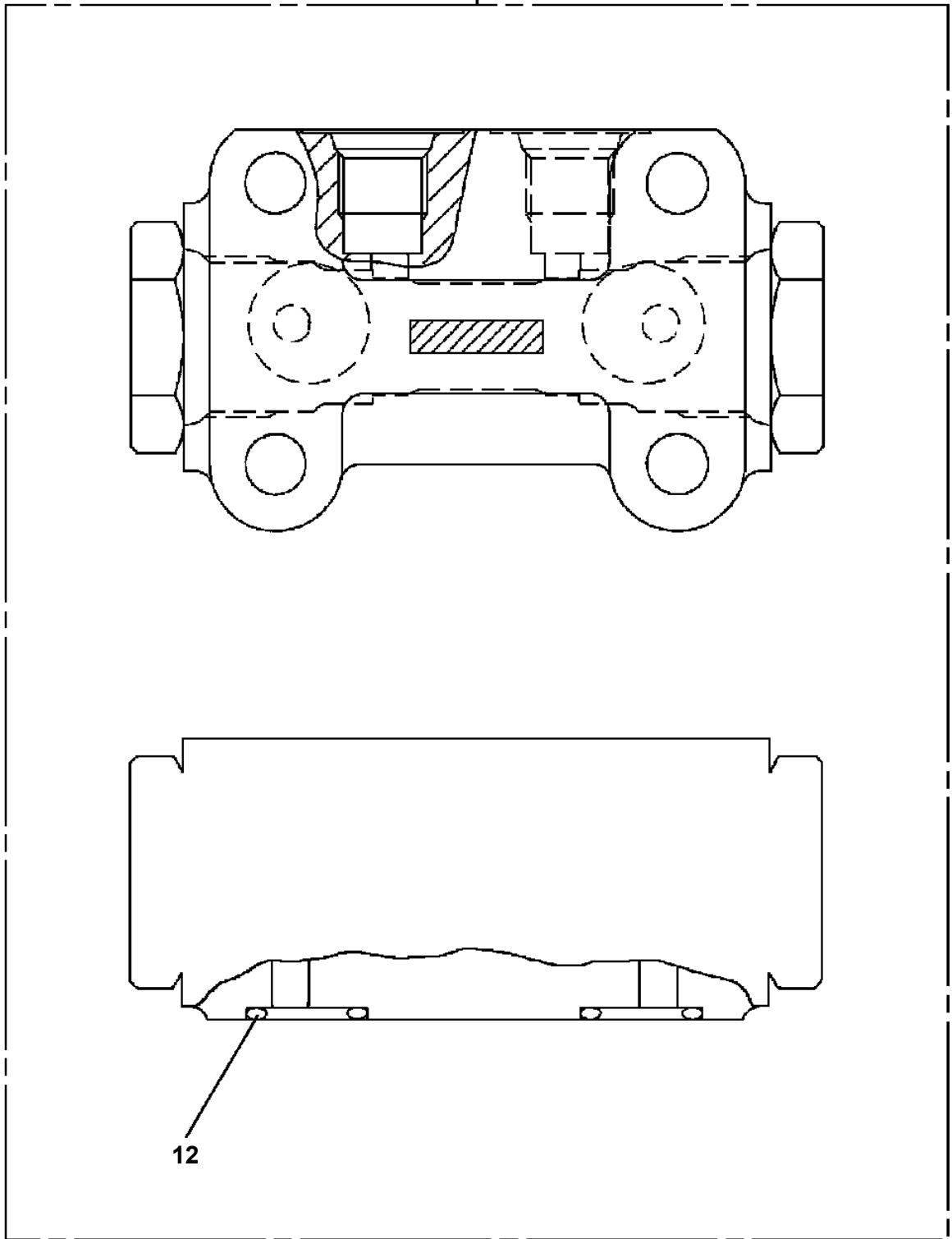


AT-146-3 43011100096 UPPER
PI1120335-00 VALVE,SOLENOID



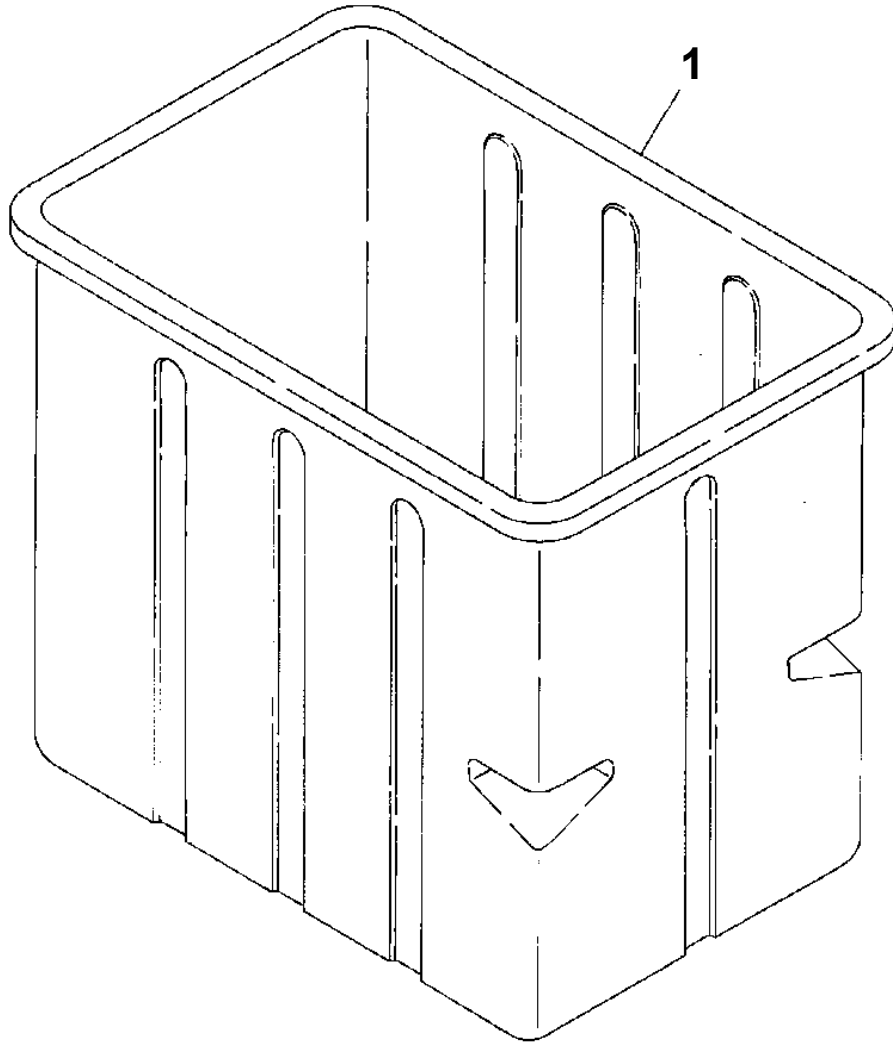
AT-146-3 43011100096 UPPER
PI1140227-00 VALVE,CHECK

100

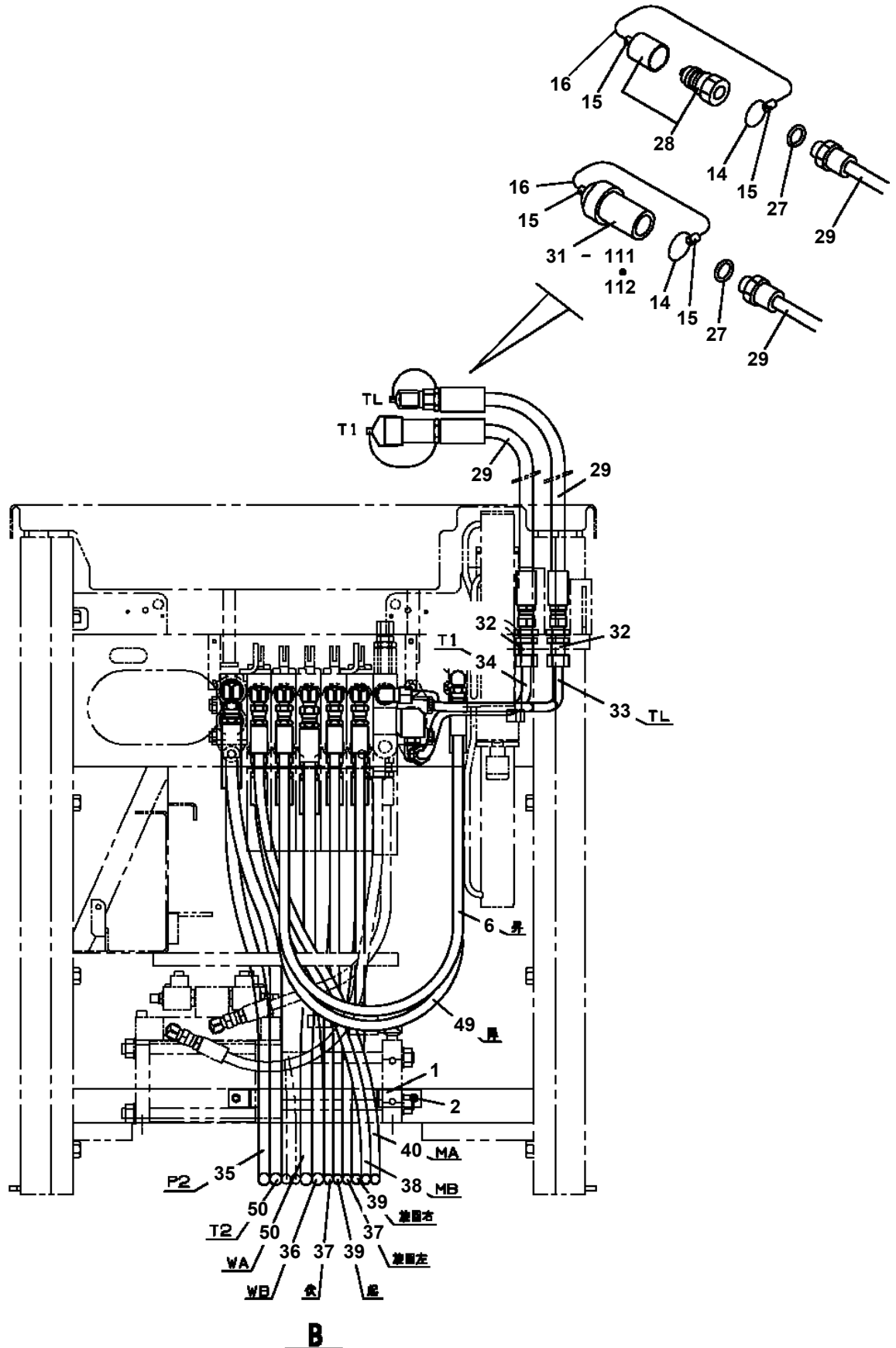


12

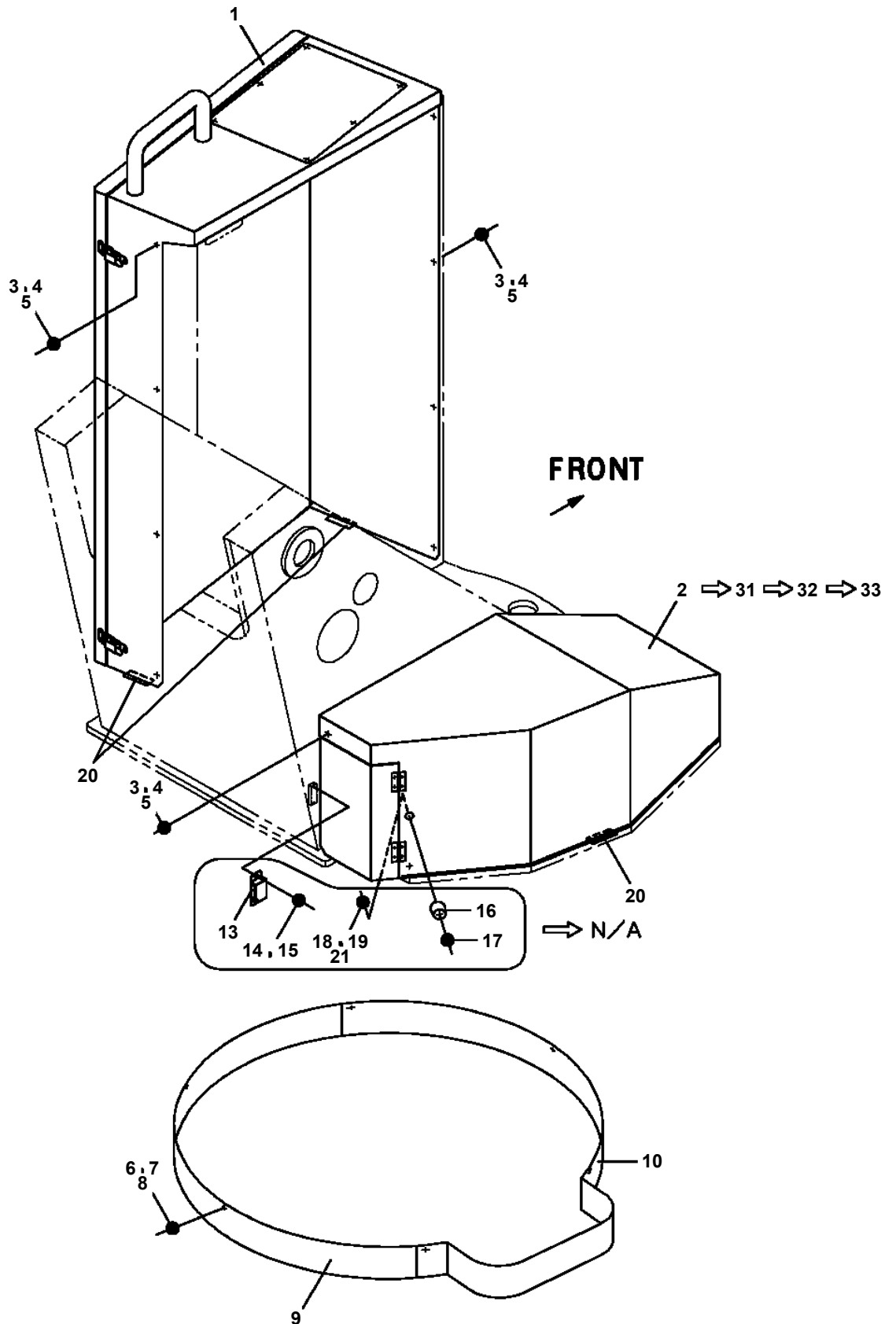
**AT-146-3 43011100096 UPPER
PJ3010108-00 BUCKET (INNER CASE)**



**AT-146-3 43011100096 UPPER
PJ3200095-03 PIPING,BUCKET**



AT-146-3 43011100096 UPPER
 PK1200454-03 COVER, SWING FRAME



展開圖有
 ILLUSTRATED BREAKDOWN NO. 2, 31, 32, 33

CLICK HERE TO **DOWNLOAD** THE COMPLETE MANUAL

- Thank you very much for reading the preview of the manual.
- You can download the complete manual from: www.heydownloads.com by clicking the link below



- Please note: If there is no response to CLICKING the link, please download this PDF first and then click on it.

CLICK HERE TO **DOWNLOAD** THE COMPLETE MANUAL

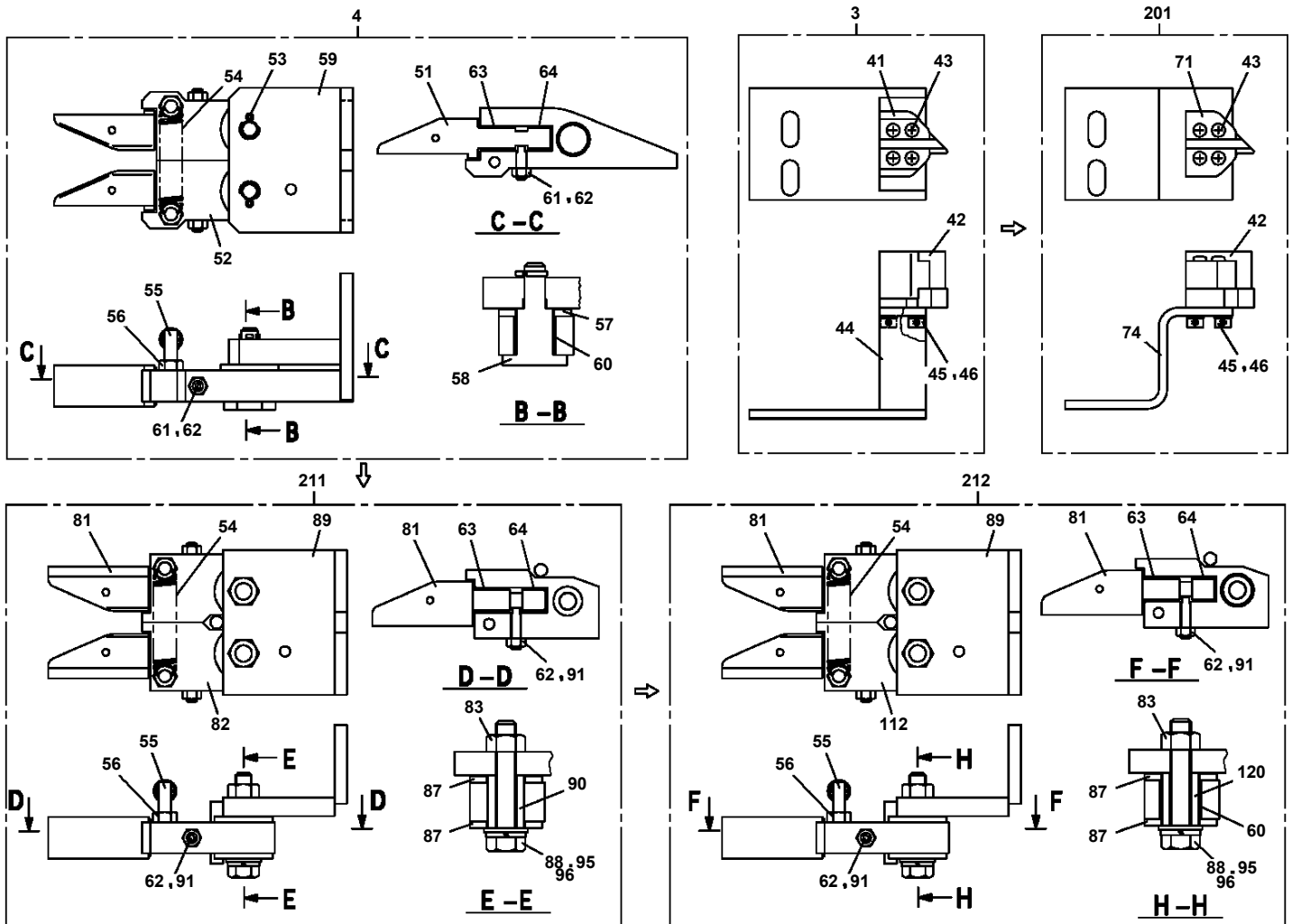
AT-146-3 43011100096 UPPER

Pos No.	Parts No	Parts Name	Qty	Unit	Technical Data	Serial No (Start)	Serial No (End)	Remarks	Pages
1	42505360000	COVER (RACK,L)	1						

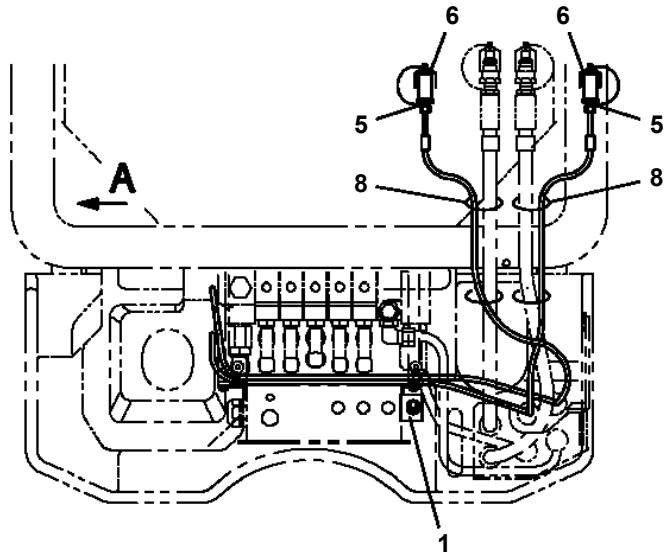
AT-146-3 43011100096 UPPER

Pos No.	Parts No	Parts Name	Qty	Unit	Technical Data	Serial No (Start)	Serial No (End)
1	36028230000	CYLINDER ASSY,LEVELING (UPPER)	1				228619
	36028620000	CYLINDER ASSY,LEVELING (UPPER)	1			228620	228696
	36028230000	CYLINDER ASSY,LEVELING (UPPER)	1			228697	
2	36606760000	VALVE ASSY,COUNTERBALANCE	1				
3	90171108065	BOLT	4		M8X65		

**AT-146-3 43011100096 UPPER
PN1014442-04 ELEC.ASSY (CHARGER)**



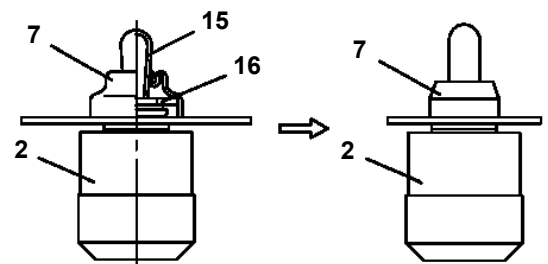
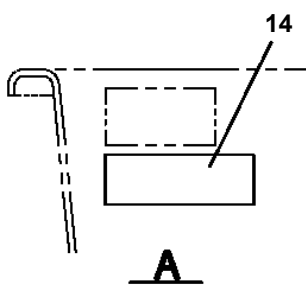
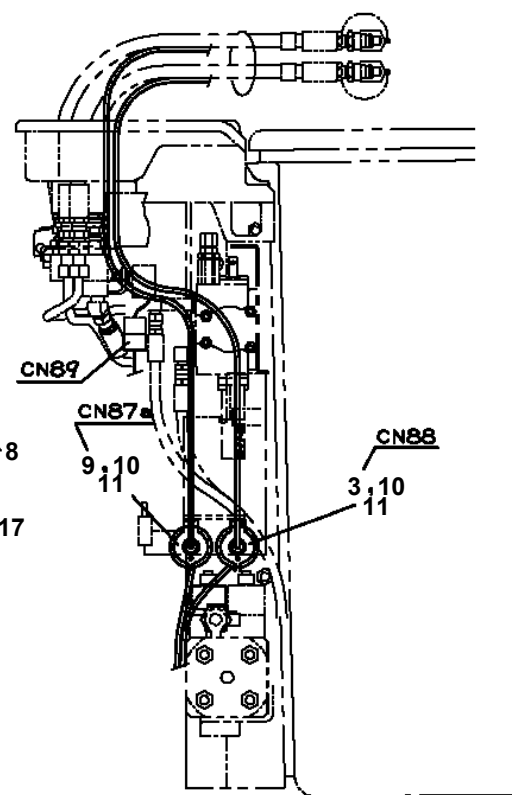
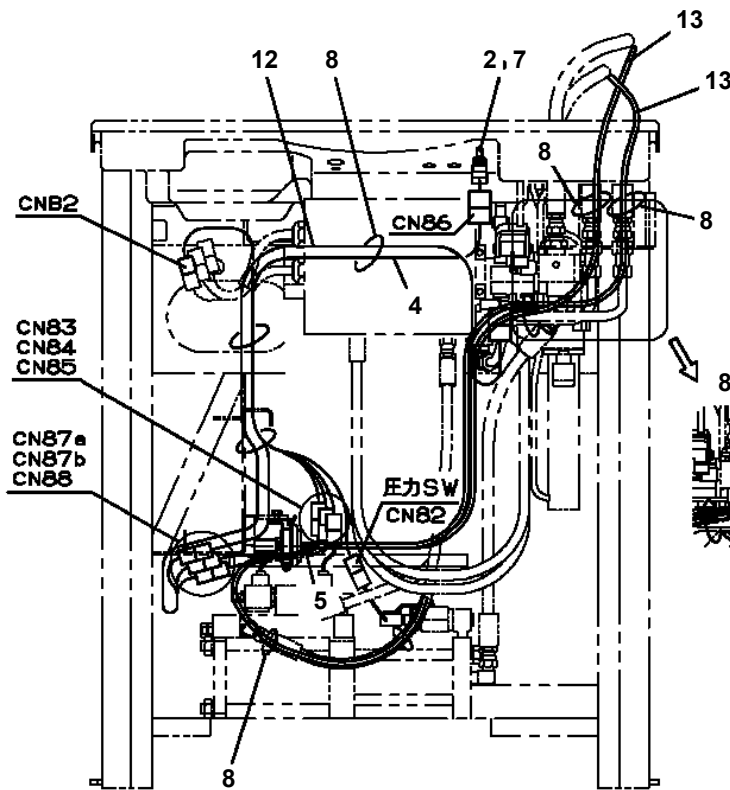
AT-146-3 43011100096 UPPER
 PN1014641-03 ELEC.ASSY (BOOSTER)



14

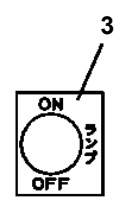
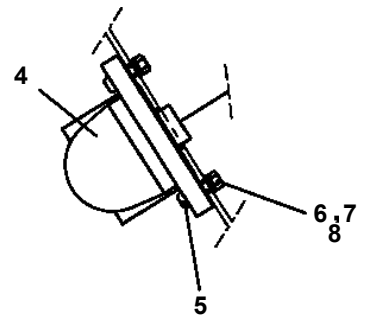
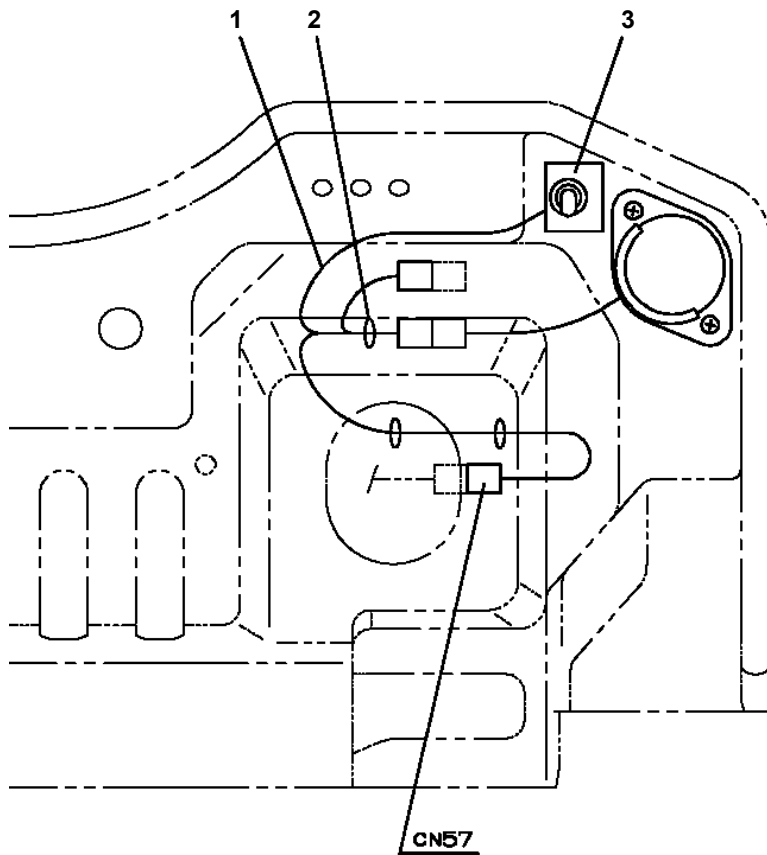
△警告/フースタ操作

○圧差感知カッタの故障部分には油を注入してください。
 ○圧差感知ガスまたはカッタの交換は、必ずアタッチメント
 レバー（スイッチ）を中立位置に行ってください。

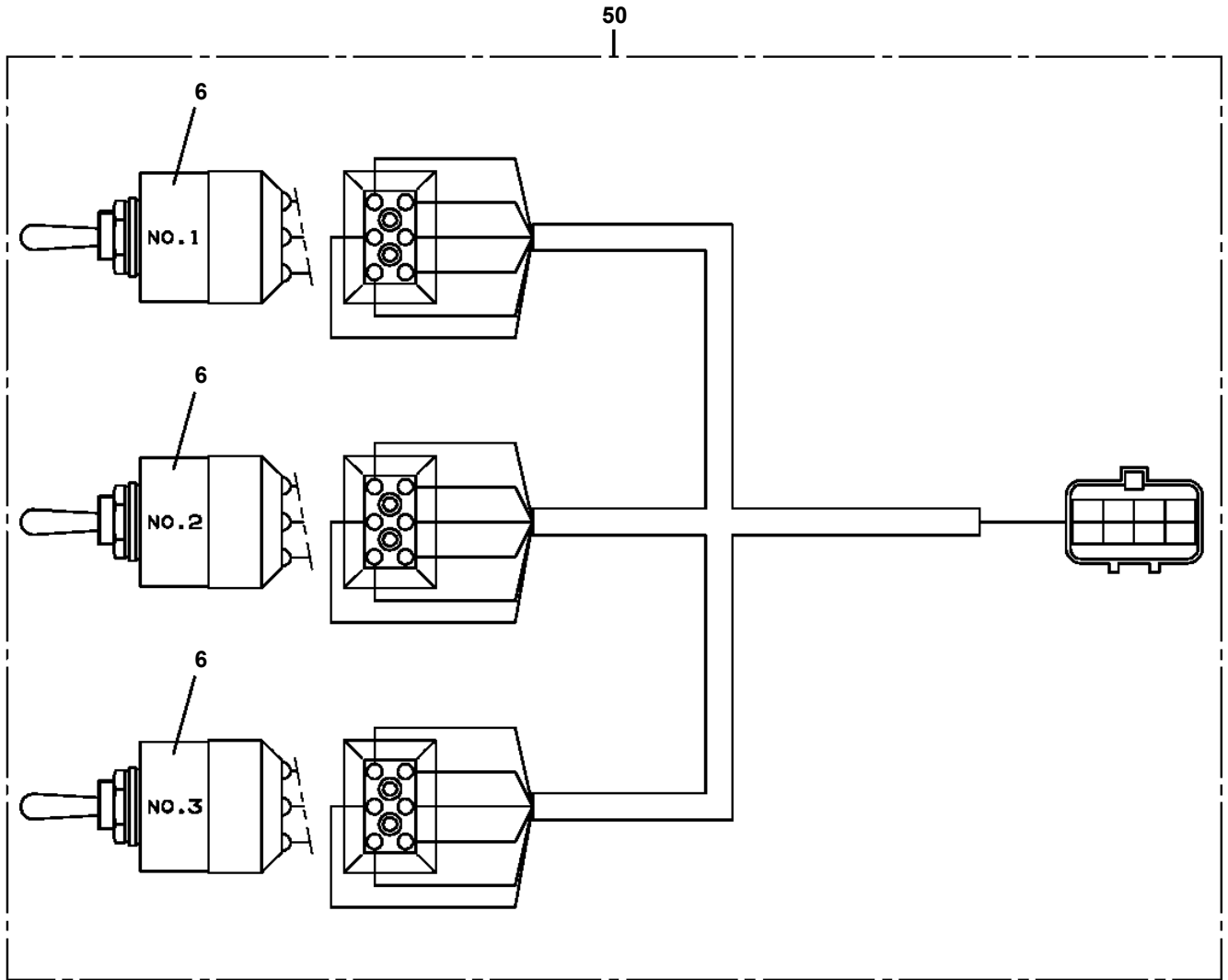


トグルSW

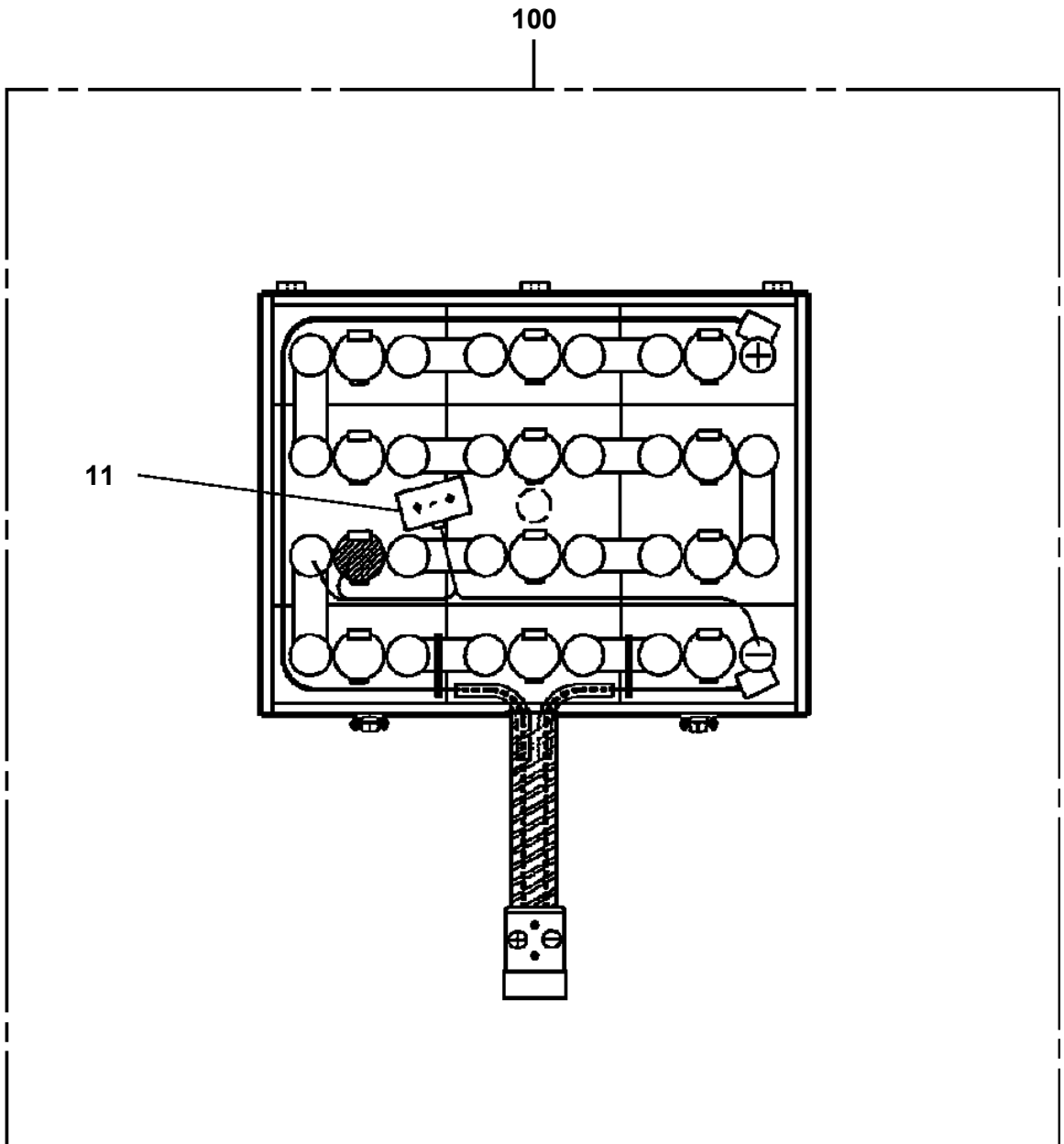
**AT-146-3 43011100096 UPPER
PN1080400-01 LAMP (WORKING:BUCKET)**



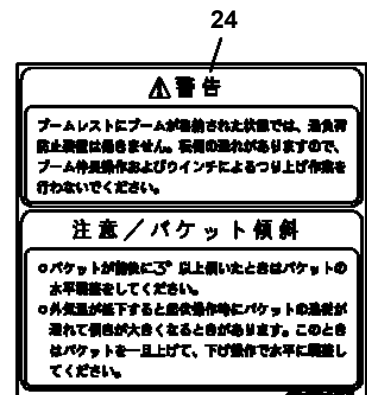
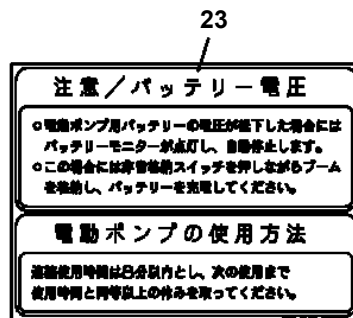
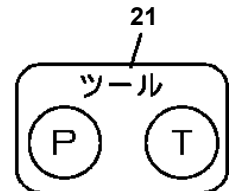
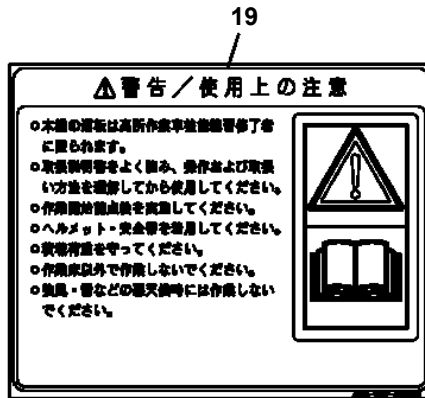
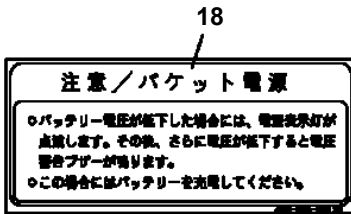
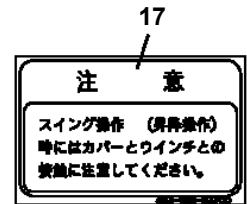
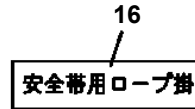
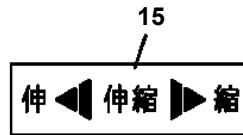
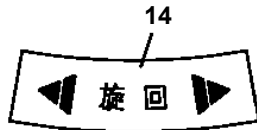
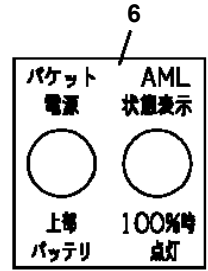
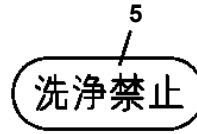
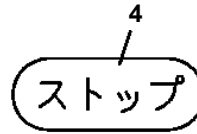
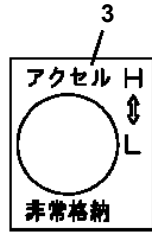
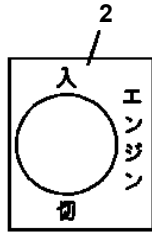
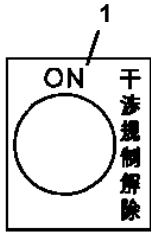
**AT-146-3 43011100096 UPPER
PN1140164-00 SWITCH ASSY (WITH HARNESS,3 SW)**



AT-146-3 43011100096 UPPER
PN1370154-00 BATTERY



AT-146-3 43011100096 UPPER
PO1015329-01 PLATE ASSY,NAME (BUCKET)



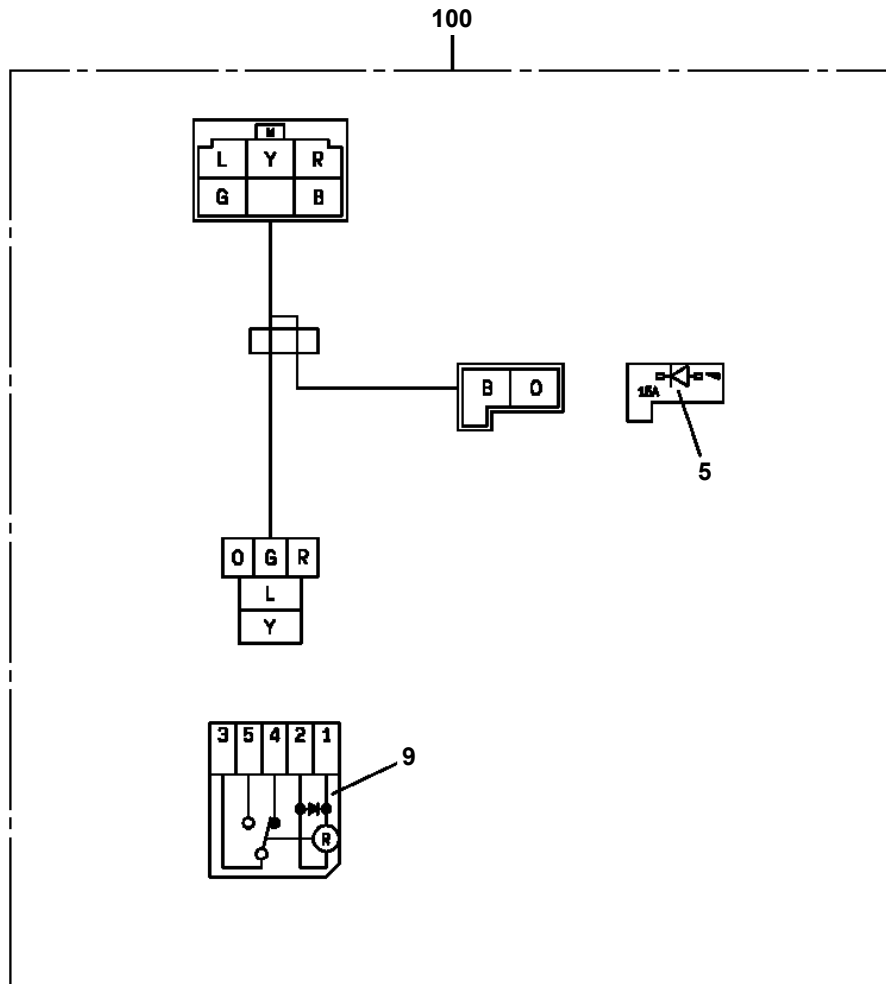
AT-146-3 43011100096 UPPER

Pos No.	Parts No	Parts Name	Qty	Unit	Technical Data	Serial No (Start)	Serial No (End)
1	(*****)	PLATE,NAME (LIVE-LINE WORKING DEVICE)	1				

AT-146-3 43011100096 UPPER

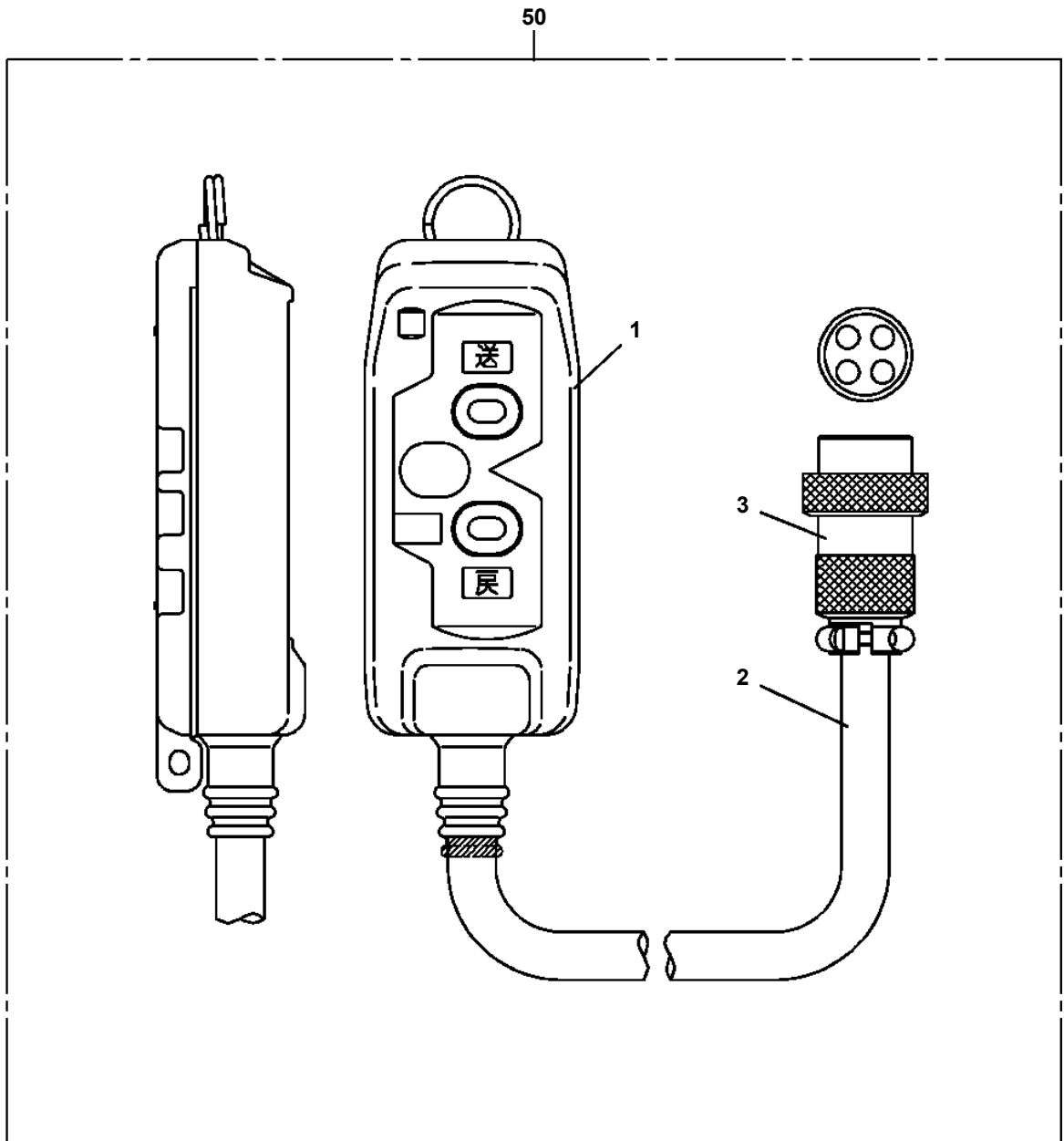
Pos No.	Parts No	Parts Name	Qty	Unit	Technical Data	Serial No (Start)	Serial No (End)	Remarks
1	37004100040	PUMP,GREASE (DOMESTIC)	1					

AT-146-3 43011100096 UPPER
PR5210003-00 RELAY



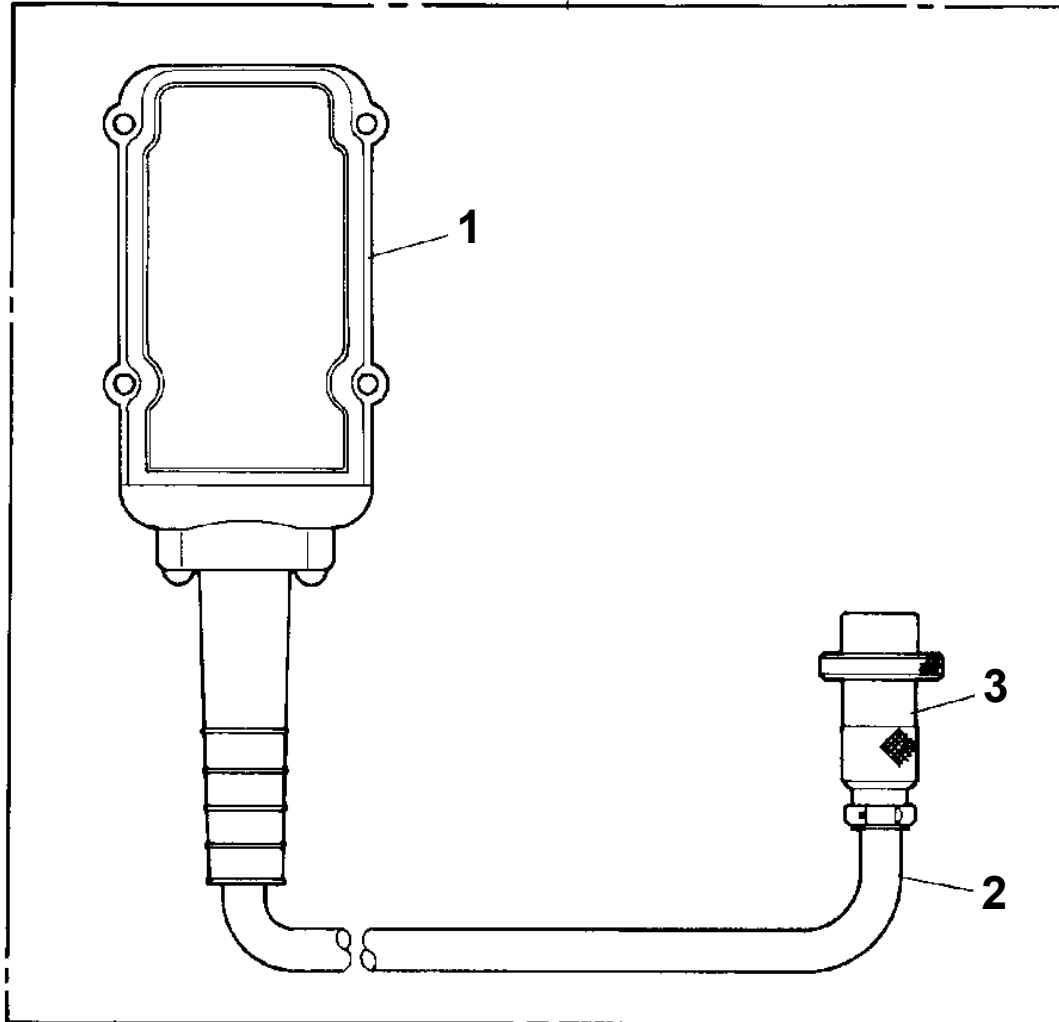
AT-146-3 43011100096 UPPER

PS5530117-00 SWITCH ASSY (ELEC.BOOSTER, REMOTE:2M,NANABOSI,KASUGA)



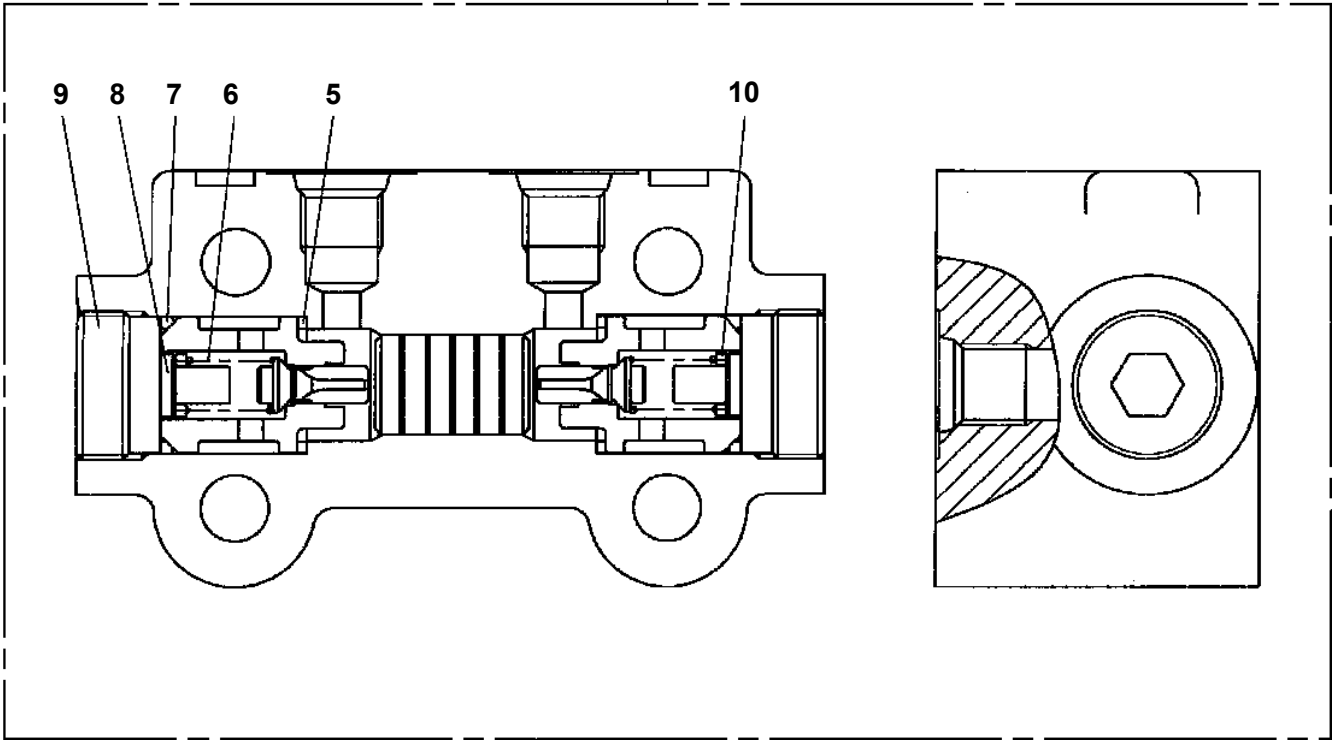
**AT-146-3 43011100096 UPPER
PV1030001-00 SWITCH BOX (FOR BOOSTER)**

10

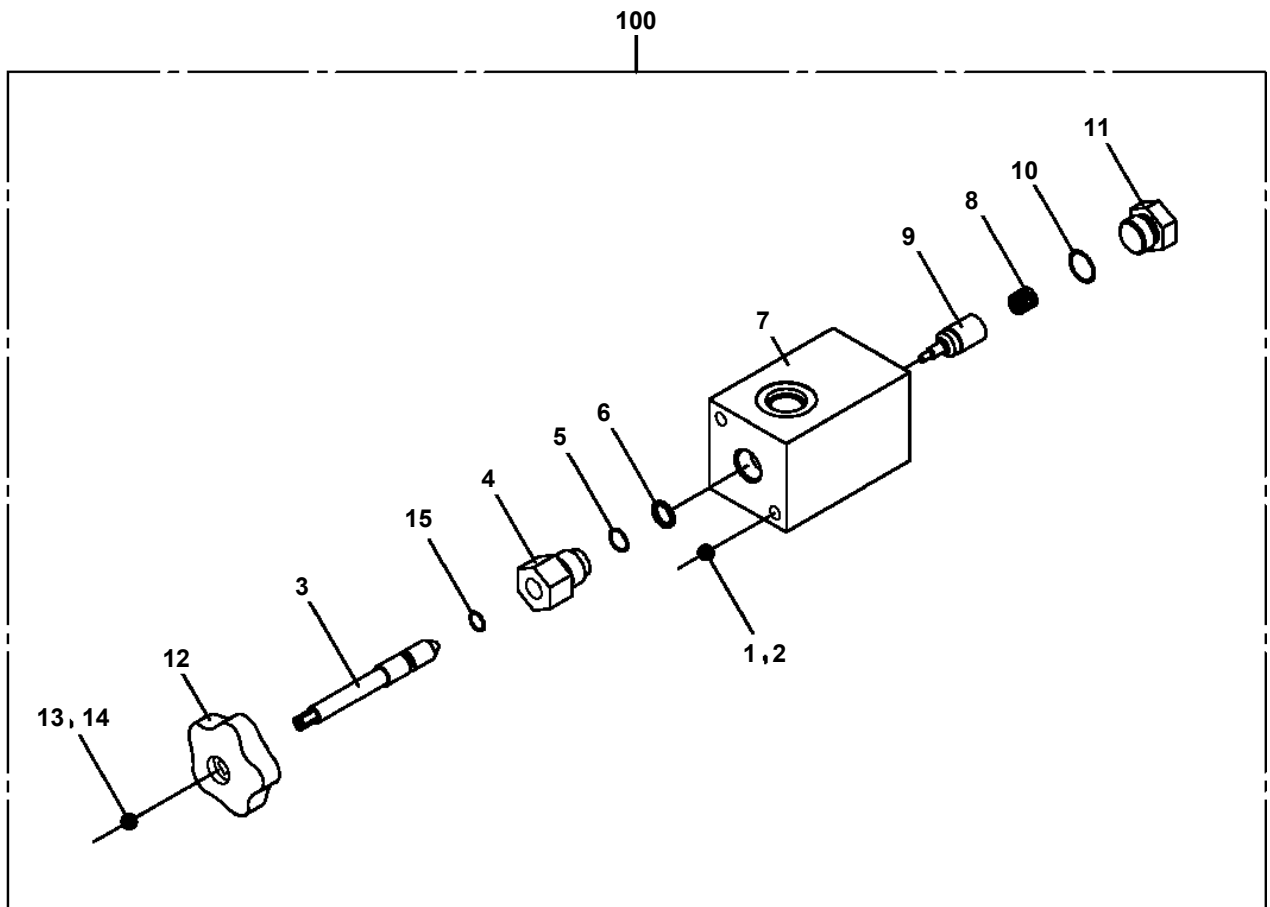


**AT-146-3 43011100096 UPPER
PV5040021-00 VALVE ASSY,CHECK**

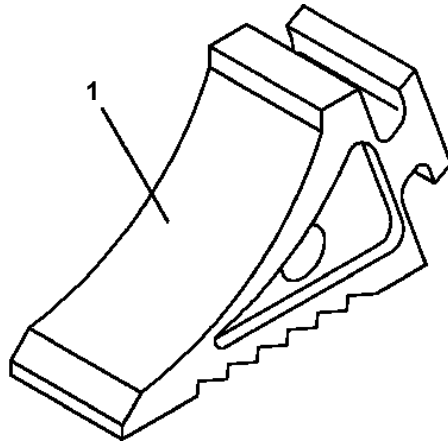
100



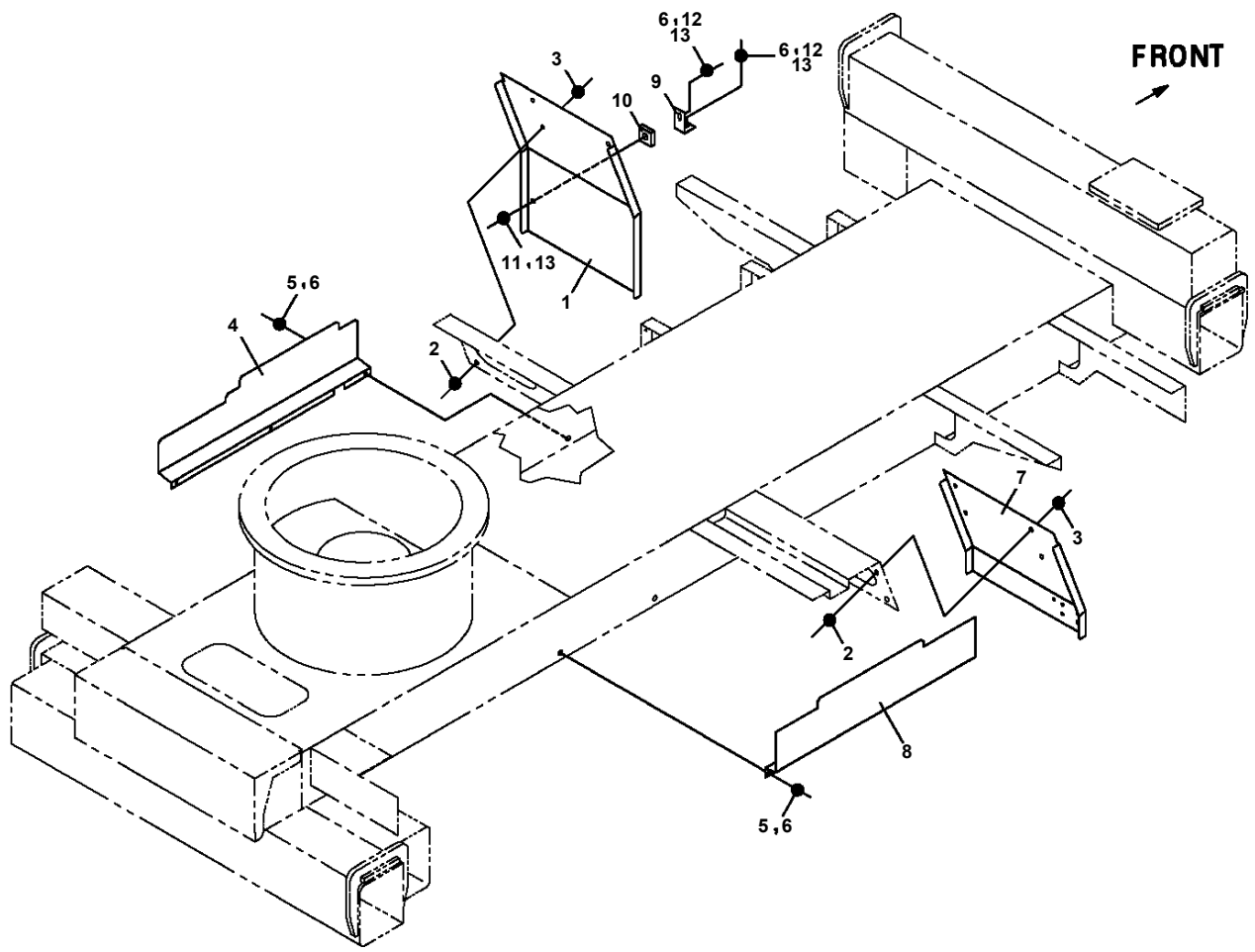
**AT-146-3 43011100096 UPPER
PV5170018-00 VALVE ASSY,SELECTOR**



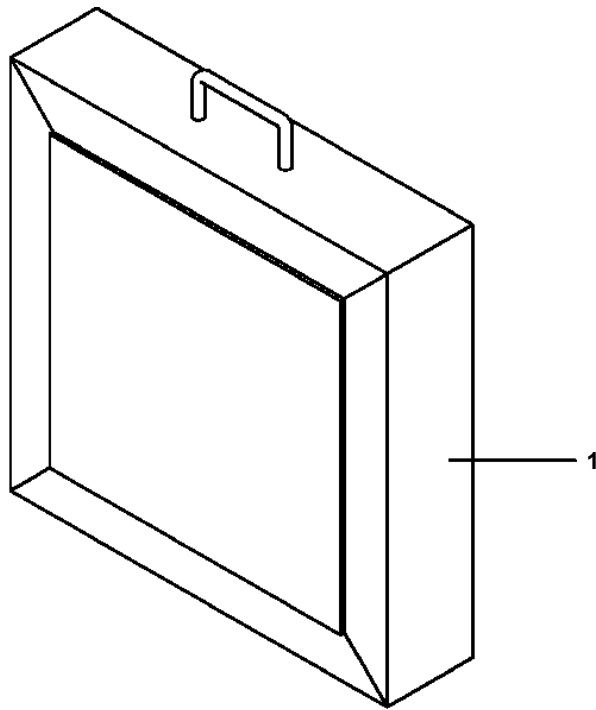
**AT-146-3 43011100096 UPPER
PW1050018-01 WEDGE (STOPPER FOR TIRE/JUSTIN)**



**AT-146-3 43011100096 UPPER
PX1030738-00 FENDER**

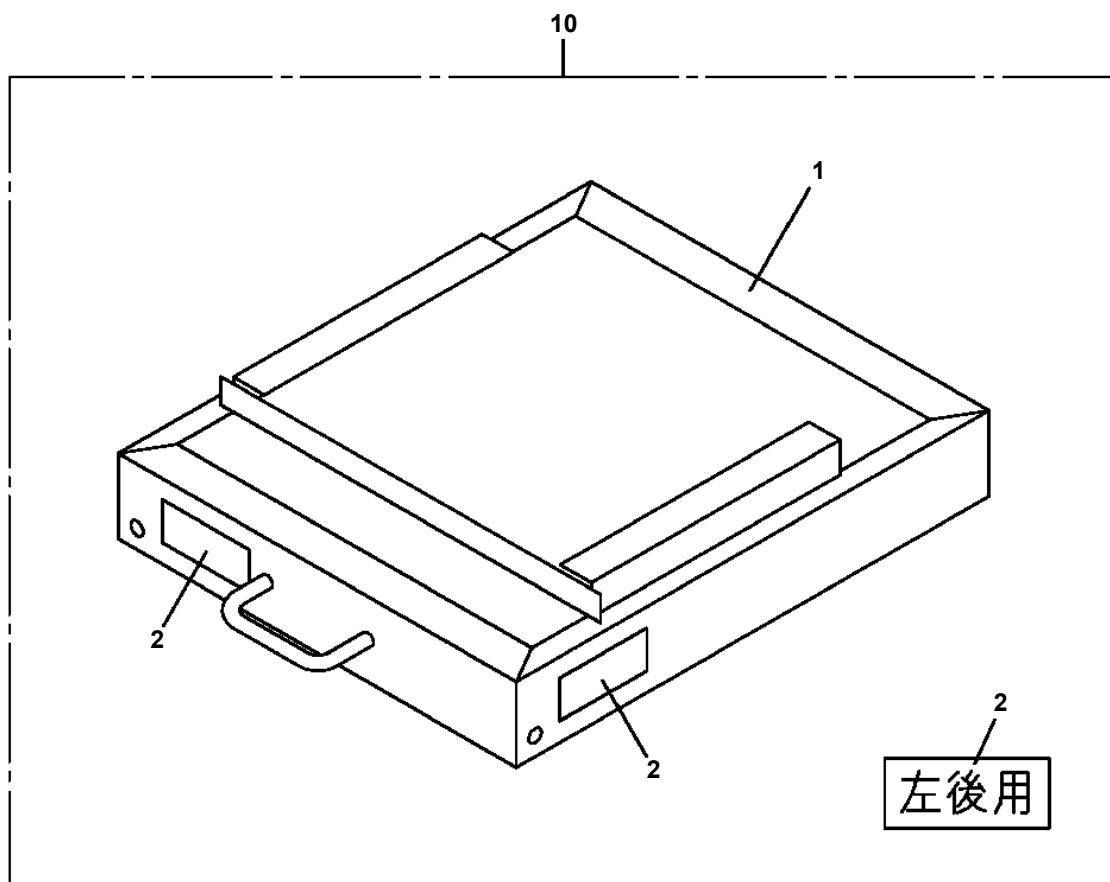


**AT-146-3 43011100096 UPPER
PX1270086-01 WOOD BLOCK (W=350,H=80)**



AT-146-3 43011100096 UPPER

PX1270163-01 BLOCK,WOOD (LEFT REAR:KANSAI DENRYOKU/DETACHABLE TYPE)



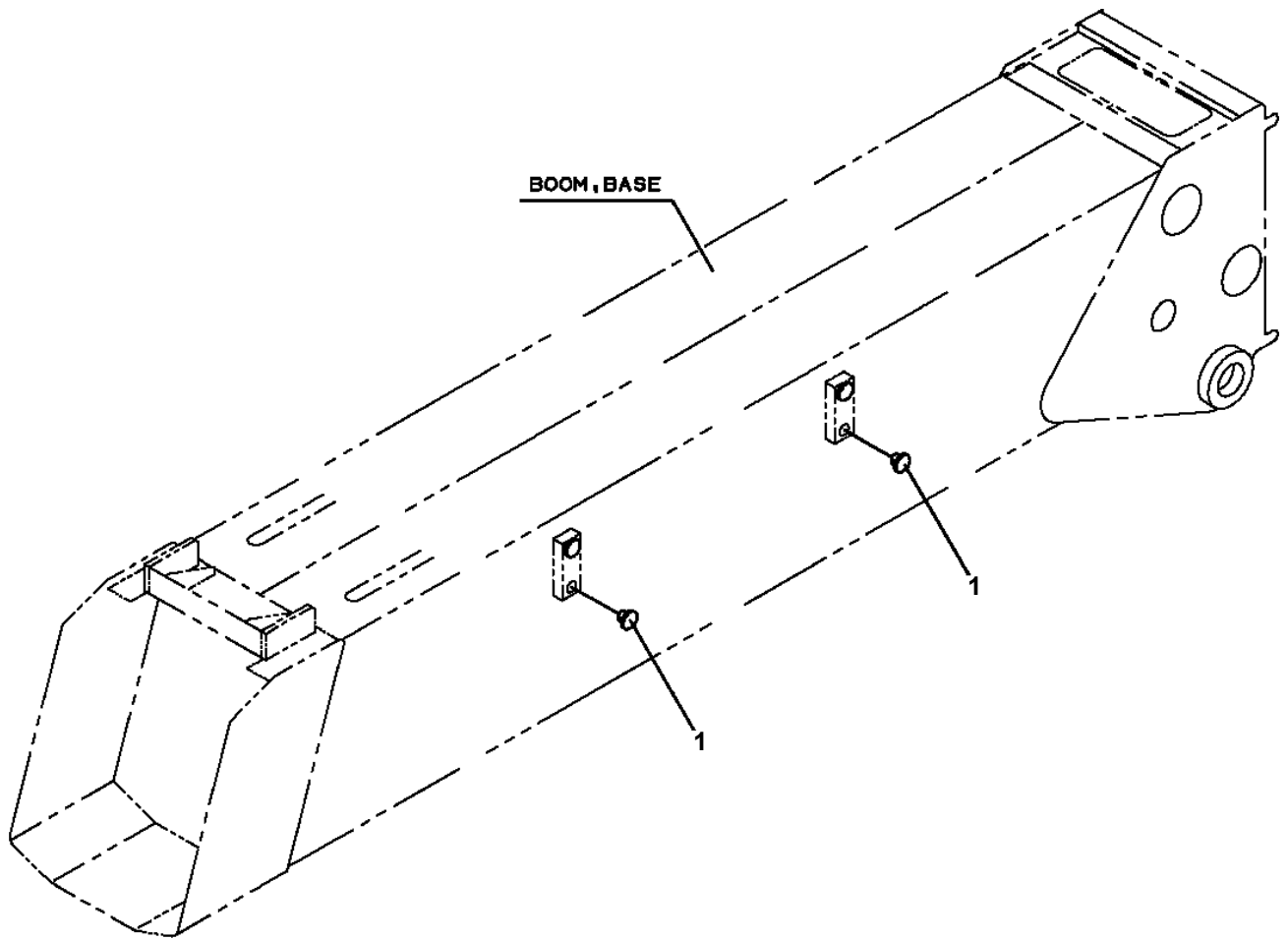
AT-146-3 43011100096 UPPER

Pos No.	Parts No	Parts Name	Qty	Unit	Technical Data	Serial No (Start)	Serial No (End)	Remarks	Pages
1	42501710000	BOX,TOOL	1						

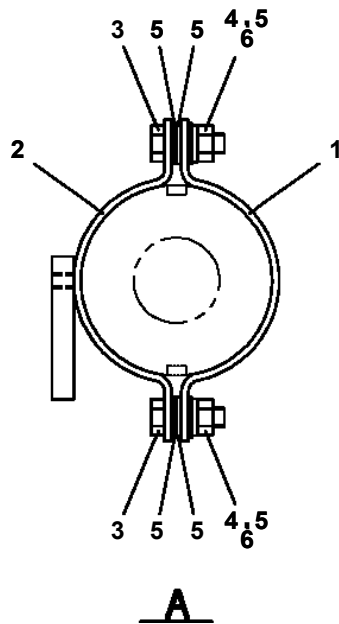
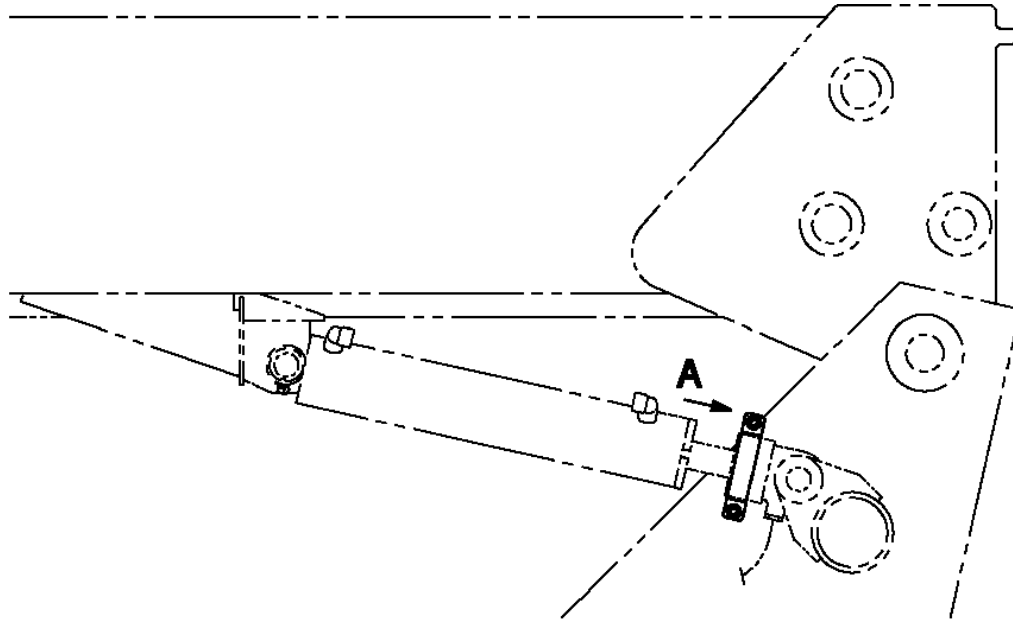
AT-146-3 43011100096 UPPER

Pos No.	Parts No	Parts Name	Qty	Unit	Technical Data	Serial No (Start)	Serial No (End)
2	42837277590	COVER	1				
3	42835797680	COVER	1				
4	42837277600	DRAWER	1				
5	42837277610	PLATE (PARTITION)	1				
6	42837277620	SUPPORT (RAIL)	2				
7	42837277630	SUPPORT(DRAWER,RIGHT)	1				
8	42837277640	SUPPORT(DRAWER,LEFT)	1				
9	42836317920	PLATE	2				
10	42837277650	MAT	1				
11	42837277660	RUBBER (WITH DOUBLE-STICK TAPE)	1				
12	42831877540	INSULATOR	2				
13	42836317950	WEATHER STRIP	2	M			
14	42836317950	WEATHER STRIP	1	M			
15	42837207520	TRIM	1	M			
16	42833077610	BUSH	4				
17	42837207530	SEAL	4				
18	42835357590	CATCH	1				
19	42835487650	HINGE	2				
20	42836317910	LATCH (RING)	1				
21	42694917550	LOCK	2				
22	42835797580	PLUG (HOLE)	6				
23	42834837670	RAIL (SLIDE)	2				
24	42835367760	BOLT (WITH W,SW)	4				
25	99164410020	BOLT (M10X20,WITH WASHER)	4				
26	42834457590	SCREW,MACHINE (SEMS)	2		M4X12		
27	42834837680	SCREW,MACHINE (SEMS)	8		M5X10		
28	42835797720	SCREW,MACHINE (WITH W,SW,NUT)	4		M4X10		
29	80175805012	SCREW,MACHINE	6		M5X12		
30	42835837600	SCREW,MACHINE	4		M5X12		
31	42832477600	SCREW,MACHINE	20		M4X8		
32	42834907710	NUT	4				
33	42834907700	NUT,CAP	4				
34	42836037550	WASHER,TOOTH	2		M10		
100	42837272000	BOX,TOOL	1				

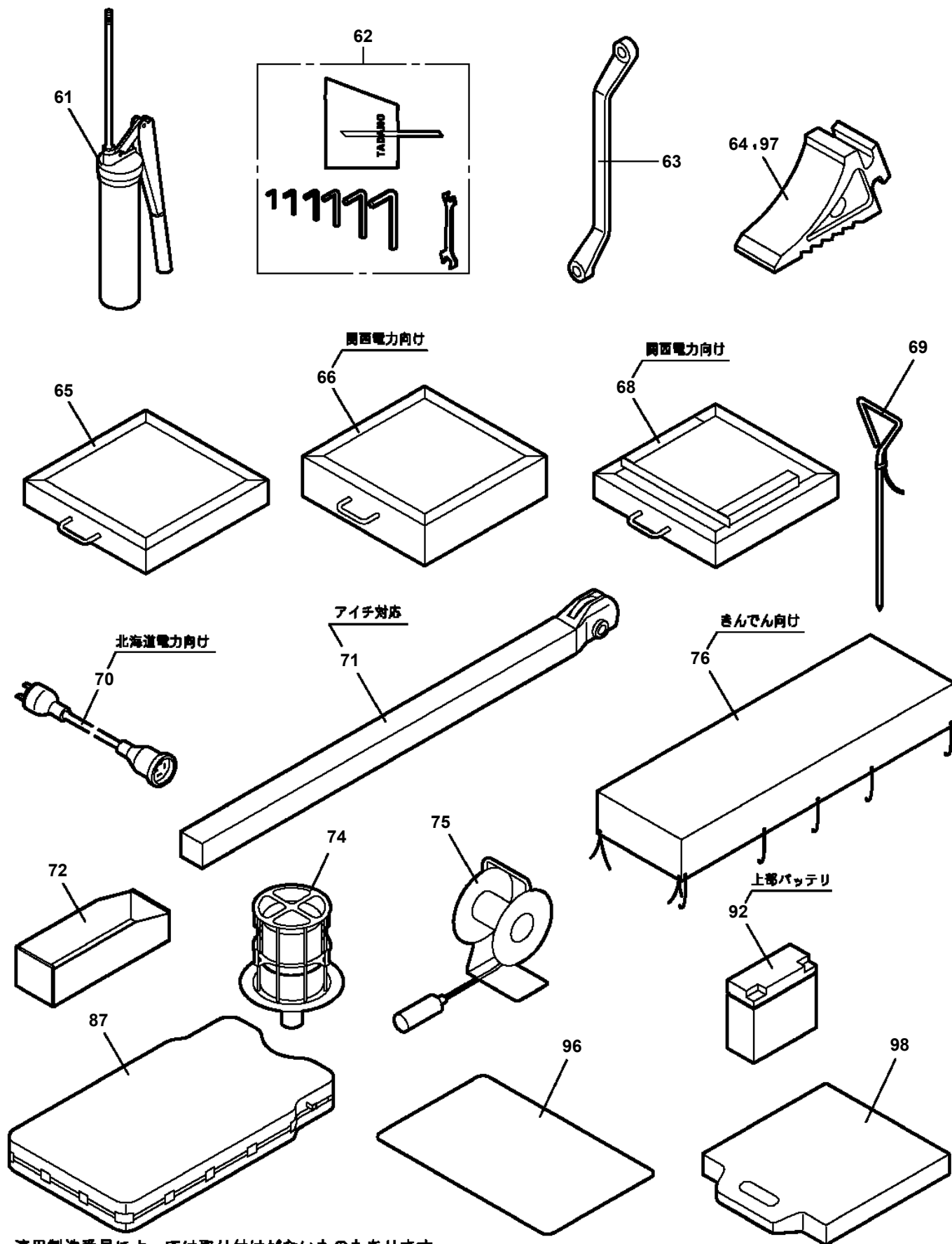
**AT-146-3 43011100096 UPPER
PX1940306-00 MOUNT (BOOM SIDE,INSTALLATION PLUG FOR JIB SUPPORT)**



AT-146-3 43011100096 UPPER
PX5690011-00 MOUNT ASSY,SUPPORT



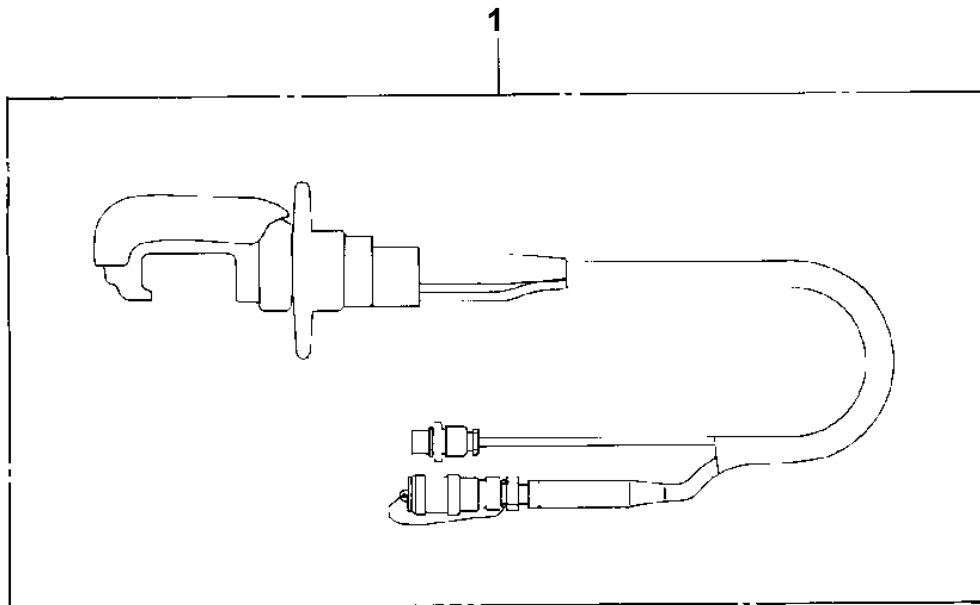
AT-146-3 43011100096 UPPER
PY1020001-10 OPTION UNIT,2



適用製造番号によっては取り付けがないものもあります。

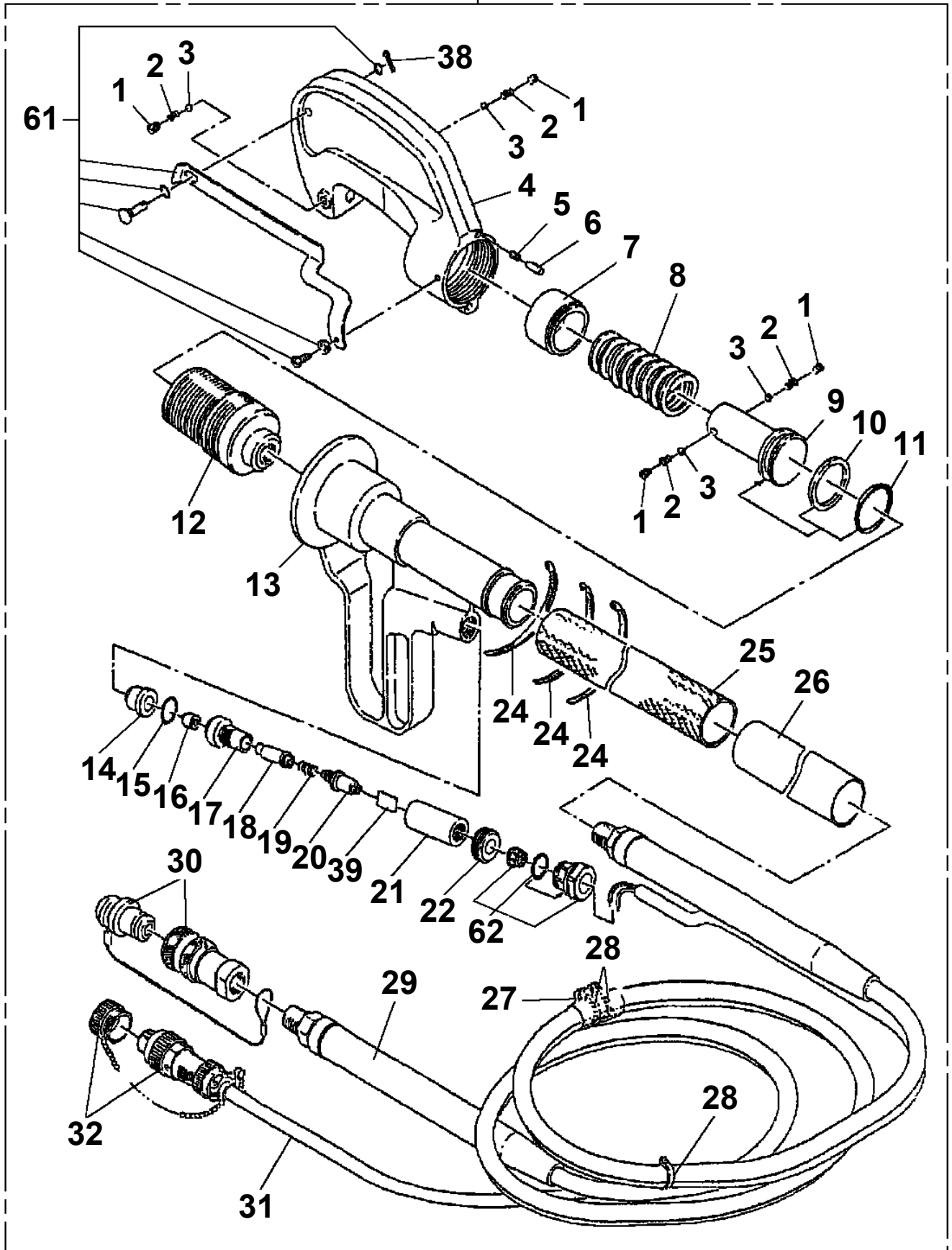
MACHINES OF SOME SERIAL NO. ARE NOT EQUIPPED WITH THESE PARTS.

**AT-146-3 43011100096 UPPER
PY1050004-00 CLAMP HEAD (O.D.K 7.5TON 3M)**

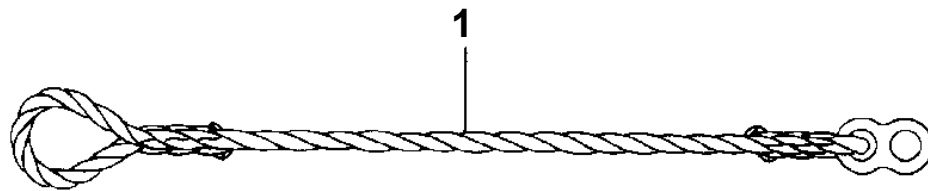


AT-146-3 43011100096 UPPER
PY1050010-00 CLAMP HEAD (IZUMI 8TON,2.5M/YONDENKOU)

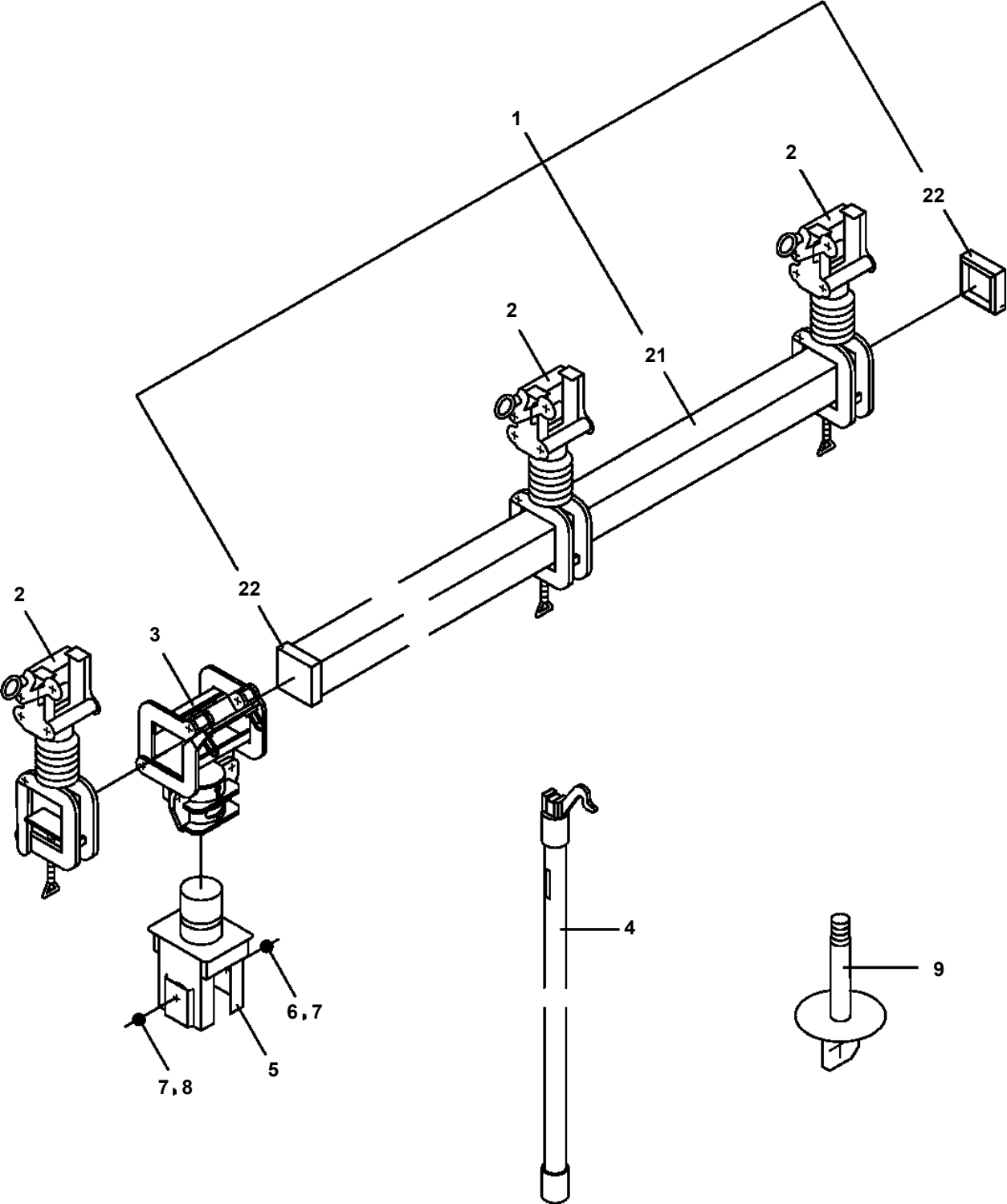
100



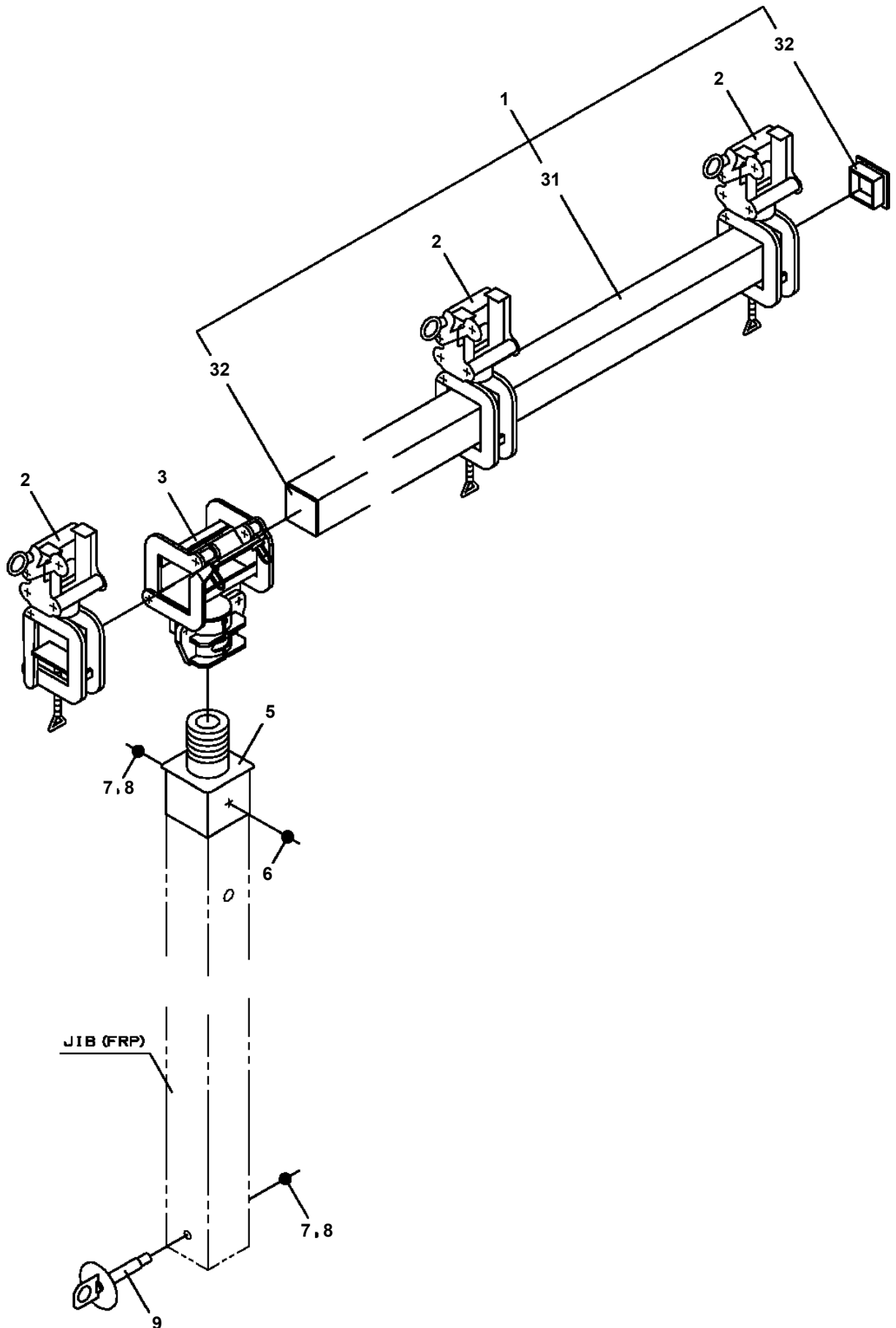
**AT-146-3 43011100096 UPPER
PY1070000-00 ROPE (SAFETY, YELLOW:TD-TYPE)**



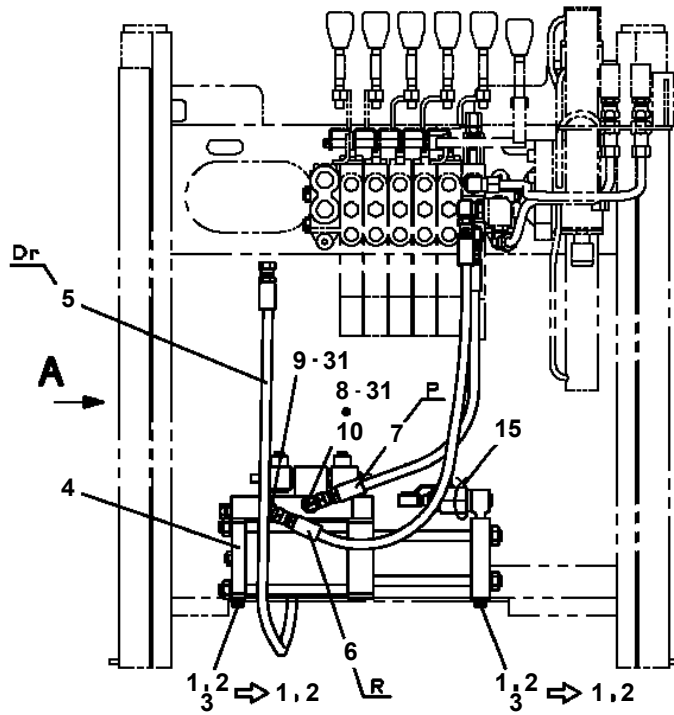
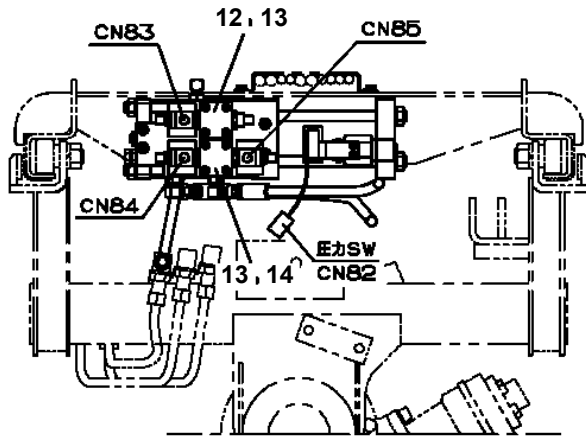
AT-146-3 43011100096 UPPER
PY1080020-00 ARM



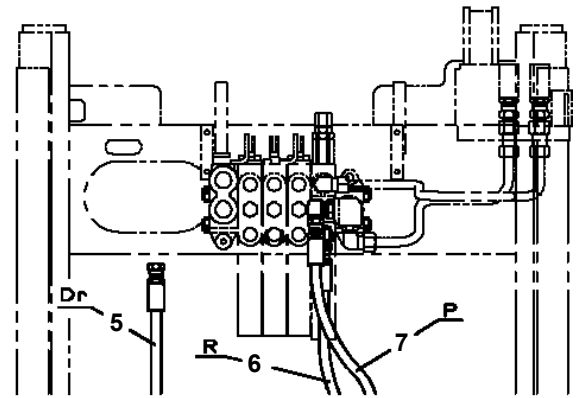
AT-146-3 43011100096 UPPER
PY1080036-00 ARM



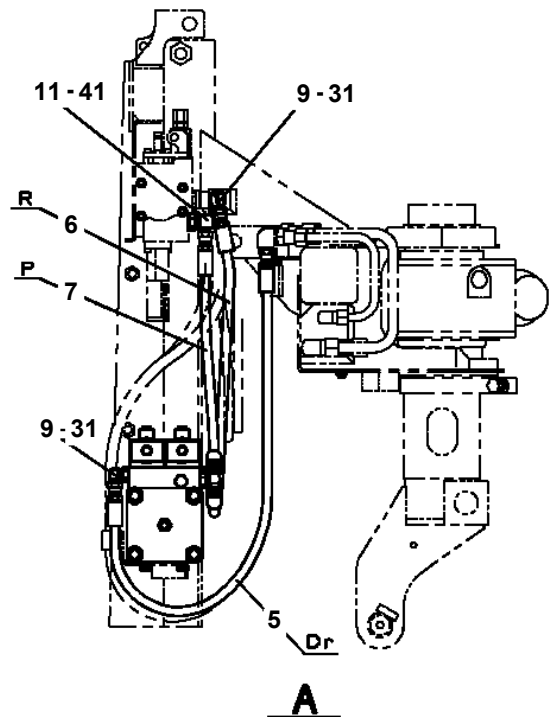
AT-146-3 43011100096 UPPER
 PY1160221-00 BOOSTER



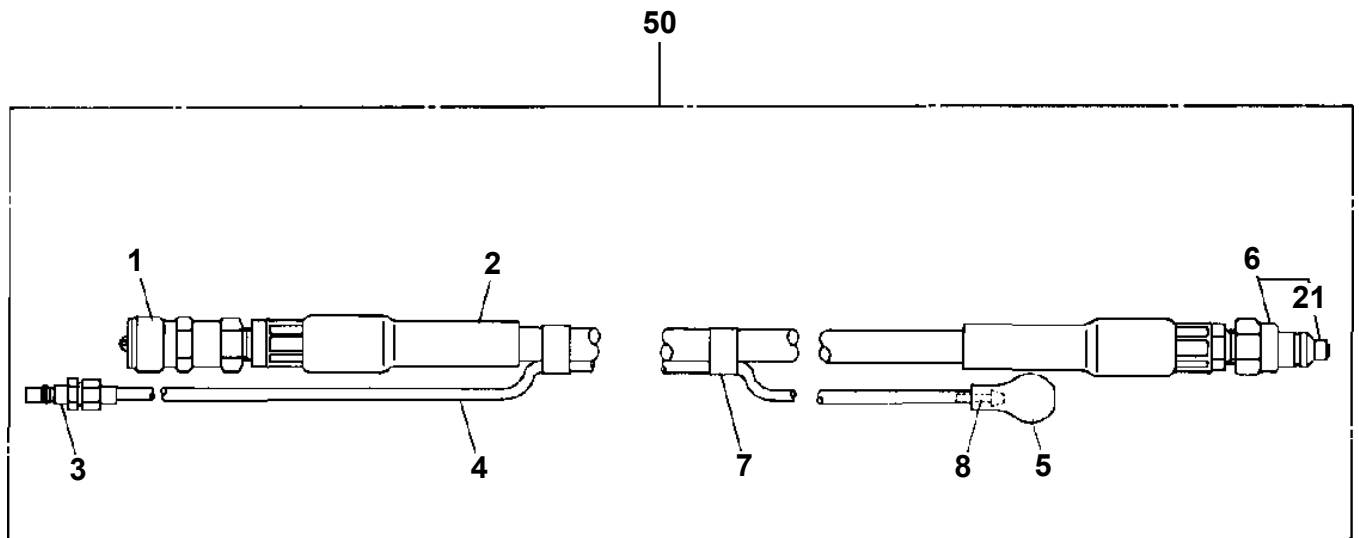
動力ジブの場合



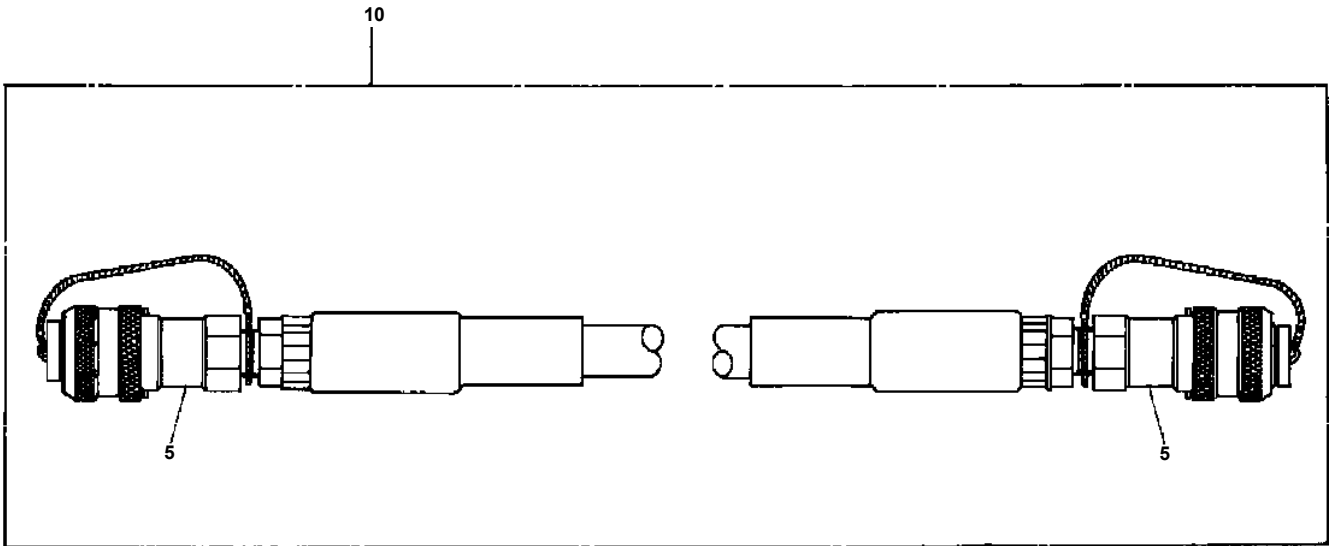
手動ジブの場合



**AT-146-3 43011100096 UPPER
PY1590000-02 HOSE,BOOSTER (WITH AIR BALLOON)**

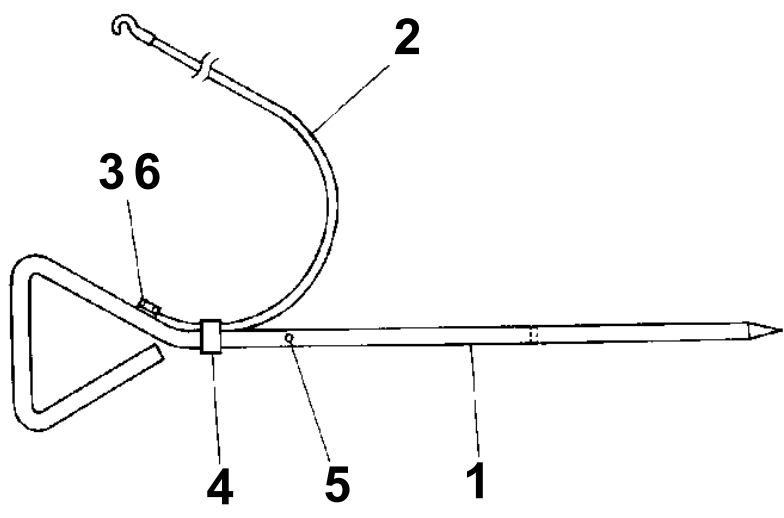


**AT-146-3 43011100096 UPPER
PY1590007-00 HOSE,BOOSTER (FEMALE-FEMALE,5M)**

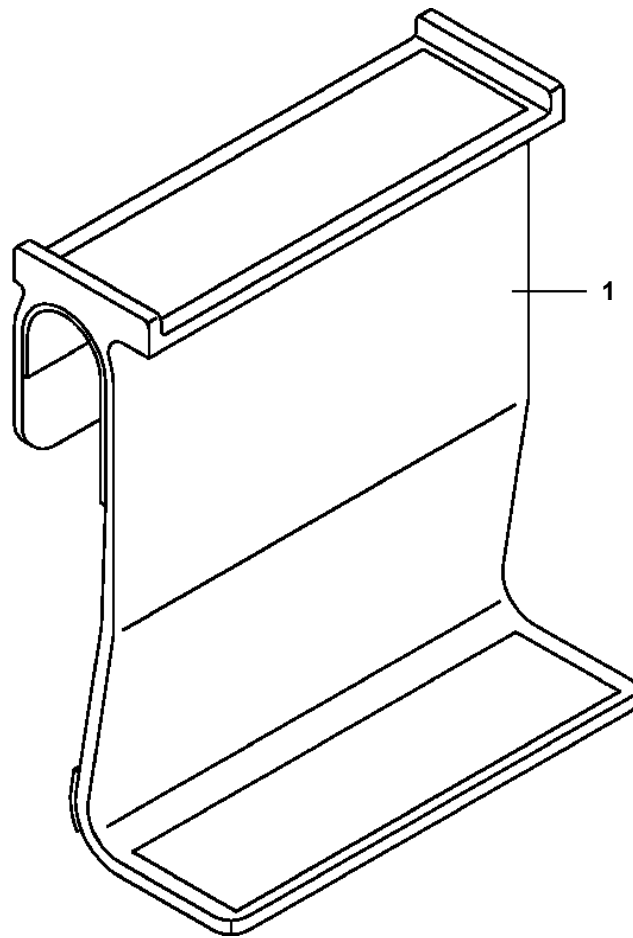


AT-146-3 43011100096 UPPER
PY1650030-00 EARTHING DEVICE

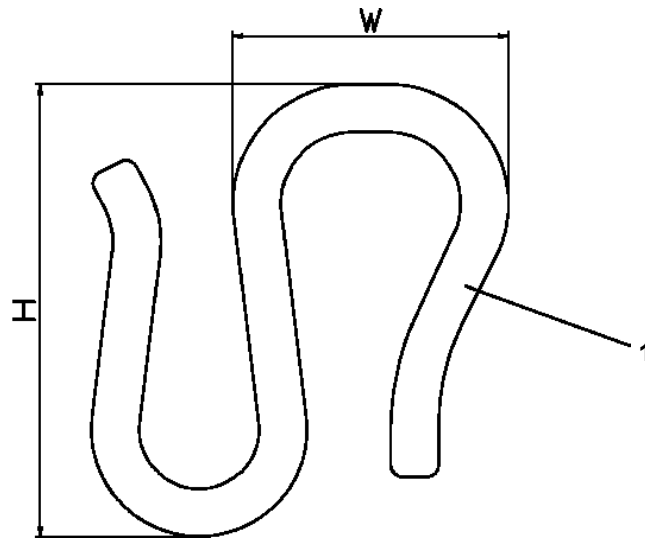
ASSEMBLY NAME EARTHING DEVICE



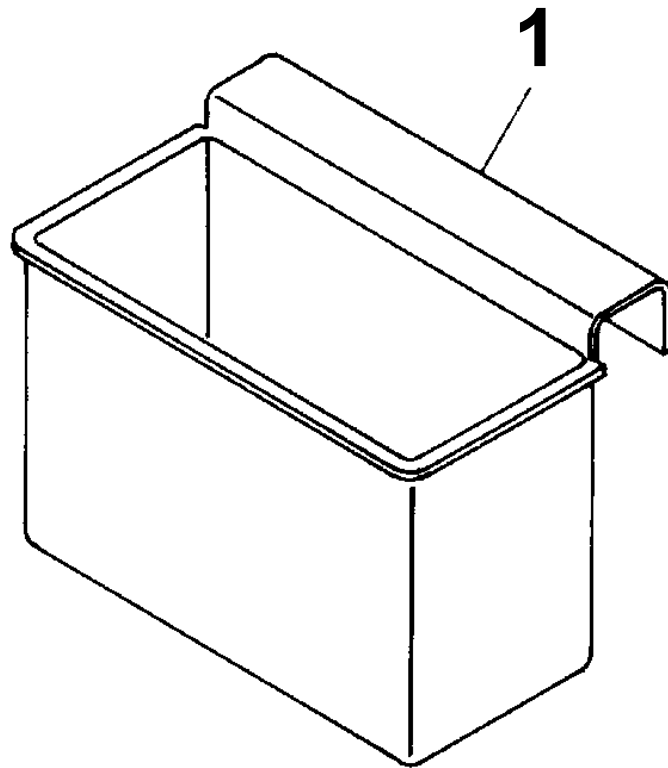
**AT-146-3 43011100096 UPPER
PY1760003-00 STEP,BUCKET (GRAY,FOR BUCKET INNER)**



**AT-146-3 43011100096 UPPER
PY1790004-01 HANGER (FOR BUCKET,FRP)**



AT-146-3 43011100096 UPPER
PY2120001-00 BOX,TOOL (FOR BUCKET)



CLICK HERE TO **DOWNLOAD** THE COMPLETE MANUAL

- Thank you very much for reading the preview of the manual.
- You can download the complete manual from: www.heydownloads.com by clicking the link below



- Please note: If there is no response to CLICKING the link, please download this PDF first and then click on it.

CLICK HERE TO **DOWNLOAD** THE COMPLETE MANUAL