

## **AT-146-3 43011100025 UPPER**

**PD2000204-01 SWING UNIT  
PF1000675-00 WINCH SYSTEM  
PG2000267-00 BOOM UNIT  
PH1000550-00 SAFETY DEVICES (MOTION CONTROLLER)  
PJ3000561-00 BUCKET SYSTEM  
PJ5000003-00 BOOSTER UNIT  
PK2001157-00 FRAME UNIT  
PO1000171-00 INDICATION PLATES  
PW1000118-00 ACCESSORIES & TOOLS  
PX1001122-00 MOUNTING PARTS  
PY1001439-00 OPTIONS  
ASSEMBLY**

CLICK HERE TO **DOWNLOAD** THE COMPLETE MANUAL

- Thank you very much for reading the preview of the manual.
- You can download the complete manual from: [www.heydownloads.com](http://www.heydownloads.com) by clicking the link below



- Please note: If there is no response to CLICKING the link, please download this PDF first and then click on it.

CLICK HERE TO **DOWNLOAD** THE COMPLETE MANUAL

# AT-146-3 43011100025 UPPER

Pos No.	Parts No	Parts Name	Qty	Unit	Technical Data	Serial No (Start)	Serial No (End)
1	(*****)	FRAME	1				228521
	(*****)	BUCKET FRAME ASSY	1			228522	
2	(*****)	PIPING,BUCKET	1				228521
	(*****)	PIPING ASSY,BUCKET	1			228522	
3	(*****)	ELEC.ASSY (BUCKET)	1				228521
	(*****)	ELEC.ASSY,BUCKET	1			228522	
4	(*****)	OPE.ASSY	1				
11	42267241000	BUCKET	1				
12	(*****)	BUCKET (INNER CASE)	1				
13	(*****)	COVER (BUCKET,FRP,WHITE)	1				
14	(*****)	COVER,BOOM (TOP/FRP,WHITE)	1				
15	42267244000	COVER (CLOTH,WHITE)	1				
16	(*****)	ACCESSORIES (BUCKET INNER MAT)	1				

# AT-146-3 43011100025 UPPER

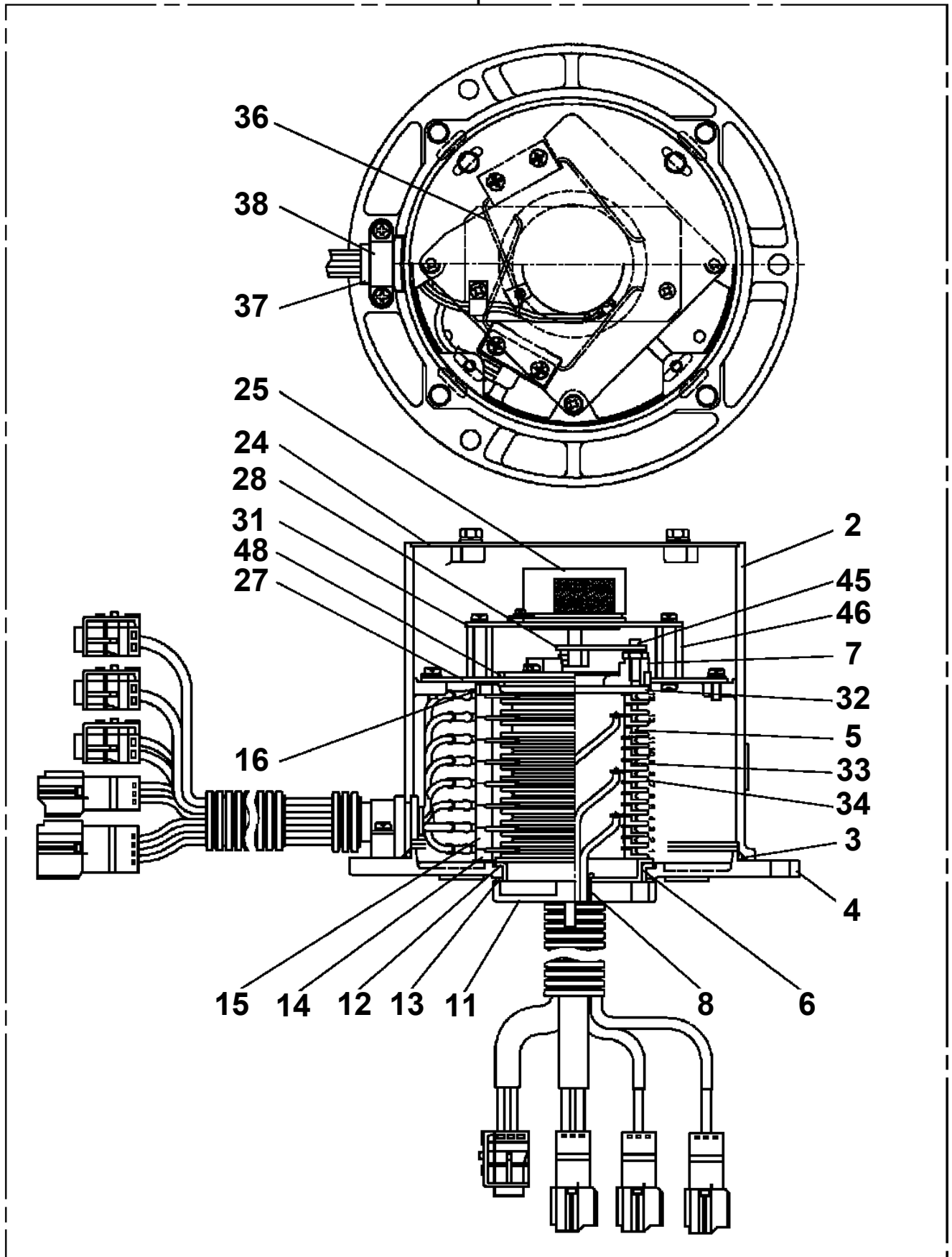
Pos No.	Parts No	Parts Name	Qty	Unit	Technical Data	Serial No (Start)	Serial No (End)
1	(*****)	BOX, TOOL (RIGHT/F:1-DECKER,R:NONE)	1				
2	(*****)	BOX, TOOL (LEFT/F:1-DECKER,R:NONE)	1				
21	(*****)	EARTHING DEVICE (8X10M, TOP CLIP)	1				

# AT-146-3 43011100025 UPPER

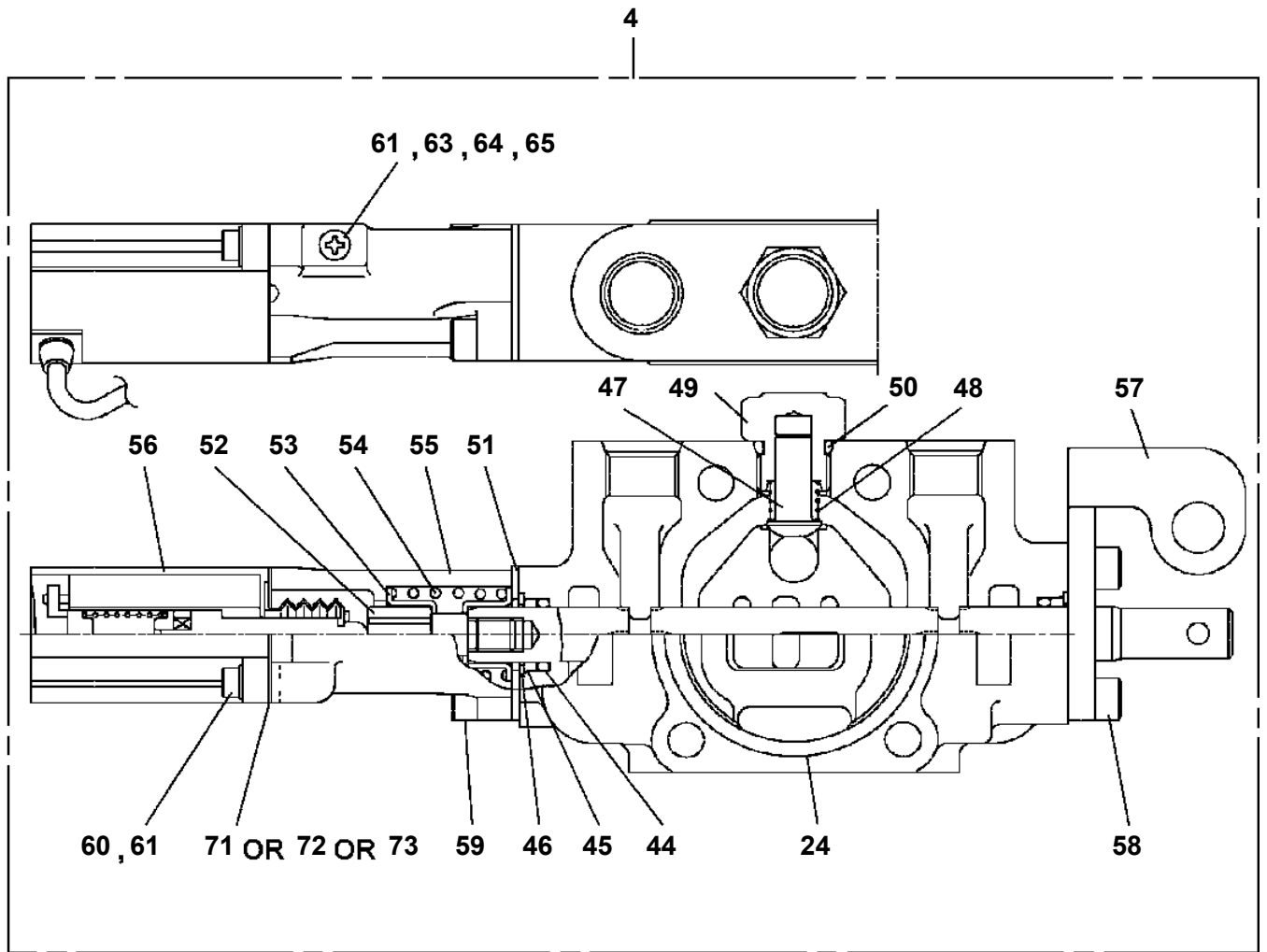
Pos No.	Parts No	Parts Name	Qty	Unit	Technical Data	Serial No (Start)	Serial No (End)	Remarks	Pages
1	36654445010	SEAL KIT	1						
100	36654440000	PUMP,HYDRAULIC	1						

AT-146-3 43011100025 UPPER  
PB1310045-00 BRUSH,ROTARY JOINT

100



**AT-146-3 43011100025 UPPER  
PB1320628-01 VALVE,MANUAL CONTROL**



# AT-146-3 4301110025 UPPER

Pos No.	Parts No	Parts Name	Qty	Unit	Technical Data	Serial No (Start)	Serial No (End)	Remarks
4	90101210035	BOLT	3		M10X35			
5	90302041001	WASHER,SPRING	7		10			
6	90101208065	BOLT	2		M8X65			
7	90302040801	WASHER,SPRING	8		8			
8	37002402610	HOSE	2		L=1980			
9	80481103030	JOINT	1		L,G3/8-G3/8			
10	37002488300	HOSE	1		L=1800		228940	
11	90101210085	BOLT	2		M10X85			
12	37002452740	HOSE	1		L=1000			
13	90101210065	BOLT	2		M10X65			
14	80441030604	FITTING,ELBOW	2					
15	37000908730	JOINT (WITH O-RING)	3		L,G3/8-G1/4			
16	37002416380	HOSE	1		L=1980			
17	37000300740	SLEEVE	1		18-12			
18	91002801800	O-RING	2		1B P18			
19	80430620400	JOINT	1					
20	37002479110	HOSE	1		L=900			
21	37002489550	HOSE	1		L=2090			
22	91002801100	O-RING	2		1B P11			
23	37002488320	HOSE	1		L=450		228940	
24	37002489560	HOSE	1		L=1600		228940	
25	37002489570	HOSE	1		L=1790		228940	
27	91810132530	FASTENER	20					
28	37002411640	HOSE	1		L=750			
29	37000714020	CLAMP ASSY	2		12X2			
30	37002489600	HOSE	1		L=1140			
31	80400160128	JOINT	1		S,G3/8-G1/4			
32	89640201000	HOSE	1		660-NFK,1M			
33	80400160131	JOINT	2					
34	91002801400	O-RING	4		1B P14			
35	37002489630	HOSE	1		L=1320			
36	80400160127	JOINT	1					
37	37002489610	HOSE	1		L=2200			
38	80400160129	JOINT	2					
39	37002411650	HOSE	1		L=850			
40	37002489580	HOSE	1		L=850			
41	37002459240	HOSE	1		L=940			
42	37000925950	JOINT	1		S,G1/4-G1/4			
43	37002488330	HOSE	1		L=470		228940	
45	82127020180	TUBE,SPIRAL	2	M				
46	37000714040	CLAMP ASSY	1		18X2			
47	37002489590	HOSE	1		L=2020			
48	82100002017	CLAMP	2		WR30			
49	90201200800	NUT	4		M8			
50	37002488310	HOSE	1		L=1670		228940	
52	42346840600	GUIDE	1					
53	42346840700	GUIDE	1					
54	37000714880	CLAMP ASSY	1				228159	
	37000714881	CLAMP ASSY	1			228160		
55	37002489650	HOSE	1		L=1070			
56	37002489540	HOSE	1		L=1850			
57	37000714030	CLAMP ASSY	1		18X1			
58	82100001411	TUBE,SPIRAL	1	M	SE-08BK			
59	37000714240	CLAMP ASSY	1					
60	90101208012	BOLT	2		M8X12			
81	36741260000	VALVE,CONTROL	1					
82	80400160130	JOINT	3		S,G1/2-G3/8		228940	
	80400160130	JOINT	1		S,G1/2-G3/8	228941		
83	80400160176	JOINT	4		S,G1/2-1/4		228940	
84	91002801800	O-RING	2		1B P18			
	91002801800	O-RING	7		1B P18		228940	
	91002801800	O-RING	10		1B P18	228941		
85	37000925660	JOINT	1		S,G3/4-G1/2			

# AT-146-3 43011100025 UPPER

Pos No.	Parts No	Parts Name	Qty	Unit	Technical Data	Serial No (Start)	Serial No (End)	Rema
77	36361361490	SPACER	2			228835		
78	36361361180	TANK ASSY	1				228834	
	36361361500	TANK ASSY	1			228835		
79	36361361190	SUPPORT (RESERVOR TANK)	1				228834	
80	36361361200	PUMP ASSY,FUEL	1					
81	36361361210	JOINT	1					
82	36361361220	JOINT	1					
83	36361361230	FILTER ASSY (FUEL)	1					
84	36361361240	SUPPORT	1					
87	36361361270	HOSE (FUEL)	1		L=300			
88	36361361280	HOSE (FUEL)	1		L=700			
90	36361361300	HOSE	1		L=1700			
91	36361361310	HOSE	1		L=2330			
93	36361361330	CLAMP (HOSE)	12					
96	36361361360	GASKET	1					
97	(*****)	HOSE ASSY	1					
121	37000711030	CLAMP ASSY	1		22X1		229422	
122	37000601020	CLAMP	1			229423		
123	90201200600	NUT	2		M6			
124	90101206012	BOLT	2		M6X12			
125	90302040601	WASHER,SPRING	2		6			
126	42421133310	CUSHION	1					
127	42421133320	PLATE	1					
128	90101208045	BOLT	1		M8X45	229423		
129	90302040801	WASHER,SPRING	1		8	229423		
131	42340170960	CUSHION	2			229423		
142	36361365040	ELEMENT ASSY	1					
161	36361365030	REPAIR KIT	1					

# AT-146-3 4301110025 UPPER

Pos No.	Parts No	Parts Name	Qty	Unit	Technical Data	Serial No (Start)	Serial No (End)	Re
2	42202592000	BOOM, TOP	1					
3	42202593002	SADDLE	1					
4	42202594101	BOOM, 2ND	1					
5	42202599510	BOOM, BASE	1					
6	37001922851	ROPE, WIRE (TESAC)	2		8X4.795M			
7	37001922871	ROPE, WIRE (TESAC)	2		10X9.22M			
9	37000115380	PIN	1					
10	90238403008	NUT, CASTLE	1		M30X2			
11	80136360050	PIN, SPLIT	1		6X50			
12	90303073001	WASHER, PLAIN	1		30			
16	37000168750	PIN	1					
17	80601110300	RING, RITAINING	2		S30			
18	42202590051	PLATE	N		T=0.8			
19	42202590061	PLATE	N		T=0.5			
20	42202590330	PLATE	N		T=0.5			
21	37002019390	PLATE, SLIDE	2					
22	37002019400	PLATE, SLIDE	4					
23	37000586481	PLATE	N		T=0.6			
24	42202590011	PLATE	4					
25	42202590090	PLATE	4		T=0.5			
26	42202590200	PLATE	N		T=0.8			
27	90201701600	NUT	10		M16			
28	90303501601	WASHER, PLAIN	10		16			
29	42202590281	SPACER	10					
31	90302041001	WASHER, SPRING	48		10			
32	90180210045	BOLT, BUTTON	4		M10X45			
33	42202591003	FRAME	1					
37	90180210055	BOLT, BUTTON	4					
38	42202590360	PIN	2					
39	42200021510	PLATE	2					
40	37001007740	SHEAVE ASSY	2					
41	42202700120	PLATE	1		T=0.8			
42	42201630570	PLATE	N		T=2.3			
44	42202700130	PLATE	1		T=1.0			
45	37002018110	PLATE, SLIDE	2					
46	90180210025	BOLT, BUTTON	24		M10X25			
47	82455106000	NIPPLE, GREASE	4		A-M6F FE			
48	82400000459	CAP	1					
50	80601110200	RING, RITAINING	4		S20			
51	42202590220	PLATE	N		T=0.8			
52	42202590230	PLATE	N		T=0.5			
53	42202590240	PLATE	N		T=0.5			
54	42202590250	PLATE	N		T=1.0			
55	90172106008	BOLT, HEXAGON SOCKET	16		M6X8			
57	37002018070	PLATE, SLIDE	2					
58	37002018060	PLATE, SLIDE	4					
59	37000586470	PLATE	N		T=1.0			
60	37000586460	PLATE	N		T=1.0			
61	42202700111	PLATE	N		T=0.6			
62	37000155020	PIN	4					
	37000168230	PIN	4					
63	42202590210	PLATE	N		T=0.8	229213	229212	
64	37002018120	PLATE, SLIDE	2					
65	37000508520	PLATE	N		T=0.8			
66	80184306012	SCREW, MACHINE	4		M6X12			
67	37002006500	PLATE, SLIDE	2					
68	37002010340	PLATE, SLIDE	2					
69	90180210016	BOLT, BUTTON	8		M10X16			
70	37000176290	PIN	1					
71	37000303050	SPACER	2		L=9			
72	42202590100	SHEAVE ASSY	1					
73	80602110300	RING, RITAINING	2		R30			
74	31630482500	CAP	4					

# AT-146-3 4301110025 UPPER

Pos No.	Parts No	Parts Name	Qty	Unit	Technical Data	Serial No (Start)	Serial No (End)
1	42614461003	OUTRIGGER (FRONT,LEFT/INNER CASE)	1				228503
	42614461004	CASE ASSY,INNER (FRONT,LEFT)	1			228504	228714
2	42614463003	OUTRIGGER (FRONT,RIGHT/INNER CASE)	1				228503
	42614463004	CASE ASSY,INNER (FRONT,RIGHT)	1			228504	228714
3	37002012620	PLATE,SLIDE	2				
4	31611640150	SPRING	2				
5	90171108016	BOLT	8		M8X16		
6	37000504780	PLATE	N		T=0.6		
7	90302041001	WASHER,SPRING	32		10		
8	90186208010	BOLT,FLANGE	4		M8X10		
9	42614460800	SUPPORT	1		T=5		228436
	42614461900	SUPPORT	1		T=4	228437	
	42614461950	SUPPORT (CAST STEEL)	1		T=4	228437	
10	37002010810	PLATE,SLIDE	2				
11	90101206014	BOLT	4		M6X14		
12	90302040601	WASHER,SPRING	4		6		
13	42614461600	SUPPORT	1		T=6		
	42614461700	SUPPORT (CAST STEEL)	1		T=6		
14	42614460010	SUPPORT	2				
15	42614460300	PLATE	2				
16	42613350100	PLATE	16				
17	42614462000	CASE ASSY,INNER (FRONT,LEFT)	1			228715	
18	37000581940	PLATE	N		T=0.5		
19	37000506590	PLATE	N		T=1.6		
20	90303070601	WASHER,PLAIN	4		6		
21	37002011280	PLATE,SLIDE	16		T=9.5		
22	90101208012	BOLT	4		M8X12		
23	90302040801	WASHER,SPRING	8		8		
24	37000575240	PLATE	2		T=3		
25	37000178190	PIN	2				
26	90171110025	BOLT	32		M10X25		
28	42614460400	PLATE	4				
29	42614460500	BLADE	2				
30	42614050020	PLATE,SLIDE	2			228715	
31	37001510810	BOLT	4		M8X25	228715	
47	42614464000	CASE ASSY,INNER (FRONT,RIGHT)	1			228715	

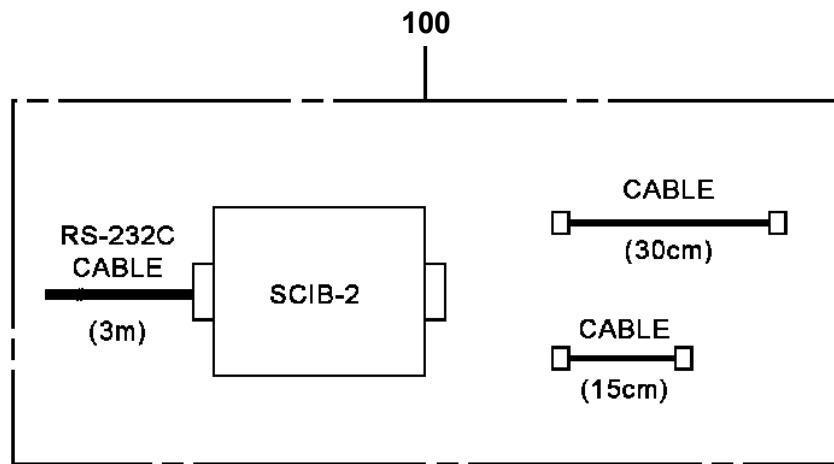
# AT-146-3 4301110025 UPPER

Pos No.	Parts No	Parts Name	Qty	Unit	Technical Data	Serial No (Start)	Serial No (End)	R
1	42614471104	CASE,INNER	1					
2	42613351200	CASE,INNER (JACK)	1					
4	36035100000	CYLINDER,JACK	1					
5	42613351400	FLOAT ASSY	1					
6	37000171720	PIN	1					
7	80601110250	RING,RITAINING	2		S25			
8	37000169010	PIN	1		30			
9	80601110300	RING,RITAINING	2		S30			
10	36625740001	VALVE,CHECK	1					
11	901711108055	BOLT	4		M8X55			
12	37000138750	PIN	1		18			
13	80136332036	PIN,SPLIT	2		3.2X36			
14	80400160127	JOINT	1					
15	91002801100	O-RING	1		1B P11			
16	36672460000	FILTER (NIPPLE TYPE)	1					
17	42612851010	COVER	1					
18	90186206014	BOLT,FLANGE	2		M6X14			
19	37000112320	PIN	1					
20	80601110120	RING,RITAINING	2		S12			
21	91810130240	FASTENER	2					
22	31201770100	PLATE,SLIDE	8		T=3.0			
23	90280200600	NUT,FLANGE	1		M6			
24	37000600700	CLAMP	1		12X3			
25	42614471010	PLATE,SLIDE	1		T=2.0			
41	36042820000	CYLINDER,EXTENSION (REAR)	1					
42	80400160127	JOINT	2					
43	91002801100	O-RING	3		1B P11			
44	37002474980	HOSE	1		L=2075			
45	42612861350	HARNESS	1				228539	
46	91810130240	FASTENER	13					
51	42612851420	TRUNNION	1					
100	42614471005	OUTRIGGER (REAR/INNER CASE)	1					

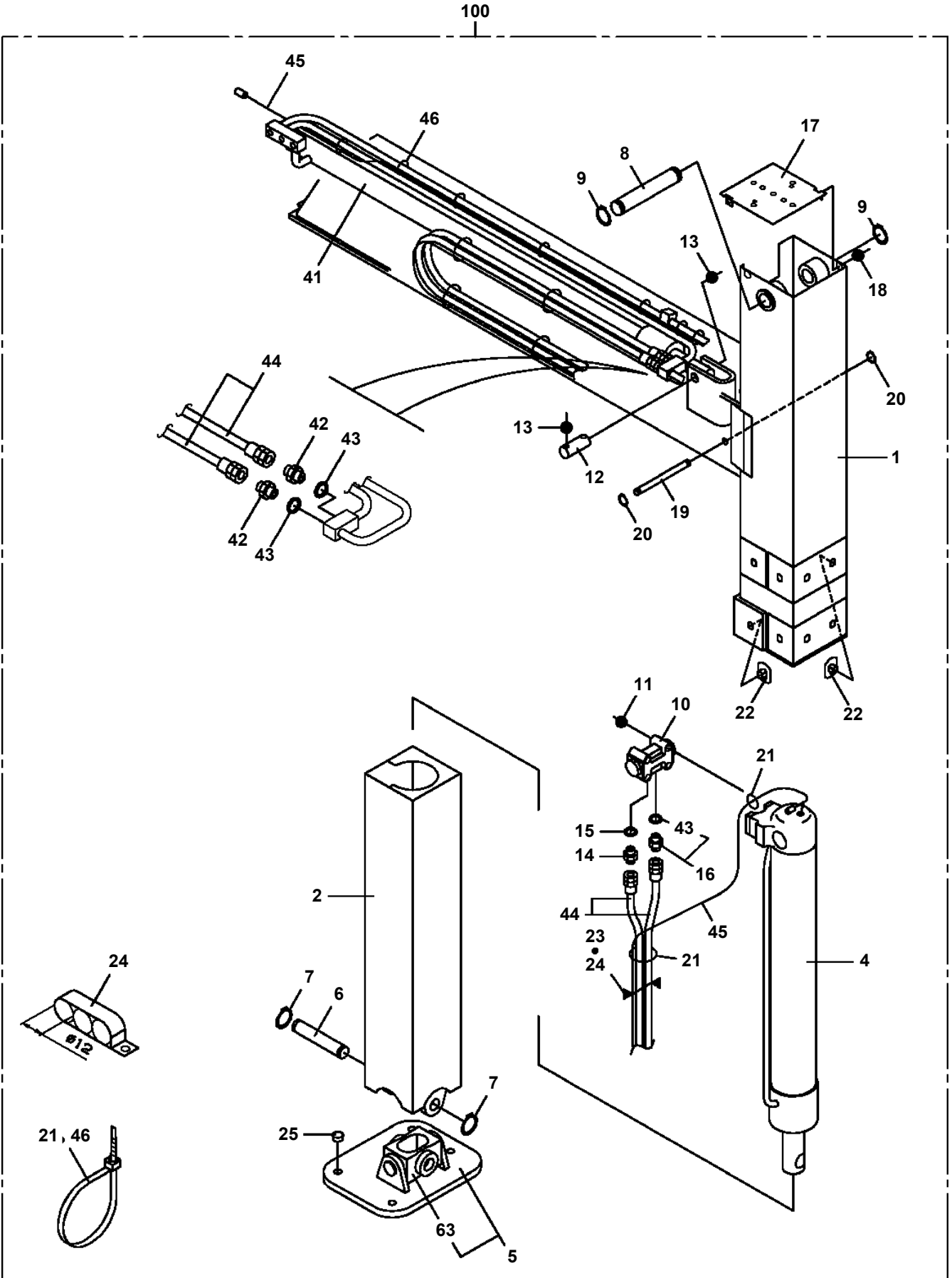
# AT-146-3 43011100025 UPPER

Pos No.	Parts No	Parts Name	Qty	Unit	Technical Data	Serial No (Start)	Serial No (End)	Remarks
1	36637490000	VALVE,MANUAL CONTROL	1					
2	90101208025	BOLT	3		M8X25			
3	90302040801	WASHER,SPRING	3		8			
4	32700007500	LEVEL	1					
5	42701410100	LEVER	1				228459	
	42701410101	LEVER	1			228460		
6	42701410200	LEVER	1				228459	
	42701410201	LEVER	1			228460		
7	42701410300	LEVER	1				228459	
	42701410301	LEVER	1			228460		
8	42701410400	LEVER	1				228459	
	42701410401	LEVER	1			228460		
9	42701410500	LEVER	1				228459	
	42701410501	LEVER	1			228460		
10	31323330200	KNOB (RED)	1					
11	31323330100	KNOB (BLACK)	4					
12	37000105610	PIN	10		L=18			
13	90303070501	WASHER,PLAIN	10		5			
14	80136320010	PIN,SPLIT	10		2X10			

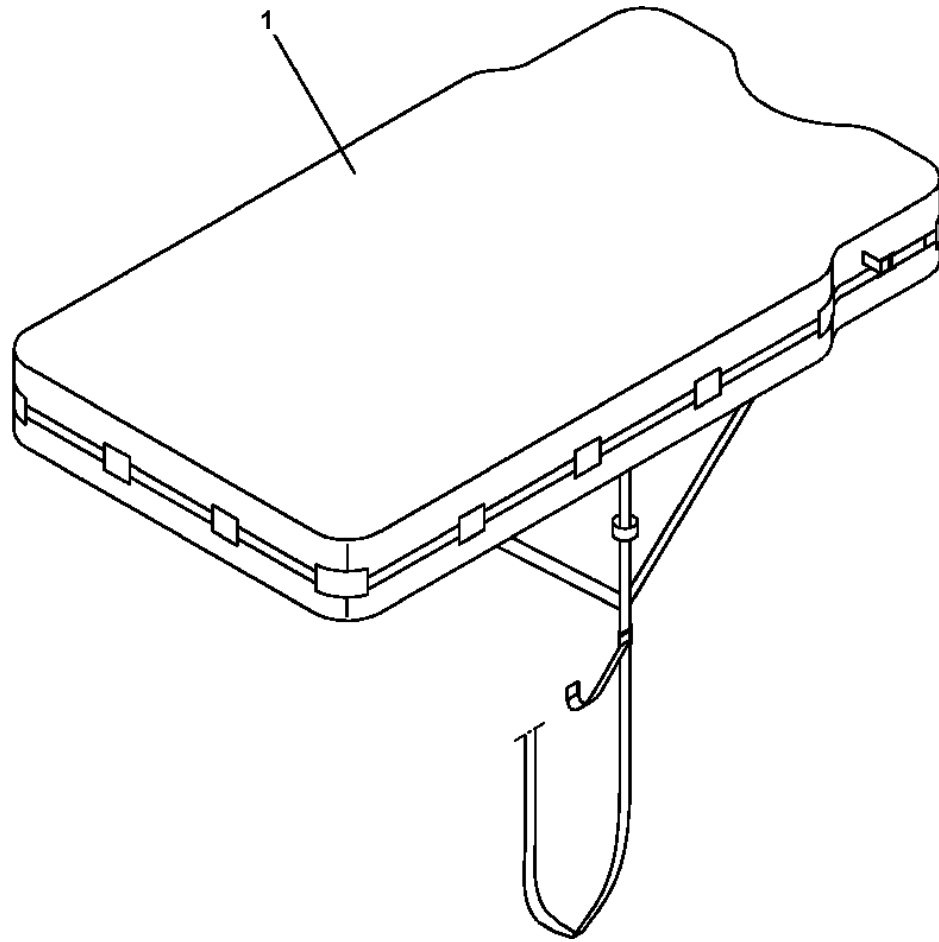
**AT-146-3 43011100025 UPPER  
PC5020022-00 CABLE ASSY (PC CONNECTION CABLE)**



AT-146-3 43011100025 UPPER  
PC5150055-00 CASE ASSY,INNER (FRONT,RIGHT)

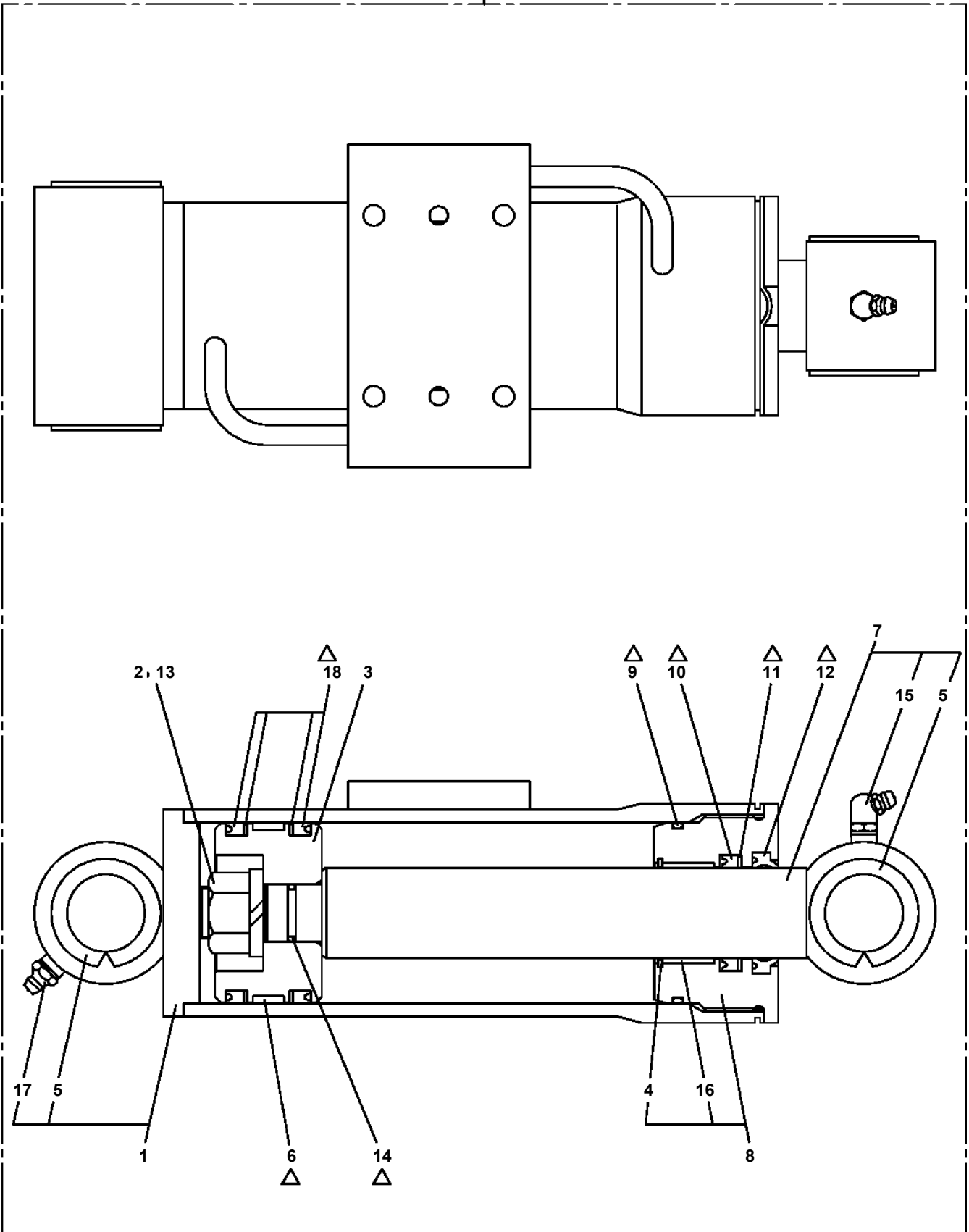


**AT-146-3 43011100025 UPPER  
PC5570055-00 COVER ASSY (BUCKET CONTROL)**



**AT-146-3 43011100025 UPPER  
PC6340001-00 CYLINDER ASSY (WINCH JIB)**

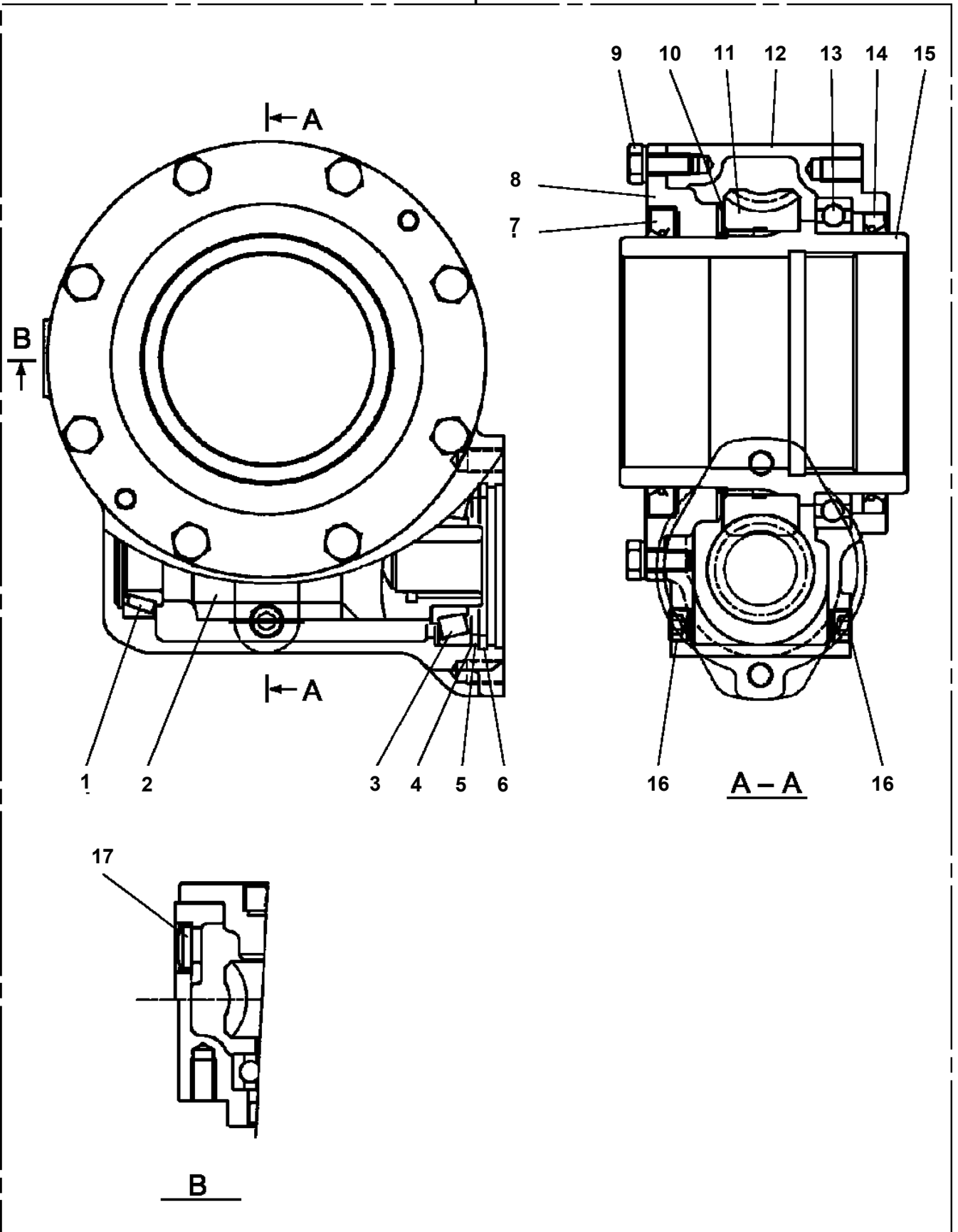
50



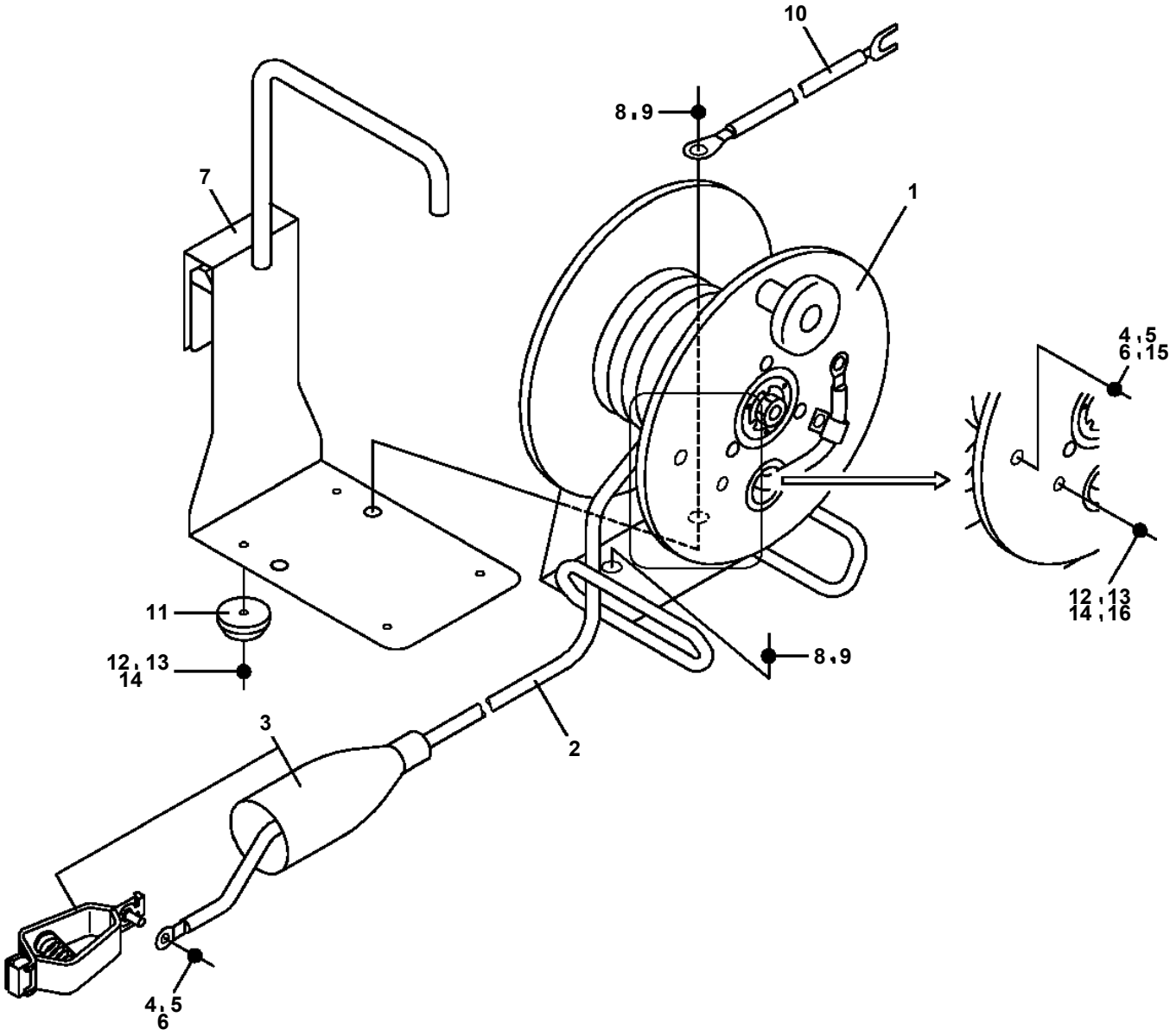
Δ:PACKING SET KEY NO.30 (KEY NO.6,9,10,11,12,14,18)

AT-146-3 43011100025 UPPER  
PD1010183-00 REDUCER, SWING SPEED

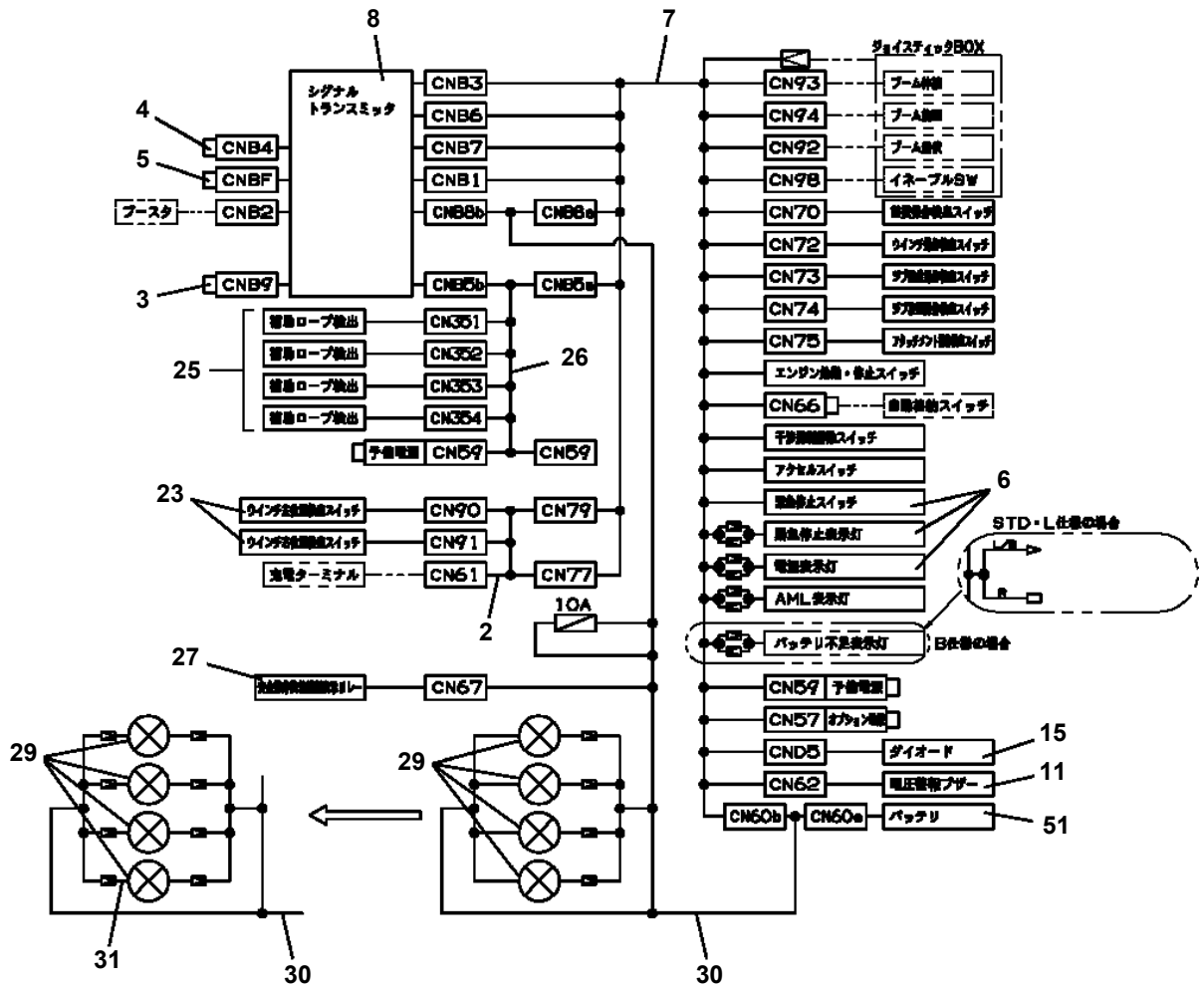
100



AT-146-3 43011100025 UPPER  
PE5010004-01 EARTH ASSY

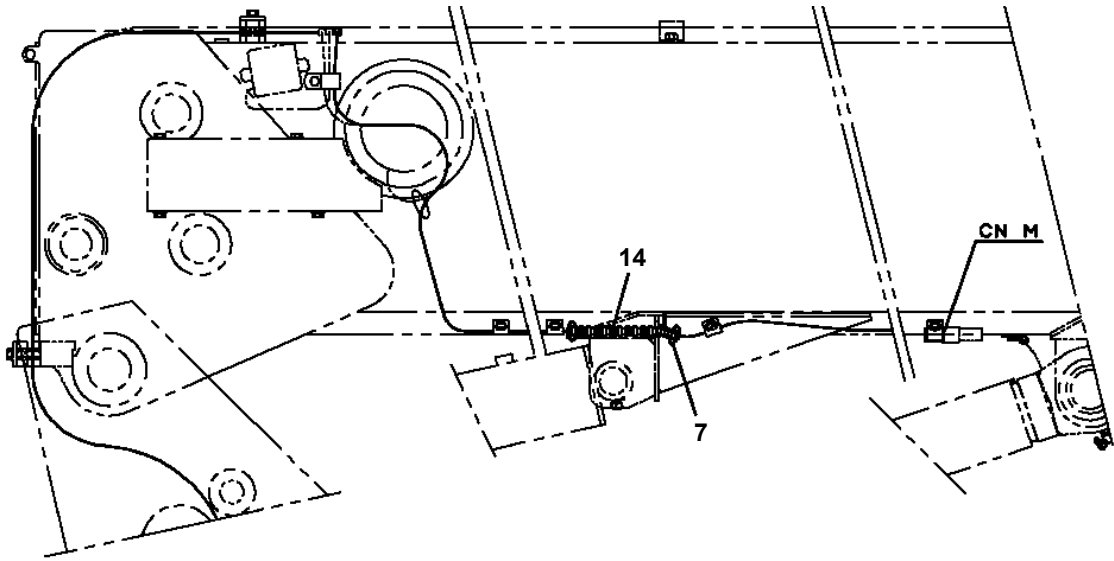


AT-146-3 43011100025 UPPER  
PE5060016-02 ELEC.ASSY, BUCKET

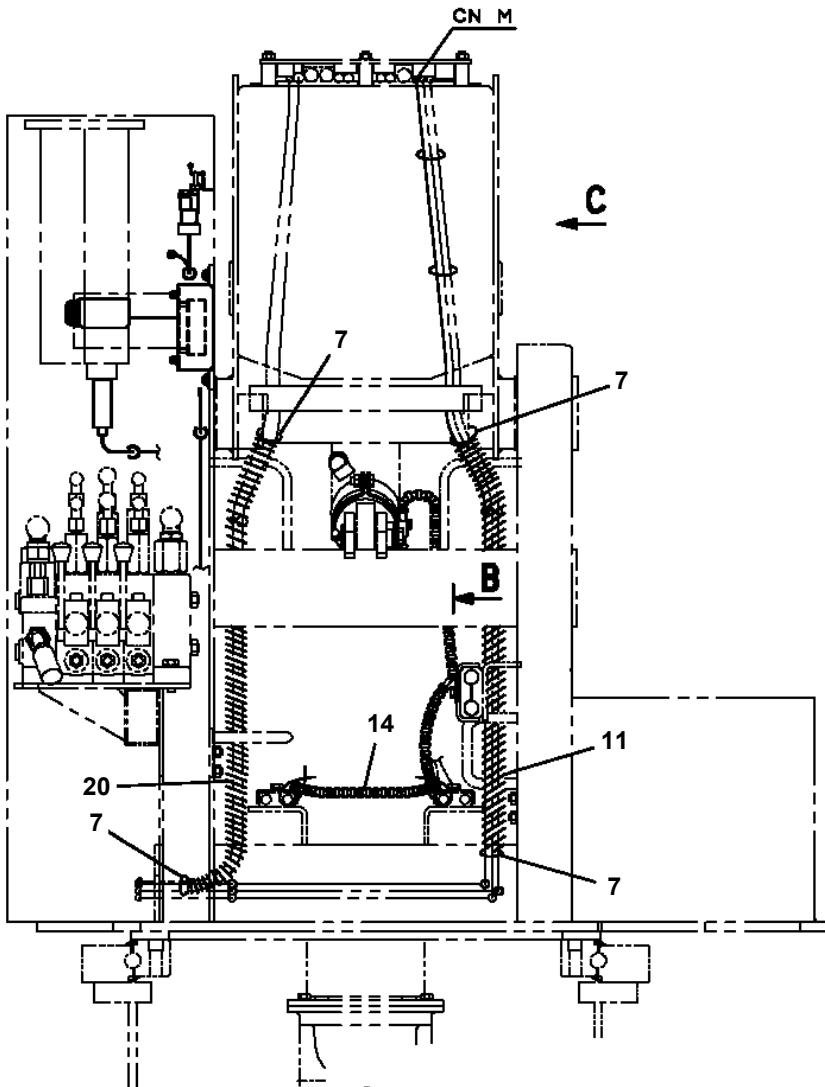


配線詳細図

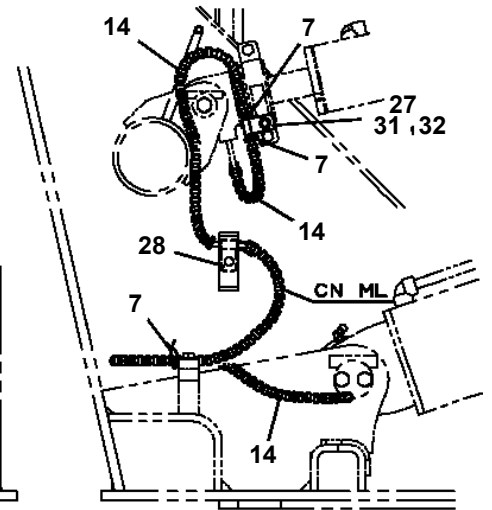
**AT-146-3 43011100025 UPPER  
PE5190027-00 ELEC.ASSY,SWING FRAME**



**C**

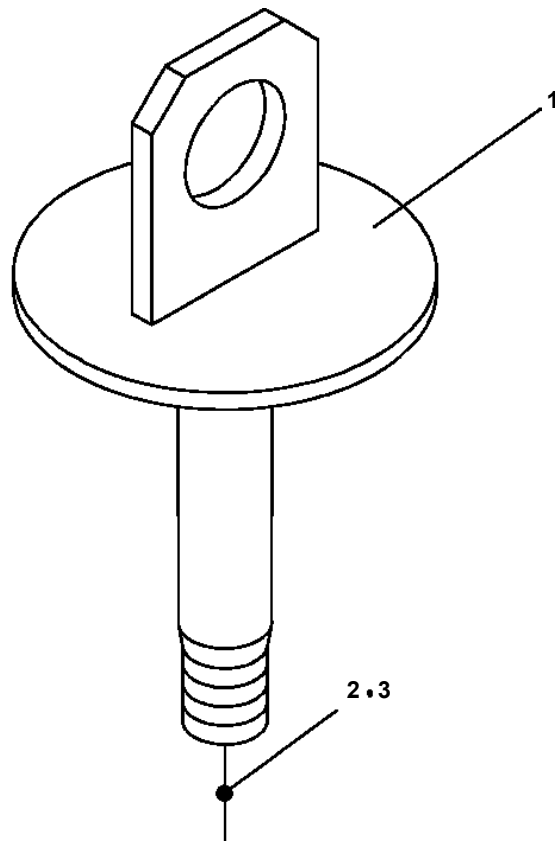


**A**

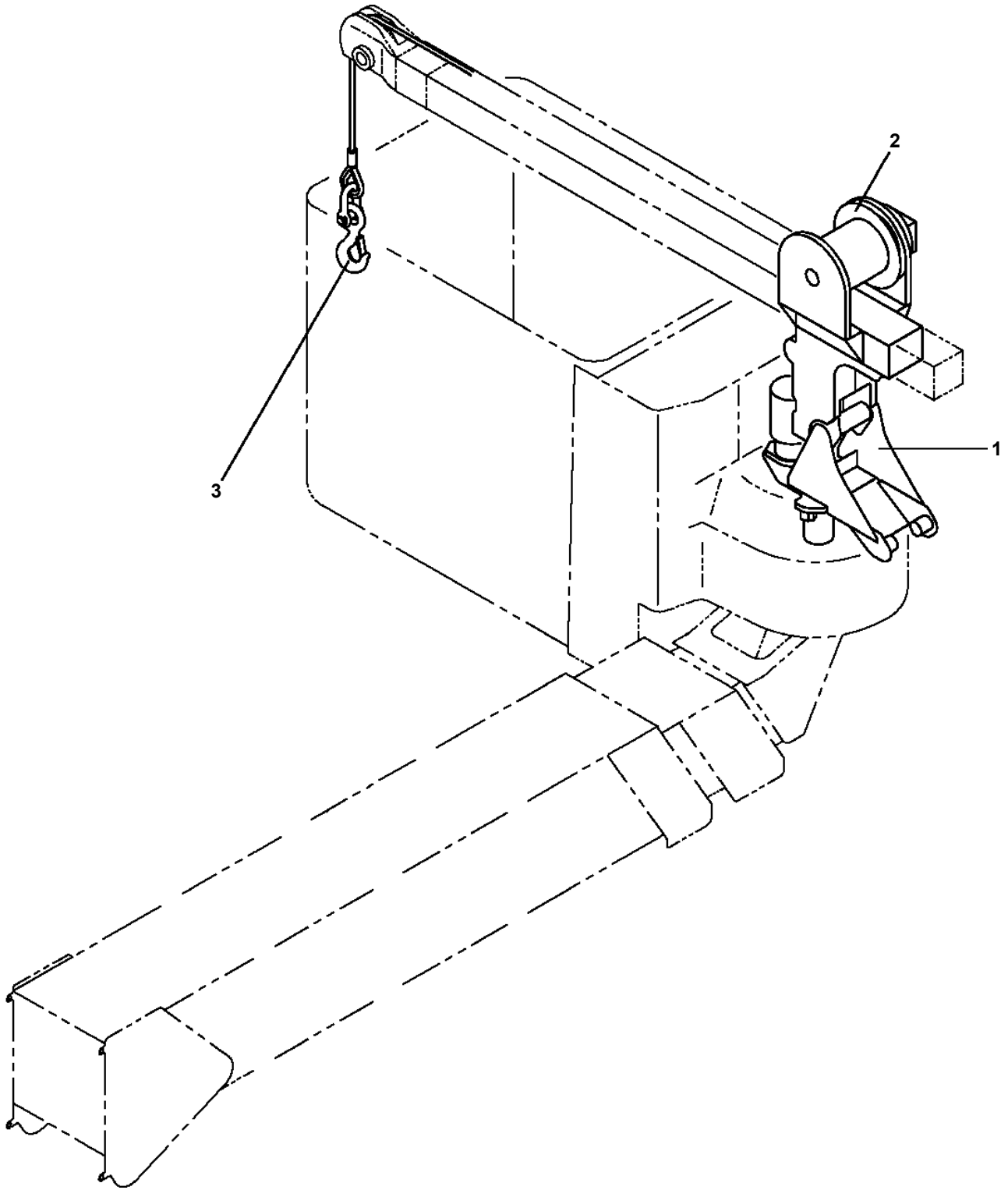


**B**

**AT-146-3 43011100025 UPPER  
PF1080004-00 SUPPORT**



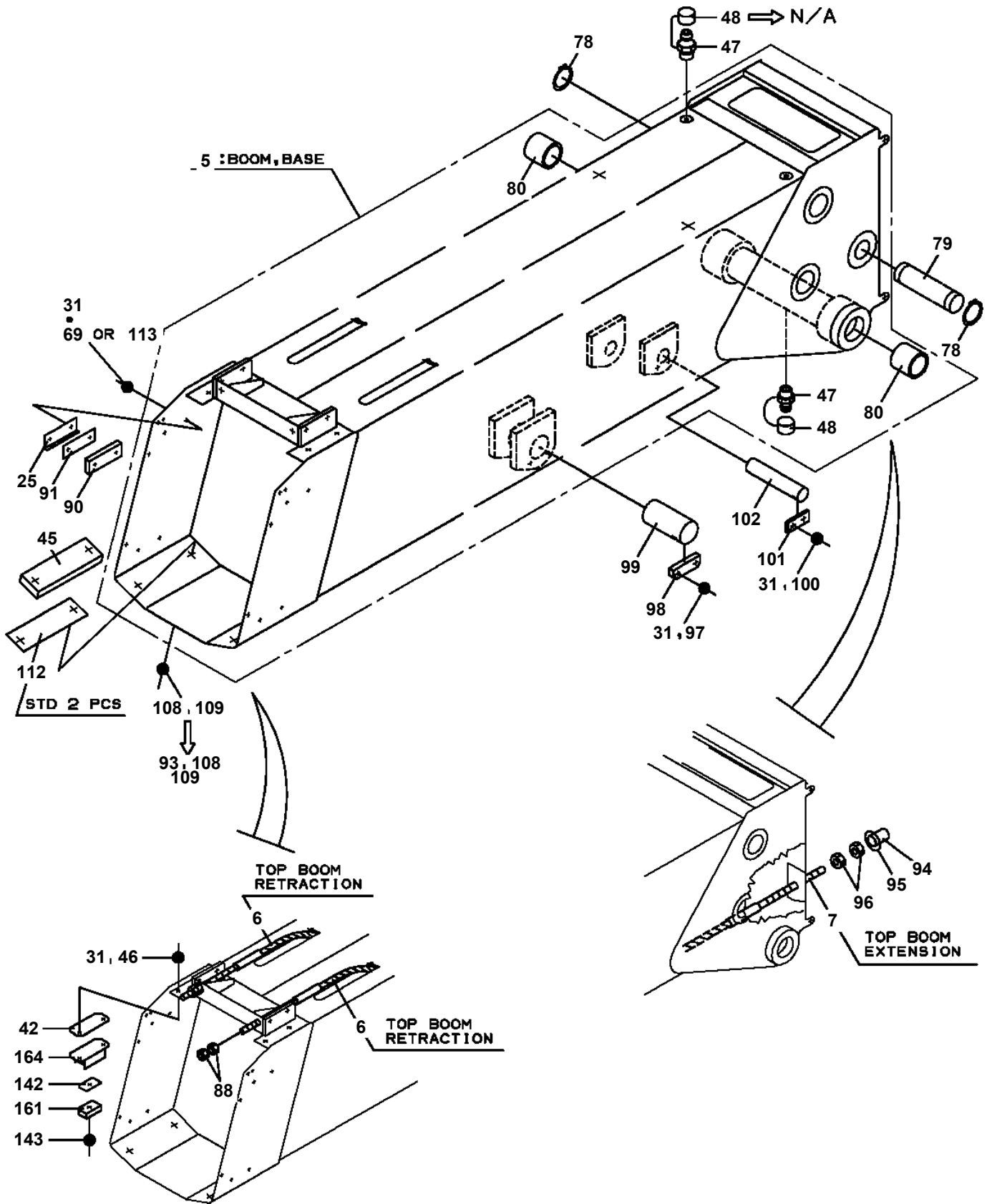
**AT-146-3 43011100025 UPPER  
PF1350136-00 WINCH,JIB (JU:WITH FREE LOCK)**



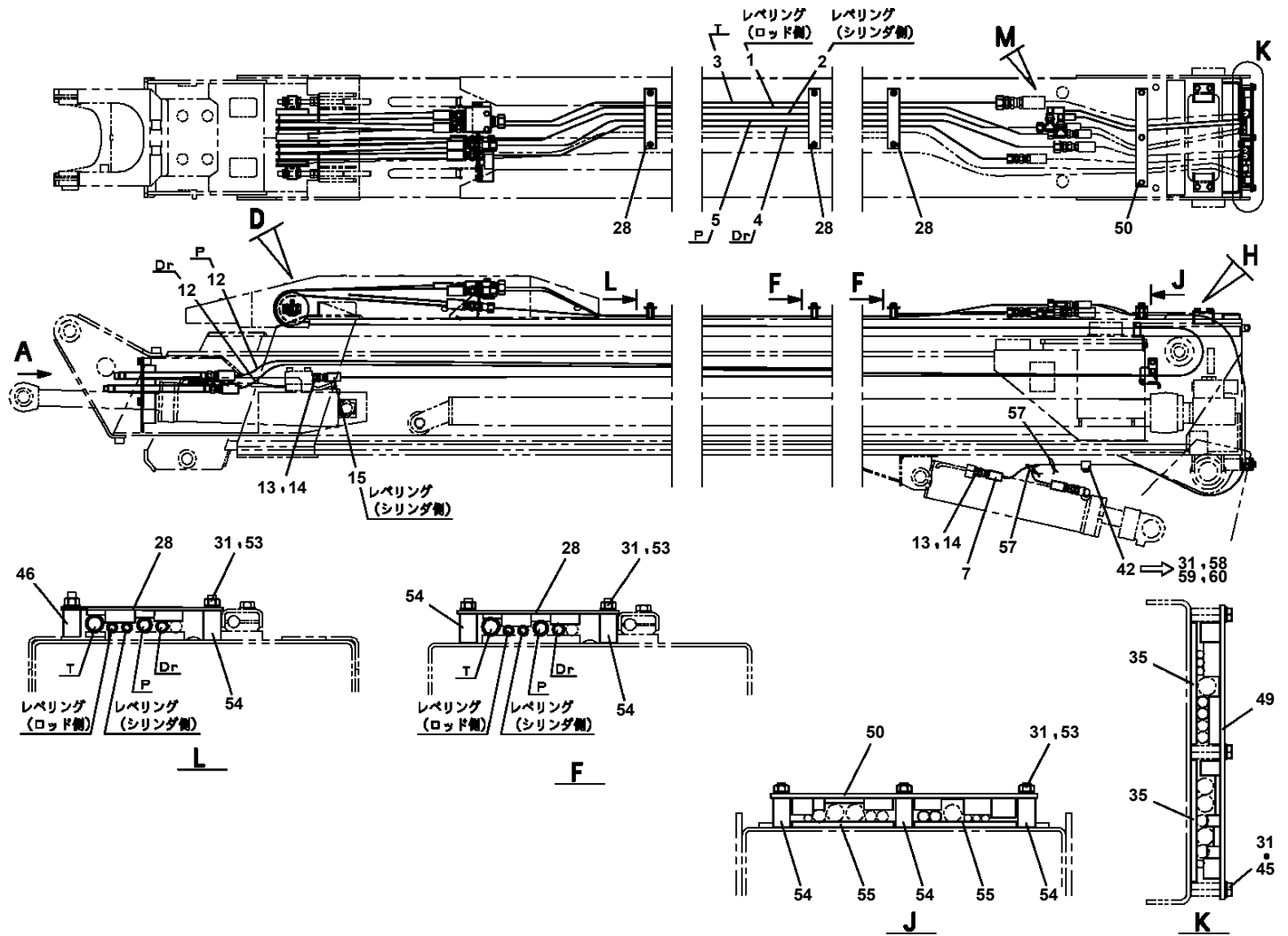
# AT-146-3 4301110025 UPPER

Pos No.	Parts No	Parts Name	Qty	Unit	Technical Data	Serial No (Start)	Serial No (End)	Remarks
1	42311891100	PIN	1					
2	80601110300	RING,RITAINING	1		S30			
3	90238402008	NUT,CASTLE	1		M20			
4	80136340040	PIN,SPLIT	1		4X40			
5	42311891200	PIN	1					
6	90303072001	WASHER,PLAIN	1		20			
7	42311891300	PIN	1					
8	80136363050	PIN,SPLIT	2		6.3X50			
9	37000516640	PLATE	2		T=1			
10	42310952600	GUIDE	2					
11	80173304010	SCREW,MACHINE	4		M4X10			
12	42310952700	GUIDE	2					
13	42311912001	TABLE,SLEWING	1			228307		
14	42312193000	FRAME ASSY	1					
15	82400000317	CATCH	1					
16	42220249510	ROPE,WIRE	1	M				
17	82112001022	SLEEVE	2					
18	42311802100	PIN	1					
19	36663960001	MOTOR ASSY,OIL	1			228553		
20	90172112080	BOLT,HEXAGON SOCKET	2		M12X80			
21	37000586760	WASHER,PLAIN	2		12	228651		
22	82400000459	CAP	4			228307		
23	36053870001	CYLINDER,WINCH JIB	1			228702		
24	82455106000	NIPPLE,GREASE	2		A-M6F FE	228307		
25	90201200600	NUT	2		M6			
26	90302040801	WASHER,SPRING	8		8			
27	80602110800	RING,RITAINING	1		R80			
28	42311911010	SUPPORT	1					
29	80516006010	BEARING,BALL	1					
30	80516006909	BEARING,BALL	1					
31	42311911080	GEAR	1					
32	37001200480	SPRING	1					
33	90101208020	BOLT	1		M8X20			
34	90201200800	NUT	1		M8			
35	37001300410	SPRING	1					
36	90172110050	BOLT,HEXAGON SOCKET	4		M10X50			
37	36624630000	VALVE,CHECK	1					
38	42311911101	LEVER	1					
39	42311911201	SUPPORT	1			228307		
40	42311911301	SUPPORT	1			228322		
41	80560006000	BALL,STEEL	1		6			
42	80913136480	KEY	1					
43	42311911600	GEAR ASSY	1					
44	42311891060	PIN	1					
45	90101208012	BOLT	2		M8X12			
46	42311891030	SPACER	1					
47	80601110650	RING,RITAINING	1		S65			
48	80513006813	BEARING,BALL	1					
49	42311911020	COUPLING	1					
50	42710040110	BOLT	1					
51	90266200800	NUT	2		M8			
52	90171112022	BOLT	2		M12X22			
53	82430208020	GRIP	1					
54	37000105250	PIN	1					
55	80136320010	PIN,SPLIT	1		2X10			
56	90303501201	WASHER,PLAIN	2		12			
57	42311911030	SUPPORT	1					
58	42311911040	SUPPORT	1					
59	90101208016	BOLT	4		M8X16			
60	90303070801	WASHER,PLAIN	4		8			
61	80175304008	SCREW,MACHINE	2		M4X8			
62	90303071201	WASHER,PLAIN	1		12			
63	80136332018	PIN,SPLIT	1		3.2X18			

**AT-146-3 43011100025 UPPER  
PG1010978-03 BOOM**



**AT-146-3 43011100025 UPPER  
PG1220171-04 PIPING,BOOM**





**AT-146-3 43011100025 UPPER**

Pos No.	Parts No	Parts Name	Qty	Unit	Technical Data	Serial No (Start)	Serial No (End)	Remarks
30	82105900050	SWITCH,TOGGLE	1					
31	82100000665	CAP (BLACK)	3					
38	42356240200	SWITCH ASSY,PUSH-PULL	1					
39	42355641010	COVER	1					
40	82105220193	SWITCH,TOGGLE	1					
41	82105900010	SWITCH,TOGGLE	1					
61	42355641210	BUTTON	1					
100	42356400014	HARNESS	1					

# AT-146-3 43011100025 UPPER

Pos No.	Parts No	Parts Name	Qty	Unit	Technical Data	Serial No (Start)	Serial No (End)	Remarks	Pages
100	42357100101	HARNESS	1						

# AT-146-3 43011100025 UPPER

Pos No.	Parts No	Parts Name	Qty	Unit	Technical Data	Serial No (Start)	Serial No (End)	Remarks	Pages
100	42352350300	HARNESS	1						

# AT-146-3 43011100025 UPPER

Pos No.	Parts No	Parts Name	Qty	Unit	Technical Data	Serial No (Start)	Serial No (End)	Remarks	Pages
100	42614061350	HARNESS	1						

# AT-146-3 43011100025 UPPER

Pos No.	Parts No	Parts Name	Qty	Unit	Technical Data	Serial No (Start)	Serial No (End)	Remarks	Pages
100	42357100102	HARNESS	1						

# AT-146-3 43011100025 UPPER

Pos No.	Parts No	Parts Name	Qty	Unit	Technical Data	Serial No (Start)	Serial No (End)	Remarks	Pages
18	82100001839	FUSE	1		10A.RED				
100	42356800201	HARNESS	1						

# AT-146-3 43011100025 UPPER

Pos No.	Parts No	Parts Name	Qty	Unit	Technical Data	Serial No (Start)	Serial No (End)	Remarks	Pages
27	82182809623	DIODE	1						
36	82182819823	DIODE	4		1.5A				
100	42901450101	HARNESS	1						

# AT-146-3 43011100025 UPPER

Pos No.	Parts No	Parts Name	Qty	Unit	Technical Data	Serial No (Start)	Serial No (End)	Remarks	Pages
100	42357000101	HARNESS	1						

# AT-146-3 43011100025 UPPER

Pos No.	Parts No	Parts Name	Qty	Unit	Technical Data	Serial No (Start)	Serial No (End)	Remarks	Pages
100	42356800300	HARNESS	1						

# AT-146-3 43011100025 UPPER

Pos No.	Parts No	Parts Name	Qty	Unit	Technical Data	Serial No (Start)	Serial No (End)	Remarks	Page
1	42310427510	SEAL KIT	1						
2	36081605110	SEAL KIT	1						
100	36663960000	MOTOR,HYDRAULIC	1						

# AT-146-3 43011100025 UPPER

Pos No.	Parts No	Parts Name	Qty	Unit	Technical Data	Serial No (Start)	Serial No (End)	Remarks	Pages
11	91001101200	O-RING	2		1A P12				
23	36624110300	SEAT	2						
24	36624110400	SPRING	2						
26	36624110600	PISTON	1						
28	91001101800	O-RING	2		1A P18				
30	36624111000	PACKING	2						
31	36624111100	O-RING	1		P12				
41	36624110100	BODY	1						
42	36624110200	PLUG	2						
45	36624110501	PLUNGER	2						
100	36624110000	VALVE,CHECK	1						

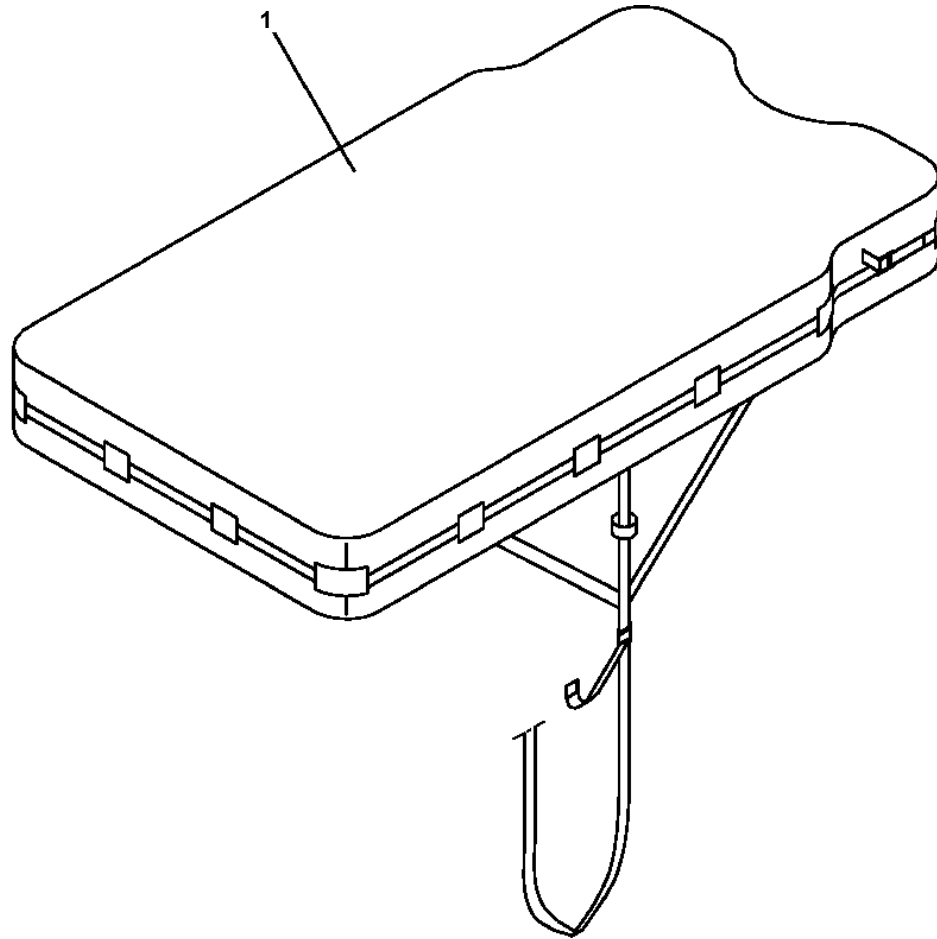
# AT-146-3 43011100025 UPPER

Pos No.	Parts No	Parts Name	Qty	Unit	Technical Data	Serial No (Start)	Serial No (End)	Remarks	Pages
12	91002801400	O-RING	2		1B P14				
100	36625740001	VALVE,CHECK	1						

# AT-146-3 43011100025 UPPER

Pos No.	Parts No	Parts Name	Qty	Unit	Technical Data	Serial No (Start)	Serial No (End)	Remarks	Pages
1	42267241000	BUCKET	1						

**AT-146-3 43011100025 UPPER  
PJ3240037-00 COVER (CLOTH,WHITE)**



CLICK HERE TO **DOWNLOAD** THE COMPLETE MANUAL

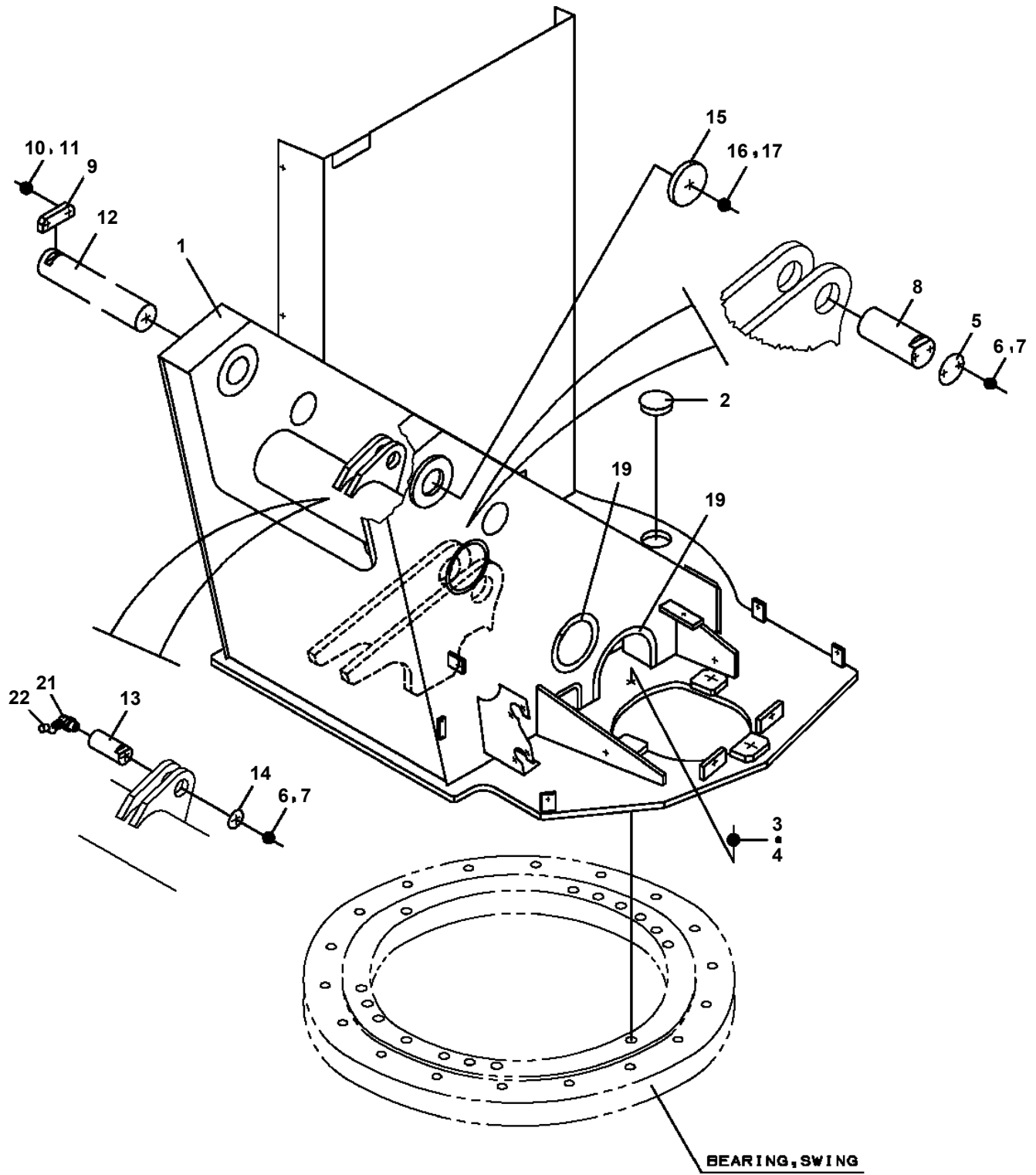
- Thank you very much for reading the preview of the manual.
- You can download the complete manual from: [www.heydownloads.com](http://www.heydownloads.com) by clicking the link below



- Please note: If there is no response to CLICKING the link, please download this PDF first and then click on it.

CLICK HERE TO **DOWNLOAD** THE COMPLETE MANUAL

**AT-146-3 43011100025 UPPER  
PK1100488-00 SWING FRAME**



# AT-146-3 43011100025 UPPER

Pos No.	Parts No	Parts Name	Qty	Unit	Technical Data	Serial No (Start)	Serial No (End)	Remarks	Pages
1	42422386400	COVER	1						
2	37000578740	PLATE	53		T=1.6				
3	90302040801	WASHER,SPRING	64		8				
4	42422385103	COVER	1				228348		
	42422385104	COVER	1			228349	228791		
	42422385800	COVER	1			228792			
5	82466154502	CATCH	2						
6	80175805012	SCREW,MACHINE	8		M5X12		228171		
	80175805016	SCREW,MACHINE	8		M5X16	228172			
7	42422385010	PLATE	2		T=3.0	228172			
8	42422385020	PLATE	2		T=3.0	228172			
9	42422386102	COVER	1						
13	90101208020	BOLT	49		M8X20				
14	42422385302	COVER	1						
15	42422385401	COVER	1						
16	37000567460	PLATE	1				228791		
	37000523710	PLATE	1		T=2.3	228792			
17	80175805014	SCREW,MACHINE	8		M5X14				
18	82464106403	HINGE	2						
20	37000568200	PLATE	1						
21	42422385061	PLATE	1				228791		
	42422385030	PLATE	1			228792			
22	42422385071	PLATE	1				228348		
	42422385072	PLATE	1			228349			
23	37000130160	PIN	1						
24	80136340022	PIN,SPLIT	1		4X22				
25	90303071401	WASHER,PLAIN	1		14				
26	42422385080	BOLT,WING	1		M8X30		228791		
	42422385040	BOLT,WING	1		M10X30	228792			
27	37000547660	PLATE	1		T=2.3		228791		
	37000506590	PLATE	1		T=1.6	228792			
28	80620210080	PIN,SNAP	1				228791		
	80620210100	PIN,SNAP	1			228792			
29	90303070801	WASHER,PLAIN	11		8		228791		
	90303070801	WASHER,PLAIN	10		8	228792			
30	90101208025	BOLT	15		M8X25				
31	42422386300	COVER	1						
32	42422386201	COVER	2						
33	82401800080	PLUG (FOR M8)	4						
35	90303071001	WASHER,PLAIN	1		10	228792			
53	42422285430	RUBBER	2						
54	42422285440	RUBBER	2						

# AT-146-3 43011100025 UPPER

Pos No.	Parts No	Parts Name	Qty	Unit	Technical Data	Serial No (Start)	Serial No (End)
2	90302042401	WASHER,SPRING	1		24		
3	90209402400	NUT	1		M24		
4	36024260020	PISTON	1				228
5	91350207500	BEARING,PLAIN (WITH PACKINGX2)	1				228
	91350207500	BEARING,PLAIN (WITH PACKINGX2)	1			228706	
6	91002802000	O-RING	1		1B P20		
7	36025149521	ROD ASSY	1				
8	36026159530	COVER,ROD	1				
9	80612110400	RING,RITAINING	1		AR40		
10	91002907000	O-RING	1		1B G70		
11	80801003525	BEARING,PLAIN	1				
12	91694003500	PACKING	1				
13	91410203501	RING,BACKUP	1				
14	91660003501	SEAL,DUST	1				
15	36025140010	COVER	1				
16	80541700030	BEARING,SPHERICAL (NTN)	1		SA4-30B		
17	80820003030	BEARING,PLAIN	2				
18	91002907500	O-RING	1		1B G75		
19	82455106000	NIPPLE,GREASE	1		A-M6F FE		
20	91001003500	O-RING	1		S35		
21	91001206500	O-RING	1		1A G65		
22	82400000459	CAP	1				
23	90303072401	WASHER,PLAIN	1		24	228619	
34	36028370010	PISTON	1			228706	
42	42360120030	CONNECTOR	1				
61	82100002132	CONNECTOR	1				
70	36027789510	CYLINDER ASSY	1				228
71	36027789511	CYLINDER ASSY	1			228508	
80	36025149900	PACKING SET	1		35X75		228
	36025149900	PACKING SET	1		35X75	228706	
100	42491400000	CYLINDER ASSY,LEVELING (LOWER)	1				
124	36028490100	PISTON	1			228619	228
125	91332207500	BEARING,PLAIN	1			228619	228
143	91350307500	PACKING ASSY (PACKING X2+BACKUP RING X2)	1			228619	228
150	36028499900	PACKING SET	1		35X75	228619	228

# AT-146-3 4301110025 UPPER

Pos No.	Parts No	Parts Name	Qty	Unit	Technical Data	Serial No (Start)	Serial No (End)
1	90101206012	BOLT	6		M6X12		
2	90302040601	WASHER,SPRING	9		6		228159
	90302040601	WASHER,SPRING	2		6	228160	
4	90304110601	WASHER,TOOTH	4		6		
5	36132420000	DETECTOR,BOOM LENGTH	1				
7	82100002014	CLAMP	1		WR20		
8	90201200600	NUT	7		M6		228159
	90280200600	NUT,FLANGE	7		M6	228160	
9	91810132530	FASTENER	10				
11	90186208010	BOLT,FLANGE	4		M8X10		
12	42350071000	ROLLER ASSY	1				229474
16	80175304010	SCREW,MACHINE	1		M4X10		
17	42360030060	WASHER	1				
18	82100002010	CLAMP	1		WR15		
19	82100002004	CLAMP	5		WR8		
21	42356320102	COVER	1				228213
	42356320103	COVER	1			228214	
30	36140670000	DETECTOR ASSY,ANGLE (ASSY ONLY)	1				229681
	36140750000	DETECTOR ASSY,ANGLE (ASSY ONLY)	1			229682	
31	42356320300	HARNESS	1				
41	42360030040	SUPPORT	1				229474
42	37001102350	ROLLER	1				
43	37000302060	SPACER	1		L=11.2		
45	90201201000	NUT	1		M10		
46	90302041001	WASHER,SPRING	1		10		
47	90303071001	WASHER,PLAIN	1		10		
52	42353100600	ROLLER ASSY	1			229475	
61	42351120200	SUPPORT	1			229475	

# AT-146-3 4301110025 UPPER

Pos No.	Parts No	Parts Name	Qty	Unit	Technical Data	Serial No (Start)	Serial No
1	91810132530	FASTENER	N				
2	42356400021	HARNESS	1				
3	42433890010	PLUG (16 POLES,MALE)	1				
4	42350980010	PLUG (6POLES,FEMALE)	1				
5	42350250150	PLUG (6 POLES,MALE)	1				
6	42503390200	LAMP ASSY (DC12V RED)	3				
7	42356400012	HARNESS	1				228159
	42356400013	HARNESS	1			228160	
8	42356371000	TRANSMITTER,SIGNAL	1				228272
	42357161000	TRANSMITTER,SIGNAL	1			228273	
9	80181306010	SCREW,MACHINE	4		M6X10		
10	90302040601	WASHER,SPRING	4		6		
11	42652120300	BUZZER ASSY	1				228249
	42357160400	BUZZER ASSY	1			228250	
12	80171304012	SCREW,MACHINE	2		M4X12		228249
	80171304014	SCREW,MACHINE	2		M4X14	228250	
13	90303070401	WASHER,PLAIN	2		4		
15	42736991030	DIODE (WITH CONNECTOR)	1				
16	42356370101	SUPPORT	1				228159
	42356370103	SUPPORT	1			228160	
17	90813108012	BOLT,WING	1		M8X12 A		
18	90303070801	WASHER,PLAIN	1		8		
19	42356240500	COVER	1				
20	90201200400	NUT	2		M4		
21	42356370200	SUPPORT	1				
22	90186206010	BOLT,FLANGE	4		M6X10		
23	82104501250	SWITCH,LIMIT (2 PCS/SET,WITH HARNESS)	2				
24	42356400030	PLATE	1			228223	
25	(*****)	SWITCH ASSY	1				
26	42357000100	HARNESS	1				
27	42356802001	RELAY BOX	1				
29	42356370300	HARNESS	1				228159
30	42356800201	HARNESS	1				
31	82165911010	LAMP	4				228346
	82165300010	LAMP	4			228347	
41	90302040401	WASHER,SPRING	2		4	228250	
51	82151401217	BATTERY (FURUKAWA/12M17B)	1				
	82100002996	BATTERY (HITACHI/HP15-12A)	1				
52	42350200310	HARNESS	1				
53	82100001261	CAP	1				
61	42356802100	BOX	1				
62	42356802200	COVER	1				
63	90101206010	BOLT	3		M6X1.0		
64	90302040601	WASHER,SPRING	3		6		
65	90303070601	WASHER,PLAIN	3		6		
66	82161201030	RELAY	1				
91	82400000200	GROMMET	1		KG-012,L=250		

# AT-146-3 43011100025 UPPER

Pos No.	Parts No	Parts Name	Qty	Unit	Technical Data	Serial No (Start)	Serial No (End)	Remarks
1	42422453102	HARNESS	1					
2	42422263011	HARNESS	1					
3	82100002012	CLAMP	6		WR18			
4	90302040801	WASHER,SPRING	8		8			
5	82100002010	CLAMP	1		WR15			
6	90103212020	BOLT	1		M12X20			
7	90302041201	WASHER,SPRING	1		12			
8	42422263020	CABLE ASSY	1		L=350			
9	90101208014	BOLT	6		M8X14			
10	82100001799	SOLENOID	1					
11	91810130250	FASTENER	10					
13	90302040601	WASHER,SPRING	16		6			
14	42352970300	HARNESS	1					
15	37001709711	CABLE,CONTROL	1					
16	42422263201	SUPPORT	1					
17	90101206012	BOLT	8		M6X12			
18	90303070801	WASHER,PLAIN	5		8			
21	90303070601	WASHER,PLAIN	5		6			
22	80136320012	PIN,SPLIT	2		2X12			
23	37000105720	PIN	2					
24	42800040030	HARNESS	1					
25	90303071201	WASHER,PLAIN	1		12			
26	82174103527	FUSE	1		65A			
27	42422453200	SUPPORT	1					
28	90103208020	BOLT	2		M8X20			
30	90101206020	BOLT	4		M6X20			
31	82100001825	RELAY	1					
32	82100001214	CAP	1					
33	82100001215	CAP	2					
34	82100002006	CLAMP	5		WR10			
35	82100001216	CAP	1					
36	90201200600	NUT	4		M6			
101	36361361010	SWITCH,PRESSURE (OIL)	1				228834	
102	36361361020	SWITCH,THERMO	1				228834	
103	36361361030	SOLENOID ASSY	1					
120	36361361200	PUMP ASSY,FUEL	1					
125	36361361250	TIMER	1					
131	36361365030	REPAIR KIT	1					

# AT-146-3 43011100025 UPPER

Pos No.	Parts No	Parts Name	Qty	Unit	Technical Data	Serial No (Start)	Serial No (End)	Remarks	Pages
1	42651711200	CASE	1						
2	42651711100	COVER	1						
3	80182306014	SCREW,MACHINE	8		M6X14				
4	90302040601	WASHER,SPRING	21		6				
5	90303070601	WASHER,PLAIN	10		6				
7	90101206014	BOLT	12		M6X14				
8	82100002596	RELAY	8						
9	82161201010	RELAY	6						
10	82100002597	RELAY	4						
11	42900002100	TERMINAL ASSY	1						
12	80172303016	SCREW,MACHINE	2		M3X16				
13	90302040301	WASHER,SPRING	4		3				
14	90303070301	WASHER,PLAIN	4		3				
16	42900023010	SUPPORT	1						
17	82100002016	CLAMP	1		WR25				
18	90201200600	NUT	1		M6				
19	42651091100	RELAY ASSY	1						
20	80172303008	SCREW,MACHINE	2		M3X8				
100	42900023002	RELAY BOX	1						

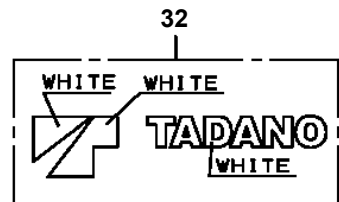
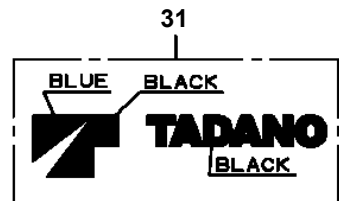
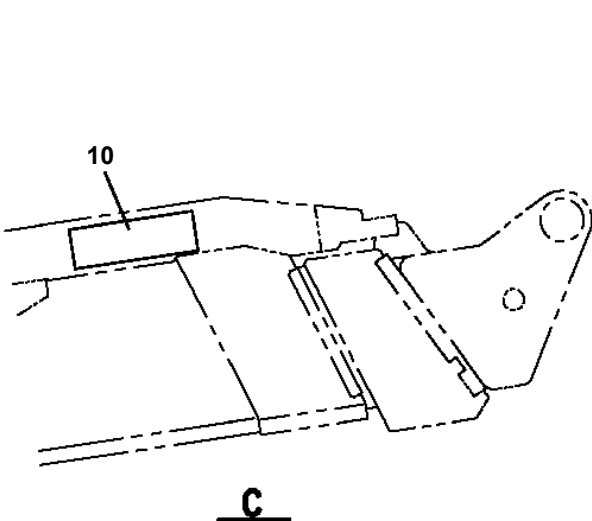
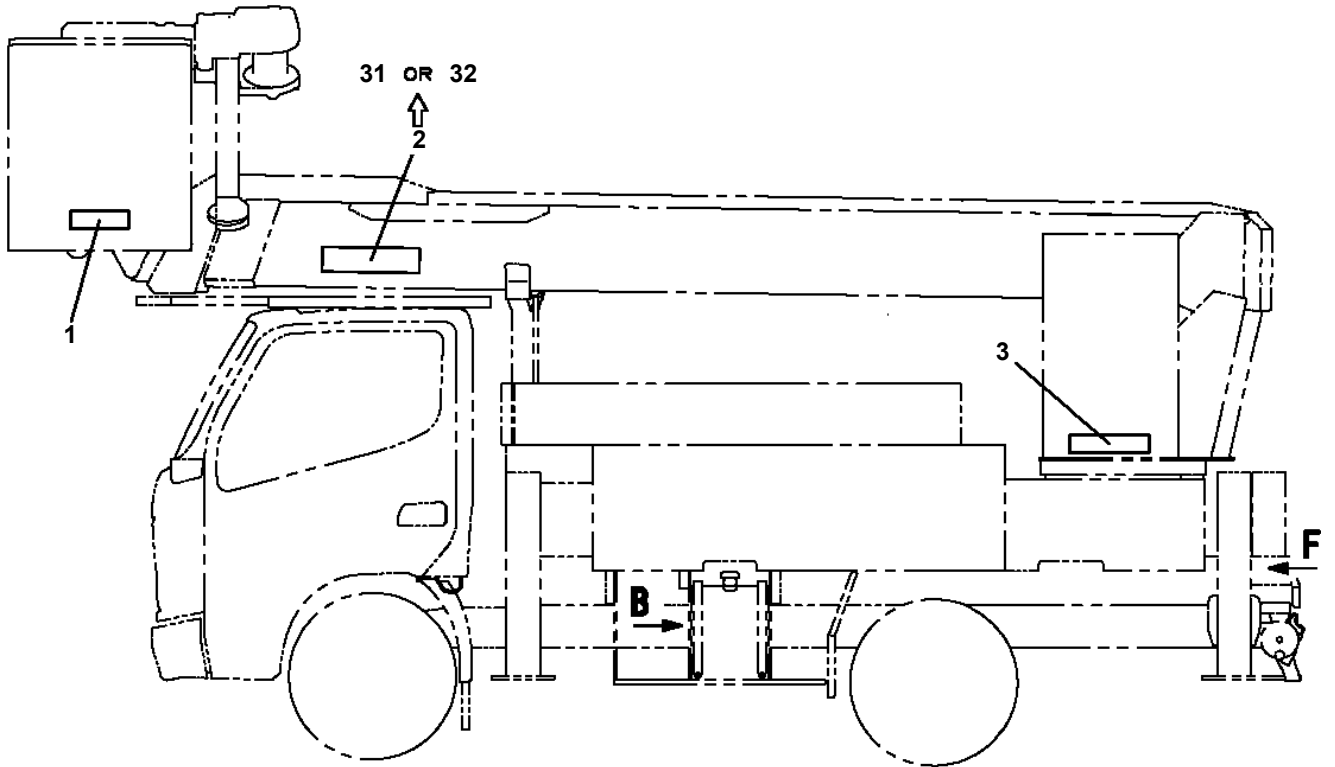
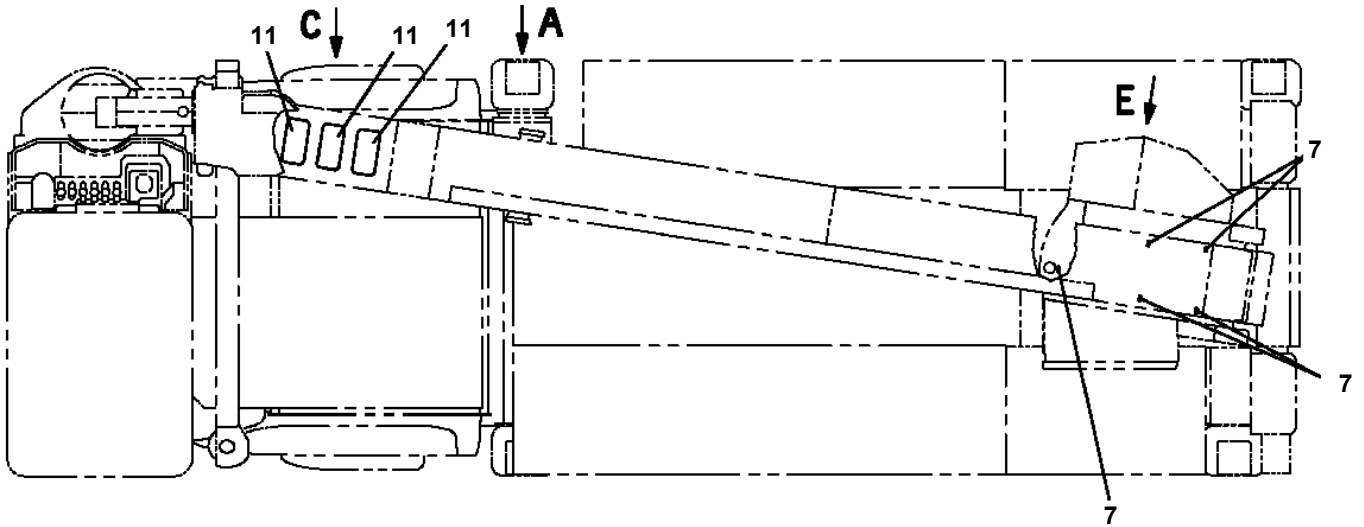
# AT-146-3 43011100025 UPPER

Pos No.	Parts No	Parts Name	Qty	Unit	Technical Data	Serial No (Start)	Serial No (End)	Remarks
2	42356377510	COVER	1					
3	42356377520	SCREW	12		M4X8			
4	42356377530	WASHER	12		M4			
5	42356377540	HARNESS	1					
6	42356377550	HARNESS	1					
7	42356377560	COVER	2					
8	42356377570	SCREW	4		M3X4			
9	42357167510	BOARD,POWER	1					
11	42356371170	BOARD ASSY	1					
12	42356377580	SEAT (SILICONE)	1					
13	42356377590	SEAT (SILICONE)	1					
15	42356377600	SPACER	9					
16	42356377610	SCREW	24		M3X6			
21	42357167530	BOARD,CPU (WITH DATA)	1					
	42357167540	BOARD,CPU (WITH DATA)	1			229329	229328	
100	42357161000	TRANSMITTER,SIGNAL	1					

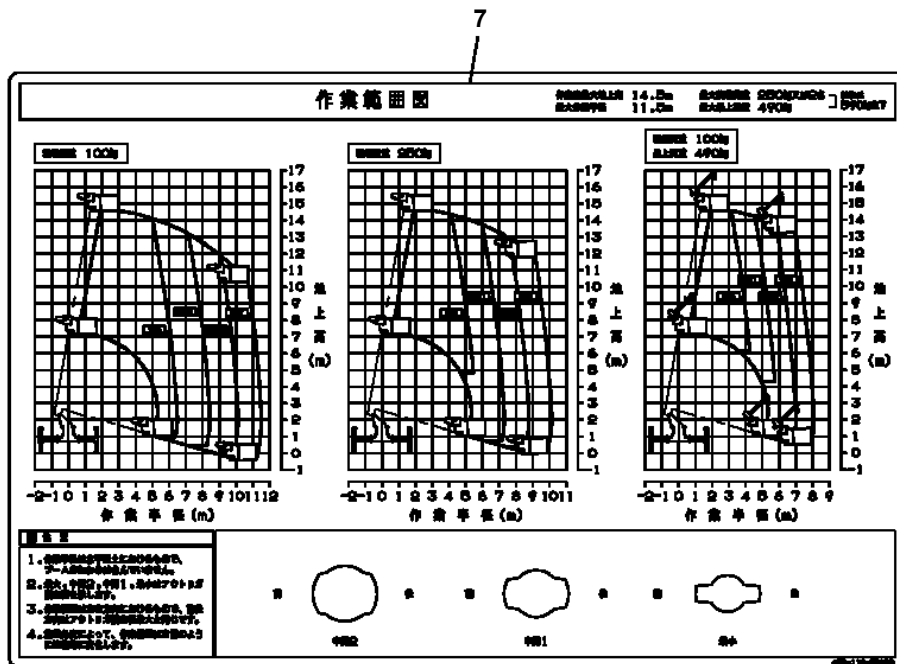
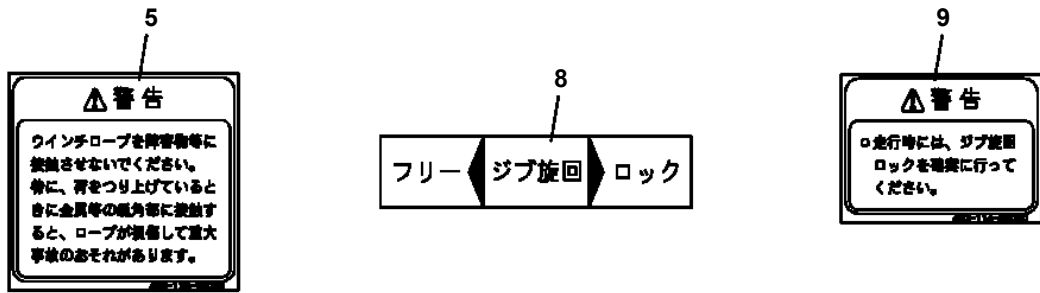
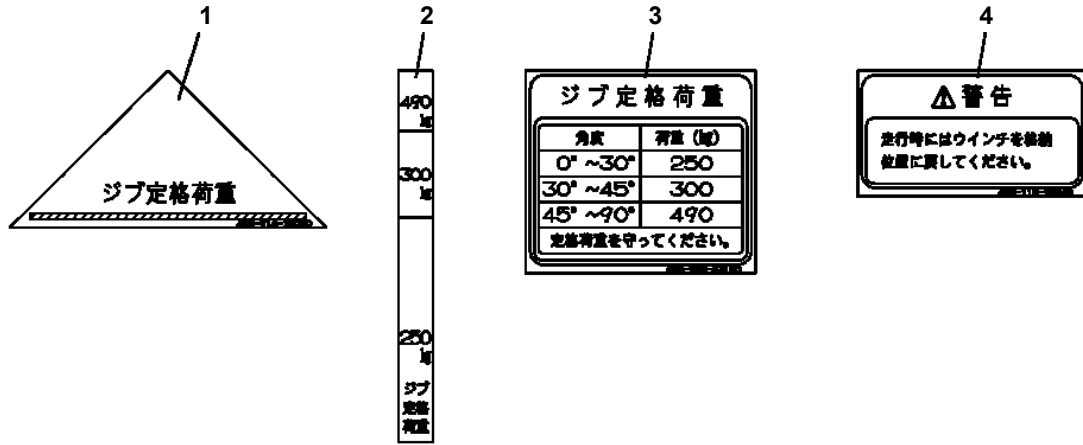
# AT-146-3 43011100025 UPPER

Pos No.	Parts No	Parts Name	Qty	Unit	Technical Data	Serial No (Start)	Serial No (End)	Remarks	Pages
1	42391164010	PLATE,NAME	1						
2	42398322010	PLATE,NAME	1						
3	42398322020	PLATE,NAME	1						
4	42399342010	PLATE,NAME	1						
5	42393204010	PLATE,NAME	1						
6	42398322060	PLATE,NAME	1						
7	42398322050	PLATE,NAME	1						
8	42399342020	PLATE,NAME	1						

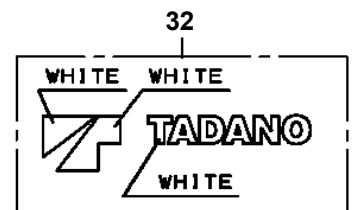
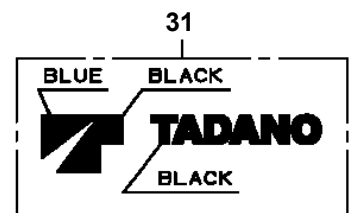
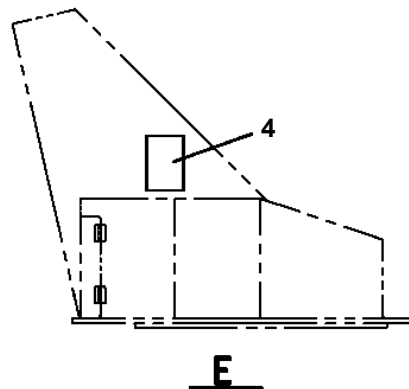
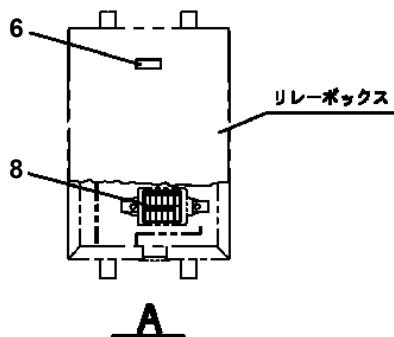
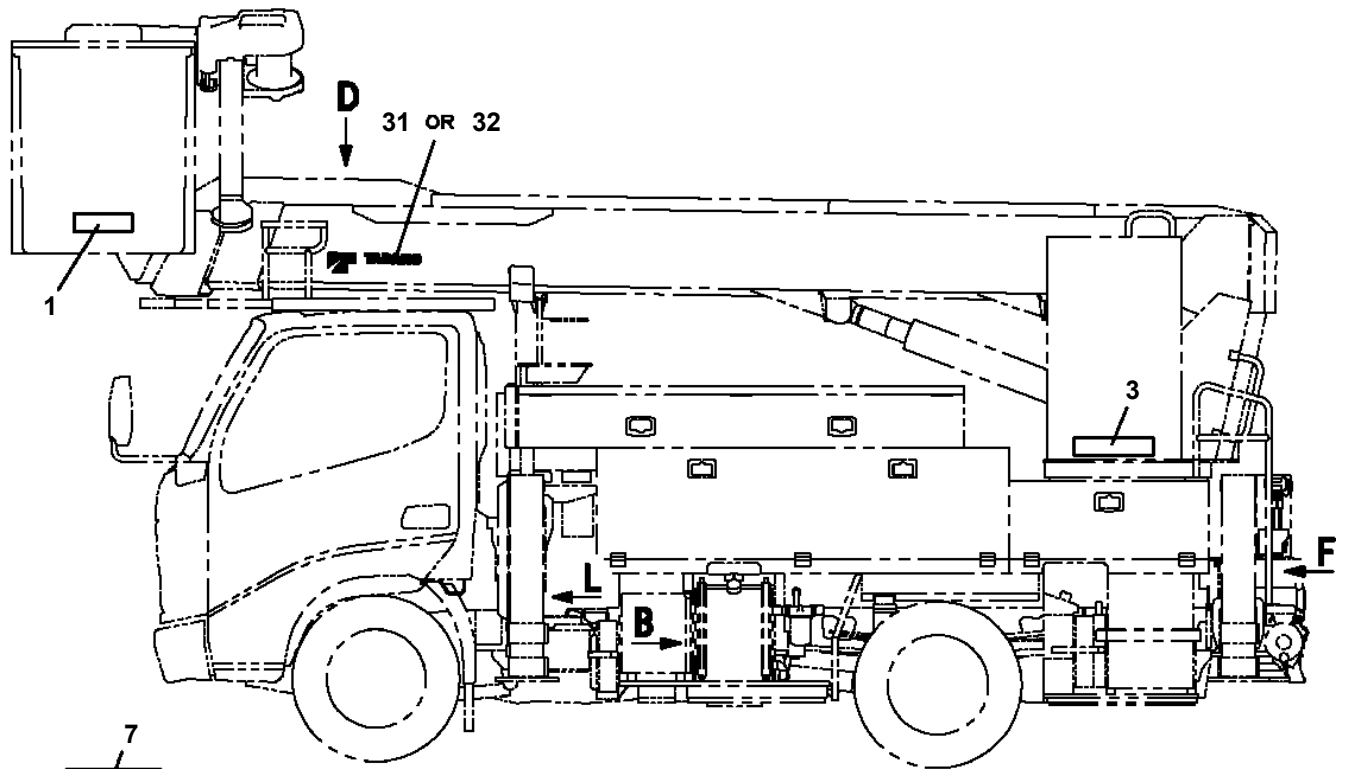
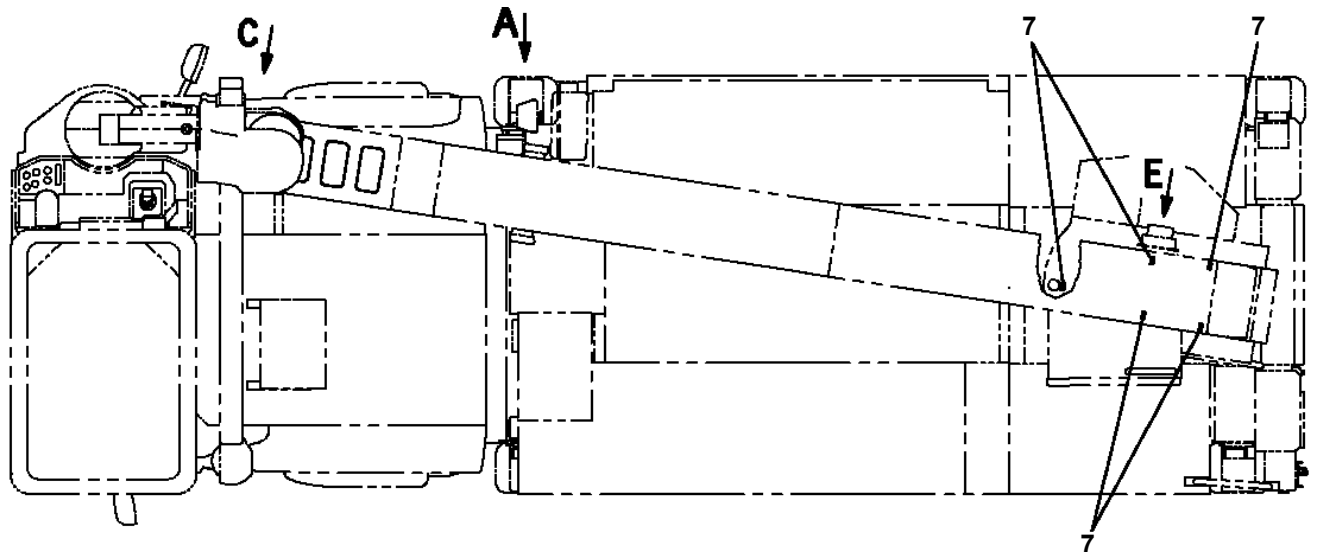
AT-146-3 43011100025 UPPER  
 PO1015016-02 PLATE ASSY,NAME (VEHICLE)



AT-146-3 43011100025 UPPER  
 PO1015128-02 PLATE ASSY,NAME (WINCH,W/FREE LOCK)



AT-146-3 43011100025 UPPER  
 PO1015679-02 PLATE ASSY,NAME (ON WHOLE VEHICLE)



**AT-146-3 43011100025 UPPER**

Pos No.	Parts No	Parts Name	Qty	Unit	Technical Data	Serial No (Start)	Serial No (End)	Remarks	Pages
7	42332677560	SPRING	1						
11	42332677520	PLUG	1						
12	42332677530	BOOT	1						
21	42332677610	COVER	1						
22	42332677620	CAP	1						
23	42332671010	PLATE	1						
47	42332677630	BEARING	2						
48	42332677540	SPRING	1						
49	42332677650	SPRING	2						
54	42332677660	WASHER	1						
100	42333572000	OPE.ASSY	1						

# AT-146-3 43011100025 UPPER

Pos No.	Parts No	Parts Name	Qty	Unit	Technical Data	Serial No (Start)	Serial No (End)	Remarks
93	42340234240	ROLLER	3		W=9			
94	44340392420	ROLLER	4					
95	90303100801	WASHER,PLAIN	14		8		229039	
	90303100801	WASHER,PLAIN	N		8	229040		
96	80136320016	PIN,SPLIT	2		2X16			
101	37000928200	JOINT	1					
102	80400160129	JOINT	2					
105	80302090241	FITTING	1		KCO18-040N			
106	91002801800	O-RING	1		1B P18			
113	42346820201	ROLLER ASSY	1			229040		

# AT-146-3 43011100025 UPPER

Pos No.	Parts No	Parts Name	Qty	Unit	Technical Data	Serial No (Start)	Serial No (End)	Remarks	F
1	36361365160	RADIATOR ASSY	1				228521		
	36361365060	RADIATOR ASSY	1			228522			
2	36361361110	HOSE (WATER/UPPER)	1						
3	36361361120	HOSE (WATER/LOWER)	1						
4	36361361130	CLAMP (HOSE)	2		45				
5	36361361140	CLAMP (HOSE)	2		38				
6	36361361150	CUSHION (RADIATOR)	2						
7	36361361160	CUSHION	2						
8	36361361170	SPACER	2						
101	36361365070	SHROUD	1				228521		
	36361365150	SHROUD	1			228522			
102	36361365080	RADIATOR	1				228521		
	36361365140	RADIATOR	1			228522			
201	36361365050	CAP (RADIATOR)	1				228521		
	36361365130	CAP (RADIATOR)	1			228522			

# AT-146-3 43011100025 UPPER

Pos No.	Parts No	Parts Name	Qty	Unit	Technical Data	Serial No (Start)	Serial No (End)	Remarks
5	82182819823	DIODE	1		1.5A			
	82182819823	DIODE	1		1.5A			
9	34354781710	RELAY (WITH BRACKET)	1					
	34354781710	RELAY (WITH BRACKET)	1					
100	34354781730	RELAY	1					
	34354781730	RELAY	1					

# AT-146-3 43011100025 UPPER

Pos No.	Parts No	Parts Name	Qty	Unit	Technical Data	Se
1	82109833232	SWITCH	1			
2	82100002220	CABLE	3	M		
3	82100002173	CONNECTOR	1			
50	42509150000	SWITCH ASSY (ELEC.BOOSTER, REMOTE:2M,NANABOSI,KASUGA)	1			

# AT-146-3 43011100025 UPPER

Pos No.	Parts No	Parts Name	Qty	Unit	Technical Data	Serial No (Start)	Serial No (End)
1	42470980100	SWITCH,PUSH	1				
2	82100002220	CABLE	3	M			
3	82116920411	CONNECTOR	1				
4	82122910100	CAP	1				
100	42479580000	SWITCH BOX(BOOSTER,3M/SANWA)	1				

# AT-146-3 4301110025 UPPER

Pos No.	Parts No	Parts Name	Qty	Unit	Technical Data	Serial No (Start)	Serial No (End)	R
2	80316100010	PLUG	4		GPF1/8			
3	91002800800	O-RING	6		1B P8			
4	36606760010	PLUG	2					
5	91002801400	O-RING	4		1B P14			
6	36606760020	SLEEVE	2					
7	36606760030	POPPET	2					
8	91000501300	O-RING	2		AS568-013			
9	37001202150	SPRING	2					
10	37001202160	SPRING	2					
11	36606760040	PLUG	2					
12	36606760051	PLUG	2					
13	91002802000	O-RING	2		1B P20			
14	91000501500	O-RING	2		AS568-015			
15	36606760061	SLEEVE	2					
16	36606760070	SPOOL	2					
17	91002800900	O-RING	2		1B P9			
19	91002801200	O-RING	2		1B P12			
20	91000501600	O-RING	2					
100	36606760000	VALVE ASSY,COUNTERBALANCE	1					

# AT-146-3 43011100025 UPPER

Pos No.	Parts No	Parts Name	Qty	Unit	Technical Data	Serial No (Start)	Serial No (End)
1	42460821200	BLOCK,RUBBER (NAKAMURA)	4				
	42460821100	BLOCK,RUBBER (WAZUMI)	4				2287
2	42460012530	WEDGE (STOPPER FOR TIRE/WAZUMI)	4				2289
	42460012540	WEDGE (STOPPER FOR TIRE/NAKAMURA KIKI)	4				2289
	42460012550	WEDGE (STOPPER FOR TIRE/JUSTIN)	4			228923	

# AT-146-3 43011100025 UPPER

Pos No.	Parts No	Parts Name	Qty	Unit	Technical Data	Serial No (Start)	Serial No (End)
1	42460012530	WEDGE (STOPPER FOR TIRE/WAZUMI)	1				

# AT-146-3 4301110025 UPPER

Pos No.	Parts No	Parts Name	Qty	Unit	Technical Data	Serial No (Start)	Serial No (End)	Remarks
2	42775712003	GUARD,SIDE	1					
3	42775711004	GUARD,SIDE	1					
4	42775690600	SUPPORT	1					
5	90171112040	BOLT	4		M12X40			
6	90302041201	WASHER,SPRING	4		12			
7	37000579050	PLATE	4				228569	
	90303501201	WASHER,PLAIN	4		12	228570	228630	
	37000586760	WASHER,PLAIN	4		12	228631		
8	90171110030	BOLT	6		M10X30			
9	90201781000	NUT	8		M10			
10	90302041001	WASHER,SPRING	14		10			
11	90303071001	WASHER,PLAIN	12		10			
14	90101208012	BOLT	3		M8X12			
15	90302040801	WASHER,SPRING	3		8			
16	90303070801	WASHER,PLAIN	5		8		229278	
	90303070801	WASHER,PLAIN	1		8	229279		
17	42775710300	SUPPORT	2					
18	90172110020	BOLT,HEXAGON SOCKET	2		M10X20			
19	90201200800	NUT	8		M8			
20	37000520150	PLATE	6					
22	42775690401	SUPPORT	1					
23	90101208025	BOLT	3		M8X25			
24	42775710100	BOX,TOOL	1					
25	90186208035	BOLT,FLANGE	4		M8X35			
26	42775710201	WEIGHT	1					
27	90101210085	BOLT	2		M10X85			
29	37000547660	PLATE	4		T=2.3	229279		

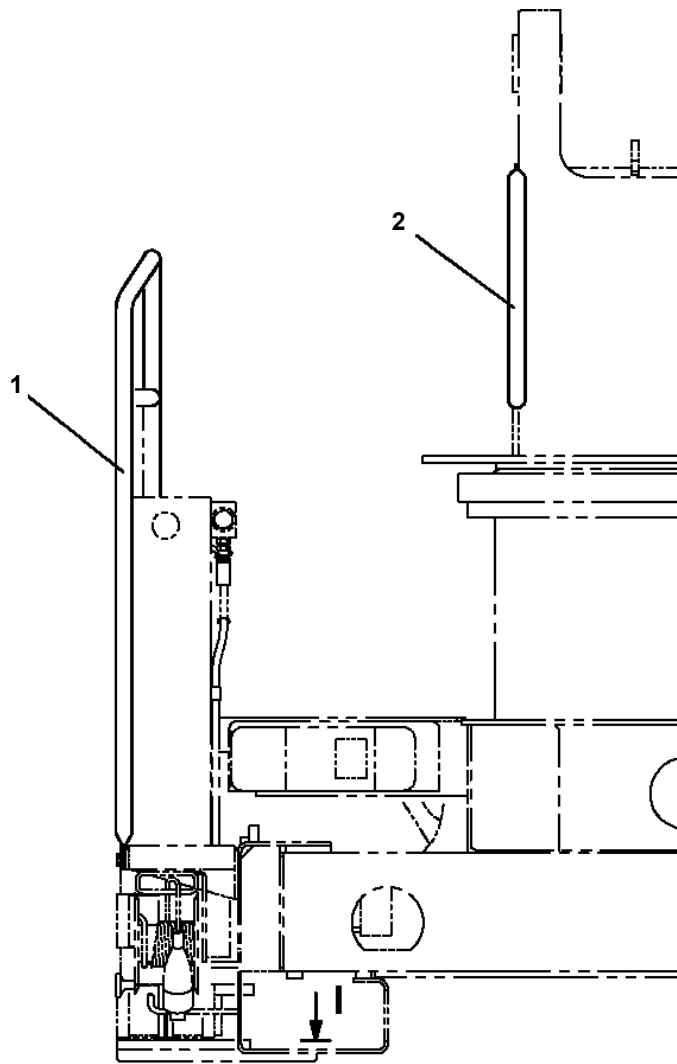
# AT-146-3 43011100025 UPPER

Pos No.	Parts No	Parts Name	Qty	Unit	Technical Data	Serial No (Start)	S
1	42738221000	WOOD BLOCK (KANSAI DENRYOKU/DETACHABLE)	1				
	42738221000	WOOD BLOCK (KANSAI DENRYOKU/DETACHABLE)	1				

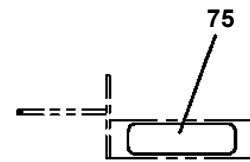
# AT-146-3 43011100025 UPPER

Pos No.	Parts No	Parts Name	Qty	Unit	Technical Data
1	42971852000	BLOCK,WOOD (LEFT REAR:KANSAI DENRYOKU/DETACHABLE TYPE)	1		
2	42738221000	WOOD BLOCK (KANSAI DENRYOKU/DETACHABLE)	3		

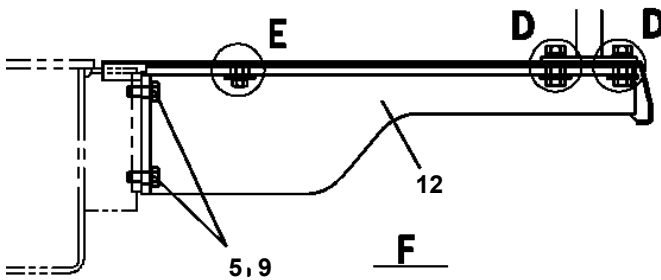
**AT-146-3 43011100025 UPPER**  
**PX1351133-02 BOX, TOOL (LEFT/F:1-DECKER,R:NONE)**



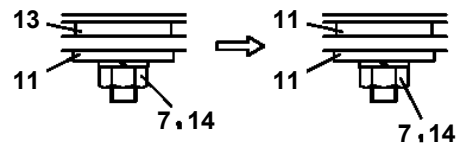
**H**



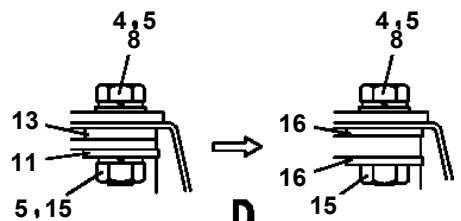
**I**



**F**

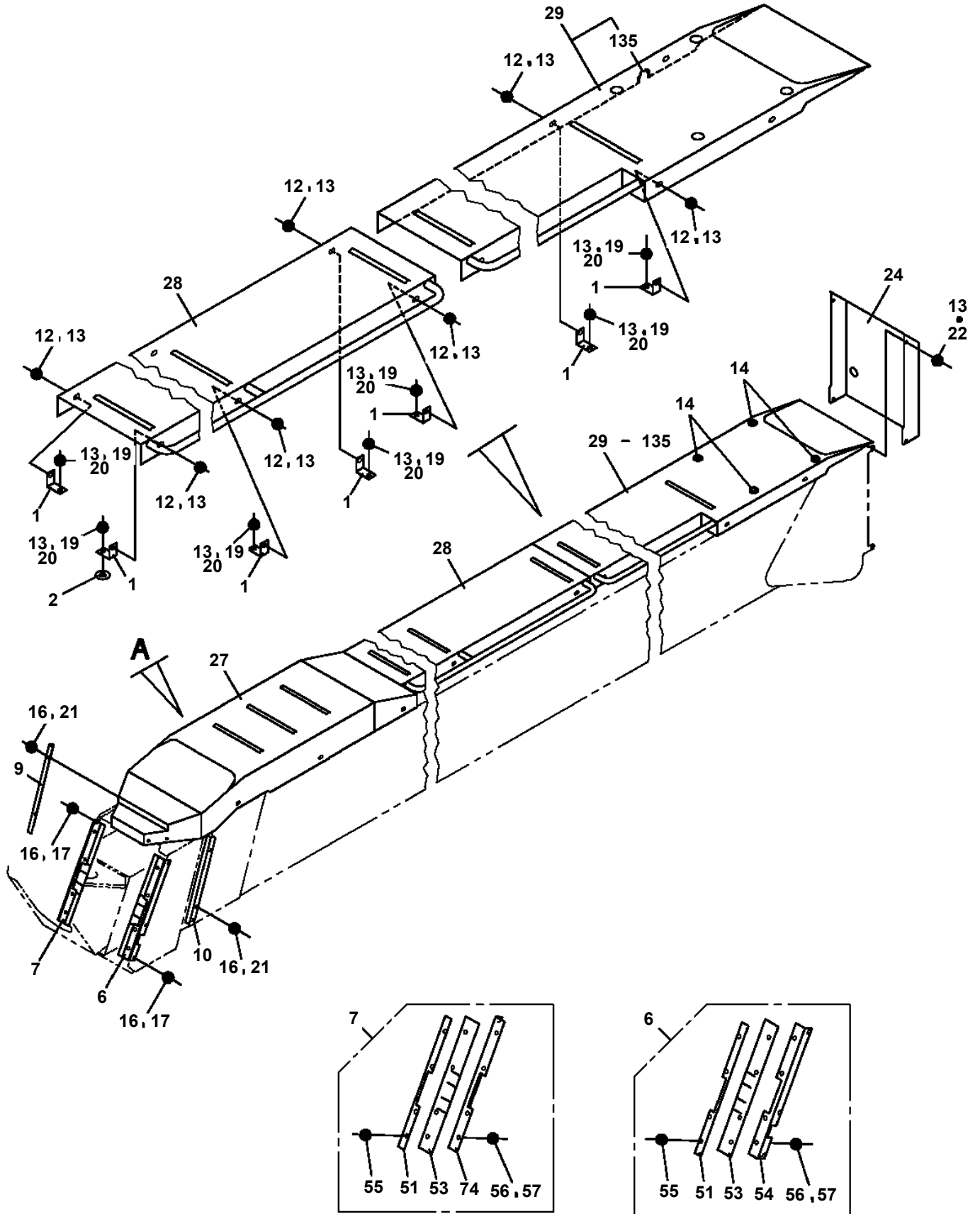


**E**  
(1ヶ所)



**D**  
(2ヶ所)

**AT-146-3 43011100025 UPPER  
PX5260016-02 MOUNT ASSY,COVER (BOOM)**



**展開圖有**  
**ILLUSTRATED BREAKDOWN NO. 27**

# AT-146-3 43011100025 UPPER

Pos No.	Parts No	Parts Name	Qty	Unit	Technical Data	Serial No (Start)	Serial No
11	(*****)	LAMP (MARKER)	1				
13	(*****)	LAMP (WORKING:BOOM REST LEFT SIDE)	1				
19	(*****)	SWITCH ASSY (AUTOMATIC STOWING)	1				
30	(*****)	COVER,BUCKET (INNER CASE)	1				
31	(*****)	GUIDE ASSY (BOOM SIDE HOOK GUIDE RAIL)	1				

# AT-146-3 43011100025 UPPER

Pos No.	Parts No	Parts Name	Qty	Unit	Technical Data	Serial No (Start)	Serial No (End)	R
1	42470180000	CLAMP HEAD (IZUMI 12TON 2.5M)	1					

# AT-146-3 43011100025 UPPER

Pos No.	Parts No	Parts Name	Qty	Unit	Technical Data	Serial No (Start)	Serial No
1	42472640000	CLAMP HEAD (IZUMI 8TON 3.5M ELECTRIC)	1				

# AT-146-3 43011100025 UPPER

Pos No.	Parts No	Parts Name	Qty	Unit	Technical Data	Serial No (Start)	Serial
1	42470030000	CUTTER HEAD (IZUMI 6.4TON 2.5M ELECTRIC)	1				

# AT-146-3 43011100025 UPPER

Pos No.	Parts No	Parts Name	Qty	Unit	Technical Data	Serial No (Start)	Serial No (End)	Remarks	P
1	42472670000	ROPE (SAFETY,WHITE)	1						

**AT-146-3 43011100025 UPPER**

Pos No.	Parts No	Parts Name	Qty	Unit	Technical Data	Serial No (Start)	Serial No (End)	Remarks	Pages
1	42470121000	ARM ASSY	1						
2	42470421000	HOLDER	3						
3	42470123000	CLAMP ASSY	1						
5	42476851000	SUPPORT	1						
6	90101216130	BOLT	1		M16X130				
7	90303071601	WASHER,PLAIN	2		16				
8	90201201600	NUT	2		M16				
9	42220011200	SUPPORT	1						
31	42470121100	ARM	1						
32	42470121200	CAP	2						

# AT-146-3 43011100025 UPPER

Pos No.	Parts No	Parts Name	Qty	Unit	Technical Data	Serial No (Start)	Serial No (End)	Remarks	Pages
2	80560057000	BALL,STEEL	1		1/4				
3	36052132020	SEAT,SPRING	1				228668		
4	12235104020	SPRING	1				228668		
5	80316030020	PLUG	1		PT1/8		228668		
7	36052132030	PIN	1						
8	37001200350	SPRING	1						
9	90104212020	BOLT	1		M12X20				
10	90201201200	NUT	1		M12				
11	91002800700	O-RING	1		1B P7				
12	80316030010	PLUG	14		NPTF1-16		228799		
	36053842040	PLUG	14			228800			
13	36052132040	ORIFICE	1		1/16				
24	36042042030	SPRING	1			228669			
25	36053842020	PLUG	1			228669	228804		
	36053842021	PLUG	1			228805			
100	36053842000	BOOSTER (JOINT)	1						

# AT-146-3 43011100025 UPPER

Pos No.	Parts No	Parts Name	Qty	Unit	Technical Data	Serial No (Start)	Serial No (End)	Remarks	Pages
1	42502890102	COVER	1						
2	42502890200	COVER	2						
3	90183108030	BOLT	12		M8X30				
4	90270200800	NUT	12		M8				
5	90303070801	WASHER,PLAIN	12		8				

# AT-146-3 43011100025 UPPER

Pos No.	Parts No	Parts Name	Qty	Unit	Technical Data	Serial No (Start)	Serial
1	42470367770	HOSE,AIR	1		3M		
2	42470362100	JOINT,SELF SEALING	1				
3	42470362200	PUMP	1				
4	42470367780	JOINT	1				
10	42471561000	HOSE,BOOSTER (SMALL,WITH AIR BALLOON)	1				

# AT-146-3 43011100025 UPPER

Pos No.	Parts No	Parts Name	Qty	Unit	Technical Data	Serial No (Start)	Serial No
1	80456210600	JOINT,SELF SEALING	1				
2	42470367790	HOSE ASSY	1		5M		
3	42470362100	JOINT,SELF SEALING	1				
4	42470367800	HOSE,AIR	1		5M		
5	42470362200	PUMP	1				
6	80456240600	JOINT,SELF SEALING (WITH DUST CAP)	1				
7	42470367840	TUBE	2		25X0.15M		
8	42470367780	JOINT	1				
21	42471437520	CAP	1				
50	42470363000	HOSE,BOOSTER (WITH AIR BALLOON,5M)	1				

# AT-146-3 43011100025 UPPER

Pos No.	Parts No	Parts Name	Qty	Unit	Technical Data	Serial No (Start)	Serial No (End)
1	42472191000	WRENCH,IMPACT	1				
2	80460003080	JOINT	2		S,G3/8-3/4-16UNF		
3	37002417130	HOSE	2		L=2900		
4	91810132530	FASTENER	5				
5	80456020610	JOINT,SELF SEALING	1				
6	42340013200	JOINT,SELF SEALING (WITH CAP)	1				
11	42340017550	CAP (DUST)	1				
16	42340017510	CAP (DUST)	1				

# AT-146-3 43011100025 UPPER

Pos No.	Parts No	Parts Name	Qty	Unit	Technical Data	Serial No (Start)	Serial No (End)	Remarks
1	42474160000	HANGER (FOR BUCKET)	1					

# AT-146-3 43011100025 UPPER

Pos No.	Parts No	Parts Name	Qty	Unit	Technical Data	Serial No (Start)	Serial No (End)	Remarks
1	42472530000	BOX,TOOL (FOR BUCKET)	1					

# AT-146-3 43011100025 UPPER

Pos No.	Parts No	Parts Name	Qty	Unit	Technical Data	Serial No (Start)	Serial No (E
1	42475965000	COVER,WINCH (GRAY,FOR KANDENKO)	1				

CLICK HERE TO **DOWNLOAD** THE COMPLETE MANUAL

- Thank you very much for reading the preview of the manual.
- You can download the complete manual from: [www.heydownloads.com](http://www.heydownloads.com) by clicking the link below



- Please note: If there is no response to CLICKING the link, please download this PDF first and then click on it.

CLICK HERE TO **DOWNLOAD** THE COMPLETE MANUAL