

## **AT-146-2A 42095900003 UPPER**

**PB3000197-00 POWER UNIT**  
**PD2000078-00 SWING UNIT**  
**PF1000606-00 WINCH SYSTEM**  
**PG2000182-00 BOOM UNIT**  
**PH1000463-01 SAFETY DEVICES (MOTION CONTROLLER)**  
**PJ3000272-00 BUCKET SYSTEM**  
**PJ5000003-00 BOOSTER UNIT**  
**PK2000875-00 FRAME UNIT**  
**PO1000127-01 INDICATION PLATES**  
**PW1000109-01 ACCESSORIES & TOOLS**  
**PX1000929-01 MOUNTING PARTS**  
**PY1001175-00 OPTIONS,1**  
**PY2000059-06 OPTIONS,2**  
**ASSEMBLY**

CLICK HERE TO **DOWNLOAD** THE COMPLETE MANUAL

- Thank you very much for reading the preview of the manual.
- You can download the complete manual from: [www.heydownloads.com](http://www.heydownloads.com) by clicking the link below



- Please note: If there is no response to CLICKING the link, please download this PDF first and then click on it.

CLICK HERE TO **DOWNLOAD** THE COMPLETE MANUAL

# AT-146-2A 42095900003 UPPER

Pos No.	Parts No	Parts Name	Qty	Unit	Technical Data	Serial No (Start)	Serial No (End)	Remarks
1	36191070001	MOTION CONTROLLER (AMC)	1					

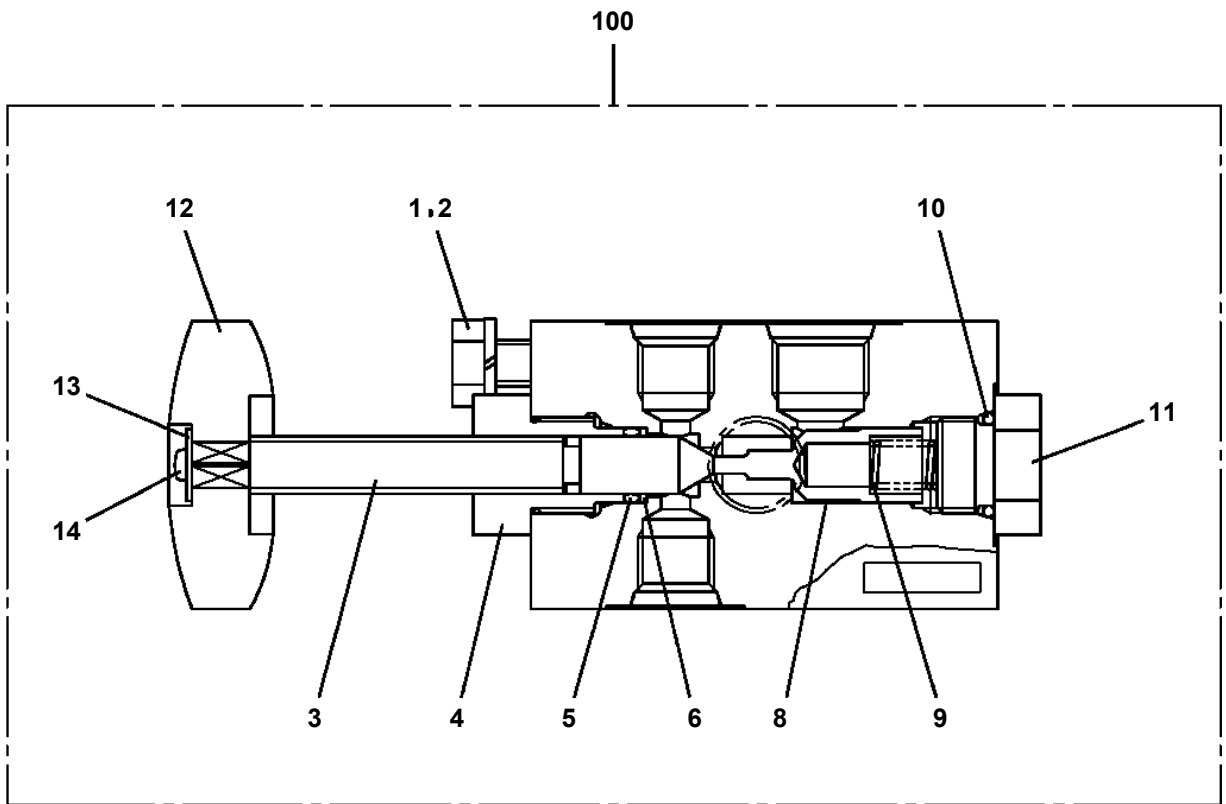
# AT-146-2A 42095900003 UPPER

Pos No.	Parts No	Parts Name	Qty	Unit	Technical Data	Serial No (Start)	Serial No (End)	Remarks	Pages
1	(*****)	ACCESSORIES	1						000206

## **AT-146-2A 42095900003 UPPER**

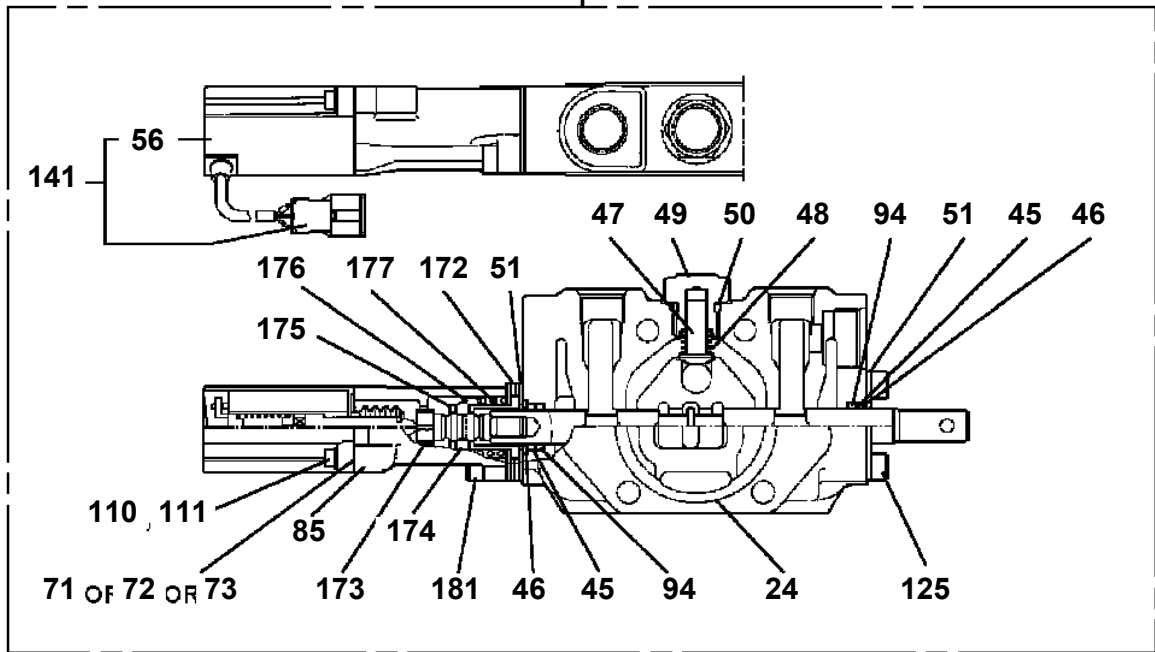
PG1410079-02 COVER,BOOM (TOP/FRP,WHITE)  
PG1410093-02 COVER,BOOM  
PH1480060-00 MOTION CONTROLLER (AMC)  
PH1540019-04 FOOT SWITCH (OPTION)  
PH1700232-00 VIEW SYSTEM (COLOR MONITOR,ICHIKOH)  
PH1700233-00 VIEW SYSTEM (COLOR MONITOR,ICHIKOH)  
PH1700234-00 VIEW SYSTEM (COLOR MONITOR,ICHIKOH)  
PH1700235-00 VIEW SYSTEM (MONITOR)  
PH1700236-00 VIEW SYSTEM (MAIN UNIT)  
PH1700237-00 VIEW SYSTEM (CAMERA)  
PH1700238-00 VIEW SYSTEM (MONITOR)  
PH1700239-00 VIEW SYSTEM  
PH1700240-00 VIEW SYSTEM (MONITOR)  
PH1700241-00 VIEW SYSTEM (MAIN UNIT)  
PH1710015-00 DISPLAY  
PH1710016-00 DISPLAY  
PH1710017-00 DISPLAY  
PH1750007-01 CAMERA  
PH5031064-00 HARNESS  
PH5031067-00 HARNESS  
PH5031068-00 HARNESS  
PH5031069-00 HARNESS  
PH5031070-00 HARNESS  
PH5031072-00 HARNESS  
PH5031073-00 HARNESS  
PH5031078-00 HARNESS  
PH5031080-00 HARNESS  
PH5031081-00 HARNESS  
PH5031372-00 HARNESS (FOR DETECTOR,O/R LENGTH)  
PH5031797-00 HARNESS  
PH5032287-00 HARNESS  
PH5032296-00 HARNESS  
PH5032326-00 HARNESS  
PH5032327-00 HARNESS  
PH5032328-00 HARNESS  
PH5032593-00 HARNESS  
PH5034356-00 HARNESS  
PH5034365-00 HARNESS  
PH5034371-00 HARNESS  
PI1010074-00 MOTOR,HYDRAULIC (SWING)  
PI1010158-00 MOTOR,HYDRAULIC  
PI1010177-00 MOTOR,HYDRAULIC  
PI1100061-00 VALVE,RELIEF  
PI1100122-00 VALVE,RELIEF  
PI1100134-01 VALVE,RELIEF  
PI1100135-00 VALVE,RELIEF  
PI1120199-02 VALVE,SOLENOID  
PI1120201-02 VALVE,SOLENOID  
PI1120238-02 VALVE,SOLENOID  
PI1140133-01 VALVE,CHECK  
PI1140136-01 VALVE,CHECK  
PI1140212-00 VALVE,CHECK  
PI1140213-00 VALVE,CHECK  
PI1140227-00 VALVE,CHECK  
PI1240030-00 VALVE  
PI1250141-00 VALVE,COUNTERBALANCE  
PI1250153-00 VALVE,COUNTERBALANCE  
PI1280041-01 VALVE,PILOT CHECK  
PI1300031-00 FILTER,OIL  
PI1300041-00 FILTER,OIL  
PJ3010104-00 BUCKET  
PJ3010107-00 BUCKET (INNER CASE)  
PJ3020033-03 FRAME  
PJ3040024-00 OPE.ASSY

**AT-146-2A 42095900003 UPPER  
PB1320319-00 VALVE,MANUAL CONTROL**

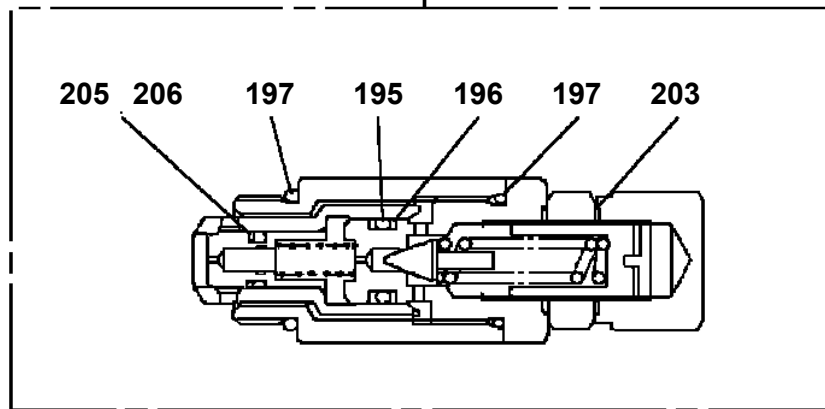


**AT-146-2A 42095900003 UPPER  
PB1320572-01 VALVE,MANUAL CONTROL**

9



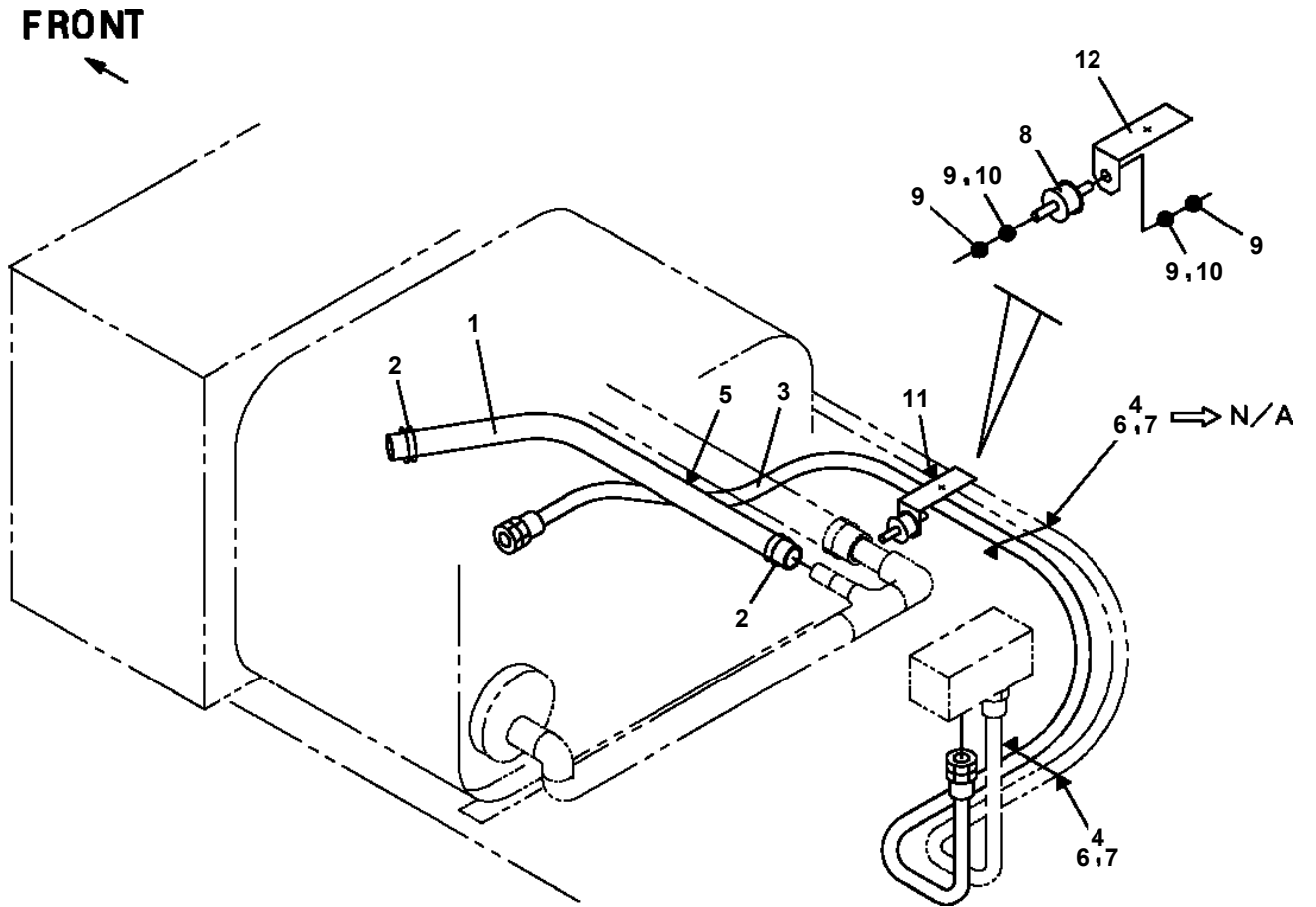
10



# AT-146-2A 42095900003 UPPER

Pos No.	Parts No	Parts Name	Qty	Unit	Technical Data	Serial No (Start)	Serial No (End)
1	(*****)	POWER SUPPLY (MOUNT/MOTOR UNIT)	1				
2	(*****)	COVER (MOTOR UNIT)	1				
3	(*****)	ELEC.ASSY (MOTOR UNIT)	1				
4	(*****)	PIPING,LOWER (MOTOR UNIT)	1				

AT-146-2A 42095900003 UPPER  
PB1411722-01 PIPING,LOWER



## AT-146-2A 42095900003 UPPER

Pos No.	Parts No	Parts Name	Qty	Unit	Technical Data	Serial No (Start)	Serial No (End)
1	42614071001	OUTRIGGER (FRONT,L/INNER CASE)	1				
2	42614073001	OUTRIGGER (FRONT,R/INNER CASE)	1				
3	37002012620	PLATE,SLIDE	2				
4	31611640150	SPRING	2				
5	90171108016	BOLT	4		M8X16		
6	37000504780	PLATE	4		T=0.6		
7	90302041001	WASHER,SPRING	32		10		
8	90186208010	BOLT,FLANGE	4		M8X10		
9	42612850300	PLATE	4				
11	90101206014	BOLT	4		M6X14		
12	90302040601	WASHER,SPRING	4		6		
13	42612850400	BLADE	2				
14	42613350010	SUPPORT	2				
16	42613350100	PLATE	16				
18	37000581940	PLATE	48		T=0.5		
19	37000506590	PLATE	52		T=1.6		
20	90303070601	WASHER,PLAIN	4		6		
21	37002011280	PLATE,SLIDE	18		T=9.5		
22	90101208012	BOLT	4		M8X12		
23	90302040801	WASHER,SPRING	4		8		
24	37000575240	PLATE	2		T=3		
25	37000178190	PIN	2				
27	90171110025	BOLT	32		M10X25		

# AT-146-2A 42095900003 UPPER

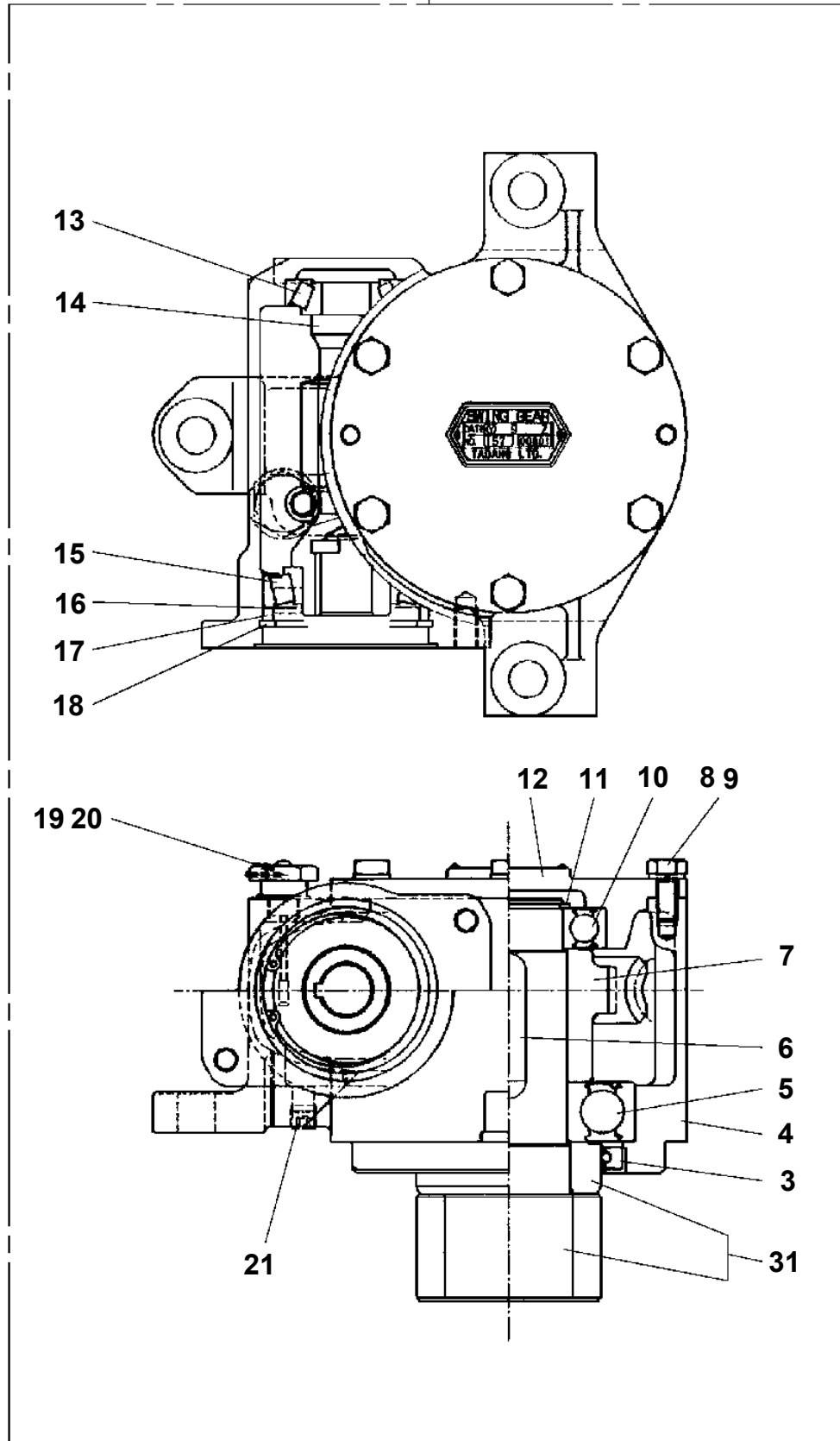
Pos No.	Parts No	Parts Name	Qty	Unit	Technical Data	Serial No (Start)	Serial No (End)	Re
1	90209201800	NUT	1		M18			
2	91684004500	PACKING	2					
3	91002802000	O-RING	1		1B P20			
4	36042810400	PISTON	1					
5	36042810200	ROD	1					
6	36042811000	CYLINDER	1					
7	36042810300	COVER,ROD	1					
8	91002904000	O-RING	1		1B G40			
9	91694003000	PACKING	1					
10	91660003001	SEAL,DUST	1					
11	90302041801	WASHER,SPRING	1		18			
12	90303071801	WASHER,PLAIN	1		18			
13	91002904500	O-RING	1		1B G45			
14	91411203501	RING,BACKUP	2					
30	36042819900	PACKING SET	1		30X45			
100	36042810000	CYLINDER,EXTENSION (FRONT)	1					

# AT-146-2A 42095900003 UPPER

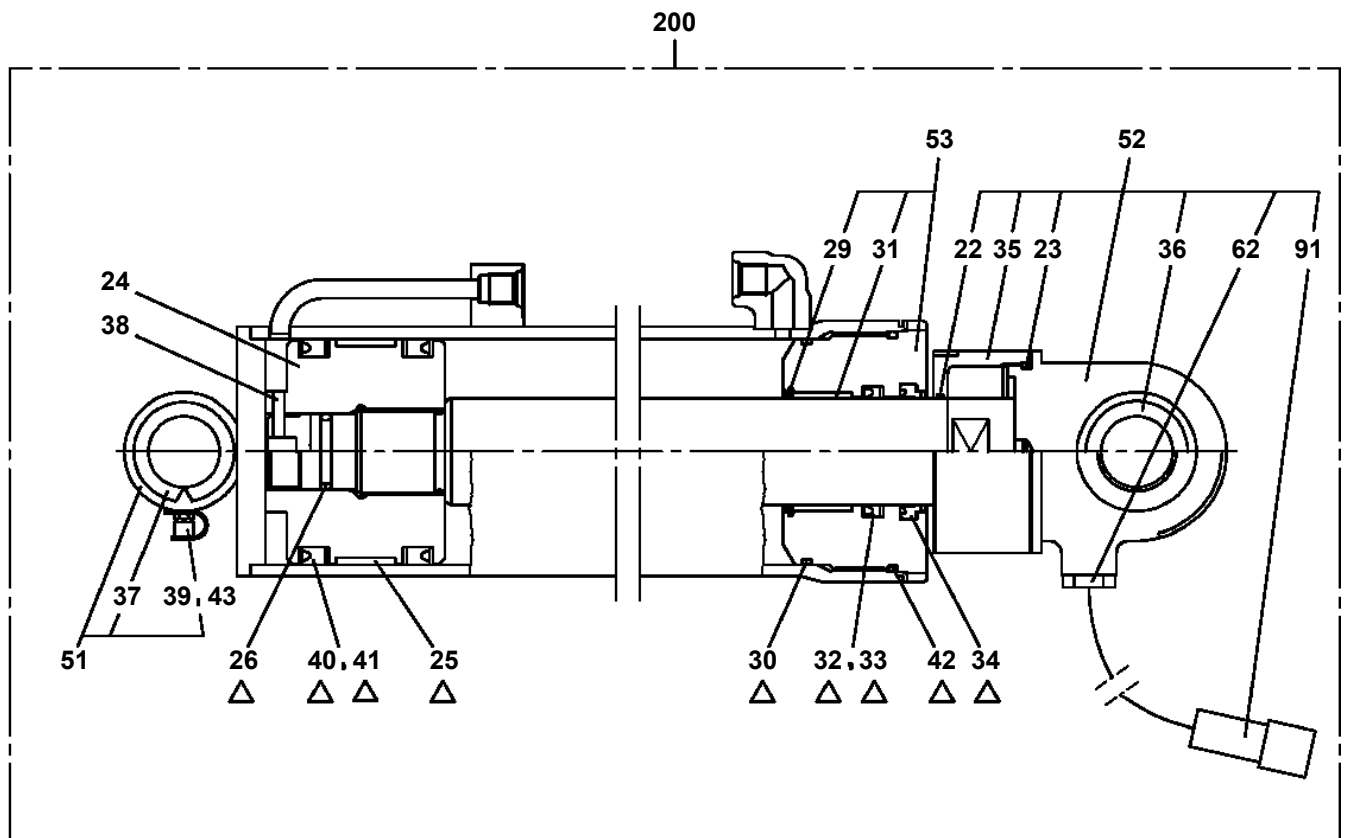
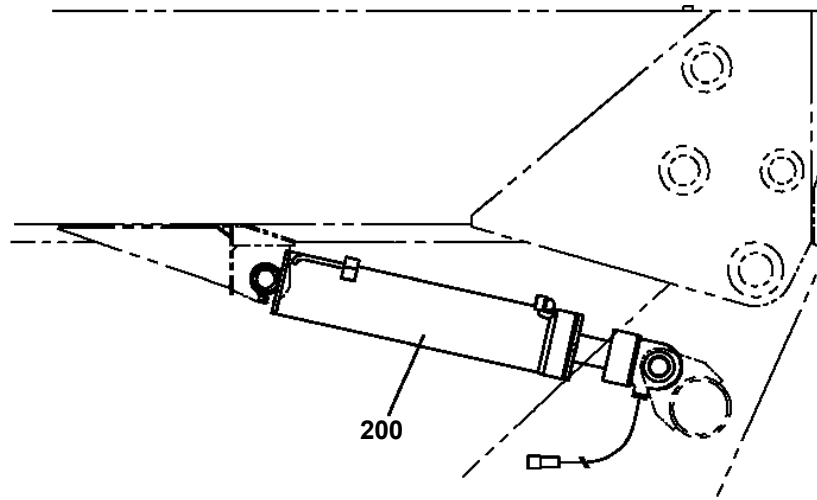
Pos No.	Parts No	Parts Name	Qty	Unit	Technical Data	Serial No (Start)	Serial No (End)	R
1	37002467090	HOSE	1		L=500			
2	37002475950	HOSE	1		L=3135			
3	37002409110	HOSE	1		L=580			
4	37002447250	HOSE	1		L=3200			
6	37002474660	HOSE	2		L=1150			
9	37002468320	HOSE	1		L=2730			
10	37002474530	HOSE	2		L=3780			
11	37002411280	HOSE	1		L=3550			
12	37002436880	HOSE	1		L=3930			
13	37002474540	HOSE	2		L=4280			
16	90171110130	BOLT	2		M10X130			
17	90302041001	WASHER,SPRING	2		10			
18	80481004060	JOINT	1		S G3/4-G1/2			
19	91002801800	O-RING	1		1B P18			
21	80400160129	JOINT	1					
22	91002801400	O-RING	1		1B P14			
23	80430620800	JOINT	1					
24	91002801100	O-RING	12		1B P11			
25	81408000241	PIPE,STEEL	1	M	18X1.9T			
26	81408000160	PIPE,STEEL	1	M	12X1.4T			
27	81408000130	PIPE,STEEL	1	M	10X1.8T			
28	80430620400	JOINT	4					
29	37000925950	JOINT	6		S,G1/4-G1/4			
32	80481302025	JOINT	6		L,G1/4-G1/4			
33	37000600700	CLAMP	13		12X3			
34	90280200600	NUT,FLANGE	14		M6			
35	82100002019	CLAMP	12		WR40	227924	227923	
	82100002019	CLAMP	8		WR40			
37	90280200800	NUT,FLANGE	9		M8			
40	82100002010	CLAMP	1		WR15			
42	82100001807	TUBE,CORRUGATE	1	M	28			
43	82100001804	TUBE,CORRUGATE	1	M	15			
44	82100001806	TUBE,CORRUGATE	2	M	22			
45	91810130250	FASTENER	30					
47	37002474550	HOSE	2		L=1030			
48	37002416170	HOSE	1		L=875			
49	37002430140	HOSE	1		L=660			
50	37000714500	CLAMP ASSY	1		25X2			
51	90186206016	BOLT,FLANGE	2		M6X16			
52	82100002012	CLAMP	1		WR18			
53	37000924960	JOINT (WITH O-RING)	2					
54	42646650010	ORIFICE	2					
56	82100001803	TUBE,CORRUGATE	1	M	13			
58	82100002039	CLAMP	2					
59	37000713480	CLAMP	4			227924		
81	42645132100	JOINT	1					
82	80302090241	FITTING	1		KCO18-040N			
83	91002801800	O-RING	9		1B P18			
84	80400160133	JOINT	2					
85	91002802400	O-RING	2		1B P24			
86	80302090101	FITTING	2		KCO10-020N			
87	91002801100	O-RING	12		1B P11			
88	80316070080	PLUG	1		PF1/2			
89	80456950401	JOINT,SELF SEALING (COUPLER)	1					
101	37000927760	JOINT	1					
102	80302090151	FITTING	1		KCO12-040N			
104	80400160127	JOINT	3					
106	80430620400	JOINT	1					
111	80303130241	FITTING,ELBOW	1		KLO18-040E			
112	80491304040	JOINT (WITH O-RING)	1					
116	80303130171	FITTING,ELBOW	1		KLO12-040E			
117	37000908730	JOINT (WITH O-RING)	4		L,G3/8-G1/4			
118	80491303020	JOINT (WITH O-RING)	4		L,G3/8-G1/4			

AT-146-2A 42095900003 UPPER  
PD1010160-00 REDUCER, SWING SPEED

50



**AT-146-2A 42095900003 UPPER  
PE1050112-01 CYLINDER,LEVELING (LOWER)**



Δ:PACKING SET KEY NO.54 (KEY NO.25,26,30,32,33,34,40,41,42)

# AT-146-2A 42095900003 UPPER

Pos No.	Parts No	Parts Name	Qty	Unit	Technical Data	Serial No (Start)	Serial No (End)	Remarks	Pages
1	42220011200	SUPPORT	1						
2	90201201600	NUT	1		M16				
3	90303071601	WASHER,PLAIN	1		16				

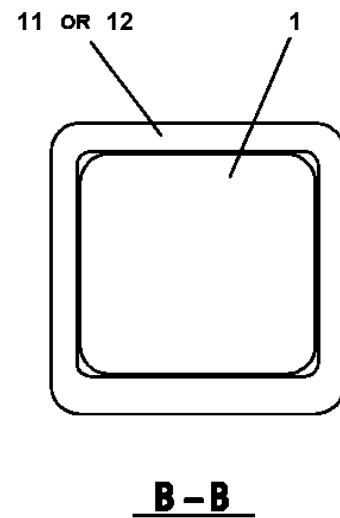
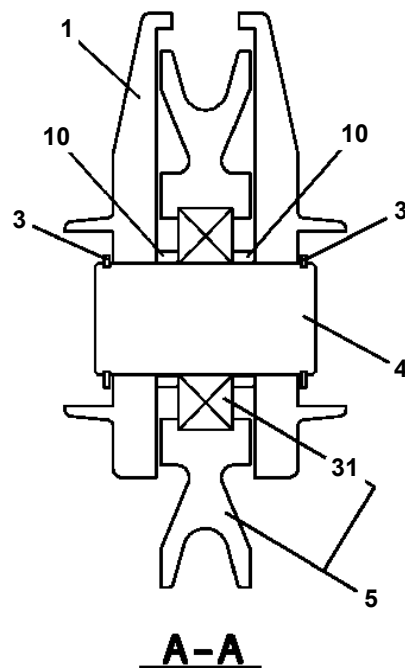
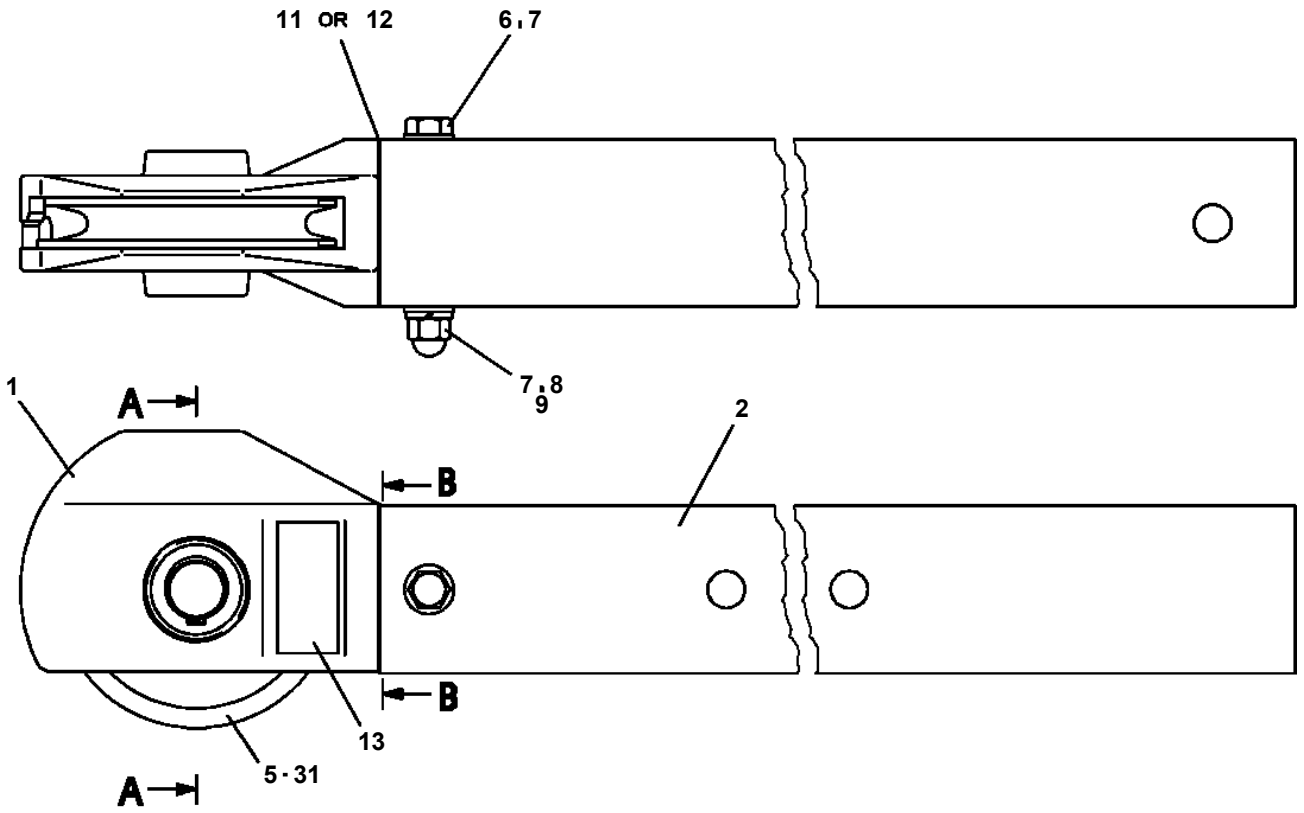
# AT-146-2A 42095900003 UPPER

Pos No.	Parts No	Parts Name	Qty	Unit	Technical Data	Serial No (Start)	Serial No (End)	Remarks	Pages
1	37001002260	SHEAVE	1						
2	37000307870	SPACER	2						
3	37000174490	PIN	1						
4	42220411000	SUPPORT	1						
5	42220410100	JIB (FRP L=1800)	1						
6	90101216130	BOLT	1		M16X130				
7	90303071601	WASHER,PLAIN	1		16				
8	90201201600	NUT	1		M16				
9	90101210016	BOLT	1		M10X16				
10	90302041001	WASHER,SPRING	1		10				
11	42220400010	GUIDE	1						
12	42220400020	GUIDE	1						
13	90183106020	BOLT	8		M6X20				
14	42220041050	PLATE,NAME	2						
15	42220400030	GUIDE	2						
21	80516006207	BEARING,BALL	1						

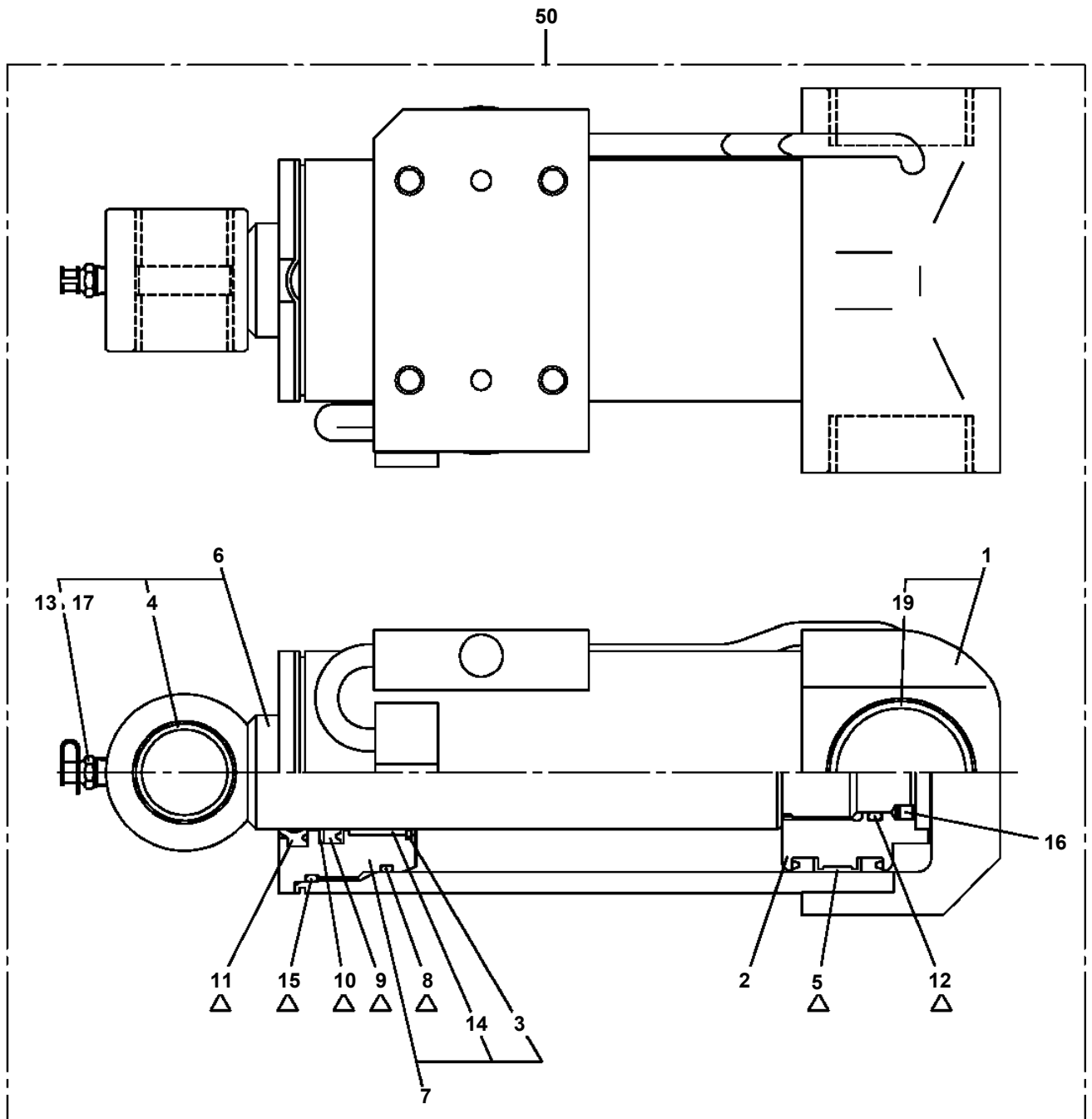
**AT-146-2A 42095900003 UPPER**

Pos No.	Parts No	Parts Name	Qty	Unit	Technical Data	Serial No (Start)	Serial No (End)	Remarks
103	90710006120	SCREW,SET	2		M6X12			
111	42312145301	GRIP	1					
112	80720105018	PIN,SPRING	1		5X18			
113	80720105028	PIN,SPRING	1		5X28			
114	42312145400	GUIDE	1					
115	37001201220	SPRING	1					
116	42312145500	PIN	1					

**AT-146-2A 42095900003 UPPER  
PF1350107-00 WINCH,JIB (FRP/INTEGRATED SUPPORT,GRAY)**



**AT-146-2A 42095900003 UPPER  
PF1360006-00 CYLINDER,WINCH JIB**



Δ:PACKING SET KEY NO.40 (KEY NO.5,8,9,10,11,12,15)

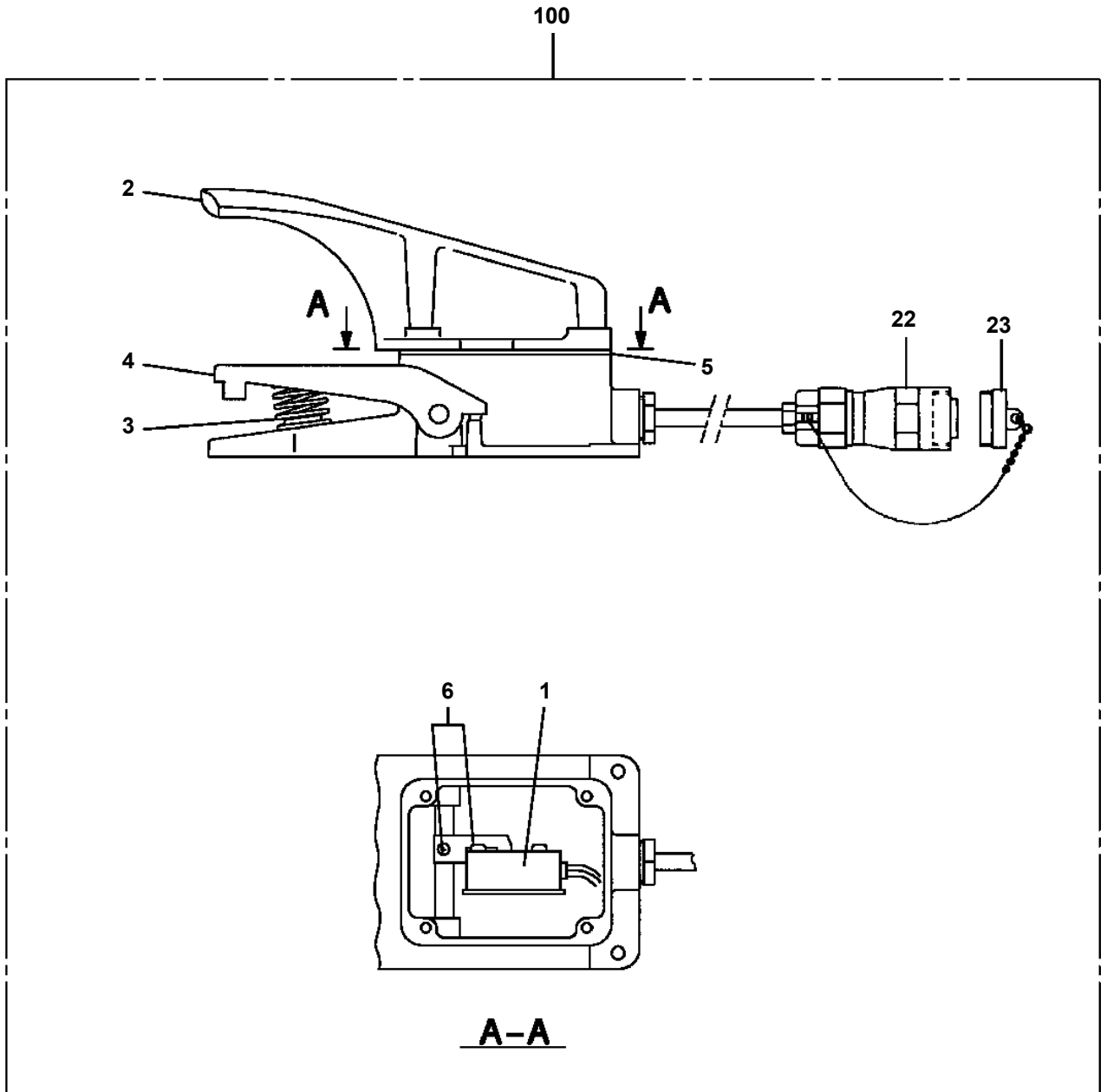
# AT-146-2A 4209590003 UPPER

Pos No.	Parts No	Parts Name	Qty	Unit	Technical Data	Serial No (Start)	Serial No (End)	Re
1	42201701000	FRAME (BOOM, TOP)	1					
2	42201632200	BOOM, TOP	1					
3	42202051000	SADDLE	1					
4	42202052000	BOOM, 2ND	1					
5	42202059510	BOOM, BASE	1					
6	37001913810	ROPE, WIRE (TESAC)	2		8X4.98M			
	37001920700	ROPE, WIRE (KOKOKU)	2		8X4.89M			
7	37001918600	ROPE, WIRE (KOKOKU)	2		10X9.415M			
	37001918590	ROPE, WIRE (TESAC)	2		10X9.415M			
9	37000115380	PIN	1					
10	90238403008	NUT, CASTLE	1		M30X2			
11	80136360050	PIN, SPLIT	1		6X50			
12	90303073001	WASHER, PLAIN	1		30			
13	42201630510	PLATE	N		T=0.8			
14	42201630520	PLATE	N		T=0.5			
15	42201630530	PLATE	N		T=0.5			
16	37000168750	PIN	1					
17	80601110300	RING, RITAINING	2		S30			
18	42201630060	PLATE	N		T=0.8			
19	42201630500	PLATE	N		T=0.5			
20	42201700400	PLATE	N		T=0.5			
21	42201700500	PLATE	N		T=0.5			
22	42201700200	ROLLER ASSY	1					
23	42201700300	ROLLER ASSY	1					
24	42201700010	PLATE	N		T=0.8			
25	42201700020	PLATE	N		T=0.5			
26	42201700030	PLATE	N		T=0.5			
27	42201700040	PLATE	N		T=0.5			
28	42202050500	ROLLER ASSY	2					
29	42201630910	PLATE	N		T=1.0			
30	42201630920	PLATE	N		T=2.3			
31	90302041001	WASHER, SPRING	56		10			
32	90180210025	BOLT, BUTTON	12		M10X25			
33	37000155100	PIN	4					
34	90171106012	BOLT	6		M6X12			
35	90302040601	WASHER, SPRING	6		6			
36	90171110025	BOLT	8		M10X25			
37	90171110065	BOLT	4		M10X65			
38	42202050010	PIN	2					
39	42200021510	PLATE	2					
40	37001007740	SHEAVE ASSY	2					
41	90172110016	BOLT, HEXAGON SOCKET	4		M10X16			
42	42201630570	PLATE	N		T=2.3			
44	42202050040	RETAINER	2					
45	37002013650	PLATE, SLIDE	2				228041	
	37002017270	PLATE, SLIDE	2			228042		
46	90171110014	BOLT	4		M10X14			
47	82455106000	NIPPLE, GREASE	5		A-M6F FE			
48	82400000459	CAP	3					
49	37000163720	PIN	2					
50	80601110200	RING, RITAINING	4		S20			
51	42201630050	PLATE	N		T=0.8			
52	42201630560	PLATE	N		T=0.5			
53	37000572020	PLATE	8					
54	42201630030	PLATE	N		T=0.8			
55	42201630540	PLATE	N		T=0.5			
56	42201630550	PLATE	N		T=0.5			
58	37002014700	PLATE, SLIDE	4					
	37002017260	PLATE, SLIDE	4			228042		228041
59	37000574810	PLATE	N		T=1.0			
60	37000574820	PLATE	N		T=1.0			
61	37000576810	PLATE	N		T=1.0			
62	37000155020	PIN	2					

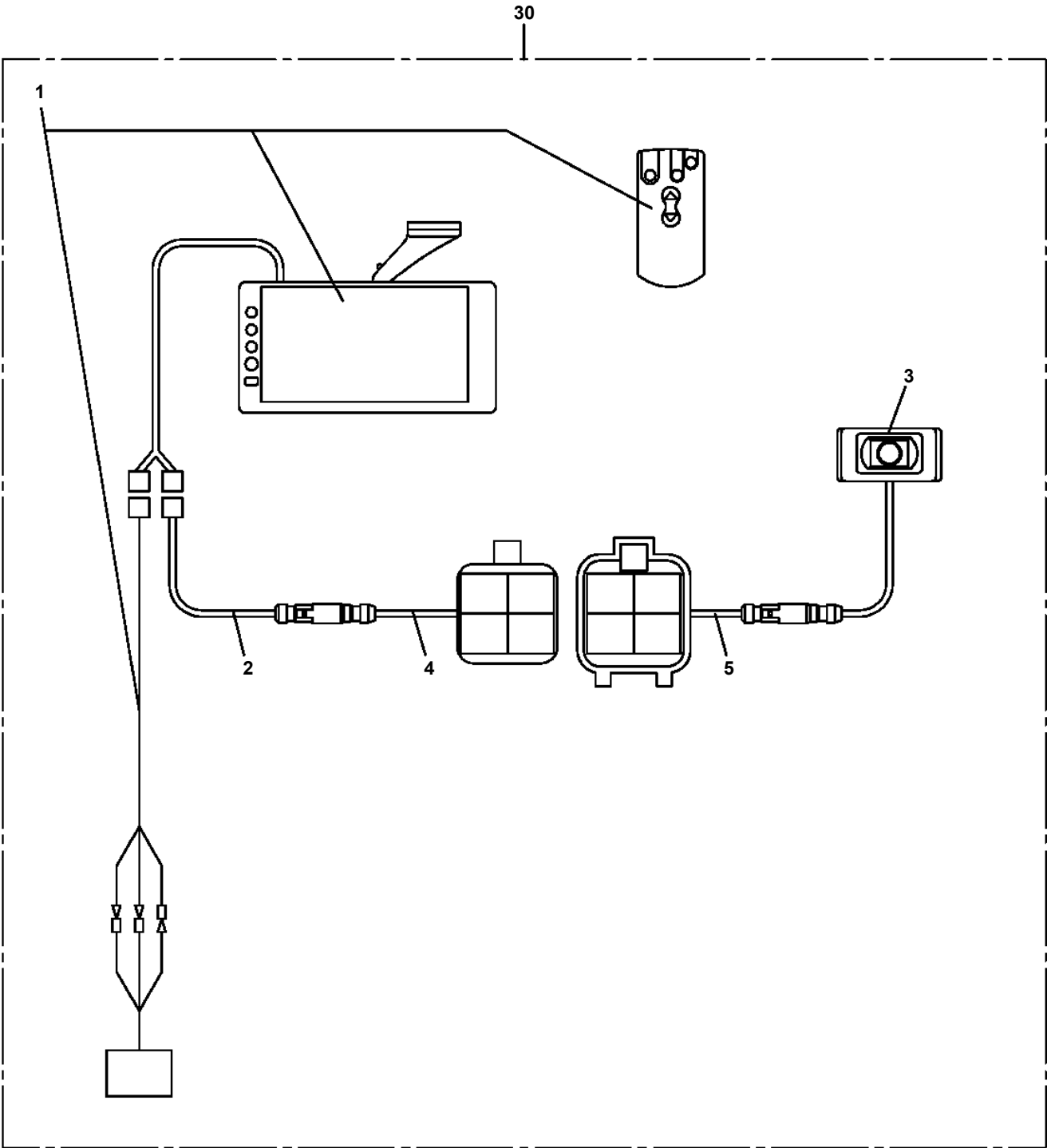
# AT-146-2A 42095900003 UPPER

Pos No.	Parts No	Parts Name	Qty	Unit	Technical Data	Serial No (Start)	Serial No (End)
101	37000928200	JOINT	1				
102	80400160129	JOINT	2				
105	80302090241	FITTING	1		KCO18-040N		
106	91002801800	O-RING	1		1B P18		

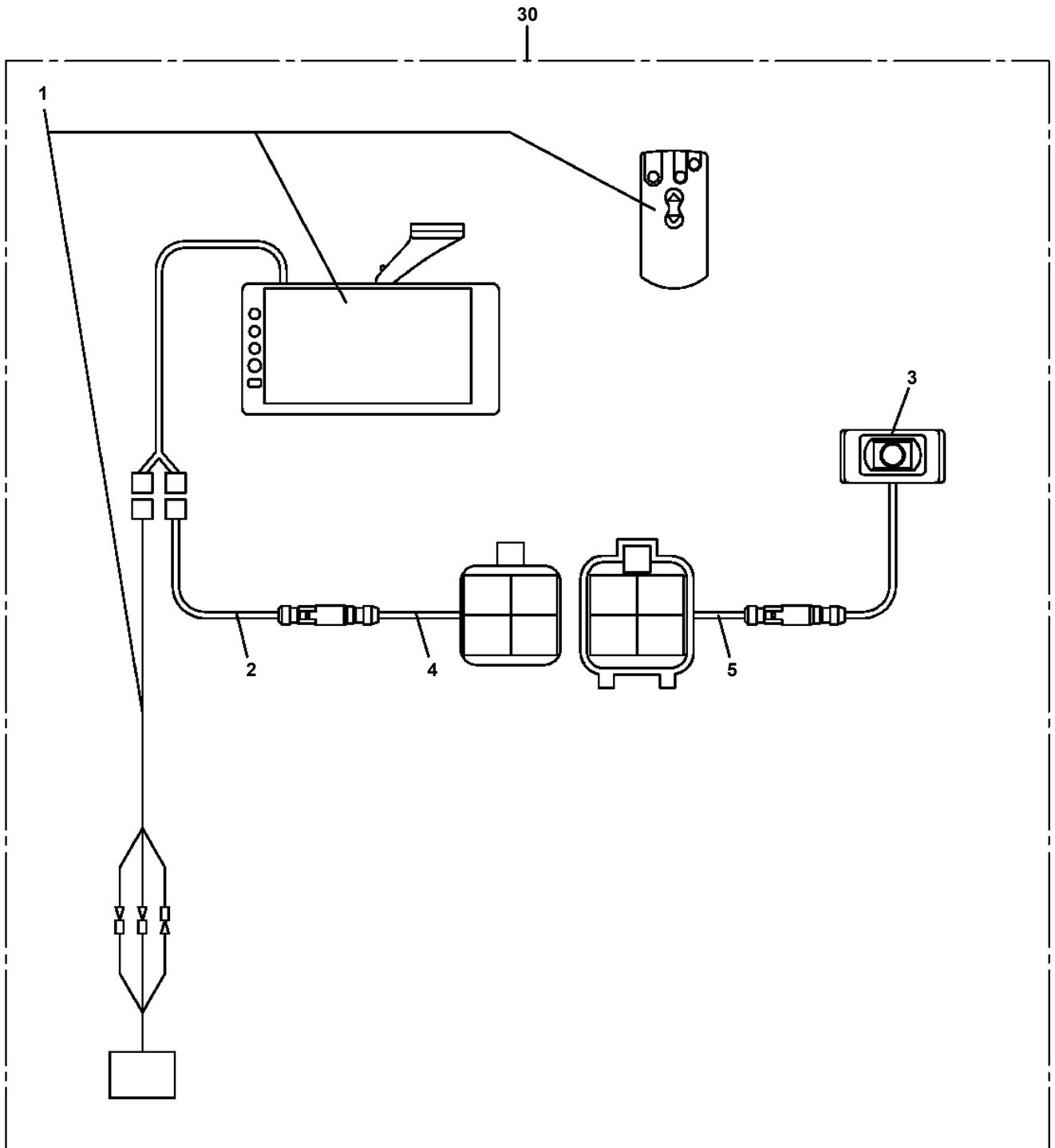
AT-146-2A 42095900003 UPPER  
PH1540019-04 FOOT SWITCH (OPTION)



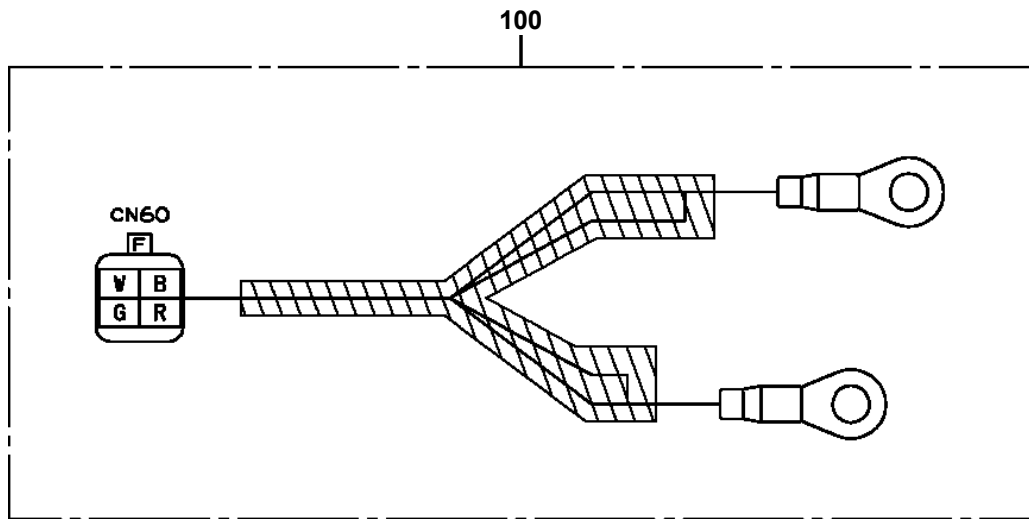
**AT-146-2A 42095900003 UPPER  
PH1700236-00 VIEW SYSTEM (MAIN UNIT)**



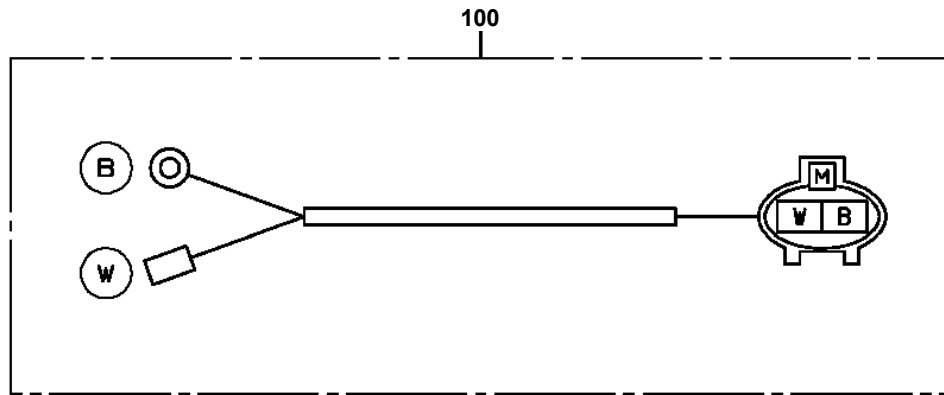
**AT-146-2A 4209590003 UPPER  
PH1700241-00 VIEW SYSTEM (MAIN UNIT)**



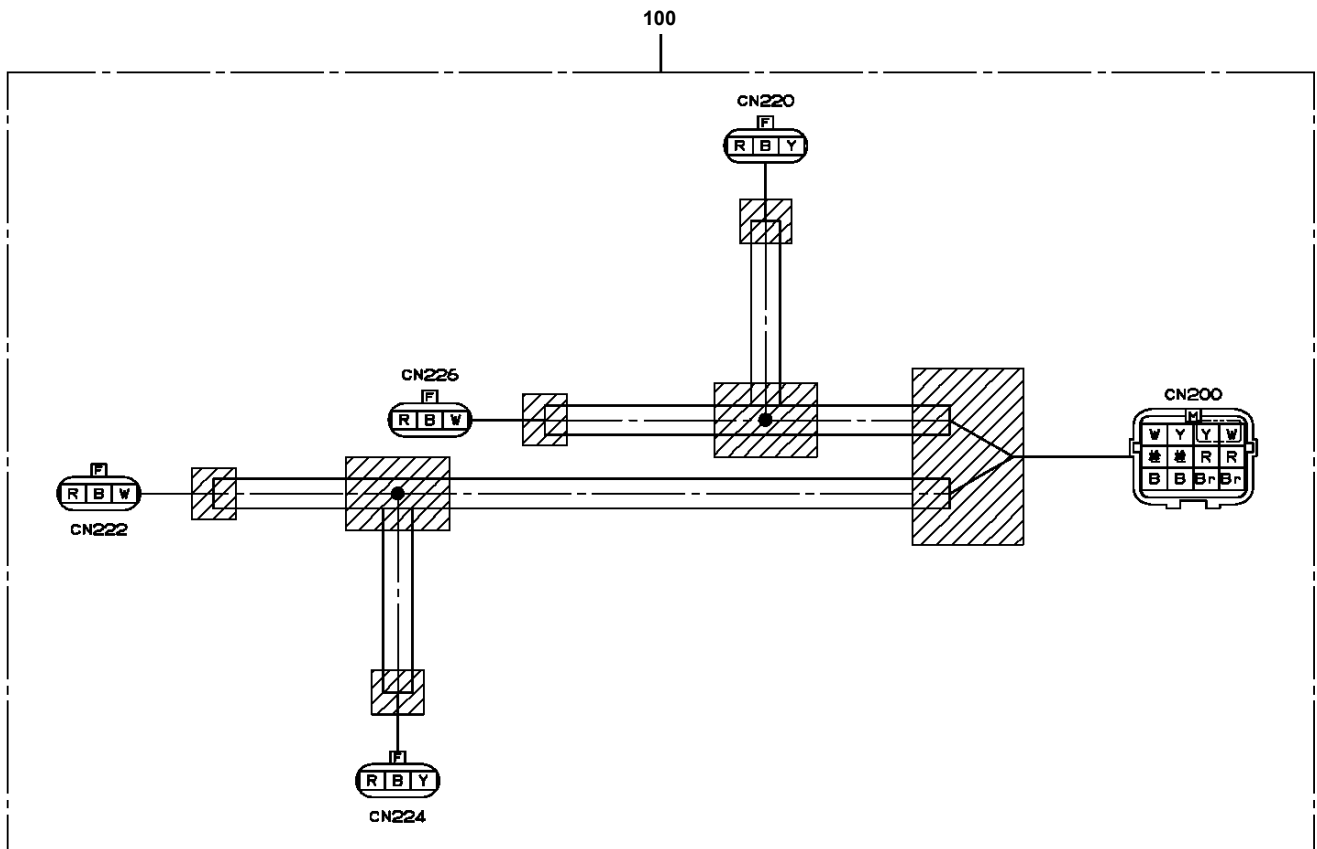
AT-146-2A 42095900003 UPPER  
PH5031064-00 HARNESS



**AT-146-2A 42095900003 UPPER  
PH5031072-00 HARNESS**



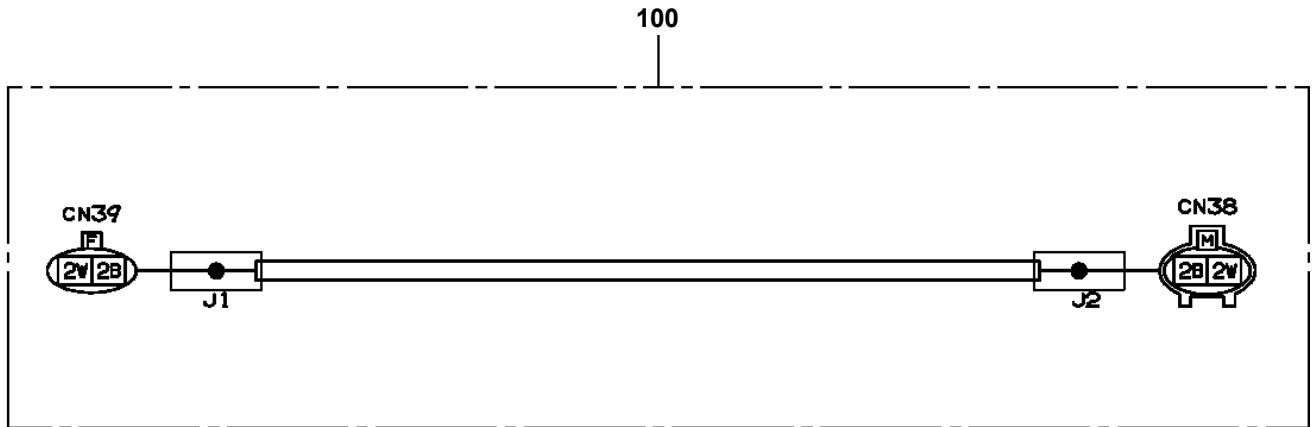
**AT-146-2A 42095900003 UPPER  
PH5031372-00 HARNESS (FOR DETECTOR,O/R LENGTH)**



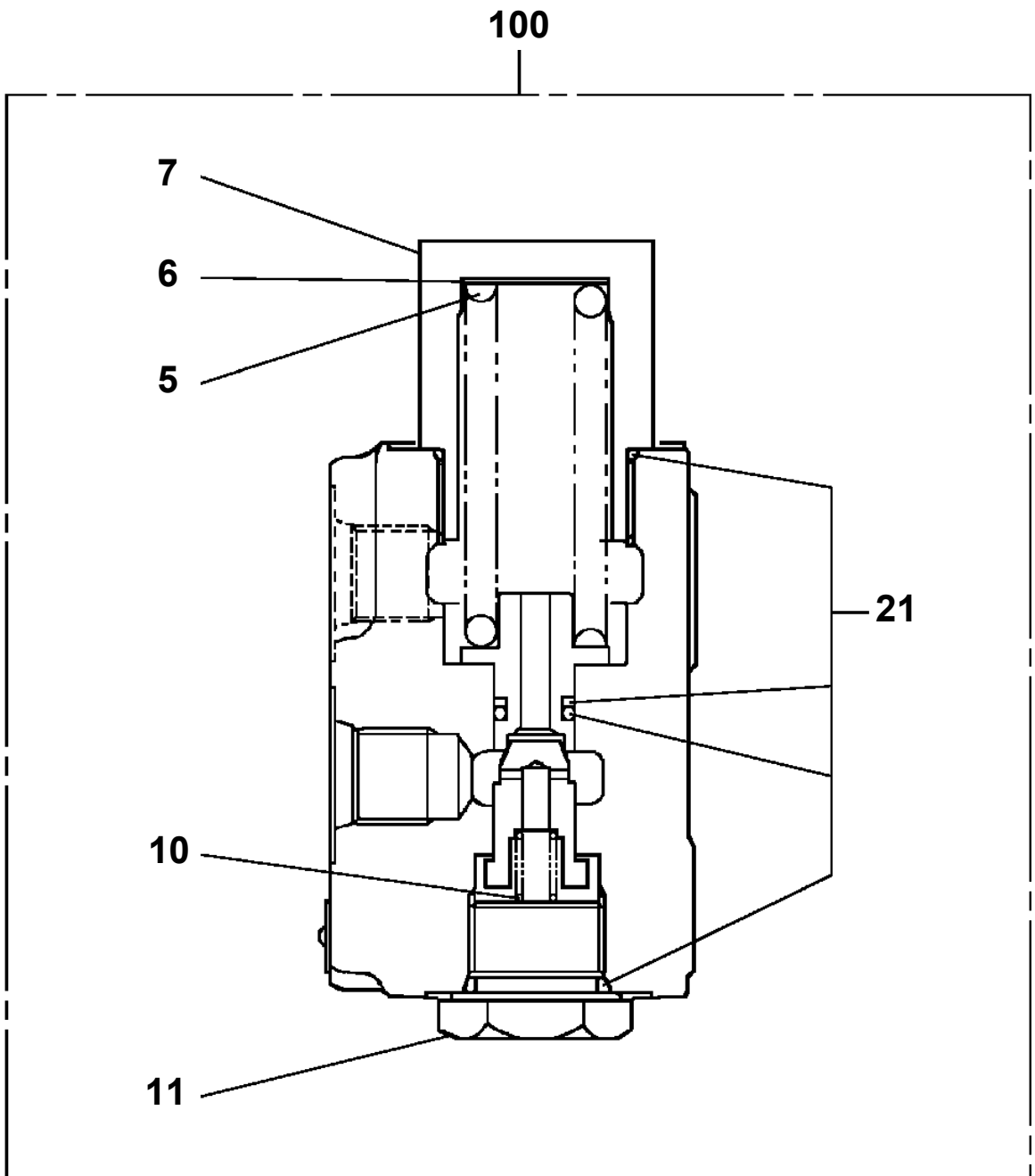
**AT-146-2A 42095900003 UPPER  
PH5032327-00 HARNESS**



AT-146-2A 42095900003 UPPER  
PH5034371-00 HARNESS

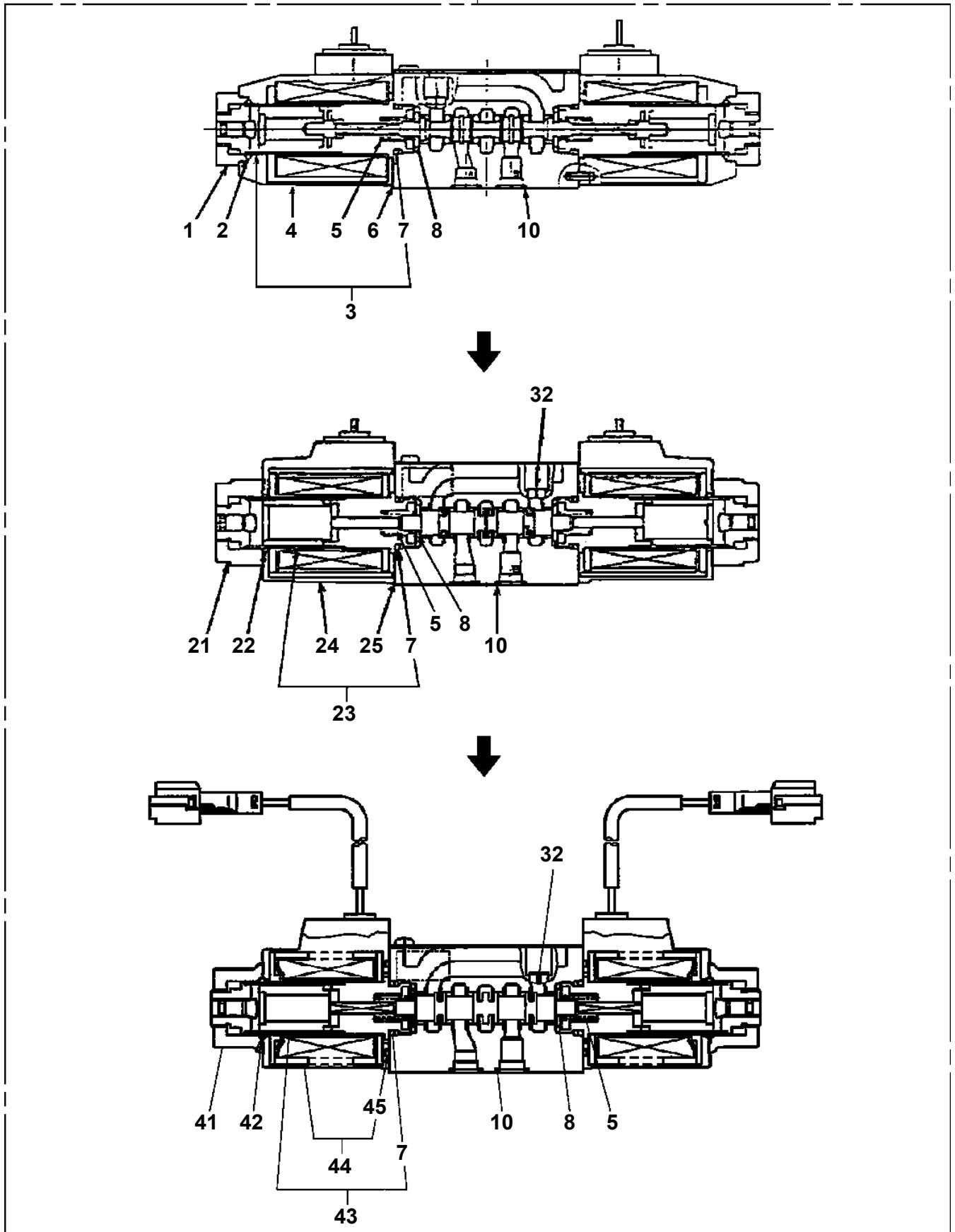


AT-146-2A 42095900003 UPPER  
PI1100122-00 VALVE,RELIEF

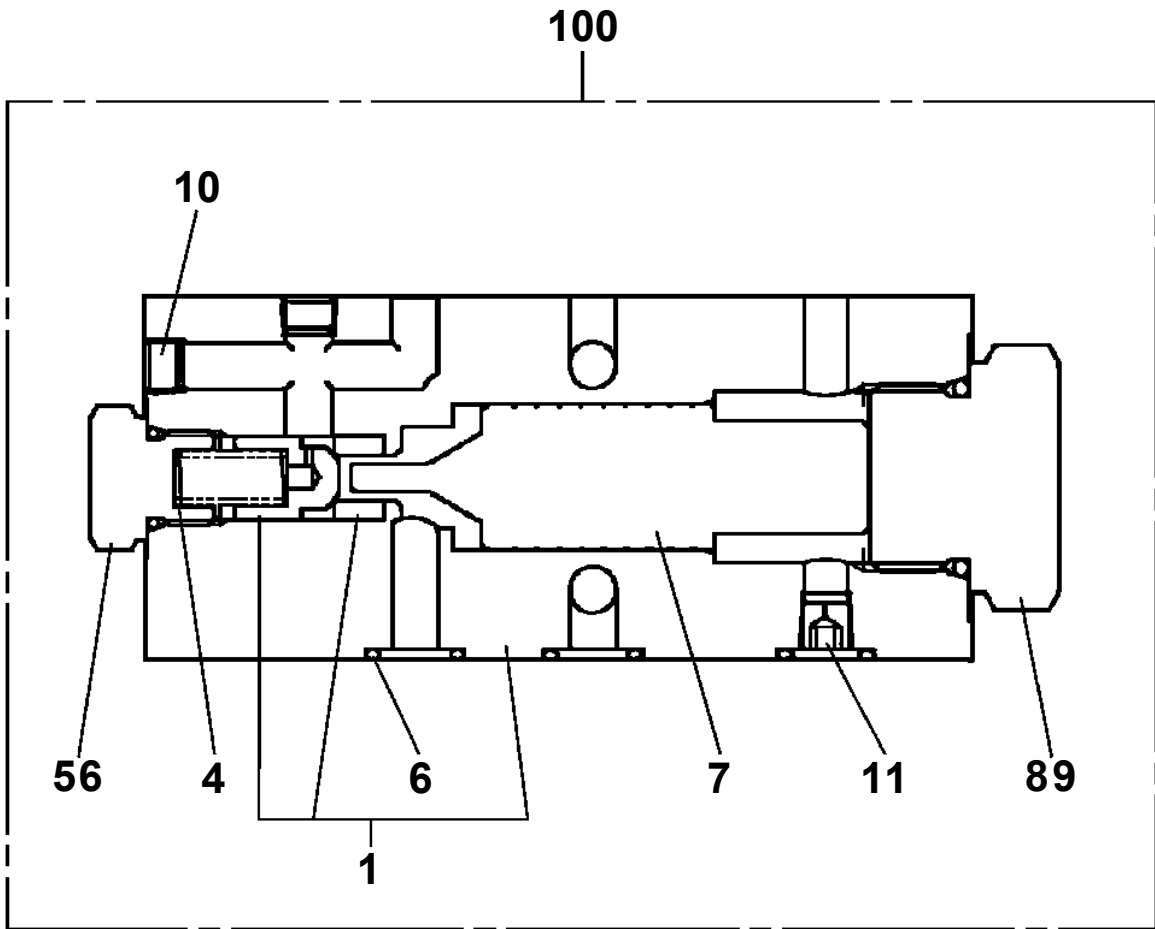


AT-146-2A 4209590003 UPPER  
PI1120238-02 VALVE,SOLENOID

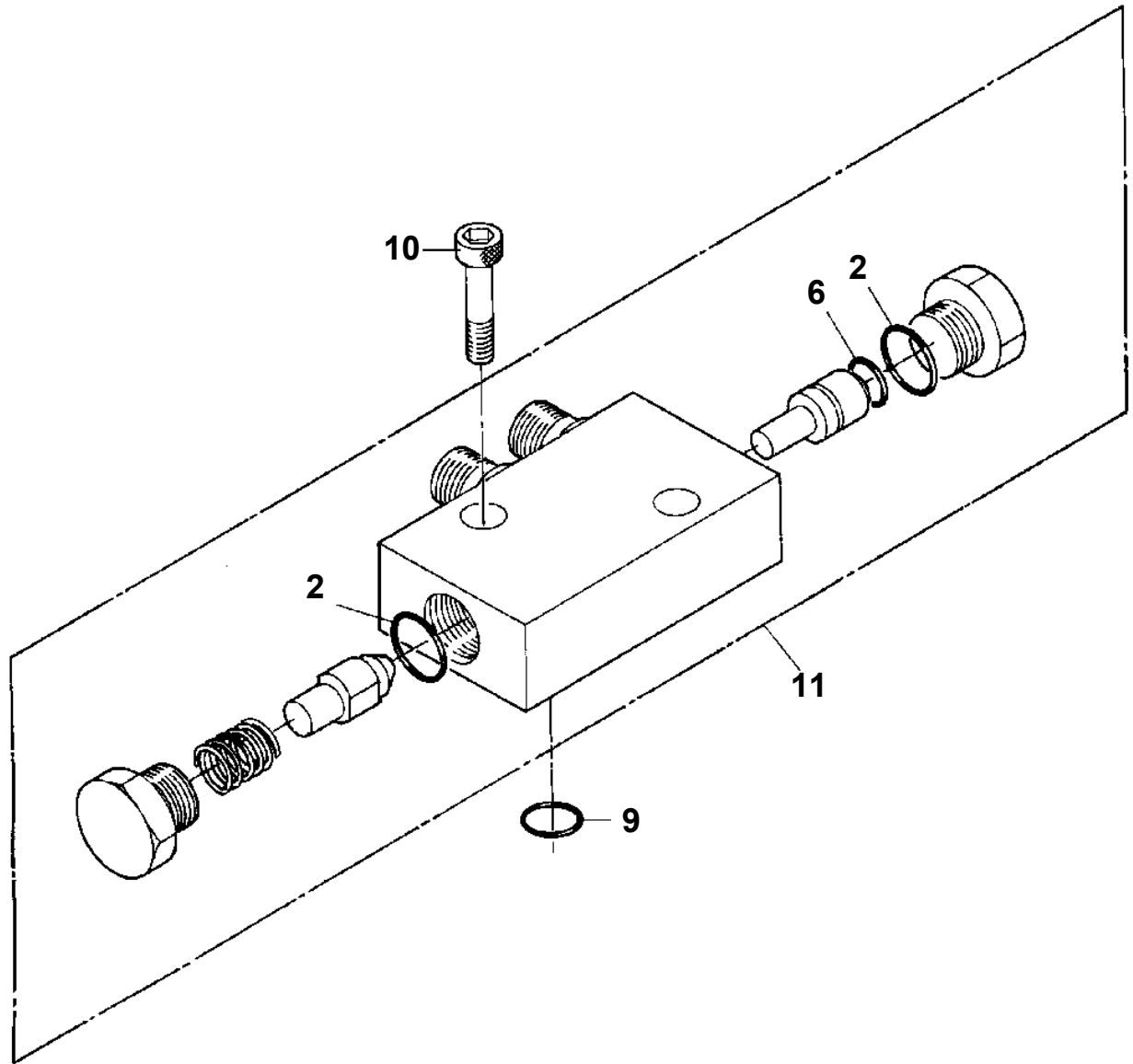
100



**AT-146-2A 42095900003 UPPER  
PI1140213-00 VALVE,CHECK**



AT-146-2A 42095900003 UPPER  
PI1280041-01 VALVE,PILOT CHECK



CLICK HERE TO **DOWNLOAD** THE COMPLETE MANUAL

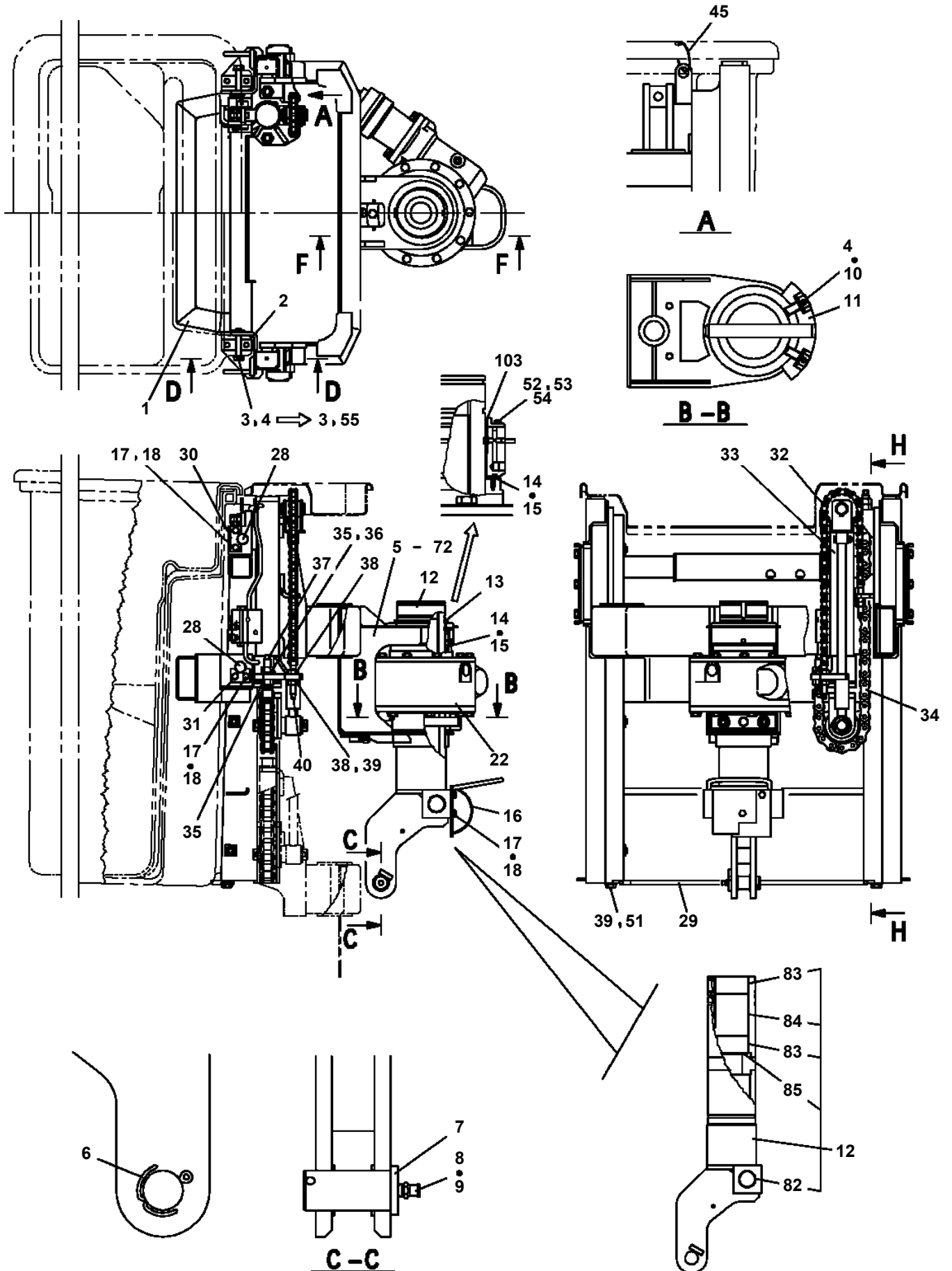
- Thank you very much for reading the preview of the manual.
- You can download the complete manual from: [www.heydownloads.com](http://www.heydownloads.com) by clicking the link below



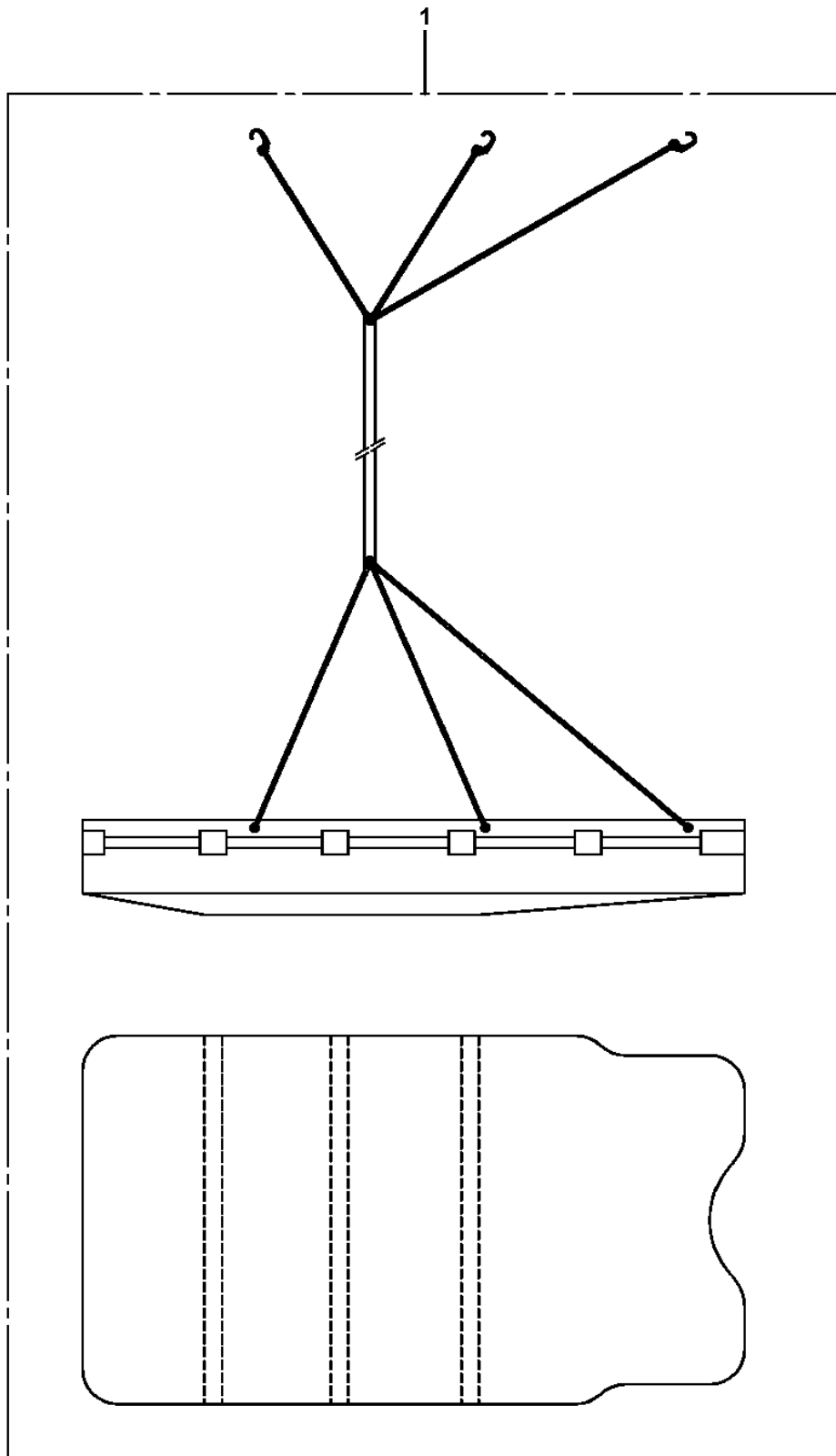
- Please note: If there is no response to CLICKING the link, please download this PDF first and then click on it.

CLICK HERE TO **DOWNLOAD** THE COMPLETE MANUAL

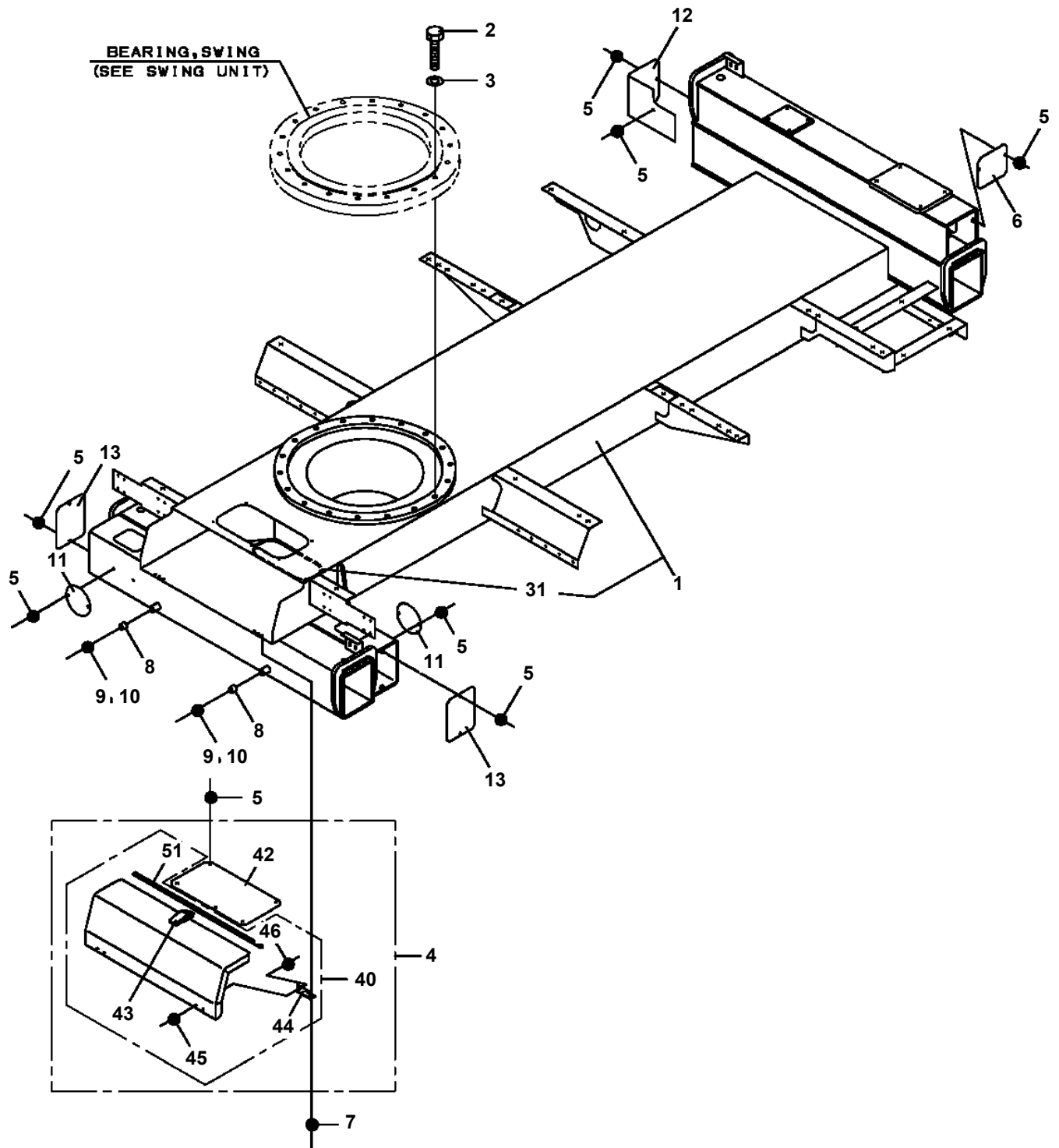
**AT-146-2A 4209590003 UPPER  
PJ3020033-03 FRAME**



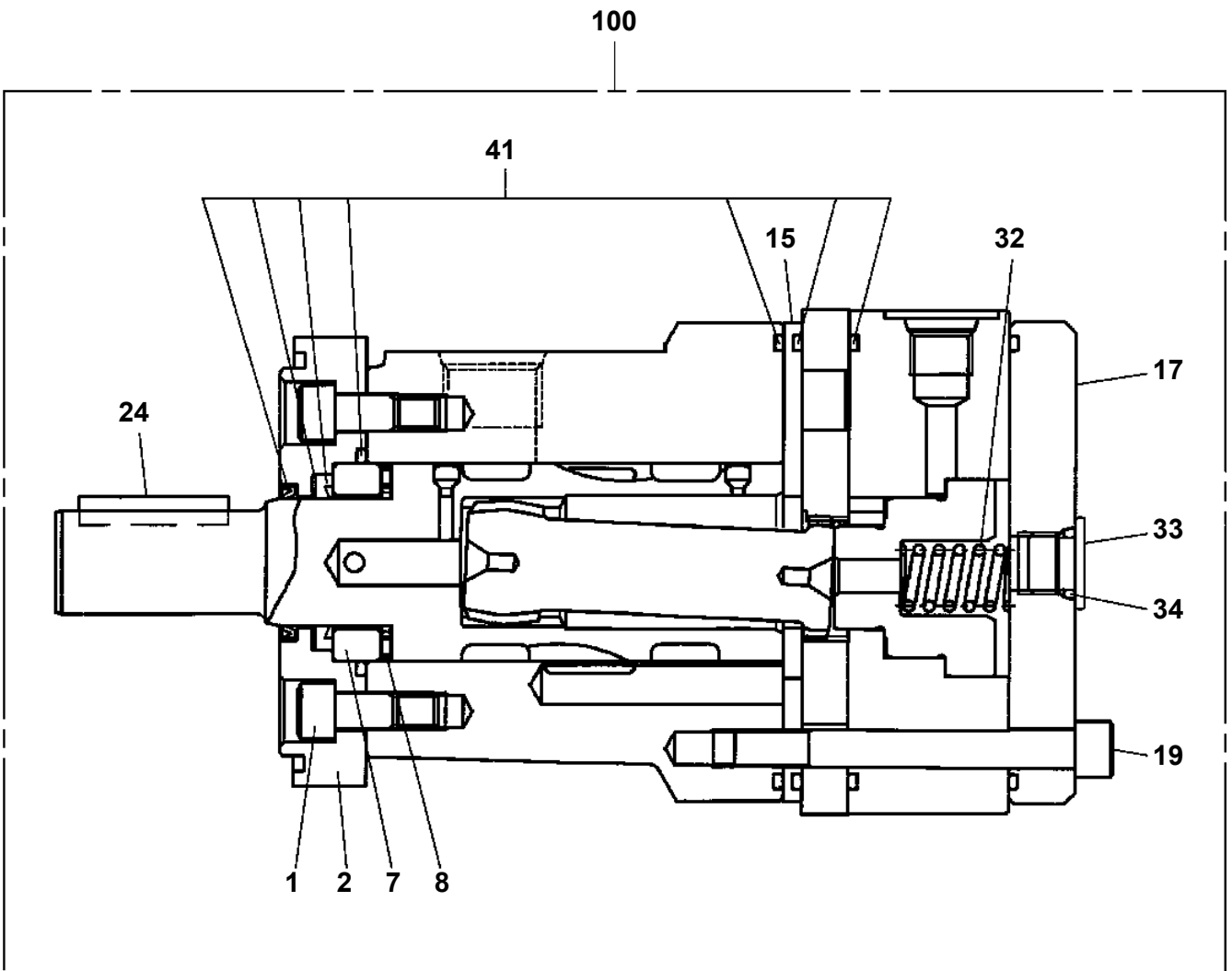
AT-146-2A 42095900003 UPPER  
PJ3240003-00 COVER (CLOTH,WHITE)



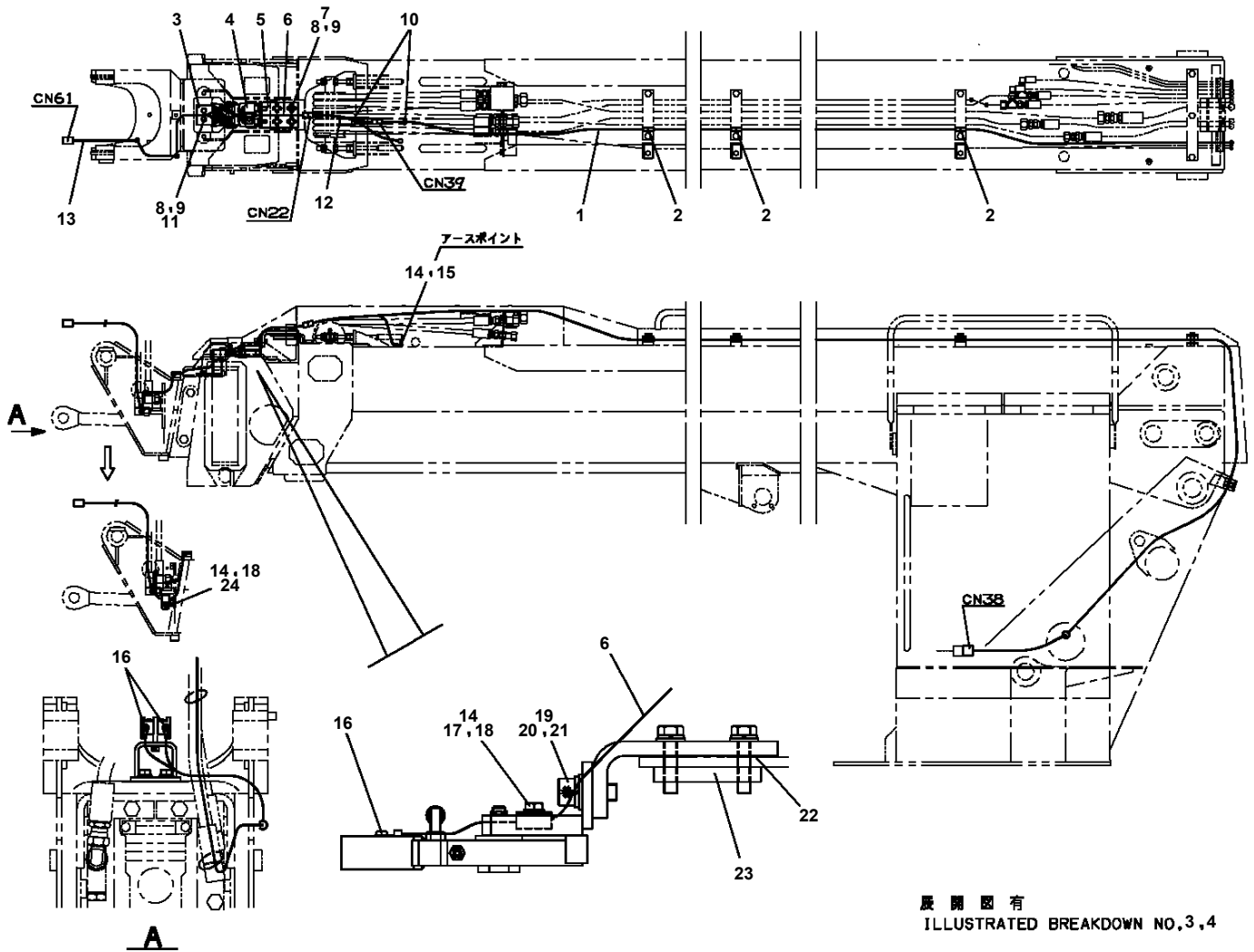
**AT-146-2A 4209590003 UPPER  
PK1011193-00 FRAME**



AT-146-2A 42095900003 UPPER  
PM5210017-00 MOTOR ASSY,OIL



**AT-146-2A 4209590003 UPPER  
PN1013475-02 ELEC.ASSY (CHARGER)**



展開図有  
ILLUSTRATED BREAKDOWN NO.3,4

AT-146-2A 42095900003 UPPER  
PN1013888-00 ELEC.ASSY(GROUNT CONDITION FONFIRMATION)

指示番号 KEY NO.	ハイセンASSY (ジ`ハ`ンカクニンSW./チュウテ`ンコウムケ) ELEC.ASSY (GROUND CONDITION CONFIRMATION)
1	ハイセンASSY (フレーム) ELEC.ASSY (FRAME)
2	ハイセンASSY (スイング`フレーム) ELEC.ASSY (SWING FRAME)

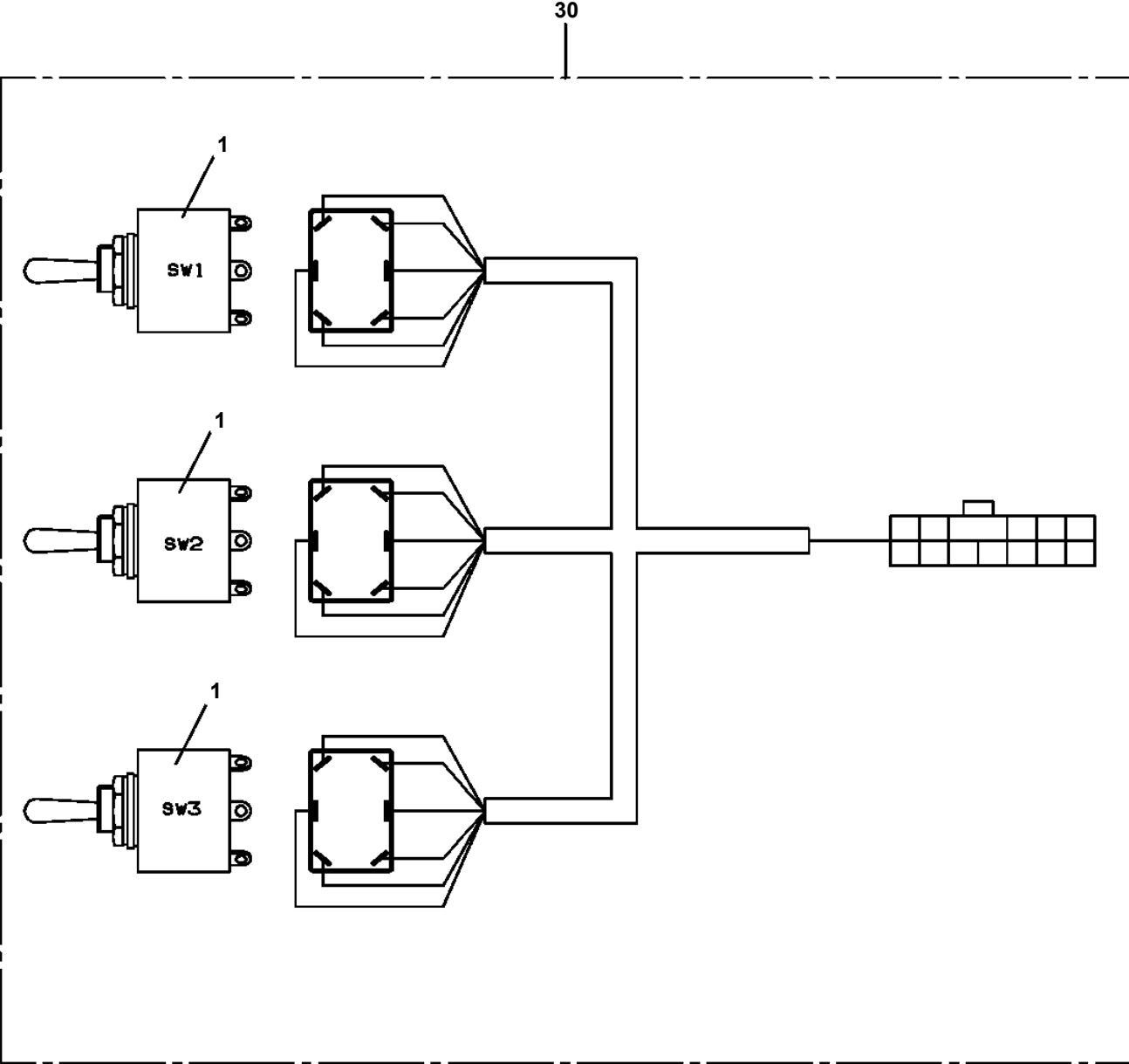
# AT-146-2A 42095900003 UPPER

Pos No.	Parts No	Parts Name	Qty	Unit	Technical Data	Serial No (Start)	Serial No (End)	Remarks	Pages
2	90101208025	BOLT	4		M8X25				
3	90201200800	NUT	4		M8				
4	90302040801	WASHER,SPRING	4		8				
6	42738320100	HARNESS	1						
7	91810132530	FASTENER	20						
8	42738320200	PLATE,NAME	2						
21	82119434100	CONNECTOR	2						
22	80175304016	SCREW,MACHINE	4		M4X16				
23	42738321100	SUPPORT	1						
24	42652124600	HARNESS	2						000109
25	91810130240	FASTENER	6						
33	42738322100	SUPPORT	1						

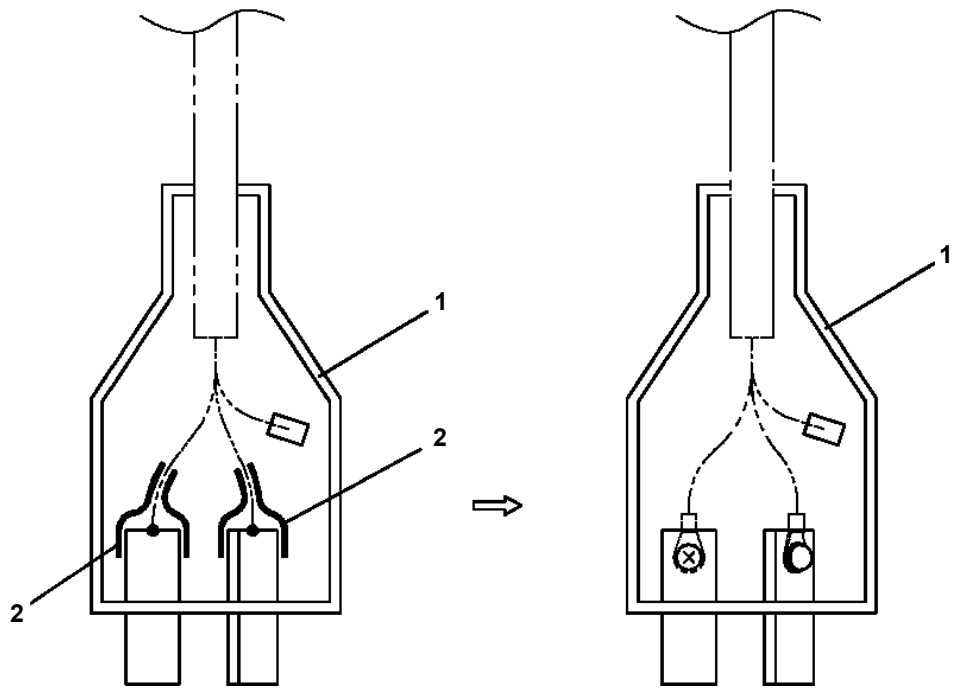
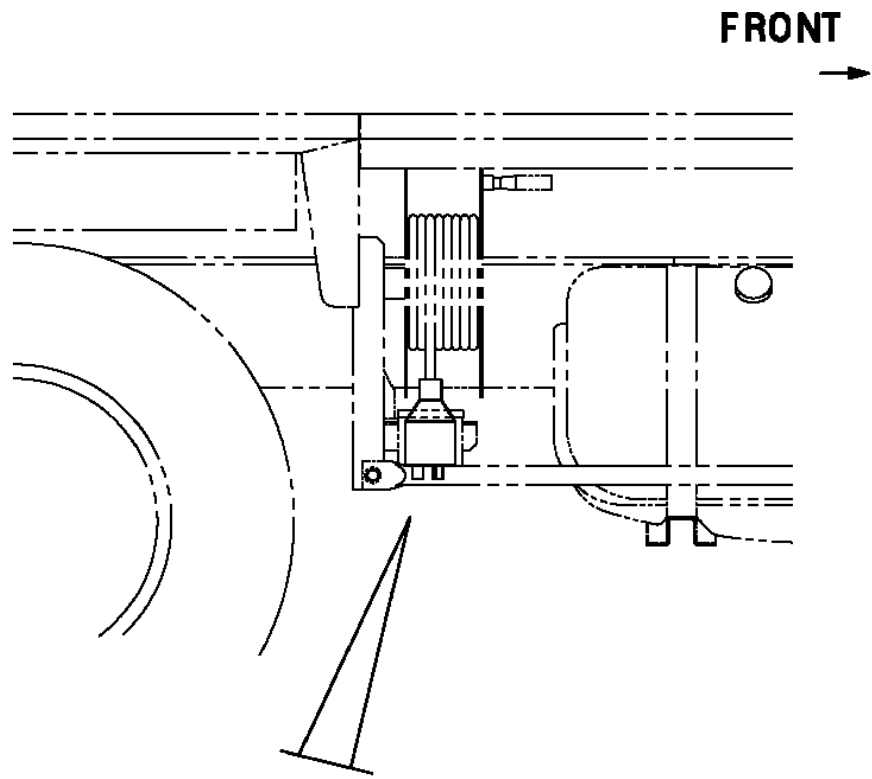
## AT-146-2A 42095900003 UPPER

Pos No.	Parts No	Parts Name	Qty	Unit	Technical Data	Serial No (Start)	Serial No (End)	Remarks
1	42478830100	SUPPORT	1					
2	42478830010	HARNESS	1		L=2050			
3	82100002563	LAMP,LICENSE	1					
4	91810130240	FASTENER	10					
5	42478830030	HARNESS	1		L=2500			
6	42478830040	HARNESS (WITH SWITCH)	1		L=500			
7	42478830020	COVER	1					
8	90101206010	BOLT	3		M6X1.0			
9	90302040601	WASHER,SPRING	9		6			
10	90201200500	NUT	1		M5			
11	90303070501	WASHER,PLAIN	1		5			
12	91810130230	FASTENER	1					
13	37000568000	PLATE	2					
14	90101206016	BOLT	6		M6X16			
15	42475560010	PLATE,NAME	1					
16	82100000665	CAP (BLACK)	1					
31	82100000783	BULB,LAMP	1		24V 12W			

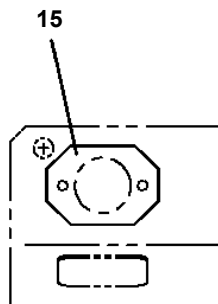
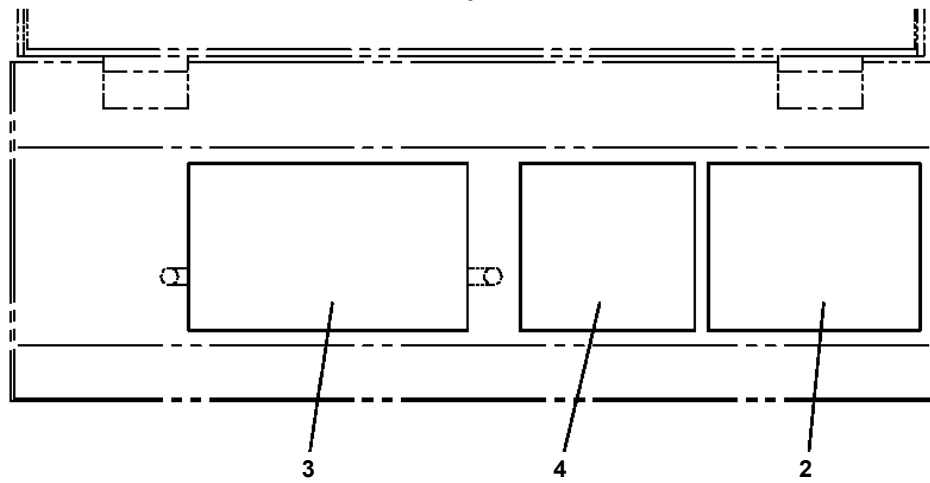
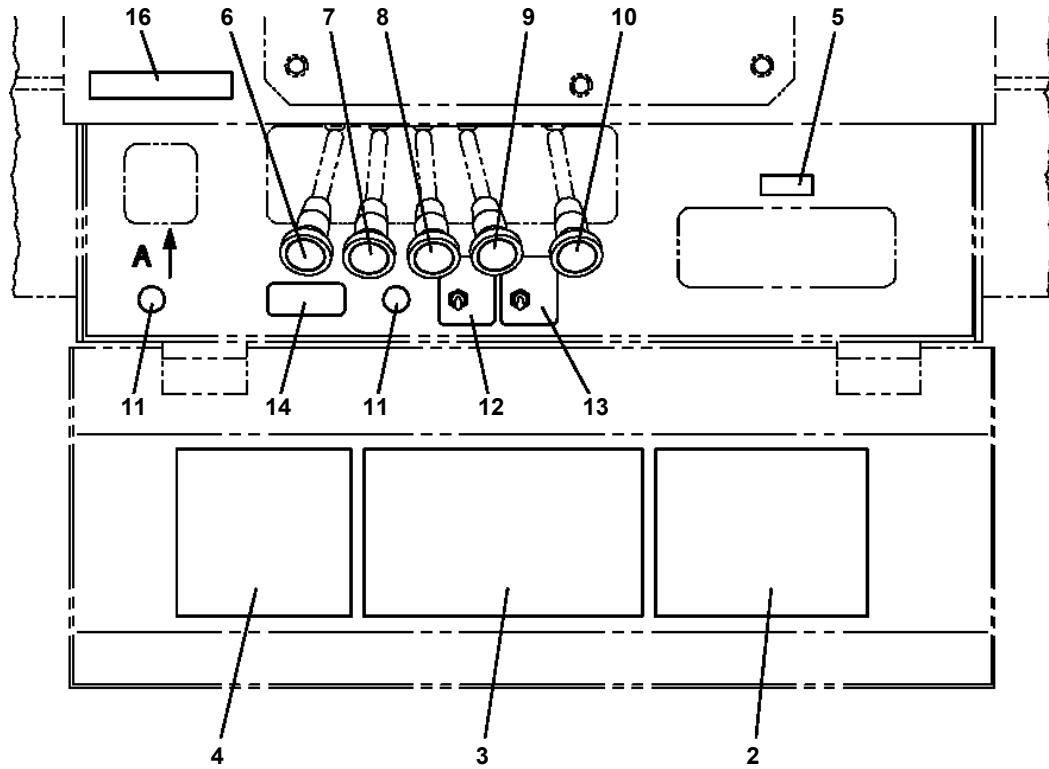
**AT-146-2A 42095900003 UPPER  
PN1140153-00 SWITCH ASSY (WITH HARNESS,3 SWITCH)**



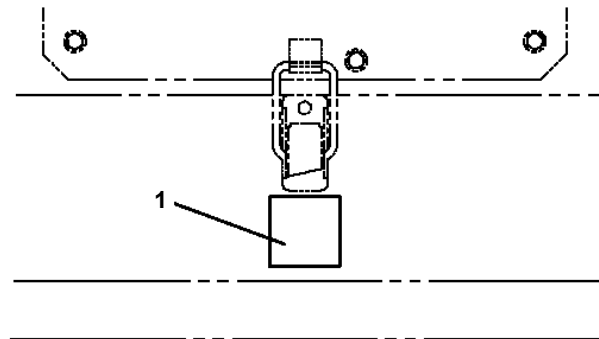
**AT-146-2A 42095900003 UPPER  
PN1350133-00 REEL, CORD (CONNECTOR WF7330)**



**AT-146-2A 42095900003 UPPER  
PO1013871-01 PLATE ASSY,NAME (OUTRIGGER CONTROL)**

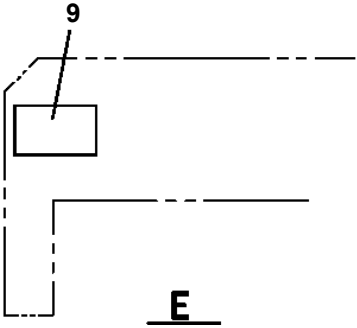
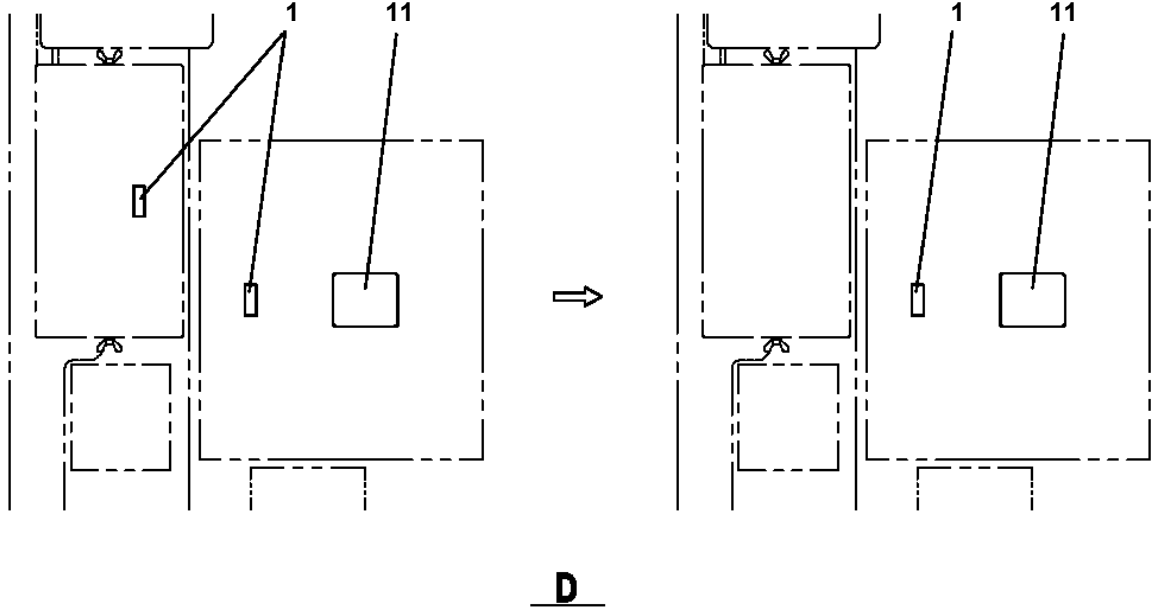
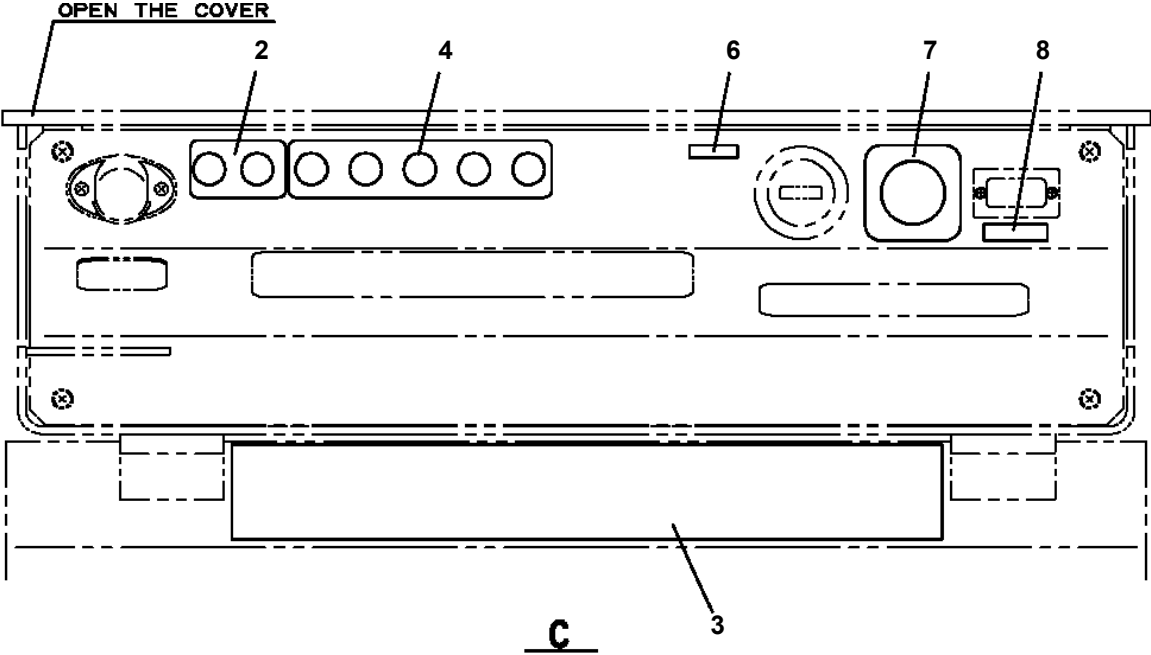


**A**

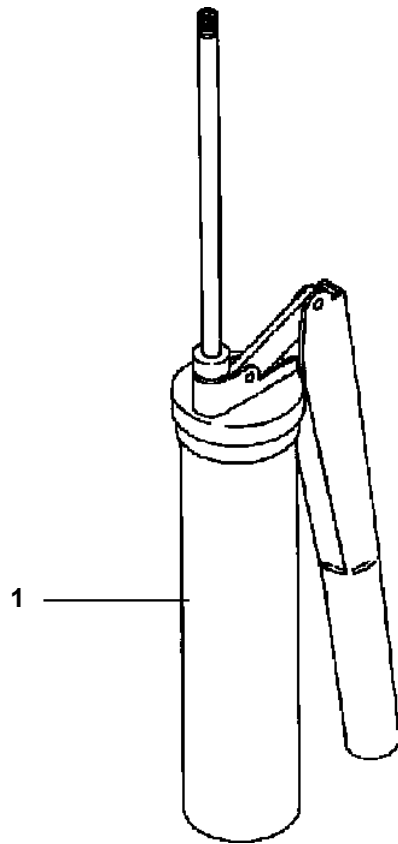


**屏上面**

**AT-146-2A 42095900003 UPPER  
PO1014027-01 PLATE ASSY,NAME (MOTOR UNIT)**

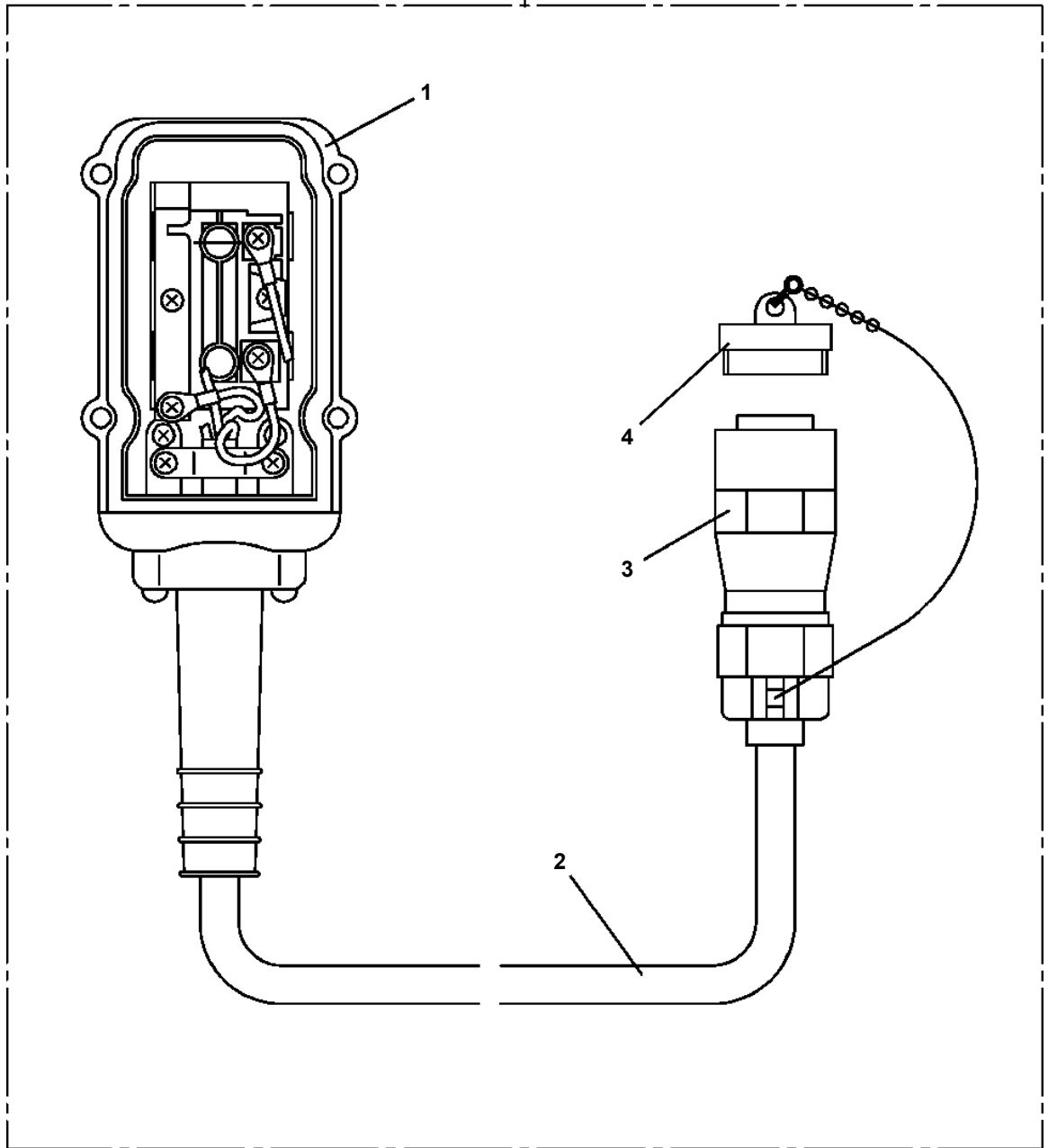


**AT-146-2A 42095900003 UPPER  
PP5450004-00 PUMP, GREASE (400CC)**

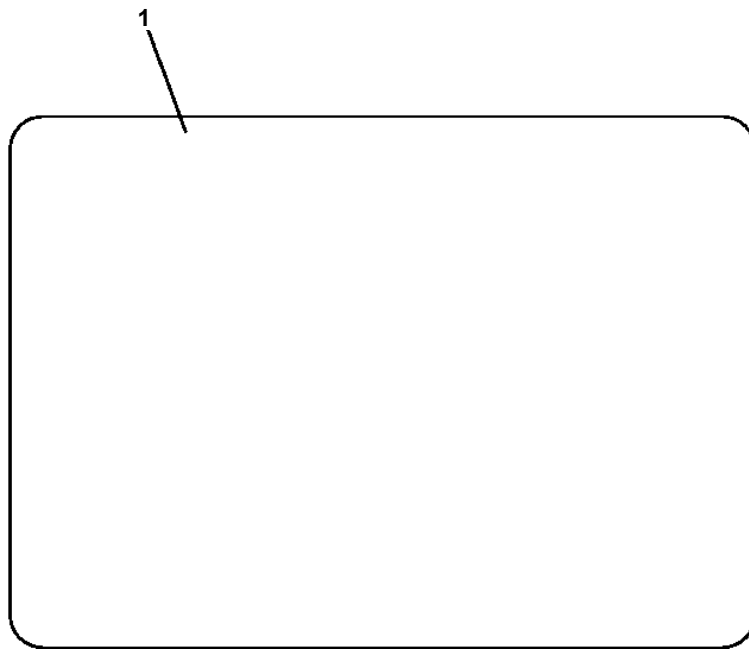


**AT-146-2A 42095900003 UPPER**  
**PV1030069-00 SWITCH BOX(BOOSTER,3M/SANWA)**

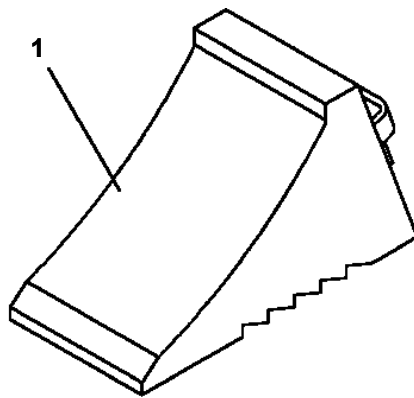
100



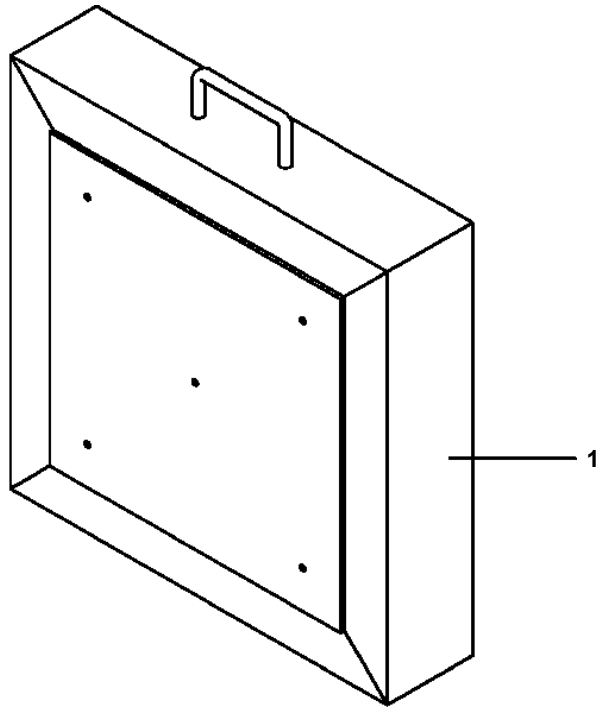
**AT-146-2A 42095900003 UPPER  
PW1010092-00 ACCESSORIES (BUCKET INNER MAT)**



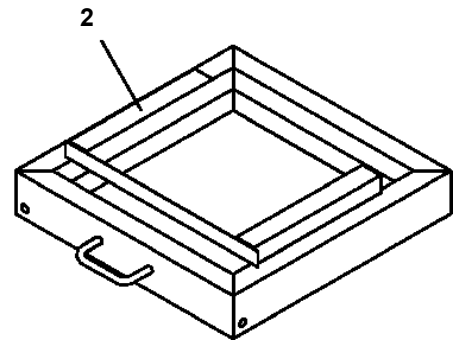
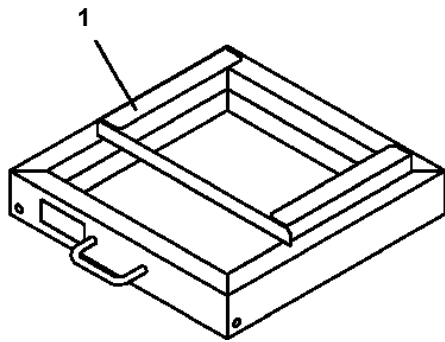
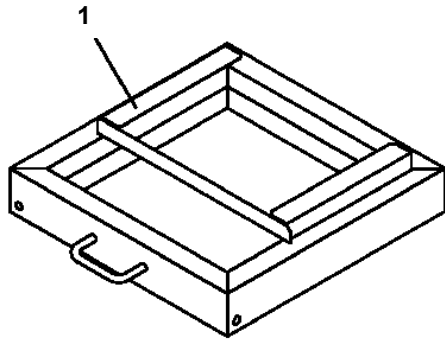
**AT-146-2A 42095900003 UPPER  
PW5110002-00 WEDGE (STOPPER FOR TIRE/WAZUMI)**



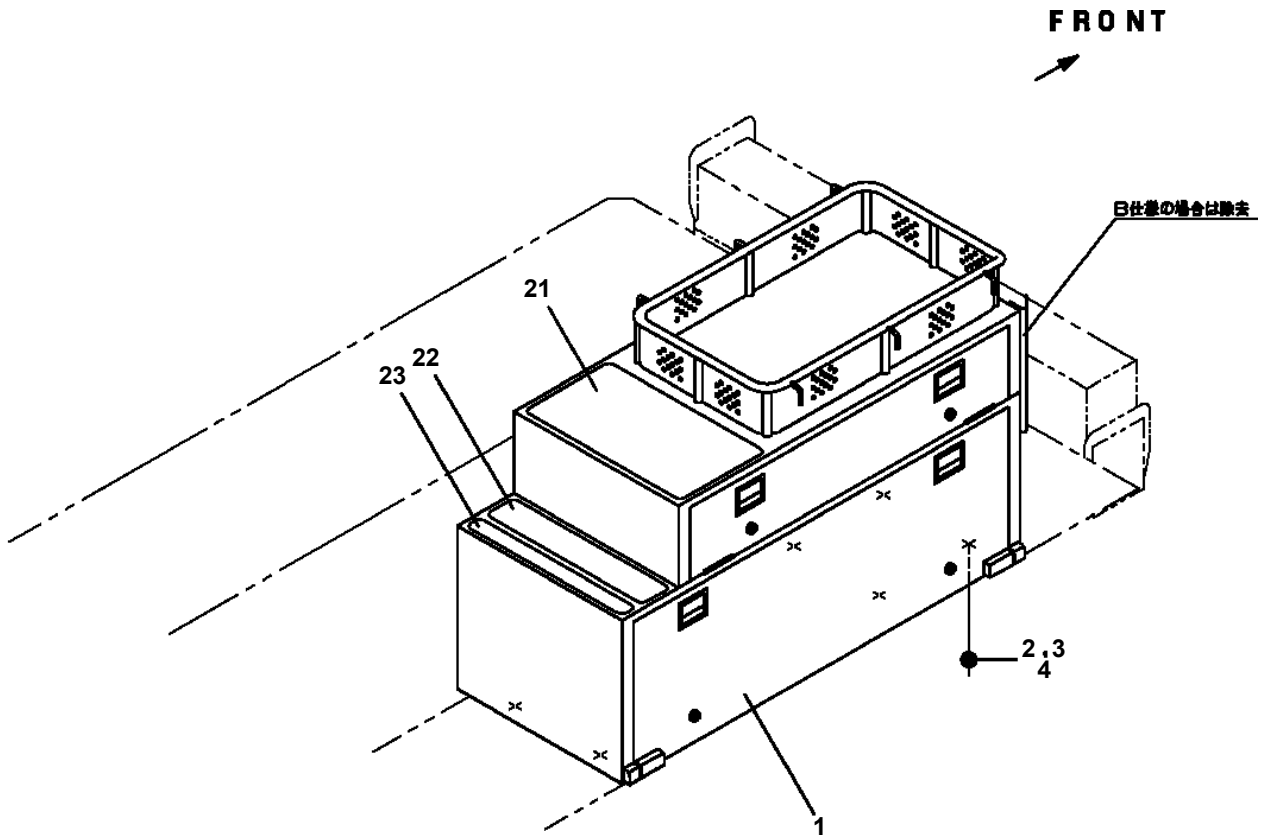
**AT-146-2A 42095900003 UPPER  
PX1270075-01 WOOD BLOCK (WITH RUBBER,T=80)**



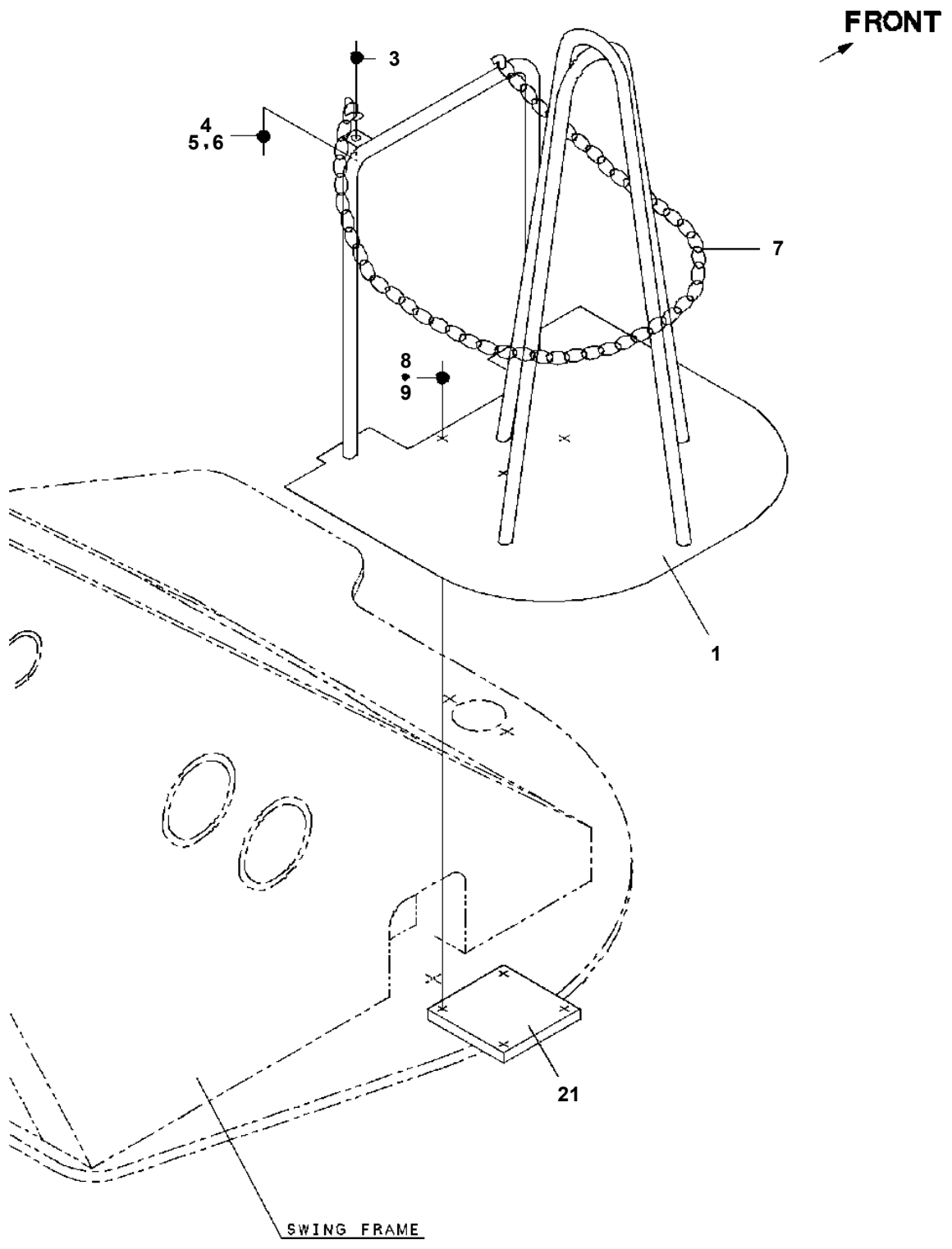
**AT-146-2A 42095900003 UPPER  
PX1270142-01 WOOD BLOCK**



AT-146-2A 42095900003 UPPER  
PX1350578-00 BOX,TOOL (RIGHT)

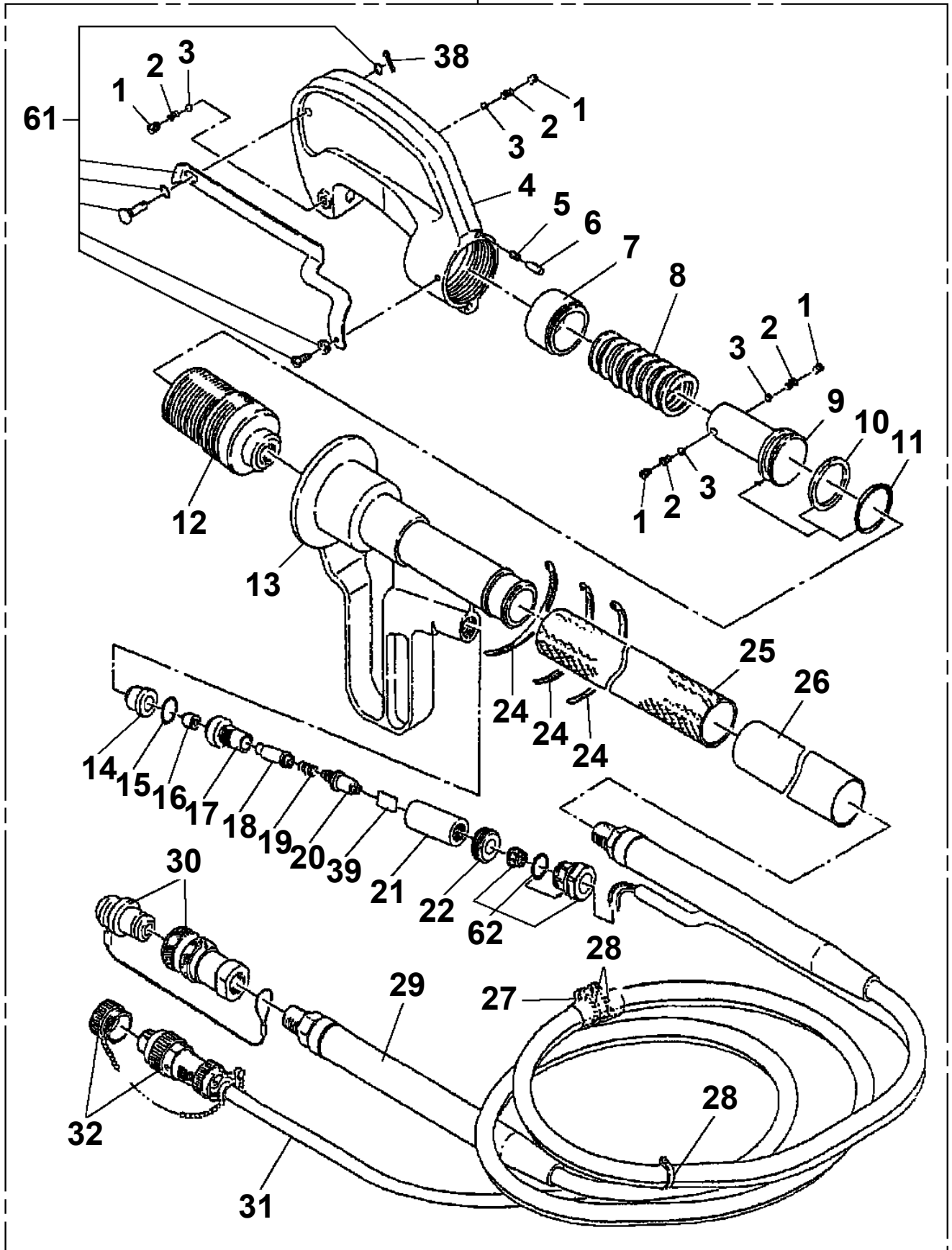


AT-146-2A 42095900003 UPPER  
PX1620018-00 MOUNT,COLOR CONE SUPPORT

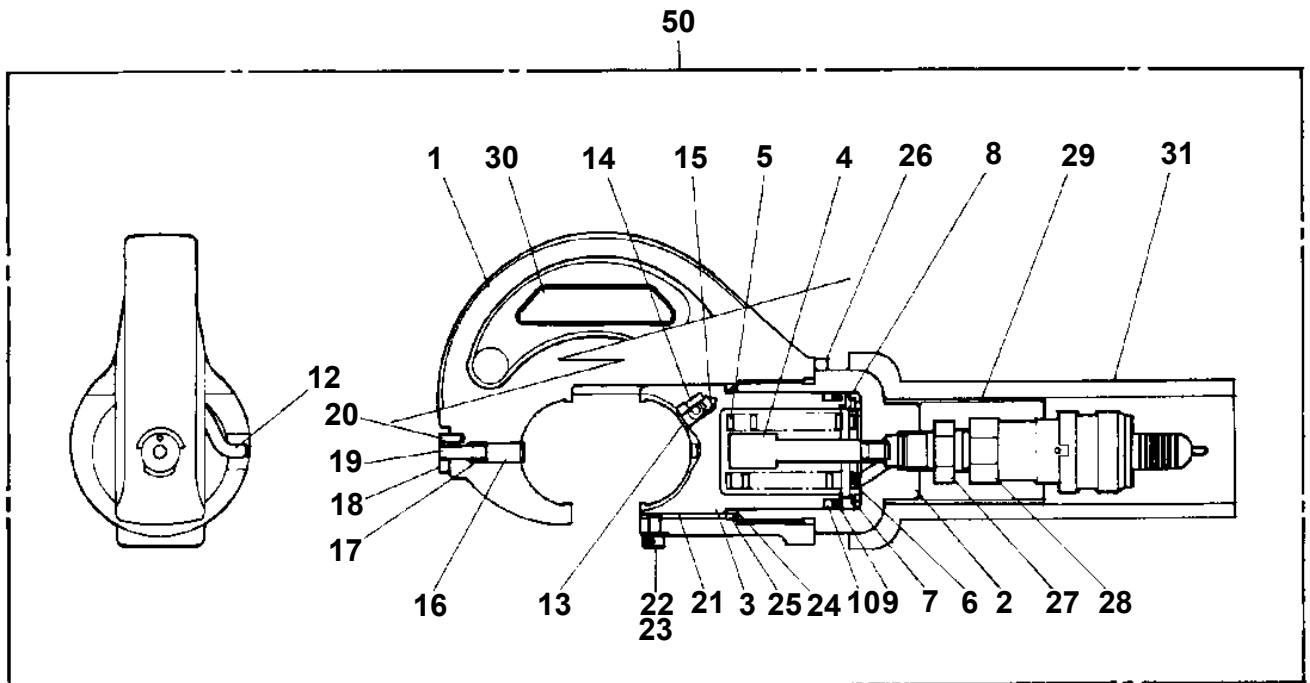


AT-146-2A 42095900003 UPPER  
PY1050001-01 CLAMP HEAD (IZUMI 8TON,2.5M)

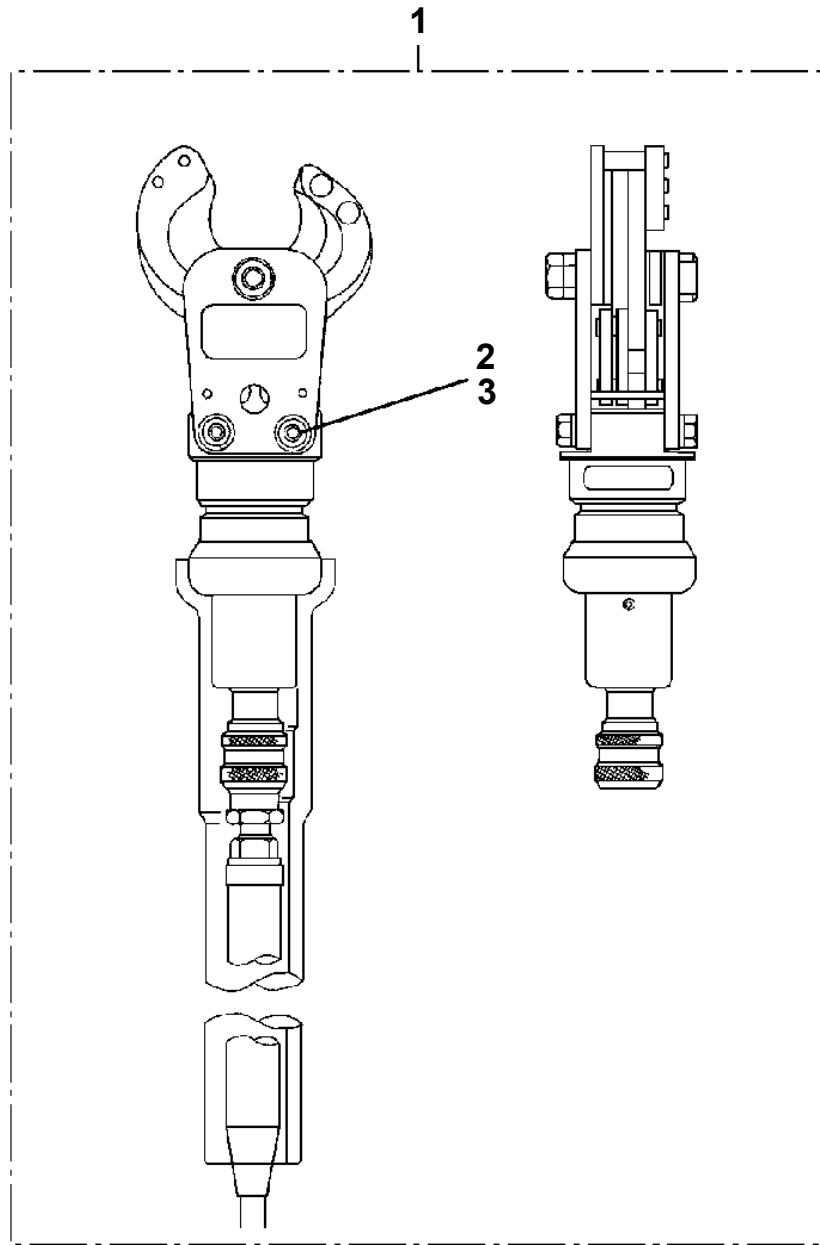
100



**AT-146-2A 42095900003 UPPER  
PY1050007-00 CLAMP HEAD (SANWA,12TON)**

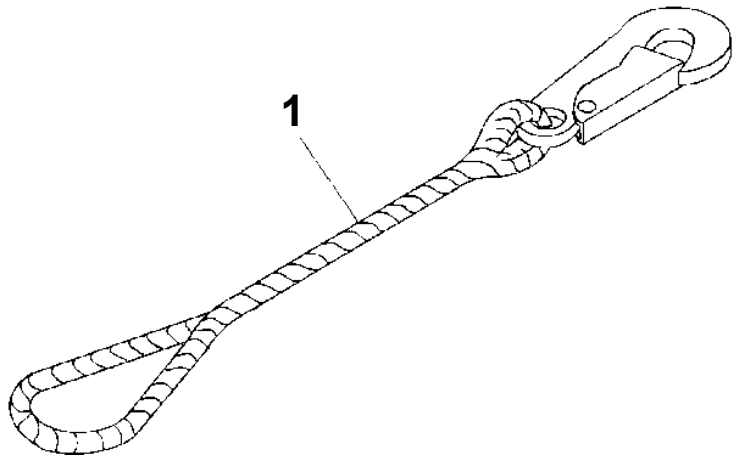


**AT-146-2A 42095900003 UPPER  
PY1060000-01 CUTTER HEAD (IZUMI 6.4TON AIR)**

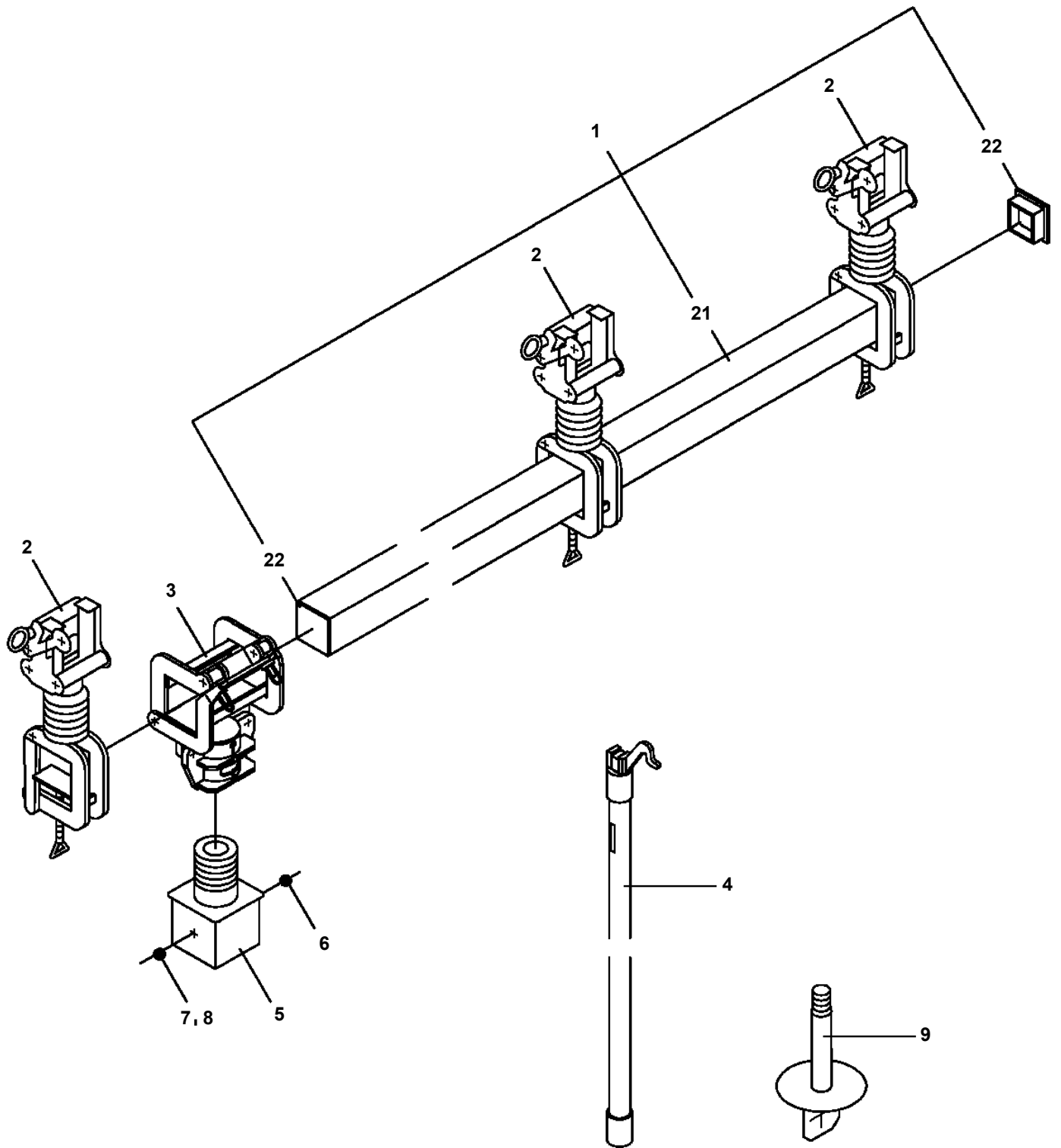


**AT-146-2A 42095900003 UPPER  
PY1070001-00 ROPE (SAFETY,1.5M,WITH HOOK)**

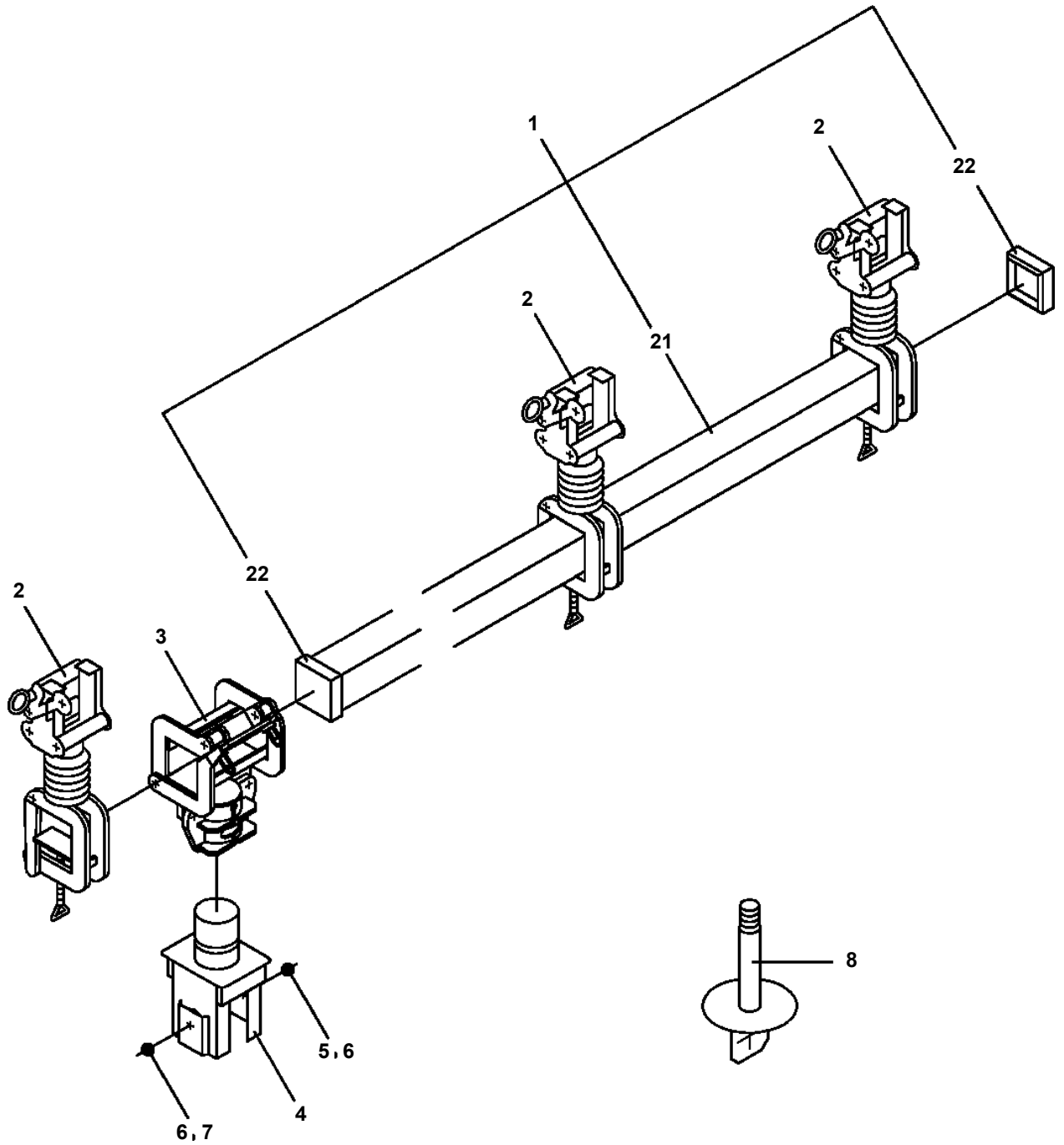
---



AT-146-2A 42095900003 UPPER  
PY1080016-00 ARM



**AT-146-2A 42095900003 UPPER  
PY1080022-00 ARM**



# AT-146-2A 42095900003 UPPER

Pos No.	Parts No	Parts Name	Qty	Unit	Technical Data	Serial No (Start)	Serial No (End)	Re
1	42478182010	PLATE,NAME	1					
2	42736070100	SWITCH ASSY (WITH HARNESS)	1					
3	42476303100	CABLE ASSY	1		L=1000			
4	42392583090	PLATE,CAUTION	1					
5	82100001802	TUBE,CORRUGATE	1	M	10			
6	42478151100	HARNESS	1					
7	82100000665	CAP (BLACK)	1					
8	91810132530	FASTENER	20					
9	42478171100	HARNESS	1					
10	42476271200	CABLE ASSY	1		L=1000			
11	82100001411	TUBE,SPIRAL	1	M	SE-08BK	228070		
31	82105220112	SWITCH,TOGGLE	1					
46	82117920411	CONNECTOR	2					
47	82122910400	CAP	2					

# AT-146-2A 42095900003 UPPER

Pos No.	Parts No	Parts Name	Qty	Unit	Technical Data	Serial No (Start)	Serial No (End)
1	(*****)	BOOSTER (AIR&ELECTRIC)	1				
2	(*****)	BOOSTER (WIRING/ELEC.SELECTOR)	1				
3	(*****)	BOOSTER (PIPING/AIR&ELEC.SELECT.)	1				

# AT-146-2A 42095900003 UPPER

Pos No.	Parts No	Parts Name	Qty	Unit	Technical Data	Serial No (Start)	Serial No (E
5	80456210600	JOINT,SELF SEALING	1				
6	80456240600	JOINT,SELF SEALING (WITH DUST CAP)	1				
11	42471437520	CAP	1				
30	42471080000	HOSE,BOOSTER (MAIL-FEMALE,3M)	1				

# AT-146-2A 42095900003 UPPER

Pos No.	Parts No	Parts Name	Qty	Unit	Technical Data	Serial No (Start)	Serial No
1	80456210600	JOINT,SELF SEALING	1				
2	42470367790	HOSE ASSY	1		5M		
3	42470362100	JOINT,SELF SEALING	1				
4	42470367800	HOSE,AIR	1		5M		
5	42470362200	PUMP	1				
6	80456240600	JOINT,SELF SEALING (WITH DUST CAP)	1				
7	42470367840	TUBE	2		25X0.15M		
8	42470367780	JOINT	1				
21	42471437520	CAP	1				
50	42470363000	HOSE,BOOSTER (WITH AIR BALLOON,5M)	1				

**AT-146-2A 42095900003 UPPER**

Pos No.	Parts No	Parts Name	Qty	Unit	Technical Data	Serial No (Start)	Serial No (End)
1	42472191000	WRENCH,IMPACT	1				
2	80460003080	JOINT	2		S,G3/8-3/4-16UNF		
3	37002417130	HOSE	2		L=2900		
4	91810132530	FASTENER	5				
5	80456020610	JOINT,SELF SEALING	1				
6	42340013200	JOINT,SELF SEALING (WITH CAP)	1				
11	42340017550	CAP (DUST)	1				
16	42340017510	CAP (DUST)	1				

# AT-146-2A 42095900003 UPPER

Pos No.	Parts No	Parts Name	Qty	Unit	Technical Data	Serial No (Start)	Serial No (End)	Remarks
1	42474160000	HANGER (FOR BUCKET)	1					

# AT-146-2A 42095900003 UPPER

Pos No.	Parts No	Parts Name	Qty	Unit	Technical Data	Serial No (Start)	Serial No (End)	Remarks
1	42472530000	BOX,TOOL (FOR BUCKET)	1					

CLICK HERE TO **DOWNLOAD** THE COMPLETE MANUAL

- Thank you very much for reading the preview of the manual.
- You can download the complete manual from: [www.heydownloads.com](http://www.heydownloads.com) by clicking the link below



- Please note: If there is no response to CLICKING the link, please download this PDF first and then click on it.

CLICK HERE TO **DOWNLOAD** THE COMPLETE MANUAL