

AT-110-4 42084400076 UPPER

PD2000249-00 SWING UNIT

PG2000223-00 BOOM UNIT

PH1000550-00 SAFETY DEVICES (MOTION CONTROLLER)

PJ3000503-00 BUCKET SYSTEM

PK2001489-00 FRAME UNIT

PO1000171-00 INDICATION PLATES

PW1000118-00 ACCESSORIES & TOOLS

PY1001436-03 OPTIONS,1

PY2000164-08 OPTIONS,2 (UPPER)

ASSEMBLY

CLICK HERE TO **DOWNLOAD** THE COMPLETE MANUAL

- Thank you very much for reading the preview of the manual.
- You can download the complete manual from: www.heydownloads.com by clicking the link below



- Please note: If there is no response to CLICKING the link, please download this PDF first and then click on it.

CLICK HERE TO **DOWNLOAD** THE COMPLETE MANUAL

AT-110-4 42084400076 UPPER

Pos No.	Parts No	Parts Name	Qty	Unit	Technical Data	Serial No (Start
1	(*****)	FRAME ASSY	1			
2	(*****)	OUTRIGGER ASSY	1			
3	(*****)	OPE.ASSY,CONT.VALVE	1			
4	(*****)	PIPING ASSY,FRAME (OUTRIGGER)	1			
6	(*****)	MOUNT ASSY,BOOM SUPPORT	1			
7	(*****)	TANK SUPPORT	1			
8	(*****)	ELEC.ASSY,FRAME	1			
9	(*****)	ELEC.ASSY (LOWER CONTROLS)	1			
10	(*****)	ELEC.ASSY (EMERGENCY SW FUNCTION LIMIT CIRCUIT)	1			
11	(*****)	ELEC.ASSY (ENGINE UNIT)	1			
12	(*****)	MOUNT ASSY,ENGINE UNIT	1			
13	(*****)	PIPING ASSY,DRAIN	1			
14	(*****)	MOUNT ASSY,COVER (ENGINE UNIT)	1			

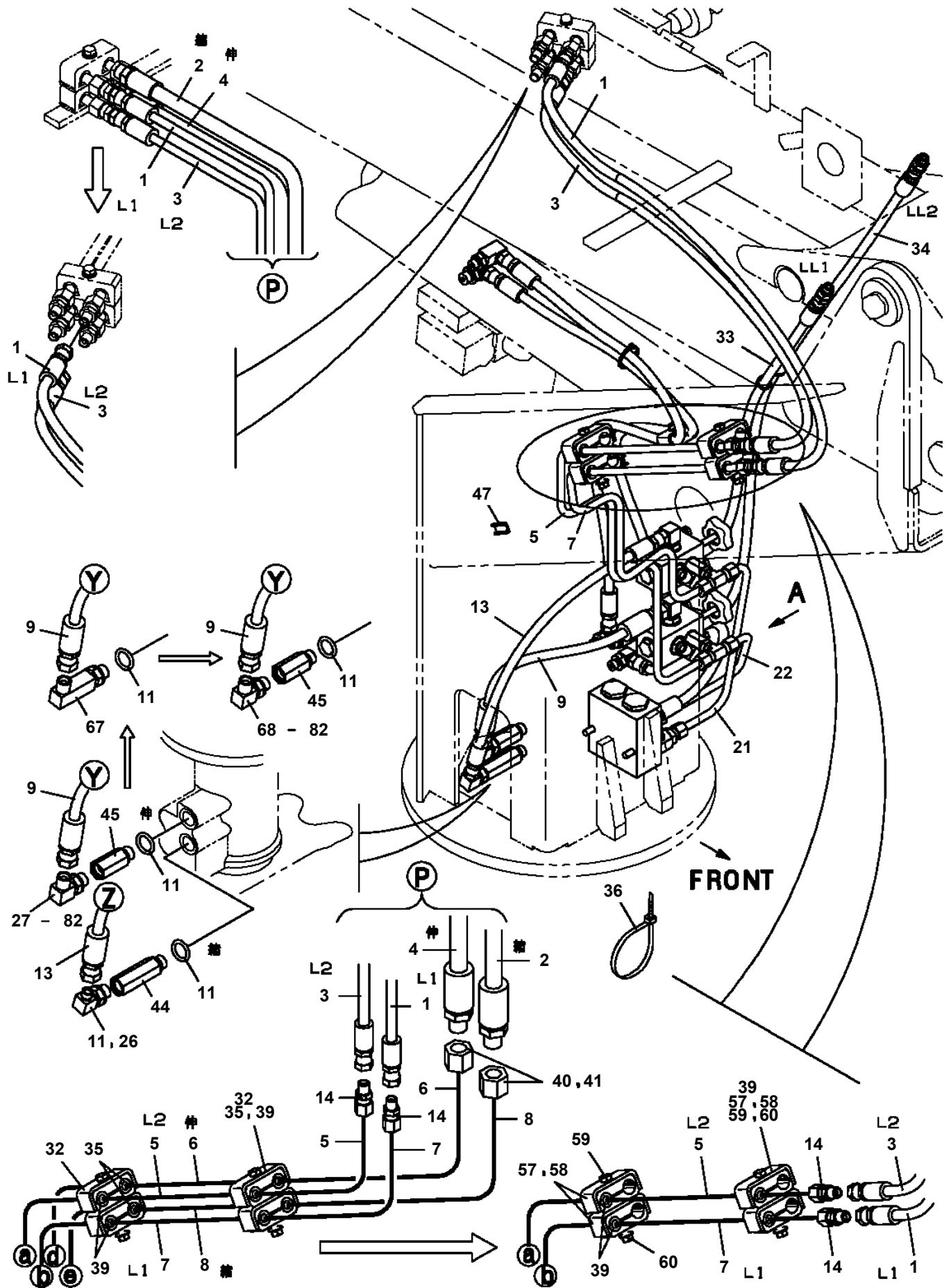
AT-110-4 42084400076 UPPER

Pos No.	Parts No	Parts Name	Qty	Unit	Technical Data	Se
1	42473850000	CLAMP HEAD (IZUMI 8TO,3.5M)	1			
	42470020000	CLAMP HEAD (IZUMI 8TON,2.5M)	1			
	42470180000	CLAMP HEAD (IZUMI 12TON 2.5M)	1			
	42470590000	CLAMP HEAD (O.D.K 7.5TON 3M)	1			
	42472640000	CLAMP HEAD (IZUMI 8TON 3.5M ELECTRIC)	1			
	42972380000	CLAMP HEAD ASSY (YONDENKO/SAFETY HOSE)	1			HK
2	42470365000	CLAMP HEAD (SANWA,12TON,TITANIUM)	1			
	42471070000	CLAMP HEAD (O.D.K 10TON ELECTRIC)	1			
	(*****)	CLAMP HEAD (SANWA,12TON)	1			
3	42470030000	CUTTER HEAD (IZUMI 6.4TON 2.5M ELECTRIC)	1			
	42473190000	CUTTER HEAD (IZUMI 6.4TON 2.5M ELECTRICSANWA)	1			
	42470530000	CUTTER HEAD (IZUMI 6.4TON AIR)	1			
	42972390000	CUTTER HEAD ASSY (YONDENKO/SAFETY HOSE)	1			HK
4	42471800000	HOSE,BOOSTER (WITH AIR BALLOON,2M)	1			
	(*****)	HOSE,BOOSTER (WITH AIR BALLOON)	1			
	42470363000	HOSE,BOOSTER (WITH AIR BALLOON,5M)	1			
	42470364000	HOSE,BOOSTER (WITH AIR BALLOON,8M)	1			
5	42472130000	HOSE,BOOSTER (FEMALE-FEMALE,5M)	1			
	42471080000	HOSE,BOOSTER (MAIL-FEMALE,3M)	1			
	42471084000	HOSE,BOOSTER (MALE-FEMALE,8M)	1			
	42472480000	HOSE,BOOSTER (FEMALE-FEMALE,3M)	1			
	42471085000	HOSE,BOOSTER (MALE-FEMALE,5M)	1			
6	(*****)	HOSE,BOOSTER (3M)	1			
7	42471561000	HOSE,BOOSTER (SMALL,WITH AIR BALLOON)	1			
	42506280000	HOSE,BOOSTER (LARGE,AIR BALLOON ONLY)	1			
11	42509170000	SWITCH ASSY (ELEC.BOOSTER, REMOTE:5M,NANABOSI,KASUGA)	1			
	42470984000	SWITCH BOX (ELECTRIC BOOSTER, 8M,NANABOSI,SINKOU DENKI)	1			
	42470985000	SWITCH BOX (ELECTRIC BOOSTER, 5M,NANABOSI,SINKOU DENKI)	1			
	42509150000	SWITCH ASSY (ELEC.BOOSTER, REMOTE:2M,NANABOSI,KASUGA)	1			
	42509160000	SWITCH ASSY (ELEC.BOOSTER, REMOTE:3M,NANABOSI,KASUGA)	1			
	42470980000	SWITCH BOX (FOR BOOSTER)	1			
	42470983000	SWITCH BOX (ELECTRIC BOOSTER, 3M,NANABOSI,SINKOU DENKI)	1			
12	(*****)	SWITCH INSTALLATION	1			
18	(*****)	PRUNER ASSY	1			
19	42471270000	DRIL,HYDRAULIC	1			
20	(*****)	WRENCH,IMPACT (HYDRAULIC)	1			
21	42460021000	BELT,SAFETY	1			
	42461162000	FALL ARREST SYSTEM (TB-LSA-550/FUJII-DENKO)	1			HK
22	42470050000	ROPE (SAFETY,1.5M,WITH HOOK)	1			
23	42472670000	ROPE (SAFETY,WHITE)	1			
24	42472650000	HANGER (FOR BUCKET)	1			
	42474540000	HANGER (FOR BUCKET,FRP)	1			
26	42474030000	STEP,BUCKET (GRAY,FOR BUCKET INNER)	1			
	42473340000	STEP,BUCKET	1			
27	42503180000	BOX,TOOL (FOR BUCKET,FRP)	1			
28	42472530000	BOX,TOOL (FOR BUCKET)	1			
29	42472990000	BOX,TOOL (FOR BUCKET)	1			
30	(*****)	WOOD BLOCK (OPTION)	4			
31	(*****)	PUMP,GREASE (400CC)	1			
32	42473931000	TOOLS	1			
33	(*****)	EARTH ASSY	1			
48	42508690000	ROPE ASSY (YELLOW)	1			
52	42461681000	WEDGE (YELLOW)	1			
54	42974561000	BLOCK,WOOD	1			
55	42516080000	MAT	1			

AT-110-4 42084400076 UPPER

Pos No.	Parts No	Parts Name	Qty	Unit	Technical Data	Serial No (Start)	Serial No (End)	Remarks
1	90101208016	BOLT	2		M8X16			
2	90302040801	WASHER,SPRING	2		8			
3	36630910060	NEEDLE	1					
4	36630910030	HOLDER	1					
5	91002801000	O-RING	1		1B P10			
6	91410001000	RING,BACKUP	1		P10			
8	36630910050	POPPET	1					
9	52255101000	SPRING	1					
10	91002801400	O-RING	1		1B P14			
11	36620030050	PLUG	1					
12	82400000350	KNOB	1					
13	37000508510	PLATE	1					
14	80172303006	SCREW,MACHINE	1		M3X6			
100	36636340000	VALVE,MANUAL CONTROL	1					

**AT-110-4 42084400076 UPPER
PB1400431-07 PIPING, UPPER**



AT-110-4 42084400076 UPPER

Pos No.	Parts No	Parts Name	Qty	Unit	Technical Data	Serial No (Start)	Serial N
1	42266611000	POST ASSY	1				
2	42268541000	FRAME ASSY	1				
3	42507782100	MOTOR ASSY,ELECTRIC (WITH CINNECTOR)	1				
4	42507780200	STOPPER	1				
5	42507780300	COVER	1				
6	42264200200	PLATE	N		T=1.0		
7	42507780350	PLATE	1				
8	42268552000	GEAR ASSY	1				
9	37000159360	PIN	1				
10	80136363050	PIN,SPLIT	1		6.3X50		
11	82456101000	NIPPLE,GREASE	1		A-PT1/8		
12	82400000459	CAP	1				
13	42507780100	WHEEL,WORM	1				
14	80601110750	RING,RITAINING	1		S75		
15	91810130290	FASTENER	2		L=470		
16	90171112065	BOLT	8		M12X65		
17	90171112055	BOLT	2		M12X55		
18	90201781200	NUT	4		M12		
19	90102212050	BOLT	2		M12X50		
20	90201201200	NUT	2		M12		
21	90171110030	BOLT	4		M10X30		
22	90302041001	WASHER,SPRING	4		10		
23	90303071001	WASHER,PLAIN	4		10		
24	37000586760	WASHER,PLAIN	16		12		
25	90172106065	BOLT,HEXAGON SOCKET	4		M6X65		
26	90302040601	WASHER,SPRING	4		6		
27	90303070601	WASHER,PLAIN	4		6		
28	90171112060	BOLT	2		M12X60		
52	80820003540	BEARING,PLAIN	2				
73	80513006015	BEARING,BALL	2				
91	42268552100	WORM	1				
92	42507782401	SUPPORT	1				
93	42264154120	COVER	1				
94	80513006205	BEARING,BALL	2				
95	42507782500	SPACER	1				
96	42264154500	SHIM	N		T=0.5		
97	42264154600	SHIM	N		T=0.2		
98	90171108016	BOLT	4		M8X16		
99	90302040801	WASHER,SPRING	4		8		

AT-110-4 42084400076 UPPER

Pos No.	Parts No	Parts Name	Qty	Unit	Technical Data	Serial No (Start)	Serial No (End)
1	42972380000	CLAMP HEAD ASSY (YONDENKO/SAFETY HOSE)	1				

AT-110-4 42084400076 UPPER

Pos No.	Parts No	Parts Name	Qty	Unit	Technical Data	Serial No (Start)	Serial No (End)
1	42509510000	COVER ASSY (BUCKET/CLOTH:WHITE)	1				

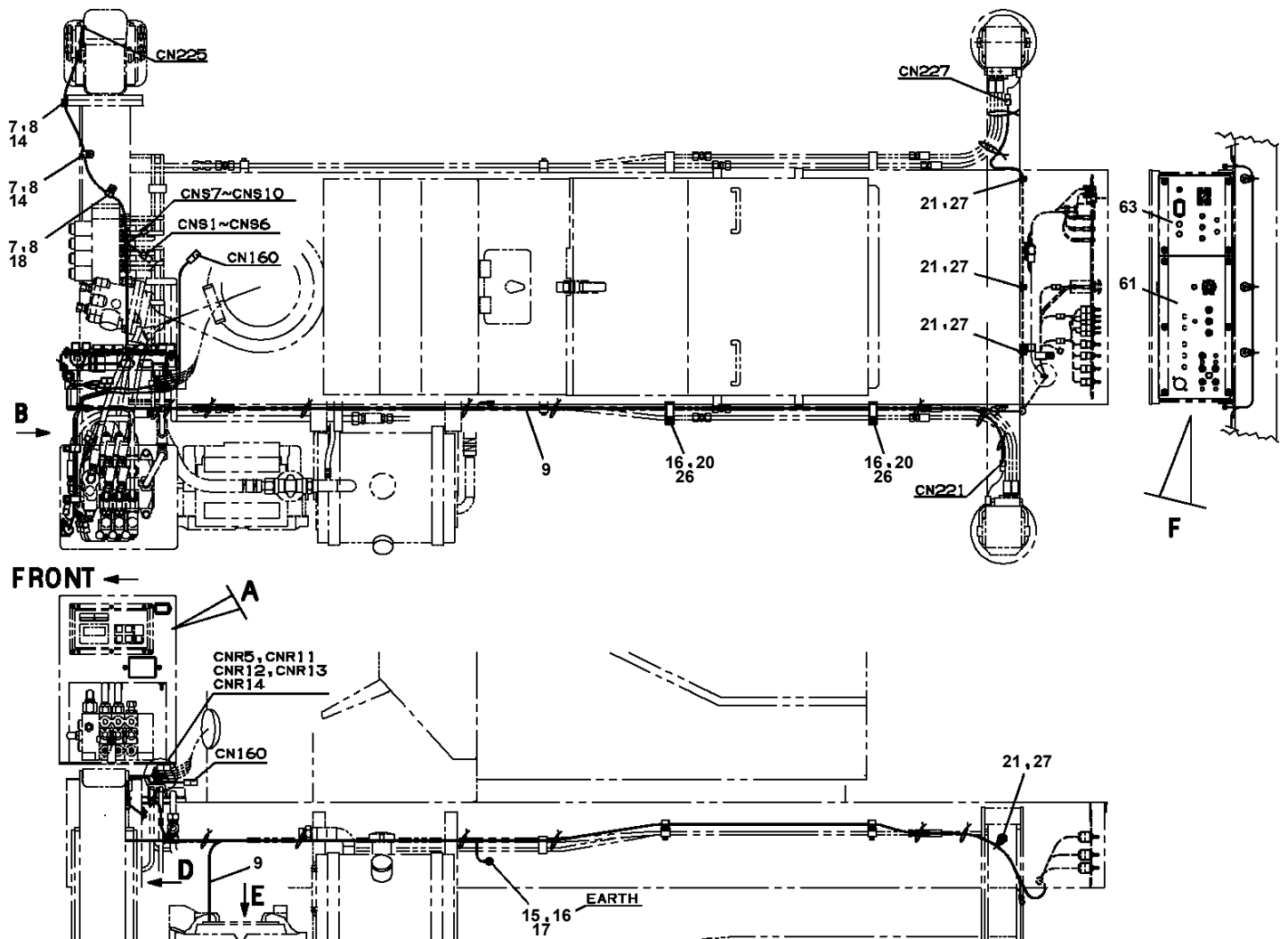
AT-110-4 42084400076 UPPER

Pos No.	Parts No	Parts Name	Qty	Unit	Technical Data	Serial No (Start)	Serial No (End)	R
1	36027800000	CYLINDER,ELEVATING	1					
2	36606450000	VALVE ASSY,COUNTERBALANCE	1					
3	90171108060	BOLT	4		M8X70			
4	90302040801	WASHER,SPRING	4		8			

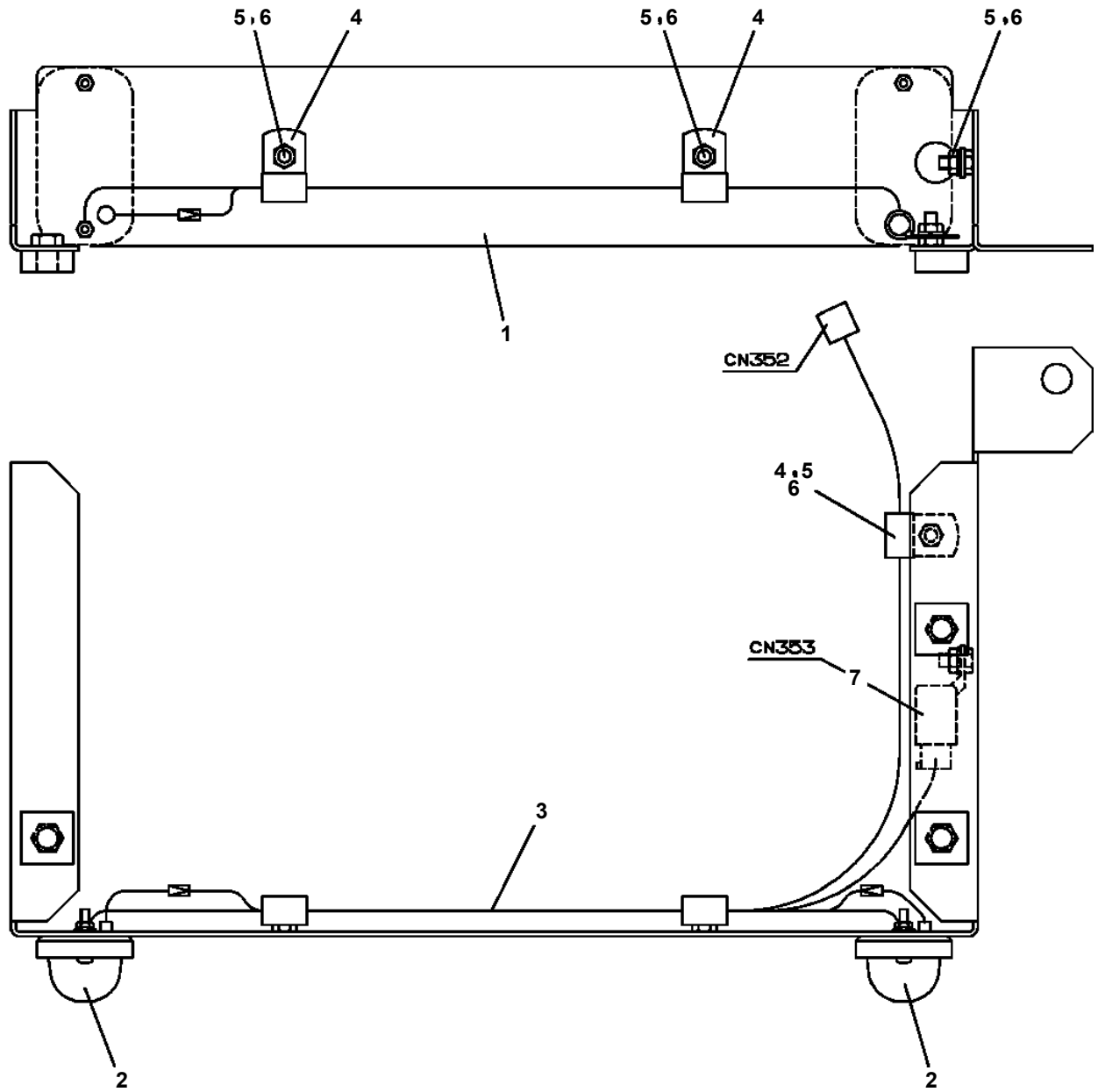
AT-110-4 42084400076 UPPER

Pos No.	Parts No	Parts Name	Qty	Unit	Technical Data	Ser
1	(*****)	POWER SUPPLY (100V2POLES & WORKING LAMP)	1			
2	(*****)	POWER SUPPLY ASSY,ELECTRICITY(LOWER/W/ CABLE 2POLES,B,L	1			

**AT-110-4 42084400076 UPPER
PE5110025-00 ELEC.ASSY,FRAME**



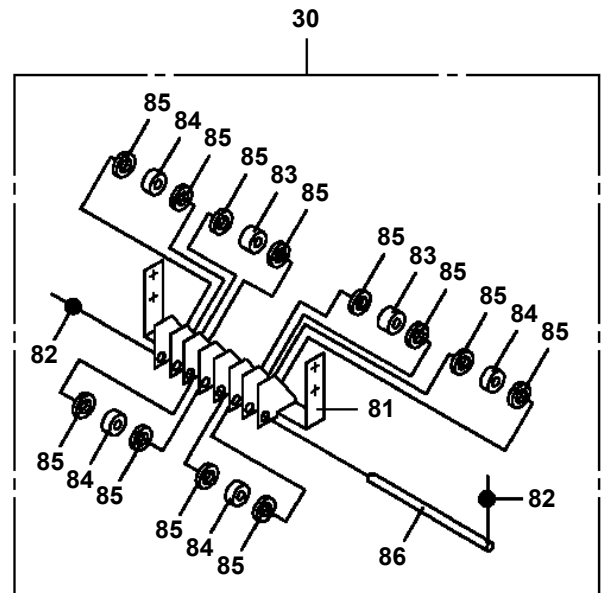
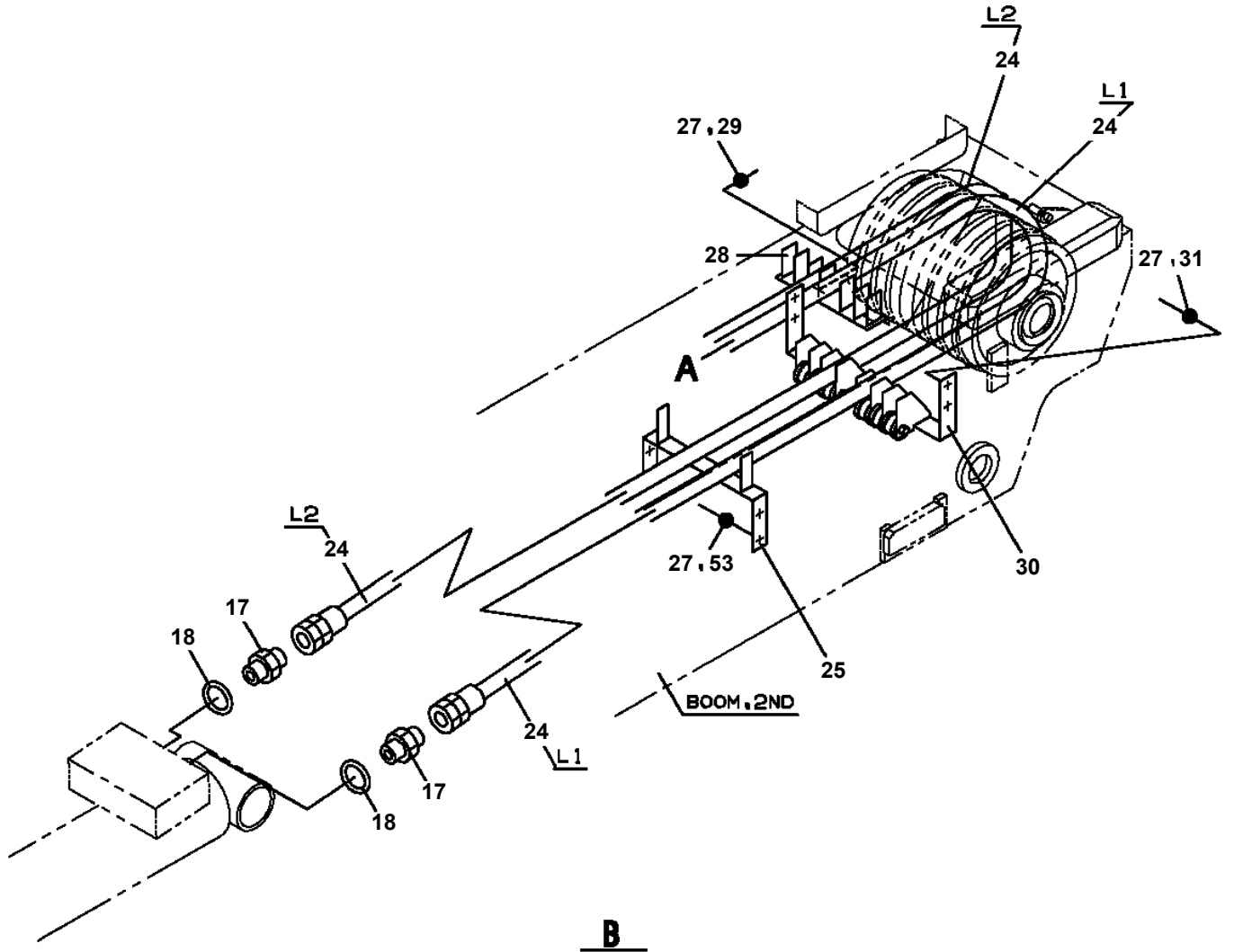
AT-110-4 42084400076 UPPER
PF1080184-00 SUPPORT



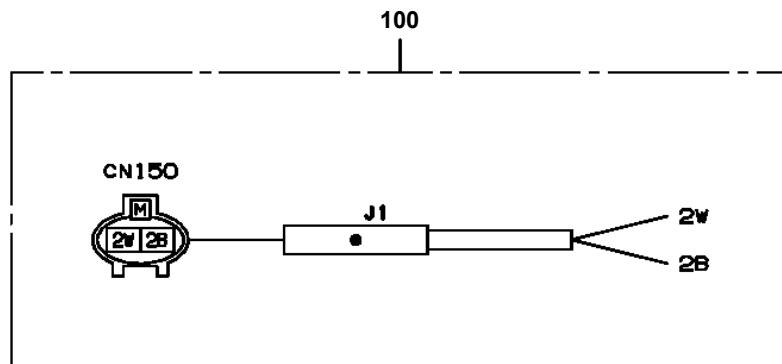
AT-110-4 42084400076 UPPER

Pos No.	Parts No	Parts Name	Qty	Unit	Technical Data	Serial No (Start)	Serial No (End)
66	42202400130	PLATE	N		T=0.5		
67	42202410010	PLATE	2		T=1.2		
68	42202670100	SHEAVE ASSY	1				
69	42202400400	COVER	1				
70	37002018450	PLATE,SLIDE	4				
71	90171110025	BOLT	4		M10X25		
72	90183108020	BOLT	1		M8X20		
73	90303070801	WASHER,PLAIN	1		8		
95	82455106000	NIPPLE,GREASE	1		A-M6F FE		
101	42202414100	COVER	1				
102	42202414200	COVER	1				
103	42202674300	COVER	1				
104	42202674400	COVER	1				
105	90186208014	BOLT,FLANGE	18		M8X14		
106	42202674800	COVER ASSY	1				
107	42202414800	SUPPORT	1				
108	42202414850	SUPPORT	1				
109	42340233030	COVER	1				
110	42202414500	COVER ASSY	1				
111	42202744100	COVER ASSY	1				
112	42202744200	COVER ASSY	1				
113	80192486010	SCREW,MACHINE	8		M6X10		
131	37001004450	SHEAVE ASSY	2				
132	42202670210	PIN	2				
133	42200383620	PLATE	2				
134	90171110022	BOLT	8		M10X22		
135	90302041001	WASHER,SPRING	12		10		
136	90171110050	BOLT	4		M10X50		
137	90303071001	WASHER,PLAIN	4		10		
142	80513006206	BEARING,BALL	2				
151	42202674810	PLATE	1				
152	42202674820	BLADE	1				
153	42202674830	PLATE	1				
154	80192484012	SCREW,MACHINE (WITH WASHER)	3		M4X12		
161	42202414550	COVER	1				
162	90101208016	BOLT	3		M8X16		
163	90201200800	NUT	3		M8		
164	90302040801	WASHER,SPRING	3		8		
165	42202414510	BLADE	1				
166	42202414520	PLATE	1				
171	42202744110	COVER	1				
172	42202414610	PLATE	2				
173	42202414620	BLADE	2				
174	90101206012	BOLT	6		M6X12		
175	90302040601	WASHER,SPRING	6		6		
176	90201200600	NUT	6		M6		
181	42202744210	COVER	1				
191	42201562810	PLATE,NAME	1				
201	37002000290	PLATE,SLIDE	2		100X30		

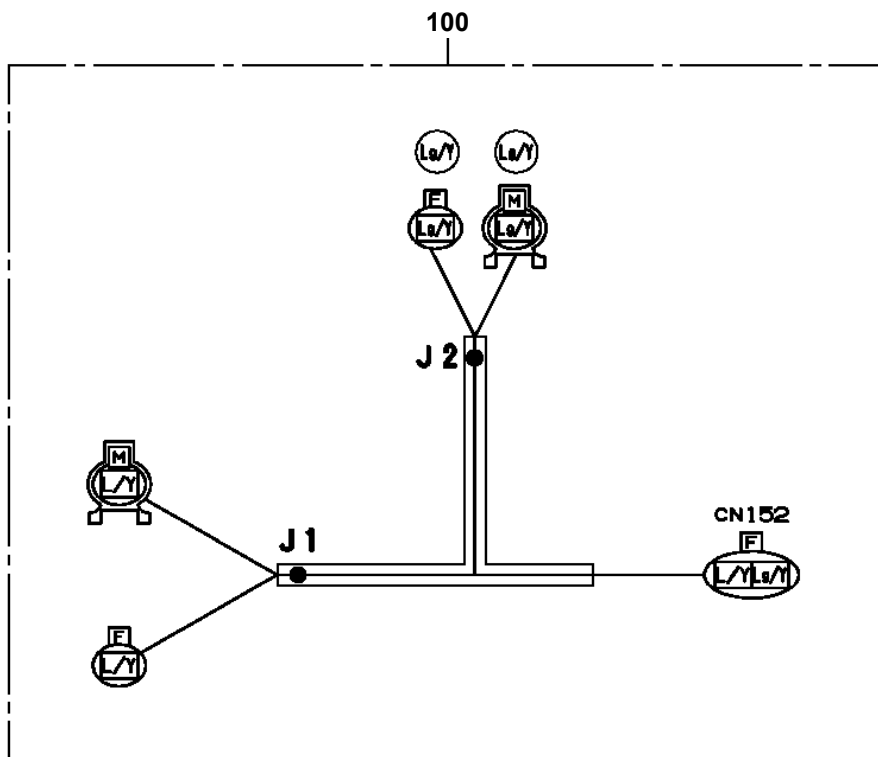
AT-110-4 42084400076 UPPER
PG1220170-02 PIPING,BOOM



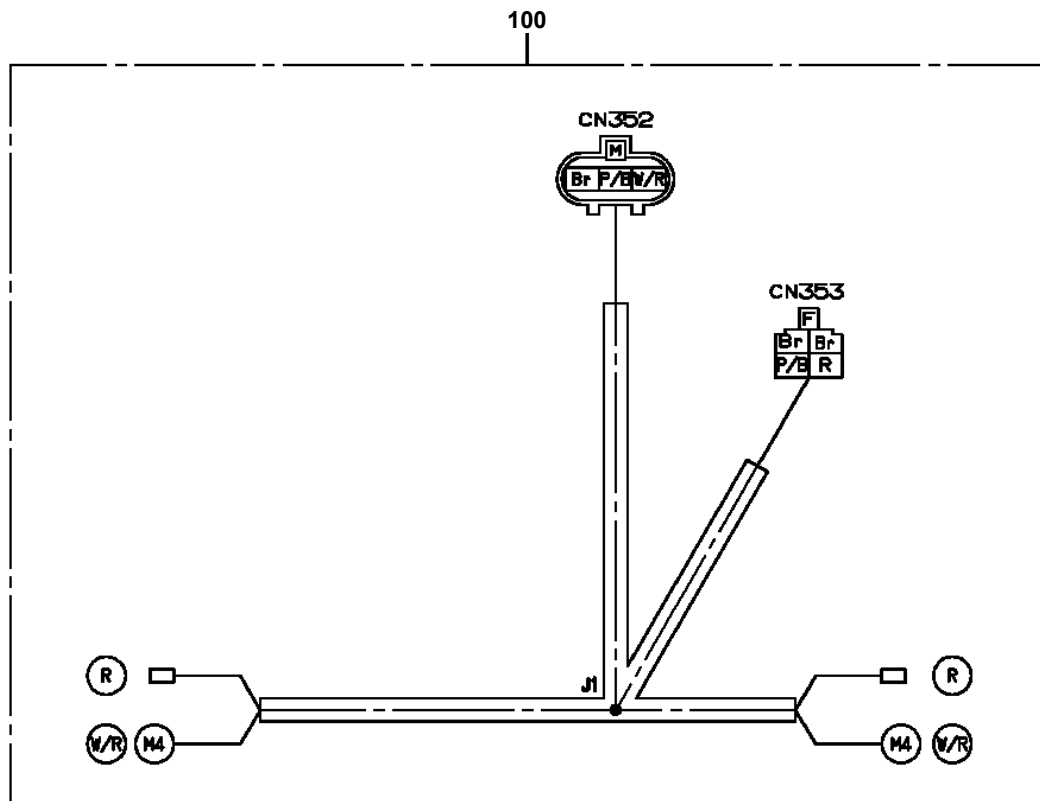
AT-110-4 42084400076 UPPER
PH5030976-00 HARNESS



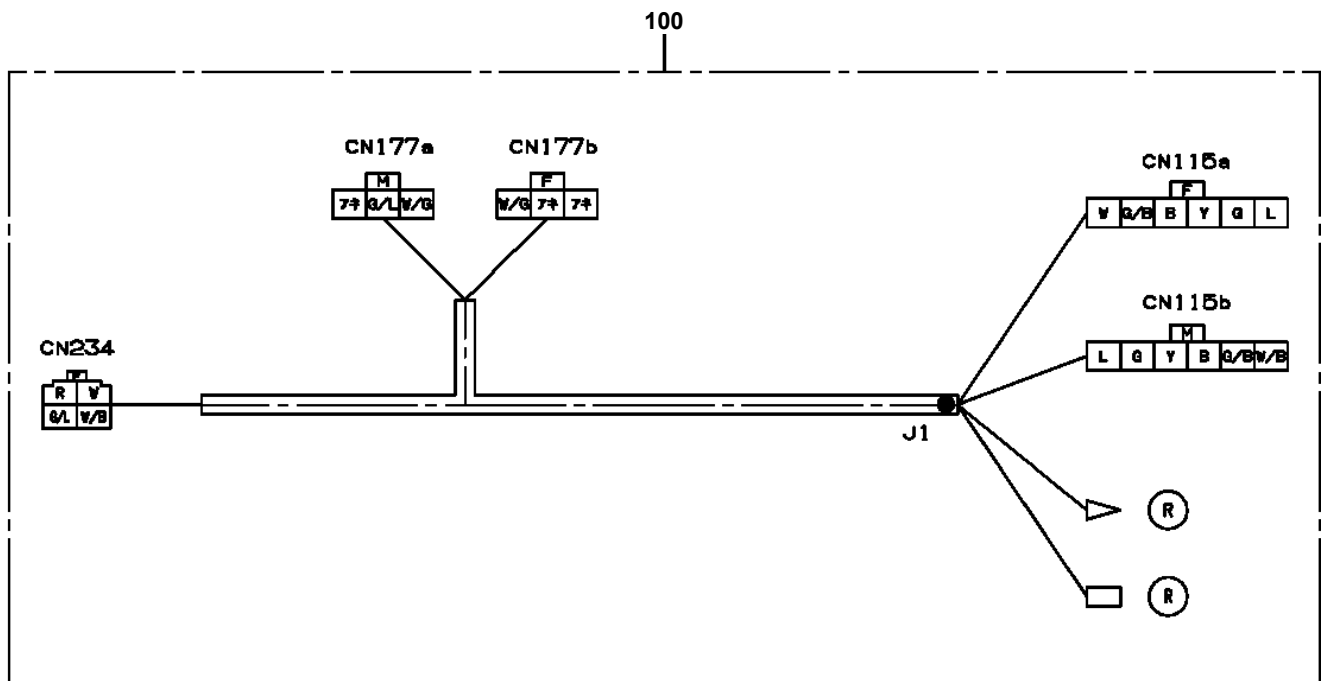
AT-110-4 42084400076 UPPER
PH5031087-00 HARNESS



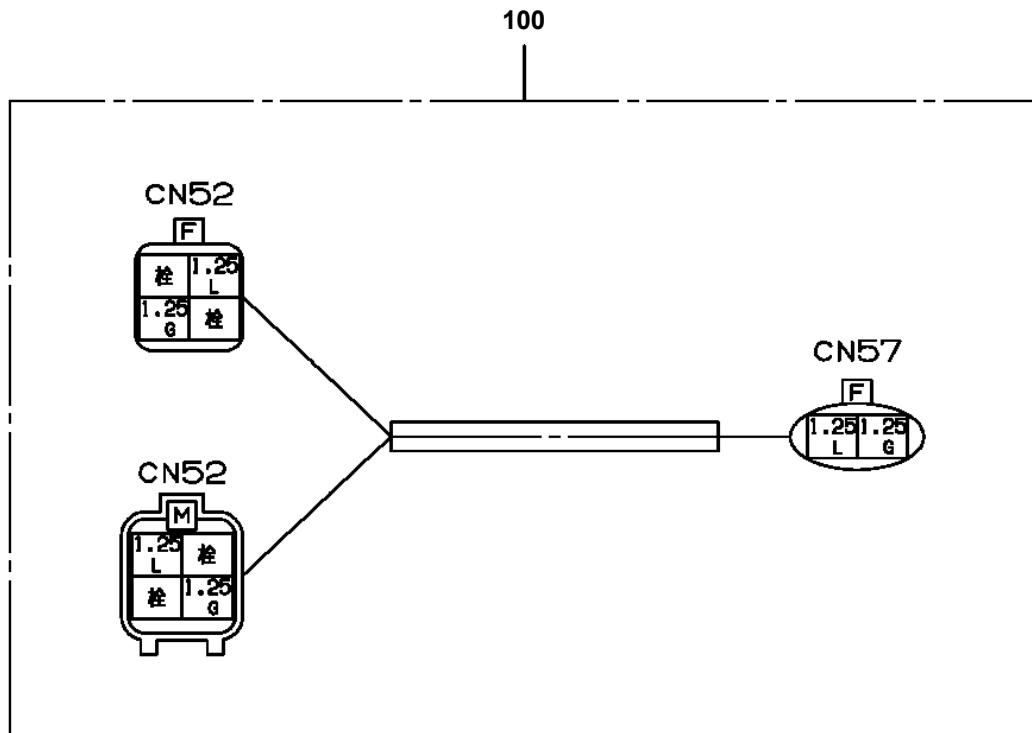
AT-110-4 42084400076 UPPER
PH5032627-00 HARNESS



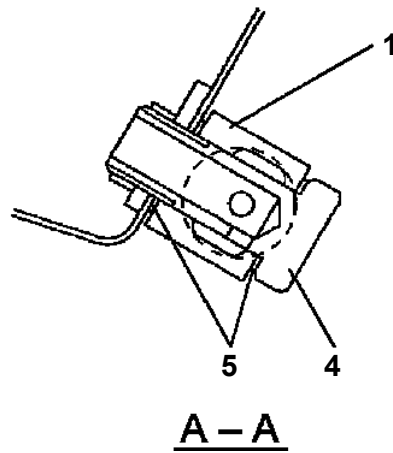
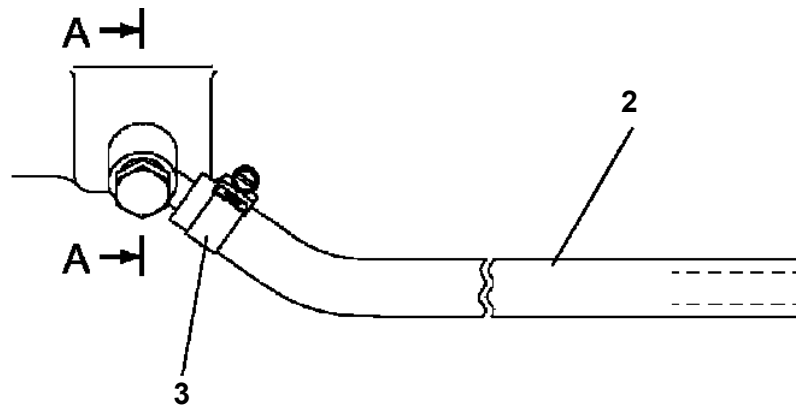
AT-110-4 42084400076 UPPER
PH5032636-00 HARNESS



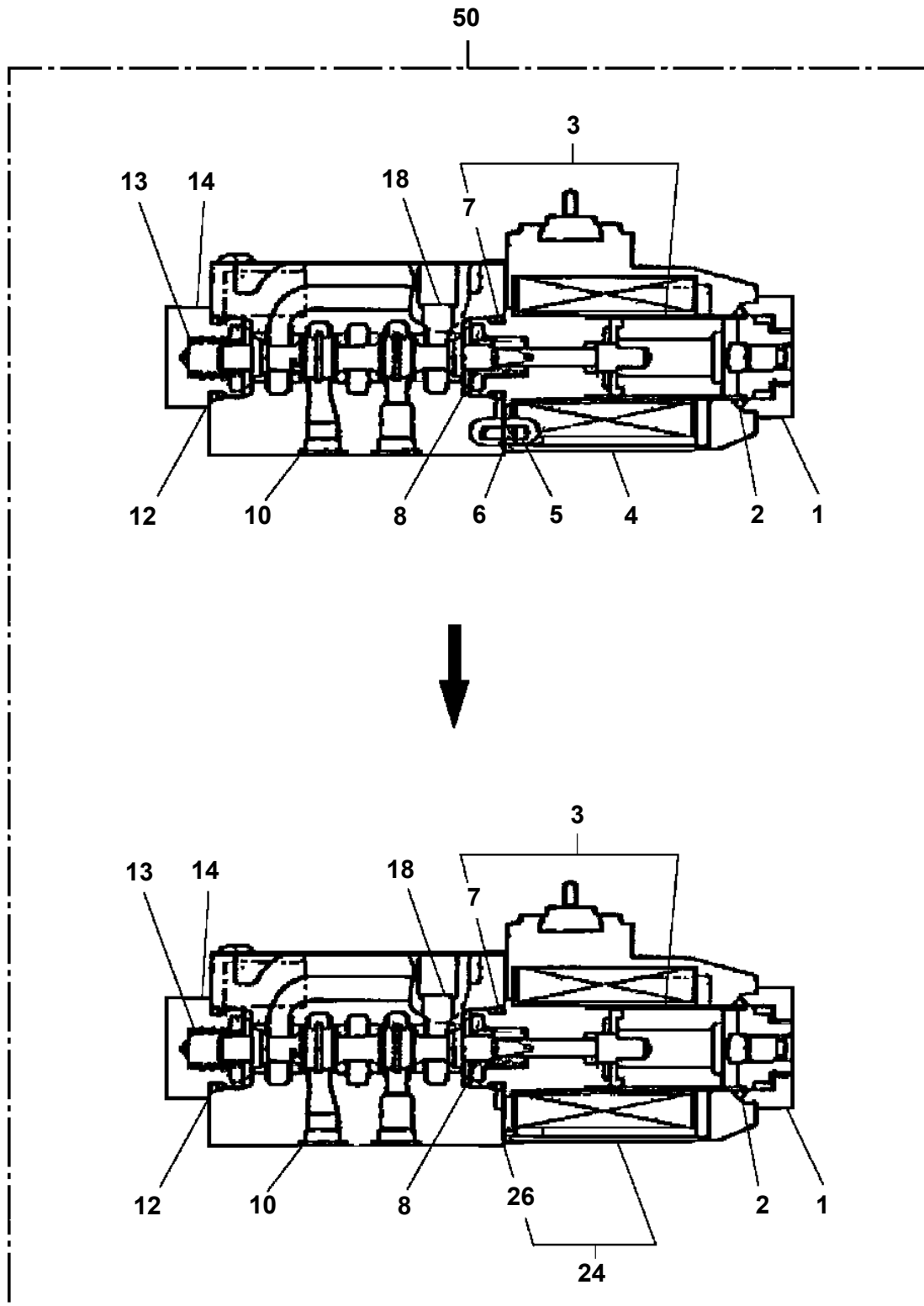
AT-110-4 42084400076 UPPER
PH5034172-00 HARNESS



AT-110-4 42084400076 UPPER
PH5100004-00 HOSE ASSY

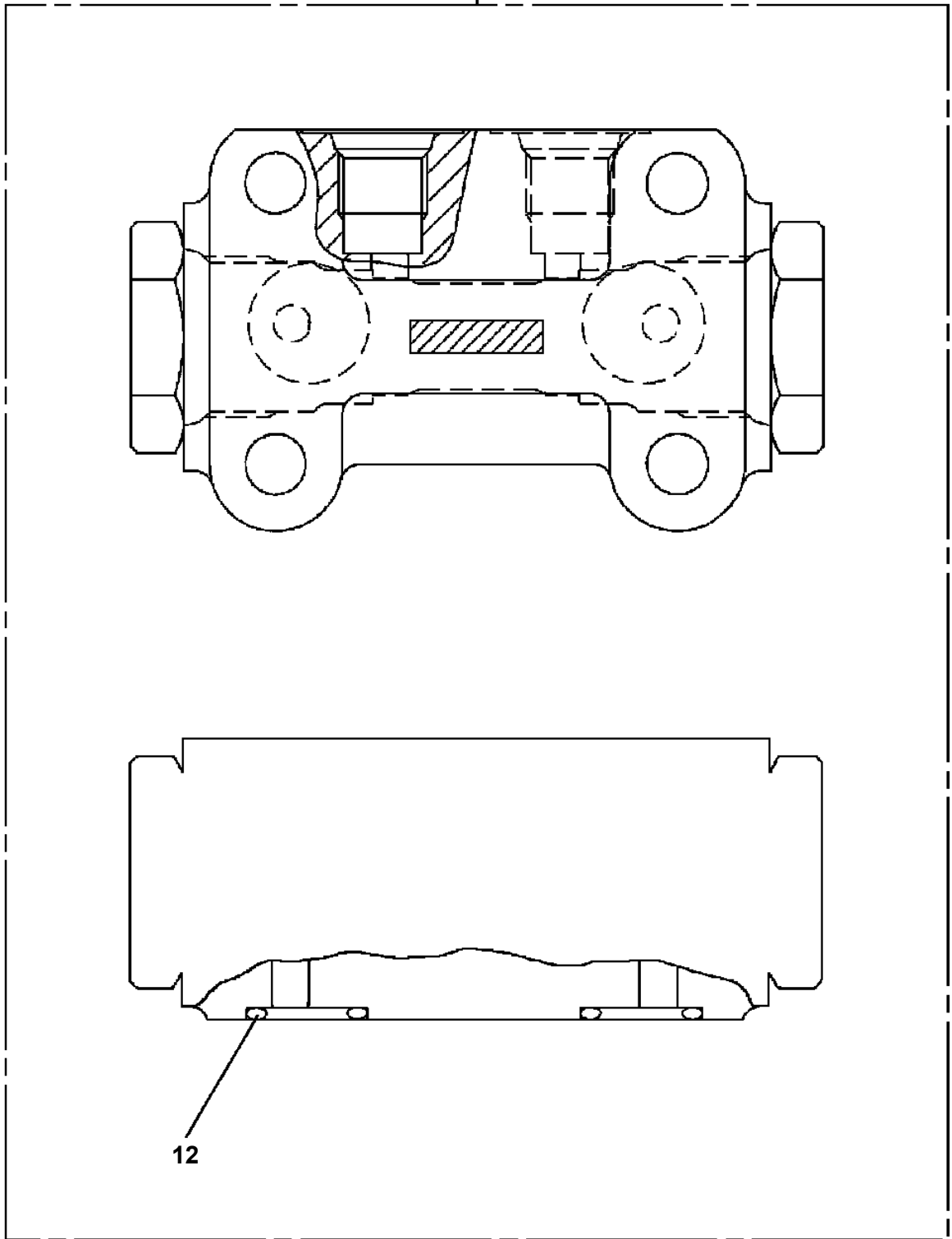


AT-110-4 42084400076 UPPER
PI1120242-01 VALVE,SOLENOID



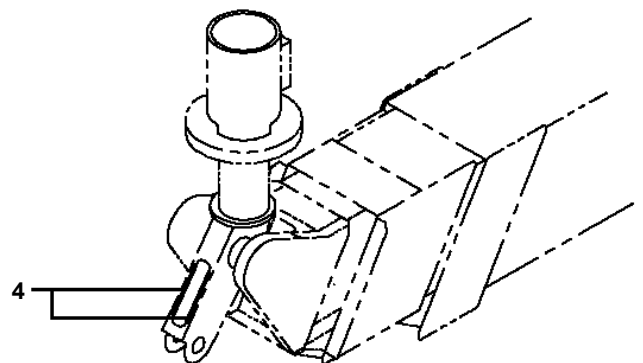
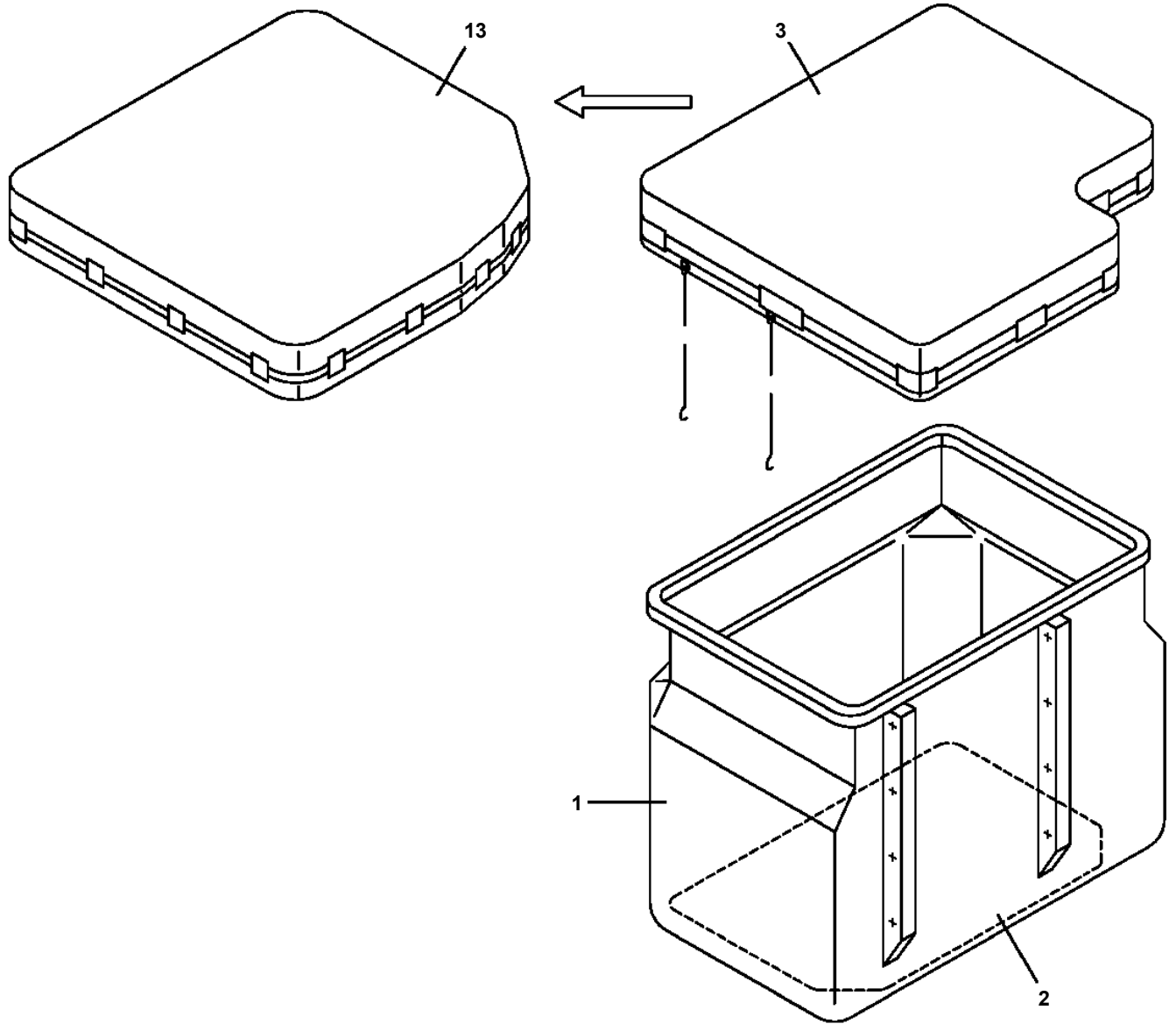
AT-110-4 42084400076 UPPER
PI1140227-00 VALVE,CHECK

100

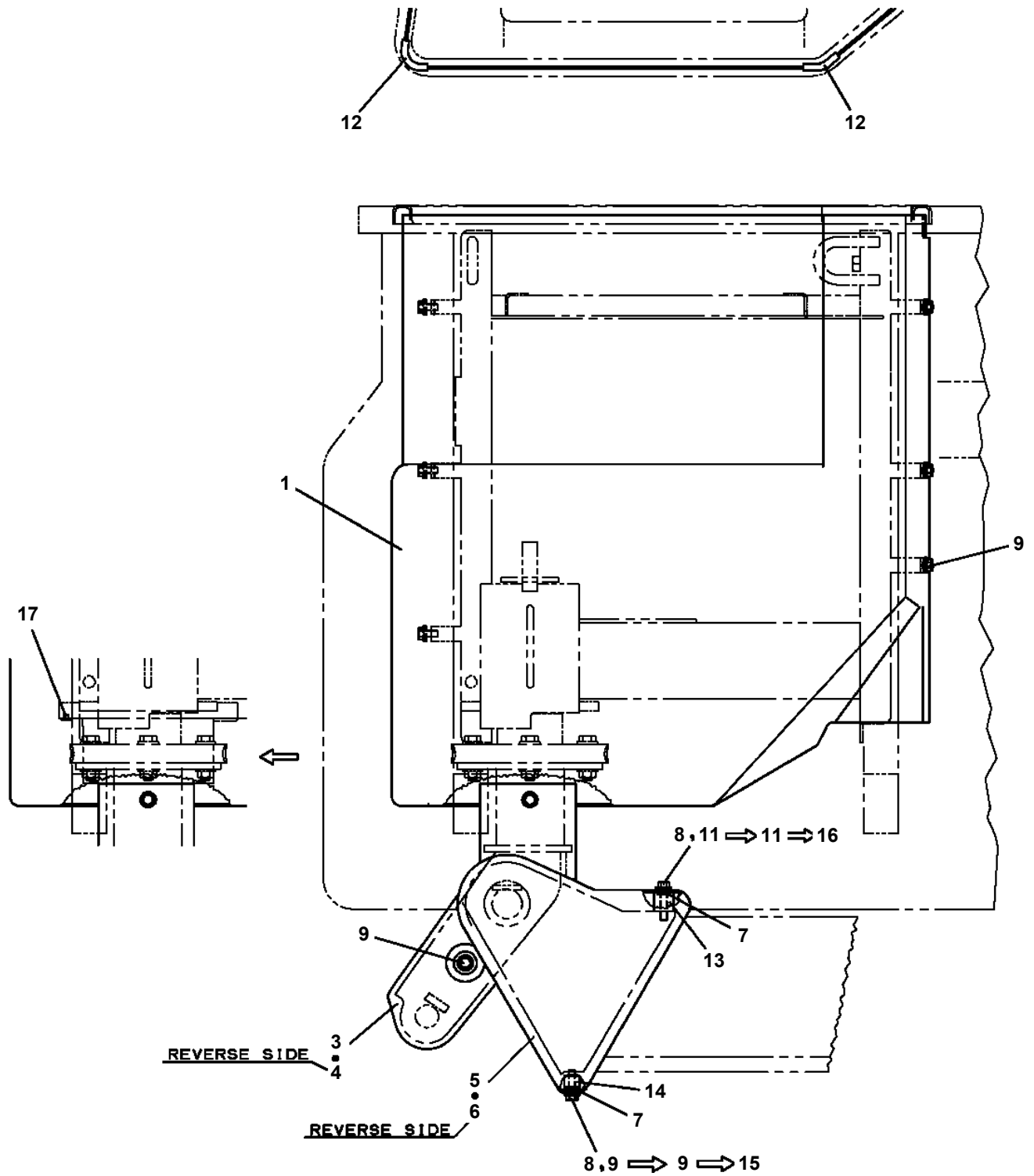


12

AT-110-4 42084400076 UPPER
PJ3010316-01 BUCKET



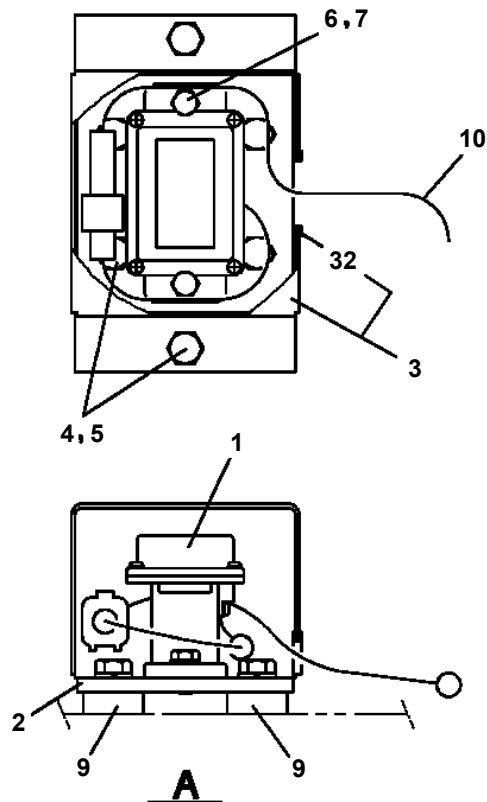
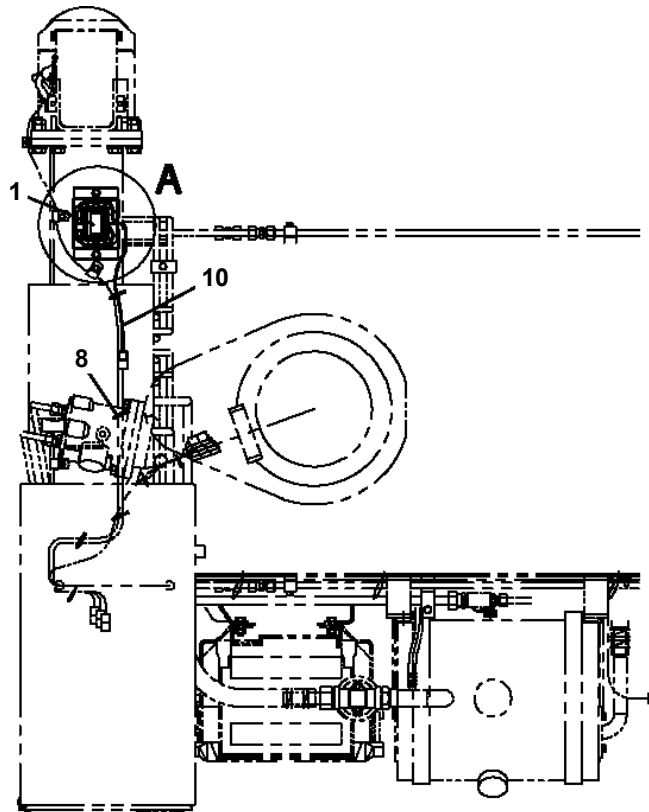
**AT-110-4 42084400076 UPPER
PK1330283-02 COVER (BUCKET)**



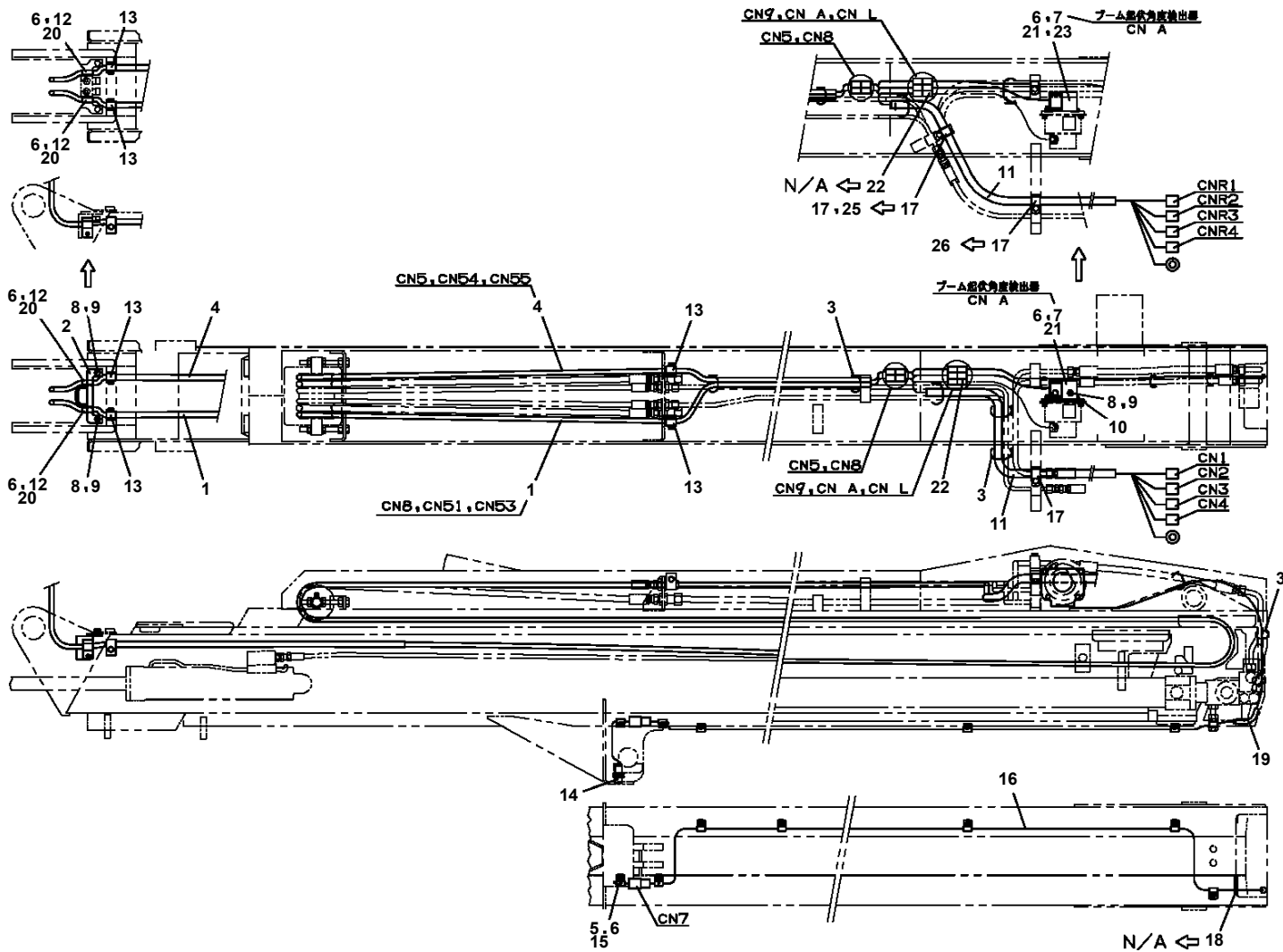
**AT-110-4 42084400076 UPPER
PM5150161-00 MODIFICATION ASSY (FUKUTOU/UNLOAD VALVE,JACK)**

指示番号 KEY NO.	カイソウASSY (フクトウデンスツムケ/アンロードバルブ, シヤツキ) MODIFICATION ASSY (FUKUTOU/UNLOAD VALVE,JACK)
1	カイソウASSY (メインアンロードバルブコウカン) MODIFICATION ASSY (MAIN UNLOAD VALVE CHENGE)
2	カイソウASSY (ブースタヨウアンロードバルブコウカン) MODIFICATION ASSY (BOOSTER UNLOAD VALVE)
3	カイソウASSY (シヤツキヨウオリフイスコウカン) MODIFICATION ASSY (JACK ORIFICE CHENGE)

AT-110-4 42084400076 UPPER
PN1013987-00 ELEC.ASSY (AUTOMATIC HORIZONTAL)

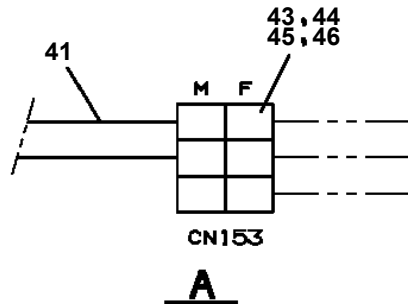
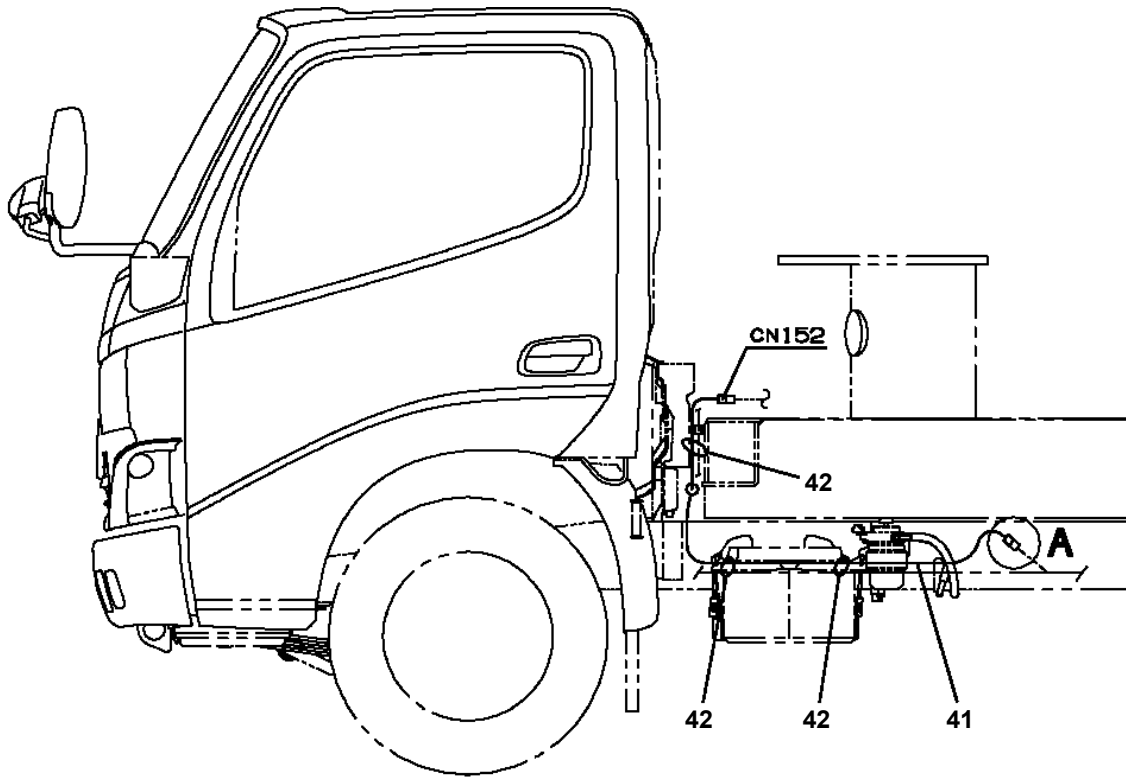


AT-110-4 42084400076 UPPER PN1014333-03 ELEC.ASSY (BOOM/ANGLE)



AT-110-4 42084400076 UPPER

PN1014511-03 ELEC.ASSY(AUTOMATIC HORIZONTAL: HINO,TOYOTA/KANDENKO)



CLICK HERE TO **DOWNLOAD** THE COMPLETE MANUAL

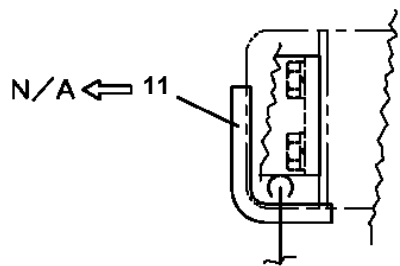
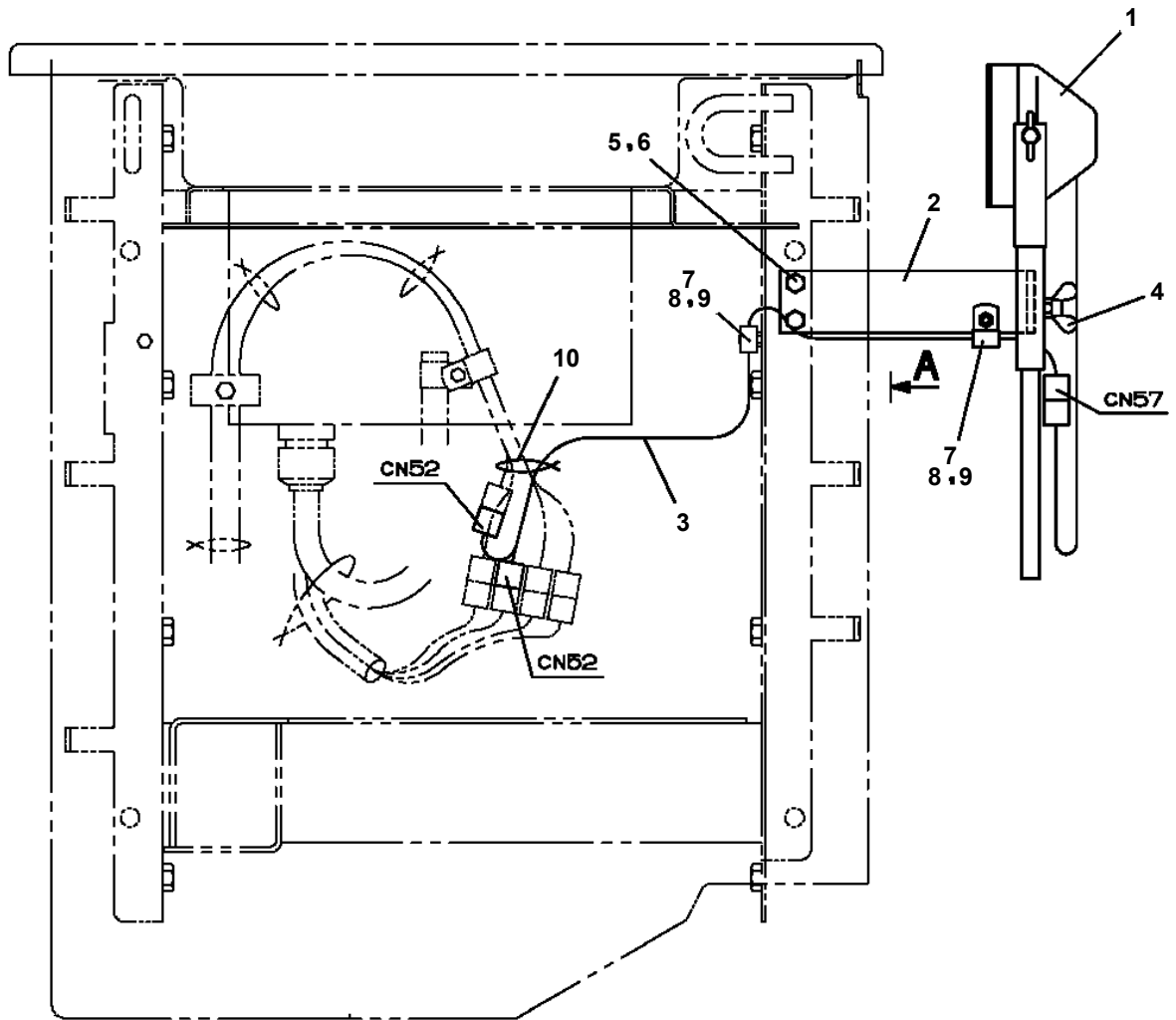
- Thank you very much for reading the preview of the manual.
- You can download the complete manual from: www.heydownloads.com by clicking the link below



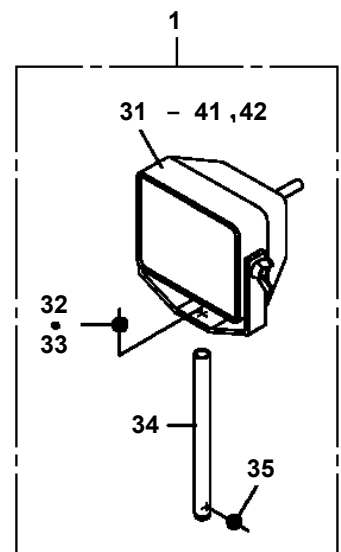
- Please note: If there is no response to CLICKING the link, please download this PDF first and then click on it.

CLICK HERE TO **DOWNLOAD** THE COMPLETE MANUAL

AT-110-4 42084400076 UPPER
PN1080273-02 LAMP (WORKING/UPPER)



A



AT-110-4 42084400076 UPPER

Pos No.	Parts No	Parts Name	Qty	Unit	Technical Data	Serial No (Start)	Serial No (End)	Remarks
1	42643051000	SWITCH ASSY (THERMO)	1					

AT-110-4 42084400076 UPPER

Pos No.	Parts No	Parts Name	Qty	Unit	Technical Data	Serial No (Start)	Serial No (End)	Remarks	Pages
1	91810132530	FASTENER	5						
2	90201200600	NUT	1		M6				
3	90302040601	WASHER,SPRING	1		6				
4	82400000203	GROMMET	1		L=250				
5	42476303100	CABLE ASSY	1		L=1000				
6	82100002006	CLAMP	1		WR10				
27	82122910400	CAP	1						

AT-110-4 42084400076 UPPER

Pos No.	Parts No	Parts Name	Qty	Unit	Technical Data	Serial No (Start)	Serial No (End)	Remarks	Pages
1	42506760010	PLATE,NAME	1						

AT-110-4 42084400076 UPPER
PN5010612-00 NAME PLATE ASSY (VEHICLE)

4

6	労働安全衛生法第45条第2項による	7
5	特定自主検査（法定年次検査）	8
4	を実施しましょう	9
3	第1回検査は□年□月です	10
2	<input type="text"/>	11
1	建設業労働安全協会 (労働省指導)	12

5

AMC P&T	油圧 アップ	AMC P&T	油圧 アップ	油圧 アップ	油圧 アップ	油圧 アップ
10A	10A	10A	10A	10A	10A	10A
スベア	スベア	スベア	スベア	スベア	スベア	スベア
10A	10A	10A	10A	10A	10A	10A
クマ	クマ	クマ	クマ	クマ	クマ	クマ
10A	20A	20A	20A	20A	20A	20A

483-974-01010

6

警告 / 非常スイッチ

非常スイッチを使用すると干渉防止機能は働きます。キャブとの接触に注意してブームを格納してください。

非常スイッチを使用するとブームインターロックは働きます。転倒の恐れがありますので必ずブームを格納させてからジャッキ操作をしてください。

非常操作方法

AMCの故障等で通常の操作ができない場合、非常スイッチをONにしながらブーム、ジャッキを格納してください。

483-974-01010

7

警告

アウトリガ操作注意

- 作業車は堅固な地面に水平に設置してください。
- ジャッキ操作を行う時は周囲の安全を十分確認してください。
- タイヤは4輪とも浮かし、アウトリガインジケータの点灯を確認してください。

走行時の注意

- バケットの積載物を降ろしてください。
- バケット、ブームを格納してください。
- アウトリガを格納してください。

483-974-01010

9

格納 ジャッキ 格納 格納

張出 張出 張出

自動・停止

10

緊急停止操作

緊急停止操作は、ストップスイッチを押してください。
(ストップスイッチを押すとエンジンは停止します。)
解除するときは、ストップスイッチを引いてください。

注意 / バケット傾斜

- バケットが前後に3°以上傾いたときはバケットの水平調整をしてください。
- 外気温が低下すると起伏操作時にバケットの追従が遅れて傾きが大きくなる場合があります。このときはバケットを一旦上げて、下げ操作で水平に調整してください。

483-974-01010

11

警告 / 走行時注意

走行時は、各扉のロックおよび蓋錠を確実に行ってください。

483-974-01010

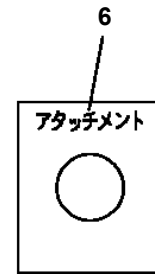
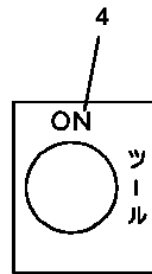
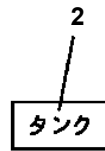
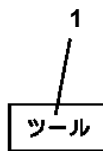
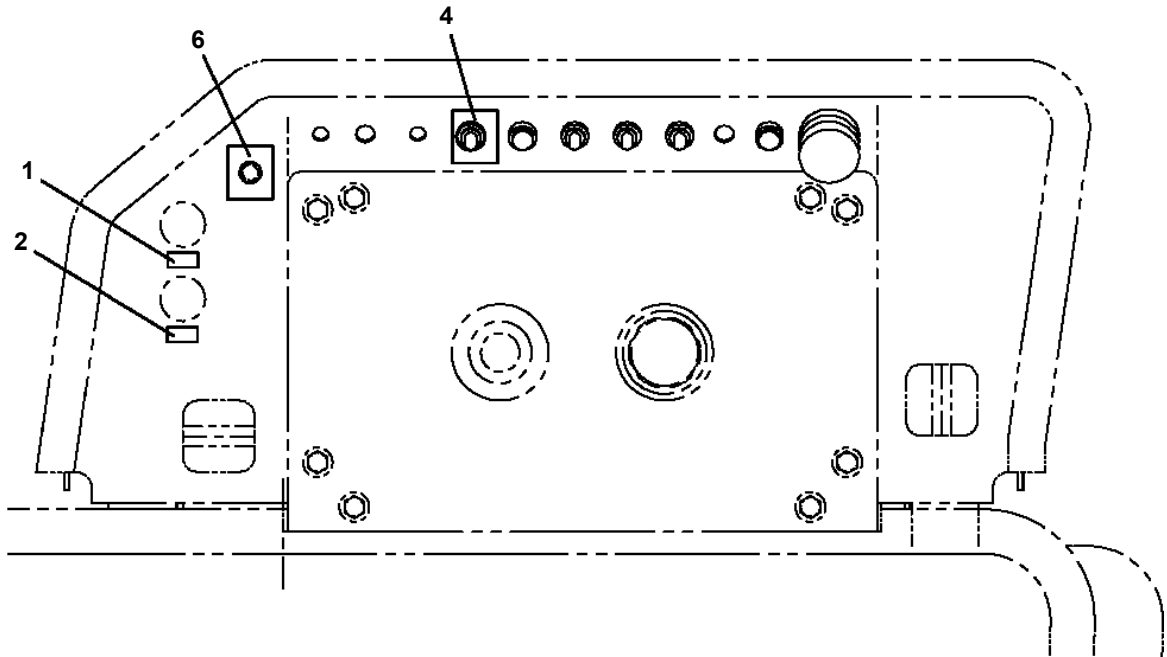
12

警告

火気厳禁

483-974-01010

AT-110-4 42084400076 UPPER
PO1014922-01 PLATE ASSY,NAME (TOOL,ATTACHMENT,TANK)



AT-110-4 42084400076 UPPER

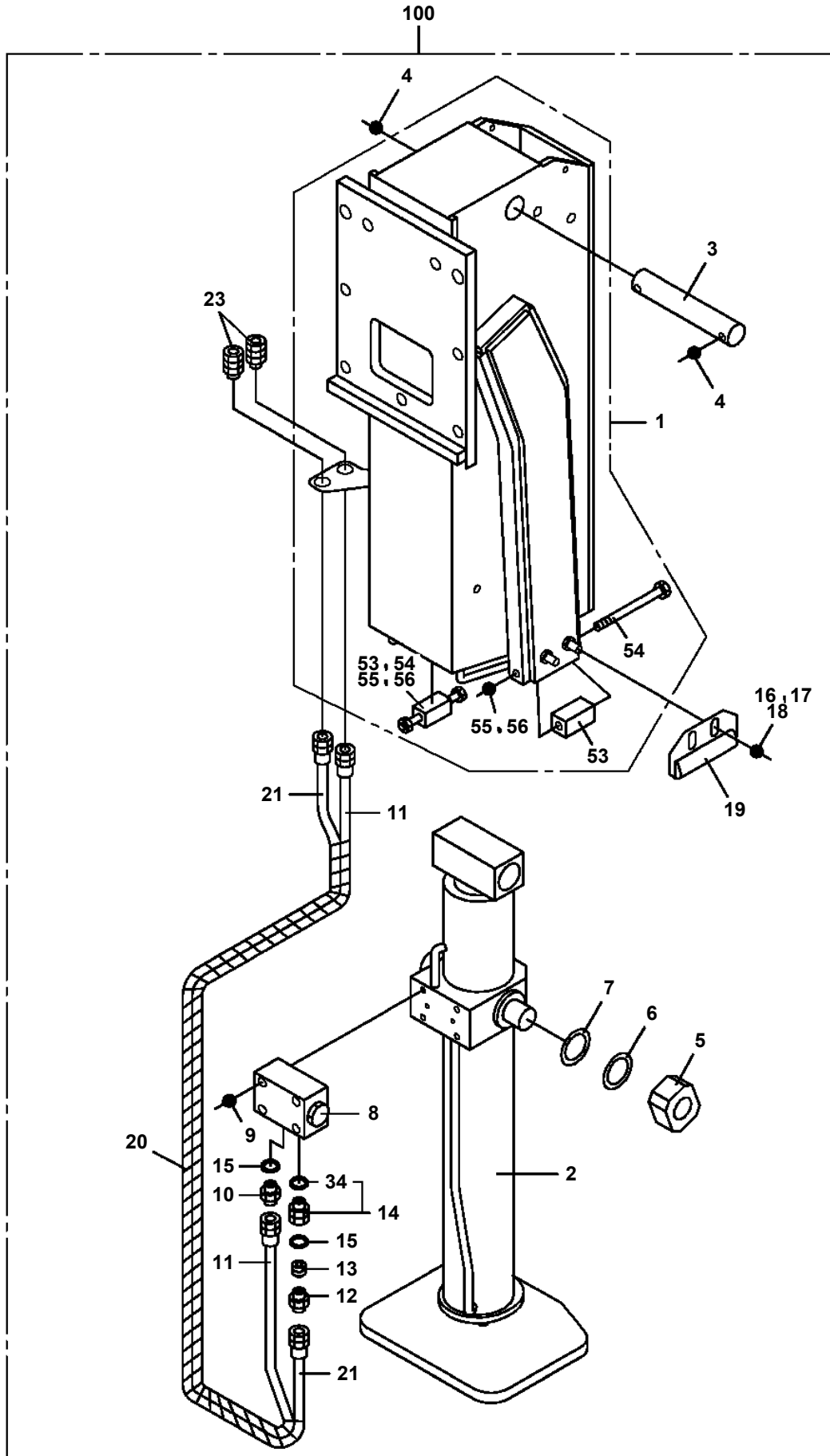
Pos No.	Parts No	Parts Name	Qty	Unit	Technical Data	Serial No (Start)	Serial No (End)	Rema
22	42332677520	PLUG	1					
23	42332677530	BOOT	1					
36	42333157520	SPRING	1					
38	42333157510	STOPPER	1					
43	42332677600	SPRING	2					
47	42332677610	COVER	1					
48	42332677620	CAP	1					
54	42332677630	BEARING	2					
55	42332677540	SPRING	1					
56	42332677650	SPRING	2					
100	42333152001	OPE.ASSY (LEVER,CONTROL)	1					

AT-110-4 42084400076 UPPER

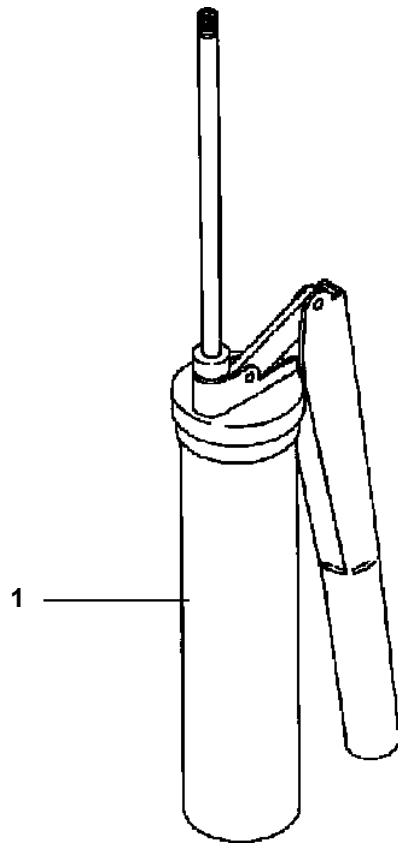
PO5050025-00 OPE.ASSY,BUCKET (W/ 3-AXIS ENABLE SW/L SPECIFICATION)

指示番号 KEY NO.	オペ .ASSY,バケツト (3シクイネーフルSWツキ/Lシヨウ) OPE.ASSY,BUCKET (WITH 3-AXIS ENABLE SW/L SPECIFICATION)
1	オペ .ASSY,バケツト OPE.ASSY,BUCKET
2	ネームプレートASSY (バケツトソウサフ) NAME PLATE ASSY (BUCKET CONTOROL)
3	ネームプレートASSY (バケツトナイメン/イネーフルソウサ) NAME PLATE ASSY (INSIDE BUCKET/ENABLE OPE.)

AT-110-4 42084400076 UPPER
PO5270052-01 OUTRIGGER ASSY



**AT-110-4 42084400076 UPPER
PP5450004-00 PUMP, GREASE (400CC)**



AT-110-4 42084400076 UPPER

Pos No.	Parts No	Parts Name	Qty	Unit	Technical Data	Serial No (Start)	Serial No (End)	Remarks	Pa
1	37000711010	CLAMP ASSY	3		18X1				
2	37000300750	SLEEVE	1		18-15				
3	91002801100	O-RING	4		1B P11				
4	37002472360	HOSE	1		L=650				
5	81408000210	PIPE,STEEL	1	M	15X2.0T				
6	91002801400	O-RING	2		1B P14				
7	37000711410	CLAMP ASSY	2		12-4				
8	80302090161	FITTING	2		KCO12-030N				
9	37000711080	CLAMP ASSY	7		12-2				
10	81408000160	PIPE,STEEL	2	M	12X1.4T				
11	81408000160	PIPE,STEEL	2	M	12X1.4T				
12	81408000160	PIPE,STEEL	2	M	12X1.4T				
13	81408000160	PIPE,STEEL	2	M	12X1.4T				
14	37000601630	CLAMP	1		65				
15	90101208016	BOLT	1		M8X16				
16	90302040801	WASHER,SPRING	1		8				
17	81408000241	PIPE,STEEL	1	M	18X1.9T				
21	81408000160	PIPE,STEEL	1	M	12X1.4T				
22	81408000160	PIPE,STEEL	2	M	12X1.4T				
23	81408000160	PIPE,STEEL	1	M	12X1.4T				
24	81408000160	PIPE,STEEL	1	M	12X1.4T				
25	81408000160	PIPE,STEEL	2	M	12X1.4T				
26	81408000160	PIPE,STEEL	2	M	12X1.4T				
27	81408000160	PIPE,STEEL	3	M	12X1.4T				
28	81408000160	PIPE,STEEL	3	M	12X1.4T				
29	81408000160	PIPE,STEEL	3	M	12X1.4T				
30	81408000160	PIPE,STEEL	3	M	12X1.4T				
31	80301010100	FITTING	4		KUA12-000N				
33	81408000241	PIPE,STEEL	1	M	18X1.9T				
34	80309010105	SLEEVE	4		KK012-000E				
35	80306010105	NUT	4		KKN12-000E				
36	37002486390	HOSE	4		L=430				
37	37000924410	JOINT	2		PF1/4-PF1/4				
38	42645290500	ORIFICE	2		1.6				
39	80400160127	JOINT	2						
41	82100001804	TUBE,CORRUGATE	1	M	15				
43	36672630000	FILTER (WITH O-RING)	2						
45	37002462370	HOSE	1		L=450				
61	42648911100	JOINT	1						
62	80302090201	FITTING	1		KCO15-040N				
63	91002801800	O-RING	4		1B P18				
64	80430620400	JOINT	1						
65	37000908720	JOINT (WITH O-RING)	1		PF1/2-PF3/8				
66	80302090241	FITTING	1		KCO18-040N				
67	80316030060	PLUG	1		PT3/8				
68	80316070080	PLUG	1		PF1/2				
81	91002801100	O-RING	3		1B P11				

AT-110-4 42084400076 UPPER

Pos No.	Parts No	Parts Name	Qty	Unit	Technical Data	Serial No (Start)	Serial No (End)	Remarks
1	(*****)	SWITCH ASSY	1					
3	90172210020	BOLT,HEXAGON SOCKET	4		M10X20			
4	90302041001	WASHER,SPRING	5		10			
5	91810132530	FASTENER	5					
6	(*****)	SUPPORT	1					
7	90101210016	BOLT	1		M10X16			
8	90184108025	BOLT	3		M8X25			
9	42503741700	COVER	1					
10	42503741800	HARNESS	1					
11	42350250080	PLUG (3 POLES,MALE)	1					
12	37000506590	PLATE	1		T=1.6			
13	90201201000	NUT	1		M10			
14	42507611010	GUARD	1					
15	90302510401	WASHER,SPRING	4		4			
16	80172804016	SCREW,MACHINE	4		M4X16			
17	90101212014	BOLT	2		M10X14			
18	90302041201	WASHER,SPRING	2		12			
19	90303520401	WASHER,PLAIN	4		4			
41	42503742020	PLATE	1					
42	42503742010	PLATE	1		T=16			
61	42398251010	PLATE,NAME	1					
62	42392583050	PLATE,NAME	1					
63	42503744510	PLATE,NAME	1					

AT-110-4 42084400076 UPPER

Pos No.	Parts No	Parts Name	Qty	Unit	Technical Data	Se
1	82109833232	SWITCH	1			
2	82100002220	CABLE	4	M		
3	82100002173	CONNECTOR	1			
50	42509160000	SWITCH ASSY (ELEC.BOOSTER, REMOTE:3M,NANABOSI,KASUGA)	1			

AT-110-4 42084400076 UPPER

Pos No.	Parts No	Parts Name	Qty	Unit	Technical Data	Se
1	42470980100	SWITCH,PUSH	1			
2	82100002220	CABLE	3	M		
3	82100002173	CONNECTOR	1			
10	42470983000	SWITCH BOX (ELECTRIC BOOSTER, 3M,NANABOSI,SINKOU DENKI)	1			

AT-110-4 42084400076 UPPER

Pos No.	Parts No	Parts Name	Qty	Unit	Technical Data	Serial No (Start)	Serial No (End)	Remarks	Page
5	91002902500	O-RING	4		1B G25				
8	80316090020	PLUG	4		KKT PT1/8				
9	36606975020	PLUG	1						
10	91002801400	O-RING	1		1B P14				
12	16066241000	SPRING	1						
100	36606970000	VALVE ASSY,RELIEF	1						

AT-110-4 42084400076 UPPER

Pos No.	Parts No	Parts Name	Qty	Unit	Technical Data	Serial No (Start)	Serial No (End)
3	42460111000	BLOCK,WOOD	4				
4	42461681000	WEDGE (YELLOW)	4				
5	42470330000	ROPE (SAFETY,YELLOW:TD-TYPE)	2				

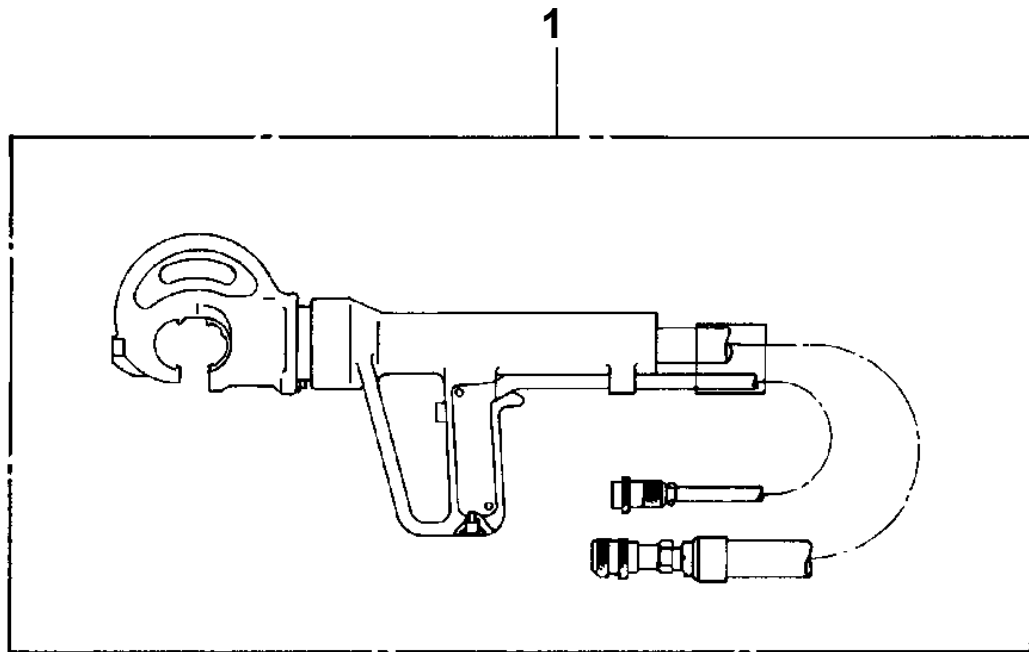
AT-110-4 42084400076 UPPER

Pos No.	Parts No	Parts Name	Qty	Unit	Technical Data	Serial No (Start)	Serial No (End)	Remarks	Pages
1	42393891100	PLATE (NON-SLIP)	1						
2	42506060101	SUPPORT	1						
3	90101210020	BOLT	2		M10X20				
4	90302041001	WASHER,SPRING	2		10				

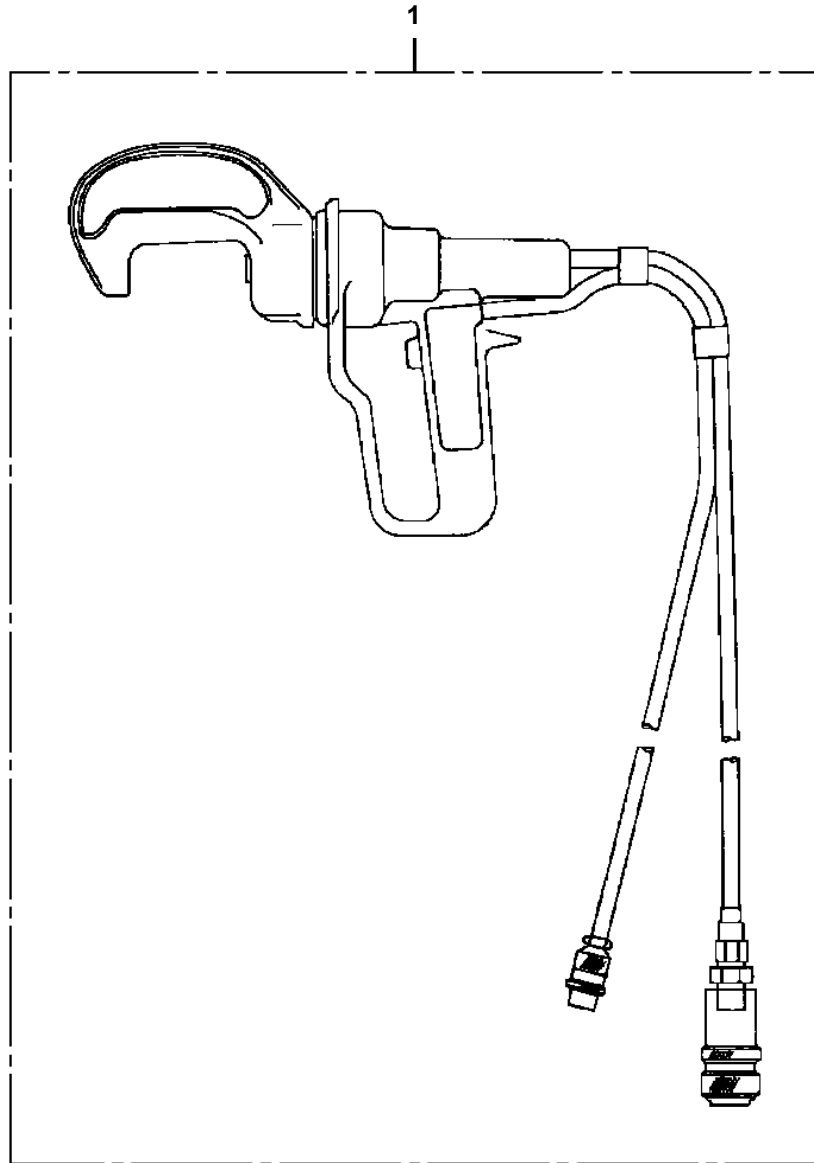
AT-110-4 42084400076 UPPER

Pos No.	Parts No	Parts Name	Qty	Unit	Technical Data	Serial No (Start)	Serial No (End)	Remarks	Pages
1	42422634100	COVER	1						
2	90101208020	BOLT	4		M8X20				
3	90302040801	WASHER,SPRING	4		8				
4	90303070801	WASHER,PLAIN	4		8				

**AT-110-4 42084400076 UPPER
PY1050000-00 CLAMP HEAD (IZUMI 12TON 2.5M)**

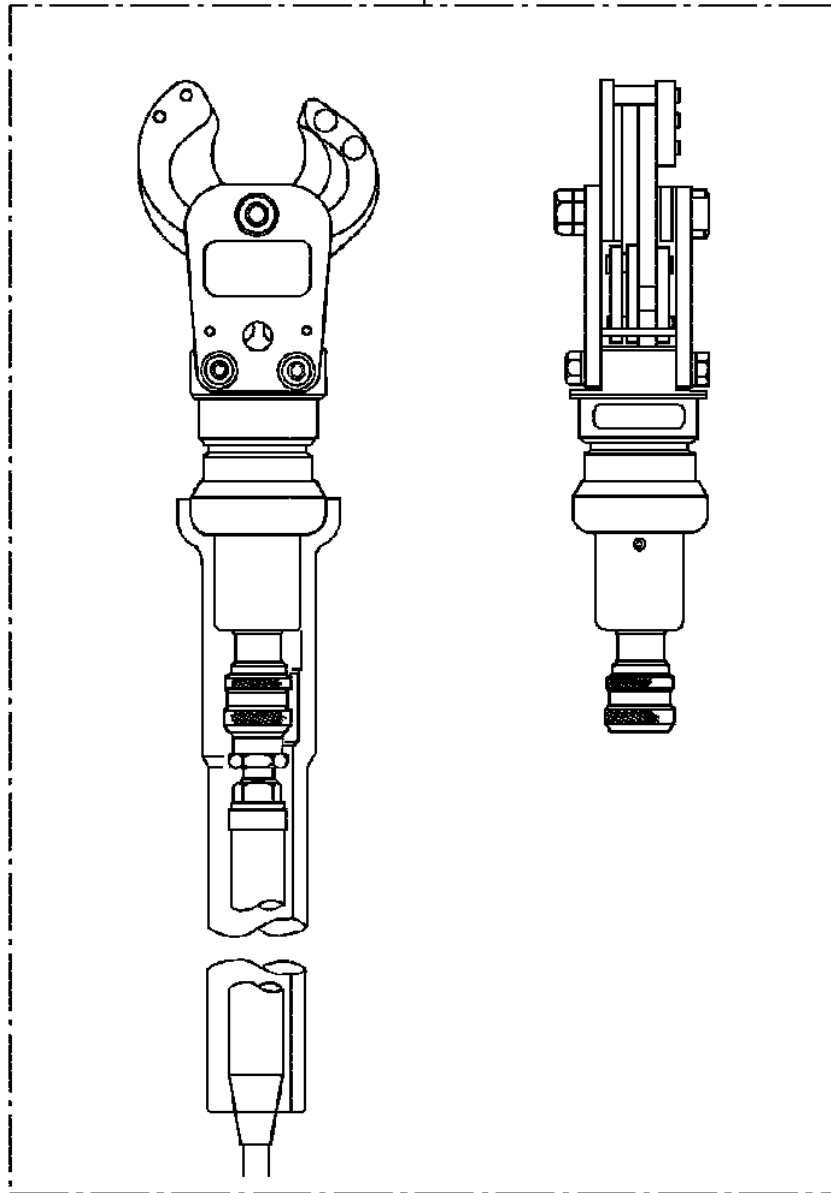


**AT-110-4 42084400076 UPPER
PY1050008-01 CLAMP HEAD (IZUMI 8TON 3.5M ELECTRIC)**

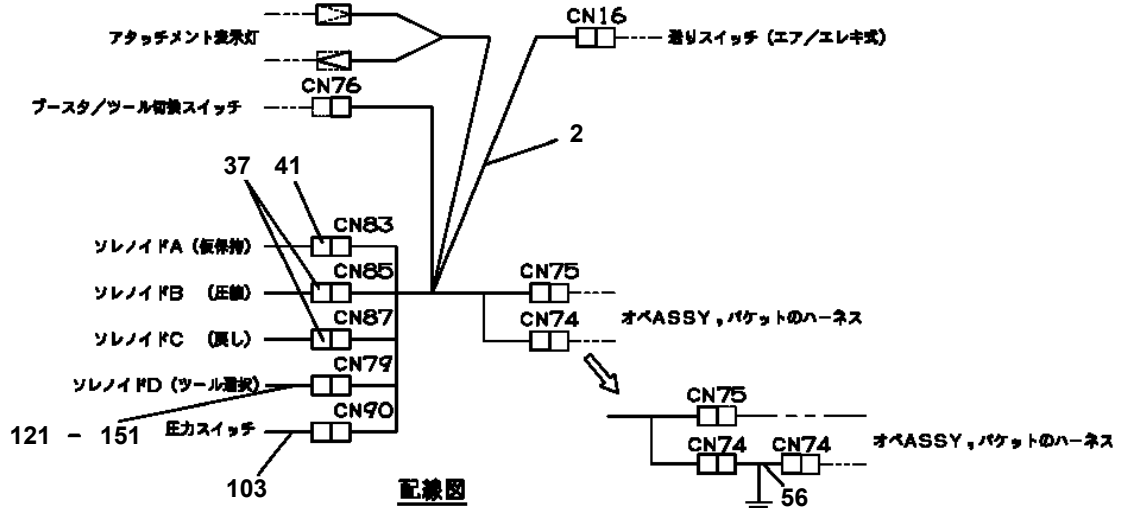
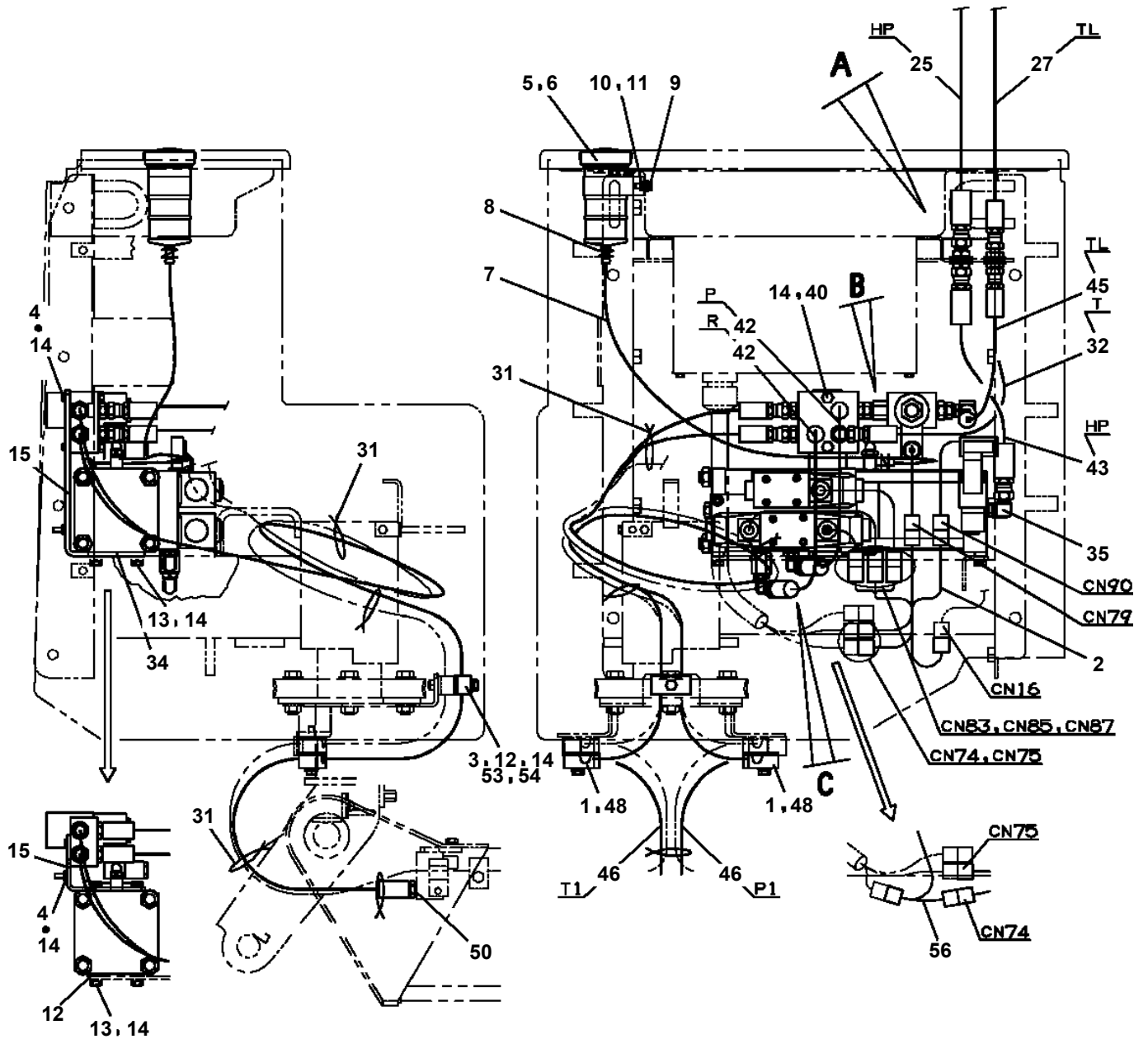


**AT-110-4 42084400076 UPPER
PY1060004-01 CUTTER HEAD (IZUMI 6.4TON 2.5M ELECTRICSANWA)**

1



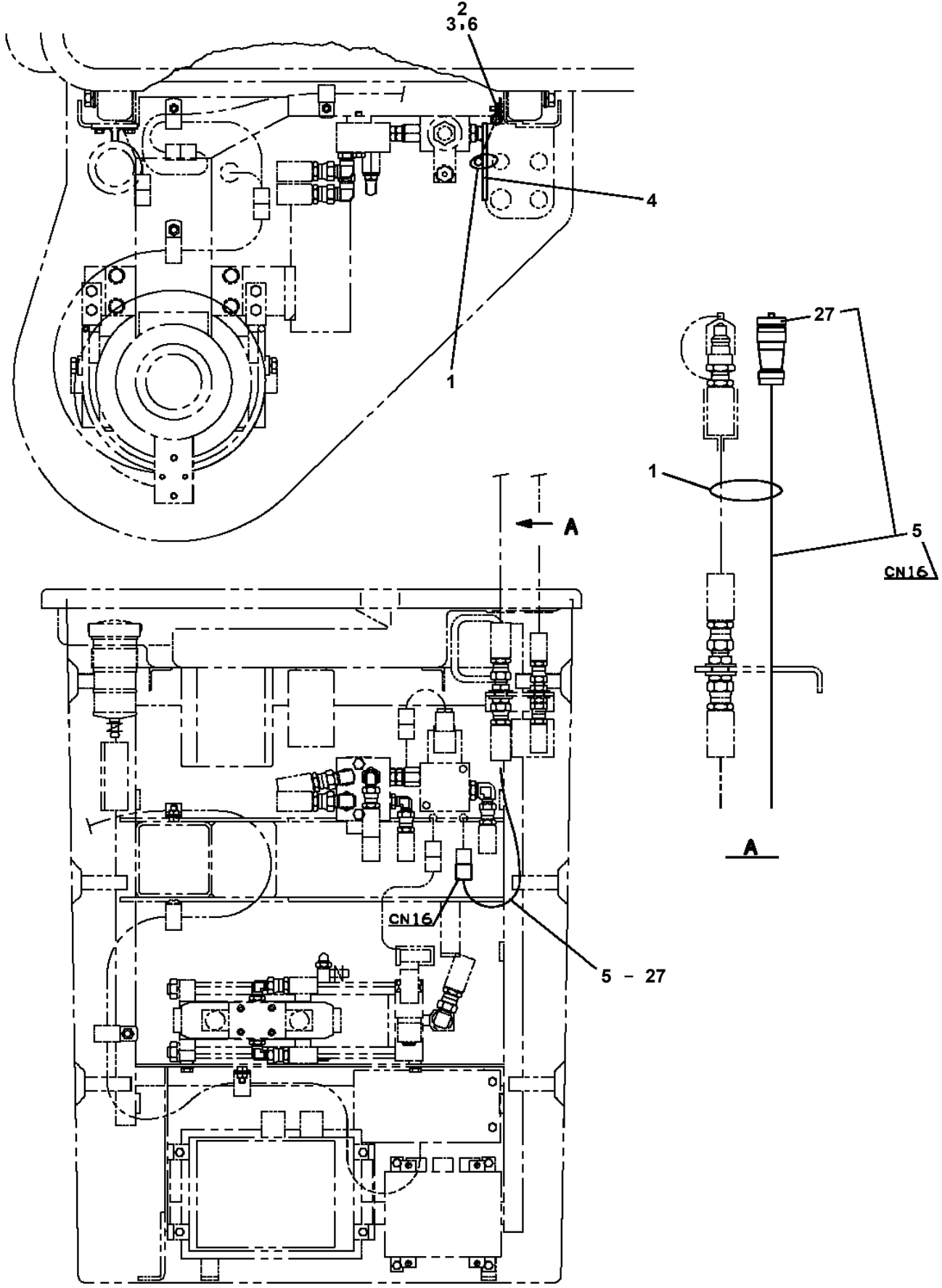
**AT-110-4 42084400076 UPPER
PY1160141-03 BOOSTER (40TON AIR & ELEC.)**



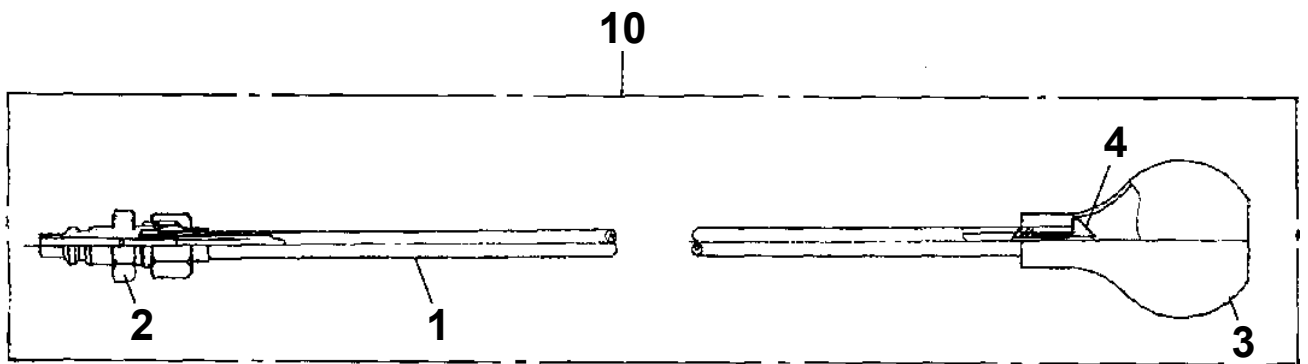
AT-110-4 42084400076 UPPER

Pos No.	Parts No	Parts Name	Qty	Unit	Technical Data	Serial No (Start)	Serial No (End)
1	(*****)	BOOSTER (40TON AIR & ELEC.)	1				
2	(*****)	PLATE ASSY,NAME (BOOSTER)	1				
3	(*****)	PIPING,OUTLET (UPPER)	1				
4	(*****)	PIPING,OUTLET (LOWER)	1				
5	(*****)	SWITCH ASSY (ELECTRIC TYPE OPERATION SW)	1				
6	(*****)	SWITCH ASSY (THERMO)	1				
7	(*****)	SWITCH PANEL	1				

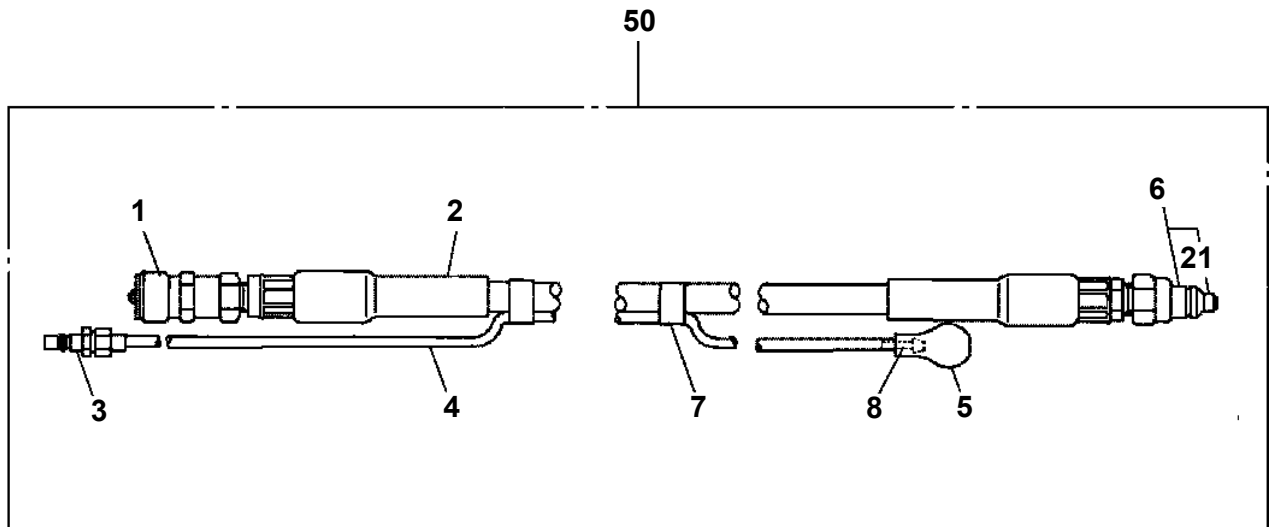
**AT-110-4 42084400076 UPPER
PY1250024-01 SWITCH INSTALLATION**



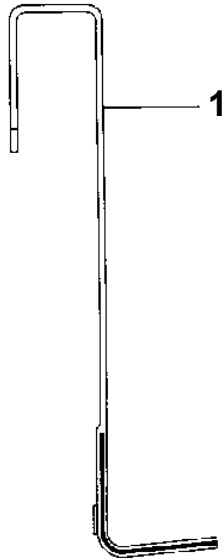
**AT-110-4 42084400076 UPPER
PY1590005-01 HOSE,BOOSTER (SMALL,WITH AIR BALLOON)**



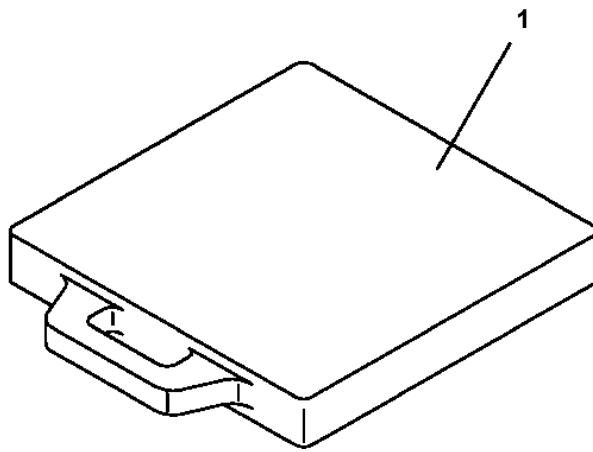
**AT-110-4 42084400076 UPPER
PY1590010-00 HOSE,BOOSTER (WITH AIR BALLOON,2M)**



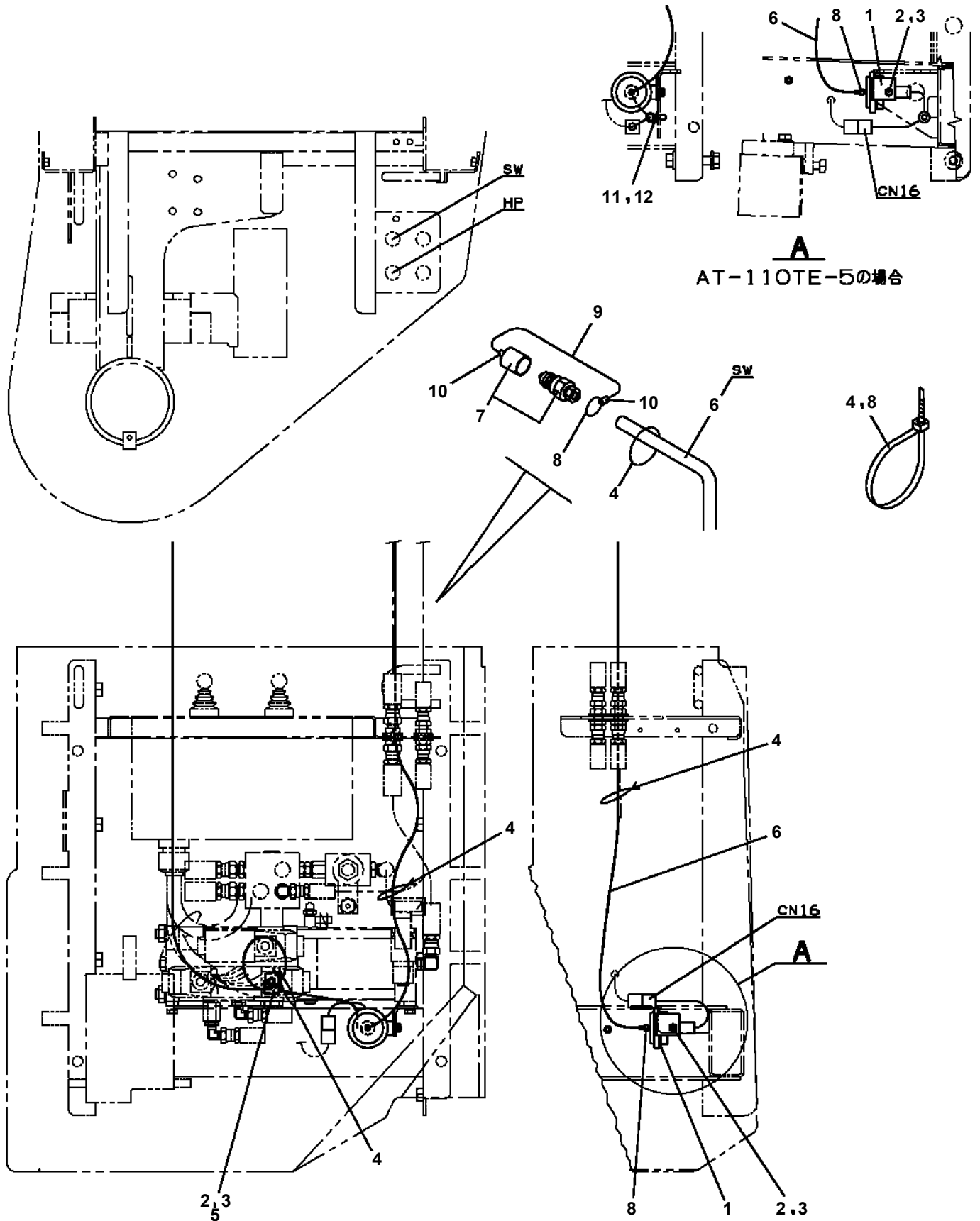
**AT-110-4 42084400076 UPPER
PY1760001-00 STEP, BUCKET**



**AT-110-4 42084400076 UPPER
PY1930005-00 BLOCK,RUBBER (NAKAMURA)**



AT-110-4 42084400076 UPPER
PY2350006-01 SWITCH,BOOSTER



A
AT-110TE-5の場合

CLICK HERE TO **DOWNLOAD** THE COMPLETE MANUAL

- Thank you very much for reading the preview of the manual.
- You can download the complete manual from: www.heydownloads.com by clicking the link below



- Please note: If there is no response to CLICKING the link, please download this PDF first and then click on it.

CLICK HERE TO **DOWNLOAD** THE COMPLETE MANUAL