

AT-100-5 42063534149 UPPER,LOWER,HINO TKG-XZU675M-TQMQC3

PB0000275-02 UPPER STRUCTURE SYSTEM

PB0000500-02 LOWER STRUCTURE SYSTEM

ASSEMBLY

CLICK HERE TO **DOWNLOAD** THE COMPLETE MANUAL

- Thank you very much for reading the preview of the manual.
- You can download the complete manual from: www.heydownloads.com by clicking the link below



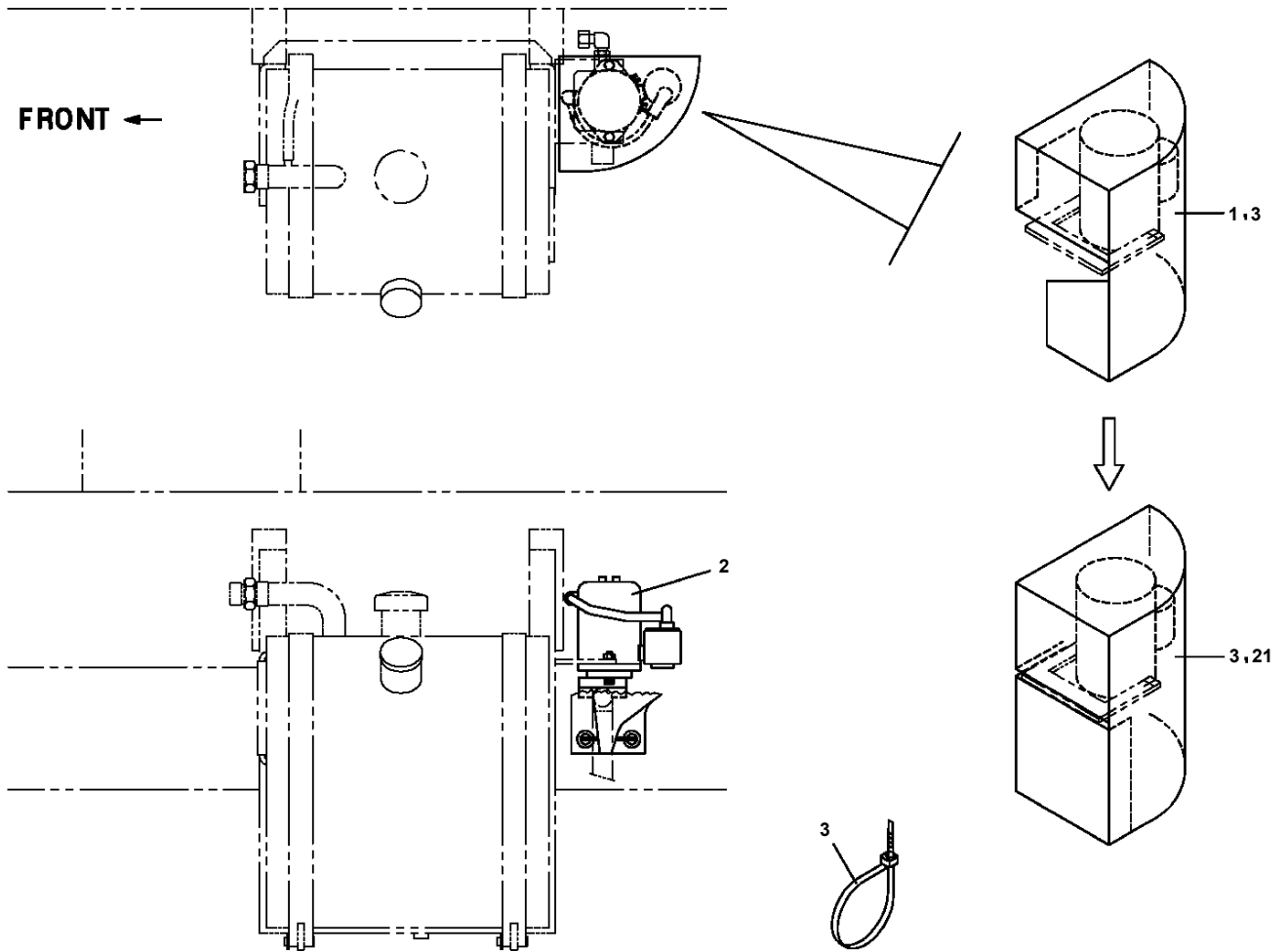
- Please note: If there is no response to CLICKING the link, please download this PDF first and then click on it.

CLICK HERE TO **DOWNLOAD** THE COMPLETE MANUAL

AT-100-5 42063534149 UPPER,LOWER,HINO TKG-XZU675M-TQMQC3

PS5530422-00 SWITCH ASSY
PS5530424-00 SWITCH ASSY (SAFETY ROPE INTERLOCK/FOR DOUBLE RIDING)
PS5530425-00 SWITCH ASSY
PS5550005-00 SUPPORT (7 DEGREES ANGLE METER MOUNTING)
PT5090008-00 TANK ASSY,OIL
PT5130050-00 TELESCOPE ASSY
PV1300020-00 CABLE (3 POLE)
PV5010007-00 VALVE ASSY (JACK CONTROL)
PV5070007-00 VALVE ASSY,COUNTERBALANCE
PV5140017-00 VALVE ASSY,RELIEF
PV5150018-01 VALVE ASSY,REMOTE CONTROL
PV5170018-00 VALVE ASSY,SELECTOR
PV5450154-00 VIEW SYSTEM (REARVIEW SYSTEM/WITHOUT MONITOR)
PW1000118-00 ACCESSORIES & TOOLS
PW1010251-00 ACCESSORIES (MAT/FOR SI BUCKET)
PW1010309-00 ACCESSORIES (MAT)
PW1010337-01 ACCESSORIES
PW1010407-00 ACCESSORIES (MAT)
PW1030049-01 TOOLS
PW1050018-01 WEDGE (STOPPER FOR TIRE/JUSTIN)
PW5110005-00 WEDGE (YELLOW)
PX1270056-00 WOOD BLOCK (OPTION)
PX1350803-00 BOX,TOOL (NEO KANSAI/BUCKET)
PX1351247-00 BOX,TOOL (BUCKET)
PX1390858-00 MODIFICATION PARTS
PX1830012-01 COUPLING
PX2001801-00 CARRIER UNIT
PX3000859-00 MOUNTING UNIT
PX5010506-00 MOUNT ASSY (SAFETY CONE SUPPORT)
PX5010507-00 MOUNT ASSY (SAFETY CONE BAR SUPPORT)
PX5110045-00 MOUNT ASSY,BOOM SUPPORT
PX5260010-00 MOUNT ASSY,COVER
PX5360102-01 MOUNT ASSY,FRAME
PX5430017-00 MOUNT ASSY,GUARD
PX5430024-01 MOUNT ASSY,GUARD
PX5670015-00 MOUNT ASSY,STEP
PX5670023-00 MOUNT ASSY,STEP (FOR BOX TOOL OF RIGHT SIDE)
PX5670044-00 MOUNT ASSY,STEP
PX5730003-00 MOUNT ASSY,SWIVEL JOINT
PX5740055-00 MOUNT ASSY,TAIL LAMP
PX5760013-00 MOUNT ASSY,TANK SUPPORT
PX5770007-00 MOUNT ASSY,TIRE
PX5780196-01 MOUNT ASSY,TOOL BOX (WITHOUT CENTRAL LOCKING)
PX5780197-01 MOUNT ASSY,TOOL BOX
PX5780380-00 MOUNT ASSY,TOOL BOX (CENTRAL LOCK/HINO,TOYOTA)
PX5780381-00 MOUNT ASSY,TOOL BOX (CENTRAL LOCK/ISUZUTPG OR LATER)
PX5780392-00 MOUNT ASSY,TOOL BOX (DRAWER FOR LEFT SLIDE TOOL BOX)
PX5820133-00 MOUNT ASSY,WEIGHT
PX5850014-01 MOUNT ASSY,WOOD BLOCK (LARGE)
PY1001894-01 OPTION UNIT,1 (UPPER)
PY1070000-00 ROPE (SAFETY,YELLOW:TD-TYPE)
PY1070001-00 ROPE (SAFETY,1.5M,WITH HOOK)
PY1090001-00 BELT,SAFETY
PY1760001-00 STEP,BUCKET
PY1930004-00 BLOCK,RUBBER (WAZUMI)
PY1930005-00 BLOCK,RUBBER (NAKAMURA)
PY2000288-00 OPTION UNIT,2 (UPPER)
PY2120005-00 BOX,TOOL (FOR BUCKET,FRP)
PY4000063-05 OPTION UNIT,1 (LOWER)
PY5020165-00 ACCESSORIES ASSY (WITHOUT BLOCK,RUBBER)
PY5310003-00 AUTOMATIC MOTION CONTROLLER
PZ0000000-00 POWER SUPPLY ASSY,ELECTRICITY (LOWER,100V/HINO PPNLT)
PZ0000000-00 MODIFICATION ASSY
PZ0000000-00 MOUNT ASSY,ROLLER

**AT-100-5 42063534149 UPPER,LOWER,HINO TKG-XZU675M-TQMQC3
PB1110058-01 MOUNT,PUMP (EMERGENCY)**



AT-100-5 42063534149 UPPER,LOWER,HINO TKG-XZU675M-TQMQC3

Pos No.	Parts No	Parts Name	Qty	Unit	Technical Data	Serial No (Start)	Serial No (End)
67	90302040601	WASHER,SPRING	4		6		
68	42202400400	COVER	1				
69	90303070801	WASHER,PLAIN	1		8		
70	90183108020	BOLT	1		M8X20		
72	42203040010	PLATE	N				
73	42203040020	PLATE	N				
81	82455106000	NIPPLE,GREASE	1		A-M6F FE		
121	42202414100	COVER	1				
122	42202414200	COVER	1				
123	42202664100	COVER	2				
124	90101208020	BOLT	18		M8X20		
125	42203064100	COVER ASSY	1				
126	42202414800	SUPPORT	1				
127	42202414850	SUPPORT	1				
128	42340233030	COVER	1				
129	42202414500	COVER ASSY	1				
130	42203064200	COVER	2				
131	80192486010	SCREW,MACHINE	8		M6X10		
132	90302040801	WASHER,SPRING	21		8		
133	90303070801	WASHER,PLAIN	18		8		
151	37001004450	SHEAVE ASSY	2				
152	42202670210	PIN	2				
153	42200383620	PLATE	2				
154	90171110022	BOLT	8		M10X22		
155	90302041001	WASHER,SPRING	12		10		
156	90171110050	BOLT	4		M10X50		
157	90303071001	WASHER,PLAIN	4		10		
172	80513006206	BEARING,BALL	2				
190	37002000290	PLATE,SLIDE	2		100X30		
201	42202462510	PLATE,NAME	1				
211	42203064110	PLATE	1				
212	42202674820	BLADE	1				
213	42202674830	PLATE	1				
214	80192484012	SCREW,MACHINE (WITH WASHER)	3		M4X12		
221	42202414550	COVER	1				
222	90101208016	BOLT	3		M8X16		
223	90201200800	NUT	3		M8		
225	42202414510	BLADE	1				
226	42202414520	PLATE	1				
242	80516006010	BEARING,BALL	2				

AT-100-5 42063534149 UPPER,LOWER,HINO TKG-XZU675M-TQMQC3

Pos No.	Parts No	Parts Name	Qty	Unit	Technical Data	Serial No (Start)	Serial No (End)	R
1	42264200600	BUCKET (WHITE/WITHOUT BOSS)	1					

AT-100-5 42063534149 UPPER,LOWER,HINO TKG-XZU675M-TQMQC3

Pos No.	Parts No	Parts Name	Qty	Unit	Technical Data	Serial No (Start)	Serial No
1	42266611000	POST ASSY	1				
2	42268551003	FRAME ASSY	1				
3	42507782100	MOTOR ASSY,ELECTRIC (WITH CINNECTOR)	1				
4	42268550100	STOPPER	1				
5	42507780300	COVER	1				
6	42264200200	PLATE	N		T=1.0		
7	42268550010	PLATE	1				
9	37000159360	PIN	1				
10	80136363050	PIN,SPLIT	1		6.3X50		
11	82456101000	NIPPLE,GREASE	1		A-PT1/8		
13	42507780100	WHEEL,WORM	1				
14	80601110750	RING,RITAINING	1		S75		
15	91810130290	FASTENER	2		L=470		
16	90171112070	BOLT	6		M12X70		
17	90171112055	BOLT	2		M12X55		
18	90201781200	NUT	10		M12		
19	90102212040	BOLT	1		M12X40		
20	90201201200	NUT	1		M12		
21	90171110030	BOLT	4		M10X30		HK2331
	90171110025	BOLT	4		M10X25	HK2332	
22	90302041001	WASHER,SPRING	4		10		
23	90303071001	WASHER,PLAIN	4		10		
24	37000586760	WASHER,PLAIN	20		12		
25	90172106065	BOLT,HEXAGON SOCKET	4		M6X65		
26	90302040601	WASHER,SPRING	4		6		
27	90303070601	WASHER,PLAIN	4		6		
28	90171112060	BOLT	2		M12X60		
29	82440901050	PLUG	2		I-5/8		
30	90309341003	WASHER,SPRING (10)	2				
31	90172110035	BOLT,HEXAGON SOCKET	2		M10X35		
32	42268552000	GEAR ASSY	1				
52	80820003540	BEARING,PLAIN	2				
62	80513006015	BEARING,BALL	2				
71	42268552100	WORM	1				
72	42507782401	SUPPORT	1				
73	42264154120	COVER	1				
74	80513006205	BEARING,BALL	2				
75	42507782500	SPACER	1				
76	42264154500	SHIM	N		T=0.5		
77	42264154600	SHIM	N		T=0.2		
78	90171108016	BOLT	4		M8X16		
79	90302040801	WASHER,SPRING	4		8		

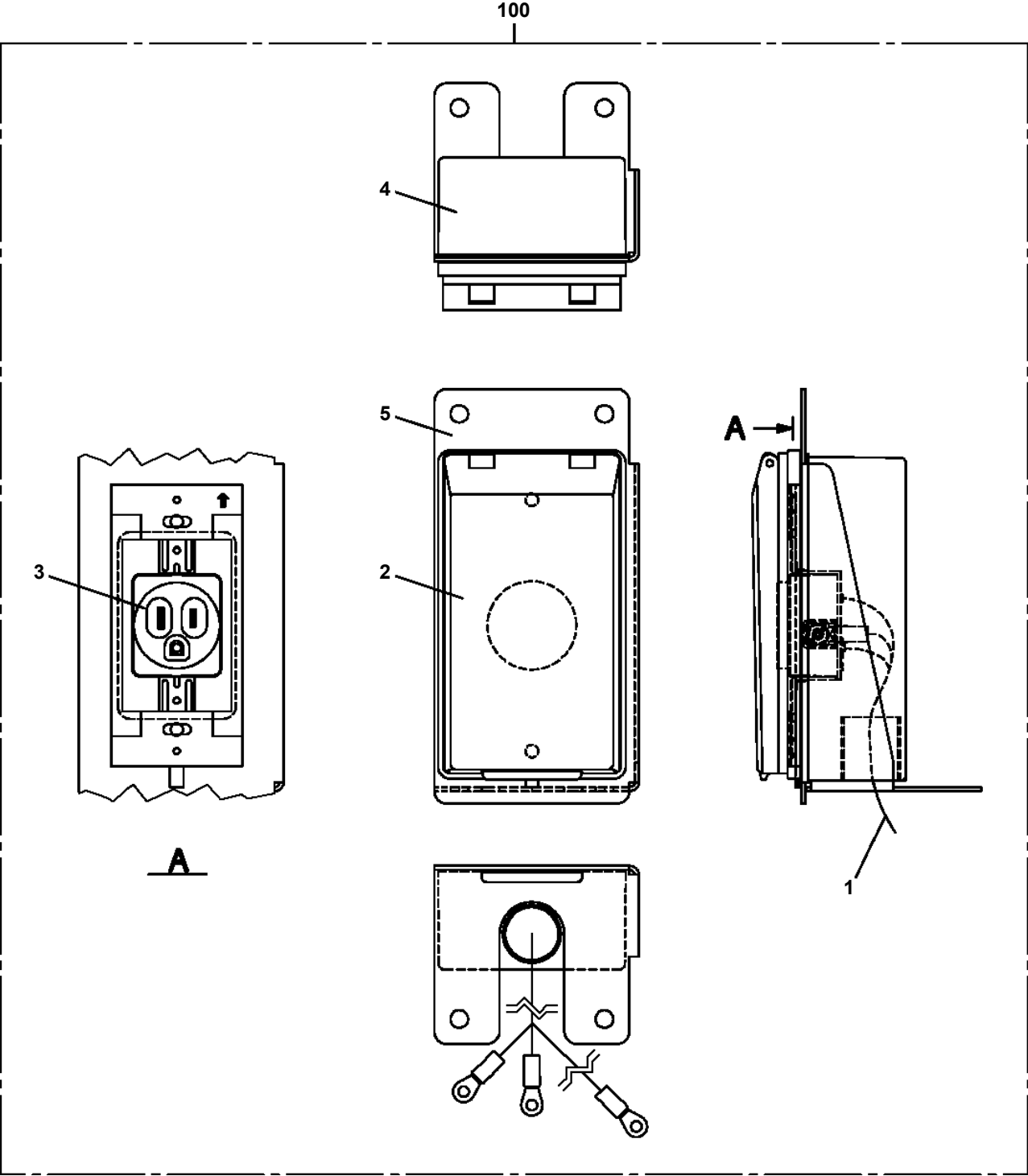
AT-100-5 42063534149 UPPER,LOWER,HINO TKG-XZU675M-TQMQC3

Pos No.	Parts No	Parts Name	Qty	Unit	Technical Data	Serial No (Start)	Serial No (End)	Re
2	42652120300	BUZZER ASSY	1					
3	80172304016	SCREW,MACHINE	2		M4X16			
4	90302040401	WASHER,SPRING	2		4			
5	90201200400	NUT	2		M4			
6	90303070401	WASHER,PLAIN	4		4			
8	42513440100	HARNESS	1					
10	42971431400	SWITCH ASSY (WITH HARNESS)	1					
11	91810130240	FASTENER	5					
12	42513440200	PLATE,NAME	1					

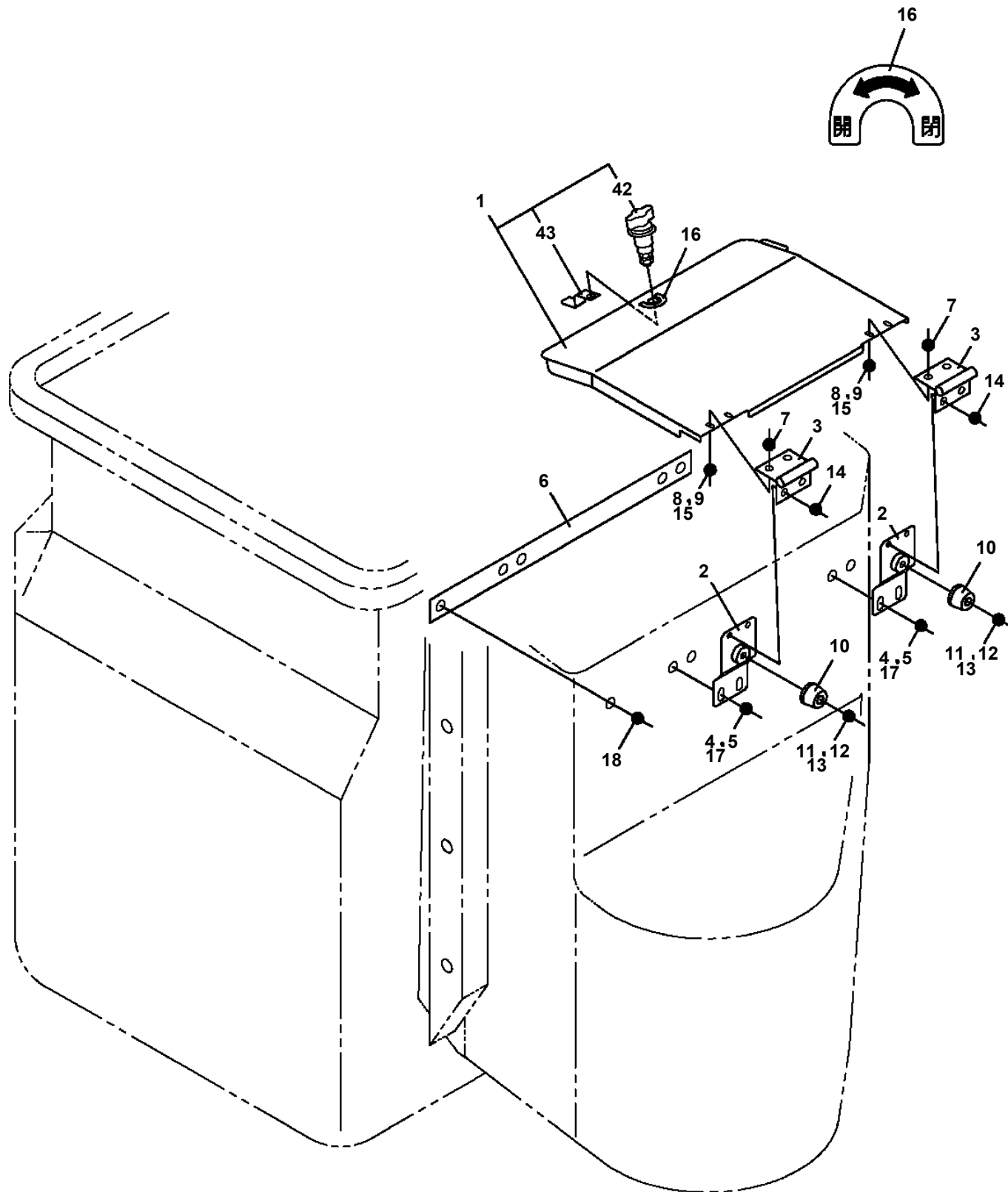
AT-100-5 42063534149 UPPER,LOWER,HINO TKG-XZU675M-TQMQC3

Pos No.	Parts No	Parts Name	Qty	Unit	Technical Data	Serial No (Start)	Serial No (End)
2	42839127551	DOOR ASSY	1				
3	42839127560	LOCK ASSY	1				
4	42839127570	SHELF	2				
5	42839127580	STOPPER	2				
6	42839127590	GUARD	1				
7	42835257620	PLATE	4				
8	42839117630	SUPPORT	8				
9	42835867560	RAIL	1				
10	42839127600	MAT	1				
11	42835767580	STOPPER	1				
12	42837377811	HARNES ASSY	1				
13	42833077610	BUSH	10				
14	42836317940	SEAL (TAPE)	2	M			
15	42836317940	SEAL (TAPE)	2	M			
16	42837157510	MOHAIR	1	M			
17	42835867840	GROMMET	1				
18	99164804010	BOLT (M4X10,WITH WASHER)	4				
19	42500577560	SCREW,MACHINE (SEMS)	7		M4X8		
20	42835257650	SCREW,MACHINE (WITH WASHER)	4		M5X20		
21	42835467840	SCREW,MACHINE (WITH W,SW)	2		M5X22		
22	42834707555	SCREW,MACHINE (WITH W,SW)	4		M6X14		
23	42835257660	SCREW,MACHINE	8		M4X18		
24	42835257680	SCREW,MACHINE (WITH SW,N)	6		M5X10		
31	34260957590	LAMP ASSY (ROOM)	2				
100	42839121300	BOX,TOOL	1				

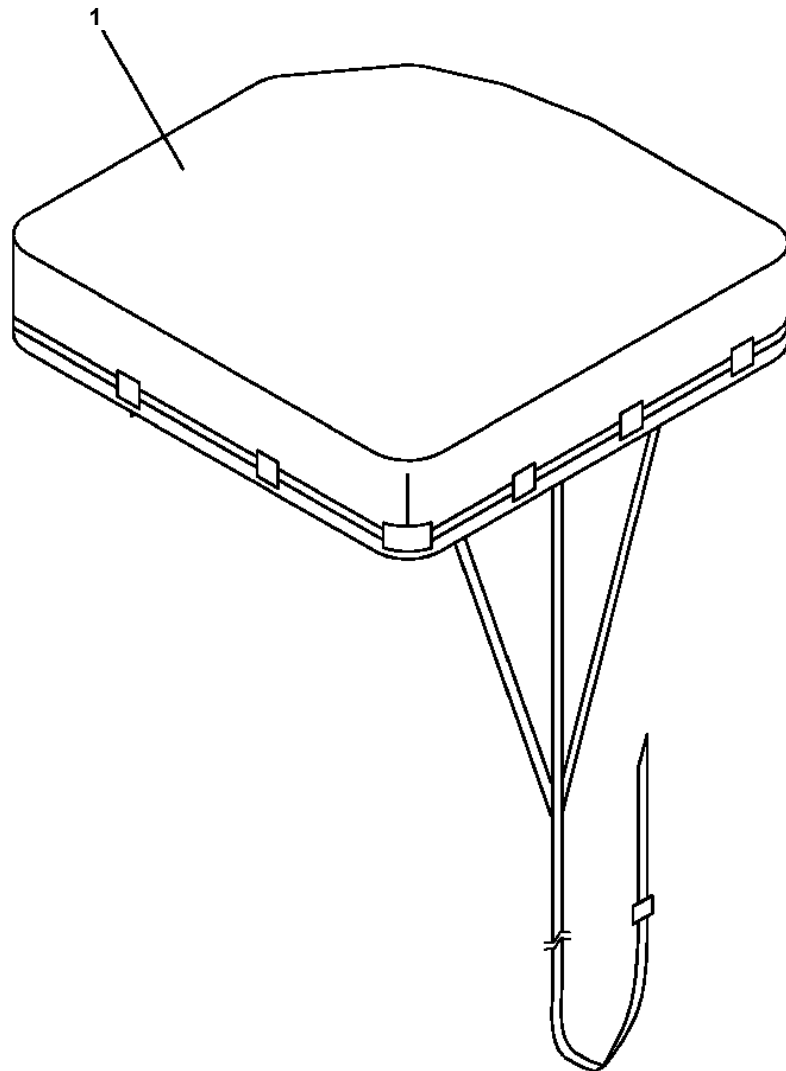
AT-100-5 42063534149 UPPER,LOWER,HINO TKG-XZU675M-TQMQC3
PC5020086-00 CABLE ASSY



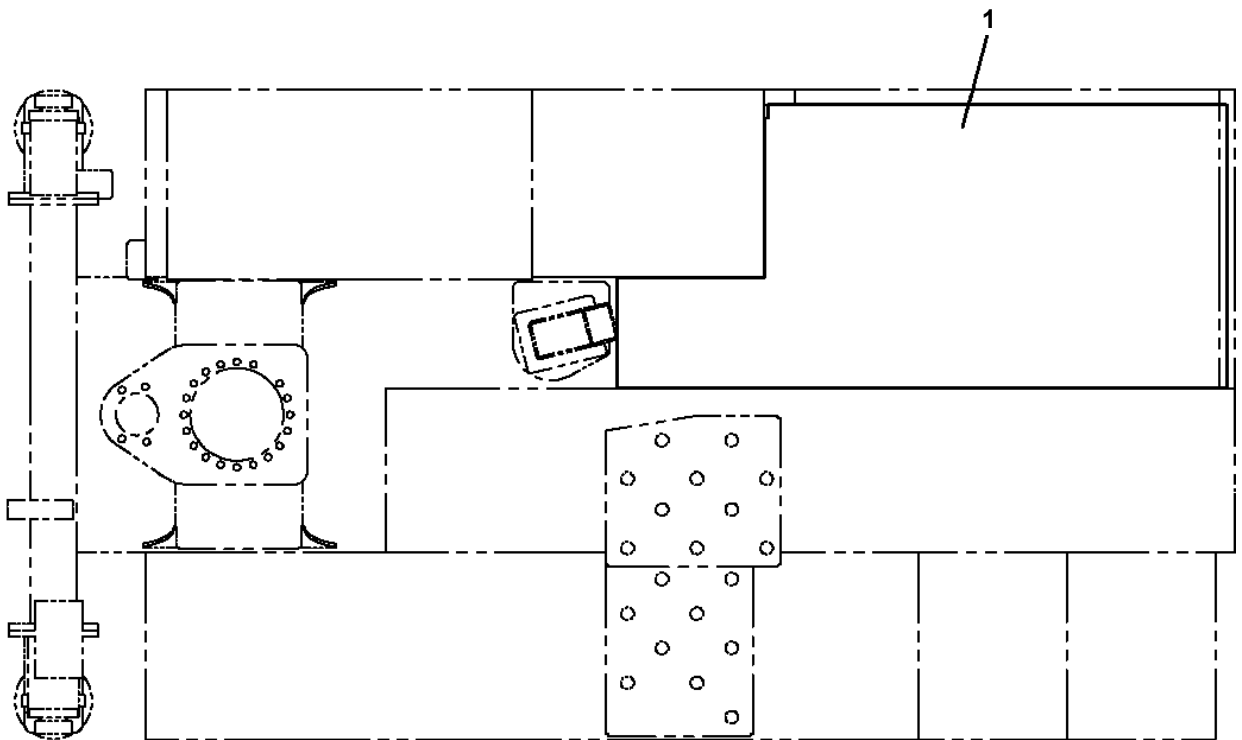
AT-100-5 42063534149 UPPER,LOWER,HINO TKG-XZU675M-TQMQC3
PC5570042-00 COVER ASSY (UPPER CONTROL/FOR ENABLE SW)



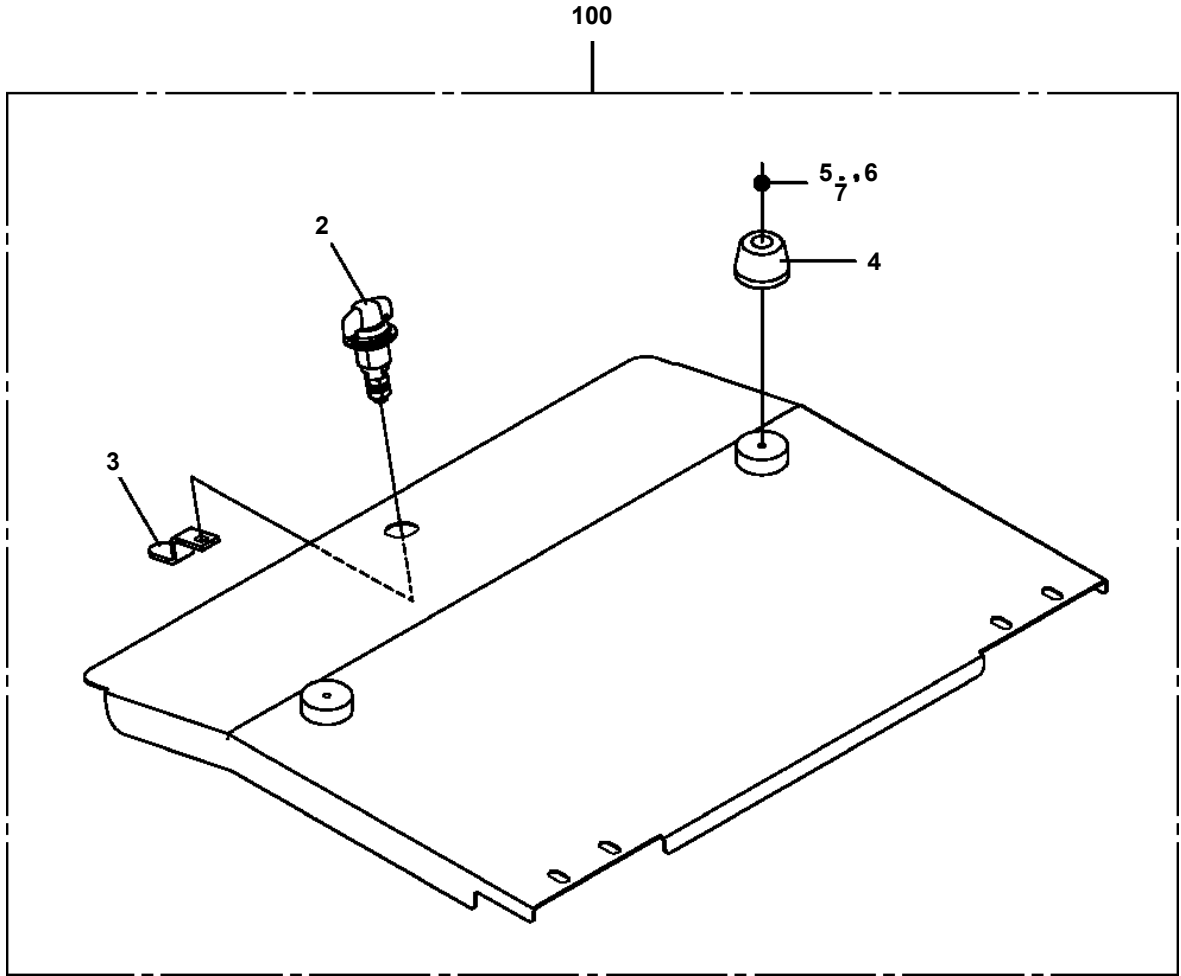
AT-100-5 42063534149 UPPER,LOWER,HINO TKG-XZU675M-TQMQC3
PC5570096-00 COVER ASSY (BUCKET/CLOTH:WHITE)



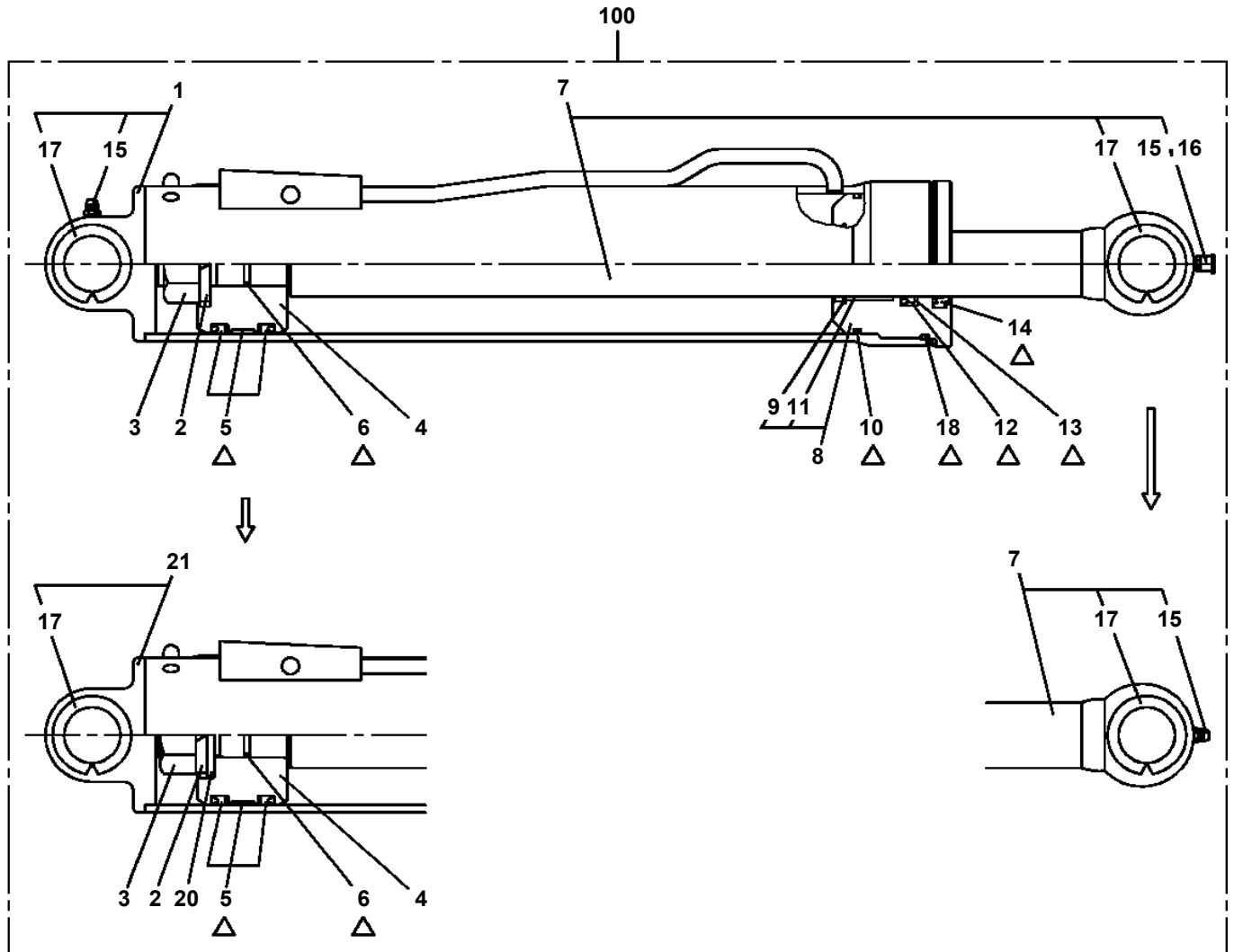
AT-100-5 42063534149 UPPER,LOWER,HINO TKG-XZU675M-TQMQC3
PC5570191-00 COVER ASSY (VEHICLE BED MAT/AT-100TTE-5,INDOOR)



AT-100-5 42063534149 UPPER,LOWER,HINO TKG-XZU675M-TQMQC3
PC5570315-00 COVER ASSY

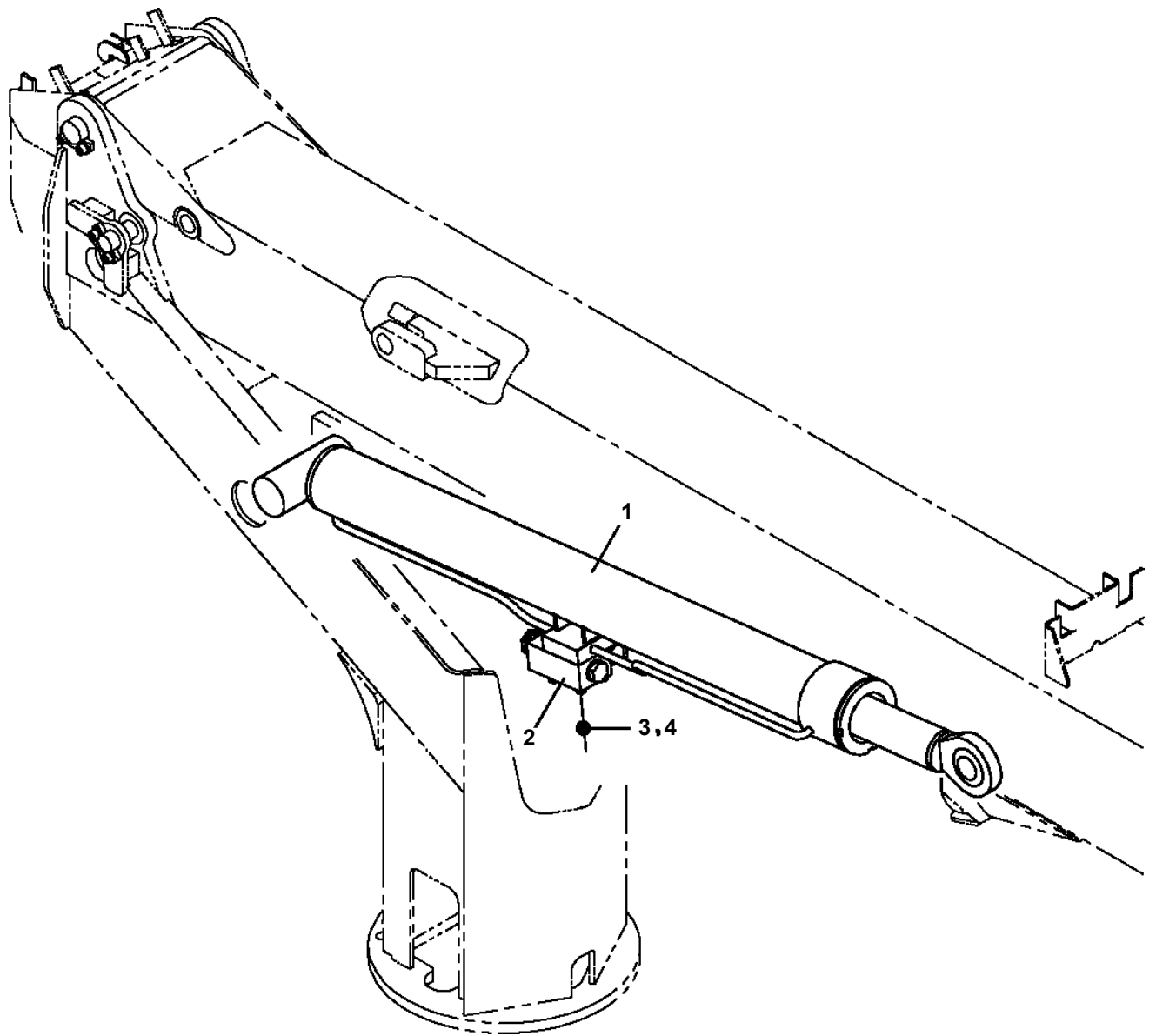


AT-100-5 42063534149 UPPER,LOWER,HINO TKG-XZU675M-TQMQC3
 PC6400012-01 CYLINDER ASSY,LEVELING

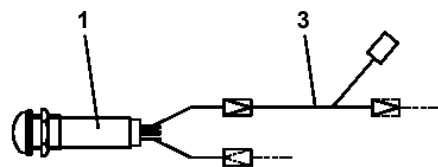
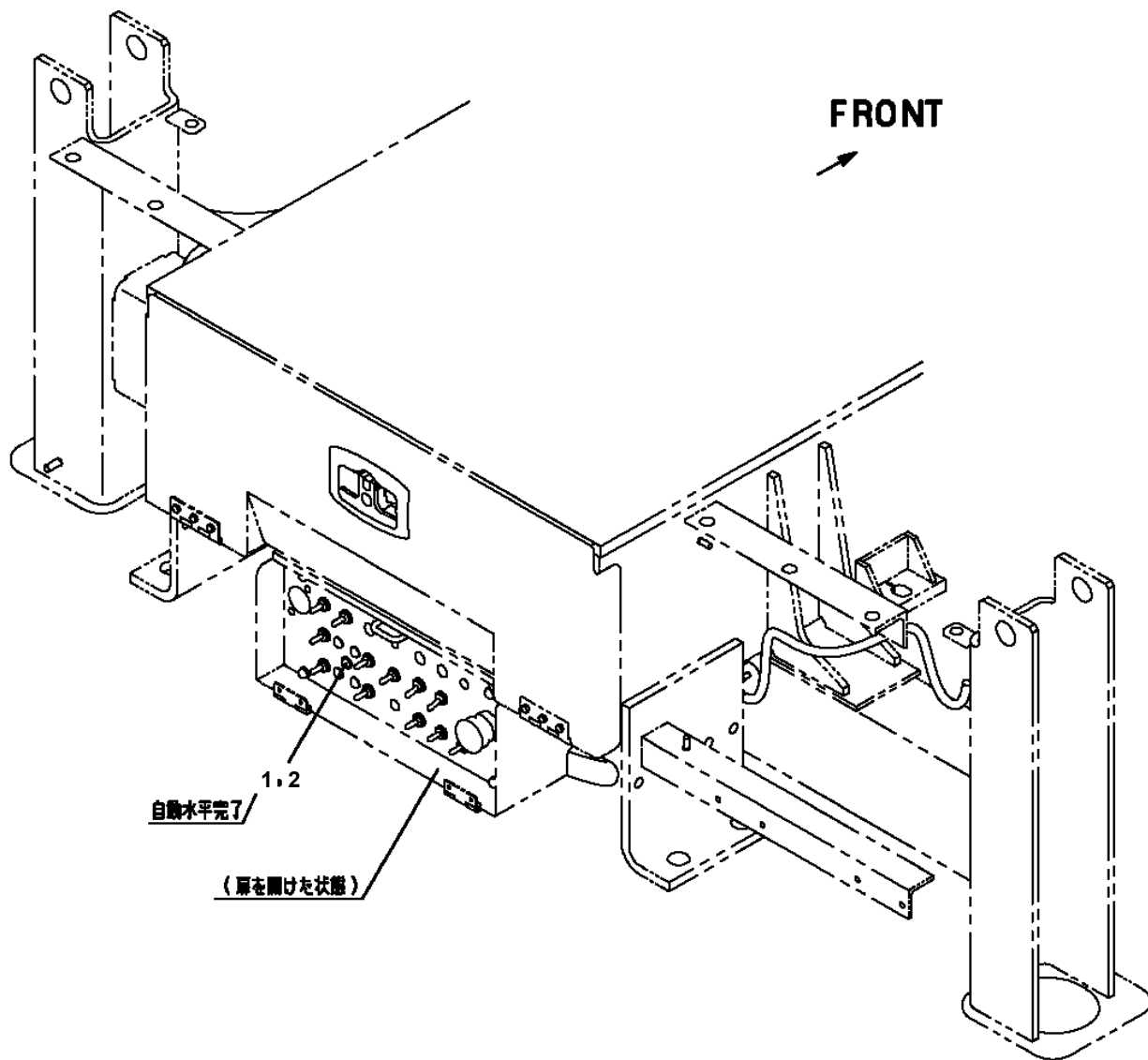


Δ:PACKING SET KEY NO.41 (KEY NO.5,6,10,12,13,14,18)

AT-100-5 42063534149 UPPER,LOWER,HINO TKG-XZU675M-TQMQC3
PD5020010-00 DERRICK ASSY



AT-100-5 42063534149 UPPER,LOWER,HINO TKG-XZU675M-TQMQC3
PE5020628-00 ELEC.ASSY (HORIZONTAL LAMP)

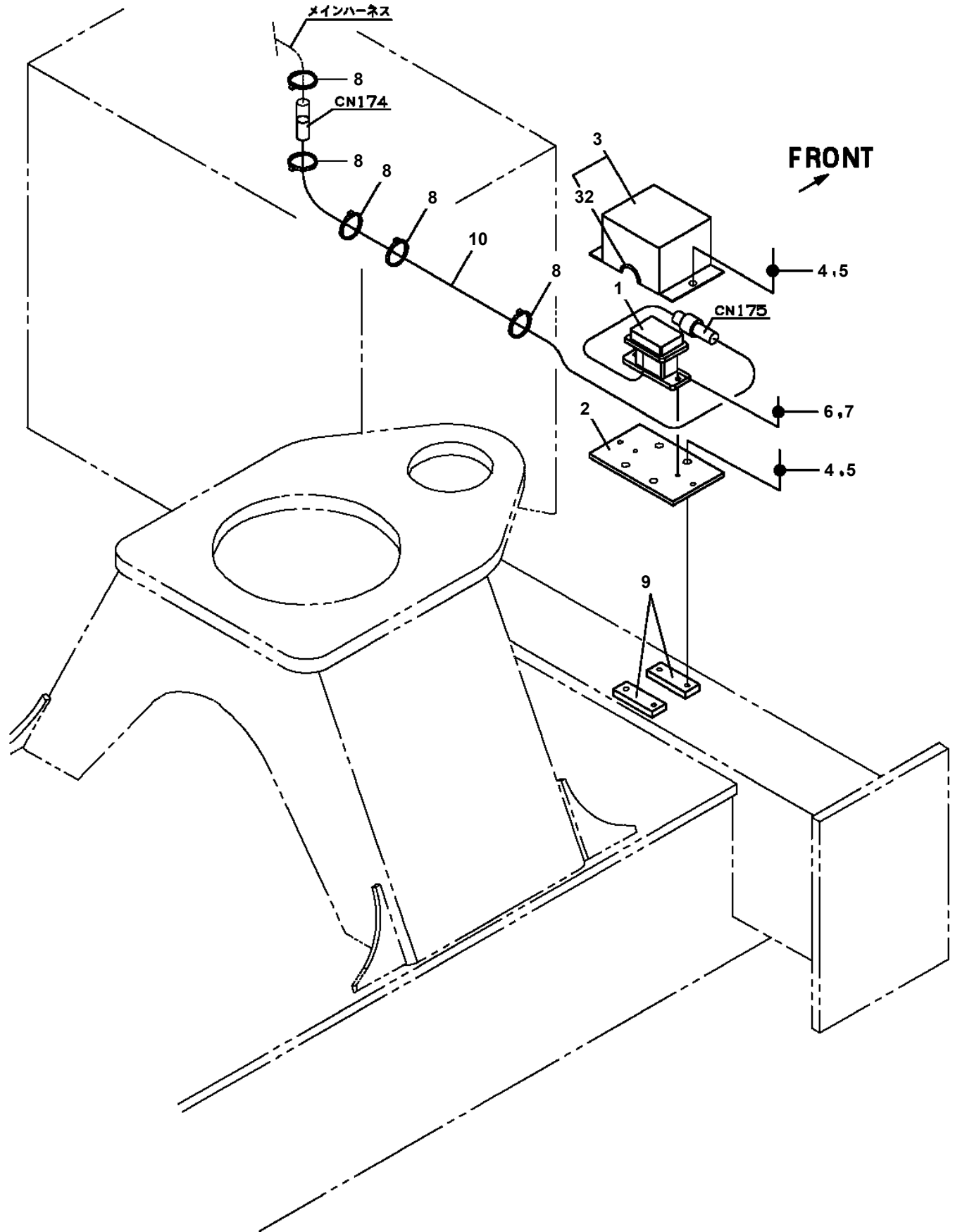


(1 材接続詳細)

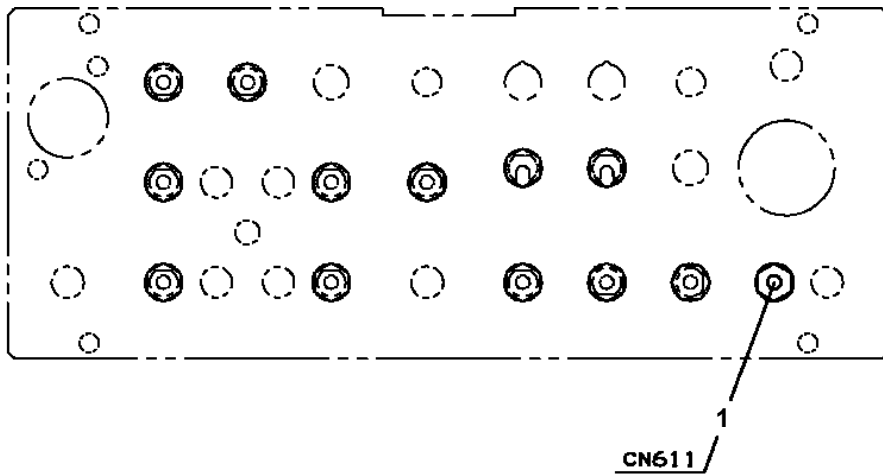
AT-100-5 42063534149 UPPER,LOWER,HINO TKG-XZU675M-TQMQC3

Pos No.	Parts No	Parts Name	Qty	Unit	Technical Data	Serial No (Start)	Serial No (End)	Remarks
1	42839124200	HARNES	1					
2	90101206016	BOLT	1		M6X16			
3	90303070801	WASHER,PLAIN	1		8			
4	90201200600	NUT	1		M6			
5	90302040601	WASHER,SPRING	1		6			
6	34354781710	RELAY (WITH BRACKET)	1					
7	90101208020	BOLT	1		M8X20			
8	90201200800	NUT	1		M8			
9	90302040801	WASHER,SPRING	1		8			
10	82115001002	CONNECTOR	4					
11	91810130250	FASTENER	5					

AT-100-5 42063534149 UPPER,LOWER,HINO TKG-XZU675M-TQMQC3
PE5021021-00 ELEC.ASSY (JACK HORIZONTAL)

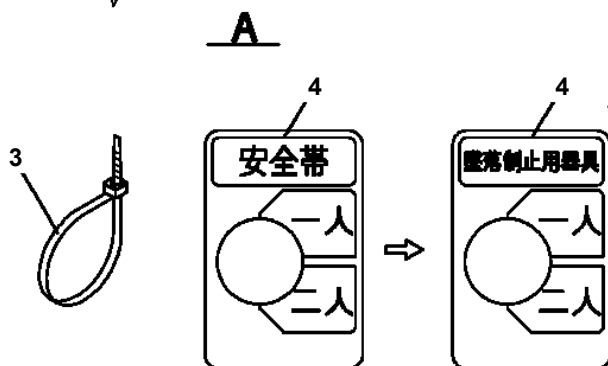
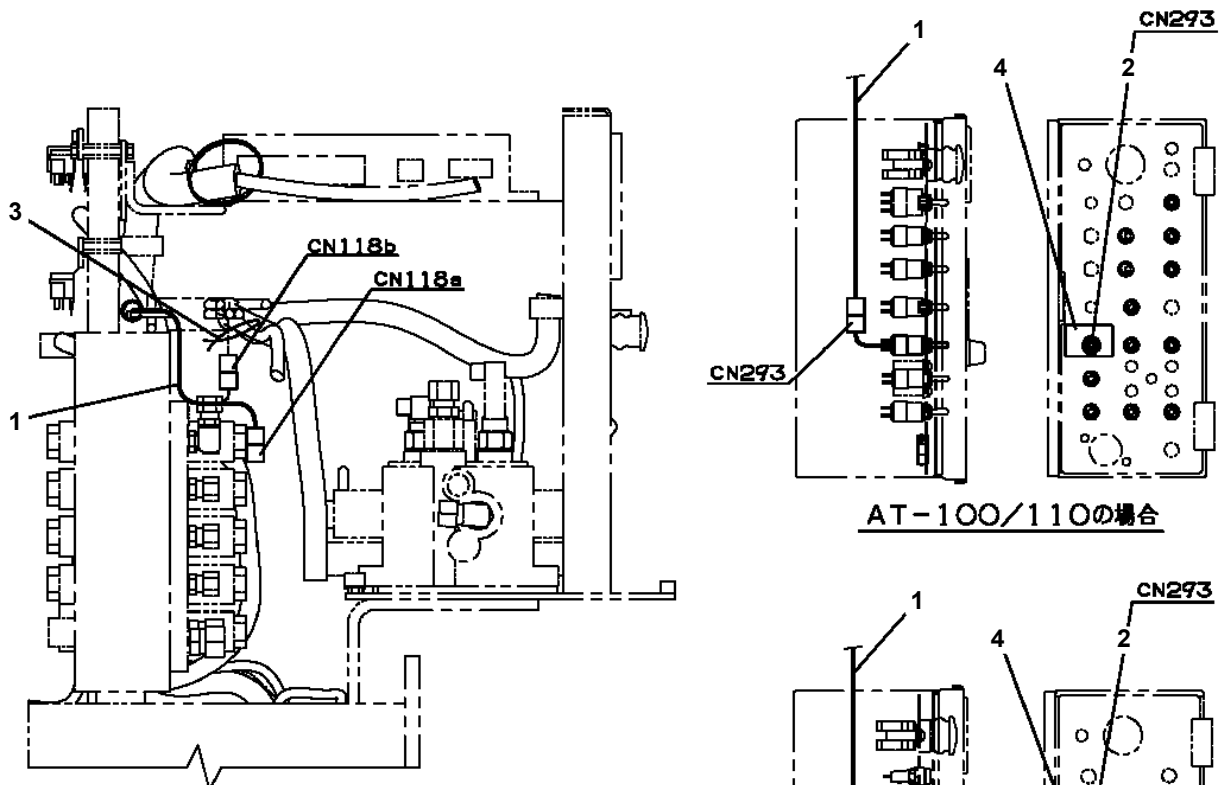
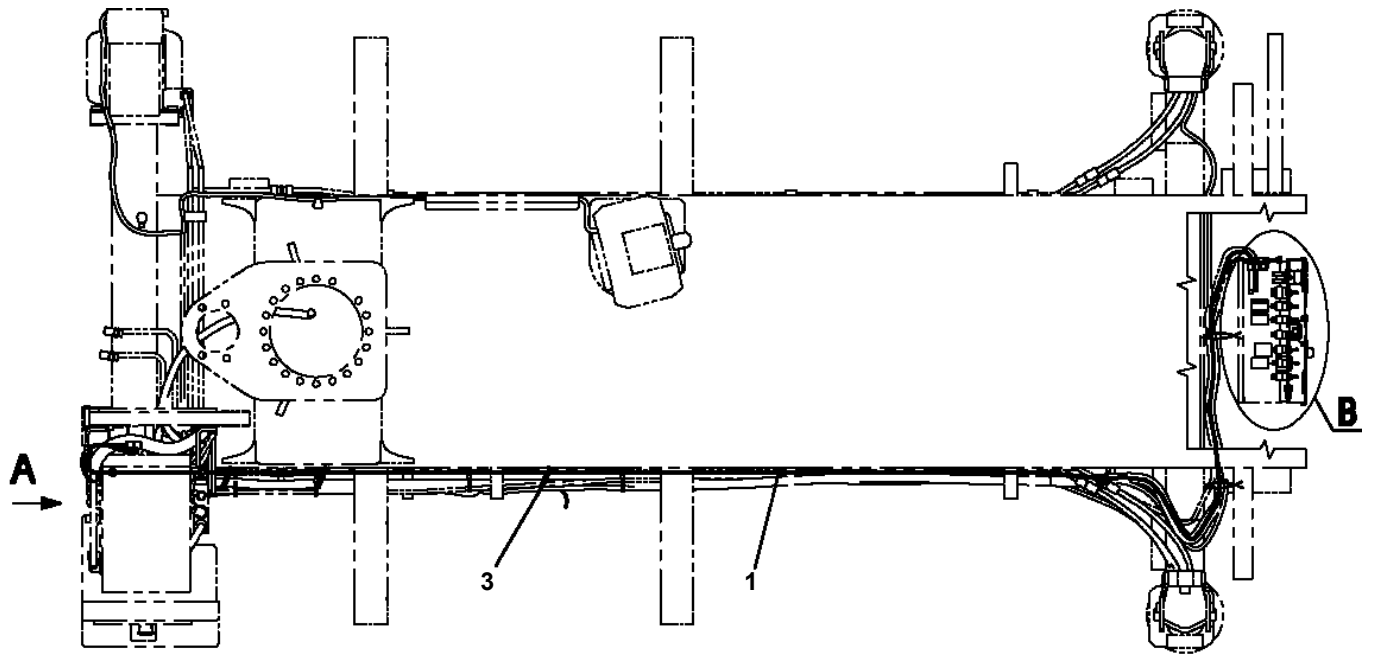


AT-100-5 42063534149 UPPER,LOWER,HINO TKG-XZU675M-TQMQC3
PE5021075-00 ELEC.ASSY (CONTROL SW)



車両後端操作パネル SW取付

AT-100-5 42063534149 UPPER,LOWER,HINO TKG-XZU675M-TQMQC3
 PE5021193-01 ELEC.ASSY (CHANGEOVER SW)

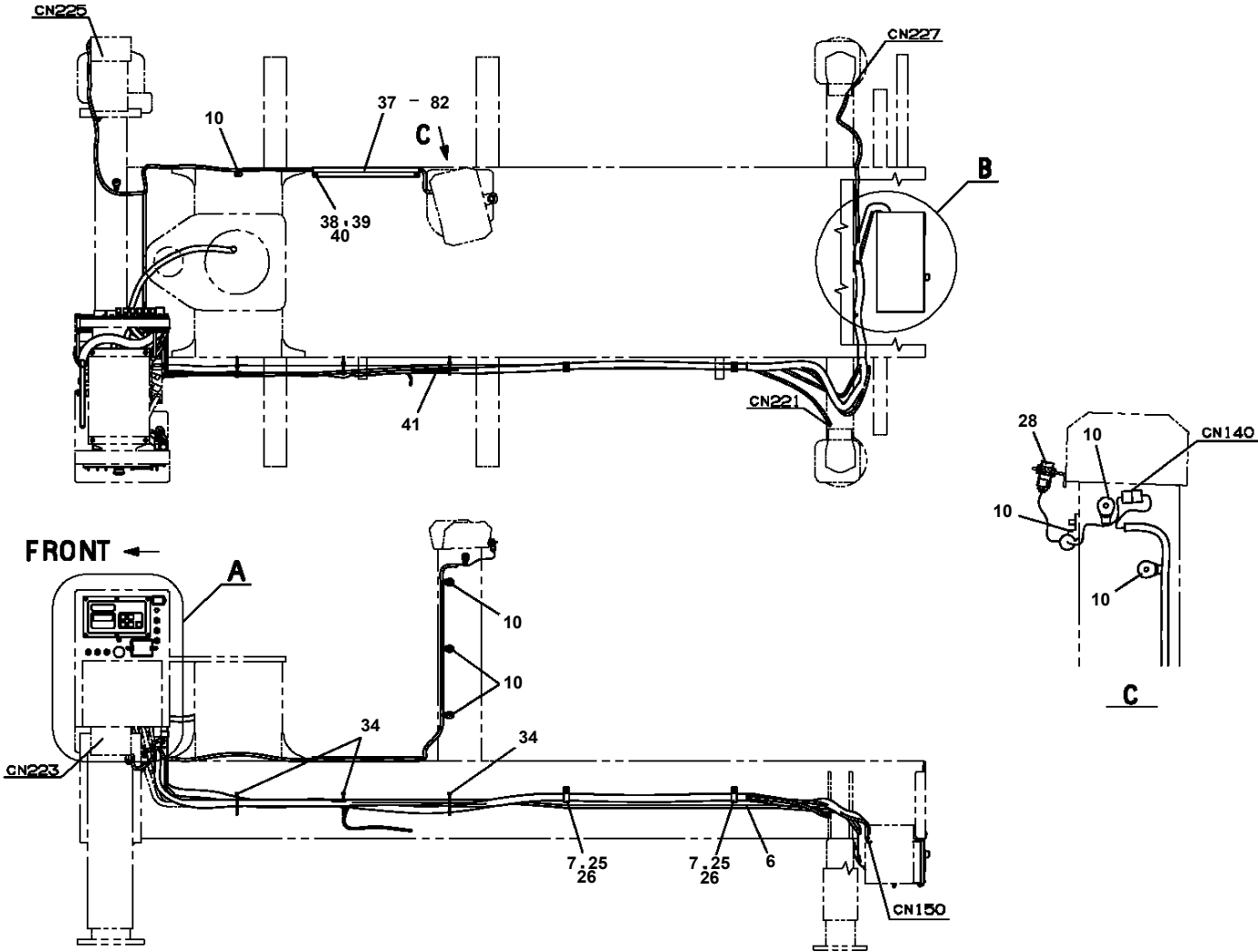


B

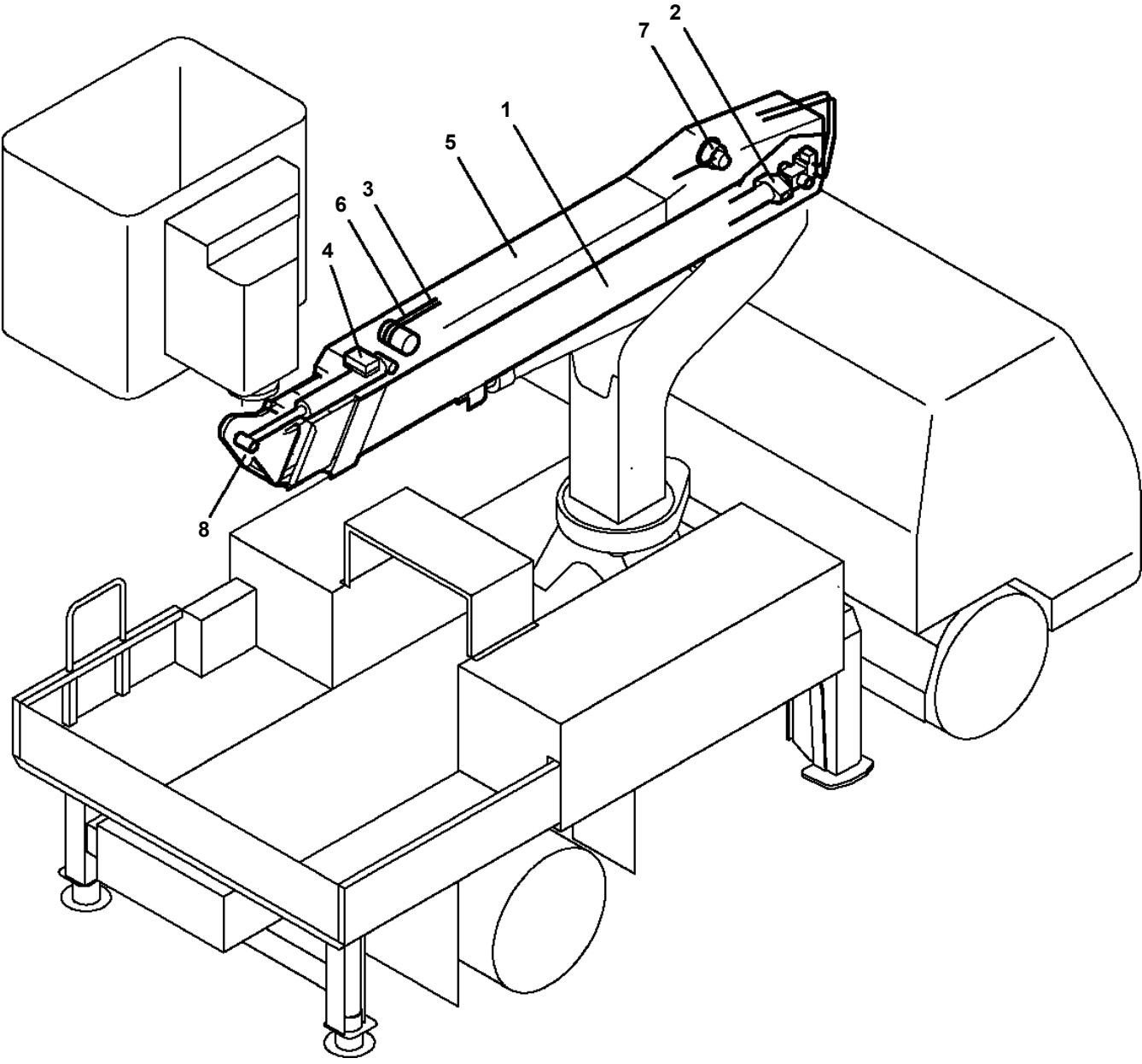
AT-100-5 42063534149 UPPER,LOWER,HINO TKG-XZU675M-TQMQC3

Pos No.	Parts No	Parts Name	Qty	Unit	Technical Data	Serial No (Start)	Serial No (End)
1	42332062500	SWITCH ASSY (WITH HARNESS,1 SW)	1				
2	91810130240	FASTENER	5				
3	82199514013	CAP	1				
4	82199504017	NUT	1		AT-401N		
5	42514030100	HARNESS	1				
6	42514030200	PLATE,NAME	1				HK2663
	42514030201	PLATE,NAME	1			HK2664	
7	42514030300	PLATE,NAME	1				HK2663
	42514030301	PLATE,NAME	1			HK2664	
8	82199504018	WASHER	1				
9	42514030400	PLATE,NAME	1				HK2663
	42514030401	PLATE,NAME	1			HK2664	

**AT-100-5 42063534149 UPPER,LOWER,HINO TKG-XZU675M-TQMQC3
PE5110078-00 ELEC.ASSY,FRAME**



**AT-100-5 42063534149 UPPER,LOWER,HINO TKG-XZU675M-TQMQC3
PG2000334-00 BOOM UNIT**



**AT-100-5 42063534149 UPPER,LOWER,HINO TKG-XZU675M-TQMQC3
PH1000633-00 SAFETY DEVICES (AUTOMATIC MOTION CONTROLLER)**

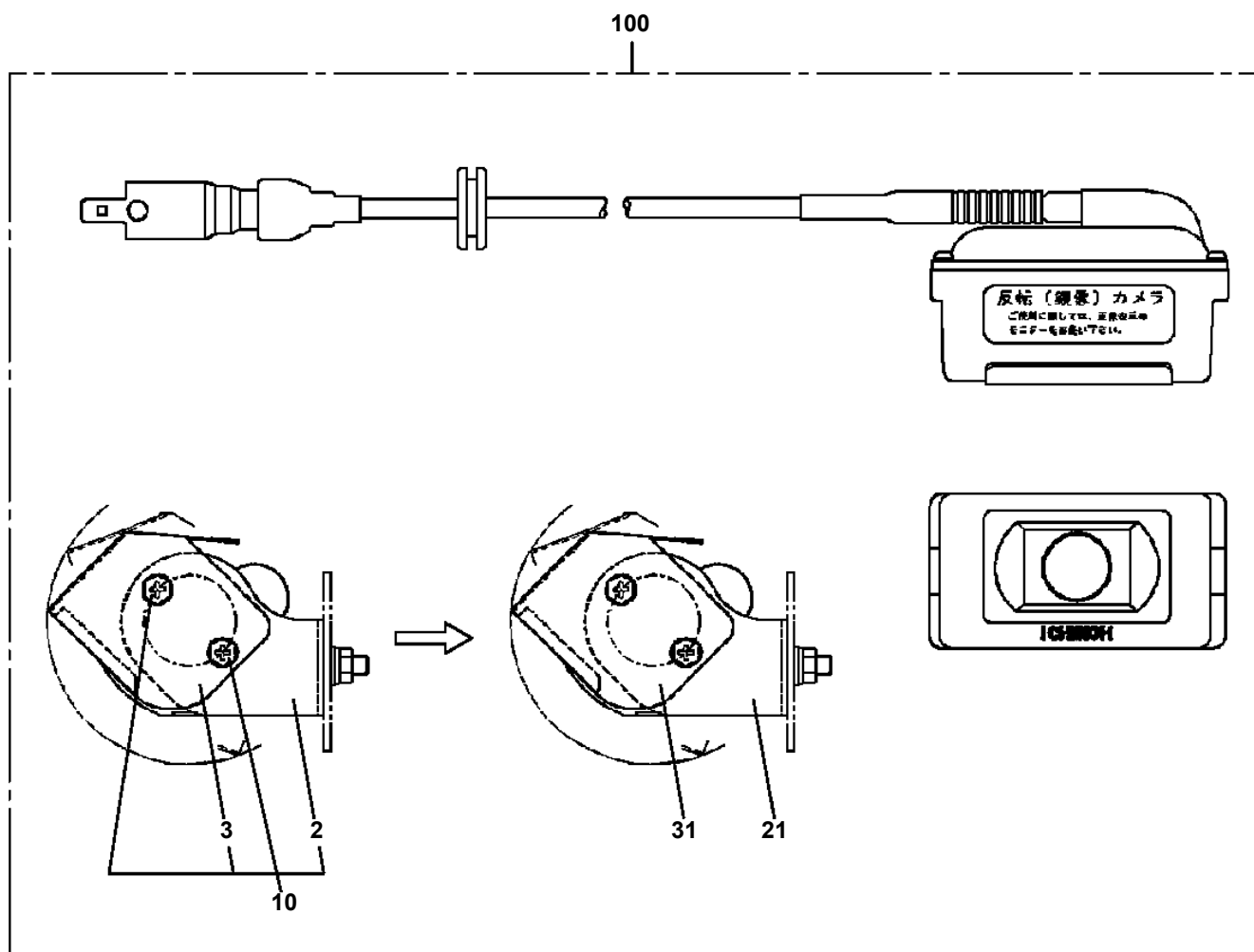
アンゼン ソウチ
SAFETY DEVICES

【組立名称一覧】より選択してください。
SEE THE CORRESPONDING "ASSEMBLY NAME" LIST.

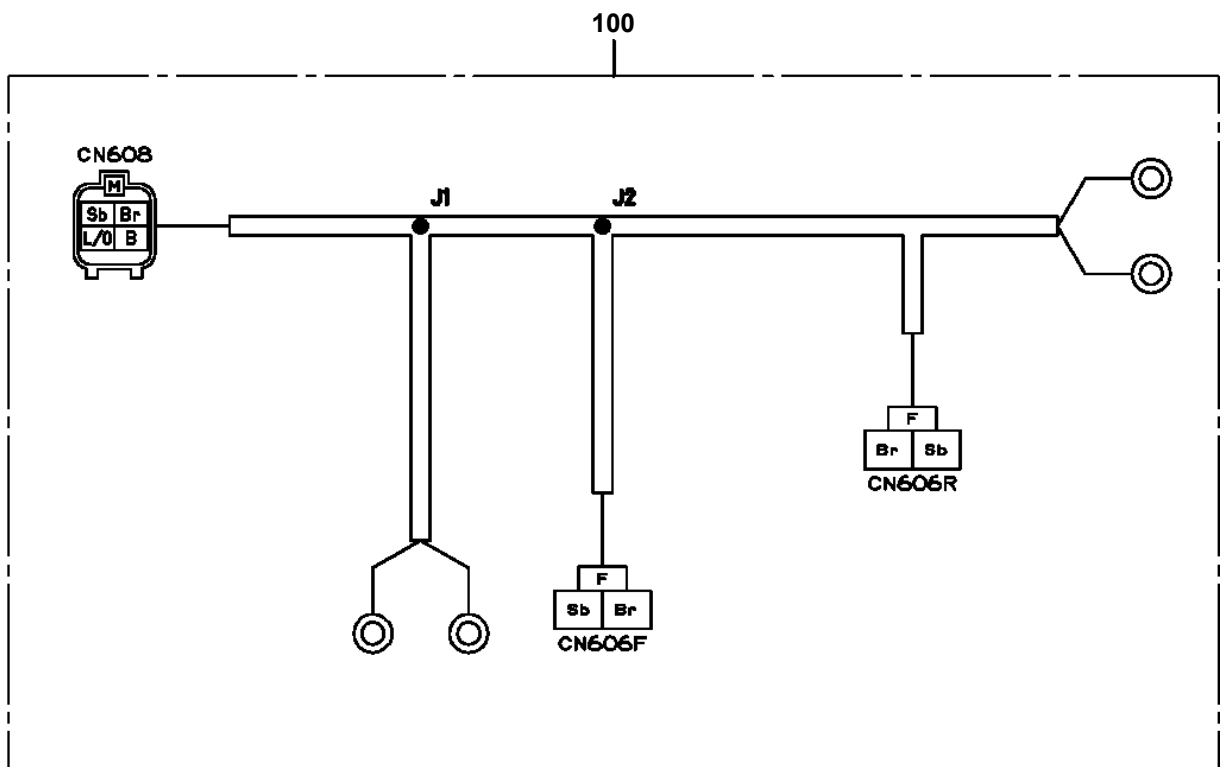
AT-100-5 42063534149 UPPER,LOWER,HINO TKG-XZU675M-TQMQC3
PH1700302-01 VIEW SYSTEM (FOR HINO,TOYOTA)

指示番号 KEY NO.	ビユー システム (ヒノ,トヨタヨウ) VIEW SYSTEM (FOR HINO,TOYOTA)
1	ビユー システム (モニタ) VIEW SYSTEM (MONITOR)
2	ビユー システム (カメラ) VIEW SYSTEM (CAMERA)

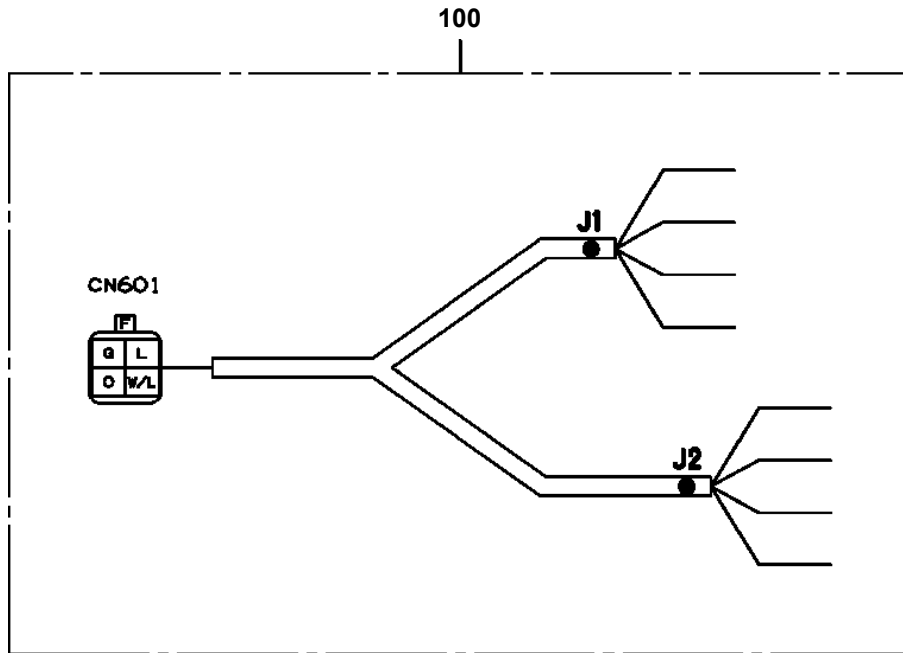
AT-100-5 42063534149 UPPER,LOWER,HINO TKG-XZU675M-TQMQC3
PH1750007-01 CAMERA



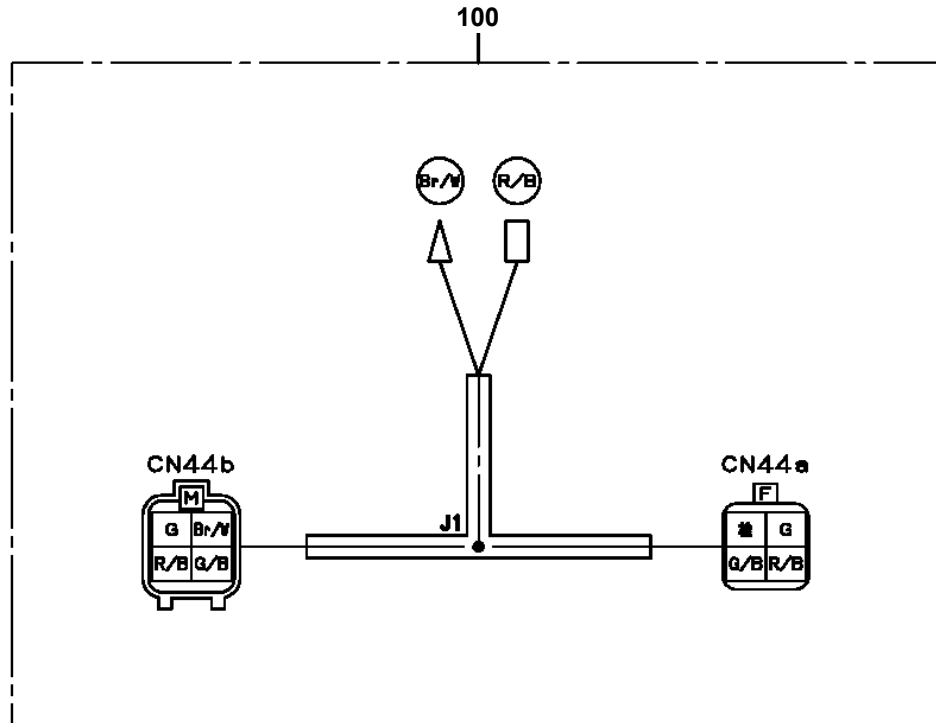
AT-100-5 42063534149 UPPER,LOWER,HINO TKG-XZU675M-TQMQC3
PH5030586-00 HARNESS (LEFT BOX TOOL)



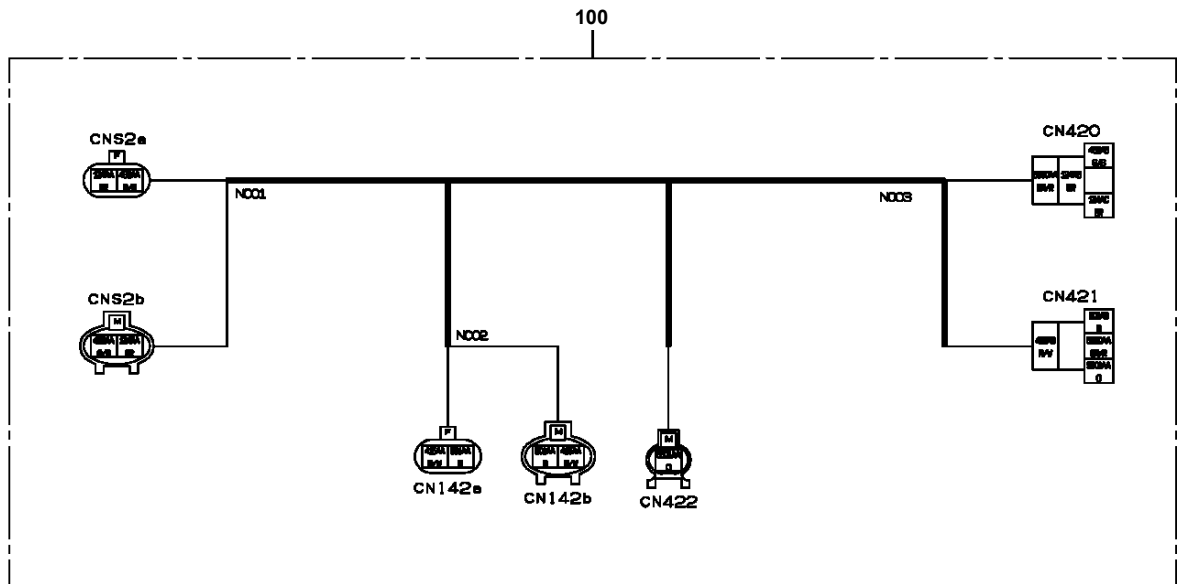
AT-100-5 42063534149 UPPER,LOWER,HINO TKG-XZU675M-TQMQC3
PH5031014-00 HARNESS



AT-100-5 42063534149 UPPER,LOWER,HINO TKG-XZU675M-TQMQC3
PH5031650-00 HARNESS



AT-100-5 42063534149 UPPER,LOWER,HINO TKG-XZU675M-TQMQC3
PH5032260-00 HARNESS



AT-100-5 42063534149 UPPER,LOWER,HINO TKG-XZU675M-TQMQC3

Pos No.	Parts No	Parts Name	Qty	Unit	Technical Data	Serial No (Start)	Serial No (End)	Remarks	Page
1	82182819823	DIODE	2		1.5A				
2	82182819834	DIODE	1		1.5A				
100	42655330103	HARNESS (FRAME)	1						

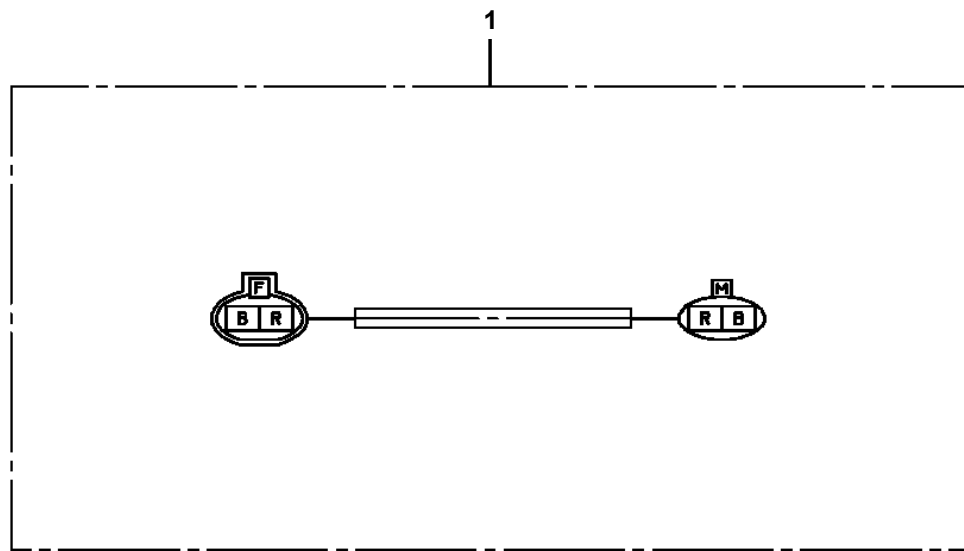
AT-100-5 42063534149 UPPER,LOWER,HINO TKG-XZU675M-TQMQC3

Pos No.	Parts No	Parts Name	Qty	Unit	Technical Data	Serial No (Star
100	42655470100	HARNESS (EMERGENCY SW FUNCTION LIMIT CIRCUIT)	1			

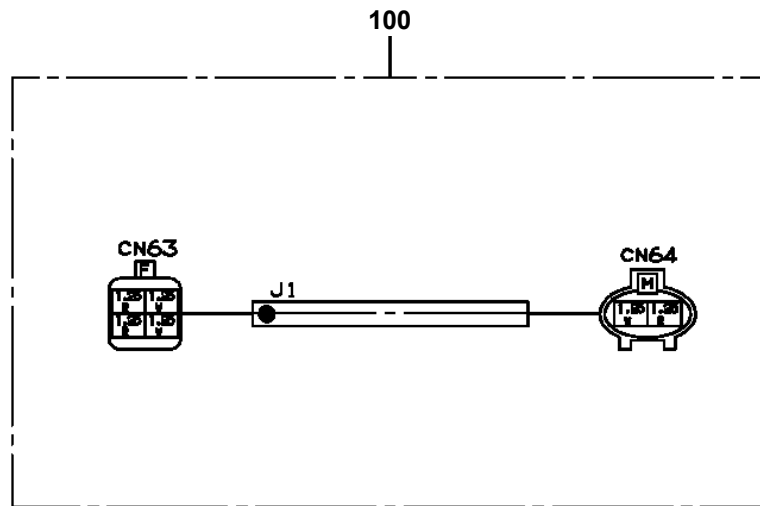
AT-100-5 42063534149 UPPER,LOWER,HINO TKG-XZU675M-TQMQC3

Pos No.	Parts No	Parts Name	Qty	Unit	Technical Data	Serial No (Start)	Serial No (End)	Remarks	Pages
100	42513440100	HARNESS	1						

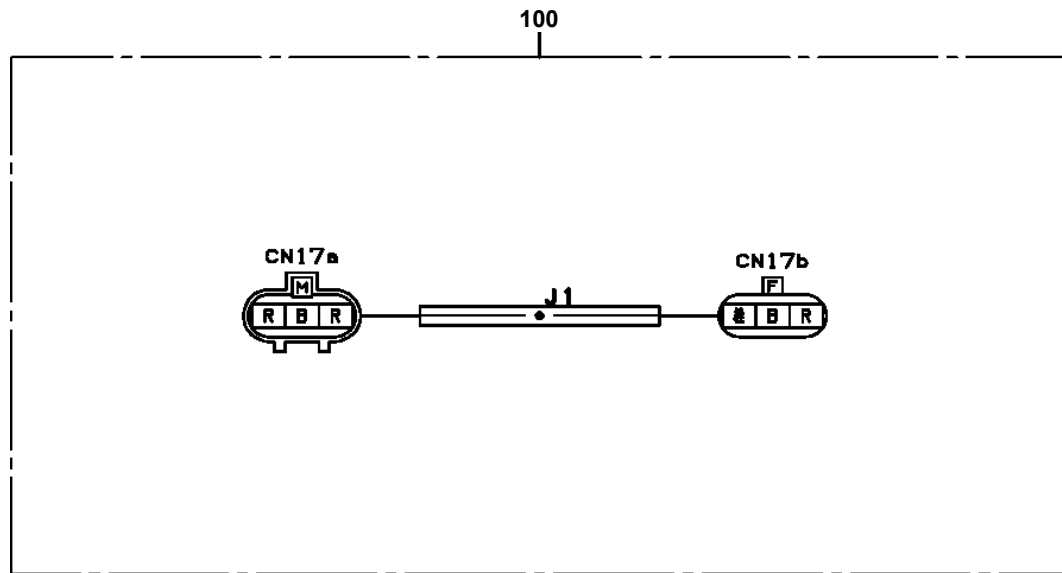
AT-100-5 42063534149 UPPER,LOWER,HINO TKG-XZU675M-TQMQC3
PH5034148-00 HARNESS



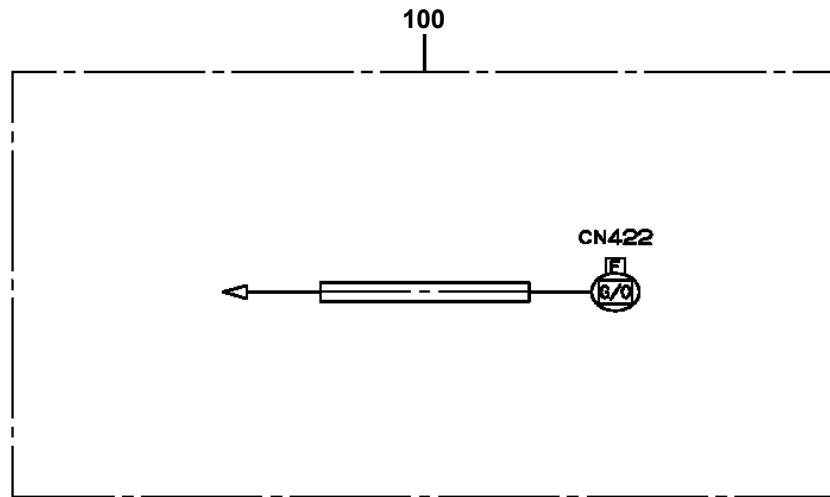
AT-100-5 42063534149 UPPER,LOWER,HINO TKG-XZU675M-TQMQC3
PH5034168-00 HARNESS



AT-100-5 42063534149 UPPER,LOWER,HINO TKG-XZU675M-TQMQC3
PH5034177-00 HARNESS

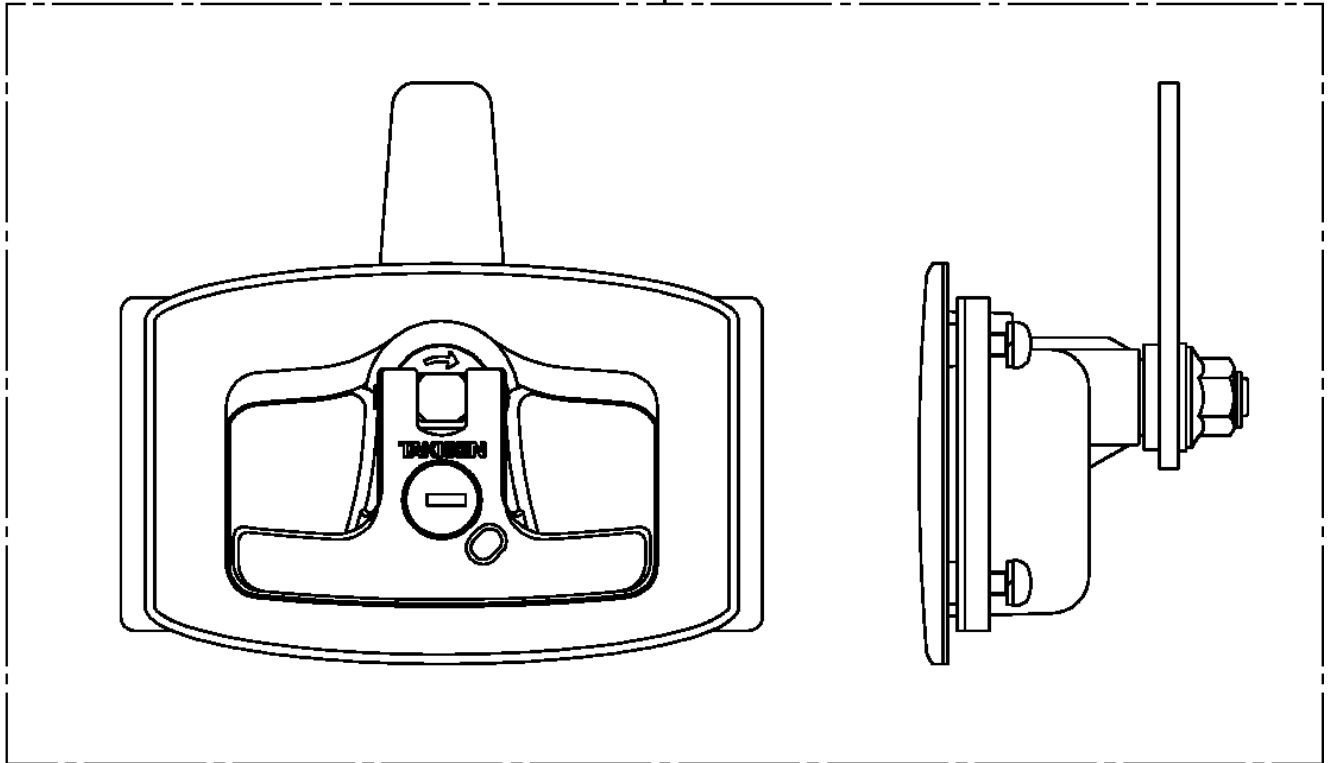


AT-100-5 42063534149 UPPER,LOWER,HINO TKG-XZU675M-TQMQC3
PH5034183-00 HARNESS



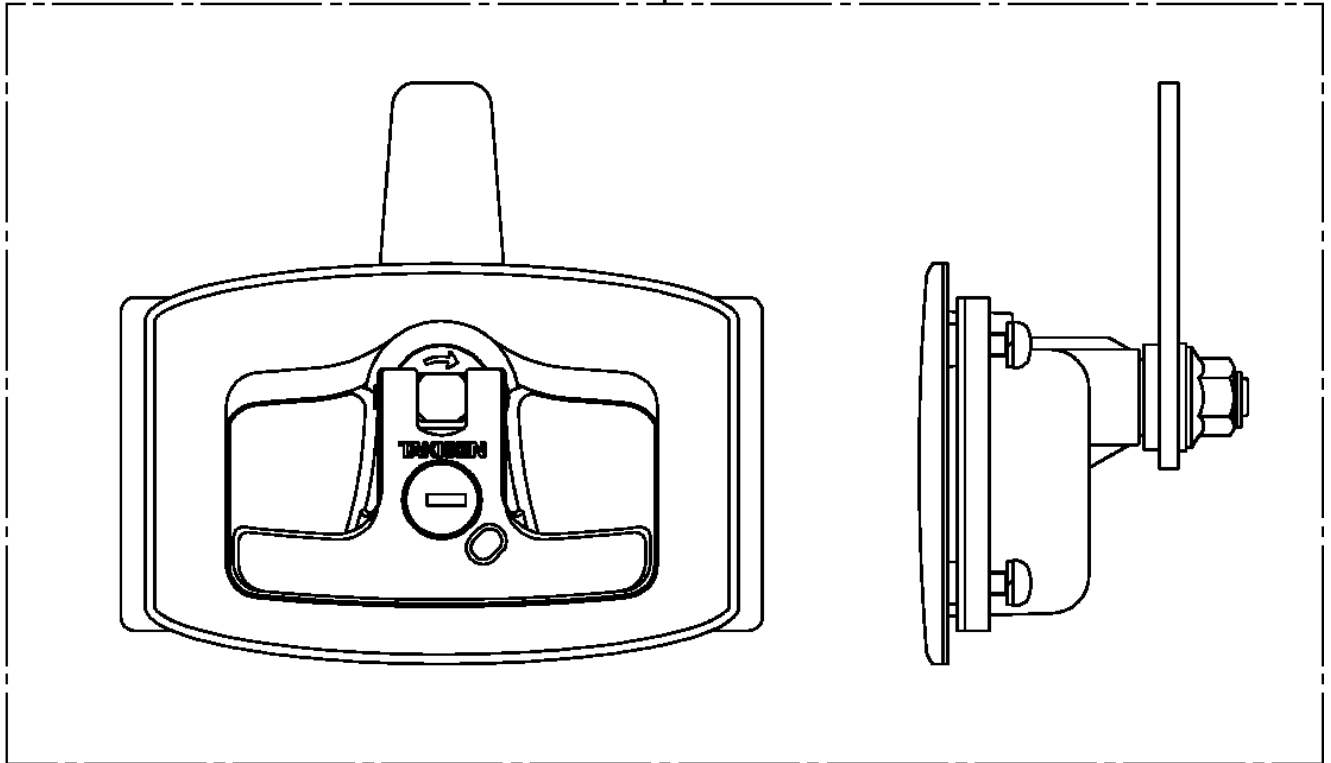
**AT-100-5 42063534149 UPPER,LOWER,HINO TKG-XZU675M-TQMQC3
PH5190001-00 HANDLE**

1

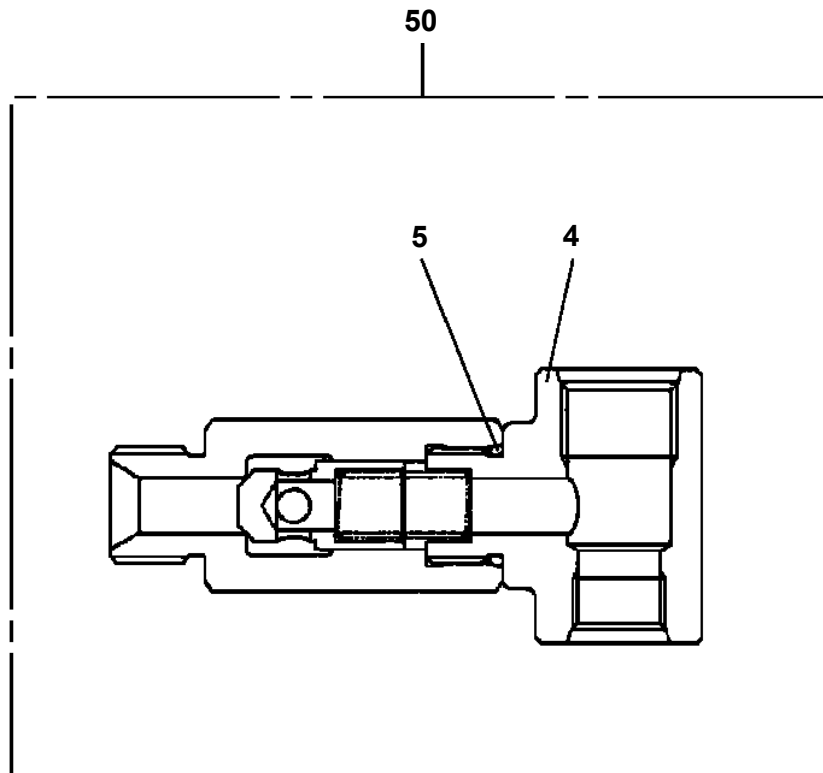


**AT-100-5 42063534149 UPPER,LOWER,HINO TKG-XZU675M-TQMQC3
PH5190001-00 HANDLE**

1



**AT-100-5 42063534149 UPPER,LOWER,HINO TKG-XZU675M-TQMQC3
PI1140167-00 VALVE,CHECK (UZUMAKI)**



**AT-100-5 42063534149 UPPER,LOWER,HINO TKG-XZU675M-TQMQC3
PI5170037-00 INTERLOCK ASSY (RUNAWAY PREVENTION/ISUZU)**

インターロックASSY (イツソウホ^ホ ウシ/イスズ^ホ)
INTERLOCK ASSY (RUNAWAY PREVENTION/ISUZU)

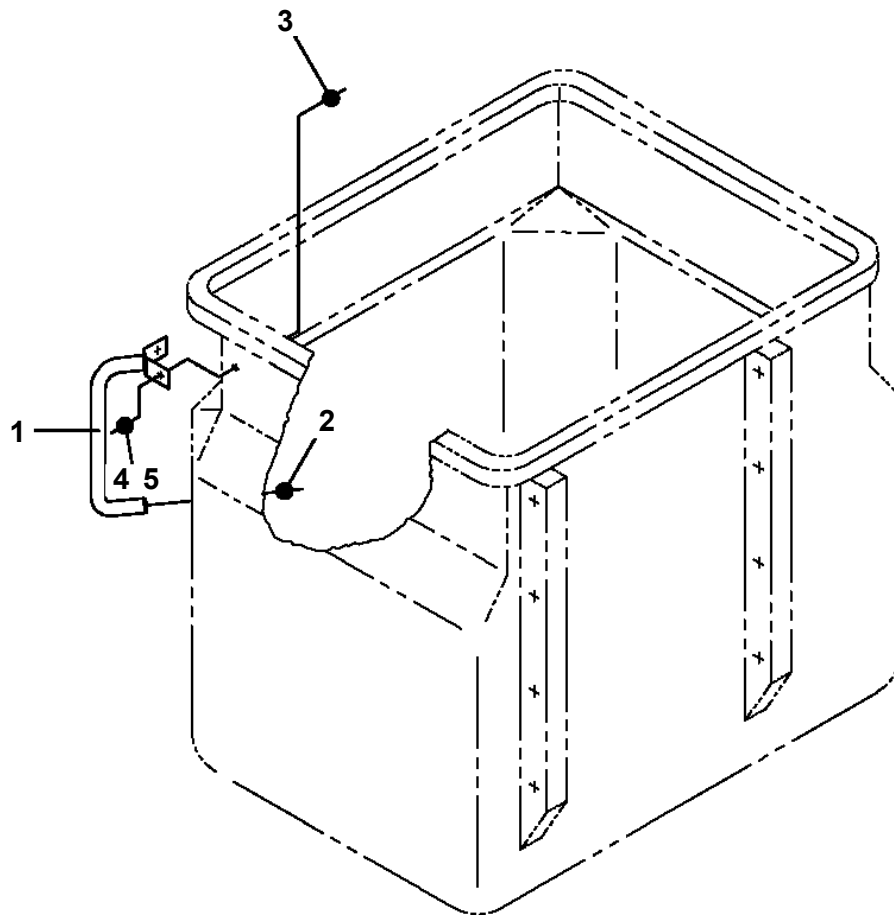
逸走防止オプション (イスズ用)

指示番号 KEY NO.	部品名称 PART NAME	備考 REMARK
1	ハイセンASSY ELEC.ASSY	フレーム部ハイセン
2	ハイセンASSY, キャリヤ ELEC.ASSY, CARRIER	イスズ用 シャーシ部ハイセン
3	ネームプレートASSY NAME PLATE ASSY	

適用製造番号によっては取り付けがないものもあります。

MACHINES OF SOME SERIAL NO. ARE NOT EQUIPPED WITH THESE PARTS.

AT-100-5 42063534149 UPPER,LOWER,HINO TKG-XZU675M-TQMQC3
PJ3010275-00 BUCKET (GRIP)



CLICK HERE TO **DOWNLOAD** THE COMPLETE MANUAL

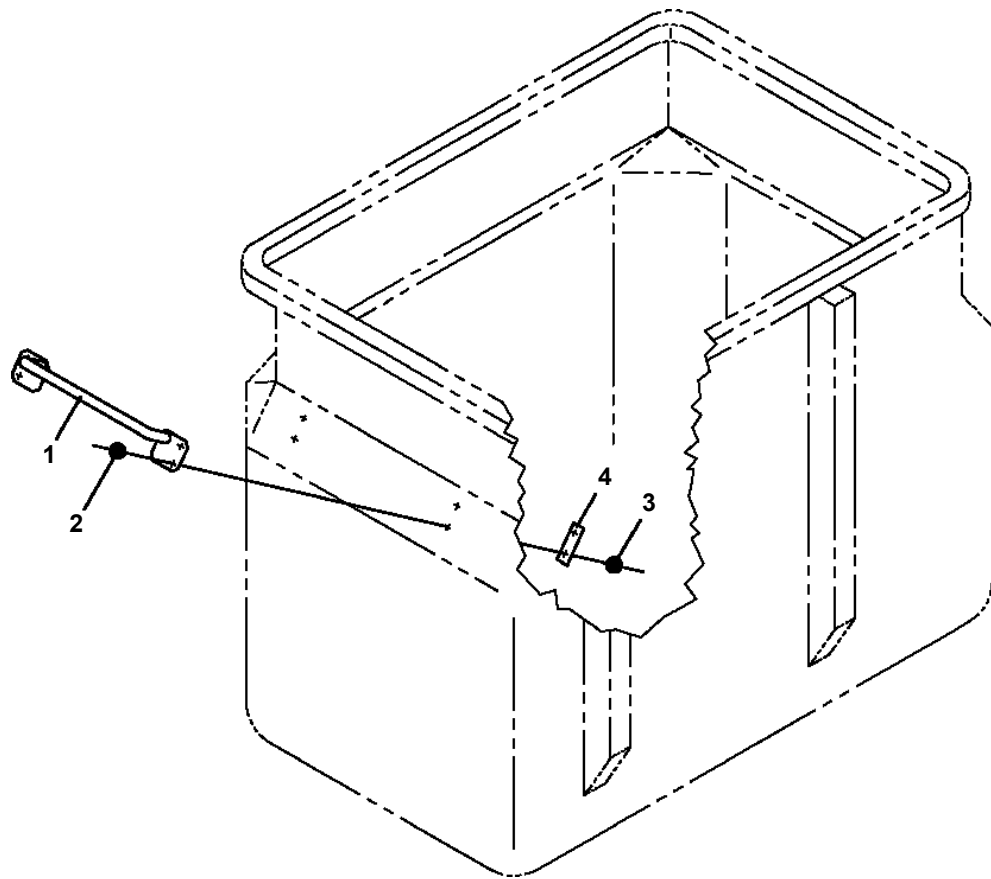
- Thank you very much for reading the preview of the manual.
- You can download the complete manual from: www.heydownloads.com by clicking the link below



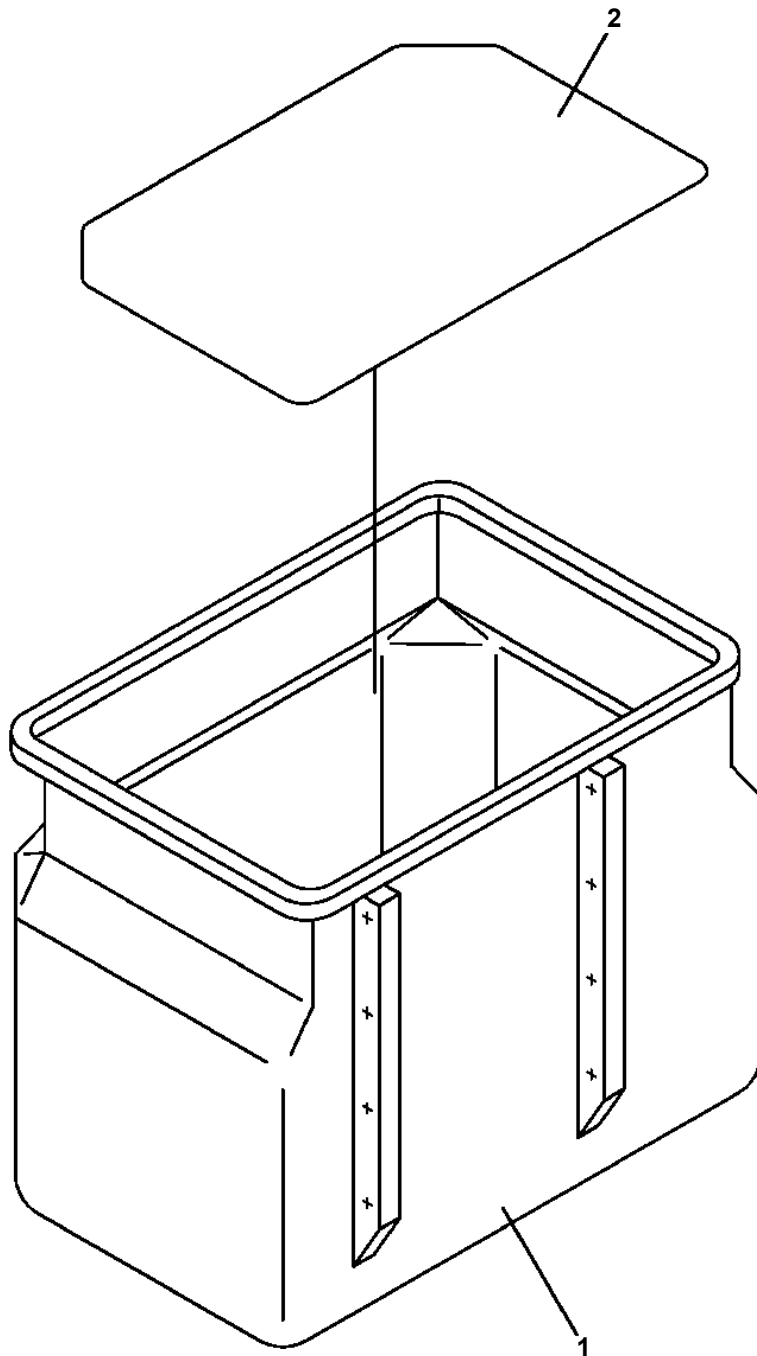
- Please note: If there is no response to CLICKING the link, please download this PDF first and then click on it.

CLICK HERE TO **DOWNLOAD** THE COMPLETE MANUAL

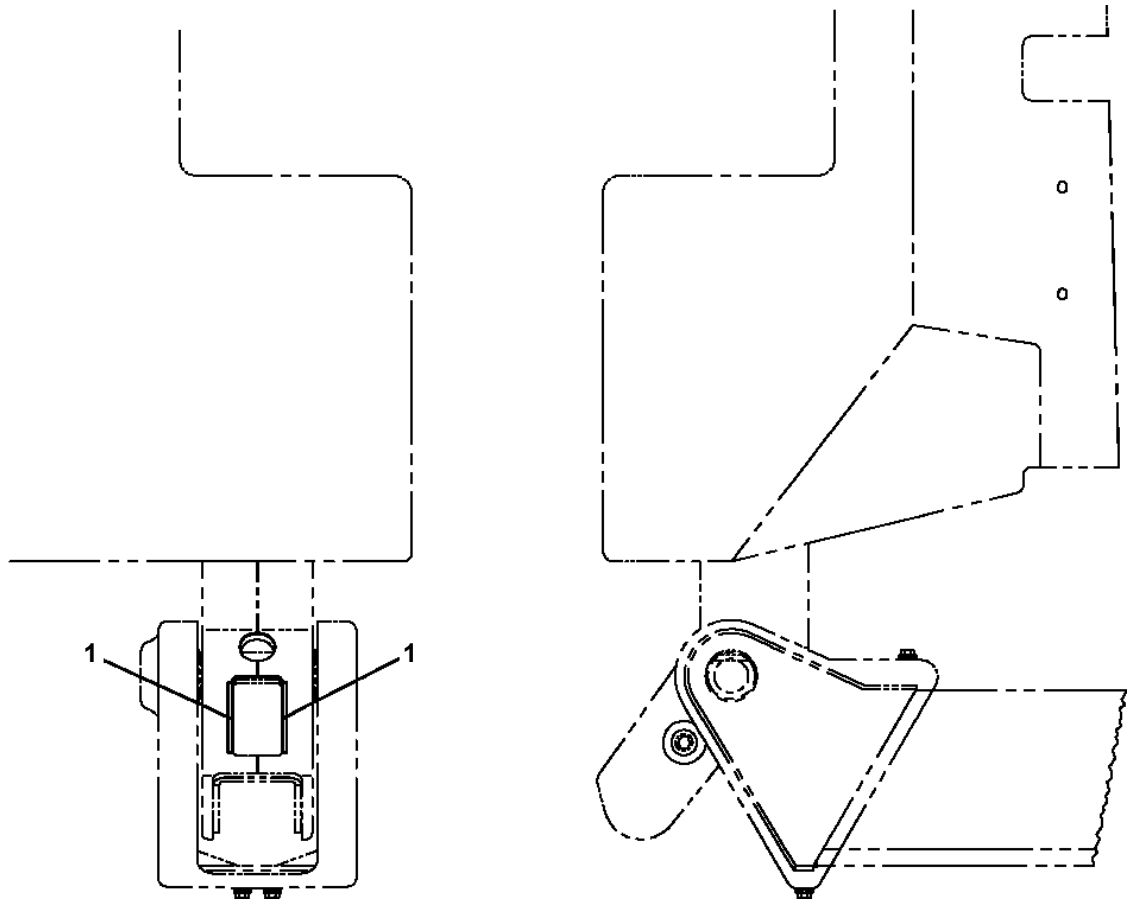
**AT-100-5 42063534149 UPPER,LOWER,HINO TKG-XZU675M-TQMQC3
PJ3010360-00 BUCKET (GRIP:HORIZONTAL)**



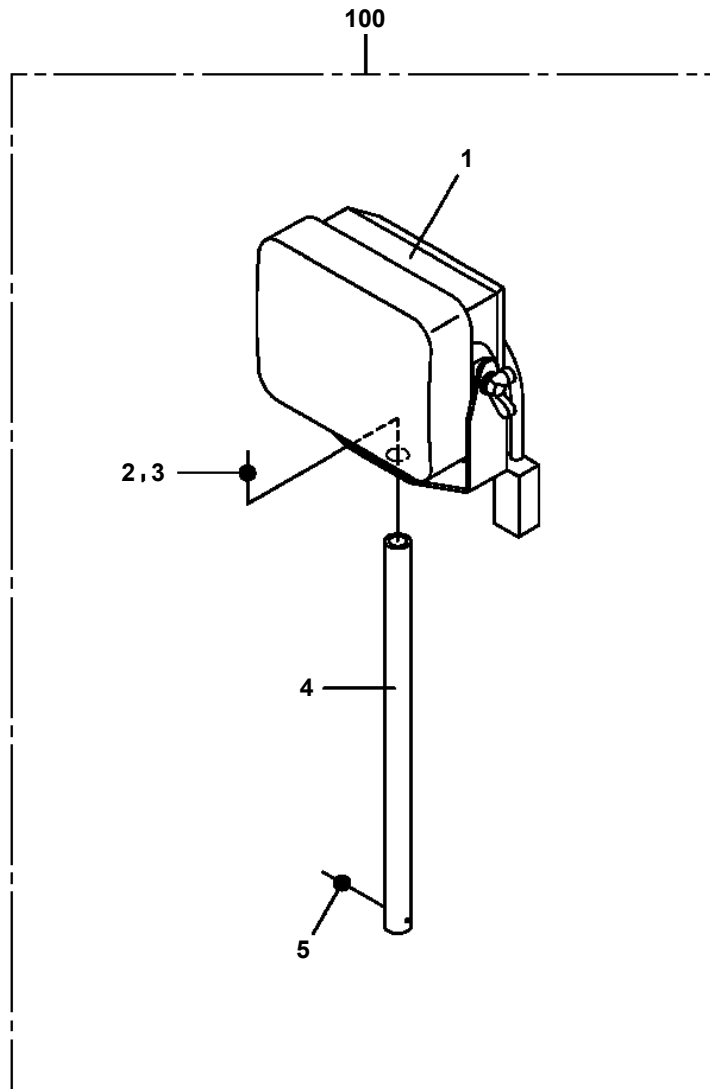
AT-100-5 42063534149 UPPER,LOWER,HINO TKG-XZU675M-TQMQC3
PJ3010367-00 BUCKET (WHITE/WITH BOSS ON ONE SIDE)



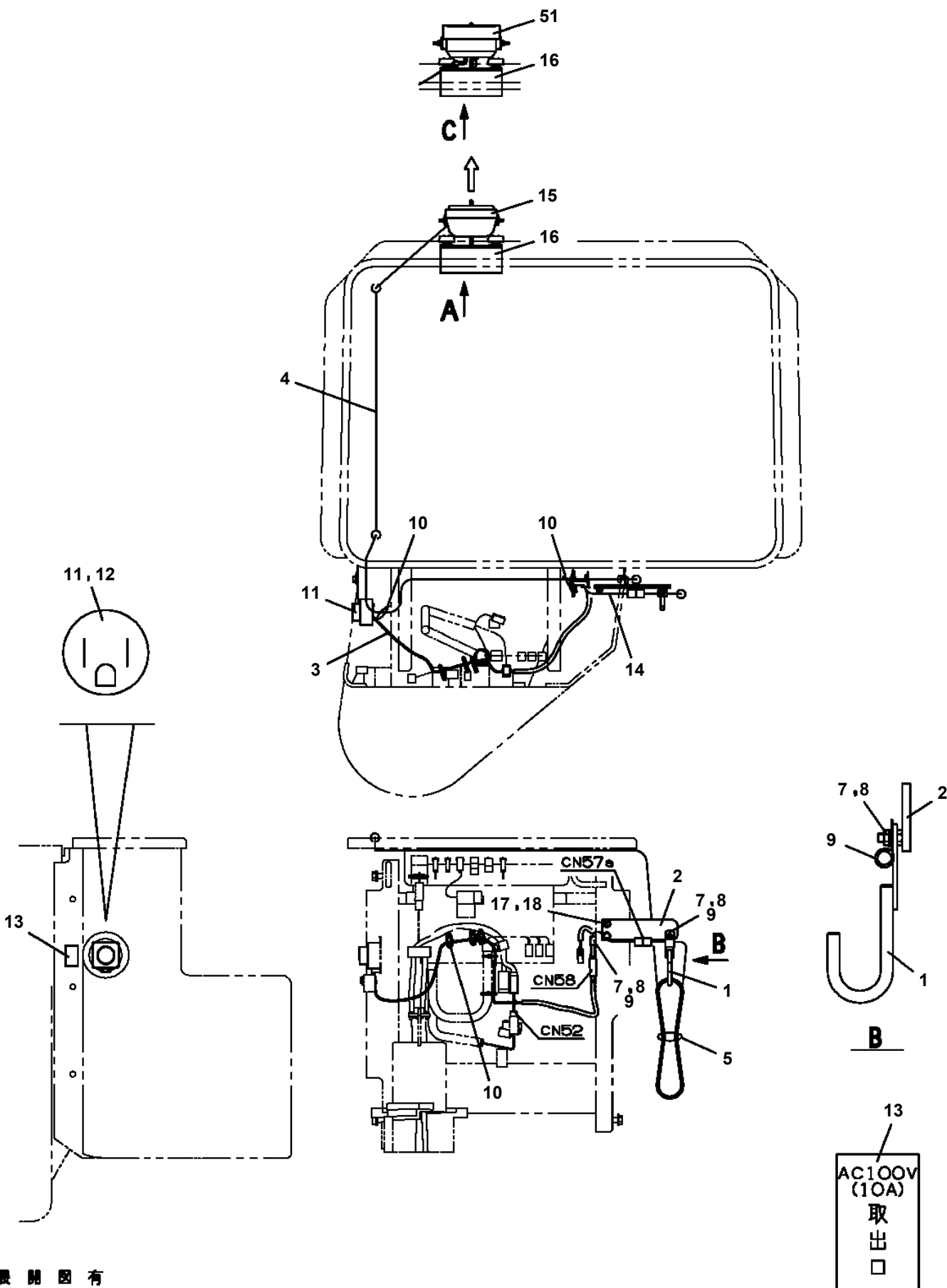
AT-100-5 42063534149 UPPER,LOWER,HINO TKG-XZU675M-TQMQC3
PK1330360-00 COVER



AT-100-5 42063534149 UPPER,LOWER,HINO TKG-XZU675M-TQMQC3
PL5020192-00 LAMP ASSY (SQUARE TYPE)

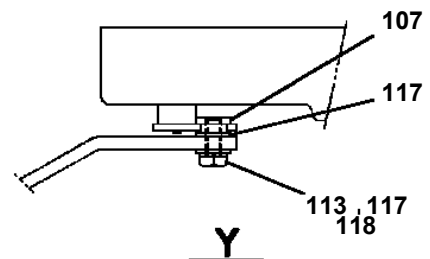
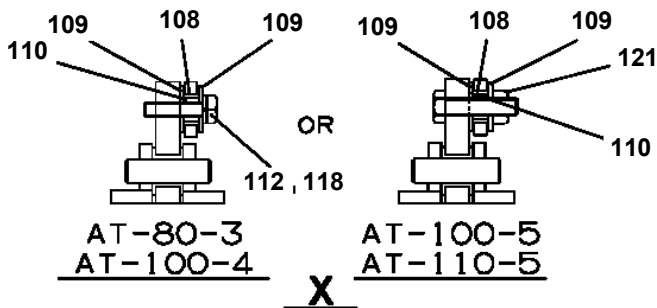
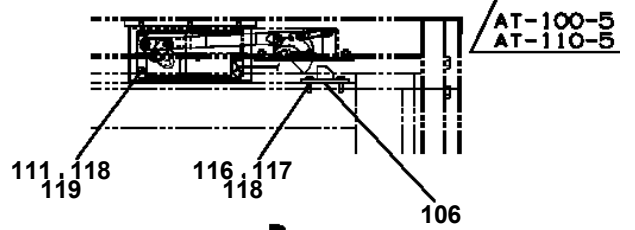
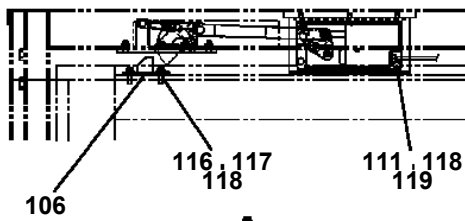
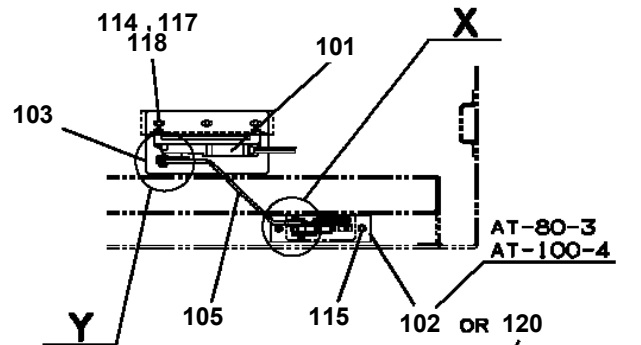
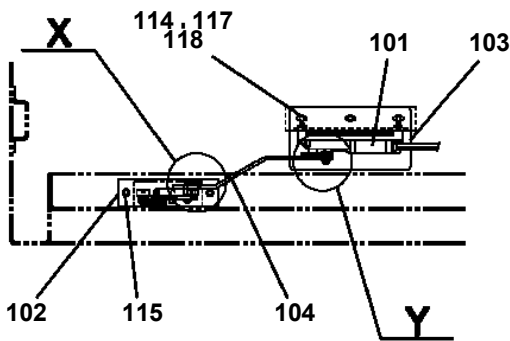
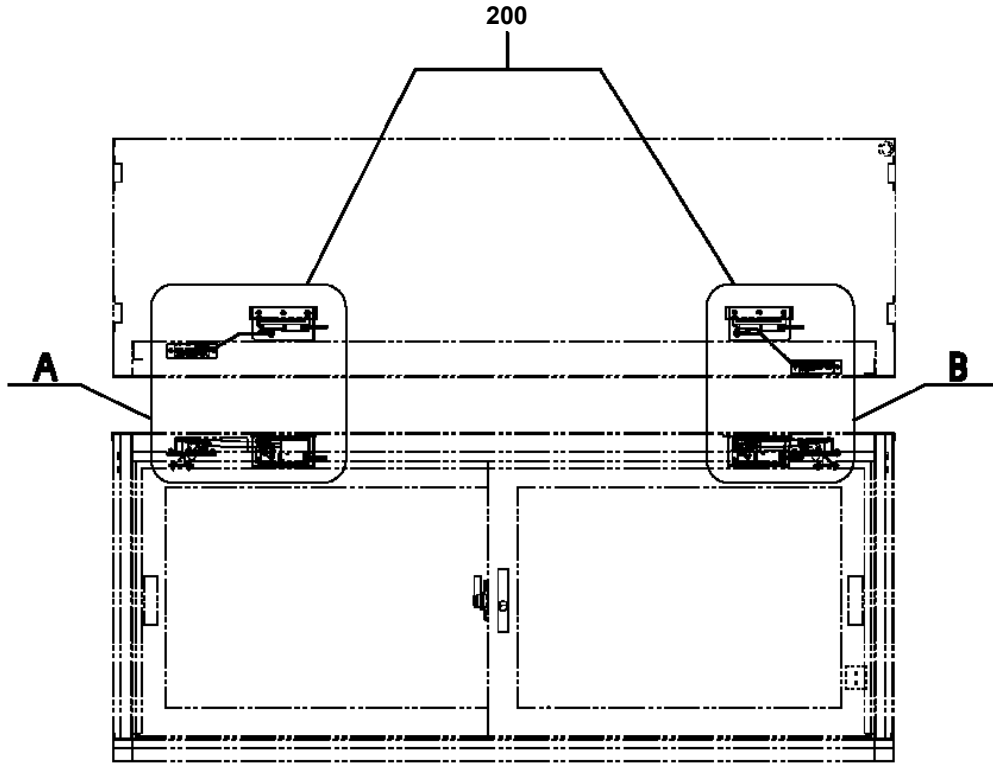


AT-100-5 42063534149 UPPER,LOWER,HINO TKG-XZU675M-TQMQC3
 PL5140016-02 LAMP ASSY,WORKING (BUCKET/100V,3POLES,LED)

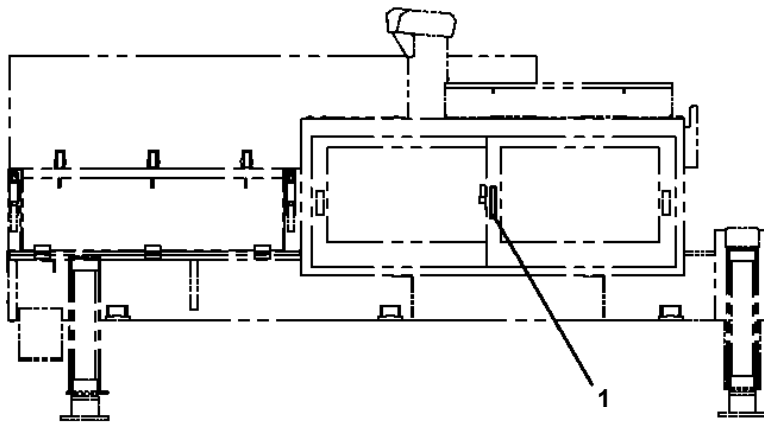
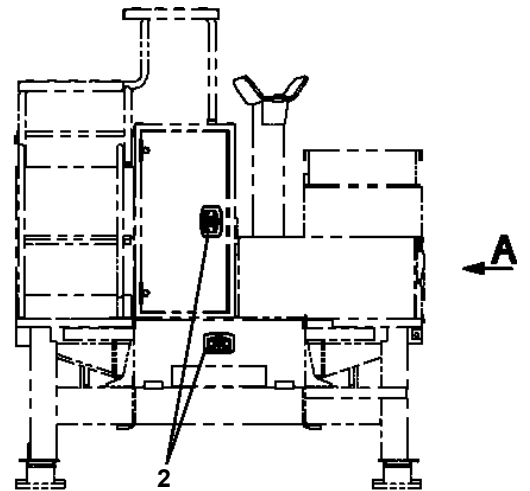
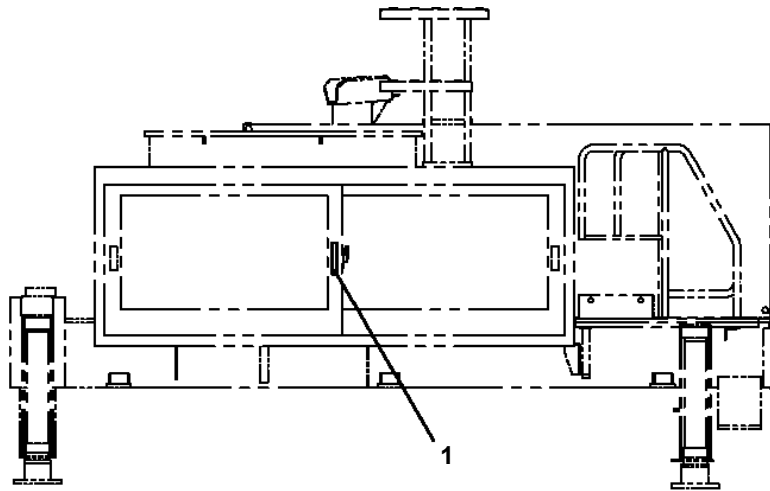


展開図有
 ILLUSTRATED BREAKDOWN NO. 15, 16

**AT-100-5 42063534149 UPPER,LOWER,HINO TKG-XZU675M-TQMQC3
PL5270022-03 LOCK ASSY**

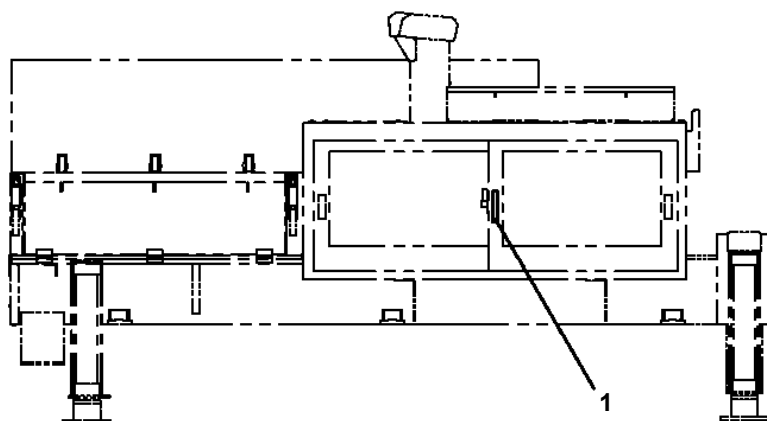
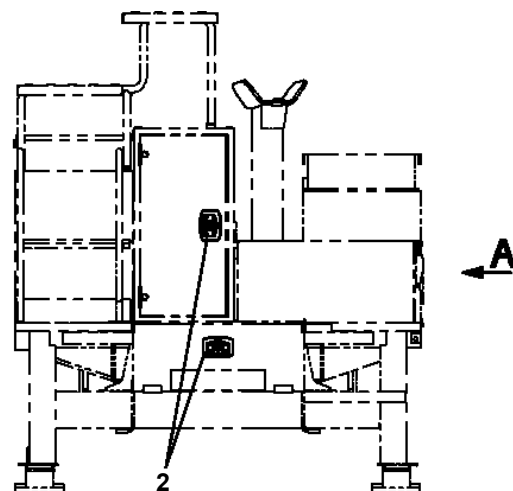
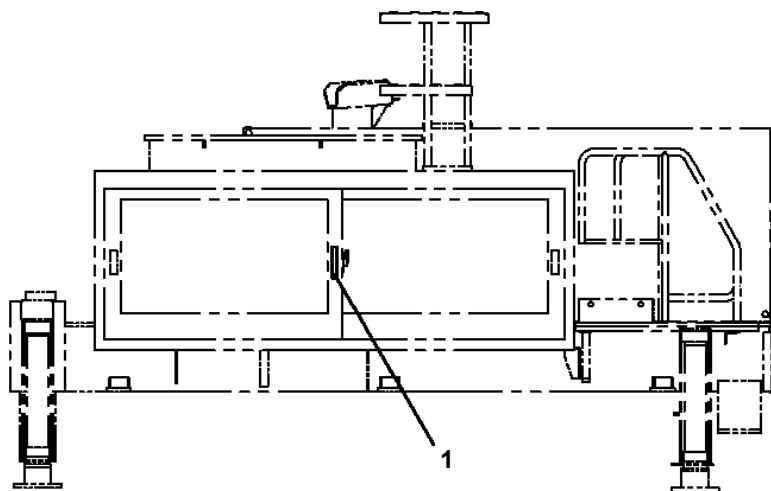


AT-100-5 42063534149 UPPER,LOWER,HINO TKG-XZU675M-TQMQC3
PL5270047-00 LOCK ASSY (KEY NO.5)



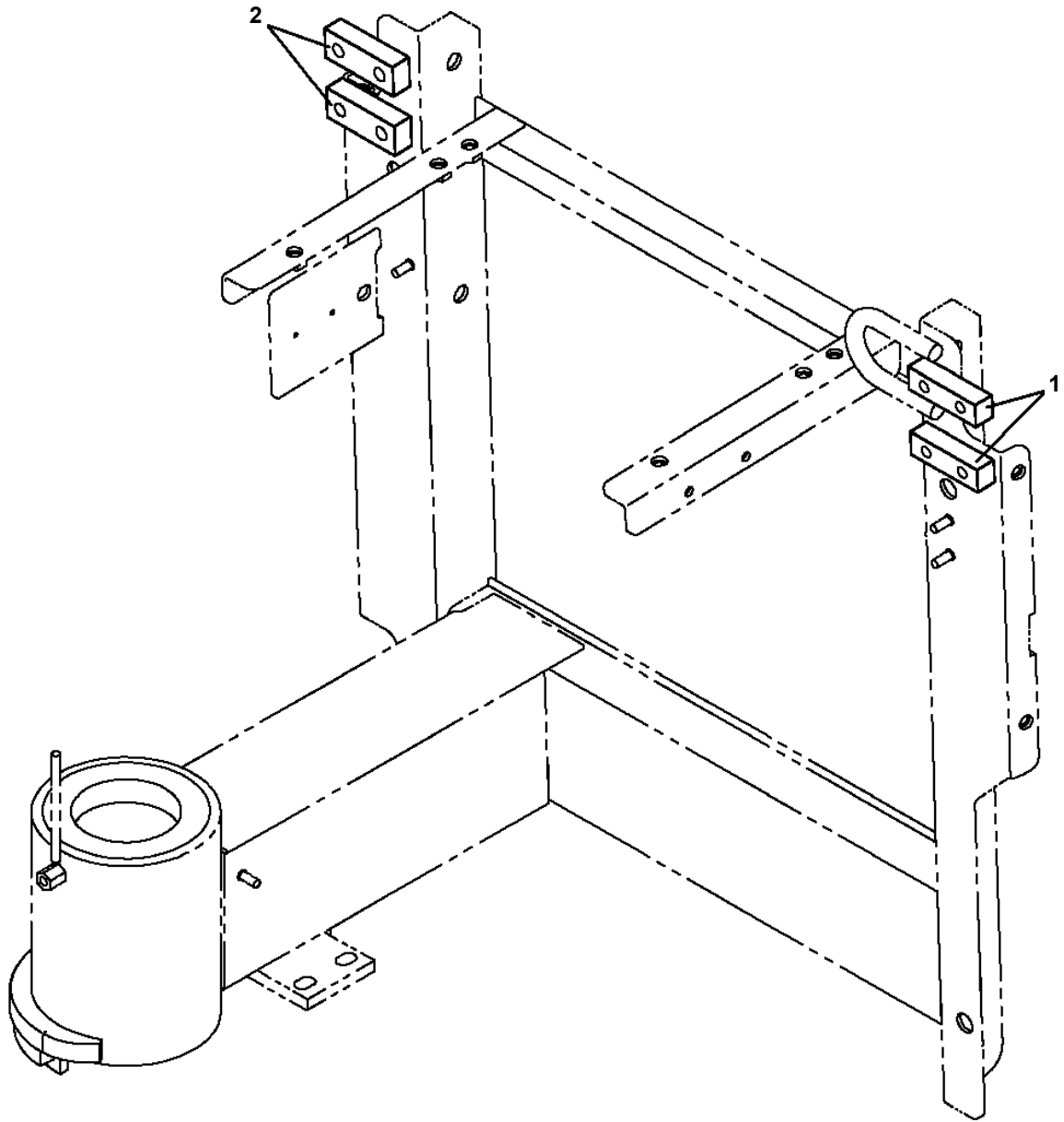
A

AT-100-5 42063534149 UPPER,LOWER,HINO TKG-XZU675M-TQMQC3
PL5270052-00 LOCK ASSY (KEY NO.10)



A

AT-100-5 42063534149 UPPER,LOWER,HINO TKG-XZU675M-TQMQC3
PM5150884-00 MODIFICATION ASSY



AT-100-5 42063534149 UPPER,LOWER,HINO TKG-XZU675M-TQMQC3

Pos No.	Parts No	Parts Name	Qty	Unit	Technical Data	Serial No (Start)	Serial No (End)	Remarks
1	42502382100	HARNESS	1					
2	42350250070	PLUG (2 POLES,MALE)	1					
3	42433330020	PLUG (2 POLES,FEMALE)	1					
4	91810130240	FASTENER	1					

AT-100-5 42063534149 UPPER,LOWER,HINO TKG-XZU675M-TQMQC3

Pos No.	Parts No	Parts Name	Qty	Unit	Technical Data	Serial No (Start)	Serial No (End)	Remarks	Pages
1	42393312020	PLATE (NON-SLIP)	2						

AT-100-5 42063534149 UPPER,LOWER,HINO TKG-XZU675M-TQMQC3

Pos No.	Parts No	Parts Name	Qty	Unit	Technical Data	Serial No (Start)	Serial No (End)	Rema
1	42333462010	PLATE,NAME (SWITCH,LAMP)	1					
3	42391163120	PLATE,NAME	1					
4	42331782120	PLATE,NAME	1					
5	42331272010	PLATE,NAME	1					
6	42331272020	PLATE,NAME	1					
7	42331272030	PLATE,NAME	1					

AT-100-5 42063534149 UPPER,LOWER,HINO TKG-XZU675M-TQMQC3

Pos No.	Parts No	Parts Name	Qty	Unit	Technical Data	Serial No (Start)	Serial No (End)	Remarks	Pages
1	42510572100	PLATE,NAME	1						
2	42510572201	PLATE,NAME	1						

AT-100-5 42063534149 UPPER,LOWER,HINO TKG-XZU675M-TQMQC3

Pos No.	Parts No	Parts Name	Qty	Unit	Technical Data	Serial No (Start)	S
1	(*****)	NAME PLATE ASSY (VEHICLE)	1				
2	(*****)	NAME PLATE ASSY (TADANO,TANK,NON-SLIP,FUSE)	1				
3	(*****)	NAME PLATE ASSY (OPERATION)	1				
4	(*****)	NAME PLATE ASSY (SPECIFICATION)	1				
11	(*****)	PLATE ASSY,NAME (OIL/COLD DISTRICT)	1				
	(*****)	PLATE ASSY,NAME (HYDRAULIC OIL)	1				

AT-100-5 42063534149 UPPER,LOWER,HINO TKG-XZU675M-TQMQC3

Pos No.	Parts No	Parts Name	Qty	Unit	Technical Data	Serial No (Start)	Serial No (End)	Remarks	Pages
1	34393906540	PLATE (NON-SLIP)	3						
2	42396801100	PLATE (NON-SLIP)	2						
3	42834921010	PLATE (NON-SLIP)	1						
4	42396863100	PLATE (NON-SLIP)	1						

AT-100-5 42063534149 UPPER,LOWER,HINO TKG-XZU675M-TQMQC3

Pos No.	Parts No	Parts Name	Qty	Unit	Technical Data	Serial No (Start)	Serial No (End)
1	(*****)	OPE.ASSY,BUCKET	2				
2	(*****)	NAME PLATE ASSY (BUCKET CONTROL)	2				
3	(*****)	NAME PLATE ASSY (INSIDE BUCKET)	2				
4	(*****)	NAME PLATE ASSY (SAFETY BELT HOOK HOLDER)	2				

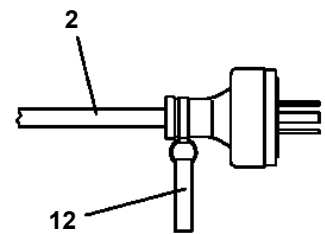
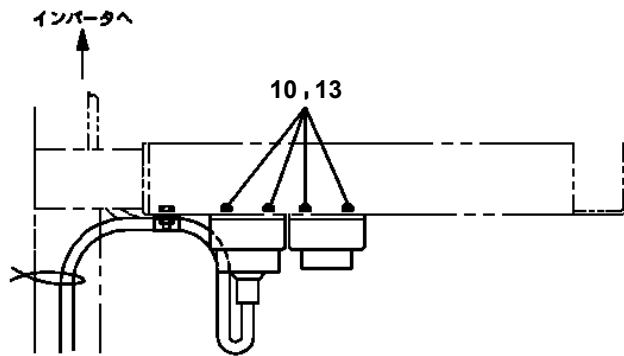
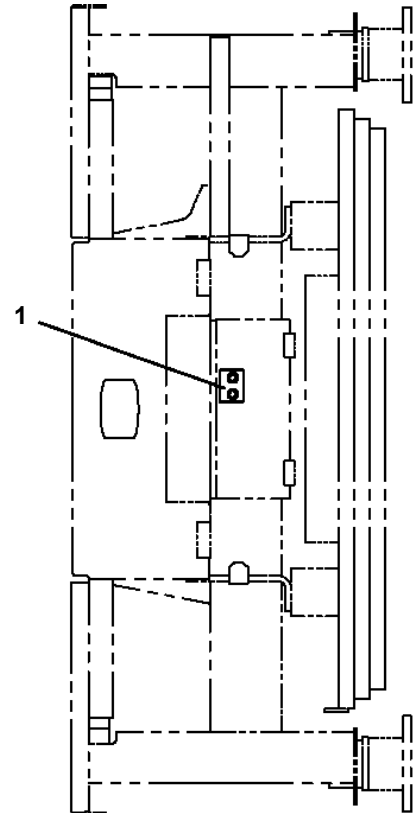
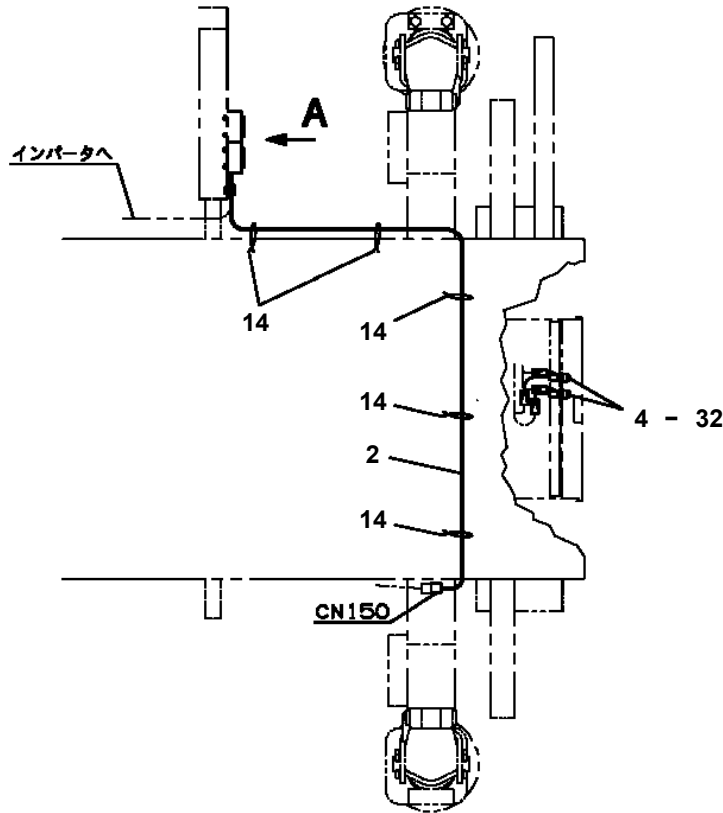
AT-100-5 42063534149 UPPER,LOWER,HINO TKG-XZU675M-TQMQC3

Pos No.	Parts No	Parts Name	Qty	Unit	Technical Data	Serial No (Start)	Serial No (End)	Remarks
1	42614962101	SUPPORT	1					
2	36037260000	CYLINDER ASSY,JACK	1					
3	37000176340	PIN	1					
4	80136380045	PIN,SPLIT	2		8X45			
5	90302041201	WASHER,SPRING	2		12			
6	90171112035	BOLT	2		M12X35			
7	90201781200	NUT	2		M12			
8	36625740001	VALVE,CHECK	1					
9	90171108055	BOLT	4		M8X55			
10	80400160127	JOINT	2					
11	37002453150	HOSE	1		L=720			
12	91803601200	CLIP	1		D=90-120			
13	42614520010	PLATE	1		T=5			
14	36672630000	FILTER (WITH O-RING)	1					
15	91002801100	O-RING	2		1B P11			
16	42614000060	PLATE	1		T=12			
17	42614520500	FLOAT (STEEL CAST)	1					
	42614520300	FLOAT (PLATE WORKING)	1					
18	90172110020	BOLT,HEXAGON SOCKET	2		M10X20			
19	80320020075	FITTING	2		KUF12-020N			
20	82100001412	TUBE,SPIRAL	2	M	SE-12BK			
21	37002473820	HOSE	1		L=770			
22	82400000205	GROMMET	1					
41	91002801100	O-RING	1		1B P11			
100	42614962002	OUTRIGGER ASSY	1					

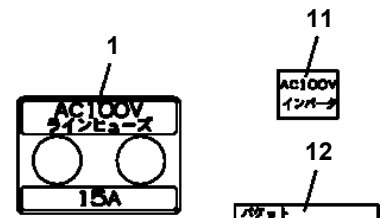
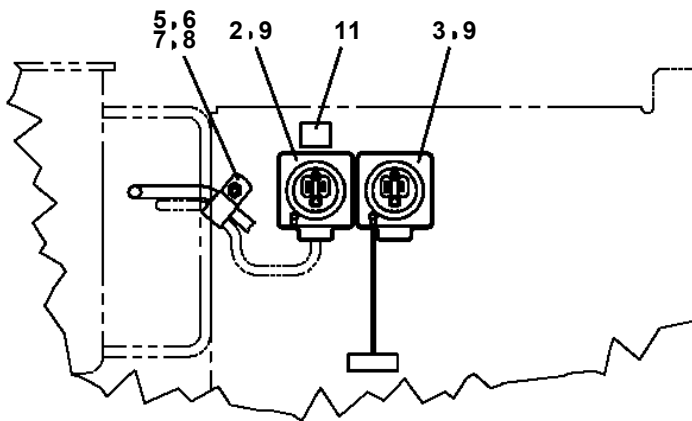
AT-100-5 42063534149 UPPER,LOWER,HINO TKG-XZU675M-TQMQC3

Pos No.	Parts No	Parts Name	Qty	Unit	Technical Data	Serial No (Start)	Serial No (End)	Remarks	P
1	82119434100	CONNECTOR	1						
2	42356280010	HARNESS	1						
3	80175304016	SCREW,MACHINE	2		M4X16				
4	91810130240	FASTENER	5						
5	42477640080	PLATE,NAME	1						
6	42350250070	PLUG (2 POLES,MALE)	1						

AT-100-5 42063534149 UPPER,LOWER,HINO TKG-XZU675M-TQMQC3
 PP5340030-01 POWER SUPPLY ASSY,ELECTRICITY (LOWER/POWER TAKEOUT)



12材取付詳細 (バケット側)



A

AT-100-5 42063534149 UPPER,LOWER,HINO TKG-XZU675M-TQMQC3

Pos No.	Parts No	Parts Name	Qty	Unit	Technical Data	Serial No (Start)	Serial No (End)
1	42508701010	PLATE,NAME (AC100V,FUSE,15A)	1				
2	42515802100	CABLE ASSY	1				
3	42501481100	HOLDER ASSY(FUSE,WITH HARNESS)	2				
4	42500583020	PLATE,NAME	1				
5	91810130240	FASTENER	8				
6	82100002010	CLAMP	1		WR15		
7	90302040601	WASHER,SPRING	1		6		
8	90201200600	NUT	1		M6		
32	82100001348	FUSE	2		15A,6.5X30		

AT-100-5 42063534149 UPPER,LOWER,HINO TKG-XZU675M-TQMQC3

Pos No.	Parts No	Parts Name	Qty	Unit	Technical Data	Serial No (Start)	Serial No (End)
3	80456950401	JOINT,SELF SEALING (COUPLER)	1				
4	91002802900	O-RING	3		1B P29		
5	44340011200	JOINT	2		PF1		
6	37002510560	HOSE	1		L=620		
7	91803600400	CLIP	8		D=27-40		
8	36672280000	FILTER,OIL (YAMASHIN)	1				
9	80302090241	FITTING	1		KCO18-040N		
10	91002801800	O-RING	2		1B P18		
11	36625240000	VALVE,CHECK (MORIKAWA GAUGE)	1				
	36625250000	VALVE,CHECK (UZUMAKI)	1				
12	80305030055	FITTING,TEE	1		KTN12-020N		
13	91002801400	O-RING	2		1B P14		
14	80400160131	JOINT	1				
15	37002443110	HOSE	1		L=710		
16	37002504010	HOSE	1		L=750		
17	81408000160	PIPE,STEEL	1	M	12X1.4T		
18	37002504550	HOSE	1		L=250		
19	91803600300	CLIP	4		D=22-30		
20	90101208020	BOLT	4		M8X20		
21	90302040801	WASHER,SPRING	4		8		
22	42648030200	FITTING,FLANGE	1				
23	91001204500	O-RING	1		1A G45		
24	42648030100	JOINT	1		PF3/8:19		
29	80303130141	FITTING,ELBOW	1		KLO12-020E		
32	80302201203	JOINT	1				
41	80307040020	JOINT,SOCKET	1				
51	91002801100	O-RING	1		1B P11		

AT-100-5 42063534149 UPPER,LOWER,HINO TKG-XZU675M-TQMQC3

Pos No.	Parts No	Parts Name	Qty	Unit	Technical Data	Serial No (Start)	Serial No (End)	Remarks
1	42837372501	SUPPORT	1					
2	42837372600	COVER	1					
3	34354781710	RELAY (WITH BRACKET)	11					
5	82199603010	SUPPORT	2					
6	82193101020	TIMER	1					
7	82100002645	SOCKET	1					
8	42837372700	BUZZER ASSY	1					
9	82100002010	CLAMP	1		WR15			
10	90101208016	BOLT	1		M8X16			
11	90101206012	BOLT	16		M6X12			
12	80172304016	SCREW,MACHINE	2		M4X16			
13	90201200600	NUT	1		M6			
14	90302040801	WASHER,SPRING	1		8			
15	90302040601	WASHER,SPRING	17		6			
16	90302040401	WASHER,SPRING	2		4			
100	42910391201	RELAY BOX ASSY	1					

AT-100-5 42063534149 UPPER,LOWER,HINO TKG-XZU675M-TQMQC3

Pos No.	Parts No	Parts Name	Qty	Unit	Technical Data	Serial No (Start)	Serial No (End)	Remarks	Pag
1	42973030100	SUPPORT	1						
2	42972650400	SUPPORT	4						
3	42973030200	SEAT	1						
4	80182806012	SCREW,MACHINE	2		M6X12				
5	90302510601	WASHER,SPRING (6)	2						
6	90303520601	WASHER,PLAIN	2		6				

AT-100-5 42063534149 UPPER,LOWER,HINO TKG-XZU675M-TQMQC3

Pos No.	Parts No	Parts Name	Qty	Unit	Technical Data	Serial No (Start)	Serial No (End)	Remarks
1	42974559510	PLATE	1					
2	42974550200	PLATE,SLIDE	1					
3	90172108012	BOLT,HEXAGON SOCKET	3		M8X12			

AT-100-5 42063534149 UPPER,LOWER,HINO TKG-XZU675M-TQMQC3

Pos No.	Parts No	Parts Name	Qty	Unit	Technical Data	Serial No (Start)	Serial No (End)
1	82105210207	SWITCH,TOGGLE	1				
2	82105220193	SWITCH,TOGGLE	1				
3	82105900010	SWITCH,TOGGLE	1				
50	42333461100	SWITCH ASSY (WITH HARNESS,3 SW)	1				

AT-100-5 42063534149 UPPER,LOWER,HINO TKG-XZU675M-TQMQC3

Pos No.	Parts No	Parts Name	Qty	Unit	Technical Data	Serial No (Start)	Serial No (End)	Remarks	Page
1	82109113022	SWITCH,EMITTER	1						
2	82109103022	SWITCH,RECEIVER	1						
100	42509541301	SWITCH ASSY	1						

AT-100-5 42063534149 UPPER,LOWER,HINO TKG-XZU675M-TQMQC3

Pos No.	Parts No	Parts Name	Qty	Unit	Technical Data	Serial No (Start)	Serial No (End)	Remarks
1	36103061000	TANK	1					
2	53156005000	BREATHER ASSY (OB-10T)	1					
3	36102120010	CAP	1					
4	91001104800	O-RING	1		1A P48			
5	37002516440	HOSE	1		L=140			
6	91803880040	CLIP	2		D=10-12.2			
7	36102790010	PLUG	1					
8	90303392001	WASHER	1		M20			
22	53156005011	ELEMENT	1					
23	53156005030	PLATE (WITH PACKING)	1					
24	53156005040	PACKING	1					
50	36103060000	TANK ASSY,OIL	1					

AT-100-5 42063534149 UPPER,LOWER,HINO TKG-XZU675M-TQMQC3

Pos No.	Parts No	Parts Name	Qty	Unit	Technical Data	Serial No (Start)	Serial No (End)	Remarks	Page
5	91002902500	O-RING	4		1B G25				
8	80316090020	PLUG	4		KKT PT1/8				
9	36606975020	PLUG	1						
10	91002801400	O-RING	1		1B P14				
12	16066241000	SPRING	1						
100	36606970000	VALVE ASSY,RELIEF	1						

AT-100-5 42063534149 UPPER,LOWER,HINO TKG-XZU675M-TQMQC3

Pos No.	Parts No	Parts Name	Qty	Unit	Technical Data	Serial No (Start)	Serial No (End)	Remarks
1	42470343000	MAT (FOR BUCKET INNER)	1					

AT-100-5 42063534149 UPPER,LOWER,HINO TKG-XZU675M-TQMQC3

Pos No.	Parts No	Parts Name	Qty	Unit	Technical Data	Serial No (Start)	Serial No (End)
1	42460012550	WEDGE (STOPPER FOR TIRE/JUSTIN)	1				

AT-100-5 42063534149 UPPER,LOWER,HINO TKG-XZU675M-TQMQC3

Pos No.	Parts No	Parts Name	Qty	Unit	Technical Data	Serial No (Start)	Serial No (End)	Remarks	Pages
1	42502153100	SUPPORT	2						

AT-100-5 42063534149 UPPER,LOWER,HINO TKG-XZU675M-TQMQC3

Pos No.	Parts No	Parts Name	Qty	Unit	Technical Data	Serial No (Start)	Serial No (End)	Remarks	Pages
1	42974130100	SUPPORT	1						
2	42974130201	SUPPORT	1						
3	90180208025	BOLT,BUTTON	2		M8X25				
4	90303400801	WASHER	2		M8X19				
5	37000549940	PLATE	2		T=3.2				
6	90302040801	WASHER,SPRING	2		8				
7	90201200800	NUT	2		M8				
8	90101208025	BOLT	2		M8X25				

AT-100-5 42063534149 UPPER,LOWER,HINO TKG-XZU675M-TQMQC3

Pos No.	Parts No	Parts Name	Qty	Unit	Technical Data	Serial No (Start)	Serial No (End)	Remarks	Pages
1	90101210025	BOLT	4		M10X25				
2	90302041001	WASHER,SPRING	4		10				
3	37000549940	PLATE	8		T=3.2				
4	90201201000	NUT	4		M10				
5	42973750200	GUARD,MUD	2						
6	42973750100	PLATE	2						

AT-100-5 42063534149 UPPER,LOWER,HINO TKG-XZU675M-TQMQC3

Pos No.	Parts No	Parts Name	Qty	Unit	Technical Data	Serial No (Start)	Serial No (End)	Remarks
1	42902260100	SUPPORT	2					
2	90201200800	NUT	4		M8			
3	90101208016	BOLT	4		M8X16			
4	91850400601	CLAMP	1					
5	91810132530	FASTENER	10					
6	42901530100	HARNESS	1					
7	90302040801	WASHER,SPRING	10		8			
8	90172108014	BOLT,HEXAGON SOCKET	2		M8X14			
9	90101208014	BOLT	4		M8X14			
10	42902180100	PLATE	1					
11	80185308014	SCREW,MACHINE	2		M8X14			

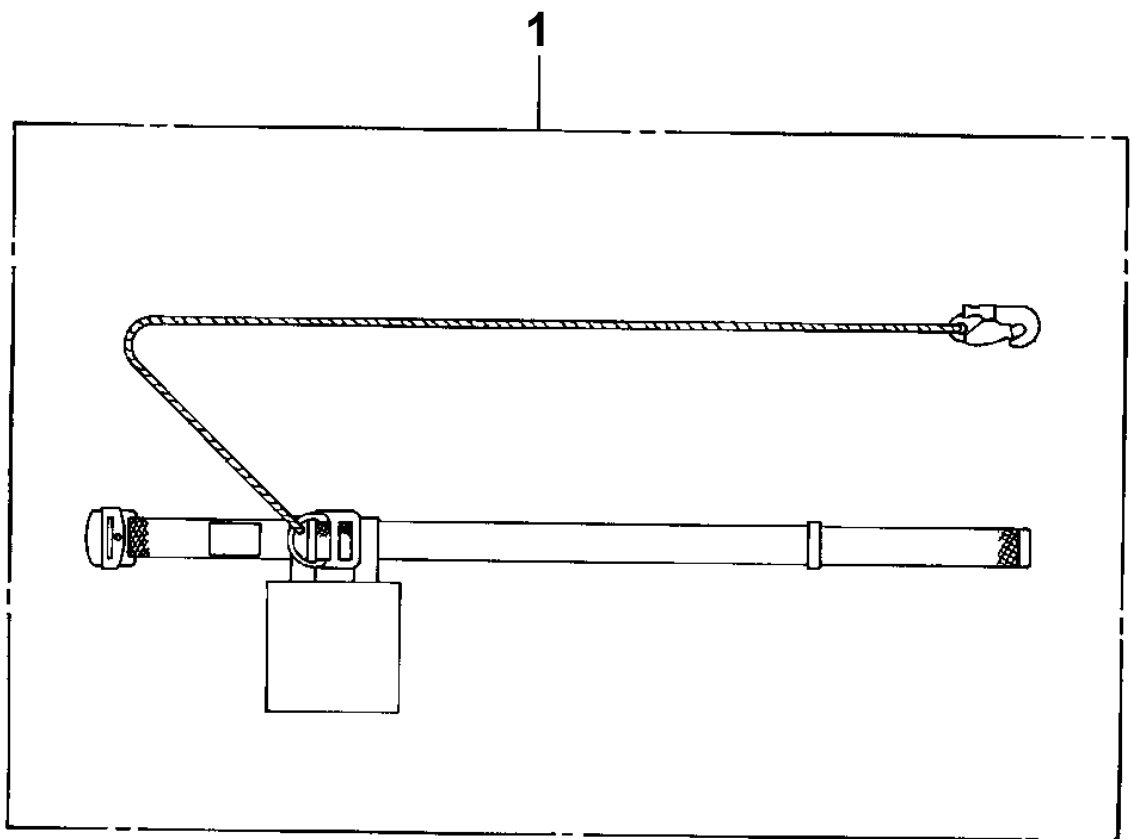
AT-100-5 42063534149 UPPER,LOWER,HINO TKG-XZU675M-TQMQC3

Pos No.	Parts No	Parts Name	Qty	Unit	Technical Data	Serial No (Start)	Serial No (End)	Remarks	P
1	42839121300	BOX,TOOL	1						0
2	42839121201	STEP	1						
3	42839120200	STEP	1						
4	42839121400	CASE	1						
5	42839121500	SUPPORT	1						
6	42839121100	BOX,TOOL	1						0
7	42839121601	BOX,TOOL	1						0
8	42839121701	SUPPORT	1						
9	42839121801	SUPPORT	1						
10	82464188210	HOOK	3						
12	82464100201	HINGE	3						
14	42835860010	HARNESS	1						0
15	91810132530	FASTENER	10						
16	90101210020	BOLT	14		M10X20				
17	90302041001	WASHER,SPRING	32		10				
18	37000506590	PLATE	16		T=1.6				
19	90101210025	BOLT	14		M10X25				
20	37000549940	PLATE	10		T=3.2				
21	90101208016	BOLT	2		M8X16				
22	90302040801	WASHER,SPRING	21		8				
23	37000547660	PLATE	2		T=2.3				
24	90180210016	BOLT,BUTTON	4		M10X16				
25	90101208020	BOLT	5		M8X20				
26	32200353500	SHIM	N		T=1.2				
27	31200713400	SHIM	N		T=0.6				
28	42696070100	SUPPORT	3						
29	42839120400	COVER	1						
30	37000578740	PLATE	10		T=1.6				
31	90190206012	BOLT	6		M6X12				
32	90302510601	WASHER,SPRING (6)	6						
33	80175805014	SCREW,MACHINE	9		M5X14				
34	90302510501	WASHER,SPRING	15		5				
35	90201500500	NUT	15		M5				
36	80172805014	SCREW,MACHINE	6		M5X14				
40	42350250070	PLUG (2 POLES,MALE)	1						
41	90303520501	WASHER,PLAIN	15		5				
42	42972613000	GUARD (ASSY ONLY)	1						
43	90101208012	BOLT	8		M8X12				
44	90303070801	WASHER,PLAIN	4		8				
45	82401800080	PLUG (FOR M8)	4						
46	90101208018	BOLT	6		M8X18				
62	82466186102	CATCH	1						

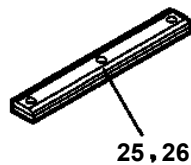
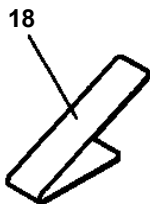
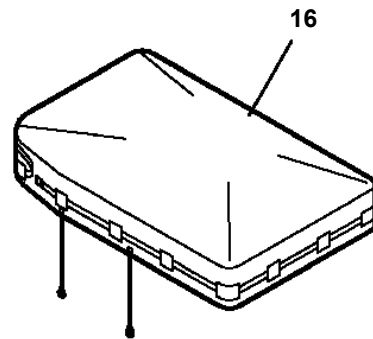
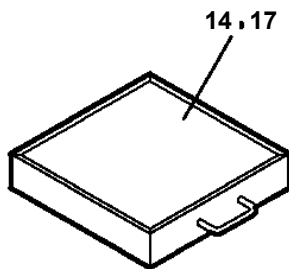
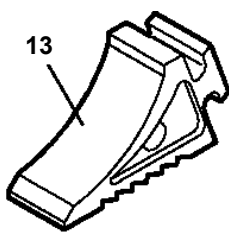
AT-100-5 42063534149 UPPER,LOWER,HINO TKG-XZU675M-TQMQC3

Pos No.	Parts No	Parts Name	Qty	Unit	Technical Data	Serial No (Start)	Serial No (End)	Rema
1	37000579400	PLATE	1					
21	42973572010	SUPPORT	1					
23	90180210015	BOLT,BUTTON	1		M10X15			
24	90201200800	NUT	4		M8			
26	42972580201	SUPPORT	1					
27	90302041001	WASHER,SPRING	5		10			
28	90201201000	NUT	3		M10			
29	42739880400	BLOCK,WOOD (FOR SLOPES)	2					
30	90101210018	BOLT	2		M10X18			
32	90101208030	BOLT	2		M8X30			
33	42973572020	SUPPORT	1					
34	37000549940	PLATE	5		T=3.2			
35	37000520150	PLATE	6					
36	91810132530	FASTENER	2					
51	91850400601	CLAMP	2					
57	42973572101	STEP	1					

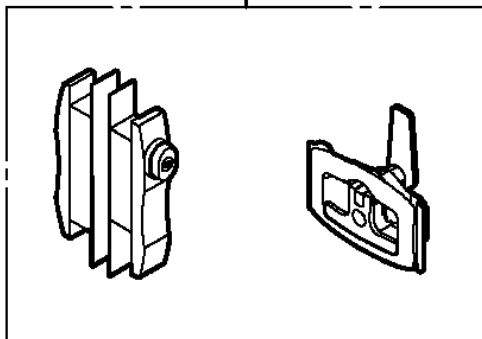
AT-100-5 42063534149 UPPER,LOWER,HINO TKG-XZU675M-TQMQC3
PY1090001-00 BELT,SAFETY



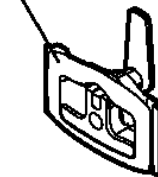
AT-100-5 42063534149 UPPER,LOWER,HINO TKG-XZU675M-TQMQC3
PY2000288-00 OPTION UNIT,2 (UPPER)



27, 28, 29, 30, 31
32, 33, 34, 35, 36



37, 38, 39, 40, 41
42, 43, 44, 45, 46



適用製造番号によっては取り付けがないものもあります。

MACHINES OF SOME SERIAL NO. ARE NOT EQUIPPED WITH THESE PARTS.

AT-100-5 42063534149 UPPER,LOWER,HINO TKG-XZU675M-TQMQC3

Pos No.	Parts No	Parts Name	Qty	Unit	Technical Data	Serial No (Start)	Serial No (End)
1	42460012550	WEDGE (STOPPER FOR TIRE/JUSTIN)	4				
2	42470330000	ROPE (SAFETY,YELLOW:TD-TYPE)	2				

AT-100-5 42063534149 UPPER,LOWER,HINO TKG-XZU675M-TQMQC3

Pos No.	Parts No	Parts Name	Qty	Unit	Technical Data	Serial No (Start)	Serial No (End)	Remarks
1	42502590100	SUPPORT	1					
2	42516030200	SUPPORT	1					
3	90101208016	BOLT	2		M8X16			
4	90302040801	WASHER,SPRING	4		8			
5	90303070801	WASHER,PLAIN	4		8			
6	90201200800	NUT	2		M8			
7	90813108016	BOLT,WING	1		M8X16			
8	42513032000	LAMP ASSY (SQUARE TYPE)	1					
9	82401601002	CLAMP	4					
10	82100002004	CLAMP	1		WR8			
11	90101206010	BOLT	1		M6X1.0			
12	90302040601	WASHER,SPRING	1		6			
13	91810130240	FASTENER	4					
14	42513030100	HARNESS	1					
33	42347860060	PLATE	1					

AT-100-5 42063534149 UPPER,LOWER,HINO TKG-XZU675M-TQMQC3

Pos No.	Parts No	Parts Name	Qty	Unit	Technical Data	Serial No (Start)	Serial No (End)	Remarks	Pages
1	42970231200	SUPPORT	1		T=4.5				
2	91810130240	FASTENER	3						
3	42974442101	SUPPORT	1				HK2826		
	42974442102	SUPPORT	1			HK2827			
4	90101205016	BOLT	2		M5X16				
5	90302040501	WASHER,SPRING	2		5				
6	90303070501	WASHER,PLAIN	2		5				
7	90201200500	NUT	2		M5				
8	42391163120	PLATE,NAME	1						
9	90101203008	BOLT	2		M3X8				
10	90302040301	WASHER,SPRING	2		3				
11	90303070301	WASHER,PLAIN	2		3				

CLICK HERE TO **DOWNLOAD** THE COMPLETE MANUAL

- Thank you very much for reading the preview of the manual.
- You can download the complete manual from: www.heydownloads.com by clicking the link below



- Please note: If there is no response to CLICKING the link, please download this PDF first and then click on it.

CLICK HERE TO **DOWNLOAD** THE COMPLETE MANUAL