

AT-100-4 42063434131 UPPER/LOWER,HINO SKG-XZU600X-TYMMC6

PB0000275-02 UPPER STRUCTURE SYSTEM

PB0000500-02 LOWER STRUCTURE SYSTEM

ASSEMBLY

CLICK HERE TO **DOWNLOAD** THE COMPLETE MANUAL

- Thank you very much for reading the preview of the manual.
- You can download the complete manual from: www.heydownloads.com by clicking the link below



- Please note: If there is no response to CLICKING the link, please download this PDF first and then click on it.

CLICK HERE TO **DOWNLOAD** THE COMPLETE MANUAL

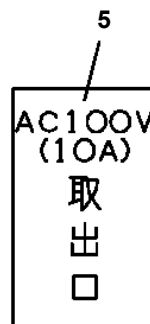
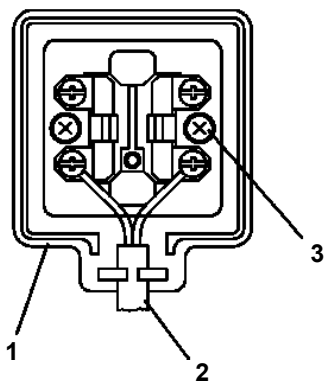
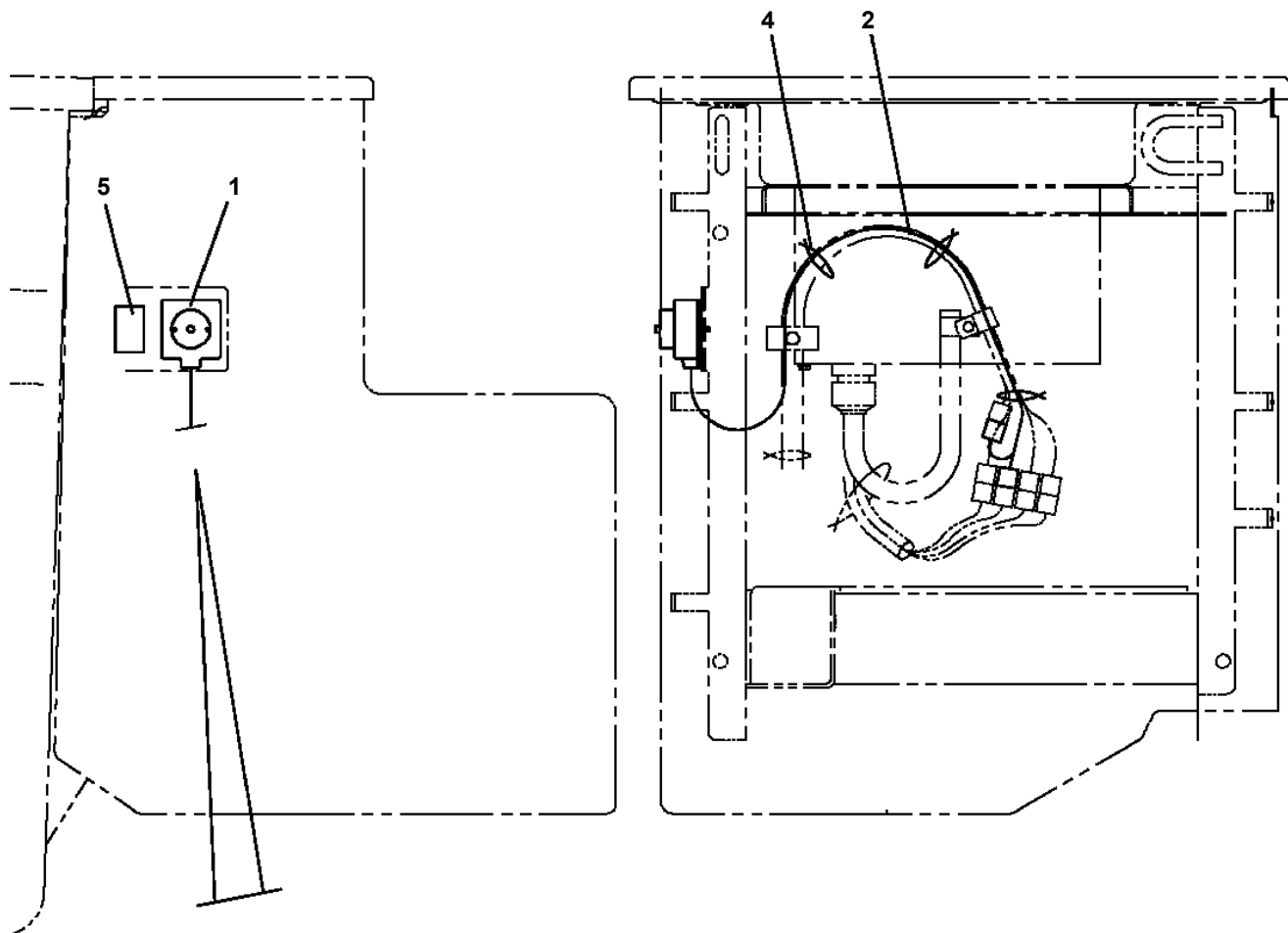
AT-100-4 42063434131 UPPER/LOWER,HINO SKG-XZU600X-TYMMC6

PN5010573-00 NAME PLATE ASSY(AMC DATE NO./AMC FRONT PANEL)
PN5010574-00 NAME PLATE ASSY (AMC DATE NO./AMC FRONTPANEL)
PN5010921-00 NAME PLATE ASSY (RUNAWAY PREVENTION)
PN5011027-00 NAME PLATE ASSY (AMC DATE NO./AMC FRONTPANEL)
PO1000182-00 INDICATION PLATES (UPPER)
PO1000183-00 INDICATION PLATES (LOWER)
PO1013121-01 PLATE ASSY,NAME (HYDRAULIC OIL)
PO1013125-05 PLATE ASSY,NAME (VEHICLE HEIGHT,LOADINGCAPACITY,TIRE)
PO1014484-00 PLATE ASSY,NAME (NTT-NEOMEIT)
PO1014485-01 PLATE ASSY,NAME
PO1014589-01 PLATE ASSY,NAME (INDIVIDUAL OPERATION/NEO KANSAI)
PO1014634-01 PLATE ASSY,NAME (OIL/COLD DISTRICT)
PO1014818-01 PLATE ASSY,NAME (SPECIFICATION)
PO1014835-01 PLATE ASSY,NAME (BUCKET CONTROL)
PO1014916-01 PLATE ASSY,NAME (BUCKET CONTROL)
PO1014930-01 PLATE ASSY,NAME (EMERGENCY STOP SW RELEASED/NTT SIKOKU)
PO1015257-01 PLATE ASSY,NAME (INSIDE BUCKET)
PO1015407-01 PLATE ASSY,NAME (VEHICLE)
PO1015410-01 PLATE ASSY,NAME (HYBRID MODE)
PO1015523-00 PLATE ASSY,NAME (FOR AT-100TT,TTE/AMC DATA)
PO1015524-01 PLATE ASSY,NAME (FOR AT-110TT,TTE/AMC DATA)
PO1015525-01 NAME PLATE ASSY (AMC DATE NO./AMC FRONTPANEL)
PO1015526-00 PLATE ASSY,NAME (AMC DATE NO./AMC FRONT PANEL)
PO1015532-00 PLATE ASSY,NAME (10M:2-OPE.ENABLE SW AMC DATA)
PO1015533-01 PLATE ASSY,NAME (11M:2-OPE.ENABLE SW AMC DATA)
PO1090061-00 NON-SLIP PLATE (NTT SHIKOKU)
PO5010004-00 OPE.ASSY
PO5010008-00 OPE.ASSY
PO5010010-00 OPE.ASSY (LEVER,CONTROL)
PO5010015-01 OPE.ASSY
PO5010017-00 OPE.ASSY
PO5010027-02 OPE.ASSY (LEVER,CONTROL)
PO5010029-00 OPE.ASSY
PO5050004-00 OPE.ASSY,BUCKET
PO5050011-00 OPE.ASSY,BUCKET (11M:WITH 3-ENABLE SW)
PO5050013-00 OPE.ASSY,BUCKET
PO5050015-00 OPE.ASSY,BUCKET (1-LEVER,3-OPE:WITH ENABLE SW)
PO5050027-00 OPE.ASSY,BUCKET
PO5050028-00 OPE.ASSY,BUCKET (W/ 2-AXIS ENABLE SW)
PO5050029-00 OPE.ASSY,BUCKET (W/ 3-AXIS ENABLE SW)
PO5050030-00 OPE.ASSY,BUCKET
PO5050034-00 OPE.ASSY,BUCKET
PP5010004-00 PANEL ASSY
PP5330001-00 POWER SUPPLY ASSY (11M,HYBRID SYSTEM)
PP5330002-00 POWER SUPPLY ASSY (10M,HYBRID SYSTEM,3-MODE)
PP5330006-00 POWER SUPPLY ASSY(11M,HYBRID,3-MODE)
PP5340001-01 POWER SUPPLY ASSY,ELECTRICITY(LOWER/W/ CABLE 2POLES,B,L
PP5340002-00 POWER SUPPLY ASSY,ELECTRICITY(100V 2POLES/UPPER:HYBRID)
PP5420012-02 PUMP ASSY,OIL
PP5450004-00 PUMP,GREASE (400CC)
PP5500003-00 PUMP,OIL (32CC:L)
PP6010107-01 PIPING ASSY
PR5210001-00 RELAY (WITH HARNESS)
PS5420065-00 SUPPORT ASSY
PS5420508-00 SUPPORT ASSY (DANKITI BUFFER,25MM)
PS5420509-00 SUPPORT ASSY (DANKITI BUFFER,30MM)
PS5500014-00 SWING ASSY
PS5530064-01 SWITCH ASSY (SAFETY INTERLOCK/WITH ENABLE SW)
PS5530084-02 SWITCH ASSY
PS5530087-00 SWITCH ASSY (SUB BATTERY CHARGER)
PS5530090-01 SWITCH ASSY (WITH HARNESS,3 SW)
PS5530176-00 SWITCH ASSY
PS5530398-00 SWITCH ASSY
PS5530402-00 SWITCH ASSY

AT-100-4 42063434131 UPPER/LOWER,HINO SKG-XZU600X-TYMMC6

Pos No.	Parts No	Parts Name	Qty	Unit	Technical Data	Serial No (Start)	Serial No (End)	Remarks	Page
1	90303071001	WASHER,PLAIN	2		10				
2	90302041001	WASHER,SPRING	2		10				
3	90174110035	BOLT	2		M10X35				
4	36652840000	PUMP,OIL (32CC:L)	1						00037

AT-100-4 42063434131 UPPER/LOWER,HINO SKG-XZU600X-TYMMC6
PB1380252-01 POWER SUPPLY (BUCKET/100V 2 POLES OUTLET)



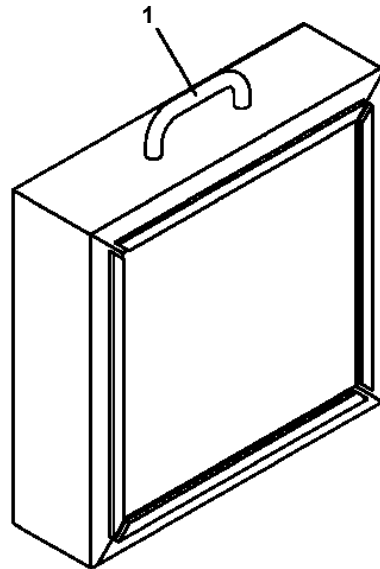
AT-100-4 42063434131 UPPER/LOWER,HINO SKG-XZU600X-TYMMC6

Pos No.	Parts No	Parts Name	Qty	Unit	Technical Data	Serial No (Start)	Serial No (End)
1	(*****)	POWER SUPPLY (100V2POLES & WORKING LAMP)	1				
2	(*****)	POWER SUPPLY (LOWER)	1				

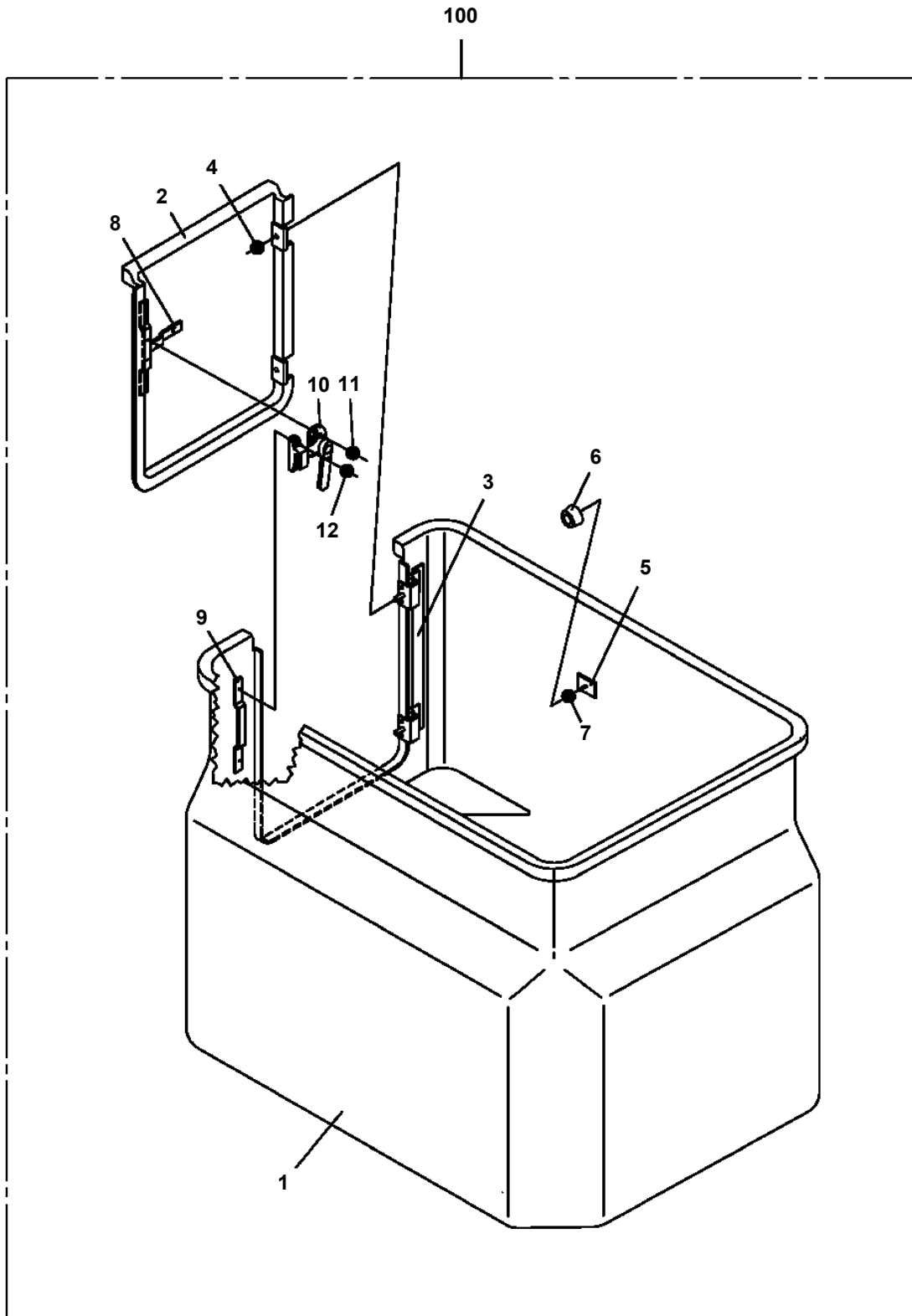
AT-100-4 42063434131 UPPER/LOWER,HINO SKG-XZU600X-TYMMC6

Pos No.	Parts No	Parts Name	Qty	Unit	Technical Data	Serial No (Start)	Se
1	(*****)	PIPING	1				
2	(*****)	ELEC.ASSY	1				
3	(*****)	ELEC.ASSY (BUCKET)	1				
4	(*****)	PLATE ASSY,NAME (HYBRID MODE)	1				
5	(*****)	PLATE ASSY,NAME (FOR AT-100TT,TTE/AMC DATA)	1				
6	(*****)	MOUNT	1				

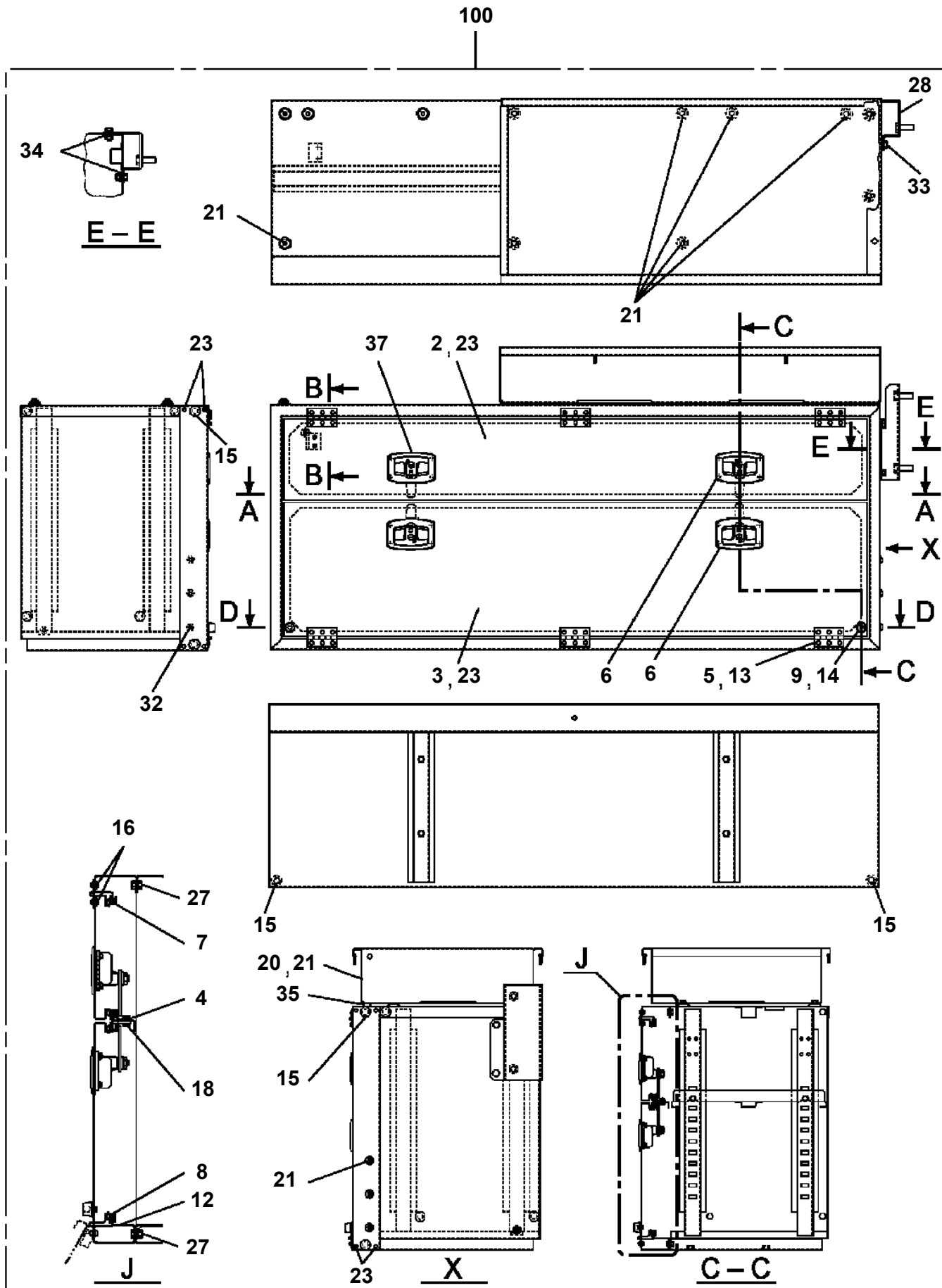
AT-100-4 42063434131 UPPER/LOWER,HINO SKG-XZU600X-TYMMC6
PB5140003-00 BLOCK,WOOD (FOR SLOPES)



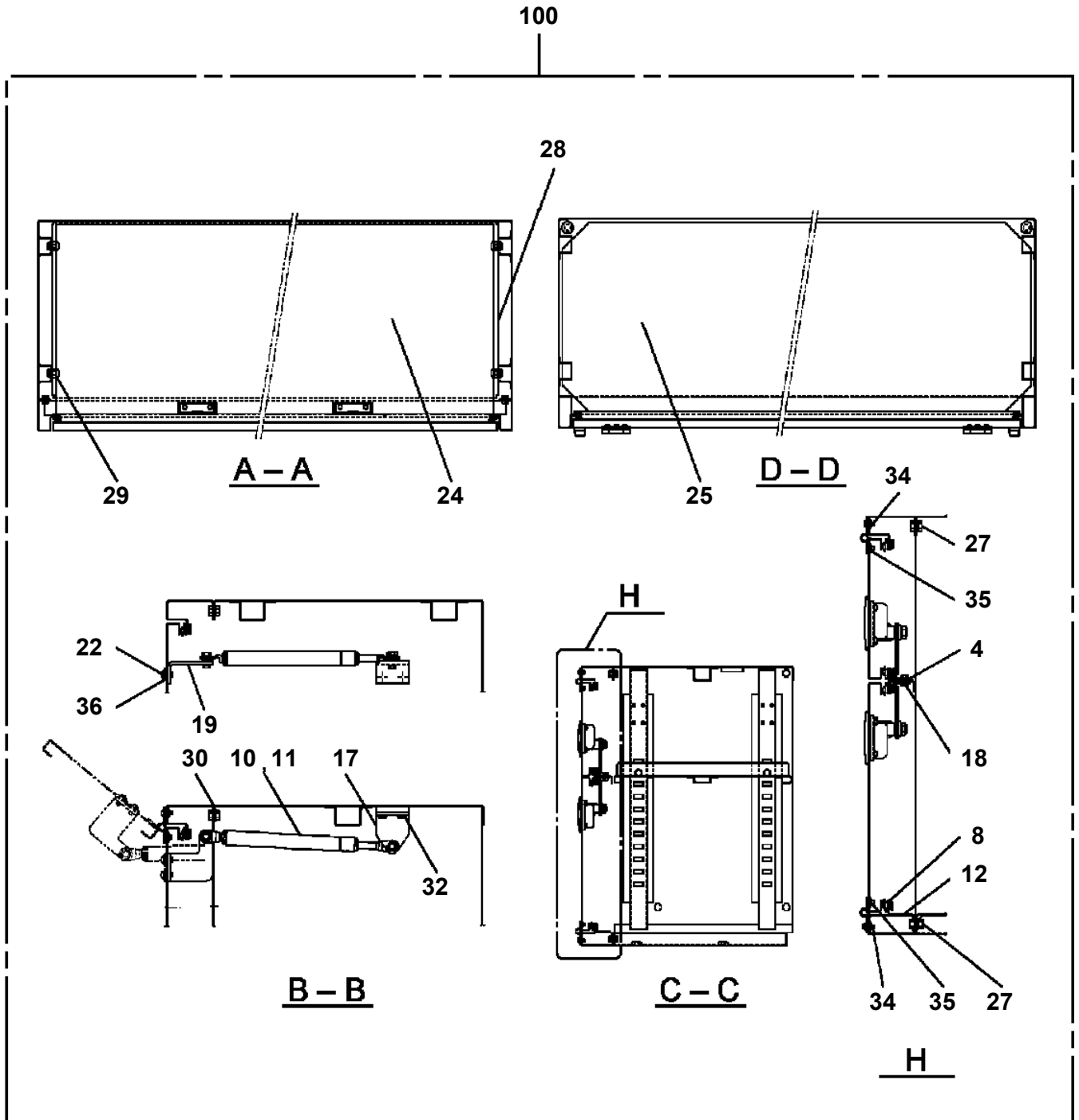
AT-100-4 42063434131 UPPER/LOWER,HINO SKG-XZU600X-TYMMC6
PB5340007-00 BUCKET (WITH DOOR,WHITE)



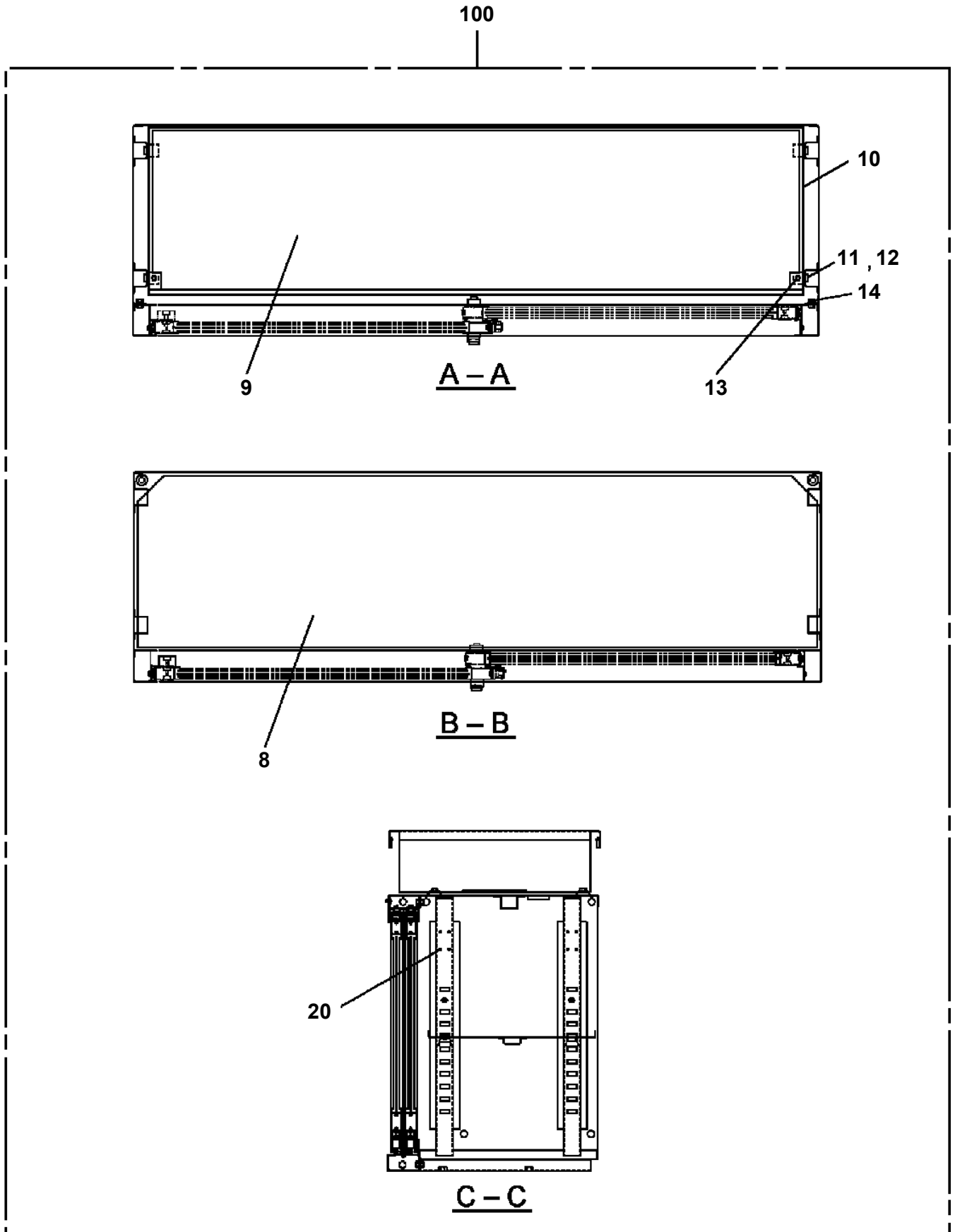
AT-100-4 42063434131 UPPER/LOWER, HINO SKG-XZU600X-TYMMC6
PB5410003-00 BOX, TOOL



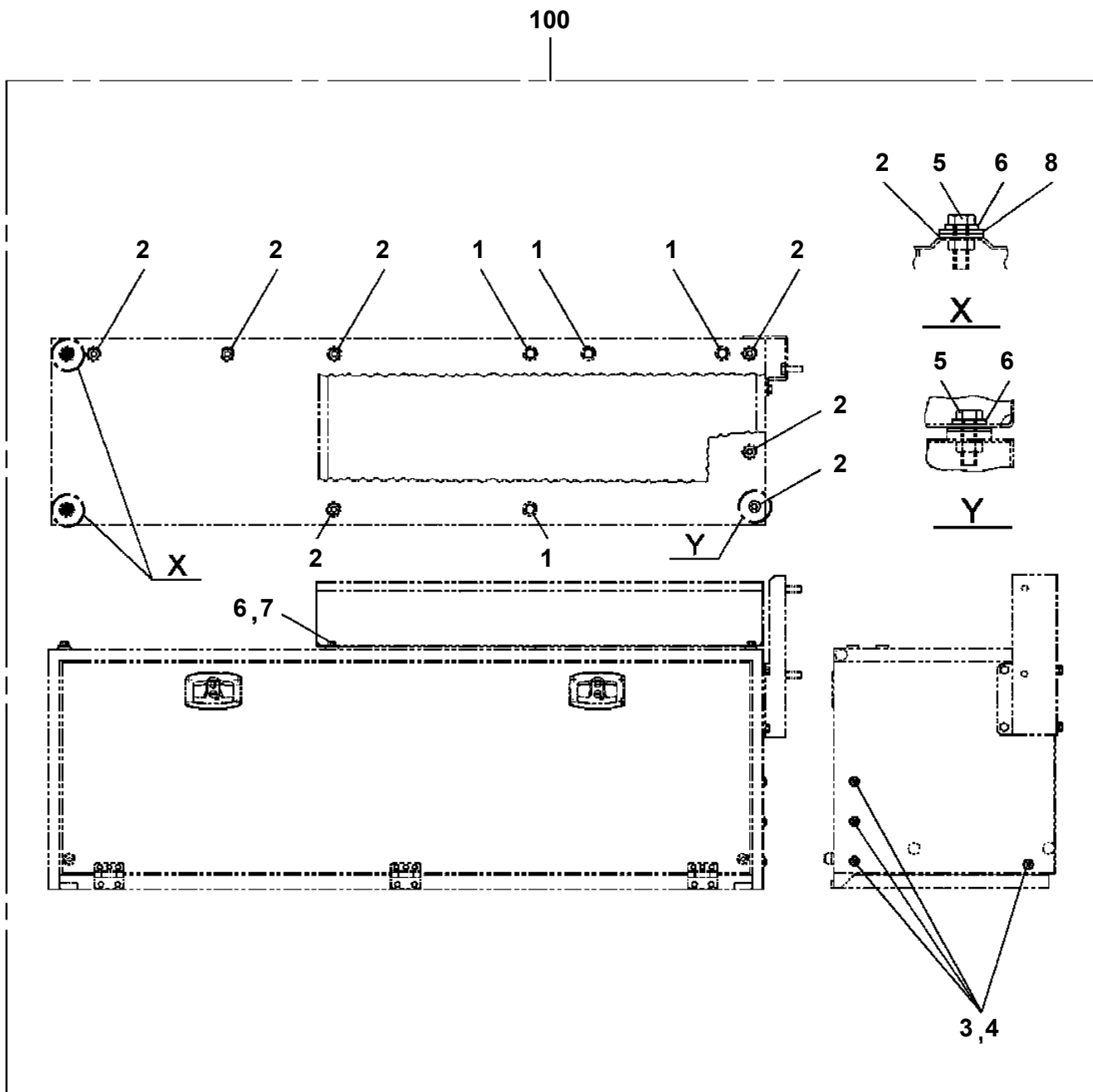
AT-100-4 42063434131 UPPER/LOWER,HINO SKG-XZU600X-TYMMC6
PB5410016-00 BOX,TOOL



AT-100-4 42063434131 UPPER/LOWER,HINO SKG-XZU600X-TYMMC6
PB5410020-00 BOX,TOOL



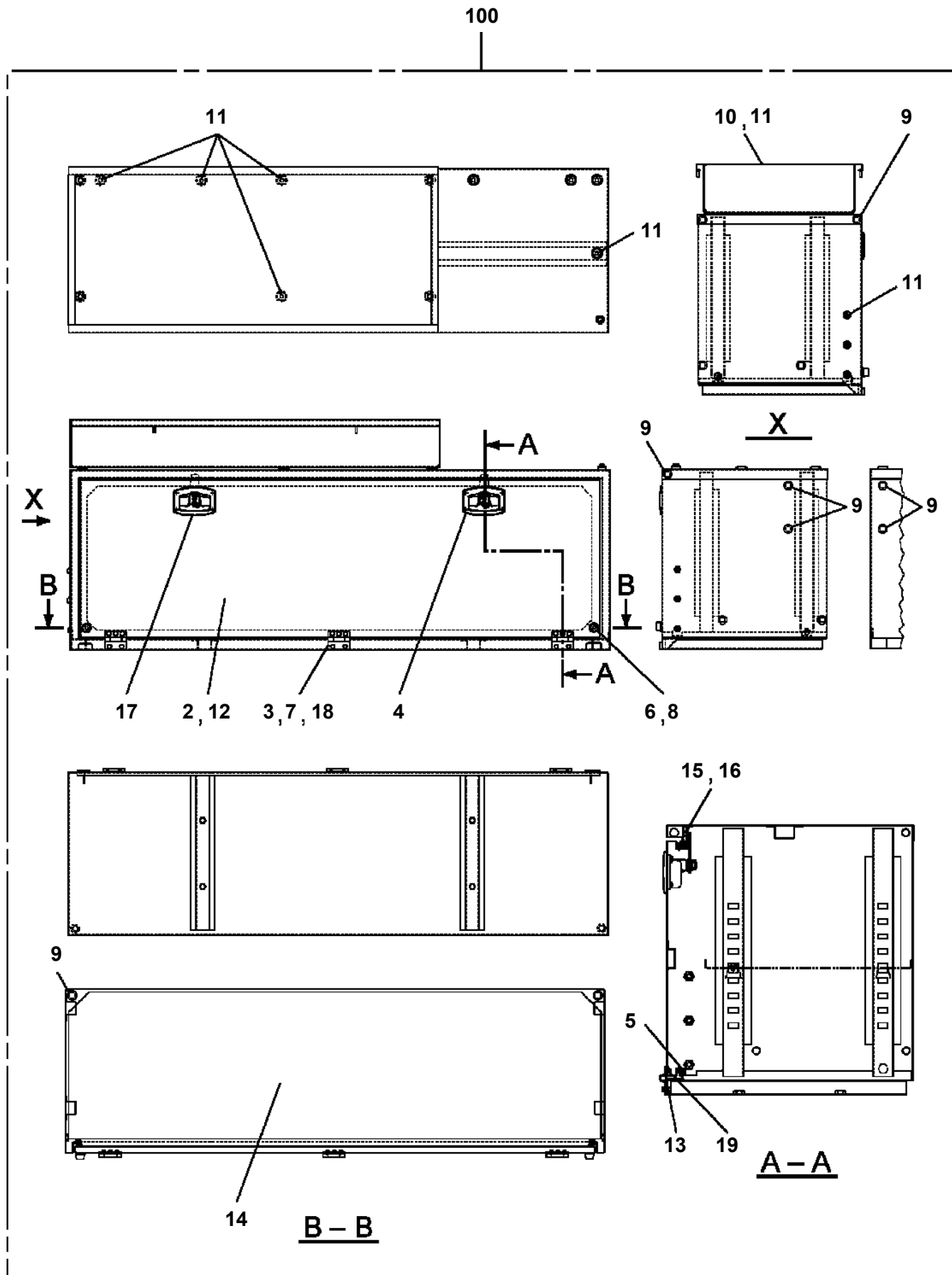
AT-100-4 42063434131 UPPER/LOWER,HINO SKG-XZU600X-TYMMC6
PB5410052-01 BOX,TOOL (PACKING ASSY)



AT-100-4 42063434131 UPPER/LOWER,HINO SKG-XZU600X-TYMMC6

Pos No.	Parts No	Parts Name	Qty	Unit	Technical Data	Serial No (Start)	Serial No (End)	Re
2	42838487510	DOOR	1					
3	42838487520	DOOR	1					
4	42835717530	STOPPER	4					
5	42835487650	HINGE	6					
6	42835867870	CATCH	2					
7	42836317950	WEATHER STRIP	4	M				
8	42836317950	WEATHER STRIP	4	M				
9	82400000393	INSULATOR	2					
10	82464046113	GAS SPRING	1					
	82440850090	GAS SPRING	1			HK0561	HK0560	
11	42835717800	PIN	2					
12	42835717560	SUPPORT	1					
13	42834917570	SCREW,MACHINE (SEMS)	12		M5X14			
14	42835717580	SCREW,MACHINE (WITH W,NUT)	2		M4X16			
15	42833077610	BUSH	17					
16	80175805012	SCREW,MACHINE	18		M5X12			
17	42835717600	SUPPORT	1					
18	42838127510	BOLT (WITH SW,NUT)	4		M6X16			
19	42835717610	SUPPORT	1					
20	42835717720	GUIDE	1					
21	42838347550	BOX,TOOL (PACKING ASSY)	1					
22	42835587520	SCREW,MACHINE (WITH SW)	2		M6X14			
23	42835797580	PLUG (HOLE)	14					
24	42835717650	SEAT	1					
25	42835717660	SEAT	1					
27	99164408016	BOLT (M8X16,WITH WASHER)	17					
28	42835717680	SUPPORT	1					
29	42835717690	BOLT (WITH W)	4		M8X12			
30	42835717700	SEAL ASSY	1					
31	42838347510	PLATE	6					
32	99163006014	BOLT,SEMS (M6X14)	2					
33	42838117510	CATCH	2					
34	42836317930	PLATE	6					
35	42838487540	PLATE	6					
36	37000512320	PLATE	2					
100	42838343001	BOX,TOOL	1					

AT-100-4 42063434131 UPPER/LOWER, HINO SKG-XZU600X-TYMMC6
PB5410062-00 BOX, TOOL



AT-100-4 42063434131 UPPER/LOWER,HINO SKG-XZU600X-TYMMC6

Pos No.	Parts No	Parts Name	Qty	Unit	Technical Data	Serial No (Start)	Serial No (End)	Remarks
1	42838487570	PACKING	2					
	42838487570	PACKING	2					
2	42837367520	PACKING	7					
	42837367520	PACKING	7					
3	42838487580	BOLT,BUTTON	4					
	42838487580	BOLT,BUTTON	4					
4	42838487590	WASHER	4					
	42838487590	WASHER	4					
5	42838487610	BOLT	4					
	42838487610	BOLT	4					
6	42838487600	WASHER	5					
	42838487600	WASHER	5					
7	42838487630	BOLT	1					
	42838487630	BOLT	1					
8	42838487620	PLATE	1					
	42838487620	PLATE	1					
9	42838357520	PACKING	1					
	42838357520	PACKING	1					
10	42838347540	PACKING	1					
	42838347540	PACKING	1					
100	42838357510	BOX,TOOL (PACKING ASSY)	1					
	42838357510	BOX,TOOL (PACKING ASSY)	1					

AT-100-4 42063434131 UPPER/LOWER,HINO SKG-XZU600X-TYMMC6

Pos No.	Parts No	Parts Name	Qty	Unit	Technical Data	Serial No (Start)	Serial No (End)	R
1	37000711010	CLAMP ASSY	3		18X1			
2	37000300750	SLEEVE	1		18-15			
3	91002801100	O-RING	4		1B P11			
4	37002472360	HOSE	1		L=650			
5	81408000210	PIPE,STEEL	1	M	15X2.0T			
6	91002801400	O-RING	2		1B P14			
7	37000711410	CLAMP ASSY	2		12-4			
8	80302090161	FITTING	2		KCO12-030N			
9	37000711080	CLAMP ASSY	7		12-2			
10	81408000160	PIPE,STEEL	2	M	12X1.4T			
11	81408000160	PIPE,STEEL	2	M	12X1.4T			
12	81408000160	PIPE,STEEL	2	M	12X1.4T			
13	81408000160	PIPE,STEEL	2	M	12X1.4T			
14	37000601630	CLAMP	1		65			
15	90101208016	BOLT	1		M8X16			
16	90302040801	WASHER,SPRING	1		8			
17	81408000241	PIPE,STEEL	1	M	18X1.9T			
21	81408000160	PIPE,STEEL	1	M	12X1.4T			
22	81408000160	PIPE,STEEL	2	M	12X1.4T			
23	81408000160	PIPE,STEEL	1	M	12X1.4T			
24	81408000160	PIPE,STEEL	1	M	12X1.4T			
25	81408000160	PIPE,STEEL	2	M	12X1.4T			
26	81408000160	PIPE,STEEL	2	M	12X1.4T			
27	81408000160	PIPE,STEEL	3	M	12X1.4T			
28	81408000160	PIPE,STEEL	3	M	12X1.4T			
29	81408000160	PIPE,STEEL	3	M	12X1.4T			
30	81408000160	PIPE,STEEL	3	M	12X1.4T			
31	80301010100	FITTING	4		KUA12-000N			
32	81408000241	PIPE,STEEL	1	M	18X1.9T			
33	81408000241	PIPE,STEEL	1	M	18X1.9T			
34	80309010105	SLEEVE	4		KK012-000E			
35	80306010105	NUT	4		KKN12-000E			
36	37002486390	HOSE	4		L=430			
37	37000924410	JOINT	2		PF1/4-PF1/4			
38	42645290500	ORIFICE	2		1.6			
39	80400160127	JOINT	2					
40	80305030120	FITTING,TEE	1		KTN18-040N			
41	80307050040	JOINT,SOCKET	1					
42	80456950401	JOINT,SELF SEALING (COUPLER)	1					
43	36672630000	FILTER (WITH O-RING)	2					
44	82100001805	TUBE,CORRUGATE	1	M	19			
45	37002462370	HOSE	1		L=450			
61	42648911100	JOINT	1					
62	80302090201	FITTING	1		KCO15-040N			
63	91002801800	O-RING	4		1B P18			
64	80430620400	JOINT	1					
65	37000908720	JOINT (WITH O-RING)	1		PF1/2-PF3/8			
66	80302090241	FITTING	1		KCO18-040N			
67	80316030060	PLUG	1		PT3/8			
68	80316070080	PLUG	1		PF1/2			
74	91002801100	O-RING	3		1B P11			

AT-100-4 42063434131 UPPER/LOWER,HINO SKG-XZU600X-TYMMC6

Pos No.	Parts No	Parts Name	Qty	Unit	Technical Data	Serial No (Start)	Serial No (End)	Remarks	Pages
1	42506151100	COVER ASSY	1						
11	42506121201	COVER	1						
12	82460027201	HANDLE	1						
13	42506151110	PLATE	1						

AT-100-4 42063434131 UPPER/LOWER,HINO SKG-XZU600X-TYMMC6

Pos No.	Parts No	Parts Name	Qty	Unit	Technical Data	Serial No (Start)	Serial No (End)
1	42509510000	COVER ASSY (BUCKET/CLOTH:WHITE)	1				

AT-100-4 42063434131 UPPER/LOWER,HINO SKG-XZU600X-TYMMC6

Pos No.	Parts No	Parts Name	Qty	Unit	Technical Data	Serial No (Start)	Ser
1	42507430200	CABLE (FOR CHARGE EXTENSION/HYBRID,10M)	1				

AT-100-4 42063434131 UPPER/LOWER,HINO SKG-XZU600X-TYMMC6

Pos No.	Parts No	Parts Name	Qty	Unit	Technical Data	Serial No (Start)	Serial No (End)
1	36027519512	CYLINDER ASSY	1				
2	90302042401	WASHER,SPRING	1		24		
3	90209402400	NUT	1		M24		
4	36028490100	PISTON	1				
5	91332207500	BEARING,PLAIN	1				
6	91002802000	O-RING	1		1B P20		
7	36027519520	ROD ASSY	1				
8	36026159530	COVER,ROD	1				
9	80612110400	RING,RITAINING	1		AR40		
10	91002907000	O-RING	1		1B G70		
11	80801003525	BEARING,PLAIN	1				
12	91694003500	PACKING	1				
13	91410203501	RING,BACKUP	1				
14	91660003501	SEAL,DUST	1				
15	82455106000	NIPPLE,GREASE	1		A-M6F FE		
16	90303072401	WASHER,PLAIN	1		24		
17	80820003020	BEARING,PLAIN	2				
	80820003020	BEARING,PLAIN	2				
18	91002907500	O-RING	1		1B G75	HK0142	
19	91350307500	PACKING ASSY (PACKING X2+BACKUP RING X2)	1				
41	36028499900	PACKING SET	1		35X75		
100	36028500000	CYLINDER ASSY,LEVELING	1				

AT-100-4 42063434131 UPPER/LOWER,HINO SKG-XZU600X-TYMMC6

Pos No.	Parts No	Parts Name	Qty	Unit	Technical Data	Serial No (Start)	Serial No (End)	Remarks	P
1	82456101000	NIPPLE,GREASE	1		A-PT1/8		HK0228		
	82455106000	NIPPLE,GREASE	1		A-M6F FE	HK0229			
2	80728105040	PIN,SPRING	1				HK0021		
3	91302209000	BEARING,PLAIN	2						
4	91684009001	PACKING	2						
5	91411207502	RING,BACKUP	2						
6	91002903500	O-RING	1		1B G35				
7	36026894000	PISTON	1				HK0021		
	36027802000	PISTON	1			HK0022			
8	36027539510	ROD ASSY	1				HK0021		
	36027809520	ROD ASSY	1			HK0022			
9	36027809511	CYLINDER ASSY	1				HK0028		
10	80612110720	RING,RITAINING	1		AR72				
11	37000403650	BEARING,PLAIN	1						
12	36026899530	COVER,ROD	1						
13	91002909500	O-RING	1		1B G95				
14	91694106500	PACKING	1						
15	91410206503	RING,BACKUP	1						
16	91660006500	SEAL,DUST	1						
17	80622000650	RING,RITAINING	1		SP65				
18	80530000114	BEARING,SPHERICAL	1						
19	80820004040	BEARING,PLAIN	2						
21	91002910500	O-RING	1		1B G105				
22	82400000459	CAP	1				HK0228		
23	36027809512	CYLINDER ASSY	1			HK0229			
24	90730008120	SCREW,SET	1		M8X12	HK0022			
50	36026899900	PACKING SET	1		65X90				
100	36027800000	CYLINDER,ELEVATING	1						

AT-100-4 42063434131 UPPER/LOWER,HINO SKG-XZU600X-TYMMC6

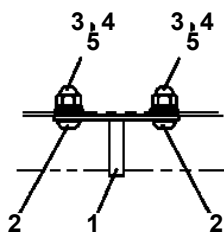
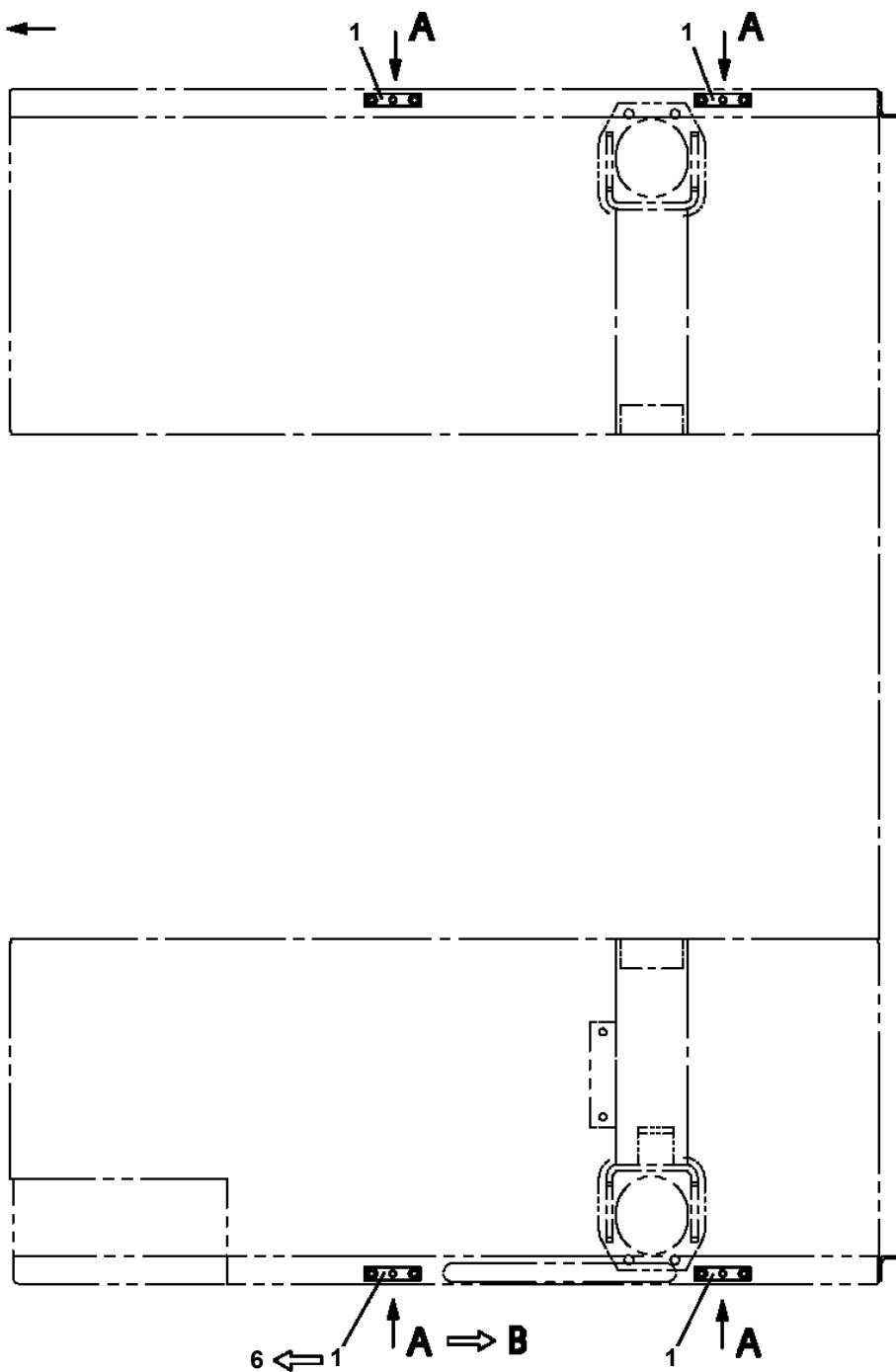
Pos No.	Parts No	Parts Name	Qty	Unit	Technical Data	Serial No (Start)	Serial N
1	42507122010	CABLE ASSY	1		L=500		
2	42507122020	CABLE ASSY	1		L=2600 & L=1200		
3	42507122600	BOX ASSY	1				
4	42421175050	CABLE ASSY	1		L=600		
5	42507123500	SWITCH ASSY (SUB BATTERY CHARGER)	1				
6	42507122100	BOX ASSY	1				
7	42507122800	PANEL ASSY	1				
8	42507122400	COVER	1				
9	42504802080	SUPPORT	4				
10	82151510160	BATTERY	2				
11	90101212020	BOLT	4		M12X20		
12	90101208020	BOLT	15		M8X20		
13	42507123100	SUPPORT	1				
14	90201200800	NUT	11		M8		
15	90302041201	WASHER,SPRING	4		12		
16	90302040801	WASHER,SPRING	20		8		
17	90303070801	WASHER,PLAIN	10		8		
18	82119101033	CONNECTOR	1				
19	91810132530	FASTENER	10				
20	42507122050	CABLE ASSY	1		L=1500		
21	82100001803	TUBE,CORRUGATE	3	M	13		
22	80171805012	SCREW,MACHINE	4		M5X12		
23	90302510501	WASHER,SPRING	4		5		
24	90303520501	WASHER,PLAIN	4		5		
25	90101206016	BOLT	4		M6X16		HK0007
	90101206016	BOLT	6		M6X16	HK0008	
26	90201200600	NUT	4		M6		HK0007
	90201200600	NUT	6		M6	HK0008	
27	90302040601	WASHER,SPRING	8		6		HK0007
	90302040601	WASHER,SPRING	10		6	HK0008	
28	82100002018	CLAMP	3		WR35		
29	82100002596	RELAY	1				
30	90186206010	BOLT,FLANGE	1		M6X10		
31	42732052300	CAP	4				
32	90303070601	WASHER,PLAIN	8		6		HK0007
	90303070601	WASHER,PLAIN	10		6	HK0008	
33	42507122090	SENSOR	1				
34	42507122500	LAMP ASSY (WITH HARNESS)	1				
35	80172304010	SCREW,MACHINE	4		M4X10		
36	90302040501	WASHER,SPRING	4		5		HK0007
	90302040401	WASHER,SPRING	4		4	HK0008	
37	42421095251	COVER	1				
38	90172106016	BOLT,HEXAGON SOCKET	4		M6X16		
39	42507123600	HARNESS	1				
40	42507122510	THERMOSTAT (ASSY)	1				
41	80172803005	SCREW,MACHINE	1		M3X5		
42	90302510301	WASHER,SPRING (SUS 3)	1				
43	90101205010	BOLT	1		M5X10		
44	82100002011	CLAMP	2		WRC15		
45	82100002017	CLAMP	1		WR30		
46	37002708930	CABLE	1		L=500		
47	42508261401	HARNESS	1				
48	42508261800	PLATE	1			HK0008	
61	42507122200	BOX	1				
62	42507122300	COVER	1				
63	90813108020	BOLT,WING	4		M8X20		
64	90303070801	WASHER,PLAIN	4		8		
71	82400000203	GROMMET	1		L=250		
82	82400000201	GROMMET	2		KG-016		

AT-100-4 42063434131 UPPER/LOWER,HINO SKG-XZU600X-TYMMC6

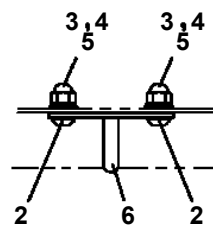
Pos No.	Parts No	Parts Name	Qty	Unit	Technical Data	Serial No (Start)	Serial No (End)
1	82100002596	RELAY	4				
2	42509821010	PLATE	1				
3	42653673200	LAMP ASSY (GREEN,WITH HARNESS)	1				
4	42509571100	HARNESS	1				
5	42509571200	HARNESS	1				
6	91810132530	FASTENER	10				
7	42509571400	SWITCH ASSY	1				
16	42509571300	HARNESS	1				
18	90303071001	WASHER,PLAIN	1		10		

AT-100-4 42063434131 UPPER/LOWER, HINO SKG-XZU600X-TYMMC6
 PF1080138-01 SUPPORT (HOOK FOR CARRIER ROPES)

FRONT ←

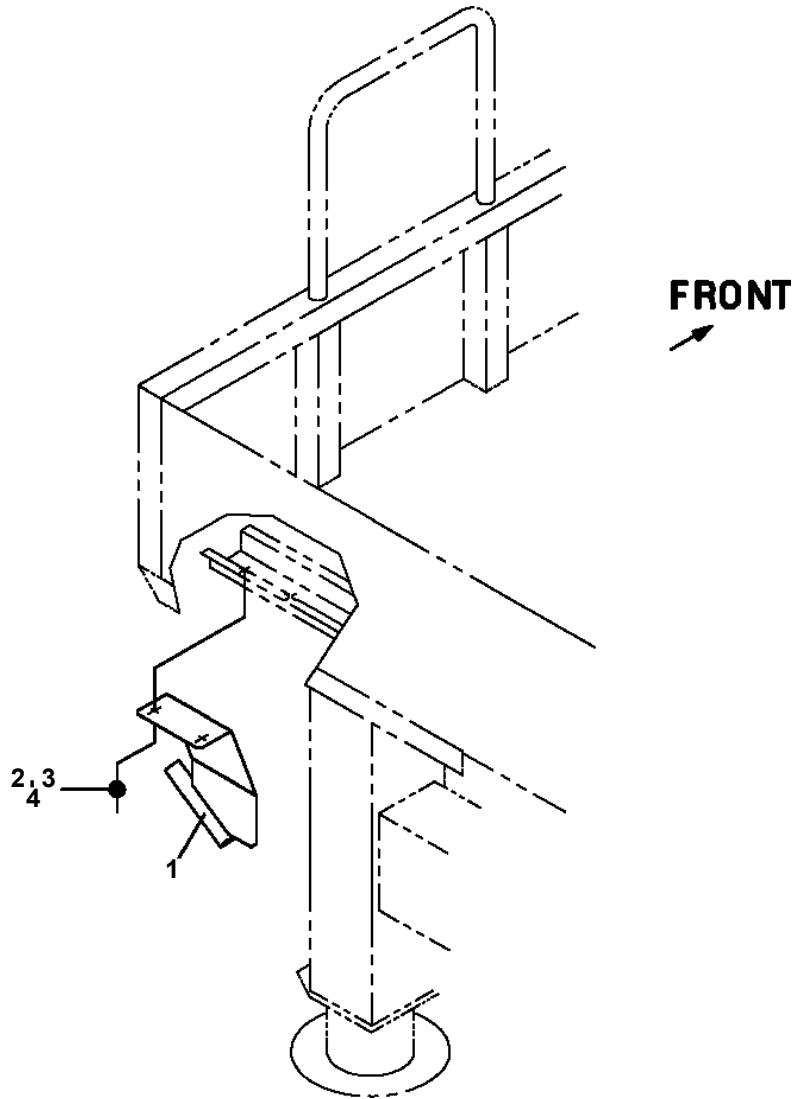


A
 (4ヶ所 ⇒ 3ヶ所)



B
 (1ヶ所)

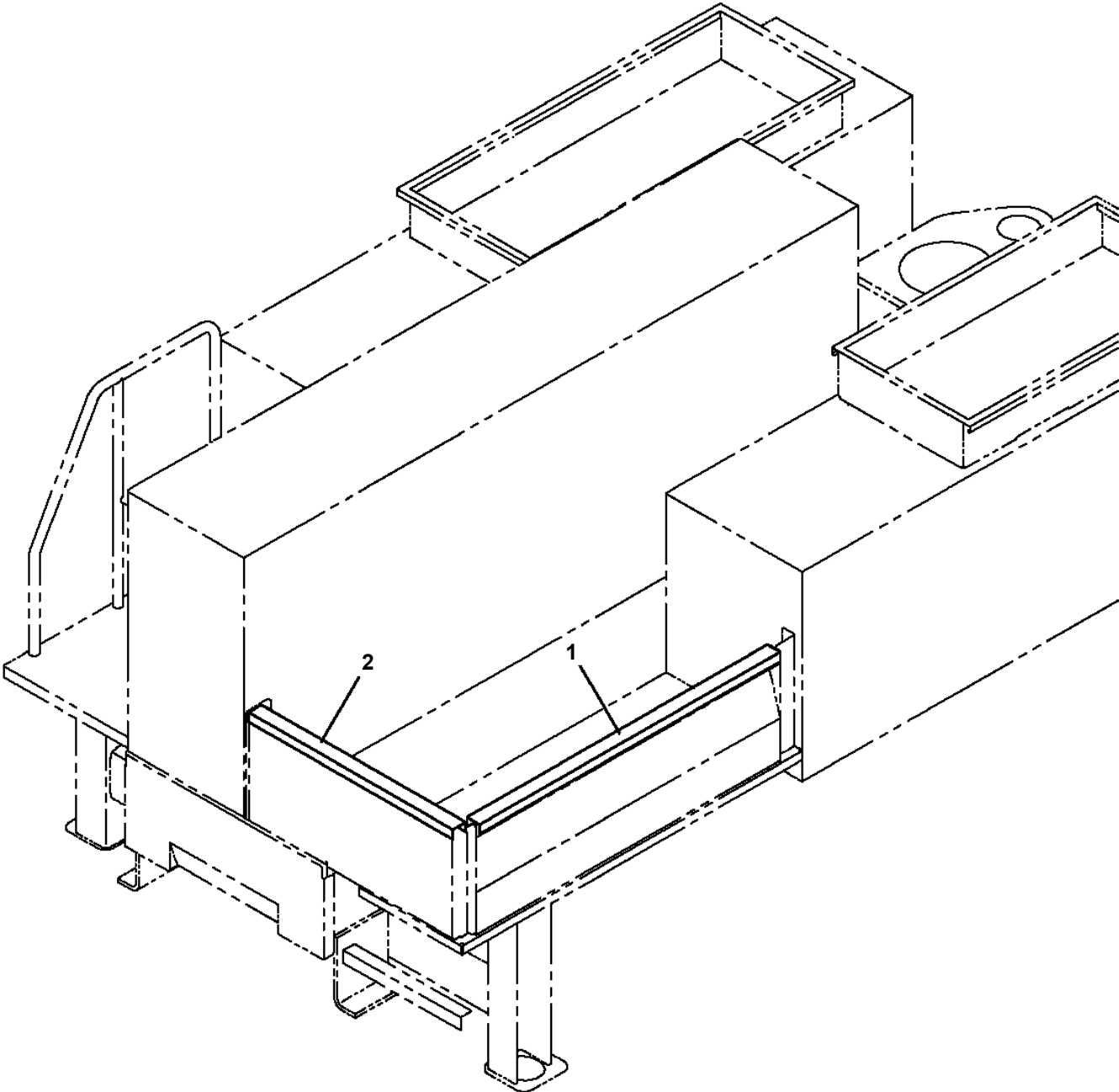
AT-100-4 42063434131 UPPER/LOWER,HINO SKG-XZU600X-TYMMC6
PF1080188-01 SUPPORT (EARTH)



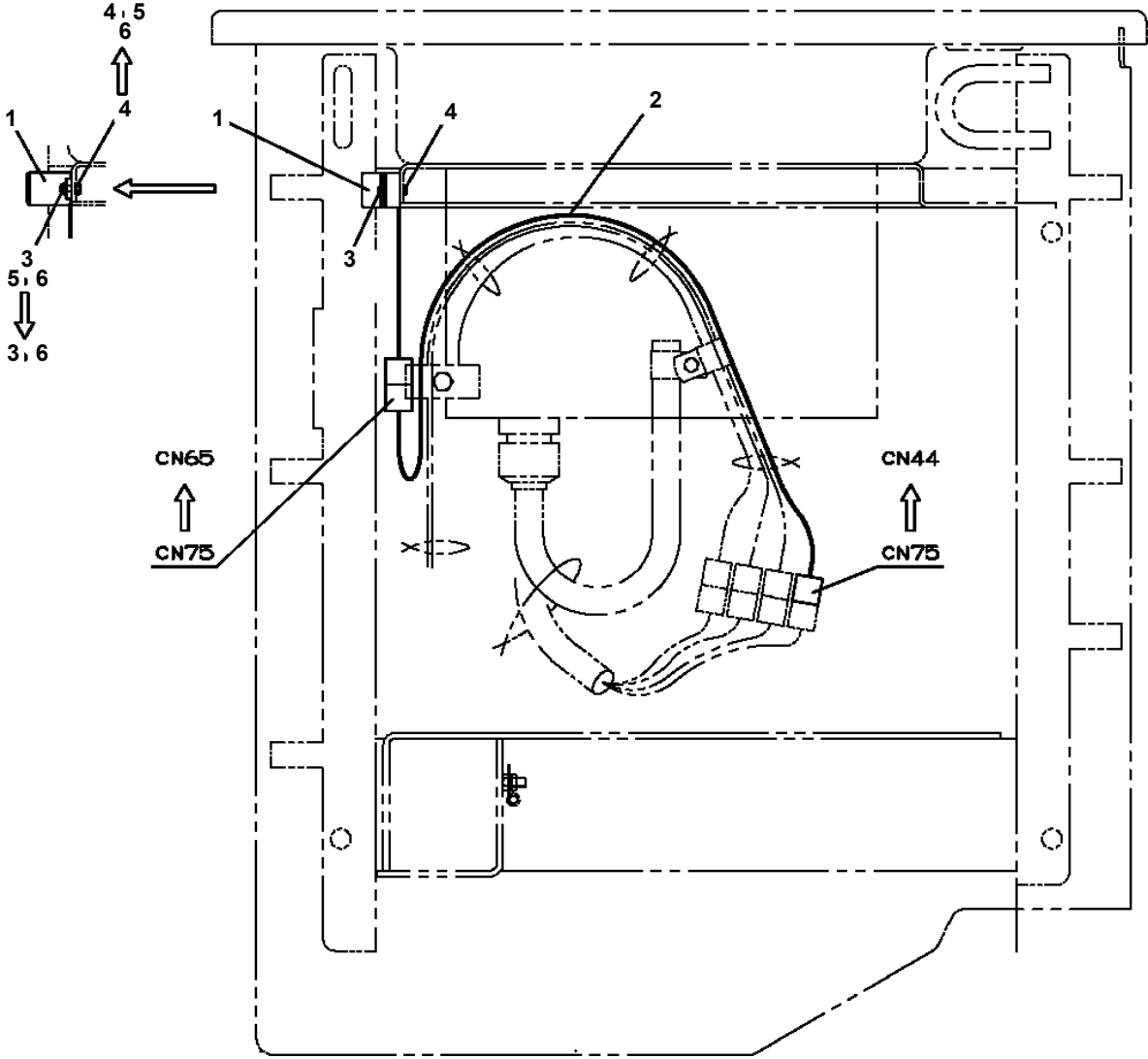
AT-100-4 42063434131 UPPER/LOWER,HINO SKG-XZU600X-TYMMC6

Pos No.	Parts No	Parts Name	Qty	Unit	Technical Data	Serial No (Start)	Serial No (End)	Remark
1	36132340000	DETECTOR,BOOM LENGTH	1					
2	42350071000	ROLLER ASSY	1					
3	42353100600	ROLLER ASSY	1					
4	90303070601	WASHER,PLAIN	1		6			
5	80620210060	PIN,SNAP	1					
6	91810132530	FASTENER	2					
7	90101206012	BOLT	4		M6X12			
8	90302040601	WASHER,SPRING	4		6			
31	42360030040	SUPPORT	1					
32	37001102350	ROLLER	2					
33	37000302060	SPACER	2		L=11.2			
35	90201201000	NUT	2		M10			
36	90302041001	WASHER,SPRING	2		10			
37	90303071001	WASHER,PLAIN	2		10			
41	42351120200	SUPPORT	1					

**AT-100-4 42063434131 UPPER/LOWER,HINO SKG-XZU600X-TYMMC6
PG5200049-00 GUARD ASSY (GATE PROTECTOR/AT-100TTE-5,INDOOR)**



**AT-100-4 42063434131 UPPER/LOWER,HINO SKG-XZU600X-TYMMC6
PH1500010-02 BUZZER (JACK ALARM)**



AT-100-4 42063434131 UPPER/LOWER,HINO SKG-XZU600X-TYMMC6

Pos No.	Parts No	Parts Name	Qty	Unit	Technical Data	Serial No (Start)	Serial No (End)
1	42970890100	HARNESS	1				
2	82100002596	RELAY	1				
3	90101206016	BOLT	2		M6X16		
5	91810132530	FASTENER	N				
6	82100002597	RELAY	1				
7	90303070601	WASHER,PLAIN	2		6		
8	42971210100	HARNESS	1		L=1060		
9	82114102010	CONNECTOR (1P FEMALE,HOUSING)	1				
10	82111101510	TERMINAL	1				
11	82121101085	PLUG (AVS0.85)	1				

AT-100-4 42063434131 UPPER/LOWER,HINO SKG-XZU600X-TYMMC6

Pos No.	Parts No	Parts Name	Qty	Unit	Technical Data	Serial No (Start)	Serial No (End)	Remarks
1	42970011100	VIEW SYSTEM (MAIN UNIT)	1					
2	91810130240	FASTENER	10					

AT-100-4 42063434131 UPPER/LOWER,HINO SKG-XZU600X-TYMMC6

Pos No.	Parts No	Parts Name	Qty	Unit	Technical Data	Serial No (Start)	Serial No (End)	Remarks	Pages
1	42625233030	SUPPORT	1		T=4.5		HK0213		
	42970231100	SUPPORT	1		T=3.5	HK0214	HK0464		
	42970231200	SUPPORT	1		T=4.5	HK0465			
2	91810130240	FASTENER	3						
3	42739961200	COVER	1				HK0079		
4	80172804010	SCREW,MACHINE	4		M4X10		HK0079		
5	90302510401	WASHER,SPRING	4		4		HK0079		
6	90303520401	WASHER,PLAIN	4		4		HK0079		
7	42391163120	PLATE,NAME	1						

AT-100-4 42063434131 UPPER/LOWER,HINO SKG-XZU600X-TYMMC6

Pos No.	Parts No	Parts Name	Qty	Unit	Technical Data	Serial No (Start)	Serial No (End)	Remarks	Pages
2	82100001839	FUSE	10		10A.RED				
3	82100001841	FUSE	4		20A,YELLOW				
10	34351562510	BOX,FUSE	1						
19	82182809623	DIODE	2						
100	42653900201	HARNESS	1						

AT-100-4 42063434131 UPPER/LOWER,HINO SKG-XZU600X-TYMMC6

Pos No.	Parts No	Parts Name	Qty	Unit	Technical Data	Serial No (Start)	Serial No (End)	Remarks	Pages
100	42356790200	HARNESS	1						

AT-100-4 42063434131 UPPER/LOWER,HINO SKG-XZU600X-TYMMC6

Pos No.	Parts No	Parts Name	Qty	Unit	Technical Data	Serial No (Start)	Serial No (End)	Remarks	Pages
1	42501120101	HARNESS	1		L=400				

AT-100-4 42063434131 UPPER/LOWER,HINO SKG-XZU600X-TYMMC6

Pos No.	Parts No	Parts Name	Qty	Unit	Technical Data	Serial No (Start)	Serial No (End)	Remarks	Pages
100	42504802070	HARNESS	1						

AT-100-4 42063434131 UPPER/LOWER,HINO SKG-XZU600X-TYMMC6

Pos No.	Parts No	Parts Name	Qty	Unit	Technical Data	Serial No (Start)	Serial No (End)	Remarks	Pages
100	42509011100	HARNESS	1						

AT-100-4 42063434131 UPPER/LOWER,HINO SKG-XZU600X-TYMMC6

Pos No.	Parts No	Parts Name	Qty	Unit	Technical Data	Serial No (Start)	Serial No (End)	Remarks	Pages
1	42355780700	HARNESS (L=3400)	1						

AT-100-4 42063434131 UPPER/LOWER,HINO SKG-XZU600X-TYMMC6

Pos No.	Parts No	Parts Name	Qty	Unit	Technical Data	Serial No (Start)	Serial No (End)	Remarks	Pages
1	42901530100	HARNESS	1						

AT-100-4 42063434131 UPPER/LOWER,HINO SKG-XZU600X-TYMMC6

Pos No.	Parts No	Parts Name	Qty	Unit	Technical Data	Serial No (Start)	Serial No (End)	Remarks	Pages
100	42333081100	HARNESS	1						
	42333081100	HARNESS	1						

AT-100-4 42063434131 UPPER/LOWER,HINO SKG-XZU600X-TYMMC6

Pos No.	Parts No	Parts Name	Qty	Unit	Technical Data	Serial No (Start)	Serial No (End)	Remarks	Pages
1	82460027202	HANDLE	1						

AT-100-4 42063434131 UPPER/LOWER,HINO SKG-XZU600X-TYMMC6

Pos No.	Parts No	Parts Name	Qty	Unit	Technical Data	Serial No (Start)	Serial No (End)	Remarks	Pages
1	82460027207	HANDLE	1						

AT-100-4 42063434131 UPPER/LOWER,HINO SKG-XZU600X-TYMMC6

Pos No.	Parts No	Parts Name	Qty	Unit	Technical Data	Serial No (Start)	Serial No (End)	Remarks	Pages
3	36605115010	POPPET	1						
6	36605115020	PLUNGER	1						
7	70320127520	BUSH	1						
9	70320127540	SPRING	1						
10	70320027625	SPRING	1						
12	36605115040	SCREW	1						
14	80316030020	PLUG	2		PT1/8				
15	80316030010	PLUG	1		NPTF1-16				
16	91002800900	O-RING	4		1B P9				
17	91001101001	O-RING	1		1A P10A				
18	91002801400	O-RING	1		1B P14				
19	91002801800	O-RING	1		1B P18				
20	91000501300	O-RING	1		AS568-013				
21	36602775040	KNOB (A)	1						
22	36602775050	KNOB	1						
23	36605115050	SCREW	1						
50	36605110000	VALVE,RELIEF	1						

AT-100-4 42063434131 UPPER/LOWER,HINO SKG-XZU600X-TYMMC6

Pos No.	Parts No	Parts Name	Qty	Unit	Technical Data	Serial No (Start)	Serial No (End)	Remarks
4	36625115010	JOINT	1					
5	91002801800	O-RING	1		1B P18			
50	36625250000	VALVE,CHECK (UZUMAKI)	1					

AT-100-4 42063434131 UPPER/LOWER,HINO SKG-XZU600X-TYMMC6

Pos No.	Parts No	Parts Name	Qty	Unit	Technical Data	Serial No (Start)	Serial No
1	(*****)	ELEC.ASSY (FRAME)	1				
2	(*****)	ELEC.ASSY,CARRIER	1				
3	(*****)	NAME PLATE ASSY (RUNAWAY PREVENTION)	1				

AT-100-4 42063434131 UPPER/LOWER,HINO SKG-XZU600X-TYMMC6

Pos No.	Parts No	Parts Name	Qty	Unit	Technical Data	Serial No (Start)	Serial No
1	(*****)	ELEC.ASSY (FRAME)	1				
3	(*****)	NAME PLATE ASSY (RUNAWAY PREVENTION)	1				

AT-100-4 42063434131 UPPER/LOWER,HINO SKG-XZU600X-TYMMC6

Pos No.	Parts No	Parts Name	Qty	Unit	Technical Data	Serial
1	(*****)	FRAME (BUCKET)	1			
	(*****)	BUCKET FRAME ASSY	1			HK00
2	(*****)	ELEC.ASSY (BUCKET OR BASKET)	1			
11	(*****)	OPE.ASSY,BUCKET (1-LEVER,3-OPE:WITH ENABLE SW)	1			
	(*****)	OPE.ASSY (BUCKET/1-LEVER ,2-OPE:W/O GUARD,W/ ENABLE SW)	1			
	(*****)	OPE.ASSY,BUCKET (W/ 3-AXIS ENABLE SW)	1			HK00
	(*****)	OPE.ASSY,BUCKET (W/ 2-AXIS ENABLE SW)	1			HK00
21	(*****)	BUCKET (WHITE/WITHOUT BOSS)	1			
	(*****)	BUCKET (WHITE/WITH BOSS ON ONE SIDE)	1			
	(*****)	BUCKET (WHITE/WITH BOSS)	1			
	(*****)	BUCKET (WHITE/WITH DOOR)	1			
	(*****)	BUCKET ASSY (WHITE/ FOR SHIKOKUKANSEI,1-MAN STRAIGHT)	1			
	(*****)	COVER (BUCKET)	1			

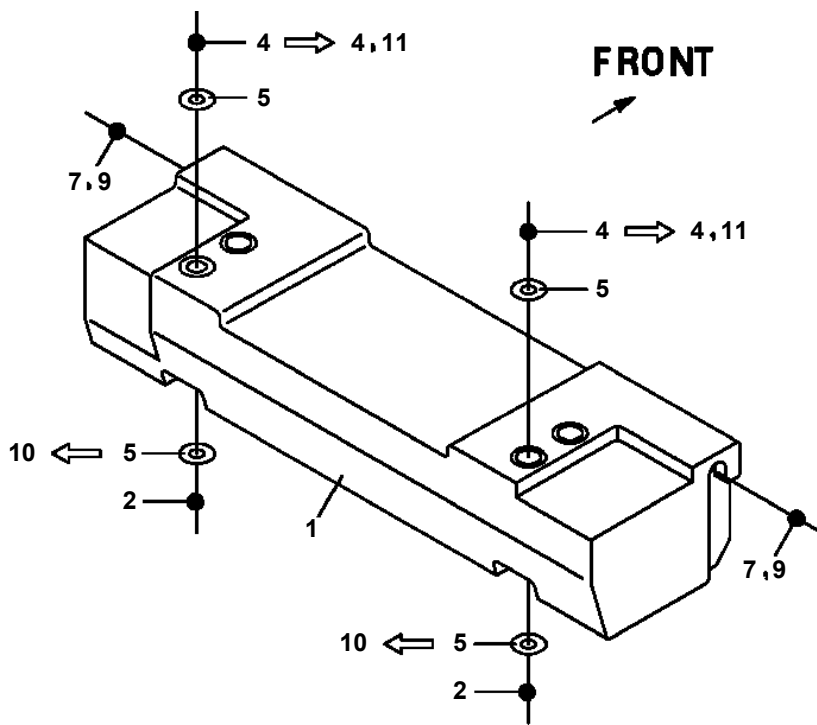
AT-100-4 42063434131 UPPER/LOWER,HINO SKG-XZU600X-TYMMC6

Pos No.	Parts No	Parts Name	Qty	Unit	Technical Data	Serial No (Start)	Serial No (End)	R
1	42266920101	BUCKET (WHITE/WITHOUT BOSS)	1					

AT-100-4 42063434131 UPPER/LOWER,HINO SKG-XZU600X-TYMMC6

Pos No.	Parts No	Parts Name	Qty	Unit	Technical Data	Serial No (Start)	Serial No (End)
1	42267180100	BUCKET (WITH BOSS ON ONE SIDE)	1				
2	42477661000	MAT	1				

AT-100-4 42063434131 UPPER/LOWER,HINO SKG-XZU600X-TYMMC6
PK1230117-02 WEIGHT



CLICK HERE TO **DOWNLOAD** THE COMPLETE MANUAL

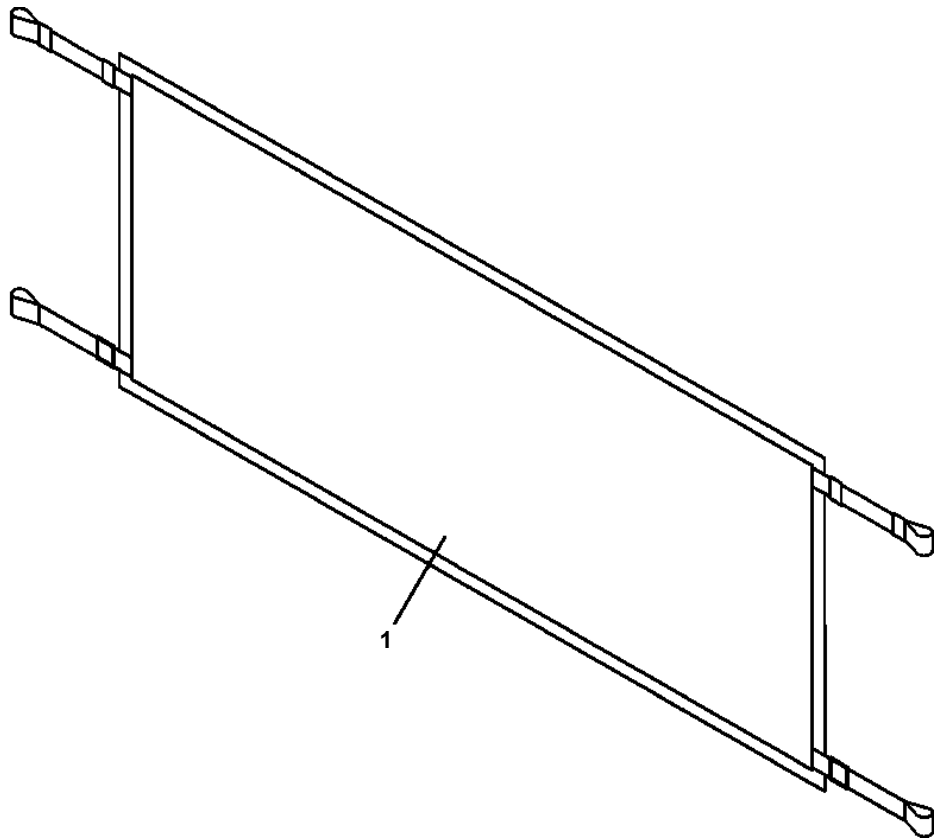
- Thank you very much for reading the preview of the manual.
- You can download the complete manual from: www.heydownloads.com by clicking the link below



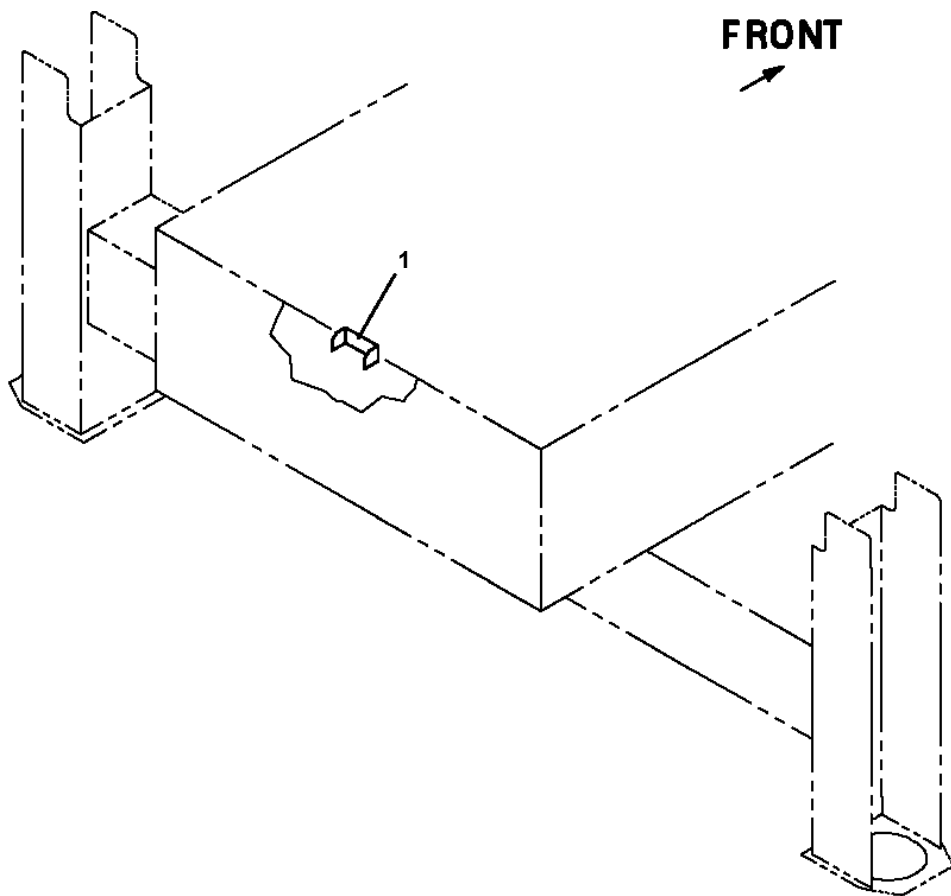
- Please note: If there is no response to CLICKING the link, please download this PDF first and then click on it.

CLICK HERE TO **DOWNLOAD** THE COMPLETE MANUAL

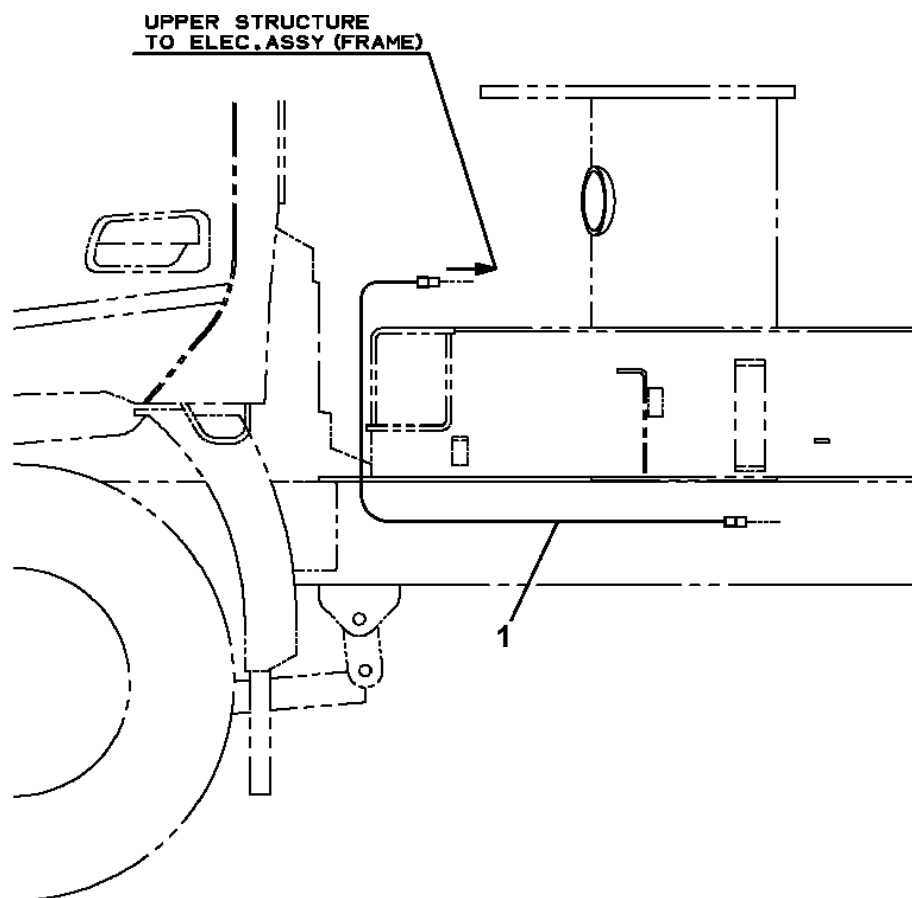
AT-100-4 42063434131 UPPER/LOWER,HINO SKG-XZU600X-TYMMC6
PK1330325-00 COVER



**AT-100-4 42063434131 UPPER/LOWER,HINO SKG-XZU600X-TYMMC6
PK1330467-00 COVER (FOR REAR COVER T-HANDLE)**



**AT-100-4 42063434131 UPPER/LOWER, HINO SKG-XZU600X-TYMMC6
PL1031085-00 OPE.ASSY, ACCELERATOR**



AT-100-4 42063434131 UPPER/LOWER,HINO SKG-XZU600X-TYMMC6

Pos No.	Parts No	Parts Name	Qty	Unit	Technical Data	Serial No (Start)	Serial No (End)
1	42333021100	PANEL	1				HK0863
2	42332892001	OPE.ASSY	1				HK0031
	42332892002	OPE.ASSY	1			HK0032	
3	42809631200	LAMP ASSY (RED,WITH HARNESS)	2				
4	42332521300	SWITCH ASSY (WITH HARNESS)	1				
5	37002709630	HARNESS	1				
6	42332531300	SWITCH ASSY (WITH HARNESS,3 SW)	1				HK0072
7	90183108020	BOLT	8		M8X20		
8	37000568770	PLATE	8		T=1.5		
9	82199514013	CAP	3				
10	82199504017	NUT	3		AT-401N		
11	37000714020	CLAMP ASSY	1		12X2		
12	82100002012	CLAMP	1		WR18		
13	90201200600	NUT	2		M6		
14	90302040601	WASHER,SPRING	2		6		
15	90280200600	NUT,FLANGE	1		M6		
16	90303070601	WASHER,PLAIN	2		6		
17	42350250150	PLUG (6 POLES,MALE)	1				
18	42350250090	PLUG (4 POLES,MALE)	1				
19	42350250080	PLUG (3 POLES,MALE)	2				
20	91810130240	FASTENER	10				
21	42332521400	HARNESS	1				
22	42332521500	HARNESS	1				
23	82100002009	CLAMP	1		WRC12		HK0031
	82100002014	CLAMP	1		WR20	HK0032	
24	42900001200	COVER	1				
39	42355641010	COVER	1				
41	42355641210	BUTTON	1				

AT-100-4 42063434131 UPPER/LOWER,HINO SKG-XZU600X-TYMMC6

Pos No.	Parts No	Parts Name	Qty	Unit	Technical Data	Serial No (Start)	Serial No (End)	Remarks	Pages
1	42332897760	JOY STICK	1						
2	42332897750	JOY STICK	1						
3	42332897730	PANEL	1						
11	42331247590	BOOT	2						
100	42332892501	OPE.ASSY	1						

AT-100-4 42063434131 UPPER/LOWER,HINO SKG-XZU600X-TYMMC6

Pos No.	Parts No	Parts Name	Qty	Unit	Technical Data	Serial No (Start)	Serial No (End)
1	42839551050	LOCK ASSY (U9SL99-2,ASSY ONLY)	2				
2	82460027206	HANDLE	2				

AT-100-4 42063434131 UPPER/LOWER,HINO SKG-XZU600X-TYMMC6

Pos No.	Parts No	Parts Name	Qty	Unit	Technical Data	Serial No (Start)	Serial No (End)
1	42839551100	LOCK ASSY (U9SL99-2,ASSY ONLY)	2				
2	82460027211	HANDLE	2				

AT-100-4 42063434131 UPPER/LOWER,HINO SKG-XZU600X-TYMMC6

Pos No.	Parts No	Parts Name	Qty	Unit	Technical Data	Serial No (Start)	Serial No (End)	Remarks	Pages
1	42509012000	BOX ASSY	1						
2	42421773500	FAN	1						
3	90101204035	BOLT	4		M4X35				
4	90302040401	WASHER,SPRING	4		4				
5	90303070401	WASHER,PLAIN	4		4				
6	90201200400	NUT	4		M4				
7	42509011100	HARNESS	1						000161
8	91810132530	FASTENER	10						
9	82100002596	RELAY	1						
10	90186206010	BOLT,FLANGE	1		M6X10				
11	91803601200	CLIP	1		D=90-120				
12	42509011010	SUPPORT	1						
13	42391163120	PLATE,NAME	1						
31	42509012100	BOX	1						
32	42509012500	COVER	1						
33	90101208016	BOLT	4		M8X16				
34	90302040801	WASHER,SPRING	4		8				
35	42422303500	COVER	1						
36	90101206010	BOLT	4		M6X1.0				
37	90302040601	WASHER,SPRING	4		6				

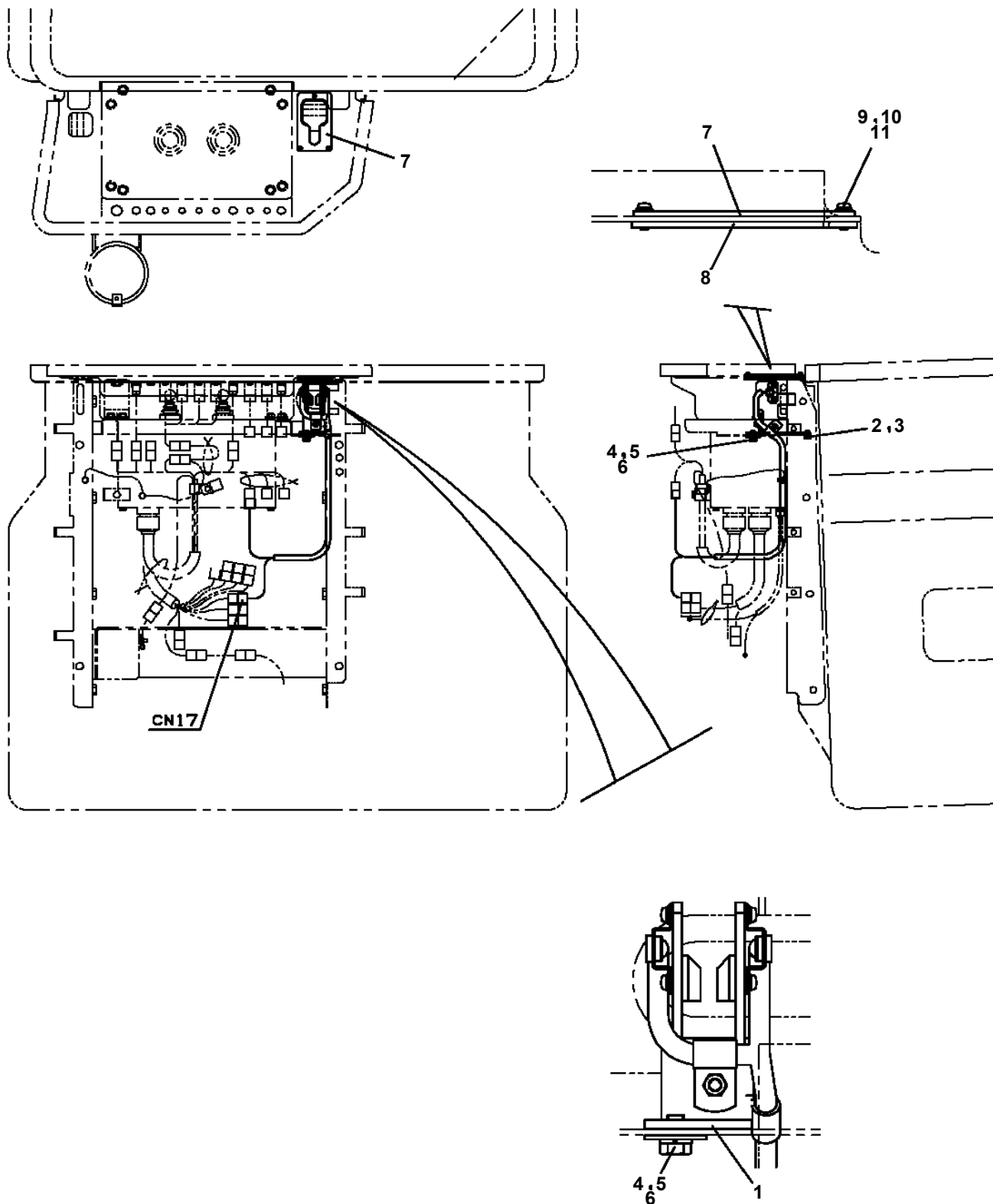
AT-100-4 42063434131 UPPER/LOWER,HINO SKG-XZU600X-TYMMC6

Pos No.	Parts No	Parts Name	Qty	Unit	Technical Data	Serial No (Start)
2	(*****)	NAME PLATE ASSY (AMC DATE NO./AMC FRONTPANEL)	1			

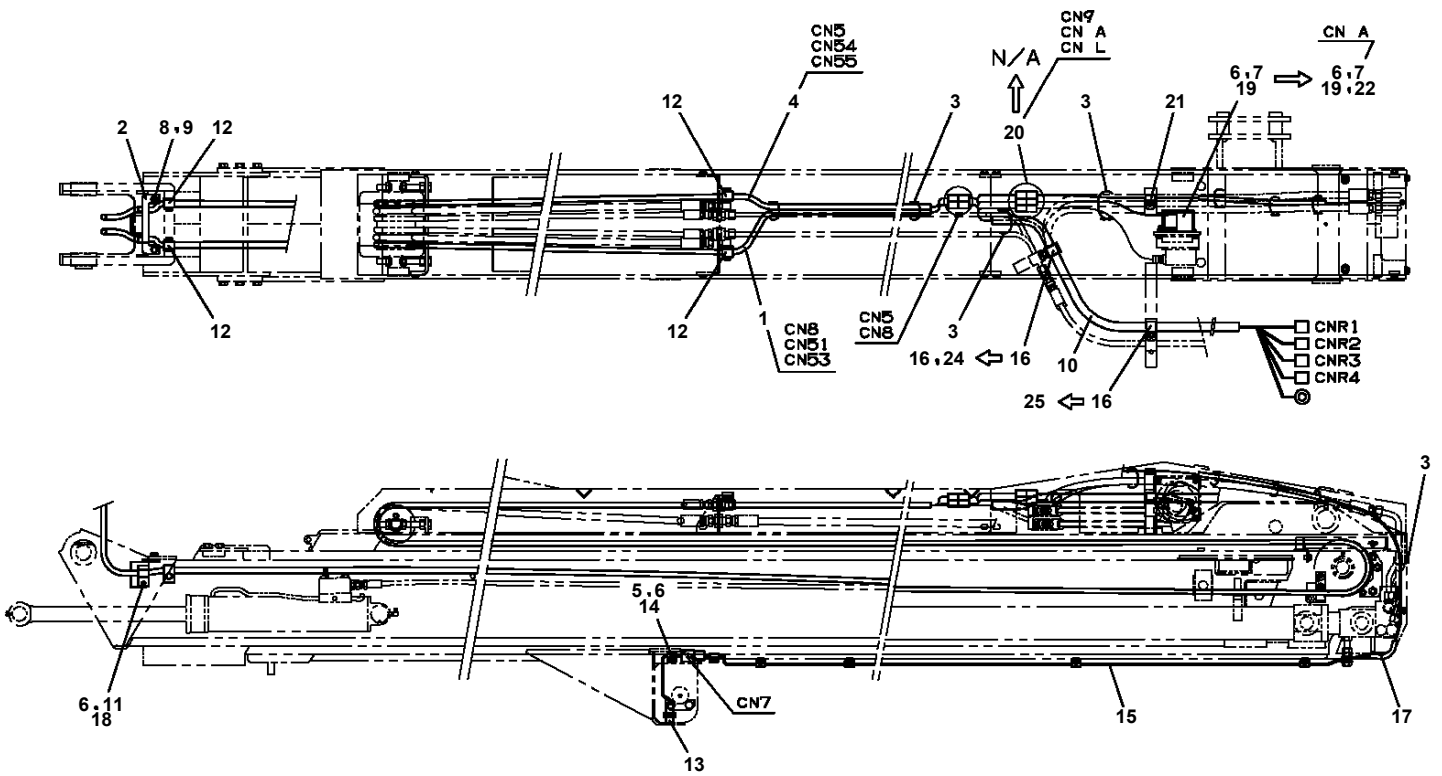
AT-100-4 42063434131 UPPER/LOWER,HINO SKG-XZU600X-TYMMC6

Pos No.	Parts No	Parts Name	Qty	Unit	Technical Data	Serial No (Start)	Serial No (End)	Remarks
1	36663955100	SHAFT	1					
2	80500006206	BEARING,BALL	1					
4	91001206500	O-RING	1		1A G65			
5	36660025021	COVER (OIL SEAL)	1					
6	36660025140	SEAL,OIL	1					
7	36663485110	RING,RETAINING	1		R72			
8	36663955020	PLATE,THRUST	1					
9	36663955030	BARREL ASSY (CYLINDER)	1					
10	36663955040	PLATE (VALVE)	1					
11	36661925030	COVER (BOTTOM)	1					
12	80500006203	BEARING,BALL	1					
13	36662355110	PIN	2					
14	36663955050	O-RING	1					
15	36663955060	BOLT	6		M10X35			
16	14125151020	KEY	1					
17	36660125060	PLUG	2		PF3/8			
18	36081315130	PROTECTOR (THREAD)	2					
44	36660025100	SPRING (PLUNGER)	5					
45	14125151300	RING,RETAINING	1					
46	12645103171	SPRING (CENTER)	1					
100	36664070000	MOTOR,OIL	1					

AT-100-4 42063434131 UPPER/LOWER, HINO SKG-XZU600X-TYMMC6
PN1014040-02 ELEC. ASSY (INTERLOCK/BELT, SAFETY)



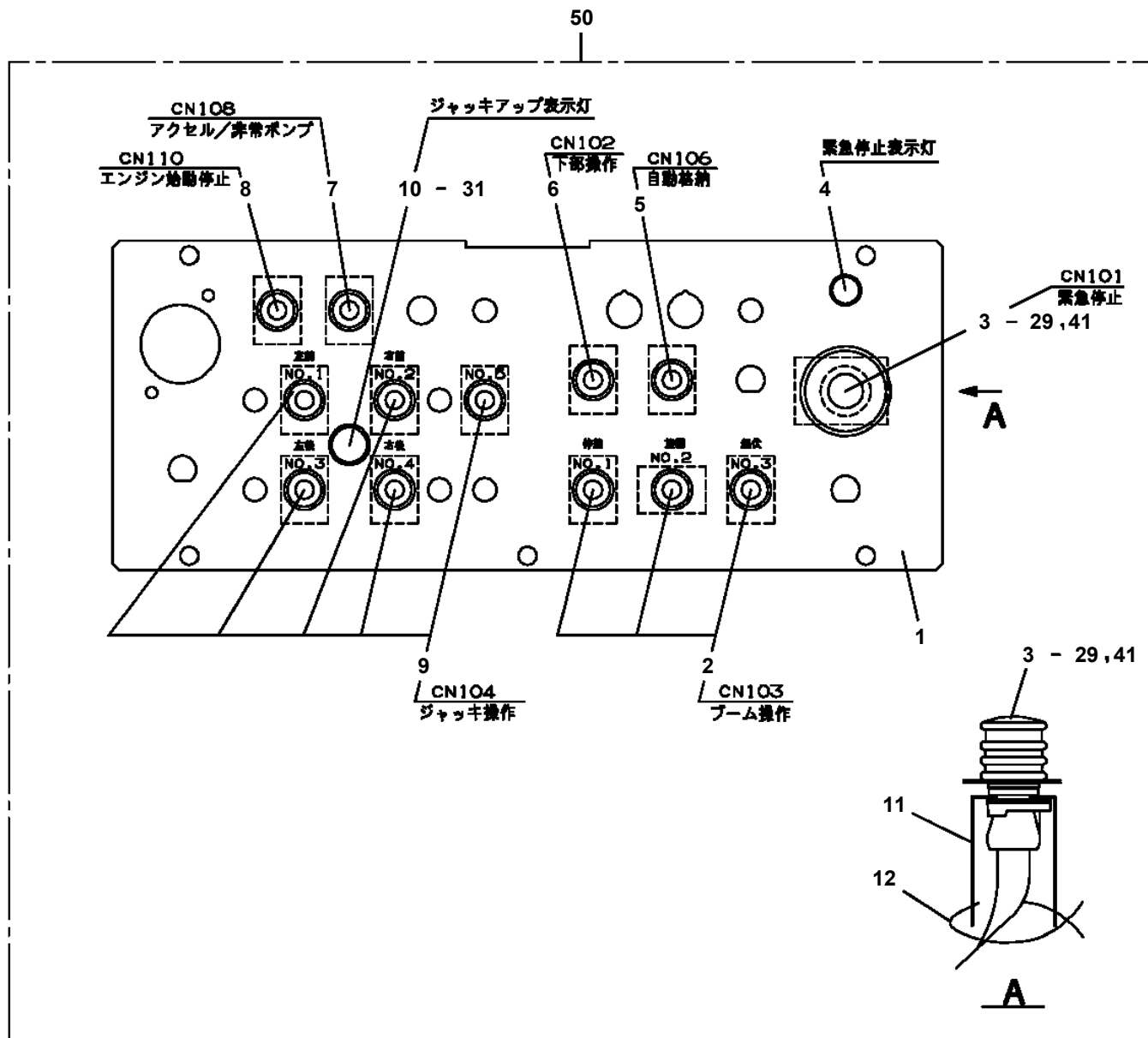
**AT-100-4 42063434131 UPPER/LOWER,HINO SKG-XZU600X-TYMMC6
PN1014545-02 ELEC.ASSY (BOOM/ANGLE)**



AT-100-4 42063434131 UPPER/LOWER,HINO SKG-XZU600X-TYMMC6

Pos No.	Parts No	Parts Name	Qty	Unit	Technical Data	Serial No (Start)	Serial No (End)	Remarks	Pa
1	(*****)	LAMP	1						00
2	(*****)	ELEC.ASSY (INVERTER)	1						00

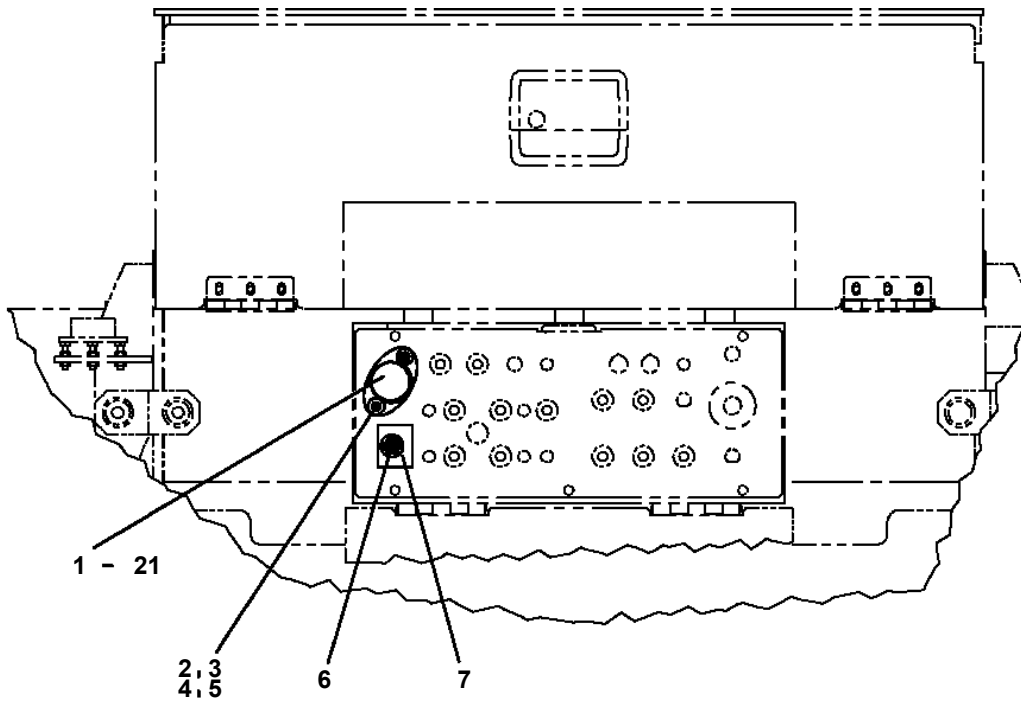
AT-100-4 42063434131 UPPER/LOWER,HINO SKG-XZU600X-TYMMC6
 PN1060284-04 SWITCH PANEL



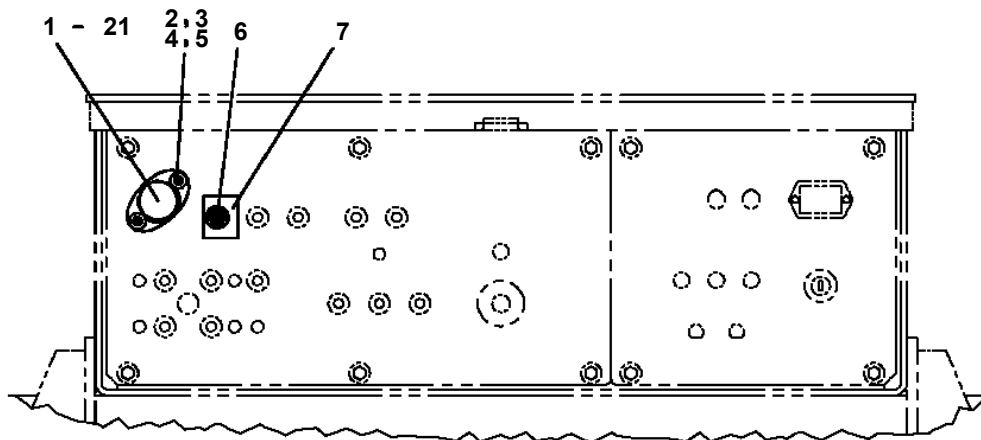
AT-100-4 42063434131 UPPER/LOWER,HINO SKG-XZU600X-TYMMC6

Pos No.	Parts No	Parts Name	Qty	Unit	Technical Data	Serial No (Start)	Serial No
1	42502590100	SUPPORT	1				
2	90101208014	BOLT	2		M8X14		
3	90302040801	WASHER,SPRING	2		8		
4	90201200800	NUT	2		M8		
5	90813108016	BOLT,WING	1		M8X16		
6	42651490100	LAMP ASSY	1				
7	91810130240	FASTENER	2				
8	82401601002	CLAMP	2				
9	82100002004	CLAMP	1		WR8		
10	90101206010	BOLT	1		M6X1.0		
11	90302040601	WASHER,SPRING	1		6		
12	42970430200	HARNESS	1				
13	90101208022	BOLT	1		M8X22		
31	82165904020	LAMP	1		24V 60W		
32	90101212020	BOLT	1		M12X20		
33	90302041201	WASHER,SPRING	1		12		
34	37000113640	PIN	1				
41	82100000054	BULB,LAMP	1		24V 60W		
42	82100002838	SWITCH ASSY (WITH HARNESS,TERMINAL)	1				

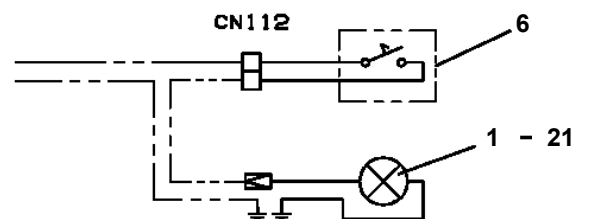
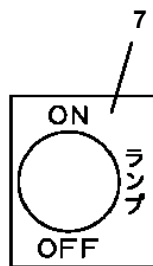
AT-100-4 42063434131 UPPER/LOWER, HINO SKG-XZU600X-TYMMC6
 PN1080368-02 LAMP (LIGHTING/LOWER CONTROLS)



操作パネルがサブフレーム下の場合



操作パネルがサブフレーム内の場合

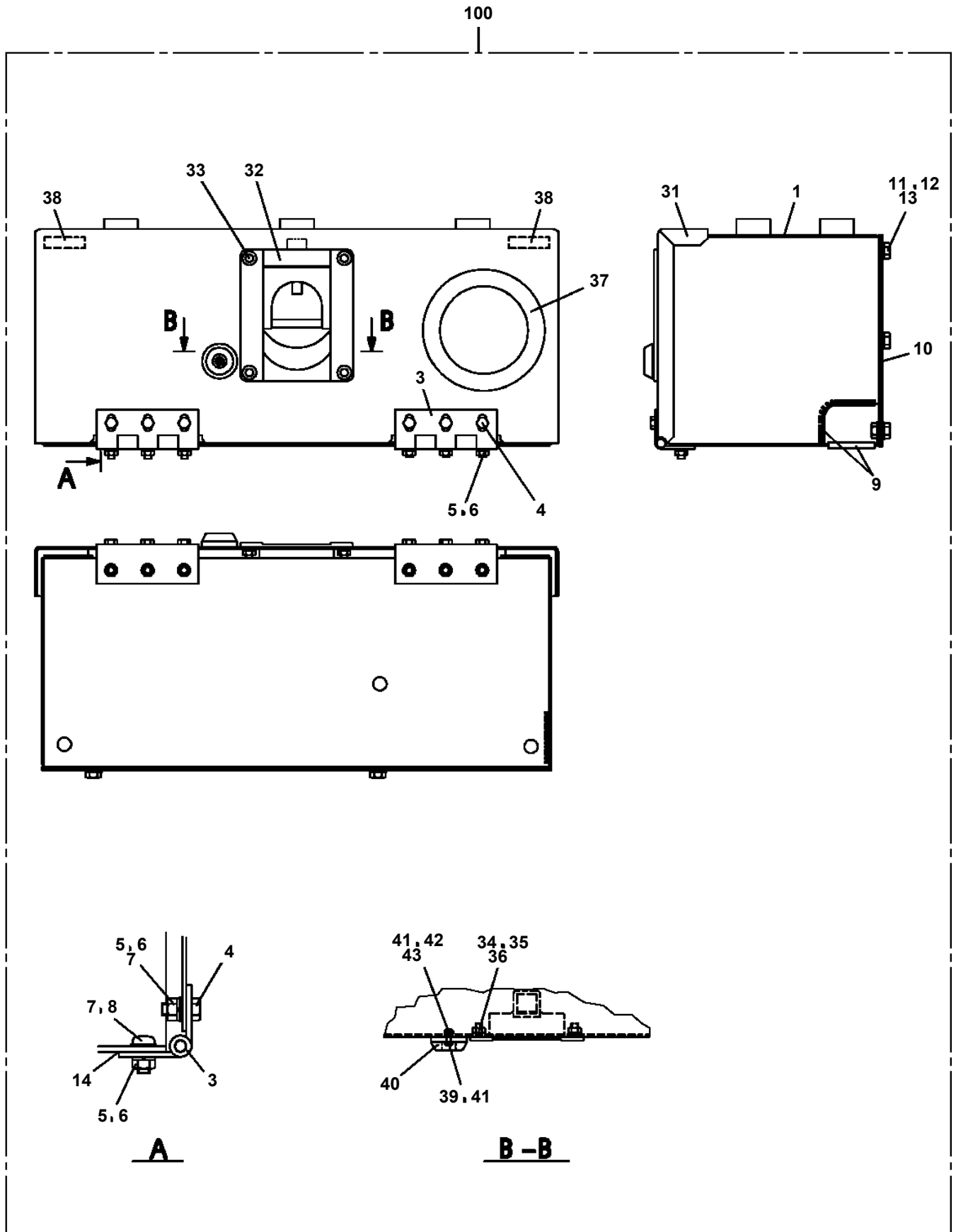


結線図

AT-100-4 42063434131 UPPER/LOWER,HINO SKG-XZU600X-TYMMC6

Pos No.	Parts No	Parts Name	Qty	Unit	Technical Data	Serial No (Start)	Serial No (End)
6	82105220286	SWITCH,TOGGLE	3				
50	42651591300	SWITCH ASSY (WITH HARNESS,3 SW)	1				

AT-100-4 42063434131 UPPER/LOWER,HINO SKG-XZU600X-TYMMC6
PN1300009-00 BOX



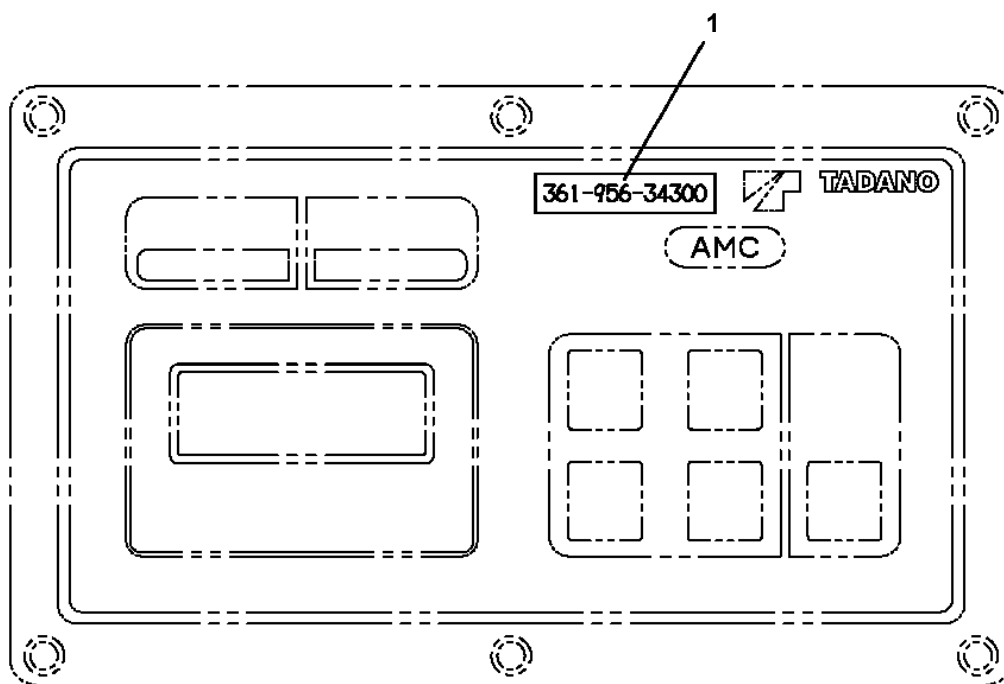
AT-100-4 42063434131 UPPER/LOWER,HINO SKG-XZU600X-TYMMC6

Pos No.	Parts No	Parts Name	Qty	Unit	Technical Data	Serial No (Start)	Serial No (End)	Remarks	Pages
2	82100001839	FUSE	10		10A.RED				
3	82100001841	FUSE	4		20A,YELLOW				
10	34351562510	BOX,FUSE	1						
19	82182809623	DIODE	2						
100	42653900200	HARNESS	1						

AT-100-4 42063434131 UPPER/LOWER,HINO SKG-XZU600X-TYMMC6

Pos No.	Parts No	Parts Name	Qty	Unit	Technical Data	Serial No (Start)	Serial No (End)	
1	36195634210	PLATE,NAME (AMC,361-956-34100)	1					

**AT-100-4 42063434131 UPPER/LOWER,HINO SKG-XZU600X-TYMMC6
PN5010573-00 NAME PLATE ASSY(AMC DATE NO./AMC FRONT PANEL)**



AMC前面パネル

AT-100-4 42063434131 UPPER/LOWER,HINO SKG-XZU600X-TYMMC6

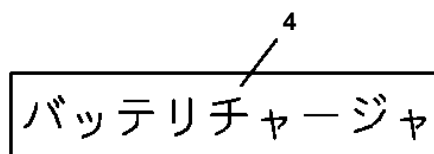
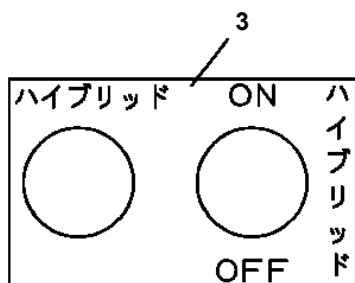
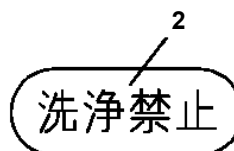
Pos No.	Parts No	Parts Name	Qty	Unit	Technical Data	Serial No (Start)	Serial No (End)
1	(*****)	PLATE ASSY,NAME (VEHICLE)	1				
2	(*****)	PLATE ASSY,NAME (SPECIFICATION)	1				
3	(*****)	PLATE ASSY,NAME (OIL/COLD DISTRICT)	1				
	(*****)	PLATE ASSY,NAME (HYDRAULIC OIL)	1				
4	(*****)	REFLECTOR (SWING ALIGNMENT MARK)	1				

AT-100-4 42063434131 UPPER/LOWER,HINO SKG-XZU600X-TYMMC6

Pos No.	Parts No	Parts Name	Qty	Unit	Technical Data	Serial No (Start)	Serial No (End)	Remarks	Page
1	42970260010	PLATE,NAME (0.5)	1						
2	42970260020	PLATE,NAME (1)	1						
3	42970260030	PLATE,NAME (3)	1						
4	42970260040	PLATE,NAME (5)	1						
5	42970260050	PLATE,NAME	4						
6	42970260060	PLATE,NAME (STOP)	1						

AT-100-4 42063434131 UPPER/LOWER,HINO SKG-XZU600X-TYMMC6

Pos No.	Parts No	Parts Name	Qty	Unit	Technical Data	Serial No (Start)	Serial No (End)	Remarks	Pages
1	42332523030	PLATE,NAME	1						
2	42331782100	PLATE,NAME	1						
3	42392583050	PLATE,NAME	2						
4	42391163120	PLATE,NAME	1						
5	42331782120	PLATE,NAME	1						
6	42331792020	PLATE,NAME	1						
7	42331272010	PLATE,NAME	1						
8	42331792030	PLATE,NAME	1						
9	42475910010	PLATE,NAME	5						



5
使用方法 / ハイブリッドモード

○ハイブリッドモードを使用するときは、モード切替スイッチをONにしてください。選択表示ランプが点灯し、エンジンが停止します。

- ・エンジンが停止した状態のままブーム操作をしてください。
- 電動モータが駆動し、ブームが作動します。
- ・操作時間が長くなると自動的にエンジンが駆動し、ブームが作動します。
- ・操作をやめると自動的にエンジンが停止します。

*ランプが点滅する場合は、車両バッテリーの容量が少ないため、通常モードに切替わります。通常モードで使用してください。

○通常モード（エンジン駆動）を使用するときは、モード切替スイッチをOFFにしてください。

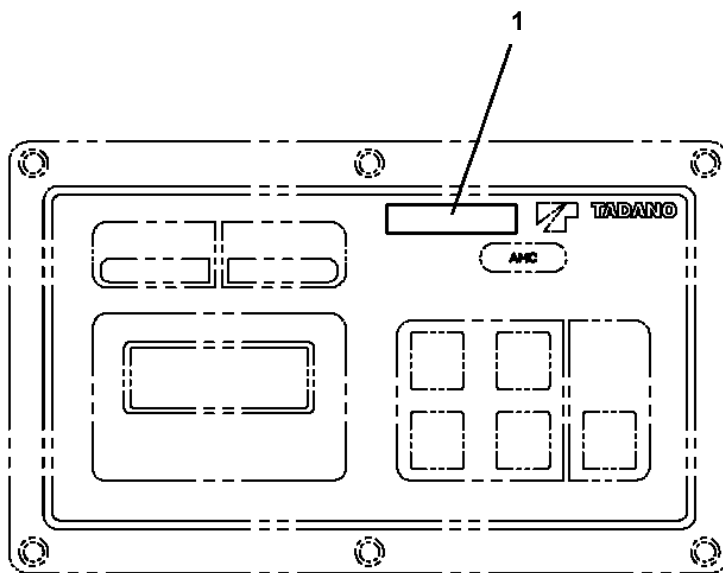
- *エンジンが停止しているときは、エンジン始動スイッチでエンジンを始動させてから、ブーム操作をしてください。

モード切替スイッチ

ON : ハイブリッドモード
 OFF : 通常モード

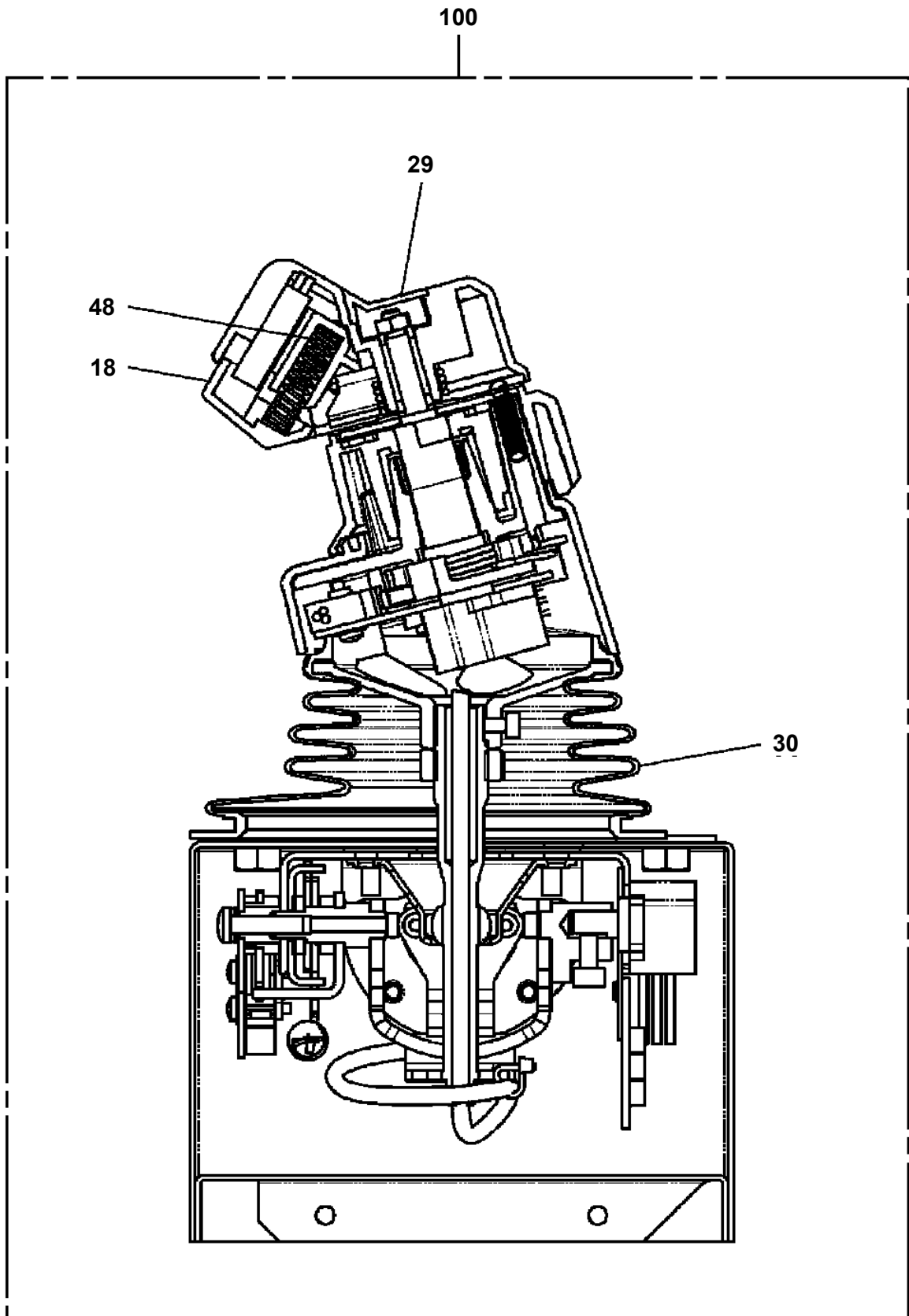
423-016-01000

AT-100-4 42063434131 UPPER/LOWER,HINO SKG-XZU600X-TYMMC6
PO1015532-00 PLATE ASSY,NAME (10M:2-OPE.ENABLE SW AMC DATA)

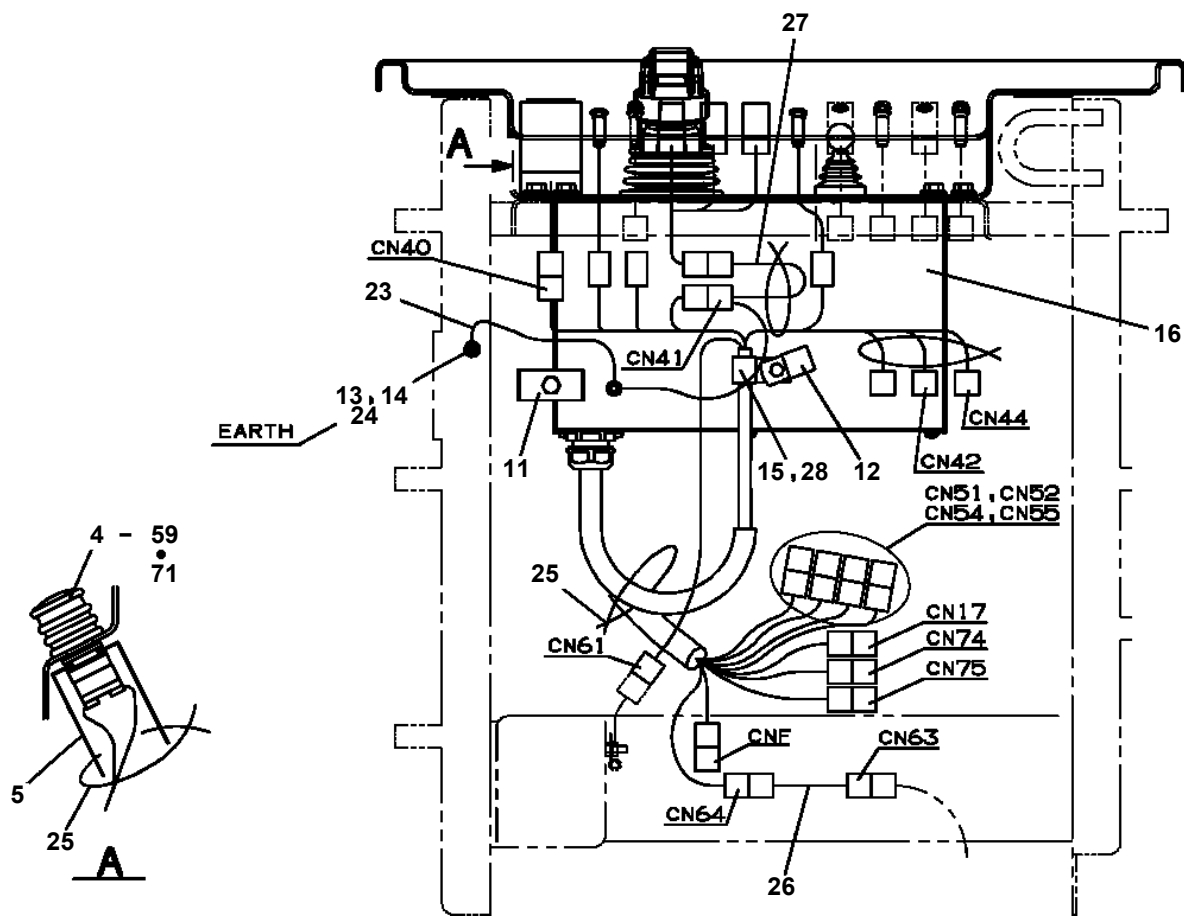
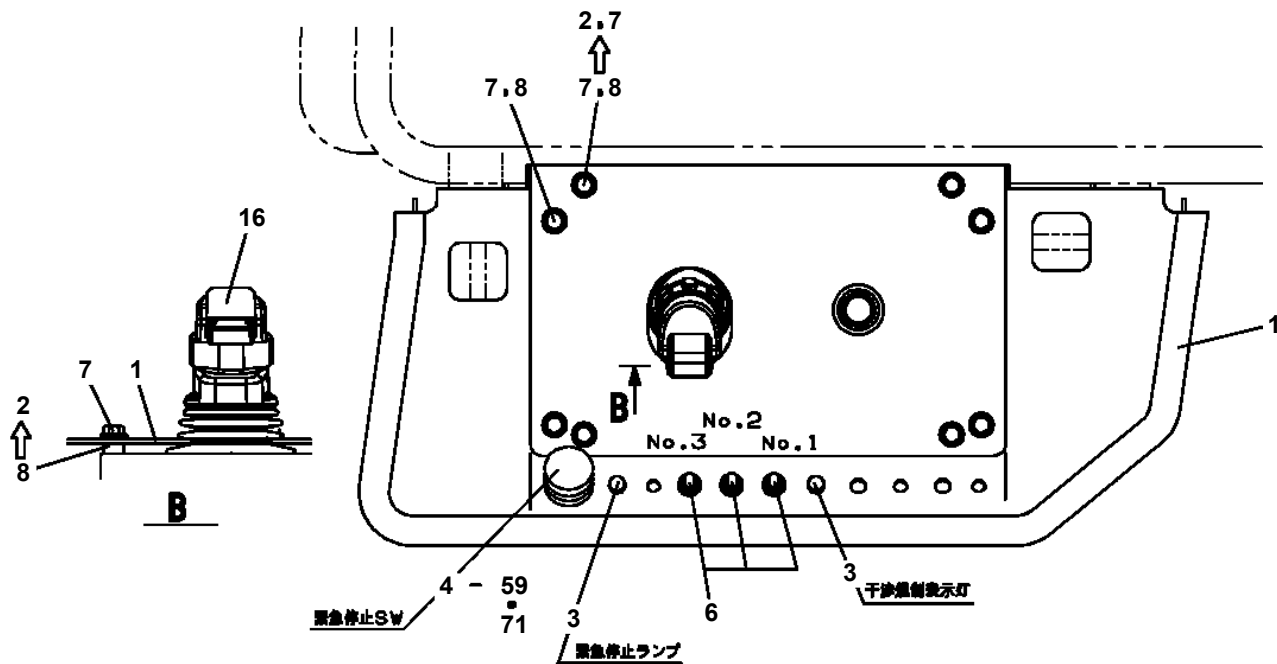


AMC前面パネル

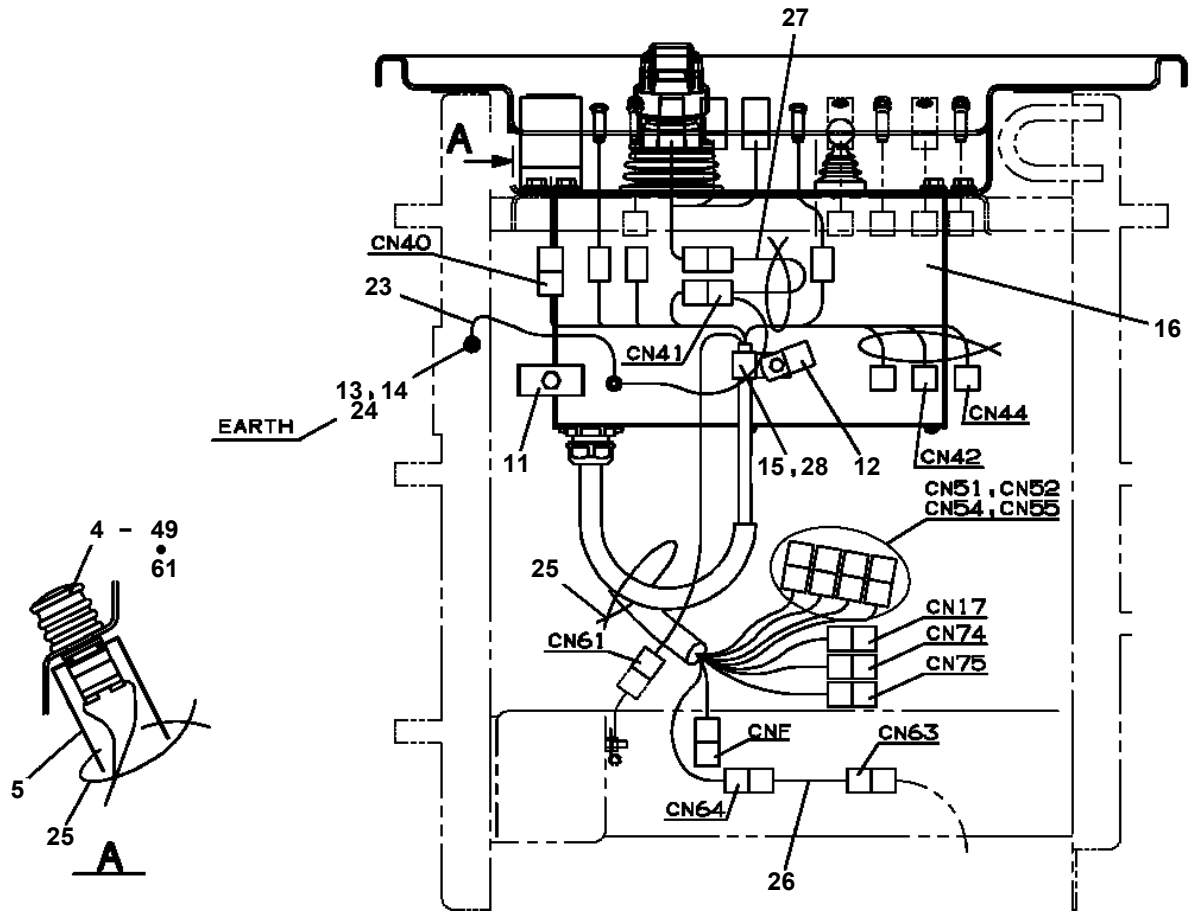
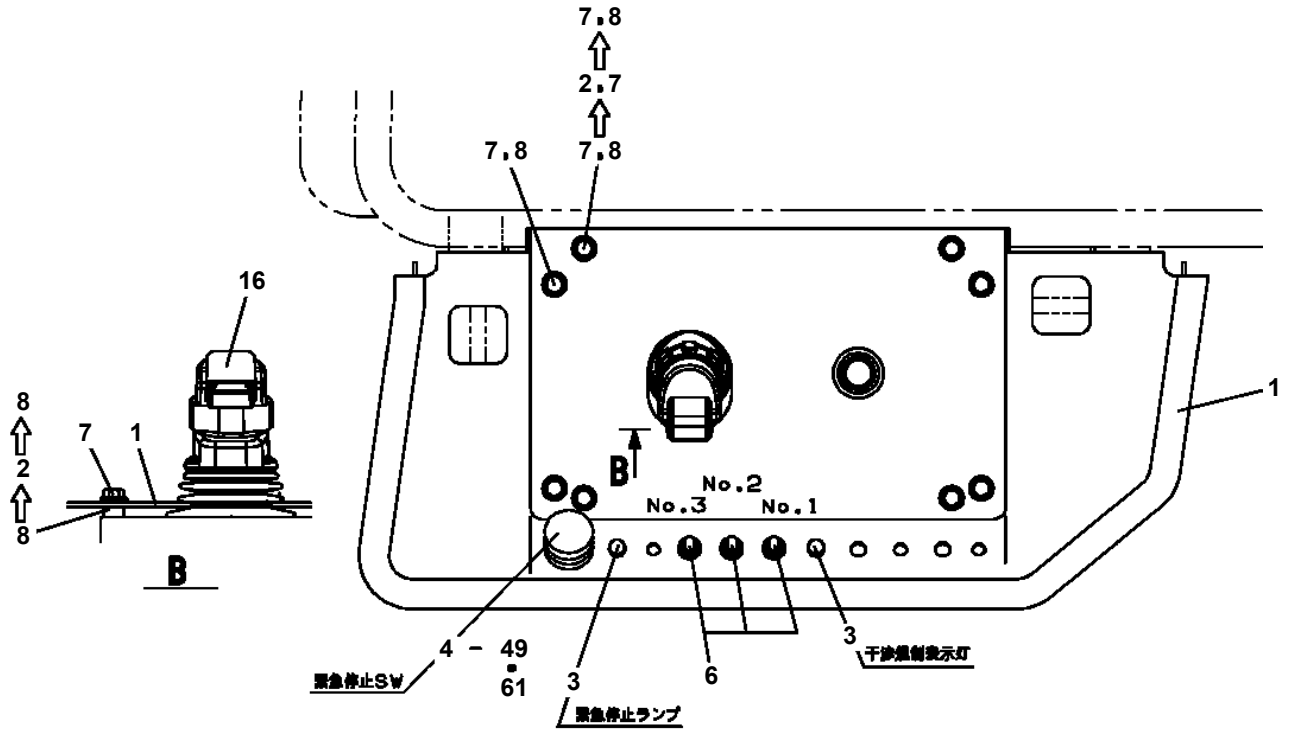
AT-100-4 42063434131 UPPER/LOWER, HINO SKG-XZU600X-TYMMC6
PO5010010-00 OPE.ASSY (LEVER, CONTROL)



AT-100-4 42063434131 UPPER/LOWER, HINO SKG-XZU600X-TYMMC6
 PO5050004-00 OPE.ASSY, BUCKET



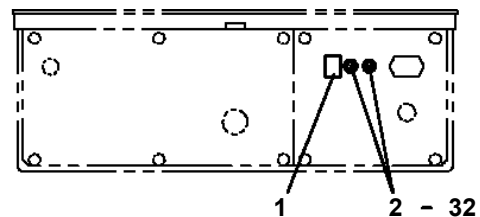
AT-100-4 42063434131 UPPER/LOWER, HINO SKG-XZU600X-TYMMC6
 PO5050027-00 OPE.ASSY, BUCKET



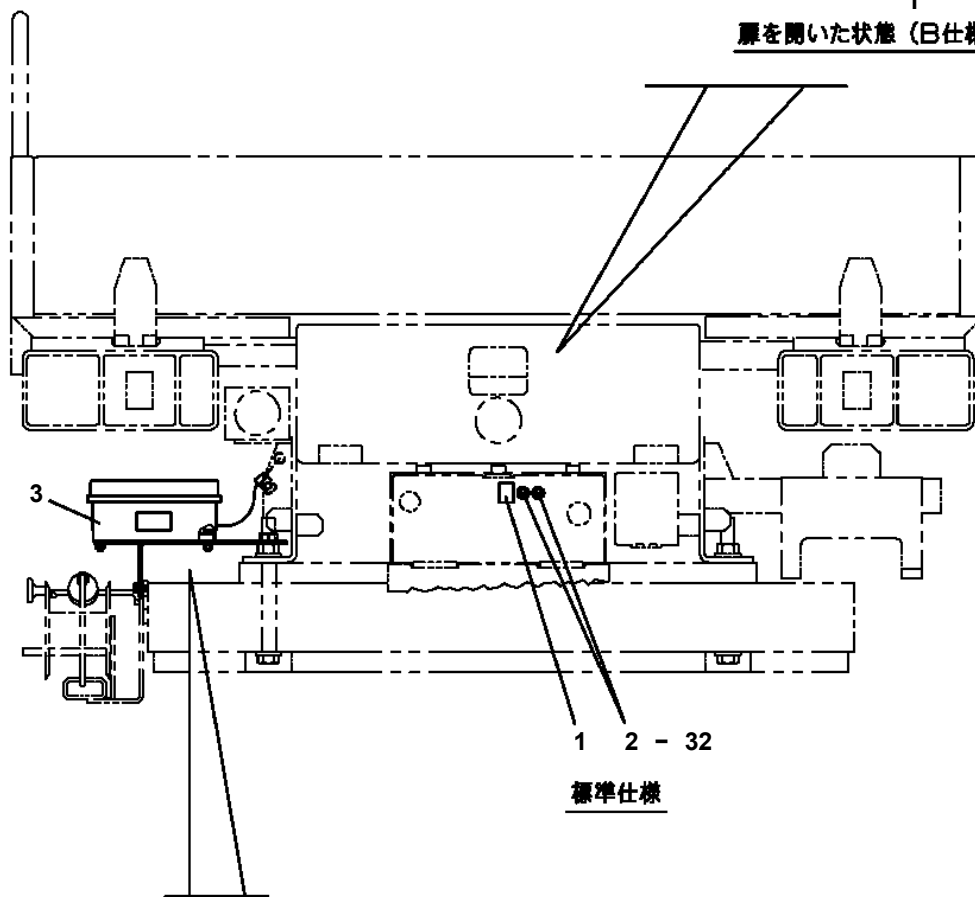
AT-100-4 42063434131 UPPER/LOWER,HINO SKG-XZU600X-TYMMC6
PO5050034-00 OPE.ASSY,BUCKET

指示番号 KEY NO.	オペ .ASSY,ハ ケット OPE .ASSY,BUCKET
1	オペ .ASSY,ハ ケット OPE .ASSY,BUCKET
2	ネームプレートASSY (ハ ケットナイメン/イネーブ ルソウサ) NAME PLATE ASSY (INSIDE BUCKET/ENABLE OPE.)
6	プレートASSY,ネーム PLATE ASSY,NAME
12	ネームプレートASSY (AMC) NAME PLATE ASSY (AMC)

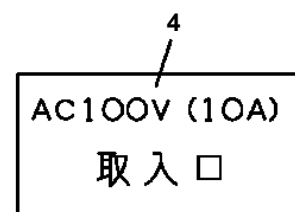
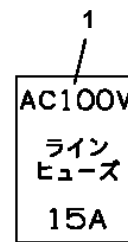
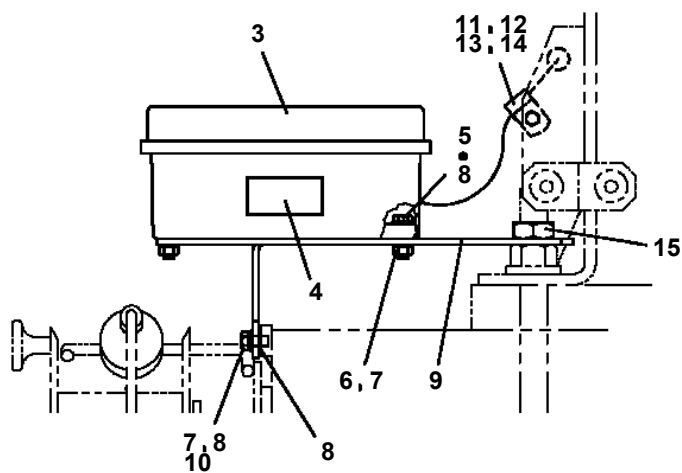
AT-100-4 42063434131 UPPER/LOWER,HINO SKG-XZU600X-TYMMC6
 PP5340001-01 POWER SUPPLY ASSY,ELECTRICITY(LOWER/W/ CABLE 2POLES,B,



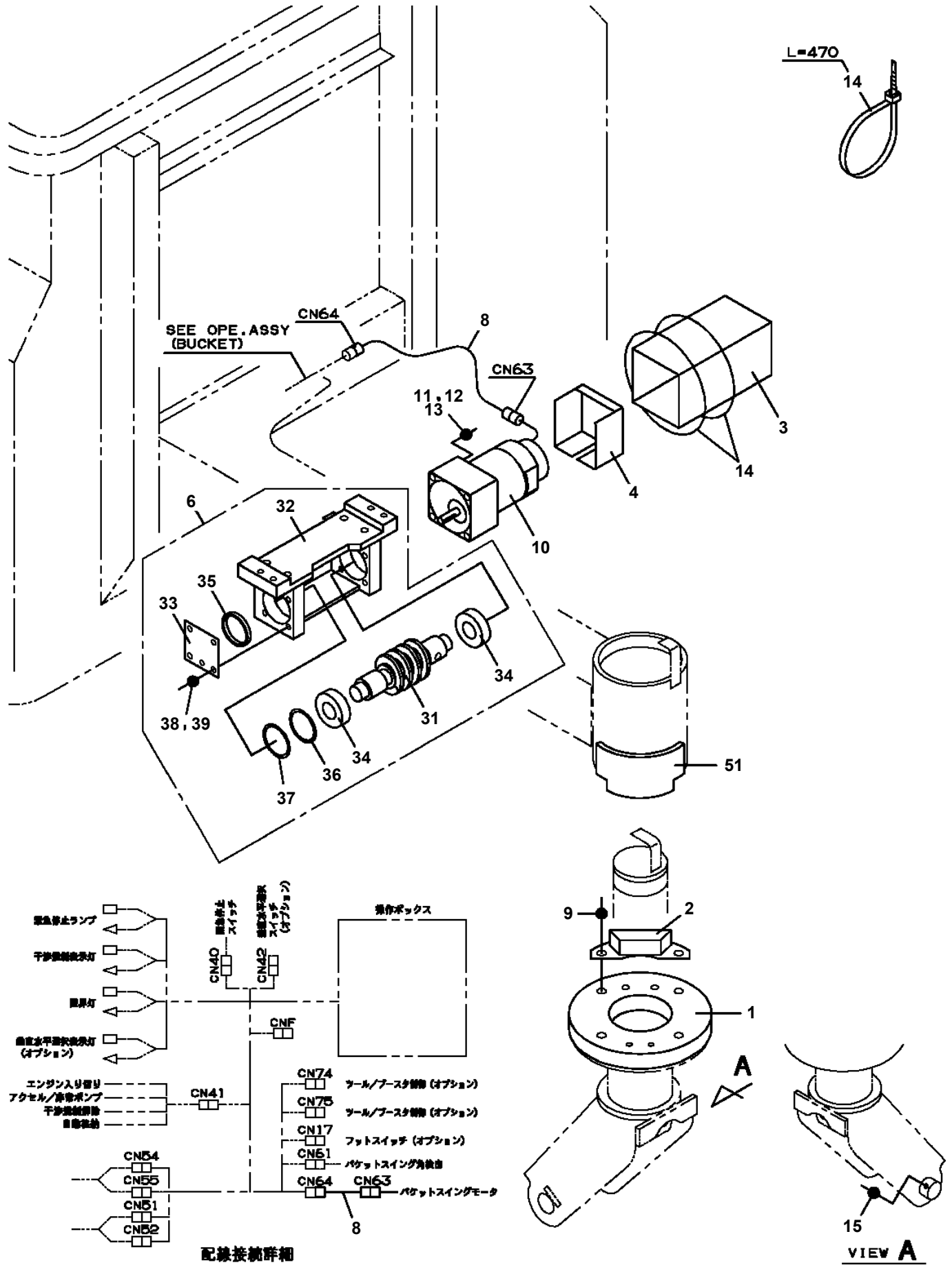
扉を開いた状態 (B仕様)



標準仕様

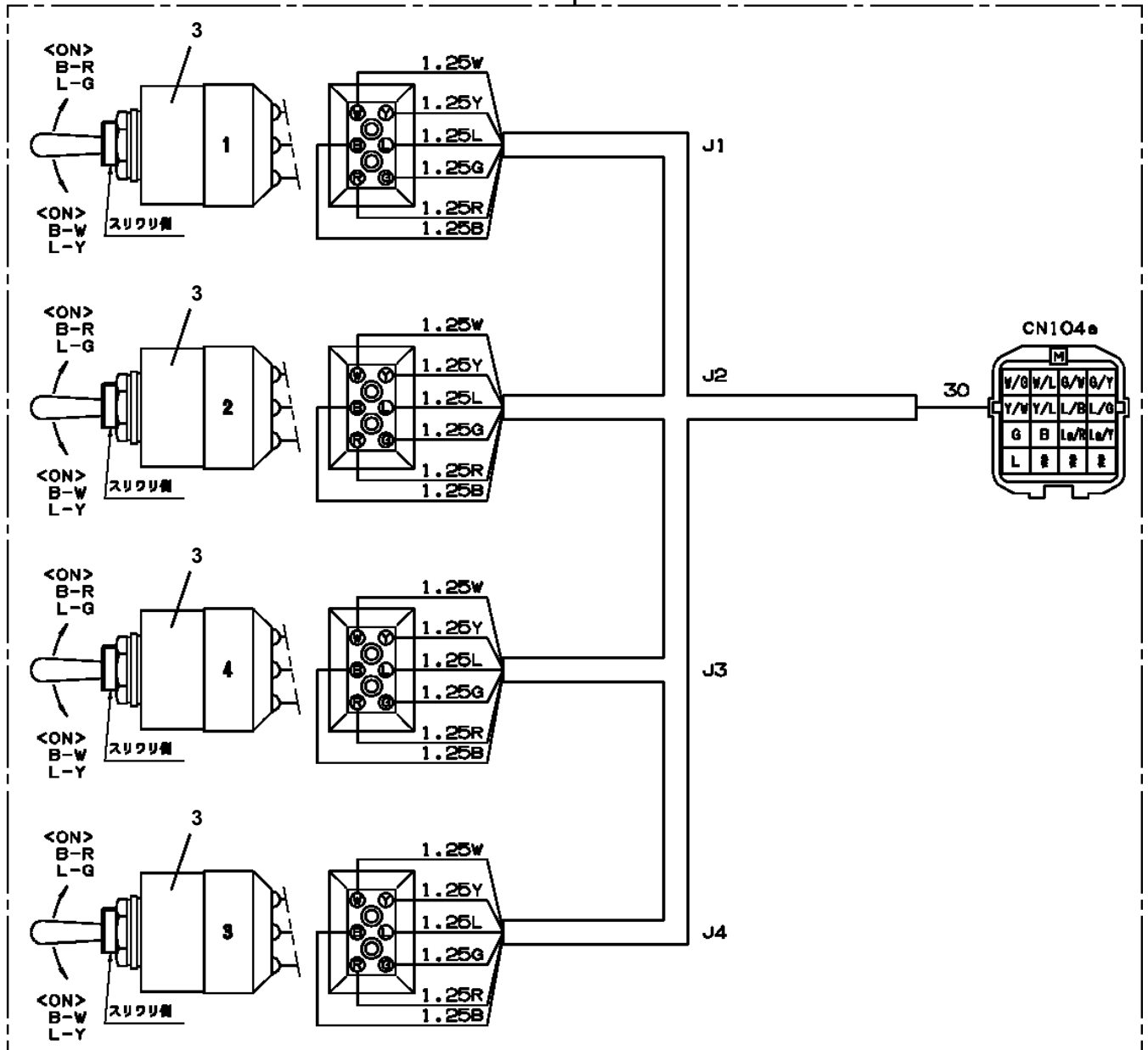


AT-100-4 42063434131 UPPER/LOWER, HINO SKG-XZU600X-TYMMC6
 PS5500014-00 SWING ASSY

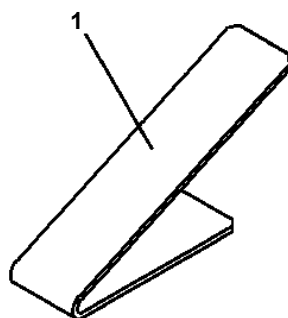


AT-100-4 42063434131 UPPER/LOWER,HINO SKG-XZU600X-TYMMC6
 PS5530176-00 SWITCH ASSY

10



**AT-100-4 42063434131 UPPER/LOWER,HINO SKG-XZU600X-TYMMC6
PS5550005-00 SUPPORT (7 DEGREES ANGLE METER MOUNTING)**



AT-100-4 42063434131 UPPER/LOWER,HINO SKG-XZU600X-TYMMC6

Pos No.	Parts No	Parts Name	Qty	Unit	Technical Data	Serial No (Start)	Serial No (End)	Rem
2	36742105010	VALVE,SOLENOID	1				HK1060	
	36742175010	VALVE,SOLENOID	1			HK1061		
3	36740995020	VALVE,RELIEF	1					
4	36740995030	VALVE,SOLENOID	4				HK1060	
	36742175020	VALVE,SOLENOID	4			HK1061		
5	36648435040	BOLT,HEXAGON SOCKET	4		M5X90			
6	36648435050	BOLT,HEXAGON SOCKET	16		M5X50			
9	36649725030	PLUG	2					
10	36649725040	O-RING	2					
11	36649725050	PLUG	1					
12	36649725060	O-RING	1					
100	36742100000	VALVE ASSY (JACK CONTROL)	1					

AT-100-4 42063434131 UPPER/LOWER,HINO SKG-XZU600X-TYMMC6

Pos No.	Parts No	Parts Name	Qty	Unit	Technical Data	Serial No (Start)	Serial No (End)	Remarks
1	42470343000	MAT (FOR BUCKET INNER)	1					

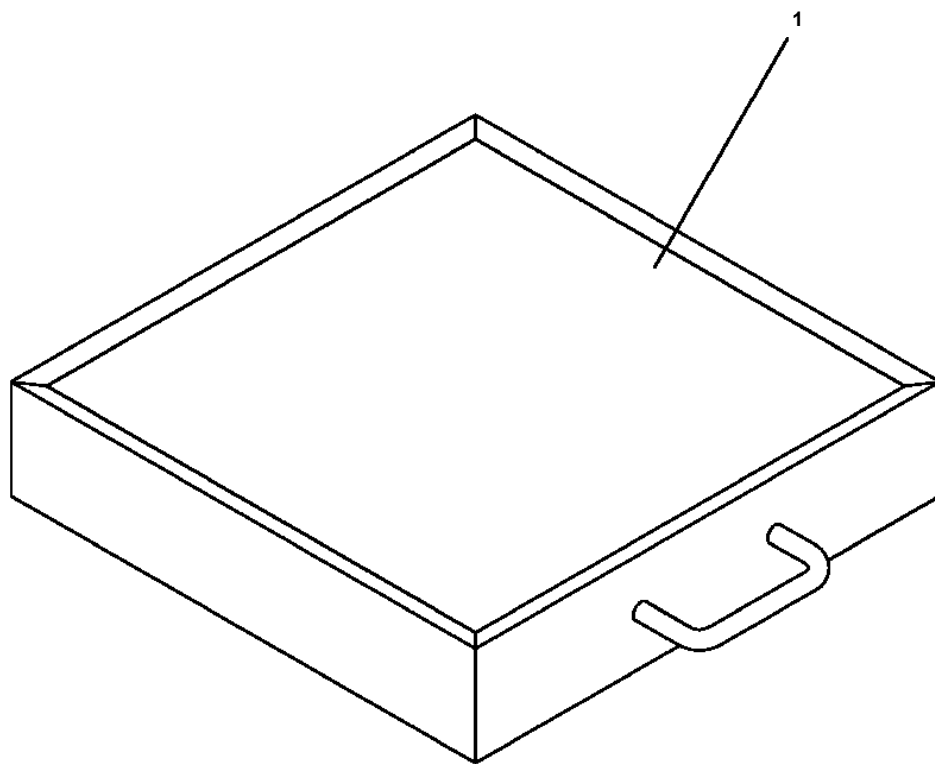
AT-100-4 42063434131 UPPER/LOWER,HINO SKG-XZU600X-TYMMC6

Pos No.	Parts No	Parts Name	Qty	Unit	Technical Data	Serial No (Start)	Serial No (End)
1	42460012530	WEDGE (STOPPER FOR TIRE/WAZUMI)	1				

AT-100-4 42063434131 UPPER/LOWER,HINO SKG-XZU600X-TYMMC6

Pos No.	Parts No	Parts Name	Qty	Unit	Technical Data	Serial No (Start)	Serial No (End)	Remarks	Pages
1	42504320100	SUPPORT	1						
15	42875250140	PLATE	1						

AT-100-4 42063434131 UPPER/LOWER,HINO SKG-XZU600X-TYMMC6
PX1270056-00 WOOD BLOCK (OPTION)



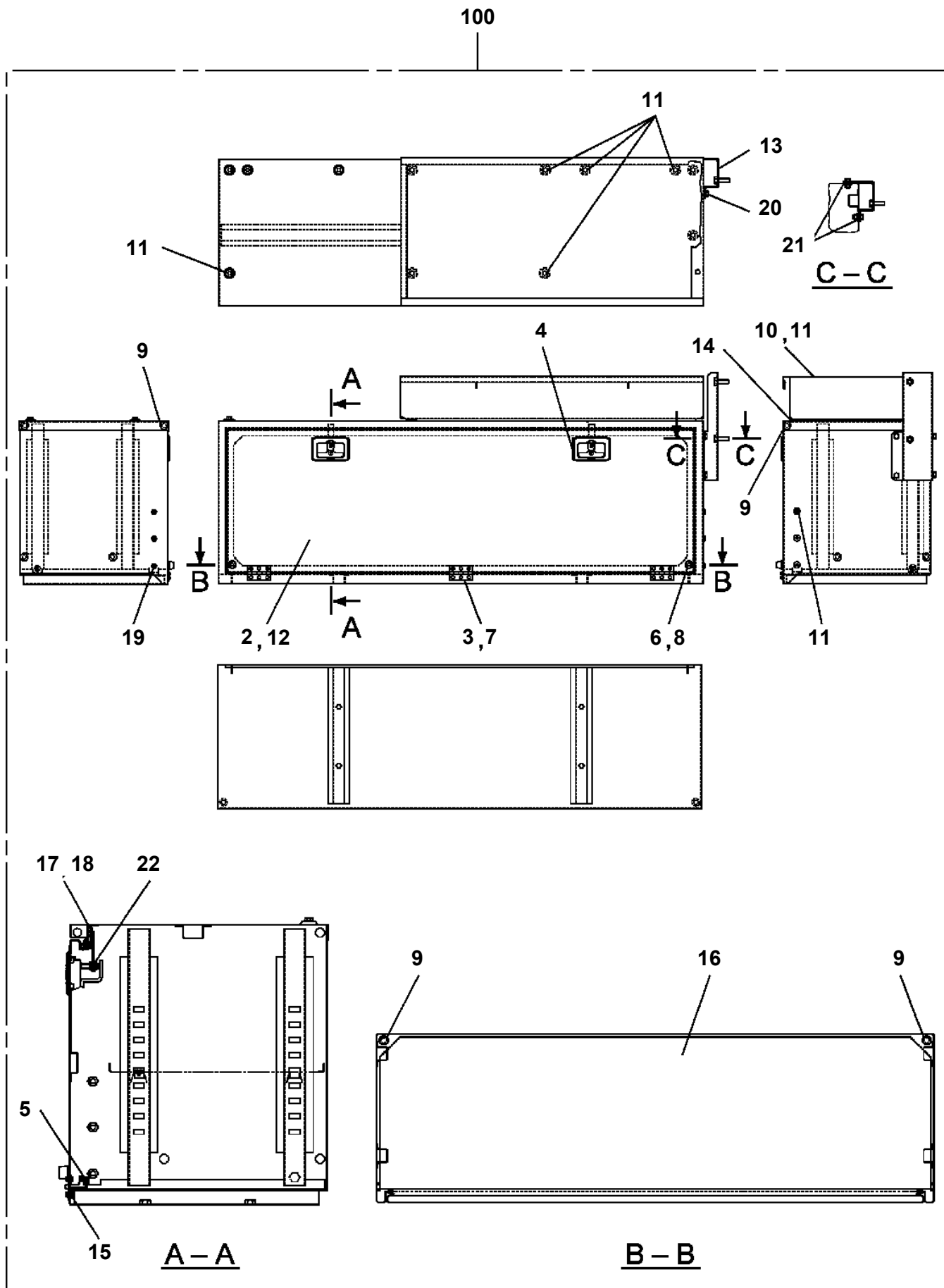
AT-100-4 42063434131 UPPER/LOWER,HINO SKG-XZU600X-TYMMC6

Pos No.	Parts No	Parts Name	Qty	Unit	Technical Data	Serial No (Start)	Serial No (End)	Remarks
1	42971581000	SUPPORT ASSY (LEFT)	1					
2	42971582000	SUPPORT ASSY (RIGHT)	1					
3	82401800080	PLUG (FOR M8)	2					
4	34394166510	PLATE (NON-SLIP)	1					
21	42971581100	SUPPORT (LEFT)	1					
22	42971581200	SUPPORT (LEFT)	1					
23	90172110020	BOLT,HEXAGON SOCKET	2		M10X20			
24	90201201000	NUT	2		M10			
25	90302041001	WASHER,SPRING	2		10			
26	90101208025	BOLT	2		M8X25			
27	90201200800	NUT	4		M8			
28	37000520150	PLATE	4					
41	42971582100	SUPPORT (RIGHT)	1					
42	42971582200	SUPPORT (RIGHT)	1					

AT-100-4 42063434131 UPPER/LOWER,HINO SKG-XZU600X-TYMMC6

Pos No.	Parts No	Parts Name	Qty	Unit	Technical Data	Serial No (Start)	Serial No (End)	Remarks	Pages
1	42836073002	BOX,TOOL	1						000424
2	42835711002	BOX,TOOL	1						000425
3	90101210025	BOLT	8		M10X25				
4	90302041001	WASHER,SPRING	10		10				
5	37000506590	PLATE	8		T=1.6				
6	42835710010	SUPPORT	1						
7	90101208020	BOLT	6		M8X20				
11	42835710100	SUPPORT	1						
14	90101210020	BOLT	2		M10X20				
15	90303071001	WASHER,PLAIN	2		10				
16	42836480010	SUPPORT	1						
17	90303400801	WASHER	6		M8X19				
31	42398701010	PLATE,CAUTION	2						

AT-100-4 42063434131 UPPER/LOWER, HINO SKG-XZU600X-TYMMC6
PX1351163-00 BOX, TOOL



AT-100-4 42063434131 UPPER/LOWER,HINO SKG-XZU600X-TYMMC6

Pos No.	Parts No	Parts Name	Qty	Unit	Technical Data	Serial No (Start)	Serial No (End)	Remarks	Pag
1	42971121102	FRAME	1						
2	42971121201	BOX	2						
3	42971121050	STOPPER	2						
4	82466188304	LOCK	2						
5	82460000500	CATCH	2						
6	80172804010	SCREW,MACHINE	8		M4X10				
7	90302510401	WASHER,SPRING	8		4				
8	90201500400	NUT	8		M4				
9	90101208018	BOLT	4		M8X18				
10	90302040801	WASHER,SPRING	4		8				
11	90303070801	WASHER,PLAIN	4		8				
12	90190206012	BOLT	8		M6X12				
13	90302510601	WASHER,SPRING (6)	8						
14	90303520601	WASHER,PLAIN	8		6				
15	42971121040	PLATE	8						
16	42971121030	STOPPER	2						
50	42971121002	BOX,TOOL	1						

AT-100-4 42063434131 UPPER/LOWER,HINO SKG-XZU600X-TYMMC6

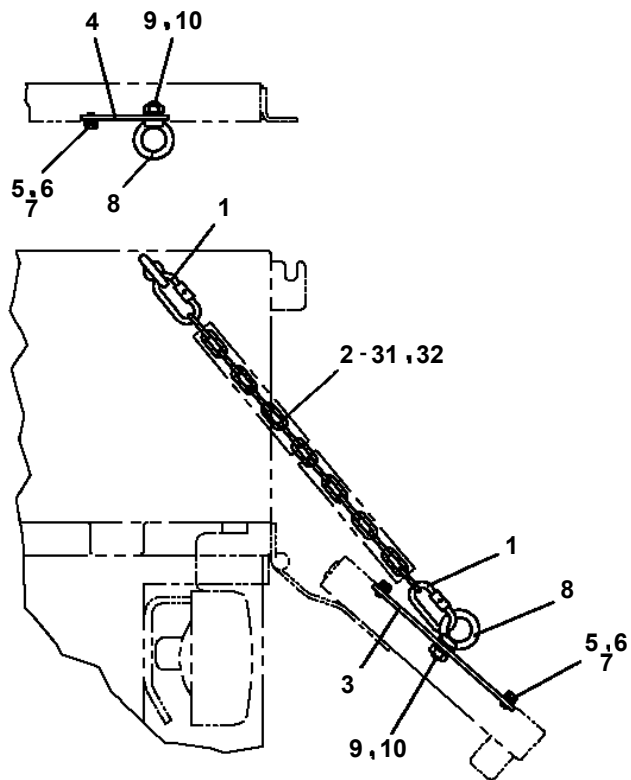
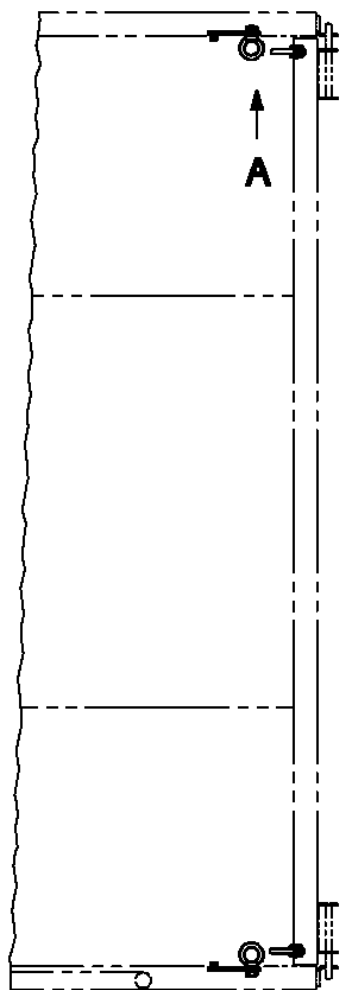
Pos No.	Parts No	Parts Name	Qty	Unit	Technical Data	Serial No (Start)	Serial No (End)	Remarks	Pages
1	42971121002	BOX,TOOL	1						000431
2	42971120011	PLATE	1						
3	90101208014	BOLT	2		M8X14				
4	90303070801	WASHER,PLAIN	2		8				
5	90302040801	WASHER,SPRING	2		8				
6	42943630070	PLATE,NAME	1						

AT-100-4 42063434131 UPPER/LOWER,HINO SKG-XZU600X-TYMMC6

Pos No.	Parts No	Parts Name	Qty	Unit	Technical Data	Serial No (Start)	Serial No (End)	Remarks	Pages
1	42736810100	SUPPORT	1						
2	37000510240	PLATE	4						
3	90101210020	BOLT	4		M10X20				
4	90302041001	WASHER,SPRING	4		10				
7	90280200600	NUT,FLANGE	1		M6				
8	90186206016	BOLT,FLANGE	1		M6X16				
9	82400000345	CHAIN (QTY=L)	2	M					

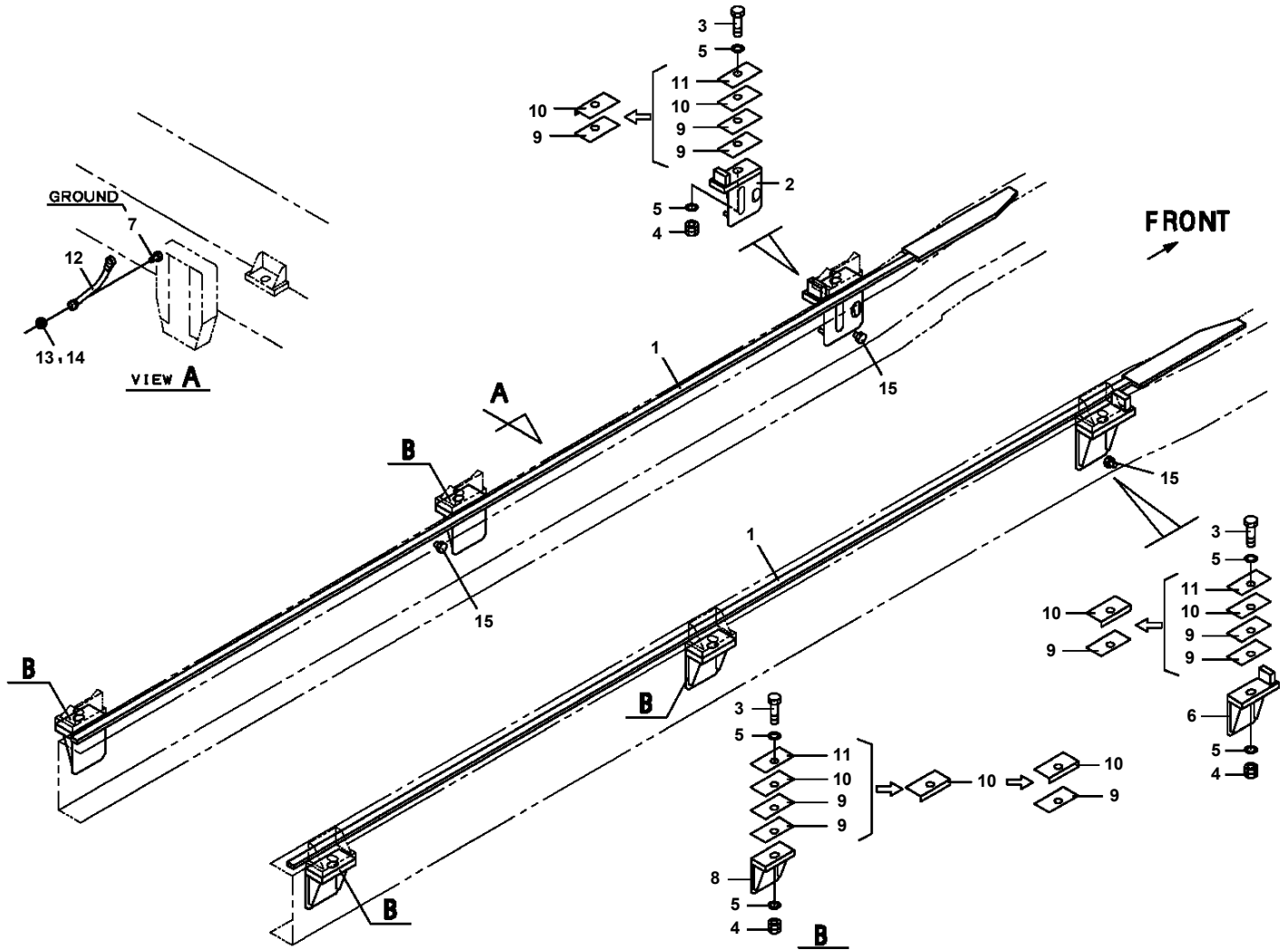
AT-100-4 42063434131 UPPER/LOWER, HINO SKG-XZU600X-TYMMC6
PX1940379-00 MOUNT (CHAIN FOR TRUCK BED)

FRONT ←

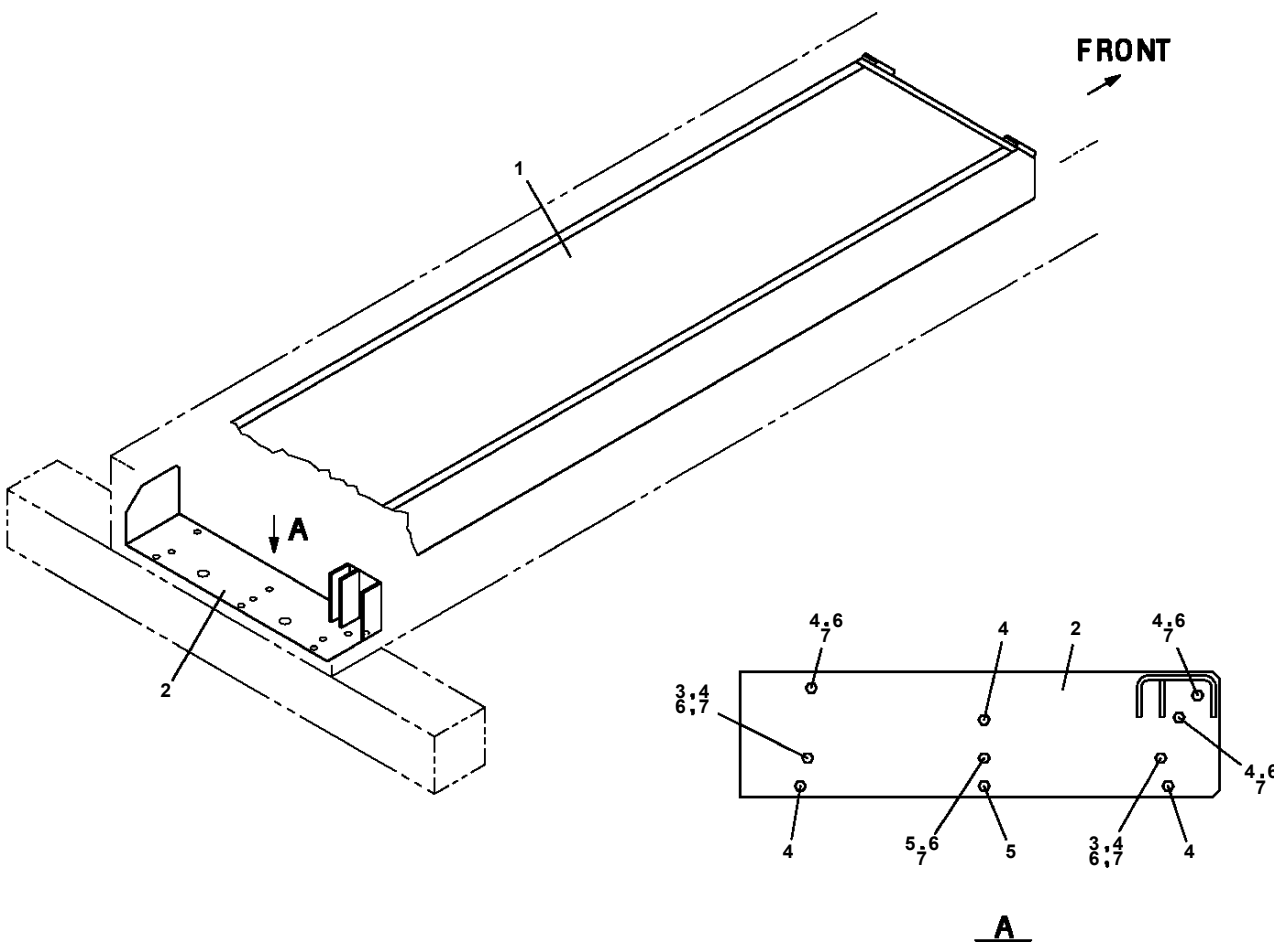


A
アオリを倒した場合

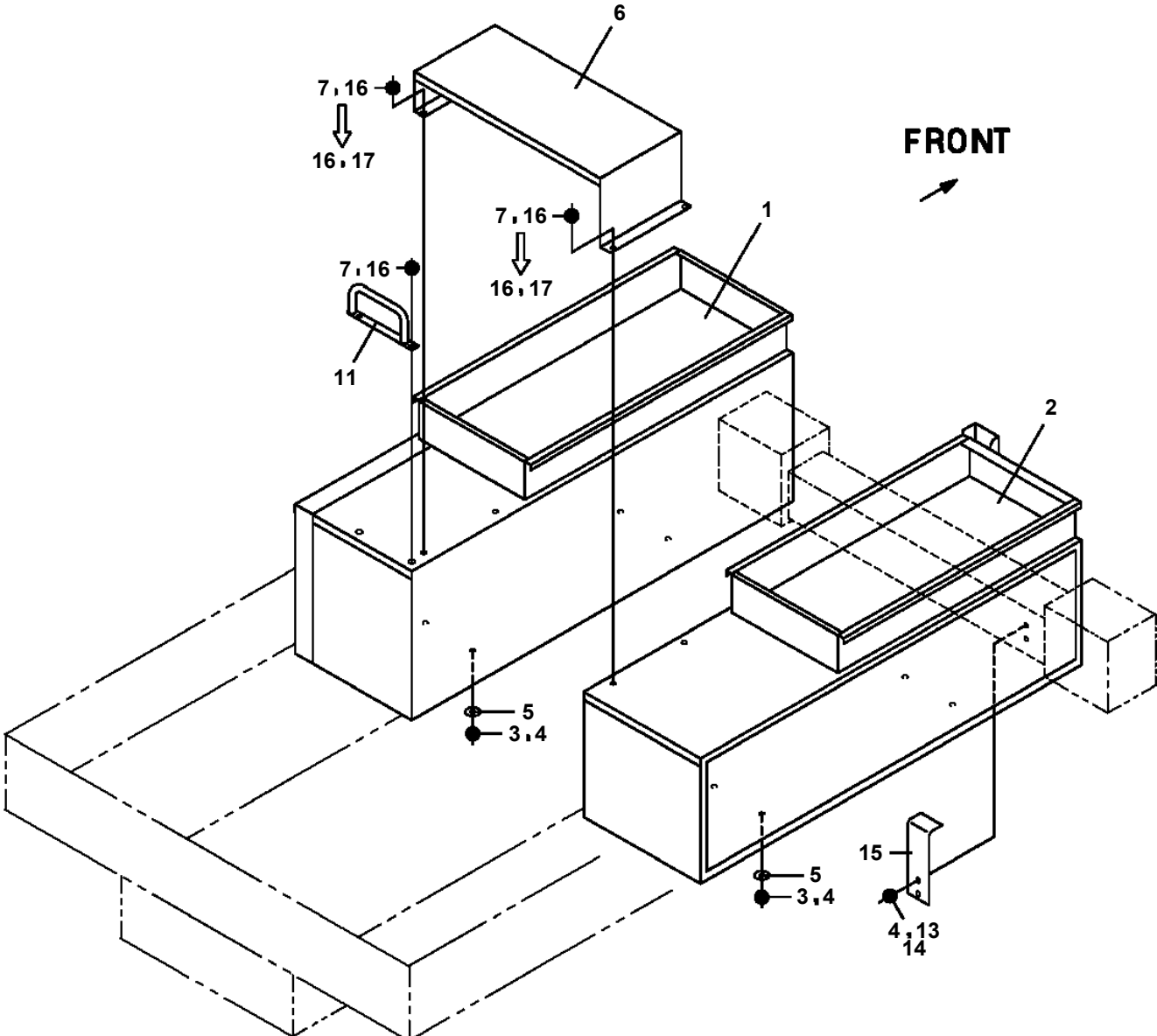
AT-100-4 42063434131 UPPER/LOWER,HINO SKG-XZU600X-TYMMC6
PX5360050-02 MOUNT ASSY,FRAME



AT-100-4 42063434131 UPPER/LOWER,HINO SKG-XZU600X-TYMMC6
PX5780018-00 MOUNT ASSY,TOOL BOX



AT-100-4 42063434131 UPPER/LOWER,HINO SKG-XZU600X-TYMMC6
PX5780034-00 MOUNT ASSY,TOOL BOX (LEFT SLIDE,RIGHT SINGLE,LOCK/2010)



CLICK HERE TO **DOWNLOAD** THE COMPLETE MANUAL

- Thank you very much for reading the preview of the manual.
- You can download the complete manual from: www.heydownloads.com by clicking the link below



- Please note: If there is no response to CLICKING the link, please download this PDF first and then click on it.

CLICK HERE TO **DOWNLOAD** THE COMPLETE MANUAL