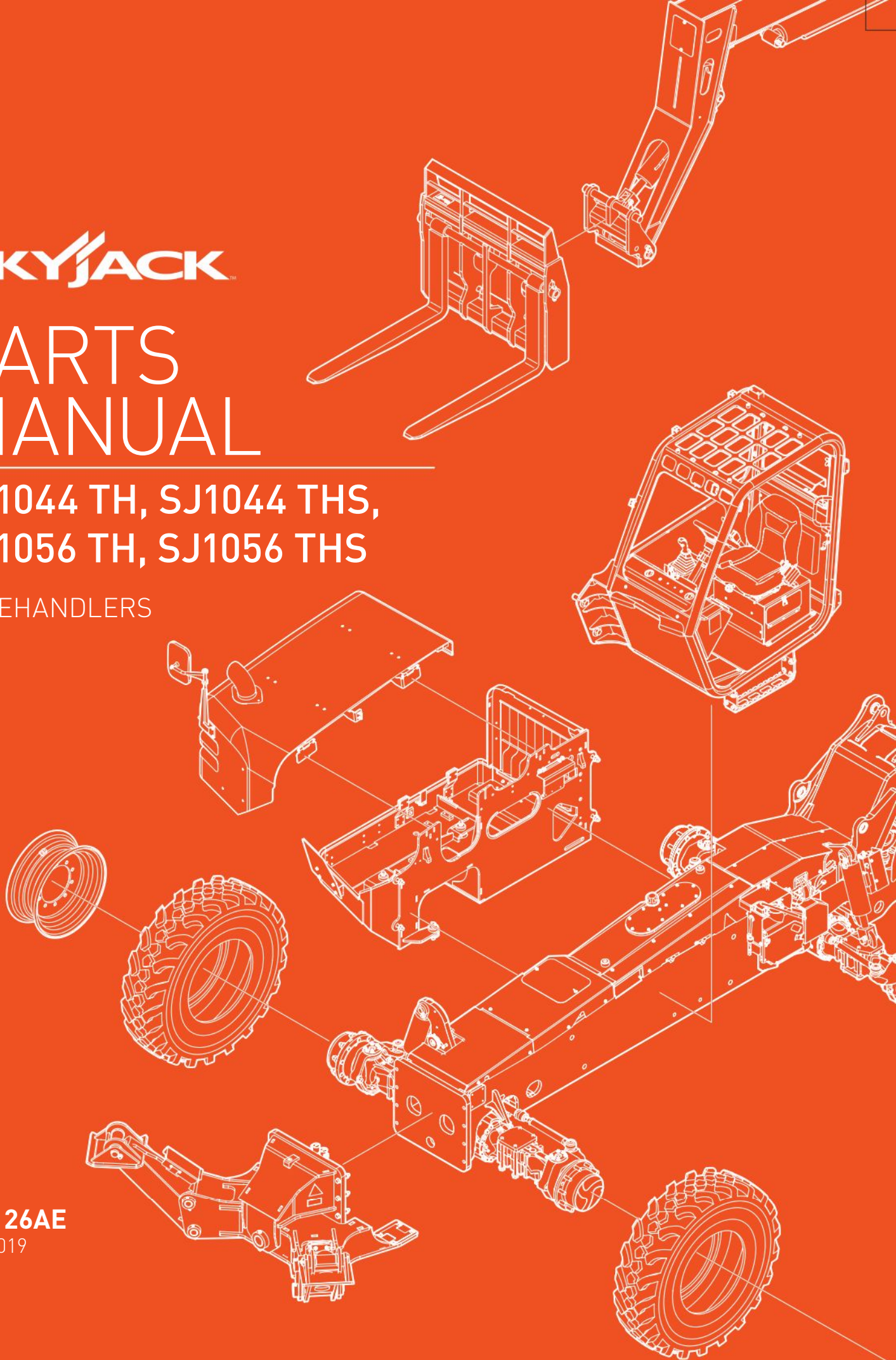


**SKYJACK**

# PARTS MANUAL

**SJ1044 TH, SJ1044 THS,  
SJ1056 TH, SJ1056 THS**

TELEHANDLERS



**190126AE**

July 2019  
ANSI

CLICK HERE TO **DOWNLOAD** THE COMPLETE MANUAL

- Thank you very much for reading the preview of the manual.
- You can download the complete manual from: [www.heydownloads.com](http://www.heydownloads.com) by clicking the link below



- Please note: If there is no response to CLICKING the link, please download this PDF first and then click on it.

CLICK HERE TO **DOWNLOAD** THE COMPLETE MANUAL

## Recommended Service Parts

Description	Year 1 Qty	Year 2 Qty	Year 3 Qty	Skyjack Part No.
<b>Boom SJ1044</b>				
Wear Pad	0	2	2	9-191266
Wear Pad	2	2	2	9-191267
Wear Pad	6	6	6	9-191268
Wear Pad	0	2	2	9-191269
<b>Boom SJ1056</b>				
Wear Pad	2	2	2	9-191265
Wear Pad	0	2	4	9-191266
Wear Pad	8	8	8	9-191267
Wear Pad	2	4	4	9-191268
Wear Pad	0	2	2	9-191269
Wear Pad	2	2	2	9-191270
Wear Pad	0	1	1	9-190915

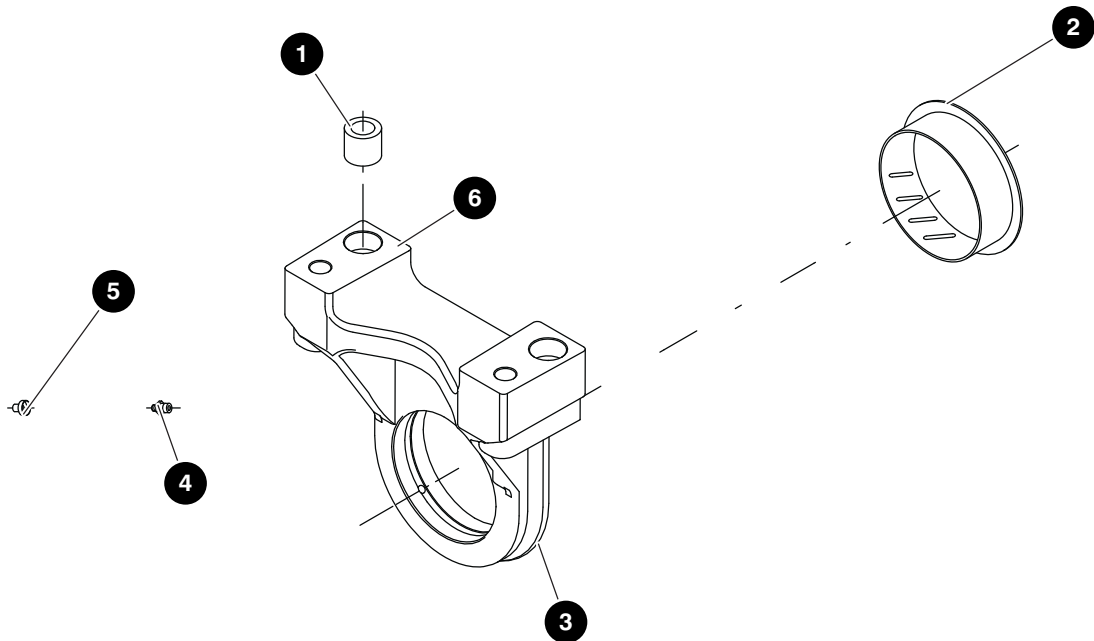
## 1.4 Engine Cowling Assembly 107 HP

Index No.	Skyjack Part No.	Qty.	Description
-	9-190664	1	COWLING SUBGROUP, TH
-	9-190663	1	• COWLING, ASSEMBLY TH
1	9-190482	1	• • COWLING, Shell TH
2	9-190647	1	• • WELDMENT, Cowling support
3	9-190607	2	• • PLATE, Perforated
4	9-190613	1	• • PLATE, Cowling guard
5	9-190608	4	• • PLATE, Anti turn
6	9-127067	23	• • WASHER, Flat 3/8" style BB
7	9-101297	12	• • BOLT, Hex head 3/8"-16 X 1-1/4" Gr. 5
8	9-104606	13	• • NUT, Lock with nylon insert 3/8"-16 Gr. 5
9	9-148368	135"	• • SEAL, Foam #1441 (2"X2")
10	9-190615	1	• WELDMENT, Hinge cowling LH
11	9-190927	1	• WELDMENT, Hinge cowling RH
12	9-190612	1	• STACK WELDMENT, Exhaust
13	9-190926	1	• BRACKET, Gas spring mounting
14	9-190609	6	• NUT, 1/2" T-SLOT 3/8"-16
15	9-190483	60"	• SEAL, 1/4" EDGE X 5/8" BULB
16	9-191892	2	• WASHER, Plastic 3/8" X 1-1/4"
17	9-191373	1	• PLATE, Latch
18	9-103996	6	• WASHER, 11/32" ID X 3/4" OD X 3/32" zinc
19	9-103984	6	• NUT, Lock with nylon insert 5/16"-18 Gr. 5
20	9-138736	2	• BOLT, Hex head 3/8"-16 X 6" Gr. 5
21	9-190925	2	• GAS SPRING, TH cowling
22	9-138836	4	• STUD - BALL
23	9-103870	10	• BOLT, Hex head 3/8"-16 X 1-1/2" Gr. 5
24	9-103999	6	• WASHER, Lock 3/8"
25	9-125959	7	• WASHER, Flat 3/8" SAE hard
26	9-106049	2	• BOLT, Carriage bolt 5/16"-18 X 1-1/4" Gr. 5
27	9-103472	9	• WASHER, 13/32" ID X 13/16" OD X 1/16" zinc
28	9-931379	1	• ASSEMBLY, Mirror
29	9-191890	1	• WELDMENT, Mirror Rotation
30	9-191451	1	• PLATE, Backing
31	9-191889	1	• WELDMENT, Mirror base
32	9-117691	2	• SET SCREW, 1/4"-20 X 1/4"
33	9-163510	1	• BOLT, Hex head 3/8"-16 X 5" Gr. 5

## 2.1 Front Axle Assembly

Index No.	Skyjack Part No.	Qty.	Description
-	9-191107	1	AXLE, FRONT SUBGROUP VR 1044/56
1	9-190025	1	• AXLE, 223, front
2	9-191084	1	• WELDMENT, 1044/1056 Frame tilt mount
3	9-702194	8	• WASHER, Flat 3/4" Hard high zinc
4	9-165200	8	• BOLT, Hex head 3/4" - 10 x 10" grade 8
5	9-191831	1	• CYLINDER, Frame level 115B
6	9-191866	2	• PIN, 1-3/4" DIA x 4-3/4" long
7	9-920767	1	• BEARING, Spherical
8	9-191232	2	• PIN, Anchor
9	9-169942	2	• BOLT, Hex head 1/2"-13 x 1-1/4" grade 8 zinc
10	9-104379	2	• WASHER, Flat 1/2" Hard
11	9-114578	2	• FITTING, 90° (06 JICM - 06 ORBM)
12	9-190867	4	• BOLT, Hex head M24-3 x 170 grade 10.9 zinc
13	9-213845	8	• WASHER, Flat M24 hard
14	9-190866	4	• NUT, Crownlock M24-3 grade 10.9 zinc
15	9-190364	4	• FITTING, Straight (06JICM)14mm
16	9-155022	2	• FITTING, Tee (06 JICM - 06JICM - 06JICF)
17	9-102027	2	• FITTING, Grease fitting, 1/8" NPT straight
18	9-191839	1	• PLATE, Hard stop base
19	9-114583	2	• FITTING, 90° (08 JICM - 08ORBM)
20	9-132565	2	• CAP, Grease GC5 (Not Shown)
21	(Ref.)	-	Oil, Hydraulic <i>(For components, refer to Section 13.1)</i>

## 2.6 Front Axle - Trunion



M190025-5

Index No.	Skyjack Part No.	Qty.	Description
-	9-197136	1	TRUNION
1	9-197178	4	• BUSHING
2	9-406991	2	• BUSHING, Axle mount
3	9-168302	2	• SUPPORT
4	9-168273	2	• FITTING, GREASE
5	9-141006	2	• PLUG
6	9-168304	2	• SUPPORT

## 2.10 Rear Axle - Brakes

Index No.	Skyjack Part No.	Qty.	Description
-	9-196778	1	BRAKES
1	9-170850	8	• DISC
2	9-196657	1	• ADJUSTING BOLT
3	9-168290	6	• SPRING
4	9-404210	10	• INTERMEDIATE BRAKE DISC, Park brake
5	9-141086	2	• BOLT, Bleeding
6	9-141006	2	• PLUG
7	9-196660	2	• BOLT, Pilot
8	9-196779	2	• KIT, Brakes piston
9	9-141098	6	• • SPRING
10	9-196658	2	• • O - RING
11	9-196659	2	• • O - RING
12	9-168299	2	• WASHER, Seal
13	9-170849	6	• BOLT, Adjusting

# Section 3 – Engine and Transmission

- *Engine Tray Installation*
- *74 HP Engine and Powershift Transmission Assembly*
- *74 HP Engine and CVT Transmission Assembly*
- *107 HP Engine and Powershift Transmission Assembly*
- *107 HP Engine and CVT Transmission Assembly*
- *Engine Assembly*
- *Powershift Transmission Assembly - Housing & Case Group*
- *Continuously Variable Transmission (CVT) Assembly*
- *Fuel Lines Assembly*
- *Air Intake System Installation*
- *Exhaust Tube Installation*
- *Exhaust System Assembly 107HP*
- *DEF Lines*
- *Cooling Package Style A for 74 HP Engine*
- *Cooling Package Style A for 74HP Engine with CVT*
- *Cooling Package Style A for 107 HP Engine*
- *CVT with Cooling Package Assembly Style A for 107 HP*
- *Cooling Package Style A- Internal Breakdown 3.6L*
- *Cooling Package Style B*
- *Cooling Package Style B - Internal Breakdown*
- *Powershift Transmission Hydraulic Pump*
- *CVT Hydraulic Pump*

### 3.5 107 HP Engine and CVT Transmission Assembly

Index No.	Skyjack Part No.	Qty.	Description
-	9-216565	1	ENGINE SUBGROUP, DEUTZ 3.6L 107HP-CVT
1	(Ref)	1	<ul style="list-style-type: none"> <li>ENGINE, DEUTZ TCD3.6 T4F 107HP</li> </ul> <i>(For components, refer to Section 3.6)</i>
2	190715	1	<ul style="list-style-type: none"> <li>MOUNT, 3.6L ENGINE - OUTER</li> </ul>
3	190718	1	<ul style="list-style-type: none"> <li>MOUNT, 3.6L ENGINE - INNER</li> </ul>
4	171177	2	<ul style="list-style-type: none"> <li>CLAMP - LOOP VINYL COATED - 2"</li> </ul>
5	194922	4	<ul style="list-style-type: none"> <li>ROLLED SPACER 3/8"X1-1/2"</li> </ul>
6	108675	7	<ul style="list-style-type: none"> <li>WIRE-PROTECTOR 1/2" DIA</li> </ul>
7	933658	11	<ul style="list-style-type: none"> <li>BOLT, HXHD M10 X 1.5 X 30MM GR 10.9 YE</li> </ul>
8	933630	8	<ul style="list-style-type: none"> <li>WASHER, STRUCTURAL M12 HARD</li> </ul>
9	933659	8	<ul style="list-style-type: none"> <li>BOLT, HEX HD M12-1.75x30MM CL 10.9</li> </ul>
10	116995	10	<ul style="list-style-type: none"> <li>WASHER LOCK M12_PLATED DIN 127B</li> </ul>
11	152324	2	<ul style="list-style-type: none"> <li>BOLT, HXHD M12 X 1.75 X 25MM GR 8.8 ZP</li> </ul>
12	103995	4	<ul style="list-style-type: none"> <li>WASHER, FLAT 0.250</li> </ul>
13	104000	4	<ul style="list-style-type: none"> <li>WASHER, LOCK 0.25</li> </ul>
14	127284	4	<ul style="list-style-type: none"> <li>BOLT, HXHD 0.25-20 X 2.500 GR5</li> </ul>
15	933833	11	<ul style="list-style-type: none"> <li>WASHER, FLAT M10-OD 20.0</li> </ul>
16	130884	11	<ul style="list-style-type: none"> <li>WASHER LOCK M10-PLATED DIN 127B</li> </ul>
-	216573	1	<ul style="list-style-type: none"> <li>TRANSMISSION ASSY, CVT</li> </ul>
17	(Ref.)	1	<ul style="list-style-type: none"> <li>CVT PURCHASED ASM</li> </ul> <i>(For components, refer to Section 3.15)</i>
18	216741	1	<ul style="list-style-type: none"> <li>BRACKET, TRANSMISSION MOUNT</li> </ul>
19	216745	1	<ul style="list-style-type: none"> <li>BRACKET, TRANSMISSION MOUNT</li> </ul>
20	933817	7	<ul style="list-style-type: none"> <li>WASHER, FLAT M12 CL 200 Y</li> </ul>
21	116995	7	<ul style="list-style-type: none"> <li>WASHER LOCK M12_PLATED DIN 127B</li> </ul>
22	149419	7	<ul style="list-style-type: none"> <li>BOLT, HXHD M12 X 1.75 X 35MM GR 8.8 ZP</li> </ul>
23	132497	1	<ul style="list-style-type: none"> <li>WASHER LOCK M10-PLATED DIN 127B</li> </ul>
24	191757	11	<ul style="list-style-type: none"> <li>BOLT, SKT HEAD M10-1.50x30</li> </ul>
25	933833	11	<ul style="list-style-type: none"> <li>WASHER, FLAT M10-OD 20.0</li> </ul>
-	220127	1	<ul style="list-style-type: none"> <li>ASSEMBLY, CVT TCU MOUNTING-10K/12K</li> </ul>
26	152200	4	<ul style="list-style-type: none"> <li>WASHER, FLAT 0.375 USS</li> </ul>
27	103596	2	<ul style="list-style-type: none"> <li>BOLT-HEX HD/ZINC (.38-16 X 2.00 / GR5)</li> </ul>
28	104606	2	<ul style="list-style-type: none"> <li>NUT, LOCK 0.375-16 GR5 - NYL</li> </ul>
-	221259	1	<ul style="list-style-type: none"> <li>SUB ASSY - CVT TCU MOUNTING</li> </ul>
29	221258	1	<ul style="list-style-type: none"> <li>PLATE, TCU MOUNTING</li> </ul>
30	800352	4	<ul style="list-style-type: none"> <li>BOLT, HEX HEAD M5 X 0.8 X 16 MM LG</li> </ul>
31	104185	4	<ul style="list-style-type: none"> <li>WASHER, LOCK #10</li> </ul>
32	104694	4	<ul style="list-style-type: none"> <li>Washer Flat #10</li> </ul>

### 3.9 Transmission - Drive Plate, Torque Converter & Pump Group

Index No.	Skyjack Part No.	Qty.	Description
A	9-190024	1	ASSEMBLY, TRANSMISSION VDT 12000
B	9-190023	1	ASSEMBLY, TRANSMISSION VDT 12000
1	9-196866	1	• KIT, Drive plate
2	9-406861	1	• • RING, Backing
3	9-196868	6	• • CAPSCREW
4	9-407780	6	• • WASHER, Lock
5	9-196704	1	• ASSEMBLY, Stator support
6	9-196705	1	• • BUSHING
7	9-196706	1	• • BEARING
8	9-406856	1	• RING, Stator support piston
9	9-406858	1	• EXPANDER, Stator support piston ring
10	9-406853	2	• SNAP RING, Stator support
11	9-406870	1	• SEAL
12	9-196711	1	• ASSEMBLY, Torque converter - A
	9-197177	1	• ASSEMBLY, Torque converter - B
13	9-406587	1	• PLUG
14	9-408324	1	• O RING
15	9-406847	1	• SNAP RING
16	9-196714	1	• GEAR, Impeller hub
17	9-406855	2	• SNAP RING
18	9-406831	1	• WASHER
19	9-406593	1	• BEARING
20	9-196718	1	• RING-OIL DISTRIBUTOR
21	9-196742	1	• ASSEMBLY, Charge pump
22	9-196743	1	• ASSEMBLY, Hydraulic spin filter
23	9-196744	1	• ASSEMBLY, Ball check valve
24	9-196745	1	• • BALL
25	9-196746	1	• • SPRING, Check valve
26	9-196747	1	• • PIN, Check valve
27	9-406923	1	• • O RING
28	9-406854	2	• GASKET, Pump & adaptor
29	9-196749	4	• SCREW
30	9-196750	1	• STUD
			Parts list continued in following page

### 3.12 Transmission Assembly - Output Shaft & Control Group

Index No.	Skyjack Part No.	Qty.	Description
1	9-196809	1	• SHAFT, Output
2	9-406614	1	• BALL BEARING 210S
3	9-196811	1	• BEARING
4	9-408754	2	• RING, Snap
5	9-408020	1	• SNAP RING
6	9-196812	1	• PLUG-END
7	9-196813	1	• COUPLING, Drive
8	9-196800	2	• SNAP RING, External
9	9-407683	4	• SOLENOID, Drop in w/ deutsch connector 12V
10	9-196842	4	• • O-RING, 21.5x1.5 mm viton-
11	9-196843	4	• • O-RING, 15.1x1.60 mm viton
12	9-196844	4	• • O-RING, 14.1x1.60 mm viton
13	9-196845	4	• • O-RING, 12.1x1.60 mm viton
14	9-196846	1	• PLUG, Solenoid bore
15	9-196847	1	• • O-RING, 18.0x 2.20 mm viton
16	9-196843	1	• • O-RING, 15.1x1.60 mm viton
17	9-196845	1	• • O-RING, 12.1x1.60 mm viton
18	9-196848	6	• CLAMP
19	9-196849	12	• SCREW, With integrated washer (M4X10 class 10.9)
20	9-196851	1	• HOUSING, Modulation valve
21	9-196852	1	• O-RING
22	9-196853	1	• PIN-STOP
23	9-196854	1	• SPRING, Inner
24	9-196855	1	• SPRING, Middle
25	9-196856	1	• SPRING, Outer
26	9-196857	1	• SPOOL, Accumulator
27	9-196858	1	• RETAINER, Spring
28	9-196859	1	• SPACER, Spring
29	9-196860	1	• SPRING, Modulation valve
30	9-196861	1	• SPOOL, Regulator
31	9-196862	1	• SLEEVE, Modulation valve
32	9-408318	1	• O-RING, Sleeve
33	9-196863	1	• PIN, Lower
34	9-196864	1	• PIN, Upper

### 3.17 CVT Clutch

Index No.	Skyjack Part No.	Qty.	Description
-	9-222704	1	CLUTCH
1	9-222628	1	• JMFT - CLUTCH
2	9-222671	1	• Snap Ring Int EH-52mm
3	9-222581	1	• Needle Bearing K45x52x18H
4	9-222582	1	• Needle Bearing K22x26x17
5	9-222669	1	• Snap Ring Int 26mm
6	9-222508	2	• SEAL RING
-	9-222705	1	CLUTCH MANIFOLD
7	9-222706	1	• Clutch Manifold Beam
8	9-222678	4	• Rivet Plug LK series 8mm KVT LK 950-080
9	9-222679	2	• Rivet Plug LK series 12mm (KVT LK 950-120)
10	9-222592	1	• O-RING 4.000 X 4.125 X 0.0625 (#045)
11	9-222591	2	• O-RING AS568 #111
12	9-222606	1	• O-RING AS568 #017
13	9-222707	1	• SET SCREW MODIFICATION
14	9-222626	5	• PISTON-RING_40.0X2.0X1.45.1

### 3.22 CVT EB2 Gear & E3 Shaft Assemblies

Index No.	Skyjack Part No.	Qty.	Description
-	9-222737	1	EB2 GEAR ASSEMBLY
1	9-222739	1	• E2b Gear LH
2	9-222672	1	• Retaining Ring Spiral (INT) 80mm
3	9-222586	2	• Bearing Cylindrical Roller 35mm x 80mm x 21
4	9-222552	2	• Shim Din988 35x45x1
-	9-222740	1	E3 SHAFT ASSEMBLY
5	9-222742	1	• OUTPUT SHAFT
6	9-222743	1	• BUSHING
7	9-222741	1	• E3 Gear RH
8	9-222575	2	• Bearing 6211
9	9-222559	2	• SHIM_DIN988_80x100x0.1-ST
10	9-222558	1	• SHIM_DIN988_80x100x0.2-ST
11	9-222557	1	• SHIM_DIN988_80x100x0.5-ST
12	9-222745	2	• HALF ROUND YOKE 1480 SPL24
13	9-222618	2	• O-ring 45x5
14	9-222744	2	• WASHER
15	9-222566	2	• Locking nut M45x1.5
16	9-222654	4	• Pin Dowel - M6 X 20MM

### 3.26 CVT Front Casing

Index No.	Skyjack Part No.	Qty.	Description
-	9-222769	1	FRONT CASING ASSEMBLY
1	9-222775	1	• CASING, Front plate
2	9-222764	1	• Insert 18mm chamfer
3	9-222623	1	• Seal Ring Double Lips
4	9-222624	1	• Seal ring double lips
5	9-222770	1	• Plate Lubrication Rear
6	9-222529	6	• FHCS M6x1x12 (91263A837)
7	9-222608	3	• O-RING AS568 #11
8	9-222772	2	• Nozzle 1/8 NPT Modification
9	9-222773	2	• LUBE INSERT
10	9-222530	2	• LHCS M8x1.25X10 188-SS
11	9-222747	1	• Input Shaft ASM
12	9-222746	2	• P2 Gear ASM
13	9-222653	4	• Pin Dowel M6 X 12mm
14	9-222771	1	• Plate Lubrication Front
15	9-222513	22	• SHCS M6 x 1.0 x 10.0 ZC-PL
16	9-222544	43	• Lock Washer Helical Spring, M10 x 18.1mm x 2.05mm
17	9-222534	24	• Bolt Hex Head
18	9-222532	18	• M10 x 1.5 x 55.0 (CLASS 8.8) ZC-PL
19	9-222533	1	• M10 x 1.5 x 80.0 (C:ASS 8.8) ZC-PL
20	9-222640	3	• Fitting Accessories (Hex Socket Plug)
21	9-222774	1	• MAGNETIC FILTER ROD
22	9-222650	1	• Oil drain plug

### 3.31 CVT Cylinder Synchro

Index No.	Skyjack Part No.	Qty.	Description
-	9-222816	1	CYLINDER SYNCHRO ASSEMBLY
1	9-222507	1	• Mid support plate reworked
2	9-222603	2	• O-RING AS568 #11
3	9-222820	2	• PISTON OUTER
4	9-222663	1	• Retaining ring int 50mm bore
5	9-222602	2	• O-RING AS568 #11
6	9-222598	2	• O-ring AS568 Dash #109 Nitrile
7	9-222818	1	• SYNCHRO SHAFT
8	9-222675	2	• Retaining ring ext 22mm shaft
9	9-222604	2	• O-RING AS568 #11
10	9-222819	2	• PISTON INNER
11	9-222605	2	• O-RING AS568 #11
12	9-222590	1	• Compression spring OD 1,312 ID 1,050 FL 1,91 (12127)
13	9-222601	1	• O-RING AS568 #11
14	9-222822	1	• SEAL CAP
15	9-222662	1	• Retaining ring int 55mm bore
16	9-222817	2	• Stopper Disk
17	9-222821	1	• Stopper Plate
18	9-222521	3	• SHCS M10 x 20 mm
19	9-222510	1	• SHLDR_Screw PRECISION (HEX SOCKET) 12mm x 30mm x M10 BL-OX
20	9-222551	1	• Spherical Washers M12 x 24 mm x 8 mm
21	9-222540	1	• M10 x 20mm x 1.8-2.2mm
22	9-222564	1	• Nut Hex Full M10 x 1.5 x 8mm ZC-PL
23	9-222523	4	• M10 x 1.5 x 30.0 (CLASS 12.9) BL-OX
24	9-222823	1	• FORK
25	9-222825	2	• SHIFT FORK SLIDER
26	9-222824	1	• SHIFT FORK LOCATOR
28	9-222657	1	• Spring Pin Steel, M8 Diameter, 45mm Length
29	9-222517	1	• SHCS M6 x 1 x 55 ZC-PL (91502A175)
30	9-222826	1	• STIFFENER BRACKET
31	9-222541	1	• Washer Plain M12 x 24mm x 2.7mm
32	9-222525	1	• SHCS M12x1.75 X 22.0

### 3.36 Exhaust Tube Installation

Index No.	Skyjack Part No.	Qty.	Description
-	9-190700	1	ASSEMBLY, EXHAUST 3.6L 74HP
1	9-190793	1	• BRACKET, Tailpipe mount
2	9-928271	1	• CLAMP 3" Exhaust
3	9-191994	1	• PIPE, Tail Deutz 3.6L 74HP
4	9-933832	2	• WASHER, Flat M8 - OD 16
5	9-116218	2	• WASHER, Lock M8-Plated DIN 127B
6	9-133174	2	• BOLT, Hex head M8 X 1-1/4" x 20mm grade 8 Zinc plated
7	(Ref).	1	CATALYTIC CONVERTER, Diesel Oxidation <i>(For components, refer to Section 3.6)</i>
8	9-190481	1	CLAMP, V-band 3"

### 3.40 Cooling Package Style A for 74HP Engine with CVT

Index No.	Skyjack Part No.	Qty.	Description
-	9-216777	1	ASSEMBLY, COOLER SUBGROUP DEUTZ 3.6L 74HP
1	9-190683	1	COOLER ASSEMBLY, 3.6L DEUTZ T4F <i>(For components, refer to Section 3.43)</i>
2	9-190721	1	BRACKET, COOLER MOUNTING - 3.6L
3	9-190428	2	ISOLATOR, 46.4MM, , 51.21MM, 1/2-13
4	9-702122	1	FITTING, 16 ORBM TO 12 JICM
5	9-137630	1	FITTING, 10 ORBM TO 10 JICM
6	9-190887	2	REDUCER, 2.5" TO 1.75" CHARGE AIR HOT SIDE
7	9-149493	2	CLAMP, T-BOLT (2.81-3.09)
8	9-168146	1	FITTING, HOSE BARB, 1/4" NPTX3/8" HOSE
9	9-933833	2	WASHER, FLAT M10-OD 20.0
10	9-130884	2	WASHER LOCK M10-PLATED DIN 127B
11	9-933640	2	BOLT, HHCS M10 X 1.5 X 20MM CL 8.8 YE
12	9-116342	2	CLAMP, HOSE ( 0.50)
13	9-103320	2	CLAMP - GEAR (SAE NO. 16 - )
14	9-191278	1	RADIATOR HOSE, SUCTION
15	9-191273	1	RADIATOR HOSE, THERMOSTAT TO COOLER
16	9-165058	1	COOLANT LEVEL SENSOR
17	9-191285	1	FAN GUARD 18"
18	9-103887	4	BOLT, HXHD 0.312-18 X 0.750 GR5
19	9-123855	2	BOLT, HXHD 0.50-13 X 2.750 GR8
20	9-101297	8	BOLT-HEX HD/ZINC (.38-16 X 1.25 / GR5)
21	9-103404	4	WASHER, LOCK 0.312
22	9-103470	2	WASHER-LOCK 1/2 NOM X 0.12
23	9-103999	9	WASHER, LOCK 0.375
24	9-191844	1	HOSE, SUCTION - 3.6L
25	9-104379	2	Washer Flat 0.500 Hard
26	9-103472	9	WASHER FLAT 0.375
27	9-191714	1	CAC TUBE, TURBO TO COOLER
28	9-190426	2	COUPLING, CAC, 44.45 ID X 70
29	9-197539	2	PLUG, SNAP IN FOR 1.38" HOLE
30	9-166164	4	WASHER, FLAT 0.312 USS
31	9-190882	1	CAC TUBE, COOLER TO AIR RETURN
32	9-190774	1	BAFFLE, 3.6L DEUTZ T4F
33	9-163193	2	CLAMP, HOSE ( 3.00)
34	9-133222	2	CLAMP, HOSE ( 2.00)
35	9-171444	120	WRAP-SPIRAL 1.00" DIA
36	9-103870	1	BOLT, HXHD 0.375-16 X 1.500 GR5
37	9-197229	6	CLAMP, T-BOLT 2.120DIA-2.240DIA
38	9-160801	1	FITTING, 16 ORBM TO 10 JICM
39	H361200470	1	HOSE HYDR - H36 (0.750 / 100R17 * 47 LG)
40	H321000650	1	HOSE HYDR - H32 (0.625 / 100R17 * 65 LG)
41	9-119922	65	PROTECTIVE TRIM 1/4 - 1/2
42	9-166737	18	FUEL LINE 3/8" RUBBER
43	9-138668	1	FTG, 10 SAE TO -12 JIC

### 3.45 Cooling Package Style B - Internal Breakdown

Index No.	Skyjack Part No.	Qty.	Description
-	-	-	<i>For machines with serial number 87210074 to 87210082</i>
-	-	-	<i>For machines with serial number 87310923 to 87311014</i>
<b>A</b>	9-223217	1	COOLING PACKAGE STYLE B FOR 74 HP ENGINE
<b>B</b>	9-223524	1	COOLING PACKAGE STYLE B FOR 107 HP ENGINE
1	9-223659	1	Upper CAC Molded Tube - <b>A</b>
-	9-223665	1	Upper CAC Molded Tube - <b>B</b>
2	9-223668	1	Hose, coolant, upper
3	9-223669	1	Hose, coolant, lower
4	9-223670	1	Hose, compensation
5	9-223680	1	Fan, 5 Blade, Suction - <b>A</b>
	9-223661	1	Fan, 10 Blade, Suction - <b>B</b>
6	9-223658	1	Fan Spacer, 10MM
7	9-223674	1	LEVEL SWITCH
8	9-223673	1	SEALING RING
9	9-223667	1	Cooling package
10	9-223662	1	Hose, 5/16"
11	9-223666	1	Protective sleeve 1.22 dia. ID (Not shown)
12	9-223675	1	Wire fan guard, loose
13	9-223657	1	Foil Heat Cable Wrap, 1"Dia. 1" Length (Not Shown)
14	9-223664	2	Mount, isolator
15	9-223671	2	Sleeve, Connecting, 1-3/4"x4" - <b>A</b>

## 4.2 Open Cab

Index No.	Skyjack Part No.	Qty.	Description
-	9-191777	1	ASSEMBLY, OPEN CAB ROPS & FOPS
1	9-190534	1	• SEAT, Criod
-	9-207639	1	• • BELT, Seat
	9-224575	1	• • KNOB, Adjuster
2	9-191574	7	• NUT, Hex 3/8"-16 NC SER flanged
3	9-103907	12	• SCREW, Hex head cap 1/2"-13 NC X 1-1/2" Gr. 5
4	9-103470	10	• WASHER, Lock, hel spring, 1/2"
5	9-191569	1	• COVER PANEL, NON-HVAC
6	9-191524	1	• GASKET, Foam seal
-	9-191580	1	• ASSEMBLY, SEAT RISER
7	9-191518	1	• • FOAM SEAL, Soft psa
8	9-191564	2	• • TETHER, Seat belt
9	9-191502	1	• • WELDMENT
10	9-191313	2	• • WASHER, Flat 7/16" type A
11	9-191531	2	• • SCREW, Hex head 7/16" - 14 NC X 1" Gr. 5
12	9-191548	13	• • SCREW, Machine 1/4"-20 NC X 1/2" torx
13	9-191563	1	• • LATCH, Padlockable
14	9-191747	1	• • SPACER, Catch latch
15	9-191753	4	• • SCREW, Phillips TMS 6-32 UNC X 1/2" SS
16	9-924972	4	• • NUT, Lock with nylon insert # 6
-	9-191587	1	• • ASSEMBLY, Tool door
17	9-191534	2	• • • NUT, Hex, Lock with nylon insert 7/16" - 14 NC
18	9-191518	1	• • • SEAL, Foam PSA
19	9-191506	1	• • • WELDMENT, Tool door
20	9-191562	1	• • • LATCH, Lockable
21	9-191539	1	• • PANEL, Tool shelf
22	9-168208	7	• • NUT, Hex 1/4" - 20 NC
23	9-191547	1	• • SEAL, Rubber 31 X 1/2"
24	9-103999	10	• WASHER, Lock, hel spring, 3/8"
25	9-191542	12	• SCREW, Machine 3/8"-16 NC x 3/4" BH Torx
26	9-191515	3	• PLUG, Hole 1"
27	9-191514	4	• PLUG, Hole 2-1/2"
28	9-191744	1	• PANEL, Seat Riser
29	9-198789	1	• MANUAL BOX
30	9-191511	1	• TRIM, Edge
31	(Ref.)	1	ASSEMBLY, Joystick <i>(For components, refer to Section 4.5)</i>
32	(Ref.)	1	ASSEMBLY, Right hand console <i>(For components, refer to Section 4.4)</i>
			Parts List continued in following page

## 4.5 Joystick Control

Index No.	Skyjack Part No.	Qty.	Description
-	9-191586	1	ASSEMBLY, JOYSTICK
1	9-191743	1	• PANEL, Inner joystick
2	9-103857	4	• SCREW, Hex head 1/4"-20 NC x 1" Gr. 5
3	9-168208	4	• NUT, Hex 1/4"-20 NC serrated flange
4	(Ref)	1	• JOYSTICK, Hydraulic <i>(For components, refer to Section 4.6)</i>
-	(Ref.)	-	JOYSTICK HOSES <i>(For components, refer to Section 9.13)</i>
5	9-701956	6	FITTING, (06 ORBM x 04 JICM)

## 4.11 RH Dash Panel

Index No.	Skyjack Part No.	Qty.	Description
-	9-191589	1	ASSEMBLY, RH DASH PANEL
1	9-191501	1	• PANEL, Console RH
2	9-191318	1	• PLATE, Flip-chart mount
3	9-149496	3	• NUT, U-clip, 1/4"-20 UNC
4	9-191548	3	• SCREW, Machine 1/4"-20 NC x 1/2" th torx
5	9-924972	2	• NUT, Hex lock with nylon insert, # 6
6	9-191753	2	• SCREW, Phillips TMS 6-32 UNC x 1/2" SS
7	9-922915	1	• POWER PORT, 12V
8	9-405339	1	• BUTTON, Horn
9	9-920689	6	• BLANK PLUG, Waytek 43242 (Not shown)
10	9-926721	1	• SWITCH, Ignition
11	9-925191	1	• COVER, Ignition
12	9-927910	1	• HOUR METER
13	9-926722	1	• NUT, Ignition
14	9-191454	1	• SWITCH, Park Brake
15	9-191457	1	• SWITCH, Steer Mode
16	9-191459	1	• SWITCH, Rear Wiper / washer
17	9-191462	1	• INDICATOR, Transmission Oil Temp / R.A.S.
18	9-191830	1	• INDICATOR, Glow Plug / Frame Level and boom Interlock
19	9-205863	1	GASKET, RH dash panel
16	-	1	SWITCH, Front / Top Wiper/Washer (enclosed cab only)
20	(Ref.)	2	SWITCH, Road lights <i>(For components, refer to Section 11.8)</i>
21	(Ref.)	1	SWITCH, Boom Lights <i>(For components, refer to Section 11.4)</i>
22	(Ref.)	1	SWITCH, Positive Air shut off <i>(For components, refer to Section 11.12)</i>
23	(Ref.)	1	INDICATOR, Positive Air Shutoff <i>(For components, refer to Section 11.12)</i>
24	(Ref.)	1	INDICATOR, Reserve Brake <i>(For components, refer to Section 11.14)</i>
25	(Ref.)	1	SWITCH, Work lights <i>(For components, refer to Section 11.6)</i>

## 4.16 Enclosed Cab

Index No.	Skyjack Part No.	Qty.	Description
			Part list continued from previous page
27	9-191680	1	• ASSEMBLY, Fan with terminals
28	9-191658	1	• DOME LIGHT, Oval with switch
29	9-191665	3	• CLIP, Window slider
30	9-191510	3	• HOSE, Washer
31	9-191694	1	• GASKET, Defroster fan
32	9-191697	1	• SEAL, Rubber strip
33	9-191663	1	• SLIDER WINDOW
-	9-211680	1	• • LATCH
34	9-191540	6	• WIRE TIE, Nylon, black, 7-1/2" long
35	9-191652	1	• RETAINER, Window slider lo
36	9-191677	4	• SCREW, Machine 3./8"-18 NC X 1/2" TH TRX -A
37	9-159294	3	• NUT, U-clip 3/8"-16 UNC
-	9-191683	1	• FRONT WINDOW WITH WIPER
38	9-191659	1	• • WINDOW, Front
39	9-191671	1	• • WIPER, Arm wet
40	9-191672	1	• • WIPER, Motor 315 LH park
41	9-191679	1	• • BUBBLE SEAL, 90° front
42	(Ref).	1	• ASSEMBLY, Door
			<i>(For components, refer to Section 4.17)</i>

CLICK HERE TO **DOWNLOAD** THE COMPLETE MANUAL

- Thank you very much for reading the preview of the manual.
- You can download the complete manual from: [www.heydownloads.com](http://www.heydownloads.com) by clicking the link below



- Please note: If there is no response to CLICKING the link, please download this PDF first and then click on it.

CLICK HERE TO **DOWNLOAD** THE COMPLETE MANUAL

## 4.21 Cab A/C System

Index No.	Skyjack Part No.	Qty.	Description
<b>A</b>	9-191368	1	ASSEMBLY, A/C OPTION 3.6L - Style A Radiator
<b>B</b>	9-223537	1	ASSEMBLY, A/C OPTION 3.6L - Style B Radiator
1	(Ref.)	1	<ul style="list-style-type: none"> <li>• A/C CONDENSER, Installation</li> </ul> <i>(For components, refer to Section 4.23)</i>
2	(Ref.)	1	<ul style="list-style-type: none"> <li>• A/C COMPRESSOR, Installation TH10k</li> </ul> <i>(For components, refer to Section 4.22)</i>
3	9-921101	1	<ul style="list-style-type: none"> <li>• A/C 12V KIT</li> </ul>
-	9-191376	1	<ul style="list-style-type: none"> <li>• HOSE HARDWARE INSTAL, 10K - <b>A</b></li> </ul>
-	9-223218	1	<ul style="list-style-type: none"> <li>• HOSE HARDWARE INSTAL, 10K - <b>B</b></li> </ul>
4	9-170182	2	<ul style="list-style-type: none"> <li>• • BOLT, Button Head Cap 3/8"-16 x 3/4"</li> </ul>
5	9-143987	2	<ul style="list-style-type: none"> <li>• • CLAMP, Loop cushion #40</li> </ul>
6	9-103996	2	<ul style="list-style-type: none"> <li>• • WASHER, Flat 5/16"</li> </ul>
7	9-103404	2	<ul style="list-style-type: none"> <li>• • WASHER, Lock 5/16"</li> </ul>
8	9-191283	1	<ul style="list-style-type: none"> <li>• • HOSE, Refrigerant #10</li> </ul>
9	9-191280	1	<ul style="list-style-type: none"> <li>• • HOSE, Refrigerant#6 - <b>A</b></li> </ul>
	9-223540	1	<ul style="list-style-type: none"> <li>• • HOSE, Refrigerant#6 - <b>B</b></li> </ul>
10	9-191282	1	<ul style="list-style-type: none"> <li>• • HOSE, Refrigerant#8 - <b>A</b></li> </ul>
	9-223541	1	<ul style="list-style-type: none"> <li>• • HOSE, Refrigerant#8 - <b>B</b></li> </ul>
11	9-191281	1	<ul style="list-style-type: none"> <li>• • HOSE, Refrigerant#6</li> </ul>
12	9-164139	1	<ul style="list-style-type: none"> <li>• • COUPLER - #10 - 90° O-Ring</li> </ul>
13	9-164138	1	<ul style="list-style-type: none"> <li>• • A/C SERVICE VALVE - #8 - O-Ring discharge</li> </ul>
14	9-920079	1	<ul style="list-style-type: none"> <li>• • BRACKET, Drier/binary</li> </ul>
-	9-207486	1	<ul style="list-style-type: none"> <li>• • • SWITCH, Pressure</li> </ul>
15	(Ref.)	1	<ul style="list-style-type: none"> <li>• • HARNESS, A/C</li> </ul> <i>(For components, refer to Section 4.25)</i>
16	9-102891	20	<ul style="list-style-type: none"> <li>• • TIEWRAP CABLE, 7-1/4" BLACK</li> </ul>
17	9-171444	48	<ul style="list-style-type: none"> <li>• • WRAP-SPIRAL 1" DIA</li> </ul>
18	9-103887	2	<ul style="list-style-type: none"> <li>• • BOLT, Hex head 5/16"-18 X 3/4" Gr. 5</li> </ul>

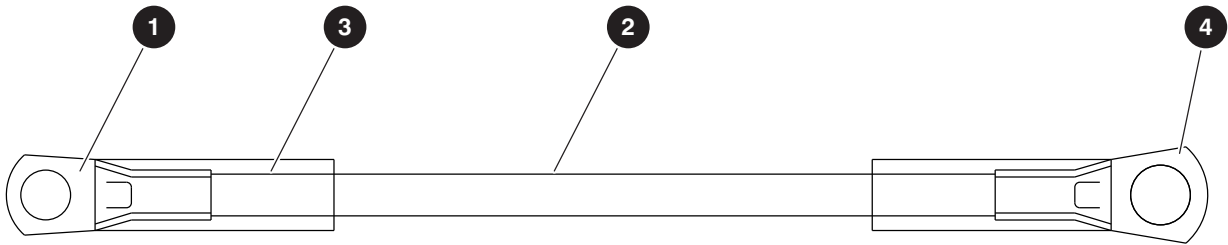
## 5.1 Chassis Harness

Index No.	Skyjack Part No.	Qty.	Description
-	9-199477	1	ASSEMBLY, TH CHASSIS HARNESS
1	9-156155	40	• PIN (16-20 AWG), Solid
2	9-156189	1	• CONNECTOR, 34M, HD34
3	9-156195	1	• STRAIN RELIEF, Straight
4	9-117596	1	• CONNECTOR Assembly 2M, DT
5	9-117598	1	• WEDGE, Pin W2P
6	9-117594	18	• PLUG, Sealing
7	9-117578	2	• CONNECTOR, Receptacle 4pin
8	9-117580	2	• WEDGE, W4P
9	9-117579	1	• CONNECTOR, 4F, DT
10	9-117581	1	• WEDGE, Socket
11	9-117590	6	• CONNECTOR, Contact pin 16-18
12	9-117591	40	• SOCKET (16-18 AWG), Solid
13	9-117583	1	• CONNECTOR, 8F, DT
14	9-117585	1	• WEDGE, Plug
15	9-156259	1	• TERMINAL, M10 Ring (3.0-2.0 mm <sup>2</sup> )
16	9-190577	2	• CABLE, Sensor TH
17	9-156105	1	• CONNECTOR 2M, W/P
18	9-124036	1	• CONNECTOR 2F, W/P
19	9-156137	2	• TERMINAL, Female sealed (2.0-1.0 mm <sup>2</sup> ), W/P
20	9-156147	2	• SEAL, Wire gray (3.5-2.8 mm), 280 M/P
21	9-190340	1	• CONNECTOR 3M, 280 M/P
22	9-190341	1	• TPA, 3W 280 M/P
23	9-102921	1	• DIODE T6A40L
24	9-117582	1	• CONNECTOR, 8M, DT
25	9-117584	1	• PLUG, W8P wedge
26	9-114595	2	• TERMINAL, Female disc. insulated (22-18 GA)
27	9-117597	15	• CONNECTOR, 2F, DT
28	9-117599	15	• WEDGE, Socket W2S
29	9-156120	2	• TERMINAL, Male (1.0-0.8 mm <sup>2</sup> ), 280 M/P
30	9-156144	2	• CONNECTOR 2M, 280 M/P
31	9-156145	2	• TPA, 2W 280 M/P
32	9-124369	2	• SEAL, Wire green (2.9-2.0 mm), 280 M/P

## 5.4 Console Harness 74 HP

Index No.	Skyjack Part No.	Qty.	Description
-	9-216785	1	HARNESS, CONSOLE UNIVERSAL
1	9-156190	1	• CONNECTOR ASSEMBLY 34F, HD34
2	9-156196	1	• STRAIN RELIEF, 90 DEG
3	9-117591	72	• SOCKET (16-18 AWG), SOLID
4	9-117579	2	• CONNECTOR ASSEMBLY 4F, DT
5	9-117581	2	• WEDGE, SOCKET
6	9-117596	1	• CONNECTOR ASSEMBLY 2M, DT
7	9-117594	48	• SEALING PLUG
8	9-190376	2	• WIRE-GREY FUSIBLE LINK 14 AWG
9	9-156222	1	• TERMINAL, M10 RING (5.0 mm <sup>2</sup> )
10	9-156104	8	• PLUG CAVITY 1W, 280 M/P & W/P
11	9-156106	1	• CONNECTOR 1M, W/P
12	9-156108	1	• CONNECTOR 1F, W/P
13	9-156137	2	• TERMINAL FEMALE SEALED (2.0-1.0 mm <sup>2</sup> ), W/P
14	9-105359	7	• TERMINAL, FEMALE DISC. INSULATED (14-16 GA)
15	9-102936	7	• TERMINAL, 14-16AWG, #10 RING BLUE
16	9-117587	1	• CONNECTOR - PLUG 12-PIN
17	9-117589	1	• CONNECTOR - PLUG 12-PIN WEDGE
18	9-117586	2	• CONNECTOR RECEPTACLE 12-PIN
19	9-117588	2	• CONNECTOR RECEPTACLE 12-PIN WEDGE
20	9-164855	2	• RESISTOR 1.0K 1/2 WATT AXIAL LEAD
21	9-117590	17	• CONNECTOR - CONTACT PIN 16-18
22	9-156109	1	• CONNECTOR 4F, W/P
23	9-156137	6	• TERMINAL FEMALE SEALED (2.0-1.0 mm <sup>2</sup> ), W/P
24	9-156259	1	• TERMINAL, M10 RING (3.0-2.0 mm <sup>2</sup> )
25	9-124036	1	• CONNECTOR ASSEMBLY 2F, W/P
26	9-931298	12	• RELAY, MINI ISO
27	9-156166	21	• SOCKET, RELAY
28	9-117583	2	• CONNECTOR ASSEMBLY 8F, DT
29	9-117585	2	• WEDGE, SOCKET
30	9-156180	1	• CONNECTOR ASSEMBLY 6F, DT
31	9-156194	1	• WEDGE, PLUG
32	9-156101	1	• CONNECTOR 6F, 56 SERIES
33	9-156135	3	• TERMINAL FEMALE (2.0-1.0 mm <sup>2</sup> ), 56 SERIES
34	9-156136	1	• TERMINAL FEMALE (2x 2.0-1.0 mm <sup>2</sup> ), 56 SERIES
35	9-114595	5	• TERMINAL, FEMALE DISC. INSULATED (22-18 GA)
36	9-156113	1	• CONNECTOR 3M, W/P
37	9-156114	1	• CONNECTOR 3F, W/P
38	9-156138	3	• TERMINAL FEMALE SEALED (3.0-2.0 mm <sup>2</sup> ), W/P
39	9-102921	11	• DIODE T6A40L
40	9-117598	1	• WEDGE, PIN W2P

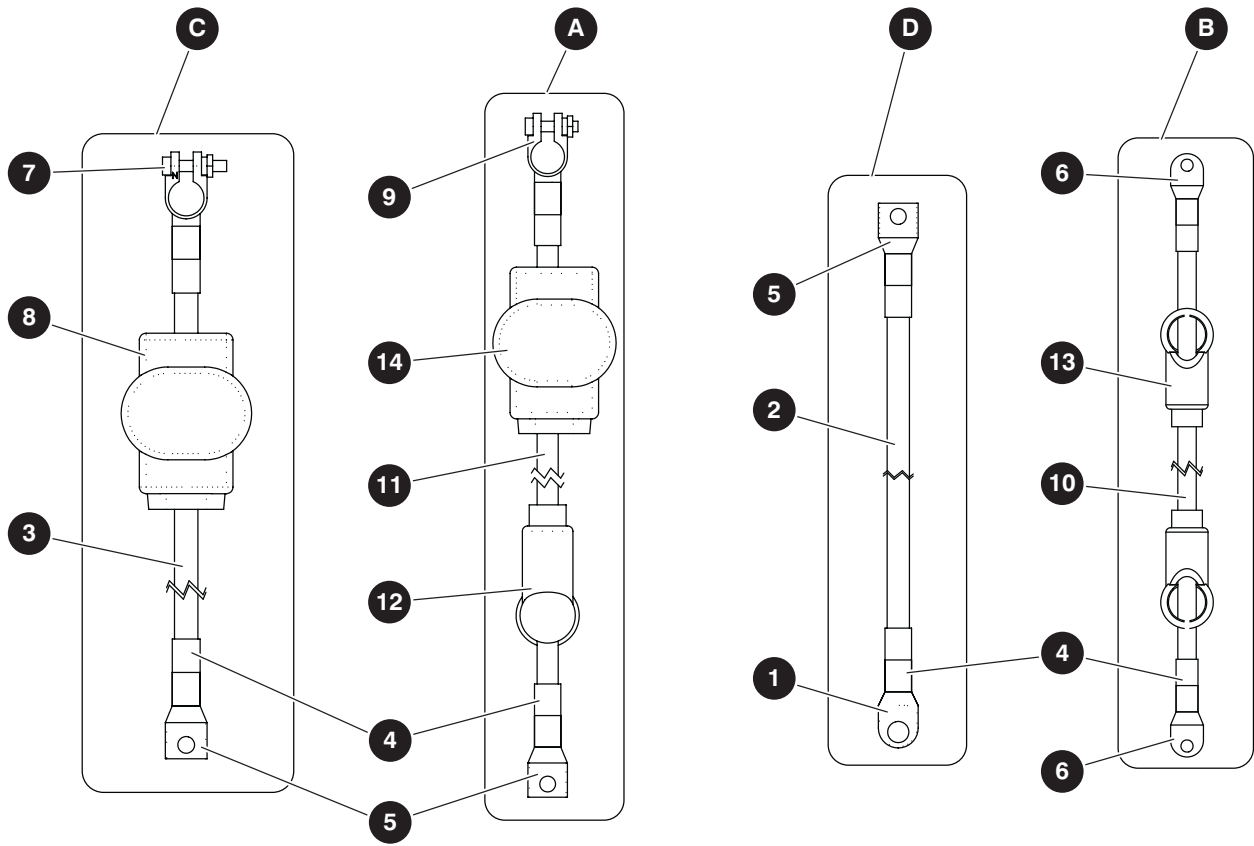
## 5.8 Wiring Harness - Cable Alternator



M191641AA

Index No.	Skyjack Part No.	Qty.	Description
-	9-191641	-	CABLE-ALTERNATOR TCD 3.6
1	9-115236	1	• TERMINAL, 6 GA * 5/16"
2	9-103147	56"	• CABLE, Welding # 6 GA (raw material)
3	9-103754	3	• SLEEVING, Heatshrink, Clear 1/2"
4	9-102947	1	• TERMINAL, 6 GA * 3/8"

# 5.14 Battery Cables



M199981AB-Cables

Index No.	Skyjack Part No.	Qty.	Description
<b>A</b>	9-204032	1	• ASSEMBLY, Cable #2/0 POST 3/8" x 20" x 5/16" (+B,03)
<b>B</b>	9-204086	1	• ASSEMBLY, Cable #2/0 3/8" x 42" x 5/16" (03, 03)
<b>C</b>	9-204063	1	• ASSEMBLY, Cable weld #2/0 POST 5/16" x 26" x 3/8"(00,00)
<b>D</b>	9-204064	1	• ASSEMBLY, Cable weld #2/0 3/8" x 72" x 1/2" (00,00)
1	9-163811	1	• • TERMINAL - Ring#2 wire 1/2" stud - <b>D</b>
2	9-139029	72	• • CABLE, #2/0 Black - <b>D</b>
3	-	26	• • CABLE, #2/0 Black - <b>C</b>
4	9-139035	3	• • HEATSHRINK, 1" clear - <b>A, B, C, D</b>
5	9-139034	1	• • TERMINAL, #2/0 3/8" DIA - <b>A, C, D</b>
6	9-209026	2	• • TERMINAL, #2/0 3/8" DIA Round lug - <b>B</b>
7	9-221807	1	• • CLAMP, Battery post #2/0 negative - <b>C</b>
8	9-191822	1	• • PROTECTOR, Terminal, military style black - <b>C</b>
9	9-221808	1	• • CLAMP, Battery post #2/0 positive - <b>A</b>
10	9-139028	42	• • CABLE, #2/0 Red - <b>B</b>
11	-	20	• • CABLE #2/0 Red- <b>A</b>
12	9-139105	1	• • BOOT, Terminal #2/0 Red (5737-005R) - <b>A</b>
13	-	2	• • BOOT, Terminal #2/0 Red (5737-005R) - <b>B</b>
14	9-191821	1	• • PROTECTOR, Terminal, military style red - <b>A</b>

## 6.2 First Boom Assembly

Index No.	Skyjack Part No.	Qty.	Description
1	9-190907	1	WELDMENT, 1st boom 1044
-	9-190969	-	ASSEMBLY, 1ST BOOM 1044
2	9-221762	2	• WEAR PAD, Black 31 X 50 X 190
3	9-191266	4	• WEAR PAD, 12 X 50 X 190
4	9-191267	2	• WEAR PAD, Black 27 X 75 X 190
5	9-107947	1	• NUT, Hex head jam 1-14 grade 5
6	9-411959	1	• NUT, 1-14 Hex grade 8 zinc dich
7	9-932724	1	• WASHER, Flat
8	9-139005	2	• BOLT, Hex head patch 1/2-13 X 1" grade 5
9	9-103999	3	• WASHER, Lock 3/8
10	9-103866	1	• BOLT, Hex head 5/16"-18 X 2-1/4" grade 5
11	9-103885	5	• BOLT, Hex head 5/16"-18 X 1-3/4" grade 5
12	9-207298	3	• BOLT, Hex head 3/4"-16 X 1" grade 8
13	9-100844	2	• BOLT, Hex head 5/8"-11 X 2-3/4" grade 8
14	9-103857	1	• BOLT, Hex head 1/4"-20 X 1" grade 5
15	9-158488	8	• BOLT, Hex head 3/8"-16 X 3/4" grade 8
16	9-119922	15"	• PROTECTIVE TRIM 1/4-1/2"
17	9-117430	8	• BOLT, Hex head 3/8"-16 X 1-1/4" grade 8
18	9-125959	19	• WASHER, Flat 3/8" SAE Hard
19	9-700782	4	• WASHER, Flat 5/8" Hard high Zn
20	9-104379	2	• WASHER Flat 1/2" Hard
21	9-103995	1	• WASHER, Flat 1/4" SAE
22	9-103996	4	• WASHER, Flat 5/16" SAE
23	9-111577	2	• NUT, Lock 5/8"-11 Grade 5 - Nylon
24	9-159294	3	• NUT, Speed clip 3/8"-16
25	9-154242	2	• NUT, Bulkhead - 08JIC
26	9-154241	2	• FITTING, Fitting - 90° Bulkhead (08 JICM - 08 JICM)
27	9-191228	1	• PIN, Anchor BL666
28	9-191169	1	• CHAIN, Retract BL666 1044
29	9-191199	1	• WELDMENT, Retract anchor BL666
30	9-930127	1	• PIN, Anchor 3/8"
			Part list continued in following page

# Section 7 – Boom Assembly SJ1056 TH

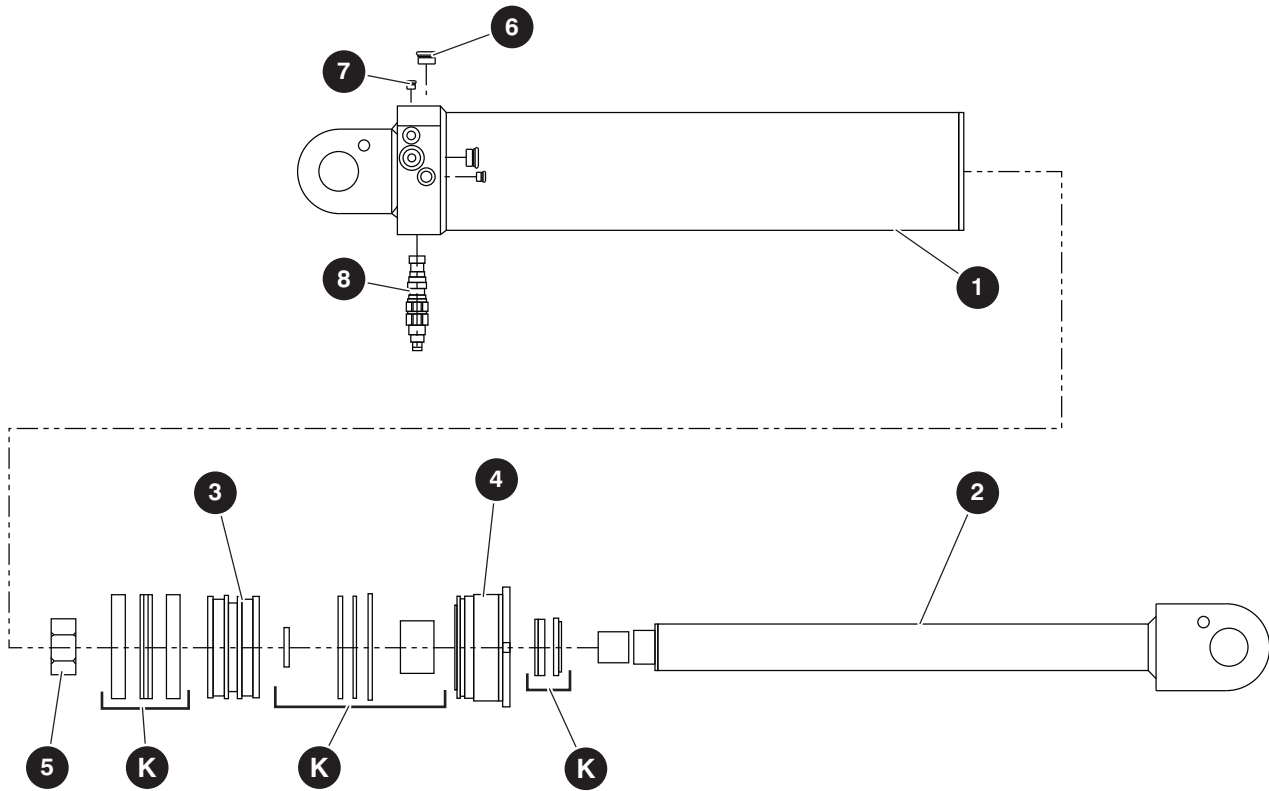
- 7.1** *Boom Installation*
- 7.2** *Boom Assembly SJ1056 TH/THS*
- 7.3** *First Boom Assembly SJ1056 TH/THS*
- 7.4** *Second Boom Assembly SJ1056 TH/THS*
- 7.5** *Third Boom Assembly SJ1056 TH/THS*
- 7.6** *Fourth Boom Assembly SJ1056 TH/THS*
- 7.7** *Extension Cylinder Assembly*
- 7.8** *Cable Carrier Assembly*
- 7.9** *Auxiliary Hydraulics Installation SJ1056 TH/THS*

## 7.3 First Boom Assembly SJ1056 TH/THS

Index No.	Skyjack Part No.	Qty.	Description
			Part list continued from previous page
31	9-191312	2	• ANCHOR, Chain threaded BL866
32	9-190467	1	• ANCHOR, Chain 866
33	9-920314	4	• BEARING
34	9-920767	1	• BEARING, Spherical
35	9-190545	1	• SPACER, Stainless Steel 1/2" OD X 5/16" long X 0.252" ID
36	9-190019	1	• PLATE, Angle indicator
37	9-199907	2	• CLAMP, Twin #12
38	9-190217	2	• PLATE, Cover 4D
39	9-199762	5	• CLAMP, Twin #08
40	9-932673	5	• COVER PLATE
41	9-920273	2	• PLATE, Shim
42	9-920274	2	• PLATE, Shim
43	9-920272	2	• PLATE, Shim
44	9-927040	6	• PLATE, Shim
45	9-926942	6	• PLATE, Shim
46	9-926177	6	• PLATE, Shim
47	9-930195	2	• PLATE, Shim
48	9-926488	2	• PLATE, Shim
49	9-920271	2	• SHIM, Narrow offset
50	9-190215	2	• PLATE, Spacer 1/4"
51	9-190218	2	• PLATE, Spacer 1/4" narrow
52	9-191344	1	• PLATE, Cylinder support
53	9-190464	1	• COVER, Boom
54	9-103404	4	• WASHER, Lock 5/16"
55	9-100397	4	• NUT, 5/16"-18 grade 5
56	9-103996	12	• WASHER, Flat 5/16"
57	9-191377	2	• PLATE, Side cover
58	9-191841	1	• SPACER, 17/32" ID x 1" OD X 22 GA
59	9-119922	9	• PROTECTIVE TRIM 1/4-1/2"
60	9-119922	12	• PROTECTIVE TRIM 1/4-1/2"



## 8.4 Fork Tilt Cylinder Assembly



M190043AC

Index No.	Skyjack Part No.	Qty.	Description
-	9-190043	1	ASSEMBLY, FORK TILT CYLINDER 120B
1	9-197079	1	• ASSEMBLY, Tube
2	9-197080	1	• ASSEMBLY, Rod
3	9-197081	1	• PISTON
4	9-197082	1	• GLAND
5	9-197072	1	• NUT, Lock
6	9-197055	2	• PLUG
7	9-197035	2	• PLUG
8	9-191815	1	• VALVE, Counterbalance - 6000 PSI
K	9-197101	1	• SEAL KIT, Fork Tilt Cylinder

## 9.2 Main Manifold Assembly

Index No.	Skyjack Part No.	Qty.	Description
-	9-191300	-	MAIN MANIFOLD ASSEMBLY
1	(Ref).	1	<ul style="list-style-type: none"> <li>• MANIFOLD, Main TH 10K</li> </ul> <i>(For components, refer to Section 9.3)</i>
2	9-150943	1	<ul style="list-style-type: none"> <li>• FITTING, 90° LLL (08JICM-08ORBM)</li> </ul>
3	9-147536	2	<ul style="list-style-type: none"> <li>• FITTING, 90 ° LLL (06JICM-06ORBM)</li> </ul>
4	9-114580	2	<ul style="list-style-type: none"> <li>• FITTING, 45° (06 JICM - 06 ORBM)</li> </ul>
5	9-139739	4	<ul style="list-style-type: none"> <li>• FITTING, 45° (08 JICM - 08 ORBM)</li> </ul>
6	9-131716	5	<ul style="list-style-type: none"> <li>• FITTING, 45° (04 JICM - 04 ORBM)</li> </ul>
7	9-114583	4	<ul style="list-style-type: none"> <li>• FITTING, 90° (08 JICM - 08 ORBM)</li> </ul>
8	9-114578	3	<ul style="list-style-type: none"> <li>• FITTING, 90° (06 JICM - 06 ORBM)</li> </ul>
9	9-125883	5	<ul style="list-style-type: none"> <li>• FITTING, 90° (04 JICM - 04 ORBM)</li> </ul>
10	9-191599	1	<ul style="list-style-type: none"> <li>• FITTING, 90° LL (16 JICM - 16 ORBM)</li> </ul>
11	9-702118	4	<ul style="list-style-type: none"> <li>• FITTING, (12 ORBM - 12 JICM)</li> </ul>
12	9-138667	1	<ul style="list-style-type: none"> <li>• FITTING, (16 ORBM - 16 JICM)</li> </ul>
13	9-162071	1	<ul style="list-style-type: none"> <li>• FITTING, 90° (06 JICM - 06 ORBM) - XL</li> </ul>
14	9-196193	1	<ul style="list-style-type: none"> <li>• FITTING, Straight (06 ORBM - 06 ORBF)</li> </ul>
15	9-126128	1	<ul style="list-style-type: none"> <li>• FITTING, (04 SAE - 04 JIC)</li> </ul>
16	9-102659	1	<ul style="list-style-type: none"> <li>• FITTING, Straight (08 JICM - 08 ORBM)</li> </ul>
17	9-209325	1	<ul style="list-style-type: none"> <li>• FITTING, 90° large (06 JICM - 06 ORBM)</li> </ul>
18	9-149215	1	<ul style="list-style-type: none"> <li>• FITTING, 45° (10 JICM - 10 ORBM)</li> </ul>
19	9-191857	2	<ul style="list-style-type: none"> <li>• FITTING, 90° LL (10 JICM - 10 ORBM)</li> </ul>

## 9.5 CVT Hydraulic Return Filter Assembly

Index No.	Skyjack Part No.	Qty.	Description
-	9-216748	1	RETURN FILTER SUBGROUP
1	9-216569	1	BRACKET, OIL FILTER MOUNT
2	9-157907	1	FILTER ELEMENT - HYDRAULIC SPIN ON
3	9-157906	1	HEAD, HYDRAULIC RETURN FILTER
4	9-103472	5	WASHER FLAT 3/8"
5	9-103999	5	WASHER, LOCK 3/8"
6	9-103473	3	BOLT-HEX HD/ZINC (3/8"-16 x 1" Gr. 5)
7	9-101297	2	BOLT-HEX HD/ZINC (3/8"-16 x 1-1/4" Gr.5)
8	9-190361	1	FITTING, Straight (20 ORBM - 16 JICM)
9	9-406249	1	FITTING, 90° (20 JICM - 20 ORBM)

## 9.10 Brakes and Steering Hydraulic Hose Connections

Index No.	Hose P/N	From		To	
		Description	Port	Port	Description
1	H340600150	Rear service brake			Rear service brake
2	H340600150	Front service brake	P2	P2	Front service brake
3	H340600130	Parking brake	P1	P1	Parking brake
4	H340601330	Main manifold	BR2	P2	Front service brake
5	H310801230	Main manifold	FCR	R	Front steer cylinder
6	H340600550	Main manifold	BR3		Rear service brake
7	H310800400	Main manifold	RCL	L	Rear steer cylinder
8	H310800400	Main manifold	RCR	R	Rear steer cylinder
9	H340601350	Main manifold	PB	P1	Front parking brake

## 9.15 Auxiliary Hydraulic Hose Connections SJ1044 TH

Index No.	Hose P/N	From		To	
		Description	Port	Port	Description
1	H610803380	Over hose sheave	A		
2	H610803380	Over hose sheave	B		
3	H340801832	Under boom	A		
4	H340801832	Under boom	B		
5	H340800360	Auxiliary manifold	A		Chassis bulkhead
6	H340800360	Auxiliary manifold	B		Chassis bulkhead
7	H310800300	Main manifold	Aux EF1	Aux EF1	Auxiliary manifold
8	H310800420	Carriage, extend/retract	B		
9	H310800420	Carriage, tank	A		
10	H360400500	Main manifold	Aux LS	Aux LS	Auxiliary manifold
11	H360800430	Main manifold	Aux T	Aux T	Auxiliary manifold

## 10.2 Side-Tilt Carriage Installation

Index No.	Skyjack Part No.	Qty.	Description
<b>A</b>	9-927442	1	48" Side Tilt Carriage
<b>B</b>	9-927445	1	60" Side Tilt Carriage
-	(Ref.)	1	72" Side Tilt Carriage <i>(For components, refer to Section 9.4)</i>
1	(Ref.)	1	• CARRIAGE, 48" Side tilt quick attach - <b>A</b> <i>(For components, refer to Section 9.3)</i>
-	(Ref.)	1	• CARRIAGE, 60" Side tilt quick attach - <b>B</b> <i>(For components, refer to Section 9.3)</i>
2	9-933277	2	• FITTING, Straight (06 JICM) 10 SAE
3	9-926080	1	• CAP, Quick connect dust nipple
4	9-926079	1	• CAP, Quick connect dust coupler
5	9-206135	1	• COUPLING, Quick disconnect nipple
6	9-206134	1	• COUPLING, Quick disconnect (Flat-Faced)
7	9-923563	1	• ASSEMBLY, Tether pin 70 mm Quick Attach
8	9-923560	2	• • ASSEMBLY, Tether pin 70 mm
9	9-923135	1	• • • PIN, Lynch 7/16" X 1-3/4" long
10	9-923169	1	• • • PIN, Quick attach
11	9-923555	1	• • • Tether, Vinyl coated 22.5"
12	9-923558	2	• • • CLAMP, 1/8" oval compression sleeve
13	9-923559	2	• • • CLAMP, Stop compression sleeve
14	9-932646	2	• • PIN, Clevis
15	9-933735	2	• • WASHER, M10
16	9-933615	2	• • PIN, Cotter

## 10.7 Carriage Bar

Index No.	Skyjack Part No.	Qty.	Description
1	9-198948	1	• BAR, Forks 48" carriage (51-1/2" long)
	9-199023	1	• BAR, Forks 60" carriage (63-1/2" long)
	9-199026	1	• BAR, Forks 72" carriage (75-1/2" long)
	9-199418	1	• BAR, Forks Side tilt Load 72" carriage (77" long)
2	9-192219	2	• BOLT, Hex head 5/8"-11 x 4" grade 8
3	9-198937	2	• COLLAR, 2" Fork bar
4	9-111577	2	• NUT, Lock with nylon insert 5/8"-11 grade 5
5	9-924110	1	• BAR, Forks 48" carriage (47-3/4" long)
	9-924109	1	• BAR, Forks 60" carriage (59-3/4" long)
	9-924108	1	• BAR, Forks 72" carriage (71-3/4" long)
	9-921630	1	• BAR, Forks Side tilt Load 72" carriage
6	9-931425	2	• PLATE
7	9-116218	4	• WASHER, Lock M8 plated DIN 127B
8	9-933634	4	• BOLT, Hex head cap M10 X 1-1/2" X 30mm CL 8.8YE

## 11.1 Outriggers Hydraulics

Index No.	Hose P/N	From		To	
		Description	Port	Port	Description
1	H340800690	Outrigger manifold	R2	R	LH Outrigger cylinder
2	H340800690	Outrigger manifold	E2	E	LH Outrigger cylinder
3	H340800690	Outrigger manifold	R1	R	RH Outrigger cylinder
4	H340800690	Outrigger manifold	E1	E	RH Outrigger cylinder
5	H310401460	Main manifold	Outt LS	Outt LS	Outrigger manifold
6	H321001310	Main manifold	Outt	Outt	Outrigger manifold
7	H321001350	Main manifold	DR4	DR4	Outrigger manifold

Index No.	Skyjack Part No.	Qty.	Description
A	9-190067	1	OUTRIGGER GROUP 1056
B	9-199890	1	OUTRIGGER GROUP 1044
-	9-191834	1	• HOSE SUBGROUP, Outriggers
-	9-131732	180"	• • SLEEVE, Nylon Hose Protection, HG-46
-	(Ref).	1	• SUBGROUP, TH outriggers <i>(For components, refer to Section 11.2)</i>
-	(Ref).	1	• SUBGROUP, Outriggers decals <i>(For components, refer to Section 11.2)</i>

# 11.6 Work Light Kit

Index No.	Skyjack Part No.	Qty.	Description
-	9-197107	1	ASSEMBLY, WORK LIGHTS
1	9-171888	4	<ul style="list-style-type: none"> <li>• LAMP, Work lamp</li> </ul>
2	9-156203	1	<ul style="list-style-type: none"> <li>• FUSE, 10A</li> </ul>
3	9-931964	2	<ul style="list-style-type: none"> <li>• CLAMP, Tube 3/8"</li> </ul>
4	9-103472	6	<ul style="list-style-type: none"> <li>• WASHER, Flat 3/8" SAE</li> </ul>
5	9-101632	3	<ul style="list-style-type: none"> <li>• BOLT, Hex head 3/8"-16 X 3/4" grade 5</li> </ul>
6	9-103473	1	<ul style="list-style-type: none"> <li>• BOLT, Hex head 3/8"-16 X 1" grade 5</li> </ul>
7	9-104606	3	<ul style="list-style-type: none"> <li>• NUT, Lock with nylon insert 3/8"-16 grade 5</li> </ul>
8	9-103873	1	<ul style="list-style-type: none"> <li>• BOLT, Hex head 3/8"-16 X 2-1/2" grade 5</li> </ul>
9	9-300437	2	<ul style="list-style-type: none"> <li>• BOLT, Hex head 3/8"-16 X 7/8" grade 5</li> </ul>
10	(Ref.)	1	<ul style="list-style-type: none"> <li>• HARNESS, Work light</li> </ul> <p><i>(For components, refer to Section 11.7)</i></p>
11	9-191457	1	<ul style="list-style-type: none"> <li>• SWITCH, 4 wheel/crab-turn-work light</li> </ul>
12	9-191865	8	<ul style="list-style-type: none"> <li>• PUSH MOUNT 1/4"</li> </ul>
13	9-190597	1	<ul style="list-style-type: none"> <li>• PLATE, Light mount</li> </ul>
14	9-197108	1	<ul style="list-style-type: none"> <li>• INSTRUCTIONS, Work lights installation</li> </ul>

## 11.12 Positive Air Shut Off Harness

Index No.	Skyjack Part No.	Qty.	Description
-	9-191820	1	HARNESS, POSITIVE AIR SHUTOFF
1	9-171900	1	<ul style="list-style-type: none"> <li>• CONNECTOR, Plug 10-way</li> </ul>
2	9-171901	8	<ul style="list-style-type: none"> <li>• TERMINAL, Female crimp</li> </ul>
3	9-156114	1	<ul style="list-style-type: none"> <li>• CONNECTOR, 3F W/P</li> </ul>
4	9-156137	3	<ul style="list-style-type: none"> <li>• TERMINAL, Female sealed (2.0-1.0MM2) W/P</li> </ul>
5	9-124369	5	<ul style="list-style-type: none"> <li>• WIRE SEAL W-P</li> </ul>
6	9-143952	1	<ul style="list-style-type: none"> <li>• RESISTOR, 50 ohm 2 watt axial lead</li> </ul>
7	9-103367	1.5	<ul style="list-style-type: none"> <li>• HEAT-SHRINK, 1/4 dia polyofin</li> </ul>
8	9-156139	2	<ul style="list-style-type: none"> <li>• TERMINAL, Male sealed (2.0-1.0 mm2), W/P</li> </ul>
9	9-156107	1	<ul style="list-style-type: none"> <li>• CONNECTOR, 4M, W/P</li> </ul>
10	9-156104	2	<ul style="list-style-type: none"> <li>• PLUG CAVITY 1W, M/P 280 &amp; W/P</li> </ul>
11	9-117590	2	<ul style="list-style-type: none"> <li>• CONNECTOR, Pin</li> </ul>
12	9-117598	1	<ul style="list-style-type: none"> <li>• CONNECTOR, W2P 2 pin wedge</li> </ul>
13	9-117596	1	<ul style="list-style-type: none"> <li>• CONNECTOR, Receptacle 2 pin</li> </ul>
14	9-171899	1	<ul style="list-style-type: none"> <li>• BREAKER, Auto reset 20 amp</li> </ul>
15	9-102936	2	<ul style="list-style-type: none"> <li>• TERMINAL, 14-16GA*#10 ring blue</li> </ul>
16	9-156219	4	<ul style="list-style-type: none"> <li>• TERMINAL, M8 ring (5.0 mm<sup>2</sup>)</li> </ul>

## 11.17 Beacon Light Assembly

Index No.	Skyjack Part No.	Qty.	Description
-	9-199050	1	ASSEMBLY, AMBER FLASHING LIGHT
1	9-144078	1	• ASSEMBLY, Flashing amber light
2	9-934724	1	• CAGE, Strobe light
3	9-191453	1	• PLATE, Beacon mount
4	9-103996	8	• WASHER, Flat 5/16" SAE
5	9-104694	3	• WASHER, Flat #10
6	9-103864	4	• BOLT, Hex head 5/16"-18 X 1" Gr. 5
7	9-103984	4	• NUT, Lock with nylon insert 5/16"-18 Gr. 5
8	9-300450	3	• NUT, Lock with nylon insert 10-32 Gr. 5
9	9-105621	3	• SCREW, Round head machine 10-32 X 1"
10	9-191613	1	• HARNESS, Beacon light
11	9-199049	1	• INSTRUCTIONS, Flashing Light installation

## 11.23 Elevate Telematics Harness

Index No.	Skyjack Part No.	Qty.	Description
-	9-221451	1	ELEVATE TELEMATICS HARNESS
1	9-220611	1	CONNECTOR, DEUTSCH DTM06-12S
2	9-220612	1	CONNECTOR, DEUTSCH DTM06 WEDGE
3	9-220613	9	CONNECTOR, CONTACT SOCKET NO.20
4	9-156152	3	SEALING PLUG, DRC SERIES
5	9-105359	8	TERMINAL FEMALE 14-16GA INSL.BLUE
6	9-117583	1	CONNECTOR PLUG 8-PIN
7	9-117585	1	CONNECTOR PLUG 8-PIN WEDGE
8	9-117591	6	CONNECTOR - CONTACT SOCKET 16-18
9	9-117594	2	CONNECTOR - SEALING PLUG
10	9-129258	1	DIODE 1N4007
11	9-931298	1	RELAY
12	9-156166	1	SOCKET, RELAY
13	9-126808	2	TERMINAL 14-08 GA 1/4 NON INSULATED
14	9-199144	2	TERMINAL, 0.187 SRS FASTIN ON RCPT PH BR

CLICK HERE TO **DOWNLOAD** THE COMPLETE MANUAL

- Thank you very much for reading the preview of the manual.
- You can download the complete manual from: [www.heydownloads.com](http://www.heydownloads.com) by clicking the link below



- Please note: If there is no response to CLICKING the link, please download this PDF first and then click on it.

CLICK HERE TO **DOWNLOAD** THE COMPLETE MANUAL