



PARTS BOOK

SD22
SD22E
SD22S
SD22D

推土机
BULLDOZER

零件目录

中华人民共和国
山推工程机械股份有限公司

SHANTUI CONSTRUCTION MACHINERY CO.,LTD
THE PEOPLE'S REPUBLIC OF CHINA

CLICK HERE TO **DOWNLOAD** THE COMPLETE MANUAL

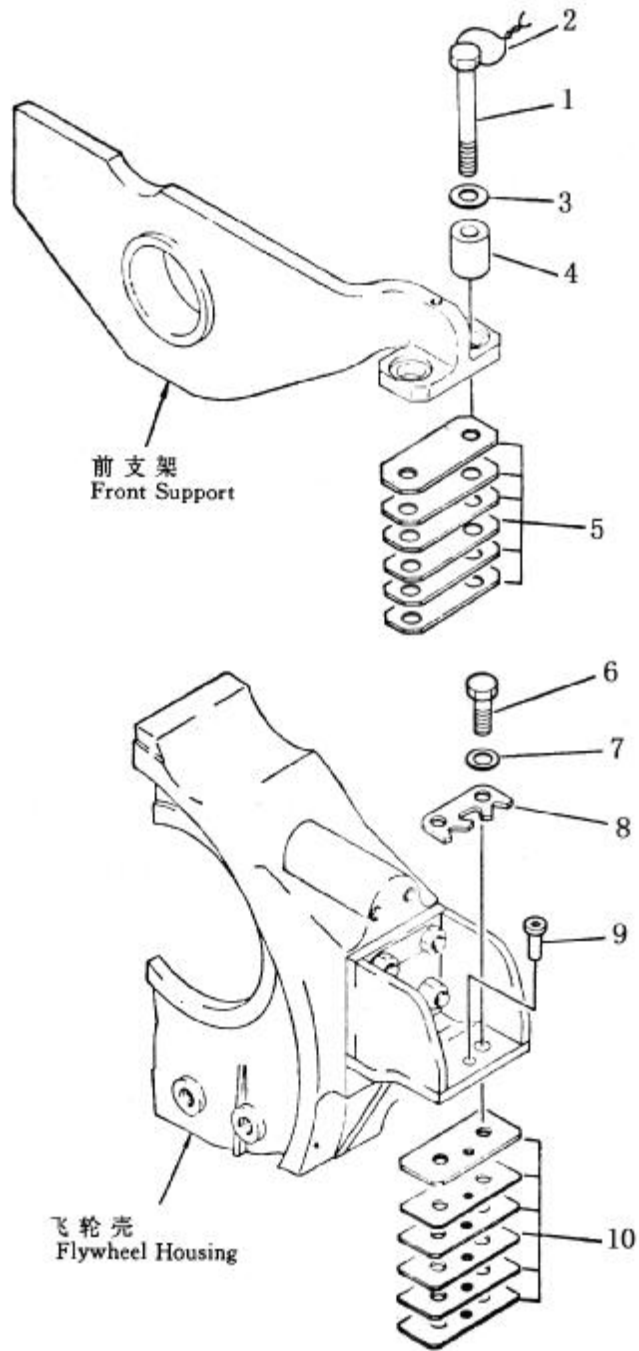
- Thank you very much for reading the preview of the manual.
- You can download the complete manual from: www.heydownloads.com by clicking the link below



- Please note: If there is no response to CLICKING the link, please download this PDF first and then click on it.

CLICK HERE TO **DOWNLOAD** THE COMPLETE MANUAL

第 101 图 发动机悬挂
FIG.101 ENGINE MOUNT



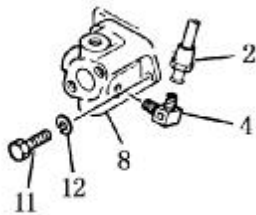
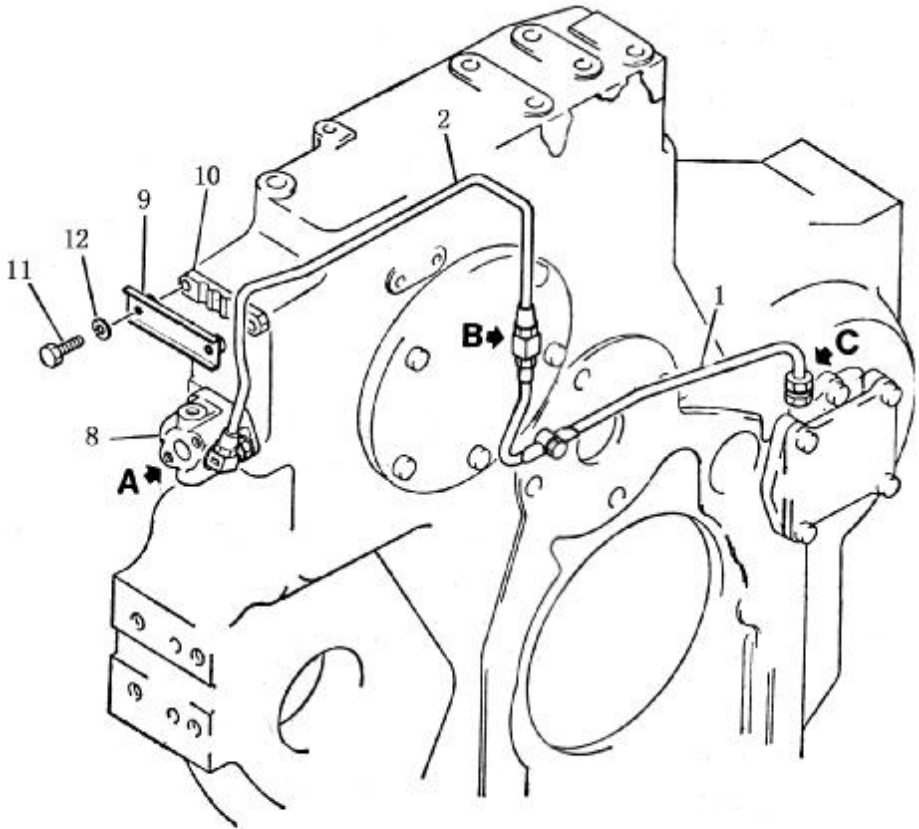
油门操纵联动装置
FUEL CONTROL LINKAGE

图及索引号码 Fig & Index No.	件 号 Part No.	名 称 Description	数量 Q' ty
105-1	17Y-05-11000	支架 bracket	1
2	17Y-05-10000	杠杆 lever	2
3	01010-50830	螺栓 M8×30 bolt	2
4	01602-20825	垫圈 8 washer spring	2
5	GB290-82	只有冲压外圈的滚针 bearing 轴承 37941/20	4
6	154-43-44140	轴 shaft	1
7	04010-00519	半园键 key wood ruff	2
8	06122-02004	防尘密封圈 seal ring	6
9	01010-51230	螺栓 M12×30 blot	4
10	01643-31232	垫圈 12 washer	4
11	198-43-18170	叉口板 yoke	3
12	04205-10822	销轴 8×22 pin	4
13	04050-12016	开口销 2×16 pin cotter	4
14	01582-11008	螺母 M10×1.25 nut	3
15	154-43-44162	杆组件 rod ass'y	1
16	17Y-05-05000	支架 bracket	1
17	17Y-05-06000	杠杆 lever	1
18	17Y-05-04000	轴 shaft	1
19	01010-51016	螺栓 M10×16 bolt	1
20	01602-21030	垫圈 10 washer	1
21	23Y-05B-00001	杆 rod	1
22	01580-10806	螺母 M8×1 nut	3
23	09290-10000	缓冲器 absorber	1
24	04245-40806	拉杆 rod	1
25	04211-20844	叉口板 yoke	1

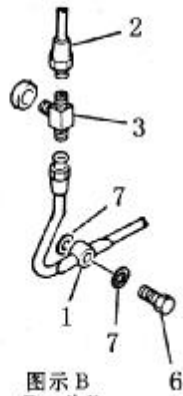
燃 油 箱
FUEL TANK

序号 Index No.	件 号 Part No.	名 称 Description	数量 Q' ty
108-1	23Y-04B-01000	燃油箱 fuel tank	1
2	07056-18416	滤网 strainer	1
3	23Y-04B-00001	油尺 gauge	1
4	23Y-04B-02000	油箱盖 cap	1
5	07002-02434	O 型圈 O-ring	1
6	23Y-04-00006	接头 joint	1
8	07700-40460	阀门 valve	1
9	23Y-04-00004	弯头 elbow	1
	(07042-00108)	螺塞 PT' plug	1
10	07000-40460	放水阀 valve	1
11	23Y-04-00002	放水接头 joint	1
12	07270-01265	软管 tube	1
13	07280-01210	软管夹 clamp	1
14	23Y-04-40000	托架 bracket	1
15	01010-52045	螺栓 bolt	6
16	01643-32060	加厚垫圈 washer	6
17	01010-52050	螺栓 bolt	4
18	01602-22060	垫圈 washer	4
19	01643-32060	加厚垫圈 washer	4
20	07000-05150	O 型圈 O-ring	1
21	23Y-04-00005	盖 cover	1
22	01602-21236	垫圈 washer	6
23	01010-51230	螺栓 bolt	6
24	23Y-04-00003	接头 joint	1

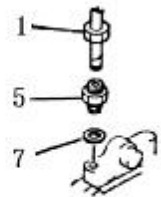
第113图 出力装置润滑油管
 FIG.113 P.T.O. LUBRICATING OIL PIPING



图示 A
 Detail A



图示 B
 Detail B



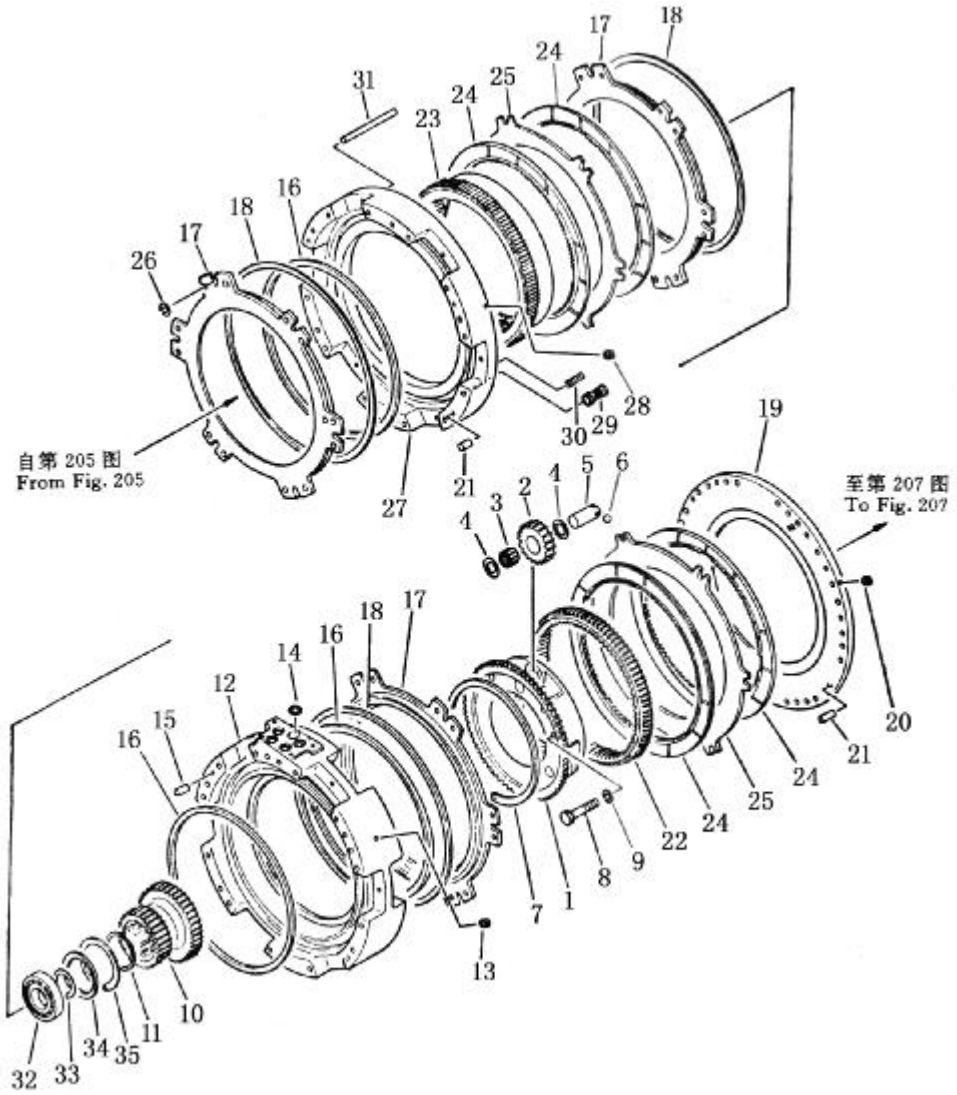
图示 C
 Detail C

液力变矩器壳

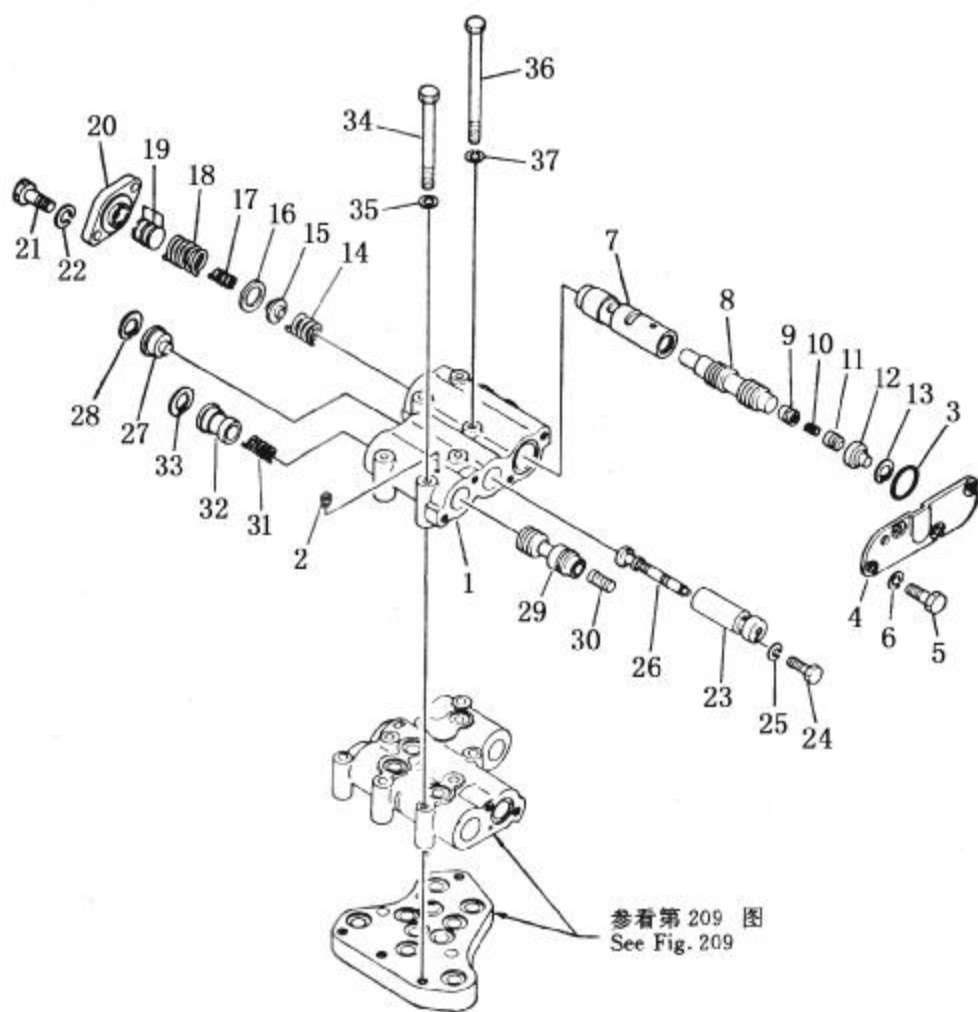
TORQUE CONVERTER HOUSING

序号 INDEXNO.	图号 PART NO.	名称 DESCRIPTION	数量 Q`TY
	23Y-11B-00000	液力变矩器总成 torque converter ass' y 本总成所构成的配件是包括在第 202 图及第 203 图所列的全部配件 This assembly consists of parts shown in Fig, 202 and Fig, 203.	1
202-1	154-13-53110	壳 housing	1
2	07042-20415	圆锥形(插)塞 plug, taper	3
3	175-13-23220	盖 cover	1
4	175-13-23231	填密垫 gasket	1
5	01010-81225	螺栓 bolt	4
6	01602-21236	弹簧垫圈 washer, spring	4
7	04530-11628	吊环螺栓 bolt, eye	2
8	07044-13620	磁性螺塞 plug, magnetic	1
9	07002-43634	O 型圈 o-ring	1
10	14Y-11-00038	铭牌 plate, name	1
11	04418-03060	自攻螺钉 screw, tapping	4
12	195-13-14111	齿轮 gear	1
13	06030-05206	轴承 bearing	1
14	04064-03015	开口环 ring, snap	1
	(134-13-13400)	过滤器总成 filter ass' y	1
15	134-13-13410	盖 cover	1
16	07000-62070	O 型圈 o-ring	1
17	195-13-13420	过滤器 filter	1
18	134-13-13430	双头螺栓 stud	1
19	01641-20608	垫圈 washer	1
20	01590-10607	螺帽 nut	1
21	04050-11212	开口销 pin, cotter	1
22	01010-81230	螺栓 bolt	3
23	01602-21236	弹簧垫圈 washer, spring	3
	(175-13-23500)	回油泵总成 scavenging pump ass' y	1
24、25	175-13-23510	传动齿轮总成 drive gear ass' y	1
26、27	175-13-23520	从动齿轮总成 driven gear ass' y	1
28	175-13-23530	箱总成 case ass' y	1
29	01190-01011	螺纹衬套 helisert	2
30	175-13-23540	盖 cover	1
31	04020-00820	定位销 pin, dowel	2
32	01010-80835	螺栓 bolt	4

第 206 图 变速箱齿轮和轴 (2/3)
 FIG. 206 TRANSMISSION GEAR AND SHAFT



第 210 图 变速控制阀 (2/3)
FIG. 210 TRANSMISSION CONTROL VALVE

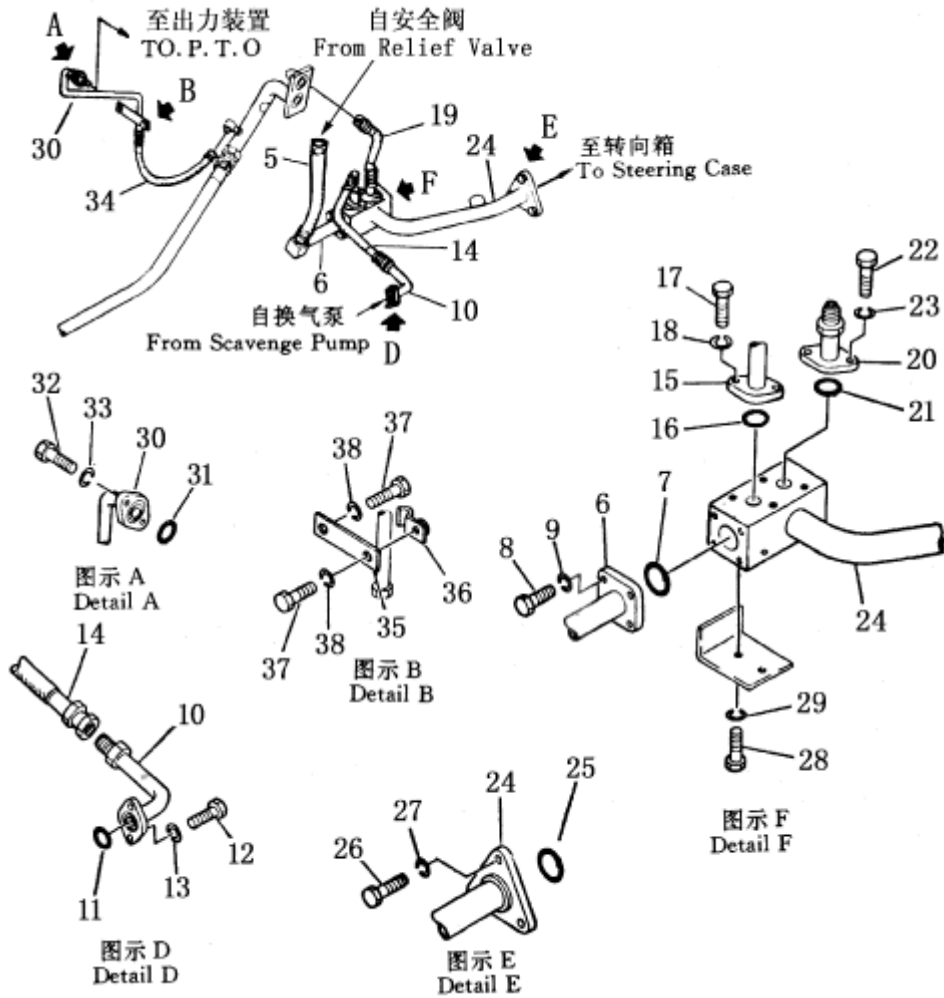


变速控制连杆 (1/3)

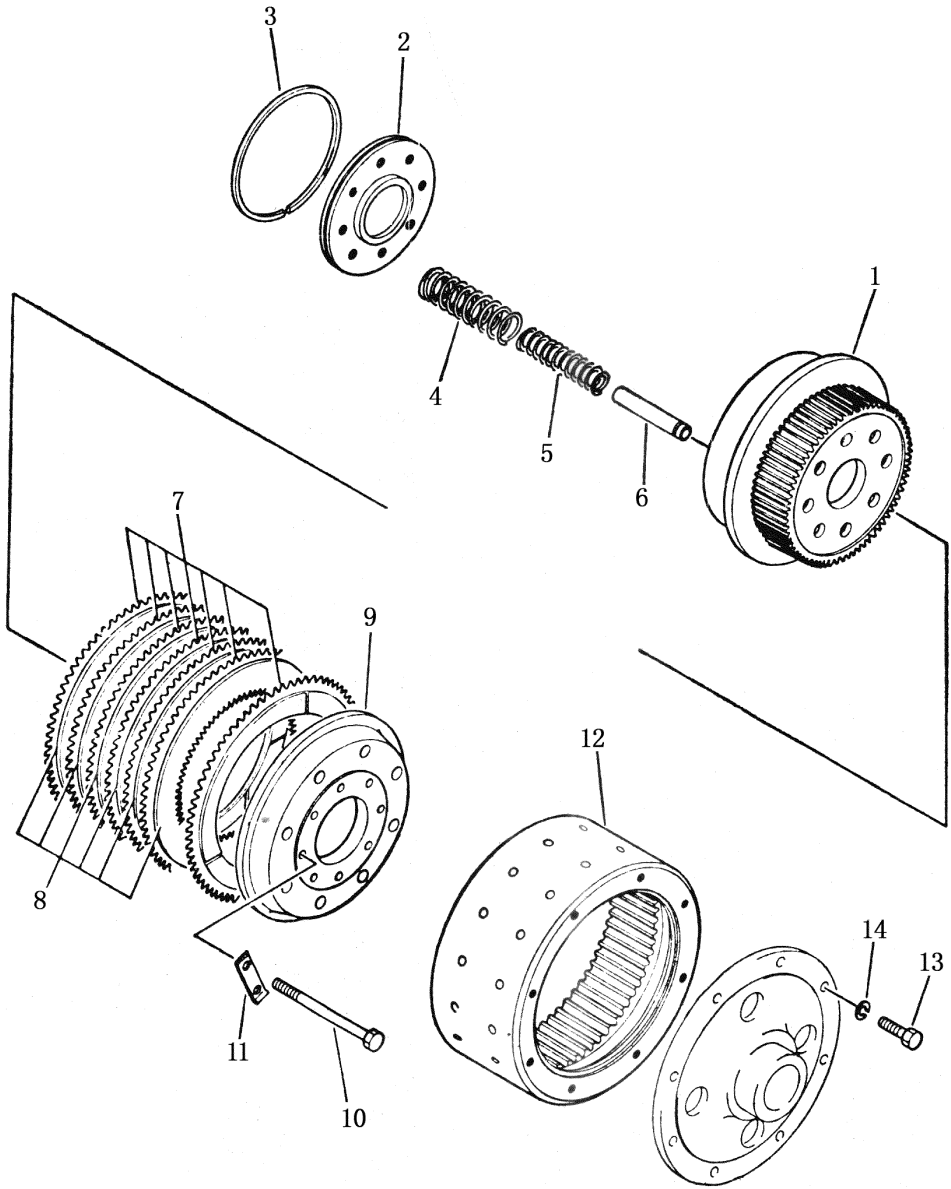
TRANSMISSION CONTROL LINKAGE

序号 INDEXNO.	件号 Part No.	名称 Description	数量 Q' ty
213-1	154-43-43230	支座 bracket	1
2	154-43-43240	摇臂 lever	1
3	195-43-43190	轴承 bearing	1
4	01640-22032	垫圈 washer	1
5	04064-02012	挡圈 ring snap	1
6	04250-81056	关节轴承 end bearing	1
7	01593-11008	螺母 nut	1
8	04050-12018	开口销 pin cotter	1
9	23Y-25B-00002	杆 rod	1
10	01582-11008	螺母 nut	2
11	04250-81056	关节轴承 end bearing	1
12	01593-11008	螺母 nut	1
13	04050-12018	开口销 pin cotter	1
14	23Y-25B-02000	摇臂 lever	1
15	01010-50830	螺栓 bolt	1
16	01602-20825	垫圈 washer	1
17	04010-00516	半圆键 key	1
18	04245-41036	杆 rod	1
19	01582-11008	螺母 nut	2
20	04250-81056	关节轴承 end bearing	1
21	01593-11008	螺母 nut	1
22	04050-12018	开口销 pin cotter	1
23	195-43-42280	波纹管 bellows	1
24	01010-51225	螺栓 bolt	2
25	01643-31232	垫圈 washer	2

第 218 图 液力变矩器管路 (2/2)
 FIG. 218 TORQUE CONVERTER PIPING

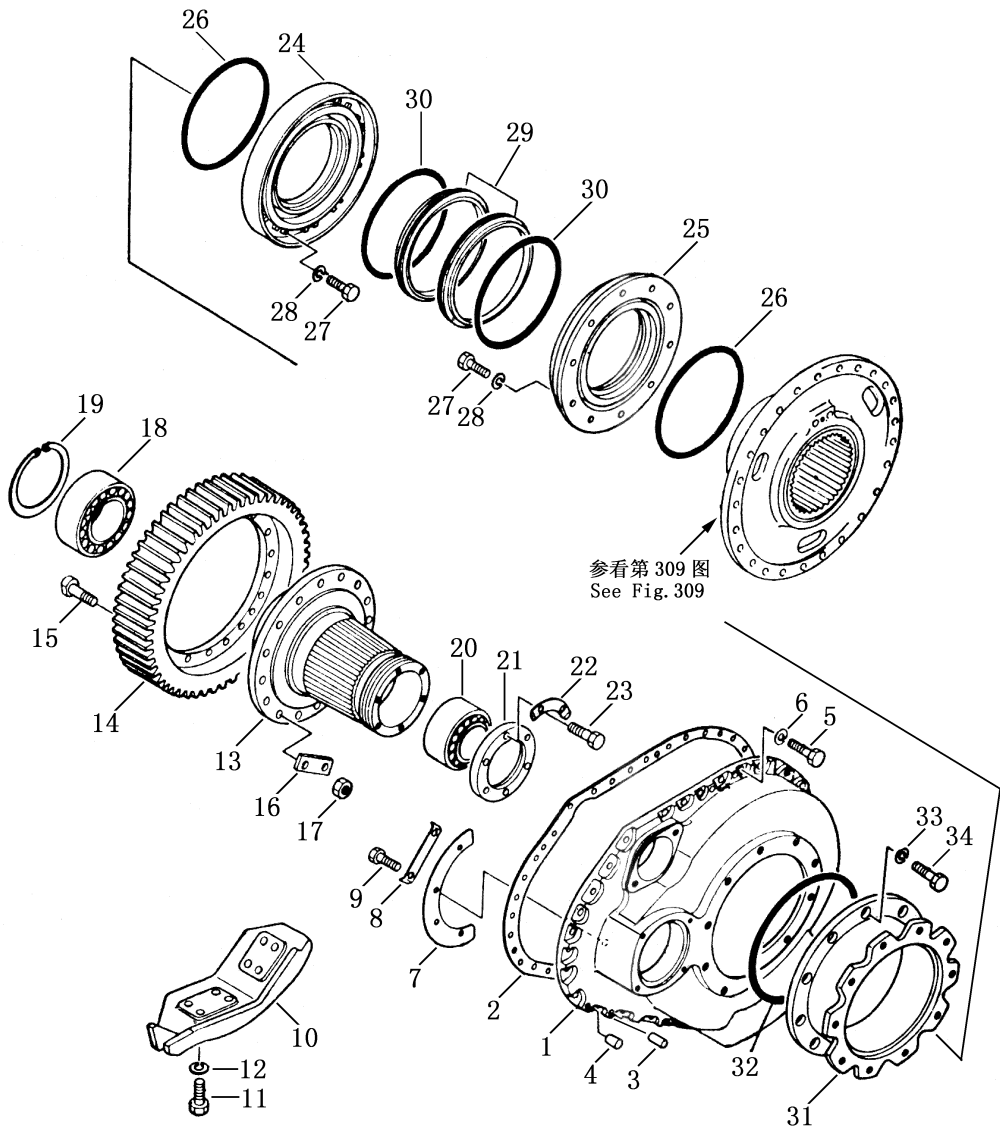


第 303 图 转向离合器
FIG. 303 STEERING CLUTCH

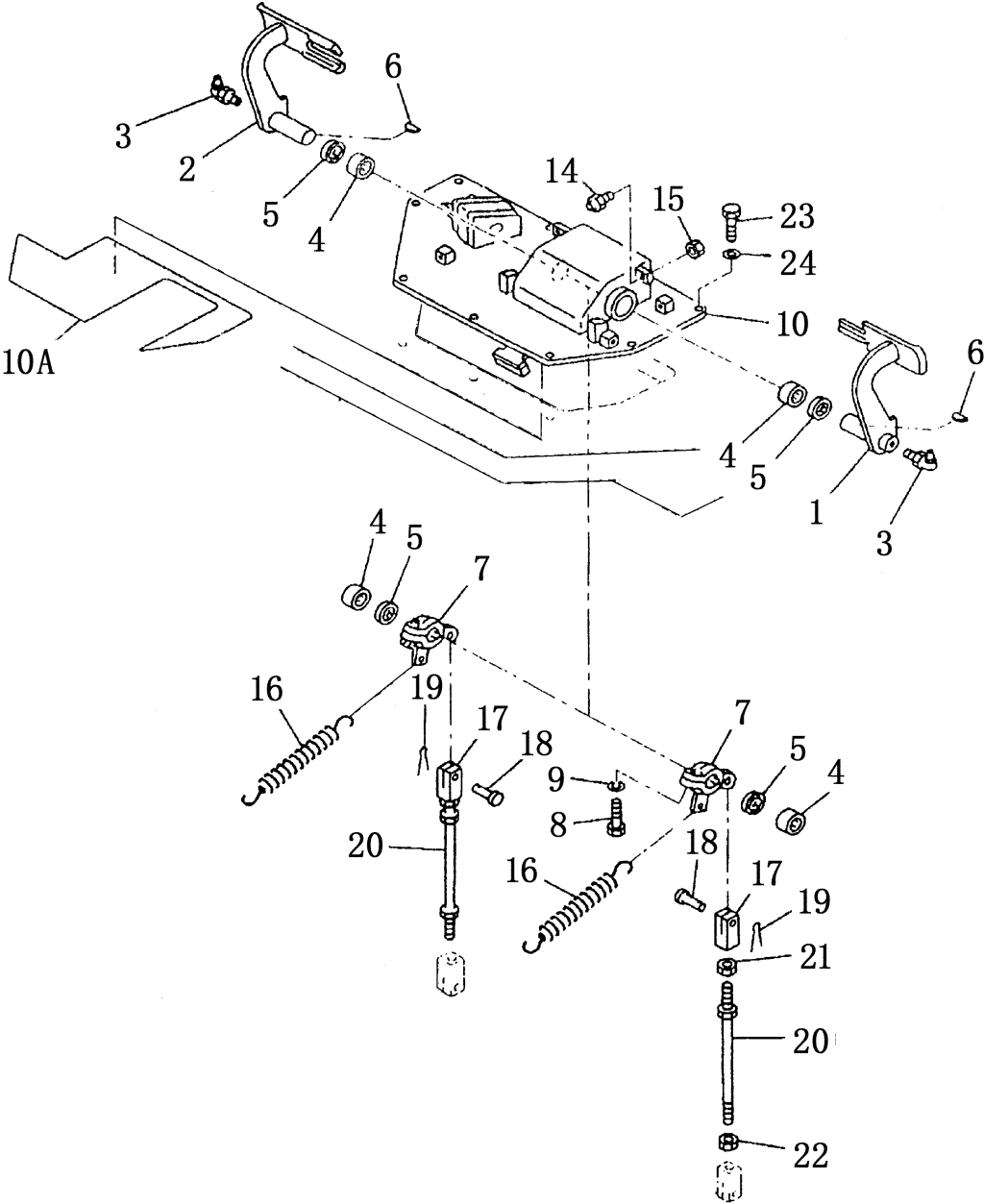


第 308 图
FIG. 308

终传动箱及齿轮 (2/2)
FINAL DRIVE CASE AND GEAR



第 313 图 制动踏板
FIG. 313 BRAKE PEDAL



主 调 压 阀
MAIN RELIEF VALVE

序 号 INDEX No.	件 号 Part No.	名 称 Description	数 量 Q' ty
	154-49-51100	调压阀 valve ass'y	1
317-1	154-49-51110	阀体 body valve	1
2	145-14-23710	阀芯 valve	1
3	145-14-23720	柱塞 piston	1
4	195-40-11431	弹簧 spring	1
5	170-33-13530	堵 stopper	2
6	07000-03025	O形圈 o-ring	2
7	04065-03515	挡圈 ring snap	2
8	07000-03042	O形圈 o-ring	2
9	01010-51085	螺栓 bolt	4
10	01643-31032	垫圈 washer	4

转向管路 (3/3)
STEERING PIPING

序号 INDEX No.	件号 Part No.	名称 Description	数量 Q'ty
322-1	07102-20616	软管 hose	1
2	07235-10628	接头 elbow	1
3	07002-02434	O形圈 O-ring	1
4	23Y-74B-01000	管 tube	1
5	154-49-51970	管夹 clamp	2
6	01010-51290	螺栓 bolt	1
7	01643-31232	垫圈 washer	1
8	195-33-11220	套 spacer	1
9	154-49-51970	管夹 clamp	4
10	01010-51230	螺栓 bolt	2
11	01643-31232	垫圈 washer	2
12	07000-03028	O形圈 O-ring	1
13	01011-51020	螺栓 bolt	2
14	01643-30032	垫圈 washer	2

CLICK HERE TO **DOWNLOAD** THE COMPLETE MANUAL

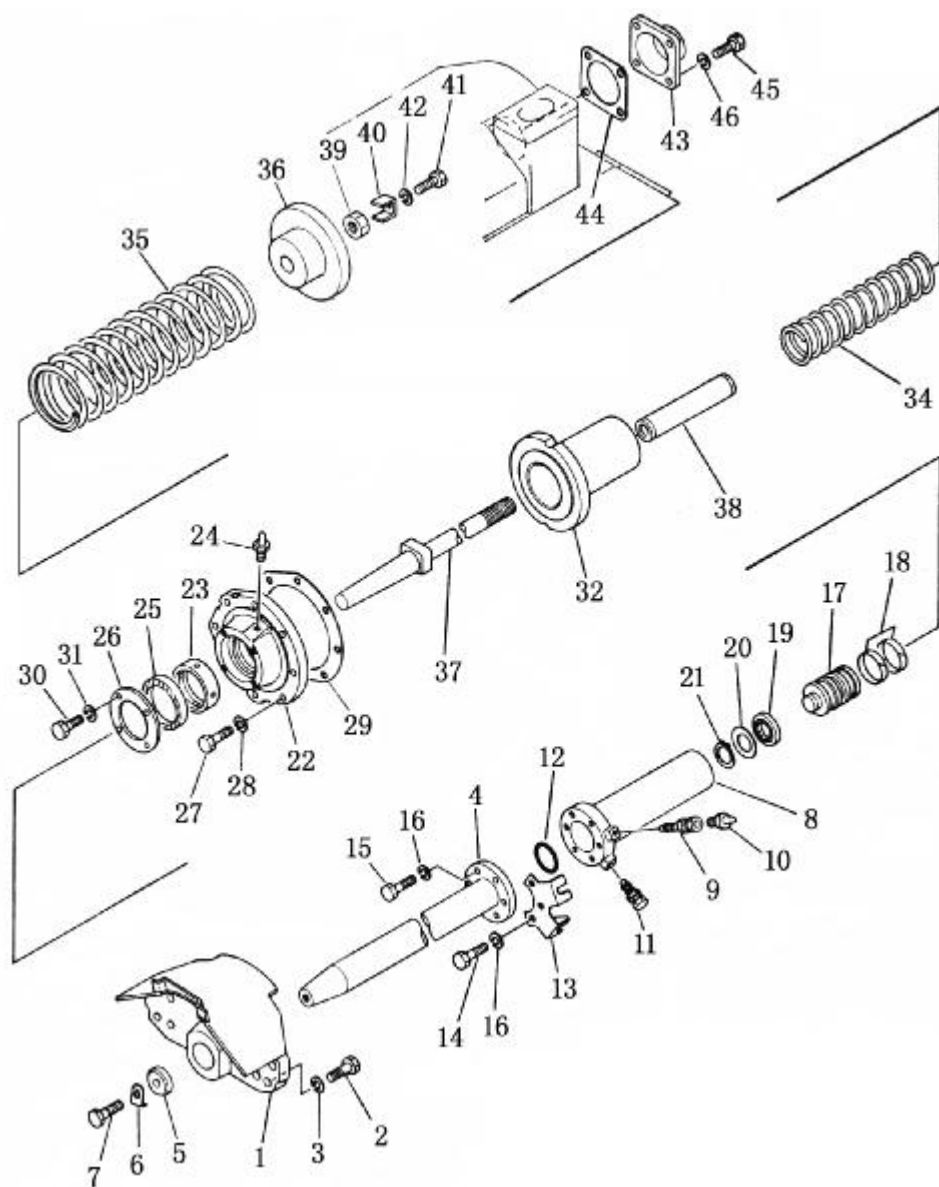
- Thank you very much for reading the preview of the manual.
- You can download the complete manual from: www.heydownloads.com by clicking the link below



- Please note: If there is no response to CLICKING the link, please download this PDF first and then click on it.

CLICK HERE TO **DOWNLOAD** THE COMPLETE MANUAL

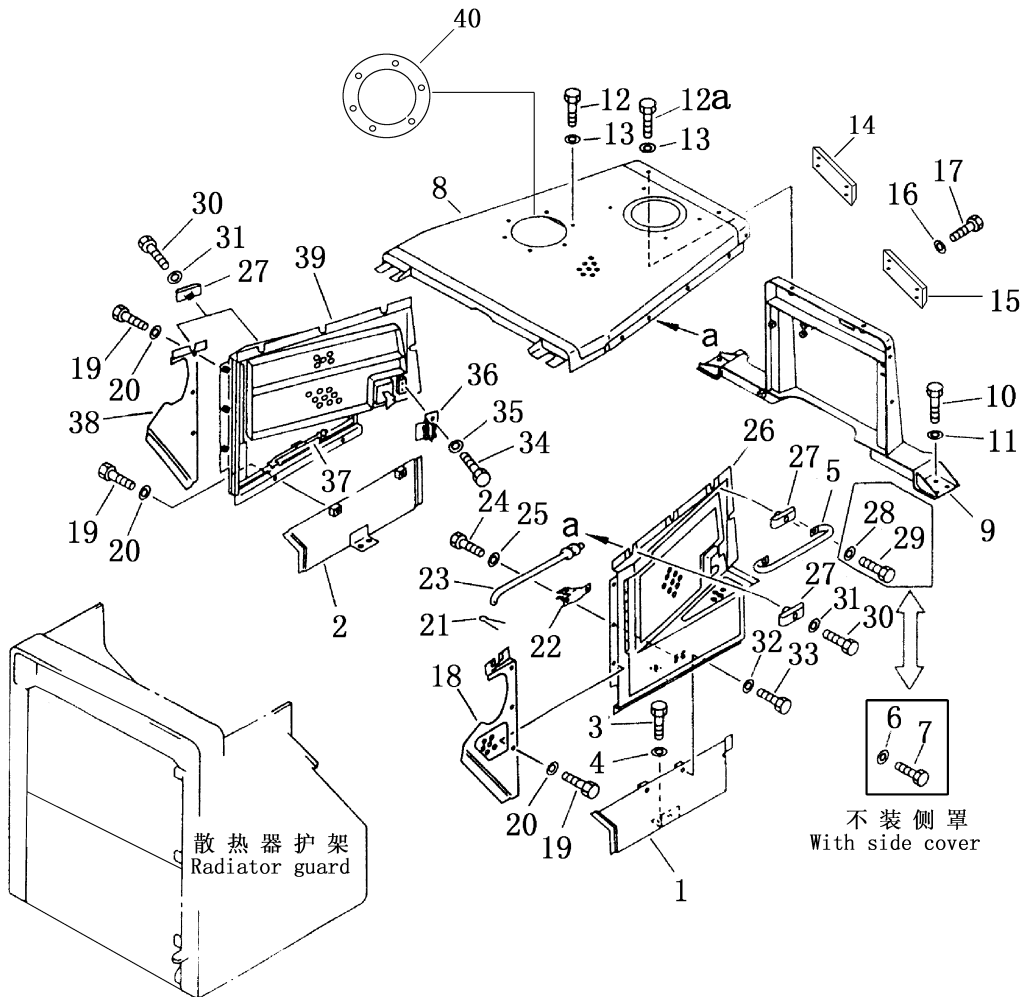
第 402 图 涨紧装置
FIG. 402 RECOIL MECHANISM



支重轮 TRACK ROLLER

序号 No.	件号 Part No.	名称 Description	数量 Q' ty		
			SD22	SD22E SD22D	SD22S
	155-30-00114	双边支重轮总成 track roller ass' y, double flange	4	6	6
	155-30-00124	单边支重轮总成 track roller ass' y, single flange	8	8	10
406-1	150-30-25125	双边支重轮 track roller, double flange	4	6	6
2	150-30-25115	单边支重轮 track roller, single flange	8	8	10
3	154-30-26131	支重轮轴 shaft	12	14	16
4	07052-21624	螺塞 plug	12	14	16
5	155-30-16201	轴套组件 bushing, ass' y	24	28	32
6	170-30-91130	销 pin	48	56	64
7	07000-02110	O型圈 O-ring	24	28	32
8	01010-51235	螺栓 bolt	144	168	192
9	01602-21236	弹簧垫圈 washer, spring	144	168	192
10	154-30-12271	密封环 seal ring	48	56	64
11	150-30-12220	O型圈 O-ring	48	56	64
12	07000-02060	O型圈 O-ring	24	28	32
13	154-30-26182	内盖 collar, inner	12	14	16
14	154-30-26192	外盖 collar, outer	12	14	16
15	154-30-26140	挡销 pin	24	28	32
16	155-30-16210	键 key	12	14	16
17	01010-62275	螺栓 bolt	48	56	64
18	01643-32260	弹簧垫圈 washer, spring	48	56	64

第 502 图 发动机罩
 FIG. 502 ENGINE HOOD



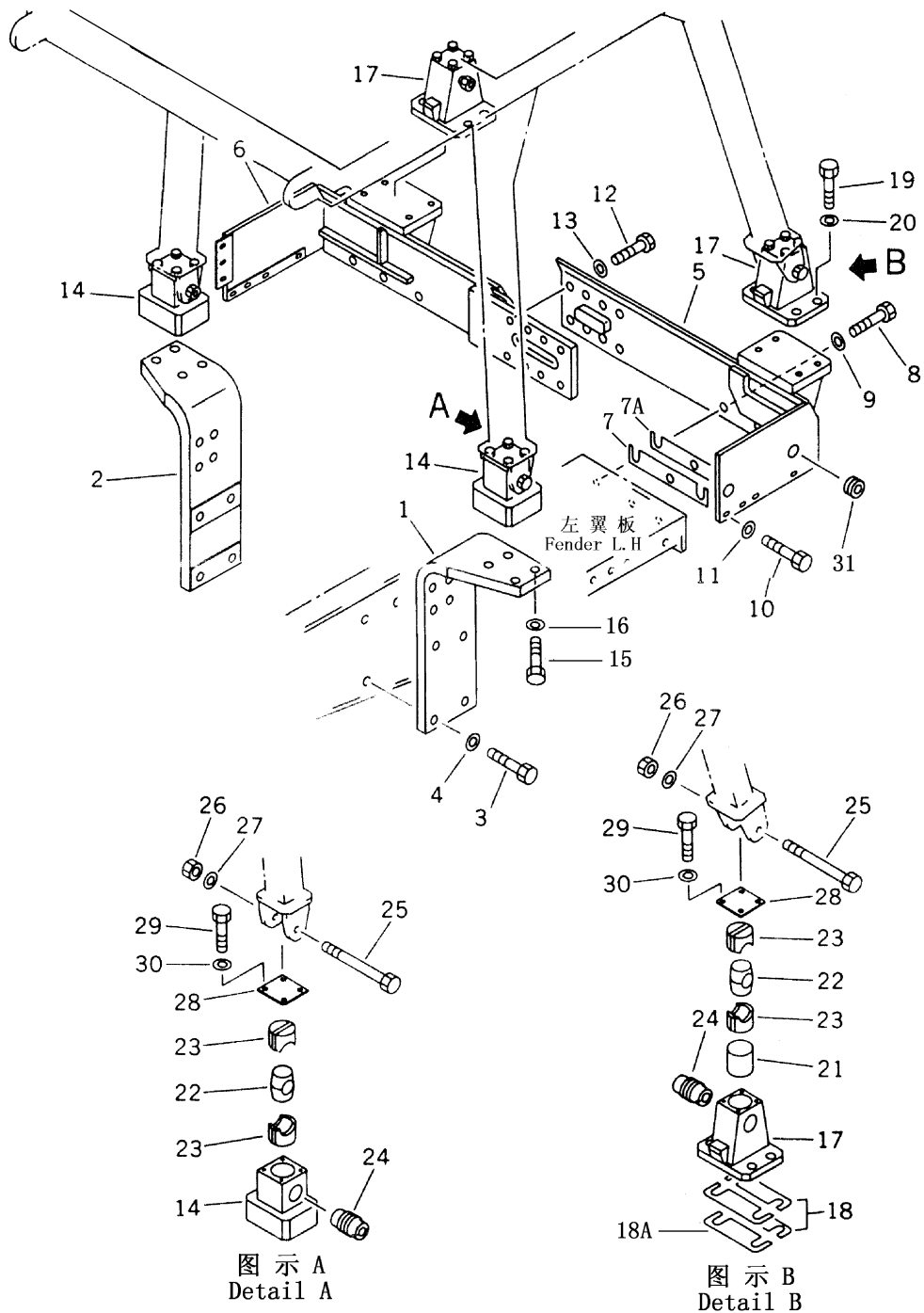
地 板 架
FLOOR FRAME

序号 Index No.	件 号 Part No.	名 称 Description	数量 Q' ty
505-1	23Y-51B-02000	地板架 frame floor (without cab)	1
2	01010-51490	螺栓 M14×50 bolt	6
3	01643-31445	垫圈 washer	6
4	154-54-22441	座	1
5	23Y-51B-22000	盖板 cover	1
6	01010-50825	螺栓 bolt	4
7	01643-30823	垫圈 washer	4
8	23Y-51B-00002	盖板 cover	1
9	01643-31232	垫圈 washer	3
10	01010-51230	螺栓 bolt	3
11	23Y-51B-20000	盖板 cover	1
12	01643-31232	垫圈 washer	4
13	01010-51230	螺栓 bolt	4
14	23Y-51B-04000	盖板 cover	1
15	01643-31232	垫圈 washer	3
16	01010-51230	螺栓 bolt	3
17	23Y-51B-21000	盖板 cover	1
18	01643-31232	垫圈 washer	7
19	01010-51230	螺栓 bolt	7
20	23Y-51B-03000	盖板 cover	1
21	01643-31232	垫圈 washer	4
22	01010-50825	螺栓 bolt	4
23	23Y-51B-05000	盖板(右)(松土器用) cover R.H, For Ripper	1
	23Y-51B-18000	盖板(右) cover R.H	1
24	01010-51230	螺栓 bolt	5
25	01643-31232	垫圈 washer	5
26	175-54-33231	盖板 cover	1
27	01643-31232	垫圈 washer	4
28	01010-51230	螺栓 bolt	4
29	195-54-23471	板 plate	1
30	01643-31445	垫圈 washer	4

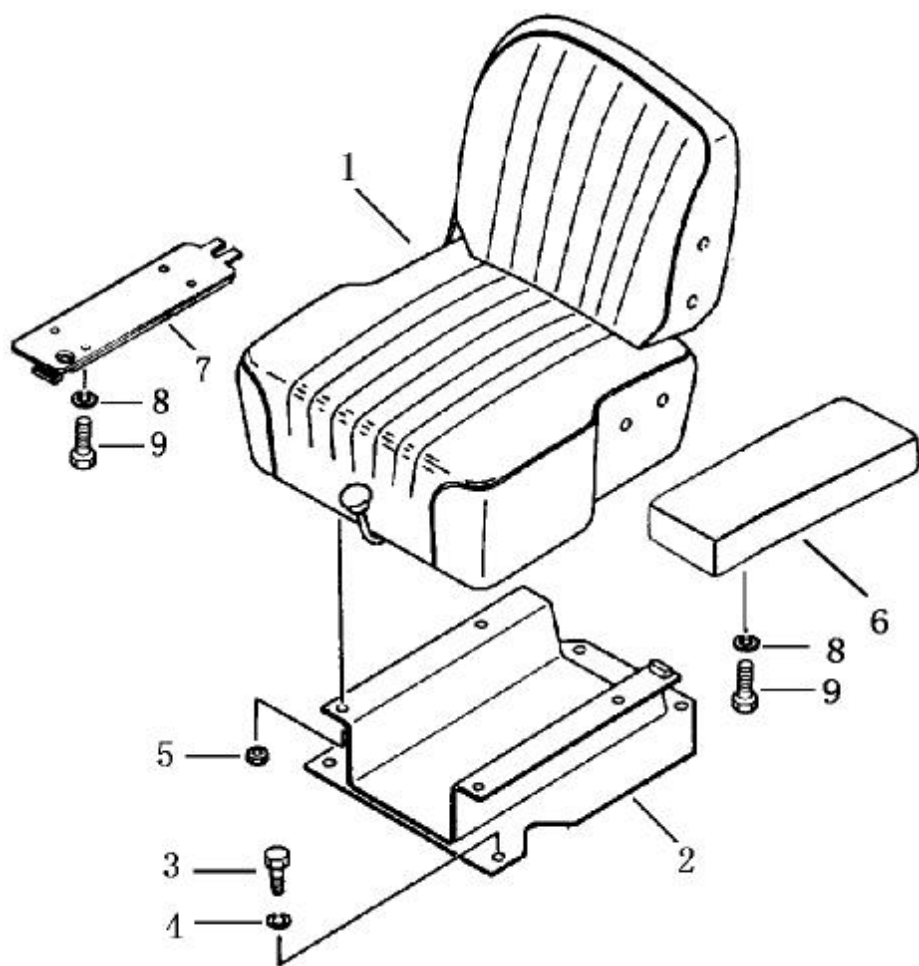
第 510 图

防 翻 滚 架 安 装

FIG. 510 ROLLOVER PROTECTIVE STRUCTURE MOUNT



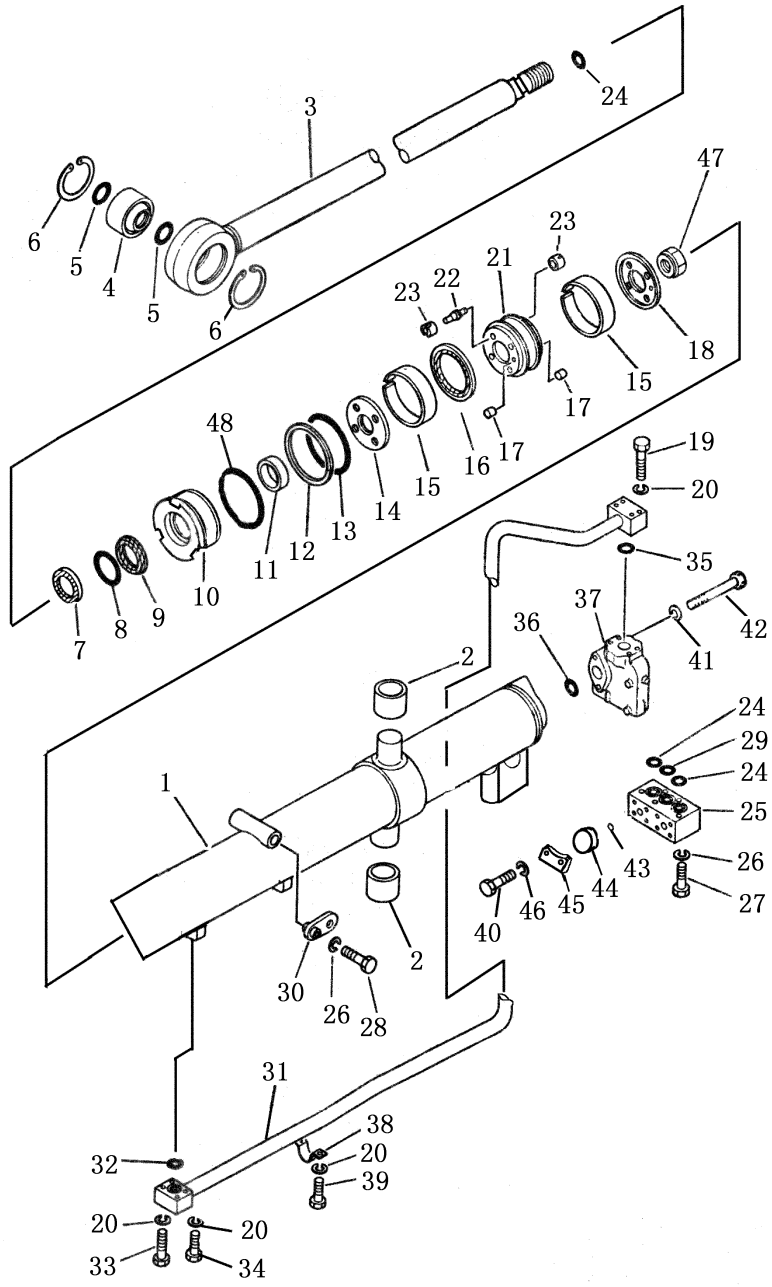
第 515 图 司机座
FIG. 515 OPERATOR'S SEAT



液 压 滤 油 器
HYDRAULIC FILTER

序号 Index No.	件 号 Part No.	名 称 Description	数量 Q' ty
	154-60-51401	液压滤油器总成 hydraulic filter ass' y	1
604-1	154-60-51392	壳体 case	1
2	175-60-27380	(滤芯) 组件 element	1
3	175-60-27300	阀总成 valve ass' y	1
4	175-60-27340	弹簧 spring	1
5	175-60-27171	盖 cover	1
6	154-60-12260	塞 plug	1
7	07000-02010	O 型圈 O-ring	1
8	07000-05150	O 型圈 O-ring	1
9	01010-51235	螺栓 bolt	4
10	01602-21236	弹簧垫圈 washer, spring	4

第 609 图 铲刀提升油缸(1/2)
 FIG. 609 BLADE LIFT CYLINDER



液压管路（自箱至升降缸）（1/2）
HYDRAULIC PIPING（TANK TO LIFT CYLINDER）

序号 Index No.	件号 Part No.	名称 Description	数量 Q' ty
			SD22, SD22E SD22D
613-1	154-61-21114	管 tube	1
2	154-61-21254	管 tube	1
3	07000-13048	O型圈 o-ring	2
4	01010-51245	螺栓 bolt	8
5	01602-21236	弹簧垫圈 washer, spring	8
6	154-61-24280	垫板 plate	1
7	07283-23442	卡箍 clip	2
8	01599-01011	螺帽 nut	4
9	01643-31032	垫圈 washer	4
10	07118-01017	软管 hose	2
11	07000-13032	O型圈 o-ring	4
12	07371-31049	拼合凸缘 flange, split	8
13	07472-21035	螺栓 bolt	16
14	01602-21030	弹簧垫圈 washer, spring	16
19	195-61-16170	卡箍 clamp	2
20	01010-51280	螺栓 bolt	2
21	01602-21236	弹簧垫圈 washer, spring	2
22	154-61-24142	管 tube	1
23	154-61-24162	托架 bracket	1
24	01010-51225	螺栓 bolt	4
25	01602-21236	弹簧垫圈 washer, spring	4
26	01010-51225	螺栓 bolt	3
27	01602-21236	弹簧垫圈 washer, spring	3

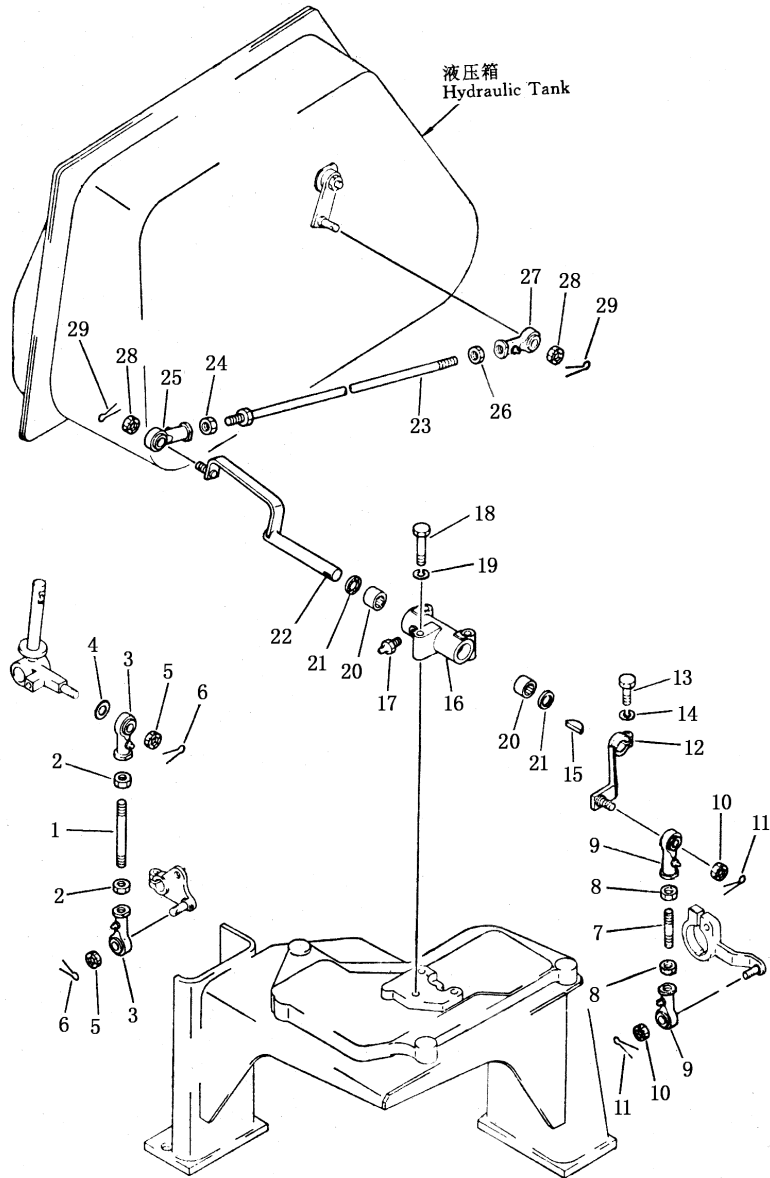
液压管路（自箱至液压缸）(2/2)
HYDRAULIC PIPING（TANK TO TILT CYLINDER）

序号 Index No.	件号 Part No.	名称 Description	数量 Q' ty	
			SD22	SD22E SD22D
618-1	07113-00411	软管 hose	4	4
2	154-71-31450	管 tube	1	1
3	01010-51430	螺栓 bolt	2	2
4	01641-31445	垫圈 washer	2	2
5	154-71-31460	卡箍 clamp	3	3
6	01010-51430	螺栓 bolt	21	21
7	01641-31445	垫圈 washer	21	21
8	154-71-31430	盖 cover	1	1
9	01010-51255	螺栓 bolt	1	1
10	01010-51240	螺栓 bolt	1	1
11	01643-31232	垫圈 washer	2	2
12	154-71-31440	盖 cover	1	
	23Y-63E-00001	盖 cover		1
13	01010-51430	螺栓 bolt	3	3
14	01643-31445	垫圈 washer	3	3
15	154-71-31383	盖 cover	1	1
16	01010-51430	螺栓 bolt	2	2
17	195-71-32220	垫圈 washer	2	2
18	154-71-31394	盖 cover	1	1
19	01010-51430	螺栓 bolt	3	3
20	01643-31445	垫圈 washer	21	21
21	195-71-32220	垫圈 washer	1	1
22	01010-51230	螺栓 bolt	1	1
23	01602-21236	垫圈 washer	1	1

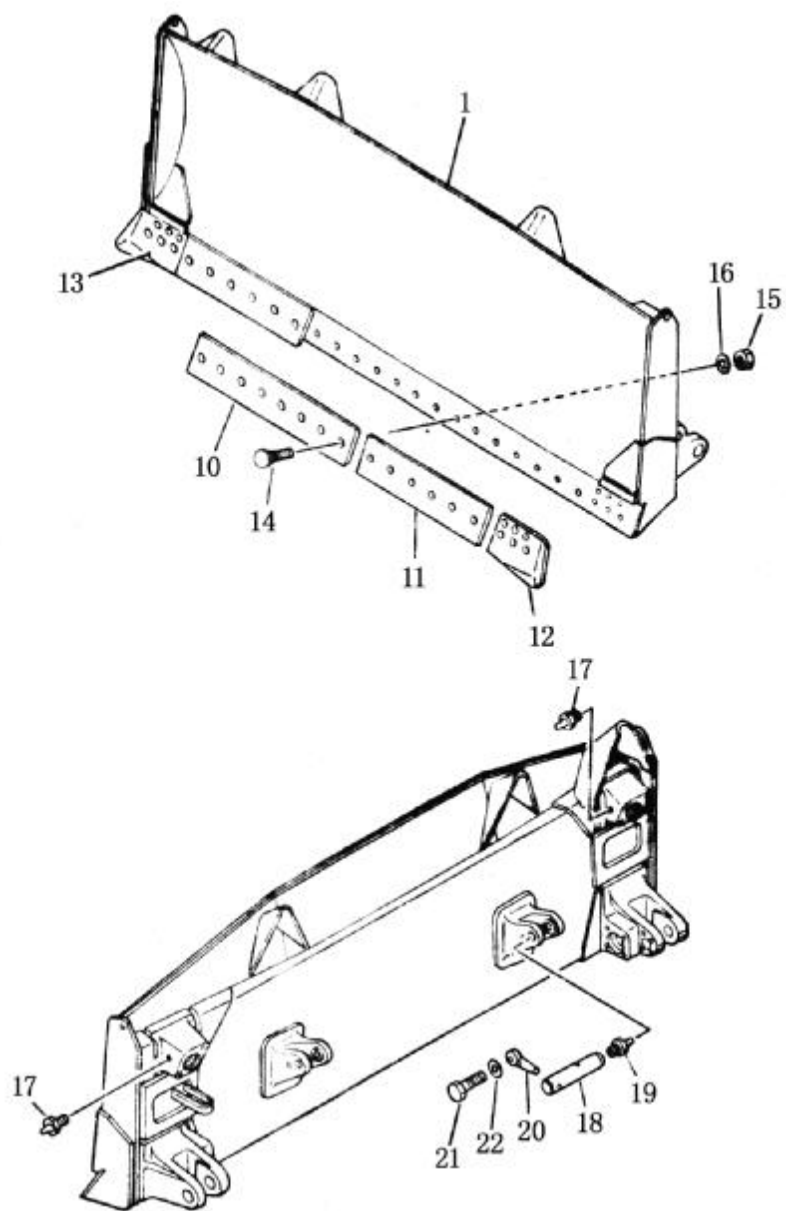
随动阀管路
SERVO VALVE PIPING

序号 Index No.	件号 Part No.	名称 Description	数量 Q' ty
622-1	07102-20410	软管 hose	1
2	154-61-17150	管 tube	1
3	07042-20108	螺塞 plug	1
4	07000-03025	O型圈 O-ring	1
5	01010-51045	螺栓 bolt	2
6	01602-21030	弹簧垫圈 washer, spring	2
7	08035-02508	卡箍 clip	1
8	01011-51016	螺栓 bolt	1
9	01602-21030	弹簧垫圈 washer, spring	1
10	154-61-17131	管 tube	1
11	07000-03025	O型圈 O-ring	1
12	01010-51045	螺栓 bolt	1
13	01602-21030	弹簧垫圈 washer, spring	1
14	07102-20412	软管 hose	1
15	07234-10422	弯头 elbow	1
16	07239-12009	螺帽 nut	1
17	07002-02034	O型圈 O-ring	1
18	154-61-17140	托架 bracket	2
19	01010-51225	螺栓 bolt	2
20	01602-21236	弹簧垫圈 washer, spring	2
21	08035-02508	卡箍 clip	2
22	01010-51016	螺栓 bolt	2
23	01602-21030	弹簧垫圈 washer, spring	

第 627 图 倾斜操纵联动装置
 FIG. 627 TILT CONTROL LINKAGE



第 702 图 直 倾 铲
FIG. 702 STRAIGHT TILT BLADE



松土器
RIPPER

序号 Index No.	件号 Part No.	名称 Description	数量 Q' ty
706-1	154-78-14154	托架 (左) bracket, L. H.	1
2	154-78-14164	托架 (右) bracket, R. H.	1
3	154-78-14223	衬套 bushing	4
4	154-78-14281	双头螺栓 stud	4
5	01580-03326	螺母 nut	4
6	01643-33380	垫圈 washer	4
7	154-78-14126	连接架 link	1
8	154-78-14223	衬套 bushing	4
9	154-78-14173	销轴 pin	2
10	07020-00000	接头式压注油杯 fitting, grease	4
11	07020-00675	接头式压注油杯 fitting, grease	2
12	154-78-14290	板 plate	2
13	01010-51845	螺栓 bolt	4
14	01643-31845	垫圈 washer	4
15	154-78-14117	横梁 beam	1
16	154-78-14223	衬套 bushing	8
17	154-78-14191	销 pin	2
18	07020-00000	接头式压注油杯 fitting, grease	4
19	154-78-14290	板 plate	2
20	01010-51845	螺栓 bolt	4
21	01643-31845	垫圈 washer	4
22	154-78-14210	销 (左) pin, L. H.	1
23	154-78-14160	销 (右) pin, R. H.	1
24	154-78-14290	板 plate	2
25	01010-51845	螺栓 bolt	4
26	01643-31845	垫圈 washer	4
27	154-78-14133	连杆(左) link, L. H.	1
28	154-78-14143	连杆(右) link, R. H.	1

弓形架
U-FRAME

序号 Index No.	件号 Part No.	名称 Description		数量 Q'ty
				SD22 SD22E
710-1	154-70-31111	弓形架	U-frame	1
11	150-70-23244	螺盖	cap	2
12	154-71-31420	螺栓	bolt	4
13	01643-32780	垫圈	washer	4
14	170-70-13141	螺帽	nut	4
15	154-70-19181	插销	pin	2
16	01010-51420	螺栓	bolt	6
17	205-06-62270	垫圈	washer	6
18	154-70-12116	支撑	arm	2
20	175-70-12160	轴盖	cap	2
21	01010-52095	螺栓	bolt	8
22	01643-32060	垫圈	washer	8
23	01010-51880	螺栓	bolt	4
24	01580-11815	螺帽	nut	4
25	01643-31845	垫圈	washer	4
26	175-70-12130	螺杆	screw	2
27	154-70-12162	轴	shaft	2
28	154-70-17160	支撑	brace	2
29	07020-00000	油杯	fitting, grease	4
30	175-70-12221	螺栓	bolt	2
31	01643-31445	垫圈	washer	2
32	154-70-12251	丝杠	screw	2
33	150-70-13411	插销	pin	2
34	170-70-12240	插销	pin	2
35	04050-04025	开口销	pin, cotter	2
36	154-71-22511	销	pin	2
37	07020-00000	油杯	fitting, grease	2
38	195-71-11520	插销	pin	2
39	01010-51435	螺栓	bolt	2
40	01643-31445	垫圈	washer	2
41	154-70-13214	耳轴	trunnion	2
42	01010-52250	螺栓	bolt	12
43	01643-32260	垫圈	washer	12

CLICK HERE TO **DOWNLOAD** THE COMPLETE MANUAL

- Thank you very much for reading the preview of the manual.
- You can download the complete manual from: www.heydownloads.com by clicking the link below



- Please note: If there is no response to CLICKING the link, please download this PDF first and then click on it.

CLICK HERE TO **DOWNLOAD** THE COMPLETE MANUAL