

**Ersatzteilliste /
Spare Parts List**

**KUBOTA
V2203-E2B**

CLICK HERE TO **DOWNLOAD** THE COMPLETE MANUAL

- Thank you very much for reading the preview of the manual.
- You can download the complete manual from: www.heydownloads.com by clicking the link below



- Please note: If there is no response to CLICKING the link, please download this PDF first and then click on it.

CLICK HERE TO **DOWNLOAD** THE COMPLETE MANUAL

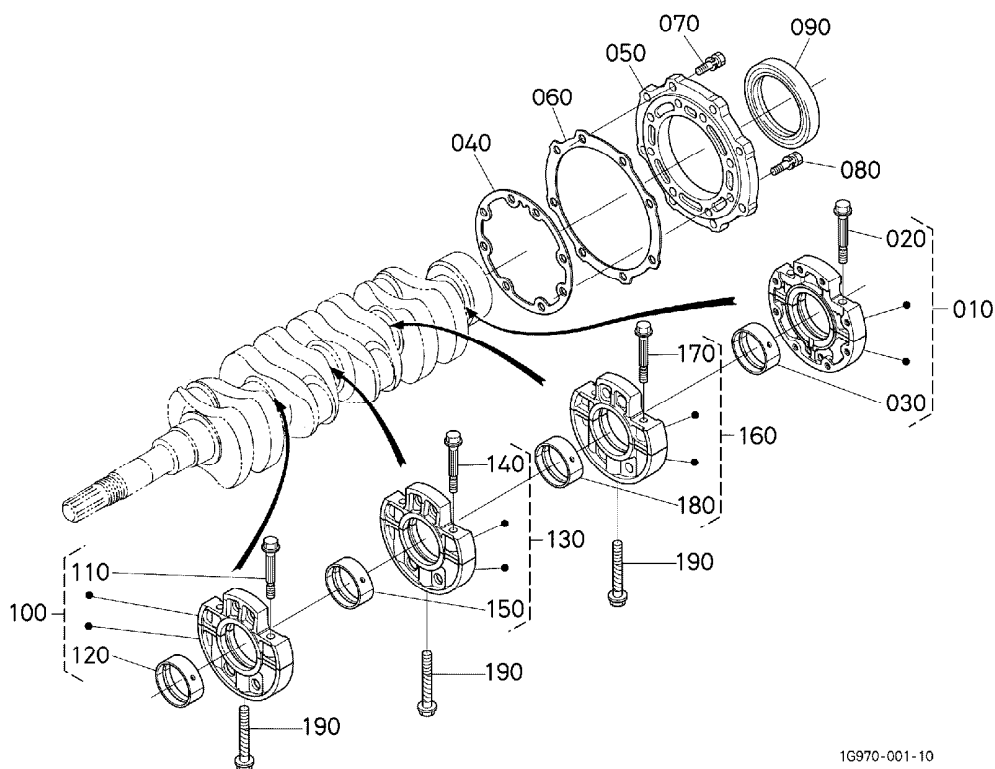
SOMMAIRE

[V2203-E2B-EU-X3]

0001	BLOC MOTEUR	1
0002	CARTER D' HUILE	2
0003	CULASSE	3
0004	CARTER DE DISTRIBUTION	4
0005	COUVRE-CULASSE	5
0006	FILTRE D' HUILE	6
0007	JAUGE D' HUILE ET GUIDE	7
0008	POMPE D' HUILE	8
0100	PALIER DE VILEBREQUIN	9
0101	ARBRE A CAMES ET ARBRE DE PIGNON DE RALENTI	10
0102	PISTON ET VILEBREQUIN	11
0103	VOLANT MOTEUR	13
0105	ARBRE A CAMES DE CARBURANT ET ARBRE REGULATEUR	14
0200	DISPOSITIF DE RALENTISSEUR	15
0201	SOLENOIDE D' ARRET	16
0202	POMPE D' INJECTION	17
0204	REGULATEUR DE VITESSES	18
0205	PLAQUE DE VITESSE-CONTROLE	19
0206	PORTE-INJECTEUR ET BOUGIE DE PRECHAUFFAGE	20
0301	POMPE D' ALIMENTATION (MECHANIQUE)	21
0402	ALTERNATEUR	22
0403	ALTERNATEUR (PARTIES COMPOSANTES)	23
0404	DEMARREUR	24
0405	DEMARREUR (PARTIES COMPOSANTES)	25
0406	CONTACT A HUILE ET THERMOMETRE	26
0500	BRIDE A EAU ET THERMOSTAT	27
0501	POMPE A EAU	28
0504	VENTILATEUR	29
0600	SOUAPES ET CULBUTEURS	30
0601	COLLECTEUR D' ADMISSION	31
0602	COLLECTEUR D' ECHAPPEMENT	32
0800	INDICATEUR DE PRECHAUFFAGE ET TEMPORISATEUR	33
0808	ACCESSOIRES ET PIECES DE SERVICE	34
0809	MANUEL DE L' UTILISATEUR	35
■	INDEX NUMERIQUE	36

0100

MAIN BEARING CASE PALIERS DE VILEBREQUIN HAUPTLAGERGEHAEUSE



1G970-001-10

A:V2203-E2B-EU-X3

REF. No. POS. No. BILD-Nr.	PART No. REFERENCE BESELL-Nr.	PART NAME	DESIGNATION	BEZEICHNUNG	Q'TY/S.No. G'TE/No. S. STUECK/S. Nr.		I. C.	REMARKS REMARQUES BEMERKUNGEN
					A	B		
010	1A041-0709-3	ASSY BRG. CASE, WHEEL	ENS. PALIER VILEBREQ.	GRP. LAGERGEHAEUSE	1	-		
020	1A091-0454-0	BOLT, BEARING CASE	VIS	BOLZEN, LAGERKASTEN	2	-		
030	1A091-2348-0	METAL, CRANKSHAFT	COUSSINET DE VILEBR.	METALLTEIL	1	-		STD SET
030	1A091-2393-0	METAL, CRANKSHAFT	COUSSINET DE VILEBR.	METALLTEIL	1	-		-0.20mm SET
030	1A091-2394-0	METAL, CRANKSHAFT	COUSSINET DE VILEBR.	METALLTEIL	1	-		-0.40mm SET
040	1A091-0436-2	GASKET, BEARING CASE	JOINT CART. DE RLMT	DICHTUNG, LAGER	1	-		
050	1G851-0481-0	COVER, BEARING CASE	PORTE JOINT	DECKEL, LAGERKASTEN	1	-		
060	1A091-0482-0	GASKET, CASE COVER	JOINT DE CARTER FOU.	DICHTUNG, GEHAEUSEDEC.	1	-		
070	01123-50825	BOLT	VIS	BOLZEN	8	-		
080	01123-50828	BOLT	VIS	BOLZEN	8	-		
090	1G911-0446-0	SEAL, OIL	BAGUE JOINT	DELDICHTUNGSRING	1	-		
100	1A091-0704-3	ASSY BRG. CASE, MAIN	ENS. PALIER VILEBREQ.	GRP. LAGERGEHAEUSE	1	-		
110	1A091-0454-0	BOLT, BEARING CASE	VIS	BOLZEN, LAGERKASTEN	2	-		
120	1A091-2348-0	METAL, CRANKSHAFT	COUSSINET DE VILEBR.	METALLTEIL	1	-		STD SET
120	1A091-2393-0	METAL, CRANKSHAFT	COUSSINET DE VILEBR.	METALLTEIL	1	-		-0.20mm SET
120	1A091-2394-0	METAL, CRANKSHAFT	COUSSINET DE VILEBR.	METALLTEIL	1	-		-0.40mm SET
130	1A091-0705-3	ASSY BRG. CASE, MAIN	ENS. PALIER VILEBREQ.	GRP. LAGERGEHAEUSE	1	-		
140	1A091-0454-0	BOLT, BEARING CASE	VIS	BOLZEN, LAGERKASTEN	2	-		
150	1A091-2348-0	METAL, CRANKSHAFT	COUSSINET DE VILEBR.	METALLTEIL	1	-		STD SET
150	1A091-2393-0	METAL, CRANKSHAFT	COUSSINET DE VILEBR.	METALLTEIL	1	-		-0.20mm SET
150	1A091-2394-0	METAL, CRANKSHAFT	COUSSINET DE VILEBR.	METALLTEIL	1	-		-0.40mm SET
160	1A091-0706-3	ASSY BRG. CASE, MAIN	ENS. PALIER VILEBREQ.	GRP. LAGERGEHAEUSE	1	-		
170	1A091-0454-0	BOLT, BEARING CASE	VIS	BOLZEN, LAGERKASTEN	2	-		
180	1A091-2348-0	METAL, CRANKSHAFT	COUSSINET DE VILEBR.	METALLTEIL	1	-		STD SET
180	1A091-2393-0	METAL, CRANKSHAFT	COUSSINET DE VILEBR.	METALLTEIL	1	-		-0.20mm SET
180	1A091-2394-0	METAL, CRANKSHAFT	COUSSINET DE VILEBR.	METALLTEIL	1	-		-0.40mm SET
190	15601-0456-0	BOLT, BEARING CASE	VIS DE VILEBREQUIN	BOLZEN, LAGERKASTEN	3	-		

↔ Interchangeable; ≠ not interchangeable; ← new for old; → old for new

CLICK HERE TO **DOWNLOAD** THE COMPLETE MANUAL

- Thank you very much for reading the preview of the manual.
- You can download the complete manual from: www.heydownloads.com by clicking the link below



- Please note: If there is no response to CLICKING the link, please download this PDF first and then click on it.

CLICK HERE TO **DOWNLOAD** THE COMPLETE MANUAL