

ORIGINAL MANUAL
SANDVIK ROCKLEA

DE710-TRACK

Parts Manual

EXPLORATION DRILL DE710-TRACK
REVISION A



CLICK HERE TO **DOWNLOAD** THE COMPLETE MANUAL

- Thank you very much for reading the preview of the manual.
- You can download the complete manual from: www.heydownloads.com by clicking the link below

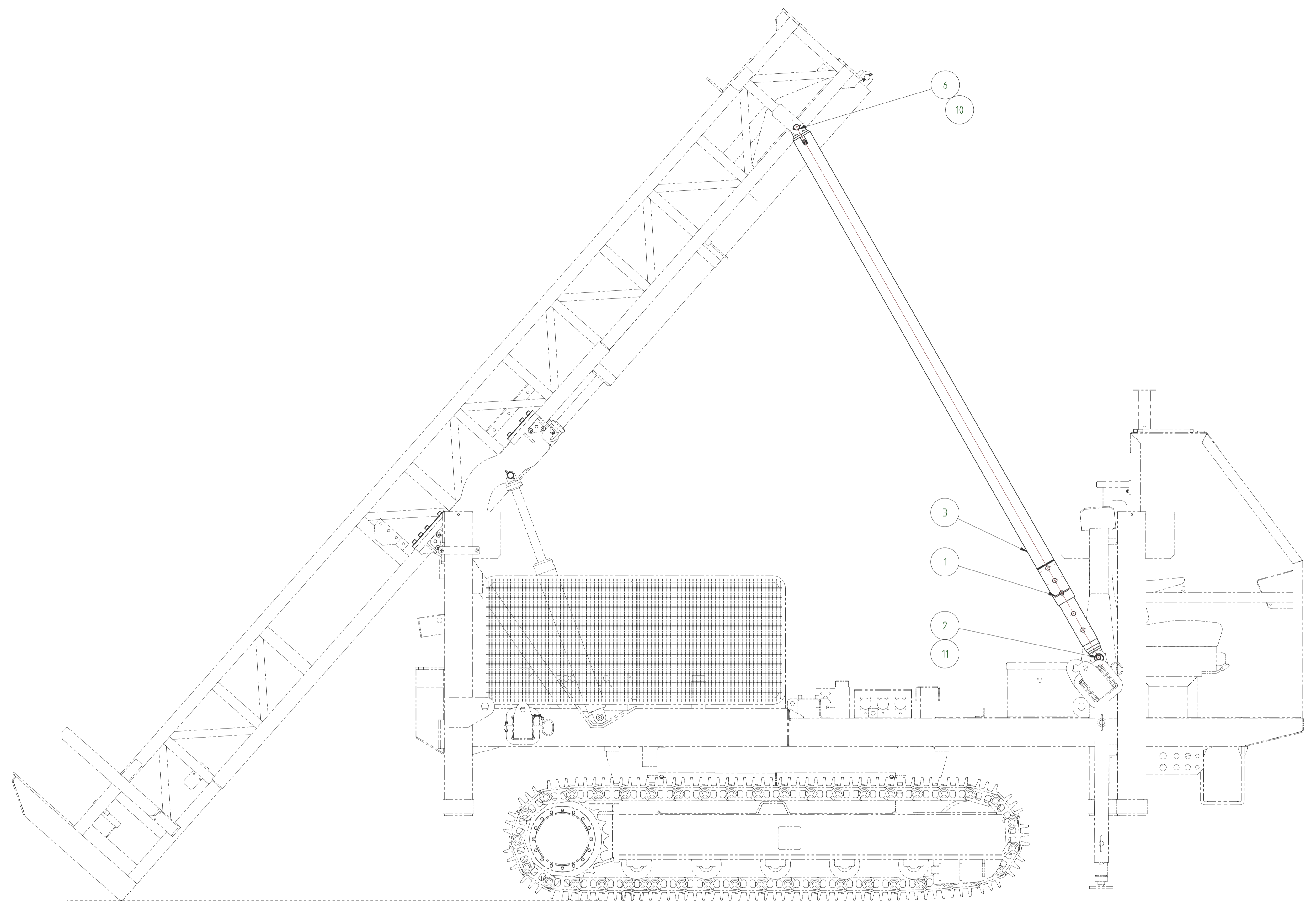


- Please note: If there is no response to CLICKING the link, please download this PDF first and then click on it.

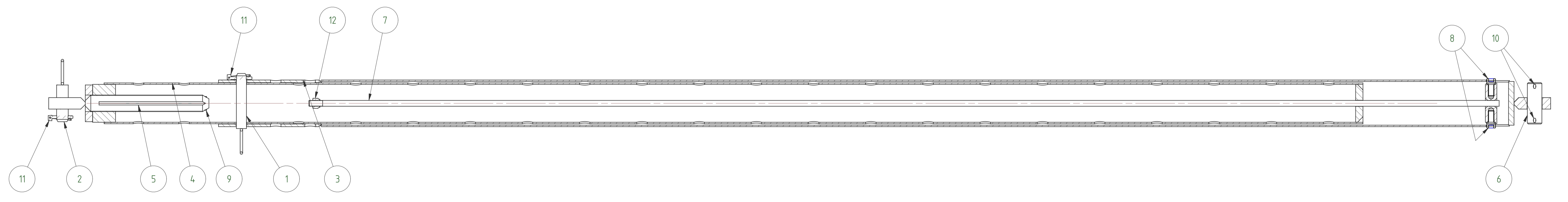
CLICK HERE TO **DOWNLOAD** THE COMPLETE MANUAL

RBR	BALL	Component	Description	Quantity
2		MPL11640-1	CROWN ASSEMBLY	1
	1	.WU11641	SHEAVE MAIN WINCH	REV.1 2
	2	.WU11642	PIN SHEAVE (200DLS)	REV 1 2
	3	.WU11643	SPACER	REV A 2
	4	.WU11644	ROPE RETAINER FRONT	REV 1 1
	5	.WU11645	ROPE RETAINER REAR	REV 1 1
	6	.WU11646	W/L ROPE RETAINER	REV 2 2
	7	.WU5246	SHEAVE WIRELINE	REV.1 2
	8	.WU5247	BEARING SPACER	REV.1 4
	9	.PD22873Z	BEARING BALL 40/90x23 +2 SEALS	2
	10	.PD22928FK	SNAP RING	4
	11	.PD24445F	ROLLER BEARING	2
	12	.PM26849F	WASHER(HARDENED) 5/8"	2
	13	.PM28610F25	HEX HD BOLT 3/8"UNC x 1"	4
	14	.PM28610J89	HEX HD BOLT 5/8"UNC x 3 1/2"	2
	15	.PM28610K51	HEX HD BOLT 3/4"UNC x 2"	2
	16	.PM28634F	HEX NUT 3/8"UNC H.T.	4
	17	.PM28634J	HEX NUT 5/8"UNC H.T.	2
	18	.PM28652F	WASHER HELICAL SPRING 3/8"	4
	19	.PM28667A2A	GREASE NIPPLE STR 1/8"BSP	2

ITEM	QTY	PART No.	PART NAME	MASS (Kg)
1	2	10564	ADJUST PIN	-
2	2	10911	PIN STAY ROD	-
3	2	11635	OUTER LEG	-
4	2	11636	INNER LEG	-
5	2	11638	STAY ROD ADJUSTER	-
6	2	11649	UPPER PIN	0.54
7	2	11793	STOP	-
8	4	PM28615H25	SKT HD CAP SCREW GR 12.9	-
9	2	PM28656H40	PIN SEL LOK 6 x 40 LG.	0.00
10	4	PM28658H32	SPLIT PIN COTTER Ø5 X 32	0.01
11	4	PM28661B	LYNCH PIN DIA 6 x 4.2	-
12	2	PM28680AA	NYLOC NUT 1/2" UNC	0.02



PICTORIAL VIEW
 ASSEMBLY FINISH = -
 ASSEMBLY MASS = 52.26 kg
 WELDMENT FINISH = -

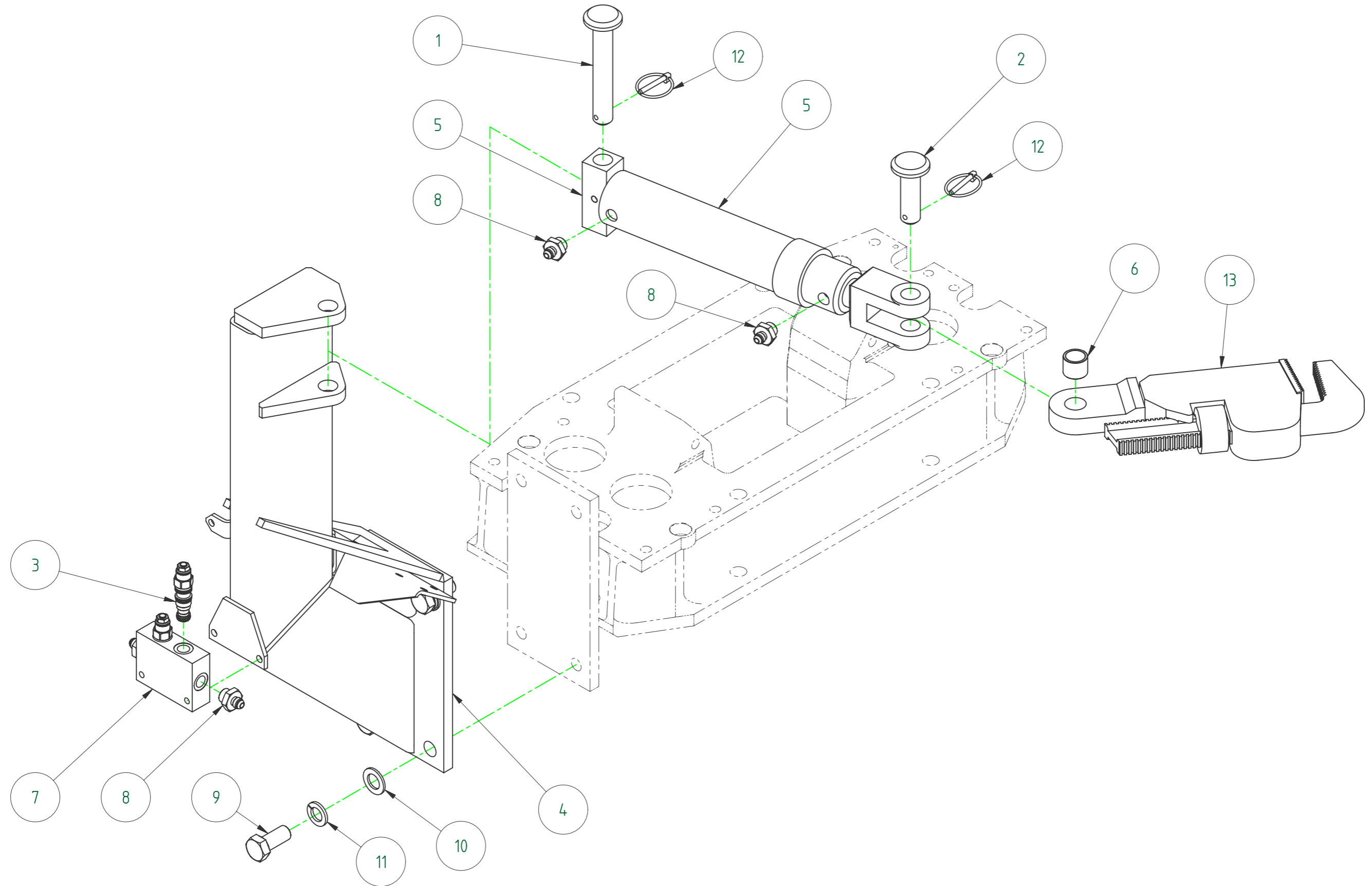


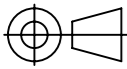
NOTE: ALL DRAWING AND PARTS LIST DIMENSIONS INDICATE FINISHED SIZES. NO ALLOWANCES HAVE BEEN MADE FOR MANUFACTURING PROCESSES

PROJECTION <small>DRAWN TO ASSEMBLY ALL DIMS IN MM - DO NOT SCALE</small> FIRST ANGLE <small>GENERAL GEOMETRIC TOLERANCES</small> 0.05 0.1 0.2 0.5 1 2 5 10 20 50 100 200 500 1000 2000 <small>LINEAR & ANGLE TOLERANCES UNLESS SPECIFIED</small> <small>UNIT FROM: 0 1 50 150 300 1000 10000</small> <small>UP TO: 50 200 300 1000 10000 PLUS ANGLE</small> <small>DEC 0 ±1.0 ±1.5 ±2.0 ±2.5 ±3 ±4.0 ±1°</small> <small>0.0 ±0.2 ±0.5 ±0.8 ±1.0 ±2 ±2.5 ±0.5°</small> <small>0.00 ±0.1 ±0.2 ±0.3 ±0.5 ±1 ±1.5 ±0.2°</small>	SCALE 1:2 DRAWN BY G.L. DATE DRN 6-08-06 DWG CHKD - DATE CHK'D - ENG APP'D - DATE APP'D -		MAST STAY ROD ASSEMBLY SIZE A1 DRAWING NUMBER 11634-1 SHEET 1 OF 2		REV. 1
	REVISIONS 1 ISSUED BY DATE		REVISIONS BY DATE		



SANDVIK MINING AND CONSTRUCTION AUSTRALIA Pty Ltd
 ABN 62 903 771 382



PROJECTION  DRAWN TO AS1100 ALL DIMS IN MM - DO NOT SCALE

GENERAL GEOMETRIC TOLERANCE					
⊕	0.5	0.5	1	0.5	0.5
∇	0.5	0.5	0.25	0.5	0.5


THIS DRAWING AND ALL INFORMATION THEREON IS THE CONFIDENTIAL PROPERTY OF SANDVIK MINING & CONSTRUCTION Pty Ltd. IT MUST NOT BE MADE PUBLIC OR COPIED, & MUST BE RETURNED ON DEMAND. IT IS NOT TO BE USED DIRECTLY OR INDIRECTLY IN ANY WAY DETRIMENTAL TO SANDVIK'S INTERESTS.

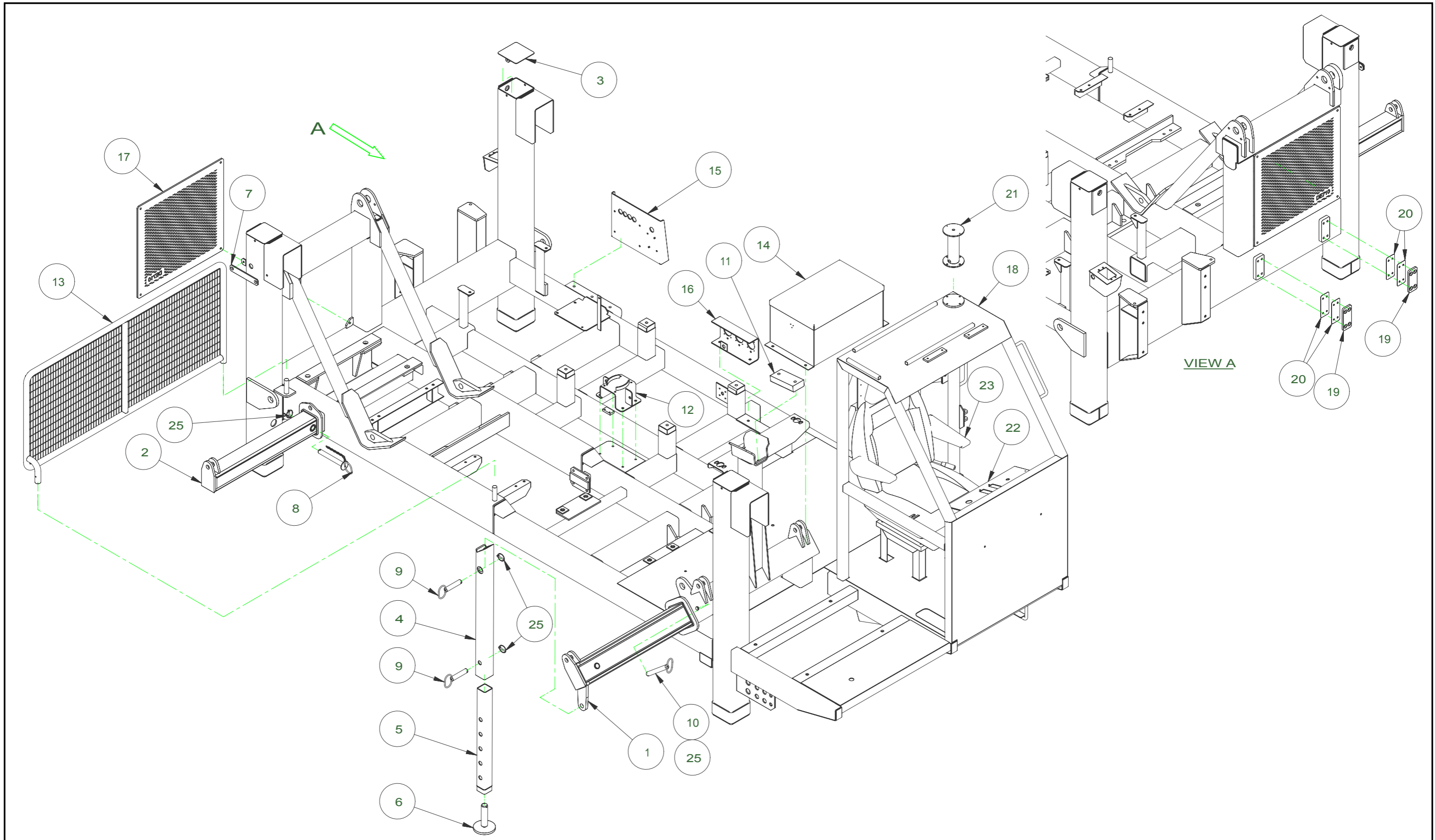
LINEAR & ANGLE TOLERANCES UNLESS SPECIFIED								
MM FROM:	0	50	150	300	1000	4000		
UP TO:	50	150	300	1000	4000	PLUS		
DEC	0	±1.0	±1.5	±2.0	±2.5	±3	±4.0	±1°
	0.0	±0.2	±0.5	±0.8	±1.0	±2	±2.5	±0.5°
	0.00	±0.1	±0.2	±0.3	±0.5	±1	±1.5	±0.2°

NO.	REVISIONS	BY	DATE
4	BOM CHANGED	CVK	23-02-10
3	SUPPORT POST WAS WU12036	RH	18-10-09
2	ITEMS 4, 11, 12, & 13 ADDED ITEM 71 REMOVED	RP	06-03-09
1	ISSUED	MH	06-01-09

SCALE	N.T.S
DRAWN BY	MH
DATE DRN	06-01-09
DWG CH'KD	-
DATE CHK'D	-
ENG APP'D	-
DATE APP'D	06-01-09

**BREAKOUT TOOL 48''
DE710**

 <small>SANDVIK MINING AND CONSTRUCTION AUSTRALIA Pty Ltd ABN 62 003 771 382</small>	SIZE	DRAWING NUMBER	REV.
	A3	12300 SHEET 2 OF 2	4



PROJECTION 		<small>DRAWN TO AS1100 ALL DIMS IN MM - DO NOT SCALE</small> GENERAL GEOMETRIC TOLERANCE <table border="1"> <tr> <td>⊕ 0.5</td> <td>⊖ 0.5</td> <td>⊥ 0.5</td> <td>∥ 0.5</td> <td>∠ 0.5</td> </tr> <tr> <td>∕ 0.5</td> <td>∕ 0.5</td> <td>∕ 0.25</td> <td>∕ 0.5</td> <td>∕ 0.5</td> </tr> </table>		⊕ 0.5	⊖ 0.5	⊥ 0.5	∥ 0.5	∠ 0.5	∕ 0.5	∕ 0.5	∕ 0.25	∕ 0.5	∕ 0.5	SCALE NTS		BASE FRAME ASSEMBLY																											
⊕ 0.5	⊖ 0.5	⊥ 0.5	∥ 0.5	∠ 0.5																																							
∕ 0.5	∕ 0.5	∕ 0.25	∕ 0.5	∕ 0.5																																							
<small>THIS DRAWING AND ALL INFORMATION THEREON IS THE CONFIDENTIAL PROPERTY OF SANDVIK MINING & CONSTRUCTION Pty Ltd. IT MUST NOT BE MADE PUBLIC OR COPIED, & MUST BE RETURNED ON DEMAND. IT IS NOT TO BE USED DIRECTLY OR INDIRECTLY IN ANY WAY DETRIMENTAL TO SANDVIK'S INTERESTS.</small>		REVISIONS		DRAWN BY BS		SIZE A3	DRAWING NUMBER MPL12330	REV. 2																																			
LINEAR & ANGLE TOLERANCES UNLESS SPECIFIED <table border="1"> <tr> <th>MM FROM UP TO:</th> <th>0</th> <th>50</th> <th>150</th> <th>300</th> <th>1000</th> <th>4000</th> <th>4000 PLUS</th> <th>ANGLE</th> </tr> <tr> <td>DEC</td> <td>± 1.0</td> <td>± 1.5</td> <td>± 2.0</td> <td>± 2.5</td> <td>± 3</td> <td>± 4.0</td> <td>± 1°</td> <td></td> </tr> <tr> <td></td> <td>0.0</td> <td>± 0.2</td> <td>± 0.5</td> <td>± 0.8</td> <td>± 1.0</td> <td>± 2</td> <td>± 2.5</td> <td>± 0.5°</td> </tr> <tr> <td></td> <td>0.00</td> <td>± 0.1</td> <td>± 0.2</td> <td>± 0.3</td> <td>± 0.5</td> <td>± 1</td> <td>± 1.5</td> <td>± 0.2°</td> </tr> </table>		MM FROM UP TO:	0	50	150	300	1000	4000	4000 PLUS	ANGLE	DEC	± 1.0	± 1.5	± 2.0	± 2.5	± 3	± 4.0	± 1°			0.0	± 0.2	± 0.5	± 0.8	± 1.0	± 2	± 2.5	± 0.5°		0.00	± 0.1	± 0.2	± 0.3	± 0.5	± 1	± 1.5	± 0.2°	2 PRELIMINARY ISSUE OF MPL 12330-2 1 ISSUED		DATE DRN 10-8-06	 <small>SANDVIK MINING AND CONSTRUCTION AUSTRALIA Pty Ltd ABN 62 003 771 382</small>		
MM FROM UP TO:	0	50	150	300	1000	4000	4000 PLUS	ANGLE																																			
DEC	± 1.0	± 1.5	± 2.0	± 2.5	± 3	± 4.0	± 1°																																				
	0.0	± 0.2	± 0.5	± 0.8	± 1.0	± 2	± 2.5	± 0.5°																																			
	0.00	± 0.1	± 0.2	± 0.3	± 0.5	± 1	± 1.5	± 0.2°																																			
				DATE CHK'D -	BY																																						
				ENG APP'D -	DATE																																						
				DATE APP'D -																																							

RBR	BALL	Component	Description	Quantity
65		MPL11260-1	MAIN DRIVE ASSY 6068TF250 200D	1
	1	.WU11053	HOSE SUPPORT BRACKET	REV 1 1
		..PM26164AG	CLAMP TUBE SINGLE 44.5mm	1
	2	.WU11391	CLEVIS	REV 1 1
	3	.WU11478	RADIATOR MOUNT	REV 1 1
	4	.WU13262	EXHAUST LAGGING JD	REV A 1
	5	.WU13269	REMOTE OIL FILTER SUPPT	REV A 1
	6	.WU13947	HAND PUMP SUPPORT	REV A 1
	7	.WU9940	SUPPORT ENG MT REAR	REV.1 2
	8	.WU9941	SUPPORT ENG MT FRONT LEFT HAND	1
	9	.WU9942	SUPPORT ENG MT FRONT RIGHT HAN	1
	10	.PD22870KM	BELL HOUSING	1
	11	.PD22870LL	COUPLING	1
	12	.PD22870UT	PUMP HYD 95/45/28cc	1
		..PD22870UG	PUMP HYD 45cc	1
		..PD22870UH	PUMP HYD 28cc	1
		..PD22870US	PUMP HYD 95cc	1
	13	.PD22929JY	ENGINE DIESEL 6068TF2501851	1
	1	..PD22929NA	ROCKER COVER GASKET	1
	2	..PD22929NB	GASKET KIT	1
	3	..PD22929NC	FILLER CAP	1
	4	..PD22929ND	SEAL	1
	5	..PD22929NE	GASKET	1
	6	..PD22929NF	O RING	1
	7	..PD22929NG	REAR SEAL	1
	8	..PD22929NH	FLYWHEEL RING GEAR	1
	9	..PD22929NJ	SEALING WASHER	1
	10	..PD22929NK	LOCKWASHER	1
	11	..PD22929NL	O RING	1
	12	..PD22929NM	O RING	1
	13	..PD22929NN	FUEL INJECTION PUMP	1
	14	..PD22929NP	FUEL INJECTION PUMP (RECON)	1
	15	..PD22929NQ	SOLENOID	1
	16	..PD22929NR	O RING	1
	17	..PD22929NS	SEAL	1
	18	..PD22929NT	WASHER	1
	19	..PD22929NU	WASHER	1
	20	..PD22929NV	INJECTOR NOZZLE	1
	21	..PD22929NW	INJECTOR NOZZLE (RECON)	1
	22	..PD22929NX	WASHER	1
	23	..PD22929NY	GASKET	1
	24	..PD22929NZ	GASKET OIL SUMP	1
	25	..PD22929PA	GASKET WATER LINE	1
	26	..PD22929PB	GASKET WATER LINE	1
	27	..PD22929PC	THERMOSTAT	1
	28	..PD22929PD	FAN DRIVE, BEARING WITH	1
	29	..PD22929PE	AIR FILTER	1
	30	..PD22929PF	COOLING FAN	1
	31	..PD22929PG	PULLEY	1
	32	..PD22929PH	SLEEVE	1
	33	..PD22929PJ	V BELT	1
	34	..PD22929PK	GASKET	1
	35	..PD22929PL	SEAL KIT (FUEL LINE)	1
	36	..PD22929PM	O RING	1
	37	..PD22929PN	SEAL KIT (FUEL LINE)	1

RBR	BALL	Component	Description	Quantity
		12 ..PM28656D10	PIN SEL LOK 3 x 10 LG.	1
		13 ..PD22873AW	STEEL BALL 4MM	1
		29 .PD22870AA	VALVE RELIEF CART	2
		30 .PD22870GY	VALVE RELIEF BODY ONLY (LESS C	5
		31 .PD22870HB	VALVE RELIEF CART	1
		32 .PD22870QY	VALVE RELIEF CART	3
		33 .PD22870RK	VALVE SHUTTLE 1/4" BSPP ***DO	1
		34 .PD22870TP	VALVE REMOTE PILOT	1
		35 .PD22870UB	VALVE REMOTE PILOT	1
		36 .PD22981F	VALVE BALL 3/4"BSPP	1
		37 .PD22981H	VALVE RESTRICTOR 1/2"BSPP	1
		38 .PD23752P	GAUGE PR 600kPa 50mm 1/8"BSPT	1
		39 .PD23752X	GAUGE PR (MUD) 1000PSI 2"M-1"F	1
		40 .PD23753CD	GAUGE PR 0-5000 psi 4"OD 1/2"N	1
		41 .PD23753CF	GAUGE PR 0-3000 psi 4" OD 1/2"	1
		42 .PD23754DM	VALVE DIVERTER 3 WAY	1
		43 .PD23754GB	VALVE DIR CONTROL 8 SPOOL	1
		44 .PD23778AA	VALVE BALL 3-WAY 1/4"NPT	2
		45 .PD23778Y	VALVE BALL 4-WAY	1
		46 .PD23816AZ	LEVER DIESEL CONTROL	1
		47 .PD23817E	VALVE BALL 3/8"BSPP	2
		48 .PD24435FY	HOSE ASSEMBLY STAUFF	1
		49 .PD24435GA	HOSE ASSEMBLY 2200MM	1
		50 .PD24464AJ	VALVE BODY	2
		51 .PD24464BB	VALVE RELIEF CART	2
		52 .PD24464D	VALVE CHECK PILOT OPEN	1
		53 .PD24464ED	HAND KNOB KIT "K"	3
		54 .PD24464GX	VALVE RELIEF CART	1
		55 .PD24464KY	VALVE CHECK CARTRIDGE	1
		56 .PD24464NR	VALVE BODY	6
		57 .PD24464PJ	VALVE BODY	3
		58 .PD27206A	VALVE SHUTTLE 1/4" BSPT	1
		59 .PM26162-017	O RING 17.17ID 1.78W	4
		60 .PM28604G16	SKT HD CAP SCREW M6x 16	6
		61 .PM28604H16	SKT HD CAP SCREW M8x 16	12
		62 .PM28610D19	HEX HD BOLT 1/4"UNC x 3/4"	12
		63 .PM28610D38	HEX HD BOLT 1/4"UNC x 1 1/2"	2
		64 .PM28610D44	HEX HD BOLT 1/4"UNC x 1 3/4"	4
		65 .PM28610D51	HEX HD BOLT 1/4"UNC x 2"	2
		66 .PM28610D57	HEX HD BOLT 1/4"UNC x 2 1/4"	5
		67 .PM28610E114	HEX HD BOLT 5/16"UNC x 4 1/2"	2
		68 .PM28610E19	HEX HD BOLT 5/16"UNC x 3/4"	8
		69 .PM28610E51	HEX HD BOLT 5/16"UNC x 2"	2
		70 .PM28610H32	HEX HD BOLT 1/2"UNC x 1 1/4"	6
		71 .PM28610H89	HEX HD BOLT 1/2"UNC x 3 1/2"	4
		72 .PM28615D19	SKT HD CAP SCREW	19
		73 .PM28615D64	SKT HD CAP SCREW	8
		74 .PM28615D70	SKT HD CAP SCREW	4
		75 .PM28615E44	SKT HD CAP SCREW	4
		76 .PM28615F19	SKT HD CAP SCREW	8
		77 .PM28615H32	SKT HD CAP SCREW GR 12.9	4
		78 .PM28633E	HEX NUT 5/16" UNC	4
		79 .PM28634D	HEX NUT 1/4"UNC H.T.	12
		80 .PM28649A	WASHER FLAT 1/4" (HARDENED)	26
		81 .PM28649B	WASHER FLAT 5/16" (HARDENED)	4

CLICK HERE TO **DOWNLOAD** THE COMPLETE MANUAL

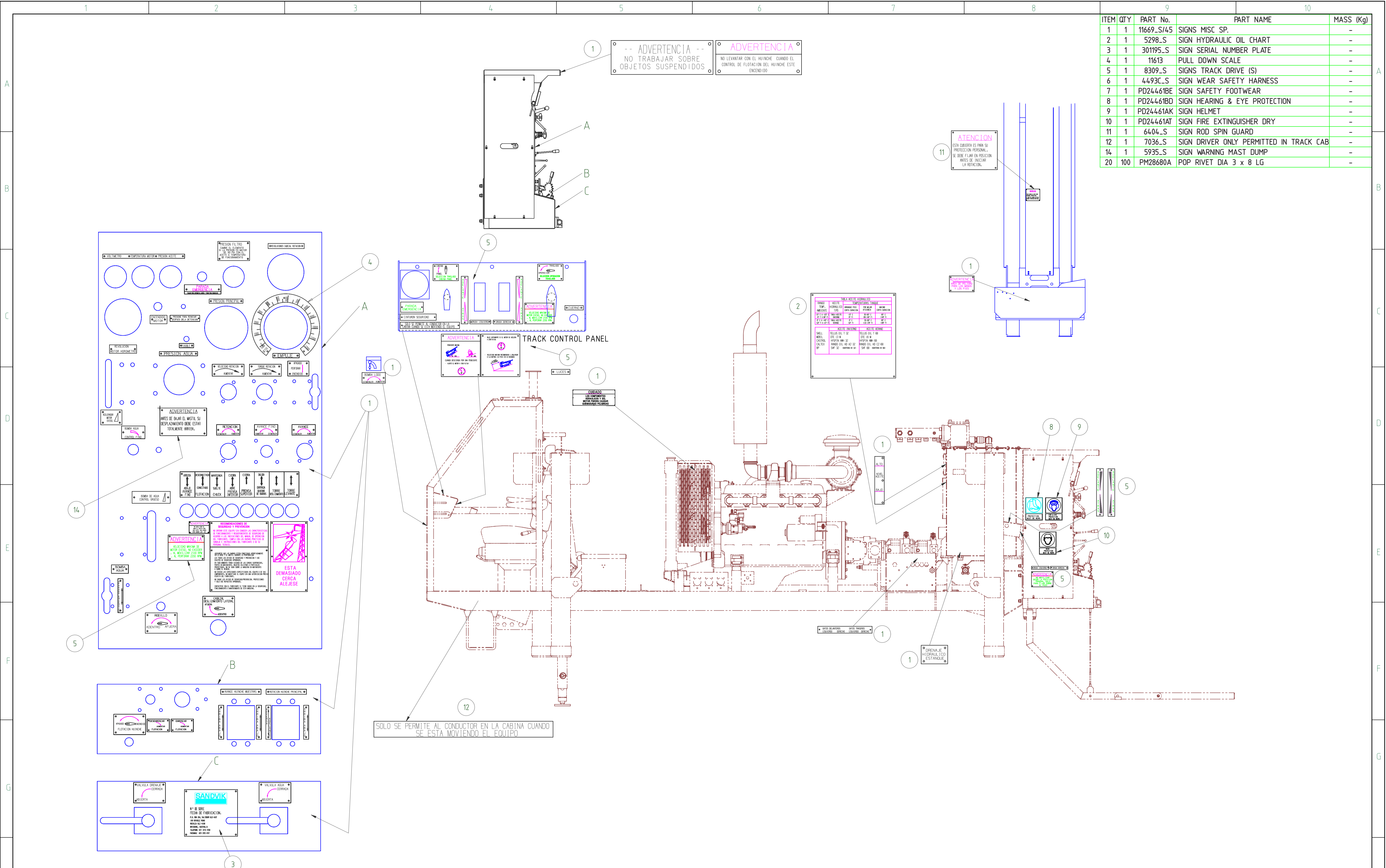
- Thank you very much for reading the preview of the manual.
- You can download the complete manual from: www.heydownloads.com by clicking the link below



- Please note: If there is no response to CLICKING the link, please download this PDF first and then click on it.

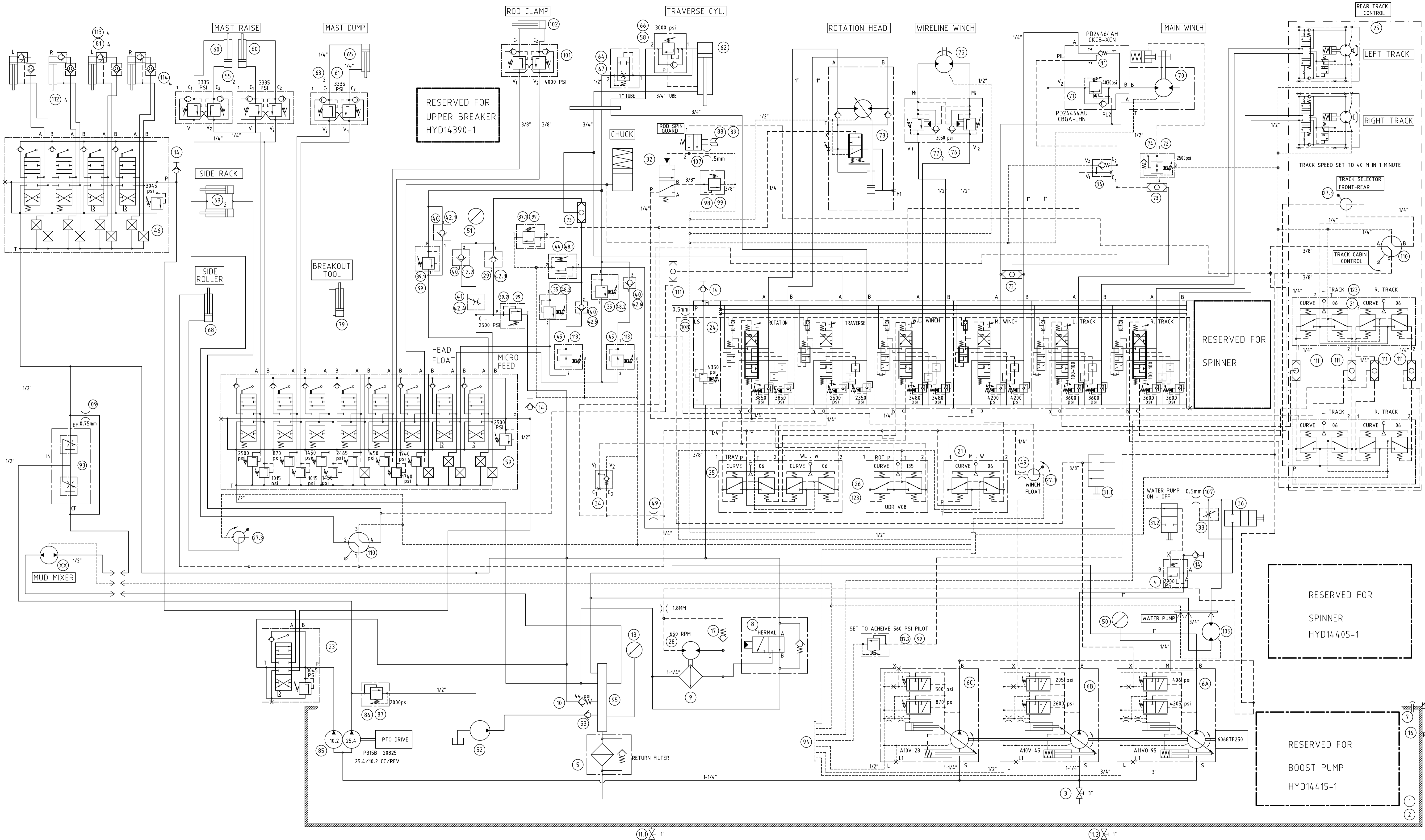
CLICK HERE TO **DOWNLOAD** THE COMPLETE MANUAL

ITEM	QTY	PART No.	PART NAME	MASS (Kg)
1	1	11669_S/45	SIGNS MISC SP.	-
2	1	5298_S	SIGN HYDRAULIC OIL CHART	-
3	1	301195_S	SIGN SERIAL NUMBER PLATE	-
4	1	11613	PULL DOWN SCALE	-
5	1	8309_S	SIGNS TRACK DRIVE (S)	-
6	1	4493C_S	SIGN WEAR SAFETY HARNESS	-
7	1	PD24461BE	SIGN SAFETY FOOTWEAR	-
8	1	PD24461BD	SIGN HEARING & EYE PROTECTION	-
9	1	PD24461AK	SIGN HELMET	-
10	1	PD24461AT	SIGN FIRE EXTINGUISHER DRY	-
11	1	6404_S	SIGN ROD SPIN GUARD	-
12	1	7036_S	SIGN DRIVER ONLY PERMITTED IN TRACK CAB	-
14	1	5935_S	SIGN WARNING MAST DUMP	-
20	100	PM28680A	POP RIVET DIA 3 x 8 LG	-



NOTE: ALL DRAWING AND PARTS LIST DIMENSIONS INDICATE FINISHED SIZES. NO ALLOWANCES HAVE BEEN MADE FOR MANUFACTURING PROCESSES

PROJECTION FIRST ANGLE GENERAL DIMENSIONAL TOLERANCES 0.5 1 1.5 2 3 4 5 6 8 10 12 15 20 25 30 40 50 60 80 100 120 150 200 250 300 400 500 600 800 1000 1200 1500 2000 2500 3000 4000 5000 PLUS LINEAR & ANGLE TOLERANCES UNLESS SPECIFIED UP TO 30 30 50 50 100 100 150 150 200 200 300 300 400 400 500 500 600 600 800 800 1000 1000 1200 1200 1500 1500 2000 2000 2500 2500 3000 3000 PLUS DEC 0 ± 0.1 ± 0.15 ± 0.2 ± 0.3 ± 0.4 ± 0.5 ± 0.6 ± 0.8 ± 1.0 ± 1.5 ± 2.0 ± 2.5 ± 3.0 ± 4.0 ± 5.0 ± 6.0 ± 8.0 ± 10 ± 15 ± 20 ± 25 ± 30 ± 40 ± 50 ± 60 ± 80 ± 100 ± 150 ± 200 ± 250 ± 300 ± 400 ± 500 ± 600 ± 800 ± 1000 ± 1500 ± 2000 ± 2500 ± 3000 ± 4000 ± 5000 PLUS ANGLES 0.1 0.2 0.3 0.5 1 1.5 2 3 4 5 6 8 10 12 15 20 25 30 40 50 60 80 100 120 150 200 250 300 400 500 600 800 1000 1200 1500 2000 2500 3000 4000 5000 PLUS	REVISIONS 1 ISSUED	SCALE N.T.S. DRAWN BY DJW DATE DRN 11-08-06 DWG CHKD - DATE CHK'D - ENG APP'D - DATE APP'D -	NAME/WARNING TAG ASSY SIZE A1 DRAWING NUMBER 11668_S/50 REV. 1 SANDVIK MINING AND CONSTRUCTION AUSTRALIA Pty Ltd ABN 62 603 771 362 SHEET 1 OF 1
---	-----------------------	--	--



RESERVED FOR
UPPER BREAKER
HYD14390-1

RESERVED FOR
SPINNER

RESERVED FOR
SPINNER
HYD14405-1

RESERVED FOR
BOOST PUMP
HYD14415-1

UNLESS OTHERWISE SPECIFIED		PROJECTION
DRAWN TO AS1100 - DIMS IN MM - DO NOT SCALE		
LINEAR DIMS	GENERAL GEOMETRIC TOLERANCE	
1 DEC -0.02	0.5	
2 DEC -0.05	0.5	0.25
3 DEC -0.15	0.5	0.5
		IF IN DOUBT ASK

THIS DRAWING AND ALL INFORMATION THEREON IS THE PROPERTY OF SANDVIK MINING & CONSTRUCTION Pty Ltd, AND IS CONFIDENTIAL, AND MUST NOT BE MADE PUBLIC OR COPIED. THIS DRAWING IS LOANED SUBJECT TO RETURN ON DEMAND, AND IS NOT TO BE USED DIRECTLY OR INDIRECTLY IN ANY WAY DETRIMENTAL TO OUR INTERESTS.

REVISIONS	BY	DATE	REVISIONS	BY	DATE
1	ISSUED				

SCALE	N/A
CHECK	
DRAWN	RH
APPRD	
DATE	30-09-08

HYDRAULIC CIRCUIT
DE710-CTXX

SANDVIK MINING AND CONSTRUCTION
AUSTRALIA Pty Ltd
ABN 62 003 771 382

REFERENCES/FIRST USED:	DE710CT-XX
DRAWING NUMBER	14420
REV.	1
SHEET 1 OF 1	

<i>Seq</i>	<i>Component</i>	<i>Item Description</i>	<i>Quantity</i>
1	MPL11615-1	UPPER ROD SLIDE ASSEMBLY	1
2	MPL11615/50	UPPER ROD SLIDE ASSY SHORT	1

<i>Seq</i>	<i>Component</i>	<i>Item Description</i>		<i>Quantity</i>
1	BE00001032	PLATFORM, MAST	REV B	1

ORIGINAL MANUAL
SANDVIK ROCKLEA

710-25CT

Parts Manual

EXPLORATION DRILL 710-25CT
REVISION A



RBR	BALL	Component	Description	Quantity
1		MPL14385-1	UPPER BREAKER ASS'Y ;DE710XXCT	1
	1	..WU11920-1	UPPER BREAKER ASSEMBLY HWT	1
	1	..WU11922	FIXED JAW	REV 1 1
	2	..WU11921	CYLINDER HOUSING	REV 2 1
	3	..WU11036	PISTON	REV 3 1
		...PD22923AX	BUSH BRONZE	1
	4	..WU11923	SLIDE JAW HOLDER	REV 1 1
	5	..WU11925	SPRING SLEEVE	REV 1 2
	6	..WU11924	TIE BOLT	REV 1 4
	7	..PD22917AJ	J-SEAL	1
	8	..PD22917AK	WEAR RING	1
	9	..PD23776AH	SEAL 3"X3.75"X3/8"	1
	10	..PD22928KH	SPRING COMP 8 X 37 X 155 LG	2
	11	..WU11051	CARRIAGE	REV 5 1
	12	..WU11052	LOAD PAD	REV 1 2
	13	..PD22928JB	SPRING COMPRESSION	1
	15	..PD22914A	CAM FOLLOWER (ROT.HD.ROLLER)	4
	16	..WU11927	COLUMN	REV 1 1
	17	..WU11926A	LINK PLATE LOWER	REV 1 2
	18	..WU11926B	LINK PLATE UPPER	REV 1 2
	19	..WU12008	ADAPTOR PLATE	REV 1 1
	20	..WU4122	COMPRESSION SPRING	REV. 1 1
	21	..WU11932	SPRING RETAINER	REV 1 1
	22	..WU11933	ROD GUIDE	REV 1 1
	24	..PM28610H191	HEX HD BOLT 1/2"UNC x 7 1/2"	2
	25	..PM28615H25	SKT HD CAP SCREW GR 12.9	4
	26	..PM28610J32	HEX HD BOLT 5/8"UNC x 1 1/4"	2
	27	..PM28634J	HEX NUT 5/8"UNC H.T.	2
	28	..PM28651J	WASHER FLAT 5/8" PLATED	4
	29	..PM28643J	5/8"-18TPI HEX NUT H.T. GRADE	8
	30	..PM28645J	WASHER LOAD CONVEX M10	4
	31	..PM28610F19	HEX HD BOLT 3/8"UNC x 3/4"	4
	32	..PM28634H	HEX NUT 1/2"UNC H.T.	2
	33	..PM28615F44	SKT HD CAP SCREW	2
	34	..PM28638F	NUT NYLOC 3/8"UNC	2
	36	..PM28647N	WASHER STRUCTURAL M20 AS1252	4
	37	..PM28616D32	SKT HD C'SUNK SCREW	4
	38	..PM28638D	NUT NYLOC 1/4"UNC	4
	39	..PM28603M180	HEX HD BOLT M16x180 GR 8.8	2
	40	..PM28621M	NUT NYLOC M16 GRADE 6	2
	41	..PM28638K	NYLOC NUT 3/4"UNC	2
	42	..WU11381	MODIFIED BOLT	REV 1 2
		...PM28610K203	HEX HD BOLT 3/4"UNC x 8"	2
	2	..HYD14390-1	HYD CIRCUIT UPPER BREAKER;	1

<i>Seq</i>	<i>Component</i>	<i>Item Description</i>	<i>Quantity</i>
1	MPL13905-1	SUPPORT STRUCTURE SAFE-T-SPIN	1

CLICK HERE TO **DOWNLOAD** THE COMPLETE MANUAL

- Thank you very much for reading the preview of the manual.
- You can download the complete manual from: www.heydownloads.com by clicking the link below



- Please note: If there is no response to CLICKING the link, please download this PDF first and then click on it.

CLICK HERE TO **DOWNLOAD** THE COMPLETE MANUAL