

# IRON 140 DCR -> 20001

## V0 - BALLAST, TOWING HITCHES

### FRONT HITCHES

FRONT TOWING HITCH.....	V0.01.0 (1)
CATCHING MOUTH.....	V0.01.1 (1)

### REAR HITCHES

TRAILER STAND - DRAWBAR COUPLING.....	V0.02.0 (1)
FRAME HOOK HOLDER.....	V0.02.1 (1)
FRAME HOOK HOLDER.....	V0.02.2 (1)
FRAME HOOK HOLDER.....	V0.02.3 (1)
TOWING FRAME - WITH PITON-FIX.....	V0.02.4 (1)
TOWING FRAME - WITH PITON-FIX.....	V0.02.5 (1)
TRAILER STAND - DRAWBAR COUPLING Ø mm 80.....	V0.02.6 (1)
TRAILER STAND - DRAWBAR COUPLING Ø mm 80.....	V0.02.6 (2)
TRAILER STAND - DRAWBAR COUPLING Ø mm 80.....	V0.02.6 (3)
TRAILER STAND - DRAWBAR COUPLING Ø mm 80.....	V0.02.7 (1)
DRAWBAR COUPLING.....	V0.02.8 (1)
REAR TOWING HITCH.....	V0.02.9 (1)
REAR TOWING HITCH BRACKET.....	V0.02.10 (1)
REAR TOWING HITCH BRACKET.....	V0.02.11 (1)
DRAWBAR COUPLING MECH.....	V0.02.12 (1)
DRAWBAR COUPLING MECH.....	V0.02.13 (1)
REAR TOWING HITCH CAT: "C".....	V0.02.14 (1)
REAR TOWING HITCH CAT: "C".....	V0.02.15 (1)
REAR TOWING HITCH CAT: "D2".....	V0.02.16 (1)
REAR TOWING HITCH CAT: "D2".....	V0.02.17 (1)
REAR TOWING HITCH CAT: "D3".....	V0.02.18 (1)
REAR TOWING HITCH CAT: "D3".....	V0.02.19 (1)
REAR TOWING HITCH CEE.....	V0.02.20 (1)
DRAWBAR COUPLING CEE.....	V0.02.21 (1)
REAR TOWING HITCH Ø mm 80.....	V0.02.22 (1)
REAR TOWING HITCH Ø mm 80.....	V0.02.23 (1)
AUTOMATIC TOWING HITCH MM 31 - TOWING EYE MM 52.....	V0.02.24 (1)
AUTOMATIC TOWING HITCH 31 MM - TOWING EYE 51 MM.....	V0.02.25 (1)
TOWING COUPLING AUTOM. MM 38 - DRAWBAR EYE MM 52.....	V0.02.26 (1)
TOWING COUPLING AUTOM. MM 38 - DRAWBAR EYE MM 52.....	V0.02.27 (1)
TOWING COUPLING AUTOM. MM 38 - DRAWBAR EYE MM 63.....	V0.02.28 (1)
TOWING COUPLING AUTOM. MM 38 - DRAWBAR EYE MM 63.....	V0.02.29 (1)
PIN FOR REAR TOW HOOK.....	V0.02.30 (1)
PICK-UP-HITCH - MECHANICAL.....	V0.02.31 (1)
PICK-UP-HITCH - HYDRAULIC.....	V0.02.32 (1)
REMOTE CONTROL FOR AUTOMATIC REAR TOWING HITCH.....	V0.02.33 (1)
REMOTE CONTROL FOR AUTOMATIC REAR TOWING HITCH.....	V0.02.34 (1)

CLICK HERE TO **DOWNLOAD** THE COMPLETE MANUAL

- Thank you very much for reading the preview of the manual.
- You can download the complete manual from: [www.heydownloads.com](http://www.heydownloads.com) by clicking the link below



- Please note: If there is no response to CLICKING the link, please download this PDF first and then click on it.

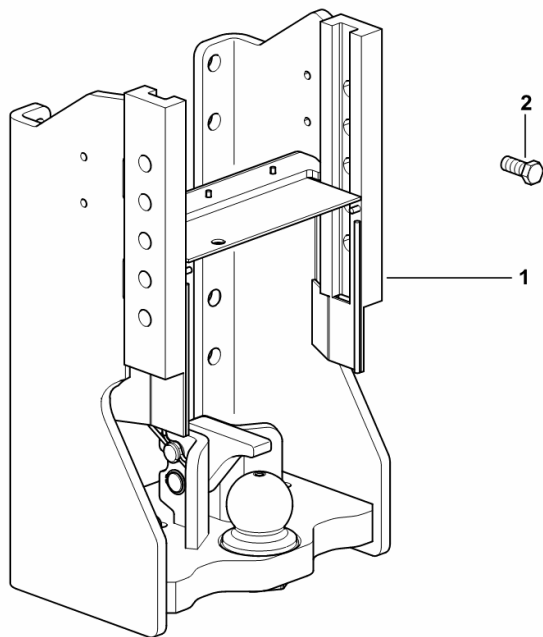
CLICK HERE TO **DOWNLOAD** THE COMPLETE MANUAL

**TRAILER STAND - DRAWBAR COUPLING Ø mm 80**

Fig.	Code	QTY	Name
------	------	-----	------

Notes:  
[IRON 140 DCR -> 20001]

1	0.015.9830.3/10	1	chassis frame CBM ☞ 0.015.9830.3/10
2	2.0129.071.6	10	screw m 18 p.1.5x40



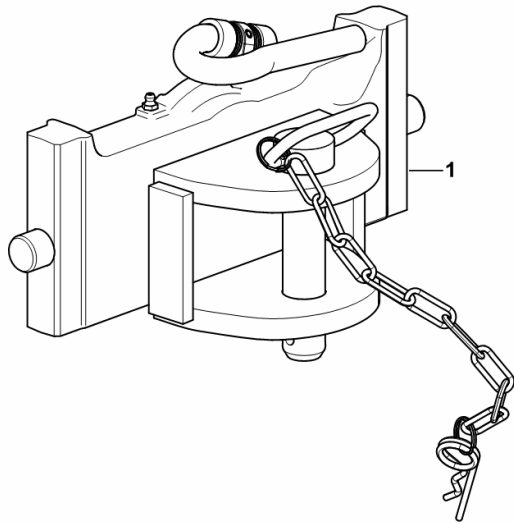
9\_L3831\_69\_0-A-001

**REAR TOWING HITCH CAT: "C"**

Fig.	Code	QTY	Name
------	------	-----	------

Notes:  
[IRON 140 DCR -> 20001]

1	0.017.8561.3	1	clevis SAUERMANN ☞ 0.017.8561.3
---	--------------	---	------------------------------------



9\_L0131\_72\_0-A-001

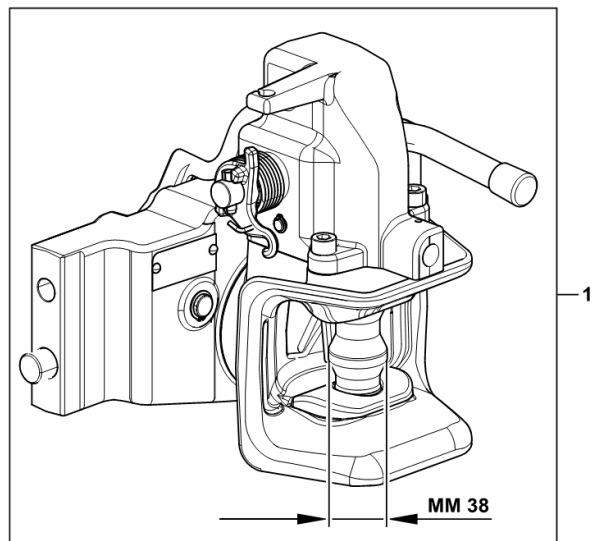
**TOWING COUPLING AUTOM. MM 38 - DRAWBAR EYE MM 52**

Fig.	Code	QTY	Name
------	------	-----	------

**Notes:**

[IRON 140 DCR -> 20001]

1	0.015.9811.3/10	1	tow hook CBM ( 20013 <- ) ☞ 0.015.9811.3/10
1	0.017.9614.3	1	tow hook - CBM -



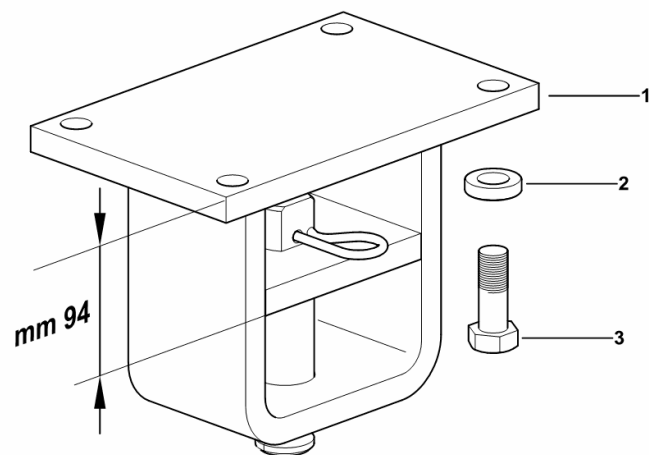
9\_L3831\_65\_0-A-001

**SWINGING DRAWBAR SUPPORT**

Fig.	Code	QTY	Name
------	------	-----	------

Notes:  
[IRON 140 DCR -> 20001]

1	0.015.9832.3/10	1	support CBM ☞ 0.015.9832.3/10
2	01174740	4	washer 16.5
3	2.0112.617.2	4	screw m 16 p.2x45



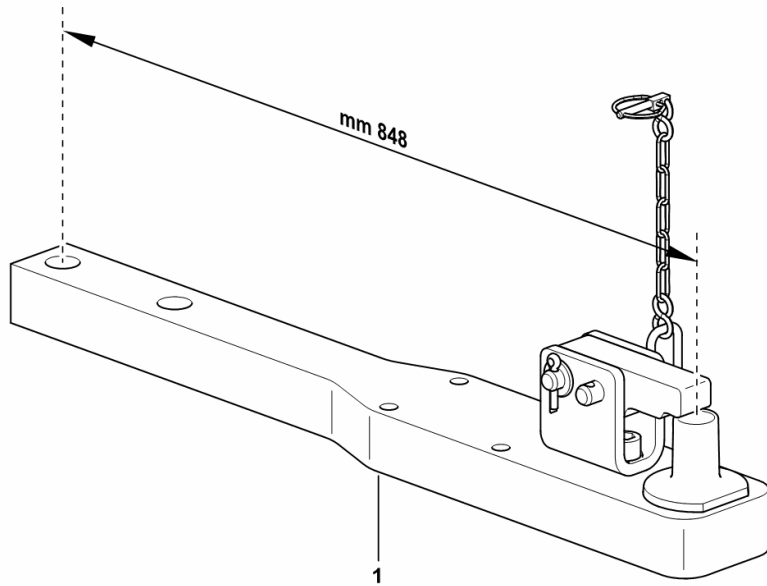
9\_J3031\_67\_0-A-001

**SWINGING DRAWBAR WITH PITON-FIX**

Fig.	Code	QTY	Name
------	------	-----	------

Notes:  
[IRON 140 DCR -> 20001]

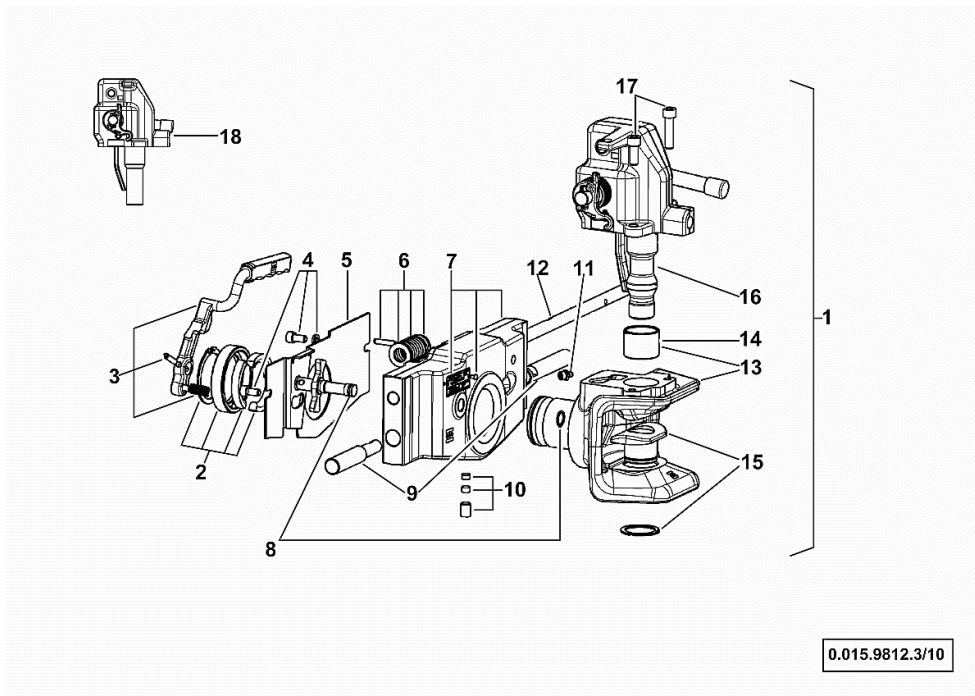
1	0.017.8587.3	1	crosspiece SAUERMANN ☞ 0.017.8587.3
---	--------------	---	--



9\_J8231\_67\_0-A-001

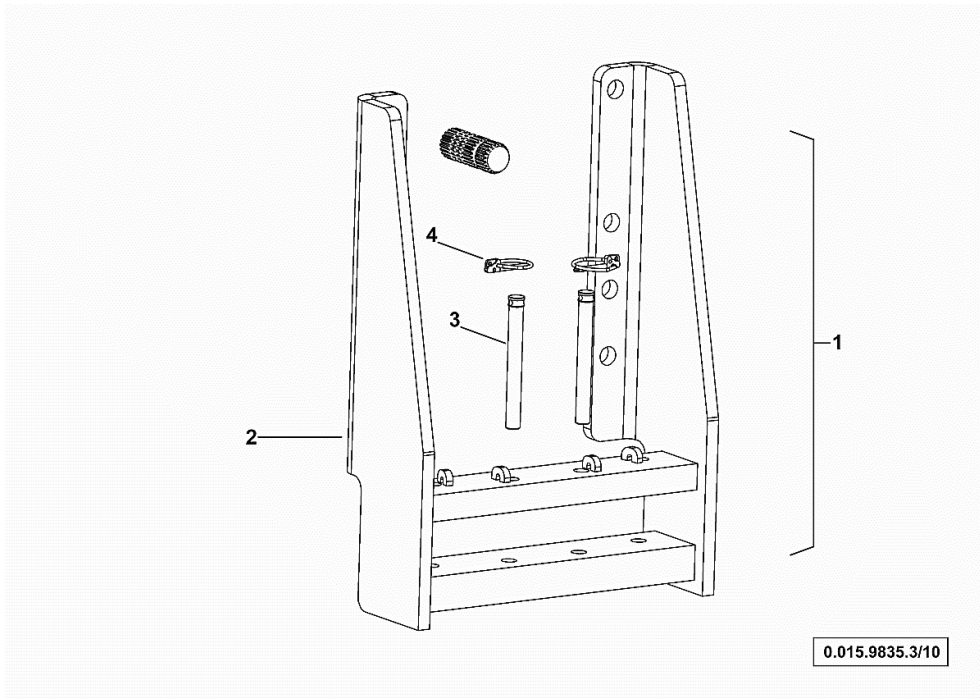
**DRAWBAR COUPLING AUTOM.**

Fig.	Code	QTY	Name
1	0.015.9812.3/10	1	tow hook CBM
2	0.900.1270.0	1	parts set
3	0.900.1270.1	1	parts set
4	0.900.1270.2	1	screw kit
5	0.900.1270.3	1	plate
6	0.900.1270.4	1	parts set
7	0.900.1274.6	1	support
8	0.900.1270.6	1	parts set
9	0.900.1272.8	1	pin kit
10	0.900.1270.8	1	parts set
11	0.900.1178.7	1	lubricator m 10 p.1
12	0.900.1178.9	1	pin
13	0.900.1274.7	1	clevis
14	0.900.1180.8	1	bushing
15	0.900.1274.8	1	parts set
16	0.900.1274.9	1	pin Ø mm 31
17	0.900.1273.1	1	screw kit
18	0.900.1275.0	1	parts set



**CHASSIS**

Fig.	Code	QTY	Name
1	0.015.9835.3/10	1	support CBM
2	0.900.1275.8	1	support
3	0.900.1275.9	1	pin
4	0.900.1275.3	1	pin



**DRAWBAR COUPLING**

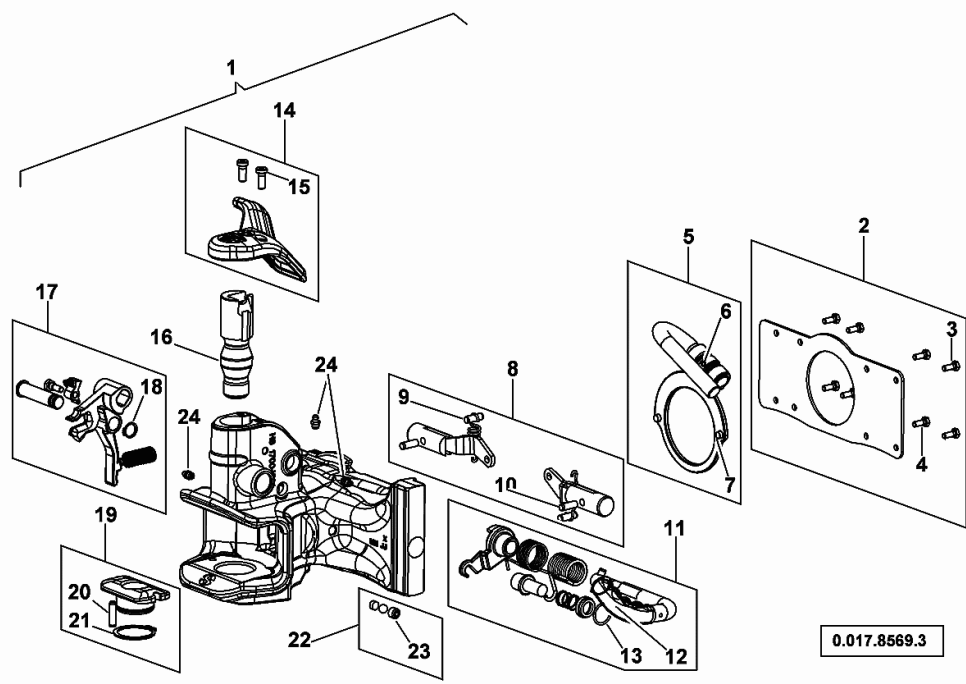
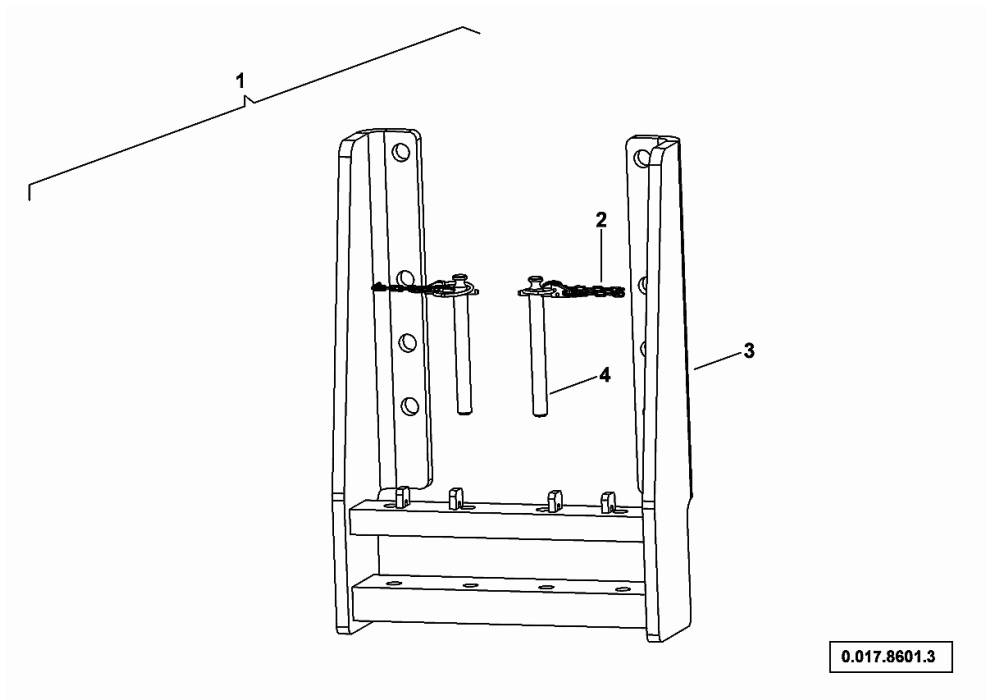


Fig.	Code	QTY	Name
1	0.017.8569.3	1	automatic hook SAUERMANN
2	0.900.0384.5	1	plate
3	0.000.0000.1	2	not serviceable DIN EN20074-M6x12 M6x12
4	0.000.0000.1	6	not serviceable DIN EN20074-M6x20 M6x20
5	0.900.0384.1	1	accessories
6	0.000.0000.1	1	not serviceable ISO 8752 - 6x35 6x35
7	0.000.0000.1	2	not serviceable ISO 8734 - 8 M6x24 M6x10
8	0.900.0384.2	1	accessories
9	0.000.0000.1	2	not serviceable ISO 8734 - 6 M6x26 M6x26
10	0.000.0000.1	2	not serviceable ISO 8734 - 8 M6x24 M6x24
11	0.900.1426.4	1	parts set
12	0.000.0000.1	1	not serviceable ISO 8750 - 8x30 8x30
13	0.000.0000.1	1	not serviceable DIN 7993 - 25x2 25x2
14	0.900.1426.5	1	parts set
15	0.000.0000.1	2	not serviceable DIN 7984 - M8x20 M8X20
16	0.900.1426.6	1	pin
17	0.900.1426.7	1	parts set
18	0.000.0000.1	1	not serviceable DIN 000471- 16X1 16x1
19	0.900.1426.8	1	parts set
20	0.000.0000.1	1	not serviceable ISO 8750 - 8x30 8x30
21	0.000.0000.1	1	not serviceable DIN 000471- 45X1,75

**SUPPORT**

Fig.	Code	QTY	Name
1	0.017.8601.3	1	support SAUERMANN
2	0.000.0000.1	2	not serviceable d=6
3	0.900.1427.4	1	chassis frame
4	0.900.0386.0	2	pin



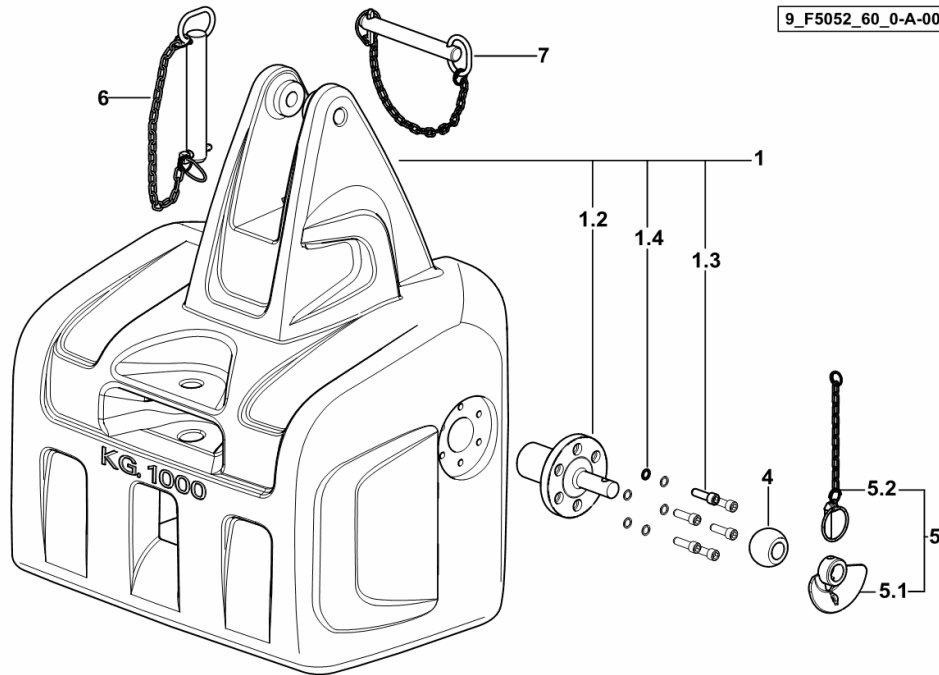
**FRONT BALLAST 1000 Kg**

Fig.	Code	QTY	Name
------	------	-----	------

**Notes:**

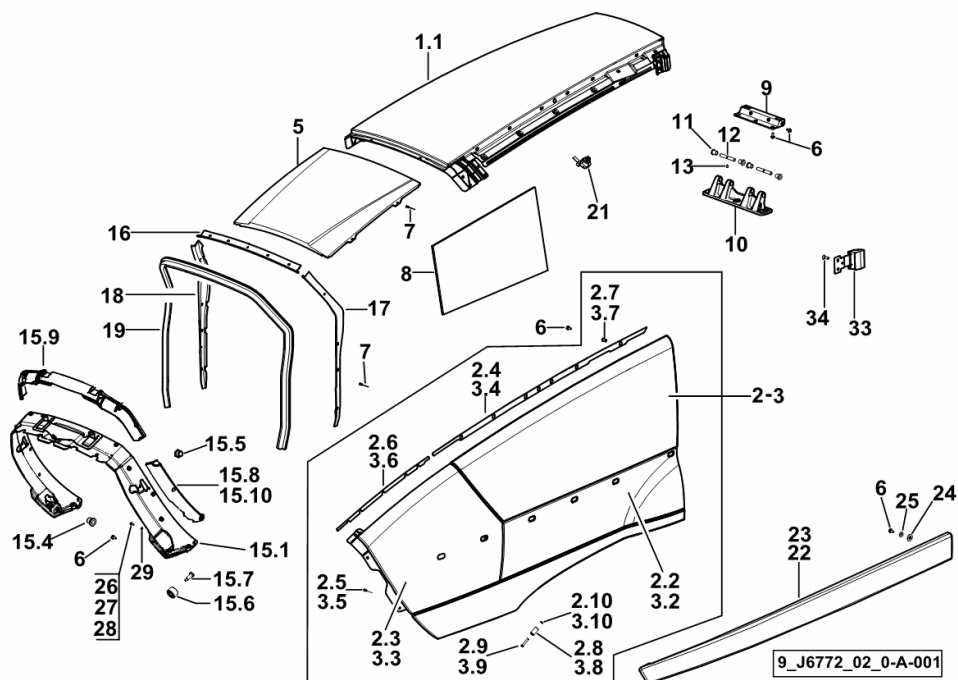
[IRON 140 DCR -> 20001]

1	0.015.4654.4/40	1	ballast 1000 Kg
1.2	0.014.7310.0/40	2	support
1.3	2.0312.414.2	12	screw m 12 x 40
1.4	2.1480.016.2	12	washer 12
4	0.760.4552.0	2	cap 2 cat.
5	0.760.5951.3	2	pin 2 cat.
5.1	0.011.6899.3	1	sleeve Ø 28.4
5.2	0.012.4860.3	1	contact surface
6	0.014.7307.4/10	1	pin
7	0.016.0306.3/20	1	pin



**HOOD**

Fig.	Code	QTY	Name
19	0.013.2565.0/10	1	gasket
21	2.6859.108.0	8	clamp
22	0.013.6228.3	1	rail sx/lh/li
23	0.013.6913.3	1	rail dx/rh/re
24	0.013.8255.0/10	12	spacer
25	2.1312.003.2	14	washer 6
26	2.0332.303.2	2	screw m 5 p.0.8 x 10
27	2.0332.304.2	7	screw m 5 p.0.8 x 12
28	2.0332.306.2	2	screw m 5x0.8x16
29	2.1310.001.2	2	flat washer 5.3
33	0.013.1133.2	2	guide
34	2.0342.203.3	4	screw m 6 p.1.0 x 16



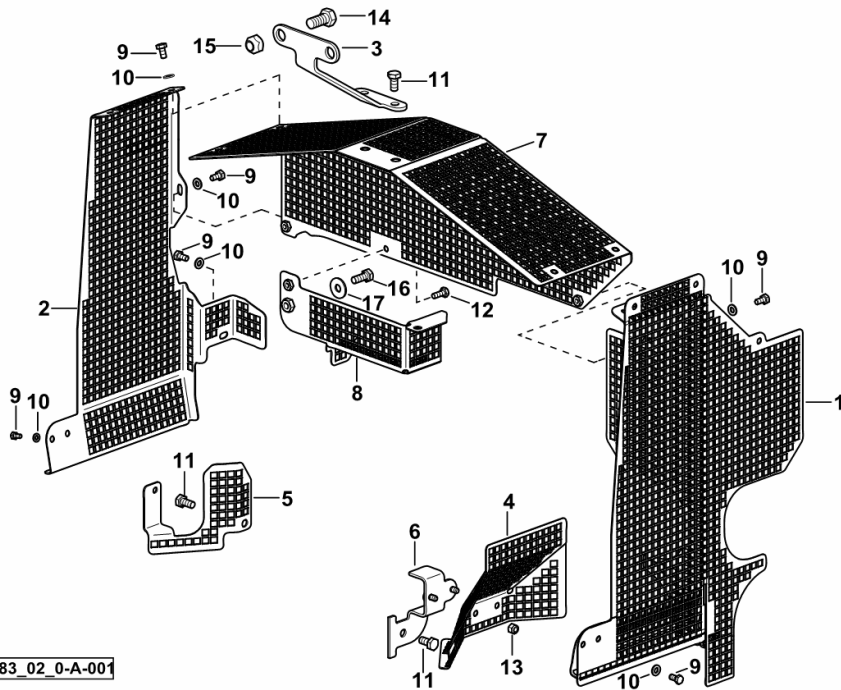
**BELT GUARDS**

Fig.	Code	QTY	Name
------	------	-----	------

**Notes:**

- EXPORT U.S.A. [IRON 140 DCR -> 20001]

1	0.016.6547.0	1	shield sx/lh/li
2	0.016.6548.0	1	shield dx/rh/re
3	0.016.6549.0	1	bracket
4	0.016.6550.0	1	shield
5	0.016.6551.0	1	shield
6	0.016.6563.3	1	support
7	0.016.6374.3	1	shield
8	0.016.6375.3	1	shield
9	2.0112.003.2	11	screw m 6 p.1 x 12
10	2.1310.002.2	11	washer 6.6, d125
11	2.0114.205.2	4	screw m 8 p.1.25 x 16
12	2.0114.005.2	1	screw m 6 p.1.0 x 16
13	2.1121.003.2	1	selflock nut m 6 p.1
14	2.0112.409.2	2	screw m 12 p.1.75 x 25
15	2.1121.008.2	2	nut m 12
16	2.0114.207.2	1	screw m 8 p.1.25 x 20
17	2.1312.004.2	1	washer 8.4



9\_J6383\_02\_0-A-001



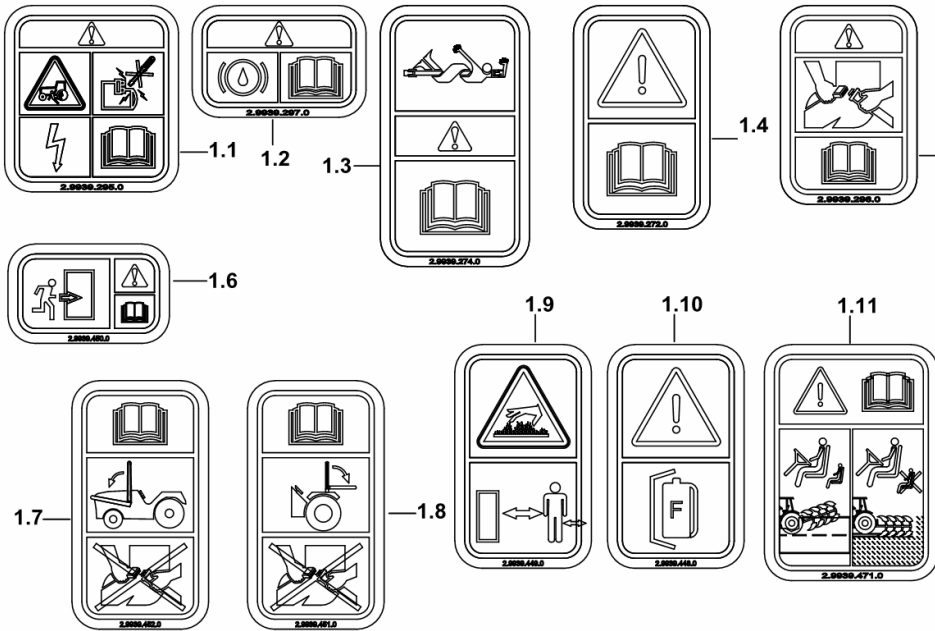
**WARNING PLATES**

Fig.	Code	QTY	Name
------	------	-----	------

**Notes:**

[IRON 140 DCR -> 20001] -> 20016

1.1	2.9939.295.0	1	plate
1.2	2.9939.297.0	1	plate
1.3	2.9939.274.0	1	plate
1.4	2.9939.272.0	1	plate
1.5	2.9939.296.0	1	plate
1.6	2.9939.450.0	1	plate
1.7	2.9939.452.0	1	plate
1.8	2.9939.451.0	1	plate
1.9	2.9939.449.0	3	plate
1.10	2.9939.448.0	1	plate
1.11	2.9939.471.0	1	plate



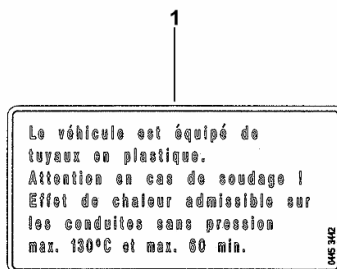
9\_H1274\_27\_0-A-003

**WARNING PLATE**

Fig.	Code	QTY	Name
1	04453442	1	plate

**Notes:**

- EXPORT F [IRON 140 DCR -> 20001]



9\_D3374\_02\_0-A-001

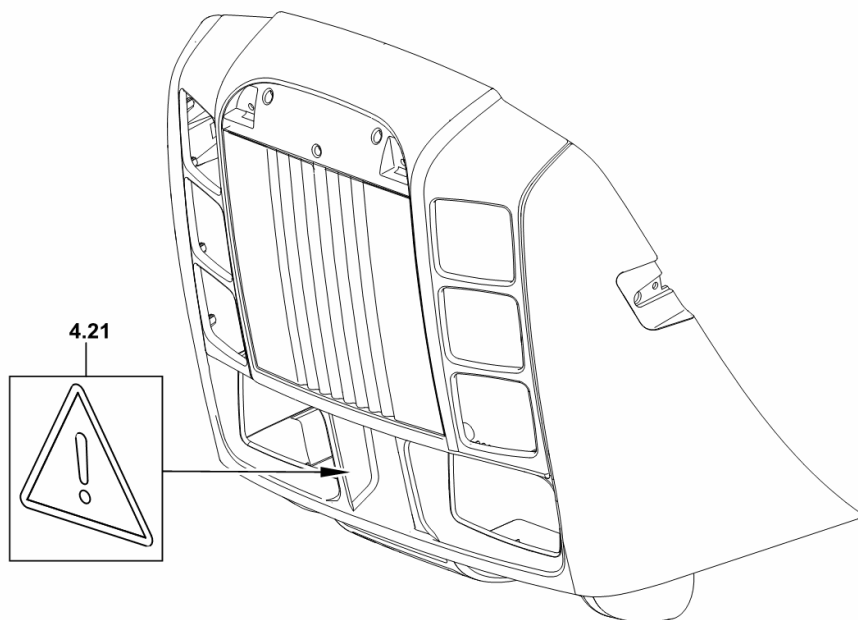
**WARNING PLATE**

Fig.	Code	QTY	Name
------	------	-----	------

**Notes:**

- FOR RIGHT-HAND DRIVE [IRON 140 DCR -> 20001]

4.21	2.9939.465.0	1	plate
------	--------------	---	-------

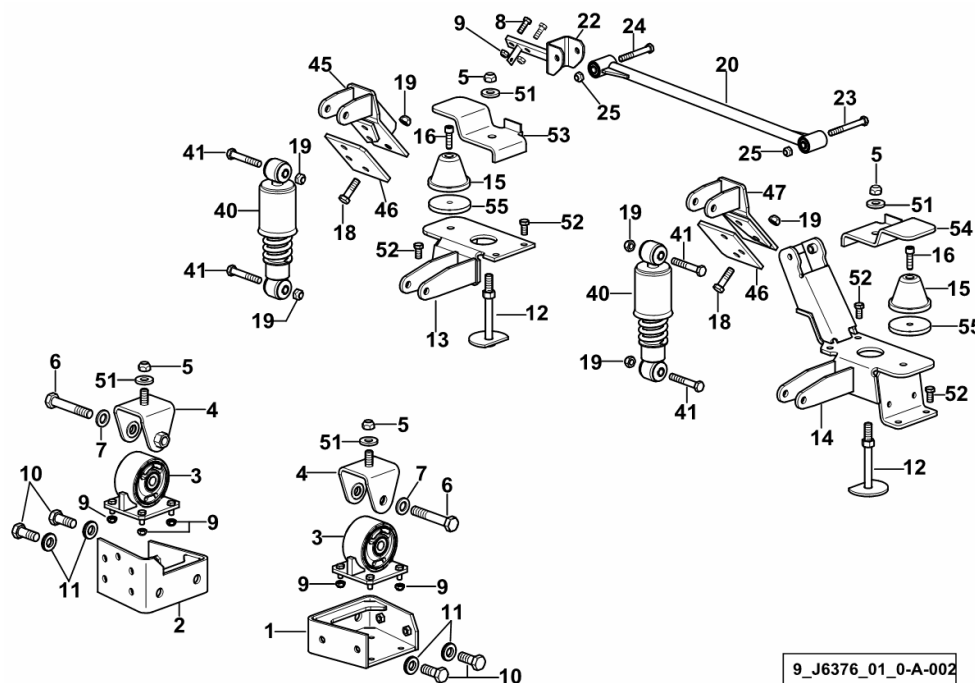


9\_J6772\_00\_0-G-001

**MECHANICAL CAB SUSPENSION**

Fig.	Code	QTY	Name
------	------	-----	------

Notes:  
[IRON 140 DCR -> 20001]



1	0.013.4924.3/20	1	bracket sx/lh/li
2	0.013.5475.3/10	1	bracket dx/rh/re
3	0.013.4925.4/20	2	silent-block
4	0.013.4926.3/10	2	fork
5	2.1121.011.2	4	nut m 16
6	2.0113.832.2	2	screw m 16 x 45
7	2.1475.108.2	2	spring washer 20
8	2.0112.311.2	2	screw m 10 p.1.5 x 30
9	2.1121.007.2	10	nut m 10 p.1.5
10	2.0129.073.6	4	screw m 20 p.2x50
11	01167055	4	washer 20.5x40
12	0.015.6970.4	2	rod
13	0.015.6933.3	1	bracket dx/rh/re
14	0.015.6926.4/30	1	bracket sx/lh/li
15	0.011.3290.2/10	2	stopper
16	2.0312.414.2	2	screw m 12 x 40
18	2.0114.517.2	6	screw m 14 x 50
19	2.1121.010.2	10	nut m 14 p.2
20	04426843.4/10	1	stabiliser
22	04427785	1	joint
23	2.0112.430.2	1	screw m 12x105
24	2.0112.427.2	1	screw m 12 p.1.75 x 90
25	2.1121.008.2	2	nut m 12
40	0.015.0003.4	2	shoch.absorber
41	2.0112.526.2	4	screw m 14 p.2x85
45	0.015.6929.2	1	bracket dx/rh/re
46	0.013.5006.0	2	plate
47	0.015.6912.2	1	bracket sx/lh/li
51	01139580	4	washer 17
52	2.0112.409.2	8	screw m 12 p.1.75 x 25
53	0.015.7129.2	1	bracket dx/rh/re
54	0.015.7118.2/10	1	bracket sx/lh/li
55	0.012.3165.0	2	washer Ø 95 / 12.5



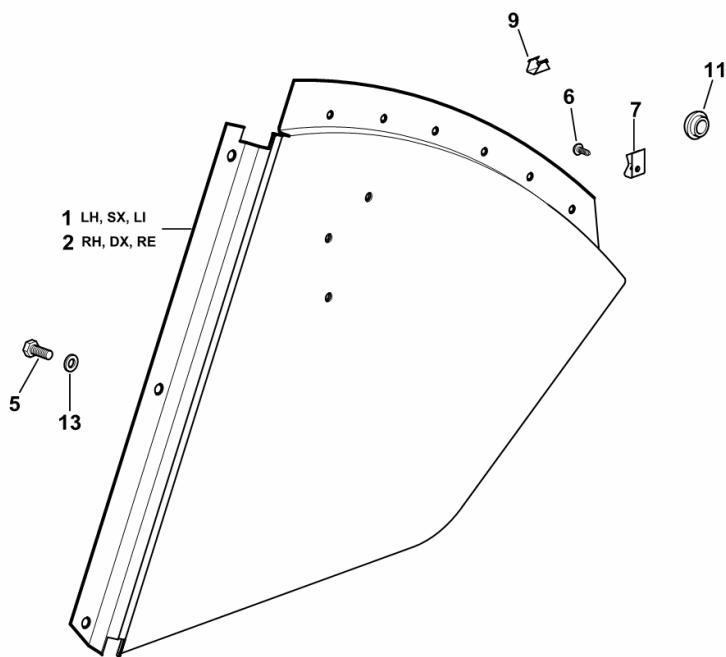
**WING SIDE PANEL**

Fig.	Code	QTY	Name
------	------	-----	------

**Notes:**

[IRON 140 DCR -> 20001]

1	04436461	1	division sx/lh/li
2	04425425/10	1	division dx/rh/re
5	04426352	6	screw m 8 p.1.25 x 20
6	04413745	1	screw 4.8x13
7	04413338	12	stop
9	04418149/10	10	small spring
11	0.178.7455.0	1	plug Ø 12
13	2.1310.004.2	6	flat washer 8.5



9\_95376\_50\_0-A-001

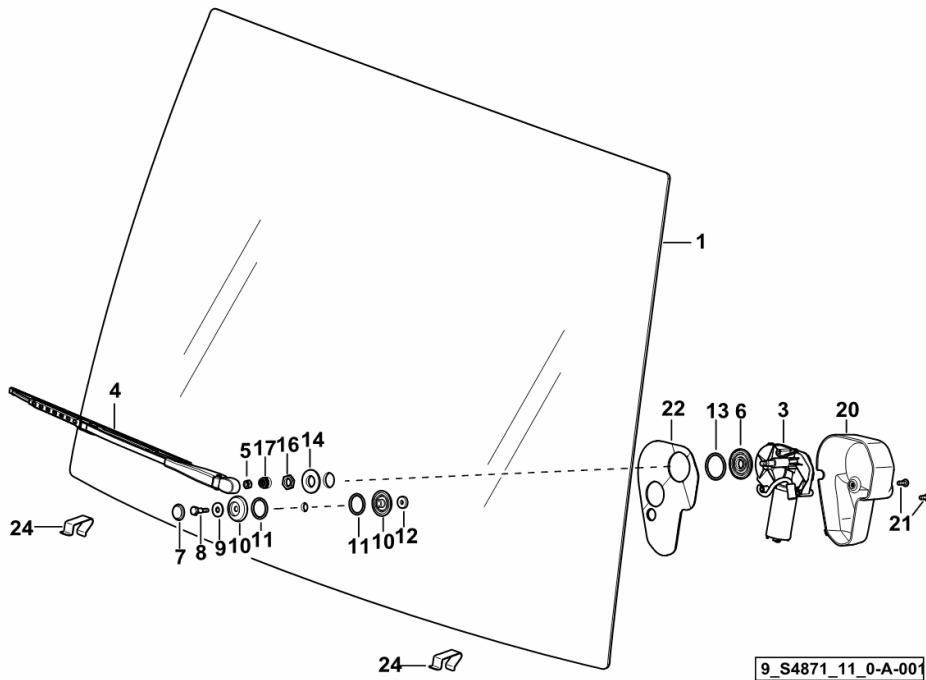
Section: G0 - BODYWORK - CAB  
**FIXED SCREEN WITH WIPER**

Fig.	Code	QTY	Name
------	------	-----	------

**Notes:**

[IRON 140 DCR -> 20001] -> 20014

1	0.010.5209.0/20	1	windshield
3	04413192	1	wiper motor
4	0.011.5529.4	1	windscreen wiper ☞ 0.011.5529.4
5	2.1011.105.2	1	nut m 8 p.1.25
6	04413223	1	washer
7	04413793	1	cap
8	04413809	1	screw
9	2.1312.004.2	1	washer 8.4
10	04429423	2	washer
11	2.1530.078.0	2	'o' ring 29.74x3.53
12	04413808	1	washer 6.5x20x5
13	2.1530.103.0	9	'o' ring 39.69x3.53
14	2.1569.176.0	1	gasket 20x40x6
16	04413207	1	nut
17	04413210	1	cap
20	04412044	1	cover
21	2.0330.406.2	2	screw m 6 p.1.0 x 16
22	04414610	1	gasket
24	0.016.5623.0	2	bracket



**REAR PANEL FLAP**

9\_95071\_14\_0-A-001

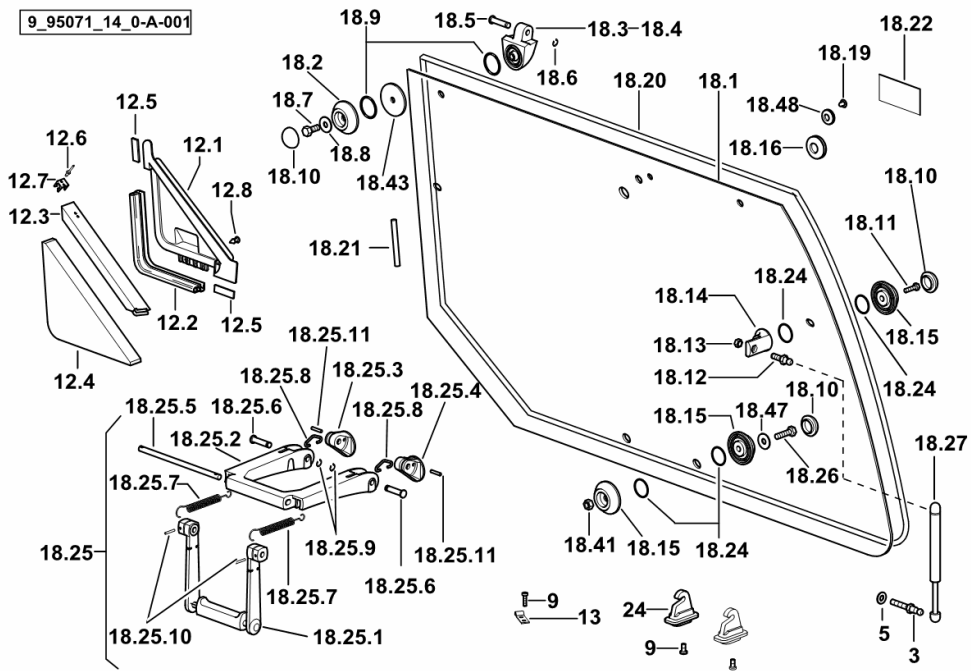


Fig.	Code	QTY	Name
18.25.8	0.009.0689.0	2	clevis
18.25.9	2.1430.007.7	2	circlip 6, d128
18.25.10	2.1630.210.9	2	pin 3 x 20
18.25.11	2.1650.309.0	2	pin 4 x 20
18.26	2.0114.213.2	2	screw m 8 x 35
18.27	04415239	2	shoch.absorber
18.41	2.1040.105.7	2	nut m 8
18.43	2.1499.197.0	4	gasket 16x44x3
18.47	01136363	6	washer 8.4
18.48	04413804	1	plug 14x25x12
24	04431844	2	clevis

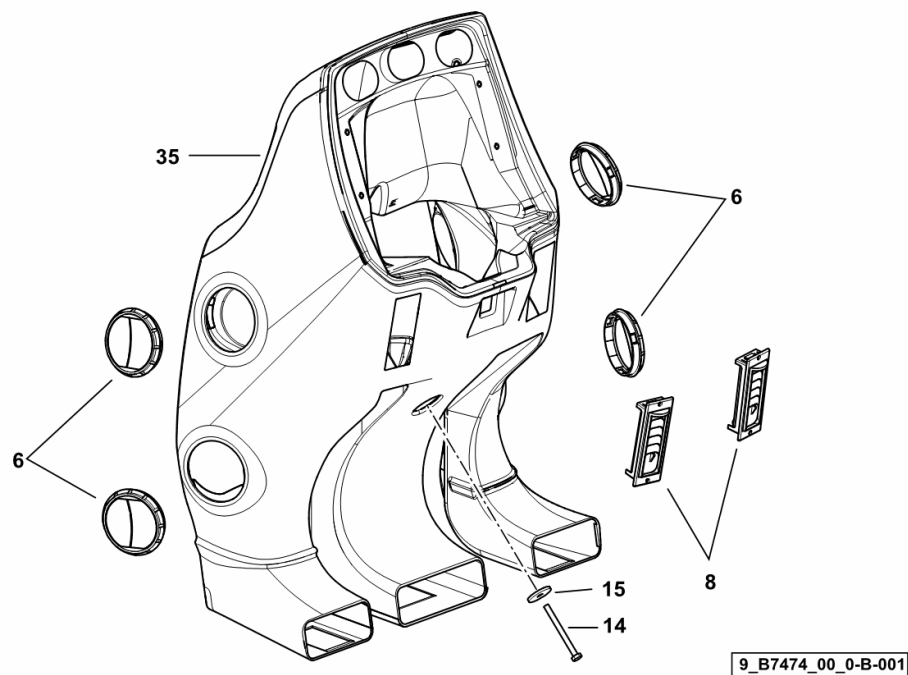
**DASHBOARD - STEERING COVER**

Fig.	Code	QTY	Name
------	------	-----	------

**Notes:**

[IRON 140 DCR -> 20001]

6	04348879	4	blower
8	04429734	2	blower
14	2.0112.227.2	1	screw m 8 p.1.25 x 90
15	2.1312.004.2	4	washer 8.4
35	0.012.4472.3/10	1	dashboard ( -> 20001 )



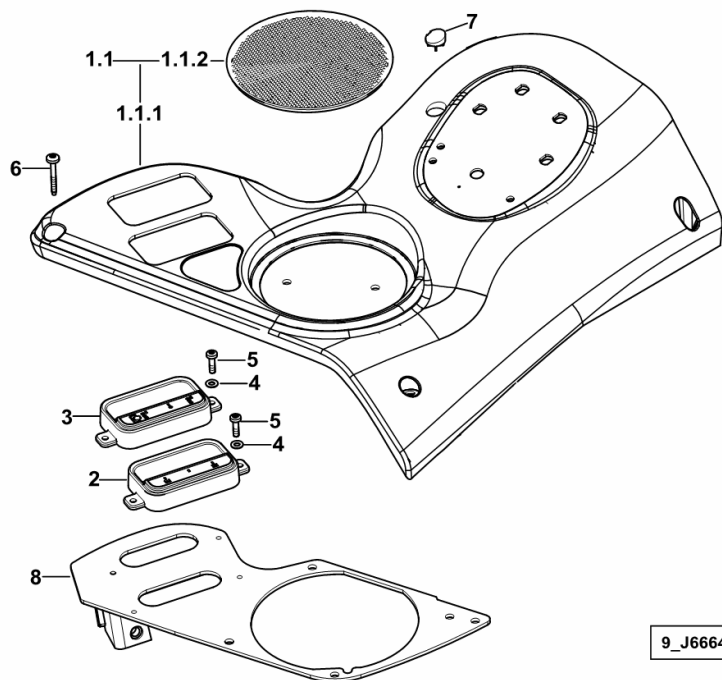
**CONTROL CONSOLE RIGHT**

Fig.	Code	QTY	Name
------	------	-----	------

**Notes:**

- FOR TYPES WITH 4-WAY AUXILIARY SERVICES CONTROL VALVE [IRON 140 DCR -> 20001]

1.1	0.015.9165.3/20	1	front grille ( -> 20005 )
1.1.1	0.015.8808.0/10	1	front grille ( -> 20005 )
1.1.2	0.015.9401.0/10	1	sound deadening mat RAL 7012 ( -> 20005 )
2	0.015.7741.0/20	1	insert P.T.O. ECO-NORM ( -> 20005 )
3	0.015.7740.0/20	1	insert P.T.O. 540-1000 ( -> 20005 )
4	2.1310.028.3	4	washer 4
5	2.0362.005.2	4	screw m4x15
6	2.0350.509.3	4	screw 4.2x32
7	0.015.9199.0	1	plug
8	0.015.9284.4	1	light panel



9\_J6664\_04\_0-A-001

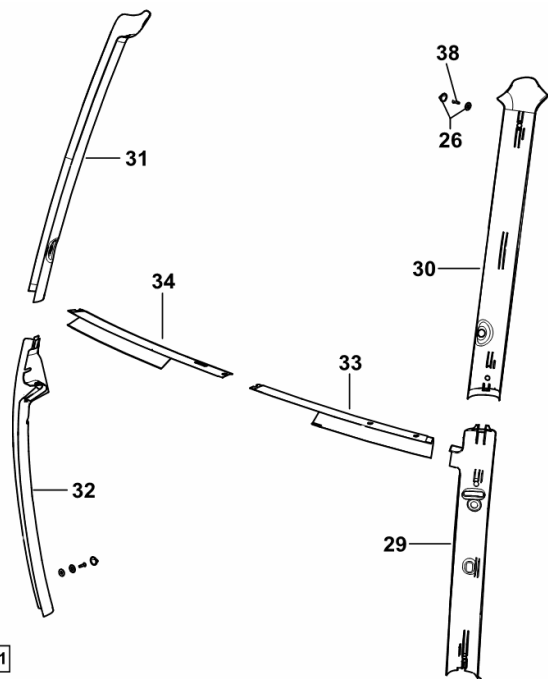
**INTERNAL CAB LININGS**

Fig.	Code	QTY	Name
------	------	-----	------

**Notes:**

[IRON 140 DCR -> 20001]

26	04419538	8	guard
29	04418683	1	lining sx/lh/li
30	0.015.4072.0	1	lining sx/lh/li
31	0.015.4076.0	1	lining dx/rh/re
32	04418685	1	lining dx/rh/re
33	04436094	1	lining sx/lh/li
34	04436095	1	lining dx/rh/re
38	2.0351.559.3	8	screw m 4.8x32



9\_J6671\_33\_0-B-001

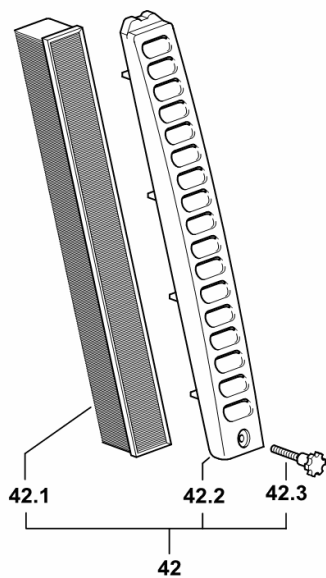
**AIR CLEANER**

Fig.	Code	QTY	Name
------	------	-----	------

**Notes:**

[IRON 140 DCR -> 20001] 20015 <-

42	04425620.4/20	2	air filter
42.1	04411228	1	air filter element
42.2	04411230/10	1	guard
42.3	04411229	1	screw



9\_95086\_20\_0-B-001

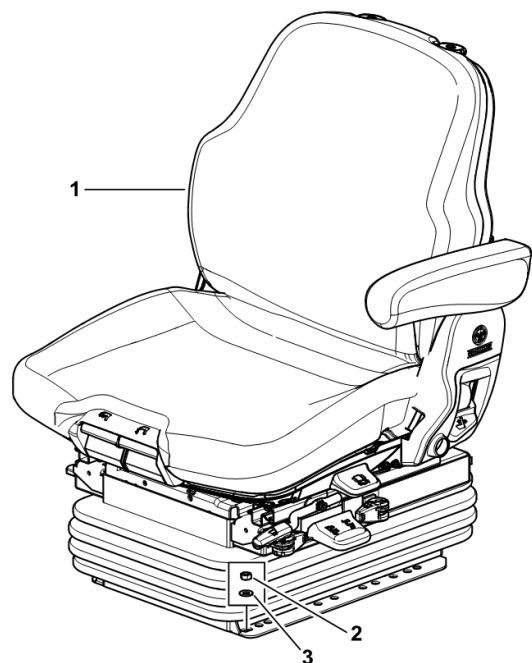
**DRIVER'S SEAT - PNEUMATIC SPRINGING**

Fig.	Code	QTY	Name
------	------	-----	------

**Notes:**

[IRON 140 DCR -> 20001] -> 20016

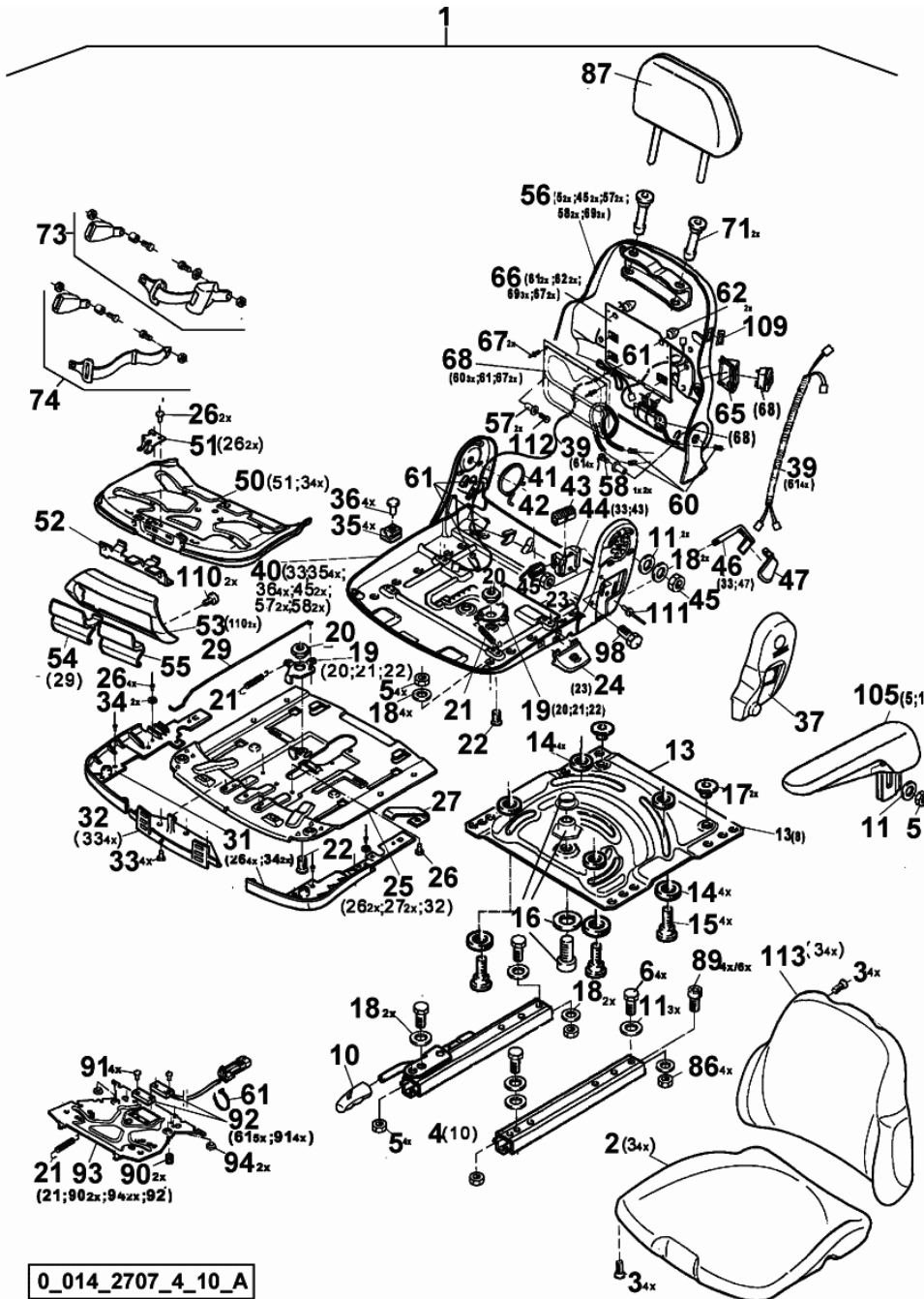
1	0.014.2707.4/20	1	driver's seat MSG 95A/721 ( -> 20016 ) ☞ 0.014.2707.4/20 ☞ 0.014.2707.4/20
2	2.1011.105.2	4	nut m 8 p.1.25
3	01138374	4	washer 8,4x21x4



9\_C5375\_00\_0-A-001

Section: G0 - BODYWORK - CAB  
**SEAT-COMPONENTS**

Fig.	Code	QTY	Name
54	0.010.3071.0	1	handle dx/rh/re
55	0.010.3071.1	1	handle sx/lh/li
56	0.900.0376.1	1	chassis frame
57	0.010.2953.1	2	bushing
58	0.010.2948.0	1	screw m 8 x 40
60	0.010.3510.2	3	guard
61	0.900.0298.5	10	cable
62	02310080	2	shoch.absorber
65	0.010.3066.1	1	body
66	0.010.3067.1	1	plate
67	0.010.3510.1	1	rivet
68	0.010.3067.0	2	support
71	0.000.0000.1	2	not serviceable
73	0.000.0000.1	1	not serviceable
74	0.000.0000.1	1	not serviceable
86	0.000.0000.1	0	not serviceable
87	0.000.0000.1	0	not serviceable
89	0.000.0000.1	0	not serviceable
90	0.010.3553.1	2	spring
91	0.010.3474.0	4	rivet
92	0.010.3473.2	1	switch
93	0.010.3553.2	1	plate
94	04370999	2	shoch.absorber
98	0.000.0000.1	0	not serviceable
105	0.900.0298.6	1	small arm sx/lh/li
109	0.000.0000.1	0	not serviceable
110	0.010.2943.1	2	screw
111	0.900.0298.8	1	rivet
112	0.900.0376.2	1	screw m 8
113	0.900.0297.4	1	backrest



0\_014\_2707\_4\_10\_A

Section: G0 - BODYWORK - CAB  
**DRIVER'S SEAT MSG 95G/721**

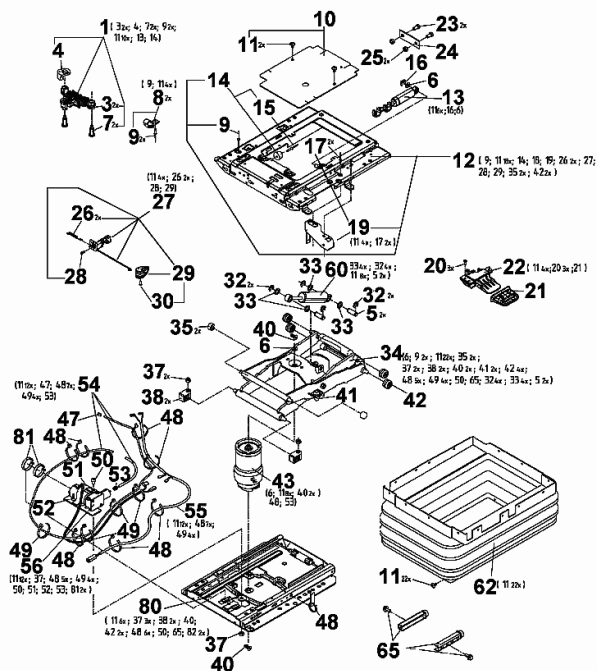


Fig.	Code	QTY	Name
1	0.900.0134.0	1	seat support
3	04402588	2	bushing
4	0.900.1286.3	1	support
7	0.900.0131.4	2	screw
8	04402565	2	contact surface
9	04418320	2	rivet
10	04418260	1	cover
12	0.900.0133.5	1	plate
13	0.900.0133.6	1	shoch.absorber
14	0.900.0133.7	1	stop
16	0.010.3523.0	1	circlip
19	04418239	1	pointer
20	0.010.2943.1	3	screw
21	0.010.3526.1	1	grip
22	04418242	1	actuator
23	0.010.2405.0	2	pin m 8 x 16
24	04418258	1	metal strap
25	0.010.2401.0	2	nut m 8
26	0.900.1286.4	2	spring
27	0.900.0133.9	1	lever
28	0.010.3523.2	1	screw
29	04418262	1	knob
30	04402564	1	screw
32	0.010.3526.0	2	circlip
34	0.900.0131.5	1	chassis frame
35	0.010.3526.2	2	roller
38	0.900.0807.1	2	support
41	02310080	2	shoch.absorber
42	04402577	4	roller
43	0.900.0131.6	1	spring
54	0.900.0134.1	1	tube
55	04418247	1	cable
56	0.900.0134.2	1	gear compressor
60	0.010.3168.1	1	shoch.absorber
62	04418245	1	guard
65	0.900.0134.3	1	accessories
80	0.010.3907.1	1	plate

Section: G0 - BODYWORK - CAB  
**CLIMATE CONTROL SYSTEM**

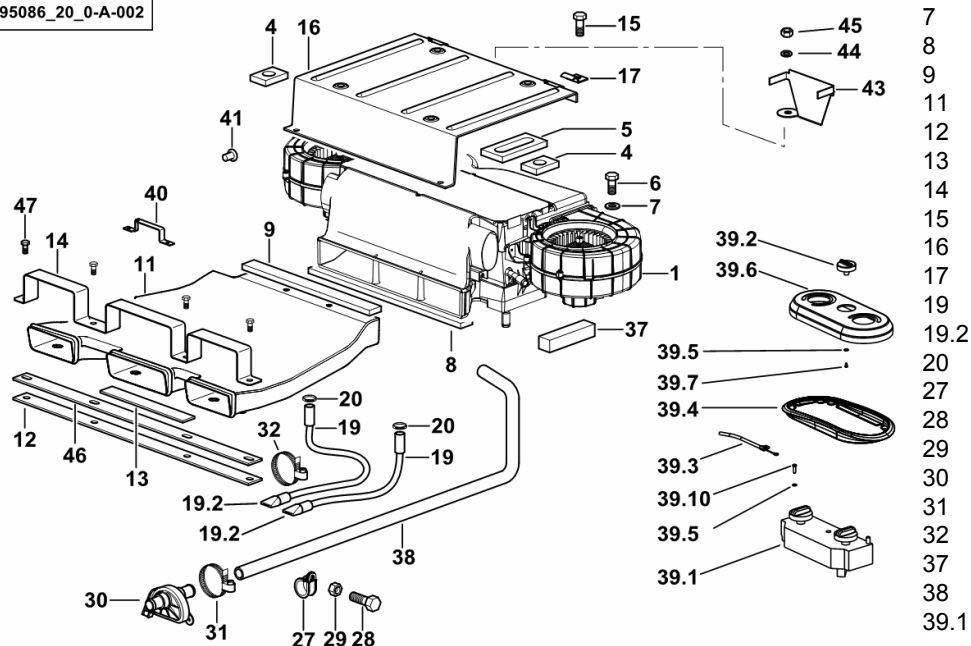
Fig.	Code	QTY	Name
------	------	-----	------

**Notes:**

[IRON 140 DCR -> 20001] -> 20007 - 20015 <-

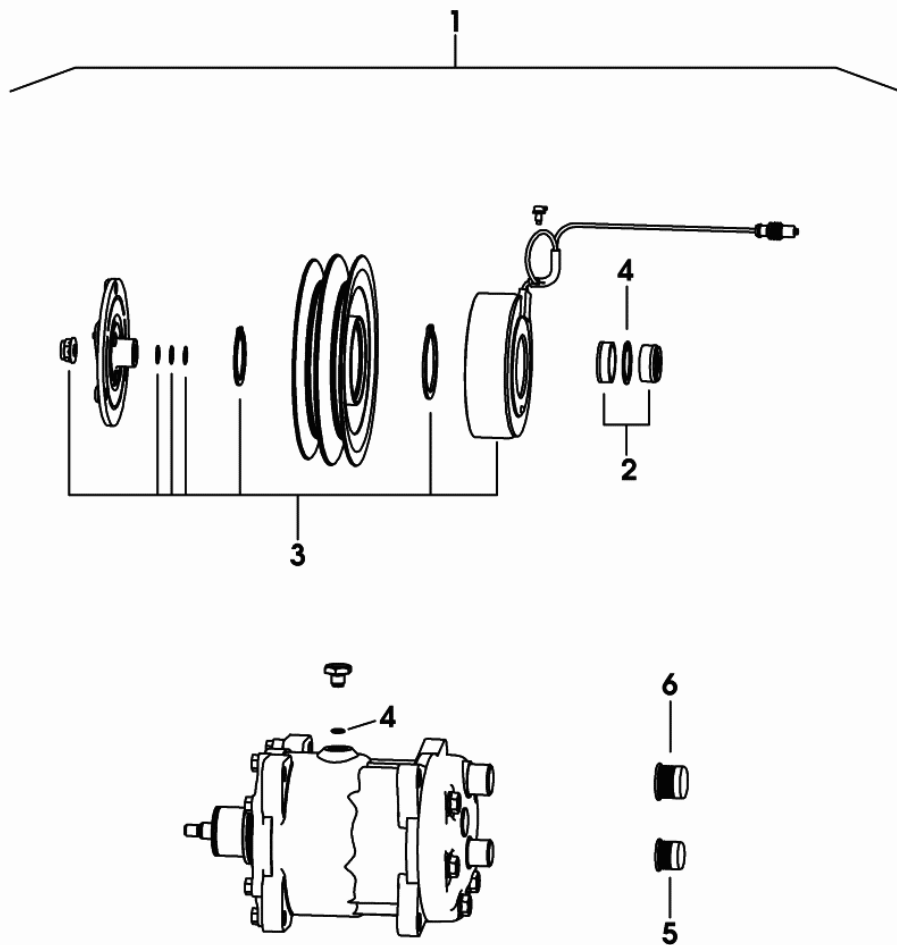
1	0.010.9139.4/50	1	air condition.system ☞ 0.010.9139.4/50
4	0.017.1000.0	2	gasket
5	0.017.0996.0	1	gasket
6	2.0114.215.2	1	screw m 8 p.1.25 x 40
7	2.1310.004.2	9	flat washer 8.5
8	0.017.1001.0	1	gasket
9	0.017.1003.0	1	gasket
11	0.010.8330.0/10	1	duct
12	0.017.1005.0	1	gasket
13	0.017.1004.0	3	gasket
14	0.010.8331.0/10	1	clamp
15	04426352	8	screw m 8 p.1.25 x 20
16	04429952.4	1	cover
17	0.010.6539.0/20	2	hinge
19	0.011.4589.3/10	2	flexible hose
19.2	0.009.0890.0	1	terminal
20	2.6851.019.0	2	clamp Ø 13/20
27	01173053	2	clamp b 25x20
28	2.0114.009.2	2	screw m 6 x 25, d933
29	2.1011.103.2	2	nut m 6 p.1
30	04429584	1	cock or tap
31	2.6851.001.0	3	clamp Ø 16/25
32	04423216	1	clamp
37	04455119	2	gasket mm 35x30x72.5
38	04429761	1	tube
39.1	04429902	1	control unit ☞ 04429902
39.2	04429903	1	diaphragm
39.3	0.017.6481.3	1	rod
39.4	0.011.5346.0	1	gasket
39.5	01122121	5	washer 4,3x9x0,8
39.6	04429898	1	button
39.7	01132709	1	screw
39.10	04414546	4	screw
40	04429773	1	bracket
41	01172669	2	rivet 4.8x10.3
43	04453445	1	bracket
44	2.1470.004.2	1	washer 8
45	2.1011.105.2	1	nut m 8 p.1.25
46	04429732	1	plate

9\_95086\_20\_0-A-002



**COMPRESSOR**

Fig.	Code	QTY	Name
1	04437339/10	1	gear compressor R 134a
2	0.900.0005.8	1	accessories
3	0.900.0005.9	1	accessories
4	0.010.3629.1	1	'o' ring
5	0.010.3630.0	1	plug
6	0.010.3629.2	1	plug



04437339\_10

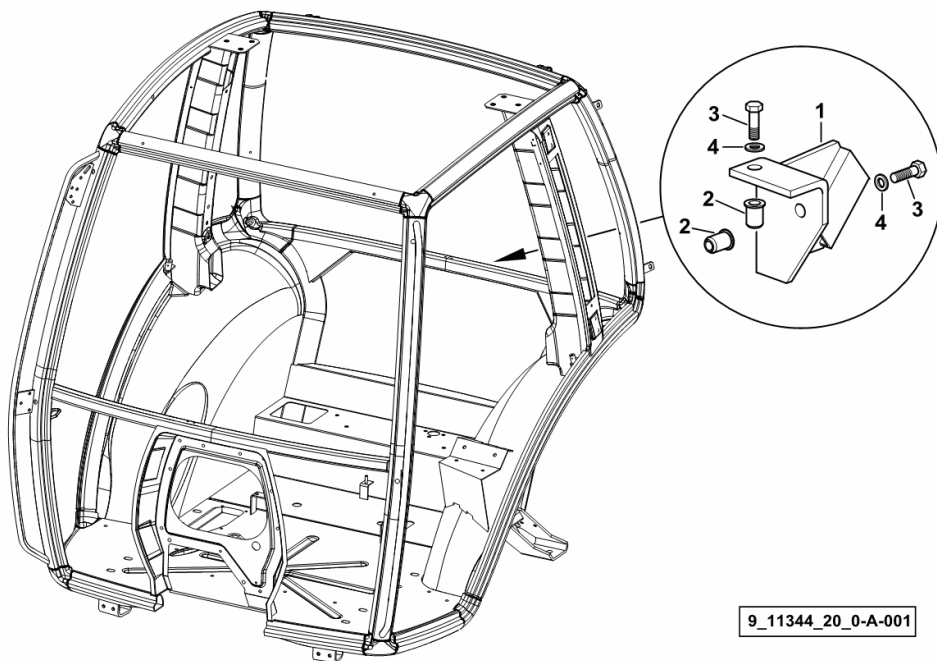
**HANDBRAKE SUPPORT FOR TRAILER**

Fig.	Code	QTY	Name
------	------	-----	------

**Notes:**

- ITALY [IRON 140 DCR -> 20001]

1	0.011.4447.2	1	support
2	2.1142.012.2	2	insert m10
3	2.0112.311.2	2	screw m 10 p.1.5 x 30
4	2.1475.003.2	2	washer 10



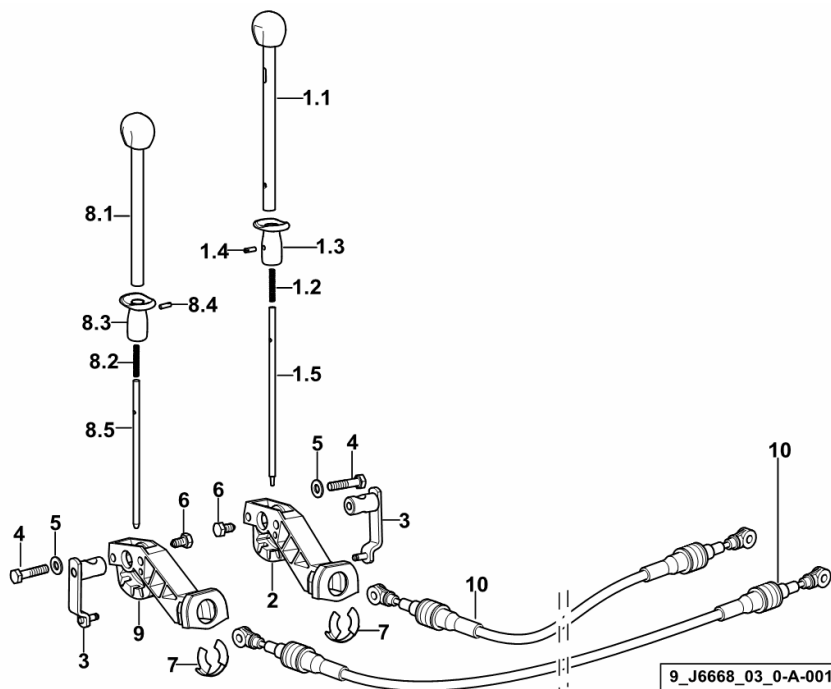
**OPERATION - P.T.O. SHAFT - REAR**

Fig.	Code	QTY	Name
------	------	-----	------

**Notes:**

[IRON 140 DCR -> 20001] 20020 <-

1.1	0.015.9113.2	1	lever
1.2	04426194	1	spring
1.3	04411645	1	support
1.4	01144807	1	screw
1.5	04429555	1	rod
2	04425448/10	1	support
3	04423032.4	2	lever
4	2.0114.213.2	4	screw m 8 x 35
5	01138374	4	washer 8,4x21x4
6	04423712	2	screw
7	04418159	2	circlip
8.1	0.015.9114.2	1	lever
8.2	04426194	1	spring
8.3	04411645	1	support
8.4	01144807	1	screw
8.5	04414328	1	rod
9	04425449/10	1	support
10	0.016.2060.3	2	rod mm 2520



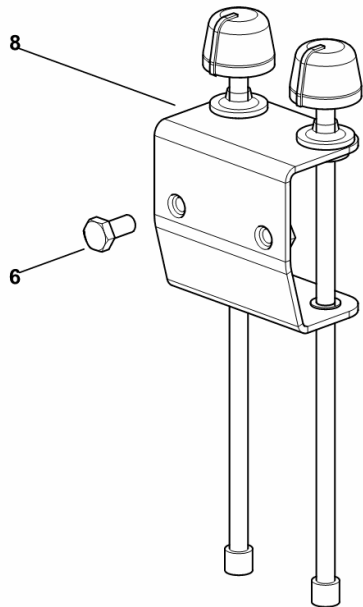
**FLOW CONTROL**

Fig.	Code	QTY	Name
------	------	-----	------

**Notes:**

- FOR 8-WAY DISTRIBUTOR [IRON 140 DCR -> 20001]

6	2.0112.205.2	4	screw m 8 p.1.25 x 16
8	0.016.8217.4	2	controller



9\_D3388\_61\_0-A-002

PLATE.....	L0.06.1 (1)
PLATE.....	L0.06.2 (1)
MULTIFUNCTION CONTROL UNIT.....	0.015.1776.4/70.A
<b>ELECTRICAL CONTROLS - PUSHBUTTONS</b>	
BATTERY DISCONNECT SWITCH.....	L0.07.0 (1)
STEERING COLUMN SWITCH UNIT - REVERSING GEAR UNIT CONTROL.....	L0.07.1 (1)
SWITCHES / IGNITION BLOCK DX/RH/RE.....	L0.07.2 (1)
SWITCHES / IGNITION BLOCK DX/RH/RE.....	L0.07.3 (1)
SWITCHES.....	L0.07.4 (1)
SWITCHES.....	L0.07.5 (1)
BOTTOM FRONT WORK LIGHTS SWITCH.....	L0.07.6 (1)
BOTTOM FRONT WORK LIGHTS SWITCH XENON.....	L0.07.7 (1)
TOP SWITCH.....	L0.07.8 (1)
REAR WINDOW WIPER SWITCH.....	L0.07.9 (1)
SWITCH FOR FRONT AXLE SUSPENSION.....	L0.07.10 (1)
SWITCH - FOR P.T.O. FRONT.....	L0.07.11 (1)
FRONT LIFT SWITCH.....	L0.07.12 (1)
FRONT LIFT SWITCH.....	L0.07.12 (2)
REAR LIFT GROUND CONTROL SWITCH.....	L0.07.13 (1)
REAR LIFT GROUND CONTROL SWITCH.....	L0.07.13 (2)
REAR P.T.O. GROUND CONTROL SWITCH.....	L0.07.14 (1)
SWITCHES FOR REAR LIFT GROUND CONTROL AND PTO.....	L0.07.15 (1)
SWITCHES FOR REAR LIFT GROUND CONTROL AND PTO.....	L0.07.15 (2)
SHUTTLE LEVER.....	0.012.7076.4.A
<b>LIGHTING AND SIGNALLING</b>	
FRONT LIGHTS.....	L0.08.0 (1)
FRONT LIGHTS.....	L0.08.1 (1)
FRONT LIGHTS.....	L0.08.6 (1)
FRONT LIGHTS.....	L0.08.7 (1)
WORKING SPOTLIGHT FRONT TOP.....	L0.08.8 (1)
WORKING SPOTLIGHT FRONT TOP.....	L0.08.9 (1)
BOTTOM FRONT WORK LIGHTS.....	L0.08.10 (1)
BOTTOM FRONT WORK LIGHTS XENON.....	L0.08.11 (1)
SIDELIGHT, DIRECTION INDICATOR AND REFLECTORS.....	L0.08.12 (1)
REAR LIGHTING SYSTEM.....	L0.08.14 (1)
REAR LIGHTING SYSTEM.....	L0.08.14 (2)
REAR LIGHTING SYSTEM.....	L0.08.15 (1)
REAR LIGHTING SYSTEM.....	L0.08.15 (2)
LOWER REAR WORKLIGHTS.....	L0.08.16 (1)
LOWER REAR WORKLIGHTS.....	L0.08.17 (1)
LOWER REAR WORKLIGHTS XENON.....	L0.08.18 (1)
RETROREFLECTOR.....	L0.08.19 (1)
REAR LIGHTS / REFLECTORS.....	L0.08.20 (1)
WORKLIGHTS FOR CAB ROOF.....	L0.08.22 (1)

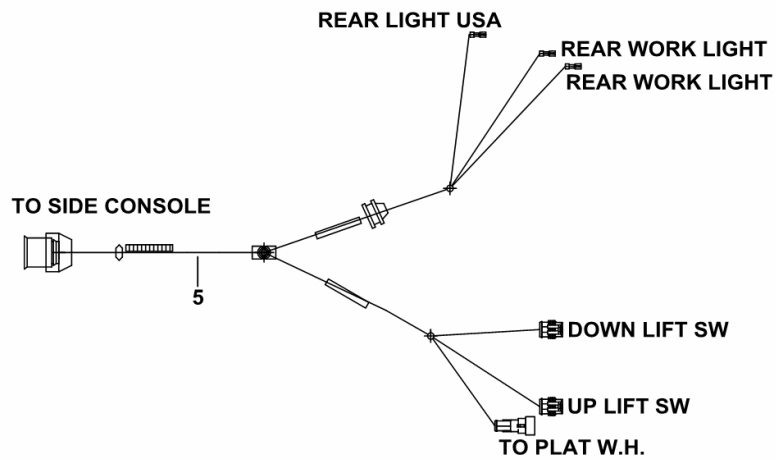
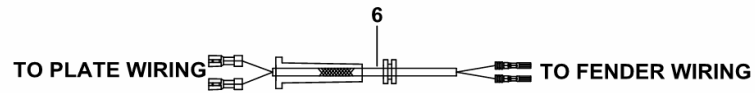
**REAR MUDGUARDS ELECTRICAL SYSTEM**

Fig.	Code	QTY	Name
------	------	-----	------

**Notes:**

- SENZA PROLUNGHE PER PARAFANGHI - EXPORT U.S.A. [IRON 140 DCR -> 20001]

5	0.017.1768.4/10	2	electrical system
6	0.012.2018.4/20	1	electrical system



9\_J8285\_32\_0-B-001

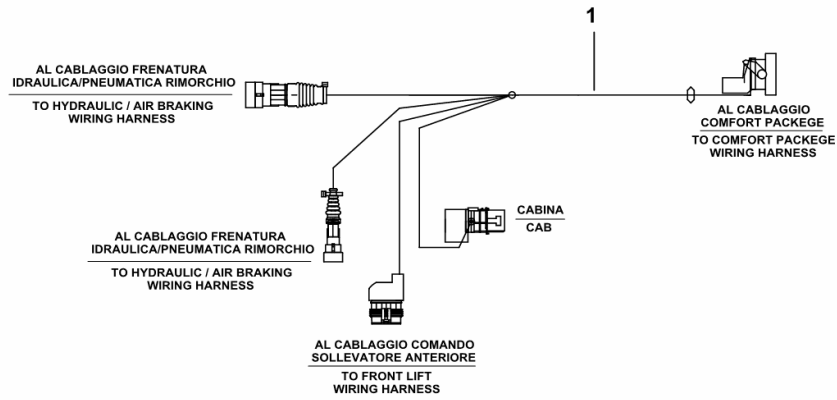


**BRAKING AND FRONT LIFT INTERFACE WIRING**

Fig.	Code	QTY	Name
------	------	-----	------

Notes:  
[IRON 140 DCR -> 20001]

1	0.015.7461.4/20	1	electrical system
---	-----------------	---	-------------------



9\_J8284\_01\_0-A-002

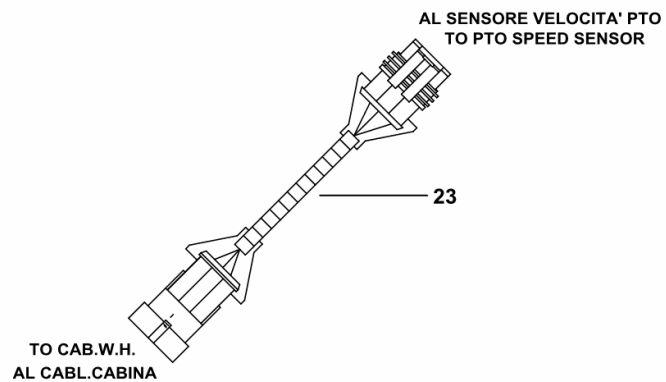
**WIRING FOR PTO SENSOR**

Fig.	Code	QTY	Name
------	------	-----	------

**Notes:**

- EXPORT U.S.A. [IRON 140 DCR -> 20001]

23	0.015.4257.4/10	1	electrical system
----	-----------------	---	-------------------



9\_J3184\_07\_0-E-001

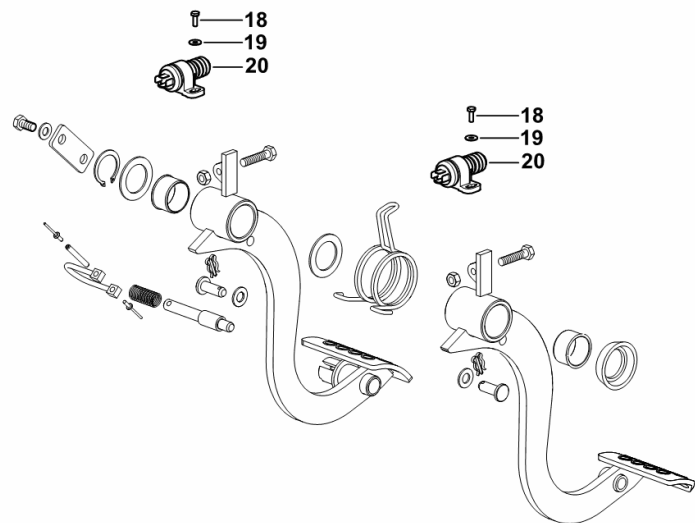
**BRAKE CONTROL SWITCH**

Fig.	Code	QTY	Name
------	------	-----	------

**Notes:**

- WITH FIXED FRONT AXLE AND FRONT BRAKES [IRON 140 DCR -> 20001] - WITH SUSPENDED FRONT AXLE AND FRONT BARKES [IRON 140 DCR -> 20001]

18	01127017	4	screw m 4.0 x 12
19	2.1312.001.2	4	washer 4
20	2.7649.100.0	2	switch



9\_F5266\_00\_0-B-001

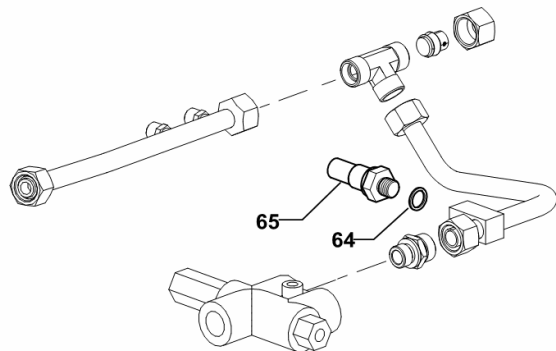
**HYDRAULIC SYSTEM PRESSURE SWITCH OPEN CENTER**

Fig.	Code	QTY	Name
------	------	-----	------

**Notes:**

- FOR TYPES WITH PNEUMATIC BRAKE [IRON 140 DCR -> 20001]

64	2.1560.009.0	1	gasket 14.2x18
65	0.012.4371.0	1	pressure switch 5 BAR



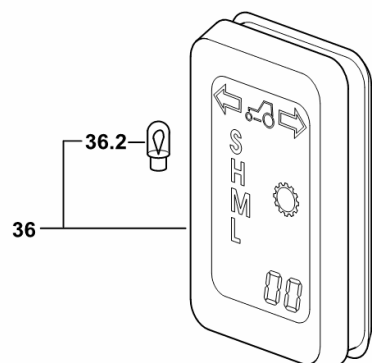
9\_J6363\_05\_0-C-001

**GEARS DISPLAY**

Fig.	Code	QTY	Name
------	------	-----	------

Notes:  
[IRON 140 DCR -> 20001]

36	04419280.4	1	monitor
36.2	04419282	2	lamp



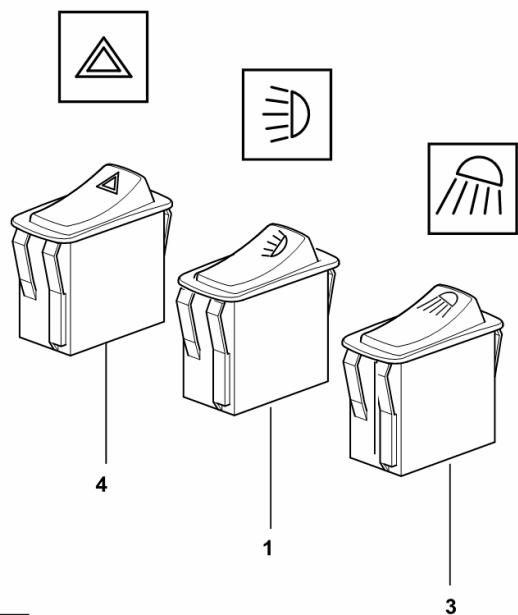
9\_J3184\_00\_0-D-001

**SWITCHES**

Fig.	Code	QTY	Name
------	------	-----	------

Notes:  
[IRON 140 DCR -> 20001]

1	0.012.5940.4	1	switch
3	0.012.5943.4	1	switch
4	0.013.1330.4	1	switch



9\_J3384\_01\_0-B-001

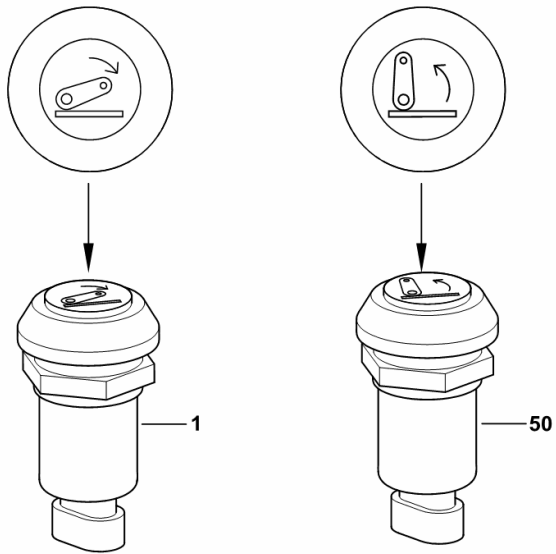
**REAR LIFT GROUND CONTROL SWITCH**

Fig.	Code	QTY	Name
------	------	-----	------

**Notes:**

- WITHOUT EXTENSIONS FOR FENDERS [IRON 140 DCR -> 20001]

1	2.7659.347.0	2	push-button
50	2.7659.348.0	2	push-button



9\_94659\_70\_0-A-002

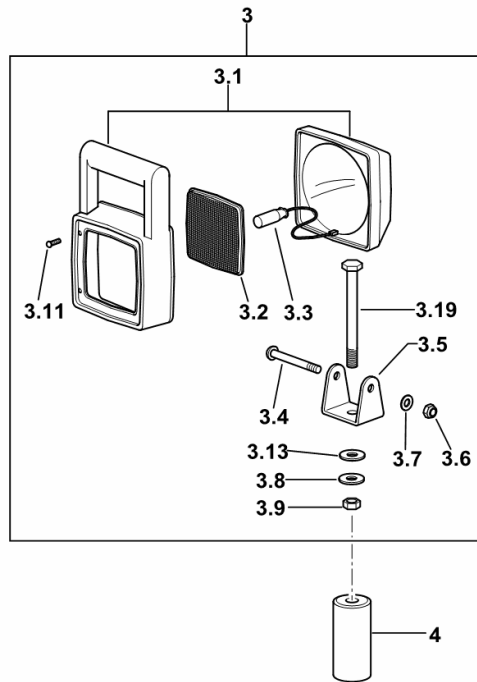
**BOTTOM FRONT WORK LIGHTS**

Fig.	Code	QTY	Name
------	------	-----	------

**Notes:**

[IRON 140 DCR -> 20001]

3	04425599.4	2	headlight
3.1	04424197	1	body
3.2	04425581	1	glass
3.3	01102258	1	lamp H3
3.4	04426563	1	screw
3.5	04425583	1	bracket
3.6	04426569	1	nut
3.7	04426570	1	washer
3.8	04426578	1	washer
3.9	04426579	1	nut
3.11	04426584	4	screw
3.13	04425586	1	washer
3.19	04426585	1	screw
4	04416732	2	spacer



9\_J3384\_12\_0-A-001

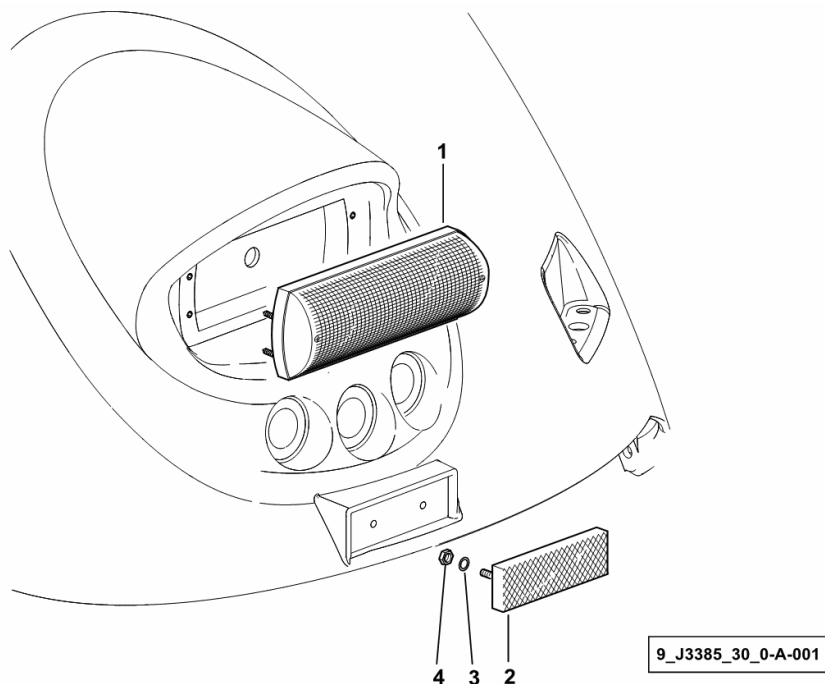
**REAR LIGHTS / REFLECTORS**

Fig.	Code	QTY	Name
------	------	-----	------

**Notes:**

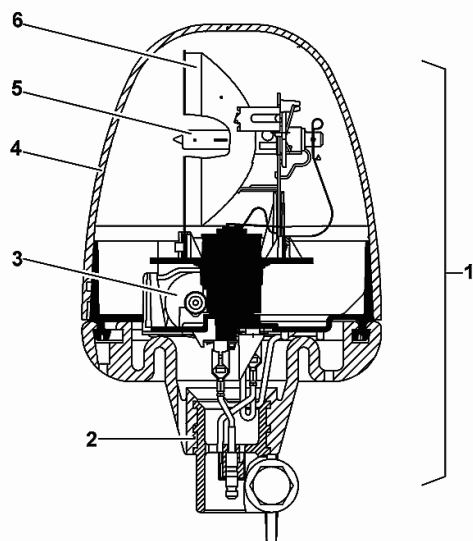
- WITHOUT EXTENSIONS FOR FENDERS [IRON 140 DCR -> 20001]

1	2.8029.880.0/10	2	side lamp ☞ 2.8029.880.0/10
2	2.8349.012.0	2	reflector
3	2.1310.001.2	4	flat washer 5.3
4	2.1011.102.2	4	nut m 5 p.0.7



**WARNING BEACON**

Fig.	Code	QTY	Name
1	04414773	1	blinker
2	0.900.1267.7	1	support
3	0.900.1267.8	1	electric motor
4	0.900.1267.9	1	cap
5	0.900.1268.0	1	lamp
6	0.900.1268.1	1	reflector



04414773

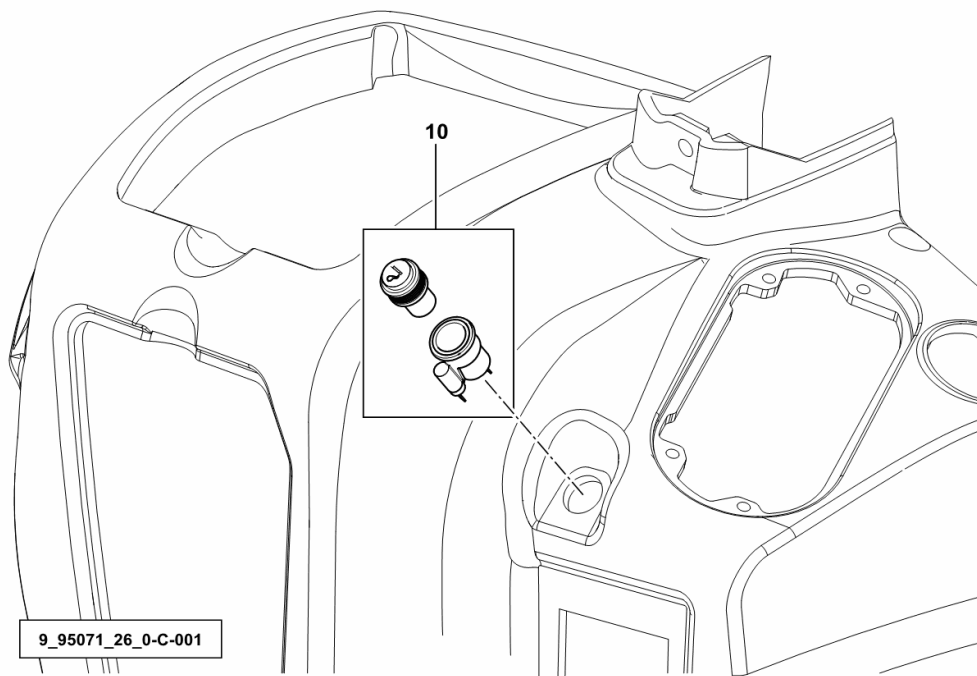
**CIGAR LIGHTER**

Fig.	Code	QTY	Name
------	------	-----	------

**Notes:**

[IRON 140 DCR -> 20001] 20020 <-

10	2.7099.770.0	1	cigar lighter
----	--------------	---	---------------



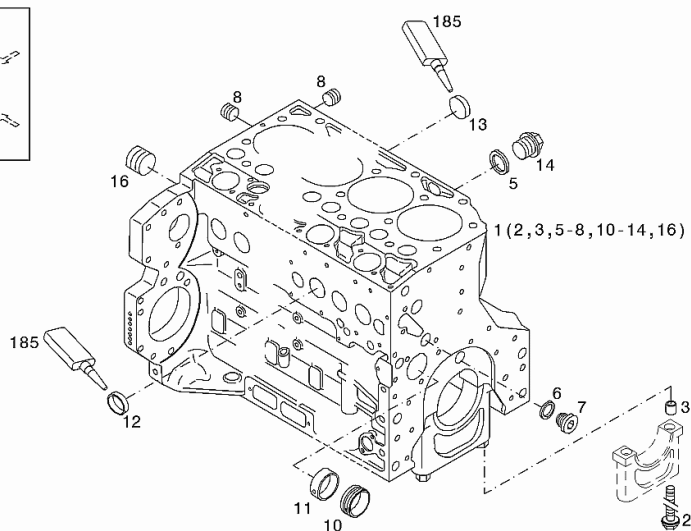
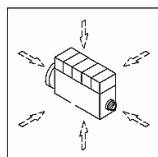
**CRANKCASE**

Fig.	Code	QTY	Name
------	------	-----	------

**Engine Serial Numbers:**

10833563 10843232 10850757 10850758 10860687 10860688 10861749 10861752 10861753 10861754 10863398  
 10869871 10892919 10892922 10928556 10957397 10960452 10984637 10987803

1	04296586	1	crankcase kpl. WITH POS.... (2,3,5-8,10-14,16)
2	04254240	14	screw
3	04160764	14	bushing
5	01118693	2	gasket 14x20 DIN 7603 -A14X20-CU
6	01101342	1	'o' ring DIN 7603 -D22X27-CU
7	04292706	1	plug
8	01182031	2	screw H 2812 -906-M14X1,5-ST-A3C-LOCTITE506
10	04251884	6	plug
11	04250086	1	ring
12	01148032	9	cover DIN 443 -A45-ZNPHR
13	01148031	6	plug DIN 443 -A36-ZNPHR
14	01100940	2	screw DIN 7604 -AM14X1,5-ST-A4C
16	04226536	1	bottom
185	01016125	1	guard H 0699 -DEUTZDW72-250ML

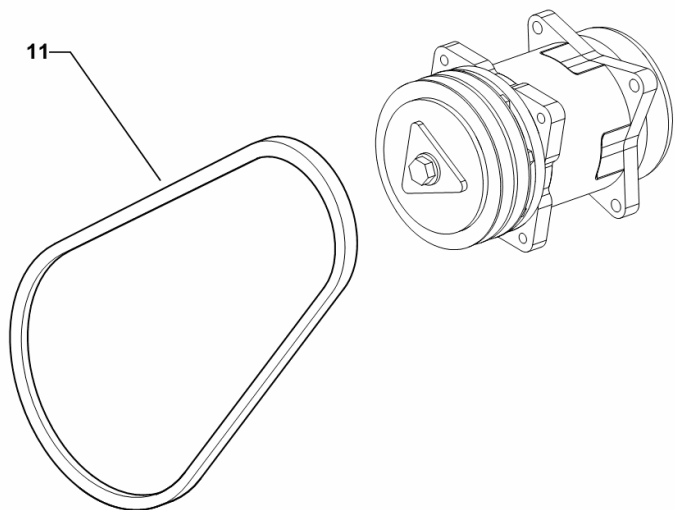


**V-BELT - FOR MODELS WITH COMPRESSOR**

Fig.	Code	QTY	Name
------	------	-----	------

Notes:  
[IRON 140 DCR -> 20001]

11	04452801	1	belt AV 13x1000 mm
----	----------	---	--------------------



9\_J6386\_22\_0-C-001

CLICK HERE TO **DOWNLOAD** THE COMPLETE MANUAL

- Thank you very much for reading the preview of the manual.
- You can download the complete manual from: [www.heydownloads.com](http://www.heydownloads.com) by clicking the link below



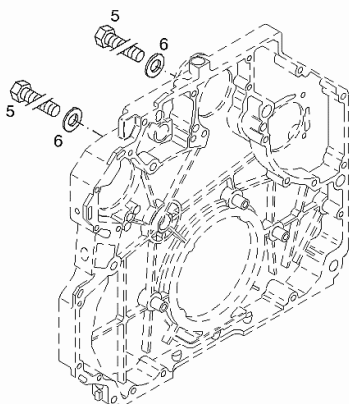
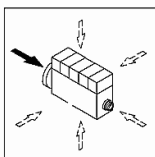
- Please note: If there is no response to CLICKING the link, please download this PDF first and then click on it.

CLICK HERE TO **DOWNLOAD** THE COMPLETE MANUAL

**FASTENINGS**

Fig.	Code	QTY	Name
<b>Engine Serial Numbers:</b> 10833563 10843232 10850757 10850758 10860687 10860688 10861749 10861752 10861753 10861754 10863398 10869871 10892919 10892922 10928556 10957397 10960452 10984637 10987803			
5	01148131	2	screw ISO 4017 -M16X60-10.9-ZNAL-A
6	01107117	2	washer 17 DIN 125 -A17-140HV-A4C

000 ©



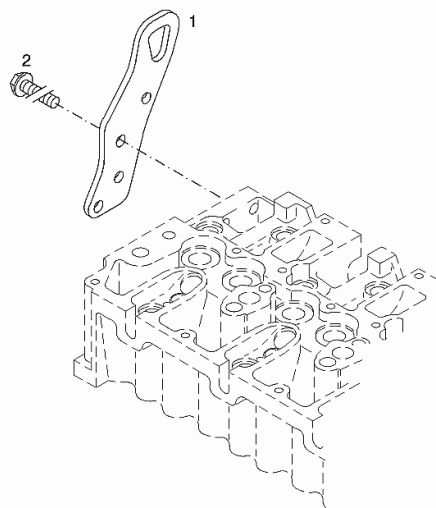
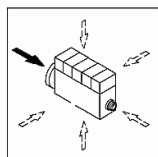
Section: B0 - ENGINE  
**ENGINE MOUNTING**

Fig.	Code	QTY	Name
------	------	-----	------

**Engine Serial Numbers:**

10833563 10843232 10850757 10850758 10860687 10860688 10861749 10861752 10861753 10861754 10863398  
 10869871 10892919 10892922 10928556 10957397 10960452 10984637 10987803

1	04255859	1	lamination
2	01181390	3	screw 40.5 Nm EN 1662 -F-M10X25-10.9-A4C

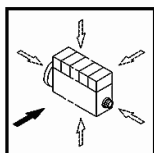


001 ©

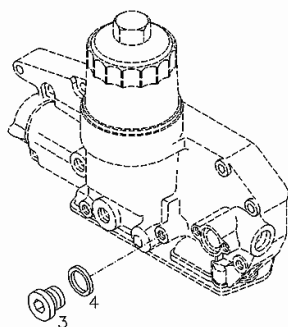
Section: B0 - ENGINE

**CLOSING COMPONENTS**

Fig.	Code	QTY	Name
<b>Engine Serial Numbers:</b> 10833563 10843232 10850757 10850758 10860687 10860688 10861749 10861752 10861753 10861754 10863398 10869871 10892919 10892922 10928556 10957397 10960452 10984637 10987803			
3	01182177	1	screw H 2812 -908-M18X1,5-ST-A4C-PRE80
4	01118713	1	washer 18.5 DIN 7603 -A18X22-CU



000 ©

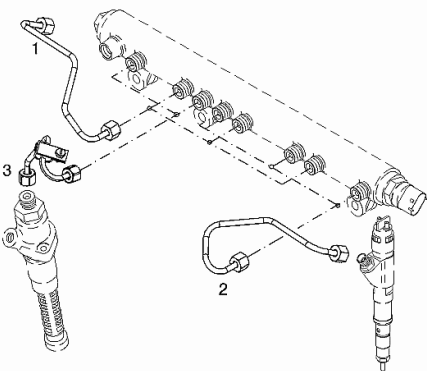
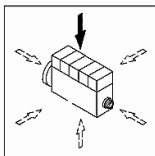


0507 7661

Section: B0 - ENGINE  
**HIGH PRESSURE PIPE**

Fig.	Code	QTY	Name
<b>Engine Serial Numbers:</b> 10833563			
1	04501716	3	tube 10 Nm , 60° Cyl.1-3
2	04501718	3	tube 10 Nm , 60° Cyl.4-6
3	04502260	2	tube 10 Nm , 60° high pressure

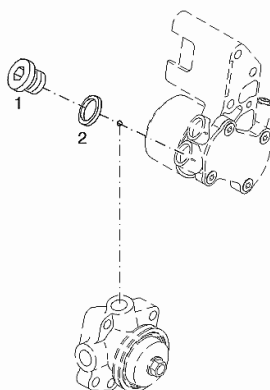
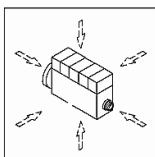
001 ©



**CLOSING COMPONENTS**

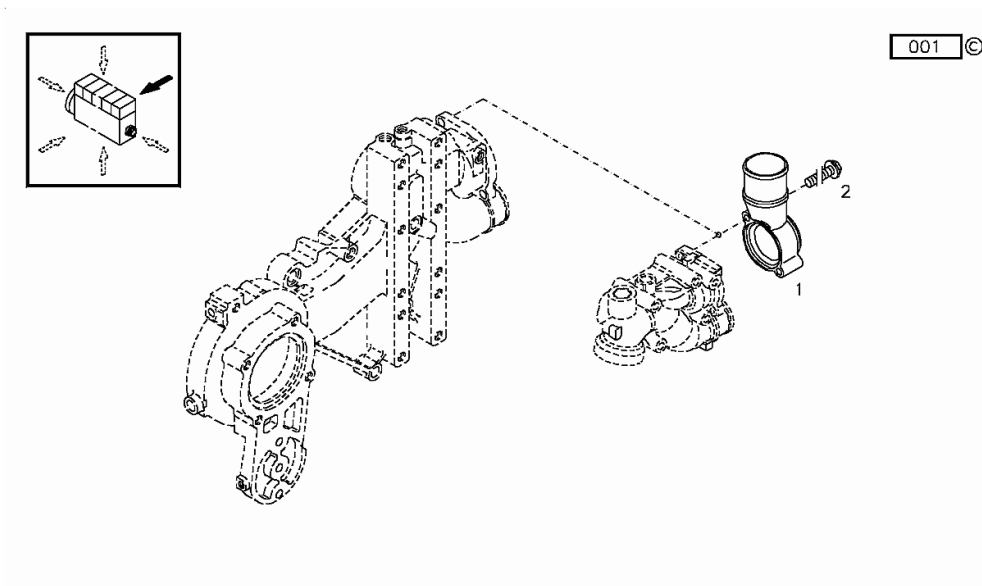
Fig.	Code	QTY	Name
<b>Engine Serial Numbers:</b> 10833563 10843232 10850757 10850758 10860687 10860688 10861749 10861752 10861753 10861754 10863398 10869871 10892919 10892922 10928556 10957397 10960452 10984637 10987803			
1	01110423	1	screw Outlet M14X1.5 / 35 Nm M16X1.5
2	01148899	1	rubber plug DIN 908 -M14X1,5-ST-ZNPHRF DIN 7603 -D14X18-CU-VERZINNT

000 ©



Section: B0 - ENGINE  
**COOLING WATER PIPE**

Fig.	Code	QTY	Name
<b>Engine Serial Numbers:</b> 10833563 10843232 10850757 10850758 10860687 10860688 10861749 10861752 10861753 10861754 10863398 10869871 10892919 10892922 10928556 10957397 10960452 10984637 10987803			
1	04256565	1	tongue
2	01181431	2	screw EN 1662 -F-M8X50-10.9-ZNAL-A



**FASTENINGS**

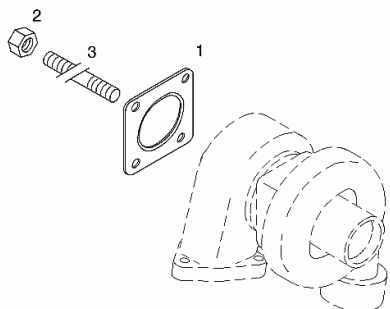
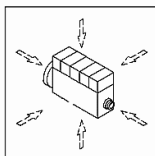
Fig.	Code	QTY	Name
------	------	-----	------

**Engine Serial Numbers:**

10833563 10843232 10850757 10850758 10860687 10860688 10861749 10861752 10861753 10861754 10863398  
 10869871 10892919 10892922 10928556 10957397 10960452 10984637 10987803

1	04500955	1	gasket
2	01144673	4	nut
3	01143285	4	DIN 934 -M10-21CRMOV57OELGESCH stud bolt DIN 939 -M10X25-21CRMOV57V-OELGESCHW

000 ©



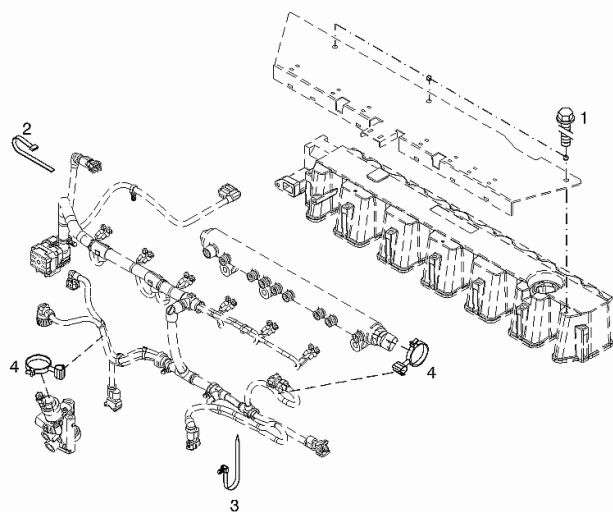
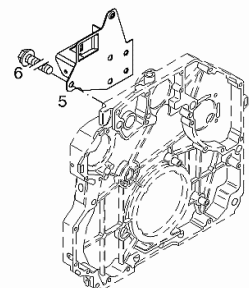
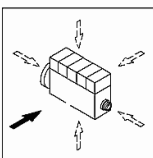
**FASTENINGS**

Fig.	Code	QTY	Name
------	------	-----	------

**Engine Serial Numbers:**

10833563 10843232 10850757 10850758 10860687 10860688 10861749 10861752 10861753 10861754 10863398  
 10869871 10892919 10892922 10928556 10957397 10960452 10984637 10987803

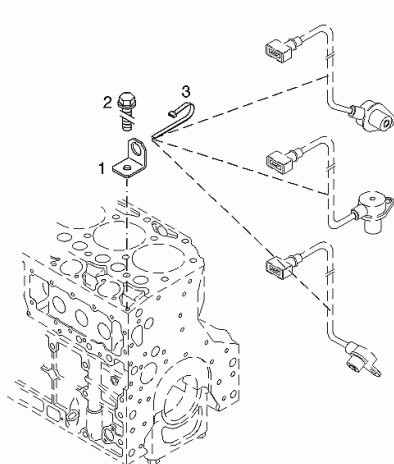
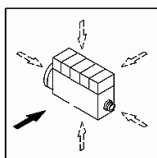
1	01181439	3	screw EN 1662 -F-M6X16-10.9-ZNAL-A
2	01176435	5	clamp H 7672 -P160X4,8
3	04214077	2	clamp
4	04215181	2	clamp
5	04298871	1	support
6	01181431	5	screw EN 1662 -F-M8X50-10.9-ZNAL-A



Section: B0 - ENGINE

**ACCESSORIES**

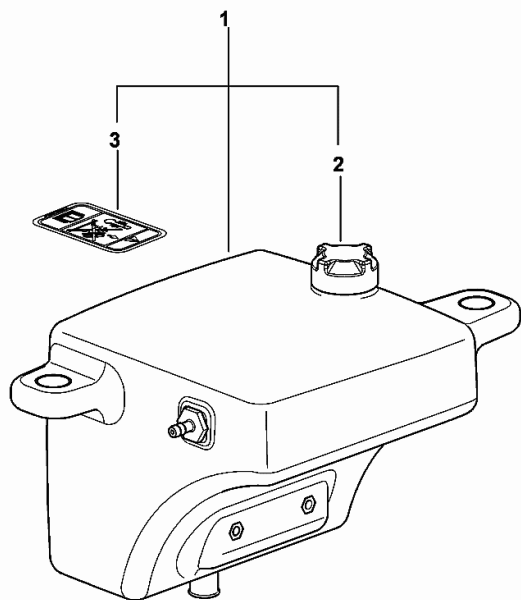
Fig.	Code	QTY	Name
1	04213872	1	support
2	01181436	1	screw EN 1662 -F-M8X16-LG2,5-10.9-ZNAL-A
3	01176435	2	clamp H 7672 -P160X4,8



000 ©

**COOLING SYSTEM EXPANSION TANK**

Fig.	Code	QTY	Name
1	0.015.4531.4/10	1	cup
2	0.010.3465.1	1	plug
3	2.9939.280.0	1	plate



0\_015\_4531\_4\_10

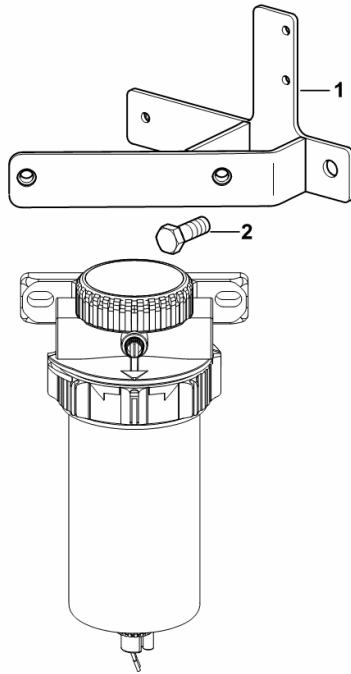
**SUPPORT**

Fig.	Code	QTY	Name
------	------	-----	------

**Notes:**

[IRON 140 DCR -> 20001] -> 20016

1	0.015.9770.3/20	1	support
2	2.0114.409.2	2	screw m 12 x 25



9\_O4919\_04\_0-A-001

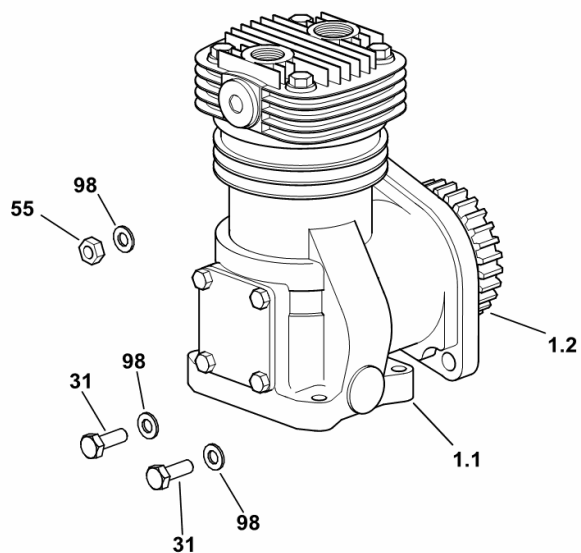
**AIR COMPRESSOR ITALY**

Fig.	Code	QTY	Name
------	------	-----	------

**Notes:**

[IRON 140 DCR -> 20001]

1.1	04428408.4	1	air compressor 229 cm <sup>3</sup> ☞ 04428408.4
1.2	04295536	1	gear Z = 43
31	2.0114.311.2	3	screw m 10 p.1.25 x 30
55	2.1011.106.2	3	nut m 10 p.1.5
98	2.1310.006.2	3	flat washer 10.5



9\_J6389\_16\_0-A-001

Section: F0 - FRONT AXLE  
**DIFFERENTIAL - [359577]**

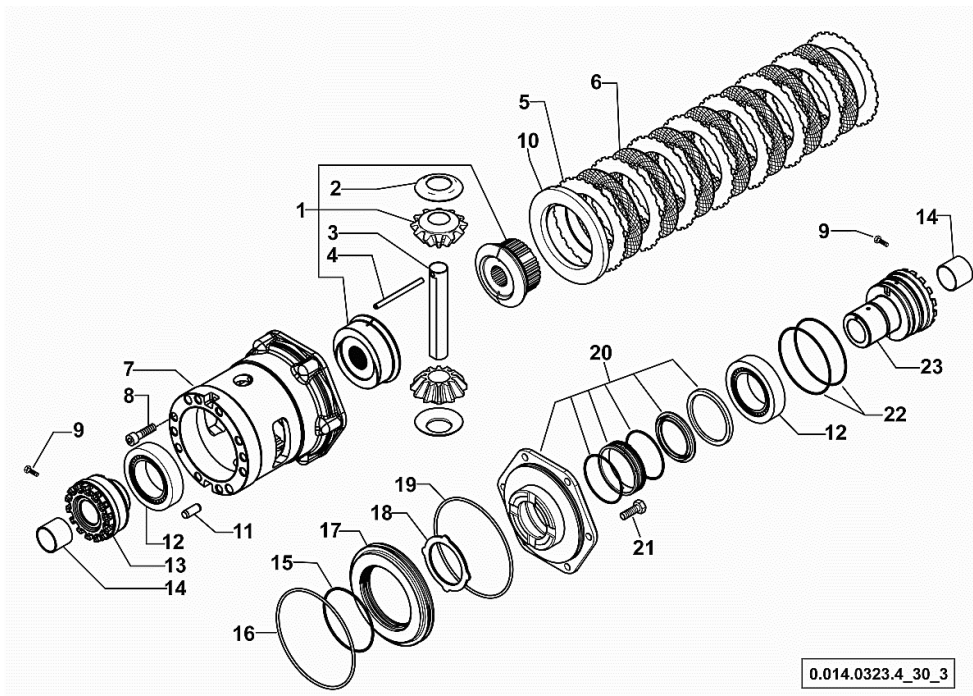


Fig.	Code	QTY	Name
1	0.900.0109.4	1	gear COMPLETE ( 2, 3 & 4 )
2	0.900.0109.5	2	thrust plate
3	0.900.0109.6	1	pin
4	0.900.0109.7	1	pin Ø 6 x 86
5	0.900.0087.7	8	disc
6	0.900.0087.8	7	disc
7	0.900.0109.8	1	box
8	0.900.0088.0	10	screw m 12 x 35
9	0.900.0088.1	2	screw m 6 x 25
10	0.900.0090.0	1	disc
11	0.900.0088.3	2	pin Ø 12 x 28
12	0.900.0090.1	2	bearing
13	0.900.0109.9	1	ring nut m 94 p.1.5
14	0.900.0088.6	2	bushing
15	0.900.0088.7	1	'o' ring
16	0.900.0088.8	1	'o' ring
17	0.900.0088.9	1	piston
18	0.900.0089.0	1	disc
19	0.900.0089.1	1	'o' ring
20	0.900.0952.0	1	cover kit
21	0.900.0089.3	6	screw m 10 x 35
22	0.900.0089.8	2	'o' ring
23	0.900.0089.9	1	ring nut m 94 p.1.5

**DRIVEN FRONT AXLE - [370483]**

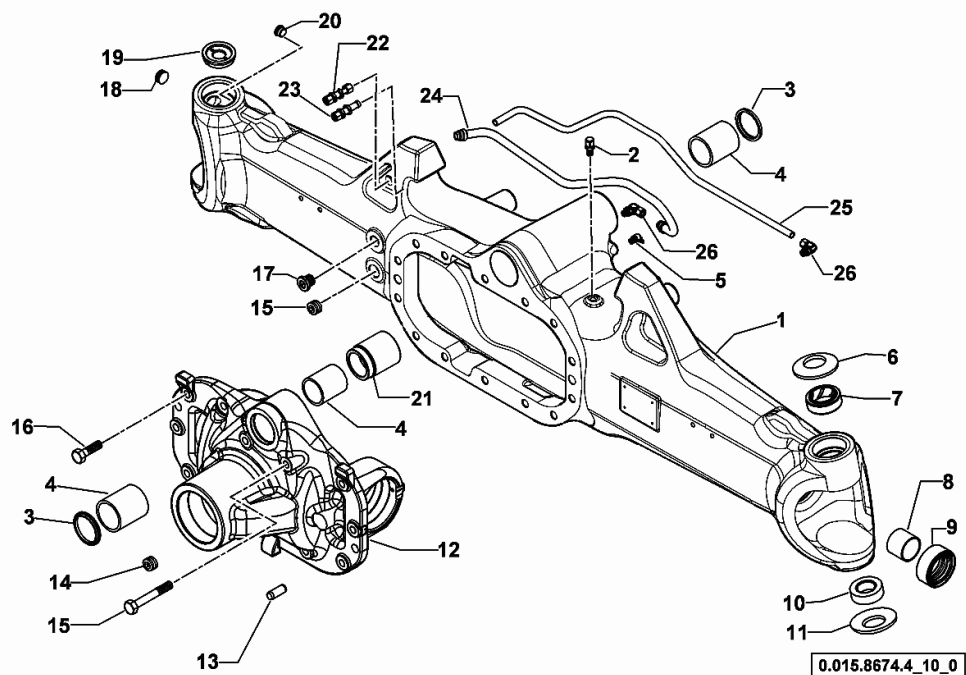
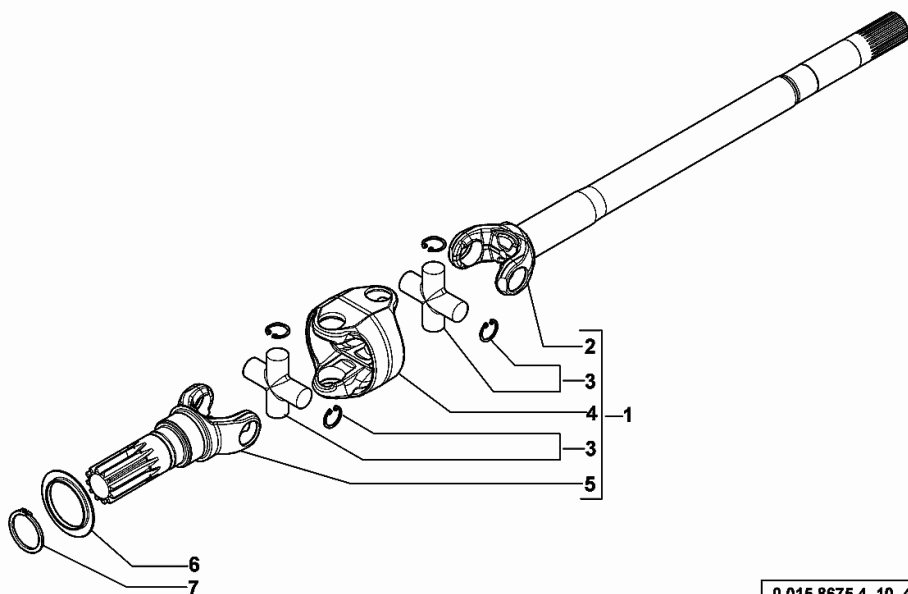


Fig.	Code	QTY	Name
1	0.900.0965.1	1	front axle
2	0.900.0079.8	1	breather m 10 p.1
3	0.900.0079.9	2	circlip
4	0.900.0080.0	3	bushing
5	0.900.0080.1	1	lubricator m 8 p.1, 45°
6	0.900.0080.2	2	spring
7	0.900.0080.3	2	bushing
8	0.900.0080.4	2	bushing
9	0.900.0912.6	2	'o' ring
10	0.900.0080.6	2	bearing
11	0.900.0080.7	2	spring
12	0.900.0960.4	1	support
13	0.900.0081.0	2	pin Ø 15x45
14	0.900.0081.1	2	plug m 24 p.1.5
15	0.900.0081.2	2	screw m 14x75
16	0.900.0081.3	12	screw m14 x 40
17	0.900.0105.5	1	bottom
18	0.900.0081.6	1	plug m 26 p.1.5
19	0.900.0966.6	1	small cover
20	0.900.0105.7	1	bottom
21	0.900.0082.2	1	bushing
22	0.900.0081.7	1	pipe fitting
23	0.900.0081.8	1	pipe fitting
24	0.900.0965.2	1	tube
25	0.900.0965.3	1	tube
26	0.900.0107.0	2	pipe fitting

**DOUBLE COUPLING - [370484]**

Fig.	Code	QTY	Name
1	0.900.0912.7	1	shaft dx/rh/re
1	0.900.0912.8	1	shaft sx/lh/li
2	0.900.0965.4	1	half-shaft dx/rh/re
2	0.900.0965.5	1	half-shaft sx/lh/li
3	0.900.0572.7	4	universal joint
4	0.900.0110.5	2	box
5	0.900.0110.6	2	gear
6	0.900.0090.9	2	cover
7	0.900.0091.0	2	circlip



0.015.8675.4\_10\_4

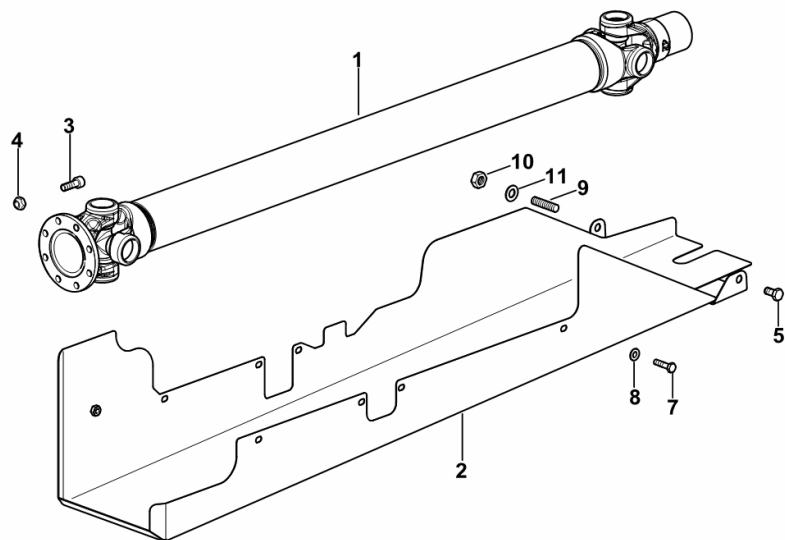
Section: F0 - FRONT AXLE  
**4WD - PROPELLER SHAFT**

Fig.	Code	QTY	Name
------	------	-----	------

**Notes:**

- FOR TYPES WITH FRONT SUSPENSION [IRON 140 DCR -> 20001]

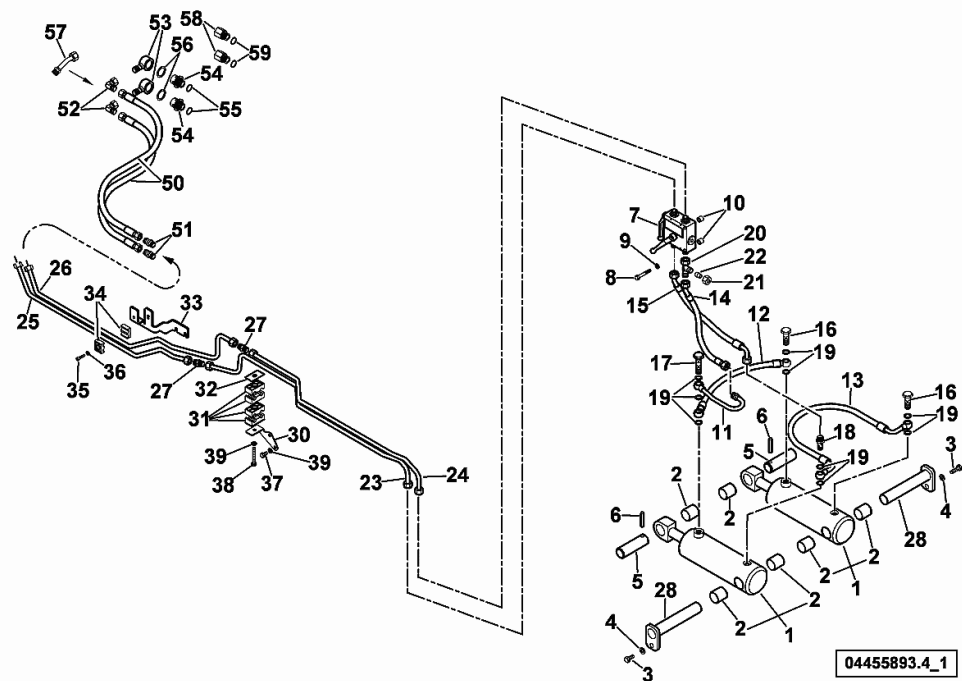
1	04419898.4	1	transmission shaft
2	0.016.4846.3	1	sump
3	2.0319.023.6/10	8	screw m 10 p.1x29
4	01136456	8	nut m 10
5	2.0114.307.2	1	screw m 10 x 20, d933
7	2.0114.205.2	7	screw m 8 p.1.25 x 16
8	2.1310.004.2	7	flat washer 8.5
9	2.0422.307.7	1	stud bolt m 10 x 30
10	2.1011.106.2	1	nut m 10 p.1.5
11	2.1310.006.2	1	flat washer 10.5



9\_J6326\_01\_0-A-002

Section: N0 - FRONT LIFT  
**HYDRAULIC SYSTEM**

Fig.	Code	QTY	Name
56	0.900.0811.2	2	ring 28.7x37x2
57	0.900.0811.6	1	tube DK12L / CE12L
58	0.900.0811.0	2	pipe fitting m 22 x 1.5
59	0.900.0811.1	2	gasket 19.6x24.3x1.5

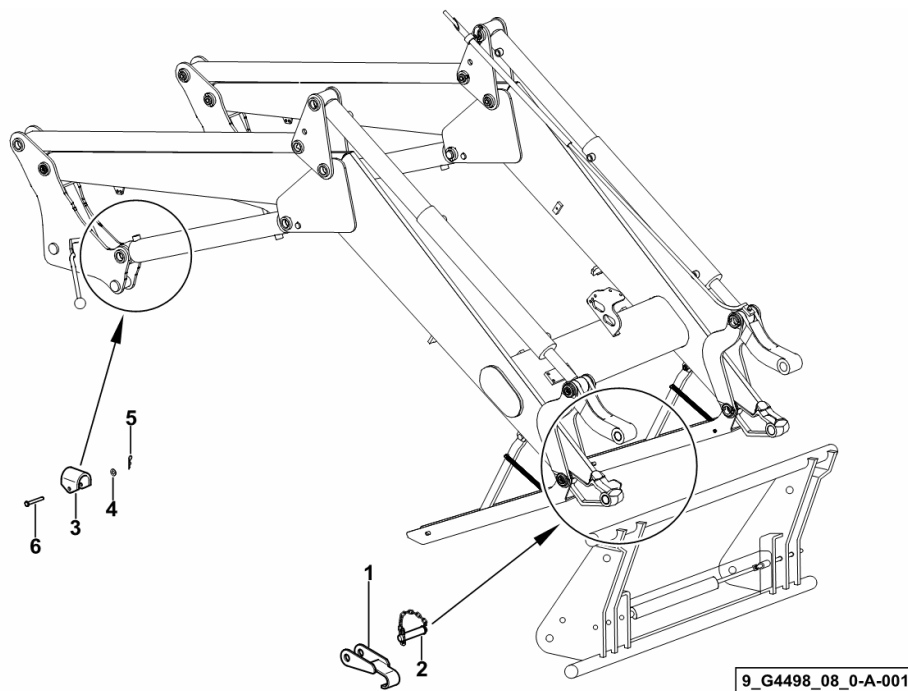


**LOCKING SYSTEM**

Fig.	Code	QTY	Name
------	------	-----	------

Notes:  
[IRON 140 DCR -> 20001]

1	0.014.5952.2/10	1	bracket
2	0.014.5963.3	1	pin
3	0.014.5950.0	2	bracket
4	2.1310.004.2	2	flat washer 8.5
5	2.1699.180.2	2	pin
6	2.1671.420.2	2	pin 10x80

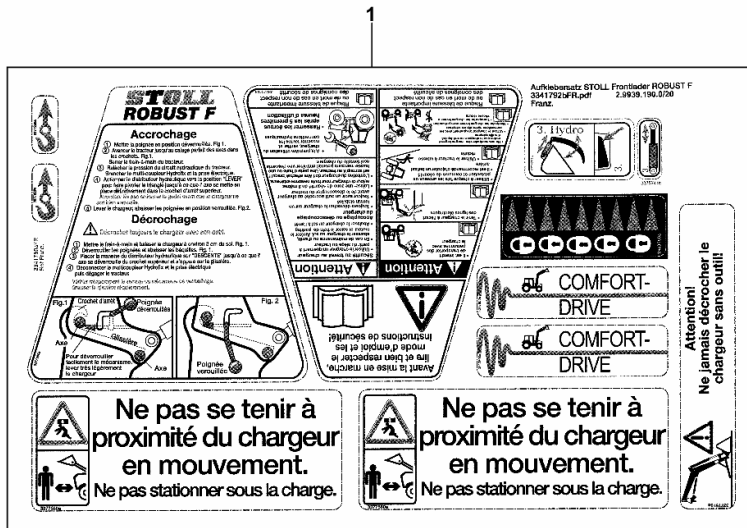


Section: P0 - FRONT LOADER  
**SIGN SET - EXPORT F**

Fig.	Code	QTY	Name
------	------	-----	------

Notes:  
 [IRON 140 DCR -> 20001]

1	2.9939.190.0/20	1	stickers
---	-----------------	---	----------



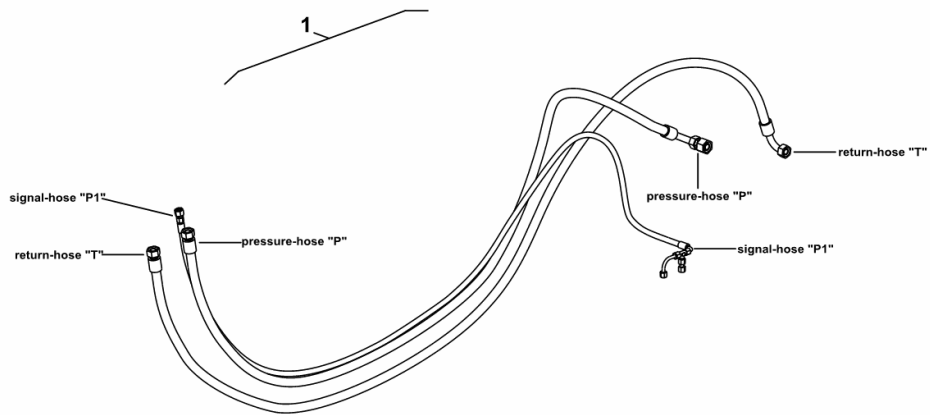
9\_G4798\_07\_0-A-001

Section: P0 - FRONT LOADER  
**PIPING LOAD SENSING**

Fig.	Code	QTY	Name
------	------	-----	------

Notes:  
 [IRON 140 DCR -> 20001]

1	0.016.7013.4	1	parts set
---	--------------	---	-----------



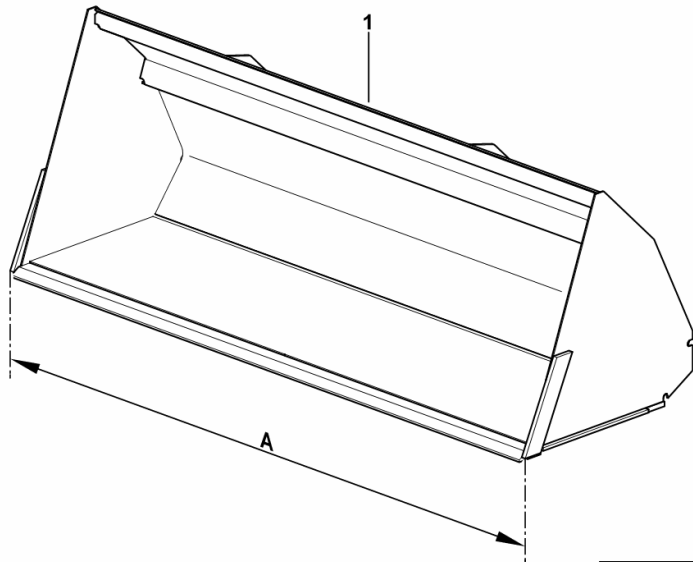
9\_J6598\_03\_0-A-001

**BUCKET EABU220R**

Fig.	Code	QTY	Name
------	------	-----	------

Notes:  
[IRON 140 DCR -> 20001]

1	0.016.1795.4	1	bin EABU220R A = mm 2200
---	--------------	---	-----------------------------



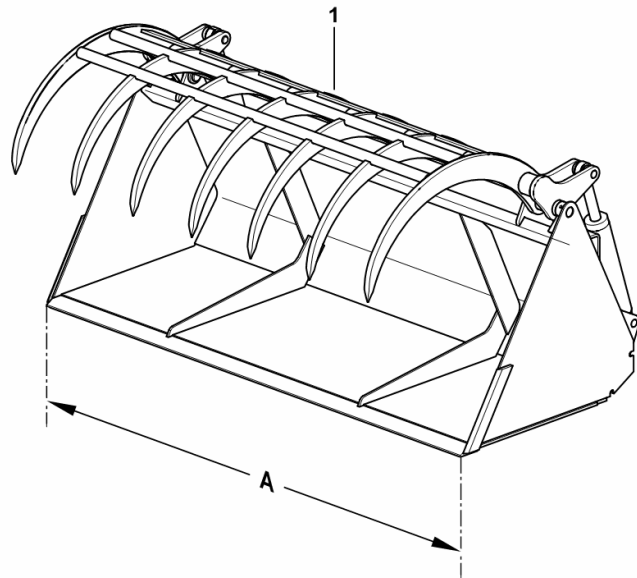
9\_L3998\_70\_0-A-001

**SHOVEL WITH LOAD HOLDER - SBWG 220 H**

Fig.	Code	QTY	Name
------	------	-----	------

Notes:  
[IRON 140 DCR -> 20001]

1	0.014.4640.4	1	bucket - SBWG 220 H A = mm 2200
---	--------------	---	------------------------------------



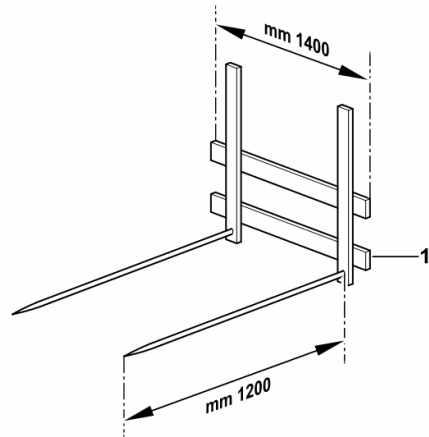
9\_G4698\_81\_0-A-001

**BAIL FORK - BBFO 120 H**

Fig.	Code	QTY	Name
------	------	-----	------

Notes:  
[IRON 140 DCR -> 20001]

1	0.014.4728.4	1	fork-lift - BBFO 120 H
---	--------------	---	------------------------



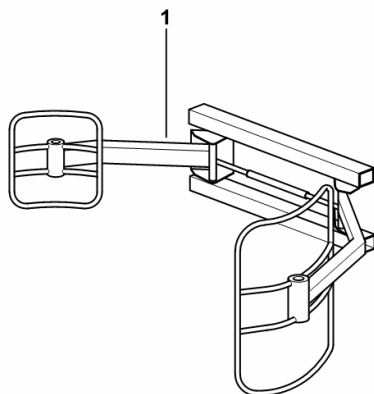
9\_G4398\_82\_0-A-001

**BAIL FORK - BACL 160 N**

Fig.	Code	QTY	Name
------	------	-----	------

Notes:  
[IRON 140 DCR -> 20001]

1	0.014.4933.4	1	fork-lift - BACL 160 N
---	--------------	---	------------------------



9\_G4398\_86\_0-A-001

# IRON 140 DCR -> 20001

## H0 - HYDRAULIC AND PNEUMATIC SYSTEM|

### HYDRAULIC SYSTEM

FRONT DIFFERENTIAL LOCK CONTROL LINES.....	H0.01.0 (1)
GEAR BOX OIL RADIATOR TUBES.....	H0.01.1 (1)
GEAR BOX OIL RADIATOR TUBES.....	H0.01.2 (1)
GEAR BOX OIL RADIATOR TUBES.....	H0.01.2 (2)
GEAR BOX OIL RADIATOR TUBES.....	H0.01.2 (3)
HYDRAULIC SYSTEM LOAD SENSING.....	H0.01.3 (1)
HYDRAULIC SYSTEM LOAD SENSING.....	H0.01.4 (1)
HYDRAULIC SYSTEM LOAD SENSING.....	H0.01.5 (1)
HYDRAULIC SYSTEM LOAD SENSING.....	H0.01.6 (1)
HYDRAULIC SYSTEM LOAD SENSING.....	H0.01.6 (2)
HYDRAULIC SYSTEM OPEN CENTER.....	H0.01.7 (1)
HYDRAULIC SYSTEM OPEN CENTER.....	H0.01.8 (1)
HYDRAULIC SYSTEM LOAD SENSING.....	H0.01.9 (1)
HYDRAULIC SYSTEM LOAD SENSING.....	H0.01.10 (1)
HYDRAULIC SYSTEM LOAD SENSING.....	H0.01.11 (1)
HYDRAULIC SYSTEM LOAD SENSING.....	H0.01.12 (1)
HYDRAULIC SYSTEM LOAD SENSING.....	H0.01.13 (1)
HYDRAULIC SYSTEM OPEN CENTER.....	H0.01.14 (1)
HYDRAULIC SYSTEM OPEN CENTER.....	H0.01.15 (1)
HYDRAULIC SYSTEM OPEN CENTER.....	H0.01.16 (1)
HYDRAULIC SYSTEM OPEN CENTER.....	H0.01.17 (1)
FLANGE.....	00290646.A
DETAILS OF OIL FILTER.....	04437773.4.A
HYDRAULIC PUMP PARTS.....	04450322.A
VALVE PARTS.....	04450326.A
HYDRAULIC PUMP PARTS.....	04450516.A
SPIN-ON FILTER.....	04451877.A
OIL PUMP.....	04452222/10.A
OIL PUMP.....	04452222/10.B
OIL PUMP.....	04452222/10.C
OIL PUMP.....	04452222/10.D
HYDRAULIC PUMP PARTS.....	2.4539.310.0/10.A

### STEERING SYSTEM

HYDROSTATIC STEERING CONTROL VALVE.....	H0.02.0 (1)
PIPES FOR HYDROSTATIC STEERING.....	H0.02.1 (1)
GUIDE PIPE.....	H0.02.2 (1)
GUIDE PIPE.....	H0.02.2 (2)
HYDROSTATIC STEERING FIXING COMPONENTS.....	H0.02.3 (1)
HYDRAULIC STEERING GEAR.....	04450329.A

### TRANSMISSION - PTO COOLERS

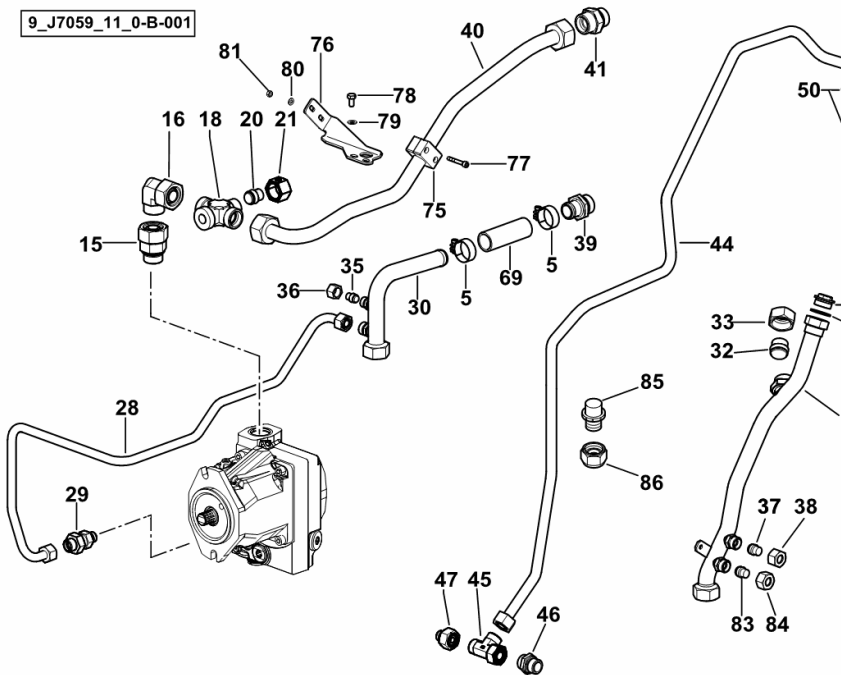
**HYDRAULIC SYSTEM LOAD SENSING**

Fig.	Code	QTY	Name
------	------	-----	------

**Notes:**

- LOAD SENSING [IRON 140 DCR -> 20001]

9\_J7059\_11\_0-B-001



5	2.6851.004.0	4	clamp Ø 32/50
15	04450497	1	tongue
16	04433363	1	tongue
18	04454458/10	1	pipe union
20	04454619	1	stop
21	01103553	1	nut
22	04455719.3/20	1	tube
23	01118989	1	plug
24	2.1560.023.0	1	gasket 30.3 x 36
28	04455744	1	pipng
29	04450523	1	valve
30	04455643.3/20	1	tube
32	04454615	1	cone
33	01102372	1	pipe fitting
35	01180565	1	plug h 310
36	01179539	1	nut CL 12 H310
37	01180617	1	cone
38	01179540	1	nut cl 15 h3105
39	04455642	1	tongue
40	04455657	1	pipng
41	04451725/10	1	shaped part
42	04455708	1	pipng
43	01127372	1	pipe fitting l 15 d3908
44	04455660/10	1	pipng
45	01144815	1	tongue
46	04455063	1	pipe fitting
47	04419612	1	reduction
50	2.1560.018.0	4	gasket 22.2 x 29
51	2.3335.009.2	2	pipe union m 22 p.1.5 x 39
69	0.016.2948.0	1	tube
75	04454620	2	small block
76	0.016.0057.0	1	link
77	2.0312.115.2	2	screw m 6 p.1x45
78	2.0112.205.2	2	screw m 8 p.1.25 x 16
79	2.1310.004.2	2	flat washer 8.5
80	2.1310.002.2	2	washer 6.6, d125
81	2.1011.103.2	2	nut m 6 p.1
83	04431440	2	nut
84	2.3369.026.2	1	nut m16x1,5
85	01180566	1	cone
86	01127347	1	nut CL 18

**HYDRAULIC SYSTEM LOAD SENSING**

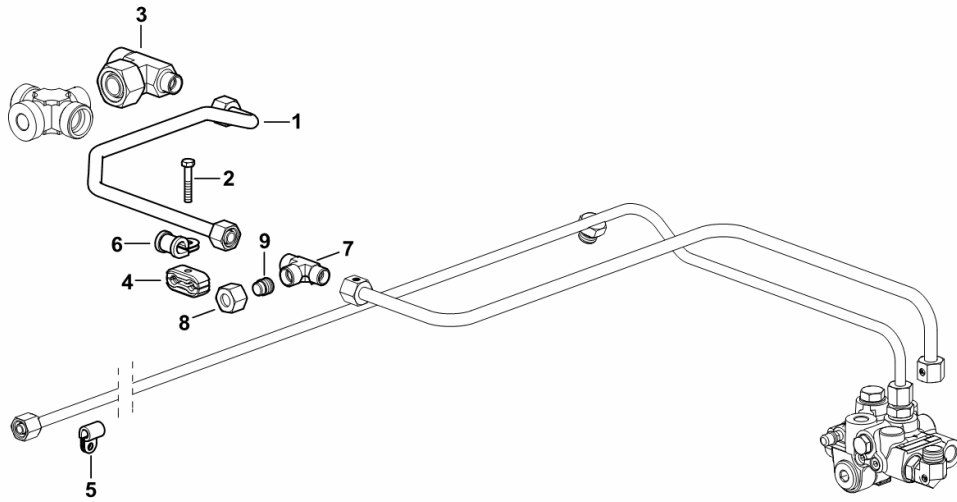
Fig.	Code	QTY	Name
------	------	-----	------

**Notes:**

- FOR TYPES WITH FRONT BRAKES [IRON 140 DCR -> 20001]

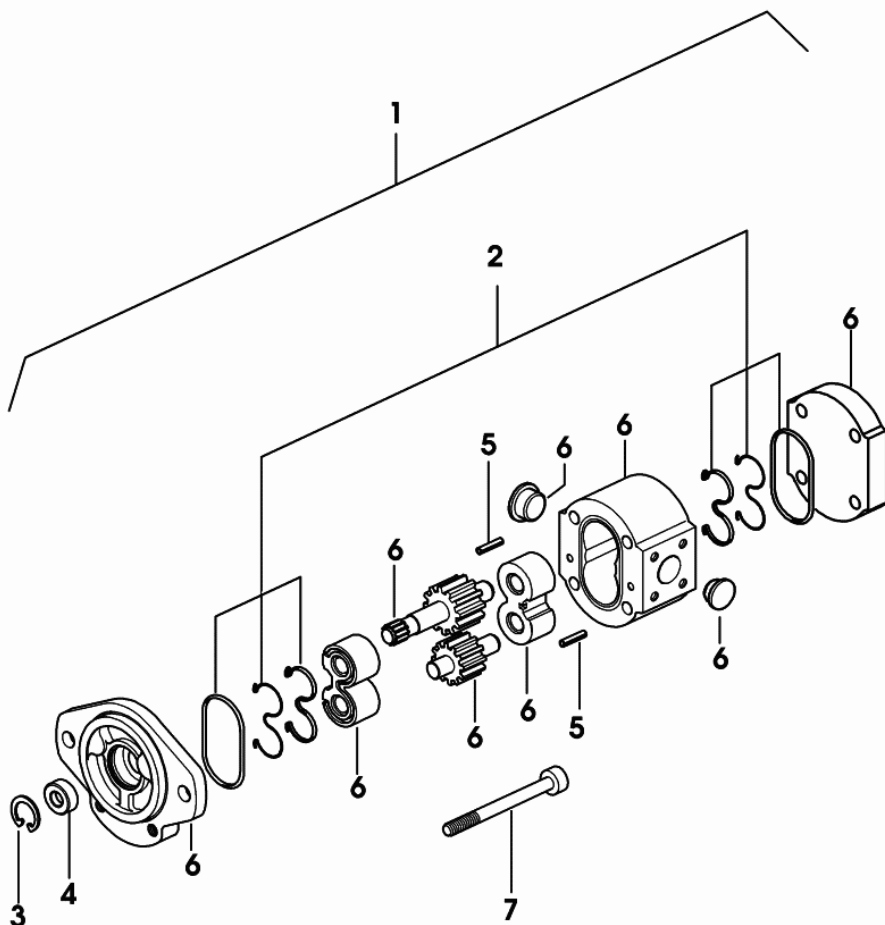
1	0.015.9783.3	1	tube
2	2.0112.013.2	1	screw m 6 p.1 x 35
3	04454457/10	1	tongue
4	01141548	1	clamp Ø 8/8
5	01175559	1	hose clip
6	2.6839.055.0	1	clamp Ø 11 / 20
7	0.015.9782.0	1	pipe fitting
8	2.3369.019.2	1	nut m 18 x 1,5
9	01180565	1	plug h 310

9\_L9582\_10\_0-A-001



**HYDRAULIC PUMP PARTS**

Fig.	Code	QTY	Name
1	04450516	1	hydraulic pump 32 cc
2	04417976	1	gasket set
3	0.010.3524.2	1	circlip
4	04417973	1	repair seal set
5	0.010.3545.1	2	cylindrical plug
6	0.000.0000.1	0	not serviceable
7	0.010.3545.0	4	screw



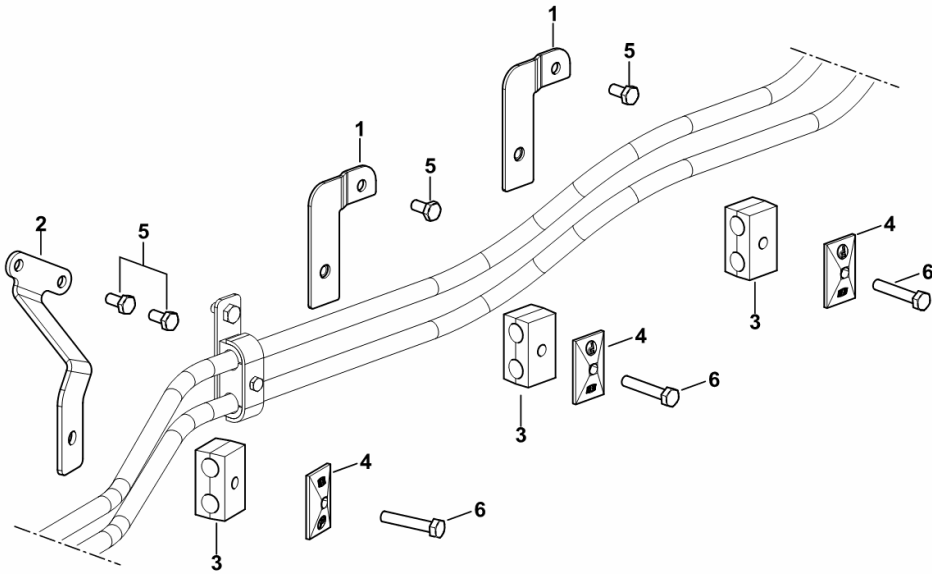
04450516

**HYDROSTATIC STEERING FIXING COMPONENTS**

Fig.	Code	QTY	Name
------	------	-----	------

Notes:  
[IRON 140 DCR -> 20001]

1	0.016.2953.3	2	bracket
2	0.016.2937.3	1	bracket
3	01175727	3	terminal
4	01175670	3	small plate
5	2.0114.205.2	4	screw m 8 p.1.25 x 16
6	2.0112.217.2	3	screw m 8 p.1.25 x 45



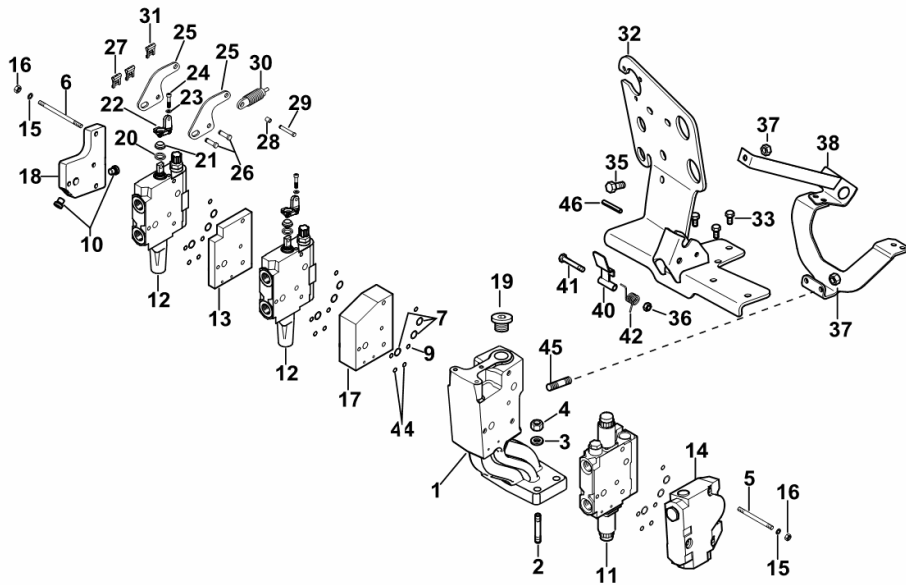
9\_J6463\_01\_0-A-001

**4-WAY HYDRAULIC CONTROL VALVE OPEN CENTER**

Fig.	Code	QTY	Name
------	------	-----	------

**Notes:**

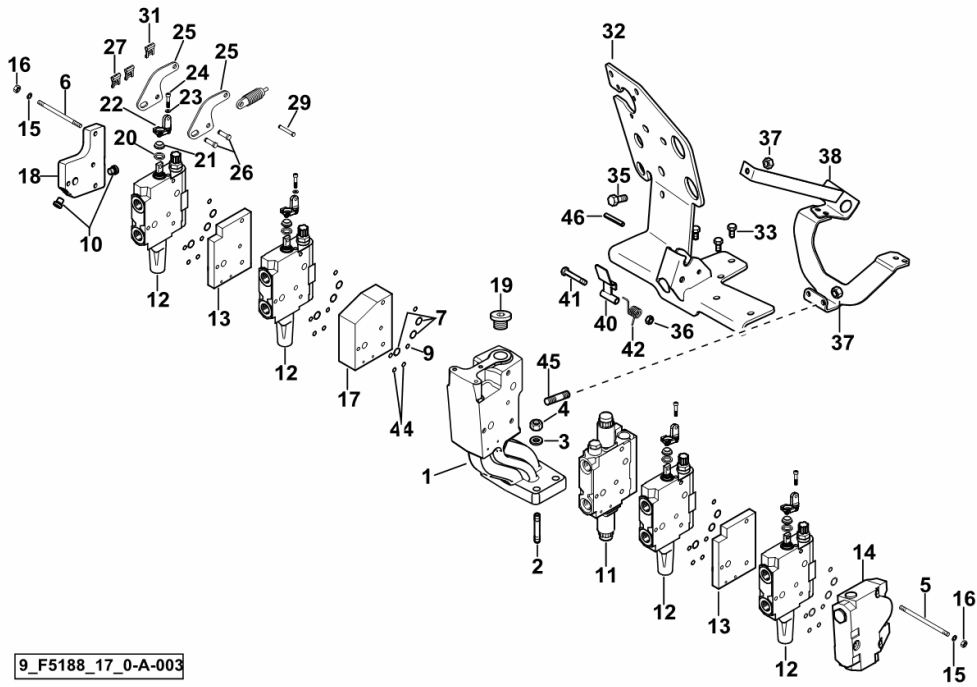
[IRON 140 DCR -> 20001] 20005 <-



1	0.017.1367.0	1	support
2	2.0432.261.7	4	stud bolt m 12 p.1.75-1.25x40
3	2.1475.004.2	4	washer 12
4	2.1011.422.2	4	nut m 12 p.1.25
5	2.0433.025.7	3	stud bolt m 8x1x100
6	2.0433.032.7	3	stud bolt m 8x1x170
7	2.1531.048.0	12	'o' ring 18.72x2.62
9	2.1589.471.0	12	shim 8.1x11.8x0.04
10	04454628	2	screw
11	04428917.4	1	valve ☞ 04428917.4
12	2.3729.480.0	2	element ☞ 2.3729.480.0
13	0.012.2329.0/10	1	plate 13 mm
14	2.3729.520.0/10	1	distributor ☞ 2.3729.520.0/10
15	2.1475.102.2	6	washer 8.4 x 16
16	2.1012.305.7	6	nut m 8 p.1 x 8
17	04451057	1	plate 40 mm
18	04454512	1	plate
19	04451879	1	plug
20	0.011.9918.0	2	spacer 18.6 x 25 x 4.3
21	0.011.9929.0	2	ring
22	0.010.8533.0/10	2	support
23	2.1474.007.2	4	washer 6, d128
24	2.0319.017.6	4	screw m 6 p.1.0 x 16
25	04438354	4	lever
26	04402646	4	pin 8x25
27	01176237	4	guard
28	04415469	2	small spring
29	2.1699.497.2/20	2	pin
30	04415468	2	stop
31	01175725	2	small spring 6, d128
32	0.017.6688.3	1	support
33	2.0114.207.2	3	screw m 8 p.1.25 x 20
35	2.0112.201.2	1	screw m 8 p.1.25 x 10
36	2.1121.005.2	1	nut m 8 p.1.25
37	2.1011.105.2	3	nut m 8 p.1.25
38	0.017.8974.3/10	1	support
40	04451512.4	1	lever
41	2.0112.220.2	1	screw m 8 p.1.25x55

**8-WAY HYDRAULIC CONTROL VALVE OPEN CENTER**

Fig.	Code	QTY	Name
45	2.0422.201.2	2	stud bolt M8X16
46	2.1630.616.0	1	roll pin 6x45



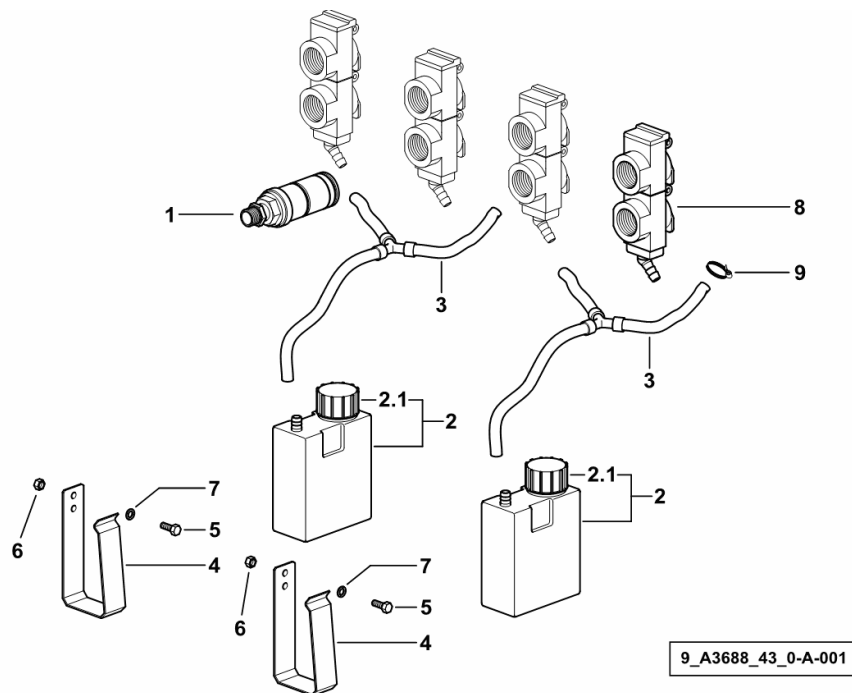
9\_F5188\_17\_0-A-003

**8-WAY QUICK COUPLERS**

Fig.	Code	QTY	Name
------	------	-----	------

Notes:  
[IRON 140 DCR -> 20001]

1	04412157/10	8	coupling ☞ 04412157/10
2	04426824.4	2	tank 600 cm <sup>3</sup>
2.1	04428375	1	plug
3	04433076.4	2	rubber tube
4	04426826	2	tank support
5	2.0112.011.2	2	screw m 6 p.1x30
6	2.1011.103.2	2	nut m 6 p.1
7	2.1310.002.2	2	washer 6.6, d125
8	04438516.4	4	small block
9	04437395	4	clamp



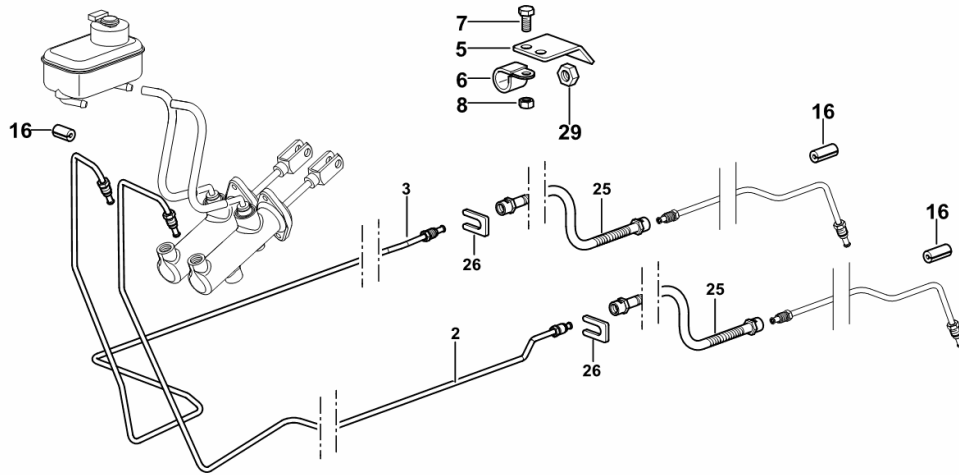
**BRAKING SYSTEM**

Fig.	Code	QTY	Name
------	------	-----	------

**Notes:**

- FOR TYPES WITHOUT FRONT BRAKES [IRON 140 DCR -> 20001]

2	0.014.9415.3	1	pipng sx/lh/li
3	0.014.9361.3	1	pipng dx/rh/re
5	04453791	1	bracket
6	01179680	2	clamp A15X15
7	2.0114.009.2	2	screw m 6 x 25, d933
8	2.1011.103.2	2	nut m 6 p.1
16	01218045	9	rubber plug
25	04415735/10	2	flexible hose
26	01121654	2	stop
29	2.1011.105.2	2	nut m 8 p.1.25

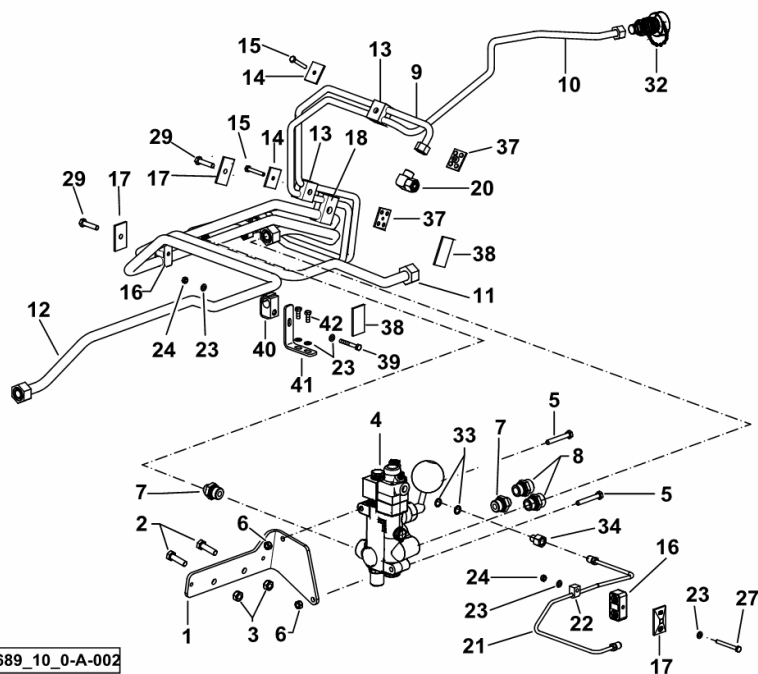


9\_J6366\_10\_0-A-001

Fig.	Code	QTY	Name
------	------	-----	------

**Notes:**

- FOR TYPES WITHOUT PNEUMATIC BRAKE [IRON 140 DCR -> 20001] -> 20017



1	04455749	1	support
2	2.0112.313.2	2	screw m 10 p.1.5 x 35
3	2.1011.106.2	2	nut m 10 p.1.5
4	04424805	1	valve ☞ 04424805
5	2.0112.220.2	2	screw m 8 p.1.25x55
6	2.1011.105.2	2	nut m 8 p.1.25
7	04428400	2	pipe fitting
8	04419602	2	pipe fitting
9	04455681/10	1	pipng
10	04455682/10	1	tube
11	04455705.3/10	1	tube
12	0.016.3104.3	1	tube
13	01180439	4	terminal
14	01175616	2	small plate
15	2.0112.015.2	2	screw m 6 p.1x40
16	01178214	4	terminal
17	01175670	3	small plate
18	04454610	2	terminal Ø 12/18
20	01144832	1	pipe fitting
21	04455685	1	pipng
22	01141501	1	clamp Ø 6
23	2.1310.002.2	6	washer 6.6, d125
24	2.1120.003.2	2	nut m 6
27	2.0112.020.2	1	screw m 6 p.1 x 55
29	2.0112.213.2	2	screw m 8 p.1.25 x 35
32	04307317	1	coupling
33	2.1560.007.0	2	gasket 12.2x16
34	04419604	1	power control
37	01177274	2	small plate
38	01180338	2	small plate
39	2.0112.017.2	1	screw m 6 p.1x45
40	2.3320.109.0	1	terminal Ø 18 -B-
41	0.017.9178.0	1	bracket
42	2.0112.005.2	2	screw m 6 p.1 x 16

9\_J6689\_10\_0-A-002

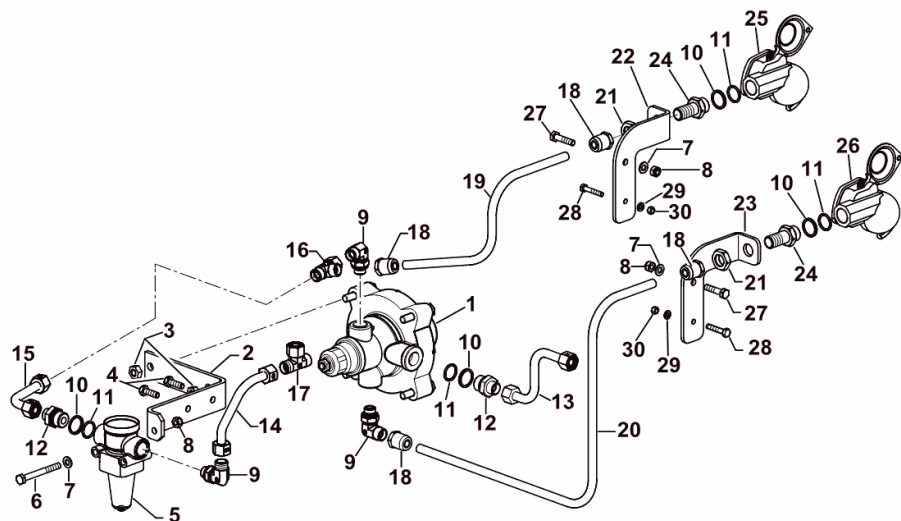
**AIR BRAKING**

Fig.	Code	QTY	Name
------	------	-----	------

**Notes:**

- EXPORT CH [IRON 140 DCR -> 20001]

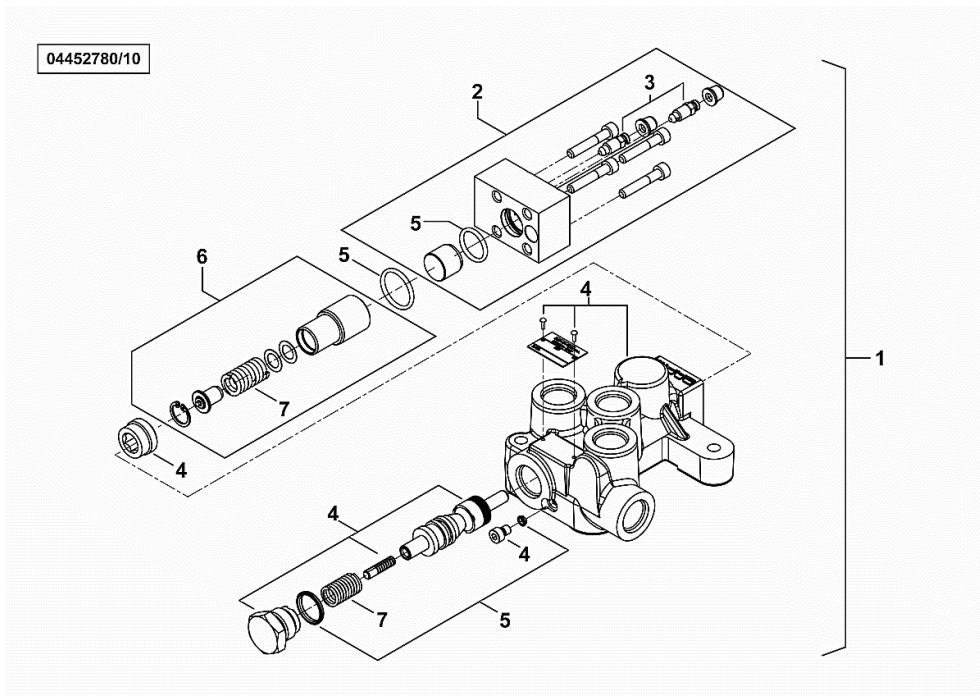
1	0.012.1713.4	1	valve
2	04455010	1	bracket
3	2.1011.106.2	2	nut m 10 p.1.5
4	2.0112.209.2	2	screw m 8 p 1.25 x 25
5	04454570	1	valve
6	2.0112.224.2	1	screw m 8 p.1.25x75
7	2.1310.004.2	3	flat washer 8.5
8	2.1121.005.2	3	nut m 8 p.1.25
9	04454066	3	pipe fitting L
10	02523701	4	ring
11	02523700	4	ring
12	01143570	2	pipe fitting m 22 x 1.5
13	04454295	1	pipng
14	04455008	1	tube
15	04455009	1	tube
16	01144813	1	pipe fitting T
17	01144831	1	pipe fitting T
18	04438664	4	pipe fitting
19	04438127	1	tube L = mm 1650
20	04438128	1	tube L = mm 1690
21	2.1012.510.7	2	nut m 18 p.1.5
22	04454560	1	support
23	04454561	1	support
24	01143567	2	pipe fitting m 22 x 1.5
25	04454569	1	socket
26	04454568	1	socket
27	2.0114.213.2	2	screw m 8 x 35
28	2.0112.013.2	2	screw m 6 p.1 x 35
29	2.1310.002.2	2	washer 6.6, d125
30	2.1121.003.2	2	selflock nut m 6 p.1



9\_G7989\_15\_0-A-001

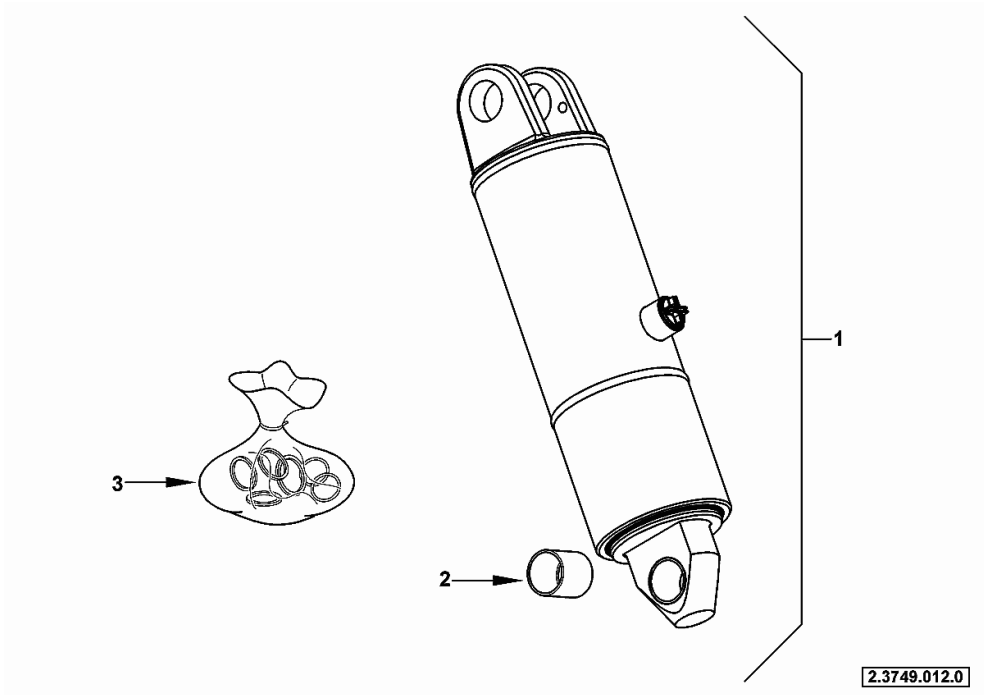
**TRAILER BRAKE VALVE**

Fig.	Code	QTY	Name
1	04452780/10	1	valve
2	0.900.0064.8	1	small block
3	0.900.0064.3	2	screw
4	0.000.0000.1	0	not serviceable
5	0.010.3494.1	1	seal ring kit
6	0.900.0064.9	1	accessories
7	0.900.0040.2	1	spring



Section: R0 - REAR LIFT  
**HYDRAULIC CYLINDER**

Fig.	Code	QTY	Name
1	2.3749.012.0	1	jack mm 100
2	0.900.1489.8	1	bushing
3	0.900.1489.9	1	gasket set



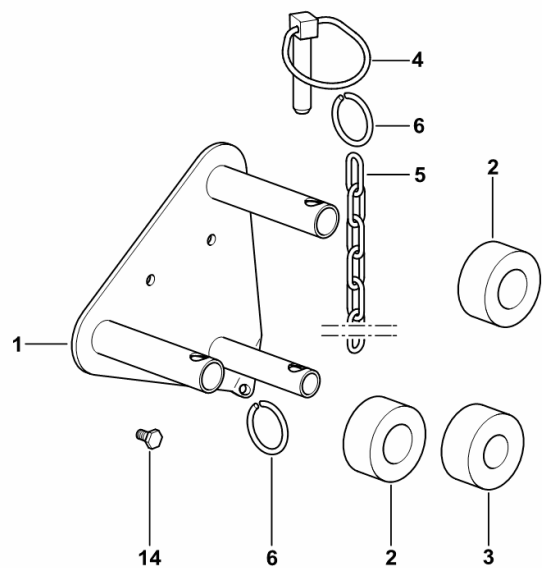
**RETAINER FOR COLLECTING TRAY**

Fig.	Code	QTY	Name
------	------	-----	------

**Notes:**

FOR TYPES WITH 250 mm REAR FENDER EXTENSIONS [IRON 140 DCR -> 20001]

1	04423557.4	1	support
2	04427960	2	rubber ring Ø 26
3	04423947	1	rubber ring Ø 22
4	01124059	1	pin
5	01402736/10	1	chain
6	04305741	2	ring
14	2.0114.003.2	3	screw m 6 p.1 x 12

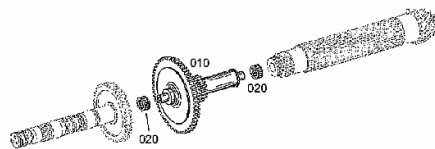
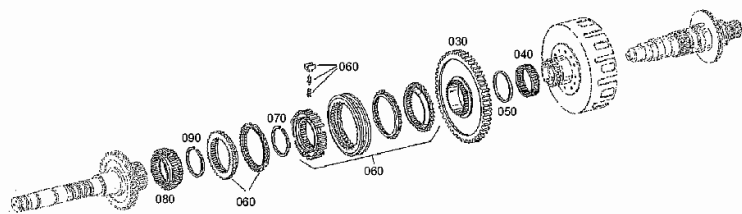


9\_95358\_71\_0-A-001



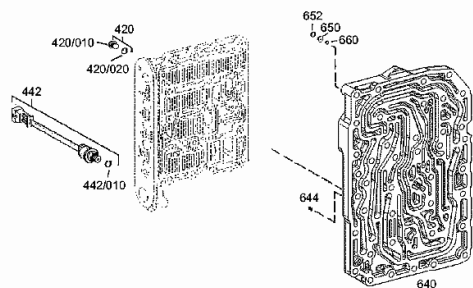
**SUPER REDUCTION GEAR UNIT - [2093 009 099]**

Fig.	Code	QTY	Name
10	04416812	1	shaft z = 59
20	04415803	2	bearing
30	04416813	1	gear z = 73
40	04415805	1	roller cage
50	04415806	1	ring
60	0.010.3841.0	1	lock synchronizer
70	04415809	1	circlip sw 65
80	04416815	1	gear Z = 31
90	04415811	1	circlip sw 60



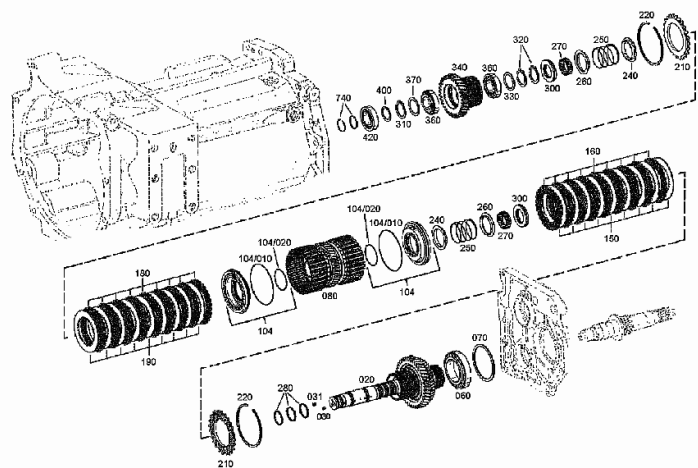
**ADJUSTER INSTRUMENT - [2093 009 099]**

Fig.	Code	QTY	Name
580.20	0.010.2619.1	1	'o' ring 17x2
600	04434337	1	plug
600.10	04416852	1	screw
600.20	02968175	1	'o' ring 15x2
640	0.900.0803.3	1	plate
644	04416857	1	diaphragm
650	04416858	1	washer
652	04416859	1	gasket 7x1.5
660	04416941	1	ball
780	04434339	1	tongue
780.10	04416944	1	tongue
780.20	04416021	1	'o' ring 27x2.5



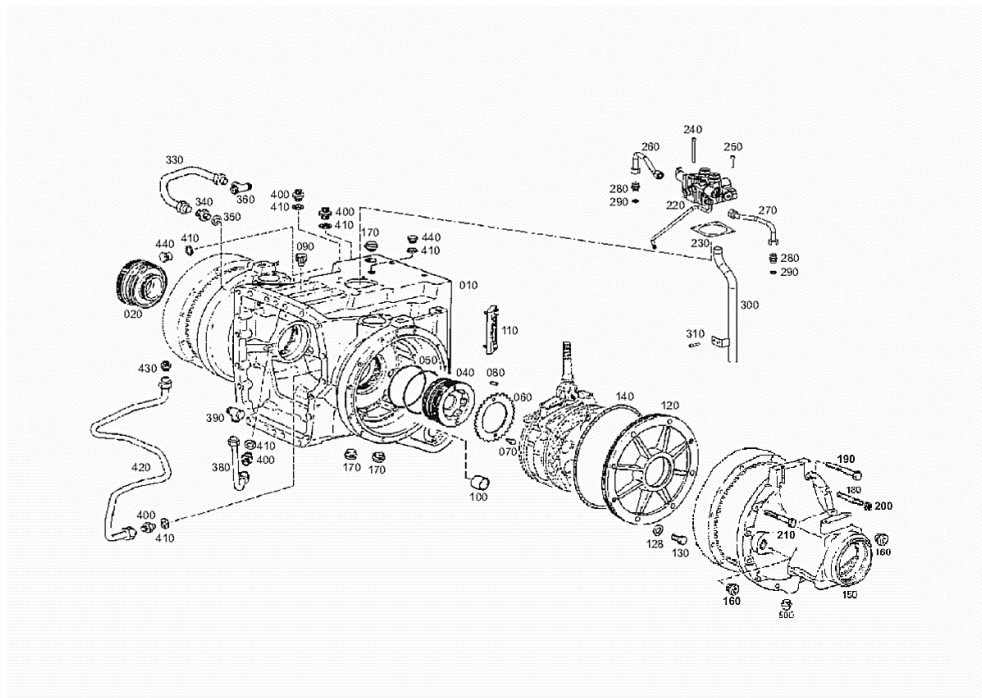
Section: D0 - TRANSMISSION  
SPLITTER - [2093 009 099]

Fig.	Code	QTY	Name
20	0.900.0954.6	1	transmission shaft
30	04416947	2	grain m 8x8 (...) <-
31	0.900.0067.3	2	plug
60	04415989	1	bearing
70	0.900.1379.3	1	washer
70	04417057	1	washer mm 2.70
70	04417058	1	washer mm 2.65
70	04417059	1	washer mm 2.60
70	04417060	1	washer mm 2.55
70	04417061	1	washer mm 2.50
70	04417062	1	washer mm 2.45
70	04417063	1	washer mm 2.40
70	04417064	1	washer mm 2.35
70	04417065	1	washer mm 2.30
70	04417066	1	washer mm 2.25
70	04417067	1	washer mm 2.20
70	04417068	1	washer mm 2.15
70	04417069	1	washer mm 2.10
70	04417070	1	washer mm 2.05
70	04417071	1	washer mm 2.0
70	04417072	1	washer mm 1.95
70	04417073	1	washer mm 1.9
70	04417074	1	washer mm 1.85
70	04417075	1	washer mm 1.80
80	0.900.0954.5	1	carrier
104	04431746	4	piston
104.40	04419762	1	'o' ring 104x3
104.50	04419763	1	'o' ring 50x3
150	04416760	8	clutch disc AV 35
160	04416967	8	clutch disc
180	04416760	8	clutch disc AV 35
190	04416967	8	clutch disc
210	04416763	4	disc
220	0.900.1380.3	4	circlip
220	04416765	4	circlip A = 2.0
220	04416766	4	circlip A = 2.5
220	04416767	4	circlip A = 3.0
220	04416768	4	circlip A = 3.5
220	0.900.0801.9	4	circlip A=2,75
220	0.900.0802.0	4	circlip A=3,25
220	0.900.0802.1	4	circlip A=2,25
240	04416953	4	ring
250	04416759	4	spring



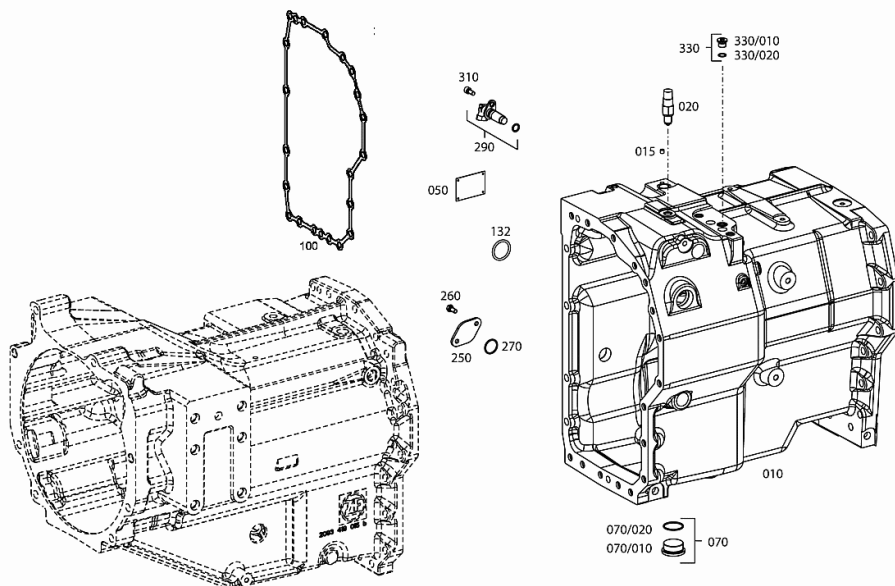
**REAR GEARBOX CASE - [2093 009 099]**

Fig.	Code	QTY	Name
440	0.900.0281.0	2	plug m 14 p.1.5
500	0.010.3849.0	2	plug



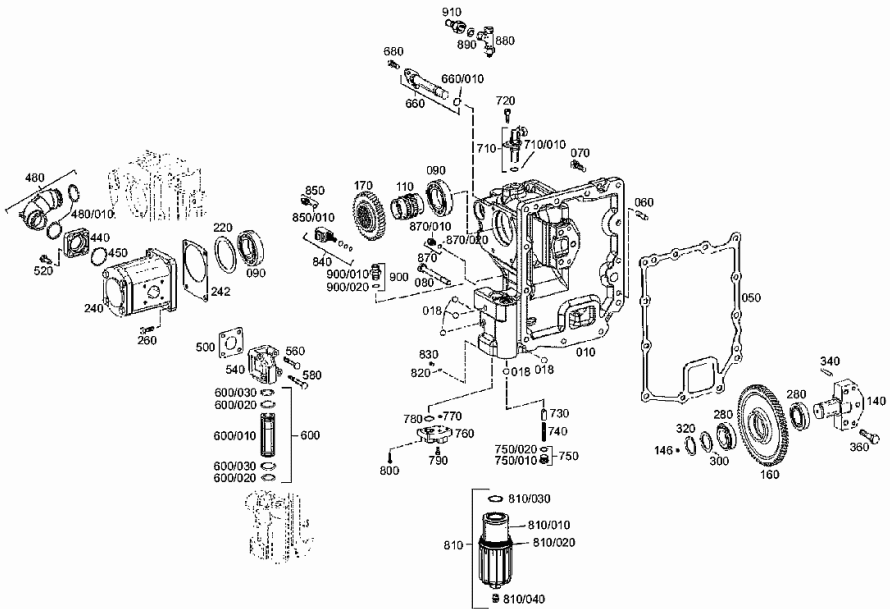
Section: D0 - TRANSMISSION  
**GEARBOX - [2093 009 104]**

Fig.	Code	QTY	Name
10	0.900.0985.3	1	gear box (...) <-
10	0.900.0985.4	1	gear box -> (...) - (...) <-
10	0.900.0954.7	1	gear box -> (...)
15	0.900.0952.5	1	plug
20	04416066	1	switch
50	04415260	1	plate
70	04435197	1	plug
70.10	04438472	1	plug m 42 p.1.5
70.20	02315144	1	'o' ring 38x2.5
100	04415679	1	gasket (...) <-
132	0.010.2845.2	1	'o' ring 38x4
250	0.010.3257.1	1	flange
260	04434497	2	screw m 8 x 18
270	0.010.3257.2	1	gasket 28x2.5
290	04438450	1	speed sensor
290.10	04417747	1	'o' ring 15.54x2.62
310	0.010.2875.0	1	screw m 8 x 18
330	04435199	1	screw
330.10	04436330	1	screw m 16 p.1.5
330.20	02315162	1	'o' ring 13x2



Section: D0 - TRANSMISSION  
**PUMP DRIVE - [2093 009 104]**

Fig.	Code	QTY	Name
10	0.900.0955.2	1	box (...) <-
10	0.900.1362.3	1	box -> (...)
18	04415830	5	ball 12 mm
60	04415833	2	cylindrical plug 10 m 6x35
70	04434540	11	screw m 10 x 35
80	0.010.2872.0	1	screw m 10 x 100
90	04415834	2	ball bearing
110	0.900.0488.6	1	sleeve z=38
140	04415918	1	bearing block
146	04415919	1	ball
160	0.900.0884.6	1	gear z=71 (...) <-
160	0.900.0955.3	1	gear -> (...)
170	0.900.0884.7	1	gear z=39 (...) <-
170	0.900.0955.4	1	gear -> (...)
220	04417130	1	washer mm 3.00
240	04431697	1	oil pump
242	04415921	1	gasket
260	04434509	4	screw m 8 x 30
280	04415821	2	ball bearing
300	0.900.1378.5	1	shim
300	04416776	1	shim mm 2.00
300	04417115	1	shim mm 2.05
300	04417056	1	shim mm 2.10
300	04417117	1	shim mm 2.15
300	04417118	1	shim mm 2.20
300	04417119	1	shim mm 2.25
300	04417120	1	shim mm 2.30
300	04417121	1	shim mm 2.35
300	04416777	1	shim mm 2.40
300	04417123	1	shim mm 2.45
300	04416778	1	shim mm 2.50
300	04416775	1	shim mm 2.50
300	04417126	1	shim mm 1.85
300	04417127	1	shim mm 1.90
300	04417128	1	shim mm 1.95
320	0.010.2621.1	1	circlip 30x2
340	04415823	2	screw 8 m 6x36
360	04434547	3	screw m 12 x 45



**ADJUSTER INSTRUMENT - [2093 009 104]**

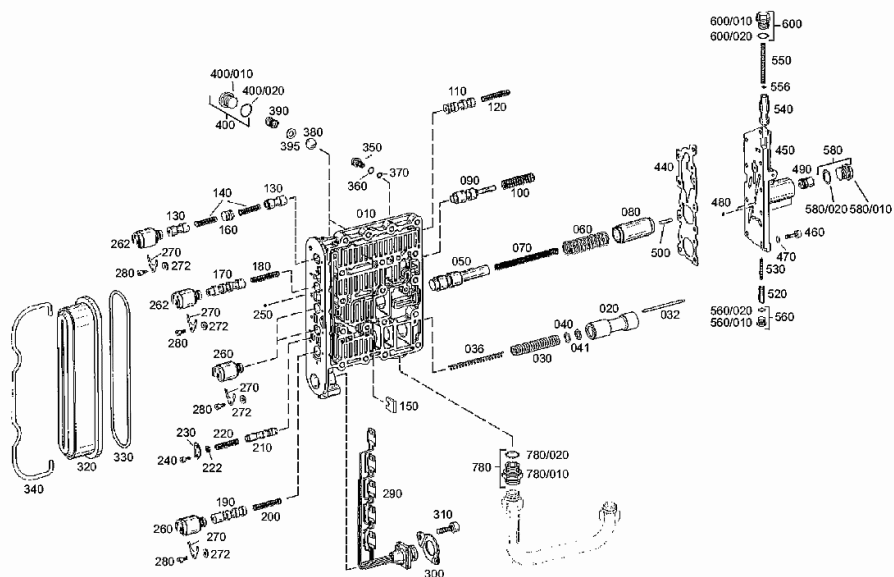
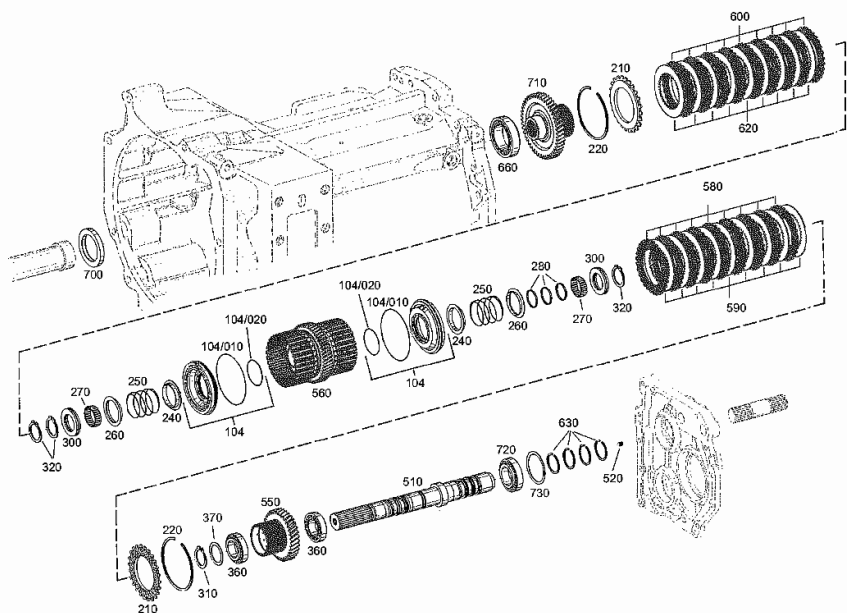


Fig.	Code	QTY	Name
10	04416824	1	distributor
20	04423298	1	piston
30	04416657	1	spring
32	04434330	1	pin
36	04434331	1	spring
40	0.900.1378.2	1	shim
40	02371798	1	shim mm 10x16x0.2
40	04416658	1	shim mm 10x16x0.3
40	04416659	1	shim mm 10x16x0.4
40	04416660	1	shim mm 10x16x0.5
40	04416661	1	shim mm 10x16x1
41	04416661	3	shim mm 10x16x1
50	04416664	1	piston
60	04416665	1	spring
70	04416666	1	spring
80	04416825	1	piston
90	04417095	1	piston
100	04416669	1	spring
110	04416826	1	piston
120	04416671	1	spring
130	04423374	1	piston
140	04416828	2	spring
150	04416829	1	small plate
160	04416830	1	contact surface
170	04416831	1	piston
180	04416671	1	spring
190	04416833	1	piston
200	04416671	1	spring
210	04416681	1	valve
220	04416682	1	spring
222	04416832	1	ring
230	04416836	1	lamination
240	04434505	2	screw m 5x10
250	04416684	10	ball
260	04416685	3	electro valve
262	04436315	2	electro valve
270	04416677	5	stop
272	04359458	5	washer mm 2.00
280	0.900.1362.8	5	screw m 5 x 12
290	04416837	1	electrical system
300	04416687	1	lamination
310	04434507	2	screw m 6 x 14
320	04416838	1	cover
330	04417233	1	ring 159.2x5.7

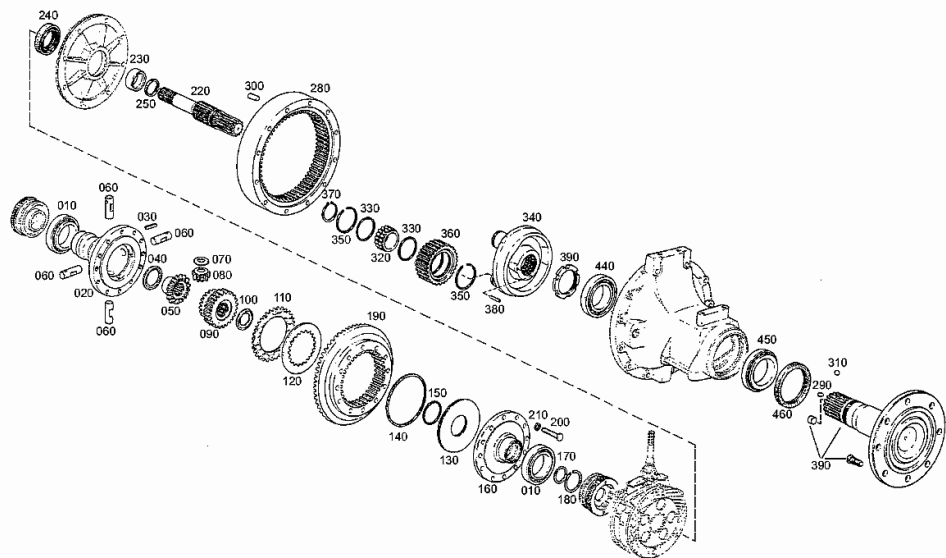
Section: D0 - TRANSMISSION  
**SPLITTER - [2093 009 104]**

Fig.	Code	QTY	Name
260	04416954	4	ring
270	04416955	4	roller cage
280	04416956	6	ring 38/35.2x2
300	04416957	4	bearing
310	04416951	2	circlip
320	0.010.3347.1	5	circlip 38x2.5
330	04416969	1	ring mm 1.5
340	0.900.0955.5	1	gear
360	04416950	4	bearing
370	0.900.1378.4	2	washer
370	04417016	2	washer mm 1.2
370	04417017	2	washer mm 1.25
370	04417018	2	washer mm 1.30
370	04417019	2	washer mm 1.35
370	04417020	2	washer mm 1.4
370	04417021	2	washer mm 1.45
370	04416969	2	ring mm 1.5
370	04417023	2	washer mm 1.55
370	04417024	2	washer mm 1.60
370	04417025	2	washer mm 1.65
370	04417026	2	washer mm 1.7
370	04417027	2	washer mm 1.75
370	04417028	2	washer mm 1.80
370	04417029	2	shim mm 1.225
370	04417030	2	shim mm 1.275
370	04417031	2	shim mm 1.325
370	04417032	2	shim mm 1.375
370	04417033	2	shim mm 1.425
370	04417034	2	shim mm 1.475
370	04417035	2	shim mm 1.525
370	04417036	2	shim mm 1.575
370	04417037	2	shim mm 1.625
370	04417038	2	shim mm 1.675
370	04417039	2	shim mm 1.725
370	04417040	2	shim mm 1.775
370	0.010.2886.0	2	washer mm 1.175
370	0.010.2886.1	2	washer mm 1.15
400	04416762	1	disc
420	04416358	1	roller bearing
510	0.900.0122.1	1	shaft Z = 29
520	0.900.0498.4	3	plug
550	0.900.0955.6	1	gear wheel
560	0.900.0954.4	1	plate carrier
580	04416760	8	clutch disc AV 35



**DIFFERENTIAL - [2093 009 104]**

Fig.	Code	QTY	Name
360	0.900.1364.0	6	planet gear -> (...)
370	0.900.0289.5	6	circlip
380	0.900.0278.3	2	roll pin
390	0.900.0953.9	2	shaft
440	0.010.3581.0	2	roller bearing
450	0.900.0480.5	2	roller bearing
450	0.900.0953.8	2	roller bearing
460	0.010.3642.2	2	ring



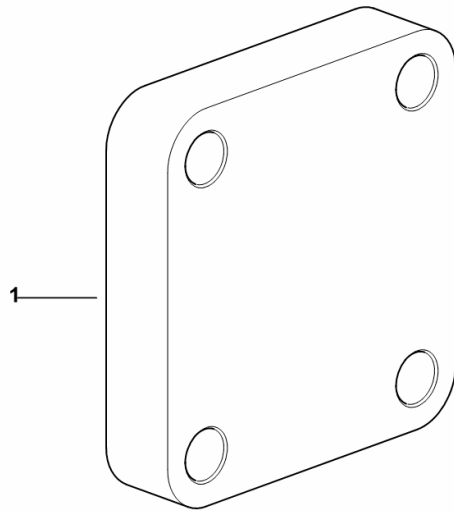
Section: D0 - TRANSMISSION  
**SEPARATOR mm 35**

Fig.	Code	QTY	Name
------	------	-----	------

**Notes:**

- FOR MODELS WITHOUT FRONT LIFT [IRON 140 DCR -> 20001]

1	0.015.7283.0	1	spacer mm 35
---	--------------	---	--------------



9\_J6356\_01\_0-A-001

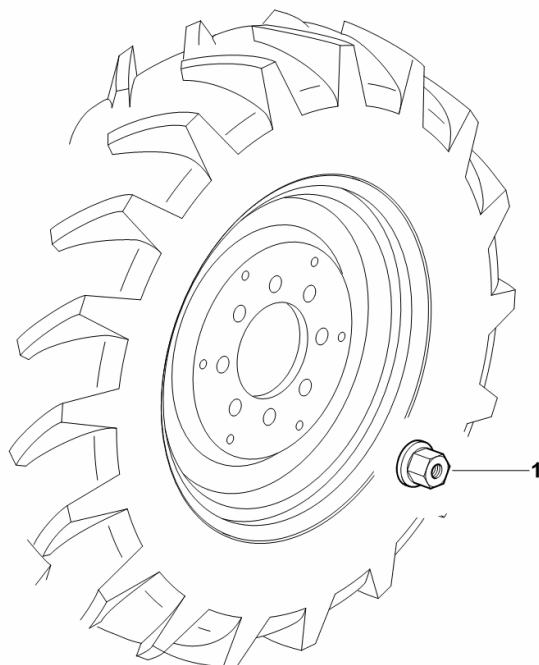
**FRONT WHEEL MOUNTING m 22 x 1,5**

Fig.	Code	QTY	Name
------	------	-----	------

**Notes:**

[IRON 140 DCR -> 20001]

1	2.1099.085.0/20	16	special nut m 22 x 1.5
---	-----------------	----	------------------------



9\_95055\_02\_0-A-001

CLICK HERE TO **DOWNLOAD** THE COMPLETE MANUAL

- Thank you very much for reading the preview of the manual.
- You can download the complete manual from: [www.heydownloads.com](http://www.heydownloads.com) by clicking the link below



- Please note: If there is no response to CLICKING the link, please download this PDF first and then click on it.

CLICK HERE TO **DOWNLOAD** THE COMPLETE MANUAL