

DORADO F 100 -> 6001

V0 - BALLAST, TOWING HITCHES

FRONT HITCHES

FRONT TOWING HITCH..... V0.01.0 (1)

REAR HITCHES

SPACER FOR TYPES WITH 2-SPEED P.T.O. WITH INSERTED END SHAFTS 540-750..... V0.02.0 (1)

SEPARATOR..... V0.02.1 (1)

SUPPORTS..... V0.02.2 (1)

SUPPORTS..... V0.02.3 (1)

PIN FOR REAR TOW HOOK..... V0.02.4 (1)

REAR TOWING HITCH..... V0.02.5 (1)

REAR SWINGING TOWING-HITCH..... V0.02.7 (1)

REAR TOWING HITCH BRACKET..... V0.02.8 (1)

REAR TOWING HITCH BRACKET..... V0.02.9 (1)

REAR TOWING HITCH CAT. " D "..... V0.02.10 (2)

REAR TOWING HITCH CAT. " D2 "..... V0.02.11 (1)

REAR TOWING HITCH CAT. " C "..... V0.02.12 (2)

REAR TOWING HITCH CEE..... V0.02.13 (2)

AUTOMATIC REAR TOWING HITCH CEE Ø 31..... V0.02.14 (1)

AUTOMATIC REAR TOWING HITCH CEE Ø 31..... V0.02.14 (2)

REAR TOWING HITCH CEE..... V0.02.15 (1)

REAR TOWING HITCH CEE..... V0.02.16 (1)

REAR TOWING HITCH CAT: "C"..... 0.014.4450.3.A

REAR TOWING HITCH CAT: "D"..... 0.014.4451.3.A

DRAWBAR COUPLING CAT: "D2"..... 0.014.4452.3/10.A

DRAWBAR COUPLING..... 0.014.4453.3/10.A

DRAWBAR COUPLING JH..... 0.014.4457.3.A

SLIDE..... 0.014.8203.3/20.A

DRAWBAR COUPLING Ø 31, kpl..... 0.014.8208.3.A

CHASSIS..... 0.014.8233.3.A

DRAWBAR COUPLING Ø 31, kpl..... 0.015.5754.3.A

SPACER FOR TYPES WITH PTO WITH INTERCHANGEABLE OUTPUT SHAFTS - 2 -SPEED + GROUNDSP. AND 3- SPEED..... V0.02.20000 (1)

FRONT BALLAST WEIGHTS

FRONT WEIGHT CARRIER..... V0.03.2 (1)

FRONT BALLAST KG. 70..... V0.03.4 (1)

FRONT BALLAST Kg 80..... V0.03.5 (1)

FRONT BALLAST Kg 160..... V0.03.6 (1)

FRONT BALLAST KG. 250..... V0.03.7 (1)

BALLAST LOCK BAR mm 30x780..... V0.03.8 (1)

CLICK HERE TO **DOWNLOAD** THE COMPLETE MANUAL

- Thank you very much for reading the preview of the manual.
- You can download the complete manual from: www.heydownloads.com by clicking the link below



- Please note: If there is no response to CLICKING the link, please download this PDF first and then click on it.

CLICK HERE TO **DOWNLOAD** THE COMPLETE MANUAL

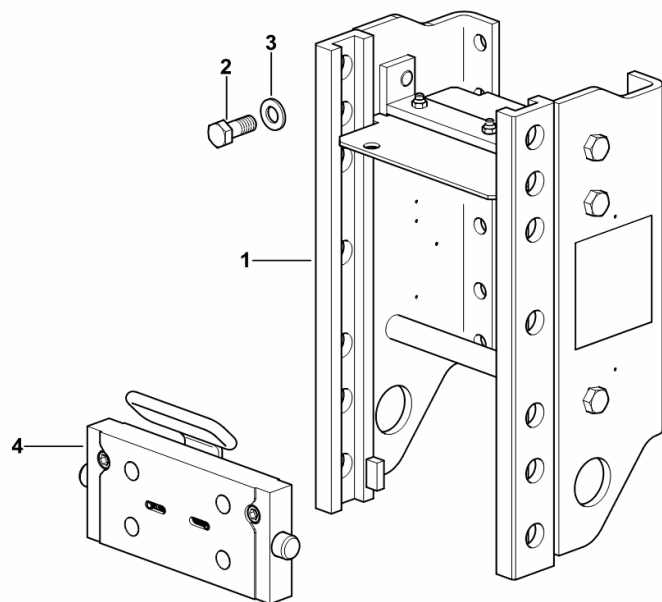
REAR TOWING HITCH BRACKET

Fig.	Code	QTY	Name
------	------	-----	------

Notes:

[DORADO F 100 -> 6001] -> 6045

1	0.015.5748.3/10	1	chassis frame V.ORLANDI
2	2.0113.615.2	12	screw m 16 p.2 x 40
3	2.1475.006.2	12	washer 16
4	0.015.5751.3/10	1	plate V.ORLANDI



9_H2831_70_0-A-001

REAR TOWING HITCH CAT: "D"

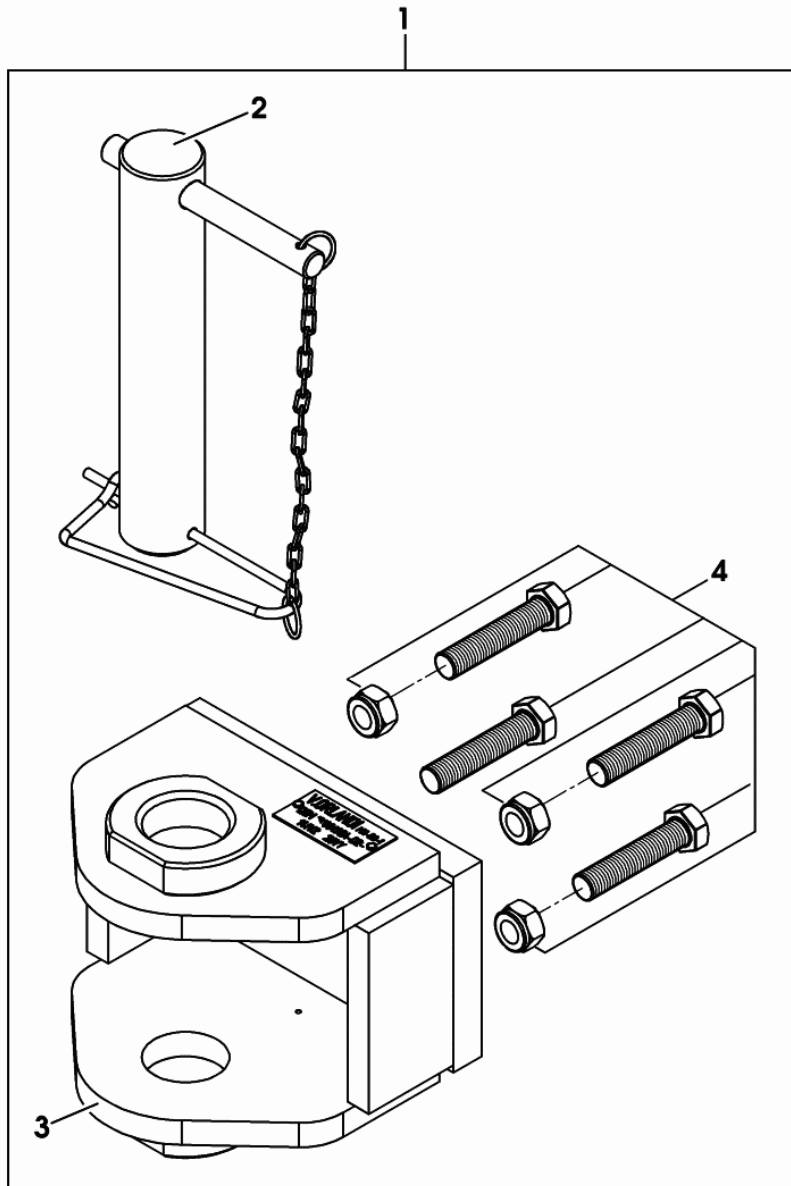


Fig.	Code	QTY	Name
1	0.014.4451.3	1	tow hook V.ORLANDI CAT. " D "
2	0.900.0458.1	1	pin
3	0.000.0000.1	0	not serviceable
4	0.900.0458.0	1	screw m 18, kit

0_014_4451_3

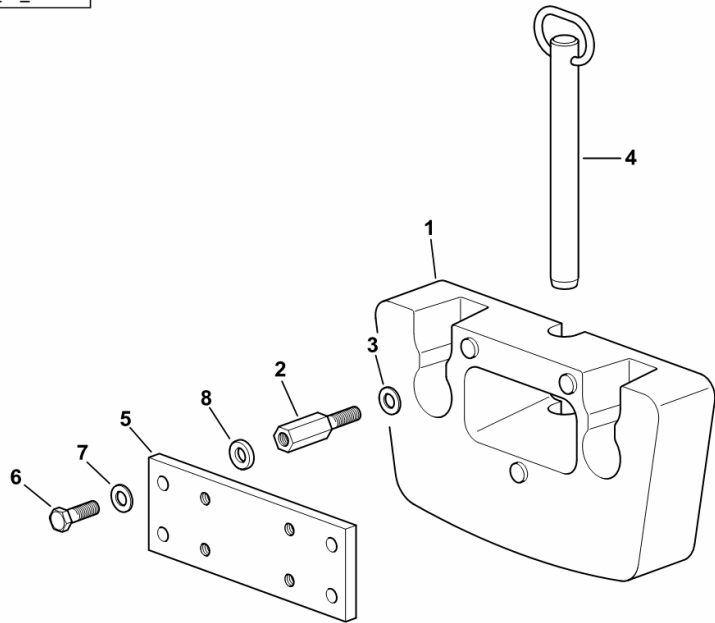
FRONT BALLAST KG. 70

Fig.	Code	QTY	Name
------	------	-----	------

Notes:
[DORADO F 100 -> 6001]

1	0.96927.40.0/10	2	ballast KG. 35
2	0.96927.50.0/10	8	small column
3	2.1310.009.2	8	flat washer 14
4	0.96927.51.2	1	pin
5	0.010.9571.0/10	1	plate
6	2.0112.517.2	4	screw m 14 p.2 x 45
7	2.1310.009.2	4	flat washer 14
8	2.1599.565.2	4	shim 15 x 30 x 6

9_56652_50_0-A-00



PTO CONTROLS

P.T.O. - EXTERNAL CONTROLS 540 - 750 + SYNCRO.....	G0.16.0 (1)
P.T.O. - EXTERNAL CONTROLS 540-750.....	G0.16.1 (1)
P.T.O. - EXTERNAL CONTROLS 540-750-1000.....	G0.16.2 (1)
P.T.O. - EXTERNAL CONTROLS 540/N.....	G0.16.3 (1)
P.T.O. SHAFT DRIVE.....	G0.16.4 (1)
P.T.O. SHAFT DRIVE.....	G0.16.5 (1)
P.T.O.-SYNCHRONIZED CONTROL.....	G0.16.6 (1)

LIFT CONTROLS

LIFT CONTROL LEVERS.....	G0.17.0 (1)
LIFT CONTROL LEVERS.....	G0.17.1 (1)
TIE RODS FOR LIFT CONTROL LEVERS.....	G0.17.3 (1)
TIE RODS FOR LIFT CONTROL LEVERS.....	G0.17.4 (1)
TIE RODS FOR LIFT CONTROL LEVERS.....	G0.17.5 (1)

REMOTE VALVE CONTROLS

CONTROLS FOR 4-WAY AUXILIARY SERVICES CONTROL VALVE.....	G0.18.0 (1)
CONTROLS FOR 4-WAY AUXILIARY SERVICES CONTROL VALVE.....	G0.18.1 (1)
CONTROLS FOR 4-WAY AUXILIARY SERVICES CONTROL VALVE.....	G0.18.2 (1)
CONTROLS FOR 4-WAY AUXILIARY SERVICES CONTROL VALVE.....	G0.18.3 (1)
CONTROLS FOR 4-WAY AUXILIARY SERVICES CONTROL VALVE.....	G0.18.4 (1)
CONTROLS FOR 6-WAY AUXILIARY SERVICES CONTROL VALVE.....	G0.18.5 (1)
CONTROLS FOR 6-WAY AUXILIARY SERVICES CONTROL VALVE.....	G0.18.7 (1)
CONTROLS FOR 6-WAY AUXILIARY SERVICES CONTROL VALVE.....	G0.18.8 (1)
CONTROLS FOR 6-WAY AUXILIARY SERVICES CONTROL VALVE.....	G0.18.9 (1)
CONTROLS FOR 6-WAY AUXILIARY SERVICES CONTROL VALVE.....	G0.18.10 (1)
OIL REGULATOR CONTROL.....	G0.18.14 (1)

ACCESSORIES

SUN BLIND.....	G0.19.0 (1)
LICENCE PLATE HOLDER.....	G0.19.1 (1)
METAL TOOLBOX.....	G0.19.3 (1)
METAL TOOLBOX.....	G0.19.4 (1)
LUBRICATOR.....	G0.19.5 (1)

SAFETY ROLL BAR

SAFETY ARCH.....	G0.20.0 (1)
------------------	-------------

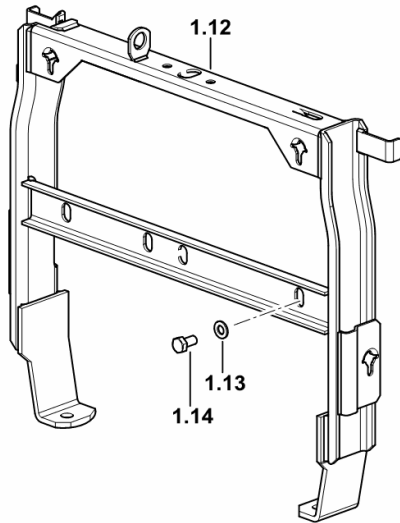
HOOD SUPPORT

Fig.	Code	QTY	Name
------	------	-----	------

Notes:

- WITH FRONT PTO AND LIFT [DORADO F 100 -> 6001]

1.12	0.013.9907.3/10	1	chassis frame
1.13	2.1310.004.2	5	flat washer 8.5
1.14	2.0112.205.2	5	screw m 8 p.1.25 x 16



9_F2081_12_0-C-001

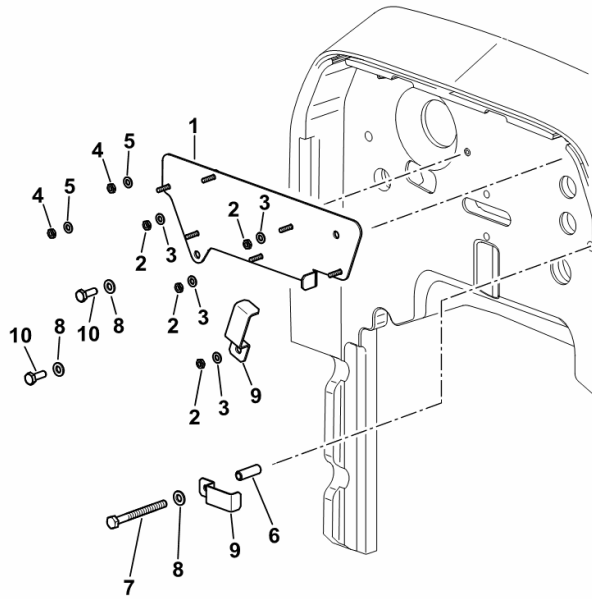
CONNECTION PLATE

Fig.	Code	QTY	Name
------	------	-----	------

Notes:

[DORADO F 100 -> 6001]

1	0.014.7069.3	1	plate
2	2.1011.202.2	4	nut m 5 p.0.8
3	2.1310.001.2	4	flat washer 5.3
4	2.1011.101.2	2	nut m 4 p.0.7
5	2.1310.028.2	2	flat washer 4
6	2.1549.001.2	1	spacer
7	2.0112.019.2	1	screw m 6 p.1 x 50
8	2.1310.002.2	3	washer 6.6, d125
9	0.013.9755.0	2	bracket
10	2.0114.005.2	2	screw m 6 p.1.0 x 16



9_F2084_32_0-A-001

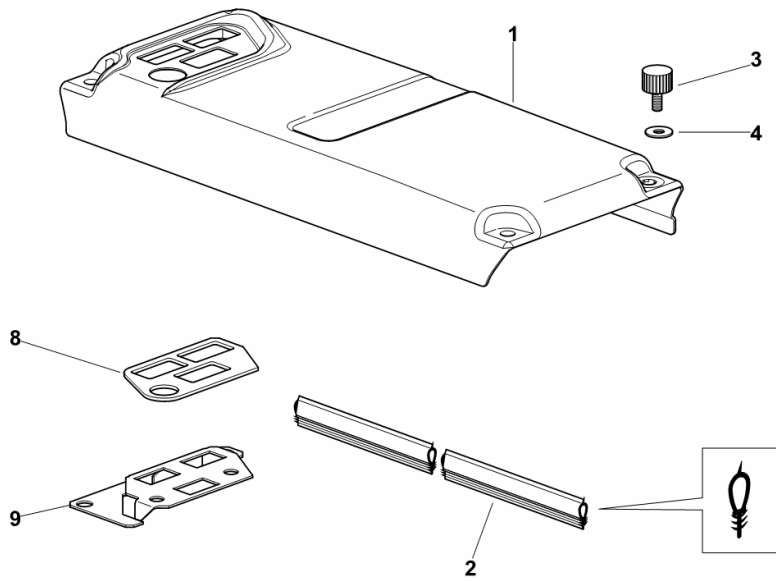
BATTERY COVER

Fig.	Code	QTY	Name
------	------	-----	------

Notes:

- WITH REAR 6-WAY CONTROL VALVE AND WITH ELECTROHYDRAULIC THREE-POINT HITCH [DORADO F 100 -> 6001]

1	0.010.7690.0/80	1	cover
2	0.010.8105.0	1	gasket mm 900
3	0.009.0133.3/10	4	knob
4	2.1312.004.3	4	washer 8,4x24x2
8	0.013.0018.0	1	gasket
9	0.013.0016.2/10	1	support (6083 <-)
9	0.016.6977.2	1	support



9_70573_04_0-A-001

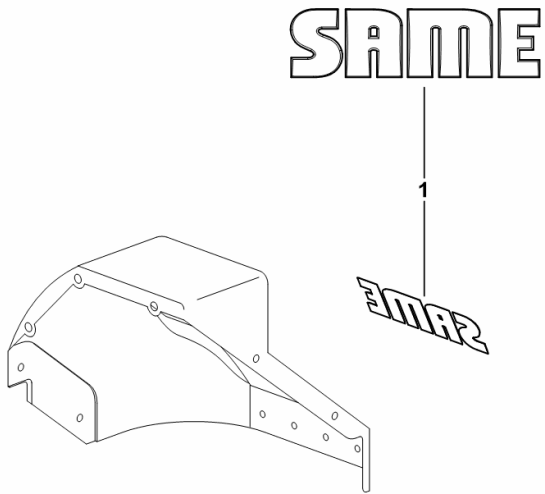
BADGE FOR SPLASH GUARDS SAME

Fig.	Code	QTY	Name
------	------	-----	------

Notes:
[DORADO F 100 -> 6001]

1	0.014.4295.2	2	plate SAME
---	--------------	---	------------

9_D6076_10_0-A-001



WATER COOLER IDENTIFICATION PLATE

Fig.	Code	QTY	Name
------	------	-----	------

Notes:
[DORADO F 100 -> 6001]

1	2.9939.329.0	1	plate
---	--------------	---	-------



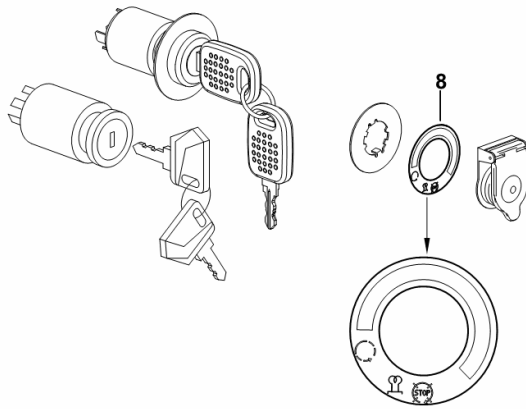
9_H1274_29_0-A-001

START ENABLE PLATE

Fig.	Code	QTY	Name
------	------	-----	------

Notes:
[DORADO F 100 -> 6001]

8	0.010.0492.0/20	1	plate
---	-----------------	---	-------



9_F1684_03_0-C-001

Section: G0 - BODYWORK - CAB
4WD ENGAGEMENT COVER

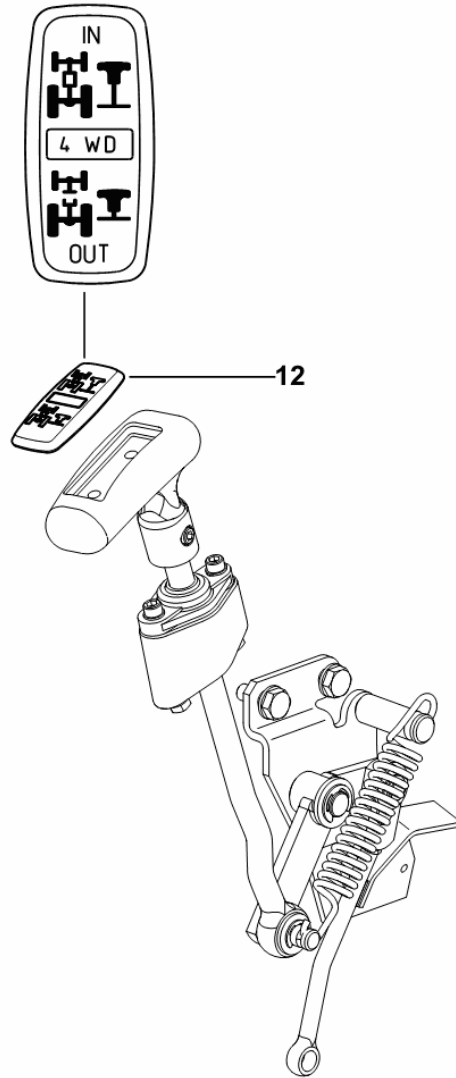


Fig.	Code	QTY	Name
Notes:			
[DORADO F 100 -> 6001]			
12	0.014.2031.0	1	cap

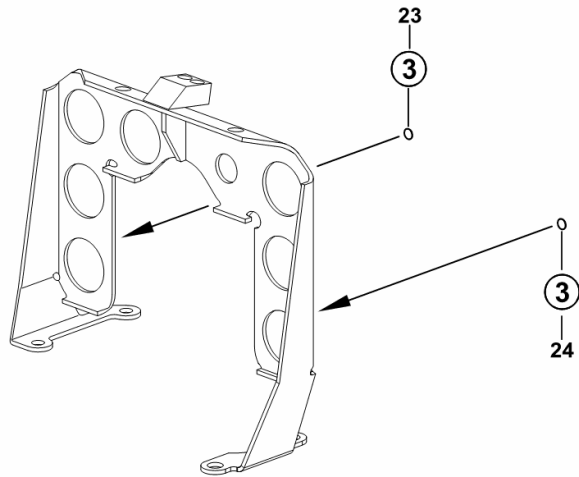
9_17568_02_0-B-001

IDENTIFICATION PLATES FOR REAR CONNECTORS

Fig.	Code	QTY	Name
------	------	-----	------

Notes:
[DORADO F 100 -> 6001]

23	2.9929.414.0	1	plate 3 - YELLOW COLOUR
24	2.9929.741.0	1	plate 3 - RED COLOUR



9_F2088_26_0-B-001

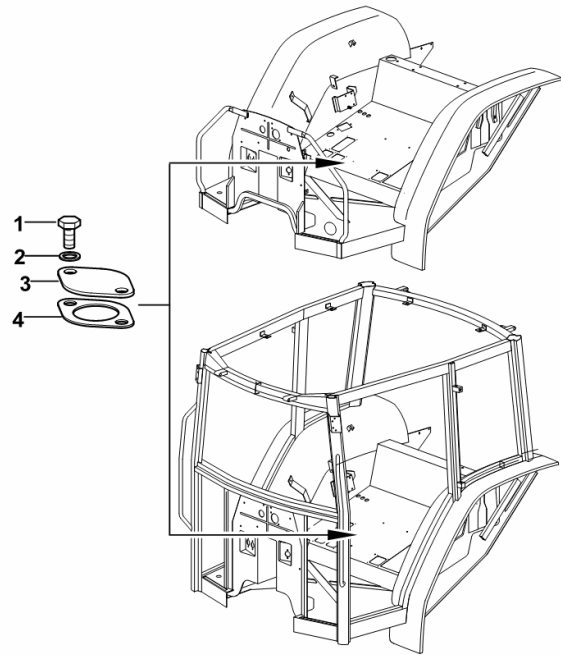
FLOOR PLUG

Fig.	Code	QTY	Name
------	------	-----	------

Notes:

[DORADO F 100 -> 6001]

1	2.0112.205.2	2	screw m 8 p.1.25 x 16
2	2.1310.004.2	2	flat washer 8.5
3	0.009.0481.0	3	plate
4	0.009.0480.0	1	gasket



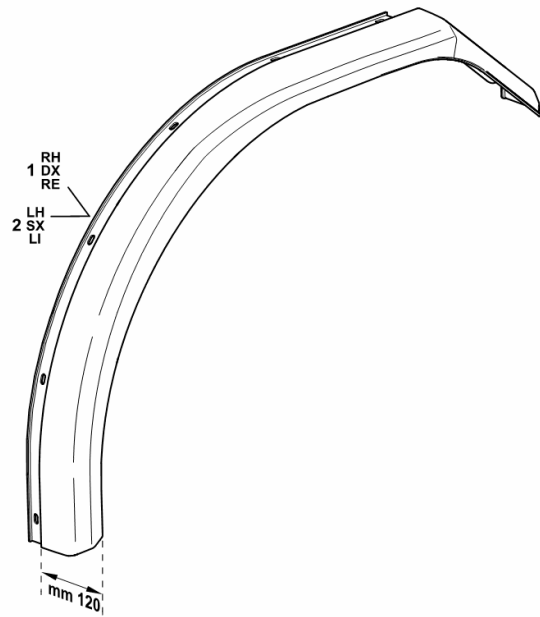
9_52668_03_0-A-001

MUDGUARDS EXTENSIONS mm 120

Fig.	Code	QTY	Name
------	------	-----	------

Notes:
[DORADO F 100 -> 6001]

1	0.014.1444.0	1	extension dx/rh/re - mm 120
2	0.014.1445.0	1	extension sx/lh/li - mm 120



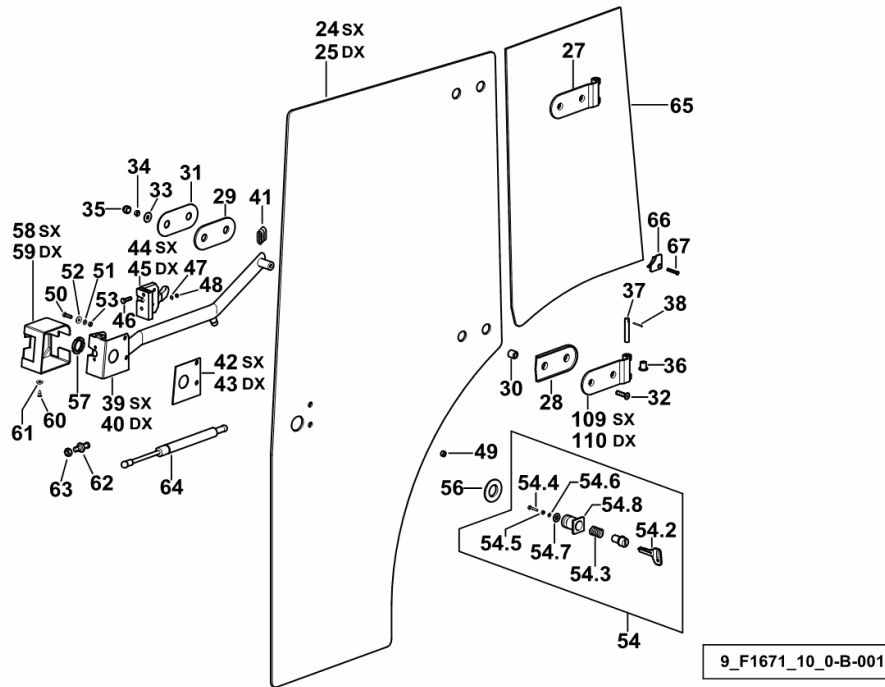
9_56676_25_0-A-001

GLASSES AND SEALS SX/LH/LI - DX/RH/RE

Fig.	Code	QTY	Name
------	------	-----	------

Notes:

[DORADO F 100 -> 6001]



24	0.009.8820.0/10	1	window glass sx/lh/li
25	0.009.8821.0/10	1	window glass dx/rh/re
27	0.009.8605.3/30	2	hinge
28	0.007.5875.0/10	4	gasket
29	0.007.5876.0	4	gasket
30	2.1549.093.2	8	spacer 9x17.5x16
31	0.007.5878.0	4	plate
32	2.0349.002.3	8	screw m 8 p.1.25 x 30
33	2.1312.004.2	6	washer 8.4
34	2.1011.105.2	6	nut m 8 p.1.25
35	0.163.7856.0	6	cap
36	2.1559.147.0	8	bushing 10 x 28 x 18
37	2.1699.325.2	4	pin
38	2.1630.210.9	4	pin 3 x 20
39	0.009.8824.3/10	1	handle sx/lh/li
40	0.009.8825.3/10	1	handle dx/rh/re
41	0.008.3805.0	2	plug
42	0.009.8822.0	1	gasket sx/lh/li
43	0.009.8823.0	1	gasket dx/rh/re
44	0.009.9213.4	1	lock sx/lh/li
45	0.009.9212.4	1	lock dx/rh/re
46	2.0332.308.2	6	screw m 5 p.0.8 x 25
47	2.1310.001.2	6	flat washer 5.3
48	2.1011.102.2	6	nut m 5 p.0.7
49	0.007.5666.0	4	rubber plug
50	2.0332.407.2	4	screw m 6 x 20
51	0.9125.662.0	4	washer 6.4 x 12.5
52	2.1474.007.2	4	washer 6, d128
53	2.1011.103.2	4	nut m 6 p.1
54	0.009.8619.4/40	2	push-button
54.2	2.7439.013.2	1	key
54.3	2.4019.343.2/20	1	spring
54.4	2.0332.308.6	1	screw m 5 p.0.8 x 25
54.5	2.1011.102.2	1	nut m 5 p.0.7
54.6	2.1481.005.2	1	washer 6, d128
54.7	2.1310.006.2	1	flat washer 10.5
54.8	0.009.8768.0	1	push-button
56	0.007.5962.0	2	gasket
57	2.1211.007.2	2	ring nut
58	0.009.8830.0/10	1	lining sx/lh/li
59	0.009.8831.0/10	1	lining dx/rh/re

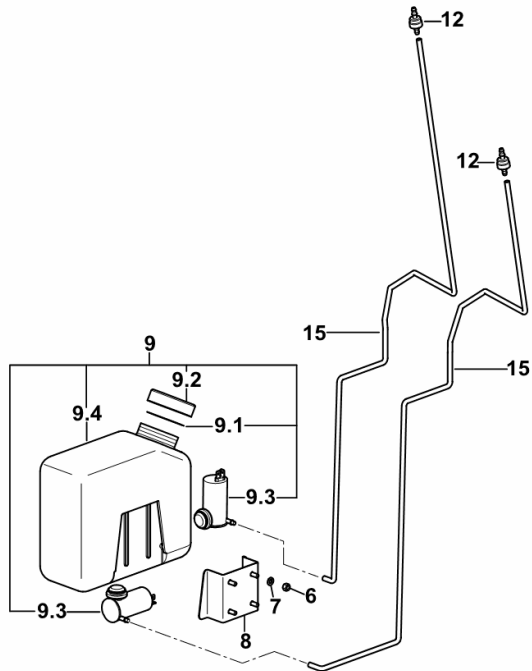
SCREEN WASH SYSTEM

Fig.	Code	QTY	Name
------	------	-----	------

Notes:

[DORADO F 100 -> 6001] 6094 <-

6	2.1011.002.2	4	nut m 5x0.8
7	2.1310.001.2	4	flat washer 5.3
8	0.015.3381.3	1	bracket
9	0.007.7785.4	1	cup
9.1	0.9241.568.1	1	gasket
9.2	0.9241.567.1	2	plug
9.3	0.9241.566.1	2	electropump
9.4	0.9241.565.1	1	tank
12	0.9231.559.0	2	pipe fitting
15	0.011.3963.0	1.08	tube



9_F1671_25_0-A-001

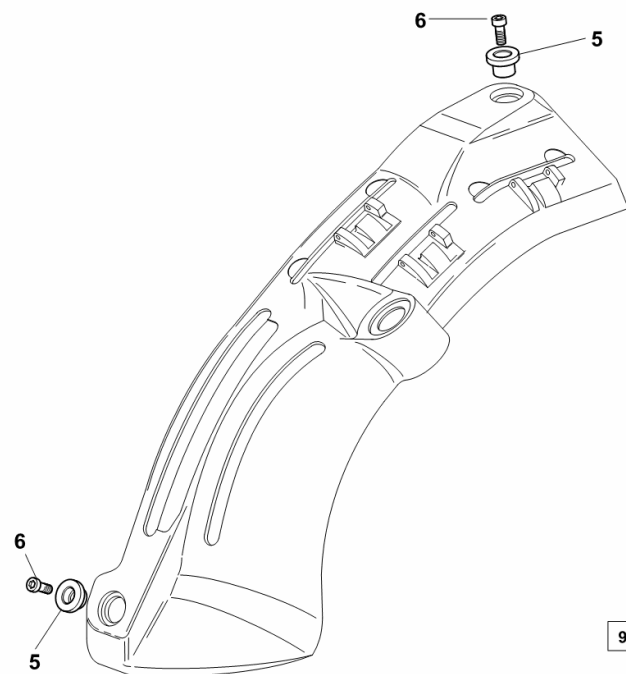
POWER LIFT CONTROL CONSOLE FIXING

Fig.	Code	QTY	Name
------	------	-----	------

Notes:

- FOR MODELS WITH CAB [DORADO F 100 -> 6001]

5	0.010.7145.0	2	bushing
6	2.0312.206.3	2	screw m 8 p.1.25 x 20



9_70559_57_0-A-001

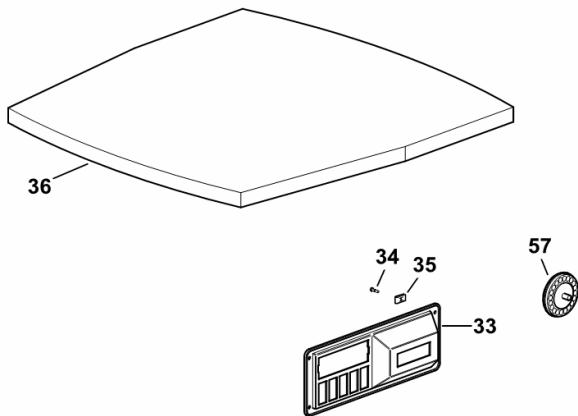
INTERNAL CAB LININGS

Fig.	Code	QTY	Name
------	------	-----	------

Notes:

- FOR TRACTORS WITH AIR HEATING [DORADO F 100 -> 6001]

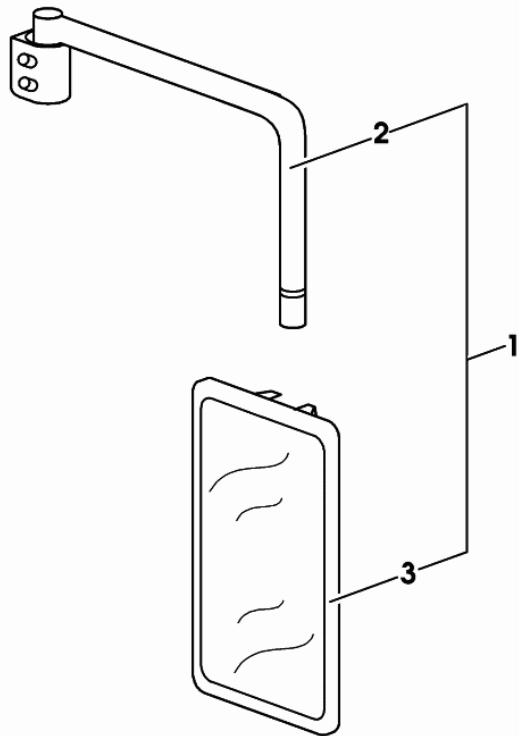
33	0.009.8583.0	1	front grille
34	2.0350.555.6	4	screw 4.8x16
35	2.6999.041.0	13	small spring
36	0.009.8653.0/10	1	lining
57	0.009.8654.2	2	tongue mm 82.8



9_F1671_60_0-B-001

Section: G0 - BODYWORK - CAB
REARVIEW MIRROR dx/rh/re

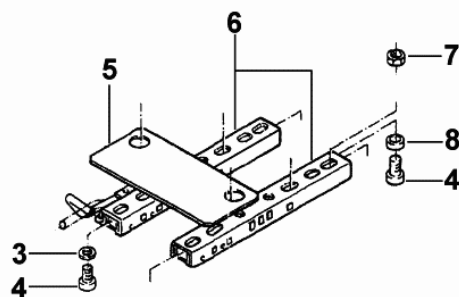
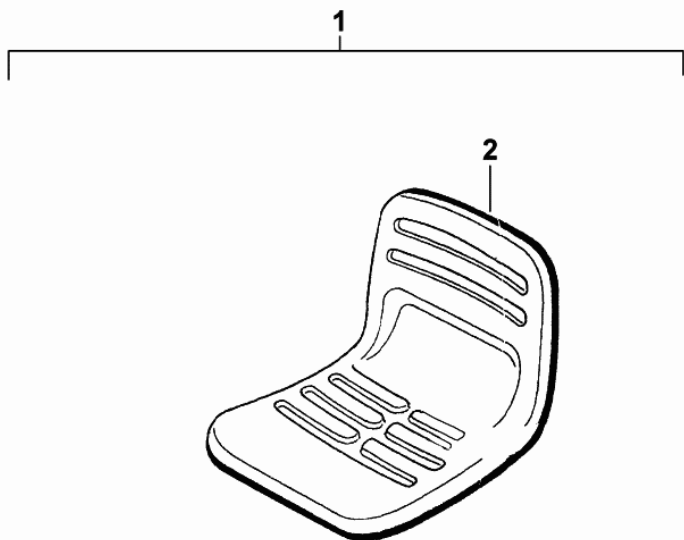
Fig.	Code	QTY	Name
1	0.009.8582.4	1	rear view mirror dx/rh/re
2	0.900.0376.5	1	rod
3	0.010.3563.1	1	rear view mirror



0_009_8582_4

SEAT-COMPONENTS

Fig.	Code	QTY	Name
1	0.000.0000.1	0	not serviceable
2	0.010.2968.0	1	seat
3	0.000.0000.1	0	not serviceable
4	0.010.2405.0	5	pin m 8 x 16
5	0.010.2961.2	1	plate
6	0.010.2962.0	1	seat guide
7	0.010.2401.0	1	nut m 8
8	0.010.2962.1	1	bushing



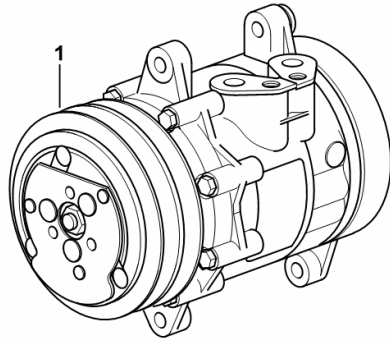
0_010_8721_4_20_A

COMPRESSOR

Fig.	Code	QTY	Name
------	------	-----	------

Notes:
[DORADO F 100 -> 6001]

1	0.007.7197.4	1	gear compressor R 134a ☞ 0.007.7197.4
---	--------------	---	--



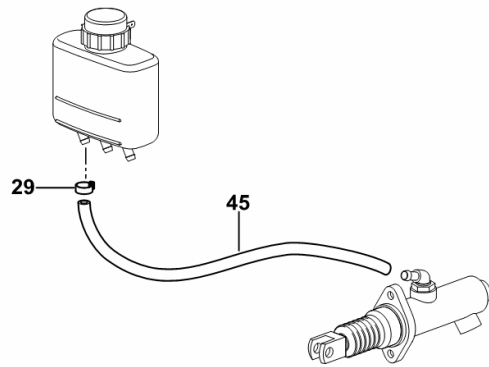
9_70586_23_0-A-001

PIPE FROM OIL TANK TO PUMP

Fig.	Code	QTY	Name
------	------	-----	------

Notes:
[DORADO F 100 -> 6001]

29	2.6857.019.0	6	clamp 14
45	0.012.6343.0	0.68	tube



9_B6166_00_0-C-001

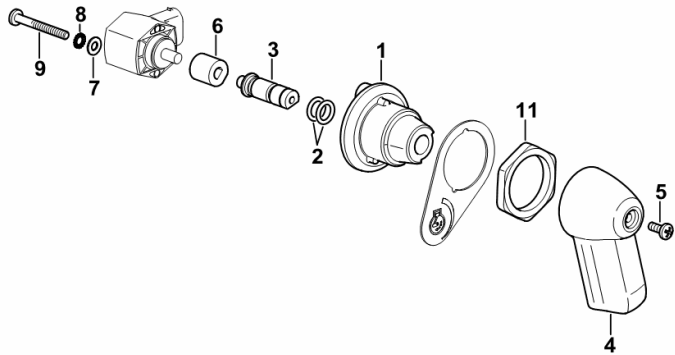
HAND CONTROL FOR ELECTRONIC THROTTLE

Fig.	Code	QTY	Name
------	------	-----	------

Notes:

[DORADO F 100 -> 6001]

1	0.014.7411.2	1	support
2	2.1530.014.0	2	'o' ring 7.66 x 1.78
3	0.014.7607.0	1	pin
4	0.010.7821.0/30	1	knob
5	2.0332.203.3	1	screw m 4 x 10
6	0.010.7366.2/10	1	joint
7	2.1310.028.2	2	flat washer 4
8	2.1470.052.2	2	lock washer 4
9	2.0332.210.3	2	screw m 4x35
11	0.014.7409.0	1	ring nut



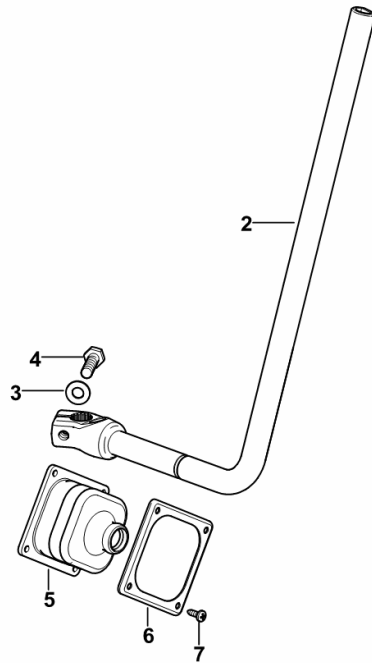
9_F2067_14_0-A-001

SHUTTLE LEVER

Fig.	Code	QTY	Name
------	------	-----	------

Notes:
[DORADO F 100 -> 6001]

2	0.015.2578.3/10	1	lever
3	2.1310.004.2	1	flat washer 8.5
4	2.0350.454.3	1	screw m 4.2 x 13 -AB-
5	0.010.4504.0/10	1	bellows
6	0.010.4505.0	1	lamination
7	2.0112.211.2	4	screw m 8 p.1.25 x 30

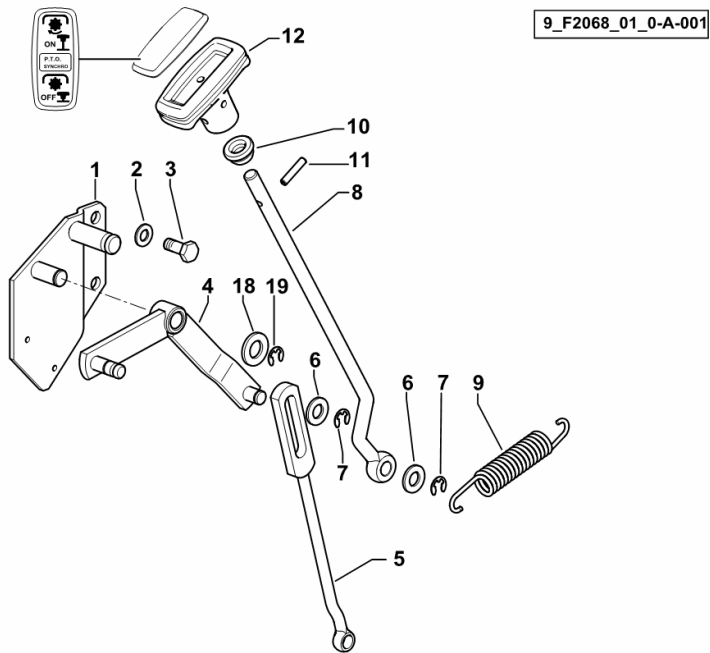


9_I7564_05_0-A-001

P.T.O.-SYNCHRONIZED CONTROL

Fig.	Code	QTY	Name
------	------	-----	------

Notes:
[DORADO F 100 -> 6001]



1	0.010.4372.3/20	1	plate
2	2.1310.004.2	2	flat washer 8.5
3	2.0112.207.2	2	screw m 8 p 1.25 x 20
4	0.010.4419.3/10	1	lever
5	0.010.4428.2/20	1	rod
6	2.1310.006.2	2	flat washer 10.5
7	2.1430.008.7	3	circlip 7
8	0.014.7150.0	1	rod
9	2.4049.139.1/10	1	spring
10	0.255.6858.0/10	1	rubber plug 18x5
11	2.1630.511.0	1	roll pin 5x24
12	0.009.9885.0/10	1	knob
18	2.1310.007.2	2	flat washer 13.5
19	2.1430.010.7	1	circlip 9

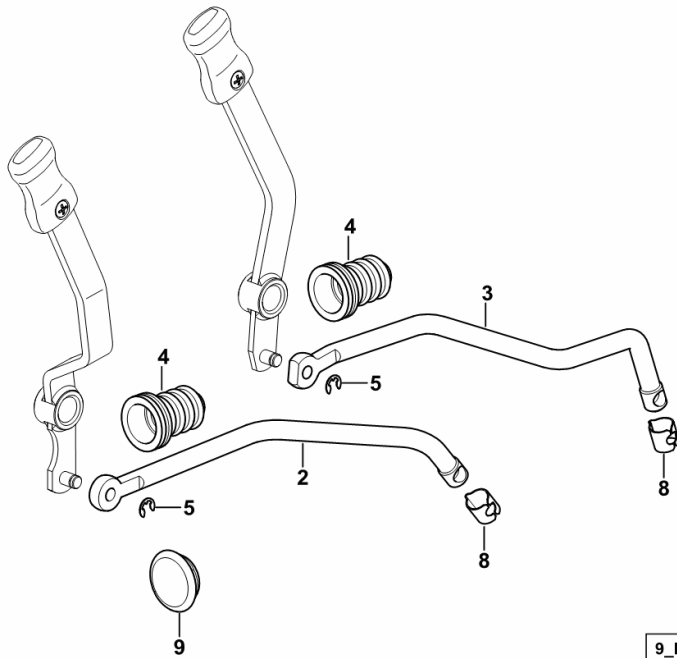
CONTROLS FOR 4-WAY AUXILIARY SERVICES CONTROL VALVE

Fig.	Code	QTY	Name
------	------	-----	------

Notes:

- FOR 28" PLATFORM [DORADO F 100 -> 6001]

2	0.015.3201.0/10	1	rod
3	0.013.5300.0	1	rod
4	0.013.3229.0	2	bellows
5	2.1430.007.7	2	circlip 6, d128
8	0.257.6757.0	2	spring
9	2.6070.052.0	1	plug Ø 30



9_I7588_37_0-A-001

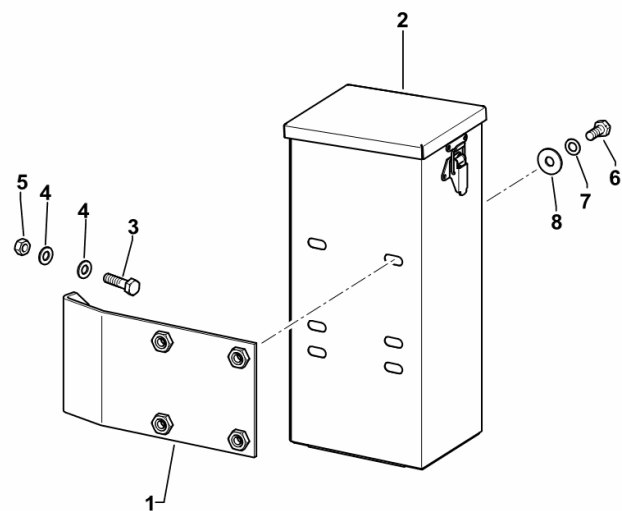
METAL TOOLBOX

Fig.	Code	QTY	Name
------	------	-----	------

Notes:

- FOR TYPES WITH FRONT FENDERS [DORADO F 100 -> 6001]

1	0.013.9163.3	1	bracket
2	0.467.7317.3/70	1	metal toolbox
3	2.0112.211.2	2	screw m 8 p.1.25 x 30
4	2.1310.004.2	4	flat washer 8.5
5	2.1011.105.2	2	nut m 8 p.1.25
6	2.0132.006.2	4	screw m 8 p.1.25 x 20
7	2.1470.004.2	4	washer 8
8	2.1312.004.2	4	washer 8.4



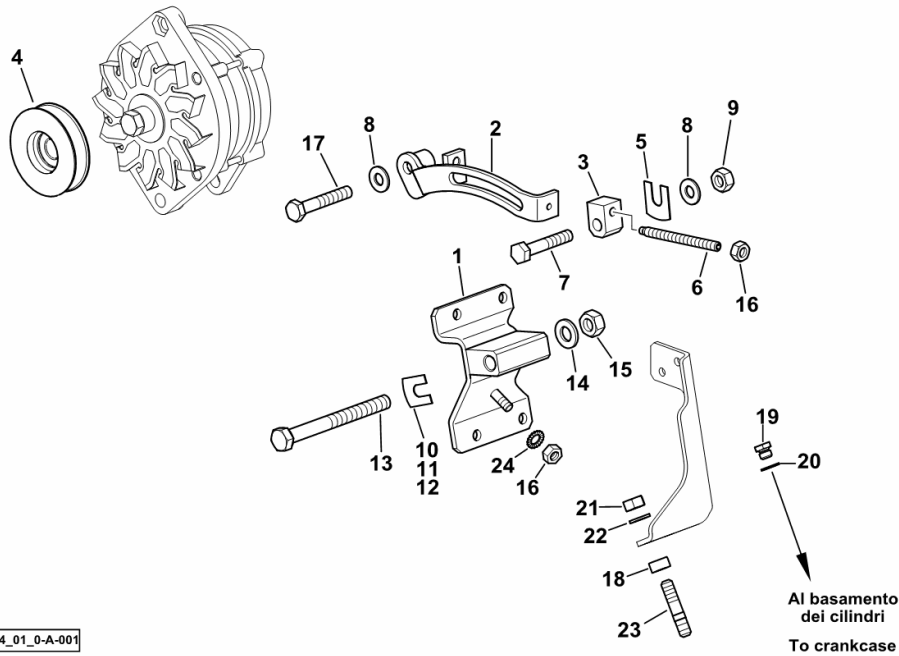
9_B6173_10_0-A-001

ALTERNATOR AND PULLEY SUPPORTS

Fig.	Code	QTY	Name
------	------	-----	------

Notes:

- FOR TRACTORS WITHOUT AIR CONDITIONING [DORADO F 100 -> 6001]



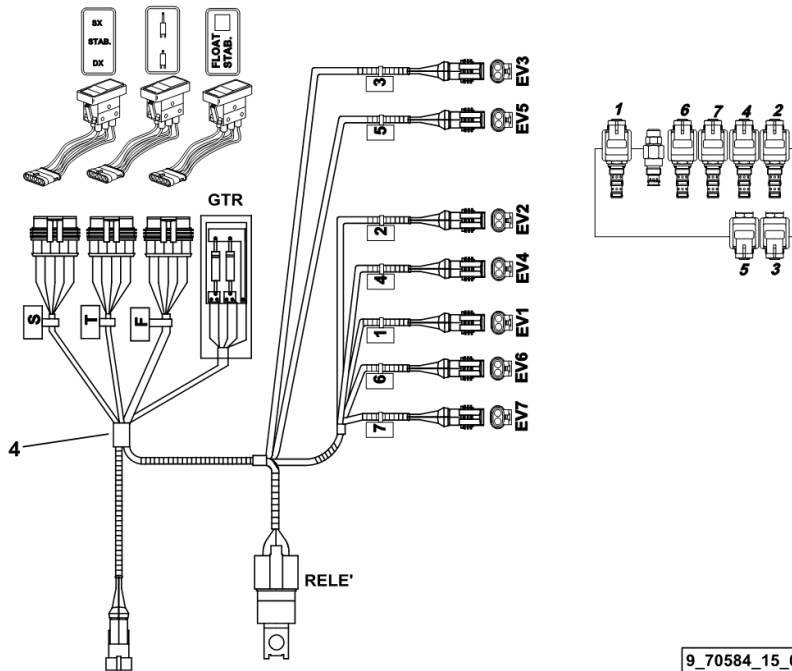
1	0.013.6369.3	1	support
2	0.013.6371.2/10	1	bracket
3	0.007.7715.0	1	small block
4	0.013.6345.0	1	pulley
5	0.167.8462.0	2	small plate mm 2.00
6	2.0399.221.2	1	screw m 8 p.1.25 x 95
7	2.0112.320.2	1	screw m 10 p.1.5 x 55
8	2.1310.006.2	2	flat washer 10.5
9	2.1011.106.2	1	nut m 10 p.1.5
10	0.167.8460.0	1	small plate mm 3.00
11	0.167.8461.0	1	small plate mm 1.00
12	0.167.8462.0	1	small plate mm 2.00
13	2.0122.483.2	1	screw m 12 x 120
14	2.1310.007.2	1	flat washer 13.5
15	2.1011.422.2	1	nut m 12 p.1.25
16	2.1011.105.2	2	nut m 8 p.1.25
17	2.0112.321.2	1	screw m 10 p.1.5 x 60
18	2.1579.969.0	2	spacer 10.5 x 20 x 18
19	2.0112.302.2	1	screw m 10 p 1.5 x 10
20	2.1560.006.0	1	gasket 10.2 x 16
21	2.1011.421.2	2	nut m 10 p.1.25
22	2.1470.006.2	2	lock washer 10
23	2.0432.159.7	2	stud bolt m 10 p.1.5 / p.1.25 x 35
24	2.1470.004.2	2	washer 8

3-POINT LINKAGE SYSTEM WITH ELECTROHYDRAULIC CONTROL

Fig.	Code	QTY	Name
------	------	-----	------

Notes:
[DORADO F 100 -> 6001]

4	0.012.0101.4	1	electrical system ☞ 0.012.0101.4
---	--------------	---	-------------------------------------



9_70584_15_0-A-001

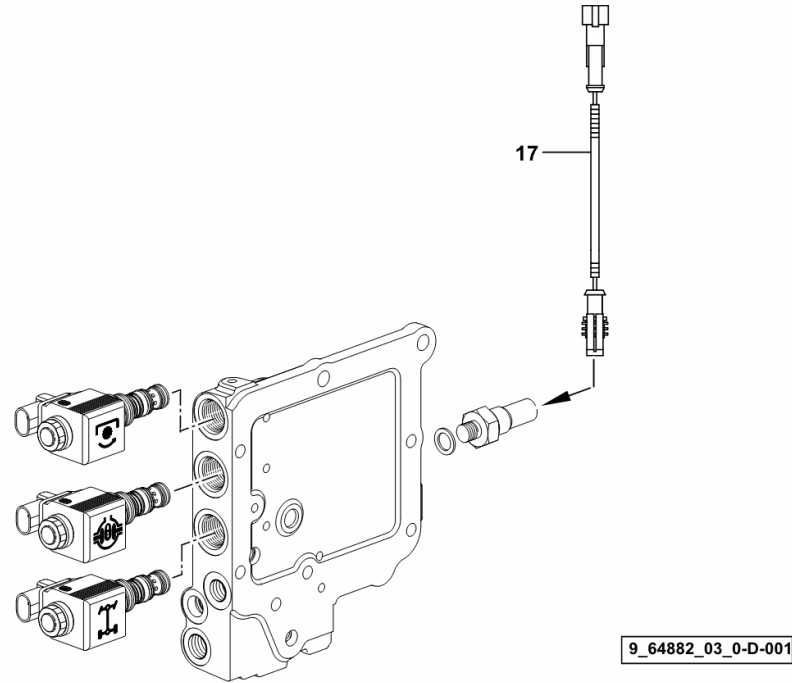
ELECTRICAL CABLE FOR OIL CONTROL VALVES HOUSING PRESSURE SWITCH

Fig.	Code	QTY	Name
------	------	-----	------

Notes:

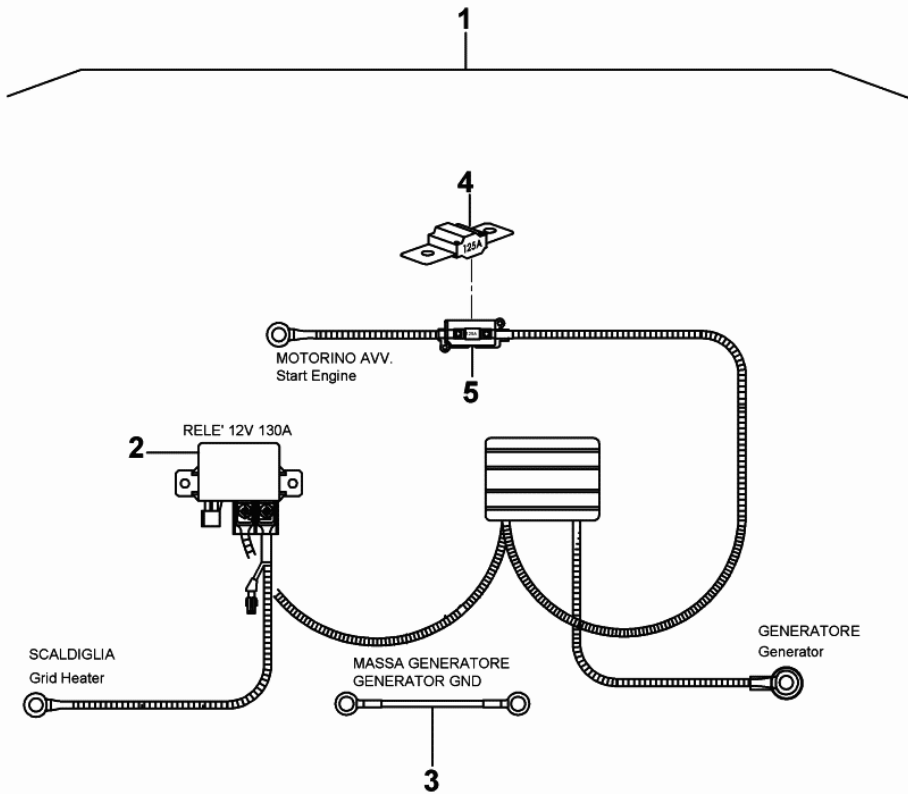
[DORADO F 100 -> 6001]

17	0.011.7711.3	1	wire mm 100
----	--------------	---	-------------



ELECTRICAL SYSTEM

Fig.	Code	QTY	Name
1	0.013.8401.4	1	electrical system
2	2.7659.240.0/10	1	relay 12 V 130A
3	0.900.0379.9	1	wire
4	0.900.0452.2	1	fuse 125 A midival
5	0.900.0391.1	1	box



0_013_8401_4

Section: L0 - ELECTRIC AL SYSTEM
PARTS FOR ELECTRICAL SYSTEM

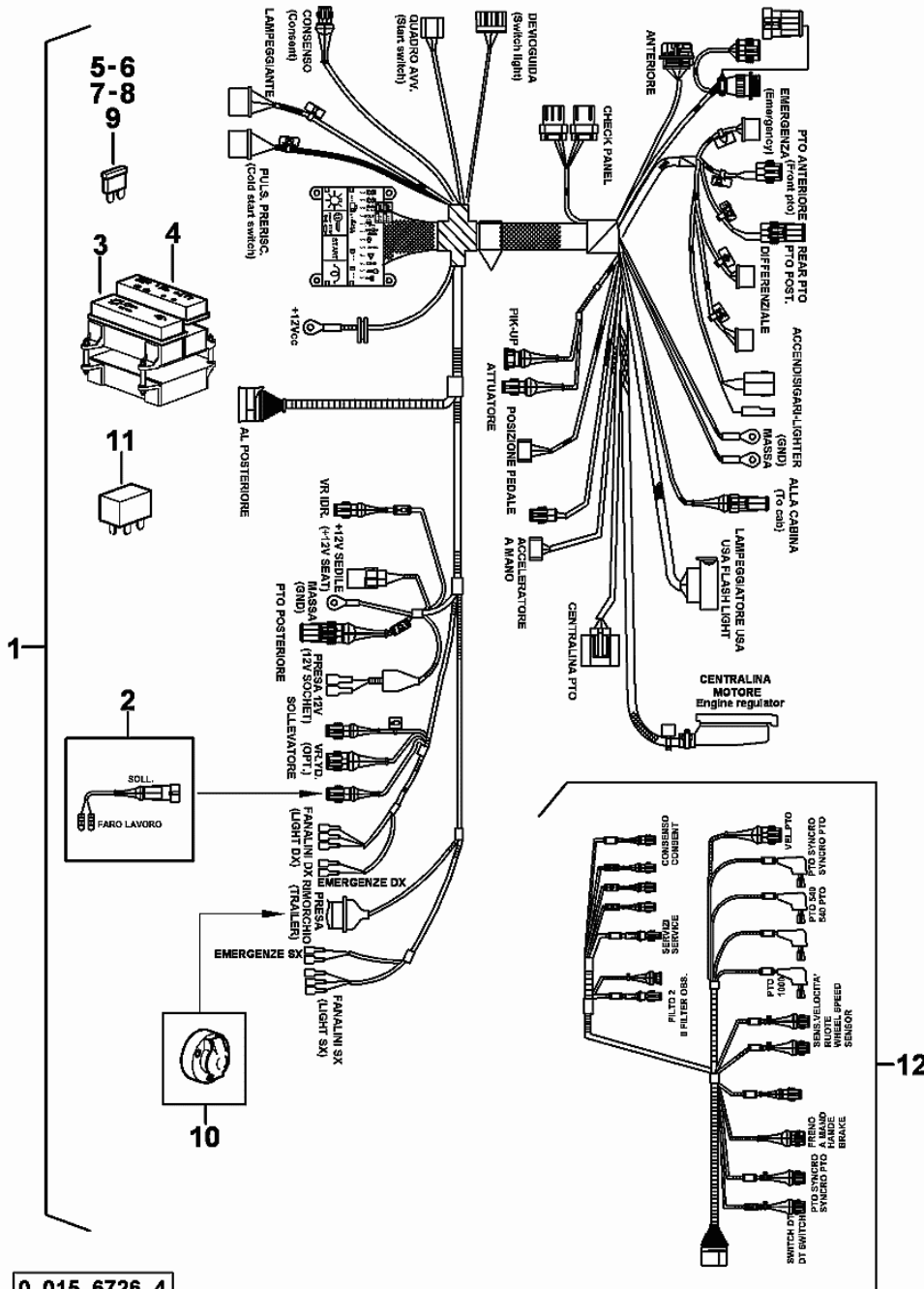


Fig.	Code	QTY	Name
1	0.015.6726.4	1	electrical system
2	0.900.0031.2	1	wire
3	0.900.0522.6	1	small cover
4	0.900.0877.5	1	small cover
5	0.010.2225.2	2	fuse 7.5 A unival
6	0.010.2087.2	6	fuse 10 A unival
7	0.010.2088.0	6	fuse 15 A unival
8	0.010.2088.1	2	fuse 20 A unival
9	0.010.2088.2	2	fuse 30 A unival
10	0.900.0017.0	1	socket
11	0.010.2089.2	4	relay 12V-30A
12	0.900.0878.3	1	electrical system

0_015_6726_4

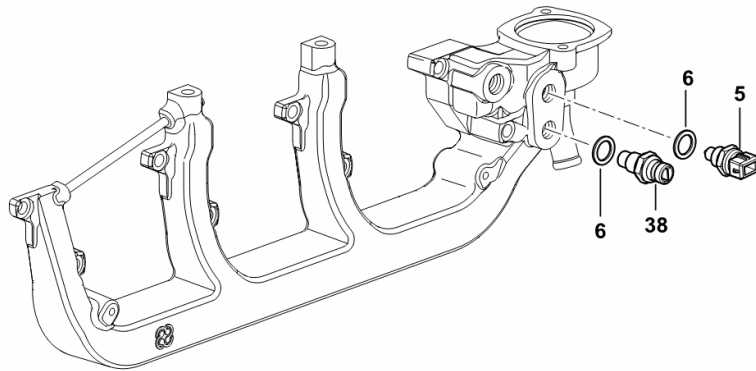
COOLING SYSTEM MANIFOLD SENSORS

Fig.	Code	QTY	Name
------	------	-----	------

Notes:

- EXPORT U.S.A. [DORADO F 100 -> 6001]

5	2.7099.640.0/10	1	tempe guage
6	2.1560.010.0	2	gasket 14.2 x 20 x 1.5
38	2.7099.800.0	1	sensor



9_O3717_00_0-B-001

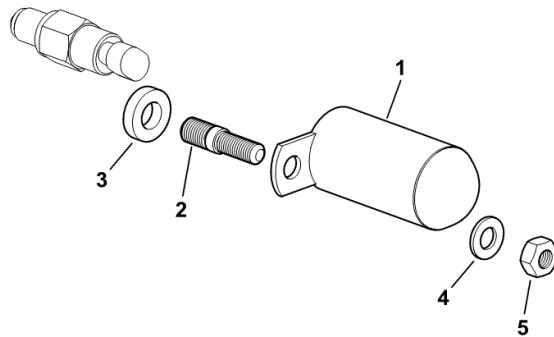
START ENABLE SWITCH PROTECTION

Fig.	Code	QTY	Name
------	------	-----	------

Notes:

- WITHOUT SUPPLEMENTARY FUEL TANK [DORADO F 100 -> 6001]

1	0.011.0481.2/20	1	guard
2	2.0439.250.7	1	stud bolt m 12 / m 10 x 30
3	2.1549.124.2	1	spacer 13 x 25 x 6
4	2.1310.006.2	1	flat washer 10.5
5	2.1011.106.2	1	nut m 10 p.1.5



9_F1664_11_0-A-001

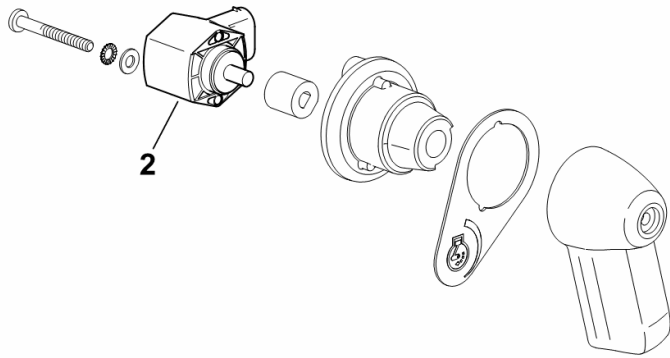
ELECTRONIC ACCELERATOR CONTROL SENSOR

Fig.	Code	QTY	Name
------	------	-----	------

Notes:

- WITH ELECTRONIC ENGINE GOVERNOR WITHOUT HML (POWERSHIFT) [DORADO F 100 -> 6001]

2	2.7099.740.0/10	1	sensor
---	-----------------	---	--------



9_F1667_16_0-B-001

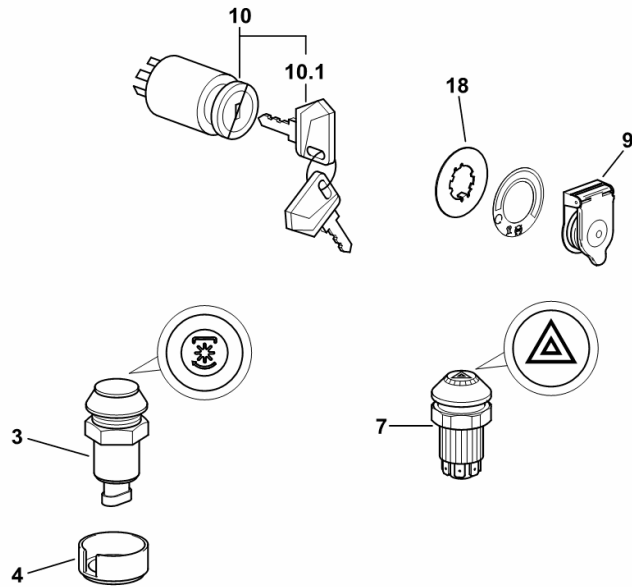
KEYSWITCH BLOCK AND PUSHBUTTONS

Fig.	Code	QTY	Name
------	------	-----	------

Notes:

[DORADO F 100 -> 6001] 6041 <-

3	2.7659.177.0/20	1	push-button P.T.O. (-> 6001)
4	0.009.3987.0	1	guard (-> 6001)
7	2.7659.110.0	1	push-button
9	0.009.7140.2/10	1	small cover
10	04411512.4	1	start device
10.1	04418435	1	key
18	0.011.4625.0	1	washer



9_F1684_03_0-A-001

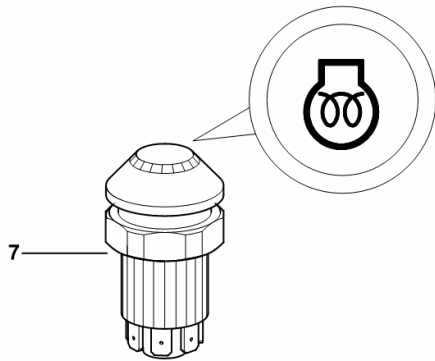
PRE-HEATER BUTTON

Fig.	Code	QTY	Name
------	------	-----	------

Notes:

- WITH MECHANICAL ENGINE GOVERNOR [DORADO F 100 -> 6001]

7	2.7659.250.0/10	1	push-button
---	-----------------	---	-------------



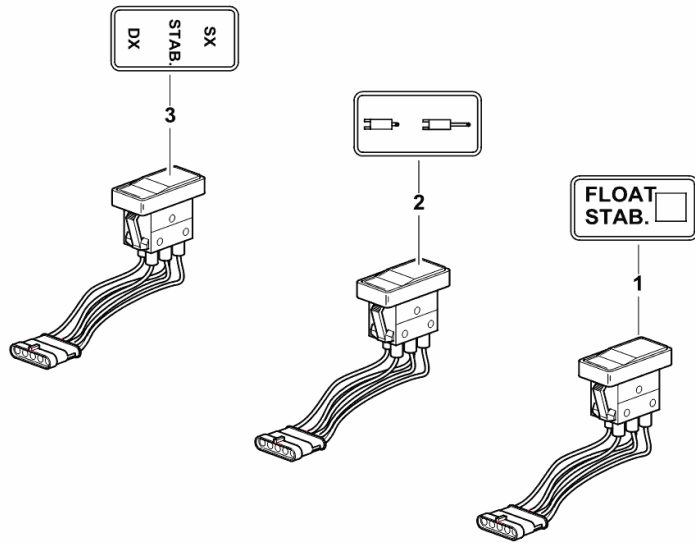
9_17584_04_0-C-001

3-POINT LINKAGE CONTROLS WITH ELECTROHYDRAULIC CONTROL

Fig.	Code	QTY	Name
------	------	-----	------

Notes:
[DORADO F 100 -> 6001]

1	2.7659.220.0	1	switch
2	2.7659.219.0	1	push-button
3	2.7659.218.0	1	push-button



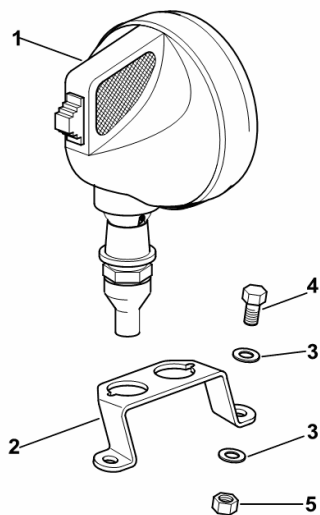
9_70584_15_0-B-001

REAR WORKLIGHT

Fig.	Code	QTY	Name
------	------	-----	------

Notes:
[DORADO F 100 -> 6001]

1	2.8029.300.0	1	headlight ☞ 2.8029.300.0
2	0.011.3008.0	1	support
3	2.1310.004.2	4	flat washer 8.5
4	2.0112.205.2	2	screw m 8 p.1.25 x 16
5	2.1011.105.2	2	nut m 8 p.1.25



9_70585_30_0-A-001

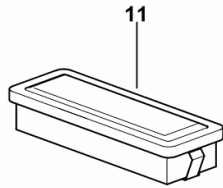
COURTESY LIGHT

Fig.	Code	QTY	Name
------	------	-----	------

Notes:

- FOR TRACTORS WITH AIR HEATING [DORADO F 100 -> 6001]

11	2.8339.032.0	1	interior light ☞ 2.8339.032.0
----	--------------	---	----------------------------------



9_F1671_60_0-E-001

CLICK HERE TO **DOWNLOAD** THE COMPLETE MANUAL

- Thank you very much for reading the preview of the manual.
- You can download the complete manual from: www.heydownloads.com by clicking the link below

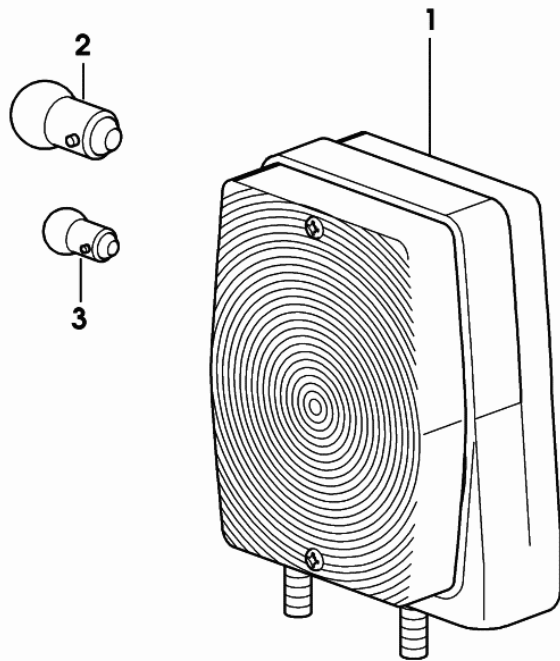


- Please note: If there is no response to CLICKING the link, please download this PDF first and then click on it.

CLICK HERE TO **DOWNLOAD** THE COMPLETE MANUAL

HEADLAMP FOR LEFT-HAND DRIVE sx/lh/li

Fig.	Code	QTY	Name
1	2.8059.002.0	1	side lamp sx/lh/li
2	2.8313.001.0	1	lamp 12V 21W
3	2.8313.003.0	1	lamp 12V 5W



2_8059_002_0

PLUG FOR MECHANICAL REGULATOR.....	B0.08.1 (1)
ACCELERATOR CONTROL BRACKETS - FOR MODELS WITH MECHANICAL ENGINE GOVERNOR.....	B0.08.2 (1)
ELECTRONIC MOTOR CONTROLLER.....	B0.08.3 (1)
GOVERNOR PARTS.....	0.013.5695.4/20.A
GOVERNOR PARTS.....	0.013.5695.4/20.B
GOVERNOR PARTS.....	0.013.5695.4/20.C

COOLING

COOLING SYSTEM MANIFOLD.....	B0.09.4 (1)
COOLING SYSTEM MANIFOLD.....	B0.09.5 (1)
ENGINE COOLING WATER PUMP.....	B0.09.6 (1)
ENGINE COOLING WATER PUMP.....	B0.09.7 (1)
COOLANT PIPE.....	B0.09.8 (1)
COOLANT PIPE.....	B0.09.13 (1)
COOLANT PIPE.....	B0.09.14 (1)
COOLANT PUMP PULLEY.....	B0.09.16 (1)
WATER COOLING -SEALING.....	B0.09.18 (1)
HEAT EXCHANGER.....	B0.09.20 (1)
HEAT EXCHANGER.....	B0.09.21 (1)
COOLING WATER PUMP.....	0.015.2993.4.A

INTAKE - EXHAUST MANIFOLDS

AIR INTAKE MANIFOLD - EXHAUST MANIFOLD.....	B0.10.2 (1)
INTAKE AND EXHAUST MANIFOLD GASKETS.....	B0.10.4 (1)

TURBOCHARGER

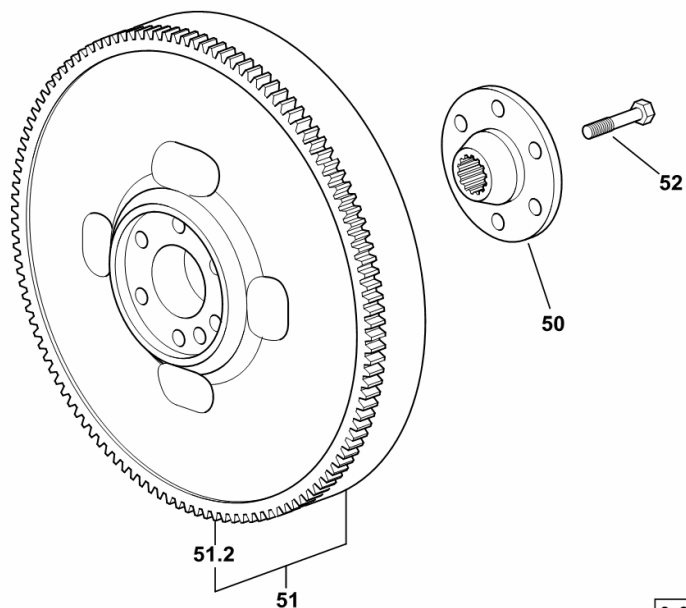
TURBOCHARGER.....	B0.11.1 (1)
-------------------	-------------

Section: B0 - ENGINE
ENGINE FLYWHEEL

Fig.	Code	QTY	Name
------	------	-----	------

Notes:
 [DORADO F 100 -> 6001]

50	0.255.2525.0/10	1	flange
51	0.076.1247.3/30	1	flywheel
51.2	0.065.1242.0	1	crown wheel Z = 123
52	2.0139.022.2	6	screw m 12 p.1.25x55

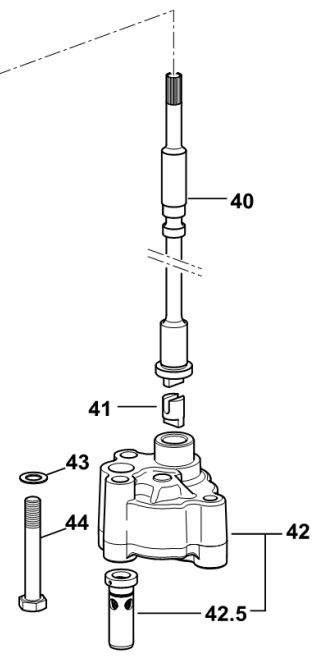
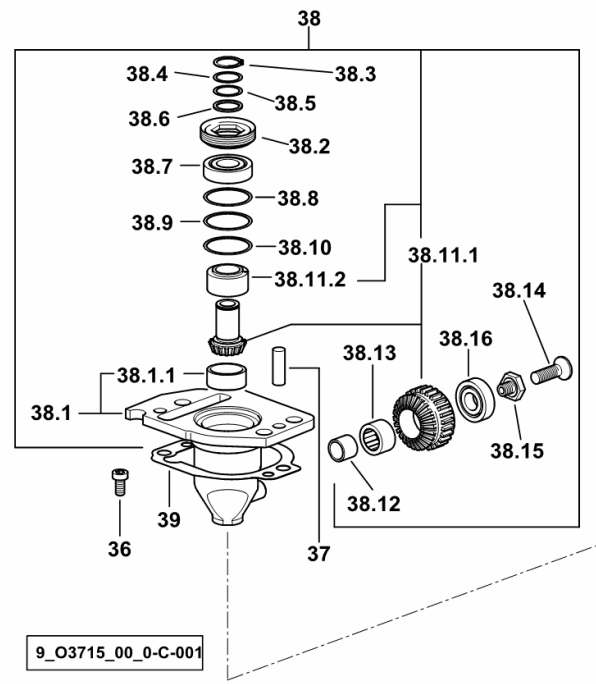


9_33212_07_0-A-001

Section: B0 - ENGINE
ENGINE OIL PUMP

Fig.	Code	QTY	Name
------	------	-----	------

Notes:
 - EXPORT U.S.A. [DORADO F 100 -> 6001]



36	2.0169.005.2	2	screw m 6 p.1 x 12
37	2.1651.711.0	2	pin 8 x 14
38	0.013.1629.4/10	1	support
38.1	0.013.1629.3/10	1	support
38.1.1	2.1559.186.0	1	bushing 26 x 31.5 x 35
38.2	2.1219.025.2/10	1	ring nut m 36 p.1.5
38.3	2.1410.057.1	1	circlip 15
38.4	2.1589.153.0	1	snoulder 15.2 x 19 x 1.00
38.5	2.1589.146.0	2	snoulder 15.2 x 19 x 0.15
38.6	2.1589.147.0	2	snoulder 15.2 x 19 x 0.10
38.7	2.2020.001.0	1	ball bearing 15 x 32 x 8.00
38.8	2.1589.148.0	1	snoulder 28.2 x 31.8 x 0.5
38.9	2.1589.150.0	2	snoulder 28.2 x 31.8 x 0.1
38.10	2.1589.151.0	2	snoulder 28.2 x 31.8 x 0.15
38.11.1	0.065.1558.6/10	1	bevel gear
38.11.2	0.065.1559.0	1	sleeve
38.12	2.2680.020.0	1	ring 12 x 15 x 12
38.13	2.2725.016.0	1	roller cage 15 x 21 x 12
38.14	2.0342.007.6	1	screw m 4 p.0.7 x 30
38.15	2.0399.128.2/10	1	screw m 8 p.1 x 8
38.16	2.2030.002.0	1	ball bearing 12 x 28 x 8
39	0.065.1560.0/30	2	gasket
40	0.065.1569.0/40	1	shaft
41	0.065.1562.0/10	1	joint
42	0.010.5441.4/10	1	oil pump
42.5	0.065.1552.3/60	1	valve
43	2.1470.006.2	2	lock washer 10
44	2.0112.325.2	2	screw m 10 p.1.5 x 80

9_O3715_00_0-C-001

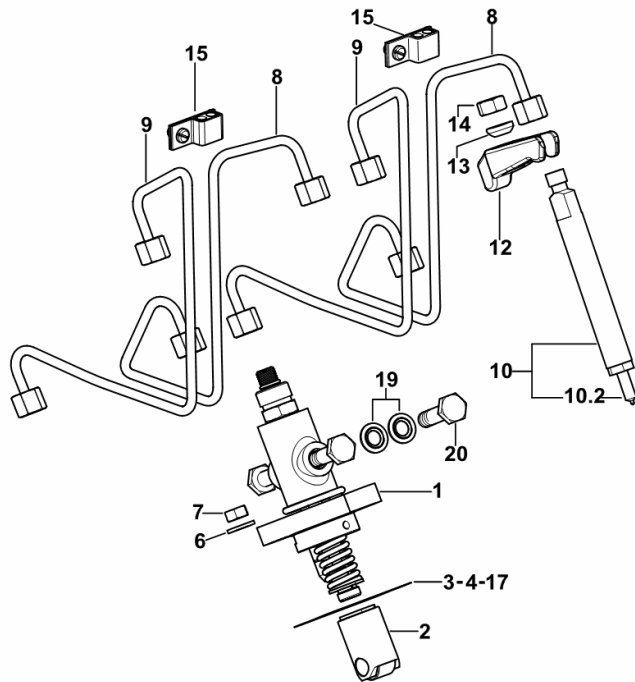
INJECTION PUMP - INJECTOR

Fig.	Code	QTY	Name
------	------	-----	------

Notes:

- EXPORT U.S.A. [DORADO F 100 -> 6001]

1	2.4619.280.0	4	injector pump
2	2.4619.291.0	4	tappets
3	0.014.9668.0/10	4	shim mm 0.20
4	0.014.9679.0/10	4	shim mm 0.30
6	2.1599.458.0/10	8	snoulder 8.4x18x2
7	2.1011.405.2	8	nut m 8 p.1
8	0.015.5421.3	2	tube
9	0.015.5420.3	2	tube
10	2.4719.640.0	4	injector Ø 17
10.2	2.4729.630.0	1	nozzle
12	0.012.5977.0/20	4	bracket
13	2.1599.454.0	4	snoulder 10.5x17x7.5
14	2.1011.421.2	4	nut m 10 p.1.25
15	0.013.1014.3	2	terminal
17	0.015.1407.0/10	8	shim mm 0.05
19	2.1569.213.0	16	washer
20	2.3249.093.2	8	pipe fitting m 12 p.1



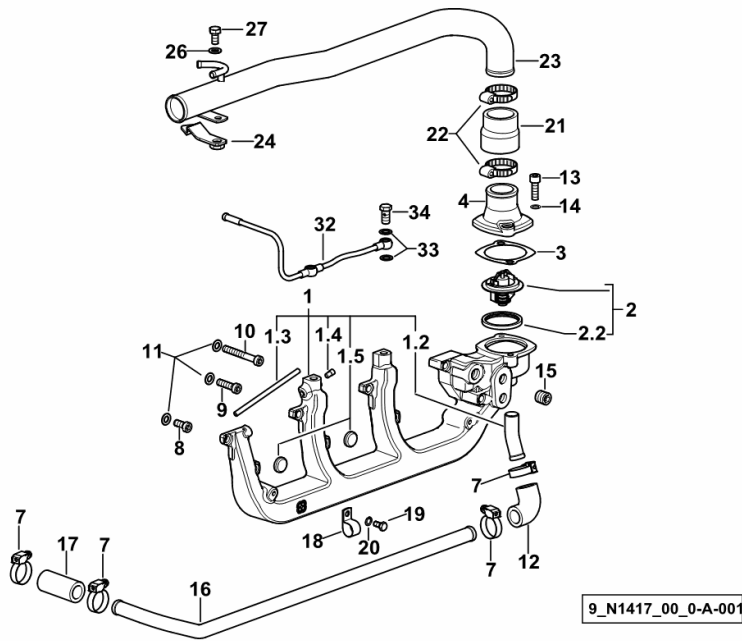
9_O1316_01_0-A-001

COOLING SYSTEM MANIFOLD

Fig.	Code	QTY	Name
------	------	-----	------

Notes:

[DORADO F 100 -> 6001]



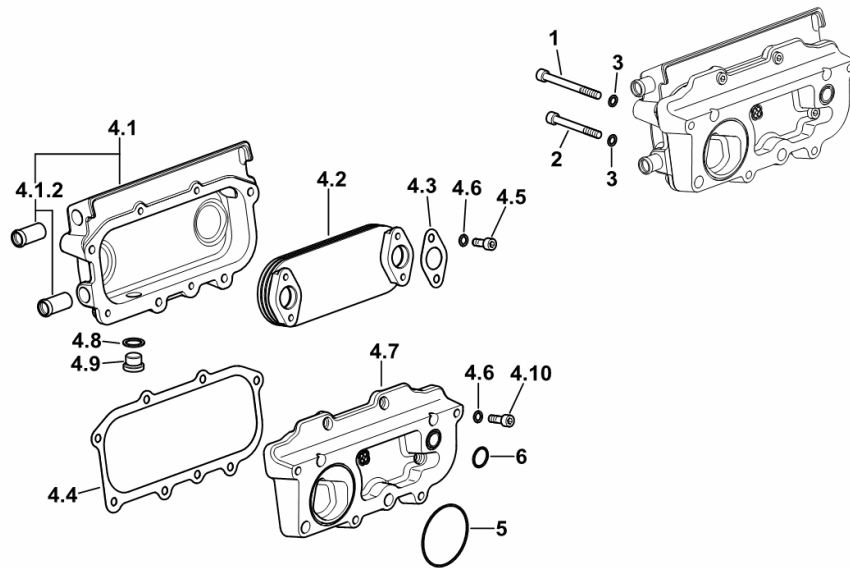
1	0.013.4517.3/20	1	manifold
1.2	0.007.0798.0	1	tube
1.3	0.007.1235.0	1	tube
1.4	2.3199.218.0	1	plug 6x13
1.5	2.3171.008.4	2	plug 20
2	0.007.1258.3/20	1	thermostat
2.2	0.007.1258.0	1	gasket
3	0.066.1757.0/30	1	gasket
4	0.007.1421.0	1	cover
7	2.6851.002.0	10	clamp Ø 20/32
8	2.0312.205.2	3	screw m 8 p.1.25 x 18
9	2.0312.210.2	4	screw m 8 p 1.25 x 30
10	2.0312.218.2	1	screw m 8 p.1.25 x 60
11	2.1480.014.1	8	washer 8
12	0.007.1236.0/10	1	sleeve
13	2.0312.208.2	2	screw m 8 p.1.25 x 25
14	2.1480.014.1	2	washer 8
15	2.3130.003.1	1	plug 3/8" gas
16	0.007.1660.0	1	tube
17	0.007.0678.0/10	4	sleeve 18x28x60
18	2.6830.010.1	2	clamp Ø 18
19	2.0112.004.2	2	screw m 6 p.1 x 14
20	2.1470.002.2	2	washer 6, d128
21	0.007.1227.0/10	1	sleeve
22	2.6851.004.0	2	clamp Ø 32/50
23	0.013.3671.2/10	1	tube
24	0.013.7298.3/10	1	square
26	2.1310.004.2	1	flat washer 8.5
27	2.0112.205.2	1	screw m 8 p.1.25 x 16
32	0.013.7248.3	1	tube
33	2.1560.006.0	4	gasket 10.2 x 16
34	2.3339.480.2/10	2	pipe union m 10 p.1.25 x 19

Section: B0 - ENGINE
HEAT EXCHANGER

Fig.	Code	QTY	Name
------	------	-----	------

Notes:

- EXPORT U.S.A. [DORADO F 100 -> 6001]



1	2.0319.024.2	2	screw m 8x85
2	2.0312.220.2	2	screw m 8 p.1.25x70
3	2.1480.014.1	4	washer 8
4.1	0.015.1128.3	1	cover
4.1.2	0.066.1750.0	2	tube
4.2	0.078.1540.3	1	radiator
4.3	0.078.1557.0/10	2	gasket
4.4	0.015.0603.0	1	gasket
4.5	2.0312.203.2	4	screw m 8 p.1.25x14
4.6	2.1480.014.2	8	washer 8
4.7	0.014.8763.0/10	1	plate
4.8	2.1560.014.0	1	gasket 18.2 x 24 x 1.5
4.9	2.3120.101.0	1	plug m 18 p.1.5
4.10	2.0312.206.2	4	screw m 8 p 1.25 x 20
5	2.1539.050.0	1	'o' ring 69.57x1.78
6	2.1539.048.0	1	'o' ring 20.35x1.78

9_O1115_03_0-A-001

Section: C0 - ENGINE ACCESSORIES
COOLING - COOLANT RADIATOR

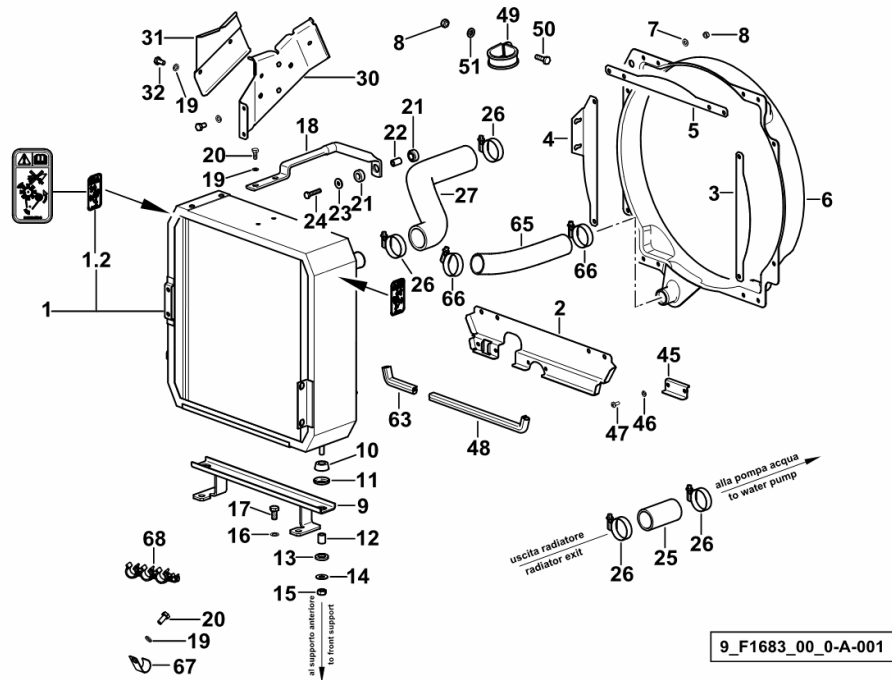


Fig.	Code	QTY	Name
------	------	-----	------

Notes:
 [DORADO F 100 -> 6001] -> 6054

1	0.013.8431.3/40	1	water cooler
1.2	2.9939.273.0	2	plate
2	0.014.0396.0/10	1	shield
3	0.013.0864.0	1	guard sx/lh/li
4	0.013.3136.0	1	guard dx/rh/re
5	0.013.0863.0/10	1	guard
6	0.014.0385.2/10	1	air duct hood
7	2.1310.002.2	12	washer 6.6, d125
8	2.1011.103.2	13	nut m 6 p.1
9	0.013.0856.2/10	1	bracket
10	0.136.7385.0	2	rubber plug
11	0.136.7384.0	2	cup
12	2.1579.090.2	2	spacer 10.1x15x18
13	0.136.7387.0	4	rubber plug 15x27x5
14	2.1599.044.2	2	snoulder 10.5x25.5x1.5
15	2.1011.106.2	2	nut m 10 p.1.5
16	2.1470.006.2	2	lock washer 10
17	2.0112.307.2	2	screw m 10 p.1.5 x 20
18	0.013.3351.0/10	2	rod
19	2.1470.002.2	1	washer 6, d128
20	2.0112.004.2	4	screw m 6 p.1 x 14
21	0.035.8459.0	2	rubber plug
22	2.1579.322.0	1	spacer 10.5x6.5x17
23	2.1312.003.2	1	washer 6
24	2.0112.011.2	1	screw m 6 p.1x30
25	0.014.1882.0	1	sleeve
26	2.6851.004.0	4	clamp Ø 32/50
27	0.013.9051.0	1	tube
30	0.013.3168.2/10	1	channel
31	0.013.3264.0	1	cover
32	2.0112.003.2	4	screw m 6 p.1 x 12
45	0.013.4009.3	2	small plate
46	2.1470.001.2	4	lock washer 5
47	2.0332.304.2	4	screw m 5 p.0.8 x 12
48	0.013.4991.0	0.27	gasket
49	2.6839.065.0	1	clamp 40
50	2.0112.007.2	1	screw m 6 p.1 x 20
51	2.1312.003.2	1	washer 6
63	0.013.4991.0	0.09	gasket
65	0.014.0257.0/10	1	tube
66	2.6851.004.0	2	clamp Ø 32/50

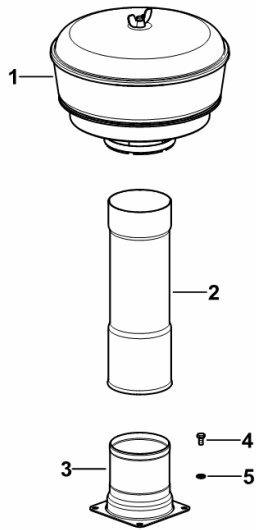
CYCLONE FILTER

Fig.	Code	QTY	Name
------	------	-----	------

Notes:

[DORADO F 100 -> 6001]

1	2.4239.110.0	1	precleaner ☞ 2.4239.110.0
2	0.010.4698.0	1	filter extension
3	0.014.0151.2	1	flange
4	2.0114.003.2	4	screw m 6 p.1 x 12
5	2.1310.002.2	4	washer 6.6, d125



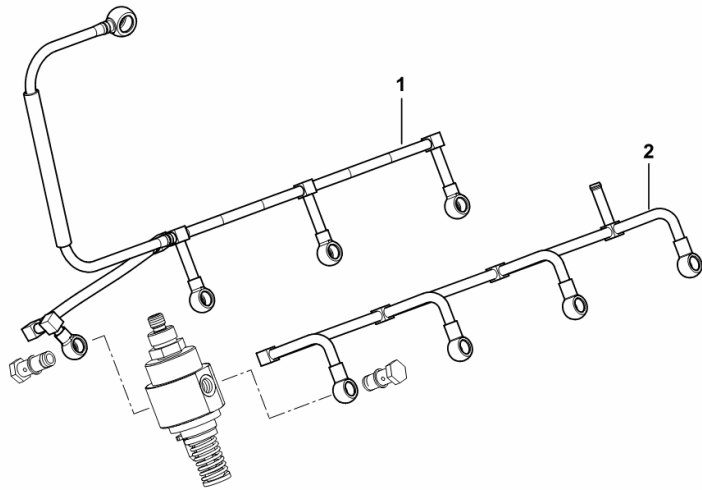
9_E6081_03_0-A-001

FUEL PIPES

Fig.	Code	QTY	Name
------	------	-----	------

Notes:
[DORADO F 100 -> 6001]

1	0.013.6551.4/20	1	tube
2	0.013.1491.3/10	1	tube



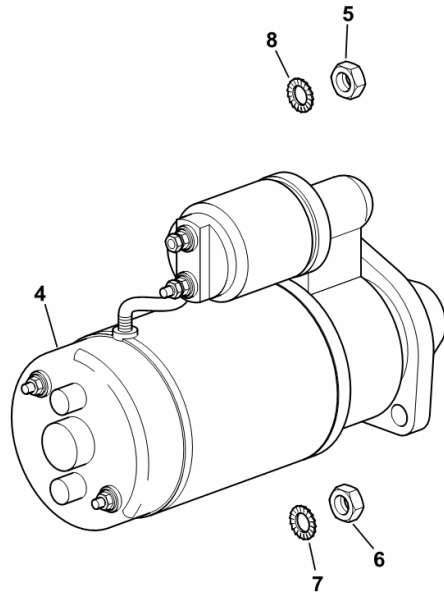
9_M8216_02_0-A-001

STARTER

Fig.	Code	QTY	Name
------	------	-----	------

Notes:
[DORADO F 100 -> 6001]

4	2.9619.390.0	1	starter motor 12 V, 3 kW, Z = 9 (6278 <-) ☞ 2.9619.390.0
4	2.9619.560.0	1	starter motor 12 V, 3.5 kW, Z = 9
5	2.1011.106.2	1	nut m 10 p.1.5
6	2.1011.522.2	1	nut m 12 p.1.25
7	2.1470.007.2	1	lock washer 12
8	2.1470.006.2	1	lock washer 10



9_52784_09_0-A-001

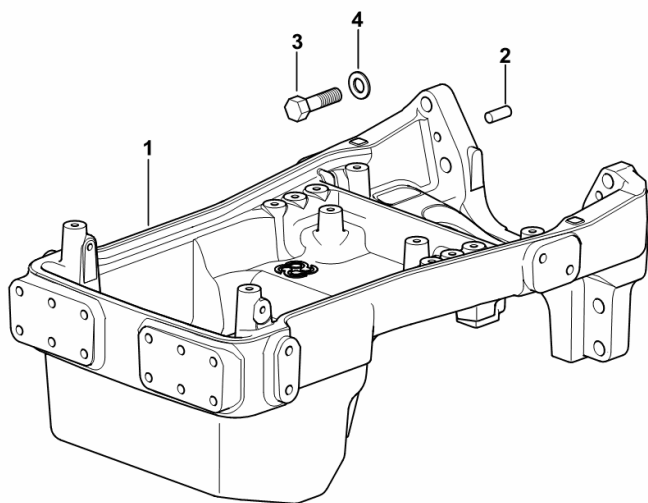
FRONT SUPPORT

Fig.	Code	QTY	Name
------	------	-----	------

Notes:

[DORADO F 100 -> 6001]

1	0.013.1445.0/60	1	front support
2	2.1699.035.0	2	cylindrical plug 14 x 35
3	2.0112.722.2	4	screw m 18 p.2.5 x 65
4	2.1475.007.7	4	washer 18



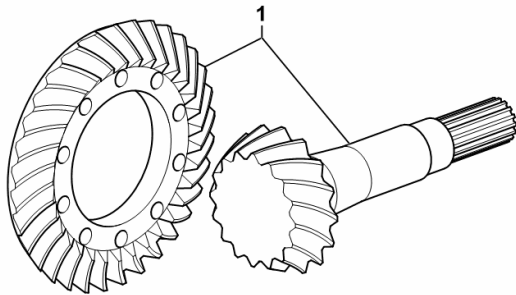
9_B6152_00_0-A-001

BEVEL WHEEL GEAR Z = 16 / 33

Fig.	Code	QTY	Name
------	------	-----	------

Notes:
[DORADO F 100 -> 6001]

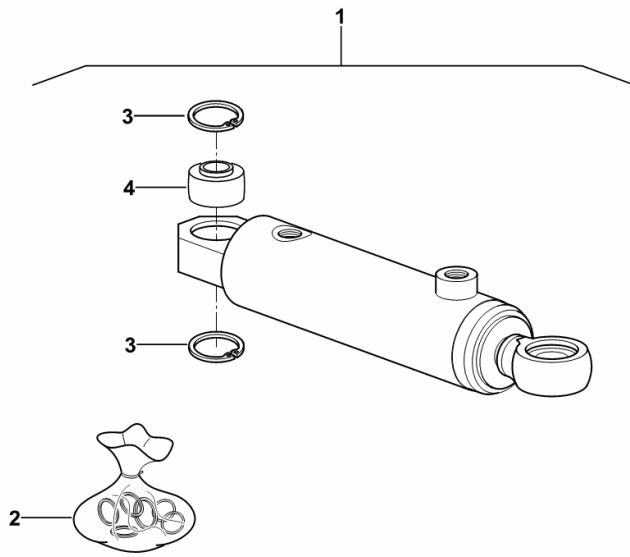
1	0.011.9951.3	1	bevel gear Z = 16 / 33
---	--------------	---	------------------------



9_16146_01_0-A-001

Section: F0 - FRONT AXLE
CYLINDER PARTS

Fig.	Code	QTY	Name
1	0.013.1401.4	1	cylinder
2	0.289.6356.1	1	seal ring kit
3	2.1423.026.1	2	circlip 35 x 1.5
4	0.176.6371.0	1	ball joint



0_013_1401_4

DORADO F 100 -> 6001

M0 - FRONT PTO

PTO INPUT SHAFT

INPUT SHAFT.....M0.01.0 (1)

FRONT PTO COVER - PROTECTIONS

P.T.O. GUARD.....M0.02.0 (1)

GEARS AND CLUTCH

P.T.O. FRONT.....M0.03.0 (1)

P.T.O. FRONT.....M0.03.1 (1)

HYDRAULIC SYSTEM

FRONT PTO HYDRAULIC SYSTEM.....M0.04.0 (1)

FRONT PTO HYDRAULIC SYSTEM.....M0.04.1 (1)

SOLENOID VALVE.....2.3729.340.0/50.A

FRONT LIFT - HYDRAULIC SYSTEM.....	H0.05.1 (2)
FRONT LIFT - HYDRAULIC SYSTEM.....	H0.05.2 (1)
FRONT LIFT - HYDRAULIC SYSTEM.....	H0.05.3 (1)
FRONT LIFT - HYDRAULIC SYSTEM.....	H0.05.3 (2)
FRONT LIFT - HYDRAULIC SYSTEM.....	H0.05.4 (1)
FRONT LIFT - HYDRAULIC SYSTEM.....	H0.05.4 (2)
PRESSURE CONTROL VALVE.....	0.009.2038.4/10.A
FRONT REMOTE CONTROL VALVES	
4+1 MID-MOUNT HYDRAULIC COUPLERS - FRONT.....	H0.06.8 (1)
BRACKETS FOR 4+1 MID-MOUNT HYDRAULIC COUPLERS.....	H0.06.9 (1)
4+1 MID-MOUNT HYDRAULIC COUPLERS - FRONT.....	H0.06.10 (1)
BRACKETS FOR 4+1 MID-MOUNT HYDRAULIC COUPLERS.....	H0.06.11 (1)
4+1 MID-MOUNT HYDRAULIC COUPLERS - REAR.....	H0.06.12 (1)
4+1 MID-MOUNT HYDRAULIC COUPLERS - REAR.....	H0.06.13 (1)
2+1 MID-MOUNT HYDRAULIC COUPLERS - FRONT.....	H0.06.14 (1)
BRACKETS FOR 2+1 MID-MOUNT HYDRAULIC COUPLERS.....	H0.06.15 (1)
2+1 MID-MOUNT HYDRAULIC COUPLERS - FRONT.....	H0.06.16 (1)
BRACKETS FOR 2+1 MID-MOUNT HYDRAULIC COUPLERS.....	H0.06.17 (1)
2+1 MID-MOUNT HYDRAULIC COUPLERS - REAR.....	H0.06.18 (1)
2+1 MID-MOUNT HYDRAULIC COUPLERS - REAR.....	H0.06.19 (1)
ENGAGEMENT.....	0.98308.50.3/10.A
REAR REMOTE CONTROL VALVES	
4-WAY AUXILIARY DISTRIBUTOR.....	H0.07.0 (1)
6-WAY AUXILIARY DISTRIBUTOR.....	H0.07.1 (1)
AUXILIARY CONTROL VALVE SYSTEM.....	H0.07.2 (1)
4-WAY AUXILIARY DISTRIBUTOR.....	H0.07.3 (1)
HYDRAULIC SYSTEM - FOR 4-WAY DISTRIBUTOR.....	H0.07.4 (1)
HYDRAULIC SYSTEM - FOR 6-WAY CONTROL VALVE.....	H0.07.5 (1)
HYDRAULIC SYSTEM - FOR 6-WAY CONTROL VALVE.....	H0.07.6 (1)
AUXILIARY CONTROL VALVE SYSTEM WITH 2+1 CENTRAL CONNECTORS.....	H0.07.7 (1)
AUXILIARY CONTROL VALVE SYSTEM WITH 4+1 CENTRAL CONNECTORS.....	H0.07.8 (1)
ENGAGEMENT.....	0.98309.50.3/10.A
HYDRAULIC DISTRIBUTOR-PARTS.....	2.3719.730.0/10.A
HYDRAULIC DISTRIBUTOR-PARTS.....	2.3719.740.0/20.A
BRAKING SYSTEM AND PNEUMATIC SYSTEM 	
FLOW CONTROL VALVE.....	H0.09.0 (1)
BRAKES CONTROL VALVE.....	H0.09.1 (1)
BRAKING SYSTEM.....	H0.09.3 (1)
4WD - FRONT BRAKING SYSTEM.....	H0.09.6 (1)
HYDRAULIC BREAKING FOR TRAILER - EXPORT F.....	H0.09.7 (1)
HYDRAULIC BREAKING FOR TRAILER - ITALY -.....	H0.09.8 (1)
HYDRAULIC TRAILER BRAKING SYSTEM.....	H0.09.9 (1)
SYSTEM FROM HYDRAULIC PUMP TO HYDRAULIC BRAKES.....	H0.09.11 (1)
HYDRAULIC TRAILER BRAKING SYSTEM.....	H0.09.12 (1)

DORADO F 100 -> 6001

Section: H0 - HYDRAULIC AND PNEUMATIC SYSTEM|

Ref.: H0.01.11 (1)

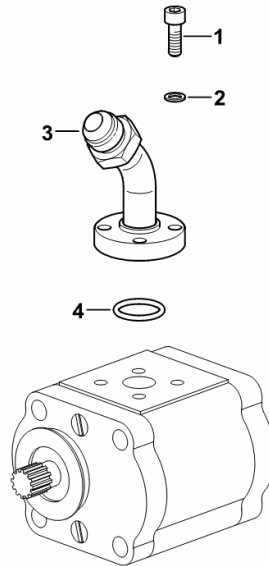
COMPLETING THE HYDRAULIC PUMP 22.5 CM³

Fig.	Code	QTY	Name
------	------	-----	------

Notes:

[DORADO F 100 -> 6001]

1	2.0312.105.2	4	screw m 6 p.1 x 18
2	2.1480.012.2	4	washer 6, d128
3	0.014.5626.3	1	tube
4	2.1531.052.0	1	'o' ring 20.29 x 2.62



9_F2082_02_0-A-001

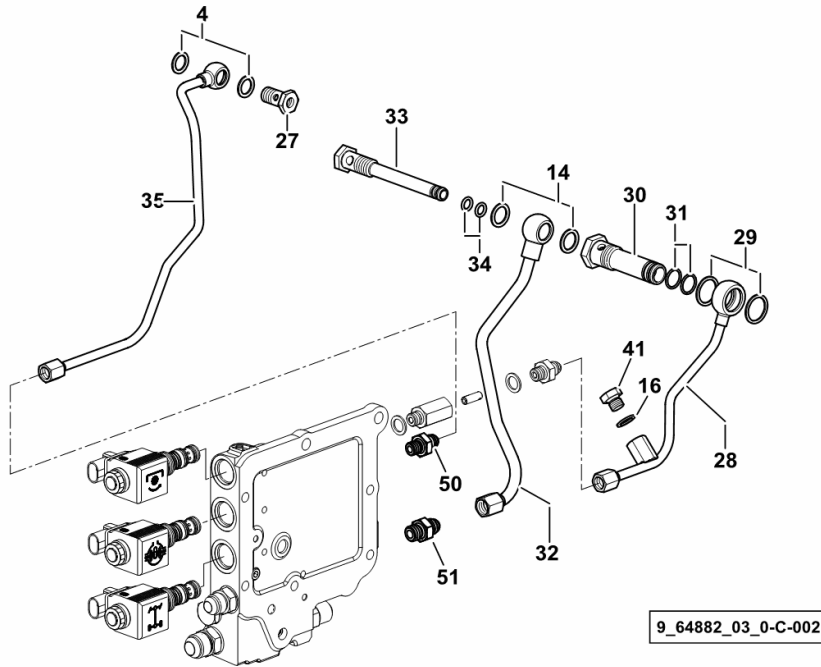
OIL CONTROL VALVES HOUSING PIPES

Fig.	Code	QTY	Name
------	------	-----	------

Notes:

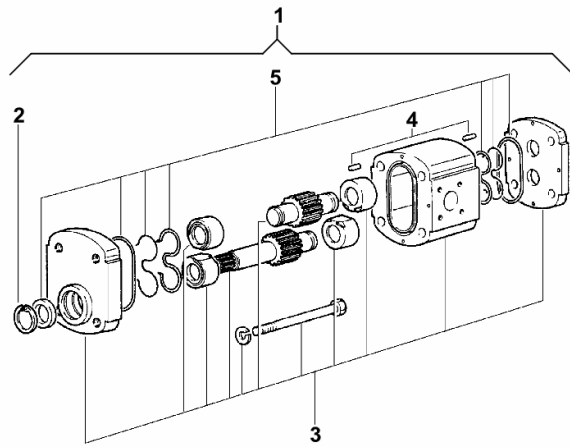
[DORADO F 100 -> 6001] -> 6054

4	2.1560.010.0	2	gasket 14.2 x 20 x 1.5
14	2.1560.012.0	2	gasket 16.2 x 22 x 1.5
16	2.1560.008.0	1	gasket 12.2 x 18
27	2.3335.006.2	1	pipe union m 14 p.1.5x24
28	0.009.9749.3/40	1	tube
29	2.1560.017.0	2	gasket 22.2 x 27
30	0.009.9746.0/40	1	pipe fitting
31	2.1531.039.0	2	'o' ring 16
32	0.009.9748.3/30	1	tube
33	0.009.9745.0/20	1	pipe fitting
34	2.1531.016.0	2	ring 8.74 x 1.78
35	0.009.9747.3/30	1	tube
41	2.3110.402.1	1	plug m 12 p.1.5x10
50	2.3249.149.2	1	pipe fitting M/M 1/2 JIC-M12
51	2.3249.159.2	1	pipe fitting M/M 9/16JIC-M14



HYDRAULIC PUMP PARTS

Fig.	Code	QTY	Name
1	2.4529.960.0	1	hydraulic pump 11 cc sx/lh/li - SAUER - TUROLLA -
2	0.009.4129.1	1	circlip
3	0.000.0000.1	0	not serviceable
4	0.009.4130.1	4	roller
5	0.009.4128.1	1	seal ring kit

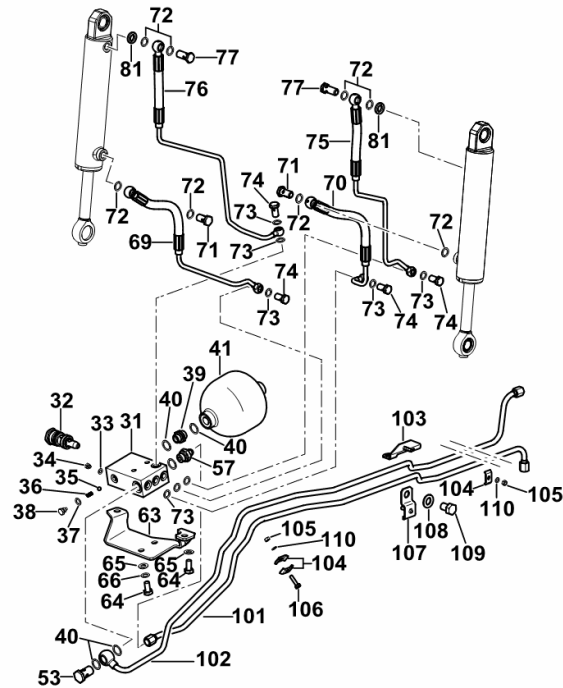


2_4529_960_0

FRONT LIFT - HYDRAULIC SYSTEM

Fig.	Code	QTY	Name
------	------	-----	------

Notes:
[DORADO F 100 -> 6001] -> 6043



9_F1659_80_0-B-002

31	0.010.7899.0/20	1	valve body
32	0.009.2038.4/10	1	valve ☞ 0.009.2038.4/10
33	2.1560.002.0	1	gasket 6.12x12
34	2.3110.427.2	1	plug m 6 p.1
35	2.2810.003.0	1	ball mm 7.144
36	2.4019.378.1	1	spring 7.1x15x0.4
37	2.1560.006.0	1	gasket 10.2 x 16
38	2.3199.151.2	1	plug m10x1.5x13
39	2.3313.007.1	1	pipe fitting m 18 p.1.5-3/4 jic
40	2.1560.014.0	5	gasket 18.2 x 24 x 1.5
41	0.010.0427.0/20	1	accumulator
53	2.3335.008.2	1	pipe union m 18 p.1.5 x 32
57	2.3339.395.2/10	1	pipe fitting m 18 p.1.5-9/16"
63	0.015.0000.2	1	bracket
64	2.0112.307.2	4	screw m 10 p.1.5 x 20
65	2.1310.006.2	4	flat washer 10.5
66	2.1470.006.2	2	lock washer 10
69	0.015.0044.3	1	tube dx/rh/re
70	0.015.0045.3	1	tube sx/lh/li
71	2.3335.006.2	2	pipe union m 14 p.1.5x24
72	2.1560.010.0	8	gasket 14.2 x 20 x 1.5
73	2.1560.008.0	8	gasket 12.2 x 18
74	2.3332.003.2	4	pipe union m 12 p.1.25 x 23
75	0.015.0046.3	1	tube sx/lh/li
76	0.015.0047.3	1	tube dx/rh/re
77	2.3335.053.2	2	pipe union m 14 p.1.5x30
81	2.1599.683.0	2	snoulder 14.5x23x4
101	0.015.0113.3	1	tube
102	0.015.0116.3/10	1	tube
103	0.015.0371.3	1	bracket
104	0.200.8152.0	3	small plate
105	2.1011.103.2	2	nut m 6 p.1
106	2.0112.009.2	1	screw m 6 p.1 x 25
107	0.015.0367.2	1	bracket
108	2.1310.009.2	1	flat washer 14
109	2.0112.507.2	1	screw m 14 p.2x20
110	2.1470.002.2	2	washer 6, d128

DORADO F 100 -> 6001

Section: H0 - HYDRAULIC AND PNEUMATIC SYSTEM|

Ref.: H0.06.11 (1)

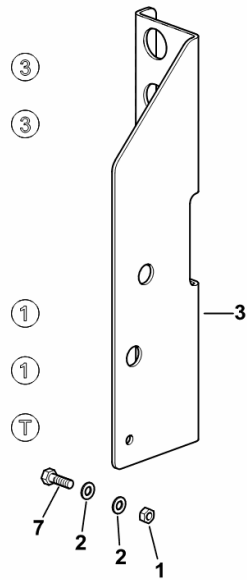
BRACKETS FOR 4+1 MID-MOUNT HYDRAULIC COUPLERS

Fig.	Code	QTY	Name
------	------	-----	------

Notes:

- FOR TYPES WITH SAFETY FRAME [DORADO F 100 -> 6001]

1	2.1011.105.2	1	nut m 8 p.1.25
2	2.1310.004.2	2	flat washer 8.5
3	0.014.7932.2	1	bracket
7	2.0112.209.2	1	screw m 8 p 1.25 x 25



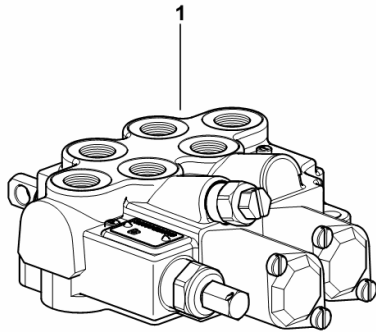
9_F7188_09_0-A-001

4-WAY AUXILIARY DISTRIBUTOR

Fig.	Code	QTY	Name
------	------	-----	------

Notes:
[DORADO F 100 -> 6001]

1	2.3719.730.0/10	1	distributor ☞ 2.3719.730.0/10
---	-----------------	---	----------------------------------



9_F2088_15_0-A-001

HYDRAULIC DISTRIBUTOR-PARTS

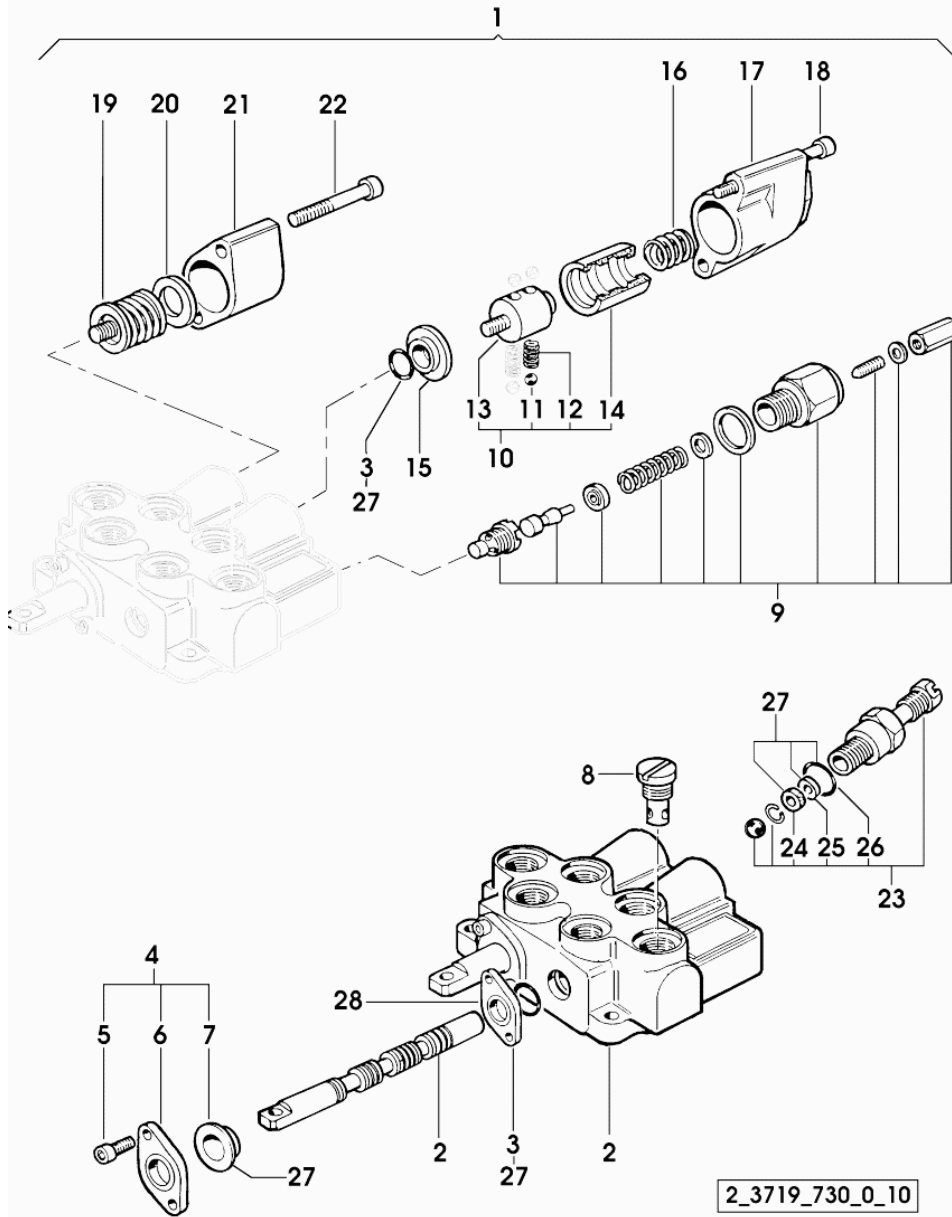


Fig.	Code	QTY	Name
1	2.3719.730.0/10	1	distributor
2	0.000.0000.1	0	not serviceable
3	0.010.2098.0	4	'o' ring
4	0.010.2098.1	2	cap
5	0.010.2098.2	4	screw
6	0.010.2099.0	2	small plate
7	0.010.2099.1	2	cup
8	0.010.2099.2	1	pipe union
9	0.010.2100.0	1	valve
10	0.010.2100.1	1	valve
11	0.010.2100.2	4	ball
12	0.010.2101.0	2	spring
13	0.010.2101.1	1	pin
14	0.010.2101.2	1	sleeve
15	0.010.2102.0	2	spacer
16	0.010.2102.1	1	spring
17	0.010.2102.2	1	small cap
18	0.010.2103.0	2	screw
19	0.010.2103.1	1	spring
20	0.010.2103.2	1	spacer
21	0.010.2104.0	1	small cap
22	0.010.2104.1	2	screw
23	0.010.2104.2	1	valve
24	0.010.2105.0	1	'o' ring
25	0.010.2105.1	1	ring
26	0.010.2105.2	1	ring
27	0.010.2106.0	1	gasket set
28	0.900.0016.4	2	gasket

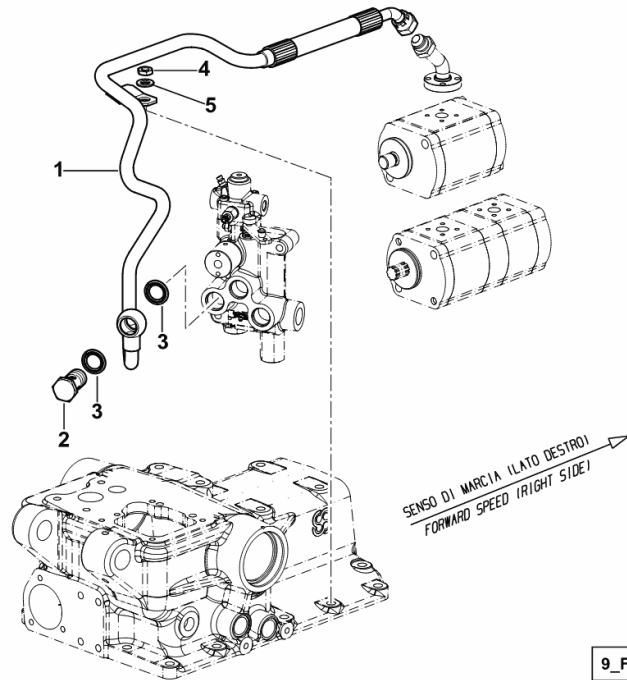
SYSTEM FROM HYDRAULIC PUMP TO HYDRAULIC BRAKES

Fig.	Code	QTY	Name
------	------	-----	------

Notes:

[DORADO F 100 -> 6001]

1	0.015.2203.3	1	tube
2	2.3335.009.2	1	pipe union m 22 p.1.5 x 39
3	2.1561.112.0	2	gasket Ø 22 -B-
4	2.1011.521.2	1	nut m 10 p.1.25
5	2.1475.003.2	1	washer 10



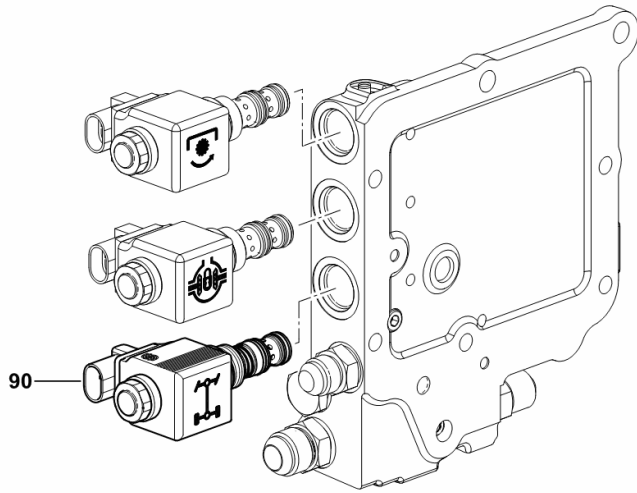
9_F1682_46_0-A-001

SOLENOID VALVE - 4WD

Fig.	Code	QTY	Name
------	------	-----	------

Notes:
[DORADO F 100 -> 6001]

90	2.3729.697.0/20	1	electro valve 13V - 20W ☞ 2.3729.697.0/20
----	-----------------	---	--



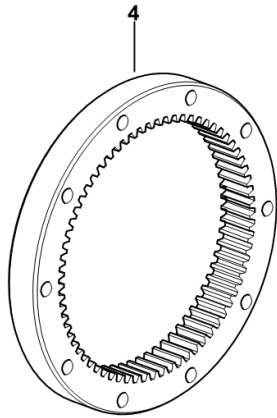
9_18382_04_0-A-001

REAR AXLE CROWN WHEEL

Fig.	Code	QTY	Name
------	------	-----	------

Notes:
[DORADO F 100 -> 6001]

4	0.008.5160.0/10	2	bevel ring gear Z = 69
---	-----------------	---	------------------------



9_64847_00_0-B-001

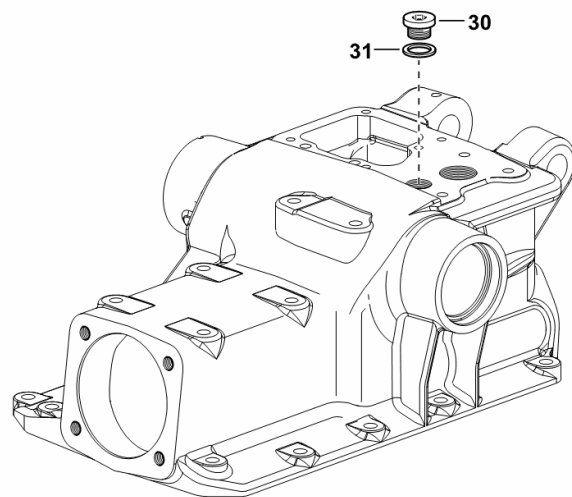
PLUG

Fig.	Code	QTY	Name
------	------	-----	------

Notes:

- FOR TYPES WITH MECHANICAL LIFTER [DORADO F 100 -> 6001]

30	2.3120.002.4	1	plug m 22 x 1.5
31	2.1560.017.0	1	gasket 22.2 x 27



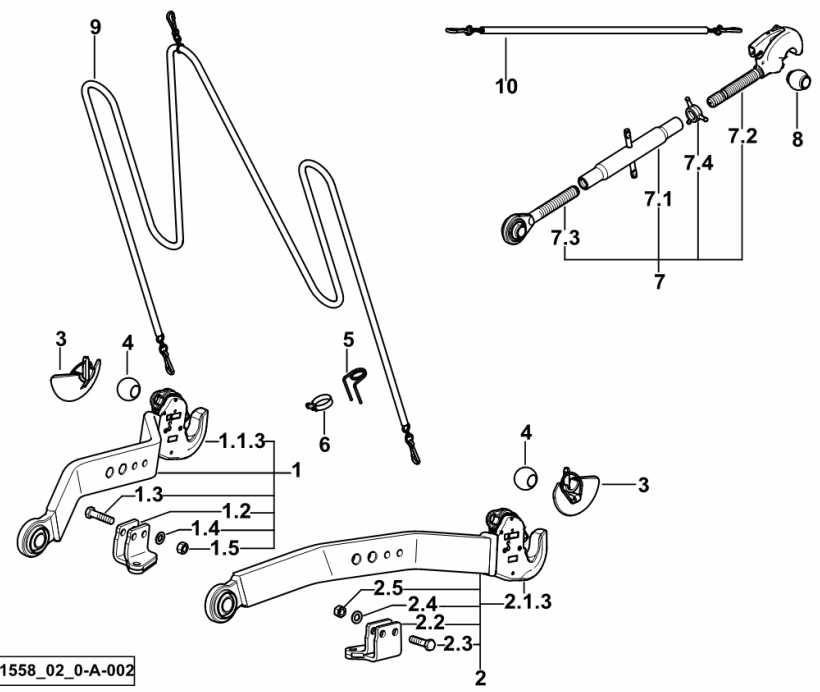
W9_58959_21_0-C-001

THREE-POINT COUPLING - TOP/LOWER LINK - AUTOM.

Fig.	Code	QTY	Name
------	------	-----	------

Notes:
[DORADO F 100 -> 6001]

1	0.014.8120.4/10	1	right hand arm
1.1.3	0.014.1420.3	1	automatic hook 2 cat.-CBM- ☞ 0.014.1420.3
1.2	0.014.8418.2	1	bracket
1.3	2.0112.622.2	2	screw m 16 p.2x65
1.4	2.1310.010.2	2	flat washer 16
1.5	2.1011.109.2	2	nut m 16 p.2
2	0.014.8121.4/10	1	left hand arm
2.1.3	0.014.1420.3	1	automatic hook 2 cat.-CBM- ☞ 0.014.1420.3
2.2	0.014.8417.2	1	bracket
2.3	2.0112.622.2	2	screw m 16 p.2x65
2.4	2.1310.010.2	2	flat washer 16
2.5	2.1011.109.2	2	nut m 16 p.2
3	0.016.7833.3	2	pin 2 cat.
4	0.760.5952.0	2	cap Ø 56
5	0.009.9410.0	2	spring
6	2.6851.005.0	2	clamp Ø 40/60
7	0.014.1413.4/30	1	top link
7.1	0.96018.13.3	1	sleeve
7.2	0.014.1412.3	1	rod 2 cat.-CBM- ☞ 0.014.1412.3
7.3	0.760.3515.3/10	1	rod sx/lh/li
7.4	0.96014.57.0/10	1	locknut m 27 p.3
8	0.96001.17.0	2	cap Ø 50
9	0.760.2258.3	1	cable
10	0.009.3534.0	1	cable



9_F1558_02_0-A-002

DORADO F 100 -> 6001

D0 - TRANSMISSION

MAIN CLUTCH

CLUTCH 12".....	D0.01.2 (1)
CLUTCH 12".....	D0.01.3 (1)
CLUTCH 12".....	D0.01.4 (1)
CLUTCH CONTROL.....	D0.01.5 (1)

HML - HI-LO - SHML

H-M-L UNIT.....	D0.04.2 (1)
H-M-L UNIT.....	D0.04.3 (1)
H-M-L UNIT.....	D0.04.4 (1)
H-M-L UNIT.....	D0.04.5 (1)

GEARBOX INPUT SHAFT

GEARBOX INPUT SHAFT.....	D0.05.2 (1)
GEARBOX INPUT SHAFT.....	D0.05.3 (1)
SHUTTLE SHAFT.....	D0.05.4 (1)
SHUTTLE FOR 5-SPEED TRANSMISSION.....	D0.05.7 (1)
SHUTTLE FOR 5-SPEED TRANSMISSION W/ UNDERDRIVE.....	D0.05.8 (1)
SHUTTLE FOR 5-SPEED TRANSMISSION W/ UNDERDRIVE.....	D0.05.9 (1)
SYNCHRONISERS.....	D0.05.12 (1)
SYNCHRONIZER PARTS.....	0.007.7620.4/10.A
SYNCHRONIZER PARTS.....	0.007.7621.4.A

PTO INPUT SHAFT

P.T.O. - CLUTCH TRANSMISSION SHAFT.....	D0.06.1 (1)
P.T.O. - CLUTCH TRANSMISSION SHAFT.....	D0.06.2 (1)

MAIN SHAFT

5-SPEED GEARBOX PRIMARY SHAFT.....	D0.07.2 (1)
5-SPEED GEARBOX PRIMARY SHAFT WITH UNDERDRIVE.....	D0.07.3 (1)
5-SPEED GEARBOX PRIMARY SHAFT WITH UNDERDRIVE.....	D0.07.4 (1)

SECONDARY SHAFT

TRANSMISSION SHAFT - FOR TYPES WITHOUT H-M-L (POWERSHIFT).....	D0.08.0 (1)
H-M-L GEARBOX SECONDARY SHAFT.....	D0.08.2 (1)
5-SPEED GEARBOX SECONDARY SHAFT.....	D0.08.5 (1)
5-SPEED GEARBOX SECONDARY SHAFT WITH UNDERDRIVE.....	D0.08.6 (1)
5-SPEED GEARBOX SECONDARY SHAFT WITH UNDERDRIVE.....	D0.08.7 (1)
SYNCHRONISERS.....	D0.08.9 (1)
SYNCHRONISERS.....	D0.08.12 (1)
SYNCHRONIZER PARTS.....	0.007.7620.4/10.A
SYNCHRONIZER PARTS.....	0.007.7621.4.A

GEARBOX

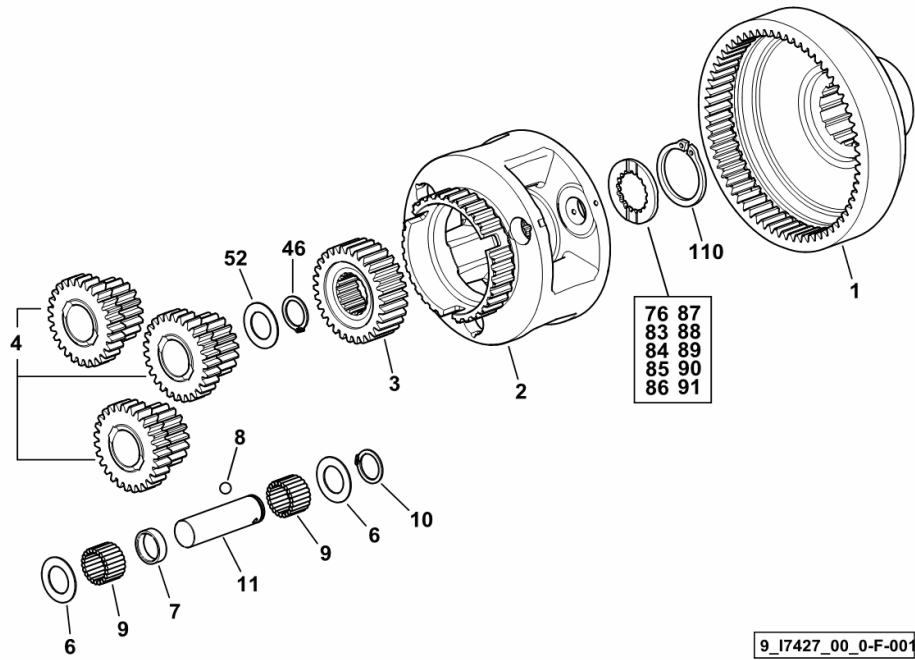
GEARBOX REAR.....	D0.09.1 (1)
GEARBOX REAR.....	D0.09.1 (2)
GEARBOX FRONT.....	D0.09.2 (1)

Section: D0 - TRANSMISSION
H-M-L UNIT

Fig.	Code	QTY	Name
------	------	-----	------

Notes:

- POWERSHIFT [DORADO F 100 -> 6001]



1	0.008.0266.0/30	1	crown wheel
2	0.008.0263.0/60	1	spider
3	0.008.0311.0/40	1	gear Z = 30 / Z = 17
4	0.008.0264.3/10	1	planet gear
			3 PIECES IN THE SET
6	2.1599.681.0	6	snoulder
7	2.1549.194.0/10	3	spacer 18.2x22x6
8	2.2819.005.0	3	ball mm 4
9	2.2999.297.0	6	roller cage
10	2.1410.005.1	3	circlip 18
11	0.008.0265.3	3	pin
46	2.1410.011.7	4	circlip 28
52	2.1599.689.0	1	thrust plate 25x36x3.6
76	2.1599.730.0/10	0.1	thrust plate 25x42x3.2
83	2.1599.725.0/10	0.3	thrust plate 25x42x2.2
84	2.1599.726.0/10	0.3	thrust plate 25x42x2.4
85	2.1599.727.0/10	0.3	thrust plate 25x42x2.6
86	2.1599.728.0/10	0.5	thrust plate 25x42x2.8
87	2.1599.729.0/10	0.5	thrust plate 25x42x3
88	2.1599.731.0/10	0.1	thrust plate 25x42x3.4
89	2.1599.732.0/10	0.1	thrust plate 25x42x3.6
90	2.1599.733.0/10	0.1	thrust plate 25x42x3.8
91	2.1599.734.0/10	0.1	thrust plate 25x42x4
110	2.1410.017.1	1	circlip 42

9_17427_00_0-F-001

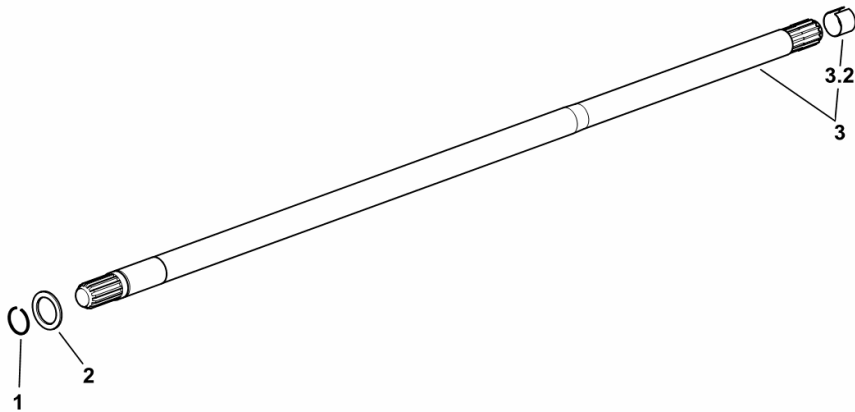
P.T.O. - CLUTCH TRANSMISSION SHAFT

Fig.	Code	QTY	Name
------	------	-----	------

Notes:

- FOR TYPES WITHOUT H-M-L (POWERSHIFT) [DORADO F 100 -> 6001]

1	2.1420.010.1	1	circlip a 25
2	2.1599.677.0	1	thrust plate 25x35x2
3	0.010.0551.3/40	1	p.t.o.shaft
3.2	0.255.2550.0	1	ring



9_17425_00_0-B-001

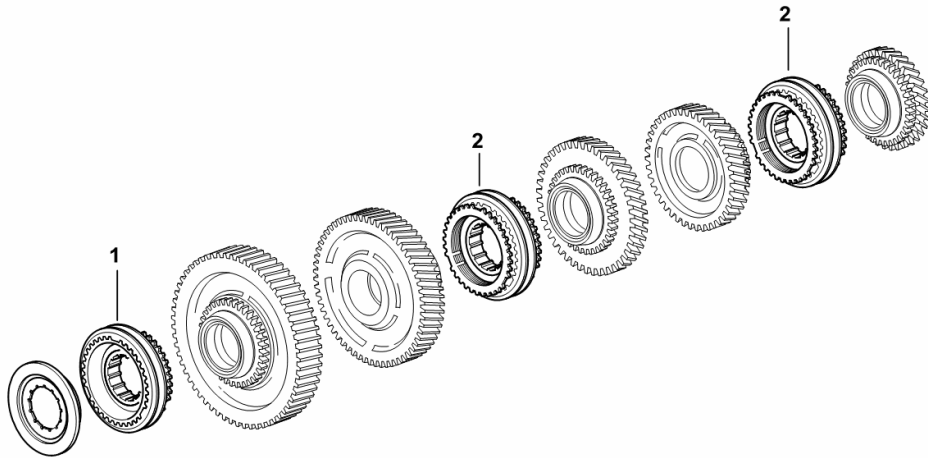
Section: D0 - TRANSMISSION
SYNCHRONISERS

Fig.	Code	QTY	Name
------	------	-----	------

Notes:

- FOR 5-SPEED GEARBOX WITH UNDERDRIVE [DORADO F 100 -> 6001]

1	0.007.7621.4	2	lock synchronizer 62  0.007.7621.4
2	0.007.7620.4/10	2	lock synchronizer 62  0.007.7620.4/10



9_C1233_02_0-B-001

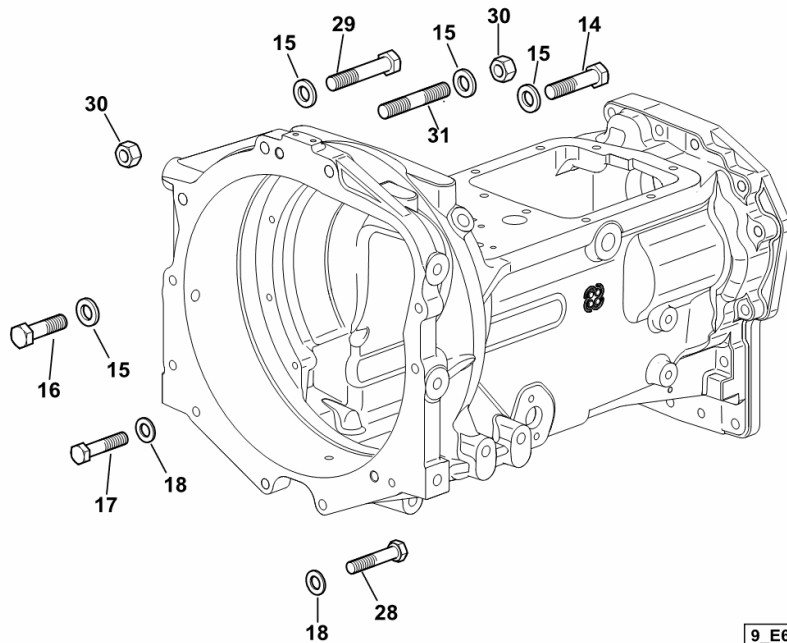
Section: D0 - TRANSMISSION
GEARBOX FRONT- FIXINGS

Fig.	Code	QTY	Name
------	------	-----	------

Notes:

[DORADO F 100 -> 6001]

14	2.0112.521.2	1	screw m 14 p.2 x 60
15	2.1475.205.7	7	washer 15x35
16	2.0112.513.2	4	screw m 14 p.2 x 35
17	2.0112.419.2	2	screw m 12 p.1.75 x 50
18	2.1475.004.7	4	washer 13 x 24
28	2.0112.421.2	2	screw m 12 p.1.75 x 60
29	2.0112.523.2	1	screw m 14 p.2x70
30	2.1011.108.2	2	nut m 14 p.2
31	2.0422.520.2	1	stud bolt m 14x75



9_E6631_02_0-A-001

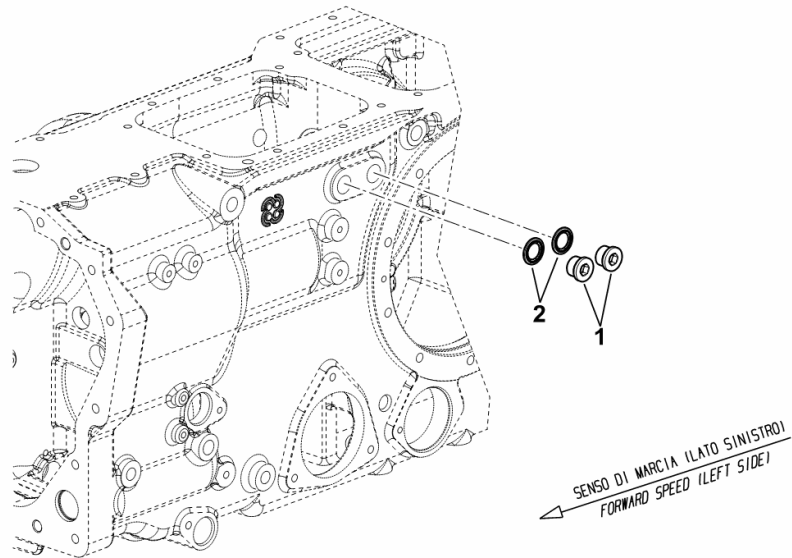
Section: D0 - TRANSMISSION
PLUGS FOR GEARBOX

Fig.	Code	QTY	Name
------	------	-----	------

Notes:

- WITHOUT FRONT CONTROL VALVE - WITHOUT CENTRAL SOCKETS [DORADO F 100 -> 6001]

1	2.3120.002.4	2	plug m 22 x 1.5
2	2.1561.112.0	2	gasket Ø 22 -B-



9_F2082_39_0-A-001

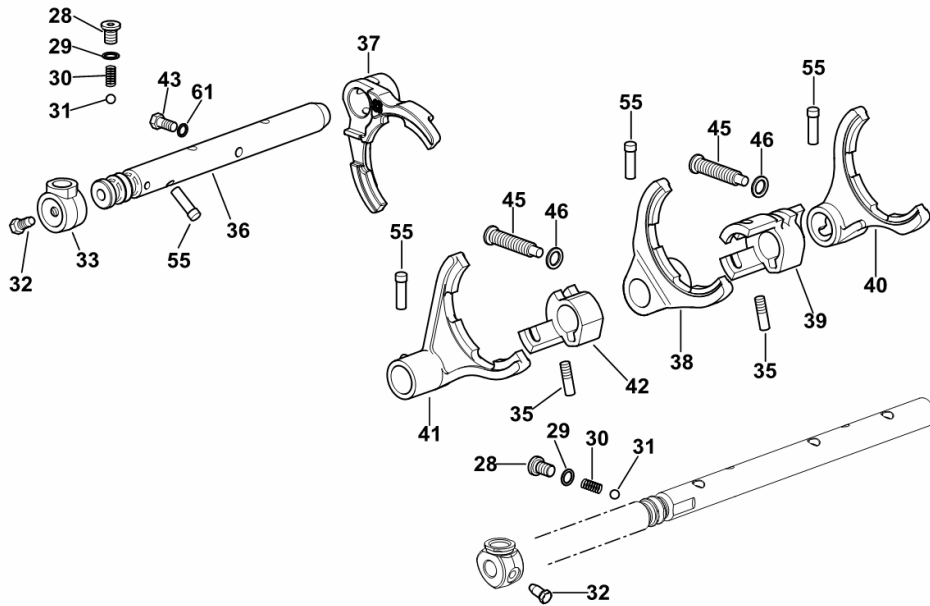
5-SPEED GEARBOX INTERNAL CONTROLS

Fig.	Code	QTY	Name
------	------	-----	------

Notes:

- FOR TYPES WITH H-M-L- (POWERSHIFT) [DORADO F 100 -> 6001]

28	2.3199.238.2	2	plug m 10
29	2.1560.005.0	2	gasket 10.2 x 14
30	2.4019.670.1	2	spring 5 x 8 x 1.5 x 22.5
31	2.2810.004.0	2	ball 5/16"
32	2.0399.019.1	2	screw m 8 p.1 x 16
33	0.008.5226.0/20	1	hub
35	2.0599.086.0/40	2	grain m 8 p.1.25 x 28
36	0.010.0543.0/20	1	rod
37	0.013.2469.0/20	1	fork
REVERSING GEAR UNIT			
38	0.009.6750.0	1	fork # 2 / # 3
39	0.008.5152.0/50	1	hub
40	0.009.7080.0	1	fork # 4 / # 5
41	0.009.6749.0	1	fork # 1
42	0.008.5198.0/40	1	hub
43	2.0122.209.2	1	screw m 8 p.1 x 25
45	2.0399.206.2	2	screw m 12 p.1.75 x 56.5
46	2.1560.008.0	2	gasket 12.2 x 18
55	0.008.5994.0/10	4	pin
61	2.1560.004.0	1	gasket 8.2 x 14



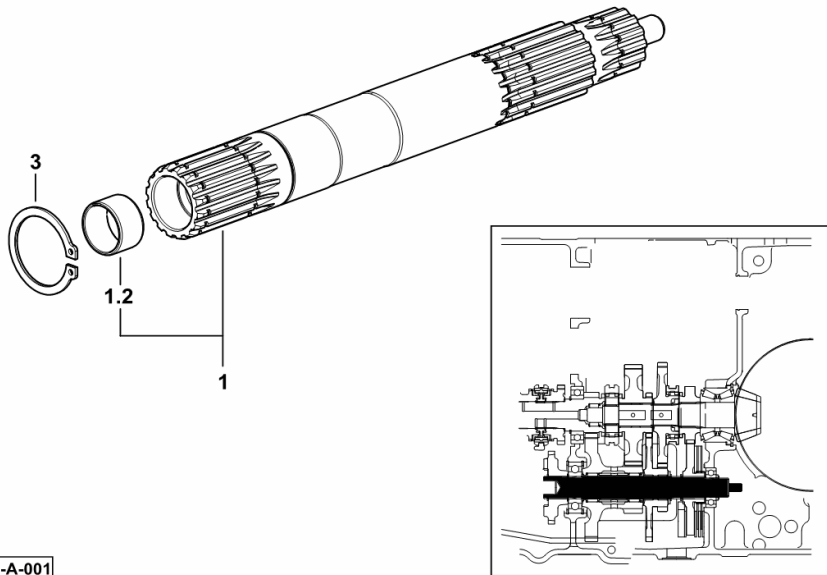
9_B6133_00_0-D-002

SPEED RANGE REDUCTION GEAR SHAFT

Fig.	Code	QTY	Name
------	------	-----	------

Notes:
[DORADO F 100 -> 6001]

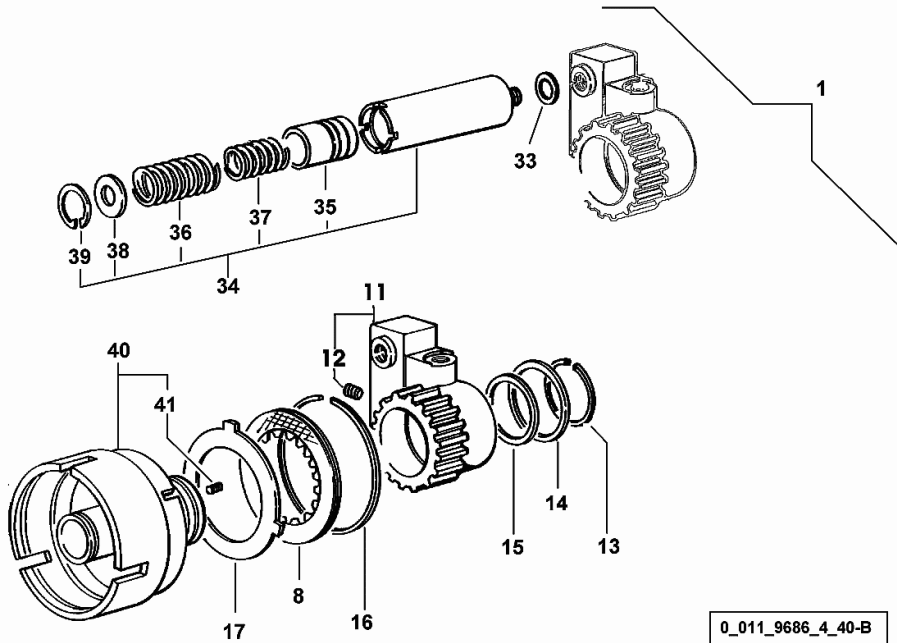
1	0.009.9943.3	1	shaft
1.2	2.1559.338.0	1	bushing 21.6 x 25 x 15.2
3	2.1410.014.1	1	circlip 35



9_70534_02_0-A-001

P.T.O. - HYDRAULIC CLUTCH

Fig.	Code	QTY	Name
1	0.011.9686.4/40	1	hydraulic pto clutch
8	0.008.9947.2	1	brake disc
11	0.008.9944.3/30	1	piston
12	2.0512.202.7	2	screw m 8 p.1.25 x 8
13	2.1419.027.1	1	circlip 48
14	2.1599.416.0	1	snoulder 50x58x1
15	2.1569.109.0/10	3	gasket 46 x 50 x 2.0
16	2.1499.137.7	1	circlip 100
17	0.008.9948.0	2	disc
33	2.1560.010.0	1	gasket 14.2 x 20 x 1.5
34	0.010.4252.4/20	1	accumulator
35	0.010.4253.0/10	1	piston
36	2.4019.648.1/10	1	spring
37	2.4019.649.1/10	1	spring
38	2.1599.241.0	1	snoulder 6.0 x 31 x 2.0
39	2.1411.013.1	1	circlip 32
40	0.011.9680.3/20	1	box
41	2.0512.002.7	1	grain m 5 p.0.8 x 8



2-SPEED - PTO WITH FIXED OUTPUT SHAFT 540-750

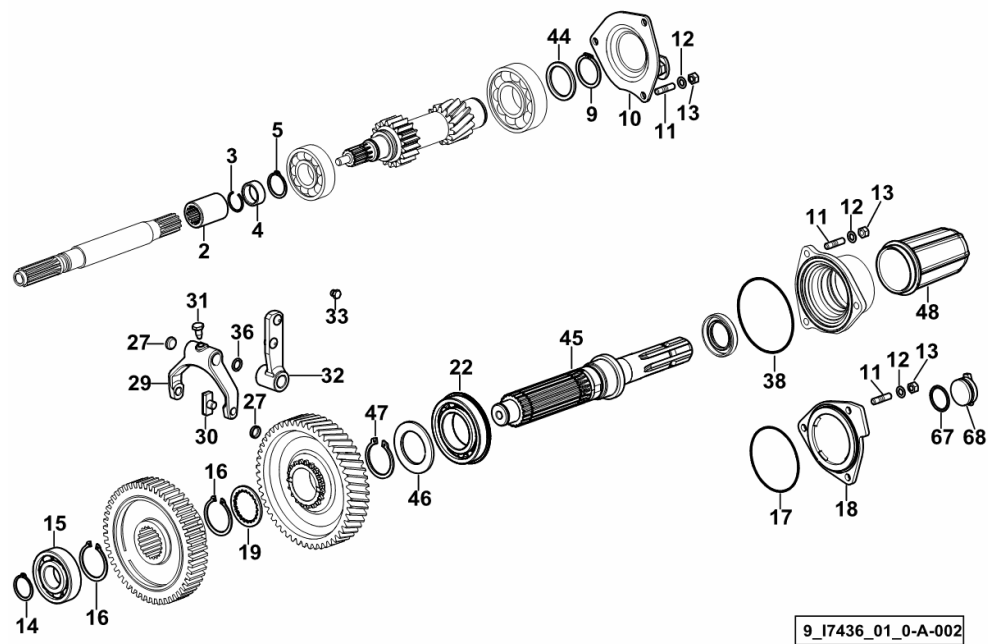


Fig.	Code	QTY	Name
------	------	-----	------

Notes:
[DORADO F 100 -> 6001]

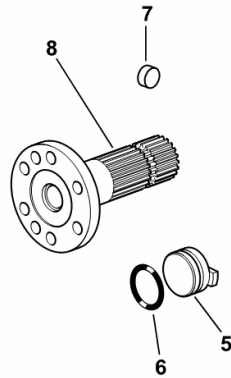
2	0.010.7696.0	1	sleeve Z = 11
3	2.1421.010.7	1	circlip 25
4	2.1549.172.0	1	spacer 24.7 x 31 x 12
5	2.1410.012.1	1	circlip 30
9	2.1410.016.1	1	circlip 40
10	0.008.5181.3/30	1	complete cover
11	2.0422.203.7	9	stud bolt m 8 p.1.25 x 20
12	2.1470.004.2	9	washer 8
13	2.1011.105.2	9	nut m 8 p.1.25
14	2.1410.012.1	1	circlip 30
15	2.2060.009.0	1	ball bearing 30 x 72 x 19
16	2.1410.018.7	2	circlip 45
17	2.1539.025.0/10	1	'o' ring 88.57 x 2.62
18	0.008.4984.2/30	1	cover
19	2.1599.828.0/10	1	thrust plate 41 x 55 x 3
22	2.2999.204.0	1	bearing 50 x 90 x 20
27	2.3171.006.4	5	plug Ø 16
29	0.010.0468.0	1	fork
30	0.255.6463.0	1	shoe
31	2.0399.019.1	2	screw m 8 p.1 x 16
32	0.012.0107.3	1	lever
33	2.3110.428.1	1	plug m 8 p.1 x 10
36	2.1530.028.0	1	'o' ring 11.91 x 2.62
38	2.1532.500.0	1	'o' ring
44	2.1599.414.0	1	snoulder 40 x 50 x 3.0
45	0.014.3979.0/10	1	p.t.o.shaft
46	2.1599.891.0	1	snoulder 45 x 70 x 4
47	2.1412.017.7	1	circlip 45
48	0.154.3655.0/10	1	guard
67	2.1530.079.0	1	'o' ring 29.82 x 2.62
68	0.014.1957.0	1	plug

PTO - 3-SPEED WITH INSERTED END SHAFT 540-750-1000

Fig.	Code	QTY	Name
------	------	-----	------

Notes:
[DORADO F 100 -> 6001]

5	0.014.1957.0	1	plug
6	2.1530.079.0	1	'o' ring 29.82 x 2.62
7	2.3171.006.4	1	plug Ø 16
8	0.011.3227.0	1	p.t.o.shaft Z = 21



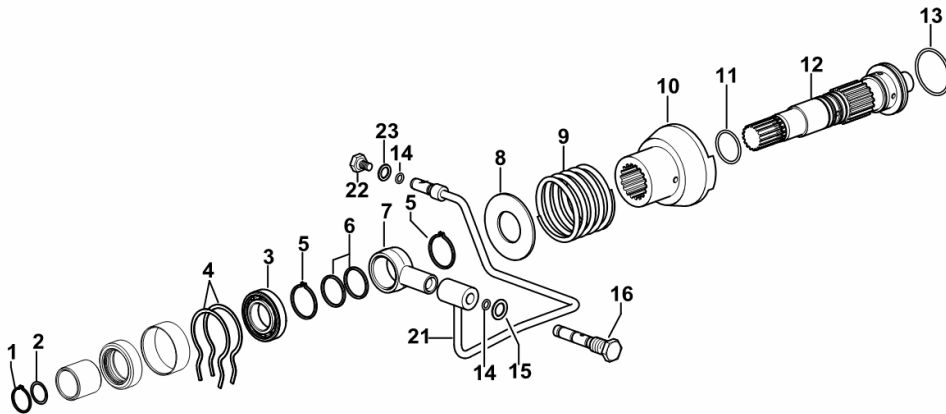
9_H6036_08_0-B-001

4WD - ELECTROHYDRAULIC ENGAGEMENT CONTROL

Fig.	Code	QTY	Name
------	------	-----	------

Notes:
[DORADO F 100 -> 6001]

1	2.1410.011.7	1	circlip 28
2	2.1530.060.0	1	'o' ring 23.40x3.53
3	2.2044.003.0	1	ball bearing 30x55x13
4	2.1499.125.1	2	circlip 49.8x1.1
5	2.1419.128.7	3	circlip 35
6	2.1569.166.0	2	gasket 35
7	0.009.3684.0	1	manifold
8	2.1599.700.0	1	thrust plate 30x74x3
9	2.4019.605.1/10	1	spring
10	0.009.3688.0/10	1	coupling
11	2.1530.095.0	1	'o' ring 36.14x2.62
12	0.009.3685.3	1	shaft
13	2.1530.125.0	1	'o' ring 50.47x2.62
14	2.1530.019.0	4	'o' ring 9.25x1.78
15	2.1560.012.0	1	gasket 16.2 x 22 x 1.5
16	0.009.6514.0/20	1	pin
21	0.009.6513.2/20	1	tube
22	2.0119.197.2	1	screw m 8 x 15
23	2.1560.008.0	1	gasket 12.2 x 18



9_C1238_00_0-A-001

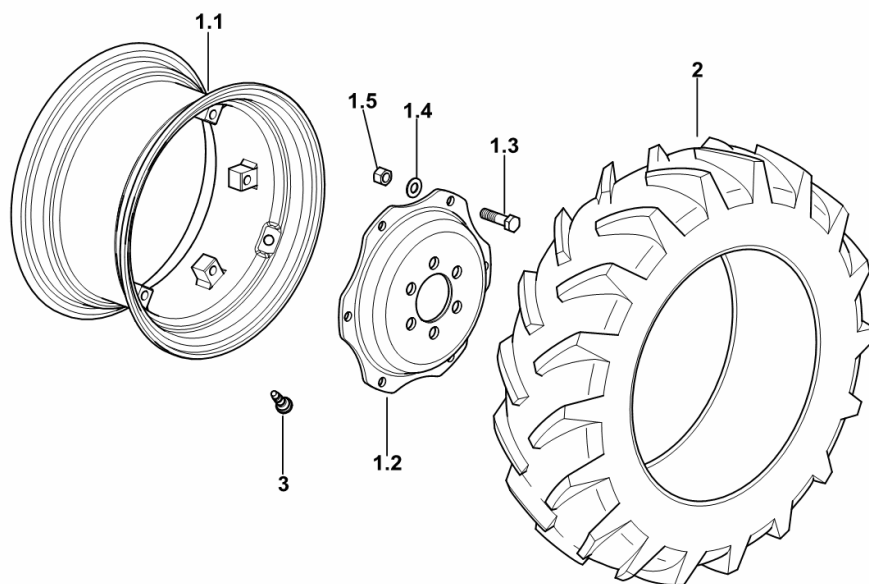
Section: S0 - WHEELS
WHEELS 260/65R16"

Fig.	Code	QTY	Name
------	------	-----	------

Notes:

[DORADO F 100 -> 6001] -> 6074

1.1	0.013.9184.3	1	rim W 9x16" C/BL
1.2	0.013.9184.0	1	rim center flange
1.3	2.0122.521.6	6	screw m 14 p.1.5 x 60
1.4	2.1475.105.6	6	conical washer 15 x 27
1.5	2.1011.308.6	6	nut m 14 p.1.5
2	2.4811.182.0	2	tyre 260/65R16"
3	0.012.6364.0	2	valve



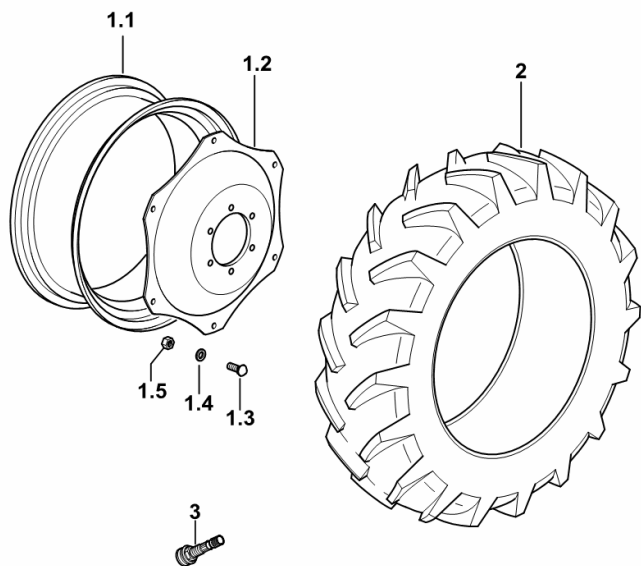
9_B6155_24_0-A-002

Section: S0 - WHEELS
WHEELS 300/70R20"

Fig.	Code	QTY	Name
------	------	-----	------

Notes:
 [DORADO F 100 -> 6001]

1.1	0.013.4310.3	1	rim W 10x20" C/ST
1.2	0.010.4301.0	1	rim center flange
1.3	2.0099.005.6	6	screw m 16 p.1.5 x 38
1.4	2.1499.019.6	6	washer 16.3 x 31.5
1.5	2.1019.059.6	6	nut m 16 p.1.5 x 16
2	2.4811.081.0	2	tyre 300/70R20"
3	0.012.6364.0	2	valve



9_63055_20_0-A-001

CLICK HERE TO **DOWNLOAD** THE COMPLETE MANUAL

- Thank you very much for reading the preview of the manual.
- You can download the complete manual from: www.heydownloads.com by clicking the link below



- Please note: If there is no response to CLICKING the link, please download this PDF first and then click on it.

CLICK HERE TO **DOWNLOAD** THE COMPLETE MANUAL