

Fig.2053B LIFT CYLINDER[Pm]
 FBT10P-18P(Std-MLH>5000),(CS/RP)

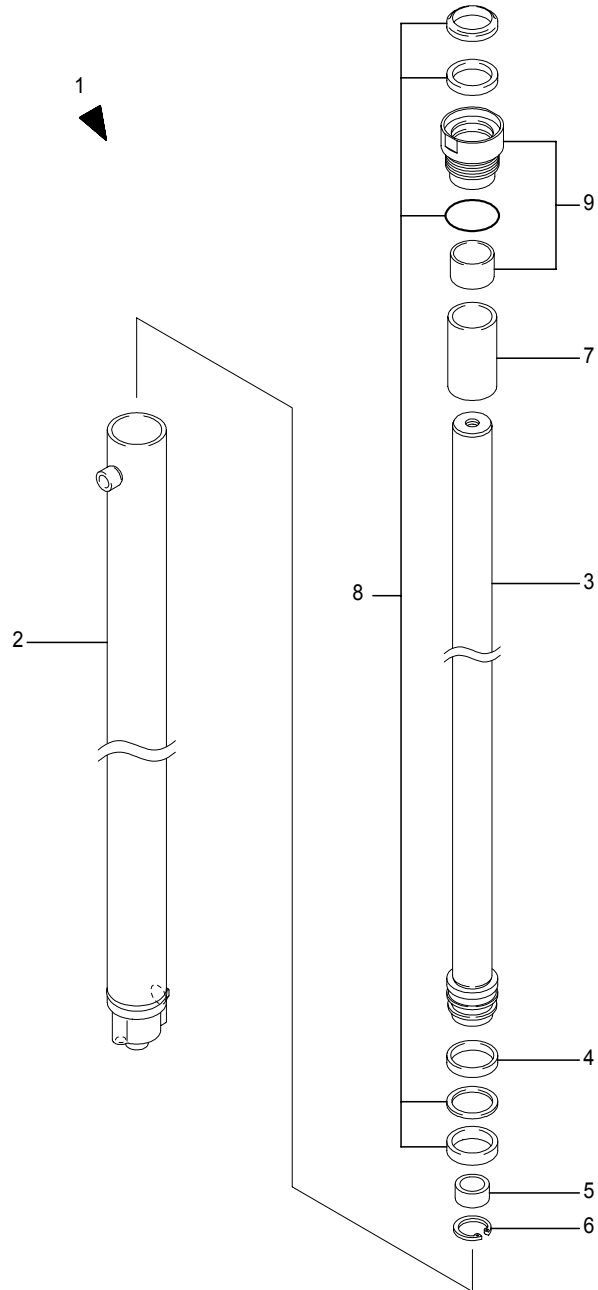


Fig.2053B LIFT CYLINDER[Pm]
 FBT10P-18P(Std-MLH>5000),(CS/RP)

(A)= (D)=FBT18P
 (B)=FBT13P (E)=
 (C)=FBT15P (F)=

No.	Parts No.	Parts Name	(A)	(B)	(C)	(D)	(E)	(F)	i/a	Remarks
1	A31850-22240	Cylinder ass'y, lift	2	2	2					MLH2000,CS/RP
	A31850-22250	Cylinder ass'y, lift	2	2	2					MLH2300,CS/RP
	A31850-22260	Cylinder ass'y, lift	2	2	2					MLH2500,CS/RP
	A31850-22270	Cylinder ass'y, lift	2	2	2					MLH2700,CS/RP
	A31850-22280	Cylinder ass'y, lift	2	2	2					MLH3000,CS/RP
	A31850-22290	Cylinder ass'y, lift	2	2	2					MLH3300,CS/RP
	A31850-22300	Cylinder ass'y, lift	2	2	2					MLH3500,CS/RP
	A31850-22310	Cylinder ass'y, lift	2	2	2					MLH3700,CS/RP
	A31850-22320	Cylinder ass'y, lift	2	2	2					MLH4000,CS/RP
	A31850-22330	Cylinder ass'y, lift	2	2	2					MLH4300,CS/RP
	A31850-22340	Cylinder ass'y, lift	2	2	2					MLH4500,CS/RP
	A31850-22350	Cylinder ass'y, lift	2	2	2					MLH4700,CS/RP
	A31850-22360	Cylinder ass'y, lift	2	2	2					MLH5000,CS/RP
	A31850-22370	Cylinder ass'y, lift	2	2	2					MLH5300,Std
A31850-22380	Cylinder ass'y, lift	2	2	2					MLH5500,Std	
2	31851-17850	Tube ass'y, cylinder	2	2	2					MLH2000,CS/RP
	31851-17860	Tube ass'y, cylinder	2	2	2					MLH2300,CS/RP
	31851-17870	Tube ass'y, cylinder	2	2	2					MLH2500,CS/RP
	31851-17880	Tube ass'y, cylinder	2	2	2					MLH2700,CS/RP
	31851-17890	Tube ass'y, cylinder	2	2	2					MLH3000,CS/RP
	31851-17900	Tube ass'y, cylinder	2	2	2					MLH3300,CS/RP
	31851-17910	Tube ass'y, cylinder	2	2	2					MLH3500,CS/RP
	31851-17920	Tube ass'y, cylinder	2	2	2					MLH3700,CS/RP
	31851-17930	Tube ass'y, cylinder	2	2	2					MLH4000,CS/RP
	31851-17940	Tube ass'y, cylinder	2	2	2					MLH4300,CS/RP
	31851-17950	Tube ass'y, cylinder	2	2	2					MLH4500,CS/RP
	31851-17960	Tube ass'y, cylinder	2	2	2					MLH4700,CS/RP
	31851-17970	Tube ass'y, cylinder	2	2	2					MLH5000,CS/RP
	31851-17980	Tube ass'y, cylinder	2	2	2					MLH5300,Std
31851-17990	Tube ass'y, cylinder	2	2	2					MLH5500,Std	
3	31851-17390	Rod ass'y, piston	2	2	2					MLH2000,CS/RP
	31851-17400	Rod ass'y, piston	2	2	2					MLH2300,CS/RP
	31851-17410	Rod ass'y, piston	2	2	2					MLH2500,CS/RP
	31851-17420	Rod ass'y, piston	2	2	2					MLH2700,CS/RP
	31851-17430	Rod ass'y, piston	2	2	2					MLH3000,CS/RP

Note :

CLICK HERE TO **DOWNLOAD** THE COMPLETE MANUAL

- Thank you very much for reading the preview of the manual.
- You can download the complete manual from: www.heydownloads.com by clicking the link below



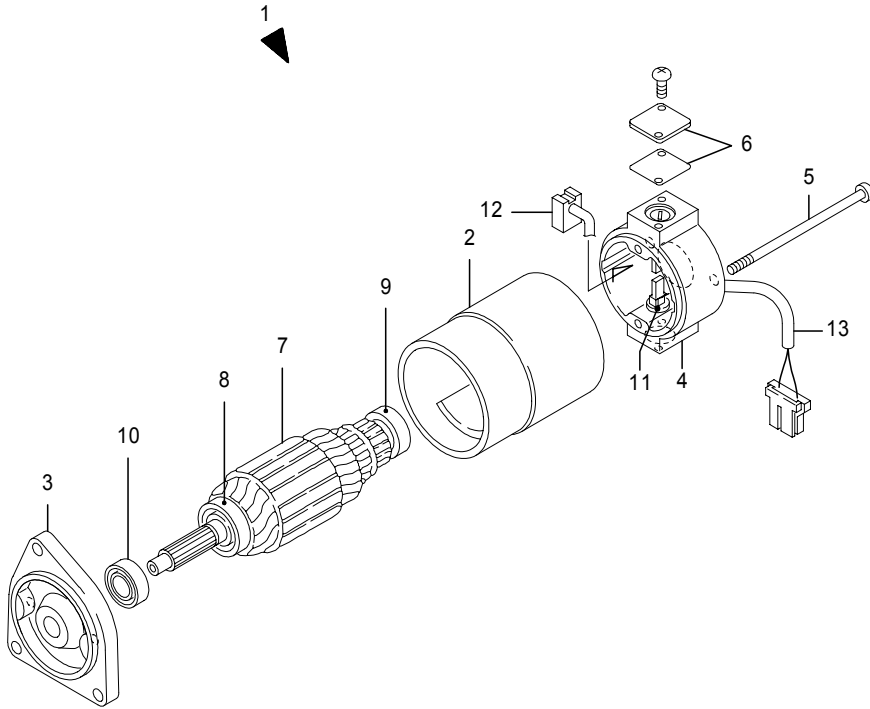
- Please note: If there is no response to CLICKING the link, please download this PDF first and then click on it.

CLICK HERE TO **DOWNLOAD** THE COMPLETE MANUAL

Fig.4073A EPS MOTOR
[FUJII],FBT10P-18P

Fig.4073A EPS MOTOR
[FUJII],FBT10P-18P

(A)= (D)=FBT18P
(B)=FBT13P (E)=
(C)=FBT15P (F)=



No.	Parts No.	Parts Name	(A)	(B)	(C)	(D)	(E)	(F)	i/a	Remarks
1	37410-01470	Motor ass'y	1	1	1					
2	37430-01700	Yoke ass'y	1	1	1					
3	37430-01710	Cover, D	1	1	1					
4	37430-01720	Cover, C	1	1	1					
5	37430-01730	Bolt	2	2	2					
6	37430-01740	Cover, brush	2	2	2					
7	37430-01880	Armature comp.	1	1	1					
8	37430-01750	Bearing, D	1	1	1					
9	37430-01760	Bearing, C	1	1	1					
10	37430-01810	Seal, oil	1	1	1					
11	37430-01800	Holder comp., brush	2	2	2					
12	37430-01790	Brush comp.	2	2	2					
13	37430-01780	Keep, wire	2	2	2					

Note : Location : See fig.1231

Fig.2165A CHAIN WHEEL(LIFT)[Mm]
FBT10P-18P

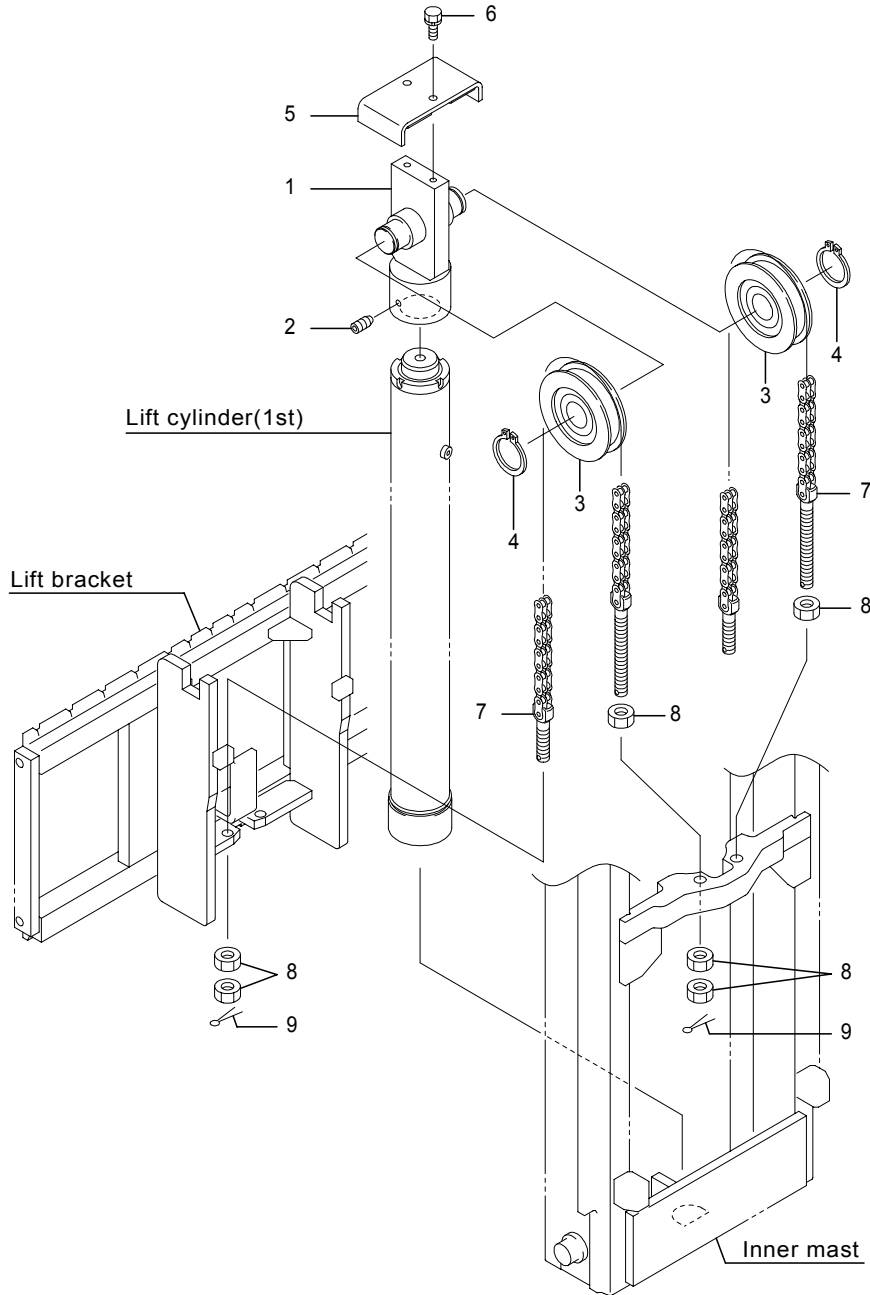


Fig.2165A CHAIN WHEEL(LIFT)[Mm]
FBT10P-18P

(A)= (D)=FBT18P
(B)=FBT13P (E)=
(C)=FBT15P (F)=

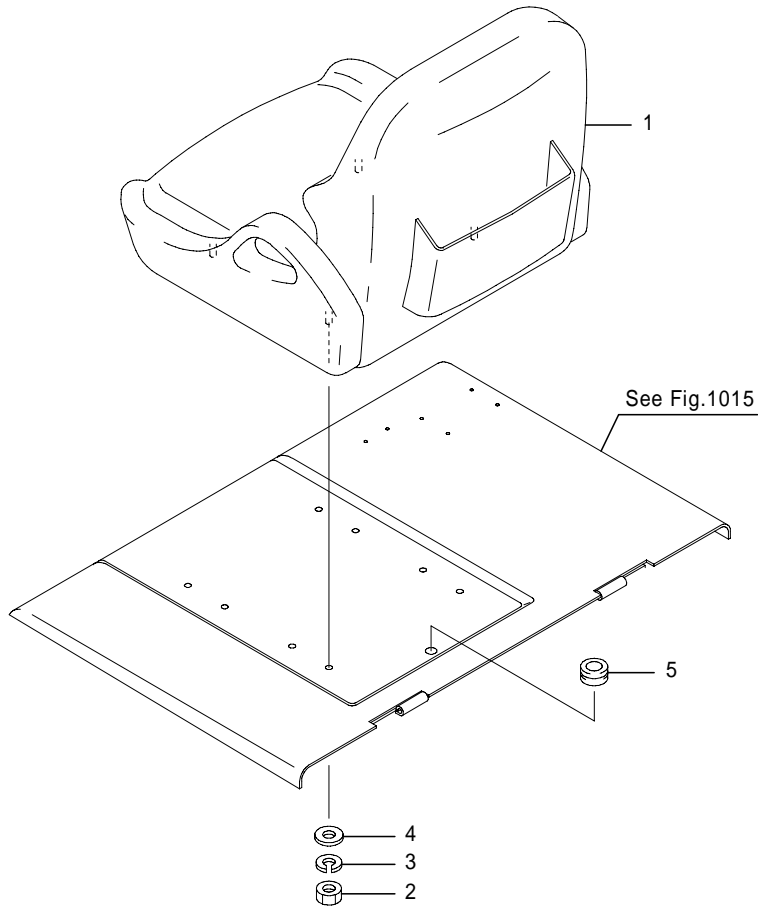
No.	Parts No.	Parts Name	(A)	(B)	(C)	(D)	(E)	(F)	i/a	Remarks
1	14604-85720	Support comp., chain	1	1	1					
2	31010-01700	Screw, set	1	1	1					
3	31220-05530	Wheel, chain	2	2	2					
4	0000-84035	Ring, snap	2	2	2					
5	14605-08330	Guard, chain	1	1	1					
6	0019-08016	Bolt, w/washer	2	2	2					
7	4038-05083	Chain comp., leaf	2	2	2					MLH3500,1st
	4038-05089	Chain comp., leaf	2	2	2					MLH3700,1st
	4038-05091	Chain comp., leaf	2	2	2					MLH4000,1st
	4038-05099	Chain comp., leaf	2	2	2					MLH4300,1st
	4038-05105	Chain comp., leaf	2	2	2					MLH4500,1st
	4038-05107	Chain comp., leaf	2	2	2					MLH4700,1st
	4038-05113	Chain comp., leaf	2	2	2					MLH5000,1st
	4038-05121	Chain comp., leaf	2	2	2					MLH5300,1st
	4038-05127	Chain comp., leaf	2	2	2					MLH5500,1st
	4038-05129	Chain comp., leaf	2	2	2					MLH5700,1st
	4038-05143	Chain comp., leaf	2	2	2					MLH6000,1st
	4038-05145	Chain comp., leaf	2	2	2					MLH6300,1st
	4038-05151	Chain comp., leaf	2	2	2					MLH6500,1st
	4038-05159	Chain comp., leaf	2	2	2					MLH6700,1st
	4038-05167	Chain comp., leaf	2	2	2					MLH7000,1st
8	0000-20016	Nut	10	10	10					
9	0302-40035	Pin, cotter	4	4	4					

Note :

Fig.1050A1 SEAT
 FBT13P(-215ZT0007), FBT15P/18P(-216ZT0051)

Fig.1050A1 SEAT
 FBT13P(-215ZT0007), FBT15P/18P(-216ZT0051)

(A)= (D)=FBT18P
 (B)=FBT13P (E)=
 (C)=FBT15P (F)=



No.	Parts No.	Parts Name	(A)	(B)	(C)	(D)	(E)	(F)	i/a	Remarks
1	70000-28750	Seat ass'y	1	1	1					w/[NICHIIYU] logo
	70000-28760	Seat ass'y	1	1	1					w/suspension, reclining & [NICHIIYU] logo,STD
	70000-28770	Seat ass'y	1	1	1					w/sensor & [NICHIIYU] logo
	70000-28780	Seat ass'y	1	1	1					
	70000-28790	Seat ass'y	1	1	1					
	70000-28800	Seat ass'y	1	1	1					w/suspension & reclining
	70000-28810	Seat ass'y	1	1	1					w/sensor
	70000-28820	Seat ass'y	1	1	1					w/suspension, reclining & sensor
2	0000-00008	Nut	4	4	4					
3	0000-70008	Washer, lock	4	4	4					
4	0000-72008	Washer, plain	4	4	4					
5	37920-00000	Bushing, rubber	1	1	1					

Note :

Fig.1140A FRONT WHEEL
[Pst/Pnst]

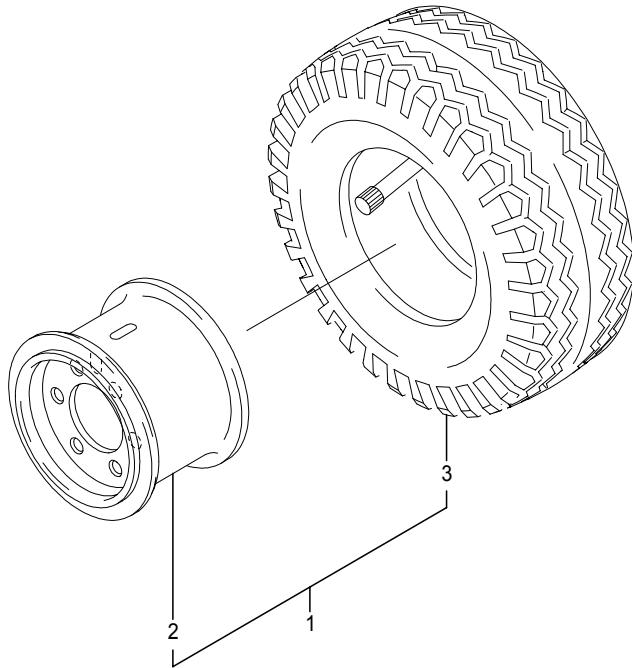


Fig.1140A FRONT WHEEL
[Pst/Pnst]

(A)= (D)=FBT18P
(B)=FBT13P (E)=
(C)=FBT15P (F)=

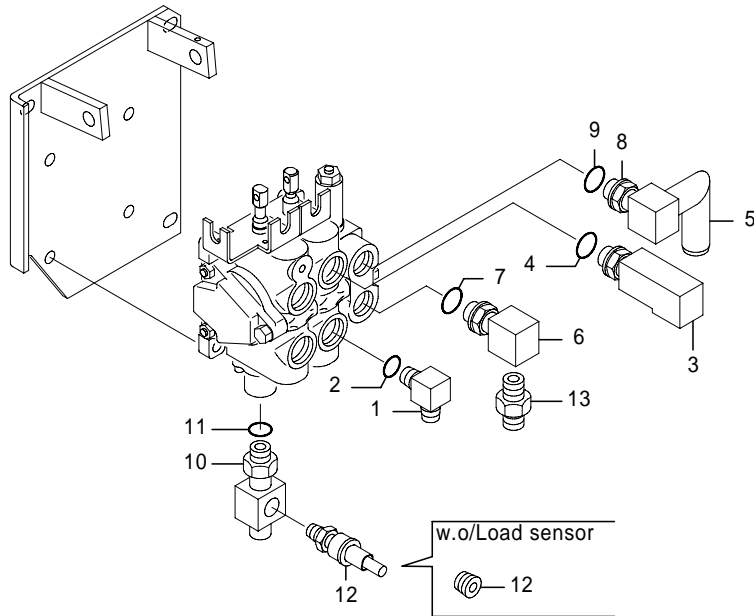
No.	Parts No.	Parts Name	(A)	(B)	(C)	(D)	(E)	(F)	i/a	Remarks
1	50005-90460	Wheel ass'y	1	1						Pst
	50005-90470	Wheel ass'y				1				Pst
	50005-81070	Wheel ass'y	1	1	1					Pnst
	50005-99230	Wheel ass'y	1	1	1					Pnst,車検仕様
2	70001-14380	Rim, wheel	1	1	1					Pst,4.33R-8 PCD130
	70001-14380	Rim, wheel	1	1	1					Pnst,4.33R-8 PCD130
	70001-21160	Rim, wheel	1	1	1					Pnst,4.33R-8 PCD130,車検仕様
3	32010-05880	Tire	1	1						Pst,18×7-8-14PR
	32010-05060	Tire				1				Pst,18×7-8-16PR
	32010-05390	Tire	1	1	1					Pnst(Opt),18×7-8MB320,車検仕様

Note :

Fig.1341A VALVE LINKAGE 2
2 SPOOLS

Fig.1341A VALVE LINKAGE 2
2 SPOOLS

(A)= (D)=FBT18P
(B)=FBT13P (E)=
(C)=FBT15P (F)=



No.	Parts No.	Parts Name	(A)	(B)	(C)	(D)	(E)	(F)	i/a	Remarks
1	4210-81101	Elbow 90°		1	1	1				
2	1916-05002	Ring, O		1	1	1				
3	4770-81210	Elbow 90°		1	1	1				
4	1916-05002	Ring, O		1	1	1				
5	50005-84570	Pipe, return		1	1	1				
6	31830-65470	Elbow		1	1	1				
7	1916-05001	Ring, O		1	1	1				
8	50003-20311	Elbow		1	1	1				
9	1916-05001	Ring, O		1	1	1				
10	70001-19980	Nipple		1	1	1				
10-1	70001-08512	Nipple		1	1	1			×	w/Load sensor
	(B=215ZT****-)(C=216ZT****-)(D=216ZT****-)									
11	1916-05002	Ring, O		1	1	1				
12	70000-51930	Transmitter, pressure		1	1	1				w/Load sensor
12-1	70001-13600	Transmitter, pressure		1	1	1			×	w/Load sensor
	(B=215ZT****-)(C=216ZT****-)(D=216ZT****-)									
12	0006-70002	Plug, screw		1	1	1				w.o/Load sensor
13	0004-30012	Nipple		1	1	1				

Note :

CLICK HERE TO **DOWNLOAD** THE COMPLETE MANUAL

- Thank you very much for reading the preview of the manual.
- You can download the complete manual from: www.heydownloads.com by clicking the link below



- Please note: If there is no response to CLICKING the link, please download this PDF first and then click on it.

CLICK HERE TO **DOWNLOAD** THE COMPLETE MANUAL

Fig.2054 TILT CYLINDER[Pm]

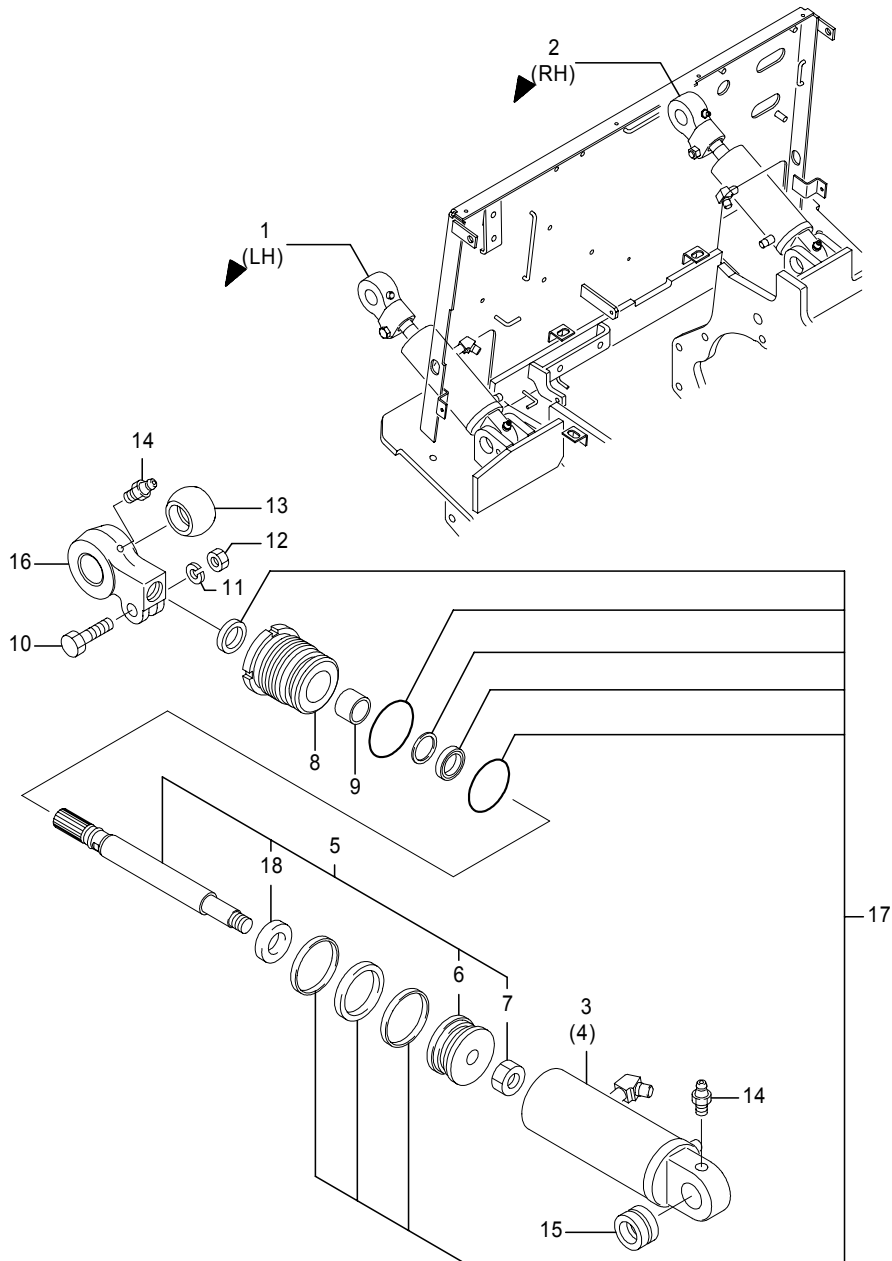


Fig.2054 TILT CYLINDER[Pm]

(A)= (D)=FBT18P
 (B)=FBT13P (E)=
 (C)=FBT15P (F)=

No.	Parts No.	Parts Name	(A)	(B)	(C)	(D)	(E)	(F)	i/a	Remarks
1	70001-08720	Cylinder(L) ass'y,tilt	1	1	1					5°/6°
	70001-19860	Cylinder(L) ass'y,tilt	1	1	1					3°/6°
	70001-19870	Cylinder(L) ass'y,tilt	1	1	1					1.5°/6°
	70001-19880	Cylinder(L) ass'y,tilt	1	1	1					5°/3°
	70001-24430	Cylinder(L) ass'y,tilt	1	1	1					3°/3°
2	70001-25200	Cylinder(L) ass'y,tilt	1	1	1					0°/6°
	70001-08730	Cylinder(R) ass'y,tilt	1	1	1					5°/6°
	70001-19890	Cylinder(R) ass'y,tilt	1	1	1					3°/6°
	70001-19900	Cylinder(R) ass'y,tilt	1	1	1					1.5°/6°
	70001-19910	Cylinder(R) ass'y,tilt	1	1	1					5°/3°
3	70001-24440	Cylinder(R) ass'y,tilt	1	1	1					3°/3°
	70001-25210	Cylinder(R) ass'y,tilt	1	1	1					0°/6°
3	70001-22910	Cylinder sub ass'y	1	1	1					LH
4	70001-22920	Cylinder sub ass'y	1	1	1					RH
5	70001-22840	Rod ass'y, piston	2	2	2					5°/6°,0°/6°
	70001-22850	Rod ass'y, piston	2	2	2					3°/6°
	70001-22860	Rod ass'y, piston	2	2	2					1.5°/6°
6	70001-22870	Rod ass'y, piston	2	2	2					5°/3°,3°/3°
	70001-22930	Piston	2	2	2					
7	70001-22940	Nut	2	2	2					
8	70001-22950	Head	2	2	2					
9	31851-37900	Bushing	2	2	2					
10	31851-38020	Bolt	2	2	2					
11	31851-38430	Washer	2	2	2					
12	31851-37650	Nut	2	2	2					
13	31851-37920	Bushing	2	2	2					
14	31851-37690	Nipple, grease	4	4	4					
15	70001-22990	Bushing	2	2	2					
16	31851-37960	Head	2	2	2					
17	70001-22900	KIT, seal	2	2	2					
18	31851-37300	Spacer	2	2	2					3°/6°
	70001-22880	Spacer	2	2	2					1.5°/6°
	70001-22890	Spacer	2	2	2					5°/3°
	****_****	Spacer	2	2	2					0°/6°,3°/3°

Note : Location : See Fig.2061

Fig.2061A OUTER MAST[Pm]
FBT10P-18P

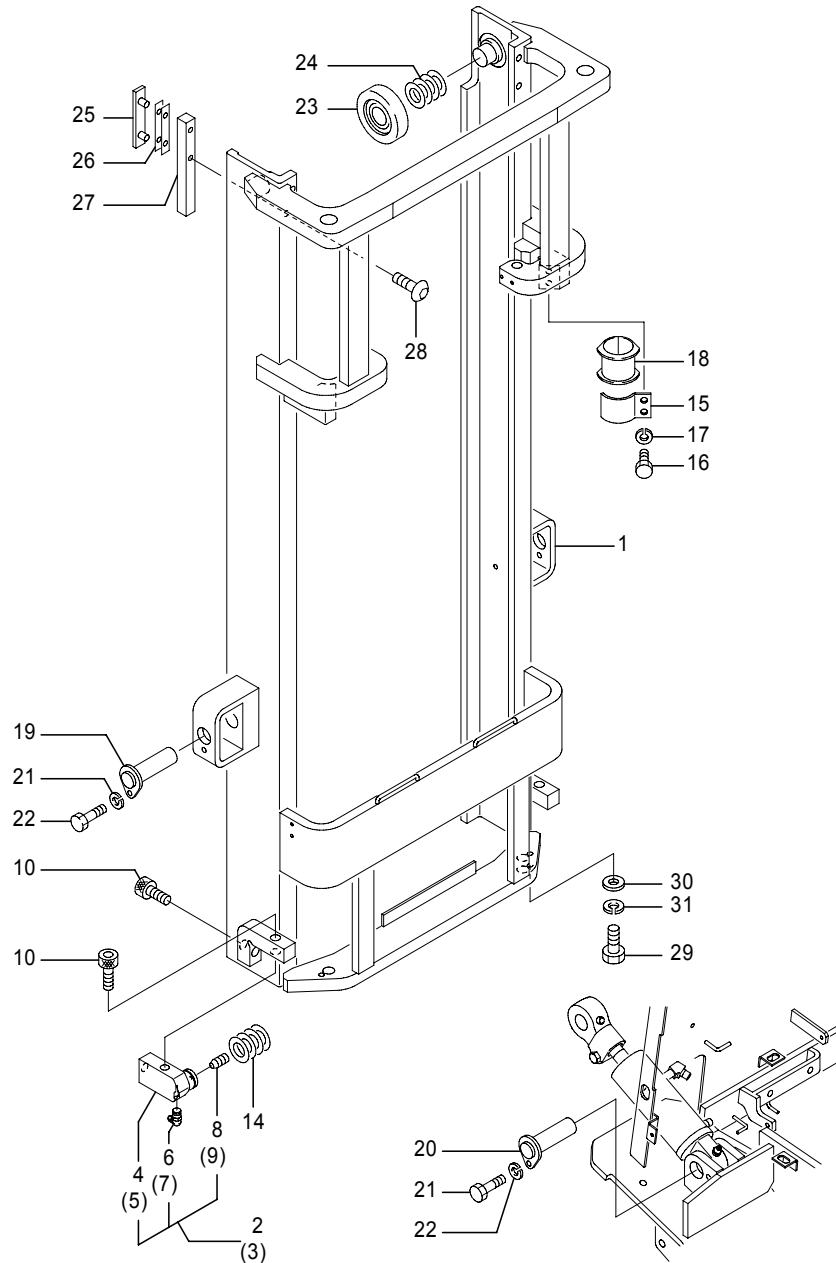


Fig.2061A OUTER MAST[Pm]
FBT10P-18P

(A)= (D)=FBT18P
(B)=FBT13P (E)=
(C)=FBT15P (F)=

No.	Parts No.	Parts Name	(A)	(B)	(C)	(D)	(E)	(F)	i/a	Remarks
1	52005-43740	Mast comp., outer	1	1	1					MLH2000
	52005-43750	Mast comp., outer	1	1	1					MLH2300
	52005-43760	Mast comp., outer	1	1	1					MLH2500
	52005-43770	Mast comp., outer	1	1	1					MLH2700
	52005-43780	Mast comp., outer	1	1	1					MLH3000
	52005-43790	Mast comp., outer	1	1	1					MLH3300
	52005-43800	Mast comp., outer	1	1	1					MLH3500
	52005-43810	Mast comp., outer	1	1	1					MLH3700
	52005-43820	Mast comp., outer	1	1	1					MLH4000
	52005-43830	Mast comp., outer	1	1	1					MLH4300
	52005-43840	Mast comp., outer	1	1	1					MLH4500
	52005-43850	Mast comp., outer	1	1	1					MLH4700
	52005-43860	Mast comp., outer	1	1	1					MLH5000
2	52005-30540	Pin comp.,mastsupport(L)	1	1	1					
3	52005-30550	Pin comp.,mastsupport(R)	1	1	1					
4	52004-42910	Pin, mast support(L)	1	1	1					
5	52004-42920	Pin, mast support(R)	1	1	1					
6	0280-11010	Nipple, grease	1	1	1					
7	0280-11010	Nipple, grease	1	1	1					
8	0210-06005	Screw, set	1	1	1					
9	0210-06005	Screw, set	1	1	1					
10	00273-16050	Screw, cap	4	4	4					
	70001-21140	Screw, cap	4	4	4					CS/RP
14	4301-67130	Shim	AR	AR	AR					t1.0
15	52002-52970	Band, cylinder	2	2	2					
16	0025-10020	Bolt	4	4	4					
17	0000-71010	Washer, lock	4	4	4					
18	52002-52990	Cushion, cylinder	2	2	2					
19	52004-42940	Pin, tilt	2	2	2					
20	14600-27742	Pin, tilt	2	2	2					
21	0020-10020	Bolt	2	2	2					
	0024-10020	Bolt	2	2	2					CS/RP
22	0000-70010	Washer, lock	2	2	2					
	0000-50010	Washer, lock	2	2	2					CS/RP
23	31220-10610	Roller	2	2	2					

Note :

Fig.2261A OUTER MAST[Fm]
FBT10-18P

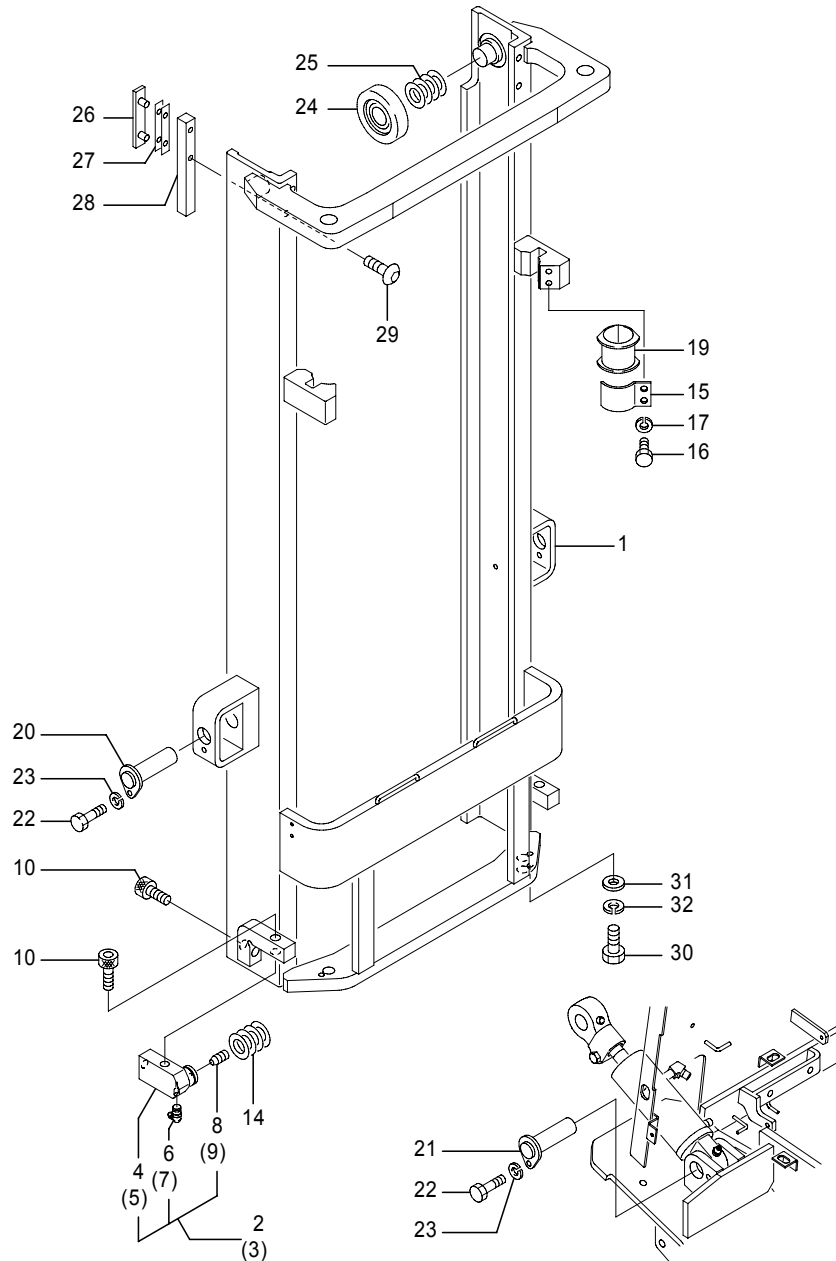


Fig.2261A OUTER MAST[Fm]
FBT10-18P

(A)= (D)=FBT18P
(B)=FBT13P (E)=
(C)=FBT15P (F)=

No.	Parts No.	Parts Name	(A)	(B)	(C)	(D)	(E)	(F)	i/a	Remarks
24	31220-10780	Roller	(2)	(2)	(2)					
	70000-62810	Roller, mast	(2)	(2)	(2)					
25	4301-67180	Shim	AR	AR	AR					t0.2
	4301-67140	Shim	AR	AR	AR					t0.5
	4301-67130	Shim	AR	AR	AR					t1.0
	4301-67170	Shim	AR	AR	AR					t2.0
26	14600-91230	Shoe, back	2	2	2					
27	4624-60410	Shim, back shoe	AR	AR	AR					t0.5
	4624-60420	Shim, back shoe	AR	AR	AR					t1.0
28	52000-77302	Spacer, back shoe	2	2	2					
29	70000-32210	Bolt, hex.soc.but.head	4	4	4					
30	0020-10040	Bolt	2	2	2					
31	0000-72010	Washer, plain	2	2	2					
32	0000-70010	Washer, lock	2	2	2					

Note :

Fig.5000C ACCESSORY
REVOLVING LAMP(LED)

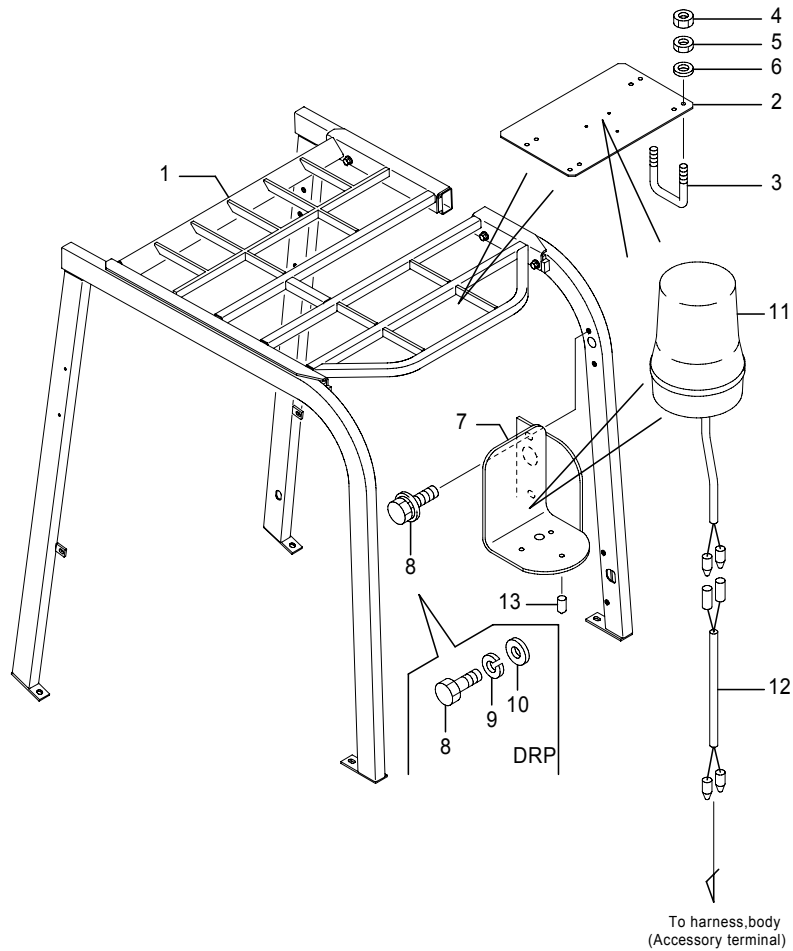


Fig.5000C ACCESSORY
REVOLVING LAMP(LED)

(A)= (D)=FBT18P
(B)=FBT13P (E)=
(C)=FBT15P (F)=

No.	Parts No.	Parts Name	(A)	(B)	(C)	(D)	(E)	(F)	i/a	Remarks
1	50006-04481	Guard sub ass'y	1							w/rear combination lamp
	50006-04491	Guard sub ass'y		1	1					w/rear combination lamp
	50006-04511	Guard sub ass'y	1							w.o/rear combination lamp
	50006-04521	Guard sub ass'y		1	1					w.o/rear combination lamp
2	50006-04730	Bracket, lamp	1	1	1					*1
3	14401-01130	Bolt, U	1	1	1					*1
	50004-51410	Bolt, U	1	1	1					DRP,*1
4	0000-05006	Nut	2	2	2					*1
	0000-04006	Nut	2	2	2					DRP,*1
5	0000-15006	Nut, jam	2	2	2					*1
	0000-14006	Nut, jam	2	2	2					DRP,*1
6	0000-73006	Washer, plain	2	2	2					*1
	0000-52006	Washer, plain	2	2	2					DRP,*1
7	50004-51480	Bracket, lamp	1	1	1					*2
8	0018-08025	Bolt, w/washers	2	2	2					*2
	0014-08025	Bolt	2	2	2					DRP,*2
9	0000-50008	Washer, lock	2	2	2					DRP,*2
10	0000-52008	Washer, plain	2	2	2					DRP,*2
11	70000-93120	Lamp, revolving	1	1	1					
12	24801-09920	Harness, accessory	1	1	1					

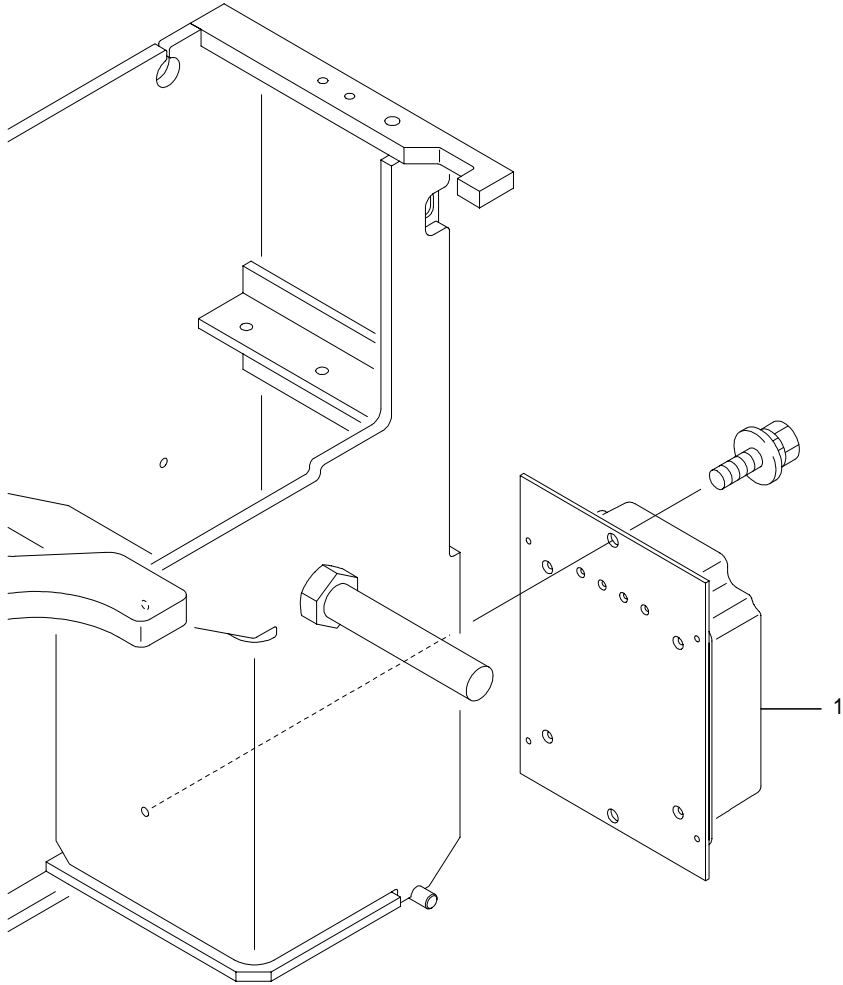
Note : *1:Revolving lamp upper overhead guard type
*2:Revolving lamp hanging type

Fig.4500 EPS CONTROLLER

Fig.4500 EPS CONTROLLER

(A)= (D)=FBT18P
 (B)=FBT13P (E)=
 (C)=FBT15P (F)=

No.	Parts No.	Parts Name	(A)	(B)	(C)	(D)	(E)	(F)	i/a	Remarks
1	54000-90913	Controller ass'y, EPS	1	1	1					CU106-44D
	54001-29232	Controller ass'y, EPS	1	1	1					CU106-45B,CS



Note :

Fig.4825 DIRECTIONAL SWITCH

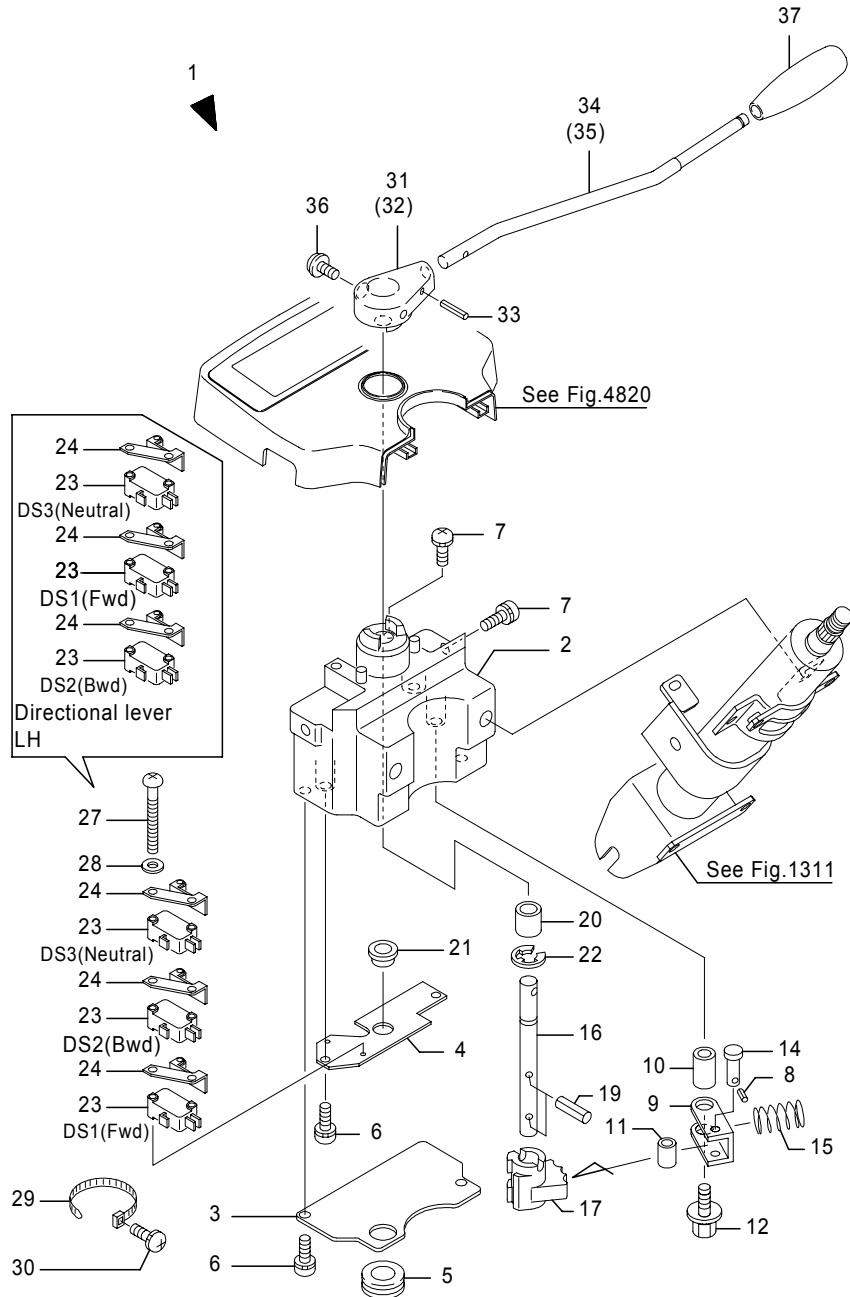


Fig.4825 DIRECTIONAL SWITCH

(A)= (D)=FBT18P
(B)=FBT13P (E)=
(C)=FBT15P (F)=

No.	Parts No.	Parts Name	(A)	(B)	(C)	(D)	(E)	(F)	i/a	Remarks
1	54000-89321	Switch comp.,directional	1	1	1					RH lever
	54001-20731	Switch comp.,directional	1	1	1					RH lever, CS
	54001-20741	Switch comp.,directional	1	1	1					LH lever, Opt
	54001-20751	Switch comp.,directional	1	1	1					LH lever, CS,Opt
2	54000-89360	Case	1	1	1					
3	24300-19720	Cover, case	1	1	1					CS
4	54000-89331	Plate, switch	1	1	1					
5	32390-10160	Bushing, rubber	1	1	1					
6	0077-05010	Screw, w/washer	2	2	2					
	0077-05010	Screw, w/washer	4	4	4					CS
7	0077-05010	Screw, w/washer	2	2	2					
8	00001-00004	Pin, snap	1	1	1					
9	24300-19740	Arm	1	1	1					
10	24300-19750	Spacer	1	1	1					
11	70001-20140	Spacer	1	1	1					
12	0016-06025	Bolt, w/washers	1	1	1					
14	24300-22610	Pin, roller	1	1	1					
15	24300-44040	Spring	1	1	1					
16	54000-89350	Shaft	1	1	1					
17	24300-19790	Cam(A)	1	1	1					
19	0303-04020	Pin, spring	2	2	2					
20	31220-11290	Bushing	1	1	1					
21	31220-11360	Bushing	1	1	1					
22	0000-88009	Ring, snap	1	1	1					
23	70001-49480	Switch, micro	3	3	3					
24	1910-52013	Actuator	3	3	3					
27	0070-03040	Screw, pan head	2	2	2					
28	0000-70003	Washer, lock	2	2	2					
29	1960-85082	Band	1	1	1					
30	0077-05010	Screw, w/washer	1	1	1					
31	24300-37981	Boss(R), lever	1	1	1					RH lever
32	24300-37991	Boss(L), lever	1	1	1					LH lever,Opt
33	0303-03020	Pin, spring	1	1	1					
34	24300-37962	Lever(R)	1	1	1					RH lever
35	24300-37972	Lever(L)	1	1	1					LH lever,Opt

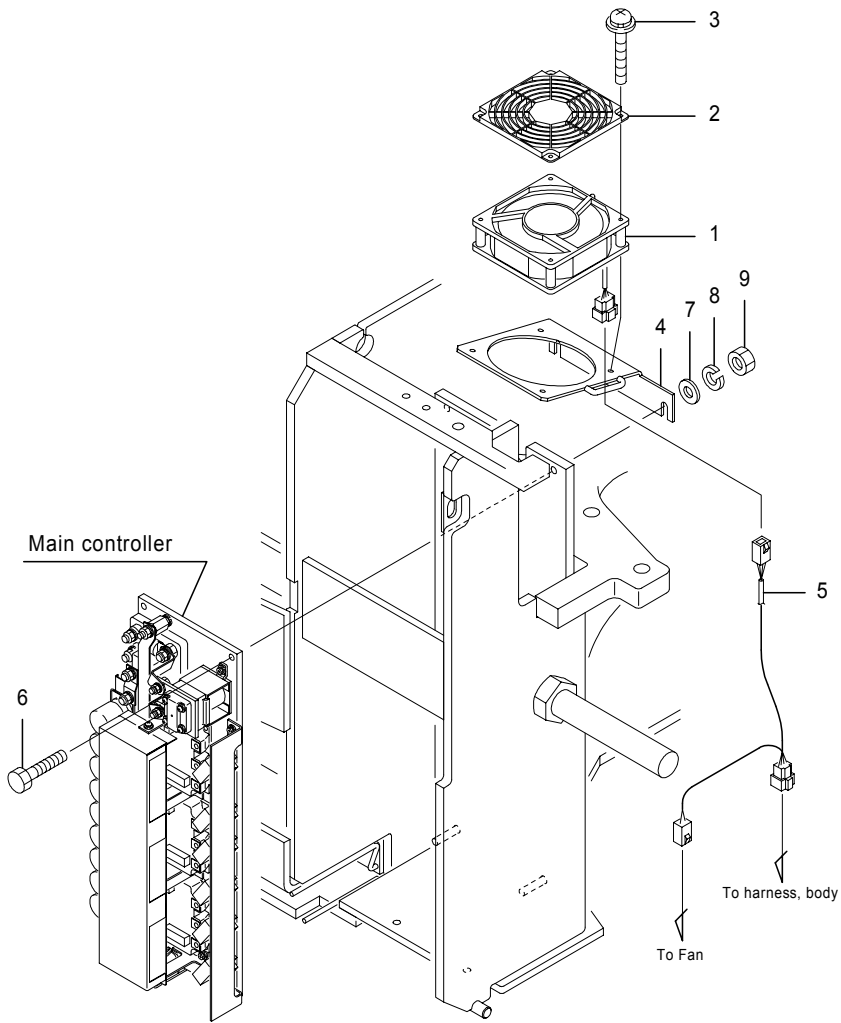
Note : Illustration : Flasher lever is LH & Directional lever is RH.

*1:Install to No.2 for clamping electric wire.

Fig.4862 ELECTRIC PARTS 3
[FAN],EEC

Fig.4862 ELECTRIC PARTS 3
[FAN],EEC

(A)= (D)=FBT18P
(B)=FBT13P (E)=
(C)=FBT15P (F)=



No.	Parts No.	Parts Name	(A)	(B)	(C)	(D)	(E)	(F)	i/a	Remarks
1	70000-26511	Fan	1	1	1					
2	70000-22910	Guard, finger	1	1	1					
3	0075-04045	Screw, w/washers	4	4	4					
4	50006-12890	Bracket, fan	1	1	1					
5	54001-26190	Harness, fan	1	1	1					
6	0110-08050	Bolt	2	2	2					
7	0000-72008	Washer, plain	2	2	2					
8	0000-70008	Washer, lock	2	2	2					
9	0000-00008	Nut	2	2	2					

Note :

CLICK HERE TO **DOWNLOAD** THE COMPLETE MANUAL

- Thank you very much for reading the preview of the manual.
- You can download the complete manual from: www.heydownloads.com by clicking the link below



- Please note: If there is no response to CLICKING the link, please download this PDF first and then click on it.

CLICK HERE TO **DOWNLOAD** THE COMPLETE MANUAL