

Fig.2053B LIFT CYLINDER[Pm]
 FBT10P-18P[Std:MLH>5000][CS/FCS/RP/DRP:MLH<=5000]

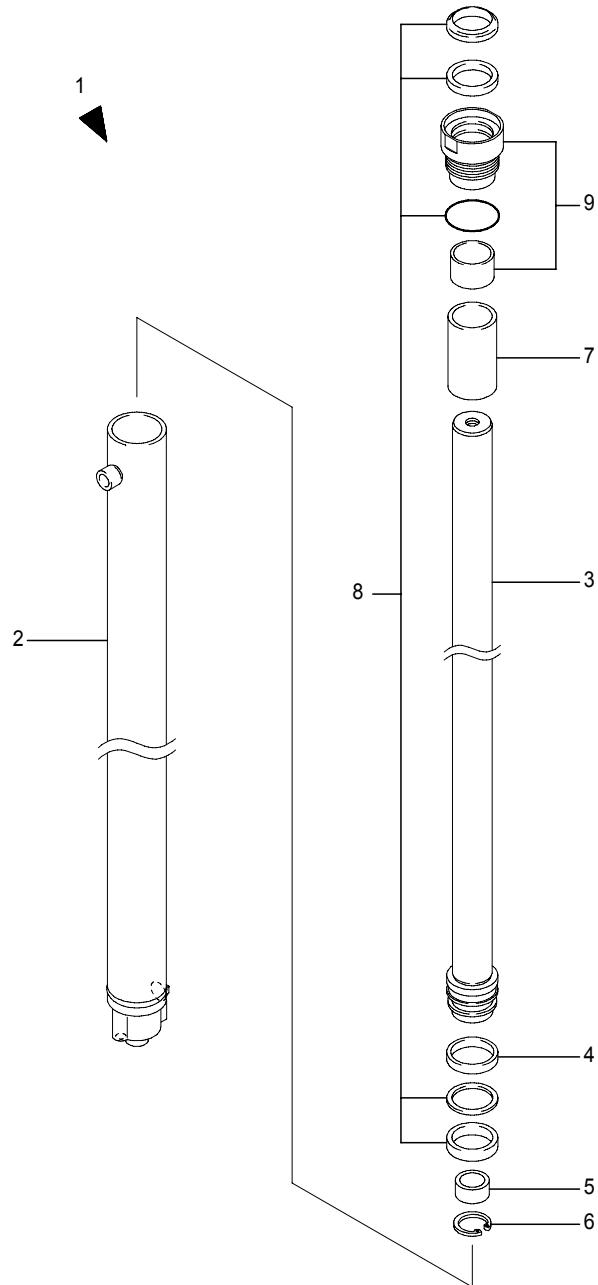


Fig.2053B LIFT CYLINDER[Pm]
 FBT10P-18P[Std:MLH>5000][CS/FCS/RP/DRP:MLH<=5000]

(A)=FBT10P (D)=FBT18P
 (B)=FBT13P (E)=FBT20PN
 (C)=FBT15P (F)=

No.	Parts No.	Parts Name	(A)	(B)	(C)	(D)	(E)	(F)	i/a	Remarks
1	31850-22240	Cylinder ass'y, lift	2	2	2	2				MLH2000,CS/FCS/RP/DRP
	31850-22250	Cylinder ass'y, lift	2	2	2	2				MLH2300,CS/FCS/RP/DRP
	31850-22260	Cylinder ass'y, lift	2	2	2	2				MLH2500,CS/FCS/RP/DRP
	31850-22270	Cylinder ass'y, lift	2	2	2	2				MLH2700,CS/FCS/RP/DRP
	31850-22280	Cylinder ass'y, lift	2	2	2	2				MLH3000,CS/FCS/RP/DRP
	31850-22290	Cylinder ass'y, lift	2	2	2	2				MLH3300,CS/FCS/RP/DRP
	31850-22300	Cylinder ass'y, lift	2	2	2	2				MLH3500,CS/FCS/RP/DRP
	31850-22310	Cylinder ass'y, lift	2	2	2	2				MLH3700,CS/FCS/RP/DRP
	31850-22320	Cylinder ass'y, lift	2	2	2	2				MLH4000,CS/FCS/RP/DRP
	31850-22330	Cylinder ass'y, lift	2	2	2	2				MLH4300,CS/FCS/RP/DRP
	31850-22340	Cylinder ass'y, lift	2	2	2	2				MLH4500,CS/FCS/RP/DRP
	31850-22350	Cylinder ass'y, lift	2	2	2	2				MLH4700,CS/FCS/RP/DRP
	31850-22360	Cylinder ass'y, lift	2	2	2	2				MLH5000,CS/FCS/RP/DRP
31850-22370	Cylinder ass'y, lift	2	2	2	2				MLH5300,Std	
31850-22380	Cylinder ass'y, lift	2	2	2	2				MLH5500,Std	
2	31851-17850	Tube ass'y, cylinder	2	2	2	2				MLH2000,CS/FCS/RP/DRP
	31851-17860	Tube ass'y, cylinder	2	2	2	2				MLH2300,CS/FCS/RP/DRP
	31851-17870	Tube ass'y, cylinder	2	2	2	2				MLH2500,CS/FCS/RP/DRP
	31851-17880	Tube ass'y, cylinder	2	2	2	2				MLH2700,CS/FCS/RP/DRP
	31851-17890	Tube ass'y, cylinder	2	2	2	2				MLH3000,CS/FCS/RP/DRP
	31851-17900	Tube ass'y, cylinder	2	2	2	2				MLH3300,CS/FCS/RP/DRP
	31851-17910	Tube ass'y, cylinder	2	2	2	2				MLH3500,CS/FCS/RP/DRP
	31851-17920	Tube ass'y, cylinder	2	2	2	2				MLH3700,CS/FCS/RP/DRP
	31851-17930	Tube ass'y, cylinder	2	2	2	2				MLH4000,CS/FCS/RP/DRP
	31851-17940	Tube ass'y, cylinder	2	2	2	2				MLH4300,CS/FCS/RP/DRP
	31851-17950	Tube ass'y, cylinder	2	2	2	2				MLH4500,CS/FCS/RP/DRP
	31851-17960	Tube ass'y, cylinder	2	2	2	2				MLH4700,CS/FCS/RP/DRP
	31851-17970	Tube ass'y, cylinder	2	2	2	2				MLH5000,CS/FCS/RP/DRP
31851-17980	Tube ass'y, cylinder	2	2	2	2				MLH5300,Std	
31851-17990	Tube ass'y, cylinder	2	2	2	2				MLH5500,Std	
3	31851-17390	Rod ass'y, piston	2	2	2	2				MLH2000,CS/FCS/RP/DRP
	31851-17400	Rod ass'y, piston	2	2	2	2				MLH2300,CS/FCS/RP/DRP
	31851-17410	Rod ass'y, piston	2	2	2	2				MLH2500,CS/FCS/RP/DRP
	31851-17420	Rod ass'y, piston	2	2	2	2				MLH2700,CS/FCS/RP/DRP
	31851-17430	Rod ass'y, piston	2	2	2	2				MLH3000,CS/FCS/RP/DRP

Note :

CLICK HERE TO **DOWNLOAD** THE COMPLETE MANUAL

- Thank you very much for reading the preview of the manual.
- You can download the complete manual from: www.heydownloads.com by clicking the link below



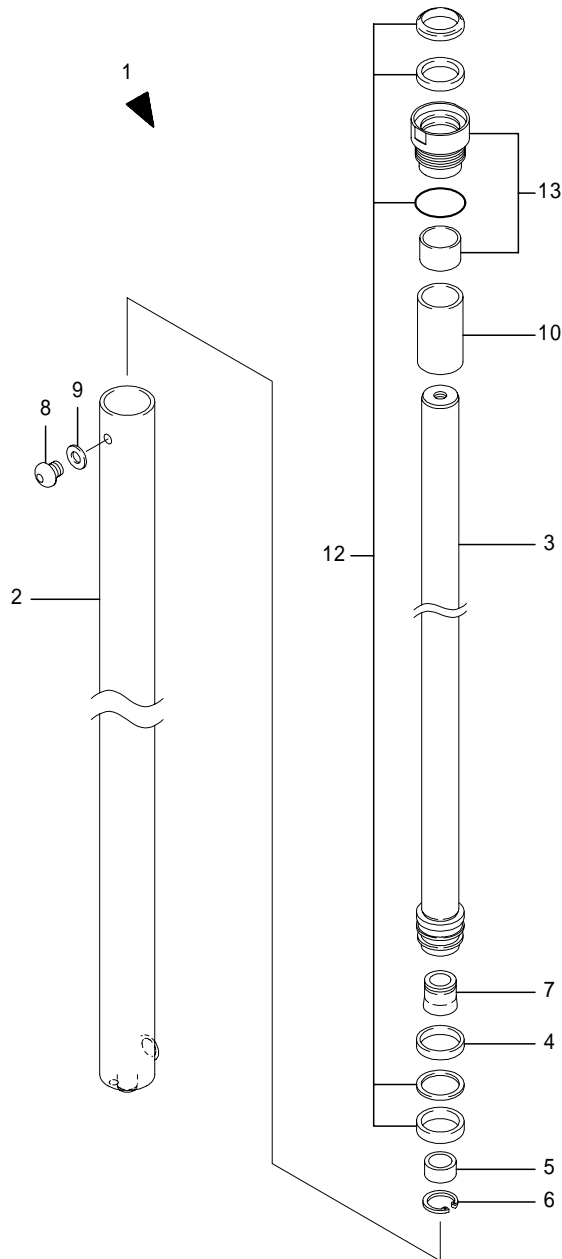
- Please note: If there is no response to CLICKING the link, please download this PDF first and then click on it.

CLICK HERE TO **DOWNLOAD** THE COMPLETE MANUAL

Fig.2153A LIFT CYLINDER(2nd)[Mm]
FBT10P-18P[Std:MLH<=5000]

Fig.2153A LIFT CYLINDER(2nd)[Mm]
FBT10P-18P[Std:MLH<=5000]

(A)=FBT10P (D)=FBT18P
(B)=FBT13P (E)=FBT20PN
(C)=FBT15P (F)=



No.	Parts No.	Parts Name	(A)	(B)	(C)	(D)	(E)	(F)	i/a	Remarks
1	31850-57440	Cylinder ass'y, lift	2	2	2	2				MLH3500
	31850-57450	Cylinder ass'y, lift	2	2	2	2				MLH3700
	31850-57460	Cylinder ass'y, lift	2	2	2	2				MLH4000
	31850-57470	Cylinder ass'y, lift	2	2	2	2				MLH4300
	31850-57480	Cylinder ass'y, lift	2	2	2	2				MLH4500
	31850-57490	Cylinder ass'y, lift	2	2	2	2				MLH4700
	31850-57500	Cylinder ass'y, lift	2	2	2	2				MLH5000
2	31850-61480	Tube ass'y, cylinder	2	2	2	2				MLH3500
	31850-61490	Tube ass'y, cylinder	2	2	2	2				MLH3700
	31850-61500	Tube ass'y, cylinder	2	2	2	2				MLH4000
	31850-61510	Tube ass'y, cylinder	2	2	2	2				MLH4300
	31850-61520	Tube ass'y, cylinder	2	2	2	2				MLH4500
	31850-61530	Tube ass'y, cylinder	2	2	2	2				MLH4700
	31850-61540	Tube ass'y, cylinder	2	2	2	2				MLH5000
3	31850-61630	Rod ass'y, piston	2	2	2	2				MLH3500
	31850-61640	Rod ass'y, piston	2	2	2	2				MLH3700
	31850-61650	Rod ass'y, piston	2	2	2	2				MLH4000
	31850-61660	Rod ass'y, piston	2	2	2	2				MLH4300
	31850-61670	Rod ass'y, piston	2	2	2	2				MLH4500
	31850-61680	Rod ass'y, piston	2	2	2	2				MLH4700
	31850-61690	Rod ass'y, piston	2	2	2	2				MLH5000
4	31851-28620	Bushing	2	2	2	2				
5	31850-62350	Cushion, bearing	2	2	2	2				
6	31851-28980	Ring, snap	2	2	2	2				
7	31851-32200	Valve, check	2	2	2	2				
8	31851-32210	Plug	2	2	2	2				
9	31850-62360	Gasket	2	2	2	2				
10	31851-30010	Spacer	2	2	2	2				MLH3500/4700/5000
	31851-30030	Spacer	2	2	2	2				MLH3700
	31851-30020	Spacer	2	2	2	2				MLH4500
12	31850-62370	KIT, repair	2	2	2	2				
13	31850-62380	KIT, head	2	2	2	2				

Note :

Fig.2253A LIFT CYLINDER(2nd)[Fm]
FBT10-18P

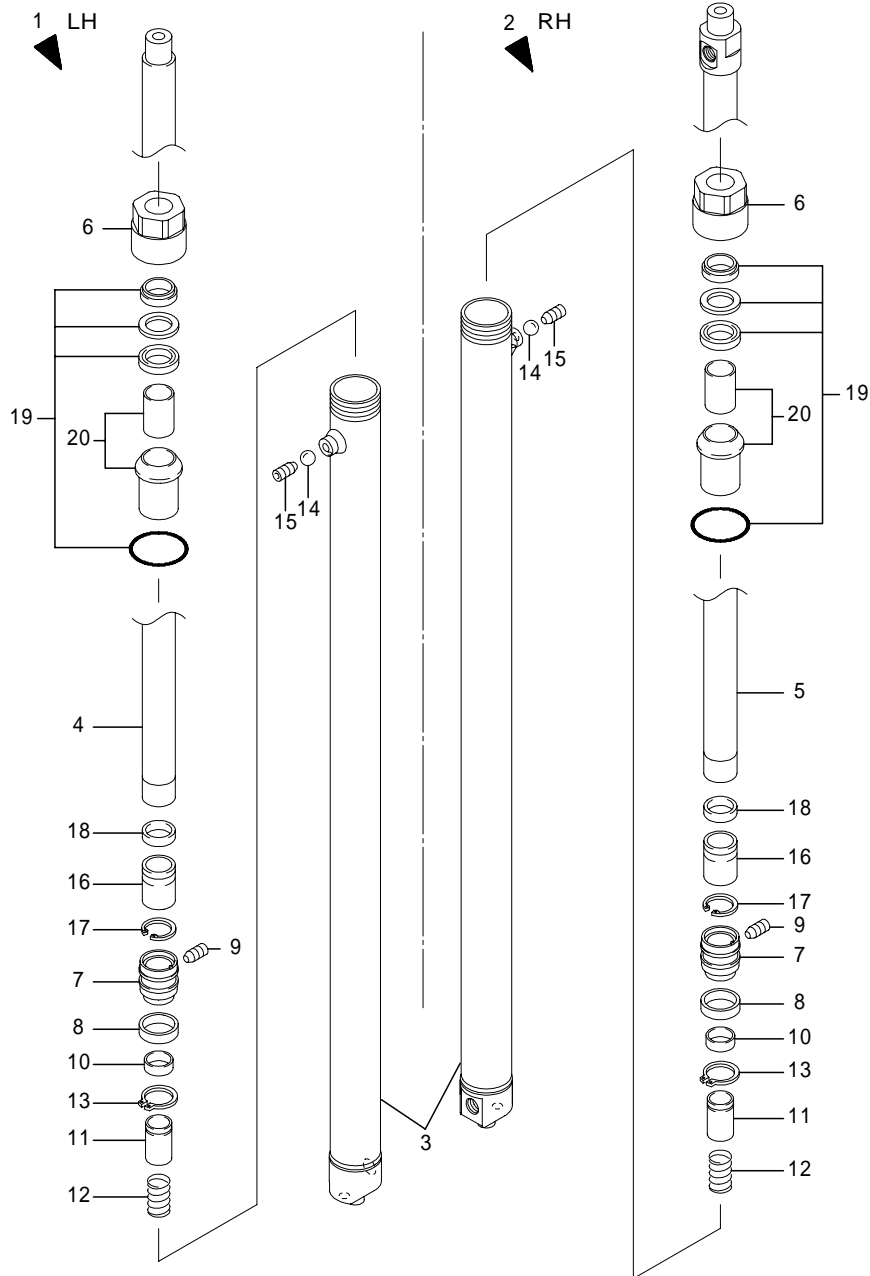


Fig.2253A LIFT CYLINDER(2nd)[Fm]
FBT10-18P

(A)=FBT10P (D)=FBT18P
(B)=FBT13P (E)=FBT20PN
(C)=FBT15P (F)=

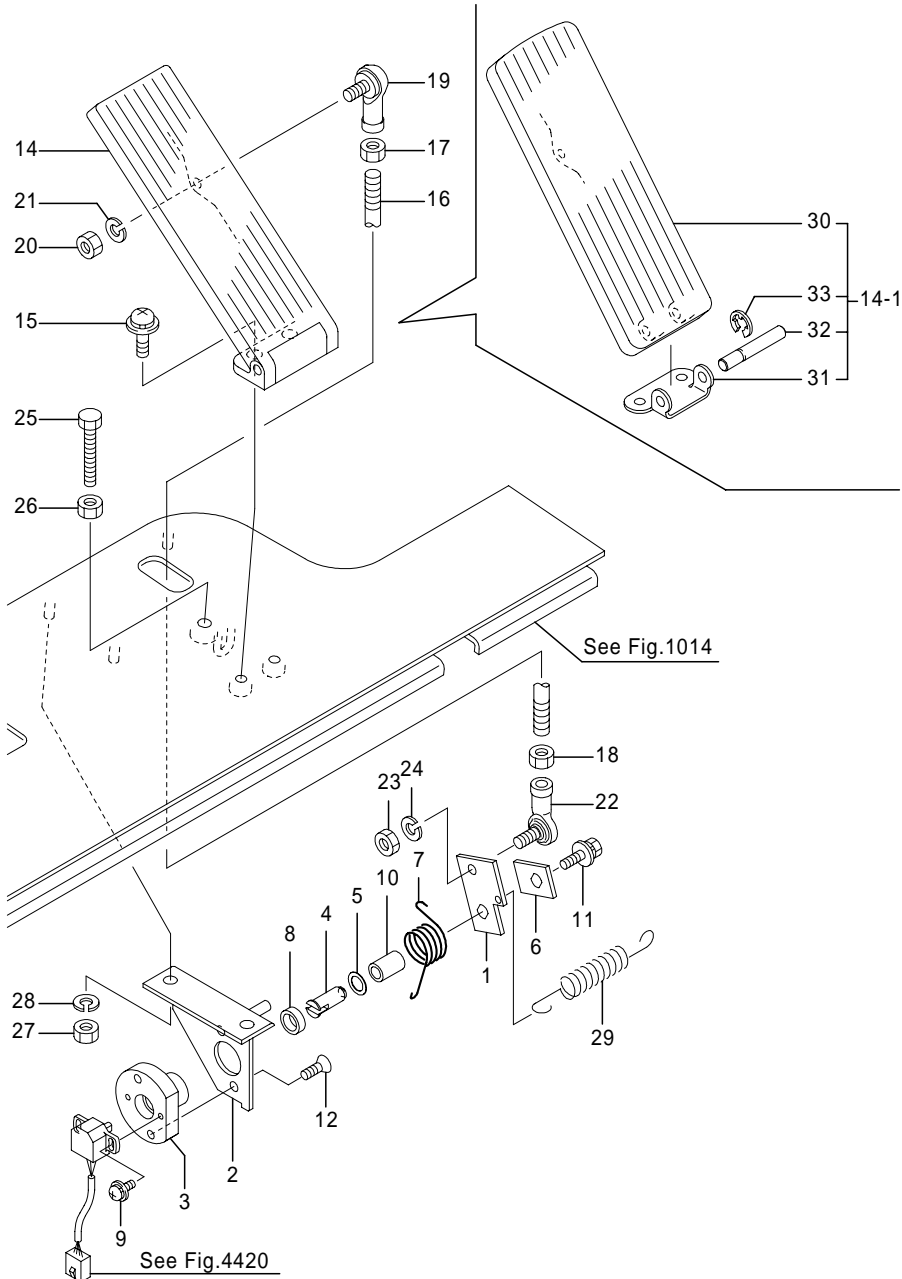
No.	Parts No.	Parts Name	(A)	(B)	(C)	(D)	(E)	(F)	i/a	Remarks
1	31850-23760	Cylinder(L) ass'y, lift	1	1	1	1				MLH2000
	31850-23770	Cylinder(L) ass'y, lift	1	1	1	1				MLH2300
	31850-23780	Cylinder(L) ass'y, lift	1	1	1	1				MLH2500
	31850-23790	Cylinder(L) ass'y, lift	1	1	1	1				MLH2700
	31850-23800	Cylinder(L) ass'y, lift	1	1	1	1				MLH3000
	31850-23810	Cylinder(L) ass'y, lift	1	1	1	1				MLH3300
	31850-23820	Cylinder(L) ass'y, lift	1	1	1	1				MLH3500
	31850-23830	Cylinder(L) ass'y, lift	1	1	1	1				MLH3700
	31850-23840	Cylinder(L) ass'y, lift	1	1	1	1				MLH4000
	31850-23850	Cylinder(L) ass'y, lift	1	1	1	1				MLH4300
	31850-23860	Cylinder(L) ass'y, lift	1	1	1	1				MLH4500
	31850-23870	Cylinder(L) ass'y, lift	1	1	1	1				MLH4700
2	31850-23630	Cylinder(R) ass'y, lift	1	1	1	1				MLH2000
	31850-23640	Cylinder(R) ass'y, lift	1	1	1	1				MLH2300
	31850-23650	Cylinder(R) ass'y, lift	1	1	1	1				MLH2500
	31850-23660	Cylinder(R) ass'y, lift	1	1	1	1				MLH2700
	31850-23670	Cylinder(R) ass'y, lift	1	1	1	1				MLH3000
	31850-23680	Cylinder(R) ass'y, lift	1	1	1	1				MLH3300
	31850-23690	Cylinder(R) ass'y, lift	1	1	1	1				MLH3500
	31850-23700	Cylinder(R) ass'y, lift	1	1	1	1				MLH3700
	31850-23710	Cylinder(R) ass'y, lift	1	1	1	1				MLH4000
	31850-23720	Cylinder(R) ass'y, lift	1	1	1	1				MLH4300
	31850-23730	Cylinder(R) ass'y, lift	1	1	1	1				MLH4500
	31850-23740	Cylinder(R) ass'y, lift	1	1	1	1				MLH4700
3	31850-23750	Cylinder(R) ass'y, lift	1	1	1	1				MLH5000
	31851-22740	Tube ass'y, cylinder	2	2	2	2				MLH2000
	31851-22750	Tube ass'y, cylinder	2	2	2	2				MLH2300
	31851-22760	Tube ass'y, cylinder	2	2	2	2				MLH2500
	31851-22770	Tube ass'y, cylinder	2	2	2	2				MLH2700
	31851-22780	Tube ass'y, cylinder	2	2	2	2				MLH3000
	31851-22790	Tube ass'y, cylinder	2	2	2	2				MLH3300
	31851-22800	Tube ass'y, cylinder	2	2	2	2				MLH3500
	31851-22810	Tube ass'y, cylinder	2	2	2	2				MLH3700
	31851-22820	Tube ass'y, cylinder	2	2	2	2				MLH4000

Note :

Fig.1350 ACCELERATOR LINKAGE

Fig.1350 ACCELERATOR LINKAGE

(A)=FBT10P (D)=FBT18P
 (B)=FBT13P (E)=FBT20PN
 (C)=FBT15P (F)=



No.	Parts No.	Parts Name	(A)	(B)	(C)	(D)	(E)	(F)	i/a	Remarks
1	50001-45320	Lever	1	1	1	1	1			
2	50001-45331	Bracket	1	1	1	1	1			
2-1	50001-45332	Bracket	1	1	1	1	1		↑	(A=215AF0137-)(B=215AF0137-)(C=216AF0398-)(D=216AF0398-)(E=288AD0077-)
3	50001-21351	Case	1	1	1	1	1			
4	50000-88011	Shaft	1	1	1	1	1			
5	50000-88020	Shim,washer	1	1	1	1	1			
6	50000-90030	Plate	1	1	1	1	1			
7	50000-88031	Spring	1	1	1	1	1			
8	50001-13520	Spacer	1	1	1	1	1			
9	0075-04012	Screw, w/washers	2	2	2	2	2			
10	1902-55059	Bushing	1	1	1	1	1			
11	0016-06012	Bolt, w/washers	1	1	1	1	1			
12	0084-06014	Screw, flat head	2	2	2	2	2			
14	32050-02670	Pedal	1	1	1	1	1			
14-1	50005-60450	PedalASS'Y, accel	1	1	1	1	1		↓	(A=215AF****-)(B=215AF****-)(C=216AF****-)(D=216AF****-)(E=288AD****-)
14-2	50005-60452	PedalASS'Y, accel	1	1	1	1	1		↑	(A=215AF0342-)(B=215AF0342-)(C=216AF1045-)(D=216AF1045-)(E=288AD0180-)
15	0077-06016	Screw, w/washer	2	2	2	2	2			
16	50001-47950	Rod	1	1	1	1	1			
17	0000-10006	Nut, jam	1	1	1	1	1			
18	0000-10906	Nut(L), jam	1	1	1	1	1			
19	31610-00460	Ball, link	1	1	1	1	1			
20	0000-00006	Nut	1	1	1	1	1			
21	0000-70006	Washer, lock	1	1	1	1	1			
22	31610-00470	Ball, link	1	1	1	1	1			
23	0000-00006	Nut	1	1	1	1	1			
24	0000-70006	Washer, lock	1	1	1	1	1			
25	0110-08045	Bolt	1	1	1	1	1			
26	0000-10008	Nut, jam	1	1	1	1	1			
27	0000-00008	Nut	2	2	2	2	2			
28	0000-70008	Washer, lock	2	2	2	2	2			
29	50001-39610	Spring	1	1	1	1	1			

Note :

Fig.1014 PAD & FLOOR PLATE

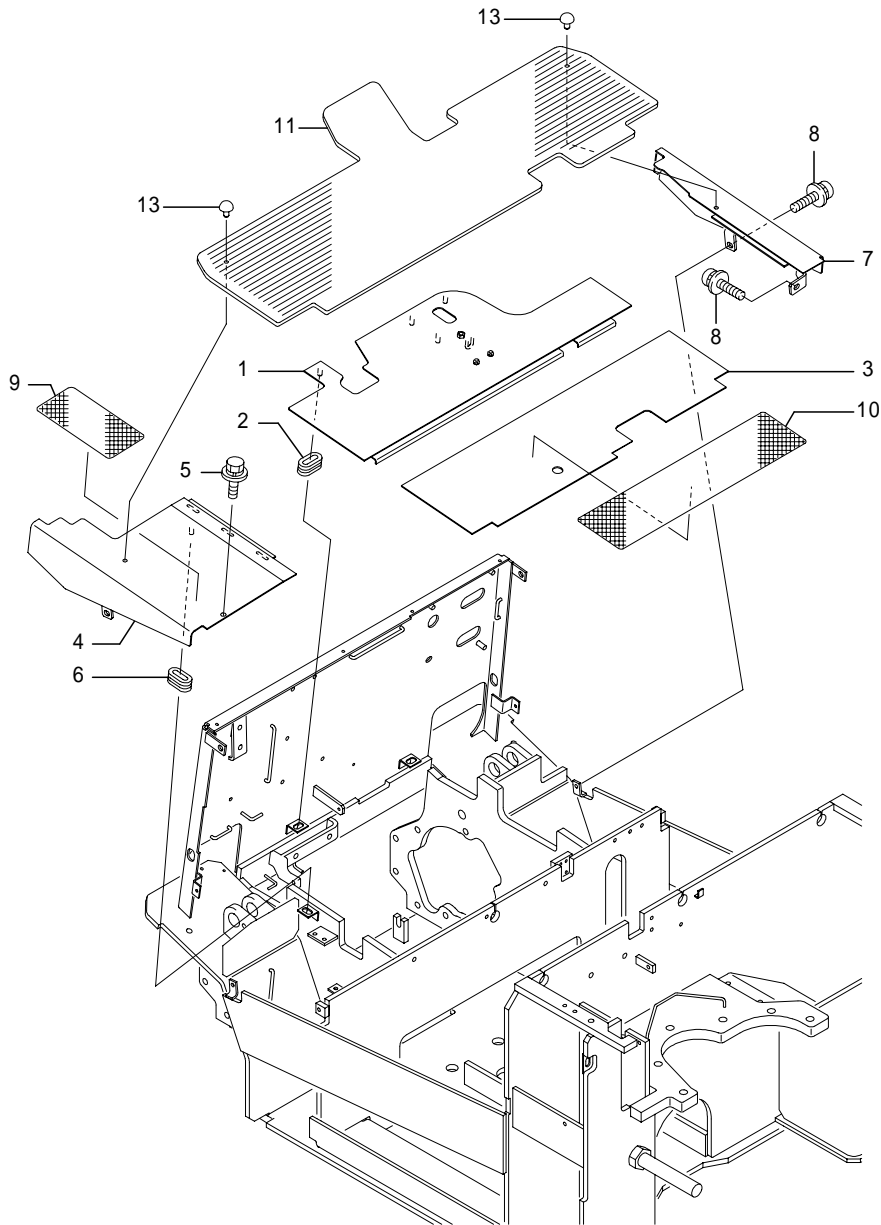


Fig.1014 PAD & FLOOR PLATE

(A)=FBT10P (D)=FBT18P
 (B)=FBT13P (E)=FBT20PN
 (C)=FBT15P (F)=

No.	Parts No.	Parts Name	(A)	(B)	(C)	(D)	(E)	(F)	i/a	Remarks
1	50005-05980	Plate, floor(1)	1	1	1	1	1			
2	14102-42611	Bushing, cover	2	2	2	2	2			
3	50005-05280	Plate, floor(2)	1	1	1	1	1			
4	50005-78880	Plate, floor(L)	1	1	1	1	1			
4-1	50005-78881	Plate, floor(L)	1	1	1	1	1		↓	

		(A=215AF****-)(B=215AF****-)(C=216AF****-)(D=216AF****-)(E=288AD****-)								
4-2	50007-36370	Plate, floor(L)	1	1	1	1	1		×	
		(A=215AF0343-)(B=215AF0343-)(C=216AF1066-)(D=216AF1066-)(E=288AD0185-)								
4-3	50007-36371	Plate, floor(L)	1	1	1	1	1		↓	
		(A=215AF0373)(B=215AF0373-)(C=216AF1212-)(D=216AF1212-)(E=288AD0202-)								

5	0018-08014	Bolt, w/washers	2	2	2	2	2			
5-1	0018-08012	Bolt, w/washers	2	2	2	2	2		×	
		(A=215AF0343-)(B=215AF0343-)(C=216AF1066-)(D=216AF1066-)(E=288AD0185-)								
6	14102-42611	Bushing, cover	1	1	1	1	1			
7	50005-78891	Plate, floor(R)	1	1	1	1	1			
7-1	50005-78892	Plate, floor(R)	1	1	1	1	1		↓	
		(A=215AF****-)(B=215AF****-)(C=216AF****-)(D=216AF****-)(E=288AD****-)								
7-2	50007-36380	Plate, floor(R)	1	1	1	1	1		×	
		(A=215AF0343-)(B=215AF0343-)(C=216AF1066-)(D=216AF1066-)(E=288AD0185-)								

8	0018-08014	Bolt, w/washers	2	2	2	2	2			
8-1	0018-08012	Bolt, w/washers	2	2	2	2	2		×	
		(A=215AF0343-)(B=215AF0343-)(C=216AF1066-)(D=216AF1066-)(E=288AD0185-)								
9	4321-02381	Sheet, non-slip	1	1	1	1	1			200 × 100, Dom, Opt
10	4301-01671	Sheet, non-slip	1	1	1	1	1			120 × 500, Exp, Opt
11	50003-26730	Mat, floor	1	1	1	1	1			Dom

13	70000-74510	Clip	2	2	2	2	2			

Note :

Fig.1150 FRONT AXLE FIT.

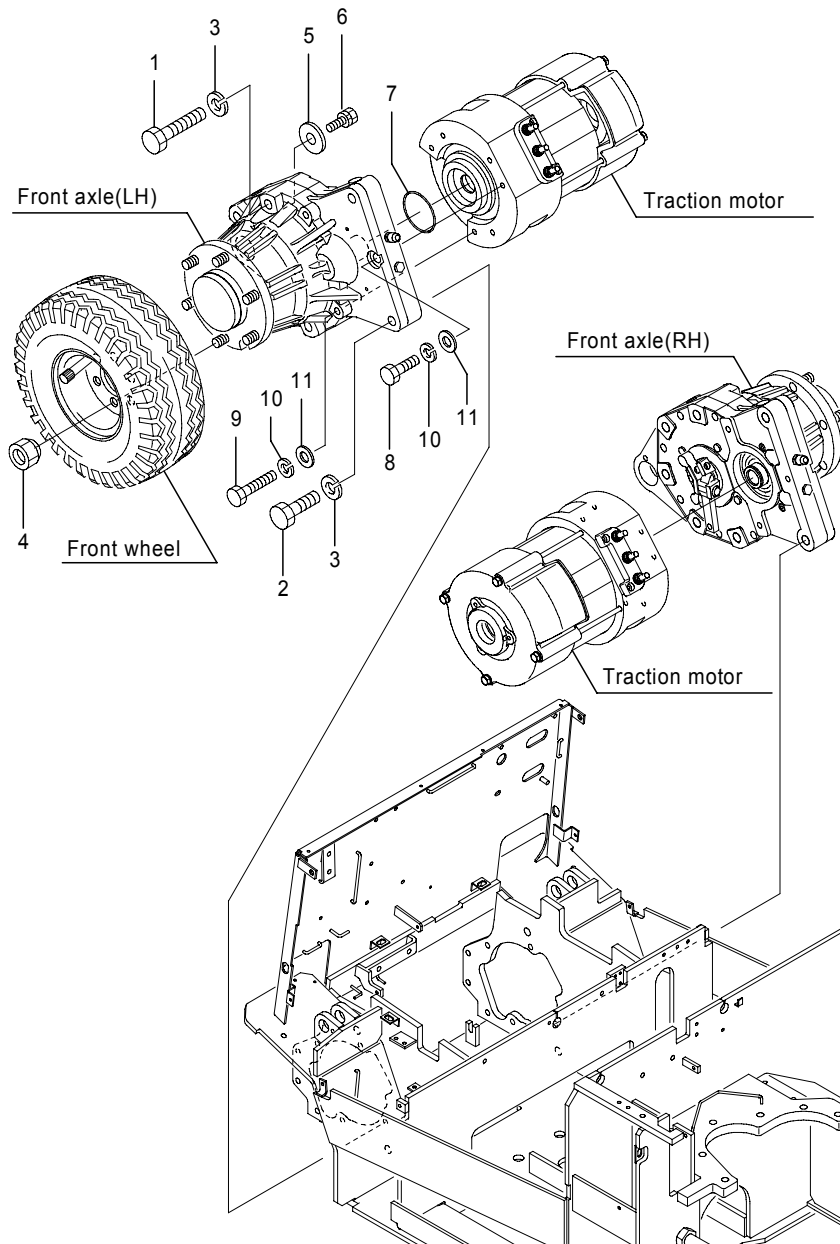


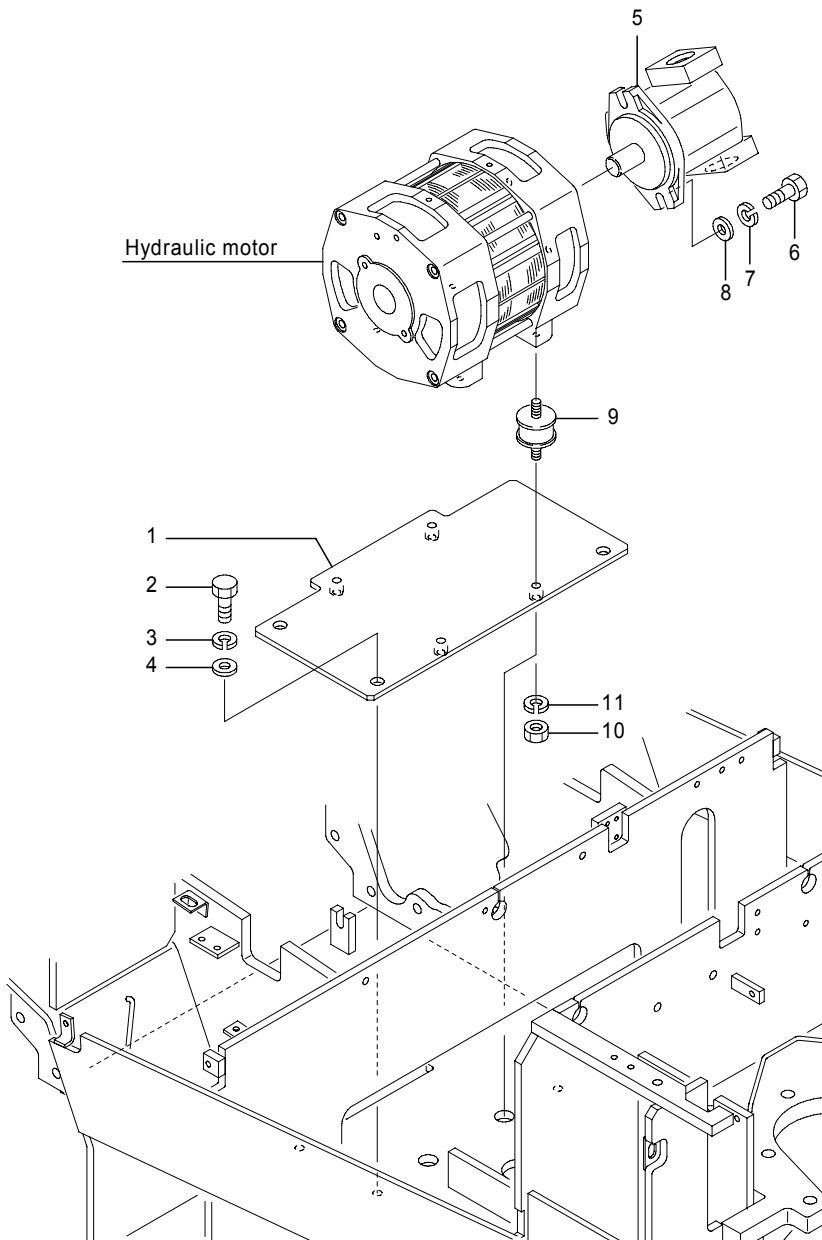
Fig.1150 FRONT AXLE FIT.

(A)=FBT10P (D)=FBT18P
 (B)=FBT13P (E)=FBT20PN
 (C)=FBT15P (F)=

No.	Parts No.	Parts Name	(A)	(B)	(C)	(D)	(E)	(F)	i/a	Remarks
1	0022-14095	Bolt	10	10	10	10	10	10		
	00067-14095	Bolt	10	10	10	10	10	10		CS/FCS/RP/DRP
2	0022-14065	Bolt	4	4	4	4	4	4		
	00067-14065	Bolt	4	4	4	4	4	4		CS/FCS/RP/DRP
3	0000-71014	Washer, lock	14	14	14	14	14	14		
	0000-70014	Washer, lock	14	14	14	14	14	14		CS/FCS/RP/DRP
4	14300-58030	Nut, hub	12	12	12	12	12	12		
	14200-00350	Nut, hub	12	12	12	12	12	12		CS/FCS/RP/DRP
5	50005-07700	Plate, stopper	2	2	2	2	2	2		
6	0017-08016	Bolt, w/washer	2	2	2	2	2	2		
7	70001-17700	Ring, O	2	2	2	2	2	2		
8	0012-08055	Bolt	2	2	2	2	2	2		
9	0012-08080	Bolt	4	4	4	4	4	4		
10	0000-70008	Washer, lock	6	6	6	6	6	6		
11	0000-72008	Washer, plain	6	6	6	6	6	6		

Note :

Fig.1510 OIL PUMP



461-1826-01
(461-1826)

Fig.1510 OIL PUMP

(A)=FBT10P (D)=FBT18P
(B)=FBT13P (E)=FBT20PN
(C)=FBT15P (F)=

No.	Parts No.	Parts Name	(A)	(B)	(C)	(D)	(E)	(F)	i/a	Remarks
1	50004-99410	Bracket, motor	1	1	1	1	1			
1-1	50004-99411	Bracket, motor	1	1	1	1	1			
1-2	50004-99412	Bracket, motor	1	1	1	1	1		↑	
(A=215AF0320-)(B=215AF0320-)(C=216AF0957-)(D=216AF0957-)(E=288AD0165-)										
2	0020-12020	Bolt	3	3	3	3	3			
	0024-12020	Bolt	3	3	3	3	3			CS/FCS/RP/DRP
3	0000-70012	Washer, lock	3	3	3	3	3			
	0000-50012	Washer, lock	3	3	3	3	3			CS/FCS/RP/DRP
4	0000-72012	Washer, plain	3	3	3	3	3			
	0000-52012	Washer, plain	3	3	3	3	3			CS/FCS/RP/DRP
5	31870-17260	Pump, gear	1	1	1	1	1			TMG1-18
6	0020-10030	Bolt	2	2	2	2	2			
	0024-10030	Bolt	2	2	2	2	2			CS/FCS/RP/DRP
7	0000-70010	Washer, lock	2	2	2	2	2			
	0000-50010	Washer, lock	2	2	2	2	2			CS/FCS/RP/DRP
8	0000-72010	Washer, plain	2	2	2	2	2			
	0000-52010	Washer, plain	2	2	2	2	2			CS/FCS/RP/DRP
9	32090-01870	Cushion(1)	4	4	4	4	4			
10	0000-00008	Nut	4	4	4	4	4			
10-1	70001-56020	Nut, flange	2	2	2	2	2		↓	
(A=215AF0362-)(B=215AF0362-)(C=216AF1167-)(D=216AF1167-)(E=288AD0195-)										
10	0000-04008	Nut	4	4	4	4	4			CS/FCS/RP/DRP
11	0000-70008	Washer, lock	4	4	4	4	4			
(A=215AF0361)(B=215AF0361)(C=216AF1166)(D=216AF1166)(E=288AD0194)										
	0000-50008	Washer, lock	4	4	4	4	4			CS/FCS/RP/DRP

Note :

Fig.2158A MAST PIPING[Mm]
 FBT10P - 18P[Std:MLH<=5000],FBT20PN[Std:MLH<=4000]

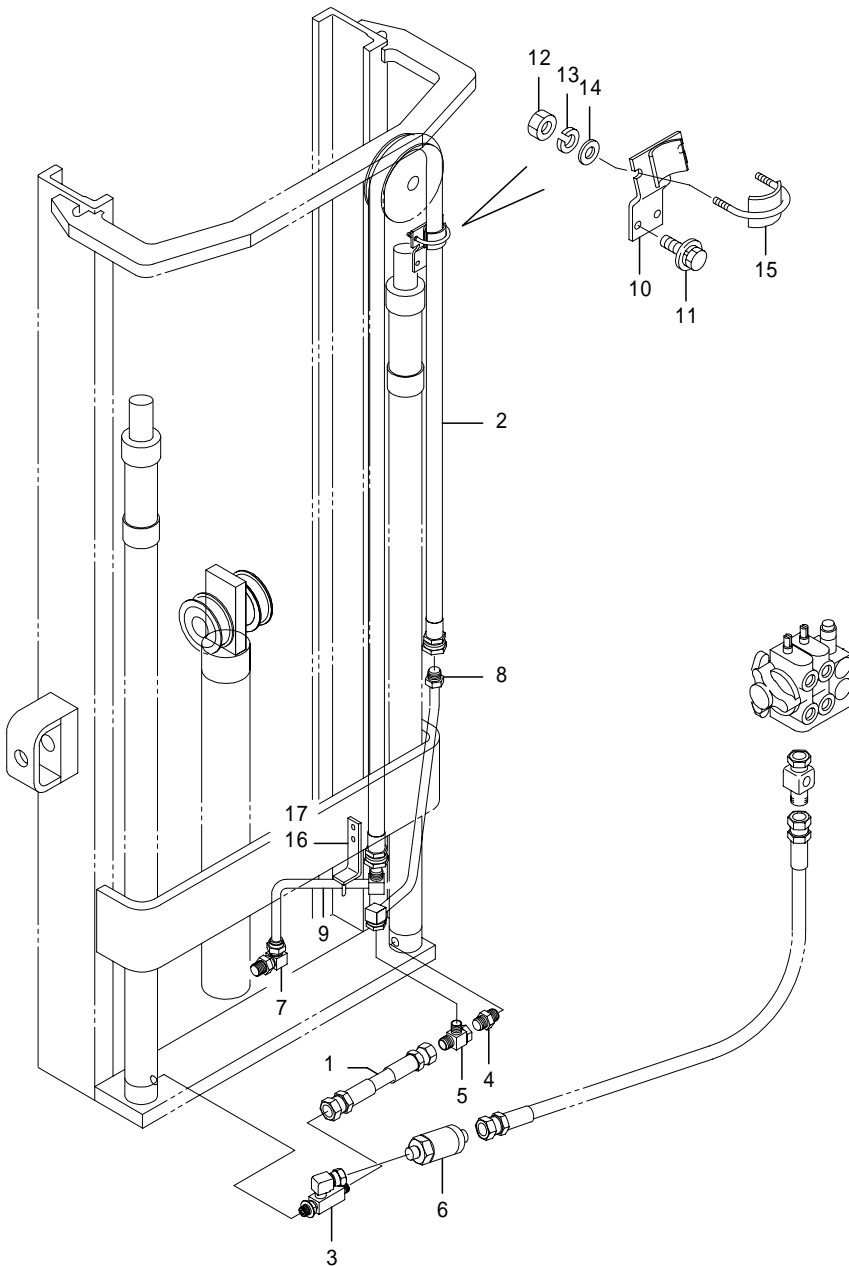


Fig.2158A MAST PIPING[Mm]
 FBT10P - 18P[Std:MLH<=5000],FBT20PN[Std:MLH<=4000]

(A)=FBT10P (D)=FBT18P
 (B)=FBT13P (E)=FBT20PN
 (C)=FBT15P (F)=

No.	Parts No.	Parts Name	(A)	(B)	(C)	(D)	(E)	(F)	i/a	Remarks
1	70001-20320	Hose, HP	1	1	1	1				
	70001-20330	Hose, HP							1	
2	5051-15240	Hose, HP	1	1	1	1	1			MLH3500
2-1	04105-15240	Hose, HP	1	1	1	1	1		↑	MLH3500
(A=215AF0355-)(B=215AF0355-)(C=216AF1101-)(D=216AF1101-)(E=288AD0188-)										
2	5051-15260	Hose, HP	1	1	1	1	1			MLH3700
2-1	04105-15260	Hose, HP	1	1	1	1	1		↑	MLH3700
(A=215AF0355-)(B=215AF0355-)(C=216AF1101-)(D=216AF1101-)(E=288AD0188-)										
2	5051-15270	Hose, HP	1	1	1	1	1			MLH4000
2-1	04105-15270	Hose, HP	1	1	1	1	1		↑	MLH4000
(A=215AF0355-)(B=215AF0355-)(C=216AF1101-)(D=216AF1101-)(E=288AD0188-)										
2	5051-15287	Hose, HP	1	1	1	1				MLH4300
2-1	04105-15287	Hose, HP	1	1	1	1			↑	MLH4300
(A=215AF0355-)(B=215AF0355-)(C=216AF1101-)(D=216AF1101-)										
2-2	04105-15290	Hose, HP	1	1	1	1			↑	MLH4300
(A=215AF0357-)(B=215AF0357-)(C=216AF1104-)(D=216AF1104-)										
2	5051-15307	Hose, HP	1	1	1	1				MLH4500
2-1	04105-15307	Hose, HP	1	1	1	1			↑	MLH4500
(A=215AF0355-)(B=215AF0355-)(C=216AF1101-)(D=216AF1101-)										
2-2	04105-15310	Hose, HP	1	1	1	1			↑	MLH4500
(A=215AF0357-)(B=215AF0357-)(C=216AF1104-)(D=216AF1104-)										
2	5051-15317	Hose, HP	1	1	1	1				MLH4700
2-1	04105-15317	Hose, HP	1	1	1	1			↑	MLH4700
(A=215AF0355-)(B=215AF0355-)(C=216AF1101-)(D=216AF1101-)										
2-2	04105-15320	Hose, HP	1	1	1	1			↑	MLH4700
(A=215AF0357-)(B=215AF0357-)(C=216AF1104-)(D=216AF1104-)										
2	5051-15337	Hose, HP	1	1	1	1				MLH5000
2-1	04105-15337	Hose, HP	1	1	1	1			↑	MLH5000
(A=215AF0355-)(B=215AF0355-)(C=216AF1101-)(D=216AF1101-)										
2-2	04105-15340	Hose, HP	1	1	1	1			↑	MLH5000
(A=215AF0357-)(B=215AF0357-)(C=216AF1104-)(D=216AF1104-)										
3	70001-22140	Joint	1	1	1	1	1			
4	31830-67310	Valve, down safety	1	1	1	1				50L/min
	31830-67320	Valve, down safety							1	70L/min
5	31830-25100	Tee	1	1	1	1	1			

Note :

Fig.2158B MAST PIPING[Mm]
 FBT10P-18P[Std:MLH>5000],FBT20PN[Std:MLH>4000],[CS/FCS/RP/DRP]

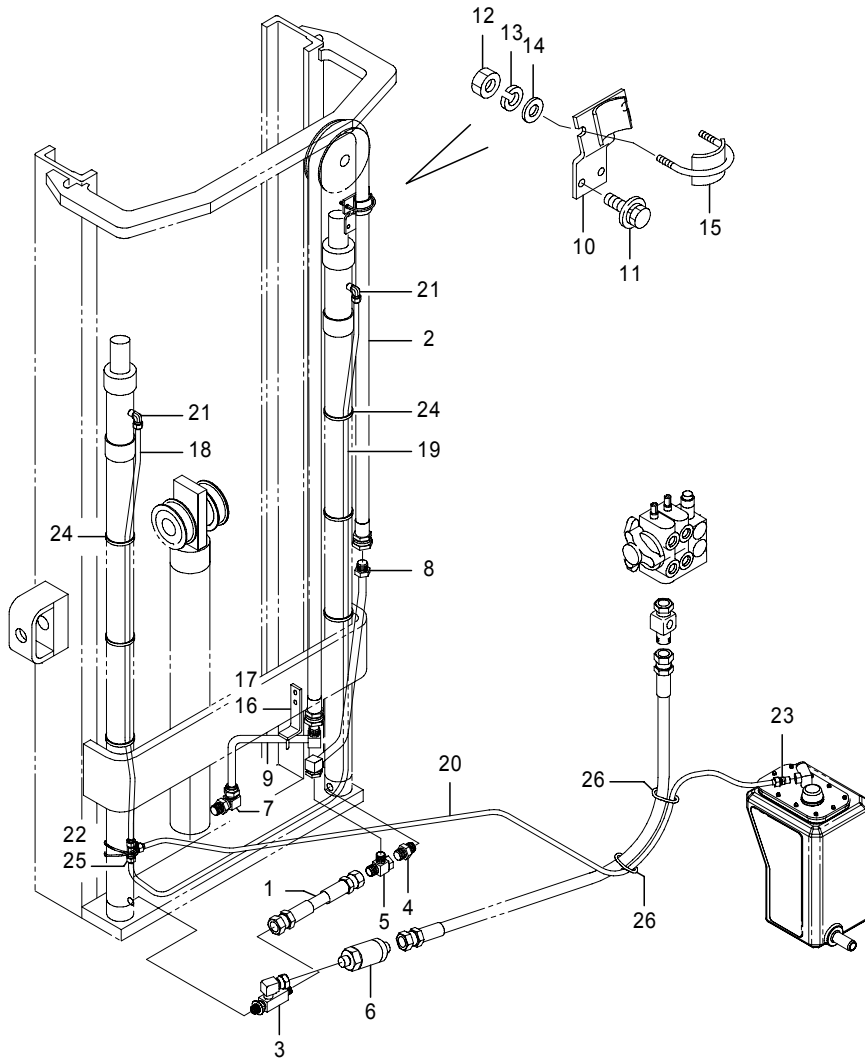


Fig.2158B MAST PIPING[Mm]
 FBT10P-18P[Std:MLH>5000],FBT20PN[Std:MLH>4000],[CS/FCS/RP/DRP]

(A)=FBT10P (D)=FBT18P
 (B)=FBT13P (E)=FBT20PN
 (C)=FBT15P (F)=

No.	Parts No.	Parts Name	(A)	(B)	(C)	(D)	(E)	(F)	i/a	Remarks
18	4045-06205	Hose, LP	1	1	1	1	1			MLH6300
18-1	4045-09205	Hose, LP	1	1	1	1	1		↑	MLH6300 (A=215AF0083-)(B=215AF0083-)(C=216AF0223-)(D=216AF0223-)(E=288AD0048-)
18	4045-06215	Hose, LP	1	1	1	1	1			MLH6500
18-1	4045-09215	Hose, LP	1	1	1	1	1		↑	MLH6500 (A=215AF0083-)(B=215AF0083-)(C=216AF0223-)(D=216AF0223-)(E=288AD0048-)
18	4045-06225	Hose, LP	1	1	1	1				MLH6700
18-1	4045-09225	Hose, LP	1	1	1	1			↑	MLH6700 (A=215AF0083-)(B=215AF0083-)(C=216AF0223-)(D=216AF0223-)
18	4045-06240	Hose, LP	1	1	1	1				MLH7000
18-1	4045-09240	Hose, LP	1	1	1	1			↑	MLH7000 (A=215AF0083-)(B=215AF0083-)(C=216AF0223-)(D=216AF0223-)
19	4045-06167	Hose, LP	1	1	1	1	1			MLH3500
19-1	4045-09167	Hose, LP	1	1	1	1	1		↑	MLH3500 (A=215AF0083-)(B=215AF0083-)(C=216AF0223-)(D=216AF0223-)(E=288AD0048-)
19	4045-06177	Hose, LP	1	1	1	1	1			MLH3700
19-1	4045-09177	Hose, LP	1	1	1	1	1		↑	MLH3700 (A=215AF0083-)(B=215AF0083-)(C=216AF0223-)(D=216AF0223-)(E=288AD0048-)
19	4045-06183	Hose, LP	1	1	1	1	1			MLH4000
19-1	4045-09183	Hose, LP	1	1	1	1	1		↑	MLH4000 (A=215AF0083-)(B=215AF0083-)(C=216AF0223-)(D=216AF0223-)(E=288AD0048-)
19	4045-06193	Hose, LP	1	1	1	1	1			MLH4300
19-1	4045-09193	Hose, LP	1	1	1	1	1		↑	MLH4300 (A=215AF0083-)(B=215AF0083-)(C=216AF0223-)(D=216AF0223-)(E=288AD0048-)
19	4045-06203	Hose, LP	1	1	1	1	1			MLH4500
19-1	4045-09203	Hose, LP	1	1	1	1	1		↑	MLH4500 (A=215AF0083-)(B=215AF0083-)(C=216AF0223-)(D=216AF0223-)(E=288AD0048-)
19	4045-06207	Hose, LP	1	1	1	1	1			MLH4700
19-1	4045-09207	Hose, LP	1	1	1	1	1		↑	MLH4700 (A=215AF0083-)(B=215AF0083-)(C=216AF0223-)(D=216AF0223-)(E=288AD0048-)
19	4045-06217	Hose, LP	1	1	1	1	1			MLH5000
19-1	4045-09217	Hose, LP	1	1	1	1	1		↑	MLH5000 (A=215AF0083-)(B=215AF0083-)(C=216AF0223-)(D=216AF0223-)(E=288AD0048-)
19	4045-06227	Hose, LP	1	1	1	1	1			MLH5300

Note :

Fig.2161A OUTER MAST[Mm]
FBT10P-18P

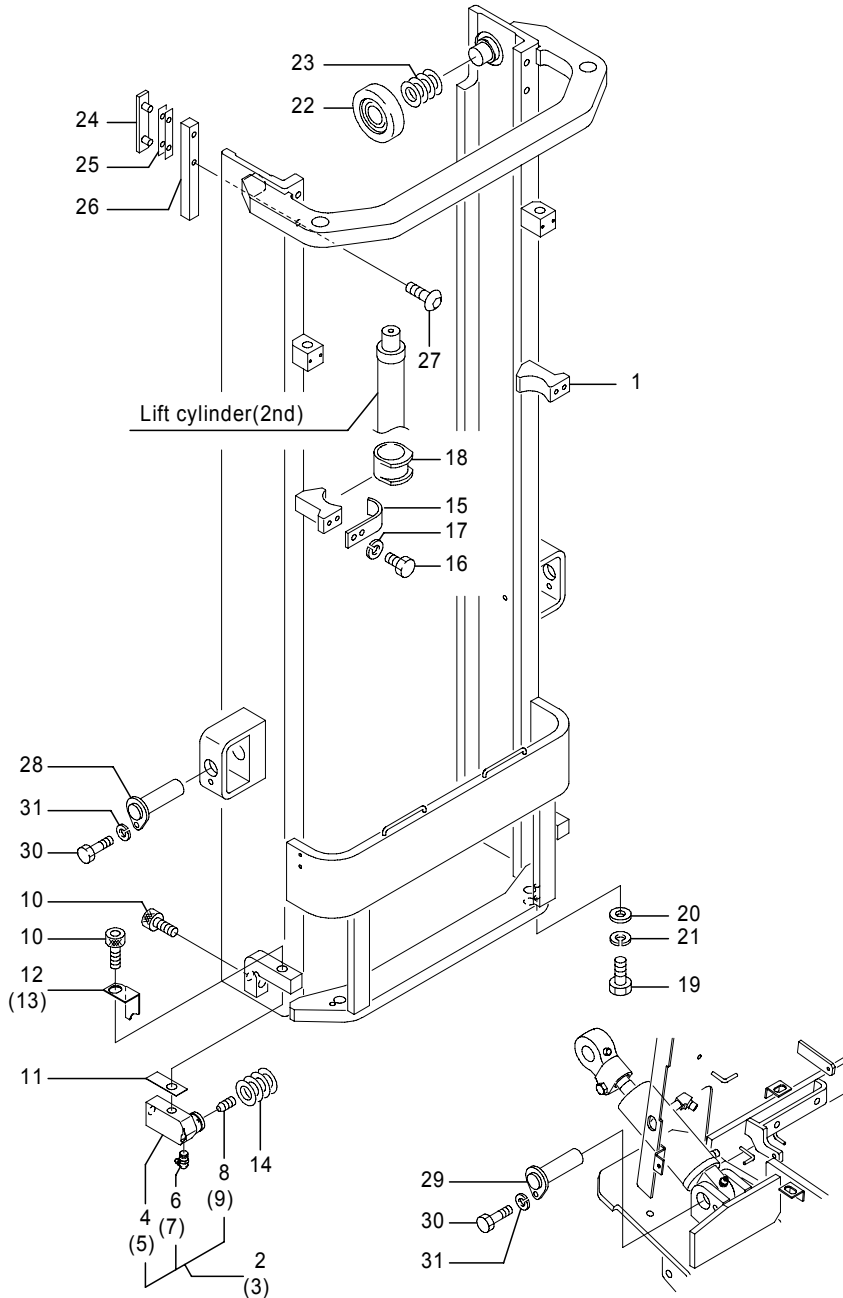


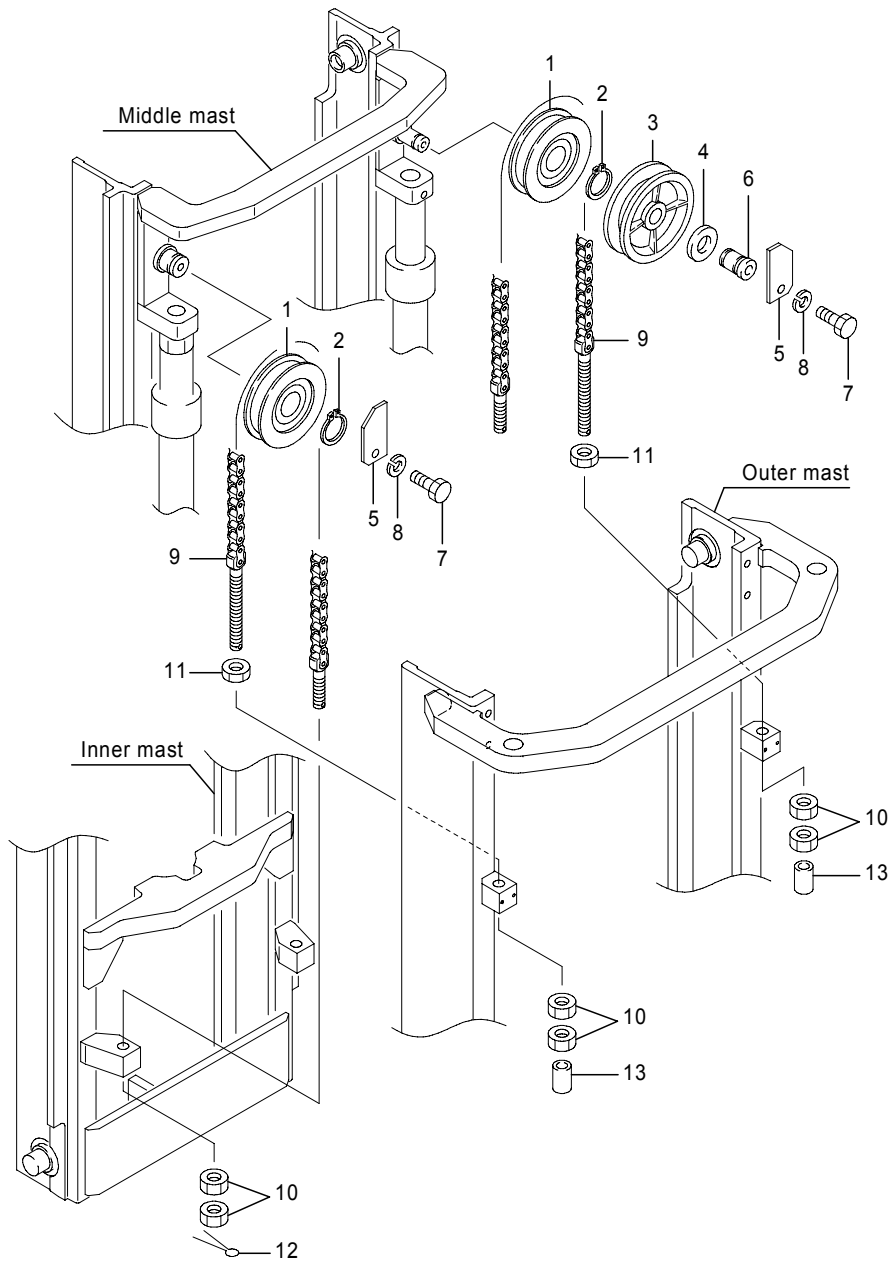
Fig.2161A OUTER MAST[Mm]
FBT10P-18P

(A)=FBT10P (D)=FBT18P
(B)=FBT13P (E)=FBT20PN
(C)=FBT15P (F)=

No.	Parts No.	Parts Name	(A) (B) (C) (D) (E) (F)	i/a	Remarks
12	52005-22410	Shim, mast(L)	AR AR AR AR		t1.5
		(A=-215AF0267)(B=-215AF0267)(C=-216AF0816)(D=-216AF0816)			
	52005-22420	Shim, mast(L)	AR AR AR AR		t2.0
		(A=-215AF0267)(B=-215AF0267)(C=-216AF0816)(D=-216AF0816)			
13	52005-22430	Shim, mast(R)	AR AR AR AR		t1.5
		(A=-215AF0267)(B=-215AF0267)(C=-216AF0816)(D=-216AF0816)			
	52005-22440	Shim, mast(R)	AR AR AR AR		t2.0
		(A=-215AF0267)(B=-215AF0267)(C=-216AF0816)(D=-216AF0816)			
14	4301-67130	Shim	AR AR AR AR		t1.0
14-1	52005-95190	Shim	AR AR AR AR	↑	t6.0
		(A=215AF****-)(B=215AF****-)(C=216AF****-)(D=216AF****-)			
14-2	4301-67130	Shim	AR AR AR AR	↑	t1.0
		(A=215AF0369-)(B=215AF0369-)(C=216AF1204-)(D=216AF1204-)			
	4301-67140	Shim	AR AR AR AR	↑	t0.5
		(A=215AF0369-)(B=215AF0369-)(C=216AF1204-)(D=216AF1204-)			
15	52000-57590	Band, cylinder	2 2 2 2		
15-1	52004-60250	Band, cylinder	2 2 2 2	↑	
		(A=215AF0275-)(B=215AF0275-)(C=216AF0858-)(D=216AF0858-)			
16	0025-10016	Bolt	4 4 4 4		
17	0000-71010	Washer, lock	4 4 4 4		
18	14604-70620	Cushion, cylinder	2 2 2 2		
19	0020-10040	Bolt	2 2 2 2		
20	0000-72010	Washer, plain	2 2 2 2		
21	0000-70010	Washer, lock	2 2 2 2		
22	31220-10610	Roller	2 2 2 2		
	31220-10780	Roller	(2) (2) (2) (2)		
	70000-62810	Roller, mast	(2) (2) (2) (2)		
23	4301-67180	Shim	AR AR AR AR		t0.2
	4301-67140	Shim	AR AR AR AR		t0.5
	4301-67130	Shim	AR AR AR AR		t1.0
	4301-67170	Shim	AR AR AR AR		t2.0
24	14600-91230	Shoe, back	2 2 2 2		
25	4624-60410	Shim, back shoe	AR AR AR AR		t0.5
	4624-60420	Shim, back shoe	AR AR AR AR		t1.0
26	52000-77302	Spacer, back shoe	2 2 2 2		

Note :

Fig.2164A CHAIN WHEEL(MAST)[Mm]
FBT10P-18P



461-1840-05
(461-1840/462-2630)

Fig.2164A CHAIN WHEEL(MAST)[Mm]
FBT10P-18P

(A)=FBT10P (D)=FBT18P
(B)=FBT13P (E)=FBT20PN
(C)=FBT15P (F)=

No.	Parts No.	Parts Name	(A)	(B)	(C)	(D)	(E)	(F)	i/a	Remarks
9	4039-05165	Chain comp.	2	2	2	2				MLH6500,2nd,FCS
	4039-05171	Chain comp.	2	2	2	2				MLH6700,2nd,FCS
	4039-05181	Chain comp.	2	2	2	2				MLH7000,2nd,FCS
10	0000-20016	Nut	8	8	8	8				
11	0000-30016	Nut, jam	2	2	2	2				
12	0302-40040	Pin, cotter	2	2	2	2				
13	32290-00510	Cap	2	2	2	2				

Note :

Fig.1090 LAMP COVER

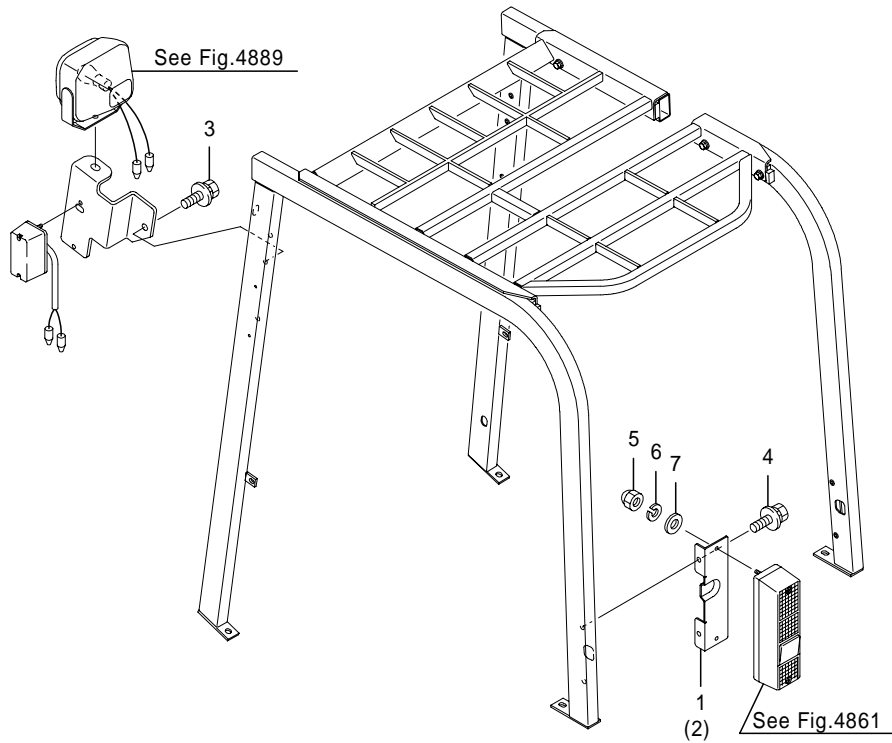


Fig.1090 LAMP COVER

(A)=FBT10P (D)=FBT18P
 (B)=FBT13P (E)=FBT20PN
 (C)=FBT15P (F)=

No.	Parts No.	Parts Name	(A)	(B)	(C)	(D)	(E)	(F)	i/a	Remarks
1	50003-43700	Bracket, lamp(L)	1	1	1	1	1			Only Japan
2	50003-43710	Bracket, lamp(R)	1	1	1	1	1			Only Japan
3	0018-08025	Bolt, w/washers	2	2	2	2	2			
4	0018-08016	Bolt, w/washers	4	4	4	4	4			Only Japan
5	31030-03420	Nut, cap	4	4	4	4	4			Only Japan
6	0000-71005	Washer, lock	4	4	4	4	4			Only Japan
7	0000-73005	Washer, plain	4	4	4	4	4			Only Japan

Note :

CLICK HERE TO **DOWNLOAD** THE COMPLETE MANUAL

- Thank you very much for reading the preview of the manual.
- You can download the complete manual from: www.heydownloads.com by clicking the link below



- Please note: If there is no response to CLICKING the link, please download this PDF first and then click on it.

CLICK HERE TO **DOWNLOAD** THE COMPLETE MANUAL

Fig.1341B VALVE LINKAGE 2
3 SPOOLS

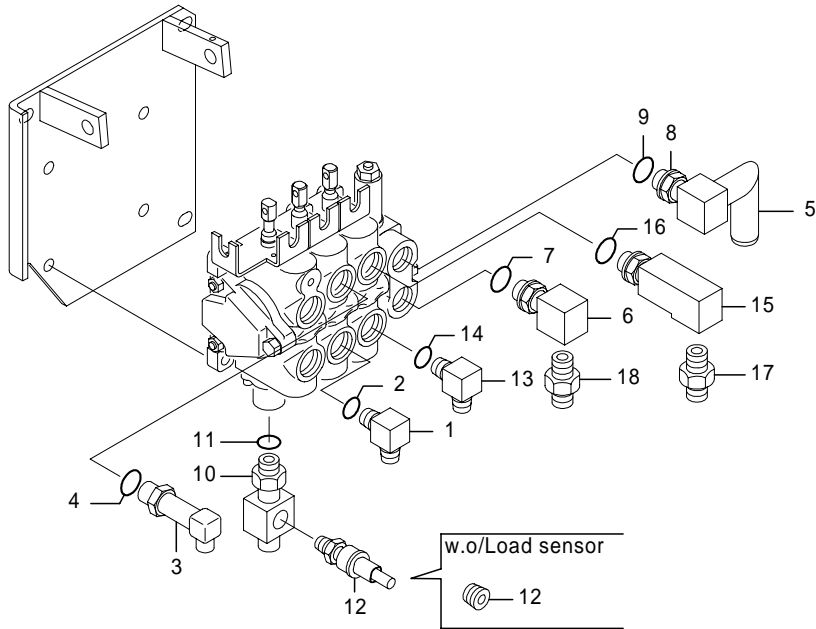


Fig.1341B VALVE LINKAGE 2
3 SPOOLS

(A)=FBT10P (D)=FBT18P
(B)=FBT13P (E)=FBT20PN
(C)=FBT15P (F)=

No.	Parts No.	Parts Name	(A)	(B)	(C)	(D)	(E)	(F)	i/a	Remarks
1	4210-81101	Elbow 90°	1	1	1	1	1			
2	1916-05002	Ring, O	1	1	1	1	1			
3	4770-81210	Elbow 90°	1	1	1	1	1			
4	1916-05002	Ring, O	1	1	1	1	1			
5	50005-84570	Pipe, return	1	1	1	1	1			

6	31830-65470	Elbow	1	1	1	1	1			
7	1916-05001	Ring, O	1	1	1	1	1			
8	50003-20311	Elbow	1	1	1	1	1			
9	1916-05001	Ring, O	1	1	1	1	1			
10	70001-19980	Nipple	1	1	1	1	1			

10-1	70001-08512	Nipple	1	1	1	1	1	1	×	w/Load sensor
	(A=215AF0255-)(B=215AF0255-)(C=216AF0764-)(D=216AF0764-)(E=288AD0145-)									
11	1916-05002	Ring, O	1	1	1	1	1			w/Load sensor
12	70000-51930	Transmitter, pressure	1	1	1	1	1			w/Load sensor
12-1	70001-13600	Transmitter, pressure	1	1	1	1	1	1	×	w/Load sensor
	(A=215AF0255-)(B=215AF0255-)(C=216AF0764-)(D=216AF0764-)(E=288AD0145-)									

12	0006-70002	Plug, screw	1	1	1	1	1			w.o/Load sensor
13	4210-81101	Elbow 90°	1	1	1	1	1			
14	1916-05002	Ring, O	1	1	1	1	1			
15	14500-37050	Elbow	1	1	1	1	1			

16	1916-05002	Ring, O	1	1	1	1	1			
17	0004-30006	Nipple	1	1	1	1	1			
18	0004-30012	Nipple	1	1	1	1	1			

Note :

Fig.1551D5 FRAME PIPING

[Finger Tip] 4 SPOOLS, FBT10P-18P[Pm/Mm:MLH>5000]

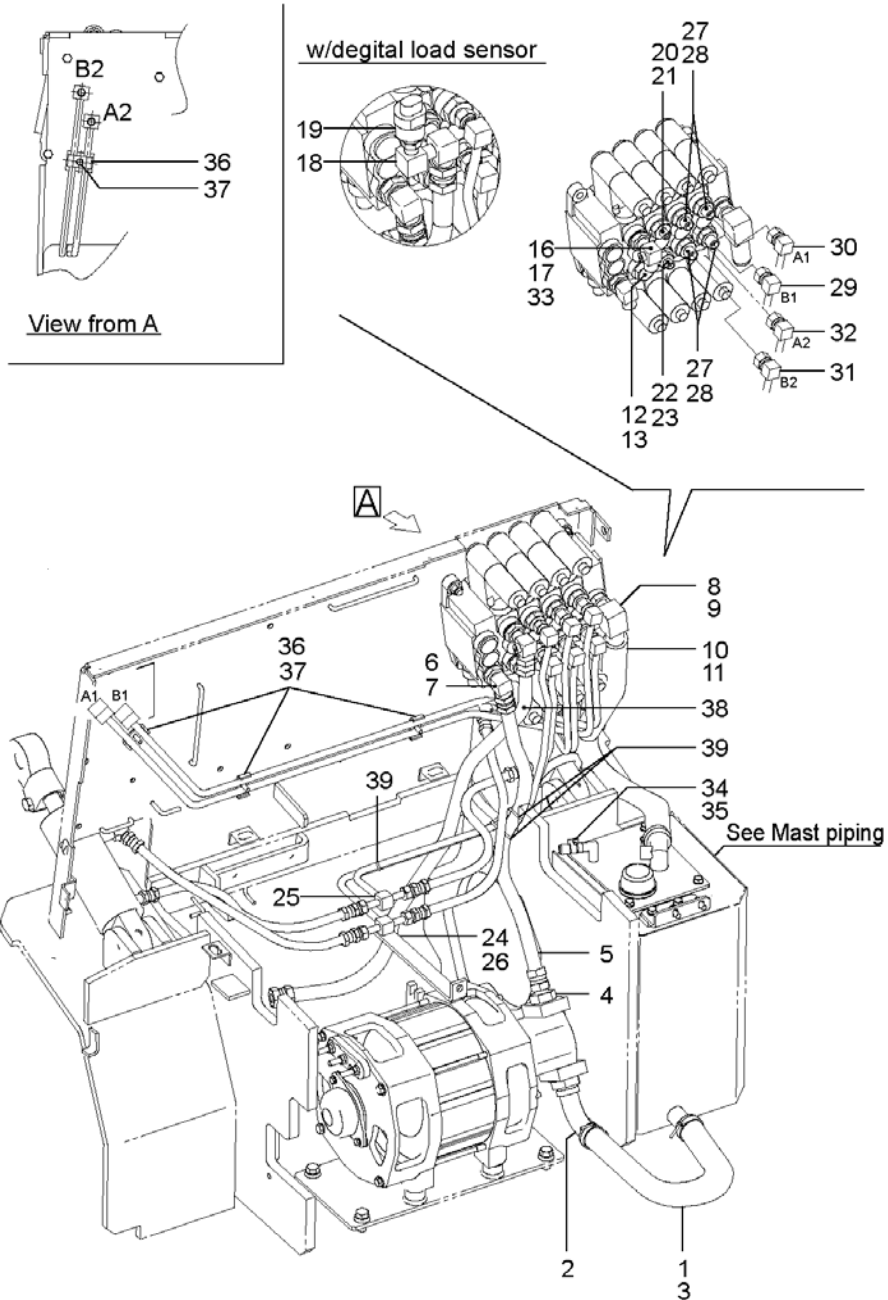


Fig.1551D5 FRAME PIPING

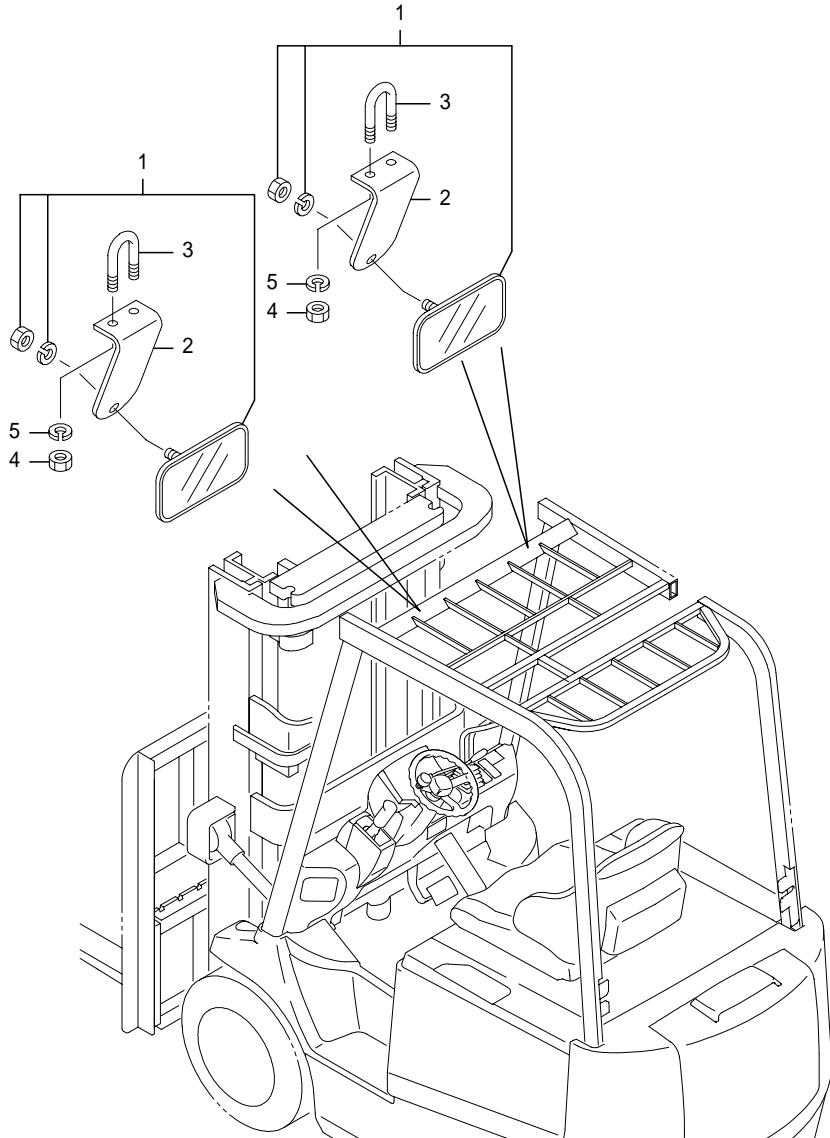
[Finger Tip] 4 SPOOLS, FBT10P-18P[Pm/Mm:MLH>5000]

(A)=FBT10P (D)=FBT18P
(B)=FBT13P (E)=FBT20PN
(C)=FBT15P (F)=

No.	Parts No.	Parts Name	(A)	(B)	(C)	(D)	(E)	(F)	i/a	Remarks
24-1	50006-06411	Pipe comp., tilt (A)	1	1	1	1			↑	(A=215AF0025-)(B=215AF0025-)(C=216AF0049-)(D=216AF0049-)
25	50006-06430	Pipe comp., tilt (B)	1	1	1	1				
25-1	50006-06431	Pipe comp., tilt (B)	1	1	1	1			↑	(A=215AF0025-)(B=215AF0025-)(C=216AF0049-)(D=216AF0049-)
26	0016-08016	Bolt, w/washers	1	1	1	1				
27	31830-66250	Nipple	4	4	4	4				
28	0350-00180	Ring, O	4	4	4	4				
29	50006-06600	Pipe, (B1)ATT	1	1	1	1				
29-1	50006-14680	Pipe, (B1)ATT	1	1	1	1			↑	(A=215AF****-)(B=215AF****-)(C=216AF****-)(D=216AF****-)
30	50006-06610	Pipe, (A1)ATT	1	1	1	1				
30-1	50006-14690	Pipe, (A1)ATT	1	1	1	1			↑	(A=215AF****-)(B=215AF****-)(C=216AF****-)(D=216AF****-)
31	50006-06621	Pipe, (B2)ATT	1	1	1	1				
32	50006-06631	Pipe, (A2)ATT	1	1	1	1				
33	0006-70002	Plug, screw	1	1	1	1				
34	32290-00490	Cap	1	1	1	1				Metal plate tank
35	0399-00018	Clip, hose	1	1	1	1				Metal plate tank
36	14502-64680	Clamp	4	4	4	4				
37	0017-06020	Bolt, w/washer	4	4	4	4				
38	04005-12088	Hose, HP	1	1	1	1				
39	37990-01850	Band	3	3	3	3				

Note :

Fig.5000D ACCESSORY
[ROOM MIRROR]



462-2610-04
(462-2610)

Fig.5000D ACCESSORY
[ROOM MIRROR]

(A)=FBT10P (D)=FBT18P
(B)=FBT13P (E)=FBT20PN
(C)=FBT15P (F)=

No.	Parts No.	Parts Name	(A)	(B)	(C)	(D)	(E)	(F)	i/a	Remarks
1	32090-01480	Mirror, driving	1	1	1	1	1			RH
	32090-01480	Mirror, driving	2	2	2	2	2			LH/RH
2	14102-57990	Bracket, mirror	1	1	1	1	1			RH
	14102-57990	Bracket, mirror	2	2	2	2	2			LH/RH
3	14401-01130	Bolt, U	1	1	1	1	1			RH
	50004-51410	Bolt, U	1	1	1	1	1			RH,DRP
	14401-01130	Bolt, U	2	2	2	2	2			LH/RH
4	50004-51410	Bolt, U	2	2	2	2	2			LH/RH,DRP
	0000-05006	Nut	2	2	2	2	2			RH
	0000-04006	Nut	2	2	2	2	2			RH,DRP
	0000-05006	Nut	4	4	4	4	4			LH/RH
	0000-04006	Nut	4	4	4	4	4			LH/RH,DRP
5	0000-71006	Washer, lock	2	2	2	2	2			RH
	0000-50008	Washer, lock	2	2	2	2	2			RH,DRP
	0000-71006	Washer, lock	4	4	4	4	4			LH/RH
	0000-50008	Washer, lock	4	4	4	4	4			LH/RH,DRP

Note :

Fig.1093D NAME PLATE FIT.
[German]

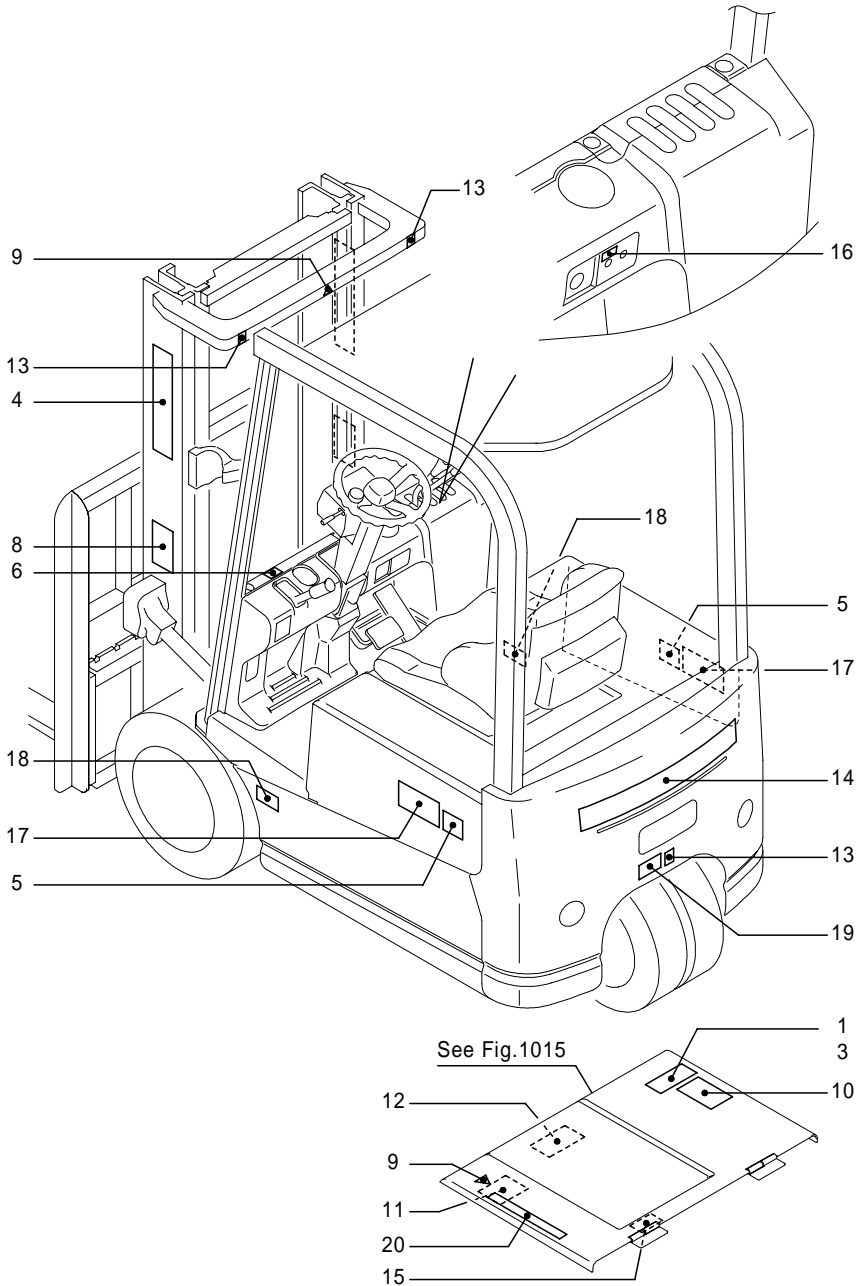


Fig.1093D NAME PLATE FIT.
[German]

(A)=FBT10P (D)=FBT18P
(B)=FBT13P (E)=FBT20PN
(C)=FBT15P (F)=

No.	Parts No.	Parts Name	(A)	(B)	(C)	(D)	(E)	(F)	i/a	Remarks
15	24700-01780	Plate, caution	1	1	1	1				Gas spring lock
16	24700-11440	Plate, name	1	1	1	1				Upper beam
17	50003-27520	Plate, name	2	2	2	2				SICOS AC
	50003-27530	Plate, name	2	2	2	2				SICOS AC, Opt
18	0902-69964	Label, tire	2	2						8.8bar,Front
	24700-09410	Label, tire				2				9.8bar,Front
19	24700-09410	Label, tire	1	1						9.8bar,Rear
	0902-69954	Label, tire					1			8.3bar,Rear
20	24700-11070	Plate, warning	1	1	1	1				In case of tipover

Note : *1:w/battery,GS YUASA *2:w/battery,SHINKOBE

Fig.2157A MAST PIPING[Mm]
[SF],w.o/LASER POINTER

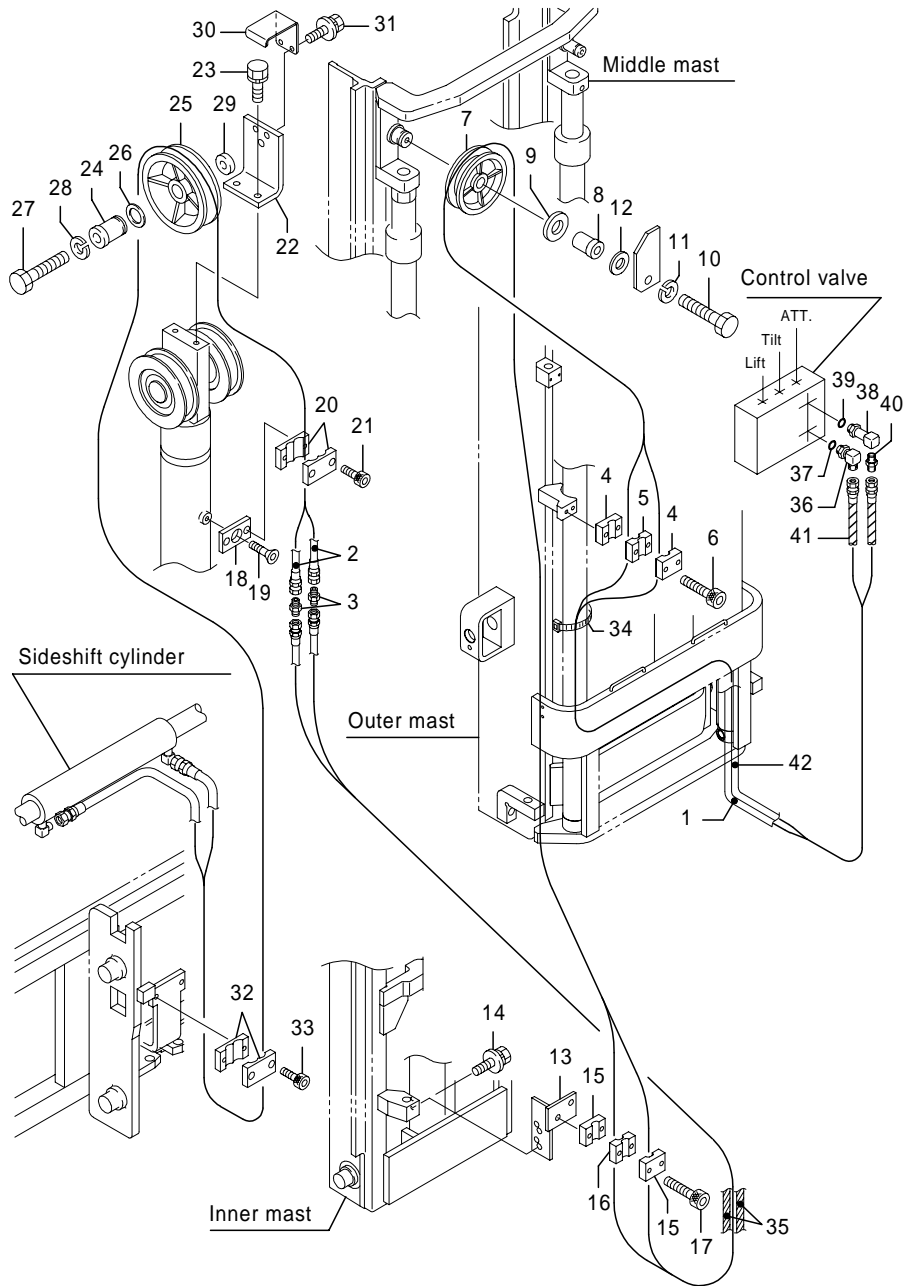


Fig.2157A MAST PIPING[Mm]
[SF],w.o/LASER POINTER

(A)=FBT10P (D)=FBT18P
(B)=FBT13P (E)=FBT20PN
(C)=FBT15P (F)=

No.	Parts No.	Parts Name	(A)	(B)	(C)	(D)	(E)	(F)	i/a	Remarks
42	4051-06563	Hose, HP	2	2	2	2				MLH5700
	4051-06603	Hose, HP	2	2	2	2				MLH6000
	4051-06613	Hose, HP	2	2	2	2				MLH6300
	4051-06633	Hose, HP	2	2	2	2				MLH6500
	4051-06653	Hose, HP	2	2	2	2				MLH6700
	4051-06683	Hose, HP	2	2	2	2				MLH7000
	4051-06413	Hose, HP						2		MLH3500
	4051-06433	Hose, HP						2		MLH3700
	4051-06443	Hose, HP						2		MLH4000
	4051-06463	Hose, HP						2		MLH4300
	4051-06483	Hose, HP						2		MLH4500
	4051-06493	Hose, HP						2		MLH4700
	4051-06513	Hose, HP						2		MLH5000
	4051-06533	Hose, HP						2		MLH5300
	4051-06553	Hose, HP						2		MLH5500
	4051-06563	Hose, HP						2		MLH5700
	4051-06603	Hose, HP						2		MLH6000
	4051-06613	Hose, HP						2		MLH6300
	4051-06633	Hose, HP						2		MLH6500

Note :

Fig.2258 MAST PIPING[Fm]
[SF],w.o/LASER POINTER

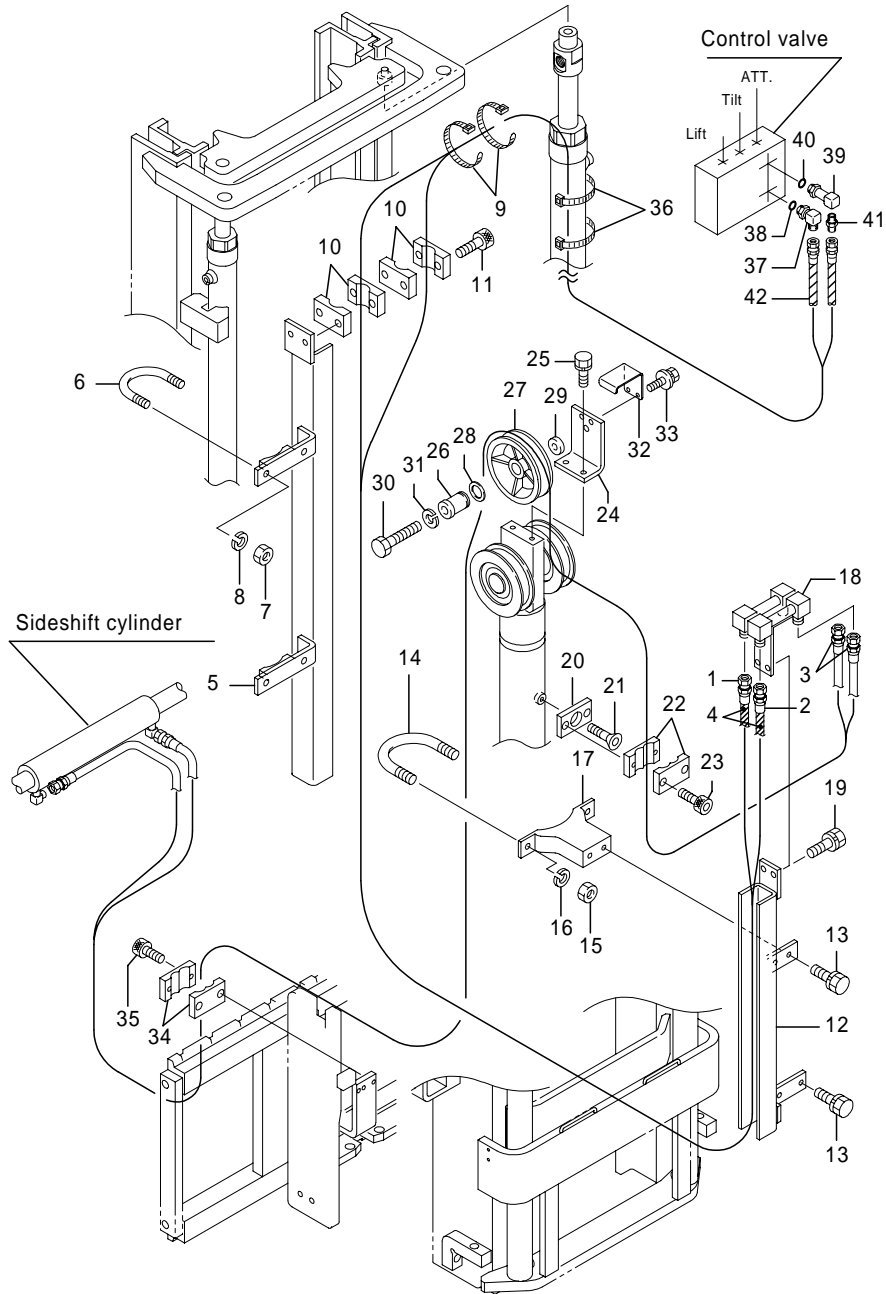


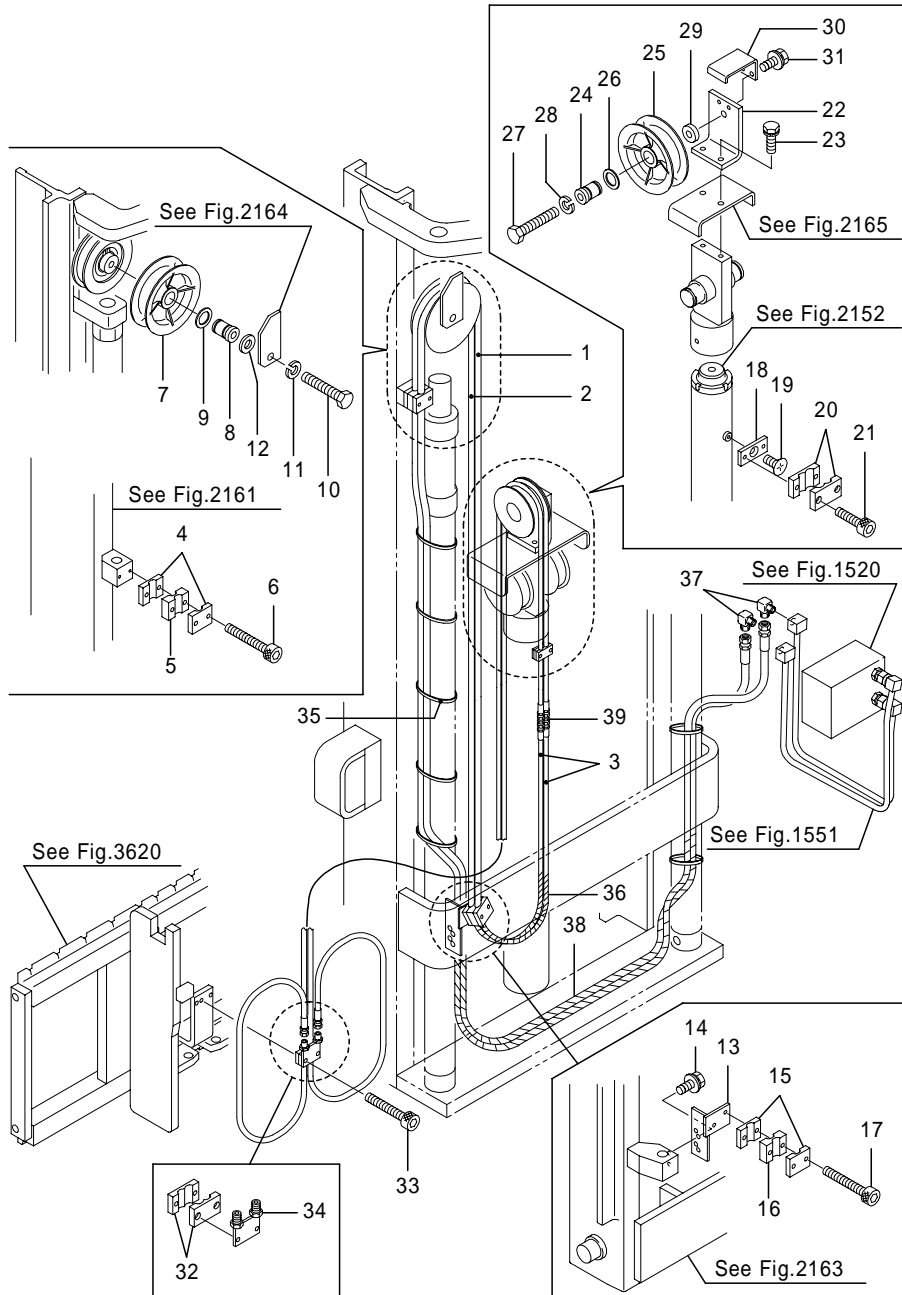
Fig.2258 MAST PIPING[Fm]
[SF],w.o/LASER POINTER

(A)=FBT10P (D)=FBT18P
(B)=FBT13P (E)=FBT20PN
(C)=FBT15P (F)=

No.	Parts No.	Parts Name	(A)	(B)	(C)	(D)	(E)	(F)	i/a	Remarks	
4	0825-15133	Tube, spiral	2	2	2	2	2			MLH3300	
	0825-15138	Tube, spiral	2	2	2	2	2			MLH3500	
	0825-15143	Tube, spiral	2	2	2	2	2			MLH3700	
	0825-15151	Tube, spiral	2	2	2	2	2			MLH4000	
	0825-15163	Tube, spiral	2	2	2	2	2			MLH4300	
	0825-15168	Tube, spiral	2	2	2	2	2			MLH4500	
	0825-15173	Tube, spiral	2	2	2	2	2			MLH4700	
	0825-15180	Tube, spiral	2	2	2	2	2			MLH5000	
	5	14503-71271	Guide, outer	1	1	1	1				MLH2000
		14503-71281	Guide, outer	1	1	1	1				MLH2300
14503-71290		Guide, outer	1	1	1	1				MLH2500	
14503-71300		Guide, outer	1	1	1	1				MLH2700	
14503-71310		Guide, outer	1	1	1	1				MLH3000	
14503-71320		Guide, outer	1	1	1	1				MLH3300	
14503-71330		Guide, outer	1	1	1	1				MLH3500	
14503-71340		Guide, outer	1	1	1	1				MLH3700	
14503-71350		Guide, outer	1	1	1	1				MLH4000	
14503-71360		Guide, outer	1	1	1	1				MLH4300	
14503-71370		Guide, outer	1	1	1	1				MLH4500	
14503-71380		Guide, outer	1	1	1	1				MLH4700	
14503-71390		Guide, outer	1	1	1	1				MLH5000	
14503-71420		Guide, outer						1		MLH2500	
14503-71430		Guide, outer						1		MLH2700	
14503-71440		Guide, outer						1		MLH3000	
14503-71450		Guide, outer						1		MLH3300	
14503-71460		Guide, outer						1		MLH3500	
14503-71470	Guide, outer						1		MLH3700		
14503-71480	Guide, outer						1		MLH4000		
14503-71490	Guide, outer						1		MLH4300		
14503-71500	Guide, outer						1		MLH4500		
14503-71510	Guide, outer						1		MLH4700		
14503-71520	Guide, outer						1		MLH5000		
6	14500-55860	Bolt, U	2	2	2	2					
	14502-13080	Bolt, U						2			
7	0000-00006	Nut	4	4	4	4	4				

Note :

Fig.2160A ATT MAST PIPING[Mm]
 FBT10P-18P [Finger Tip, w.o/laser pointer]



462-2661-01
 (462-2661)

Fig.2160A ATT MAST PIPING[Mm]
 FBT10P-18P [Finger Tip, w.o/laser pointer]

(A)=FBT10P (D)=FBT18P
 (B)=FBT13P (E)=FBT20PN
 (C)=FBT15P (F)=

No.	Parts No.	Parts Name	(A)	(B)	(C)	(D)	(E)	(F)	i/a	Remarks	
2-1	4051-06515	Hose, HP	1	1	1	1			↑	MLH4700	
	(A=215AF0336-)(B=215AF0336-)(C=216AF1007-)(D=216AF1007-)										
	4051-06535	Hose, HP	1	1	1	1			↑	MLH5000	
	(A=215AF0336-)(B=215AF0336-)(C=216AF1007-)(D=216AF1007-)										
	4051-06555	Hose, HP	1	1	1	1			↑	MLH5300	
	(A=215AF0336-)(B=215AF0336-)(C=216AF1007-)(D=216AF1007-)										
	4051-06575	Hose, HP	1	1	1	1			↑	MLH5500	
	(A=215AF0336-)(B=215AF0336-)(C=216AF1007-)(D=216AF1007-)										
	4051-06585	Hose, HP	1	1	1	1			↑	MLH5700	
	(A=215AF0336-)(B=215AF0336-)(C=216AF1007-)(D=216AF1007-)										
	4051-06625	Hose, HP	1	1	1	1			↑	MLH6000	
	(A=215AF0336-)(B=215AF0336-)(C=216AF1007-)(D=216AF1007-)										
4051-06635	Hose, HP	1	1	1	1			↑	MLH6300		
(A=215AF0336-)(B=215AF0336-)(C=216AF1007-)(D=216AF1007-)											
4051-06655	Hose, HP	1	1	1	1			↑	MLH6500		
(A=215AF0336-)(B=215AF0336-)(C=216AF1007-)(D=216AF1007-)											
4051-06675	Hose, HP	1	1	1	1			↑	MLH6700		
(A=215AF0336-)(B=215AF0336-)(C=216AF1007-)(D=216AF1007-)											
4051-06685	Hose, HP	1	1	1	1			↑	MLH7000		
(A=215AF0336-)(B=215AF0336-)(C=216AF1007-)(D=216AF1007-)											
3	4051-06230	Hose, HP	2	2	2	2				MLH3500	
	4051-06240	Hose, HP	2	2	2	2				MLH3700	
	4051-06245	Hose, HP	2	2	2	2				MLH4000	
	4051-06255	Hose, HP	2	2	2	2				MLH4300	
	4051-06265	Hose, HP	2	2	2	2				MLH4500	
	(A=215AF0336-)(B=215AF0336-)(C=216AF1007-)(D=216AF1007-)										
	4051-06270	Hose, HP	2	2	2	2				MLH4700	
	4051-06280	Hose, HP	2	2	2	2				MLH5000	
	4051-06290	Hose, HP	2	2	2	2				MLH5300	
	4051-06300	Hose, HP	2	2	2	2				MLH5500	
	4051-06305	Hose, HP	2	2	2	2				MLH5700	
	(A=215AF0336-)(B=215AF0336-)(C=216AF1007-)(D=216AF1007-)										
4051-06325	Hose, HP	2	2	2	2					MLH6000	
4051-06330	Hose, HP	2	2	2	2					MLH6300	
4051-06340	Hose, HP	2	2	2	2					MLH6500	
4051-06350	Hose, HP	2	2	2	2					MLH6700	
4051-06365	Hose, HP	2	2	2	2					MLH7000	

Note :

Fig.4400 CONTROL UNIT 1

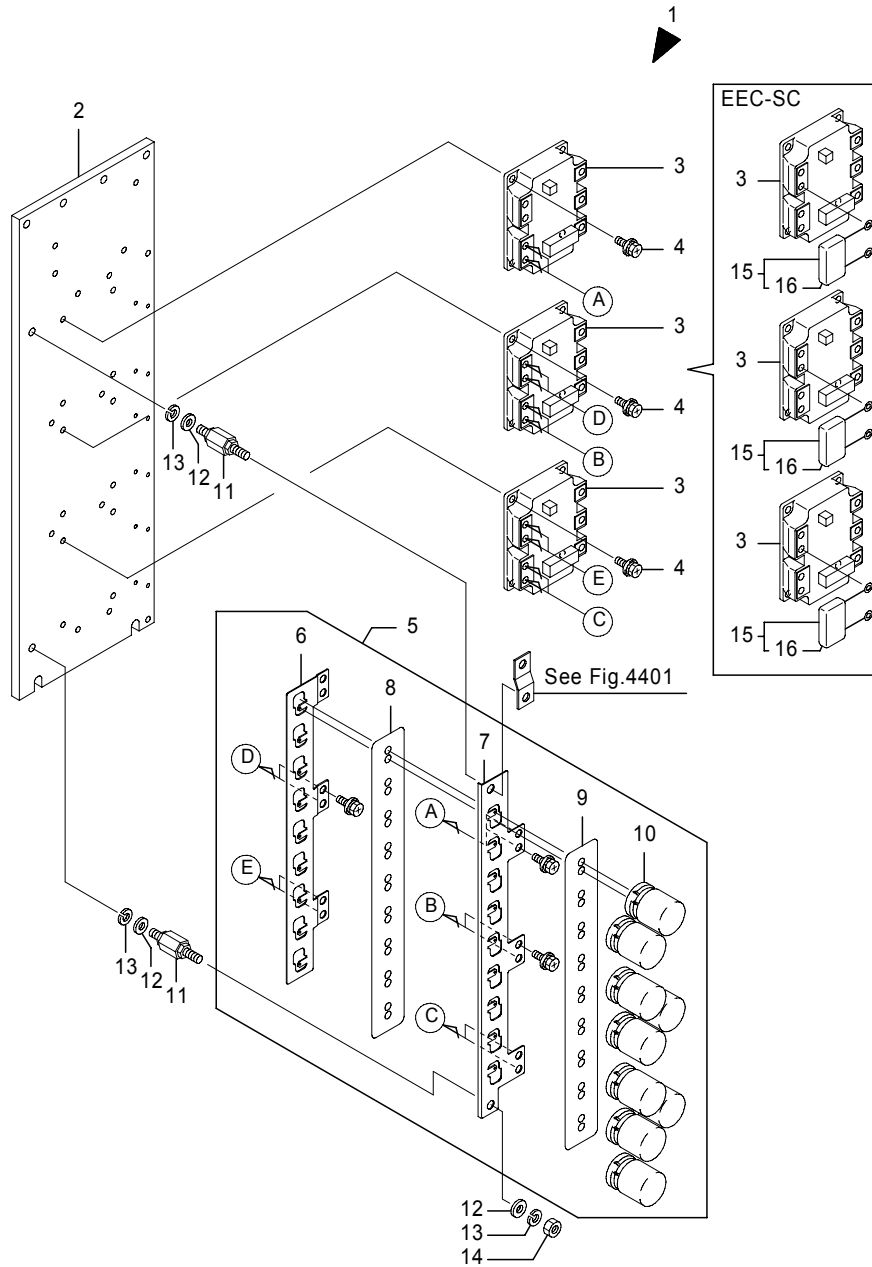


Fig.4400 CONTROL UNIT 1

(A)=FBT10P (D)=FBT18P
 (B)=FBT13P (E)=FBT20PN
 (C)=FBT15P (F)=

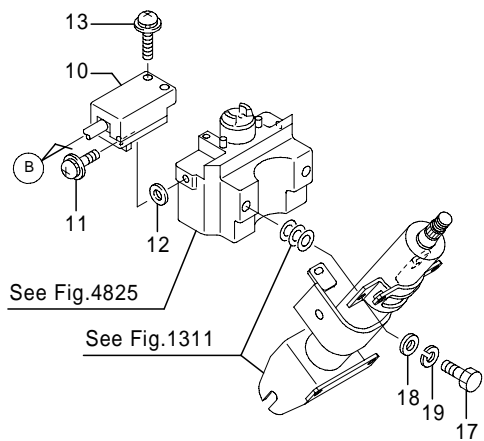
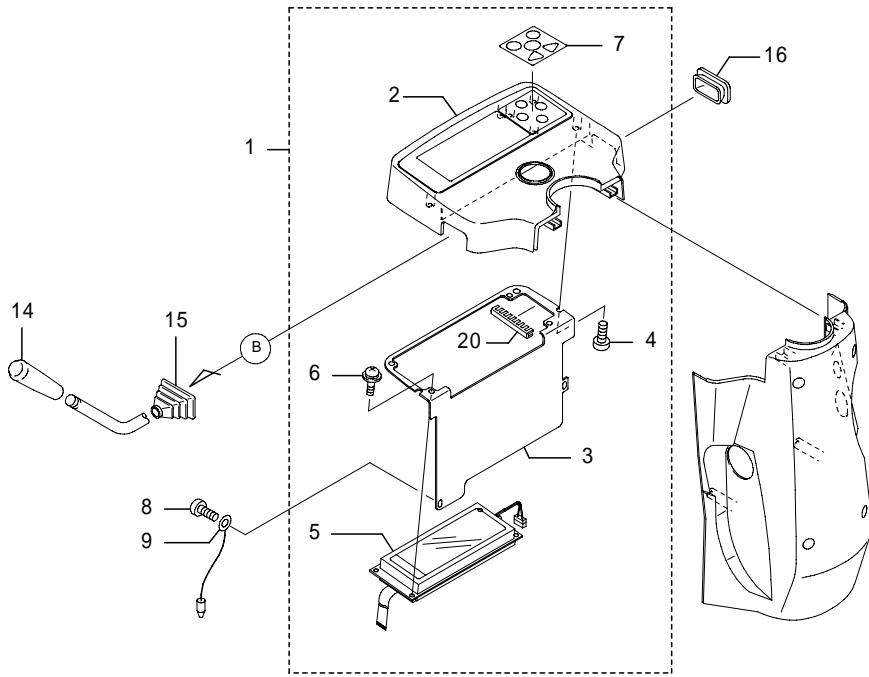
No.	Parts No.	Parts Name	(A)	(B)	(C)	(D)	(E)	(F)	i/a	Remarks
1	54001-05072	Controller ass'y, main	1	1	1	1				CU107-80,*1
1-1	54001-05073	Controller ass'y, main (A=215AF0218-)(B=215AF0218-)(C=216AF0639-)(D=216AF0639-)	1	1	1	1			×	CU107-80,*1
1-2	54001-64680	Controller ass'y, main (A=215AF0320-)(B=215AF0320-)(C=216AF0966-)(D=216AF0966-)	1	1	1	1			×	CU109-10,*1
1-3	54001-64681	Controller ass'y, main (A=215AF0393-)(B=215AF0393-)(C=216AF1302-)(D=216AF1302-)	1	1	1	1			⌄	CU109-10,*1
1	54001-18601	Controller ass'y, main					1			CU107-81,-565Ah,*1
1-1	54001-18602	Controller ass'y, main (E=288AD0134-)					1		×	CU107-81,-565Ah,*1
1-2	54001-64690	Controller ass'y, main (E=288AD0169-)					1		×	CU109-11,-565Ah,*1
1-3	54001-64691	Controller ass'y, main (E=288AD0225-)					1		⌄	CU109-11,-565Ah,*1
1	54001-20830	Controller ass'y, main					1			CU107-82,624Ah,*1
1-1	54001-20831	Controller ass'y, main (E=288AD0134-)					1		×	CU107-82,624Ah,*1
1-2	54001-64700	Controller ass'y, main (E=288AD0169-)					1		×	CU109-12,624Ah,*1
1-3	54001-64701	Controller ass'y, main (E=288AD0225-)					1		⌄	CU109-12,624Ah,*1
1	54001-20840	Controller ass'y, main	1	1	1	1				CU107-83,SC,*1
1-1	54001-20841	Controller ass'y, main (A=215AF0218-)(B=215AF0218-)(C=216AF0639-)(D=216AF0639-)	1	1	1	1			×	CU107-83,SC,*1
1-2	54001-64710	Controller ass'y, main (A=215AF0320-)(B=215AF0320-)(C=216AF0966-)(D=216AF0966-)	1	1	1	1			×	CU109-13,SC,*1
1-3	54001-64711	Controller ass'y, main (A=215AF0393-)(B=215AF0393-)(C=216AF1302-)(D=216AF1302-)	1	1	1	1			⌄	CU109-13,SC,*1
1	54001-20850	Controller ass'y, main					1			CU107-84,SC,-565Ah,*1
1-1	54001-20851	Controller ass'y, main (E=288AD0134-)					1		×	CU107-84,SC,-565Ah,*1
1-2	54001-64720	Controller ass'y, main (E=288AD0169-)					1		×	CU109-14,SC,-565Ah,*1
1-3	54001-64721	Controller ass'y, main (E=288AD0225-)					1		⌄	CU109-14,SC,-565Ah,*1

Note : *1:Contents:Fig.4400-4403

Fig.4823 DISPLAY PANEL 1

Fig.4823 DISPLAY PANEL 1

(A)=FBT10P (D)=FBT18P
 (B)=FBT13P (E)=FBT20PN
 (C)=FBT15P (F)=



No.	Parts No.	Parts Name	(A)	(B)	(C)	(D)	(E)	(F)	i/a	Remarks
1	54000-96912	Panel comp., display(1)	1	1	1	1	1			
2	50001-10490	Panel, display(1)	1	1	1	1	1			
2-1	50001-10491	Panel, display(1)	1	1	1	1	1		↑	
(A=215AF0316-)(B=215AF0316-)(C=216AF0918-)(D=216AF0918-)(E=216AF0918-)										
3	50005-15781	Support, display	1	1	1	1	1			

4	31010-46250	Screw, pan head	3	3	3	3	3			
5	70000-90630	Display	1	1	1	1	1			
6	0075-04008	Screw, w/washers	4	4	4	4	4			
7	54000-12190	Sheet, switch	1	1	1	1	1			
8	31010-46910	Screw, pan head	2	2	2	2	2			

9	54000-34650	Harness, earth	1	1	1	1	1			
(A=-215AF0468)(B=-215AF0468)(C=-216AF1477)(D=-216AF1477)(E=-288AD0253)										
10	24300-34440	Switch, flasher	1	1	1	1	1			
11	0075-05016	Screw, w/washers	1	1	1	1	1			
12	0000-72005	Washer, plain	1	1	1	1	1			

13	0075-05025	Screw, w/washers	1	1	1	1	1			
14	24300-33090	Knob, lever	1	1	1	1	1			
15	24300-20890	Cap(1)	1	1	1	1	1			
16	24300-20881	Cap(2)	1	1	1	1	1			
17	0010-08016	Bolt	2	2	2	2	2			

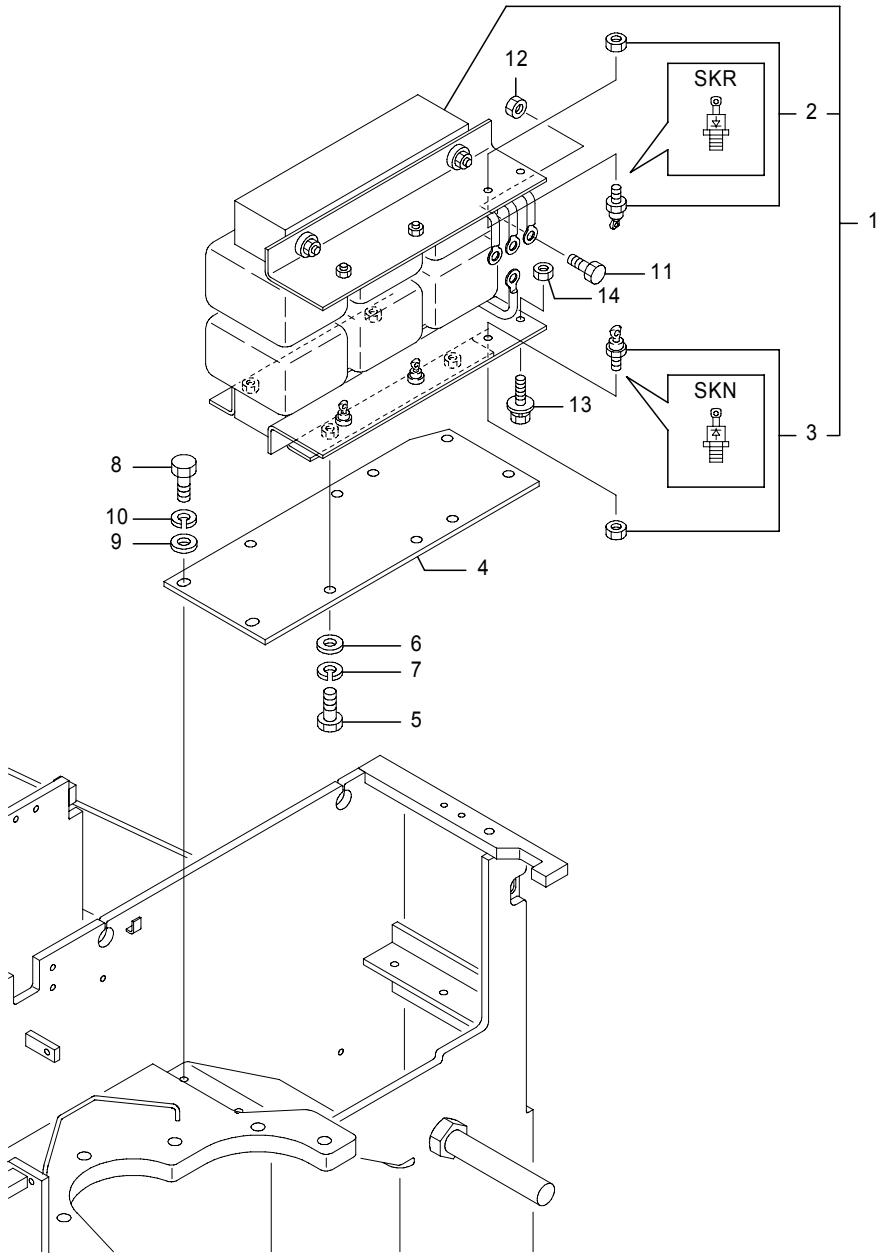
18	0000-72008	Washer, plain	2	2	2	2	2			
19	0000-70008	Washer, lock	2	2	2	2	2			
20	37940-00250	Trim	1	1	1	1	1			
(A=215AF0340-)(B=215AF0340-)(C=216AF1038-)(D=216AF1038-)(E=288AD0179-)										

Note : Illustration : Flasher lever is LH & Directional lever is RH.

Fig.4811A CHARGER(BC) 2
AC200V

Fig.4811A CHARGER(BC) 2
AC200V

(A)=FBT10P (D)=FBT18P
(B)=FBT13P (E)=FBT20PN
(C)=FBT15P (F)=



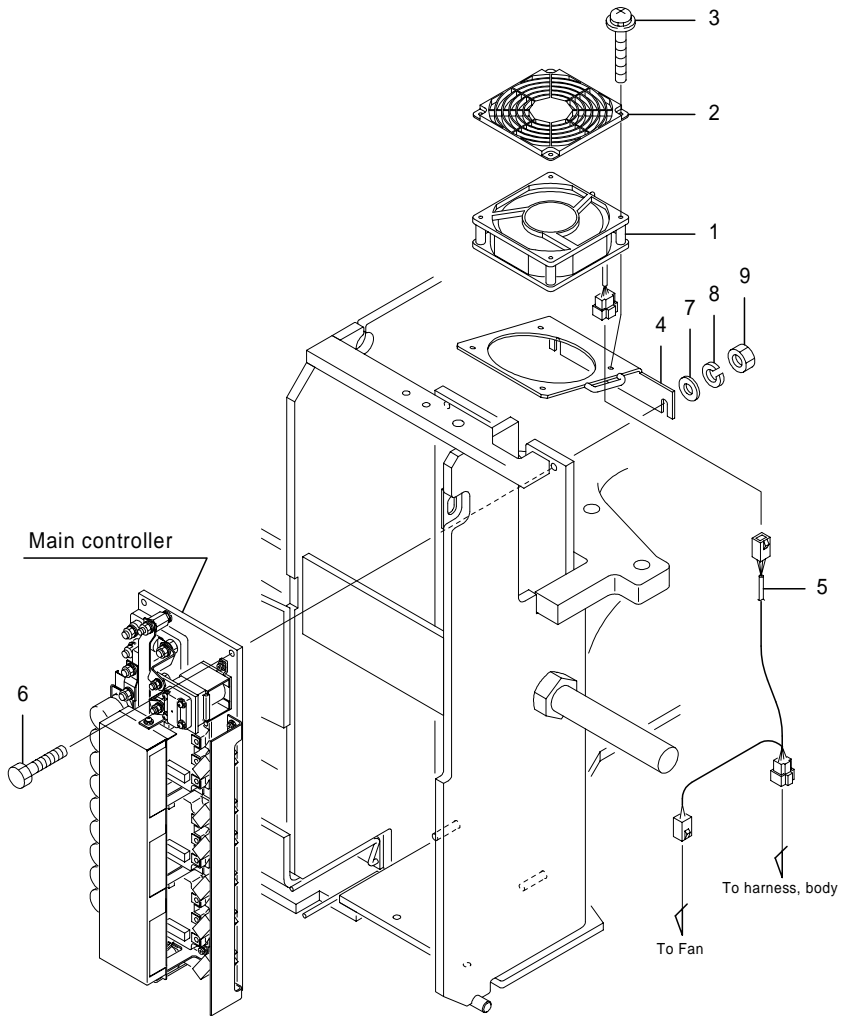
No.	Parts No.	Parts Name	(A)	(B)	(C)	(D)	(E)	(F)	i/a	Remarks
10-1	0000-70010	Washer, lock	2	2	2	2	2			
		(A=215AF0363-)(B=215AF0363-)(C=216AF1190-)(D=216AF1190-)(E=288AD0198-)								
11	31010-03590	Bolt	3	3	3	3	3			
12	0000-00005	Nut	3	3	3	3	3			
13	0016-08025	Bolt, w/washers	2	2	2	2	2			
		(A=215AF0314-)(B=215AF0314-)(C=216AF0913-)(D=216AF0913-)(E=288AD0162-)								
14	0000-00008	Nut	2	2	2	2	2			
		(A=215AF0314-)(B=215AF0314-)(C=216AF0913-)(D=216AF0913-)(E=288AD0162-)								

Note :

Fig.4862 ELECTRIC PARTS 3
[FAN],EEC

Fig.4862 ELECTRIC PARTS 3
[FAN],EEC

(A)=FBT10P (D)=FBT18P
(B)=FBT13P (E)=FBT20PN
(C)=FBT15P (F)=



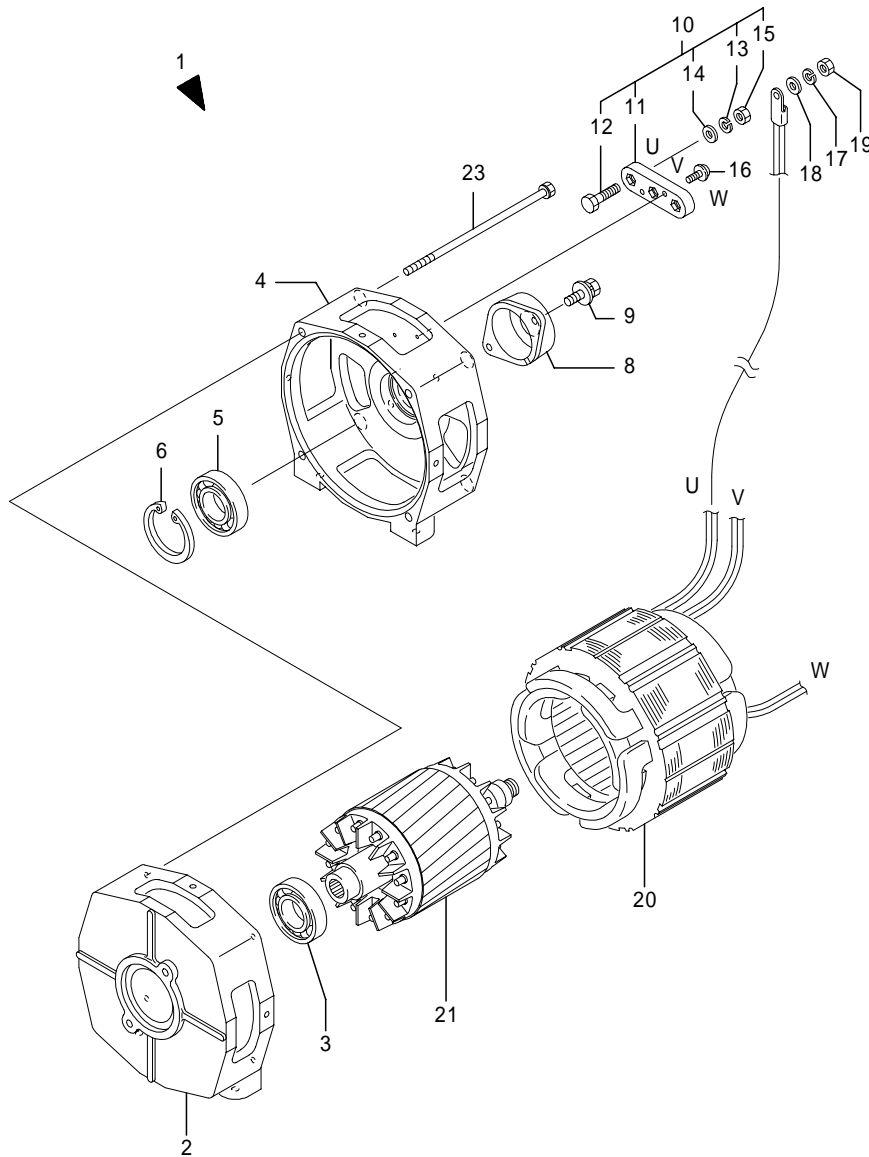
No.	Parts No.	Parts Name	(A)	(B)	(C)	(D)	(E)	(F)	i/a	Remarks
1	70001-06890	Fan	1	1	1	1	1			
1-1	70000-26511	Fan	1	1	1	1	1		↓	(A=215AF0146-)(B=215AF0146-)(C=216AF0438-)(D=216AF0438-)(E=288AD0083-)
2	70000-22910	Guard, finger	1	1	1	1	1			
3	0075-04045	Screw, w/washers	4	4	4	4	4			
4	50006-12890	Bracket, fan	1	1	1	1	1			
5	54001-26190	Harness, fan	1	1	1	1	1			
6	0110-08050	Bolt	2	2	2	2	2			
7	0000-72008	Washer, plain	2	2	2	2	2			
8	0000-70008	Washer, lock	2	2	2	2	2			
9	0000-00008	Nut	2	2	2	2	2			

Note :

Fig.4072A HYDRAULIC MOTOR
(-215AF0217/ -216AF0638/ -288AD0133)

Fig.4072A HYDRAULIC MOTOR
(-215AF0217/ -216AF0638/ -288AD0133)

(A)=FBT10P (D)=FBT18P
(B)=FBT13P (E)=FBT20PN
(C)=FBT15P (F)=



No.	Parts No.	Parts Name	(A)	(B)	(C)	(D)	(E)	(F)	i/a	Remarks
1	56000-13440	Motor ass'y	1	1	1	1	1			AH95C2D/1
1-1	56000-13441	Motor ass'y	1	1	1	1	1		↑	AH95C2D/1 (A=215AF0051-)(B=215AF0051-)(C=216AF0120-)(D=216AF0120-)(E=288AD0031-)
2	24150-03400	Cover(D), end	1	1	1	1	1			
3	31220-12270	Bearing	1	1	1	1	1			
4	24150-03421	Cover, end	1	1	1	1	1			
4-1	56000-13620	Cover, end	1	1	1	1	1		×	(A=215AF0051-)(B=215AF0051-)(C=216AF0120-)(D=216AF0120-)(E=288AD0031-)
5	31220-12260	Bearing	1	1	1	1	1			
6	0000-85062	Ring, snap	1	1	1	1	1			
8	24150-03020	Housing, sensor	1	1	1	1	1			(A=-215AF0050)(B=-215AF0050)(C=-216AF0119)(D=-216AF0119)(E=-288AD0030)
9	0017-06016	Bolt, w/washer	2	2	2	2	2			(A=-215AF0050)(B=-215AF0050)(C=-216AF0119)(D=-216AF0119)(E=-288AD0030)
10	24180-00420	Terminal comp.	1	1	1	1	1			
11	24180-00372	Base, terminal	1	1	1	1	1			
12	0010-08030	Bolt	3	3	3	3	3			
13	0000-70008	Washer, lock	3	3	3	3	3			
14	0000-72008	Washer, plain	3	3	3	3	3			
15	0000-10008	Nut, jam	3	3	3	3	3			
16	0075-05016	Screw, w/washers	2	2	2	2	2			
17	0000-70008	Washer, lock	3	3	3	3	3			
18	0000-72008	Washer, plain	3	3	3	3	3			
19	0000-00008	Nut	3	3	3	3	3			
20	24150-02401	Stator comp.	1	1	1	1	1			
21	24150-03170	Rotor sub ass'y	1	1	1	1	1			
21-1	56000-13560	Rotor sub ass'y	1	1	1	1	1		×	(A=215AF0051-)(B=215AF0051-)(C=216AF0120-)(D=216AF0120-)(E=288AD0031-)
23	24150-04600	Bolt, w/washer	4	4	4	4	4			

Note : 8.8KW,48V,235A,1850r/m,1/12h,*1: DTL-8.2H-E1750B, *2: DTL-8.2H-E1750BS

Location : See fig.1510

CLICK HERE TO **DOWNLOAD** THE COMPLETE MANUAL

- Thank you very much for reading the preview of the manual.
- You can download the complete manual from: www.heydownloads.com by clicking the link below



- Please note: If there is no response to CLICKING the link, please download this PDF first and then click on it.

CLICK HERE TO **DOWNLOAD** THE COMPLETE MANUAL