

Fig.2053B LIFT CYLINDER[Pm]
FBC20P/25P(CS/FCS/RP/DRP)

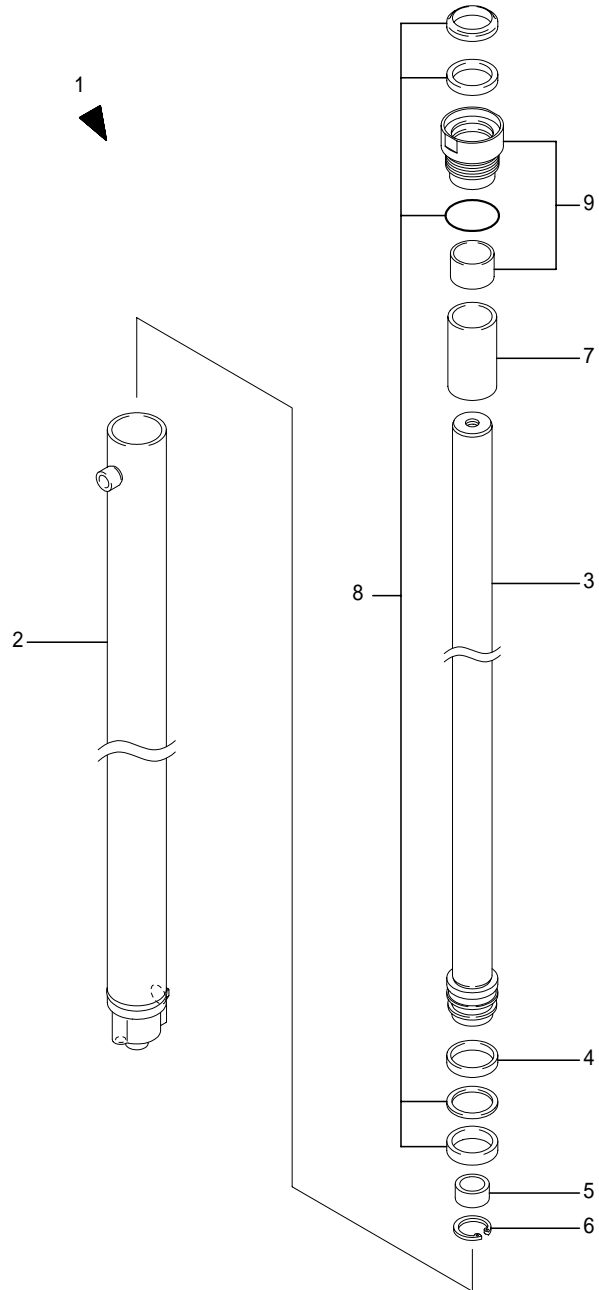


Fig.2053B LIFT CYLINDER[Pm]
FBC20P/25P(CS/FCS/RP/DRP)

(A)=FBC20P (D)=
(B)=FBC25P (E)=
(C)=FBC30P (F)=

No.	Parts No.	Parts Name	(A)	(B)	(C)	(D)	(E)	(F)	i/a	Remarks
1	31850-22620	Cylinder ass'y, lift	2	2						MLH2500
	31850-22630	Cylinder ass'y, lift	2	2						MLH2700
	31850-22640	Cylinder ass'y, lift	2	2						MLH3000
	31850-22650	Cylinder ass'y, lift	2	2						MLH3300
	31850-22660	Cylinder ass'y, lift	2	2						MLH3500
	31850-22670	Cylinder ass'y, lift	2	2						MLH3700
	31850-22680	Cylinder ass'y, lift	2	2						MLH4000
	31850-22690	Cylinder ass'y, lift	2	2						MLH4300
	31850-22700	Cylinder ass'y, lift	2	2						MLH4500
	31850-22710	Cylinder ass'y, lift	2	2						MLH4700
31850-22720	Cylinder ass'y, lift	2	2						MLH5000	
2	31851-18230	Tube ass'y, cylinder	2	2						MLH2500
	31851-18240	Tube ass'y, cylinder	2	2						MLH2700
	31851-18250	Tube ass'y, cylinder	2	2						MLH3000
	31851-18260	Tube ass'y, cylinder	2	2						MLH3300
	31851-18270	Tube ass'y, cylinder	2	2						MLH3500
	31851-18280	Tube ass'y, cylinder	2	2						MLH3700
	31851-18290	Tube ass'y, cylinder	2	2						MLH4000
	31851-18300	Tube ass'y, cylinder	2	2						MLH4300
	31851-18310	Tube ass'y, cylinder	2	2						MLH4500
	31851-18320	Tube ass'y, cylinder	2	2						MLH4700
31851-18330	Tube ass'y, cylinder	2	2						MLH5000	
3	31851-17560	Rod ass'y, piston	2	2						MLH2500
	31851-17570	Rod ass'y, piston	2	2						MLH2700
	31851-17580	Rod ass'y, piston	2	2						MLH3000
	31851-17590	Rod ass'y, piston	2	2						MLH3300
	31851-17600	Rod ass'y, piston	2	2						MLH3500
	31851-17610	Rod ass'y, piston	2	2						MLH3700
	31851-17620	Rod ass'y, piston	2	2						MLH4000
	31851-17630	Rod ass'y, piston	2	2						MLH4300
	31851-17640	Rod ass'y, piston	2	2						MLH4500
	31851-17650	Rod ass'y, piston	2	2						MLH4700
31851-17660	Rod ass'y, piston	2	2						MLH5000	
4	31851-28630	Bushing	2	2						
5	31851-28670	Bearing, cushion	2	2						

Note :

CLICK HERE TO **DOWNLOAD** THE COMPLETE MANUAL

- Thank you very much for reading the preview of the manual.
- You can download the complete manual from: www.heydownloads.com by clicking the link below



- Please note: If there is no response to CLICKING the link, please download this PDF first and then click on it.

CLICK HERE TO **DOWNLOAD** THE COMPLETE MANUAL

Fig.2153A LIFT CYLINDER(2nd)[Mm]
FBC20P/25P(Std)

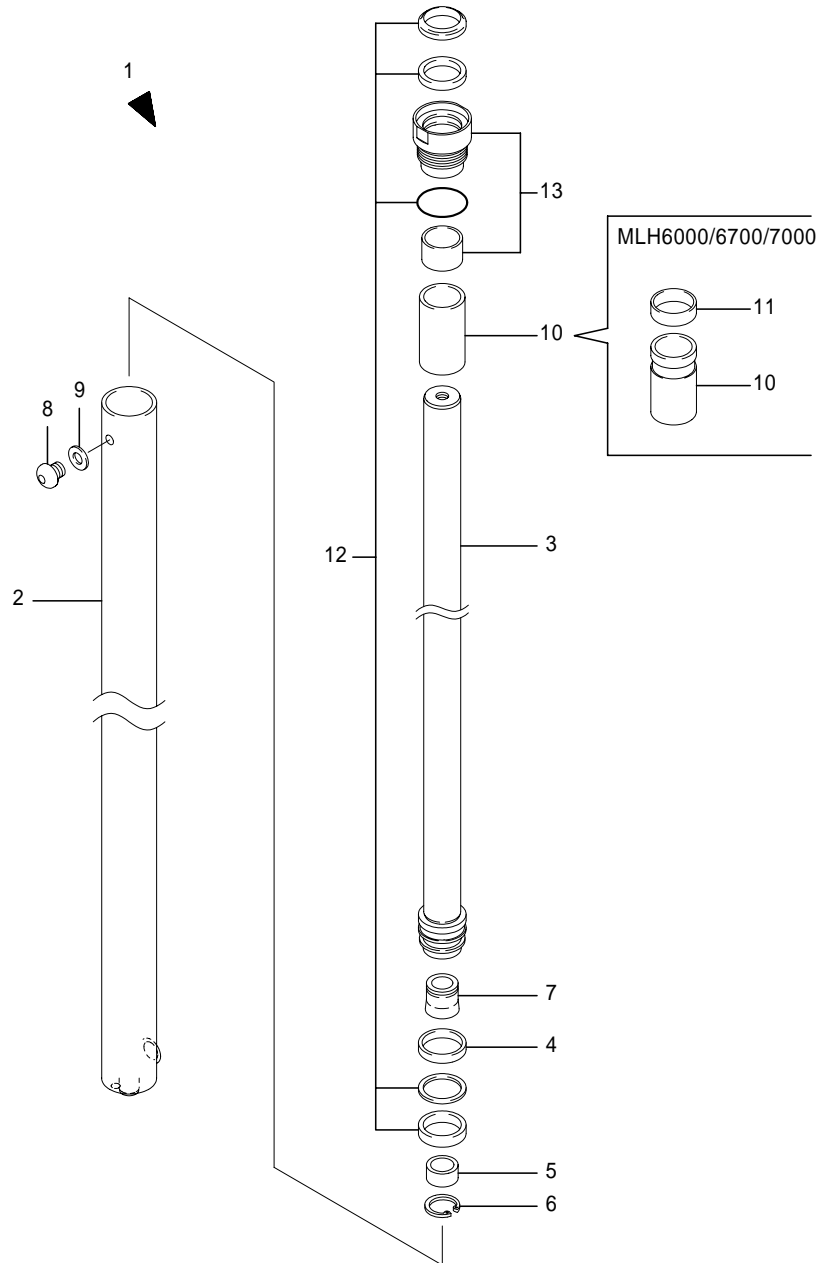


Fig.2153A LIFT CYLINDER(2nd)[Mm]
FBC20P/25P(Std)

(A)=FBC20P (D)=
(B)=FBC25P (E)=
(C)=FBC30P (F)=

No.	Parts No.	Parts Name	(A)	(B)	(C)	(D)	(E)	(F)	i/a	Remarks
3	31850-62950	Rod ass'y, piston	2	2						MLH5700
	31850-62960	Rod ass'y, piston	2	2						MLH6000
	31850-62970	Rod ass'y, piston	2	2						MLH6300
	31850-62720	Rod ass'y, piston	2	2						MLH6500
4	31851-28630	Bushing	2	2						
5	31850-63070	Cushion, bearing	2	2						
6	31851-28980	Ring, snap	2	2						
7	31851-32200	Valve, check	2	2						
8	31851-32210	Plug	2	2						
9	31850-62360	Gasket	2	2						
10	31851-30060	Spacer	2	2						MLH3500/4700/5000/5300
	31851-30070	Spacer	2	2						MLH3700/5500
	31851-30080	Spacer	2	2						MLH4500/5700
	31851-30090	Spacer	2	2						MLH6300
	31851-30100	Spacer	2	2						MLH6500
11	31851-28490	Ring, wear	2	2						MLH6000
12	31850-63080	KIT, repair	2	2						
13	31850-63090	KIT, head	2	2						

Note :

Fig.1131A FRONT AXLE 2
FBC20P/25P

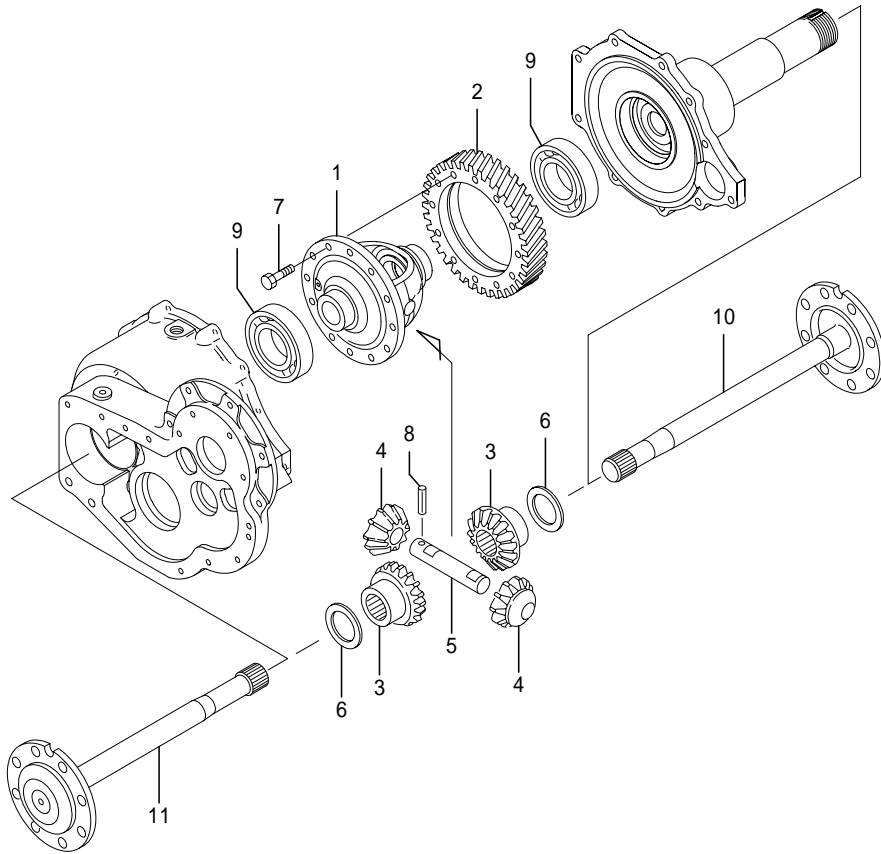


Fig.1131A FRONT AXLE 2
FBC20P/25P

(A)=FBC20P (D)=
(B)=FBC25P (E)=
(C)=FBC30P (F)=

No.	Parts No.	Parts Name	(A)	(B)	(C)	(D)	(E)	(F)	i/a	Remarks
1	14200-13300	Case, differential	1	1						
2	14200-13490	Gear(4)	1	1						
3	32511-01010	Gear, differential sid	2	2						
4	32511-01000	Gear, pinion	2	2						
5	32511-00990	Shaft, pinion gear	1	1						
6	32511-01020	Washer, side gear	2	2						
7	32511-00960	Bolt	12	12						
8	0303-06040	Pin, spring	1	1						
9	0405-62130	Bearing, radial ball	2	2						
10	14200-13560	Shaft(1), drive	1	1						
11	14200-13570	Shaft(2), drive	1	1						

Note :

Fig.2152A LIFT CYLINDER(1st)[Mm]
FBC20P/25P(Std)

1
▲

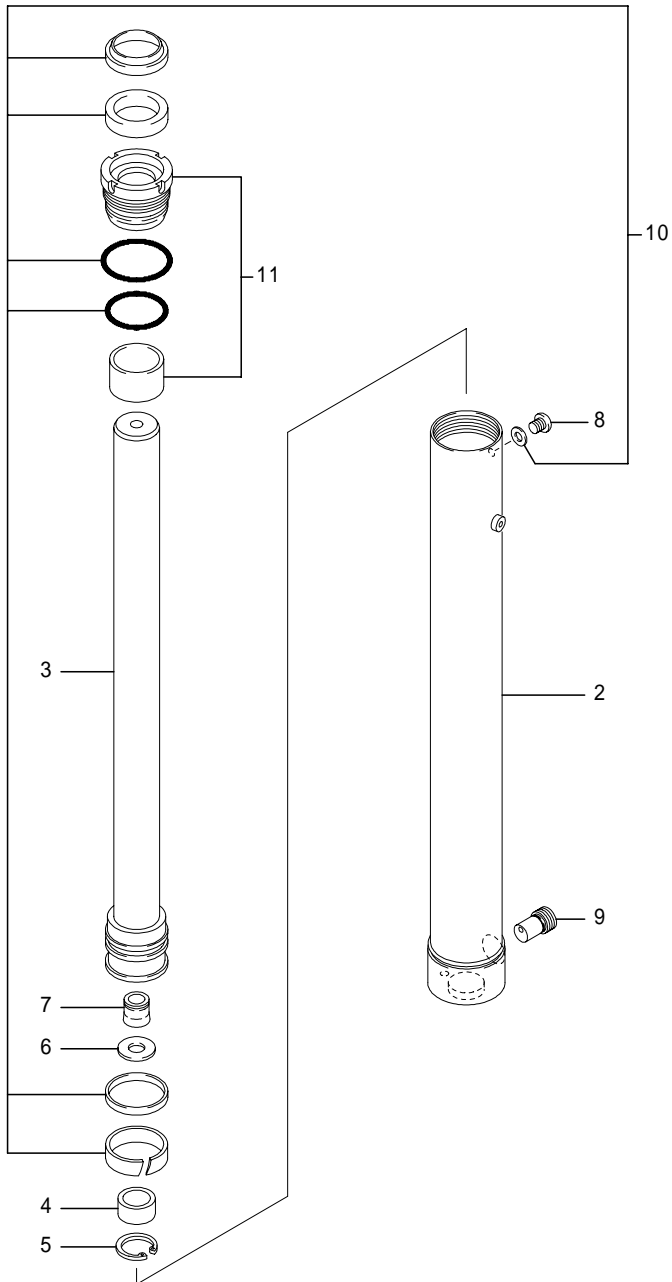


Fig.2152A LIFT CYLINDER(1st)[Mm]
FBC20P/25P(Std)

(A)=FBC20P (D)=
(B)=FBC25P (E)=
(C)=FBC30P (F)=

No.	Parts No.	Parts Name	(A)	(B)	(C)	(D)	(E)	(F)	i/a	Remarks
3	31851-31150	Rod ass'y, piston	1	1						MLH4700
	31851-31160	Rod ass'y, piston	1	1						MLH5000
	31851-31170	Rod ass'y, piston	1	1						MLH5300
	31851-31180	Rod ass'y, piston	1	1						MLH5500
	31851-31190	Rod ass'y, piston	1	1						MLH5700
	31851-31200	Rod ass'y, piston	1	1						MLH6000
	31851-31210	Rod ass'y, piston	1	1						MLH6300
	31851-31220	Rod ass'y, piston	1	1						MLH6500
	31851-31230	Rod ass'y, piston	1	1						MLH6700
	31851-31240	Rod ass'y, piston	1	1						MLH7000
4	31851-34310	Cushion, bearing	1	1						
5	31851-34300	Ring, snap	1	1						
6	31851-34290	Plate	1	1						
7	31851-32200	Valve, check	1	1						
8	31851-32210	Plug	1	1						
9	31851-10720	Valve, down safety	1	1						
10	31851-32440	KIT, repair	1	1						
11	31851-32450	KIT, head	1	1						

Note :

Fig.2164 CHAIN WHEEL(MAST)[Mm]

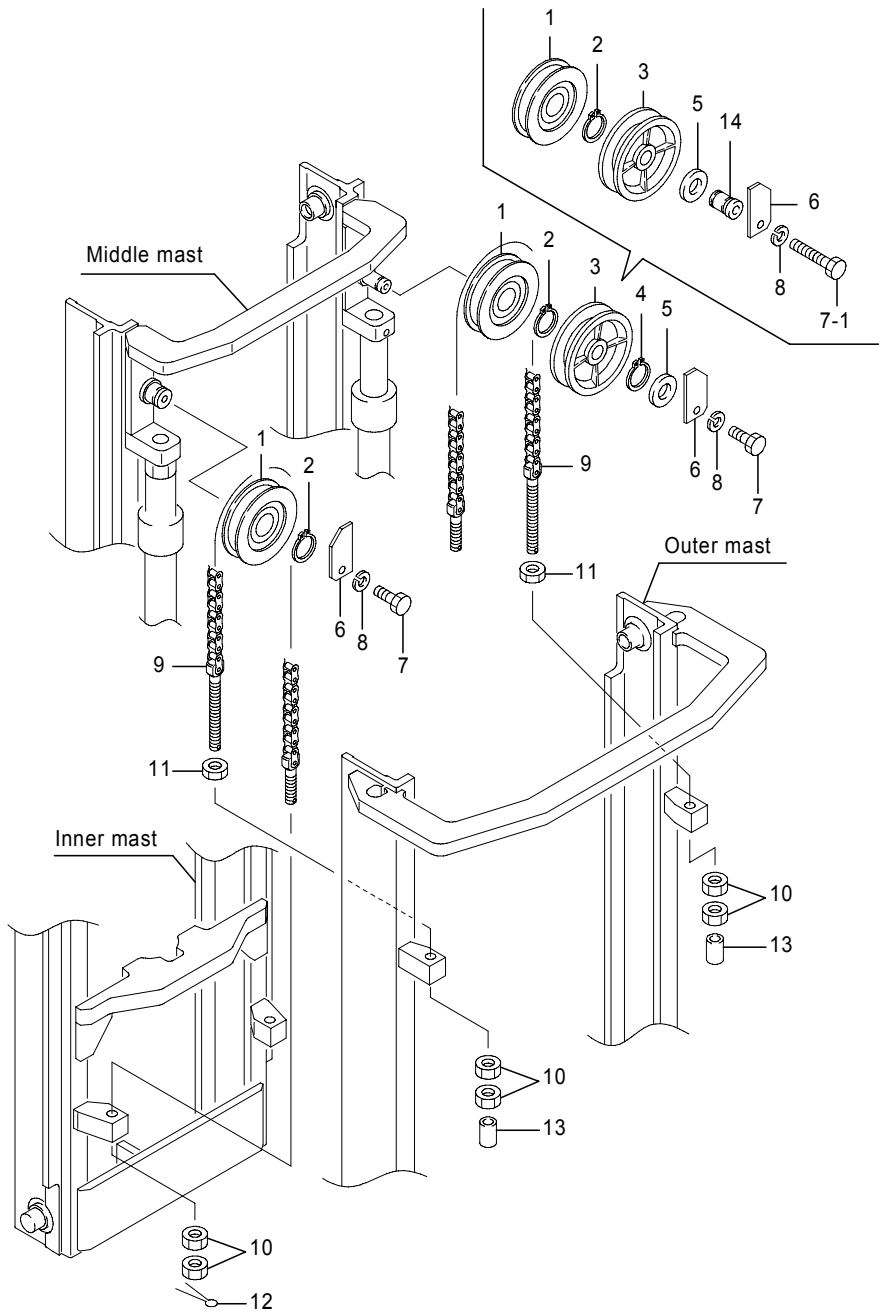


Fig.2164 CHAIN WHEEL(MAST)[Mm]

(A)=FBC20P (D)=
(B)=FBC25P (E)=
(C)=FBC30P (F)=

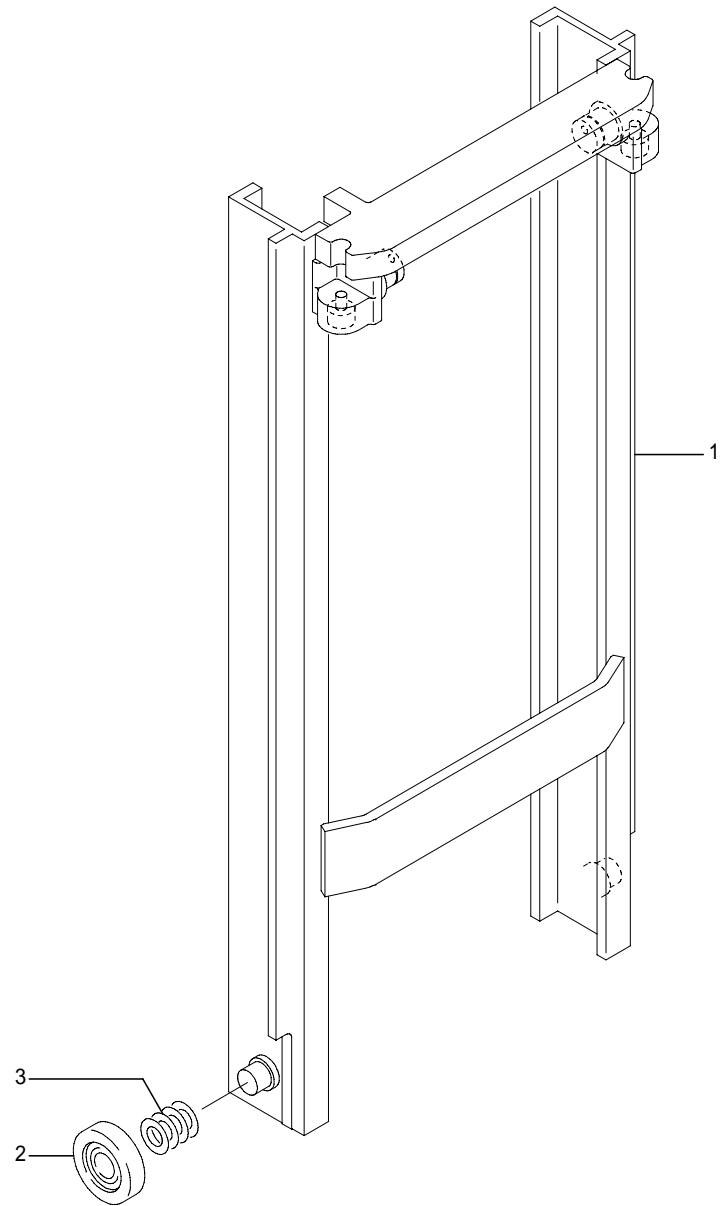
No.	Parts No.	Parts Name	(A)	(B)	(C)	(D)	(E)	(F)	i/a	Remarks
9	52001-93800	Chain comp.				2				MLH6500,FCS/RP/DRP,2nd
	52001-93810	Chain comp.				2				MLH6700,FCS/RP/DRP,2nd
	52001-97370	Chain comp.				2				MLH7000,FCS/RP/DRP,2nd
10	0000-20018	Nut	8	8	8					
11	0000-30018	Nut, jam	2	2	2					
12	0302-40040	Pin, cotter	2	2	2					
13	32290-00540	Cap	2	2	2					
14	52000-58732	Shaft, pulley	1	1	1					
(A=244AA****-)(B=244AA****-)(C=254AA****-)										

Note : *1: 2nd,Std/CS

Fig.2063A INNER MAST[Pm]

Fig.2063A INNER MAST[Pm]

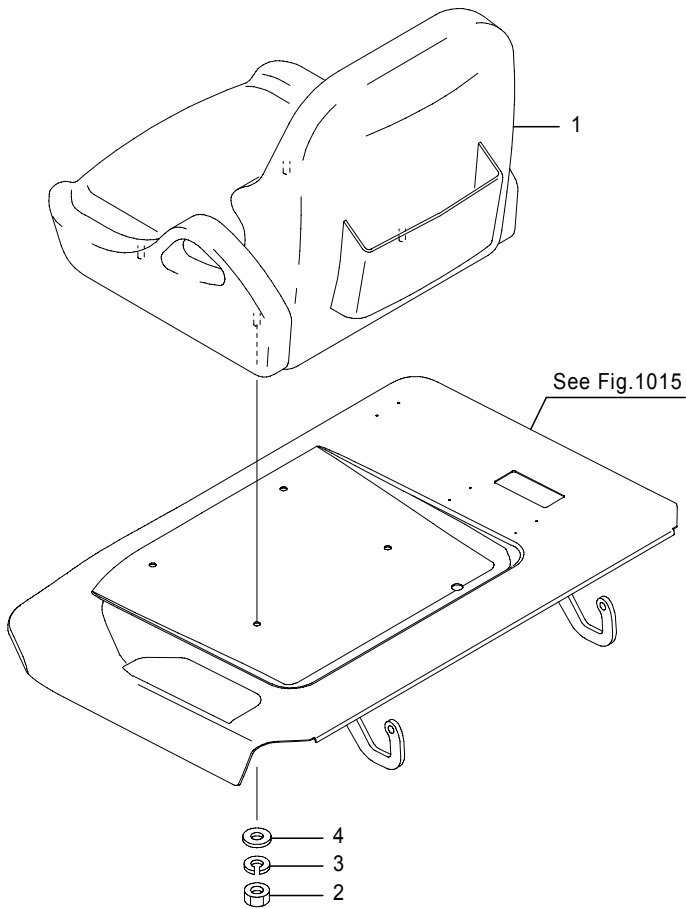
(A)=FBC20P (D)=
 (B)=FBC25P (E)=
 (C)=FBC30P (F)=



No.	Parts No.	Parts Name	(A)	(B)	(C)	(D)	(E)	(F)	i/a	Remarks
1-1	52001-12081	Mast comp., inner (A=244AA0393-)(B=244AA0393-)	1	1					×	MLH5000
2	31220-10600	Roller	2	2						
	70001-05480	Roller	2	2						
3	4341-67640	Shim	AR	AR						t0.2
	4341-67340	Shim	AR	AR						t0.5
	4341-67350	Shim	AR	AR						t1.0
	4341-67360	Shim	AR	AR						t2.0

Note :

Fig.1050 SEAT



Remarks	Suspension & Reclining	Seat sensor	Logo
*1(Std)	X	X	○
*2	○	X	○
*3	X	○	○
*4	○	○	○
*5	X	X	X
*6	○	X	X
*7	X	○	X
*8	○	○	X

Fig.1050 SEAT

(A)=FBC20P (D)=
(B)=FBC25P (E)=
(C)=FBC30P (F)=

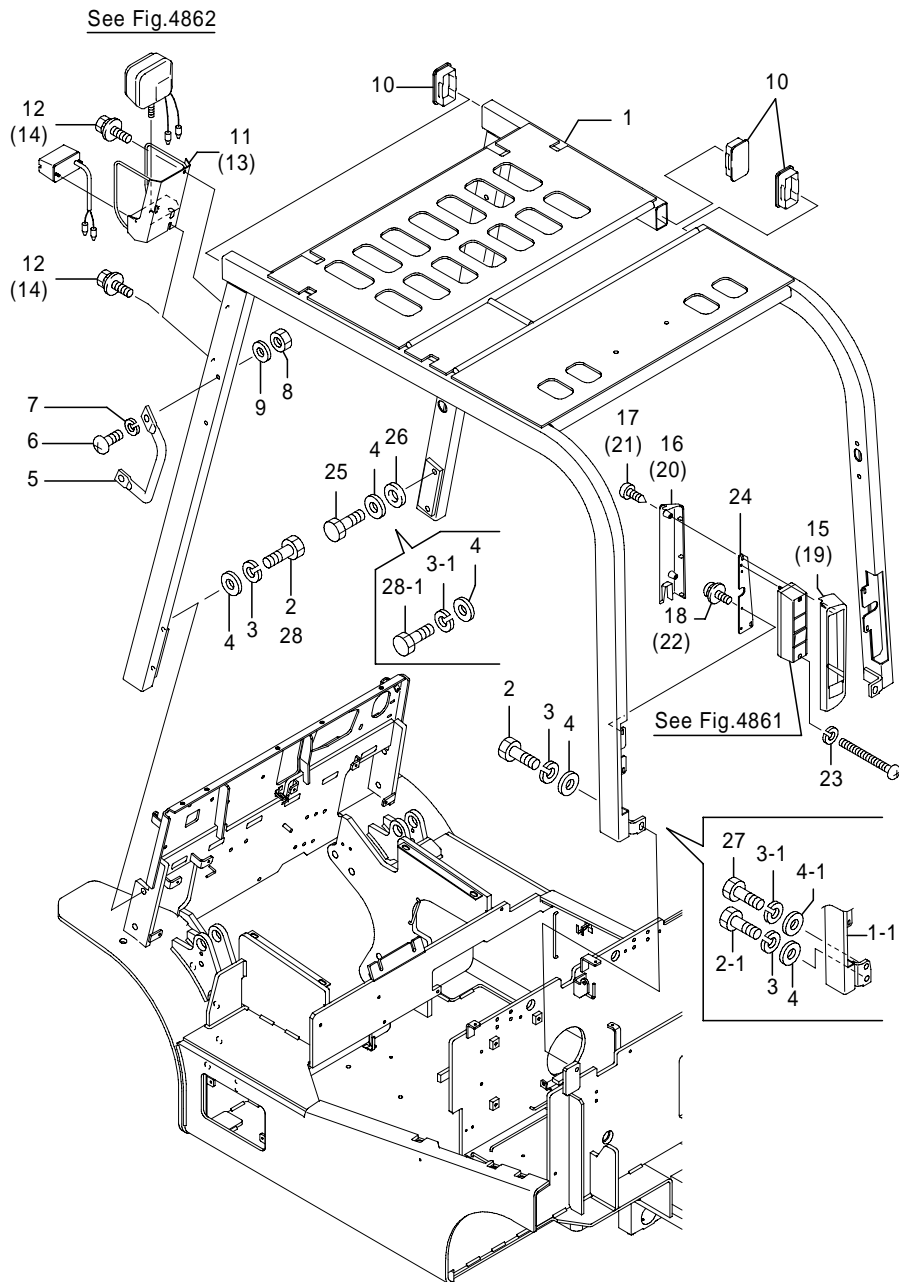
No.	Parts No.	Parts Name	(A)	(B)	(C)	(D)	(E)	(F)	i/a	Remarks
1	70000-28750	Seat ass'y	1	1	1					*1,Std
		(A=-244AA0609)(B=-244AA0609)(C=-244AA0609)								
	70000-28760	Seat ass'y	1	1	1					*2
		(A=-244AA0609)(B=-244AA0609)(C=-244AA0609)								
	70000-28770	Seat ass'y	1	1	1					*3
		(A=-244AA0609)(B=-244AA0609)(C=-244AA0609)								
	70000-28780	Seat ass'y	1	1	1					*4
		(A=-244AA0609)(B=-244AA0609)(C=-244AA0609)								
	70000-28790	Seat ass'y	1	1	1					*5
1-1	70001-56270	Seat ass'y	1	1	1				X	*5
		(A=244AA0695-)(B=244AA0695-)(C=254AA0213-)								
1	70000-28800	Seat ass'y	1	1	1					*6
		(A=-244AA0694)(B=-244AA0694)(C=-254AA0212)								
	70000-28810	Seat ass'y	1	1	1					*7
1-1	70001-56250	Seat ass'y	1	1	1				X	*7
		(A=244AA0695-)(B=244AA0695-)(C=254AA0213-)								
1	70000-28820	Seat ass'y	1	1	1					*8
1-1	70001-56240	Seat ass'y	1	1	1				X	*8
		(A=244AA0695-)(B=244AA0695-)(C=254AA0213-)								
2	0000-00008	Nut	4	4	4					
3	0000-70008	Washer, lock	4	4	4					
4	0000-72008	Washer, plain	4	4	4					

Note : *1:w.o/suspension & reclining, *2:w/suspension & reclining
*3:w.o/seat switch, *4:w/seat switch

Fig.1060 OVERHEAD GUARD

Fig.1060 OVERHEAD GUARD

(A)=FBC20P (D)=
(B)=FBC25P (E)=
(C)=FBC30P (F)=



No.	Parts No.	Parts Name	(A)	(B)	(C)	(D)	(E)	(F)	i/a	Remarks
26-1	50002-28840	Washer, rubber	1	1	1					
		(A=-244AA0466)(B=-244AA0466)(C=-254AA0107)								
27	0022-12025	Bolt	2	2	2					
		(A=244AA0467-)(B=244AA0467-)(C=254AA0108-)								
28	0022-12040	Bolt	3	3	3					
		(A=244AA****-)(B=244AA****-)(C=254AA****-)								
28-1	0022-12040	Bolt	4	4	4					
		(A=244AA0467-)(B=244AA0467-)(C=254AA0108-)								
28	0024-12040	Bolt	3	3	3					DRP
		(A=244AA****-)(B=244AA****-)(C=254AA****-)								

Note :

Fig.1340A VALVE LINKAGE
2 SPOOLS

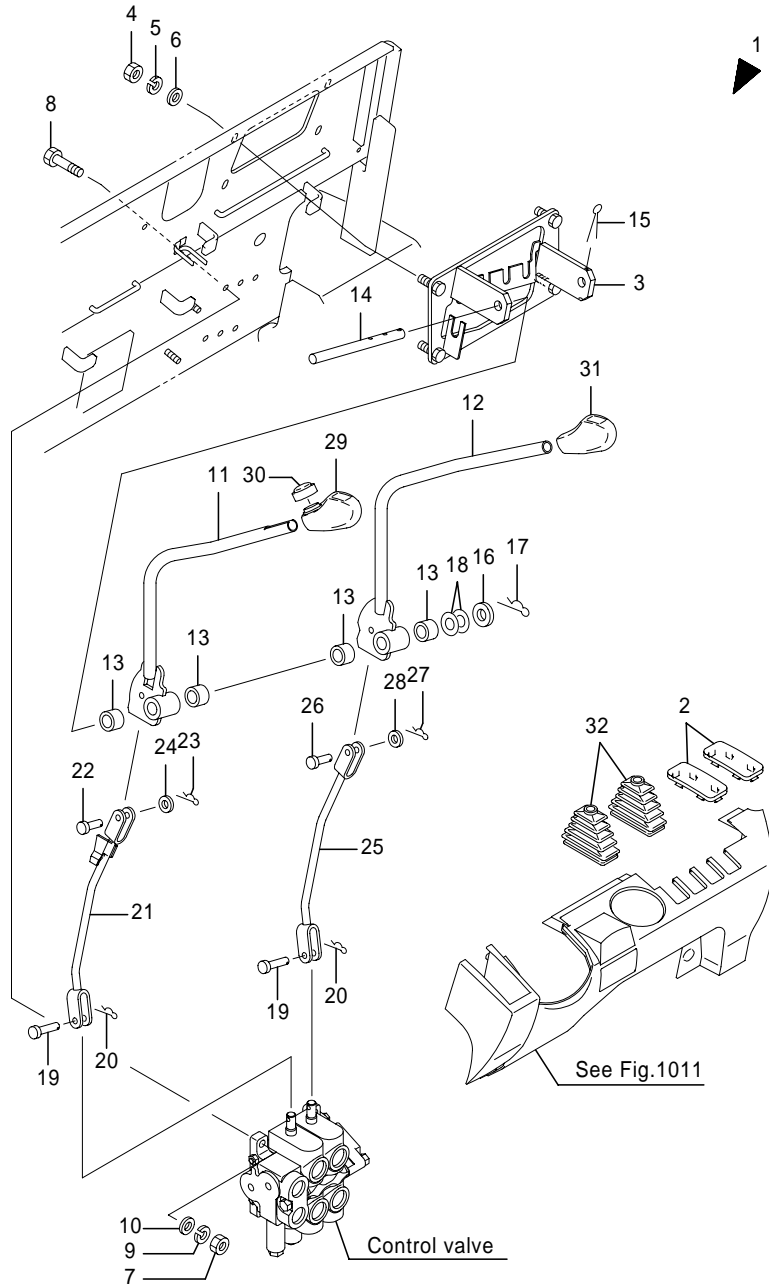


Fig.1340A VALVE LINKAGE
2 SPOOLS

(A)=FBC20P (D)=
(B)=FBC25P (E)=
(C)=FBC30P (F)=

No.	Parts No.	Parts Name	(A)	(B)	(C)	(D)	(E)	(F)	i/a	Remarks
1	50001-79170	Linkage ass'y, valve	1	1	1					
2	14401-00990	Cap, lever	2	2	2					
3	14400-99874	Bracket, lever	1	1	1					
4	0000-20010	Nut	4	4	4					
5	0000-70010	Washer, lock	4	4	4					
6	0000-72010	Washer, plain	4	4	4					
7	0000-20010	Nut	3	3	3					
8	0025-10040	Bolt	3	3	3					
9	0000-70010	Washer, lock	3	3	3					
10	0000-72010	Washer, plain	3	3	3					
11	50000-83520	Lever comp., valve	1	1	1					Lift
12	50000-83550	Lever comp., valve	1	1	1					Tilt
13	1903-35003	Bushing	4	4	4					
14	14400-52032	Shaft	1	1	1					
15	0302-32050	Pin, cotter	1	1	1					
16	0000-72014	Washer, plain	1	1	1					
17	00001-00014	Pin, snap	1	1	1					
18	14400-52790	Spacer	AR	AR	AR					
19	4641-87153	Pin, valve	2	2	2					
20	00001-00005	Pin, snap	2	2	2					
21	50000-83600	Link, lift	1	1	1					Lift
22	0300-08025	Pin, clevis	1	1	1					Lift
23	00001-00008	Pin, snap	1	1	1					
24	0000-72008	Washer, plain	1	1	1					
25	50000-83610	Link(2)	1	1	1					Tilt
26	0300-08025	Pin, clevis	1	1	1					
27	00001-00008	Pin, snap	1	1	1					
28	0000-72008	Washer, plain	1	1	1					
29	14400-97212	Knob	1	1	1					Lift
30	14401-02440	Boot, switch	1	1	1					
31	14400-97222	Knob	1	1	1					Tilt
32	14400-96861	Boot, lever	2	2	2					

Note :

CLICK HERE TO **DOWNLOAD** THE COMPLETE MANUAL

- Thank you very much for reading the preview of the manual.
- You can download the complete manual from: www.heydownloads.com by clicking the link below



- Please note: If there is no response to CLICKING the link, please download this PDF first and then click on it.

CLICK HERE TO **DOWNLOAD** THE COMPLETE MANUAL

Fig.2054A TILT CYLINDER[Pm]
FBC20P/25P,(Std/CS)

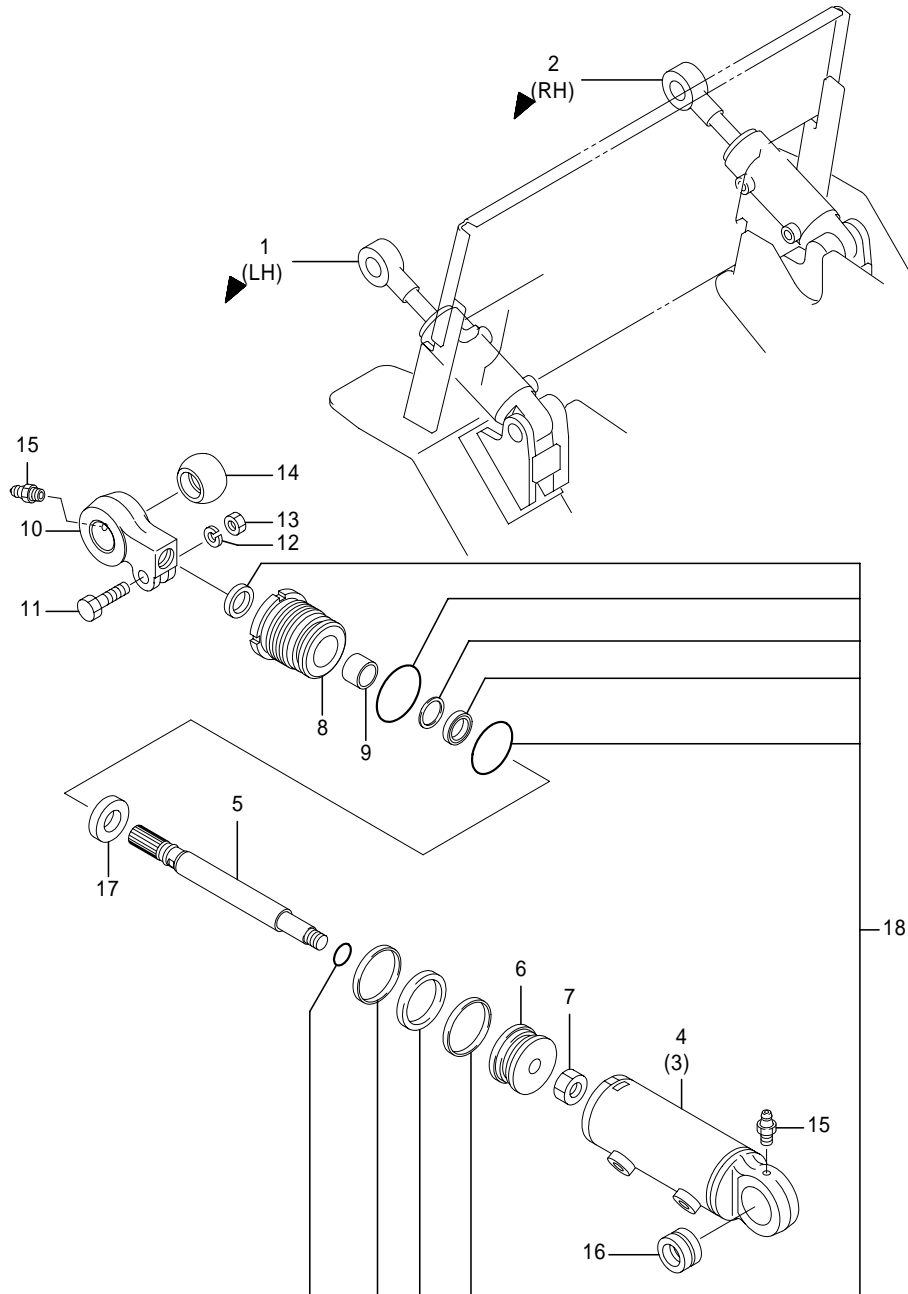


Fig.2054A TILT CYLINDER[Pm]
FBC20P/25P,(Std/CS)

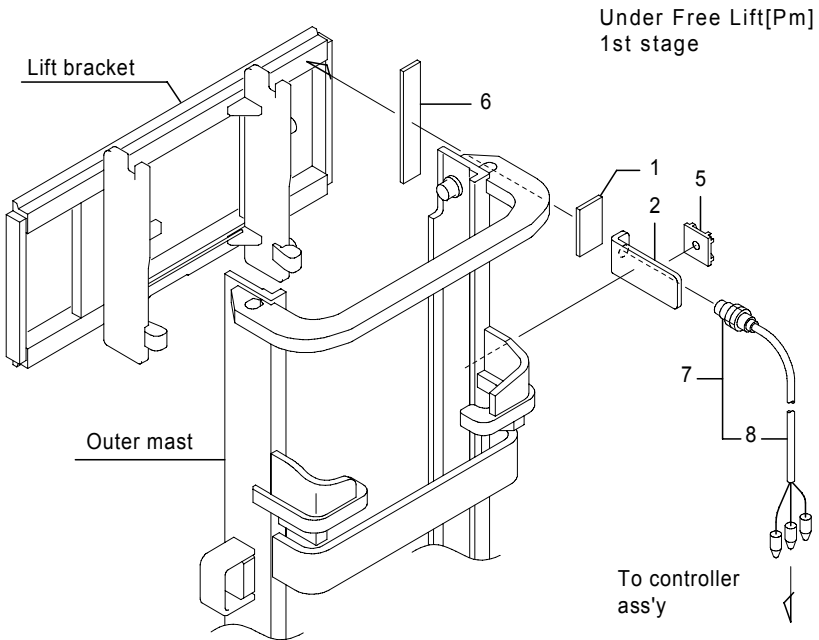
(A)=FBC20P (D)=
(B)=FBC25P (E)=
(C)=FBC30P (F)=

No.	Parts No.	Parts Name	(A)	(B)	(C)	(D)	(E)	(F)	i/a	Remarks
1	70000-41470	Cylinder(L) ass'y, til	1	1						LO1,6°/12°,MLH3000-4000
	70000-41500	Cylinder(L) ass'y, til	1	1						LO4,4°/6°, *1
2	70000-41560	Cylinder(R) ass'y, til	1	1						RO1,6°/12°,MLH3000-4000
	70000-41590	Cylinder(R) ass'y, til	1	1						RO4,4°/6°, *1
3	31851-37170	Cylinder sub ass'y	2	2						LH
4	31851-37180	Cylinder sub ass'y	2	2						RH
5	31851-38260	Rod ass'y, piston	2	2						6°/12°
	31851-38400	Rod ass'y, piston	2	2						4°/6°
6	31851-37890	Piston	2	2						
7	31851-37680	Nut	2	2						
8	31851-37060	Head	2	2						
9	31851-37910	Bushing	2	2						
10	31851-37990	Head	2	2						
11	31851-38030	Bolt	2	2						
12	31851-38440	Washer	2	2						
13	31851-37660	Nut	2	2						
14	31851-37930	Bushing	2	2						
15	31851-37690	Nipple, grease	4	4						
16	31851-37950	Bushing	2	2						
17	31851-37530	Spacer	2	2						4°/6°
18	31850-63270	KIT, seal	2	2						

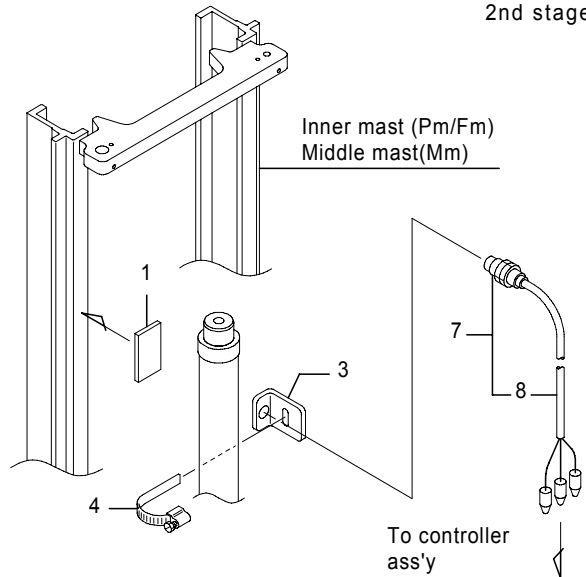
Note : Location:See Fig.2061

*1:MLH2000-2700,MLH>=4300

Fig.5471A LIFT LIMIT 1
SINGLE STAGE TYPE, FBC20P-25P(-244AA****), FBC30P(-255AA****)



Over Free Lift
2nd stage



462-1792-04A
(462-1792/485-5516)

Fig.5471A LIFT LIMIT 1
SINGLE STAGE TYPE, FBC20P-25P(-244AA****), FBC30P(-255AA****)

(A)=FBC20P (D)=
(B)=FBC25P (E)=
(C)=FBC30P (F)=

No.	Parts No.	Parts Name	(A)	(B)	(C)	(D)	(E)	(F)	i/a	Remarks
1	32390-11450	Magnet	1	1	1					
2	14400-68620	Base, switch	1	1	1					Under free lift
3	14400-68610	Bracket, switch	1	1	1					2nd stage
4	32390-13710	Clamp	1	1	1					2nd stage
4-1	70001-31820	Clamp	1	1	1					2nd stage
5	37990-45320	Base, mount	1	1	1					Under free lift
6	14401-07920	Bracket, magnet	1	1	1					Under free lift
7	39530-02640	Sensor, magnetic	1	1	1					Std
	39530-02650	Sensor, magnetic	1	1	1					CS/FCS
8	24801-21350	Harness, accessory	1	1	1					

(A=244AA0558-)(B=244AA0558-)(C=254AA0144-)

Note :

Fig.2158B MAST PIPING[Mm] 1
[CS/FCS/RP/DRP]

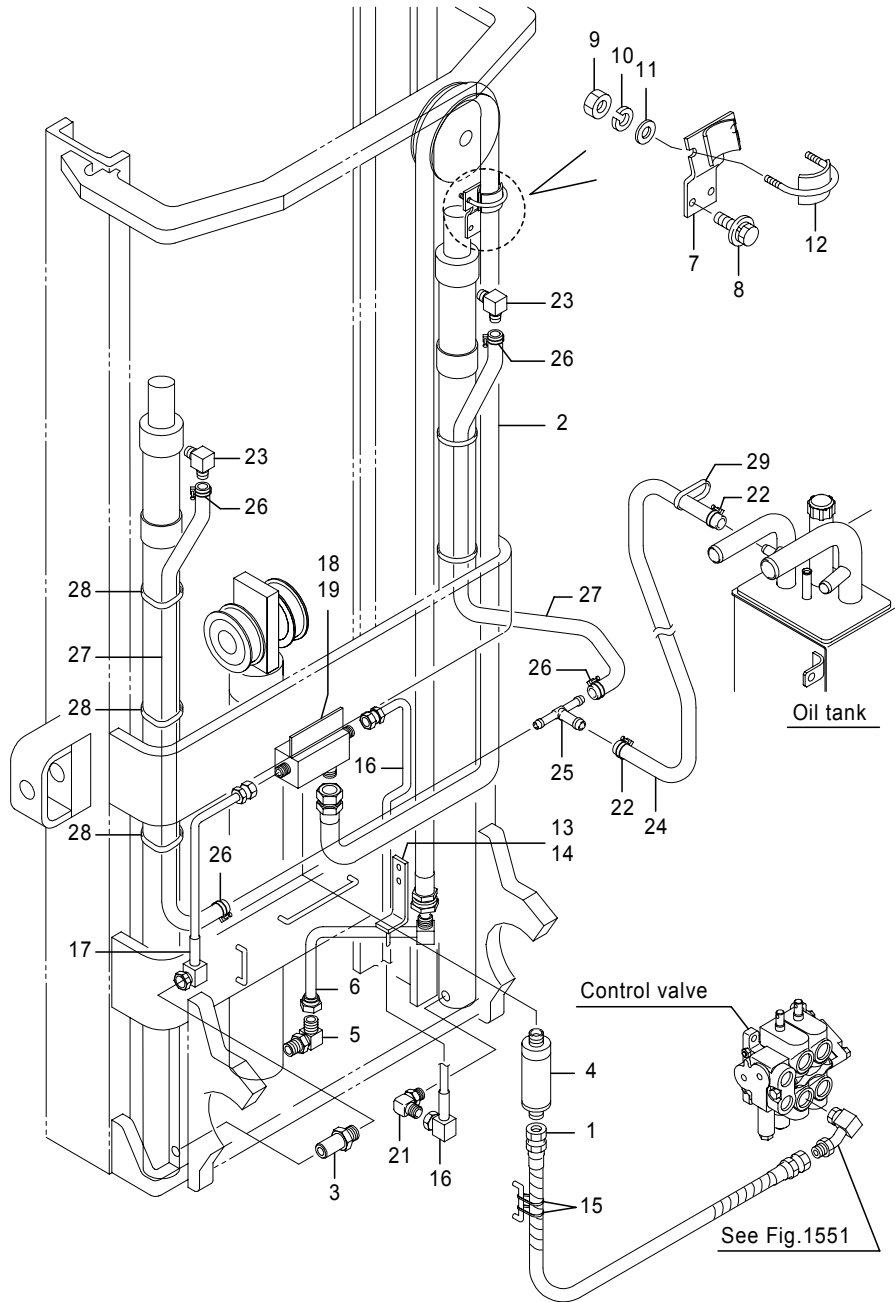


Fig.2158B MAST PIPING[Mm] 1
[CS/FCS/RP/DRP]

(A)=FBC20P (D)=
(B)=FBC25P (E)=
(C)=FBC30P (F)=

No.	Parts No.	Parts Name	(A)	(B)	(C)	(D)	(E)	(F)	i/a	Remarks
2-2	04105-15383	Hose, HP (A=244AA0658-)(B=244AA0658-)(C=254AA0197-)	1	1					↑	MLH5000
	04105-15383	Hose, HP (A=244AA0658-)(B=244AA0658-)(C=254AA0197-)				1			↑	MLH4700
2	5051-15395	Hose, HP	1	1						MLH5300
	5051-15395	Hose, HP				1				MLH5000
2-1	04105-15395	Hose, HP (A=244AA0658-)(B=244AA0658-)(C=254AA0197-)	1	1					↑	MLH5300
	04105-15395	Hose, HP (A=244AA0658-)(B=244AA0658-)(C=254AA0197-)				1			↑	MLH5000
2-2	04105-15403	Hose, HP (A=244AA0658-)(B=244AA0658-)(C=254AA0197-)	1	1					↑	MLH5300
	04105-15403	Hose, HP (A=244AA0658-)(B=244AA0658-)(C=254AA0197-)				1			↑	MLH5000
2	5051-15415	Hose, HP	1	1						MLH5500
	5051-15415	Hose, HP				1				MLH5300
2-1	04105-15415	Hose, HP (A=244AA0658-)(B=244AA0658-)(C=254AA0197-)	1	1					↑	MLH5500
	04105-15415	Hose, HP (A=244AA0658-)(B=244AA0658-)(C=254AA0197-)				1			↑	MLH5300
2-2	04105-15423	Hose, HP (A=244AA0658-)(B=244AA0658-)(C=254AA0197-)	1	1					↑	MLH5500
	04105-15423	Hose, HP (A=244AA0658-)(B=244AA0658-)(C=254AA0197-)				1			↑	MLH5300
2	5051-15425	Hose, HP	1	1						MLH5700
	5051-15425	Hose, HP				1				MLH5500
2-1	04105-15425	Hose, HP (A=244AA0658-)(B=244AA0658-)(C=254AA0197-)	1	1					↑	MLH5700
	04105-15425	Hose, HP (A=244AA0658-)(B=244AA0658-)(C=254AA0197-)				1			↑	MLH5500
2-2	04105-15433	Hose, HP (A=244AA0658-)(B=244AA0658-)(C=254AA0197-)	1	1					↑	MLH5700
	04105-15433	Hose, HP (A=244AA0658-)(B=244AA0658-)(C=254AA0197-)				1			↑	MLH5500

Note : CS-FBC20P/25P(244AA0420-),FBC30P(254AA0097-)

Fig.4410A CONTACTOR

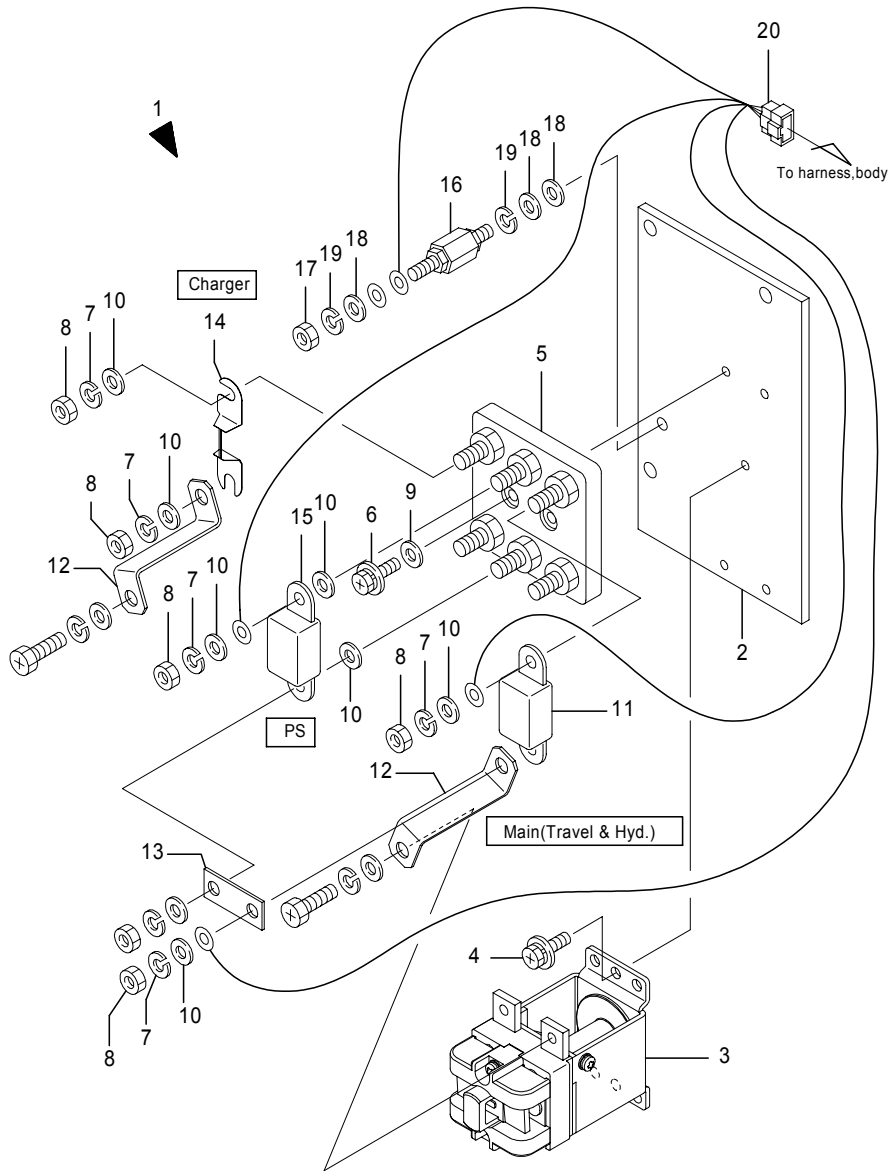


Fig.4410A CONTACTOR

(A)=FBC20P (D)=
(B)=FBC25P (E)=
(C)=FBC30P (F)=

No.	Parts No.	Parts Name	(A)	(B)	(C)	(D)	(E)	(F)	i/a	Remarks
1	54000-36552	Contactor ass'y, main	1	1	1					11.0/12.8kVA
	54000-44381	Contactor ass'y, main	1	1	1					17.0kVA
2	54000-36560	Base, contactor	1	1	1					
3	35810-63421	Contactor	1	1	1					
4	0016-06012	Bolt, w/washers	3	3	3					
5	70000-16930	Plate, fuse	1	1	1					
6	0016-06020	Bolt, w/washers	2	2	2					
7	0000-70008	Washer, lock	6	6	6					
8	0000-00008	Nut	6	6	6					
9	0000-72006	Washer, plain	2	2	2					
10	0000-72008	Washer, plain	8	8	8					
11	1995-32015	Fuse	1	1	1					[BN-325A]
12	54000-15580	Bar, lead(1)	2	2	2					
13	54000-15590	Bar, lead(2)	1	1	1					
14	70000-24110	Fuse	1	1	1					[BNE-160A], 11.0/12.8kVA
	1995-32014	Fuse	1	1	1					[BN-275A], 17.0kVA
15	1995-32012	Fuse	1	1	1					[BN-200A]
16	24200-63030	Terminal	1	1	1					
17	0000-00008	Nut	1	1	1					
18	0000-72008	Washer, plain	3	3	3					
19	0000-70008	Washer, lock	2	2	2					
20	54000-43340	Harness, contactor	1	1	1					

Note :

Fig.4810A CHARGER(BC) 1
AC200V

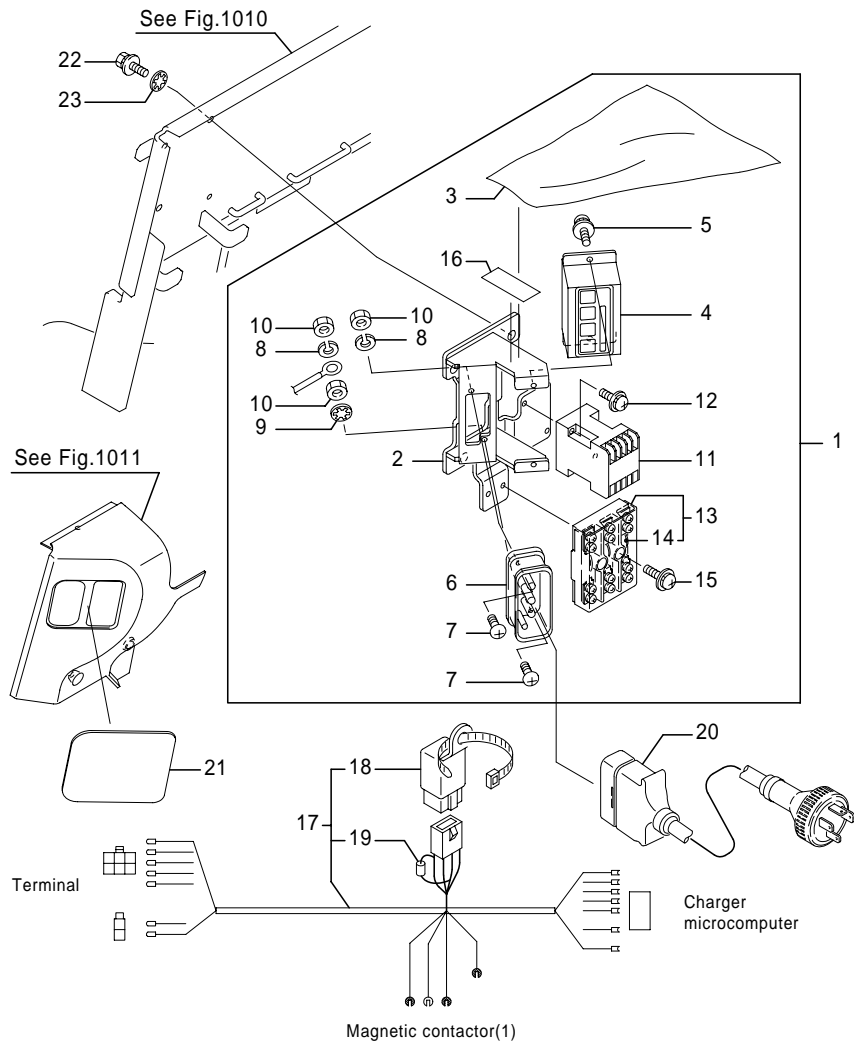


Fig.4810A CHARGER(BC) 1
AC200V

(A)=FBC20P (D)=
(B)=FBC25P (E)=
(C)=FBC30P (F)=

No.	Parts No.	Parts Name	(A)	(B)	(C)	(D)	(E)	(F)	i/a	Remarks
1	54000-32120	Panel ass'y, charger	1	1	1					
2	50001-71290	Bracket, panel	1	1	1					
3	24200-63210	Cover	1	1	1					
4	24300-35242	Charger microcomputer	1	1	1					
5	0075-04010	Screw, w/washers	2	2	2					
6	37010-10890	Socket	1	1	1					RT-316N, [250V/30A]
7	0070-04010	Screw, pan head	2	2	2					
8	0000-70004	Washer, lock	2	2	2					
9	0000-80004	Washer, tooth lock	1	1	1					
10	0000-00004	Nut	3	3	3					
11	35810-06100	Contactior	1	1	1					
12	0075-04016	Screw, w/washers	2	2	2					
13	8600-35000	Fuse comp.	1	1	1					[30A], FA-6-30
14	0820-10030	Fuse, link	3	3	3					[30A]
15	0075-04016	Screw, w/washers	2	2	2					
16	24700-05140	Plate, name	1	1	1					[, ^ 3 Š ě Ğ]
17	24801-10152	Harness, BC	1	1	1					
18	38520-02250	Relay	1	1	1					CA1-DC48-N
19	1911-59001	Diode	1	1	1					[10E6]
20	24800-85850	Plug comp.	1	1	1					
21	14104-30270	Cap	1	1	1					SC
22	0018-08020	Bolt, w/washers	2	2	2					
23	0000-80008	Washer, tooth lock	1	1	1					

Note :

c

Fig.4811A TRANSFORMER 1
AC200V

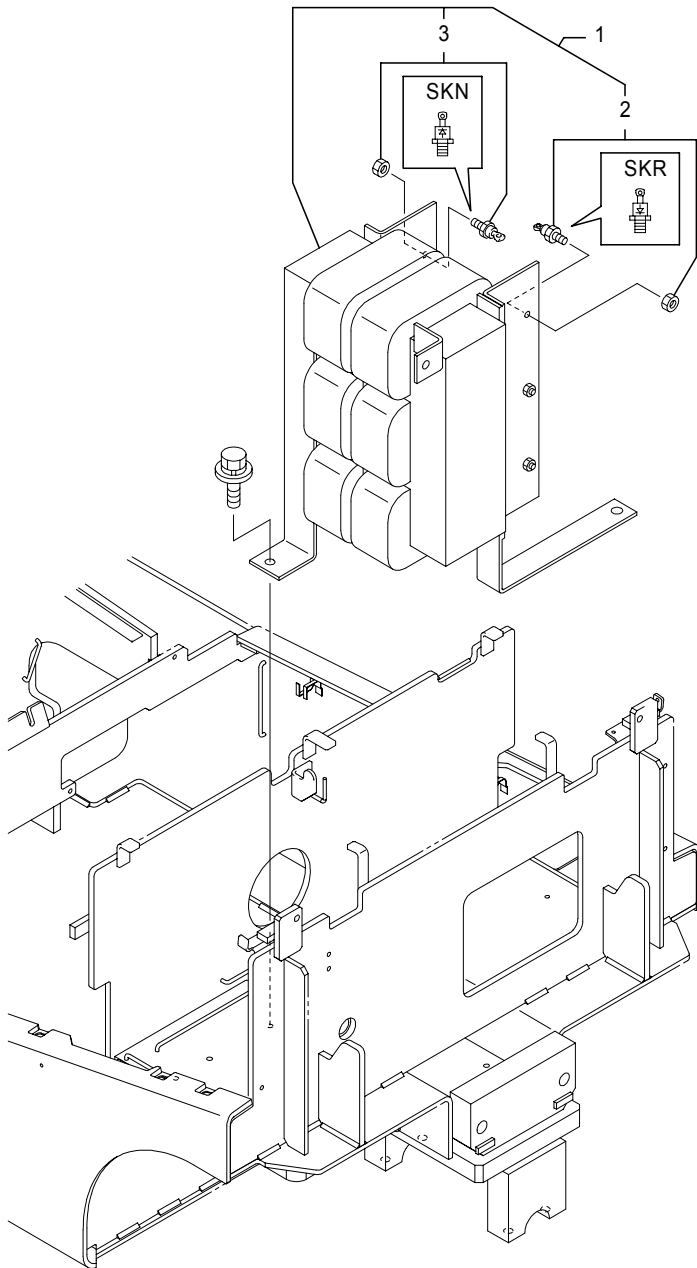


Fig.4811A TRANSFORMER 1
AC200V

(A)=FBC20P (D)=
(B)=FBC25P (E)=
(C)=FBC30P (F)=

No.	Parts No.	Parts Name	(A)	(B)	(C)	(D)	(E)	(F)	i/a	Remarks
1	70000-58690	Transformer	1	1	1					T2324-0401, 12.8KVA, *1
	70000-21684	Transformer	1							T2324-0300, 370Ah, 11.0KVA
	70000-31923	Transformer	1	1	1					T2324-0400, 12.8KVA, *1
2	35010-02020	Diode	3	3	3					SKR130/04
3	35010-02010	Diode	3	3	3					SKN130/04

Note : *1:FBC20P-Opt,FBC25P-470Ah(Std)/600Ah(Opt),FBC30P-600Ah(Std)

Fig.4877C BUZZER
(ON/OFF SW),(Opt)

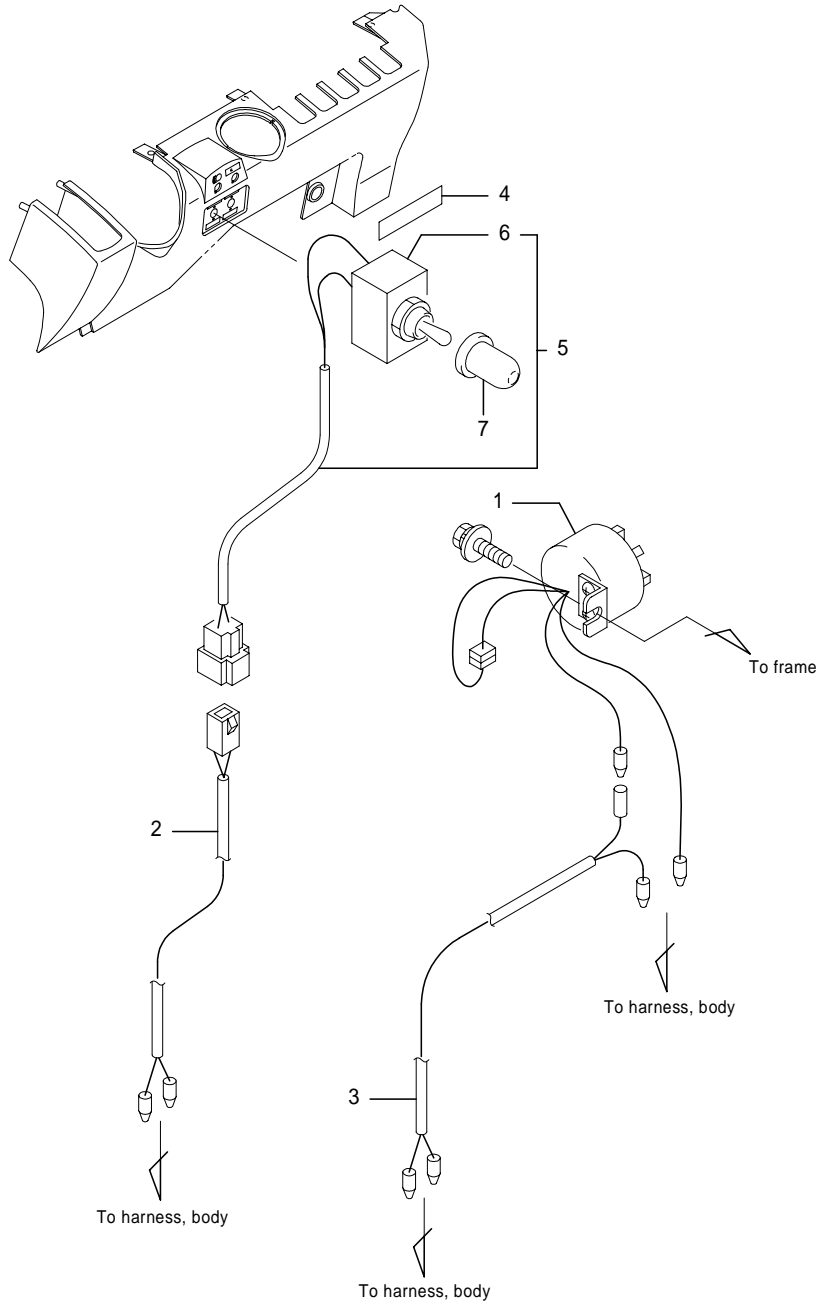


Fig.4877C BUZZER
(ON/OFF SW),(Opt)

(A)=FBC20P (D)=
(B)=FBC25P (E)=
(C)=FBC30P (F)=

No.	Parts No.	Parts Name	(A)	(B)	(C)	(D)	(E)	(F)	i/a	Remarks
1	70000-24001	Buzzer, back	1	1	1					[DC48V]
1-1	70000-24002	Buzzer, back (A=244AA0515-)(B=244AA0515-)(C=254AA0133-)	1	1	1				↑	[DC48V]
2	54000-38480	Harness, switch	1	1	1					
3	54000-38890	Harness, accessory	1	1	1					
4	24700-08050	Plate, name	1	1	1					[ÉP` ,]P»P°]
5	24300-33150	Switch comp., toggle	1	1	1					
6	35620-00020	Switch, toggle	1	1	1					
7	1910-43012	Cap	1	1	1					

Note :

Fig.6000B ICHIGIMEKUN 1
[Mm], WIRE HARNESS

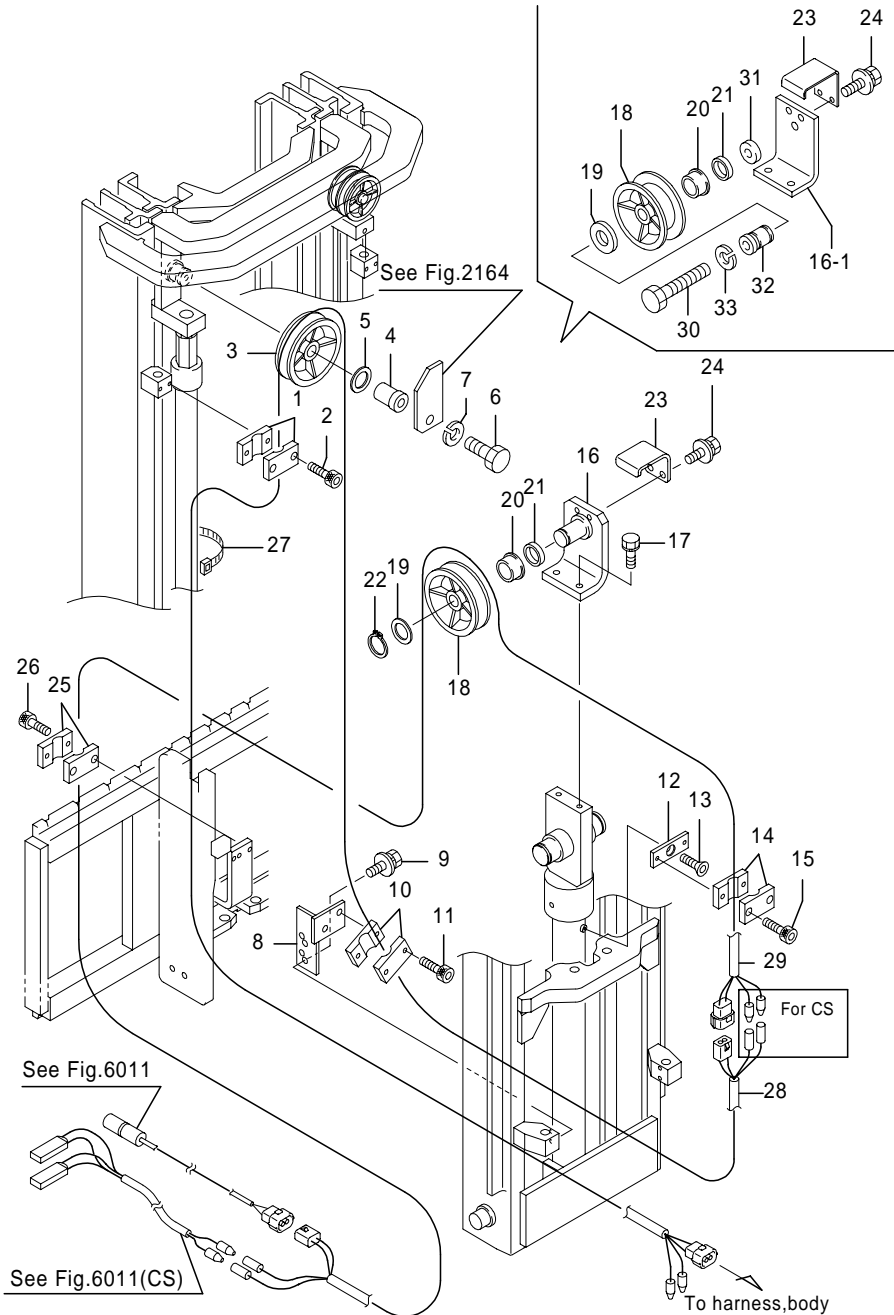


Fig.6000B ICHIGIMEKUN 1
[Mm], WIRE HARNESS

(A)=FBC20P (D)=
(B)=FBC25P (E)=
(C)=FBC30P (F)=

No.	Parts No.	Parts Name	(A)	(B)	(C)	(D)	(E)	(F)	i/a	Remarks
29	24800-94642	Harness, mast (2)	1	1						MLH4700
	24800-94652	Harness, mast (2)	1	1						MLH5000
	24800-94662	Harness, mast (2)	1	1						MLH5300
	24800-94672	Harness, mast (2)	1	1						MLH5500
	24801-20220	Harness, mast (2)	1	1						MLH5700
	24800-94692	Harness, mast (2)	1	1						MLH6000
	24800-94692	Harness, mast (2)	1	1						MLH6300
	24800-94702	Harness, mast (2)	1	1						MLH6500
	24801-20230	Harness, mast (2)	1	1						MLH6700
	24801-20240	Harness, mast (2)	1	1						MLH7000
	24800-94602	Harness, mast (2)			1					MLH3300
	24800-94612	Harness, mast (2)			1					MLH3500
	24800-94622	Harness, mast (2)			1					MLH3700
	24800-94632	Harness, mast (2)			1					MLH4000
	24800-94642	Harness, mast (2)			1					MLH4300
	24800-94642	Harness, mast (2)			1					MLH4500
	24800-94652	Harness, mast (2)			1					MLH4700
	24800-94662	Harness, mast (2)			1					MLH5000
	24800-94672	Harness, mast (2)			1					MLH5300
	24801-20220	Harness, mast (2)			1					MLH5500
	24801-20220	Harness, mast (2)			1					MLH5700
	24800-94692	Harness, mast (2)			1					MLH6000
	24800-94702	Harness, mast (2)			1					MLH6300
	24801-20230	Harness, mast (2)			1					MLH6500
	24801-20230	Harness, mast (2)			1					MLH6700
	24801-20240	Harness, mast (2)			1					MLH7000
30	0025-12060	Bolt	1	1	1					(A=244AA****-) (B=244AA****-) (C=254AA****-)
31	52000-99090	Washer	1	1	1					(A=244AA****-) (B=244AA****-) (C=254AA****-)
32	52000-58732	Shaft, pulley	1	1	1					(A=244AA****-) (B=244AA****-) (C=254AA****-)
33	0000-71012	Washer, lock	1	1	1					(A=244AA****-) (B=244AA****-) (C=254AA****-)

Note : *1:Interchangeable as a set of No.28 and No.29.

CLICK HERE TO **DOWNLOAD** THE COMPLETE MANUAL

- Thank you very much for reading the preview of the manual.
- You can download the complete manual from: www.heydownloads.com by clicking the link below



- Please note: If there is no response to CLICKING the link, please download this PDF first and then click on it.

CLICK HERE TO **DOWNLOAD** THE COMPLETE MANUAL