

Fig.1520B CONTROL VALVE
2 SPOOLS,[KYB]

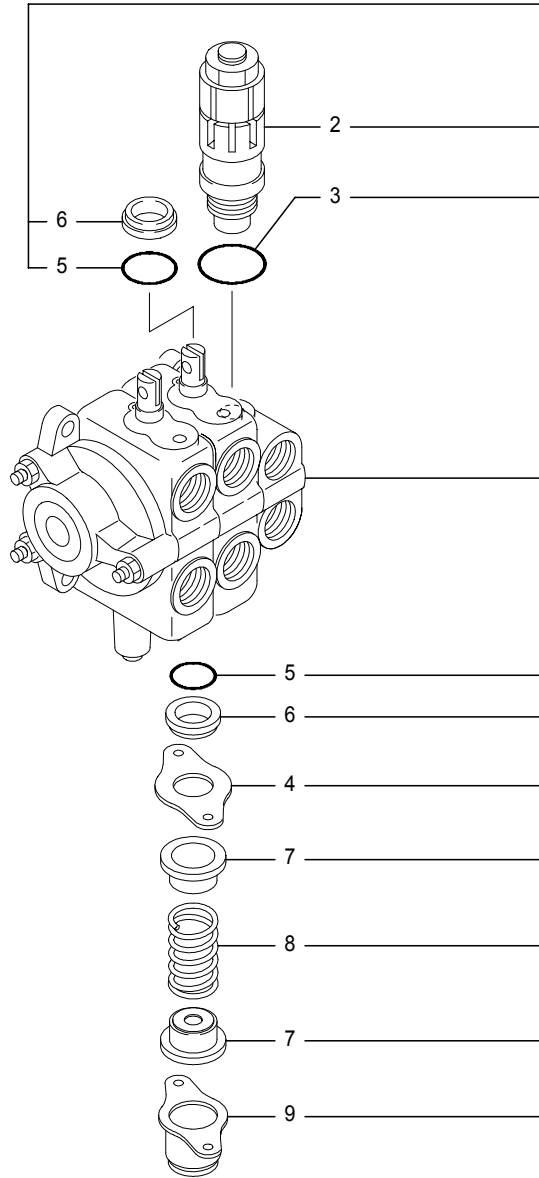


Fig.1520B CONTROL VALVE
2 SPOOLS,[KYB]

(A)=FB10P (D)=
(B)=FB15P (E)=
(C)=FB18P (F)=

| No. | Parts No. | Parts Name | (A) | (B) | (C) | (D) | (E) | (F) | i/a | Remarks |
|-----|-------------|----------------------|-----|-----|-----|-----|-----|-----|-----|---------------|
| 1 | 31810-15890 | Valve ass'y, control | 1 | 1 | | | | | | KVS-65K-2 |
| | 31810-15900 | Valve ass'y, control | | | | 1 | | | | KVS-65K-2 |
| 2 | 31810-05510 | Valve, relief | 1 | 1 | | | | | | 13.7MPa(Red) |
| | 31810-05520 | Valve, relief | | | | | 1 | | | 15.7MPa(Gray) |
| 3 | 1902-03119 | Ring, O | 1 | 1 | 1 | | | | | |
| 4 | 1902-03219 | Plate, seal | 2 | 2 | 2 | | | | | |
| 5 | 1902-03220 | Ring, O | 4 | 4 | 4 | | | | | |
| 6 | 1902-03221 | Wiper | 4 | 4 | 4 | | | | | |
| 7 | 1902-03223 | Seat, spring | 4 | 4 | 4 | | | | | |
| 8 | 31060-01000 | Spring | 2 | 2 | 2 | | | | | |
| 9 | 1902-03222 | Cap | 2 | 2 | 2 | | | | | |

Note : Location : See fig.1340

CLICK HERE TO **DOWNLOAD** THE COMPLETE MANUAL

- Thank you very much for reading the preview of the manual.
- You can download the complete manual from: www.heydownloads.com by clicking the link below



- Please note: If there is no response to CLICKING the link, please download this PDF first and then click on it.

CLICK HERE TO **DOWNLOAD** THE COMPLETE MANUAL

Fig.2064 CHAIN WHEEL[Pm]

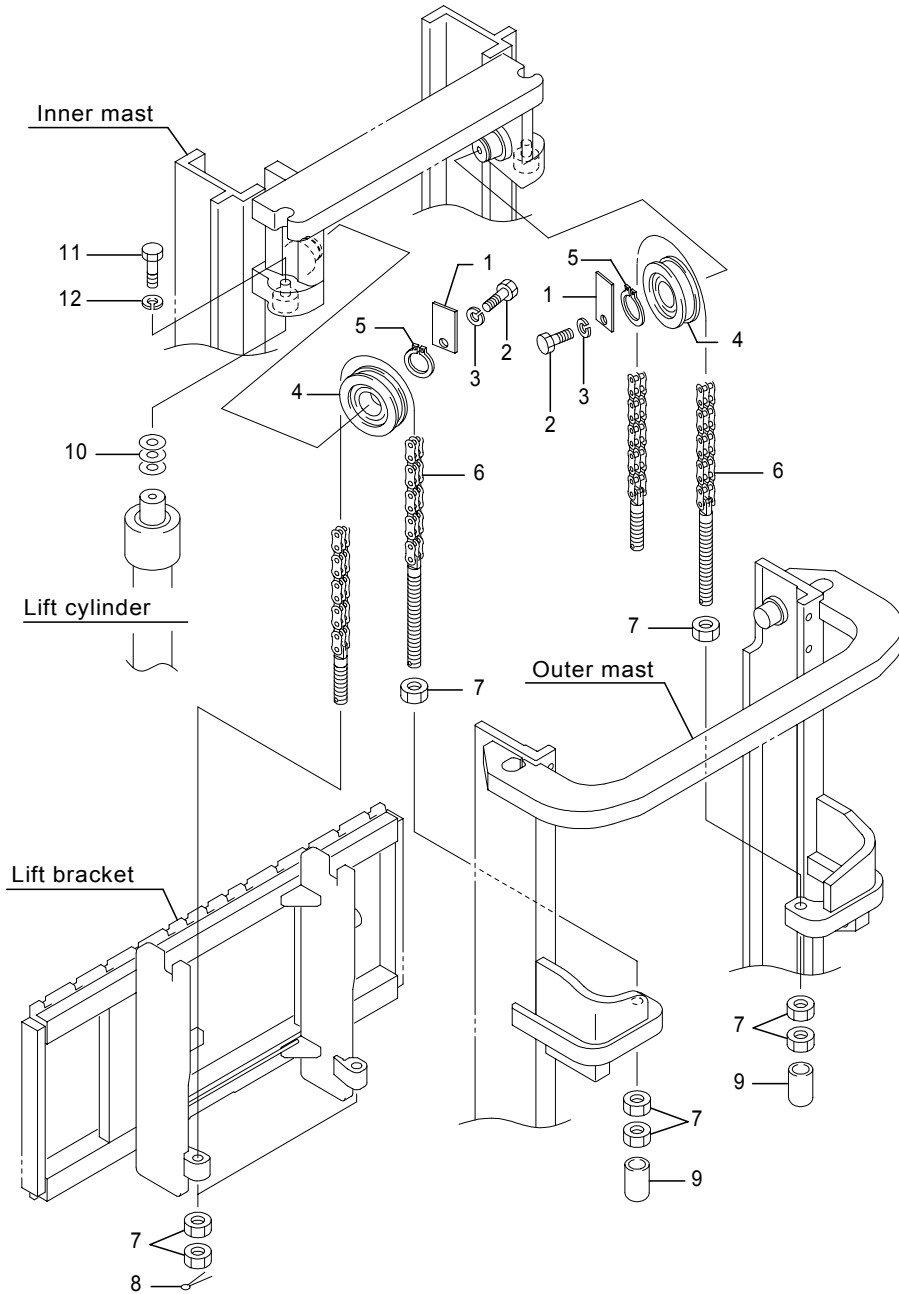


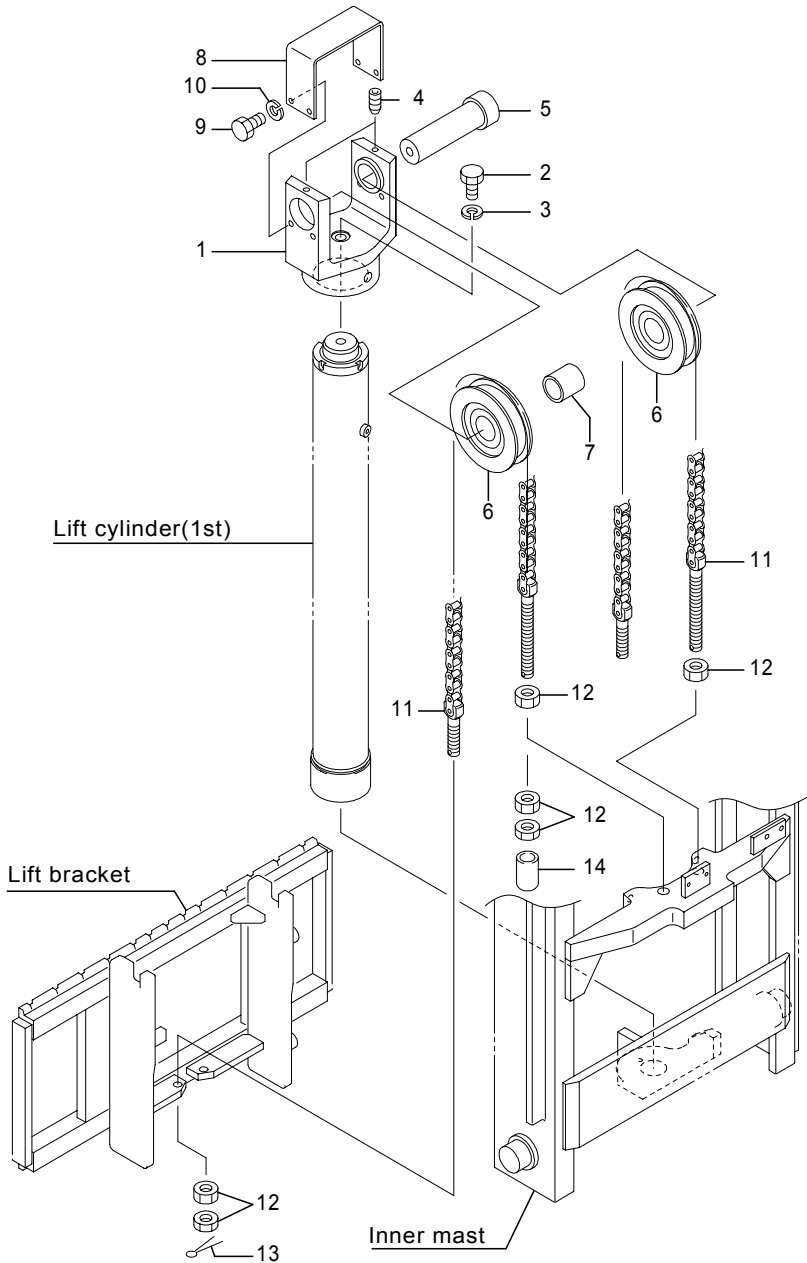
Fig.2064 CHAIN WHEEL[Pm]

(A)=FB10P (D)=
 (B)=FB15P (E)=
 (C)=FB18P (F)=

| No. | Parts No. | Parts Name | (A) | (B) | (C) | (D) | (E) | (F) | i/a | Remarks |
|-----|-------------|--------------|-----|-----|-----|-----|-----|-----|-----|---------|
| 10 | 14602-84570 | Shim | AR | AR | AR | | | | | t0.5 |
| | 14602-84580 | Shim | AR | AR | AR | | | | | t1.0 |
| 11 | 0025-12040 | Bolt | 2 | 2 | 2 | | | | | |
| 12 | 0000-71012 | Washer, lock | 2 | 2 | 2 | | | | | |

Note :

Fig.2264 CHAIN WHEEL[Fm]



461-1261-05A
(461-1261/462-1843)

Fig.2264 CHAIN WHEEL[Fm]

(A)=FB10P (D)=
(B)=FB15P (E)=
(C)=FB18P (F)=

| No. | Parts No. | Parts Name | (A) | (B) | (C) | (D) | (E) | (F) | i/a | Remarks |
|-----|-------------|-------------------|-----|-----|-----|-----|-----|-----|-----|-------------|
| 11 | 4039-05189 | Chain comp., leaf | 2 | 2 | 2 | | | | | MLH5000,FCS |
| 12 | 0000-20016 | Nut | 10 | 10 | 10 | | | | | |
| 13 | 0302-40025 | Pin, cotter | 2 | 2 | 2 | | | | | |
| 14 | 32290-00510 | Cap | 2 | 2 | 2 | | | | | |

Note :

Fig.1312 STEERING LINKAGE 3

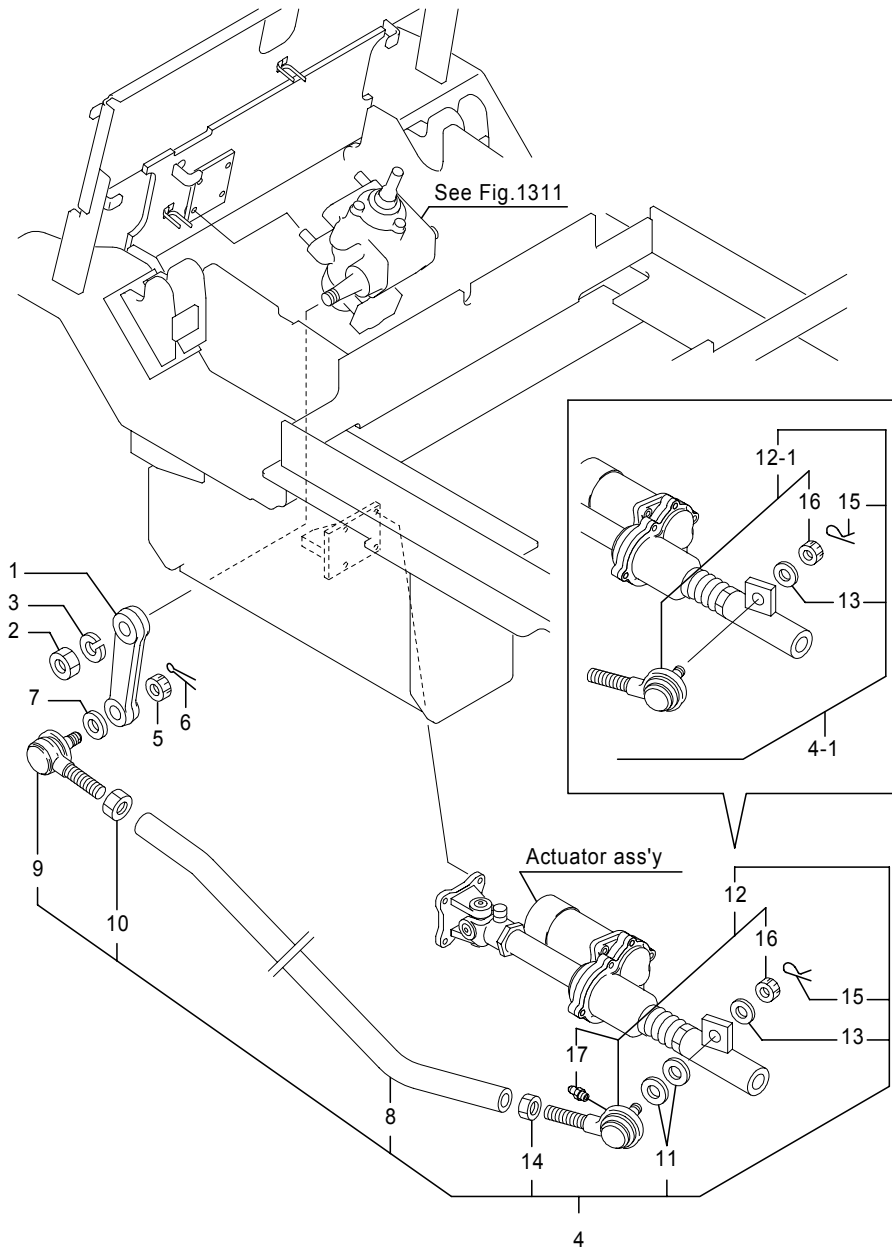


Fig.1312 STEERING LINKAGE 3

(A)=FB10P (D)=
 (B)=FB15P (E)=
 (C)=FB18P (F)=

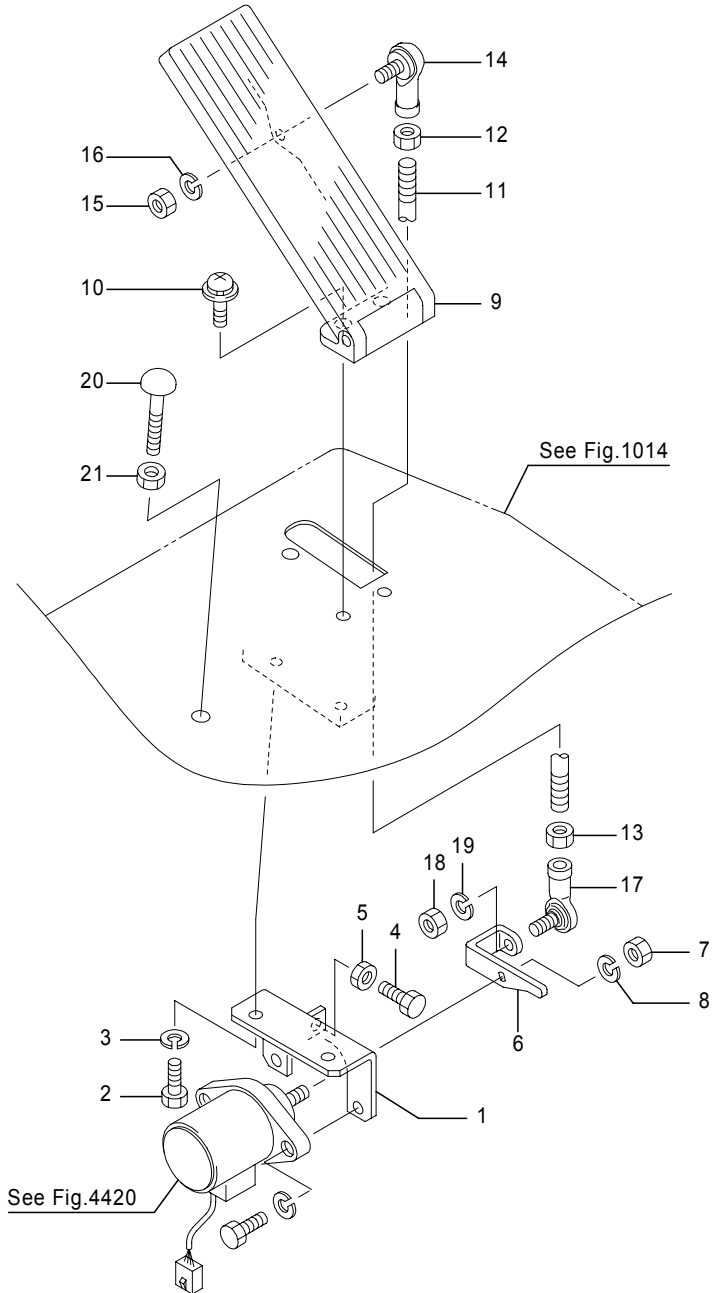
| No. | Parts No. | Parts Name | (A) | (B) | (C) | (D) | (E) | (F) | i/a | Remarks |
|--|-------------|-------------------|-----|-----|-----|-----|-----|-----|-----|---------|
| 1 | 32910-01270 | Arm, pitman | 1 | 1 | 1 | | | | | |
| 2 | 0000-30020 | Nut, jam | 1 | 1 | 1 | | | | | |
| 3 | 0000-70020 | Washer, lock | 1 | 1 | 1 | | | | | |
| 4 | 14300-60092 | Link ass'y, drag | 1 | 1 | 1 | | | | | |
| 4-1 | 14300-60093 | Link ass'y, drag | 1 | 1 | 1 | | | | | ┌ |
| 5 | 0000-61016 | Nut, castle | 1 | 1 | 1 | | | | | |
| 6 | 0302-32040 | Pin, cotter | 1 | 1 | 1 | | | | | |
| 7 | 14300-39890 | Spacer | 1 | 1 | 1 | | | | | |
| 8 | 14300-60102 | Link, drag | 1 | 1 | 1 | | | | | |
| 9 | 31230-02390 | End ass'y, rod | 1 | 1 | 1 | | | | | |
| 10 | 0000-30022 | Nut, jam | 1 | 1 | 1 | | | | | |
| 11 | 14300-39890 | Spacer | 2 | 2 | 2 | | | | | |
| 12 | 31230-00010 | End(R) ass'y, rod | 1 | 1 | 1 | | | | | └ |
| 12-1 | 31230-02510 | End ass'y, rod(R) | 1 | 1 | 1 | | | | | |
| (A=226DC1781-)(B=226DC1781-)(C=226DC1781-) | | | | | | | | | | |
| 13 | 0000-72014 | Washer, plain | 1 | 1 | 1 | | | | | |
| 14 | 0000-30020 | Nut, jam | 1 | 1 | 1 | | | | | |
| 15 | 14300-40960 | Pin | 1 | 1 | 1 | | | | | |
| 16 | 31231-00050 | Nut, castle | 1 | 1 | 1 | | | | | M14×1.5 |
| 17 | 31230-00070 | Nipple, grease | 1 | 1 | 1 | | | | | |
| (A=-226DC1780)(B=-226DC1780)(C=-226DC1780) | | | | | | | | | | |

Note :

Fig.1350A ACCELERATOR LINKAGE
(226DC0001-1856,1858-1864)

Fig.1350A ACCELERATOR LINKAGE
(226DC0001-1856,1858-1864)

(A)=FB10P (D)=
(B)=FB15P (E)=
(C)=FB18P (F)=



| No. | Parts No. | Parts Name | (A) | (B) | (C) | (D) | (E) | (F) | i/a | Remarks |
|-----|-------------|-------------------------|-----|-----|-----|-----|-----|-----|-----|---------|
| 1 | 14401-05460 | Bracket(1), accelerator | 1 | 1 | 1 | | | | | |
| 2 | 0010-08016 | Bolt | 2 | 2 | 2 | | | | | |
| 3 | 0000-70008 | Washer, lock | 2 | 2 | 2 | | | | | |
| 4 | 0010-06020 | Bolt | 1 | 1 | 1 | | | | | |
| 5 | 0000-10006 | Nut, jam | 1 | 1 | 1 | | | | | |
| 6 | 14400-53281 | Bracket(2), accelerator | 1 | 1 | 1 | | | | | |
| 7 | 0000-00006 | Nut | 1 | 1 | 1 | | | | | |
| 8 | 0000-70006 | Washer, lock | 1 | 1 | 1 | | | | | |
| 9 | 32050-02670 | Pedal | 1 | 1 | 1 | | | | | |
| 10 | 0077-06016 | Screw, w/washer | 2 | 2 | 2 | | | | | |
| 11 | 14400-53290 | Rod | 1 | 1 | 1 | | | | | |
| 12 | 0000-10006 | Nut, jam | 1 | 1 | 1 | | | | | |
| 13 | 0000-10906 | Nut(L), jam | 1 | 1 | 1 | | | | | |
| 14 | 31610-00460 | Ball, link | 1 | 1 | 1 | | | | | |
| 15 | 0000-00006 | Nut | 1 | 1 | 1 | | | | | |
| 16 | 0000-70006 | Washer, lock | 1 | 1 | 1 | | | | | |
| 17 | 31610-00470 | Ball, link | 1 | 1 | 1 | | | | | |
| 18 | 0000-00006 | Nut | 1 | 1 | 1 | | | | | |
| 19 | 0000-70006 | Washer, lock | 1 | 1 | 1 | | | | | |
| 20 | 31010-45820 | Screw, truss | 1 | 1 | 1 | | | | | |
| 21 | 0000-10008 | Nut, jam | 1 | 1 | 1 | | | | | |

Note :

Fig.2152 LIFT CYLINDER(1st)[Mm]

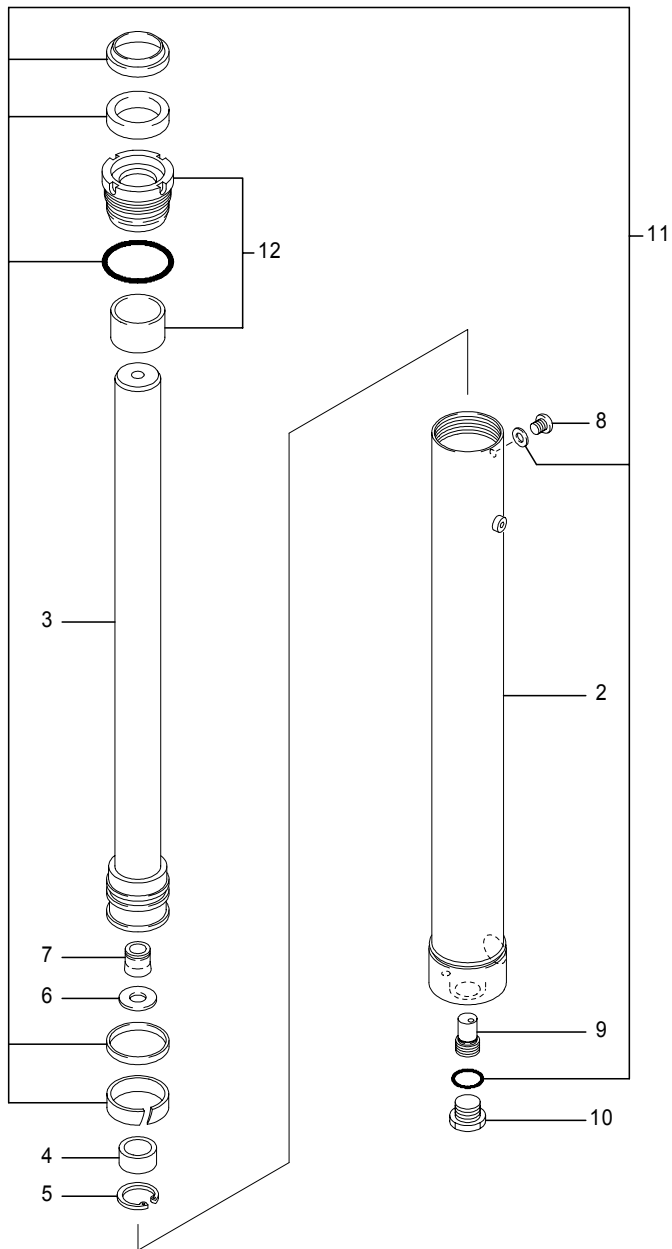


Fig.2152 LIFT CYLINDER(1st)[Mm]

(A)=FB10P (D)=
(B)=FB15P (E)=
(C)=FB18P (F)=

| No. | Parts No. | Parts Name | (A) | (B) | (C) | (D) | (E) | (F) | i/a | Remarks |
|-----|--------------|---|-----|-----|-----|-----|-----|-----|-----|------------|
| 1 | 31850-21010 | Cylinder ass'y(1st) | 1 | 1 | 1 | | | | | MLH3300,*1 |
| 1-1 | A31850-21010 | Cylinder ass'y(1st) (A=226DC0899-)(B=226DC0899-)(C=226DC0899-) | 1 | 1 | 1 | | | | ↑ | MLH3300,*2 |
| 1 | 31850-21020 | Cylinder ass'y(1st) | 1 | 1 | 1 | | | | | MLH3500,*1 |
| 1-1 | A31850-21020 | Cylinder ass'y(1st) (A=226DC0899-)(B=226DC0899-)(C=226DC0899-) | 1 | 1 | 1 | | | | ↑ | MLH3500,*2 |
| 1 | 31850-21030 | Cylinder ass'y(1st) | 1 | 1 | 1 | | | | | MLH3700,*1 |
| 1-1 | A31850-21030 | Cylinder ass'y(1st) (A=226DC0899-)(B=226DC0899-)(C=226DC0899-) | 1 | 1 | 1 | | | | ↑ | MLH3700,*2 |
| 1 | 31850-21040 | Cylinder ass'y(1st) | 1 | 1 | 1 | | | | | MLH4000,*1 |
| 1-1 | A31850-21040 | Cylinder ass'y(1st) (A=226DC1603-)(B=226DC1603-)(C=226DC1603-) | 1 | 1 | 1 | | | | ↑ | MLH4000,*2 |
| 1 | 31850-21050 | Cylinder ass'y(1st) | 1 | 1 | 1 | | | | | MLH4300,*1 |
| 1-1 | A31850-21050 | Cylinder ass'y(1st) (A=226DC1603-)(B=226DC1603-)(C=226DC1603-) | 1 | 1 | 1 | | | | ↑ | MLH4300,*2 |
| 1 | 31850-21060 | Cylinder ass'y(1st) | 1 | 1 | 1 | | | | | MLH4500,*1 |
| 1-1 | A31850-21060 | Cylinder ass'y(1st) (A=226DC1277-)(B=226DC1277-)(C=226DC1277-) | 1 | 1 | 1 | | | | ↑ | MLH4500,*2 |
| 1 | 31850-21070 | Cylinder ass'y(1st) | 1 | 1 | 1 | | | | | MLH4700,*1 |
| 1-1 | A31850-21070 | Cylinder ass'y(1st) (A=226DC1008-)(B=226DC1008-)(C=226DC1008-) | 1 | 1 | 1 | | | | ↑ | MLH4700,*2 |
| 1 | 31850-21080 | Cylinder ass'y(1st) | 1 | 1 | 1 | | | | | MLH5000,*1 |
| 1-1 | A31850-21080 | Cylinder ass'y(1st) (A=226DC1253-)(B=226DC1253-)(C=226DC1253-) | 1 | 1 | 1 | | | | ↑ | MLH5000,*2 |
| 1 | 31850-21090 | Cylinder ass'y(1st) | 1 | 1 | 1 | | | | | MLH5300,*1 |
| 1-1 | A31850-21090 | Cylinder ass'y(1st) (A=226DC1115-)(B=226DC1115-)(C=226DC1115-) | 1 | 1 | 1 | | | | ↑ | MLH5300,*2 |
| 1 | 31850-21100 | Cylinder ass'y(1st) | 1 | 1 | 1 | | | | | MLH5500,*1 |
| 1-1 | A31850-21100 | Cylinder ass'y(1st) (A=226DC1603-)(B=226DC1603-)(C=226DC1603-) | 1 | 1 | 1 | | | | ↑ | MLH5500,*2 |
| 1 | 31850-21110 | Cylinder ass'y(1st) | 1 | 1 | 1 | | | | | MLH5700,*1 |
| 1-1 | A31850-21110 | Cylinder ass'y(1st) (A=226DC1185-)(B=226DC1185-)(C=226DC1185-) | 1 | 1 | 1 | | | | ↑ | MLH5700,*2 |
| 1 | 31850-21120 | Cylinder ass'y(1st) | 1 | 1 | 1 | | | | | MLH6000,*1 |

Note : *1:NCY products, This part is applied to NCY products.
*2:NFS products, This part is applied to NFS products.

Fig.2253 LIFT CYLINDER(2nd)[Fm]

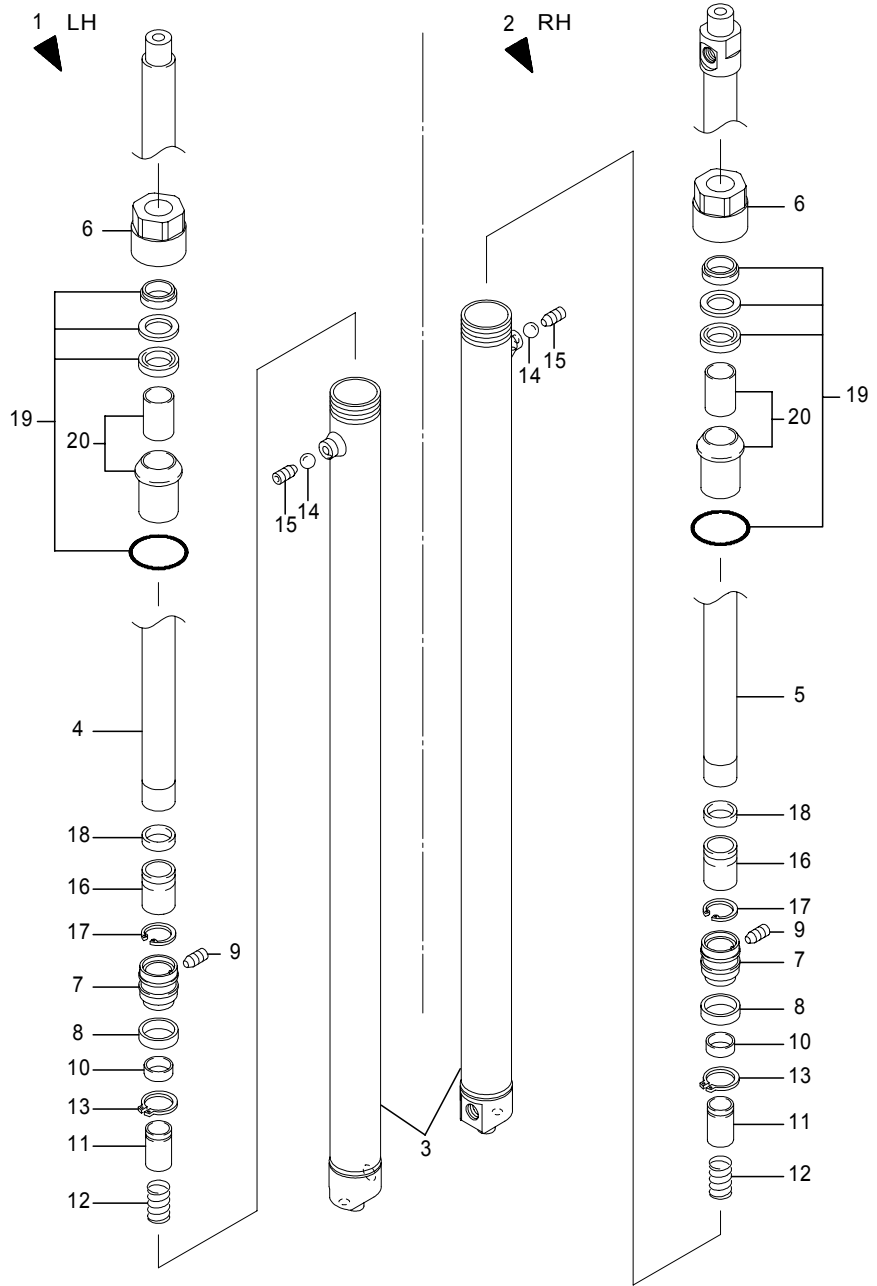


Fig.2253 LIFT CYLINDER(2nd)[Fm]

(A)=FB10P (D)=
 (B)=FB15P (E)=
 (C)=FB18P (F)=

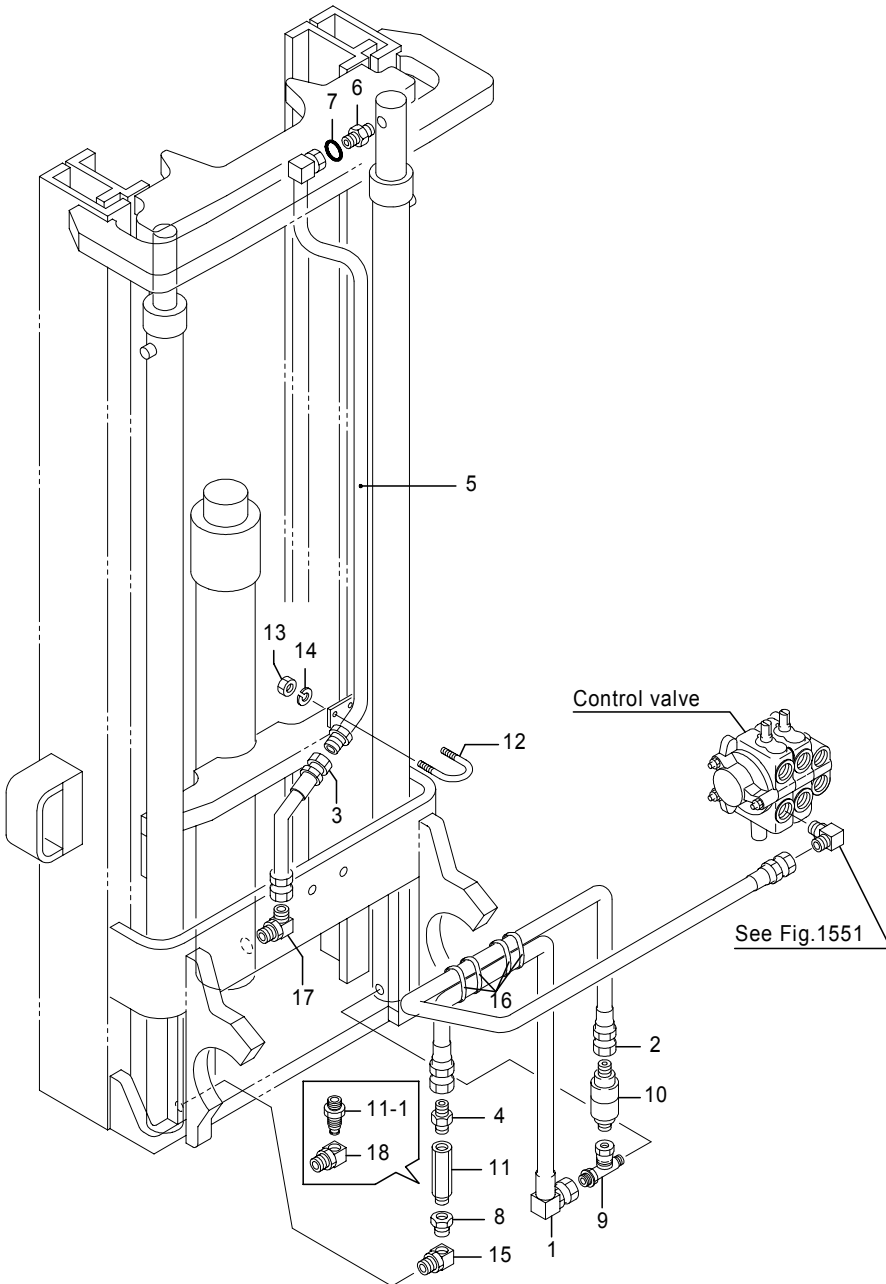
| No. | Parts No. | Parts Name | (A) | (B) | (C) | (D) | (E) | (F) | i/a | Remarks |
|------|-------------|--|-----|-----|-----|-----|-----|-----|-----|------------|
| 5-1 | 145-08440 | Rod(R), piston (A=226DC1603-)(B=226DC1603-)(C=226DC1603-) | 1 | 1 | 1 | | | | × | MLH3300,*2 |
| 5 | 31851-33020 | Rod(R), piston | 1 | 1 | 1 | | | | | MLH3500,*1 |
| 5-1 | 145-08450 | Rod(R), piston (A=226DC1603-)(B=226DC1603-)(C=226DC1603-) | 1 | 1 | 1 | | | | × | MLH3500,*2 |
| 5 | 31851-33030 | Rod(R), piston | 1 | 1 | 1 | | | | | MLH3700,*1 |
| 5-1 | 145-08460 | Rod(R), piston (A=226DC1603-)(B=226DC1603-)(C=226DC1603-) | 1 | 1 | 1 | | | | × | MLH3700,*2 |
| 5 | 31851-33040 | Rod(R), piston | 1 | 1 | 1 | | | | | MLH4000,*1 |
| 5-1 | 145-08470 | Rod(R), piston (A=226DC1603-)(B=226DC1603-)(C=226DC1603-) | 1 | 1 | 1 | | | | × | MLH4000,*2 |
| 5 | 31851-33050 | Rod(R), piston | 1 | 1 | 1 | | | | | MLH4300,*1 |
| 5-1 | 145-08480 | Rod(R), piston (A=226DC1603-)(B=226DC1603-)(C=226DC1603-) | 1 | 1 | 1 | | | | × | MLH4300,*2 |
| 5 | 31851-33060 | Rod(R), piston | 1 | 1 | 1 | | | | | MLH4500,*1 |
| 5-1 | 145-08490 | Rod(R), piston (A=226DC1603-)(B=226DC1603-)(C=226DC1603-) | 1 | 1 | 1 | | | | × | MLH4500,*2 |
| 5 | 31851-33070 | Rod(R), piston | 1 | 1 | 1 | | | | | MLH4700,*1 |
| 5-1 | 145-08500 | Rod(R), piston (A=226DC1603-)(B=226DC1603-)(C=226DC1603-) | 1 | 1 | 1 | | | | × | MLH4700,*2 |
| 5 | 31851-33080 | Rod(R), piston | 1 | 1 | 1 | | | | | MLH5000,*1 |
| 5-1 | 145-08510 | Rod(R), piston (A=226DC1603-)(B=226DC1603-)(C=226DC1603-) | 1 | 1 | 1 | | | | × | MLH5000,*2 |
| 6 | 30851-10380 | Holder | 2 | 2 | 2 | | | | | *1 |
| 6-1 | 145-08660 | Holder | 2 | 2 | 2 | | | | × | *2 |
| 7 | 31851-28550 | Piston | 2 | 2 | 2 | | | | | *1 |
| 7-1 | 145-09530 | Piston | 2 | 2 | 2 | | | | × | *2 |
| 8 | 31851-10440 | Ring, slide | 2 | 2 | 2 | | | | | *1 |
| 8-1 | 145-09900 | Ring, slide | 2 | 2 | 2 | | | | × | *2 |
| 9 | 31851-10450 | Screw, set | 2 | 2 | 2 | | | | | *1 |
| 9-1 | 300-00980 | Screw, set | 2 | 2 | 2 | | | | × | *2 |
| 10 | 31851-10670 | Valve, check | 2 | 2 | 2 | | | | | *1 |
| 10-1 | 145-08680 | Valve, check | 2 | 2 | 2 | | | | × | *2 |
| 11 | 31851-10460 | Spool, cushion | 2 | 2 | 2 | | | | | *1 |
| 11-1 | 145-08690 | Spool, cushion | 2 | 2 | 2 | | | | × | *2 |

Note : *1:NCY products, This part is applied to NCY products.
 *2:NFS products, This part is applied to NFS products.

Fig.2259 MAST PIPING[Fm]

Fig.2259 MAST PIPING[Fm]

(A)=FB10P (D)=
 (B)=FB15P (E)=
 (C)=FB18P (F)=



| No. | Parts No. | Parts Name | (A) | (B) | (C) | (D) | (E) | (F) | i/a | Remarks |
|-----|-------------|---------------------|-----|-----|-----|-----|-----|-----|-----|---------|
| 1 | 04007-09080 | Hose, HP | 1 | 1 | 1 | | | | | |
| 2 | 04005-12077 | Hose, HP | 1 | 1 | 1 | | | | | |
| 3 | 04005-12029 | Hose, HP | 1 | 1 | 1 | | | | | |
| 4 | 0004-30009 | Nipple | 1 | 1 | 1 | | | | | |
| 5 | 14501-67251 | Pipe | 1 | 1 | 1 | | | | | MLH2000 |
| | 14501-67261 | Pipe | 1 | 1 | 1 | | | | | MLH2300 |
| | 14501-67271 | Pipe | 1 | 1 | 1 | | | | | MLH2500 |
| | 14501-67281 | Pipe | 1 | 1 | 1 | | | | | MLH2700 |
| | 14501-67291 | Pipe | 1 | 1 | 1 | | | | | MLH3000 |
| | 14501-67301 | Pipe | 1 | 1 | 1 | | | | | MLH3300 |
| | 14501-67311 | Pipe | 1 | 1 | 1 | | | | | MLH3500 |
| | 14501-67321 | Pipe | 1 | 1 | 1 | | | | | MLH3700 |
| | 14501-67331 | Pipe | 1 | 1 | 1 | | | | | MLH4000 |
| | 14501-67341 | Pipe | 1 | 1 | 1 | | | | | MLH4300 |
| | 14501-67351 | Pipe | 1 | 1 | 1 | | | | | MLH4500 |
| | 14501-67361 | Pipe | 1 | 1 | 1 | | | | | MLH4700 |
| | 14501-67371 | Pipe | 1 | 1 | 1 | | | | | MLH5000 |
| 6 | 4311-81241 | Nipple | 1 | 1 | 1 | | | | | |
| 7 | 0350-00180 | Ring, O | 1 | 1 | 1 | | | | | |
| 8 | 31830-04810 | Bushing | 1 | 1 | 1 | | | | | |
| 9 | 31830-65930 | Tee | 1 | 1 | 1 | | | | | |
| 10 | 31810-06800 | Valve, flow control | 1 | 1 | 1 | | | | | 48L/min |
| 11 | 14504-11080 | Valve, fuse | 1 | 1 | 1 | | | | | |
| 12 | 14500-86570 | Bolt, U | 1 | 1 | 1 | | | | | |
| 13 | 0000-00006 | Nut | 2 | 2 | 2 | | | | | |
| 14 | 0000-70006 | Washer, lock | 2 | 2 | 2 | | | | | |
| 15 | 1907-92010 | Elbow, connection | 1 | 1 | 1 | | | | | |
| 16 | 37990-03500 | Band | 4 | 4 | 4 | | | | | |
| 17 | 31830-15860 | Elbow | 1 | 1 | 1 | | | | | |

Note :

CLICK HERE TO **DOWNLOAD** THE COMPLETE MANUAL

- Thank you very much for reading the preview of the manual.
- You can download the complete manual from: www.heydownloads.com by clicking the link below



- Please note: If there is no response to CLICKING the link, please download this PDF first and then click on it.

CLICK HERE TO **DOWNLOAD** THE COMPLETE MANUAL

Fig.2163 INNER MAST[Mm]

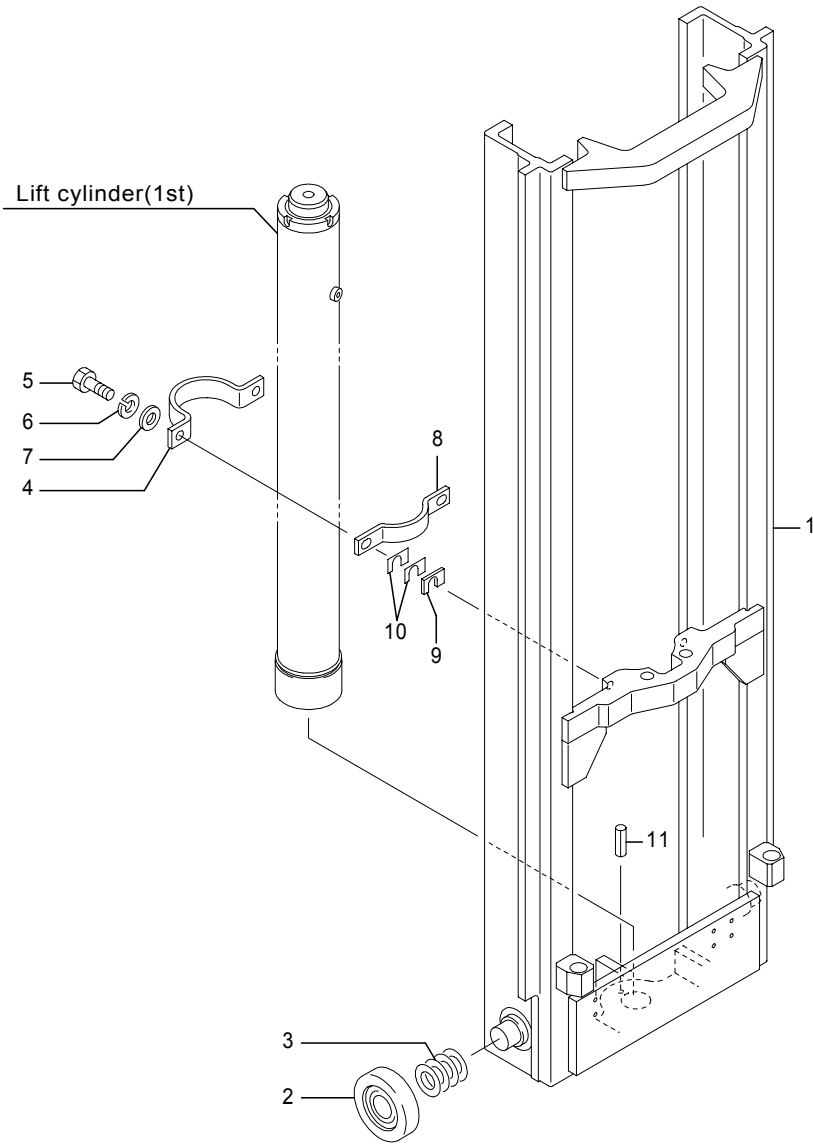


Fig.2163 INNER MAST[Mm]

(A)=FB10P (D)=
 (B)=FB15P (E)=
 (C)=FB18P (F)=

| No. | Parts No. | Parts Name | (A) | (B) | (C) | (D) | (E) | (F) | i/a | Remarks |
|-----|-------------|--------------------|-----|-----|-----|-----|-----|-----|-----|---------|
| 1 | 14604-85540 | Mast comp., inner | 1 | 1 | 1 | | | | | MLH3300 |
| | 14604-85550 | Mast comp., inner | 1 | 1 | 1 | | | | | MLH3500 |
| | 14604-85560 | Mast comp., inner | 1 | 1 | 1 | | | | | MLH3700 |
| | 14604-85570 | Mast comp., inner | 1 | 1 | 1 | | | | | MLH4000 |
| | 14604-85580 | Mast comp., inner | 1 | 1 | 1 | | | | | MLH4300 |
| | 14604-85590 | Mast comp., inner | 1 | 1 | 1 | | | | | MLH4500 |
| | 14604-85600 | Mast comp., inner | 1 | 1 | 1 | | | | | MLH4700 |
| | 14604-85610 | Mast comp., inner | 1 | 1 | 1 | | | | | MLH5000 |
| | 14604-85620 | Mast comp., inner | 1 | 1 | 1 | | | | | MLH5300 |
| | 14604-85630 | Mast comp., inner | 1 | 1 | 1 | | | | | MLH5500 |
| | 14604-85640 | Mast comp., inner | 1 | 1 | 1 | | | | | MLH5700 |
| | 14604-85650 | Mast comp., inner | 1 | 1 | 1 | | | | | MLH6000 |
| | 14604-85660 | Mast comp., inner | 1 | 1 | 1 | | | | | MLH6300 |
| | 14604-85670 | Mast comp., inner | 1 | 1 | 1 | | | | | MLH6500 |
| | 14604-85680 | Mast comp., inner | 1 | 1 | 1 | | | | | MLH6700 |
| | 14604-85690 | Mast comp., inner | 1 | 1 | 1 | | | | | MLH7000 |
| 2 | 31220-10610 | Roller | 2 | 2 | 2 | | | | | |
| 3 | 4301-67180 | Shim | AR | AR | AR | | | | | t0.2 |
| | 4301-67140 | Shim | AR | AR | AR | | | | | t0.5 |
| | 4301-67130 | Shim | AR | AR | AR | | | | | t1.0 |
| | 4301-67170 | Shim | AR | AR | AR | | | | | t2.0 |
| 4 | 14603-76660 | Clamp(1), cylinder | 1 | 1 | 1 | | | | | |
| 5 | 0020-12025 | Bolt | 2 | 2 | 2 | | | | | |
| 6 | 0000-70012 | Washer, lock | 2 | 2 | 2 | | | | | |
| 7 | 0000-72012 | Washer, plain | 2 | 2 | 2 | | | | | |
| 8 | 14603-76670 | Clamp(2), cylinder | 1 | 1 | 1 | | | | | |
| 9 | 14703-84310 | Shim, cylinder | 2 | 2 | 2 | | | | | t3.0 |
| 10 | 14701-70670 | Shim, cylinder | AR | AR | AR | | | | | t0.5 |
| | 14701-70680 | Shim, cylinder | 6 | 6 | 6 | | | | | t1.0 |
| 11 | 0303-08014 | Pin, spring | 1 | 1 | 1 | | | | | |

Note :

Fig.1551 FRAME PIPING 1

Fig.1551 FRAME PIPING 1

(A)=FB10P (D)=
 (B)=FB15P (E)=
 (C)=FB18P (F)=

| No. | Parts No. | Parts Name | (A) | (B) | (C) | (D) | (E) | (F) | i/a | Remarks |
|--|-------------|-----------------|-----|-----|-----|-----|-----|-----|-----|---------------------------|
| 1 | 14504-79270 | Hose, LP | 1 | 1 | 1 | | | | | |
| 2 | 0399-00038 | Clip, hose | 2 | 2 | 2 | | | | | |
| 3 | 04005-12050 | Hose, HP | 1 | 1 | 1 | | | | | |
| 4 | 31830-66010 | Connector comp. | 1 | 1 | 1 | | | | | |
| 5 | 31830-65690 | Elbow | 1 | 1 | 1 | | | | | |
| 6 | 5319-07090 | Adapter | 1 | 1 | 1 | | | | | |
| 7 | 1916-05001 | Ring, O | 1 | 1 | 1 | | | | | |
| 8 | 14502-28790 | Connector comp. | 1 | 1 | 1 | | | | | |
| 9 | 1916-05001 | Ring, O | 1 | 1 | 1 | | | | | |
| 10 | 14504-25860 | Hose, LP | 1 | 1 | 1 | | | | | |
| 11 | 0399-00038 | Clip, hose | 2 | 2 | 2 | | | | | |
| 12 | 4210-81140 | Adapter | 2 | 2 | 2 | | | | | |
| 13 | 1916-05002 | Ring, O | 2 | 2 | 2 | | | | | |
| 14 | 4210-81091 | Elbow | 1 | 1 | 1 | | | | | |
| 15 | 1916-05002 | Ring, O | 1 | 1 | 1 | | | | | |
| 16 | 4641-81230 | Plug | 1 | 1 | 1 | | | | | |
| 17 | 1916-05002 | Ring, O | 1 | 1 | 1 | | | | | |
| 17-1 | 300-01150 | Ring, O | 1 | 1 | 1 | | | | | × NFS supply |
| (A=226DC0001-)(B=226DC0001-)(C=226DC0001-) | | | | | | | | | | |
| 18 | 32290-00490 | Cap | 1 | 1 | 1 | | | | | Pm/Mm(CS/FCS/DRP),Fm(Std) |
| | 32290-00490 | Cap | 2 | 2 | 2 | | | | | Fm(CS/FCS/DRP) |
| 19 | 0399-00018 | Clip, hose | 1 | 1 | 1 | | | | | Pm/Mm(CS/FCS/DRP),Fm(Std) |
| | 0399-00018 | Clip, hose | 2 | 2 | 2 | | | | | Fm(CS/FCS/DRP) |

Note :

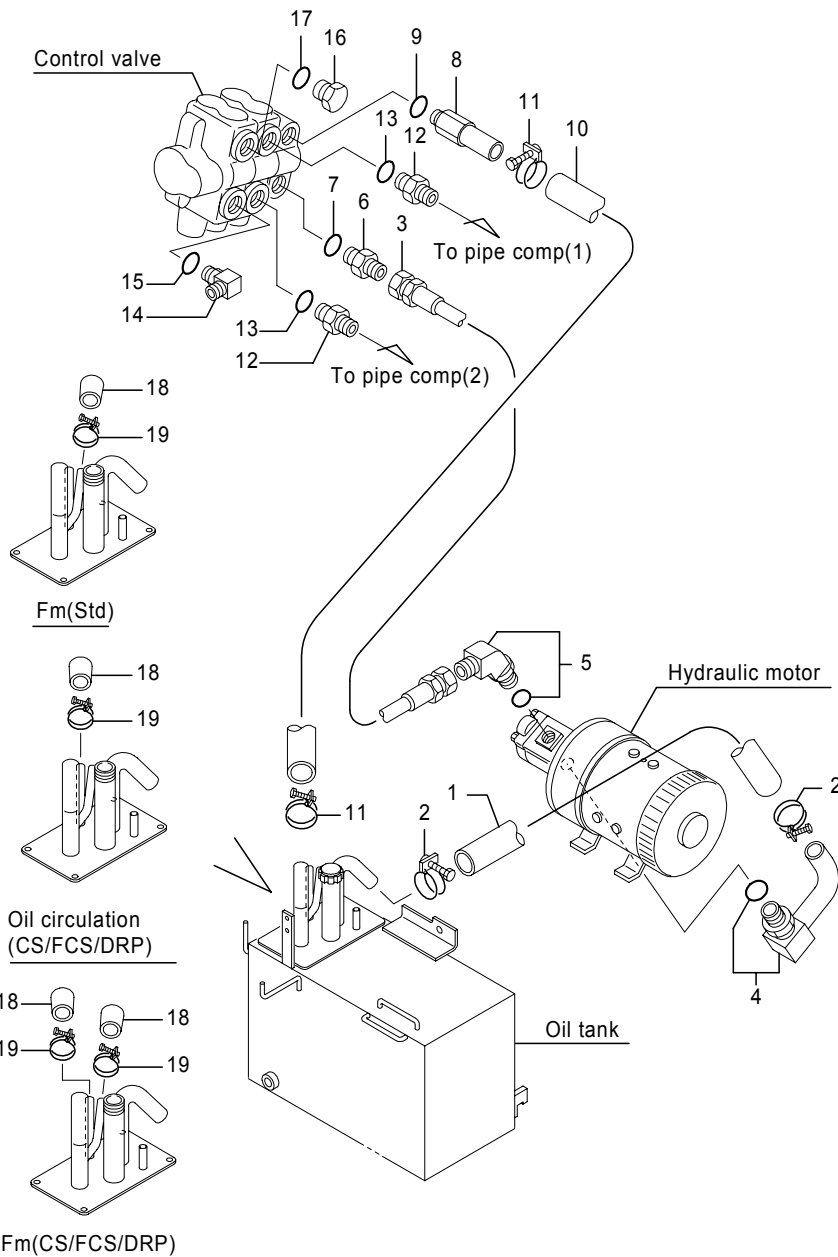


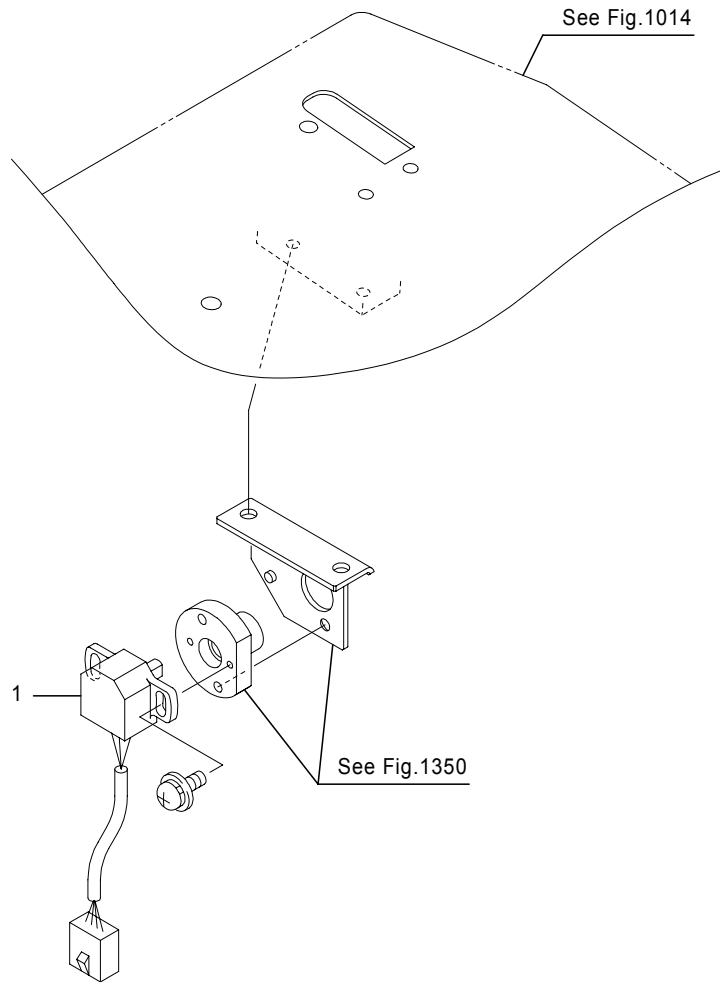
Fig.4420B ACCELERATOR
(226DC1857,1865-)

Fig.4420B ACCELERATOR
(226DC1857,1865-)

(A)=FB10P (D)=
(B)=FB15P (E)=
(C)=FB18P (F)=

| No. | Parts No. | Parts Name | (A) | (B) | (C) | (D) | (E) | (F) | i/a | Remarks |
|-----|-------------|---------------|-----|-----|-----|-----|-----|-----|-----|---------|
| 1 | 70000-45710 | Potentiometer | 1 | 1 | 1 | | | | | |
| 1-1 | 70000-45711 | Potentiometer | 1 | 1 | 1 | | | | ↑ | |

(A=226DC2741-)(B=226DC2741-)(C=226DC2741-)



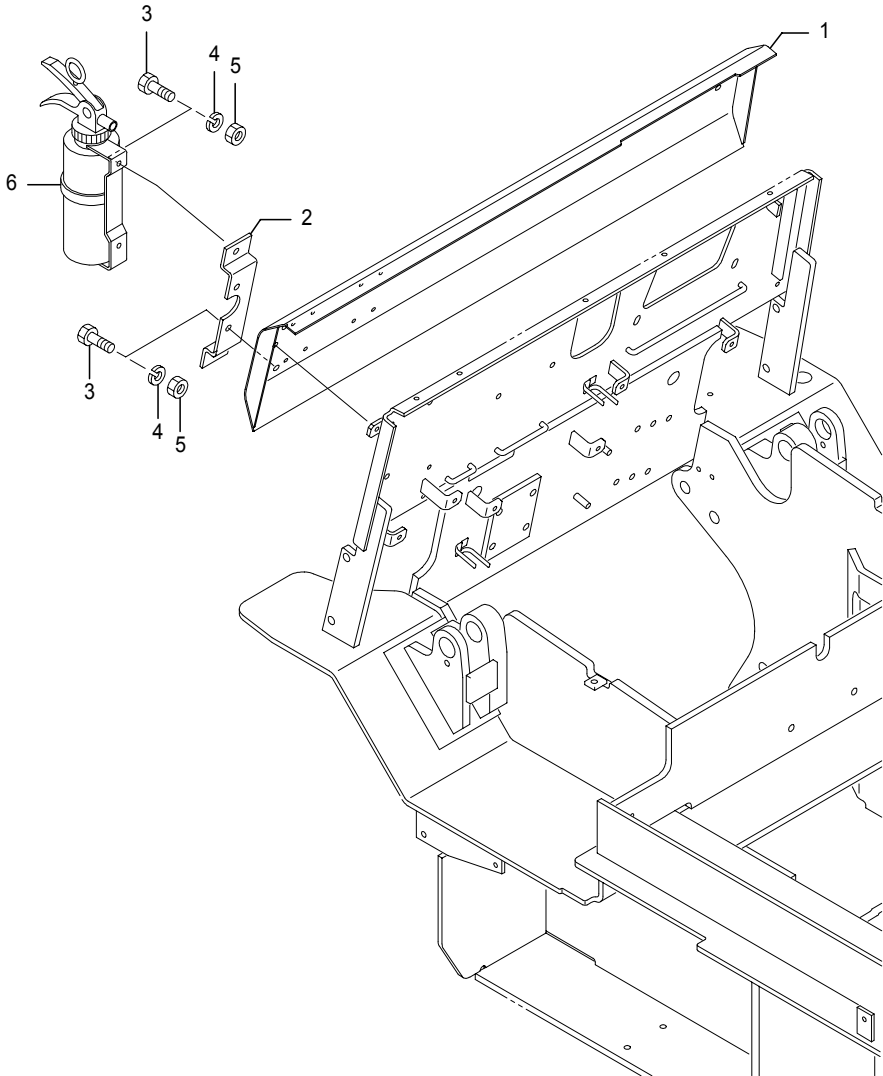
Note :

Fig.5012 COVER
[w/EXTINGUISHER]

Fig.5012 COVER
[w/EXTINGUISHER]

(A)=FB10P (D)=
(B)=FB15P (E)=
(C)=FB18P (F)=

| No. | Parts No. | Parts Name | (A) | (B) | (C) | (D) | (E) | (F) | i/a | Remarks |
|-----|-------------|-----------------------|-----|-----|-----|-----|-----|-----|-----|---------|
| 1 | 14104-32371 | Cover(5), front | 1 | 1 | 1 | | | | | |
| 2 | 14401-01670 | Bracket, extinguisher | 1 | 1 | 1 | | | | | |
| 3 | 0010-08018 | Bolt | 4 | 4 | 4 | | | | | |
| 4 | 0000-70008 | Washer, lock | 4 | 4 | 4 | | | | | |
| 5 | 0000-00008 | Nut | 4 | 4 | 4 | | | | | |
| 6 | 32250-00450 | Extinguisher, fire | 1 | 1 | 1 | | | | | |



Note :

Fig.5002 FRONT WINDOW 2
[WIPER(UNDER),(WIPER CONTROLER & COVER)]

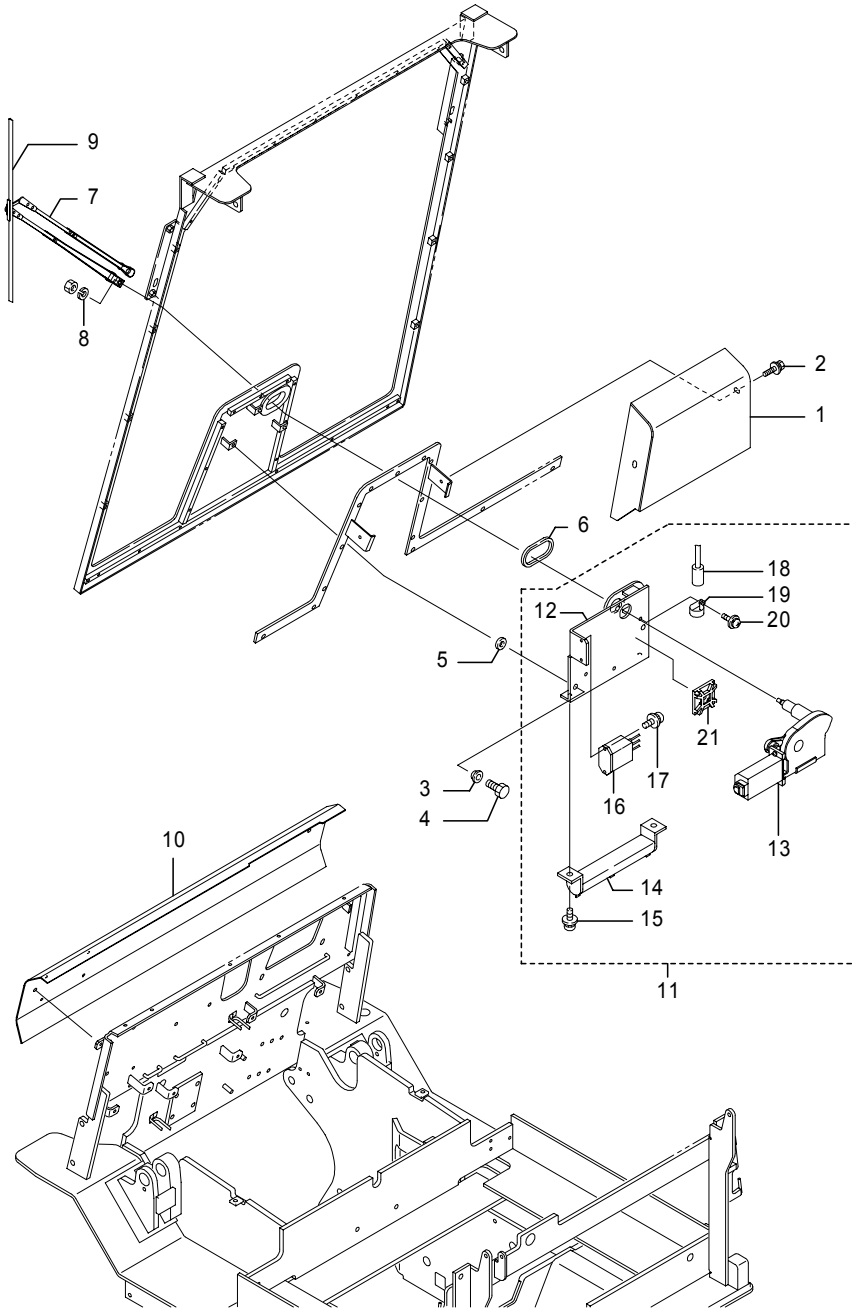


Fig.5002 FRONT WINDOW 2
[WIPER(UNDER),(WIPER CONTROLER & COVER)]

(A)=FB10P (D)=
(B)=FB15P (E)=
(C)=FB18P (F)=

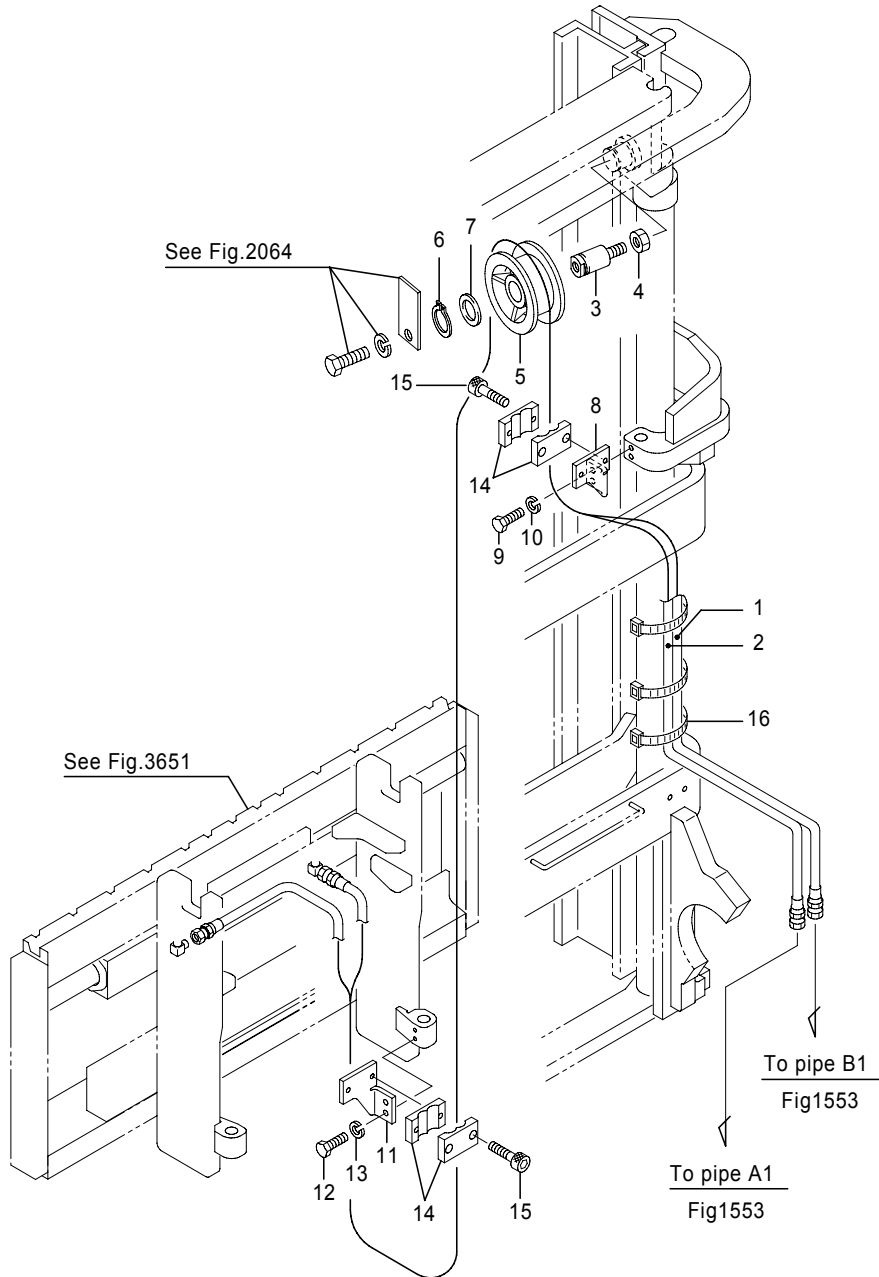
| No. | Parts No. | Parts Name | (A) | (B) | (C) | (D) | (E) | (F) | i/a | Remarks |
|-----|-------------|-------------------|-----|-----|-----|-----|-----|-----|-----|---------|
| 1 | 14800-42391 | Cover | 1 | 1 | 1 | | | | | |
| 2 | 31010-03610 | Bolt, w/washers | 2 | 2 | 2 | | | | | |
| 3 | 31220-11000 | Bushing | 3 | 3 | 3 | | | | | |
| 4 | 0010-06016 | Bolt | 3 | 3 | 3 | | | | | |
| 5 | 31040-01520 | Washer | 3 | 3 | 3 | | | | | |
| 6 | 14800-25931 | Packing | 1 | 1 | 1 | | | | | |
| 7 | 37450-10090 | Arm, wiper | 1 | 1 | 1 | | | | | |
| 8 | 0000-70006 | Washer, lock | 1 | 1 | 1 | | | | | |
| 9 | 37450-10100 | Blade, wiper | 1 | 1 | 1 | | | | | |
| 10 | 14104-78301 | Cover(5), front | 1 | 1 | 1 | | | | | |
| 11 | 24801-26511 | Controller, wiper | 1 | 1 | 1 | | | | | |
| 12 | 24801-26441 | Base, wiper | 1 | 1 | 1 | | | | | |
| 13 | 37420-15080 | Motor, wiper | 1 | 1 | 1 | | | | | |
| 14 | 38910-03850 | Resistor | 1 | 1 | 1 | | | | | |
| 15 | 0075-05010 | Screw, w/washers | 2 | 2 | 2 | | | | | |
| 16 | 1910-52151 | Relay | 1 | 1 | 1 | | | | | [DC24V] |
| 17 | 0075-03010 | Screw, w/washers | 2 | 2 | 2 | | | | | |
| 18 | 39110-00880 | Condenser | 1 | 1 | 1 | | | | | |
| 19 | 37990-03940 | Clamp, nylon | 1 | 1 | 1 | | | | | |
| 20 | 0075-03010 | Screw, w/washers | 1 | 1 | 1 | | | | | |
| 21 | 37990-45320 | Base, mount | 1 | 1 | 1 | | | | | |

Note :

Fig.2058 MAST PIPING[Pm]
Integral SF

Fig.2058 MAST PIPING[Pm]
Integral SF

(A)=FB10P (D)=
(B)=FB15P (E)=
(C)=FB18P (F)=



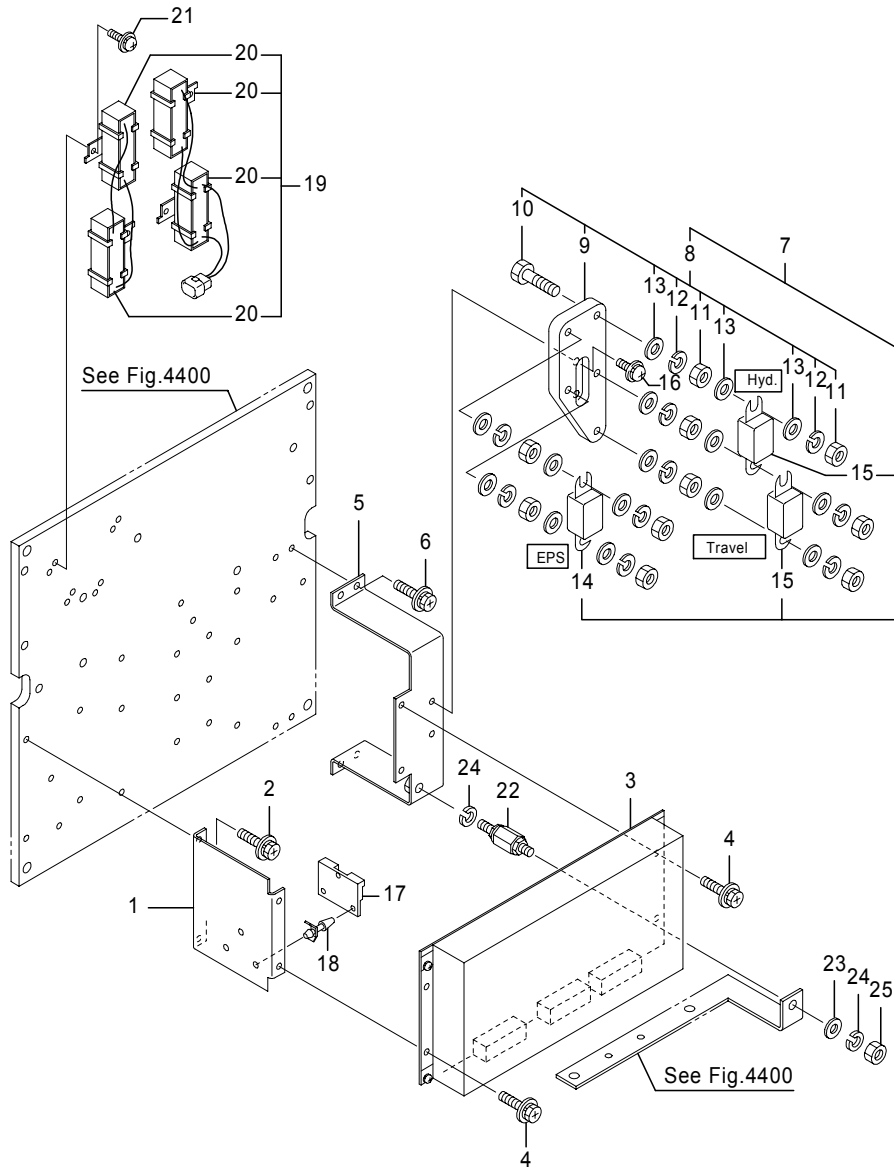
| No. | Parts No. | Parts Name | (A) | (B) | (C) | (D) | (E) | (F) | i/a | Remarks |
|-----|-------------|--------------|-----|-----|-----|-----|-----|-----|-----|---------|
| 12 | 0015-06016 | Bolt | 2 | 2 | 2 | | | | | |
| 13 | 0000-70006 | Washer, lock | 2 | 2 | 2 | | | | | |
| 14 | 14600-90740 | Clamp, hose | 4 | 4 | 4 | | | | | |
| 15 | 0270-06025 | Screw, cap | 4 | 4 | 4 | | | | | |
| 16 | 37990-03500 | Band | 3 | 3 | 3 | | | | | |

Note :

Fig.4402 MAIN CONTROLLER 3

Fig.4402 MAIN CONTROLLER 3

(A)=FB10P (D)=
 (B)=FB15P (E)=
 (C)=FB18P (F)=



| No. | Parts No. | Parts Name | (A) | (B) | (C) | (D) | (E) | (F) | i/a | Remarks |
|-----|-------------|--|-----|-----|-----|-----|-----|-----|-----|-------------------------|
| 1 | 24200-68681 | Bracket, boad | 1 | 1 | 1 | | | | | |
| 1-1 | 54000-52960 | Bracket, boad (A=226DC1160-)(B=226DC1167-)(C=226DC1167-) | 1 | 1 | 1 | | | | × | |
| 2 | 0016-06012 | Bolt, w/washers | 2 | 2 | 2 | | | | | |
| 3 | 24200-68540 | Board comp., MPU | 1 | 1 | 1 | | | | | PBC100-09 |
| 3-1 | 24200-68542 | Board comp., MPU (A=226DC1865-)(B=226DC1865-)(C=226DC1865-) | 1 | 1 | 1 | | | | ┘ | PBC100-09A |
| 4 | 0016-04010 | Bolt, w/washers | 4 | 4 | 4 | | | | | |
| 5 | 24200-68691 | Bracket, fuse | 1 | 1 | 1 | | | | | |
| 5-1 | 54000-52970 | Bracket, fuse (A=226DC1160-)(B=226DC1167-)(C=226DC1167-) | 1 | 1 | 1 | | | | × | |
| 6 | 0016-06012 | Bolt, w/washers | 4 | 4 | 4 | | | | | |
| 7 | 24800-86370 | Fuse ass'y | 1 | 1 | 1 | | | | | |
| 8 | 24800-86380 | Terminal comp., fuse | 1 | 1 | 1 | | | | | |
| 9 | 24200-29340 | Base, fuse | 1 | 1 | 1 | | | | | |
| 10 | 0010-08035 | Bolt | 5 | 5 | 5 | | | | | |
| 11 | 0000-00008 | Nut | 10 | 10 | 10 | | | | | |
| 12 | 0000-70008 | Washer, lock | 10 | 10 | 10 | | | | | |
| 13 | 0000-72008 | Washer, plain | 15 | 15 | 15 | | | | | |
| 14 | 1995-32023 | Fuse | 1 | 1 | 1 | | | | | BN-40A,[EPS] |
| 15 | 1995-32014 | Fuse | 2 | 2 | 2 | | | | | BN-275A,[Travel],[Hyd.] |
| 16 | 0016-05012 | Bolt, w/washers | 2 | 2 | 2 | | | | | |
| 17 | 24200-36320 | Board comp., printed | 1 | 1 | 1 | | | | | PB83-62 |
| 18 | 35890-00030 | Spacer | 3 | 3 | 3 | | | | | |
| 19 | 24200-68700 | Resistor comp. | 1 | 1 | 1 | | | | | |
| 20 | 38910-03420 | Resistor | 4 | 4 | 4 | | | | | |
| 21 | 0075-04010 | Screw, w/washers | 4 | 4 | 4 | | | | | |
| 22 | 24200-63030 | Terminal | 1 | 1 | 1 | | | | | |
| 23 | 0000-72008 | Washer, plain | 1 | 1 | 1 | | | | | |
| 24 | 0000-70008 | Washer, lock | 2 | 2 | 2 | | | | | |
| 25 | 0000-00008 | Nut | 1 | 1 | 1 | | | | | |

Note :

Fig.4824 DISPLAY PANEL

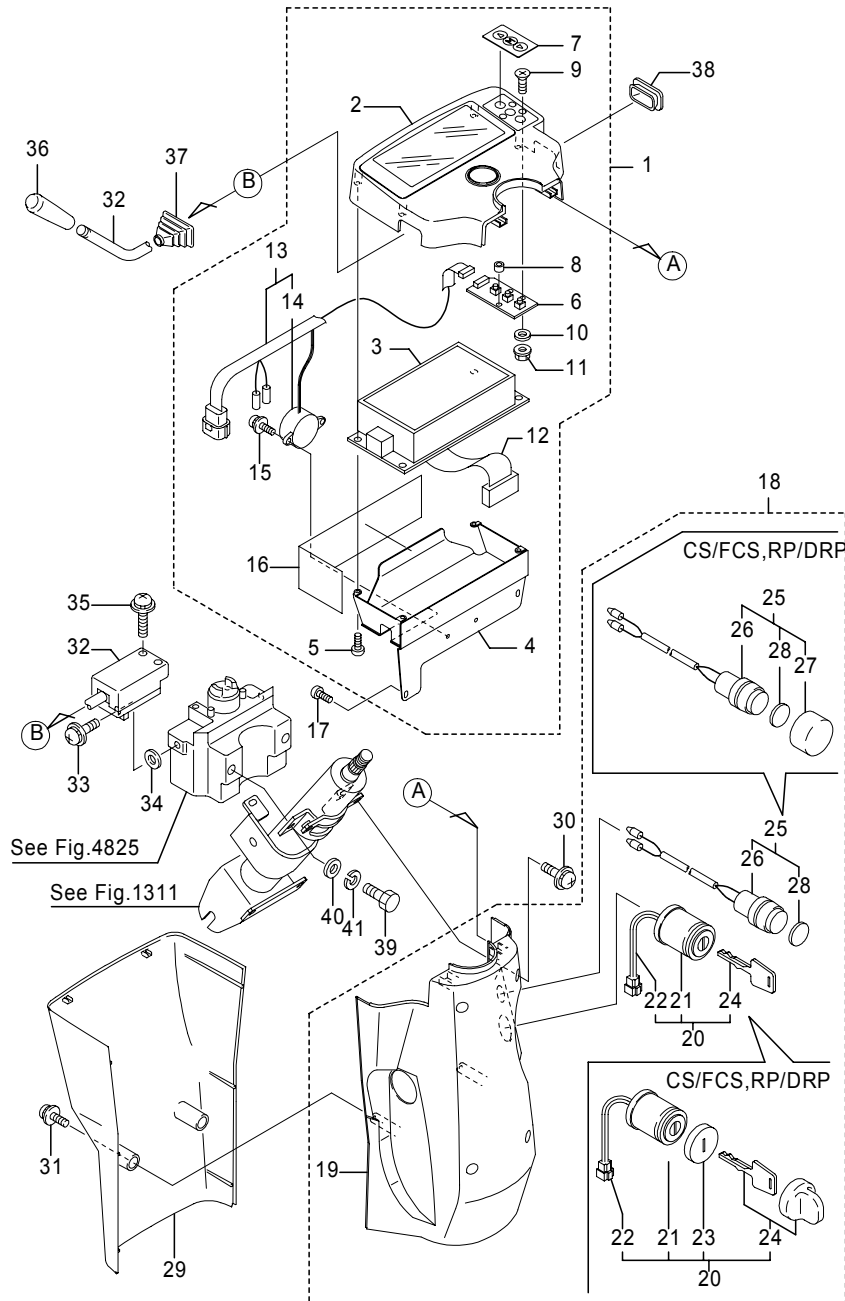


Fig.4824 DISPLAY PANEL

(A)=FB10P (D)=
 (B)=FB15P (E)=
 (C)=FB18P (F)=

| No. | Parts No. | Parts Name | (A) | (B) | (C) | (D) | (E) | (F) | i/a | Remarks |
|-----|-------------|------------------|-----|-----|-----|-----|-----|-----|-----|---------|
| 32 | 24300-44720 | Switch, flasher | 1 | 1 | 1 | | | | | |
| 33 | 0075-05016 | Screw, w/washers | 1 | 1 | 1 | | | | | |
| 34 | 0000-72005 | Washer, plain | 1 | 1 | 1 | | | | | |
| 35 | 0075-05025 | Screw, w/washers | 1 | 1 | 1 | | | | | |
| 36 | 24300-33090 | Knob, lever | 1 | 1 | 1 | | | | | |
| 37 | 24300-20890 | Cap(1) | 1 | 1 | 1 | | | | | |
| 38 | 24300-20881 | Cap(2) | 1 | 1 | 1 | | | | | |
| 39 | 0010-08016 | Bolt | 2 | 2 | 2 | | | | | |
| 40 | 0000-72008 | Washer, plain | 2 | 2 | 2 | | | | | |
| 41 | 0000-70008 | Washer, lock | 2 | 2 | 2 | | | | | |

Note : Illustration : Flasher lever is LH & Directional lever is RH.

Fig.5003 FRONT WINDOW 3
[WIPER(UNDER),(SWITCH & WIRE HARNESS)]

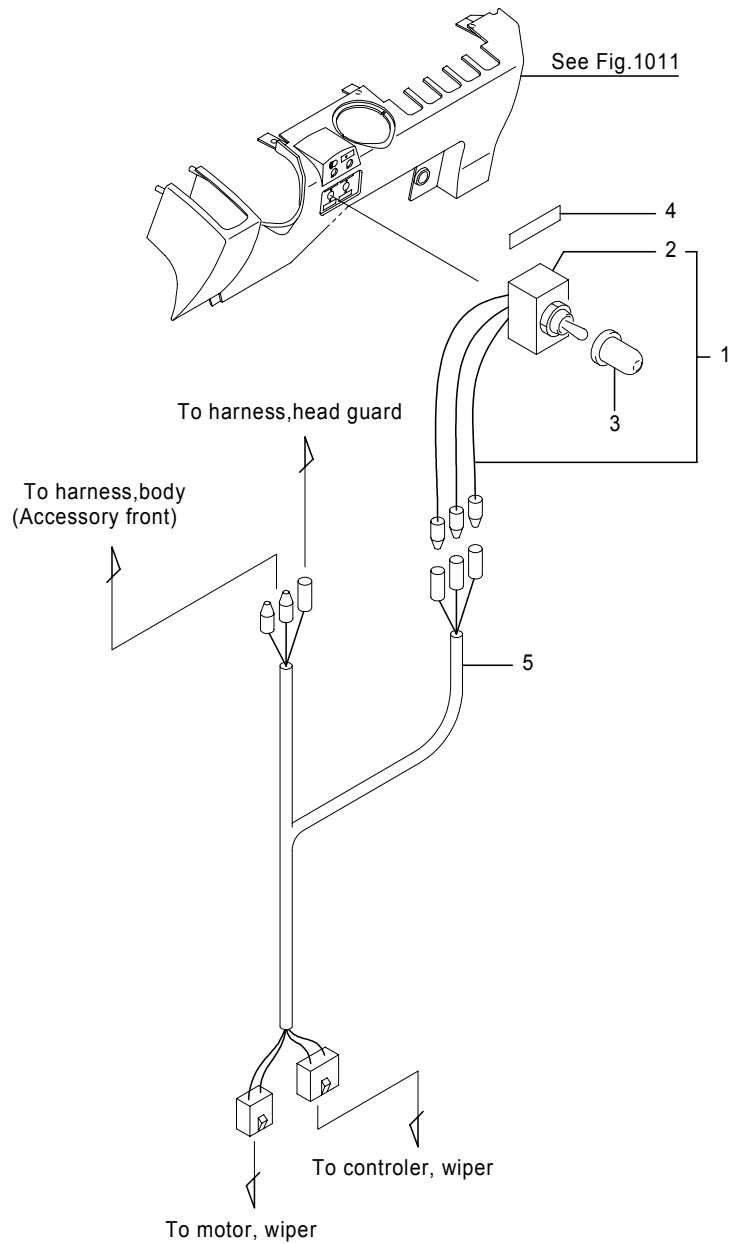


Fig.5003 FRONT WINDOW 3
[WIPER(UNDER),(SWITCH & WIRE HARNESS)]

(A)=FB10P (D)=
(B)=FB15P (E)=
(C)=FB18P (F)=

| No. | Parts No. | Parts Name | (A) | (B) | (C) | (D) | (E) | (F) | i/a | Remarks |
|-----|-------------|----------------------|-----|-----|-----|-----|-----|-----|-----|---------|
| 1 | 24300-22992 | Switch comp., toggle | 1 | 1 | 1 | | | | | |
| 2 | 35610-00160 | Switch, toggle | 1 | 1 | 1 | | | | | |
| 3 | 1910-43012 | Cap, water resistant | 1 | 1 | 1 | | | | | |
| 4 | 24700-13530 | Label, switch | 1 | 1 | 1 | | | | | [71/8] |
| 5 | 24801-39300 | Harness, wiper | 1 | 1 | 1 | | | | | |

Note :

CLICK HERE TO **DOWNLOAD** THE COMPLETE MANUAL

- Thank you very much for reading the preview of the manual.
- You can download the complete manual from: www.heydownloads.com by clicking the link below



- Please note: If there is no response to CLICKING the link, please download this PDF first and then click on it.

CLICK HERE TO **DOWNLOAD** THE COMPLETE MANUAL