

Fig.2053B LIFT CYLINDER[Pm]
(221AC4260-)

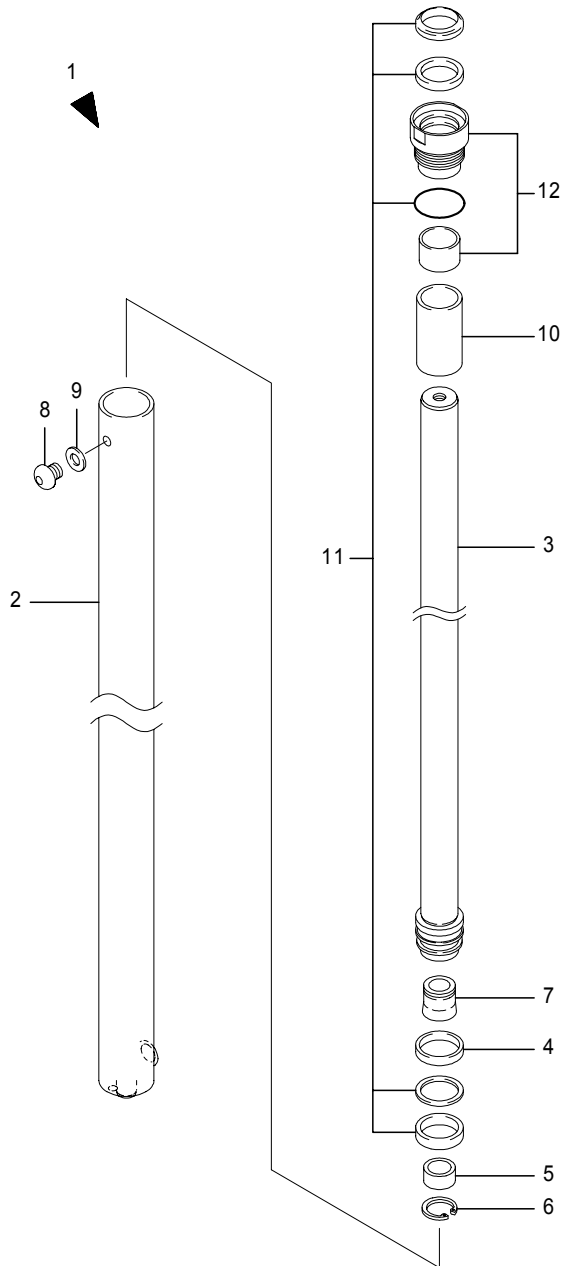


Fig.2053B LIFT CYLINDER[Pm]
(221AC4260-)

(A)=FB10P (D)=FB18P
(B)=FB14P (E)=
(C)=FB15P (F)=

No.	Parts No.	Parts Name	(A)	(B)	(C)	(D)	(E)	(F)	i/a	Remarks
1	31850-57060	Cylinder ass'y, lift	2	2	2	2				MLH2000
	31850-57070	Cylinder ass'y, lift	2	2	2	2				MLH2300
	31850-57080	Cylinder ass'y, lift	2	2	2	2				MLH2500
	31850-57090	Cylinder ass'y, lift	2	2	2	2				MLH2700
	31850-57100	Cylinder ass'y, lift	2	2	2	2				MLH3000
	31850-57110	Cylinder ass'y, lift	2	2	2	2				MLH3300
	31850-57120	Cylinder ass'y, lift	2	2	2	2				MLH3500
	31850-57130	Cylinder ass'y, lift	2	2	2	2				MLH3700
	31850-57140	Cylinder ass'y, lift	2	2	2	2				MLH4000
	31850-57150	Cylinder ass'y, lift	2	2	2	2				MLH4300
	31850-57160	Cylinder ass'y, lift	2	2	2	2				MLH4500
	31850-57170	Cylinder ass'y, lift	2	2	2	2				MLH4700
	31850-57180	Cylinder ass'y, lift	2	2	2	2				MLH5000
	2	31850-61220	Tube ass'y, cylinder	2	2	2	2			
31850-61230		Tube ass'y, cylinder	2	2	2	2				MLH2300
31850-61240		Tube ass'y, cylinder	2	2	2	2				MLH2500
31850-61250		Tube ass'y, cylinder	2	2	2	2				MLH2700
31850-61260		Tube ass'y, cylinder	2	2	2	2				MLH3000
31850-61270		Tube ass'y, cylinder	2	2	2	2				MLH3300
31850-61280		Tube ass'y, cylinder	2	2	2	2				MLH3500
31850-61290		Tube ass'y, cylinder	2	2	2	2				MLH3700
31850-61300		Tube ass'y, cylinder	2	2	2	2				MLH4000
31850-61310		Tube ass'y, cylinder	2	2	2	2				MLH4300
31850-61320		Tube ass'y, cylinder	2	2	2	2				MLH4500
31850-61330		Tube ass'y, cylinder	2	2	2	2				MLH4700
21850-61340		Tube ass'y, cylinder	2	2	2	2				MLH5000
3		31850-61350	Rod ass'y, piston	2	2	2	2			
	31850-61360	Rod ass'y, piston	2	2	2	2				MLH2300
	31850-61370	Rod ass'y, piston	2	2	2	2				MLH2500
	31850-61380	Rod ass'y, piston	2	2	2	2				MLH2700
	31850-61390	Rod ass'y, piston	2	2	2	2				MLH3000
	31850-61400	Rod ass'y, piston	2	2	2	2				MLH3300
	31850-61410	Rod ass'y, piston	2	2	2	2				MLH3500
	31850-61420	Rod ass'y, piston	2	2	2	2				MLH3700
	31850-61430	Rod ass'y, piston	2	2	2	2				MLH4000

Note :

CLICK HERE TO **DOWNLOAD** THE COMPLETE MANUAL

- Thank you very much for reading the preview of the manual.
- You can download the complete manual from: www.heydownloads.com by clicking the link below



- Please note: If there is no response to CLICKING the link, please download this PDF first and then click on it.

CLICK HERE TO **DOWNLOAD** THE COMPLETE MANUAL

Fig.2063A INNER MAST[Pm]
(-221AC4259)

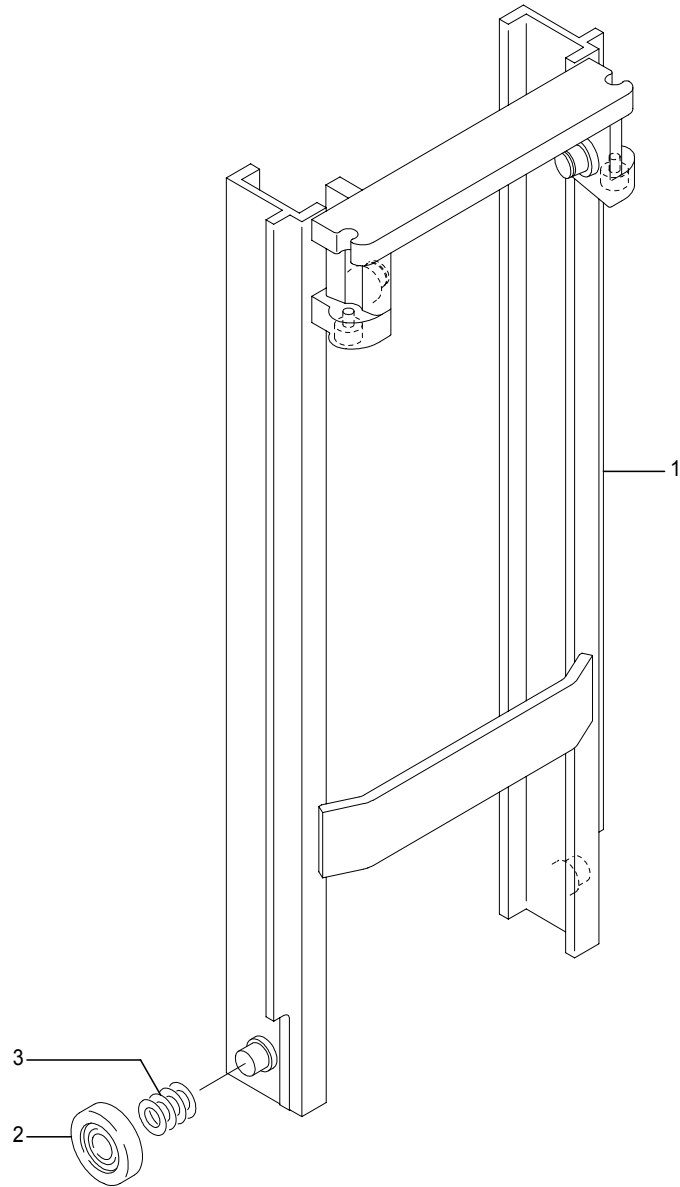


Fig.2063A INNER MAST[Pm]
(-221AC4259)

(A)=FB10P (D)=FB18P
(B)=FB14P (E)=
(C)=FB15P (F)=

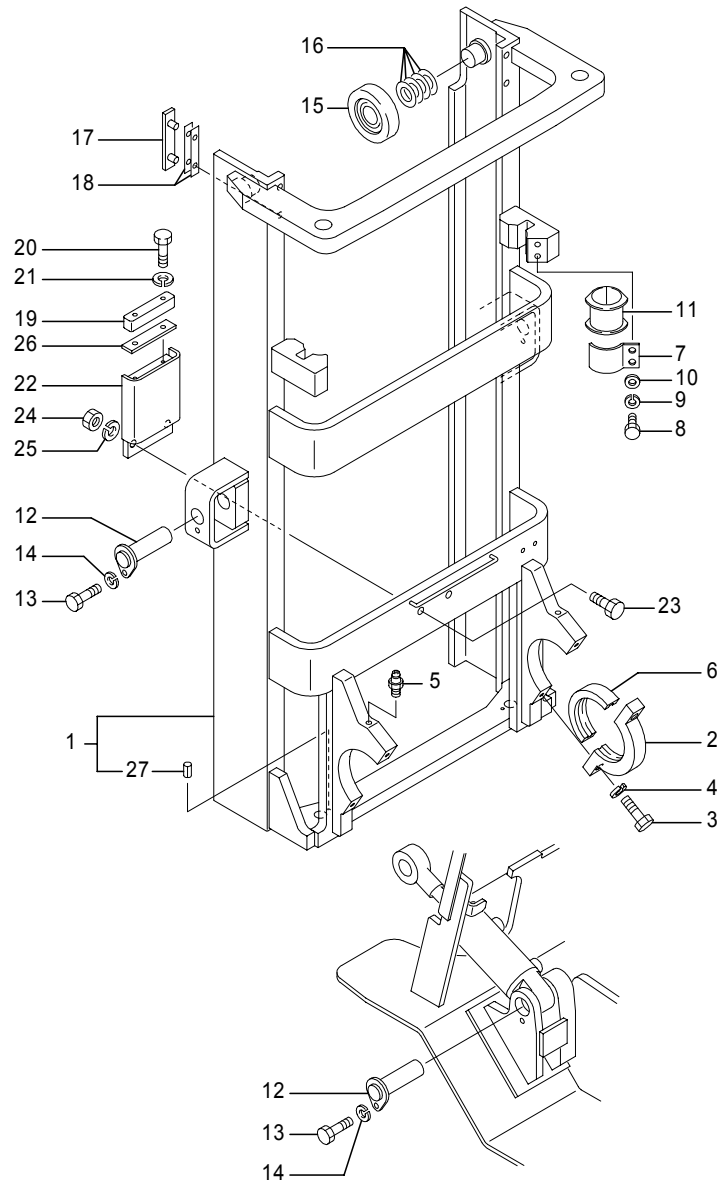
No.	Parts No.	Parts Name	(A)	(B)	(C)	(D)	(E)	(F)	i/a	Remarks
1-1	14603-87043	Mast comp., inner	1	1	1	1				↑ MLH4700
(A=221AC0146-) (B=221AC0146-) (C=221AC0146-) (D=221AC0146-)										
1	14603-87052	Mast comp., inner	1	1	1	1				MLH5000
1-1	14603-87053	Mast comp., inner	1	1	1	1				↑ MLH5000
(A=221AC0146-) (B=221AC0146-) (C=221AC0146-) (D=221AC0146-)										
2	31220-10610	Roller	2	2	2	2				
3	4301-67180	Shim	AR	AR	AR	AR				t0.2
	4301-67140	Shim	AR	AR	AR	AR				t0.5
	4301-67130	Shim	AR	AR	AR	AR				t1.0
	4301-67170	Shim	AR	AR	AR	AR				t2.0

Note :

Fig.2261A OUTER MAST[Fm]

Fig.2261A OUTER MAST[Fm]

(A)=FB10P (D)=FB18P
(B)=FB14P (E)=
(C)=FB15P (F)=



No.	Parts No.	Parts Name	(A)	(B)	(C)	(D)	(E)	(F)	i/a	Remarks
1	14604-03931	Mast comp., outer	1	1	1	1				MLH2000
	14604-03941	Mast comp., outer	1	1	1	1				MLH2300
	14604-03951	Mast comp., outer	1	1	1	1				MLH2500
	14604-03961	Mast comp., outer	1	1	1	1				MLH2700
	14604-03971	Mast comp., outer	1	1	1	1				MLH3000
	14604-03981	Mast comp., outer	1	1	1	1				MLH3300
	14604-03991	Mast comp., outer	1	1	1	1				MLH3500
	14604-04001	Mast comp., outer	1	1	1	1				MLH3700
	14604-04011	Mast comp., outer	1	1	1	1				MLH4000
	14604-04021	Mast comp., outer	1	1	1	1				MLH4300
2	14604-04031	Mast comp., outer	1	1	1	1				MLH4500
	14604-04041	Mast comp., outer	1	1	1	1				MLH4700
	14604-04051	Mast comp., outer	1	1	1	1				MLH5000
	14600-04361	Cap, pivot	2	2	2	2				
3	0020-16055	Bolt	4	4	4	4				
	0024-16055	Bolt	4	4	4	4				CS/FCS/DP/DRP
4	0000-70016	Washer, lock	4	4	4	4				
5	0280-00010	Nipple, grease	2	2	2	2				
6	14602-84530	Bushing	2	2	2	2				
7	14603-87420	Band, cylinder	2	2	2	2				
8	0025-10030	Bolt	4	4	4	4				
8-1	0025-10020	Bolt	4	4	4	4				↑
(A=221AC2049-) (B=221AC2049-) (C=221AC2049-) (D=221AC2049-)										
9	0000-71010	Washer, lock	4	4	4	4				
10	0000-73010	Washer, plain	4	4	4	4				
(A=-221AC2048) (B=-221AC2048) (C=-221AC2048) (D=-221AC2048)										
11	14603-94451	Cushion, cylinder	2	2	2	2				
12	14600-27742	Pin, tilt	4	4	4	4				
13	0020-10020	Bolt	4	4	4	4				
	0024-10020	Bolt	4	4	4	4				CS/FCS/DP/DRP
14	0000-70010	Washer, lock	4	4	4	4				
15	31220-10610	Roller	2	2	2	2				
16	4301-67180	Shim	AR	AR	AR	AR				t0.2
	4301-67140	Shim	AR	AR	AR	AR				t0.5
	4301-67130	Shim	AR	AR	AR	AR				t1.0

Note :

Fig.1012 COVER 2

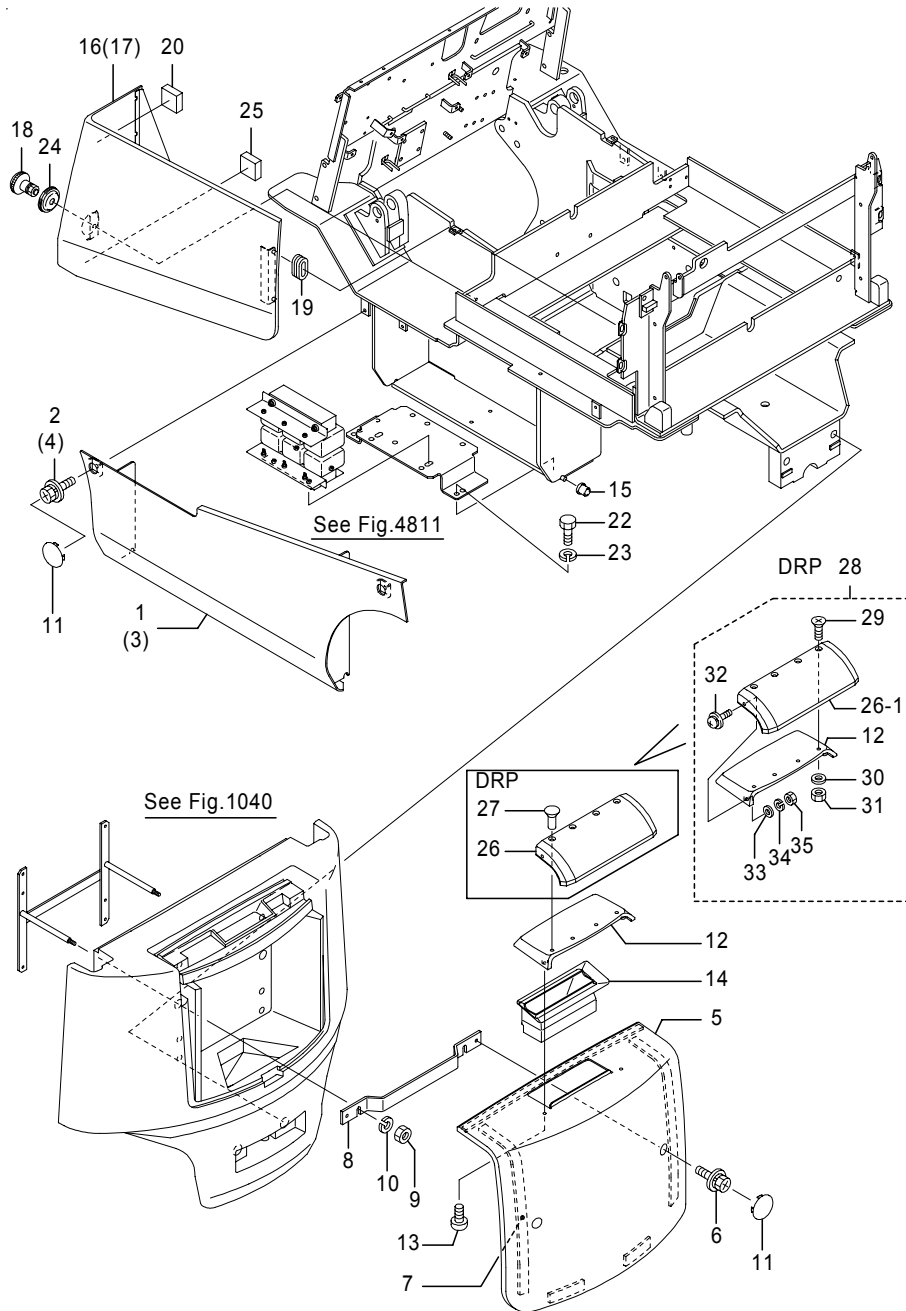


Fig.1012 COVER 2

(A)=FB10P (D)=FB18P
 (B)=FB14P (E)=
 (C)=FB15P (F)=

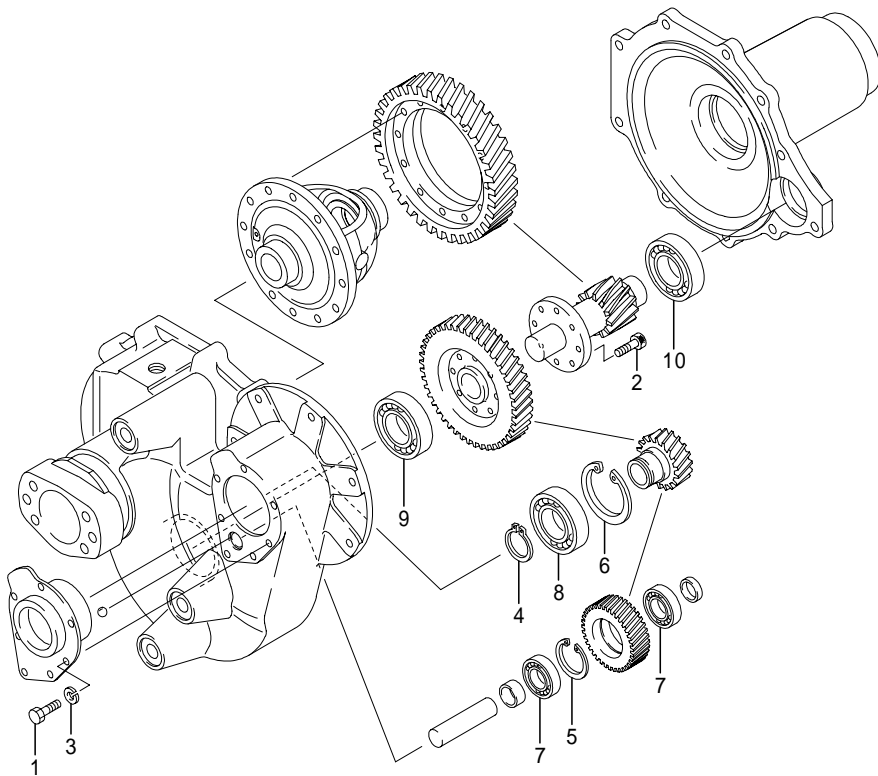
No.	Parts No.	Parts Name	(A)	(B)	(C)	(D)	(E)	(F)	i/a	Remarks
19	14102-42611	Bushing, cover	4	4	4	4				
20	14104-43840	Cushion	2	2	2	2				
		(A=-221AC0604) (B=-221AC0604) (C=-221AC0604) (D=-221AC0604)								
22	0020-10015	Bolt	3	3	3	3				
23	0000-70010	Washer, lock	3	3	3	3				
24	14104-46510	Cap	2	2	2	2				
25	14104-43840	Cushion	2	2	2	2				
		(A=221AC0362-) (B=221AC0362-) (C=221AC0362-) (D=221AC0362-)								
26	14104-52810	Cover(2), duct	1	1	1	1				DRP
26-1	14104-52811	Cover(2), duct	1	1	1	1				↑ DRP
		(A=221AC1002-) (B=221AC1002-) (C=221AC1002-) (D=221AC1002-)								
27	0261-08017	Rivet, flat head	4	4	4	4				DRP
		(A=-221AC1001) (B=-221AC1001) (C=-221AC1001) (D=-221AC1001)								
28	14104-63660	Cover comp., duct	1	1	1	1				DRP
		(A=221AC1002-) (B=221AC1002-) (C=221AC1002-) (D=221AC1002-)								
29	0081-08020	Screw, flat head	4	4	4	4				DRP
		(A=221AC1002-) (B=221AC1002-) (C=221AC1002-) (D=221AC1002-)								
30	0000-70008	Washer, plain	4	4	4	4				DRP
		(A=221AC1002-) (B=221AC1002-) (C=221AC1002-) (D=221AC1002-)								
31	0000-00008	Nut	4	4	4	4				DRP
		(A=221AC1002-) (B=221AC1002-) (C=221AC1002-) (D=221AC1002-)								
32	0078-05016	Screw, w/washer	2	2	2	2				DRP
		(A=221AC1002-) (B=221AC1002-) (C=221AC1002-) (D=221AC1002-)								
33	0000-72005	Washer, plain	2	2	2	2				DRP
		(A=221AC1002-) (B=221AC1002-) (C=221AC1002-) (D=221AC1002-)								
34	0000-70005	Washer, lock	2	2	2	2				DRP
		(A=221AC1002-) (B=221AC1002-) (C=221AC1002-) (D=221AC1002-)								
35	0000-00005	Nut	2	2	2	2				DRP
		(A=221AC1002-) (B=221AC1002-) (C=221AC1002-) (D=221AC1002-)								

Note :

Fig.1132 FRONT AXLE 3

Fig.1132 FRONT AXLE 3

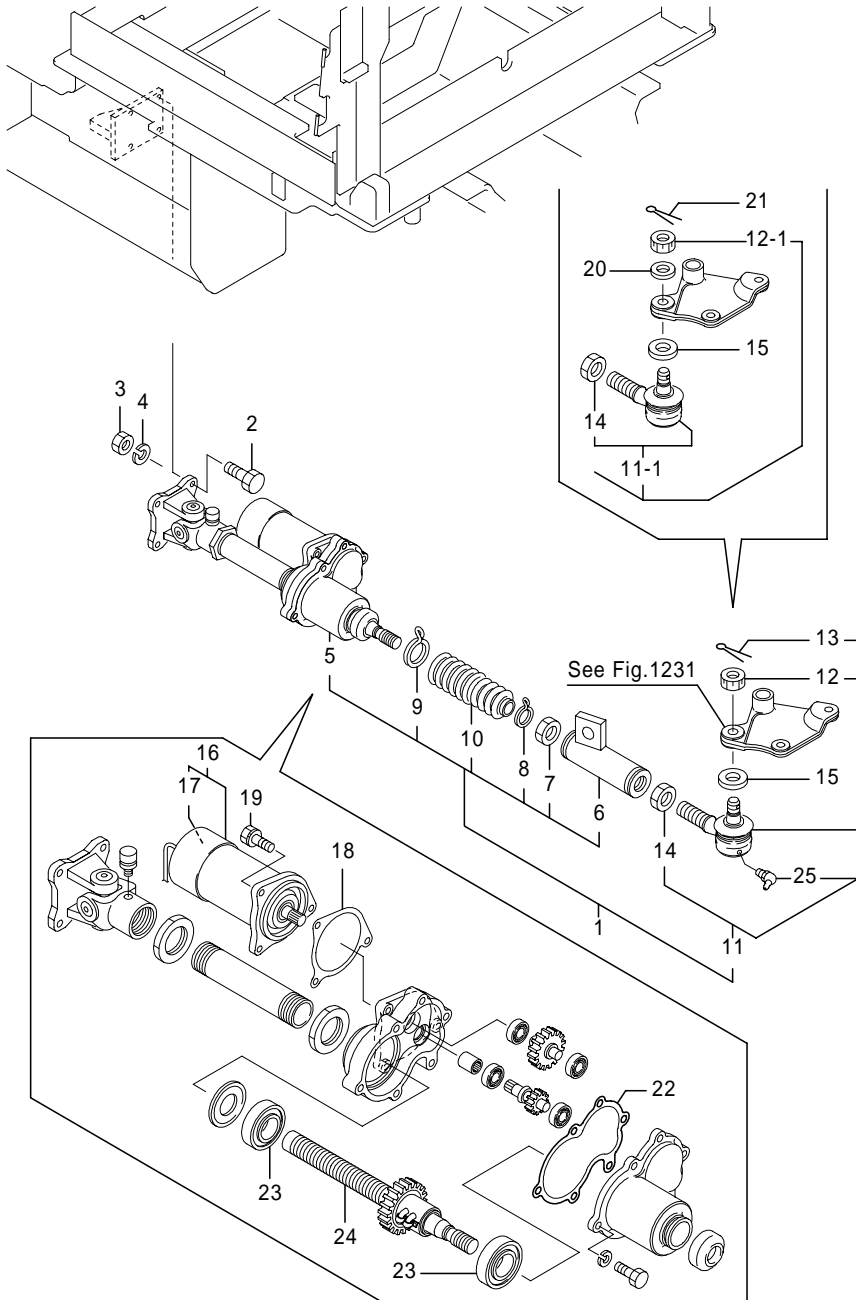
(A)=FB10P (D)=FB18P
 (B)=FB14P (E)=
 (C)=FB15P (F)=



No.	Parts No.	Parts Name	(A)	(B)	(C)	(D)	(E)	(F)	i/a	Remarks
1	0012-08025	Bolt	7	7	7	7				
2	99505-00080	Screw, cap	8	8	8	8				
3	0000-70008	Washer, lock	7	7	7	7				
4	99505-00077	Ring, snap	1	1	1	1				
5	0000-85062	Ring, snap	1	1	1	1				
6	0000-85080	Ring, snap	1	1	1	1				
7	0405-63050	Bearing, radial ball	2	2	2	2				
8	0405-62080	Bearing, radial ball	1	1	1	1				
9	0405-63070	Bearing, radial ball	1	1	1	1				
10	0405-63080	Bearing	1	1	1	1				

Note :

Fig.1313 STEERING LINKAGE 4
ACTUATOR



461-1273-03C
(461-1273)

Fig.1313 STEERING LINKAGE 4
ACTUATOR

(A)=FB10P (D)=FB18P
(B)=FB14P (E)=
(C)=FB15P (F)=

No.	Parts No.	Parts Name	(A)	(B)	(C)	(D)	(E)	(F)	i/a	Remarks
22	32911-02550	Packing, cover	1	1	1	1				
23	32911-02410	Bearing	2	2	2	2				
24	32911-03360	Screw, comp., ball	1	1	1	1				
25	31830-65980	Nipple, grease	1	1	1	1				

(A=-221AC0549) (B=-221AC0549) (C=-221AC0549) (D=-221AC0549)

Note :

Fig.1340B VALVE LINKAGE
3 SPOOLS

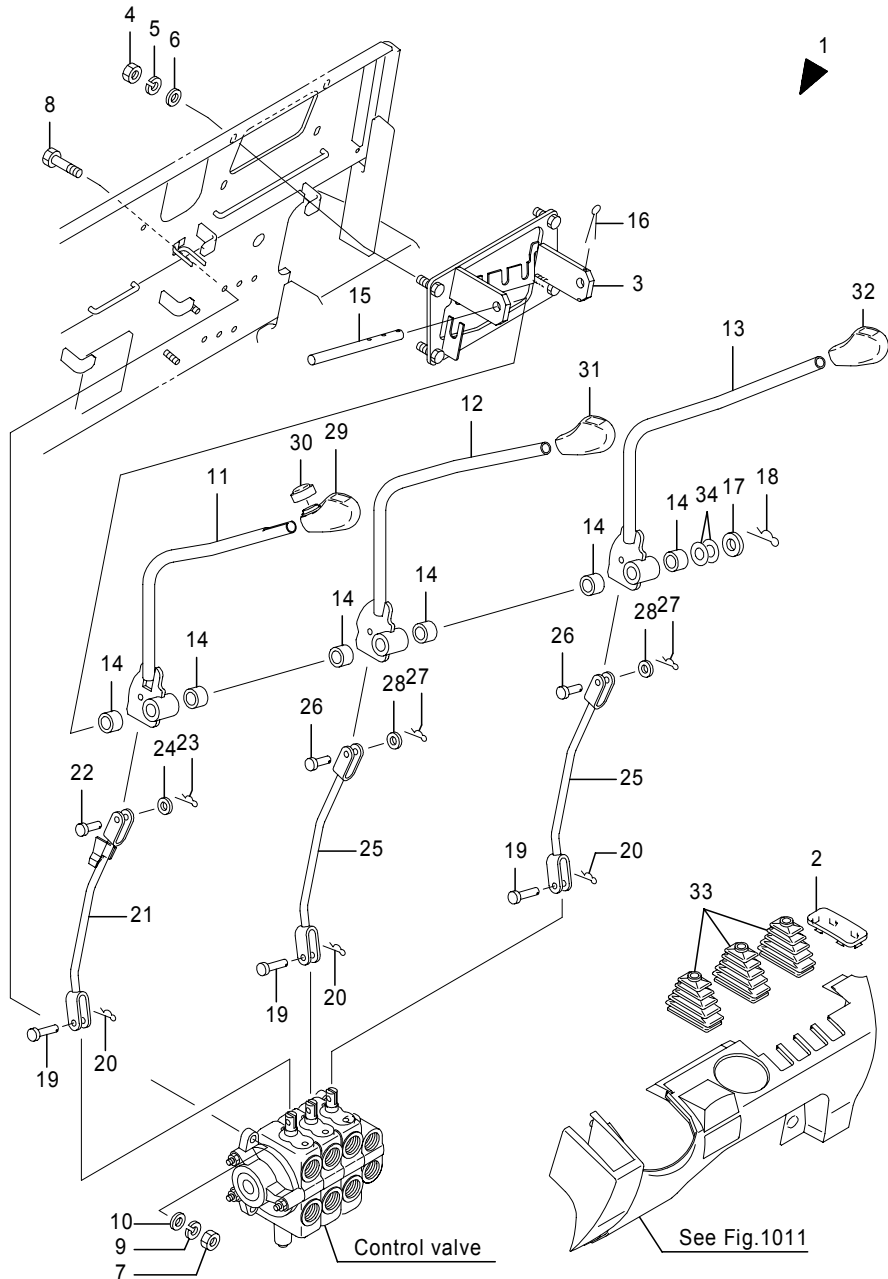


Fig.1340B VALVE LINKAGE
3 SPOOLS

(A)=FB10P (D)=FB18P
(B)=FB14P (E)=
(C)=FB15P (F)=

No.	Parts No.	Parts Name	(A)	(B)	(C)	(D)	(E)	(F)	i/a	Remarks
1	14400-99731	Linkage ass'y, valve	1	1	1	1				
1-1	14400-99732	Linkage ass'y, valve	1	1	1	1				↑
	(A=221AC0434-)	(B=221AC0434-)	(C=221AC0434-)	(D=221AC0434-)						
1-2	14400-99733	Linkage ass'y, valve	1	1	1	1				↑
	(A=221AC0455-)	(B=221AC0455-)	(C=221AC0455-)	(D=221AC0455-)						
1	14400-99851	Linkage ass'y, valve	1	1	1	1				650/730Ah
1-1	14400-99852	Linkage ass'y, valve	1	1	1	1				↑ 650/730Ah
	(A=221AC0434-)	(B=221AC0434-)	(C=221AC0434-)	(D=221AC0434-)						
1-2	14400-99853	Linkage ass'y, valve	1	1	1	1				↑ 650/730Ah
	(A=221AC0455-)	(B=221AC0455-)	(C=221AC0455-)	(D=221AC0455-)						
2	14401-00990	Cap, lever	1	1	1	1				
3	14400-99873	Bracket, lever	1	1	1	1				
3-1	14400-99874	Bracket, lever	1	1	1	1				↑
	(A=221AC0434-)	(B=221AC0434-)	(C=221AC0434-)	(D=221AC0434-)						
4	0000-25010	Nut	4	4	4	4				
4-1	0000-20010	Nut	4	4	4	4				↑
	(A=221AC2566-)	(B=221AC2566-)	(C=221AC2566-)	(D=221AC2566-)						
5	0000-71010	Washer, lock	4	4	4	4				
5-1	0000-70010	Washer, lock	4	4	4	4				↑
	(A=221AC2566-)	(B=221AC2566-)	(C=221AC2566-)	(D=221AC2566-)						
6	0000-73010	Washer, plain	4	4	4	4				
6-1	0000-72010	Washer, plain	4	4	4	4				↑
	(A=221AC2566-)	(B=221AC2566-)	(C=221AC2566-)	(D=221AC2566-)						
7	0000-20010	Nut	4	4	4	4				
8	0025-10040	Bolt	2	2	2	2				
9	0000-70010	Washer, lock	4	4	4	4				
10	0000-72010	Washer, plain	4	4	4	4				
11	14400-99880	Lever(1) comp., valve	1	1	1	1				
12	14400-99910	Lever(2) comp., valve	1	1	1	1				
13	14400-99940	Lever(3) comp., valve	1	1	1	1				
14	1903-35003	Bushing	6	6	6	6				
15	14400-52032	Shaft	1	1	1	1				
16	0302-32050	Pin, cotter	1	1	1	1				
17	0000-72014	Washer, plain	1	1	1	1				
18	00001-00014	Pin, snap	1	1	1	1				

Note :

Fig.2053A LIFT CYLINDER[Pm]
(-221AC4259)

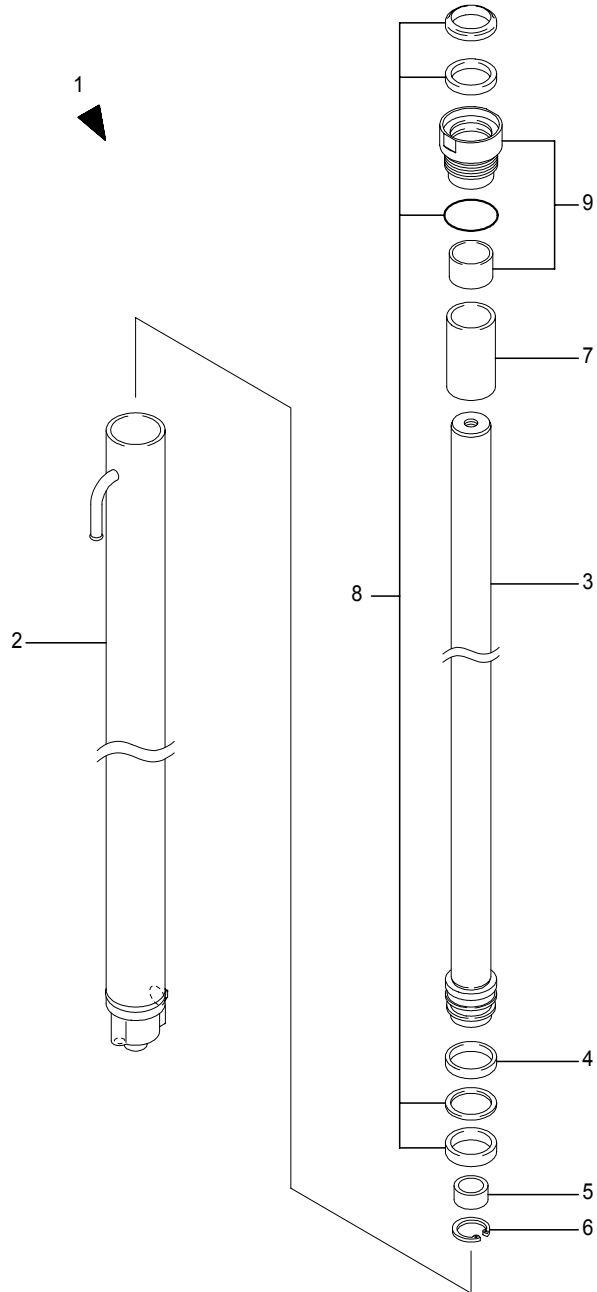


Fig.2053A LIFT CYLINDER[Pm]
(-221AC4259)

(A)=FB10P (D)=FB18P
(B)=FB14P (E)=
(C)=FB15P (F)=

No.	Parts No.	Parts Name	(A)	(B)	(C)	(D)	(E)	(F)	i/a	Remarks
1	31850-21330	Cylinder ass'y, lift	2	2	2	2				MLH2000
	31850-21340	Cylinder ass'y, lift	2	2	2	2				MLH2300
	31850-21350	Cylinder ass'y, lift	2	2	2	2				MLH2500
	31850-21360	Cylinder ass'y, lift	2	2	2	2				MLH2700
	31850-21370	Cylinder ass'y, lift	2	2	2	2				MLH3000
	31850-21380	Cylinder ass'y, lift	2	2	2	2				MLH3300
	31850-21390	Cylinder ass'y, lift	2	2	2	2				MLH3500
	31850-21400	Cylinder ass'y, lift	2	2	2	2				MLH3700
	31850-21410	Cylinder ass'y, lift	2	2	2	2				MLH4000
	31850-21420	Cylinder ass'y, lift	2	2	2	2				MLH4300
2	31850-21430	Cylinder ass'y, lift	2	2	2	2				MLH4500
	31850-21440	Cylinder ass'y, lift	2	2	2	2				MLH4700
	31850-21450	Cylinder ass'y, lift	2	2	2	2				MLH5000
	31850-21460	Cylinder ass'y, lift	2	2	2	2				MLH5300
	31850-21470	Cylinder ass'y, lift	2	2	2	2				MLH5500
	31851-16940	Tube ass'y, cylinder	2	2	2	2				MLH2000
	31851-16950	Tube ass'y, cylinder	2	2	2	2				MLH2300
	31851-16960	Tube ass'y, cylinder	2	2	2	2				MLH2500
	31851-16970	Tube ass'y, cylinder	2	2	2	2				MLH2700
	31851-16980	Tube ass'y, cylinder	2	2	2	2				MLH3000
3	31851-16990	Tube ass'y, cylinder	2	2	2	2				MLH3300
	31851-17000	Tube ass'y, cylinder	2	2	2	2				MLH3500
	31851-17010	Tube ass'y, cylinder	2	2	2	2				MLH3700
	31851-17020	Tube ass'y, cylinder	2	2	2	2				MLH4000
	31851-17030	Tube ass'y, cylinder	2	2	2	2				MLH4300
	31851-17040	Tube ass'y, cylinder	2	2	2	2				MLH4500
	31851-17050	Tube ass'y, cylinder	2	2	2	2				MLH4700
	31851-17060	Tube ass'y, cylinder	2	2	2	2				MLH5000
	31851-17070	Tube ass'y, cylinder	2	2	2	2				MLH5300
	31851-17080	Tube ass'y, cylinder	2	2	2	2				MLH5500
3	31851-17390	Rod ass'y, piston	2	2	2	2				MLH2000
	31851-17400	Rod ass'y, piston	2	2	2	2				MLH2300
	31851-17410	Rod ass'y, piston	2	2	2	2				MLH2500
	31851-17420	Rod ass'y, piston	2	2	2	2				MLH2700
	31851-17430	Rod ass'y, piston	2	2	2	2				MLH3000

Note :

Fig.2059A MAST PIPING[Pm]
(-221AC4259)

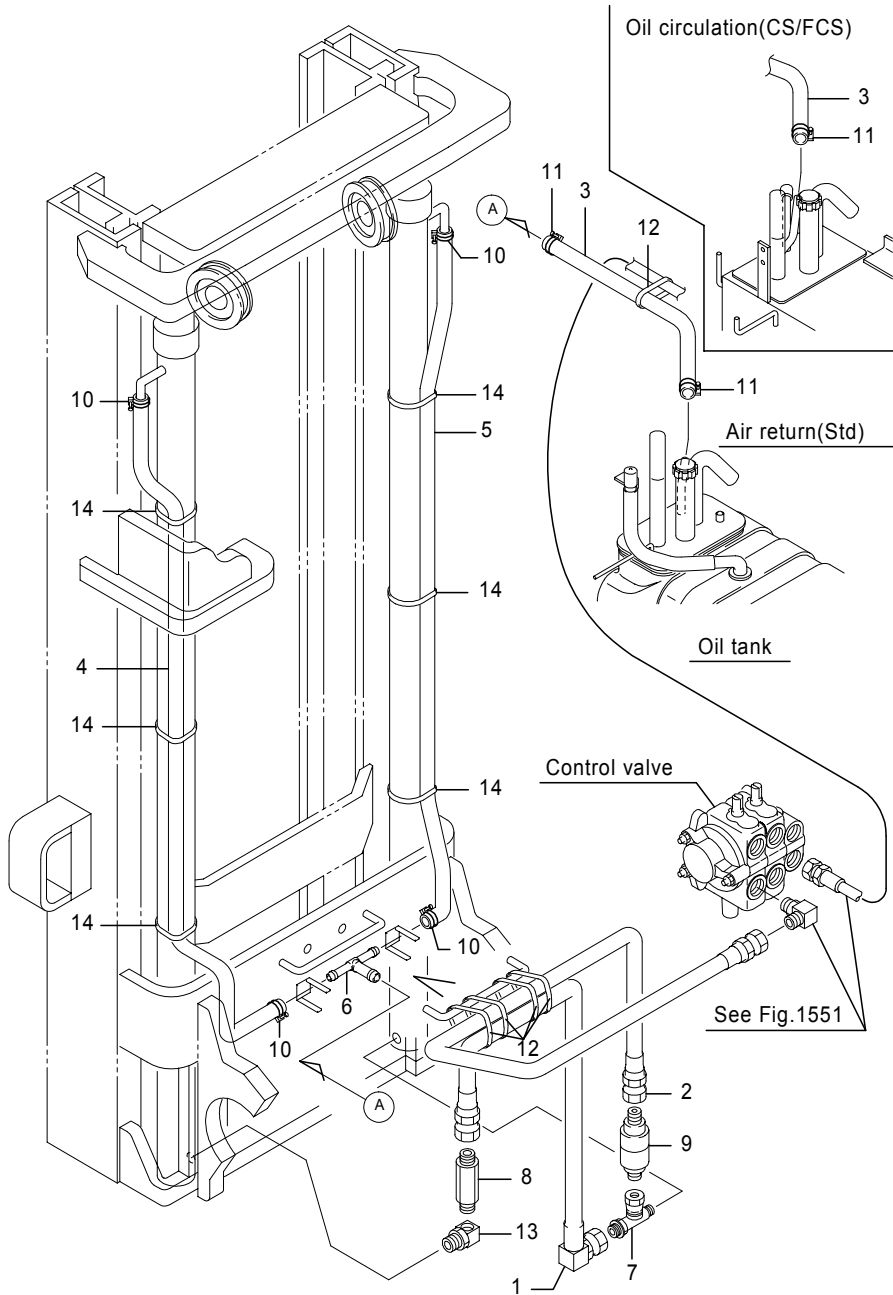


Fig.2059A MAST PIPING[Pm]
(-221AC4259)

(A)=FB10P (D)=FB18P
(B)=FB14P (E)=
(C)=FB15P (F)=

No.	Parts No.	Parts Name	(A)	(B)	(C)	(D)	(E)	(F)	i/a	Remarks
5-1	0369-09167	Hose, LP	1	1	1	1			↑	MLH3500
(A=221AC1948-) (B=221AC1948-) (C=221AC1948-) (D=221AC1948-)										
5	0369-09175	Hose, LP	1	1	1	1				MLH3700
5-1	0369-09177	Hose, LP	1	1	1	1			↑	MLH3700
(A=221AC1948-) (B=221AC1948-) (C=221AC1948-) (D=221AC1948-)										
5	0369-09190	Hose, LP	1	1	1	1				MLH4000
5-1	0369-09192	Hose, LP	1	1	1	1			↑	MLH4000
(A=221AC1948-) (B=221AC1948-) (C=221AC1948-) (D=221AC1948-)										
5	0369-09215	Hose, LP	1	1	1	1				MLH4300
5-1	0369-09217	Hose, LP	1	1	1	1			↑	MLH4300
(A=221AC1948-) (B=221AC1948-) (C=221AC1948-) (D=221AC1948-)										
5	0369-09225	Hose, LP	1	1	1	1				MLH4500
5-1	0369-09227	Hose, LP	1	1	1	1			↑	MLH4500
(A=221AC1948-) (B=221AC1948-) (C=221AC1948-) (D=221AC1948-)										
5	0369-09235	Hose, LP	1	1	1	1				MLH4700
5-1	0369-09237	Hose, LP	1	1	1	1			↑	MLH4700
(A=221AC1948-) (B=221AC1948-) (C=221AC1948-) (D=221AC1948-)										
5	0369-09250	Hose, LP	1	1	1	1				MLH5000
5-1	0369-09252	Hose, LP	1	1	1	1			↑	MLH5000
(A=221AC1948-) (B=221AC1948-) (C=221AC1948-) (D=221AC1948-)										
6	14502-38190	Tee	1	1	1	1				
7	31830-65760	Tee	1	1	1	1				
8	14501-66951	Valve, fuse	1	1	1	1				w/O-ring
9	31810-06800	Valve, flow control	1	1	1	1				48L/min
10	0399-00016	Clip, hose	4	4	4	4				
11	0399-00022	Clip, hose	2	2	2	2				
12	37990-03500	Band	5	5	5	5				
13	31830-65880	Elbow	1	1	1	1				
14	32391-00220	Band	4	4	4	4				MLH<4000
	32391-00220	Band	6	6	6	6				MLH>=4000

Note :

Fig.1050 SEAT

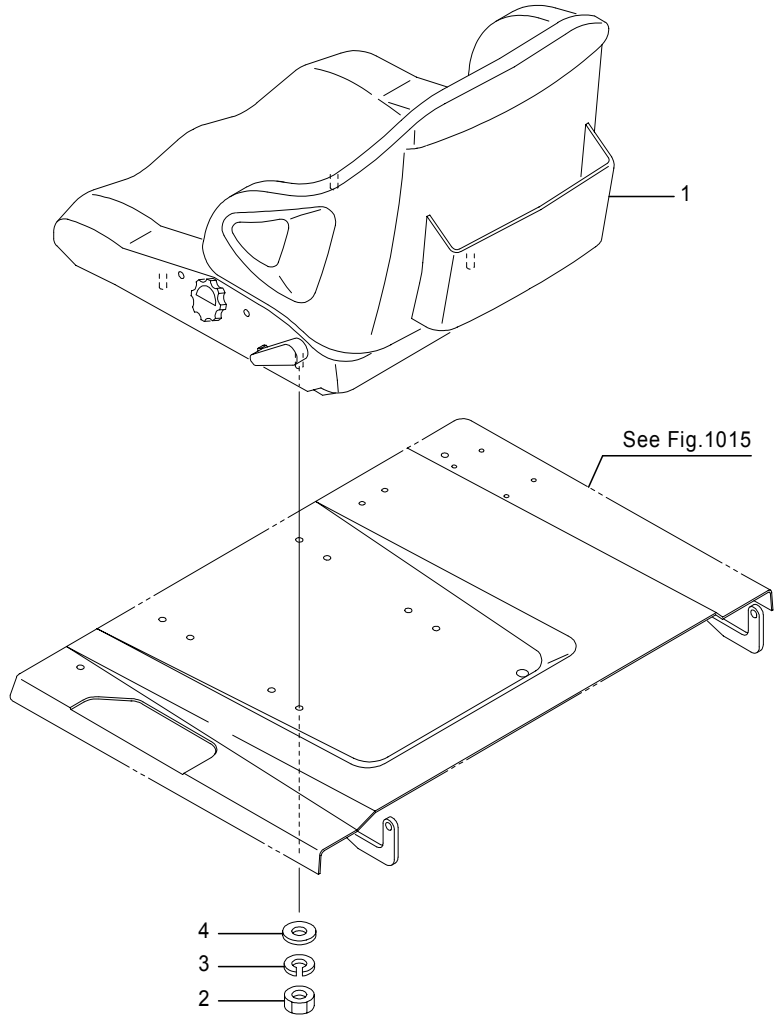


Fig.1050 SEAT

(A)=FB10P (D)=FB18P
 (B)=FB14P (E)=
 (C)=FB15P (F)=

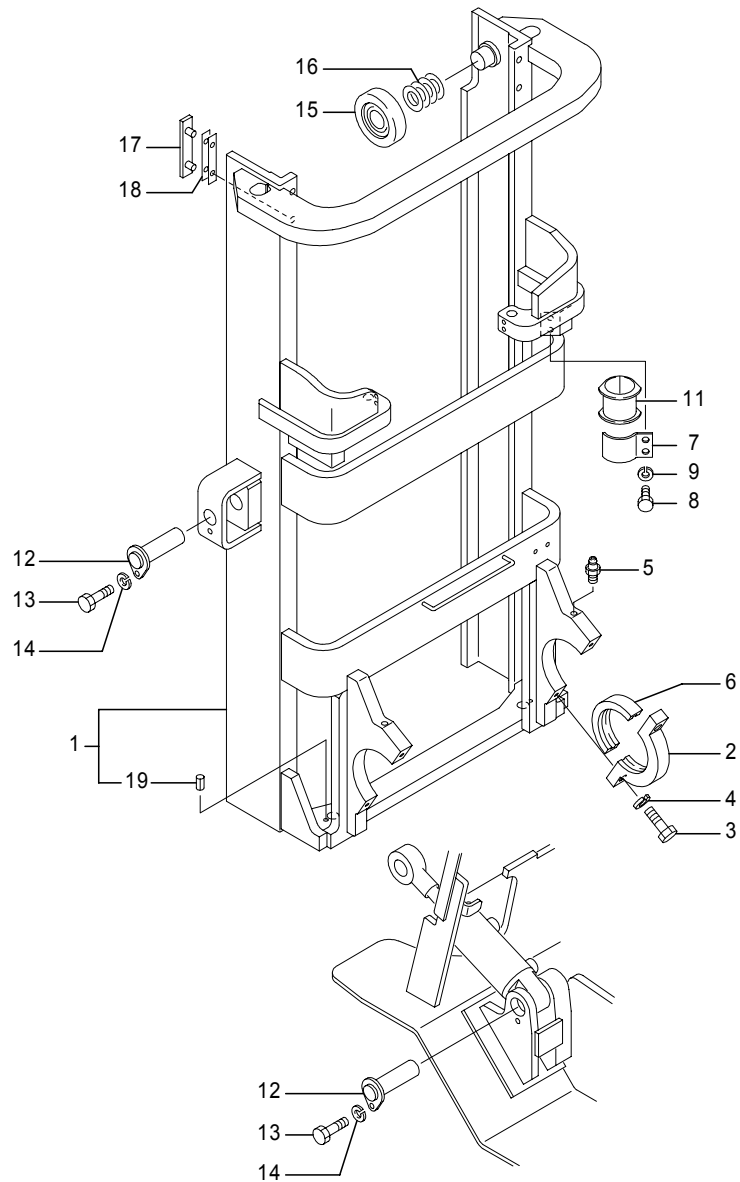
No.	Parts No.	Parts Name	(A)	(B)	(C)	(D)	(E)	(F)	i/a	Remarks
1	32210-00540	Seat ass'y	1	1	1	1				Std, *1, *3, w/NICHIYU logo
	32210-00550	Seat ass'y	1	1	1	1				Std, *1, *3, w.o/NICHIYU logo
	32210-00580	Seat ass'y	1	1	1	1				Opt, *2, *3, w/NICHIYU logo
	32210-00590	Seat ass'y	1	1	1	1				Opt, *2, *3, w.o/NICHIYU logo
	32210-00560	Seat ass'y	1	1	1	1				Opt, *1, *4, w/NICHIYU logo
	32210-00570	Seat ass'y	1	1	1	1				Opt, *1, *4, w.o/NICHIYU logo
	32210-00600	Seat ass'y	1	1	1	1				Opt, *2, *4, w/NICHIYU logo
	32210-00610	Seat ass'y	1	1	1	1				Opt, *2, *4, w.o/NICHIYU logo
2	0000-00008	Nut	4	4	4	4				
3	0000-70008	Washer, lock	4	4	4	4				
4	0000-72008	Washer, plain	4	4	4	4				

Note : *1:w.o/suspension & reclining *2:w/suspension & reclining
 *3:w.o/seat switch *4:w/seat switch

Fig.2061B OUTER MAST[Pm]
(221AC4260-)

Fig.2061B OUTER MAST[Pm]
(221AC4260-)

(A)=FB10P (D)=FB18P
(B)=FB14P (E)=
(C)=FB15P (F)=



No.	Parts No.	Parts Name	(A)	(B)	(C)	(D)	(E)	(F)	i/a	Remarks
1	52000-31050	Mast comp., outer	1	1	1	1				MLH2000
	52000-31060	Mast comp., outer	1	1	1	1				MLH2300
	52000-31070	Mast comp., outer	1	1	1	1				MLH2500
	52000-31080	Mast comp., outer	1	1	1	1				MLH2700
	52000-31090	Mast comp., outer	1	1	1	1				MLH3000
	52000-31100	Mast comp., outer	1	1	1	1				MLH3300
	52000-31110	Mast comp., outer	1	1	1	1				MLH3500
	52000-31120	Mast comp., outer	1	1	1	1				MLH3700
	52000-31130	Mast comp., outer	1	1	1	1				MLH4000
	52000-31140	Mast comp., outer	1	1	1	1				MLH4300
	52000-31150	Mast comp., outer	1	1	1	1				MLH4500
	52000-31160	Mast comp., outer	1	1	1	1				MLH4700
	52000-31170	Mast comp., outer	1	1	1	1				MLH5000
2	14600-04361	Cap, pivot	2	2	2	2				
3	0020-16055	Bolt	4	4	4	4				
	0024-16055	Bolt	4	4	4	4				CS/FCS/RP/DRP
4	0000-70016	Washer, lock	4	4	4	4				
5	0280-00010	Nipple, grease	2	2	2	2				
6	14602-84530	Bushing	2	2	2	2				
7	14603-87420	Band, cylinder	2	2	2	2				
8	0025-10020	Bolt	4	4	4	4				
9	0000-71010	Washer, lock	4	4	4	4				
11	14603-94451	Cushion, cylinder	2	2	2	2				
12	14600-27742	Pin, tilt	4	4	4	4				
13	0020-10020	Bolt	4	4	4	4				
	0024-10020	Bolt	4	4	4	4				CS/FCS/RP/DRP
14	0000-70010	Washer, lock	4	4	4	4				
15	31220-10610	Roller	2	2	2	2				
16	4301-67180	Shim	AR	AR	AR	AR				t0.2
	4301-67140	Shim	AR	AR	AR	AR				t0.5
	4301-67130	Shim	AR	AR	AR	AR				t1.0
	4301-67170	Shim	AR	AR	AR	AR				t2.0
17	14600-91230	Shoe, back	2	2	2	2				
18	4624-60410	Shim, back shoe	AR	AR	AR	AR				t0.5
	4624-60420	Shim, back shoe	AR	AR	AR	AR				t1.0

Note :

CLICK HERE TO **DOWNLOAD** THE COMPLETE MANUAL

- Thank you very much for reading the preview of the manual.
- You can download the complete manual from: www.heydownloads.com by clicking the link below



- Please note: If there is no response to CLICKING the link, please download this PDF first and then click on it.

CLICK HERE TO **DOWNLOAD** THE COMPLETE MANUAL

Fig.2159B MAST PIPING[Mm] 3
(221AC4260-)

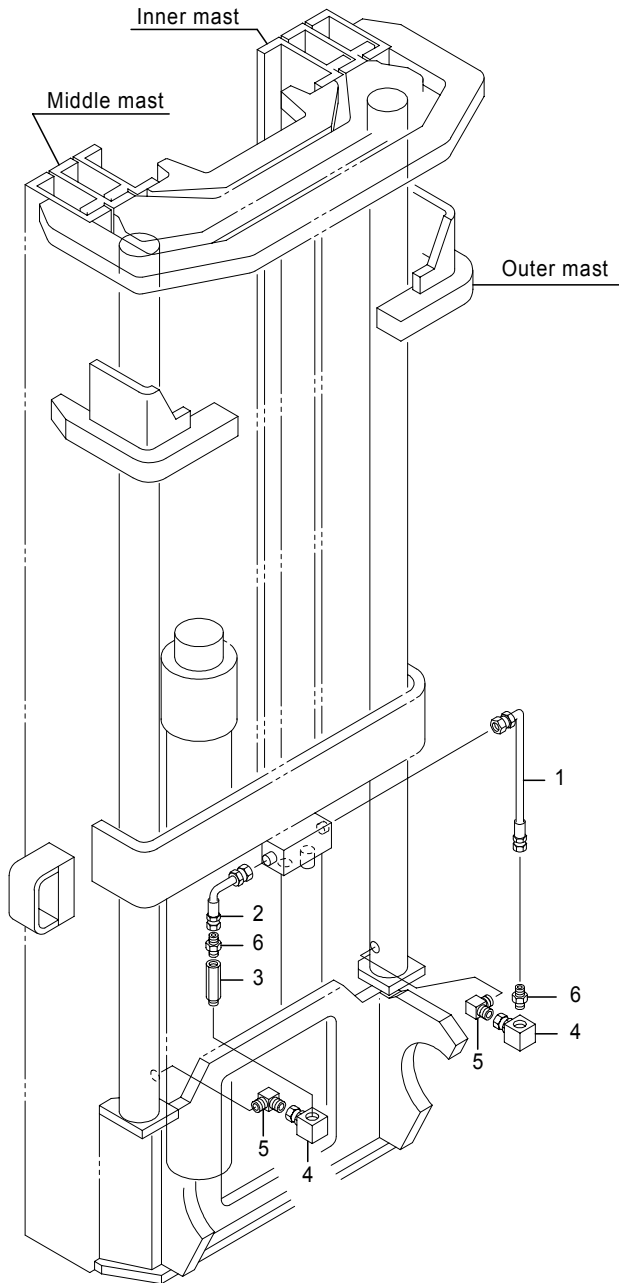


Fig.2159B MAST PIPING[Mm] 3
(221AC4260-)

(A)=FB10P (D)=FB18P
(B)=FB14P (E)=
(C)=FB15P (F)=

No.	Parts No.	Parts Name	(A)	(B)	(C)	(D)	(E)	(F)	i/a	Remarks
1	4051-09050	Hose, HP	1	1	1	1				
2	4051-09040	Hose, HP	1	1	1	1				
3	14504-11070	Valve, fuse	1	1	1	1				
4	1907-92019	Elbow	2	2	2	2				
5	4370-81080	Elbow	2	2	2	2				
6	0004-30019	Nipple	2	2	2	2				

Note :

Fig.5000L ACCESSORY
[EARTH CHAIN]

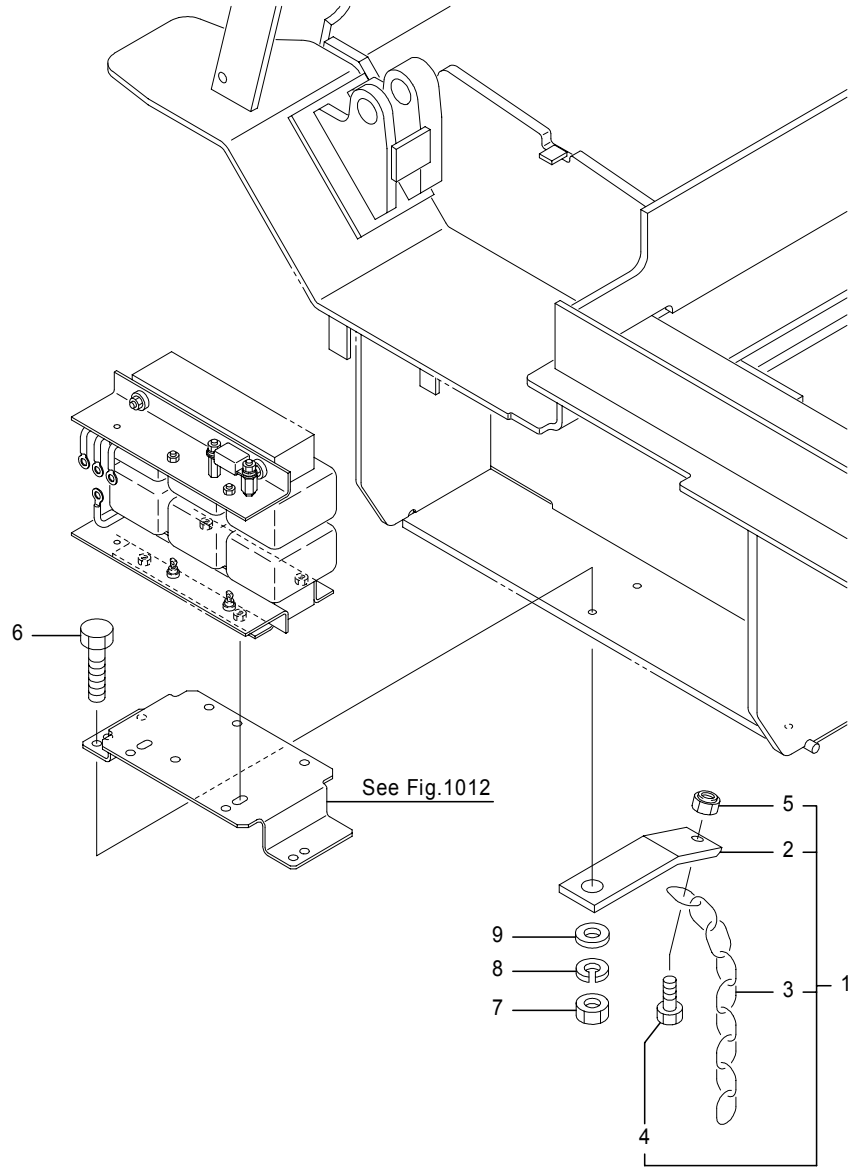


Fig.5000L ACCESSORY
[EARTH CHAIN]

(A)=FB10P (D)=FB18P
(B)=FB14P (E)=
(C)=FB15P (F)=

No.	Parts No.	Parts Name	(A)	(B)	(C)	(D)	(E)	(F)	i/a	Remarks
1	14800-38540	Chain comp., earth	1	1	1	1				
2	14800-38550	Bracket, chain	1	1	1	1				
3	31440-20320	Chain	1	1	1	1				
4	0000-05012	Bolt	1	1	1	1				
5	00000-41005	Nut, U	1	1	1	1				
6	0125-10040	Bolt	1	1	1	1				
7	0000-25010	Nut	1	1	1	1				
8	0000-71010	Washer, lock	1	1	1	1				
9	0000-73010	Washer, plain	1	1	1	1				

Note :

Fig.3620B LIFT BRACKET [Mm]
(-221AC2499)

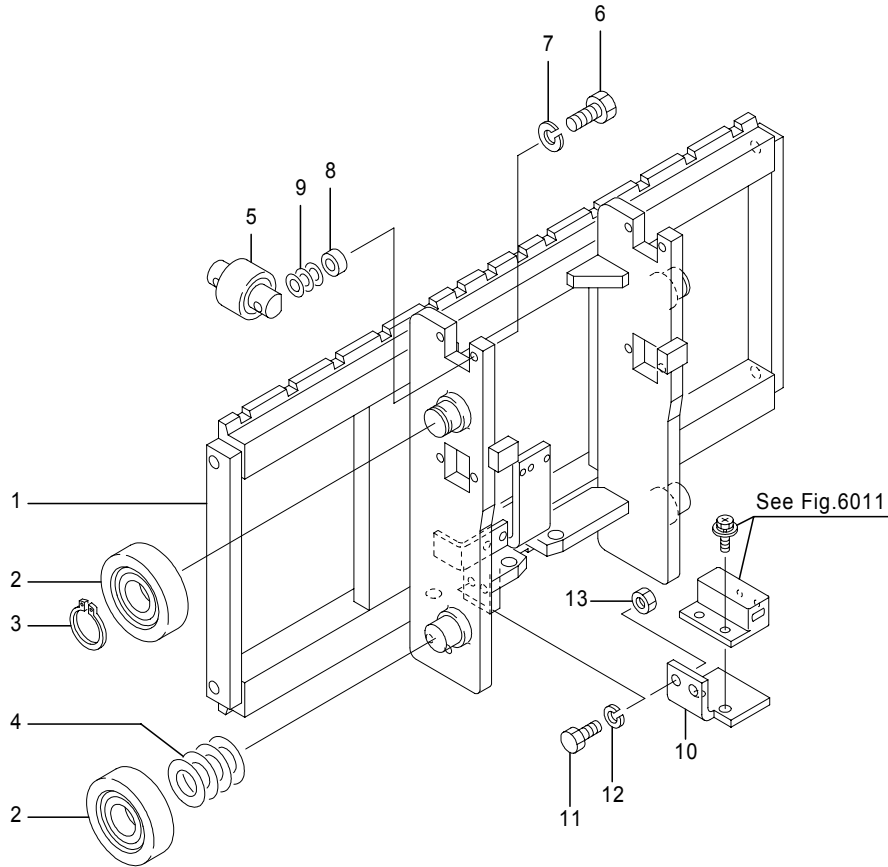


Fig.3620B LIFT BRACKET [Mm]
(-221AC2499)

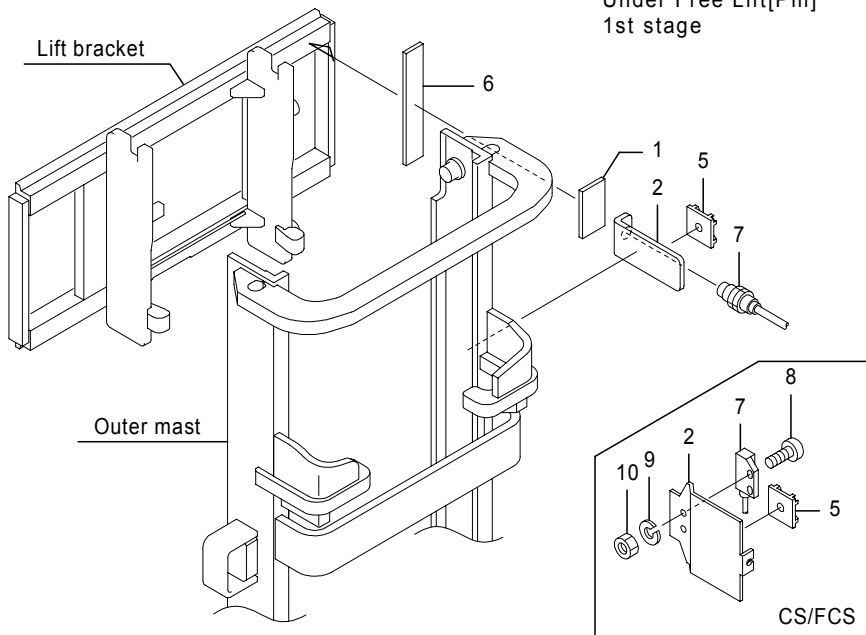
(A)=FB10P (D)=FB18P
(B)=FB14P (E)=
(C)=FB15P (F)=

No.	Parts No.	Parts Name	(A)	(B)	(C)	(D)	(E)	(F)	i/a	Remarks
1	14705-43100	Bracket comp., lift	1	1	1	1				
2	31220-10610	Roller	4	4	4	4				
3	0000-84035	Ring, snap	2	2	2	2				
4	4301-67180	Shim	AR	AR	AR	AR				t0.2
	4301-67140	Shim	AR	AR	AR	AR				t0.5
	4301-67130	Shim	AR	AR	AR	AR				t1.0
	4301-67170	Shim	AR	AR	AR	AR				t2.0
5	31220-11350	Roller, side	4	4	4	4				
	4624-65250	Roller, side	(4)	(4)	(4)	(4)				
	31220-12010	Roller, side	(4)	(4)	(4)	(4)				
6	0020-10050	Bolt	8	8	8	8				
7	0000-70010	Washer, lock	8	8	8	8				
8	4660-64661	Spacer	8	8	8	8				t9.0
9	4220-67651	Spacer	AR	AR	AR	AR				t0.5
	4220-67661	Spacer	AR	AR	AR	AR				t1.0
	4220-65241	Spacer	AR	AR	AR	AR				t2.0
10	14705-02890	Bracket, sensor	1	1	1	1				
11	0010-08030	Bolt	2	2	2	2				
12	0000-70008	Washer, lock	2	2	2	2				
13	0000-20008	Nut	2	2	2	2				

Note :

Fig.5472 LIFT LIMIT 2
[2 STAGE TYPE]

Under Free Lift[Pm]
1st stage



Over Free Lift
2nd stage

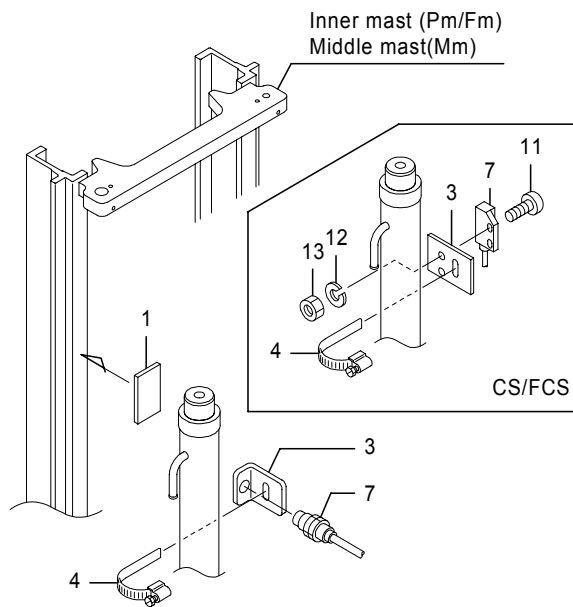


Fig.5472 LIFT LIMIT 2
[2 STAGE TYPE]

(A)=FB10P (D)=FB18P
(B)=FB14P (E)=
(C)=FB15P (F)=

No.	Parts No.	Parts Name	(A)	(B)	(C)	(D)	(E)	(F)	i/a	Remarks
1	35490-00010	Magnet	1	1	1	1				*1,*3
	35490-00010	Magnet	2	2	2	2				*2
2	14400-68620	Base, switch	1	1	1	1				Std
	14400-43820	Base, switch	1	1	1	1				CS/FCS,*2
2-1	14400-68620	Base, switch	1	1	1	1				↙ CS/FCS,*2

2	14400-68620	Base, switch	2	2	2	2				Std
	14400-43820	Base, switch	2	2	2	2				CS/FCS,*1
2-1	14400-68620	Base, switch	2	2	2	2				↙ CS/FCS,*1

3	14400-68610	Bracket, switch	1	1	1	1				Std,2nd stage,*2
	14400-42930	Bracket, switch	1	1	1	1				CS/FCS,2nd stage,*2
3-1	14400-68610	Bracket, switch	1	1	1	1				↙ CS/FCS,2nd stage,*2

3	14400-68610	Bracket, switch	2	2	2	2				Std,2nd stage,*3
	14400-42930	Bracket, switch	2	2	2	2				CS/FCS,2nd stage,*3
3-1	14400-68610	Bracket, switch	2	2	2	2				↙ CS/FCS,2nd stage,*3

4	32390-08620	Clamp	1	1	1	1				2nd stage,*2
	32390-08620	Clamp	2	2	2	2				2nd stage,*3

5	37990-45320	Base, mount	1	1	1	1				Under free lift,*2
	37990-45320	Base, mount	2	2	2	2				Under free lift,*1
6	14401-07920	Bracket, magnet	1	1	1	1				Under free lift
	(A=221AC0550-)(B=221AC0550-)(C=221AC0550-)(D=221AC0550-)									
7	39530-01790	Sensor, magnetic	2	2	2	2				Std
	39530-02640	Sensor, magnetic	2	2	2	2				↘ Std

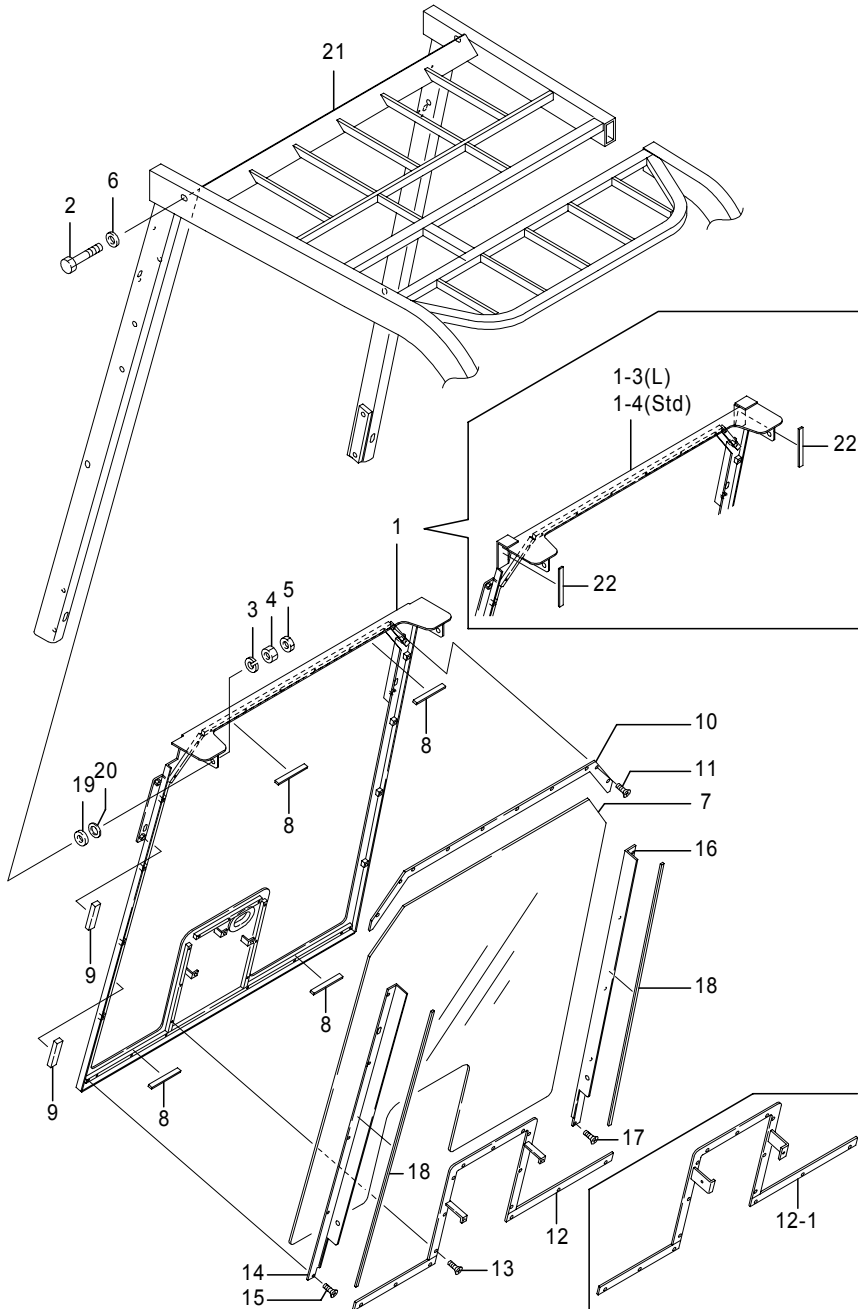
7	35420-00090	Switch, proximity	2	2	2	2				CS/FCS
	39530-01790	Sensor, magnetic	2	2	2	2				× CS/FCS

7-2	39530-02650	Sensor, magnetic	2	2	2	2				↘ CS/FCS

8	0073-04014	Screw, pan head	2	2	2	2				CS/FCS,*2
	(A=-221AC0321)(B=-221AC0321)(C=-221AC0321)(D=-221AC0321)									

Note : *1:All under free lift
*2:Under free lift and 2nd stage
*3:All 2nd stage

Fig.5001 FRONT WINDOW 1
[WIPER(UNDER)]



462-1850-01B
(462-1850/485-7865)

Fig.5001 FRONT WINDOW 1
[WIPER(UNDER)]

(A)=FB10P (D)=FB18P
(B)=FB14P (E)=
(C)=FB15P (F)=

No.	Parts No.	Parts Name	(A)	(B)	(C)	(D)	(E)	(F)	i/a	Remarks
1	14800-40151	Window, front	1	1	1	1				
1-1	14800-40152	Window, front	1	1	1	1				↑
	(A=221AC0362-) (B=221AC0362-) (C=221AC0362-) (D=221AC0362-)									
1-2	14800-40153	Window, front	1	1	1	1				↑
	(A=221AC0550-) (B=221AC0550-) (C=221AC0550-) (D=221AC0550-)									
1-3	14800-42361	Window, front	1	1	1	1				↑
	(A=221AC1919-) (B=221AC1919-) (C=221AC1919-) (D=221AC1919-)									
1-4	14800-42362	Window, front	1	1	1	1				↑
	(A=221AC1948-) (B=221AC1948-) (C=221AC1948-) (D=221AC1948-)									
1	14800-40860	Window, front	1	1	1	1				L
1-1	14800-40861	Window, front	1	1	1	1				↑ L
	(A=221AC0550-) (B=221AC0550-) (C=221AC0550-) (D=221AC0550-)									
1-2	14800-42570	Window, front	1	1	1	1				↑ L
	(A=221AC1919-) (B=221AC1919-) (C=221AC1919-) (D=221AC1919-)									
1-3	14800-42571	Window, front	1	1	1	1				↑ L
	(A=221AC1948-) (B=221AC1948-) (C=221AC1948-) (D=221AC1948-)									
2	0010-10070	Bolt	4	4	4	4				
2-1	0025-10070	Bolt	4	4	4	4				↑
	(A=221AC0550-) (B=221AC0550-) (C=221AC0550-) (D=221AC0550-)									
3	0000-70010	Washer, lock	4	4	4	4				
3-1	0000-73010	Washer, plain	4	4	4	4				↑
	(A=221AC0550-) (B=221AC0550-) (C=221AC0550-) (D=221AC0550-)									
4	0000-00010	Nut	4	4	4	4				
5	0000-10010	Nut, jam	4	4	4	4				
6	0000-73010	Washer, plain	4	4	4	4				
	(A=221AC0362-) (B=221AC0362-) (C=221AC0362-) (D=221AC0362-)									
7	14800-40170	Glass, front	1	1	1	1				t5
7-1	14800-42371	Glass, front	1	1	1	1				↑ t5
	(A=221AC1919-) (B=221AC1919-) (C=221AC1919-) (D=221AC1919-)									
7	14800-40880	Glass, front	1	1	1	1				t5,L
7-1	14800-42590	Glass, front	1	1	1	1				↑ t5,L
	(A=221AC1919-) (B=221AC1919-) (C=221AC1919-) (D=221AC1919-)									
8	14800-40270	Rubber (1)	4	4	4	4				
9	14800-40190	Rubber (2)	4	4	4	4				
10	14800-40200	Support (1)	1	1	1	1				

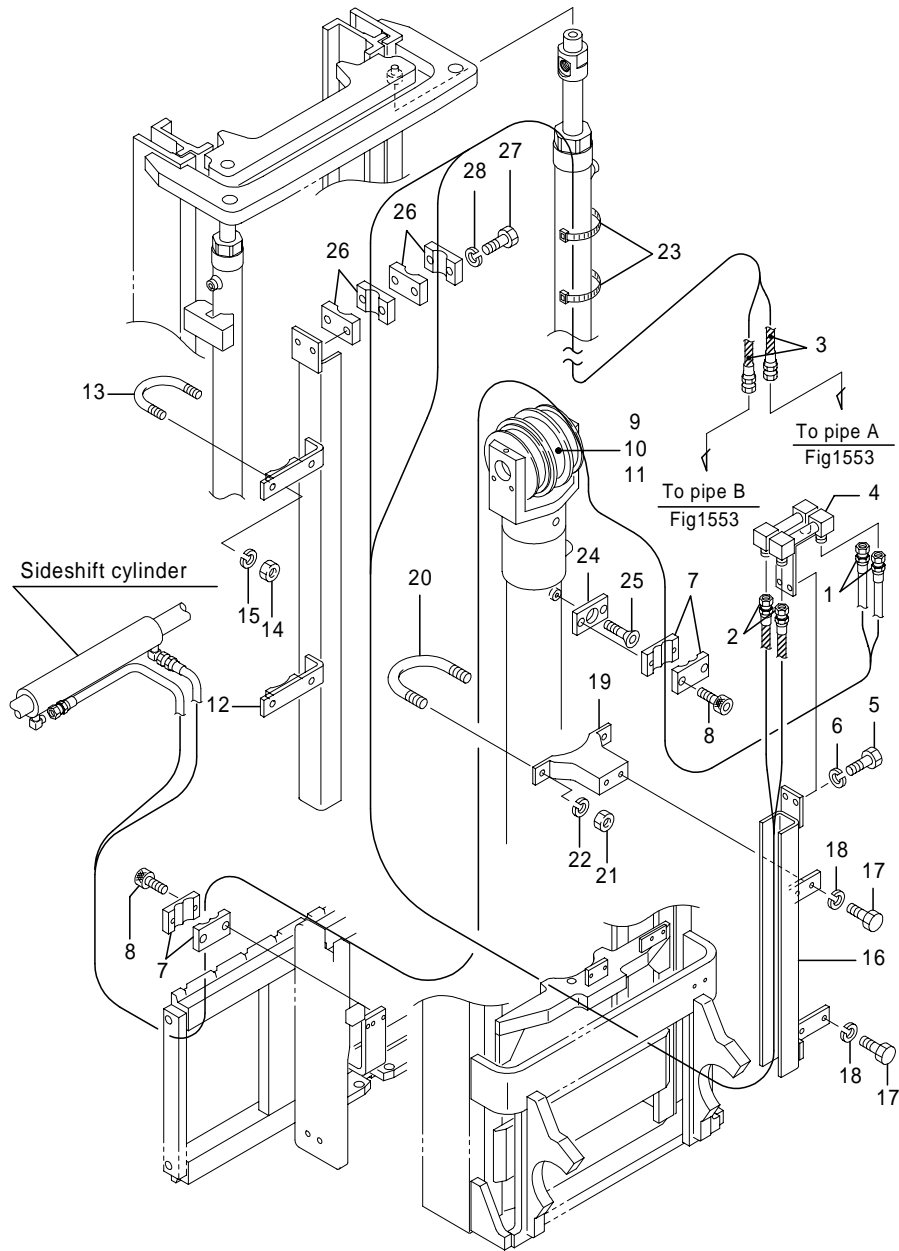
Note : Pm/Fm:Bwd tilt 3°MLH<2700, Bwd tilt 6°MLH>=2700

Mm:Bwd tilt 3°MLH<4300, Bwd tilt 6°MLH>=4300

Fig.2258A MAST PIPING[Fm] 2

Fig.2258A MAST PIPING[Fm] 2

(A)=FB10P (D)=FB18P
 (B)=FB14P (E)=
 (C)=FB15P (F)=



No.	Parts No.	Parts Name	(A)	(B)	(C)	(D)	(E)	(F)	i/a	Remarks
21	0000-00006	Nut	2	2	2	2				
22	0000-70006	Washer, lock	2	2	2	2				
23	37990-03500	Band	8	8	8	8				
24	14500-57780	Base	1	1	1	1				
25	0272-08010	Screw, hex.soc.	1	1	1	1				
26	14600-94940	Clamp, hose	4	4	4	4				
27	0010-06050	Bolt	2	2	2	2				
28	0000-70006	Washer, lock	2	2	2	2				

Note :

Fig.21571 MAST PIPING[Mm] 1
(221AC2500-)

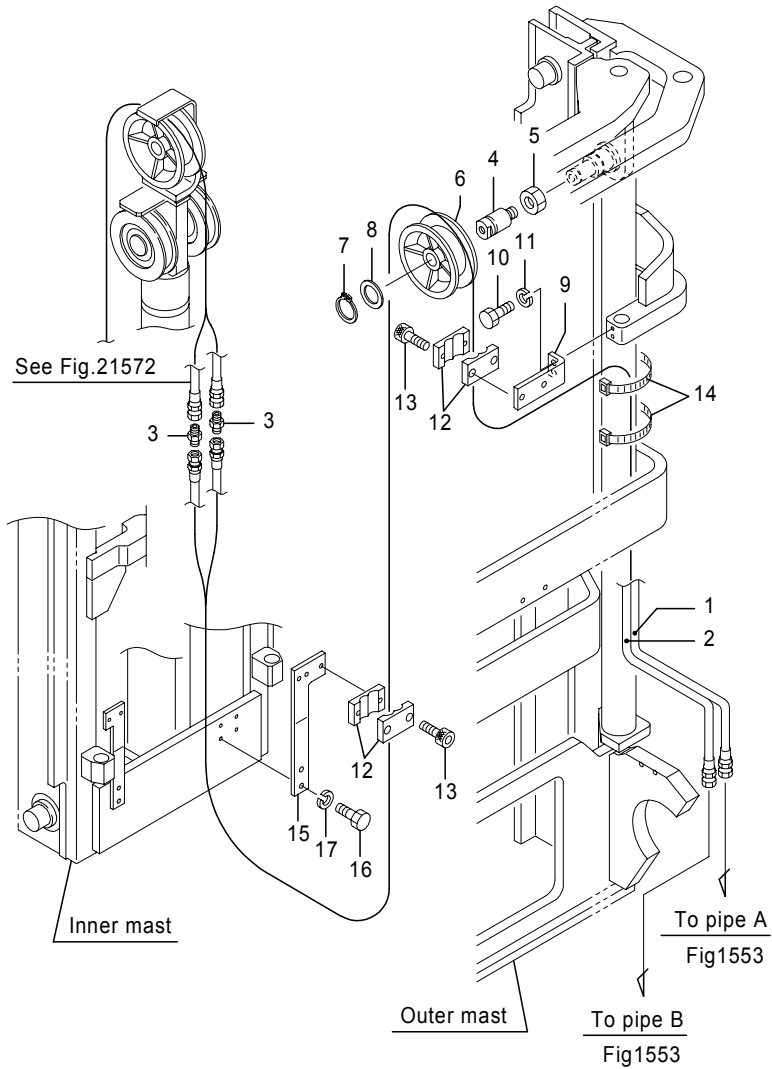


Fig.21571 MAST PIPING[Mm] 1
(221AC2500-)

(A)=FB10P (D)=FB18P
(B)=FB14P (E)=
(C)=FB15P (F)=

No.	Parts No.	Parts Name	(A)	(B)	(C)	(D)	(E)	(F)	i/a	Remarks
11	0000-70006	Washer, lock	2	2	2	2				
12	14600-90740	Clamp, hose	4	4	4	4				
13	0270-06020	Screw, cap	4	4	4	4				
13-1	0270-06025	Screw, cap	4	4	4	4				┘
(A=221AC3019-) (B=221AC3019-) (C=221AC3019-) (D=221AC3019-)										
14	37990-03500	Band	4	4	4	4				MLH<=4300
	37990-03500	Band	6	6	6	6				MLH<=5700
	37990-03500	Band	8	8	8	8				MLH<=7000
15	14604-86860	Bracket, clamp	1	1	1	1				
15-1	14604-86861	Bracket, clamp	1	1	1	1				┘
(A=221AC3019-) (B=221AC3019-) (C=221AC3019-) (D=221AC3019-)										
16	0010-06020	Bolt	2	2	2	2				
17	0000-70006	Washer, lock	2	2	2	2				

Note :

Fig.4403A MAIN CONTROLLER 4
 Std batt.(-221AC3751),Std batt.(w/Opt)/U(-221AC3574)

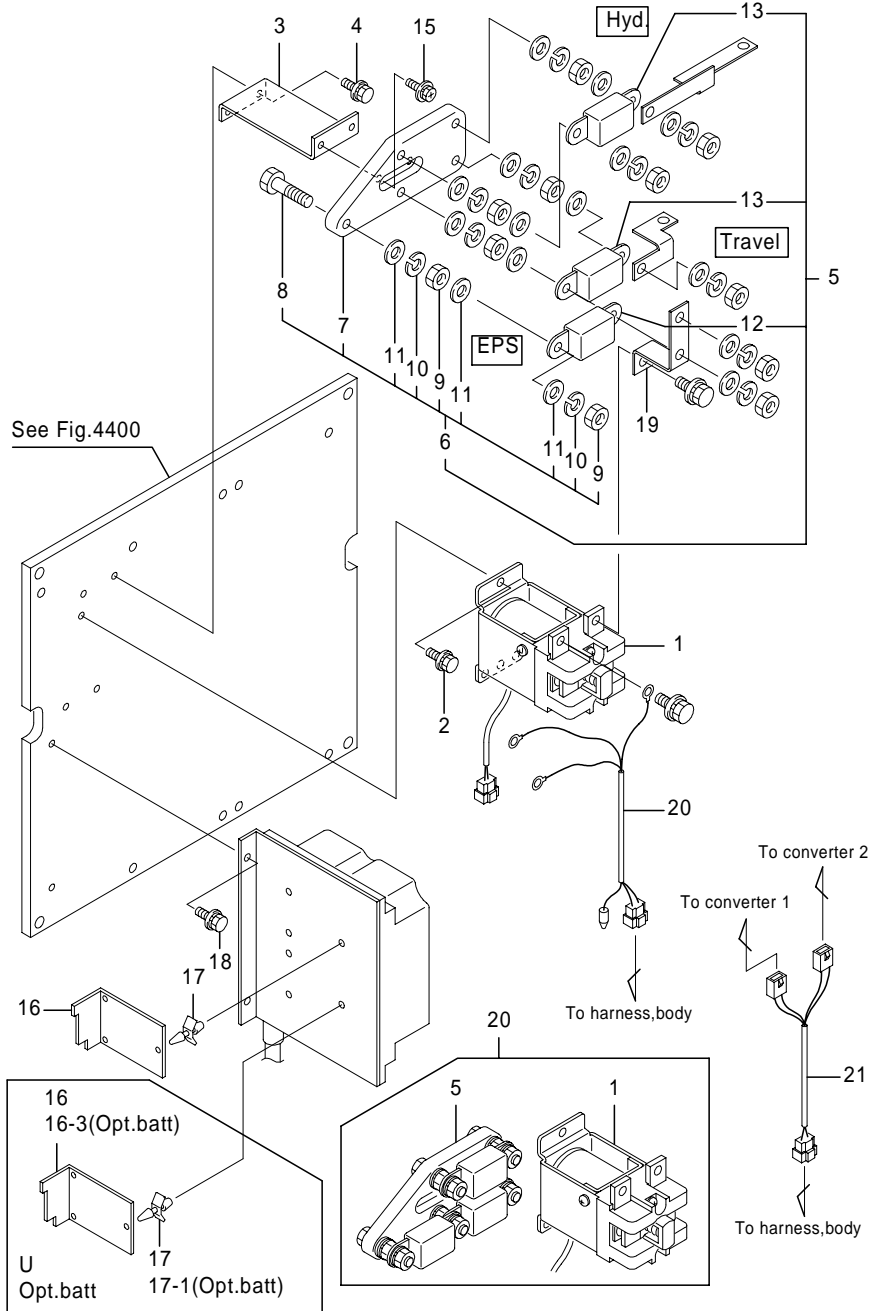


Fig.4403A MAIN CONTROLLER 4
 Std batt.(-221AC3751),Std batt.(w/Opt)/U(-221AC3574)

(A)=FB10P (D)=FB18P
 (B)=FB14P (E)=
 (C)=FB15P (F)=

No.	Parts No.	Parts Name	(A)	(B)	(C)	(D)	(E)	(F)	i/a	Remarks
1	35810-63310	Contactor	1	1	1	1				
1-1	35810-63420	Contactor	1	1	1	1				↑
	(A=221AC2141-) (B=221AC2141-) (C=221AC2141-) (D=221AC2141-)									
2	31010-03600	Bolt, w/washers	3	3	3	3				
3	24200-60720	Bracket, fuse	1	1	1	1				
4	31010-03590	Bolt, w/washers	2	2	2	2				
4-1	31010-01490	Bolt	2	2	2	2				↑
	(A=221AC2626-) (B=221AC2626-) (C=221AC2626-) (D=221AC2626-)									
5	24801-14080	Fuse ass'y	1	1	1	1				
6	24801-14090	Terminal comp., fuse	1	1	1	1				
7	24200-29340	Base, fuse	1	1	1	1				
8	0010-08035	Bolt	5	5	5	5				
9	0000-00008	Nut	10	10	10	10				
10	0000-70008	Washer, lock	10	10	10	10				
11	0000-72008	Washer, plain	15	15	15	15				
12	1995-32023	Fuse	1	1	1	1				DC96V/BN-40A, [EPS]
13	1995-32014	Fuse	2	2	2	2				DC96V/BN-275A, [Travel/Hyd.]
15	31010-03810	Bolt, w/washers	2	2	2	2				
15-1	31010-01490	Bolt	2	2	2	2				↑
	(A=221AC2626-) (B=221AC2626-) (C=221AC2626-) (D=221AC2626-)									
16	24200-60641	Board, converter	1	1	1	1				
16-1	24200-60642	Board, converter	1	1	1	1				↑
	(A=221AC0322-) (B=221AC0322-) (C=221AC0322-) (D=221AC0322-)									
16-2	24200-60643	Board, converter	1	1	1	1				↑
	(A=221AC0722-) (B=221AC0722-) (C=221AC0722-) (D=221AC0722-)									
16-3	24200-60643	Board, converter	2	2	2	2				Opt.batt
	(A=221AC1846-) (B=221AC1846-) (C=221AC1846-) (D=221AC1846-)									
16	24200-60641	Board, converter	2	2	2	2				U
16-1	24200-60642	Board, converter	2	2	2	2				↑ U
	(A=221AC0322-) (B=221AC0322-) (C=221AC0322-) (D=221AC0322-)									
16-2	24200-60643	Board, converter	2	2	2	2				↑ U
	(A=221AC0722-) (B=221AC0722-) (C=221AC0722-) (D=221AC0722-)									
17	35890-00030	Spacer	3	3	3	3				
	35890-00030	Spacer	6	6	6	6				U

Note :

Fig.4810A CHARGER(BC) 1
AC200V

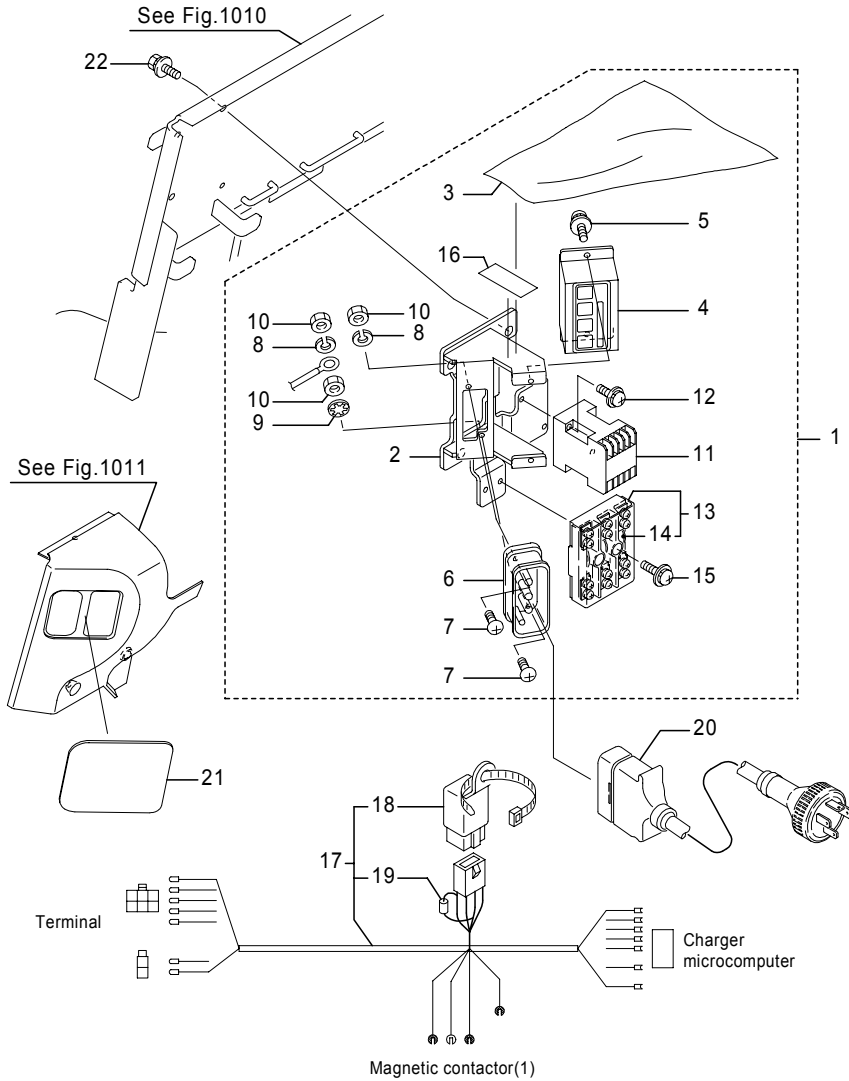


Fig.4810A CHARGER(BC) 1
AC200V

(A)=FB10P (D)=FB18P
(B)=FB14P (E)=
(C)=FB15P (F)=

No.	Parts No.	Parts Name	(A)	(B)	(C)	(D)	(E)	(F)	i/a	Remarks
1	24300-38093	Panel ass'y, charger	1	1						*1
	24300-37133	Panel ass'y, charger	1	1	1	1				*2
2	14104-13053	Bracket, panel	1	1	1	1				
3	24200-63210	Cover	1	1	1	1				
4	24300-35242	Charger microcomputer	1	1	1	1				
5	0075-04010	Screw, w/washers	2	2	2	2				
6	37010-10890	Socket	1	1	1	1				RT-316N, [250V/30A]
7	0070-04010	Screw, pan head	2	2	2	2				
8	0000-70004	Washer, lock	2	2	2	2				
9	0000-80004	Washer, tooth lock	1	1	1	1				
10	0000-00004	Nut	3	3	3	3				
11	35810-63260	Contactor	1	1	1	1				[200V]
12	0075-04016	Screw, w/washers	2	2	2	2				
13	8600-33000	Fuse comp.	1	1						[15A], FA-6-15, *1
	8600-34000	Fuse comp.	1	1	1	1				[20A], FA-6-20, *2
14	0820-10015	Fuse, link	3	3						*1, [15A]
	0820-10020	Fuse, link	3	3	3	3				*2, [20A]
15	0075-04016	Screw, w/washers	2	2	2	2				
16	24700-05140	Plate, name	1	1	1	1				"高压危険"
17	24801-10152	Harness, BC	1	1	1	1				
18	35820-02250	Relay	1	1	1	1				CA1-DC48-N
19	1911-59001	Diode	1	1	1	1				[10E6]
20	24800-92400	Plug comp.	1	1						*1
	24800-84490	Plug comp.	1	1	1	1				*2
21	14104-30270	Cap	1	1	1	1				SC
22	0018-08020	Bolt, w/washers	2	2	2	2				

	FB10P	FB14P	FB15P	FB18P	Remarks
	Battery capacity				
200V, 3 φ 5.2kVA, 48V	Std(330Ah)		Std(400Ah)/Opt(485Ah)		*1
200V, 3 φ 6.4kVA, 48V	Opt(480-485Ah)				*2
200V, 3 φ 7.0kVA, 48V	Opt(545Ah)				

Note : *1: 200V, 3 φ ,5.2KVA, 48V, 330Ah/5HR *2: 200V, 3 φ ,6.4/7.0KVA, 48V, 400-600Ah/5HR

Fig.4860 ELECTRIC PARTS 1

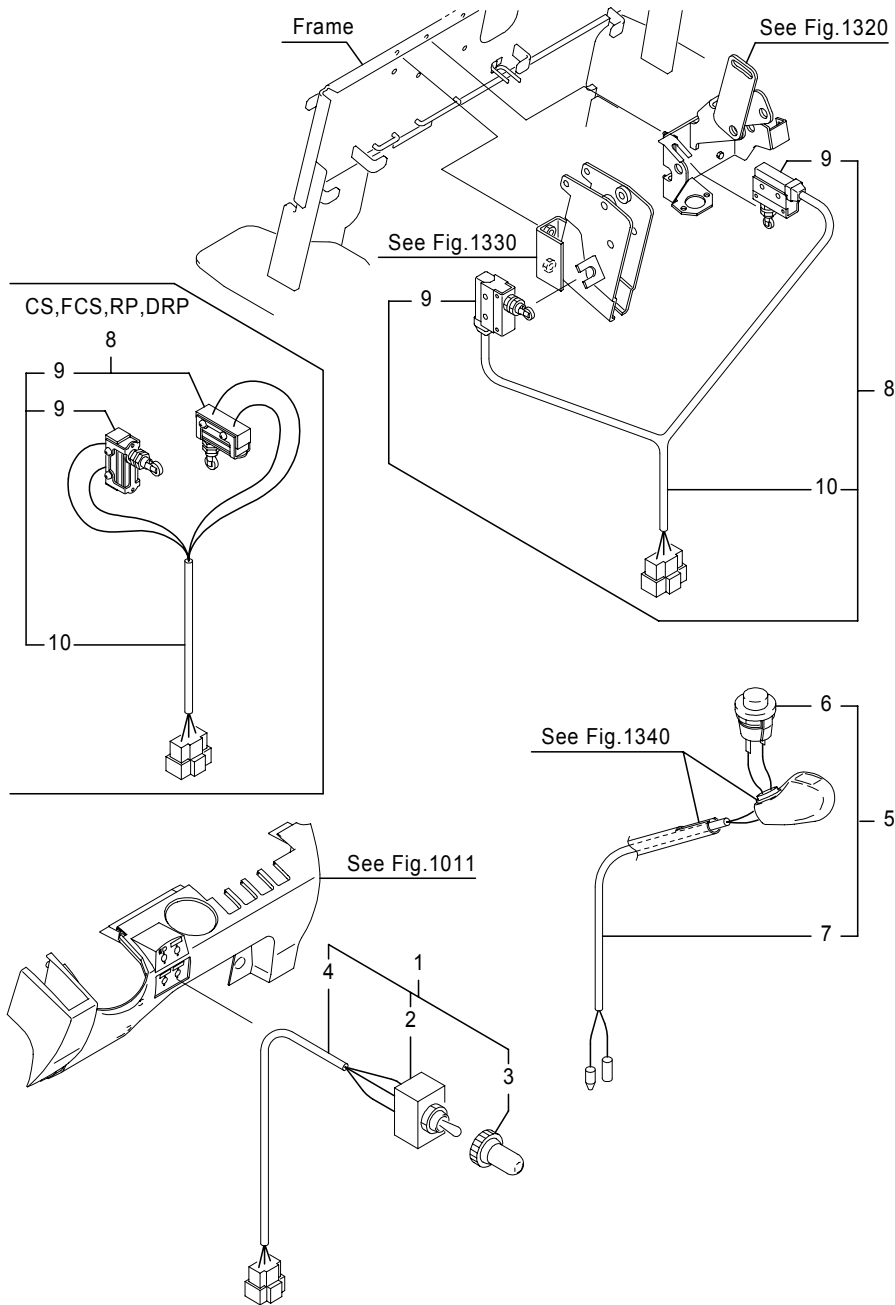


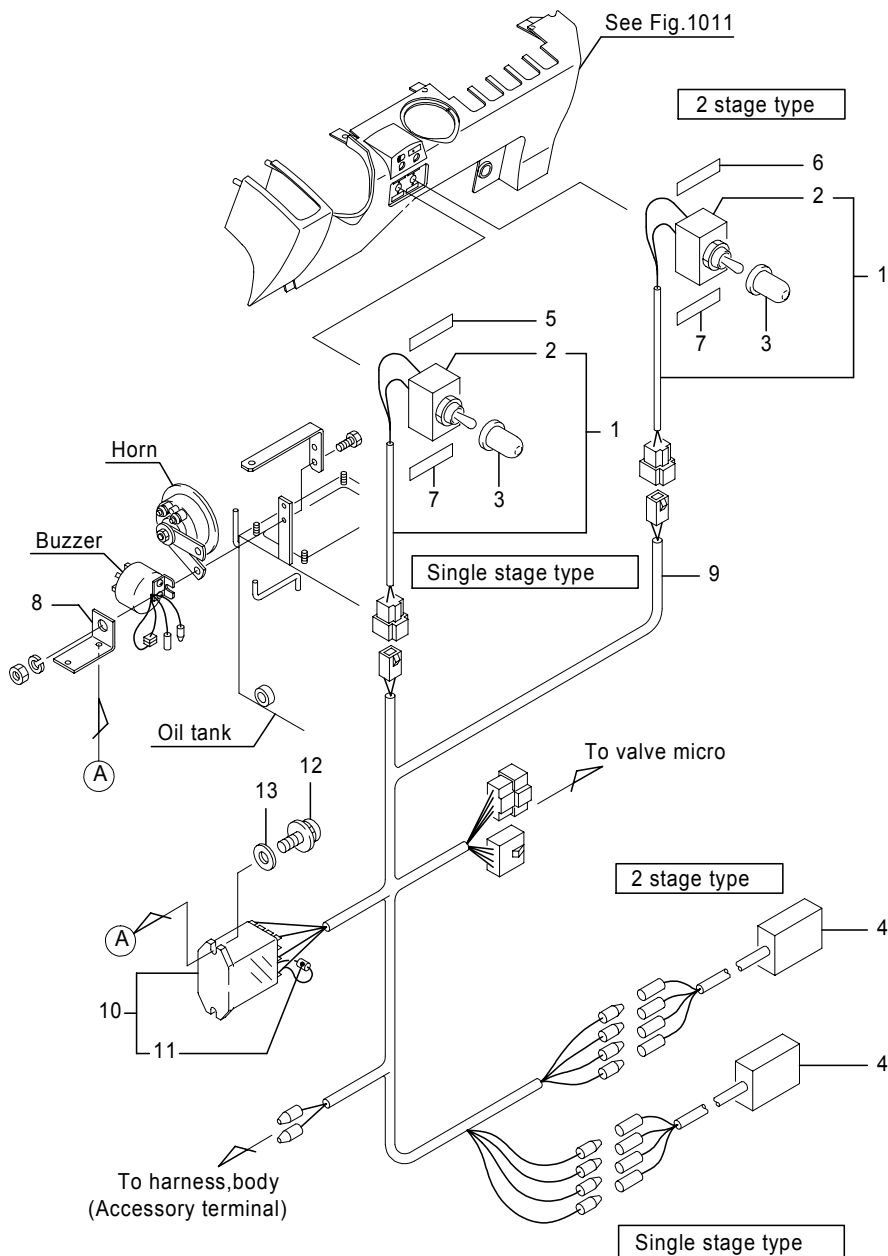
Fig.4860 ELECTRIC PARTS 1

(A)=FB10P (D)=FB18P
 (B)=FB14P (E)=
 (C)=FB15P (F)=

No.	Parts No.	Parts Name	(A)	(B)	(C)	(D)	(E)	(F)	i/a	Remarks
1	24300-38200	Switch comp., toggle	1	1	1	1				
	24300-38220	Switch comp., toggle	1	1	1	1				SYA
2	35620-00020	Switch, toggle	1	1	1	1				
	1910-43011	Switch, toggle	1	1	1	1				SYA
3	1910-43012	Cap, water resistant	1	1	1	1				
	1910-43012	Cap, water resistant	1	1	1	1				SYA
4	24300-38210	Harness, toggle	1	1	1	1				
	24300-38230	Harness, toggle	1	1	1	1				SYA
5	24300-38240	Switch comp., push	1	1	1	1				
6	35610-35950	Switch, push	1	1	1	1				
7	24300-38250	Harness, horn switch	1	1	1	1				
8	24801-10600	Switch comp., brake	1	1	1	1				
	24801-10610	Switch comp., brake	1	1	1	1				CS/FCS/RP/DRP
9	1910-42002	Switch, micro	2	2	2	2				
	35210-00630	Switch, micro	2	2	2	2				CS/FCS/RP/DRP
10	24801-10620	Harness, brake	1	1	1	1				

Note :

Fig.5473 LIFT LIMIT 3
[SWITCH & HARNESS]



485-5516-01A
(485-5516)

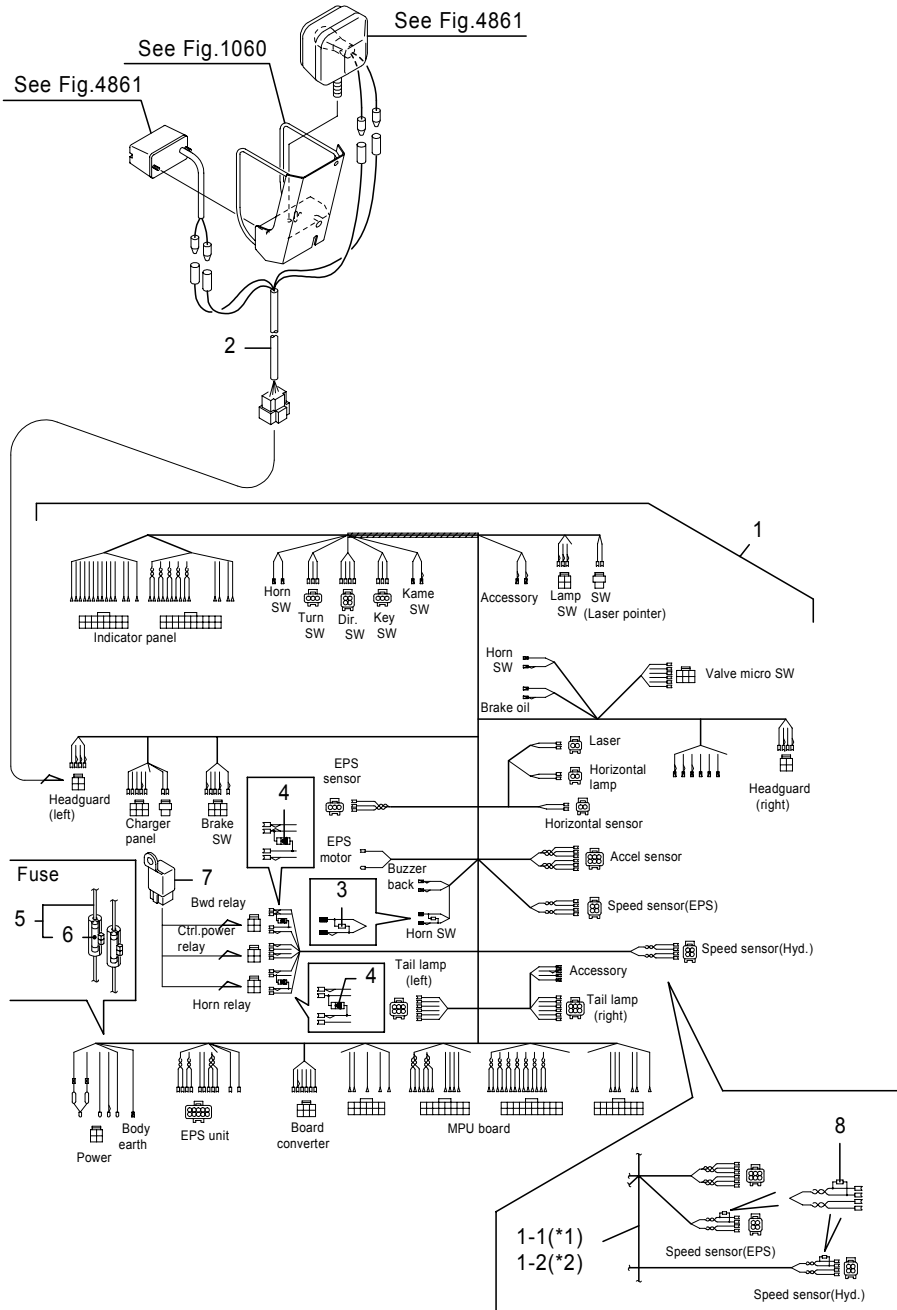
Fig.5473 LIFT LIMIT 3
[SWITCH & HARNESS]

(A)=FB10P (D)=FB18P
(B)=FB14P (E)=
(C)=FB15P (F)=

No.	Parts No.	Parts Name	(A)	(B)	(C)	(D)	(E)	(F)	i/a	Remarks
1	24300-33150	Switch comp., toggle	1	1	1	1				*1
	24300-33150	Switch comp., toggle	2	2	2	2				*2
2	35610-00160	Switch, toggle	1	1	1	1				*1
	35610-00160	Switch, toggle	2	2	2	2				*2
3	1910-43012	Cap	1	1	1	1				*1
	1910-43012	Cap	2	2	2	2				*2
4	24200-42230	Controller ass'y	1	1	1	1				[48V], *1
	38530-00330	Controller ass'y	1	1	1	1				[48V], *1, CS/FCS
4-1	24200-42230	Controller ass'y	1	1	1	1				× [48V], *1, CS/FCS
(A=221AC0322-) (B=221AC0322-) (C=221AC0322-) (D=221AC0322-)										
4	24200-42230	Controller ass'y	2	2	2	2				[48V], *2
	38530-00330	Controller ass'y	2	2	2	2				[48V], *2, CS/FCS
4-1	24200-42230	Controller ass'y	2	2	2	2				× [48V], *2, CS/FCS
(A=221AC0322-) (B=221AC0322-) (C=221AC0322-) (D=221AC0322-)										
5	24700-12080	Plate, name	1	1	1	1				[-g], [SGA1'i]
6	24700-12090	Plate, name	1	1	1	1				[-g], [SGA2'i], *2
7	24700-03280	Plate, name	1	1	1	1				[%Ø], *1
	24700-03280	Plate, name	2	2	2	2				[%Ø], *2
8	24801-11790	Bracket, relay	1	1	1	1				
9	24801-11381	Harness, lift limit	1	1	1	1				*1
9-1	24801-11392	Harness, lift limit	1	1	1	1				× *1
(A=221AC0322-) (B=221AC0322-) (C=221AC0322-) (D=221AC0322-)										
9	24801-11401	Harness, lift limit	1	1	1	1				*2
9-1	24801-11412	Harness, lift limit	1	1	1	1				× *2
(A=221AC0322-) (B=221AC0322-) (C=221AC0322-) (D=221AC0322-)										
10	35820-02470	Relay	1	1	1	1				[DC48V]
(A=221AC0322-) (B=221AC0322-) (C=221AC0322-) (D=221AC0322-)										
11	1911-59001	Diode	1	1	1	1				[1G6]
(A=221AC0322-) (B=221AC0322-) (C=221AC0322-) (D=221AC0322-)										
12	0075-03006	Screw, w/washers	2	2	2	2				
13	0000-72003	Washer, plain	2	2	2	2				

Note : *1: Single stage type
*2: 2 stage type

Fig.4851 WIRE HARNESS (BODY)



485-7846-01B
(485-7846)

Fig.4851 WIRE HARNESS (BODY)

(A)=FB10P (D)=FB18P
(B)=FB14P (E)=
(C)=FB15P (F)=

No.	Parts No.	Parts Name	(A)	(B)	(C)	(D)	(E)	(F)	i/a	Remarks	
1	24801-09993	Harness, body	1	1	1	1				Std/CS/FCS/DP/DRP	
1-1	24801-09994	Harness, body	1	1	1	1				↑ Std/CS/FCS/DP/DRP	
			(A=221AC0658-) (B=221AC0658-) (C=221AC0658-) (D=221AC0658-)								
1	24801-10053	Harness, body	1	1	1	1				EEC	
1-1	24801-10054	Harness, body	1	1	1	1				↑ EEC	
			(A=221AC0393-) (B=221AC0393-) (C=221AC0393-) (D=221AC0393-)								
1-2	24801-10055	Harness, body	1	1	1	1				↑ EEC	
			(A=221AC0658-) (B=221AC0658-) (C=221AC0658-) (D=221AC0658-)								
1	24801-18171	Harness, body	1	1	1	1				Opt	
1-1	24801-18172	Harness, body	1	1	1	1				↑ Opt	
			(A=221AC0393-) (B=221AC0393-) (C=221AC0393-) (D=221AC0393-)								
1-2	24801-18173	Harness, body	1	1	1	1				↑ Opt	
			(A=221AC0658-) (B=221AC0658-) (C=221AC0658-) (D=221AC0658-)								
2	24801-10111	Harness, overhead guar	2	2	2	2					
3	39110-01200	Condenser	1	1	1	1				[100V, 22μF]	
4	1911-59001	Diode	2	2	2	2				[1G6]	
5	36010-01220	Fuse comp.	2	2	2	2				[10A]	
6	1910-98019	Fuse	2	2	2	2				[10A]	
7	35820-00000	Relay	3	3	3	3				[DC48V]	
8	39110-01350	Condenser	2	2	2	2				[125V, 0.022μF]	
			(A=221AC0658-) (B=221AC0658-) (C=221AC0658-) (D=221AC0658-)								

Note : *1:Std/CS/FCS/DP/DRP
*2:EEC

CLICK HERE TO **DOWNLOAD** THE COMPLETE MANUAL

- Thank you very much for reading the preview of the manual.
- You can download the complete manual from: www.heydownloads.com by clicking the link below



- Please note: If there is no response to CLICKING the link, please download this PDF first and then click on it.

CLICK HERE TO **DOWNLOAD** THE COMPLETE MANUAL