

COMPACT EXCAVATORS



ME1903 & ME2203

Compact Excavators

PARTS MANUAL

Form No. 909829



Mustang Manufacturing Company, Inc., A Gehl® Company

1605 County Road 45 North P.O. Box 547
Owatonna, MN 55060-0547 USA
Phone: (507) 451-7112
Fax: (507) 451-8209

CLICK HERE TO **DOWNLOAD** THE COMPLETE MANUAL

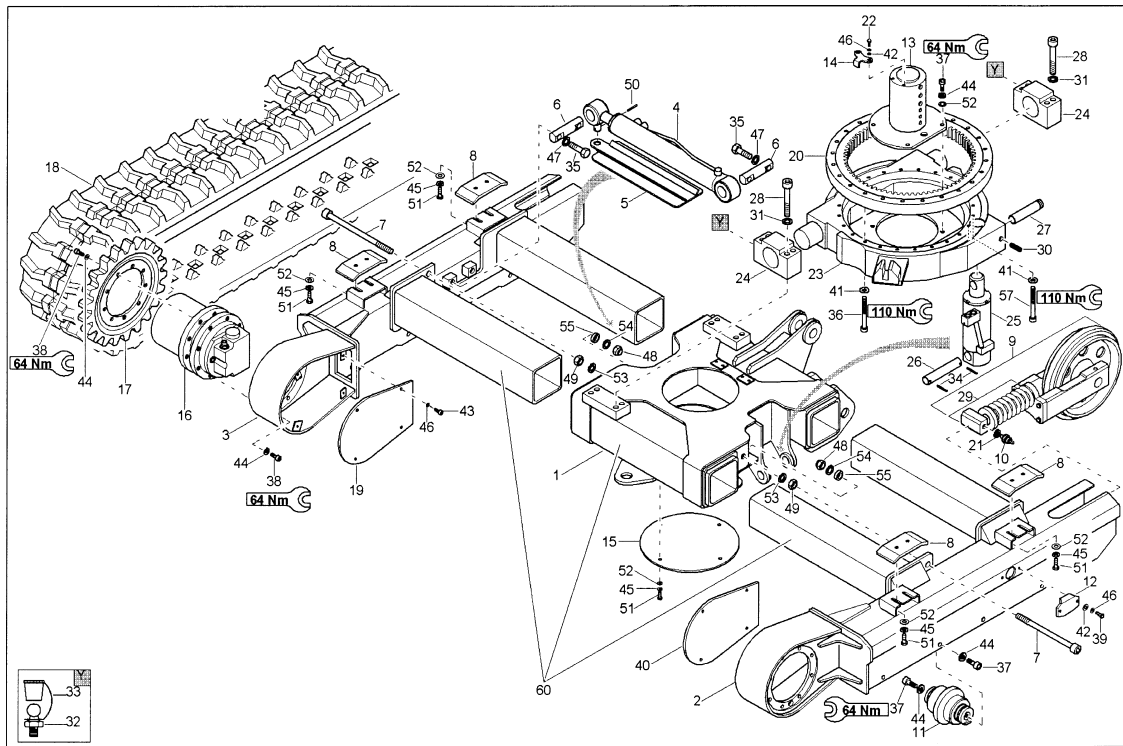
- Thank you very much for reading the preview of the manual.
- You can download the complete manual from: www.heydownloads.com by clicking the link below



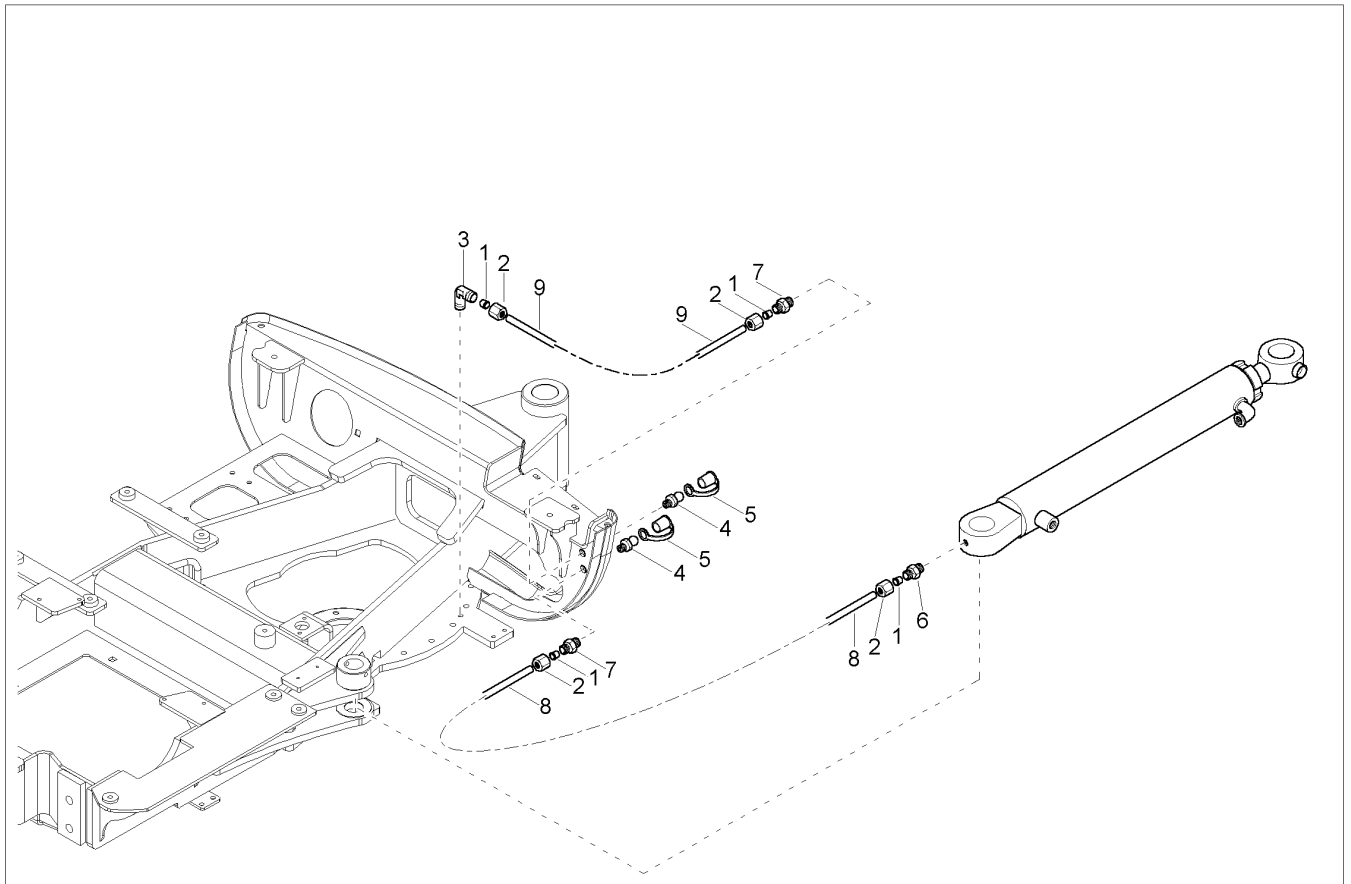
- Please note: If there is no response to CLICKING the link, please download this PDF first and then click on it.

CLICK HERE TO **DOWNLOAD** THE COMPLETE MANUAL

ME2203 – UNDERCARRIAGE

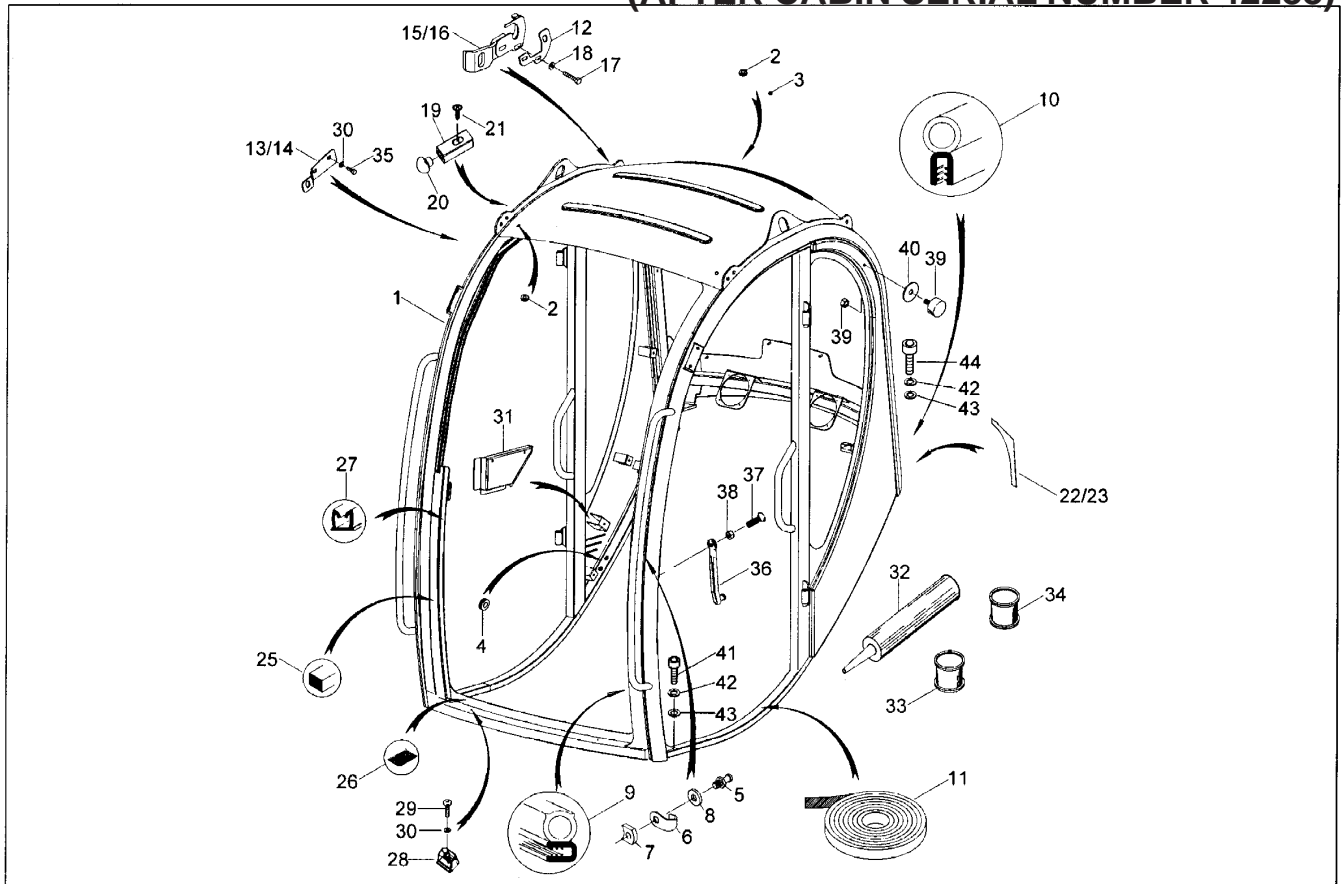


Ref. No.	Part No.	Description	Qty. Req.	Ref. No.	Part No.	Description	Qty. Req.
01	2222001G	BRACKET	1	29	1402306G	TENSION CYLINDER	2
02	1922200G	FRAME RIGHT	1	30	651445	SHSS M10 X 16 45H DP	1
03	1922201G	FRAME LEFT	1	31	161672	RING/SNAP S16	8
04	2228006G	TELESCOPIC CYLINDER	1	32	161412	LUBRICATION NIPPLE	2
05	160616	PROTECTION	1	33	161416	PROTECTION CAP	2
06	160622	PIN	2	34	162124	COTTERPIN	2
07	161399	SCREW	2	35	651412	CS M14-2.0 X 50 10.9	4
08	161918	PLATE	4	36	162122	SCREW	21
09	160516	TRACK TENSION	2	37	163631	SCREW	20
10	160638	NON RETURN VALVE	2	38	162022	SCREW	34
11	160517	ROLLER	8	39	651430	CS M8-1.2 X 12 C 8.8	4
12	1422277G	COVER	2	40	1922215G	COVER	1
13	162115	SWIVEL JOINT	1	41	161643	WASHER/ROUND HI-TENS	23
14	2221001G	BRACKET II	1	42	161661	WASHER/GR A 8.4	6
15	162094	COVER	1	43	651515	SHCS HS M8-1.2 X 20 8.8 ZO	8
16	160636	TRAVELING GEAR W/MOTOR	2	44	161635	WASHER/NORD-LOCK NL 10	54
17	160634	SPROCKET	2	45	161669	RING/SNAP S10	12
18	1922401G	RUBBER CHAIN	2	46	161676	RING/SNAP S8	14
19	1922216G	COVER	1	47	161671	RING/SNAP S14	4
20	161724	TURNTABLE	1	48	163646	NUT	2
21	160865	SCREW SEAL	2	49	656052	HN M16-2.0	2
22	163649	SCREW	2	50	651468	PIN/SPRING M8 X 70	1
23	2222015G	BRACKET	1	51	651391	CS M10-1.5 X 20 C 8.8	12
24	2222018G	BLOCK	2	52	161640	WASHER/GR A 10.5	16
25	2228013G	TILT CYLINDER	1	53	161647	WASHER/ROUND HI-TENS	2
26	160779	PIN	1	54	161649	WASHER/GR A 18	2
27	160780	PIN	1	55	161915	TUBE	2
28	9901345G	SCREW	8	56	2222013G	UNDERCARRIAGE	1
				57	9901427G	SCREW	2



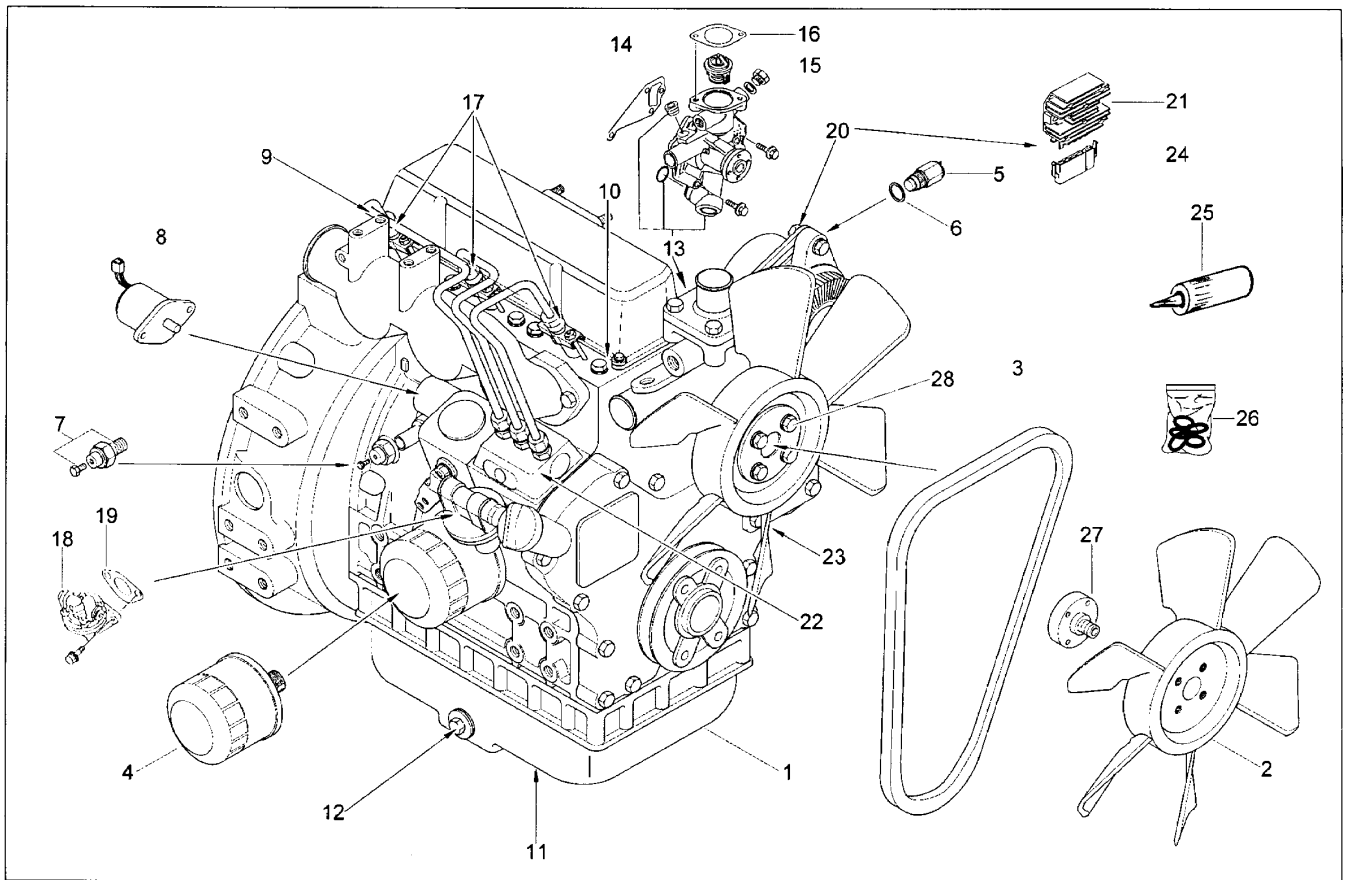
Ref. No.	Part No.	Description	Qty. Req.	Ref. No.	Part No.	Description	Qty. Req.
01	161469	WASHER	4	05	161416	PROTECTION CAP	2
02	161468	NUT	4	06	161461	SCREW JOINT	2
03	165964	ELBOW	1	07	9910598G	SCREW JOINT	2
04	9909039G	GREASE FITTING	2	08	165916	LUBRICATION TUBE	0.9

ME1903-2203 – CABIN FRAME (AFTER CABIN SERIAL NUMBER 42288)



Ref. No.	Part No.	Description	Qty. Req.	Ref. No.	Part No.	Description	Qty. Req.
01	1424452G	CABIN FRAME	1	23	1423410G	FOIL RIGHT	1
02	162797	PLUG	5	25	1423411G	CELLULAR RUBBER	1.5
03	164677	PLUG	2	26	1423412G	SEAL	0.8
04	1424420G	RUBBER BUSHING	8	27	1423413G	SEAL	1.5
05	161921	PIN	1	28	1423414G	COLLAR	2
06	164771	BRACKET	1	29	162862	SCREW	2
07	164678	PLATE	1	30	162925	WASHER	6
08	161923	WASHER	1	31	1423415G	BRACKET	1
09	165922	RUBBER PROFILE	3.9	32	165035	GLUE	1
10	165818	RUBBER PROFILE	1.1	33	164744	AKTIVATOR	1
11	165034	NON-SKIDDING	0.6	34	164745	REMOVER 208	1
12	1423433G	LOCK/REAR	1	35	651521	CS M5-0.8 X 16 C 8.8	4
13	1423434G	LOCK/LEFT	1	36	2003018G	DOOR POST EXTENSION	2
14	1424454G	LOCK/RIGHT	1	37	9901392G	SCREW	2
15	164679	BRACKET	1	38	163650	NUT	4
16	164680	BRACKET	1	39	1423449G	RUBBER BUFFER	1
17	651425	CS M6-1.0 X 30 C 8.8	4	40	160639	RUBBER WAHER	1
18	162924	WASHER	4	41	651483	SHCS HS 12-1.75X40 10.9	2
19	164681	RESILIENT PAD	2	42	163651	WASHER	4
20	164686	RUBBER PLUG	2	43	161645	WASHER/GR A13	4
21	164907	SCREW	2	44	656148	SHCS HS 12-1.75X50 12.9	2
22	1423409G	FOIL LEFT	1				

ME1903-2203 – DIESEL ENGINE



Ref. No.	Part No.	Description	Qty. Req.	Ref. No.	Part No.	Description	Qty. Req.
01	1405426G	DIESEL ENGINE	1	15	425-35269	THERMO SWITCH	1
02	1425403G	VENTILATOR	1	16	425-36142	SEAL	1
03	425-36141	BELT	1	17	425-36146	INJECTION VALVE	3
04	425-35259	OIL FILTER	1	18	425-35318	FUEL PUMP	1
05	425-34683	THERMO SWITCH	1	19	425-35317	SEAL	1
06	425-34707	SEAL	1	20	425-36147	GENERATOR	1
07	425-36085	OIL PRESSURE SWITCH	1	21	425-36148	REGULATOR	1
08	425-35925	STOP SOLENOID	1	22	425-35274	INJECTION PUMP	1
09	425-36144	CYLINDER HEAD SEAL	1	23	425-35376	STARTER	1
10	425-35207	VALVE COVER SEAL	1	24	425-36149	PLUG	1
11	425-36145	SUMP ASSY LUB OIL	1	25	161737	SEAL	1
12	425-34753	SCREW	1	26	1405422G	SEAL KIT	1
13	425-35264	WATER PUMP	1	27	1425428G	FAN SPACER	1
14	425-35265	SEAL	1				

CLICK HERE TO **DOWNLOAD** THE COMPLETE MANUAL

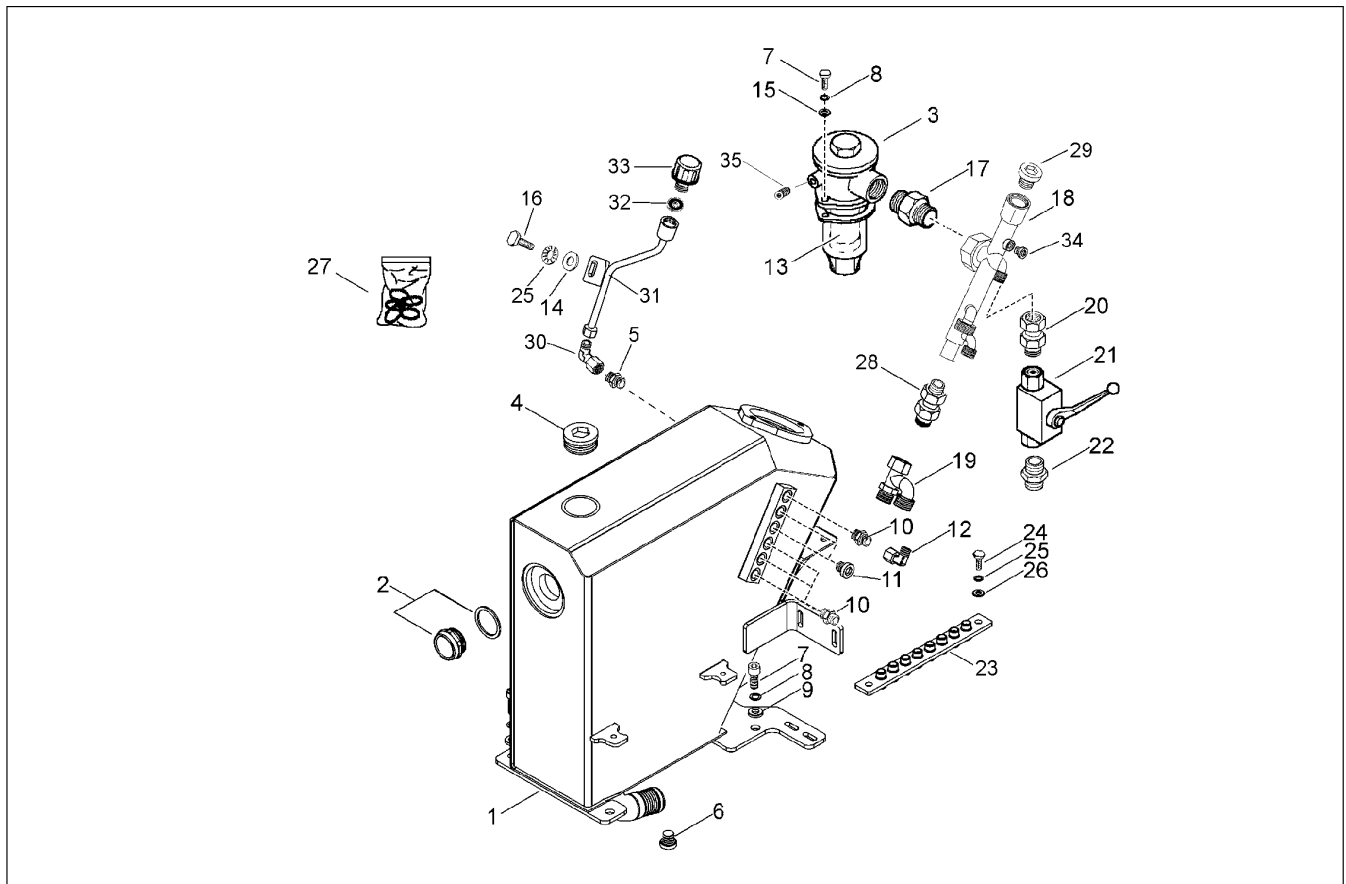
- Thank you very much for reading the preview of the manual.
- You can download the complete manual from: www.heydownloads.com by clicking the link below



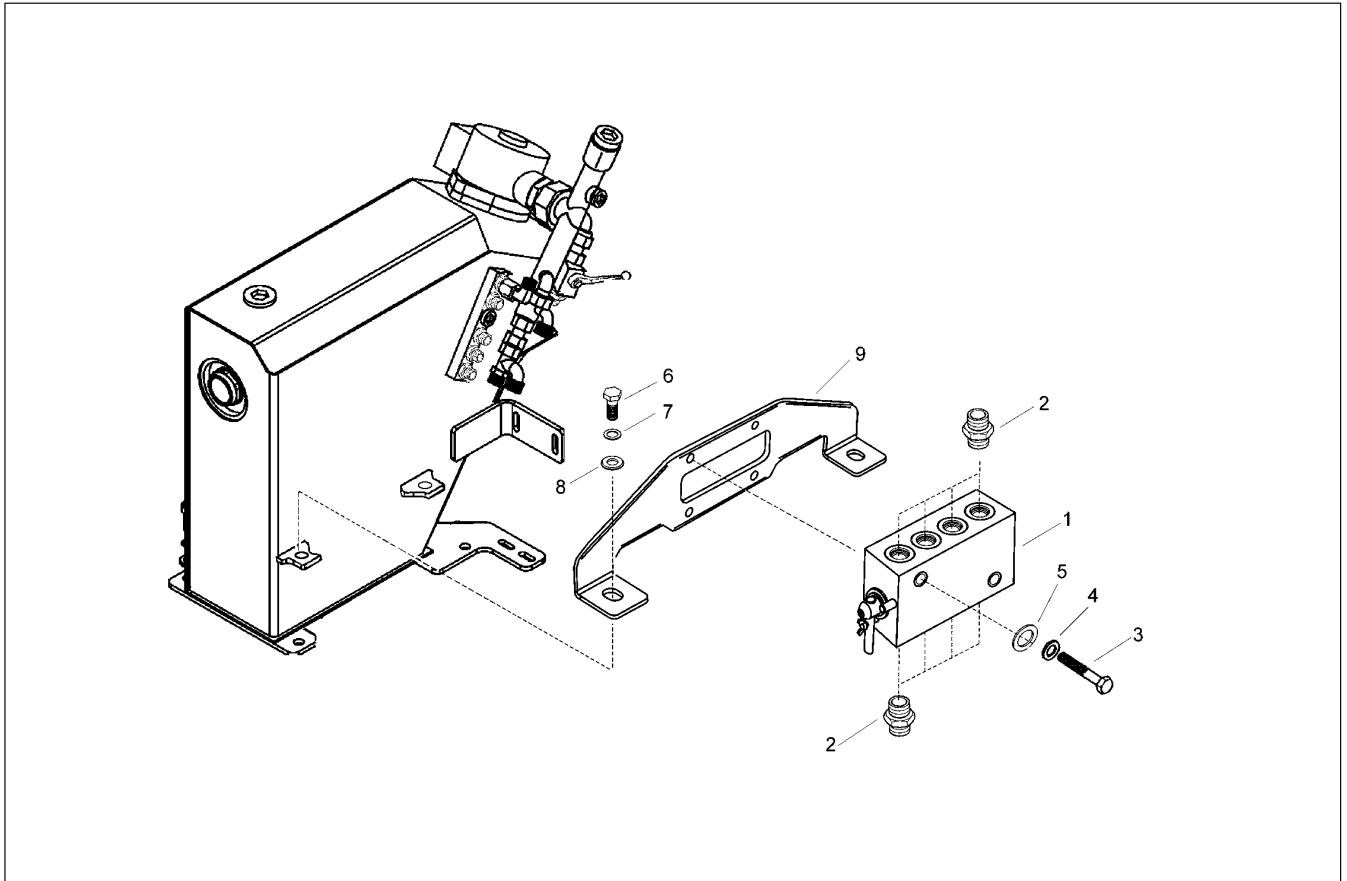
- Please note: If there is no response to CLICKING the link, please download this PDF first and then click on it.

CLICK HERE TO **DOWNLOAD** THE COMPLETE MANUAL

ME1903-2203 – HYDRAULIC OIL TANK

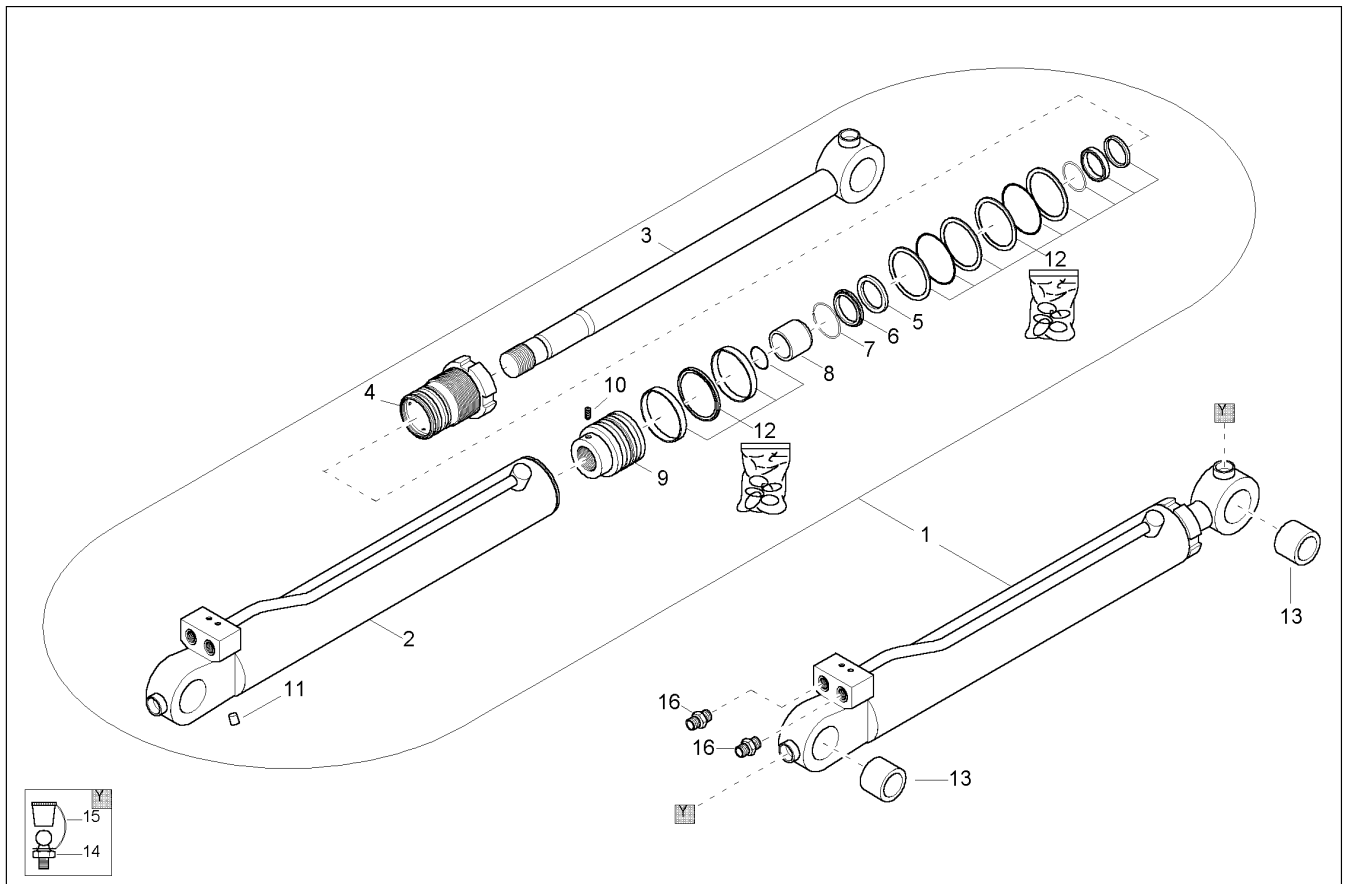


Ref. No.	Part No.	Description	Qty. Req.	Ref. No.	Part No.	Description	Qty. Req.
01	1421110G	HYDRAULIC OIL TANK	1	22	161431	SCREW JOINT	1
02	1428450G	OIL LEVEL GLASS	1	23	1428048G	SHIELD	1
03	165108	HYD OILFILTER COMP.	1	24	656093	CS M8-1.2 X 16 C 8.8	2
04	9909013G	SCREW	1	25	161676	RING/SNAP S8	3
05	161429	SCREW JOINT	1	26	161661	WASHER/GR A 8.4	2
06	161415	SCREW	1	27	165113	SEAL KIT/HYD FILTER	1
07	651475	SHCS HS M10-1.2 X 30 8.8	6	28	9911064G	NON RETURN VALVE	1
08	161669	RING/SNAP S10	6	29	162929	SCREW	1
09	161641	WASHER/GR A 10.5	4	30	161445	ANGLE	1
10	161426	SCREW JOINT	5	31	1528064G	TUBE	1
11	161414	SCREW	1	32	9917376G	O-RING (AFTER SN AC00984)	1
12	161443	ANGLE	1		161579	SEAL (BEFORE SN AC00985)	1
13	165111	HYDRAULIC OIL FILTER	1	33	1528425G	BREATHER (AFTER SN AC00984)	1
14	161667	WASHER/GR A 8.4	2		160949	FILTER (BEFORE SN AC00985)	1
15	161640	WASHER/GR A 10.5	2				
16	656093	CS M8-1.2 X 16 C 8.8	1	34	9909024G	SCREW	1
17	161490	SCREW JOINT	1	35	163859	SCREW	1
18	1428045G	TUBE	1				
19	1428047G	DISTRIBUTOR PIECE	1				
20	162495	SCREW JOINT	1				
21	160972	BALL VALVE	1				



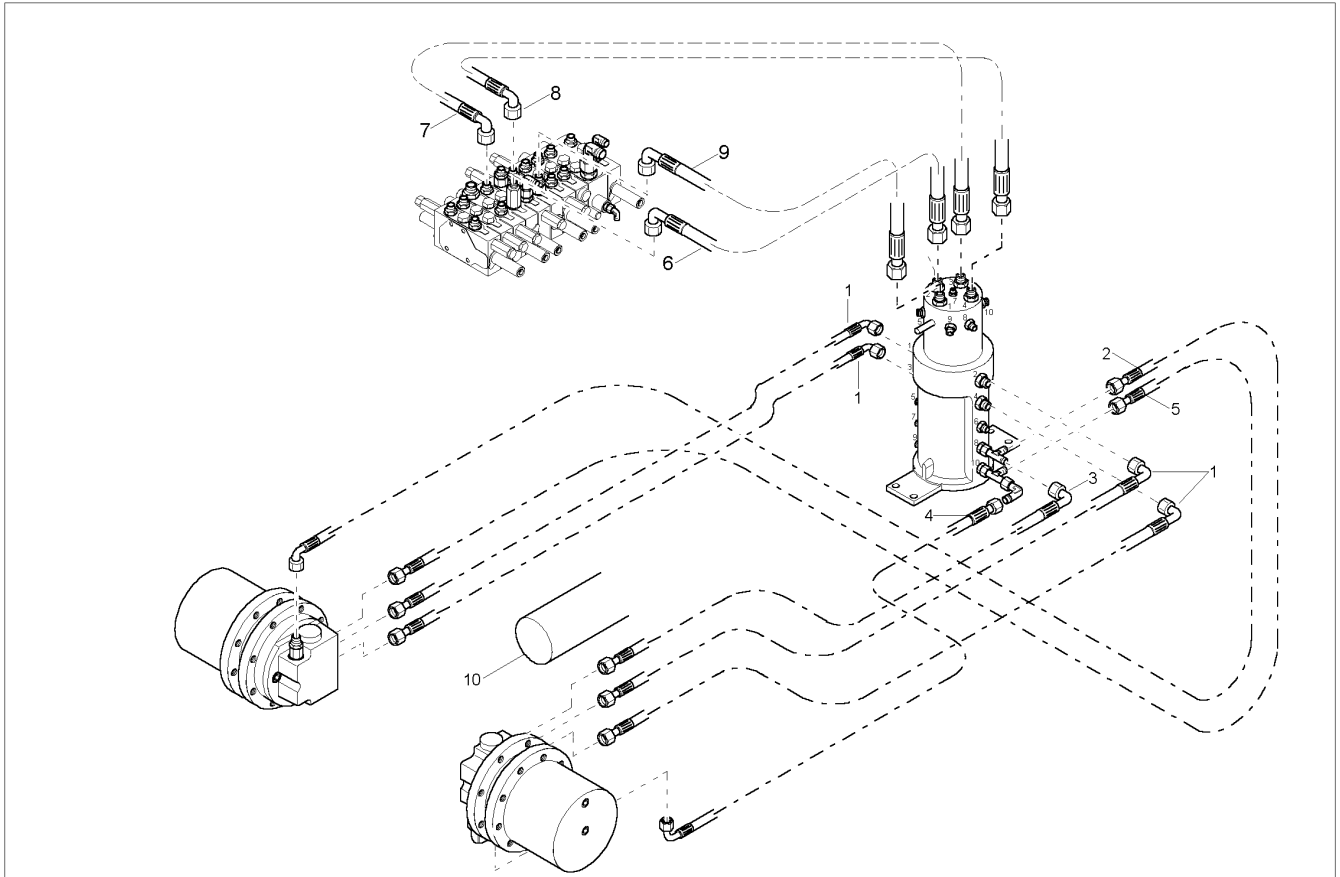
Ref. No.	Part No.	Description	Qty. Req.	Ref. No.	Part No.	Description	Qty. Req.
01	1408450G	ISO/SAE VALVE	1	06	656093	CS M8-1.2 X 16 C 8.8	2
02	161426	SCREW JOINT	8	07	161676	RING/SNAP S8	2
03	165946	SCREW	2	08	161661	WASHER/GR A 8.4	2
04	161675	RING/SNAP S6	2	09	1421184G	BRACKET	1
05	161660	WASHER/GR A 6.4	2				

ME1903-2203 – DIPPER ARM CYLINDER



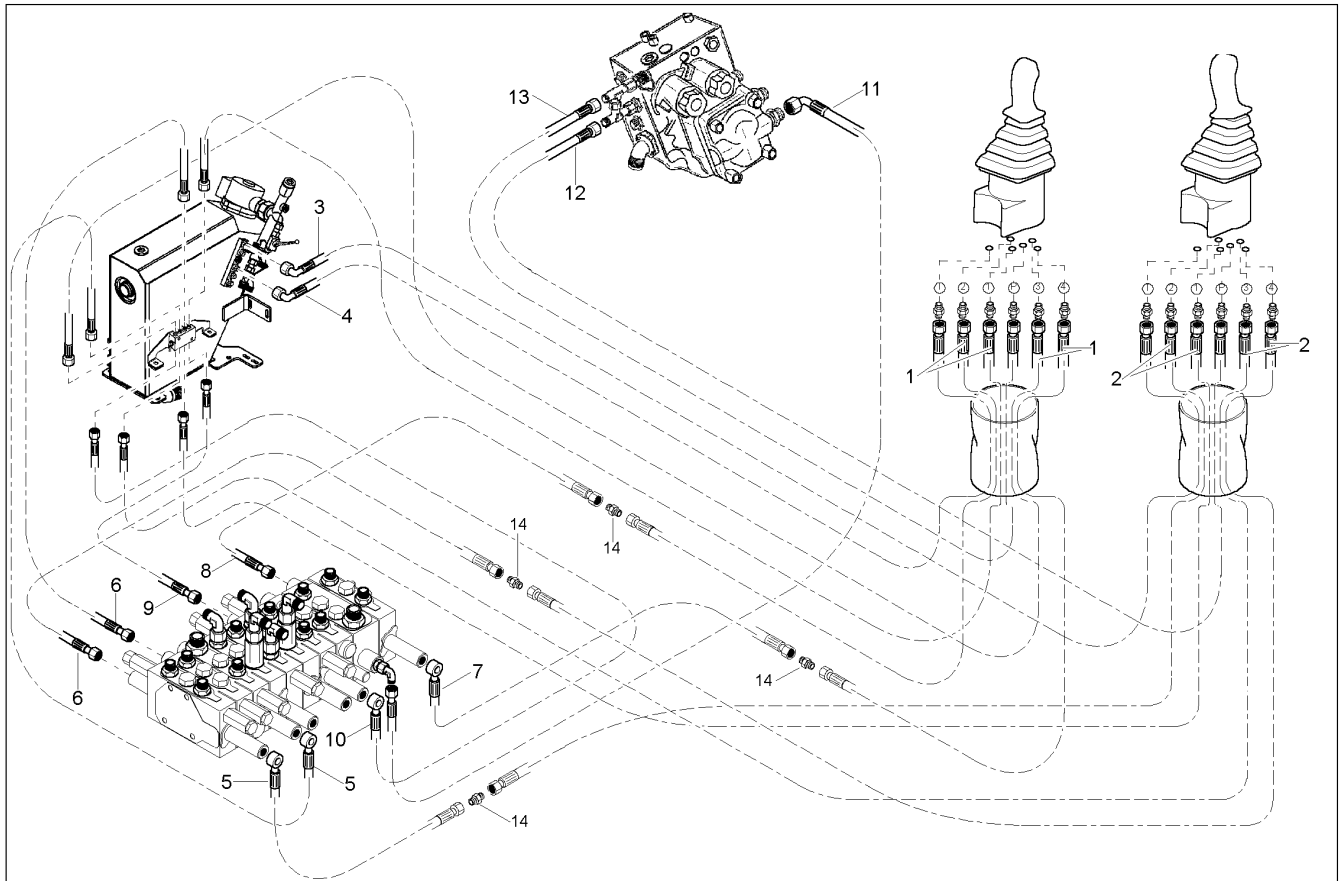
Ref. No.	Part No.	Description	Qty. Req.	Ref. No.	Part No.	Description	Qty. Req.
01	165445	DIPPER ARM CYLINDER	1	09	165449	PISTON	1
02	165450	CYLINDER TUBE	1	10	161400	SCREW MOUNT	1
03	165451	PISTON ROD	1	11	165959	BALL EXPANDER	1
04	165448	BUSHING	1	12	165570	SEAL KIT	1
05	160464	RING	1	13	161544	BUSHING	2
06	160465	RING	1	14	161411	LUBRICATION NIPPLE	2
07	161408	WASHER	1	15	161422	PROTECTION CAP	2
08	2528024G	BUSHING	1	16	161429	SCREW JOINT	2

ME1903 – HOSES, TRAVEL MOTOR

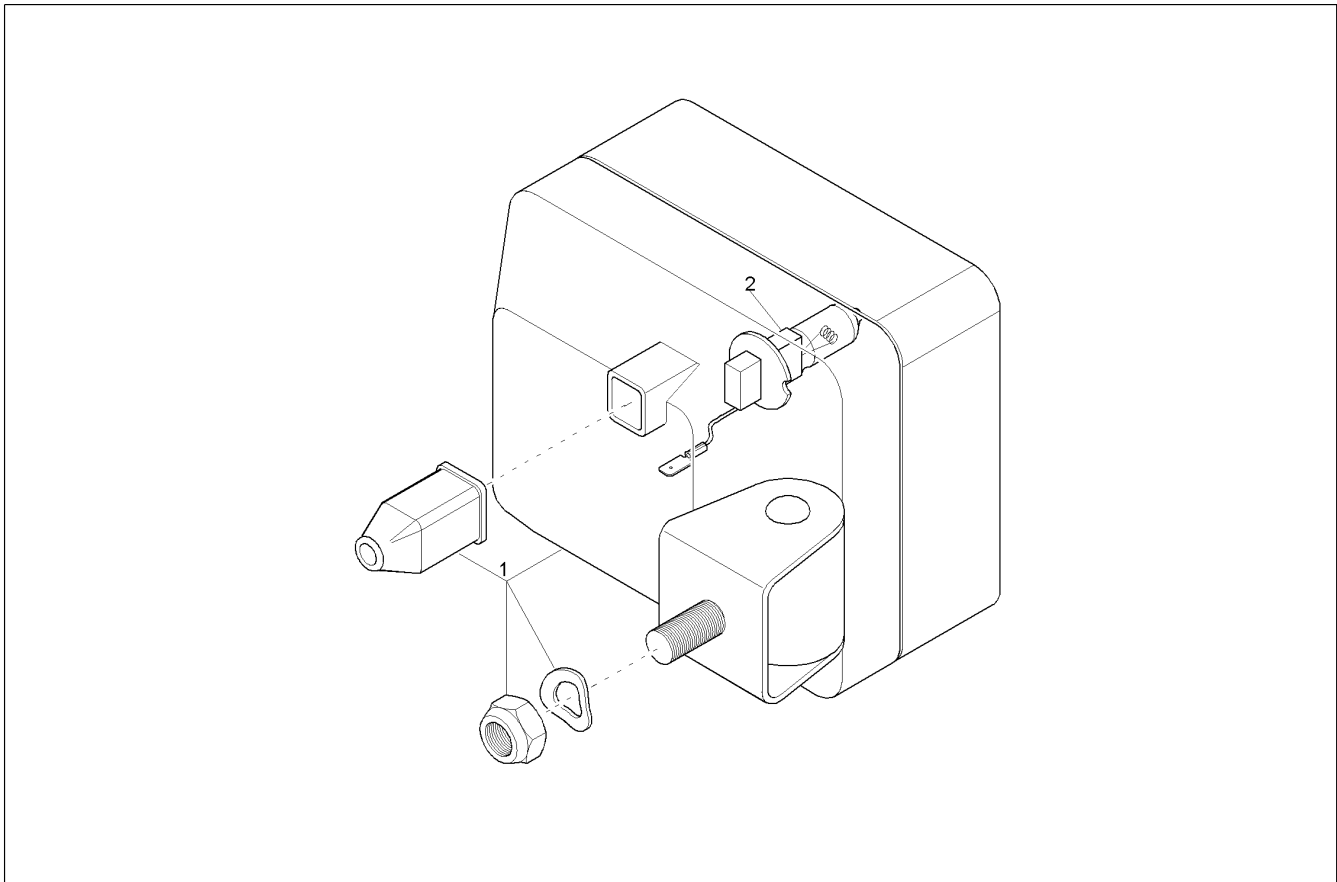


Ref. No.	Part No.	Description	Qty. Req.	Ref. No.	Part No.	Description	Qty. Req.
01	8004146G	HIGH PRESSURE HOSE	4	06	8004364G	HIGH PRESSURE HOSE	1
02	161263	HIGH PRESSURE HOSE	1	07	8004362G	HIGH PRESSURE HOSE	1
03	161252	HIGH PRESSURE HOSE	1	08	8004348G	HIGH PRESSURE HOSE	1
04	161245	HIGH PRESSURE HOSE	1	09	8004361G	HIGH PRESSURE HOSE	1
05	161229	HIGH PRESSURE HOSE	1	10	9710041G	PROTECTION HOSE	2

ME1903-2203 – HOSES, JOYSTICKS



Ref. No.	Part No.	Description	Qty. Req.	Ref. No.	Part No.	Description	Qty. Req.
01	8009010G	HIGH PRESSURE HOSE	4	08	8002308G	HIGH PRESSURE HOSE	1
02	164799	HP HOSE	4	09	8002307G	HIGH PRESSURE HOSE	1
03	161220	HIGH PRESSURE HOSE	1	10	8001863G	HIGH PRESSURE HOSE	1
04	162447	HP HOSE	1	11	162447	HP HOSE	1
05	8002312G	HIGH PRESSURE HOSE	2	12	163291	HP HOSE	1
06	161227	HIGH PRESSURE HOSE	2	13	163288	HP HOSE	1
07	8002309G	HIGH PRESSURE HOSE	1	14	161479	SCREW JOINT	4



Ref. No.	Part No.	Description	Qty. Req.	Ref. No.	Part No.	Description	Qty. Req.
01	160537	WORKING LIGHT	1	02	161367	HALOGEN LAMP	1

CLICK HERE TO **DOWNLOAD** THE COMPLETE MANUAL

- Thank you very much for reading the preview of the manual.
- You can download the complete manual from: www.heydownloads.com by clicking the link below



- Please note: If there is no response to CLICKING the link, please download this PDF first and then click on it.

CLICK HERE TO **DOWNLOAD** THE COMPLETE MANUAL