

Manitowoc

TRADITIONAL CRANE PARTS MANUAL

This manual has been prepared for and is considered part of

3900T

Model

399016

Serial Number

GROUP A = Rotating Structure (Includes rotating bed, operator's cab, cases, fuel tanks, transfer pump, counterweights, guards, platforms, catwalks, machinery enclosure, horn)

GROUP B = Upperworks Machinery (Includes front, rear, and auxiliary drums, boom hoist, swing and drive shafts, hand levers, foot pedals, control linkage, rotation indicators, upperworks hydraulic components, hydraulic piping, hydraulic oil reservoir, lubrication pump and piping, blowers)

GROUP C = Air Components & Electrical (Includes control console, air piping, electric wiring, auxiliary light plant and lighting, TV monitoring, compressor and air tank)

GROUP D = Power Components - Upperworks (Includes engine or motor, radiator, auxiliary power plant, take off converters and piping, controls, VICON power lowering, torque limiter, hydraulic pumps and piping, fuel piping, battery box)

GROUP E = Lower Structure & Control (Includes carbody, crawlers, travel shafts and control, steering travel locks, hydraulic travel, travel power outriggers, carrier, pedestal, lowerworks hydraulic piping, RINGER components, barge mounting and machinery, spud drums)

GROUP F = Attachments (Includes booms, jibs, masts, tower, wire rope guides, equalizer, gantry, fairlead, timber guards, boom angle indicator, block-up limit, tag line, hook block, weight ball, upper and lower boom point, wind speed indicator, crowd and retract dipper sticks, dippers,)

O-NUMBER SECTION = (Includes lacing drawings and purchased component parts drawings referenced in sections A through F)

This manual is arranged in sections as listed above. Sections A through F are arranged by group numerical order with an index after each section tab. An alphabetical index for groups A Through F combined is located after the O-number Section. The O-number section is arranged in numerical order by O-number. Following this cover page are the Basic Specifications, Warranty Information, Tool List (if applicable) Outline Dimensions, Weights, and Dealer Listing.

CLICK HERE TO **DOWNLOAD** THE COMPLETE MANUAL

- Thank you very much for reading the preview of the manual.
- You can download the complete manual from: www.heydownloads.com by clicking the link below



- Please note: If there is no response to CLICKING the link, please download this PDF first and then click on it.

CLICK HERE TO **DOWNLOAD** THE COMPLETE MANUAL

Corrosion and Abrasion

Refer to Figure 3.

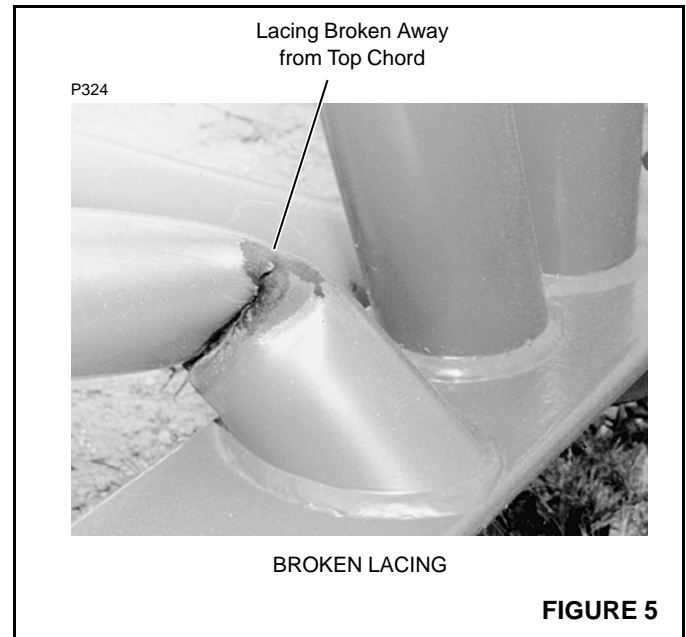
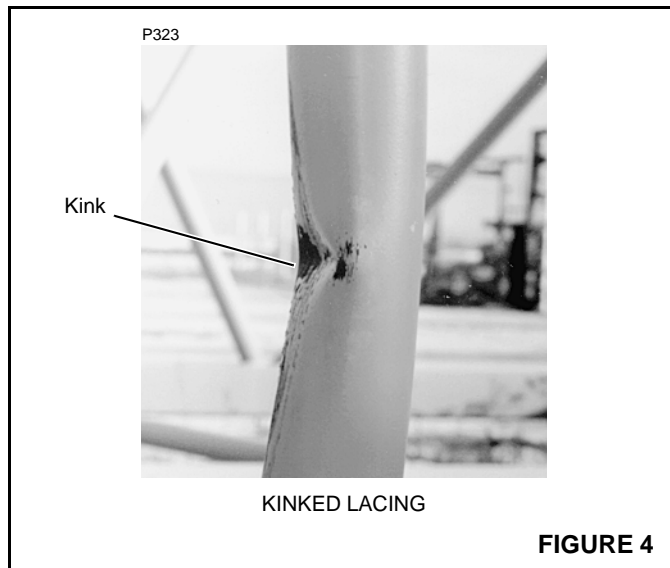
Corrosion and abrasion must not be deeper than 10 percent of the wall thickness, the angle thickness, or the plate thickness.

Kinks

Refer to Figure 4.

Kinked lacings must be replaced; *do not bend kinked lacings back into alignment.*

If any chord or platework is kinked, contact Manitowoc Crane Care for approved repair instructions. *Do not bend kinked chords or platework back into alignment.*



Cracks and Breaks

Refer to Figure 5.

Cracked and broken lacings must be replaced; *do not attempt to repair cracked or broken lacings.*

If any chord or platework is cracked or broken, contact Manitowoc Crane Care for approved repair instructions. *Do not attempt to repair cracked or broken chords or platework.*

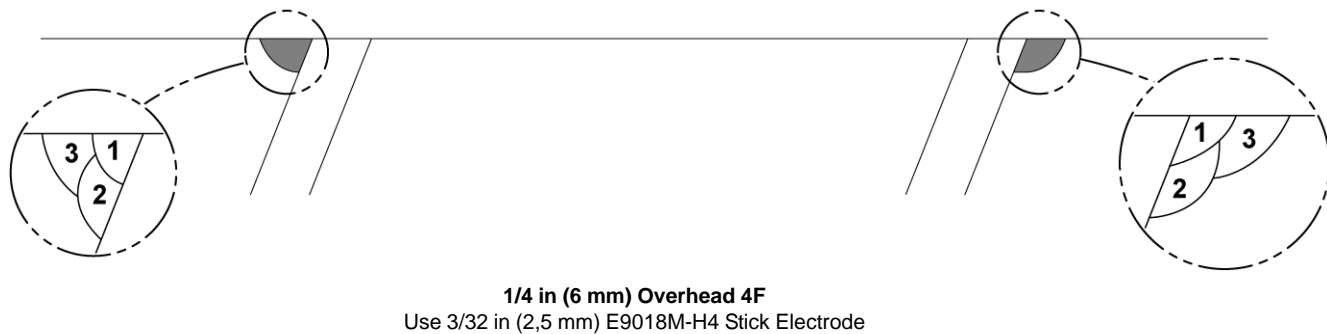
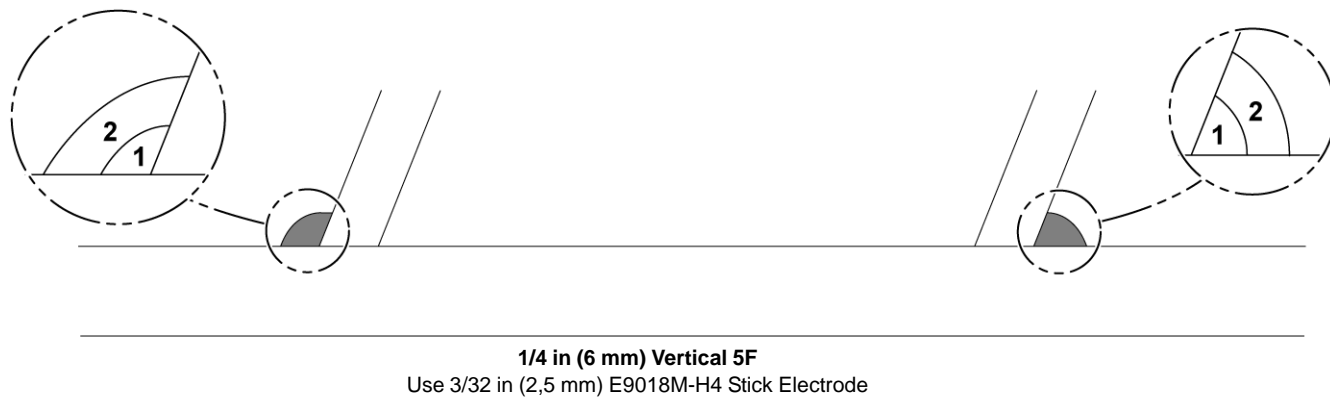
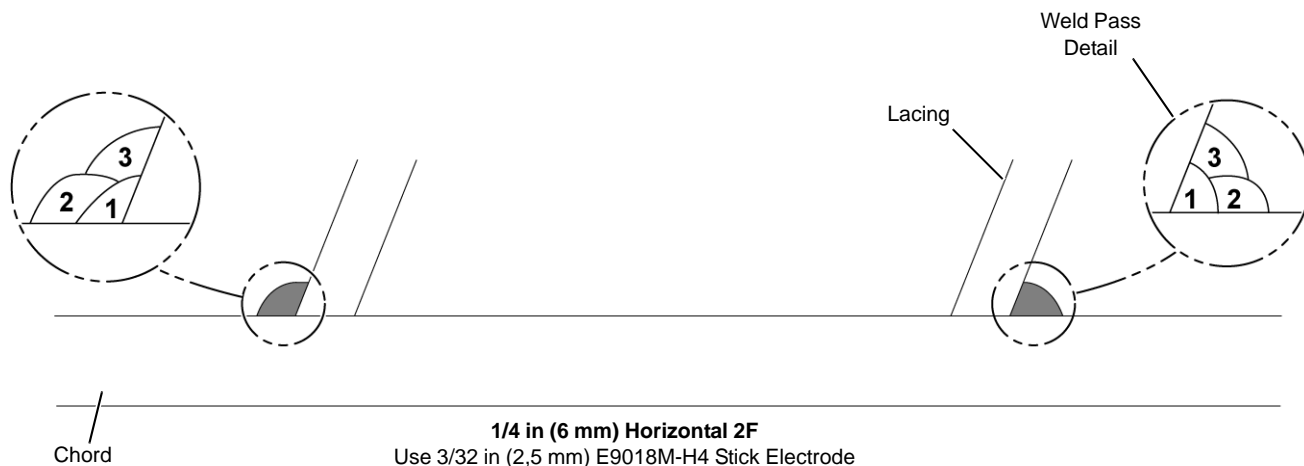


FIGURE 16



MANITOWOC ENGINEERING CO.

A division of The Manitowoc Company, Inc.

Manitowoc, Wisconsin 54220

WEIGHTS

3900T SERIES-2 VICON®*

DESCRIPTION	APPROX. WEIGHT (IN LBS.)
* LIFTCRANE - w/No. 9A boom, 74,000# counterweight, gantry w/folding backhitch, Hendrickson carrier w/10,500# front bumper cwt., split drums w/21" dia. lagging for left drum, std. swing, ind. boom hoist, Vicon controlled Cummins NT-855-C310 engine, boom hoist rope, equalizer, telescopic air cushioned boom stop, 155 ton load block . . . 60' OT/T Boom	240,970**
33' HH/T Boom	240,840**
* UPPERWORKS - w/Vicon controlled Cummins NT-355-C310 engine, ind. boom hoist, std. swing and split drums w/21" dia. lagging for left drum; LESS boom, gantry and folding backhitch, equalizer, load block, weight ball, counterweights, boom stop, and catwalk.	54,240**
* UPPERWORKS as above - w/gantry and folding backhitch, equalizer, boom hoist rope	59,980**
* CARRIER - w/10,500# front bumper counterweight, ring gear and roller path, king pin and outriggers w/hydraulic jacks and pads.	94,070

SELF-REMOVING COUNTERWEIGHTS

* Inner	30,000
* Middle.	31,200
Outer	12,800

BOOM NO. 9A

Boom Butt - 30'	4,460
Boom Top	
Hammerhead (w/wire rope guide and boom point)	3,850
Open Throat - 30' (w/lower boom point assembly)	4,170
Upper Boom Point - OT/T (shaft and sheaves)	320
* Boom Insert - 5' (hammerhead only).	720
Boom Insert - 10' (w/rope guide roller assembly).	1,160
Boom Insert - 20' (w/rope guide roller assembly).	2,040
* Boom Insert - 40' (w/rope guide roller assembly).	3,170
* Boom Insert - 40' (w/rope guide roller assembly and jib backstay lugs).	3,345
Link - equalizer to boom top (basic boom w/hammerhead top only) (2 req'd)	90 each
Pendant Connecting Link (hammerhead top - for other than basic boom) (2 req'd)	115 each
* Basic Pendant - 30'-10" (4 req'd. for OT/T).	115 each
Pendant - 5' (4 req'd. per insert).	70 each
Pendant - 10' (4 req'd. per insert)	85 each
Pendant - 20' (4 req'd. per insert)	110 each
Pendant - 40' (4 req'd. per insert)	165 each
Pendant Spreader Bar (9A OT/T only)	490

*For non-Vicon machines deduct 3700 lbs. from upperworks and liftcrane weights.

**Weights do not include hoist line, whip line or fuel.

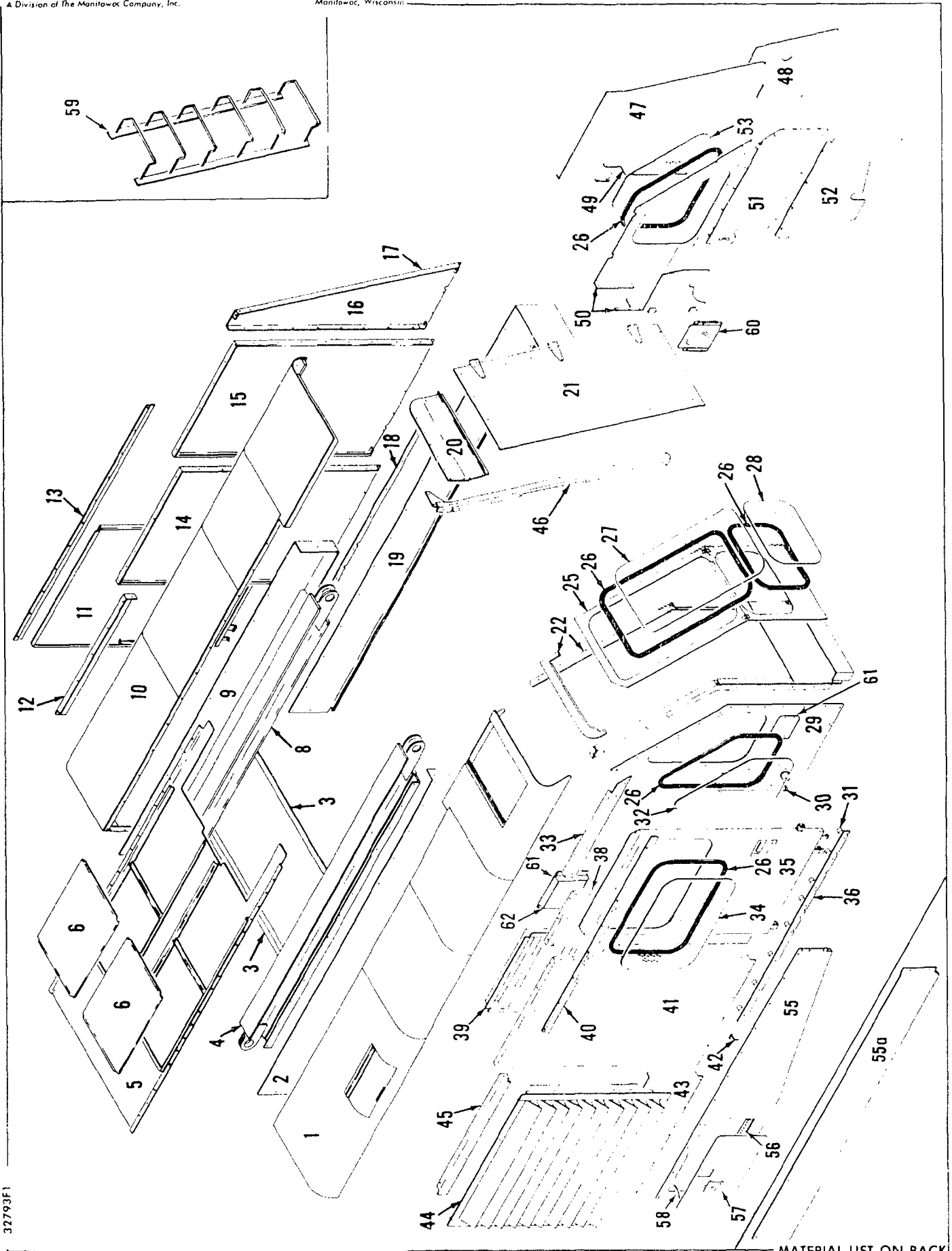
(Cont'd.)

MANITOWOC ENGINEERING CO.

A Division of the Manitowoc Company, Inc.

Manitowoc, Wisconsin

MASTER

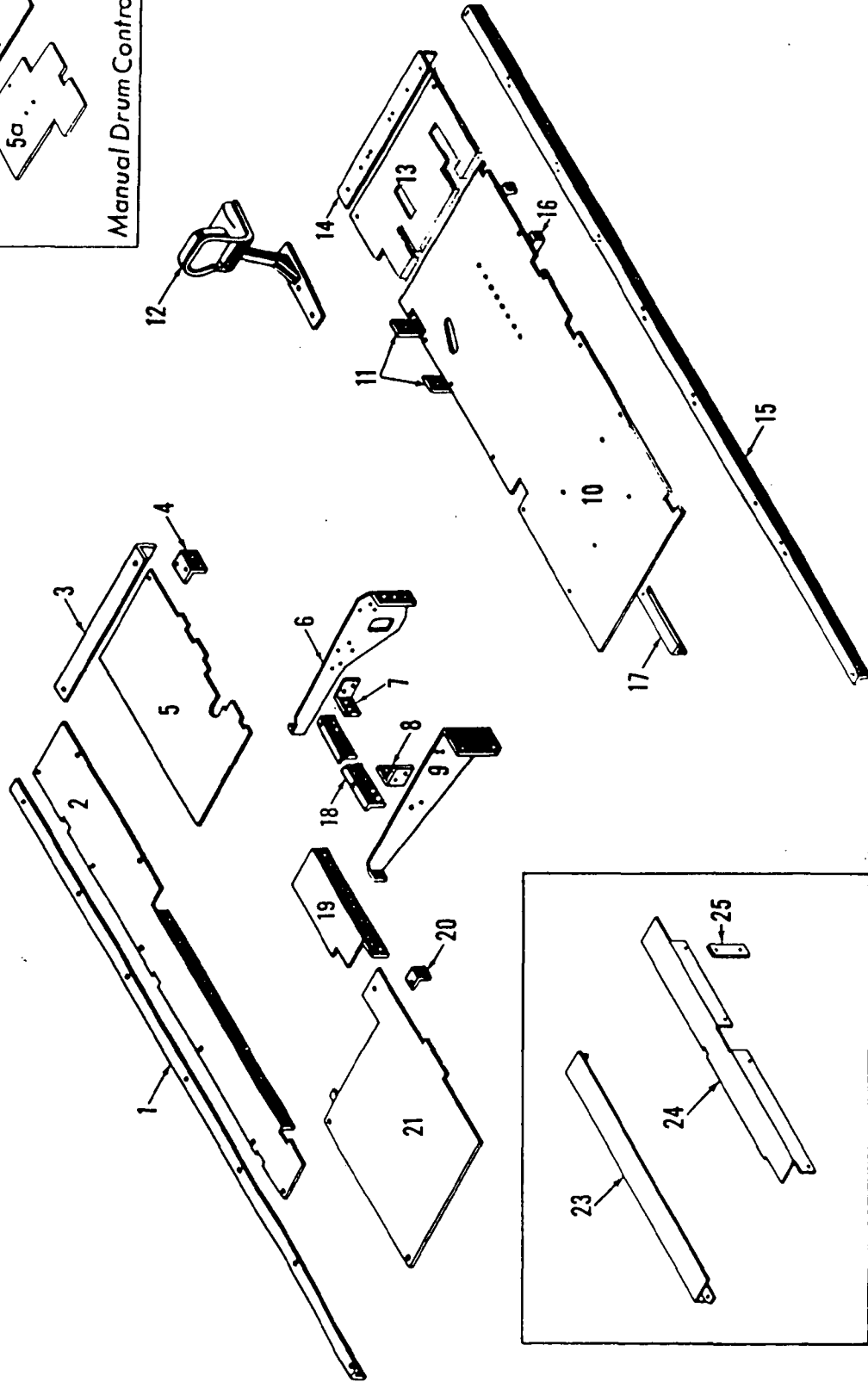
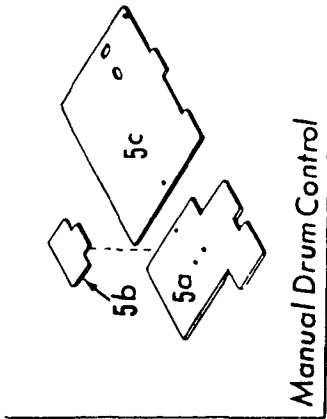


32793F1

MATERIAL LIST ON BACK

CAB

MASTER



42992D1

MATERIAL LIST ON BACK

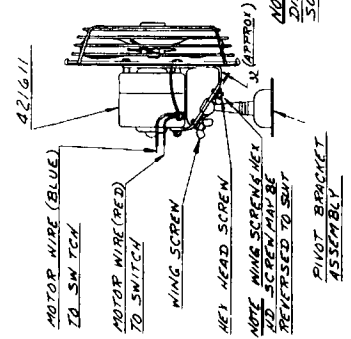
PLATFORM

42992D1

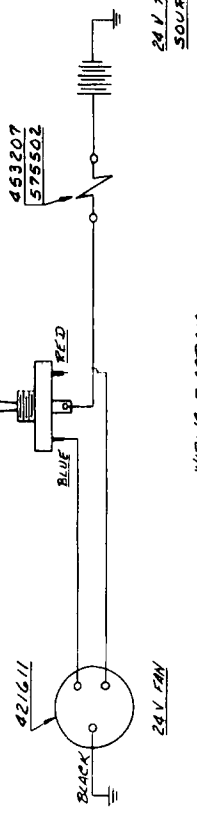
BILL OF MATERIAL		QTY	TERMS	CODE NO.	QTY	TERMS	QTY	TERMS
1	MOUNTING PLATE	1		92593	1		92593	2 SPEED
1	FAN ITEM 1 DNG #37833	1		421611	1		421611	
1	FUSE 3AMP SLOW BLOW	1		453207	1		453207	
1	HOLDER FUSE	1		575502	1		575502	
2	3/8 UNC 2 1/2" PHD MACH SCREW	2		612456	2		612456	
2	3/8 UNC 2 1/2" PHD MACH SCREW	2		617542	2		617542	
3	20 3/4 UNC 2 1/2" PHD MACH SCREW	3		618543	3		618543	
1	SWITCH ITEM 2 DNG #37833	1		673161	1		673161	
2	LOCKWASHER	2		710304	2		710304	
3	SHAKEPROOF LOCKWASHER	3		710747	3		710747	

NOTICE
 THE FIRST NUMBER IS
 MANTOWOC ENGINEERING CO
 THE SECOND NUMBER IS
 THE DRAWING NO
 THE THIRD NUMBER IS
 THE PART NO
 THE FOURTH NUMBER IS
 THE QUANTITY

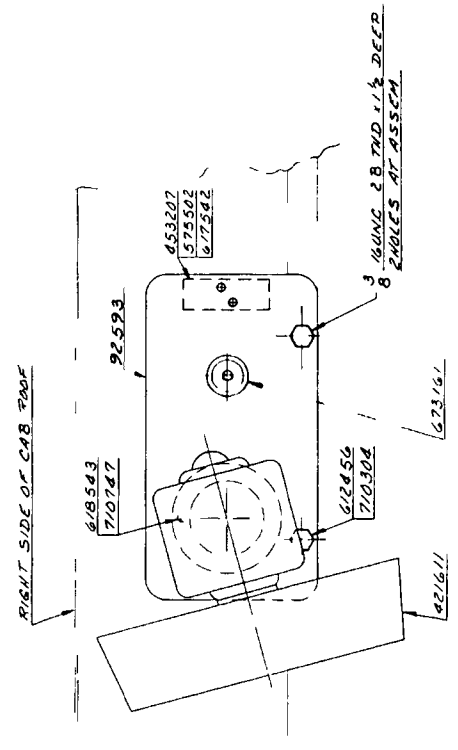
INSTRUCTIONS FOR MOUNTING FAN # 421611
 1 ATTACH ROUND BASE PIVOT BRACKET ASSEMBLY TO CAB AS SHOWN BELOW WITH WING SCREWS & HEY HEAD SCREWS LEAVING APPROX 1/2" GAP BETWEEN CLAMP AND BRACKET
 2 ADJUST FAN TO DESIRED POSITION & TIGHTEN WING SCREWS SECURELY



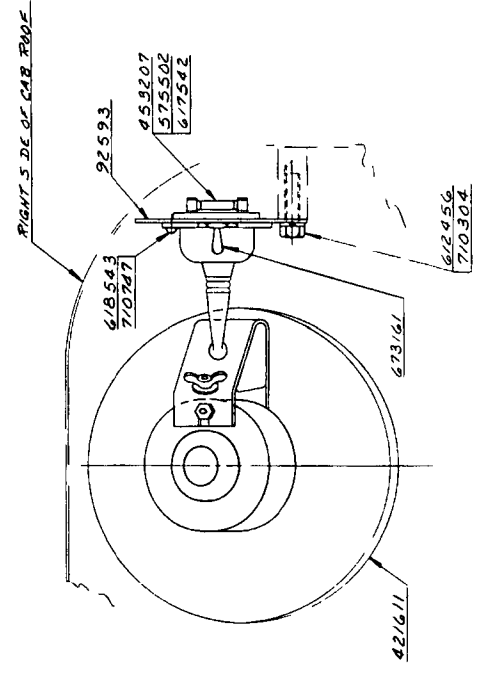
FAN DETAIL
 SCALE 3/10



WIRING DIAGRAM



NOTE 1
 LOCATE THIS ASSEMBLY AS SHOWN ON RIGHT SIDE OF CAB ROOF AS NEAR TO FRONT WINDOW AS POSSIBLE TO ENABLE FAN TO DEFOG FRONT WINDOW AS WELL AS LEFT SIDE WINDOW

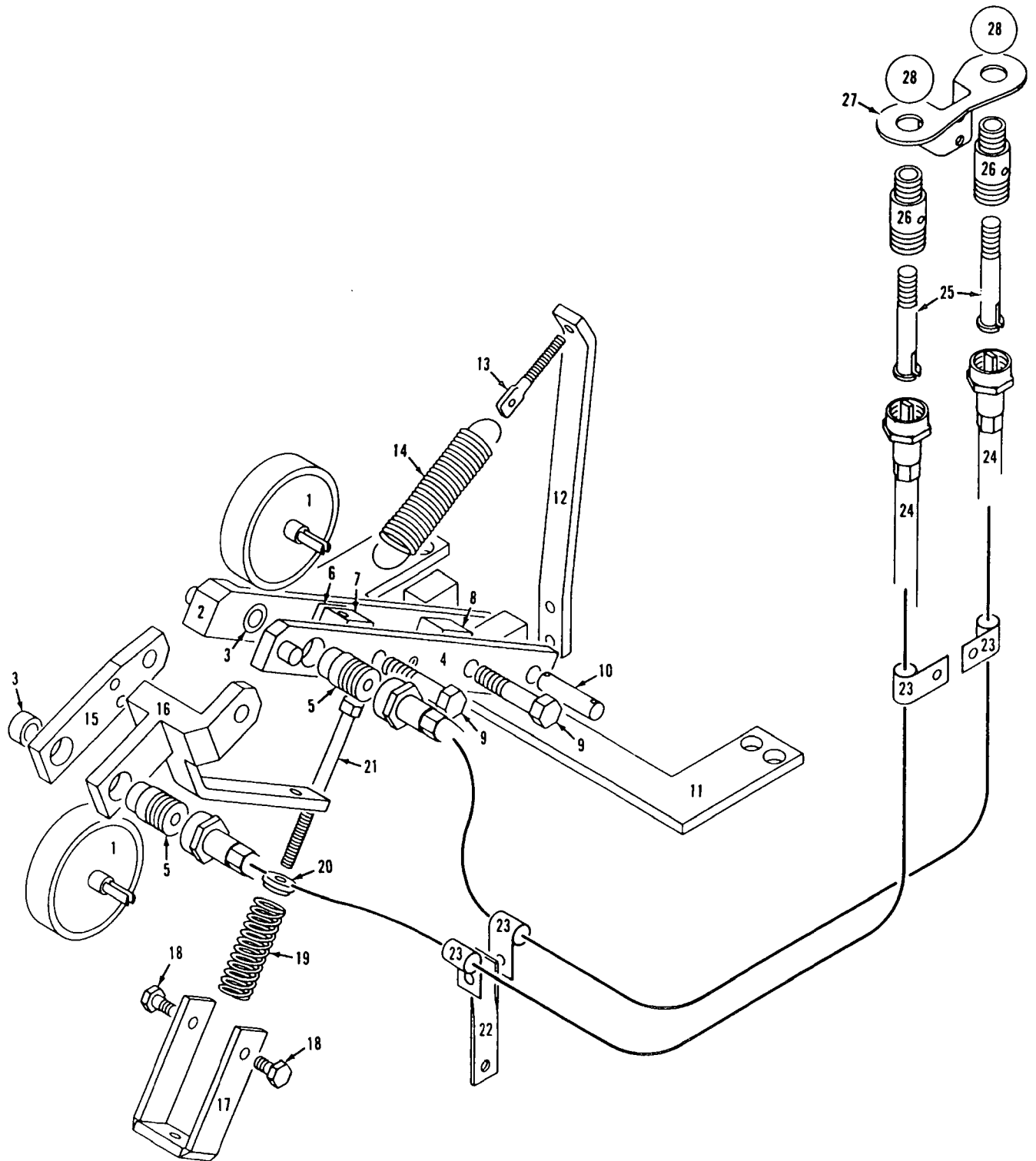


SUPERSEDED BY 180535 OF 8.5.76
 SUPERSEDES 180535 OF 7.31.69

DATE	6/7/72
BY	JWA
CHECKED BY	JWA
SCALE	AS SHOWN
COMPANY	MANTOWOC ENGINEERING CO
ADDRESS	1805 150th St, St. Louis, Mo. 63104
PHONE	314-241-1100
FAX	314-241-1100
TELETYPE	314-241-1100
TELEFAX	314-241-1100
EMAIL	MANENG@SBCOMPTON.COM
DESIGNER	JWA
DRAWN	JWA
CHECKED	JWA
DATE	6/7/72
SCALE	AS SHOWN
COMPANY	MANTOWOC ENGINEERING CO
ADDRESS	1805 150th St, St. Louis, Mo. 63104
PHONE	314-241-1100
FAX	314-241-1100
TELETYPE	314-241-1100
TELEFAX	314-241-1100
EMAIL	MANENG@SBCOMPTON.COM

PARTS MANUAL ALPHABETICAL INDEX
Group B - Upperworks Machinery

DESCRIPTION	PUBLICATION	REV	START DATE	END DATE	GROUP
Boom Hoist Auxiliary Brake	48379	E1	05/08/68	07/28/76	B0210
Boom Hoist Control, Independent	181533	C1	09/28/71	04/09/85	B0204
Boom Hoist Control, Independent	48405	F1	04/25/68	02/21/78	B0204
Boom Hoist Drive Shaft, Independent	50310	B1	01/23/63	12/13/83	B0207
Boom Hoist Drive Shaft, Independent	50310	F2	01/23/63	12/23/83	B0207
Boom Hoist Drive Shaft, Independent	50310	B3	01/23/63	12/13/83	B0207
Boom Hoist Pawl	181284	C1	09/03/70	07/10/78	B0211
Boom Hoist, Independent	49290	F1	04/09/70	05/29/86	B0202
Boom Hoist, Independent	49290	C2	09/07/70	05/29/86	B0202
Drum Brake - Front	43107	G1	01/30/68	07/20/79	B0603
Drum Brake - Front	43108	D1	01/30/68	01/07/69	B0603
Drum Rotation Indicator - Front and Rear	33135	F1	09/02/64	03/10/76	B0607
Drum Shaft - Front	22596	A	09/03/52	10/08/81	B0601
Drum Shaft - Front	42385	J1	05/27/64	03/08/78	B0601
Drum Shaft - Front	42385	G2	04/10/59	12/23/92	B0601
Hand Levers	181449	C1	09/28/72	05/24/76	B1201
Hand Levers	91921	A1	11/17/71	02/26/76	B1201
Lubrication Pump & Piping (Sump)	33242	D1	04/05/65	05/20/77	B1401
Lubrication Pump & Piping (Sump)	43308	H1	10/22/65	05/20/77	B1401
Main Drive Shaft	43132	F1	08/19/63	09/17/76	B1301
Main Drive Shaft	43132	F2	09/19/63	05/06/74	B1301
Main Drive Shaft	43132	C3	08/09/63	07/13/78	B1301
Main Drive Shaft Control	43499	C1	04/16/65	08/21/81	B1302
Slide Pinion Shaft (Intermediate Travel or Swing Shaft)	90468	C1	04/21/64	04/18/72	B1601
Swing Brake Control	43093	E1	06/06/63	05/13/81	B1802
Swing Brake Shaft	20572	D1	01/02/40	02/17/83	B1801
Swing Lock Control	48963	E1	04/23/70	04/08/93	B1701
Swing Shaft	22880	J1	01/26/54	04/12/85	B1901

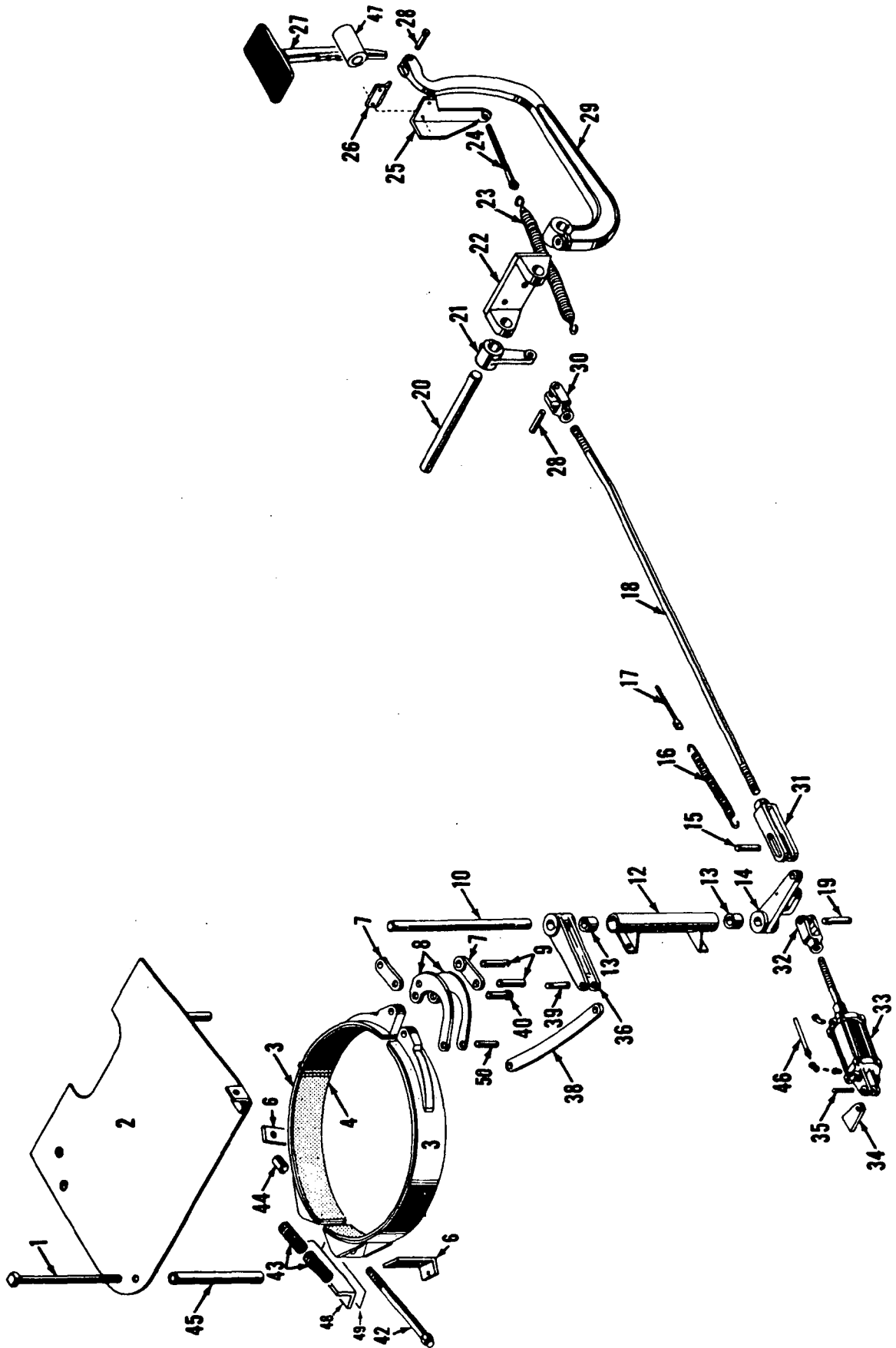


33135B1

MATERIAL LIST ON BACK

DRUM ROTATION INDICATOR

MASTER



42658D1

MATERIAL LIST ON BACK

Swing Brake

43132-1 cont.	REV. F	MODEL 3000W-3100-3400-3600-3900-3900T-3900W-4000-4000W
---------------	-----------	---

MAIN DRIVE SHAFT
(VICON)

REF. NO.	PART NUMBER	QUANTITY REQUIRED	DESCRIPTION OF PART	VENDORS PART NO.
34	21733	1	COVER, Bearing w/capscrews, hex nuts, lockwashers and gr. fitting	
	257202	2	BOLT, Coupling	
35	22482	1	HOUSING, Bearing w/capscrews, hex nuts and lockwashers	
36	224909	1	BEARING, Roller	
37	15535	1 set	SHIM (1/16" set)	
38	21734	1	COVER, Bearing w/capscrews, hex nuts, lockwashers and gr. fitting	
	257202	2	BOLT, Coupling	
39	15548	1	SPACER	
40	15551	1	NUT, Split w/capscrews and elastic stop nuts	
41	73236	1	SPACER	
45	224323	1	BEARING, Ball	
46	20163	1	HOUSING, Bearing w/gr. fitting (M3000-3600 incl.)	
46	23697	1	HOUSING, Bearing w/gr. fitting (M3900-3900W-3900T-4000-4000W)	
47	11535	1	NUT, Lock	
48	11536	1	PLATE, Locking w/capscrews (See Note 2)	
49	10526	1	COVER, Bearing w/capscrews and lockwashers (See Note 2)	
50	71084	2	BOLT, Coupling w/elastic stop nut (Housing No. 23697-M3900-3900T-4000-4000W)	
50	12020	1	BOLT, Coupling w/hex nuts (Housing No. 23697-M3900W)	
50	71084	1	BOLT, Coupling w/elastic stop nut (Housing No. 23697-M3900W)	
50	16786	2	BOLT, Coupling w/elastic stop nut (Housing No. 20163)	
55	596934	1	RING, Spirolox	
<u>THE FOLLOWING PARTS ARE FOR CRANE, DRAG, CLAM TRENCH HOE ONLY. FOR SHOVEL CLUTCH SEE SH. NO. 3</u>				
42	18872	1	GUARD, Spline	
43	18731	1	SPACER	
44	10525	1	COVER, Bearing w/capscrews and lockwashers	
<u>FOR INDEPENDENT SWING (NOT INCL. M3900T)</u>				
51	24718	1	SPROCKET, Drive (bolt to outer sprocket) (46T.)	
52	256245	6	BOLT, Coupling	
	548367	6	NUT, Elastic Stop	
51	91684	1	SPROCKET, Drive (bolt to outer sprocket) (71T.)	
52	257247	6	BOLT, Coupling	
	548367	6	NUT, Hex	
<u>FOR CHAIN DRIVEN IND. BOOM HOIST (NOT INCL. M3900T)</u>				
51	90618	1	SPROCKET, Drive (1-1/2"P. - 2 strand 59T) (bolt to outer sprocket)	
52	257247	6	BOLT, Coupling	
	548367	6	NUT, Elastic stop	
51	90637	1	SPROCKET, Drive (1-1/4"P. - 2 strand 45T) (bolt to outer sprocket)	
52	257247	6	BOLT, Coupling	
	548367	6	NUT, Elastic Stop	

REV. F	43132-1 cont.
-----------	---------------

PLEASE GIVE MACHINE S/N W/ORDER

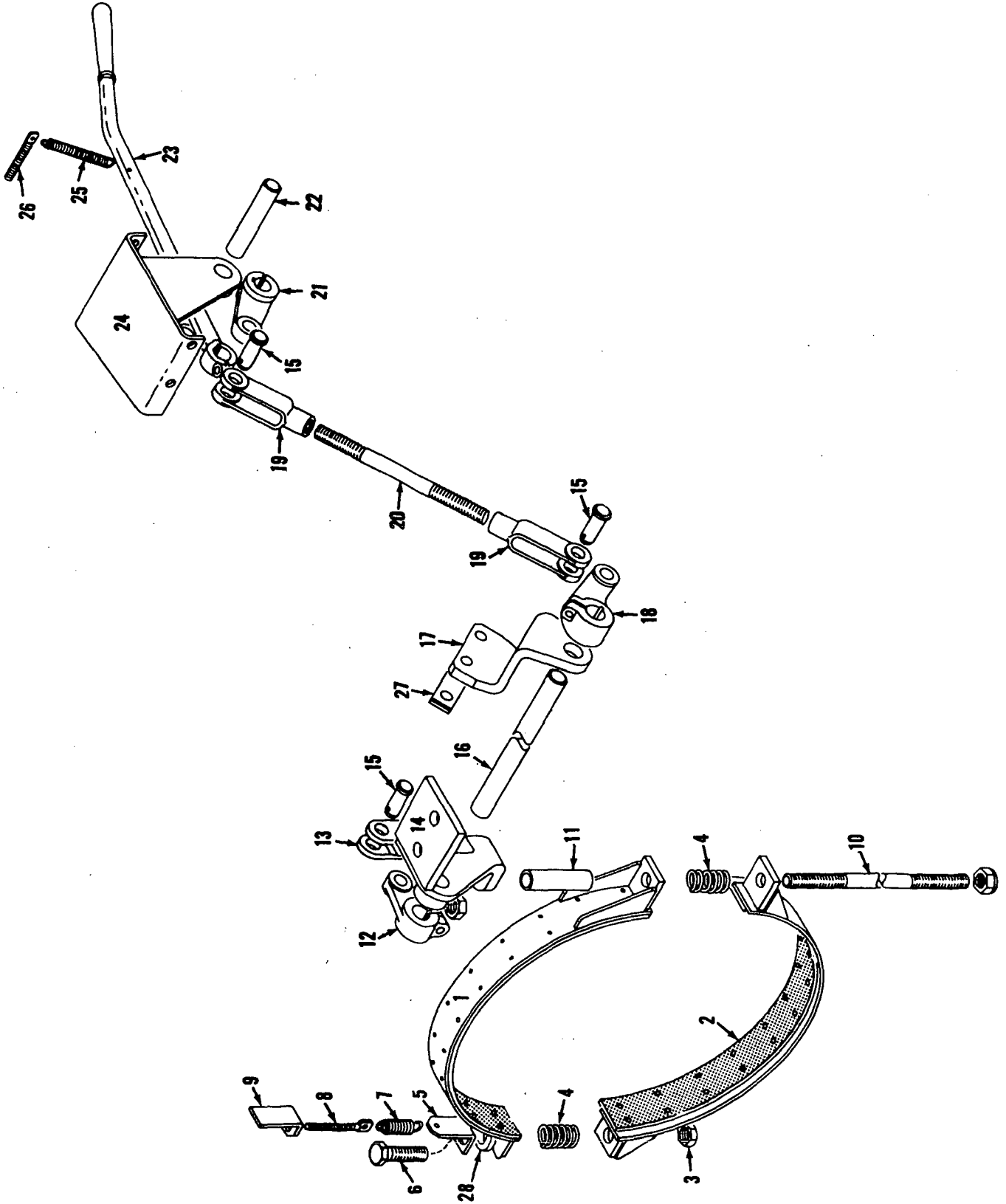
CPT
Run as a Front
43132 Fl Cont -1

MANITOWOC ENGINEERING CO.

A Division of The Manitowoc Company, Inc.

Manitowoc, Wisconsin

MASTER



48379 C1

48379C1

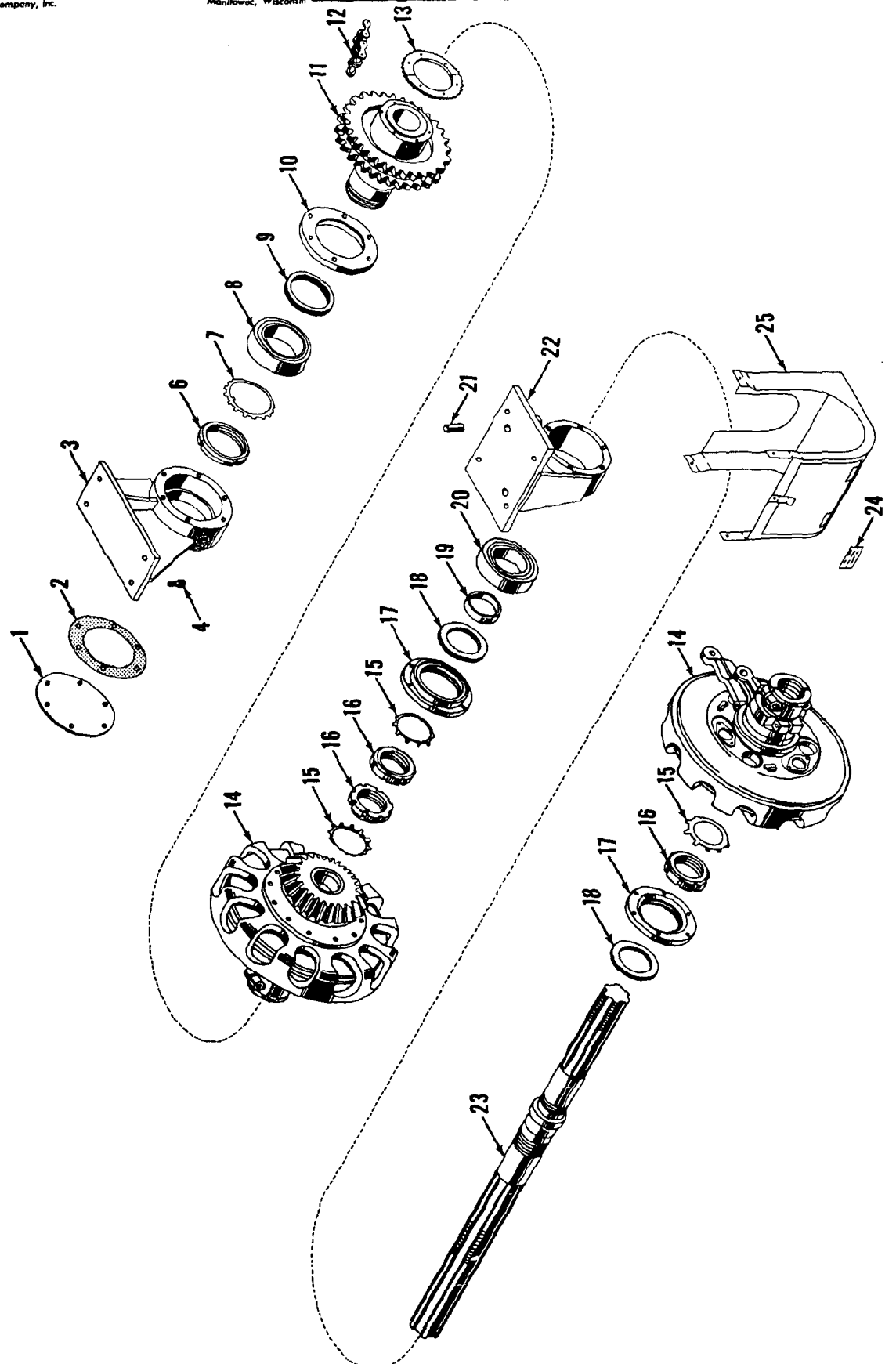
MATERIAL LIST ON BACK

IND. BOOM HOIST AUX. BRAKE

MANITOWOC ENGINEERING CO.

A Division of The Manitowoc Company, Inc.

Manitowoc, Wisconsin



5031081

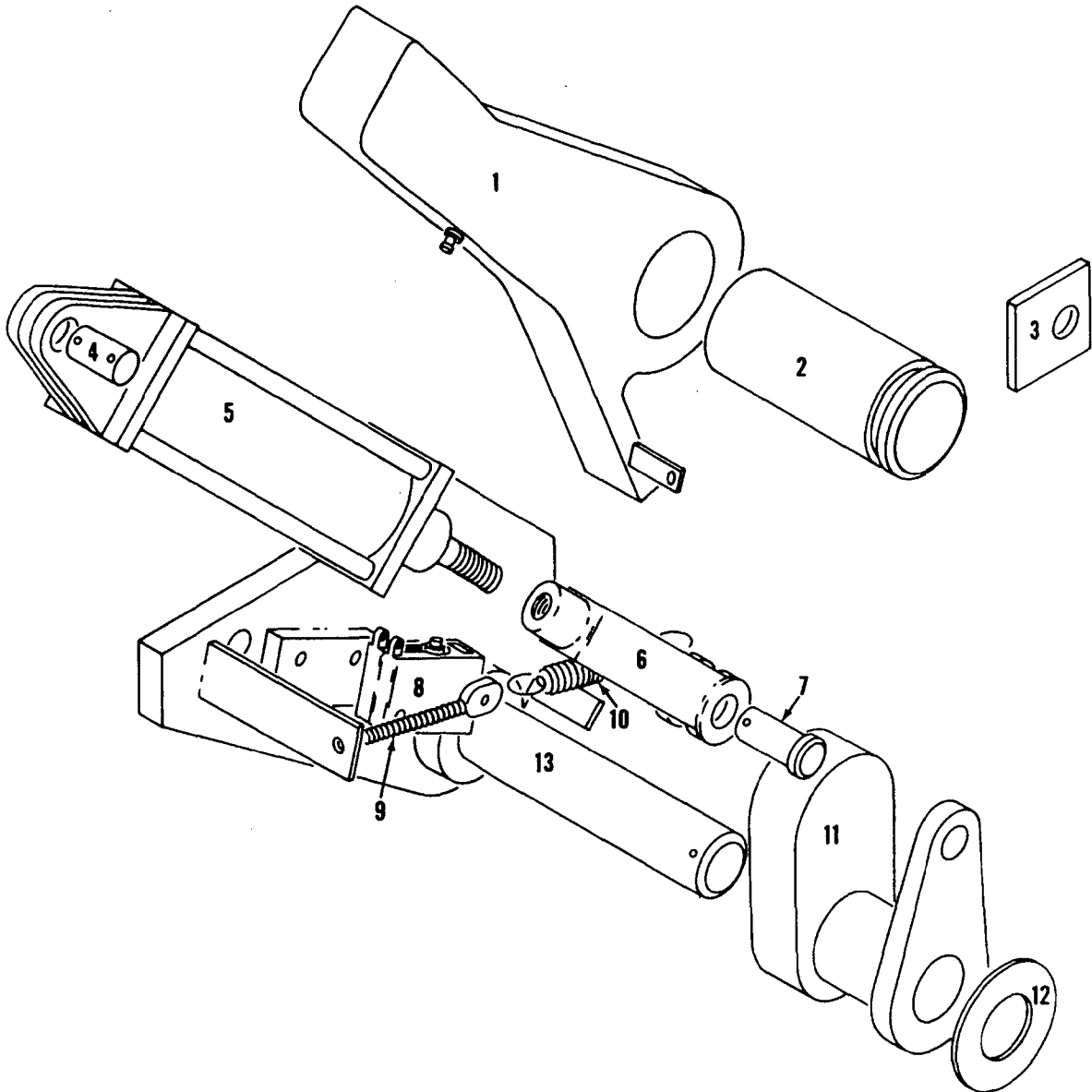
MATERIAL LIST ON BACK

IND. BOOM HOIST DRIVE SHAFT

MANITOWOC ENGINEERING CO.

A Division of The Manitowoc Company, Inc.

Manitowoc, Wisconsin



MASTER

181284A1

181284A1

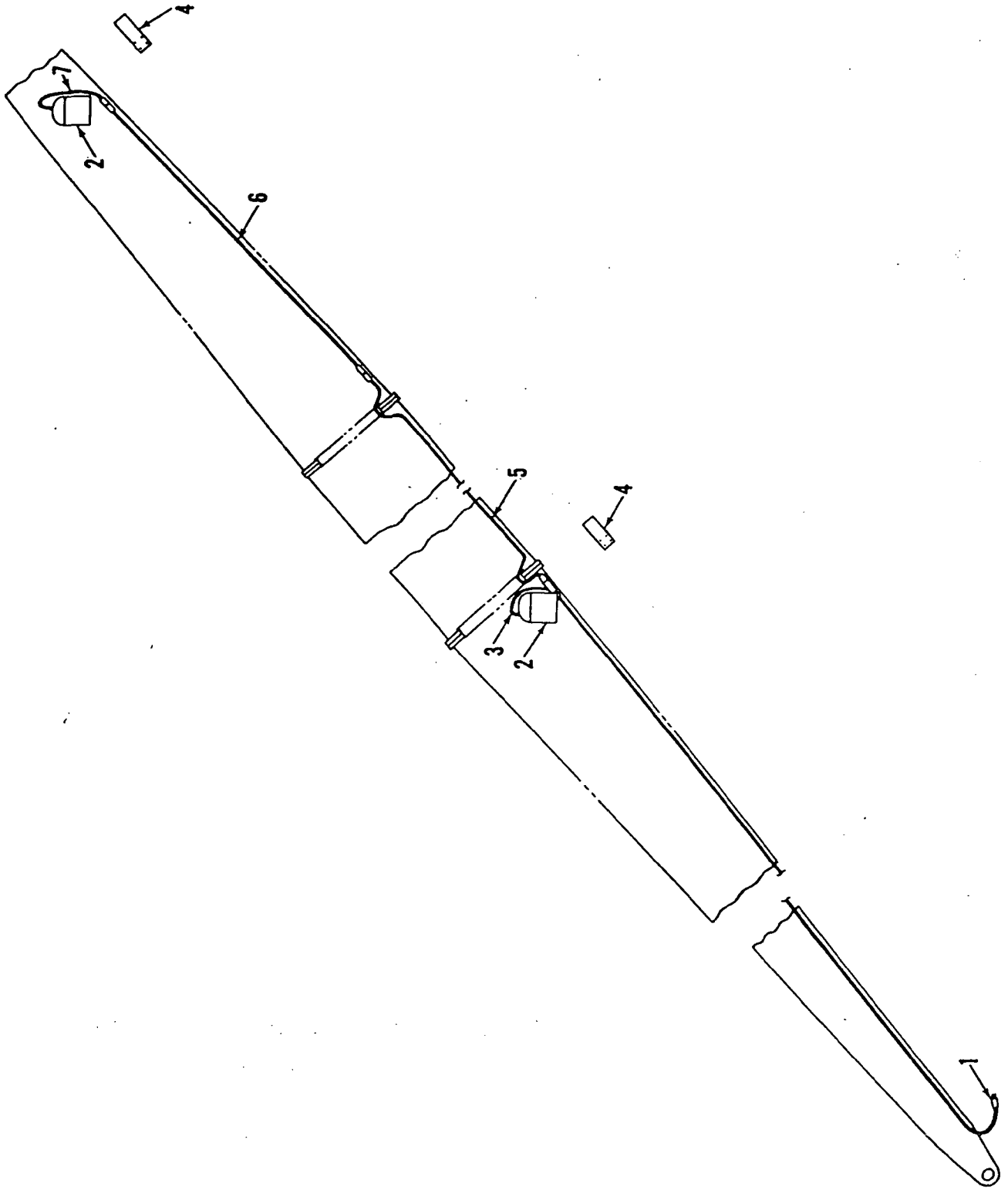
MATERIAL LIST ON BACK

PAWL

MANITOWOC ENGINEERING CO.

A Division of The Manitowoc Company, Inc.

Manitowoc, Wisconsin



MASTER

3111781

MATERIAL LIST ON BACK

BOOM WIRING

48462-1 Cont.	REV. Q	MODEL 3000W, 3600, 3900, 3900T, 3900W, 4000W
---------------	-----------	---

CONTROL CONSOLE

REF. NO.	PART NUMBER	QUANTITY REQUIRED	DESCRIPTION OF PART	VENDORS PART NO.
41	715511	1	VALVE, Hydraulic Winch Control	
42	139244	1	HANDLE, Valve	
43	714440	1	KNOB, Handle	
44	715506	1	VALVE, Front or Right Front Drum Control	
44	182873		VALVE, Right or Right Front Drum Control (Lift Combination Mach. W/out Manual Converter Control) (See Note 5)	
44	183210		VALVE, Right or Right Front Drum Control (Straight Lift W/out Manual Converter Control) (See Note 5)	
44	180848		VALVE, Right or Right Front Drum Control (Vicon W/Out Manual Converter Control) (Superseded by #182873 or 183210)	
45	137496	1	HANDLE, Valve	
46	500812	1	KNOB, Handle	
47	714491	1	VALVE, Left Front or Rear Drum Control (See Note 3)	
47	182873		VALVE, Left Front or Rear Drum Control (Lift Combination W/Out Manual Converter Control) (See Note 5)	
47	183210		VALVE, Left Front or Rear Drum Control (Straight Lift W/Out Manual Converter Control) (See Note 5)	
47	180848		VALVE, Left Front or Rear Drum Control (Vicon W/Out Manual Converter Control) (Superseded by #182873 or 183210)	
48	714491	1	VALVE, Ind. Boom Hoist Control (M3000W, 3600, 3900, 4000W Vicon)	
48	714420	1	VALVE, Ind. Boom Hoist Control (All Non-Vicon and M3900T, 3900W Vicon) (See Note 4 - M3900W W/Hyd. Boom Hoist)	
49	76833	1	BRACKET, Quick Release Valve W/capscrews, hex nuts and lockwashers (Vicon)	
50	714688	as req	VALVE, Quick Release	
51	92398	1	MANIFOLD, Valve Standard	
52	93626	1	NAMEPLATE W/capscrews (M3000W, 3600)	
52	93822	1	NAMEPLATE W/capscrews (M3900, 3900T, 3900W, 4000W)	
53	139241	1	SPACER (M3000W, 3600, 3900, 3900W, 4000W)	
53a	139242	1	BRACKET (M3900T only)	
54	136217	1	BRACKET, Stand Right	
55	139243	1	SPACER W/capscrews (M3900T only)	
56	136218	1	BRACKET, Stand Left	
57	70188	1	HOSE, Flex (9'4" - 2.845 m long)	
58	15054	2	HOSE, Flex (3'4" - 1.016 m long)	
59	472025	2	GROMMET, Rubber	
60	679106	1	TEE (3/4" x 1/2" x 1/2")	
61	288834	1	BUSHING (1/2" x 1/2")	
62	673356	1	SWITCH, Pressure (See Note 2)	
63	543185	2	NIPPLE (3/4" x 2")	
64	511111	1	INJECTOR, Alcohol (Optional)	
65	543185	1	NIPPLE (3/4" x 2") (W/Alcohol Injector Only)	
66	427130	1	FILTER, Air (See Note 2)	
67	406873	1	ELBOW, 90° Reducing (3/4" x 1/2")	
69	79017	1	BRACKET W/capscrews, hex nuts and lockwashers (W/Filter Only)	
68	667227	2	STRAP, Pipe	
70	73366	1	BRACKET W/capscrews, hex nuts and lockwashers (W/Filter and Alcohol Injector)	
71	73368	1	CLAMP W/capscrews, hex nuts and lockwashers (W/Filter and Alcohol Injector)	

REV. Q	48462-1 Cont.
-----------	---------------

PLEASE GIVE MACHINE S/N W/ORDER

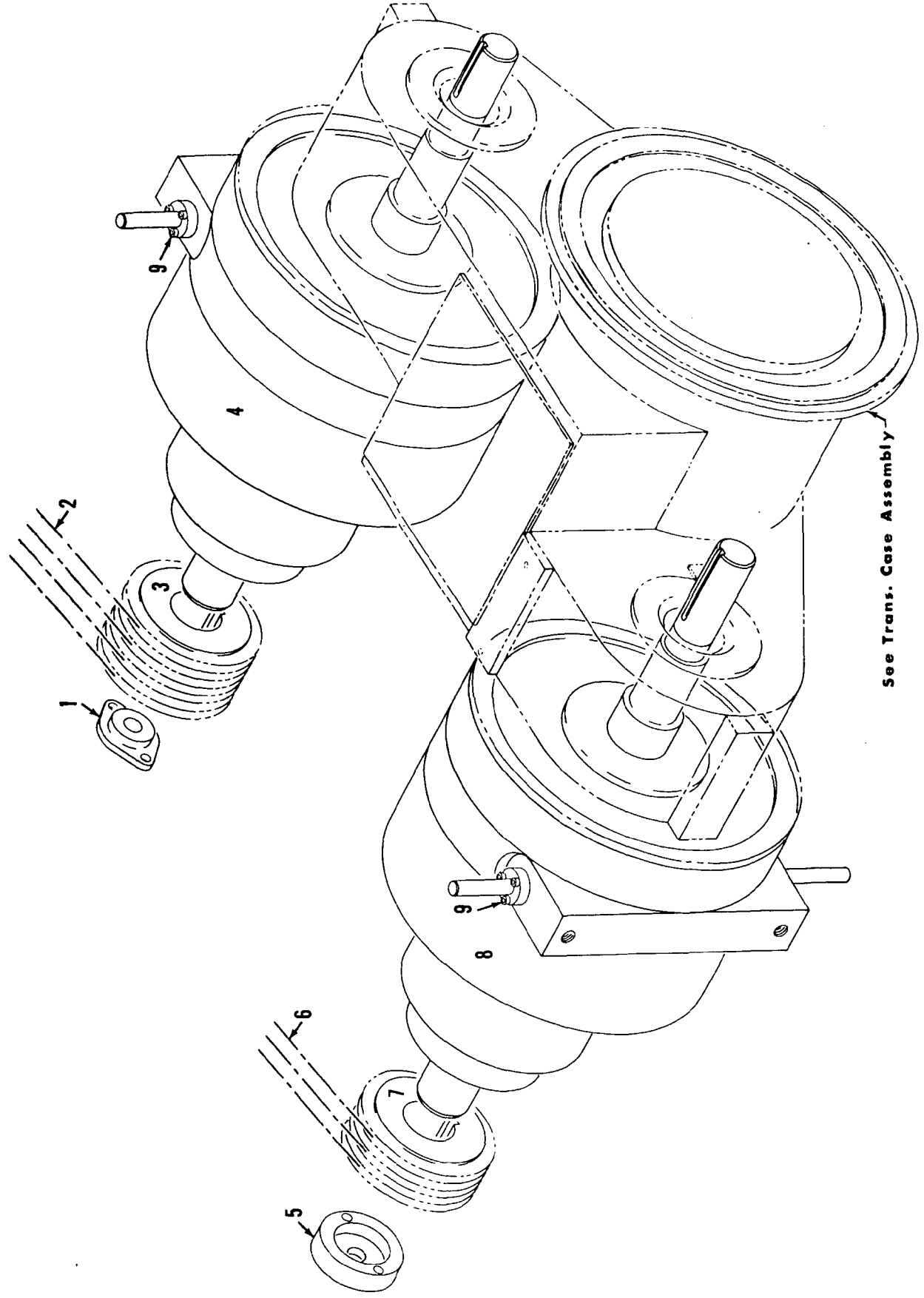
MANIFOLD

TOTAL

PARTS MANUAL ALPHABETICAL INDEX
Group D - Power Components

DESCRIPTION	PUBLICATION	REV	START DATE	END DATE	GROUP
Battery Boxes	49383	A1	03/23/71	06/29/71	D0104
Converter Control	32600	F1	02/23/62	07/19/77	D0601
Converter Control	43091	G1	05/26/63	08/21/81	D0601
Converter Piping	48090	E1	05/22/67	09/18/80	D0701
Converter Piping	48090	F2	05/22/67	04/18/80	D0701
Converter Piping	48090	B3	05/22/67	09/18/80	D0701
Converter Piping	48090	E4	05/22/67	09/18/80	D0701
Converter Piping	48090	E5	04/26/73	09/18/80	D0701
Engine & Clutch Control	181633	D1	12/05/72	05/15/81	D0501
Exhaust Stack	181987	A1	04/06/73		D0102
Instrument Panel/Engine	49301	D1	01/14/75		D0301
Power Plant	49398	H1	06/04/71	08/06/76	D0101
Power Take Off - Transmission Case	180624	C1	11/12/68	04/13/79	D0401
Power Take Off - Transmission Case	48067	C1	04/24/67	04/15/91	D0401
Power Take Off - Transmission Case	48067	B2	04/24/67		D0401

MASTER



See Trans. Case Assembly

42749A2

42749A2

MATERIAL LIST ON BACK

POWER TAKE - OFF ASSEMBLY

CLICK HERE TO **DOWNLOAD** THE COMPLETE MANUAL

- Thank you very much for reading the preview of the manual.
- You can download the complete manual from: www.heydownloads.com by clicking the link below



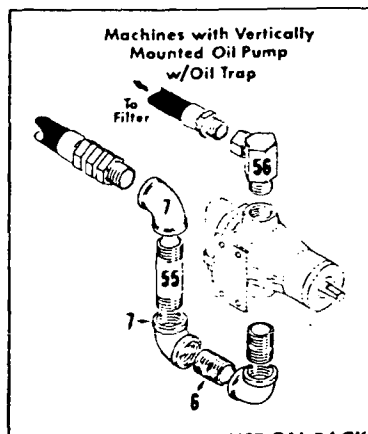
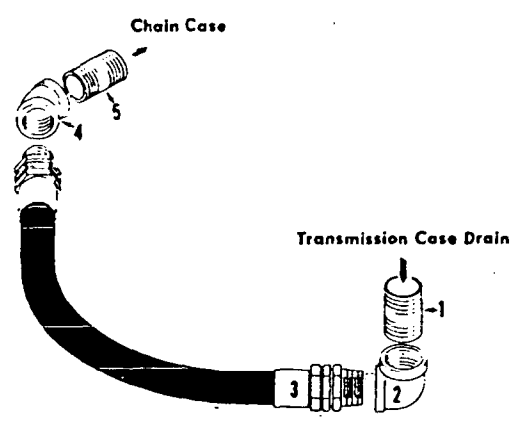
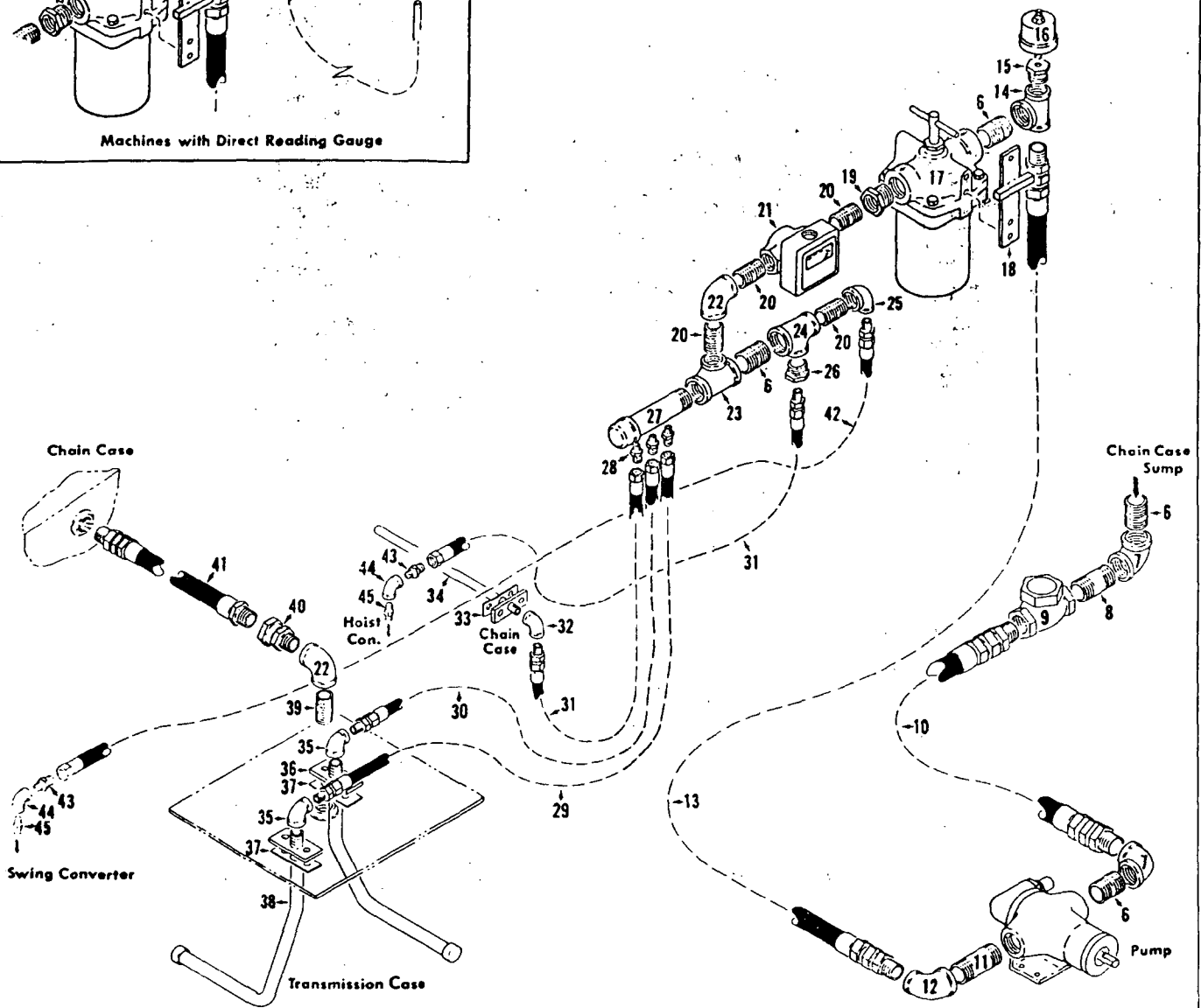
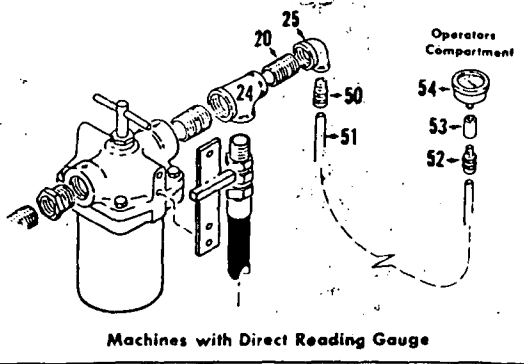
- Please note: If there is no response to CLICKING the link, please download this PDF first and then click on it.

CLICK HERE TO **DOWNLOAD** THE COMPLETE MANUAL

MANITOWOC ENGINEERING CO.

A Division of the Manitowoc Company, Inc.

Manitowoc, Wisconsin



MANITOWOC

LUBRICATION PIPING

MATERIAL LIST ON BACK

48090C5

49398-1 Cont.	REV. H	MODEL 3900T
---------------	-----------	----------------

POWER PLANT
(CUMMINS NT-855-C310)

REF. NO.	PART NUMBER	QUANTITY REQUIRED	DESCRIPTION OF PART	VENDORS PART NO.
52	701010	1	SWITCH, Temperature (205° - High Temp. Alarm)	
53	701034	1	SWITCH, Pressure (Low Oil Press. alarm)	
54	181800	1	BASE, Engine	
55	143914	2	SPACER (See note 1) W/capscrews and lockwashers	
56	77889	1	SUPPORT, Rear Converter	
57	77888	1	SUPPORT, Front Converter	
58	93793	1	CLEANER, Air (Farr)	
59	181914	1	SUPPORT, Air Cleaner	
60	78076	2	FLANGE	
61	71030	1	GASKET	
62	94681	1	STOCK, Exhaust	
62	181987		MUFFLER, Exhaust	
63	19536	8	SHIM	
64	19535	8	STOP, Engine Base	
65	137458	1	BRACKET	
66	93792	1	TUBE, Air Inlet	
67	79290	1	BRACE, Radiator	
69	94552	1	PIPE, Water Outlet	
70	182203	1	PLATE, Shroud	
71	94344	1	PIPE, Water Inlet	
72	93791	1	PIPE, Flex Exhaust	
73		1	CLAMP	CUMMINS 186917
74	73955	1	SUPPORT	
75	140900	2	PAD, Mounting	
76	94343	1	SUPPORT, Engine Front	
77	140901	2	SPACER	
78	33889	1	SHROUD, Fan	
79	143836	1	PLATE, Shroud	
80	143911	2	SUPPORT, Engine W/capscrews and lockwashers (See note 1)	
			NOTE 1: Prior to design change of June 8, 1976, rear engine supports, Ref. #80, were not used. For these engines, delete Ref. Nos. 1,55,80 and use the following:	
1	414004	1	ENGINE, Diesel	
55	140115	2	SPACER	

0-451

REV. H	49398 - 1
-----------	-----------

PLEASE GIVE MACHINE S/N W/ORDER

PARTS MANUAL ALPHABETICAL INDEX
Group E - Lower Structure & Control

DESCRIPTION	PUBLICATION	REV	START DATE	END DATE	GROUP
Carrier	50323	K1	06/06/63	02/15/79	E2701
Hydraulic Outriggers	50478	-	05/13/66	10/16/08	E2801
Hydraulic Outriggers	50478	B0	05/13/66	05/06/85	E2801
Hydraulic Outriggers	50478	C1	05/13/66	09/15/80	E2801
Hydraulic Outriggers	50478	E2	05/13/66	06/18/73	E2801

50478-1 Cont	REV C	MODEL 3900T
--------------	----------	----------------

HYDRAULIC OUTRIGGER CONTROL

REF NO	PART NUMBER	QUANTITY REQUIRED	DESCRIPTION OF PART	VENDORS PART NO
	695466	1	TUBE, Preformed (Center Section)	
	695892-2	1	TUBE, Preformed (Rear Section)	
F	695891-0	1	TUBE, Preformed (Left Rear Jack Up)	
	695891-1	1	TUBE, Preformed (Front Section)	
G	695466	1	TUBE, Preformed (Center Section)	
	695891-2	1	TUBE, Preformed (Rear Section)	
	695890-0	1	TUBE, Preformed (Left Rear Beam Out)	
	695890-1	1	TUBE, Preformed (Front Section)	
H	695466	1	TUBE, Preformed (Center Section)	
	695890-2	1	TUBE, Preformed (Rear Section)	
	695889-0	1	TUBE, Preformed (Left Rear Beam In)	
	695889-1	1	TUBE, Preformed (Front Section)	
J	695466	1	TUBE, Preformed (Center Section)	
	695889-2	1	TUBE, Preformed (Rear Section)	
J	695888	1	TUBE, Preformed (Right Front Jack Up)	
K	695887	1	TUBE, Preformed (Right Front Jack Down)	
L	695886	1	TUBE, Preformed (Right Front Beam In)	
M	695885	1	TUBE, Preformed (Right Front Beam Out)	
N	695884	1	TUBE, Preformed (Left Front Jack Down)	
P	695883	1	TUBE, Preformed (Left Front Jack Up)	
Q	695882	1	TUBE, Preformed (Left Front Beam Out)	
R	695881	1	TUBE, Preformed (Left Front Beam In)	
			NOTE 1 Per design change of March 4, 1971, Oil Tank now furnished by Hendrickson Mfg Co	
			NOTE 2 Per design change of June 4, 1976 the following changes were made Delete Ref Nos 7, 8 and add	
7	429552	1	FITTING, 90°	
8	485754	1	HOSE, Flex (7'0" - 2 134 m)	
			USE 0-244	
				REV C
				50478 - 1

PLEASE GIVE MACHINE S/N W/ORDER

MASTER

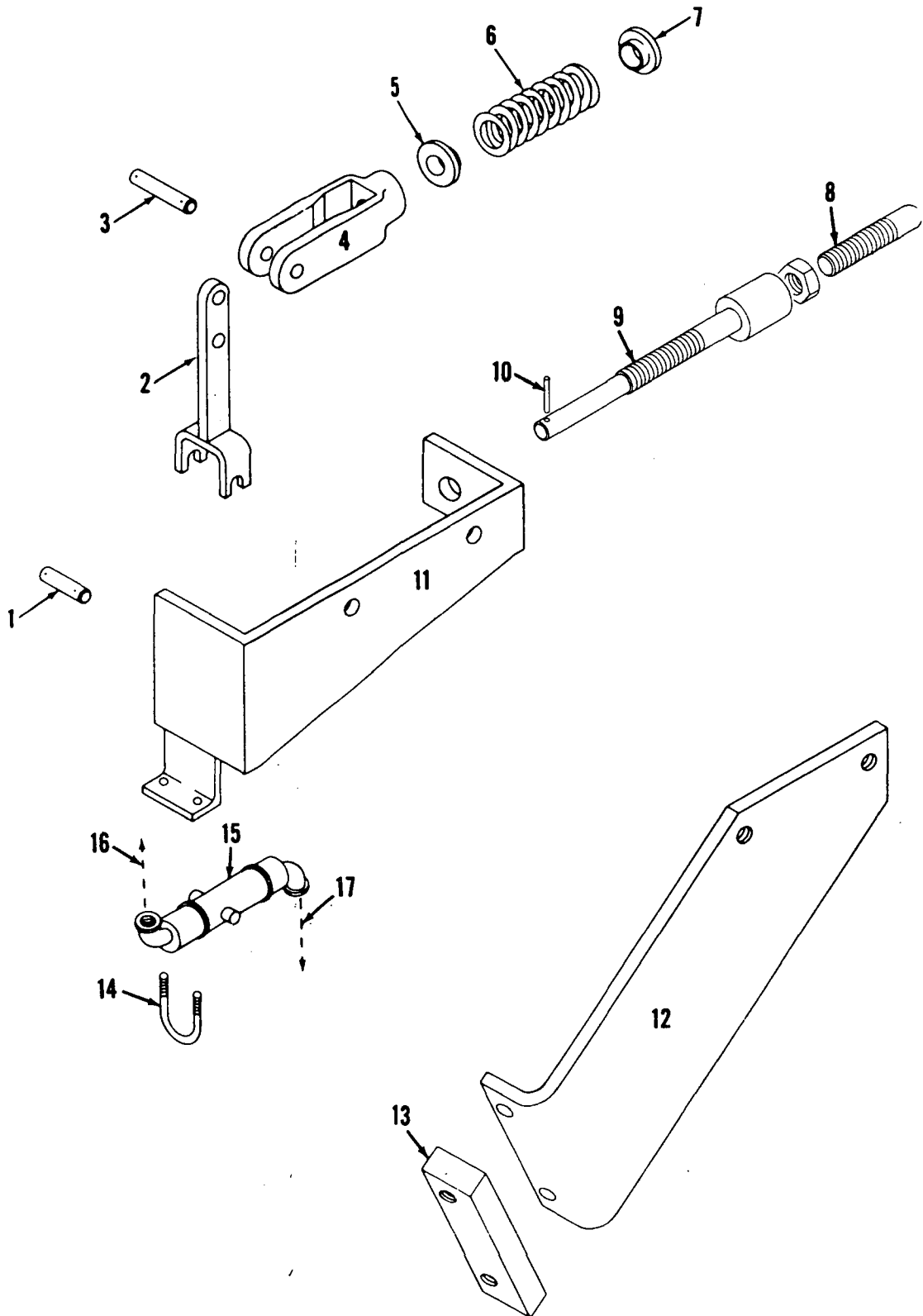
run as a IRO

478 C1 Cont

MANITOWOC ENGINEERING CO.

A Division of The Manitowoc Company, Inc.

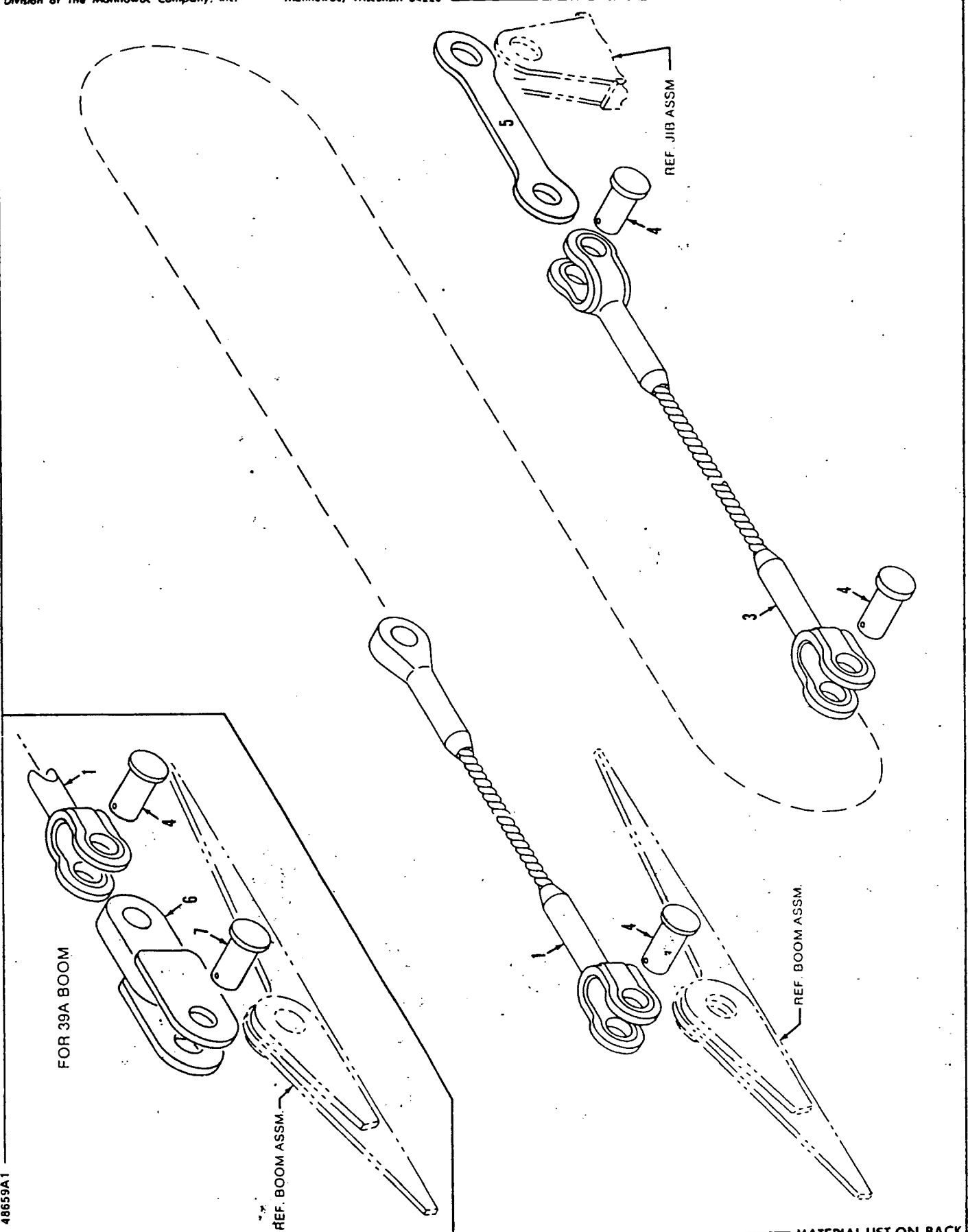
Manitowoc, Wisconsin



3285081

MATERIAL LIST ON BACK

BOOM HOIST AUTOMATIC THROW-OUT



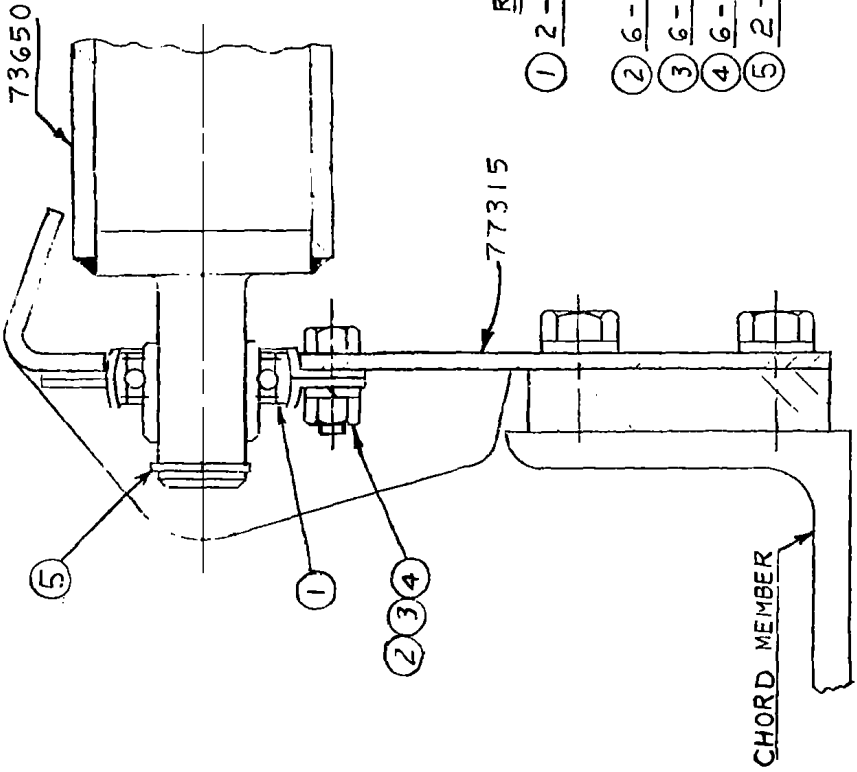
48659A1

MATERIAL LIST ON BACK

JIB BACKSTAY

DWG. NO. 73649	WIRE ROPE ROLLER GUIDE	SCALE 6" = 1'-0"	UNLESS NOTED FRACT. DIM.	DATE 6-30-67
CODE NO.	ASSEMBLY	DR. R/J/L	HOLE DIA.	REVISED DATE 9-13-79 JN
PATTERN NO.	# 8 & # 9 BOOMS	CK.	HOLE CENTERS	REVISIONS (A) REVERSED POSITION OF HEX SCREW
	MODEL 3900	APP.	FINISH	
			MATERIAL	

MANITOWOC ENGINEERING CO.
MANITOWOC, WISCONSIN



NOTE:
SET SCREWS TO BE
REMOVED FROM
BOTH BEARINGS

REQ'D	CODE NO.
① 2 - # F 116 NICE FLANGE MOUNTED BEARING	<u>224218</u>
② 6 - 5/16" - 18 N.C. - 7/8" HEX SCREW	<u>612404</u>
③ 6 - 5/16" - 18 N.C. HEX NUT	<u>546053</u>
④ 6 - 5/16" LOCKWASHER	<u>710303</u>
⑤ 2 - TRUARC RETAINE RING	<u>596823</u>

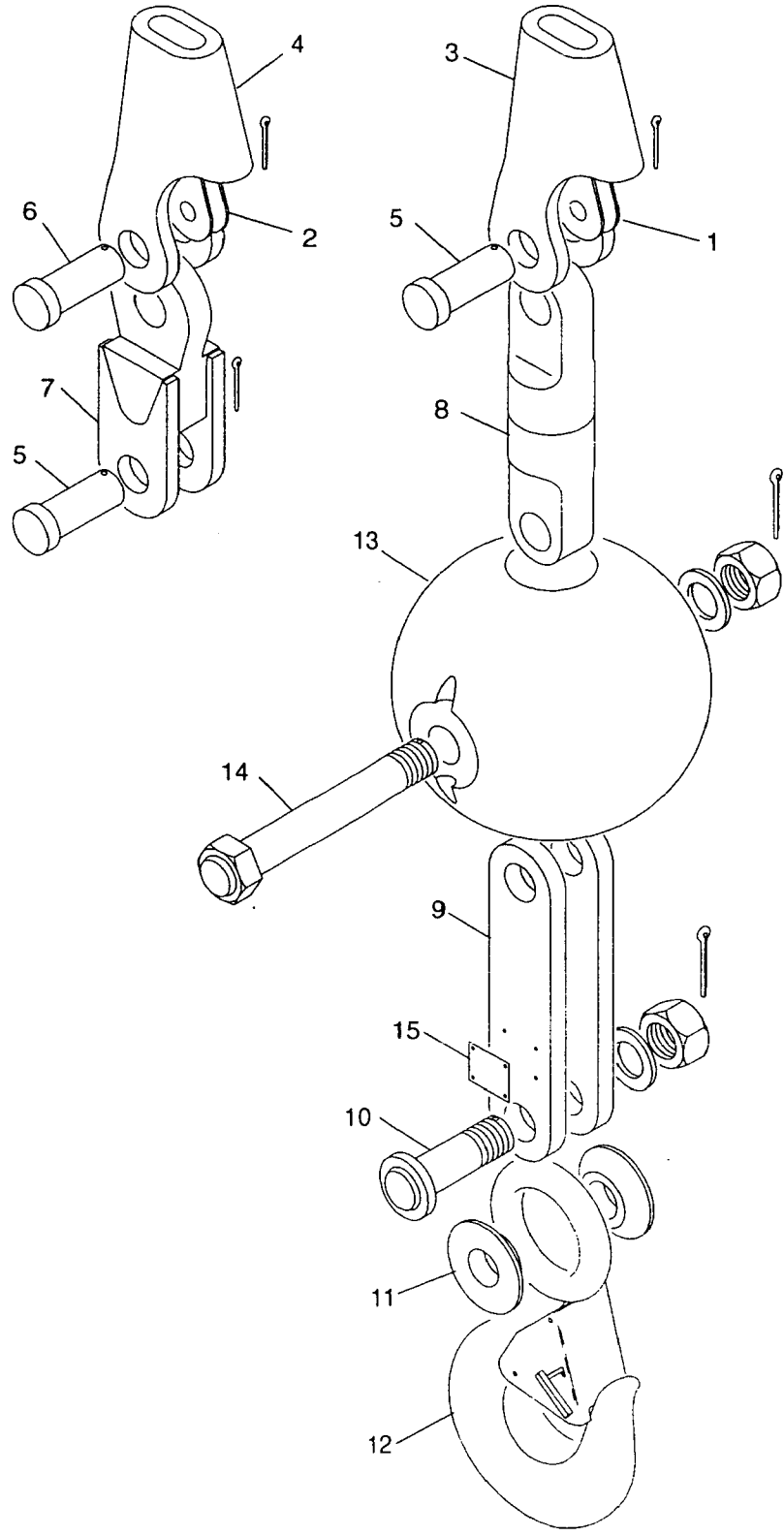
NO REQ'D	DWG NO.	TITLE
<u>1</u>	<u>73650</u>	<u>ROLLER</u>
<u>2</u>	<u>77315</u>	<u>BRG. BRACKET</u>

- 190401
- 65550
- 65541
- 190281
- 47447
- 49761
- 49759
- 65136
- 43991
- 48074
- 42425
- 43258

SUPERSEDES 73649 OF 3-5-65

ASSEMBLIES
USED ON

DWG. NO.
73649



ASSEMBLY
95111

REVISION
C

HOOK & WEIGHT BALL, 15 TON

CPT

1900631 Cont.	REV. D	MODEL 3900T
---------------	-----------	----------------

GANTRY AND BACKHITCH
(TOWER OR LIFT CRANE - 10 OR 12 PART LINE)

Use as Front

REF. NO.	PART NUMBER	QUANTITY REQUIRED	DESCRIPTION OF PART	VENDORS PART NO.
44	596541	2	RING, Snap	
45	277220	2	PENDANT, Hold down (to cab rear) (3'11" - 1.193m) (Also used for "counterweight handling")	
46	564096	4	PIN w/cotter pin	
47	146060	2	LINK, Counterweight handling w/screw dowel	
14	74697	2	BUSHING	
48	78130	2	PLATE, End w/capscrews and lockwashers	
<p><u>NOTE 1:</u> Machine prior to design change of Feb. 15, 1979 w/out link, Ref. 47 used the following:</p>				
36	75045	2	PIN, Gantry (in place of pin 146090)	
	11413	2	LOCK, Shaft w/capscrews and lockwashers (in place of end plate 78130)	

190063 D1 Cont.

REV. D	190063 - 1
-----------	------------

MANITOWOC ENGINEERING CO.

Division of The Manitowoc Company, Inc.

Manitowoc, Wisconsin 54220



TUBING (soft copper)

Code No.	Tube O.D.
696205	3/16
696210	1/4
696214	5/16
696216	3/8
696218	1/2
696219	5/8
696220	3/4



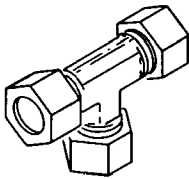
NUT

Code No.	Tube O.D.
424603	3/8
424604	1/2
424605	3/4
424633	5/16
424634	1/4
424635	3/16



FERRULE

Code No.	Tube O.D.
424600	1/4
424601	3/4
424602	3/8
424616	5/16
424617	1/2
424618	1/8
424619	3/16



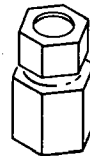
UNION TEE

Code No.	Tube O.D.
429315	1/4
429316	3/8
429317	5/16



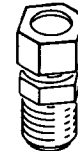
UNION

Code No.	Tube O.D.
429349	3/8
429361	1/4
429362	1/2
429397	5/16



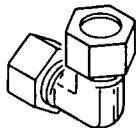
FEMALE CONNECTOR

Code No.	Tube O.D.	Pipe Thread
429312	3/16	1/8
429407	1/4	1/8
429830	1/4	1/4



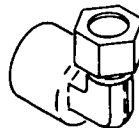
MALE CONNECTOR

Code No.	Tube O.D.	Pipe Thread
429324	3/4	3/4
429328	3/8	1/2
429351	5/16	1/8
429358	1/2	3/4
429359	1/2	3/8
429363	1/4	1/8
429364	1/4	1/4
429365	3/16	1/8
429366	3/8	1/8
429367	3/8	1/4
429368	3/8	3/8



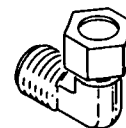
UNION ELBOW

Code No.	Tube O.D.
429372	3/8
429378	1/2
429381	1/4



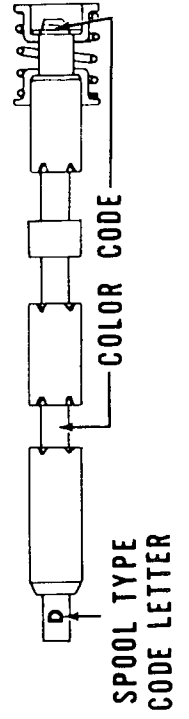
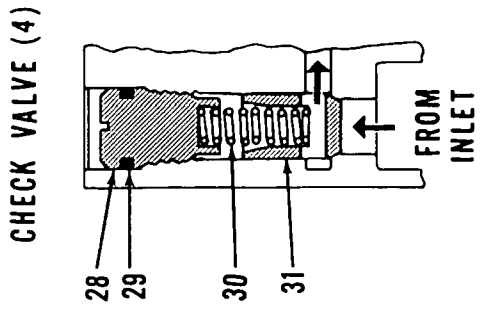
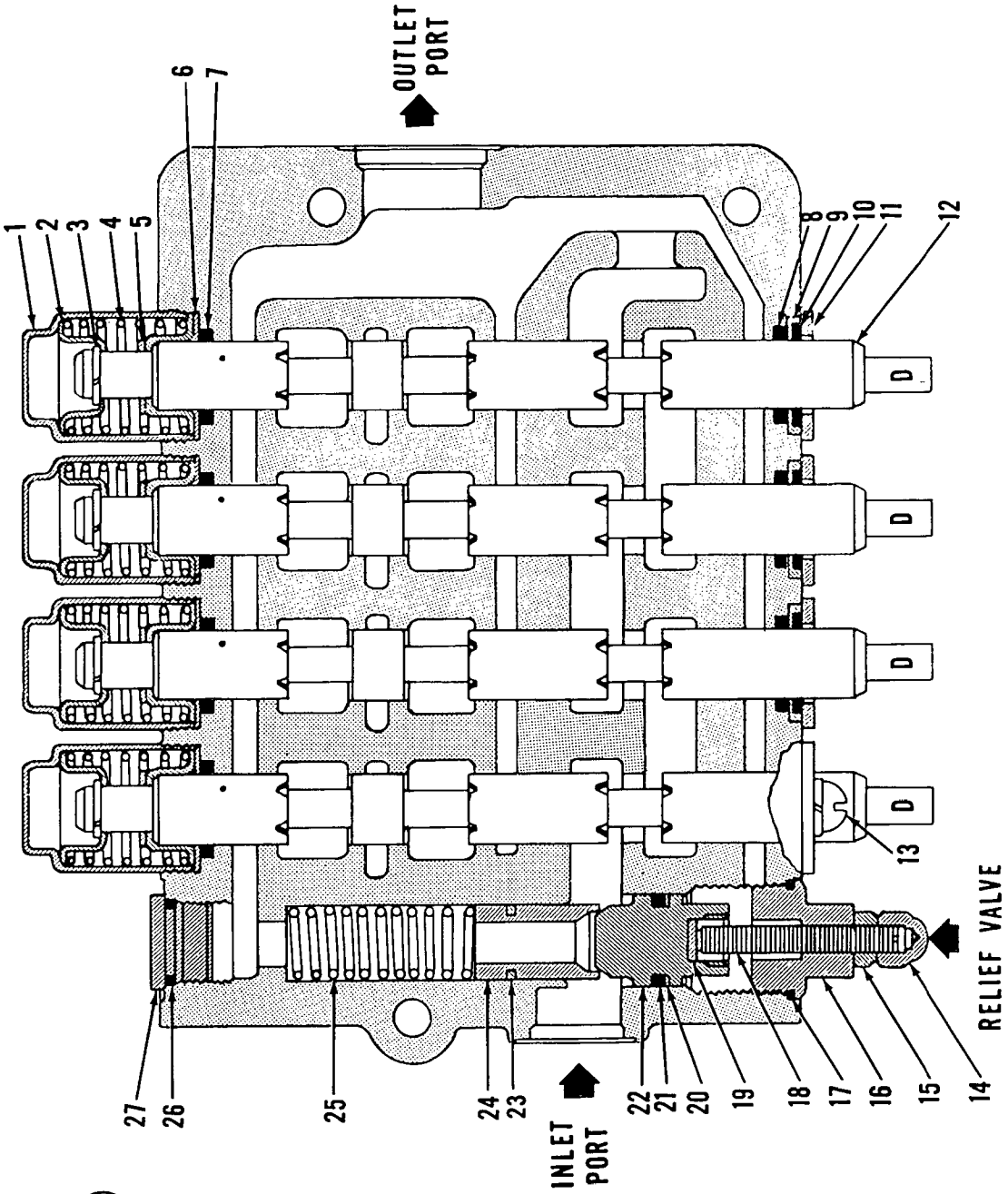
FEMALE ELBOW

Code No.	Tube O.D.	Pipe Thread
429066	1/4	1/8
429825	1/4	1/4



MALE ELBOW

Code No.	Tube O.D.	Pipe Thread
429371	1/2	1/2
429373	3/8	1/8
429374	1/4	1/4
429375	3/8	1/4
429376	1/2	3/8
429380	1/4	1/8
429384	3/8	1/2
429385	5/16	1/8
429386	3/16	1/8
429401	1/2	3/4
429422	3/8	3/8
429453	3/4	3/4



HYDRAULIC CONTROL VALVE

MATERIAL LIST ON BACK

O-244-M1

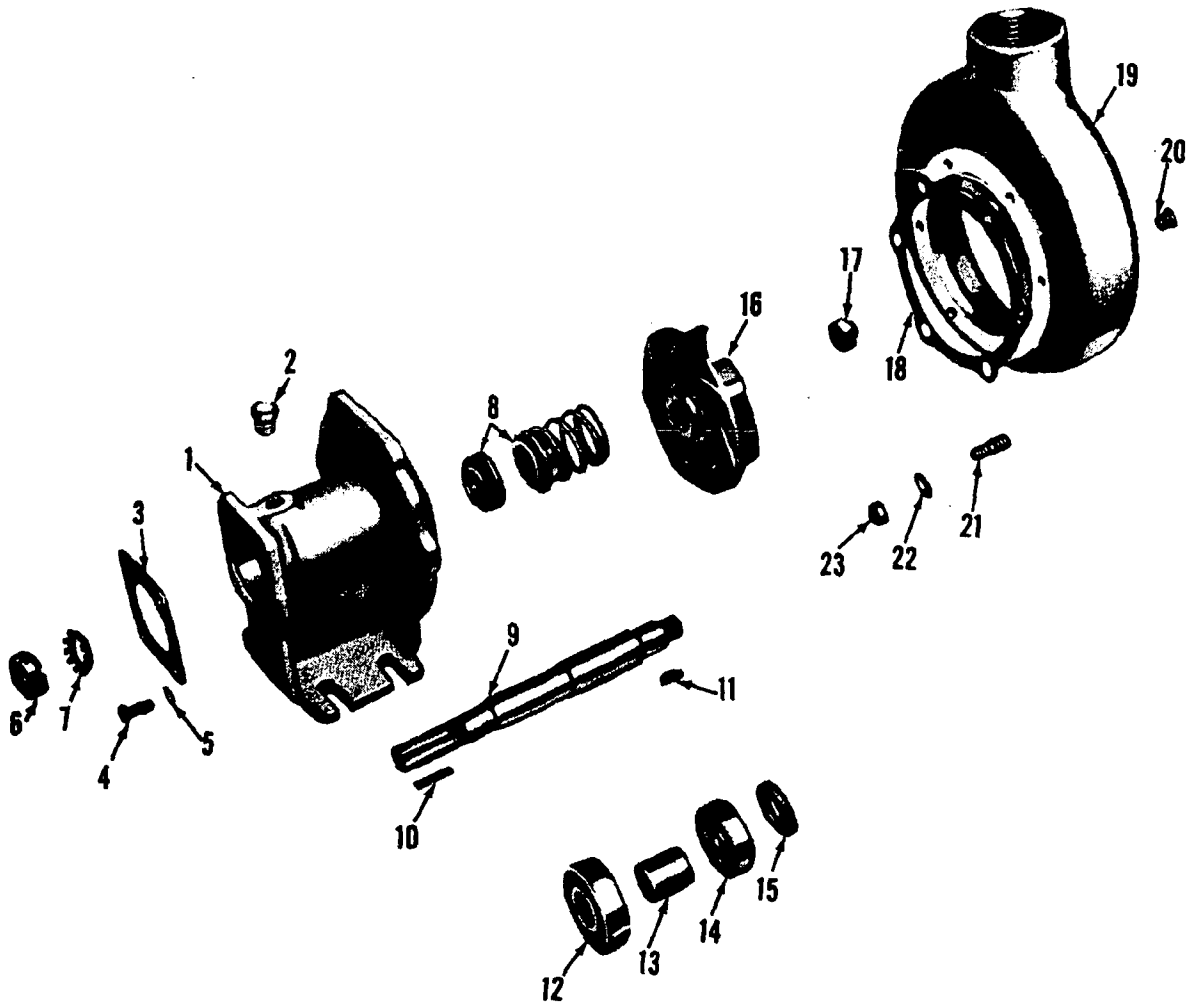
42630-A-5

MANITOWOC ENGINEERING CO.

A Division of The Manitowoc Company, Inc.

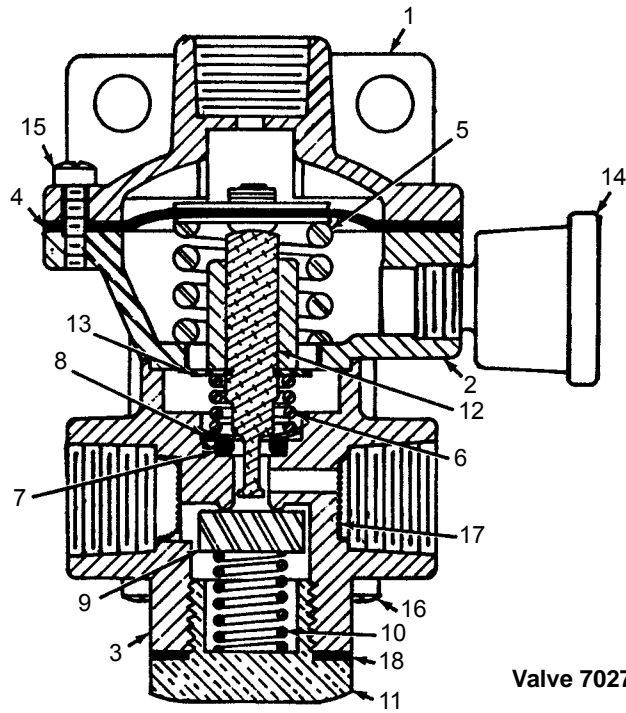
Manitowoc, Wisconsin

MASTER

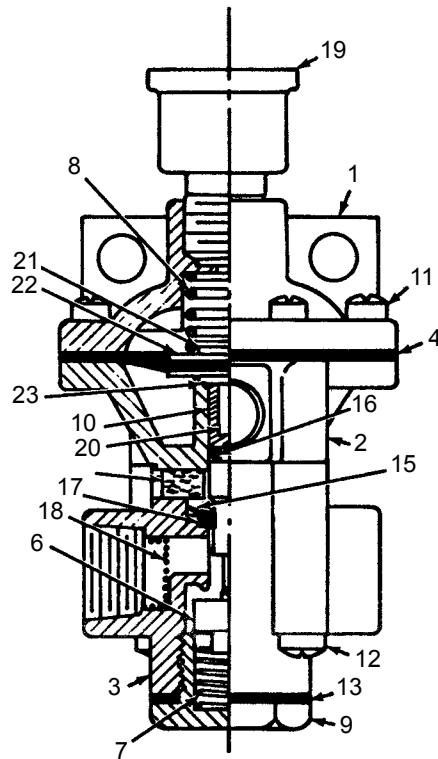


43051A6

MATERIAL LIST ON BACK



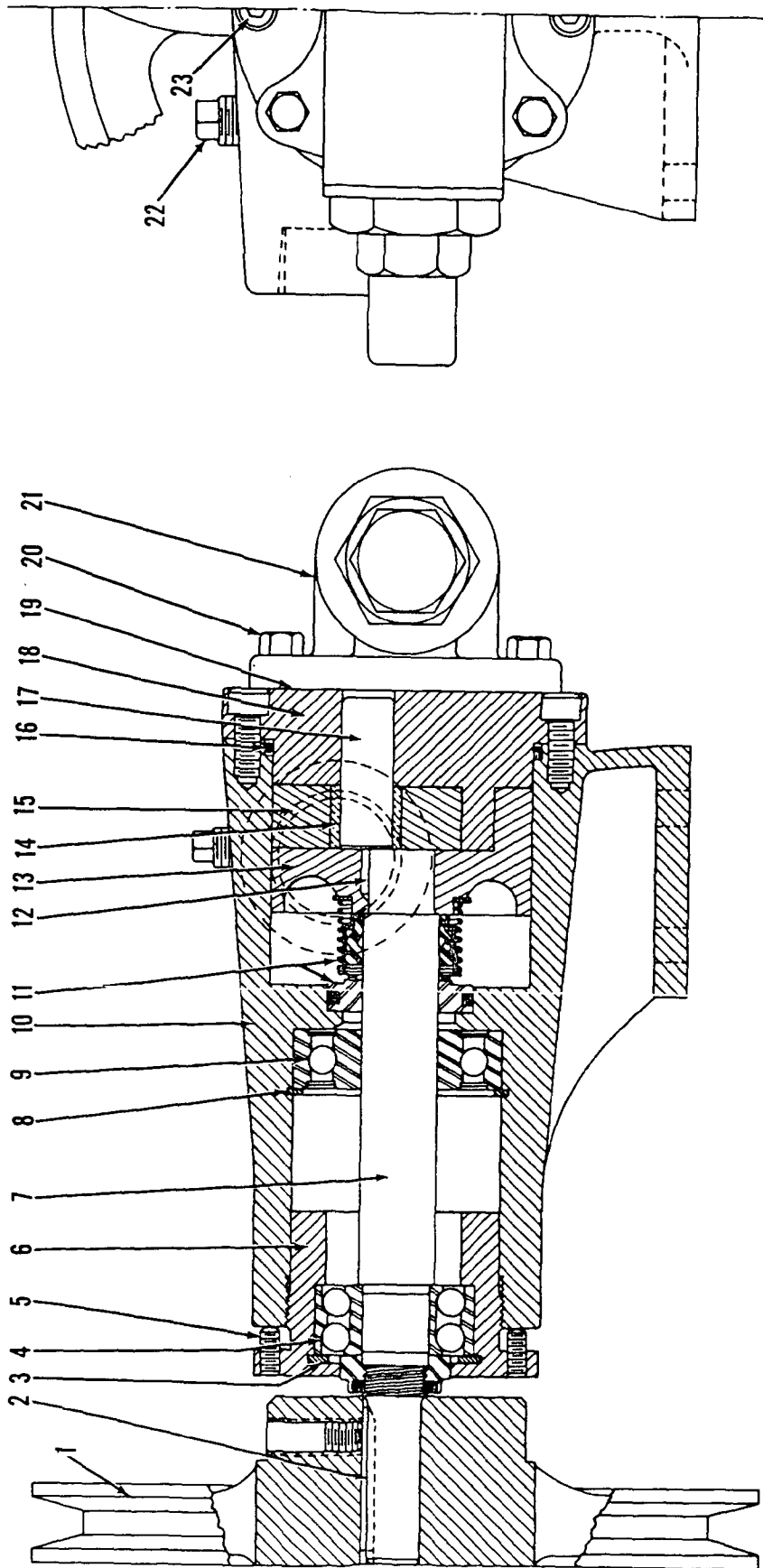
Valve 702755



Valve 702756

ASSEMBLY	REVISION
O-294	E

RELAY VALVE



43051B7

MATERIAL LIST ON BACK

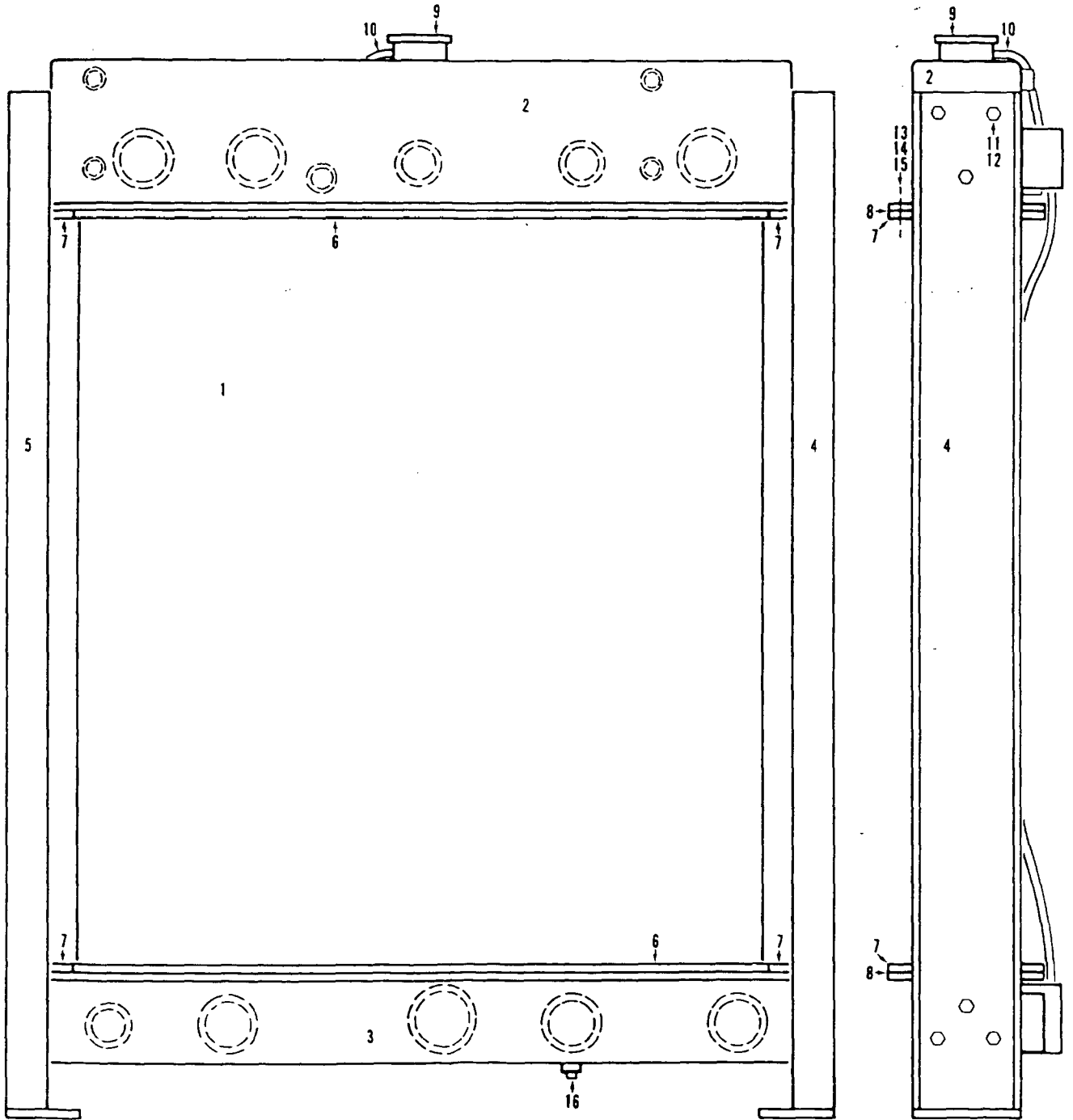
OIL PUMP

0-407 B7

MANITOWOC ENGINEERING CO.

A Division of The Manitowoc Company, Inc.

Manitowoc, Wisconsin



0-45181

MATERIAL LIST ON BACK

RADIATOR

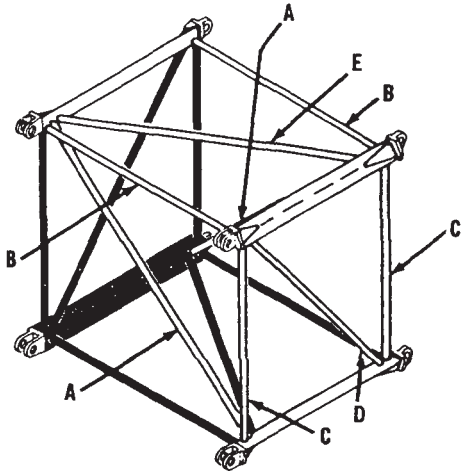
MANITOWOC ENGINEERING CO.

A Division of The Manitowoc Company, Inc.

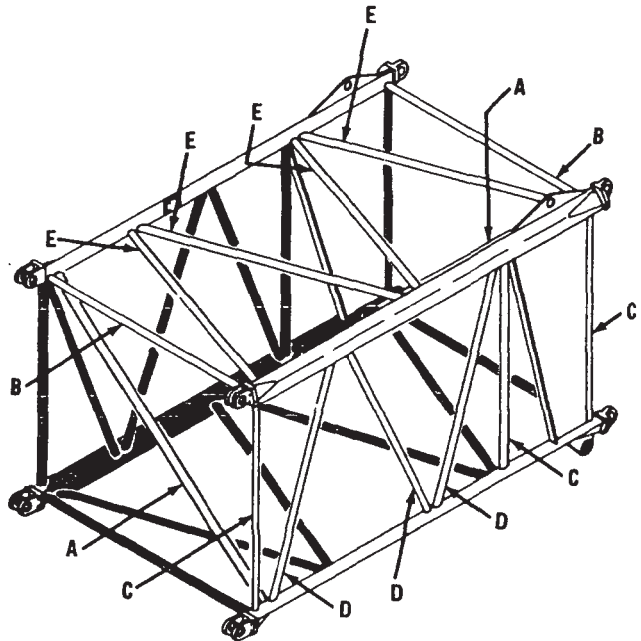
Manitowoc, Wisconsin

Boom #9, 9A, 24
Opposite lacings (black) same unless noted.

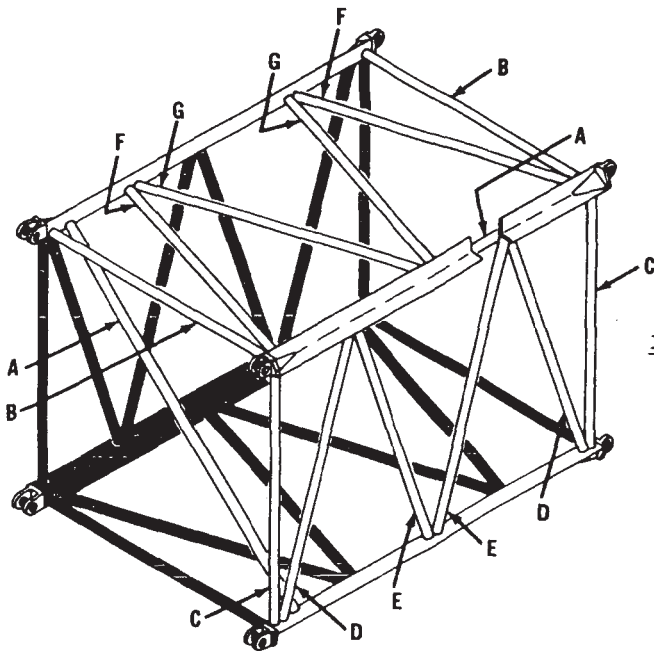
MASTER



5' (1.524m) Insert
#48930
49135
49384



10' (3.048m) Insert
#180789



10' (3.048m) Insert
#32803
420665

To order lacings see Folio #823

0-64-1 Cont.	REV. B	MODEL 2900-3000-4600 Incl.
--------------	--------	----------------------------

AIR CONTROL VALVE (2HA-2Z)
 (MANITOWOC #714495)
 (WESTINGHOUSE #P59339 NEW)
 (WESTINGHOUSE #P54425-0310 OLD)

REF. NO.	PART NUMBER	QUANTITY REQUIRED	DESCRIPTION OF PART	VENDORS PART NO.
13		4	SCREW, Truss Head	P49861-3
14		4	LOCKWASHER	506608
15		2	FLANGE, Valve Retaining	P54463
16	714504	2	RING, "O" (15/16" O.D.)*	P49708-116
17		2	GUIDE, Plunger	P54147
18	714506	2	RING, "O" (7/16" O.D.)*	P49708-11
19		2	PLUNGER, Valve	P54146
20	714525	2	SPRING, Exhaust Valve*	P54144
21		2	SEAT, Inlet Valve	P54145
22	714441	2	RING, "O" (7/8" O.D.)*	P49708-115
23		2	WASHER	P53455-3
24	714442	2	VALVE, Inlet*	P5125
25		2	SPRING, Inlet Valve	539115
26		2	SPACER, Valve	P54794
27		1	BODY	P54306
28		2	LOCKWASHER	506607
29		2	SCREW, Fillet Head	P49835

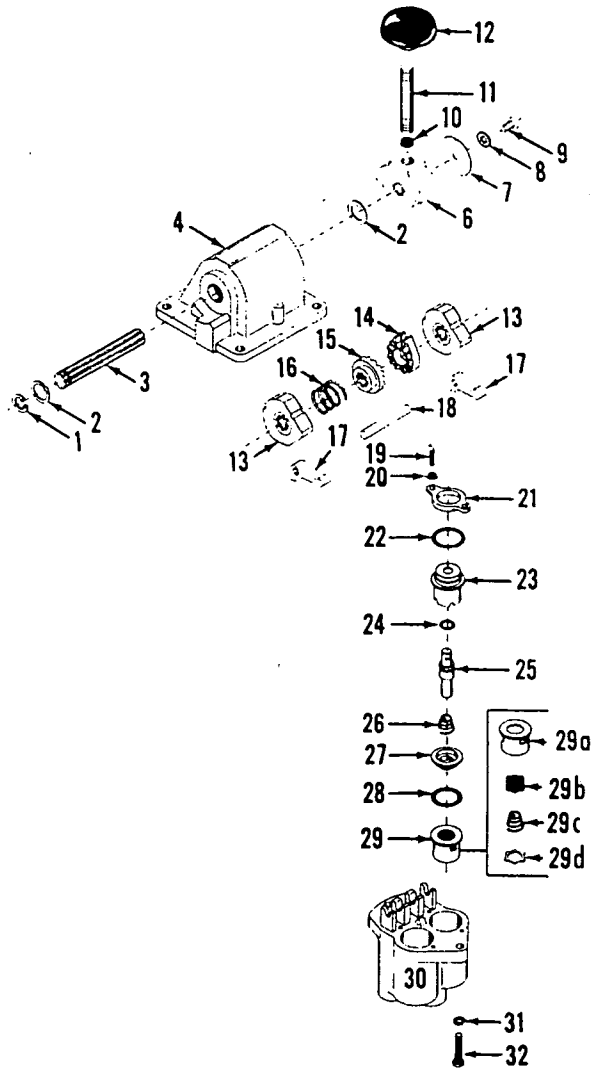
*Recommended to be stocked at all times.
 NOTE: Part numbers at right are Westinghouse. Please so specify if ordering.
 Valve changed approx. July 1969. Check nameplate for correct valve.

Run as a Front

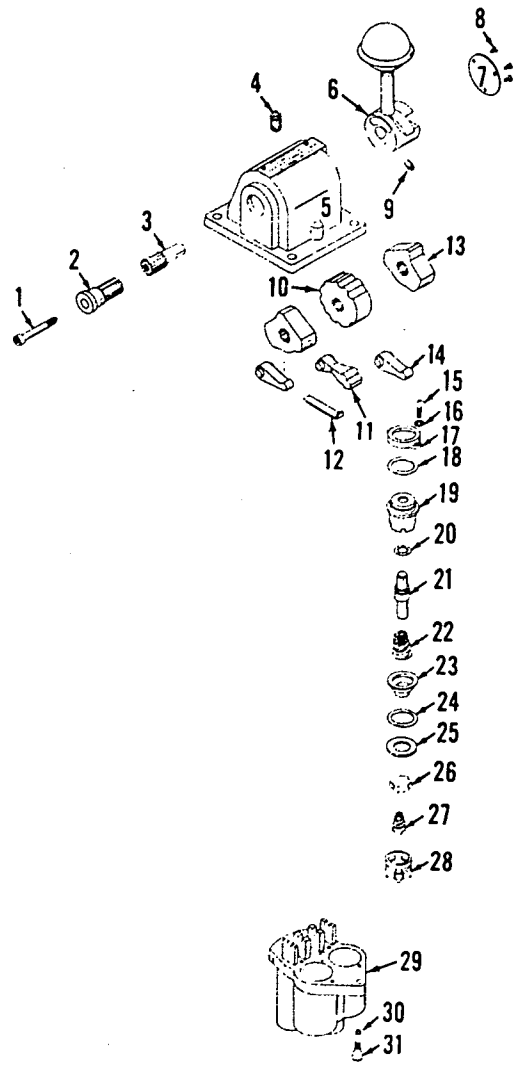
0-64 - 1 B Cont.

MAST

REV. B	0 - 64
--------	--------



P59335



P54426-0312

MATERIAL LIST ON BACK

CONTROL VALVE

CLICK HERE TO **DOWNLOAD** THE COMPLETE MANUAL

- Thank you very much for reading the preview of the manual.
- You can download the complete manual from: www.heydownloads.com by clicking the link below



- Please note: If there is no response to CLICKING the link, please download this PDF first and then click on it.

CLICK HERE TO **DOWNLOAD** THE COMPLETE MANUAL