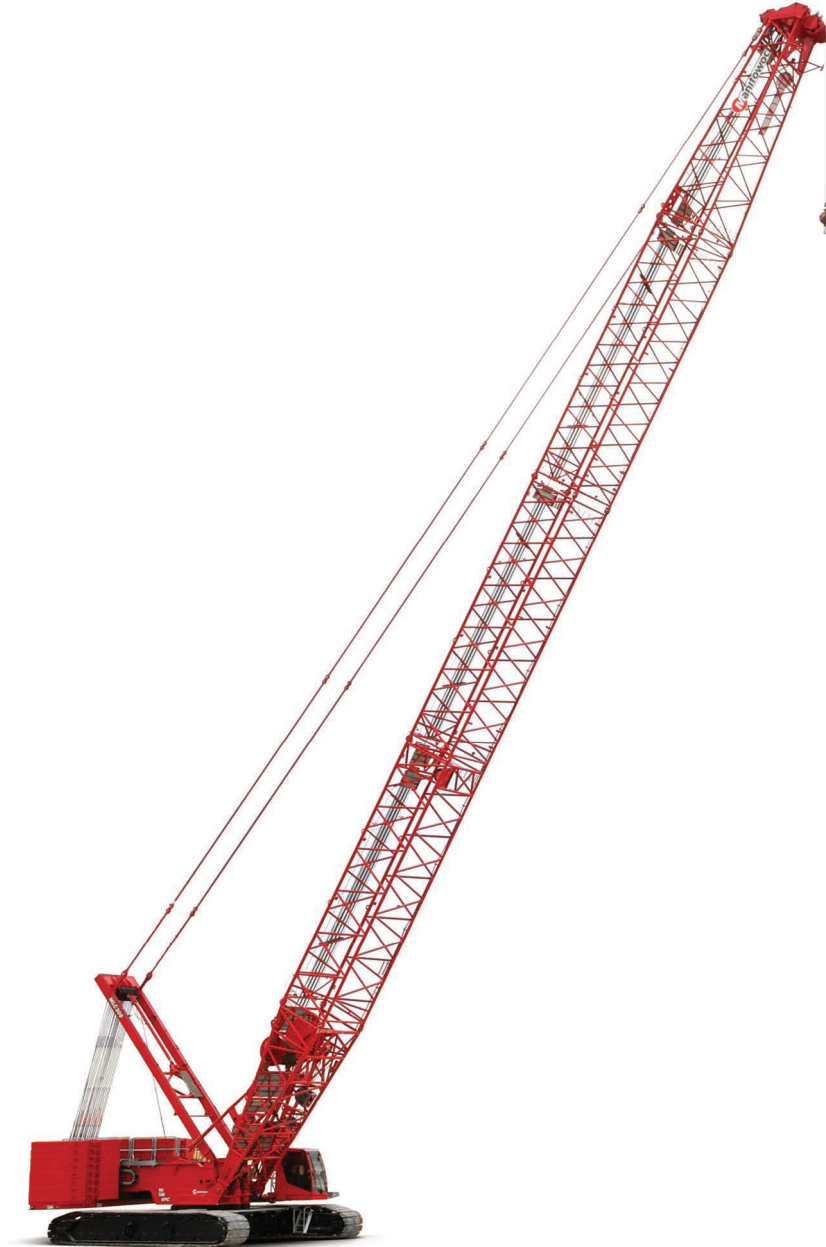


# Manitowoc MLC300

## 604720 Parts Manual Luffing Jib



ENU  
2020-04-20

CLICK HERE TO **DOWNLOAD** THE COMPLETE MANUAL

- Thank you very much for reading the preview of the manual.
- You can download the complete manual from: [www.heydownloads.com](http://www.heydownloads.com) by clicking the link below



- Please note: If there is no response to CLICKING the link, please download this PDF first and then click on it.

CLICK HERE TO **DOWNLOAD** THE COMPLETE MANUAL

Original Copy

**1. CONTROLS, ELECTRICAL**  
**1.1.1 ESI LUFFING JIB BUTT MTG (81031018) Rev D**

<b>LIMIT SWITCH SUBASSY (810249950) Rev C</b>				
<b>Pos.</b>	<b>Part</b>	<b>BOM Qty.</b>	<b>Foot Note</b>	<b>Description</b>
1	3643870	1		ELEC CONNECTOR MALE 3 POLE 13 AMP SEALED
2	4716820	1		GRIP CORD .50 NPT CABLE OD (.312-.437)
3	5726060	1		ELEC CONNECTOR WEDGE LOCK W3P
4	6806940	3		TERMINAL PIN CONTACT MALE
5	810161350	1		SWITCH LIMIT
6	810070200	1 FT		SLEEVE POLYOLEFIN 4.1 SHRINK RATIO 1.2
20	2971820	2 FT		CABLE - SHIELDED 16GA/3COND
21	2972110	1 FT		CABLE WIRE 18 AWG XLPE TYPE TXL BLUE

**1. CONTROLS, ELECTRICAL**  
**1.2.1 ESI ZINC 00MAPI001 (81031020Z) Rev D**

ESI ZINC 00MAPI001 (81031020Z) Rev D				
Pos.	Part	BOM Qty.	Foot Note	Description
1	1424030	1		WEIGHT ZINC RICH 00MAPI001
2	3341010	8 FT		CHAIN STRAIGHT LINK #5/0
3	6246330	1		SHACKLE ANCHOR LOOSE PIN GALV
4	80042207	1		ELEC CONNECTOR MOUNT CLIP
5	80069038	1		CONTROLLER SCM
6	84019147 → page 1-24	1		A2B DEVICE MOD TWO SPRINGS
7	810254610	1		BRACKET ZINC RICH PRIMER
8	810291390	1		SENSOR ANGLE MEMS 200 DEG
10	810329362	1		HOOK BOLT J 1/2 INCH
11	7126131153	4		HHCS 5 X 20.8.8 FULL THREAD
12	7126152053	4		SCR CAP HEX HD M6-1 X 65 8.8 ZC
13	7126191253	1		HHCS M10X25 8.8 FLZN 4017
14	7126211353	2		HHCS M12X30 8.8 FLZN 4017
15	7660180008	2		HEX NUT 1/2-13 UNC GR8
16	7661130004	4		NUT HEX M5-0.8 10 PLN
17	7661150004	4		HEX NUT M6 10FLZN ISO4032
18	7661190103	1		HEX JAM NUT M10 04FLZN ISO4035
19	7661210003	2		HEX NUT M12 8FLZN ISO4032
20	7950180141	2		WASHER FLAT 0.50 X 0.12
21	7951130014	4		F WASHER 5 ST ISO 7089
22	7951130210	4		L WASHER 5 ST DIN 7980
23	7951150210	4		L WASHER 6 FLZN DIN7980
24	7951190014	8		F WASHER 10 200HV FLZN 7089
25	7951210014	2		F WASHER 12 200HV FLZN 7089
26	7951210210	2		L WASHER 12 ST DIN 7980
27	810070010	1 FT		WIRE ROPE 3/64 7X7 SS VC-1/16 CLEAR
28	810070020	2		SLEEVE 1/16 OVAL ALUMINUM
29	810284270	1		PIN SAFETY .25 DIA X 2.50 LG
30	7126191453	3		HHCS M10x35 8.8 FLZN 4017
31	7661190803	3		HEX LOCK NUT M10 8FLZN ISO7040

## 2. ATTACHMENTS

ATTACHMENTS				
Pos.	Part	BOM Qty.	Foot Note	Description
10	1759161 ➡ page 2-3	1		DECAL DANGER BOOM SECTIONS
40	810233981 ➡ page 2-5	1		TRANSITION INSERT ASSY #500/501 6M
100	810247831 ➡ page 2-7	1		BUTT ASSY #500A 6.00 M
160	810266701 ➡ page 2-11	1		TOP ASSY #501, 12M LJ
190	810295381Z ➡ page 2-17	1		INSERT 12.0 M ZINC PRIMER LUFF JIB EQUIP
280	810300091Z ➡ page 2-19	1		INSERT 12.0 M HEAVY ZINC PRIMER LJ EQUIP
390	810316271Z ➡ page 2-21	1		INSERT 6.0 M MEDIUM ZINC LUFF JIB EQUIP
440	810253441Z ➡ page 2-23	1		STRUT #502 MAIN ASSY ZINC RICH
450	810253471Z ➡ page 2-35	1		STRUT JIB #502 ASSY ZINC RICH
480	81033831 ➡ page 2-43	1		CATWALK ASSY 6M BUTT #500A
510	81034071 ➡ page 2-45	1		CATWALK ASSY #501, LJ TOP
520	81034271 ➡ page 2-47	1		INSERT ASSY #501,12M W/SUSP
550	81034942 ➡ page 2-51	1		STOP ASSY, JIB #501A
630	81036402 ➡ page 2-55	1		SPREADER FRAME 500/501 TRANS INSERT
640	81037271 ➡ page 2-57	1		CATWALK #500/501 6M INSERT
750	810340488 ➡ page 2-59	1		DECAL ASSY FOR TYPICAL INSERT (EN)
760	810340489 ➡ page 2-60	1		DECAL ASSY FOR LUFFING JIB (EN)
770	81042560A ➡ page 2-61	1		DECAL ASSY INSERT SHIPMENT
790	84020169 ➡ page 2-63	1		STRUT #502,SHIPPING ASSY

**2. ATTACHMENTS**  
**2.4 TOP ASSY #501, 12M LJ (810266701) Rev E**

TOP ASSY #501, 12M LJ (810266701) Rev E				
Pos.	Part	BOM Qty.	Foot Note	Description
7	5620850	20		PIN COTTER 3/16 DIA X 1.50 LG
8	5621510	2		PIN COTTER 3/8 X 3.50 LG
9	5636400	2		PIN SAFETY .243 OD X 5.00
10	5638030	6		PIN SAFETY .375 X 2.25 LG
13	84024200	2		SAFETY PIN 3.2 DIA X 50.8 LG
14	810254722	4		CLAMP CABLE SPRING CLIP
15	810257340	2		LOAD CELL LINK 145,150 KGS
16	810258190 ▶ page 2-15	2		SHEAVE ASSY 28MM DIA
18	810277822	2		PIN 2 HOLE 19.1 DIA X 287.0 LG
19	84024128	1		TIMBER 38.1X88.9X1064.0
20	810294422	2		BRACKET STRAP
21	810294472	6		BRACKET STRAP
22	810296892	4		COLLAR 70.50MM ID
23	810297082	4		PIN 2 HOLE 12.7 DIA X 98.0 LG
24	810297312	1		PLATE KEEPER 12.0 MM
25	810298062	2		PIN 1 HOLE W/HD 62.0 DIA X 77.8 LG
26	810298072	4		LINK #501 JIB
28	81031805	1		SHAFT 129.95 X 835.0 LG
29	81031844	3		GUIDE WIRE ROPE 50.8 DIA X 760 LG
30	81031849	1		SHAFT M30 X 3.5 X 840
31	81032176	2		PIN 1 HOLE W/HD 100.0 X 86.3 LG
32	81033402	8		CLAMP 130.0 MM DIA SHAFT
34	81034288	4		LINK #501 12M LJ TOP
35	81034289	4		LINK #501 12M LJ TOP
36	81036091	4		PIN 1 HOLE W/HD 69.5 DIA X 86.3 LG
37	81036226	2		STRAP 9.67 M #501 JIB 31.75 X 63.0
38	81036902	2		PIN 1 HOLE W/HD 62.0 DIA X 85.8 LG
39	81036908	4		SHIM .134 (IN) THICK
41	7126151150	8		HHCS 6 X 20 8.8
42	7126191850	20		HHCS M10x55 8.8 FLZN 4014
44	7126243550	8		HHCS M16-2 X 180 8.8 ZC
45	7127271453	2		HHCS FULL THREAD 20 X 35 10.9
46	7661150803	8		HEX LOCK NUT M6 8FLZN ISO7040
48	7661190803	24		HEX LOCK NUT M10 8FLZN ISO7040
49	7661240004	16		HEX NUT M16 10FLZN ISO4032
50	7661340803	1		HEX LOCK NUT M30 8FLZN ISO7040
51	7951150014	16		F WASHER 6 200HV FLZN ISO7089
53	7951190014	48		F WASHER 10 200HV FLZN 7089
54	7951240220	8		L WASHER 16 FLZN DIN127B
55	7951340015	1		F WASHER 30 300HV FLZN 7089
57	A117992	4		PIN 2 HOLES 12.7 DIA X 93.0 LG
58	A118002	4		COLLAR 66 MM ID

CLICK HERE TO **DOWNLOAD** THE COMPLETE MANUAL

- Thank you very much for reading the preview of the manual.
- You can download the complete manual from: [www.heydownloads.com](http://www.heydownloads.com) by clicking the link below



- Please note: If there is no response to CLICKING the link, please download this PDF first and then click on it.

CLICK HERE TO **DOWNLOAD** THE COMPLETE MANUAL

## 2.7 INSERT 6.0 M MEDIUM ZINC LUFF JIB EQUIP (810316271Z) Rev A

INSERT 6.0 M MEDIUM ZINC LUFF JIB EQUIP (810316271Z) Rev A				
Pos.	Part	BOM Qty.	Foot Note	Description
1	5620850	8		PIN COTTER 3/16 DIA X 1.50 LG
2	810297260	2		STRAP #500 JIB ZINC RICH
3	810298062	4		PIN 1 HOLE W/HD 62.0 DIA X 77.8 LG
4	810298070	4		LINK #500 BOOM ZINC RICH PRIMER
5	A117992	4		PIN 2 HOLES 12.7 DIA X 93.0 LG
6	A118002	4		COLLAR 66 MM ID

## 2.8.3 SPREADER ASSY #501 MAIN STRUT ZINC (81033881Z) Rev A

SPREADER ASSY #501 MAIN STRUT ZINC (81033881Z) Rev A				
Pos.	Part	BOM Qty.	Foot Note	Description
1	5620850	16		PIN COTTER 3/16 DIA X 1.50 LG
2	810342470	4		LINK CONNECTING ZINC RICH PRIMER
3	810342700	4		STRAP BACKSTAY ZINC RICH
4	810342930	2		STRAP ZINC RICH PRIMER
5	810342940	1		SPREADER ZINC RICH 00MAPI001
6	81034298	4		PIN 1 HOLE W/HD 65.0 DIA X 82.3 LG
7	81034465	4		PIN 1 HOLE W/HD 65.0 DIA X 104.3 LG
8	A117992	8		PIN 2 HOLES 12.7 DIA X 93.0 LG
9	A118002	8		COLLAR 66 MM ID

STRUT SHIPPING, #502 (84039032) Rev A				
Pos.	Part	BOM Qty.	Foot Note	Description
1	84039038	1		STRUT SHIPPING, OUTER
2	84039098	1		TUBE SHIPPING, INNER
3	810296652	1		PIN 1 HOLE W/HD 30.00 X 96.50 LG
4	84024200	1		SAFETY PIN 3.2 DIA X 50.8 LG

2. ATTACHMENTS

2.13 STOP ASSY, JIB #501A (81034942) Rev H

STOP ASSY, JIB #501A (81034942) Rev H				
Pos.	Part	BOM Qty.	Foot Note	Description
1	5621060	2		PIN COTTER 1/4 DIA X 1.75 LG
2	5621740	2		PIN COTTER 1/2 DIA X 4.50 LG
3	84036376	1		STOP JIB, INNER TUBE
4	81037872	1		STOP JIB OUTER TUBE
5	81037876	2		BAR JIB STOP GUIDE
7	84033292	1		WEAR PAD LJ STOP
8	81039343	1		PIN 2 HOLE 65.24 DIA X 102.0 LG
9	7126171154	4		SHCS M8x20 8.8 FLZN 4762
10	7661290804	4		HEX LOCK NUT M24 10FLZN ISO7040
11	7951170014	4		F WASHER 8 200HV FLZN ISO7089
12	7951290095	4		F WASHER 24 HST B18.22M
13	81037866	1		SPRING 149.2X31.8X1565.3
14	81039751	1		LOCK #501 JIB STOP
15	81039755	2		WASHER THRUST NYLON FOR 10 MM SHAFT
17	81039757	4		PIN 1/4 DIA X 1.75 LG
18	81039758	1		PIN 10.0 X 139.0 LG
19	81039759	1		PIN 14.0X83.0 LG
20	81039760	1		SPRING RH TORSION #501 JIB STOP
21	81039761	1		SPRING RH TORSION #501 JIB STOP
22	81039764	1		BUSHING 12.034X10.089X50.0
23	81039792	1		BUSHING 16.035 X 14.089 X 24.0
27	81040409 → page 2-53	1		STRUT JIB STOP ASSY
28	5620420	2		PIN COTTER 1/8 DIA X 0.75 LG
29	6177860	4		SLOT RMS 10-24UNC X 0.50 GR 1
30	7103010	4		L WASHER MEDIUM #10 ST B18.21.1
31	7951190220	4		L WASHER 10 FLZN DIN127B
32	81041923	2		KEY 1/8 (IN)
33	81041932	1		COVER STOP LATCH
34	81041938	2		COVER BRUSH
35	7126191353	4		HHCS M10X30 8.8 FLZN 4017
36	81042250	2		RETAINING RING 14.0 MM
37	84033279	2		LATCH NYL #502 JIB STOP

Original Copy

81038966 (PIN COTTER 1 HOLE W/HD 12.7 DIA X 25.0 L) . . . . .	2-36	81040446 (BUMPER PLASTIC) . . . . .	2-54
81039284 (PIN 2 HOLE 12.7 DIA X 167.0 LG) . . . . .	2-8, 2-36	81040459 (THREADED ROD STRUT GUIDE BAR) . . . . .	2-54
81039285 (PLATE ANTIROTATION) . . . . .	2-8	81040628 (LIMIT SWITCH JIB STOP MAX ANGLE) . . . . .	1-9
81039304 (PIN #502 JIB STRUT HINGE) . . . . .	2-36	81040633 (CATWALK 50.8X724X924) . . . . .	2-44
81039305 (PIN #501 JIB HINGE) . . . . .	2-8	81041842 (ESI JIB MAX ANGLE) . . . . .	1-7
81039323 (PLATE 10 GA X 86 X 86) . . . . .	2-6	81041843 (PLATE STOP CONTACT) . . . . .	1-9
81039328 (PIN 1 HOLE W/HD 62.0 DIA X 92.0 LG) . . . . .	2-6	81041905 (WIRING HARNESS WJB1) . . . . .	1-5
81039341 (PIN 2 HOLE 25.4 DIA X 120.0 LG) . . . . .	2-54	81041923 (KEY 1/8 (IN)) . . . . .	2-52
81039343 (PIN 2 HOLE 65.24 DIA X 102.0 LG) . . . . .	2-52	81041932 (COVER STOP LATCH) . . . . .	2-52
81039364 (PIN 2 HOLE 30.0 X 86 LG) . . . . .	2-6	81041938 (COVER BRUSH) . . . . .	2-52
81039401 (CATWALK 241.3 MM 409.2 MM) . . . . .	2-58	81042181 (WIRING HARNESS WJB4) . . . . .	1-5
81039439 (LINK #500/501 BOOM) . . . . .	2-6	81042250 (RETAINING RING 14.0 MM) . . . . .	2-52
81039751 (LOCK #501 JIB STOP) . . . . .	2-52	81042560A (DECAL ASSY INSERT SHIPMENT) . . . . .	2-2
81039755 (WASHER THRUST NYLON FOR 10 MM SHAFT) . . . . .	2-52	84018474 (BRACKET STRAP SPACER) . . . . .	2-56
81039757 (PIN 1/4 DIA X 1.75 LG) . . . . .	2-52	84019147 (A2B DEVICE MOD TWO SPRINGS) . . . . .	1-23
81039758 (PIN 10.0 X 139.0 LG) . . . . .	2-52	84019149 (BRACKET NAMEPLATE "84019147") . . . . .	1-25
81039759 (PIN 14.0X83.0 LG) . . . . .	2-52	84020076 (WIRE ROPE #502 STRUT SHIP ASSY) . . . . .	2-64
81039760 (SPRING RH TORSION #501 JIB STOP) . . . . .	2-52	84020077 (SHACKLE ANCHOR,PIN 3.25 MTON) . . . . .	2-64
81039761 (SPRING RH TORSION #501 JIB STOP) . . . . .	2-52	84020079 (PIN 2 HOLE 19.1 DIA X 241.2 LG) . . . . .	2-6, 2-48
81039764 (BUSHING 12.034X10.089X50.0) . . . . .	2-52	84020169 (STRUT #502,SHIPPING ASSY) . . . . .	2-2
81039792 (BUSHING 16.035 X 14.089 X 24.0) . . . . .	2-52	84020349 (PIN 57.9 X 72.4 LG W/HD) . . . . .	2-64
81039877 (BRACKET STRUT SUPPORT) . . . . .	2-10	84022171 (SENSOR PROX PNP 15 MM) . . . . .	1-7
81039879 (WEAR PAD 25.4 X 130.0 X 255.0 6PA MOS2) . . . . .	2-10	84023910 (PLATE 6X80X146.8) . . . . .	2-48
81039884 (WEAR PAD 25.4 X 70.0 X 255.0 6PA MOS2) . . . . .	2-10	84023912 (PLATE 6X80X80) . . . . .	2-6, 2-13, 2-48
81039889 (BRACKET STRUT SUPPORT ASSY) . . . . .	2-8	84024128 (TIMBER 38.1X88.9X1064.0) . . . . .	2-12
81040019 (SHIM 1.5) . . . . .	2-8	84024200 (SAFETY PIN 3.2 DIA X 50.8 LG) . . . . .	2-6, 2-12, 2-36, 2-42, 2-48
81040020 (SHIM 1.5) . . . . .	2-8	84024240 (PIN 1 HOLE 12.7 DIA X 96.2 LG) . . . . .	2-6
81040145 (PIN 2 HOLE 25.4 DIA X 150.0 LG) . . . . .	2-54	84025425 (CABLE REEL HAND CRANK) . . . . .	1-7
81040393 (STRUT JIB STOP LOWER MACH) . . . . .	2-54	84027007 (HEX NUT 3/4-10UNC GALV) . . . . .	2-44, 2-46, 2-50, 2-58
81040403 (STRUT JIB STOP UPPER MACH) . . . . .	2-54	84029063 (LINK CROSS) . . . . .	2-13
81040409 (STRUT JIB STOP ASSY) . . . . .	2-52	84029295 (PIN WITH HEAD 63.5 X 110.6) . . . . .	2-13

CLICK HERE TO **DOWNLOAD** THE COMPLETE MANUAL

- Thank you very much for reading the preview of the manual.
- You can download the complete manual from: [www.heydownloads.com](http://www.heydownloads.com) by clicking the link below



- Please note: If there is no response to CLICKING the link, please download this PDF first and then click on it.

CLICK HERE TO **DOWNLOAD** THE COMPLETE MANUAL