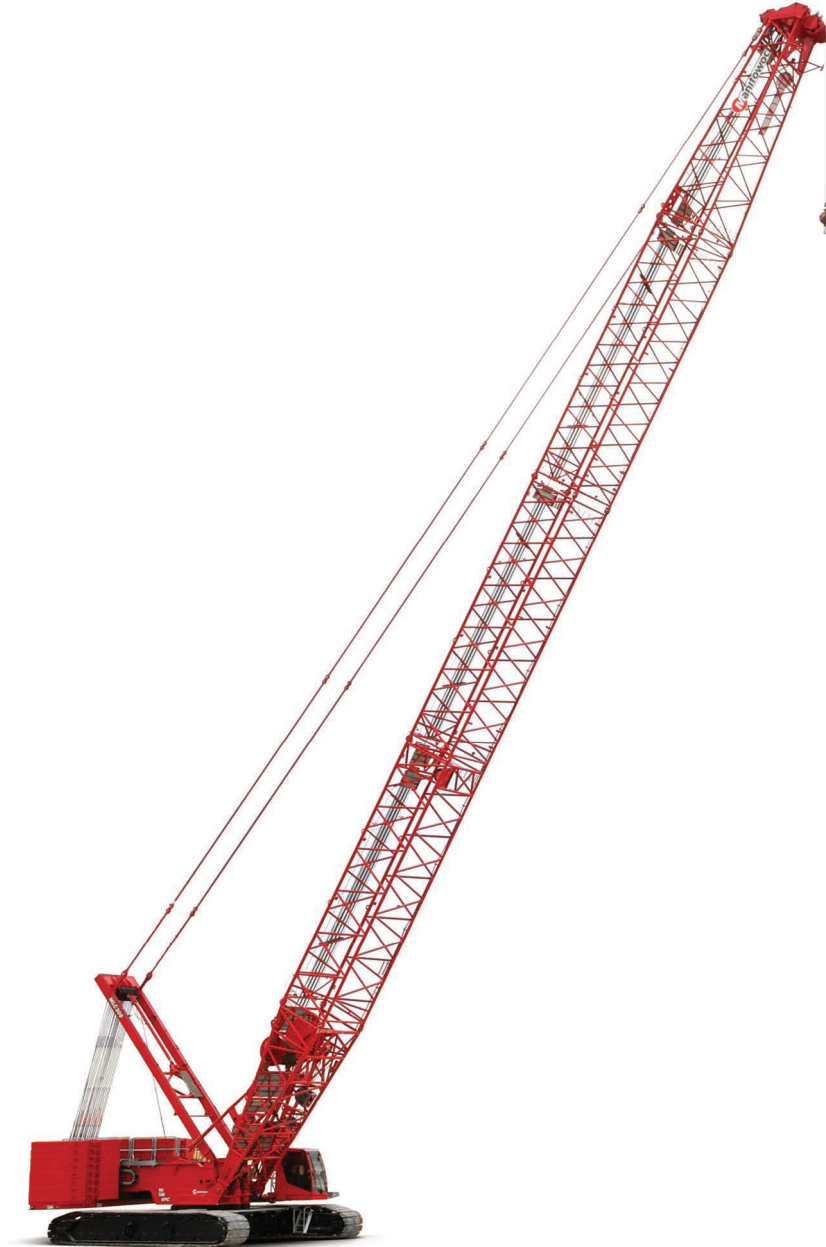


Manitowoc MLC300

605692

Parts Manual

Luffing Jib



ENU
2020-03-31

CLICK HERE TO **DOWNLOAD** THE COMPLETE MANUAL

- Thank you very much for reading the preview of the manual.
- You can download the complete manual from: www.heydownloads.com by clicking the link below



- Please note: If there is no response to CLICKING the link, please download this PDF first and then click on it.

CLICK HERE TO **DOWNLOAD** THE COMPLETE MANUAL

ENU / 2020-03-31

1. CONTROLS, ELECTRICAL
1.1.1 ESI LUFFING JIB BUTT MTG (81031018) Rev D

| LIMIT SWITCH SUBASSY (810249950) Rev C | | | | |
|---|-------------|-----------------|------------------|--|
| Pos. | Part | BOM Qty. | Foot Note | Description |
| 1 | 3643870 | 1 | | ELEC CONNECTOR MALE 3 POLE 13 AMP SEALED |
| 2 | 4716820 | 1 | | GRIP CORD .50 NPT CABLE OD (.312-.437) |
| 3 | 5726060 | 1 | | ELEC CONNECTOR WEDGE LOCK W3P |
| 4 | 6806940 | 3 | | TERMINAL PIN CONTACT MALE |
| 5 | 810161350 | 1 | | SWITCH LIMIT |
| 6 | 810070200 | 1 FT | | TUBING POLYOLEFIN 4.1 SHRINK RATIO 1.2 |
| 20 | 2971820 | 2 FT | | CABLE - SHIELDED 16GA/3COND |
| 21 | 2972110 | 1 FT | | CABLE WIRE 18 AWG XLPE TYPE TXL BLUE |

ENU / 2020-03-31

1. CONTROLS, ELECTRICAL
1.2.1 ESI LUFFING JIB TOP MTG (81031020) Rev D

| ESI LUFFING JIB TOP MTG (81031020) Rev D | | | | |
|--|-------------------------|----------|-----------|-------------------------------------|
| Pos. | Part | BOM Qty. | Foot Note | Description |
| 1 | 1424032 | 1 | | WEIGHT |
| 2 | 3341010 | 8 FT | | CHAIN STRAIGHT LINK #5/0 |
| 3 | 6246330 | 1 | | SHACKLE ANCHOR LOOSE PIN GALV |
| 4 | 80042207 | 1 | | ELEC CONNECTOR MOUNT CLIP |
| 5 | 80069038 | 1 | | CONTROLLER SCM |
| 6 | 84019147 → page 1-24 | 1 | | A2B DEVICE MOD TWO SPRINGS |
| 7 | 810254612 | 1 | | BRACKET RECEPTACLE SIZE 24 |
| 8 | 810291390 | 1 | | SENSOR ANGLE MEMS 200 DEG |
| 10 | 810329362 | 1 | | HOOK BOLT J 1/2 INCH |
| 11 | 7126131153 | 4 | | HHCS 5 X 20.8.8 FULL THREAD |
| 12 | 7126152053 | 4 | | SCR CAP HEX HD M6-1 X 65 8.8 ZC |
| 13 | 7126191253 | 1 | | HHCS M10X25 8.8 FLZN 4017 |
| 14 | 7126211353 | 2 | | HHCS M12X30 8.8 FLZN 4017 |
| 15 | 7660180008 | 2 | | HEX NUT 1/2-13 UNC GR8 |
| 16 | 7661130004 | 4 | | NUT HEX M5-0.8 10 PLN |
| 17 | 7661150004 | 4 | | HEX NUT M6 10FLZN ISO4032 |
| 18 | 7661190103 | 1 | | HEX JAM NUT M10 04FLZN ISO4035 |
| 19 | 7661210003 | 2 | | HEX NUT M12 8FLZN ISO4032 |
| 20 | 7950180141 | 2 | | WASHER FLAT 0.50 X 0.12 |
| 21 | 7951130014 | 4 | | F WASHER 5 ST ISO 7089 |
| 22 | 7951130210 | 4 | | L WASHER 5 ST DIN 7980 |
| 23 | 7951150210 | 4 | | L WASHER 6 FLZN DIN7980 |
| 24 | 7951190014 | 8 | | F WASHER 10 200HV FLZN 7089 |
| 25 | 7951210014 | 2 | | F WASHER 12 200HV FLZN 7089 |
| 26 | 7951210210 | 2 | | L WASHER 12 ST DIN 7980 |
| 27 | 810070010 | 1 FT | | WIRE ROPE 3/64 7X7 SS VC-1/16 CLEAR |
| 28 | 810070020 | 2 | | SLEEVE 1/16 OVAL ALUMINUM |
| 29 | 810284270 | 1 | | PIN SAFETY .25 DIA X 2.50 LG |
| 30 | 7126191453 | 3 | | HHCS M10X35 8.8 FLZN 4017 |
| 31 | 7661190803 | 3 | | HEXAGON LOCK NUT |

ENU / 2020-03-31

| ATTACHMENTS | | | | |
|-------------|--------------------------|----------|-----------|-------------------------------------|
| Pos. | Part | BOM Qty. | Foot Note | Description |
| 10 | 1759161 ➔ page 2-3 | 1 | | DECAL DANGER BOOM SECTIONS |
| 40 | 810233981 ➔ page 2-5 | 1 | | TRANSITION INSERT ASSY #500/501 6M |
| 60 | 810234051 ➔ page 2-7 | 1 | | INSERT ASSY 12M #501 |
| 80 | 810234101 ➔ page 2-11 | 1 | | INSERT ASSY 6M #501 |
| 100 | 810247831 ➔ page 2-15 | 1 | | BUTT ASSY #500A 6.00 M |
| 160 | 810266701 ➔ page 2-19 | 1 | | TOP ASSY #501, 12M LJ |
| 190 | 810295381 ➔ page 2-25 | 1 | | INSERT 12.0 M LUFF JIB EQUIP |
| 280 | 810300091 ➔ page 2-27 | 1 | | INSERT 12.0 M LJ EQUIP-HEAVY |
| 390 | 810316271 ➔ page 2-29 | 1 | | INSERT 6.0 M LUFF JIB EQUIP-MEDIUM |
| 440 | 810253441 ➔ page 2-31 | 1 | | STRUT #502, MAIN ASSY |
| 450 | 81025347 ➔ page 2-43 | 1 | | STRUT ASSY #502, JIB |
| 480 | 81033831 ➔ page 2-49 | 1 | | CATWALK ASSY 6M BUTT #500A |
| 510 | 81034071 ➔ page 2-51 | 1 | | CATWALK ASSY #501, LJ TOP |
| 520 | 81034271 ➔ page 2-53 | 1 | | INSERT ASSY #501,12M W/SUSP |
| 550 | 84037517 ➔ page 2-57 | 1 | | STOP ASSY JIB #501A |
| 630 | 81036402 ➔ page 2-61 | 1 | | SPREADER FRAME 500/501 TRANS INSERT |
| 640 | 81037271 ➔ page 2-63 | 1 | | CATWALK #500/501 6M INSERT |
| 750 | 810340488 ➔ page 2-65 | 1 | | DECAL ASSY FOR TYPICAL INSERT (EN) |
| 760 | 810340489 ➔ page 2-66 | 1 | | DECAL ASSY FOR LUFFING JIB (EN) |
| 770 | 81042560A ➔ page 2-67 | 1 | | DECAL ASSY INSERT SHIPMENT |
| 790 | 84020169 ➔ page 2-69 | 1 | | STRUT #502,SHIPPING ASSY |

2. ATTACHMENTS
2.4 INSERT ASSY 6M #501 (810234101) Rev B

| INSERT ASSY 6M #501 (810234101) Rev B | | | | |
|---------------------------------------|-------------------------|----------|-----------|--------------------------------------|
| Pos. | Part | BOM Qty. | Foot Note | Description |
| 1 | 5620640 | 4 | | PIN COTTER 5/32 DIA X 1.25 LG |
| 2 | 5620850 | 8 | | PIN COTTER 3/16 DIA X 1.50 LG |
| 3 | 5621510 | 2 | | PIN COTTER 3/8 X 3.50 LG |
| 4 | 5636400 | 2 | | PIN SAFETY .243 OD X 5.00 |
| 5 | 810208520 | 8 | | PIN COTTER HAIR 0.14 DIA X 3.38 LG |
| 7 | 810253062 | 4 | | PIN 2 HOLE 19.1 MM DIA X 81.2 MM |
| 8 | 810254722 | 2 | | CLAMP CABLE SPRING CLIP |
| 9 | 810277822 | 2 | | PIN 2 HOLE 19.1 DIA X 287.0 LG |
| 10 | 810277952 | 1 | | TIMBER 50.8 MM X 88.9 MM X 1325.0 MM |
| 11 | 810297262 | 2 | | STRAP 6.0 M #501 JIB 31.75 X 63.0 |
| 12 | 810298062 | 4 | | PIN 1 HOLE W/HD 62.0 DIA X 77.8 LG |
| 13 | 810298072 | 4 | | LINK #501 JIB |
| 14 | 810315992 | 4 | | BRACKET STRAP |
| 15 | 81035733 ▶ page 2-13 | 1 | | CATWALK ASSY 6M #501 |
| 16 | 81036348 | 2 | | BRACKET STRAP |
| 17 | 81036354 | 2 | | BRACKET STRAP |
| 18 | 81036398 | 2 | | BRACKET STRAP |
| 19 | 7126151150 | 4 | | HHCS 6 X 20 8.8 |
| 20 | 7126191850 | 12 | | HHCS M10X55 8.8 FLZN 4014 |
| 21 | 7126191750 | 4 | | HHCS M10X50 8.8 FLZN 4014 |
| 22 | 7661150803 | 4 | | HEX LOCK NUT M6 8FLZN ISO7040 |
| 23 | 7661190803 | 16 | | HEXAGON LOCK NUT |
| 24 | 7951150014 | 8 | | F WASHER 6 200HV FLZN ISO7089 |
| 25 | 7951190014 | 32 | | F WASHER 10 200HV FLZN 7089 |
| 26 | 7951270014 | 8 | | F WASHER 20 200HV FLZN 7089 |
| 27 | A117992 | 4 | | PIN 2 HOLES 12.7 DIA X 93.0 LG |
| 28 | A118002 | 4 | | COLLAR 66 MM ID |
| 29 | A167322 | 2 | | PIN 1 HOLE W/HD 45.00 DIA X 129.0 LG |
| 30 | A167332 | 2 | | PIN 1 HOLE W/HD 70.00 DIA X 132.4 LG |

ENU / 2020-03-31

CLICK HERE TO **DOWNLOAD** THE COMPLETE MANUAL

- Thank you very much for reading the preview of the manual.
- You can download the complete manual from: www.heydownloads.com by clicking the link below



- Please note: If there is no response to CLICKING the link, please download this PDF first and then click on it.

CLICK HERE TO **DOWNLOAD** THE COMPLETE MANUAL

ENU / 2020-03-31

2. ATTACHMENTS
2.10 STRUT #502, MAIN ASSY (810253441) Rev G

| STRUT #502, MAIN ASSY (810253441) Rev G | | | | |
|---|--------------------------|----------|-----------|--|
| Pos. | Part | BOM Qty. | Foot Note | Description |
| 1 | 1771082 | 2 | | WASHER 5.78 ID X 8.00 OD |
| 2 | 5620850 | 12 | | PIN COTTER 3/16 DIA X 1.50 LG |
| 3 | 5621050 | 4 | | PIN COTTER 1/4 DIA X 1.50 LG |
| 4 | 5621120 | 2 | | PIN COTTER 1/4 DIA X 4.00 LG |
| 5 | 5636400 | 9 | | PIN SAFETY .243 OD X 5.00 |
| 6 | 5638170 | 14 | | PIN HAIRPIN COTTER .148 DIA X 2.69 LG |
| 7 | 5638510 | 2 | | PIN HAIRPIN COTTER .092 DIA X 1.62 LG |
| 8 | 5965410 | 4 | | RING SNAP 1.865 DIA |
| 9 | 5967600 | 8 | | RETAINING RING EXT FOR 2.5"SHAFT .078THK |
| 10 | 810281790 | 1 | | ROLLER 50.8 101.6 TBD NYLON |
| 11 | 6021740 | 6 | | ROLLER 2.08 ID X 4.00 OD X |
| 13 | 810258190 ➡ page 2-23 | 8 | | SHEAVE ASSY 28MM DIA |
| 14 | 810282652 | 2 | | PIN 2 HOLE 19.05 DIA X 167.8 LG |
| 15 | 81031460 | 1 | | SHAFT 129.9 DIA X 1350.0 LG |
| 16 | 81031494 | 1 | | GUARD WIRE ROPE |
| 17 | 81032183 ➡ page 2-37 | 1 | | CATWALK ASSY #502 MAIN STRUT |
| 19 | 81033375 | 1 | | PIN 50.8 DIA X 1065.0 LG |
| 20 | 81033377 | 2 | | ROLLER 52.8 101.6 207 NYLON |
| 21 | 81033383 | 1 | | PIN 50.8 DIA X 350.0 LG |
| 22 | 81033881 ➡ page 2-39 | 1 | | SPREADER ASSY #501 MAIN STRUT |
| 23 | 81033908 | 2 | | PIN 63.5 DIA. X 85.0 LG |
| 24 | 81034035 | 3 | | PIN 2 HOLE 19.1 DIA X 139.0 LG |
| 25 | 81034037 | 2 | | PIN 2 HOLE 19.1 DIA X 195.0 LG |
| 26 | 81034176 | 2 | | COLLAR 131.0 ID X 158.8 OD X 40.0 LG |
| 27 | 81034501 | 2 | | SLEEVE 200.0 OD X 131.0 ID |
| 28 | 81034773 | 1 | | GUARD WIRE ROPE |
| 29 | 81035062 | 1 | | LINK CONNECTING STRUT RAISING PENDANT |
| 30 | 81035159 | 1 | | GUARD WIRE ROPE |
| 31 | 81035191 | 1 | | PIN 66.50 DIA X 180.0 LG |
| 32 | 81035210 | 1 | | SHEAVE 152.4 DIA FOR .375" WIRE ROPE |
| 33 | 81035213 | 1 | | PIN 2 HOLE 9.5 DIA X 60.0 LG |
| 34 | 81036879 | 1 | | ARM 502 M STRUT RAISING |
| 35 | 81037339 | 1 | | SHAFT 25.4 DIA |
| 36 | 81037361 | 2 | | STRAP #502 MAIN STRUT BASIC |
| 37 | 81037362 | 2 | | STRAP BASIC #502 MAIN STRUT BACKSTAY |
| 38 | 81037363 | 1 | | PLATE RETAINER |
| 39 | 81037372 | 2 | | TUBE RD 148.0 X 8.0 X 62.0 |
| 40 | 81037391 | 1 | | SHAFT 129.9X324.0 LG |
| 41 | 81037576 | 2 | | PIN 63.5 DIA X 62.0 LG |
| 42 | 81037623 | 2 | | SPACER 158.8 OD X 131.0 ID X 28.0 LG |

ENU / 2020-03-31

2.10.4 STRUT STOP MAIN STRUT #502 (81032853) Rev A

| STRUT STOP MAIN STRUT #502 (81032853) Rev A | | | | |
|---|------------|----------|-----------|--|
| Pos. | Part | BOM Qty. | Foot Note | Description |
| 1 | 5636400 | 2 | | PIN SAFETY .243 OD X 5.00 |
| 2 | 5638710 | 2 | | PIN SAFETY .375 DIA X 2.25 LG |
| 3 | 810234372 | 1 | | PIN QUICK RELEASE 12.0MM DIA X 75.0MM LG |
| 4 | 81033015 | 1 | | PIN 2 HOLE 63.5 DIA. X 185.0 LG |
| 5 | 81034130 | 1 | | STRUT STOP #502 UPPER TUBE |
| 6 | 81034131 | 1 | | STRUT STOP #502, MIDDLE TUBE |
| 7 | 81034132 | 1 | | STRUT STOP #502 LOWER TUBE |
| 8 | 81034153 | 1 | | PIN 2 HOLE 55.0 X 176.0 LG |
| 9 | 81034317 | 2 | | RETAINER #502 MAIN STRUT STOP |
| 10 | 7127171153 | 6 | | HHCS M8x20 10.9 FLZN 4017 |
| 11 | 7127211253 | 2 | | HHCS M12x25 10.9 FLZN4017 |

2. ATTACHMENTS

2.13 CATWALK ASSY #501, LJ TOP (81034071) Rev A

| CATWALK ASSY #501, LJ TOP (81034071) Rev A | | | | |
|--|------------|----------|-----------|--|
| Pos. | Part | BOM Qty. | Foot Note | Description |
| 1 | 5460590 | 8 | | HEX NUT 3/4-10UNC GR 5 |
| 2 | 6124050 | 42 | | HHCS 5/16-18UNC X 1.00 GR 5 |
| 3 | 810166910 | 21 | | WASHER SHOULDER GRIP STRUT DIAMOND PATRN |
| 4 | 810169952 | 6 | | BRACKET 4 HOLE 1.50X0.13X6.50 |
| 5 | 810266232 | 3 | | CATWALK 724 MM X 3667 MM |
| 6 | 810272652 | 1 | | CATWALK 724 MM X 666 MM |
| 7 | 810281050 | 2 | | CABLE .75-10X456.52 (IN) |
| 8 | 7114153664 | 21 | | C BOLT SQ GR 4 5/16-18UNC X 4.50 |
| 9 | 7660152500 | 63 | | HEX LOCK NUT PA 5/16-18UNC SS |
| 10 | 7950150141 | 105 | | F WASHER 5/16 ST B18.21.1 NARROW |
| 11 | 7950220141 | 8 | | F WASHER 3/4" DIA |

ENU / 2020-03-31

2.16 SPREADER FRAME 500/501 TRANS INSERT (81036402) Rev D

| SPREADER FRAME 500/501 TRANS INSERT (81036402) Rev D | | | | |
|--|------------|----------|-----------|-------------------------------------|
| Pos. | Part | BOM Qty. | Foot Note | Description |
| 1 | 5620850 | 16 | | PIN COTTER 3/16 DIA X 1.50 LG |
| 2 | 81034298 | 2 | | PIN 1 HOLE W/HD 65.0 DIA X 82.3 LG |
| 3 | 81034465 | 4 | | PIN 1 HOLE W/HD 65.0 DIA X 104.3 LG |
| 4 | 81036405 | 1 | | SPREADER |
| 5 | 81036406 | 4 | | STRAP SPREADER #500/501 |
| 6 | 81036407 | 2 | | STRAP SPREADER #500/501 |
| 7 | 81038662 | 2 | | LINK CONNECTING |
| 8 | 81034247 | 2 | | LINK CONNECTING |
| 9 | A117992 | 8 | | PIN 2 HOLES 12.7 DIA X 93.0 LG |
| 10 | A118002 | 8 | | COLLAR 66 MM ID |
| 11 | 810249512 | 2 | | PIN 1 HOLE W/HD 65.0 DIA X 94.3 LG |
| 12 | 84018474 | 4 | | BRACKET STRAP SPACER |
| 13 | 7126213050 | 2 | | HHCS 12 X 140 8.8 |
| 14 | 7661210804 | 2 | | HEX LOCK NUT M12 10FLZN ISO7040 |
| 15 | 7951210014 | 4 | | F WASHER 12 200HV FLZN 7089 |

Part Number Index

0

0012042 (SPRING .75 X .105 WIRE 3.04) 1-25, 1-27
 0017152 (SPRING WASHER) 1-11, 1-15
 0034392 (SPRING 1 1/4 OD X 7 1/2 FREE HEIGHT) 1-11
 0700912 (BUSHING .762IDX.942ODX1.25LG)... 1-29

1

1424032 (WEIGHT) 1-23
 1478529 (DECAL DANGER BOOM HAZARD)... 2-4
 1622712 (COVER 6 X 7) 1-27
 1759161 (DECAL DANGER BOOM SECTIONS) 2-2
 1768092 (SPRING WASHER) 1-11, 1-15
 1768102 (ROD ACTUATOR) 1-11
 1770762 (BRACKET) 1-27
 177080001 (LEVER CASTING) 1-29
 1770804 (LEVER) 1-27
 1771082 (WASHER 5.78 ID X 8.00 OD) 2-32
 1791942 (PIN 2 HOLE .50 DIA X 3.72 LG)..... 2-21
 1791952 (COLLAR) 2-21
 181503 (ID PLATE BLANK CRANE ID) 2-66
 1953262 (PIN COTTER 2 HOLE 1.00 DIA X 4.38 LG)..... 2-16

2

2250650 (CYL ROLLER BRG 7.87 X 5.12 X 3.74) 2-24, 2-36, 2-48
 2528810 (SHSS-L 3/4 X 1.50 A574) 1-27
 2771270 (PENDANT 15 FT 0 IN) 2-33
 2897970 (BUSHING .752 ID X .937 OD) 1-19
 2971820 (CABLE - SHIELDED 16GA/3COND) 1-13, 1-17, 1-31
 2972110 (CABLE WIRE 18 AWG XLPE TYPE TXL BLUE)..... 1-13, 1-17, 1-31

3

3341010 (CHAIN STRAIGHT LINK #5/0) 1-23
 3503410 (CLOSURE PLUG BLACK HOLE 1.093/1.125") 1-15

3643870 (ELEC CONNECTOR MALE 3 POLE 13 AMP SEALED)..... 1-13, 1-17, 1-31
 3964010 (PIN SPRING SLOT 1/4 DIA X 1.50 LG)..... 1-11, 1-15

4

4292590 (FITTING 90 DEG 46756) 1-29
 4716820 (GRIP CORD .50 NPT CABLE OD (.312-.437)) 1-13, 1-17, 1-31

5

5460590 (HEX NUT 3/4-10UNC GR 5) 2-10, 2-14, 2-38, 2-50, 2-52, 2-56, 2-64
 5467630 (HEX JAM NUT 3/8-16UNC GR5) 1-25, 1-27, 1-29
 5469560 (NUT PANEL 1.69-18 UNEF-2B) 1-7, 1-21
 5620420 (PIN COTTER 1/8 DIA X 0.75 LG)..... 2-58
 5620640 (PIN COTTER 5/32 DIA X 1.25 LG)..... 2-6, 2-8, 2-12, 2-16, 2-54
 5620850 (PIN COTTER 3/16 DIA X 1.50 LG)..... 2-6, 2-8, 2-12, 2-16, 2-20, 2-26, 2-28, 2-30, 2-32, 2-40, 2-44, 2-54, 2-62
 5620870 (PIN COTTER 3/16 DIA X 2.00 LG)... 2-60
 5621050 (PIN COTTER 1/4 DIA X 1.50 LG)..... 2-21, 2-32, 2-44
 5621060 (PIN COTTER 1/4 DIA X 1.75 LG)..... 2-6, 2-58
 5621080 (PIN COTTER 1/4 DIA X 2.25 LG)..... 2-44
 5621120 (PIN COTTER 1/4 DIA X 4.00 LG)..... 2-32
 5621490 (PIN COTTER 3/8 DIA X 2.50 LG)..... 2-54
 5621510 (PIN COTTER 3/8 X 3.50 LG)..... 2-8, 2-12, 2-20, 2-54
 5621720 (PIN COTTER 1/2 DIA X 4.00 LG)..... 2-6
 5621740 (PIN COTTER 1/2 DIA X 4.50 LG)..... 2-58
 5636400 (PIN SAFETY .243 OD X 5.00) 2-6, 2-8, 2-12, 2-20, 2-32, 2-42, 2-44, 2-54
 5637900 (PIN HAIRPIN COTTER .120 DIA X 2.38 LG)..... 2-44
 5638030 (PIN SAFETY .375 X 2.25 LG) 2-20

ENU / 2020-03-31

CLICK HERE TO **DOWNLOAD** THE COMPLETE MANUAL

- Thank you very much for reading the preview of the manual.
- You can download the complete manual from: www.heydownloads.com by clicking the link below



- Please note: If there is no response to CLICKING the link, please download this PDF first and then click on it.

CLICK HERE TO **DOWNLOAD** THE COMPLETE MANUAL