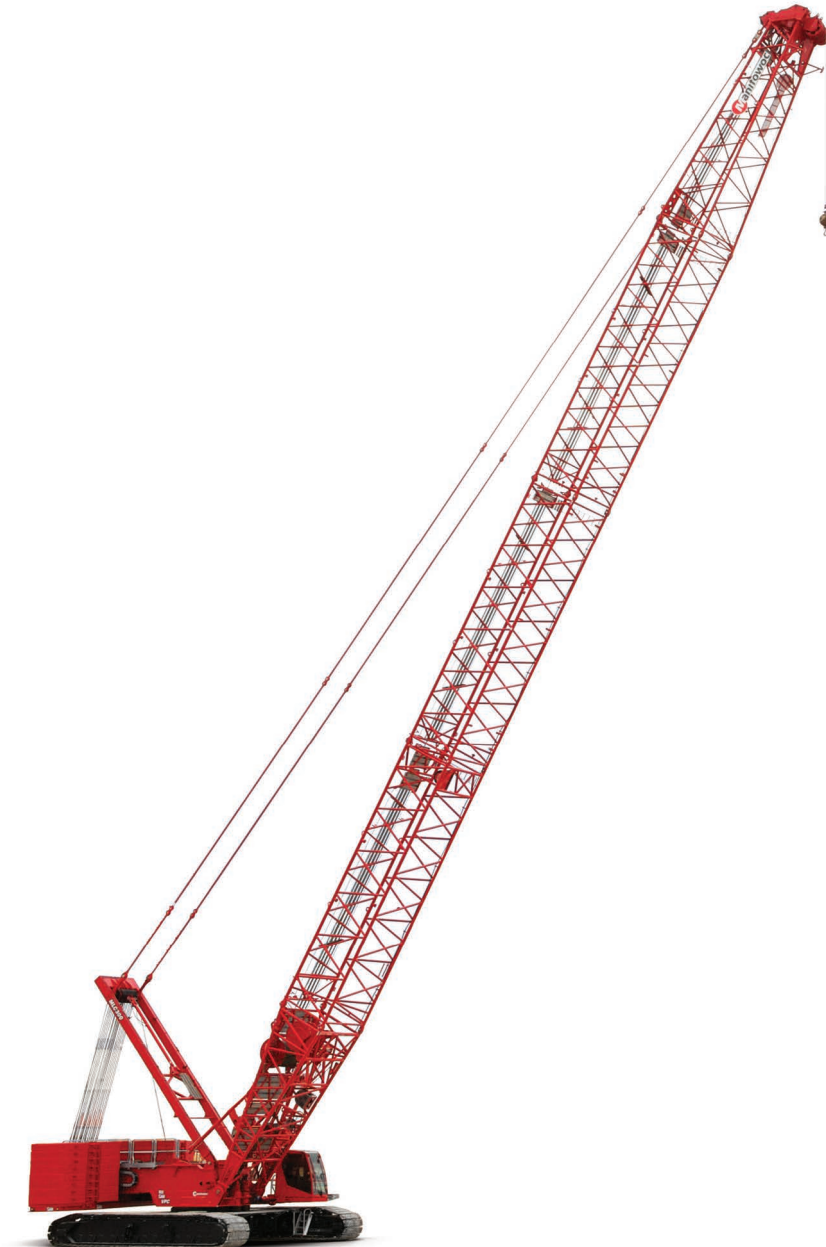


Manitowoc MLC300

605767

Parts Manual Luffing Jib



ENU
2016-01-25

CLICK HERE TO **DOWNLOAD** THE COMPLETE MANUAL

- Thank you very much for reading the preview of the manual.
- You can download the complete manual from: www.heydownloads.com by clicking the link below



- Please note: If there is no response to CLICKING the link, please download this PDF first and then click on it.

CLICK HERE TO **DOWNLOAD** THE COMPLETE MANUAL

ENU / 2016-01-25

1. CONTROLS, ELECTRICAL
1.1.1 ESI LUFFING JIB BUTT MTG (81031018) Rev D

LIMIT SWITCH SUBASSY (810249950) Rev C				
Pos.	Part	BOM Qty.	Foot Note	Description
1	3643870	1		ELEC CONNECTOR MALE 3 POLE 13 AMP SEALED
2	4716820	1		CORD GRIP .50 NPT .312 TO .437 CHORD
3	5726060	1		PLUG ELEC LOCK W3P
4	6806940	3		TERMINAL PIN CONTACT MALE
5	810161350	1		SWITCH LIMIT
6	810070200	1 FT		TUBING POLYOLEFIN 4.1 SHRINK RATIO
20	2971820	2 FT		CABLE WIRE 16 AWG 3 CONDUCTOR TYPE SDN
21	2972110	1 FT		CABLE WIRE 18 AWG XLPE TYPE TXL BLUE

ENU / 2016-01-25

1. CONTROLS, ELECTRICAL
1.2.1 ESI LUFFING JIB TOP MTG (81031020) Rev C

ESI LUFFING JIB TOP MTG (81031020) Rev C				
Pos.	Part	BOM Qty.	Foot Note	Description
1	1424032	1		WEIGHT
2	3341010	8 FT		CHAIN STRAIGHT LINK #5/0
3	6246330	1		SHACKLE ANCHOR LOOSE PIN GALV
4	80042207	1		ELEC CONNECTOR MOUNT CLIP
5	80069038	1		ELECTRONIC CONTROL
6	84019147 → page 1-24	1		A2B DEVICE MOD TWO SPRINGS
7	810254612	1		BRACKET RECEPTACLE SIZE 24
8	810291390	1		SENSOR ANGLE MEMS 200 DEG
10	810329362	1		HOOK BOLT J 1/2 INCH
11	7126131153	4		HHCS 5 X 20.8.8 FULL THREAD
12	7126152053	4		SCR CAP HEX HD M6-1 X 65 8.8 ZC
13	7126191253	1		HHCS M10X25 8.8 FLZN 4017
14	7126211353	2		HHCS M12X30 8.8 FLZN 4017
15	7660180008	2		HEX NUT 1/2-13 UNC GR8
16	7661130004	4		NUT HEX M5-0.8 10 PLN
17	7661150004	4		HEX NUT M6 10FLZN ISO4032
18	7661190103	1		HEX JAM NUT M10 04FLZN ISO4035
19	7661210003	2		HEX NUT M12 8FLZN ISO4032
20	7950180141	2		WASHER FLAT 0.50 X 0.12
21	7951130014	4		F WASHER 5 ST ISO 7089
22	7951130210	4		L WASHER 5 ST DIN 7980
23	7951150210	4		L WASHER 6 ST DIN 7980
24	7951190014	2		F WASHER 10 ST ISO 7089
25	7951210014	2		F WASHER 12 ST ISO 7089
26	7951210210	2		L WASHER 12 ST DIN 7980
27	810070010	1 FT		WIRE ROPE 3/64 7X7 SS VC-1/16 CLEAR
28	810070020	2		SLEEVE 1/16 OVAL ALUMINUM
29	810284270	1		PIN SAFETY .25 DIA X 2.50 LG

ENU / 2016-01-25

1. CONTROLS, ELECTRICAL
1.3 ESI CAMERA SYS JIB BUTT (81041370) Rev A

ESI CAMERA SYS JIB BUTT (81041370) Rev A				
Pos.	Part	BOM Qty.	Foot Note	Description
1	5911160	1		REEL CABLE FOR 350' OF 16/2 WIRE
2	6670070	19		STRAP NYLON CABLE TIE 7.4
3	810268742	2		BRACKET CABLE REEL MOUNT
4	81041372	1		WIRING HARNESS CCTV 7P WJB3
5	81039261	1		CABLE ELEC CCTV 7P WJR3
6	7126191253	4		HHCS M10X25 8.8 FLZN 4017
7	7127211353	4		HHCS M12X30 10.9 FLZN4017
8	7661190003	4		HEX NUT M10 8FLZN ISO4032
9	7661210003	4		HEX NUT M12 8FLZN ISO4032
10	7951190014	4		F WASHER 10 ST ISO 7089
11	7951210014	4		F WASHER 12 ST ISO 7089

ENU / 2016-01-25

2. ATTACHMENTS**2.3.1 CATWALK ASSY 12M #501 (81035734) Rev A**

CATWALK ASSY 12M #501 (81035734) Rev A				
Pos.	Part	BOM Qty.	Foot Note	Description
1	5460590	8		HEX NUT 3/4-10UNC GR 5
2	6124050	42		HHCS 5/16-18UNC X 1.00 GR 5
3	810166910	16		WASHER SHOULDER GRIP STRUT DIAMOND PATRN
4	810169952	6		BRACKET 4 HOLE 1.50X0.13X6.50
5	810266232	3		CATWALK 724 MM X 3667 MM
6	810281050	2		CABLE .75-10X456.52 (IN)
7	810281382	1		CATWALK 724 MM X 724 MM
8	7114153664	16		C BOLT SQ GR 4 5/16-18UNC X 4.50
9	7660152500	58		HEX LOCK NUT PA 5/16-18UNC SS
10	7950150141	100		F WASHER 5/16 ST B18.21.1 NARROW
11	7950220141	8		F WASHER 3/4" DIA

ENU / 2016-01-25

CLICK HERE TO **DOWNLOAD** THE COMPLETE MANUAL

- Thank you very much for reading the preview of the manual.
- You can download the complete manual from: www.heydownloads.com by clicking the link below



- Please note: If there is no response to CLICKING the link, please download this PDF first and then click on it.

CLICK HERE TO **DOWNLOAD** THE COMPLETE MANUAL

2. ATTACHMENTS
2.6 TOP ASSY #501, 12M LJ (810266701) Rev D

TOP ASSY #501, 12M LJ (810266701) Rev D				
Pos.	Part	BOM Qty.	Foot Note	Description
7	5620850	20		PIN COTTER 3/16 DIA X 1.50 LG
8	5621510	2		PIN COTTER 3/8 X 3.50 LG
9	5636400	2		PIN SAFETY .243 OD X 5.00
10	5638030	6		PIN SAFETY .375 X 2.25 LG
12	810088292	2		SIGN BOOM MANITOWOC 790 X 3070
13	810208520	4		PIN COTTER HAIR 0.14 DIA X 3.38 LG
14	810254722	4		CLAMP CABLE SPRING CLIP
15	810257340	2		LOAD CELL LINK 145,150 KGS
16	810258190 ▶ page 2-23	2		SHEAVE ASSY 28MM DIA
18	810277822	2		PIN 2 HOLE 19.1 DIA X 287.0 LG
19	810280570	1		TIMBER 38.1 X 88.9 X 1080.0
20	810294422	2		BRACKET STRAP
21	810294472	6		BRACKET STRAP
22	810296892	4		COLLAR 70.5 ID
23	810297082	4		PIN 2 HOLE 12.7 DIA X 98.0 LG
24	810297312	1		PLATE KEEPER 12.0 MM
25	810298062	2		PIN 1 HOLE W/HD 62.0 DIA X 77.8 LG
26	810298072	4		LINK #501 JIB
28	81031805	1		SHAFT 129.95 X 835.0 LG
29	81031844	3		GUIDE WIRE ROPE 50.8 DIA X 760 LG
30	81031849	1		SHAFT M30 X 3.5 X 840
31	81032176	2		PIN 1 HOLE W/HD 100.0 X 86.3 LG
32	81033402	8		CLAMP 130.0 MM DIA SHAFT
34	81034288	4		LINK #501 12M LJ TOP
35	81034289	4		LINK #501 12M LJ TOP
36	81036091	4		PIN 1 HOLE W/HD 69.5 DIA X 86.3 LG
37	81036226	2		STRAP 9.67 M #501 JIB 31.75 X 63.0
38	81036902	2		PIN 1 HOLE W/HD 62.0 DIA X 85.8 LG
39	81036908	4		SHIM .134 (IN) THICK
40	7121171301	32		SLOT PMS 8 X 30 4.8
41	7126151150	8		HHCS 6 X 20 8.8
42	7126191850	16		HHCS M10X55 8.8 FLZN 4014
43	7126191750	4		HHCS M10X50 8.8 FLZN 4014
44	7126243550	8		HHCS M16-2 X 180 8.8 ZC
45	7127271453	2		HHCS FULL THREAD 20 X 35 10.9
46	7661150803	8		HEX LOCK NUT M6 8FLZN ISO7040
47	7661170004	32		HEX NUT M8 10FLZN ISO4032
48	7661190803	20		HEX LOCK NUT M10 8FLZN ISO7040
49	7661240004	16		HEX NUT M16 10FLZN ISO4032
50	7661340803	1		HEX LOCK NUT M30 8FLZN ISO7040
51	7951150014	16		F WASHER 6 ST ISO 7089
52	7951170210	32		L WASHER 8 ST DIN 7890

ENU / 2016-01-25

2.9 INSERT 6.0 M LUFF JIB EQUIP-MEDIUM (810316271) Rev A

INSERT 6.0 M LUFF JIB EQUIP-MEDIUM (810316271) Rev A				
Pos.	Part	BOM Qty.	Foot Note	Description
1	5620850	8		PIN COTTER 3/16 DIA X 1.50 LG
2	810297262	2		STRAP 6.0 M #501 JIB 31.75 X 63.0
3	810298062	4		PIN 1 HOLE W/HD 62.0 DIA X 77.8 LG
4	810298072	4		LINK #501 JIB
5	A117992	4		PIN 2 HOLES 12.7 DIA X 93.0 LG
6	A118002	4		COLLAR 66 MM ID

2.13 SHEAVE ASSY #500 LOWER PNT (810347951) Rev C

SHEAVE ASSY #500 LOWER PNT (810347951) Rev C				
Pos.	Part	BOM Qty.	Foot Note	Description
1	1715852	3		SHIM
2	1715862	1		SHIM
3	810277662 ➡ page 2-41	2		SHEAVE BANK ASSY #500 LOWER POINT

ENU / 2016-01-25

2. ATTACHMENTS

2.16 CATWALK #500/501 6M INSERT (81037271) Rev A

CATWALK #500/501 6M INSERT (81037271) Rev A				
Pos.	Part	BOM Qty.	Foot Note	Description
1	5460590	8		HEX NUT 3/4-10UNC GR 5
2	6124050	32		HHCS 5/16-18UNC X 1.00 GR 5
3	81016691	25		F WASHER GRIP STRUT DIAMOND PATTERN
4	810169952	2		BRACKET 4 HOLE 1.50X0.13X6.50
5	810280762	1		CATWALK 965 MM X 1524 MM
6	81031064	1		LADDER 371 X 1634
7	810310670	2		CABLE SEE DRW 81003372
8	81037272	2		CATWALK 723.9MM X 2362.9MM
9	81037273	2		CATWALK 495.0 MM X 517.4 MM
10	81038835	2		CATWALK 241 MM X 2363 MM
11	7114153664	25		C BOLT SQ GR 4 5/16-18UNC X 4.50
12	7126191450	4		HHCS 10 X 35 8.8
13	7660152500	57		HEX LOCK NUT PA 5/16-18UNC SS
14	7661190803	4		HEX LOCK NUT M10 8FLZN ISO7040
15	7950150141	89		F WASHER 5/16 ST B18.21.1 NARROW
16	7950220141	8		F WASHER 3/4" DIA
17	7951190014	8		F WASHER 10 ST ISO 7089
18	81039401	2		CATWALK 241.3 MM 409.2 MM

ENU / 2016-01-25

ENU / 2016-01-25

2. ATTACHMENTS
2.20.2 STRUT #502, MAIN ASSY (810253441) Rev G

CATWALK ASSY #502 MAIN STRUT (81032183) Rev B				
Pos.	Part	BOM Qty.	Foot Note	Description
1	81038109	1		CATWALK 723.9 MM X 2123.8 MM
2	81038113	2		CATWALK 482.6 X 2154.4
3	81038116	1		CATWALK 482.6 X 2752.4
4	81038430	1		CATWALK 482.6 X695.0
5	81038712	1		CATWALK 352.1 X 482.6
6	81016691	32		F WASHER GRIP STRUT DIAMOND PATTERN
7	7114153664	32		C BOLT SQ GR 4 5/16-18UNC X 4.50
8	7950150141	40		F WASHER 5/16 ST B18.21.1 NARROW
9	7660152500	36		HEX LOCK NUT PA 5/16-18UNC SS
10	6124050	4		HHCS 5/16-18UNC X 1.00 GR 5
11	81038119	1		CABLE SEE DRW 81003372
12	7950220141	4		F WASHER 3/4" DIA
13	5460590	4		HEX NUT 3/4-10UNC GR 5

ENU / 2016-01-25

810277662 (SHEAVE BANK ASSY #500 LOWER POINT)	2-40	81031017 (ESI LUFFING JIB BUTT WRG)	1-2
810277822 (PIN 2 HOLE 19.1 DIA X 287.0 LG)	2-6, 2-8, 2-12, 2-20, 2-36, 2-65	81031018 (ESI LUFFING JIB BUTT MTG)	1-5
810277952 (TIMBER 38.1X88.9X1325.0)	2-6, 2-8, 2-12, 2-36	81031019 (ESI LUFFING JIB TOP WIRING)	1-2
810278542 (CATWALK 724 MM X 2495 MM)	2-14	81031020 (ESI LUFFING JIB TOP MTG)	1-21
810280472 (CATWALK 724 MM X 3410 MM)	2-32	81031021 (WIRING HARNESS WJT1)	1-21
810280570 (TIMBER 38.1 X 88.9 X 1080.0)	2-20	81031064 (LADDER 371 X 1634)	2-50
810280762 (CATWALK 965 MM X 1524 MM)	2-50	810310670 (CABLE SEE DRW 81003372)	2-14, 2-50
810281050 (CABLE .75-10X456.52 (IN))	2-10, 2-34	81031460 (SHAFT 129.9 DIA X 1350.0 LG)	2-58, 2-64
810281382 (CATWALK 724 MM X 724 MM)	2-10, 2-14, 2-38	81031494 (GUARD WIRE ROPE)	2-58, 2-64
810281790 (ROLLER 50.8 101.6 TBD NYLON)	2-64	81031591 (GUARD WIRE ROPE)	2-58
810282652 (PIN 2 HOLE 19.05 DIA X 167.8 LG)	2-58, 2-64	810315992 (BRACKET STRAP)	2-6, 2-8, 2-12, 2-36
810284270 (PIN SAFETY .25 DIA X 2.50 LG)	1-23	810316271 (INSERT 6.0 M LUFF JIB EQUIP-MEDIUM)	2-2
810288502 (ROD ADJUSTMENT)	1-9	81031805 (SHAFT 129.95 X 835.0 LG)	2-20
810291390 (SENSOR ANGLE MEMS 200 DEG)	1-7, 1-23	81031844 (GUIDE WIRE ROPE 50.8 DIA X 760 LG)	2-20
810293802 (GUARD WIRE ROPE)	2-58	81031849 (SHAFT M30 X 3.5 X 840)	2-20
810294422 (BRACKET STRAP)	2-20, 2-65	810321682 (BRACKET STRAP)	2-36
810294472 (BRACKET STRAP)	2-20	81032176 (PIN 1 HOLE W/HD 100.0 X 86.3 LG)	2-20
810295381 (INSERT 12.0 M LUFF JIB EQUIP)	2-2	81032183 (CATWALK ASSY #502 MAIN STRUT)	2-64
810296892 (COLLAR 70.5 ID)	2-20	81032853 (STRUT STOP MAIN STRUT #502)	2-65
810297082 (PIN 2 HOLE 12.7 DIA X 98.0 LG)	2-20	810329362 (HOOK BOLT J 1/2 INCH)	1-23
810297262 (STRAP 6.0 M #501 JIB 31.75 X 63.0)	2-12, 2-30	810329940 (WIRING HARNESS WJR1)	1-5
810297282 (STRAP 12.0 M #501 JIB 31.75 X 63.0)	2-8, 2-26, 2-28	81033015 (PIN 2 HOLE 63.5 DIA. X 185.0 LG)	2-74
810297312 (PLATE KEEPER 12.0 MM)	2-20	81033296 (CLAMP 130.0 DIA SHAFT)	2-58
810298062 (PIN 1 HOLE W/HD 62.0 DIA X 77.8 LG)	2-6, 2-8, 2-12, 2-20, 2-26, 2-28, 2-30, 2-36, 2-58, 2-65	81033303 (PLATE RETAINER)	2-58
810298072 (LINK #501 JIB)	2-8, 2-12, 2-20, 2-26, 2-30, 2-36, 2-58, 2-65	81033375 (PIN 50.8 DIA X 1065.0 LG)	2-64
810299412 (HITCH PIN .5 DIA X 5.50 LG)	2-36	81033377 (ROLLER 52.8 101.6 207 NYLON)	2-64
810300091 (INSERT 12.0 M LJ EQUIP-HEAVY)	2-2	81033383 (PIN 50.8 DIA X 350.0 LG)	2-64
810300282 (LINK #501 BOOM BUTT)	2-28	81033384 (PIN 2 HOLE 25.4 DIA X 80.0 LG)	2-58
810301722 (LADDER 371 MM X 2064 MM)	2-32	81033386 (COLLAR 131.0 ID)	2-58
		810333880 (BUSHING 145 OD X 130 ID X 52 LG)	2-58
		81033402 (CLAMP 130.0 MM DIA SHAFT)	2-20
		81033831 (CATWALK ASSY 6M BUTT #500A)	2-2
		81033859 (CABLE SEE DRW 81003372)	2-32

ENU / 2016-01-25

CLICK HERE TO **DOWNLOAD** THE COMPLETE MANUAL

- Thank you very much for reading the preview of the manual.
- You can download the complete manual from: www.heydownloads.com by clicking the link below



- Please note: If there is no response to CLICKING the link, please download this PDF first and then click on it.

CLICK HERE TO **DOWNLOAD** THE COMPLETE MANUAL