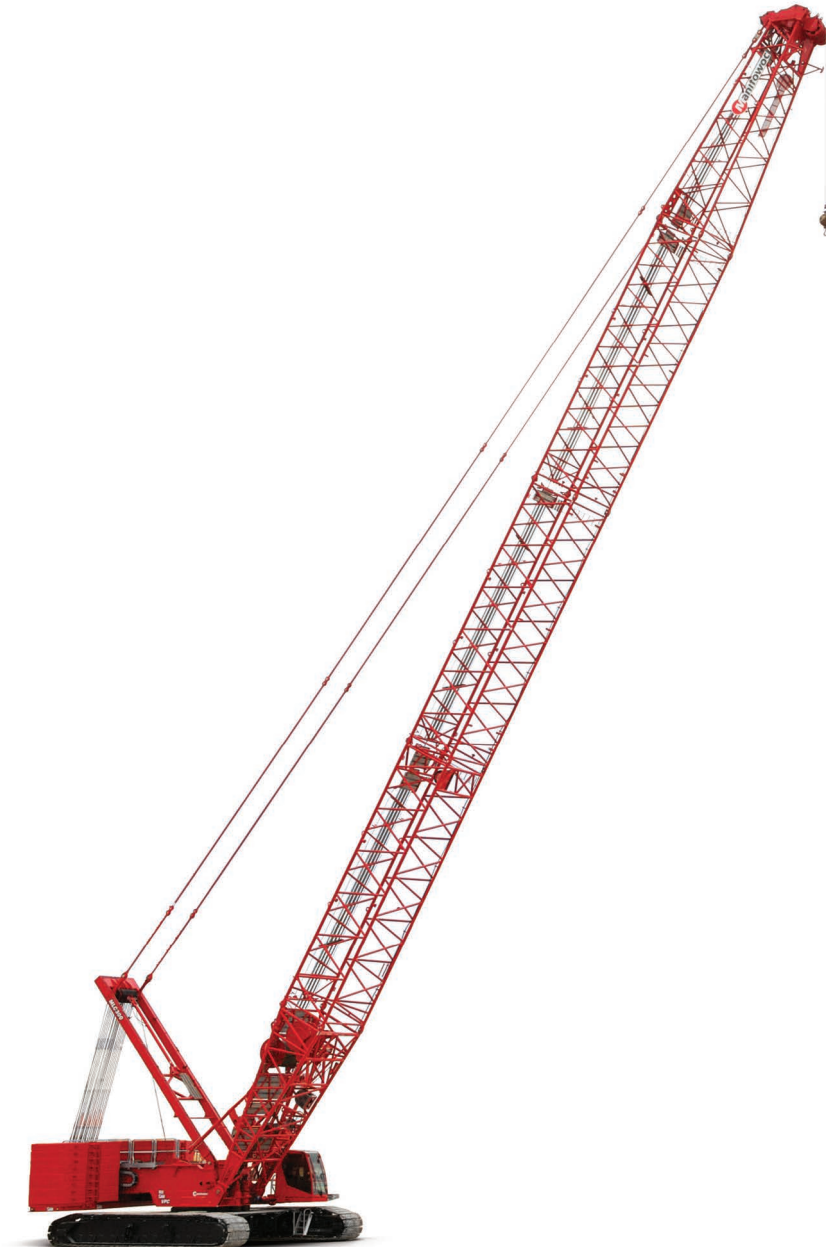


Manitowoc MLC300

605328

Parts Manual

Luffing Jib



ENU
2020-04-02

CLICK HERE TO **DOWNLOAD** THE COMPLETE MANUAL

- Thank you very much for reading the preview of the manual.
- You can download the complete manual from: www.heydownloads.com by clicking the link below



- Please note: If there is no response to CLICKING the link, please download this PDF first and then click on it.

CLICK HERE TO **DOWNLOAD** THE COMPLETE MANUAL

ENU / 2020-04-02

1. CONTROLS, ELECTRICAL
1.1.1 ESI LUFFING JIB BUTT MOUNT ZINC (81031018Z) Rev D

LIMIT SWITCH SUBASSY (810249950) Rev C				
Pos.	Part	BOM Qty.	Foot Note	Description
1	3643870	1		ELEC CONNECTOR MALE 3 POLE 13 AMP SEALED
2	4716820	1		GRIP CORD .50 NPT CABLE OD (.312-.437)
3	5726060	1		ELEC CONNECTOR WEDGE LOCK W3P
4	6806940	3		TERMINAL PIN CONTACT MALE
5	810161350	1		SWITCH LIMIT
6	810070200	1 FT		TUBING POLYOLEFIN 4.1 SHRINK RATIO 1.2
20	2971820	2 FT		CABLE - SHIELDED 16GA/3COND
21	2972110	1 FT		CABLE WIRE 18 AWG XLPE TYPE TXL BLUE

ENU / 2020-04-02

1. CONTROLS, ELECTRICAL
1.2.1 ESI ZINC 00MAPI001 (81031020Z) Rev D

ESI ZINC 00MAPI001 (81031020Z) Rev D				
Pos.	Part	BOM Qty.	Foot Note	Description
1	1424030	1		WEIGHT ZINC RICH 00MAPI001
2	3341010	8 FT		CHAIN STRAIGHT LINK #5/0
3	6246330	1		SHACKLE ANCHOR LOOSE PIN GALV
4	80042207	1		ELEC CONNECTOR MOUNT CLIP
5	80069038	1		CONTROLLER SCM
6	84019147 → page 1-24	1		A2B DEVICE MOD TWO SPRINGS
7	810254610	1		BRACKET ZINC RICH PRIMER
8	810291390	1		SENSOR ANGLE MEMS 200 DEG
10	810329362	1		HOOK BOLT J 1/2 INCH
11	7126131153	4		HHCS 5 X 20.8.8 FULL THREAD
12	7126152053	4		SCR CAP HEX HD M6-1 X 65 8.8 ZC
13	7126191253	1		HHCS M10X25 8.8 FLZN 4017
14	7126211353	2		HHCS M12X30 8.8 FLZN 4017
15	7660180008	2		HEX NUT 1/2-13 UNC GR8
16	7661130004	4		NUT HEX M5-0.8 10 PLN
17	7661150004	4		HEX NUT M6 10FLZN ISO4032
18	7661190103	1		HEX JAM NUT M10 04FLZN ISO4035
19	7661210003	2		HEX NUT M12 8FLZN ISO4032
20	7950180141	2		WASHER FLAT 0.50 X 0.12
21	7951130014	4		F WASHER 5 ST ISO 7089
22	7951130210	4		L WASHER 5 ST DIN 7980
23	7951150210	4		L WASHER 6 FLZN DIN7980
24	7951190014	8		F WASHER 10 200HV FLZN 7089
25	7951210014	2		F WASHER 12 200HV FLZN 7089
26	7951210210	2		L WASHER 12 ST DIN 7980
27	810070010	1 FT		WIRE ROPE 3/64 7X7 SS VC-1/16 CLEAR
28	810070020	2		SLEEVE 1/16 OVAL ALUMINUM
29	810284270	1		PIN SAFETY .25 DIA X 2.50 LG
30	7126191453	3		HHCS M10X35 8.8 FLZN 4017
31	7661190803	3		HEXAGON LOCK NUT

ENU / 2020-04-02

1. CONTROLS, ELECTRICAL
1.3 ESI CAMERA SYST JIB BUTT ZINC (81041370Z) Rev A

ESI CAMERA SYST JIB BUTT ZINC (81041370Z) Rev A				
Pos.	Part	BOM Qty.	Foot Note	Description
1	5911160	1		REEL CABLE FOR 350' OF 16/2 WIRE
2	6670070	19		STRAP NYLON CABLE TIE 7.4
3	810268740	2		BRACKET ZINC RICH PRIMER
4	81041372	1		WIRING HARNESS CCTV 7P W JB3
5	81039261	1		CABLE ELEC CCTV 7P W JR3
6	7126191253	4		HHCS M10X25 8.8 FLZN 4017
7	7127211353	4		HHCS M12x30 10.9 FLZN4017
8	7661190003	4		HEX NUT M10 8FLZN ISO4032
9	7661210003	4		HEX NUT M12 8FLZN ISO4032
10	7951190014	4		F WASHER 10 200HV FLZN 7089
11	7951210014	4		F WASHER 12 200HV FLZN 7089

ENU / 2020-04-02

2. ATTACHMENTS**2.3.1 CATWALK ASSY 12M #501 (81035734) Rev A**

CATWALK ASSY 12M #501 (81035734) Rev A				
Pos.	Part	BOM Qty.	Foot Note	Description
1	5460590	8		HEX NUT 3/4-10UNC GR 5
2	6124050	42		HHCS 5/16-18UNC X 1.00 GR 5
3	810166910	16		WASHER SHOULDER GRIP STRUT DIAMOND PATRN
4	810169952	6		BRACKET 4 HOLE 1.50X0.13X6.50
6	810281050	2		CABLE .75-10X456.52 (IN)
8	7114153664	16		C BOLT SQ GR 4 5/16-18UNC X 4.50
9	7660152500	58		HEX LOCK NUT PA 5/16-18UNC SS
10	7950150141	100		F WASHER 5/16 ST B18.21.1 NARROW
11	7950220141	8		F WASHER 3/4" DIA

ENU / 2020-04-02

CLICK HERE TO **DOWNLOAD** THE COMPLETE MANUAL

- Thank you very much for reading the preview of the manual.
- You can download the complete manual from: www.heydownloads.com by clicking the link below



- Please note: If there is no response to CLICKING the link, please download this PDF first and then click on it.

CLICK HERE TO **DOWNLOAD** THE COMPLETE MANUAL

2. ATTACHMENTS

2.6 TOP 12.0 M #501 ASSY ZINC 00MAPI001 (810266701Z) Rev D

TOP 12.0 M #501 ASSY ZINC 00MAPI001 (810266701Z) Rev D				
Pos.	Part	BOM Qty.	Foot Note	Description
7	5620850	20		PIN COTTER 3/16 DIA X 1.50 LG
8	5621510	2		PIN COTTER 3/8 X 3.50 LG
9	5636400	2		PIN SAFETY .243 OD X 5.00
10	5638030	6		PIN SAFETY .375 X 2.25 LG
12	810088292	2		SIGN BOOM MANITOWOC 790 X 3070
13	810208520	4		PIN COTTER HAIR 0.14 DIA X 3.38 LG
14	810254720	4		CLAMP CABLE ZINC RICH 00MAPI001
15	810257340	2		LOAD CELL LINK 145,150 KGS
16	810258190 ▶ page 2-23	2		SHEAVE ASSY 28MM DIA
18	810277822	2		PIN 2 HOLE 19.1 DIA X 287.0 LG
19	810280570	1		TIMBER 38.1 X 88.9 X 1080.0
20	810294422	2		BRACKET STRAP
21	810294472	6		BRACKET STRAP
22	810296892	4		COLLAR 70.50MM ID
23	810297082	4		PIN 2 HOLE 12.7 DIA X 98.0 LG
24	810297310	1		PLATE KEEPER ZINC OOMAPI001
25	810298062	2		PIN 1 HOLE W/HD 62.0 DIA X 77.8 LG
26	810298070	4		LINK #500 BOOM ZINC RICH PRIMER
28	81031805	1		SHAFT 129.95 X 835.0 LG
29	810318440	3		GUIDE WIRE ROPE ZINC RICH PRIMER
30	81031849	1		SHAFT M30 X 3.5 X 840
31	81032176	2		PIN 1 HOLE W/HD 100.0 X 86.3 LG
32	81033402	8		CLAMP 130.0 MM DIA SHAFT
34	810342880	4		LINK ZINC RICH PRIMER
35	810342890	4		LINK ZINC RICH PRIMER
36	81036091	4		PIN 1 HOLE W/HD 69.5 DIA X 86.3 LG
37	810362260	2		STRAP 9.7 M ZINC RICH
38	81036902	2		PIN 1 HOLE W/HD 62.0 DIA X 85.8 LG
39	810369080	4		SHIM
40	7121171301	32		SLOT PMS M8x30 4.8 FLZN 1580
41	7126151150	8		HHCS 6 X 20 8.8
42	7126191850	16		HHCS M10X55 8.8 FLZN 4014
43	7126191750	4		HHCS M10X50 8.8 FLZN 4014
44	7126243550	8		HHCS M16-2 X 180 8.8 ZC
45	7127271453	2		HHCS FULL THREAD 20 X 35 10.9
46	7661150803	8		HEX LOCK NUT M6 8FLZN ISO7040
47	7661170004	32		HEX NUT M8 10FLZN ISO4032
48	7661190803	20		HEXAGON LOCK NUT
49	7661240004	16		HEX NUT M16 10FLZN ISO4032
50	7661340803	1		HEX LOCK NUT M30 8FLZN ISO7040
51	7951150014	16		F WASHER 6 200HV FLZN ISO7089
52	7951170210	32		L WASHER 8 FLZN DIN7980

ENU / 2020-04-02

2.9 INSERT 6.0 M MEDIUM ZINC LUFF JIB EQUIP (810316271Z) Rev A

INSERT 6.0 M MEDIUM ZINC LUFF JIB EQUIP (810316271Z) Rev A				
Pos.	Part	BOM Qty.	Foot Note	Description
1	5620850	8		PIN COTTER 3/16 DIA X 1.50 LG
2	810297260	2		STRAP #500 JIB ZINC RICH
3	810298062	4		PIN 1 HOLE W/HD 62.0 DIA X 77.8 LG
4	810298070	4		LINK #500 BOOM ZINC RICH PRIMER
5	A117992	4		PIN 2 HOLES 12.7 DIA X 93.0 LG
6	A118002	4		COLLAR 66 MM ID

2.10.3 SPREADER ASSY #501 MAIN STRUT ZINC (81033881Z) Rev A

SPREADER ASSY #501 MAIN STRUT ZINC (81033881Z) Rev A				
Pos.	Part	BOM Qty.	Foot Note	Description
1	5620850	16		PIN COTTER 3/16 DIA X 1.50 LG
2	810342470	4		LINK CONNECTING ZINC RICH PRIMER
3	810342700	4		STRAP BACKSTAY ZINC RICH
4	810342930	2		STRAP ZINC RICH PRIMER
5	810342940	1		SPREADER ZINC RICH 00MAPI001
6	81034298	4		PIN 1 HOLE W/HD 65.0 DIA X 82.3 LG
7	81034465	4		PIN 1 HOLE W/HD 65.0 DIA X 104.3 LG
8	A117992	8		PIN 2 HOLES 12.7 DIA X 93.0 LG
9	A118002	8		COLLAR 66 MM ID

2. ATTACHMENTS

2.12 CATWALK ASSY 6M BUTT #500A (81033831) Rev B

CATWALK ASSY 6M BUTT #500A (81033831) Rev B				
Pos.	Part	BOM Qty.	Foot Note	Description
1	5460590	8		HEX NUT 3/4-10UNC GR 5
2	81016691	12		F WASHER GRIP STRUT DIAMOND PATTERN
4	810301722	1		LADDER 371 MM X 2064 MM
5	81033859	2		CABLE .75 10X184.00 (IN)
6	81038841	1		CATWALK 50.8 X 482.6 X 752.2
7	7114153664	12		C BOLT SQ GR 4 5/16-18UNC X 4.50
8	7126191450	4		HHCS 10 X 35 8.8
9	7660152500	12		HEX LOCK NUT PA 5/16-18UNC SS
10	7661190803	4		HEXAGON LOCK NUT
11	7950150141	12		F WASHER 5/16 ST B18.21.1 NARROW
12	7950220141	8		F WASHER 3/4" DIA
13	7951190014	8		F WASHER 10 200HV FLZN 7089
14	810280472	1		CATWALK 724 MM X 3410 MM
15	81040633	1		CATWALK 50.8X724X924

ENU / 2020-04-02

2.15.1 SHEAVE BANK ASSY #500 LOWER POINT (810277662) Rev A

SHEAVE BANK ASSY #500 LOWER POINT (810277662) Rev A				
Pos.	Part	BOM Qty.	Foot Note	Description
1	1706622	1		SHAFT 5.000X1.370X10.94
2	1715872	1		NUT
3	81026861X	3		SHEAVE WIRE ROPE ASSY 1.125

ENU / 2020-04-02

2.20 DECAL ASSY FOR LUFFING JIB (EN) (810340489) Rev F

DECAL ASSY FOR LUFFING JIB (EN) (810340489) Rev F				
Pos.	Part	BOM Qty.	Foot Note	Description
400	181503	1		ID PLATE BLANK CRANE ID
401	810182050	1		DECAL (EN) 29CFR 1926.1423
403	A134940	6		DECAL (EN) WARNING CRUSH HAZARD
404	810177940	12		DECAL PERSONNEL TIE DOWN
405	810121832	2		DECAL WARNING FALL PROTECTION EQUIP
407	810113150	2		DECAL NO STEP SYMBOL
408	84032551	1		DECAL BM WIRING

810266380 (LIMIT SWITCH JIB STOP MIN. FLANGE)	1-7	810297310 (PLATE KEEPER ZINC OOMAPI001)	2-20
81026639 (ACTUATOR ROD 305.0 MM)	1-15	810298062 (PIN 1 HOLE W/HD 62.0 DIA X 77.8 LG)	2-6, 2-8, 2-12, 2-20, 2-26, 2-28, 2-30, 2-33, 2-44, 2-54
810266701Z (TOP 12.0 M #501 ASSY ZINC OOMAPI001)	2-2	810298070 (LINK #500 BOOM ZINC RICH PRIMER)	2-8, 2-12, 2-20, 2-26, 2-30, 2-33, 2-44, 2-54
81026861X (SHEAVE WIRE ROPE ASSY 1.125)	2-60	810299412 (HITCH PIN .5 DIA X 5.50 LG)	2-54
810268740 (BRACKET ZINC RICH PRIMER)	1-33	810300091Z (INSERT 12.0 M HEAVY ZINC PRIMER LJ EQUIP)	2-2
810272652 (CATWALK 724 MM X 666 MM)	2-52	810300280 (LINK #501 ZINC RICH PRIMER)	2-28
810277662 (SHEAVE BANK ASSY #500 LOWER POINT)	2-58	810301722 (LADDER 371 MM X 2064 MM)	2-50
810277822 (PIN 2 HOLE 19.1 DIA X 287.0 LG)	2-6, 2-8, 2-12, 2-20, 2-33, 2-54	81031017 (ESI LUFFING JIB BUTT WRG)	1-2
810277952 (TIMBER 50.8 MM X 88.9 MM X 1325.0 MM)	2-6, 2-8, 2-12, 2-54	81031018Z (ESI LUFFING JIB BUTT MOUNT ZINC)	1-5
810278542 (CATWALK 724 MM X 2495 MM)	2-14	81031019Z (ESI ZINC OOMAPI001)	1-2
810280472 (CATWALK 724 MM X 3410 MM)	2-50	81031020Z (ESI ZINC OOMAPI001)	1-21
810280570 (TIMBER 38.1 X 88.9 X 1080.0)	2-20	81031064 (LADDER 371 X 1634)	2-68
810280762 (CATWALK 965 MM X 1524 MM)	2-68	810310670 (CABLE .75 10X219.00 (IN))	2-14, 2-68
810281050 (CABLE .75-10X456.52 (IN))	2-10, 2-52	81031460 (SHAFT 129.9 DIA X 1350.0 LG)	2-32, 2-44
810281382 (CATWALK 724 MM X 724 MM)	2-14, 2-56	810314940 (GUARD ZINC RICH PRIMER)	2-32, 2-44
810281790 (ROLLER 50.8 101.6 TBD NY-LON)	2-32	810315910 (GUARD ZINC RICH PRIMER)	2-44
810282652 (PIN 2 HOLE 19.05 DIA X 167.8 LG)	2-32, 2-44	810315990 (BRACKET STRAP ZINC RICH)	2-6, 2-8, 2-12, 2-54
810284270 (PIN SAFETY .25 DIA X 2.50 LG)	1-23	810316271Z (INSERT 6.0 M MEDIUM ZINC LUFF JIB EQUIP)	2-2
810288502 (ROD ADJUSTMENT 85MM)	1-9	81031805 (SHAFT 129.95 X 835.0 LG)	2-20
810291390 (SENSOR ANGLE MEMS 200 DEG)	1-7, 1-23	810318440 (GUIDE WIRE ROPE ZINC RICH PRIMER)	2-20
810293802 (GUARD WIRE ROPE)	2-44	81031849 (SHAFT M30 X 3.5 X 840)	2-20
810294422 (BRACKET STRAP)	2-20, 2-33	810321682 (BRACKET STRAP)	2-54
810294472 (BRACKET STRAP)	2-20	81032176 (PIN 1 HOLE W/HD 100.0 X 86.3 LG)	2-20
810295381Z (INSERT 12.0 M ZINC PRIMER LUFF JIB EQUIP)	2-2	81032183 (CATWALK ASSY #502 MAIN STRUT)	2-32
810296892 (COLLAR 70.50MM ID)	2-20	81032853Z (STRUT STOP ZINC RICH MAIN STRUT 502)	2-33
810297082 (PIN 2 HOLE 12.7 DIA X 98.0 LG)	2-20	810329362 (HOOK BOLT J 1/2 INCH)	1-23
810297260 (STRAP #500 JIB ZINC RICH)	2-12, 2-30	810329940 (WIRING HARNESS WJR1)	1-5
810297280 (STRAP #500 JIB ZINC RICH)	2-8, 2-26, 2-28	81033015 (PIN 2 HOLE 63.5 DIA. X 185.0 LG)	2-42

ENU / 2020-04-02

CLICK HERE TO **DOWNLOAD** THE COMPLETE MANUAL

- Thank you very much for reading the preview of the manual.
- You can download the complete manual from: www.heydownloads.com by clicking the link below



- Please note: If there is no response to CLICKING the link, please download this PDF first and then click on it.

CLICK HERE TO **DOWNLOAD** THE COMPLETE MANUAL