

Manitowoc Cranes MACHINE COMPONENT INDEX

Date: November 08, 2022

Rev:

<u>Model Number</u> MLC150-1		<u>Serial Number</u> 91501022	
Item	Part	Description	Page
1	80133863	ROTATING STRUCTURE CAB INSTL FIXED CAB	3
	80123265	CAB ASSY 24V CCS	5
	80103175	CAB ASSY 24V CCS PURCHASED	7
	80113644	CAB - SUB ASSY 24V CRAWLER	11
	80103172	GLASS DOOR ASSEMBLY	17
	80071856	WINDOW ASSY. RH SIDE	21
	90039109	GLASS ASSY. SLIDING	23
	90039110	GLASS ASSY. FIXED	25
	80142662	LIGHT ASSEMBLY-LED FLOOD	
	80004449	KIT - FRONT WIPER (24 VOLT) (COMPLETE ASSEMBLY)	27
	80124600	WORK LIGHT HA - JUMPER	29
	80102531	HEATER & AC INSTALL CAB 24V	31
	80089969	KIT - 24V HEATER/COOL	35
	80104074	CAB ACOUSTICS INSTALLATION	39
	80104075	MISC CAB COMPONENTS INSTALL	41
	80104188	INSTL, CAB BRACKETS	43
	80104189	INSTL, CAB PEDAL GROUP	45
	80079452	PLUG INSTALLATION	47
	80123879	CONSOLE CONTROL ASSY CAB	49
	80102334	CONSOLE OVERHEAD ASSY	51
	80123880	CONSOLE RIGHT HAND ASSY	53
	84054782	DISPLAY CCS COLOR	57
	80123881	CONSOLE LEFT HAND ASSY	59
	A024680	CONTROLLER, JOYSTICK	61
	80102338	CONSOLE REAR ASSY	65
	80107986	PANEL ASSY ELEC REAR CAB UPPER	67
	80107988	PANEL ASSY ELEC REAR CAB LOWER	69
	80107991	PANEL ASSY ELEC REAR CAB INNER	71
	A02019	FOOT PEDAL ASSY THROTTLE CONTR	73
	80123266	SEAT ASSY CAB	75
	84055200	INSTL, CAB INTERIOR	81
	80120620	ESI CAB INTERIOR WIRING	85

CLICK HERE TO **DOWNLOAD** THE COMPLETE MANUAL

- Thank you very much for reading the preview of the manual.
- You can download the complete manual from: www.heydownloads.com by clicking the link below



- Please note: If there is no response to CLICKING the link, please download this PDF first and then click on it.

CLICK HERE TO **DOWNLOAD** THE COMPLETE MANUAL

Manitowoc Cranes

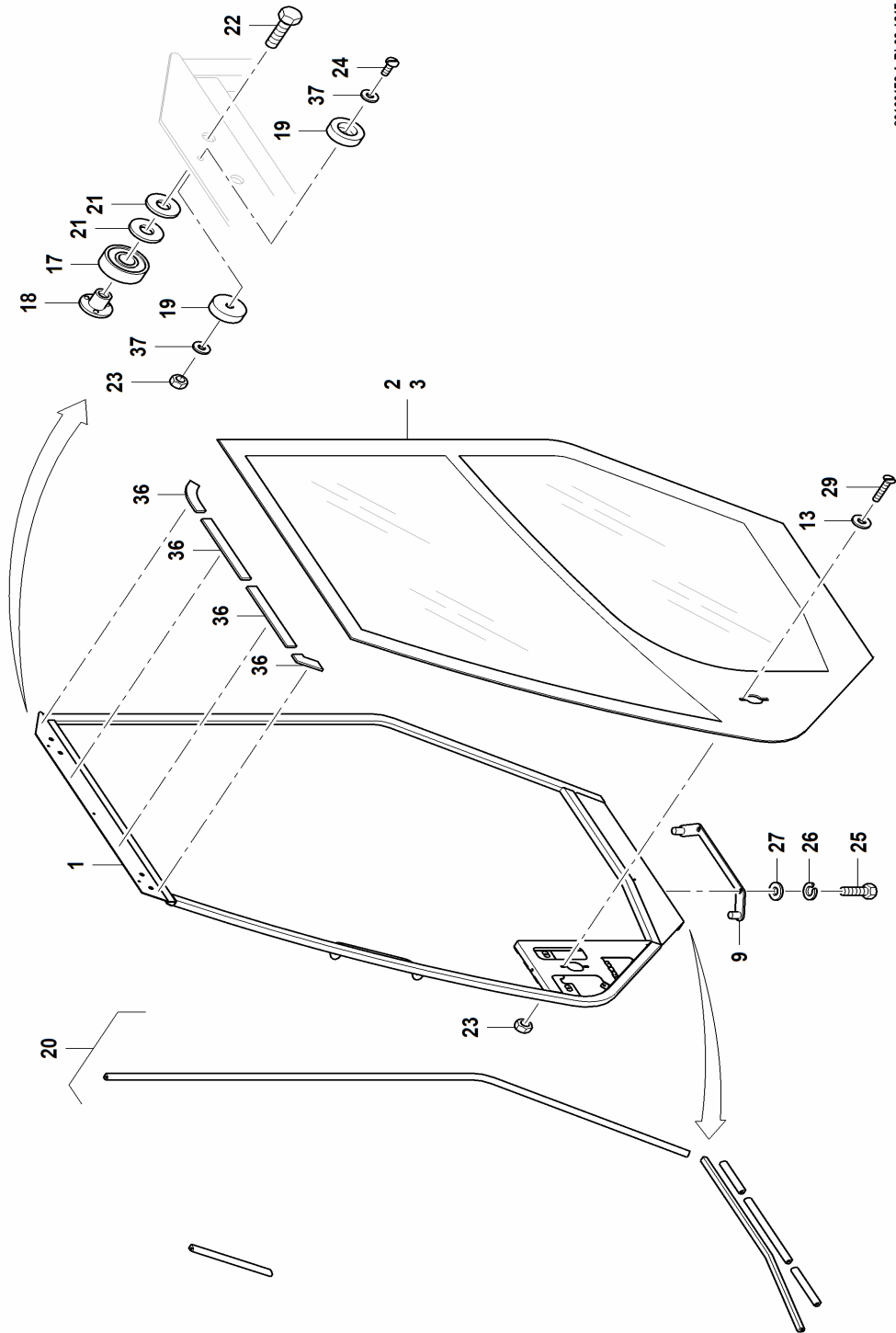
Description
CAB ASSY 24V CCS

Assembly No.
80123265
 Revision: **A**

Item	FN	Part	Qty	Description
1	+	80103175	1	CAB ASSY 24V CCS PURCHASED
2	+	80123879	1	CONSOLE CONTROL ASSY CAB
3	+	80123266	1	SEAT ASSY CAB
4	+	84055200	1	INSTL, CAB INTERIOR
5	+	80120620	1	ESI CAB INTERIOR WIRING
6		539052	1	IDENTIFICATION PLATE
7		599294	2	RIVET-BLIND-.125 DIA.
8		02254477	1	OUTSIDE MIRROR WITH HOLDER
9		7115140850	2	HHCS 1/4-20UNCX1.00 G5
10		7950140050	2	WASHER, LOCK 1/4"
11		7950140141	4	WASHER, FLAT 1/4" PLAIN NARROW
12		7660140001	2	HEX NUT 1/4-20UNC GR5 FLZN

+ SEE FURTHER BREAKDOWN THIS GROUP

Manitowoc Cranes



80103172-A-BL02-1217-0000

Manitowoc Cranes

Description
GLASS ASSY. FIXED

Assembly No.
90039110
Revision:

Item	FN	Part	Qty	Description
1		90038877	1	GASKET, WEATHERFIN SEAL
2		NSS	1	NOT SERVICED SEPARATELY MOLDING, RUBBER
4		NSS	1	NOT SERVICED SEPARATELY GLASS

Manitowoc Cranes

Description KIT - 24V HEATER/COOL				Assembly No. 80089969 Revision:
Item	FN	Part	Qty	Description
1		90018863	1	THERMOSTAT, NON-ADJ.
2		90018875	1	HARNESS ASSY. WATER VALVE
3		90041469	1	MOTOR ASSY. 24V. ACTUATOR
4		90041470	2	SCREW #6
5		90018867	1	GROMMET, 3/4"
6		90041471	2	NUT, 1/4
7		90041472	2	GROMMET, 3/8"
8		90041473	4	WASHER, 3/8" S.S.
9		90041474	8	SCREW #10
10		90021737	2	CAPSCREW S.S.
11		90041475	2	CAPSCREW S.S.
12		90021742	4	WASHER S.S.
13		90021743	4	WASHER, LOCK S.S.
14		90041476	4	CAPSCREW S.S.
15		90022805	6	CLAMP, #10
16		90041477	4	NUT, HEX JAM
17		90041478	4	CAPSCREW, S.S.
18		90041479	3	SPACER
19		90021054	4	NUT, LOCK #10 S.S.
20		90041480	3	NUT, COUPLING
21		90041481	1	BUSHING
22		90041482	39	SCREW, #10 S.S.
23		90041483	1	COIL, EVAPORATOR HIGH-OUTPUT
24		90032349	1	EXPANSION BLOCK, 2 TON
25		90022804	1	HOSE ASSY. 90DEG
26		90022802	1	FITTING, TEE
27		90041250	1	VALVE
28		90018870	1	BRACKET, MOUNTING
29		90018858	1	PLATE ASSY. REAR
30		90024311	1	BRACE
31		90041484	1	PLATE, MOUNTING SEAT BASE
32		90041485	1	HOUSING, BLOWER
33		90041486	1	BRACKET, WATER VALVE MOUNT
34		90041487	1	PLATE, TOP
35		90041488	1	BRACKET, R.H.
36		90041489	1	HOUSING, MAIN
37		90041490	1	DOOR ASSY. FRESH/RECIRCULATE
38		90041491	1	HOUSING, FILTER
39		90041492	1	PLATE, ACTUATOR MTG.

Manitowoc Cranes

Description
INSTL, CAB PEDAL GROUP

Assembly No.
80104189
 Revision: **C**

Item	FN	Part	Qty	Description
1		80115288	8	FASTENER M6 X 25 LG BLACK SS
2		810063210	6	SCREW, SOCKET BUTTON CAP
3		7661150003	2	NUT, HEX
4		7951150014	2	F WASHER
8		80105909	1	WELDMENT, FLOOR MOUNT PLATE
9		80104280	2	PLATE- PEDAL PLATE COVER

Manitowoc Cranes

Notes

Manitowoc Cranes

<u>Description</u> CONSOLE REAR ASSY				Assembly No. 80102338 Revision: C
Item	FN	Part	Qty	Description
1		80107868	1	PANEL RECPTACLE FLOOR MOUNT
2	+	80107986	1	PANEL ASSY ELEC REAR CAB UPPER
3	+	80107988	1	PANEL ASSY ELEC REAR CAB LOWER
4	+	80107991	1	PANEL ASSY ELEC REAR CAB INNER
5		810247150	1	RELAY 24V 10A
6		7099001159	4	SCREW, THUMB
7		7115140550	16	HHCS 1/4-20UNCX0.63 G5
8		7126151153	4	HHCS M6X20 SS ISO 4017
9		7126171153	4	HHCS M8X20 8.8 ISO 4017
10		7126191253	4	HHCS
11		7519000198	4	NYLON LIFT OFF HINGE, LH
12		7659000287	4	RETAINING NUT 5/16-18UNC
13		7661130003	1	HEX NUT M5 8 ISO 4032
14		7950140050	16	WASHER, LOCK 1/4"
15		7951170210	4	L WASHER
16		7951190580	4	SER WASHER 10 -HRC44-51 DIN 67
17		A039400	1	PLUG HOLE 0.625 DIA HOLE
18		A118130	1	POWER SUPPLY
19		A183310	4	HEX KEPS LNUT
20		A183320	4	WASHER, LOCK COUNTERSUNK
21		A196490	1	WASHER FLAT
22		A200200	1	SLOT PMS
23		3503330	4	CLOSURE PLUG DOME
24		A019730	2	CONNECTOR, BULKHEAD

+ SEE FURTHER BREAKDOWN THIS GROUP

Manitowoc Cranes

Description SEAT ASSY CAB				Assembly No. 80123266 Revision: C
Item	FN	Part	Qty	Description
1		80122605	1	SEAT HEADREST CAB 1NO/1NC SW
2		80116362	1	BRACKET SEAT PLATE
3		80136911	1	SEAT RISER-6-WAY POWER
		90048505	1	INCLUDES THE FOLLOWING PARTS SWITCH CONTROL
4		03193874	1	BEARING PIN
5		7661170003	4	NUT
6		03044941	1	LOCKING WASHER
7		7951170014	10	F WASHER
8		80064695	1	SWIVEL ARM
9		03193875	2	SLIDING BEARING
10		00028194	1	RETAINING RING
11		03143248	1	PIN
12		7312000095	1	HAIRPIN (FOR 5/16-1/2 PIN)
13		03194045	1	FLASH POINT
14		03194042	1	GAS SPRING
15		80104025	1	BRACKET SEAT ADAPTER PLATE
16		7126171153	4	HHCS M8X20 8.8 ISO 4017
17		7103030	4	WASHER, LOCK
18		5460530	4	NUT, HEX
19		7951170210	12	L WASHER
20		84054803	1	MOD WIRING HARNESS
		3642210	1	INCLUDES THE FOLLOWING PARTS CONNECTOR, 2 POLE SHROUD
		6228720	2	SEAL, CABLE
		6805450	2	TERMINAL, PIN CONTACT
21		7126171253	4	HHCS M8X25 8.8 ISO 4017
22		7126171053	4	HHCS M8X16 SS ISO 4017
23		80107139	1	STOP SEAT RISER
24		7103020	2	WASHER, LOCK
25		6123540	2	HHCS
26		7951170054	8	FLAT WASHER 8 100HV FLZN
27		3490060	1	CLIP
28		A040120	1	RETAINER
29		80135377	1	BAR

Manitowoc Cranes

Description

ESI CAB INTERIOR WIRING

Assembly No.

80120620

Revision: **B**

Item	FN	Part	Qty	Description
1		5460780	4	HEX NUT
2		5469560	2	NUT PANEL
3		6670070	35	STRAP
4		7114330	2	WASHER
5		7121091101	4	SCREW, MACHINE M3X20 - 4.8
6		7121111101	2	MACHINE SCREW, M4X20 SLOTTED
7		7126152053	8	HHCS M6x65 -8.8 ISO 4017
8		7126171053	8	HHCS M8X16 SS ISO 4017
9		7661090003	4	HEX NUT M3 8 ISO 4032
10		7661110003	2	HEX NUT M4-8 ISO 4032
11		7950040053	4	WASHER LOCK #4 SS B18.21.1
12		7951090210	4	L WASHER 3 -HRC44-51 DIN 7980
13		7951110210	2	LOCKWASHER, 4MM I.D.
14		7951150210	8	LOCKWASHER, 6MM I.D.
15		7951170014	8	F WASHER
16		7951170210	8	L WASHER
17		80069036	1	CONTROLLER IOS
18		03313303	1	ELECTRONIC CONTROL UNIT
19		80106489	1	WELDMENT, FUSE PLATE
20		80107435	1	WELDMENT, PLATE, MOD MTG
22		810185910	4	PHIL RMS
24		80122953	1	WIRING HARNESS WCB1

Manitowoc Cranes

Description

DECAL KIT LOWERWORKS

Assembly No.

80127265

Revision: **A**

Item	FN	Part	Qty	Description
15		0987399	4	DECAL(EN) WARNING CRUSH HAZARD
16		A073390	8	DECAL WARNING CRUSH HAZARD
43		176856	4	DECAL-WARNING-CRUSH HAZARD
44		80126911	1	DECAL DIR CONTROL VALVE

Manitowoc Cranes

Description

DECAL KIT MLC150-1 NOMENCLATUR

Assembly No.

80127268

Revision: **A**

Item	FN	Part	Qty	Description
18		80111361	3	DECAL MANITOWOC 26" WHITE
19		80124957	1	DECAL MLC150-1 32" WHITE
20		80126740	1	DECAL MLC150-1 26" WHITE
21		80125098	1	DECAL MLC150-1 36" WHITE

Manitowoc Cranes

Description

SOCKET/WEDGE, 1" (26 MM)

Assembly No.

6462460

Revision:

Item	FN	Part	Qty	Description
1		9826220012	1	SOCKET (1")
2		9914100033	1	PIN W/COTTER
3		9826220014	1	WEDGE (1")
4		7312800000	1	CLAMP

Manitowoc Cranes

Description

PIN PULLER ASSY, CTWT

Assembly No.

80117501

Revision: **B**

Item	FN	Part	Qty	Description
1		80117502	2	PIN 100.0 X 212.0 LG
2		80117503	2	PLATE 12 MM
3		80117504	1	SHAFT PIN PULLER
4		80119629	2	BRACKET PIN PULLER
5		80121754	1	BRACKET PIN PULLER
6		84054356	1	CYL HYD COUNTERWEIGHT PIN
7		7126171253	12	HHCS M8X25 8.8 ISO 4017
8		7126191353	2	HHCS
9		7126211453	4	HHCS
10		7661190804	2	HEX LOCK NUT M10
11		7661210804	4	HEX LOCK NUT
12		7951190014	4	F WASHER 10
13		7951210014	8	F WASHER 12 -ST ISO 7089

Manitowoc Cranes

Description

SOCKET/WEDGE, 7/8" (22 MM)

Assembly No.

6462450

Revision:

Item	FN	Part	Qty	Description
1		9826220008	1	SOCKET (7/8")
2		9826220009	1	PIN, SOCKET (7/8")
3		7132650	1	WEDGE
4		9826220010	1	CLIP, WIRE ROPE (7/8")
5		9826220011	1	PIN, COTTER

Manitowoc Cranes

Description
ENCLOSURE ASSY RIGHT

Assembly No.
80122832
Revision: D

Item	FN	Part	Qty	Description
1		7115140450	4	HHCS 1/4-20UNCX0.50 G5
2		7123130918	4	SBCS M5x14 A2 ISO 7380
3		7123131418	10	SBCS M5 X 35 SS
4		7126191118	32	SBCS M10X20 ISO 7380
5		7126191218	22	SBCS M10x25 SS ISO 7380
6		7126191353	8	HHCS
7		7661130803	14	LOCKNUT
8		7661190803	30	HEX LOCK NUT M10 -8 ISO 7040
9		7950140141	4	WASHER, FLAT 1/4" PLAIN NARROW
10		7951130014	14	F WASHER 5 ST ISO 7089
11		7951190014	68	F WASHER 10
12		80107811	4	HINGE SURFACE MOUNT 75X100
13		80108730	2	DOOR RETAINER
14	+	80128164	2	DOOR ASSY ENCL
16		80122716	4	BRACKET DOOR LATCH
17		80122719	4	BUMPER 25.4X19.1
18		80122720	10	SPACER 5.3X10X20
19		80122834	1	FRAME ENCLOSURE
20		80137317	1	SHEET METAL ENCLOSURE
21		80128195	2	RUBBER 0.50X0.13x28.0 SILICONE
22		80136413	2	BRACKET ENCLOSURE SUPPORT

+ SEE FURTHER BREAKDOWN THIS GROUP

Manitowoc Cranes

Description
PANEL ASSY ACCESS

Assembly No.
80122912
Revision: **A**

Item	FN	Part	Qty	Description
1		80122913	1	PANEL ACCESS
2		81015879	1	LATCH QUARTER TURN

Manitowoc Cranes

Description

PARTS BOX ASSY OPT 5 A/C OR SP

Assembly No.

810425865

Revision: **F**

Item	FN	Part	Qty	Description
501		80139244	1	PLUG 3P4W 50A 125/250V
502		80139245	1	COVER 50A

Manitowoc Cranes

Description

LIMIT SWITCH SUBASSY 6P LINEAR

Assembly No.

80129711

Revision: **A**

Item	FN	Part	Qty	Description
1		80129250	1	CABLE GLAND NPT 0.50 ID 4-10
2		80129310	1	CABLE
3		810161350	1	SWITCH, LIMIT
20		80129310	2	CABLE

Manitowoc Cranes

<u>Description</u> PAWL ASSY BOOM HOIST				Assembly No. 80121244 Revision: D
Item	FN	Part	Qty	Description
1		428576	2	ELBOW 90 DEG. .25 NPT
2		4299360	1	FITTING
3		5620420	1	PIN COTTER
4		5620440	4	PIN, COTTER
5		7126131654	2	SHCS M5x45 -8.8 ISO 4762
6		7126191250	2	HHCS M10X25 8.8 FLZN ISO 4014
7		7126211553	4	HHCS M12X40 8.8 FLZN ISO 4017
8		7127151053	2	HHCS FULL THREAD
9		7440010200	1	FITTING GREASE 0.25 NPT 45 DEG
10		7661130803	2	LOCKNUT
11		7661170003	2	NUT
12		7951130014	2	F WASHER 5 ST ISO 7089
13		7951150014	2	F WASHER
14		7951190015	2	F WASHER
15		7951210014	4	F WASHER 12 -ST ISO 7089
16		7951210220	4	L WASHER 12 -HRC44-51 DIN 127
17		80113377	1	PAWL BOOM HOIST
18		80113379	1	BRACKET SWITCH
19		810161360	1	SWITCH, LEVER ARM FIXED
20	+	81019943	1	CYLINDER HYDR
21		81021008	2	PIN 2 HOLE
22		810217572	1	SHAFT
23		810223760	1	TUBE ROUND
24	+	81029368	1	LIMIT SWITCH MOLDED 3P SUBASSY
25		810259862	6	SHIM
26		810267143	1	BRACKET BOOM HOIST PAWL
27		810267163	1	CAM
28		810267172	1	SPRING 16 ODX2.6 WIREX125.0 L
29		810267182	1	BOLT EYE M8-1.25 X 50.0 X 3.0
30		810267192	1	SPACER TUBE 35.0 OD X 20.0 ID
31		810267202	1	SPACER TUBE 35.0 OD X 20.0 ID
32		810267212	1	BUSHING 55.0 OD X 20.0 ID X 30
33		A002012	1	PLATE KEEPER
34		A177492	1	PIN 1 HOLE W/HD

+ SEE FURTHER BREAKDOWN THIS GROUP

Manitowoc Cranes

<u>Description</u> HYD LINES INSTL RETURN				Assembly No. 80115269 Revision: H
Item	FN	Part	Qty	Description
69		81027218	3	CLAMP 35MM-35MM D GRP5 DIN3015
70		810275870	1	CLAMP
71		810275980	2	CHANNEL ANCHOR CLAMP
72		810276060	2	COVER PLATE
73		810276300	1	PLATE
74		810338510	1	SENSOR PRESSURE DIFFERENTIAL
75		81037850	4	SBCS
76		84037612	1	VALVE CHECK -120RFS X -120RB
77		A085820	4	CLAMP SPRING LIGHT DUTY
78		A107110	2	CLAMP TUBE
79		A125970	2	CONNECTOR PLATE
80		A175620	4	FLANGE ASSY SPLIT CODE 61 W/HA
81		A175640	2	FLANGE ASSY SPLIT CODE 61
82		7126171953	2	HHCS M8X60 SS ISO 4017
83		810029580	1	DISCONNECT
84		5968010	3	O RING
85		7447121240	1	ADAPTER, STRAIGHT INCLUDES THE FOLLOWING PARTS
		7755018002	1	O-RING
		7755912002	1	O-RING
86		80140715	2	SWITCH VACUUM HYDRAULIC
87		7447080846	1	ADAPTER, MALE ORFS 45 DEG
88		80101695	8	CLAMP SPRING LIGHT DUTY 4.53 -
89		7447201608	1	ELBOW, 45 DEGREE INCLUDES THE FOLLOWING PARTS
		7755025002	1	O-RING
		7755916002	1	O-RING
90		7447242051	1	EXPANDER
91		7555804090	1	1 1/2" I.D. HYDR HOSE ASSY STR
92		7447161616	1	CAP
93		7950160150	4	WASHER, 3/8" I.D.

Manitowoc Cranes

Description

HYD LINES INSTL DRUM & TRAVEL

Assembly No.

80115270

Revision: **E**

Item	FN	Part	Qty	Description
73		80120633	1	TUBE ASSY SUPPLY
74		80120634	1	TUBE ASSY SUPPLY
75		80120635	1	TUBE ASSY TRAVEL
76		80120636	1	TUBE ASSY TRAVEL
77		80120637	1	TUBE ASSY TRAVEL
78		80120638	1	TUBE ASSY TRAVEL
79		80120639	4	TUBE ASSY DRUM
80		80121314	1	TUBE ASSY MOTOR
81		80131311	1	BRACKET MAIN VALVE
82		80121569	1	BRACKET MAIN VALVE
83		80121575	1	BRACKET MAIN VALVE
84		80121579	1	BRACKET MAIN VALVE
85		80121581	2	BRACKET MAIN VALVE
86		80121595	1	BRACKET HOSE
87		80122099	1	HOSE ASSY -20 X 2690 LG
88		80122100	1	HOSE ASSY -20 X 1235 LG
89		80122101	1	HOSE ASSY -12 X 3050 LG
90		80122242	2	FITTING STRAIGHT -6ORB X -6ORB
91		80123379	1	HOSE ASSY -24 X 2060 LG
92		80123380	1	HOSE ASSY -24 X 1885 LG
93		80123381	1	HOSE ASSY -24 X 2370 LG
94		80123382	1	HOSE ASSY -24 X 2090 LG
95		80123476	1	BRACKET HYD CHANNEL
96		80123952	1	BRACKET SPACER
97		810027560	1	FITTING ADAPTER SPECIAL
98		810029580	2	DISCONNECT
99		810114770	6	FLANGE ASSY SPLIT CODE 62
100		810160830	2	FLANGE SPLIT CODE 62
101		810160850	1	FLANGE SPLIT CODE 62
102		81021918	2	FLANGE
103		810234540	2	FLANGE SPLIT CODE 62
104		810250160	2	CHANNEL ANCHOR CLAMP
105		810250180	2	CHANNEL ANCHOR CLAMP
106		810268620	12	SENSOR
107		810269540	1	CHANNEL
108		810269570	1	CHANNEL
109		810269880	1	CHANNEL
110		810270420	4	CLAMP 1.75 DIA DIN3015
111		80126437	4	CLAMP 2.16 DIA DIN3015

Manitowoc Cranes

<u>Description</u> HYD LINES INSTL ACCESSORIES				Assembly No. 80115271 Revision: E
Item	FN	Part	Qty	Description
1		3455110	4	CLAMP TUBE, 0.75 DIA
2		3455150	4	CLAMP, TUBE
3		3456840	2	CLAMP, TUBE
4		3456860	2	CLAMP TUBE
5		3759550	1	Q DISCON FITTING
6		4286090	1	FITTING
7		7126151653	4	CAP SCREW
8		7126171453	12	HHCS M8x35 -8.8 ISO 4017
10		7126171653	6	HHCS M8x45 -8.8 ISO 4017
11		7126172253	2	HHCS M8x75 -8.8 ISO 4017
12		7126172950	3	CAP SCREW, M8 X 130 HEX HEAD
13		7126173053	3	HHCS M8 X 140 8.8
14		7126191153	2	HHCS M10X20 8.8
15		7126192353	2	HHCS M10x80 -8.8 ISO 4017
16		7447060404	1	BRANCH TEE - HYD
17		7447060468	4	FITTING, 90 ORFS
18		7447060601	13	ADAPTER, STRAIGHT MALE INCLUDES THE FOLLOWING PARTS
		7755012002	1	O-RING
		7755906002	1	O-RING
19		7447060603	9	ELBOW, 90 DEGREE INCLUDES THE FOLLOWING PARTS
		7755012002	1	O-RING
		7755906002	1	O-RING
21		7447060634	1	TEE, FEMALE RUN INCLUDES THE FOLLOWING PARTS
		7755012002	1	O-RING
		7755906002	1	O-RING
22		7447060635	1	TEE, BRANCH INCLUDES THE FOLLOWING PARTS
		7755012002	1	O-RING
23		7447060646	1	ADAPTER, MALE ORFS 45 DEG
24		7447060651	1	FITTING
25		7447060803	2	ELBOW, 90 DEGREE MALE INCLUDES THE FOLLOWING PARTS
		7755012002	1	O-RING
		7755908002	1	O-RING
26		7447061001	1	ADAPTER, STRAIGHT INCLUDES THE FOLLOWING PARTS
		7755012002	1	O-RING
		7755910002	1	O-RING
27		7447061003	1	FITTING, 90 DEGREE INCLUDES THE FOLLOWING PARTS
		7755012002	1	O-RING
		7755910002	1	O-RING
28		7447080801	5	ADAPTER, STRAIGHT

Manitowoc Cranes

Description

HOIST ASSY DRUM 2 W/O FF

Assembly No.

80115485

Revision: **B**

Item	FN	Part	Qty	Description
1		5621740	8	PIN COTTER
2		7126271853	4	HHCS FULL THREAD
3		7126272353	1	CAP SCREW, M20 X 80MM HEX HEAD
4		7126272653	1	CAP SCREW, M20 X 100MM HEX HEAD
5		7661270103	2	NUT
6		7951270014	4	F WASHER
7		80115486	1	HOIST DRUM 2 W/O FF
8		80116971	1	MOTOR HYD 170 CC/REV
9		80123271	4	PIN 2 HOLE 63.5MM X 184.5MM LG
10		810249210	1	PLUG

Manitowoc Cranes

Description ESI ROT BED MOUNTING				Assembly No. 80120824 Revision: D
Item	FN	Part	Qty	Description
1		3455160	1	CLAMP TUBE
2		3490060	1	CLIP
3		5911170	1	REEL
4	#	80069035	1	ELECTRONIC CONTROL UNIT
5		80069037	3	CONTROLLER IOL
6		80110749	1	CARABINER 15.8 OPEN 181 KG
7		80119669	1	BRACKET LIMIT SWITCH
8	+	80122110	1	LIMIT SWITCH BOOM STOP
9		80122120	1	BRACKET LIMIT SWITCH
10		80122134	1	BRACKET ALARM
11		80122174	1	BRACKET CABLE REEL
12		80123603	1	BRACKET CCS NODE
13		80123734	1	BRACKET CCS NODES
14		810018650	1	ALARM
15		3455150	1	CLAMP, TUBE
16		810236902	1	BRACKET
17	+	80129368	1	LIMIT SWITCH MOLDED 3P SUBASSY
18		810254612	2	BRACKET
19		810270380	1	CLAMP
20		81027045	4	CLAMP 2.5 DIA DIN3015
21		810270640	1	PLATE
22		810270650	4	PLATE
23		810272150	1	CLAMP 30 MM-30MM DIA GRP4 DIN3
24		810276050	1	COVER PLATE
25		810291390	1	SENSOR ANGLE MEMS 200 DEGREES
26		81042145	1	LIMIT SWITCH ARM ADJUSTABLE
27		7126131153	4	HHCS M5x20 -8.8 ISO 4017
28		7126131654	4	SHCS M5x45 -8.8 ISO 4762
29		7126151153	4	HHCS M6X20 SS ISO 4017
30		7126152150	7	CAP SCREW, M6 X 70MM HEX HEAD
31		7126152950	3	HHCS M6x130 -8.8 ISO 4017
32		7126171253	1	HHCS M8X25 8.8 ISO 4017
33		7126171653	1	HHCS M8x45 -8.8 ISO 4017
34		7126191218	4	SBCS M10x25 SS ISO 7380
35		7126191253	2	HHCS
36		7126191353	1	HHCS
37		7126192153	2	HHCS M10x70 -8.8 ISO 4017
38		7126211353	4	HHCS
39		7126211453	12	HHCS

SERVICED AS AN ASSEMBLY ONLY

+ SEE FURTHER BREAKDOWN THIS GROUP

CLICK HERE TO **DOWNLOAD** THE COMPLETE MANUAL

- Thank you very much for reading the preview of the manual.
- You can download the complete manual from: www.heydownloads.com by clicking the link below



- Please note: If there is no response to CLICKING the link, please download this PDF first and then click on it.

CLICK HERE TO **DOWNLOAD** THE COMPLETE MANUAL

Manitowoc Cranes

Description

DECAL KIT T4F ENGINE

Assembly No.

80127269

Revision: **A**

Item	FN	Part	Qty	Description
36		7376102946	1	DECAL-WARNING ULTRA LOW SULFUR
37		80021901	1	PANEL-ULTRA LOW SULFUR DIESEL
38		810276890	1	DECAL
39		810276880	1	DECAL

Manitowoc Cranes

<u>Description</u> ENGINE INSTL POWER PLANT				Assembly No. 80118284 Revision: C
Item	FN	Part	Qty	Description
1		3490040	4	CLIP, TUBE COLLARD 3/4 ID
2		6637037005	1	MOLDING - USE 8246964300 QTY 5 5 FEET
3		6637053002	1	MOULDING
4		80106752	2	SPACER NYLON FOR M6 BOLT
5	+	80118286	1	ENGINE ASSY PUMP DRIVE Q6.7
6	+	80118290	1	BATTERY INSTL CUMMINS QSB
7	+	80118291	1	TANK FUEL INSTL 125 GAL
8	+	80118292	1	FUEL CIRCUIT CUMMINS QSB
9	+	80118293	1	HVAC AC/HEATER ASSY
10		80120065	1	PANEL AIR DEFLECTOR
11		80120066	1	PANEL AIR DEFLECTOR
12		80120067	1	BRACKET DEF TANK
13		80120068	1	BRACKET DEF TANK
14		80120136	1	PANEL AIR DEFLECTOR
15		80120145	1	BRACKET AIR DEFLECTOR PANEL
16		80120304	1	BRACKET DEF HOSE CLAMPING
17		80120367	1	BRACKET AIR DEFLECTOR PANEL
18		7126151253	6	HHCS M6X25 8.8 FLZN 4017
19		7126151753	2	CAP SCREW,M6X50 -8.8 ISO 4017
20		7126171253	23	HHCS M8X25 8.8 ISO 4017
21		7126191153	1	HHCS M10X20 8.8
22		7126191253	4	HHCS
23		7126211453	4	HHCS
24		7126211553	8	HHCS M12X40 8.8 FLZN ISO 4017
25		7126241553	3	CAP SCREW, M16 X 40MM LONG
26		7126241653	3	CAP SCREW, M16 X 45MM HEX HEAD
27		7661150803	8	NUT NYLOC
28		7661170803	23	NUT NYLOC M8
29		7661210803	8	HEX LOCK NUT
30		7951150014	12	F WASHER
31		7951150054	4	F WASHER 6 FLZN DIN7980
32		7951170014	46	F WASHER
33		7951190014	6	F WASHER 10
34		7951190054	6	FLAT WASHER 10 100HV FLZ
35		7951210014	8	F WASHER 12 -ST ISO 7089
36		7951210054	12	FLAT WASHER 12 100HV FLZN
37		7951240014	6	FLATWASHER 16MM I.D.
38		A015950	5	RETAINER, P-CLIP

+ SEE FURTHER BREAKDOWN THIS GROUP

Manitowoc Cranes

Description
PANEL ENCLOSURE

Assembly No.
80122770
Revision: **B**

Item	FN	Part	Qty	Description
1		7115140450	2	HHCS 1/4-20UNCX0.50 G5
2		7126191118	20	SBCS M10X20 ISO 7380
3		7126191218	4	SBCS M10x25 SS ISO 7380
4		7661190803	24	HEX LOCK NUT M10 -8 ISO 7040
5		7950140141	2	WASHER, FLAT 1/4" PLAIN NARROW
6		7951190014	28	F WASHER 10
7		80107811	1	HINGE SURFACE MOUNT 75X100
8		80122719	2	BUMPER 25.4X19.1
9		80122772	1	PANEL ENCLOSURE
10		80122773	1	CHANNEL FRAME
11		80122774	1	CHANNEL FRAME
12		80122775	1	CHANNEL FRAME
13		80122776	1	CHANNEL FRAME
14		80122798	1	PANEL ACCESS
15		80122800	1	BRACKET PANEL LATCH

Manitowoc Cranes

Description

FUEL CIRCUIT CUMMINS QSB

Assembly No.

80118292

Revision: B

Item	FN	Part	Qty	Description
1		5434050	1	NIPPLE PIPE
2		5434440	1	PIPE, NIPPLE
3		543752	1	PIPE NIPPLE 0.75DIA 4.5LGX40
4		543760	2	PIPE NIPPLE 0.75DIA 6.00LGX40
5		7019160	1	VALVE
6		7019170	2	VALVE
7		810272120	5	CLAMP
8		810275850	2	CLAMP
9		810275970	2	CHANNEL ANCHOR CLAMP
10		810276040	3	COVER PLATE
11		7126171553	3	CAP SCREW, M8 X 40MM HEX HEAD
12		7445120853	1	ELBOW
13		7445121251	2	UNION, STRAIGHT
14		7445121252	2	45 DEGREE ELBOW
15		7445121253	2	ELBOW, 90 DEGREE
16		7447060468	1	FITTING, 90 ORFS
17		7447080651	1	FITTING
18		7447080861	1	FEMALE SWIV ORFS/ORB METRIC -8
19		7447100851	2	EXPANDER
20		7447101228	2	90 DEG ELBOW - MALE ORS THD TO
21		7572421545	1	HOSE ASSY .63 ID X 215
22		7572425045	1	HOSE ASSY .63 ID X 250
23		5717030	1	PLUG, PIPE

Manitowoc Cranes

Description

COLD WEATHER KIT ROT BED INSTL

Assembly No.

80122818

Revision: **B**

Item	FN	Part	Qty	Description
1		2752330	3	BREAKER CIRCUIT
2		5464330	6	ELEC CONNECTOR WIRE ORANGE #10
3		5464370	3	CONNECTOR
4		7123111154	4	SHCS M4X20 A2 ISO4762
5		7126191353	2	HHCS
6		7364100011	2	WEDGE, 3 SOCKET
7		7661110803	4	NUT LOCK NYLON
8		7826000648	6	SOCKET, (14-16) GOLD
9		7951130016	4	F WASHER 5 A2 ISO 7089
10		7951190014	4	F WASHER 10
11	+	80110914	1	JUNCTION BOX ASSY ENG HEATERS
12		80111084	1	BRACKET BOX JUNCTION MOUNT
13		80116433	2	HEATER BATTERY WRAP 160W
14	+	80122733	1	HEATER HYDRUALIC TANK
15		80127260	1	CLAMP 1.437 DIA
16		3456730	2	CLAMP, TUBE
17		81036358	2	ELEC CONNECTOR
18		84031362	5	CABLE GLAND M20
19		A014920	1	RETAINER
20		A015990	1	RETAINER, P-CLIP
21		7661190803	2	HEX LOCK NUT M10 -8 ISO 7040
50		3718410	23	CABLE ELECTRIC
51		3718410	16	CABLE ELECTRIC
52		3718410	16	CABLE ELECTRIC
53		3718410	17	CABLE ELECTRIC
54		3718410	16	CABLE ELECTRIC

+ SEE FURTHER BREAKDOWN THIS GROUP

Manitowoc Cranes

Description
CARBODY ASSY

Assembly No.
80117547
Revision: **C**

Item	FN	Part	Qty	Description
1		80117548	1	CARBODY MACHINING
3	+	80145696	1	HYD LINES INSTL CARBODY
4	+	80121397	2	PIN PULLER CARBODY CRAWLER
5		7126091254	3	SHCS 3 X 25 8.8
6		7486000225	1	LEVEL, CIRCULAR
7		7661090003	3	HEX NUT M3 8 ISO 4032
8		7951090210	3	L WASHER 3 -HRC44-51 DIN 7980

+ SEE FURTHER BREAKDOWN THIS GROUP

Manitowoc Cranes

Description

PIN PULLER CARBODY CRAWLER

Assembly No.

80121397

Revision: **C**

Item	FN	Part	Qty	Description
1		7127271753	4	HHCS FULL THREAD
2		7951270095	4	FLAT WASHER
3		80116918	1	CYL HYD CARBODY PIN PULLER
4		80121221	2	PIN WITH HEAD 125 DIA X 239 LG
5		80121313	1	GUIDE PIN PULLER
6		80121316	1	ROD CARBODY PIN PULLER
7		810052462	4	PIN COTTER
8		81037743	2	PIN 2 HOLE

Manitowoc Cranes

Description
CRAWLER PAD ASSY

Assembly No.
80123686
Revision: **B**

Item	FN	Part	Qty	Description
1		80117201	56	CRAWLER SHOE 300.0P X 1200.0W INCLUDES QTY. 2 EACH ITEMS 2-4
2		7661240804	112	HEX LOCK NUT PA
3		7126241453	112	HHCS M16x35 -8.8 ISO 4017
4		0119782	112	TREAD PIN

Manitowoc Cranes

Description
OUTRIGGER PAD ASSY

Assembly No.
810247561
Revision: E

Item	FN	Part	Qty	Description
1		810247572	1	PIN LOCKING
2		81037302	1	OUTRIGGER PAD WELDMENT

Manitowoc Cranes

Description
BUTT WELD #350 6.8M

Assembly No.
80121275
Revision: C

Item	FN	Part	Qty	Description
7	*	80121126	2	TUBE 2.50 OD X .120 W (INCH)
8	*	80121127	2	TUBE 2.50 OD X .120 W (INCH)
9	*	80121128	2	TUBE 2.50 OD X .120 W (INCH)
10	*	80121129	2	TUBE 2.50 OD X .120 W (INCH)
11	*	80121130	2	TUBE 2.50 OD X .120 W (INCH)
12	*	80121131	2	TUBE 2.50 OD X .120 W (INCH)
13	*	80121132	2	TUBE 2.50 OD X .120 W (INCH)
14	*	80121133	2	TUBE 2.50 OD X .120 W (INCH)
15	*	80121134	2	TUBE 2.50 OD X .120 W (INCH)
16	*	80121135	2	TUBE 2.50 OD X .120 W (INCH)
17	*	80121203	2	TUBE 2.50 OD X .120 W (INCH)
18	*	80121205	2	TUBE 2.00 OD X .120 W (INCH)
19	*	80121206	2	TUBE 2.00 OD X .095 W (INCH)
20	*	80121207	2	TUBE 2.00 OD X .095 W (INCH)
21	*	80121208	2	TUBE 2.00 OD X .095 W (INCH)
22	*	80121209	2	TUBE 2.00 OD X .095 W (INCH)
23	*	80121210	2	TUBE 2.00 OD X .095 W (INCH)
24	*	80121211	2	TUBE 2.00 OD X .095 W (INCH)
25	*	80121212	2	TUBE 2.00 OD X .095 W (INCH)
26	*	80121213	2	TUBE 2.00 OD X .095 W (INCH)
27	*	80121214	2	TUBE 2.00 OD X .095 W (INCH)
28	*	80121215	2	TUBE 2.50 OD X .120 W (INCH)
29	*	80121216	2	TUBE 2.50 OD X .120 W (INCH)
30	*	80121218	2	TUBE 2.75 OD X .120 W (INCH)
31	*	80121219	4	TUBE 2.75 OD X .120 W (INCH)
32	*	80121222	1	TUBE 3.00 OD X .120 W (INCH)
33	*	80121223	1	TUBE 3.00 OD X .120 W (INCH)
34	*	80121231	2	TUBE 2.50 OD X .120 W (INCH)
35	*	80121234	2	TUBE 2.50 OD X .120 W (INCH)
36	*	80121235	2	TUBE 2.50 OD X .120 W (INCH)
37	*	80121236	1	TUBE 4.00 OD X .394 W (INCH)
38	*	80121238	2	TUBE 4.00 OD X .394 W (INCH)
39	*	80121241	1	TUBE 3.00 OD X .120 W (INCH)
40	*	80121243	2	TUBE 2.50 OD X .120 W (INCH)
99	*	80124623	1	80121275 LACING KIT BUTT PART NOT SHOWN

* REPAIR KIT AND/OR PART OF KIT

Manitowoc Cranes

Notes

Manitowoc Cranes

Description
A2B FLAG ASSY

Assembly No.
9333102633
Revision:

Item	FN	Part	Qty	Description
1		9333102373	1	FLAG, RETAINER
2		9333102618	1	DECAL, A2B
3		9333102232	1	LANYARD

Manitowoc Cranes

Description
A2B ASSY

Assembly No.
80119795
Revision: A

Item	FN	Part	Qty	Description
1	+	80075460	1	WEIGHT-LMI A2B
2		3341010	6	CHAIN
3		6246330	2	SHACKLE REF PARTS BOX 84054316 OR 80124069

+ SEE FURTHER BREAKDOWN THIS GROUP

Manitowoc Cranes

Description
INSERT WELD #350 3M

Assembly No.
80117701
 Revision: **D**

Item	FN	Part	Qty	Description
5	*	80117789	4	TUBE 2.00 OD X .095 W (INCH)
6	*	80117790	4	TUBE 2.00 OD X .120 W (INCH)
7	*	80117791	8	TUBE 2.00 OD X .095 W (INCH)
8	*	80117792	8	TUBE 2.00 OD X .095 W (INCH)
12	*	80117813	1	TUBE 2.00 OD X .095 W (INCH)
99	*	80124937	1	KIT LACING FOR 80117701 PART NOT SHOWN

* REPAIR KIT AND/OR PART OF KIT

Manitowoc Cranes

Description

INSERT ASSY #350 12M W/LUG

Assembly No.

80118954

Revision: B

Item	FN	Part	Qty	Description
1		5620430	4	PIN, COTTER
2		5636400	8	SAFETY PIN
3		5638230	8	PIN SAFETY
4		80118039	4	PIN 2 HOLE 70.0 DIA X 126.0 LG
5	+	80118955	1	INSERT WELD #350 12M W/LUG
6		80121465	2	STRAP 12.0 M #350
7		80121469	4	LINK #350
8		80121470	4	PIN W/HD 52.1 DIA X 64.25 LG
9		80121471	4	COLLAR 63.5 DIA X 25.0 LG
10		810254720	1	CLAMP CABLE ZINC RICH 00MAPI00
11		81026582	4	BRACKET
13		81037242	4	PIN CLEVIS
14		7126151150	2	CAP SCREW, M6X20 HEX HEAD
15		7126191750	12	HHCS M10x50 -8.8 ISO 4014
16		7661150803	2	NUT NYLOC
17		7661190803	12	HEX LOCK NUT M10 -8 ISO 7040
18		7951150014	4	F WASHER
19		7951190014	24	F WASHER 10
20		81026590	2	BRACKET
21		80130148	4	PIN 2 HOLE 19.05 DIA X 193.5

+ SEE FURTHER BREAKDOWN THIS GROUP

Manitowoc Cranes

Description
TIMBER ASSY #350 12M

Assembly No.
80123960
Revision: B

Item	FN	Part	Qty	Description
1		80101819	4	U-BOLT COATED 2.00 PIPE
2		80123136	4	PLATE 5 MM
5		7660152500	8	HEX LOCK NUT PA 5/16-18UNC SS
6		7950150141	16	F WASHER 5/16"
7		80129763	2	TIMBER 38.1 x 88.9 x 1520.0
8		7115153250	8	HHCS 5/16-18UNCx4 G5

Manitowoc Cranes

Description
SHEAVE ASSY

Assembly No.
1712501
Revision: **G**

Item	FN	Part	Qty	Description
1		2250190	1	BEARING
2		80121082	2	SEAL LIP 6.11 ID X 7.19 OD
3		1703542	1	SHEAVE, 30 IN DIA

Manitowoc Cranes

Alphabetical Index	Appendix A	
Description	Part	Page
CAP SCREW, M8 X 130 HEX HEAD	7126172950	215
CAP SCREW, M8 X 40MM HEX HEAD	7126171553	275, 279
CAP SCREW, M8X25 HEX HEAD	7126171250	41
CAP SCREW, M8X50 HEX HEAD	7126171753	206, 219, 299
CAP SCREW, M6X50 -8.8 ISO 4017	7126151753	255
CAP, 1/4"	7258001451	17, 59, 82
CAP, DUST	90038812	353, 401
CAPSCREW S.S.	90021737	35
	90041475	35
	90041476	35
CAPSCREW, S.S.	90041478	35
CARABINER 15.8 OPEN 181 KG	80110749	235, 339, 351
CARBODY MACHINING	80117548	295
CCS COLOR DISPLAY	80096475	57
CHAIN	3341010	111, 365
CHANL ANCHR CLMP 25.4DP 812.8	81026958	219
CHANNEL	810269530	219
	810269540	205
	810269570	205
	810269870	219
	810269880	205, 301
CHANNEL 25.4 DP X 660.4 LG	810269560	301
CHANNEL ANCHOR CLAMP	810250150	219, 300
	810250160	194, 205
	810250180	205
	810251520	181, 206
	810271010	219, 301
	810271020	206
	810275970	177, 181, 219, 275, 279, 301
	810275980	195, 206, 219, 301
CHANNEL ANCHOR CLAMP 25.4 DP X	81026954	219
CHANNEL FRAME	80122773	265
	80122774	265
	80122775	265
	80122776	265
	80122910	153
CHANNEL FRONT WIPER MOUNT	80113733	12
CIRCUIT BREAKER 10A 24V	810244830	67
CIRCUIT BREAKER 15A 24V	81024484	67
CIRCUIT BREAKER 25A 24V	810244850	67
CLAMP	7312800000	115
	810270380	235
	810270400	219, 301
	810270740	219
	810270750	206
	810272040	219

From - CAP SCREW, M8 X 130 HEX HEAD

To - CLAMP

Manitowoc Cranes

Alphabetical Index	Appendix A	
Description	Part	Page
HHCS	7126191353	3, 125, 141, 145, 151, 159, 181, 197, 235, 259, 269, 285, 339
	7126191553	142
	7126211353	127, 131, 235, 259, 339
	7126211453	125, 235, 255, 337
HHCS 1/2-13UNC X 1.25 GR5	7115181050	299
HHCS 1/2-13UNC X 3.25 GR8	7118182650	203
HHCS 1/2-13UNCX1.13 G8	7118180950	261
HHCS 1/4-20UNCX0.50 G5	7115140450	145, 151, 159, 263, 265
HHCS 1/4-20UNCX0.63 G5	7115140550	65, 81
HHCS 1/4-20UNCX0.75 G5	7115140650	281
HHCS 1/4-20UNCX1.00 G5	7115140850	5
HHCS 1/4-20UNCX1.25 G5	7115141050	17
HHCS 10 X 16 8.8	7126191053	259
HHCS 3/4-10UNCx1.5 G5	7115221250	397
HHCS 3/8-16UNC X 0.75 GR 5	6124520	73
HHCS 3/8-16UNCX0.75 G5	7115160650	17, 41
HHCS 3/8-16UNCX1 G5	7115160850	17
HHCS 3/8-16UNCX1.25 G5	7115161050	229, 259
HHCS 3/8-16UNCX1.5 G5	7115161250	256
HHCS 3/8-16UNCx2.75 G5	7115162250	203
HHCS 5/16-18UNCx4 G5	7115153250	377, 383, 389, 395
HHCS 5/8-11UNCx1.75 G5	7115201450	203
HHCS 5/8-11UNCX1.75 G8	7118201450	261
HHCS FULL THREAD	7126151853	141
	7126192253	141
	7126271853	183, 223, 225
	7127151053	185
	7127221653	203
	7127241353	263
	7127271553	141, 299
	7127271753	261, 305, 313
	7127271953	203
HHCS M10X20 8.8	7126191153	141, 193, 215, 255, 279
HHCS M10X25 8.8 FLZN ISO 4014	7126191250	185
HHCS M10X35 8.8 FLZN 4017	7126191453	87, 141, 236, 269
HHCS M10X45 8.8 FLZN ISO 4017	7126191653	11
HHCS M10x50 -8.8 ISO 4014	7126191750	344, 373, 379, 385, 391
HHCS M10X55	7126191853	131, 263
HHCS M10X60 8.8 FLZN ISO 4017	7126191953	299
HHCS M10x70 -8.8 ISO 4017	7126192153	141, 235, 299
HHCS M10x80 -8.8 ISO 4017	7126192353	215
HHCS M12X100 10.9 FLZ4017	7127212653	203

From - HHCS

To - HHCS M12X100 10.9 FLZ4017

Manitowoc Cranes

Alphabetical Index	Appendix A	
Description	Part	Page
PAWL ASSEMBLY	80119689	167
PAWL BOOM HOIST	80113377	185
PAWL FRAME MACHINING	80119690	169
PAWL SUBASSY	80119695	169
PEDAL FOOT	A020232	73
PENDANT 2295.0 MM	80119145	129
PHIL OMS	A030300	59
PHIL RMS	810185910	85
PHIL RMS, 10-32 X 0.50 SS	810185870	67
PHIL TMS	6184030	82
	810034210	51, 53
	A030310	54
PHIL TMS 10-32UNF X 0.50 GR 5	6184180	51, 53, 59
PHIL TMS 6-32UNC X 0.75 GR 1	80107488	82
PHIL TMS 8-32UNC X 0.50 GR 1	6184170	54, 59
PIN	03143248	75
	1410162	307
	1766369	169
	1773632	341
	1790102	327
	1953192	318
	1965382	397
	81041239	318
PIN 2 HOLE	1614172	169
PIN (12) 12-14GA	7689000797	36
PIN 1 HOLE 41.28 OD X 84 LG	80125079	337
PIN 1 HOLE W/HD	5638740	397
	81039710	142
	A177492	169, 185
	A179832	397
PIN 1 HOLE W/HD 58.5DIA X 55.2	81009755	132
PIN 100.0 X 212.0 LG	80117502	125
PIN 130.0 dia x 161.0 lg	80123832	331
PIN 19.1X120.0	80123500	142
PIN 19.1X69 LG	80123499	142
PIN 2 HOLE	0743369	397
PIN 2 HOLE	1405382	331
	81021008	185
	81031888	391
	81035218	307
	81037743	305
	A117992	331
PIN 2 HOLE 19.05 DIA X 193.5	80130148	344, 373, 379, 385
PIN 2 HOLE 38.1 DIA X 174.0 LG	80120009	89, 129
PIN 2 HOLE 50.8MM X 89.5 MM LG	80103824	183

From - PAWL ASSEMBLY

To - PIN 2 HOLE 50.8MM X 89.5 MM LG

Manitowoc Cranes

Alphabetical Index	Appendix A	
Description	Part	Page
SPACER TUBE 35.0 OD X 20.0 ID	810267202	185
SPACER, NYLON	90018840	281
SPRAY CORROSION PREVENTATIVE	9999101803	111
SPRING	0034392	239
	0701262	169
	6524940	73
	7834100003	17
	9372220367	113
SPRING 11.00X1.25WX50.0L (IN)	80120671	333
SPRING 16 ODX2.6 WIREX125.0 L	810267172	185
STEP CRAWLER	80107880	307
STOP BOOM #350	80120866	331
STOP BOOM INNER	80137324	333
STOP BOOM, OUTER	80137351	333
STOP SEAT RISER	80107139	75
STRAP	6670050	351, 399
	6670060	197
	6670070	59, 85
STRAP 12.0 M #350	80121465	385, 391
STRAP 3.0 M #350	80121467	373
STRAP 6.0 M #350	80121466	379
STRAP 8.2 M #350 TOP	80121468	343
STRAP MOUNTING FUEL TANK	80119687	271
STRAP, GROUND	7850000046	41
STRIKER BOLT ASSY	80113916	12
STRIP RUBBER	810190690	279
STRIP RUBBER 0.50 X 0.52 X 10.	810224140	149
STRIP, SAFETY WALK	6677480	54
STUD THREADED M10-1.5 X 300 LG	80119789	269
SUN SHADE	80101497	12
SWITCH ASSY	810054120	231
SWITCH ASSY ATB, W/DUST CAP	80091847	351, 399
SWITCH ASSY HYD LEVEL	84055204	197
SWITCH ASSY SETUP REMOTE	80107601	229
SWITCH ASSY. W/CONNECTOR	90044872	353, 401
SWITCH CONTROL	90048505	75
SWITCH HOUSING WITH HANDLE GRI	195064	231
SWITCH KEY 2 POS	A096000	53
SWITCH KEY 3 POS	A095990	53
SWITCH MOMENTARY NO HORN	81035522	53
SWITCH PUSH BUTTON RED	81037980	53, 231

From - SPACER TUBE 35.0 OD X 20.0 ID

To - SWITCH PUSH BUTTON RED

Manitowoc Cranes

Numeric Index		Appendix B
Part	Description	Page
2971890	CABLE	231
2972110	CABLE, WIRE	189, 243
2981410	ADJUSTABLE SUN VISOR	123
3050130	CAP	59
3341010	CHAIN	111, 365
3453370	CLAMP, WORM DRIVE	119
3455110	CLAMP TUBE, 0.75 DIA	215
3455130	CLAMP, TUBE	203
3455150	CLAMP, TUBE	215, 235
3455160	CLAMP TUBE	235
3456730	CLAMP, TUBE	206, 285
3456740	CLAMP TUBE	193
3456840	CLAMP, TUBE	215
3456850	CLAMP TUBE	206
3456860	CLAMP TUBE	215
3456870	CLAMP, TUBE	193, 197
3490040	CLIP, TUBE COLLARD 3/4 ID	255, 279
3490060	CLIP	75, 235, 339
3503330	CLOSURE PLUG DOME	65, 82
3503380	CLOSURE	53
3641390	CONNECTOR	289
3642210	CONNECTOR, 2 POLE SHROUD	75
3718410	CABLE ELECTRIC	285
3718590	CABLE ELECTRIC	289
3753030	COUPLING, PLUG	197
3753040	COUPLING, DUST CAP	197
3759550	Q DISCON FITTING	203, 215
3854495	KIT, PACKING	113
3856530	JACK CYLINDER	111
4272850	FILTER, HYDRAULIC	197
4284210	FITTING REDUCER	193, 317
4285520	FITTING, QUICK LINK ADAPTER	109
4285750	FITTING, 90 DEG ELBOW	109
428576	ELBOW 90 DEG. .25 NPT	185
4286090	FITTING	215
4290100	FITTING LUBE, NPT .25	109, 307, 323
4295330	FITTING	206
4296170	FITTING, ADAPTER STRAIGHT	197
4299360	FITTING	109, 185

From - 2971890

To - 4299360

Manitowoc Cranes

Numeric Index		Appendix B
Part	Description	Page
7447121205	TEE, RUN	216
7447121208	ELBOW, 45 DEGREE MALE	216
7447121211	TEE, UNION	216
7447121217	UNION, BULKHEAD	219
7447121234	TEE, RUN	193, 216
7447121235	TEE	193, 216, 300
7447121238	ELBOW, 90 DEGREE LONG MALE	204
7447121240	ADAPTER, STRAIGHT	195
7447121248	SWIVEL, FEMALE 90	217
7447121250	ADAPTER ORFS SWIVEL/SAE O-RING	193
7447121261	FITTING ADAPTER 90 DEG -120RFS	317
7447121601	ADAPTER, STRAIGHT	204
7447161601	ADAPTER, STRAIGHT	193, 217
7447161603	ELBOW, 90 DEGREE MALE	217
7447161616	CAP	195
7447161633	ELBOW, 90 DEGREE	217, 300
7447161634	TEE, RUN	217
7447201601	ADAPTER, STRAIGHT MALE	193, 206
7447201608	ELBOW, 45 DEGREE	195
7447202001	ADAPTER, STRAIGHT MALE	193
7447202008	ELBOW, 45 DEGREE	206
7447202033	ELBOW, 90 DEGREE	193
7447202046	FITTING	193
7447242051	EXPANDER	195
7450000403	PLUG, FLANGE	194
7486000225	LEVEL, CIRCULAR	82, 295
7519000198	NYLON LIFT OFF HINGE, LH	65, 81
7519000199	HINGE, RIGHT HAND NYLON	81
7543000685	HOSE - USE 9543100045	41
7555201601	HOSE ASSY, 3/8" I.D. X 16" LONG	217
7555201702	3/8 HOSE ASSY STR X 45 ORFS	217
7555201800	HOSE ASSY 0.375 ID X 18 LG	217
7555202101	HOSE ASSY, 3/8" I.D. X 21" LONG	218
7555202501	HOSE ASSY CODED, .375 ID X 25	217
7555202601	3/8" I.D. HYDR HOSE ASSY STR-9	217
7555202681	HOSE ASSY, 3/8" ID X 26" LG	204
7555202700	HOSE ASSY, 3/8" I.D. X 27" LONG	217
7555203801	HOSE ASSY, 3/8" I.D. X 38" LONG	193
7555203903	HYDR HOSE ASSY	217

From - 7447121205

To - 7555203903

Manitowoc Cranes

Numeric Index		Appendix B
Part	Description	Page
80104187	FOAM - ACOUSTIC BACK WALL	39
80104188	INSTL, CAB BRACKETS	7
80104189	INSTL, CAB PEDAL GROUP	7
80104225	PLATE- CAB BULKHEAD COVER	43
80104227	PLATE- CAB BULKHEAD COVER	43
80104233	PLATE- CAB RIGHT SIDE	43
80104277	DECAL ENGINE THROTTLE	59
80104280	PLATE- PEDAL PLATE COVER	45
80104312	WELDMENT - LEVEL BUBBLE	43
80104371	BRACKET, SHELF	81
80104433	CLAMP .312 DIA	351, 399
80104574	RETAINING RING 19.1X25.4	141
80104823	RECEPTACLE USB DUAL PORT	53
80104827	PRINTED PANEL CONSOLE RH FRONT	53
80104840	U-BOLT .375-16 X 2.0 SQUARE	59
80104879	BRACKET BOOM TOP CABLE MTG	343
80104981	COVER, REAR ELEC LOWER	81
80105033	COVER, RH REAR SIDE	81
80105089	COVER, AIR VENT	81
80105203	COVER, AIR VENT	81
80105212	SHAFT 130 DIA X 727.0 LG	343
80105325	COVER, CAB UPPER FRONT	81
80105532	U-BOLDT .25-2OUNC 1.25 ID SS	51
80105671	SHEET METAL 14 GA	343
80105690	BREATHER 1 NPT 1274 LPM	197
80105691	BREATHER INDICATOR	197
80105909	WELDMENT, FLOOR MOUNT PLATE	45
80106033	O-RING 200X192X4.00W	313
80106106	PLUG HOLE 1.63 ID HOLE RUBBER	53
80106390	SHEAVE ASSY 26MM ROPE	341, 343
80106455	COVER, LH UPPER CONSOLE	81
80106456	COVER, LH UPPER CONSOLE	81
80106489	WELDMENT, FUSE PLATE	85
80106665	COVER, REAR ELEC UPPER	81
80106668	COVER, RADIO SHELF	81
80106705	WIRING HARNESS WCO1	51
80106752	SPACER NYLON FOR M6 BOLT	255, 269
80106797	BRACKET THROTTLE MOUNTING	59
80106865	RIVET .25 DIA (IN)	343

From - 80104187

To - 80106865

Manitowoc Cranes

Numeric Index		Appendix B
Part	Description	Page
80122217	TUBE ASSY GANTRY	218
80122218	TUBE ASSY GANTRY	218
80122219	TUBE ASSY LOW PRES	218
80122223	LINK CROSS 60X60	131
80122224	LINK CROSS	131
80122242	FITTING STRAIGHT -6ORB X -6ORB	205
80122319	RETAINING RING EXT 2.13 IN DIA	132
80122320	RETAINING RING EXT 3.00 IN DIA	132
80122321	RETAINING RING EXT 30.0 MM DIA	132
80122334	LINK MACH #350	343
80122343	ROPE GUARD 2.0 OD X .25 W (IN)	343
80122344	PIN W/HD 69.85 DIA X 147.8 LG	343
80122345	PIN W/HD 52.1 DIA X 87.8 LG	343
80122348	SPACER 145.5 X 131.50 X 107.0	343
80122349	SPACER 145.5 X 131.50 X 144.0	343
80122350	BRACKET HOSE CLAMP	218
80122356	SPACER 145.5 X 131.5 X 63.0	343
80122359	RETAINER 8 MM, 17.5 DIA HOLES	343
80122360	SHAFT 127.00 DIA X 655.1	343
80122361	SLEEVE 170.0 OD X 127.00 ID	343
80122362	SLEEVE 170.0 OD X 127.00 ID	343
80122363	SPACER 141.00 X 127.13 X 35.0	343
80122366	SPACER 141.00 X 127.13 X 67.8	343
80122372	LINK ASSY	343
80122402	HOSE ASSY -06 X 838 LG	218
80122405	HOSE ASSY -12 X 1143 LG	219
80122528	LINK CTWT	132
80122567	OUTRIGGER BEAM CARBDY JACKMACH	323
80122568	OUTRIGGER BEAM CARBODY JACK	323
80122605	SEAT HEADREST CAB 1NO/1NC SW	75
80122644	ENCLOSURE LEFT FRAME	159
80122686	SPACER 5.3X10X7	147, 161, 163, 267
80122687	BRACKET DOOR HINGE	147, 161, 163, 267
80122694	PANEL ENCLOSURE	159
80122696	LADDER 400X1616.7	141
80122708	FRAME SUPPORT	159
80122716	BRACKET DOOR LATCH	145, 159, 263
80122719	BUMPER 25.4X19.1	145, 151, 159, 263, 265
80122720	SPACER 5.3X10X20	145, 159, 263

From - 80122217

To - 80122720

Manitowoc Cranes

Numeric Index		Appendix B
Part	Description	Page
810190690	STRIP RUBBER	279
810196970	F WASHER	51
81019943	CYLINDER HYDR	169, 185
810209672	BRACKET	53
81021008	PIN 2 HOLE	185
810211760	CABLE ELEC	289
810217572	SHAFT	185
81021918	FLANGE	205
810223760	TUBE ROUND	109, 185
810224040	DECAL CAUTION HYDRAULIC TANK F	99
810224140	STRIP RUBBER 0.50 X 0.52 X 10.	149
810230470	BATTERY	71
810234540	FLANGE SPLIT CODE 62	205
810236902	BRACKET	235
810239320	ELECCONNECT M31HD36-24-31PE-072	231
810241160	CAP DUST SIZE 24	231
81024261	TUBE .25 ODX .05WX119 LG	109
810244830	CIRCUIT BREAKER 10A 24V	67
81024484	CIRCUIT BREAKER 15A 24V	67
810244850	CIRCUIT BREAKER 25A 24V	67
81024487	FUSE BOX ATC 20 1 BUS	67
810244880	FILTER HYD RETURN TO TANK	197
810247150	RELAY 24V 10A	65
810247561	OUTRIGGER PAD ASSY	323
810247572	PIN LOCKING	325
810249210	PLUG	183, 223, 225
810249240	PLUG	107
810249410	HOSE	119
810249430	VALVE ASSY QUICK DRAIN	111
81024945	PLUG QIK DRN -16 ORB	197
810249470	FITTING, ADAPTER STRAIGHT QUIC	119
810250150	CHANNEL ANCHOR CLAMP	219, 300
810250160	CHANNEL ANCHOR CLAMP	194, 205
810250180	CHANNEL ANCHOR CLAMP	205
810251520	CHANNEL ANCHOR CLAMP	181, 206
810253160	ACCUMULATOR	318
810254612	BRACKET	235, 339
810254720	CLAMP CABLE ZINC RICH 00MAPI00	385
810254722	CLAMP CABLE	344, 373, 379, 391

From - 810190690

To - 810254722

CLICK HERE TO **DOWNLOAD** THE COMPLETE MANUAL

- Thank you very much for reading the preview of the manual.
- You can download the complete manual from: www.heydownloads.com by clicking the link below



- Please note: If there is no response to CLICKING the link, please download this PDF first and then click on it.

CLICK HERE TO **DOWNLOAD** THE COMPLETE MANUAL